

SAH/SCC

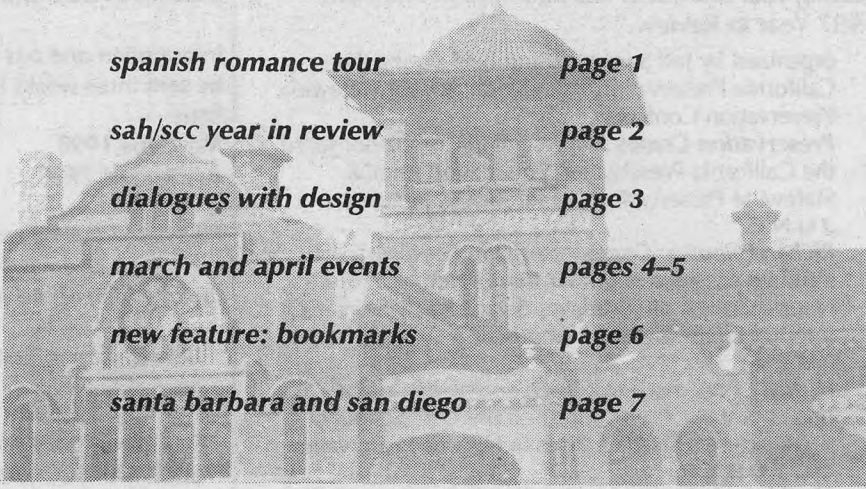
SOCIETY OF ARCHITECTURAL HISTORIANS  
SOUTHERN CALIFORNIA CHAPTER

post office box 92224, pasadena, ca 91109-2224 800.9SAHSCC  
http://www.cacr.caltech.edu/~mac/sah/index.htm

NEWS 88  
1 march/april 1998

<i>spanish romance tour</i>	<i>page 1</i>
<i>sah/scc year in review</i>	<i>page 2</i>
<i>dialogues with design</i>	<i>page 3</i>
<i>march and april events</i>	<i>pages 4-5</i>
<i>new feature: bookmarks</i>	<i>page 6</i>
<i>santa barbara and san diego</i>	<i>page 7</i>

U.S. Postage  
FIRST CLASS MAIL  
PAID  
Pasadena, CA  
Permit No. 740



The Smiley Library is the special feature on the Redlands tour, June 6th.

# SPANISH ROMANCE & CALIFORNIA LIVING

## SAH/SCC TOUR: MARCH 28TH

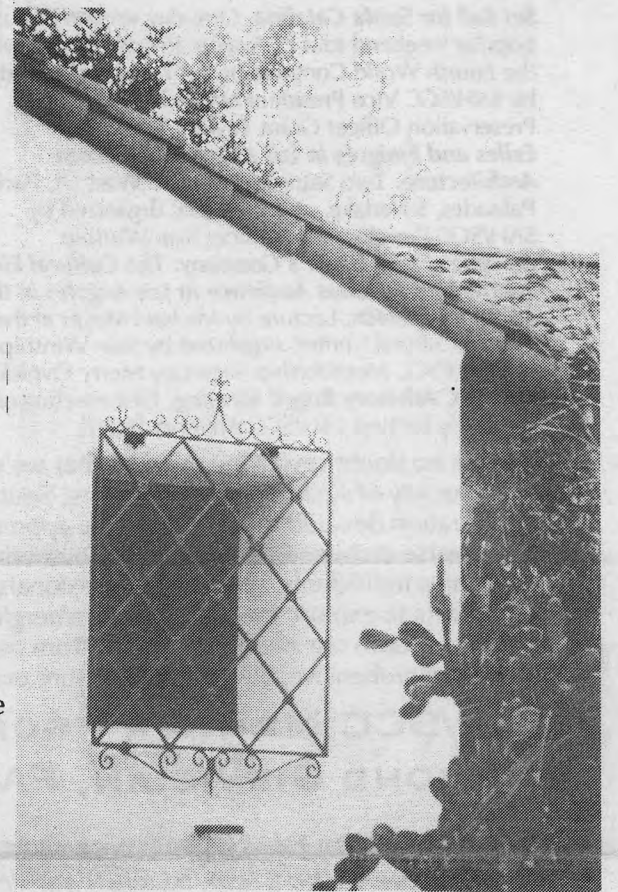
On Saturday afternoon, March 28th, SAH/SCC members and guests will explore the Spanish colonial legacy in Southern California during **Spanish Romance and California Living**, from 12:30PM to 4:30PM. Cost for members, \$20; for non-members, \$25. Led by SAH/SCC Board Member and historian Merry Ovnick, you'll explore the significant architectural features of the San Gabriel Mission and its early 19th-century grist mill, El Molino Viejo. How the simple forms of Nueva España's frontier were transfigured into a romanticized myth is beautifully illustrated at El Molino. Originally nothing more than a functional out-building of the mission, El Molino was remodeled and refined by architect Myron Hunt in 1904 as a charming little hideaway with inviting terraces, quaint interior touches, and elegant exterior moldings. His client was streetcar magnate Henry E. Huntington. El Molino is an important link between historical Spanish influence in Southern California and the charming

Mediterranean-Colonial Revival homes, whose arches and tile roofs became synonymous with gracious California living in the 1920s.

One of the masters of the mellow Mediterranean Revival styles of the 1920s was architect Wallace Neff (1895-1982), whose Ohlmond house (1925) is one of the private homes we'll visit. After seven decades, its architectural integrity and fine details remain intact. The new owners fell in love with the place at first sight and they look forward to sharing their discoveries with us. Other works in Neff's California Style will be featured in a comparative drive-by route and one other interior.

Appropriate to the theme of Spanish Romance and California Living, this will be a relaxed afternoon starting at the San Gabriel Mission, with coffee in the garden at El Molino (San Marino), and homes in San Marino and Pasadena. And, of course, it will be a sunny day with the shadows of leaves etched on mellow adobe walls.

Sign up now; see page 8 for order form.



Wallace Neff's Ohlmond House of 1925 will be experienced on the Spanish Romance and California Living tour, March 28th. (Photo: Merry Ovnick)

# REDLANDS RENDEZVOUS

## SAH/SCC BUS TOUR: JUNE 6TH

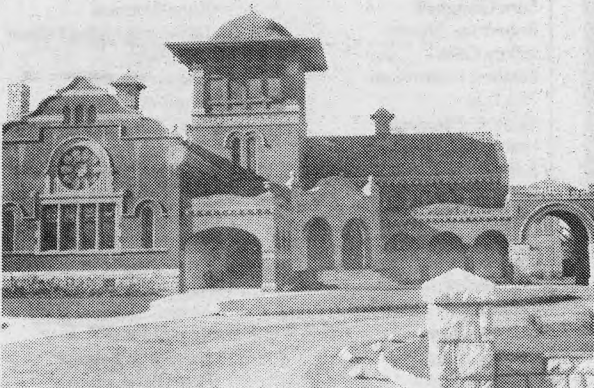
been restored—everything but the tower, whose upper portion was removed more than half a century ago. Redlands has launched a drive to restore the tower, and we've been invited to see the "before" version on our **Redlands Rendezvous**.

On Saturday, June 6th, we'll cruise to Redlands by comfortable bus for a tour of the A. K. Smiley Library—and more! Redlands' turn-of-the-century citrus barons built elegant mansions, which still there—avenue after avenue of comfortable Victorian, Craftsman, and Mission Revival middle-class homes. As well, there are notable churches, and Beaux Arts buildings of the University of Redlands (1907-08) by Norman F. Marsh, who is also known for Venice, California.

Our hosts will give us a glimpse of Redlands' treasures and a hospitable invitation into selected highlights. Our featured speakers for the day will be Dr. Larry E. Burgess, Director of the A. K. Smiley Library, and architectural historian Kenneth A. Breisch. Dr. Breisch, a sometimes-irreverent professor at both USC and SCI-Arc, is the author of *Henry Hobson Richardson and the Small Public Library in America* (M.I.T., 1997).

Transportation, tour and presentation, lunch, concluding reception, and contribution to the A.K. Smiley Library Tower Fund will be included in the ticket price, tentatively estimated at \$75 for members; \$90 for non-members.

Reserve your spot now. See page 8 for order form.

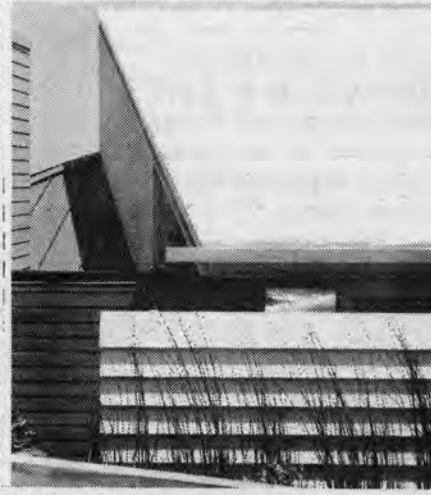


A.K. Smiley Library is seen in a vintage photograph. (Photo: Courtesy, A.K. Smiley Library)

The A. K. Smiley Library in Redlands (1897-1899; T. R. Griffith, architect) is an example of the functionalist principles of library layout inspired by Henry Hobson Richardson (1838-1886). It is also a beautiful monument in the Mission Revival style. Featuring fine details, inside and out, including a mural by Dean Cornwall, the library has recently







Shubin + Donaldson Architects is featured in "101 New Blood" at Pacific Design Center.  
 (Photo: Farhid Assasi)

**The Architecture Gallery at the Southern California Institute of Architecture**  
 5454 Beethoven St., LA. 310.574.1123.  
 9+1: Ten Young Dutch Architectural Practices, March 9–April 5. Dynamic showcase of new Dutch architecture organized by the Netherlands Architectural Institute.

**Autry Museum of Western Heritage**  
 4700 Western Heritage Way, LA. 213.667.2000.  
 Inventing the Southwest: The Fred Harvey Company and Native American Art, through April 19. Vintage ads, postcards, and photographs depict Southwest as a tourist destination.

**Barnsdall Arts Center Gallery**  
 4800 Hollywood Blvd., LA. 213.485.2116.  
 Trash, through April 5. Work about debris, both mental and material.

**Fisher Architecture Gallery**  
 USC, Harris Hall, LA. 213.740.2097.  
 L.A. Obscura, March 4–April 18. Photographs by Julius Shulman.

**Form Zero Bookstore**  
 2445 Main St., SM. 310.450.0222.  
 Thinking About Associations Between Architecture and Art, March 6–April 26. Featuring the work of LA architect Wes Cones, in celebration of the release of his first monograph.

**Gamble House**  
 4 Westmoreland Pl., Pasadena. 626.93.3334.  
 Tours of Greene and Greene house, Thursday–Sunday, Noon–3PM.

**The J. Paul Getty Museum**  
 1200 Getty Center Dr., LA. 310.440.7300.  
 Beyond Beauty: Antiquities as Evidence, through January 17, 1999. Cultural, historical, and technical look at ancient Greek and Roman art.

**Making Architecture: The Getty Center From Concept Through Construction**, through December 6. Timeline of 15-year project includes photos, sketches, and models.

**Greystone Mansion**  
 905 Loma Vista Dr., BH. 310.285.2537.  
 Built on a 12-acre site, by Gordon B. Kaufman in 1928, Greystone Mansion features extensive grounds and gardens for public viewing daily.

**Hollyhock House**  
 Barnsdall Art Park, 4808 Hollywood Blvd., LA. 213.662.7272.  
 Tours of Frank Lloyd Wright's Hollyhock House, Tuesday–Sunday, 1, 2, 3PM.

**American Institute of Architecture Student Design Competition**, March 7–29.

**Helen Lindhurst Architecture Gallery**  
 USC, Watt Hall, LA. 213.740.2097.  
 Fernanda Lin and Leonardo d'Anconia, March 16–27. An exhibition documenting the travels of the USC Architectural Guild Traveling Fellows.

**Los Angeles County Museum of Art**  
 5905 Wilshire Blvd., LA. 213.857.6000.  
 Hirado Porcelain of Japan from the Kurtzman Family Collection, through March 30. Featuring 82 pieces of blue-and-white Hirado ware.

**From Head to Toe: Concepts of the Body in Twentieth-Century Art**, through April 27. Works by more than 40 artists in many media look at realism and abstraction of the human body.

**The Marston House**  
 3525 7th Ave., SD. 619.298.3142.  
 A 1905 home designed by Irving Gill and William Hebbard sits upon an almost five-acre estate, including historic gardens. Tours: Friday–Sunday, Noon–3:45PM.

**Museum of Architecture**  
 34000 Via de Agua, San Juan Capistrano. 714.443.5288.  
 House of Soul: R.M. Schindler and the Greene Brothers: Exploring the Deeper Meaning of Home, March 5–31.

**A Blurock Retrospective: 1947–1997**, March 5–31.

**Neutra in Orange County: Julius Schulman Photography**, March 5–31.

**Wallace Cunningham: Three Houses**, March 5–31.

**The Judson Studios: Historic Stained Glass**, March 5–31.

**McKim, Mead, and White: Selections from the 1914 Wenzel-Krakow Monograph**, March 5–31.

**Museum of San Diego History**  
 Balboa Park, SD. 619.232.6203.  
 Developing San Diego: The Images of Ralph P. Stineman, through April 1. Historic photographs of San Diego's construction from 1910 to 1915.

**Neff Park Historic Site**  
 La Mirada. 310.943.7277.  
 More than 40 historic trees at the National Register Site, home of Andrew McNally of Rand McNally.

**Oakland Museum of California**  
 1000 Oak St., Oakland. 510.238.2200.  
 Gold Rush! California's Untold Stories, through July 26. Exhibition explores the impact of the Gold Rush on the state, with artifacts and re-created archaeological dig.

**Silver and Gold, Cased Images of the Gold Rush**, through July 26. Exhibition of 150 daguerreotypes and ambrotypes of the faces and landscape of the Gold Rush.

**Pacific Design Center**  
 8687 Melrose Ave., LA. 310.657.0800.  
 101 New Blood, March 18–April 30. Exhibition brings together 101 of LA's newest talents in the fields of architecture, interior design, landscape, product design, graphic design, and fashion.

**FilmArt**, March 18–20. Exhibition of Hollywood production design representing more than four decades of film art.

**Cool Dogs, Hot Digs II**, March 18–20. An exhibit of 50 cat and dog houses created by well-known LA architects.

**LA Eyeworks Eyeglass Design: History and Process**, March 18–20. Seventeen years of craftsmanship combined with functionality and a sense of fun.

**LA Modern and Beyond: Selections from the Los Angeles County Museum of Art**, March 18–20. Collection of signature furniture pieces by proto-modernist, high-modernist, and post-modernist Los Angeles architects and designers.

**100 Giants of Chair Design**, March 18–20. Miniatures from the Vitra Design Museum on display.

**Style and Function**, March 18–20. Interior and furniture designs by members of the Los Angeles Design Group.

**Rancho Los Alamitos Historic Gardens**  
 6400 Bixby Hill Rd., LB. 562.431.3541.  
 Four acres of gardens are part of a historic site that includes 18th century adobe ranch house, barns and blacksmith shop.

**Rancho Los Cerritos Historic Site**  
 4600 Virginia Rd., LB. 562.570.1755.  
 National Historic Landmark 1844 adobe and 1931 gardens by Ralph Cornell tell the story of ranch lands evolving into modern cities.

**San Francisco Museum of Modern Art**  
 151 3rd St., SF. 415.357.4000.  
 Likeness and Guise, through March 3. Portraits by Paul Klee.

**Zaha Hadid: Painted Projects**, through March 10. A selection of large, scroll-like paintings by the London-based architect Zaha Hadid.

**Opening Spreads from Wired Magazine**, through March 10. Featuring a selection of digitally produced magazine spreads, 1993–1996.

**April Greiman Graphics**, March 27–July 3. Exhibition of the work of one of LA's best-known graphic artist.

**Heavenly Hallucinations: A.G. Rizzoli**, March 27–June 23. Exhibition of 58 works created by a reclusive San Francisco draftsman, 1930–70, which were only recently discovered.

**Fabrications: Bodybuildings**, through April 28. Focuses on the organic human body and fabricated building through four architectural installations.

**Humane Technology: The Eames Studio and Beyond**, ongoing. Re-installation of the Eameses' conference room, additional designs and films, plus work by designers who share the Eameses' vision.

**Santa Barbara Historical Museum**  
 136 E. De la Guerra St., SB. 805.966.1601.  
 Scenic View Ahead: A Collection of Westways Art From the Automobile Club of Southern California, through May 3. A special exhibition of original works from the Auto Club's Westways magazine.

**Santa Barbara Museum of Art**  
 1130 State Street, SB. 805.963.4364.  
 Japanese Paper Stencils for Textiles, March 14–June 7. Masterfully carved, these stencils on exhibit embody the Japanese genius for design.

**Southwest Museum**  
 234 Museum Dr., LA. 213.221.2164.  
 Yungyapu: The Art of Hopi Wicker Basketry, through April 11. Features 125 colorful wicker pieces from the Third Mesa in Arizona.



The Office of J.M. Reynolds Architects is featured in "101 New Blood" at Pacific Design Center.  
 (Photo: Benny Chan)

## BOOKMARKS

Bookmarks will bring a round up of new publications about the history and architecture of Southern California. We especially want to acknowledge books written by or about SAH/SCC members, so send notice of books to SAH/SCC News.



**AIA/Los Angeles: 1996 Design and Next LA Awards**. Review of 91 commercial and residential projects from 1996 in Southern California. AIA/LA and Hennessey + Ingalls, paper, \$19.50.

**The Architecture of Gregory Ain: The Play Between the Rational and High Art** by David Gebhard, Harriette Von Breton, and Lauren Weiss. Reprint of the catalogue that accompanied a show of Ain's work at UC Santa Barbara in 1980. Hennessey & Ingalls, paper, \$24.50.

**Art & Architecture: The Entenza Years** edited by Barbara Goldstein; essay by Esther McCoy. Entenza's tenure at Art & Architecture championed all that was new. Hennessey & Ingalls, paper, \$39.95.

**Craig Ellwood: Architecture** by Esther McCoy. One of the most sought after books on California modernist architecture is back in print. Hennessey & Ingalls, cloth, \$65.00; paper, \$39.95.

**Discover Los Angeles: An Informed Guide to LA's Rich and Varied Cultural Life** by Letitia Burns O'Connor. More than 200 cultural resources are described in this complete guidebook. J. Paul Getty Trust, paper, \$16.95.

**Going to the Getty** by J. Otto Seibold and Vivian Walsh. A children's book—from the creators of the Mr. Lunch series—takes a delightful tour through the Getty Center. J. Paul Getty Trust, cloth, \$16.95.

**The Los Angeles Watts Towers** by Bud and Arloa Paquin Goldstone. Account of techniques, history, and conservation of Simon Rodia's work. J. Paul Getty Trust, paper, \$24.95.

**Light and Illusion: The Hollywood Portraits of Ray Jones** by Tom Zimmerman. Story of a "regular guy" who rose to glamour as the head of Universal Studio's still photography department. Balcony Press, paper, \$24.95.

**Making Architecture: The Getty Center** with preface by Harold M. Williams; essays by Richard Meier, Stephen D. Rountree, and Ada Louise Huxtable. Documentation of the planning, design, and construction of the Getty Center. J. Paul Getty Trust, paper, \$50.

**Western Ranch Houses** by Cliff May. The classic second-edition of Sunset Western Ranch Houses (1958). Hennessey & Ingalls, paper, \$32.50.

# SAH ANNUAL MEETING IS HERE!

## SPECIAL TOURS OPEN TO SAH/SCC MEMBERS: APRIL 19–20

Annual meeting registrations have been literally rolling off the fax machine in Chicago during the past weeks since the meeting announcement has been mailed. The meeting promises to exceed all estimates for attendance, and some events have already sold out. In order to still have an opportunity to attend the events of choice, SAH/SCC members are urged to send in their registrations without delay.

The Southern California Chapter has co-sponsored the two-day tours to San Diego and Santa Barbara. The two tours are overnight bus tours, 8AM, Sunday, April 19th, to 7PM, Monday, April 20th. **Members may attend these as separate events, without registering for the annual meeting.** A block of spaces on each tour is being held specifically for SAH/SCC members. You must register with the SAH National office in Chicago: 312.573.1368.



Santa Barbara County Courthouse by William Mosser, 1925.  
 (Watercolor by Stephen Harby)

**Santa Barbara and Montecito: The Genius Loci of the Spanish Colonial** A memorial tribute to Dr. David Gebhard Santa Barbara is a unique example of a living American city that has defined itself based on its historic origins and has used its traditions to guide its planning and physical development right up to the present. We owe this to the passion and life's work of the late David Gebhard, who served the community faithfully as an architectural watchdog and guru. This tour is dedicated to his vision.

We will have the opportunity to see the many historic sites and vistas that inspired Dr. Gebhard, and savor many of his accomplishments, including the Pueblo Viejo Historic District, the treasures he gathered at the Architectural Drawings Collection at UCSB, and the Montecito house and study he designed, where his wife Pat has kindly invited us for drinks. Stephen Harby, former SAH/SCC Board member, architect, and part-time Santa Barbaran, will be leading this tour and will be

joined by local architects, planners, historians, and scholars—many of them former colleagues of Dr. Gebhard's.

The tour will focus on Sunday on Spanish Colonial origins with the Mission district and downtown, where the distinction between the original Spanish artifacts, 20th-century restorations, and revivals will be subtle. After arrival at the Mission (1812–20) and a tour of the adjacent Plaza Rubio (Mary Osborne Craig, 1926), a walking tour downtown will be led by local historian Mary Louise Days. Lunch at the courtyard of the Arts and Letters Cafe will afford us the chance to browse in Santa Barbara's best art and architecture bookstore.

After lunch, we will re-board our bus for the short trip to Montecito where we will see two large estates, then we will wind down at Pat Gebhard's where we will have the chance to meet many active local preservation, research, and architectural design folks at a reception co-hosted by the Santa Barbara chapter of the American Institute of Architects.

Monday, we will return to Montecito, where we will continue our exploration of a selection of the most interesting estates. Next, an in-depth look at the Dater-Ludington estate designed by Bertram Goodhue with gardens by Lockwood de Forest (1915) will be guided by resident historian Gail Jansen. We will have a picnic lunch high above the sea at the dramatically sited "Hesperides" by Lurah Maria Riggs (1956). After lunch we will descend to the sea to visit the Moorish style minaret-festooned poolhouse designed by George Washington Smith. Our day will end in Goleta at the University of California campus where we will be received by Kurt Helfrich at the Architectural Drawings Collection, and will be shown the original drawings of several of the projects we have seen.

The tour will entail walking and negotiating steps and changes of terrain. Please call tour leader Stephen Harby at 310.450.8239 (sharby@aol.com) if you have any questions. **San Diego and La Jolla Architecture: From Spanish Missions and Mexican Ranchos to Cutting-Edge Contemporary** San Diego is California's second largest city. Founded prior to better-known San Francisco and Los Angeles, San Diego and environs provide a treasure-trove of noteworthy works by well-known architects, landscape architects, and botanists of international repute as well as many lesser-known local practitioners. This two-day tour will explore the distinct history and architecture of the area by looking at several discrete periods: Spanish mission, Mexican rancho, American boomtown, two world's fairs, W.W.II, and beyond. Tour leaders and SAH/SCC Advisory Board Members Richard Rowe and Jeff Samudio will be joined by knowledgeable local guides and architects.

On Sunday, the tour will highlight the period from Spanish mission through the world's fairs. The tour begins at the Casa de Bandini in the Old Town San Diego State Historic Park. La Casa de Bandini was built in 1829 as the home of Juan Bandini, which in the 1850s became a hotel. Later, under the ownership of Albert Seeley, La Casa de Bandini became a hotel to



California State Building, Panama Pacific Exposition, San Diego, by B. Goodhue, 1913–15. (Watercolor by Stephen Harby)

service Seeley's San Diego–Los Angeles Stage Line. We will enjoy a Mexican lunch here. Our overnight stay will be in the recently remodeled 1912 St. James Hotel (a 10-story hotel that was once the tallest building in San Diego). It is in the middle of San Diego's Gaslamp Quarter. On Monday, we will focus on 20th-century architecture, including a visit to La Jolla with a special tour of the Salk Institute's assemblage of buildings.

At both the turn of the 19th and now the 20th centuries, San Diego's architecture explores new ideas with an exuberance outside the shadow of those big cities to the north. The tour will examine the work of Irving Gill, Frank Mead and Richard Requa, Hazel Waterman, John Morley, and Kate Sessions, as well as Bertram Goodhue, Rudolph Schindler, Lilian Rice, Louis Kahn, Rob Wellington Quigley, Kendrick Kellogg, Michael Graves, Moore Ruble Yudell, and Todd Williams and Billie Tsien. The tour will visit private homes and noteworthy public buildings, such as those of the Salk Institute and Balboa Park. For further information, call Richard Rowe 760.324.2448.

## TOUR DETAILS

Departure is 8:00 AM, Sunday, April 19th, from the Los Angeles Biltmore, Grand Avenue. Price: \$210 double occupancy; \$250 single occupancy. The price of the tour includes: transportation, lunches and refreshments both days; hotel accommodations in a historic hotel; continental breakfast; tour fees. Dinner Sunday will be on-your-own with numerous high-quality restaurants in easy walking distance. Our rooms will have either one or two queen-sized beds. These will be allocated as requests are received. Those who wish to share a room should indicate the name of their partner and whether one or two beds are desired when making a reservation. The tour will return to the Los Angeles Biltmore by 7PM Monday, April 20th.

