

# P/A NEWS REPORT

Progressive Architecture 430 Park Ave., New York, N. Y. 10022

REC JAN 24 1967

AQJ		
FEE	2	
EB		
HS		
KN		
JT		
WL	3	
LL		

Suby EKS

# 1

BULK RATE  
U.S. POSTAGE  
**PAID**  
BROOKFIELD, WIS.  
PERMIT No. 5





# P/A NEWS REPORT

## REPOSITORY FOR LBJ DATA

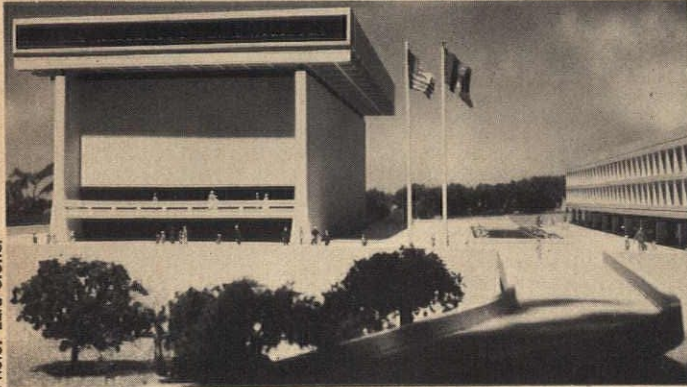


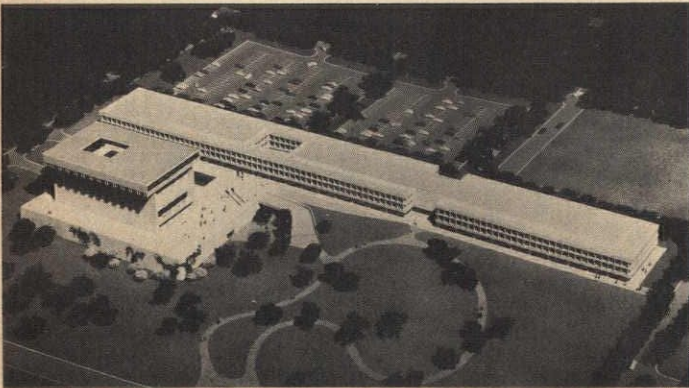
Photo: Ezra Stoller

AUSTIN, TEX. The Presidential library is a species of building that has received very spotty architectural treatment in the past. The repositories of the papers and memorabilia of Presidents Franklin Roosevelt, Hoover, Truman, and Eisenhower generally are conglomerations of storage space for vast amounts of poorly indexed material housed in undistinguished buildings. I.M. Pei's design for the John F. Kennedy Library at Harvard has not been revealed, of course, but the program provides for professional treatment of the Kennedy collection and related research materials on politics and statesmanship.

Now the University of

low, "background" building to house the university's Texas Collection, its archives, headquarters for the Texas State Historical Association, a Latin American Library and Institute, and the new Lyndon B. Johnson School of Public Service. A third building may be added to the complex.

The design, by Gordon Bunshaft of the New York office of Skidmore, Owings & Merrill (Brooks, Barr, Graeber & White of Austin are associate architects), indicates a monumental library building raised on a podium on the university's East Campus, its side walls monolithic and loadbearing. The library will be crowned by a separately articulated top floor, presum-



Texas has announced the impending construction of the Lyndon Baines Johnson Library, to house the President's papers and other documents and artifacts bearing on his public life, as well as a 1000-seat auditorium, a lecture hall, and space for art exhibits and display of rare volumes. Also part of the project is a long,

ably containing office space. The university buildings will be horizontally expressed concrete structures with deep window reveals furnishing sun control. A handsome, natural knoll will form a parklike setting for the library and other structures, and there will be on-grade parking for 500 automobiles at the

rear of the site, near an existing expressway.

Associated structural engineers are Paul Weidlinger

and W. Clark Craig & Associates; mechanical engineers are Gregson, Gayner & Sirmen, Inc.

## BREUER'S VERSION: MORE SLABS FOR FDR

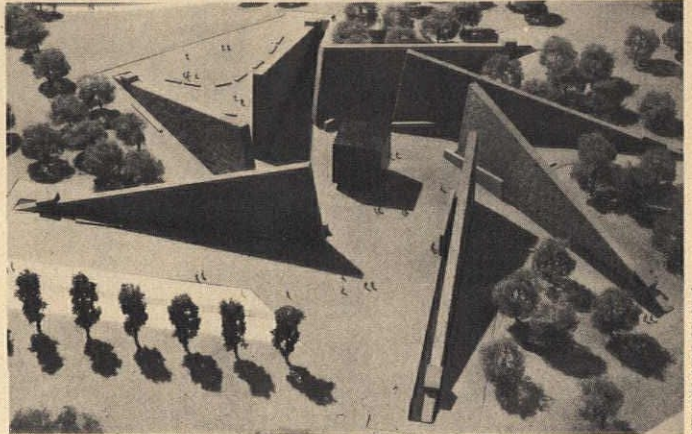
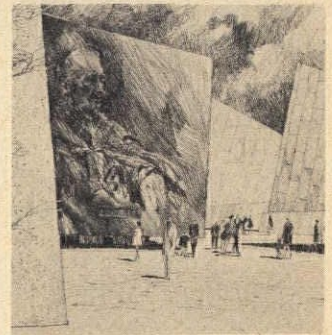


Photo: Ben Schnall

WASHINGTON, D.C. When asked by the members of the Franklin Delano Roosevelt Memorial Commission, who were interviewing him for the job, whether the memorial should be a functional one — a school or a hospital, for instance — Marcel Breuer answered with an emphatic no. It should, he told them, be a monument that would make visitors think only of the man. Breuer's design, done in collaboration with Herbert Beckhard, will do just that. When a visitor enters the memorial from a walkway lined with columnar beach trees, he will face a hovering cube of polished black granite, on the west face of which is engraved a portrait of FDR. As the visitor nears the portrait, he will hear the late President's voice, from a loudspeaker, quietly reciting portions of his more memorable speeches. Thus, the architects hope to recreate the presence of the man.

Seen from above, the memorial looks like a giant pinwheel. The approach walk is the handle; the polished black granite cube in the center is



the pin, and the 73'-high granite slabs arranged around the cube form the wheel. From the ground, these wedge-shaped slabs will seem less frivolous.

Comparisons with the original competition-winning design by Pedersen, Tilney, Hoberman, Wasserman & Beer are inevitable, for, like its predecessor, Breuer's design has free-standing slabs. When asked whether he had taken his design direction from the former, Breuer simply said no. And, at this point, comparisons seem academic. Unlike the competition winner, Breuer's version already has the approval of FDR, Jr.

## REYNOLDS SETS UP AWARD FOR COMMUNITY DESIGN

WASHINGTON, D.C. The Reynolds Metals Company last month announced the establishment of a new award pro-

gram. In addition to its yearly award for a building design in aluminum, it will now offer, every two years a \$25,000



## Look, no structural columns!

### Mo-Sai windowalls provide complete structural system.

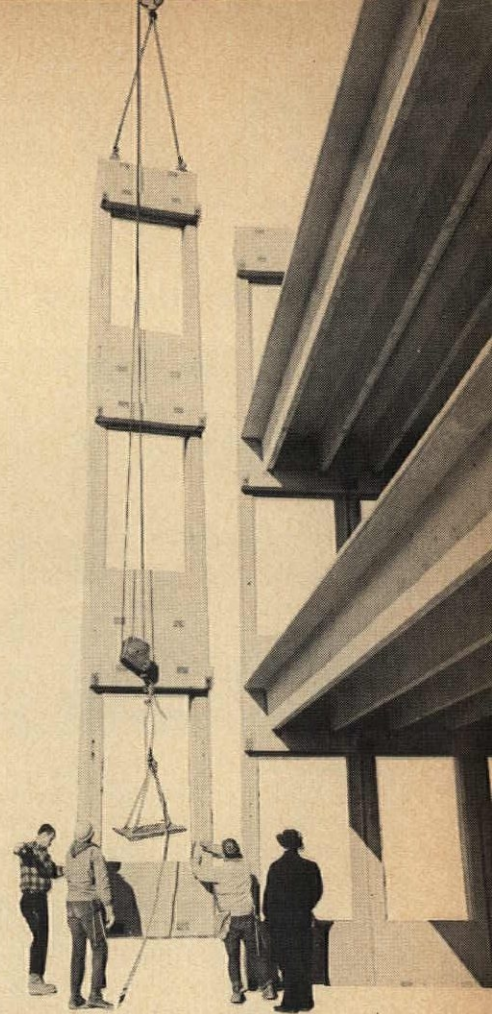
Concrete double "T's" span sixty feet of clear office space between structural Mo-Sai windowalls. There are no columns, juts, or load-bearing partitions to disrupt office planning. Three-story windowalls were custom cast under rigid Mo-Sai factory quality-controlled conditions.


The entire structural Mo-Sai shell and double "T's" were stored at the plant until needed and then erected from truck beds in eight weeks. Double "T's" rest on haunches cast on the back of the Mo-Sai units.

Exposed white quartz aggregates form the exterior surface. The interior was smooth-troweled and painted.

Consistent high quality is assured by Mo-Sai quality control and plant inspection standards. Insist on genuine Mo-Sai from one of the licensees shown below.

Edens Executive Center / Wilmette, Illinois  
Architect: Lattin Smith & Associates  
General Contractor: Joseph Duffy  
Photos by: Cabanban Studio



Mo-Sai Institute, Inc.,  110 Social Hall Ave., Salt Lake City, Utah 84111

*Mo-Sai*

PRECAST, PRESTRESSED CONCRETE  
WITH EXPOSED AGGREGATE

BADGER CONCRETE CO.  
Oshkosh, Wisconsin  
BEER PRECAST CONCRETE, LTD.  
Scarborough, Ontario, Canada  
BUEHNER & CO., INC.  
Mesa, Arizona  
CAMBRIDGE CEMENT STONE CO.  
Allston, Massachusetts  
ECONOMY CAST STONE CO.  
Richmond, Virginia  
FORMIGLI SALES CO.  
Philadelphia, Pennsylvania  
GEORGE RACKLE & SONS CO.  
Cleveland, Ohio  
GOODSTONE MFG. CO., INC.  
Rochester, New York

GRASSI AMERICAN CORP.  
South San Francisco, California  
HAMILTON CONCRETE PRODUCTS CO.  
Chattanooga, Tennessee  
HARTER CONCRETE PRODUCTS, INC.  
Oklahoma City, Oklahoma  
INTERNATIONAL PIPE & CERAMICS CO.  
Pomona, California  
JACKSON STONE COMPANY, INC.  
Jackson, Mississippi  
OLYMPIAN STONE CO., INC.  
Seattle, Washington  
OOLITE INDUSTRIES, INC.  
Ojus Br., Miami, Florida

PLASTICRETE CORPORATION  
Hamden, Connecticut  
READY-TO-POUR CONCRETE CO.  
Idaho Falls, Idaho  
SEKIGAHARA STONE COMPANY, LTD.  
Tokyo, Japan  
SOUTHERN CAST STONE CO., INC.  
Knoxville, Tennessee  
SUPERCRETE, LTD.  
St. Boniface, Manitoba, Canada  
TEXAS INDUSTRIES, INC.  
Arlington, Texas  
WILSON CONCRETE CO.  
Red Oak, Iowa  
South Omaha, Nebraska



award for community architecture. The AIA will administer the program, and communities being considered will be judged by an AIA jury, which will work from its own nomination list.

This year's jury includes Morris Ketchum, Jr., John Fisher-Smith of the San Francisco office of Skidmore, Owings & Merrill, and Archibald C. Rogers of Rogers, Taliaferro, Kostritsky, Lamb in Baltimore. The jury has not yet set a date for a final review, but results of the initial program will be announced before the end of 1967.

According to R. S. Reynolds, Jr., chairman of the board of Reynolds Metals, "Our company is sponsoring the new award for community architecture to encourage public recognition of the contribution being made by architects to create an urban environment in which man can live pleasantly and work efficiently." The use of aluminum will have no bearing on the judging. Only communities sufficiently complete "in execution and use to demonstrate clearly the architectural design accomplishment" will be considered.

## PLANS FOR ST. JOHN THE DIVINE: NEOECLECTICISM

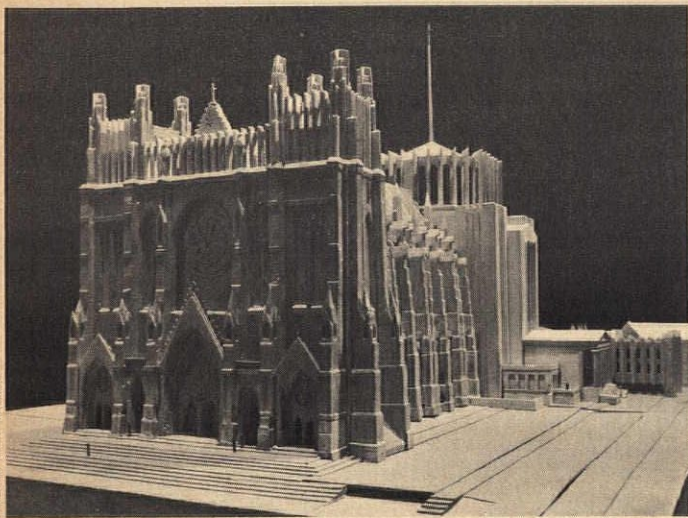
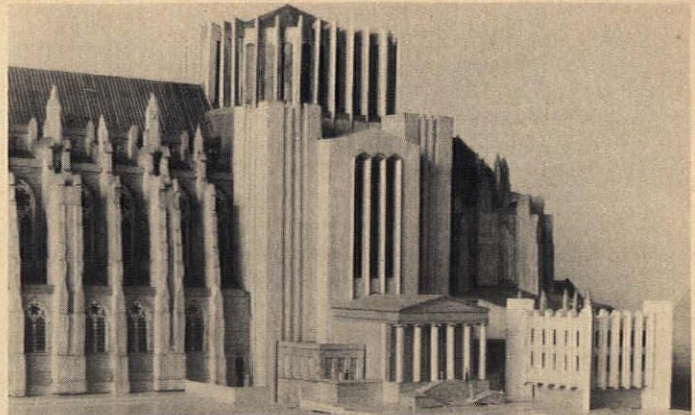


Photo: Bob Noble

NEW YORK, N.Y. One day in December 1946, on the eve of his retirement, Bishop Manning, head of the Episcopal Diocese of New York, looked from his office window across the cathedral grounds to the steel scaffolding atop the west front of the still uncompleted Cathedral of St. John the Divine. To him, the scaffolding had become a symbol of the cathedral's incompleteness, the way roadside junkyards symbolize American affluence. There had been other reminders of the work needed to complete the cathedral: During the war, the bishop had donated tons of iron and steel to the war effort, building material left lying on the cathedral ground when construction stopped in 1941.

Last month, New York architects Adams and Woodbridge revealed plans for the cathedral's completion. With the announcement, discussion

in architectural circles turned from whether or not the cathedral would be completed to *how* it should be completed. The Adams and Woodbridge model (shown here) includes details of the completion of the west front, the transept, and the dome above the crossing. This dome, currently a temporary one of brick and mortar, becomes a concrete and stained-glass lantern, and the architects talk of varying the colors in the glass so that the hue of the light falling on the altar, which will be moved beneath it, will vary according to the time of day. Just what the architectural style of these completing elements is is hard to pinpoint. In that they are to be constructed of contemporary materials with clean straight lines, they are contemporary. But in the transept, they produce a massiveness reminiscent of U.S. office buildings in the 1930's. And it is pos-



sible that, when completed, the sense of massiveness generated by these bulwarks of concrete will overbalance the massiveness of the rest of the church — a massiveness that is at least partially offset by its refined detailing.

The argument that a cathedral should be completed in one style carries little weight with the cathedral's board of directors. They point out that cathedrals built in the past and completed over a period of centuries often became a hodgepodge of architectural styles. And they further point out that the lantern over the transept, instead of being a 500' spire called for by architect Ralph Adams Cram (see p. 67, SEPTEMBER 1966 P/A), who worked on St. John's from 1911 until his death in 1942, will make it possible to gather worshipers around a centralized altar. Bringing people closer to the service has long been a desire of the church, and so sure was a former canon of St. John's that the altar would some day be beneath the crossing he had a foundation for a pulpit built into the cathedral floor there. Architect Woodbridge told P/A that engineers had told him Cram's existing supports for the planned spire would not have supported it. Steel trusses will support the Adams and Woodbridge lantern, and the piers supporting the trusses will house three elevators to carry maintenance men the 15-story distance to the lantern.

Just to the south of the transept is the old Leak and Watts Orphan Home, now used as a gift shop by the cathedral. This building, with its pillared Greek temple façade, will be moved 5' or 6' to the west to line up with the transept. St.

John's may very well become the only Western cathedral to have a Greek temple portico as an entrance. Just to the east of this entrance, the architects plan a square, two-story building housing church offices; an enclosed walkway will connect it with the cathedral. Although in the model this building looks like an afterthought, it actually shows foresight, for it may become the base of a 450' campanile. Architects Adams and Woodbridge believe that the cathedral, despite its mass, needs something to make it a focal point for the neighborhood it serves. When construction of the cathedral got underway in 1892, it was sited on open land, the highest point on Manhattan Island, close to the campus of Columbia University and the homes of the affluent that were being built near it, overlooking the Hudson River. Churchmen chose the spot deliberately — in preference to a site where the Plaza Hotel is now located on 59th Street, off Fifth Avenue. Since then, the city has slowly encroached on the cathedral: Today, it is barely visible, until one comes upon it in the midst of the apartment buildings, shops, and hospital that surround it.

A campanile could also house the smokestack of the power plant (now in the basement of the cathedral), which will have to rise at least 250', the height of the top of the lantern. At present, the exhaust from the six giant boilers that heat St. John's is piped from the church through a tin conduit running up the wall of the south transept. If the tower is built, the heating plant will be moved out beneath it.

How much all this work will cost is not yet known. The church hopes to have esti-



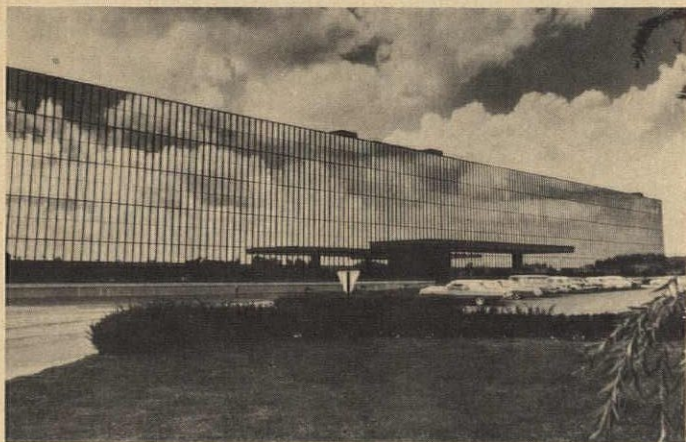
mates available soon and fund raising will begin after that.

Completion will be a mammoth task. Only St. Peter's in Rome is larger in both length and area. St. John's has a floor area greater than Notre Dame and Chartres combined.

Its completion will give

much-belated birth to an anachronism. Under Cram's direction, the cathedral was, at least in part, Gothic — probably the last Gothic cathedral that will ever be built. No one can build Gothic cathedrals anymore. Certainly no one seems able to finish them.

## SAARINEN'S LOOKING GLASS WALL



HOLMDEL, N.J. The two-way-mirror curtain wall of Bell Telephone Laboratories' Holmdel laboratory lets only 15% of the sun's light through. The other 85% is reflected, together with 65% of the heat and goodly portions of the images of passing clouds and automobiles.

The structure, which is really four buildings under one roof, opened officially here last month. Originally designed in 1959 by Eero Saarinen, it was under construction in 1961 at the time of his death. The first phase — the two front buildings — were completed in 1962 by the Saarinen firm (see p. 77, OCTOBER 1962 P/A), and the rear two were completed in 1966 with the successor to the Saarinen firm, Kevin Roche, John Dinkeloo & Associates, acting as consultants.

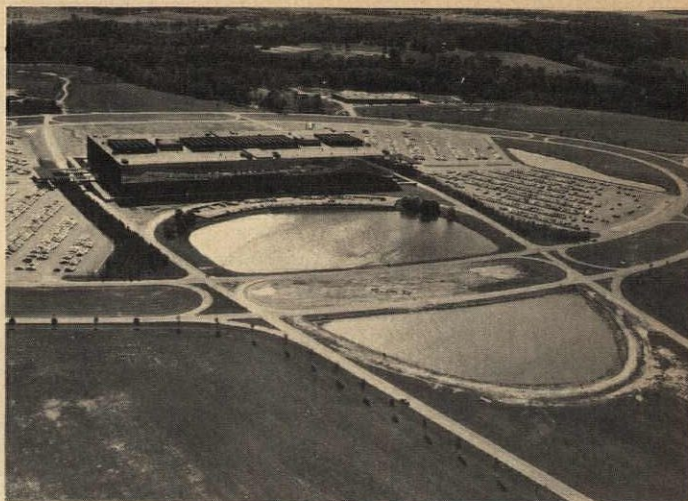
Behind the looking-glass façade are 1,200,000 sq ft of space in five stories. In the center of the 700' long structure, a cross-shaped, open skylighted area of garden courts, reception area, and lounge divides the four buildings. All are connected by walkways at each upper floor, and both reception and lounge areas are ringed by upper story balconies (see photo).

The 6-acre reflecting pool directly in front of the structure, besides providing some-



thing for the mirrored façade to reflect, feeds water to the air-conditioning system. This system's air-intake vents are located in the concrete podium on which the building rests.

Any building of this size and complexity produces a mass of intriguing statistics. There are, for example, 6800 glass panes, each measuring 3' x 6'-6", mounted in neoprene gaskets and supported between black and anodized aluminum mullions. Each pane is actually two panels of clear glass with a thin coating of aluminum between. The reinforced concrete structural frame and floors took more than 100,000 yds of poured concrete and 8000 tons of structural steel. And on the interior of the building, the exposed bush-hammered con-



crete becomes a design feature; it is left exposed in the court and corridors. All corridors run around the periphery

of the structure, and offices open off connecting cross-ises, keeping pedestrian traffic past them to a minimum.

## TAC MEDICAL CENTER FOR BOSTON

BOSTON, MASS. During the next 15 years, Tufts-New England Medical Center will spend \$72,500,000 expanding its facilities on a 13-acre site in Boston's South Cove area. Plans announced recently show a tightly knit complex of buildings, fitting the site as carefully as pieces in a three-dimensional jig-saw puzzle. The design was worked out by The Architects Collaborative (Herbert K. Gallagher, partner in charge), in co-operation with the Center's own planner, Hermann H. Field, and the Boston Redevelopment Authority. Before TAC was called in in 1964, Field's staff completed a three-year study of hospital design financed by a U.S. Public Health Service Grant.

The site will be dotted with plazas, walks, arcades, and a small park, tying it to the surrounding city; and the

planners hope that the Center, instead of becoming an isolated unit, an island in the sprawl of urban buildings surrounding it, will become a bellwether for development of the area. Various parts of the Center will have street-level shops and restaurants, and at least one city street will cut beneath it.

First building to rise in the Center, beginning in 1968, will be a 12-story Dental Health Science Building for Tufts University School of Dental Medicine. Next will come facilities for the Tufts University School of Medicine, including a 20-story basic science building, a library and several research buildings, and, at the same time, a new pediatric hospital. During this phase of the program, part of Washington Street will be bridged by a building housing additional adult care fa-

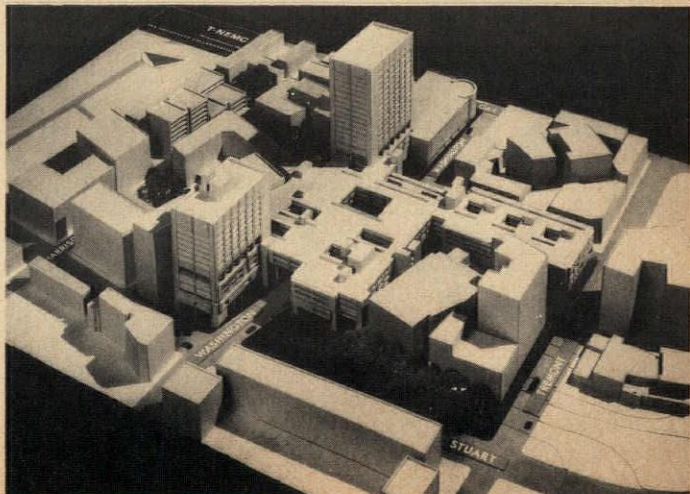
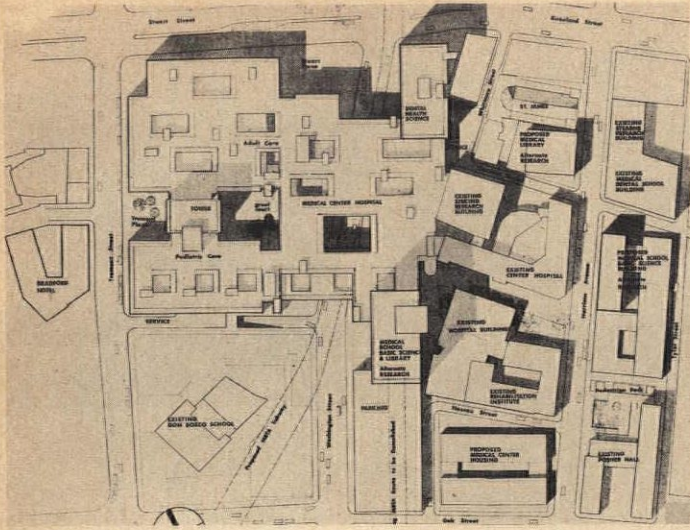


Photo: Robert D. Harvey Studio

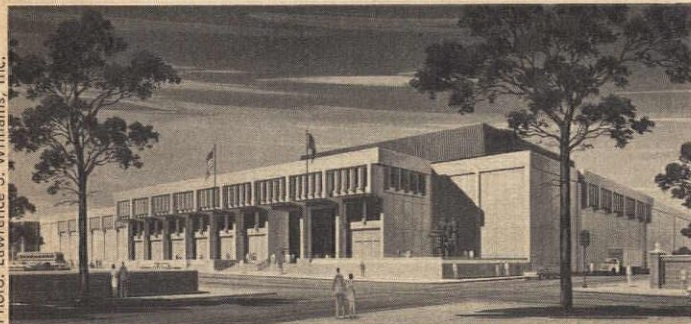




cilities. In the final phase, additional hospital facilities will be added. Eventually, housing will go up just outside the site,

and the Center will continue to lease the Wilbur and Music Hall Theaters across Tremont Street.

## MINT NEWLY MINTED



PHILADELPHIA, PA. Making money, like any other commercial enterprise, is time-consuming and costly. Faced with rising prices and a fantastic increase in the use of coins as the growing population pumps them into vending machines, toll gates, and piggy banks, the U.S. Mint has been forced to expand and automate its production. Ground was broken in September 1965 on a new mint building in Philadelphia, home of the first U.S. Mint, built in 1792; completion is scheduled for January 1968. The original mint, which went up on the site of a demolished distillery, was only a block or so from the site for the new one. It will be located on Independence Mall, between Fourth and Fifth Streets facing Independence Hall.

Designed by Parsons-Jurden Corporation with Vincent G. Kling & Associates as consulting architects, the mint will have a look as contemporary as that of the Kennedy half-dollar. To design a build-

ing that is essentially a manufacturing plant, yet which must also be a landmark, a tourist mecca, and a sedate Government building bespeaking solidarity, security, and sensibility, and which must also fit easily into its historic surroundings, presents a formidable challenge. The architects have met it well. Their design shows a three-story structure fronted by a raised entrance plaza and portico. Panels of red-gray granite form the façade, and are intended to blend with the red brick construction of the historic buildings around the Mall. The interior has a three-story high lobby, and, beyond that, an open bay to house the smelting, stamping, and machining equipment. Visitors will be able to peer down on this operation from a third-story gallery running the length of the building. Below them, the automatic machinery will turn metal bars into coins in a continuous operation: A machine will, for example, spew forth 10,000

pennies per minute, as compared to the present rate of 560 per minute. Seigniorage—the amount by which face value of the coins exceeds production costs—is expected to be about \$100 million. Security was, of course, a major consideration, and in part this has been solved by keeping the number of doors to a minimum. A practice pistol range for the guards will be in the basement.

## PERSONALITIES

**Robert Martin Engelbrecht** of Princeton, N.J., has been elected to the National Board of Directors of the Building Research Institute . . . New York City's newly appointed Housing and Development Administrator is **Jason Ralph Nathan**. The department he will head is one of the city's new "super-agencies" . . . **J. Philip Murphy** of Emeryville, Calif., has been re-elected president of the American Institute of Steel Construction . . . Architect **Fred Bassetti** has been elected president of the Seattle Chapter, AIA.

## BIRMINGHAM COMPETITION NAMES FINALISTS

BIRMINGHAM, ALA. Eight finalists survived the initial judging of 275 entries in the competition to design a \$25 million civic center for Birmingham. They are:

- Marvin Fitch of Fridstein & Fitch, Chicago, Ill.
- James Martin Harris of Harris & Reed, Tacoma, Wash.
- B. J. Hoffman and Hanford Yang of Devon, Pa.
- John Stuart Mill of Beckhart & Mill, Los Angeles, Calif.
- George W. Qualls, of Geddes, Brecher, Qualls, Cunningham, of Philadelphia, Pa.
- Ralph Rapson of Minneapolis, Minn.
- Elvin Riley of Elbasani, Logan, Barakonski & Riley Associates, Los Angeles, Calif.
- Emanuel N. Turano of New York, N.Y.

These eight finalists will submit second entries, which will be judged in April. At that time first-, second-, and third-prize winners will be an-

nounced. The first prize is a commission to build the Civic Center, with a fee estimated at about \$1,350,000. Second prize will be \$15,000; third prize, \$5000.

Comprising the Civic Center will be a 13,000-seat sports coliseum, a 3000-seat concert hall, a 1300-seat theater and exhibition hall, a restaurant, parking facilities, meeting rooms, and offices.

Jurors for the competition are architects Max Abramovitz, Gyo Obata, and John Carl Warnecke, and theater consultants Harold Burris-Meyer and John Fernald.

## THE WHYS AND WHY NOTS

Every now and then, press releases come across our desk that bear the unmistakable imprimatur of the luncheon meeting between the P.R. man and his client, be he architect, manufacturer, planner, or publicity minded civic official. These are usually of the "why-not" ilk, conceived as a grand idea to solve the world's woes, and, incidentally, garner a little publicity. You know the kind of thing: Why not roof over San Francisco Bay to make commuting to Tiburon easier? Why not divert the Rappahannock River through southern Utah to make the desert bloom? In other words, the sort of proposal the suggestor can make and then walk away from.

We were reminded of this backwater of the communications industry today when a mimeographed sheet arrived from Lehrman & Glanzberg, Inc., who represent Queens (N.Y.) architects Lawrence Werfel, Weissman & Berg. It concerns a speech that Marc Weissman made before the Queens chapter of AIA, in which he proposed heliports in Central Park (Manhattan), Prospect Park (Brooklyn), and Van Cortland Park (Bronx) to ferry people back and forth between these parks and Kennedy, Newark, and La Guardia airports. "Anticipating the objections of people who would oppose turning over valuable parkland for a helicopter site," the release reads, Weissman said that "only a small area would be required, since most of the facilities would be built un-



derground." No word about crowds of people and surface vehicles to feed the choppers, of course, or the intolerable racket of constant landings and take-offs. On a macabre note, Weissman claims he got his inspiration for this visionary suggestion from the dandy job helicopters are doing in the war. "From Vietnam," he says, "we have learned the vast possibilities of pin-point

flight from area to area delivering men and materials. Here is an expanded peacetime [sic] use of the helicopter to serve us all." Why stop there? Those big parks would be ideal areas to conduct war games for fledgling soldiers, and the populace could gather round and watch just like in the good old days of Nero's full-scale naval battles. Commissioner Hoving, take note.

## POTOMAC VALLEY CHAPTER AIA AWARDS



Photo: J. Alexander

1



Photo: J. Alexander

2

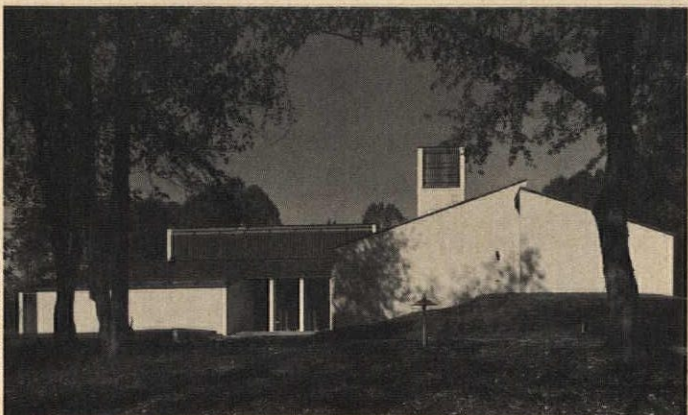


Photo: J. Alexander

3

SILVER SPRING, MD. The Potomac Valley Chapter of the AIA announced winners in its 1966 awards program last month. Honored with First

Awards were Eugene A. Delmar for an office building for the Realty Investment Corp. (1); James F. Hilleary for a speculative house (2); and

Keyes, Lethbridge & Condon for the River Road Unitarian Church (3).

Awards of Merit went to five firms: Chapman & Miller for the Joseph Miller Residence; Eugene A. Delmar for the Metropolitan National Bank office building; Duane & Lawrence for the Greenbelt Regional Park Police Station; Hugh Newell Jacobsen for the Cafritz Residence (4); Keyes, Lethbridge & Condon for the David Condon residence, for the YMCA in Frederick, Md., and for the Tiber Island Apartments.

Jurors were: architects Mario Campioli, J. Roy Carroll, Jr., and Paul L. Gaudreau.



Photo: Robert Lautman

4

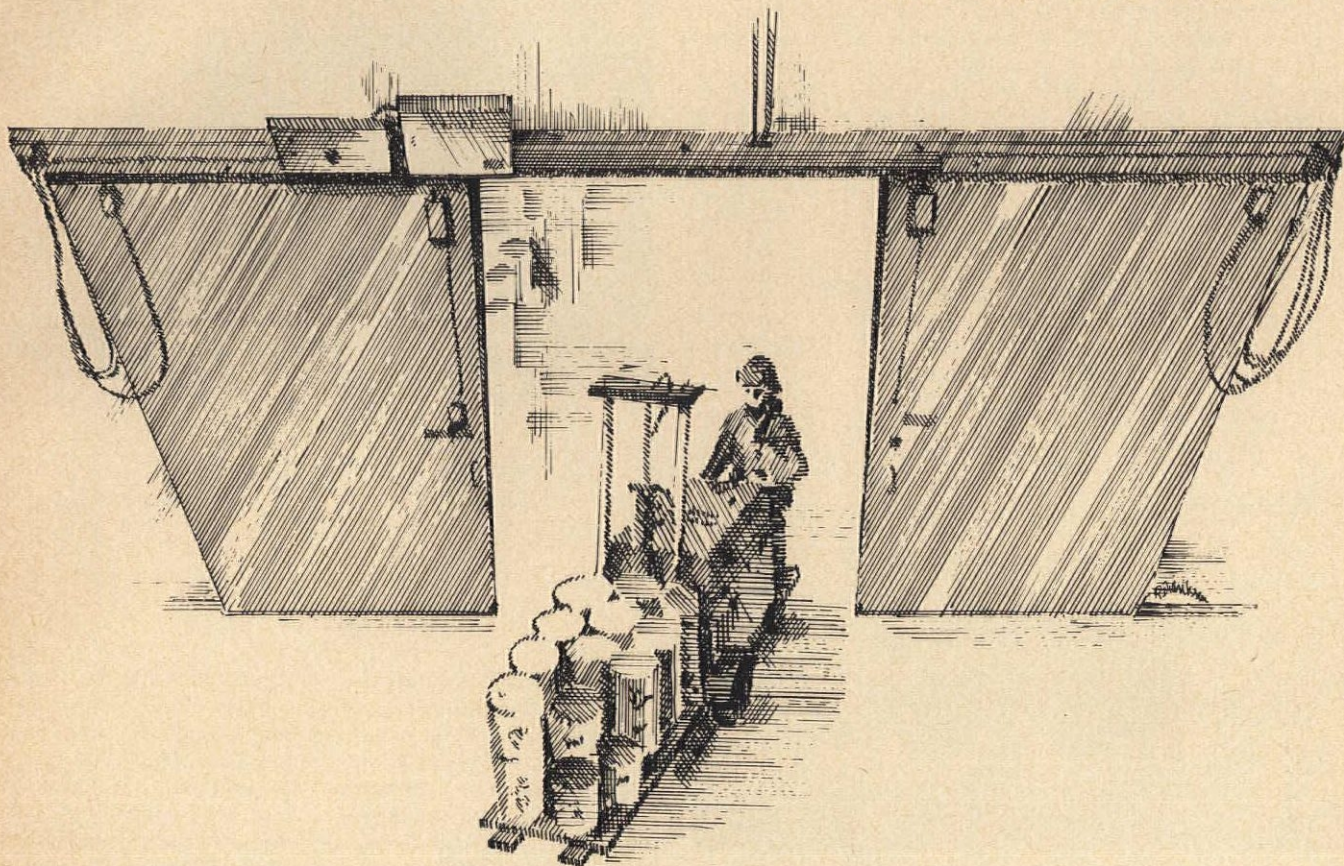
## AWARDS

Philadelphia architects **Harberson, Hough, Livingston & Larson** received the Gold Medal for Design Excellence awarded by the Philadelphia Chapter, AIA. The award was made for the firm's North Block of Philadelphia's Independence Mall State Park . . . **Kennedy International Airport's Tri-Faith Chapel Plaza** has received a special award from the Queens Borough (N. Y.) Chamber of Commerce. Edgar A. Tafel designed the Protestant chapel; George J. Sole, Our Lady of the Skies Roman Catholic chapel; and Bloch & Hesse and H. Shalat, International Synagogue . . . **Roy E. Thornton**, graduate student at Oklahoma State University's School of Architecture and Architectural Engineering, has been granted a pilot fellowship from the U.S. Office of Civil Defense. The School of Architecture will receive \$2800; a stipend of \$2200 will go to Thornton for the 1966-67 academic year to finance study of architectural and engineering aspects of radiation shielding problems in high-rise structures . . . Eighteen steel bridges have been named "most beautiful open to traffic in 1965" by the American Institute of Steel Construction. Prizes were awarded in seven categories, with eleven bridges receiving "awards of merit." The seven prize winners are: **Rio Grande Gorge Bridge**, Taos County, N. M., designed by the New Mexico State Highway Commission; **Eagle Canyon Arch**, Emery County, Utah, designed by the Utah

State Department of Highways; **Knik River Bridge**, north of Anchorage, Alaska, designed by the Alaska Department of Highways; **White Canyon Bridge**, San Juan County, Utah, by the Utah Department of Highways; **Interstate Route 70, Cambridge Bypass**, Guernsey County, Ohio; designer, Alden E. Stilson and Associates of Columbus, Ohio; **Pennsylvania Railroad Lift Bridge** over Chesapeake and Delaware Canal, Mount Pleasant, Newcastle, Del.; Howard, Needles, Tammen & Bergendoff, of New York, designers; **Westinghouse Transit Expressway**, Pittsburgh, Pa., designed by Richardson, Gordon & Associates of Pittsburgh . . . The Architects Division of the Committee for Construction Industry Product Literature made awards last month to three building products manufacturers and one trade association. The awards, for advertising and technical literature aimed at architects, went to **American Saint Gobain Corp.**, the **Portland Cement Association**, and the **United States Gypsum Company** . . . **Walter Netsch**, chief designer for Skidmore, Owings & Merrill (Chicago) received the 1966 Design Award of the U.S. Department of Health, Education and Welfare for the design of Illinois' Chicago Circle College of Architecture and Art Laboratories. The campus was an SOM project . . . Awards of Excellence were presented by the American Institute of Steel Construction to four projects



White Villa Groceries Warehouse, Inc., West Carrollton, Ohio  
Ohler & Doench, Architects, Dayton, Ohio



Now—from the Clark Door Man

## Aluma-Cold™ Cold Storage Door opens and closes at 3' per second

(and it installs almost as fast)

Our new Aluma-Cold is the lightest and fastest-operating cold storage door ever built. It's also the best looking. So what other advantages could it have?

It's so easy to install that it seems to go up almost by magic. And it's built so sturdily and carefully that Maintenance can just about forget it's there. Oh yes—it also does a great job of keeping cold air **in**, warm air **out**.

The Aluma-Cold is the first cold storage door with a textured aluminum (20 gage) skin that adds new beauty to your doorways. Its unprecedented 3'-per-second speed cuts refrigeration loss by up to 400%—and the Duo-Wedge™ perimeter seals boost that figure even higher.

Like all Clark industrial, commercial and cold storage doors, the Aluma-Cold is available in a wide range of sizes and designs, with a variety of controls. Ask for complete details.

**FREE CATALOGS** New 16-page Cold Storage Door and 12-page Industrial Door Catalogs are available without charge. Write or call for either or both.



Doorway  
specialists  
since 1878.



69 Myrtle Street, Dept. P-1  
Cranford, New Jersey  
Tel. (201) 272-5100

On Readers' Service Card, Circle No. 329



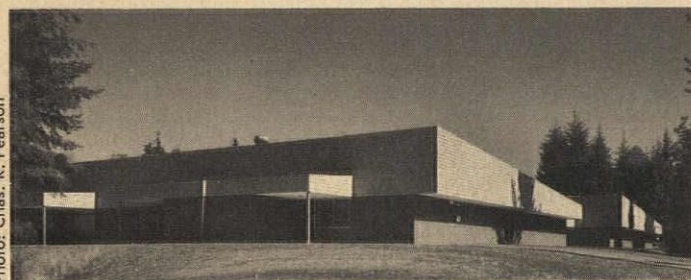
completed this year: The **Chicago Civic Center**, a joint project of C. F. Murphy Associates, SOM, and Loeb, Schlossman, Bennett & Dart; the **Equitable Building in Chicago**, SOM, the **Inland Steel Products Company's Calumet Road Plant** in Milwaukee, Wis., designed by William P. Wenzler in association with The Engineers Collaborative;

the **Birmingham-Bloomfield Bank** of Wixom, Mich., architects, Ziegelman & Ziegelman. Eleven Awards of Merit were also made . . . **Dr. Paul A. Goettelmann** is the recipient of the Catholic University of America Alumni Association Alumni Achievement Award in Architecture. Goettelmann is head of C.U.'s department of architecture.

## SOUTHWEST WASHINGTON AIA AWARDS



1



2

TACOMA, WASH. The Southwest Washington Chapter of the AIA announced the results of its 1966 Honor Awards Program last month. The three-man jury — Daniel Streissguth, chairman of the department of architecture at the University of Washington; Warren Cummings Heylman of Spokane; and Norman C. Zimmer, of Wolff, Zimmer, Gunsul & Frasca, Portland, Ore. — awarded one Honor Award. It went to Johnson-Austin Associates for their own offices (1).

According to the jury, this building "seems to contain all the basic elements of honor award architecture as it applies to small buildings. Excellent selection and use of materials, sensitive detailing, and



3

very thorough interior coordination of architecture and furnishings. The interior court and the restricted but not confined introversion of the scheme provide a controlled environment of high quality."

Merit awards went to

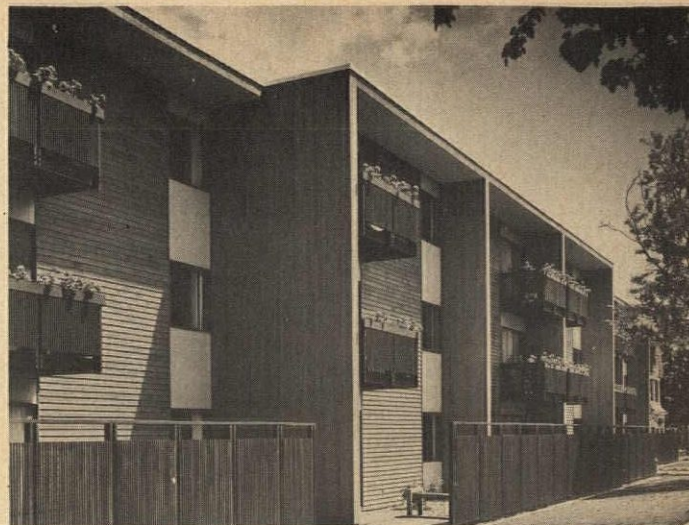


Photo: Morley Baer

4

Harris & Reed for the Camelot School (2); to Liddle & Jones for the office of John

Hewitt (3); and to Robert Price & Associates for their elderly housing project (4).

## EAVESDROPPINGS

"Most of these buildings [Chicago skyscrapers] began to settle soon after they were built, and many of them continued to settle for years afterwards. Ten years of experience with this type of foundation led to the conclusion that it was inadequate for heavy buildings." *Civil Engineering Handbook.*

Overheard in a New York City hosiery shop: "Miss, you should just put these stockings in the refrigerator for a few minutes every night. It hardens the chemicals so that the stockings last longer in this New York air. It's the air pollution that does it, you know. When the polluted air hits your legs, it makes the chemicals deteriorate and fall apart. If you lived in the country, you'd hardly ever have to buy stockings."

"A survey of 38 Los Angeles and 10 San Francisco advertising agency owners or managers by *Media-Agencies-Clients* magazine showed that automobile dealers, in both new and used categories, were thought to have the lowest ethical standards of all businesses and professions. . . . Runners-up to car dealers for the lowest spot were the construction industry, morticians, and liquor dealers." *From Automotive News.*

"Nobody has yet been able

to convince me that many of modern man's phobias are not due to the noise, filth, and ugliness that surround him. We are told that, by the year 2000, half the population will be doctors, nurses, and psychiatrists, all necessary to take care of all the rest of us." *Constantinos Doxiadis, quoted in Life.*

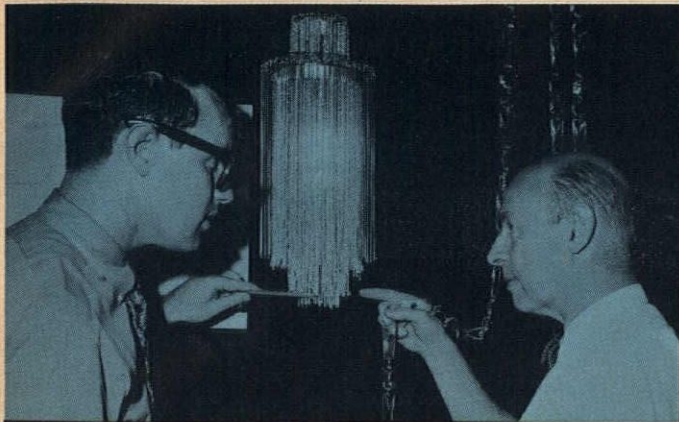
"Scientists have invented The Pill to control human fertility. They have shown man the way to prevent overpopulation of the globe. But what about a pill for the automobile — a little something slipped into the gasoline tank to keep its proliferation in check?"

"Because automobiles lead, like night to day, to concrete. All across this nation, concrete is flowing like water once did before the water tables began to fall and droughts became semiannual.

"The states of Connecticut and New Jersey probably have a life expectancy of 10 years before both disappear under the flow of concrete necessitated by the automobile explosion in the New York metropolitan area.

"It will be sad to see two of the original states disappear. However, suitable historical markers will undoubtedly be put up to commemorate their place and part in the nation's past — markers by which traffic will whiz at 80 miles an hour. Who, with a tiger in his





From the Architect's Esquisse Rambusch made models, working drawings, and this crystal and gold chandelier. Gentle air movements cause the free-hanging elements to create continually changing scintillating light, color and sound.

**RAMBUSCH LIGHTING**  
 DESIGNERS • CRAFTSMEN • LIGHTING ENGINEERS  
 40 WEST 13th STREET, NEW YORK, N. Y. 10011 • Tel. 212 675-0400

The Travellers Insurance Companies, Hartford, Conn. Smith Haines Lundberg & Wachler, Architects



On Readers' Service Card, Circle No. 384



tank, needs history?" *Inez Robb, writing in the New York World Journal Tribune.*

"But let the site of such places be as they may, how can they be excused that have a delicious seat, a pleasant air, and

all that nature can afford, and yet through their own nastiness and sluttishness, immune and sordid manner of life, suffer their air to putrify, and themselves to be choked up?" *Robert Burton, The Anatomy of Melancholy.*

## DETROIT CHAPTER AIA AWARDS

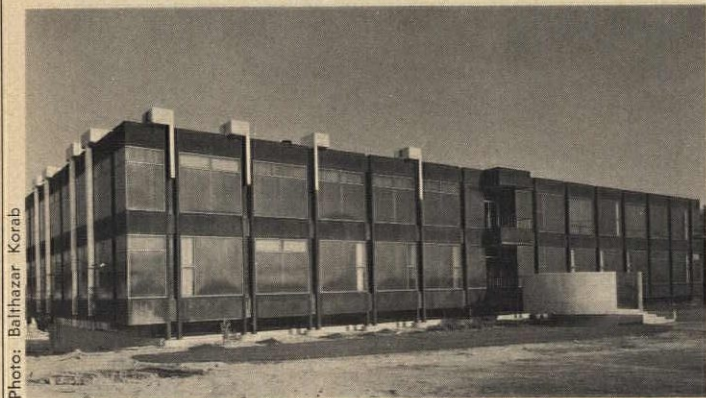


Photo: Balhazar Korab

1

DETROIT, MICH. The Detroit Chapter of the AIA announced eight awards in its 1966 Honor Awards program. There were two First Honor Awards; one went to Meathe, Kessler & Associates for the Loutit Hall of Science at Grand Valley State College (1), and the other to Sol King and Albert Kahn, Associated Architects and Engineers, for the Avon Products Company laboratory and office building (2).

Awards of Merit went to Giffels & Rossetti, Inc., for the Federal Mogul Staff and Divisional Office Complex; to Meathe, Kessler & Associates

for the John F. Oberlin Housing Project; and to Smith Hinchman & Grylls for the First Federal Building.

Honorable Mention went to Eberle M. Smith Associates for the Park North of Elmwood Park Redevelopment; to Glen Paulsen & Associates for Our Shepherd Lutheran Church; and to Albert Kahn, Associated Architects and Engineers, for the City of Detroit Air Terminal Building.

Jurors for the competition were all Minneapolis architects: Bruce A. Abrahamson, Thomas Hodne, Valerius L. Michelson, George Rafferty, and Ralph Rapson.

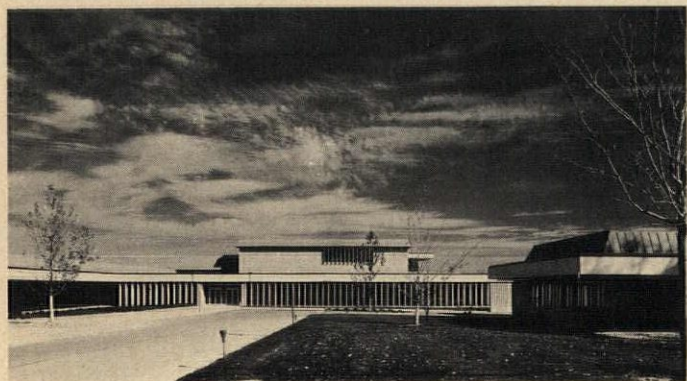


Photo: Sol King and Albert Kahn, Associated Architects and Engineers

2

## SCHOOLS

**Washington University** has received a grant of \$200,000 from the St. Louis Regional Planning and Construction Foundation, for use in the

Urban Design Program of the University's School of Architecture . . . Five **Nuclear Defense Design Summer Institutes** will be available for

members of engineering, architectural, and city planning faculties in 1967. The programs are sponsored by the Office of Civil Defense, the American Society for Engineering Education, and the Association of Collegiate Schools of Architecture . . . William A. Speer, dean of **Auburn University's** School of Architecture and the Arts, will retire from that post next fall to assume full-time teaching responsibilities as a full professor of architecture . . . The Elsie de Wolfe Foundation, Inc., has awarded a full tuition scholarship to the Art School at **Pratt Institute**, Brooklyn, N.Y. The scholarship will go to a student of interior design . . . Also recently established at Pratt is its **Center for Middle Eastern and Tropical Architecture**. The program of studies at the Center leads to the Master of Science (Tropical Architecture) degree, and is designed for men and women from tropical areas or U.S. architecture students preparing for work in such regions. Further

information may be obtained by writing to Olindo Grossi, Dean, School of Architecture, Pratt Institute, Brooklyn, N.Y. . . . A relatively new development in the engineering field has been given recognition at **Illinois Institute of Technology**, with the establishment of a department of environmental engineering. Dr. Fred C. Gurnham will head the department, which will continue to emphasize water supply and air- and water-pollution control . . . Professor William Alonso has left the faculty at Harvard to join the department of city and regional planning at the University of California at Berkeley. He will lead the department in formulating its new specialization in planning for regions larger than urban areas . . . R. Buckminster Fuller, whose name also appears in the awards column this month, has accepted a post as visiting professor of design at Iowa State University this year. As visiting professor, he will lecture and reside part-time at the university.

## SOUTH ATLANTIC AIA AWARDS

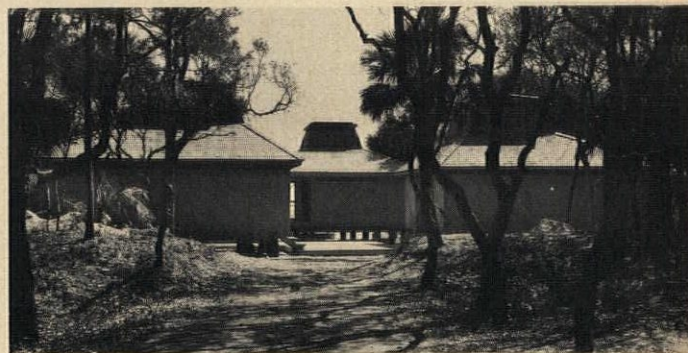


Photo: Andrew Pine

1



Photo: Gordon H. Schenk, Jr.

2

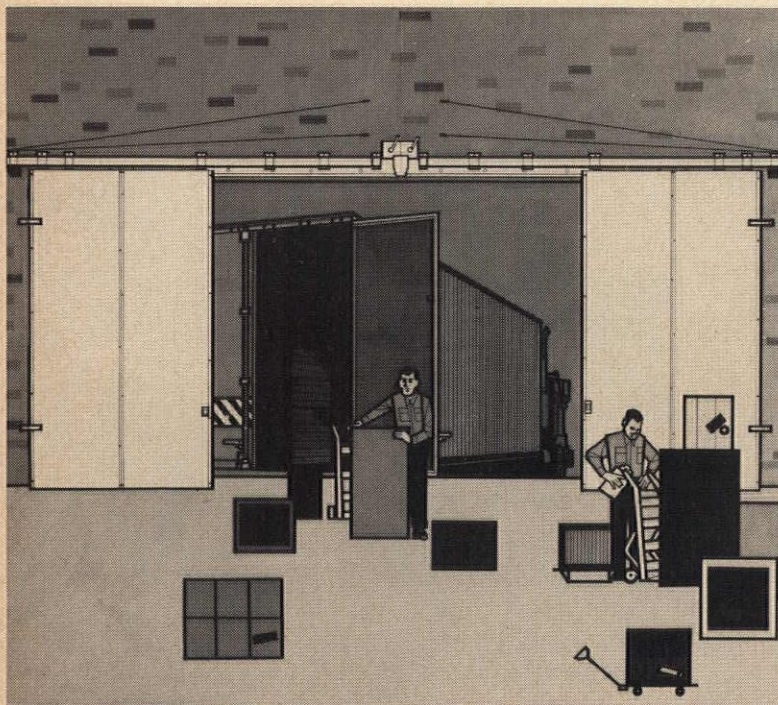
**CHARLOTTE, N.C.** The South Atlantic Regional Chapter of the AIA presented 13 architectural awards in its 1966 competition. Of these, five were honor awards. They went to Corkern, Wiggins &

Associates for their work for Sea Pines Plantation Co. (1); to Graves & Toy for a prestressed concrete manufacturing plant, Concrete Materials of Georgia, Inc. (2); to Jova/Daniels/Busby for



# The neat door

**Beautifully functional. Functionally beautiful.**



That's Steelcraft's new "J" sliding labeled fire door. Clean, flush design. Looks like it belongs—not just something to be tolerated. No crazy-quilt patchwork. No ugly weights, or counter-balances.

Normal operation is independent of self-closing mechanism. And if there's a fire, it will close automatically, regardless of position.

Other nice things about "the neat door": UL and FM 3-hour rated. Level track.

Eighteen-gage steel bonded to honeycomb core means rugged construction, light weight, and easy operation. Quickly installed without special tools. Write for "The neat door" folder. It's neat, too.



STEELCRAFT MFG. CO., 9017 BLUE ASH ROAD, CINCINNATI, OHIO 45242, U. S. A.

On Readers' Service Card, Circle No. 424



the Festival Cinema (3); to Toombs, Amisano & Wells for the John Knox Presbyterian Church (4); and to Harry C. Wolf, III, for a vacation house for Mr. and Mrs. Luther H. Hodges, Jr. (5).

Merit awards went to Martin & Bainbridge for the Lake Lucerne Clubhouse; to Edwards & Portman and Henry D. Norris for low-rent housing of the Atlanta Housing Authority; to J. N. Pease Associates for Albright Hall at Queens College; to Graves & Toy for a gymnasium and student lounge in the Monroe, N.C., city school system; to Wilbur Smith & Associates and Lyles, Bisset, Carlisle & Wolf for the City of Columbia parking facilities; to Wheatley, Whisnant & Associates for the Randolph Medical Center; and to the Freeman-White Associates for Hamlet Hospital Nursing School.

Jurors for the competition were Kevin Roche, Hugh Asher Stubbins, Jr., and Victor Christ-Janer.

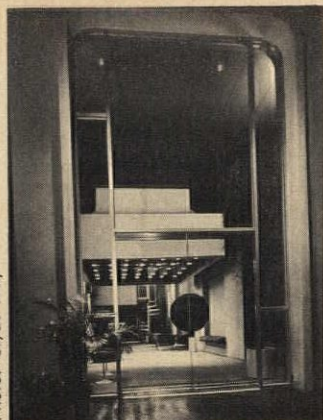


Photo: Clyde May

3



Photo: Clyde May

4



Photo: Tom Walters

5

## COMPETITIONS

The **National Institute for Architectural Education** has announced a special competition for architectural students under 30 years of age. For details and entry blanks, write to N.I.A.E., 115 E. 40th St., New York, N.Y. 10016 . . . **Pittsburgh Plate Glass Industries and the National Institute for Architectural Education** announce their joint awards program for 1967, open to architectural students. Theme of the competition will be "A Nursing Home (Ten Minutes from a General Hospital)." Entry forms and relevant information may be obtained from the National In-

stitute for Architectural Education, 115 E. 40th St., New York, N.Y. . . . The S.M. Hexter Company has announced its ninth annual competition for the **Interior of the Year**. Open to everyone, the competition requires that entries be actual installations, the major parts of which have been done this year. For further information write to: The Interior of the Year Award, c/o The S.M. Hexter Company, 979 Third Avenue, New York, N.Y. 10022 . . . Nominations are open for the eleventh annual **R.S. Reynolds Memorial Award** for architectural de-

signs using aluminum. Architects may submit nominations until January 31, 1967, by writing to the Reynolds Award, The American Institute of Architects, 1735 New York Avenue, N.W., Washington, D.C. 20006.

## BIG BAY CITY BOMB

SAN FRANCISCO, CALIF. The famous old quip of tourists in New York: "I don't mind visiting here, but I sure would hate to live here," can be paraphrased, once more, for the completed Wells Fargo Building on San Francisco's Market Street as, "I don't mind looking out of this building (1), but I sure would hate to look at it (2)." For here is the most pronounced specimen of the—we sincerely hope—old-fashioned 1950's-type office building the city by the bay has yet seen;



1

it is almost as though the Los Angeles contingent had it sent up out of spite, even though it was designed by the Seattle firm of John Graham & Company. The San Francisco office of SOM has indicated to residents how San Francisco's tall buildings—if they must



Photo: Robert Brandeis

2

be built—should be handled in the Hartford Building (after themselves experimenting in the John Hancock and Crown-Zellerbach buildings). Architects and planners do

not suffer lessons gladly, however. And everyone else is left to suffer the consequences.

## OBITUARIES

ANDRE BLOC, editor of *l'Architecture d'Aujourd'hui*, died in November at the age of 70. His death was caused by a 25' fall from the terrace of a building he was photographing in New Delhi, India.

Born in Algiers in 1896, Bloc studied at the School of Arts and Manufacturers in Paris and received his degree in engineering. He was internationally known as editor of the magazine he founded in 1930, and for his avid interest in the plastic arts and architecture. His home in Meudon, near Paris, was a center for artists and architects, some of whose work he exhibited there. He was often the first in the field to publish work of European architects abroad.

In 1951, he became co-founder and president of the group "l'Espace," an organization centered in the south of France whose goal is the integration of art and architecture. The group works in environmental architecture and the design of open spaces.

Bloc was himself an active sculptor and painter, and had exhibited widely in South America and Europe. He did a number of sculptures for the Shah of Iran in 1959; others stand in the garden of his home in Meudon. Bloc not only wrote about architecture, but practiced it himself in the design of free-form houses such as the Gordon House in London and a house in southern Spain. A book illustrating his work, *From Architecture to Art*, was published last year.

Dead at the age of 86 is New York architect **AYMAR EMBURY, 2ND**, who designed many of New York's most familiar architectural landmarks. Among the impressive projects he designed or collaborated on are the White-stone Bridge, Lincoln Tunnel, the Triboro Bridge, and the permanent New York City building at the 1939 World's Fair. He also served on the advisory board for the design of the New York Coliseum.

Embury received a degree in civil engineering and a Master of Science from Princeton in 1900. He was





© The Prescon Corp. ®

# THE PRESCON MEMO NEWS

THE PRESCON CORP.: 502 CORPUS CHRISTI STATE NATIONAL BUILDING — CORPUS CHRISTI, TEXAS 78401

## SCHOOLS POST-TENSIONING ENCOURAGES DESIGN FLEXIBILITY WITH ECONOMY

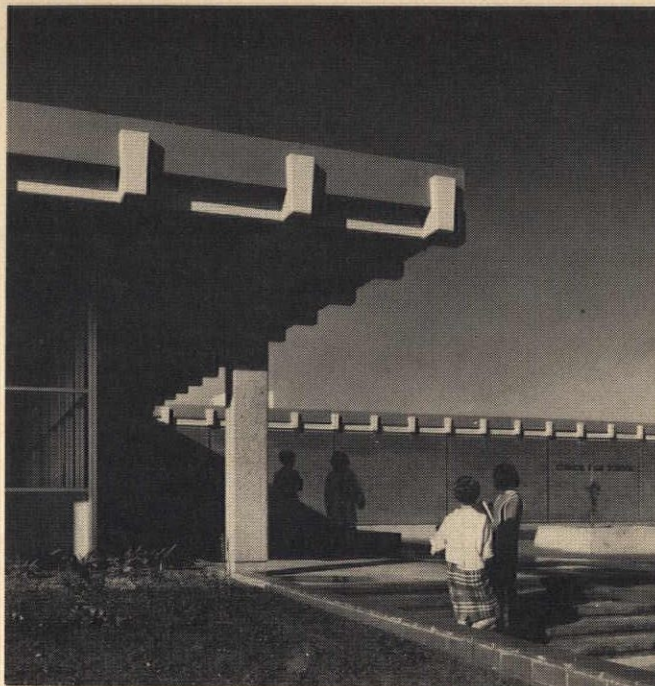
School design problems have been solved by many architects and engineers with the Prescon System of post-tensioning for prestressed concrete. Examples near you can be pointed out by a Prescon representative.

The multiple-award winning Estancia High School, Costa Mesa, California, features a "Great Court" surrounded by academic areas all under one roof. The 200,000 square foot roof was a post-tensioned prestressed waffle slab on a 5-foot square module. The waffle slab is 23¾" deep using 8" joist stems and 20" deep pans. Spans varied from 25' to 35'. The roof system was designed for zero deflection under dead load.

Design criteria called for (1) 2,000 student capacity (2) departmentalization (3) flexibility in number, size and organization of departments and teaching stations. All exterior and interior walls are non-bearing demountable throughout the academic areas. Building costs were \$1,586.00 per student.

Architects—William E. Blurock & Associates; Structural Engineers—John A. Martin & Associates; General Contractor—Robert E. McKee.

At Bishop College (Dallas, Texas) where all buildings are permanent type, post-tensioning was widely employed. The Prescon System was used in classroom, dormitory and library structures. It contributed to economy in materials, forms and construction speed. (The men's dormitory was occupied in 8 mos.) The flat plates are 8" thick and cantilever 4' in all levels of several structures. Bays are 24' x 26', with columns 12" x 20" and designed for 50 lbs. live load, plus partitions. The Zale Library on the campus has slabs 9½" thick, with 4½" drop panels at columns. The first and second level slabs are designed for 150 lbs. live load, plus partitions. Cost, including library furniture, less than \$13.50 per sq. ft.



Estancia High School, Costa Mesa, Calif.

Prescon coated, as well as grouted tendons were used. The library is a 65' x 90' clear span area; the auditorium has 90' maximum spans with the balcony framed of post-tensioned cast-in-place concrete to eliminate the need for columns.

Architect—Wheeler & Lewis; Structural Engineer—Russ Kostroski; Contractor—Hensel Phelps Construction Co.

The Student Union Building, Southwest Missouri State College, Springfield, is a four-level structure with 55' clear spans. The second and third floors, and roof have 4" slabs with 6½" ribs on 3'4" centers. Floor construction depth is 2'7½" and 2'11" for the roof.

Field measurement of camber indicated a variance of ¼" — from a minimum of ⅝" to a maximum of ⅞". In addition to being more economical than the original design, post-tensioning provided the benefit of creep and shrinkage control. Post-tensioning sealed the slabs so well that water standing on the upper portions showed no moisture evidence on the undersides.

Architects—Harold A. Casey & Associates; Engineers—Saul A. Nuccitelli; Contractor—Dondlinger Construction Company.

Today's school design and construction requires ingenuity and creativity to meet the evolving educational concepts, yet remain within budgets. Often post-tensioning will enable you to achieve these demands. Remember the Prescon System — post-tensioning with positive end anchorage.

These are but a few of the hundreds of school structures using the Prescon System. For more complete examples and technical information, write for literature, or contact a Prescon representative.

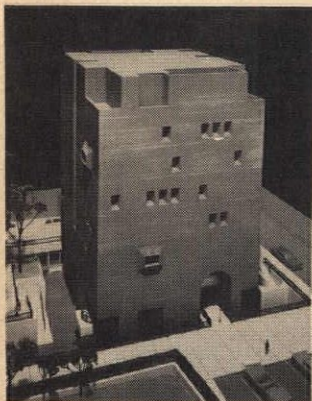
### The PRESCON Corporation

General Offices: 502 Corpus Christi State National Building  
Telephone: 512-882-6571 Corpus Christi, Texas 78401

© 1966 THE PRESCON CORPORATION

J 66

On Readers' Service Card, Circle No. 363



Roy E. Larsen Hall, Harvard University. Architects: Caudill, Rowlett & Scott; General Contractor: Wexler Construction Company.

E. D. Mayes, structural engineer, pointed out that among advantages of post-tensioning were: (1) elimination of deflection in the slab to reduce partition placement problems; (2) use of thinner slabs for reduced floor-to-floor height resulting in lower material costs. Flat plates allow easier mechanical distribution, and ceiling finish can be applied directly to under side of slab.

Architect—Donald B. Kleinschmidt; Consulting Engineers—Mayes & Brockette.

A Ft. Morgan, Colorado, school utilized four structural systems, all post-tensioned: (1) two-way waffle slab; (2) one-way joists and one-way zee-type sections; (3) folded plates; (4) haunched slabs.



Watkins Overton High School Gymnasium with classrooms, Memphis, Tenn. Architect: A. L. Aydelott and Associates; Structural Engineer: S. S. Kenworthy and Associates; Contractor: Sam P. Maury Construction Company.



noted for his disagreement with "modernists," who, he felt, tended to omit all ornamentation on the ground that it served no functional purpose. "I suppose," he once said, "some of these architects do not use neckties or buttons when they dress."

Architect **GEORGE C. SMITH**, a founding partner in the Cleveland firm of Small, Smith, Reed & Draz, died in October at his home in Litchfield, Conn. He had retired from professional life in 1963, and

was 78 at the time of his death.

After receiving his education at Cornell University and l'École des Beaux Arts in Paris, Smith began his career with Warren & Wetmore, designers of New York's Grand Central Station. Throughout his career, he was associated with the design of railroad buildings, among them the Biltmore and Ritz-Carlton hotels in New York, and an office building for the B & O and C & O railroads in Huntington, W. Va.

## INFORMAL CAMPUS CENTER

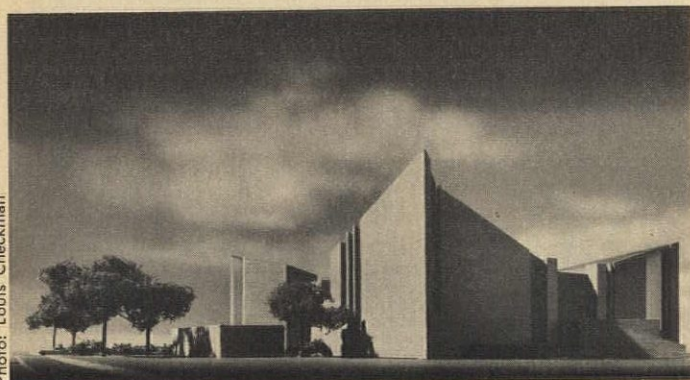
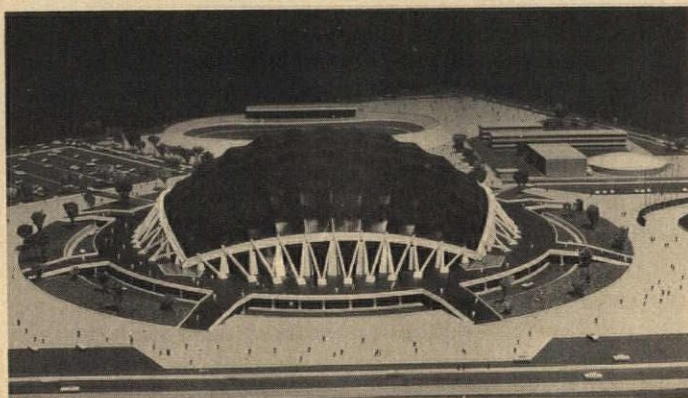


Photo: Louis Checkman

**GARDEN CITY, N.Y.** If we can believe the mass news-media image of the U.S. college student, then informality is the thing. Yet the architecture in which students live, work, and play is mostly formal. In designing a student center for Adelphi University on Long Island, architects Warner, Burns, Toan, Lunde went after an informal look, to contrast with the formality of the rest of the campus. At present

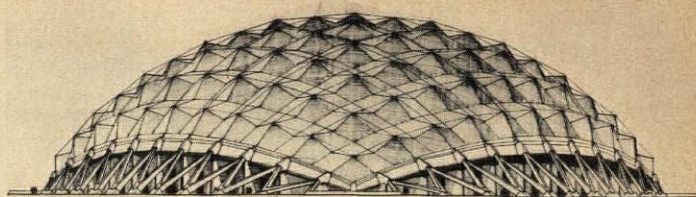
in the working-drawings stage, the building will house a two-story high 7000 sq ft multi-purpose room under a sloping roof, facilities for campus organizations and clubs, six or seven meeting rooms, and, in the basement, a café. There will also be lounges on each of three floors. The building will be arranged around an interior court, and will open onto a ground-level plaza. Walls will be loadbearing brick.

## OLYMPIAD IN MEXICO: 1968

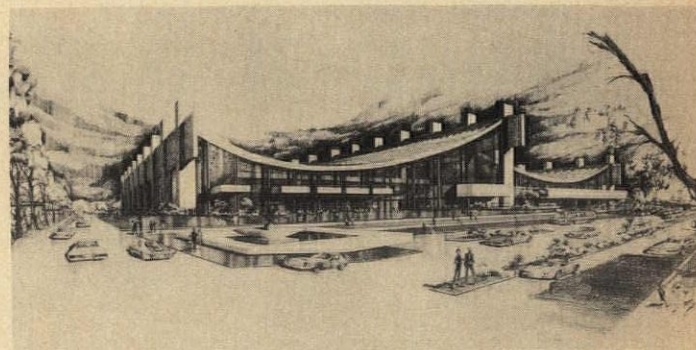


**MEXICO CITY, MEXICO.** Work is underway here on structures for the 1968 summer Olympic

Games. The two facilities shown were designed in an invited national competition



2



3

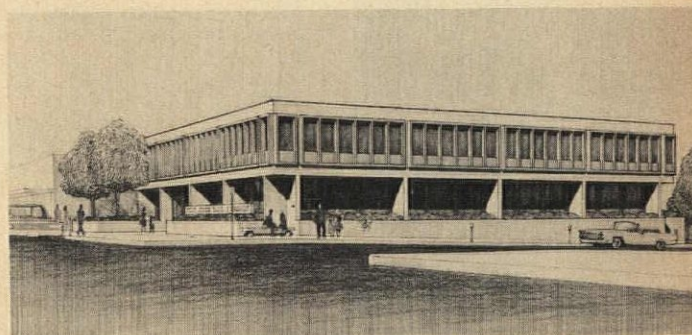
to which 13 architectural teams, with three members each, submitted plans; each team received a guaranteed fee of 20,000 pesos to cover costs. The winners were allowed to continue with the general direction of their winning designs under the supervision of the Ministry of Public Works.

The Sports Palace (1, 2), on which construction was started last October, is to be a stadium for 24,000 spectators. Its dome, measuring

about 475' across and 135' from ground to top, will be constructed of metal supports covered with a wooden frame. Its design team consists of Felix Candela, Antonio Peyri, and Enrique Castaneda Tambarrel.

The Olympic swimming pool (3) and gymnasium, which will get under way next December, is being designed by Manuel Rosen, Antonio Recamier, Javier Valverde, and Edmundo Gutierrez Bringas.

## OPEN SECURITY



**MILWAUKIE, ORE.** Wilmsen, Endicott & Unthank of Portland and Eugene, Ore., have dotted the Northwest with small bank buildings. In an era of bigness, small banks are still very much a part of the American community, and, in this area of the country, those designed by Wilmsen, Endicott & Unthank are among the most distinctive.

Bids will go out this month on their latest bank, whose officers want "a facility to serve well into the next century"; the design presents a

façade that shows both quiet strength and openness. It manages to look both inviting and secure.

Construction will involve two stages. In the first stage, a building will go up right next to the bank's present headquarters. Then, when that unit is finished, the old bank will come down, and a second unit, on the old site, will be joined to the first. Floor space will total 35,400 sq ft. Plans include provision for an eventual third and fourth story to be added in the future.





# GOVERNMENT BUYS ELJER FOR NEW KANSAS CITY FEDERAL BUILDING



Eljer's commercial plumbingware scores another big one! It's the \$27.5 million Federal Office Building in downtown Kansas City. Twenty Federal agencies employing 4,500 people will call it home 40 hours a week. That guarantees plenty of wear for washroom fixtures and fittings.

The Eljer line is built to take it. It's durable. Acid-resistant, exposed surfaces shrug off years of use, provide the ultimate in sanitation. Fixtures and fittings work together to keep call-backs almost nonexistent.

And what's more, Eljer plumbingware is good-looking. Shapes are streamlined and modern in Eljer pastels and white. All good reasons why you'll find Eljer in so many prestige buildings.

Eljer's Master Crafted commercial line gives you complete product selection. For more information, call your Eljer representative, or write Eljer Plumbingware Division, Wallace-Murray Corporation, Dept. PA7, P.O. Box 836, Pittsburgh, Pa. 15230.



Architects: Voskamp & Slezak, Radotinsky-Meyn-Deardorff, Everitt & Keleti, Harris Armstrong, F.A.I.A., all of Kansas City, Mo./ Engineers: Massaglia-Neustrom-Middleton, Howard, Needles, Tammen & Bergendoff, both of Kansas City, Mo./ General Contractors: Frank Briscoe Co., Inc., Newark, N. J.; Huber, Hunt & Nichols, Inc., Indianapolis, Ind./ Mechanical Contractors: Limbach Co., Pittsburgh, Pa.; Interstate P & H Co., Kansas City, Mo./ Wholesaler: Missouri-Kansas Supply, Kansas City, Mo.



**ELJER**  
SINCE 1904 FINE PLUMBING FIXTURES

On Readers' Service Card, Circle No. 334



# WASHINGTON/FINANCIAL NEWS

BY E. E. HALMOS, JR.

Understandably enough, the new Department of Housing and Urban Development accentuated the positive in the fanfare accompanying its first anniversary as a full-fledged Cabinet department.

The "positive" turned out to be steps in internal organization, push behind legislative action on Capitol Hill, and continuation of older, inherited programs.

However, HUD's accomplishments in terms of initiating new programs or actual construction projects were minor. The agency made no dramatic breakthroughs in planning or in ladling out money, started no new construction projects that were any different from those that its five component parts had carried out while they existed in semi-independent state (under the old Housing and Home Finance Agency).

Nevertheless, HUD Secretary Robert C. Weaver could be pardoned for some of his "pointing with pride" statements, made in a ceremony in front of HUD's gull-winged headquarters (reminiscent of Washington's new Hilton Hotel) in southwest Washington, which is presently under construction.

What has been done, with somewhat unusual quiet and efficiency, constitutes a major welding together of the huge and unwieldy agency (some 80,000 employees, at least 50 separate programs, five semi-independent agencies) into what approximates a single unit; the integration of many programs and personalities; and the assuming of some semblance of direction. (In the process, there was the inevitable reshuffling of personalities who didn't fit Weaver's plans, such as Urban Renewal Administrator William L. Slayton, who resigned to make room for a Weaver choice, Don Hummel, former Mayor of Tucson.)

To do all this, and still find time to push through pet Presidential legislation successfully (the Demonstration Cities program, for example) is indeed a major accomplishment.

Of perhaps greatest impor-

tance to architects and the construction industry, however, is a shift in departmental emphasis—a genuine change of direction that will become more readily apparent this year.

The switch is from mass clean-outs of slum areas—replacing them with glitteringly expensive, new apartments, civic centers and the like—to construction of more low-income housing and more rehabilitation of existing structures.

The change in emphasis is already reflected in the figures: two-thirds of the projects approved and half of the new applications received by HUD since July 1 call for rehabilitation of poverty-ridden areas—rehabilitation, not complete reconstruction. Big-city mayors and other officials have been told, quietly and forcefully, that HUD thinks they've lavished too much attention and money on city centers, that they should spend more on residential areas, but do so without displacing slum dwellers, where possible.

(Municipal officials, incidentally, got a frightening demonstration of Federal ability to bring them to heel, and the willingness of Federal agencies to crack the whip on what they consider recalcitrant local governments. In a wild political mix-up, a "lame duck" county council in suburban Montgomery County, Maryland, did a lot of rezoning that allegedly made a mish-mash of long-term plans for the area. Interior Secretary Udall breathed fire on the "paltry band" of local politicians, threatening reprisals. Dutifully, HUD and other agencies chopped off promised Federal aid of nearly \$10 million within a few days—even before a newly elected County Council could take any action at all.)

**National Building Code Proposed**—A state-adopted model building code that would require licensing of building inspectors (some of whom would be architects or civil engineers) is among 16 major proposals prepared by the semiofficial Advisory

Commission on Intergovernmental Relations.

The commission, created by Congress to study relationships between national, state, and local governments, includes four governors, six Congressmen, and four mayors among its 26 members. Recommendations this year are included in a mammoth (600 page) booklet, "1967 State Legislative Program," available free from the commission's headquarters in Washington. They include suggested laws and studies relating to taxation, borrowing powers, stream regulation, and much other related information.

Of special interest to architects are provisions of the suggested national building code, which could be adopted by states, then by local governmental units. The code is a "performance" code, quite similar to the long-standing model code of the Building Officials Conference of America.

But it includes a provision for creation of state boards to license building inspectors in five categories: (1) a "professional building inspector," who must be a registered architect or civil engineer, or an engineering or architectural graduate with two years' building inspection experience; (2) a "certified building inspector"; (3) a "certified electrical inspector"; (4) a "certified mechanical inspector"; (5) trainees. All grades which are below that of "professional" would have fewer educational and experience requirements.

Another aspect of the model code would be establishment of state-paid research staffs and architectural and engineering personnel to evaluate new building materials and devices, adopt appropriate standards, and offer advice to local governmental organizations.

**National Airport vs. Dulles, Cont.**—Few building plans in or near Washington get away without loud comment. The Federal Aviation Agency is no exception, even though a plan for a \$200 million face-lift for National Airport isn't due to come from an architect's hands (Vincent Kling of Philadelphia) until next spring.

Word has gotten around

that FAA wants to upgrade the very convenient National field to make better accommodations for jets, better passenger and freight handling, etc. This will entail new or extended runways, new buildings, and quite possibly the razing of some existing structures.

An alternative, proposed in the December issue of *Washingtonian* magazine, would be to shut down National completely and make it a site for a "new town"; shuttle air passengers to brand new (and woefully little used) Dulles airport in the Virginia countryside via a rail rapid-transit system (either above or below ground) that might cost as much as \$80 million.

A residential area on National's mile-square, riverside site would be attractive, would also make it possible to commute to Washington by boat, as well as by surface transportation.

**Financial**—New year's predictions of total business for the construction industry poured into print as 1966 ended, and they offered several views of what might happen. One or two private organizations thought there'd be a continuing uptrend in dollar volume—up perhaps 5% over the record total for 1966. □ Probably the most authoritative of the predictions, and the one closest to the beliefs of those in the industry itself, was the forecast of the Commerce Department's Business and Defense Services Administration: It anticipated a flat leveling off in dollar volume, and a drop in physical volume for 1967. In detail, BDSA predicted 1967 dollar volume would be about \$76,100,000,000—about even with 1966; physical volume would drop "slightly." Factors would include a very modest (4%) increase in commercial building volume; a drop in religious and educational building (8 and 3% respectively); and a 4% decline in public building work.

□ As if to point out what will happen, Bureau of Public Roads sent an unpublicized telegram to all state highway departments and its own regional offices, calling for a \$700 million cutback in road building authorizations for the remainder of the current calendar year.



# 2 suggestions for architects who think ceiling seams are unsightly:



## Hide them.

With the bold, textured ceiling tile whose sharp, square edges are meticulously arranged and designed to create a remarkably monolithic appearance. The seams virtually disappear. This is Armstrong Santaglio\* Travertone™. It's noncombustible, fire retardant, and acoustical. Available in 12" x 12" x 3/4" tile, with self-leveling tongue-and-groove joints, you can suspend it mechanically or cement it to any firm, flat, dry surface.

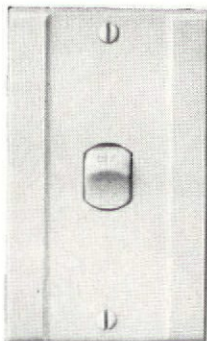
\*U.S. Patent D-206,119.



## Dramatize them.

With the lay-in ceiling system whose individual panels extend 11/32" below the grid, creating a uniquely bold dimensional effect. This is Armstrong Tegular Travertone. It's noncombustible, fire retardant, and acoustical. Available with small through perforations for ceiling-wide air diffusion, it's fabricated for standard 24" x 24" grid suspension systems. You can create extra drama with a black or bold, brightly colored recessed grid system.





If you think  
**P&S ROCKER-GLO**  
is just another  
"residential" switch . . .

. . . see what it does  
in hospitals, schools and offices.



Push It

Press It

Rock It

Don't be fooled by Rocker-Glo's smart, compact design. It's as tough as any AC switch. But no ordinary switch looks this good . . . works this good.

**WHISPER QUIET** Satin-smooth rocker action needs only slightest brush of finger (elbow, book, package) to operate.

**GLOWS IN DARK** Luminous plastic button is charged by exposure to any light source, glows all night long.

**DEPENDABLE, POSITIVE ACTION** Extra heavy silver buttons mounted on vertical contact arms at point of least vibration for trouble-free, long-life operation . . . meets Federal specifications.

**LONG LIFE** Wall-hugging rocker handle practically eliminates handle breakage making it ideal for school installations.

**EASILY INSTALLED** No change in operating habits or wiring methods needed.

Over 3½ million **ROCKER-GLO** switches are hard at work everywhere—especially in schools, hospitals, offices and commercial buildings.

For more information write Dept. PA 167



Pass & Seymour Inc., Syracuse, New York 13209

On Readers' Service Card, Circle No. 361

TO SHARPEN: *PUSH HERE* →

**DEMI-.5**

**WORLD'S THINNEST LEAD  
AUTOMATIC PENCIL**

Finally! Sharpening is a *snap!* Demi-.5 always assures you of a sharp constant fine line.

**0.5MM  
LEAD**

Designed especially for architects, engineers and draftsmen. A precision instrument for delineating the finest detailed drawings. DEMI-.5 leads (0.5mm within a tolerance of 1/1000) are always sharp and black (reproducible)—saving you time—in a hand-balanced holder.

\$1.98 each. Set (with a dozen H and 2H leads) \$2.99. DEMI-.5 leads are available in the finest HB, F, 2H, 3H and 4H sizes. 50¢ per dozen lead box.

Available at your favorite art materials and stationery dealers—or have your dealer write us. Dealer inquiries invited.



**YASUTOMO & CO.**

24 CALIFORNIA ST., SAN FRANCISCO, CALIF. 94111

On Readers' Service Card, Circle No. 396

## NOW AVAILABLE

REPRINTS FROM PROGRESSIVE  
ARCHITECTURE

A limited number of the editorial sections of the October and December issues of **PROGRESSIVE ARCHITECTURE** are now available to readers.

The **OCTOBER** issue explored the subject of concrete in depth in office buildings, houses, hospitals, saloons and state capitols. Comments and critiques were supplied by architects, designers, engineers and builders. To order your copy or copies of the October reprint at \$1.00 each, circle #443 on the Readers' Service Card at the back of this issue.

The **DECEMBER** issue on "Toward the Third Millennium" examined all aspects of the many disciplines that are now in a state of flux, with special attention given to the coming role of the architect—if that is what he will be called—in the altered scheme of things. To order your copy or copies of the December issue reprint at \$1.00 each, circle #444 on the Readers' Service Card at the back of this issue.

To order both the October and December issue reprint, circle #445 on the Readers' Service Card.



# PRODUCTS

## ACOUSTICS



**Sound the horns.** High-power sound amplification in large public areas is significantly advanced by new multicell horns, states manufacturer. A number of careful refinements in the design, and precision in the fabrication, account for the improved sound quality; e.g., specifications for high-power drivers call for tolerances as close as .0001". Seven horn sizes are available with 3 to 15 cells; each has a 20° angular dispersion per cell. Units are engineered to fit into an integrated system — from microphones to speakers and baffles. DuKane Corp., Communications Systems Div., St. Charles, Ill. 60174.

*Circle 100, Readers' Service Card*



**Patterned acoustical tile.** Three designs are available for accents or for entire ceilings in special areas. Mineral-fiber tiles measure 12" x 12" x 3/4", and have butt-kerfed edges. The Celotex Corp., 1500 N. Dale Mabry, Tampa, Fla. 33607.

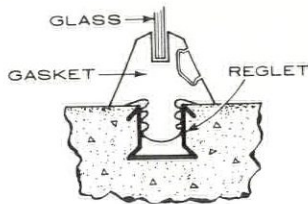
*Circle 101, Readers' Service Card*

## CONSTRUCTION

**Polyurethane sealant.** High abrasion-resistance makes this one-part polyurethane rubber

joint sealant especially durable in traffic-bearing areas, says the manufacturer. Sharp objects such as spike heels do not affect it, and it is flexible as well as hard. "Terraseal 100" is suitable for sidewalks, swimming pool decks, highways, etc. Dow Corning Corp., Midland, Mich. 48641.

*Circle 102, Readers' Service Card*



**Reglet for concrete.** For glazing in concrete panels, metal reglet provides a snug fit for zipper gaskets, thus forming a more positive moisture barrier to prevent weeping. Roll-formed reglet is "V"-locked into concrete; manufactured in straight sections or with 6", 9", or 24" radius. Fry Reglet Corp., 4903 San Fernando Rd. West, Los Angeles, Calif. 90039.

*Circle 103, Readers' Service Card*



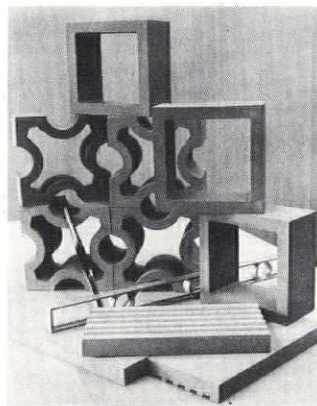
**Wood paneled partitions.** Hardwood paneled or pre-painted hardboard partition units are 4' wide, and come in heights of 42", 66", 86", or full ceiling height. Weyerhaeuser Movable Partitions are said to be easily repositioned, and may be installed without mechanical fastenings to floor or walls, except for starter and free-standing end-units. A special tape holds partitions in place; units are fastened at edges by a concealed bolting. Vertical joints take switches and outlets; standard wiring is carried

through baseboards and millions. Fire-rated and fire-and-sound-rated partitioning is available. Weyerhaeuser Co., Wood Products Group, Tacoma, Wash. 98401.

*Circle 104, Readers' Service Card*

**Sky-high panels.** Special assembly-line techniques enable manufacturer to fabricate insulated panels up to 11' x 50' and 1/2" to 18" thick, suitable for building construction and other applications such as railroad cars. Panels, faced with a variety of materials, have void-free polyurethane foam cores. Landreth Industries, Inc., 2100 Greenwood St., Evanston, Ill. 60201.

*Circle 105, Readers' Service Card*



**Decorative tile and nonskid floor brick.** Tiles for patterned screen walls are press-molded from fire clays, and high-fired to insure strength, low porosity, and resistance to weathering. Nonskid floor brick (foreground), suitable for shower rooms, is fabricated in the same manner. Tile and brick are available in a variety of colors. Harbison-Walker Refractories Co., 2 Gateway Center, Pittsburgh, Pa. 15222.

*Circle 106, Readers' Service Card*

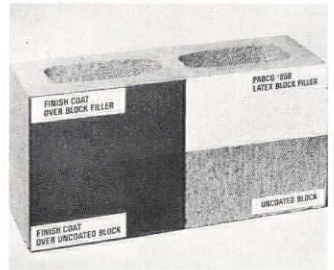
## DOORS/WINDOWS

**Magnetic fire doors.** An electromagnet releases fire doors when a fire alarm or remote switch interrupts current. Standard 4" outlet box accommodates electromagnet on the wall behind a door, and an armature fastens to the door itself. The force exerted by the magnet to hold the door open may be adjusted. Suitable for schools, hospitals, hotels, etc. Honeywell, Inc., Commercial Div., 2727 S.

Fourth Ave., Minneapolis, Minn. 55408.

*Circle 107, Readers' Service Card*

## FINISHES PROTECTORS



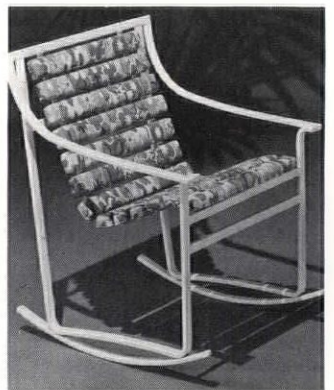
**Filler primes concrete block.** A heavy-bodied, latex-base vinyl paint fills porous openings in concrete and pumice block. One coat is said to be sufficient as a preparation for the finish paint coat. It dries to the touch in approximately two hours. Fibreboard Corp., Pabco Paint Div., 475 Brannan St., San Francisco, Calif. *Circle 108, Readers' Service Card*

## FLOORING

**Unglazed clay.** Natural clay floor tile, in three shades of tan, plus red, is 6" x 3" x 3/8" thick, back- or face-mounted in 12" squares (patterns: Brick Course, Basket Weave, and Brick Spiral) or loose. The extruded clay tiles are designed primarily for commercial and institutional use — both indoors and out. United States Ceramic Tile Co., 217 Fourth St. NE, Canton, Ohio 44702.

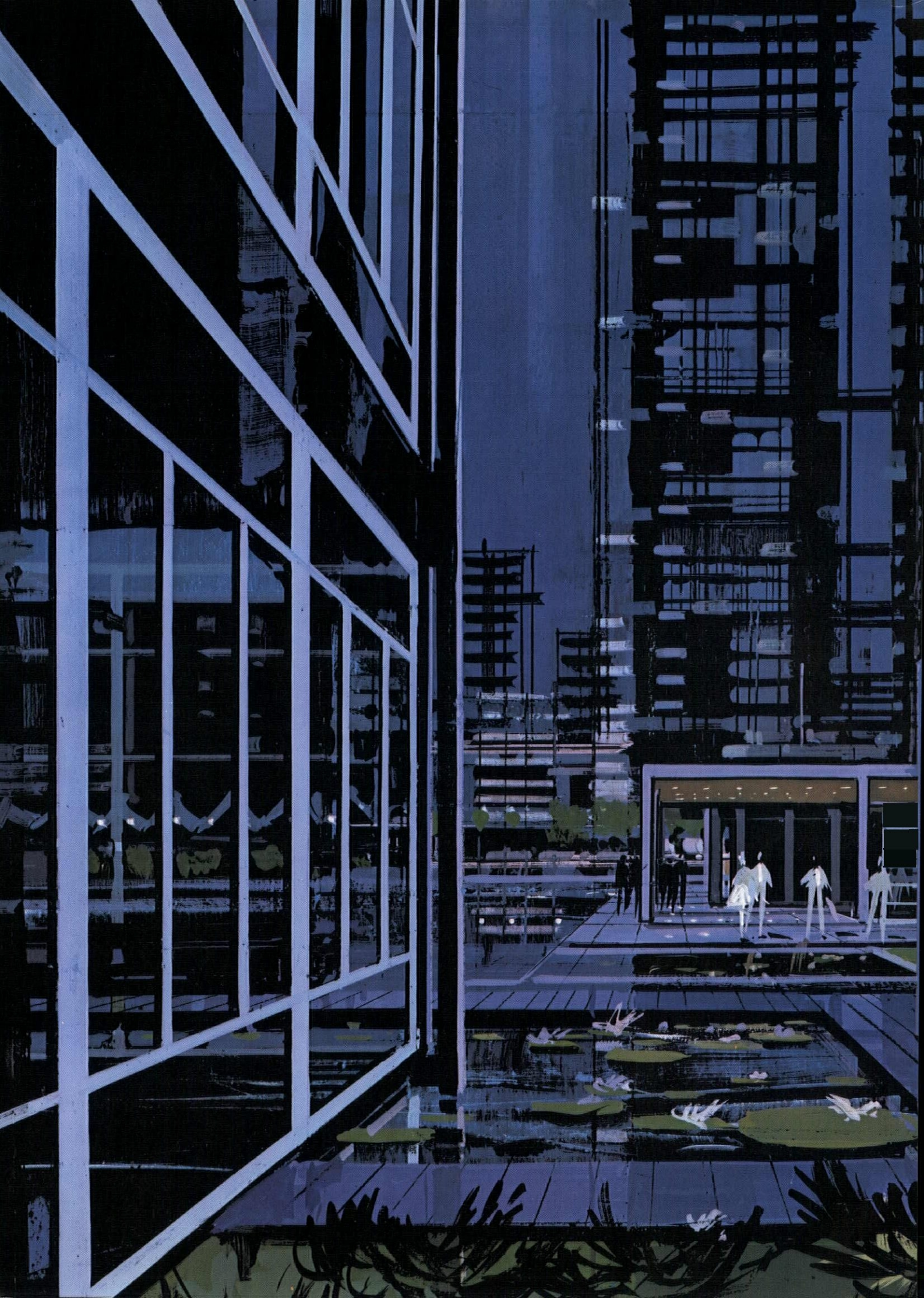
*Circle 109, Readers' Service Card*

## FURNISHINGS



**Outdoor Furniture.** "Cushionaire" steel-framed furniture by Samsonite has cable-strung flexible slats covered by polyurethane foam and upholstered in fade- and weather-resistant vinyl. Steel frames are white or olive. Maintenance is simple: Turn a hose









This steel window won't rust.

It's finished  
in polyvinyl  
chloride.

Polyvinyl chloride is impervious to moisture. We put it on our window four times as thick as paint, using a Ceco-researched method, an exclusive process. This is a resilient finish. It doesn't crack or chip. It gives. We call it Cecoclad. There is no other finish like it.

The Cecoclad window is in the price range of a galvanized-and-painted steel window and a hard-coat-anodized aluminum window. The Cecoclad window needs practically no maintenance. Your client can keep it looking brand new by washing it down with water when the glass is washed. That's all.

We'll be glad to sell you whatever window you want. We make them all. But if you'll take our unbiased advice, you'll specify the Cecoclad window. It's incomparable.

Send for colors, test data, specifications, samples and comprehensive list of projects built with Cecoclad windows throughout the country. The Ceco Corporation, general offices: 5601 West 26th Street, Chicago, Illinois 60650. Sales offices and plants in principal cities from coast to coast.



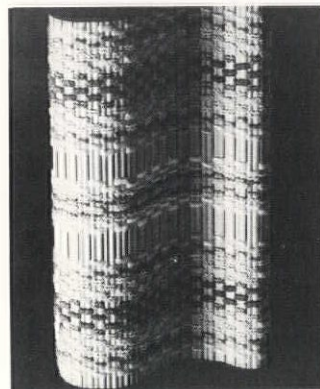
**CECOCLAD / STEEL WINDOWS**

encased in colored polyvinyl chloride four times thicker than paint.



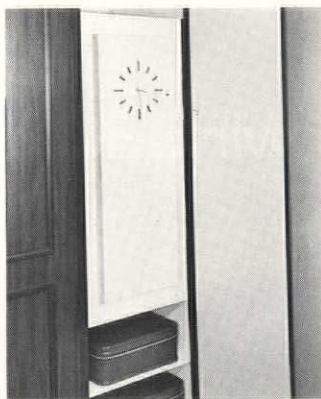
on the furniture and wipe it dry. And, in case of damage, individual slats can be removed and replaced. Included in the collection are rocker, loveseat, side chair, lounge chair, ottoman, folding serving cart, umbrella table, side table, and chaise longue. Regrettably, no solid color upholstery fabrics are available; floral print vinyl comes in blue/green, orange/yellow, or gray/blue. Samsonite Corp., Outdoor Furniture Div., 1050 S. Broadway, Denver, Colo. 80217.

*Circle 110, Readers' Service Card*



**New aluminum blind "Blenweave"** consists of aluminum strips closely interwoven with threads of chenille and bouclé. It is available in nine colors, including various wood grains. Identical on both sides, "Blenweave" blinds require no lining or special treatment and come in rolls. Also new to this manufacturer is "The Riviera Blind," a narrow-slat venetian blind connected by slim nylon strings rather than tapes. A lucite "magic-wand," which operates at the turn of the wrist, replaces the customary cords used to open and close blinds and is another step toward invisibility. Levolor Lorentzen, Inc., 720 Monroe St., Hoboken, N.J. 07030.

*Circle 111, Readers' Service Card*



**Fight wrinkles** with the "Host Valet," a cabinet unit incorporating a fold-up ironing board and an iron holder; it can masquerade as a clock when the cabinet door is closed. Electrical fixtures will service any type of iron. Front panel comes with or without clock. Door measures 16" x 45½"; cabinet interior, 14" x 44". Unit usually shipped unfinished. Iron-A-Way Co., Inc., 220 W. Jackson St., Morton, Ill.

*Circle 112, Readers' Service Card*



**Discontinuous Pedestals.** "Departure," designed by Hans Krieks Associates, is a line of table-desks that use mobile cabinets as pedestals. When placed under desks, cabinets occupy less space than two standard built-in pedestals yet provide almost as much storage area because of two drawers in the desk apron. They can be angled in any direction, moved adjacent to the desk for more surface space, or ganged with other units (under one top) to form credenzas. Scheme accommodates many individual work patterns. Table-desks come in six sizes, ranging from 48" x 30" to 78" x 36"; cabinets, in depths of 18", 22", or 28". Drawers in legal or letter size come in various depths to fit files, etc. Available with chrome or black legs, and with tops of

walnut wood or Formica, the table-desks have both back and side modesty panels in wood or metal (in blue, red, green, and black). Cabinets come in either all wood, or metal with a wood top. Designcraft Mfg. Corp., Kero Rd., Carlstadt, N.J. 07072.

*Circle 113, Readers' Service Card*



**Simon Manges & Son, Inc.**, distributor of wide range of broadrooms for contract use, also has an exclusive series of area rugs, which are woven in Portugal and Spain to specified sizes in patterns designed for office use by Simon Manges' staff. Shown is "Prado," hand-knotted in Spain to form a watery design with shades of blue ranging from "deep midnight to ocean foam." Variations in design can be executed upon request. Simon Manges & Son Inc., 575 Madison Ave., New York 22, N.Y.

*Circle 114, Readers' Service Card*

**Casement Cloths.** Two casement weaves combine advantages of fireproof glass-fiber with the textured look of wool. The Beta glass-fiber yarn, which is washable and requires no ironing, is said never to shrink, stretch, or fade. A vertical novelty weave, "Baghdad," is available in muted shades — oyster, straw, pistachio, parchment, and white. "Cairo," a heavy vertical cable, comes in white, linen, gold, oyster, avocado, and wintergreen. Both fabrics are 45" wide. Thortel Fireproof Fabrics, Inc., 51 Madison Ave., New York, N.Y. 10010.

*Circle 115, Readers' Service Card*

**Creative Weaves.** Anton Maix's substantial Quadrangle

III collection contains both upholsteries and casements, all 54" wide, in several textures and colors. The upholsteries, solid and durable, are meant for public space furniture; some have withstood an abrasion test of 5500 cycles. The natural, undyed wool upholsteries look like tweeds of whites and off-whites. The two Danish wool series offer a choice of 17 excellent colors. Casement cloths come in weaves of wool with linen and wool with nylon, in vibrant solids as well as in Maix's distinctive prints. Anton Maix Fabrics, Inc., 330 E. 59 St., New York, N.Y. 10022.

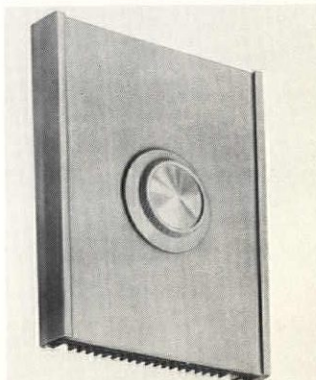
*Circle 116, Readers' Service Card*



**New "Hudee" lavatory basin** has a chrome-plated, stainless-steel frame that meets the long-time need for a frame to match chrome-plated bathroom fixtures. Basins come in round and oval shapes. Clamp-down fastenings hold bowl, countertops, and frame together for a rigid watertight, approved sanitary seal. Also available in 24K-gold plating. Walter E. Selck and Company, 7125 W. Gunnison St., Chicago, Ill. 60656.

*Circle 117, Readers' Service Card*

#### LIGHTING



**Dim the lights.** A 2000-w electronically controlled dimmer for incandescent lighting re-





**IT'S  
HERE...  
1967  
Edition!**

## ***Specifications and Load Tables for High Strength Open Web and Longspan Steel Joists***

It's the Steel Joist Institute's practical working handbook of everything you need to specify joists to carry uniform loads on spans up to 96 feet.

The 1967 Edition covers the following joists: J-SERIES, joists made from 36,000 PSI minimum yield strength steel; LJ-SERIES, longspan joists compatible with the J-SERIES; H-SERIES high-strength joists with chord sections made from 50,000 PSI minimum yield strength steel; LH-SERIES high-strength joists with chord and web sections designed on the basis of 36,000

PSI to 50,000 PSI yield strength steel. Send coupon for your free copy of this valuable handbook.

### ***MAIL COUPON TODAY!***

#### **STEEL JOIST INSTITUTE**

Room 715 DuPont Circle Bldg., Washington, D. C. 20036

Please send me a complimentary copy of the 1967 Edition of Specifications and Load Tables.

NAME

COMPANY

ADDRESS

CITY  STATE  ZIP



#### **STEEL JOIST INSTITUTE**

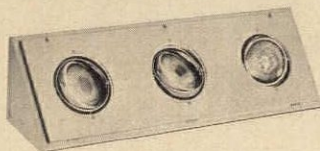
Room 715 DuPont Circle Bldg., Washington, D. C. 20036

On Readers' Service Card, Circle No. 373



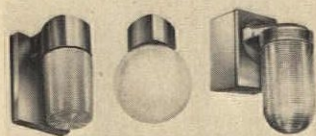
quires no separate remote power unit; it will fit standard two-gang box and has a silicon symmetrical switch to withstand current and voltage surges. Solid-state circuitry assures dimming without flickering, states manufacturer. Ideal Industries, Inc., Sycamore, Ill. 60178.

*Circle 118, Readers' Service Card*



**Lock-in lights.** Adjustable floodlights for architectural and display lighting are now furnished with locking gimbal rings that will maintain any desired focus position. Available in one-, two-, or three-lamp units. NL Corp., Cleveland, Ohio.

*Circle 119, Readers' Service Card*



**Sturdy Stonco.** Lighting fixtures with polycarbonate globes formed from "Lexan" are said to defy breakage—"practically indestructible," claims manufacturer. The clear, opal, or red globes are ultraviolet stabilized, and are available in sphere or cylinder shapes. Mountings for wall, ceiling, corner, or pendant are aluminum. Stonco Electric Products Co., 333 Monroe Ave., Kenilworth, N.J. 07033.

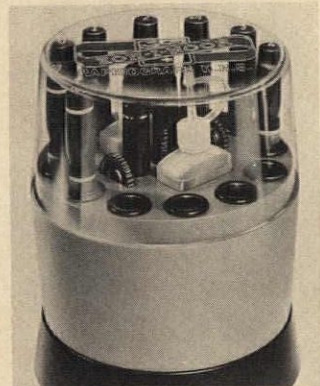
*Circle 120, Readers' Service Card*

#### OFFICE EQUIPMENT

**Eye-saver.** "Dazor Polaroid Filter," attached to the underside of two-tube, floating-arm lamp reflectors, will control glare and brightness, and improve contrasts, claims manufacturer. Dazor Mfg. Corp.,

4455-99 Duncan Ave., St. Louis, Mo. 63110.

*Circle 121, Readers' Service Card*



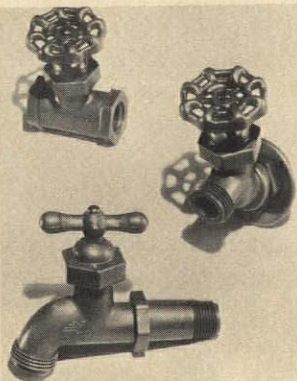
**Humidified pen holder.** Compact kit organizes draftsmen's pens and accessories. Revolving rack stores up to 12 drawing point sections, 3 pen holders, ink, pen cleaner, and 2 nib keys. Sponge ring in circular base maintains humid interior for keeping uncapped pens usable during work periods. Desk-top clamp is included, and hygrometer accessory measures the interior humidity. Koh-I-Noor, Inc., 100 North St., Bloomsbury, N.J. 08804.

*Circle 122, Readers' Service Card*

**Flat rule.** Transparent plastic scale rule includes all standard architectural scales along slots on one face. Available 6" or 12" long. C-Thru Ruler Co., Hartford, Conn. 06121.

*Circle 123, Readers' Service Card*

#### SANITATION PLUMBING



**Brass? No.** These plumbing valves and sink faucets are molded of Celcon acetal copolymer—saving 30% in cost and 75% in weight, according to manufacturer. Smoother interior surfaces and resistance to corrosion provide better water flow, and make it possible to eliminate a seat washer,

seat screw, and bonnet washer. Continuous operating heat range runs from -20F to 180F; standard plumbing tools can be used to install valves. Braham Industries, Inc., Santa Ana, Calif.

*Circle 124, Readers' Service Card*

#### SPECIAL EQUIPMENT

**Highway safety.** Break-away aluminum posts for roadside signs can withstand 100-mph winds, but will shear at the base when struck by the heavy impact of a vehicle. Pfaff & Kendall, 84 Foundry St., Newark, N.J.

*Circle 125, Readers' Service Card*

**Thinner soapstone.** The traditional material for laboratory working surfaces, soapstone, is now available in 1" thicknesses instead of the customary 1 1/4". The 1"-thick "Alberene Stone, Grade-25," does not sacrifice serviceability, claims manufacturer, and it reduces the cost. The Albermar Co., 386 Park Ave. South, New York, N.Y. 10016.

*Circle 126, Readers' Service Card*

**Improving the water.** For areas where the water quality is unsatisfactory, manufacturer offers units that will not only remove hardness but also iron, and "sulfur" gas, and will neutralize acidity. Other equipment improvements include automatic controls on deionizers (used for treating water in laboratories, hospitals, etc.), and a sensing device for commercial or residential water-softeners. "Aqua-Sensors" signal the need for recharging filter beds when water hardness reaches a certain level. This method is said to be substantially more efficient than recharging by pre-set time intervals. Culligan Inc., Northbrook, Ill.

*Circle 127, Readers' Service Card*

**Fairway friend.** Gear-driven sprinkler heads are available in two speeds with standard or automatic valves; three nozzle turrets sprinkle circular area between 180'-225' in diameter. Installed flush with ground, sprinklers pop up for spraying, and all parts may be removed from the top for

easy maintenance. Adaptable for converting existing manual systems to fully automatic ones. Suitable for golf courses, schools, parks, etc. Toro Mfg. Corp., 8111 Lyndale Ave. So., Minneapolis, Minn. 55420.

*Circle 128, Readers' Service Card*



**Watering place.** Precast stone drinking fountain for interior or exterior wall mounting can be fitted with a freeze-proof valve system for cold climates. Available in a variety of aggregate colors and three finishes: light sandblast, exposed aggregate, or polished. Haws Drinking Faucet Co., Fourth and Page Sts., Berkeley, Calif. 94710.

*Circle 129, Readers' Service Card*

**Solid-state nurse call system** with "computer-type memory" stores patient calls coming in while the nurse is on another call. Signals can then be read off in order of priority on a digital read-out panel. Physiological monitoring can be tied into system if desired; when medical parameters exceed safe limits, a call is automatically placed. Motorola Inc., Communications Div., 4900 W. Flournoy St., Chicago, Ill. 60644.

*Circle 130, Readers' Service Card*

**Knotty pine and 2 1/2' wide.** Edge-glued, panel-grade common boards from 14" to 30" wide and 6' to 16' long are 3/4" thick, sanded smooth on both sides. No end gluing is necessary as boards extend full length of panel. Production with high-frequency bonding equipment has just begun at manufacturer's sawmill in Oregon and lumber will soon be available nationally. Georgia-Pacific Corp., P.O. Box 311, Portland, Ore. 97207.

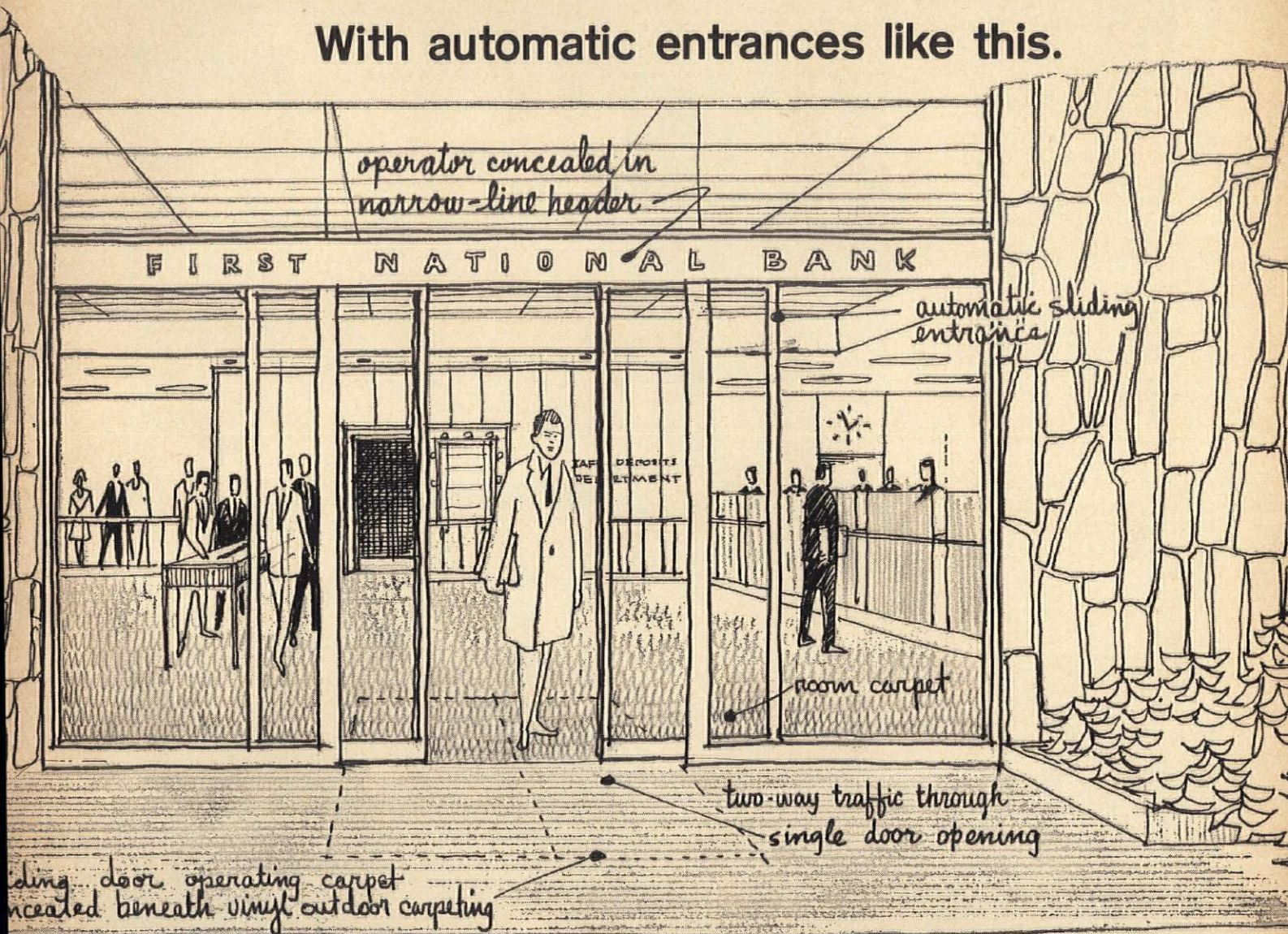
*Circle 131, Readers' Service Card*



Who is doing something  
to open doorways to design freedom?

Stanley is.

With automatic entrances like this.



Help us strike a blow for freedom of design! Get information on Stanley automatic sliding entrances. Write us for Folder No. M67-COM. Look us up in Sweet's. Or check under "Door Operating Devices" in the Yellow Pages for the name of the Stanley distributor nearest you. Stanley offers a complete line of famous MAGIC-DOOR™ operators (pneumatic, hydraulic, electric), controls and accessories for doors that swing, slide or fold. Stanley Door Operating Equipment, Division of The Stanley Works, New Britain, Connecticut.

THE  
**STANLEY**  
WORKS®

On Readers' Service Card, Circle No. 372



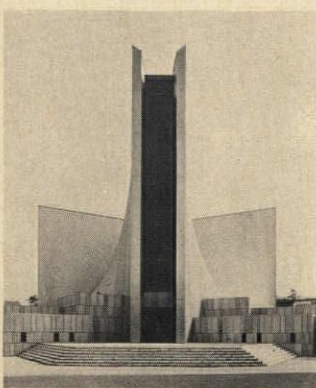
# MFRS' DATA

## ACOUSTICS

**Modular panels form acoustic enclosures.** Steel-faced "acoustic-fill" panels (standard thickness: 4", in several sizes) combine with manufacturer's special doors and window panels to make structures ranging from a noise-controlling partition to a fully enclosed machinery room with "Moduline" floor supported on vibration isolators. Data sheets give dimensions; transmission loss and sound-absorption tables for components; joiner and connector data; installation details; specifications. Industrial Acoustics Co., Inc., 380 Southern Blvd., Bronx, N.Y. 10454. *Circle 200, Readers' Service Card*

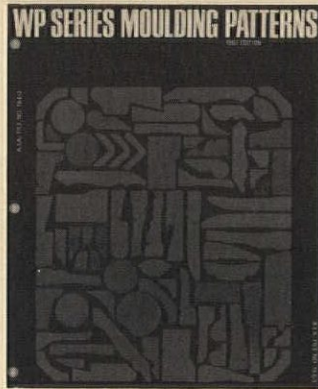
## CONSTRUCTION

**Sealant array.** One-part polysulfide "Rubber Calk 5000" seals joints subject to structural movement (metal panels, marble, window glazing, etc.). Brochure also gives performance characteristics, suggested applications, colors, and specifications for six other sealants — two-part polysulfides and two-part polyurethanes. 8 pages. Products Research & Chemical Corp., 2919 Empire Ave., Burbank, Calif. 91504. *Circle 201, Readers' Service Card*



**Stainless-steel roofing.** Lighter gages, easy soldering, and no stripping of coating metal or surface preparation give stainless steel an advantage in roofing, flashing, and related applications, say industry producers. "Stainless Steel Data Manual" contains information on finishes, suggested minimum thickness for specific applications, and detail drawings of representative roofing seam types and pat-

terns, spandrel flashing, expansion joints, etc. 28 pages. Companion booklet, "Suggested Guide Specifications for Roofing, Flashings and Accessories," is 20 pages. Shown: Kenzo Tange's stainless-steel-roofed cathedral in Tokyo. Committee of Stainless Steel Producers, American Iron and Steel Institute, 150 E. 42 St., New York, N.Y. 10017. *Circle 202, Readers' Service Card*



**Finishing touches.** Moldings are cataloged in a booklet published by three lumber associations. All patterns currently manufactured and distributed are listed by type (crowns, coves, rounds, stops, etc.) with a simple profile and dimensions. 24 pages. Price: 50¢. Western Wood Moulding Producers, Box 25278, Portland, Ore. 97225.

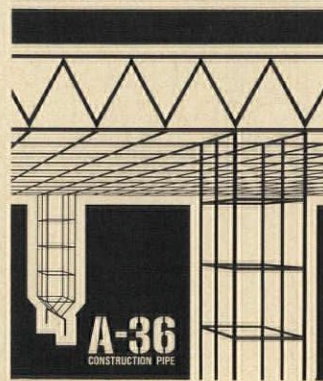
**Metal lath and plaster.** Non-bearing partitions are described and specified in manual that generously details the use of metal lath and accessories in studless solid, channel stud solid, channel stud hollow, prefabricated steel stud hollow, and sound-insulating double partitions. Sound transmission loss tables, fire ratings, stud spacing, and other construction and technical data. 38 pages. Wheeling Corrugating Co., Wheeling, W. Va. *Circle 203, Readers' Service Card*

**Plastic skins.** Curtain-wall panels, insulated with either polyurethane or polystyrene foam, are faced with Plexiglas — flat or patterned; glossy or matte finish colors. A choice of materials is available for

the interior face. Tooling for custom designs can be done for as little as \$500, claims manufacturer. Descriptions, color photos, short specs, installation details, and brief discussion of building codes and fire ratings. 8 pages. Structural Plastics Corp., Osseo, Minn.

*Circle 204, Readers' Service Card*

**Preventing failure of tinted glass.** Edge strength is the key to reliable performance of tinted glass. Edge tension stresses created by the heat-absorbing qualities of tinted glass make special problems when there is partial shading, heating-cooling directed against the glass, etc. Edges must be clean cut and left unpolished, and treated with care in handling and installation. Booklet details job-site procedures for cutting and installation, and discusses special situations that require factory fabrication. Charts, photos, graphs, installation details, text. 36 pages. Pittsburgh Plate Glass Co., One Gateway Center, Pittsburgh, Pa. 15222. *Circle 205, Readers' Service Card*

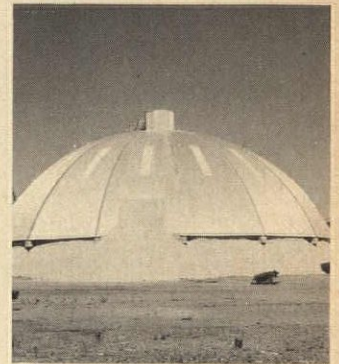


**Steel pipe.** Construction and fabrication using steel pipe meeting ASTM A-36 specifications are discussed briefly; technical tables list allowable loads and physical characteristics for beams and columns. 20 pages. Jones & Laughlin Steel Corp., 3 Gateway Center, Pittsburgh, Pa. 15230. *Circle 206, Readers' Service Card*

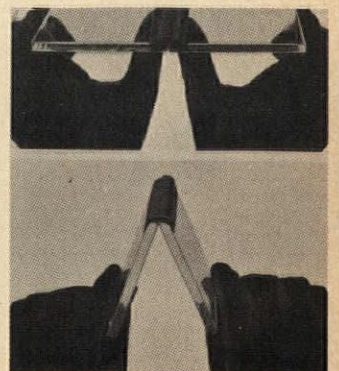
### "U.S. Product Standard PS 1-66 for Softwood Plywood."

This new voluntary Product Standard covers Douglas fir plywood, Western softwood plywood and Southern pine plywood, and replaces three previous U.S. Commercial Standards. Extensive industry

research on performance testing has been used to set quality standards. Produced with the cooperation of the Product Standards Section of the U.S. Department of Commerce, the standard classifies and lays down requirements for different types and grades of plywood, sets forth inspection and testing procedures, and illustrates grade-trade-marks. 28 pages. American Plywood Assn., 1119 A St., Tacoma, Wash. 98401. *Circle 207, Readers' Service Card*



**The Fink Dome** was designed by Al Fink, and, since 1963, these geometric domes have been manufactured by General Conveyor Inc. Built on top of an earth berm, a product berm, or a retaining wall, they can be covered by metal, wood, concrete, or plastic panels. The structural framing can be steel, laminated wood, etc. Brochure outlines possible industrial and architectural uses. 6 pages. Color. General Conveyor Inc. of Northern California, 1821 Mt. Diablo Blvd., Walnut Creek, Calif. *Circle 208, Readers' Service Card*



**Tape sealant, "PTI 606,"** is made up of 100% solids, yet is compressible and sticky, states manufacturer. Suitable for all curtain-wall components, the sealant (black or aluminum gray) can be ap-



Pittsburgh Corning

# the insulation people

offer you living proof that FOAMGLAS® Roof Insulation  
is the only really waterproof insulation—  
and it stays waterproof.

This planter is made of FOAMGLAS, the cellular glass roof insulation. It's the only completely waterproof and vaporproof insulation you can get.

The plant, a sequoia, belongs to the oldest living species around. Some of the giants in California are over 2,000 years old.

We're not claiming FOAMGLAS will last *that* long (although the material's inorganic composition makes it possible). But we do know that this FOAMGLAS planter will still be waterproof—still have all its orig-

inal insulating efficiency—years after the sequoia has outgrown it.

Once FOAMGLAS is down on your client's roof, he's protected against insulation failure. We guarantee it for twenty years.

Get full details on new bevel-edged FOAMGLAS®-BOARD, the ideal way to get the full value of FOAMGLAS in a 2' x 4' size. Write Pittsburgh Corning Corporation, Department PP-17, One Gateway Center, Pittsburgh, Pennsylvania 15222.

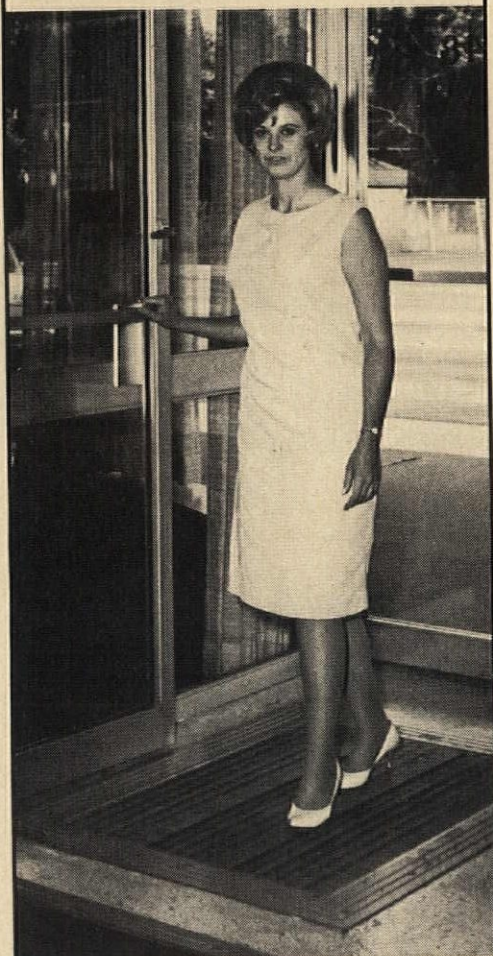
On Readers' Service Card, Circle No. 407



PITTSBURGH  
**PC**  
CORNING



**Hard to believe?  
It's true anyway.**



**"-the-  
miracle  
mat"**

automatically scrubs shoes clean with hundreds of thousands of oscillating nylon bristles. Step on, it scrubs - - step off, it stops. Why pay as much as \$475.00\* per lb. to remove dirt? Keep it out in the first place with Miracle Mat. Hundreds now in service in industrial, commercial, and residential buildings. Write for brochure.

\*Labor alone,  
industry estimate.

**PROGRESSIVE  
ENGINEERING CO.**

Holland, Mich. 49423  
The "Scrub Clean" City  
Phone 616-392-2373

On Readers' Service Card, Circle No. 364

plied under extreme weather conditions. Pamphlet gives test and technical data, installation details, and suggested specs. 4 pages. Protective Treatments, Inc., 4401 W. North Ave., Chicago, Ill. 60639.  
*Circle 209, Readers' Service Card*

#### FLOORING

**New floors cover old "Perimiflor"** system for laying sheet vinyl over old flooring requires sanding and adhesive only around perimeter and along seams. Sanding strip is 6"-8" wide, and special adhesive is laid in a 4" band. Seams are kept to a minimum by 6'-wide rolls, up to 90' long. System uses manufacturer's Montana and Tessera Vinyl Corlon. Can be laid over old floors of sheet vinyl, rubber, asphalt or vinyl tile, linoleum, ceramic or clay tile, terrazzo, marble, or metal. Booklet gives installation instructions, chemical resistance tables, brief specs, and one-page sections with photos on different types of commercial and institutional remodeling. 14 pages. Armstrong Cork Co., Floor Div., Lancaster, Pa.

*Circle 210, Readers' Service Card*

#### FURNISHINGS

**Decraguard decorative panels** are presented in a triptych catalog. Panels, finished on one or both sides, consist of overlay sheets bonded to selected substrates. There are three systems: "Standard Grade" is meant for vertical surfaces; "Deluxe Grade" serves on both vertical and horizontal surfaces; "Supreme Grade" is engineered specifically to meet high-abrasion requirements. Surface patterns come in both dark and light shades of most woodgrains. Also available is self-adhering edge banding to match all patterns. Catalog includes separate sheets with specifications and illustrations of patterns. Simson Timber Company, 2000 Washington Building, Seattle, Wash. 98101.

*Circle 211, Readers' Service Card*

**Contract furniture** designed for Directional by Kipp Steward includes desks, cabinets, and occasional tables. Brochures in a three-ring binder illustrate pieces indi-

vidually and in color settings. Four series are shown. Series one and two include executive-area pieces in walnut with ebony trim. Series three displays pieces of cherry wood with ebony inlays; hardware is solid antique brass. Series four has conservative designs in walnut, available in four different finishes and with leather tops. A price list with illustrated specifications chart is included. Directional Contract Furniture Corp., 979 Third Avenue, New York, N. Y. 10022.

*Circle 212, Readers' Service Card*



**Living Wall.** Three Royalcote wood-paneling finishes now come slotted to accept brackets and hooks for lively shelving. A development of Poul Cadovius' Danish system, this scheme eliminates unsightly and expensive vertical metal wall strips. Corresponding "Sandtone Gold" metal shelf brackets and picture hooks lock easily into the "Living Wall." Royalcote offers these panels in Teak, Honeytone Cherry, and Sable Walnut, which are compatible with their other woodgrains. Shelves of Satin Walnut come in five sizes, ranging from 8" x 24" to 10" x 48". Masonite Corp., 29 N. Wacker Drive, Chicago, Ill.

*Circle 213, Readers' Service Card*

**No Shock.** The Brunswick Corporation has announced that they have successfully and economically eliminated static electricity from carpets. This was accomplished, they report, by the use of "Brunsmet," a blend of wool and stainless-steel filaments. Under test conditions, a blend containing one-third of its weight in stainless-steel filaments achieved a voltage reduction of 75-80% compared





*Eight story apartment uses Hi-Stress Deck on masonry bearing walls.*

## New HI-STRESS DECK is prestressed concrete. It does a better job.

Close up, that HI-STRESS slab looks pretty much like the original Flexicore unit. And it has all its traditional good characteristics: high-speed erection, immediate work deck, high fire-resistance rating, and the other benefits of concrete construction.

*Structurally, it's different.*

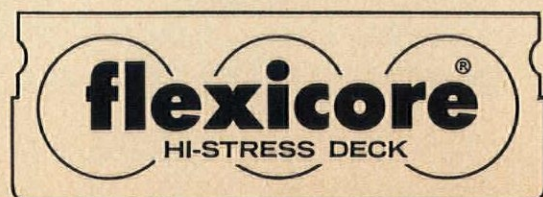
This slab is fully prestressed, so it has all the advantages of prestressed concrete. This means it will give much improved structural performance over a conventionally designed slab.

New fire tests give you 2-hour fire resistance rating on untopped decks, 3-hour on decks with 1¾ inch topping. UL, Inc. labeling service is available.

New underfloor electrical distribution systems give

ultra-high capacity for telephone and power lines. New manufacturing methods and high speed erection result in a superior product and faster construction time.

Check up on new HI-STRESS DECK. Phone your local representative: see the white pages of your phone book. Or write The Flexicore Co., Inc., P. O. Box 825, Dayton, Ohio 45401. It may be just right for your next job.



On Readers' Service Card, Circle No. 335



**Private Intercom**

**Area Paging**

**Time Signals**

**Emergency Warning**

**Music Distribution**

# Now, an amazing new sound system...

## combines all conventional features with private telephone intercom

Webster Electric, a pioneer manufacturer of sound and intercom equipment, has developed an entirely new sound system combining all outstanding features of a conventional system with private automatic telephone intercom. This innovation, the Webster PC System, is modular and fully transistorized — so entirely unique — a patent has been allowed.

It works like this. The sound system is multi-channel, permitting normal distribution of recorded, broadcast, or live programs, time and emergency signals to selected rooms, groups and areas. The telephone intercom section features a solid state line circuit switchboard, providing trouble-free communication over any number of dial telephones. In addition, you gain access to the sound system from any phone for paging, announcements or emergency all-calls on a private and/or priority line basis.

The advantages to this system are many. The electronic components and switchboard can be located in a remote spot — closet or equipment room. Wiring is telephone type — economical to install, maintain and expand. No special training is required to use — dial telephones are familiar to everyone. There are no restrictions on access to system — any authorized telephone may call.

The Webster PC System is ideal for schools, dormitories, hospitals, factories, wherever you recommend a sound or music distribution system. It's a natural to replace existing systems in remodeling or expansion programs.

Your Webster Electric distributor\* can tell you more — how your clients can benefit from the new PC System concept. Call him today or write direct for technical literature.

\*See Yellow Pages — "Intercommunications Systems"

5260

COMMUNICATIONS DIVISION

**WEBSTER**



**ELECTRIC  
COMPANY, INC.**

RACINE, WISCONSIN 53403

subsidiary of Sta-Rite Industries, Inc.

PRIVATE DIAL TELEPHONE • LOUD-SPEAKING INTERCOM • SOUND & PAGING SYSTEMS • TEACHING LABORATORIES

On Readers' Service Card, Circle No. 381

to an all-wool carpet. A complete description of the experiment and its results is available in "The Brunsmet Bulletin." New Products Division, Brunswick Corp., 69 W. Washington St., Chicago, Ill. 60602. Circle 214, Readers' Service Card

**Patterns in Glass.** "Cascade" is a decorative glass that can be used as a partition panel because it allows light to pass through, while obscuring images to insure privacy. Entrapped air bubbles provide pinpoints of white within the green-tinted glass. It is available in standard sizes up to 48" x 120". The latest issue of "Creative Ideas in Glass," a four-color catalogue, demonstrates uses of glass both indoors and outdoors. American Saint Gobain Corp., Box 929, Kingsport, Tenn.

**Wallboard of gypsum covered with vinyl plastic.** Manufacturer claims material is less expensive than building a wall and then covering it with vinyl. Panels come in thicknesses of  $\frac{3}{8}$ " and  $\frac{1}{2}$ ". They are 4' wide and 8', 9', and 10' long; lengths up to 14' are provided upon request. A broad selection of colors is available in the various textures (including burlap, travertine, wood-grain, linen). Eight-page brochure includes color and texture charts. It also describes matching covering for interior and exterior corners, and aluminum accessories to form outside corners, and to trim around windows, etc. The National Gypsum Company, Buffalo, N.Y.

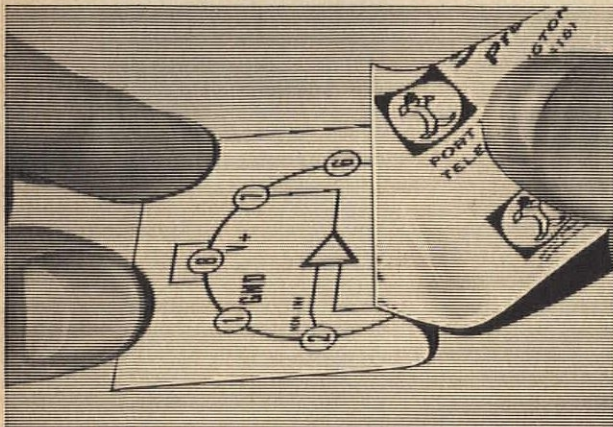
Circle 215, Readers' Service Card

**Tiles and mosaics** by Western States Ceramic Corporation are color-illustrated in a four-page brochure. For wall application, there are glazed ceramic tiles in 20 colors (including crystal, spice, oatmeal, yellow), three designs (one of which is "Plain Specks" — a sprinkle of dots on a plain background), and a variety of sizes. For swimming pools, there are vitreous tiles and marker tiles with black numerals. Mosaic tiles are available for floor application in straight joints and random blocks, glazed and unglazed, in muted colors.



*if your applique sheet does not give  
crisp reproduction every time...*

# you're not using **STANPAT** THE ORIGINAL INSTANT DRAFTING



We couldn't take better care of your tracings if they were our own. And, because we've been making appliques longer than anyone else, we're quite a few steps ahead of everyone else. That's why we can guarantee that STANPAT sheets meet the most exacting requirements of draftsmen and engineers... will give perfect reproduction every time and saves costly man hours. Don't take chances with inferior imitations and ruin costly tracings. Insist on STANPAT!

- Only STANPAT pressure sensitive sheets adhere permanently. Won't wrinkle when tracings are rolled.
- Only STANPAT has a non-reflective matte surface that thrives on erasures... will never polish... is receptive to pencil or ink... assures clean, crisp reproduction, even with microfilm.
- Only STANPAT is compatible with all drafting materials and fabrics. Cannot disturb oils contained in some papers that could be leached out, causing "ghosting".
- Only STANPAT is laminated on both sides to prevent absorption of moisture and curling.
- Only STANPAT has translucent backing to allow positioning before application to your tracing.
- Only STANPAT is dated for your protection, with a one year shelf-life guarantee.

Yet, with all these performance features, STANPAT is priced low. And there's never a charge for plates or delivery. What's more, STANPAT's new and improved production techniques cut in-plant time to three days.

Unbelievable? Then send for a free sample today and judge for yourself. Better yet, send us a sample of your repetitive artwork and we'll send you a quote. There's no obligation.

## MAKE YOUR OWN STANPAT



When an emergency arises, you can now make STANPAT drawing symbols in your own office. Make your repetitive symbols for any diagram, spec, detail, title block, or any other drawing, on our newly developed 8 1/2" x 11" sheets of special material. Run it through your electrostatic copier, and you have your own pre-printed transfer sheet within minutes. Reproductions are always crisp and clean.

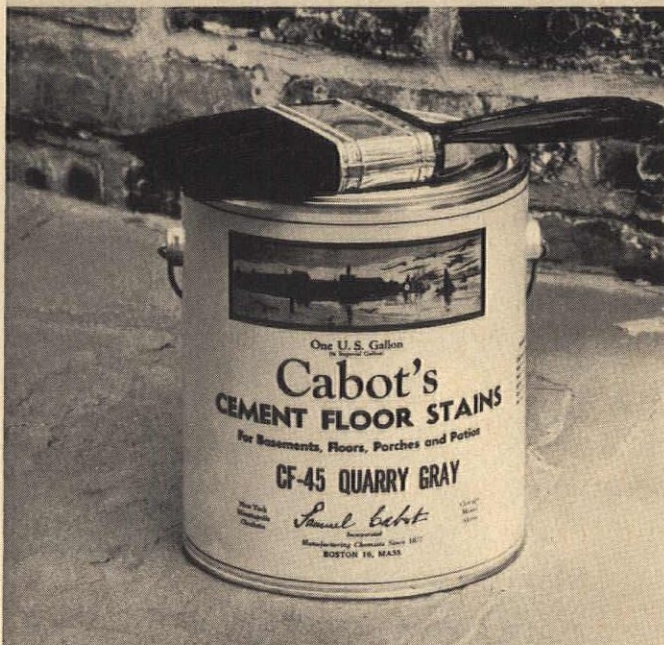
*faithfully serving the engineer and architect for a quarter of a century*



## STANPAT PRODUCTS INC.

Covert and Main Street, Dept. Q-1  
Port Washington, N.Y. 11050  
Telephone: 516 883-8400

## NEW ... for Cement, Masonry, Flagstones



# Cabot's CEMENT FLOOR STAINS

**NOT A DYE... NOT A PAINT!**

When it comes to painting, cement floors are a problem. Cement, porous and moisture-absorbent by nature, will often discolor after painting... or even worse, crack, peel, or scale. Cabot's Cement Floor Stains, newly developed to answer these problems, penetrate well into the cement surface. The resulting color is decorative and uniform, lending beauty to the texture of cement and concrete. Unlike integral colors, Cabot's Cement Floor Stains may be relied on to provide accurate colors without fading.

- For cement, concrete, flagstones, all masonry surfaces inside or out... basement floors, walks, steps, patios, sun decks.
- Resists abrasion and moisture, will not crack, peel, or blister. Detergents and beverages will not mar the finish; it is alcohol-resistant.
- Easy to apply with brush, roller, or spray... has great covering power; prevents cement floor "dusting."
- Eight colors: Mint Green, Brownstone, Brick Red, Quarry Gray, Evergreen, Cobblestone Gray, Sandstone, Pipe-stone Red... plus White and Black.

## SAMUEL CABOT INC.

128 S. Terminal Street, Boston, Massachusetts 02210

Please send color card and information on Cabot's Cement Floor Stains.

---



---



---

On Readers' Service Card, Circle No. 392

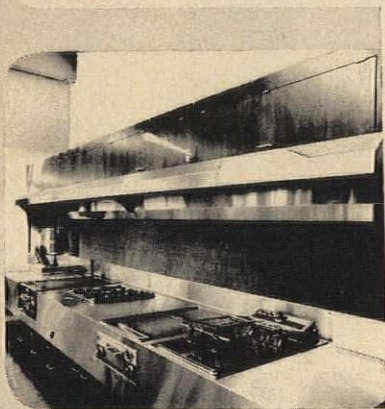
On Readers' Service Card, Circle No. 326



# anything **NEW** IN KITCHEN VENTILATION **YES**



The  
**GAYLORD**  
VENTILATOR



- No Filters — or removable parts
- Automatic Water Cleaning — Daily
- Centrifugal Grease Extraction
- Requires less air
- Removes grease, heat, odors
- 24 hour Automatic Fire Quenching
- Fire System thermostatically controlled
- Underwriters' Laboratories Inc. Listed
- National
- Sanitation Foundation Approved
- Regional Fire Underwriters Approved
- Reduced Insurance Rates
- Reduced Maintenance Costs
- Guaranteed Performance

## **AUTOMATION WITH A FLAIR**

**DESIGN SERVICE** — The Gaylord Ventilator is adaptable to all equipment — upon request we will provide design services and layout drawings for each of your installations showing not only our recommendations for the utilization of the Gaylord Ventilators but complete air engineering for the job — at no cost or obligation.

**For Complete Literature:**  
**GAYLORD INDUSTRIES**

P. O. BOX 19044  
Portland, Ore. 97219 - 503-246-8835

On Readers' Service Card, Circle No. 336

Patterned mosaics are available. Brochure also lists related products for installation of tiles and mosaics. Western States Ceramic Corporation, 7609 Wilbur Way, P.O. Box 7597, Sacramento, Calif. 95828.

Circle 216, Readers' Service Card

**Bathroom Fixtures.** A choice of nine lavatories, four bathtubs, and two sinks is available from Mansfield Sanitary, in a collection primarily for residential use. The fixtures come in "Lifetime Mirror China" as well as in cast-iron and steel, and in such colors as summer coral, pastel tan, and seafoam green. A four-color leaflet describes and illustrates the collection. Catalogue 7396-L, Mansfield Sanitary, Inc., Perrysville, Ohio 44864.

Circle 217, Readers' Service Card

**Signature office furniture.** This line includes double and single pedestal desks with modular cabinets and drawers (box drawers, file drawers, center drawers). All units are 17½" deep, and come with locks if requested. Fourteen colors are available ("leaf green", "harvest brown", "desert sage"). Seven-page brochure also describes tables, telephone cabinets, and swivel chairs, with specifications and color reproductions. Bentson Manufacturing Company, Inc., Box 1143, Aurora, Ill. 60507.

Circle 218, Readers' Service Card

**Fuzzy vinyl.** "Concept," a nylon tricot stabilized with expanded vinyl, looks like a cross between velvet and suede cloth. Nylon tricot is made of DuPont Antron nylon knitted by Burlington Tricot Co. It is backed with Terson-expanded vinyl for stabilization. A sponge, just damp or mildly soapy, will clean Concept. Roll length is 30 yd; 54 in. wide. Swatches of 14 rich colors are glued to a bank-book size brochure; specifications and distributors listed. Athol Manufacturing, Vinyl Fabrics, Butner, N.C. 27509.

Circle 219, Readers' Service Card

**Doorknobs like diamonds.** "Facet" — an addition to Kwikset's "400 line" of door-



... with Stonco **BREAKPROOF** lighting fixtures. Over 200 different types. All with lifetime Lexan® globes that will not bust, shatter, crack or bubble.

What a terrific idea for maintenance-free lighting in parks, playgrounds, public housing, subways—any area where glass is a tempting target for kids. (Not to mention hazardous locations, like food processing plants, shower rooms, gymnasiums, etc.)

Smashed glass giving you gray hair? Specify Stonco **BREAK-PROOF**. . . the most inexpensive "accident" insurance money can buy.

# STONCO®

© 1966 STONCO ELECTRIC PRODUCTS CO., KENILWORTH, N.J.

On Readers' Service Card, Circle No. 374



# Detex knows all the ins and outs about total exit protection

Your doors — especially emergency exits — are probably the weakest points in your building security program. Thieves, pilferers, and vandals often use them despite your best efforts.

To protect yourself from illicit door use, you need Total Exit Protection — and that's where Detex comes in.

Write today for free  
8-page brochure.



**DETEX CORPORATION**  
Dept. PG-1  
53 Park Place, New York, N.Y. 10007  
Tel. (212) 732-6450

Represented in Canada by: K. M. Thomas Co., Ltd. Toronto

On Readers' Service Card, Circle No. 394

## MATERIALS FOR ARCHITECTURE from ABRASIVES to ZIRCONIUM

AN  
ENCYCLOPEDIA  
GUIDE



by **CALEB HORNBOSTEL, A.I.A.**

### INDISPENSABLE...

first single source of basic and scientific data on all materials used in modern architecture!

### INCLUSIVE...

COMPONENTS (copper, lead, nickel and zinc)—FABRICATED BUILDING PRODUCTS (panels, insulation, tile and acoustic materials)—PHYSICAL & CHEMICAL PROPERTIES (lists, complete analysis of advantages, limitations, details of use in buildings)—DESCRIPTION OF PRINCIPLE TYPES OF MATERIALS (uses, history, manufacturer, techniques of application)—CONSTRUCTION MATERIALS—FINISHING PROCESSES—ACCESSORY MATERIALS (for installation)—PREFERRED MATERIALS (for each building part)—plus much more!

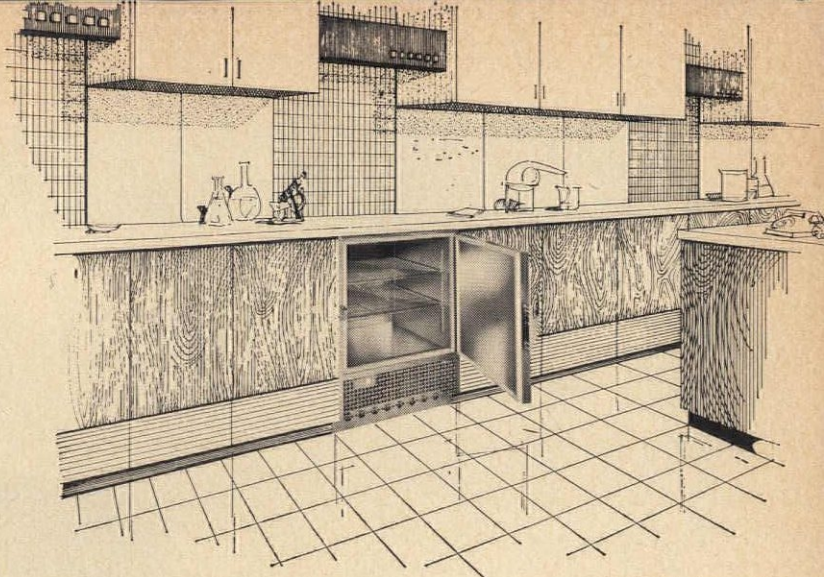
1961. 8½ x 10½. 624 double-column pages. 1,046 tables, charts, diagrams, and photographs. \$20.00

REINHOLD BOOK DIVISION



Dept. M-134 430 Park Ave., N. Y. 22

On Readers' Service Card, Circle No. 440



MODEL UC-5-CW

## BIGGER INSIDE THAN OUT?

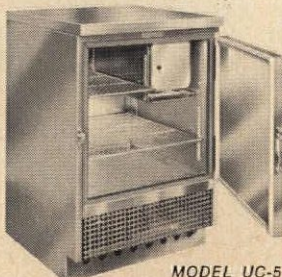
Hardly... but with outside dimensions of 24" x 24" x 34½" this versatile line of nurses station/pharmacy/laboratory-refrigerators has a large capacity of 5.4 cubic feet. Built to fit flush with adjacent cabinet work, and custom finished to your specifications, a trim uninterrupted line of design and color can be easily achieved.

Other important features include:

- Gleaming stainless steel interiors.
- Explosion-safe and total explosion-proof construction, optional.
- Removable front grille through which all fittings and controls can be easily serviced without moving refrigerator.
- Dished interior bottom to protect floors from spilled products.
- Automatic and semi-automatic defrost system with built-in condensate evaporator and accumulator. Eliminates need for floor drain.



MODEL UC-5-BC



MODEL UC-5

### MODEL UC-5-CW

(illustrated above)

Cold wall type cooling system with automatic push button defrost. No freezing compartment. Explosion-safe and total explosion-proof construction available on this model only.

### MODEL UC-5-BC

Blower type cooling system with automatic off cycle defrosting. No freezing compartment.

### MODEL UC-5

Two-tray ice cuber cooling system and semi-automatic defrost.

*NOTE: Jewett also makes a line of freezers with the same dimensions and features listed above.*

THE

**JEWETT**

REFRIGERATOR CO., INC.  
4 LETCHWORTH STREET  
BUFFALO 13, NEW YORK

MANUFACTURERS  
OF REFRIGERATORS  
OF EVERY TYPE  
FOR INSTITUTIONS  
Since 1849

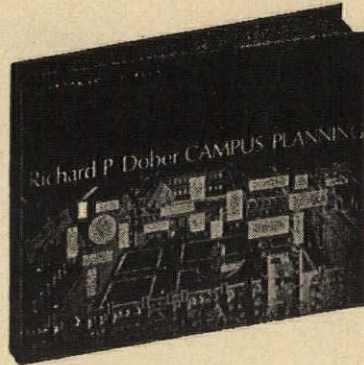


On Readers' Service Card, Circle No. 431



**SEND TODAY**

for this important and timely book:



# CAMPUS PLANNING

by Richard P. Dober

Between now and 1980, the population explosion will make it necessary to provide campus space equivalent to all the campuses constructed from 1936 to 1960. This is an urgent problem facing the entire nation, and **CAMPUS PLANNING** provides vital information on the approaches to a solution.

This copiously illustrated and intriguingly written volume contains design programs both for existing facilities and institutional expansion. Significant trends on site design and landscape planning are described, with special attention to the relationship of community and campus. Plans outlined include

complexes of buildings, housing, research laboratories, and individual structures . . . all illustrated by outstanding examples.

The author, Richard P. Dober, has served as consultant on planning and design to M.I.T., Harvard University, Drake University and Goucher College. He has prepared master plans for the University of Rhode Island, University of Colorado, Dana Hall School and others.

A book with wide appeal for architects, planners, administrators, educators, and libraries. 1963. 8½" x 11". 320 pages.

**\$25.00**

**30-Day Approval**

**Reinhold Book Division**  
**430 Park Avenue, New York, N. Y. 10022**

Please send me \_\_\_\_\_ copy(ies) of **CAMPUS PLANNING** by Dober at \$25.00, for 30 days' approval under the following terms:

☐ Total payment enclosed (Reinhold pays regular delivery charges)

☐ Bill me (plus delivery charges)

Print Name \_\_\_\_\_

Address \_\_\_\_\_

City & Zone \_\_\_\_\_ State \_\_\_\_\_

Save Money! Send full payment with order and Reinhold pays regular delivery charges. Same return privilege guaranteed. Please include sales tax on Ohio, Pa., and N.Y. orders. For your protection—do not send cash. Send check or money order. Dept. M-339.

**REINHOLD BOOK DIVISION. 430 Park Avenue, New York, N. Y. 10022**



knobs that simulates the faceted shape of a diamond. It is a shape conducive to a sure grip and to easy turning. Knobs come in finishes of antique brass, antique bronze, antique nickel, and polished brass. Miniature version of "Facet" is available for cabinet application. Knobs will meet all interior and exterior locking requirements. Four-page brochure is color-illustrated. Kwikset Sales and Service Company, a subsidiary of Emhart Corporation, Anaheim, Calif.

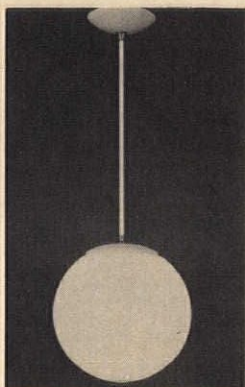
Circle 220, Readers' Service Card

**Knobs and handles.** Door and furniture handles come in reproductions of several historical styles; one is a group of porcelain knobs—white, with the attaching screw-head visible in the middle. They bring back the turn-of-the-century's "cottage" and "mission oak" furniture, as well as capitalizing on the art nouveau revival. Also shown in the 8-page catalog is a rope-binding hook—for securing hammocks—which folds flat when not in

use. Peabody Distributing, Sales Division of Belwith International Ltd., 1119 E. 63rd St., Los Angeles, Calif.

Circle 221, Readers' Service Card

#### LIGHTING



**Lights for all reasons.** Available in a variety of shapes, Globe Lighting's ceiling fixtures, in white satin glass, include hand-blown spheres (fastened flush against the ceiling or held by a slim stem). To make plain fixtures elaborate, the glass can be mounted onto an oiled-walnut plaque attached either to ceiling or wall. A simple spring catch

arrangement holds glass to ceiling and facilitates cleaning and changing light bulbs. All this and more (including Tiffanesque lamps and polyethylene flower-entwined outdoor chandeliers) are in this new 72-page color-illustrated book. Dept. R-190, Globe Lighting Products, Inc., Valmont Industrial Park, West Hazleton, Pa.

Circle 222, Readers' Service Card

**Linear Lighting.** A system of incandescent and fluorescent lighting troffers can be run end-to-end, wall-to-wall over counters, offices, circulation areas, and conference rooms; it may be suspended or mounted on ceiling. Several mounting systems are available, among them wall-block support and stem suspension. Lamp enclosures are of extruded anodized aluminum, finished with matte black ends and apertures of satin anodized aluminum. Optional side panels come in black naugahyde, rosewood vinyl, and walnut vinyl. Brochure provides drawings and specifica-

tions. Lightolier, Jersey City 5, N.J.

Circle 223, Readers' Service Card

#### OFFICE EQUIPMENT

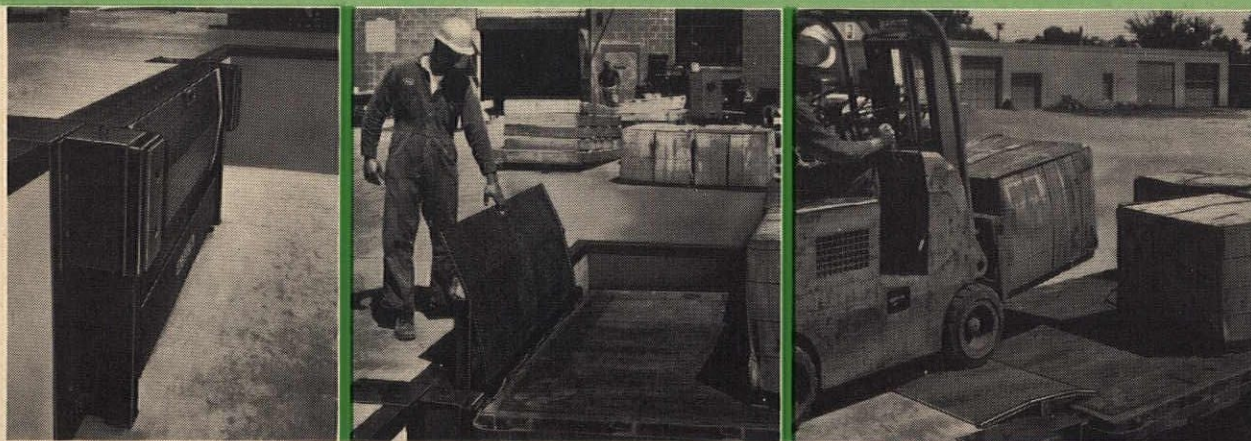


**Neat file front** incorporates index frame with recessed pull and concealed latch. Available in colors or wood-grain panels. Art Metal, Inc., 301 Prince St., Jamestown, N.Y.

Circle 224, Readers' Service Card

**Drafting-room furniture** and related equipment for draftsmen is illustrated in a 36-page catalog with complete specifications. Shown are au-

## NEW LTL PERMANENT DOCKBOARD / Eliminates Concrete Forming! Fastens to Face of Dock!



Now, every dock can operate with the speed, safety and capacity that only Permanent Dockboards provide . . . And do it at a price comparable to portable plates. Check these features! ■ Full 11" projection. Full 6' width. Full 15,000 lb. capacity. No springs, rollers, cams, hinges

or adjustments. Low purchase price includes bumpers. ■ You can see the new Kelley LTL Dockboard in action in your own office. Call collect, wire or write for private showing of Kelley LTL "Test" movie.



### KELLEY COMPANY, INC.

6754 North Teutonia Avenue • Milwaukee, Wisconsin 53209  
Area Code 414 - 352-1000

50 Representatives Coast-to-Coast / 50,000 Installations

55-260



tomatically adjustable drafting-table/desk combinations and other drafting tables (four-post and wood-pedestal types). Reference desks, work tables, utility cabinets, and bookshelves are also described. Especially attractive is a multistudent drawing unit, constructed of heavy gage steel; it has a lockable supply cabinet flanked by one or two drawing boards, which are available with or without legs. Stacor's vertical filing

systems for blueprints are detailed in a separate brochure. Price list included. Stacor Corporation, 285 Emmet Street, Newark, N.J. 07114. Circle 225, Readers' Service Card

#### SPECIAL EQUIPMENT

**Waste disposal.** Pulpers suitable for under-counter, floor-level or chute feeding are available in a number of models designed to process kitchen, hospital, or office

wastes. Leaflet shows simple piping schematics, drawings, and specs. 4 pages. Wascon Systems Inc., 210 Bonair Ave., Hatboro, Pa. 19040. Circle 226, Readers' Service Card

**Rear-projection screen.** For viewing in fully lighted rooms, screen is coated with a film of microscopic cells or lenses capable of spreading or diverging projected light rays. Glass, Plexiglas, or vinyl-type

plastic "Lenscreens" are available in wide-angle for general use, and a "high grain, directional beam developed for low intensity projection." Literature in manufacturer's kit includes information and diagrams for the designer planning a rear-projection room, and data on selecting the size and type of screen. Polacoat Inc., 9750 Conklin Rd., Blue Ash, Ohio 45242.

Circle 227, Readers' Service Card

#### SURFACING

**It takes grit.** To keep pedestrians off the skids, "Fut-Sure" aluminum oxide, abrasive grains applied to, or mixed with, traffic toppings prevent people slipping and cars skidding. The material, available in grit mixtures of varying coarseness, can be applied to the finished surfaces of stairs, ramps, floors, and highways, or it may be mixed with concrete, terrazzo — or molten metal for casting stair treads. "Carbonite" silicon carbide antislip grains are primarily for sidewalk application. Folder describes uses and application. 4 pages. General Abrasive Co., Inc., 2000 College Ave., Niagara Falls, N.Y. 14305.

Circle 228, Readers' Service Card

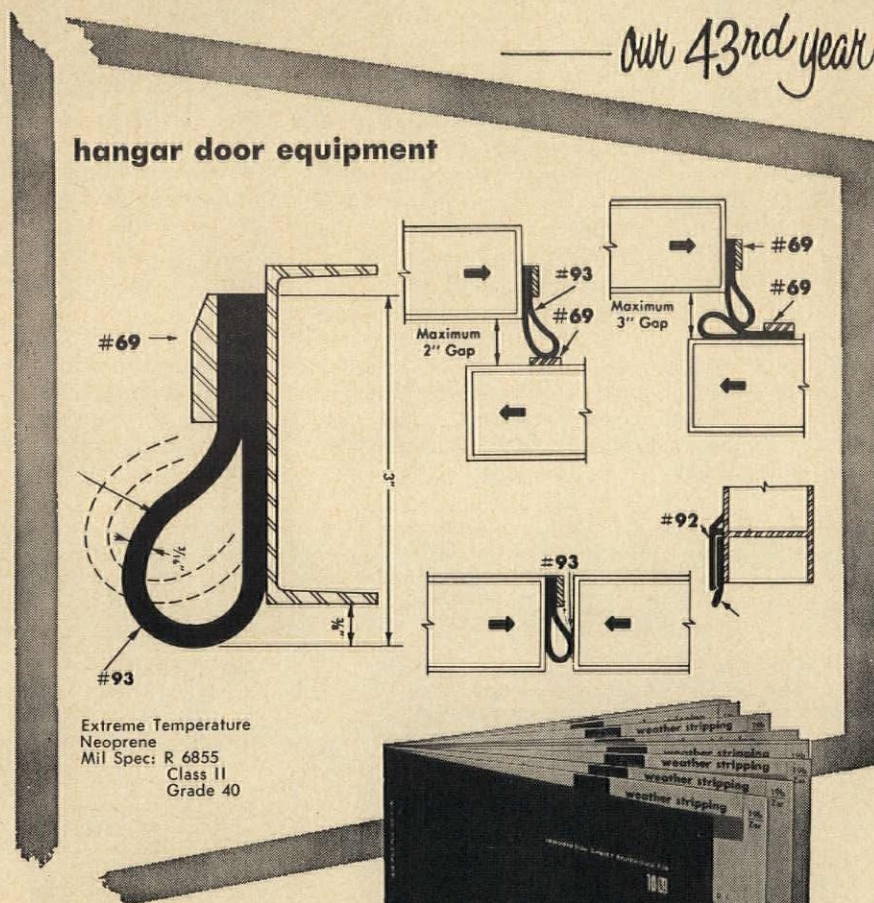
**Textolite melamine laminated plastics** are illustrated on 8-page, information-filled sheet. Four grades of Textolite are distinguished in terms of ruggedness and intended installation. Paper reproductions of 18 wood-grain patterns, 3 tortoise patterns, 2 marbles, and 24 plain colors are shown, as well as 8 different amoeba- and star-flecked patterns in various hues. Charts list specifications, general characteristics, and regional offices. General Electric, Laminated Products Department, Section SW, Coshocton, Ohio 43812.

Circle 229, Readers' Service Card

#### PROGRESSIVE ARCHITECTURE NEWS REPORT

REINHOLD PUBLISHING CORPORATION  
A subsidiary of Chapman-Reinhold, Inc.  
430 Park Avenue, New York, N.Y. 10022

Editor ..... Jan C. Rowan  
Associate Editor ..... E. K. Carpenter  
Publisher ..... P. H. Hubbard, Jr.  
Business Mgr. .... David N. Whitcombe  
Production Mgr. .... Joseph M. Scanlon



**the most complete  
and authoritative  
guide for . . .**

- WEATHER STRIPPING
- SOUND PROOFING
- LIGHT PROOFING
- THRESHOLDS

Zero's 1967 Catalog shows many new products, contains 175 full size drawings.



Write today for your copy

**ZERO WEATHER STRIPPING CO., INC.**

Our 43rd year of service to architects

415 Concord Ave., Bronx, N.Y. 10455 • (212) LU 5-3230



On Readers' Service Card, Circle No. 383



# NEXT MONTH IN P/A



## When is a college building not a college building?

When it becomes a major focal point of the cityscape, as in the case of Yale's Kline Science Center, by Philip Johnson and Richard Foster. Kline will be documented and critiqued by P/A and by prominent people on the scene, such as Charles Moore, Vincent Scully, Earl Carlin, Pete Millard, and William Mileto.

When it teaches the lessons of contemporary design to a traditional campus, as in the case of Paul Rudolph's Charles A. Dana Creative Arts Center at Colgate University. Some people up in Hamilton, N. Y., were apprehensive when Rudolph's design for this project was announced. Since then, most of the conservatives have been won over by the new campus sweetheart. On-campus discussions with students and faculty will supplement P/A's presentation.

## The Little Car With the Big Image

Volkswagen is renowned not only for its superior product, but also for the adult way it treats its actual and potential clientele in its advertising. This practice extends to its selection of architecture, as shown by VW Distribution HQ for N.Y., N.J., and Conn., by Katz, Waisman, Weber, Straus—a handsome structure that does its job.

## Living Up To the Past

Being faced with the problem of housing the artifacts of so glittering an anthropological history as Mexico's might daunt even the bravest heart. Fortunately, it did not intimidate Vasques, Mijares, and Campuzano of Mexico, and they produced a formidable design to house the National Museum of Anthropology in Chapultepec Park. One of the most important museums of our time.

## Plus

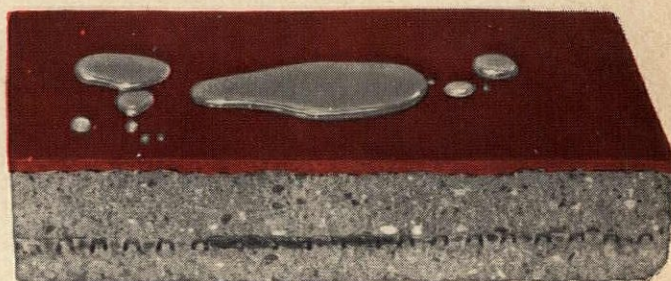
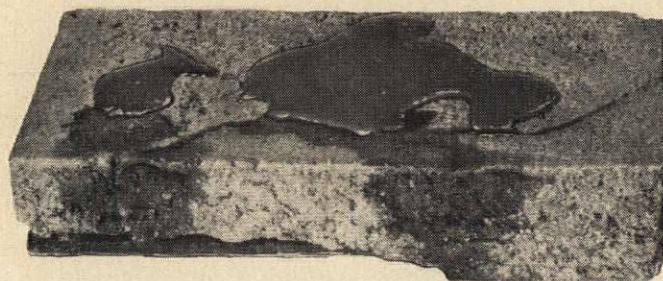
An "On the Job" article concerning fireproof wood detailing; Materials & Methods articles on industrial building, a brick turbine structure, and Harvard's structures workshop; P/A Observer's opinions and investigations on architecture and related realms; and P/A News Report's pithy digest of what you need to know that's current and coming.

## Tear Out, Fill Out, Send In

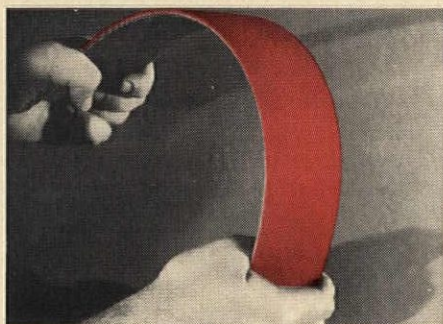
The subscription card (see Contents Page for location) if you want to get in on the excitement of the February P/A and 11 more. We'll be happy to have you join the world's largest, best-informed architectural circulation. You'll be happy, too.



# G-E Silicone Traffic Topping permanently hides unsightly surfaces, permanently protects new ones.



**Waterproof.** Traffic Topping prevents water penetration and moisture retention damage in concrete and other flooring construction materials. Protects against freeze-thaw cycles. Repairs previous damage. Ideal for outdoor ramps, platforms, walks, and traffic bearing roofs.



**Permanently flexible.** Made of silicone rubber, Traffic Topping keeps its resilience indefinitely. Won't harden, soften or become brittle, even at  $-65^{\circ}\text{F}$  or  $300^{\circ}\text{F}$ . Provides a cushioned walking surface as it protects.



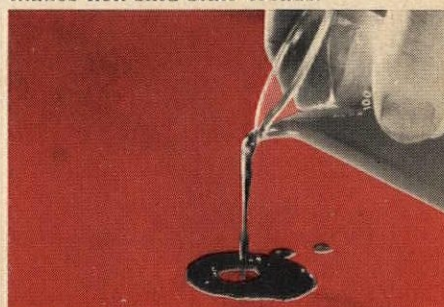
**Wear resistant.** Traffic Topping withstands wear and abrasion of shoes and vehicles. It's a superior surfacing medium for parking areas, garages, promenade decks, and light duty industrial floorings.



**Quick, easy application.** Traffic Topping adheres securely to most clean flooring construction materials, old or new. Needs no costly equipment. Cures to a tough, weatherproof surface. Looks great too. Six colors available.



**Skidproof, too.** Even when wet, Traffic Topping's textured surface assures safe, sure traction where it's needed most: pool copings, laundry rooms, public walking areas, tennis courts. And it even makes non-skid stair treads.



**Fights chemicals.** Because Traffic Topping resists many chemicals, organic acids, alkalis, salts and oils, it is an ideal surfacing medium for food processing and similar plants, where such materials present a problem.

For complete information and your distributor's name, write Section Q1248, Silicone Products Dept., General Electric Company, Waterford, N. Y. 12188

GENERAL  ELECTRIC

On Readers' Service Card, Circle No. 398