

MODERN LIVING



INSIDE AND OUT

# MODERN **IN** DENVER

WARREN PLATNER • SUSAN SAARINEN • PURA VIDA • GENSLER • SEMPLE BROWN • OUTDOOR FURNITURE + FUN  
PEARL VELO • ICFF 09 • COLORADO MODERN ICONS • PATRICIA URQUIOLA • JAMES DORMER • MORE!

Issue no. 5  
Summer 09  
\$4.00

live outside

modernindenvver.com

ROY LICHTENSTEIN | MODERN SCULPTURE WITH APERTURES. 1967 | SCREENPRINTED ENAMEL ON INTERLOCKING PLEXIGLAS FORMS | 16.5 x 6 x 7.5 INCHES



# MODERN AND CONTEMPORARY ART

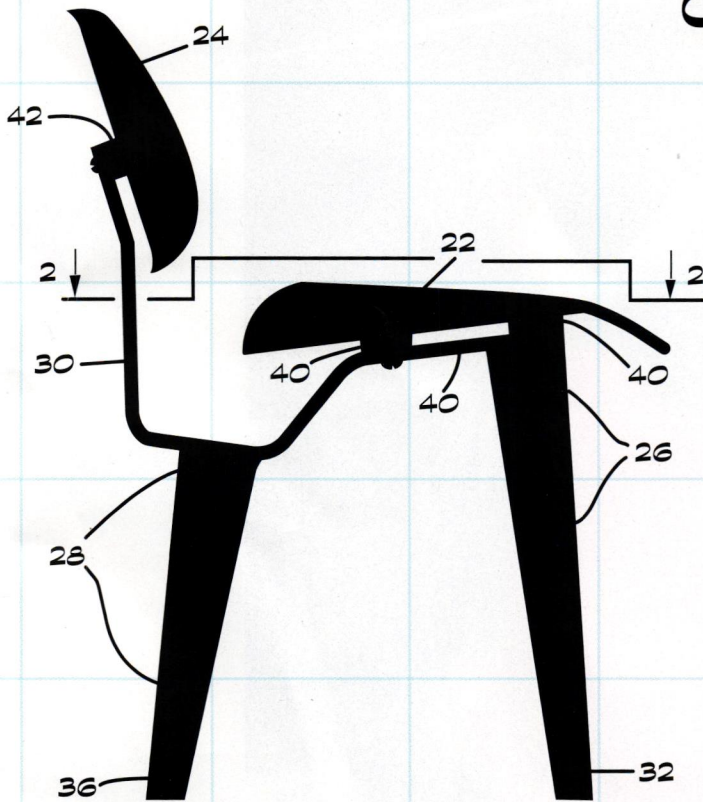
136 WEST 12TH AVENUE AT BANNOCK | DENVER  
303-534-5433 | [WWW.MICHELEMOSKOFINEART.COM](http://WWW.MICHELEMOSKOFINEART.COM)  
WED. - SAT. | 12-6 PM | AND DAILY BY APPOINTMENT





# DENVER BY DESIGN

## COMPETITION



**CALL  
FOR  
ENTRIES**

If interested please email

**[Denver\\_by\\_Design@modlivin.com](mailto:Denver_by_Design@modlivin.com)**

to receive your instructions for the entry process  
Deadline July 1<sup>st</sup>

**D**ENVER BY DESIGN will consist of a series of events and exhibits taking place in the Mod Livin showroom during the month of August 2009. The most exciting will be the DENVER BY DESIGN competition which will be a juried contest to pick the best modern designed object, art or furniture. Our goals are two-fold; to bring attention to up and coming talent, and to focus on the influence of Modern Design in our society.



Milo Roy flexes while riding a Julian Childs Chair by MAGIS during our patio furniture shoot. Available at Mod Livin'.

See page 34 for the full story.

# MODERN **IN** DENVER



PG54.



PG20.



PG76.



PG64.



PG82.

summer 09

## TOC **#FIVE** ..... **INSIDE**

- PG10 A LITTLE COLOR: GREEN
- PG12 A FIELD STUDY: OBJECTS ETC.
- PG20 COLORADO MODERN: A BRIEF SURVEY
- PG34 MODERN OUTDOOR FURNITURE & FUN
- PG50 AN ICON NAMED WARREN PLATNER
- PG52 PARAGON: PATRICIA URQUIOLA
- PG54 ONE FILLMORE
- PG64 SUSAN SAARINEN
- PG68 ICFF 09
- PG76 PEARL VELO
- PG82 JAMES DORMER
- PG86 IN PRINT: BOOKS TO READ AND LOOK AT
- PG88 ON THE RADAR: EVENTS AND OTHER RELEVANCE

SUMMER BREEZE MAKES ME FEEL \_\_\_\_\_

LISTINGS ETC. → NOW AT [MODERNINDENVER.COM](http://MODERNINDENVER.COM)



## HELLO,

and welcome to the fifth issue of Modern In Denver. It has been a full year since we unveiled our inaugural issue and we would like to extend a hearty “thank you” to everyone who has helped make our dream a reality: family, friends, readers, advertisers, contributors and volunteers.

This summer issue features the hottest in outdoor furnishings, an in-depth look at One Fillmore – Cherry Creek North’s new architectural icon, an exclusive interview with Susan Saarinen, a behind-the-scenes look at ICFF 2009, a preview of Denver’s latest cycle shop, and all the regular articles you have come to expect from Modern In Denver.

If you haven’t yet, please join us on Facebook and Twitter or even join our RSS feed– we are expanding our electronic presence everyday – and we will keep you up-to-date on the latest in modern Denver.

Wishing you a fun-filled summer!

## GET OUTSIDE - AND ENJOY!

William Logan     Alaina Gonzales  
*Publisher*             *Editor*

## THANK YOU.

Many of the images we used in our outdoor furniture + fun article were taken on a beautiful and sunny day this spring at 557 Columbine. This modern beauty was designed by Bothwell Davis George Architects (and is currently being offered for sale by MileHi Modern-milehimodern.com and Kentwood City Properties.)

We would like to extend a huge thank you to the owners of the home, Glen and Margaret Wood, for being so generous and letting our crew spend the day at their stunning home.

We would also like to thank everyone who helped make this shoot a great success: Peter Blank and Craig Mayer, Tom and Aimee Brainard, Steve Swoboda, Crystal Allen, Ben Roy, Milo Roy, The Ooms family, Melissa Belongea, Brooke McKinnon, Jill Warner, Hans Osheim, Azure Avery and Piper Dee Avery.

## OUR COVER.

Aimee Brainard relaxes on the 78” Square Double Sun Bed from Room & Board. Pillow from Urban Outfitters and placemats from Mod Livin’



bulthaup

CLAUS A. FROM



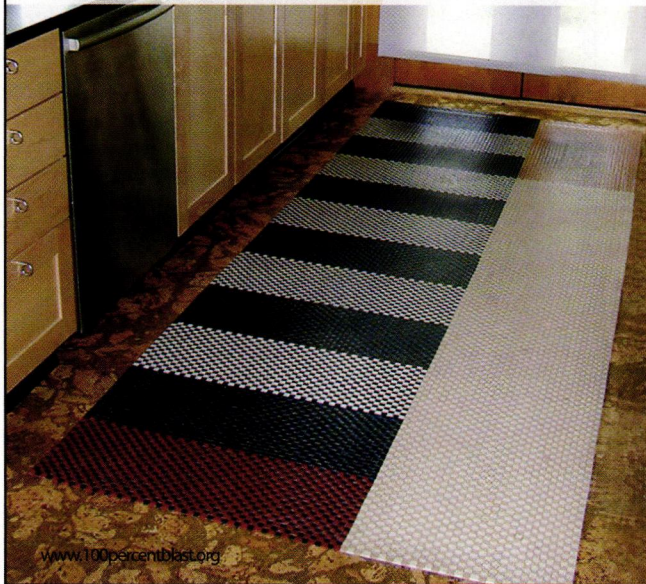
**If you refuse to compromise** when it comes to the aesthetics of practical objects, the choice of materials, craftsmanship quality, and if you're looking for an exceptionally good value for your kitchen design, then you need look no further. With bulthaup b1, a new standard has been set on the world stage for the "the essential kitchen." Please visit our specialist to experience this new bulthaup kitchen architecture or visit us at [www.bulthaup.com](http://www.bulthaup.com)

**bulthaup Denver - Kitchen Distributors, Inc. | 1038 Bannock Street | Denver | CO 80204 | Tel. 1 303 777 5409**

215.236.0745

www.jbsdesigns.net

barker-schwartz designs  
custom woven canvas rugs for  
indoors and outdoors

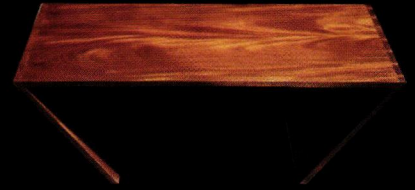


www.100percentblast.org

REFINED MODERN

## THE LUCKY 7'S TABLE

ANOTHER IDEA FROM THE MIND OF LOREN LARSON



NOW OFFERING THE LUCKY 7  
AND OTHER ORIGINAL DESIGNS

WE ALSO OFFER CUSTOM WORK ON COMMISSION.

MORE THAN 25 YEARS OF CUSTOM WOODWORKING.  
CONTACT LOREN DIRECTLY  
OR HAVE YOUR DESIGNER CONTACT HIM.

studio **g**

303.489.1031

WWW.STUDIO-G-FURNITURE.SPACES.LIVE.COM

peter blank & craig mayer

the **coolest**  
**homes** in town

MILE HI MODERN

REAL ESTATE FOR MODERN LIVING

**milehimodern.com**

modern living  inside and out

# mid

MODERN IN DENVER™

**PUBLISHER** William Logan

**EDITOR** Alaina Gonzales

**ART DIRECTION / DESIGN** Indelible Inc. [iidesign.com](http://iidesign.com)

## PHOTOGRAPHY

Hans Osheim, Crystal Allen, Melissa Belongea

## WRITERS

Jaime Kopke, Aimee Brainard, Maureen Russell,  
Melissa Belongea, Hans Osheim, Jenna Billingsley,  
Heather Lauren Quiroga

---

[modernindenter.com](http://modernindenter.com)

---

All rights reserved. Copyright 2009

visit [modernindenter.com](http://modernindenter.com)

published by modernindenter LLC

---

contact: [info@modernindenter.com](mailto:info@modernindenter.com)

telephone number: 303.991.6695

---

Modern In Denver is created by the dexterous hands and sometimes agile minds of Indelible Inc. using Mac OS 10.5.7, Adobe Illustrator, Photoshop, InDesign and Lightroom with Suitcase Fusion, an HP Laser printer, pandora.com, a spiral notebook, a ruler, a PaperMate flexi grip pen and a much needed sense of humor.

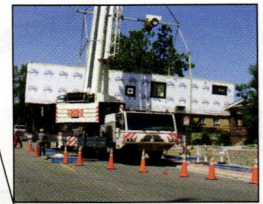
---

**ADVERTISING SALES:** William Logan

[william@modernindenter.com](mailto:william@modernindenter.com)

## SPECIAL THANKS:

Azure Avery, Cara Hines, Michele Mosko, Aimee Brainard, Melissa Belongea, Brooke McKinnon, Gavin Levy, Nate Reeder, Alex Smith, Peter Blank, Marc Burg, Heather Lauren Quiroga, Penny Greeley, Mark Lewis, Steve Swoboda, Tom Brainard, The Ooms family, Crystal Allen, Ben Roy, Milo Roy.



## OUR 1<sup>ST</sup> ISSUE COVER HOUSE COULD BE YOURS...

Own a piece of Modern In Denver history. For those of you who have been loyal readers since the beginning, now is your chance to purchase the house that appeared on the cover of the first issue of Modern In Denver! The Tomecek family's home, designed by Boulder-based studio h:t, is on the market. This prefabricated, modular house is anything but standard; from the design to the building process to the materials used, this house is an outstanding example of sustainable design.

Situated in Denver's Highlands neighborhood, this home provides other eco-friendly options – the ability to walk or bike to restaurants, shops and other locations such as Little Man Ice Cream, Root Down restaurant and Sportique Scooters, just to name a few.

In recent years, the North Denver neighborhoods of Highlands proper, Sunnyside and Lower Highlands together make up one of Denver's meccas for new-modern homes. In addition to all the new houses that have been built, modern-style developments, such as High Point Nine and 3131 Zuni have also added to Denver's growing modern landscape.

*2311 W. 32nd Ave. is being offered by Joline Bernardini at Live Urban Real Estate. 720-936-2824.  
[liveurbandenver.com](http://liveurbandenver.com)*



EACH ISSUE WE PICK A COLOR AND EXPLORE A LITTLE OF ITS HISTORY, CONNOTATIONS AND SYMBOLISM. SOME FUN, INTERESTING AND COLORFUL INFO! **A LITTLE COLOR**



WORDS: AIMEE BRAINARD

# GET YOUR GREENS

**IT IS SUMMER AND THE FOLIAGE IS BACK.** It has blanketed our landscape and renewed our energy for living, so it is most fitting that we dig a little deeper into why green plants such a positive seed in our soul.

Green has become both literal and figurative, representing a color and a lifestyle. Influenced by the ecological movement, the color green has gained significant momentum and popularity over the past several years. This influence, evident in multiple markets and industries, has moved green into the forefront of design as we continue to see demand for products and colors that reflect an environmentally conscious world.



At the core, green symbolizes life and nature. The association conjures images of the outdoors, of lush flora and fauna, helping to create a sense of vitality and energy in a space. Rejuvenation and re-growth are expressed through brighter shades of green and can help uplift one's spirit, generating feelings of optimism. The citrus and botanical greens that are so popular this season, energize and refresh our senses. While vigorous and vibrant, green can also be very relaxing and tranquil, creating a peaceful and calming environment. Darker and grayed tones of green can offer a sense of serenity, the same natural peace experienced in the quiet of a forest or in a wide open field or meadow. The versatility of this color, which has essentially become a neutral, allows it to be easily used in almost any space and with almost limitless application.

When incorporating green on the walls of your home, Laurie Hessemer of New Era Paint suggests using the "Leaf" family of zero VOC paints by Yolo Colorhouse. The line consists of seven shades of green, ranging from subtle to vibrant hues, all of which reflect what surrounds us in the natural world. Try "Leaf .01" in places of calm and concentration as it is the most livable and serene of the greens in the palette. Go for "Leaf .04" for a more lively, daring and up-to-date look.

Another great way to bring a little of the outdoors into your home is in the form of home furnishings and accessories. Spruce up your space with the Case Study Bed from Modernica, available at Mod Livin'. This sleek sofa/daybed offers a creative seating solution in a fresh botanical shade, great for small spaces. A more literal yet effective option is to ac-

OPPOSITE ABOVE: (left): Link Lamp by Peter Sathis for Pablo, roomandboard.com;  
(right): Mushroom Pillow by Paper Cloud, designpublic.com



ABOVE: Modernica Case Study Bed, modlavin.com

BELOW: Vegetal Chair by Ronan & Erwan Bouroullec for Vitra, unicachome.com

OPPOSITE BELOW: Tina Frey Designs Hannes Container, designpublic.com

cessorize your home with live plants. Creating green pockets of life throughout your home is a very healthy and invigorating way to incorporate the color. Tina Frey's modern hand-sculpted Hannes Container, available at [www.designpublic.com](http://www.designpublic.com), is a perfect way to display and house your botanicals and greens. The world of vegetation and its shapes serve as the inspiration for Ronan & Erwan Bouroullec's new vegetal chair for Vitra, available at [www.unicahome.com](http://www.unicahome.com). Its plant-like structure is suitable for both indoor and outdoor use and was designed to get us all one step closer to nature. Try adding a pop of bright green to energize your workspace as well with the Link Lamp, designed by Peter Sathis for Pablo and available at Room & Board. Another simple solution for adding green into your home would be with a pillow like this one by Paper Cloud available at [www.designpublic.com](http://www.designpublic.com).

Although we are quite possibly experiencing the height of green's popularity today, the demand for an environmentally greener world reaches far beyond trend. It is what is expected. According to the Color Marketing Group's executive director, Jaime Stephens, the "green" environmental message will be soon delivered by the color blue. (CMG is an international association for color design professionals, which identifies and forecasts color trends.) A range of sky and watery blues will come to represent our commitment to living on a greener planet. However, with its natural representations, green will always be important to the spaces we create and its connotations of vitality will always lift our spirits.

**"While vigorous and vibrant, green can also be very relaxing and tranquil..."**



# FIELD STUDY | OBJECTS | etc.

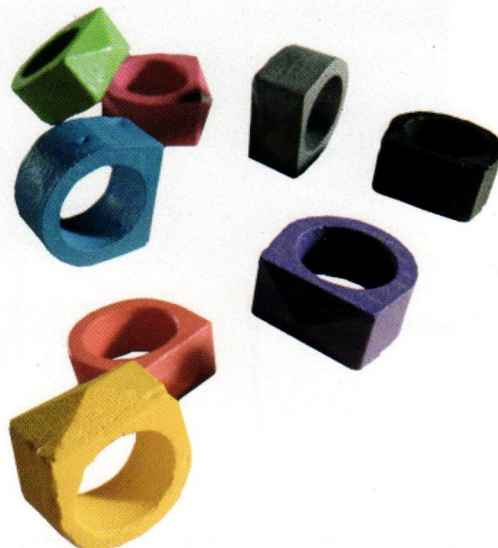
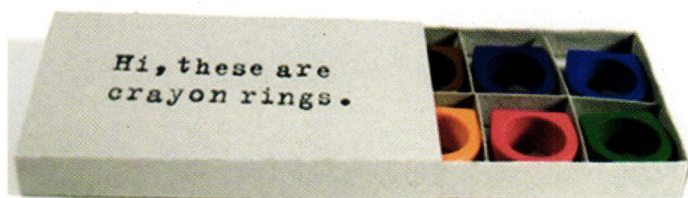
words: Jaime Kopke

surveying what's new and exciting : [inside and out](#)

## CRAYON RINGS

Designer Timothy Liles proves coloring is not just for kids. These rings are cast from washable crayon and come in a set of 8 - so you'll always have one that matches your outfit.

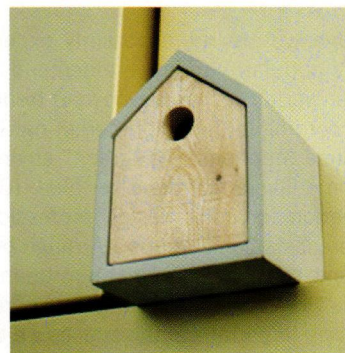
+ [voon-benson.com](http://voon-benson.com)



## CONCRETE BIRDHOUSE

Now the neighborhood birds can live in modern digs too. The Rohbau birdhouse has a concrete frame and removable wooden panel for cleaning.

+ [das-rote-paket.de/en/products\\_shop\\_area/detail/27-0-144.birdhouse\\_rohbau.html](http://das-rote-paket.de/en/products_shop_area/detail/27-0-144.birdhouse_rohbau.html)





## CYCLOC

The Cycloc is a simple way to secure your bike. These wall mounted units can be rotated to fit a variety of frames.

.....  
 + [cycloc.com/cycloc-features.html](http://cycloc.com/cycloc-features.html)



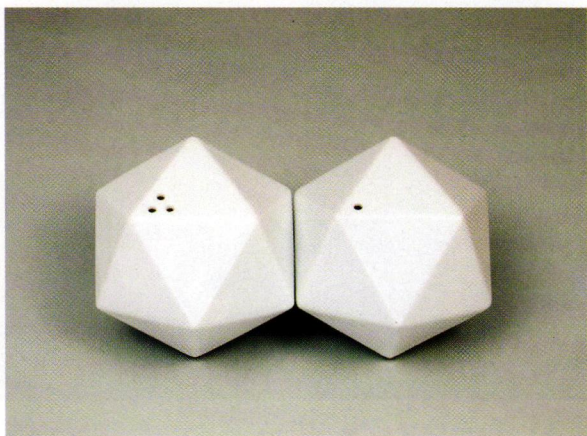
**source FOUR**  
 INTERIOR ELEMENTS

*Live. Work. Learn. Heal.*



The Innovation C Chair

**showroom:** 753 Kalamath, Denver, CO 80204 • 303.893.1515 • [sourcefour.com](http://sourcefour.com)



**TAI DESIGN SALT & PEPPER**

Science geeks rejoice! Tai Design's twenty-sided Salt and Pepper shakers take the form of a Icosahedron. Made from porcelain.

.....  
*+ [supermarkethq.com/product/salt-pepper-shaker-icosa](http://supermarkethq.com/product/salt-pepper-shaker-icosa)*



**FAT BOY HEADDEMOCK**

Put lounging on the top of your summer to-do list with the Fat Boy Headdemock. Made from padded non-woven mesh, this free-standing hammock is a great addition to any yard.

.....  
*Available at Mod Livin' + [modlivin.com/Outdoor/Furniture/FATBOY-Headdemock.html](http://modlivin.com/Outdoor/Furniture/FATBOY-Headdemock.html)*



### NENDO OUTLETS

Nendo's clever Socket-Deer gives your electronics a place to rest as they recharge.

+ [nendo.jp/en/works/detail.php?y=2008&t=127](http://nendo.jp/en/works/detail.php?y=2008&t=127)

### BODUM BEAN

New for 2009 is Bodum's Bean line. These colorful French presses hold 32 oz. of the sacred joe and will be available this summer.

+ [bodum.com](http://bodum.com)

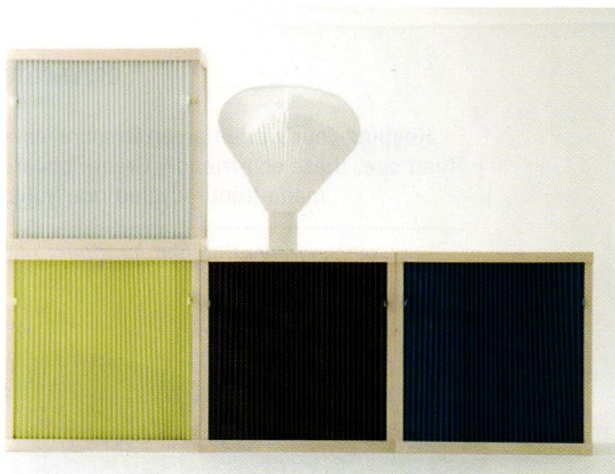




**DAVID TRUBRIDGE ITI KITSET**

David Trubridge's ITI light is a do-it-yourself dream. Each kit comes with geometric parts, which allow the user to create five different pendant lights. Made from recyclable polypropylene.

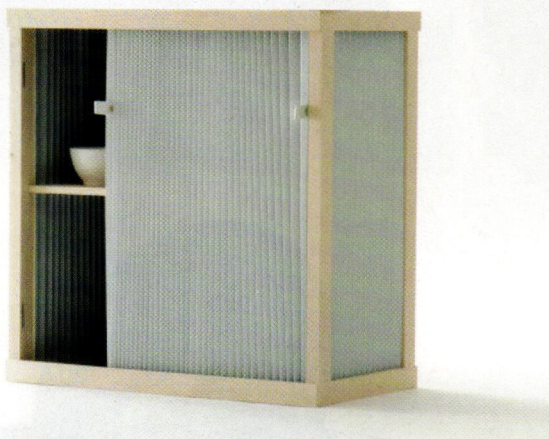
.....  
*+ [davidtrubridge.com/new-products](http://davidtrubridge.com/new-products)*



### AMOIRE SOUPLE MOUSTACHE

These simple and stackable storage modules are made from wood and retractable fabric.

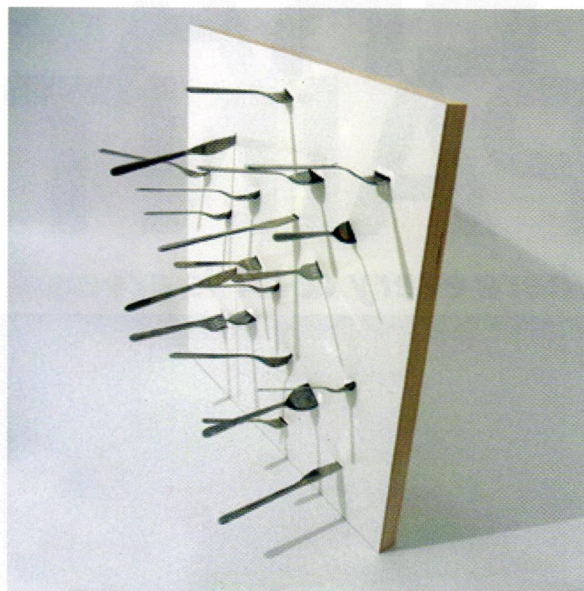
.....  
+ [ingasempe.fr/projets/armoireSouple/diapo.html](http://ingasempe.fr/projets/armoireSouple/diapo.html)

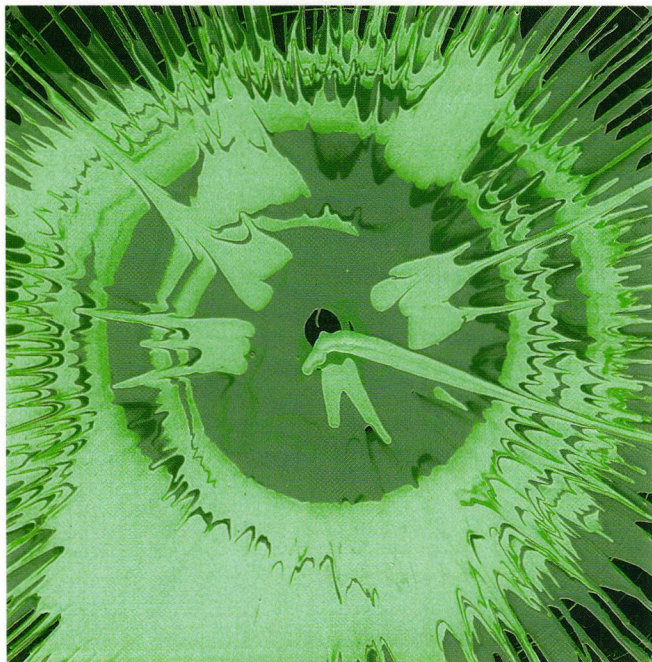


### THOUT UTILITILE

Rummaging through drawers for a fork is thing of the past with Thout's clever lacquer UtiliTILE. Through the magic of magnets, your utensils will always be close at hand.

.....  
+ [designpublic.com/shop/thout/10735](http://designpublic.com/shop/thout/10735)





# NEW ERA PAINT

*where every color is green*

Environmentally friendly stains, sealers,  
lacquer, glaze, plaster & stucco too!

2045 Sheridan Boulevard Denver, CO 80214

**303-237-6337**

[www.newerapaint.com](http://www.newerapaint.com)

## GREENPOTS

Keeping your garden green in more ways than one, these eco-friendly GreenPots are made from recycled rice hulls.

.....  
[+ ecosourceonline.com/products.php](http://ecosourceonline.com/products.php)



**LOWER HIGHLANDS**

COSMOPOLITAN, COOL AND URBAN WITH DROP-JAW VIEWS

# HIGH POINT 9



**LOWER HIGHLANDS**  
PRICES BEGIN AT \$469,000

## **BOLD AND STRIKING**

High Point 9 was Designed by one of Denver's Hottest Architecture Design Teams-Sprocket!

## **SWEEPING CITY VIEWS**

These Nine Town Homes Feature Dramatic Rooflines, Innovative Floor Plans, and Sweeping City and Mountain Views! Rooftop Decks Boast Unrestricted Views! No HOA Fees!

## **DENVER'S HOTTEST NEIGHBORHOOD**

An Exciting Urban Living Environment Smack in the Middle of the Lower Highlands (LoHi) Neighborhood at the Corner of 18th and 32nd! LoHi is quickly becoming Denver's Hottest Neighborhood-full of Cosmopolitan Buzz, Happening Restaurants and Forward-thinking Architecture! Linked to Downtown and Riverfront Park via the Bicycle and Pedestrian Highland Bridge!

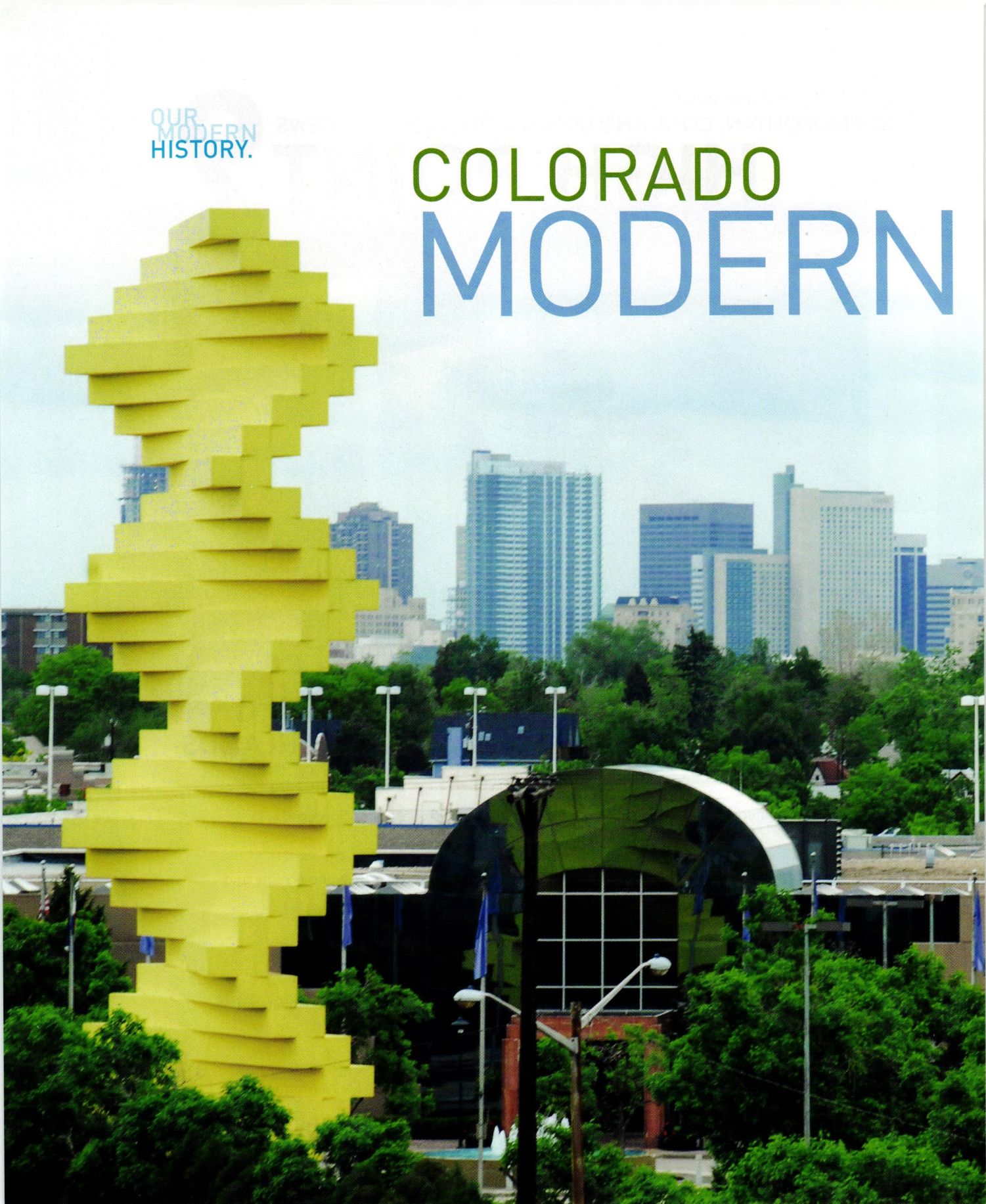
*Marketed Exclusively by:*

*Dee Chirafisi, Peter Blank and Craig Mayer with Kentwood City Properties and Mile Hi Modern.com*

**[KENTWOODCITY.COM/HIGHPOINT9](http://KENTWOODCITY.COM/HIGHPOINT9)**

OUR  
MODERN  
HISTORY.

# COLORADO MODERN



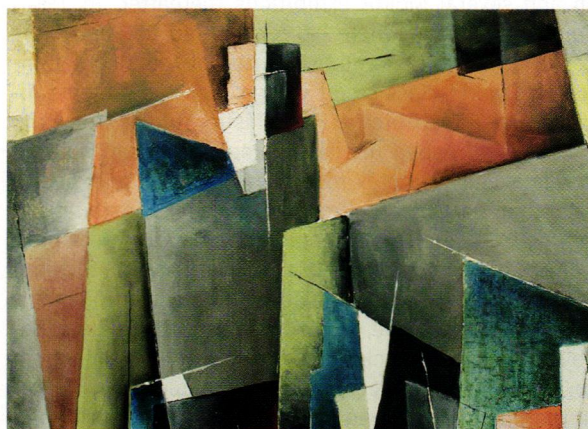
DENVER IS HOME TO A RICH ART & ARCHITECTURAL LEGACY LEFT BY SOME OF MID-CENTURY MODERNISM'S MOST RENOWN ARTISTS AND DESIGNERS

## ART+ARCHITECTURAL ICONS // A BRIEF SURVEY

WORDS BY HEATHER LAUREN QUIROGA  
PHOTOS BY CRYSTAL ALLEN, JOHN OLSON

**NEW YORK, LOS ANGELES AND CHICAGO** are the undisputed epicenters of American modernism, but no artist, movement or place exists in a vacuum. Just as an earthquake ripples its message out in waves, so travel new ideas. Despite Colorado's relatively recent warp-speed game of "catch up" to the ranks of the big cities on other forefronts of modern thinking, our aesthetic contribution to the period during which we are often popularly misrepresented more as "cow town" than sophisticate – the late 1930s through the early '70s – has a backstory that challenges this perception. After all, we are a territory built by pioneers and groundbreakers and those unafraid to embrace progress. In the 20th century, a seemingly disparate group of progressive artists, architects and thinkers made their mark on our cultural landscape, devised communities and built Denver's architectural icons – all in the name of modernism. Here we present what cannot be called a "primer," since it is hardly comprehensive. It is a smorgasbord of bite-sized information meant to whet your appetite for more. We aspire to inspire and enrich your understanding of Colorado's modernist history by introducing you to some of the more influential ghosts of the past century whose work admits Colorado entry into the international dialogue of modernism. If nothing else, you'll be a cocktail party chatter hero.

One of the 20th century's newly blazed trails of thought was the blurring of lines among architect, artist and designer, and no respectable survey of the period would be complete



Charles Ragland Bunnell (1897-1968) New York, 1955  
oil on canvas. Courtesy of David Cook Galleries

without mention of all three. On the national stage, for example, mid-century American phenoms, architect/designer Charles Eames (1907-1978) and artist/designer Ray Eames (1912-1988) followed Frank Lloyd Wright's earlier example of creating comprehensive and cohesive architectural environments complete with art, furniture and decorations (and in Wright's case, even residents' evening gowns) in the seemingly boundary-less and boundless spirit of modernism. Colorado's temperate weather, crisp blue skies, sunny days and abundance of natural beauty was a natural environment for mid-century (Eichler Style/California Modern) homes that were designed with large-windowed, open and airy floor plans and integrated indoor/outdoor spaces, and they surged in popularity all over suburban Denver and beyond. Their expansive walls and gallery-like spaces begged big art and big design as accompaniment. Artists responded, some drawn outdoors to experiment with landscape architecture and outdoor sculpture. Here is a brief introduction to some of the better known and most influential of them – some natives, some transplants, some merely visitors – and their most notable contributions to the Colorado story.

## HERBERT BAYER

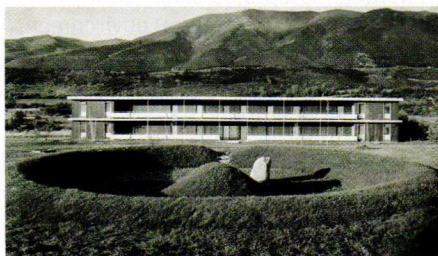
(Austrian/American, 1900–1985;  
in Colorado 1946–1974)

**PAINTER, GRAPHIC DESIGNER, PHOTOGRAPHER, ARCHITECT.**

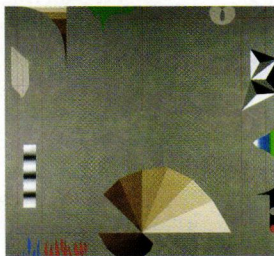
A major Bauhaus artist in his early years, Bayer emigrated to the United States in 1938, organizing the New York Museum of Modern Art's famous 'Bauhaus 1919-1928' exhibition and several MoMA exhibitions thereafter. In 1946 Bayer moved to Aspen where he contributed to what many consider to be the transformative period of the sleepy mining town into world-class resort village. Notable projects included the Aspen Institute for Humanistic Studies, (now the Aspen Meadows / Aspen Institute complex,) which featured a conference center, hotel rooms, restaurants and health center sited among his architectural landscape installations ("earthworks"). Two of his celebrated Aspen earthwork projects include his monumental "Marble Garden" (1955) and the adjacent "Earth Mound" (also called "Grass Mound"), dubbed "the first instance on record of landscape as sculpture." by Jan van der Marck in his book, *Herbert Bayer: from Type to Landscape*. An accomplished graphic artist, Bayer spent a lifetime of artistic energy jockeying among print and poster design, photography and sculpture, including a Denver icon – the 85-foot bright yellow "Articulated Wall" sculpture sited at the Denver Design Center. (It is a 1986 copy of the smaller-scaled original Bayer designed created for the 1968 Mexico City Olympics.)

The Denver Art Museum holds a collection of more than 8,000+ Bayer works, many of them now on permanent display. "A Visual Alphabet: Herbert Bayer's Anthology Paintings" is on exhibition through December 31, 2009.

+ [denverartmuseum.org](http://denverartmuseum.org)

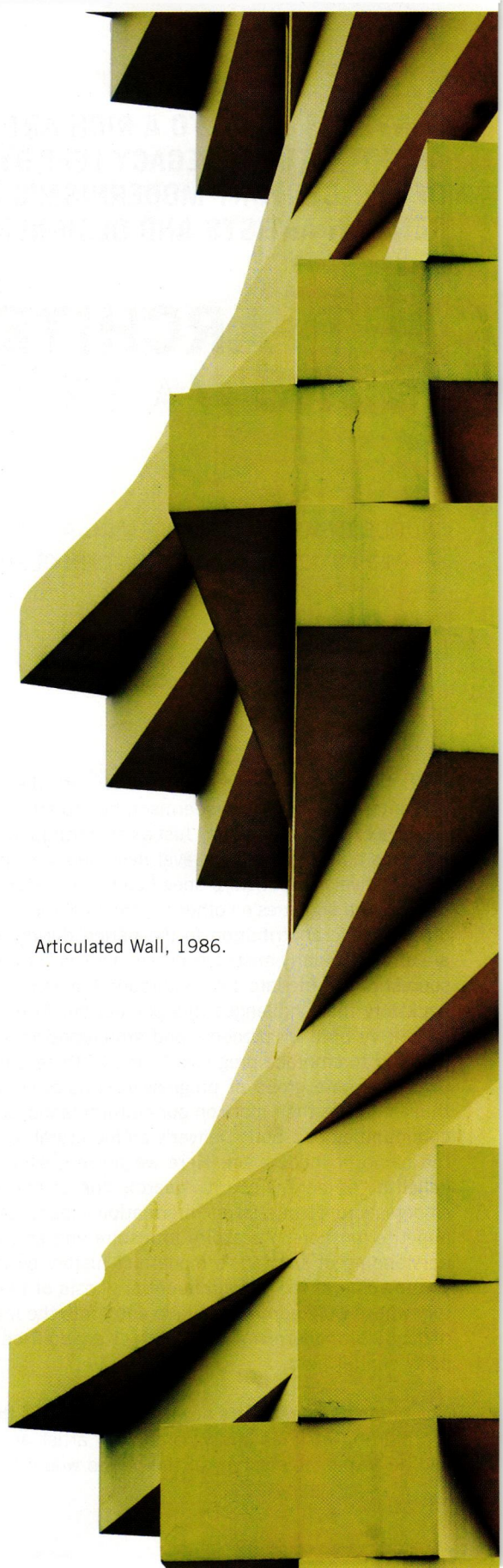


Earth Mound. Aspen, Colorado, 1955.



Iconography of a Day, 1978.

Articulated Wall, 1986.



# CHARLES DEATON

(American, 1921-1996; in Colorado 1955-1996)

## ARCHITECT, DESIGNER, COMMERCIAL ARTIST.

Deaton occupies an interesting niche of modernism – that futuristic subcategory defined by space-age design and use of advanced materials (think: The Space Needle, Seattle). Deaton's notable futuristic projects include the Key Savings and Loan (now Colonial Bank) building in Englewood and The Sculptured House (aka the "Sleeper House" or the "Flying Saucer House") in Genesee, both designed and built in the 1960s, and in a rare departure, the Sculptured House Dining Chair/Antennae Chair, circa 1965.



Antennae Chair (from SCULPTURED HOUSE, Genesee, CO), early 1960s by Charles Deaton. Collection of Kirkland Museum

# EDWARD B. HAWKINS

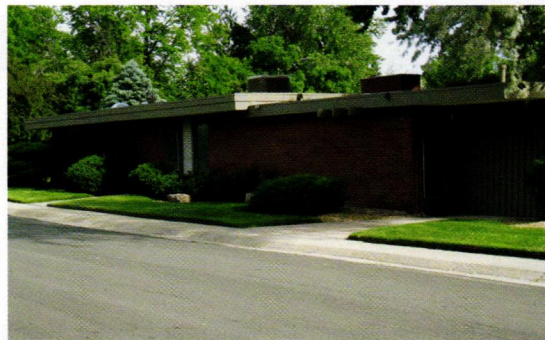
(Denver, Colorado 1902-1991)

# EUGENE STERNBERG

(Czechoslovakia, 1915; in Colorado after 1945, died 2005)

## ARCHITECTS / DEVELOPERS.

The collaboration of these two – each notable in his own right – was short-lived, but is critically important to Colorado's residential mid-century modern legacy. Sternberg, an immigrant architect trained in Prague and London and possessing what would become a life-long concern with creating socially conscious architecture (affordable housing for all) came to Denver to become the Director of the University of Denver's new School of Architecture and Planning. The aligning of his star with that of native Coloradoan, engineer, builder and developer, Edward Hawkins (and his business partner/wife, Charlotte Hawkins, along with myriad others) resulted in the conception and materialization of Arapahoe Acres - arguably one of Colorado's most meaningful claims to modernism fame. The Englewood, Colorado enclave of 124 unique modern residences (20 of which were designed by Sternberg, others by Hawkins and young architect Joseph Dion after Hawkins and Sternberg's "creative split," fueled by fundamental differences in philosophies, in 1950), holds the distinction of having been the nation's first post-World War II residential subdivision to be listed as a Historic District on the National Register. Arapahoe Acres paved the way for the historical landmarking of post-war districts across the country.



Homes in Arapahoe Acres. Photos by Alex Smith.



The Ross branch Library.

## VICTOR HORNBEIN

(Denver, Colorado 1914-1995)

### ARCHITECT.

Along with partner Edward D. White, Jr., Victor Hornbein earned his place among Colorado's most prominent architects with the 1964 creation of the Denver Botanic Gardens Conservatory. The iconic lattice-pattern concrete and glass structure remains a defining feature of the Denver skyline. Hornbein was a chief proponent of the Usonian Style of architecture espoused by Frank Lloyd Wright, described in this way in a 1995 article in the *Historic Denver News*: "Throughout his career Hornbein maintained a strict modernist design ethos. He embraced: simplicity of design; limitation of rooms and spaces to that which was necessary; exclusion of unnecessary ornament; the use of natural color and natural finishes; aesthetic exploitation of the inherent nature of the materials used; a well defined relationship of inside spaces to the outside, and the whole site; and the use of an open (free) floor plan." Denver neighborhoods sport 36 examples of Hornbein's Usonian vision. He also designed 80 public and

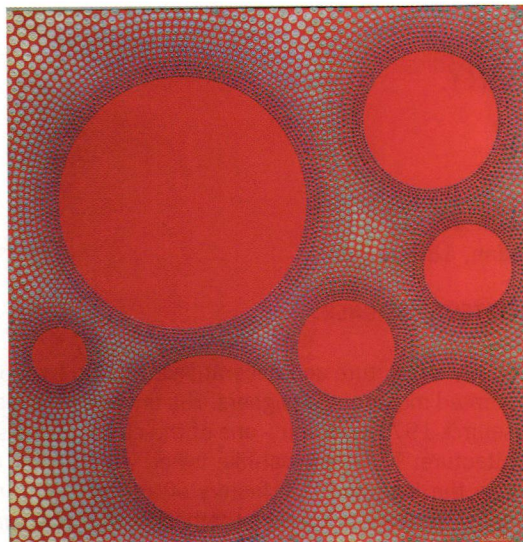
civic buildings (schools, libraries) over the course of a career, mostly in Colorado. One might presume he was most proud of his more monumental architectural achievements, such as the Botanic Gardens Conservatory, but his artistic nature was revealed in a late quote in which he said that his favorite project was the small, stunning, circa 1951 Frederick R. Ross Branch of the Denver Public Library – a structure quintessentially Hornbein. No consideration of Victor Hornbein's career is complete without mention of some of the peers and colleagues with whom he trained and worked along the way. Each a distinguished member of Denver's "Who's Who" of architects in his own right, these include Burnham Hoyt, Tom Moore, Mark Musick, Frank Frewen, and from 1960 to 1975, partner Edward D. White, among others.

## VANCE KIRKLAND

(American, 1904-1981)

### ARTIST, DESIGNER.

As founder of the University of Denver's School of Art in 1929, Kirkland has been called "Colorado's pre-eminent artist" by his namesake museum. Denver's Kirkland Museum of 20th Century Decorative Art presents the artist's life and work within the dynamic context of the art, furniture, decorative art and craft of thousands of his contemporaries. Though known primarily for a long, distinguished career in painting, Kirkland also forayed experimentally into the world of decorative art. Examples of chandeliers and a handful of other decorative objects are on display at the museum.



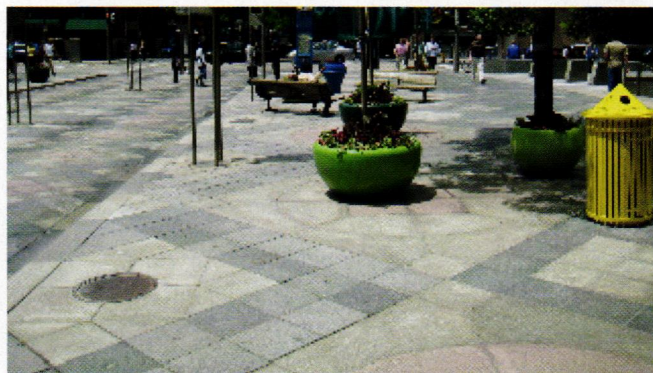
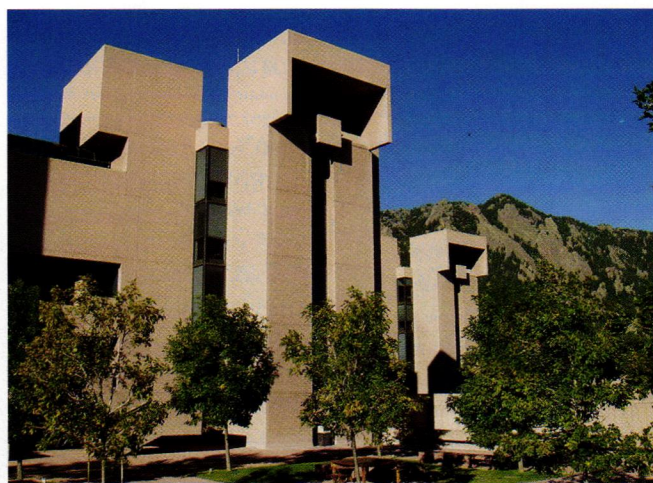
Seven Red Suns in Grey Space, 1971 by Vance Kirkland.  
Oil on canvas. Collection of Kirkland Museum.

## I.M. PEI

(Chinese-American, born 1917,  
in Colorado more than three decades)

### ARCHITECT.

An architect of international importance whose vast and varied repertoire includes the famous glass pyramid at the Grand Louvre Museum in Paris (1989) and the Rock and Roll Hall of fame in Cleveland, Ohio (1995), I.M. Pei is responsible for several Mile High projects over his decades-long career. Early, (as Principal Designer for I.M. Pei and Partners and architect Henry Cobb) his Colorado projects include Denver's first skyscraper, the 23-floor Mile High Center (1956), Zeckendorf Plaza and the adjoining Court House Square (1960) that featured the country's largest (132' x 113') concrete hyperbolic paraboloid. The modern mixed-use complex, which featured a sunken garden, seasonal skating rink-turned café, hotel and shopping, all interconnected with bridges and walkways, was substantially lost to what many preservationists consider to be one of Denver's most unfortunate 1990s development casualties. Only the hotel remains. In 1967 Pei completed the project during which he believes his "personal architectural style blossomed" – the National Center for Atmospheric Research in Boulder. And decades later he returned to Denver (as I.M. Pei, Cobb, Fred & Partners) to design another transformative downtown Denver feature - the 16th Street Mall. In what may become a startling and sad case of history repeating, the 16th Street Mall was recently named to Colorado Preservation Inc.'s "Most Endangered" list, as the city debates balancing problematical physical maintenance of the Mall's iconic rattlesnake-patterned granite pavers while respecting the integrity of the architect's original design.



The National Center for Atmospheric Research in Boulder.  
The 16th Street Mall, downtown Denver.

## GIO PONTI

(Italian, 1891-1979)

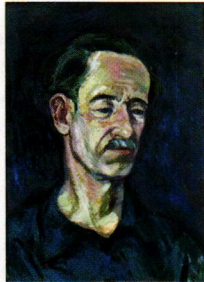
### ARCHITECT, DESIGNER.

Primarily a furniture and decorative art luminary, Ponti was one of Italy's most celebrated modernist designers. His unlikely Colorado legacy is the Denver Art Museum's 1971 addition – one of the city's most visible examples of Brutalist architecture. The medieval-like tower, which Ponti called “a fortress for art”, has, in the long and rich history of art criticism, inspired debate ever since its construction – not unlike the hoopla that has surrounded the newest DAM addition, Daniel Libeskind's Hamilton Building.



## COLORADO ARTISTS / HONORABLE MENTION

Though their role on the national stage of modernism is relatively limited, these Colorado artists – many of whom began careers as WPA (Works Progress Administration) muralists - are widely honored and recognized for regional excellence. One caveat – this is merely a glimpse at a few in a pantheon of many.



### EDGAR BRITTON

(American, 1901-1982; in Colorado after 1940)

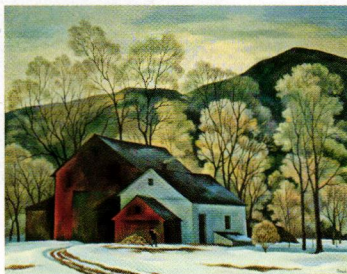
A painter, muralist and sculptor, the Nebraska native worked and studied his way across the Midwest and Western United States, working primarily on murals and frescos, before moving to Colorado in the 1940s. Here, he spent the rest of his life and career creating the bronze sculptures for which he is best known – the abstract interpretation of the human figure.



### CHARLES RAGLAND BUNNELL

(American, 1897-1968; in Colorado sporadically after 1915 and primarily after 1940)

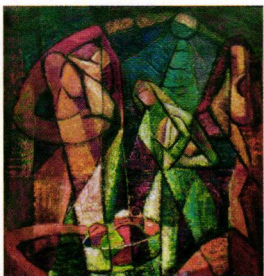
Born in Kansas City, Missouri, Bunnell moved to Colorado Springs and spent the next few decades between the two cities studying and teaching an impressionistic style of painting. After 1940, and over the next two decades, his impressionistic hand gave way to a more abstract/modern style.



### WILLIAM SANDERSON

(Latvian/American, 1905-1990; in Colorado after World War II)

This modern master of Cubism, Realism and Hard-edge Abstraction began life in Europe, studied in New York and made a considerable mark on Colorado, having participated in over 200 group exhibitions between 1945 and 1985. He is considered one of Colorado's foremost painters, illustrators and educators.



### FRANK JOSEPH VAVRA

(American, 1892-1967; in Colorado circa 1920 and thereafter)

Like others on this short list of Colorado painters, Vavra began his career elsewhere and in an impressionistic style that would morph into a more abstract style as decades passed and the artist evolved. Native of Nebraska, Vavra is well known as a member of the celebrated Taos School of artists, but spent most of his career in and around Denver. Although he is best known for his earlier impressionistic works, the abstract paintings of his later years have quite recently become collectible.

The Kirkland Museum of Fine & Decorative Art,  
1311 Pearl St., Denver, 303.832.8404,  
[kirklandmuseum.org](http://kirklandmuseum.org)

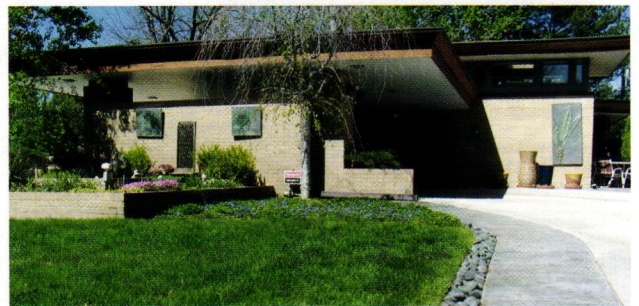
David Cook Galleries, 1637 Wazee St., Denver,  
303.623.8181, [davidcookfineart.com](http://davidcookfineart.com)

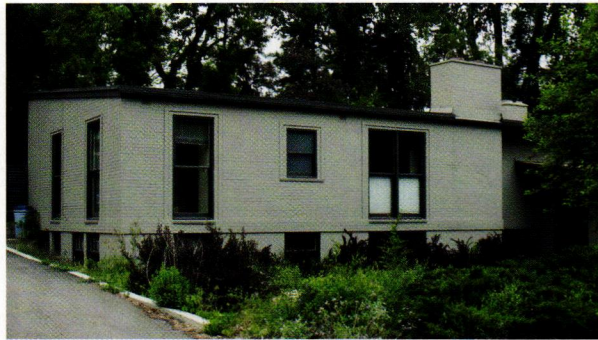
## COLORADO'S MID-CENTURY MODERN ARCHITECTURAL ANCESTRY

The influence of some of the superstar mid-century modern architectural minds of the American West (and California, specifically) such as Richard Neutra (Austrian/American, 1892-1970, an architect who favored the International Style) and Joseph Eichler (American, 1900-1974, a builder and developer whose style borrowed heavily from Wright's Usonian vision) made their mark indelibly in Colorado, if indirectly. In the mid-20th century, multitudes of Eichler-style (also called California Modern) homes were constructed in Denver and suburban neighborhoods such as Arapahoe Acres, Arapaho Hills, Applewood, Lynwood and Krisana Park. Today, interest in Eichler-style residences is experiencing a fierce renaissance in Colorado as it is across the country. Decades of the unpopularity of the modest, stylish "tract" homes have happily given way as people begin to understand and appreciate the beauty of Eichler's vision – that of affordable, stylish homes for the middle class. The roots of Colorado's mid-century modern architecture are firmly anchored in two major modernist styles: Usonian and International.

### USONIAN

The Usonian Style is a term coined by Frank Lloyd Wright (an abbreviation for United States of North America) for an architectural style characterized by low roofs, open floor plans and the use of natural materials such as wood and brick. Colorado's preeminent Usonian architect was Victor Hornbein, but he was in good company with the likes of Joseph and Louise Marlowe, William Muchow, Paul Atchison, Richard Crowther, Edward Hawkins, Joseph Dion, Earl Chester Morris and others.





## INTERNATIONAL

International Style is sometimes described as the American interpretation of the European Bauhaus style, but its many incarnations and phases over a long period of popularity make it tough to define under one umbrella of definition. It is generally distinguished by simple lines, lack of ornamentation, use of industrial materials and the concept of functionalism as guiding principle, and is most often associated with corporate and public architecture (in Denver, I.M. Pei's 1960 Hilton Hotel - now the Adam's Mark Hotel - and the Burnham Hoyt / Fisher & Fisher-designed 1955 Denver Public Library are notable examples.) Regional residential examples are found all over Denver and neighboring suburban communities (the Arapahoe Acres work of Eugene Sternberg, for example) and include a great concentration of homes in the Hilltop and Bonnie Brae neighborhoods by Burnham Hoyt, Thomas Moore, William Boorman, Lester Jones, Max Morris and others.

## COLORADO MODERNE

A late offshoot of the Art Deco period (1925-1939), the Moderne movement hit its height of popularity in the late 1930s, but its influence would be domestically evident for decades. Think of the round and rocket-like toasters, martini shakers, the iconic airstream trailer. In Denver, architects Fisher & Fisher (Arthur Fisher and Alan Fisher) gave us two exemplary structures in the regionally rare Moderne style - the circa 1938 Railway Exchange Building downtown on 17th Street (now the Hotel Monaco) and the Country Club Gardens at Downing and Ellsworth, a 1940 enclave of two and three-story apartment residences with uncertain futures, thanks to proposed demolition and development and that many preservationists and neighbors view as insensitive to the property's historical importance.

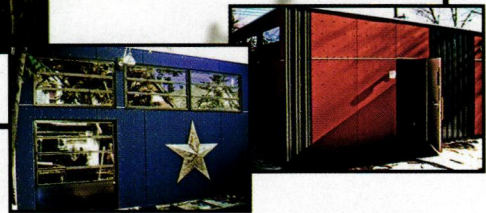




- \* MODERN DESIGN
- \* HIGH CEILINGS
- \* EXPOSED WOODEN BEAMS
- \* SUPERIOR INSULATION WITH 2" X 6" CONSTRUCTION
- \* POURED CONCRETE SLAB FLOOR, OPTIONAL RADIANT FLOOR HEATING
- \* MODERN CONCRETE SIDING
- \* WIRED FOR ELECTRICITY, OPTIONAL WATER AND GAS HOOK-UPS
- \* CUSTOM DESIGNED AND BUILT TO WORK WITH YOUR LOT

## CUSTOM STUDIOS

SPACE STUDIOS    WWW.SPACEGALLERY.ORG    720.904.1088



## Don't trust your Le Corbusier to just any hands...



Movemasters has been moving and storing collectible furniture and art in Denver for 27 years, earning the Better Business Bureau's coveted A+ rating.

We are a "think Green" company with environmentally friendly habits, including using recyclable packing materials.

745 Lipan Street  
Denver, CO 80204  
303.893.8200



# MOVEMASTERS

MOVING & STORAGE    [www.movemastersdenver.com](http://www.movemastersdenver.com)



Diane Huntress Photography

## ART of the LAND

Colorado

Landscape Architecture  
Landscape Construction  
Environmental Art

Designing and  
building spirited,  
practical landscapes

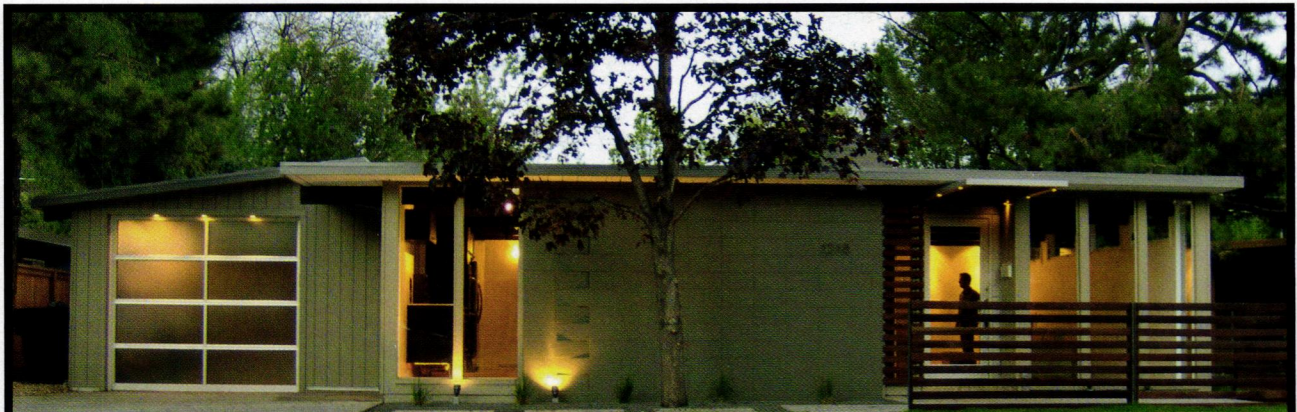
**303.233.5007**  
artoftheland.com

emerge  
MODERN SALON



Haircuts/Styling  
Expert Coloration  
Facial Waxing  
Walk-ins welcome  
Women  
Men  
Children

**EMERGE MODERN SALON**  
An eco-friendly environment  
1513 South Holly Street  
Denver, CO 80222  
720.862.8676  
www.emergemodernsalon.com  
appt@emergemodernsalon.com



dramatic space  
sexy baths  
cool kitchen

krisana park  
1316 south elm street \$459,000

REAL ESTATE FOR MODERN LIVING  
milehimodern.com



# THE IMPORT WAREHOUSE

PRE-OWNED • PRE-CERTIFIED

- ALWAYS A GREAT PRICE, NEVER RETAIL •
- NO MANAGERS, NO DEALERS, NO GAMES •
- NO-HASSLE EXPERIENCE •
- A DONATION GOES TO YOUR CHARITY •  
SCHOOL OR ORGANIZATION

Specializing in Certified Pre-owned cars:

Audi • Mini • BMW • Volvo • Volkswagen

[theimportwarehouse.com](http://theimportwarehouse.com)

235 Broadway Denver, Colorado 80203

**303-629-0966**



## BUY WITH CONFIDENCE

*Time and money are your two most precious commodities.*

**NO HAGGLE** We don't believe in wasting your time. Shop for the right vehicle, read through our comprehensive dossiers, and drive our cars. When you decide on the right car, we can usually have you out on the town within an hour.

**NO BETTER PRICE** – We don't believe in wasting your money. We shop our competition every day to make sure we have the lowest advertised price. The only place that even comes close to our inspection process is the franchised dealer. If you find a lower advertised price from a franchised dealer, bring us the proof. We're so confident in our prices and in the quality of our cars, we can make you this promise.

Live Urban. Live LoHi. Live GREEN.



**2311 W 32nd Ave**

- Eco-Chic Modern
- Undergoing LEED Silver Certification
- Award-Winning Design

4 Bed & 4.5 Bath  
2 Car Garage  
2908 SF With  
Finished Basement

Take a tour @  
[obeo.com/521724](http://obeo.com/521724)

Joline Bernardini  
Broker Associate.Realtor  
720.936.2824  
[Joline@LiveUrbanDenver.com](mailto:Joline@LiveUrbanDenver.com)



**3501 Mariposa St**

- Smarter, Cleaner Healthy Living
- Solar Equipped
- HERS & Energy Star Rated

4 Bed & 4 Bath  
+ Roof Top Deck  
2634 SF With  
Finished Basement

Take a tour @  
[3501Mariposa.com](http://3501Mariposa.com)

Rachel Gallegos  
Broker Associate.Realtor  
720.308.2615  
[Rachel@LiveUrbanDenver.com](mailto:Rachel@LiveUrbanDenver.com)

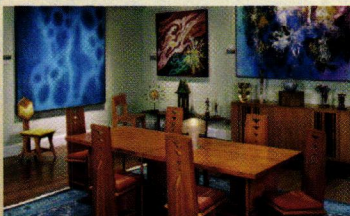


# The Incredible Inedible Egg

See why Kirkland Museum is known for displaying one of the most comprehensive modernist decorative art collections in America.

Explore the diverse and creative talents of artists from 1880 to 1980. Over 3,300 pieces are on display representing every major design movement from Arts & Crafts to Modern.

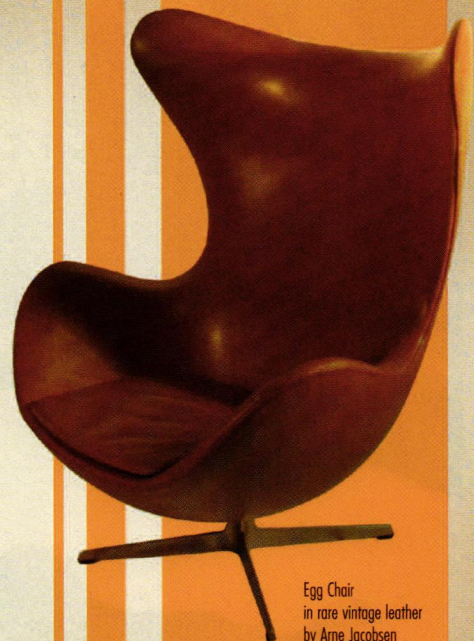
Also on view is an extensive Colorado Modernist Collection and the work of Colorado's own distinguished painter, Vance Kirkland (1904-1981), partially housed in his 1911 historic studio. Kirkland Museum is a National Trust Associate Site.



Prairie Style Dining Suite (with original cushions) by Frank Lloyd Wright; nebula & galactic abstractions (1962-1980) by Vance Kirkland.



1311 Pearl Street • Denver, CO 80203  
303.832.8576 • [www.kirklandmuseum.org](http://www.kirklandmuseum.org)



Egg Chair  
in rare vintage leather  
by Arne Jacobsen  
1957-58



shuttlecock

ball

cartwheel

jump

TIME TO PLAY

Words: Jenna Billingsley &  
Melissa Belongea  
Images: Crystal Allen



# GET OUTSIDE

**FOR OWNERS OF MODERN HOMES, OR FOR THE CONTEMPORARY FURNITURE ENTHUSIAST, A WELL-CRAFTED PIECE OF OUTDOOR FURNITURE IS NOT ONLY A PLACE TO SIT AND WATCH THE SUNSET, BUT ALSO A SEAMLESS SEGUE BETWEEN THE INTERIOR AND EXTERIOR SPACES OF A HOME.**

Understandably, when pondering your own modern outdoor oasis, questions are bound to arise. For instance, what makes outdoor furniture “modern”? And where can you find such treasures amidst the sea of bulky plastic chairs littering the aisles of many home improvement stores?

To explain what makes some outdoor furniture “modern,” one only has to look at Richard Schultz’s 1966 collection. Designed for Florence Knoll’s beach house, Schultz’s challenge was to bring indoor mid-century design aesthetics outdoors. The result was a sleek collection that could withstand the harsh salt air of the Florida coast. The collection continues to set the precedence for modern outdoor furniture by combining indoor elegance with outdoor materials.

While you may or may not be able to get your hands on Richard Schultz’s 1966 collection, there are many designs that can be equally impressive in your yard. When purchasing furniture consider how the form, function and material of each piece reflects the aesthetic of your home. Remembering, when it comes to mid-century modern and contemporary design form and function take equal precedence.

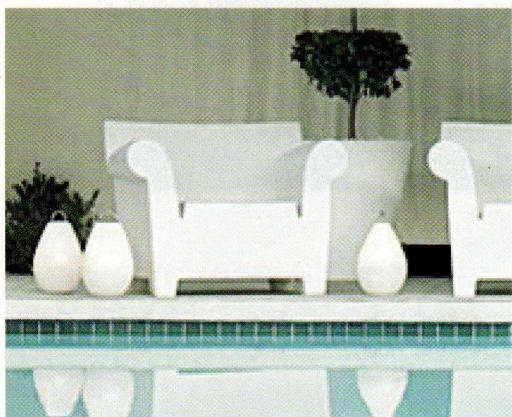
Before setting off to the store, evaluate the size of the space you need to fill. If you have a large backyard or patio consider a modular design, allowing for an individualized arrangement that can cover a large area. For small spaces or areas near the house look for individual pieces with narrow or tapered legs, making sure the base hovers above the ground instead of anchoring to it. The airy form will give the illusion of more space.

In addition to the size of the area, the primary purpose of the patio or yard should be considered before purchasing any furniture. If entertainment is your goal look to create a flow throughout your backyard, al-

# SUMMER FUN!



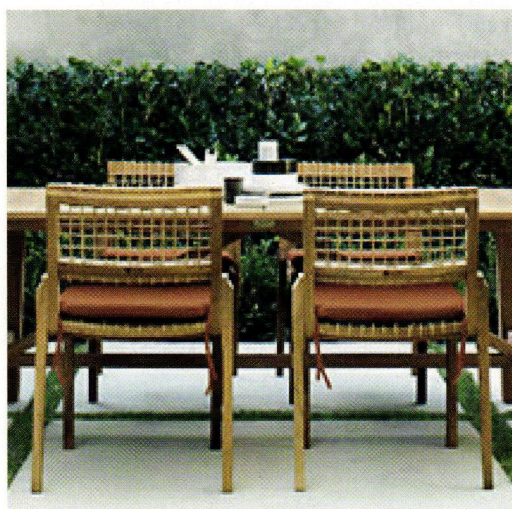
## OUTDOORS ARE IN SUMMER 2009



Bubble Club Armchair.



Luxembourg Lounge and Ottoman / Side Table.



Veneto Rectangular Dining Table and Veneto Dining Armchair.

lowing guests enough room to easily maneuver around furniture, storing extra seating wherever possible. For small urban porches get creative with your furniture, perhaps integrating it into your deck or patio design.

Living in Colorado requires furniture to be able to stand up to harsh weather. Look for materials that are impregnable to fading, mold, rust, insects and weathering, taking into account how much maintenance is required to keep them looking their best. Also look for materials that won't heat up in the sun, or are made through sustainable processes. Ipe wood, stainless and powder-coat finished steel, and recycled Polyethylene are examples of some great outdoor materials.

By visiting local showrooms and some online resources, Modern In Denver has brought you the latest in modern outdoor trends. So sit back and enjoy the soft breeze moving slowly across your deck, all while considering what chair you would rather be sitting in.

### DESIGN WITHIN REACH

2500 E. 2nd Ave., Ste. 120  
Denver, CO 80206  
720.407.0749

+ [dwr.com](http://dwr.com)

When it comes to outdoor furniture, Design Within Reach lives up to its name, bringing some of the most sought-after collections from international designers right here to Denver. The Luxembourg Collection, by French designer Frédéric Sofia, includes a lounge, stacking bench, side table and chair, folding tables and a bar cart. Modeled after the iconic chairs and benches in Paris' historic public garden, Sofia's aim was to "invite one to idle away the minutes and the hours in one's own secret garden." Made in a zero-waste facility, out of lightweight 100% recyclable aluminum and solvent-free paint, this collection may be modeled after the past but is definitely made for today.

While you are there, also check out the sustainable teak Veneto Collection as well as the Bubble Club Collection from Philippe Starck, which playfully recalls the classic Chesterfield styling.

PAGE 35: Contour Chaise Lounge, Adjustable Chaise Lounge and End Table (1966 Richard Schultz Collection, [richardshultz.com](http://richardshultz.com))

RIGHT: Oliva Ooms hides in the 30" Bordato Illuminated Planter.





**OUTDOORS ARE IN**  
**SUMMER 2009**



## ROOM & BOARD

222 Detroit St.  
Denver, CO 80206  
303.322.6462  
[+ roomandboard.com](http://roomandboard.com)

Choosing just one item from Room & Board's Montego Collection is as difficult as it gets. Domestically made in Wisconsin of solid Ipe wood and stainless steel, the sleek design is not only durable, but with so many table, chair and lounge options to choose from you can easily fill any size space in your backyard.

Another great design to look for is the Bermuda Chaise. The streamlined look invites laid-back lounging, while the light-weight frame makes moving it to your favorite spot easy.

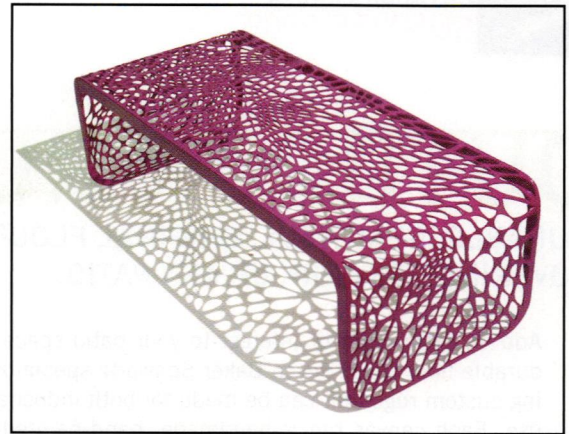
## MOD LIVIN'

5327 E. Colfax Ave.  
Denver, Colorado 80220  
720.941.9292  
[+ modlavin.com](http://modlavin.com)

With plenty of mid-century modern and contemporary objects to offer, it is no surprise that Mod Livin' has a wide range of outdoor furniture and accessories available online and in the store. From the minds of California-based architects, the Arktura Coral Collection's nature-inspired shapes are the result of an intricate process in which algorithmically generated patterns are laser cut into bent steel. Available in several vibrant colors, these benches and tables will add a sculptural dimension to your yard while providing guests with a comfortable place to sit down and relax.

If you are looking for interesting accessories to adorn your yard, the Architectural Pottery collection epitomizes Californian mid-century modern design.

LEFT: Azure and Piper lounge about on the Montego 78" Square Double Sun Bed from Room & Board while enjoying the company of the Magis Puppy (available at Mod Livin'). Also pictured, the Hip Haven Retro Bullet Planters from Mod Livin'.



TOP LEFT: Azure relaxes on the Bermuda Chaise from Room & Board.  
 TOP RIGHT: Arktura Coral Table/ Bench at Mod Livin'.  
 BOTTOM LEFT: Architectural Pottery Peanut Planter at Mod Livin'.  
 BOTTOM RIGHT: Aimee & Tom Brainard cool off at Montego 32" Round Dining Table and bar stools from Room & Board.



OUTDOORS ARE IN  
SUMMER 2009

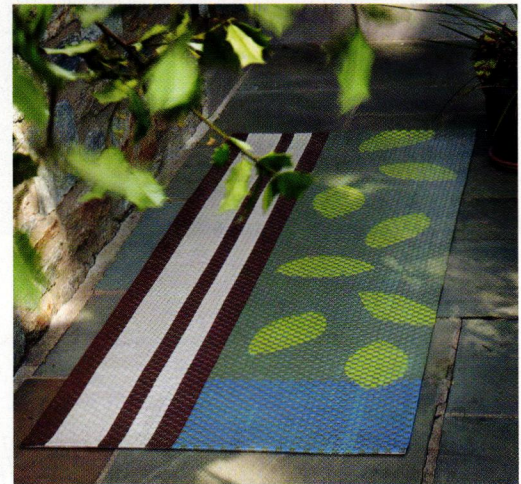
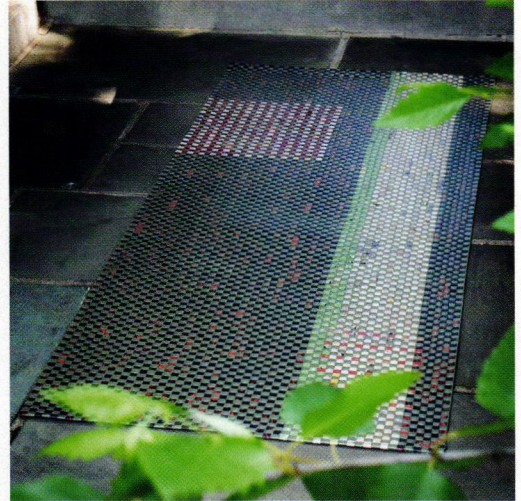
# OUTDOOR RUGS

DURABLE, BEAUTIFUL, ORIGINAL FLOOR COVERINGS TO PERK UP ANY PATIO.

Add an extra point of interest to your patio space by using a durable floor cover. Joyce Baker Schwartz specializes in creating custom rugs that can be made for both indoor and outdoor use. Each canvas rug is handmade, hand-painted and represents a unique work of art. Joyce Baker Schwartz floor coverings are designed with an active, healthy lifestyle in mind. The acrylic finish used on the rugs is extremely durable for high traffic areas as well as for outdoor elements. The rugs are easy to maintain, easy to clean and as a result, do not collect the normal particles that other rugs do, making them resistant to mildew and an excellent choice for those prone to allergies.

In addition, Joyce Baker Schwartz employs artists to produce the original floor and wall hangings. Baker Schwartz, has a background in painting, sculpture and textiles. She believes part of her work includes creating opportunities for artists to work and providing mentorship. While most of the pieces Joyce Baker Schwartz produces are commissioned she does design new lines regularly.

+ [jbsdesigns.net](http://jbsdesigns.net)



JOYCE  
BAKER  
SCHWARTZ

## CRATE & BARREL

101 Clayton Ln.  
Denver, CO 80206  
303.331.9300  
+ [crateandbarrel.com](http://crateandbarrel.com)

Within Crate & Barrel's expansive collection of outdoor furniture and accessories you can find some great modern pieces. The Ventura Collection's clean lines and modular design make it ideal for outdoor entertaining, particularly if you are looking to fill a larger space. The powder-coated aluminum frame, with fade and mildew-resistant Sunbrella® acrylic cushions, help you to relax and enjoy your furniture instead of worrying about what the weather will do to it. To protect your guests from the sun you may want to consider the Sunbrella® Umbrella, which is available in many colors to fit your style.

In CB2, you can find a wide selection of modern outdoor accessories and furniture. The Sunny Chairs are a modern take on the classic café chair. The airy slat design, made of rust-resistant welded steel, can be yours in powder coated hi-gloss yellow, white or blue. Don't forget a G-nome, a modern twist on an old favorite; this little guy is made of terra cotta and coated with hi-gloss white lacquer for a polished finish.



## ZMODERN

1132 N. Speer Blvd.  
Denver, CO 80204  
303.298.8432  
+ [zmodern.com](http://zmodern.com)

Stan Bitter's Birdhouses are a wonderful addition to any yard. The textured exterior of these playful spheres adds dimension to the sculpted pieces while simultaneously providing a refuge for the neighborhood birds. As a prominent retailer of modern furniture, ZModern also carries outdoor pieces, including lines by Kartell, Magis, Design House, Artecnic and Vitra.





**OUTDOORS ARE IN  
SUMMER 2009**

### **SOURCE FOUR INTERIOR ELEMENTS**

753 Kalamath St.  
Denver, CO 80204  
303.893.1515  
+ [sourcefour.com](http://sourcefour.com)

For additional seating and added color consider Source Four's Venezia stacking chairs. Making convenience cool these chairs come in white, black, light grey, mustard, orange, red, brown and yellow.



### **DESIGNPUBLIC.COM**

The OFFI Tiki Stools, created by Eric Pfeiffer, are a lively addition to your deck. Available in six different colors these stools can also be used as a side table featuring a convenient storage area in the bottom.



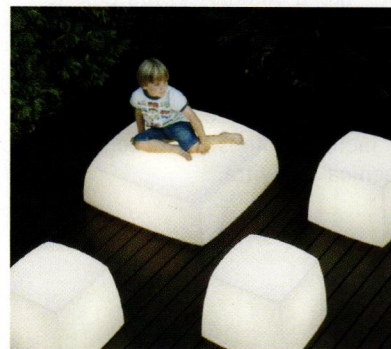
### **GIORGIOBISCARO.COM**

Originally designed to provide seating for smokers sitting outside pubs in Europe, the Atlas chair by Giorgio Biscaro for Slide Design seems to come alive right in front of your eyes. The four legs and bright colors make it ideal for any outdoor space.



### **EN.CARPYEN.COM**

Sure your furniture is fun to look at in the light but once the sun sets it often loses some of its charm. That is not the case for Carpyen's Lite Cubes; these polyethylene chairs light up to illuminate the deck while supplying an extra seat for anyone willing to be in the spotlight. Color choices include white, red, green, yellow and blue.



# FILL IT UP

REPURPOSING TAKES ON A WHOLE NEW SHAPE. GARDEN HOSES AS FUNCTIONAL BASKETS MAKE YARD WORK THAT MUCH MORE FUN!

**STREWN** across the grass following a water fight, or coiled in anticipation, the garden hose is an inadvertent summertime yard ornament. For Chase DeForest it takes center stage becoming the foundation for the baskets and chairs within her Hosewares line. Colorful, sturdy and visually appealing, her pieces are reminders of the beauty that is often hidden in everyday materials or objects.

A Seattle native, DeForest's interest in basket weaving started at a young age. "I have always been a basket maker. Growing up in the Pacific Northwest, the native basket tradition was an inspiration and part of life." Following her undergraduate degree in sculpture, DeForest turned her focus to building custom furniture, drawn to functionality and the reclaimed building products around the industrial neighborhood of her shop.

Never neglecting her sculpture background, DeForest created the Hosewares collection a few years. Coiling the hoses with zip ties for the baskets or around a stainless steel frame for the chairs, the products epitomize the range of her artistic talents; the ultimate combination of her sculpture expertise and her ingenious flare for materiality and function.

The line has evolved into a full-fledged production, constantly expanding to include more twists on the classic idea. "The garden hose is an easy material to work with, and I find it interesting to see how many different ways I can use it." Fans of her work can see her latest creations, including hose clamp jewelry and mirrors, at the Cherry Creek Arts Festival (July 3-5) as well as the Aspen Arts Festival (July 18-19).

Despite the line's popularity, DeForest still personally assembles each order.

+ [chasedeforest.com](http://chasedeforest.com)



## CHASE DEFOREST





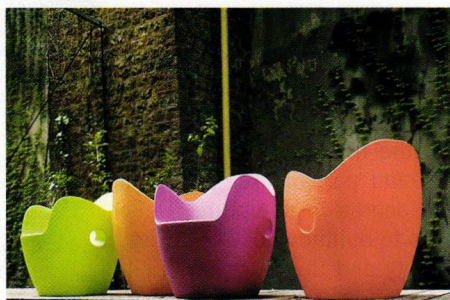
**OUTDOORS ARE IN  
SUMMER 2009**

## MOROSO OUTDOOR

+ [moroso.it](http://moroso.it)

Designed by Ross Lovegrove, the Supernatural stackable chairs are the result of a highly evolved process that uses the technology of injection moulding in glass fibre reinforced polypropylene. Don't understand what that means? Fall in love with the organic forms and the bright colors that make these chairs truly Supernatural.

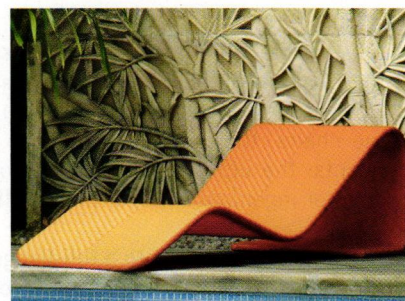
Another favorite from Moroso is the O-Nest chair designed by Tord Boontje. Embossed with floral decorations, a hallmark of the Dutch designer, the rotationally moulded polyethylene chair seems to blossom before your eyes.



## HOME INFATUATION

+ [homeinfatuation.com](http://homeinfatuation.com)

Fabricated with the pool in mind, this Contemporary Wicker Chaise Lounge is 100% recyclable polyethylene fiber, woven together to look like real wicker and able to withstand the effects of chlorine, sea salt, UV and all weather conditions.



## NEIMAN MARCUS

+ [neimanmarcus.com](http://neimanmarcus.com)

Tubular aluminum legs give a modern look to the retro-style chair and ottoman handcrafted of durable cumaru wood.



# LOLL DESIGNS

+ [loll designs.com](http://loll designs.com)



Tom relaxes in the Emmet Adirondack Chair.



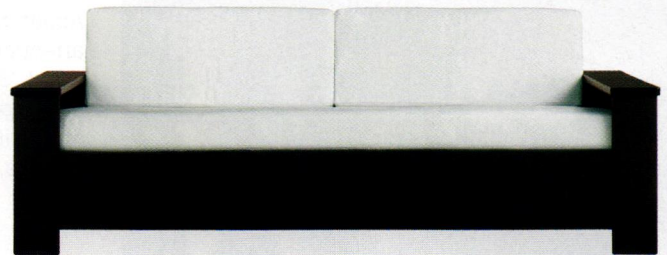
Locally Available at:  
**DESIGN WITHIN REACH  
ROOM & BOARD**

The uniquely green story behind Loll Designs is almost as intriguing as the products themselves. Getting its start back in 1997 with the creation of TrueRide, Loll was originally a design and build contractor specializing in custom municipal skate parks. In 2003, Loll outdoor furniture was conceived as a way to repurpose the excess skate ramp material.

The iconic Adirondack Chair, the first Loll outdoor furniture design, was launched in 2006 after several years of prototyping. The material evolved from its initial post-industrial plastic, to the 100% recycled post-consumer polyethylene it is today. Each chair is manufactured using an estimated 400 recycled milk jugs, or 8 milk jugs per pound. To make it better, not only are these chairs fade resistant, waterproof and maintenance-free, but they all 100% recyclable without heating up in the sun.



The Monterey Collection





**OUTDOORS ARE IN  
SUMMER 2009**



## TIME 4 ICE CREAM! (AND YOGURT TOO)

It's only natural for the creature of indoor-outdoor, modern living to love summertime. What's better than enjoying your own patio oasis? Being treated to someone else's. Take a field trip to any one of these cool, summertime hangouts, guaranteed to refresh and delight.

### KUULTURE FROZEN YOGURT

1512 Larimer St. • Denver, CO 80202  
303.573.7200

Two sisters and a brother from Los Angeles opened Kuulture Frozen Yogurt in August 2008. Since frozen yogurt is 100% non-fat, sweetened only by the (organic) ingredients added, it seemed only right to open up shop in Denver, one of the healthiest cities in the country. Flavors not to miss are: Original, Hawaiian Paro and Peanut butter. Also, try the Acai (pronounced As-ai) bowl, a detoxifying tradition from Brazil and Hawaii.



### SWEET ACTION ICE CREAM

52 Broadway • Denver, CO 80203  
303.282.4645 • [sweetactionicecream.com](http://sweetactionicecream.com)

Sweet Action Ice Cream is Broadway's latest addition for summer time fun. The giant, airy front window space is lined with a bar and several places to sit, both inside and out, and is a great place to people watch. Sweet Action Ice Cream was started by Chia Basinger, a Denver native, and Sam Kopicko, from Boston. Sweet Action Ice Cream is dedicated to strengthening the local community through their Sweet Action Sponsored Flavor program, a collaboration designed to draw attention to businesses that are making a special effort to better the world. Sweet Action Ice Cream sources their ingredients both locally and organically, wherever possible. Unique flavors to look for include: Margarita Sorbet (made from scratch), Baklava (a mash up of honey, baklava, cinnamon and vanilla) and White Russian.

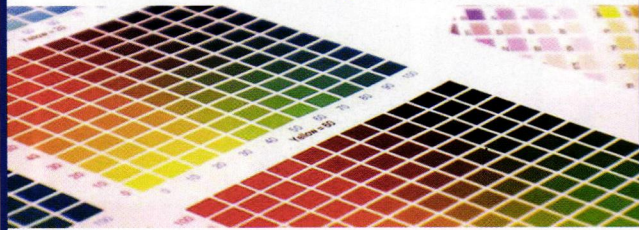


THE BEST QUALITY, SERVICE AND TURN AROUND  
**DIGITAL PRINTING EXPERTS**  
 THE LOWEST PRICES IN DENVER. OVER 24 YEARS IN LODO!



**National Teleprinting®**

Full Service Electronic Prepress  
 Fine Offset & Digital Printing



1420 Blake Street • 303-595-2460 • teleprinting.com



Rob Williams, *Daisy a Day*

**TRANSLATIONS GALLERY**  
 CONTEMPORARY FINE ART

1743 Wazee Street Denver CO 80202 Tel 303.629.0713  
 www.translationsgallery.com



**cutting edge design**  
**stunning detail**

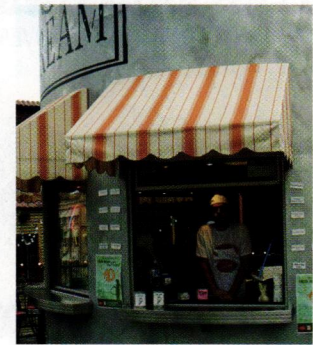
**bow mar**  
 5700 S. Blue Sage Drive  
 \$1,499,000

REAL ESTATE FOR MODERN LIVING  
**milehimodern.com**

## LITTLE MAN ICE CREAM

2620 16th St. • Denver, CO 80211  
303.455.3811 • + [littlemanicecream.com](http://littlemanicecream.com)

Little Man Ice Cream is not only well known for its delectable treats, but also as one of Denver's newest landmarks. The 28ft. literal ice cream can, made of 17,000 lbs. of steel, is located in the Lower Highlands Historic neighborhood. Developer, Paul Tamburelo says the main goal is to facilitate community by creating a hang out or town square area that attracts people across generations. Little Man Ice Cream also has a program called 'Scoop for Scoop'. For every scoop of ice cream, a scoop of rice is donated to impoverished villages abroad. So far, Little Man Ice Cream has served 50,000 scoops (and counting), plus 4,400 lbs. of rice to people in need. With that sort of exchange, Little Man takes the guilt out of eating ice cream. Be sure to try the Mexican Chocolate, Pistachio Gelato or the Inside Out Root Beer Float (root beer ice cream and vanilla soda).



## THE SHOPPE

3103 E. Colfax Ave. • Denver, CO 80206  
303.322.3969 • + [theshoppe-denver.com](http://theshoppe-denver.com)

A neighborhood hangout and destination spot for cupcake and cereal addicts alike, The Shoppe is always coming up with new and different ways to treat. Most recently, The Shoppe and Sweet Action Ice Cream have collaborated on the Ice Cream Cupcake. Emma Skala, master pastry chef, has been working hard to figure out just the right combination of flavors and layers. Emma and her business partner, Tran Wills, co-own and operate The Shoppe and The Fabric Lab next door. If you're looking for a place to pass the summer time, indulging in treats of all kinds, head down to the corner of East Colfax and St. Paul. The Shoppe will also be hosting a cup-cake eating contest on the 4th of July, where all are welcome to attend the 2nd Annual East Colfax Block Party.

# DENVER MODERNISM SHOW



## AUGUST 28-29-30

### HIGHLIGHTS:

- Over 80 Vendor Booths
- Tiki Lounge all 3 days
- Post-Atomic Car Show Sunday
- Airstream Display & Tours
- Vintage AND Contemporary
- Art Gallery
- Slide Shows & Lectures
- Live Bands & Entertainers

### GUESTS:

- SHAG
- Richard Cheese
- Charles Phoenix
- HGTV's Matt Locke
- The Aquasonics
- GoGo Lab
- Rocky Mtn Roller Girls
- Hula Girls, Robots & more!

[denvermodernism.com](http://denvermodernism.com)

Art Credit: "Our Glorious Lifestyle" by SHAG, who'll be at the Denver show all 3 days with a booth. Slide shows Friday and Sunday!

## DESIGN ICON:

# WARREN PLATNER

Words: Pamela Torke



While his name is perhaps not as instantly recognizable as, say, Eero Saarinen or Charles and Ray Eames, Warren Platner's work continues to be influential and timeless among mid-century modern designs. One of his best-known creations is the sculptural steel and wire furniture that he designed for Knoll. (He designed both the furnishings and their production method.) Said Platner, "I felt there was room for the kind of decorative, gentle, graceful design that appeared in a period style like Louis XV." Platner created a collection of tables, chairs and stools that sit on a base of nickel-plated steel rods. The bases conjure up images of bundled, flowing, golden wheat but are juxtaposed with Platner's use of industrial materials. The collection, introduced by Knoll in 1966, proved hugely successful and has been in continuous production ever since.

Born in 1919 in Baltimore, Platner studied architecture at Cornell University. After he graduated in 1941, he worked in the offices of legendary architects and designers I.M. Pei, Raymond Loewy and Eero Saarinen. He opened his own design studio, Platner Associates, in New Haven, Connecticut in 1967, where he created furniture, textiles and residential and commercial interiors.



ABOVE: Windows On The World Restaurant.  
TOP: Platner Dining Table.

While designing his Platner Collection of furnishings for Knoll, he was also busy creating a different hallmark of modern design – the interior of the Ford Foundation Headquarters at 320 East 43rd Street in Manhattan. The building, designed by architect Kevin Roche, is made of steel, granite and glass and features a lush, green garden in the central atrium, which the offices overlook. The interior was designed to provide privacy while also creating a sense of openness. Platner used a rich, warm color scheme and had custom-made furniture (including ergonomic desks) installed to utilize space and eliminate unnecessary clutter. Today, the building's dedicated management department seeks to keep the building faithful to its original design, and the large offices are still stocked with Platner's original furniture, including mahogany desks, wall-mounted bookshelves and cabinetry. Architecture critic Ada Louise Huxtable called the interiors "a virtual hothouse of suave, standardized elegance," in her 1967 review. Platner provided his definition of "classic" as being, "something that every time you look at it, you accept it as it is and you see no way of improving it" – a characteristic that has often been applied to his designs. Today, the auditorium still has the original leather-wrapped Charles Eames armchairs and textile-covered walls by artist Sheila Hicks.

In addition to the Ford Foundation, Platner also created the interior for Windows on the World restaurant located within the World Trade Towers. Opened in 1976, the space was created to mimic the interior of a cruise ship and the main dining room was terraced so that every table had a view. He also designed the New York showroom for high-end Scandinavian designer Georg Jensen, which opened in 1968. Other notable projects included the interior design of Chicago's Water Tower Place mall in 1976 and the renovation of the Pan Am Building lobby for new owner MetLife in 1986.

Platner received the Rome Prize in architecture in 1955 and was inducted into Interior Design magazine's hall of fame in 1985. He died in 2006 at the age of 86 in New Haven, Connecticut.



TOP: Platner Lounge Chairs and Coffee Table.

RIGHT: Platner Lounge Chair in red.

## DESIGN PARAGON:



# PATRICIA URQUIOLA

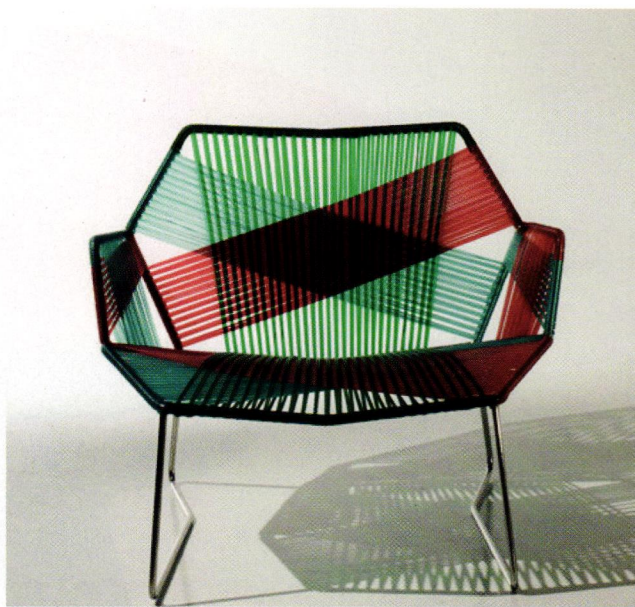
Words: Jaime Kopke

**PATRICIA** Urquiola (b.1961) is one of the design world's leading ladies, quickly taking her place among female stars like Hella Jongerius. In contrast to many contemporary designers who thrive on creating lavish one-off pieces, Urquiola has a refreshingly practical approach. Her work is centered around the principles of comfort, style and easy reproduction.

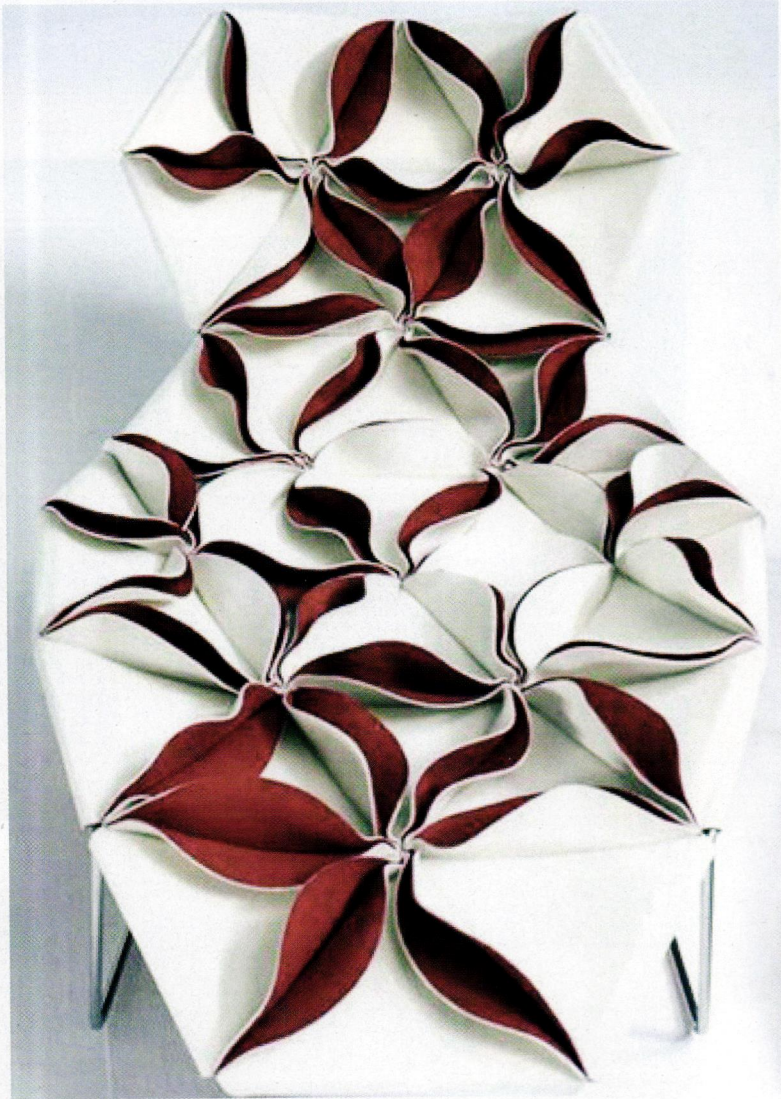
Though Urquiola is a native of Spain it is in Milan where she has found center stage. After beginning her studies in Madrid, Urquiola relocated to Italy where she earned a degree in architecture from the Milan Polytechnic in 1989. It was there she met famed designer Achille Castiglione, who convinced her to switch from architecture to design. Upon graduation, Urquiola stayed in Milan, designing products for a variety of studios including De Padova and Lissoni Associati.

In 2001 she opened her own studio, and has been churning out an immense array of products and accessories ever since. The list of manufacturers Urquiola has partnered includes all the big names; among them B&B Italia, Kartell, Cappellini and Moroso. Though she works across a broad array of materials, she has continued to favor simple technologies over experimental production. The results have been expressive forms with defined function.

In her 'T-table' for Kartell, Urquiola took the most basic of substances, plastic, and gave the piece organic life with flowing cut outs. Her 'Antibodi' chaise for Moroso is also indicative of this style; finely quilted petals of fabric offer a feminine touch, yet the cover can be flipped over for a smoother, more symmetrical look. Though Urquiola has only stormed onto the scene in the last few years her output has been prolific, and in the male dominated world of design, Patricia Urquiola is already leaving her mark.



ABOVE: The Tropicalia Chair.



ABOVE: The Antibodi Chaise.



ABOVE RIGHT: The T-Table.



MIDDLE RIGHT: The Canasta Sofa.



BOTTOM RIGHT: The Canasta Circular Sofa.



  
spectar  
the spa at Pura Vida

west e'

west e'

est. 01m west e' in west e' in west e' in

west e'

# A CLEAR VISION



FROM THE CROSSWALK AT FIRST AND MILWAUKEE TO THE CROSS TRAINER THREE STORIES ABOVE, TWO DENVER-BASED ARCHITECTS HAVE REDESIGNED THE FORMER TATTERED COVER BOOK STORE BUILDING INTO A NEW LANDMARK FOR CHERRY CREEK NORTH.

words:  
**Maureen Russell**

Photos by:  
**Ron Pollard**  
**Ed LaCasse**

**BE** it driving, walking or riding down First Avenue one cannot help being transfixed by the metamorphosis of One Fillmore. Morning, afternoon and dusk the building is a giant swath of color set on a much larger canvas. The source of this, the single most important element of the entire architectural endeavor for the Cherry Creek North community, is Viracon Glass. “Most glass is green on its ends and that is due to the high levels of iron in the glass,” explains Blake Mourer, Design Director with Gensler. “This custom-made glass has very low levels of iron in it, which creates the silvery, clear effect. Most people think it’s just a green shaded glass but it’s the low iron content and production process that produces that transparency.” That is the very high impact statement both the architect and developer wanted to create.

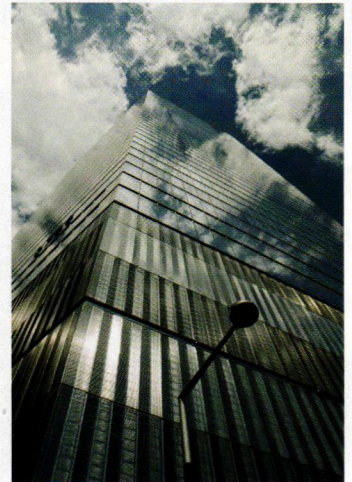
The story actually begins with the selection of Denver-based Gensler by Sturm Group, One Fillmore’s owner and developer. “We interviewed several architectural firms and we liked Gensler’s modern, international style in other cities,” says Bob Mattucci, Real Estate Developer with Sturm Group. “We especially liked Blake Mourer and his design sense and approach.”

Don Sturm, owner of Sturm Group, was interested with the idea of glass, and wanted to see it on an existing project, so he visited the World Trade 7 building in New York City. That building utilized a similar low iron glass that Gensler was presenting for One Fillmore. Sturm gained a sense of what the transparency can do for a structure and was convinced that it was the direction to take for the Denver structure. The question of cost was significant but the transparency created the iconic, modern form the team was envisioning for One Fillmore, so effect overcame cost and the team decided to move forward with

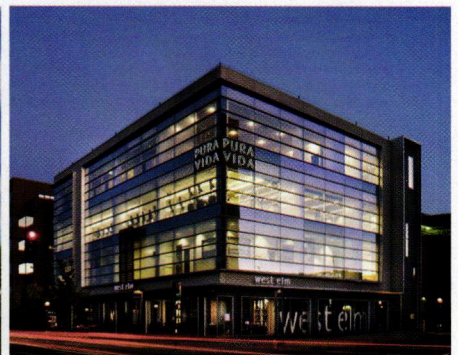
that approach. States Mattucci, “we wanted an iconic, organic, transparent addition to the block. Gensler achieved that.”

To achieve this goal, the plan for the exterior design was two-fold. First, to remove the windowless, stucco exterior façade and provide natural sunlight to the building. Second, to bring the building closer to the sidewalk.

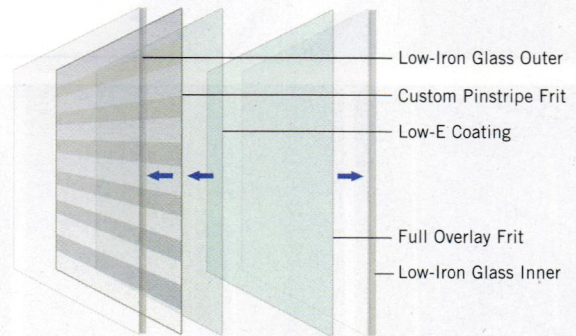
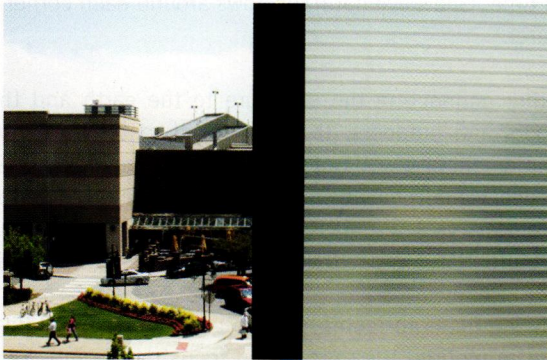
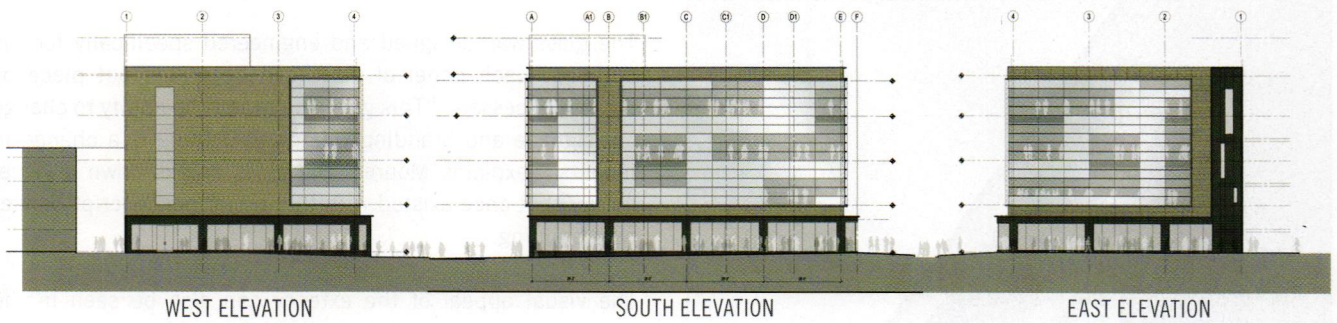
The decision to use glass on the façade was crucial to the building’s design. The use of this specific glass gives the building a chameleon quality, allowing it to take on the color and mood of the day by reflecting the color and textures of the sky, while giving a glimpse into the active spaces above the street. The crystal clear glass is achieved by specifying a low-iron glass to eliminate any green tint that is usually seen in commercial glazing. The overall composition uses clear low-iron glass in conjunction with a custom translucent frit—the two were organized in a three-story composition that wraps the three sides, stitching the elevation together both vertically and horizontally. The use of the clear vision glass in conjunction with the translucent glass panels is intended to “hide” portions of the upper levels from view, making the clear glass areas more prominent and framing the activity within.



ABOVE: World Trade 7, NYC.



ABOVE (left to right): The Tattered Cover Bookstore, Gensler’s rendering of One Fillmore, The completed building with tenants West Elm and Pura Vida.



GLASS MAKE-UP



**“WE INTERVIEWED SEVERAL ARCHITECTURAL FIRMS AND WE LIKED GENSLER’S MODERN, INTERNATIONAL STYLE IN OTHER CITIES. WE ESPECIALLY LIKED BLAKE MOURER AND HIS DESIGN SENSE AND APPROACH.”**

Bob Matucci



The glass was designed and engineered specifically for the building. Each panel of glass can be pulled out piece by piece if necessary. "This gives the owner the ability to change out signage and branding when and if there is a change in tenants," explains Mourer. The glass breaks down a visual barrier that once existed with the former nondescript bunker type building.

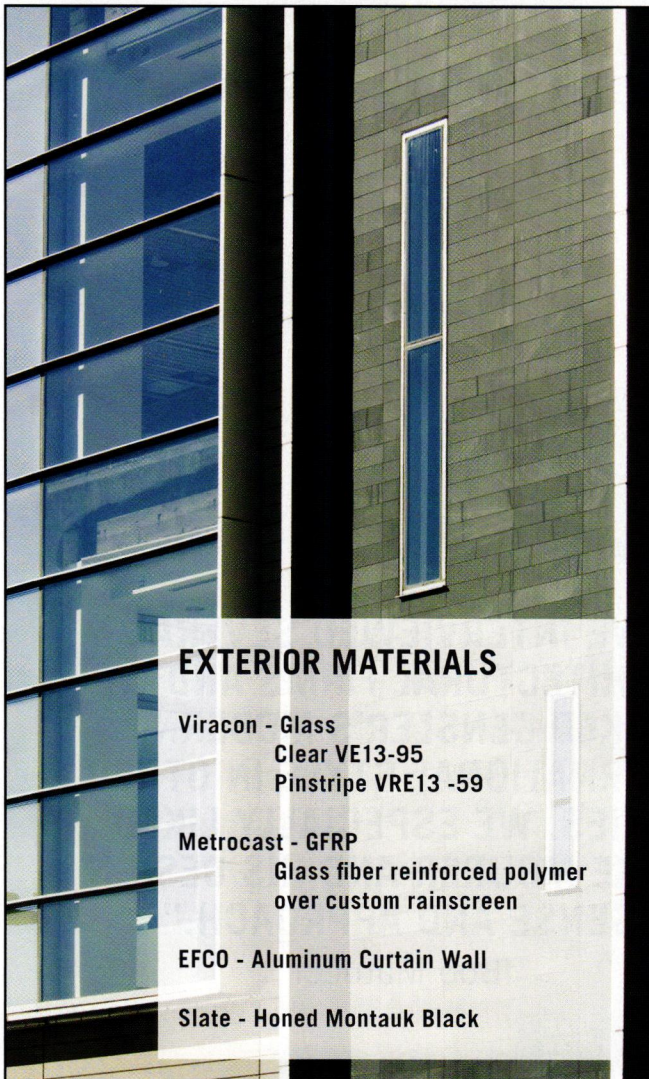
The visual appeal of the exterior can also be seen in the continuous wrapping of the building from the east side to the west side where the street entrance is located. "The continuity allows one to take in the building and structure all at one time. One's eye naturally flows around each corner," says Mourer.

Further connecting the structure to the earth and the sky, indoors and outdoors, the team used materials that would complement the walls of glass. Honed Montauk black slate recedes, visually moving the retailers toward the public space. Extreme large-scale glass plays with the proportion pushing the building's composition down to a more human scale.

With the plans for achieving the goals for the building's exterior in motion, the team could focus on the interior of the structure and its tenants such as West Elm and Pura Vida Fitness & Spa, who was inspired by the exterior's design.

For several months Pura Vida owner, J. Madden was going through the planning and development process for his Pura Vida vision inside the Cherry Creek Mall. However, one day in October 2006 he walked out of the mall and looked toward the structure across the street. The building, in a blanket of scaffolding, was the exact location he was envisioning for the home of Pura Vida. Madden, not a novice to health clubs (he owns and manages Greenwood Athletic Club), created a distinctive vision for a club in Denver that he knew would cater to a specific group of people who were not currently being served. He wanted to incorporate lifestyle, health and fitness into a space that lived up to his chosen name, Pura Vida.

Since this was a new concept not yet seen in Denver, Madden was adamant about not selecting a typical fitness club architect. "I didn't want to have to deal with the status quo of health club facility design," says Madden. "I knew I wanted Matt Appelbaum and Semple Brown. I liked what they had designed at the Glass House." (Madden and Appelbaum already had a history of collaboration as Madden was the



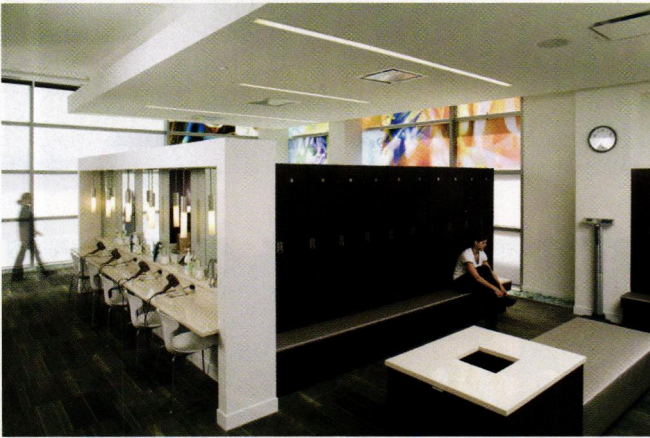
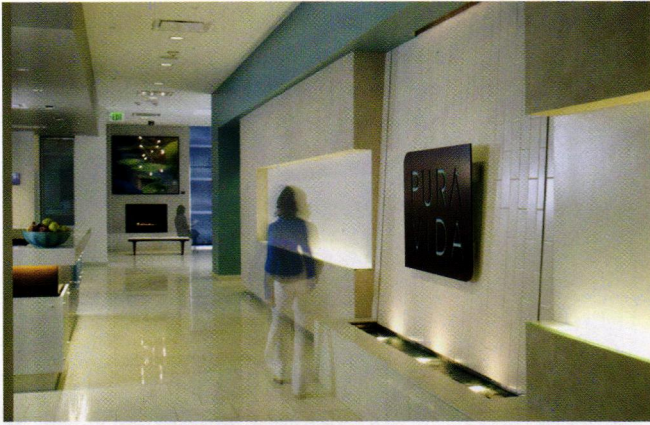
## EXTERIOR MATERIALS

**Viracon - Glass**  
Clear VE13-95  
Pinstripe VRE13 -59

**Metrocast - GFRP**  
Glass fiber reinforced polymer  
over custom rainscreen

**EFCO - Aluminum Curtain Wall**

**Slate - Honed Montauk Black**

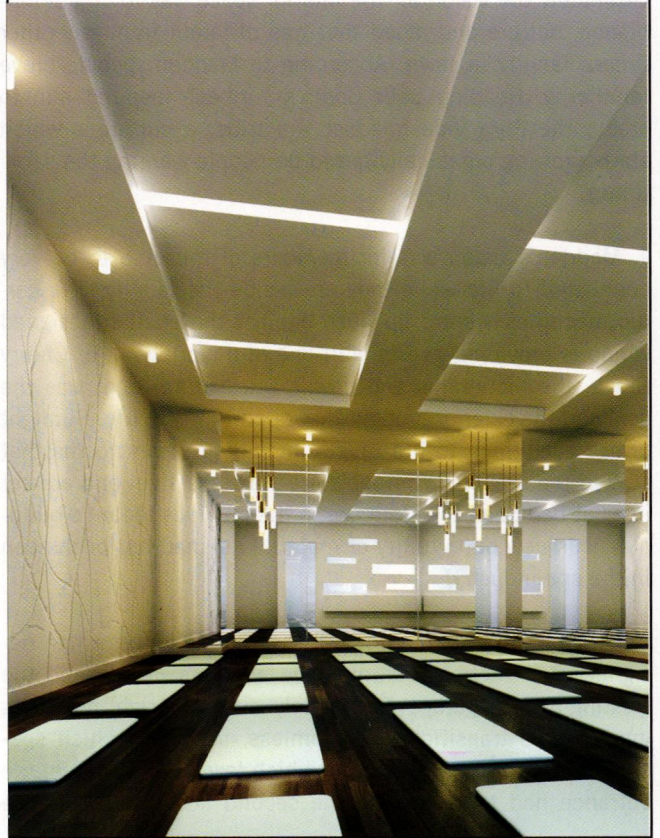


ABOVE (top to bottom): Pura Vida's entry, the women's locker room, The reception desk at Nectar, the Spa at Pura Vida.

## PURA VIDA'S THERMAL™ YOGA ROOM

### HOW IT WORKS

With a normal temperature of 72 degrees within the yoga room, an increase in temperature for thermal yoga is a must as is a decrease after class is over. Most systems take up to one hour but the one in this room adjusts in just 30 minutes. The ceiling in the yoga room is packed with (and conceals) mechanical equipment that adjusts temperatures, evacuates air and prevents mold on the room's surfaces. Vents in the sidewall, a drop ceiling, which provides access to the system's units, and branch wall panels also conceal the system's equipment.



fitness club consultant on the Riverfront Park Athletic Club in the Glass House. The Glass House, a glass and steel residential highrise set in the heart of Riverfront Park in Lower Downtown Denver, was also a never-before-seen addition to the city's expanding architectural lexicon.)

"Typical fitness club architects want to drive their agenda and take it off the shelf of the designs they have completed," explains Madden, "Mark and his team are good listeners who do great design and deliver 'wow factors,'" something that was required to achieve the architectural wonder that is Pura Vida.

As designers of the interiors, Dalton Davis and Sage Case from Semple Brown were tasked with the selection of the finishes. At the same time, the Pura Vida logo and brand colors were being specified. The blues and browns that decorate the interior tiles, walls and entry design are all derived from the Pura Vida logo palette. The blues are subtle hues of sea and sky. The brown is a deep rich shade of the coconut shell and a sand-like beige combined together create a relaxing and engaging atmosphere.

Ultimately the vision for the interior space was to create ambiance, culture and mood that was different from any other fitness facility in town. According to Madden, people crave familiarity. Reading Seth Godin's "Tribes" inspired him to create the Pura Vida mindset – a tribe, a culture – which starts growing organically based on people wanting the same things.

J. Madden's vision was for members of the club to be very connected to life while they are inside the facility. The cardio machines are set up flush against the custom-designed windows providing guests with one-of-a-kind views of Cherry Creek, the mountains and downtown. Natural light was the goal and the exterior brought that opportunity to life. Sunlight brings everything to life inside, including steam rooms that soar to the ceiling. Whirlpools are stainless steel and are set in what had been the staircase in the previous tenant's build-out. This new opportunity of material use had not been seen in the spa industry.

Appelbaum and his team faced several challenges when designing the interior, including the all glass facade and the existing parking garage. Fortunately, since the right team was involved the transition was seamless, including which specific function would happen on which level. For example, the entrance had to remain on the second floor where Semple



ABOVE: Fitness Studios at Pura Vida.



#### AN INTERIOR LIST OF SUSTAINABLE BENEFITS

- Exterior Shade Fabric – Silverscreen Fabrics.
- Sustillian by Constantine in the Stairwell.
- Mondo Rubber Flooring in workout rooms.
- Armstrong Linoleum in Nectar Treatment Rooms – Floorscore Certified.
- PV Carpet Tile throughout by Shaw with eco-worx backing is “Cradle to Cradle” Certified.
- Recycled tumble glass tile in bathrooms from bottles, jars and windows by Bedrock Industries.
- American Clay brand plaster at the Fireplace, the entry feature wall and in Nectar.

ABOVE: The women's locker room.

**DALE CHIHULY**

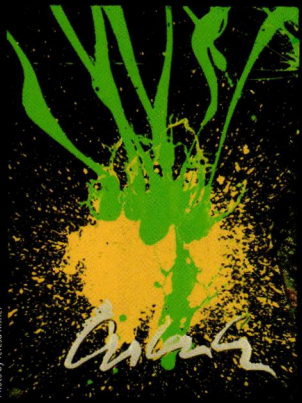
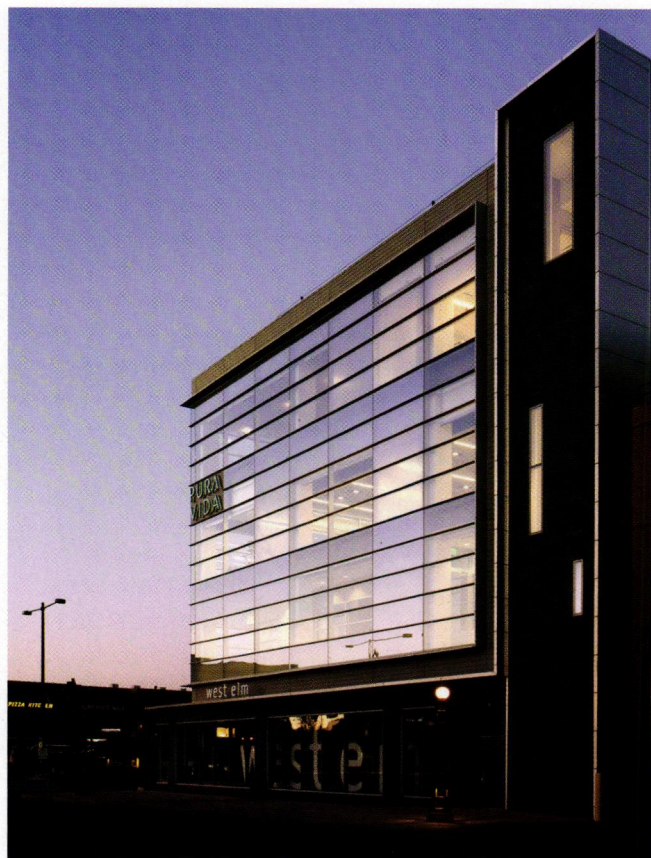


Photo by Teresa Ribbel

Black Kebab Drawing 2008, Mixed Media on Paper, 30"x22"

**PISMO**  
Fine Art Glass

2770 E. 2nd Ave. • Denver, CO 80206 • 303.333.2879  
Aspen • Beaver Creek • Denver • Vail  
[www.pismoglass.com](http://www.pismoglass.com)




ABOVE: East view of One Fillmore.

we live modern • we build modern  
we understand modern

**ON THE LEVEL CONSTRUCTION LLC.**

- remodels
- new construction
- renovations



Call us today for more information **303-815-5604**

Brown achieved a dramatic entry with sunlight streaming in from the east and a Zen-like rock formation waterfall. Access and entry points such as the elevators now seemed specific rather than constraints.

For Pura Vida, potential future plans include an outdoor pool and event space. For the developer, plans for the Fillmore block include a residential component and added retail. Both plans promise to bring impressive additions to Cherry Creek North's skyline.

Until then, the next time you find yourself on First Avenue, pay attention to the time of day, the clouds in the sky and the glass on the One Fillmore building – the ever-changing hues and light achieve the architects' vision. Through the creative use of glass, Denver is blessed with a modern and iconic building.

+ [puravidacub.com](http://puravidacub.com), [westelm.com](http://westelm.com), [gensler.com](http://gensler.com), [sbdesign-pc.com](http://sbdesign-pc.com)

Dedicated to Contributing to the Betterment and Welfare  
of at-risk CHILDREN

THE SCHOMP BMW  
2 0 0 9  
DENVER

POL  
CLASSIC  
JULY 10 - 12

SCHOMP BMW  
DENVER polo CLASSIC 2009



An event of the Denver Active 20-30 Children's Foundation benefiting at-risk and disadvantaged children's charities. All proceeds go to benefit Denver Active 20-30 and the charities they support.

To purchase single day tickets or a weekend pass please call 303-832-8390 or go to [DenverPolo.org](http://DenverPolo.org)

RINO DISTRICT  
1240  
31st  
street  
\$569,000

MODERN DWELLING - BEAUTIFUL LIGHT  
dramatic architecture

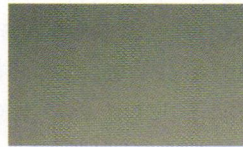
[www.charpiotlofts.com](http://www.charpiotlofts.com)

leilani renteria  
simply home

Kentwood City Properties  
LoDo across from Union Station

m 303.908.9207  
o 303.820.CITY  
f 720.228.CITY

leilani@kentwoodcity.com  
[www.simplyhomerealestate.com](http://www.simplyhomerealestate.com)



american



cabinetry

modern textures  
and colors for  
kitchen and bath

- RECYCLED MATERIALS
- LEED ELIGIBLE
- NON-TOXIC

[americanloftcabinetry.com](http://americanloftcabinetry.com)  
ph: 303.413.8030

available at RED PEPPER KITCHEN + BATH  
Boulder, CO • [www.redpepdesign.com](http://www.redpepdesign.com)

DESIGNER / ARTIST  
PROFILE → INTERVIEW

# SUSAN SAARINEN

For Susan Saarinen (b. 1945), daughter of famed architect/product designer Eero Saarinen and sculptor Lily Swann, life as a designer seemed almost inevitable. Saarinen spent most of her childhood at Cranbrook Academy, one of the country's preeminent artistic communities and where her father was a teacher. After graduating from high school, Saarinen attended the Rhode Island School of Design and later the Massachusetts College of Art where she earned a BFA in ceramics and weaving. It wasn't until her early thirties however, that Saarinen started to fall in love with landscape architecture and began taking classes at Radcliffe. By the time she moved to Colorado in 1990, Saarinen had already started her own landscape design company and eventually went on to earn her Masters in Landscape Architecture at University of Colorado at Denver. Saarinen is now the owner of Saarinen Landscape Architecture, working on a variety of commercial and residential properties. We asked her a few questions about her work, her family and what it was like growing up Saarinen.



Susan Saarinen with her father Eero.

WORDS: JAIME KOPKE

SPENDING YOUR CHILDHOOD AT CRANBROOK MUST HAVE BEEN AN AMAZINGLY CREATIVE ENVIRONMENT. WHAT WAS IT LIKE?

George Gough Booth and his wife, Ellen Scripps Booth, wanted to build a community based on the Academy of Art in Rome that is modeled on the apprenticeship system of learning. To this end they spent their considerable newspaper fortune to build Cranbrook, an arts and crafts art community. The Booths spared no expense to build a beautiful community including three schools, faculty and support staff housing, an art museum, a science museum, a church, a library and the art academy. The buildings on campus are primarily of brick and stone and laid out over 300+ acres of Michigan farmland. The remarkable thing about Cranbrook is that the priority was to make a beautiful and inspiring campus. Each building is a gem amongst gems, with rich and lovely details that relate to the whole, creating a total work of art. Within this community of buildings that exist to support the Art Academy artists work to develop their crafts, often exploring media other than their own. It was and is a lively environment of exploration and exuberance. All this I learned by osmosis. It wasn't until I was far from Cranbrook that I understood better how extraordinary the physical surroundings and atmosphere were. I still remember proportions and light, textures and layout when I am looking for a solution to a puzzle on which I am working.

YOUR GODFATHER WAS FAMED FURNITURE DESIGNER CHARLES EAMES. CAN YOU TELL US A LITTLE BIT ABOUT YOUR FAMILY'S RELATIONSHIP WITH THE EAMES AND THE OTHER WELL-KNOWN DESIGNERS THAT WORKED AT CRANBROOK?

My dad and Charles worked together on the Organic Design in Home Furnishings MoMa Competition in 1940. They were great friends and happy rivals when it came to design. One night, late, my father called Charles to talk with him about an idea for a chair. He made sure he described his idea in great detail so that Charles couldn't use the idea! As a youngster I remember Charles coming over often along with Harry Bertoina, Hans and Shu (Florence) Knoll and Marianne Strengell as well as, of course, my grandparents. Ben Baldwin, Jack Lenor-Larsen and the artists at Cranbrook were also a very important part of society there. Both Booth and Eliel Saarinen felt very strongly that there is a strong connection between art and design. They play off and enhance one another.

MOST PEOPLE KNOW YOUR FATHER THROUGH HIS HIGHLY ACCLAIMED DESIGNS AND BUILDINGS. WHAT ARE SOME THINGS PEOPLE MAY NOT KNOW THAT YOU'D LIKE TO SHARE?

My grandfather's household, like most Finnish households, subscribed to the idea of work hard, play hard. My father



Saarinen's landscape work at a mid-century modern home in Denver.

adopted this as his approach to life also. He wasn't a practical jokester, but he definitely had a droll and sometimes Charles Addams type of humor. The office parties were times to dress up in costume and indulge in great hilarity. One time he decided that they were going to have a party with a Venetian theme. They decorated canoes like gondolas and filled someone's basement with water! Once, when my father and step-mother were waiting in the airport for a plane, my father observed that there were two very badly behaved children running around close by. My step-mother, Aline, had a very large Teddy bear all wrapped up in brown paper, which she was tenderly holding under her arm. My father said in a voice loud enough to hear "Why don't other people wrap their children up to travel the way we do?" My father's humor also came out in drawings he did, such as the Christmas card he sent out in 1956, right after he finished the GM Technical Center.

**WHICH PROJECTS OF YOUR FATHER'S DO YOU REMEMBER HIM WORKING ON GROWING UP? DID YOU SPEND MUCH TIME IN HIS STUDIO?**

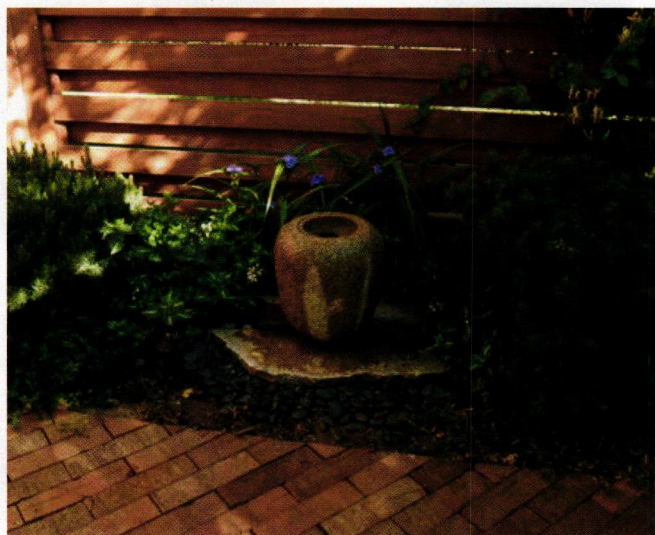
The first job that my father ever did entirely on his own, was one of the last to be completed. That was what we call today the Gateway Arch. I remember my father asking my brother and I to step in and out of the tram car model while he timed us with his stop watch. There was a huge model of half the TWA building, all in white, in his office annex. It sat on a table with a cut out in the middle, and up against a huge mirror. I ducked underneath and came up "inside" the building to experience what it was like to be "in" it. It was this very technique that allowed Balthazar Korab to photograph the models and give clients a virtual tour of a building before computers were ever used in architecture! You know, my father did all of his own work in the 11 years before his death. I remember most of the buildings in drawing or model form, even though I didn't really spend that much time in his office. We had regular visits to see what was going on and for a while my mother had her ceramic studio in the basement. I used to spend time playing with clay or building an abstract model rather than designing.

**YOU GRANDFATHER, ELIEL, WAS ONE OF THE MOST FAMOUS ARCHITECTS IN FINLAND AND THEN WENT ON BECOME PRESIDENT OF CRANBROOK. HAVE YOU BEEN TO FINLAND TO SEE HIS WORK?**

I had the great privilege and pleasure, after I finished graduate school, of studying abroad with my old landscape history professor, Ann Komara and her Finnish-American husband, Taisto Makela. In 1995 I went over to Finland to study Finnish Architecture and Culture for 6 weeks. I learned a great deal about my grandfather's work along with the other important architects of the time, met members of my family and went to visit my great grandfather's summer house in the



A patio setting designed by Susan Saarinen.



Detail of a landscape design by Saarinen.

lake district (designed by my grandfather). It was personally gratifying and an important part of my personal education. I had always felt that my grandfather's work was more relevant to my interests as I didn't really like the building materials of the modernist era. I came away better understanding Eero's and Eliel's individual strengths and my own preferences, which were not exactly what I had thought. It was an important passage.

#### HOW DID YOU GET INVOLVED WITH LANDSCAPE DESIGN? DID YOU EVER CONSIDER FOLLOWING FAMILY TRADITION INTO ARCHITECTURE OR FURNITURE DESIGN?

I never had any interest in going into architecture. I didn't, as I said, like the building materials of the modernist era, but more than that, I wasn't about to risk failure against a nine foot tall yard stick. I always knew that I would be a designer or an artist of some kind, but not in the same line of work as my parents. Well, as it turns out, I have designed furniture, I have sculpted and studied ceramics and weaving (weaving was one of the many arts my grandmother was involved in) and today I know I could have been an architect. But, it took me many years to understand that there was some aspect of design perfectly suited to my abilities and passion. I was 32 when I finally started to study landscape design. I was already a gardener by then and I knew color theory and proportion. I loved the outdoors and I was good and at drawing and seeing in three dimensions. It really just took an open mind to discover what I should be doing. I've been doing it now for many years and I'm still having a ball!

#### HOW WOULD YOU DESCRIBE YOUR OWN DESIGN STYLE? HOW HAS IT BEEN INFLUENCED BY THOSE YOU GREW UP WITH?

My father taught me that each design program, each client, each situation is different. This I have incorporated into my design philosophy and approach to work. Although I use formal form language in my work, generally speaking my work has an Asian influence woven into the fabric of native materials. That is to say, rather than using the bilateral symmetry that is so evident in my father's work, I use balance. Interestingly enough, when I did a study of Cranbrook, I found the same balance. I learned a lot by osmosis growing up at Cranbrook.

My mother was a sculptor and used to sit and draw animals for hours. I sat with her and talked. I guess that is where I developed a deep love of nature and a respect for inherent order. As a landscape architect I am known for my knowledge of native plants, wildlife and use of ecological principles. Unlike Dan Kiley who was one of the first designers to develop modernist landscape principles, I tend to design softer, asymmetrical landscapes that counterbalance the harder



A peaceful garden path designed by Saarinen.

edges of architecture. However, every program and client is different and I'll probably do something different tomorrow! I think the one thing that is essential when one is designing outdoor spaces, whether they are public spaces or backyards, is to think of the spaces as they relate to everything else. A landscape design is not just a landscape design. It is part of a larger whole. Materials used in a building must relate to the materials in the landscape, proportion to proportion, details to details. I grew up with the concept of "a total work of art." I still think that way.

#### ANY ADVICE FOR THE HOME GARDEN ENTHUSIASTS LOOKING FOR EASY PROJECTS TO IMPROVE THEIR OUTDOOR SPACES? WHAT'S THE ONE THING YOU THINK EVERYONE SHOULD DO?

However large or small your outdoor space is, create a beautiful outdoor sitting or gathering space. Consider putting it out in the yard rather than rest next to the house. (Drag a chair around the yard to see where the best view is.) Some greenery is necessary to ground our spirit, but if you only have room for a lattice wall with a vine growing on it, that will do. Put some color in, but not enough to make maintenance a chore. Shrubs are low maintenance and you can plant something for the birds. And the one thing everyone should do is to use native plants! There are lots of them and they do really well in the arid west when we have an extended dry spell.

*Susan Saarinen will be speaking June 25th at The Kirkland Museum, [kirklandmuseum.org](http://kirklandmuseum.org)*

**145,000**  
**SQUARE FEET**  
**600+**  
**EXHIBITORS**  
**32**  
**COUNTRIES**  
**4**  
**DAYS**



Party in the Desiron showroom showcasing Candy by David Rockwell.

# ICFF09

## MODERN IN DENVER'S HANS OSHEIM WENT TO THE INTERNATIONAL CONTEMPORARY FURNITURE FAIR IN NYC TO FIND OUT WHAT'S NEXT...

This is what draws international designers to New York City every spring. Now in its twenty-first year, the International Contemporary Furniture Fair has become the preeminent event to showcase modern design. Not only will you find furniture and seating, but carpet, lighting, outdoor furniture, materials, wall coverings, accessories, textiles, as well as kitchen and bath elements. These designs come from as close as Brooklyn and as remote as Ghana. Not only do individuals promote their wares, but countries will tout the best designs their nation has to offer while schools exhibit the best of their students.

New York City takes full advantage of being the epicenter of international design for the four days that the Fair takes place. There is a plethora of posh parties all over the city, the majority taking place in design showrooms in once derelict neighborhoods like SoHo and the Meat Packing District. Galleries also don't let the opportunity of having a city full of designers slip away. One can find shows at high-end museums (like the ICFF opening at MoMA) as well as obscure events like "table fights" (think remote controlled tables designed to destroy one another).

This year's show was the usual onslaught of high design. Wandering the floor like a situationist on a derive there were numerous objects that grabbed at the eye. Materially, felt proliferated the show. Wall coverings, rugs, seating and other objects were all found in felt. Stand outs included Anne Kyyrö Quinn's sound dampening wall coverings. In seating, the Packock chair by Dror Benshetri for Cappellini drew a constant crowd. Green products were also found throughout

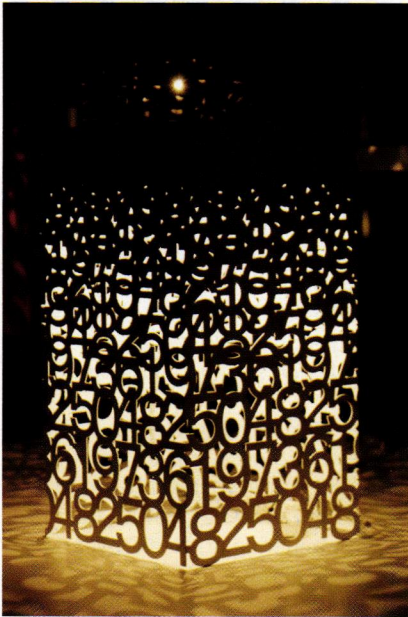
the show. Shimna exhibited furniture using wood from a local Pennsylvania saw mill. Hero displayed a rain collector along with a stylish drying rack to help you reduce your carbon foot print and look good while doing it.

If absorbing all this design was not enough to exhaust, there was a myriad of parties and events found throughout the city. Finland took over the Gansevoort Plaza providing relaxing, open air seating while lending a Scandinavian feel to a cool New York evening in the middle of the Meat Packing District. Meanwhile, showrooms like Cappellini, Valcucine, Desiron and Blu-Dot drew in masses with music, food and drink. Other events included shows at a number of galleries. Milk Gallery exhibited recent work from Bond. This design firm showed recent work including modular architecture along with a night light book for children. Design Within Reach became a gallery for the Swedish architecture firm of Claesson Koivisto Rune. There were plenty of basswood models throughout the store and even the possibility of speaking with the architects one on one about design intents. The Cooper-Hewitt even had a show about felt. Just in case an excuse to buy that rug seen at the show was needed; "it was on display at the Cooper-Hewitt."

While far from a vacation the ICFF will invigorate and stimulate the design aficionado deep within. A trip to the ICFF is like any trip to NYC - plan ahead. Know what will be there and what is important to see. Know what events provide the most interest but don't be afraid of wandering off to discover. Most of all, come back fulfilled and inspired.



ABOVE: Chairs are by Fredrickson Stallard



LEFT: The number lamp is called Memento by Tonerico: Inc. (Hiroshi Yoneya, Yumi Masuko) for Cassina.

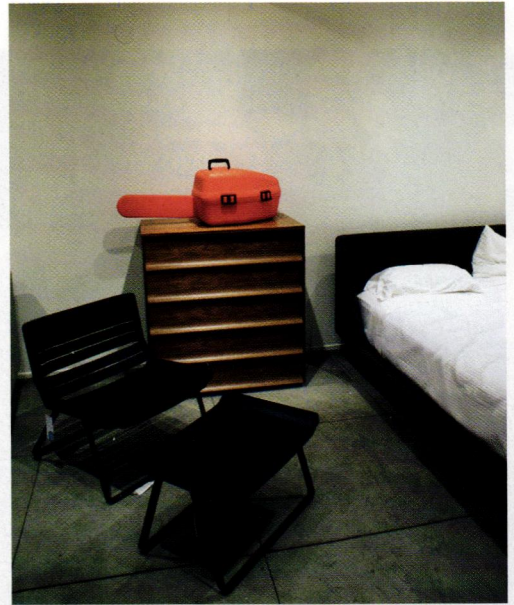


ABOVE: The 'See me TV' Mirror CCTV cameras, the 'Off the Wall' Pots and 'Hand Job' hooks are all by Thereromont Hupton.



TOP: Anne Kyrro Quinn did the felt wall covering. This product helps to soften the space as well as the sound.

BELOW: This sofa by Shimna incorporates local wood hand selected from a Pennsylvania saw mill. (rabbit by ebay)



ABOVE: Chair, bed and dresser all by Blu Dot.





LEFT: Felted yarn created these “soft rocks” by Tanya Aguiniga.



RIGHT: The Slice by Lene Frantzen. These felt objects are fabricated in a large roll and then sliced creating cushions or just objects of beauty. Lene's Slices were also seen at the Cooper-Hewitt National Design Museum.



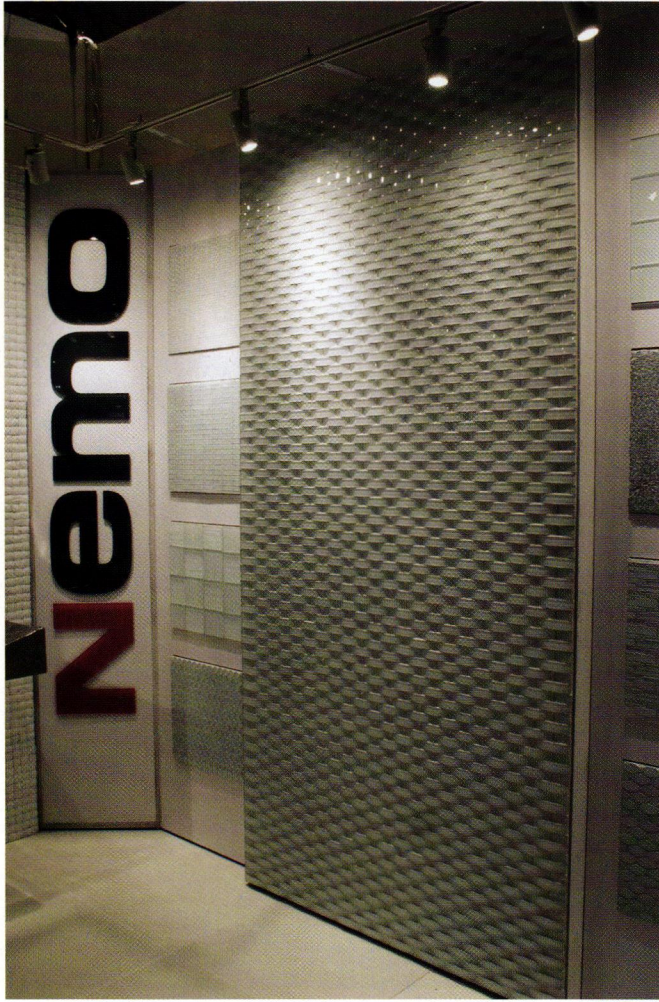
LEFT: These light Sculptures by Sydney Cash Incorporate mirrored elements to create reflections and shadows all through a simple plane.



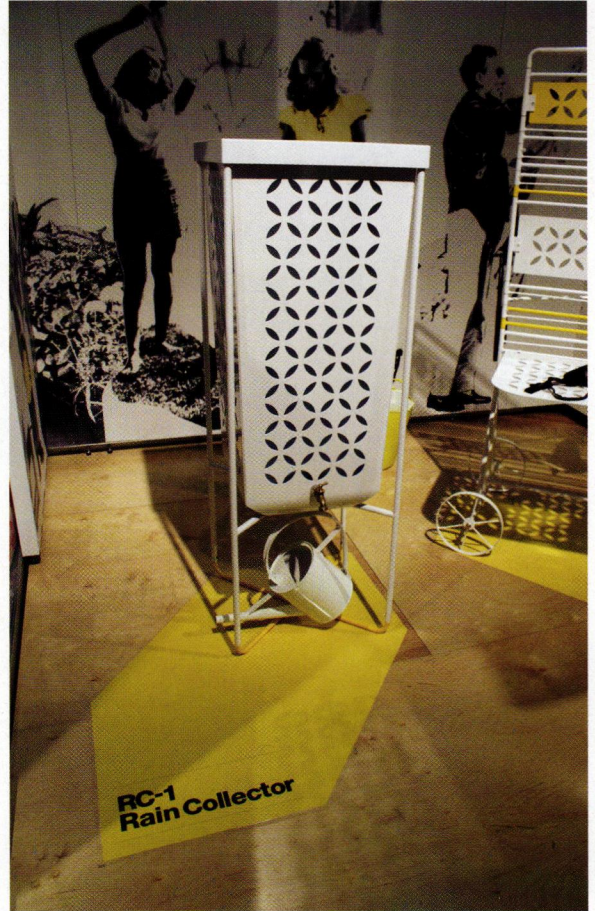
ABOVE RIGHT: The Pacok Chair by Dror Benshetri for Cappellini. This felt chair has a frame which supports the undulating felt offering a soft, yet supporting surface.

BELOW RIGHT: Proust Geometrica by Alessandro Mendini also for Cappellini.

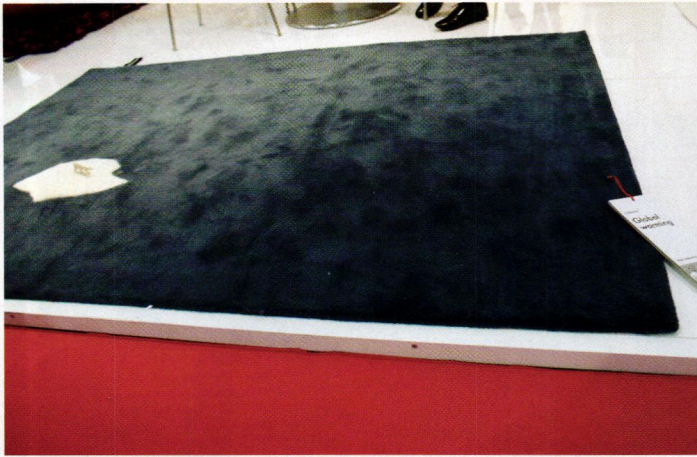




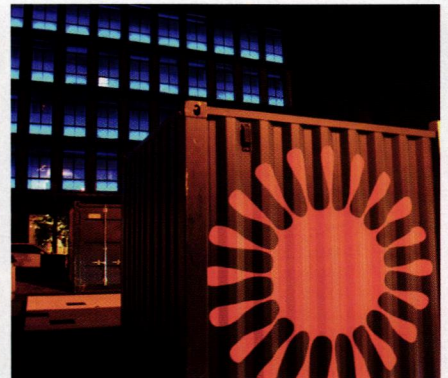
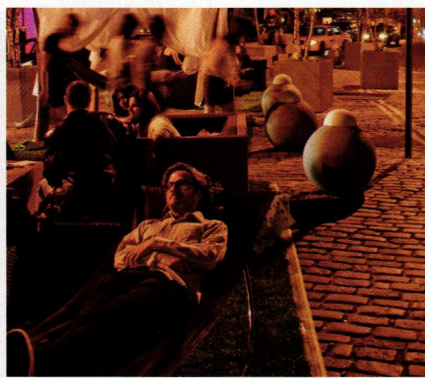
ABOVE: This glass tile by Nemo takes the traditional 'subway' tile and bends it, offering another layer of texture for your bathroom or backsplash.



ABOVE: Canada's Hero designed this Rain Collector helps ease the drain on water supplies. Unfortunately, rain collection in Denver is still illegal, but it sure would look good next to the Victory Garden.



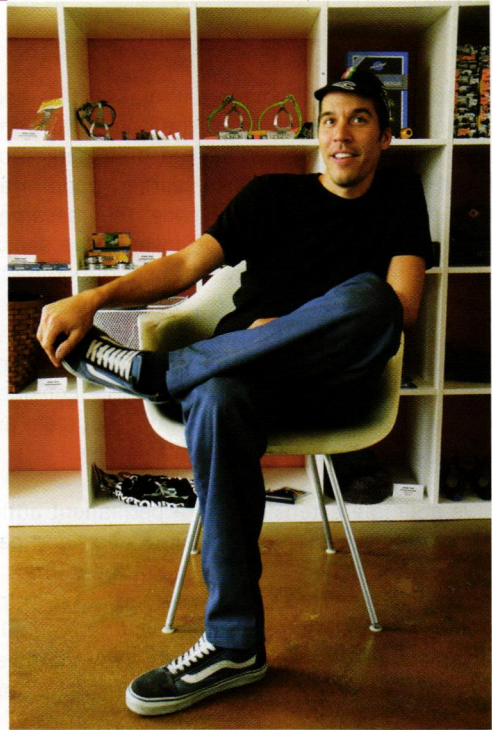
LEFT: Nina Marquina of Spain offered up this poignant expression of the state of the world. While disheartening, it is a constant reminder to do your part.



ABOVE: The shipping containers and outdoor furniture for Playful: New Finnish Design. This exhibit transformed Gansevoort Plaza into a de facto patio for the meat packing district.



## TYLER HARDIE



# PEARL VELO

WORDS: MELISSA BELONGEA  
IMAGES: CRYSTAL ALLEN

## “WELCOME TO THE ARTISTIC WAY OF A BIKE SHOP.”

These are among some of the first words you encounter upon visiting Pearl Velo’s website. After stopping by the storefront location in the Tennyson neighborhood, you quickly gain a sense of what these words really mean: a bright yellow brick entrance, clean and simple product displays, bright and bold color options, a few fully assembled and highly stylized modern and vintage road bikes, a lighting system and space arrangement similar to what you would find in an art gallery, shop tools arranged as a design piece and two Eames-inspired shell chairs to accommodate a seating area.

Tyler Hardie began making the transition from Lead Genius at The Apple Store in Cherry Creek to bike shop owner about six weeks ago. Hardie felt inspired to turn his love for the bicycle into fulfilling a life-long dream of becoming a shop owner. Hardie explains that this dream has transcended through different stages and, consequently, other passions as well. First as a kid wanting to own a BMX shop and then, later, interest in owning a skateboard shop. Hardie says by the time he felt ready to actually become a shop owner road biking had become his focus.



PEARL  
VELO

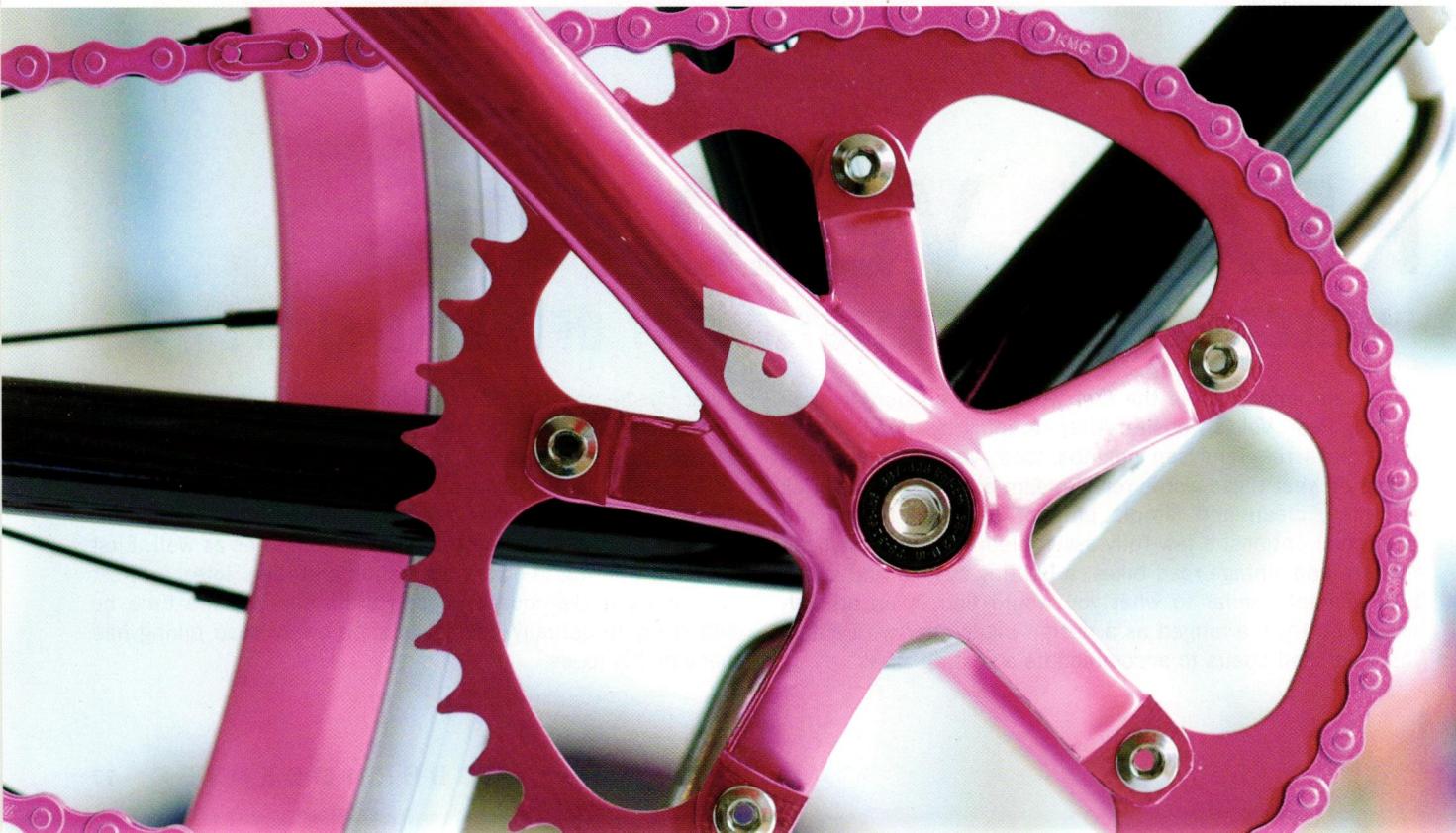
One of the most validating moments in making this decision came for Hardie when he arrived at The Apple Store one day to see six or seven of the bikes he had built parked on the bike rack outside. Once coworkers learned about Hardie's new venture in bike building and service, they became curious, began to ask questions and discovered the sensibility of making adjustments in their own transportation methods. One after the next, Hardie began receiving requests to build bikes. Hardie says of arriving to work that day, he saw a clear demonstration of the way one person can affect others around him. In this case, one person could be considered a catalyst in saving a significant amount of resources, as well as introducing an instrument of health to many.

Pearl Velo is a simple extension and a permanent outlet for continuing to affect customers with an interest and passion for bicycling. What makes Pearl Velo different from other shops, however, is that Hardie is interested in engaging his customers in a full process of creativity and individual style in order to create a greater connection between bike and bicyclist. Hardie places emphasis on making sure options for

this process remain available. Aside from constantly searching for and collecting vintage road frames, Hardie has also set up vendor relationships with small, boutique companies. Hardie says it is important to source unique parts from other small businesses with the same focus on quality.

One of the companies Hardie has chosen to work with is Charge Bikes, from the United Kingdom. Hardie carries the Plug Freestyler, a fully assembled (single or fixed-gear) bike with a strong graphic look. This is the only fully assembled piece Hardie carries.

While Hardie specializes in building and upgrading road bikes, Pearl Velo is also a full-service repair shop, accommodating any type of bicycle. He says a lot of his customers have a bike or two laying around that simply need a few upgrades to make them bikes that the owners are excited about riding. Seats, handle grips, tires, rims and chains are all stocked in bright colors to assist in this process. Basic color selections are also available.





to advanced to the style-specific cyclist (vintage or modern, multiple or single gear). Recently, there has been a surge in the popularity of road and fixed gear bikes. Not to be mistaken as a fashion trend, however, becoming good on a road bike serves a highly practical purpose. It is the optimal bicycle design for riding long distances and commuting. As people everywhere become more and more conscious about the effects of global warming, the waning of natural resources and the increased priority on health and well being, the road bike becomes evermore significant as a classic invention.

The first true modern bicycle was called a Safety Bicycle with wheels of equal size, pneumatic (air-filled tires) and a fixed gear, used in track or Velodrome riding. This competitive style of bicycle riding became a popular spectator sport around 1889. Bikes used in Velodrome racing were made with a fixed gear because they required fewer parts, traveled lighter and therefore went faster. Brakes were not used since it was considered safer for riders to come to a stop simply by slowing the pace of their pedaling. The current trend back to fixed-gear bikes, Hardie thinks, extends

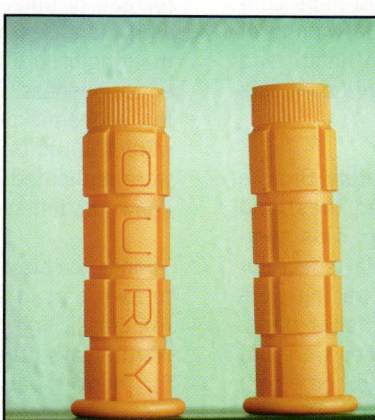
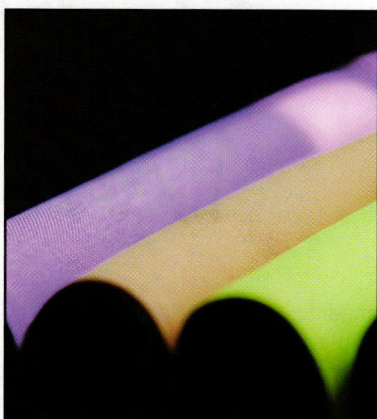
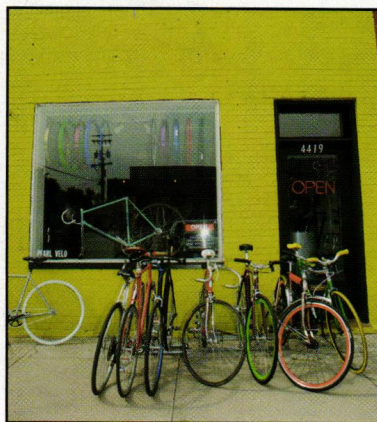
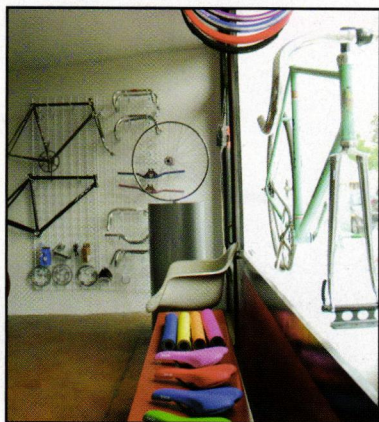
from a desire people have to engage in a more minimal and cleaner style of bicycling.

Enthusiasm for biking as a sport and a leisure activity remained popular through the 1920s, until the onset of greater industry and the common vehicle. People then opted to drive instead of bike. Not until the 1960s, in the United States, with increased awareness and emphasis on exercise and remaining fit, did the bicycle reestablish itself into mainstream consciousness. The period between 1971 and 1975 marks the economic peak of the bicycle boom with more than 17 million units being sold. Most of the bikes during this time were replicated after European road racing bikes, commonly known as ten-speeds.

Thanks to this previous boom in business, Pearl Velo is able to take part in a specific niche, helping to restore some of the classic frames and styles from the '60s, '70s and '80s. Hardie says classic frames are out there and that searching for them is part of the process. Thrift stores, garage sales,



PEARL  
VELO



pawn shops and Craig's List are among some of the best places to locate them.

Recycling old bike parts is in Hardie's blood. His father builds hot rods, and Hardie remembers spending a lot of time at flea markets and salvage sales when he was growing up, going through boxes and boxes of bike parts. Hardie says owning Pearl Velo is connecting him back to those roots, but with a more current and modern application.

While Hardie is always looking out for good, classic frames, customers are encouraged to take matters into their own hands. Sometimes, for as little as fifteen dollars, a person can find a good basic road bike or a true classic, such as a Schwinn, Peugeot, Miyata or Nishiki, to name a few. Once a bike is located, then the true fun begins. From here, Hardie helps guide his customers through various options (both technical and decorative), transforming something that might otherwise have ended up collecting dust or littering a landfill

into a fully functional and individual tool for greater health and quality of life.

In the end, that is the ultimate goal. Hardie says getting people on bikes, creating a resource for the community and doing something he can feel good about are the real rewards of owning and operating Pearl Velo. 'Pearl' comes from his daughter's middle name and 'Velo' refers to the word for bicycle in many Romanic languages. Hardie and his wife, Kelsey, are intent on leading a lifestyle encompassing the values of sustainability. They say that the presence of Scarlett Pearl has only reinforced this commitment for them.

Pearl Velo is located at 4421 W. 43rd Ave. in the Tennyson neighborhood. Hours are Monday, Thursday, Friday, Saturday from 10-6 and Sundays 12-5. As the tiny sign on the inside corner of the front window reads, "Thanks...for backing the dream."

+ [pearlvelo.com](http://pearlvelo.com)





## PRINT MASTER

JAMES DORMER CONTINUES TO HELP SHAPE FUTURE GENERATIONS OF PRINTMAKERS WHILE CREATING A BODY OF WORK INFORMED BY THE TECHNIQUES OF MID-CENTURY ABSTRACT EXPRESSIONISM.

# JAMES DORMER



WORDS: MELISSA BELONGEA

**WHEN** Kate Chimenti went searching for new artists to include in the Translations Gallery collection, what she found was an unexpected surprise - local print master, James Dormer. While researching university professors, Chimenti discovered Dormer, Professor of Art, where he heads the printmaking department at Colorado State University. This fall marks Dormer's fortieth year at the university, where he has worked with countless students and helped shape an entire program, if not generations of printmakers. Dormer himself worked under one of the father's of American printmaking, Mauricio Lasansky, at the University of Iowa between 1967 and 1969.

When not teaching, Dormer is busy in his Ft. Collins studio creating new works. Dormer uses both the intaglio (cutting marks into the surface of metal) and lithograph (stone writing) processes in his printmaking. While he enjoys both, Dormer mentions that he appreciates lithography for the amount of possibilities inherent in stone. Limestone, the mineral composite most commonly used in lithography, can be grained down time and time again to create a different surface with each layer. Perhaps Dormer has the same experience upon

ABOVE (LEFT AND RIGHT): Arezzo I and Arezzo II

uncovering a new layer of stone that his viewers have when seeing one of his prints for the first time. The story is there. But it is Dormer who draws out the details and tells the story through tone and composition. Likewise, when viewing a Dormer print, there is a distinct moment taking place; but because of the abstract quality of his prints the viewer is left to fill in the details, complimented with clues from his or her own imagination. Additionally, there is a sophisticated wildness about Dormer's pieces. Somehow the erratic markings that make up his prints come together in a way that the eye can understand.

What draws Dormer to lithography and intaglio techniques, specifically, is the process of mark making and surrealist automatism (spontaneous painting, drawing, writing). He says he enjoys the immediacy of making marks and then reacting to them. The New York School of Painters of the '50s and '60s was well known for their abstract expressionism, or automatism, across many mediums. Dormer sites this group as a direct influence on his work and says he often uses music to create rhythm in his pieces.



LEFT: Snowman.

RIGHT: Battle I and II  
& James Dormer in his Ft. Collins studio.

The content of Dormer's prints, he says, is related to the complexities of nature and to the land. Growing up in rural New Jersey, Dormer had the opportunity to tune his senses and absorb a palette of sounds and textures associated with nature. He says much of what is revealed in his prints comes from a mental collage of sounds, images and thoughts on the natural world. Robert Frost, Wallace Stevens and Marianne Moore are among Dormer's favorite authors.

While nature is at the forefront of inspiration for Dormer, his prints, especially his most recent work, are very much an

abstraction of these impressions. For the most part, Dormer works in all black and white and in small scale. The effect of these smaller prints creates an opportunity for the viewer to engage in a more intimate examination and consequent connection to Dormer's pieces. Viewed as a collection, Dormer's prints are that much more powerful and reveal the scope of his talent and his reverence for the printmaking process as a fine art.

Ironically, Dormer is an accomplished printmaker and active participant in the national printmaking community, showing



regularly in New York and in printmaking shows on the East Coast, yet his work has never been represented in his home of forty years until now. Chimenti of Translations Gallery says of Dormer, "I think he is a really important, undiscovered artist. Automatic drawing is difficult when trying to create a composition and he achieves that balance." Owner, Judy Hagler, says she feels fortunate to acquire someone with so much experience and a strong body of work. Additionally, "Each time I look at his pieces, I see something new in them, a different shape or form. There is a lot of depth to his pieces."

Dormer is a member of the oldest society of printmakers, The Boston Printmakers, and was just recently accepted into the Center For Contemporary Printmaking's 7th International Miniature Print Biennial. Distinguished jurors, Lisa Hodermarsky, print curator at Yale, and Craig Zammiello, a master printer in NYC, reviewed 708 prints submitted by 255 artists from 23 countries and 26 states.

View Dormer's work locally at Translations Gallery, 1743 Wazee St., Denver.

# IN PRINT

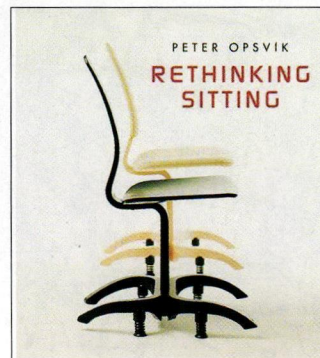
RECENTLY PUBLISHED BOOKS FOR INSPIRATION AND EDUCATION

## Rethinking Sitting

by Peter Opsvik  
(W.W. Norton & Co.)

For millions of years humans have led physically active lives. In recent centuries, however, industrialization has fostered passivity and the growing predominance of the sitting posture for more and more people. Increasingly, chairs and furniture for sitting have become standard pieces of equipment in the workplace, institutions and homes. These sitting devices were designed according to the established standard of the chair, based on the accepted Western manner of sitting.

+ [wwwnorton.com](http://wwwnorton.com)

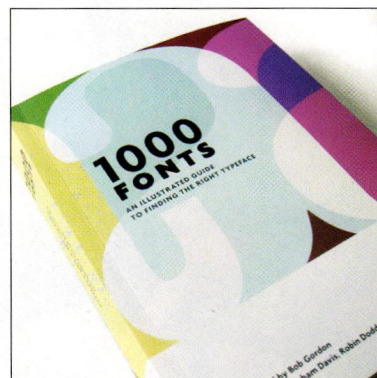


## 1000 Fonts: An Illustrated Guide to Finding the Right Typeface

by Bob Gordon  
(Chronicle Books)

Finding the right font can be tricky, and in an increasingly digital age, the options are endless. This volume takes the mystery out of font selection by displaying the entire alphabet and numerals for 1000 typefaces, making it easy to find the perfect face for any job. An icon system organizes hundreds of fonts, making searching and cross-referencing simple. And, color photos offer real-world examples of many of the fonts in action.

+ [chroniclebooks.com](http://chroniclebooks.com)

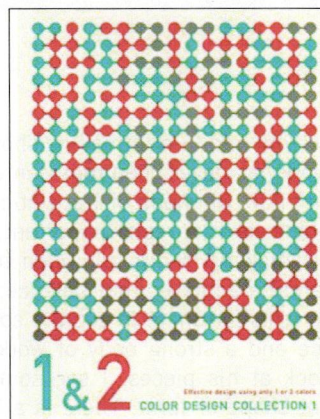


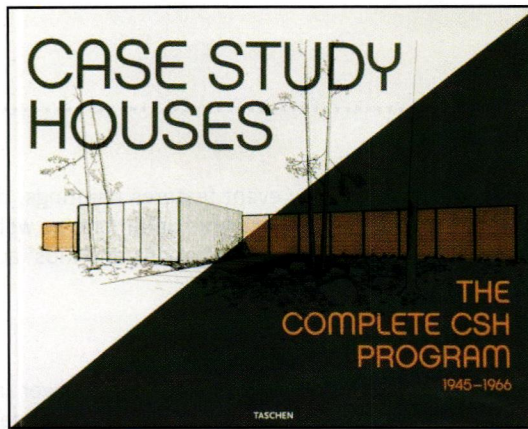
## 1 & 2 Color Design Collection 1

by Tomoe Nakazawa  
(Rizzoli)

Effective design can be created using only one or two colors. This book displays powerful designs achieved by restricting color. With unusual combinations of color that claim the attention all the artwork featured in this collection makes a dramatic visual impact. Focusing on graphics printed with only one or two colors, this book presents a variety of examples of posters, brochures, flyers, publications and packages.

+ [rizzoliusa.com](http://rizzoliusa.com)



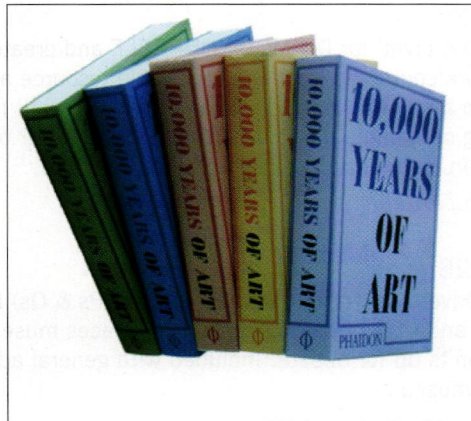


## Case Study Houses

by Elizabeth A. T. Smith  
(Taschen)

The Case Study House program (1945-66), which concentrated on the Los Angeles area and oversaw the design of 36 prototype homes, sought to make available plans for modern residences that could be easily and cheaply constructed during the postwar building boom. This book looks at the entire program with comprehensive documentation, photographs from the period and, for the houses still in existence, contemporary photos, as well as extensive floor plans and sketches.

+ [taschen.com](http://taschen.com)

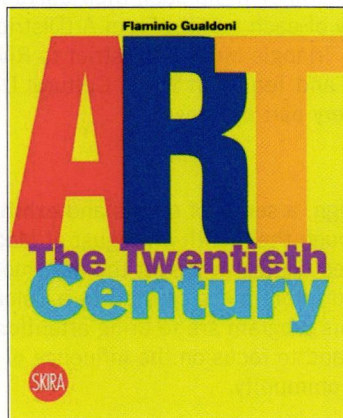


## 10,000 Years of Art: 500 great works of art from all periods and regions of the world

conceived and edited by Phaidon Editors  
(Phaidon)

This book serves as a pocket guide to world art from 8,000 BC to the present day. With 500 masterworks from all cultures, in chronological order, 10,000 Years of Art demonstrates what was being made all over the globe at the same time. Each work occupies a unique place in the history of art and is a representative example of the art of its culture. Concise descriptive texts set each work in context.

+ [phaidon.com](http://phaidon.com)



## Art: The Twentieth Century

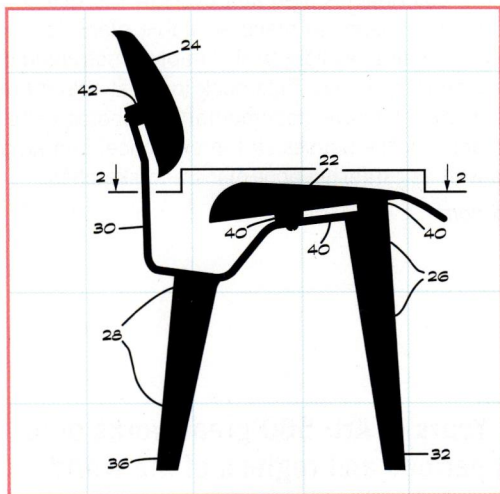
by Flaminio Gualdoni  
(Rizzoli)

With concise introductions devoted to every significant art movement of the twentieth century and more than 400 color illustrations, this volume enables readers to become familiar with the fascinating and complex world of contemporary art from futurism to pop-art, dada to conceptual. Presented are some of the most famous artists of the twentieth-century—from Arp to Brancusi, Bacon to Basquiat, Gris to Koons, Gaudi to Schnabel, Warhol to Grant Wood—and their greatest masterworks.

+ [rizzoliusa.com](http://rizzoliusa.com)

# on the **RADAR:**

## EVENTS, AND OTHER CURRENT INFO OF NOTE .....



Denver by Design at Mod Livin' : August

### SUNDAYS, JUNE 7 - AUGUST 9

Pack a picnic, leash your dog and invite friends to join you at City Park Jazz, free jazz concerts at the bandstand by City Park Pavilion on Ferril Lake. This people-watching event is the perfect cap to any summer weekend.

+ [cityparkjazz](#)

### JUNE 12-14

The Denver Public Library hosts its annual Used Book Sale, which includes more than 100,000 books and other media sold at bargain prices.

+ [denverlibrary.org](#)

### JUNE 12, 19, 26 • JULY 3, 10, 17, 24, 31 AUGUST 7, 14, 21, 28

MCA Denver presents tag team lectures on unrelated topics. "Mixed Taste" subjects include everything from Hot Sauce & Jewish Mysticism to Medieval Feminism & Atomic Time to Absinthe & Artic Ice Caps, among others. Tickets sell out quickly!

+ [mcadenver.org](#)

### JUNE 13-14

Support local artists and maybe buy an affordable, original piece or two at the Art Students League of Denver's Summer

Art Market. The two-day event features paintings, drawings, sculptures, book art, screenprints and more, as well as live music, food and drink, demonstrations and kids' activities.

+ [asld.com](#)

### JUNE 25

The Vance Kirkland Museum and Historic Denver Inc. partner for a Summer of Modernism, a series of mid-century-themed events. One event is a lecture/reception featuring Susan Saarinen, local landscape architect and daughter of design icon Eero Saarinen.

+ [kirklandmuseum.org](#) + [historicdenver.org](#)

### JUNE 25

Join Mod Livin' for DO-MOD-YOURSELF and create your own cork container. Cork is a renewable resource and can be used in a number of applications – this class will focus on making containers/platters for the kitchen. RSVP to [jaimemod@modlivin.com](mailto:jaimemod@modlivin.com), cost \$12, all supplies included.

+ [modlivin.com](#)

### JUNE 26

The Denver Art Museum's Untitled #22 (Ps & Qs) looks at rituals and rites of passage as well as places museum dos and don'ts up for debate. Included with general admission to the museum.

+ [denverartmuseum.org](#)

### JULY 3, AUGUST 7

All of the city's arts districts open their doors to visitors the First Friday of each month. From ArtDistrict on Santa Fe and Golden Triangle Museum District to River North Art District (RiNo) and Tennyson Street Cultural District there is a district in every part of Denver.

### AUGUST

Denver by Design, a series of events and exhibitions that take place through the month of August at Mod Livin' includes a juried contest to select the best modern design object, art or furniture piece created by a Colorado designer. The goals of this program are to bring attention to up-and-coming talent and to focus on the influence of modern design in our community.

+ [modlivin.com](#)

## FREE DAYS. OH YEAH.

Whoever said you can't get something for nothing obviously didn't do his or her research – local cultural institutions offer free admission on a regular basis. Dive in.

### DENVER ART MUSEUM

August 1

+ [denverartmuseum.org](http://denverartmuseum.org)

### BOULDER MUSEUM OF CONTEMPORARY ART

Wednesdays, 4:00 p.m.-8:00 p.m.

Saturdays, 9:00 a.m.-4:00 p.m.

+ [bmoc.org](http://bmoc.org)

### DENVER BOTANIC GARDENS

July 20 & August 20

+ [botanicgardens.org](http://botanicgardens.org)

### DENVER BOTANIC GARDENS AT CHATFIELD

August 7

+ [botanicgardens.org](http://botanicgardens.org)

### DENVER MUSEUM OF NATURE & SCIENCE

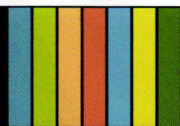
July 13 & August 12

+ [dmns.org](http://dmns.org)

### MUSEO DE LAS AMERICAS

July 11

+ [museo.org](http://museo.org)



MODERN **IN** DENVER  
MAGAZINE

ADVERTISE. FUN AND AFFORDABLE. YEAH.



MODERN **IN** DENVER  
MAGAZINE

# REACH

EVERYONE IN DENVER (AND BEYOND) WHO LOVES AND CARES ABOUT MODERN ART, ARCHITECTURE AND DESIGN.

**WE ARE ANALOG,  
DIGITAL AND SOCIAL.  
HI THERE.**

**ONLINE & IN PRINT**

**ADVERTISE.**

[moderninddenver.com/advertise](http://moderninddenver.com/advertise)

new **RSS** feed at  
**moderninddenver.com**

Now get all the the new stories and  
info delivered to your in box.

**yes.**

PREMIERING IN DENVER!

**Diamonds are Forever**

LET'S MAKE SURE HUNTINGTON'S DISEASE ISN'T!

Celebrating the 10 year anniversary of the HDSA Center of Excellence at CNI

**FOR YOUR EYES ONLY!**

*Mark your calendar for an exciting evening fit  
for a sophisticated, Super Spy in Denver's  
hottest new venue.*

*Featuring:*

- ◆ *Bond Girl Beauties*
- ◆ *Delicious Delicacies*
- ◆ *Exciting Experiences*
- ◆ *Tempting Libations*
- ◆ *Amazing sounds to dance the night away...*

**Thursday, September 10, 2009**

PALAZZO VERDI  
6363 S. Fiddler's Green Circle  
Greenwood Village, Colorado

Questions? Call M at 303.830.0889

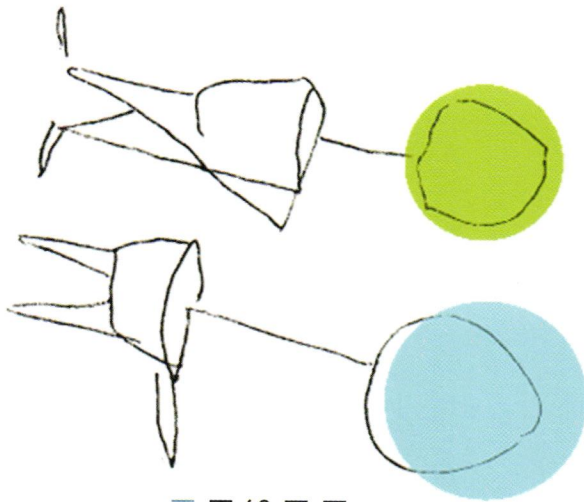
*Shhhhhh...it's going to be a fabulous party!*

Benefiting

 **Huntington's Disease Society of America**



iidesign.com



BRANDING  
DESIGN  
STRATEGY  
EXECUTION  
IDEAS!

# INDELIBLE INC.

A CREATIVE SERVICES COMPANY

303-991-6695





# Prepare for impact

MODERN DESIGN MEETS  
TRADITIONAL CRAFTSMANSHIP  
Beautiful from every angle, the Boden  
chair offers relaxed comfort with a  
luxurious feel. It's just one of our  
handcrafted, American-made accent  
chairs that's sure to turn heads.

The Boden chair and ottoman are made  
in North Carolina. Shown here in Prima  
leather, \$2498; available in more than 250  
fabrics and leathers.

**Room&Board**<sup>®</sup>  
HOME FURNISHINGS

we're here to help  
800.952.8455  
roomandboard.com