

1930

1940

1950

1960

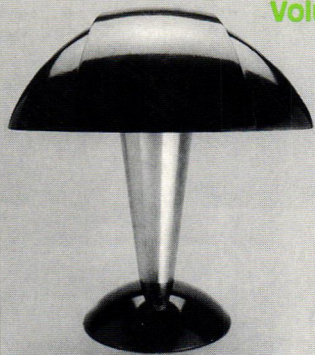
# ECHOES

U.S. \$3.50 / CAN. \$4.95

778

R E P O R T

Volume 3, Number 2 \* Fall 1994



SAMPLE JOURNAL



Mexican Silver Artistry

1950S LAMPS: ILLUMINATED SCULPTURE

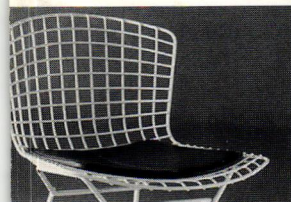
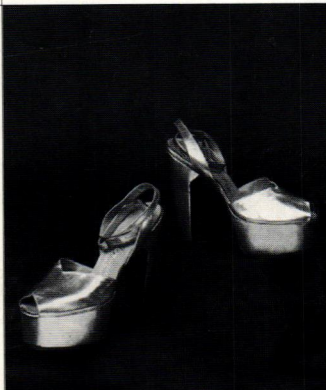
Knoll's Modern Classics

WHAT IS ART DECO?

DUTCH POSTER DESIGN

MODERN PLASTIC DINNERWARE

TAMARA DE LEMPICKA



The International Journal of 20th Century Style & Design



43 >



# ECHOES

R E P O R T

## DECO ECHOES® PUBLICATIONS

PO Box 2321  
Mashpee, MA  
02649  
Tel: 508-428-2324  
Fax: 508-428-0077

### PUBLISHER

Wm. Scott Cheverie

### EDITOR

Suzanne Cheverie

### CONTRIBUTORS

Cynthia Barta  
Tony Fusco  
Jerryl Habegger & Joseph Osman  
Penny C. Morrill  
Chris Harris

*The Echoes Report* is a quarterly publication focused on 20th century style and design. Specific emphasis is placed on the 1920s, '30s, '40s, '50s and '60s eras, including Art Deco, Streamline Moderne, Biomorphic '50s and abstract '60s styles and movements, from kitsch to high-end.

Annual subscriptions are available for \$16.50, which includes 4 issues per year plus supplemental mailings and a copy of our annual catalog, ECHOES. Please send checks payable to **Deco Echoes** with your name, address, and phone number (Canada \$19.95, Foreign \$26.50).

For credit card orders call 508-428-2324. Visa, MasterCard, Discover, and American Express accepted.

All rights reserved. No part of this publication may be reproduced without written permission from Deco Echoes Publications.  
Printed in U.S.A.

## LETTERS....

### Populuxe in Nashville

"I have certainly enjoyed your publication during the last year. I picked up my first copy at a shop in Tampa's 'Ybor City' district, and sent my subscription in right away. My favorite era is the 'Populuxe' era, or typically 1954-1964. I was born in 1958. Nashville seems to be fairly well represented in your publication. Most of the shows advertised are either in New York City or the West Coast somewhere though and I don't have much opportunity to visit either place. I would like to see an article on Fifties Modern architecture, maybe create a map of 'high spots' to see in the Los Angeles area. I have most of the books on public buildings -- i.e. Google, and am more interested in interesting homes... Keep up the good work and I hope to be renewing my subscription for many years to come."

John Bissell  
Tennessee

### Mid-Century Moderne on Disk

"We love your magazine -- keep a large database of all your advertisers and shops mentioned in articles so I can print out a list of shops for the area of the country we'll be in. Much better way of finding resources than going through the yellow pages. Glad to see you covering the auctions with prices. Keep up the good work and keep growing!"

Connie & Mitchell Kearney  
North Carolina

### Curious Couch Owner

"I'm a subscriber to the *Echoes Report*. I just came back from a trip to NY where I visited Atomic Passion (saw advertised in *Echoes*.) I had a great time visiting with Gigi. Enclosed are pictures of a couch that I can't seem to find any information on. Gigi suggested I send them to you. The couch is pink & black vinyl -- the front and sides are trimmed with chrome. The original cushion was probably pink, however, I could not find a pink that would match, so I had a black cushion made. The couch is in near mint condition. Can you be of any help? I'd love to hear from you --

keep up the good work! I look forward to every issue of *Echoes*."

Marla Cantor  
Virginia

### A Big Fan Of Retro Look

"I have thoroughly enjoyed every issue of *The Echoes Report* that I have received. There are really no other publications that concentrate on mid-twentieth century collectibles and design, and I find the writing informative and down-to-earth. As a collector of hard plastic and lucite bags and purses (mainly from the 1950s), I would be interested in any articles on that subject. I also collect aprons (the fancy little hostess aprons from the '50s are great), and I was wondering if anyone else does too. I would also be interested in seeing more information about exhibits, shows, and dealers in the Washington DC / Baltimore area. As you can see from my classified, I am a graphic designer. As a big fan of Art Deco, Art Nouveau, and 1950s-'60s style, I enjoy designing anything that calls for a retro or vintage look from these periods...Thanks for publishing such a fun magazine. Keep up the good work!"

Kelly Scannell  
Maryland

### I Want More!

"Yes! I want more!...You are performing a long-overdue, much needed function and doing it very, very well. Thank you!"

Eric Swegle  
Kansas

### A Work In Progress

"Let me compliment you on the success of *The Echoes Report*. I have been following your progress over the past few years as copies have been made available to me by John Herrmann of Art Moderne Antiques in Ybor City. I am enclosing a copy of two publications that our museum has published, which may be of interest to your readership... Looking forward to hearing from you."

Jose Gelats, Tampa Museum of Art  
Florida



~ LETTERS ~

Tell us how we're doing - we'd love to hear from you! Send us your comments, suggestions, or story ideas!

Send them to:

Deco Echoes Publications  
PO Box 2321  
Mashpee, MA 02649

# & INDUSTRIAL DESIGN SHOP

# ART

## SPECIALIZING IN

- \* American Deco
  - \* English Deco & Collectibles
  - \* Italian Glass
  - \* Bedroom Sets
  - \* Tables & Chairs
  - \* Buffets
  - \* Bars
  - \* China Cabinets
  - \* Art
  - \* Paintings
  - \* Sculptures
  - \* Industrial Designs
- Select from our world famous collections



**ART & DESIGN OF THE 20TH CENTURY**

We Buy and sell the following artists:

DONALD DESKY  
GEORGE NELSON  
SAARINEN  
KNOLL ASSOC.  
MARCELLO FANTONI  
GILBERT ROHDE  
VENINI GLASS  
SEGUSO  
D.H. CHIPARUS  
COLINET  
ORREFORES  
GOLDSCHIEDER  
KEITH HARING  
VERNER PANTON  
FULVIO BIANCONI  
PICASSO  
MIRO  
K.F. HAGENAUER  
WILLIAM SPRATLING  
and many more!!

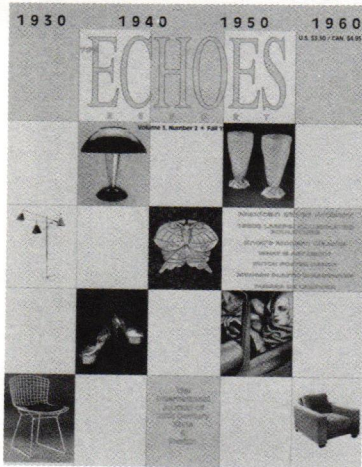
**399 Lafayette Street @ 4th St. / New York City**

**212-477-0116 / FAX 212-477-1420**

**HRS. MON-SAT 12-7PM**

# e contents

Volume 3, Number 2



## ON THE COVER

*From Top Left: Polaroid No.114 bakelite plastic and aluminum desk lamp, c.1939 (photo courtesy Christie's East); Two Art Deco Ruba Rhombic tumblers, c.1930 (photo courtesy Christie's New York); William Spratling silver butterfly pin, c.1940 (photo courtesy Carole A. Berk); Gold custom-made platform shoes, c.1940s (photo courtesy William Doyle Galleries); Tamara de Lempicka's Auto Portrait (photo courtesy DK Art Publishing Inc.); Bertoia Side Chair, c.1952 (photo courtesy Knoll); Gilbert Rhode streamline armchair, c.1930 (photo courtesy Don Treadway Gallery)*

# F A L L

*Left: Antonio Pineda silver, copper and enamel pins, from Mexican Silver. Page 24.*

*Below left: 1950s style guest room at the Bauhaus On Barton Bed & Breakfast. Page 8. Below right: 1950s abstract form lamp with cylindrical patterned shades. Page 12.*

## FEATURES

### Today's Modern Vacationer 8

Take a trip to two Bed & Breakfasts with retro appeal -- 1950s modern in Michigan and Art Deco elegance in sunny California

### Knoll's Modern Classics 10

The furniture manufacturer who has produced many of the most memorable and classic pieces by some of the world's greatest architects and designers brings its collection to the retail market

### Illuminated Sculpture by Cynthia Barta 12

The wild and unusual style of the lighting of the 1950s is the result of the combination of several different design influences

### Dutch Poster Design 15

Ideas from many movements are combined in Dutch Posters, producing their decidedly different "look"

### What Is Art Deco? by Tony Fusco 17

Learn how to recognize true Art Deco items, the materials and techniques used to produce them, and the different phases of Deco design in this informative excerpt from *The Confident Collector's Art Deco Identification And Price Guide*

### Modern Plastic Dinnerware 23

by Jerryll Habegger & Joseph Osman

Plastic dinnerware was the exciting new 'modern' household item created with the exciting new material -- plastic -- during the 1950s

### The Artistry Of Mexican Silver 24

by Penny C. Morrill

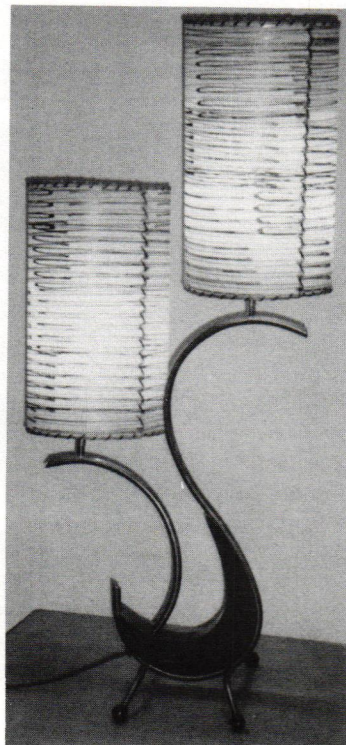
From the earliest days of William Spratling's workshop to the present time, the silversmiths of Mexico have produced some of the most creative jewelry and decorative art in the world

### Tamara de Lempicka by Chris Harris 26

The work of this Art Deco artist is remembered and celebrated at a black-tie event at the St. James Club to benefit Planet Hope

## IN EACH ISSUE

What's Hot.....	7
Auction Highlights.....	16
Book Review.....	19
Bookstore.....	19
Calendar of Events.....	29
Show Updates.....	33
Classifieds.....	39
"Smalls".....	43



**NOVEMBER 17-20, 1994**

Thursday & Friday 11 to 9pm  
Saturday 11 to 8pm • Sunday 11 to 6pm

**PREVIEW: November 16th**

Wednesday, from 6 to 9 pm to  
Benefit The Brooklyn Museum  
(\$150) Information: (718)638-5000 ext.326

SANFORD SMITH'S 9TH ANNUAL

# MODERNISM

1860 • A CENTURY OF STYLE AND DESIGN • 1960

## THE PARK AVENUE ARMORY

Park Avenue & 67th Street • New York City

Admission ten dollars • wheelchair accessible

cafe bar • catalogue available

GOthic, ROMAN, GREEK AND  
EGYPTIAN REVIVAL, AESTHETIC  
MOVEMENT, ARTS & CRAFT, PRAIRIE  
SCHOOL, WIENER WERKSTÄTTE  
BAUHAUS, ART NOUVEAU, ART DECO  
ART MODERN, FIFTIES, SIXTIES

Info: *Sanford L. Smith & Assoc. Ltd*  
(212) 777-5218 • Fax (212) 477-6490