

atomic MID CENTURY MARVELS ranch

THE
DESIGN
ISSUE
A RETROSPECTIVE

MASTERFUL MODERN



The **ARTFUL HOME**
Inspiring interior spaces

RETRO REVIVAL

VINTAGE SELLERS YOU NEED TO KNOW

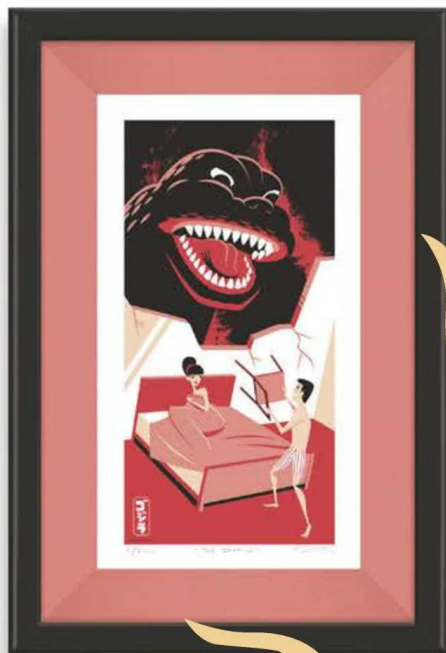
**Saul Bass, Jens Quistgaard
and Googie Design**

ATOMIC RANCH
THE DESIGN ISSUE 2023
\$10.99 U.S. DISPLAY UNTIL 01/09/2024
EG MEDIA INVESTMENTS LLC



gQE12/ukgS80LxZylZSKhg==

PLEASE Overindulge



PALM SPRINGS
745 North Palm Canyon Drive

LAS VEGAS
4321 W. Flamingo Rd.
(in the Palms Casino)

shagstore.com

gQEI2/vkyS80LzZyZSKhg==

The Chair Has a Story

WHEN HANS WEGNER WAS AT THE BEACH ONE DAY IN 1949, he began digging in the sand to create the perfect slant for the most comfortable repose. When he found it, he used its angle and shape to create the Flag Halyard chair. In the early 1950s, when Arne Jacobsen wanted to challenge himself with newly available technology that eschewed steel and wood framing for sculptable hard foam, he gravitated toward the most pure and natural shape he could think of that took advantage of an amorphous shape: the egg. Charles and Ray Eames designed a molded plastic chair to answer the challenge of creating a piece of furniture out of one single piece of material. And Irving Harper, attempting to prove that furniture could be mass-produced and customizable, created the Marshmallow sofa; the buyer could add any number of "pops" in any of a range of colors to the order to create a seating option available in myriad lengths and colors.

The study of Mid Century Modern design style is infinitely fascinating, as the artistic engineers of the era tapped into both the creative and mathematical sides of their brains to redesign and invent the everyday elements of life—sofas, chairs, teapots, etc.—for a changing world.

Every year in this issue we aim to highlight and celebrate these achievements by bringing an extra layer of understanding as to why the beloved designs of the era endure as they do. We also visit homes, designers and makers today who embody this spirit and work to both preserve this genius design from the past and blend it with fresh approaches to design that capture the MCM vibe today.

I hope you find something in these pages that deepens your appreciation for this era we love so much.




Jackie Torres

Get connected!

Email: editor@atomic-ranch.com

Online: atomic-ranch.com



@theatomicranch



THE DESIGN ISSUE 2023

EG Media investments LLC

Rima Dorsey: Managing Director/Publisher

EDITORIAL

Content Director and Brand Leader: Jackie Torres

Managing Editor: Meryl Schoenbaum

Associate Editor: Ian McMaster

Web Editor: Jolene Nolte

DESIGN

Design Director: Gabby Oh

CONTRIBUTORS

Angelina Kaul, Mark Mendez, Laura Shimko, Sarah Jane Stone

CONTRIBUTING PHOTOGRAPHERS

Chris Dibble, Matthew Gallant, Lance Gerber,
Andrew Giammarino, Bret Gum

ADVERTISING

Suzy Bailey: Account Representative

Leslie Huddleston: Account Representative

Theresa McGrew: Account Representative

Christina Walker: Sales, Marketing & Events Coordinator

Sebastian Turkey: Advertising Traffic Coordinator

Vipin Marwaha: Advertising Traffic Manager

For advertising inquiries: rdorsey@egmediamags.com

OPERATIONS

Shailesh Khandelwal: Associate Vice President - Operations

Mohammad Danish: Manager - Subscriptions

Surajpal Singh Bisht: Prepress Manager

Chandan Pandey: Production & Newsstand Circulation Manager

EDITORIAL, PRODUCTION & SALES OFFICE

3622 Lyckan Parkway, Suite 3003, Durham, NC 27707

(844) 330-6373, Fax (972-920-3737)

www.atomic-ranch.com

ATOMIC RANCH (ISSN 1547-3902) is published 6 times per year (Spring,

Summer, Renovation Guide, Fall, Winter, Design Issue)

by EG Media Investments LLC, 3622 Lyckan Parkway, Suite 3003,

Durham, NC 27707. Periodical postage paid at Durham, NC,

and additional mailing offices. **Postmaster:** Send address changes

to Atomic Ranch c/o EG Media Investments LLC, ColorArt, 101

Workman Ct., Eureka, MO 63025. Canadian Post: Publications Mail

Agreement #40612608. Return undeliverable Canadian addresses to:

PITNEY BOWES, INC., P.O. Box 25542, London, ON N6C 6B2, Canada.

GST #R55050365RT001. © 2023 by EG Media Investments LLC. All rights

reserved. Reproduction of any material from this issue in whole or

in part is strictly prohibited.

CUSTOMER SERVICE

EG Media Investments LLC

3622 Lyckan Parkway, Suite 3003

Durham, NC 27707

SUBSCRIPTIONS, ADDRESS CHANGES, RENEWALS,
MISSING OR DAMAGED COPIES AND FOREIGN INQUIRIES
BOOKS, MERCHANDISE AND REPRINTS

(844) 330-6373

subs@egmediamags.com

customerservice@egmediamags.com

BACK ISSUES

<https://engagedmedia.store/>

LETTERS TO THE EDITOR, NEW PRODUCTS OR TO

CONTRIBUTE A STORY OR PHOTO

editor@atomic-ranch.com

SUBSCRIPTION RATES

\$29.95/1 year, \$52.95/2 years. Foreign: \$51.95 per year, \$96.95
per 2 years payable in U.S. funds.

Atomic Ranch single copy price is \$9.99;

Renovation Guide and Design issue price is \$10.99.

Please allow 6 to 8 weeks for new subscriptions to begin.

SixSails Group

Prashant Upadhyaya: Portfolio Manager

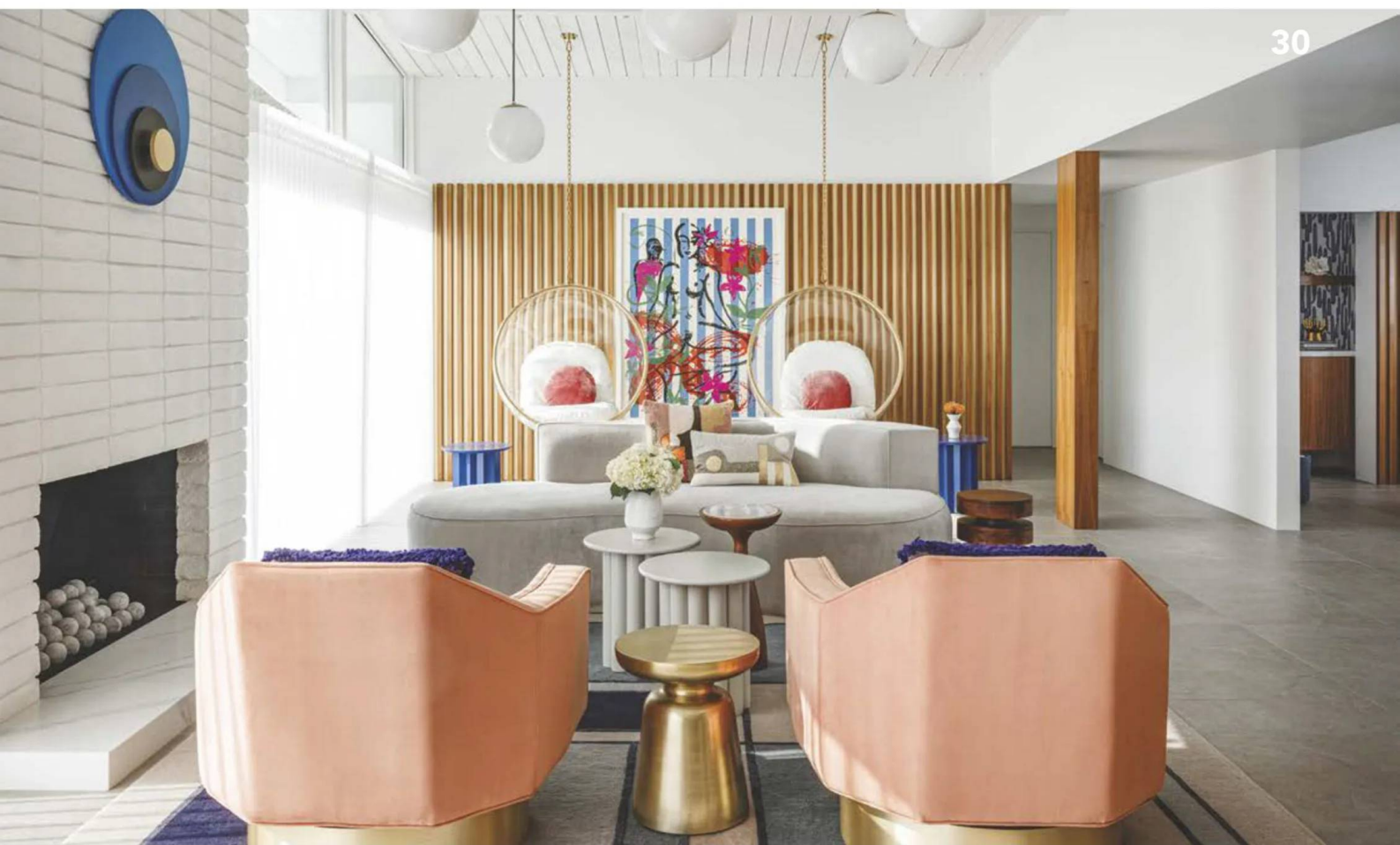
Wanda Negron: Human Resources



This magazine is purchased by the buyer with the understanding that information presented is from various sources from which there can be no warranty or responsibility by EG Media Investments LLC, as to the legality, completeness or technical accuracy.

THE DESIGN ISSUE

A RETROSPECTIVE



MID-MOD LIVING

30 Blue Beauty

A Palm Springs home gets splashes of blue and other sea-inspired motifs to transform it into a watery desert oasis.

44 Playful Preservation

This 1960 hillside home combines mid-mod charm and bold modern updates for a colorful take on MCM style.

56 Seeing the Light

Completely hidden from the street, this lakeside home was renovated to take in the view.

68 Building a Haven

How this mid-century California property became a beautiful and necessary home away from home.

86 The Emotion of Home

A look at warm modernism and how to design a modernist interior with soul.

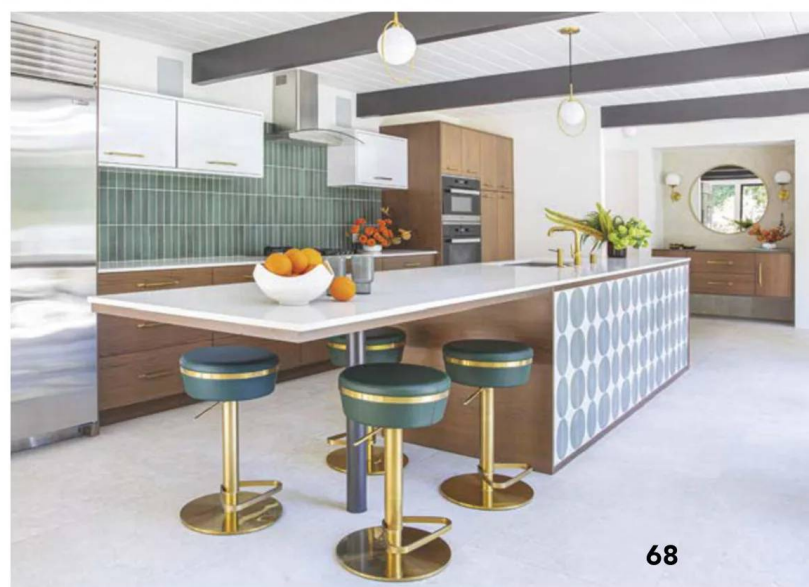
94 Small Kitchens With Big Style

How to design an MCM space that delivers memorable moments.

100 Destination Eichler

Bringing your Mid Century Modern style ideas together doesn't have to be a nightmare. Here's how your passion can light the way.





BEYOND THE BASICS

- 8 Take It Home: Shopping for sofas, chairs, bookcases and desks
- 12 Illuminate: Editor's picks for lighting
- 14 Curb Appeal
- 22 Atomic Kitchens

THE NAME GAME

- 16 Design Icon: Saul Bass
- 20 On Design: Google Architecture
- 21 Take a Seat: The Wassily Chair
- 80 Modern Makers
- 90 Jens Quistgaard

MISC.

- 3 Editor's Letter
- 6 Web Update
- 110 Resources
- 113 Advertisers
- 114 Last Look

ON THE COVER

COVER DESIGN BY GABBY OH

ATOMIC RANCH (ISSN 1547-3902) is published 6 times per year (Spring, Summer, Renovation Guide, Fall, Winter, Design Issue) by EG Media Investments LLC, 3622 Lyckan Parkway, Suite 3003, Durham, NC 27707. Periodical postage paid at Durham, NC, and additional mailing offices. **Postmaster:** Send address changes to Atomic Ranch c/o EG Media Investments LLC, ColorArt, 101 Workman Ct., Eureka, MO 63025. Canadian Post: Publications Mail Agreement #40612608. Return undeliverable Canadian addresses to: PITNEY BOWES, INC., P.O. Box 25542, London, ON N6C 6B2, Canada. GST #R55050365RT001. © 2023 by EG Media Investments LLC. All rights reserved. Reproduction of any material from this issue in whole or in part is strictly prohibited.



atomic-ranch.com

FIND MORE MCM DESIGN INSPIRATION AND ADVICE ONLINE.



CREDIT: JUSTIN CHUNG

HOUSE TOUR: VISIT A JAPANESE HOME IN LA

In the Los Angeles neighborhood of Mount Washington, a 1955 house has been transformed into an MCM Ryokan-inspired home. Take a tour of this tranquil and inspiring home.



CREDIT: COURTNEY APPLE

COOL STUFF: BITOSSI AND BEYOND, A GUIDE TO MCM CERAMICS

From sculptural art for your shelves to functional designs for your dining table, Mid Century Modern ceramics are an iconic collectible. Learn about collecting or gifting these timeless pieces.



CREDIT: MARK HOGAN/CC-BY-SA-2.0

RETRO ROAD TRIP: MEXICO'S NATIONAL MUSEUM OF ANTHROPOLOGY

The National Museum of Anthropology is Mexico City's largest and most popular museum. Learn about the extraordinary collections it houses as well as its incredible team of MCM architects.



CREDIT: CARSTEN JANSSEN/CC-BY-SA-2.0-DE

MOD INDEX: WALTER GROPIUS, VISIONARY FOUNDER OF BAUHAUS

Learn more about the career of Walter Gropius, who founded the Bauhaus school and pioneered modernist architecture in the U.S. and Europe.



Follow us online on
**Facebook, Pinterest and
Instagram** daily!

LOOK FOR THIS
THROUGHOUT THE
ISSUE TO SEE WHAT
EXTRA CONTENT
YOU'LL FIND
ONLINE.



MODERN PERFORMANCE AND UNMISTAKABLE STYLING

When your kitchen transforms into a space fashioned uniquely to your style, you experience an unparalleled sense of home. Even when embracing popular kitchen design trends, the result is completely original once merged with the unmistakable styling of Northstar appliances from Elmira Stove Works.

Get up close and personal with your new appliances from Elmira. The chrome is real, the finishes are polished to perfection, and the performance is fully modern. From interior LED refrigerator lighting and filtered water dispensers to sealed gas burners and true convection ovens, the features are rich, and the Canadian handcraftsmanship is truly remarkable.

Begin your design journey with our industry-leading kitchen visualizer. Visit us online and craft a style all your own.

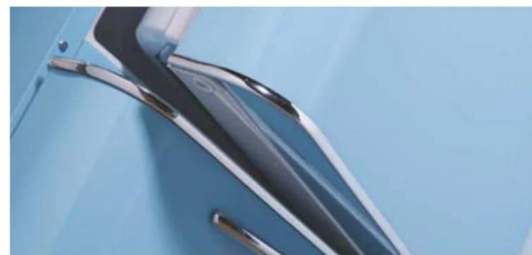
elmirastoveworks.com/visualizer/northstar



ELMIRA
STOVE WORKS

elmirastoveworks.com
800-295-8498

gQEI2/ukgS80LxZylZSKhg==



/ **TAKE IT** HOME /



The best in design-focused furniture.

By IAN McMASTER

Refined Taste



BOOKSHELVES:

1. The Console, \$849. Visit casaramodern.com.
2. Elysée bookshelf, \$5,778.30. Visit dwr.com.
3. Dream 50" bookshelf, \$1,042. Visit kardiel.com.
4. Esther bookshelf, tall, \$899. Visit castlery.com.
5. Zig Zag shelf, \$2,799. Visit hem.com.



1



2



3

CHAIRS:

1. Andy stool in forest + lichen, \$529. Visit schoolhouse.com.
2. RM58 classic chair, \$1,595. Visit store.moma.org.
3. Hai lounge chair + ottoman, \$2,449. Visit hem.com.
4. The Raymore Chair, \$1,199. Visit casaramodern.com.
5. Tripod fabric chair 2-pc set, \$840. Visit kardiel.com.



4



5

/ **TAKE IT** HOME /

1



DESKS:

1. Protractor Jr. 67" desk, \$1,317. Visit kardiel.com.
2. Protractor Jr. 67" desk, \$1,317. Visit kardiel.com.
3. Mode desk, \$1,095. Visit dwr.com.
4. Eames desk from Herman Miller, \$2,915. Visit store.moma.org.
5. Jetson desk, \$2,659. Visit oldbonesco.com.

2



3



4



5



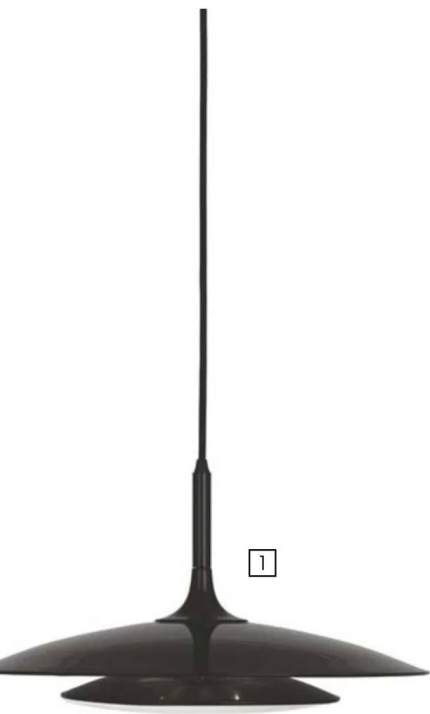


SOFAS:

1. The Clementine Sofa, \$2,829. Visit casaramodern.com.
2. Montrose sofa, \$5,450. Visit lawsonfenning.com.
3. Chelsea sofa, \$3,396. Visit joybird.com.
4. Foundry sofa by Gus Modern, \$2,695. Visit afternoonlight.com.
5. Vatne Mobler teak sofa, \$3,495. Visit midcenturywarehouse.com.
6. Series 3300 by Arne Jacobsen, \$26,988. Visit fritzhanzen.com.



/ ILLUMINATE /



Style *Spotlight*

Design-focused ceiling lighting to brighten any room.

By IAN McMASTER

1. Axiom pendant by Robert Abbey, \$902 (prices subject to change). Visit [Lumens.com](https://lumens.com).
2. Doo Wop pendant by Louis Poulsen, \$1,255 (prices subject to change). Visit [Lumens.com](https://lumens.com).
3. Medieval iron retro single-head Bauhaus pendant light, \$169.99. Visit homdiyhardware.com.
4. Retro Bullet swing-arm chandelier, \$495. Visit hiphaven.com.
5. Alpine clear globe, \$237. Visit illuminatevintage.com.
6. Luna rod pendant with 12" clear shade, \$429. Visit schoolhouse.com.

NANAWALL FOLDING GLASS WALLS



REIMAGINE
the relationship
between built spaces
and nature.

Clean Aesthetics: The slimmest profiles available and minimal exposed hardware.

Easy Operation: Smoothest and easiest operation of any folding glass wall.

Barefoot Friendly: Sill design offers a smooth indoor-outdoor transition.

Flexible Stacking: Unlimited widths with flexible panel stacking to the left or right, inward or outward opening.

Secure & Durable: Tamper-resistant locks enable peace of mind. Air, water, and forced entry tested.

Available in
three different
material choices:



ALUMINUM



WOOD



CLAD

NanaWall.com
800 873 5673

NanaWall®

gQEI2/ukgS80LxZylZSKhg==

Midwestern Mid Century

This Covid-era new build borrows from its lakefront landscape and evokes a classic MCM vibe with contemporary touches.



WHEN HOMEOWNERS ANDREA AND MARK BRIMMER DECIDED they wanted to raise their family in a Mid Century Modern home, they knew that they would have to build it themselves. "We have both always loved mid-century design," Andrea says. "For us, it brings back the joy and happiness of our childhood." They purchased a two-acre lot surrounded by woods next to Lake Ponemah in Fenton, Michigan, to make their dream a reality.

They sent an email to architect Karl Jasinski—a fellow enthusiast of MCM architecture and design—in the hopes that he would respond. "Literally one hour later, he replied to our email and attached sketches of both the exterior and interior of the home," Andrea says. "He was clearly as excited as we were!"

Andrea and Mark hired Elin Walters of Exactly Designs to work on the design of the home and ensure their

aesthetic goals were met. The build started right before Covid hit, which caused the entire project to take roughly 22 months to complete with some challenges due to material shortages and shut downs.

Inspired by Donald Wexler, William Krisel and Alexander Homes, Andrea and Mark wanted to bring in a desert-modernism look combined with a midwestern, Frank Lloyd Wright feel replete with lots of wood, earth tones and Roman brick. The abundance of windows create an indoor/outdoor connection with views of the lake and allow in natural light, while the butterfly roof lines and V-shaped porch support create a visually stunning curbside view.

"We wanted something that would stay in our family forever: timeless, significant and a 'livable' home where we could create memories and joy," Andrea says.



ORION FLAT WALL PANEL

submaterial

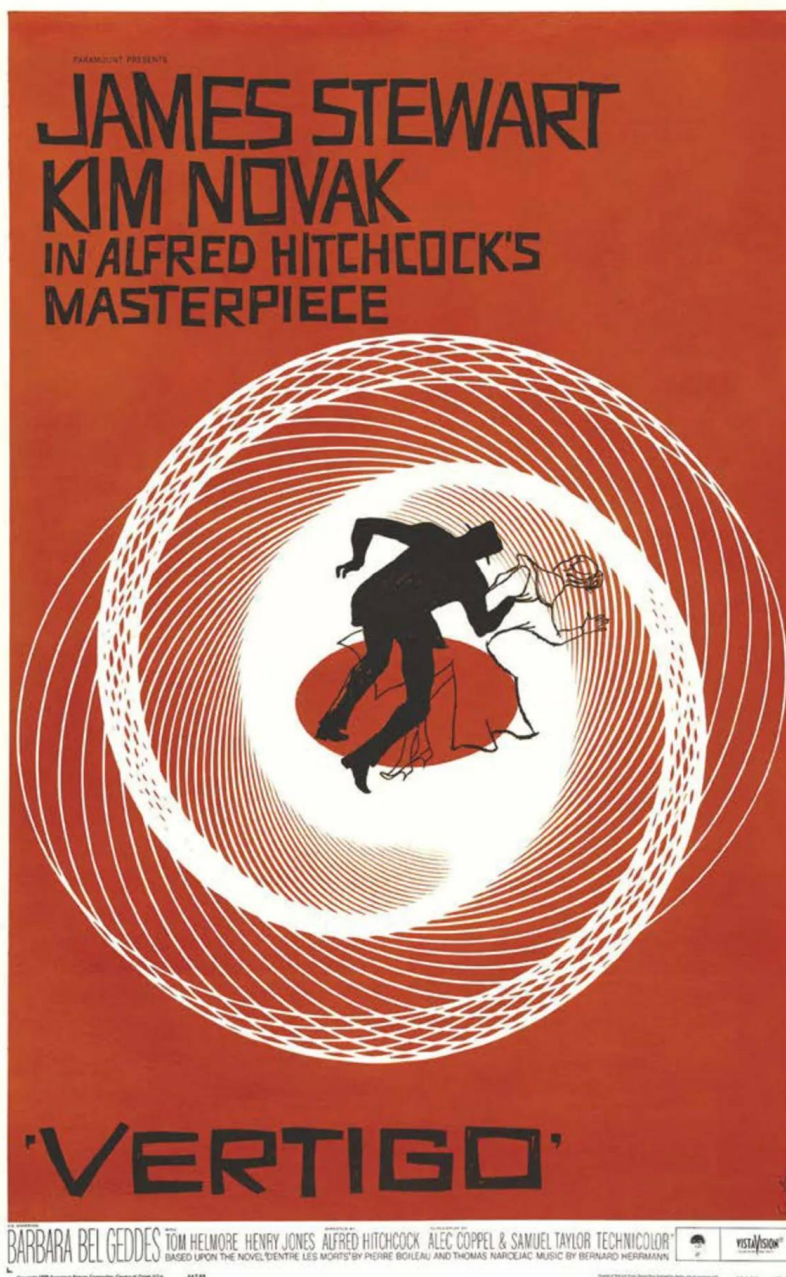
submaterial.com | new mexico, usa

gQE12/ukgS80LxZylZSKhg==

/ DESIGN ICON /

Mid Century in Motion

Spotlight on Saul Bass, the architect
of mid mod cinema. By Mark Mendez



(ABOVE) WHILE MOSTLY KNOWN FOR HIS CINEMATIC CAREER, BASS ALSO DESIGNED SOME OF THE WORLD'S MOST WELL-KNOWN CORPORATE LOGOS, SUCH AS CONTINENTAL AIRLINES, QUAKER OATS, THE GIRL SCOUTS, AT&T, WARNER BROS. AND GEFLEN RECORDS. PHOTO TAKEN MARCH 6, 1985, IN HIS OFFICE. (PHOTO BY TONY BARNARD/LOS ANGELES TIMES VIA GETTY IMAGES).

FROM KEY ART TO TITLE SEQUENCES, American-born graphic artist and filmmaker Saul Bass is the godfather of motion design for cinema. Born and raised in the Bronx, New York, in 1920, he was the son of Eastern European Jewish immigrants. As a student, Bass began working with a Manhattan ad agency. His first jobs were designing movie posters for one of the agency's biggest clients: Warner Bros. Studios. By the 1940s, Bass made the move to Hollywood and began designing print advertising for such films as "Champion," "The Moon is Blue" and "Death of a Salesman," all films by controversial director Otto Preminger. Preminger, known for his use of off-limit topics and taboos for his films, was highly impressed with Bass' work. It was here that Bass was introduced to the process of filmmaking.

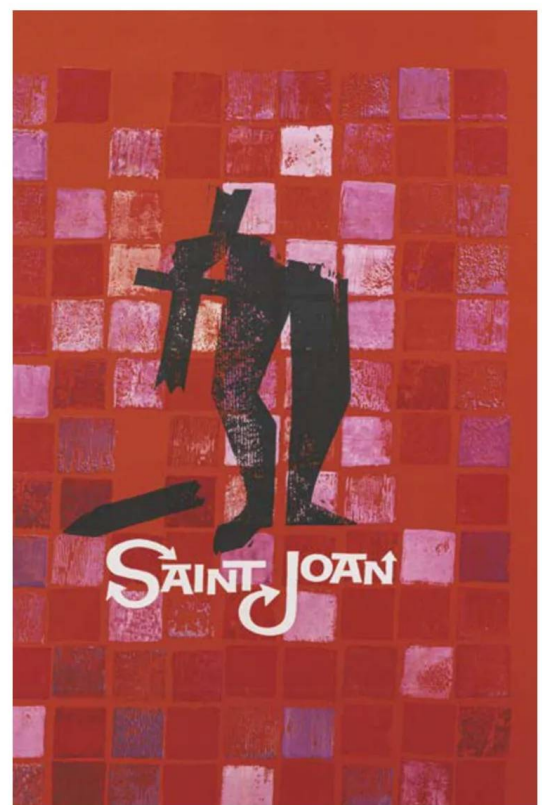


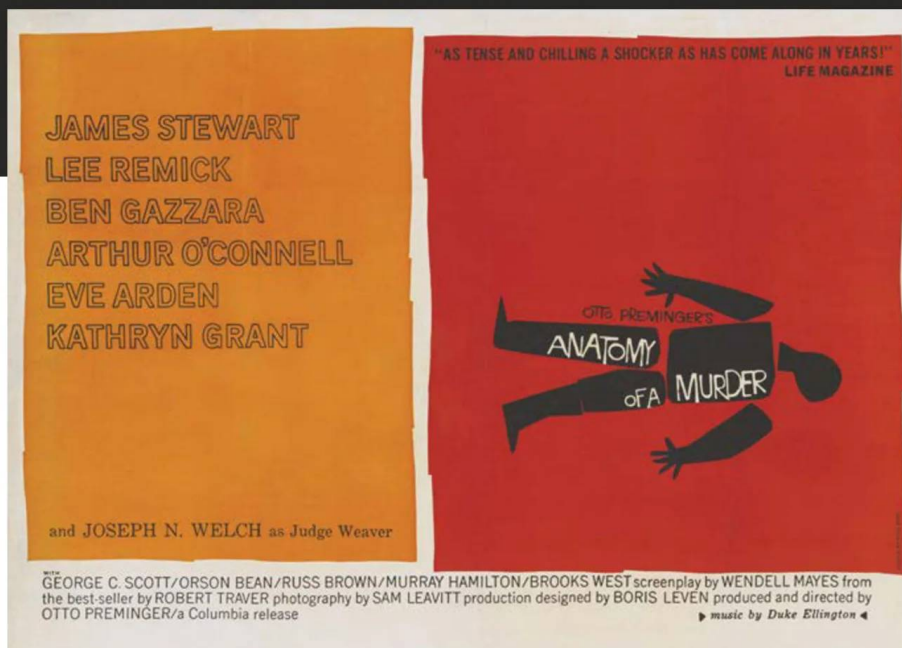
(ABOVE) ONE OF BASS' MANY EARLY COLLABORATIONS WITH OTTO PREMINGER. 1962'S DRAMA "ADVISE & CONSENT." (PHOTO BY MOVIE POSTER IMAGE ART/GETTY IMAGES)

(RIGHT) FROM COLOR TO TYPOGRAPHY, THIS POSTER IS WIDELY CONSIDERED ONE OF SAUL BASS' FINEST WORKS. OTTO PREMINGER'S 1957 HISTORICAL DRAMA "SAINT JOAN," STARRING JEAN SEBERG. THE FILM IS AN ADAPTATION OF GEORGE BERNARD SHAW'S PLAY. THE POSTER ARTWORK BY SAUL BASS. (PHOTO BY MOVIE POSTER IMAGE ART/GETTY IMAGES)

(OPPOSITE, BOTTOM) WIDELY CONSIDERED SAUL BASS' MOST ICONIC POSTER DESIGN FROM ALFRED HITCHCOCK'S 1958 PSYCHOLOGICAL THRILLER "VERTIGO," STARRING JAMES STEWART AND KIM NOVAK. (PHOTO BY MOVIE POSTER IMAGE ART/GETTY IMAGES)

Bass' work with Alfred Hitchcock, including "North by Northwest," "Vertigo" and "Psycho," are some of his most memorable title sequences and key art. These iconic works are the foundation of Mid Century Modern art and design for cinema.





A GREAT EXAMPLE OF BASS' USE OF HAND-DRAWN SHAPES, BOLD COLORS AND MINIMALISM. OTTO PREMINGER'S 1959 DRAMA "ANATOMY OF A MURDER." (PHOTO BY MOVIE POSTER IMAGE ART/GETTY IMAGES)

His groundbreaking work came with Preminger's "The Man with the Golden Arm," starring Frank Sinatra, a film about a jazz musician's struggle to overcome a heroin addiction. Traditionally, film advertising leaned heavily on fanciful art and words collaged around primary actors and actresses in an attempt to sell the stars, rather than sell the story. Bass created a controversial title sequence and poster with a central graphic of a man's arm—assumed to be heroin-riddled because of its crooked appearance. Then, film opens with bold white lines skidding across the screen, cutting into the frame and coming in-between the credits. The line moves, comes and goes, slashes and divides until it descends down in the frame a final time to morph into the memorable crooked arm.

Production Pioneer

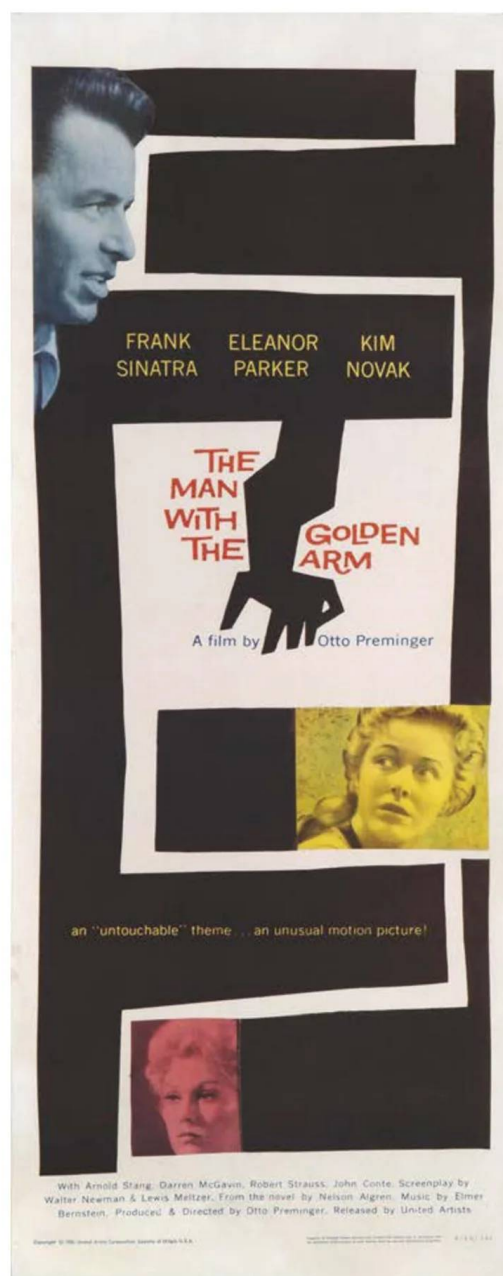
Breaking from conventional style, Bass' designs omitted images of the actors, instead focusing on graphic design elements, which he then set into motion, replacing static images with mood and energy, foreshadowing for movie patrons the events they were about to see. The role he played allowed the audience to see plot details revealed before the show even began.

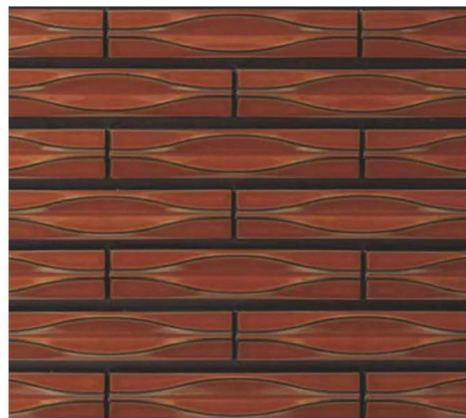
Bass is known stylistically for his non-conforming, geometric design. A fan of the Bauhaus movement, he felt that design had the ability to change society. At the same time that Mid Century Modern architects and designers were leaning on simplified geometric forms for their rooflines and furniture, Bass was drawing upon similar elements of simple, hand-drawn shapes, bold colors and the art of minimalism.

His work with Alfred Hitchcock, including "North by Northwest," "Vertigo" and "Psycho," are some of his most memorable title sequences and key art. These iconic works are the foundation of Mid Century Modern art and design for cinema.

Saul Bass continued a lucrative career in Hollywood for decades, working with highly acclaimed filmmakers such as Billy Wilder, Stanley Kubrick and Martin Scorsese. Bass died on April 25, 1996, at the age of 75, due to complications from non-Hodgkins lymphoma. ☼

SAUL BASS' FIRST COLLABORATION WITH CONTROVERSIAL DIRECTOR OTTO PREMINGER. PREMINGER'S 1955 DRAMA "THE MAN WITH THE GOLDEN ARM," STARRING FRANK SINATRA, KIM NOVAK AND ELEANOR PARKER. (PHOTO BY MOVIE POSTER IMAGE ART/GETTY IMAGES)





72060 CA-111 Ste A, Rancho Mirage CA 92270 760-636-4135
 hello@modfloors.com www.ModFloors.com

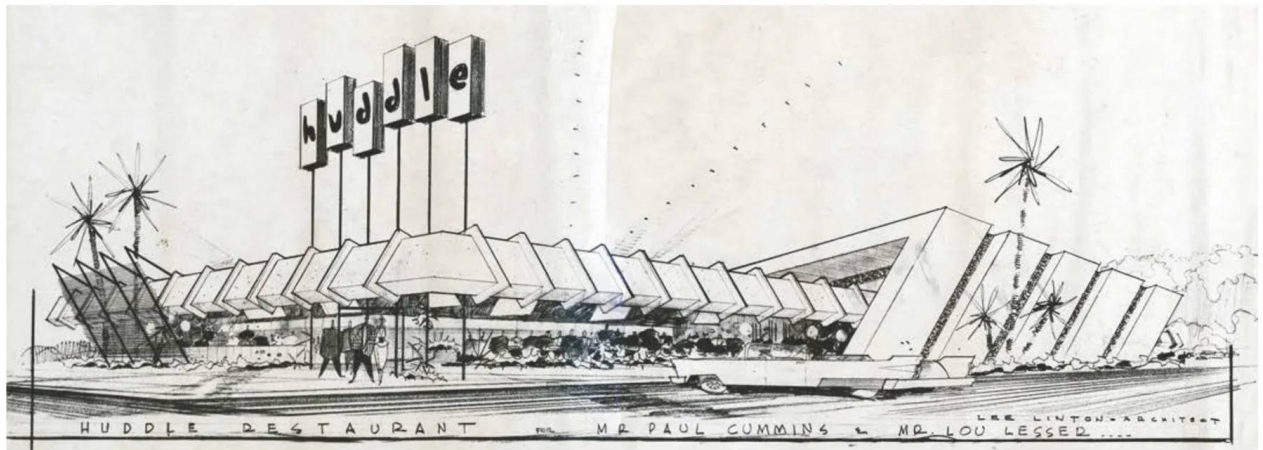
Eating the *Future*

How Armet Davis Newlove Architects popularized Googie on the street corner.

By Jackie Torres | Photos courtesy of Angel City Press



BOB'S BIG BOY FAMILY RESTAURANT; FRESNO, CALIFORNIA, C. 1962 // THE TWO TAPERED, PERPENDICULAR SPIRES SUPPORTING THE SIGN OF THIS BOB'S IN FRESNO, SHOWN IN THE COLOR SKETCH AT TOP, BECAME A STANDARD FEATURE OF THE CURVED-ROOF PROTOTYPES FOR BOB'S BIG BOY RESTAURANTS. | BUILT; PROTOTYPE DESIGN

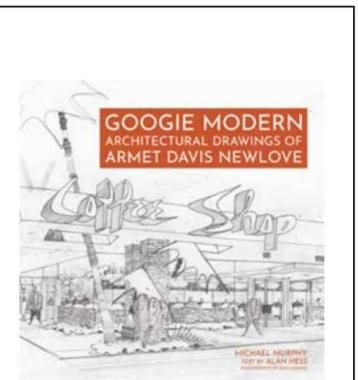


THE FERVOR FOR FUTURISM during the post-war design boom is perhaps most distilled in Googie-style architecture. To appreciate its impact on the average citizen, look to Los Angeles and the buildings designed by Armet Davis Newlove Architects. Michael Murphy along with prolific architectural historian Alan Hess chronicle the journey from drafting table to drive-up in their book *Googie Modern: Architectural Drawings of Armet Davis Newlove*.

"For the price of a hamburger or a tuna melt, ordinary Angelenos could be a part of the future at any Googie coffee shop," Hess writes. Indeed, the firm's specialty in coffee shops, diners and eateries such as Denny's, Big Boy's and Norm's popularized the Space Age archetype. "Googie expanded the concept of Modernism in three significant ways: it is fundamentally democratic as part of the daily life of the average person; it enthusiastically incorporates pleasure

in its designs; and it is an architecture of modern communication Projecting a structure's purpose, location, and character was a key concept in Googie design," Hess explains. "The roof itself served as an abstract canvas for broadcasting the building's presence on a busy commercial strip site. It may have seemed exaggerated to some critics, but it was the appropriate scale to be legible to a motorist driving by at 40 mph. The glass wall stretching across the entire façade was an eye-catching, three-dimensional billboard, showing off its product in a bright, colorful tableau of happy customers."

The book conveys not only an origin story but also the ripple effect these works had in an evolving American cultural landscape. Told through more than 175 renderings from the ADN Architects archives and brilliantly elucidated by Hess, it's a must-read for modernist fans, design buffs and pop-culture enthusiasts. ☼



Googie Modern: Architectural Drawings of Armet Davis Newlove by Michael Murphy with text by Alan Hess, published by Angel City Press, (c) 2023.

(TOP) HUDDLE RESTAURANT; PASADENA, CALIFORNIA, 1954 // THE RESTAURANT WAS PLANNED WITH A VAULTED, THIN CONCRETE SHELL STRUCTURE OVER TWO LEVELS. GOOGIE'S FORMS TURN THE ENTIRE BUILDING INTO A SIGN TO ATTRACT MOTORISTS' ATTENTION. | CLIENT: PAUL S. CUMMINS | RENDERINGS BY LEE LINTON

/ **TAKE** A SEAT /

The **Wassily** Chair

**Marcel Breuer's pivotal design
was a watershed moment for the
birth of modernism.**

By **Jickie Torres**

ONE OF THE MOST REMARKABLE ASPECTS OF MODERN DESIGN is just how groundbreaking they were, especially relative to the popular aesthetic of its time. Case in point: the Wassily chair designed by Bauhaus pioneer, Marcel Breuer, in 1925 and considered today to be an icon of the modernist furniture movement. At a time when homes were mostly colonial, Greek revival or English in style and filled with the vestiges of Victorian furniture, the steel tube and leather chair was aggressively different and defiant.



KNOLL WASSILY CHAIR BY MARCEL BREUER,
\$3,633, VISIT [DWR.COM](https://www.dwr.com).



PHOTO BY SAILKO, CC BY 3.0



(ABOVE) PHOTO BY KAI 'OSWALD' SEIDLER. BAUHAUS BUILDING
WASSILY CHAIRS BY MARCEL BREUER (1925/26)

Inspired by the bicycle frame and later named after friend and fellow Bauhaus School instructor Wassily Kandinsky (for whom Breuer created a duplicate of his prototype for his home), Breuer's chair is a study in constructivist theory—that is, that we learn by building upon our existing foundation. Breuer attempted to take the classic club chair and reduce it to its simplest form. Additionally guided by the De Stijl movement, which emphasized vertical and horizontal geometry, this left Breuer to expose the chair's elemental lines and key planes.

Breuer, a master carpenter at the Bauhaus, aimed to exemplify the movement's unification of art and industry with his creation—and he did—quite possibly forever changing the trajectory of furniture design to come. ☼

/ **ATOMIC** KITCHENS /

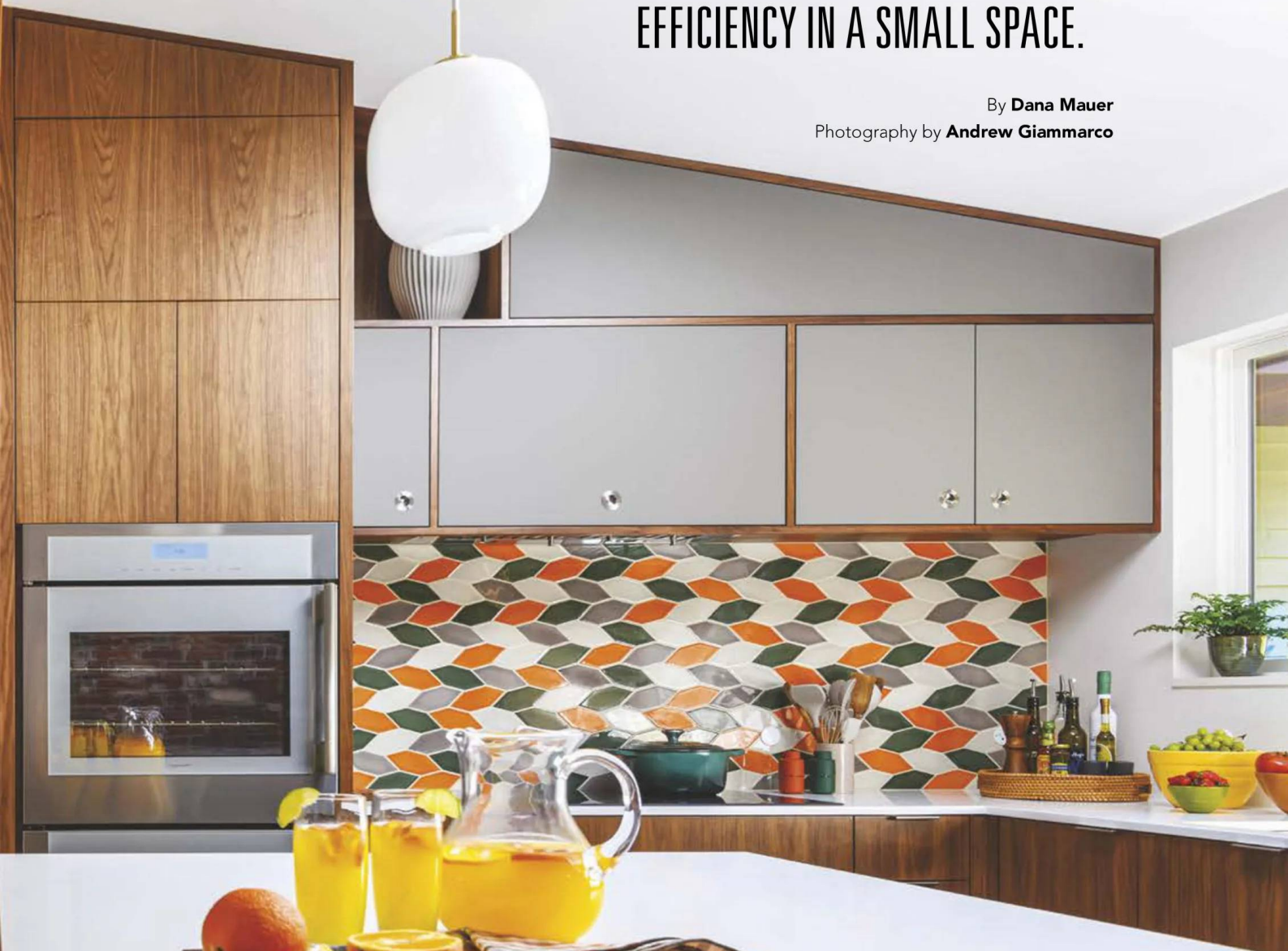
The Architect's **KITCHEN**



HOW TO BALANCE COMFORT AND EFFICIENCY IN A SMALL SPACE.

By **Dana Mauer**

Photography by **Andrew Giammarco**



"THE SPACE STILL NEEDED A SUNLIGHT VIBE AS IT CAN BE A BIT GRAY AND GLOOMY IN OUR WET SEATTLE WINTERS," SAYS DESIGNER KATHLEEN GLOSSA. "WHITE CAN FEEL TOO COLD, SO WE OPTED FOR A MCM MIX OF ELONGATED HEXAGON TILES IN DEEP ORANGES AND GREENS AS THEY COMPLEMENT THE WALNUT CABINETRY."





BEFORE

RICK'S WIFE, KRISTEN, FOUND THIS DINING ROOM TABLE IN BONE JAX, AN ANTIQUES STORE IN PORTLAND, OREGON. THE CHAIRS ARE MOLDED PLYWOOD FROM CHERNER CHAIR. RICK HAD ALWAYS WANTED MOLDED PLYWOOD CHAIRS AND BOUGHT THEM WHEN THE PROJECT WAS NEARLY FINISHED.

Have you ever wondered what choices an architect would make in their own home renovation project? Architect Rick Chesmore and his wife, Kristen, live in a 1958 Snow White model home developed by Bell and Valdez in Lake Hills, the first planned-unit development of MCM homes in Bellevue, Washington. But it needed some major modifications to make it fit their lifestyle.

"We have performed four different remodels over the past 30 years, doubling the size and removing walls to achieve more open spaces for entertaining and modernization with newer finishes and materials," Rick says.

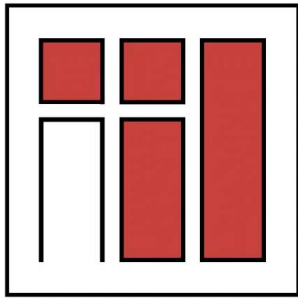
Let in the Light

Rick needed a solution to improve the home's lack of light. Even though there are a few skylights bringing in natural light, more light sources were required. "We didn't have much lighting in the great room, so we added 2-inch diameter can lights for general lighting, accent lighting at art walls and pendant lights over the island and the dining area," Rick says. The LED adjustable can lights wash the walls with light rather than aiming the light straight down.

Island Design

When designing the kitchen's new central island, Rick added a steel-tube structure underneath to distribute the load to the new stainless-steel furniture legs. A round steel column under the island holds the electrical needed for outlets, an undercounter microwave and a docking drawer. The island matches the floor-to-ceiling walnut cabinets and Fenix laminate doors' walnut inset.

Working with Kathleen Glossa, founder of Swivel Interiors, they chose anti-fingerprint Fenix laminate in the color Grigio Londra for the island. "Rick and Kristen really embraced my invitation to allow the island to feel more like a piece of furniture, as it would also lighten its impact in the room," Kathleen says. "Rick sourced the fun, tapered metal legs allowing the new island to float above that stunning terrazzo floor," she says.



ALDEN B. DOW HOME & STUDIO

315 POST STREET
MIDLAND, MI 48640

(866) 315-7678
abdow.org



The Best of Mid-Twentieth Century Modern Architecture

The Alden B. Dow Home and Studio engages the imagination and elicits emotional responses in all who experience this powerful statement of Mid-Twentieth Century Modern architecture. Planted into an encompassing pond, the Home and Studio is alive with reflective light, soaring roof lines, diverging angles, brilliant color and the perfect balance of enticement and tranquility. It truly is an "oasis of architecture and inspiration." **Schedule your visit for architectural tours, educational programs, Michigan history and much more.**



B&W Tile

Vintage Original Since 1949

*Colors
We Have Those!!*



- Manufactured In North Hollywood, California
- Original Vintage & Historic Colors
- Custom Colors & Color Matching Available
- Nationwide Shipping

www.bwtile.com
310-538-9579
info@bwtile.com



"I'm a big fan of the wood material extending to the ceiling, and that one [detail] has really finished the kitchen off nicely."

—Rick Chesmore

Backsplash and Bar

"Kristen had some fun selecting the colorful backsplash tiles," Rick says. She chose a Pratt and Larsen pattern called Small Picket Smooth in orange, gray, green and cream white. To avoid big outlet boxes on the walls, Rick used Sillite outlets. "These are inset into the tile and have a 2-inch diameter white cap, so they're not noticeable," Rick says.

Bright Terrazzo

Opting for a bright kitchen, inspired by their frequent visits to Palm Springs, meant replacing the darker marmoleum floor. "We had to reframe the floor to achieve more depth, as we wanted to install a 2-foot by 2-foot terrazzo tile floor with a heated floor mat," Rick says. They decided on thicker, concrete-base terrazzo tile from Artistic Tile.

"The glass pieces are the perfect complement to the existing brick fireplace wall and the walnut and laminate cabinets and add a 24-7 light vibe to the kitchen we could not have accomplished with porcelain tile," Kathleen says. 🌿

SEE RESOURCES, PAGE 110

(TOP, LEFT) A WALNUT DOOR ON THE FRONT OF THE 18-INCH WIDE SUB ZERO WINE FRIDGE KEEPS MATERIALS CONSISTENT AND TIES IT TO THE ROOM AND CABINETRY. KEEPING THE MATERIAL LIST SHORT HELPS TO EMPHASIZE THE DETAILS AND STRUCTURE OF THE SPACE.

(TOP, RIGHT) DESIGNED WITH LEGS TO LOOK LIKE A PIECE OF FURNITURE, THE ISLAND FLOATS IN THE CENTER OF THE KITCHEN. A WARM WALNUT VENEER FRAMES THE FENIX LAMINATE CABINETS AND DRAWERS IN GRIGIO LONDRA, A DARK GRAY SHADE WITH GREEN UNDERTONES. THE HANGING PENDANT LIGHTS OVER THE ISLAND ARE BY LOUIS POULSEN.



modernous
INTERIOR DESIGN

modern + midcentury specialists
modernous.com
206.430.1966

Retro is . . .

a celebration of modern vintage style and craftsmanship.



Kimber Dempsey
RETRO REALTOR®
ASSOCIATE BROKER

Specializing in all types of mid-20th century retro homes, Kimber is your guide to buying and selling the most interesting, bold, and well-designed homes in Colorado.

ONE REALTYONEGROUP
PREMIER

TheRetroRealtor.com

Instagram @KimberRetroRealtor

Facebook FB.me/KimberRetroRealtor

Call or Text **303-913-4505**
Kimber@TheRetroRealtor.com



gQE12/ukgS80LxZylZSKhg==

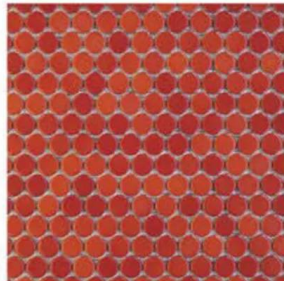
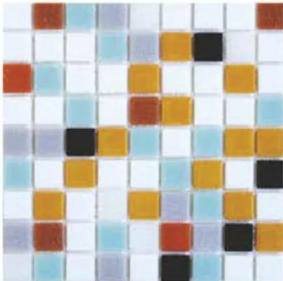
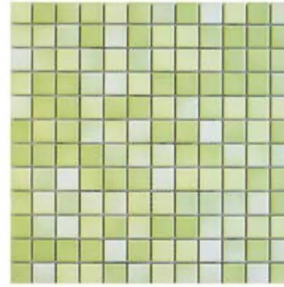
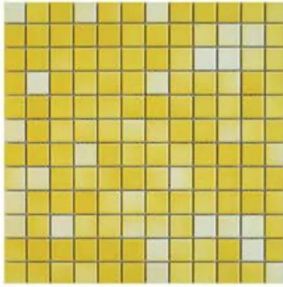


5 Ways to Maximize a Small Kitchen

MAKE THE MOST OF ANY SMALL KITCHEN WITH THESE PRO TIPS.

- **Keep your material list short.** "This allows the few materials to emphasize the design, as often projects can become overwhelmed with too many material differences," Rick says. "I'm a big fan of the wood material extending to the ceiling, and that one [detail] has really finished off the kitchen nicely." Look for places the lines in your kitchen can be lengthened with a single material.
- **Do more with less.** "Multifunction ovens (steam, convection, microwave) can increase or decrease the number of appliances to plan for," Kathleen says. Downsize kitchen appliances and tools by replacing them with hardworking multitaskers.
- **Create a focal point.** What do you see when you walk into a room? In spaces that are awkward or not intentionally left blank, consider something eye-catching. "Creating an art or display area on a wall that's first viewed when one enters the space can make a big visual impact," Kathleen says.
- **Thin out undercounter storage.** The cabinets may be full, making you wish you had more room or better organization, but do you need everything in there? "Try moving these items into boxes in the garage and notice how rarely you ever go looking for any of them," Kathleen says. "Once they're in boxes, they are all ready for donation."
- **Buy functional items you love looking at.** Not all appliances can be condensed or hidden. "When you have appliances that need to remain on the counter 24-7, like the coffee maker, it helps to dial up the charm. We sourced a vintage mug tree from Etsy to hold a collection of mid-century coffee mugs," Kathleen says.

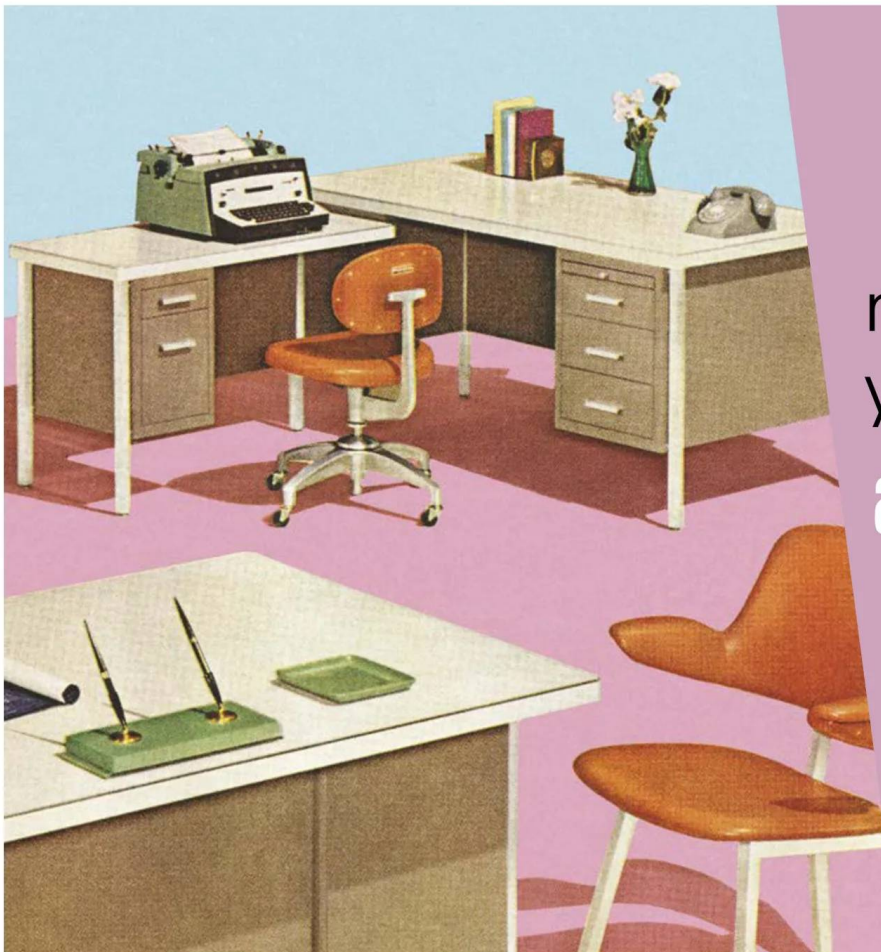
LIGHT ACID-WASHING ON THE ORIGINAL BRICKS BRIGHTENED UP THE WALL'S COLOR, AND THE EXISTING INDOOR BUILT-IN BARBECUE WAS CONVERTED TO AN APPLIANCE GARAGE. THEY HOUSE THE ESPRESSO MAKER, ESPRESSO CUPS AND A STAINLESS-STEEL DRAWER FOR ROOT VEGETABLES. "WE PLACED A CLEVER ABSTRACT PAINTING BY RYA WU ON THE EXISTING BRICK WALL WHERE THE GAP BETWEEN INSET CABINETRY NEEDED A VISUALLY ENGAGING MOMENT," KATHLEEN SAYS.



Midcentury Modern Tile

Get your
first \$20 in
samples
free using
code
ATOMIC

modwalls.com
877-439-9734
service@modwalls.com



Get more of the
mid mod content
you love online at
atomic-ranch.com

- exclusive tours
- travel ideas
- DIY projects
- recipes
- real estate
- shopping

gQEI2/ukgS80LxZylZSKhg==



Blue Beauty

A PALM SPRINGS HOME GETS SPLASHES OF BLUE AND OTHER SEA-INSPIRED MOTIFS TO TRANSFORM IT INTO A WATERY OASIS IN THE CALIFORNIA DESERT.

By MICHELLE MASTRO
Photography by LANCE GERBER

0FI2/ukqS80LxZylZSKhg==



THE LIVING ROOM'S HANGING LIGHT FIXTURES FEEL LIKE MOONS IN A CONSTELLATION OF STARS SHOOTING ACROSS THE CEILING. HANGING AT DIFFERENT HEIGHTS, THE LIGHTS OFFER A PLAYFUL NOTE, ESPECIALLY WHEN PAIRED WITH THE CORAL PINK OF THE SITTING CHAIRS NEARBY.



MCM ARCHITECT WILLIAM KRISSEL DESIGNED THE HOME'S SIGNATURE BUTTERFLY ROOFLINE, OBSCURING THE CIRCLES HIDDEN INSIDE THE HOME.

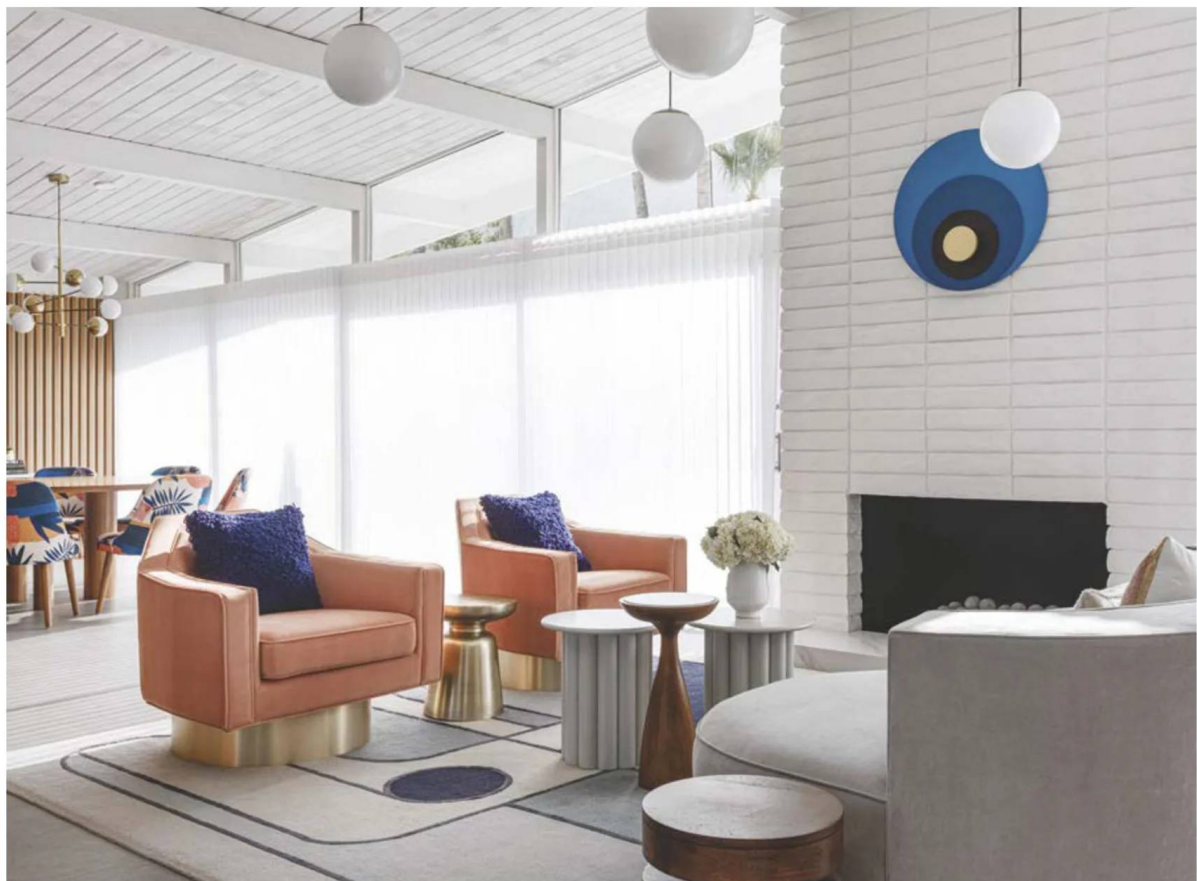
Pairing Mid Mod styles with modern

needs takes finesse. But Michelle Boudreau, interior designer and environment curator, rose to the challenge set by the owners of this beautiful Palm Springs abode. They wanted Michelle to merge MCM design with modern approaches to living. But perhaps more than anything, they wanted her to redesign the property with fresh styles and color palettes in mind. Hence, blue hues and a whimsical motif of circles flow through the house, splashing on walls and through hallways, and finding their way into every nook and cranny.

MODERN MEETS CONTEMPORARY

Built in 1958, the house sits in the historic neighborhood of Vista Las Palmas in Palm Springs. Renowned architect William Krisel designed the house and made sure to top it off with the signature Butterfly roofline. Many years later, the current owners of the house approached Michelle for help with the full remodel. They admired her experience and passion for reviving Mid Century Modern homes. As a designer, she is known for carefully blending MCM style with contemporary ways of living or décor preferences. "The owners also really liked the way I work with color and pattern in an elevated way," Michelle explains. "We hit it off right away!"

(BELOW, RIGHT) THE ENTRYWAY USES THE DESIGN "RULE OF THREE" TO CREATE A SENSE OF FULLNESS WITH THE THREE DECORATIVE OBJECTS ON THE TABLE AND THREE HOUSEPLANTS IN THE CORNER.



(BELOW) MICHELLE INCORPORATED A CORAL-PINK ACCENT COLOR THROUGHOUT AS A PLAYFUL FOIL TO THE BLUE MOTIF. THIS CONTRAST ALSO KEEPS THE THEME MODERN AND FRESH RATHER THAN TOO HEAVY-HANDED.

(OPPOSITE) ACCORDING TO MICHELLE, THE REVIVED BUBBLE CHAIRS CREATE A SPACE FOR ENJOYING THE DESERT LANDSCAPE. "THE CUSTOM CURVED FURNISHINGS PROVIDE A SITTING ENVIRONMENT THAT IS LIKE A WARM HUG."





The primary goals for the renovation were to emphasize the existing structure, as it had beautiful bones, and to redesign the interiors for modern living. “I approached the redesign to feel like it fit naturally into the environment of the house, but created custom details that were unique to this home,” Michelle says. She added important elements like a custom built-in sofa and made sure it had multiple blue fabrics in a clean geometric shape to fit the owners’ preferred aesthetics.

BLUE OASIS

Michelle wanted to capture the owners’ colorful personalities and interests. “They are passionate about sailing and

traveling in the beauty of the oceans and seas,” she says. Thus, the house now uses variations of water colors to flow throughout the home, ranging from vibrant turquoise to rich navy blues. While many Mid Mod homes lean warm with orange and yellow, Michelle wanted the home to feel refreshingly cool, but that doesn’t mean warm tones are avoided altogether. To allude to the sandy beaches and shorelines of their adventures, Michelle also added touches of coral colors and blush tones throughout. The pinkish shades render another throughline to the rooms, enriching the home with a sense of warmth and softness, especially when juxtaposed with the cool blue colors.

THE GLASS SHELF MICHELLE CHOSE FOR THIS HANGING SHELVING UNIT NOT ONLY PROVIDES EASY ACCESS TO THE OWNER'S SPIRITS OF CHOICE BUT CREATES THE ILLUSION OF FLOATING GLASS BOTTLES. THE WOOD PANELING ON THE WALLS MOVES THE EYE UPWARD TO NOTICE THE CURIOUS FLOATING BOTTLES ALONG WITH THE FLOATING SPHERES OF THE GRANDIOSE LIGHT FIXTURE ABOVE THE TABLE. BACK AT THE BAR, THE LEATHER-COVERED STOOLS INCLUDE A THIN METAL BASE, WHICH ALLOWS SIGHT LINES TO THE BRASS FACING ON THE BAR, CREATING YET ANOTHER TRICK OF SIGHT.



THE DESIGNER CREATED A WARMER AND MORE FUNCTIONAL KITCHEN THAT HAD A LOT OF PERSONALITY. "WE CHOSE TO GO WITH BLUE BASE CABINETS AND TOP CABINETS MADE OF WALNUT FOR A MIX OF RICHNESS AND WARMTH," SHE SAYS. "YOU'LL FIND HINTS OF BRASS THROUGHOUT, HONORING THE METAL THAT ORIGINALLY GRACED MANY MID-CENTURY HOMES, INCLUDING ON THE OVERSIZED ISLAND PENDANTS THAT ARE THE JEWELS OF THIS ROOM."



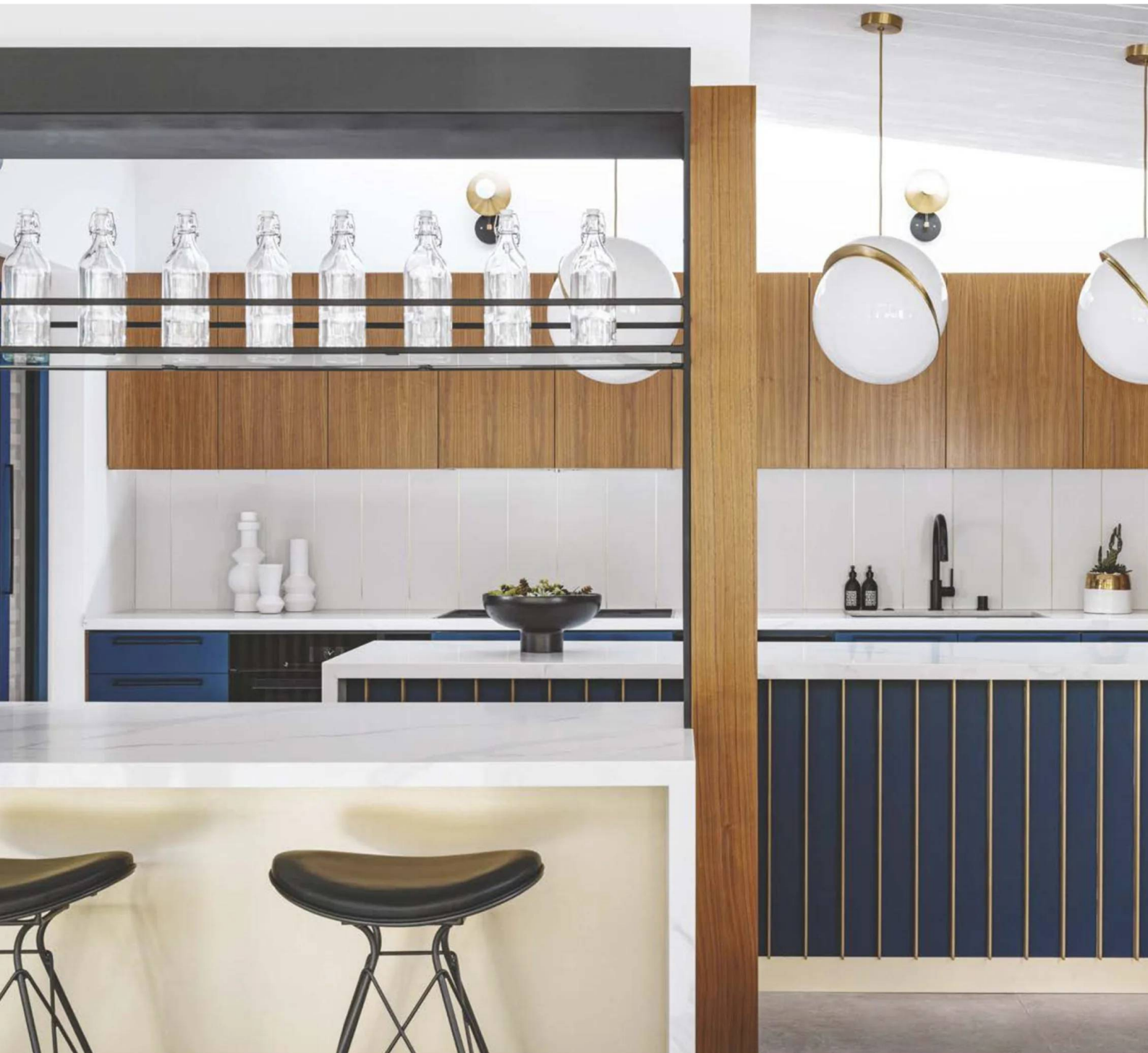
MICHELLE SAYS IT WAS IMPORTANT TO CELEBRATE THE ORIGINAL ARCHITECTURE AND REDESIGN THE PROPERTY WITH UNIQUE PERSONALITY AND STYLE IN AN ARTFUL WAY BY SEAMLESSLY MERGING MATERIALS AND NEW SPACES WITH MODERN TECHNOLOGY WHILE RESPECTING THE MID-CENTURY CHERISHED DESIGN DETAILS. THE PHILOSOPHY OF THE RENOVATION WAS TO ESTABLISH A GOOD RELATIONSHIP WITH THE EXISTING STRUCTURE, AS IT HAD BEAUTIFUL BONES.

"The mixtures of shape and patterns create dimension and individuality to the home and invite you to explore the interesting differences of each room," she says. The resulting look is a blue oasis in the California desert, and the soft colors of the blues, blush and touches of white create a sense of calm.

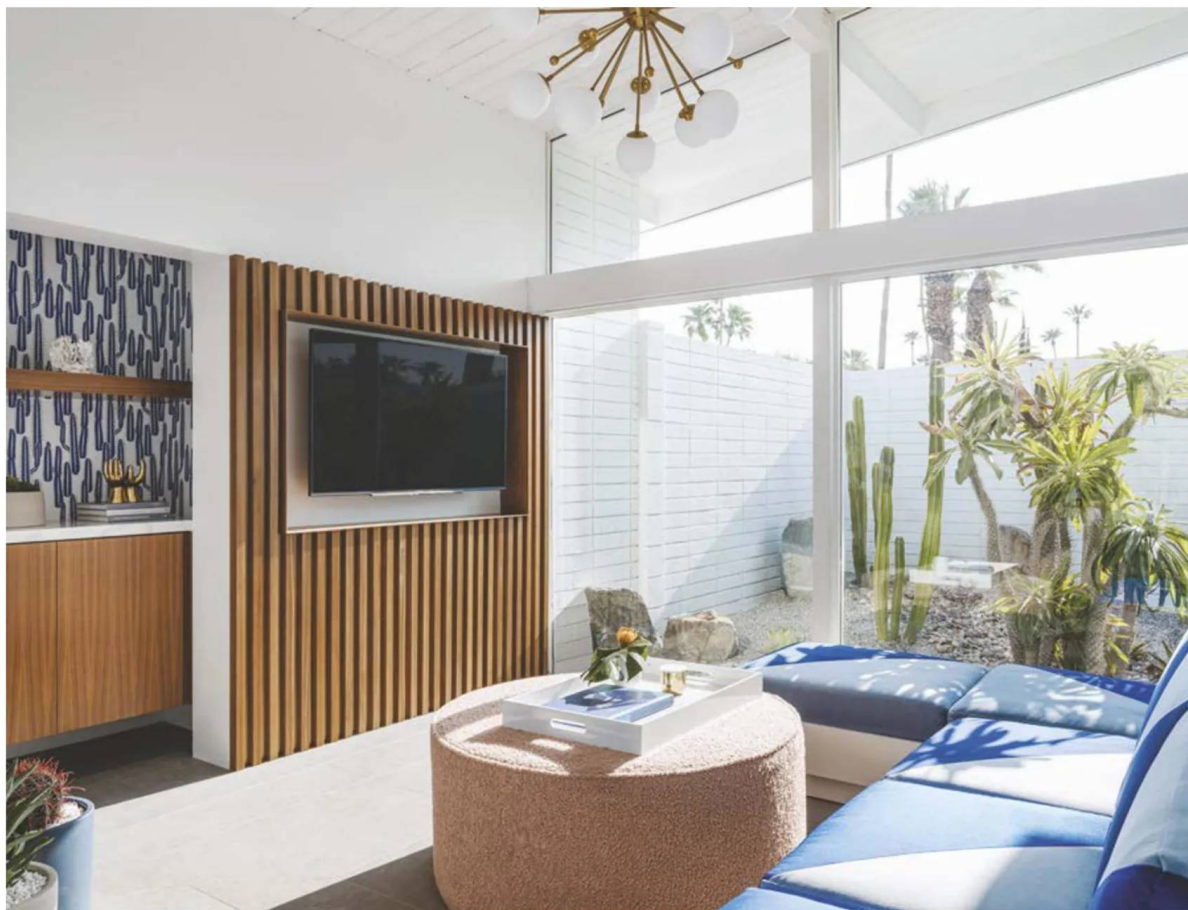
COMING FULL CIRCLE

Michelle wanted the home to feel smooth, so she leaned head and shoulders into circles for the shape's perfect simplicity and to add another subtle allusion to the owners' travels. "The circle shapes were inspired by sea portholes and the shape that was used often in the original era," Michelle says. "I translated the shape in new and unpredictable ways." For example, the revived bubble chairs in the living room create a space for enjoying the desert landscape and swinging in style, "but they also provide a sitting environment that is like a warm hug," she says.

THE OWNERS LOVE TO HANG OUT AND CONVERSE WITH FAMILY AND FRIENDS WHILE PREPARING MEALS, BUT THEIR PREVIOUS KITCHEN DIDN'T HAVE ENOUGH COUNTERTOP SPACE AND LACKED STORAGE. "THEY DREAMED OF A BAR AREA WHERE THEY COULD MAKE AND SERVE COCKTAILS WHILE THEY ENTERTAINED," MICHELLE SAYS. THE KITCHEN WAS OPENED UP WITH SLATED SCREEN DIVIDERS TO THE LIVING ROOM WITH ITS 40-FOOT WINDOWS TO ENJOY THE VIEW OF THE MOUNTAINS.



Like seafarers on their own unique ocean voyage, guests to the home can wind their way through the house, stopping to note every example of Michelle's reimagining of MCM style. In the guest room, cobalt-blue energizes the walls around a scalloped bed and play against the circle tiles. Everywhere, thoughtful curated décor and details mix with modernity and contemporary living. "Really, it's a vacation home that embraces the Palm Springs lifestyle," Michelle says. 🌿



(TOP) A CUSTOM-CREATED BUILT-IN SOFA COMES WITH TRI TONES OF VELVET FOR COZY COMFORT FEELS FOR GUESTS WATCHING TV IN THE EVENINGS OR LISTENING TO VINTAGE VINYL RECORDS. THE CACTUS WALLPAPER GIVES THE ROOM A TOUCH OF TEXTURE AS WELL. (ABOVE) IN THE DEN, UNIQUE CACTI-INSPIRED WALLPAPER CREATED BY MICHELLE FRAMES THE NOOK NEAR THE TV. THE TILE IS A SURPRISING BLUE AND WHITE, MADE MORE UNEXPECTED WHEN JUXTAPOSED WITH THE LIVE CACTUS SITTING ON THE COFFEE TABLE.

SOOTHING BLUES, WARM WOODS, BRASS TOUCHES AND BRIGHT WHITES WORK HARMONIOUSLY IN THIS SPACE TO FILL IT WITHOUT OVERWHELMING THE VIEWER. THE MID-CENTURY WALL MILLWORK ADDS DIMENSION AND PATTERN TO THE SPACE WITH ITS WALNUT WOOD AND BRASS INLAY BETWEEN EACH SLAT.





THE SOFT COLORS OF THE BLUES BEHIND THE BED MEET WITH THE BLUSH AND WHITE TONES TO CREATE A SENSE OF CALM IN THE BEDROOM. DIMENSIONAL TILES, RANGING FROM A RICH DEEP BLUE TO A LIGHT AQUA COLOR, PROTRUDE FROM THE WALLS AND GESTURE DRAMATICALLY TO THE MCM ERA.

Create a Color Story

MICHELLE SHARES HER ADVICE FOR PERFECTLY BLENDING COLOR WITH TEXTURES, PATTERNS AND SHAPES.

Michelle, a master at knowing when to reign in and pare down, transformed a riot of shape and color into a subtle fusion through her careful design expertise that pays homage to Mid Mod fashions. Here are her top tips.

1. Warm it Up With Wood. Even though Michelle's designs rely heavily on a cooler color palette, she brings in wood to warm it up and make the spaces feel homey. "Walnut wood is carried through to warm up the crisp white ceilings and walls," she says. The wood's textures and dimension also offset the blue colors.

2. Illuminate the Colors. For Michelle, custom lighting creates artful sculptures in every room. "In the kitchen and dining areas, the unique and artful pendants create a sculptural moment while providing extra light in the dining area," she says.

3. Opt for Unique Pairings. "Mixtures of shapes and patterns create dimension and individuality to the home," Michelle says. This is why she suggests choosing a pattern or shape to run throughout the house. "These will invite guests to explore the interesting differences of each room."



(TOP) A BESPOKE WALLPAPER OF ICONIC MID-CENTURY ARCHITECTURE WRAPS THE WALLS WITH AN INVITING INVESTIGATION FOR GUESTS. (ABOVE) A COBALT-BLUE COLOR ENERGIZES THE ROOM, WHICH FEATURES A SPECIAL SCALLOPED BED. COLOR-MATCHED CIRCLE TILES INVITE GUESTS INTO THE BATHROOM.



(TOP) THE PRIMARY BEDROOM'S BATHROOM HAS A COUNTER WRAPPED IN WALNUT WOOD TO WARM UP THE PROFUSION OF COLDER COLORS IN THE PRIMARY BEDROOM. THE STARBURST TILE OFFERS A BURST OF AQUA COLOR AND A TOUCH OF VISUAL LIGHT WHEN PAIRED WITH THE GLOW OF THE BRASS FIXTURES FITTINGS. (ABOVE, RIGHT) IN THIS BATHROOM, A TRIANGLE SHAPE OFFERS A BIT OF DIFFERENCE COMPARED WITH THE CIRCLES THAT DOMINATE THE MIRROR'S SHAPE AND CABINET HANDLES.

Playful Preservation

By **LAURA SHIMKO**

Photography by **MATTHEW GALLANT**

Interior design by **MODERNOUS**



THIS 1960 HILLSIDE HOME COMBINES MID MOD CHARM AND BOLD MODERN UPDATES FOR A COLORFUL, FUN TAKE ON MCM STYLE.

THE WINDOWS AND SLAT WALLS IN THE LIVING ROOM ARE ALL ORIGINAL, ADDING WARMTH AND LIGHT TO THE SPACE. A FUN AND FUNKY RUG ADDS VISUAL INTEREST WHILE YELLOW CHAIRS ADD PUNCHES OF COLOR. "WE CUT THROUGH THE SLAT WALL AT THE END TO CREATE THE HIDDEN DOOR INTO THE PRIMARY BEDROOM AND WERE ABLE TO PATCH ANY BROKEN PIECES WITH EXTRA SLAT WALL MATERIAL SALVAGED FROM THE KITCHEN WALLS THAT WERE TAKEN DOWN—CAREFULLY," SALLY SAYS.





Taking a Mid Century gem

and making it your own involves a delicate balance of preserving those elements that give it character and introducing functional and style updates that reflect your unique needs. Add in a good dose of fun color and patterns, and you have this MCM home located in Issaquah, Washington.

When the homeowners purchased the property, they knew they needed to make some changes to accommodate their growing family as well as reflect

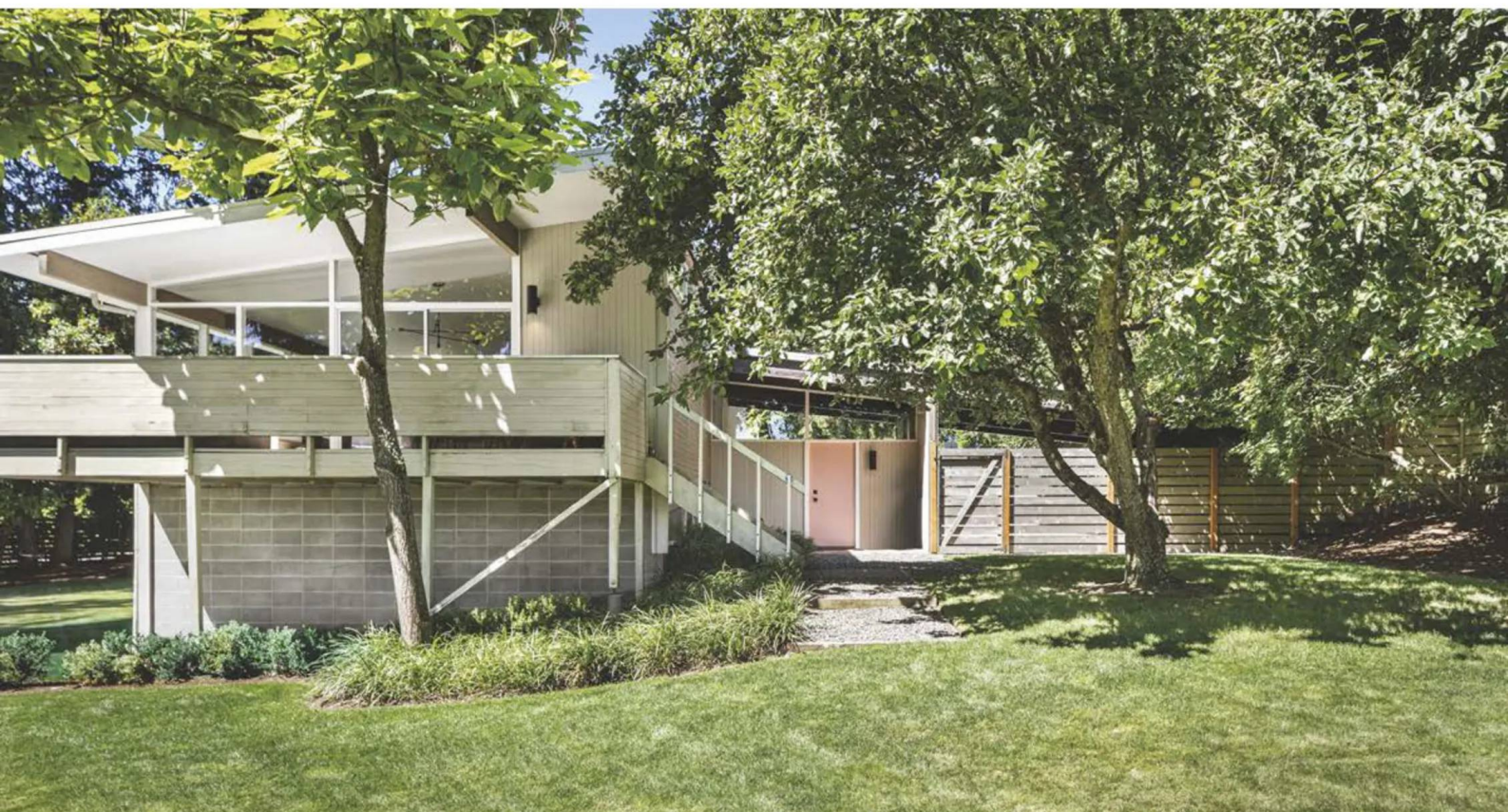
their personal style. They enlisted the help of the Modernous interior-design firm (modernous.com) to help them incorporate these updates without sacrificing the soul of the original design.

The house was designed for the Robertiello family in 1960 by the Kirkland, Washington, architectural firm, Cummings and Martenson. Known in and around Kirkland for their projects, including several elementary schools and a few houses, Cummings and Martenson worked together from 1957 to 1968 before creating separate firms.



(ABOVE, LEFT) THE WOOD FINISHES ARE ALL ORIGINAL HERE IN THE ENTRYWAY AS WELL AS THE SHOJI SCREENS. "WE DID PAINT THE STAIRCASE AND RAILINGS BLACK, AS THE EXISTING WOOD WAS A DARKER BROWN WOOD TONE THAT WE FELT TOOK AWAY FROM THE GRAY STAINED WOOD," SALLY SAYS.

(ABOVE, RIGHT) MODERNOUS WORKED TO PRESERVE AS MUCH OF THE ORIGINAL MATERIALS AND DESIGN ELEMENTS AS POSSIBLE, INCLUDING ALL OF THE BEAUTIFUL WOOD. "WE WORKED TO PRESERVE ALL OF THE BEAMS AND CEILINGS IN THEIR ORIGINAL STAINED FINISH, CLEANING ANY STAINS OR DISCOLORATIONS," SHE SAYS.



WALLS OF WINDOWS PROVIDE A SEAMLESS CONNECTION BETWEEN INTERIOR AND EXTERIOR SPACES AND INSPIRED THE DESIGN. "WE TRIED TO BRING SOME GREENERY INTO THIS ROOM TO HELP BLEND THE INDOORS AND OUT," SALLY EXPLAINS. "WE KEPT A VERY NEUTRAL PALETTE WITH JUST A FEW POPS OF BLACK TO EMPHASIZE THE VIEW BEYOND THE WINDOW."



At 2,690 square feet and situated on .75 acres, the two-story home features four bedrooms, two original bathrooms and a new powder room, walls of windows, exposed beams and a deck in back with a large yard. When the current homeowners purchased it in 2018, there had been no changes made to the original design. "It was beautifully maintained and preserved as-is for many, many years—exactly as the architect had envisioned it," says Sally Julien, principal and founder of Modernous.

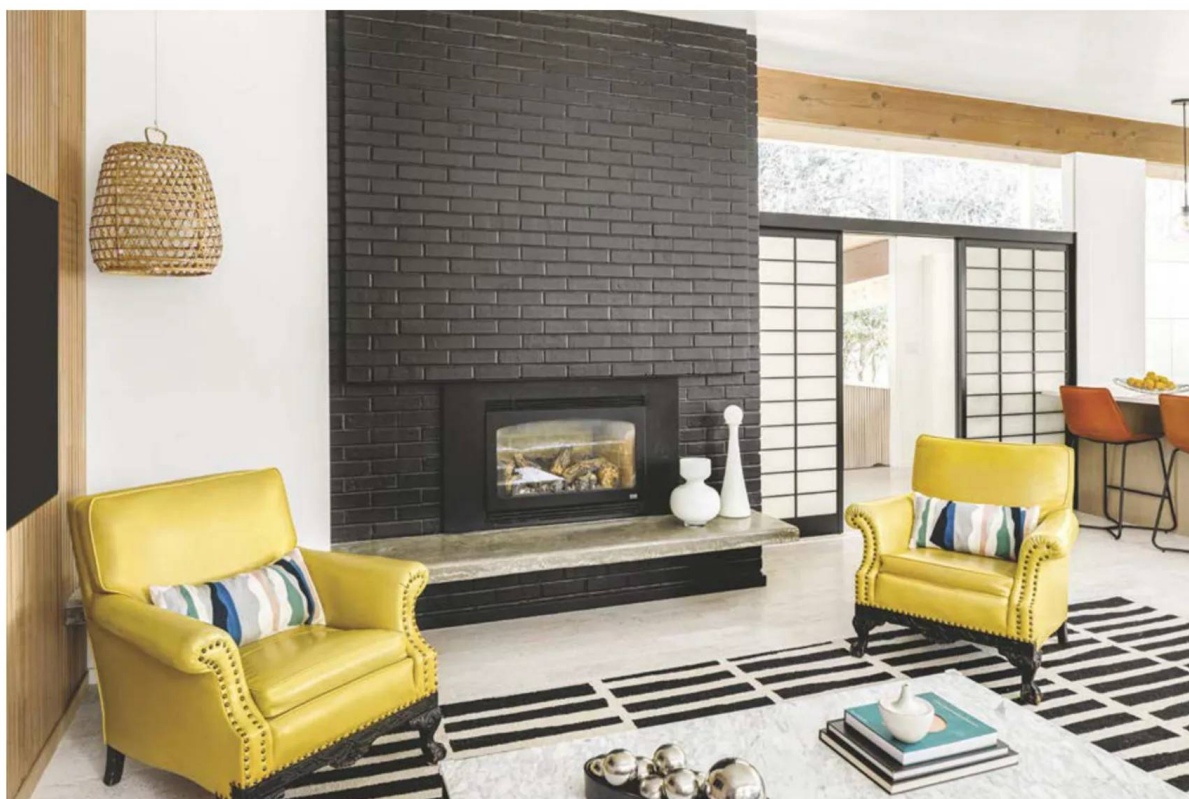
REVISIONS & RENOVATIONS

While the renovation did not involve any major structural changes, there were a few layout updates to accommodate functional needs. One of the goals of the homeowners was to create a new half bath, or powder room, on the main floor and thereby create more privacy for the primary suite. "As it was, the primary bathroom served double duty as a powder room, and you had to enter the primary suite through that bathroom," Sally says. This meant adding a wall to section off the new powder room and a total redesign of the primary bathroom. "We spent a lot of time optimizing every square inch to ensure that the clients got everything they wanted (private water closet, soaking tub, walk-in shower, double vanity and a walk-in closet) in a very small space," she says.



(ABOVE) HERE IN THE PLAYROOM, STYLE AND FUNCTION COME TOGETHER TO CREATE A FUN PLACE FOR THE HOMEOWNERS' GROWING FAMILY. THE RED TOY-STORAGE BIN WAS ALREADY PART OF THE HOMEOWNERS' COLLECTION AND SERVED AS THE LAUNCH POINT FOR COLOR. MODERNOUS WORKED WITH THEM TO CHANGE UP THE PAINT AND FLOORING TO GET THE PLAYFUL FEEL THEY WANTED—WITH A MID MOD TWIST.

(BELOW) THE FIREPLACE IN THE LIVING ROOM UNDERWENT A MODERN MAKEOVER DUE TO THE POOR STATE OF THE HEARTH AS WELL AS THE FINISH OF THE BRICK EXTERIOR. "I'M TYPICALLY NOT INCLINED TO PAINT BRICK, BUT IN THIS CASE, THE BRICK WASN'T THE MOST ATTRACTIVE COLOR/FINISH," SALLY SAYS. "THE CLIENT REALLY WANTED BLACK, AND WE AGREED THAT IT WAS THE RIGHT DECISION." THEY ALSO COMPLETELY GUTTED THE HEARTH AND REBUILT IT TO THE EXACT DIMENSIONS OF THE ORIGINAL, AS IT WAS A CHALLENGE TO REPLACE THE INSERT DUE TO THE ORIGINAL CONCRETE TILED CONSTRUCTION OF THE ORIGINAL.





(BELOW) ORIGINAL WOOD BEAMS AND CABINETRY BALANCE THE AIRY FEEL OF THE PALETTE AND NATURAL LIGHT. THE NEW WALL OF CABINETS IS THE PERFECT FUNCTIONAL ADDITION TO THE GROWING FAMILY'S MAIN GATHERING SPACE.

(ABOVE) CLERESTORY WINDOWS PROVIDE A PEEK OF THE EVERGREENS OUTSIDE. THE WALL OF CABINETS ADJACENT TO THE KITCHEN AND DINING AREA IS A NEW ADDITION THAT PROVIDES PLENTY OF STORAGE, WHICH THE ORIGINAL KITCHEN LAYOUT LACKED. THE SLEEK DESIGN WITH WHITE FINISH IS A CLEAN, MODERN UPDATE THAT BLENDS IN EFFORTLESSLY WITH THE ORIGINAL EXPOSED BEAMS AND WINDOWS.



"Once the function was determined, we worked to find finishes that echo what might have been used in the '60s. I always try to envision what the architect might have chosen if they had access to the materials we have access to today."

Another goal was to rework the kitchen layout. "It needed to be opened up a bit in order to take advantage of the great light and allow sight lines out to the yard and into the living room to ensure they could keep an eye on their kids," Sally says. They removed the wood slat-clad wall that originally separated the living room from the kitchen area, immediately getting the open and bright feel they were looking for, but sacrificing storage. "In order to make the kitchen feel reminiscent of the original space and add storage, we added an entire wall of push latch cabinetry from the staircase to the end of the dining room," she says. "This run included a paneled refrigerator to keep a functional kitchen triangle." To create cohesion, Modernous matched the cabinet color to the white walls so they would not stand out but blend seamlessly into the wall.

WOOD PLAYS A LARGE ROLE IN THE OVERALL DESIGN OF THE HOME IN THE EXPOSED BEAMS, SLAT WALLS AND, IN THE KITCHEN, THE CABINETS. MODERNOUS USED THE PALETTE TO CREATE HARMONY BETWEEN THE DIFFERENT FINISHES. "WE WORKED WITH THE CABINET MANUFACTURER TO COME UP WITH A STAIN THAT WAS VERY CLOSE TO THE GRAY WOOD TONE YOU SEE THROUGHOUT," SALLY SAYS. "HAVING SOME EXPANSES OF WHITE, LIKE THE FLOORING THROUGHOUT THE HOUSE, SPECIFICALLY BETWEEN THE VARIOUS WOOD TONES HELPS DETRACT FROM ANY DIFFERENCES IN TONE."

PRESERVING ELEMENTS OF THE ERA

To keep to the mid-mod feel of the home, Modernous worked with the homeowners to save many of the materials and design elements that were original to the home while making slight changes where needed. Some of the features they kept original are the wood-slat walls, beams and ceiling, two sets of Shoji screens (one that partitions the living room from the stairway and another that hides the entryway closet), windows (with a few replaced) and the block walls downstairs that Modernous had painted.





IN ORDER TO GET THE OPEN LOOK AND FEEL THE HOMEOWNERS WANTED, MODERNOUS REMOVED THE WALL THAT DIVIDED THE LIVING ROOM AND KITCHEN. THEY THEN BALANCED THE ABUNDANCE OF NATURAL LIGHT IN THE DESIGN WITH DARKER ELEMENTS. "THE ARCHITECT DID SUCH AN AMAZING JOB OF GETTING LIGHT INTO THE HOUSE THAT IT REALLY LET US USE SOME DARK ACCENTS AND KEEP THE WOOD-TONED CEILINGS THAT WOULD HAVE POSSIBLY FELT DARK WITHOUT THE EXPERT WORK IN PLACING THE WINDOWS," SHE SAYS.

Pops of color throughout the home help to soften the overall look and feel while drawing attention to and updating the original design. "The homeowner had said early on that she wanted a pale-pink front door, so that was top of mind as we developed the design palette," Sally says. "We also wanted to highlight the grayish wood tones that were original without adding more competing wood tones." They chose a modern take on a cork floor that was stained white with gray flecks to enhance the wood tones already present. "This gave us a light palette for some dramatic elements throughout the house," she says.



Palette Power

A LITTLE COLOR GOES A LONG WAY TO MAKE A BIG STATEMENT IN ANY SPACE IN YOUR HOME.

One potential pitfall of mid-mod design is the tendency toward a cold or sterile feel. If you're concerned about this in your own MCM home, color may be the remedy. Interior designer Sally Julien of Modernous shares her tips for picking a palette to enhance the look and feel of any space.

Look for opportunities. The first place to begin is to decide what rooms and areas of your home would be the best focal point for color, like a range hood, an office or powder room, or even a door. In this home, the Modernous team decided to capitalize on the children's playroom as an obvious choice for adding splashes of color, while the living room and powder room also contain extra pops of color.

Refine your palette. "Pick a color or two, but don't get too 'matchy matchy' with it," Sally advises. She also recommends choosing a complementary color or two and being very thoughtful about where to integrate them into the rest of your design.

Keep it simple. It can be tempting to go overboard with color, but this can make you lose sight of the overall vision for the home. Make sure you have a good sense of your style as you renovate, and update accordingly. "Resist the urge to splash color everywhere," Sally says. "Less is more when it comes to making an impact with color."

Accessorize. To add little punches of color throughout your home, Sally advises looking for subtle, easy ways to tie your design together through accent items and décor accessories. For example, throw pillows, lamps, rugs and wall art are great options.

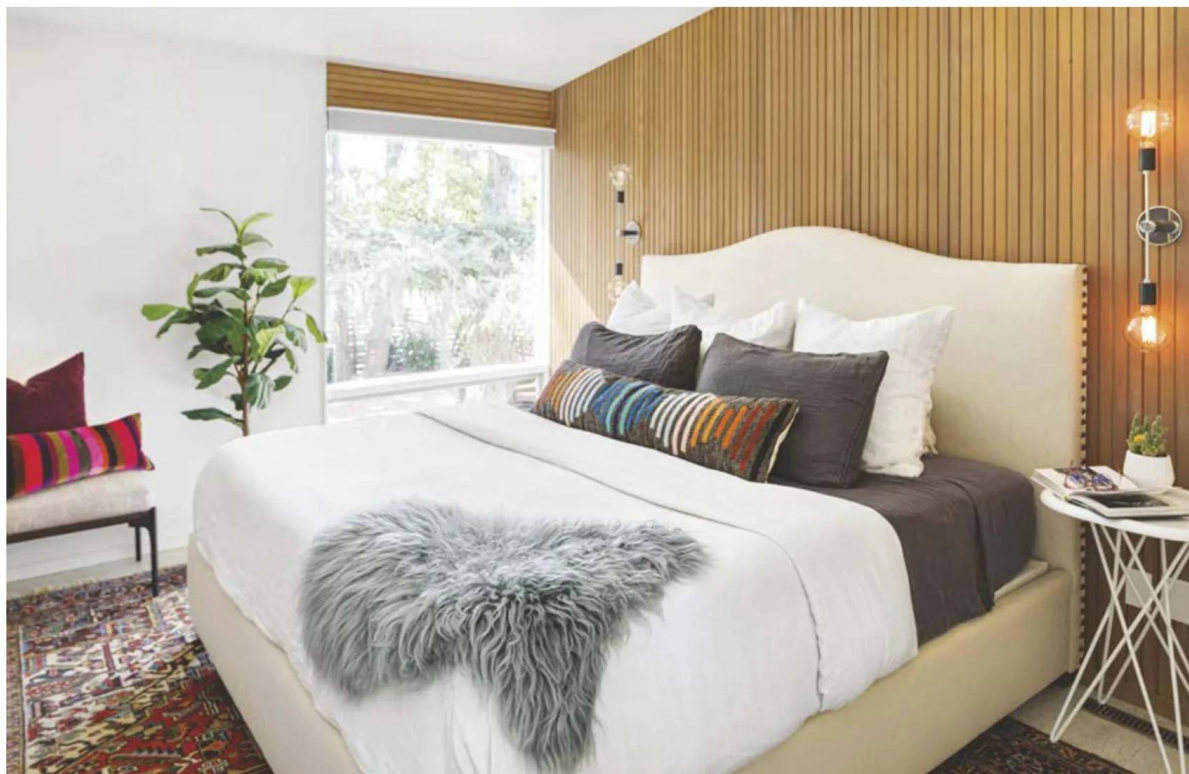


The bold design choices throughout the home pack a punch against the light and bright canvas. Modernous opted to paint the fireplace run black per the homeowners' request for black accents. "We also added dark and dramatic wallpaper to the new powder room," Sally says. Another original feature is the staircase railing; they kept it but painted it black so it reflected the other black accents throughout the rest of the home and brought it up to code by adding Plexiglass screening on the railings for safety.

The connection between interior and exterior spaces serves as an underlying design point, tying all the spaces together with clerestory and walls of windows that provide glimpses of the evergreen scenery outside as well as bring in an abundance of natural light. "There are views of beautiful huge trees on every side of the house, and from the deck and main floor the city sparkles just below," Sally says. "On this point, we just made sure not to mess with what was already there!" 🌿

(ABOVE) THE HOMEOWNERS TOOK THE LEAD IN CHOOSING THE LIGHTING FOR THIS HOME. "THE CLIENT HAD A SPECIFIC VISION AND WE WORKED TOGETHER TO REFINE THE METAL COLORS AND FINISHES," SALLY SAYS. "SHE WANTED TO GO MORE MODERN WITH A NOD TO MID CENTURY VS. A MID-CENTURY REPLICA OR VINTAGE LIGHTING THROUGHOUT."

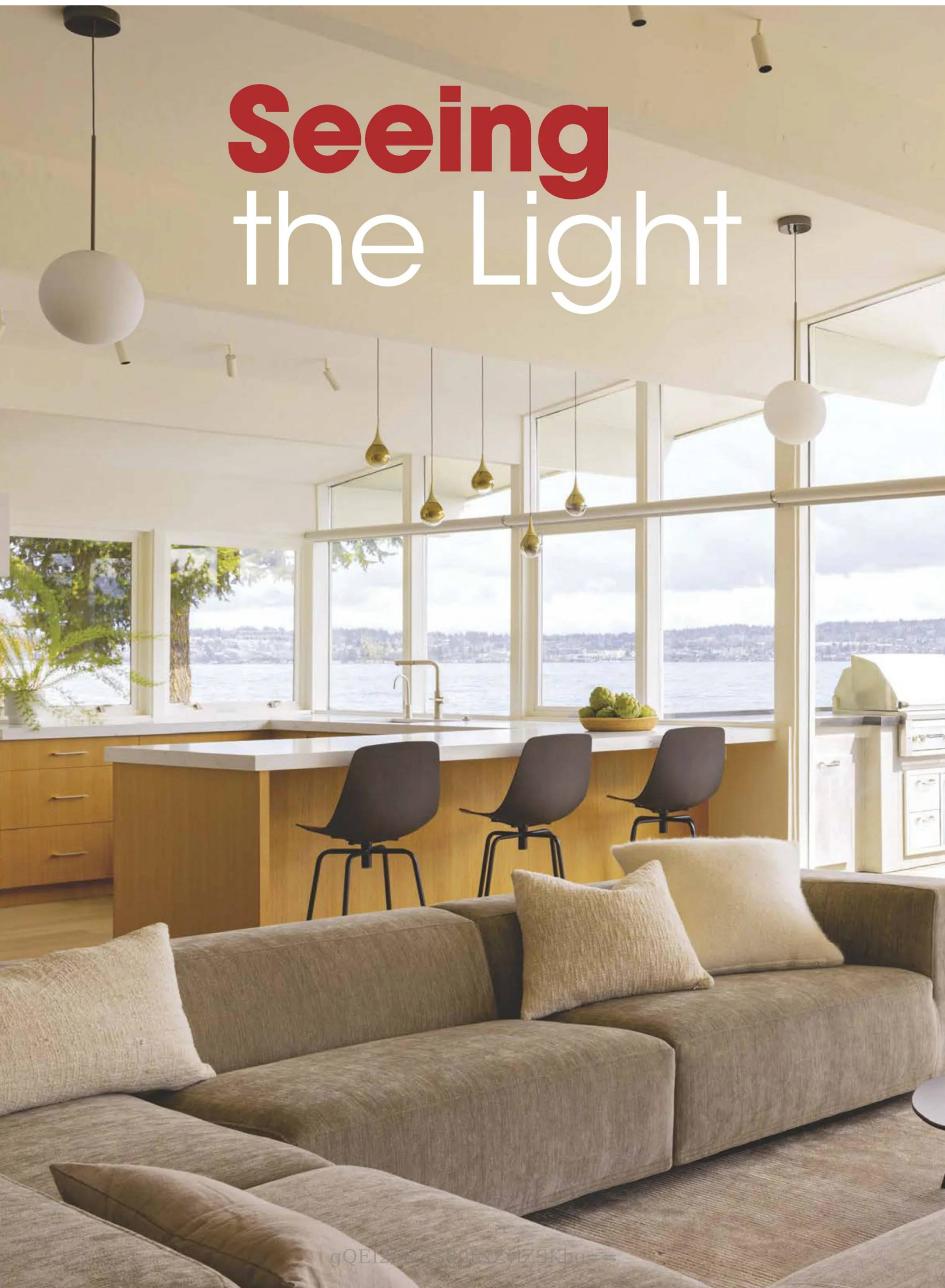
(OPPOSITE, BOTTOM RIGHT) THE PRIMARY BATH, IN DISREPAIR AND IN DESPERATE NEED OF UPDATING, RECEIVED A TOTAL MAKEOVER TO MEET THE NEEDS OF THE NEW HOMEOWNERS. "THEY HAD TO HAVE A TUB; THIS WAS A NON-NEGOTIABLE," SALLY SAYS. THEY WERE ABLE TO INSTALL A FULL-SIZE SOAKING TUB AS WELL AS A SHOWER, PARTITIONED BY GLASS. BEHIND THE GRAY-TILE WALL IS THE NEW POWDER ROOM. "WE MATCHED BATHROOM CABINETS TO THOSE IN THE KITCHEN AND KEPT THE PALETTE BRIGHT AND SIMPLE," SHE SAYS.



(TOP) THIS SLAT WALL IN THE PRIMARY BEDROOM IS ORIGINAL, AND THE CONTRACTOR USED PIECES OF THE TORN-DOWN WALL IN THE LIVING ROOM AND KITCHEN TO PATCH IT AS NEEDED. UPDATES TO THE SPACE INCLUDE LIGHTING AND FURNITURE.

(ABOVE, LEFT) THIS POWDER ROOM WAS CARVED OUT OF THE ORIGINAL PRIMARY BATHROOM, WHICH MODERNOUS DIVIDED INTO A POWDER ROOM AND PRIMARY BATHROOM. BOLD COLORS CATCH THE EYE AND ADD A BIT OF FUN TO THE OTHERWISE NEUTRAL PALETTE. "WE WANTED TO DO SOMETHING BOLD, SO WE TURNED TO WALLPAPER, ECHOING THE PINK ON THE FRONT DOOR WITHOUT HAVING PINK BE THE PRIMARY COLOR," SHE SAYS.

Seeing the Light



gQE127VgSP0ExZyI2SKhg==

COMPLETELY HIDDEN FROM THE STREET, THIS LAKESIDE HOME WAS RENOVATED TO TAKE IN THE VIEW.

By SARAH JANE STONE

Photography by RAFAEL SOLDI



AFTER A DEEPLY THOUGHTFUL RENOVATION, THE HOUSE GLOWS FROM WITHIN AND HAS A STRONG CONNECTION TO ITS MAJESTIC SETTING.



Any real estate expert will tell you that location matters. So, when a property becomes available in the exact location you've been watching, you'd likely make an offer to secure it. This is exactly how the story of Globe House begins. Seattle's Lake Washington is a dreamy destination, with properties rarely making their way to market. Therefore, in 2020 when this home became available, it was apparent to the current owners they'd stumbled upon a truly special find. The lot itself was enticing as it has no street presence at all—the only evidence is the front of the garage. They hadn't been specifically seeking a Mid Century Modern home, but they were looking for a home on the lake, and this sprawling 1957 home was rife with opportunity.

(BELOW, LEFT) CLASSIC MID-CENTURY DETAILS LIKE TERRAZZO FLOORING HONOR THE HOME'S RETRO ROOTS. WHERE THE FIREPLACE ONCE STOOD NOW SITS A BENCH, OPENING THE SPACE AND LETTING LIGHT FLOW FREELY.

(BELOW, RIGHT) ORIGINAL PLANTERS WERE REFRESHED, BUT THE ENTRY'S LARGEST CHANGE WAS THE ADDITION OF A WINDOW THAT FOLLOWS THE INTERIOR STAIRS. (BOTTOM, LEFT) THE EXTERIOR OF THE HOME WAS REFRESHED BUT LARGELY UNCHANGED.



Enter Paul Moon of Paul Moon Design. Paul is familiar with mid-century architecture and with this particular area. In fact, the homeowners sought Paul because of his nearby work on a significant 1951 property. His challenge here was two-fold: refresh a mottled mid-century home befitting a modern family and do it without changing the character.

PEELING BACK THE LAYERS

Honoring the original intent for the architecture became Paul's mission. The original drawings helped Paul and his team understand the structure and some of the intent behind its details—even though the plans weren't terribly accurate.



UPGRADED WINDOWS IN A LAYOUT NEARLY IDENTICAL TO THE ORIGINAL FRAMING OPEN THE MAIN LIVING AREA UP TO THE BEST PART OF LAKESIDE LIVING: THE VIEW.

"Roland Terry was a pretty prominent Seattle architect around that time and responsible for a lot of Mid Century Modern architecture around town," Paul explains. "This looks to me to be one of the first projects that maybe some of his architects under him broke off and did their own. The drawings were confusing and disorganized. It looked like a junior architect—and this may be totally inaccurate—took every detail they'd learned from Roland Terry and put them all into this one drawing set."

With the original, albeit imperfect, drawing set in hand, Paul began undoing a patchwork of uncharacteristic renovations and unhelpful details. Excessive columns, crown molding and a kitchen that managed to be both too contemporary and dated were removed.

As the layers of previous renovations were peeled away, Paul and his team discovered the timber beams supporting the roof were inconsistent. When the chimney was removed, it became apparent that what should have been 6-foot by 16-foot beams were all different widths and depths.

The solution? The cabinet maker they hired for the kitchen created a floating banquette in the fireplace's footprint, then matched the grain of the original ceiling beams and furred out the joints to look continuous. However, they left the twists and subtle bends that had warped some of the beams over time as a nod not only to the home's age but to the Northeast's moist climate.



(TOP) RATHER THAN COMPETE WITH THE HOME'S ANGULAR CEILINGS AND VAST EXPANSE OF WINDOWS, PAUL OPTED FOR WHITE UPPER CABINETS THAT ALL BUT DISAPPEAR.

(ABOVE) THE ADDITION OF JUST ONE WINDOW, LOCATED TO THE RIGHT OF THE STOVE, INTRODUCES AN INCREDIBLE AMOUNT OF NATURAL LIGHT TO THE KITCHEN.

CAPTURING THE VIEWS

With a location and view as pristine as Lake Washington, it made sense for the home's architecture to take complete advantage of its setting. Unfortunately, a disjointed floor plan, obstructive fireplace (see sidebar, page 64, for more) and a deck with too many posts left much to be desired in terms of a connection with the outdoors. By shifting the primary bedroom and kitchen as well as removing the fireplace, Paul created a living space wrapped in views of the lake.

Another space that received a refresh outlook is the home's main entry. Given the home's hillside setting, the garage is located above what is traditionally the front door, making a landing zone necessary at the top of the stairs. By removing the chimney, Paul was able to add three windows to the space. The sweeping view is now an incredible welcome and is anchored by highly functional custom-made cabinetry.

A key project was the deck. Numerous columns had been added over the years to delay its renovation, but they wound up blocking views from the lower levels. It was rotting, unsafe for children, and in need of a more secure design to better withstand the elements of life on the lake. The lengthy process did more than create a serene outdoor escape; it opened up the view from numerous rooms and now beckons guests to step outside.

WHERE ONCE STOOD AN IMPOSING
FIREPLACE NOW HOSTS A CUSTOM
STORAGE SOLUTION AND VIEWPOINT.
HORIZONTAL SHELVES PLAY OFF THE
REPEATING VERTICAL SLAT DETAIL WHILE
LEAVING JUST ENOUGH SPACE TO
APPRECIATE VIEWS OF LAKE WASHINGTON
FROM THE STAIRS.





BIG RISK, BIG REWARD

Difficult to do and expensive, Paul took a leap with white-oak screens—and it paid off. Beginning in the entryway off the garage as the stair railing, white-oak slats reinforced with steel create a warm yet sleek stairwell. They even replace what was once a solid wall, thereby opening the stairs to the entryway and hall on the home's main floor.

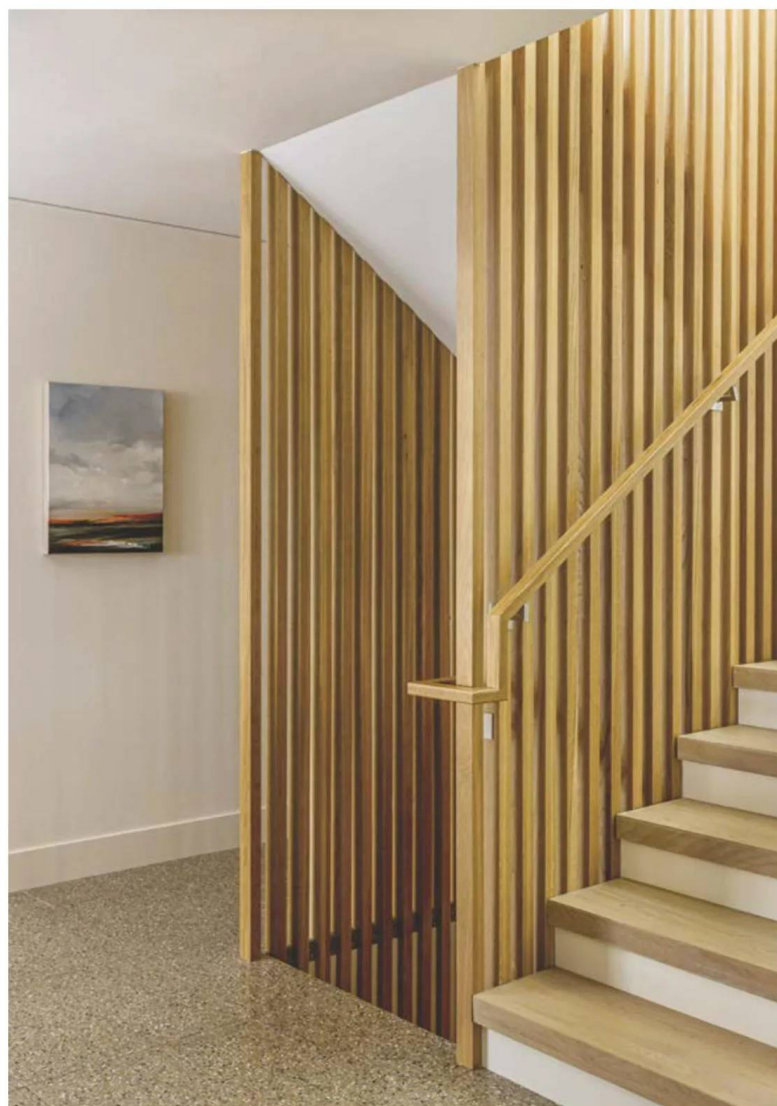
"We took this theme and carried it throughout the house. We obscured the entry to the primary bedroom because their door is right off the foyer and dining room," Paul says. The detail continues downstairs to a sliding door for the kids' playroom. "That was a big risk, because I don't necessarily know that the owners would've ever appreciated these elements until they saw it at the end," he explains.

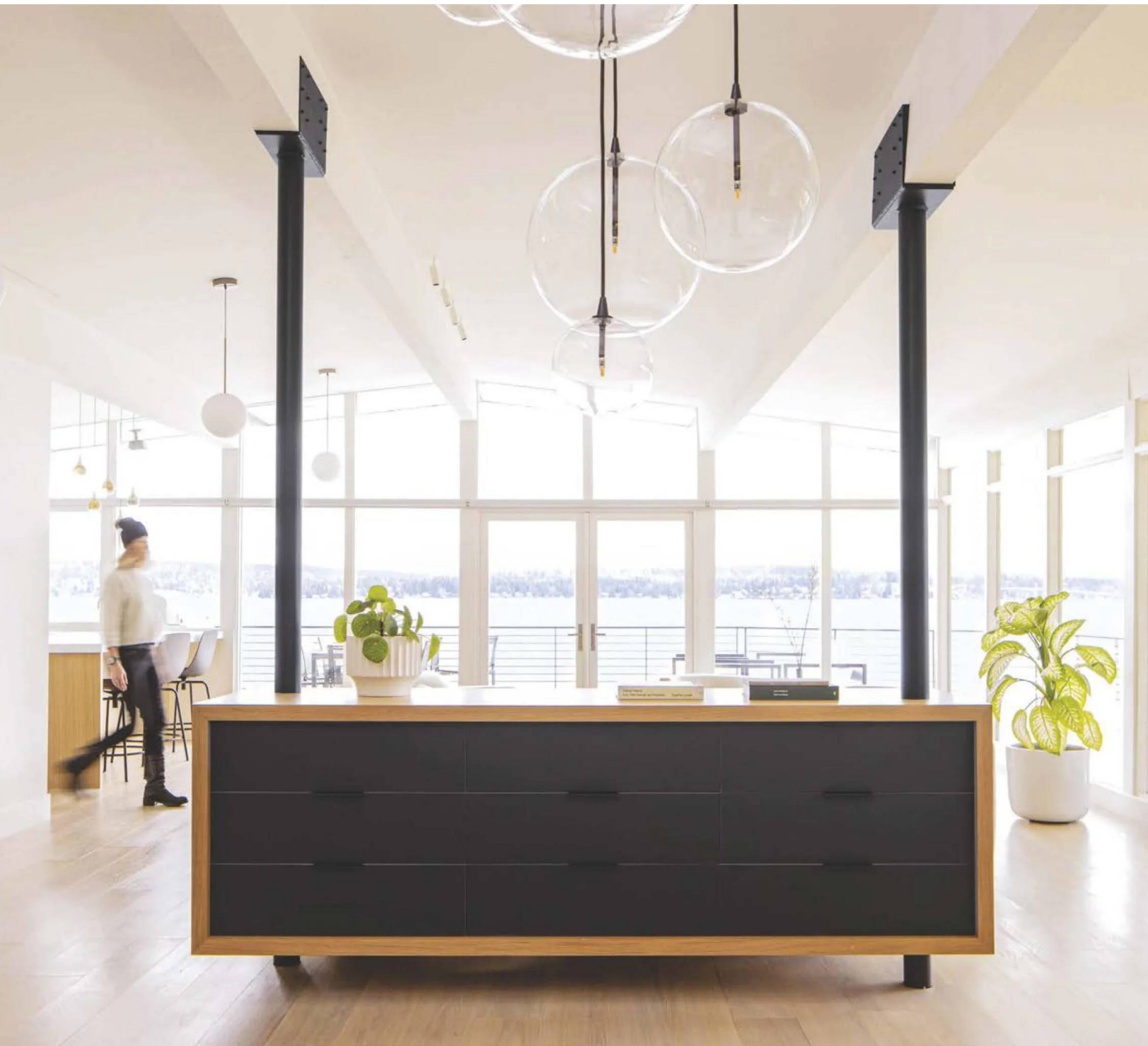
LIGHTING DONE RIGHT

Made unnecessarily dark by dividing walls now long gone, a key goal of the renovation was creating brightness. This was made possible with the addition of a few carefully placed new windows and an intentional lighting plan.

(TOP, RIGHT) BY REPLACING SOLID WALLS AROUND THE STAIRWELL WITH VERTICAL WHITE-OAK SLATS, PAUL WAS ABLE TO BRING NATURAL LIGHT TO THE OTHERWISE DIM SPACE. THE DETAIL'S CONTINUOUS USE BRINGS PERSONALITY TO THE HOME AS WELL.

(RIGHT) EXTENDING FROM THE HOME'S EXTERIOR WALKWAY THROUGH THE MAIN FLOOR OF THE HOME, GLOBE LIGHT FIXTURES ARE A STAPLE OF THE APTLY NAMED GLOBE HOUSE.





Save the Fireplace or the Scenery?

SEE HOW PAUL MOON RESOLVED A DESIGN DILEMMA.

Fireplaces are often selling points, however poor placement and obstructed views turned an original fireplace into an unwelcome design element in this home.

Stretching through the center of the home and spanning two stories, the dense and dark 8-foot-wide stone fireplace had two factors working against its survival: it awkwardly divided the home's floor plan and blocked views of the lake.

Removing the original feature was an easy choice for Paul Moon, who saw it as an opportunity to give his clients a greater connection to their waterfront location and ensure the home truly functioned for their needs.

In its place sits a custom furniture piece that speaks to the home's modern lines. The three-inch in diameter structural steel columns that were previously encased by the fireplace now suspend an impressive floating dining room credenza. Those steel beams may tie into the ceiling joists for structural support, but their presence is now a nod to what once was while framing the reason they remain: the view.

Without the two-story fireplace, the home has a clear line of sight to the lake. Even the experience of walking down the stairs, with their white-oak slatted screen design, is improved by a breathtaking view out to the trees and water.

Obstructive nature and contemporary alternatives aside, sometimes a fireplace just isn't a lifestyle fit. The homeowners updated to electric heating and replaced the gas stove with induction one. Now, the Globe House provides its owners with nearly uninterrupted views and peace of mind.



WHITE-OAK SLATS DISGUISE THE PRIMARY BEDROOM ENTRANCE. SITUATED NEAR BOTH THE DINING ROOM AND THE HOME'S FRONT DOOR, THIS ADDED DETAIL PROVIDES A GREATER SENSE OF PRIVACY AND STREAMLINES THE VIEW.



(ABOVE) THE PRIMARY BATHROOM NEEDED TO FIT INTO AN EXISTING FOOTPRINT, WHICH WAS NO SMALL FEAT. PAUL USED TIMELESS MATERIALS WITH AMPLE TEXTURE AS WELL AS MORE GLOBE LIGHTS TO BRING PERSONALITY AND CONSISTENCY TO THE SPACE.

(BELOW) LOCATED AT THE TOP OF THE STAIRS, THIS SPACE IS PART MUDROOM AND PART ENTRY. WHEN THE HOMEOWNERS COME IN FROM THE GARAGE, THEY ARE NOW GREETED WITH A THOUGHTFULLY DESIGNED LANDING SPACE.

"I often find that lighting is overdone," Paul says. Rather than filling the house with can lights or excessive chandeliers, he crafted a continuous narrative with the ever classic, ever humble, globe light.

"If you look at the exterior, the globes carry from the outside through the inside in line all the way out to the water."

HONORING ORIGINAL INTENT

"There's always a balance of what's special or sentimental and needs to be kept in the house — but these houses were about pushing the edge and diverging from traditions," Paul says. "To be honest, so many of the details in these houses were tracked house details and did not stand the test of time. I just see this as pushing the edge again. Now you have 60, 70 years of experience, thanks to new materials and new opportunities. I think that's very much in the spirit." 🌿

SEE RESOURCES, PAGE 112





(TOP) A WELL-PLACED MIRROR REFLECTS BOTH NATURAL LIGHT AND LAKE VIEWS INTO THE PRIMARY BEDROOM.

(ABOVE, RIGHT) THE GUEST BEDROOM OFFERS A SERENE ESCAPE FOR VISITORS.

Building a Haven

HOW THIS MID-CENTURY CALIFORNIA
PROPERTY BECAME A BEAUTIFUL AND
NECESSARY HOME AWAY FROM HOME.

By **HEATHER CHRISTENSEN**

Photography by **BRET GUM** | Styled by **JICKIE TORRES**



Many people would jump at the chance to stay at a luxury mid-mod rental or Airbnb. Not only would it be a unique experience, but the spacious layout adds to the relaxed, vacation feel of staying in a rental home. This is exactly the kind of experience that Lori and Justin Pecikonis provided their clients with during the height of the pandemic.

BUILDING THE BEGINNING

Lori and Justin are the owners of JRP Design & Remodel, based in Westlake Village, California. This husband-and-wife duo has been crafting and creating homes together for the past 20 years. Their passion for building started early. "Justin developed a profound passion for the construction process at a young age," says Lori, "which initially took root through his fascination with Legos." Justin adds, "I was consistently enthralled by the act of building and took great pleasure in crafting objects using my hands."

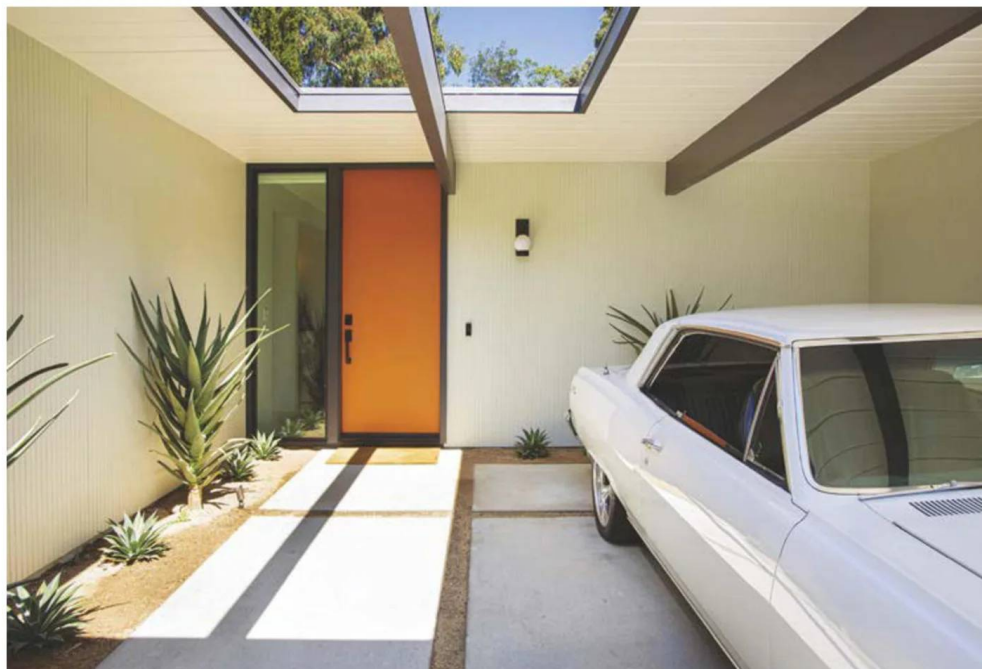
LORI AND JUSTIN WERE INTENTIONAL WITH THE COLOR DESIGN BOTH IN THE INTERIOR AND EXTERIOR. "MID CENTURY MODERN ARCHITECTURE EMPHASIZES A CONNECTION TO NATURE AND THE OUTDOORS. GREEN AND ORANGE ARE COLORS COMMONLY FOUND IN NATURE, WITH GREEN REPRESENTING FOLIAGE AND ORANGE RESEMBLING WARM HUES IN SUNSETS," LORI SAYS.



"The exterior of the residence was meticulously restored to its authentic beauty, highlighting the iconic cantilevered roof, a strikingly colored door, clerestory windows and the clean, distinctive lines that define Eichler homes."

Lori, too, took an interest in building at a young age. She grew up doing on-site jobs with her father, who was a commercial general contractor, and she also worked for a decade in the world of real estate and custom home development.

It is no surprise that, when Justin and Lori met, they decided to build a life together. As a team, they continued building the foundation for other's lives as well.





A SHELTER AMID THE SHUTDOWNS

During the pandemic, Lori and Justin began to realize that their customers could not stay in their homes during renovations, as would have previously been the case. "During the Covid lockdown, we learned that our clients could not work in their homes during a remodel due to the noise pollution," Lori says. "We realized that we needed to create a luxury, furnished rental for our clients to live in while we remodeled their homes."

Although Lori and Justin do not specialize in Mid Century Modern homes, they knew that the Eichler mid-mod style would be the perfect home away from home their clients needed in this challenging time. "We knew the Eichler was a treasure and would be something unique for our clients," Lori explains.

THE RIGHT REMODEL

Lori and Justin found a house in Thousand Oaks, California, that suited their purpose. The famed neighborhood boasts more than a hundred Eichler homes. When the owners of JRP Design & Remodel purchased the house it was in poor condition.



Fighting the Foundation

HOW JRP DESIGN & REMODEL FOUND CREATIVE WAYS TO REPAIR STRUCTURAL ISSUES IN THE HOME.

Old houses can have great character, with their historic accents and cozy layouts, but they can also have crooked bones, which poses a problem to any home-remodeling crew. Lori Pecikonis knows this issue well. She is co-owner of JRP Design & Remodel along with her husband, Justin, and their Eichler property in Thousand Oaks, California, had this exact problem. "Dealing with a floor that was two inches off-level posed a significant challenge as our initial priority was to establish a level baseline," Lori explains. Here are some ways the team worked through the building's structural challenges.

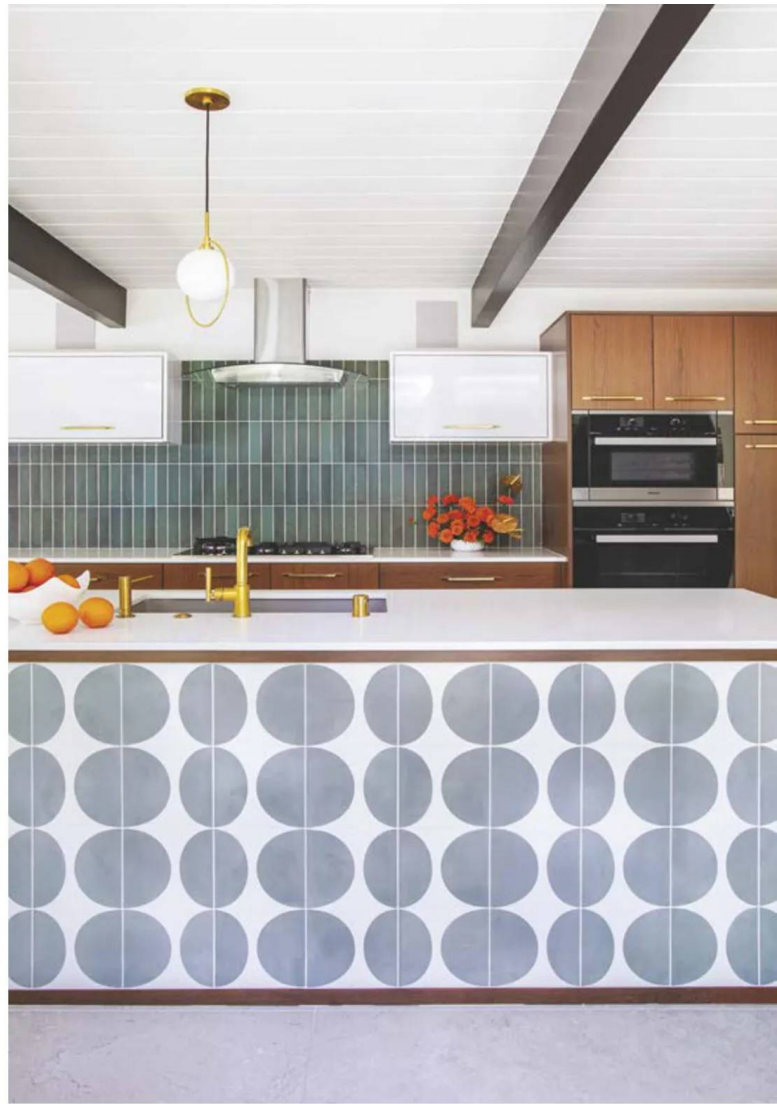
1. Assess the Situation. Lori, Justin and their crew started by conducting a laser survey to assess the condition of the house. "This survey revealed that there was a two-inch slope from one side of the house to the other," Lori says. "This slope was likely due to the settling of the house's foundation, which can happen over time, especially with clay-rich soil."

2. Reframe and Reconstruct. The need for repairs allowed the team to restructure the house in a way that would align the doors and windows. "Given the significant settling, dry rot and termite damage, it was necessary to replace a substantial portion of the structure," Lori explains. "This step ensured the structural integrity and also allowed us to ensure all our window and door heights matched, again using the laser-control line through the home during the reconstruction."

3. Level Line of Sight. Another fix that was made to fight against the house's two-inch slope was to adjust the concrete slab. "To level the existing concrete slab, we added a lightweight concrete subfloor," Lori says. "This subfloor likely helped create a more even and stable surface for the subsequent construction and flooring installation."

Once all this was done, it allowed the old house to sit tall once more. "In doing what we did, we were able to create an even sight line through the home and all the glass," Lori says.

(OPPOSITE) THE FLOOR-TO-CEILING WINDOWS OFFER AN INVITING VIEW OF THE MID-CENTURY ATRIUM WITH A PEEK INTO THE KITCHEN BEYOND. "EVERYONE KNOWS THAT THE HEART OF A TRADITIONAL HOME IS THE KITCHEN, BUT IN AN EICHLER, THE HEART OF THE HOME IS THE ATRIUM, AND WE'RE PROUD TO HAVE CONNECTED THE TWO," LORI SAYS.



"TRADITIONALLY, I HAVE ALWAYS HELD A SPECIAL AFFECTION FOR THE KITCHEN, AS IT IS OFTEN CONSIDERED THE HEART OF A HOME," LORI SAYS. "WE RELOCATED THE KITCHEN AND EXPANDED IT FROM A NARROW GALLEY INTO A SPACIOUS AREA WITH A CENTRAL ISLAND OVERLOOKING THE ATRIUM, WHICH HAS SEAMLESSLY BLENDED THESE SPACES TOGETHER. THIS TRANSFORMATION NOT ONLY BRINGS THE BEAUTY OF THE OUTDOORS INDOORS, BUT ALSO ENHANCES OUR ENTERTAINMENT OPPORTUNITIES."





"Originally built in 1964, this mid-century gem had fallen into despair," Lori says. "The journey of re-viving it began in 2021, when we purchased it with the aspiration of returning it to its former status as a California icon. This was our (and our team's) first mid-century remodel, which presented its own unique set of challenges."

Many of the issues in restoring this home were structural. "We started with needing to replace three-quarters of the framing due to significant structural termite damage," Lori says. "We upgraded the post-and-beam structure with seismic hold-downs and concealed fasteners to meet the current codes. The exterior of the residence was meticulously restored to its authentic beauty, highlighting the iconic cantilevered roof, a strikingly colored door, clerestory windows and the clean, distinctive lines that define Eichler homes."

After the structural work was done, the JRP Design & Remodel team was able to bring it back its former glory while also adding some essential modern comforts, including new all-aluminum, dual-glazed windows and doors for better insulation and a new application of spray-foam insulation, enhancing its thermal performance of the flat roof.





THE CUSTOM-BUILT, RUST-COLORED SOFA IS THE LIVING ROOM'S SHOWSTOPPER. THE COFFEE TABLE IS FROM WEST ELM. LORI OPTED FOR FURNITURE AND ACCENTS THAT WERE CASUAL, EASY CARE AND WOULD STAND UP TO WEAR AND TEAR. THE BRASS LIGHT—AN ETSY FIND—ADDS THE PERFECT SPECIAL TOUCH.

They also modernized the outdated heating system of the 1964 home. "We opted to abandon the use of radiant floor heating and, instead, installed state-of-the-art, high-efficiency ductless heating and air units in every room," Lori says. "Each room is now equipped with its individual thermostat and control." It also allowed them to eliminate the need for soffits and ductwork. This enables them to properly display the iconic MCM tongue-and-groove ceiling.

The team also redesigned the layout to better meet their client's needs and they did so without altering the home's original footprint. "The living space

next to the family and dining room was repurposed to relocate the washer and dryer and allowed space to add a third bathroom," Lori mentions. "The primary bathroom was also reconfigured for a larger layout."

RESTFUL REMOTE WORK

After the Eichler home was remodeled and modernized, it was ready for JRP Design & Remodel's clients to enjoy. It allowed homeowners and families to feel like they were in a vacation home during the isolation of the pandemic and created a great open space for those who needed to work from home.

(RIGHT) LORI PROVES IT DOESN'T TAKE MUCH TO ADD IN FUNCTIONALITY IN A STYLISH, MID-MOD WAY. THIS HOME-OFFICE FIT NICELY INTO THE WALKWAY FROM THE SLIDING GLASS DOOR TO THE DINING ROOM. THE SWIVEL CHAIR MATCHES THE ONE ON THE OTHER END OF THE ROOM, WHICH HELPS TIE THE TWO SPACES TOGETHER.

(BELOW) LORI CHOSE TO REFACE THE FIREPLACE IN A FRANK LLOYD WRIGHT-INSPIRED ARTO TILE, WHICH ADDS A LOVELY, RICH CENTRAL FEATURE TO THE ROOM.





THE ORIGINAL GRASSCLOTH SCREENS FOR THE HOME'S HALL CLOSETS WERE LONG GONE. THE COUPLE OPTED FOR WARM-TONED SLIDING DOORS, WHICH BRINGS WOOD INTO THIS MOSTLY WHITE SPACE.

"Clients have been impressed by the impeccable attention to detail evident in every selection," Lori says. "One of their favorite features inside the home is the interior atrium, where people enjoy drinking a cup of coffee as the sun rises or enjoy a cocktail and conversation. They love the size of the island in the kitchen and how many people can participate in the food prep or entertainment around the island."

This MCM dream rental gave Lori and Justin's clients exactly what they needed while their homes were being renovated. And given its rough shape, it's safe to say that the couple might have been the one of the few that were capable and willing to put in the work and investment to restore it properly. It also allowed Lori and Justin to continue to live out their mission: "To oversee remarkable and enjoyable transformations of not just homes, but lives." 🌿

SEE RESOURCES, PAGE 112





(TOP) AS A RENTAL, LORI WANTED TO CREATE FAMILY FRIENDLY SPACES. THIS ROOM FEATURES TWIN BEDS AND A RUGGABLE RUG, PERFECT FOR KIDS. (ABOVE) LORI'S OBJECTIVE FOR THE INTERIOR WAS TO MAKE IT FEEL SERENE AND ORGANIC. THE TILE IN THE PRIMARY BATH IS A FUN EXPRESSION OF THE COLOR PALETTE FROM THE REST OF THE HOUSE.

Retail Revival

By Lauren Hofer

LOOK NO FURTHER FOR THE MID-CENTURY
FURNITURE OF YOUR DREAMS WITH THESE
THREE SOURCING AND RESTORATION EXPERTS.



Mid Century MOBILER



WHEN JULIAN GOLDKLANG STARTED sourcing Mid Century Modern furniture pieces from Europe more than 10 years ago, he was just learning the ropes. "I went over to Europe and was fortunate to meet some vintage dealers who helped me establish a network," he says. In the years since, he and his wife and business partner, Desiree Myers, have developed a thriving business.

"We've both always had a passion for all things vintage," Julian says. For him, it started with restoring cars from the 1950s; for Desiree, it was vintage clothing. "The business really took off when we met because our shared love of the era helped it thrive," he says.

Today, their vintage expertise has grown and their business specializes in Danish Modern style. "There's just a lot of amazing furniture there," Julian says. "We've dabbled in pieces from other countries, but we are experts in Scandinavian pieces." With a 7,500-square-foot showroom in Berkeley, California, and a constantly evolving collection, there's always something new and exciting to see. "We go on regular buying trips to Scandinavia and our pieces are stored in a warehouse there until there's enough to fill a shipping container," Julian says. Once the container has made its way to the U.S., the furniture is displayed in the showroom, listed online and sold. After the piece is sold, they begin the restoration process with the purchasers' preferences as the goal. "They can choose whatever upholstery and finishes they want, but hope is always to restore it with the designer's original intent in mind," Julian says.

One of Julian and Desiree's favorite discoveries was a rocking chair designed by Leon Meyer, the same architect who built the Bay Area round home that they are currently restoring. "We randomly found the chair at an antiques store in San Francisco—an amazing find considering there were very few made."

Their established presence and solid reputation has made them a top source for quality furniture on the West Coast. "Social media really helped build our presence," Julian says. "People will swing by when they're in the area because they've seen us on TikTok or Instagram. That's been a driving force since the beginning." Julian hopes their social-media presence and their business inspires more people to shop vintage. As he explains, "The build on vintage pieces is better, the materials are rare and extremely durable, and you can restore them over and over again."



Location: Berkeley, California
Specialty: Danish Modern furniture
Website: midcenturymobler.com
Instagram: @midcenturymobler



KELLY LOCKER WAS JUST A KID when he first fell in love with mid-century design. "I had an aunt and uncle who bought and furnished their home with modern furniture. It was fascinating to me when I was a kid," he recalls. Kelly carried those ideas with him through college and started working in design, eventually ending up as store designer for Barnes and Noble. "Then I had the opportunity to move to New York and keep doing that job or to take severance," he says, "so I took severance and used the money to open my own shop in Mid Century Modern furniture and decorative arts."

Modern REDUX





That was back in the 1990s, and in the years since he closed that shop, went back into store design, left that career again, and most recently started Modern Redux with his friend and business partner Douglas Smith. "In the meantime, the Internet had become a thing and we really put our energy there," Kelly says. "So we sell a lot online... mostly the small pieces, as people often want to see furniture in person."

On top of his many years of experience in sourcing and selling mid-century furniture and his keen eye for design, in recent years Kelly has developed a niche specialty. "Most of our energy right now is in European pottery. We sort of got off on this tangent a while back and I haven't stopped," he says. It all started with a German vase he purchased a few years back and has continued to expand.

"After World War II and into the mid-'70s there was a huge explosion of pottery work being done in Europe," Kelly says. "The variety of the work was incredible." It also wasn't really being imported to the United States. "Most Americans aren't familiar with the broad array of pieces," he says. Today, Kelly sources the stunning pottery directly from Europe, choosing



what he wants shipped to the U.S. from friends and partners who are local buyers.

In addition to selling one-of-a-kind pottery and furniture, Modern Redux also does restoration work. "I try to sell furniture in original condition, but sometimes that's not really possible," Kelly says. His passion for good design and more specifically the

mid-century era is a driving motivator behind the work he loves. "We try to do our best to find pieces that are worth saving and reintroduce them to a contemporary audience," he says.

Location: Austin, Texas
Specialty: European Pottery
Website: modernredux.com
Instagram: @modernredux

Modern Hill



CHICAGO-BASED MODERN HILL MID CENTURY FURNITURE was formed in 2016 by husband and wife team Barry and Hillary Louks. "The 'Hill' in the business name comes sort of from Hillary," says their business partner Mike Solan. When the pair joined forces with Mike in 2020, their sourcing and restoration business really took off. "I met Barry and Hillary as they were shoppers at some of my estate sales," Mike says. "In 2020, when Covid started, I was no longer able to conduct estate liquidations in the same way for the foreseeable future. Barry and I started talking about working together to grow Modern Hill." The growth was exponential. "We outgrew our facility and had to move every year!" Mike says.

While the vast breadth of mid-century pieces on the market can make having a specific expertise difficult, Modern Hill—with over 7,000 pieces in stock—certainly knows what they're doing. "I like to think that I'm an expert in all things Mid Century Modern," Mike says, "but the truth is we are always learning. There are so many designers and so many categories from furniture to lighting and art." In his opinion, their true expertise lies in the restoration process.

Once a piece is sold, either online or in person, the Modern Hill experts tackle the restoration and refinishing while preserving the original character. "We have now restored over 10,000 vintage pieces and there isn't anything we can't fix," Mike says.



A particular favorite piece that passed through their hands was a Hans Wegner table and chairs, formerly owned by an American colonel who lived in Denmark with his family in the 1950s, to help rebuild the Danish air force. It stayed in the family moving

all around the U.S. until Modern Hill acquired it. Both the past and future matters to the Modern Hill team. They're passionate about both the history of each piece and the opportunity to give each one a new life. "After these pieces are restored, they end up in some incredible projects, from movie sets to Manhattan penthouses," he says.

Located in a suburb of Chicago, Modern Hill is ideally located to both source and sell amazing pieces that have stood the test of time. "A lot of today's popular designs are just reiterations of vintage pieces from an era where design and quality were thought of first," Mike says. ✿



Location: McCook, Illinois
Specialty: Restoration
Website: midcenturywarehouse.com
Instagram: @modern_hill_

The **EMOTION** of **HOME**

|| A look at warm modernism and how to
design a modernist interior with soul. ||

By Jackie Torres



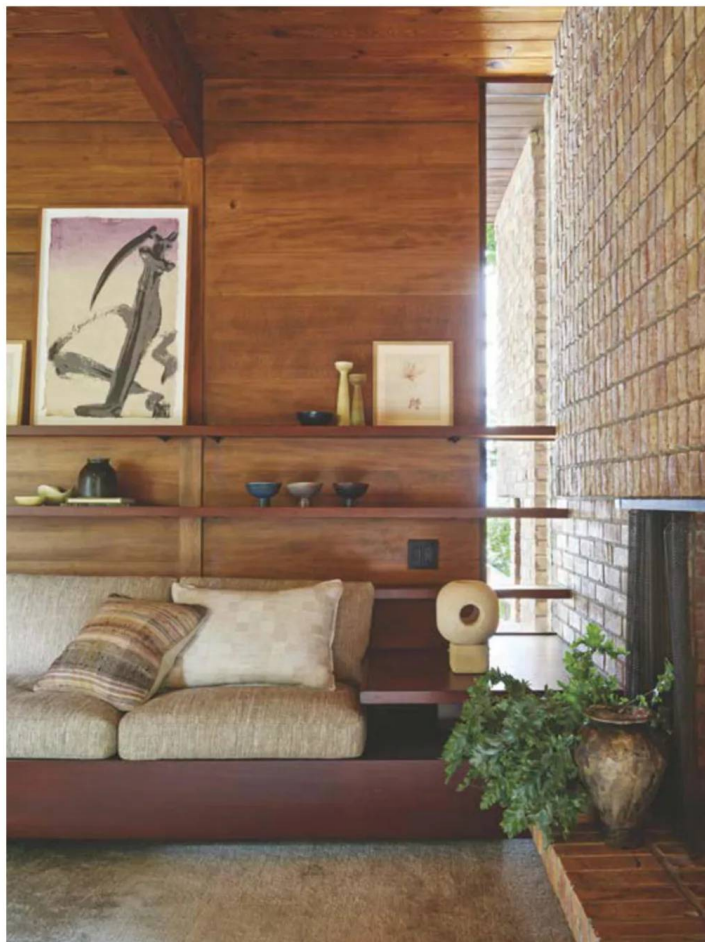
WHEN ARCHITECT CELESTE ROBBINS OPENED UP her home for a neighborhood tour, she was struck by a theme in the compliments she overheard. “They were transfixed by the wall of windows, stretching end to end across the rear façade, that showcased the sloping ravine in all its seasonal glory and brought the intoxicating beauty of a Midwest spring landscape into focus,” she recounts. “To my delight, there was a kind of a buzz, a sense of enchantment and surprise. The visitors, making their way through the house’s open plan, expressed the same reactions again and again: ‘This home is so warm!’ and ‘I didn’t think that I was modern, but I could live here!’ That’s when I understood that I had captured something special, and that this vision of warm modernism—my own definition of modernism—would be my signature.”

In her new book, *Meaningful Modern Home: Soulful Architecture and Interiors*, Robbins culls a tour of nine homes—including a couple of her own—that exemplify this approach to design, which prioritizes softness and livability while staying true to historical modernism with elements like open floor plans, a connection to the landscape and what Robbins calls “a clean aesthetic that emphasizes function and serenity over drama.”

Trained at Cornell University and a devotee of the work of Le Corbusier, Frank Lloyd Wright and Rudolph Schindler, Robbins cultivated a personal style that homes in on the artful and emotional side of design. Her process follows these philosophies:

Warmth comes through proportion, balance and light

For Robbins, the long, low-slung roofs of modern homes are best complemented by layers of experiences—considering the ways in which you experience a room or a space. Whether it’s through emphasizing the depth of built-ins or crafting deliberating vistas from every window or courtyard, by paying attention to and being intentional about the many views a person encounters as they walk through a house is one way to ensure that the home feels warm and cradling rather than stark and too expansive. “A graceful dialogue between indoors and outdoors nurtures a feeling of being utterly surrounded by the landscape,” Robbins writes.



(OPPOSITE, TOP AND LEFT) THE AUTHOR’S HOME WAS DESIGNED BY WINSTON ELTING. “I INSTANTLY FELL IN LOVE,” HE SAYS. “THE CLEAR FORM OF ELTING’S HOUSE SAT IN HARMONY WITH THE LAKESIDE LANDSCAPE. IT HONORED NATURE WITH ITS MATERIALS AND DESIGN. I KNEW I COULD LEARN FROM ITS PRECISE BEAUTY WHILE BRINGING MY OWN VOICE TO A RENOVATION.”

(ABOVE) ROBBINS MIXED 1930s SEATING WITH A CUSTOM COFFEE TABLE INSPIRED BY THE MID-MOD ERA, PROVING THAT MIXING FURNITURE IS A WAY TO EXPRESS YOUR PERSONAL STYLE.



(TOP) THE FRONT FACADE IS LIKE A SCULPTURE, WITH THE SCREEN WALL CREATING AN ARRESTING VISUAL PLAY, ESPECIALLY IN THE EVENING WHEN THE HOUSE IS ILLUMINATED FROM THE WITHIN.

(ABOVE, LEFT) TO MAXIMIZE THE IMPACT OF THE RAVINE VIEW, THE WINDOW MULLIONS IN THE GREAT ROOM ARE ORGANIZED IN AN IRREGULAR RHYTHM TO FRAME THE NATURAL GROUPINGS OF TREES.

Don't Overlook Details

Part of that comes from what you choose to decorate and furnish with, but also where you decide to get them from. "Artistry doesn't only come with such grand moves. Small-scale touches foster an appreciation for the talented hands that bring these expressions to life," the author explains. "Extraordinary craftspeople were commissioned to create custom design elements in metal, glass and stone."

Recalling one stone-heavy new build in the Midwest she helped to design, Robbins says: "These specially crafted details bring intimate moments to counterbalance the broad expanses of glass and the monolithic exterior walls clad in Ramon Gray limestone that define the house's envelope. The fossil-imprinted stone, for example, infuses a layer of time and scale between the modern glass walls, but I took the human connection even further by introducing hand-chiseled vertical recesses to the façade. This is not a 'form follows function' moment; it's a soulful, personal touch that brings to life what modernism is to me." ❧

(ABOVE, RIGHT) "THE DARK WOOD VOCABULARY OF THE REST OF THE HOUSE BECOMES AN ACCENT IN THE LIGHT AND AIRY KITCHEN APPEARING IN THE FURNITURE AND THE SLIDING PANELS THAT CONCEAL SMALL APPLIANCES AND GLASSWARE," ROBBINS WRITES OF THIS MODERN IN NORTH SHORE CHICAGO.



THE MEANINGFUL MODERN HOME
BY CELESTE ROBBINS, PUBLISHED
BY THE MONACELLI PRESS © 2023;
MONACHELLIPRESS.COM.

Your Home Deserves

MID MOD

INSPIRATION.



Get a 1-year subscription to **Atomic Ranch** and **save 55%** on the cover price!

ONLY
\$26.95

Fill out the form below and mail it to: **EG Media Investments LLC, PO Box 74660, Chicago, IL 60675-4660**

YES! Sign me up for a subscription to **Atomic Ranch \$26.95.**

(That's 6 issues for a \$29.95 savings on the cover price.)

Payment Method

☐ Check Enclosed

☐ Credit Card

☐ Money Order

Payment through Credit Card

☐ Visa

☐ MC

☐ AMEX

☐ Discover

Name on Credit Card _____

Credit Card Number

Expiration Date ____ / ____ / ____

Subscriber Name _____

Address _____

Phone _____

Email _____

Signature _____

Date ____ / ____ / ____

Or, log on to <https://atomic-ranch.com/ar> and use promo code **A83AR001**

or call **844-330-6373** to order your subscription. Allow 6-8 weeks for delivery of first issue.

Outside U.S., add \$30 per year for postage. Payment in U.S. funds only.

Scan QR code & pay online to get additional **discount** on offer price.



gQEI2/ukgS80LxZylZSKhg==

JENS QUISTGAARD

The autodidactic Danish sculptor brought Scandinavian Modern design to America and the rest of the world by combining form with function to home goods.

By Angelina Kaul

"The manufacturers are disappointed

that I just call myself 'tegner.' They want something impressive for advertising purposes: the architect, the artist, or something like that. I can't help them with that. If I can't be tegner, it will have to be sculptor...." During the Mid Century Modern period, it was with this independent attitude that Danish sculptor and industrial designer Jens Quistgaard introduced his Scandinavian Modern products to Americans and rose to international fame.

A Hands-On Education

Born in Copenhagen on April 23, 1919, Quistgaard was trained in the traditional methods of arts and crafts from early childhood. His father was a sculptor and his mother, an artist. As a young boy, he forged knives, jewelry and ceramic works in the kitchen. "I attended neither the Academy nor any school of arts and crafts, but already from the age of four or five my father taught me the joy of creating."

To this, Quistgaard added hours of careful observation of nature. Indeed, he preferred being alone in nature rather than sitting behind a desk in a classroom because he was dyslexic. "Jens was not backward, quite the opposite, but his schooling was hampered by dyslexia...it was something he found difficult to speak about, a disability he would continue to associate with something humiliating and shameful..." explains author Stig Guldberg in his latest work, *Jens Quistgaard: The Sculpting Designer*.

SMOOTH FLAMESTONE COFFEE POT. STONEWARE, 1964. A NEWER VERSION AFTER THE FLUTED FLAMESTONE, THIS COFFEE POT WAS COMPLETELY SMOOTH WITHOUT ANY DECORATIONS. THE BEAUTY OF IT LAY IN ITS SCULPTED FORM DESIGNED BY QUISTGAARD.



(RIGHT) KOBENSTYLE PITCHER. ENAMELED STEEL AND PLASTIC, 1955. QUISTGAARD USED NATURE AS HIS INSPIRATION IN SELECTING THE COLORS FOR THIS PITCHER, WHICH WAS PRODUCED IN ORANGE RED, TURQUOISE, YELLOW, LIME GREEN AND BLUE. (BELOW) JENS QUISTGAARD FOR HERMAN O. JACOBSEN, 1947. QUISTGAARD HOLDS HIS STERLING SILVER COFFEE POT WITH ITS CONICAL SHAPE, SMOOTH SIDES AND A MAHOGANY HANDLE. IT COMBINED HIS FAVORITE MATERIALS, WOOD WITH METAL, AND REFLECTED HIS PHILOSOPHY OF COMBINED BEAUTY AND FUNCTION.



FJORD FLATWARE. STAINLESS STEEL AND TEAK, 1954. THE FJORD FLATWARE WAS CREATED ON QUISTGAARD'S ANVIL IN HIS SMALL APARTMENT IN COPENHAGEN. UNLIKE OTHER FLATWARE MADE COMPLETELY WITH STAINLESS STEEL, THE FJORD WAS MADE USING STAINLESS STEEL AND TEAK WOOD WITH ROUNDED HANDLES.



TED AND MARTHA NIERENBERG RESIDENCE, 1961. THE HOUSE SHOWS THE 12-POINTED ATTICS THAT FORM THE ROOF STRUCTURE. QUISTGAARD'S LOVE FOR WOOD IS EVIDENT EVEN IN THE SMALLEST DETAIL. HE USED WOODEN PEGS INSTEAD OF NAILS AND SCREWS TO BUILD THE STRUCTURE.



FESTIVAAL CUTTING BOARD. LACQUERED MAPLE AND TEAK WOOD, 1959. QUISTGAARD FELL IN LOVE WITH JAPANESE LACQUER WORKS AND INFUSED IT IN HIS FESTIVAAL COLLECTION OF BRIGHT-COLORED TRAYS AND BOWLS, SUCH AS THIS CUTTING BOARD MADE OF LACQUERED MAPLE AND TEAK WOOD IN TURQUOISE BLUE.

But what he missed in classroom instruction he more than made up for by observing and working with carpenters, blacksmiths and silversmiths. This hands-on training served the self-taught sculptor well, as he grew up to create beautiful and functional home goods. His main objective in all his work was always to "combine the useful with a distinct, sculpted form," Guldberg says.

Achievements

Quistgaard was a pioneer in Scandinavian Modern design. He forged metal to sculpt beautiful jewelry, such as cufflinks, bracelets, rings, brooches and earrings. He also created graphic designs for logos.

In 1954, Quistgaard joined forces with Ted and Martha Nierenberg and became the chief designer and a founder of Dansk Designs. His contributions produced more than 4,000 products for the company, including Fjord flatware, Kobenstyle pitchers, cutting boards, candleholders, Flamestone dishes, teak ice buckets, glassware, peppermills and furniture. He worked with Dansk Designs until the 1980s.

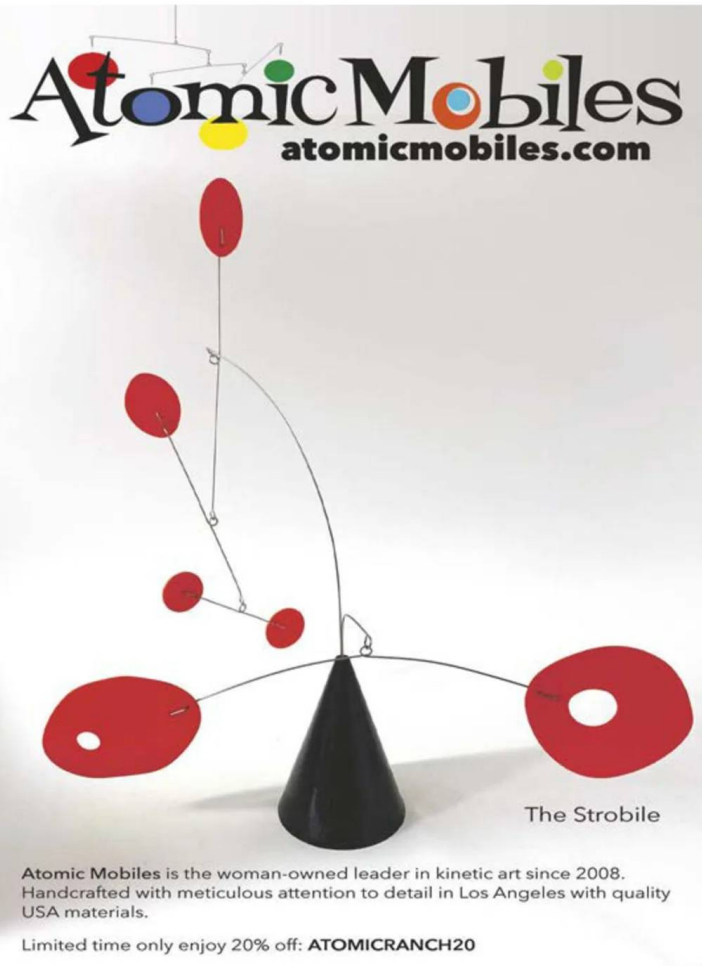
He followed it by designing the Nierenberg's home at Armonk in 1961, which may have been influenced by Frank Lloyd Wright's Fallingwater. But Quistgaard's philosophy remained the same. Guldberg writes, "Thus, even if on a larger scale, designing a house was no different from designing for the table or the kitchen; harmony and homogeneity of expression were always of prime concern."

His products were exhibited at major museums such as the Design Museum Denmark, MoMA and the British Museum. As of 2023, Dansk has reintroduced the classic Koben-style pitcher in new colors.

Legacy

"It was clear that to Quistgaard design was never just a question of inane problem solving. The onset of creativity was always based on a specific idea, the countless variations always the product of a tireless effort to realize his ideas in the best possible way," Guldberg notes. "And on top of this, there was always his insistence on the element of beauty, a vision that would follow him to the end..." This simple concept of mixing the utilitarian with an element of beauty is what Quistgaard created. It was more than design. It was more than a useful object. It was both. And it was all pure art. ☼





Atomic Mobiles
atomicmobiles.com

The Strobile

Atomic Mobiles is the woman-owned leader in kinetic art since 2008. Handcrafted with meticulous attention to detail in Los Angeles with quality USA materials.

Limited time only enjoy 20% off: **ATOMICRANCH20**

Proud to be Recognized as
a Top Realtor in the Desert
for the 3rd Year in a Row!



Beth Cummins

REALTOR®

636.248.3493 | DRE 01990421

bethcummins@yahoo.com

bethcumminsproperties.com

Compass is a real estate broker licensed by the State of California and abides by Equal Housing Opportunity laws. License Number 01991628. All material presented herein is intended for informational purposes only and is compiled from sources deemed reliable but has not been verified. Changes in price, condition, sale or withdrawal may be made without notice. No statement is made as to accuracy of any description. All measurements and square footages are approximate.



COMPASS



Modern Classics. In stock now.

With classic midcentury modern styling and durable, baked enamel finishes, RETRO by Remcraft fixtures are built to their original 1950's specifications and quality standards (with a few modern improvements) to ensure unmatched durability and long, trouble-free service. They are available in a wide variety of styles and finishes to suit any decor, indoors or out. What's more, most styles are in stock and ready to ship. Give us a call or visit our website to find out more.

800.327.6585 | atomicremcraft.com

RETRO
BY REMCRAFT

REAL OPPORTUNITY

- * AWARD WINNING RESTAURANT
- * ESTABLISHED IN 1995
- * OPEN 5 DAYS A WEEK:
WED-SUN, 7:30AM-2:00PM
- * INCREDIBLE FINANCIAL STATEMENT
- * GREAT MENU
- * INDOOR/OUTDOOR SEATING FOR 106



START A NEW ADVENTURE!

Email: bestrestaurantinLasCrucesNM@gmail.com

FOR SALE... SERIOUS INQUIRIES ONLY PLEASE

gQE12/ukgS80LxZylZSKhg==

WHEN FORM FOLLOWS FUNCTION CREATIVELY, ANY SIZED KITCHEN CAN MAKE A LASTING IMPRESSION. "WE INCORPORATED THE ROUNDED ISLAND AS A FUNCTIONAL SOLUTION TO WHAT WOULD OTHERWISE HAVE BEEN A LARGE SQUARE ISLAND. THE CLIENTS WANTED TO ENTERTAIN AND COOK FOR GUESTS, SO THE CIRCULAR SHAPE IS A MORE INVITING AND DISTINCTIVE FEATURE IN THE SPACE," SAYS INTERIOR DESIGNER CHRISTINE TURKNETT OF THIS AUSTIN, TEXAS, KITCHEN.



Small Kitchens With **BIG STYLE**

HOW TO DESIGN
AN MCM SPACE
THAT DELIVERS
MEMORABLE
MOMENTS.

By Jackie Torres

PHOTO BY CHASE DANIEL





We demand a lot of our Mid Century Modern kitchens. They should be sleek yet serviceable, ample yet organized and, of course, reflect your personal style. So how do you balance it all? Interior designer Christine Turknott says it's all about unifying your elements and, like any other room, choosing your focal point.

"When designing an MCM kitchen, I focus on mixing clean lines with warm tones and color palette," she says. "The combination between the colors and the motifs in the space tie it together and gives the kitchen a distinct identity that reflects your style."

Building on a motif is a great way to concept a unified design—even for design novices. "For example, the backsplash may contain colors and shapes that I try to mimic in the tone and shape of the hardware and appli-

ances," Christine explains. "If there is a white penny-tile backsplash, then I try to mix in a contrasting metallic color, such as round brass knobs and appliance pulls."

Designing for Small Kitchens

It's an extra challenge to fit all your requirements when working with a small kitchen footprint. The key here, Christine says, is to keep an eye on editing. "Select one bold design element and balance it out with neutral details to create a focal point—either lighting, backsplash or cabinet color, but not all three," she says. "Lean toward lighter cabinets, flooring and countertops" as darker tones can make the space feel small and enclosed. And don't underestimate the details. Christine likes to select knobs or smaller pulls with unique features that imbue the space with depth and personality.

(BELOW, RIGHT) "THE BAR AREA OF THIS KITCHEN WAS AN OPPORTUNITY TO DO SOMETHING BOLDER AND MORE FUN," CHRISTINE SAYS. "THE CLIENTS SELECTED THE GRAY AND WHITE HEX TILE, WHICH WE COMPLEMENTED WITH BLUE CABINETRY AND FUN KNOBS."



PHOTO BY ALLISON CARTWRIGHT

(ABOVE, LEFT) "THIS KITCHEN INCORPORATES A WOOD CEILING ALONGSIDE TWO-TONE KITCHEN CABINETS TO BALANCE WARMTH TO MONOCHROMATIC FINISHES," CHRISTINE SAYS. "THE CLEAR GEOMETRIC BACKSPLASH ADDS VISUAL INTEREST IN A CLASSIC WHITE COLOR TO KEEP THINGS BALANCED."

Maximal Function in a Simple Space

Christine says a small, streamlined kitchen can take on heavy-duty tasks just as well as larger spaces. In addition to selecting smaller appliances, you can hide appliances like microwaves in lower cabinets to create cleaner sight lines. "Opt for open shelving if that's functional for your lifestyle and consider drawers over cabinets," she suggests.

Another option is to lean on movable workhorses. "Adding a small portable kitchen island can be one way to get the task space you need without permanently forfeiting the space," Christine says. "But be sure to measure beforehand for clearance around the island, which should be at between 36 to 42 inches for it to be truly functional." ❀



PHOTO BY CHASE DANIEL

Clear Your Countertops

CHRISTINE'S FAVORITE WAYS TO SIMPLIFY YOUR KITCHEN STYLE WITHOUT SACRIFICING FUNCTIONALITY.

- Use a wall magnet for basic items, like knives.
- Store your spices in a drawer.
- Use a pegboard or simple metal bar on less prominent walls for infrequently used pots/pans.
- Pour frequently used cooking oils into attractive small labeled dispensers next to the stove.
- Save counter space for fun appliances, such as colorful toasters or coffee makers.



PHOTO BY LEONID FURMANSKY

The Keys to an MCM Kitchen

CHRISTINE'S RECIPE FOR A STYLISH MEAL-PREP SPACE.

Clean lines

Think flat-panel or slim Shaker cabinets. Keep your drawer and cabinet hardware simple and minimal—or lose them completely with a notched cabinet design or one with a lip. Think about your countertops for clean lines too, through eased or flat countertop edges. And avoid busy countertop materials such as granite. Last but not least, incorporate plumbing fixtures such as sinks and faucets with sharp angles.

Warm tones

Walnut, teak, mahogany. These wood tones are ubiquitous in MCM design. Replicate the vibe with similar warm tones through wood or hardware.

Vintage-inspired backsplashes

Look for shapes, colors and patterns like round Penny tile or geometric tiles in classic shapes like square, rectangle or semi-circle. Less conventional subway-tile patterns such as basketweave, horizontal or vertical stack will work as well. You can also create great mod style with 3D rectangular or square tiles.

Lighting is key

Mid Century Modern sconces and pendants deliver instant mod style.

When in doubt, less is more.



PHOTO BY CASEY DUNN

(LEFT) "WE PLACED FUN ACCESSORIES IN THIS KITCHEN, SUCH AS THIS VINTAGE-INSPIRED TOASTER TO CAPTURE A MIDCENTURY MODERN CHARM.," CHRISTINE SAYS. "THE LIGHT FIXTURE ADDS A VINTAGE TOUCH TO THE CLEAN WHITE MODERN KITCHEN."

YOUR COUNTERTOPS ARE A KEY WAY TO MAKE A STYLE STATEMENT. "THE BOLD TEAL BACKSPLASH IN THIS KITCHEN IS MIRRORED IN THE DRAPES IN THE LIVING ROOM, CREATING CONTINUITY THROUGHOUT THE OPEN FLOOR LAYOUT," CHRISTINE SAYS. "THE SIMPLE WOOD CABINETS WITH THE MARBLE COUNTERTOPS EXUDE A LUXURIOUS AND WARM LOOK."

*THE STARBURST



Be informed, be inspired,
be the first to know what's going on in the world of MCM!

Are you getting **The Starburst**? Your weekly guide to all things Mid Mod!

Sign up for the newsletter at atomic-ranch.com

Living the Dream

By **Jickie Torres** | Photography by **Chris Dibble**

THIS HOME HAS ITS ORIGINAL WOOD PANELING. "A MORE ACCESSIBLE WAY TO BRING THE WARMTH OF NATURAL WOOD TO YOUR LIVING ROOM, LIKE THE ORIGINAL PANELING IN THIS HOME, IS TO OPT FOR A SLAT WALL INSTEAD OF PANELING," THE AUTHOR WRITES. "YOU CAN CREATE GORGEOUS SLAT WALLS WITH INDIVIDUAL SLATS OR PREMADE PANELS MADE TO LOOK LIKE INDIVIDUAL SLATS—OR YOU CAN TRICK EVERYONE WITH A REALISTIC WOOD PANEL OR SLAT WALLPAPER."

Bringing your Mid Century Modern style ideas together doesn't have to be a nightmare. Karen Nepacena proves that your passion can light the way.





POSITIVE REWARD IS A POWERFUL THING. You hunt for that gem of a Mid Century Modern home and finally get one. Cue the enthusiast's high. Comb the Internet and your local mid-mod shops for the perfect pieces to fill that home. Your pride and sense of accomplishment swells. Karen Nepacena took that momentum to another level when she bought her fixer-upper Eichler in Northern California and started the blog Destination Eichler to document her and her husband John's hard work transforming and restoring that home to its mid-century splendor.

SPACE IS OFTEN AT A PREMIUM WHEN IT COMES TO MID CENTURY MODERN HOMES. SO, NEPACENA HAS ADVICE FOR ANYONE TRYING TO CARVE OUT A HOME-OFFICE SPACE. "YOU CAN HELP DEFINE DIFFERENT ZONES IN A SHARED SPACE BY USING RUGS, ACCENT WALLS AND DÉCOR—ANYTHING THAT WILL SET OFF OR SIGNAL A SHIFT IN SETTING," SHE WRITES.



Calabaza™
textiles
& homewares

crossgrovestudio.com

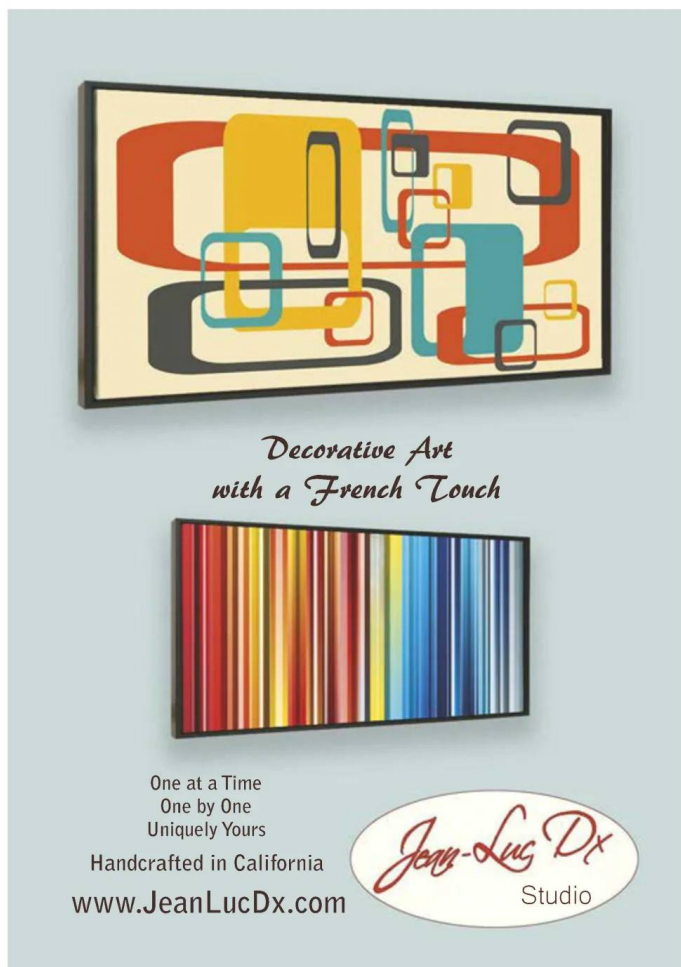
Design with Light!



TedStuff RadiantLight Address Markers and Wall Sconces come in a variety of designs and finishes are easy to install and maintain and are built to last.

To find out more visit us at
tedstuff.com

TedStuff
Modern. Elegant. Fun.



*Decorative Art
with a French Touch*

One at a Time
One by One
Uniquely Yours

Handcrafted in California
www.JeanLucDx.com

Jean-Luc Dx
Studio



Modern tile for your modern home.



makeitmidcentury.com

gQE12/ukgS80LxZylZSKhg==



NEPACENA SAYS TO EMBRACE UPHOLSTERY AND CUSHIONS. "ANOTHER CLASSIC WAY TO CHANNEL MIDCENTURY MODERN DESIGN IN YOUR DINING CHAIRS IS TO CHOOSE ONES THAT ARE UPHOLSTERED, LIKE THOSE WE USED IN A DINING ROOM IN LOS ALTOS, CALIFORNIA," SHE WRITES OF THIS SPACE. "THE SEAT OF THE CHAIR PROVIDES THE VISUAL INTEREST, WHILE THE REST OF THE ROOM IS LEFT RELATIVELY SIMPLE AND UNADORNED."

It wasn't long before Nepacena was being recognized for her impressive work on the home. Other MCM homeowners began to ask her for advice and suggestions for their homes. Soon, she left her day job and launched full steam ahead into a boutique interior design and remodeling business where she became known as one of the few pioneering mod-centric firms helping to restore and revive Mid Century Modern houses one client at a time. And more than 150 clients later, she's leveling up again with her new book, *Mid Century Modern Style: An Approachable Guide to Inspired Rooms*, created alongside her long-time photographer partner, Chris Dibble.

Mid Century For All

Nepacena's unconventional path to professional interior design has made her passionate about one major thing: a great functional and stylish mod home can be carved out for anyone. "Transforming or updating a space doesn't always have to mean a large-scale renovation or big budget. Maybe you are looking for small ways to infuse that mid-century feel into your home without a big overhaul," she writes in the first chapter. "In some cases, it could be as simple as swapping one material for another or finding just the right vintage retro clock to make your space more mid-mod. Mixing in MCM-inspired colors, patterns, textures and treasured objects can take a space from just a room with four walls to an environment that evokes comfort and joy."

Indeed, Nepacena writes the book from the perspective that you can create a period-appropriate design scheme that works for your household—and it doesn't have to require a major budget.

Your Chicago-Area
Mid-Century Modern &
Ranch Homes Specialist



**MODERN
ILLINOIS**
modernil.com



Lou Zucaro

lou@modernil.com • 312.907.4085

Baird & Warner

754 W. Northwest Highway, Barrington, IL 60010



NEW LOCKING!

modboxUSA



NEW RECORD HOLDERS!



modboxusa.com | 919.322.0894



Quality. Style. Affordable.

**H3K HOME+
DESIGN**

2 Showrooms!

PALM SPRINGS:
501 S. Palm Canyon Drive

PALM DESERT
74180 Highway 111

(760) 325-5400

www.h3khome.com

Use coupon code **Atomic10**
and receive 10% OFF your online order.

gQE12/ukgS80LxZylZSKhg==



NEPACENA ADVOCATES FOR SUSTAINABLE SHOPPING, SUCH AS OPTING FOR VINTAGE WHEN YOU CAN, WHICH IS WHAT HER CLIENTS IN LOS ALTOS, CALIFORNIA, DID BY SELECTING THIS ADRIAN PEARSALL SOFA, WHICH RECEIVED NEW CUSHIONS AND WAS REUPHOLSTERED IN A VIBRANT FABRIC TO GIVE IT ANOTHER GENERATION OF USE. "IN TODAY'S WORLD FULL OF MASS-PRODUCED FURNITURE AND DÉCOR, I BELIEVE THAT CHOOSING SUSTAINABLE OPTIONS WHENEVER POSSIBLE IS MORE IMPORTANT THAN EVER," THE AUTHOR WRITES. "FORTUNATELY, MUCH LIKE WHEN IT COMES TO ADDING MID-MOD TOUCHES TO YOUR HOME, IT ONLY TAKES A FEW APPROACHABLE GUIDEPOSTS AND IDEAS TO HELP REDUCE YOUR CARBON FOOTPRINT."

Indeed, Nepacena writes the book from the perspective that you can create a period-appropriate design scheme that works for your household—and it doesn't have to require a major budget. In her subsequent chapters, she not only arms readers with a user-friendly primer on MCM architecture and history, she often includes frequently asked questions from her readers over the years as well as tips for DIY approaches and reuse ideas to keep costs down.

Interior Design Basics

Part of the path to approachability that the author paves is through helpful diagrams and sidebars that explain everything from room arrangements and lighting categories to retro patterns and classic MCM color palettes.



Nepacena's unconventional path to professional interior design has made the author passionate about one major thing: a great functional and stylish mod home can be carved out for anyone.

NEPACENA'S WORK IS OFTEN ABOUT INFUSING A SPACE WITH PERSONAL STYLE. A GREAT WAY SHE DOES THIS IS THROUGH ART. "MIDCENTURY MODERN ARTWORK INCLUDES A VARIETY OF MEDIUMS AND STYLES, BUT A FEW KEY THEMES INCLUDE ABSTRACT ART, GEOMETRIC PATTERNS, SCULPTURAL AND ORGANIC SHAPES, AND INFLUENCES FROM THE BAUHAUS MOVEMENT, WHICH CENTERED AROUND THE PRINCIPLE OF FORM FOLLOWING FUNCTION," SHE WRITES.

Subsequent chapters go room by room, starting with the exterior, with Nepacena breaking down her go-to design principles to help readers tackle everything from furniture placement and focal points to décor and accents. For those ready for bigger projects, she details her advice for choosing things like tile backsplashes and even artwork. Last, but not least, she also addresses everyday design challenges such as designing with kids or pets in mind, or creating a home office that works just as effectively as is it stylish. ✿





"WHEN WORKING WITH CLIENTS ON A MID CENTURY-IN-
SPIRED KITCHEN DESIGN, WE TRY TO STRIKE A BALANCE BE-
TWEEN INCORPORATING SIMILAR MATERIALS FROM THE ERA
AND MAKING SURE TO KEEP MODERN-DAY FUNCTIONALITY
AND PRACTICALITY TOP OF MIND," THE AUTHOR WRITES.



MID CENTURY MODERN STYLE:
AN APPROACHABLE GUIDE TO
INSPIRED ROOMS BY KAREN
NEPACENA, PHOTOGRAPHY BY
CHRIS DIBBLE, PUBLISHED BY GIBBS
SMITH, GIBBS-SMITH.COM; © 2023.

Your Source for Mid-Century Modern Homes
in the Pacific Northwest



Marisa Swenson

971-285-7955

Marisa@ModernHomesPortland.com

ModernHomesPortland.com

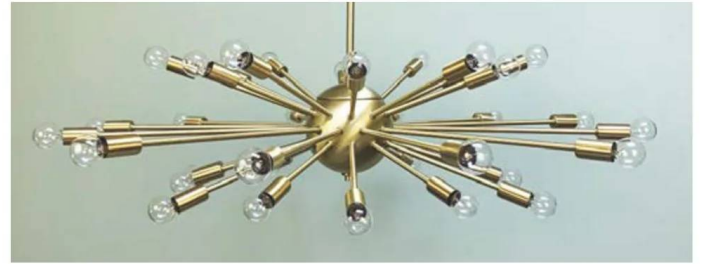
@modernhomesportland

MODERN HOMES
COLLECTIVE

Licensed OR & WA Broker



Practical
P R O P S



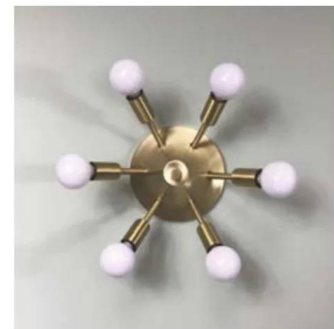
**Specializing in Authentic, Quality
Midcentury Reproduction Lighting**



**Pendants - Sputniks - Flush Mounts
Interior & Exterior Sconces
Bath Lighting - Floor & Arc Lamps
Desk, Table & Bedside Lamps
Restored Vintage Lighting**



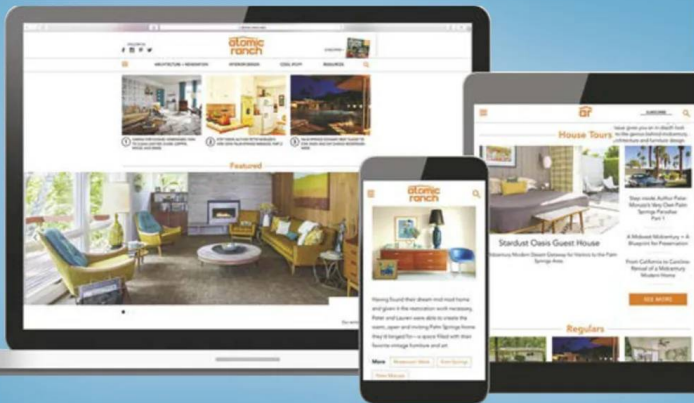
Family-Owned & Operated since 1991



shop.PracticalProps.com

DO YOU HAVE A **PASSION**
FOR **MIDCENTURY DESIGN**
... AND **WRITING**?

We're looking for well-versed mid mod
enthusiasts to write for our website!



> Visit www.atomic-ranch.com/contributors
to learn more.

gQE12/ukgS80LxZylZSKhg==

/ RESOURCES /

THE ARCHITECT'S KITCHEN

Page 22

For more on Rick's work, visit his website, chesmorebuck.com, or follow him on Instagram @chesmorebuck_architecture.

Interior design: Kathleen Glossa, founder, Swivel Interiors, @swivelinteriors on Instagram

Terrazzo tile: Artistic Tile in Veronese, artistictile.com

Backsplash tiles: Pratt + Larsen, colors R346, R146, R350, R63, prattandlarsen.com

Slab and tile installer: Carly Michael Stone Design, cmstonedesign.com

Pendant lights: Louis Poulsen, Design Within Reach, dwr.com

Saucer Bubble light: George Nelson, Design Within Reach, dwr.com

Molded plywood dining chairs: Cherner Chair Company, chernerchair.com

BLUE BEAUTY

Page 30

Kitchen tile backsplash, floor: Design Collaborative Tile. (760) 774-5970 or designcollaborativeusa.com

Kitchen ceiling pendants: Lee Broom, leebroom.com

Kitchen sconces: MBD Custom Lighting, michelleboudreaudesign.com

SEEING THE LIGHT

Page 56

Architecture, landscape design: Paul Moon Design, paulmoondesign.com

Interior design: Karin DeYoung of Paul Moon Design, paulmoondesign.com

General contractor: Bender Wasenmiller Custom Builders, benderwasenmiller.com

Structural: Quantum Consulting Engineers, quantumce.com



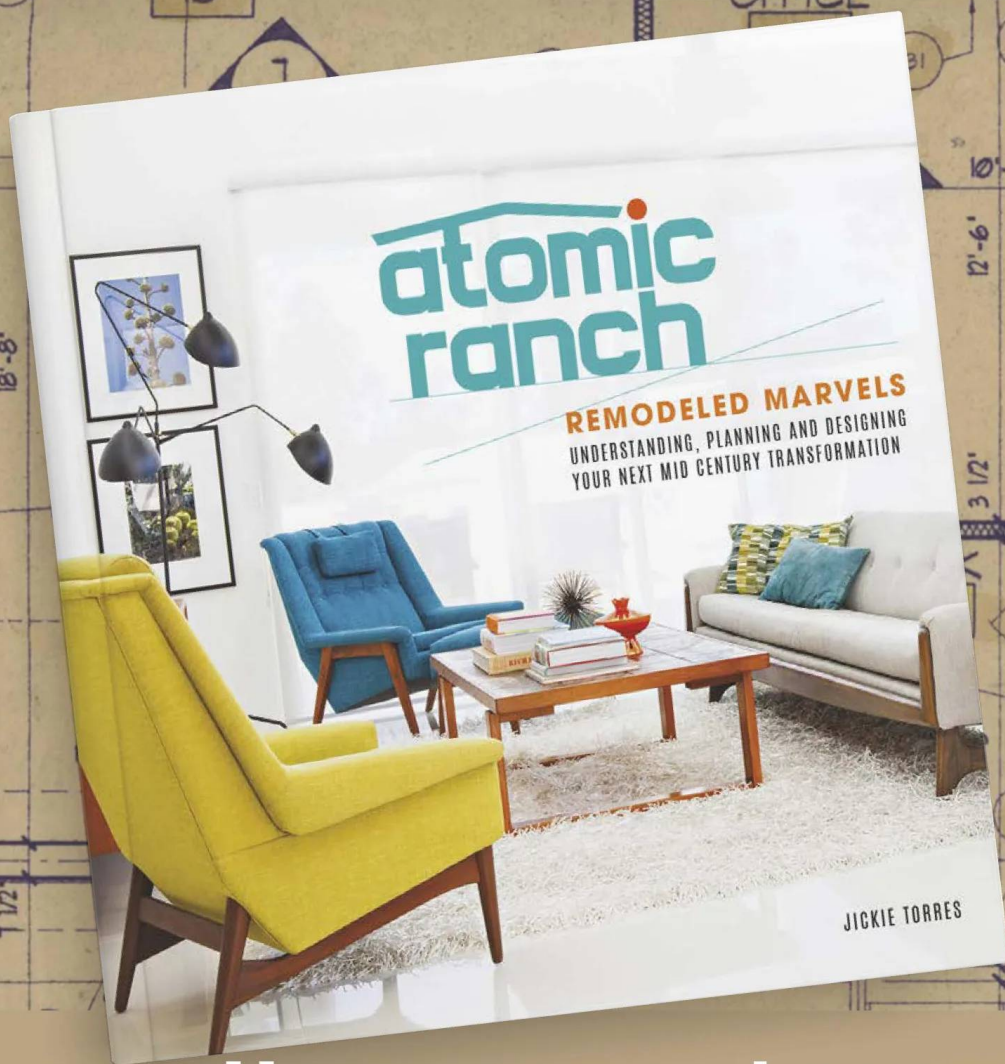
PHOTOGRAPHY BY ANDREW GIAMMARCO



Handmade with ❤️



smashfiredesigns.com



How can you keep Mid Century Modern style alive?

Know your home's history and character before you remodel.

Remodel while also preserving everything you love.

Our book teaches you to do both: It's time to style your home and keep its history alive.

*Remodeled Marvels: Your Guide to Understanding, Planning and
Designing Your Next Mid Century Modern Transformation*

Order your copy today at

atomic-ranch.com/merchandise/atomic-ranch-book
gQEI2/ukgS80LxZyI2SKhg==

Kitchen table, credenza, guest-room one and two wallpaper: MBD Custom Designs, michelleboudreaudesign.com

Kitchen stools: Allred Collaborative, allredcollaborative.com

Kitchen and wine-cellar refrigerators: Sub-Zero, subzero-wolf.com

Living room bubble chairs: Rex Vintage, rexvintage.com

BUILDING A HAVEN

Page 68

Interior design and build: JRP Design & Remodeling, (805) 446-6500 or jrpdesignandremodel.com

Laundry (all from West Elm): bath planter, vanity set, bedroom table lamp, guest-room sidetable, guest-room double bed, guest-room throw, guest-room rug, primary bedroom bed, nightstand and dresser set, entry-table brass sculpture, atrium chairs, family-room stone side table, family-room desk, fire-pit chairs, West Elm, westelm.com

Dining chair set, family room coffee table, laundry room planter, atrium coffee table: CB2, cb2.com

Flooring: Arizona Tile, arizonatile.com

Paint (all from Dunn-Edwards): Interior walls in Antique Paper; exterior in Particular Mint; front door, garage door in Burnt Almond; trim, beams in Black Bean, Dunn-Edwards, dunnedwards.com

Backyard lounge chairs: Lowes, lowes.com

Backyard dining table, kids room nightstand: All Modern, allmodern.com

Exterior front entrance sconce: Rejuvenation, rejuvenation.com

Washer/dryer: Whirlpool, whirlpool.com

Garage artwork, green kettle, leather bedside tray, kids bed: Amazon, amazon.com

Mailbox: Sol Pixie Dust/Etsy, etsy.com

House numbers: Emtek, emtek.com

Rain chain: Rainchains.com

Kitchen barstools: Living Spaces, livingspaces.com

Kitchen range, dishwasher, oven, microwave: Miele, mieleusa.com

Refrigerator: Subzero, subzero-wolf.com

Range hood: Zephyr, zephyronline.com

Kitchen cabinetry in Mesa Verde and Medina, custom dining table: Crystal Cabinets, crystalcabinets.com

Kitchen faucet: Kohler, kohler.com

Kitchen sink: Ferguson, ferguson.com

Kitchen countertops in Ocean Foam: Caesarstone, caesarstoneus.com

Kitchen pendant lights: Lightology, lightology.com

Kitchen island tile: Zia Tile, ziatile.com

Kitchen backsplash, laundry backsplash and laundry bath tile, guest-bath tile: Bedrosians, bedrosians.com

Fireplace tile: Arto, arto.com

Family room shag rug: Rugs.com

Family room console: Design Within Reach, dwr.com

Arc floor lamp, all-brass guest bed sconces: Lamps Plus, lampsplus.com

Family room pendant light: Sputnik Lights/etsy

Family room swivel chair: Forom Shop, foromshop.com

Atomic clock, sectional, entry built-in console, wooden circles wall art: custom

Marble tick tac toe, wooden bird: Crate and Barrel, crateandbarrel.com

Entry sconces (interior): Lumens, Lumens.com

Guest-room rug, tufted bed, guest-bedroom nightstand, primary-bedroom rug: Wayfair, wayfair.com

Primary bedroom sconces, guest bedroom sconces: Hudson Valley Lighting Group, hvlgroup.com

Flax-linen quilt, marble tray, primary-bedroom duvet and shams:

Pottery Barn, potterybarn.com

Primary-bedroom wallpaper: Phillip Jeffries, phillipjeffries.com

Vintage style radio, shag pillows: HomeGoods, homegoods.com

Guest bedroom artwork trio: World Market, worldmarket.com

Kid's bedroom rug: Ruggable, ruggable.com

Hallway-bath shower pan, primary-bath shower pan: TileBar, tilebar.com

Laundry-bath tiger artwork: Society6, society6.com

Primary-bath shower tile: Ceramic Matrix, ceramicmatrix.com

Statement of Ownership, Management, and Circulation

1. Publication Title: Atomic Ranch
2. Publication No.: 1547-3902
3. Filing Date: 15-Sep-23
4. Issue Frequency: 6 Issues (Spring, Summer, Renovation Guide, Fall, Winter and Design)
5. No. of Issues Published Annually: 6
6. Annual Subscription Price: \$29.95
7. Complete Mailing Address of Known Office of Publication: EG Media Investments LLC, 3622 Lyckan Parkway, Suite 3003, Durham, NC 27707
8. Complete Mailing Address of Headquarters or General Business Office of Publisher: EG Media Investments LLC, 3622 Lyckan Parkway, Suite 3003, Durham, NC 27707
9. Full Names and Complete Mailing Addresses of Publisher, Editor, and Managing Editor:
 - Publisher: Prashant Upadhyaya, EG Media Investments LLC, 3622 Lyckan Parkway, Suite 3003, Durham, NC 27707
 - Editor: Jackie Torres, EG Media Investments LLC, 3622 Lyckan Parkway, Suite 3003, Durham, NC 27707
 - Managing Editor: Meryl Schoenbaum, EG Media Investments LLC, 3622 Lyckan Parkway, Suite 3003, Durham, NC 27707
10. Owner: EG Media Investments LLC, 3622 Lyckan Parkway, Suite 3003, Durham, NC 27707
11. Known Bondholders, Mortgagees, and Other Security Holders Owning or Holding 1 Percent of More of Total Amount of Bonds, Mortgagees, or Other Securities: None
12. Tax Status (For completion by nonprofit organizations authorized to mail at nonprofit rates): Not Applicable
13. Publication Title: Atomic Ranch
14. Issue Date for Circulation Data Below: Winter 2022-Fall 2023
15. Extent and Nature of Circulation:
 - A. Total No. of Copies (Net Press Run): 38,715 / 38,009
 - B. Paid and/or Requested Circulation:
 - 1. Paid/Requested Outside-County Mail Subscriptions Stated on Form 3541: 10,935 / 10,771
 - 2. Paid In-County Subscriptions: 0 / 0
 - 3. Sales through Dealers and Carriers, Street Vendors, Counter Sales, and Other Non-USPS Paid Distribution: 3,813 / 3,258
 - 4. Other Classes Mailed Through the USPS: 0 / 0
 - C. Total Paid and/or Requested Circulation: 14,748 / 14,029
 - D. Free Distribution By Mail:
 - 1. Outside-County as Stated on Form 3541: 850 / 0
 - 2. In-County as Stated on Form 3541: 0 / 0
 - 3. Other Classes Mailed Through USPS: 0 / 0
 - 4. Outside the Mail: 1,234 / 1,622
 - E. Total Free Distribution Outside the Mail: 2,084 / 1,622
 - F. Total Distribution: 16,832 / 15,651
 - G. Copies Not Distributed: 21,883 / 22,358
 - H. Total: 38,715 / 38,009
 - I. Percent Paid: 87.62% / 89.64%
16. Total Circulation includes electronic copies. Report circulation on PS form 3526-X worksheet: Print Only (No electronic copies)
17. Publication of Statement of Ownership: Atomic Ranch Design Issue 2023
18. Signature: Prashant Upadhyaya - Business Owner

Would You Like To Be A Mid-Century Modern Antiques Dealer?

You Can:

- *Start your own Mid-Century Modern Antiques Business
- *Choose the hours you wish to work
- *Become a "Certified" Decorative Arts Appraiser
- *Complete an internationally recognized 12 Volume Course with Diploma & Appraisal Certification (PACC & USPAP)



www.asheford.com

For A FREE Course Prospectus Booklet:

www.asheford.com

Email: asheford@mail.com

Toll free: 877-444-4508

Or write to:

Asheford Institute: 981 Harbor Blvd.
Ste. 3, Dept. 275ATR35 Destin, FL 32541

/ ADVERTISERS /

ACCESSORIES & ARTWORK

- Atomic Mobiles.** 93
atomicmobiles.com
- Crossgrove Studio.** 103
505.395.6624
crossgrovestudio.com
- Jean-Luc DX Studio.** 103
505.395.6624
JeanLucDX.com
- Modbox USA, Inc.** 105
919.322.0894
modboxusa.com
- Smashfire Designs.** 110
smashfiredesigns.com
- Submaterial.** 15
919.322.0894
submaterial.com
- TedStuff** 103
561.272.0770
tedstuff.net
- The Shag Store** 2
760.322.3400
shagstore.com

DESIGN RESOURCES & BOOKS

- Asheford Institute of Antiques** 112
877.444.4508
Asheford.com

INTERIOR & EXTERIOR DESIGN & FINISHES

- B&W Tile/American Tile Makers** 25
bwtile.com
- Kerf Design.** 115
206.954.8677
kerfdesign.com
- Make It Midcentury.** 103
makeitmidcentury.com
- Mod Floors** 19
760.636.4135
ModFloors.com
- Modernous** 27
206.430.1966
modernous.com
- Modwalls** 29
877.439.9734
modwalls.com
- Nana Wall System Inc.** 13
nanawall.com

LIGHTING

- Lumens** 116
Lumens.com
- Practical Props** 109
818.980.3198
shop.PracticalProps.com
- Remcraft** 93
800.327.6585
atomicremcraft.com

MID-CENTURY REALTORS & HOUSE TOURS

- Alden B. Dow Home & Studio.** 25
866.315.7678
abdow.org
- Beth Cummins, COMPASS** 93
636.248.3493
bethcumminsproperties.com
- Modern Homes Portland.** 109
971.285.7955
modernHomesPortland.com
- Modern Illinois** 105
312.907.4085
modernil.com
- Realty One Group-Lone Tree** 27
303.913.4505
TheRetroRealtor.com

MODERN FURNISHINGS

- Elmira Stove Works.** 7
800.295.8498
elmirastoveworks.com
- H3K Design.** 105
760.325.5400
h3khomeanddesign.com

VINTAGE STORES & FURNITURE REHAB

- Evans Family Company—Fagas Straps** . . . 113
858.461.8069
fagasstraps.com
- OMPC The Shed** 93

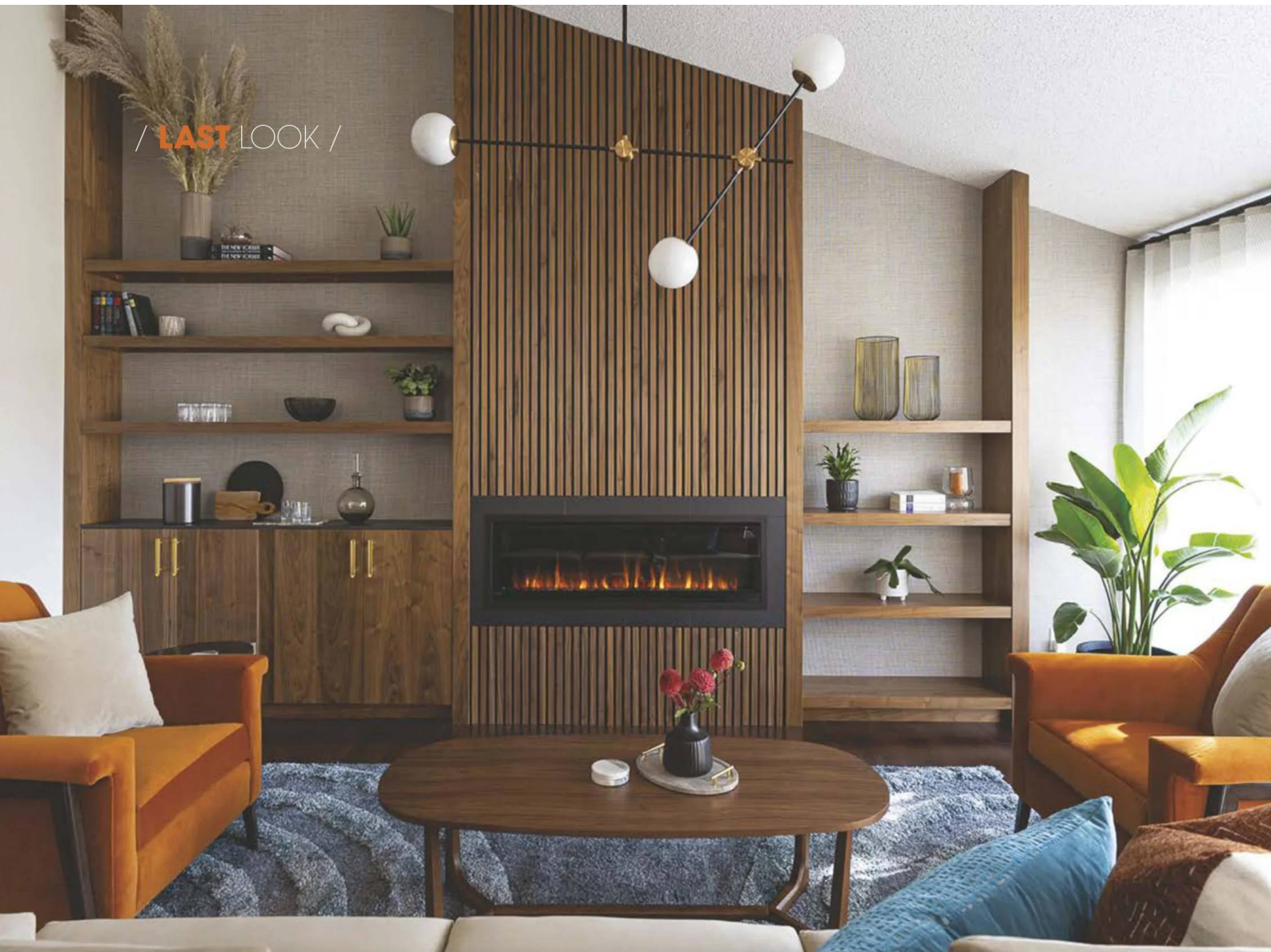


Official US distributor
since 1945

**Replace
broken or stretched
Fagas Straps!**

**www.fagasstraps.com
info@fagasstraps.com 858.461.8069**

/ LAST LOOK /



Double the Design

This fireplace/bookcase combines two beloved focal points of Mid Century Modern design.

By IAN McMASTER

Photography by Valerie Schneider, Point in Time Photography

WHEN AN OPPORTUNITY PRESENTS ITSELF to build a space that embodies a style and a mood, you take it. Award-winning designer Charlene Threatful of Lush Interiors (lushinteriors.com) recently undertook a project that breathed new life into a once scant living room in Calgary, Canada. The clients expressed a desire for a space that would serve as an entertainment hub, complete with a fireplace and bar, all while being functional for a family.

Drawing on her love of MCM design, Charlene was well-equipped to infuse the space with a classic yet fresh look. "It is such a timeless design, and we love working with all the different [MCM] design elements, from lighting to tile and millwork. It's so creative," Charlene.

The shape of the space served as a muse. "Our jumping-off point was the sloped ceiling and we wanted to pay homage to the style," the designer says. Charlene strategically placed the fireplace on the north wall, accentuating the ceiling's slope. "We used a fluted walnut detail

to elevate and create interest and a simple black-slate surround," she explains. This careful selection of materials ensured a seamless transition between the fireplace and adjacent spaces—particularly the bar area, where the same slate was integrated into the countertop.

To create even more warmth, Charlene used a textured wallpaper behind the open shelving. This choice was echoed in the sheer draperies, which not only diffuse light beautifully but also add a layer of sophistication. "We used a combination of man-made and natural materials, incorporating a rich contrasting color palette of rust and indigo against a neutral backdrop of sand-colored texture in the wallpaper, drapes and sofa," Charlene adds.

The modern light fixture, featuring black and brass accents, and brushed-brass hardware with MCM lines completed the look. "It's 'Mad Men' meets modern and works perfectly," Charlene says. 🌿

KERF

kerfdesign.com
plywood cabinets
for the modern home



qQEI2/ukgS80LxZylZSKhg==

LUMENS

Enlightened by Design



The Gift Guide

Lumens.com



gQE12/ukgS80LxZylZSKhg==