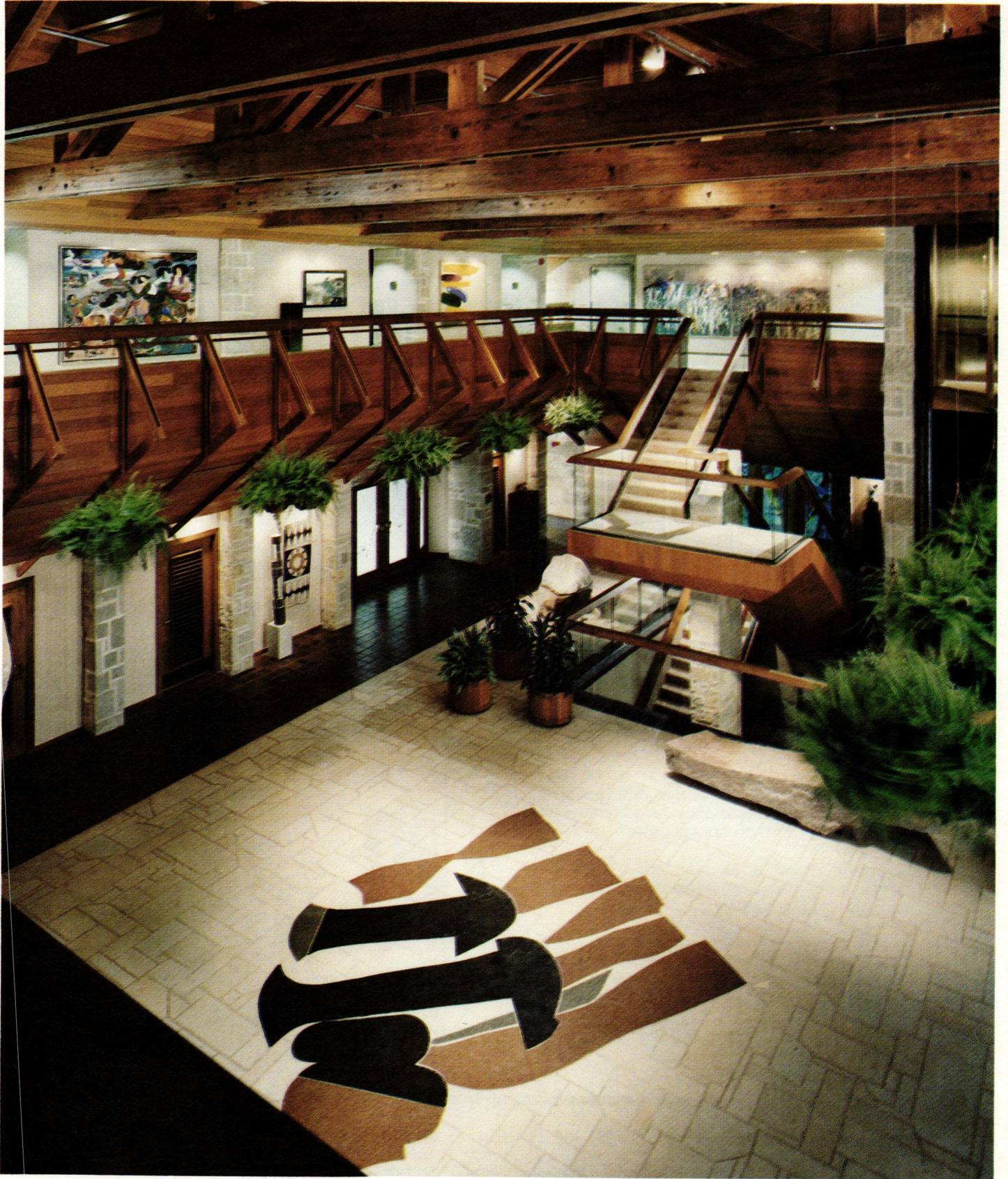
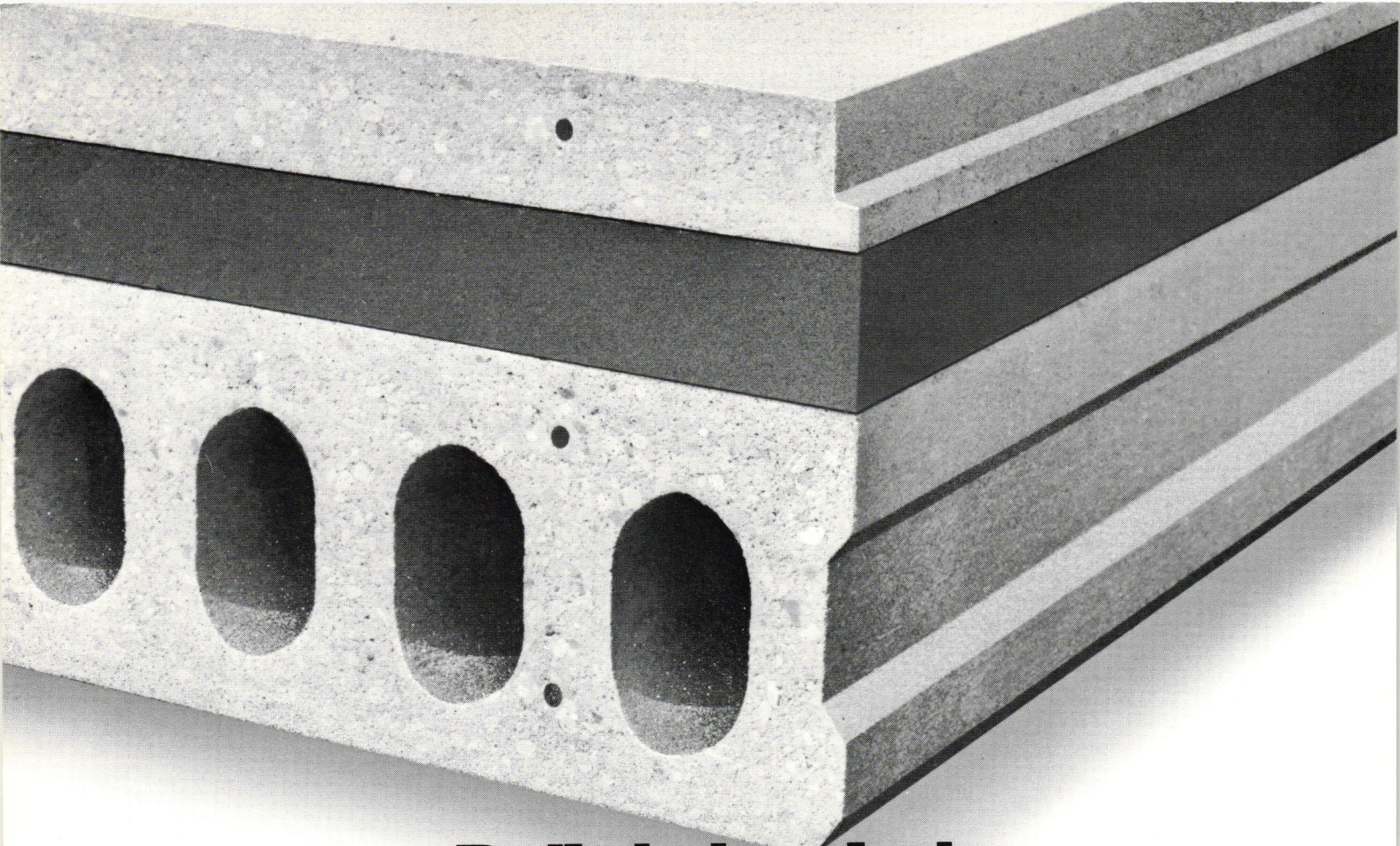


Wisconsin Architect



Kohler/Chapter Honor Awards ● November 1982



Built-in insulation against high energy costs.

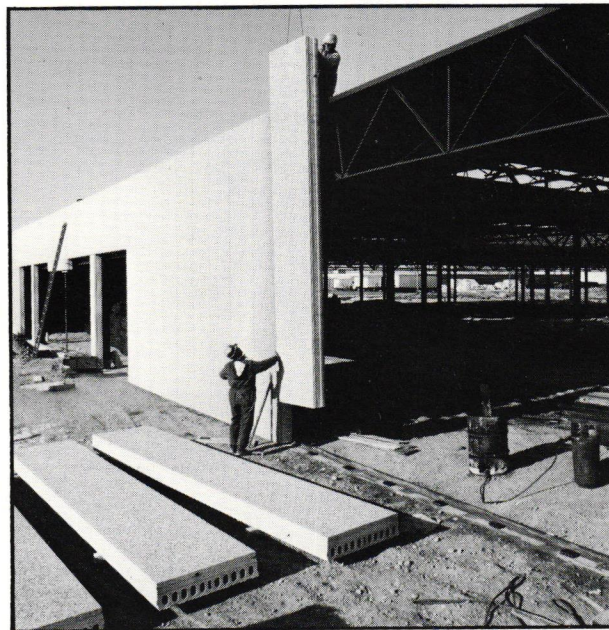
Now there's an extruded concrete wall panel with a layer of built-in insulation that saves you the expense and time of insulating. By sandwiching a layer of urethane between an interior hollow core panel and an exterior concrete slab, Spancrete has created the energy efficient, cost effective and aesthetically pleasing Sandwich Wall Panel.

The Sandwich Wall Panel provides outstanding U-values which translate into money saved on fuel bills. Especially with today's high energy costs.

The Sandwich Panel is flexible, too. It can even withstand annual temperature variations from -30F to +95F, or more without cracking.

With a variety of exterior finishes including broomed, raked, and exposed aggregate, it's easy to see why Spancrete's Sandwich Panel gives you built-in beauty, built-in savings and built-in durability — all in one.

For further information, contact:

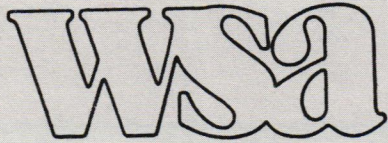


Spancrete Industries, Inc.
10919 West Bluemound Road
Milwaukee, Wisconsin 53226
Phone 414/258-4110

Spancrete, Inc.
641 N. Hickory Farm Lane
Appleton, Wisconsin 54911
Phone 414/734-5641

Spancrete of Illinois, Inc.
4012 Route 14
Crystal Lake, Illinois 60014
Phone 815/459-5580





WISCONSIN ARCHITECT

Wisconsin Architect, Inc.: Board of Directors: Walter E. Zoller, Brian Larson, Glenn Johnson, Fred Zimmermann.

Wisconsin Architects Foundation Board of Trustees: 615 East Washington Ave., Madison, WI 53703 — Phone 608/257-8477. Leonard H. Reinke, FAIA, President; Paul Bronson, Vice President; John Somerville, AIA, Secretary/Treasurer; Richard Griffith, AIA; Emma Macari, AIA; Richard Blake, FAIA; Richard Knothe, AIA; Florian Remitz, AIA; Robert Kluth; Eric Englund, Executive Director.

Wisconsin Society of Architects/A.I.A.: 615 East Washington Ave., Madison, WI 53703 — Phone 608/257-8477.

Board of Directors: Brian Larson, President; Glenn M. Johnson, Vice-President; Fred Zimmermann, Secretary/Treasurer; Walter E. Zoller, Past President, Ex-Officio; Robert D. Cooper, Milwaukee; Frank Dropsho, Madison; Lawrence R. Earll, Milwaukee; George W. Ehrich, Green Bay; Victor D. Halloran, Green Bay; David E. Lawson, Madison; Richard F. Maleniak, Madison; Gordon D. Orr, Madison; Noble E. Rose, Beloit; Robert J. Sajbel, Appleton; Douglas H. Smith, Chippewa Falls; Wayne E. Spangler, Rice Lake; Charles D. Wahlberg, Hudson; Eric Englund, Executive Director.

North Central Region: Leroy Bean, Director.

Southeast Chapter Officers: Lawrence R. Earll, President; Robert D. Cooper, Vice President/President Elect; Dennis J. Horbinski, 2nd Vice President; James Otto, Secretary/Treasurer.

Southwest Chapter Officers: Richard F. Maleniak, President; Frank Dropsho, Vice President/President Elect; Ronald L. Howard, Secretary/Treasurer.

Northeast Chapter Officers: Robert J. Sajbel, President; George W. Ehrich, Vice President/President Elect; William A. Doyle, Secretary/Treasurer.

Northwest Chapter Officers: Douglas H. Smith, President; Charles D. Wahlberg, Vice President/President Elect; David G. Peterson, Secretary/Treasurer.

Wisconsin Architect Editorial Board: Peter Schuyler, Chairman; Uel C. Ramey, Douglas Ryhn, H. J. Wirth, Jeff Kavanagh, Eric Englund. Times Publishing Co., Random Lake, WI - Printer; Bob Arndt - Graphics. Lynn W. Ruenger - Advertising Manager.

The Wisconsin Architect is the official publication of the Wisconsin Society of Architects/A.I.A., published by Wisconsin Architect, Inc. Address all editorial and advertising inquiries to: Editor, Wisconsin Architect, 615 East Washington Ave., Madison, WI 53703; Phone: 608/257-8477. The Wisconsin Architect and WSA disclaims liability for statements by the editors, contributors, and advertisers.

TABLE OF CONTENTS

Registration Board Update 6
Kohler - A Commitment To Planning 8
The American Club 15
Industry And Art At Kohler 18
The Distribution Center 21
Chapter Honor Awards 25
On The Boards 36
SOCIETY NEWS
Dan Murrish 38
Priority Plan Review . . . A Success 38
Are You Illegal 38
Film Series - Milwaukee 38
Doug Smith Honored 38
Historic Building Code Committee 39
Wisconsin Architects Foundation Report 39
Halloran Bites The Bullet . . . Again 39
Expert Fees 40
WSA Health Insurance Program Cost Containment 41

Cover Credit . . . The Council House Hedrich-Blessing Studio Photographers