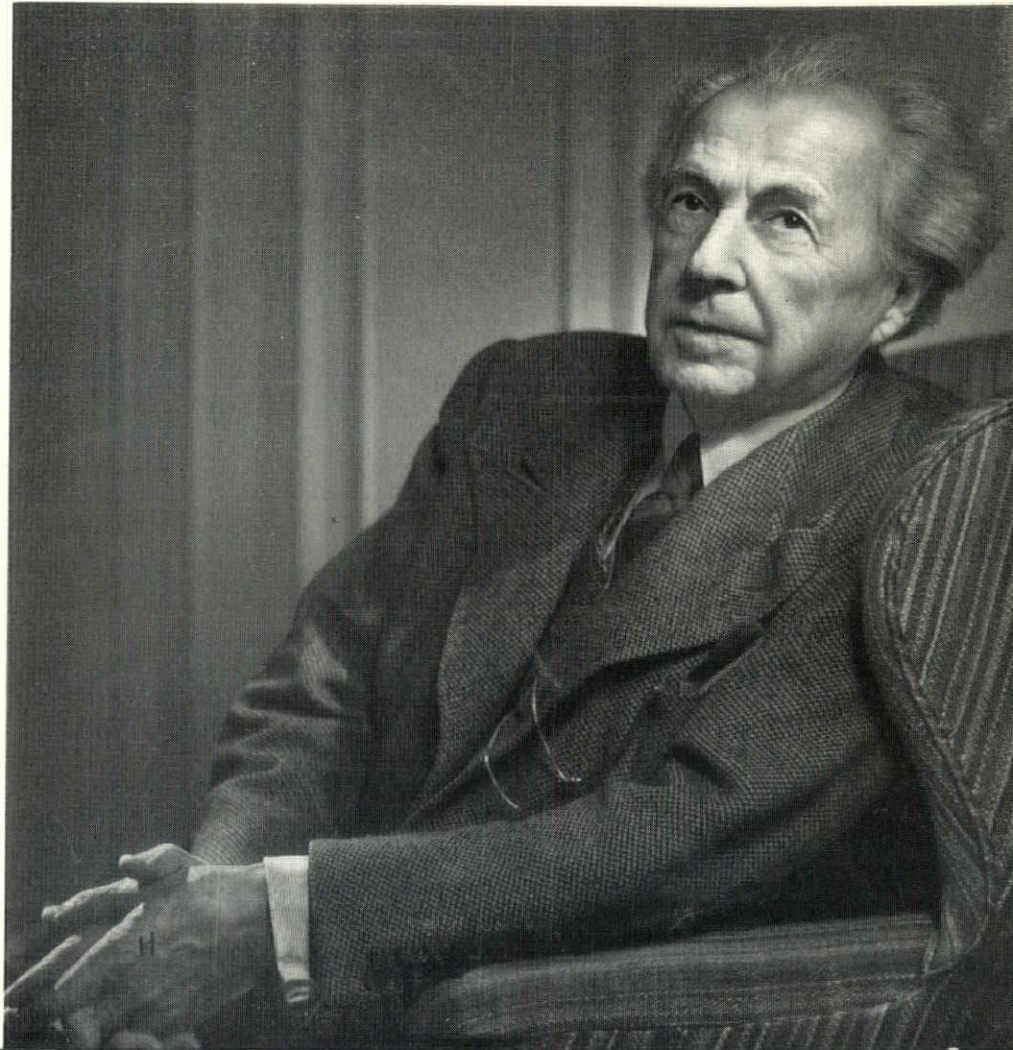


January 1955

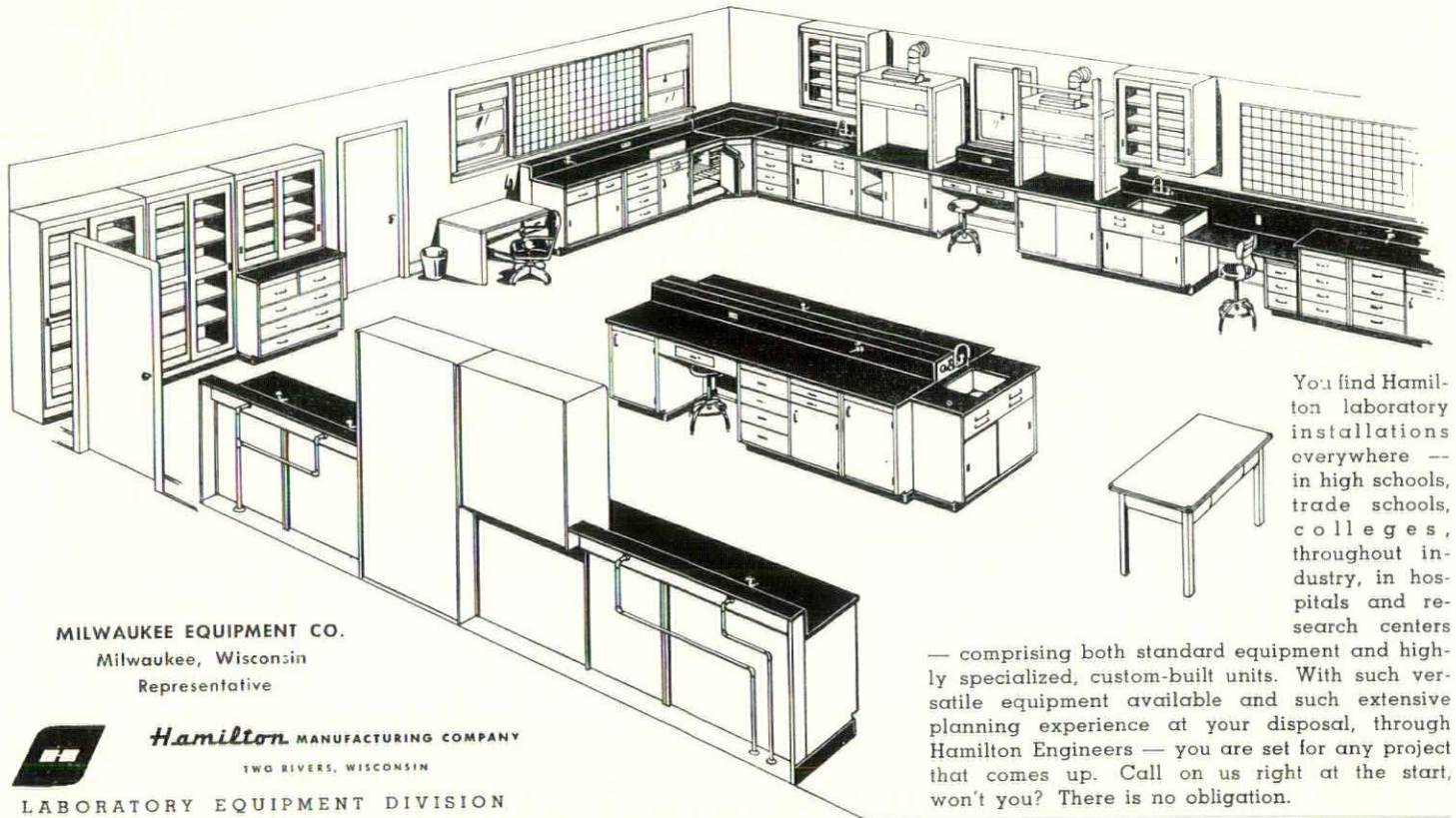
e 1 2 1 1

the  
Wisconsin  
Architect

Convention Speaker



**Any type of laboratory you name YOU CAN DESIGN!**



MILWAUKEE EQUIPMENT CO.  
Milwaukee, Wisconsin  
Representative



**Hamilton** MANUFACTURING COMPANY  
TWO RIVERS, WISCONSIN

LABORATORY EQUIPMENT DIVISION

You find Hamilton laboratory installations everywhere — in high schools, trade schools, colleges, throughout industry, in hospitals and research centers

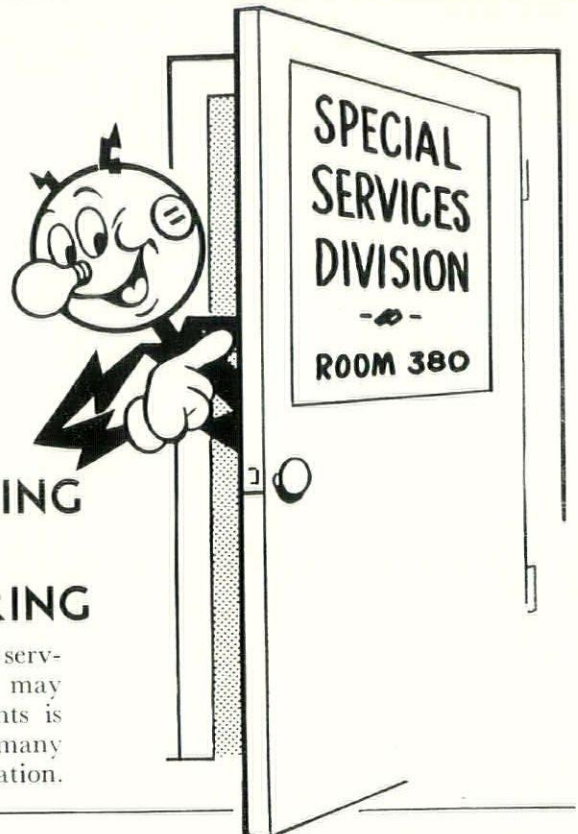
— comprising both standard equipment and highly specialized, custom-built units. With such versatile equipment available and such extensive planning experience at your disposal, through Hamilton Engineers — you are set for any project that comes up. Call on us right at the start, won't you? There is no obligation.

*Do You Have Problems?*

*on*

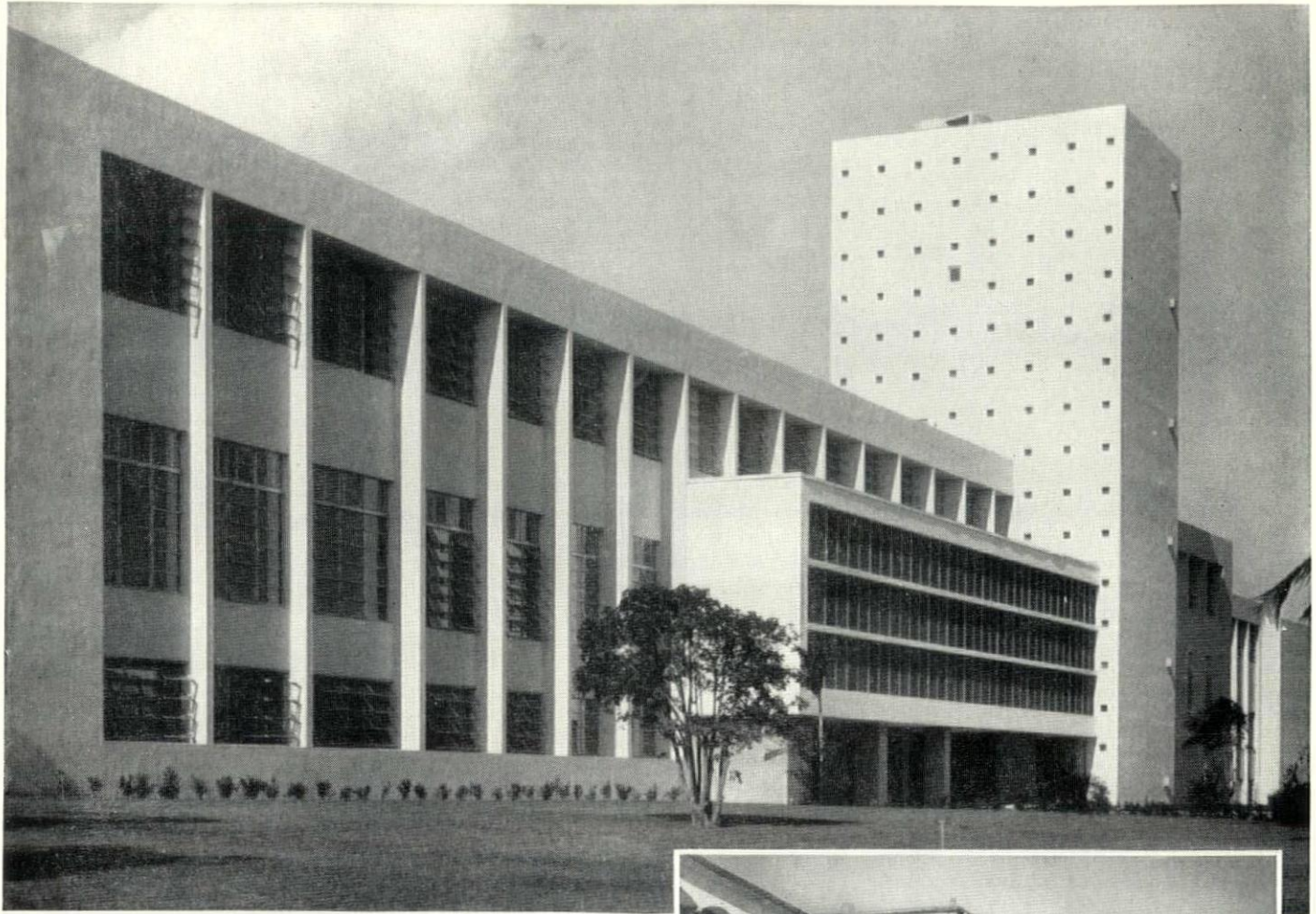
- LIGHTING      • AIR CONDITIONING
- REFRIGERATION
- COMMERCIAL COOKING   • WIRING

Experienced personnel, specializing in each of the above services are available for consultation on any problems you may have. The experience and information of our consultants is based on hundreds of actual cases, covering a period of many years. Why not make use of these special services? No obligation.



**WISCONSIN ELECTRIC POWER CO.**

231 W. MICHIGAN ST.

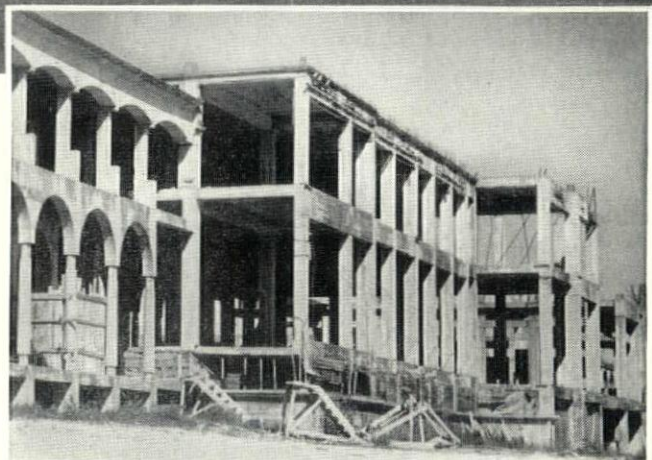


*24 years of severe weathering  
demonstrate the durability of*  
**CONCRETE CONSTRUCTION**

The destructive hurricane of 1926 halted construction of the University of Miami's 8-million-dollar building program—including the Mediterranean style structure designed by Phineas Paist shown in the small photo at the right. For 24 years this reinforced concrete frame and floor skeleton stood exposed to rain, sun and hurricane winds.

In the spring of 1950 a subscription drive was launched to obtain funds to finish the building. Examination showed that the concrete frame was sound so the structure was redesigned by Architect Robert M. Little of Miami Beach, Fla., in keeping with the modern motif of present campus buildings.

The photo above shows the completed structure now known as the Merrick Building. The seven-story 100-ft. tower contains faculty offices and display rooms, the wings classrooms and lecture halls.



Structural engineer for Merrick Building: A. H. Baxter, Coral Gables, Fla.; contractor: Gust K. Newberg Construction Co., Miami, Fla.

This is another graphic example of how reinforced concrete construction can "take it." Such construction has the strength and rigidity to resist all static and dynamic loads. It is durable, sturdy and firesafe.

Reinforced concrete construction is moderate in first cost, requires little or no maintenance, gives long years of service. Result: **low annual cost**. For more information send for free, illustrated literature. Distributed only in the United States and Canada.

**PORTLAND CEMENT ASSOCIATION**  
735 NORTH WATER STREET, MILWAUKEE 2, WISC.

A national organization to improve and extend the uses of portland cement and concrete through scientific research and engineering field work

## Editor's Note

At the beginning of this, its twenty-third year, The Wisconsin Architect is pleased to welcome many new advertisers. Additional advertisers will join us in February.

It goes without saying that The Wisconsin Architect is grateful to the steadfast corps of companies whose faith in our publication has enabled it to serve architects, municipalities, the Wisconsin construction industry and the public with news and feature material about the architectural profession.

We pledge ourselves to continue to justify our advertisers' confidence.

### COVER COMMENT

Our cover photo is of a man whose name, in the public mind, is synonymous with Architecture. This magazine is proud to carry this distinguished Karsh photograph of Frank Lloyd Wright. Another architect (also of national and international repute) once described Wright succinctly to your publisher by saying, "If architecture today occupied the rightful position it held in Renaissance Europe, Wright would be the greatest man in the world".

#### THE WISCONSIN ARCHITECT

Volume 23, No. 1

Official Publication of

#### Wisconsin Architects Association

N. J. Russell, Jr., Editor and Publisher

Published Monthly

Subscription, \$1.00 per year

Business and Editorial Offices

828 N. Broadway, Milwaukee 2, BRoadway 2-0822

#### Wisconsin Architects Association

A Chapter of the American Institute of Architects

#### OFFICERS

Julius S. Sandstedt ..... President  
 Arthur O. Reddemann ..... Vice-President  
 Fritz von Grossmann ..... Secretary-Treasurer  
 N. J. Russell, Jr., Public Relations Counsel and  
 Consultant for Administration  
 828 N. Broadway, Milwaukee 2, BRoadway 2-0822

#### DIRECTORS AT LARGE

John J. Brust ..... Francis S. Gurda  
 William G. Herbst ..... Mark T. Purcell  
 Arthur O. Reddemann ..... Joseph J. Weiler

#### DIVISIONAL DIRECTORS

Milwaukee Division  
 Fritz von Grossmann ..... Frederick J. Schweitzer  
 Madison Division  
 William Vogt Kaeser ..... Emiel F. Klingler  
 Northeastern Division  
 Sylvester J. Schmitt ..... Julius S. Sandstedt

#### DIVISION OFFICERS

Milwaukee Division  
 Roger M. Herbst, President; Maynard W. Meyer, Vice-President; Robert P. Potter, Secretary-Treasurer.  
 Madison Division  
 Thomas H. Flad, President; John W. Steinmann, Vice-President; Carl H. Gausewitz, Secretary-Treasurer.  
 Northeastern Division  
 Maurey Lee Allen, President; Paul A. Kilp, Vice-President; Eugene Wasserman, Secretary-Treasurer.

To fill you in . . . .

## Distinguished Out-State Architects to Judge 1955 Honor Competition

A distinguished jury has been announced for the 1955 Honor Awards Competition of the Wisconsin Architects Association to be judged in Milwaukee January 28, 1955.

Carl Koch of the Massachusetts Institute of Technology Department of Architecture, Harold Spitznagel, practicing architect of Sioux Falls, South Dakota, and John Root of the Chicago architectural firm of Holabird, Root, and Burgee, have accepted requests to serve as the Competition's jurors.

The judging will begin Friday morning, January 28, and is expected to last the entire day. Date of the announcement of award winners has not yet been set. Honor Award Program entries will be on display at the Annual Convention.



Harold Spitznagel

## Nominations Made for Directors-at-Large

The nominating committee composed of the three 1954 division presidents, Roger M. Herbst, Milwaukee, Maurey Lee Allen, Appleton,

and Thomas H. Flad, Madison, has nominated ten men for the five positions of Directors At Large. Those elected will serve one-year terms on the Board of Directors of the Wisconsin Architects Association.

Nominees are: Donn Hougen, Wisconsin Rapids; Karel H. Yasko, Wausau; Leonard M. Schober, Green Bay; and Sylvester J. Stepnoski, Fond du Lac; Herbert J. Grassold, Alvin E. Grellinger, Wallace R. Lee, Jr., Arthur O. Reddemann, all of Milwaukee; Mark T. Purcell, Madison and Emiel F. Klingler, Eau Claire.

## Convention to Consider "Reserve Fund" Plan

Plans are being made to ask the membership of the Wisconsin Architects Association at its Annual Meeting February 10 to consider the creation of an "Administrative and Reserve Fund".

A plan, recommended unanimously by the Board of Directors at its January 8 meeting, calls for the contribution by architectural firms to the Association of funds, based upon the number and type of members and employees each firm has.

Funds thus received would be, in the main, set aside as a reserve to be used to operate the Association when and if the current high level of construction declines and the present association dues would be lowered. A portion of these funds also would be utilized to meet operation expenses and continue to broaden the current programs which are resulting in increased benefit to individual architects.

A type of assessment based upon building permits obtained by each architect's office also may be offered for consideration at the 1956 convention or at a special meeting in 1955 in the event the suggested voluntary plan is not accepted.

Association officers and other leading architects have voiced concern over the fact that vital and worthwhile association activities which would result in direct benefits to each architect have been hampered by lack of adequate operating funds.



Sibyl Moholy-Nagy

Frank Lloyd Wright (see cover) will head the impressive list of speakers to address The Wisconsin Architects Association Convention in Milwaukee February 10, 11 and 12 at the Hotel Pfister.

The Convention program, announced by Convention Committee Chairman, Roger M. Herbst, reveals a well-paced series of activities designed to keep the interest of Convention goers at a high pitch.

Discussion will range through down-to-earth details of bidding procedures, thread the labyrinth of law and business regulations as they affect architects, review current architectural education practice, and climax with a seminar on the aesthetics of design.

The Annual Meeting set for 2:00 p.m., Thursday, February 10, will

## Nationally Known Speakers to Address Convention of Wisconsin Architects

set the stage for the Convention. The election of directors, a discussion of the creation of a Reserve and Administrative Fund, discussions of Institute policy as they affect the Association, and other items will highlight the agenda.

President Sandstedt will open the Convention proper at 9:15 a.m., Friday, February 11, and matters then will move swiftly as architects and representatives of the General Contractors Association tangle with the problems of bid opening date coordination, standardized specifications, alternate bids, the revealing of the identity of subcontractors. This "workshop" will be guided by a panel consisting of Julius S. Sandstedt and Arthur O. Reddemann, President and Vice-President of the Association respectively, and George A. Benish, General Manager of the GCA, and T. L. Cottam of the Hunzinger Construction Co. There is some foundation for a belief that representatives of each of these groups may suggest changes in the policy of the other.

To let the smoke of the morning's program clear away, no speaker is scheduled for the noon luncheon. At 2:30 p.m. Edward T. Bardwell of

the Equitable Life Assurance Society will discuss Corporate and Partnership Practice for Architects.

Later in the afternoon Gerald J. Rice, Association legal counsel, will discuss the "Safe Place" statute and the architect's liability under it.

The Convention's Banquet, as indicated, will be addressed by Frank Lloyd Wright and, as expected, interest in this address is at a very high level.

The Convention Committee successfully sought a program for Saturday morning which would not prove anticlimactic. Walter H. Kilham, New York member of the architectural firm of O'Connor and Kilham, who has served on a national architectural education committee, will discuss current architectural education and practice.

Sibyl Moholy-Nagy will lead a conference on "Environment and Design in Architecture". Author, critic and teacher, Mrs. Moholy-Nagy is expected to provide a suitable climax to a worthwhile Convention program.

At each of the seminars time has been arranged for group participation in the subject under discussion.

## Architect-Engineer Practice Code Will Come Before Annual Meeting

A proposed "Code of Interprofessional Practice" for architects and professional engineers will be offered to the Wisconsin Architects Association for consideration at its Annual Meeting February 10, 1955.

The code is the result of many months of work by a joint committee representing the Wisconsin Architects Association and the Wisconsin Society of Professional Engineers. Approved by the boards of directors of both organizations,

the code will be submitted to the membership of both groups at their conventions in January and February. Architect members of the joint committee have emphasized that the code is one of ethics and that deliberately matters of law were not included. The assumption is that both groups are required to work under the laws of the state of Wisconsin and that legal requirements provide only a minimum basis of morality. The code of ethics suggested is designed, its proposers de-

clare, to define the standards of both groups.

In addition, the code, according to the joint committee, merely will provide an additional workable basis for an approach to working out the problems common to both organizations.

One committee member has stated that it is recognized the code is not perfect but that its adoption is urged so that it can be the basis for additional improvements.

## Divisions Pick Officers, 1955 Director Nominees

The officers who will guide the 1955 affairs of the three divisions of the Wisconsin Architects Association have been chosen, along with Division nominees to the Board of Directors.

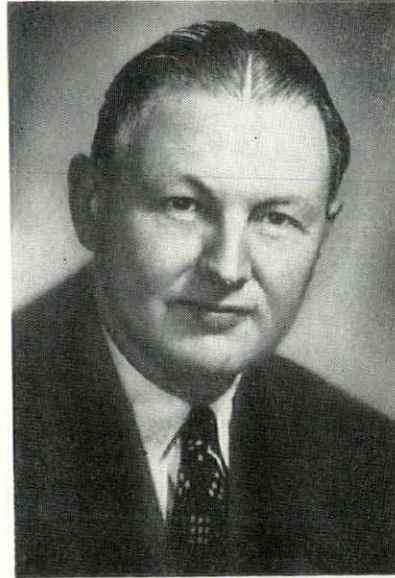
Perc Brandt, Manitowoc, was named president of the Northeastern Division at a meeting in Chilton, January 3. The vice-presidency went to Eugene Wasserman of Sheboygan, former secretary-treasurer of the group. Leonard H. Reinke, Oshkosh, will assume the duties of secretary-treasurer.

Julius S. Sandstedt, present president of the Association, and Maurey Lee Allen, former Northeastern Division president, were nominated as the group's divisional directors.

Milwaukee Division officers, elected January 11 in Milwaukee, are Herbert Grassold, president, Robert P. Potter (former secretary-treasurer), vice-president, and Herbert W. Bradley, secretary-treasurer.

Roger M. Herbst, former division president, was nominated to a two-year term on the Association's Board of Directors. Fritz von Grossmann, present state secretary-treasurer

## Gillett Named Producers' Council National Head



William Gillett

The presidency of the Producers' Council, the nation's largest organization of building material manufacturers, and their trade associations changed hands on January 1, when William Gillett, vice-president and a director of Detroit Steel Products Company succeeded retiring president Elliott C. "Jack" Spratt, St. Joseph, Mo. Spratt is secretary of Hillyard Chemical Company and vice-president of their eastern sales company.

Gillett, the unanimous selection of the representatives at the Council's annual meeting, has been associated with the construction industry and material production since his graduation from Case Institute of Technology in 1928. His first employment was with Holorib, Inc., a company later acquired by his present firm.

and Board member, was nominated for a one-year term as a division director.

Present Madison Division officers will remain in office pending the election of their successors. They are T. H. Flad, president; John W. Steinmann, Monticello, vice-presi-

dent, and Carl H. Gausewitz, secretary-treasurer.

Divisional Directors nominated from the Madison Division are Joseph J. Weiler and William V. Kaeser. Both men are from Madison and currently are on the Board of Directors.

## Milwaukee Code Form Revision Agreed Upon

The Milwaukee Building Inspection Department's recently-created Bulletin No. 59 requiring certification by the architect that the contractor has complied with the City Building Code, will be revised in the near future.

This form, prepared by the City of Milwaukee Department of Building Inspection and Safety Engineering, was issued in August, 1954 and occasioned considerable concern on the part of architects designing structures within the city of Milwaukee.

Milwaukee architects expressed themselves as being heartily in favor of continued careful inspection by the City Building Code Inspectors and also strongly for continued careful supervision of construction by the architect concerned.

The portion of the form which drew the most comment required that the architect "certify that all construction work on the premises" was "executed in accordance with all of the applicable regulations of

the Milwaukee Building and Zoning Code of 1951, approved plans, specifications, terms of permit, and data filed with the application and permit".

Certain architects stated that the material requested by the report was essentially the same as that which would be completed by any competent architect during the course of his usual supervision of a structure for which he was responsible.

However, the requirement that the architect certify that the contractor has executed all of his work in accordance with the Building Code was believed to be so far beyond the architect's normal function that this portion of the form could not be complied with.

Meetings of the Milwaukee Division Code Committee, chaired by Arthur O. Reddemann, resulted in requests for written comments by interested architects. After study of Bulletin No. 59 by Wisconsin Architects Association legal counsel, Gerald J. Rice, a conference was scheduled between representatives of the architects' group, the Milwaukee Building Code Inspectors staff and the City Attorney's office. As a

result of this conference it was determined that the certificate required by architects should read as follows:

"I hereby certify that I have supervised the construction of this building and that all of the reports of inspection made upon this report are true and correct."

Milwaukee Division members expressed appreciation of the cooperation shown them by the Milwaukee Building Code Inspectors Office and applauded the Building Inspector for the completeness of the revised certified inspection report.

## Associates to Receive A.I.A. Journal Along With Junior Associates

Associate as well as Junior Associate members of the Wisconsin Architects Association soon will begin to receive The American Institute of Architects Journal.

At its January 8 meeting, the Board of Directors approved a budget which includes \$390.00 for this purpose. This action has long been desired and, it is believed, will be welcomed by the membership.

## Nationwide Group of Architects Suggests AIA "Action" Program

A suggested program of action for the American Institute of Architects has been prepared and endorsed by a group of member architects which has urged "grass roots" members to consider the program at state conventions, endorse it and support it for acceptance by the Institute at the national convention.

The purpose of this program, according to its proposers, is "so that The Institute can become a more effective instrument assisting the architect to fulfill his professional responsibilities".

The group's recommendations have been published in booklet form and sent to chapter presidents by Thomas H. Creighton, Editor of Progressive Architecture. The purposes of the program, as stated in the brochure, are to: (1) improve the quality of output from the practicing profession; (2) improve movement from school through apprenticeship to practice; (3) improve functioning and widen the membership of the A.I.A. and, (4) improve public understanding and acceptance of the architect.

The preface to the program states it is an attempt to "coordinate" the findings of the Burdell Commission which conducted a survey of architectural practice, education, registration and apprenticeship and the Committee on Organization, set up to study the Institute's structure and functioning.

The suggested program lists nineteen recommendations: a planned program of advanced professional education, another on research; study and possible

coordination of Institute publications, improvement of Fellowship requirements, coordination of movement from school through apprenticeship to practice, creation and definition of requirements for a new designation of "architects in training", studies toward a National Architectural Registration Examination, to determine the advisability of direct mail-ballot election of national officers, and many others.

**QUALITY..** GLAZED BRICK AND TILE,  
FACE BRICK, COMMON BRICK, FIRE BRICK  
AND HIGH TEMPERATURE CEMENTS

**Wisconsin Face Brick & Supply Corp.**

4485 N. Green Bay Ave. CONCORD 4-4770 Milwaukee, Wis.  
BRIXMENT the leading masonry cement

**NOVOTNY L. J.  
INC.**

Representing  
**F. H. LAWSON CO.  
WADE MFG. CO.**

B Roadway 6-1899  
PLANKINTON BLDG.

MILWAUKEE

WISCONSIN

The Weldwood Fire Door offers  
the *Architect* and the *Owner*  
many advantages.

- Increased Safety
- Beauty
- Durability
- Dimensional Stability
- Light Weight
- Vermin and Decay Protection
- Easy Installation
- Standard Thickness Veneers
- Moderate Cost

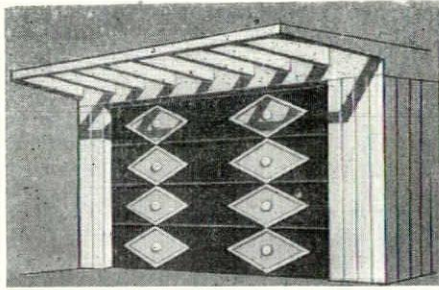
*"Fireproof" IS NOT ENOUGH!*  
*Weldwood Fire Doors Insulate*  
*Other Doors Communicate*

The high insulating value of the Weldwood Fire Door is a real feature. During a 1-hour fire test, a Weldwood Fire Door was subjected to approximately 1700° F. The highest temperature registered at a distance of one foot from the other side of the door was only 102° F. This means full protection against loss of life and property.

**UNITED STATES PLYWOOD CORPORATION**

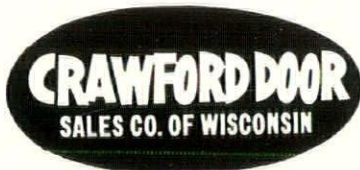
3354 NORTH 35th STREET, MILWAUKEE, WISCONSIN

## CUSTOMIZE . . .



## . . . YOUR GARAGE DOOR

Any standard model CRAWFORD Marvel-Lift Garage Door can be customized to the architecture of a home or preferences of a client. Moldings, rosettes and initials are available from Crawford. Produces a decorator-designed, custom-built door at modest cost. Crawford Doors are built to outlast the garage.



1940 W. FOREST HOME AVE.  
MILWAUKEE 4, WIS.  
EVERGREEN 3-5200  
JOSEPH W. WILDE, Pres.

## T. C. ESSER CO.

PAINTS

GLASS

WALL PAPER

MIRRORS

GLASS BLOCK

•

CHURCH

STAINED GLASS

•

MILWAUKEE

•

OSHKOSH

LA CROSSE

## Westinghouse Electric Supply Co.

Branch Offices and Stocks at  
MILWAUKEE — MADISON — GREEN BAY

•

Serving Wisconsin With  
ALL WESTINGHOUSE PRODUCTS  
Plus Nationally Known Brands Such As

- ILG Ventilation
- Bryant Wiring Devices
  - Crouse Hinds Fittings
  - Hub Stage Lighting
  - Edwards Signal Systems

•

You Can Be SURE —  
If It's WESTINGHOUSE



## DRAFTING FURNITURE TRACING PAPERS

•

Complete Supplies for  
ARCHITECT AND ENGINEER

•

BLUE PRINTS • DIRECT READING  
BLACK OR BLUE DRY PRINTS  
TRACING REPRODUCTIONS

•

Radio Equipped Trucks for  
Faster Pickup and Delivery Service

## FREDERICK POST CO.

BROADWAY 1-7246 • 115 EAST WELLS STREET  
MILWAUKEE, WISCONSIN

# Rundle-Spence

MANUFACTURING COMPANY

PLUMBING, HEATING  
and MILL SUPPLY

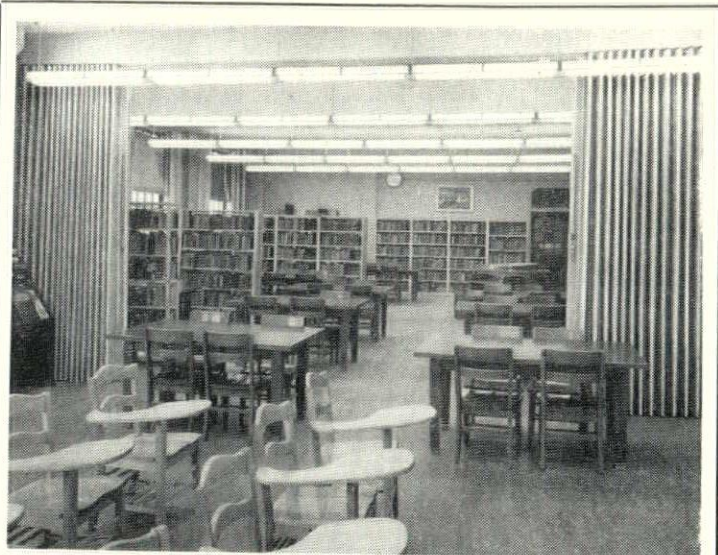
MILWAUKEE - MADISON

29 N. CHARTER ST. MADISON 5, WIS.

Phone 5-6754

445 N. FOURTH STREET MILWAUKEE 3, WIS.

Phone BRoadway 1-2500



Room Division — Milwaukee High School  
"MODERNFOLD" "IN SCHOOLS"

FOR  
WARDROBES  
STAGE CLOSURES  
CAFETERIAS

MODERNFOLD DOOR DIVISION

**W. H. PIPKORN CO.**

1548 W. Bruce St. • Mitchell 5-6800 • Milwaukee 46, Wis.  
EVERYTHING IN BUILDING MATERIALS AND REINFORCING STEEL

## Choice of Wood Paneling is a Problem to Architect and Client

We at Steinman can help you find the answer. At one of two convenient locations you and your client can "shop" through the 30-in. by 60-in. panels to find exactly what you want. Plywood — Pana-wall — Wood Paneling — 80 different species — Northern, Southern, Western and Foreign Woods for distinctive interiors and exteriors.

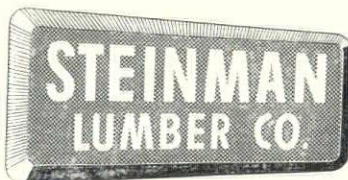


**HERE'S THE ANSWER!**

**WRITE OR CALL — WE'RE HERE TO HELP**

1235 North 35th Street  
Division 2-0740

3500 North Holton Street  
WOODRUFF 2-4331



**LIZA-LEIGH HUNT**  
 ARCHITECTURAL PHOTOGRAPHER  
 3800 North Humboldt Avenue  
 Milwaukee, Wisconsin  
 Phone EDgewood 2-2113

**QUALITY . . .**

GLAZED BRICK AND TILE, FACE BRICK,  
 COMMON BRICK

**GAGNON CLAY PRODUCTS CO.**

526 S. Broadway HEMLOCK 5-5318 Green Bay, Wis.  
 BRIXMENT *the leading masonry cement*

PHOTOCOPIES                      DRAFTING SUPPLIES  
 REPRODUCED TRACINGS

**SCHMITT BLUEPRINT CO.**

VAN DYKES                      •                      A.I.A. CONTRACTS

**C. F. PEASE AGENCY**

628 N. BROADWAY                      BRoadway 6-1761  
 MILWAUKEE

# Hunzinger Construction Company



Milwaukee

Phone: SUNset 1-9100

*Architects,*

*take advantage of* **PRITZLAFF'S**

*Contract Hardware Service*

We offer you —

- aid in specification writing
- a complete line of time-tested, nationally advertised finish hardware for any type structure
- hardware consultants to help on special problems

*105 years of experience  
 is at your command!*

Call BRoadway 1-1965

Ask for Don Loss or Larry Sutton

**John Pritzlaff Hardware Co.**

333 N. Plankinton Ave. • Milwaukee, Wis.

\*

**F. R. DENGEL CO.**

*for*

*Fine Plumbing & Heating*

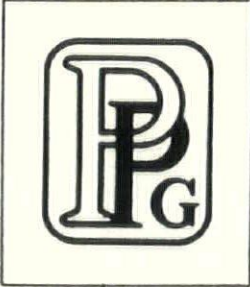
*Appointments*

\*

*Urge your clients to visit  
our showroom. Three makes  
of fixtures to select from . . .  
Kohler, Briggs Beautyware  
. . . W. A. Case Co.*

**BRoadway 6-8950**

1114 N. 4th St. Milwaukee 3, Wis.



**STANDS  
FOR QUALITY**

**PAINTS · GLASS**

**in homes · offices · factories  
institutions · schools · stores**

PAINTS · GLASS · CHEMICALS · BRUSHES · PLASTICS  
**PITTSBURGH PLATE GLASS CO.**  
620 SOUTH FIRST STREET · MILWAUKEE, WIS.

**VITREOUS WALL SURFACING**

by

**CEMENT ENAMEL  
OF WISCONSIN**

**Permanent - Washable - Sanitary - Durable**

**VIRTUALLY UNLIMITED  
COLOR SELECTIONS**

WEst 3-2072

505 North 29th St. Milwaukee 8, Wisconsin

**FLOORING**

FOR  
RESIDENTIAL, PUBLIC BUILDINGS  
OR  
COMMERCIAL USE

---

. MAPLE, BEECH, BIRCH .  
. and WISCONSIN OAK .  
. in .  
. STRIP, HERRINGBONE and .  
. ASSEMBLED BLOCK FORM .

---

OUR MAPLE, BEECH and BIRCH flooring is guaranteed MFMA (Maple Flooring Manufacturers Association) grade and manufacture.

*Architects*

ADDRESS YOUR FLOORING PROBLEMS TO US

**HOLT HARDWOOD CO.**

OCONTO, WISCONSIN

\* \* \*

