

# THE ARCHITECTURAL AND BUILDING MONTHLY

A JOURNAL OF PRACTICAL DESIGNS & DETAILS

Vol. 1. No. 4. July, 1890.

A. J. BICKNELL, PUBLISHER.

[Entered at New York Post Office as second-class matter.]

115 BROADWAY, NEW YORK.

## MINTON'S TILES

Of all descriptions for Mantels, Fire-places, Floors, etc., etc.

**MILLER & COATES,**  
SOLE AGENTS,

270 Pearl Street, NEW YORK.

## Art Stained Glass

## Belcher Mosaic Glass Co.,

HENRY F. BELCHER, Pres.

123 Fifth Avenue, - New York.

Designs and Catalogue sent free to readers of Architectural and Building Monthly.

FOR SUBSCRIPTION BLANK  
See Page 14.



ARCHITECTS AND BUILDERS  
Should send for and read our argument on construction of  
**LIGHTNING RODS,**

and if they believe in our reasons given they will order rods which will PROTECT, last long and look neat. Our Hollow Square Copper Rod is universally approved by scientists.  
J. D. WEST & CO., 40 Cortlandt St., N. Y.

## PEERLESS Mortar Colors.

BLACK, RED, BROWN AND BUFF.

These Colors are Permanent and Superior to any Article in Use.

PREPARED ONLY BY

**SAMUEL H. FRENCH & CO.,**

Paint Manufacturers,

Importers, Dealers and Manufacturers of Painters' and Builders' Supplies.

YORK AVE., FOURTH & CALLOWHILL STS., PHILADELPHIA, PA.

Send for Circular and Catalogue.

## THE DUNNING PATENT WROUGHT-IRON BOILER

WITH SELF-FEEDING COAL MAGAZINE IS THE BEST FOR



TRADE MARK.

Low Pressure Steam or Hot-Water Heating,

And insures a warm House night and day. Over 15,000 in use. Keeps steam up constantly. Also Steam Engines and Boilers of all kinds and Machinery generally.

MANUFACTURED AT THE

NEW YORK CENTRAL IRON WORKS,  
43 Exchange St., Geneva, N. Y.

Send for 120 page Illustrated Catalogue and Price List.



AGENTS WANTED EVERYWHERE

FOR THE TOCH BROS.,  
35 Bowery, NEW YORK.

Famous Mortar Tinters.

SAMPLES AND PRICE-LIST MAILED FREE TO ANY ADDRESS.

## CONTRACTORS

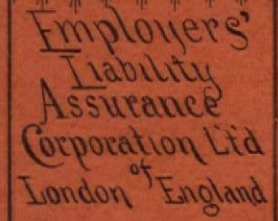
## AND BUILDERS.

Protection against Claims for

## ACCIDENTS

To their own and other Contractors' Workmen and the Outside Public.

Deposited in United States \$700,000.00.



Policies issued giving full protection to Employers against loss by Claims from Employees on account of Accident. Rules proportioned to Risks of Occupation. One Premium the only Payment during year. No Contingent or other Liability on part of Employer. Employers with Pay Rolls of \$100,000,000 already covered in the United States. No Employer should be without this protection. Cases Investigated by Competent Inspectors, and considered by Eminent Counsel. If Liability shown, claims settled without litigation.

CHIEF OFFICES FOR UNITED STATES: No. 71 KILBY STREET, BOSTON, MASS. ENDICOTT & MACOMBER, Mgrs. and Attys.

AGENTS—SAMUEL APPLETON, 23 Central Street, Boston; KIRBY & DWIGHT, 51 Cedar Street, New York; MIDDLE DEPARTMENT, TATTNALL PAULDING, Manager JOHN G. HOOVEN, General Agent 416 and 420 Walnut Street, Philadelphia; G. W. S. HALL, 413 Second Street, Baltimore, Md.; GEO. A. GILBERT, 226-228 La Salle Street, Chicago; F. D. HIRSHBERG & BRO., 120 N. Third St., St. Louis; ROBT. ZENER & CO., Indianapolis, Ind.; HUFFMAN & ALLISON, Birmingham, Ala.

AGENTS IN ALL PRINCIPAL CITIES.

## Centrifugal, Rotary and Piston Power Pump, and House Pumps,

Over 800 Varieties of Brass Lift and Force Pumps.

SEND FOR ILLUSTRATED CATALOGUE.

400 Seneca Street.

**Rumsey & Company, Ltd.,** Seneca Falls, New York.



## Natural WOOD ORNAMENTS Pressed in Relief.

NEW DESIGNS IN PLAIN AND VENEERED WOODS. For Builders, Furniture Manufacturers, Interior Decorators, etc. Pressed Corner Blocks for Door and Window Casings. Patent Papyrus Centre Pieces.

EDWIN C. PARKER, 157 Eleventh Avenue, near 23d Street, NEW YORK.

Successor to ALBERT KOMP. Send one cent stamp for Catalogue.

## TILES

— FOR —  
MANTEL FACINGS, HEARTHES, DADOES, ETC., ETC.

THE PROVIDENTIAL TILE WORKS,

MANUFACTURERS,

P. O. Box 603. TRENTON, N. J.



J. C. French & Son,  
Vault and Sidewalk LIGHTS  
Of Every Description.

155 West Broadway, N. Y.

## HYATT HOUSE FILTERS.



These filters are connected to the supply pipe and filter all the water which enters the house, whether for drinking, bathing, washing clothes, or for culinary purposes.

The filtering material can be thoroughly cleaned once each day or more frequently if desired by following directions, which are easily understood by the least intelligent custodian.

HYATT PURE WATER CO.,

18 CORTLANDT ST., NEW YORK.

## P. PRYIBIL,



Twist Machine.

518-524 W. 41st St.

NEW YORK CITY,

Manufacturer of SUPERIOR

Wood-Working Machinery.



Corner Block Machine.

Shafting, Pulleys and Hangers,



LATHES, all sizes.

SEND FOR CATALOGUE.

# DESCRIPTION OF PLATES.

## Plate No. 37.

DESIGN FOR AN ENTRANCE GATE.

This design would appropriately mark the entrance to large grounds in the country, where the old farm wall still remained, and should be constructed of ancient field stone and boulders laid in mortar, and as nearly like the old work as possible. The jointing of the mortar should be kept well back from the face of the wall.

The beauty of such work is greatly helped by using little or no cut-work, even for piers, coping or such parts of the design.

Other features of country use could easily be combined with the walls, such as a well-curb, a tent platform, etc.

## Plate No. 38.

MASON BUILDER'S DETAILS.

This plate is intended to show the practical construction of a chimney and fireplace, carried from the cellar bottom to the topping out above the roof. The location is on the outside studded wall of a frame dwelling, and consequently needs to be protected against the possibility of setting the woodwork on fire. The thickness of brick immediately behind fireplace is eight inches, and racked back to four after leaving fireplace; this is for the purpose of using 2x4 studding to nail the sheathing to. Fire brick should be used for the backing to fireplace; also, the fireplace and all flues should be lined with chimney flue tile. Line next to all woodwork with XX bright tin, and every precaution should be taken to prevent the woodwork from catching on fire. Another way would be to make the wall back of fireplace and flues eight inches thick all the way up, and use 2x2 furring to nail sheathing to, setting the chimney in the room two inches further.

## Plates Nos. 39, 40 and 41.

ELEVATION, PLANS AND DETAIL OF TWO CITY HOUSES.

These plates give the elevations, plans and many of the principal details of two city houses on 18 ft. lots, that could be erected at a very moderate cost. The fronts are of stone up to the first story sills, and above of buff or other light colored brick, with stone and terra cotta trim, etc., etc., as shown by the details on Plate 41, of appropriate colors, to harmonize with the brick. But few moulds would be required for the terra cotta, thereby giving a very rich and handsome effect at a small cost. Leaded glass in

window and door transoms. The section will give the height of stories. On entering the house there are three steps in the vestibule to the entrance hall, which, with the green at stairs would make a very pleasing entrance; as large parlor and stair hall, and dining room at back with convenient butler's pantry and dumb waiter, and open fireplaces in all three rooms. The other floors are so arranged as to give as large and great a number of rooms as can be put in a house of this size, with ample closets, bath room and all modern conveniences. The trim throughout could be of whitewood stained any color desirable; or, in parlor, enameled white and gold.

## Plate No. 42.

STORE FRONT WITH FLATS ABOVE.

This store front is intended to be built of stone, brick and terra cotta; the stone work extending to top of second story, and intended to be all cranded work. Above this point the best quality of pressed brick, together with stone and terra cotta trimmings, are to be used. The first story may be finished for a store or an office, as desired, and the three upper floors for flats, as per plan. If desired a back staircase may be constructed in the rear in connection with porches, thus facilitating domestic work.

## Plate No. 43.

This plate contains six elevations and plans of chimney tops, drawn to scale of one-half inch to one foot.

## Plate No. 44.

1.—Plan, section and details of outside and inside Vestibule Doors.

2.—Design of Entrance Gate in Iron, by the Jackson Architectural Iron Works, New York City.

## FORECAST OF CONTENTS OF NO. 5, TO BE READY AUG.; 1.

Elevations and plans of a seaside cottage; elevations, plans and details of a suburban house; elevations and plans of a picturesque cottage; view, elevations and plans of a shingle cottage, with exterior and interior details, a full plate of iron construction, etc., all drawn to scale.



## PRESS NOTICES.

## THE MAIL AND EXPRESS, NEW YORK.

The "Architectural and Building Monthly," published by A. J. Bicknell, with an office at 115 Broadway, comes out with the first number of its first volume for April, or at what is virtually the beginning of the building year in the country. It is \$5 a year, or 50 cents a number, and aims to do what no other publication does so thoroughly, namely, furnish practical designs, plans and details for residences. Each number is to contain eight to twelve plates to scale, with abundant information. The first issue promises finely, and is worth more than the price to anyone who intends to build a small house. It looks like an admirable, interesting and instructive publication, and is certainly, so far, one of the best of its kind.

## THE ALBANY EVENING JOURNAL.

The "Building Monthly" is an excellent journal of practical designs and details, amply illustrated, and devoted to the use of all associated with architecture and the building trades. A. J. Bicknell, publisher, No. 115 Broadway, New York city. \$5 a year.

## THE BERKSHIRE COUNTY EAGLE,

PITTSFIELD, MASS.

One of the best monthlies devoted to the interests of builders and everybody interested in house building is the "Architectural and Building Monthly," published by A. J. Bicknell, at 115 Broadway, New York. The April number, which, by the way, is the first issue, is a very interesting and creditable number. There are plans for several houses of various costs, and more details are given than is usual in such works. Detail drawings of all peculiar parts of the construction are given. There are sheets of plans for handy shelves, kitchen dresser, seat, etc.

## THE CHICAGO JOURNAL OF COMMERCE.

We are in receipt of a new technical periodical, "The Architectural and Building Monthly," a journal of practical designs and details, published by A. J. Bicknell, 115 Broadway, New York. The initial number (for April) contains twelve large quarto pages of architectural plates, showing a design for front stairs and details; elevations, floor and framing plans of a special cottage; elevations and plans of a shingled cottage in the colonial style; perspective and design for a modern cottage; a model kitchen; shelves, seat and table combined; details for inside window and door finish; designs for low-cost cottages, and exterior details of a suburban house recently built. On this subject the publisher says: "Having issued several practical books on architecture, carpentry, and building, I propose to furnish more designs each year in this journal for \$5.00 than I ever published in book form for \$10.00." While he does not propose to burden readers with a mass of letter-press, he purposes to give an abundance of valuable drawings of modern designs and details, with descriptions not spun out and lumbered up with technicalities, but brief and intelligent, with the intention to make all plates so easily understood that any long explanation of them will be unnecessary. For ordinary builders this periodical will be a helpful assistant.

## THE PAPER WORLD.

"The Architectural and Building Monthly" is a new candidate for favor among the building fraternity. It aims to furnish "designs and details of a practical character," and the initial number, which bears date of April 1, 1890, gives excellent promise. Its publisher is A. J. Bicknell, of 115 Broadway, New York, and the subscription price is \$5 a year, single numbers selling for 50 cents. The present number has twelve pages of designs, embracing a variety of architectural subjects.

## CHRISTIAN ENQUIRER, NEW YORK.

"The Architectural and Building Monthly" is a journal of practical designs and details, of which the first number has just appeared. It gives several designs of houses with copious illustrations engraved in a superior manner. Certainly, anyone can tell from such a book whether a house erected after one of its plans, would be likely to suit his wishes. It promises to be a real addition to the publications of the architectural world, numerous though they be. The Monthly is published by Mr. A. J. Bicknell, 115 Broadway, at \$5.00 a year.

## THE NORTHERN BUDGET, TROY, N. Y.

"The Architectural and Building Monthly" is the title of a new periodical, of which we have the first number. It is somewhat different from most architectural journals, as giving in addition to the simple design, the practical details and working drawings, made to scale, enabling the builder to utilize them in his business. Original design for dwellings, varied in style and cost, will appear in every number. The editor is a person of long experience, and of great practical knowledge, and under such auspices the new enterprise ought to prove very successful. It will be of interest, not only to professionals, but to anyone who is contemplating the erection of a dwelling, or indeed, of any building whatever. New York: A. J. Bicknell; \$5.00 a year.

## NEW YORK SUNDAY NEWS.

"The Architectural and Building Monthly," published by A. J. Bicknell, 115 Broadway, enters a field in which there are already numerous publications but bases its claims for attention on the attractive manner in which it presents its subjects to its readers. Unlike many of the building journals, which deal in wordy descriptions, the new monthly is profusely illustrated, and confine the reading matter to short but comprehensive descriptions of its illustrations. The issue in hand contains many attractive architectural designs, and presents a very handsome appearance. The price is \$5.00 per year.

## EXTRACTS FROM TRADE PAPERS

## THE ARCHITECTURAL ERA.

"The Architectural and Building Monthly," a journal of practical designs and details, is the name of the latest arrival in the field of architectural journalism. We bid the new comer welcome and trust it may meet with the success it merits. This journal being eminently practical in its character seems to fill a niche that was waiting for it and we commend it to those who are seeking something which will be of real utility in architectural work and study and also to the builder who will find these "Practical Designs and Details" of great value and interest. A. J. Bicknell, publisher, 115 Broadway, New York City.

## THE SANITARY NEWS, CHICAGO, ILL.

We have Vol. 1, No. 1 of "The Architectural Building Monthly," published by A. J. Bicknell, 115 Broadway, New York City, at the subscription of \$5.00 per year. The object of the journal is to furnish a larger number of practical designs and details than are usually published in the average architectural journals, and judging from this first number, that object will be most fully accomplished. The journal is practicable and brings the information regarding building construction, illustrated and explained, home to its readers. The journal is handsomely printed and its designs, even to details, are perfect, no suggestive, but explicit. "The Building Monthly" is the result of Mr. Bicknell's wide knowledge of and experience with building journals, and if anyone is qualified to fill a vacancy or need in this field of journalism, that one is Mr. Bicknell. He possesses the knowledge, ability and experience to make his publication succeed, and give its patrons more than full value for their money.

## BUILDERS' GAZETTE, PITTSBURGH, PA.

We are in receipt of the initial number of the "Architectural Building Monthly," published by A. J. Bicknell, 115 Broadway, New York. The first number is beautifully illustrated with drawings and plans for both interior and exterior purposes. Judging from the large number of well known advertisers it looks as though it came to stay and that its success has been already attained. The untiring energy of Mr. Bicknell will add very materially to its future success. May it long well live.

## U. S. GOVERNMENT ADVERTISER,

WASHINGTON, D. C.

The attention of contractors and builders of iron, stone, brick or frame work is called to a new publication entitled "The Architectural and Building Monthly," containing practical designs and details, the April number of which has reached us, and which promises to be the most useful work of its class. This journal is issued at 50 cents a number; \$5.00 per year. A. J. Bicknell, publisher, 115 Broadway, New York.

## THE BUILDING BUDGET, CHICAGO, ILL.

"The Architectural Building Monthly," a journal of practical designs and details, published by A. J. Bicknell, 115 Broadway, New York. The first copy has appeared and contains interesting designs and details of specialties in building.

## CONTRACTOR AND BUILDER, ST. LOUIS.

"The Architectural and Building Monthly" is the name of the new publication the first issue of which reached us. It is published by A. J. Bicknell, the proprietor of Bicknell's Advertising Agency. Is handsomely gotten up, given over almost entirely to detail drawings in building specifications. It, however, fills a new field in that particular line. We welcome the rival.

BUILDER, DECORATOR AND WOODWORKER,  
PHILADELPHIA.

"The Architectural and Building Monthly" is the title of a new journal, which gives in every number a large and varied assortment of "practical designs and details," a feature that is of great value and one that must bring to it a host of patrons. The initial number consists of twenty-four pages, bound in a heavy, brick-red cover, and twelve of the pages are illustrations. A. J. Bicknell, 115 Broadway, New York, is the publisher.

**MORSE ELEVATOR WORKS,**

MORSE, WILLIAMS & CO.,  
Builders of all kinds of  
**PASSENGER AND FREIGHT  
ELEVATORS,**  
Automatic  
Catches  
Doors  
A SPECIALTY.  
and for Illustrated Circular.  
1105 FRANKFORD AVE.,  
New York, Frankford Ave., Wilder  
and Shackmaxon Sts.,  
PHILADELPHIA.  
N. Y. Office, 108 Liberty Street.  
Boston Office, 14 High Street.



Decorate  
Your  
Own  
Windows



M'CAW, STEVENSON & ORR'S PATENT.  
Glacier Window Decoration and Glacier Letters.  
Low-priced, Effective, Durable and  
Satisfactory, gives all the benefits of the  
most expensive Stained Glass at a frac-  
tion of the cost. Illustrated Circular  
sent by mail.  
**HENRY H. ROSS,**  
UNITED STATES AGENT,  
Pine Street, - New York.  
Sub-Agents in States or Cities Wanted.

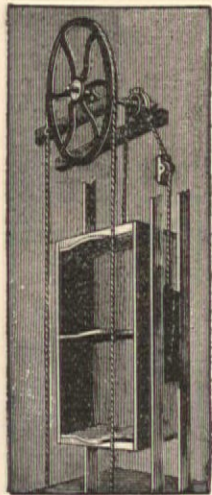
**Magneso Calcite  
Fire-Proof Co.,**

HOME OFFICE:  
6 ARCH ST., - BOSTON.  
MANUFACTURERS OF  
**MAGNESO-CALCITE**

**FIRE-PROOF BOARD.**  
Extensively used in Boston and  
other cities.  
Endorsed by leading Architects  
and Builders.

Circulars giving practical tests in  
detail, including a recent test by Prof.  
Morton of Stevens Institute, furnished  
on application.  
**JOHN MCGLENSEY & SON,**  
AGENTS,  
No. 115 BROADWAY,  
NEW YORK.

**ELEVATORS AND DUMB WAITERS.**



The Wythe (patent) is superior to any other  
machine for Dumb Waiters. The load is abso-  
lutely controlled by a self-acting stop, concealed  
within the head; this stop is substantially a  
**LOCK**, and the Hand Wheel is the Key; it  
cannot run down of itself no matter how heavy the load. Pull  
one way to raise, the other to lower. It is very dur-  
able, the controlling parts being made of steel, Mal-  
leable Iron and Bronze; any part broken or worn can  
be duplicated at small cost. See cut.  
*Specially adapted for Hotels, Dining Rooms, Restaurants  
and all places where absolute safety in raising or lowering is  
required.*  
*WYTHE No. 2, Same as above, but geared for heavier  
work, Light Elevators, Invalid Lifts, Etc. One man can  
raise 300 to 500 pounds.*  
For Illustrated Circular and Price List mention A. & B. MONTHLY and  
Address,  
**JOHN Q. MAYNARD, 12 Cortlandt Street, New York.**

**TWO VALUABLE BOOKS  
FOR MASONS AND PLASTERERS,  
Powell's Foundations and Foundation Walls,  
CAMERON'S PLASTERER'S MANUAL.**  
For Description and Prices See Page 16.



**CHAS. W. SPURR COMPANY,**  
MANUFACTURERS OF  
**Spurr's Patent Veneers  
and Wood Carvings.**  
Samples of Veneers and Catalogue of 200  
designs of Wood Carvings and Price-list  
free to any address upon application.  
PRINCIPAL OFFICE  
465-467 East 10th St., New York.



**The D. Frisbie Co. ELEVATORS** 118 LIBERTY STREET  
NEW YORK.

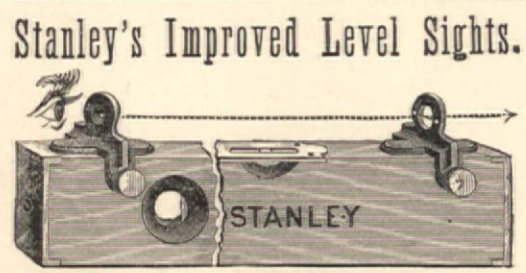


**CHAS. E. LITTLE, 59 FULTON STREET,**  
New York.  
Will send Illustrated Price List of Mechanics' Tools,  
Brass, Cabinet Hardware and Pressed Wood Ornaments to  
Readers of A. & B. MONTHLY Free. Also Supplies  
**W. F. & J. BARNES' WORKSHOP MACHINERY**  
At Factory Prices.

**THE GRAVES ELEVATORS**  
**PASSENGER AND FREIGHT**  
**L. S. GRAVES & SON, ROCHESTER, N. Y.**  
NEW YORK, 92 & 94 LIBERTY ST. ST. LOUIS, 301 ROE BUILDING.  
BOSTON, 113 DEVONSHIRE ST. DETROIT, HODGES BUILDING.  
CATALOGUE ON APPLICATION.

**"BURHAM" PORTLAND CEMENT**  
Imported by **JAMES BRAND** Office in  
Market and Fulton Bank Building, 81-83 Fulton Street, New York.

**IMPROVED  
Labor-Saving  
CARPENTERS'  
TOOLS.  
STANLEY  
RULE & LEVEL CO.  
New Britain, Conn.**  
SOLD BY ALL  
Hardware Dealers.



**Stanley's Improved Level Sights.**  
By the use of these ingenious devices, which can be attached  
to any Level, the owner has a convenient and accurate means for  
leveling from one given point, to another at a long distance away.  
When not in use, the Level Sights are easily detached, and  
can be packed away in a small space, for future use.  
No. 1. Improved Level Sights, per pair, in a box.....\$0 75

**DRAWING  
INSTRUMENTS,  
DRAWING PAPER,  
BLUE PROCESS  
PAPER,  
AMERICAN  
LIQUID INK.**

A fully illustrated and priced catalogue of 200 pages,  
of all instruments and materials used by draughtsmen,  
sent upon mention of this paper.  
**G. S. WOOLMAN,**  
116 Fulton Street,  
NEW YORK.

**DRAFTING PENCILS.**

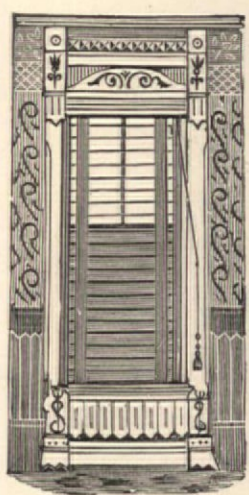
Every builder is obliged to do more or  
less drafting, and nothing is more annoy-  
ing than to get hold of a pencil that is  
gritty or has a crumbling lead. **Dixon's  
American Graphite "Artists'" Pencils**  
have the smoothest and toughest leads of  
any pencils made. If you do not know this  
mention *The A. and B. Monthly* and  
send 9 cents in stamps for samples  
worth **DOUBLE** the MONEY, to

**JOS. DIXON CRUCIBLE CO.,**  
JERSEY CITY, N. J.

"Acme" Drawing Papers,  
"Acme Helio" for Blue Printing,  
"Bon Accord" and Doppelt  
Detail Papers,  
Drawing Instruments and  
Drawing Materials  
OF EVERY DESCRIPTION.  
**ENGINEERS' INSTRUMENTS.**  
Send for Catalogue for 1890.

**QUEEN & CO.,**  
PHILADELPHIA.

**Albany Venetian Blind Co.,**  
MANUFACTURERS OF



**Phillip's Patent  
Venetian Blind.**  
The Best in Quality  
And Lowest in Price.  
This blind can  
hang either between  
the stop beads or  
jamb, and does not  
interfere with drap-  
eries; is specially  
adapted to frame  
buildings, and can  
be hung in a few  
minutes by any per-  
son. Send for esti-  
mate to  
**WM. G. ORR,**  
150 Broadway,  
NEW YORK.

**PASSENGER AND FREIGHT  
ELEVATORS**  
Hydraulic, Steam, Belt and  
Hand Power.

Mention "A. & B. Monthly" and send for  
my new 48-Page Illustrated Catalogue.  
**HENRY H. HILL,**  
33 & 35 Desbrosses St., New York.

Recently Published.

# Stair- Building

IN ITS VARIOUS FORMS.

AND THE

New One-Plane Method

OF

## HAND-RAILING

AS APPLIED TO

DRAWING FACE-MOLDS,

UNFOLDING THE CENTRE LINE

OF WREATHS,

AND

GIVING LENGTHS OF

BALUSTERS

UNDER ALL WREATHS.

Numerous Designs and Plans of

### STAIRS, NEWELS AND BALUSTERS.

### Thirty Designs of Iron Stairs,

FOR THE USE OF

Architects, Stair-Builders,

Carpenters, and

Iron Workers.

By JAMES H. MONCKTON,

Author of the

"American Stair-Builder," etc., etc.

SECOND EDITION,

With Sixteen New Plates.

4to, Cloth Extra, \$4.00

# CASSELL'S TECHNICAL \* MANUALS

— FOR —

Carpenters, Joiners, Builders, Draughtsmen, Cabinet Makers, Stone Masons, etc.

**Architectural Drawing.**—By R. Phenne Spiers. With 9 colored and 15 plain plates. Introduction by Wm. R. Ware. Demy 4to, 96 pages. \$5.00

**Drawing for Carpenters and Joiners.** Containing a description of the Construction of each Subject, and the Method of Drawing it; with Elementary Lessons in Freehand and Object Drawing. 250 Illustrations and Drawing Copies. Extra fcap. 8vo. Cloth \$1.75

**Drawing for Bricklayers.**—With the Elements of Freehand, Object and Plan Drawing. Containing two double and thirty-two single pages of illustrations, adapted for Architectural Drawing. Cloth, \$1.50

**Drawing for Cabinet Makers.**—With lessons in Ornamental and Object Drawing; Elementary Instruction in Water-Colored Drawing, containing Twenty-nine plates. Cloth, \$1.50

**Drawing for Machinists and Engineers.** Comprising a Complete Course of Drawings adapted to the requirements of Millwrights and Engineers; also, a Course of Practical Instruction in the Coloring of Mechanical Drawings, etc. With 200 Engravings and working Drawings, including Forty full page and Six treble-page plates. Cloth, \$2.00

**Drawing for Stone Masons.**—With Elementary Lessons in Freehand and Object Drawing, and a Concise History of Masonry. Containing Six double and Twenty-five single pages of Illustrations adapted for Drawing Copies. Cloth, \$1.50

**Building Construction.**—The Elements of, and Architectural Drawing, with 130 Illustrations. 128 pp. extra fcap. 8vo. Cloth limp, \$1.00

**Color.**—By A. H. Church, M.A., of Lincoln College, Oxford. Professor of Chemistry in the Royal Agricultural College of Science, Cirencester. With Six Colored Plates and numerous Diagrams. Cloth, \$1.50

**Model Drawing.**—Containing the Elementary Principles of Drawing from Solid Forms, the Method of Shading, and Patterns for making Drawing Objects in Cardboard. With Twenty-eight single and Six double-page Plates. \$1.50

**Gothic Stonework.**—Containing the History and Principles of Church Architecture, and Illustrations of the Characteristic Features of each Period, the arrangements of the Ecclesiastical Edifices, etc. With Seven double and Eighteen single-page Plates. Cloth, \$1.50

**Practical Perspective.**—Containing Perspective Projection of Simple Points, Lines, Planes and Rectangular Solids; Polygons, Prisms, Pyramids, Circles, Cylinders, and Arches, etc. With Thirty-six double-page Illustrations. Extra fcap. 8vo. Cloth, \$1.50

**Linear Drawings and Practical Geometry.**—By Ellis A. Davidson, Lecturer on Engineering and Architectural Drawing in the City of London Middle Class Schools. With about 150 Illustrations and Six whole-page Diagrams of working drawings. FOURTEENTH THOUSAND. 128 pp. extra fcap. 8vo. Cloth limp, \$1.00

**Orthographic and Isometrical Projection** treats of the Projection of Plans, Elevations and Sections of Solids, and the Development of Surfaces, etc. With about Forty whole-page Diagrams. TENTH THOUSAND. 128 pp. extra fcap. 8vo. Cloth limp, \$1.00.

**Linear Drawing and Projection.**—The Two Vols. in One. Cloth lettered. By E. A. Davidson. \$1.75

**Handrailing and Staircasing.**—A Complete Set of Lines for Handrails, by "Square Cut System," and Full Practical Instructions for making and fixing Geometrical Staircases. By Frank O. Creswell, of the Liverpool School of Science; Medallist for Geometry. With upwards of One Hundred Working Drawings. Cloth, \$1.50

**Practical Mechanics.**—By J. Perry, M.E., Professor of Mechanical Engineering, City and Guilds of London Technical College, Finsbury. \$1.50

**Systematic Drawing and Shading,** giving Practical Lessons on Drawing. By Charles Ryan, Head Master, Lemington School of Art. FIFTH THOUSAND. 120 pp. extra fcap. 8vo. Cloth limp, \$1.00

**Geometry, First Elements of Experimental,** applied to the measurement of Length, Area and Volume. By Paul Bert, Member of the Institute, Professor of the Faculty of Sciences, Paris. Translated from the French. Fully Illustrated. Cloth, \$0.75

**Geometry, Practical Solid, A Manual of.** Adapted to the requirements of Military Students and Draughtsmen. By William Gordon Ross, Major Royal Engineers. \$1.00

**Applied Mechanics.**—By Professor R. S. Ball, LL.D. Cloth, \$1.00

**Sepia Painting, A Course of.**—With 24 Plates from designs by R. P. Leitch. The Letterpress to each contains full instructions to the Learner, and the Plates show the Progress of the work through the different stages. Oblong 4to. Cloth, \$2.50

**Steel and Iron.** By W. H. Greenwood, F. C. S. Assoc. M. I. C. E. A new volume in Cassell's Manuals of Technology. Edited by Prof. Ayrton, F.R.S., and Richard Wormell, D.Sc., M.A. Cloth, \$2.00

**Cutting Tools.** Worked by Hand and Machine, with 14 folding Plates and 51 Wood-cuts. By Robert H. Smith. M. I. M. E., Ass. M. I. C. E. 16mo. Cloth, \$1.50

**Forty Lessons in Carpentry Workshop Practice.**—By Charles F. Mitchell, Lecturer on Carpentry and Joinery. Revised by George Campion Pope, Teacher of Practical Carpentry, Hand-rail and Staircase Work. \$0.50

**Practical Electricity.**—A Laboratory and Lecture Course, for First Year Students of Electrical Engineering, based on the Practical Definitions of the Electrical Units. By W.E. Ayrton, F.R.S. With numerous illustrations. 1 vol., 12mo, extra. Cloth, \$2.50

Recently Published.

— THE —

# Architect's - - - and Builder's Pocket Book.

— OF —

*Mensuration, Geometry, Trigonometry, Rules, Tables and Formulas Relating to the Strength and Stability of Foundations, Walls, Buttresses, Piers, Arches, Posts, Ties, Beams, Girders, Trusses, Floors, Roofs, etc., etc. Statistics and Tables Relating to Carpentry, Masonry, Drainage, Painting and Glazing, Plumbing, Plastering, Roofing, Heating and Ventilation, Weights of Materials, Capacity and Dimensions of Churches, Theatres, Domes, Towers, Spires, etc., etc.*

— BY —

F. E. KIDDER, C.E.,

Consulting Architect, BOSTON

MOROCCO, ROUND CORNERS.

600 Pages. 408 Engravings

PRICE, \$3.50.

Will be sent by mail, prepaid, on receipt of the price.

This is a new and thoroughly practical work especially adapted to the needs of American Architects, Builders, Contractors and Draughtsmen, and indispensable as a Reference Book. Practical Rules, Tables and Information pertaining to Architecture.

## The Theory of Transverse Strains

*And its application to the Construction of Buildings, including a full discussion of the Theory and Construction of Floor Beams, Girders, Header Carriage Beams, Bridging, Rolled Iron Beams, Tubular Iron Girder, Cast Iron Girders, Framed Girders and Roof Trusses, with Tables calculated expressly for the work, etc., etc.*

By R. G. HATFIELD, Architect

FULLY ILLUSTRATED.

Second Edition, with Addition

8vo, Cloth, \$5.00.

"The 'Theory of Transverse Strains' is undoubtedly the most important contribution to the Science of Building that has yet appeared." *London Architect.*

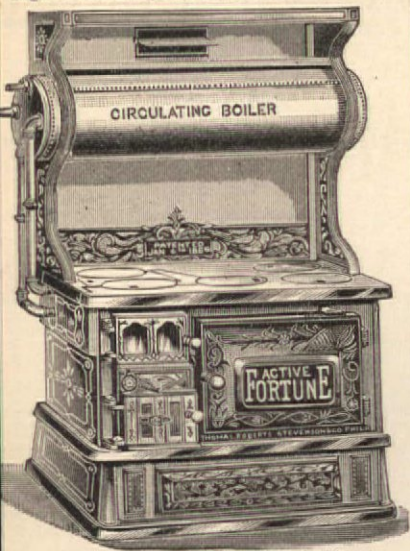
Any of the above Books sent post-paid on receipt of price by

# A. J. BICKNELL, Publisher and Bookseller,

P. O. Box 560.

115 BROADWAY, NEW YORK

The Greatest Improvement of the Age.  
**ACTIVE FORTUNE RANGES**  
Right or Left Fire, with Cast Base or Low Closet.

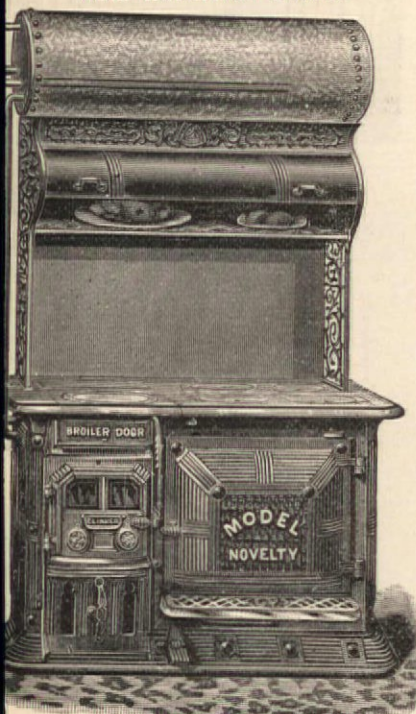


Secured under U.S. Patent, Jan. 6, 1885.  
A complete cooking Range with Circulating boiler.  
Great saving in space, time and expense.  
No brick work required.  
Hot water as fast as can draw.  
No impurities will settle in boiler.  
Endorsed by builders for their convenience and money saving.  
Buyers of Houses prefer the ACTIVE FORTUNE RANGE, because they are perfect in operation and don't get out of order. Hence, no repair bills.  
Thomas, Roberts, Stevenson Company,  
No. 15 Peck Slip, New York.  
Write for our 64-page Catalogue.

**BUTCHER'S BOSTON POLISH**  
—OR—  
**HARD-WAX**  
Is the Best Finish for  
FLOORS.  
BUTCHER POLISH CO., 9 & 11 Haverhill Street, BOSTON, MASS.

**The Great CHURCH LIGHT**  
Frink's Patent Reflectors for Gas, Oil, or Electric give the most powerful, softest, cheapest, and best light known for Churches, Stores, Banks, Theatres, Depots, etc. New and elegant designs. Send size of room. Get circular & estimate. A liberal discount to churches & the trade. Don't be deceived by cheap imitations.  
P. FRINK, 51 Pearl St., N.Y.

**Model Novelty Range,**  
With Hot-Water Boiler.

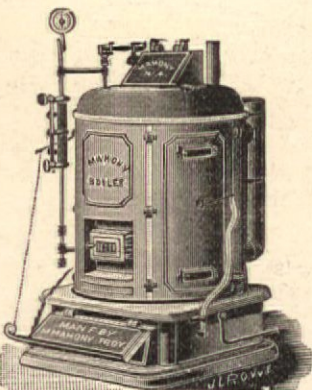


Send for descriptive circular, showing plans for setting, cost, etc.  
**ABRAM COX STOVE CO.,**  
144 N. 2d Street, Philadelphia, Pa.  
57 Lake Street, Chicago, Ill.  
79 Blackstone Street, Boston, Mass.  
254 Water Street, New York.

SEND FOR  
Containing  
houses  
**MAHONY**

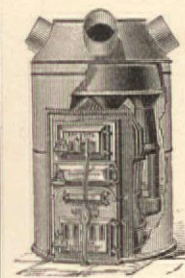


PRICE LIST  
Views of  
warmed by  
**BOILERS.**



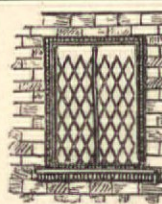
RETURN-FLUE, SELF-FEEDING ;  
STEAM BOILER.

MADE BY **M. MAHONY,**  
Troy Architectural Iron Works, Troy, N. Y.



**BAY STATE FURNACES AND RANGES,**  
CELEBRATED THE WORLD OVER  
FOR ECONOMY, DURABILITY AND POWER.  
Send for 78-page Architects and Builders' Catalogue.  
**BARSTOW + STOVE + CO.,**  
Cor. Water and Beekman Streets, NEW YORK.  
Boston and Providence.

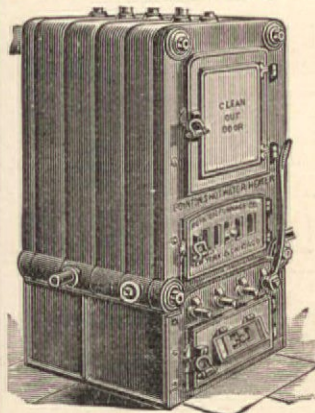
**PLATE GLASS DEPOT**  
AND  
GENERAL WINDOW GLASS WAREHOUSE,  
Skylight and Floor Glass,  
ROLLED CATHEDRAL BEAUTIFUL TINTS.  
Embossed, Enameled and Colored Glass.  
A full stock of PLAIN WINDOW GLASS.  
Every variety for Architects' and Builders' Use.  
**BENJAMIN H. SHOEMAKER,**  
235, 207, '09 & 211 N. Fourth St., PHILADELPHIA.



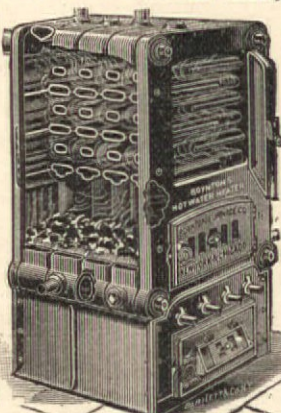
Bostwick Patent Steel  
**FOLDING GATES**  
AND  
**WINDOW GUARDS.**  
Iron work for Buildings.  
22-page Illustrated Catalogue mailed free to Architects and Builders.  
**WM. E. PITT, Iron Works,**  
83 Rende Street, New York.

ESTABLISHED 1849.

INCORPORATED 1884.



**'BOYNTON'**  
HOT  
WATER  
HEATER.



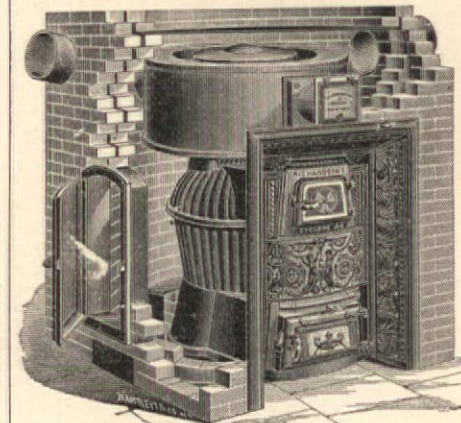
**FOR WARMING HOUSES, SCHOOLS, CHURCHES & PUBLIC BUILDINGS.**  
These Heaters have been pronounced by scientific experts to be the most effective, economical, and of the best mechanical construction of any ever placed on the market.  
Also Manufacturers of the Celebrated **BOYNTON FURNACES, RANGES, Etc.**  
**THE BOYNTON FURNACE CO.,**  
207 and 209 Water Street, NEW YORK,  
47 and 49 Dearborn Street, CHICAGO, ILL.

Illustrated circular of all of our Heaters will be sent on application to readers of "THE A. & B. MONTHLY," together with the address of the nearest agent.

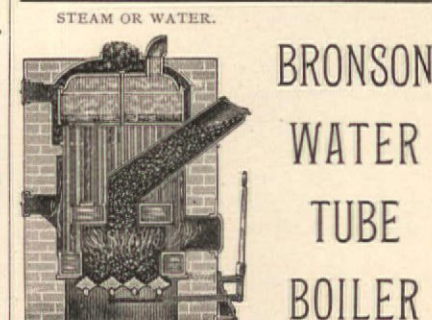
THE  
**Richardson & Morgan Co.,**  
92 BEEKMAN ST.,  
NEW YORK.

Sole Manufacturers of  
**RICHARDSON'S**  
Furnaces, Ranges,  
Fire-Place Heaters,  
Air Warming and  
Ventilating Grates,  
Steam and  
Hot Water Heaters,  
With all Latest Improvements.

SEND FOR DESCRIPTIVE MATTER, ETC.



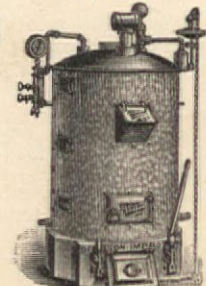
**WYANDANCE**  
**Brick and Terra-Cotta**  
COMPANY.  
FINE PRESSED, ORNAMENTAL AND COMMON  
**BRICK,**  
In all Shades of Buff and Red.  
Also all Classes of Terra-Cotta in any Shape Desired.  
Samples and Prices on Application.  
OFFICE: 19 Park Place, New York City.



**BRONSON**  
WATER  
TUBE  
BOILER  
For Steam or Water Heating.  
A MAGAZINE, BASE-BURNING, AUTOMATIC,  
BRICK SET OR PORTABLE HEATER.  
Write or call for prices. Guaranteed Satisfactory.  
STEAM OR WATER.

**Weston Engine**  
Company,  
SOLE MFRS.,  
Painted Post,  
NEW YORK.

N. Y. City Agent,  
H. J. BARRON,  
74 Cortlandt Street.



Business and Personal.

A NEW PLASTERING MATERIAL.—King's Windsor Cement for plastering walls and ceilings, which is claimed to be both fire and water-proof, is the material now being used on the Madison Square Garden, New York City, and also in the United States Government Court House and Post Office Building at Williamsport, Pa. Among the numerous jobs where it has been used, as we understand, to the entire satisfaction of the owners, are the New York Central Railroad Depot at Niagara Falls, N. Y.; Dr. Meredith's Church, Brooklyn; The Lincoln Club, Brooklyn; Mr. Wm. Knowlton's House at 87 Remsen Street, Brooklyn; addition to the Arlington Hotel at Washington, D. C.; the Hier Flats at Syracuse, N. Y.; Mr. Geo. Westinghouse's villa at Lenox, Mass., and many other places throughout the country.

We believe it to be to the interest of all who contemplate building to thoroughly investigate this material before giving out contracts.

Circular and sample of this cement will be sent free by J. B. King & Co., Manufacturers, 24 State street, New York, N. Y.

\*\*

THE STANDARD PAINT COMPANY, of 59 Maiden Lane, New York, whose Building Paper prepared with the celebrated P. & B. Compound has been favorably known in market for years, announce placing in market two new grades of Building Paper. One, whose trade mark is the "Universal," is prepared with their P. & B. Compound, is thoroughly water proof, acid, alkali and gas proof, and in all respects superior to the ordinary building papers in market. A special feature, and the one which has induced the manufacturers to give it the name of the "Universal" in addition to its merit as a building paper, is that they have put it in market at a lower price than any building paper of any description, for which reason they feel certain that it is bound to become the universal building paper.

The other new brand is put into market under the trade mark of the "Giant" Building Paper. This paper is completely saturated with waterproof, acid and alkali proof and insulating material, and the work is so thoroughly done that the paper can be cut in any way and torn into bits and no particle of it will absorb moisture. Every fiber is thoroughly impregnated and there has never been a similar paper manufactured before. The paper is more waterproof than leather and where the best article that is possible to make is wanted, the "Giant" paper is sure to be used. The attention of architects and builders is especially called to these papers, and they are urged to send for samples.

\*\*

THE Patent Foot Power Machinery of the Seneca Falls Mfg. Co., advertised in another column, is the latest and most improved for Carpenters, Builders, Cabinet Makers, Wood and Metal Workers generally. The machines of this firm are sold on trial if desired. Those about to purchase are advised to send for the 36-page illustrated catalogue and price-list giving full description, testimonials, etc., to The Seneca Falls Mfg. Co., 300 Water St., Seneca Falls, N. Y.

**SPECIALTIES.**

**H** Damper Regulators, Oil Extractor and Filter, Exhaust Heads, Pressure Regulators, Shaking Grate Bars, Steam Separators. Send for Catalogue and Price-List. **R**

**HINE & ROBERTSON, 45 Cortlandt Street, New York.**  
JAS. L. ROBERTSON.

**WROUGHT IRON AND STEEL**

**ARTISTIC GRILL WORK**

IN WROUGHT-IRON-STEEL-BRONZE-AND BRASS.

**~ HOBOKEN-IRON-WORKS ~**

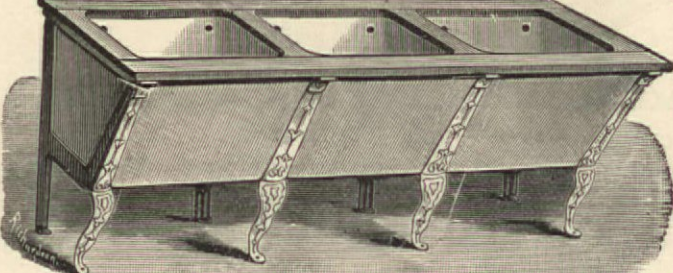
-HOBOKEN-N-J-

H. A. VANDERBECK, Prop. ESTABLISHED 1863. J. W. BESSEL-EDG.

: FIRE PROOF :  
: BUILDINGS :  
: SPECIALTY :

ARCHITECTURAL IRON WORK OF EVERY DESCRIPTION

All First-Class Houses should be Furnished with the Sanitary Tubs of  
**THE STEWART CERAMIC COMPANY,**  
Cor. PEARL ST. and PECK SLIP, NEW YORK.



Sole Manufacturers under Morahan's Patents of  
**THE CELEBRATED SOLID WHITE CROCKERY STATIONARY WASH TUBS.**

The only Perfect Sanitary Tubs now in Existence.  
**VERY STRONG.**  
**No Seams to Open.**

ABSOLUTE CLEANLINESS SECURED FOR ALL TIME. WELL GLAZED. WILL NOT ABSORB, LEAK OR DECAY. The only Solid White Crockery Wash tub ever made in the world. Do not buy imitations until you see the Genuine "Morahan's Patent" stamped on the front of every tub. Washboard and Soap cup moulded in every set. Will outlast any house.

**Solid White Crockery Sinks, comprising Butler's Pantry, Kitchen Slop, &c.,**  
Made of same material as the Tubs. Very strong, Well Glazed, no labor required to keep clean.  
**LIBERAL TERMS TO THE TRADE. SEND FOR 1890 ILLUSTRATED PRICE LIST.**

**THE RICHARDSON SAWS ARE THE BEST IN THE WORLD.**

*So say the Thousands of Carpenters who use them, and we want every Carpenter who has not used them to give them a trial,*

**ONCE USED ALWAYS USED.**

Guaranteed to give perfect satisfaction where all others fail.



All their Saws are ground TAPER, THIN at the Back, and warranted SMOOTH CUTTERS.

**The Richardson Brothers are Thoroughly Practical Saw Makers.**

The RICHARDSON SAWS will be sent, Express Paid, direct from the Factory, when they cannot be procured from the Hardware Dealer. Special saws made to order. Send for Illustrated Price List to  
**RICHARDSON BROS., 15 to 31 River St., Newark, N. J.**

**COMINS & EVANS,**  
**GRAVEL AND METAL ROOFING.**



**COMINS & EVANS.**

41-45 Waverly Ave., Brooklyn. TELEPHONE CALL, BROOKLYN 366.  
MARKET AND FULTON BANK BUILDING, 81 & 83 Fulton St., N. Y. City.

**THE BUILDERS' GAZETTE**  
SEMI-MONTHLY

The Exponent of the Building Craftsmen General

SUBSCRIPTION, \$2.00 PER ANNUM, IN ADVANCE.  
SAMPLE COPIES FREE.

The Widest-Spread Circulation of any Building Journal Extant in the Mid-land United States.

LOWEST ADVERTISING RATES, VALUE CONSIDERED.

**THE BUILDERS' GAZETTE PUBLISHING CO.**  
PITTSBURGH, PA.

**U.S. GOVERNMENT ADVERTISER**  
AND  
**MUNICIPAL CONTRACTOR.**


A Weekly Record of Contract Work Under Federal, State and City Governments.

It is the only paper containing all advertisements for Proposals for Government Work, Materials and Supplies, with names of bidders, amount of each bid and awards.

Contractors interested in Municipal or County Improvements will find in this paper a complete record of such work, with awards and all pertinent information.

Send for sample copy and circular letter.

PUBLISHED AT  
1420 PENNSYLVANIA AVE., N.W.  
WASHINGTON, D. C.



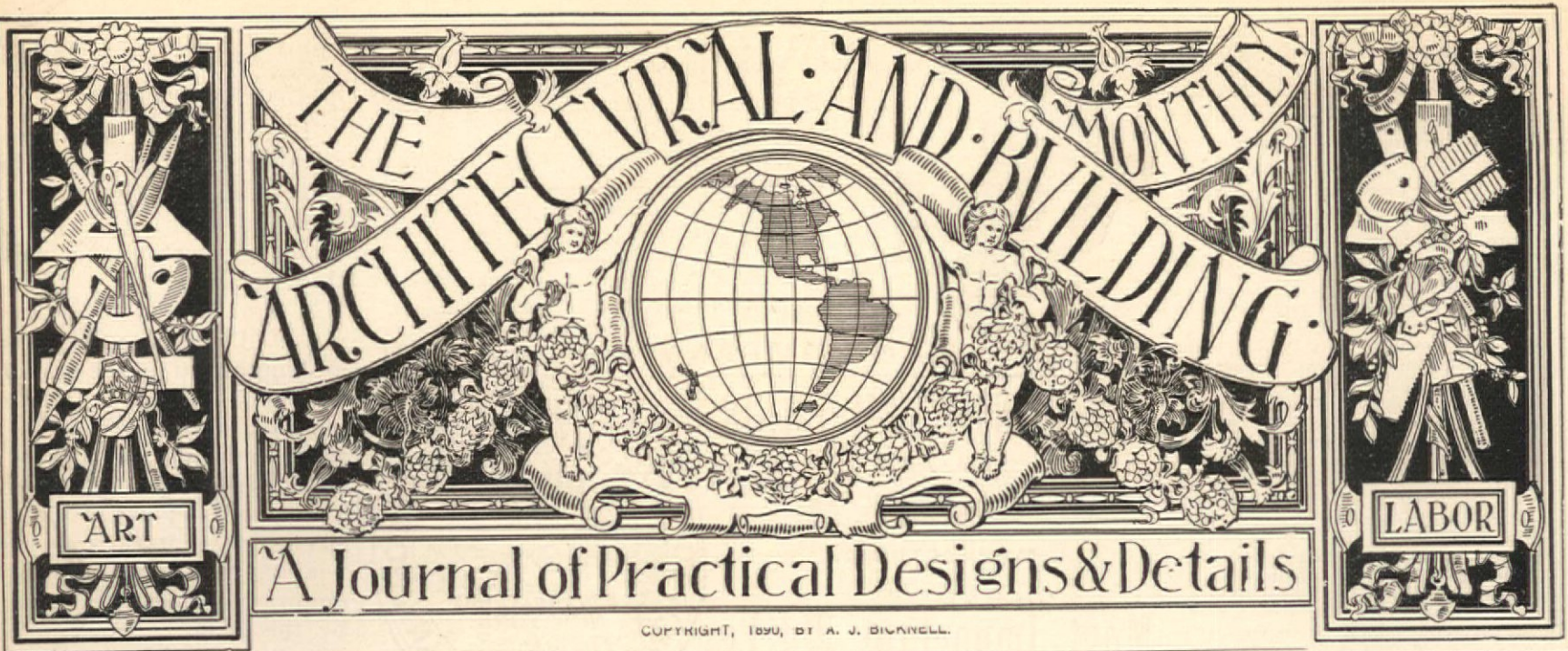
**Open Burner, Perfectly White, Smokeless Flame**  
Produced by TIRRELL'S  
**EQUALIZING GAS MACHINES**  
Circulars and full information free to any address.  
**O. TIRRELL,**  
39 Dey St., New York

Bound to be the  
**"UNIVERSAL"**  
Building Paper.

The new Building Paper coated with the celebrated P. & B. Compound although superior is sold cheaper than any other Building Paper.

**The Standard Paint Co.**  
SOLE MANUFACTURERS AND PATENTEES,  
59 MAIDEN LANE, - - NEW YORK.





**A Journal of Practical Designs & Details**

COPYRIGHT, 1890, BY A. J. BICKNELL.

**THE ARCHITECTURAL & BUILDING MONTHLY.**

A JOURNAL OF PRACTICAL DESIGNS AND DETAILS.  
Devoted to the Use of all Associated with Architecture and the Building Trades.

**A. J. BICKNELL, Publisher,**  
P. O. Box 560. 115 Broadway, New York City.

Subscription, Domestic or Foreign,  
**\$5.00 a Year,**

*We shall be pleased to receive from Architects, and Draughtsmen, practical drawings showing New and Improved Designs and Details, with brief description. Due credit will be given for all acceptable designs. Details of special interest will be paid for.*

**INTRODUCTORY TO VOL. I.**

**THE ARCHITECTURAL AND BUILDING MONTHLY**

IS intended to supply such designs as are usually found in Practical Architectural and Building Journals, but its leading feature will be one in which many are largely deficient. There are at the present time about fifty publications treating on Architecture, Carpentry, Building and kindred arts and trades in the United States. Having had a full acquaintance with these periodicals, beginning with the publication of "Sloan's Architectural Review" and the various journals since established, it has been found that while many are valuable for news and general information, only a very limited number are practical in design. More designs and details of a practical character are wanted. The object of this journal is to supply that want. The endeavor from the beginning will



**OFFICE ENTRANCE NEW YORK TIMES BUILDING.**

be to give full value for the price, and no reasonable effort or expense will be spared to make our subscribers satisfied.

See page 14 for blank order, which it is hoped those receiving this number will use, if they have not already sent in their subscriptions.

**TO READERS**

**INTERESTED IN BUILDING.**

THE publisher will be glad to hear from all interested, who may receive this number of THE ARCHITECTURAL AND BUILD-

ING MONTHLY as a specimen copy. Their opinions and suggestions will be acceptable. This issue is a fair sample of what the MONTHLY is intended to be, although, if possible, it will be made better and better each month. It is hoped many will show their appreciation by forwarding \$5 for subscription for the first year, if they have not already done so, or \$2.75 for a trial subscription for six months, after which \$2.25 will be accepted for the balance of the year.

Each succeeding issue will

contain from 8 to 12 plates of Practical Designs and Details to scale, giving in all, during the year, a very large amount of original and useful matter valuable to the building trades.

It will be seen that the aim of THE ARCHITECTURAL AND BUILDING MONTHLY is not to burden readers with a mass of letterpress, of which they have no doubt more than they can read, but to give an abundance of valuable drawings of Modern Designs and Details, with brief descriptions only. The intention is to make all plates so easily understood that any extended description will be unnecessary.

All subscriptions to commence with Vol. I, No. 1, April, 1890, until the edition of 10,000 copies is exhausted. It is hoped that the A. & B. MONTHLY will be made so valuable that all subscribers will wish to have it complete. To be sure of this it will be necessary to forward names early.

**SUBSCRIPTIONS.**

ALL persons desiring to subscribe for this Journal should do so only through well-known and responsible parties.

The publisher cannot be responsible for subscriptions, unless the same be sent to the office of publication by Money Order, Registered Letter or Draft on New York, or paid to an Agent having receipts signed by the Publisher, and written authority for the collection of money.

*A. J. Bicknell*

**Business and Personal.**

At this season of the year a word of advice to those contemplating painting may not be out of place. Within the past few years there has been so much attention given to the tasteful architecture in moderate-cost dwellings, that the selection of appropriate shades for decorative painting has come to be a more important question than at any previous period, and the richest shades, if selected with taste, may be used to the greatest advantage. We caution the uninitiated, however, against attempting to choose combinations of deep, rich colors, without first consulting a competent architect or some reliable paint manufacturer. The H. W. Johns Manufacturing Co., of New York, make a specialty of designing combinations of harmonious shades for their customers. This they do free of charge on receipt of photograph or architect's plan of the building to be painted.

A point we cannot too strongly impress upon the minds of our readers is the importance of using none but the best. The question of quality should receive the first consideration, and in estimating price it should be remembered that it is questionable economy to expend from fifty to one hundred dollars in applying twenty-five dollars' worth of inferior paint which will never have a satisfactory appearance, and will wear, at most, but two or three years, when the use of a strictly first-class article, costing, say twenty per cent more (or five or six dollars for an ordinary house), would insure a serviceable and much more pleasing result for at least two or three times as long. The H. W. Johns Manufacturing Co. are manufacturers of first-class, strictly pure linseed oil paints, and their reputation as a reliable house, well known in business circles for many years, should give weight to any claims they make for their goods. If any information is desired regarding quantity of paints required, or any special points, they will cheerfully answer any questions addressed to their office, 87 Maiden Lane, New York.

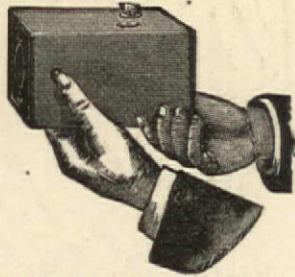
**HOW IT IS DONE.**

HAVING issued several Practical Books on Architecture, Carpentry, and Building, the publisher proposes to furnish more designs each year in this journal for \$5 than he ever published in book form for \$10. This can only be done by using a portion of each issue for advertising articles used in the construction and finish of buildings, thus introducing a feature of interest to all subscribers and of value to advertisers on account of the large circulation. In corresponding with the Manufacturers and Dealers who advertise in this journal, please mention the A. & B. MONTHLY. It is not intended to insert the advertisements of any irresponsible parties.

**Note to Subscribers.**

All copies sent to subscribers will be delivered flat or mailed in tubes, which will insure their receipt in perfect condition.

**NEW KODAK CAMERAS.**



"You press the Button, we do the rest."

(OR YOU CAN DO IT YOURSELF.)

SEVEN NEW STYLES AND SIZES

ALL LOADED WITH  
TRANSPARENT FILMS.

FOR SALE BY ALL PHOTO. STOCK DEALERS.

Mention this Journal and send for Illustrated Catalogue and Price-list.

**THE EASTMAN COMPANY, Rochester, N.Y.**

**WARRANTED SUPERIOR**

TO ANY

ROSENDALE HYDRAULIC CEMENT

MANUFACTURED.

USED ON THE

**Most Important Works**

IN THE COUNTRY.



TRADE MARK.

**THE LINCRUSTA-WALTON MANUFACTURING COMPANY,**

Sole Manufacturers in the United States of the material known as "Lincrusta-Walton,"

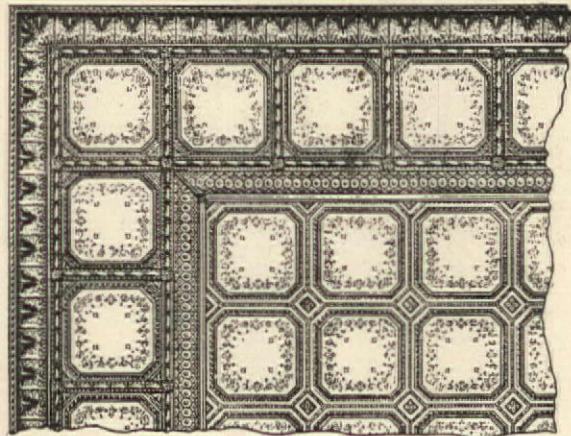
Desires to call the attention of Architects, Decorators and House-owners to the merits of its material for wall covering and decoration. It is made in beautiful and artistic designs, of which a catalogue containing 192 patterns will be mailed on request.

The Company will also manufacture from special designs for Architects, Decorators and Dealers in Wall Coverings.

The material is capable of any desired relief and decoration, and being un-influenced by heat, cold, or moisture, is practically indestructible. Being absolutely non-absorbent, it is the most sanitary wall covering known. The Company's goods are sold by leading Decorators and Dealers in Paper Hangings in the United States.

Company's Salesroom,  
No. 7 West 28th Street, New York City.

**METAL CEILINGS.**



27 x 27 Embossed Plates.

—OF—  
Fine Corrugated  
Twilled & Embossed  
**SOFT STEEL.**

Suitable Designs  
For All Classes of Buildings.  
Send for Illustrated Circular.

Agents Wanted in all towns of 5,000 and upwards.

**HENRY S. NORTHROP**  
20 Rose St., NEW YORK.

**IF YOU ARE INTERESTED IN THE  
Practical Operation of Wood-Working Machinery**

Send for a sample copy of

**THE WOOD-WORKER,**

PUBLISHED BY

S. H. SMITH, - - - Indianapolis, Ind.

It is the most popular journal published for practical machine wood-workers.

**POINTS ON VARNISH.**

COMMON INTEREST.

The Architect ought to be on terms of plain speaking with all his material men. He shall be with us. We are doing our part to this end in these papers.

A man to control the building of all the beautiful homes and important public buildings of every sort for ambitious people the country over, ought to be and must be a most accomplished man. He knows how forces act and react; the strength of materials; bearing bending and tensile strength endurance, how they change by the lapse of time and exposure; new things are old to him; his sense of order and beauty, of color and form and the fitness of things, is keen and true; his invention ready, his memory stored with details of the works of man for three thousand years; above all with high ideals of art he brings an intimate knowledge of use, of ten thousand uses of daily life in work and duty and pleasure to bear on his many-sided task.

Is it a cause for surprise that he has put off varnish?

He knows all about foundations and walls and structures and plan; proportion and form and color are easy to him; but varnish is treacherous. He has been beguiled a hundred times by its promises.

Varnish is only the glaze of the pottery, bloom of the fruit, life of the flower; touch or a day, it is gone. It is a deceiver.

He will none of it. Varnish is varnish.

All this because it all looks alike in the can and fresh out of the wood!

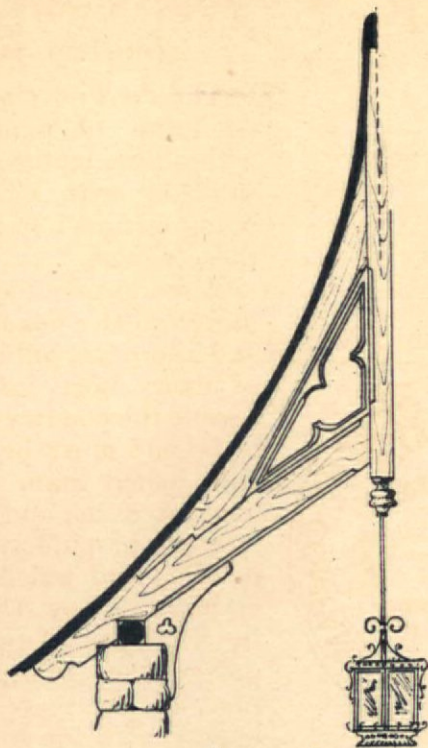
But, dear Sir, we varnish the cars, and you ride in them. Do you ever see such varnish in cars as you let your corner tractors put in your houses?

Varnish is not varnish; it only looks alike for a little while. Give time. There is varnish that lasts that keeps its hold on the wood, that perpetuates color and grain, that heightens the ripening graces of time. Give it time, O Architect! then you may choose your varnish.

Transparent Wood Finish, Interior and Exterior; \$2.50 and \$4 a gallon.

**MURPHY & COMPANY.**

Newark, Boston, Cleveland,  
St. Louis, Chicago.



Section



Elevation



### Design for an Entrance Gate

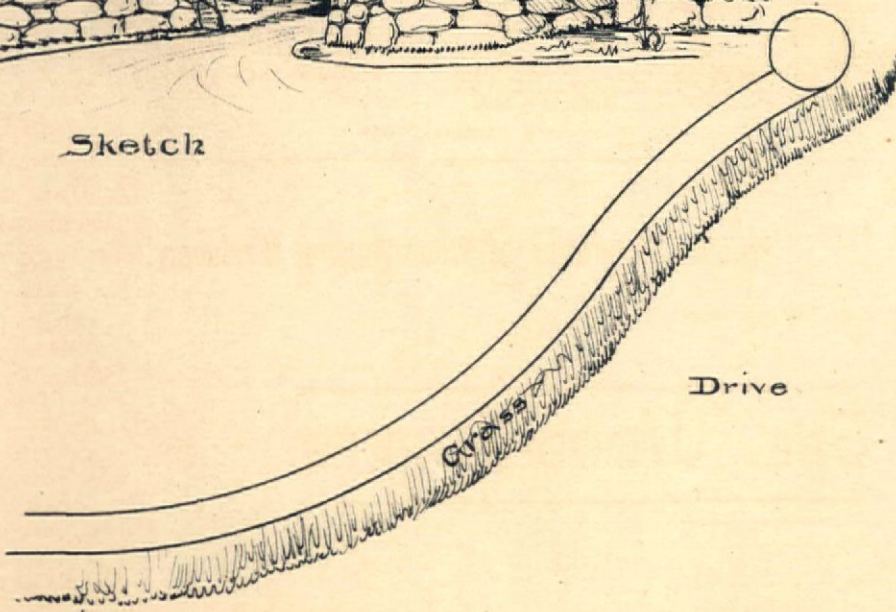
Scale for Elevation 1/4" = 1ft



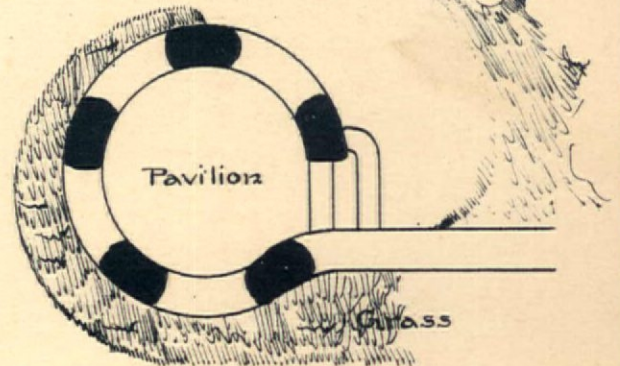
Scale for Plan 1/8" = 1ft



Sketch



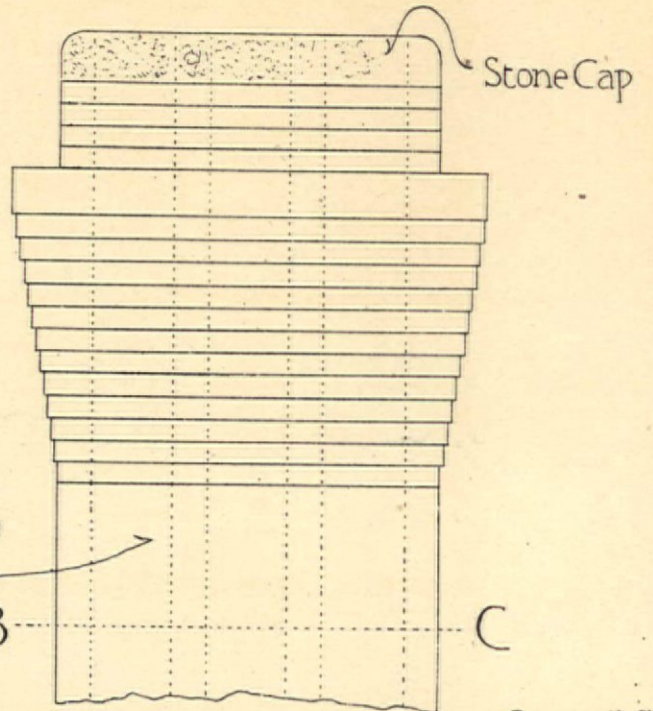
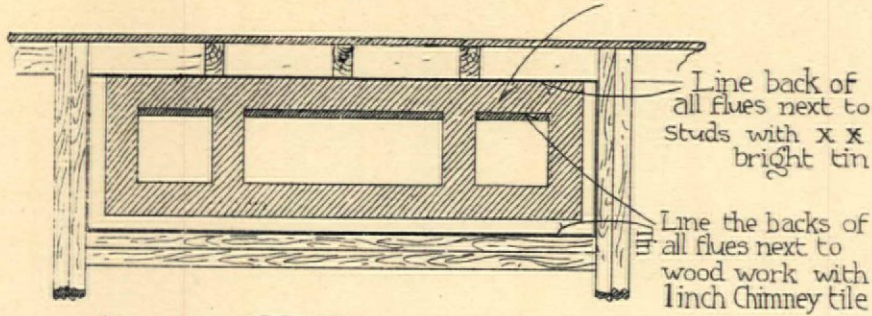
Drive



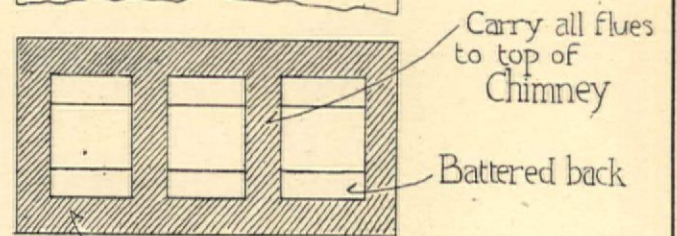
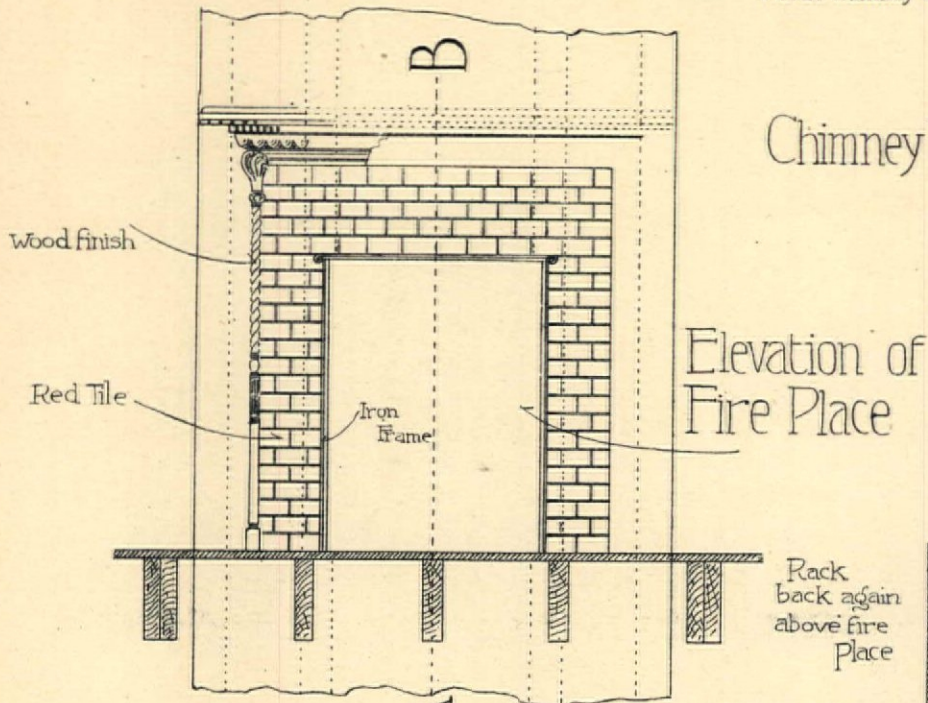
Pavilion

Grass

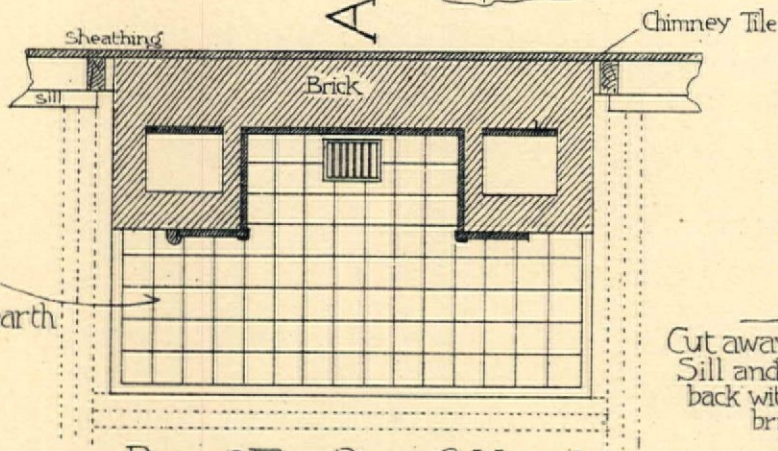
Section through Second Story



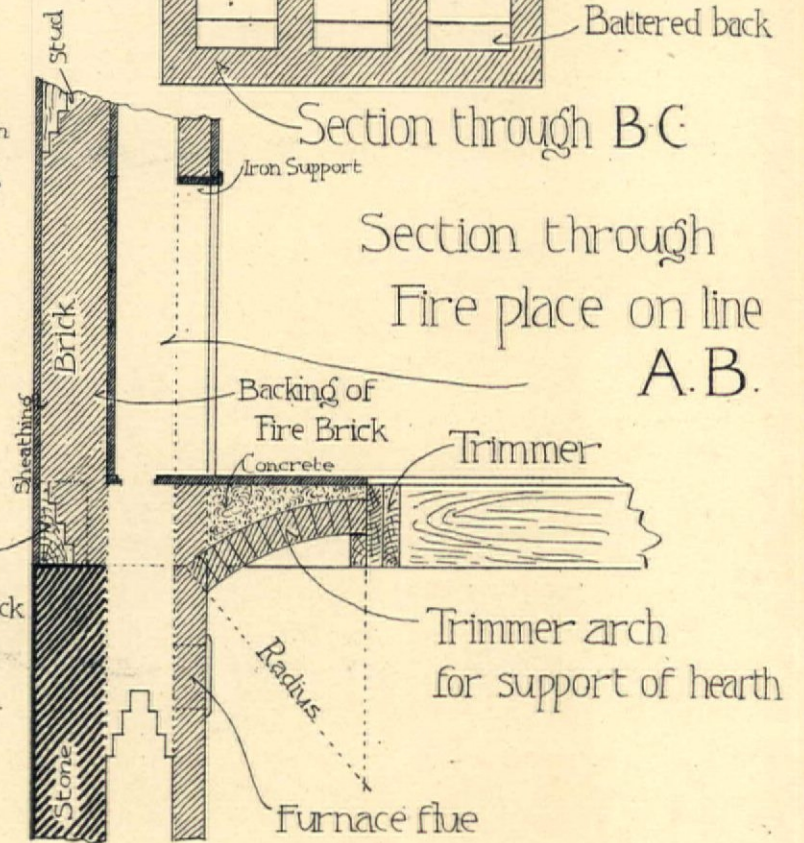
Chimney Top



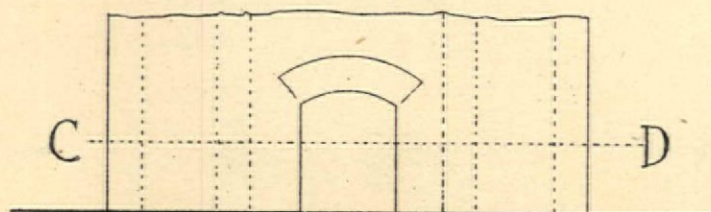
Section through B-C



Section through Fire place on line A.B.



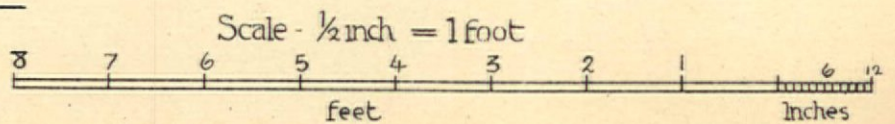
Section through C-D



Cellar Bottom

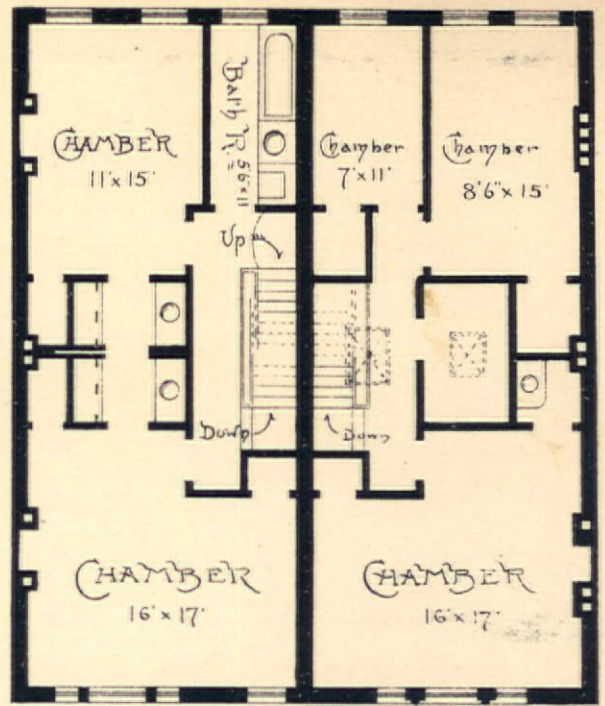
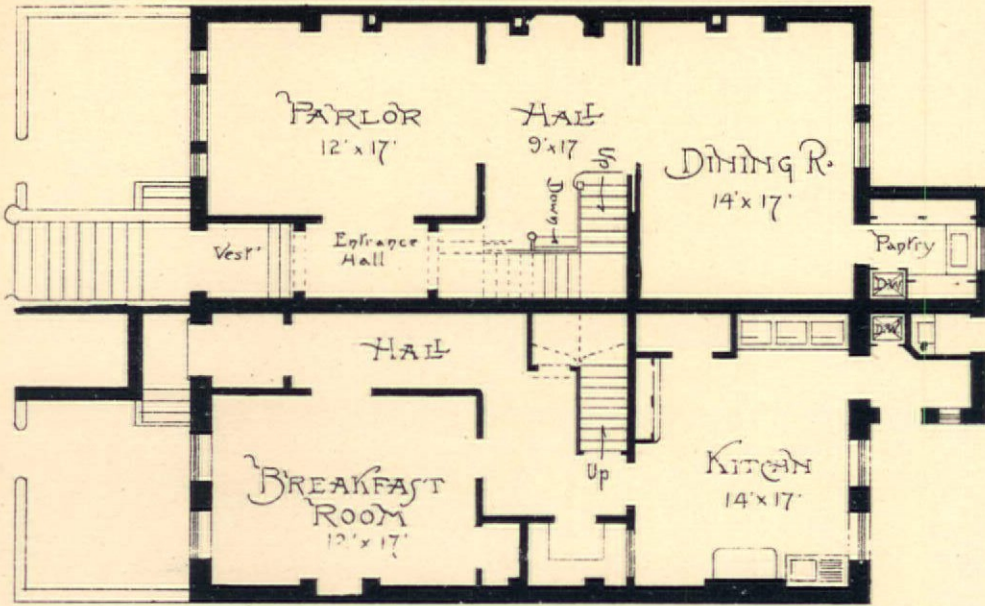
# MASON BUILDERS DETAILS

## FOR CHIMNEY AND FIRE PLACE.



FIRST STORY

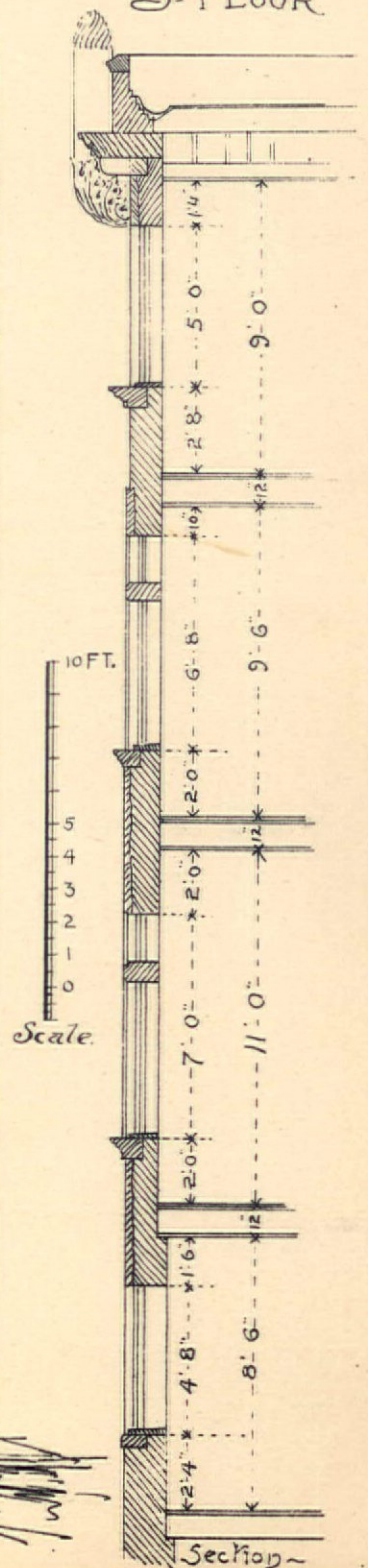
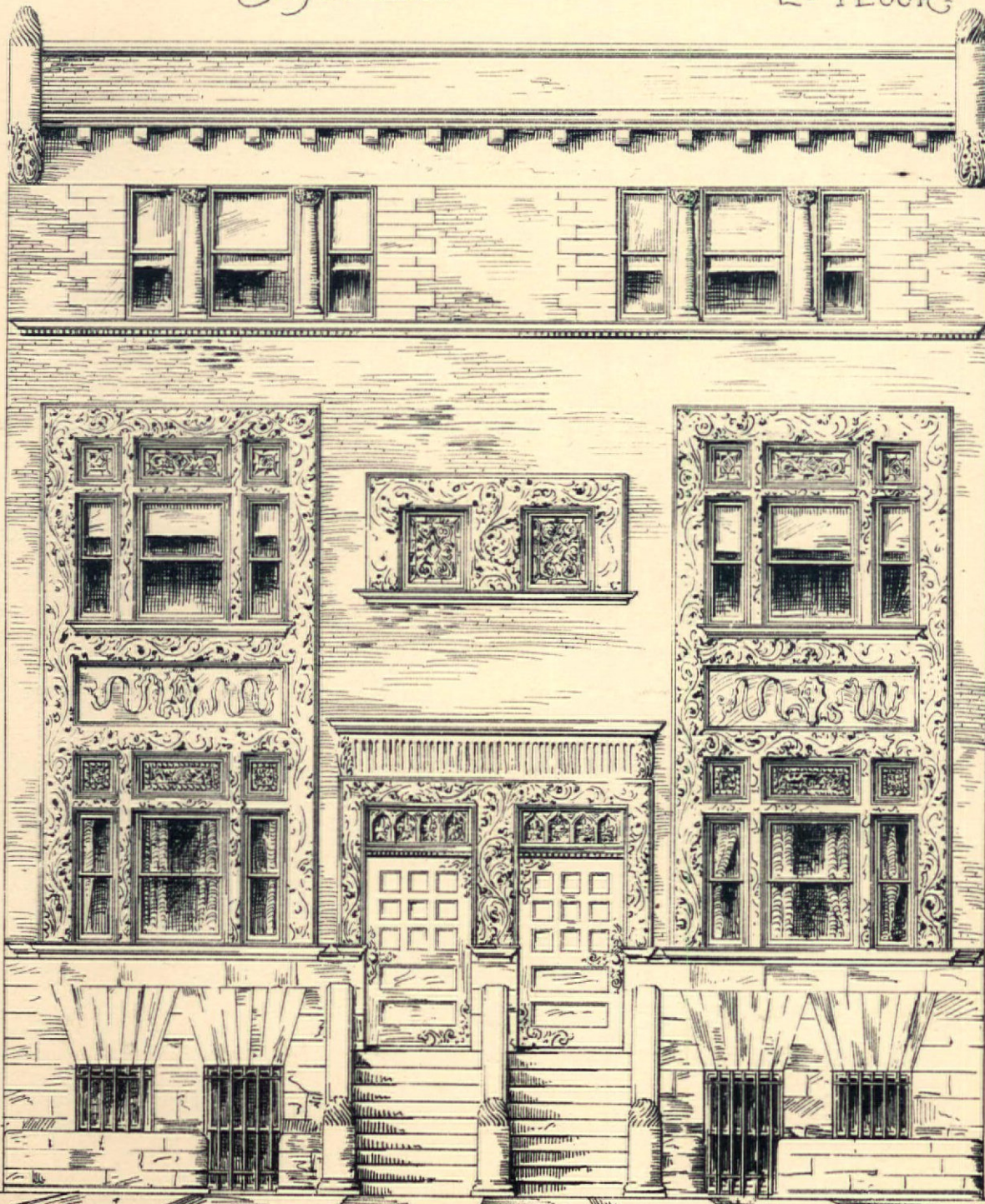
Scale of Plans  
0 1 2 3 4 5 10 FT.



BASEMENT

2<sup>o</sup> FLOOR

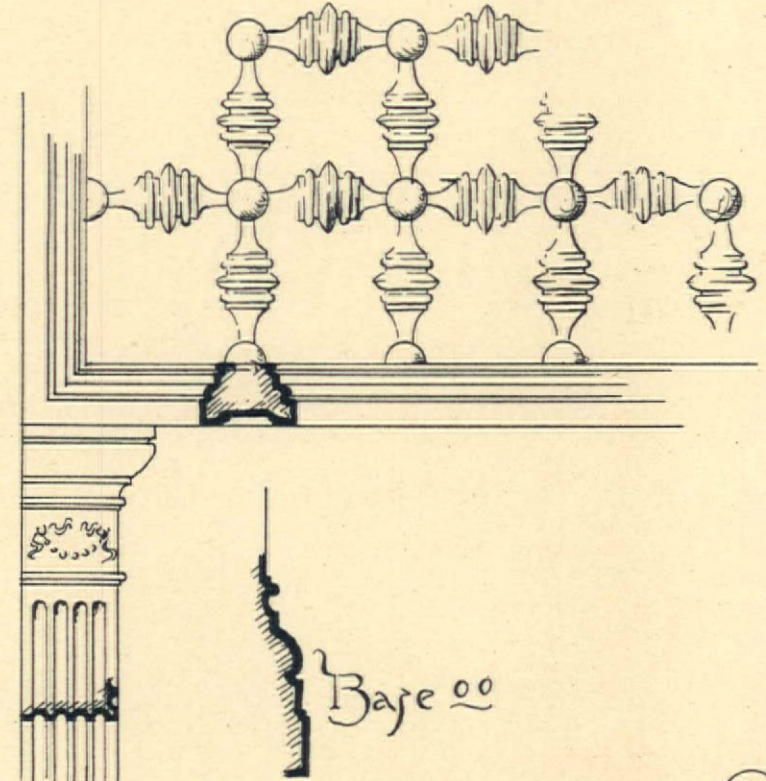
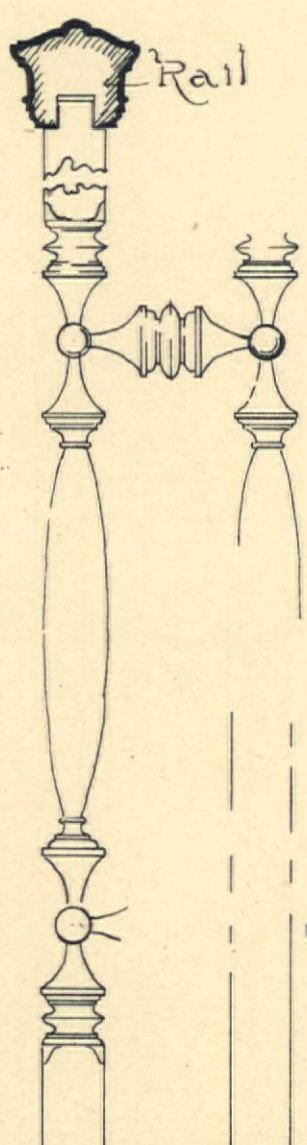
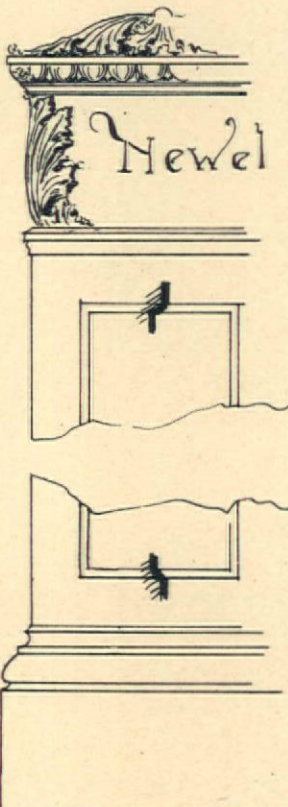
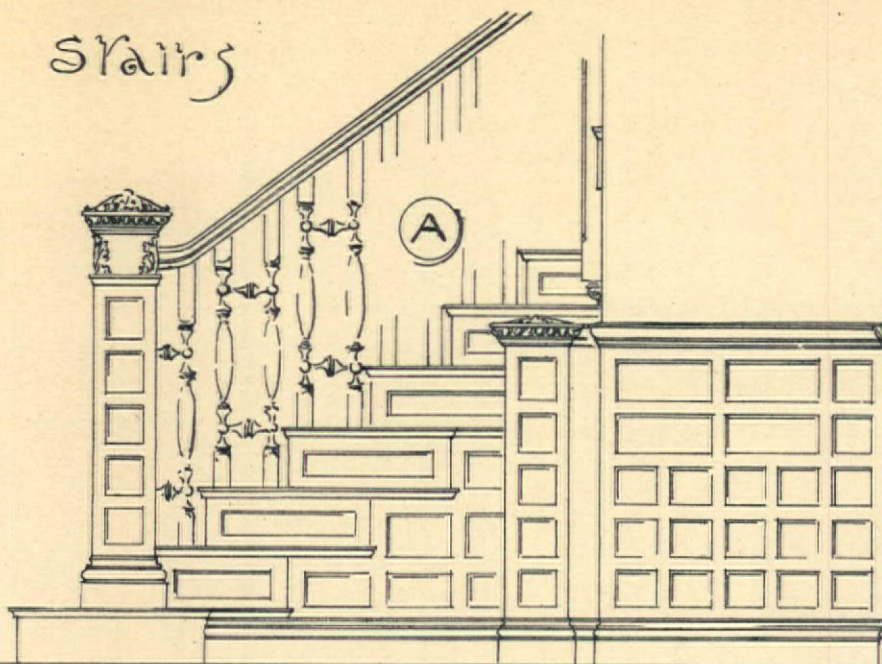
3<sup>o</sup> FLOOR



W. E. STONE - Archt.

ELEVATION OF TWO CITY HOUSES

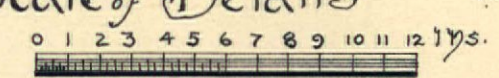
Stairs



Scale of Drawings (A)  
(B)



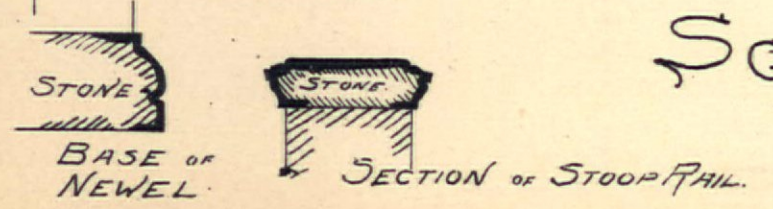
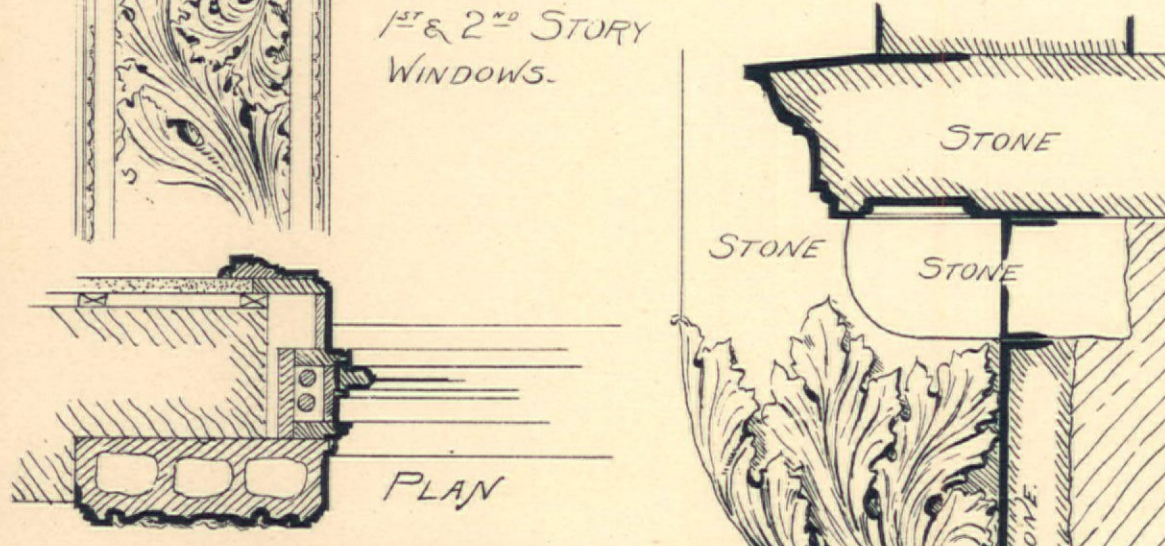
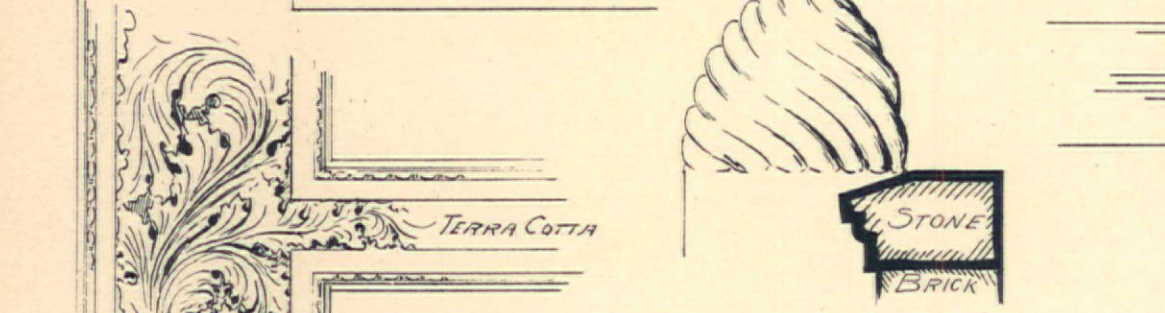
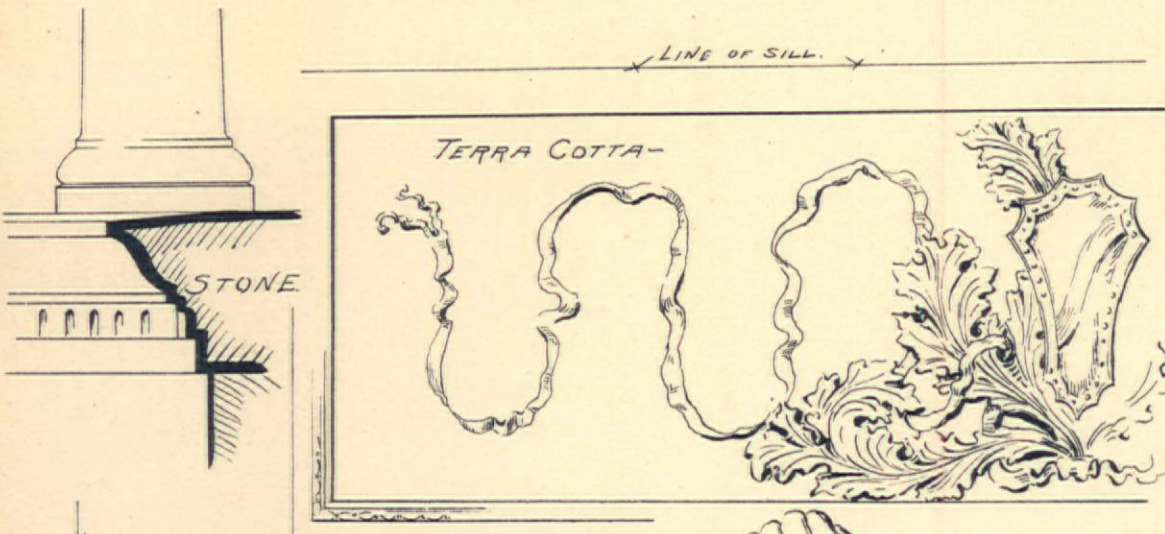
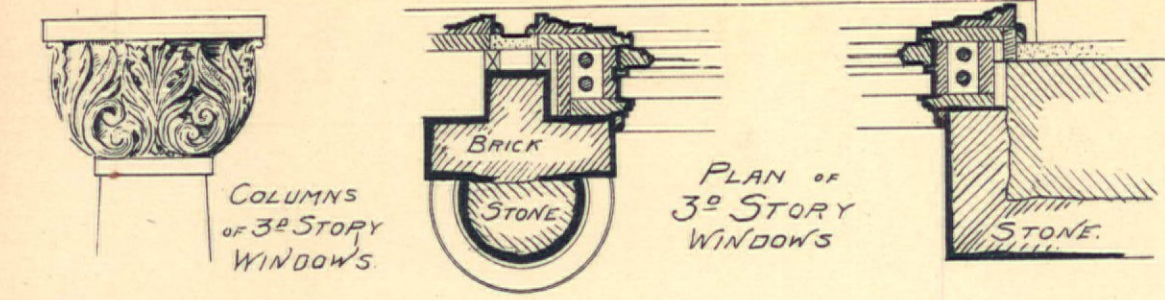
Scale of Details  $\frac{1}{2} \text{ in.} = 1 \text{ ft.}$



$2 \text{ in.} = 1 \text{ ft.}$

INTERIOR  
 DETAILS  
 of  
 TWO  
 CITY HOUSES

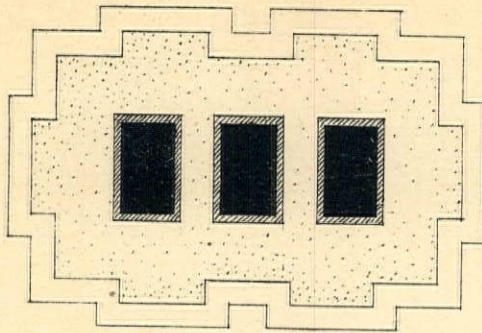
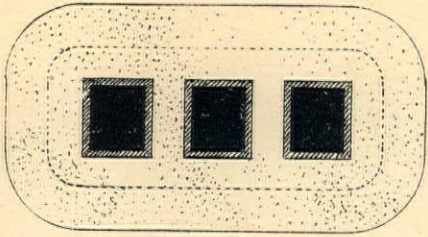
# DETAILS of STONE & TERRA COTTA on fronts of Two CITY Houses



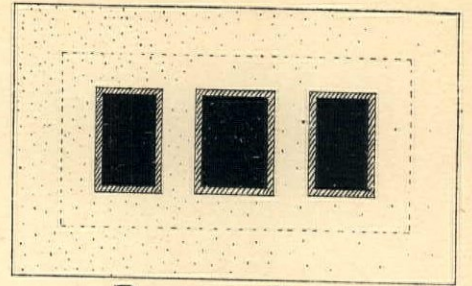
SCALE IN. ≈ 1 FT. ≈

3 6 9 12 1 2 FT.

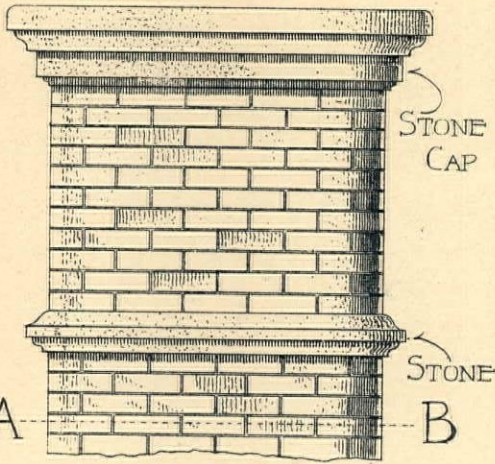
PLAN OF TOP



PLAN OF TOP



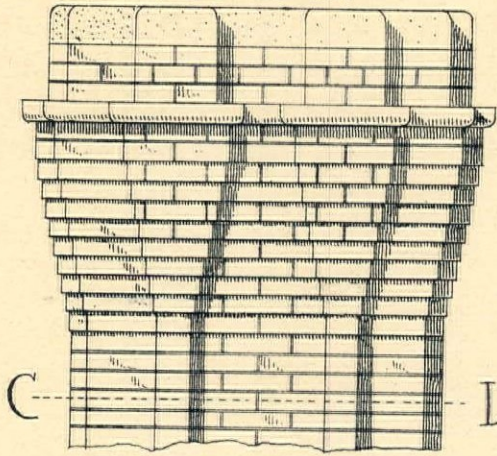
PLAN OF TOP



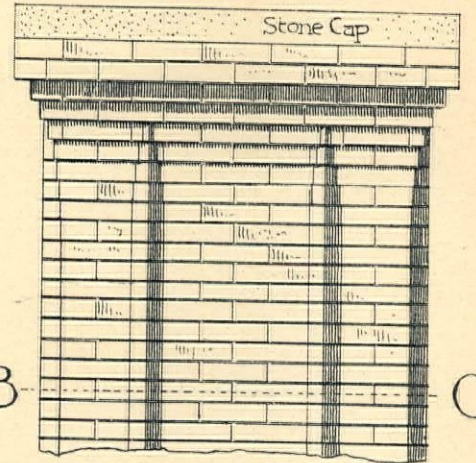
STONE CAP

STONE

ELEVATION OF CHIMNEY TOP

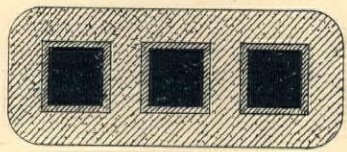


ELEVATION OF CHIMNEY TOP

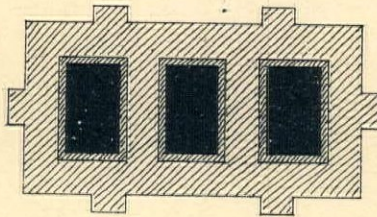


Stone Cap

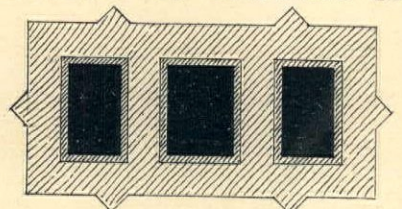
ELEVATION OF CHIMNEY TOP



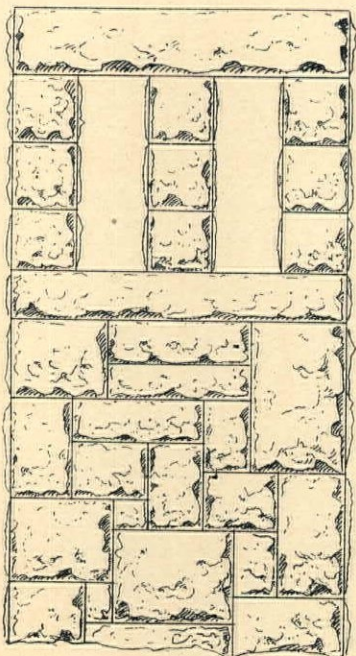
SECTION ON LINE A-B



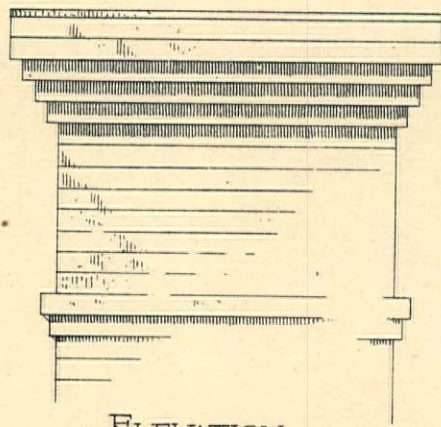
SECTION ON LINE C-D



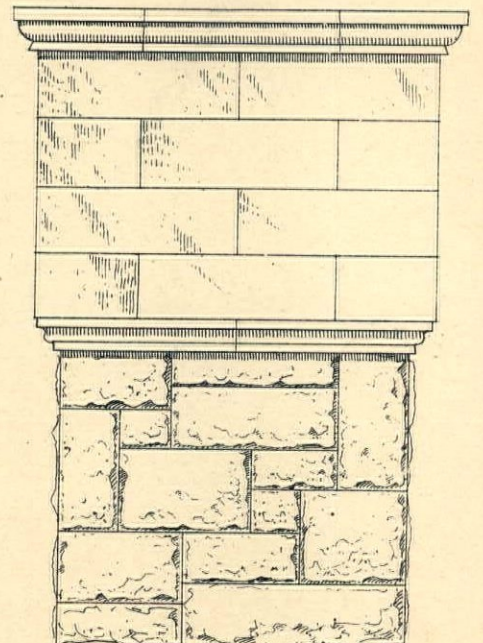
SECTION ON LINE B-C



ELEVATION



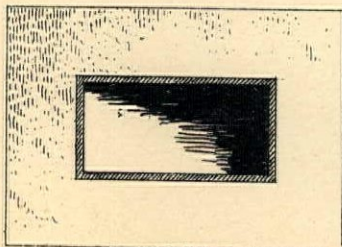
ELEVATION



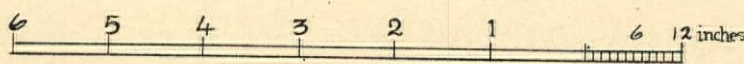
ELEVATION

# MASON BUILDERS DETAILS.

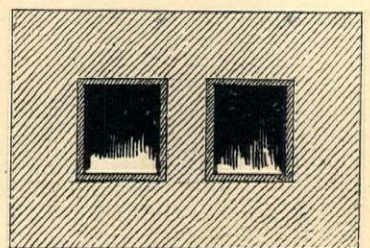
## DESIGNS FOR CHIMNEYS



PLAN OF TOP



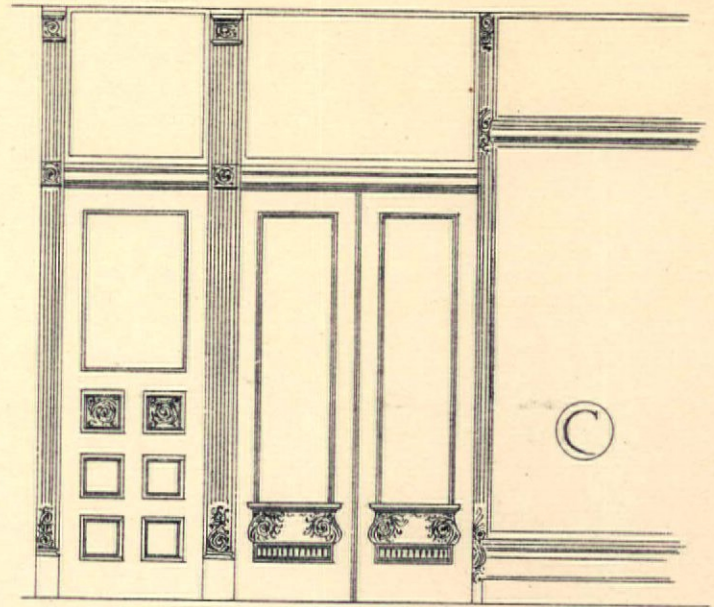
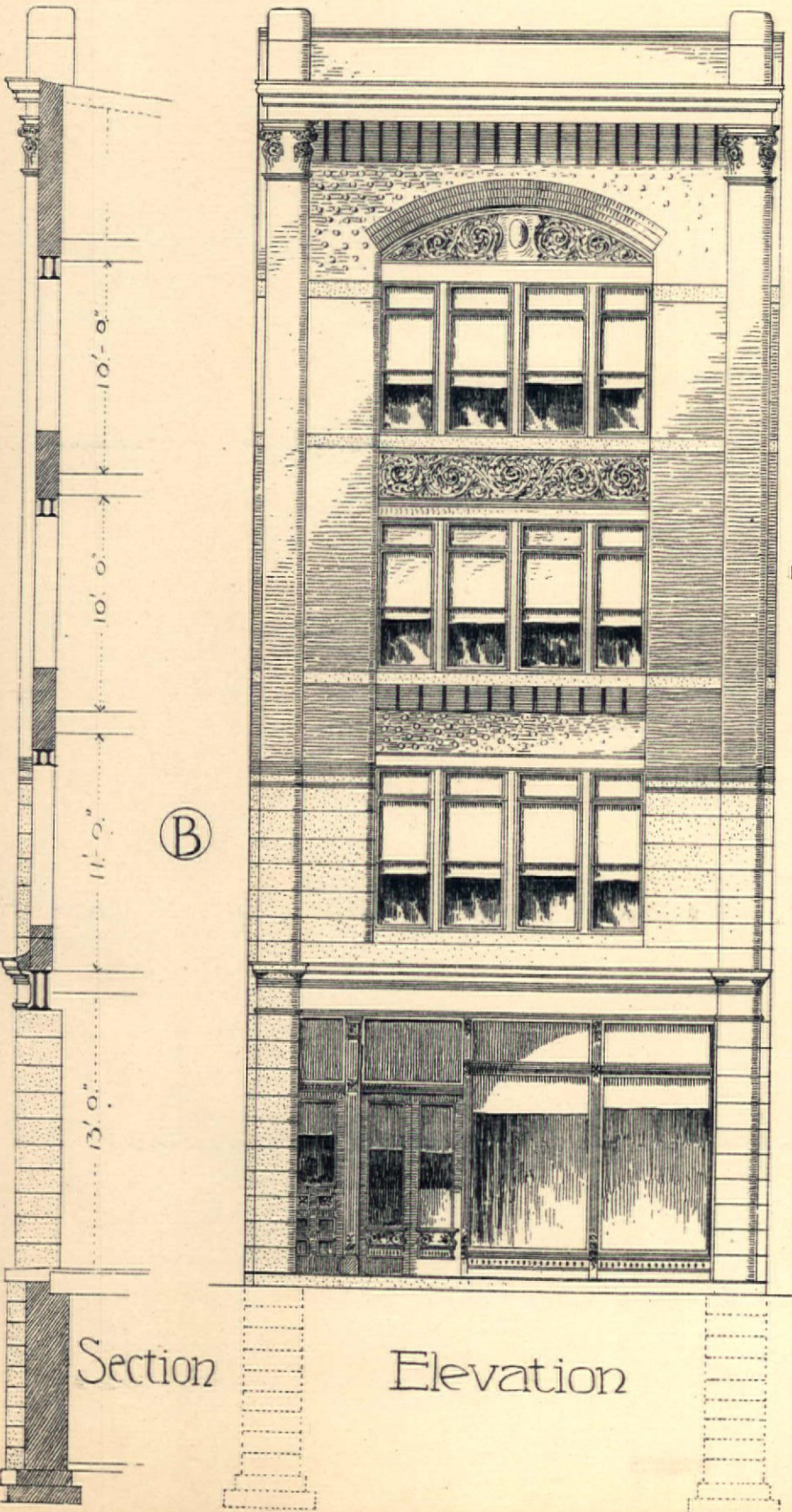
Scale  $\frac{1}{2}$  inch = 1 Foot



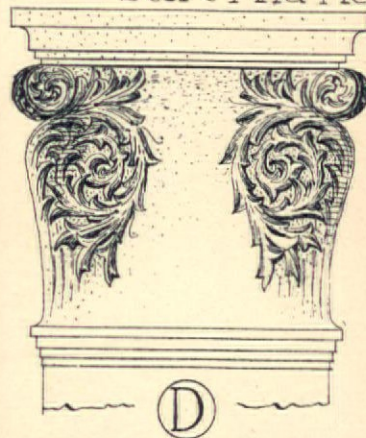
SECTION THROUGH SHAFT



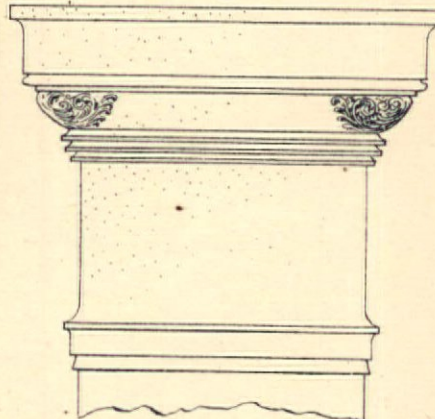
# DESIGN FOR A STORE FRONT WITH FLATS OVER



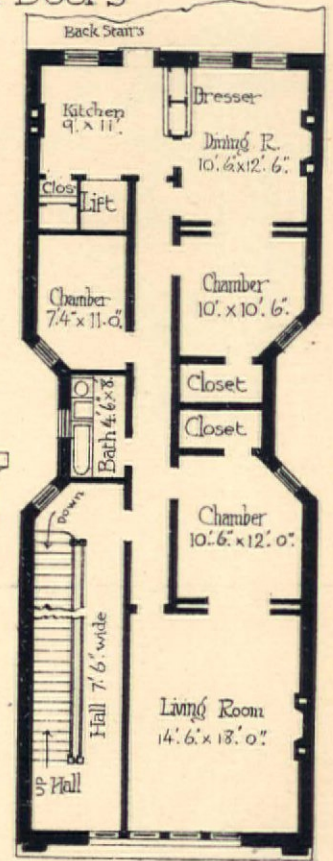
Store And Hall Doors



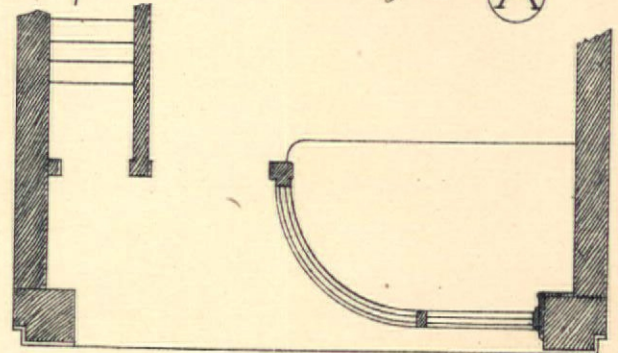
(D)



Capitals

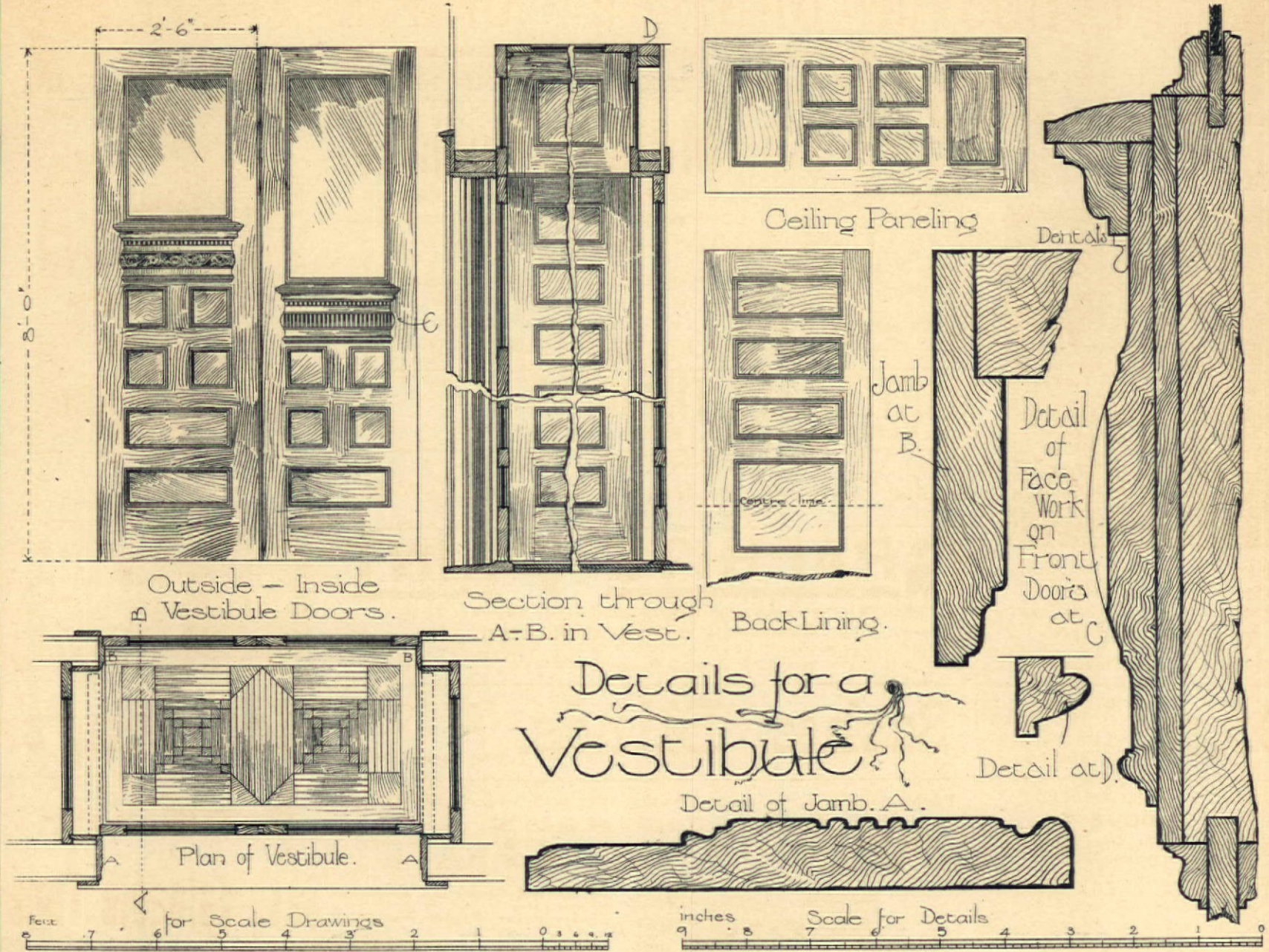


2<sup>d</sup> Story Plan (A)

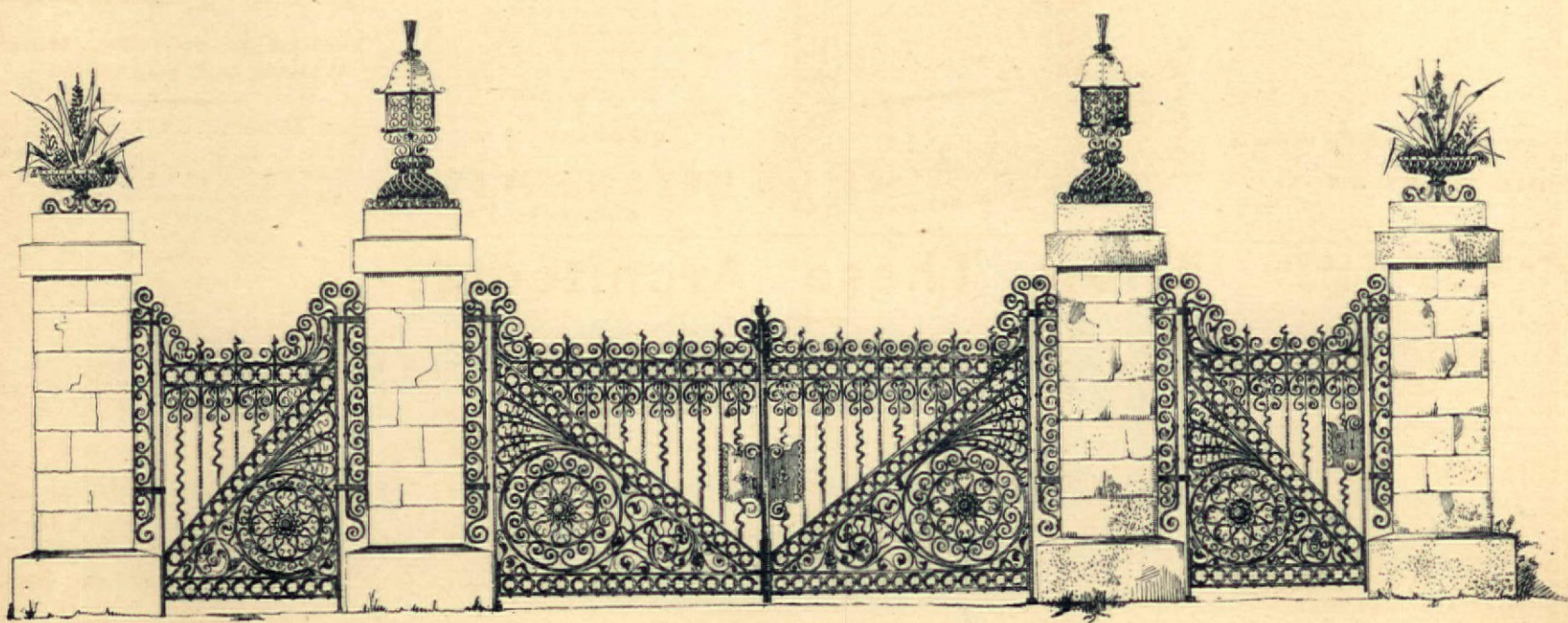


(B)

Plan of Store Fronts

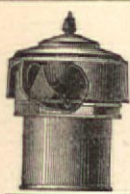


# Details for a Vestibule

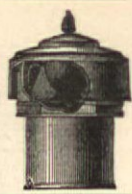


"Entrance Gates"

No 511



# THE BOSTON SANITARY CHECK VALVE,



FOR CHECKING ESCAPE OF SEWER GAS FROM FRESH AIR INLETS.

H. H. SAWYER & CO., Manufacturers,

292 WASHINGTON STREET, BOSTON.

**- SAMPLE OF WINDOW -**  
MANUFACTURED BY  
Postel's Stained Glass Works.



Estimates for Architects and Builders promptly given on application.  
Work shipped to any part of the country.  
**C. H. POSTEL & CO.,**  
1314 & 1316 Ridge Ave., Philadelphia, Pa.



## Metallic Ceilings.

**NO FALLING. NO CRACKING.**  
DANGEROUS PLASTER CEILINGS SUPERSEDED.  
**M**ETAL FRIEZES, DADOS, PANELS,  
MOLDINGS AND CORNICES  
In Elegant and Original Designs.  
SUITED TO ALL CLASSES OF BUILDINGS.  
SEND FOR ILLUS. CATALOGUE AND PRICE-LIST.  
**LYLES & MILLS, 231 William Street, N. Y.**

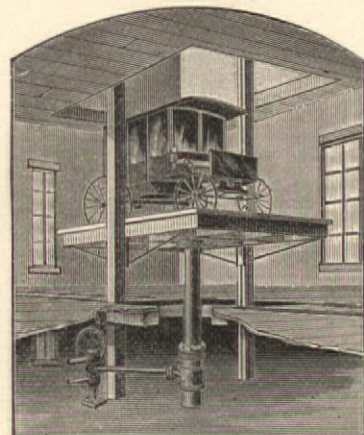
## MANTELS and TILING,

**E. H. HARRISON & BRO., M'f'rs,**  
J. F. HONEY & SON,  
Metallic Skylights and General Sheet Metal Works.  
116 West 18th Street, NEW YORK.

## GRAPHITE PAINT

For Tin or Sningle Roofs and Iron Work. It is  
Absolutely without an Equal.  
A tin roof well painted will not need repainting for 10 to 15 years. If you need any paint it will pay you to send for circular.  
**Joseph Dixon Crucible Co., Jersey City, N. J.**

## ECLIPSE ELEVATOR.



**ONLY SAFE ELEVATOR.**  
For Circulare and Estimates, Address,  
**Tuerk Hydraulic Power Co., 12 Cortlandt St., N. Y.**



Established 1827.  
**W. JACKSON'S SONS,**  
M'f'rs. & Importers of  
**GRATES, OPEN FIRE-PLACES, FENDERS, FIRE IRONS, AND IRONS, TILES, Etc.**  
Factory, 268 Water Street  
Office and Showroom, 1246 Front St., NEW YORK.

# Doors, Sashes, Blinds, Mouldings.

**C. B. KEOGH & CO.,**  
6 & 8 Howard St.,  
NEW YORK.

Price List  
SENT FREE  
On Application.

JUST PUBLISHED.  
**CATALOGUE X,**  
On Architecture, Building, Carpentry,  
Stair Building, Etc.

- We also publish a series of Circular Catalogues on various scientific subjects. No. 1 to 11 now ready as follows.
- No. I. Engineering.
  - II. Materials of Engineering.
  - III. Bridges, Roofs, Etc.
  - IV. Hydraulics, Etc.
  - V. Steam Engines, Boilers, Etc.
  - VI. Chemistry, Electricity, Etc.
  - VII. Mathematics, Astronomy, Etc.
  - VIII. Assaying, Metallurgy, Mineralogy, Etc.
  - IX. Art, Drawing, Painting, Engraving, Etc.
  - X. Architecture, Carpentry, Stair Building, Etc.
  - XI. Mechanics, Machinery, Manufactures.

The above will be sent FREE by mail on application to  
**JOHN WILEY & SONS,**  
53 East Tenth Street, NEW YORK.  
(SECOND DOOR WEST OF BROADWAY.)

**STAMBACH & LOVE,**  
52 N. 7th Street, Philadelphia.  
PLUMBERS' SUPPLIES and SANITARY SPECIALTIES

MANUFACTURERS OF  
Superior Soap Stone Laundry Tubs, Sinks, Hearths, etc. Using only the best Qualities of Soap Stone, and employing experienced workmen, we can fully guarantee our Laundry Tubs as superior to all others.

**Bicknell's Advertising Bureau,**  
Especially Devoted to the Interests of Those who Supply.

**THE ARCHITECTURAL, BUILDING, DECORATIVE AND KINDRED ARTS AND TRADES.**

SPECIAL LIST OF  
Journals, Magazines and Illustrated Weeklies  
Mailed to any Address on Application.  
**Office, 115 Broadway, N. Y.**

Perfect ventilation is necessary to good health, and is secured by the use of  
**THE JACKSON VENTILATING GRATE**



Combined Grate and Fireplace Furnace.  
Introducing Heated Out-Door Air.  
Heating two or more floors if desired.  
77 in use in Columbia College, New York; 87 in the New Court House, St. Paul, Minn.; 53 in Hastings Hall of Harvard College; 65 for the Presbyterian Hospital in Philadelphia; and by the War Department at many posts. Also in use in thousands of residences in various sections of the country.  
OVER 200 DIFFERENT STYLES OF DESIGN AND FINISH.  
SEND FOR ILLUSTRATED PRICE-LIST AND CIRCULAR L.  
**EDWIN A. JACKSON & BRO.,**  
50 Beekman St., N. Y.

## Know These Architects?

STONE, Carpenter & Willson, Rhode Island; Geo. C. Mason & Son, Brown & Day, Pennsylvania; Charles S. Frost, Clarence L. Stiles, Illinois; Chas. E. Illsley, F. B. Hamilton, Eckel & Mann, Missouri; O. P. Hatfield, Marling & Burdett, New York; Longstaff & Hurd, Connecticut; Guy Tilden, Ohio; Rogers & MacFarlane, Michigan; Wing & Mahurin, Indiana; Armstrong & Messer, Texas. They cover a wide range of country, and with hundreds of others have used the STANDARD CONTRACT and endorse it.

Perhaps the best evidence that the STANDARD CONTRACT is thoroughly practical and adapted to general use, is the fact that it was framed by the Joint Committee of THE AMERICAN INSTITUTE OF ARCHITECTS, THE WESTERN ASSOCIATION OF ARCHITECTS and THE NATIONAL ASSOCIATION OF BUILDERS. We are licensees for the exclusive publication of the STANDARD CONTRACT, and furnish the blanks at the following prices, agreed upon with the committee, viz.: \$1.10 per 100, \$4.25 per 500 and \$8.00 per 1,000, free by mail or express. Architects' names and consequent pronouns inserted at additional cost. To save innumerable small accounts, payments should accompany orders. Personal checks on local banks not accepted unless New York, Chicago or equivalent exchange is added.

**INLAND PUBLISHING CO.,**  
Publishers of the Inland Architect. Tribune Building, Chicago.

IF YOU WISH  
- TO -  
Save Valuable Time

USE THE  
"EUREKA  
Building Specifications"

Instead of Spending Hours in Writing Out Your Own.

- CLASS A.—These Specifications are intended to be used for Frame Dwellings, without plumbing. Price, 25 cts.
- CLASS B.—These Specifications are intended to be used for Frame Dwellings, of moderate cost, with heating and plumbing. Price, 30 cts.
- CLASS C.—These Specifications are intended to be used for Frame Dwellings, costing \$4,000 and upwards, with heating and plumbing. Price, 40 cts.
- CLASS D.—These Specifications are intended to be used for Brick Dwellings, with heating and plumbing. Price, 50 cts.

ARCHITECTS, Builders and Contractors cannot afford to do without them. Published in four Styles as above. Sample copy of all sent for introduction to any address on receipt of One Dollar.

**A. J. BICKNELL,**  
115 BROADWAY, NEW YORK.

All Interested Should Send for a Free Sample Copy of the  
**Builder, Decorator and Woodworker,**  
 1305-1307 Arch Street,  
**PHILADELPHIA, PA.,**



Giving Particulars of a Series of Interesting and  
**IMPORTANT COMPETITIONS**  
 That are open to all. We want you to enter.

The **Builder, Decorator and Woodworker** is one of the **Handsomest and most profusely Illustrated** Journals of its class, consists of **36 pages, and 4 full-page Supplements**, and should be in the hands of every Architect, Builder, Carpenter and every Artisan in the Building Trades. April issue will contain **Prize Designs** in Competition No. 1 for a \$2,000 Cottage.

**Manufacturers and Dealers in Builders' Supplies** will find it a **Paying Advertising Medium**, and should send for rates.

VALUABLE TO ARCHITECTS, BUILDERS AND CARPENTERS.

INTERESTS EVERY ONE

WHO WISHES TO

**OWN A HOME,**

OR WHO WISHES TO

**DECORATE OR**

**BEAUTIFY HOME.**

— THE —

**BUILDER & WOODWORKER**

W. F. Underwood, Ph.D., Editor.



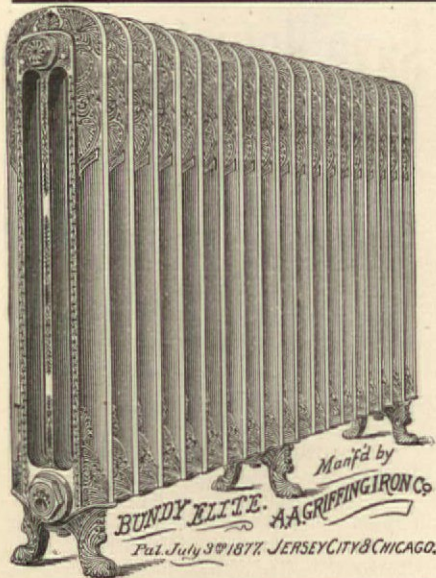
The oldest Building Journal in America, now in its twenty-sixth year.

Above is shown a house costing \$2,200, plans and description of which appeared in **THE BUILDER AND WOODWORKER**.

**EACH NUMBER** contains **EIGHT full-page plates, printed in tint, of city and country residences, cottages, etc., plans with estimates of cost, elevations, etc., etc., in addition to numerous illustrated articles, suggestions for, and illustrations of interior decoration.**

**ISSUED EVERY MONTH at ONE DOLLAR PER YEAR.**

Published by **A. L. CHATTERTON & CO.,**  
 78 Maiden Lane, New York City.



**Bundy Radiators.**

**NO DOUBT** almost any radiator, when brand new, will give fairly good satisfaction, but the test comes later on when it has been in use for years. There are over

**TWENTY MILLION**

square feet of Bundy Radiators now in use, many of which have been in operation from ten to twenty years, and yet they are as good as they ever were and have never cost the owners one cent for repairs.

*Architects specify the Bundy.  
 Steam Fitters use the Bundy.  
 Consumers require the Bundy.*

**A. A. GRIFFING IRON CO.,**

482 Communipaw Ave., Jersey City, N. J.

Branch Offices and Stores: { 12 Cortlandt St., New York City.  
 { 130 Dearborn St., Chicago, Ill.  
 { Builders' Exchange, Phila., Pa.

1869.

1890.

**The Manufacturer and Builder,**  
 Published Monthly.

A **Handsomely Illustrated Mechanical Journal,**  
 Edited by **DR. WM. H. WAHL.**

Every Number Consists of **38 Large Quarto Pages and Cover.**  
 Filled with useful information on all subjects of a practical nature.

It is invaluable to the Manufacturer, the Builder, the Architect, the Carpenter, the Engineer, the Plumber, and in fact to everyone who works with hands or brain. For the Household there is information given in every number worth the subscription price. The newest inventions are illustrated and described; science, both practical and theoretical, have a place in its columns; the Architectural department has an attractive design in every number. Questions on any topic asked by readers are answered, and a thousand and one bits of interesting matter go to complete the oldest, best, and cheapest Mechanical Monthly in the country. It is the best, because the information it contains is accurate and up to the times. It is the oldest, being now in its twenty-second year. It is the cheapest because it gives the reader the most substantial literary food for his money.

Send \$1.50 for yearly subscription, and begin with the earliest number you can get.

**SPECIMEN COPY FREE.**

FOR SALE BY ALL NEWSDEALERS. AGENTS WANTED EVERYWHERE. ADDRESS

**HENRI GERARD,**

P. O. Box 1001.

83 Nassau Street, New York.

**ACME MORTAR COLORS.**

BLACK, RED, BUFF AND BROWN.

**L. MARTIN & CO.,**

226 Walnut Street,

PHILADELPHIA.

MANUFACTURERS OF THE FINEST

**Mortar Colors to be Found in the World's Market.**

SAMPLES AND DIRECTIONS SENT FREE ON APPLICATION.

The Black Pulp is a Pure Vegetable Black, will always Retain its Color and not Turn Ashy Grey.

JUST PUBLISHED.

**DIRECTORY OF ARCHITECTS—1890**  
 PRICE, \$2.00.

For Sale at the Office of this Journal, or Mailed on Receipt of Price by

**A. J. BICKNELL,**

115 BROADWAY,

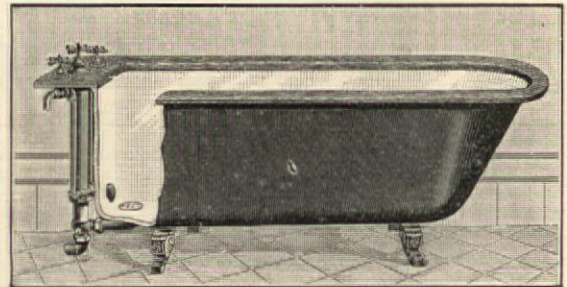
NEW YORK

**ENAMELED IRON FRENCH BATHS.**

WITH NICKEL-PLATED SECRET SUPPLY AND WASTE.

All sizes in Stock, 4 ft., 4½ ft., 5 ft., 5½ ft. and 6 ft. long.

CUT  
 illustrates  
 the  
 "Electric"  
 Supply & Waste,  
 Sanitary,  
 Durable,  
 Cleanly,  
 Inexpensive.



Handsome,  
 Practical  
 Perfect.  
 Adaptable to various combinations, including Mixing Cocks and Plug Waste  
 Send for New Catalogue

**HAINES, JONES & CADBURY CO.,**

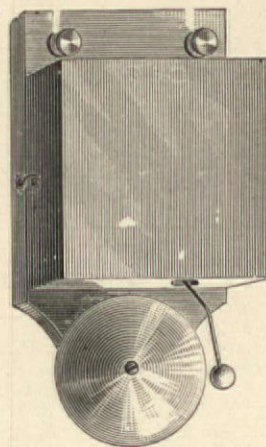
MANUFACTURERS OF AND DEALERS IN

**PLUMBERS' SUPPLIES AND SANITARY SPECIALTIES**

1136 RIDGE AVE., PHILADELPHIA, PA.

Established 14 Years.

**R. KANZE,**



Electric  
 Bells  
 AND  
 Door  
 Openers,  
 Burglar  
 Alarms,  
 Electric  
 Gas Lighting  
 Annunciator  
 Systems.

Only reliable work done and guaranteed.

103 East 9th St., bet. 3d & 4th Aves., N. Y.

**BOOKS ON BUILDING**

And the Allied Arts.

LATEST WORKS ISSUED.

Palliser's Court Houses, City Halls, Jails, Etc.  
 Palliser's Common Sense School Architecture.

Each Containing 85 plates.

Specification and Contract Blanks, etc.

Full descriptive lists mailed on application; also of all American and Foreign Building Journals, with club rates.

**PALLISER, PALLISER & CO.,**  
 24 East 42d St., New York.

PUBLISHED MONTHLY.

**The Builders Exchange.**

The Official Organ of The  
 National Association  
 of Builders of the  
 United States.

**Circulation 5,000**

This paper offers unequalled facilities for reaching builders and contractors throughout the United States.

**SAMPLE COPIES FREE.**

Garnsey, Stone & Co., Publishers  
 164 DEVONSHIRE STREET,  
 BOSTON, MASS.

Advertising Rates on Application.

# THE NATIONAL LEAD & OIL CO.

Of New York.

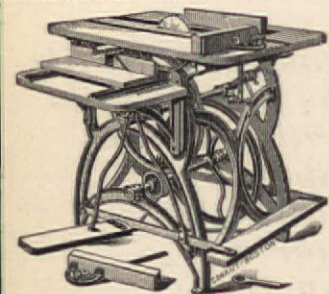
28 BURLING SLIP, NEW YORK CITY.

PROPRIETORS OF

- Brooklyn White Lead Co.,
- The Bradley White Lead Co.,
- The Jewett White Lead Co.,
- The Ulster Lead Co.,
- The Union White Lead Mfg. Co.

When painting use only pure White Lead and the result will always be satisfactory. The above brands are guaranteed perfectly pure. Architects and Builders in specifying the same can feel assured that their clients will be entirely satisfied with results.

## Marston's Hand & Foot Power Machinery.



Circular Saw, Iron Frame, Steel Shafts and Arbors, Machine Cut Gears, Iron center part in top. Send for Circular and Price-List

J. M. MARSTON & CO., 66 Lenox St., Boston, Mass.



THE JERSEY CITY Woodworking Company, No. 310 Washington St., JERSEY CITY, N. J.

TURNED BALUSTERS of all Sizes and Patterns. Pedestal and Turned Newels. STAIR RAILS of all dimensions worked ready to put up. Send 4c. in Stamps for Illustrated Catalogue.

SOUTH BROOKLYN

RUST PROOF IRON AND STEEL WORKS. GESNER PROCESS.

\* Latest, most perfect and cheapest, converting body of surfaces treated into a Double Carbide of Iron and Hydrogen. Does not scale. Does not alter dimensions. Architectural Iron, Art Hardware, etc., treated. For prices, also for shop rights for iron and steel apply to

G. W. GESNER, 15 State St., N. Y.

# NATIONAL \* BUILDER

—AND—

# ARCHITECTURAL NEWS.

An Architectural and Art Weekly.

PUBLISHED EVERY SATURDAY.

Subscription \$5 Per Year. Single Number 10 Cents.

POSTAGE PREPAID.

CHAS. H. VAN BUREN, PUBLISHER,

OFFICE, 608 F. Street, N. W., WASHINGTON, D. C.



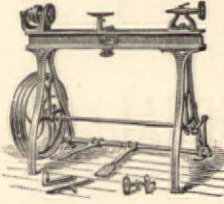
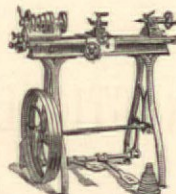
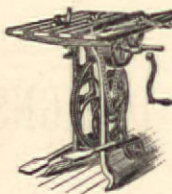
## Patent Foot Power Machinery.

The Latest and Most Improved, for

Carpenters, Builders, Cabinet Makers and Wood and Metal Workers Generally.

Machines for Scroll Sawing, Riping, Cross-Cutting, Mitering, Rabbling, Grooving, Gaining, Beading Variety Molding, Boring, Mortising, Tenoning, Wood and Metal Turning, Screw Cutting, Etc., Etc.

Enterprising Mechanics are quick to see the Superior Merit of our Machines. Machines sold on trial if desired. Send for 36-page Illustrated Catalogue and Price-list, giving full description, testimonials, etc.



## THE SENECA FALLS MFG. CO.,

300 Water Street, Seneca Falls, N. Y.

## The Smead System of Warming and Ventilation AND THE SMEAD DRY CLOSET SYSTEM,

For Public School Buildings.

PURE AIR AND PLENTY OF IT! NO SEWER GAS!! A NEW SUN IN THE SANITARY HEAVENS." This system is peculiarly adapted to School Buildings, and is now in acceptable use in more than three thousand buildings of that class. Architects and School Authorities are invited to write for our new illustrated book (containing 150 pages), sent free on application.

ASSOCIATED OFFICERS:  
SAAC D. SMEAD & CO., Toledo, O., Washington, D. C. and Kansas City, Mo.  
SMEAD, WILLS & CO., Philadelphia.  
SMEAD WARMING & VENTILATING CO., Boston.  
RITTAN WARMING & VENTILATING CO., Chicago.  
SMEAD, DOWD & CO., Toronto, Ont.

T. C. NORTHCOTT,  
(Successor to Smead & Northcott),  
ELMIRA, N. Y.



## Butler Hardware Co.,

18 WARREN ST., NEW YORK,  
Sole Manufacturers of the Emerick Patent Geared

## Dumb Waiters

—AND—  
HAND ELEVATORS.

The EMERICK DUMB WATER remains stationary at any point empty or loaded to 60 pounds with out using brake. Adapted for use in Restaurants, Dining-Rooms, Flats, and any work not requiring a lift of more than 300 lbs.

The EMERICK HAND ELEVATOR is adapted for invalid lifts, trunks, and other heavy work in flats and private dwellings, light store work, etc., etc.

WILL RAISE 500 POUNDS.

ENDORSED BY LEADING ARCHITECTS.

We manufacture Cannon's Dumb Waiter and also cheaper grades of Dumb Waiters and Hoist Fixtures. Send for 30-page Illustrated Catalogue for above.

MANUFACTURERS OF AND DEALERS IN A FULL LINE OF

Builders' Fine Hardware, Building Paper, Iron and Steel Cut Nails, Wire Nails, Mechanics' Tools, Railroad and Contractors' Supplies, etc.

Wholesale and Retail Prices Furnished on Application.

NOTE.—It will pay architects, carpenters and builders to write us for our bottom prices before purchasing elsewhere.

# House Painting and Decorating.

An Illustrated Monthly Magazine.

VALUABLE TO

House Owners, Builders, House Painters, Coach Painters, Car Painters, Fresco Painters, Sign Writers, Paper Hangers, and all interested in Painting and Decoration.

Every Number contains a Colored Plate and Fifty Pages of Reading Matter.

The following serial articles are now running:

- Sign Painting (Illustrated with examples of lettering banners, monograms, etc., etc.)
- Decoration.
- Scene Painting.
- Coach Painting.
- Wall Paper Design.

With much useful information, recipes, etc., etc.

\$1.00 a Year. Single number, 10 cts.

Send postal for free sample copy.

1130 South 35th St., Philadelphia, Pa.

## ACADEMY OF BUILDING.

Academy of Architecture and Building. An Institute for Theoretical and Practical Education for Building Tradesmen. 3366 South 9th St., St. Louis, Mo. Terms begin September, December and March. Send for prospectus. H. MAACK, Principal.

RECENTLY PUBLISHED.

EIGHTH EDITION.

## BUILDING SUPERINTENDENCE.

A MANUAL: For young Architects, Students, and others interested in Building Operations as carried on at the present time. By T. M. CLARK, Fellow of the American Institute of Architects, 1 vol., 8vo., 336 pages. Illustrated with 194 Plans, Diagrams, etc. Price, \$3.00.

Introduction—The Construction of a Stone Church—Wooden Dwelling-Houses—A Model Specification—Contracts—The Construction of a Town-Hall, etc.

"This is not a treatise on the architectural art, or the science of construction, but a simple exposition of the ordinary practice of building in this country, with suggestions for supervising such work efficiently. Architects of experience probably know already nearly everything the book contains, but their younger brethren, as well as those persons not of the profession, who are occasionally called upon to direct building operations, will perhaps be glad of its help."

This volume has been used for years as a text-book in the chief Architectural Schools of the United States.

Postpaid to any address by

A. J. BICKNELL,  
115 BROADWAY, NEW YORK

# THE ARCHITECTURAL AND BUILDING MONTHLY.

A JOURNAL OF PRACTICAL DESIGNS AND DETAILS

Adapted to the Use of Architects, Contractors, Carpenters and Builders, Mason Builders, Plasterers, Sash and Blind Manufacturers, Real Estate and all other Interests connected and associated with the Building Trades in Various Localities.

Each Number will contain from eight to twelve 9x12 Plates of designs and details. Before the the completion of the first year, a large variety of Designs and Details of Public and Private Buildings suited to Cities, Towns and Villages, also Medium and Low-Cost Cottages, Suburban or Country Houses, Stables and Out Buildings, Street and Store Fronts, with details of Store Finish, Designs of Furniture and a great variety of Miscellaneous Exterior and Interior Details, drawn to Scale, will be published. Including Details of Brick, Stone and Plaster Work, making in all a collection of more new and original matter for \$5.00 than we ever published in book form for \$10.00.

A. J. BICKNELL, PUBLISHER,

P. O. Box 560.

No. 115 BROADWAY, NEW YORK.

(Original publisher of Bicknell's Village Builder, Bicknell's Detail, Cottage and Constructive Architecture, Wooden and Brick Buildings, Wither's Church Architecture, Loth's Practical Stair Builder, and compiler and publisher of several other practical works on Architecture, Carpentry and Building.)

Please fill this out and send it to Publisher of A. and B. Monthly, P. O. Box 560, New York.

## ⚡ SUBSCRIPTION ORDER ⚡

A. J. BICKNELL, Publisher,

(P. O. Box 560) 115 Broadway, New York,

1890.

Please send the "ARCHITECTURAL AND BUILDING MONTHLY" to the undersigned for one year, including No. .... already received. Five Dollars enclosed, for which please acknowledge receipt.

TERMS:

\$5.00 - PER YEAR.  
2.75 - SIX MONTHS.  
.50 - A NUMBER.

Name, .....

Street, .....

City or Town, .....

State, .....

Please remit by Money Order, Registered Letter or Draft, on New York, payable to the order of A. J. BICKNELL.

**Business and Personal.**

THE Wyandance Brick & Terra Cotta Company will be pleased to show our readers samples of their various shades of bricks at their offices, 16 Park Place, New York. See another column for their advertisement.

THE Stereo-Relief Decorative Company, who for some time have had their office and works on University Place, corner 13th Street, have been compelled, on account of largely increased business, to move into much larger quarters on East 41st Street.

WE direct the attention of our readers to the advertisement of the Indiana Paint and Roofing Co., of New York, in another column, who will, on application, send samples free of expense.

**Contents of Architectural and Building Monthly.**

- No. 1.—APRIL, 1890.  
**Plate No. 1.**—A Design for Front Stairs and Details.  
**Plates Nos. 2, 3, and 4.**—Elevations, Floor and Framing Plans for Cottage A.  
**Plate No. 5.**—Elevations and Plans of a Shingled Cottage in the Colonial Style.  
**Plates Nos. 6 and 7.**—View, Elevation, and Plans of a Modern Cottage.  
**Plate No. 8.**—Designs and Details of a Model Kitchen.  
**Plate No. 9.**—Design of Shelves, Seat, and Table Combined, etc.  
**Plate No. 10.**—Details for Inside Window and Door Finish.  
**Plate No. 11.**—Elevations and Plans of Three Low-Cost Cottages.  
**Plate No. 12.**—Exterior Details of a Suburban House, shown on Plates Nos. 13, 14, 15, and 16, erected at Elizabeth, N. J.  
 No. 2.—MAY, 1890.  
**Plates Nos. 13, 14, 15 and 16.**—Elevations, Plans and Interior Details of a Suburban Residence.  
**Plate No. 17.**—Elevations, Plans and Details of a Double Cottage.  
**Plates Nos. 18 and 19.**—Elevations and Plans of a Suburban House in Colonial Style.  
**Plate No. 20.**—Design for Park Entrance with Details.  
**Plate No. 21.**—Two mantels in Colonial Style, with Sections.  
**Plate No. 22.**—Three Designs for Staircases with Sectional Drawings.  
**Plate No. 23.**—Five Dormer Windows of Ornamental Design with Sections and Details.  
**Plate No. 24.**—Iron Highway Bridge, and Iron Fireproof Construction of a building.  
 No. 3.—JUNE, 1890.  
**Plates Nos. 25, 26 and 27.**—Elevations and plans, exterior and interior details for suburban residence, Colonial style, including perspective view also view of parlor and hall.  
**Plate No. 28.**—Four designs for mantels, with section and details.  
**Plate No. 29.**—Eight designs for doors with sectional drawings.  
**Plate Nos. 30 and 31.**—A country residence, with plans, elevations, exterior and interior details.  
**Plate No. 32.**—Details for porch. Details of pantry for frame dwelling of moderate cost.  
**Plate No. 33.**—Details for window frames and for cellar window frames and water table.  
**Plate No. 34.**—Mantel details and sections suited for cottage "A."  
**Plate No. 35.**—Design and details of staircase for cottage "A."  
**Plate No. 36.**—Design for mantel and alcove, elevation and section. Iron Roof of Balbach Iron Works, Newark, N. J.

**DYCKERHOFF  
 PORTLAND CEMENT**

IS superior to any other Portland Cement made. It is very finely ground, always uniform and reliable, and of such extraordinary strength that it will permit the addition of 25 per cent more sand, etc., than any other well-known Portland Cement, and produce the most durable work. It is unalterable in volume and not liable to crack. The foundations of many of the most important buildings recently erected in this city were constructed of the Dyckerhoff Portland Cement, such as the Statue of Liberty, Equitable Life, New York Times, New York World, Puck, Judge, Metropolitan Opera House, Metropolitan Telephone, U. S. Army, U. S. Trust Co., Union Trust Co., Farmers' Loan and Trust Co., Washington Memorial Arch, Brooklyn Soldiers' and Sailors' Memorial Arch, and others.

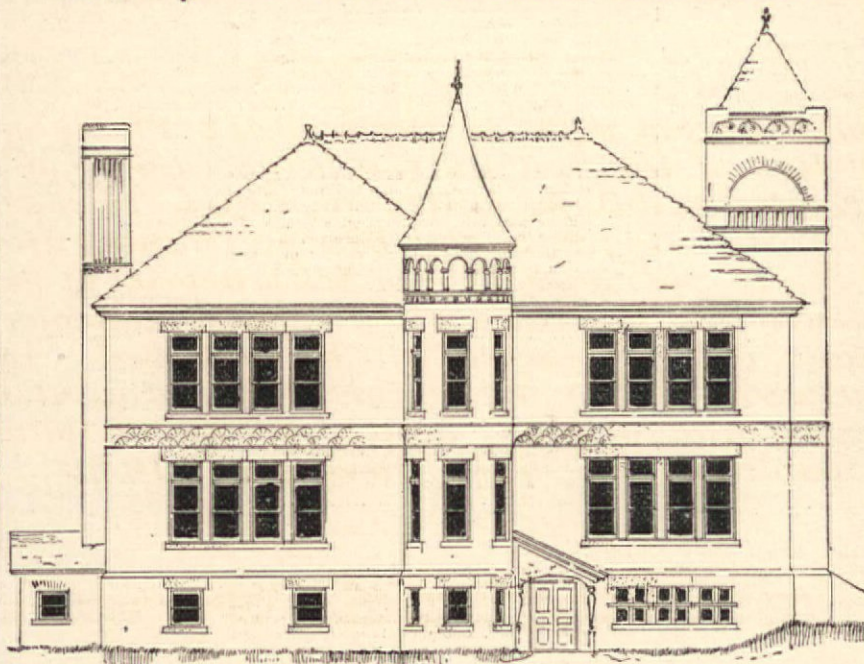
Pamphlet with directions, tests and testimonials sent free.

**H. THIELE,**

SOLE AGENT, U. S.,

78 William Street, NEW YORK.

**TOWN AND COUNTRY SCHOOL BUILDINGS.**



A collection of Plans and designs for Schools of various sizes, graded and ungraded, with description of Construction of Sanitary Arrangements, Light, Heat and Ventilation.

BY **E. C. GARDNER, ARCHITECT.**

1 vol., small 4to, 130 illustrations, 128 pages. Cloth. Price, \$2.50  
 Postpaid to any address by **A. J. BICKNELL, 115 Broadway, N. Y.**



Only Stone Tub sent to Paris Exhibition 1889.

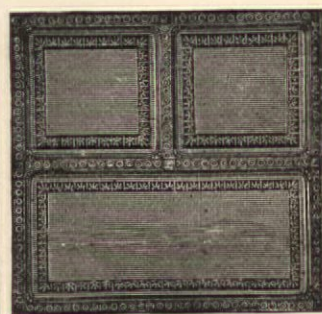
**EMPIRE GRANITE CO., 625 & 627 E. 15th St., New York City.**

**GRANITE LAUNDRY TUBS & SINKS.**

NEVER WARP AND NEVER LEAK.

Made in One Solid Piece.  
 Cheaper than Wood.  
 More Durable than Iron.

Send for Illustrated Circular and Price-List. Special Terms to Architects and Builders specifying our goods.  
 We have the largest capacity for the manufacture of these wares. No stone tubs are of such hard quality or made so perfectly.



**JOHN McCALLUM & CO.,**

ALL KINDS OF

Panelled and Embossed Metal Ceilings.

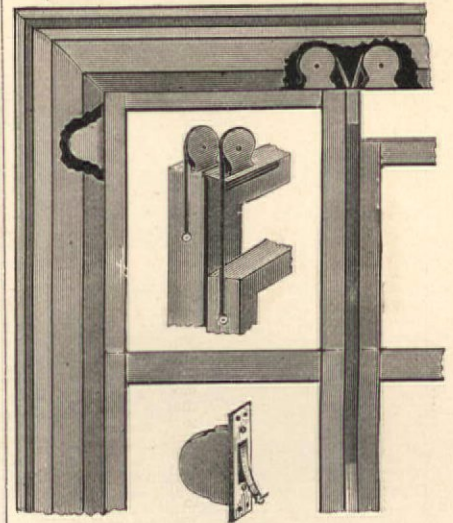
SOLE AGENTS FOR THE

**NORTHROP & KINNEAR PATENT CEILINGS.**

SEND FOR CATALOGUES.

426 Washington St., New York City.

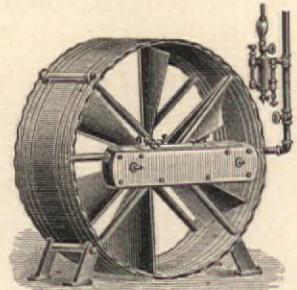
**The Caldwell Sash Balance**



PAT. OCT. 30, 1888.

is specified by architects and endorsed by builders. Carried in stock by the hardware trade generally. Applied to new or old windows at less expense than cord and weights, and perfect satisfaction guaranteed. The Side Balance for general use, and Top Balance for narrow mullions. Ask your dealer for them, or write to

**CALDWELL MFG. CO.,**  
 Center, near State St., Rochester, N. Y.



**L. J. WING CO.,**

Manufacturers of Wing's Disc Fans, High Speed Engines, Electric Motors, Fan Ventilators, etc., for Mechanical Heating, Ventilating, Cooling, Drying, Removing Dust, Steam, Smoke, etc. Illustrated Catalogue and Reference List on application.  
 80 John Street, New York. | 96 Lake Street, Chicago, Ill.

THE **Iron Clad**

—STEEL—

**BATH BOILER**

GALVANIZED.

Tested 150 Lbs.  
 (28 Different Sizes.)

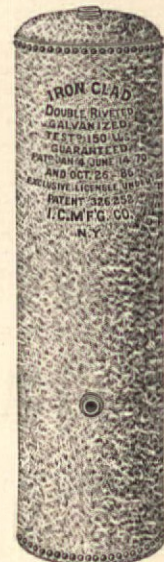
Perfect Satisfaction  
 Guaranteed.

For sale by all  
 JOBBERS and DEALERS  
 in PLUMBERS' SUPPLIES.

Illustrated Circular and Price-List sent to the readers of "The A. and B. Monthly," also the address of our nearest dealer.

**Iron-Clad Mfg. Co.**

22 Cliff Street,  
 NEW YORK.



**CLINTON**

**STRONG,  
 DURABLE,  
 ECONOMICAL.**

**METALLIC**

**CLINTON METALLIC PAINT CO.,**  
 CLINTON, N. Y.,  
 AND  
 229 PEARL ST., NEW YORK CITY.

**PAINT**

# ➤ PRACTICAL BOOKS ◀

FOR

ARCHITECTS, • CARPENTERS, • BUILDERS, • MASONS, • PAINTERS,  
STUDENTS, • ETC.

**Ames' Alphabets.** (Fourth Revised Edition.) Adapted to the use of Architects, Engravers, Engineers, Artists, Sign Painters, Draughtsmen, etc. This work has been prepared with especial reference to the wants of Architects, Sign Painters and Draughtsmen. Architects will find examples of the most common words in use on their drawings, so that if desired they may be transferred directly to their drawings, "with instruction in regard to tracing and transferring, and the preparation of India Ink." This will be especially valuable to architectural students and amateurs. Sign Painters will find fancy and shaded letters especially adapted to their wants, while every alphabet in the book will be found suggestive. One oblong volume, thirty-three 7x11 well-filled plates, handsomely bound in cloth. Price.....\$1.50

**Tuthill's Practical Lessons in Architectural Drawing;** or, How to Make the Working Drawings for Buildings. By Wm. B. TUTHILL, A.M., Architect. 5th edition. 44 pages descriptive letter-press, illustrated by 33 full-page plates (one in colors) and 33 wood cuts, showing methods of construction and representation. One large 8vo vol., oblong, cloth. Price.....\$2.50

**Hulme's Treatise on Mathematical Drawing Instruments,** and How to Use Them. One imperial 16mo volume, bound in cloth, containing 152 pages and over 70 illustrations, including 11 different Styles of Lettering. Price.....\$1.50

**Camp's Draughtsman's Manual;** or How Can I Learn Architecture? By F. T. CAMP. Containing Hints to Inquirers and Directions in Draughtsmanship. New, Revised and Enlarged Edition. One small volume, cloth. Price....50 cts.

**A Practical Book on Perspective.** Architectural Perspective for Beginners. By F. A. WRIGHT, Architect. Containing 11 large plates, and full descriptive letter-press. One large quarto (page the size of ARCHITECTURE AND BUILDING), handsomely bound in cloth. Price.....\$3.00

**A Manual of Industrial Drawing,** for Carpenters and other Wood-workers. By W. F. DECKER, Instructor in Drawing, University of Minnesota. 176 pages, 29 plates and numerous other illustrations. One 8vo volume, cloth. Price...\$2.00

**Perspective.** (Just out.) By A. L. CONE. A Series of Practical Lessons beginning with Elementary Principles and Carrying the Student through a thorough course in Perspective. 33 illustrations. One 12mo volume, cloth. Price....\$1.00

**Gould's Steel Square Problems.** Illustrated by 60 engravings. One 12mo volume, cloth. Price.....\$1.00

**Monckton's Practical Geometry.** 42 full-page plates. One 12mo volume, cloth. Price, \$1.00

**Gould's Carpenters' and Builders' Assistant and Woodworkers' Guide.** By L. D. GOULD, Architect and Practical Builder. (Fourth Revised Edition.) Containing 36 plates, fully described; also Tables of the Strength of Materials, Length of Braces where the Run is given, and Length of Run where the Brace is given, Technical Terms used by Carpenters, etc. This work is intended to combine all the knowledge the workman requires to construct any design in Carpentry by an easy system of lines. 8vo volume, bound in cloth. Price.....\$2.50

**Elementary Graphic Statics and the Construction of Trussed Roofs.** (Second Edition Revised.) By PROF. N. C. RICKER. One 8vo volume, cloth. 158 pages, 115 illustrations. Price.....\$2.00

**Houses from \$500 to \$2,500.** Giving Perspectives, Elevations and Plans, with Specifications, Bills of Materials and Estimates of Cost. One paper portfolio, 12 plates. Price, post-paid....\$1.00

**The Suburban Cottage.** Its Design and Construction. By W. B. TUTHILL, Architect. One 8vo volume, cloth. 117 illustrations. CONTENTS: Chap. I.—The Plan; its Designs and Requirements. Chap. II.—Elevations. Chap. III.—Masonry and Brick-work. Chap. IV.—Framing. Chap. V.—The Roof. Chap. VI.—General Details. Chap. VII.—Plastering. Chap. VIII.—Plumbing.....\$1.50

**Hussey's Home Building.** This work contains 42 plates of Designs and Plans of Dwellings of Low and Medium Cost, with Short Descriptive Specifications, including 2 Designs for small Barns, 1 Design for Carriage-house, 1 Design for small Bank Building, 1 Design for small Chapel and 1 Design for a Church; nearly 400 pages in all, including letter-press. Price.....\$1.50

**Modern Architectural Designs and Details.** Vol. I.—Containing 80 Finely Lithographed Plates, showing new and original Designs of Dwellings of Moderate Cost in the Queen Anne, Eastlake, Elizabethan and other modernized styles, giving Perspective Views, Floor and Framing Plans, Elevations, Sections, and a great variety of miscellaneous Exterior and Interior Details of Dwellings, Stores, Offices, etc. All Elevations, Plans and Details to Scale. One large (11x14) quarto volume, handsomely bound in cloth. Price.....reduced from \$10 to \$7.50

**Modern Architectural Designs and Details.** Vol. II.—Giving Details of Exterior and Interior Wood-work, drawn to scale. Gelatine Prints of Late Work by Prominent Architects, and such other Designs and Details as will prove useful in the practical work of an Architect, Builder and Carpenter. 42 plates, handsomely bound in cloth. Price.....\$4.00

**Cottages;** or, Hints on Economical Building. Containing 24 plates of Medium and Low Cost Houses, contributed by different New York Architects, together with descriptive letter-press, giving Practical Hints on Economical Building and a chapter on the Water Supply, Drainage, Sewerage, Heat and Ventilation and other Sanitary Questions Relating to Country Houses. By Wm. PAUL GERHARD. Compiled and Edited by A. W. BRUNNER, Architect. One 8vo volume, cloth. Price.....\$1.00

**Interior Decoration.** Containing, besides introductory remarks, Chapters on The Hall, The Staircase, The Library, The Parlor, The Dining-room, The Study, The Bedrooms. Fully illustrated with 65 Drawings. Price.....\$3.00

**Interior Wood work of Houses of Moderate Cost.** Price.....\$1.00

**Brown's Building Table and Estimate Book.** By a Practical Mechanic. For Carpenters, Builders and Lumbermen. One 8vo volume, cloth. 152 pages. Price.....\$1.50

**Cameron's Plasterers' Manual.** By K. CAMERON. Containing accurate descriptions and illustrations of Tools and Materials used in Plastering; description of the appearance and action of every variety of Lime and Cement; instructions for making all kinds of Mortar; instructions for doing all kinds of Plain and Ornamental Plastering; Cistern Building; form of Contract; useful Tables; many important Receipts, etc. 12mo, cloth. Price.....75 cts.

**Powell's Foundations and Foundation Walls,** Pile Driving, Building Stones and Brick. By GEO. T. POWELL, Architect and Civil Engineer, N. Y. Illustrations of Foundations, Pier and Wall Constructions, Mortars, Limes, Cements, Concretes, Stuccos, etc. 60 illustrations. By FREDERICK BAUMANN, Architect. One volume, 8vo, cloth. (Second Revised Edition.) Just Published. Price.....\$2.00

**Modern House-Painting.** (Second Edition.) By ROSSITER & WRIGHT. On bringing out a Second Edition it was decided to revise the plates, and in some cases substitute new ones, which required a very general revision of the text, and as now presented it is largely a new book. One oblong quarto volume. Price.....reduced from \$5.00 to \$3.00

**Improved Plumbing Appliances.** By J. PICKERING PUTNAM, Architect. With 91 illustrations. One octavo volume, cloth. Price.....reduced from \$1.50 to \$1.00

**Gerhard's Drainage and Sewerage of Dwellings.** 302 pages and 282 illustrations. One 12mo volume. Price.....\$1.50

**Stables.** Containing 12 plates of Stables suitable for Village Lots, ranging in cost from \$300 upward. Price.....\$1.00

**Outbuildings.** Containing 12 plates of Designs of Small Stables, Summer Houses, Pavilions, Privies, Fences, Gates, etc. Price.....\$1.00

**City Houses.** The designs here presented were many of them the result of a competition, and show a large number of plans and many excellent fronts. One paper portfolio, 12 plates. Price.....\$1.00

**Houses, Low Cost.** Including Prize Designs, with Elevations, Plans, Details, Specifications, Bills of Materials and Estimates of Cost. 12 large (11x14) Plates of Practical Designs, costing from \$500 to \$3,000. Price.....\$1.00

**Notes on the Art of House Planning.** By C. FRANCIS OSBORNE, Architect, Assistant Professor of Architecture, Cornell University. One volume, 12mo, cloth. Price.....\$1.00

**Seaside and Southern Houses.** 12 plates of Designs for Cheap Houses, with Ample Verandas, Suited to a Summer Climate. Average Cost, \$1,500. Price, post-paid.....\$1.00

**Gould's American Stair-Builder.** By L. D. GOULD. Illustrated by 40 original plates, showing a variety of Newels, Balusters and Rails fully described and drawn to Scale. One 3vo volume. (Third Edition, revised and Improved.) Price.....\$2.50

**Architects' and Stair-Builders' Tables of Treads and Risers.** By JOHN A. HAMILTON, Architect. This book will be found a convenient and practical reference book. One oblong 16mo, imp. cloth. Price.....50 cts.

**Store Fronts and Interior Details.** 12 Plates and Descriptive Letter-press.

**Store Fittings.** Counter and Showcase, with Plate Details; Detached Case, with Details; Wall-shelving with Details; Telephone Case, with Details; Counter for Druggist, with Details; Wall Cases, with Details; Two Counters, with Details; Two Detached Cases, with Details; Prescription Counter, with Details; Perfumery Case, with Details; Wall-shelving, with Details, Cashier's Desk, with Details. One paper portfolio, 12 plates. Price.....\$1.00

FOR SALE BY

A. J. BICKNELL, PUBLISHER AND BOOKSELLER,

115 Broadway, New York.



# KING'S WINDSOR CEMENT

## FOR PLASTERING WALLS AND CEILINGS.

Has 300 per cent more TENSILE STRENGTH, is 200 per cent HARDER, requires ONE-THIRD LESS LABOR than Lime and Hair Plaster, and is much cheaper in the end.



Hier Flats, Syracuse, N. Y.



Station of the N. Y. C. and Northern R. R., Yonkers, N. Y.



U. S. Court House and Post Office now in course of completion at Williamsport, Pa.

All the Buildings shown on this sheet are Plastered with King's Windsor Cement.

Readers of "THE A. & B. MONTHLY" who have not seen or used this material, which is suited to buildings costing \$1,000 and upwards, will be supplied with *sample free, prepaid by mail, to any address.*

FOR FURTHER PARTICULARS, APPLY TO OR ADDRESS

**J. B. KING & CO.,** Patentees and Sole Manufacturers, **24 State St., New York City,**

Sole Manufacturers of King's "EAGLE" (Patented) and Celebrated "DIAMOND" Brand Calcined Plaster,

OR WHEN MORE CONVENIENT APPLY TO OR ADDRESS OUR FOLLOWING AGENCIES:

- |   |                                       |   |  |
|---|---------------------------------------|---|--|
| HOLMES & HAYES, Elmira, N. Y.             | W. J. DUNN & CO., Alleghany, Pa.      | STITT, PRICE & CO., Columbus, O.        | LUTHER KELLER, Scranton, Pa.               |
| L. MANDERY, Rochester and Buffalo, N. Y.  | R. M. RICHARDS, Pittsburgh, Pa.       | KELLY ISLAND L. & T. CO., Cleveland, O. | W. W. WESTON, Honesdale, Pa.               |
| W. H. WALTZ, Williamsport, Pa.            | MORPHY BROS., Amsterdam, N. Y.        | W. W. SMITH, Sing Sing, N. Y.           | S. M. HAMILTON & CO., Baltimore, Md.       |
| LESLIE & TRINKLE, Philadelphia, Pa.       | BARNES & LADOW, Mechanicsville, N. Y. | E. A. CHATFIELD CO., New Haven, Conn.   | J. W. GAFFNEY, Waterbury, Conn.            |
| JAS. H. MCGILL, Washington, D. C.         | HASCAL DODGE, Pittsfield, Mass.       | T. B. CAMPBELL, Ithaca, N. Y.           | C. F. PAISLER, New Bedford, Mass.          |
| DICKINSON BROS. & KING, Chicago, Ill.     | MUNSON BROS., Utica, N. Y.            | A. SCHAUPP, South Bethlehem, N. Y.      | I. C. WRIGHT & CO., Fitchburg, Mass.       |
| GLENCOE LIME & CEMENT CO., St. Louis, Mo. | INMAN BROS., Akron, O.                | COOK & GENUNG, Newark, N. J.            | W. M. WHITMORE & CO., Dayton, Ohio.        |
| L. H. McCAMMON & BRO., Cincinnati, O.     | ERIE LIME & CEMENT CO., Erie, Pa.     | DAVIS & BAINBRIDGE, Trenton, N. J.      | CHAS. FRAZER & SON, East Providence, R. I. |

In writing Advertisers, please mention "The A. & B. Monthly" and oblige them and the Publisher.

# H.W. JOHNS' ASBESTOS LIQUID PAINTS

SEND FOR SAMPLE CARD AND DESCRIPTIVE PRICE-LIST.

**H. W. JOHNS MANUFACTURING CO.,**

Sole Manufacturers of H. W. Johns' Asbestos Roofing, Sheathing, Building Felt, Asbestos Steam Packings, Boiler Coverings, Roof Paints, Fire-Proof Paints, etc.  
**VULCABESTON.** Moulded Piston-Rod, Packing Rings, Gaskets, Sheet Packing, etc.  
**87 MAIDEN LANE, NEW YORK.** Chicago, Philadelphia, London.  
 ESTABLISHED 1858.



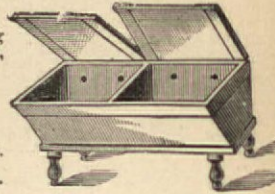
**FRED. BRANDT,**  
 No. 169 EAST 85th STREET, - - NEW YORK.  
 MANUFACTURER OF

**BRANDT'S Sheet Iron Sliding Dumb-Waiter Door**  
 PRICE, PUT UP, \$5.50 EACH.

These Doors are desirable because, moving vertically, they do not occupy valuable space, and can be used in narrow halls.

ALSO, BRANDT'S PATENT STATIONARY ZINC WASH TUBS.

Warranted for 10 Years. Price, \$8.50 per Set.  
 Send for Illustrated Catalogue and Price List.



## HALL DUPLEX STEAM PUMPS.

For Residences, Flats, Hotels, Fire Service and all Factory Purposes. Prices as low as any first-class pump, \$35 and upwards.  
 Send for 1890 Illustrated Circular.  
**HALL STEAM PUMP CO.,**  
 91 Liberty St., New York.

## HALL & GARRISON, Interior Fittings,

For Dwellings, Offices, Stores, &c., in all kinds of wood, finished and fitted up.  
**HARDWOOD MANTELS AND CABINETS.**  
 N. Y. Office, 280 BROADWAY, cor. Chambers St. Factory in Philadelphia. HENRY C. ADAMS, Mgr.

# Wheeler's Patent Wood Filler

For beauty of finish and durability no wood should be naturally finished without first filling the pores with this article. Specified by all prominent Architects. In use ten years. The wood-work of the principal public and private buildings throughout the world are and have been treated with it. Beware of Infringements. 1890 Illustrated Catalogue on Hard Wood finish sent free to any address

**The Bridgeport Wood Finishing Co.,**  
 Principal Office: New Milford, Conn.  
 New York Office, 240 Pearl St.  
 Chicago Office and Warehouse,  
 211 East Randolph Street, Chicago, Ill.  
 Mention "The A. & B. Monthly."

80-Paged Illustrated Catalogue of over 250 Designs of Superior Weather Vanes, Tower Ornaments, Church Crosses, Finials, Etc., Etc.  
 Mailed to any address for two-cent stamp—half the postage.  
**T. W. JONES, Manufacturer,**  
 170 & 172 Front St., New York.

**A \$5 Book For \$1.00. How To Build A House.**

If you are thinking of building a house you ought to buy the new book, *Palliser's American Architecture*, or every man a complete builder, prepared by Palliser, Palliser & Co., the well known architects.  
 There is not a Builder or any one intending to Build or otherwise interested that can afford to be without it. It is a practical work and everybody buys it. The best, cheapest and most popular work ever issued on Building. Nearly four hundred drawings. A \$5 book in size and style, but we have determined to make it meet the popular demand, to suit the times, so that it can be easily reached by all.  
 This book contains 104 pages 11 x 14 inches in size, and consists of large 8 x 12 plate pages giving plans, elevations, perspective views, descriptions, owners' names, actual cost of construction, no guess work, and instructions How to Build 30 Cottages, Villas, Double Houses, Brick Block Houses, suitable for city suburbs, town and country, houses for the farm and workmen's homes for all sections of the country, and costing from \$300 to \$6,500; also Barns, Stables, School House, Town Hall, Churches, and other public buildings, together with specifications, form of contract, and a large amount of information on the erection of buildings, selection of site, employment of Architects. It is worth \$5.00 to any one, but I will send it in paper cover by mail postpaid on receipt of \$1.00; bound in cloth, \$2.00. Address all orders to J. B. COCHRAN, Publisher, P. O. Box 2764, 67 West St., New York.

A PRACTICAL BOOK ON BUILDING CONSTRUCTION.

# The City Residence: Its Design and Construction.

By W. B. TUTHILL, Architect.

Author of the Suburban Cottage: its Design and Construction, and Practical Lessons in Architectural Drawing.

One 8vo Vol., Fully Illustrated, Cloth, Price, \$2.50.

CONTENTS.—The Dwelling House, designing, with plans. The Tenement House, with plans. The Apartment House, with plans. Mason Work. Mortars and Concretes. Iron Work. Brick Work in Elevation. Stone Work in Elevation. Carpenters' Work. Stairs. Plastering. Sheet Metal Work. Painting.

Any book published on Architecture, Carpentry or Building sent, post-paid, on receipt of price, by

**A. J. BICKNELL, Publisher and Bookseller,**  
 115 Broadway, New York.

## PENNSYLVANIA GLOBE GAS LIGHT CO.

SOLE MANUFACTURERS OF THE

### IMPROVED ROYAL AND ELKINS GAS MACHINE

**THE BEST IN THE MARKET**

22 TO 28 SO 15TH ST. PHILA'D'A.  
 115 BROADWAY NEW YORK  
 195 MICHIGAN ST. CHICAGO.

FOR ALL KINDS OF GAS MACHINES

**CONTRACTORS FOR LIGHTING CITIES AND TOWNS WITH THEIR RENOWNED SYSTEM OF SELF-GENERATING GAS LAMPS. OVER 50,000 IN USE**

## ELECTRO-LIGHT ENGRAVING CO., DESIGNING & ENGRAVING FOR ALL Mercantile and Artistic Purposes.

**Color work a Specialty. Electrotyping in all Branches.**  
 All reproduced Photographic and Line Work shown in this Journal was done by this Company.  
 Terms Reasonable and Work First-Class. Send Copies for Estimates.  
 Office, 157 and 159 William Street, - - New York.

**Decorative Glass and Sand Blast Work.**

Novel Effects in Beveled and Chipped Plate Glass. Also in Colored Chipped. New Designs in Stock Sheets of Colored Glass. The Original Matthews' Silver Embossed Obscured Glass, Plain or in Suitable Designs. Send for Price List of Matthews' New Sand Blast Enameled Glass—Cheapest and Handsomest Glass Made.

**THE MATTHEWS' DECORATIVE GLASS CO.,**  
 328 and 330 East 26th Street, New York.

## NOTE.

It costs as much to spread a gallon of whitewash as a gallon of

## Pure - Imperial - Paint.

The latter will wear and preserve the wood ten times as long, to say nothing of the artistic effect.

Send for Sample Card.  
 MANUFACTURED BY  
**ROBERT SHOEMAKER & CO.,**  
 (ESTABLISHED 1837.)  
 N. E. Cor. 4th and Race Sts.,  
 PHILADELPHIA, PA.

## Building Trades JOURNAL, St. Louis, Mo.

ESTABLISHED 1883.  
 Published the first of each month at 721 Pine St., St. Louis, Mo.  
**W. C. PIERCE, Editor.**  
**PARKER H. PIERCE, Business Manager.**  
 Subscription Price, \$2.00 Per Year.

To advertisers who wish to introduce their goods throughout the West and the rapidly growing Southwest—the market for building materials and appliances—the Journal offers superior inducements.  
 Advertising rates made known on application.

### M.A. SMITH

AMERICAN GLASS BENDING & BEVELING WORKS

BENT GLASS FOR COACHES, HEARSES, SHOW CASES, OFFICES, BANKS.

BENT GLASS FOR STEAMBOAT RAILWAY CLOCKS, LAMP BOW WINDERS, ETC.

**NEWARK, N. J.**

Estimates and Price List on Application.

**GENUINE ALTENEDEK DRAWING INSTRUMENTS. THE BEST MADE.**  
**ALTENEDEK & SONS MANUFACTURERS PHILADELPHIA. BEWARE OF INFERIOR IMITATIONS. CATALOGUE ON APPLICATION**

In writing Advertisers, please mention "The A. & B. Monthly" and oblige them and the Publisher

# CORTRIGHT



Metal Roofing, Tiles and Slates



Storm-Proof, Fire-Proof, Durable, Handsome.

Illustrated Catalogue Free.

**Cortright Metal Roofing Co.,**  
PHILADELPHIA, PA.

Western Office, 720 Delaware St., Kansas City, Mo.  
Eastern Office, 83 Cedar St., N. Y. City.

# "RUSTLESS" IRON PIPE

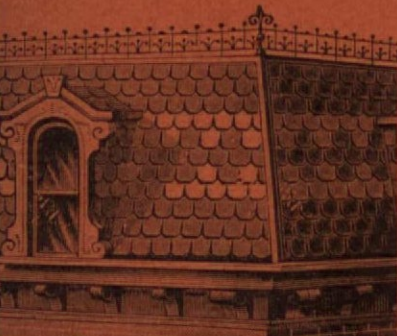
WROUGHT AND CAST IRON.

Manufactured by  
**The Wells Rustless Iron Co.,** 52 John Street,  
NEW YORK.  
Send for Catalogue.

**C. F. HOLLINGSHEAD,**  
Wrought-Iron Railings  
ROOF CRESTING,  
Doors, Shutters.  
COOPER'S POINT IRON WORKS  
Camden, N. J.

**DRAUGHTSMEN'S SENSITIVE PAPER**  
FOR COPYING DRAWINGS &C. IN  
WHITE LINES ON BLUE GROUND  
BY LIGHT AN EXCEEDINGLY CHEAP & SIMPLE METHOD  
**AMATEUR PHOTOGRAPHIC OUTFITS**  
SEND FOR THOS H Mc COLLIN 635 ARCH ST  
PRICE LIST PHILADELPHIA PA.

# "EASTLAKE"



# METALLIC SHINGLES.

(MONTROSS PATENT.)

No Leakage. Over 4,000,000 feet in actual use and not one complaint.  
Ornamental, Durable, Cheap and Storm proof. The simplest and easiest of all to lay, the best roofing in the market for Churches, Schools, Residences and Factories and all buildings of one-sixth pitch or over.  
Send for circular to nearest factory.

GRYGLA & SELDEN, Minneapolis, Minn.  
E. VAN NOORDEN & CO., Boston, Mass.  
W. J. BURTON & CO., Detroit, Mich.  
MONTROSS METAL SHINGLE CO., Camden, N. J.



Samples of this Lathing sent to the readers of the A. & B. Monthly free.

SEE Page 14  
For Blank Order.

**Labor Saving Forstner Auger Bit**  
THE B. G. T. CO. BORING SMOOTH, ROUND, OVAL AND SQUARE HOLES, MORTISING, Etc. Superior to the old center guided bits. Invaluable to all Wood-Workers. Send \$-.25 for set (3-8 to 11-8) in fine cloth case, or 5¢ for 4-8 sample, mailed free. Illustrated Price-list on application. Highest awards, American Institute, N. Y., 1885-6-7 for sale everywhere.  
**THE B'PORT CUN IMP. CO., 17 Maiden Lane, New York City.**

**"PEDAL VALVE"** For Direct Radiators. Radical Improvements for 1890. Mechanism simplified one-half. Prices reduced. Valve seats with the pressure and the greater the pressure the tighter it will close. Seat is perpendicular and chips and dirt fall away from it. A touch of the foot will turn the heat on or off. Patented in the U. S. and Canada. Circulars on application.  
**UTICA STEAM GAUGE CO., Utica, N. Y.**

HAVE your Roofs, Nails, Pipes and all Hardware coated with **PURE LEAD** to prevent rust, by  
**The Ajax Lead Coating Co.,** Drexel Building, Philadelphia.  
CIRCULARS AND SAMPLES SENT ON APPLICATION.

**WOOD MANTELS.** THE BRADLEY & CURRIER CO., LIMITED. HUDSON AND SPRING STS., NEW YORK. DOORS, WINDOWS, BLINDS, MOULDINGS, Etc.

## Club Offer.

Our offer for a Club of five or ten subscribers for this Journal will be forwarded on application.

**GLASS** Ornamental, Ground, Cut, Beveled and Embossed. For Dwellings, Railway Cars, Steamboats, Offices, Banks, Churches, Etc.  
**POTTS BROTHERS, METRE 48 AND 50 DUANE ST., NEW YORK.**  
Estimates, Photographs and Designs sent on Application.

**ROOFING.** Asbestos and Building Paper, Sheathing, Deadening and Roofing Felts. Coal Tar Products and all kinds of Roofing Materials. Samples and prices to readers of "A. & B. Monthly" free.  
**JOHN C. TAIT, 100 Maiden Lane, N. Y.**

**ELECTROTYPES** For the advertising department of this Journal are made by us. We refer to the publisher for the quality and promptness in the execution of our work. Send for estimates for large or small work.  
**SEEBECK BROS., 41 and 43 Beekman St., New York.**

**OMEGA VENTILATING GRATE.** Saves Fuel. Gives Uniform Heat and Perfect Ventilation. Cost Reasonable. Catalogue free. on Application. Address **THE OMEGA GRATE CO., CHICAGO.**

**PORTABLE HOUSES.** For Illustrated Circular and Estimates for Portable and Permanent Buildings, address  
**THE PORTABLE HOUSE MANUFACTURING CO., 335 Broadway, New York, or Tenady, N. J.**

**Esterbrook's Pens.** Standard and superior quality. Leading Nos. 048, 14, 130, 125, 239, 313, 333. All stationers have them.  
**THE ESTERBROOK STEEL PEN CO., 26 John Street, New York.**

NATH'L CHENEY. CHAS. HEWLETT

# CHENEY & HEWLETT,

## Architectural

## Iron Works,

OFFICE,  
207 BROADWAY,  
NEW YORK.

WORKS:  
GREENPOINT, L. I.

Price \$1, Post-Paid.

Free With One Year's Subscription, Paid For in Advance.

SPECIMEN COPY

# The Architectural Era,

An Artistic and Practical Monthly,

Mailed Free to the Readers

# THE A. & B. MONTHLY,

Each Number Contains a SUPPLEMENT SHEET showing a large photographic reproduction of a new and prominent Building, also designs of Cottages, Country Houses, and other new and original designs.

Subscription, Per Year, - \$2.00.

D. MASON & CO., PUBLISHERS,  
Syracuse, N. Y.



**GRANOLITHIC**  
SIDEWALKS, FLOORS, AND FIRE-PROOF  
STEPS, LANDINGS, AND CORRIDORS.  
**STAR ASPHALT,**  
Sanitary Cellars, Floors, Arches, Etc.  
**STAR ROOFING,**  
Sparham Cement Roofs, guaranteed for ten years.  
Tin Roofs Covered.  
**MATT TAYLOR PAVING CO.,**  
15 STATE ST., NEW YORK.

**BUILDERS AND SLATE ROOFERS**  
— IN WANT OF —  
**Roofing Slate or Black-Boards**  
WILL FIND IT TO THEIR ADVANTAGE  
TO CORRESPOND WITH  
**T. M. LOISE, Elmira, N. Y.**

**The McTear Flax Felt Mfg Co.,**  
MANUFACTURERS OF  
**ROOFING and ROOFING MATERIALS,**  
Sheathing and Lining Felts.  
Send for Descriptive Catalogue to  
**292 PEARL ST., NEW YORK.**  
Samples and Price-List Mailed Free.

**MAC KNIGHT FLINTIC STONE CO.**  
— MAKE THE BEST —  
**Artificial Stone Sidewalk & Curb,**  
**FLOORS AND TILING,**  
Washtrubs and Sinks, Fire-Proof Flintic Stone Roofs, Also Best  
and Cheapest Fire-Proofing. Illustrated Circular  
on application.  
Office, 150 Broadway, New York.

**CLINTON H. MENEELY BELL COMPANY,**  
**J. B. & J. M. CORNELL,**  
139 to 143 Centre St., N. Y.  
**Wrought and Cast Iron Work**  
OF ALL KINDS  
**For Buildings, Etc.**

**NEW YORK**  
**Photo & General Lithographing.**  
Reproductions of Steel, Copper,  
Stone and Wood Engravings, Etc.,  
Etc., at low Prices.  
Estimates for any number of reproductions  
promptly given on receipt of drawings.  
For Sample of Work See the Full Plate  
Illustrations in this Journal.  
**ROBT. A. WELCKE,**  
178 William Street, N. Y.

See PAGE 14 FOR  
**PROSPECTUS.**



UPPER STORIES AND ROOF OF UNION TRUST CO.'S BUILDING, 80 BROADWAY, N. Y.

*Do you want any* **ROOFING,**  
SHEATHING PAPER OR HOUSE PAINT?  
**INDIANA PAINT & ROOFING CO., New York.**  
Samples Free. Mention "A. & B. Monthly" and send for Special Price.

**GEM SPRING HINGES.**

For Doors.		Length of Flanges.	Japanned.		Copper Bronzed.		Real Bronze and Brass.		
Feet.	Inch.		Single Acting Per pair.	Double Acting Per pair.	Single Acting Per pair.	Double Acting Per pair.	Single Acting Per pair.	Double Acting Per pair.	
6x2	x 3/4	to 1 1/4	3 1/2 in.	63 \$0.70	83 \$1.40	\$2.00	\$3.75	\$5.00	\$6.00
7x2	x 1	to 1 3/4	4 in.	64 0.90	84 1.75	2.50	4.75	3.75	7.00
7x2 1/2	x 1	to 1 3/4	5 in.	65 1.10	85 2.20	3.00	5.75	4.75	8.50
7x2 1/2	x 1 1/4	to 1 3/4	6 in.	66 1.40	86 2.80	3.75	6.75	5.75	10.25
8x2 1/2	x 1 1/4	to 1 3/4	7 in.	67 1.75	87 3.50	4.50	8.25	7.00	13.25
8x3	x 1 1/4	to 2 1/4	8 in.	68 2.50	88 5.00	5.50	10.50	9.25	17.00
9x3	x 1 3/4	to 2 3/4	10 in.	69 3.50	89 7.00	7.50	14.25	12.25	23.00
10x3	x 2	to 3	12 in.	70 4.50	90 9.00	10.00	18.00	16.50	30.00

Manufactured by **VAN WAGONER & WILLIAMS CO.,**  
Send for April, 1899, Catalogue. 82 Beckman St., New York.

**CLINTON H. MENEELY BELL COMPANY,**  
— MANUFACTURE SUPERIOR —  
**Church, Chime, Peal, School and Court House Bells,**  
TROY, N. Y.

**ZIMDARS & HUNT,**  
PATENTERS AND MANUFACTURERS OF  
**AIR BELLS**  
FOR PUBLIC BUILDINGS, DWELLINGS, ELEVATORS, ETC.  
No Wires. No Batteries.  
**127 FIFTH AVE., - NEW YORK.**

**Thorn's Patent Metallic Roofing, Tiles and Spring-Lock Shingles.**



The best, most handsome, durable  
and secure roofing plates yet  
offered to the building trade.  
INDORSED BY ALL THE LEADING  
ARCHITECTS.  
We keep a complete stock of Eight  
Designs of Tiles and Two Sizes of  
Shingles.  
Our tiles are a marvel of beauty  
and have the most secure and most  
practical side-lock ever invented.  
SEND FOR  
ILLUSTRATED CATALOGUE.  
**THORN SHINGLE &  
ORNAMENT CO.,**  
1227 Callowhill St., Philadelphia, Pa.  
Mention A. & B. Monthly.

**HOW TO SECURE  
A GOOD TIN ROOF.**  
Use the Genuine "Old Style" Brand  
The Original Brand—the Standard Tin that  
has been so often imitated.  
It has stood a practical test of over 40 years  
and then been found just as good as when  
first put on.  
N. & G. Taylor Co. offer the following  
*absolute protection* in the use of their special  
brand of Roofing Tin:  
1st. By guaranteeing every sheet to be  
perfect, square and true to standard gauge  
all Wasters rigidly excluded.  
2d. Guaranteeing the sheets to be heavy  
coated than any of its imitations.  
3d. Every sheet stamped with the name  
N. & G. Taylor Co. It being the only  
made that bears the name of the guarantor  
upon the sheets.  
4th. Protection by stamping the Regis-  
tered Trade Mark of Target and Arrow, also  
the thickness and the name "OLD STYLE"  
on each sheet.  
5th. If the tin should not be found as rep-  
resented it will be removed from the roof  
and replaced, the expense being borne by the  
guarantor, N. & G. Taylor Co.  
N. & G. Taylor Co. originated the idea of  
stamping the brand and the thickness of  
sheets of tin. They were also the first to  
offer a bona fide guarantee to Architects,  
Property Owners and Tin Roofers. They  
publicly challenge contradiction on these two  
points. They further assert that through  
their exertions a complete change has been  
wrought among the trade. Bidders place  
on an equal, more honest work done and  
better tin used.  
Our book "How to Secure a Good Tin  
Roof," sent free to any address, also sample  
of Tin, etc.  
**N. & G. TAYLOR CO.**  
Established 1810—81st year.  
Chicago. Philadelphia. Liverpool.

**The "Calumet."**  
PRICE.  
With Copper Lined Cistern, - \$20.  
With Cabinet Cistern and Seat, 35.



Ivory Tinted Embossed Back Outlet Closes  
**GEO. A. BLESSING & Co.,**  
Plumbing Goods and \* \* \*  
\* \* \* Sanitary Appliances  
Illustrated Circular of our Specialties in  
Wood Work and Nickel Goods mailed free.  
**290 PEARL ST.,** Near Beekman  
Formerly 52 Cliff Street,  
**NEW YORK.**

**SUBSCRIPTIONS** for  
this Journal in Philadelphia  
and vicinity may be secured  
through **JOHN WANAMAKER**  
who will also supply single  
numbers.

**ART STAINED GLASS**

FOR CHURCHES, DWELLINGS, ETC.  
Designs and Estimates on Application.  
**KEYSTONE STAINED GLASS WORKS**  
S. 5th, near Locust St., PHILADELPHIA.