

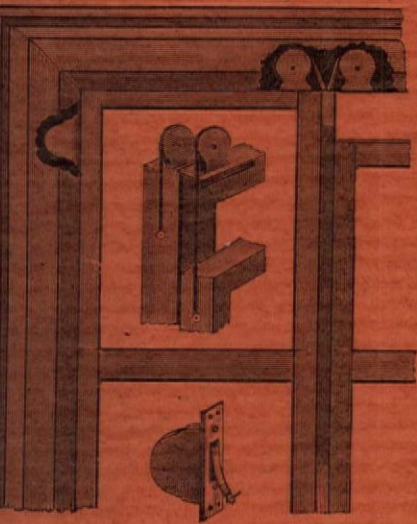
THE ARCHITECTURAL AND BUILDING MONTHLY

A JOURNAL OF PRACTICAL DESIGNS & DETAILS

Vol. 1. No. 3. June, 1890.

A. J. BICKNELL, PUBLISHER. [Entered at New York Post Office as second-class matter.] 115 BROADWAY, NEW YORK.

The Caldwell Sash Balance



PAT. OCT. 30, 1888.

is specified by architects and endorsed by builders. Carried in stock by the hardware trade generally. Applied to new or old windows at less expense than cord and weights, and perfect satisfaction guaranteed. The Side Balance for general use, and Top Balance for narrow mullions. Ask your dealer for them, or write to

CALDWELL MFG. CO.,
Center, near State St., Rochester, N. Y.

THE Iron Clad BATH BOILER

STEEL GALVANIZED.



Tested 150 Lbs.
(28 Different Sizes.)
Perfect Satisfaction Guaranteed.

For sale by all **JOBBERS and DEALERS** in PLUMBERS' SUPPLIES.

Illustrated Circular and Price-List sent to the readers of "The A. and B. Monthly," also the address of our nearest dealer.

Iron-Clad Mfg. Co.
22 Cliff Street, NEW YORK.

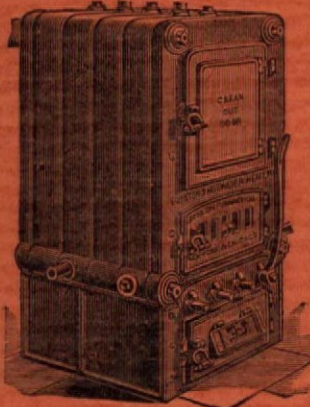
Decorative Glass and Sand Blast Work.

Novel Effects in Beveled and Chipped Plate Glass. Also in Colored Chipped. New Designs in Stock Sheets of Colored Glass. The Original Matthews' Silver Embossed Obscured Glass, Plain or in Suitable Designs. Send for Price List of Matthews' New Sand Blast Enameled Glass—Cheapest and Handsomest Glass Made.

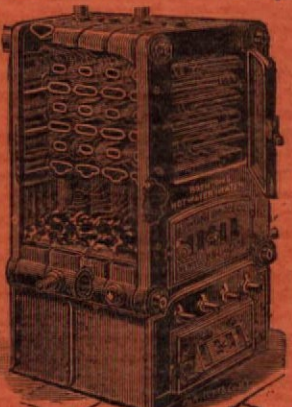
THE MATTHEWS' DECORATIVE GLASS CO.,
328 and 330 East 26th Street, New York.

ESTABLISHED 1849.

INCORPORATED 1884.



'BOYNTON' HOT WATER HEATER.



FOR WARMING HOUSES, SCHOOLS, CHURCHES & PUBLIC BUILDINGS.

These Heaters have been pronounced by scientific experts to be the most effective, economical, and of the best mechanical construction of any ever placed on the market.

Also Manufacturers of the Celebrated **BOYNTON FURNACES, RANGES, Etc.**

THE BOYNTON FURNACE CO.,
207 and 209 Water Street, NEW YORK.,
47 and 49 Dearborn Street, CHICAGO, ILL.

Illustrated circular of all of our Heaters will be sent on application to readers of "THE A. & B. MONTHLY," together with the address of the nearest agent.

PASSENGER AND FREIGHT ELEVATORS

Hydraulic, Steam, Belt and Hand Power.

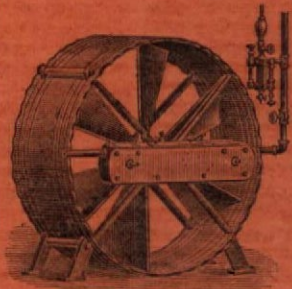
Mention "A. & B. Monthly" and send for my new 48-Page Illustrated Catalogue.

HENRY H. HILL,
33 & 35 Desbrosses St., New York.



CHAS. E. LITTLE, 59 FULTON STREET, New York.

Will send Illustrated Price List of Mechanics' Tools, Brass, Cabinet Hardware and Pressed Wood Ornaments to Readers of A. & B. MONTHLY Free. Also Supplies **W. F. & J. BARNES' WORKSHOP MACHINERY** At Factory Prices.



L. J. WING CO.,
Manufacturers of Wing's Disc Fan, High Speed Engines, Electric Motors, Fan Ventilators, etc. for Mechanical Heating, Ventilation, etc. Illustrated Catalogue and Reference List on application.
80 John Street, New York.
90 Lake Street, Chicago, Ill.

Decorate Your



Own Windows

M'CAW, STEVENSON & ORR'S PATENT.

Glacier Window Decoration and Glacier Letters.

Low-priced, Effective, Durable and Satisfactory, gives all the effects of the most expensive Stained Glass at a fraction of the cost. Illustrated Circular free by mail.

HENRY H. ROSS,
UNITED STATES AGENT,
56 Pine Street, - New York.
Sub-Agents in States or Cities Wanted.

NOTE.

It costs as much to spread a gallon of whitewash as a gallon of

Pure - Imperial - Paint.

The latter will wear and preserve the wood ten times as long, to say nothing of the artistic effect.

Send for Sample Card.

MANUFACTURED BY

ROBERT SHOEMAKER & CO.,
(ESTABLISHED 1837.)
N. E. Cor. 4th and Race Sts.,
PHILADELPHIA, PA.

DESCRIPTION OF PLATES.

Plates Nos. 25, 26, and 27.

A SUBURBAN RESIDENCE.

This house has recently been erected in Elizabeth, N. J., for Mr. C. Symmes Kiggins.

The style is "colonial" both exterior and interior, as will be seen by elevations and details.

The house is trimmed throughout the first floor with hardwood, oak being used for dining-room and hall; black walnut for the library, and mahogany for the parlor; the balance of house is finished in white pine, rubbed and polished.

Steam heat, with direct and indirect radiation, is used throughout.

The arrangement of rooms, and the general plan is the result of considerable study on the part of architect and client, and by referring to same it will be seen that every detail for comfort and economy has been carefully looked after, thus insuring perfect satisfaction to the owner.

Plate No. 28.

Four designs for mantels in different styles, with sections and details to scale.

Plate No. 29.

Eight designs for doors with sectional drawings.

Plates Nos. 30 and 31.

A COUNTRY RESIDENCE.

These plates show a house with simple exterior, arranged to have no features introduced for ornament but only such as are called for by the requirements of the plan. Thus both sides of the roof are plain slopes except at the two broad dormers, each of which have balconies. The parlor or living room has been made liberal as it should be in a country home.

The fireplace and bay would make the stair landing an inviting spot if the exterior view was an agreeable one.

A small interior bay opens back to the main hall from the "den," over the landing.

The interior details as shown would be best finished in light paint, to show the delicacy of the ornament.

The stairs would look well, white, except rail, the treads and risers which should be oak or some stained or naturally finished wood.

Plate No. 32.

PORCH WITH DETAILS.

This plate illustrates a porch for a frame dwelling of moderate cost, and is one of a series, all of which are designated by the same device as shown on this drawing.

This plate also contains details of pantry, showing cupboard in sections and construction of flour bin.

Plate No. 33.

This plate contains details for window frames, and for cellar window frames and water-table.

It is intended for one of the series of detail sheets belonging to Cottage "A," or may be used in any other connection.

The sash of cellar windows is intended to be hung at the top with back flaps. The frame is so constructed that a wire screen may be set in against the blind stop.

Plate No. 34.

This plate shows mantel for Cottage "A," with details and sections drawn to scale.

Plate No. 35.

Details of hall and staircase for Cottage "A."

This detail sheet represents a hall and staircase intended to be finished in quarter-sawed oak. The first and second floor plans herewith represented belong to one of the better class of frame dwellings.

These drawings, with the others bearing the same device, belong to the set of drawings of Cottage "A," which may be considered complete within themselves, and can be used in other connections.

Plate No. 36.

1. Design for mantel and alcove. This plate represents a design for a mantel and alcove, the mantel to be made of oak, to have open fireplace, laid up with tile.

2. Iron roof built by the Riverside Bridge & Iron Works, for Balbach Smelting Works, at Newark, N. J. Suitable for spans 20 to 35 feet. Wrought iron trusses and galvanized corrugated iron roofing fastened to iron *purlins*, to carry 30 to 90 pounds per square foot of roof surface, including wind and snow.

FORECAST OF CONTENTS OF NO. 4, TO BE READY JULY 1.

Gateway of stone with pavilion; plate of city houses with plans, interior details and exterior details of stone and terra cotta; chimneys with plans and sections; sections and details of fireplace, hearth, etc.; store front, with plans of flats above and details; plaster cornices and center pieces showing sections, all drawn to scale.

MORSE ELEVATOR WORKS.

MORSE, WILLIAMS & CO.,
Builders of all kinds of

PASSENGER AND FREIGHT ELEVATORS,



Automatic Hatch Doors
A SPECIALTY.
Send for Illustrated Circular.

Office, 1105 FRANKFORD AVE.,
Works, Frankford Ave., Willey
and Shackmaxon Sts.,
PHILADELPHIA.

N. Y. Office, 108 Liberty Street.
Boston Office, 14 High Street.

ACADEMY OF BUILDING.

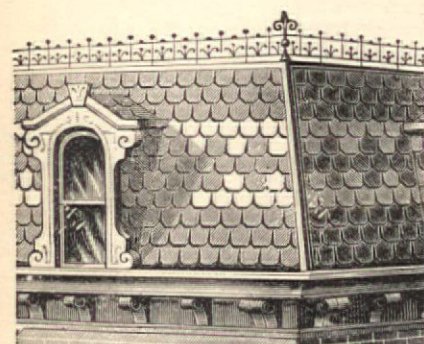
Academy of Architecture and Building. An Institute for Theoretical and Practical Education for Building Tradesmen. 3966 South 9th St. St. Louis, Mo. Terms begin September, December and March. Send for prospectus. H. MAACK, Principal.

P. PRYIBIL,



Twist Machine.
518-524 W. 41st St.
NEW YORK CITY,
Manufacturer of
SUPERIOR
Wood-Working
Machinery.
Shafting, Pulleys and Hangers,
Corner Block Machine.

"EASTLAKE"



METALLIC SHINGLES.

(MONTROSS PATENT.)
No Leakage. Over 4,000,000 feet in actual use and not one complaint.
Ornamental, Durable, Cheap and Storm-proof. The simplest and easiest of all to lay. The best roofing in the market for Churches, Schools, Residences and Factories and all buildings of one-sixth pitch or over.
Send for circular to nearest factory.
GRYGLA & SELDEN, Minneapolis, Minn.
E. VAN NOORDEN & CO., Boston, Mass.
W. J. BURTON & CO., Detroit, Mich.
MONTROSS METAL SHINGLE CO., Camden, N. J.

ZIMDARS & HUNT,

PATENTEES AND MANUFACTURERS OF

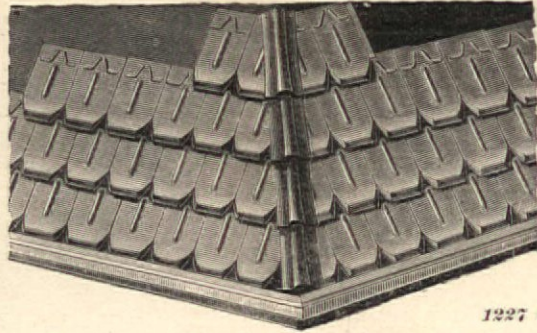
AIR BELLS

FOR PUBLIC BUILDINGS, DWELLINGS, ELEVATORS, ETC.

No Wires. No Batteries.

237 MERCER ST., - NEW YORK.

Thorn's Patent Metallic Roofing, Tiles and Spring-Lock Shingles.



The best, most handsome, durable and secure roofing plates yet offered to the building trade.

INDORSED BY ALL THE LEADING ARCHITECTS.

We keep a complete stock of Eight Designs of Tiles and Two Sizes of Shingles.

Our tiles are a marvel of beauty and have the most secure and most practical side-lock ever invented.

Send for Illustrated Catalogue and Circular.

THORN SHINGLE & ORNAMENT CO.,

1227 Callowhill St., Philadelphia, Pa.
Mention A. & B. Monthly.



CHAS. W. SPURR COMPANY,
MANUFACTURERS OF

Spurr's Patent Veneers and Wood Carvings.

Samples of Veneers and Catalogue of 200 designs of Wood Carvings and Price-list free to any address upon application.

PRINCIPAL OFFICE
465-467 East 10th St., New York



The D. Frisbie Co. ELEVATORS 118 LIBERTY STREET NEW YORK.



GRANITE LAUNDRY TUBS & SINKS.

NEVER WARP AND NEVER LEAK.

Made in One Solid Piece.
Cheaper than Wood.
More Durable than Iron.

Send for Illustrated Circular and Price-List. Special Terms to Architects and Builders specifying our goods.
We have the largest capacity for the manufacture of these wares.
No stone tubs are of such hard quality or made so perfectly.

Only Stone Tubs sent to Paris Exhibition 1889.
EMPIRE GRANITE CO., 625 & 627 E. 15th St., New York City.



Natural Wood ORNAMENTS Pressed in Relief.

NEW DESIGNS IN PLAIN AND VENEERED WOODS.
For Builders, Furniture Manufacturers, Interior Decorators, etc.
Pressed Corner Blocks for Door and Window Casings.
Patent Papyrus Centre Pieces.

EDWIN C. PARKER, 157 Eleventh Avenue, near 23d Street, NEW YORK.

Successor to ALBERT KOMP. Send one cent stamp for Catalogue.

"BURHAM" PORTLAND CEMENT

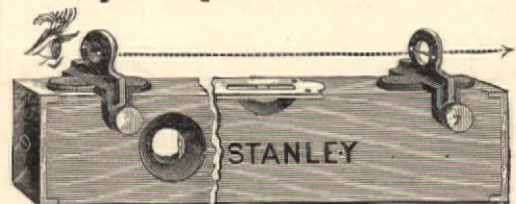
Imported by JAMES BRAND Office in
Market and Fulton Bank Building, 81-83 Fulton Street, New York.

IMPROVED Labor-Saving CARPENTERS' TOOLS.

STANLEY
RULE & LEVEL CO.
New Britain, Conn.

SOLD BY ALL
Hardware Dealers.

Stanley's Improved Level Sights.



By the use of these ingenious devices, which can be attached to any level, the owner has a convenient and accurate means for leveling from one given point, to another at a long distance away.
When not in use, the Level Sights are easily detached, and can be packed away in a small space, for future use.
No. 1. Improved Level Sights, per pair, in a box.....\$0 75

DRAWING INSTRUMENTS, DRAWING PAPER, BLUE PROCESS PAPER, AMERICAN LIQUID INK.

A fully illustrated and priced catalogue of 200 pages, of all instruments and materials used by draughtsmen, sent upon mention of this paper.

G. S. WOOLMAN,
116 Fulton Street,
NEW YORK.

DRAFTING PENCILS.

Every builder is obliged to do more or less drafting, and nothing is more annoying than to get hold of a pencil that is gritty or has a crumbling lead. Dixon's American Graphite "Artists" Pencils have the smoothest and toughest leads of any pencils made. If you do not know this mention *The A. and B. Monthly* and send 9 cents in stamps for samples worth DOUBLE the MONEY, to

JOS. DIXON CRUCIBLE CO.,
JERSEY CITY, N. J.

"Acme" Drawing Papers,
"Acme Helio" for Blue Printing,
"Bon Accord" and Doppelt
Detail Papers,
Drawing Instruments and
Drawing Materials
OF EVERY DESCRIPTION.
ENGINEERS' INSTRUMENTS.

Send for Catalogue for 1890.

QUEEN & CO., PHILADELPHIA.

80-Page Illustrated Catalogue of over 250 Designs of Superior
Weather Vanes,
Tower Ornaments,
Church Crosses,
Finials, Etc., Etc.
Mailed to any address for two-cent stamp—half the postage.
T. W. JONES, Manufacturer,
170 & 172 Front St., New York.

"RUSTLESS" IRON PIPE WROUGHT AND CAST IRON.

Manufactured by
The Wells Rustless Iron Co., 52 John Street, NEW YORK.
Send for Catalogue.

Albany Venetian Blind Co.,

MANUFACTURERS OF



Phillip's Patent
Venetian Blind.

The Best in Quality
And Lowest in Price.

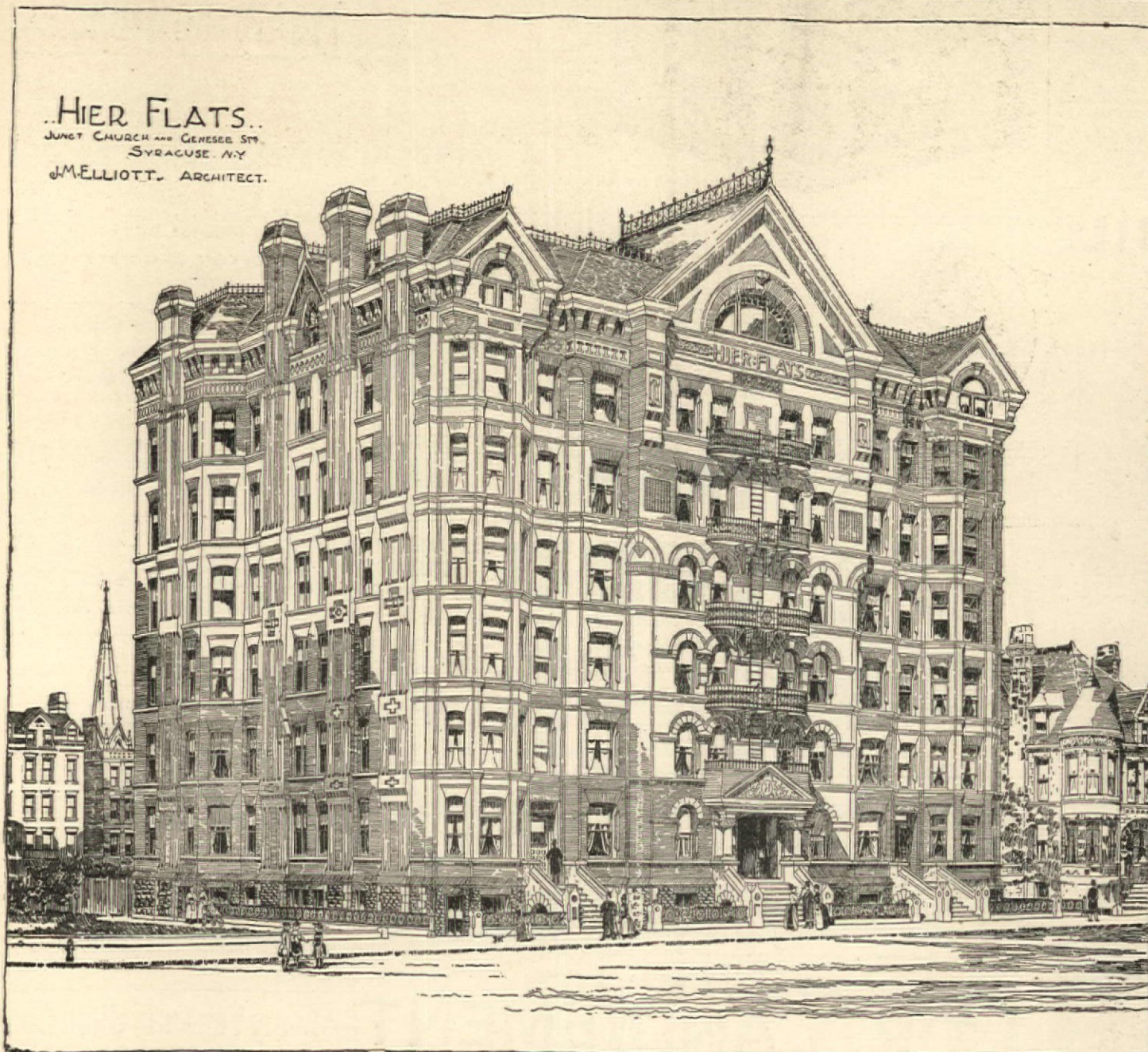
This blind can hang either between the stop beads or jambs, and does not interfere with draperies; is specially adapted to frame buildings, and can be hung in a few minutes by any person. Send for estimate to

WM. G. ORR,
150 Broadway,
NEW YORK.

KING'S WINDSOR CEMENT

FOR PLASTERING WALLS AND CEILINGS.

Has 300 per cent more TENSILE STRENGTH, is 200 per cent HARDER, requires ONE-THIRD LESS LABOR than Lime and Hair Plaster, and is much cheaper in the end.



This Building recently erected at Syracuse, New York, and hundreds of other Public and Private Buildings have been plastered with this Cement.

Readers of "THE A. & B. MONTHLY" who have not seen or used this material, which is suited to buildings costing \$1,000 and upwards, will be supplied with sample free, prepaid by mail to any address.

FOR FURTHER PARTICULARS, APPLY TO OR ADDRESS

J. B. KING & CO., Patentees and Sole Manufacturers, **24 State St., New York City,**

Sole Manufacturers of King's "EAGLE" (Patented) and Celebrated "DIAMOND" Brand Calcined Plaster,

OR WHEN MORE CONVENIENT APPLY TO OR ADDRESS OUR FOLLOWING AGENCIES:

HOLMES & HAYES, Elmira, N. Y.
L. MANDERY, Rochester and Buffalo, N. Y.
W. H. WALTZ, Williamsport, Pa.
LESLIE & TRINKLE, Philadelphia, Pa.
JAS. H. MCGILL, Washington, D. C.
DICKINSON BROS. & KING, Chicago, Ill.
GLENCOE LIME & CEMENT CO., St. Louis, Mo.
L. H. McCAMMON & BRO., Cincinnati, O.

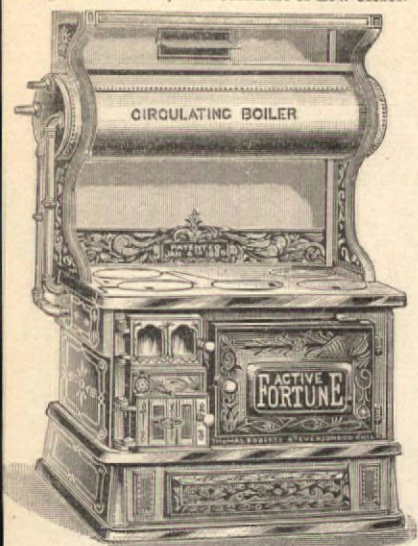
W. J. DUNN & CO., Alleghany, Pa.
R. M. RICHARDS, Pittsburgh, Pa.
MORPHY BROS., Amsterdam, N. Y.
BARNES & LADOW, Mechanicsville, N. Y.
HASCAL DODGE, Pittsfield, Mass.
MUNSON BROS., Utica, N. Y.
INMAN BROS., Akron, O.
ERIE LIME & CEMENT CO., Erie, Pa.

STITT, PRICE & CO., Columbus, O.
KELLY ISLAND L. & T. CO., Cleveland, O.
W. W. SMITH, Sing Sing, N. Y.
E. A. CHATFIELD CO., New Haven, Conn.
T. B. CAMPBELL, Ithaca, N. Y.
A. SCHAUPP, South Bethlehem, N. Y.
COOK & GENUING, Newark, N. J.
DAVIS & BAINBRIDGE, Trenton, N. J.

LUTHER KELLER, Scranton, Pa.
W. W. WESTON, Honesdale, Pa.
S. M. HAMILTON & CO., Baltimore, Md.
J. W. GAFFNEY, Waterbury, Conn.
C. F. PAISLER, New Bedford, Mass.
I. C. WRIGHT & CO., Fitchburg, Mass.
W. M. WHITMORE & CO., Dayton, Ohio.
CHAS. FRAZER & SON, East Providence, R. I.

In writing Advertisers, please mention "The A. & B. Monthly" and oblige them and the Publisher.

The Greatest Improvement of the Age.
ACTIVE FORTUNE RANGES
Right or Left Fire, with Cast Base or Low Closet.

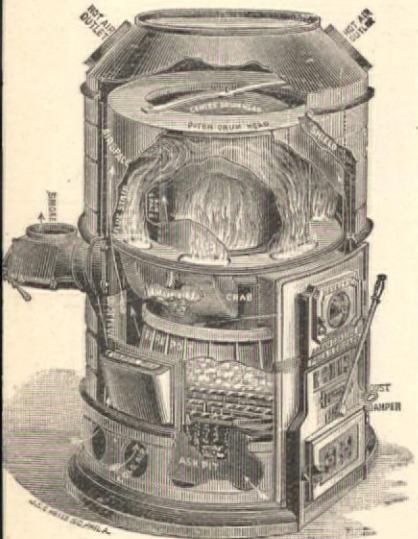


A complete cooking Range with Circulating Boiler.
Great saving in space, time and expense.
No brick work required.
Hot water as fast as can draw.
No impurities will settle in boiler.
Endorsed by builders for their convenience and money saving.
Buyers of Houses prefer the ACTIVE FORTUNE RANGE, because they are perfect in operation and don't get out of order. Hence, no repair bills.
Thomas, Roberts, Stevenson Company,
No. 15 PECK SLIP, NEW YORK.
Write for our 64-page Catalogue.

BUTCHER'S BOSTON POLISH
OR
HARD-WAX
Is the Best Finish for
FLOORS.
BUTCHER POLISH CO., 9 & 11 Haverhill Street, BOSTON, MASS.

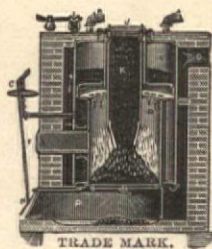
The Great CHURCH LIGHT
Frink's Patent Reflectors for Gas, Oil, or Electric, give the most powerful, softest, cheapest, and best light known for Churches, Stores, Banks, Theatres, Depots, etc. New and elegant designs. Send size of room. Get circular & estimate. A liberal discount to churches & the trade. Don't be deceived by cheap imitations.
I. P. FRINK, 551 Pearl St., N. Y.

Little Fuel-Great Heat-No Dust.



Houses are healthier and more comfortable heated with a Furnace, and cost no greater than stoves.
The Novelty Line of Hot-Air Furnaces give entire satisfaction and are the best to use.
Send for descriptive circular, showing plans for setting, complete to heat 4 rooms at a cost of \$50.
ABRAM COX STOVE CO.,
254 Water St., New York.
144 N. 2d Street, Philadelphia, Pa.
57 Lake Street, Chicago, Ill.
79 Blackstone Street, Boston, Mass.
254 WATER STREET, NEW YORK.

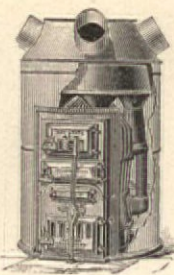
THE DUNNING PATENT WROUGHT-IRON BOILER



WITH SELF-FEEDING COAL MAGAZINE IS THE BEST FOR
Low Pressure Steam or Hot-Water Heating,
And insures a warm House night and day. Over 15,000 in use. Keeps steam up constantly. Also Steam Engines and Boilers of all kinds and Machinery generally.



MANUFACTURED AT THE
NEW YORK CENTRAL IRON WORKS,
43 Exchange St., Geneva, N. Y.
Send for 120 page Illustrated Catalogue and Price List.



BAY STATE FURNACES AND RANGES,

CELEBRATED THE WORLD OVER
FOR ECONOMY, DURABILITY AND POWER.

Send for 78-page Architects and Builders' Catalogue.

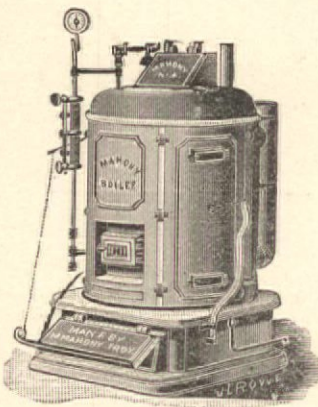
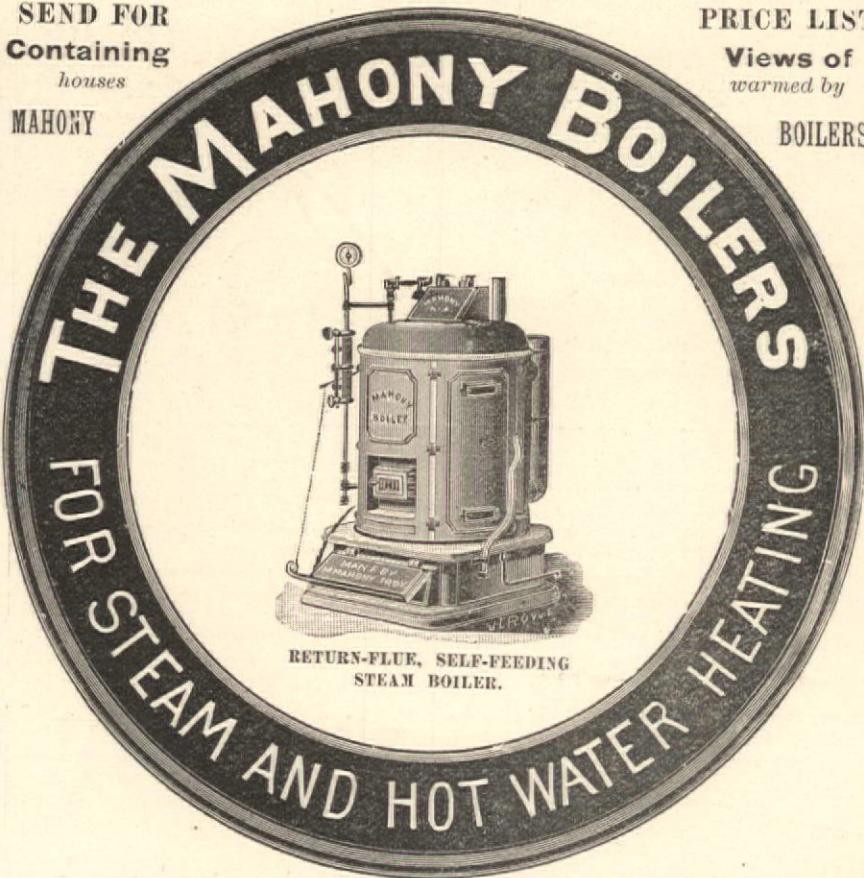
BARSTOW & STOVE CO.,

Cor. Water and Beekman Streets, NEW YORK.

Boston and Providence.

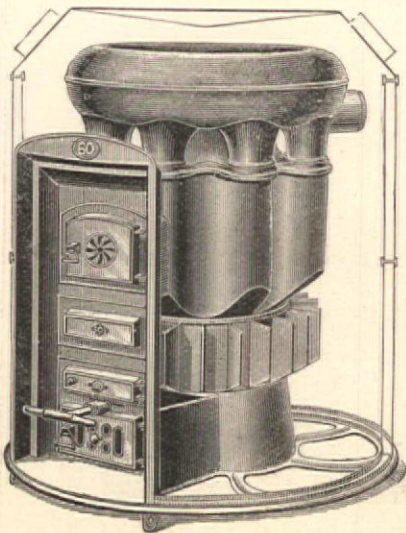
SEND FOR
Containing
houses
MAHONY

PRICE LIST
Views of
warmed by
BOILERS.



RETURN-FLUE, SELF-FEEDING
STEAM BOILER.

MADE BY **M. MAHONY,**
Troy Architectural Iron Works, Troy, N. Y.



CORY'S
EXCELSIOR
Gas-Tight Furnaces

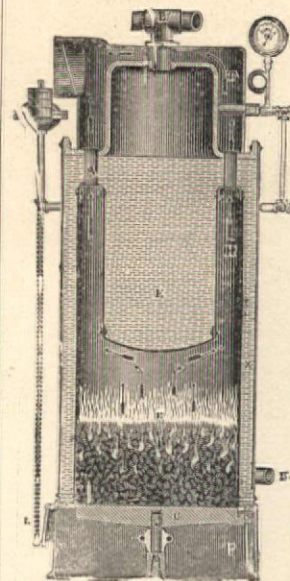
For Anthracite or Bituminous Coal.
SEVENTEEN SIZES, PORTABLE AND MASONRY.
From \$35.00 to \$125.00.

Pure air is necessary for Health. The supply is always outside the house. When heated over the surface of a GAS-TIGHT FURNACE, with large radiation, the best results are obtained. The modern radiator (steam or water) simply raises the temperature of the impure air in the room in which it is placed. SEND FOR 1890 ILLUSTRATED GAS-TIGHT FURNACE CIRCULAR.

UZAL CORY & CO.,
MANUFACTURERS,
210 Water Street, NEW YORK.

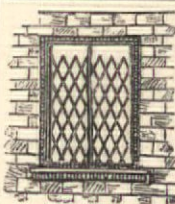
Simplest and Best.

Automatic, Economical & Durable.
No Engineer or Skilled Labor is Required.



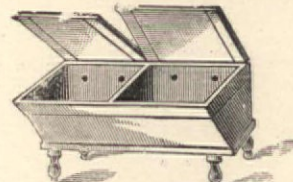
Burns either hard or soft coal.
Agents in the trade wanted everywhere
Suitable for houses costing \$1,500 and upwards.
Manufactured under Fiske's Patents.
Our 96-page Illustrated Catalogue containing the addresses of hundreds of parties using our heater sent to the readers of "The A. & B. Monthly" free.

DUPLEX STEAM HEATER CO.,
23 BETHUNE ST., NEW YORK.

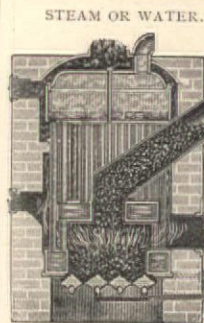


Bostwick Patent Steel
FOLDING GATES
AND
WINDOW GUARDS.
Iron work for Buildings.
32-page Illustrated Catalogue mailed free to Architects and Builders.
WM. E. PITT, Iron Works,
83 Rende Street, New York.

BRANDT'S PATENT STATIONARY Zinc Wash-Tubs.



PRICE, - \$8.50 Per Set.
More Economical and Cheaper than any other Water-Proof Tubs. Warranted for 10 years.
Mention this Journal and Send for Illustrated Descriptive Circular.
Fred. Brandt, Mfr., 169 E. 85th St., N. Y.

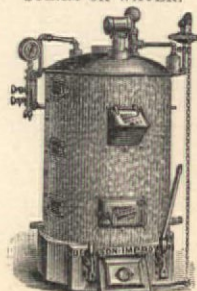


STEAM OR WATER.
BRONSON
WATER
TUBE
BOILER

For Steam or Water Heating.
A MAGAZINE, BASE-BURNING, AUTOMATIC,
BRICK SET OR PORTABLE HEATER.
Write or call for prices. Guaranteed Satisfactory.
STEAM OR WATER.

Weston Engine
Company,
SOLE MFRS.,
Painted Post,
NEW YORK.

N. Y. City Agent,
H. J. BARRON,
74 Cortlandt Street.



Business and Personal.

The mantels for the House illustrated on plates 25, 26 and 27 of this issue, were manufactured by the Bradley & Currier Co., Limited, office corner Hudson and Spring streets, New York, who will be pleased to forward their catalogue to our readers on application. For their special announcement, see page 8.

The Wells Rustless Iron Co. have moved their New York City office from 21 Cliff street, to 52 John street. Their works for the manufacture of "Rustless" Iron Pipes are located at Little Ferry, N. J., where all orders will receive prompt and careful attention.

L. S. Graves & Son, offices at 92-94 Liberty street, New York, have recently completed the erection of the following Hydraulic passenger and freight elevators, and respectfully refer to same: **Apartment Houses**:—P. Braender (2), Wm. B. Frankie, Jno. G. Prague (2), Chas. A. Fuller (2), Imperial Flats, Geo. R. Bidwell, Hollywood Apartments, S. T. Meyers & Son, M. Steinhart (2).

Store Buildings:—Messrs. Wm. G. Borgfeldt & Co., Stern Brothers, Bloomingdale Bros., and J. C. Lyons.

Hotels:—Hotel Winthrop, St. Nicholas, and Hotel Beresford.

Hospitals:—St. Joseph's Hospital (3), Montefiore Home, St. Vincent's Hospital, and Berachah Home, all of New York City.

Also Messrs. R. M. Howe's Son, Johnson Bros., B. G. Latimer & Co., Vosburgh M'g Co., Mrs. W. S. Packer, West End Apartments, Berkely Apartments, Grosvenor Apartments, Montague Apartments, A. G. Jennings and St. Peter's Hospital (3), all of Brooklyn, N. Y.

Also Messrs. Amos Van Horn & Co., Newark City Hall, Newark City Hospital, Muller & Schmid St. Mit, chael's Hospital, and Heath and Drake, all of Newark, N. J.

Also Messrs. John J. Dezouche Co., Limited, John Wanamaker, and Philadelphia Warehousing and Cold Storage Co. (4), all of Philadelphia, Pa.

PHOTOGRAPHY is certainly a most interesting and delightful study, and the results obtained by means of the improved system of film photography are so beautiful, and the apparatus employed so simple, it is no wonder thousands of our most cultured people are becoming enthusiastic amateurs. These little instruments measure but 3 1/2 x 6 1/2 inches., and weigh only thirty-two ounces. The Eastman Dry Plate & Film Co., of Rochester, N. Y., are the makers, to whose advertisement in another column, we call attention.

MESSRS. N. & G. TAYLOR CO., of Philadelphia, the originators of stamped and guaranteed roofing tin, in a recent communication desire to call our readers attention to the following facts concerning their special and guaranteed brand of roofing tin, the genuine Taylor old style, extra heavy coated.

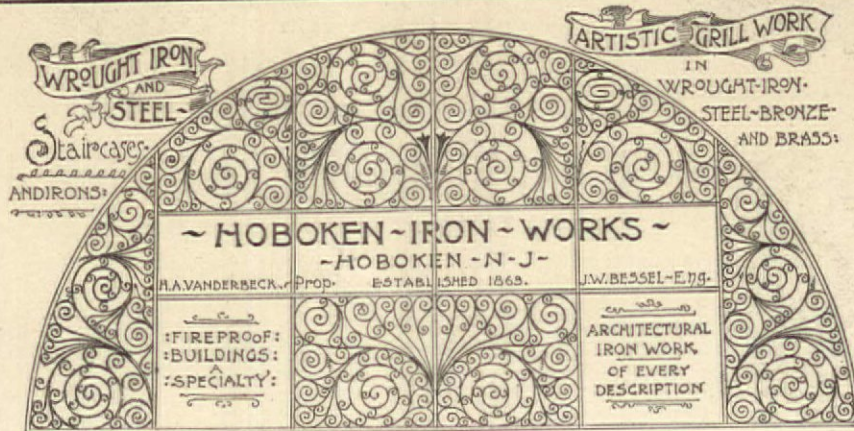
They inform us that it is the only brand that has stamped on each sheet the name of the guarantor—N. & G. Taylor Co. They originated this idea of stamping the brand and thickness on sheets of tin. Every box is guaranteed full standard weight. The genuine Taylor old style is, we understand, the only brand of roofing tin ever imitated and therefore must be good.

Architects can safely specify the Taylor old style in their contracts.

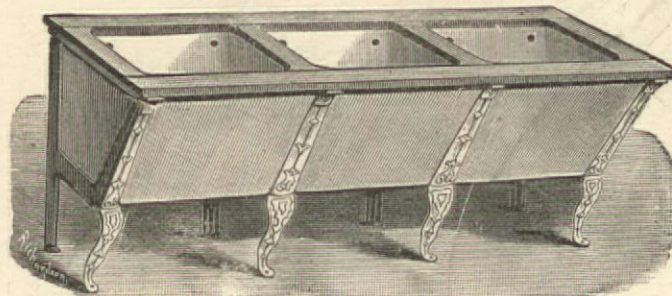
THE house of which we give front and elevations, floor plans and details on Plates 25 to 27 this issue, is supplied with the Florida heating system manufactured by Messrs. Pierce, Butler & Pierce, of Syracuse, N. Y., who are represented in New York City by Messrs. Williams & James, 60 Barclay Street.

SPECIALTIES.

H Damper Regulators, Oil Extractor and Filter, Exhaust Heads, Pressure Regulators, Shaking Grate Bars, Steam Separators. Send for Catalogue and Price-List. **R**
HINE & ROBERTSON, 45 Cortlandt Street, New York.
JAS. L. ROBERTSON.



All First-Class Houses should be Furnished with the Sanitary Tubs of
THE STEWART CERAMIC COMPANY,
Cor. PEARL ST. and PECK SLIP, NEW YORK.



Sole Manufacturers under Morahan's Patents of
THE CELEBRATED SOLID WHITE CROCKERY STATIONARY WASH TUBS.
The only Perfect Sanitary Tubs now in Existence.
VERY STRONG. No Seams to Open.

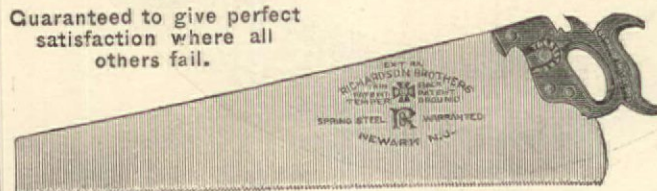
ABSOLUTE CLEANLINESS SECURED FOR ALL TIME. WELL GLAZED. WILL NOT ABSORB, LEAK OR DECAY.
The only Solid White Crockery Wash tub ever made in the world. Do not buy imitations until you see the Genuine "Morahan's Patent" stamped on the front of every tub. Washboard and Soap cup moulded in every set. Will outlast any house.
Solid White Crockery Sinks, comprising Butler's Pantry, Kitchen Slop, &c.,
Made of same material as the Tubs. Very strong, Well Glazed, no labor required to keep clean.
LIBERAL TERMS TO THE TRADE. SEND FOR 1890 ILLUSTRATED PRICE LIST.

THE RICHARDSON SAWS ARE THE BEST IN THE WORLD.

So say the Thousands of Carpenters who use them, and we want every Carpenter who has not used them to give them a trial.

ONCE USED
Guaranteed to give perfect satisfaction where all others fail.

ALWAYS USED.

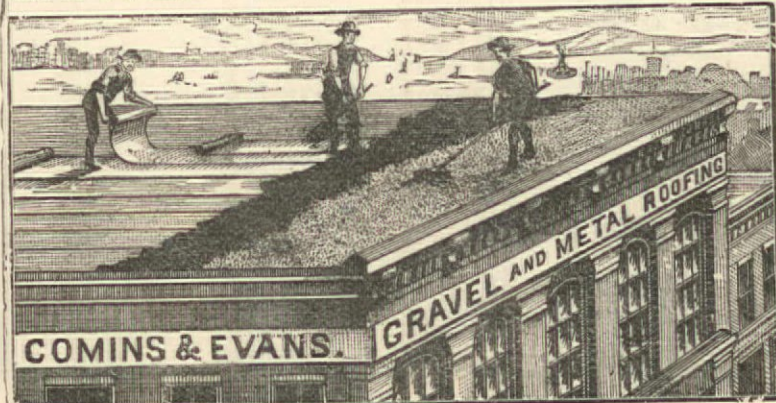


All their Saws are ground TAPER, THIN at the Back, and warranted SMOOTH CUTTERS.

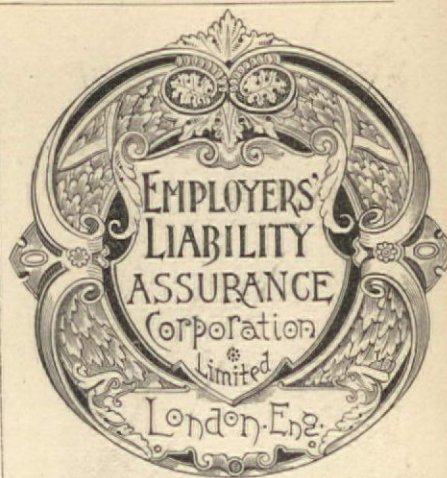
The Richardson Brothers are Thoroughly Practical Saw Makers.

The RICHARDSON SAWS will be sent, Express Paid, direct from the Factory, when they cannot be procured from the Hardware Dealer. Special saws made to order. Send for Illustrated Price List to
RICHARDSON BROS., 15 to 31 River St., Newark, N. J.

COMINS & EVANS,
GRAVEL AND METAL ROOFING.



41-45 Waverly Ave., Brooklyn. TELEPHONE CALL, BROOKLYN 366
MARKET AND FULTON BANK BUILDING, 81 & 83 FULTON ST., N. Y. City.



Deposited in the U. S., \$670,000.

Chief Office in the United States:
71 KILBY STREET, BOSTON, MASS.
ENDICOTT & MACOMBER,
Managers and Attorneys.
BOSTON: Samuel Appleton, 28 Central St.
New York: Kirby & Dwight, 51 Cedar St.
PHILADELPHIA: Tattnell Paulding, John G. Hooven, 416 and 420 Walnut St.
CHICAGO: Geo. A. Gilbert, 226 and 228 La Salle St.
ST. LOUIS: F. D. Hirschberg Bro., 120 N. Third St.
AGENTS IN ALL THE PRINCIPAL CITIES.

IF YOU EXPECT TO BUILD OR REMODEL A HOME SEND 25¢ TO CUTTING & DELANEY BUFFALO, N. Y. FOR THE NEW BOOK OUR DOORS AND WINDOWS HOW TO DECORATE OVER 200 ILLUSTRATIONS

HYATT HOUSE FILTERS.

These filters are connected to the supply pipe and filter all the water which enters the house, whether for drinking, bathing, washing clothes, or for culinary purposes.
The filtering material can be thoroughly cleaned once each day or more frequently if desired by following directions which are easily understood by the least intelligent custodian.
Hundreds are in use in Pittsburgh, Alleghany, Philadelphia, Cleveland, Washington, Albany, Newark and other cities.

HYATT PURE WATER CO.,
18 CORTLANDT ST., NEW YORK.

Contractors for the purification of city water supplies under the Hyatt System as practised at Long Branch, Lakewood, Atlanta, etc.

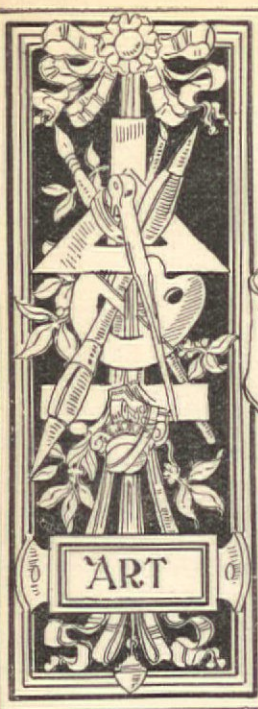
Open Burner, Perfectly White, Smokeless Flame. PRODUCED BY TIRRELL'S EQUALIZING GAS MACHINE. Circulars and full information free to any address.
O. TIRRELL,
39 DEY ST., NEW YORK

Bound to be the
"UNIVERSAL"
Building Paper.

The new Building Paper coated with the celebrated P. & B. Compound although superior is sold cheaper than any other Building Paper.

The Standard Paint Co.,

SOLE MANUFACTURERS AND PATENTEES,
59 MAIDEN LANE, - - NEW YORK.



THE ARCHITECTURAL AND BUILDING MONTHLY



A Journal of Practical Designs & Details

COPYRIGHT,
1890,

BY
A. J. BICKNELL.

THE ARCHITECTURAL & BUILDING MONTHLY.

A JOURNAL OF PRACTICAL DESIGNS AND DETAILS.
Devoted to the Use of all Associated with
Architecture and the Building Trades.

A. J. BICKNELL, Publisher,
P. O. Box 560. 115 Broadway, New York City.

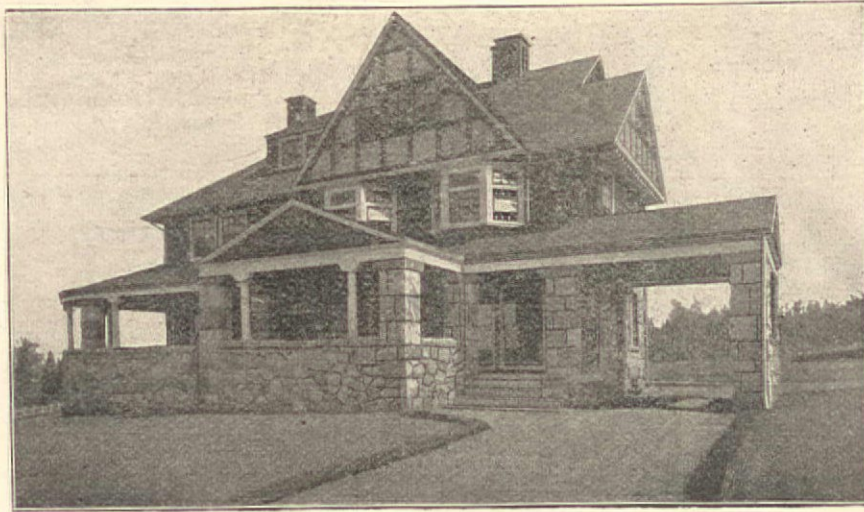
Subscription, Domestic or Foreign,
\$5.00 a Year.

We shall be pleased to receive from Architects, and Draughtsmen, practical drawings showing New and Improved Designs and Details, with brief description. Due credit will be given for all acceptable designs. Details of special interest will be paid for.

INTRODUCTORY TO VOL. I.

THE ARCHITECTURAL AND BUILDING MONTHLY

IS intended to supply such designs as are usually found in Practical Architectural and Building Journals, but its leading feature will be one in which many are largely deficient. There are at the present time about fifty publications treating on Architecture, Carpentry, Building and kindred arts and trades in the United States. Having had a full acquaintance with these periodicals, beginning with the publication of "Sloan's Architectural Review" and the various journals since established, it has been found that, while many are valuable for news and general information, only a very limited number are practical in design. More designs and details of a practical character are wanted. The object of this journal is to supply that want. The endeavor from the beginning will



VIEW OF RESIDENCE OF F. A. HINE, Tenafly, N. J.
Edward T. Haggood, Architect, New York. For Elevations and Plans see Plates nos. 18 and 19. May issue.

be to give full value for the price, and no reasonable effort or expense will be spared to make our subscribers satisfied.

See page 12 for blank order, which it is hoped those receiving this number will use, if they have not already sent in their subscriptions.

TO READERS

INTERESTED IN BUILDING.

THE publisher will be glad to hear from all interested, who may receive this number of THE ARCHITECTURAL AND BUILDING MONTHLY as a specimen copy, whose opinions and suggestions will be acceptable. This issue is a fair sample of what the MONTHLY is intended to be, although, if possible, it will be made better and better each month. It is hoped many will show their appreciation by forwarding \$5 for subscription for the first year, if they have not already done so, or \$2.75 for a trial subscription for six months, after which \$2.25 will be accepted for the balance of the year.

Each succeeding issue will contain from 8 to 12 plates of Practical Designs and Details to scale, giving in all, during the year, a very large amount of original and useful matter valuable to the building trades.

It will be seen that the aim of THE ARCHITECTURAL AND BUILDING MONTHLY is not to burden readers with a mass of letterpress, of which they have no doubt more than they can read, but to give an abundance of valuable drawings of Modern Designs and Details, with brief descriptions only. The intention is to make all plates so easily understood that any extended description will be unnecessary.

All subscriptions to commence with Vol. I, No. 1, April, 1890, until the edition of 10,000 copies is exhausted. It is hoped that the A. & B. MONTHLY will be made so valuable that all subscribers will wish to have it complete. To be sure of this it will be necessary to forward names early

HOW IT IS DONE.

HAVING issued several Practical Books on Architecture, Carpentry, and Building, the publisher proposes to furnish more designs each year in this journal for \$5 than he ever published in book form for \$10

This can only be done by using a portion of each issue for advertising articles used in the construction and finish of buildings, thus introducing a feature of interest to all subscribers and of value to advertisers on account of the large circulation. In corresponding with the Manufacturers and Dealers who advertise in this journal, please mention the A. & B. MONTHLY. It is not intended to insert the advertisements of any irresponsible parties.

SUBSCRIPTIONS.

ALL persons desiring to subscribe for this Journal should do so only through well-known and responsible parties.

The publisher cannot be responsible for money paid for subscriptions, unless the same be sent to the office of publication by Money Order, Registered Letter or Draft on New York, or paid to an Agent having receipts signed by the Publisher, and written authority for the collection of money.

A. J. Bicknell

Note to Subscribers.

All copies sent to subscribers will be delivered flat or mailed in tubes, which will insure their receipt in perfect condition.

Business and Personal.

The house of Mr. Kiggins illustrated on Plates 25, 26 and 27, this issue, was plastered with King's Windsor Cement, the new and greatly improved substitute for the old style mortar and lime York. For advertisement see page, 4 and notice that applied samples of this material will be mailed free to any address on application.

E. H. HARRISON & BRO., of Newark, claim to carry the largest and finest assortment of mantels, tiles, grates, and brass goods in the State of New Jersey. They manufacture all their wood mantels in their large and well equipped factory, 71-73 Clinton st., and guarantee their work in every way. Estimates cheerfully given on all kinds of hard woodwork, buffets, mantels, etc., and tile vestibules, bathrooms, halls, and fireplace work. Salesroom and office, 257 Market st., Newark, N. J.

On page 3 of this issue appears cut of the "Eastlake" metallic shingle, which has within the past few years attained great popularity and favor with architects, builders, roofers and owners of buildings throughout the United States and Canada. The "Eastlake" is unequalled for roofing and siding all classes of buildings. It is constructed entirely upon scientific principles, with loose interlapping joints, which allows fully for contraction and expansion without any possible strain or wear on the metal, joints or fastenings.

It is claimed for "Eastlake" roofs that they never leak nor wear out, and that they are of handsome appearance, durable, effective, fire and storm-proof and cheap—all that can be desired of a strictly first-class roofing. The manufacturers' illustrated circular fully describes the merits of the shingle, manner of laying, etc., and will be promptly forwarded on application, addressing the nearest office mentioned in adv.

ATTENTION is called to the advertisement of the Magnesio Calcite Fireproofing Co., in another column, who have recently opened an office in New York, of which John McGlensey & Son are the managers.

Contents of Architectural and Building Monthly.

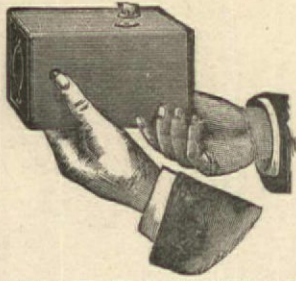
No. 1.—APRIL, 1890.

- Plate No. 1.—A Design for Front Stairs and Details.
 Plates Nos. 2, 3, and 4.—Elevations, Floor and Framing Plans for Cottage A.
 Plate No. 5.—Elevations and Plans of a Shingled Cottage in the Colonial Style.
 Plates Nos. 6 and 7.—View, Elevation, and Plans of a Modern Cottage.
 Plate No. 8.—Designs and Details of a Model Kitchen.
 Plate No. 9.—Design of Shelves, Seat, and Table Combined, etc.
 Plate No. 10.—Details for Inside Window and Door Finish.
 Plate No. 11.—Elevations and Plans of Three Low-Cost Cottages.
 Plate No. 12.—Exterior Details of a Suburban House, shown on Plates Nos. 13, 14, 15, and 16, erected at Elizabeth, N. J.

No. 2.—MAY, 1890.

- Plates Nos. 13, 14, 15 and 16.—Elevations, Plans and Interior Details of a Suburban Residence.
 Plate No. 17.—Elevations, Plans and Details of a Double Cottage.
 Plates Nos. 18 and 19.—Elevations and Plans of a Suburban House in Colonial Style.
 Plate No. 20.—Design for Park Entrance with Details.
 Plate No. 21.—Two mantels in Colonial Style, with Sections.
 Plate No. 22.—Three Designs for Staircases with Sectional Drawings.
 Plate No. 23.—Five Dormer Windows of Ornamental Design with Sections and Details.
 Plate No. 24.—Iron Highway Bridge, and Iron Fireproof Construction of a building.

NEW KODAK CAMERAS.



"You press the Button, we do the rest."

(OR YOU CAN DO IT YOURSELF.)

SEVEN NEW STYLES AND SIZES

ALL LOADED WITH

TRANSPARENT FILMS.

FOR SALE BY ALL PHOTO STOCK DEALERS.

Mention this Journal and send for Illustrated Catalogue and Price-list.

THE EASTMAN COMPANY, Rochester, N. Y.

WARRANTED SUPERIOR

TO ANY

ROSENDALE HYDRAULIC CEMENT

MANUFACTURED.

USED ON THE

Most Important Works

IN THE COUNTRY.



*Lincrusta
Walton*

TRADE MARK.

The material is capable of any desired relief and decoration, and being uninfluenced by heat, cold, or moisture, is practically indestructible. Being absolutely non-absorbent, it is the most sanitary wall covering known. The Company's goods are sold by leading Decorators and Dealers in Paper Hangings in the United States.

Factory, Stamford, Conn.

THE LINCRUSTA-WALTON MANUFACTURING COMPANY,

Sole Manufacturers in the United States of

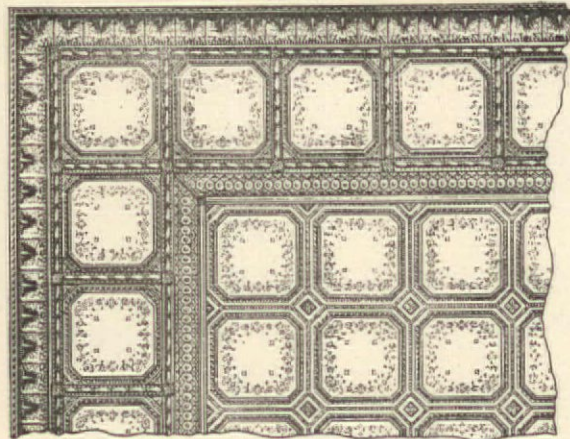
the material known as "Lincrusta-Walton,"

Desires to call the attention of Architects, Decorators and Home-owners to the merits of its material for wall covering and decoration. It is made in beautiful and artistic designs, of which a catalogue containing 192 patterns will be mailed on request.

The Company will also manufacture from special designs for Architects, Decorators and Dealers in Wall Coverings.

Company's Salesroom,
No. 7 West 28th Street, New York City.

METAL CEILINGS.



27 x 27 Embossed Plates.

—OF—

Fine Corrugated Twilled & Embossed

SOFT STEEL.

Suitable Designs

For All Classes of Buildings.

Send for Illustrated Circular.

Agents Wanted in all towns of 5,000 and upwards.

HENRY S. NORTHROP
20 Rose St., NEW YORK.

SPECIAL ANNOUNCEMENT

—OF—

The Bradley & Currier Co.,

Cor. Hudson and Spring Sts., New York.

Having decided to make the MANTEL DEPARTMENT an important branch of our business, we cordially invite the attendance of Architects, Builders, Owners, and all Persons interested.

TO OUR NEW MANTEL SHOW-ROOMS.

We there display more Designs, better Work and offer Lower Prices than those of any house in the trade. Our FINISHED MANTELS in unlimited variety are displayed with TILES, OPEN FIRES, GRATES, Etc., and the mantels in process of construction will be shown to those so desiring, at our Factory on the adjoining block, where all our Mantels and Fine Cabinet Work are manufactured. Buyers cannot afford to let this opportunity pass, and all visitors will be cordially welcomed. We also manufacture

DOORS, WINDOW BLINDS, MOLDINGS, etc.

Our 64-page Illustrated Catalogue Mailed Free on Application.

POINTS ON VARNISH.

CAN A MANUFACTURER BE DEPENDED ON TO ADVISE HIS CUSTOMERS RIGHT?

Will he seek his own advantage at their expense, or will he make their interest his?

A change has come over some manufacturing businesses.

Formerly a manufacturer sold to the trade. He made what the trade was satisfied with; and he was satisfied when he had sold it and got his money for it. There was little change in products. Improvements were slow. There was no one to make them. The Manufacturer could not make them; he had no market except for approved commodities.

Europe goes on in the same old way. The Old World has great advantage in labor, which is supposed to rule manufacturing interests; but we are getting ahead in spite of that difference.

The change is from making to suit an unintelligent market to making a market for better products.

The modern way, the modern American way at least, is to make things right for use and to seek out the users of them, skipping buyers and sellers more or less and going direct to the users.

The way to commend a thing for use is to find the user and lend or give it to him. Then if he finds it better than what was best before, he adopts it. The market is made.

But the thing has got to be an improvement on what has gone before. The way to make improvements is to study the places for them. So it has come to be manufacturers' work to study their customers' work and improve on facilities for it.

A great manufacturer has resource for study and means of informing himself beyond the reach of his customers. They are his friends as well as customers. All their wants are open to him. They are his counsel and he is theirs. He takes their knowledge, puts it with his, and draw conclusions, invents and improves and they try his inventions. He is partner with them.

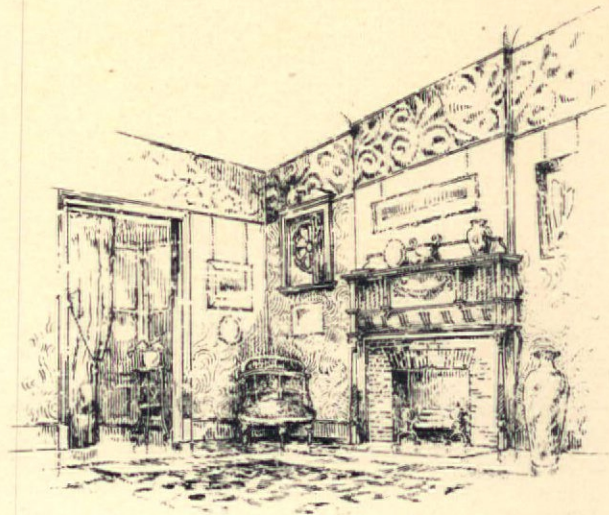
He ought to be good counsel.

MURPHY & COMPANY.

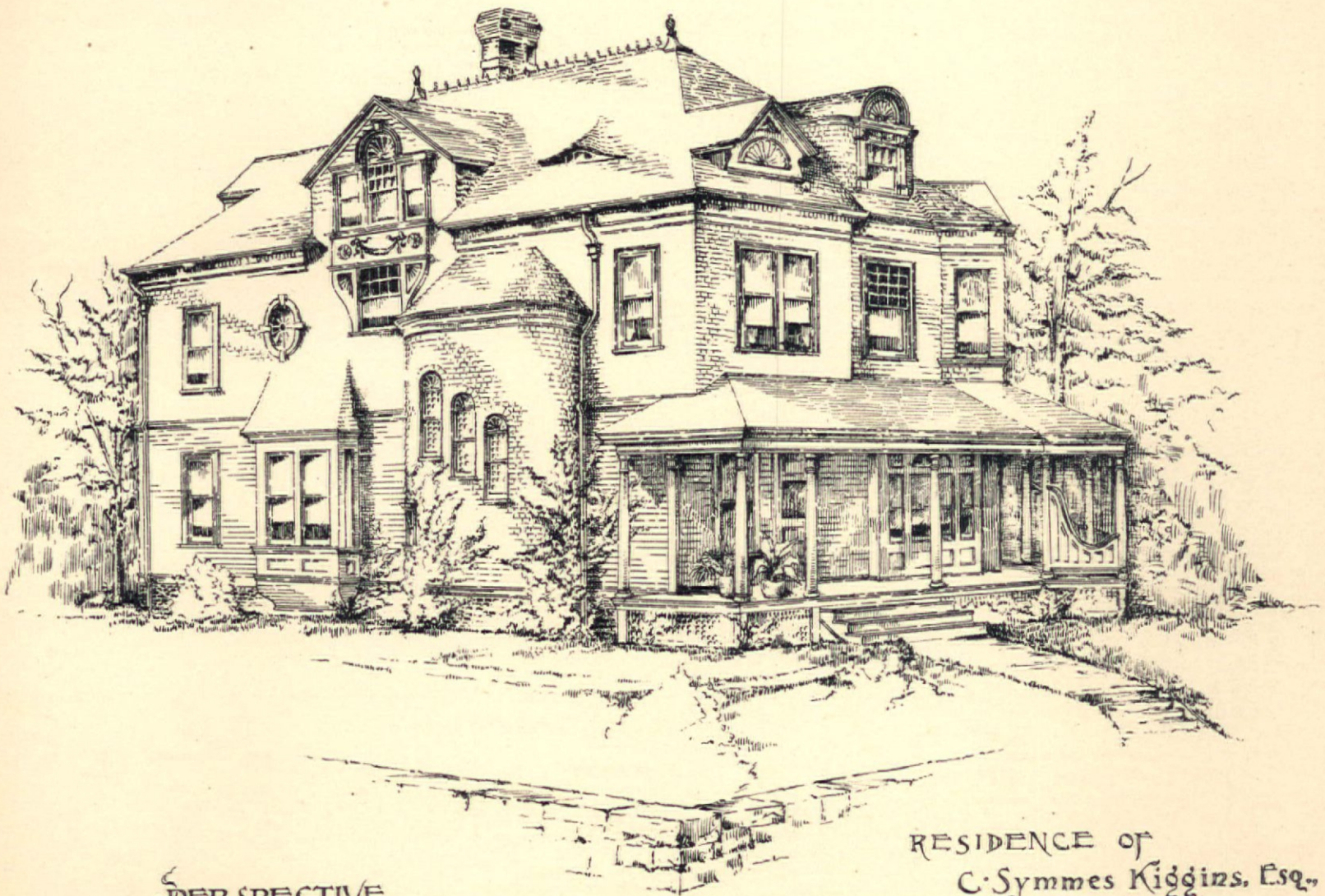
Newark, Boston, Cleveland,
St. Louis, Chicago.



In the Hall



In the Parlor



PERSPECTIVE VIEW

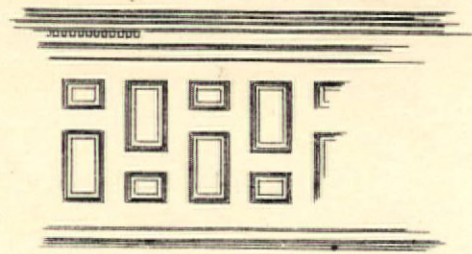
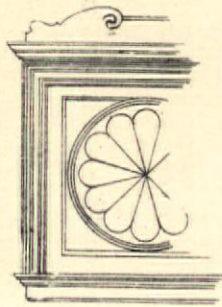
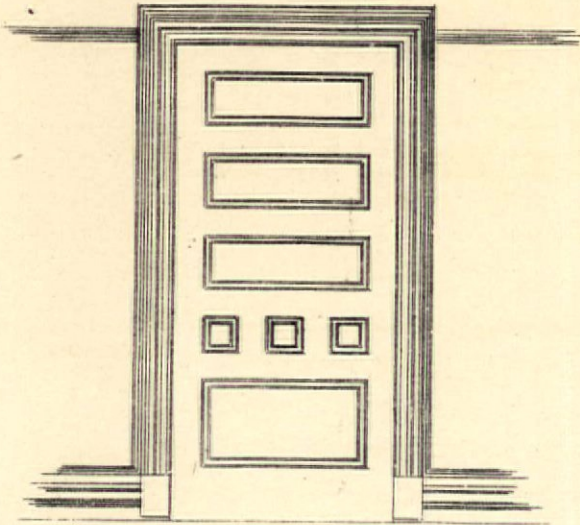
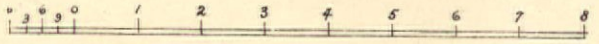
RESIDENCE OF
 C. Symmes Kiggins, Esq.,
 Elizabeth N.J.

CLARENCE W. SMITH
 ARCHITECT
 30 BROAD ST. NEW YORK CITY

Details + For

Interior Finish

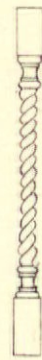
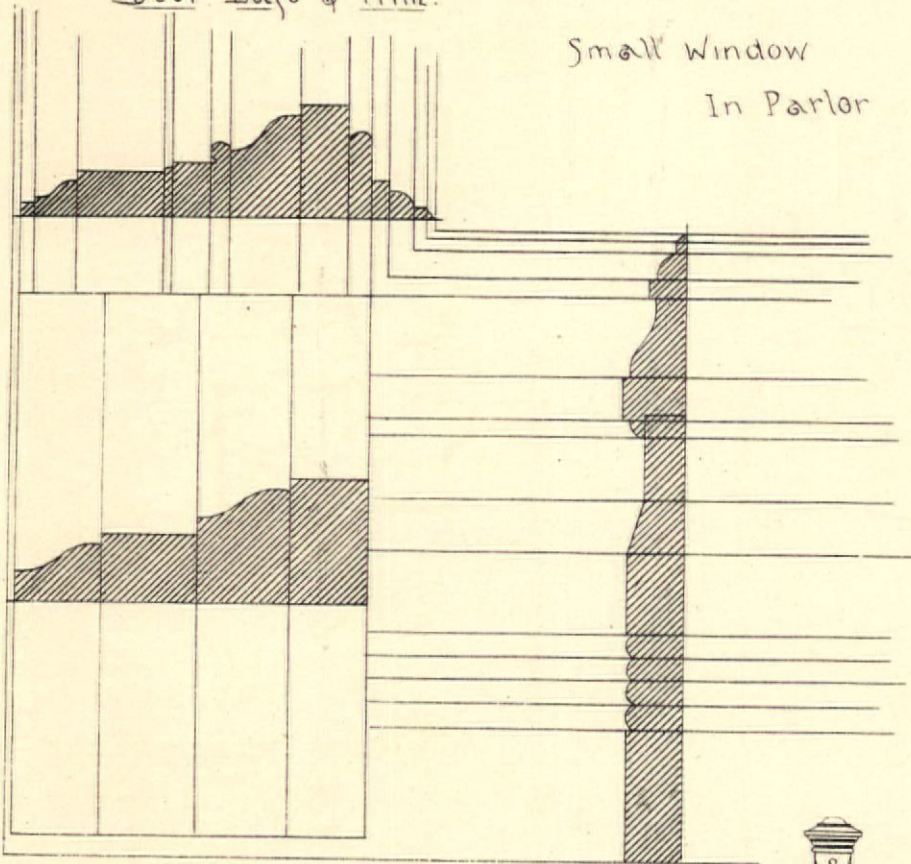
Scale for
Doors + Wainscot



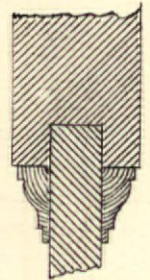
Door Base & Trim.

Wainscot.

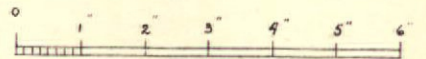
Small Window
In Parlor



Balluster

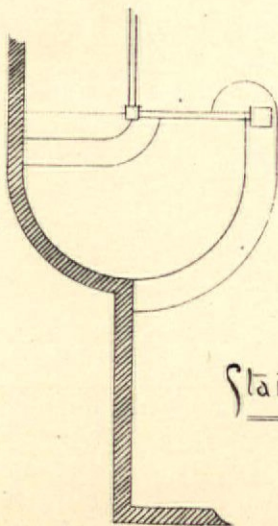


Door
Section

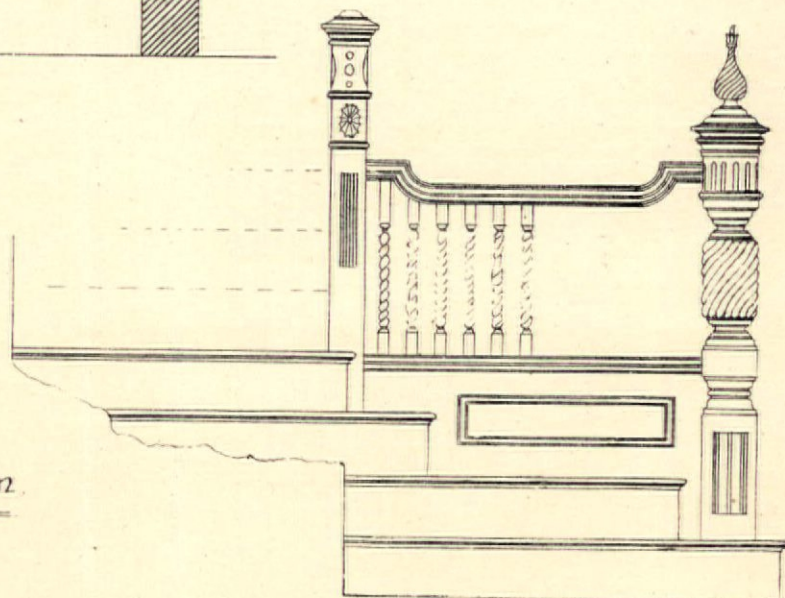


Scale, in Inches.

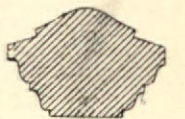
for
Detail of Trim and Door Section.



Staircase Plan.



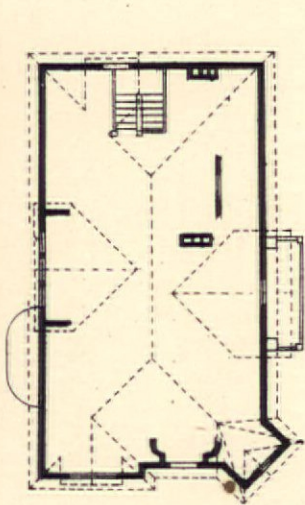
Staircase.



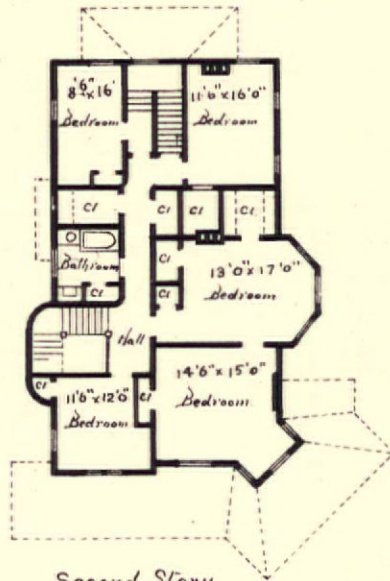
Rail



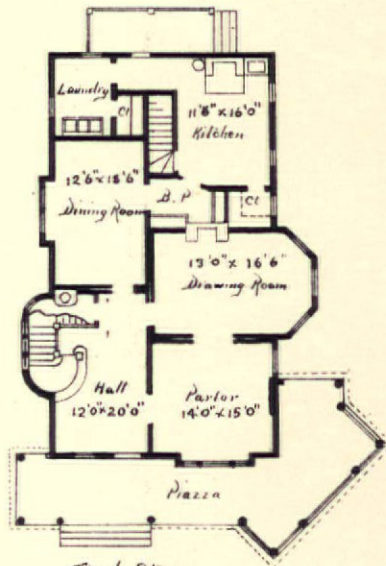
Side Elevation



Third Story



Second Story

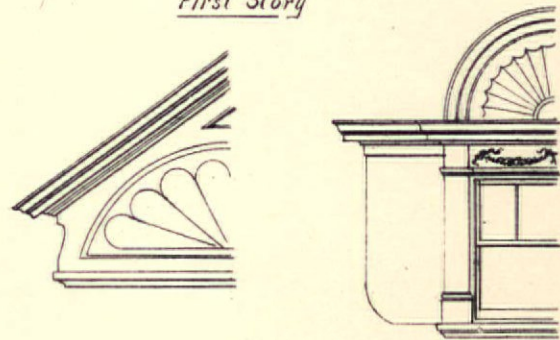


First Story

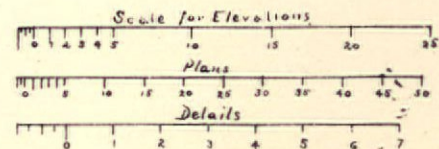


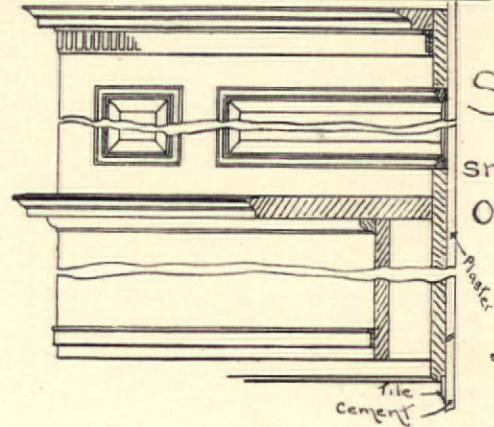
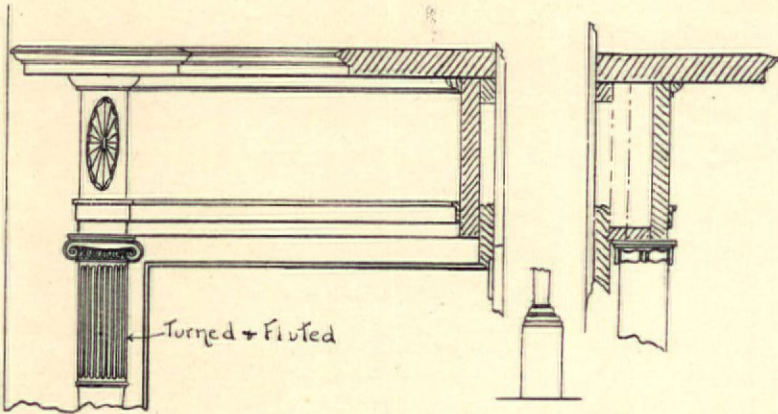
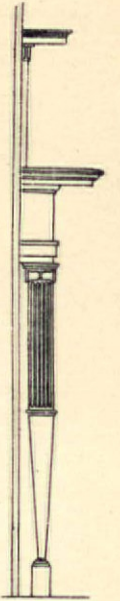
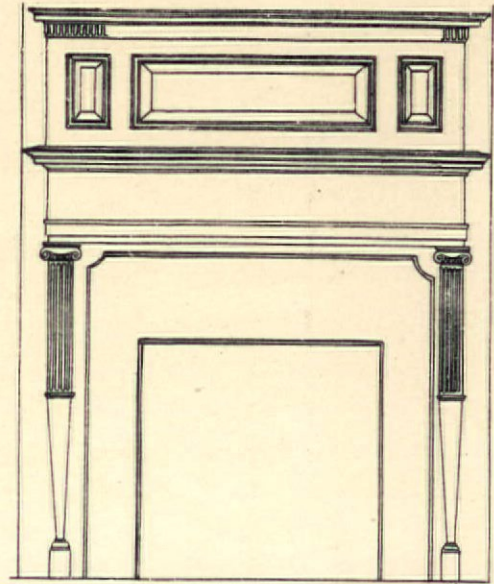
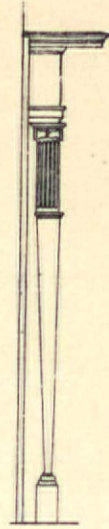
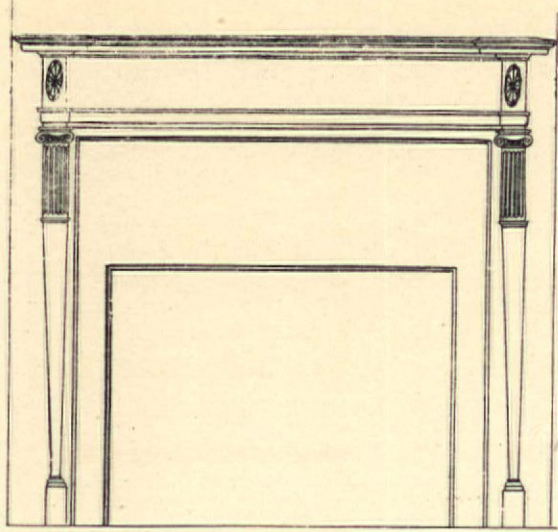
Front Elevation

Section

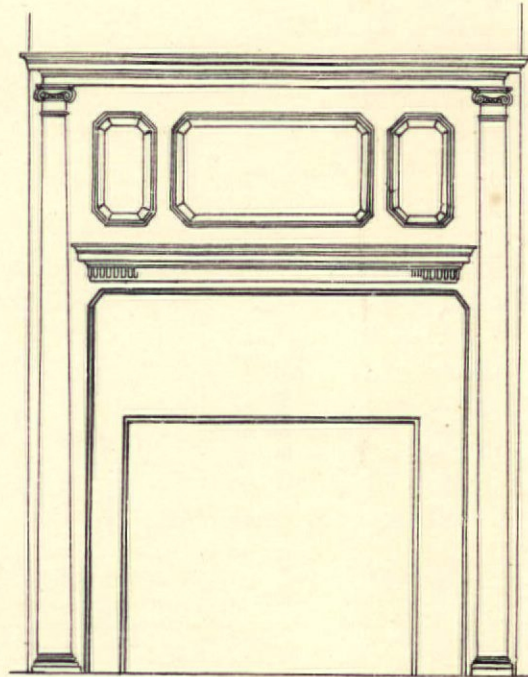
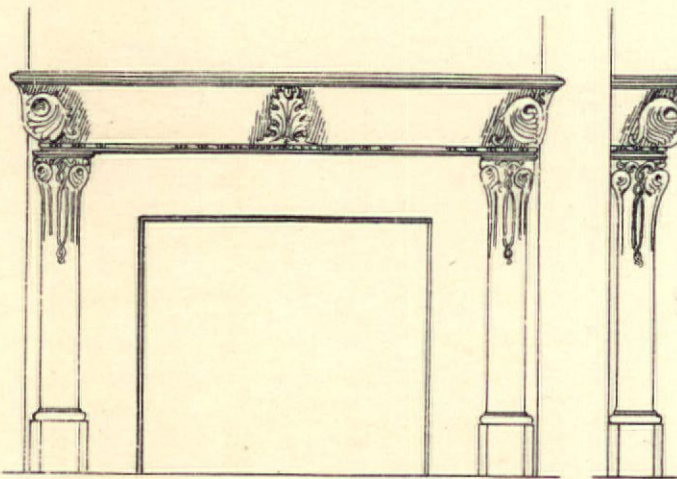
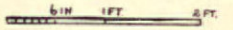


Detail of Dormer Windows

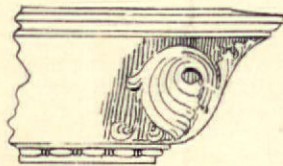
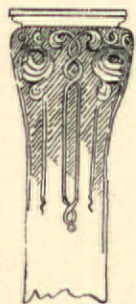
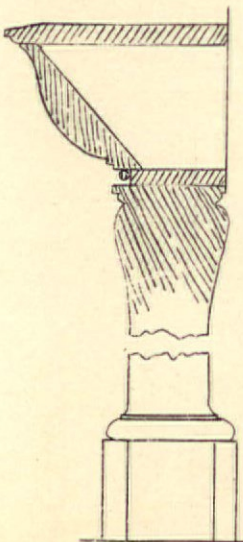




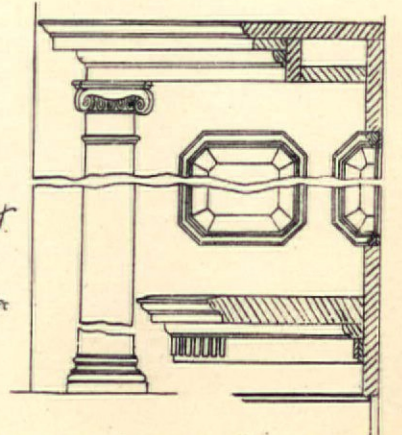
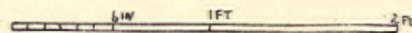
Scale of all small elevations: One half inch to one foot

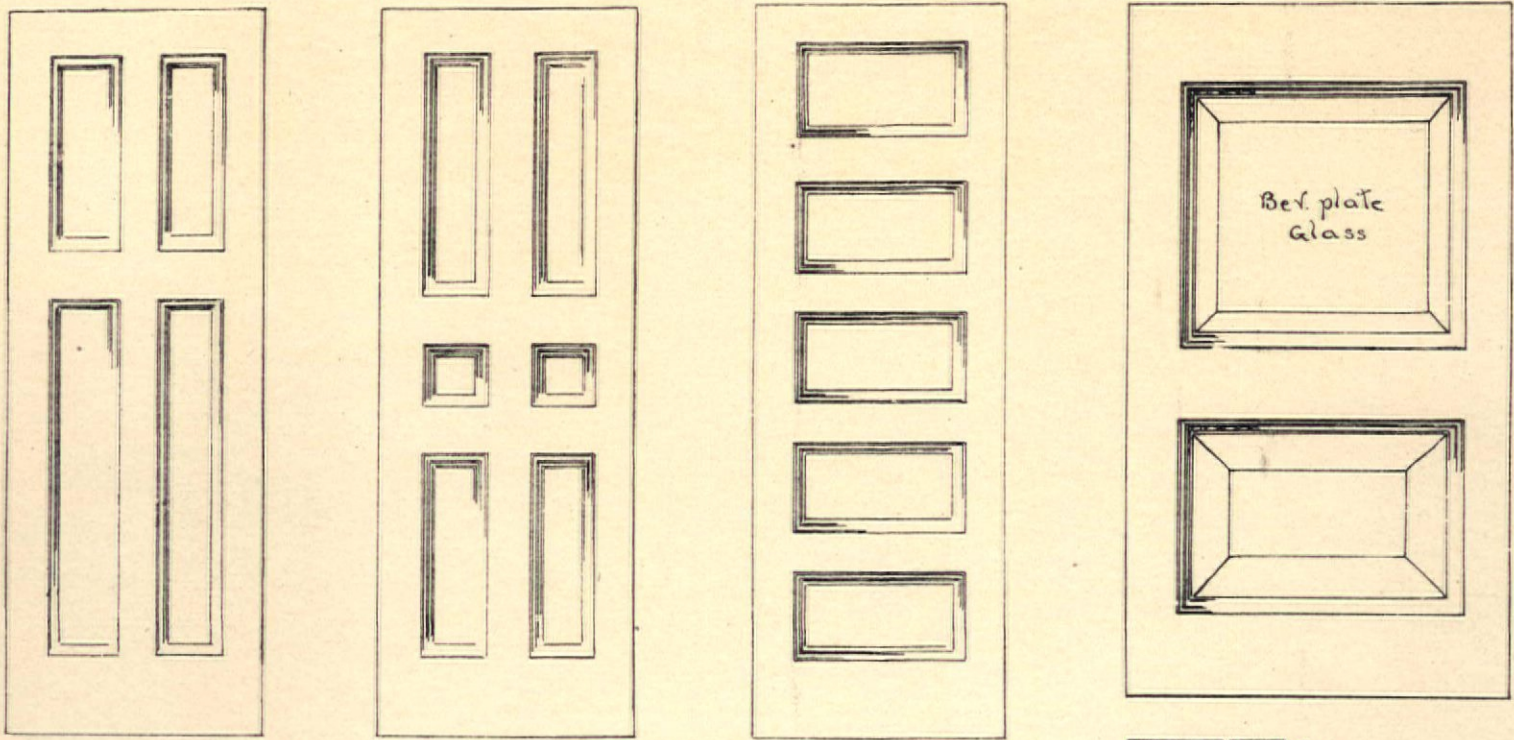


All four sides of this cap are to be alike.

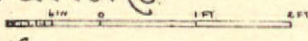


Scale of all large elevations and details: One inch to one foot

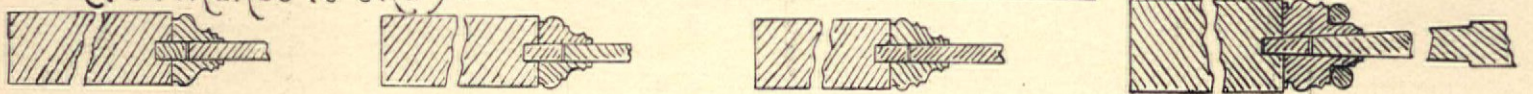




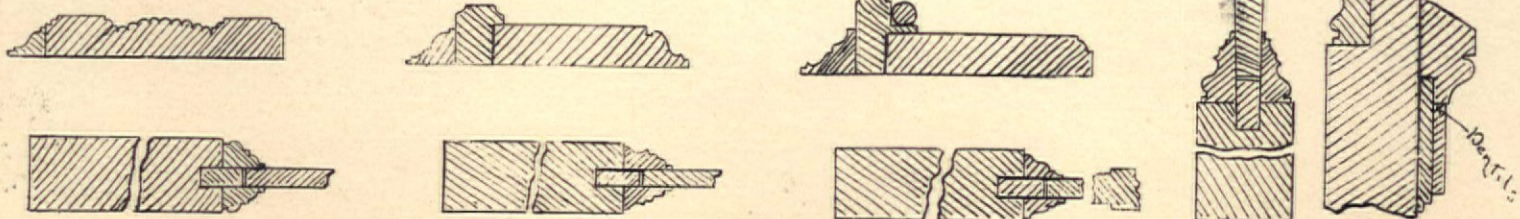
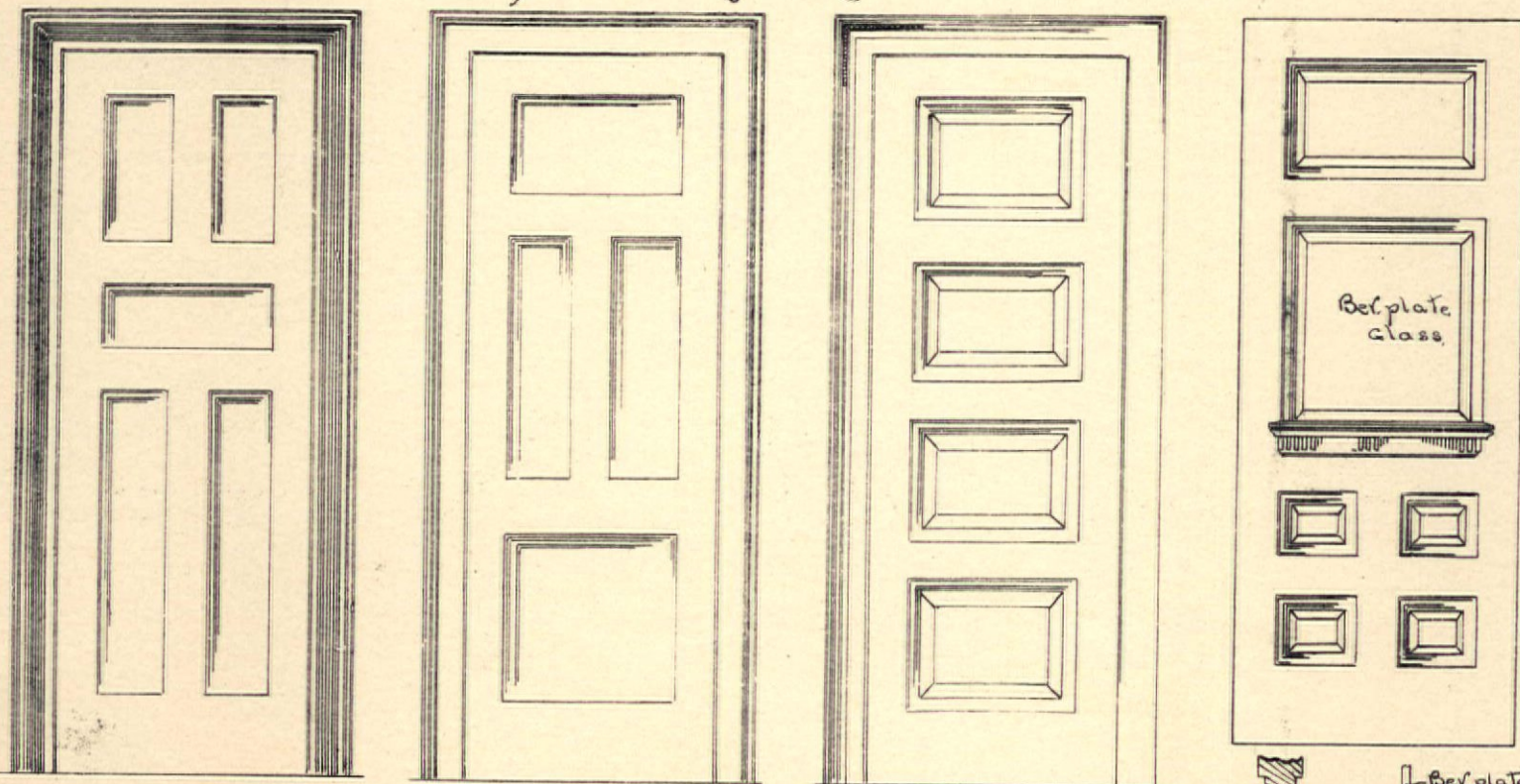
Scale of all elevations.
One half inch to one foot

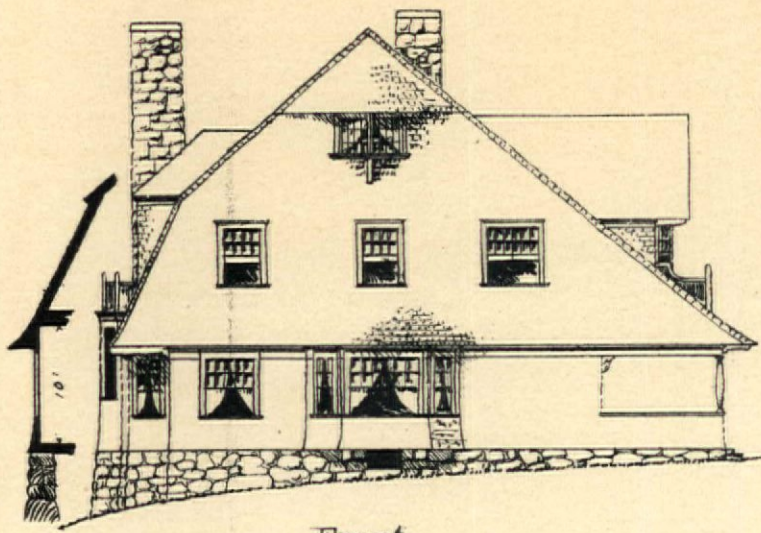


Scale of all sections.
Three inches to one foot

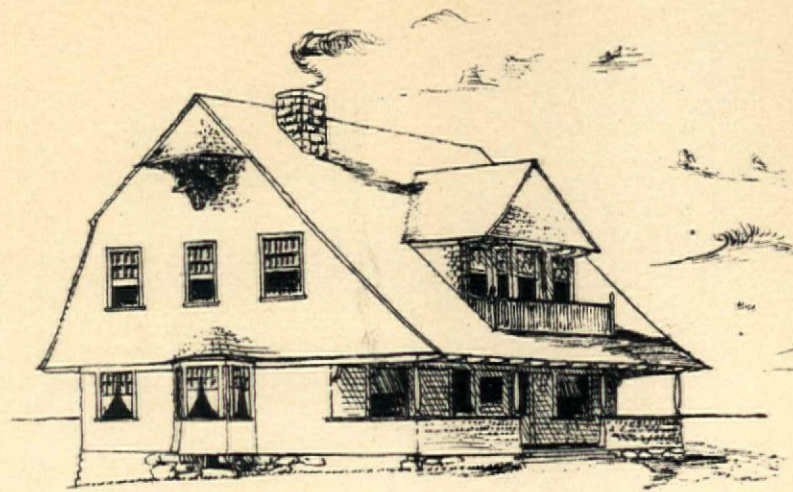


Details of doors and trim

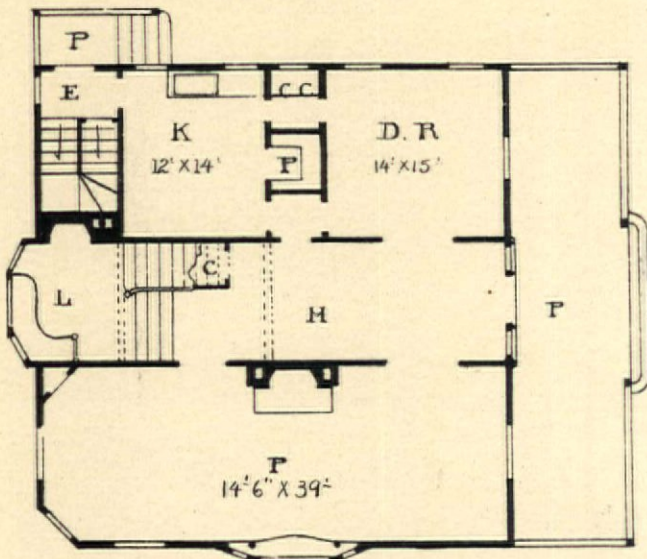




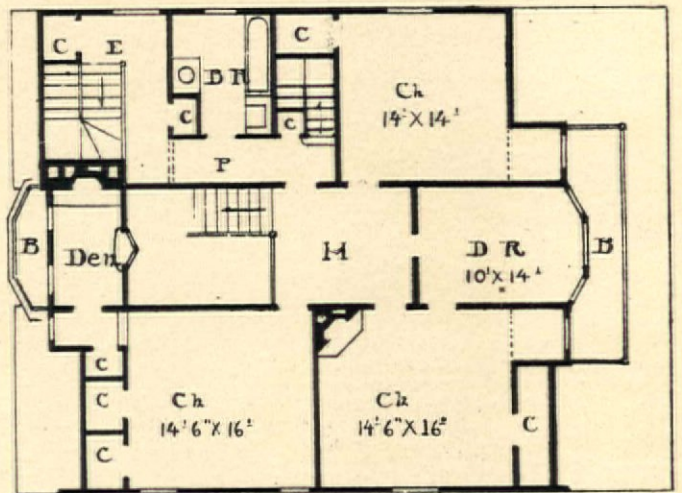
Front



Sketch



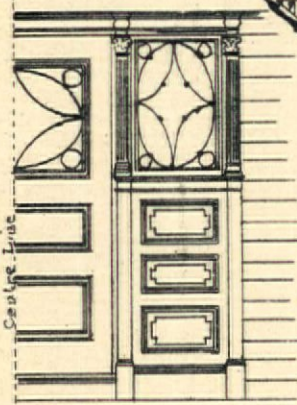
1st Story Plan



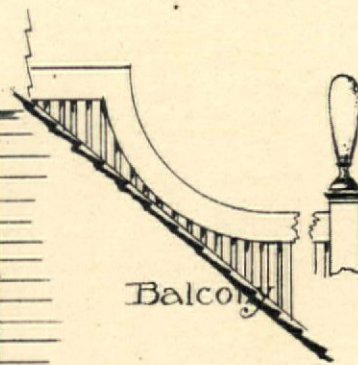
2nd Story Plan



Sketch of Rear



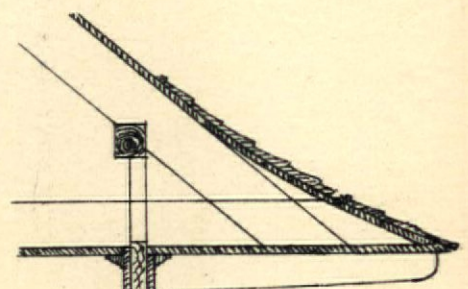
Front Door Scale 1/4" = 1ft



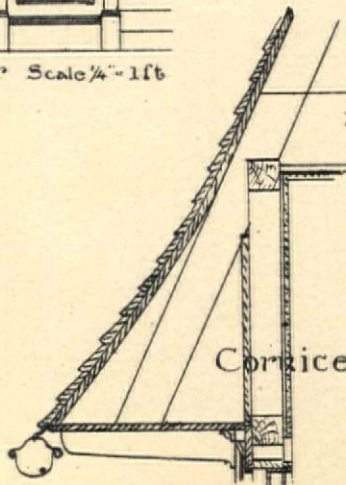
Balcony



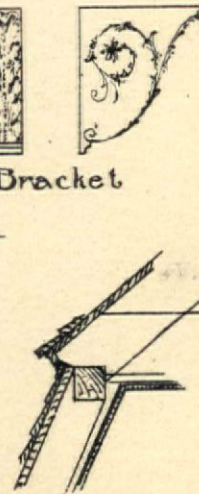
Bracket



Column



Cornice



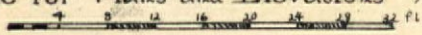
Window Frames



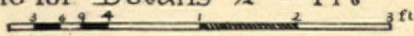
Sill

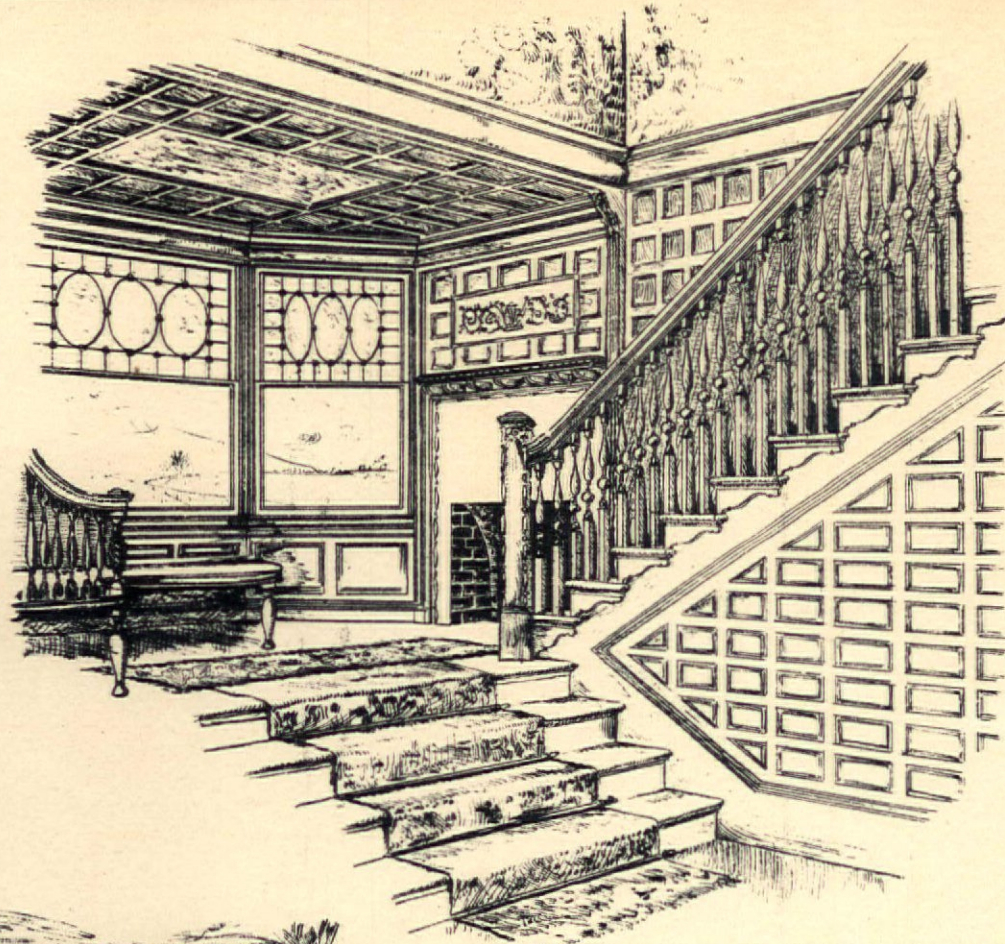
A Country Residence

Scale for Plans and Elevations 1/16" = 1ft

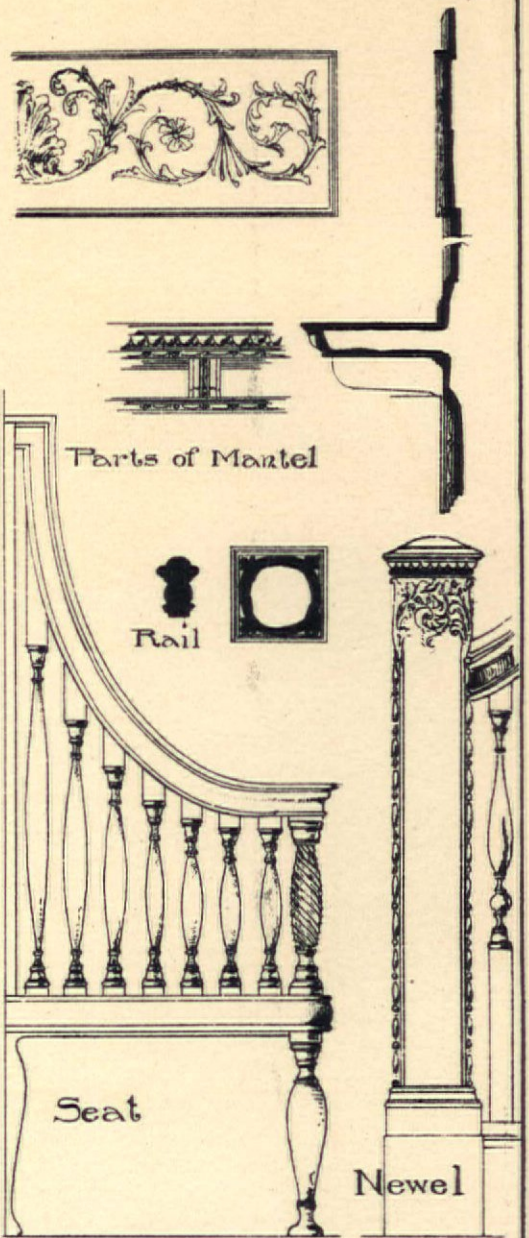


Scale for Details 1/2" = 1ft





Stair Case Hall

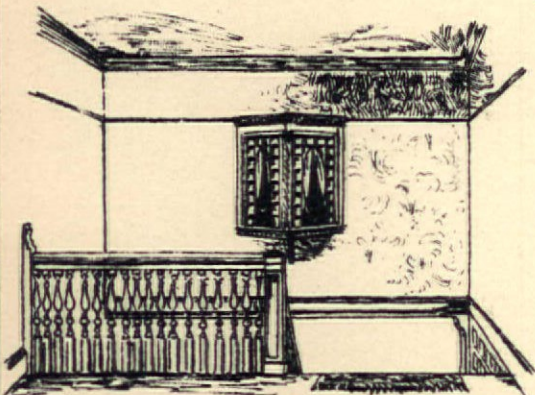


Parts of Mantel

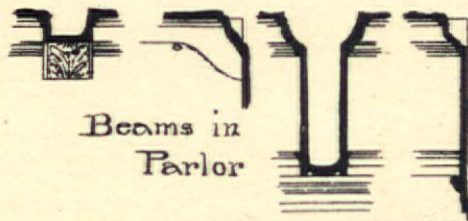
Rail

Seat

Newel



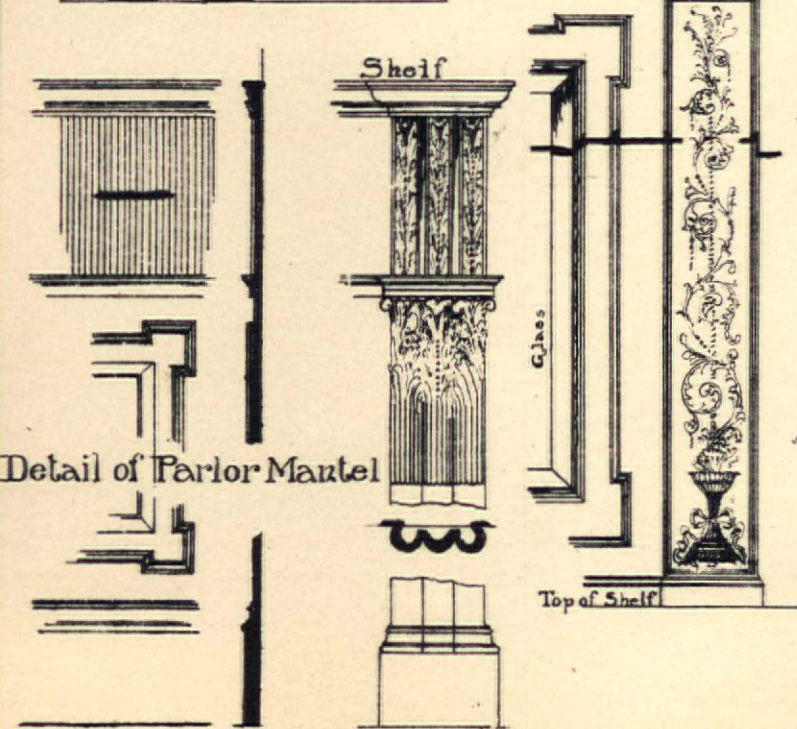
Bay over Landing from 2nd Story



Beams in Parlor

Interiors and Details for A Country Residence

Scale for Details 1" = 1ft

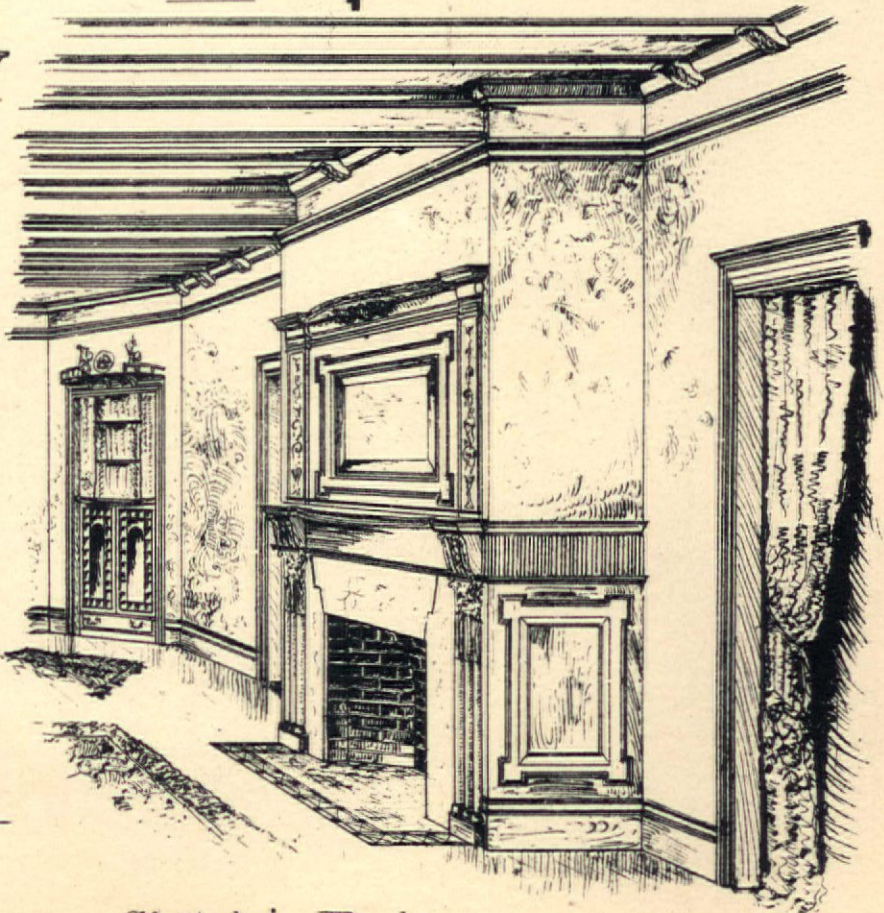


Shelf

Glass

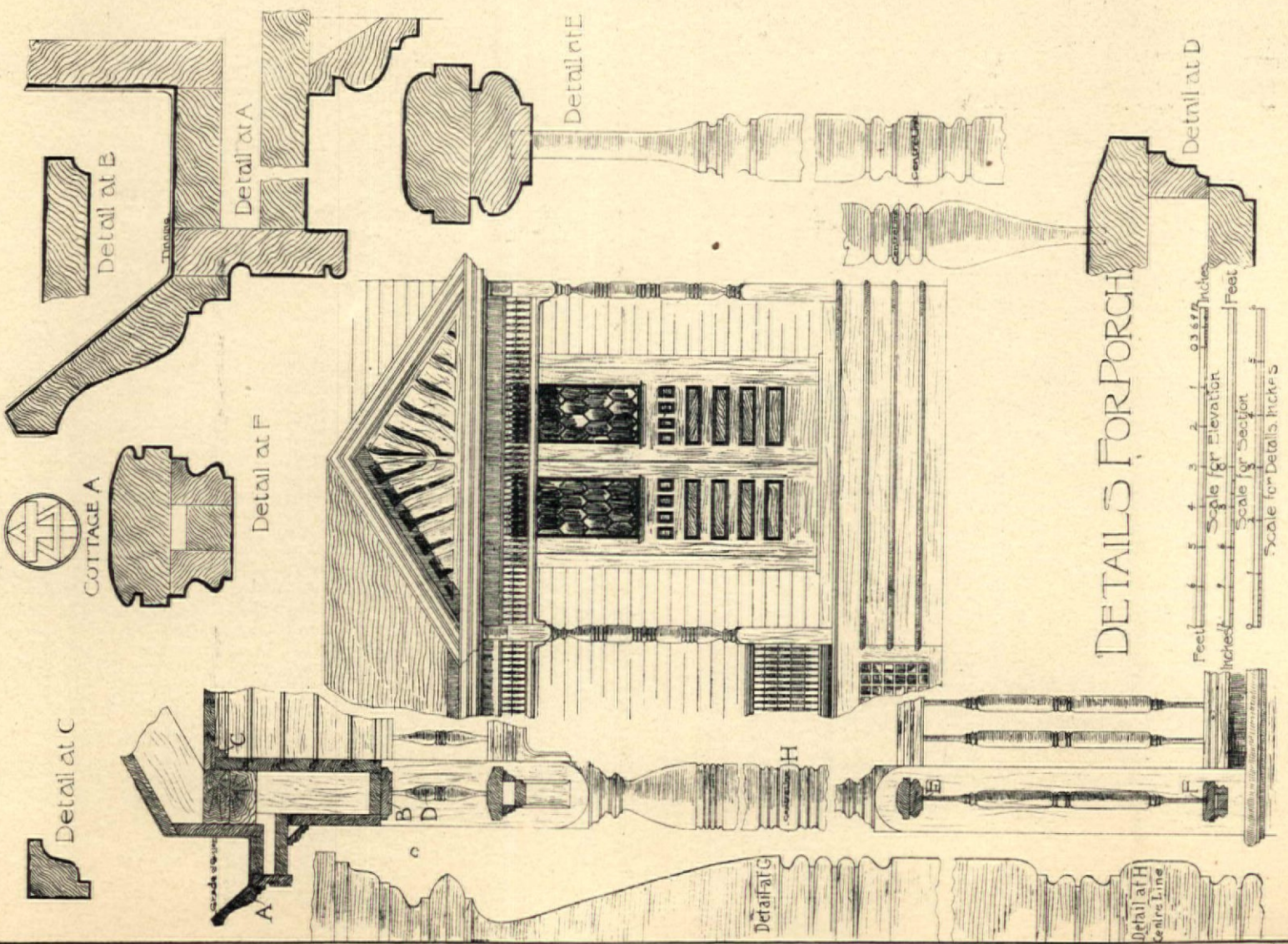
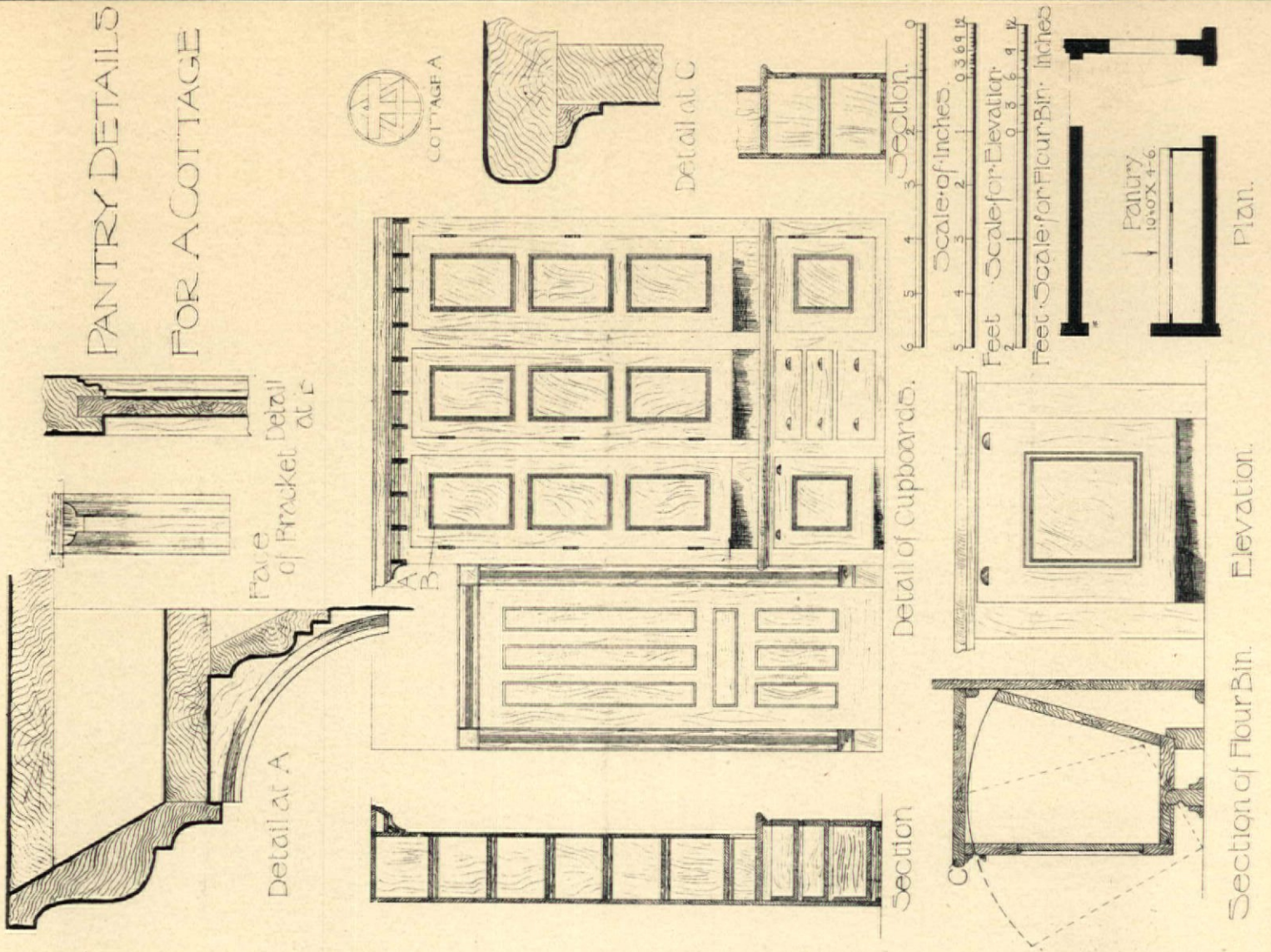
Top of Shelf

Detail of Parlor Mantel



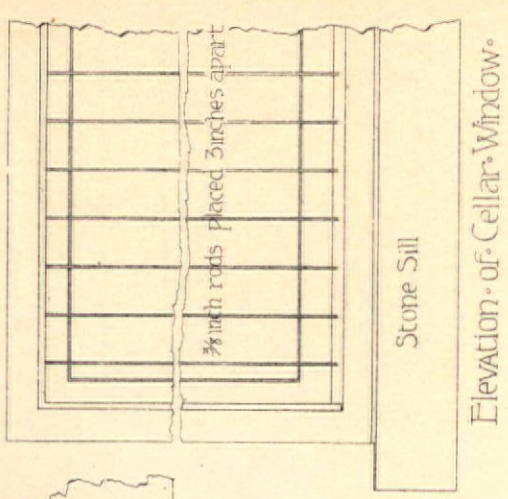
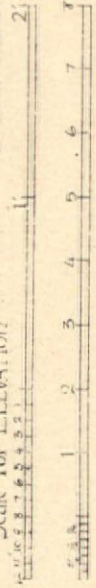
Sketch in Parlor

PANTRY DETAILS FOR A COTTAGE

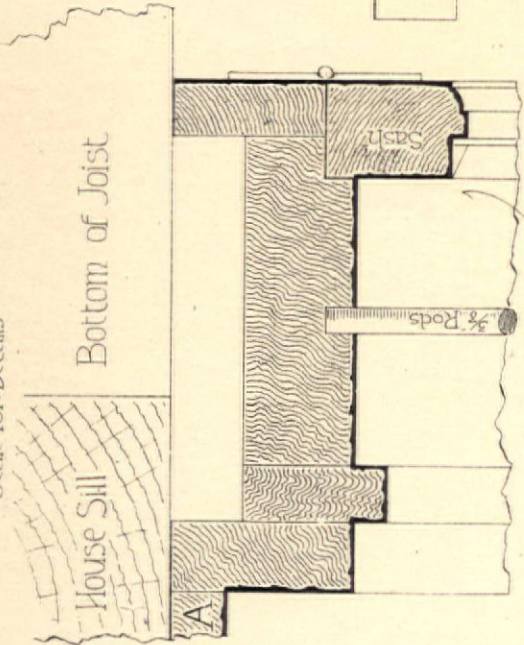


DETAILS FOR CELLAR WINDOW...
FRAMES AND WATER TABLE...

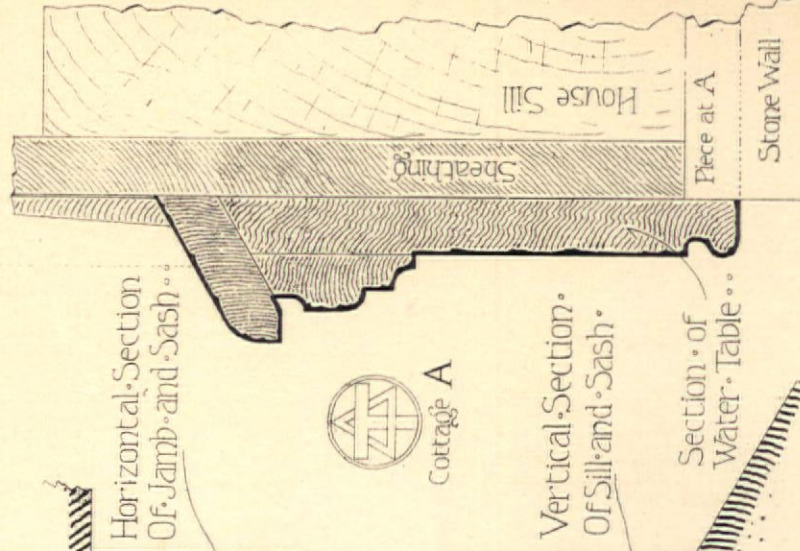
Scale for Elevation



Elevation of Cellar Window



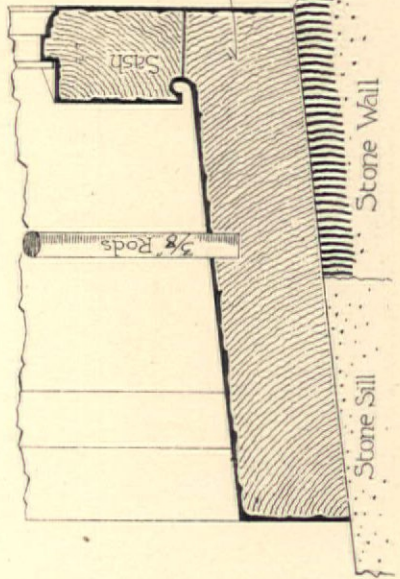
Vertical Section of Window Head



Horizontal Section of Jamb and Sash

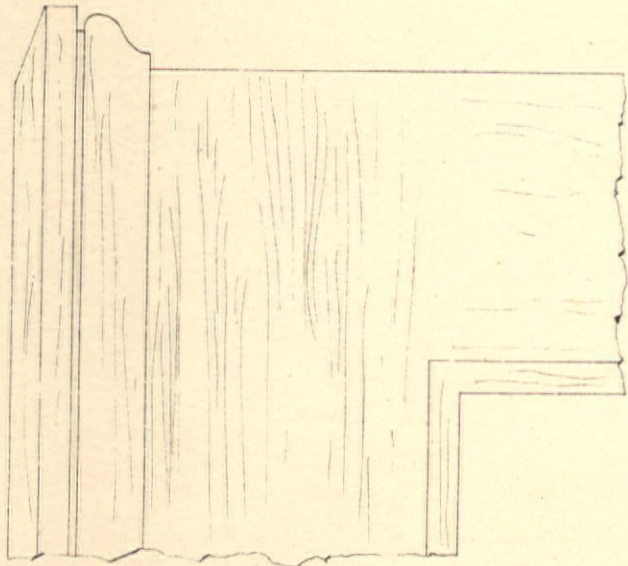


Cottage A



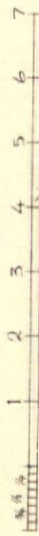
Vertical Section of Sill and Sash

Section of Water Table

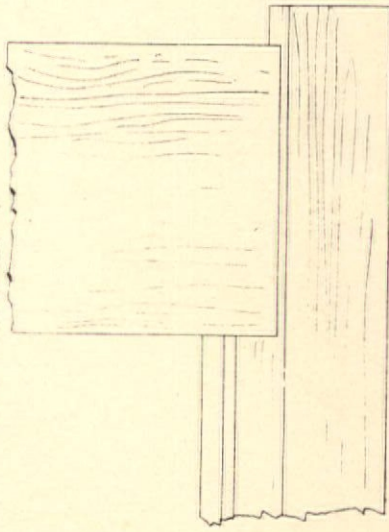


Elevation

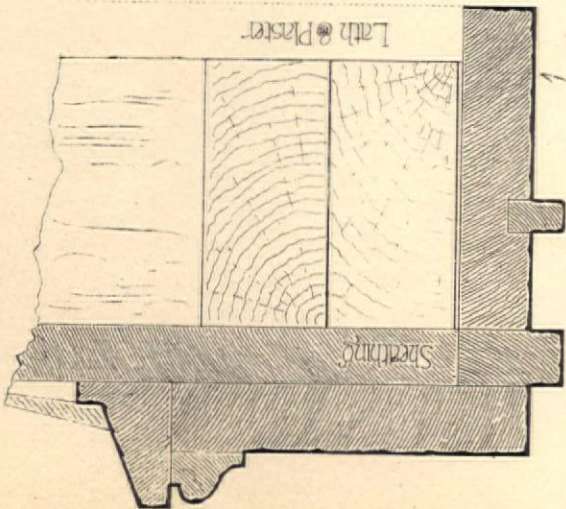
DETAILS FOR WINDOW FRAMES



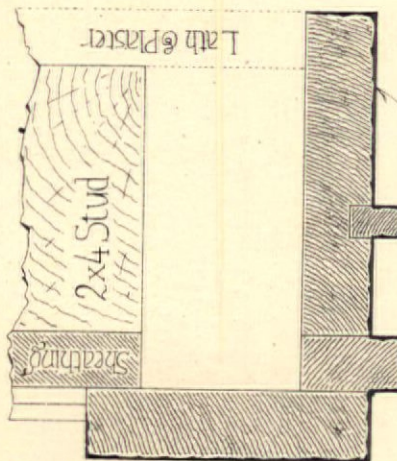
Scale of Inches



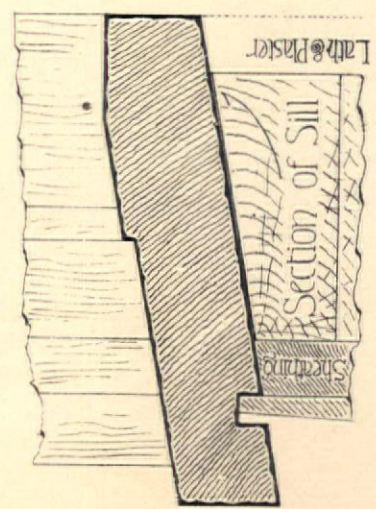
Elevation



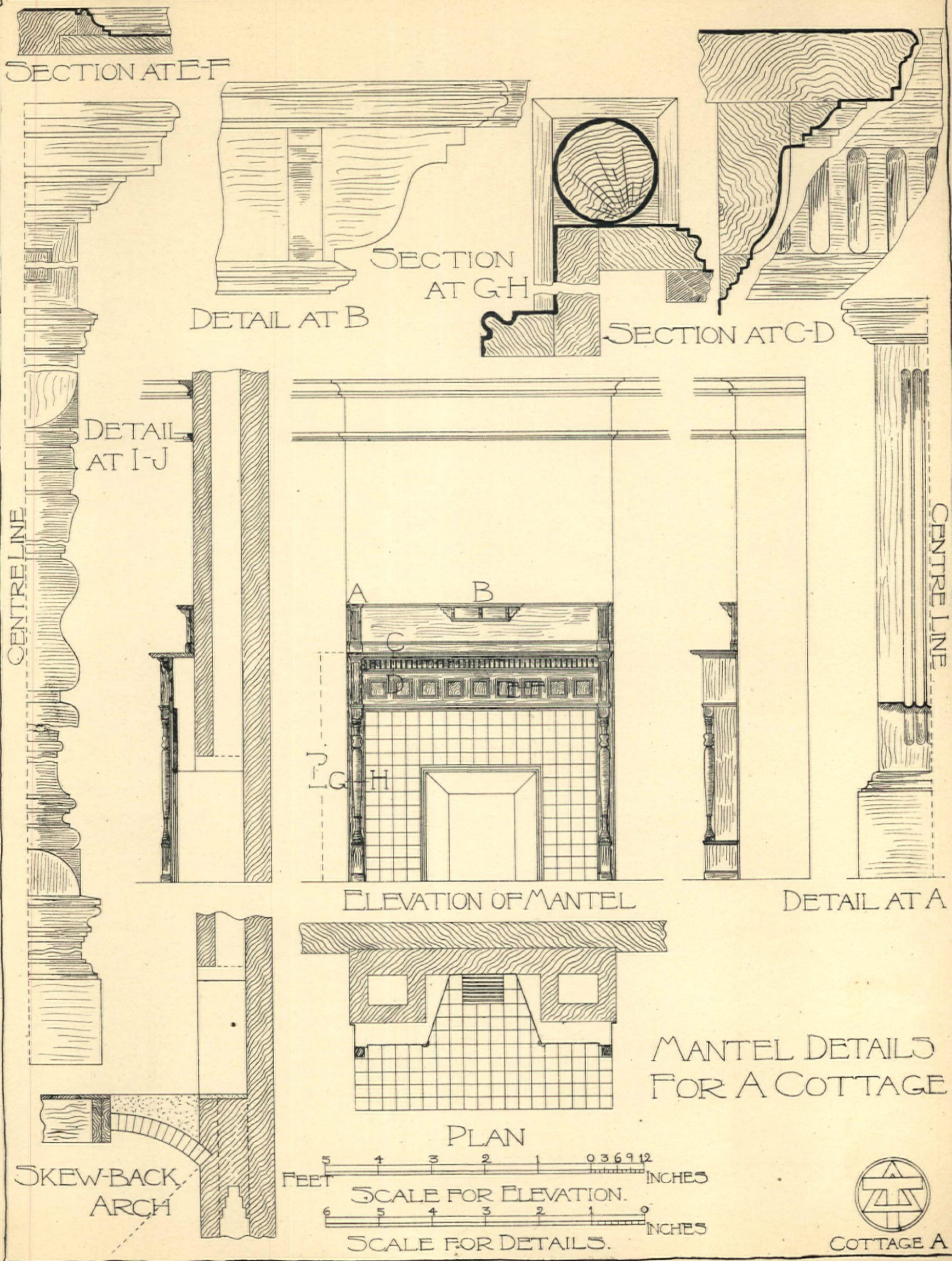
Window Head

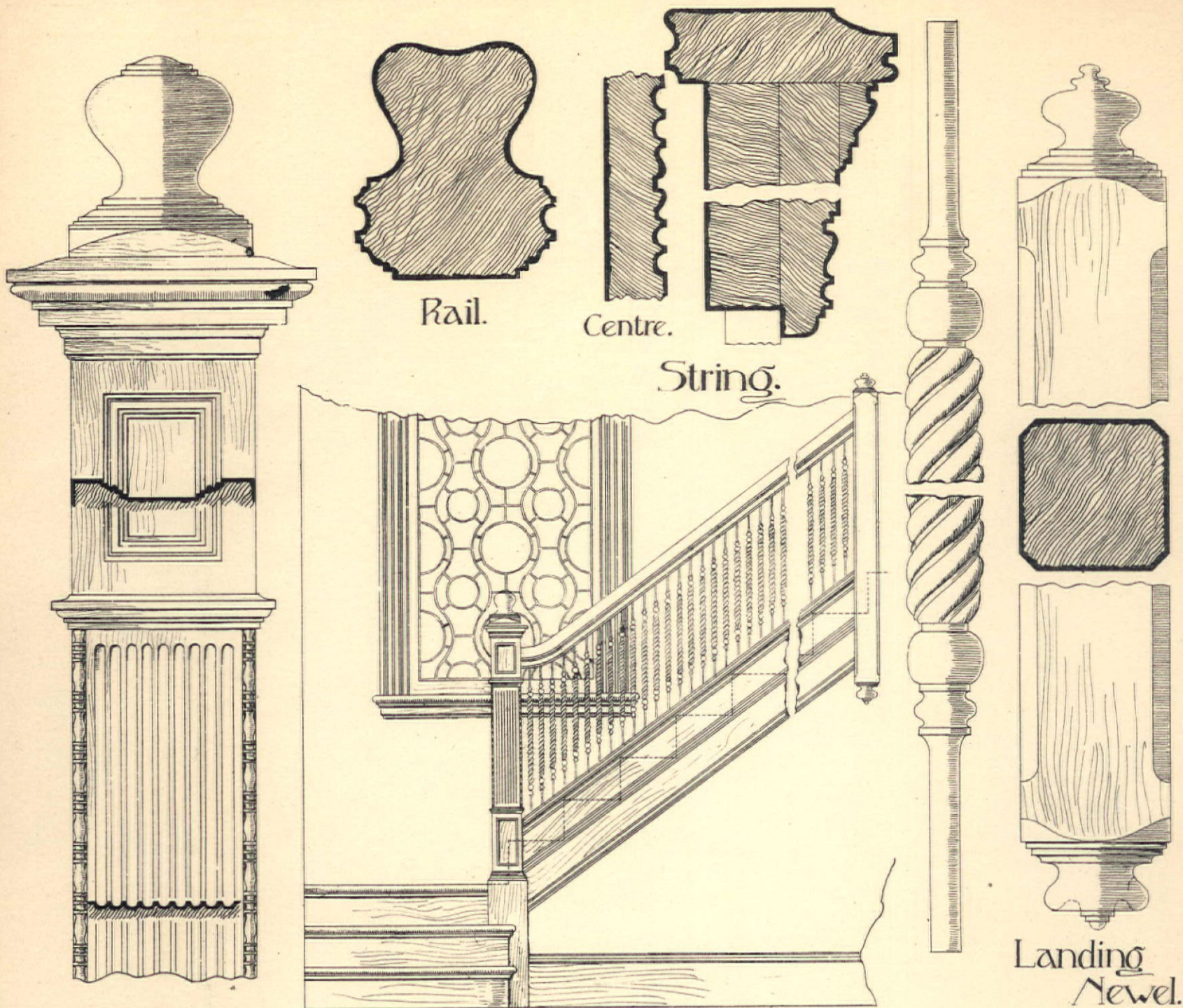


Section of Box



Section of Sill



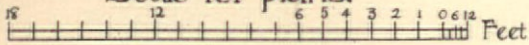


Main Newel.

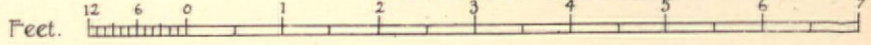
Elevation

Landing Newel.

Scale for plans.



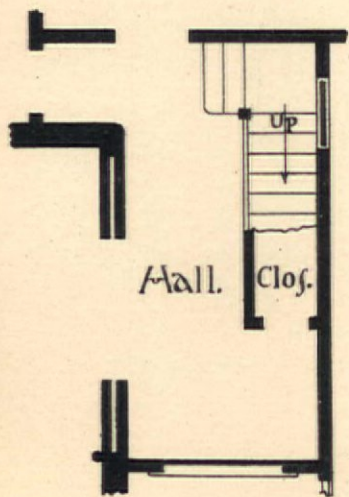
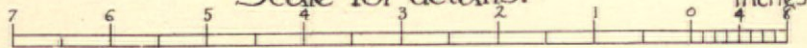
Scale for elevation of stairs.



Scale for newels.



Scale for details.

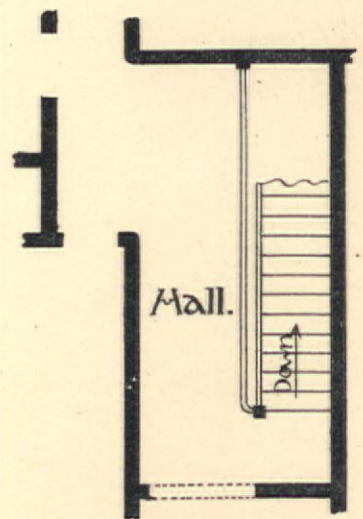


First Floor Plan.

DESIGN AND DETAILS
OF STAIR-CASE
FOR A COTTAGE.

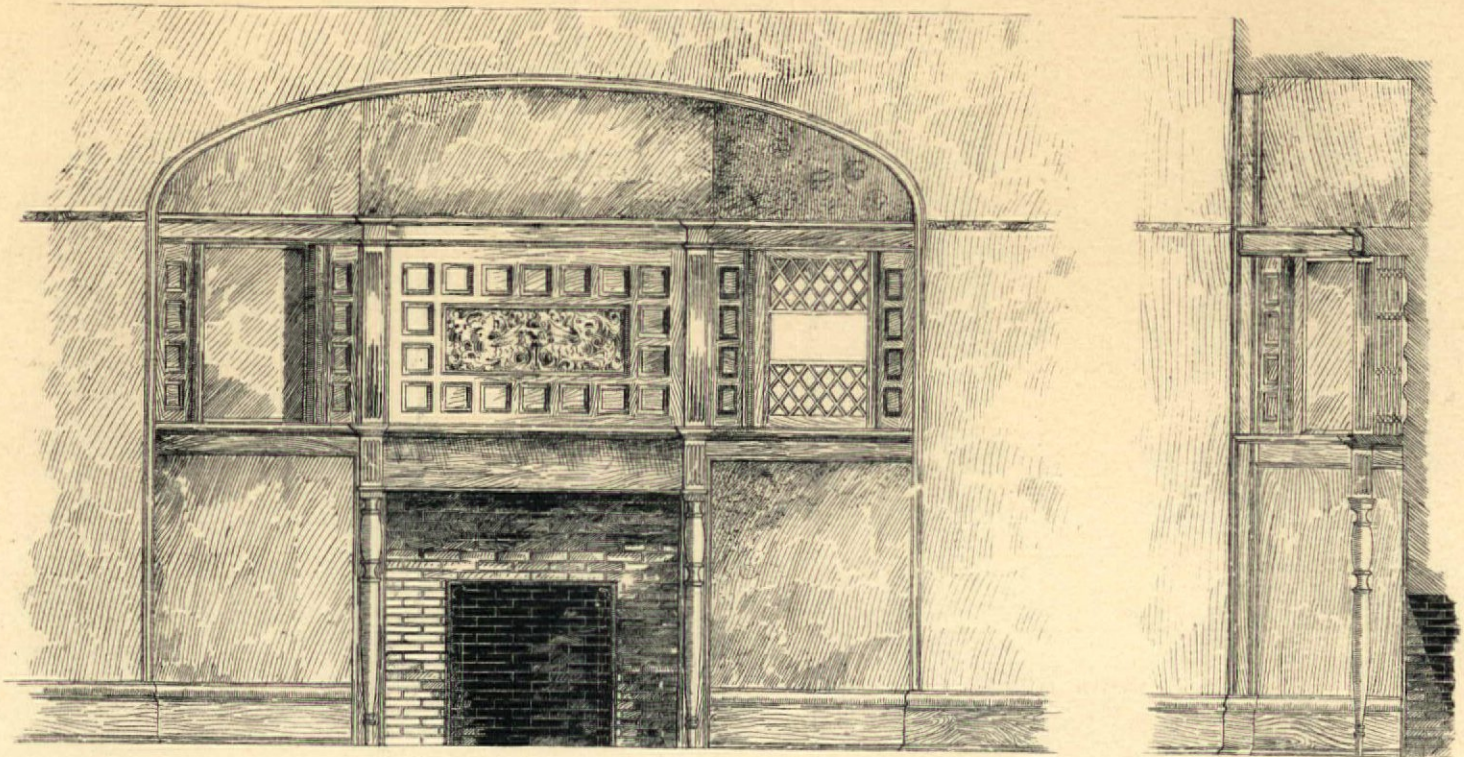


Cottage 'A'.



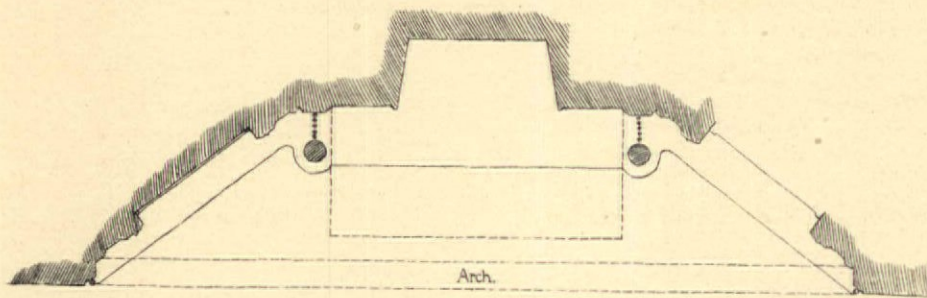
Second Floor Plan.

C. Allen Del. 89



Elevation.

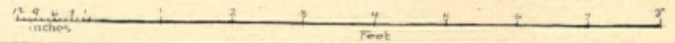
Section.



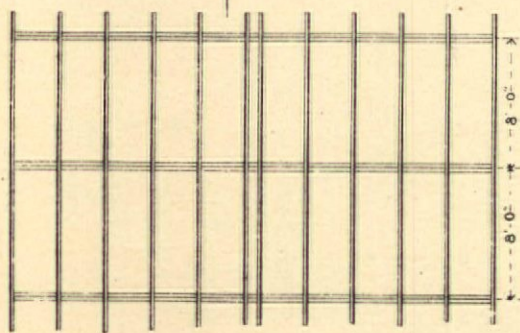
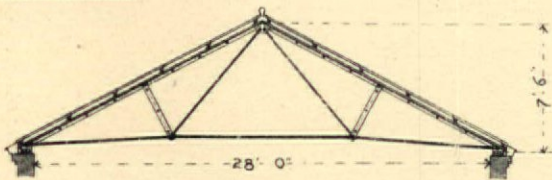
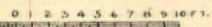
Arch.

Plan.

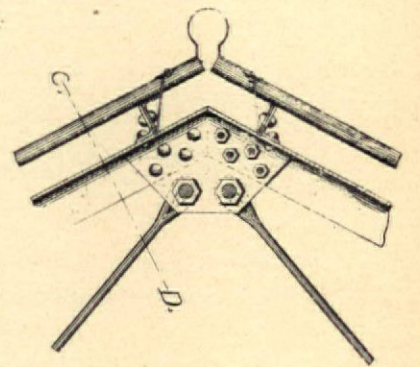
DESIGN FOR
MANTEL AND ALCOVE.



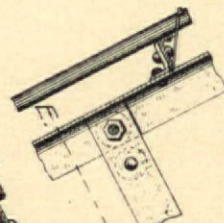
Scale



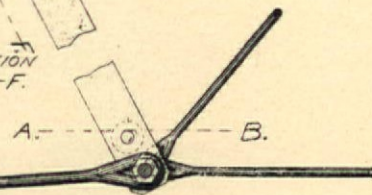
IRON ROOF of
BALBACH IRON WORKS
NEWARK - N.J.



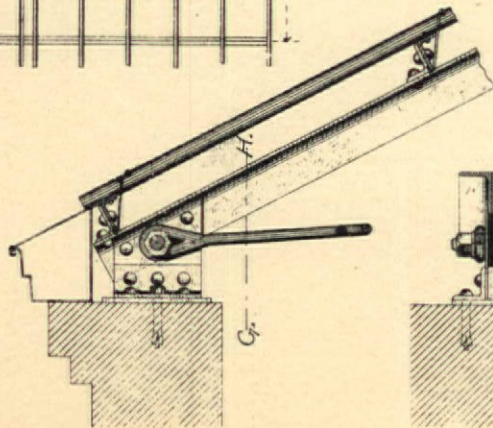
SECTION C-D.



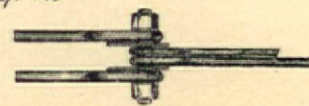
SECTION E-F.



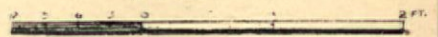
PLAN A-B.



SECTION G-H.



Scale





THE BOSTON SANITARY CHECK VALVE,



FOR CHECKING ESCAPE OF SEWER GAS FROM FRESH AIR INLETS.

H. H. SAWYER & CO., Manufacturers,

292 WASHINGTON STREET, BOSTON.

- SAMPLE OF WINDOW -
MANUFACTURED BY

Postel's Stained Glass Works.



Estimates for Architects and Builders promptly given on application.

Work shipped to any part of the country.

C. H. POSTEL & CO.,

1314 & 1316 Ridge Ave., Philadelphia, Pa.



Metallic Ceilings.

NO FALLING. NO CRACKING.
DANGEROUS PLASTER CEILINGS SUPERSEDED.

METAL FRIEZES, DADOS, PANELS,
MOLDINGS AND CORNICES

In Elegant and Original Designs.
SUITED TO ALL CLASSES OF BUILDINGS.
SEND FOR ILLUS. CATALOGUE AND PRICE-LIST.

LYLES & MILLS, 231 William Street, N. Y.

E. H. HARRISON & BRO., M'f'rs, MANTELS and TILING, Grates and Brass Goods.

Mantels made to design. Estimates cheerfully given.

Salesrooms, 257 Market St., Newark, N. J. Factory, 71 and 73 Clinton St.

J. F. HONEY & SON,

Metallic Skylights and General Sheet Metal Works.

116 West 18th Street, NEW YORK.

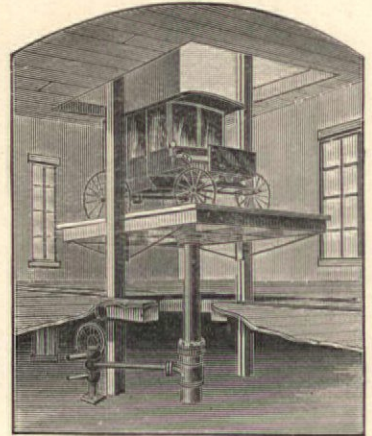
GRAPHITE PAINT

For Tin or Shingle Roofs and Iron Work. It is
Absolutely without an Equal.

A tin roof well painted will not need repainting for 10 to 15 years. If you need any paint it will pay you to send for circular.

Joseph Dixon Crucible Co., Jersey City, N. J.

ECLIPSE ELEVATOR.



ONLY SAFE ELEVATOR.

For Circulars and Estimates, Address,

Turk Hydraulic Power Co., 12 Cortlandt St., N. Y.

MINTON'S TILES

Of all descriptions for Mantels, Fireplaces, Floors, etc., etc.

MILLER & COATES,

SOLE AGENTS,

279 Pearl Street,

NEW YORK.

Doors, Sashes, Blinds, Mouldings.

C. B. KEOGH & CO.,
6 & 8 Howard St.,
NEW YORK.

Price List

SENT FREE

On Application.

IS YOUR HOUSE
NEARING COMPLETION?

Then you will soon need to

Decorate the Walls and Ceilings.

WHY NOT TRY

LIGNOMUR

TRADE MARK

"The Manufacturer and Builder" says of
this New Material:

"It may safely be commended to the
notice of architects, builders, decorators,
and the wall-paper trade as a meritorious
invention worthy of their attention."

Call or Send for Samples.

AMERICAN DECORATIVE CO.,
116 PEARL ST., BOSTON.

STAMBACH & LOVE,
52 N. 7th Street, Philadelphia.

PLUMBERS' SUPPLIES and SANITARY SPECIALTIES
MANUFACTURERS OF

Superior Soap Stone Laundry Tubs, Sinks, Hearths,
etc. Using only the best Qualities of Soap Stone, and
employing experienced workmen, we can fully guar-
antee our Laundry Tubs as superior to all others.

Bicknell's Advertising Bureau,

Especially Devoted to the Interests
of Those who Supply.

THE ARCHITECTURAL, BUILDING,
DECORATIVE AND KINDRED
ARTS AND TRADES.

SPECIAL LIST OF

Journals, Magazines and Illustrated Weeklies
Mailed to any Address on Application.

Office, 115 Broadway, N. Y.

Know These Architects?

STONE, Carpenter & Willson, Rhode Island; Geo. C. Mason & Son, Brown & Day, Pennsylvania; Charles S. Frost, Clarence L. Stiles, Illinois; Chas. E. Pillsley, F. B. Hamilton, Eckel & Mann, Missouri; O. P. Hatfield, Marling & Burdett, New York; Longstaff & Hurd, Connecticut; Guy Tilden, Ohio; Rogers & MacFarlane, Michigan; Wing & Mahurin, Indiana; Armstrong & Messer, Texas. They cover a wide range of country, and with hundreds of others have used the STANDARD CONTRACT and endorse it.

Perhaps the best evidence that the STANDARD CONTRACT is thoroughly practical and adapted to general use, is the fact that it was framed by the Joint Committee of THE AMERICAN INSTITUTE OF ARCHITECTS, THE WESTERN ASSOCIATION OF ARCHITECTS and THE NATIONAL ASSOCIATION OF BUILDERS. We are licensees for the exclusive publication of the STANDARD CONTRACT, and furnish the blanks at the following prices, agreed upon with the committee, viz.: \$1.10 per 100, \$4.25 per 500 and \$8.00 per 1,000, free by mail or express. Architects' names and consequent pronouns inserted at additional cost. To save innumerable small accounts, payments should accompany orders. Personal checks on local banks not accepted unless New York, Chicago or equivalent exchange is added.

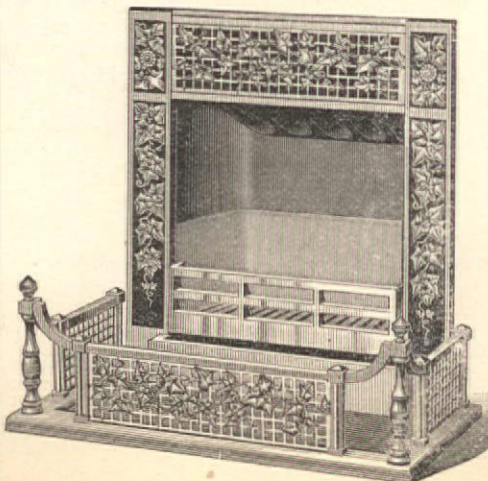
INLAND PUBLISHING CO.,

Publishers of the Inland Architect.

Tribune Building, Chicago.

Perfect ventilation is necessary to good health, and is secured by the use of

THE JACKSON VENTILATING GRATE



Combined Grate and Fireplace
Furnace.
Introducing Heated Out-Door
Air.
Heating two or more floors if
desired.

77 in use in Columbia College,
New York; 87 in the New Court
House, St. Paul, Minn.; 53 in Has-
tings Hall of Harvard College; 65
for the Presbyterian Hospital in
Philadelphia; and by the War De-
partment at many posts. Also in
use in thousands of residences in
various sections of the country.

OVER 200 DIFFERENT STYLES OF
DESIGN AND FINISH.

SEND FOR ILLUSTRATED PRICE-LIST AND
CIRCULAR L.

EDWIN A. JACKSON & BRO.,
50 Beekman St., N. Y.

IF YOU WISH

- TO -

Save Valuable Time

USE THE

"EUREKA

Building Specifications"

Instead of Spending Hours
in Writing Out Your Own.

CLASS A.—These Specifications are in-
tended to be used for Frame Dwell-
ings, without plumbing. Price, 25 cts.

CLASS B.—These Specifications are in-
tended to be used for Frame Dwell-
ings, of moderate cost, with heating
and plumbing. Price, 30 cts.

CLASS C.—These Specifications are in-
tended to be used for Frame Dwellings,
costing \$4,000 and upwards, with heat-
ing and plumbing. Price, 40 cts.

CLASS D.—These Specifications are in-
tended to be used for Brick Dwellings,
with heating and plumbing. Price,
50 cts.

ARCHITECTS, Builders and
Contractors cannot afford
to do without them. Published
in four Styles as above. Sam-
ple copy of all sent for introduc-
tion to any address on receipt
of One Dollar.

A. J. BICKNELL,

115 BROADWAY, NEW YORK

All Interested Should Send for a Free Sample Copy of the
Builder, Decorator and Woodworker,

1305-1307 Arch Street,
PHILADELPHIA, PA.,

Giving Particulars of a Series of Interesting and
IMPORTANT COMPETITIONS

That are open to all. We want you to enter.

The **Builder, Decorator and Woodworker** is one of the **Handsomest and most profusely illustrated** Journals of its class, consists of **36 pages**, and **4 full-page Supplements**, and should be in the hands of every Architect, Builder, Carpenter and every Artisan in the Building Trades. April issue will contain **Prize Designs** in Competition No. 1 for a \$2,000 Cottage.

Manufacturers and Dealers in Builders' Supplies will find it a **Paying Advertising Medium**, and should send for rates.



VALUABLE TO ARCHITECTS, BUILDERS AND CARPENTERS.

INTERESTS EVERY ONE

WHO WISHES TO

OWN A HOME,

OR WHO WISHES TO

**DECORATE OR
 BEAUTIFY HOME.**

— THE —

BUILDER & WOODWORKER

W. F. Underwood, Ph.D., Editor.



The oldest Building Journal in America, now in its twenty-sixth year.

EACH NUMBER contains EIGHT full-page plates, printed in tint, of city and country residences, cottages, etc., plans with estimates of cost, elevations, etc., etc., in addition to numerous illustrated articles, suggestions for, and illustrations of interior decoration.

ISSUED EVERY MONTH at ONE DOLLAR PER YEAR.

Published by **A. L. CHATTERTON & CO.,**
 78 Maiden Lane, New York City.

Bundy Radiators.

NO DOUBT almost any radiator, when brand new, will give fairly good satisfaction, but the test comes later on when it has been in use for years. There are over

TWENTY MILLION

square feet of Bundy Radiators now in use, many of which have been in operation from ten to twenty years, and yet they are as good as they ever were and have never cost the owners one cent for repairs.

*Architects specify the Bundy.
 Steam Fitters use the Bundy.
 Consumers require the Bundy.*

A. H. GRIFFING IRON CO.,

482 Communipaw Ave., Jersey City, N. J.

Branch Offices and Stores: { 12 Cortlandt St., New York City.
 { 130 Dearborn St., Chicago, Ill.
 { Builders' Exchange, Phila., Pa.



1869.

1890.

The Manufacturer and Builder,
 Published Monthly.

A Handsomely Illustrated Mechanical Journal,
 Edited by **DR. WM. H. WAHL.**

Every Number Consists of **38 Large Quarto Pages and Cover.**
 Filled with useful information on all subjects of a practical nature.

It is invaluable to the Manufacturer, the Builder, the Architect, the Carpenter, the Engineer, the Plumber, and in fact to everyone who works with hands or brain. For the Household there is information given in every number worth the subscription price. The newest inventions are illustrated and described; science, both practical and theoretical, have a place in its columns; the Architectural department has an attractive design in every number. Questions on any topic asked by readers are answered, and a thousand and one bits of interesting matter go to complete the oldest, best and cheapest Mechanical Monthly in the country. It is the best, because the information it contains is accurate and up to the times. It is the oldest, being now in its twenty-second year. It is the cheapest because it gives the reader the most substantial literary food for his money.

Send \$1.50 for yearly subscription, and begin with the earliest number you can get.

SPECIMEN COPY FREE.

FOR SALE BY ALL NEWSDEALERS. AGENTS WANTED EVERYWHERE. ADDRESS

HENRI GERARD,
 P. O. Box 1001. 83 Nassau Street, New York.

ACME MORTAR COLORS

BLACK, RED, BUFF AND BROWN.

L. MARTIN & CO.,

226 Walnut Street,

PHILADELPHIA.

MANUFACTURERS OF THE FINEST

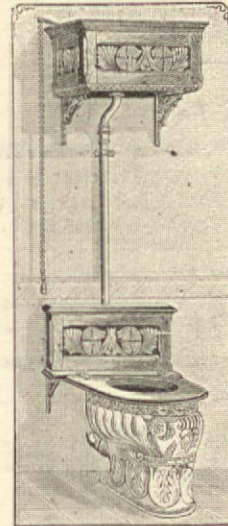
Mortar Colors to be Found in the World's Market

SAMPLES AND DIRECTIONS SENT FREE ON APPLICATION.

The Black Pulp is a Pure Vegetable Black, will always Retain its Color and not Turn Ashy Grey.

HAVE your Roofs, Nails, Pipes and all Hardware coated with **PURE LEAD** to prevent rust.
THE AJAX LEAD COATING CO., Drexel Building, Phila.

CIRCULARS AND SAMPLES SENT ON APPLICATION.



Buffalo Front Outlet Wash

CLOSET,

— WITH —

**Carved Hard Wood Tank and Bracket
 Seat and Nickel Plated Perfection
 Flush Pipe.**

The tank has a time valve, by which any quantity water up to 10 gallons can be supplied by a single flush.

HAINES, JONES & CADBURY CO.,

MANUFACTURERS,

1136 Ridge Ave., PHILADELPHIA

**AGENTS
 WANTED
 EVERYWHERE**

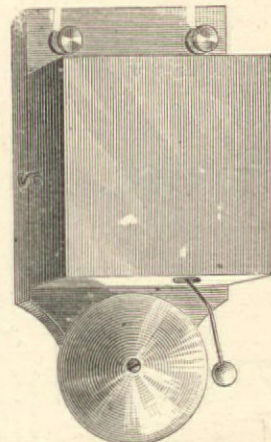
FOR THE
TOCH BROS.,
 35 Bowery, NEW YORK.

**Famous
 Mortar
 Tinters**

SAMPLES AND PRICE-LIST MAILED FREE TO ANY ADDRESS.

Established 14 Years.

R. KANZE,



**Electric
 Bells
 AND
 Door
 Openers,
 Burglar
 Alarms,
 Electric
 Gas Lighting
 Annunciator
 Systems.**

Only reliable work done and guaranteed.

103 East 9th St., bet. 3d & 4th Aves., N. Y.

BOOKS ON BUILDING

And the Allied Arts.

LATEST WORKS ISSUED.

Palliser's Court Houses, City Halls, Jails, Etc.

Palliser's Common Sense School Architecture.

Each Containing 85 plates.

Specification and Contract Blanks, etc.

Full descriptive lists mailed on application; also of all American and Foreign Building Journals, with club rates.

PALLISER, PALLISER & CO.,
 24 East 42d St., New York.

PUBLISHED MONTHLY

The Builders Exchange.

The Official Organ of the
 National Association
 of Builders of the
 United States.

Circulation 5,000

This paper offers unequal facilities for reaching builders and contractors throughout United States.

SAMPLE COPIES FREE

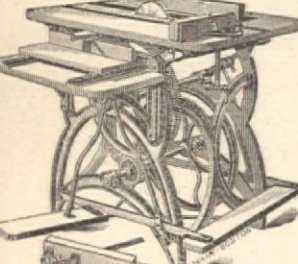
Garnsey, Stone & Co., Publishers
 164 DEVONSHIRE STREET
 BOSTON, MASS.

Advertising Rates on Application

THE
National Lead & Oil Co.
 Of New York.
 28 BURLING SLIP, NEW YORK CITY.
 PROPRIETORS OF
*Brooklyn White Lead Co.,
 The Bradley White Lead Co.,
 The Jewett White Lead Co.,
 The Ulster Lead Co.,
 The Union White Lead Mfg. Co.*

When painting use only pure White Lead and the result will always be satisfactory. The above brands are guaranteed perfectly pure. Architects and Builders in specifying the same can feel assured that their clients will be entirely satisfied with results.

Marston's Hand & Foot Power Machinery.



Circular Saw, Iron Frame, Steel Shafts and Arbors, Machine Cut Gears, iron center part in top.
 Send for Circular and Price-List

M. MARSTON & CO., 66 Lenox St., Boston, Mass.




THE JERSEY CITY Woodworking Company,
 No. 310 Washington St., JERSEY CITY, N. J.
TURNED BALUSTERS of all Sizes and Patterns.
Pedestal and Turned Newels.
STAIR RAILS of all dimensions worked ready to put up.
 Send 4c. in Stamps for Illustrated Catalogue.

SOUTH BROOKLYN RUST PROOF IRON AND STEEL WORKS.
 GESNER PROCESS.
 Latest, most perfect and cheapest, converting body of surfaces treated into a Double Carbide of Iron and Hydrogen. Does not scale. Does not alter dimensions. Architectural Iron, Art Hardware, etc., treated. For prices, also for shop rights for iron and steel apply to
G. W. GESNER, 15 State St., N. Y.

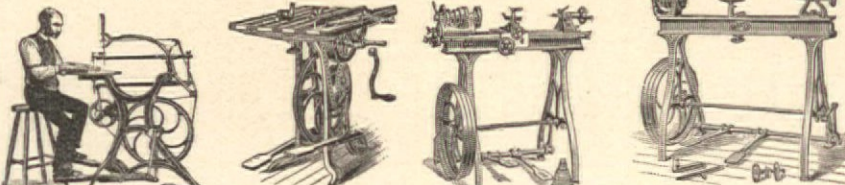
NATIONAL * BUILDER
 —AND—
ARCHITECTURAL NEWS.
 An Architectural and Art Weekly.
 PUBLISHED EVERY SATURDAY.
 Subscription \$5 Per Year.
 Single Number 10 Cents.
 POSTAGE PREPAID.
CHAS. H. VAN BUREN, PUBLISHER,
 OFFICE,
 608 F. Street, N. W., WASHINGTON, D. C.

Patent Foot Power Machinery.
The Latest and Most Improved, for
Carpenters, Builders, Cabinet Makers and Wood and Metal Workers Generally.



Machines for Scroll Sawing, Ripping, Cross-Cutting, Mitering, Rabbeting, Grooving, Gaining, Beading, Variety Molding, Boring, Mortising, Tenoning, Wood and Metal Turning, Screw Cutting, Etc., Etc.
 Enterprising Mechanics are quick to see the Superior Merit of our Machines.
 Machines sold on trial if desired. Send for 36-page Illustrated Catalogue and Price-list, giving full description, testimonials, etc.

THE SENECA FALLS MFG. CO.,
 300 Water Street, Seneca Falls, N. Y.



The Smead System of Warming and Ventilation AND THE SMEAD DRY CLOSET SYSTEM,
 For Public School Buildings.
PURE AIR AND PLENTY OF IT! NO SEWER GAS!!
A NEW SUN IN THE SANITARY HEAVENS!!
 This system is peculiarly adapted to School Buildings, and is now in acceptable use in more than three thousand buildings of that class. Architects and School Authorities are invited to write for our new illustrated book (containing 150 pages), sent free on application.

ASSOCIATED OFFICES:
 ISAAC D. SMEAD & CO., Toledo, O., Washington, D. C. and Kansas City, Mo.
 SMEAD, WILLS & CO., Philadelphia.
 SMEAD WARMING & VENTILATING CO., Boston.
 RUTTAN WARMING & VENTILATING CO., Chicago.
 SMEAD, DOWD & CO., Toronto, Ont.

T. C. NORTHCOTT,
 (Successor to Smead & Northcott),
 ELMIRA, N. Y.



EMERICK'S PATENT



Butler Hardware Co.,
 18 WARREN ST., NEW YORK,
 Sole Manufacturers of the Emerick Patent Geared
Dumb Waiters
 —AND—
HAND ELEVATORS.

The EMERICK DUMB WATER remains stationary at any point empty or loaded to 60 pounds with out using brake. Adapted for use in Restaurants, Dining-Rooms, Flats, and any work not requiring a lift of more than 300 lbs.

The EMERICK HAND ELEVATOR is adapted for invalid lifts, trunks, and other heavy work in flats and private dwellings, light store work, etc., etc.

WILL RAISE 500 POUNDS.

ENDORSED BY LEADING ARCHITECTS.

We manufacture Cannon's Dumb Waiter and also cheaper grades of Dumb Waiters and Hoist Fixtures. Send for 30-page Illustrated Catalogue for above.

MANUFACTURERS OF AND DEALERS IN A FULL LINE OF
 Builders' Fine Hardware, Building Paper, Iron and Steel Cut Nails, Wire Nails, Mechanics' Tools, Railroad and and Contractors' Supplies, etc.

Wholesale and Retail Prices Furnished on Application.

NOTE.—It will pay architects, carpenters and builders to write us for our bottom prices before purchasing elsewhere.

Magneso Calcite Fire-Proof Co.,
 HOME OFFICE:
 96 ARCH ST., - BOSTON.
 MANUFACTURERS OF
MAGNESO-CALCITE FIRE-PROOF BOARD,
 Extensively used in Boston and other cities.
 Indorsed by leading Architects and Builders.

Circulars giving practical tests in detail, including a recent test by Prof. Morton of Stevens Institute, furnished on application.

JOHN MCGLENSEY & SON,
 General Agents,
 Room 73. No. 115 BROADWAY, NEW YORK.

House Painting and Decorating.
 An Illustrated Monthly Magazine.
 VALUABLE TO
 House Owners, Builders, House Painters, Coach Painters, Car Painters, Fresco Painters, Sign Writers, Paper Hangers, and all interested in Painting and Decoration.
 Every Number contains a Colored Plate and Fifty Pages of Reading Matter.
 The following serial articles are now running:
Sign Painting (Illustrated with examples of lettering, banners, monograms, etc., etc.),
Decoration.
Scene Painting.
Coach Painting.
Wall Paper Design.
 With much useful information, recipes, etc., etc.
 \$1.00 a Year. Single number, 10 cts.
 Send postal for free sample copy.
 1130 South 35th St., Philadelphia, Pa.

THE ARCHITECTURAL AND BUILDING MONTHLY.

A JOURNAL OF PRACTICAL DESIGNS AND DETAILS

Adapted to the Use of Architects, Contractors, Carpenters and Builders, Mason Builders, Plasterers, Sash and Blind Manufacturers, Real Estate and all other Interests connected and associated with the Building Trades in Various Localities.

Each Number will contain from eight to twelve 9x12 Plates of designs and details. Before the the completion of the first year, a large variety of Designs and Details of Public and Private Buildings suited to Cities, Towns and Villages, also Medium and Low-Cost Cottages, Suburban or Country Houses, Stables and Out Buildings, Street and Store Fronts, with details of Store Finish, Designs of Furniture and a great variety of Miscellaneous Exterior and Interior Details, drawn to Scale, will be published. Including Details of Brick, Stone and Plaster Work, making in all a collection of more new and original matter for \$5.00 than we ever published in book form for \$10.00.

A. J. BICKNELL, PUBLISHER,

P. O. Box 560.

No. 115 BROADWAY, NEW YORK.

(Original publisher of Bicknell's Village Builder, Bicknell's Detail, Cottage and Constructive Architecture, Wooden and Brick Buildings, Wither's Church Architecture, Loth's Practical Stair Builder, and compiler and publisher of several other practical works on Architecture, Carpentry and Building.)

Please fill this out and send it to Publisher of A. and B. Monthly, P. O. Box 560, New York.

SUBSCRIPTION ORDER

1890.

A. J. BICKNELL, Publisher,
(P. O. Box 560) 115 Broadway, New York,

Please send the "ARCHITECTURAL AND BUILDING MONTHLY" to the undersigned for one year, including No. already received. Five Dollars enclosed, for which please acknowledge receipt.

TERMS:
\$5.00 - PER YEAR.
2.75 - SIX MONTHS.
.50 - A NUMBER.

Name,

Street,

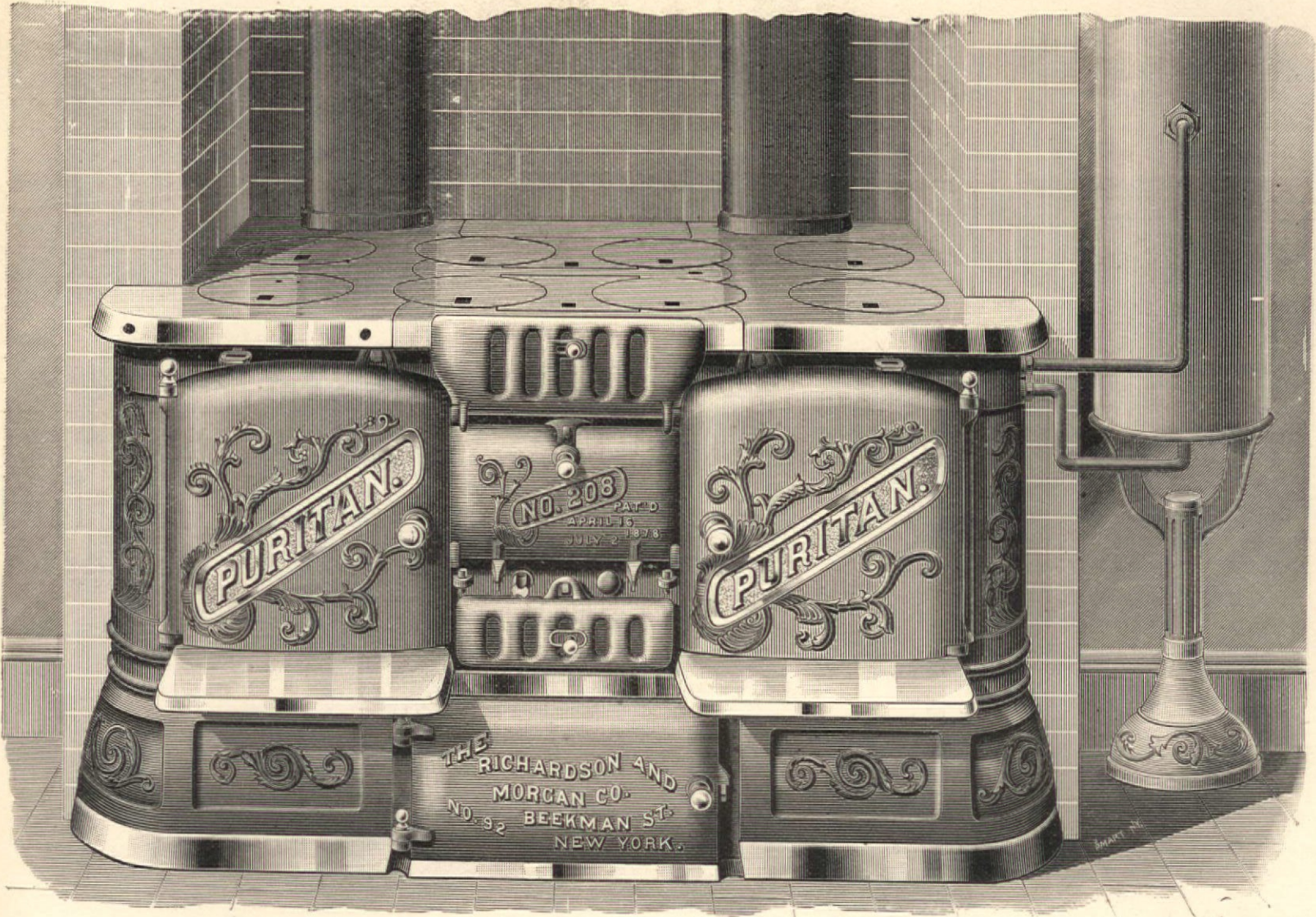
City or Town,

State,

Please remit by Money Order, Registered Letter or Draft, on New York, payable to the order of A. J. BICKNELL.

RICHARDSON'S

Puritan Range.



THE MOST PERFECT, EFFICIENT, AND ATTRACTIVE DOUBLE OVEN RANGE IN THE MARKET. IT WILL CERTAINLY PAY YOU TO EXAMINE THIS, AND OUR OTHER LINES OF NEW AND IMPROVED GOODS, ESPECIALLY OUR IMPROVED CYCLONE FURNACES AND COMBINATION STEAM AND HOT-WATER BOILERS.

MANUFACTURED ONLY BY

THE RICHARDSON & MORGAN CO.,

No. 92 BEEKMAN STREET,

NEW YORK.

THE GREAT IMPROVEMENT IN ROOFING.

We are now ready to supply the product of entirely new machinery and processes just completed, by which we not only have greatly improved the strength and durability of our well-known ASBESTOS ROOFING, but have also secured a degree of uniformity never before attained in any similar fabric. We offer this as the PERFECTED form of the portable Roofing which we have manufactured with continued improvements during the past thirty years, and as the most desirable Roofing for general purposes.

The important features of our recent improvements, for which Patents have been allowed in this Country and in Europe, are described in our new circular, which, with samples, will be sent free by mail.

Our Asbestos Roofing is now in use upon Factories, Foundries, Cotton Gins, Chemical Works, Railroad Bridges, Cars, Steamboat Decks, etc., in all parts of the world for use, in rolls of 200 square feet, and weighs with Asbestos Roof Coating, ready for shipment, about 85 pounds to 100 square feet. It is adapted for steep or flat roofs in all climates, and can be readily applied by unskilled workmen.

There are inferior imitations of our Asbestos Roofing, purchasers are cautioned.

Samples and Descriptive Price List free by mail.

H. W. JOHNS MANUFACTURING CO.,

SOLE MANUFACTURERS OF

H. W. Johns' Asbestos Liquid Paints, Fire-Proof Paints, Building Felt, Steam-Pipe and Boiler Coverings, Asbestos Steam Packings, Caskets, etc. Vulcaboston Moulded Rings, Washers, etc. 87 Maiden Lane, New York.

Wheeler's Patent Wood Filler

For beauty of finish and durability no wood should be naturally finished without first filling the pores with this article. Specified by all prominent Architects. In use ten years. The wood-work of the principal public and private buildings throughout the world are and have been treated with it. Beware of Infringements. 1890 Illustrated Catalogue on Hard Wood finish sent free to any address

The Bridgeport Wood Finishing Co.,

Principal Office: New Milford, Conn.

New York Office, 240 Pearl St.

Chicago Office and Warehouse,

211 East Randolph Street, Chicago, Ill.

Mention "The A. & B. Monthly."

A SAMPLE COPY OF THE "Architectural Era,"

AN ILLUSTRATED MAGAZINE,

Will be mailed free to readers of "THE A. & B. MONTHLY."

D. MASON & CO., Publishers, Syracuse, N. Y.

A \$5 Book For \$1.00.



How To Build A House.

If you are thinking of building a house you ought to buy the new book, Palliser's American Architecture, or every man a complete builder, prepared by Palliser, Palliser & Co., the well known architects.

There is not a builder or any one intending to build or otherwise interested that can afford to be without it. It is a practical work and everybody buys it. The best, cheapest and most popular work ever issued on Building. Nearly four hundred drawings. A \$5 book in size and style, but we have determined to make it meet the popular demand, to suit the times, so that it can be easily reached by all.

This book contains 104 pages 11 x 14 inches in size, and consists of large 9 x 12 plate pages giving plans, elevations, perspective views, descriptions, owners' names, actual cost of construction, no guess work, and instructions How to Build 70 Cottages, Villas, Double Houses, Brick Block Houses, suitable for city suburbs, towns and country, houses for the farm and workmen's homes for all sections of the country, and costing from \$200 to \$6,500; also Barns, Stables, School Houses, Town Halls, Churches, and other public buildings, together with specifications, form of contract, and a large amount of information on the erection of buildings, selection of site, employment of Architects. It is worth \$5.00 to any one, but I will send it in paper cover by mail postpaid on receipt of \$1.00; bound in cloth, \$2.00. A large all orders to D. MASON & CO., Publishers, P. O. Box 3706, 57 Rose St., New York.

Peerless Mortar Colors.

BLACK, RED, BROWN AND BUFF.

THESE COLORS ARE PERMANENT AND SUPERIOR TO ANY ARTICLE IN USE.

Prepared only by

SAMUEL H. FRENCH & CO.,

PAINT MANUFACTURERS,

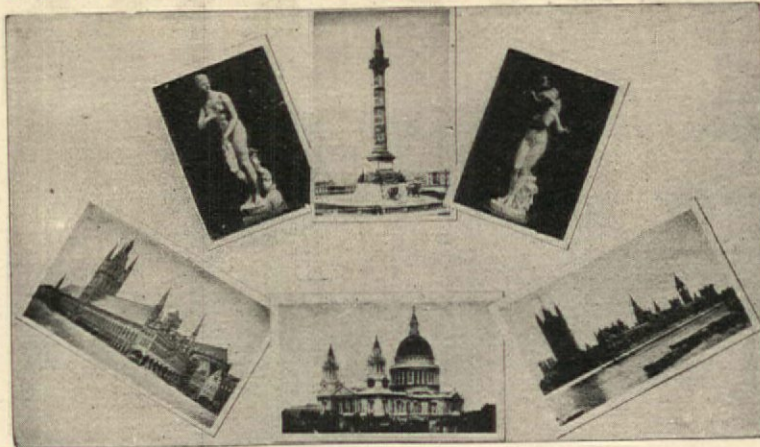
Importers, Dealers and Manufacturers of Painters' and Builders' Supplies,

York Avenue, Fourth and Callowhill Streets,

Send for Circular and Catalogue.

PHILADELPHIA, PA.

THE BUILDING BUDGET.



A Journal of Architecture and Kindred Arts.

INSTRUCTIVE AND INTERESTING TO ALL ARCHITECTURAL READERS. Published Monthly at Chicago. 63 and 65 WASHINGTON ST.

PENNSYLVANIA GLOBE GAS LIGHT CO.

IMPROVED ROYAL AND ELKINS GAS MACHINE

SOLE MANUFACTURERS OF THE

IMPROVED ROYAL AND ELKINS GAS MACHINE

THE BEST IN THE MARKET

22 TO 28 SO 15TH ST.

PHILA'DA.

115 BROADWAY

NEW YORK

195 MICHIGAN ST.

CHICAGO.

FOR ALL KINDS OF GAS MACHINES NAPHTHA & GASOLINE

CONTRACTORS FOR LIGHTING CITIES AND TOWNS WITH THEIR RENOWNED SYSTEM OF SELF-GENERATING GAS LAMPS OVER 50,000 IN USE

ELECTRO-LIGHT ENGRAVING CO. DESIGNING & ENGRAVING FOR ALL Mercantile and Artistic Purposes.

Color work a Specialty. Electrotyping in all Branches.

All reproduced Photographic and Line Work shown in this Journal was done by this Company.

Terms Reasonable and Work First-Class. Send Copies for Estimates.

Office, 157 and 159 William Street, - - New York.

THE GRAVES ELEVATORS

PASSENGER AND FREIGHT

L. S. GRAVES & SON, NEW YORK, 92 & 94 LIBERTY ST. BOSTON, 113 DEVONSHIRE ST.

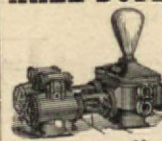
ROCHESTER, N. Y.

ST. LOUIS, 301 ROE BUILDING.

DETROIT, HODGES BUILDING.

CATALOGUE ON APPLICATION.

HALL DUPLEX STEAM PUMPS.



For Residences, Flats, Hotels, Fire Service and all Factory Purposes. Prices as low as any first-class pump, \$35 and upwards. Send for 1890 Illustrated Circular.

HALL STEAM PUMP CO., 91 LIBERTY ST., NEW YORK.

HALL & GARRISON, Interior Fittings,

For Dwellings, Offices, Stores, &c., in all kinds of wood, finished and fitted up.

HARDWOOD MANTELS AND CABINETS. N. Y. Office, 280 BROADWAY, cor. Chambers St. Factory in Philadelphia. HENRY C. ADAMS, Mgr.

JUST PUBLISHED.

Elevations, Plans, Details and Specifications

A MODEL ARTISTIC HOME,

By Lawrence B. Valk & Son,

COSTING \$2,500.

Including full working drawings. This house can be easily executed by any carpenter or builder. Price of complete drawings, \$5.00. Post-paid by

A. J. BICKNELL,

115 BROADWAY, NEW YORK

Building Trades

JOURNAL,

St. Louis, Mo.

A twenty-eight page Illustrated Monthly Journal devoted to Architecture and the Building Interests of the West and Southwest.

ESTABLISHED 1883.

Published the first of each month at 721 Pine St., St. Louis, Mo

W. G. PIERCE, Editor.

PARKER H. PIERCE, Business Manager

Subscription Price, \$2.00 Per Year.

To advertisers who wish to introduce their goods throughout the West and the rapidly growing Southwest—the market for building materials and appliances—the Journal offers superior inducements.

Advertising rates made known on application.

ADDRESS

The Building Trades Journal

ST. LOUIS, MO.

TALTENEDER & SONS MANUFACTURERS OF SUPERIOR IN WORKMANSHIP CONSTRUCTION TEMPER AND FINISH. GENUINE ALTENEDER DRAWING INSTRUMENTS THE BEST MADE. CATALOGUE ON APPLICATION. BEWARE OF INFERIOR IMITATIONS.

writing Advertisers, please mention "The A. & B. Monthly" and oblige them and the Publisher.

CORTRIGHT



Metal Roofing, Tiles and Slates



Storm-Proof, Fire-Proof, Durable, Handsome

Illustrated Catalogue Free.

Cortright Metal Roofing Co.,
PHILADELPHIA, PA.

Western Office, 720 Delaware St., Kansas City, Mo.
Eastern Office, 83 Cedar St., N. Y. City.



J. C. French & Son,
Vault and Sidewalk

LIGHTS

Of Every Description.
155 West Broadway, N. Y.



C. F. HOLLINGSHEAD,
Wrought-Iron Railings
ROOF CRESTING,
Doors, Shutters.
COOPER'S POINT IRON WORKS
Camden, N. J.

DRAUGHTSMEN'S SENSITIVE PAPER
FOR COPYING DRAWINGS & C. IN
WHITE LINES ON BLUE GROUND
BY LIGHT AN EXCEEDINGLY CHEAP & SIMPLE METHOD
AMATEUR PHOTOGRAPHIC OUTFITS
SEND FOR THOS H McCOLLIN 635 ARCH ST
PRICE LIST PHILADELPHIA PA.

FOR
SUBSCRIPTION BLANK
See Page 12.


PRESS NOTICE
FROM
MONTHLY RECORD
OF
SCIENTIFIC LITERATURE.
Published by D. VAN NOSTRAND & COMPANY
23 MURRAY ST. and 27 WARREN ST.,
NEW YORK.

The first two issues of the "Architectural and Building Monthly" are creditable to both publisher and printer. This journal is one of practical designs and details, simply consisting of a series of plates and descriptive letterpress. No editorial or other extraneous matter is incorporated in it, so that twelve numbers, a year's issue, will form a volume of architectural designs and facts complete in itself. There is really nothing of this character published as a journal. The price is 50 cents per number or \$5.00 per year.




Samples of this Lathing sent to the readers of the A. & B. Monthly free.

SEE Page 12
For Blank Order.

Labor Saving  **Forstner Auger Bit**
THE B. G. I. CO.
NO EQUAL ON EARTH.
BORING SMOOTH, ROUND, OVAL AND SQUARE HOLES, MORTISING, ETC. Superior to the old center guided bits. Invaluable to all Wood-Workers. Send \$4.25 for set (3-8 to 11-8) in fine cloth case, or 50c. for 4-8 sample, mailed free. Illustrated Price-list on application. Highest awards, American Institute, N. Y., 1885-6-7 for sale everywhere.
THE B'PORT CUN IMP. CO., 17 Maiden Lane, New York City.

JOSEPH B. TIFFANY & CO.,
SPECIALISTS IN
Constructive and Decorative Fine Art.
INTERIOR COLOR TREATMENTS, WOOD WORK, METALS, MASONIC, ORNAMENTAL AND ECCLESIASTICAL GLASS.
12 East 22d Street, New York.

 **"PEDAL VALVE"** For Direct Radiators. Radical Improvements for 1890. Mechanism simplified one-half. Prices reduced. Valve seats with the pressure and the greater the pressure the tighter it will close. Seat is perpendicular and chips and dirt fall away from it. A touch of the foot will turn the heat on or off. Patented in the U. S. and Canada. Circulars on application.
UTICA STEAM GAUGE CO., Utica, N. Y.

Gibbs' English Portland Cement.	HOWARD FLEMING, 23 Liberty Street, New York. SOLE AGENT. Send for Circulars and Testimonials.	Ingram's English Enamelled Bricks.
----------------------------------------	---------------------------------------------------------------------------------------------------------------	-------------------------------------------

Club Offer.
Our offer for a Club of five or ten subscribers for this Journal will be forwarded on application,

GLASS Ornamental, Ground, Cut, Beveled and Embossed. For Dwellings, Railway Cars, Steamboats, Offices, Banks, Churches, Etc.
POTTS BROTHERS, M'rs 48 and 50 DUANE ST., NEW YORK.
Estimates, Photographs and Designs sent on Application.

ROOFING. Asbestos and Building Paper, Sheathing, Deadening and Roofing Felts. Coal Tar Products and all kinds of Roofing Materials. Samples and prices to readers of "A. & B. Monthly" free.
JOHN C. TAIT, 100 Maiden Lane, N. Y.

ELECTROTYPES For the advertising department of this Journal are made by us. We refer to the publisher for the quality and promptness in the execution of our work. Send for estimates for large or small work.
SEEBECK BROS., 41 and 43 Beckman St., New York.

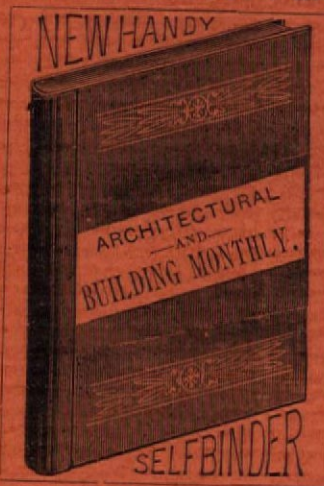
OMEGA VENTILATING GRATE. Saves Fuel. Gives Uniform Heat and Perfect Ventilation. Cost Reasonable. Catalogue free on Application. Address **THE OMEGA GRATE CO., CHICAGO.**

PORTABLE HOUSES. For Illustrated Circular and Estimates for Portable and Permanent Buildings, address **THE PORTABLE HOUSE MANUFACTURING CO., 335 Broadway, New York, or Tenafly, N. J.**

Esterbrook's Pens. Standard and superior quality. Leading Nos. 048, 14, 130, 125, 239, 313, 333. All stationers have them.
THE ESTERBROOK STEEL PEN CO., 26 John Street, New York.

NATH'L CHENEY. CHAS. HEWLETT

CHENEY & HEWLETT,
Architectural Iron Works,
OFFICE,
207 BROADWAY,
NEW YORK.
WORKS:
GREENPOINT, L. I.

Price \$1, Post-Paid.

NEW HANDY
ARCHITECTURAL AND BUILDING MONTHLY.
SELFBINDER
Free With One Year's Subscription, Paid For in Advance.

FOR
TILES MANTEL FACINGS, HEARTHES, DADOS, ETC., ETC.
THE PROVIDENTIAL TILE WORKS,
MANUFACTURERS,
P. O. Box 603. TRENTON, N. J.


ARCHITECTS AND BUILDERS Should send for and read our argument on construction of **LIGHTNING RODS,** and if they believe in our reasons given they will order rods which will PROTECT, last long and look neat. Our Hollow Square Copper Rod is universally approved by scientists.
J. D. WEST & CO., 40 Cortlandt St., N. Y.

SUBSCRIPTIONS for this Journal in Philadelphia and vicinity may be sent through **JOHN WANAMAKER,** who will also supply single numbers.

In writing Advertisers, please mention "The A. & B. Monthly" and oblige them and the Publisher.



DETROIT SURE GRIP
STEEL TACKLE BLOCK,
HALF THE COST of hoisting saved
to Machinists, Builders, Contractors,
and OTHERS. Admitted to be the
greatest improvement EVER made in
tackle blocks. Freight prepaid. Send
for catalogue.
PULTON IRON & ENGINE WORKS.
Estab. 1852. 26 Brush St., Detroit, Mich.

GRANOLITHIC

SIDEWALKS, FLOORS, AND FIRE-PROOF
STEPS, LANDINGS, AND CORRIDORS.
STAR ASPHALT.
Sanitary Cellars, Floors, Arches, Etc.
STAR ROOFING.
Sparham Cement Roofs, guaranteed for ten years.
Tin Roofs Covered.
MATT TAYLOR PAVING CO.,
15 STATE ST., NEW YORK.

BUILDERS AND SLATE ROOFERS

—IN WANT OF—
Roofing Slate or Black-Boards
WILL FIND IT TO THEIR ADVANTAGE
TO CORRESPOND WITH
T. M. LOISE, Elmira, N. Y.

The McTear Flax Felt Mfg. Co.,
MANUFACTURERS OF
ROOFING and ROOFING MATERIALS,
Sheathing and Lining Felts.
Send for Descriptive Catalogue to
292 PEARL ST., NEW YORK.
Samples and Price-List Mailed Free.

The Eureka Building
Specifications Advertised on
another page will be found
adapted to most of the designs
published in this Journal.

MAC KNIGHT FLINTIC STONE CO.

—MAKE THE BEST—
Artificial Stone Sidewalk & Curb,
FLOORS AND TILING.
Wash-tubs and Sinks, Fire-Proof Flintic Stone Roofs. Also Best
and Cheapest Fire-Proofing. Illustrated Circular
on application.
Office, 150 Broadway, New York.

FOR 68-page Illustrated Catalogue, Price
List and Testimonials of the following Blinds:
Outside Venetian, Rolling Steel Shutters, English
Venetian Blinds, Rolling Venetian Blinds, Rolling
Partitions, School Venetian. Address

JAS. G. WILSON,
Patentee and Manufacturer of Blinds and Shutters
74 West 23d Street, Cor. 6th Ave.
Telephone No. 486, 21st, NEW YORK.

NEW YORK

Photo & General Lithographing.
Reproductions of Steel, Copper,
Stone and Wood Engravings, Etc.,
Etc., at low Prices.

Estimates for any number of reproductions
promptly given on receipt of drawings.

For Sample of Work See the Full Plate
Illustrations in this Journal.

ROBT. A. WELCKE,
178 Wilham Street, N. Y.

SEE PAGE 12 FOR
PROSPECTUS.



SKETCH OF COTTAGE "A".

For elevations, timber and floor plans see April Issue. For exterior and interior details see this issue.

ROOFING.

Do you want any SHEATHING PAPER OR HOUSE PAINT?
Sample Free. Send for Special Price.
INDIANA PAINT & ROOFING CO., New York.

GEM SPRING HINGES.

For Doors.	Length		Japanned.		Copper Bronzed.		Real Bronze and Brass.	
	Feet.	Inch.	Single Acting Per pair.	Double Acting Per pair.	Single Acting Per pair.	Double Acting Per pair.	Single Acting Per pair.	Double Acting Per pair.
6x2 x 3/4 to 1 1/4	3 1/2	in.	63 \$0 70	83 \$1 40	\$2 00	\$3 75	\$3 00	\$6 00
7x2 x 1 to 1 1/4	4	in.	64 0 90	84 1 75	2 50	4 75	3 75	7 00
7x2 1/2 x 1 to 1 1/4	5	in.	65 1 10	85 2 20	3 00	5 75	4 75	8 50
7x2 1/2 x 1 to 1 1/2	6	in.	66 1 40	86 2 80	3 75	6 75	5 75	10 25
8x2 1/2 x 1 1/4 to 1 1/2	7	in.	67 1 75	87 3 50	4 50	8 25	7 00	13 25
8x2 1/2 x 1 1/2 to 2	8	in.	68 2 50	88 5 00	5 50	10 50	9 25	17 00
9x2 1/2 x 1 1/2 to 2 1/4	10	in.	69 3 50	89 7 00	7 50	14 25	12 25	23 00
10x2 1/2 x 2 to 3	12	in.	70 4 50	90 9 00	10 00	18 00	16 50	33 00

Manufactured by **VAN WAGONER & WILLIAMS CO.,**
82 Beekman St., New York.
CLINTON H. MENEELY BELL COMPANY,
—MANUFACTURE SUPERIOR—
Church, Chime, Peel, School and Court House Bells,
TROY, N. Y.

Centrifugal, Rotary and Piston Power
Pump, and House Pumps,
Over 800 Varieties of Brass Lift and Force Pumps.



SEND FOR ILLUSTRATED CATALOGUE.
400 Seneca Street, **Rumsey & Company, Ltd.,** Seneca Falls, New York.

ELEVATORS AND DUMB WAITERS.



The Wythe (patent) is superior to any other machine for Dumb Waiters. The load is absolutely controlled by a self-acting stop, concealed within the head; this stop is substantially a **LOCK**, and the Hand Wheel is the Key; no visible brake, clamp or check rope. It cannot run down of itself no matter how heavy the load. Pull one way to raise, the other to lower. It is very durable, the controlling parts being made of steel, Malleable Iron and Bronze; any part broken or worn can be duplicated at small cost. See cut.

Specially adapted for **Hotels, Dining Rooms, Restaurants** and all places where absolute safety in raising or lowering is required.

WYTHE No. 2, Same as above, but geared for heavier work, Light Elevators, Invalid Lifts, Etc. One man can raise 300 to 500 pounds.

For Illustrated Circular and Price List mention **A. & B. MONTHLY** and Address,

JOHN Q. WAYNARD, 12 Cortlandt Street, New York.

HOW TO SECURE A GOOD TIN ROOF.

Use the Genuine "Old Style" Brand. The Original Brand—the Standard Tin that has been so often imitated. It has stood a practical test of over 40 years and then been found just as good as when first put on.
N. & G. Taylor Co. offer the following absolute protection in the use of their special brand of Roofing Tin:
1st. By guaranteeing every sheet to be perfect, square and true to standard gauge, all Wasters rigidly excluded.
2d. Guaranteeing the sheets to be heavier coated than any of its imitations.
3d. Every sheet stamped with the name of N. & G. Taylor Co. It being the only tin made that bears the name of the guarantor upon the sheets.
4th. Protection by stamping the Registered Trade Mark of Target and Arrow, also the thickness and the name "OLD STYLE" on each sheet.
5th. If the tin should not be found as represented it will be removed from the roof and replaced, the expense being borne by the guarantor, N. & G. Taylor Co.
N. & G. Taylor Co. originated the idea of stamping the brand and the thickness on sheets of tin. They were also the first to offer a bona fide guarantee to Architects, Property Owners and Tin Roofers. They publicly challenge contradiction on these two points. They further assert that through their exertions a complete change has been wrought among the trade. Bidders placed on an equal, more honest work done and better tin used.
Our book "How to Secure a Good Tin Roof," sent free to any address, also samples of Tin, etc.

N. & G. TAYLOR CO.
Established 1810—Sixty year.
Chicago. Philadelphia. Liverpool.

The "Calumet."

PRICE.
With Copper Lined Cistern, - \$20.00
With Cabinet Cistern and Seat, 35.00



Ivory Tinted Embossed Back Outlet Closet.

GEO. A. BLESSING & Co.,
Plumbing Goods and * * *
* * * Sanitary Appliances.

Illustrated Circular of our Specialties in Fine Wood Work and Nickel Goods mailed free.

290 PEARL ST., Near Beekman,
Formerly 52 Cliff Street.
NEW YORK.

Art Stained Glass

Belcher Mosaic Glass Co.,

HENRY F. BELCHER, Pres.
123 Fifth Avenue, - New York.

Designs and Catalogue sent free to readers of Architectural and Building Monthly.

ART STAINED GLASS

FOR CHURCHES, DWELLINGS, ETC.
Designs and Estimates on Application.
KEYSTONE STAINED GLASS WORKS.
S. 5th, near Locust St., PHILADELPHIA.