

THE ARCHITECTURAL AND BUILDING MONTHLY

A JOURNAL OF PRACTICAL DESIGNS & DETAILS

Vol. 1. No. 1. APRIL, 1890.

A. J. BICKNELL, PUBLISHER. [Entered at New York Post Office as second-class matter.] 115 BROADWAY, NEW YORK.

MORSE ELEVATOR WORKS.

MORSE, WILLIAMS & CO.,
Builders of all kinds of
PASSENGER AND FREIGHT ELEVATORS,
Automatic Hatch Doors
A SPECIALTY.
Send for Illustrated Circular.

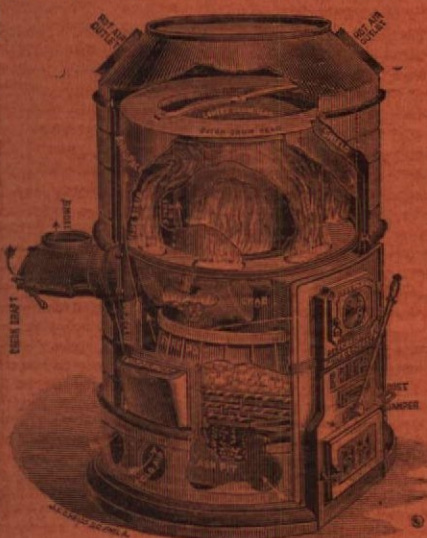
Office, 1105 FRANKFORD AVE.,
Works, Frankford Ave., Wilder
and Shackamaxon Sts.,
PHILADELPHIA.

N. Y. Office, 108 Liberty Street.
Boston Office, 14 High Street.

ACADEMY OF BUILDING.
Academy of Architecture and Building. An Institute
for Theoretical and Practical Education for Building
Tradesmen. 306 South 9th St., St. Louis, Mo. Terms
begin September, December and March. Send for pro-
spectus. H. MACK, Principal.

FOR SUBSCRIPTION BLANK
See Page 9.

Little Fuel-Great Heat-No Dnst.



Houses are healthier and more comfortable
heated with a Furnace, and cost no greater
than stoves.
The Novelty Line of Hot-Air Furnaces give
entire satisfaction and are the best to use.
Send for descriptive circular, showing plans for
setting, complete to heat 4 rooms at a cost of \$50.

ABRAM COX STOVE CO.,
250 Water St., New York.
W. B. WILKINSON, Mgr.

ZIMDARS & HUNT,

PATENTERS AND MANUFACTURERS OF

AIR BELLS

FOR PUBLIC BUILDINGS, DWELLINGS, ELEVATORS, ETC.

No Wires. No Batteries.

237 MERCER ST., - NEW YORK.

Do you want any **ROOFING,**
SHEATHING PAPER OR HOUSE PAINT?
Sample Free. Send for Special Price.
INDIANA PAINT & ROOFING CO., New York.

[SAMPLE OF WINDOW
MANUFACTURED BY



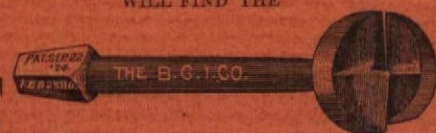
Postel's
Stained
Glass Works.

Estimates
for
Architects
and
Builders
Promptly
given
on
Application.
Work
Shipped
to
any part
of the
Country.
Prices
Moderate.
Address

C. H. POSTEL & CO., 1314 & 1316 Ridge Ave., Philadelphia, Pa.

ALL PROGRESSIVE CARPENTERS, BUILDERS AND WOOD WORKERS
WILL FIND THE

FORSTNER AUGER BIT



INDISPENSABLE
FOR
CAREFUL WORK.

For Smooth, Round, Oval or Square Boring, Scroll and Twist Work.

Highest Award, American Institute Fair, 1885-6. Pat. Sept. 22d, 1874 and Feb. 23d, 1886.

Send for PRICE-LIST, TESTIMONIALS and DIRECTIONS FOR USE, to

THE BRIDGEPORT GUN IMPLEMENT CO.,

Our 4-8 inch sample bit mailed free on receipt of
55 cents in stamps. DEPOT FOR SALES:
17 MAIDEN LANE, NEW YORK.

DRAWING INSTRUMENTS, DRAWING PAPER, BLUE PROCESS PAPER, AMERICAN LIQUID INK.

A fully illustrated and priced catalogue of 200 pages,
of all instruments and materials used by draughtsmen,
sent upon mention of this paper.

G. S. WOOLMAN,
116 Fulton Street,
NEW YORK.

DRAFTING PENCILS.

Every builder is obliged to do more or
less drafting, and nothing is more annoy-
ing than to get hold of a pencil that is
gritty or has a crumbling lead. Dixon's
American Graphite "Artists" Pencils
have the smoothest and toughest leads of
any pencils made. If you do not know this
mention *The A. and B. Monthly* and
send 9 cents in stamps for samples
worth DOUBLE the MONEY, to

JOS. DIXON CRUCIBLE CO.,
JERSEY CITY, N. J.

80-Page Illustrated Catalogue of
over 250 Designs of Superior
Weather Vanes,
Tower Ornaments,
Church Crosses,
Finials, Etc., Etc.
Mailed to any address for two-
cent stamp—half the postage.
T. W. JONES, Manufacturer,
170 & 172 Front St., New York.

Decorate
Your



Own
Windows

M'CAW, STEVENSON & ORR'S PATENT.

Glacier Window Decoration and Glacier Letters.

Low-priced, Effective, Durable and
Satisfactory, gives all the effects of the
most expensive Stained Glass at a frac-
tion of the cost. Illustrated Circular
free by mail.

HENRY H. ROSS,
UNITED STATES AGENT,
56 Pine Street, - New York.
Sub-Agents in States or Cities Wanted.

IN YOUR SPECIFICATIONS
INCLUDE

THE BOSTON SANITARY CHECK VALVE,

For Checking Escape of Sewer Gas
From Fresh Air Inlets.

Illustrated Circular and Price List on Application.

H. H. SAWYER & CO.,

292 WASHINGTON STREET, BOSTON.

Peerless Mortar Colors.

BLACK, RED, BROWN AND BUFF.

THESE COLORS ARE PERMANENT AND SUPERIOR TO ANY ARTICLE IN USE

Prepared only by

SAMUEL H. FRENCH & CO.,

PAINT MANUFACTURERS,

Importers, Dealers and Manufacturers of Painters' and Builders' Supplies.

York Avenue, Fourth and Callowhill Streets,

Send for Circular and Catalogue.

PHILADELPHIA, PA.

ESTABLISHED 1837.

PURE IMPERIAL WHITE LEAD.

(REGISTERED TRADE MARK.)

Snow White and of Great Durability. Will wear longer than any other Lead made
WILL NOT CHALK OR PEEL OFF.

TRADE Pure Imperial Paints. MARK.
(READY MIXED FOR USE.)

These Paints are *not* made by any secret or patent method, and, unlike most brands of "Ready Mixed" Paints now on the market, contain no Benzine or Water, but consist *Solely* of the Best and most Durable Pigments combined with pure Linseed Oil. *Send for 1890 Sample Cards and Price List.*

ROBERT SHOEMAKER & CO.,

Manufacturers of Paints and Varnishes,

N. E. Cor. Fourth & Race Sts., Philadelphia.

IS YOUR HOUSE

NEARING COMPLETION?

Then you will soon need to

Decorate the Walls and Ceilings.

WHY NOT TRY

LIGNOMUR

TRADE MARK

"The Manufacturer and Builder" says of this New Material:

"It may safely be commended to the notice of architects, builders, decorators, and the wall-paper trade as a meritorious invention worthy of their attention."

Call or Send for Samples.

AMERICAN DECORATIVE CO.,
116 PEARL ST., BOSTON.

SEND STAMPS FOR SPECIMEN.



Edited by CHAS. O'C. HENNESSY,

President Daily News Co-operative Building and Loan Association, and Secretary Metropolitan League of B. and L. Associations.

Published by THE HOME-SEEKER Printing and Publishing Co., 258 Broadway, New York. Stock owned entirely by members of B. and L. Associations.

KNOWLEDGE IS POWER.

THE HOME-SEEKER teaches the TRUE CO-OPERATIVE road to WEALTH and HAPPY HOMES, and how to avoid the traps of expensive associations of private capital, which imitate co-operation. Fifty thousand HOME OWNERS are created yearly in the United States without individual capital, but by using the rent money for CO-OPERATIVE PURCHASE. You should know the difference between true co-operation and the bogus kind. THE HOME-SEEKER advises WHERE TO BUILD, HOW TO BUILD, HOW TO FURNISH, HOW TO DECORATE, HOW TO ORGANIZE BUILDING ASSOCIATIONS, What they are, What they do, Where to find them, How to join them.

A PROFITABLE INVESTMENT OF ONE DOLLAR.

Subscribe now and start right. Send \$1.00 to

HOME-SEEKER,

258 BROADWAY, NEW YORK.

Advertising Rates and Estimates cheerfully furnished upon Application.

Thorn's Patent Metallic Roofing Tiles & Shingles.



The best, most handsome, durable and secure roofing plates yet offered to the building trade.

INDORSED BY ALL THE LEADING ARCHITECTS.

TEN SIZES AND DESIGNS.

Send for Illustrated Catalogue.

ADDRESS

THORN SHINGLE & ORNAMENT CO.,
1227 Callowhill St.,
PHILADELPHIA, PA.
Mention A. & B. Monthly.

THE

"BUILDING NEWS"

Published at

97 Oliver Street, Boston, Mass.

BY THE

BUILDING NEWS CO.

A Weekly Journal Devoted to Building Interests. Issued every Saturday.

CONTAINING the Freshest and most Authentic News that it is possible to obtain in regard to Buildings contemplated and in process of erection, by means of special correspondents in all the Cities and prominent Towns of New England, and through correspondence with all the Architects in the same section; Real Estate Transfers and Mortgages in Boston, the largest list of Building Permits published by any journal on Building matters; Trade Notes for the benefit of patrons; in short, all news in regard to building or in any way allied therewith.

Subscription \$5.00 Per Year. Advertising Rates upon Application.

As a means of introducing a specialty to the notice of New England Architects and Builders, the "BUILDING NEWS" is positively without a rival, as it is the only paper that covers the ground. Address all communications to the

BUILDING NEWS CO.



Only Stone Tubs sent to Paris Exhibition 1889.

EMPIRE GRANITE CO., 625 & 627 E. 15th St., New York City.

GRANITE LAUNDRY TUBS & SINKS.

NEVER WARP AND NEVER LEAK.

Made in One Solid Piece.
Cheaper than Wood.
More Durable than Iron.

Send for Illustrated Circular and Price-List. Special Terms to Architects and Builders specifying our goods. We have the largest capacity for the manufacture of these wares. No stone tubs are of such hard quality or made so perfectly.

ELECTRO-LIGHT ENGRAVING CO., DESIGNING & ENGRAVING FOR All Mercantile and Artistic Purposes.

Color work a Specialty. Electrotyping in all Branches.

All reproduced Photographic and Line Work shown in this Journal was done by this Company.

Terms Reasonable and Work First-Class. Send Copies for Estimates.

Office, 157 and 159 William Street, New York.



CHAS. E. LITTLE, 59 FULTON STREET, New York.

Will send Illustrated Price List of Mechanics' Tools, Brass, Cabinet Hardware and Pressed Wood Ornaments to Readers of A. & B. MONTHLY Free. Also Supplies

W. F. & J. BARNES' WORKSHOP MACHINERY
At Factory Prices.

P. PRYIBIL,

518-524 W. 41st St.

NEW YORK CITY.

MANUFACTURER OF

SUPERIOR

SHAFTING,



Corner Block Machines. Twist Machines.

PULLEYS AND HANGERS,
And Other Wood-Working Machinery.



LATHES, All Sizes.

Send for 80-Page Illustrated Catalogue.

BUTCHER'S BOSTON POLISH

OR

HARD-WAX

Is the Best Finish for

FLOORS.

BUTCHER POLISH CO., 9 & 11 Haverhill Street, BOSTON, MASS.

The Great CHURCH LIGHT

Frink's Patent Reflectors for Gas, Oil, or Electric give the most powerful, softest, cheapest, and best light known for Churches, Stores, Banks, Theatres, Depots, etc. New and elegant designs. Send size of room. Get circular and estimate. A liberal discount to churches & the trade. Don't be deceived by cheap imitations. I. P. FRINK, 531 Pearl St., N.Y.

See PAGE IX FOR

PROSPECTUS.

BOOKS ON BUILDING

And the Allied Arts.

LATEST WORKS ISSUED.

Palliser's Court Houses, City Halls, Jails, Etc.
Palliser's Common Sense School Architecture.

Each Containing 85 plates.

Specification and Contract Blanks, etc.

Full descriptive lists mailed on application; also of all American and Foreign Building Journals with club rates.

PALLISER, PALLISER & CO.,
24 East 42d St., New York

DESCRIPTION OF PLATES.

Plate No. 1.

A DESIGN FOR FRONT STAIRS AND DETAILS.

This plate shows the end view of a simple landing and staircase suited for a "Reception Hall" now arranged in many houses. The landing has been extended beyond the distance required by the stairs to include, with the rail at the seat and the arched form at the ceiling, the entire end of the hall; the cornice to be of wood. The thin bands forming panels would be placed directly on the plastering or over Lincrusta Walton, thick paper in relief pattern, canvas, or similar wall treatment, and is one of the most inexpensive methods of wainscoting.

The arch at recess under stairs, is to be filled in with thin strips of wood like basket splints braided, and would look well finished like the other woodwork, or might be bronzed with good effect.

Plate Nos. 2, 3 and 4.

ELEVATIONS, FLOOR AND FRAMING PLANS OF COTTAGE A.

Exterior.—The foundation walls are of stone underpinning, rock face-work. Cellar under entire house and stone cistern in cellar. Posts twenty feet, cellar eleven feet high in the clear. The exterior frame is sheathed, papered and clapboarded. Gables and roof shingled. The exterior is painted with three coats of paint, the colors being warm, light chocolate for body and darker tint of same for trimmings. Paint the entire porch with trimming color. Prominent features, porch, gables, etc., to be published in later issues, which will also be suited to similar designs to follow.

Interior.—Has eight rooms besides hall, pantry and closets, arranged with regard to economy and compactness. The hall and staircase are pleasing and attractive features. The interior is finished in pine, natural finish throughout. For further information, refer to plans. The cost of this house is medium.

Plate No. 5.

ELEVATIONS AND PLANS OF A SHINGLED COTTAGE IN THE COLONIAL STYLE.

These drawings give but a limited idea of the architectural beauty and novelty of this house. Its striking appearance attracts immediate attention and a continued study of its lines in perspective brings out symmetry in proportions and originality in design not to be found in many dwellings of moderate cost. Its interior combines all that could be desired in a home. The rooms on first floor although disconnected, are virtually as one room, the broad openings into the hall from each room being without doors, hung with portieres. The four bedrooms on second floor are most desirable in shape, light and airy. Two fine bedrooms on third floor with a large airy attic, make it a model house. For sketch of this cottage see fourth page of cover.

Plate Nos. 6 and 7.

PERSPECTIVE AND DESIGN FOR MODERN COTTAGE.

This house, designed for moderate cost, can be placed upon quite a small suburban lot and has nearly all the conveniences of a much larger house. All rooms on each floor communicating with the hall, and the single staircase is screened in such a way, that use of it by the servants would not be objectionable, as a portiere would completely shut off the stairs from principal rooms if desired.

The details shown indicate the construction of the principal parts. The exterior is intended to be sawed shingles.

Plate No. 8.

A MODEL KITCHEN.

This sheet shows a kitchen arranged with fixtures at side of kitchen as well as in the pantry, with convenient drawers, cupboards, etc. Details are shown for the shelving, with wall molding, a sliding mixing board above the flour barrel and a full lid to serve as a counter when the mixing board is not in use.

The space under kitchen sink is best left open to prevent mould and dampness, common to such places.

The front and end view of china closet, front of sideboard and section through same, also sections of door, drawers, shelves and sink and details of cornice over shelves, will be shown on a scale of $\frac{1}{2}$ to 2 inches to the foot, in an early number.

Plate No. 9.

SHELVES, SEAT AND TABLE COMBINED, ETC.

On this plate are several simple shelves suited for hanging wall shelves "over doors" and corners, with details to larger scales. An example is given of one method for filling a doorway to a shallow closet with enclosed cupboard, drawer, open shelving and a shelf and rail above for bric-a-brac.

A sketch is also given for a combined seat-table and wood box, suited for a hall.

Plate No. 10.

DETAILS FOR INSIDE WINDOW AND DOOR FINISH.

This plate represents details for inside finish in a frame dwelling of moderate cost.

Plate No. 11.

DESIGNS FOR LOW COST COTTAGES.

This plate shows three very low-cost cottages, and illustrates the fact that in order to build a neat and attractive house it is not necessary that it be either large or expensive.

Thus in sketch No. 1 the only change from a square house is the treatment of the angle porch, which has the corner post of the house passing through it, forming one of the columns.

In No. 3 the plan is still simpler. In each of these houses but one chimney is required.

Plate No. 12.

EXTERIOR DETAILS OF

A suburban house recently built at Elizabeth, New Jersey. For a complete set of elevations, plans and a plate of interior details, see following number for May, 1890.

FORECAST OF CONTENTS OF NO. 2, TO BE READY BY OR BEFORE MAY 1.

Number 2 will contain the elevations, plans and interior details of the suburban house of which exterior details are shown on plate No. 12; plans and elevations of another good house just being completed; front and rear view of a picturesque suburban cottage; several designs of mantels in colonial style; several designs of dormer windows with details; elevations, plans and details of double house; a park entrance; and several staircases with details, to working scale.

Business and Personal.

We propose hereafter to make a brief mention from time to time in the interests of our readers and advertisers, under this heading, but on account of want of time we open this department in this issue only to show that it will have a place in this journal.—Ed.

ATTENTION is called to the advertisement of Howard Fleming in another column, whose name and brand of cement and bricks have been well known to our readers for many years, although he is still a comparatively young man and full of vigor. We are informed by him that while his business has largely increased during the last few years he expects to be able to supply all the demands made upon him for his materials during the coming season.

* * *

THE Buffalo Door and Sash Company of Ninth avenue and One Hundred and Twenty-fourth street, New York City, have issued a complete and copiously illustrated catalogue (price list attached) of goods which this enterprising and progressive concern produces. The catalogue is so comprehensive and complete that every architect and builder will find it a valuable addition to his professional library. This price list includes within its covers illustrations of absolutely all styles of doors, sash and outside trim now known to the trade, besides a very large number of entirely novel and original designs conceived in the best taste and executed in the most workmanlike manner. The company have taken great pains and gone to considerable expense to make their catalogue and price list worthy of themselves, and the work it depicts, therefore, they confidently present it to the trade as a complete compendium of designs in doors, sash, blinds, moldings and all forms of inside trimmings. The work deserves a more extended notice than it is here possible to give, but as the company will mail the catalogue without charge to any of our readers who will address them a request for the same, enclosing six cents in stamps for postage, we think it unnecessary to do more than advise our friends to send for one of "The Buffalo Door and Sash Co.'s New Illustrated Catalogue and Price List."

* * *

THE handsome cut illustrating the advertisement of H. A. Vanderbeck, of the Hoboken Iron Works, is not a fancy sketch but a piece of accomplished work now in place.

It decorates the transom over the entrance door of a fine building in an interior city of Pennsylvania.

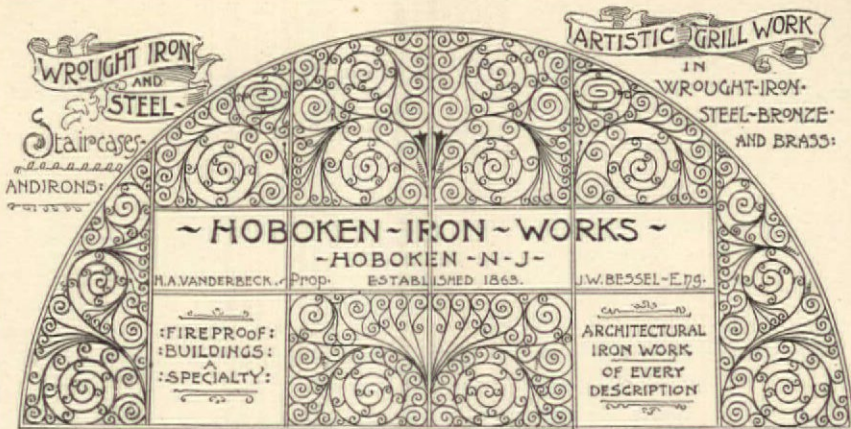
* * *

THE Michigan Radiator and Iron Manufacturing Company, of Detroit, have now opened offices and warerooms at 42 Dey street, New York City, from which point they are ready to fill all Eastern orders. Mr. C. F. Gessert, Manager, will also be pleased at all times to receive their friends and others in the trade. Their new illustrated catalogue, now in press, will be mailed free on application.

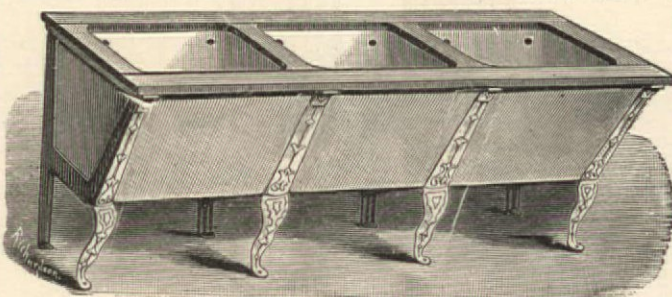
Gibbs' English Portland Cement.

HOWARD FLEMING,
23 Liberty Street, New York.
SOLE AGENT.
Send for Circulars and Testimonials.

Ingram's English Enamelled Bricks.



All First-Class Houses should be Furnished with the Sanitary Tubs of
THE STEWART CERAMIC COMPANY,
Cor. PEARL ST. and PECK SLIP, NEW YORK.



Sole Manufacturers under Morahan's Patents of
THE CELEBRATED SOLID WHITE CROCKERY STATIONARY WASH TUBS.
The only Perfect Sanitary Tubs now in Existence.
VERY STRONG.
No Seams to Open.

ABSOLUTE CLEANLINESS SECURED FOR ALL TIME. WELL GLAZED. WILL NOT ABSORB, LEAK OR DECAY
The only Solid White Crockery Washtub ever made in the world. Do not buy imitations until you see the Genuine "Morahan's Patent" stamped on the front of every tub. Washboard and Soap cup moulded in every set. Will outlast any house.
Solid White Crockery Sinks, comprising Butler's Pantry, Kitchen Slop, &c.,
Made of same material as the Tubs. Very strong, Well Glazed, no labor required to keep clean.
LIBERAL TERMS TO THE TRADE. SEND FOR 1890 ILLUSTRATED PRICE LIST.

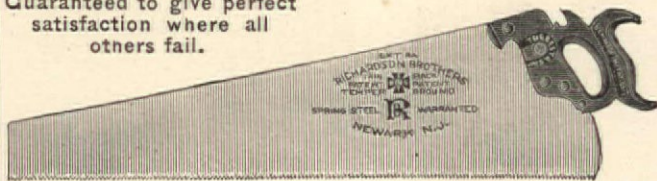
THE RICHARDSON SAWS ARE THE BEST IN THE WORLD.

So say the Thousand of Carpenters who use them, and we want every Carpenter who has not used them to give them a trial.

ONCE USED

ALWAYS USED.

Guaranteed to give perfect satisfaction where all others fail.

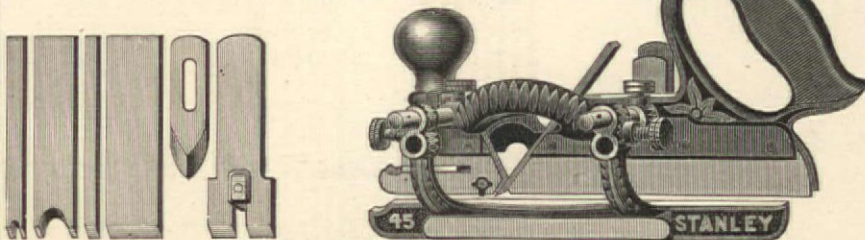


All their Saws are ground TAPER, THIN at the Back, and warranted SMOOTH CUTTERS.

The Richardson Brothers are Thoroughly Practical Saw Makers.

The RICHARDSON SAWS will be sent, Express Paid, direct from the Factory, when they cannot be procured from the Hardware Dealer. Special saws made to order. Send for Illustrated Price List to
RICHARDSON BROS., 15 to 31 River St., Newark, N. J.

STANLEY'S ADJUSTABLE
Beading, Rabbet, Slitting and Matching Plane.
No. 45. Iron Stock and Fence, with Eighteen Tools, Bits, etc., \$8.00
Sold by all Hardware Dealers.



"BURHAM" PORTLAND CEMENT
Imported by JAMES BRAND Office in
Market and Fulton Bank Building, 81-83 Fulton Street, New York.

Beautiful and Lasting for ORNAMENTING WINDOWS, DOORS, TRANSOMS, Etc.

Stained Glass SUBSTITUTE

AT SMALL COST. Send for Illustrated Catalogue and Prices. Samples by mail 25 cents.
SOLE AGENT, 974 ARCH ST., PHILADELPHIA, PA.
W.C. YOUNG,
AGENTS WANTED EVERYWHERE.

THE BUILDERS' GAZETTE
SEMI-MONTHLY

The Exponent of the Building Craftsmen Generally

SUBSCRIPTION, \$2.00 PER ANNUM, IN ADVANCE. SAMPLE COPIES FREE.

The Widest-Spread Circulation of any Building Journal Extant in the Mid-land United States.

LOWEST ADVERTISING RATES, VALUE CONSIDERED.

THE BUILDERS' GAZETTE PUBLISHING CO.
PITTSBURGH, PA.

IF YOU EXPECT TO BUILD OR REMODEL A HOME
SEND 25¢ TO
CUTTING & DELANEY
BUFFALO, N.Y.
FOR THE NEW BOOK,
OUR DOORS AND WINDOWS HOW TO DECORATE
OVER 200 ILLUSTRATIONS



Open Burner, Perfectly White, Smokeless Flame,
PRODUCED BY TIRRELL'S
EQUALIZING GAS MACHINE.
Circulars and full information free to any address.
O. TIRRELL,
39 Dey St., New York.

P & B
WATERPROOF Building Paper.

Cannot Rot, Thoroughly VERMIN, ACID and Alkali Proof. Put up in Rolls each containing 1,000 square feet.

Mention this Journal and send for Price-List.

THE STANDARD PAINT CO.,
59 Maiden Lane, New York.



THE ARCHITECTURAL & BUILDING MONTHLY.

A JOURNAL OF PRACTICAL DESIGNS AND DETAILS.
Devoted to the Use of all Associated with Architecture and the Building Trades.

A. J. BICKNELL, Publisher,
P. O. Box 560. 115 Broadway, New York City.

Subscription, Domestic or Foreign,
\$5.00 a Year.

We shall be pleased to receive from Architects, and Draughtsmen, practical drawings showing New and Improved Designs and Details, with brief description. Due credit will be given for all acceptable designs. Details of special interest will be paid for.

INTRODUCTORY.

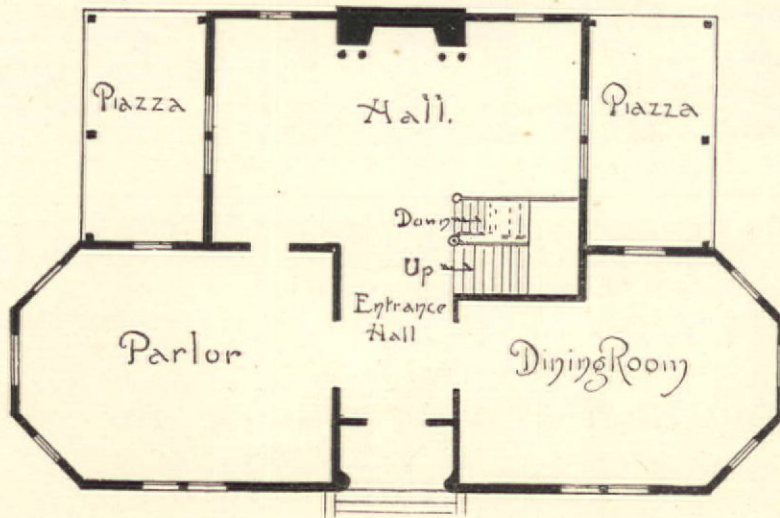
THE ARCHITECTURAL AND BUILDING MONTHLY.

It is intended to supply such designs as are usually found in Practical Architectural and Building Journals, but its leading feature will be one in which many are largely deficient. There are at the present time about fifty publications treating on Architecture, Carpentry, Building and kindred arts and trades in the United States. Having had a full acquaintance with these periodicals, beginning with the publication of "Sloan's Architectural Review" and the various journals since established, it has been found that, while many are valuable for news and general information, only a very limited number are practical in design. More designs and details of a practical character are wanted. The object of this journal is to

Publisher's Department.



SHINGLED COTTAGE AT TUXEDO PARK, NEW JERSEY.
BRUCE PRICE, ARCHITECT, NEW YORK.



SKETCH OF FIRST FLOOR PLAN.

supply that want. The endeavor from the beginning will be to give full value for the price, and no reasonable effort or expense will be spared to make our subscribers satisfied.

See page 9 for blank order, which it is hoped those receiving this number will use, if they have not already sent in their subscriptions.

TO READERS,

PRINCIPALLY INTERESTED IN THE ARCHITECTURAL AND THE BUILDING TRADES.

THE publisher will be glad to hear from all interested (many of whom have been his former patrons), who may receive this number of THE ARCHITECTURAL AND BUILDING MONTHLY. Their opinions and suggestions will be acceptable. This issue is a fair sample of what the MONTHLY is intended to be, although, if possible, it will be made better and better each month. It is hoped many will show their appreciation by forwarding \$5 for subscription for the first year, if they have not already done so, or \$2.75 for a trial subscription for six months, after which \$2.25 will be accepted for the balance of the year.

Each succeeding issue will contain from 8 to 12 plates of Practical Designs and Details to scale, giving in all, during the year, a very large amount of original and useful matter valuable to the building trades.

It will be seen that the aim of THE ARCHITECTURAL AND BUILDING MONTHLY is not to burden readers with a mass of letterpress, of which they have no doubt more than they can read, but to give an abundance of valuable drawings of Modern Designs and Details, with brief descriptions only. The intention is to make all plates so easily understood that any extended description will be unnecessary.

All subscriptions to commence with Vol. 1, No. 1,

April, 1890, until the edition of 10,000 copies is exhausted. It is hoped that the A. & B. MONTHLY will be made so valuable that all subscribers will wish to have it complete. To be sure of this it will be necessary to forward names early.

HOW IT IS DONE.

HAVING issued several Practical Books on Architecture, Carpentry, and Building, the publisher proposes to furnish more designs each year in this journal for \$5 than he ever published in book form for \$10.

This can only be done by using a portion of each issue for advertising articles used in the construction and finish of buildings, thus introducing a feature of interest to all subscribers and of value to advertisers on account of the large circulation. In corresponding with the Manufacturers and Dealers who advertise in this journal, please mention the A. & B. MONTHLY. It is not intended to insert the advertisements of any irresponsible parties.

SUBSCRIPTIONS.

ALL persons desiring to subscribe for this Journal should do so only through well-known and responsible parties.

The publisher cannot be responsible for money paid for subscriptions, unless the same be sent to the office of publication by Money Order, Registered Letter or Draft on New York, or paid to an Agent having receipts signed by the Publisher, and written authority for the collection of money.

SPECIAL NOTICE TO ADVERTISERS.

ON account of several of my patrons having given orders for advertising to parties whom they supposed represented me, I wish to say that all contracts intended for me should be written on the blanks of "**BICKNELL'S ADVERTISING BUREAU**," printed on blue paper, with which all persons working in my interest are supplied.

A. J. BICKNELL.

JOSEPH B. TIFFANY & CO.,
SPECIALISTS IN
Constructive and Decorative Fine Art.
INTERIOR COLOR TREATMENTS, WOOD WORK, METALS, MASONIC,
ORNAMENTAL AND ECCLESIASTICAL GLASS.
12 East 22d Street, New York.

**Decorative
Glass
and
Sand Blast
Work.**

Novel Effects in Beveled and Chipped Plate Glass. Also in Colored Chipped. New Designs in Stock Sheets of Colored Glass. The Original Matthews' Silver Embossed Obscured Glass. Plain or in Suitable Designs. Send for Price List of Matthews' New Sand Blast Enameled Glass—Cheapest and Handsomest Glass Made.

THE MATTHEWS' DECORATIVE GLASS CO.,
328 and 330 East 26th Street, New York.

ANNOUNCEMENT

To Advertisers who wish to reach the

ARCHITECTURAL AND BUILDING TRADES.

Before making up or completing your list of Advertising Mediums for 1890 your attention is called to this Monthly as one of the most valuable mediums of the year.

Seventy-Five Thousand or more copies of this Journal will be issued during the first year, commencing with the April issue. Each number will contain from **eight to twelve** plates of illustrations. We appreciate the fact that there are a large number of Architectural and Building Journals in the field, and that the only chance for another is to make it as good or better than the best.

In point of circulation it is a question whether we shall be excelled, as we propose during the year to reach from **Fifty to Sixty Thousand** different persons and firms **directly interested** in all articles that enter into the **construction and finish of buildings**. We also propose to make such a **practical and useful Journal** that the specimen and other copies sent out will be retained and referred to for **many months** after their receipt, and when we say that we hope to place the same in the hands of every **Architect, Carpenter, Builder, Sash and Blind Manufacturer**, as well as in the hands of many others connected with the **Building Trades in the United States**, you can judge of its value as an advertising medium.

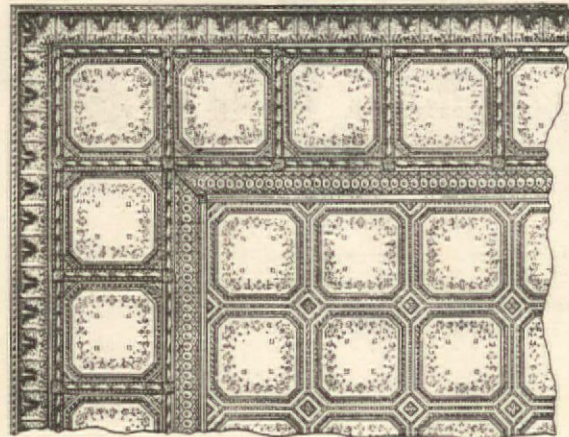
A trial advertisement will be inserted at the *pro rata* yearly rate, if desired. We make this **offer** believing that the results will warrant a **continuance** of your business in this Journal, certainly when a trial of three to **six months** is given. Our experience of twenty years or more as a **publisher and advertiser** will be used for the benefit of our **subscribers and advertisers**, and we most respectfully solicit a share of your business for this Journal to commence with an **early issue**. No reasonable effort will be spared to fully **please** all who favor us with their orders.

Awaiting the receipt of your **request** for advertising rates for the **space** you may wish to occupy, I am

Very respectfully yours,

A. J. BICKNELL.

METAL CEILINGS.



14 x 14 Embossed Plate.

—OF FINE—
Corrugated, Twilled
and Embossed

SOFT STEEL.

Suitable Designs

For All Classes of Buildings.

Send for Illustrated Circular.

Agents Wanted in all towns of
5,000 and upwards.

HENRY S. NORTHROP,
20 Rose St., NEW YORK.

THE STANDARD CONTRACT.

—FRAMED AND ADOPTED BY—

American Institute of Architects, Western Association of Architects, National Association of Builders.

*It is Certain to Come into General Use. Try it for
Your Next Building.*

PUBLISHERS' CARD.

Having been licensed to publish and sell THE STANDARD FORM OF CONTRACT, we are prepared to fill all orders promptly. We will furnish the blanks at the following prices, agreed upon with the Joint Committee, viz.: \$1.10 per 100, \$4.25 per 500, and \$8.00 per 1,000, free by mail or express. Architects' names and consequent pronouns inserted at additional cost. To save innumerable small accounts, payment should accompany orders. Personal checks on local banks not accepted unless New York, Chicago, or equivalent exchange is added.

INLAND PUBLISHING CO.,

(Publishers Inland Architect.)

Tribune Building, CHICAGO.

POINTS ON VARNISH.

THE DIFFERENCE.

Of course it costs more to put on good varnish well than poor varnish ill. Of course a proper finish costs more than a sham. How much more? We may as well look the facts in the face.

Transparent Wood Finish, Interior and Exterior, costs \$2.50 and \$4 a gallon. You can get "oil finish" or other varnish "good enough for housework" for \$1.25. We know; we make a dozen such above and below that price.

It costs twice as much, for the varnish itself, for proper varnish as for the sham. It probably costs somewhat more for putting it on and rubbing properly than for the sham. The total difference, then, between a proper varnish job and a fraud is, roughly, two to one.

The fraud is not necessarily in the varnish itself, nor in the varnishing; may or may not be; it is in the common representation, "good enough for house-work." House-work has its proper standards peculiar to itself; they are neither so high as those of piano or carriage varnishing, nor so low as those of agricultural-implement varnishing. "Good enough for house-work" implies that the proper standards for house-work are low. They are not; they are high.

The result is worth vastly more than two to one.

Consider carriages: what the effect of finish on them is. They are luxurious, whether you regard them as means of comfort and pleasure, or as merchandise.

The occupants of them are never indifferent to their shine; and they are kept immaculate year after year in all weathers. That costs a hundred times more than the varnishing costs in the first place, and proves the owner's estimate of it.

The carriage-maker knows his work is sold by its finish; therefore he spares no money on it.

Consider pianos: what the effect of finish is on them.

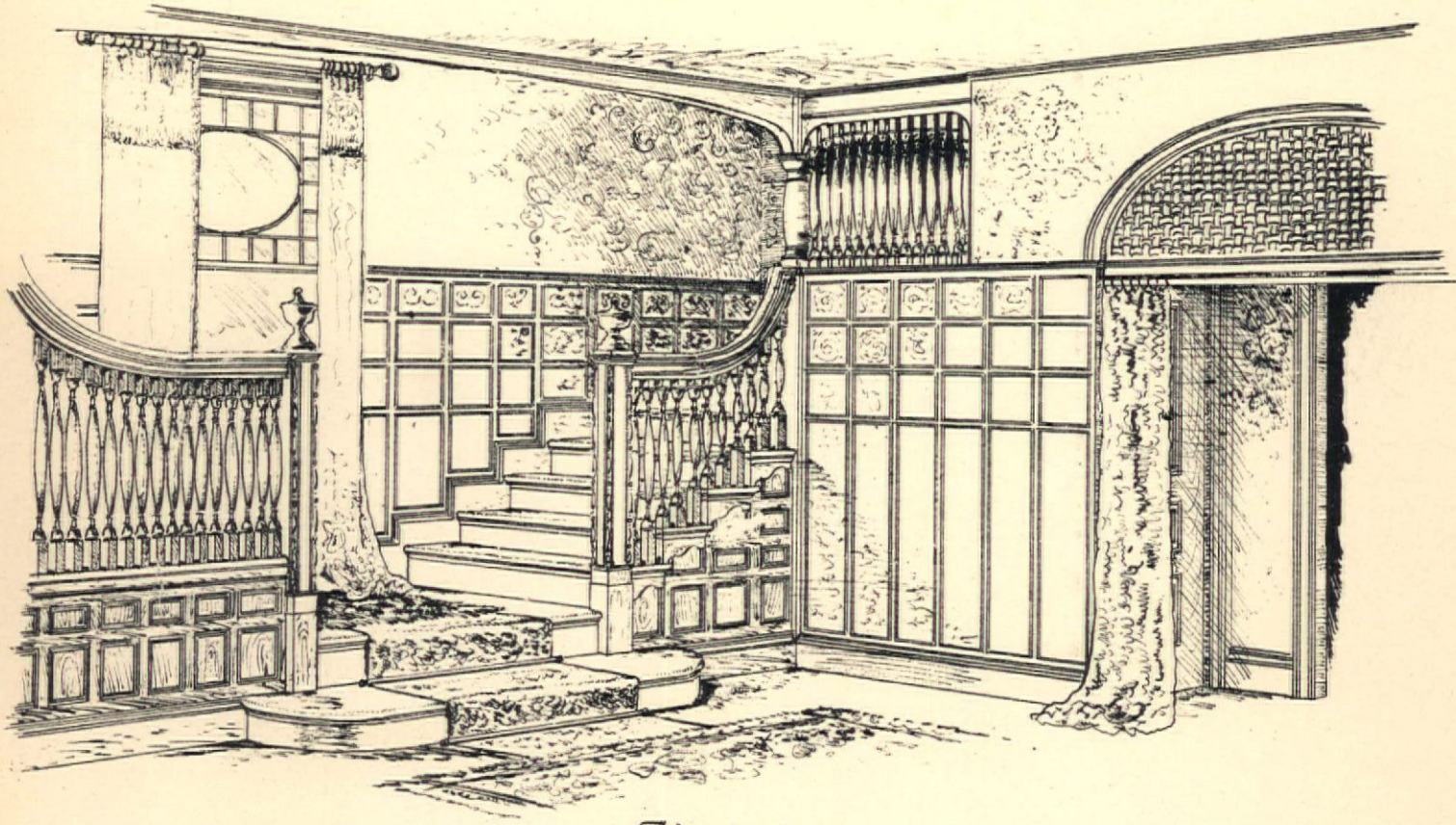
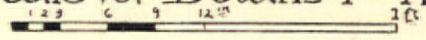
Is the house-interior different? Varnish can do as much for it as for carriage or piano.

MURPHY & COMPANY.

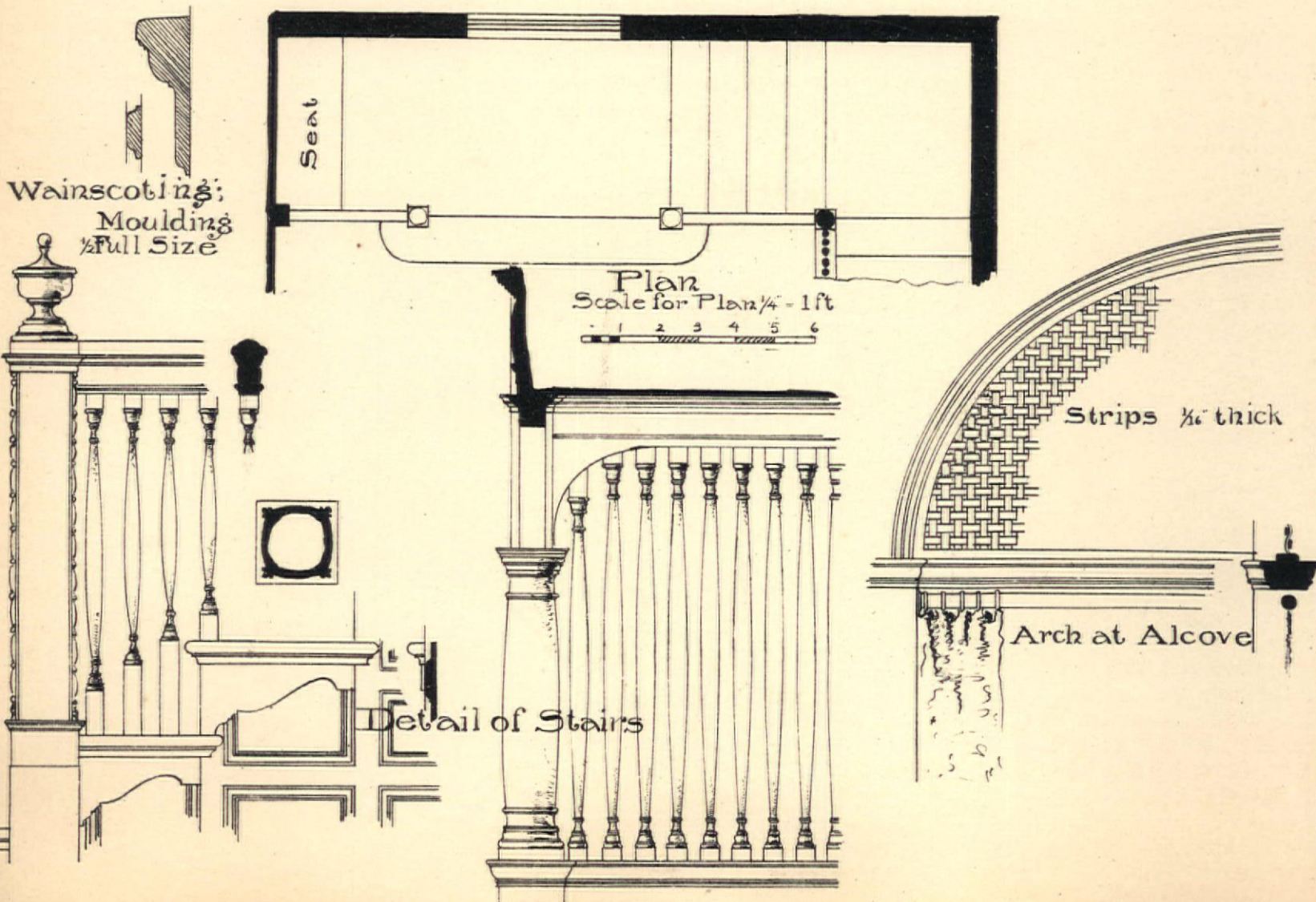
Newark, Boston, Cleveland,
St. Louis, Chicago.

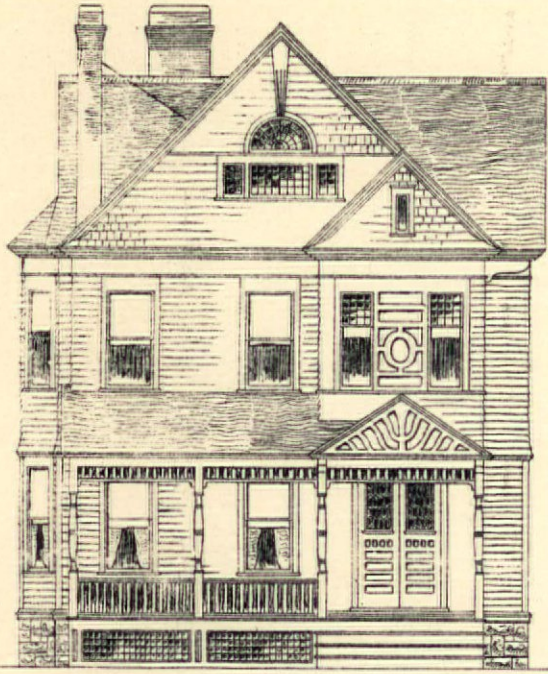
A Design for Front Stairs and Details

Scale for Details 1" = 1ft

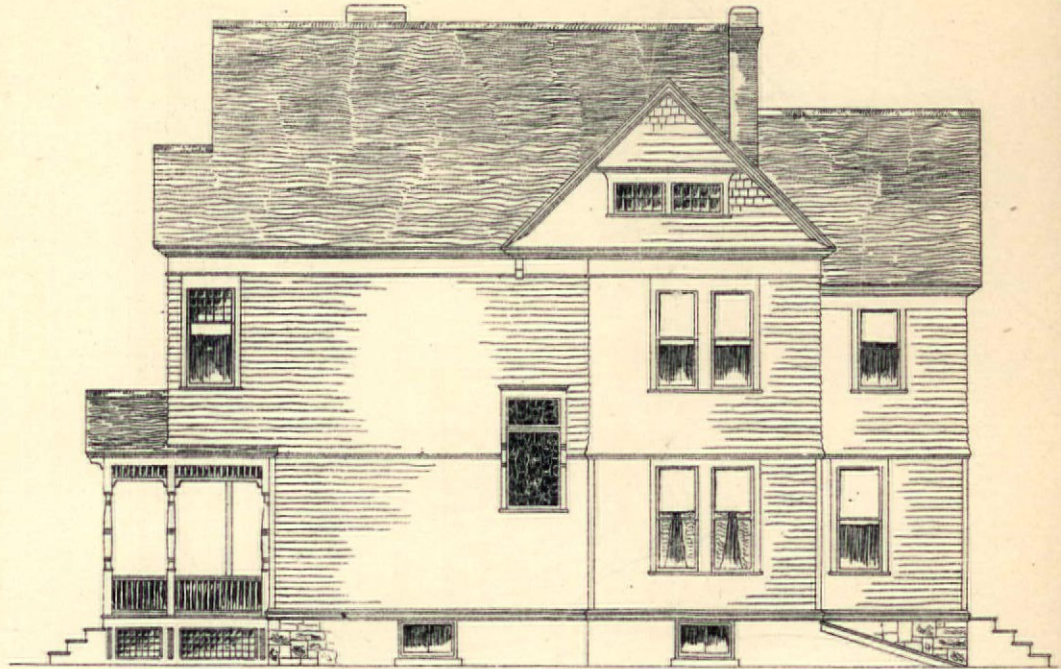


Sketch





FRONT ELEVATION.

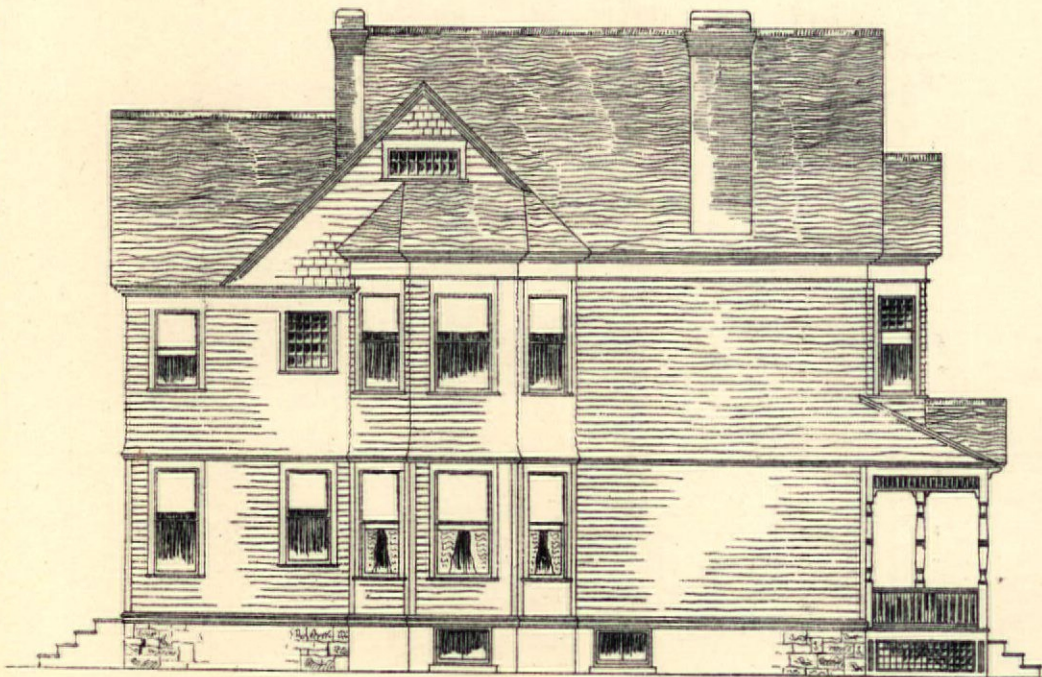


SIDE ELEVATION.

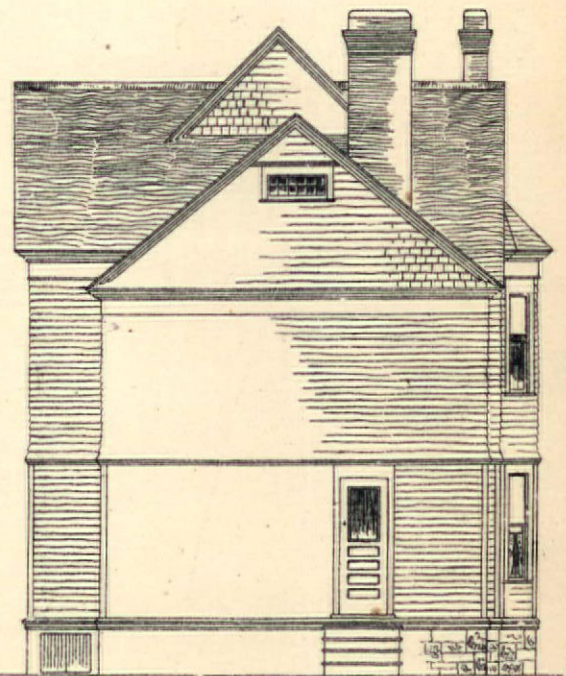
DESIGN FOR A COTTAGE



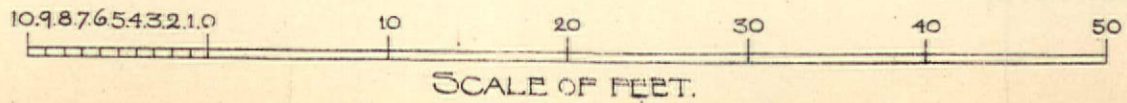
COTTAGE A

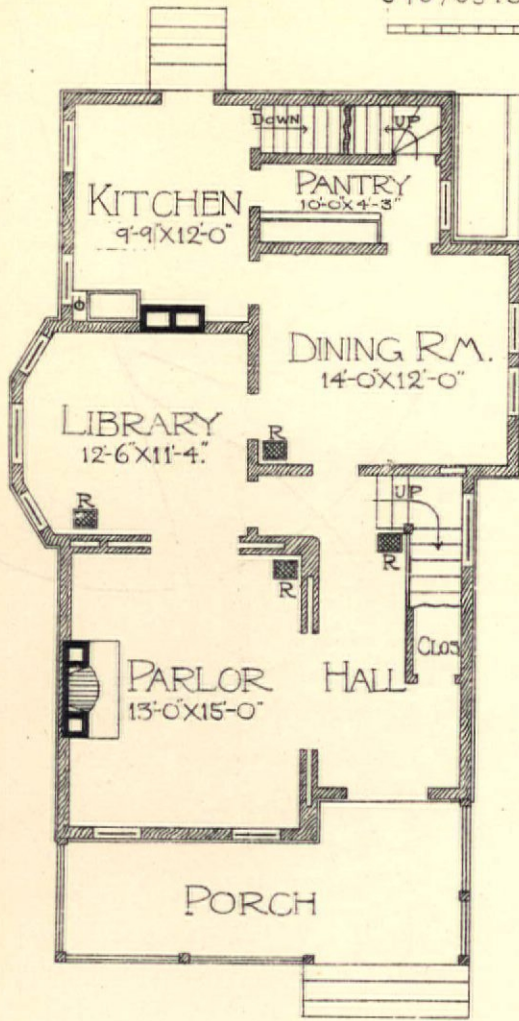
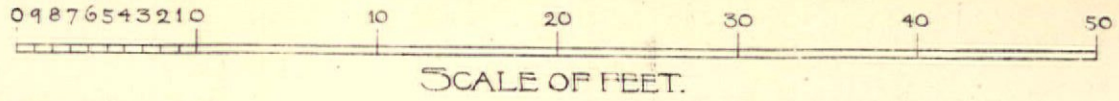


SIDE ELEVATION.

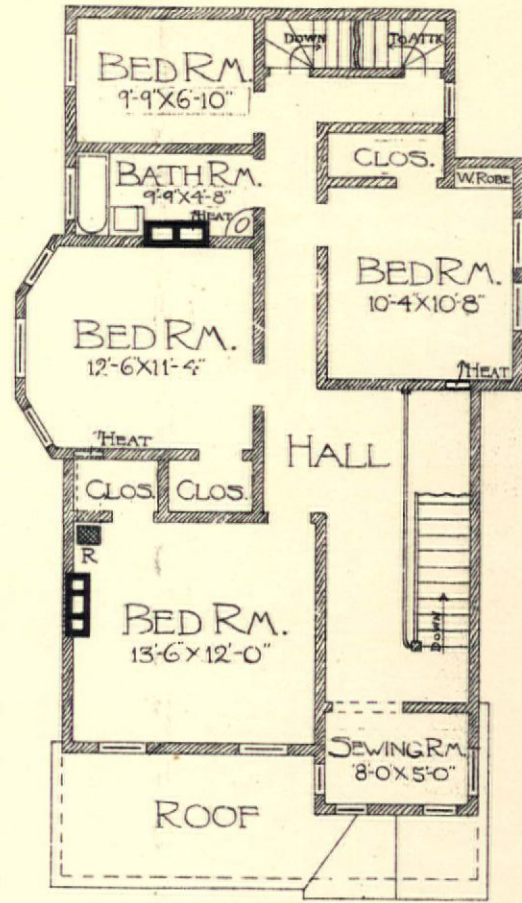


REAR ELEVATION.



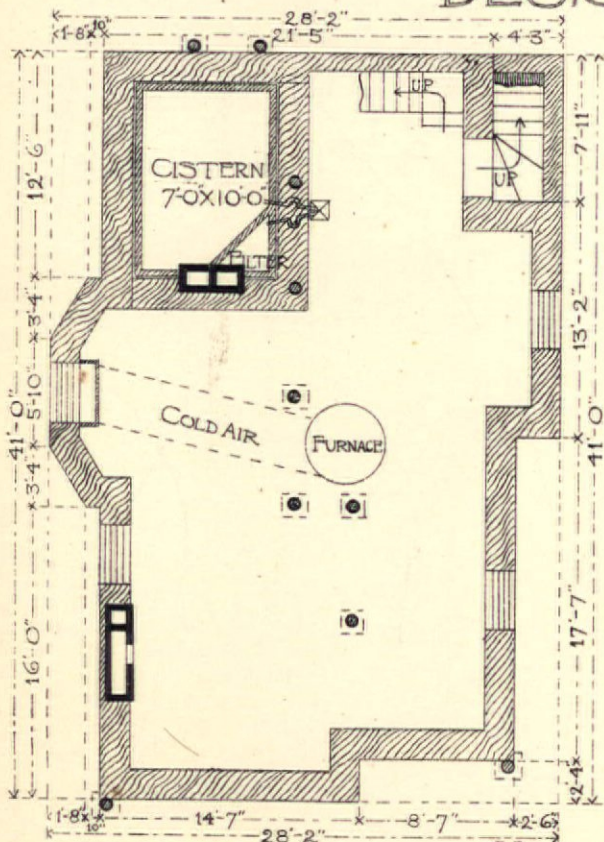


FIRST FLOOR PLAN

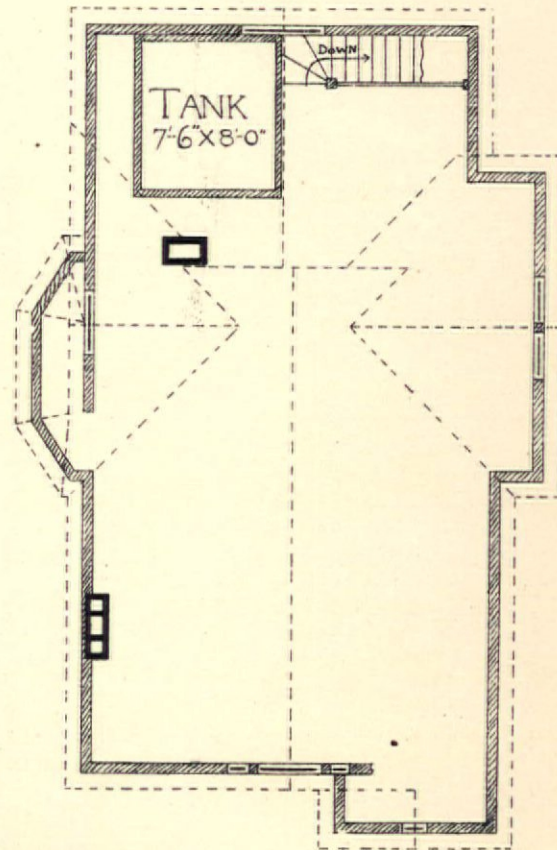


SECOND FLOOR PLAN

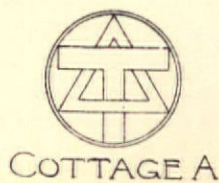
DESIGN FOR A COTTAGE.

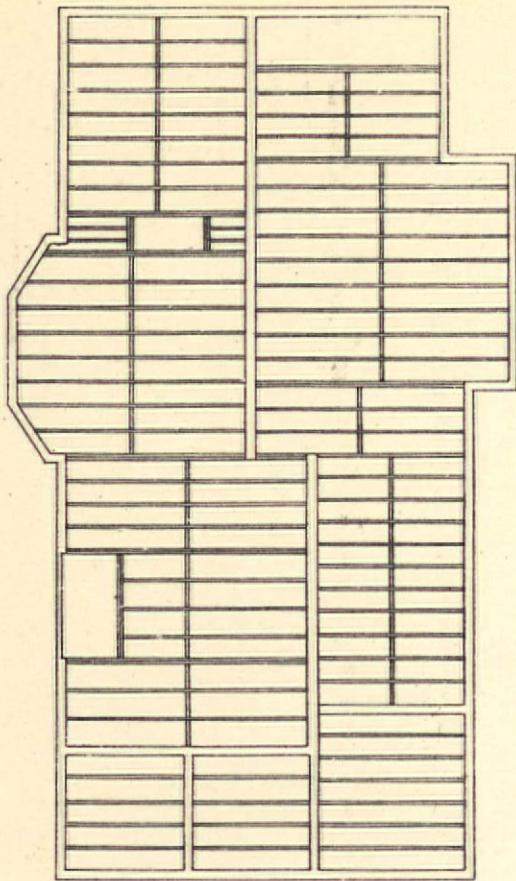


FOUNDATION PLAN

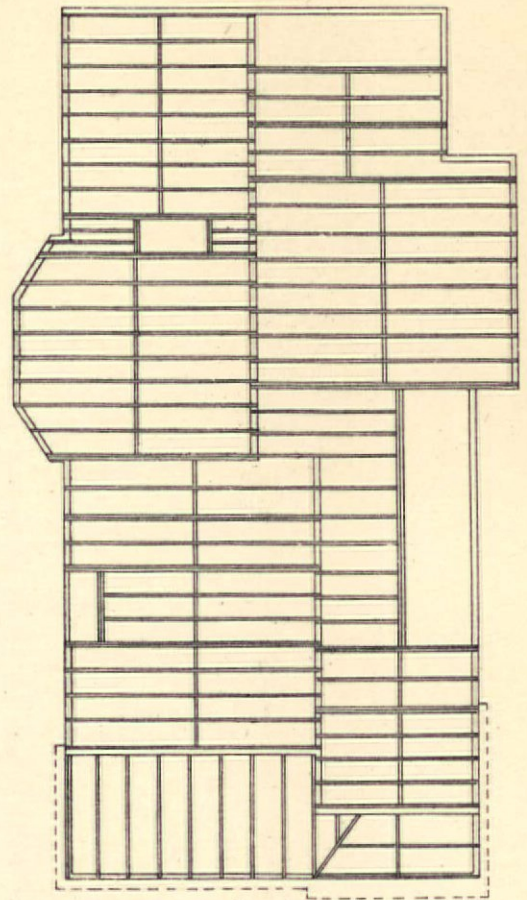


ATTIC & ROOF PLAN



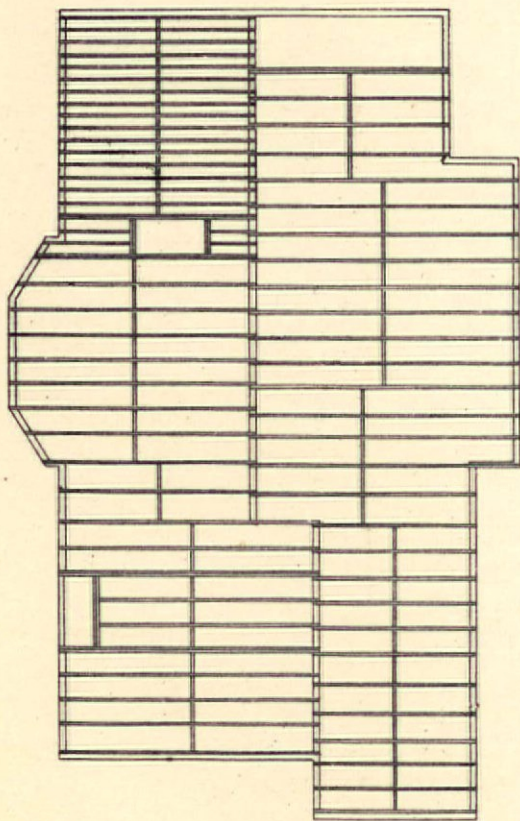


FIRST FLOOR TIMBER PLAN.



SECOND FLOOR TIMBER PLAN.

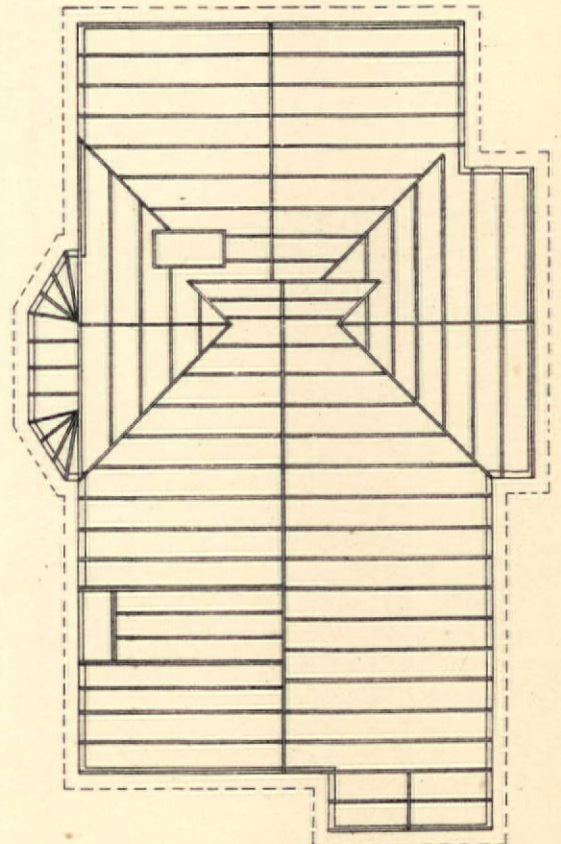
DESIGN FOR A COTTAGE ☼



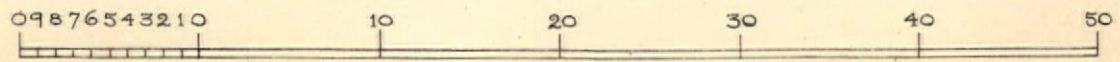
ATTIC FLOOR TIMBER PLAN.



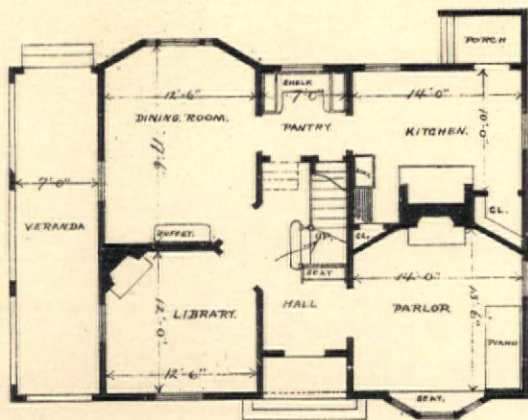
COTTAGE A



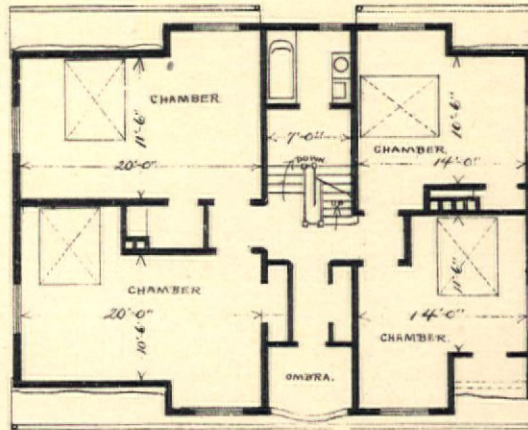
ROOF TIMBER PLAN.



SCALE OF FEET.

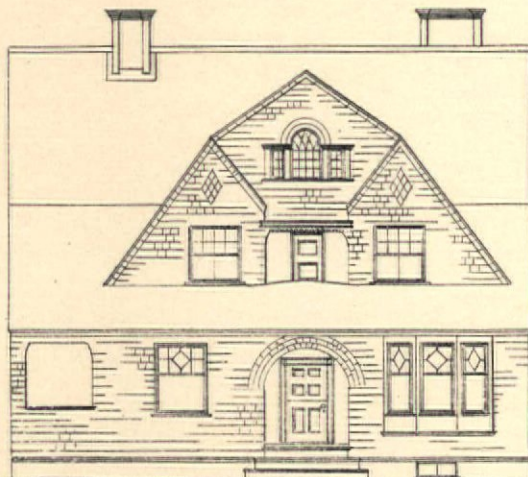


FIRST FLOOR PLAN.

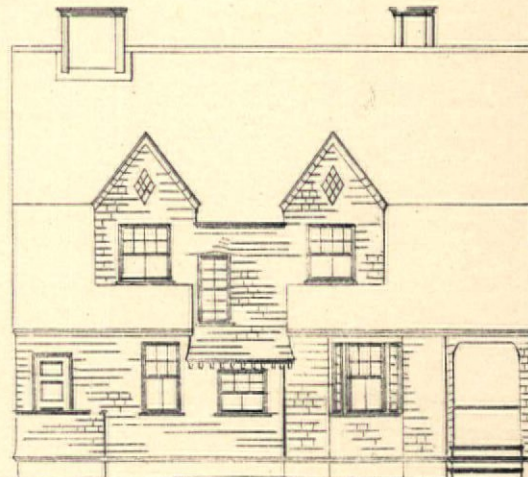


SECOND FLOOR PLAN.

Residence of
James L. Robertson,
Bergen Point, New Jersey.

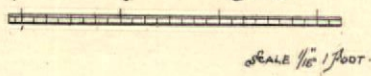


FRONT ELEVATION.

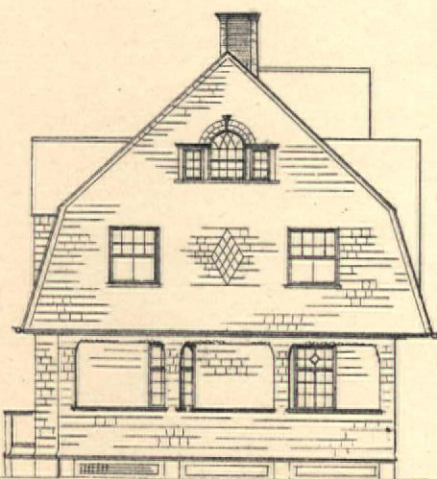


REAR ELEVATION.

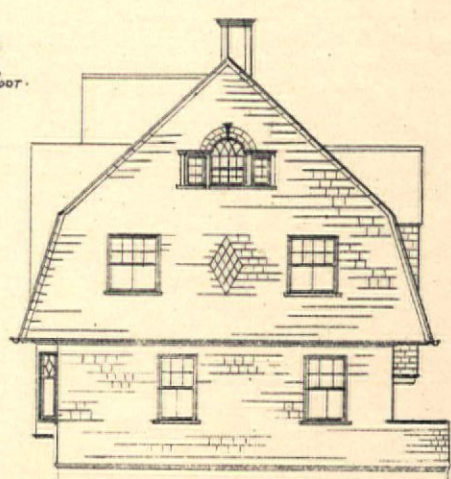
EDWARD J. HAPGOOD
ARCHITECT.
1285 BWAY. N.Y.



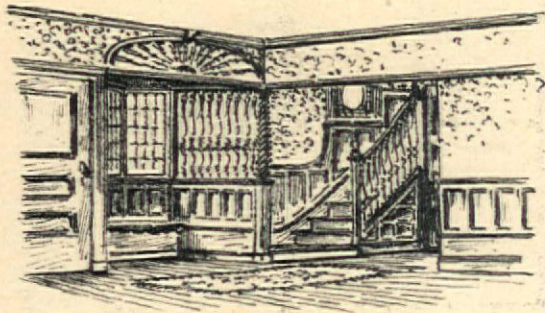
SCALE 1/16" = 1 FOOT.



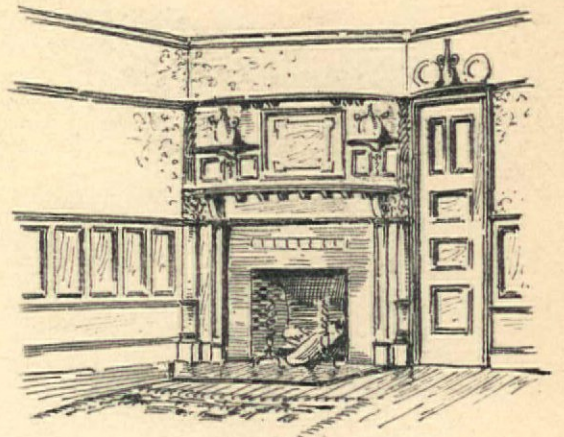
SIDE ELEVATION.



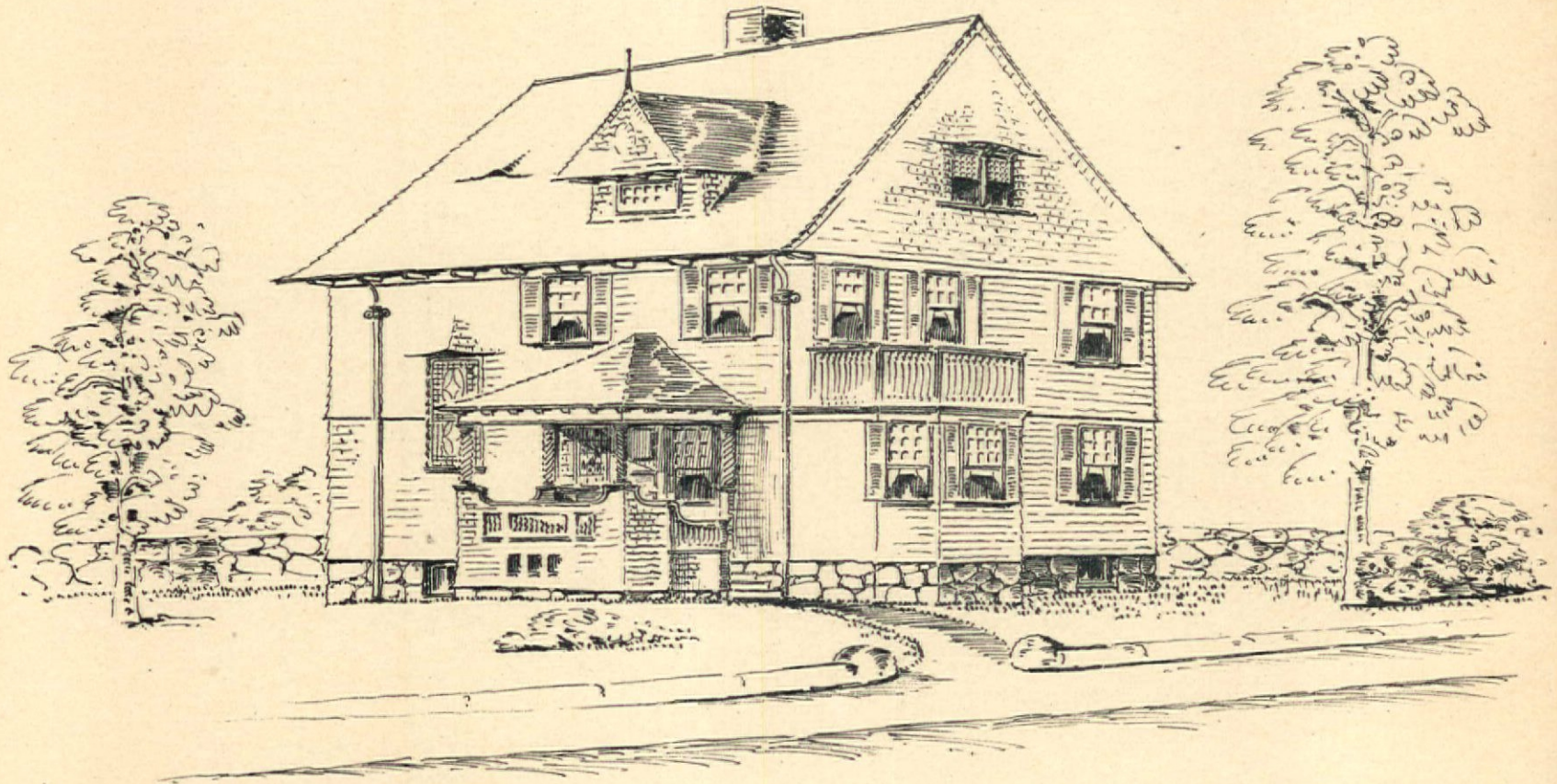
SIDE ELEVATION.



— THE HALL —

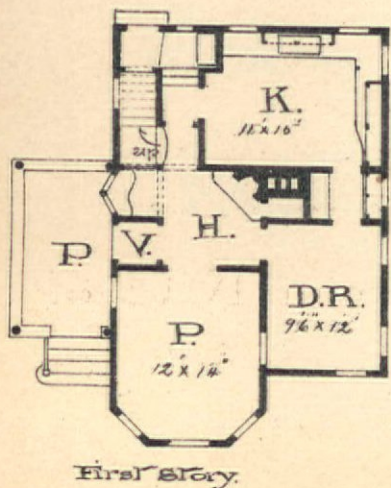
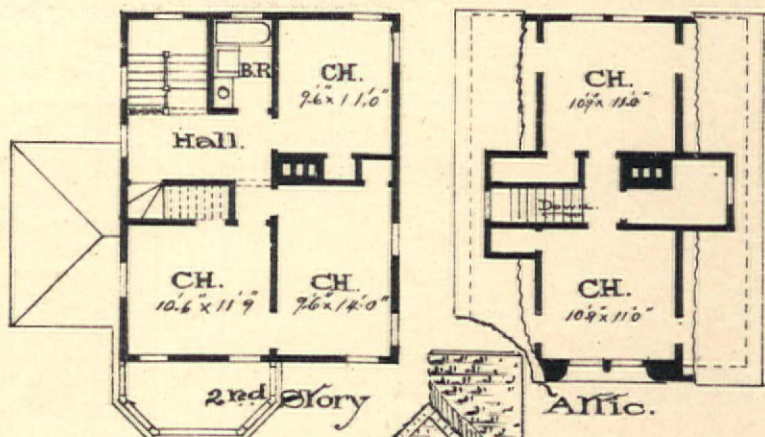
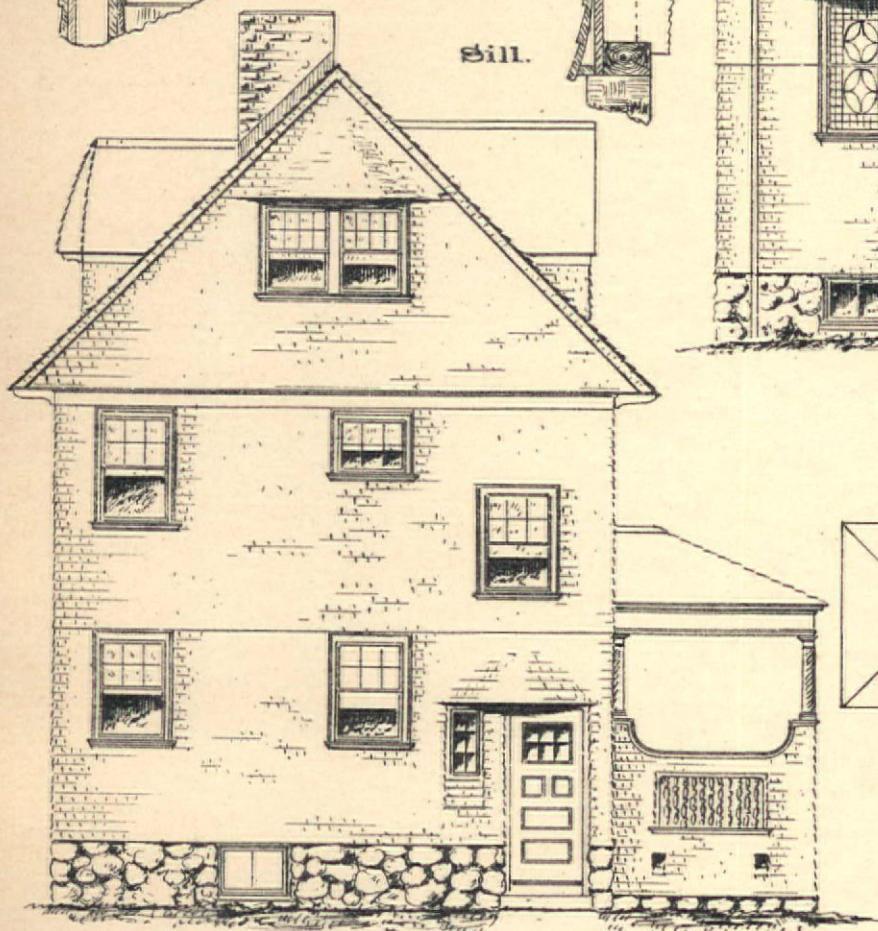
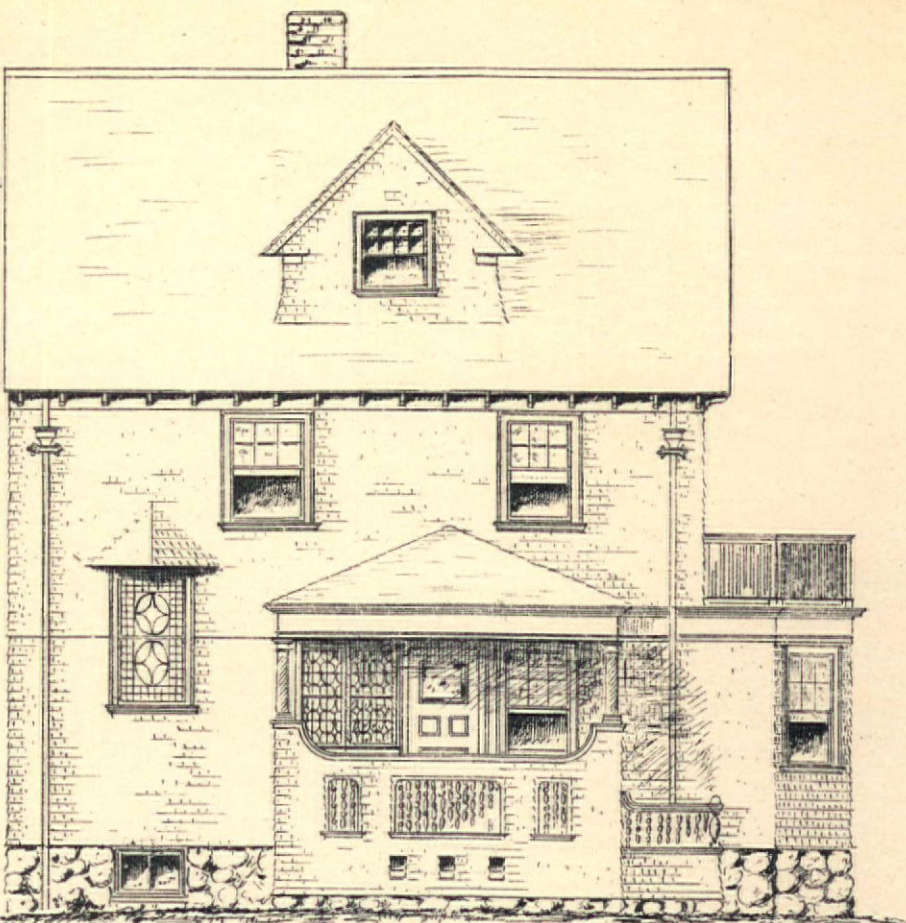
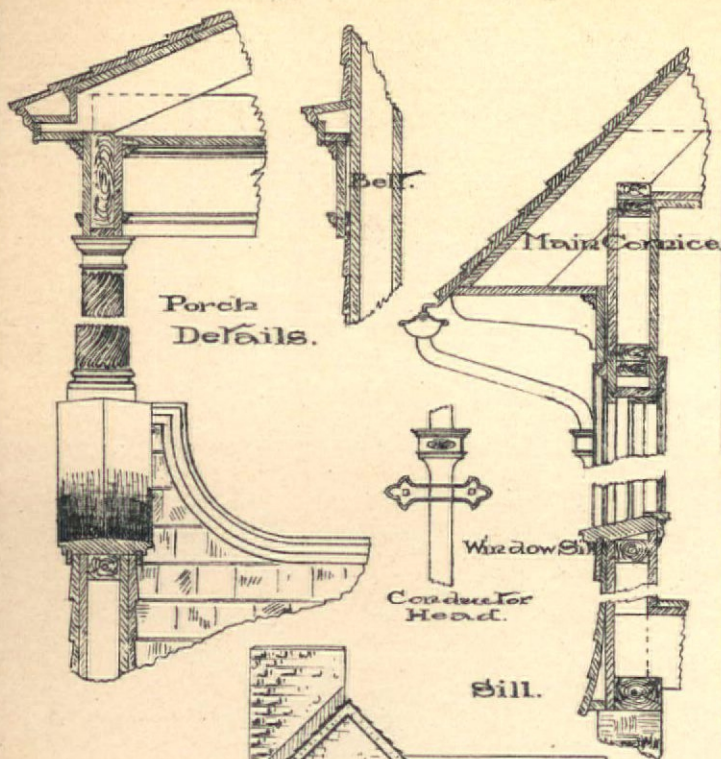


— HALL MANTEL —



— DESIGN FOR HOUSE
OF MODERATE COST —

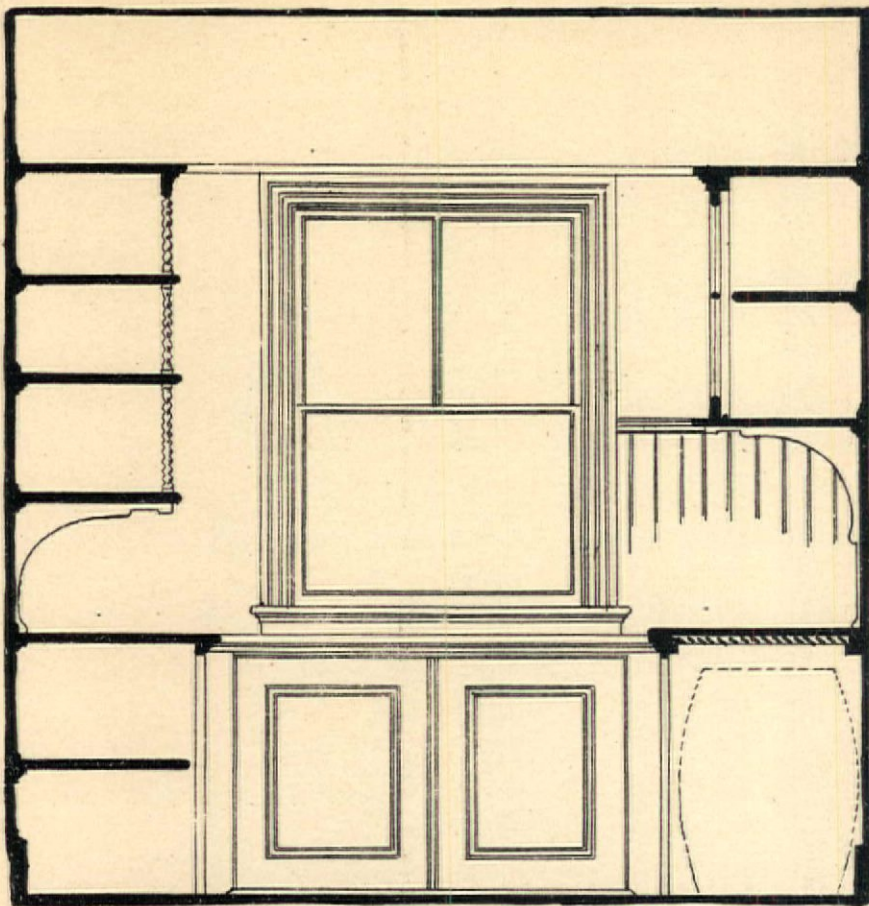
GOULD AND ANGELL
ARCHITECTS.
— PROVIDENCE R. I. —



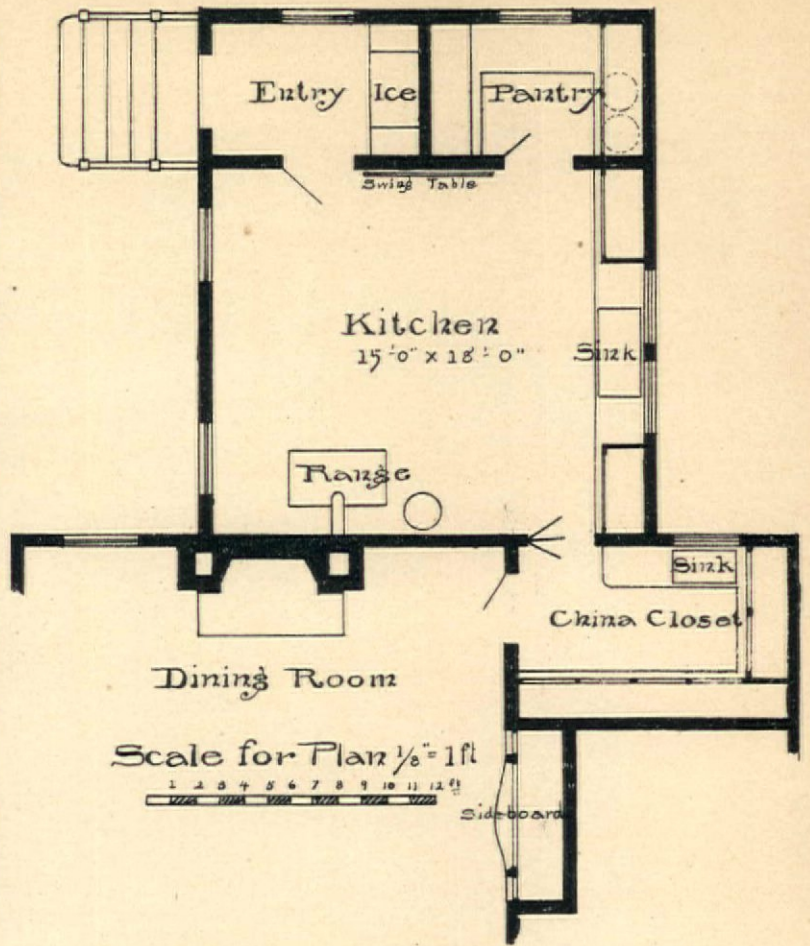
Scale
 Details 1/2" = 1 FT.
 Elevations 1/8" = 1 FT.
 Plans 1/4" = 1 FT.

Design.
For Cottage
OF
Moderate Cost.

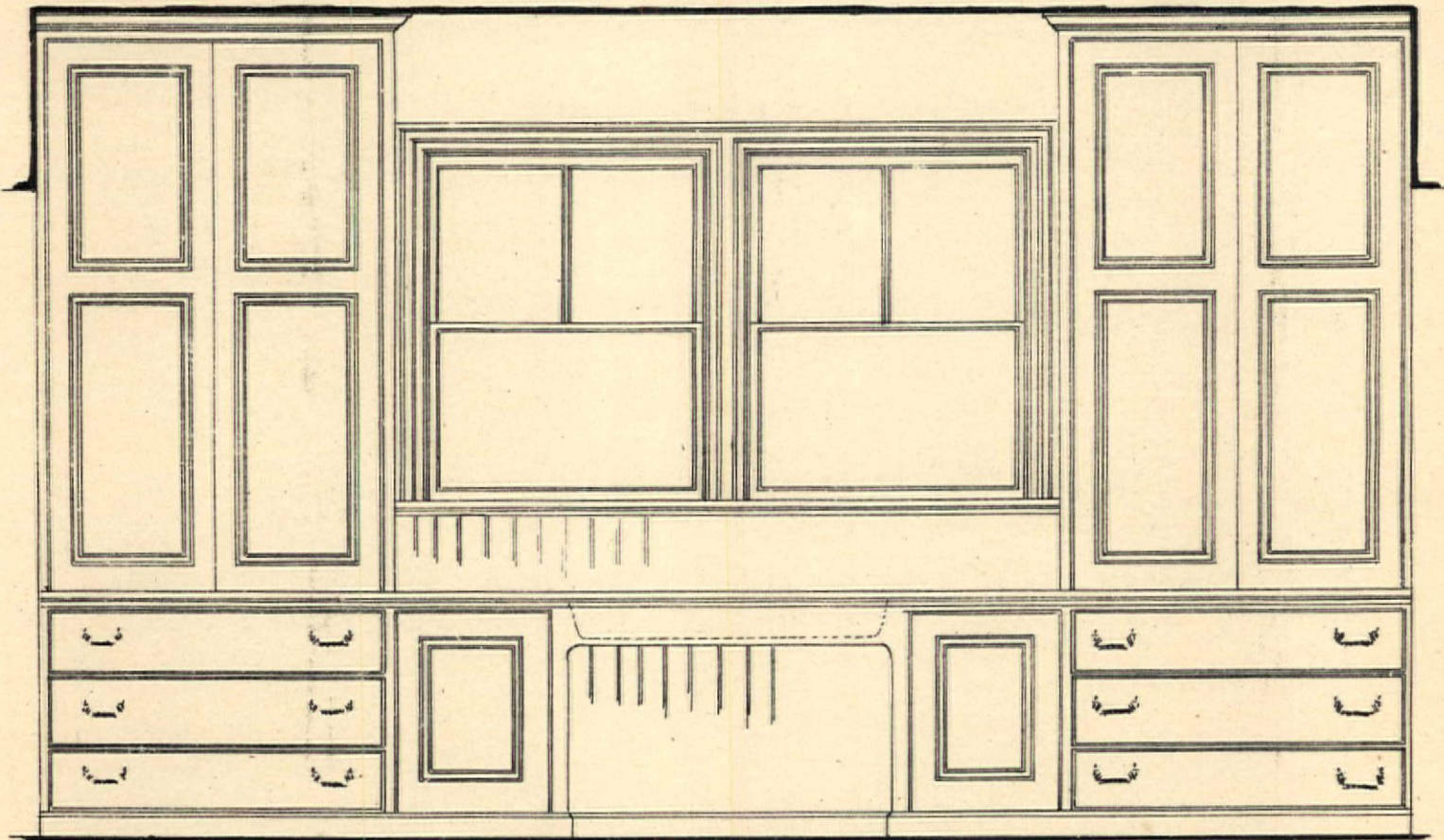




Kitchen Pantry



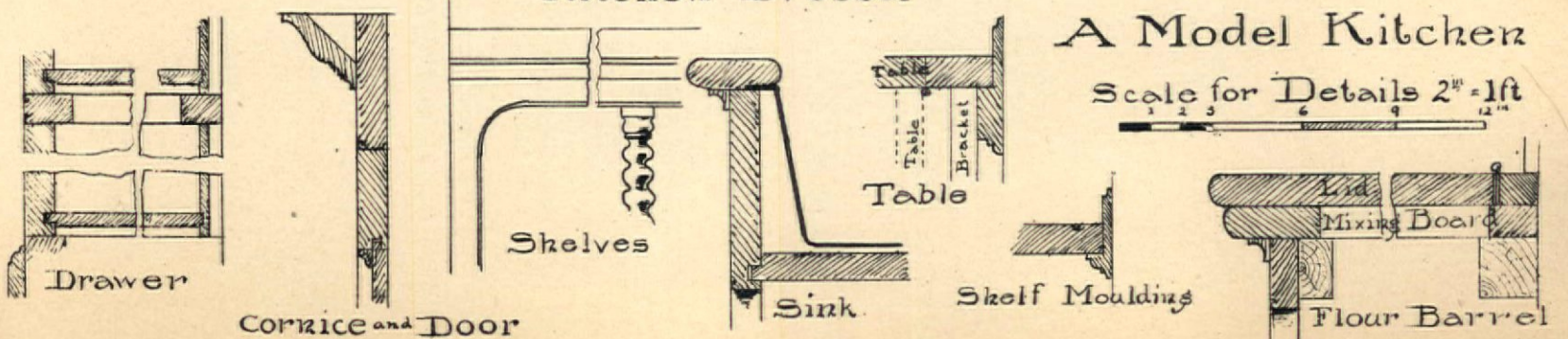
Scale for Plan 1/8" = 1ft

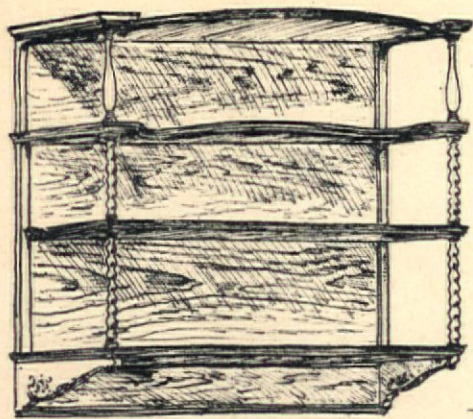


Kitchen Dresser

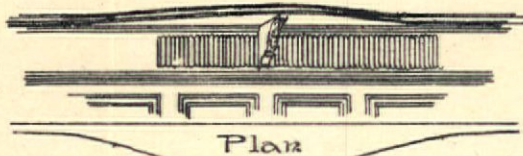
A Model Kitchen

Scale for Details 2" = 1ft

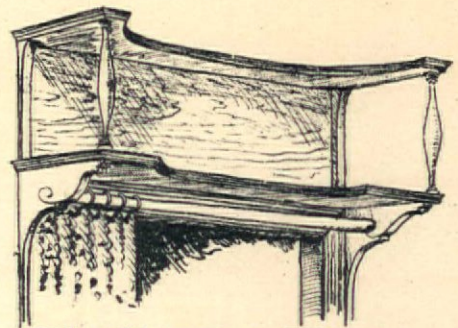




Wall Shelves



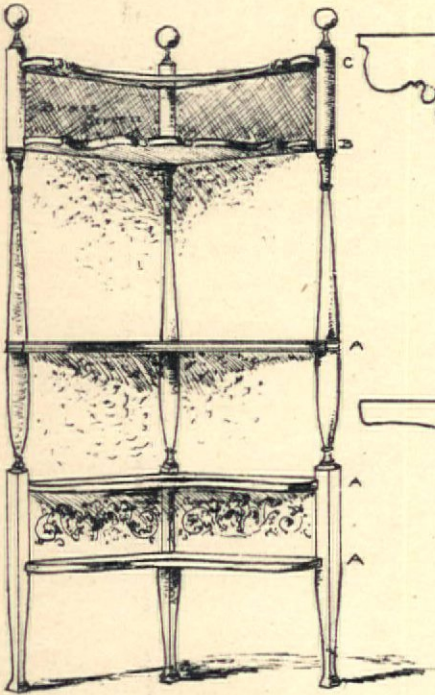
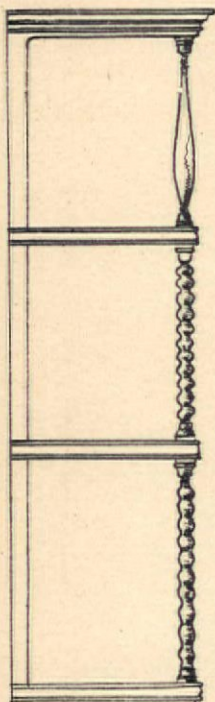
Plan
Shelf in Wainscoting



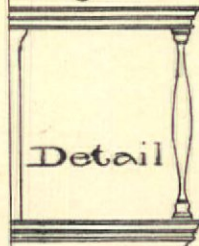
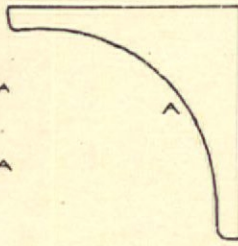
Shelf over Door

Detail

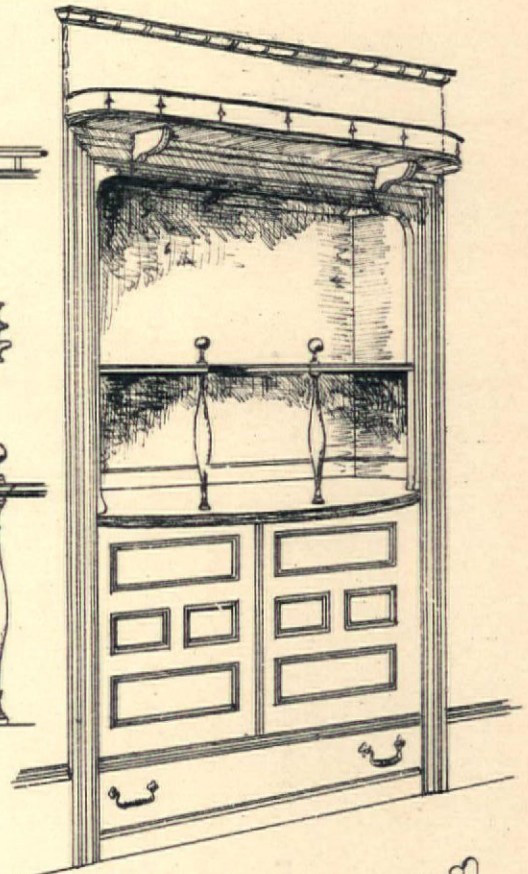
Detail



Corner Shelves

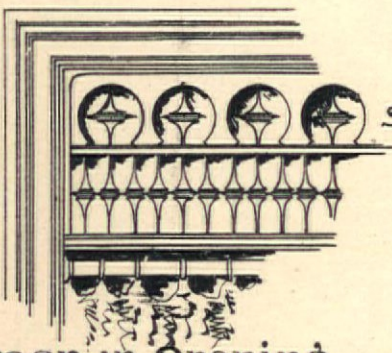


Detail



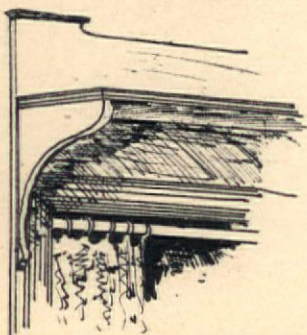
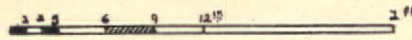
Detail

Shelves and Cupboards to fill an Old Door Opening

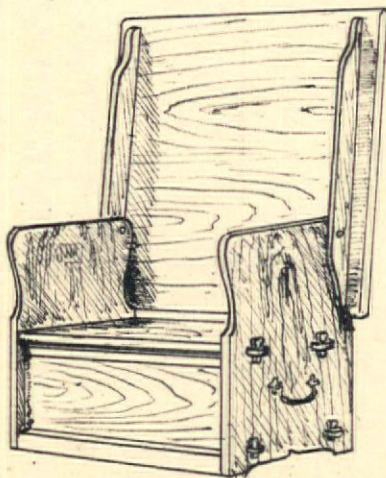


Screen in Opening

Scale for Details 1" = 1ft

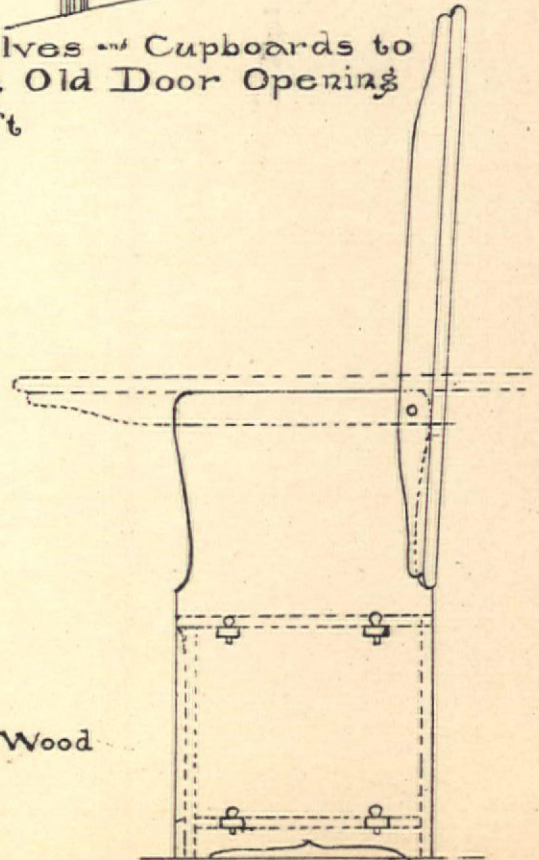


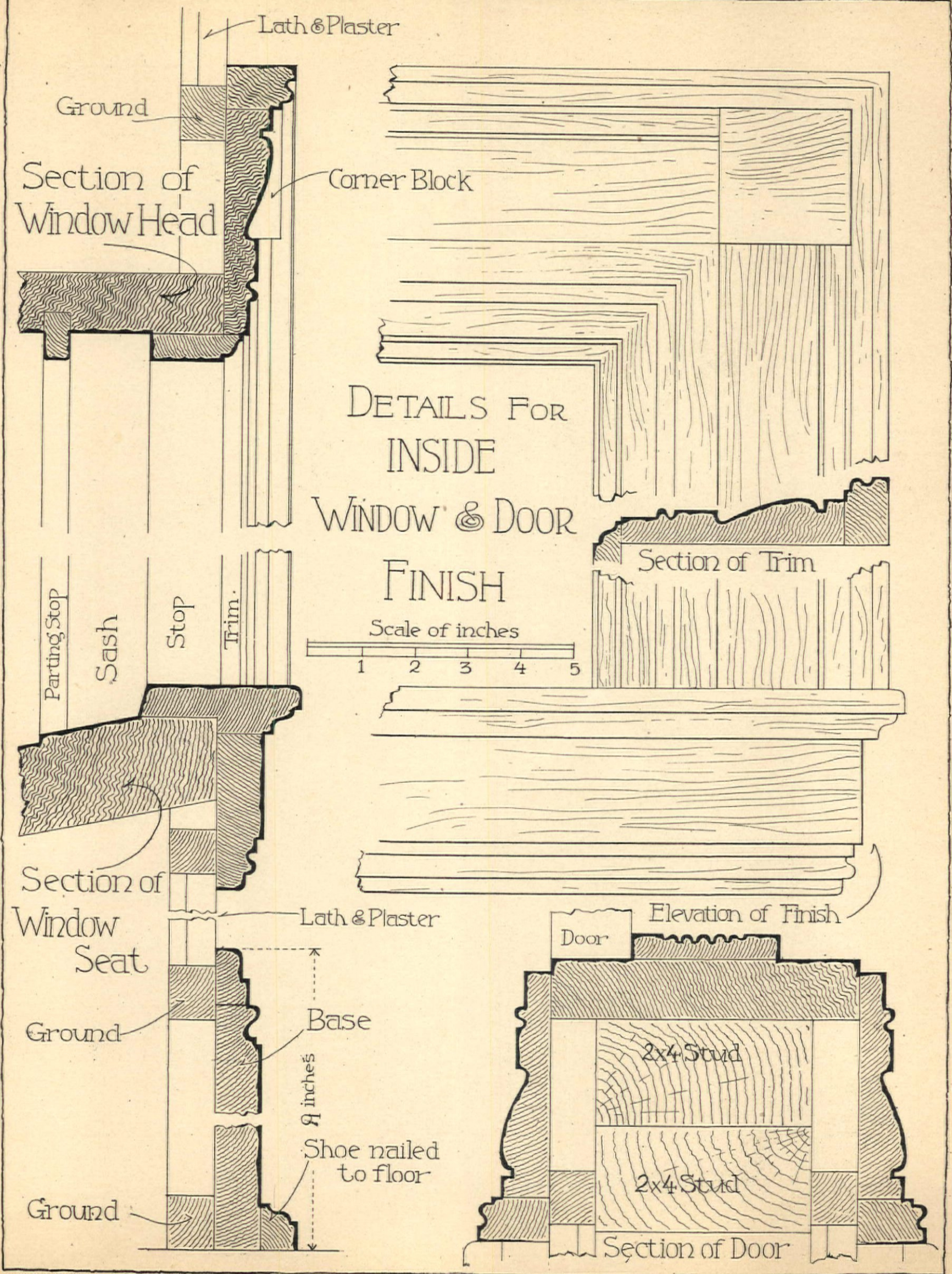
Shelf over Door

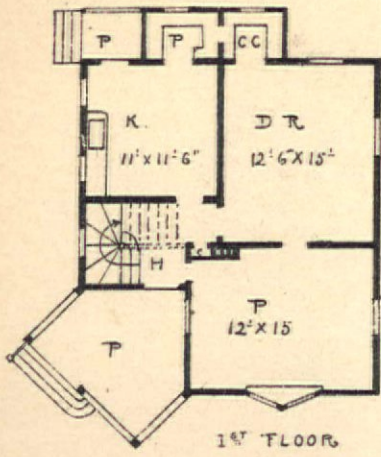


Sketch

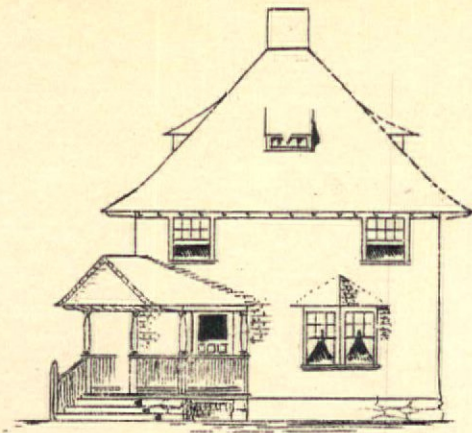
A. Seat Table and Wood Box Combined



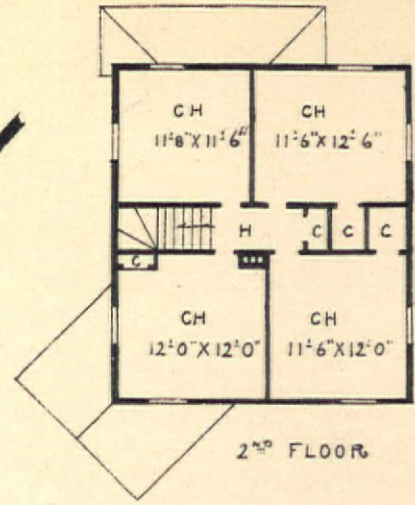




1ST FLOOR



FRONT



2ND FLOOR

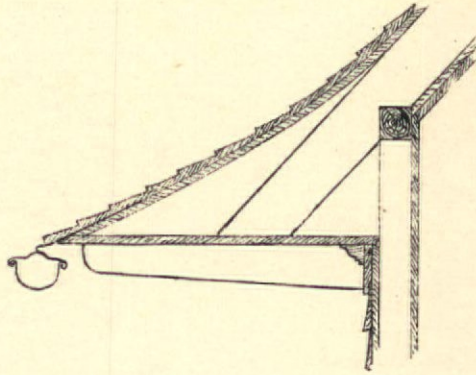


SECTION

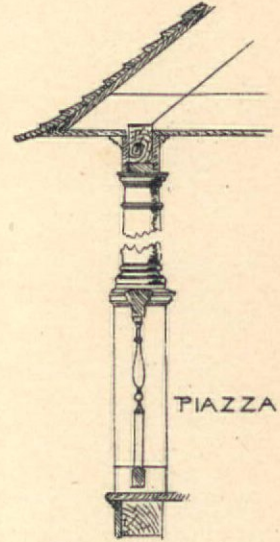
NO 1,



SKETCH



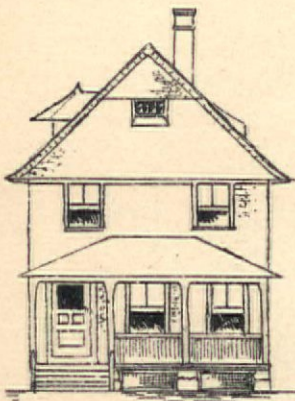
CORNICE



PIAZZA

DESIGNS FOR LOW COST COTTAGES,

SCALE $\frac{1}{16} = 1$ ft

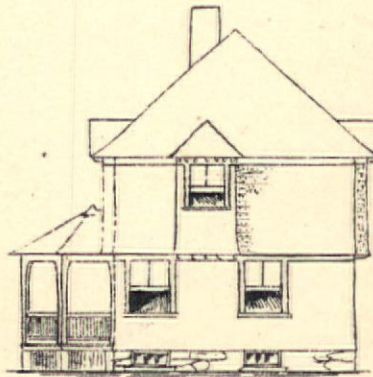


FRONT

No 2

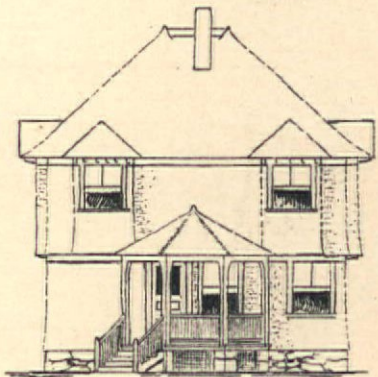


SKETCH

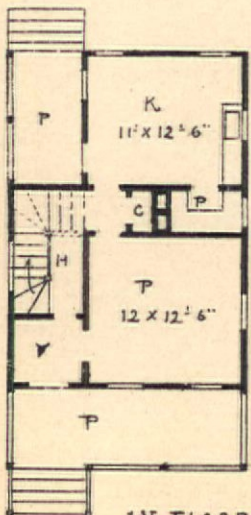


SIDE

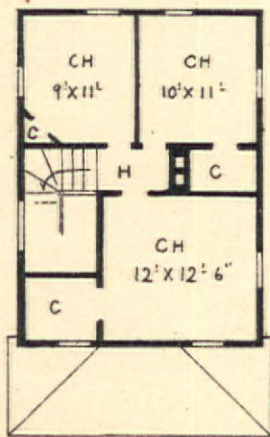
No 3



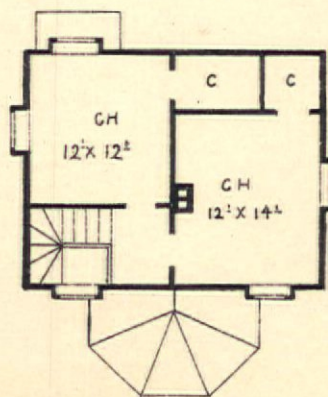
FRONT



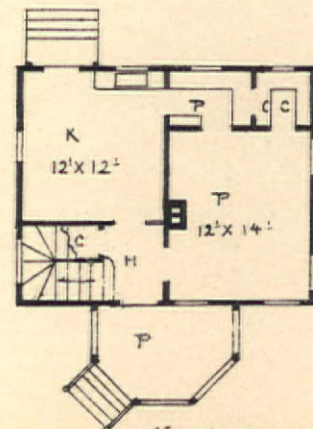
1ST FLOOR



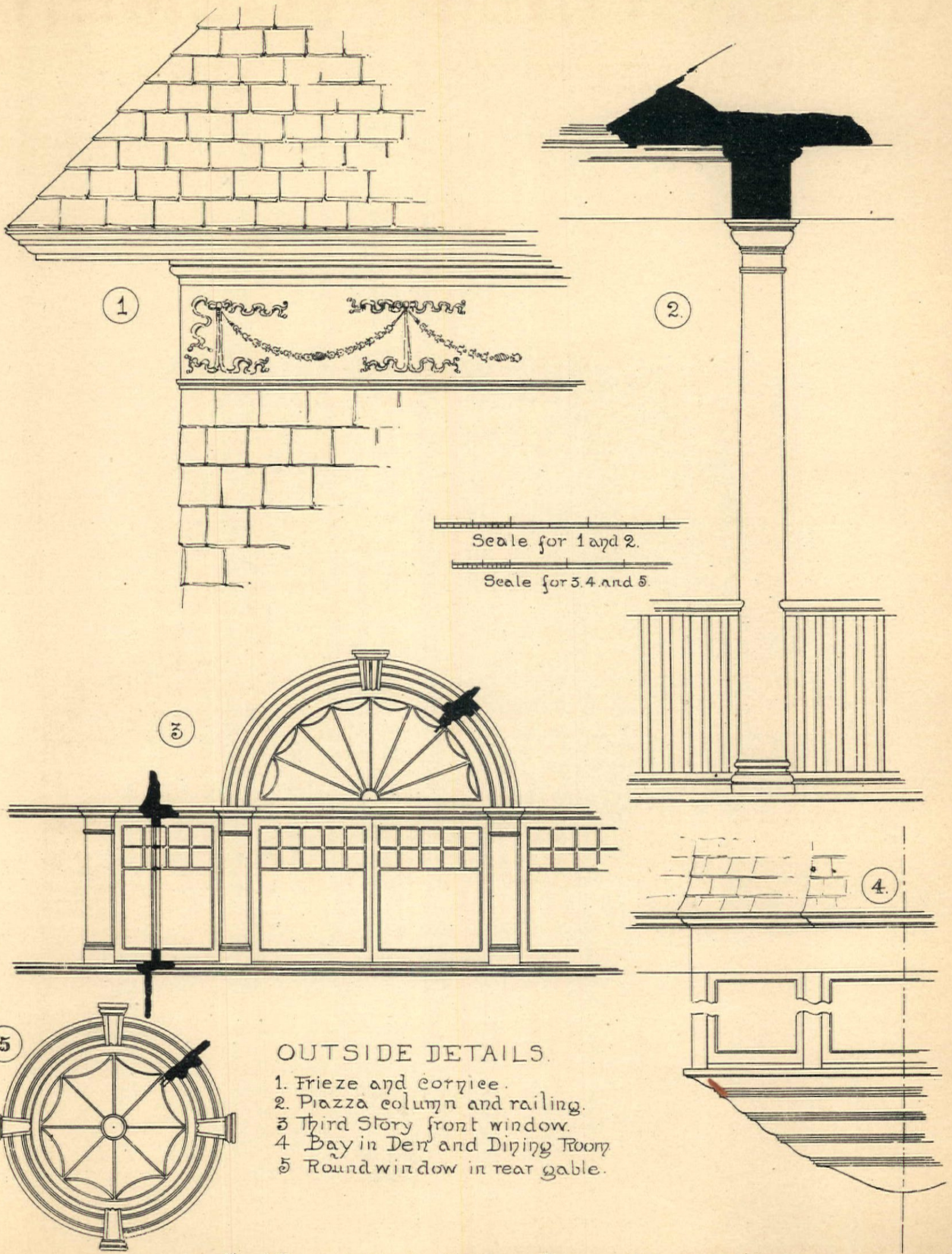
2ND FLOOR



2ND FLOOR



1ST FLOOR



Scale for 1 and 2.
 Scale for 3, 4, and 5.

OUTSIDE DETAILS.

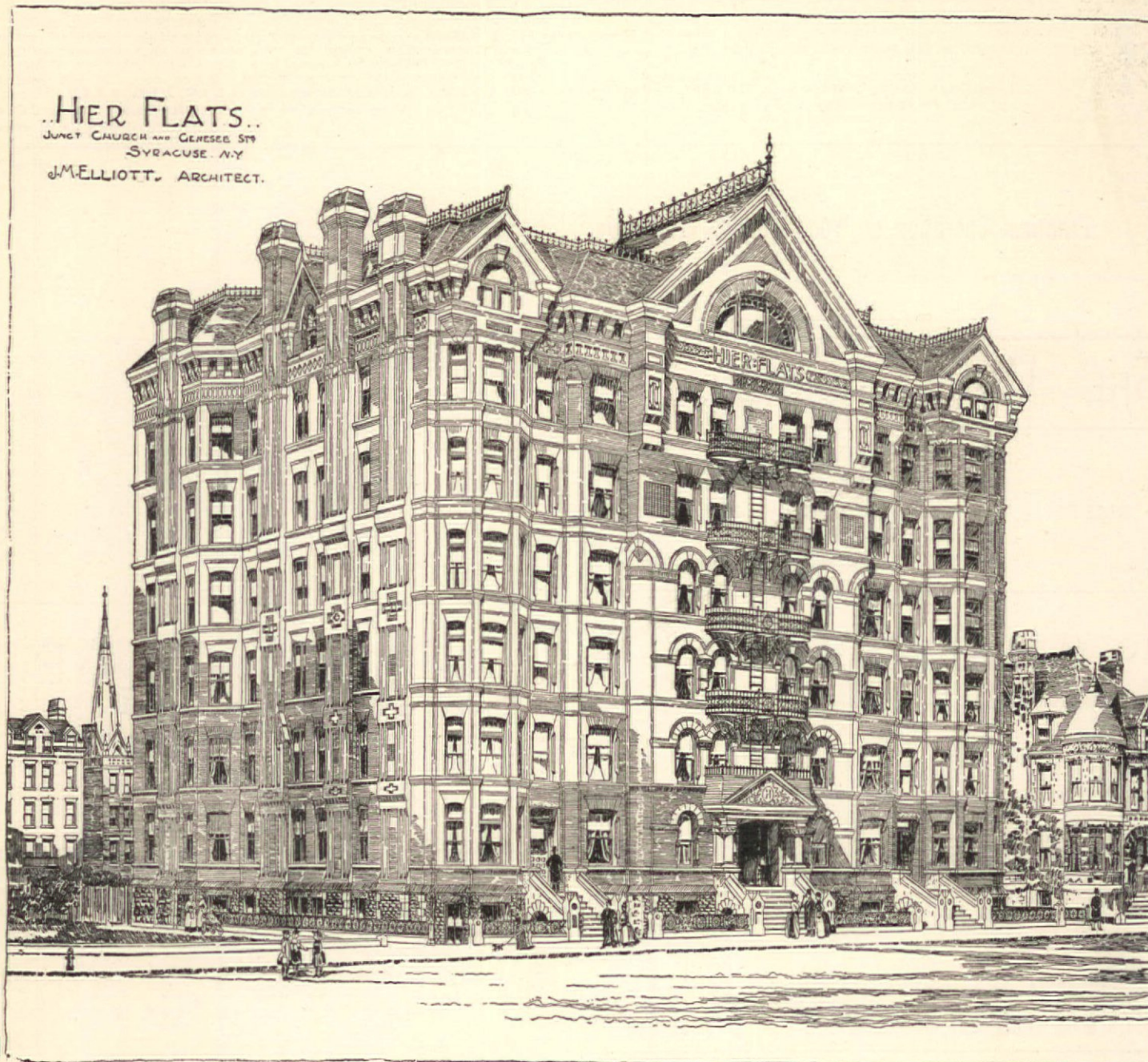
1. Frieze and cornice.
2. Piazza column and railing.
3. Third Story front window.
4. Bay in Den and Dining Room.
5. Round window in rear gable.

See following plates for Elevations, Plans and Interior details.

KING'S WINDSOR CEMENT

FOR PLASTERING WALLS AND CEILINGS.

Has 300 per cent more TENSILE STRENGTH, is 200 per cent HARDER, requires ONE-THIRD LESS LABOR than Lime and Hair Plaster, and is much cheaper in the end.



This Building recently erected at Syracuse, New York, and hundreds of other Public and Private Buildings have been plastered with this Cement.

Houses can be OCCUPIED in from FOUR to SIX WEEKS EARLIER than those finished in the old method. Does not Chip, Pit nor Crack. Any mechanic who understands his trade can apply it.

Endorsed and Used by the BEST ARCHITECTS, BUILDERS and PLASTERERS. All Dealers in Building Materials are Familiar with our Goods. ASK THEM FOR PRICES.

Readers of "THE A. & B. MONTHLY" who have not seen or used this material, which is suited to buildings costing \$1,000 and upwards, will be supplied with sample free, prepaid by mail to any address.

FOR FURTHER PARTICULARS, APPLY TO OR ADDRESS

J. B. KING & CO., Patentees and Sole Manufacturers, **24 State St., New York City.**

Sole Manufacturers of King's "EAGLE" (Patented) and Celebrated "DIAMOND" Brand Calced Plaster.

In writing Advertisers, please mention "The A. & B. Monthly" and oblige them and the Publisher.

All Interested Should Send for a Free Sample Copy of the

Builder, Decorator and Woodworker,

1305-1307 Arch Street,
PHILADELPHIA, PA.,

Giving Particulars of a Series of Interesting and
IMPORTANT COMPETITIONS

That are open to all. We want you to enter.

The **Builder, Decorator and Woodworker** is one of the **Handsomest and most profusely Illustrated** Journals of its class, consists of **36 pages**, and **4 full-page Supplements**, and should be in the hands of every Architect, Builder, Carpenter and every Artisan in the Building Trades. April issue will contain **Prize Designs** in Competition No. 1 for a \$2,000 Cottage.

Manufacturers and Dealers in Builders' Supplies will find it a **Paying Advertising Medium**, and should send for rates.



VALUABLE TO ARCHITECTS, BUILDERS AND CARPENTERS.
INTERESTS EVERY ONE
WHO WISHES TO

OWN A HOME,

OR WHO WISHES TO

**DECORATE OR
BEAUTIFY HOME.**

— THE —

BUILDER & WOODWORKER

W. F. Underwood, Ph.D., Editor.



The oldest Building Journal in America, now in its twenty-sixth year.

EACH NUMBER contains EIGHT full-page plates, printed in tint, of city and country residences, cottages, etc., plans with estimates of cost, elevations etc. etc. in addition to numerous illustrated articles, suggestions for, and illustrations of interior decoration.

ISSUED EVERY MONTH at ONE DOLLAR PER YEAR.

Published by **A. L. CHATTERTON & CO.**
78 Maiden Lane, New York City

IF YOU ARE INTERESTED IN THE
Practical Operation of Wood-Working Machinery,
Send for a sample copy of

THE WOOD-WORKER,

PUBLISHED BY

S. H. SMITH, Indianapolis, Ind.

It is the most popular journal published for practical machine wood-workers.

The American Builder.

PUBLISHED MONTHLY.—DEVOTED TO THE INTERESTS OF

**Architects, Builders, Carpenters,
MASONS AND PLUMBERS.**

EACH ISSUE CONTAINS FULL SET OF HOUSE PLANS, ELEVATIONS AND DETAILS
AND MANY VALUABLE AND PROFUSELY ILLUSTRATED ARTICLES
WRITTEN BY ABLE WRITERS.

SUBSCRIPTION PRICE, ONLY 50 CENTS A YEAR.

SAMPLE COPY SENT FREE TO ANY ADDRESS.

ADVERTISING RATES MAILED ON APPLICATION.

F. HOUGHTON & CO., Publishers, 84 Champlain Street, Cleveland, O.

THE SOUTH.

A JOURNAL OF SOUTHERN AND SOUTHWESTERN PROGRESS.

The South occupies a distinctive field in journalism. It is the oldest journal in the country devoted exclusively to the development of the Southern States.

Every issue is illustrated, often in color, with characteristic views, prominent buildings, factories, iron works, mines, railways, etc.

Advertisers will find it to their interest to advertise in *The South*, as it answers all those questions with regard to the Southern States in which people are now interested. Write us for information.

TERMS OF SUBSCRIPTION, \$3 A YEAR, IN ADVANCE. SAMPLE COPIES FREE.

The South Publishing Company, 76 Park Place, N. Y.

THE HANDSOMEST PUBLICATION IN THE WEST.

**THE WESTERN ARCHITECT
AND BUILDING NEWS.**

Published Monthly at Three Dollars per year.

DEVOTED TO WESTERN BUILDING INTERESTS. TWO SPECIAL NUMBERS DURING THE YEAR. PHOTO-GRAVURE SUPPLEMENTS.

J. B. DORMAN & CO., PUBLISHERS,
DENVER, COLO.

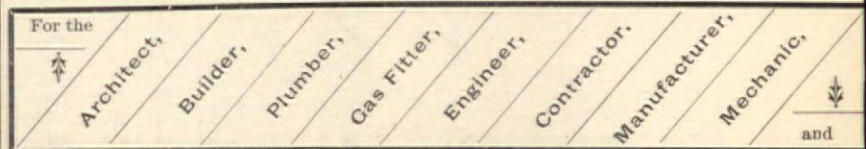
Box 2265.

Rooms 26-32, Cass and Graham Block

Sample Copies FREE.

THE SANITARY NEWS,

A WEEKLY JOURNAL



ALL PERSONS INTERESTED IN SANITARY INTELLIGENCE.

ESTABLISHED 1882.

SUBSCRIPTION: \$2.00 A YEAR, IN ADVANCE.

ADVERTISING RATES FURNISHED ON APPLICATION.

SEND FOR A SAMPLE COPY.

88 AND 90 LA SALLE STREET, CHICAGO

1869. 1890.

The Manufacturer and Builder,
Published Monthly.

A Handsomely Illustrated Mechanical Journal,
Edited by DR. WM. H. WAHL.

Every Number Consists of 38 Large Quarto Pages and Cover
Filled with useful information on all subjects of a practical nature.

It is invaluable to the Manufacturer, the Builder, the Architect, the Carpenter, the Engineer, the Plumber, and in fact to everyone who works with hands or brain. For the Household there is information given in every number worth the subscription price. The newest inventions are illustrated and described; science, both practical and theoretical, have a place in its columns; the Architectural department has an attractive design in every number. Questions on any topic asked by readers are answered, and a thousand and one bits of interesting matter go to complete the oldest, best and cheapest Mechanical Monthly in the country. It is the best, because the information it contains is accurate and up to the times. It is the oldest, being now in its twenty-second year. It is the cheapest because it gives the reader the most substantial literary food for his money.

Send \$1.50 for yearly subscription, and begin with the earliest number you can get.

SPECIMEN COPY FREE.

FOR SALE BY ALL NEWSDEALERS. AGENTS WANTED EVERYWHERE. ADDRESS

HENRI GERARD,
P. O. Box 1001. 83 Nassau Street, New York.

THE ARCHITECTURAL AND BUILDING MONTHLY.

A JOURNAL OF PRACTICAL DESIGNS AND DETAILS

Adapted to the Use of Architects, Contractors, Carpenters and Builders, Mason Builders, Plasterers, Sash and Blind Manufacturers, Real Estate and all other Interests connected and associated with the Building Trades in Various Localities.

Each Number will contain from eight to twelve 9x12 Plates of designs and details. Before the the completion of the first year, a large variety of Designs and Details of Public and Private Buildings suited to Cities, Towns and Villages, also Medium and Low-Cost Cottages, Suburban or Country Houses, Stables and Out Buildings, Street and Store Fronts, with details of Store Finish, Designs of Furniture and a great variety of Miscellaneous Exterior and Interior Details, drawn to Scale, will be published. Including Details of Brick, Stone and Plaster Work, making in all a collection of more new and original matter for \$5.00 than we ever published in book form for \$10.00.

A. J. BICKNELL, PUBLISHER,

P. O. Box 560.

No. 115 BROADWAY, NEW YORK.

(Original publisher of Bicknell's Village Builder, Bicknell's Detail, Cottage and Constructive Architecture, Wooden and Brick Buildings, Wither's Church Architecture, Loth's Practical Stair Builder, and compiler and publisher of several other practical works on Architecture, Carpentry and Building.)

Please fill this out and send it to Publisher of A. and B. Monthly, P. O. Box 560, New York.

SUBSCRIPTION ORDER

1890.

A. J. BICKNELL, Publisher,
(P. O. Box 560) 115 Broadway, New York,

Please send the "ARCHITECTURAL AND BUILDING MONTHLY" to the undersigned for one year, including No. already received. Five Dollars enclosed, for which please acknowledge receipt.

TERMS:
\$5.00 - PER YEAR.
2.75 - SIX MONTHS.
.50 - A NUMBER.

Name,

Street,

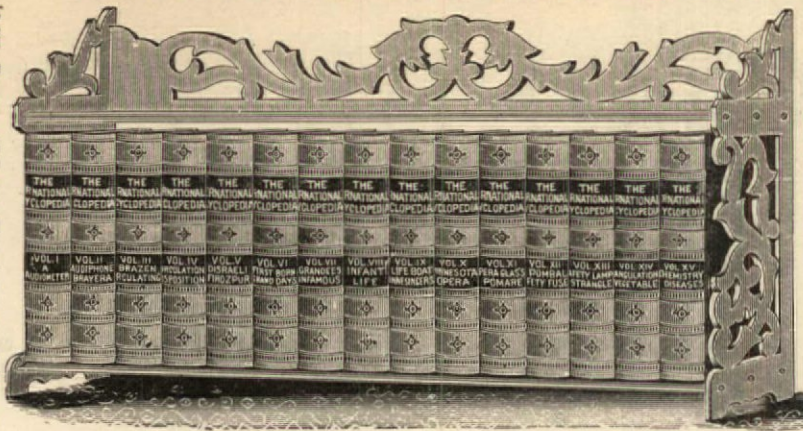
City or Town,

State,

Please remit by Money Order, Registered Letter or Draft, on New York, payable to the order of A. J. BICKNELL.

THE INTERNATIONAL CYCLOPEDIA. The Best for Ready Reference.

13,000 Pages. 15 Large Royal Octavo Volumes. Latest and Best.



50,000 Titles. 150 Double-Page Illustrations. 100 Double-Page Maps.

YOU NEED IT IN YOUR HOME.—It is a complete, comprehensive, read reference cyclopedia, published four years ago at the lowest cost consistent with good paper, good type, and good editing, and is better to-day because of careful revision.

NO OTHER CYCLOPEDIA APPROACHING IT IN SIZE (15 volumes with 50,000 titles) is sold at so low a price, and no other so generally contains the latest information and statistics. Yet its cost is moderate and terms of payment easy, if you wish. Delivered free of expense.

Correspondence Solicited.

Salesmen Wanted.

Address **SUBSCRIPTION DEPARTMENT,**

DODD, MEAD & COMPANY, Publishers,

753 and 755 Broadway, New York

Bicknell's Advertising Bureau,

Especially Devoted to the Interests of Those who Supply.

THE ARCHITECTURAL, BUILDING, DECORATIVE AND KINDRED ARTS AND TRADES.

SPECIAL LIST OF

Journals, Magazines and Illustrated Weeklies

Mailed to any Address on Application.

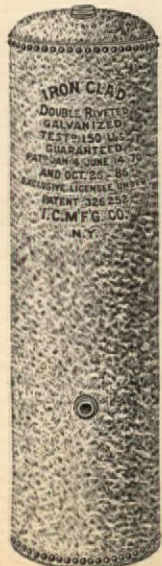
Office, 115 Broadway, N. Y.

Wheeler's Patent Wood Filler

For beauty of finish and durability no wood should be naturally finished without first filling the pores with this article. Specified by all prominent Architects. In use ten years. The wood-work of the principal public and private buildings throughout the world are and have been treated with it. Beware of Infringements. 1890 Illustrated Catalogue on Hard Wood finish sent free to any address

The Bridgeport Wood Finishing Co.,
Principal Office: New Milford, Conn.
New York Office, 240 Pearl St.
Chicago Office and Warehouse,
211 East Randolph Street, Chicago, Ill.
Mention "The A. & B. Monthly."

THE **Iron Clad**
—STEEL—
BATH BOILER
GALVANIZED.



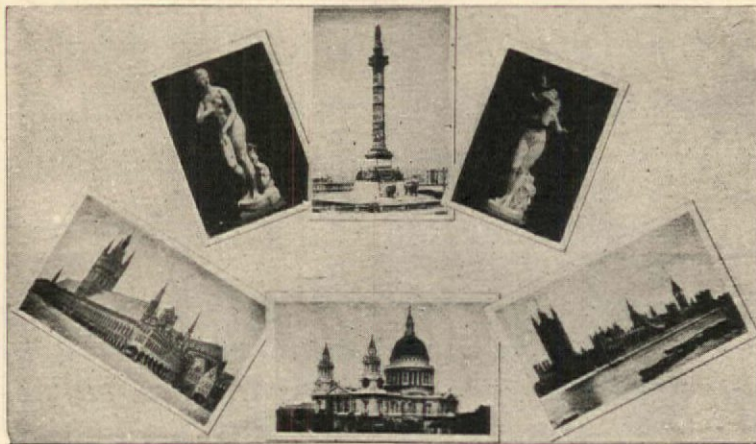
Tested 150 Lbs.
(28 Different Sizes.)
Perfect Satisfaction Guaranteed.

For sale by all **JOBBERS and DEALERS in PLUMBERS' SUPPLIES.**

Illustrated Circular and Price-List sent to the readers of "The A. and B. Monthly," also the address of our nearest dealer.

Iron-Clad Mfg. Co.
22 Cliff Street,
NEW YORK.

THE BUILDING BUDGET.



— A Journal of Architecture and Kindred Arts. —

* **INSTRUCTIVE AND INTERESTING TO ALL ARCHITECTURAL READERS.** *
Published Monthly at Chicago. 63 and 65 WASHINGTON ST.

PENNSYLVANIA GLOBE GAS LIGHT CO.
SOLE MANUFACTURERS OF THE
IMPROVED ROYAL AND ELKINS GAS MACHINE

THE BEST IN THE MARKET
22 TO 28 SO 15TH ST. PHILA'D'A.
115 BROADWAY NEW YORK
195 MICHIGAN ST. CHICAGO.

NAPHTHA & GASOLINE
FOR ALL KINDS OF GAS MACHINES

CONTRACTORS FOR LIGHTING CITIES AND TOWNS WITH THEIR RENOWNED SYSTEM OF SELF-GENERATING GAS LAMPS. OVER 50,000 IN USE.

— FOR —
ORDER * BLANK
SEE OTHER SIDE.

PARQUET FLOORS.
ALSO, WAINSCOTING, CEILINGS AND SIDE WALLS IN THICK PARQUETRY.
ARTISTIC AND DURABLE.
SEND FOR COLORED ILLUSTRATED CATALOGUE AND PRICE LIST.
PEEL & METZ, CO. MANUFACTURERS, OFFICE, 315, 317 & 319 E. 22ND ST. N.Y.

U. S. Government Advertiser

—AND—

MUNICIPAL CONTRACTOR

This paper is valuable to all persons having or desiring to have business with the Government; furnishes record of all contracts; publishes all calls for proposals gives the list of bidders, and amount of each bid. The ONLY paper containing all Government Advertisements. Special arrangements with every department of the Government. Price Five Dollars a year. Published at 1420 PENNSYLVANIA AVENUE, WASHINGTON, D.

Albany Venetian Blind Co.

MANUFACTURERS OF



Phillip's Patent Venetian Blind

The Best in Quality

And Lowest in Price

Anyone can put them up. They can be instantly removed for dusting, cleaning window etc. Occupy less space when drawn up than any other.

Mention the A. & B. Monthly and Builders' Illustrated Circular in Price List.

336 & 338 Central Ave.

ALBANY, N. Y.

New York Office:

150 BROADWAY

Cor. Liberty St., Room 10

Wm. G. Orr, Manager

CORTRIGHT



Metal Roofing, Tiles and Slates,



Storm-Proof, Fire-Proof, Durable, Handsome.

Illustrated Catalogue Free.

Cortright Metal Roofing Co.,

PHILADELPHIA,

Western Office, 720 Delaware St., Kansas City, Mo.



J. C. French & Son,

Vault and Sidewalk

LIGHTS

Of Every Description.

155 West Broadway, N. Y.

3.00 PER YEAR 3.00

NATIONAL

BUILDER

IF YOU PROPOSE to build a house and desire to obtain the latest and most approved designs, drawings and specifications, or if you are interested in any building operation, or if you are a contractor or mechanic, subscribe for THE NATIONAL BUILDER, a monthly journal now in its sixth year of publication, acknowledged to be the only practical magazine reproducing an accurate scale, working drawings or plans for all classes of buildings, and guaranteed to be reproductions of original drawings, made by prominent architect engaged especially for the purpose. All matters in connection with the building interests are plainly and scientifically presented in THE NATIONAL BUILDER. Send for sample copy, 25 cts. Subscription one year, \$3.00. THE NATIONAL BUILDER, 116 LaSalle Street, Chicago, Ills.

3.00 PER YEAR 3.00



C. F. HOLLINGSHEAD,

Wrought-Iron Railings

ROOF CRESTING,

Doors, Shutters.

COOPER'S POINT IRON WORKS

Camden, N. J.

DRAUGHTSMEN'S SENSITIVE PAPER

FOR COPYING DRAWINGS & C. IN WHITE LINES ON BLUE GROUND BY LIGHT AN EXCEEDINGLY CHEAP & SIMPLE METHOD AMATEUR PHOTOGRAPHIC OUTFITS SEND FOR THOS H. M. COLLIN 635 ARCH ST PHILADELPHIA PA.



Samples of this Lathing sent to the readers of the A. & B. Monthly free.

IMPROVED Labor-Saving CARPENTERS' TOOLS.

STANLEY RULE & LEVEL CO.

New Britain, Conn.

SOLD BY ALL Hardware Dealers.

Stanley's Improved Level Sights.



By the use of these ingenious devices, which can be attached to any Level, the owner has a convenient and accurate means for leveling from one given point, to another at a long distance away.

When not in use, the Level Sights are easily detached, and can be packed away in a small space, for future use.

No. 1. Improved Level Sights, per pair, in a box.....\$0 75



"PEDAL VALVE"

For Direct Radiators. Radical Improvements for 1890. Mechanism simplified one-half.

Prices reduced. Valve seats with the pressure and the greater the pressure the tighter it will close.

Seat is perpendicular and chips and dirt fall away from it. A touch of the foot will turn the heat on or off.

Patented in the U. S. and Canada. Circulars on application.

UTICA STEAM GAUGE CO., Utica, N. Y.

ESTABLISHED 1849.

INCORPORATED 1884.



'BOYNTON' HOT WATER HEATER.



FOR WARMING HOUSES, SCHOOLS, CHURCHES & PUBLIC BUILDINGS.

These Heaters have been pronounced by scientific experts to be the most effective, economical, and of the best mechanical construction of any ever placed on the market.

Also Manufacturers of the Celebrated BOYNTON FURNACES, RANGES, Etc.

THE BOYNTON FURNACE CO.,

47 & 49 Dearborn St., CHICAGO, ILL.,

207 & 209 Water St., NEW YORK.

Illustrated circular of all of our Heaters will be sent on application to readers of "THE A. & B. MONTHLY," together with the address of the nearest agent.

OMEGA VENTILATING GRATE.

Saves Fuel. Gives Uniform Heat and Perfect Ventilation. Cost Reasonable. Catalogue free on Application. Address THE OMEGA GRATE CO., CHICAGO.

The D. Frisbie Co.

ELEVATORS

118 LIBERTY STREET NEW YORK.

PORTABLE HOUSES.

For Illustrated Circular and Estimates for Portable and Permanent Buildings, address

THE PORTABLE HOUSE MANUFACTURING CO., 335 Broadway, New York, or Tenafly, N. J.

Esterbrook's Pens.

Standard and superior quality. Leading Nos. 048, 14, 130, 125, 230, 313, 333. All stationers have them. THE ESTERBROOK STEEL PEN CO., 26 John Street, New York:

SPECIMEN COPY

The Architectural Era,

An Artistic and Practical Monthly,

Mailed Free to the Readers

THE A. & B. MONTHLY,

Each Number Contains a SUPPLEMENT SHEET showing a large photographic reproduction of a new and prominent Building. Also designs of Cottages, Country Houses, and other new and original designs, including a plate of

DETAILS TO SCALE.

Subscription, Per Year, - \$2.00.

D. MASON & CO., PUBLISHERS, Syracuse, N. Y.

OFFICE:

115 Broadway, New York.

A. J. BICKNELL, MANAGER,

New York & Phila.

HALL & GARRISON,

Interior Fittings,

For Dwellings, Offices, Stores, &c., in all kinds of wood, finished and fitted up.

HARDWOOD MANTELS AND CABINETS. N. Y. Office, 280 BROADWAY, cor. Chambers St. Factory in Philadelphia. HENRY C. ADAMS, Mgr.

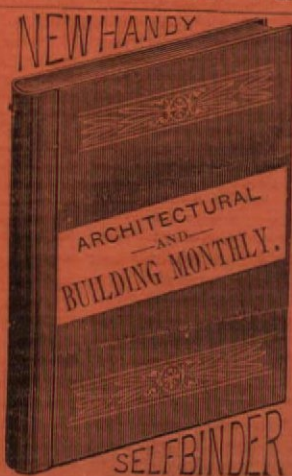
"RUSTLESS" IRON PIPE WROUGHT AND CAST IRON.

Manufactured by

The Wells Rustless Iron Co., 21 Cliff Street, NEW YORK. Send for Catalogue.

SEE Page IX For Blank Order.

Price \$1, Post-Paid.



Free With One Year's Subscription, Paid For in Advance.



DETROIT SURE GRIP
STEEL TACKLE BLOCK.
HALF THE COST of hoisting saved to Machinists, Builders, Contractors, and OTHERS. Admitted to be the greatest improvement EVER made in tackle blocks. Freight prepaid. Send for catalogue.
FULTON IRON & ENGINE WORKS.
Estab. 1852. 25 Brush St., Detroit, Mich.

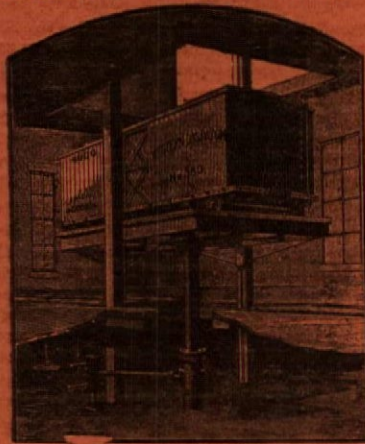
GRANOLITHIC

SIDEWALKS, FLOORS, AND FIRE-PROOF STEPS, LANDINGS, AND CORRIDORS.
STAR ASPHALT.
Sanitary Cellars, Floors, Arches, Etc.
STAR ROOFING.
Sparham Cement Roofs, guaranteed for ten years. Tin Roofs Covered.
MATT TAYLOR PAVING CO.,
15 STATE ST., NEW YORK.

HALL DUPLEX STEAM PUMPS.

For Residences, Flats, Hotels, Fire Service and all Factory Purposes. Prices as low as any first-class pump, \$35 and upwards.
Send for 1890 Illustrated Circular.
HALL STEAM PUMP CO.,
91 LIBERTY ST., NEW YORK.

ECLIPSE ELEVATOR.



ONLY SAFE ELEVATOR.
For Circulars and Estimates, Address,
Tuerk Hydraulic Power Co., 12 Cortlandt St., N. Y.

MAC KNIGHT FLINTIC STONE CO.
— MAKE THE BEST —

Artificial Stone Sidewalk & Curb,
FLOORS AND TILING,
Wash-tubs and Sinks, Fire-Proof Flintic Stone Roofs. Also Best and Cheapest Fire-Proofing. Illustrated Circular on application.
Office, 150 Broadway, New York.

FOR 68-page Illustrated Catalogue, Price List and Testimonials of the following Blinds: Outside Venetian, Rolling Steel Shutters, English Venetian Blinds, Rolling Venetian Blinds, Rolling Partitions, School Venetian. Address
JAS. G. WILSON,
Patentee and Manufacturer of Blinds and Shutters
307 BROADWAY,
Telephone No. 490, 21st, NEW YORK.

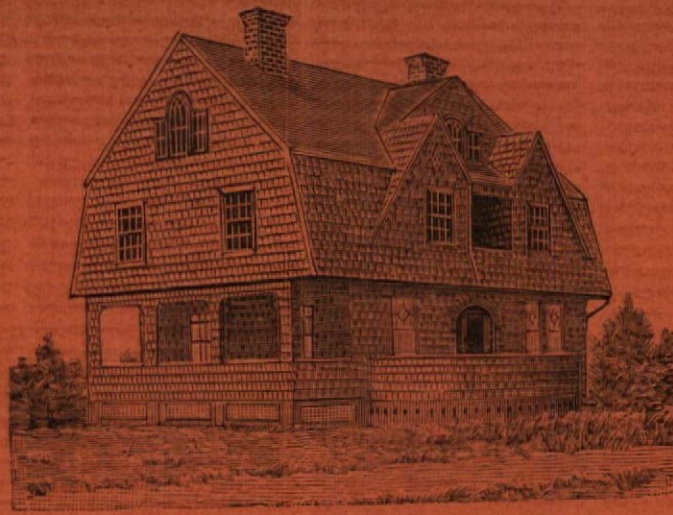
NEW YORK
Photo & General Lithographing.

Reproductions of Steel, Copper, Stone and Wood Engravings, Etc., Etc., at low Prices.

Estimates for any number of reproductions promptly given on receipt of drawings.

For Sample of Work See the Full Plate Illustrations in this Journal.

ROBT. A. WELCKE,
178 William Street, N. Y.



Sketch of House of Jas. L. Robertson, Bergen Point, New Jersey.
For Elevations and Plans see Plate No. 5.

VALUABLE SPECIALTIES FOR USERS OF STEAM.

Kellam's Damper Regulator, Oil Extractor and Filter. Centrifugal Exhaust Heads. Shaking and Dumping Grate Bar. Standard Reducing Valve.

Send for Catalogue and Price List.
HINE & ROBERTSON, 45 Cortlandt Street, New York

GEM SPRING HINGES.

For Doors.		Length of Flanges.	Japanned.		Copper Bronzed.		Real Bronze and Brass.	
Feet.	Inch.		Single Acting Per pair. No.	Double Acting Per pair. No.	Single Acting Per pair.	Double Acting Per pair.	Single Acting Per pair.	Double Acting Per pair.
6x2	x 3/4 to 1 1/4	3 1/2 in.	63 \$0 70	83 \$1 40	\$2 00	\$3 75	\$3 00	\$6 00
7x2	x 1 to 1 1/4	4 in.	64 0 90	84 1 75	2 50	4 75	3 75	7 00
7x2 1/2	x 1 to 1 1/4	5 in.	65 1 10	85 2 20	3 00	5 75	4 75	8 50
7x2 1/2	x 1 1/4 to 1 3/4	6 in.	66 1 40	86 2 80	3 75	6 75	5 75	10 25
8x2 1/2	x 1 1/4 to 1 3/4	7 in.	67 1 75	87 3 50	4 50	8 25	7 00	13 25
8x3	x 1 1/4 to 2 1/4	8 in.	68 2 50	88 5 00	5 50	10 50	9 25	17 00
9x3	x 1 1/4 to 2 1/4	10 in.	69 3 50	89 7 00	7 50	14 25	13 25	23 00
10x3	x 2 to 3	12 in.	70 4 50	90 9 00	10 00	18 00	16 50	30 00

Manufactured by **VAN WAGONER & WILLIAMS CO.,**
Send for April, 1889, Catalogue. **82 Beekman St., New York.**

Club Offer.

Our offer for a Club of five or ten subscribers, for this Journal will be forwarded on application.

Send for Price List of

Lindeman LIQUID FILLER

NO WASTE. NO CLEANING OFF. NO SETTLING.
The only Liquid Wood Filler on the Market by which a perfectly smooth and non-absorbing surface for varnishing can be obtained without the labor and expense of rubbing off.
NOTE.—Our Liquid Filler does not settle; is transparent as a varnish; it readily combines with any of the pigment stains; is especially adapted to the use of the House Painter.

WM. T. LINDEMAN & CO., **SOMERS, LINDEMAN & CO.,**
1400 Frankford Ave., PHILA., PA. 281 Pearl Street, NEW YORK.

ELEVATORS AND DUMB WAITERS.



The Wythe (patent) is superior to any other machine for Dumb Waiters. The load is absolutely controlled by a self-acting stop, concealed within the head; this stop is substantially a **LOCK**, and the Hand Wheel is the Key; no visible brake, clamp or check rope. It cannot run down of itself no matter how heavy the load. Pull one way to raise, the other to lower. It is very durable, the controlling parts being made of steel, Malleable Iron and Bronze; any part broken or worn can be duplicated at small cost. See cut.

Specially adapted for Hotels, Dining Rooms, Restaurants and all places where absolute safety in raising or lowering is required.

WYTHE No. 2, Same as above, but geared for heavier work, Light Elevators, Invalid Lifts, Etc. One man can raise 300 to 500 pounds.

For Illustrated Circular and Price List mention A. & B. MONTHLY and Address,

JOHN Q. MAYNARD, 12 Cortlandt Street, New York.

HOW TO SECURE A GOOD TIN ROOF.

Use the Genuine "Old Style" Brand. The Original Brand—the Standard Tin that has been so often imitated.

It has stood a practical test of over 40 years and then been found just as good as when first put on.

N. & G. Taylor Co. offer the following absolute protection in the use of their special brand of Roofing Tin:

1st. By guaranteeing every sheet to be perfect, square and true to standard gauge, all Wasters rigidly excluded.

2d. Guaranteeing the sheets to be heavier coated than any of its imitations.

3d. Every sheet stamped with the name of N. & G. Taylor Co. It being the only tin made that bears the name of the guarantor upon the sheets.

4th. Protection by stamping the Registered Trade Mark of Target and Arrow, also the thickness and the name "OLD STYLE" on each sheet.

5th. If the tin should not be found as represented it will be removed from the roof and replaced, the expense being borne by the guarantor, N. & G. Taylor Co.

N. & G. Taylor Co. originated the idea of stamping the brand and the thickness on sheets of tin. They were also the first to offer a bona fide guarantee to Architects, Property Owners and Tin Roofers. They publicly challenge contradiction on these two points. They further assert that through their exertions a complete change has been wrought among the trade. Bidders placed on an equal, more honest work done and better tin used.

Our book "How to Secure a Good Tin Roof," sent free to any address, also samples of Tin, etc.

N. & G. TAYLOR CO.
Established 1810—81st year.
Chicago. Philadelphia. Liverpool.

The "Galumet."

PRICE.

With Copper Lined Cistern, - \$20.00
With Cabinet Cistern and Seat, 35.00



Ivory Tinted Embossed Back Outlet Closet.

GEO. A. BLESSING & Co.,
Plumbing Goods and * * *
* * * Sanitary Appliances.

Illustrated Circular of our Specialties in Fine Wood Work and Nickel Goods mailed free.

52 CLIFF ST., NEW YORK.

Will Remove about May 1st
—TO—
290 Pearl Street, Near Beekman

Art Stained Glass

Belcher Mosaic Glass Co.

HENRY F. BELCHER, Pres.,
123 Fifth Avenue, - New York

Designs and Catalogue sent free to readers of Architectural and Building Monthly.

ART STAINED GLASS

FOR CHURCHES, DWELLINGS, ETC
KEYSTONE STAINED GLASS WORKS.
271 South 5th St., PHILADELPHIA.

In writing Advertisers, please mention "The A. & B. Monthly" and oblige them and the Publisher.