

LIVING

FOR YOUNG HOMEMAKERS



DO YOU KNOW YOUR HOME'S HIDDEN ASSETS?
BUDGET DECORATION FOR OLD AND NEW HOUSES

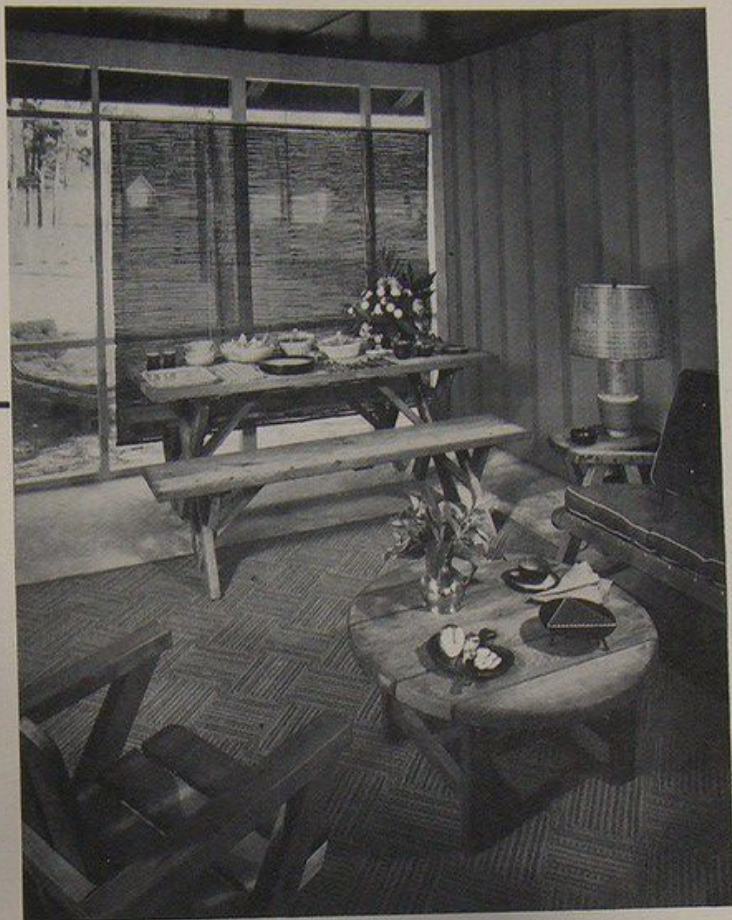
JANUARY 1953

35 CENTS

Red Cole
Harold

© 1953 NATIONAL ASSOCIATION OF HOME BUILDERS

AN INFORMAL second living-dining room, the breezeway was decorated as an inviting spot for relaxation. Comfortable settee and chairs in natural redwood (by Utility Cabinet) are appropriate in this almost-outdoor setting; three-piece redwood barbecue set against screened wall is well suited for impromptu summer meals and parties. Green *Twiltex* fiber rug is a practical floor covering over the concrete slab



opposite

HERALDING THE FRESH COLORS used throughout the house, the living-dining room offers a bright and cheerful welcome. This view from dining corner across to the breezeway highlights the thoughtfully placed seating pieces—tweed-covered sofa, side chair, and club chairs by Stratford Furniture. Softening the entrance to the much-used outdoor sitting room are lengths of Riverdale's *Tonga* print, the same fabric used for draperies at the front windows (right, unseen). Use of the same warm green cotton carpet (Sanford's *Havana*) unifies the two areas of this dual-purpose room, also dramatizes the gleaming hardwood floors. Lamps are by Lightolier

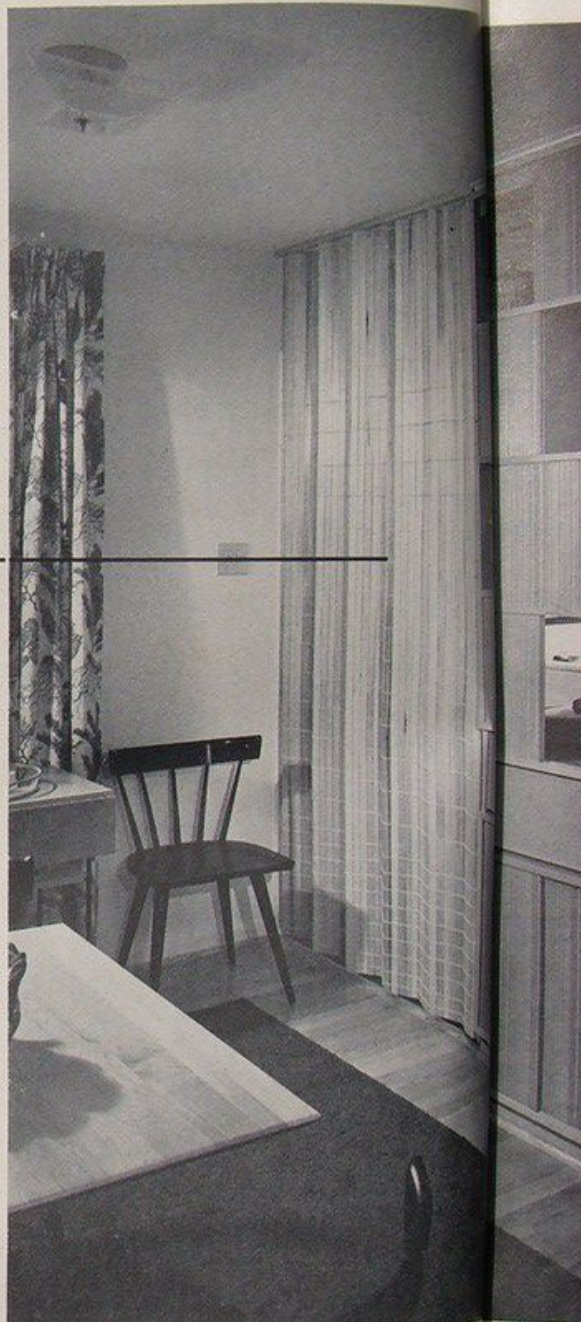


FROM FRONT DOOR, view of living room shows entrance to bedroom hall (right) which can be closed off by a *Ratox* door on a traverse system. The opening at left is the dining section, showing pass-through to the kitchen

ALL DECORATION AND ACCESSORIES BY JOSKE'S OF HOUSTON

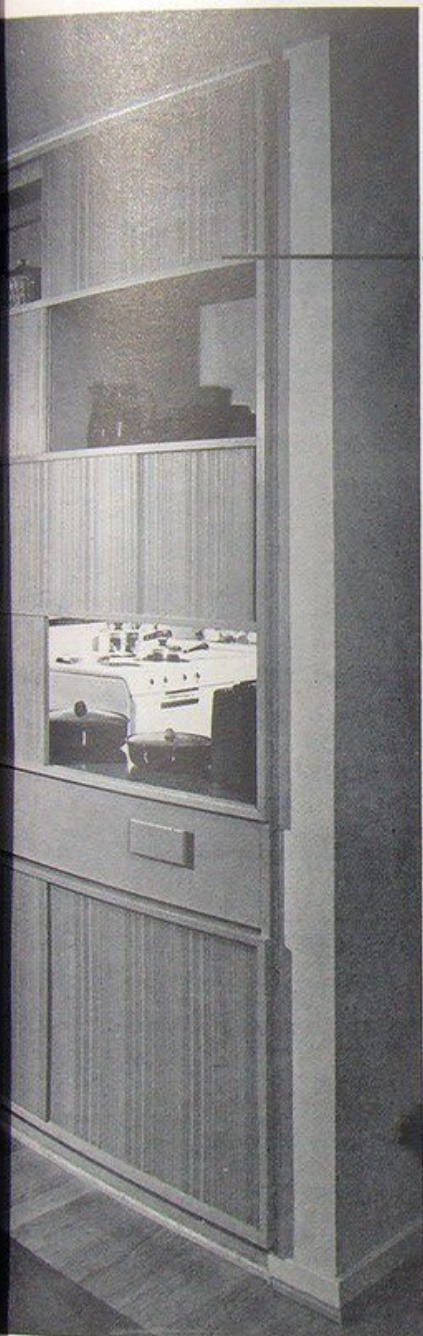


JOHN ROCKS

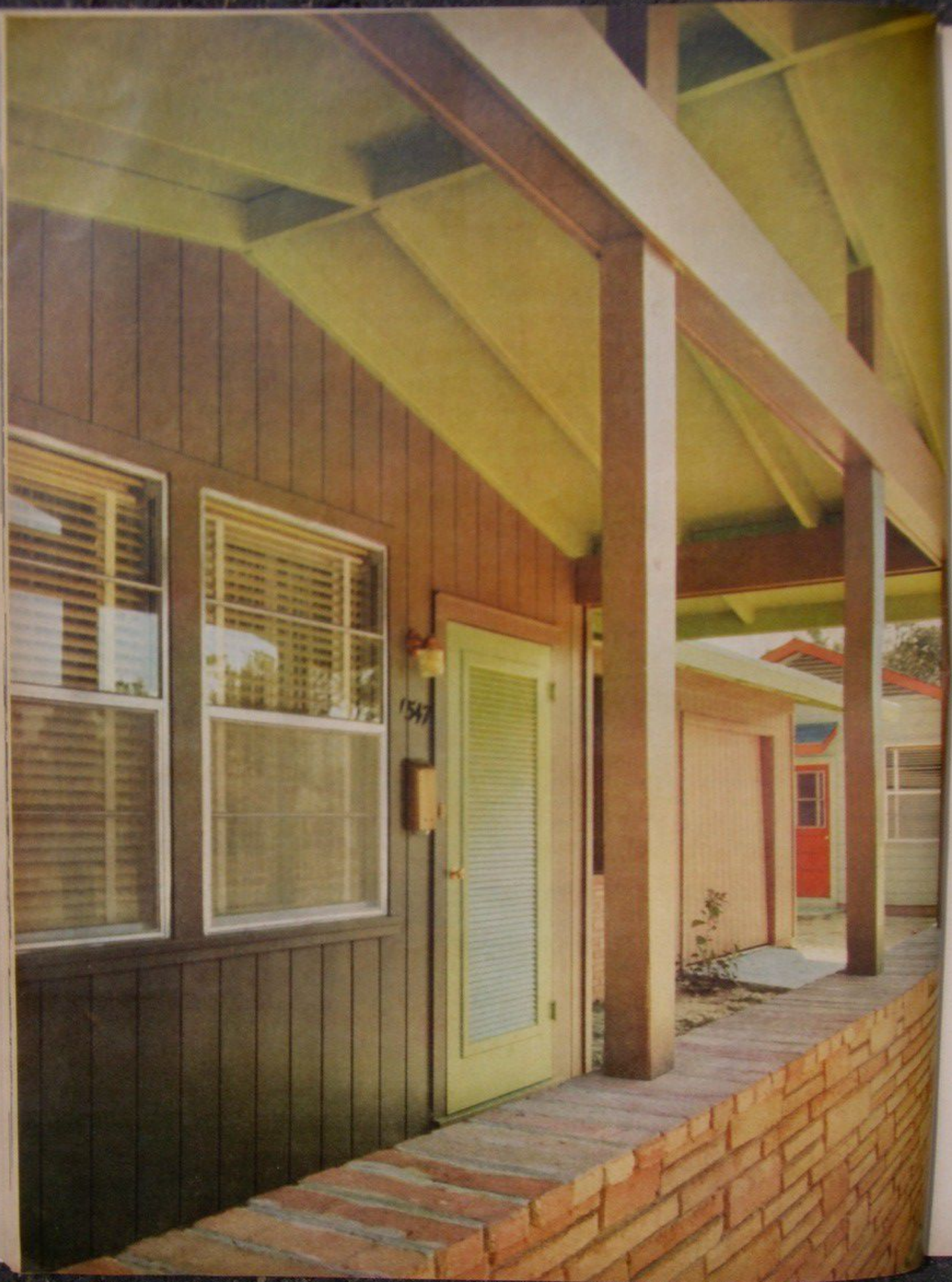


DINING FURNITURE has been arranged to make the most of 8' x 9' space. Drop-leaf table has been placed along the wall to create ample passage between kitchen and living areas. Teacart stands by for easy wheeling through kitchen entrance, equipped with a flexible door (directly above). Partition between dining room and kitchen is a factory-built storage wall, installed as a unit. Sliding panels allow convenient access to the kitchen

KITCHEN has its own dining corner, a convenience for families who like to serve breakfast or snacks with a minimum of effort. Wrought-iron table and chairs have graceful construction which gives the appearance of greater space; glass table top is cleaned easily and quickly after children's meals. Dining room is on the other side of built-in storage wall



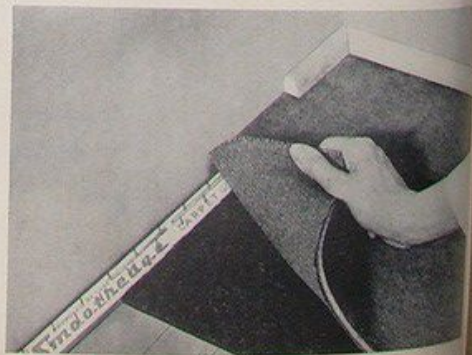
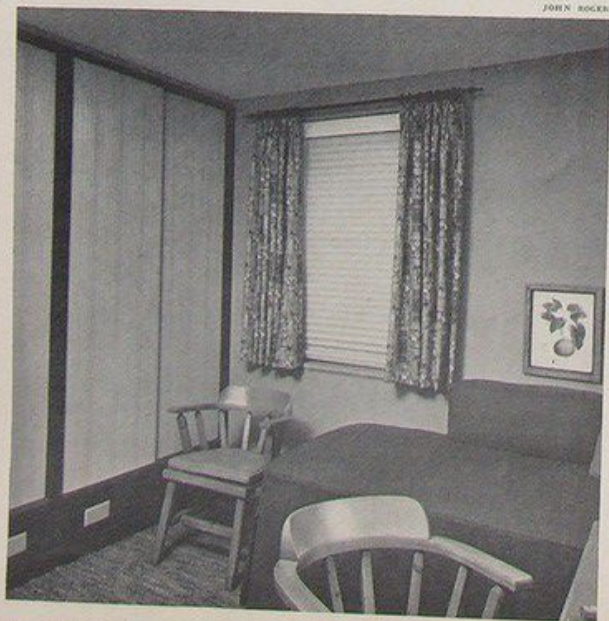
WORKING AREA of the kitchen has appliances organized into a step-saving triangle. Sink is at one point, *Frigidaire* electric range and refrigerator at the other two. Between sink and range a counter and storage unit is efficiently placed. A long, spacious counter runs the width of kitchen's end wall with more than ample storage cabinets above



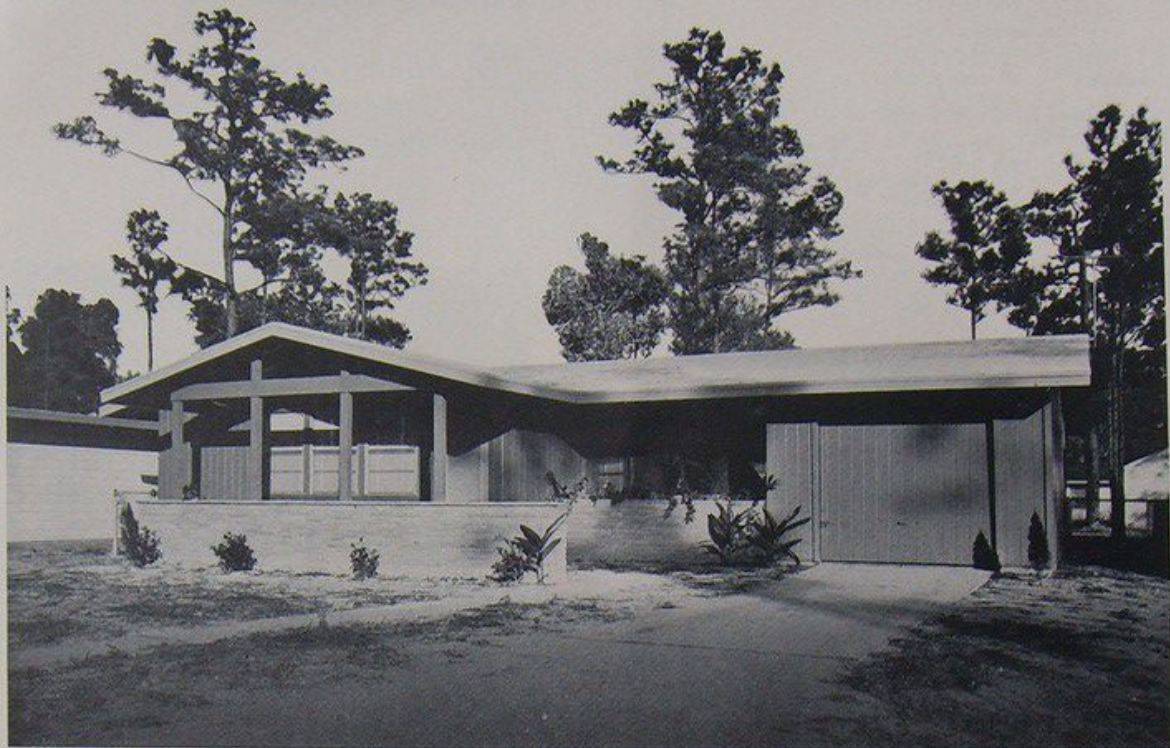


JOHN ROGERS

SECOND BEDROOM is the children's domain, decorated to be their private sitting room by day as well as sleeping quarters by night. Study and play are not overlooked: sturdy, solid pine desk is an invitation to school work; the gun and holster sets are fitting for descendants of Texas cowpunchers. Lounges are twin-size Simmons box springs and mattresses on Harvard frames, covered in brown *Malabar*, a hard-wearing cotton which blends with the *Somerset* drapery fabric—a red, chocolate, and beige pattern. These same colors are mingled in the cotton rug (by Chenille), here used wall to wall with the *Smoothedge* tackless method of installation (*below*). In this hidden asset, a carpet gripper, consisting of plywood strips with steel pins, is anchored parallel to walls, the rug underlay, flush to it. Rug is then stretched tight and attached



See Your Guide to This Issue for further information



MORE THAN MEETS THE EYE

A home buyer is sure of getting his money's worth when the unseen qualities designed and built into a home match

its surface impression. This is the case with the homes which Ned Cole has designed and P. S. Luttrell has built in the Oak Forrest addition of Houston, Texas. Since the war, Cole, a young architect who understands the needs of young families, has been working closely with builders throughout the Middle and Southwest to raise the quality of the ready-built home. Builder Luttrell is similarly dedicated. With the 3,000 homes planned for Oak For-

A young architect and a builder in Houston have packed a \$13,850 home with values

rest he has schemed tirelessly to wring the last penny of value out of the building dollar. A result of these combined efforts is the home shown here, a three-bedroom house of 1,695 square feet (including the garage) which sells for \$13,850. Other readily discernible features include hardwood flooring throughout, a 12' x 20' breezeway which has nearly year-round use in the Texas climate, a kitchen with space for dining, more than adequate closet stor-

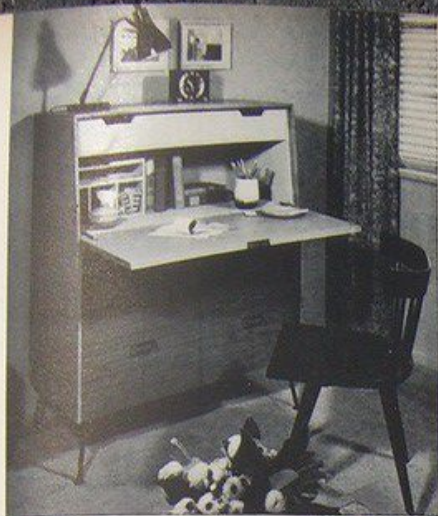
age space, two large lockers in the garage. Of less immediate notice are these nonetheless valuable attributes: a heating system

which can easily be converted for year-round air conditioning; an attractive, contemporary roof design in which the pitch creates space for heating ducts and for added ventilation in summer; a trussed roof which allows nonbearing walls so that planned changes in room arrangement can be made later with only detailed finishing. These and other features provide a home whose hidden and visible assets add up to most comfortable living.

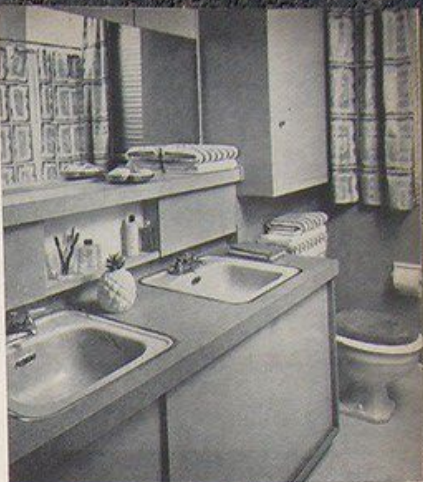
opposite and above

LOW ROOF AND EARTH COLORS of masonry and painted vertical siding skillfully relate this compact home to its plot. The front entrance and three living-dining-room windows are sheltered by a deep continuation of the roof, sheathed with plywood and supported by posts embedded in the waist-high masonry wall. These posts and horizontal bracing add decorative as well as structural importance to the front of the house. A planter box continues the masonry line across a breezeway which ties main part of the house and garage together and provides covered passage between them

[Continued on the next page]



UTILIZATION of all possible storage space is one of bath's main features. Sliding panels beneath lavatory counter hide shelves for supplies, those above conceal toilet articles and medicines. Over toilet tank, a wall cabinet has been installed in an otherwise unused spot



THIRD BEDROOM in this Houston home has been decorated to serve many purposes. Simmons' lounge is a seating piece or bed, as needed. On the opposite wall, the desk-chest (left), another piece from the *First Edition* group, carries out the study-sleeping room theme. Color scheme is an interplay of gray and persimmon; draperies pull across window wall



BUILDING DATA

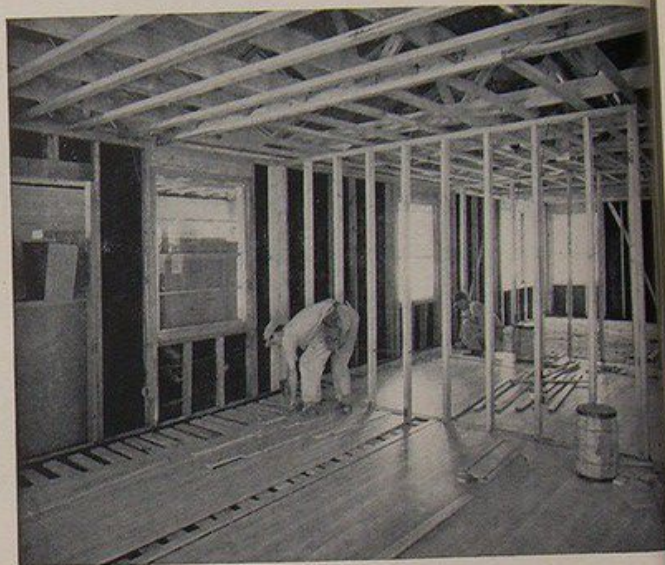
ARCHITECT: NED A. COLE
 BUILDER: P. S. LUTTRELL

| | | |
|------------------------|--------------------------------------|--|
| Foundation | 4" concrete slab on gravel fill | |
| Waterproofing | 2-ply mopped felt | |
| Floor surfacing | ceramic tile | Mosaic Tile Co. |
| bath | <i>Tile-Tex</i> | The Flintkote Co. |
| kitchen | oak on 1 x 4 sleepers set in asphalt | |
| all others | 2 x 4 studs built up | |
| All walls | white marble chips | |
| Roof | wood siding, masonry planting box | |
| Surfacing | <i>Sheetrock</i> | U. S. Gypsum Co. |
| interior and ceiling | walls and ceiling: blown | Johns-Manville Corp. |
| Insulation | | |
| Paint | <i>Super Kem-Tone</i> | O'Brien Corp. Sherwin-Williams |
| exterior | slab | |
| interior | slab, hollow core | |
| Doors | <i>Ratox</i> flexible doors | Hough Shade Co. Fabricon, Inc. |
| exterior | sliding door units | Schlage Lock Co. |
| closet | | |
| hardware | aluminum double hung | |
| Sash | double strength, B grade | Pittsburgh Plate Glass Co. |
| glass | forced warm air, gas fired | |
| Heating | <i>Atlas</i> furnace | International Sales Co. Minneapolis-Honeywell |
| controls | thermostat | |
| Plumbing | gas fired | Mission Appliance Briggs Mfg. Co. |
| water heater | | |
| fixtures | | |
| Kitchen | range and refrigerator | Frigidaire Division of General Motors Corp. Fabricon, Inc. |
| equipment | | |

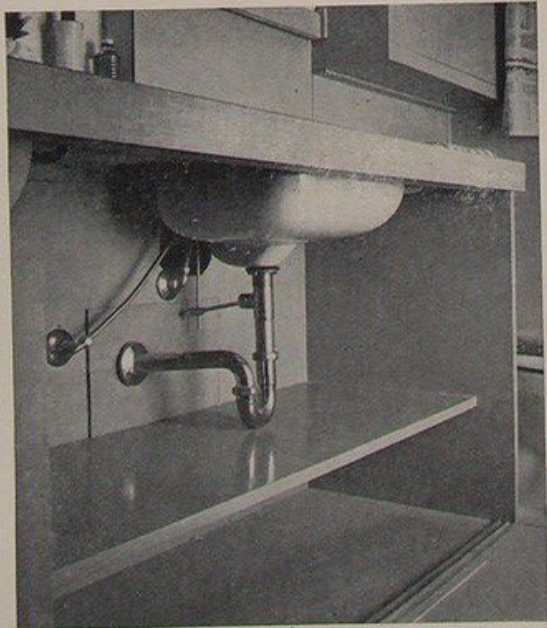
Built-in units

When you buy, build or remodel a house, be sure you know the brands of material used. They are the best protection for your total investment.

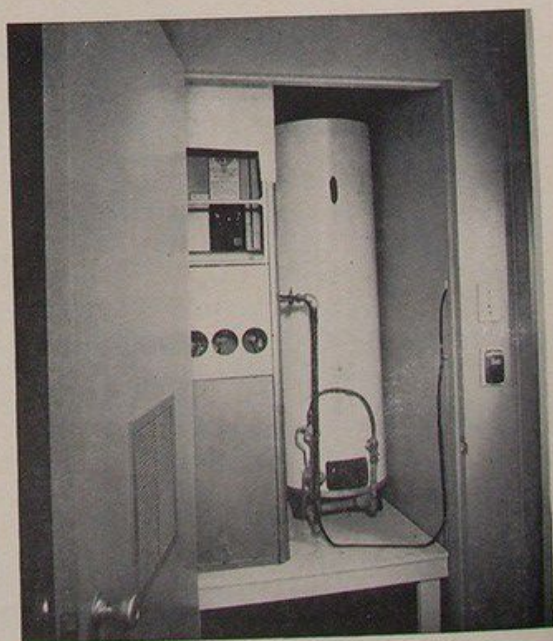
Building materials and methods are often hidden assets which a homemaker can study profitably



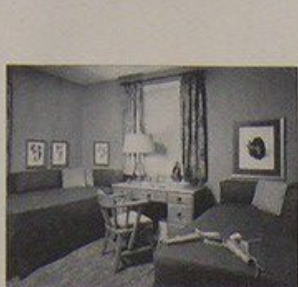
HARDWOOD FLOORING was laid over wood sleepers set in a coating of asphalt on the concrete slab. This provides an air space under the floor which cuts down moisture, preserves floor. No subflooring or underlay of any kind need be used. Workman in middle room is nailing strips to sleepers, one in foreground is arranging lengths of loose flooring



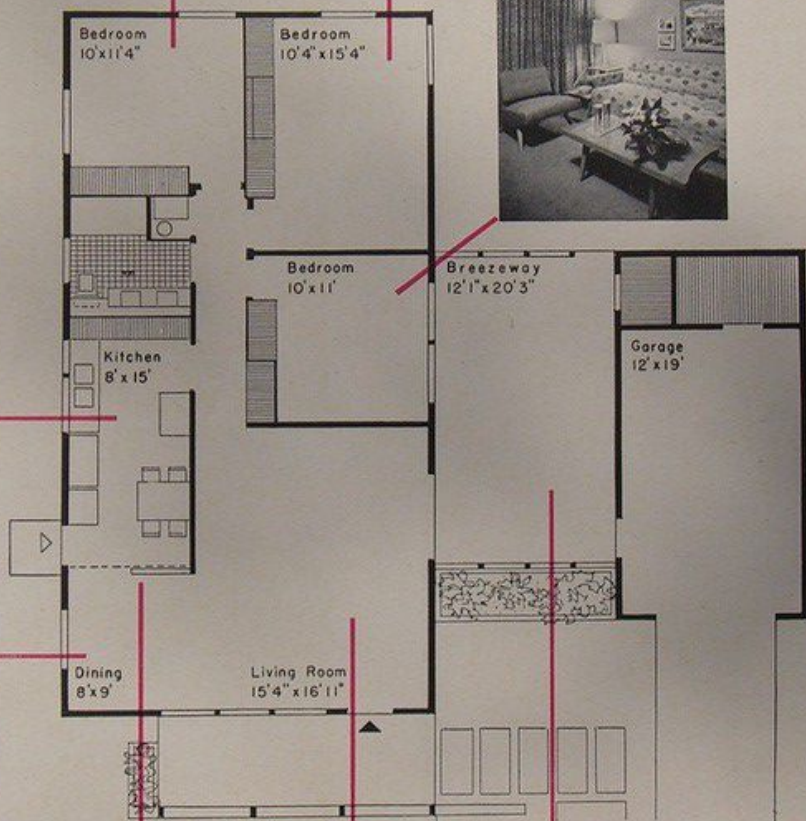
PIPING AND LAVATORY BASINS are hidden under built-in counter, creating storage out of unused and unattractive space. Shelf is removable if waste pipe repairs are needed



FURNACE AND WATER HEATER are set on a platform in a room adjacent to bath. Forced warm-air furnace is updraft type, lower louver in closet door serving as cooled-air return



L-SHAPED PLAN carefully segregates living, cooking, and sleeping areas of the house. Sizable living and dining room is augmented by a 12' x 20' breezeway which serves as a semi-outdoor living room much of the year in the Texas climate. It opens onto an outdoor terrace at the rear. Kitchen has its own outside door, its own dining corner, ample space for appliances. Third bedroom is used in this case as a den, guest room, study



For details on how these rooms were budget-

decorated, see the following eight pages ▶

