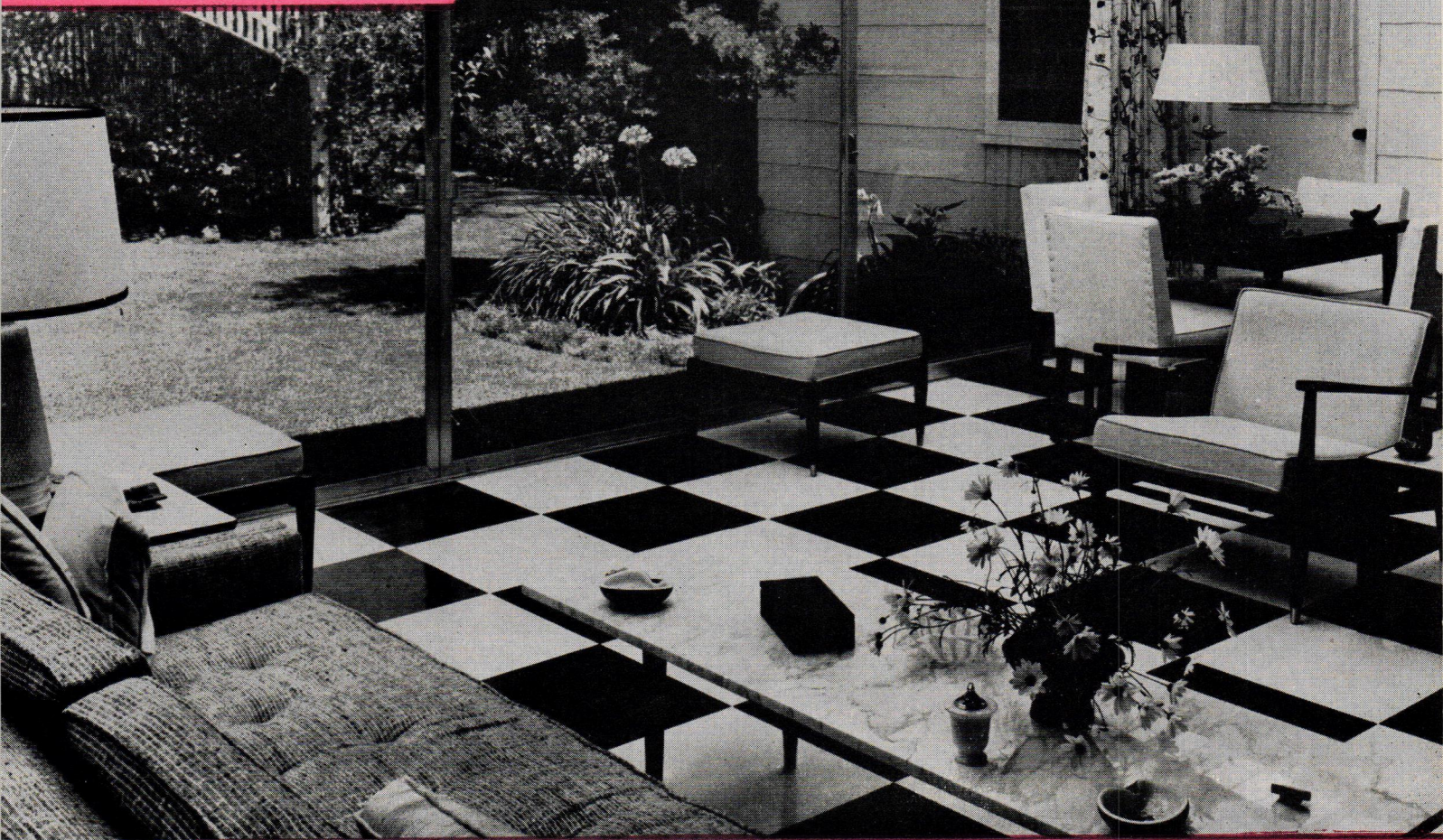


YOUR
HOME
OF
TOMORROW

MAY, 1958



PLANNING
DECORATING

PRESENTED BY

MAINTENANCE
GOOD IDEAS
GARDENING

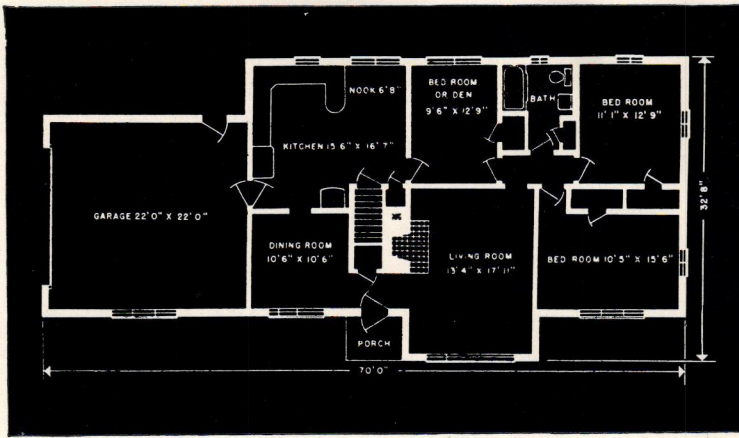
Hughey
CONSTRUCTION CO.

4305 MELBOURNE ROAD PHONE WA 3-5141

INDIANAPOLIS 8, INDIANA

BUILDERS OF QUALITY HOMES

"DEVELOPERS OF BEAUTIFUL KNOLLTON HEIGHTS"



- 3, 4 and 5 Bedroom Models
- 1 1/2 Baths
- All Brick and Stone Construction
- Birch Cabinets or Full Basement
- Full Basement (3 Room)
- Oil or Gas Heat
- Aluminum Windows, Marble Sills
- Hardwood Floors
- Plastered Walls—Ceramic Tile Bath
- Finest Conventional Construction Throughout

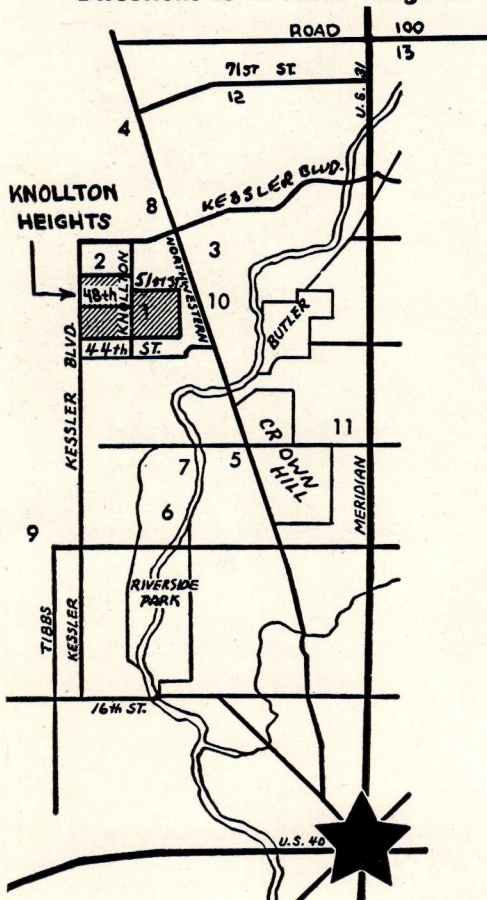
Why So Many New Homes Are Being Sold in Knollton Heights

- PROTECTIVE BUILDING CODE
- MINIMUM LOT SIZE OVER 1/2 ACRE
- ALL BRICK AND STONE CONSTRUCTION
- 200 ACRES OF FINE HOMES
- WIDE CIRCULAR STREET
- EXCELLENT DRAINAGE
- MANY 3, 4 and 5 BEDROOM MODELS

SELECT YOUR OWN HOME NOW

Our Service Includes Everything From Lot to Financing – Ready to Move In

Directions to Knollton Heights



1. Knollton Heights
2. Broadmoor Country Club
3. Highland Country Club
4. Delux Shopping Center
5. Woodstock Golf Course
6. Riverside Park
7. Lake Sullivan
8. Crooked Creek School
9. St. Michaels Church and School
10. Excellent Bus Service Direct to Downtown
11. 38th and Illinois Shopping Center
12. West Lane Jr. High School
13. North Central High School

HUGHEY CONSTRUCTION CO.

4305 Melborne Rd.

Phone WA 3-5141

Indianapolis, Indiana

"BUILDERS OF QUALITY HOMES"



Above: Evergreens interspersed with tall flowering plants add contrast to this lovely entrance walk.



Right: This beautiful walk contributes to the overall attractiveness of this lovely home.

LANDSCAPING YOUR HOME can be one of the most effective means of adding lasting beauty to your entire property. It will also serve as a gracious and attractive setting for the days of outdoor living and entertaining during the summer months ahead.

One of the most important areas for landscaping is the entrance walk. Beautiful walks are just as important to the small home as to the large estate. In fact, on the smaller properties they are even more important because there is less space available to beautify. Most popular for beautifying walks are flowering and evergreen plants.

If you are planning to landscape your walk, there are

a few rules to observe in order to get the most out of your planting.

The first step is proper planning. Know before hand exactly what you intend to do. For best results, draw a small diagram of the walk, spacing the plants so they will not encroach upon each other, but will retain their individuality.

Now you are ready for the actual planting. Usually at the beginning of a walk on the street side two shrubs, one on each corner of the walk, should be somewhat higher than the planting bordering the walk. They may be small trees if they are planted farther back so they do not cover

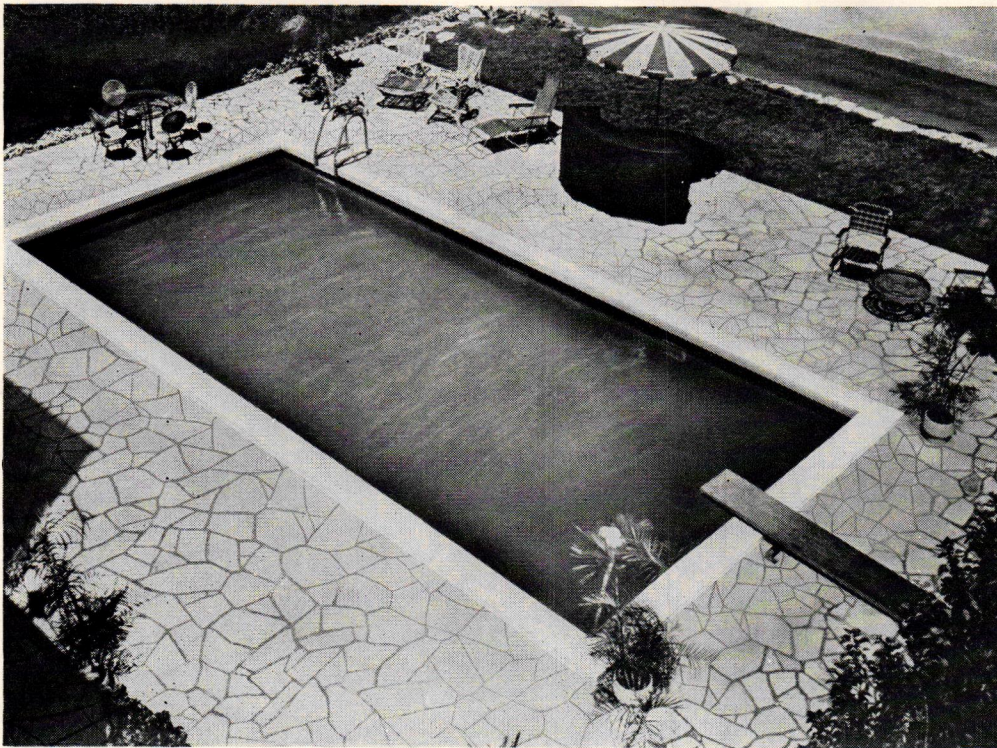


Photo: Cascade Pools Div.

Left: The combination of a flagstone terrace and effective landscaping makes this swimming pool a focal point for "leisure living."

Below: Colorful flowering shrubs and taller bushes and contrasting evergreens make a striking setting for this terrace.

the walk as they grow.

Next, a ground cover should be planted along a narrow strip on each side of the walk, so that the bare earth will not show.

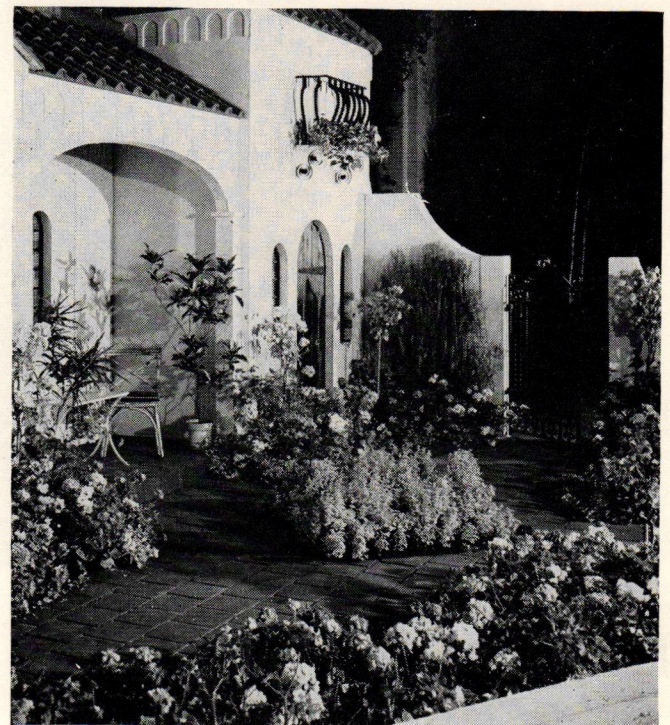
With the ground cover, a wide range of small evergreen and flowering shrubs may be planted, including roses, azaleas, or perennials, and evergreen foliage plants to give color in winter.

Although the entrance walk is certainly one of the most important areas to beautify, there are many other areas of your home which will benefit by attractive landscaping. With today's trend toward informal outdoor living, a landscaped patio and backyard will add a great deal to the setting of your outdoor "living room."

If you're fortunate enough to have a swimming pool in your backyard, effective plantings can contribute to making it the focal point of your "leisure living." If space permits, add a flagstone walk around the entire pool, lined with flowering shrubs interspersed with evergreens.

In addition to its obvious ability to beautify the home, landscaping can also be used for practical purposes. For example, perhaps your need is privacy, and a hedge will give you privacy as well as beauty.

The range of hedge plant materials is a wide one. A living fence of roses offers a fairly open hedge, which flowers over a long period of time. Evergreens provide winter as well as summer color. Other popular hedge choices include Japanese quince, Cornelian-cherry Dogwood, Washington Hawthorne, Winged Euonymus, Clavey's Dwarf Honeysuckle, Chinese Lilac, White Pine and Littleleaf Boxwoods.



Many flowering shrubs, such as forsythia, lilac, spirea and rhododendrons are often used as hedges, often without pruning. In the warmer climates, Hibiscus, Oleander, Pyracantha and many others may be used.

Whether you own a small home or a large estate, landscaping can contribute much to your enjoyment of outdoor living as well as the overall beauty of your home.

Inside Facts On Outdoor Painting



THIS IS THE TIME of year to examine the exterior of your home to discover whether it needs dressing-up. Study the coat of paint now on the house. Is it cracking or peeling? If so, it is probably a "paint year" in the life cycle of your home. If not, perhaps you will want to change its appearance by applying an attractive and contrasting color to the front door and window shutters.

When checking the condition of the paint on the exterior of your home, don't forget to give the foundation a thorough going-over. If it is concrete or concrete block and any hair lines are present, cover them with paint. If this is neglected, a year or so of frost and weather will convert the hair lines into chasms and cause the concrete to crumble.

If previous painting has been done properly, the surface will be marked with a uniform, dull, chalk-like film. In chalking, the film of the paint is wearing away evenly and has no opening where moisture can seep through. If this happens, the surface, in most cases, can be prepared for repainting by proper sanding and wiping.

After examination, your next step will be to study a color chart for exterior paints. There is a trend toward the distinctive use of color on the exterior of homes, and pastels and bright shades, once reserved for use as a trim only, now are popular for the entire exterior.

Choice of color can also create effective allusions regarding width and length. For example, to make the exterior of your home seem lower, paint the dormers the same color as the roof. Conversely, to add height to your home, paint the dormers and side walls the same color.

According to psychologists, your preference for certain colors is a clue to your personality. Among the more popular interpretations are the following:

Yellow is often the favorite color of the intellectual.

People who like yellow may be "lone wolves" who can keep secrets but who do not, as a general rule, have many close friends. However, the friendships they do form are deep and lasting. Ordinarily they control their tempers well, but react sharply when unduly put upon.

Brown signifies patience and steadiness. It is a great favorite among disciplinarians and those who keep their heads in almost any situation. Because they are usually steady, methodical and able to persevere, people who like brown are considered good marriage material.

Blue-green (aqua, turquoise, etc.) indicates a person who is usually self-possessed and able to meet emergencies calmly. Yet, it also denotes a certain lack of tolerance, an unfortunate quirk which often makes those who like blue-green somewhat difficult to get along with.

Green is a symbol of normality. People who show a strong preference for green are the balance wheels of society. They like to make and follow rules, and are the kind of people who can get along well with anybody and everybody.

Blue is the color preferred by the cautious and serious. Those who like this color seldom indulge in silliness. They like to keep things to themselves and often make good executives because they can readily win cooperation.

Purple, a very subtle color, is actually preferred by very few. However, a person who really likes purple makes charming company. He often has strong artistic tendencies. Though he can invent wonderful solutions to the world's problems, he rarely does anything about putting his solutions to work.

Red is an exciting color, and those who prefer it are usually exciting people. They are human, hearty, and vigorous; enjoy good fun; and know where to find it. Their moods are sometimes a problem for friends since they can swing from high spirits to low very rapidly, and their tempers are quick and explosive.

Of course, the psychologists point out, few people can be accurately described by only a single color. Most are a "blend" of colors, displaying some traits at one time and others at another.

What's more, personal color preferences may shift noticeably over a period of time. This does not necessarily reflect a marked change in personality. Rather, it indicates that a person may be unconsciously emphasizing certain personality traits more strongly than he did previously. Such changes are usually gradual, but in youngsters they can be overnight.

Whether you believe your color preference is a clue to your personality or not, the exterior of your home should be inspected to see whether it needs painting. In addition to a wide variety of colors, there are also many types of house paints which should be considered. One of the newest is a blister resistant paint, designed to cope with the blistering, peeling and scaling so common in new and insulated homes.

Proper care of the exterior — as well as the interior — of your home will result in renewed pride in your home as well as increasing the life and value of your property.

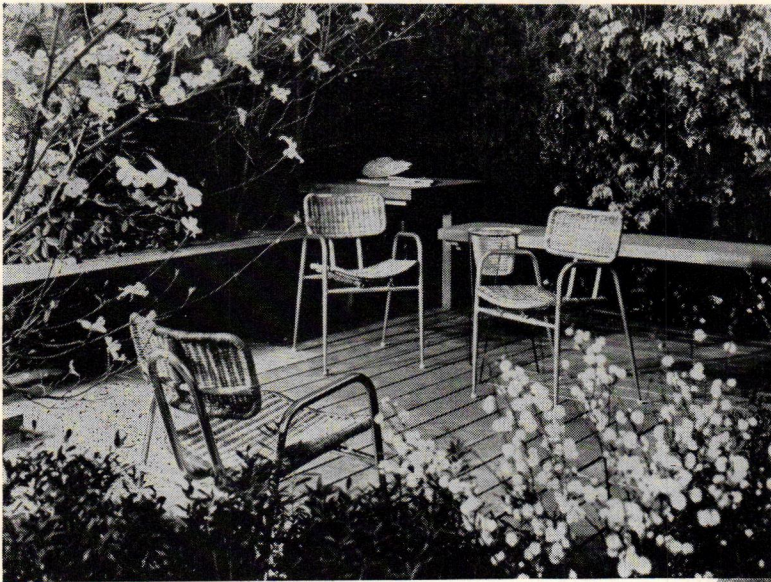


Photo: Troy Sunshade Co.

Dress Up Your Outdoors

YOUR OUTDOOR "living room" will undoubtedly be used extensively this summer for entertaining, as well as family cook-outs and recreational activities. This trend toward maximum outdoor living has prompted furniture manufacturers to design special pieces with which to dress up your outdoors.

This year, in each of the five major categories of outdoor furniture — wrought iron, rattan and cane, wood, aluminum and steel — there is something new to indicate that the gap between interior and exterior decorating is narrowing. There are new interpretations in traditional design, and a refreshing sophistication in modern, with design inspiration varying from classic Greek or Oriental motifs to Scandanavian adaptations.

In wrought iron, for example, the ornamental detail that can be achieved, as well as the fresh colors its use permits, is more apparent than ever this year. There are sculptured modern designs, traditional pieces inspired by the baroque grillwork of Spanish or New Orleans gate design, and wrought iron with an Early American feeling. Wrought iron finishes, such as mint and antique green, white, and green, as well as many exciting finishes are available.

Rattan, one of the most popular materials for outdoor

Left: These light-weight chairs feature form fitting rattan seats and backs that have been coupled with gold anodized aluminum frames.



Photo: Telescope Folding Furniture Co., Inc.

Above: Two different types of imported rattan are used in these new casual chairs. One is wide-woven, flat-surfaced and light in color; the other is close-woven, more elaborately textured and darker-toned.

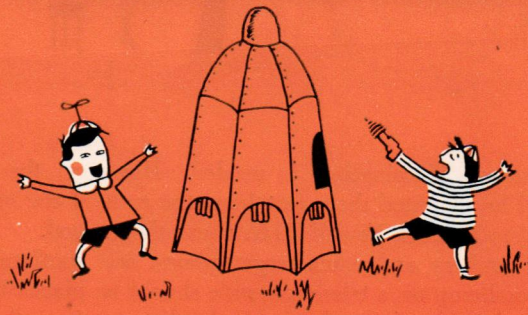
furniture, has been combined with solid oak, natural birch or walnut to create exciting new contrasts in summer furniture. Tasteful detail is evident in such touches as solid brass or pewter hardware to accent warm-toned finishes, and in the use of luxurious materials for table tops, including imported white and gold mosaic tiles, and thermoset plastic sprinkled with flora and fauna motifs.

Manufacturers of casual furniture in wood have taken advantage of the fact that rich, warm finishes highlighting the natural grains of fine woods is one of the primary sources of elegance. The Scandanavian influence is popular, as is the use of redwood with gold-anodized aluminum.

In aluminum and steel, there are many new designs, richer looking fabrics and finishes as well as radical new mechanical developments in chaise construction.

No matter what your preference in design or construction, summer furniture will help to make your outdoor "living room" as attractive and functional as your indoor living room.

Ideas For Summer Fun



SUMMER FUN for both adults and youngsters can be greatly increased with new streamlined summer houses, which are sturdily built of light weight materials. Colorful children's playhouses will keep them occupied for hours, and the larger adult model provides cool comfort for grownups.

To keep out pesky insects and let in cool breezes, sides of these summer houses are screened. The basis of the children's model is a light framework of metal rods. No stakes are needed, so the frame can be erected on a concrete drive, or in the basement playroom. Cover of the children's playhouses are tent canvas, designed in festive carnival colors, which slip over the metal framework as easily as a pillowcase. Screen on one side is transparent mesh, sewed right to the cloth.

An all-aluminum adult model provides an inside area of 108 feet, ample space for family dining, entertaining or sleeping. It is constructed on the same simple principle as the small ones. Composed of a series of panel screens bolted together, the adult house has a kickplate around the bottom to protect the screens, and a hinged door with handle and lock. Its colorful canvas top is weather and mildew-resistant, and specially constructed supports keep it neat and tight.

To provide safe summer fun for the children, or to give the whole family a summer house, these easy-to-construct playhouses, which fold into flat packages for storage, will give added enjoyment to the entire family.

Right: Six-sided spaceship will provide endless hours of summer fun for the youngsters. See-through plastic top adds to the fun, particularly for those imaginary trips to the moon!



Photos: Courtesy of Better Homes & Gardens

The adult summerhouse boasts an inside area of 108 feet, ample room for the whole family.



Above: What child doesn't like to play store, and think of the fun he'll have with this miniature drive-in, complete with pass-through window plastic screened window and door.



Light For Outdoor Living



GONE ARE THE DAYS when outdoor lighting was needed only for the front door, rear entrance and garage. Today, the trend toward cooking, eating, entertaining and playing outdoors has created new needs and uses for outdoor illumination.

Take, for example, outdoor cooking and dining. With proper outdoor lighting, the time you schedule your meals will not be dictated by the sun, and it will give the entire family more hours to enjoy the fun of outdoor dining and parties. For lighting the barbeque, two 150-watt floodlamps placed 12 to 20 feet above the ground will supply the best light. To soften shadows, aim the lamps from several directions. To illuminate the dining table, use diffusing plastic bubble fixtures placed three to five feet above the table.

Hours more fun in family recreation is also possible with outdoor lighting. Buildings and trees are good locations for sports lighting equipment, or telescopic poles, fitted into pipe sleeves that are driven in the ground, can be used. For lawn games, such as croquet, three floodlamps on each of two telescopic poles will provide the best light. Locate poles at center line on each side of court, and extend to between 16 and 20 ft. above ground, and aim lamps to cover playing area.

For net games, such as badminton or tennis, the same

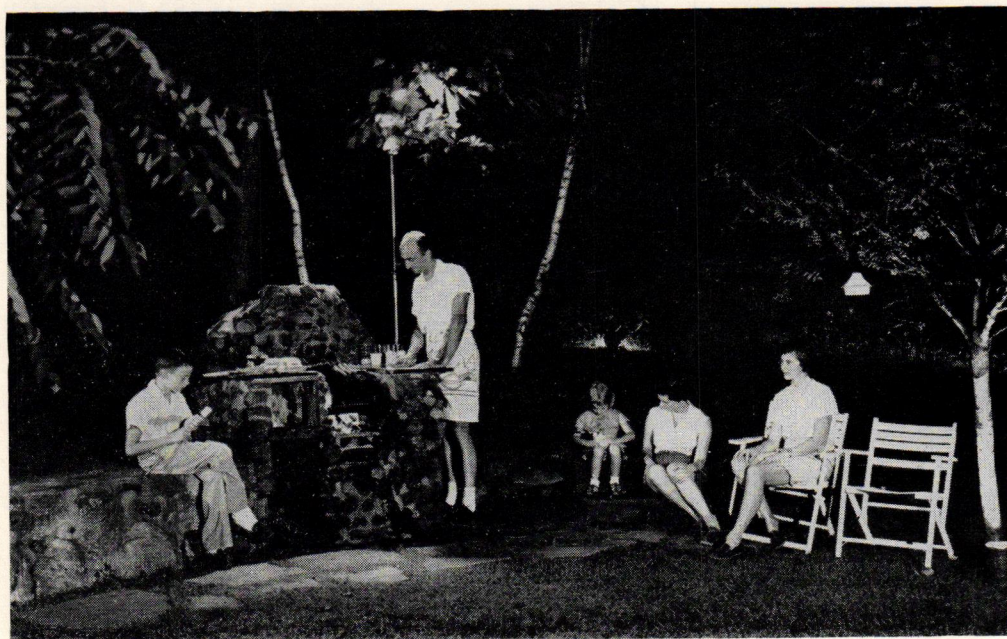
amount of illumination is needed. However, the poles should be mounted three feet from the ends of the net and extend to between 16 and 20 ft. above the ground.

For archery and other target games, one spotlamp and one floodlamp on a telescopic pole should be placed behind and to the side of the player. If the distance from the pole to the target exceeds 25 ft., use two spotlamps and one floodlamp.

In addition to adding to the family's outdoor living enjoyment, outdoor lighting can be used for practical purposes, too. For example, such tasks as gardening, mowing and yardwork can often be done after dark, when it's cooler, if proper lighting is available. For such diverse jobs as gardening or repair work, portable lighting equipment is available.

For pure visual enjoyment, lighting can make your garden come to life at night, as well as during the day. The small, as well as the large formal garden, can create a lovely scene from the living room picture window or from the terrace or patio. The garden spots to be lighted and the equipment selected will determine the size and type of light bulb to be used. Bulbs from 10 to 150 watts are used in most cases.

Lighting devices designed for ordinary household bulbs usually have a covering of metal or plastic to protect the



Outdoor barbeques mean lots of enjoyment for the whole family, especially when their outdoor fun can be extended into the evening thanks to outdoor lighting.

Games are never called because of darkness here. Yard games, such as croquet, badminton, shuffleboard and darts, can be played at any hour by the light from two portable telescopic poles.



Photos: Westinghouse

glass from the elements. Projector-type bulbs have a built-in reflector and are made of glass that will not break if rain or snow falls on the lighted bulb. Projector bulbs with a medium screw base come in 75 and 150-watt sizes in two types — the spot type for a concentrated beam of light and the flood type which gives a wider beam.

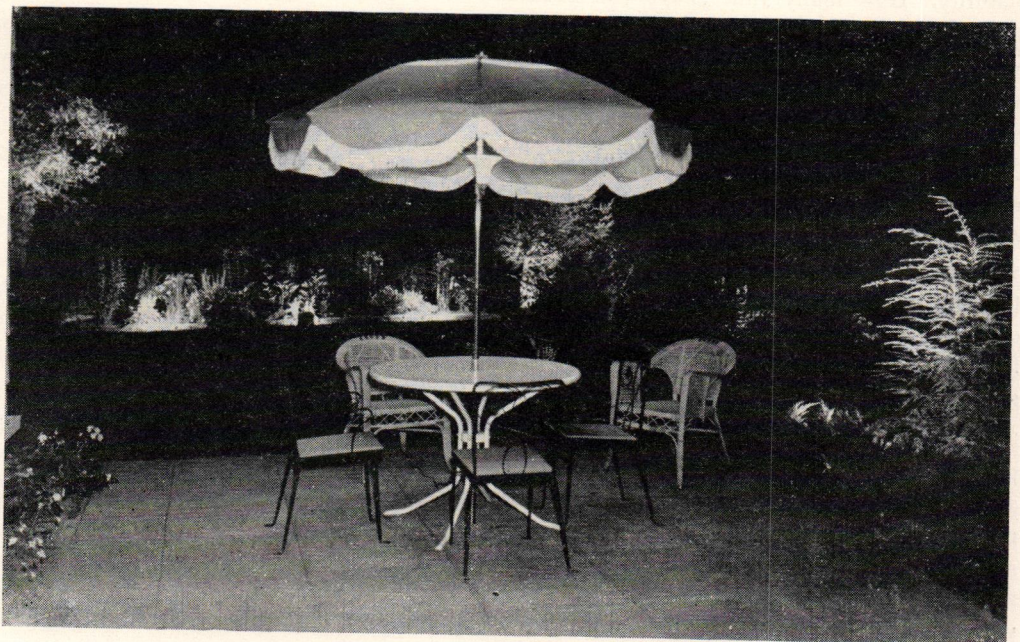
But no matter what area of your home you plan to illuminate, there are several general hints which will help you in carrying out your outdoor lighting program. If you plan a permanent lighting system, install underground wiring, (Remember you can use the same lighting equipment for your Christmas lighting). For temporary lighting, weather-proof outlets are available in portable devices.

For all outdoor lighting installations, use weather-proof outdoor type cord with watertight plugs, sockets and connections. Use colored light, especially in the garden, sparingly. Pale tints of green or blue-green are attractive on walls, trellises, statuary and foliage.

For outdoor cooking areas, terraces and patios, use yellow bug-a-way bulbs, available in 60, 100, and 150-watt sizes. These bulbs do not attract pesky insects, as does bright, white light.

Today, outdoor lighting equipment is available to create any lighting effect which your imagination concocts. Outdoor lighting will add new dimensions to the many hours you and your family will spend in your outdoor "living room" this summer.

Al fresco dining or a card game in the cool of the evening can be enjoyed under this lighted umbrella. The plastic "morning glory" attached to the pole directs the light up to the umbrella.



Entertain Your Friends Outdoors

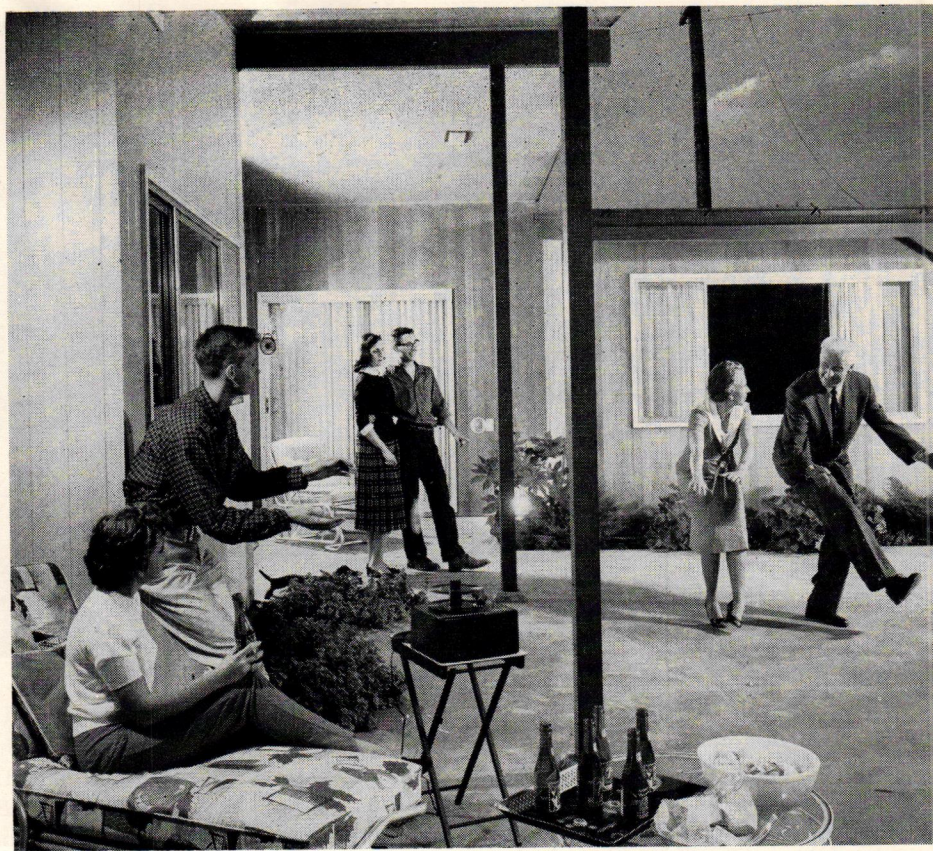
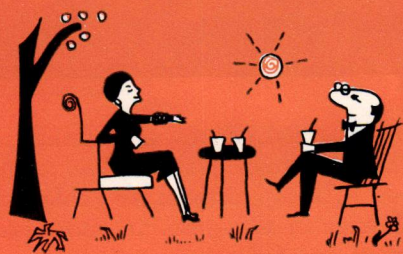


Photo: West Coast Lumbermen's Association

Informal outdoor entertaining means more fun and enjoyment for everyone. Above, teen-agers, undoubtedly Rock and Roll enthusiasts, seem to be enjoying a lesson from Mom and Dad on the Charleston.

SUMMER ENTERTAINING can be easier and more enjoyable, if you make the weather an asset instead of a liability. How many times have you been all set to go to a formal party, and then decided not to go, because you couldn't stand the thought of getting dressed up in stiff, uncomfortable clothes and standing around in a hot, stuffy room?

The hot, sultry climate that characterizes the summer months is a good excuse to forget conventional ways of entertaining and plan an informal outdoor party, where soft sport shirts and denim skirts are in order. In addition to comfortable attire, you'll find your guests will quickly get into the spirit of an outdoor party, and they'll find Mother Nature's setting is not only cooler, but also more spacious.

Like any other party, outdoor entertaining should be planned ahead of time. Comfortable furniture, such as attractive chaise lounges and chairs, should be strategically placed to accommodate the guests. If you're planning to serve dinner, you'll need a barbecue pit or portable grille. Just before the guests arrive, check the prevailing winds, and place the barbecue unit so that the wind

will carry the smoke and fumes away from the house.

The menu is entirely up to you. Charcoal-broiled steaks are always a favorite. One of the most popular vegetables for outdoor cooking is corn on the cob, roasted in the husks, or stripped and wrapped in protective foil. A large green salad and potato chips would add the finishing touches to this meal. But a word of warning! Plan to have plenty of food, because for some inexplicable reason, appetites are ravenous and everything tastes so much better when cooked outdoors.

The teen-agers will also love entertaining their friends in your outdoor "living room." They'll have fun cooking their own hot dogs and hamburgers over the outdoor grille, or toasting marshmallows over an open fire.

If you have a concrete patio, it will make an excellent dance floor, as pictured above. An outdoor electrical outlet makes plugging in a record player or radio easy, and guests of all ages will enjoy dancing to their favorite bands and orchestras.

You'll find that summer entertaining is a lot more fun — for you and your guests — if you make your outdoor "living room" your entertainment headquarters.

ROBERT TAYLOR LUMBER CO.

YELLOW PINE LUMBER
FROM MILL TO YOU

PHONE
ME 6-1222

1723 N. WARMAN AVE.
INDIANAPOLIS, IND.

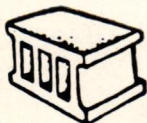
ALBERT HENRY

BRICK AND BLOCK WORK

3657 CAPITOL
INDIANAPOLIS, INDIANA

PHONE
WA 3-6997

FRANZEN BLOCK & MATERIAL CORPORATION



Concrete Blocks - Building
Materials - Lintels - Coping
Stepping Stone - Lawn Furniture

1935 KENTUCKY AVENUE
INDIANAPOLIS 21, INDIANA

MElrose 8-1311

MElrose 8-1312

YOUR HOME OF TOMORROW

is sent to you each month
through the courtesy of
the friendly firms listed
on these back covers.

Your only real security is a home of your own. That is the American dream and ideal.

The friendly firms on these covers are here to help you fulfill that dream.

Bring your problems to them. They are **anxious to serve you.**

Hughey Construction Co.

4305 MELBOURNE ROAD
INDIANAPOLIS 8, INDIANA

Phone WA 3-5141



BUILDERS OF QUALITY HOMES

"Developers of Beautiful Knollton Heights"

BUILDERS PUBLISHING COMPANY
100 STEVENS AVENUE
MT. VERNON, N. Y.

Lloyd E McCann
1905 Orlando
Indianapolis 8 Ind.

BULK RATE
U. S. POSTAGE
PAID
Permit No. 8
Mt. Vernon, N. Y.

A COMPLETE DEPENDABLE BUSINESS GROUP TO SERVE YOU

HOOSIER COAL & OIL CO.



WALnut 3-3343

BEA AND BEA

GUTTERING — ROOFING — HEATING
OIL OR GAS FURNACES
AIR CONDITIONERS
DELCO and JANITROL FURNACES

2425 E. 29th STREET — PHONE WA. 5-7020

HILL BROTHERS

"Painting At Its Best"

WEST 116th STREET
VI 6-8808

SPRING MILL ROAD
VI 6-8680



3468 CONGRESS INDIANAPOLIS 22, INDIANA WA 4-0566

ELECTRICAL CONTRACTING & ENGINEERING
GENERAL ELECTRIC WIRE HEAT
SALES AND SERVICE

BROAD RIPPLE LUMBER AND SUPPLY CORPORATION

"Your home deserves the best"

1001 Broad Ripple Ave. Phone CLifford 5-5456

UNITED MORTGAGE CO., INC.

515 Lemcke Building Indianapolis, Indiana

RESIDENTIAL AND COMMERCIAL LOANS

Conventional — V. A. — F. H. A.

EARL LAYNE, President
ME 2-9396



ALBERT GRIFFITH

Hardwood Floor Refinisher
Floors Laid - Quality Work

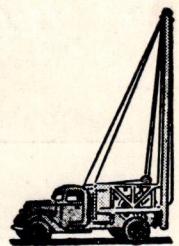
5115 Rosslyn Avenue Indianapolis, Indiana
Phone CL 5-9665



WE DRILL WELLS!
LET US WORRY FOR YOU
NO DOWN PAYMENT
36 MONTHS TO PAY
WELLS AND PUMPS

HAMILTON BROS.
WELL DRILLING CO.

4025 ROCKVILLE RD. CALL CH 1-2571



FACE BRICK AND
PLASTERING MATERIALS

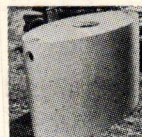
Furnished by

HARRY C. ENT MATERIALS, INC.

1415 Commerce Avenue Phone MElose 8-6543

Indianapolis, Indiana

CARMEL CONCRETE PRODUCTS
ALL-NEW SEPTIC TANKS



Featured in All

HUGHEY CONSTRUCTION CO.
HOMES

Meets All F.H.A. State and County
Health Code Requirements

FOR ADDITIONAL INFORMATION—CALL VI 6-2301