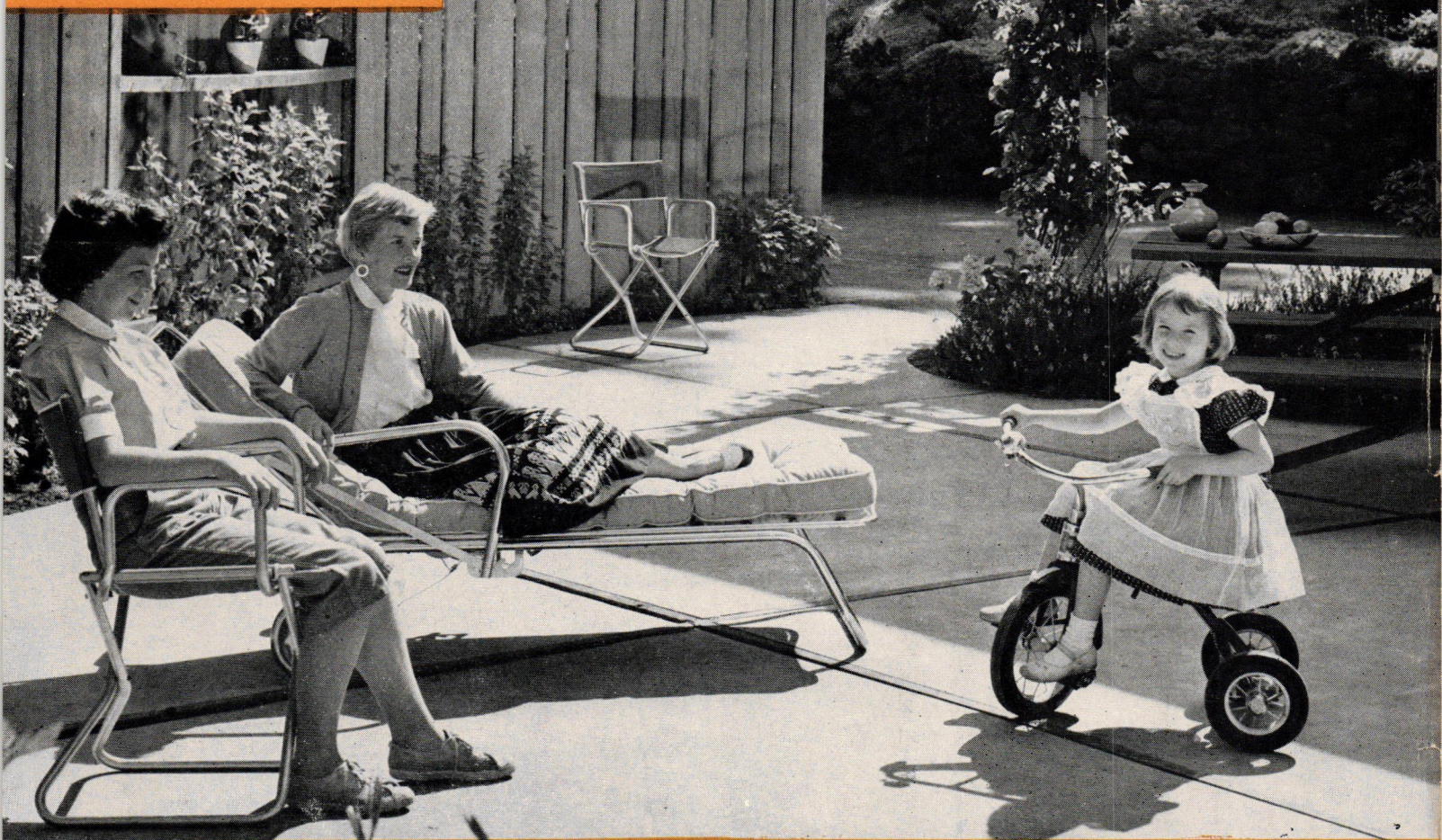


YOUR
HOME
OF
TOMORROW

APRIL, 1958



PLANNING
DECORATING

PRESENTED BY

MAINTENANCE
GOOD IDEAS
GARDENING

Hughey
CONSTRUCTION CO.

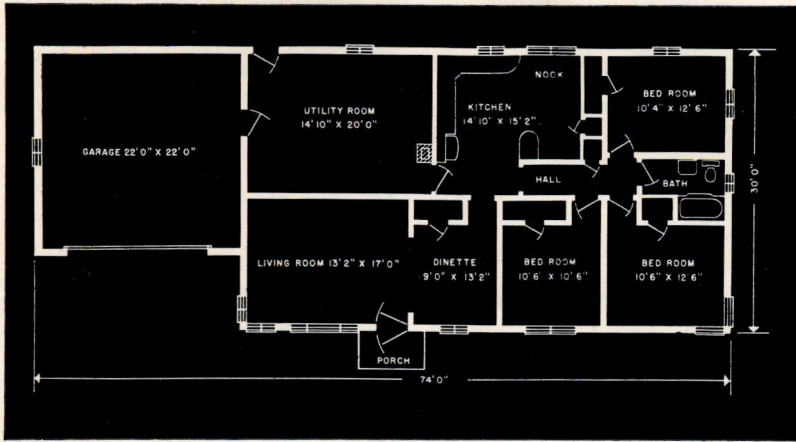
4305 MELBOURNE ROAD

PHONE WA 3-5141

INDIANAPOLIS 8, INDIANA

BUILDERS OF QUALITY HOMES

"DEVELOPERS OF BEAUTIFUL KNOLLTON HEIGHTS"



- 3, 4 and 5 Bedroom Models
- 1 1/2 Baths
- All Brick and Stone Construction
- Birch Cabinets
- Full Basement (3 Room), or Utility Room
- Oil or Gas Heat
- Aluminum Windows, Marble Sills
- Hardwood Floors
- Plastered Walls—Ceramic Tile Bath
- Finest Conventional Construction Throughout

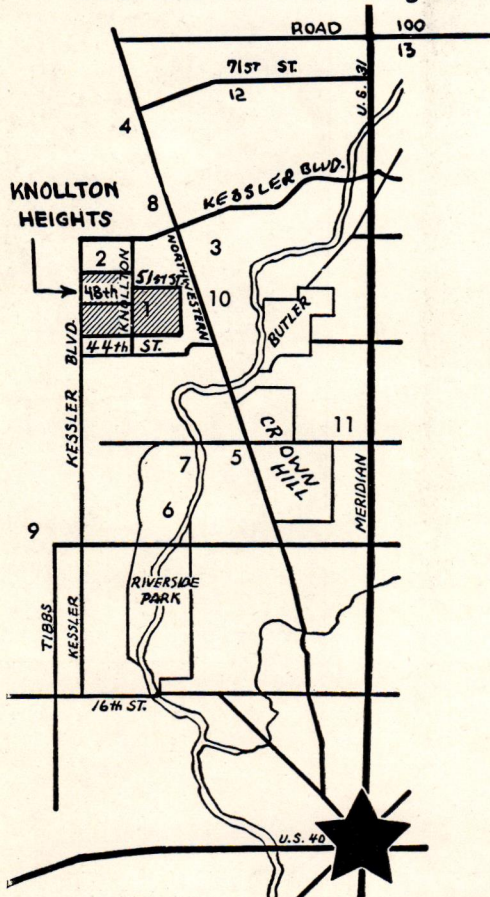
Why So Many New Homes Are Being Sold in Knollton Heights

- PROTECTIVE BUILDING CODE
- MINIMUM LOT SIZE OVER 1/2 ACRE
- ALL BRICK AND STONE CONSTRUCTION
- 200 ACRES OF FINE HOMES
- WIDE CIRCULAR STREET
- EXCELLENT DRAINAGE
- MANY 3, 4 and 5 BEDROOM MODELS

SELECT YOUR OWN HOME NOW

Our Service Includes Everything From Lot to Financing – Ready to Move In

Directions to Knollton Heights



1. Knollton Heights
2. Broadmoor Country Club
3. Highland Country Club
4. Deluxe Shopping Center
5. Woodstock Golf Course
6. Riverside Park
7. Lake Sullivan
8. Crooked Creek School
9. St. Michaels Church and School
10. Excellent Bus Service Direct to Downtown
11. 38th and Illinois Shopping Center
12. West Lane Jr. High School
13. North Central High School

HUGHEY CONSTRUCTION CO.

4305 Melborne Rd.

Phone WA 3-5141

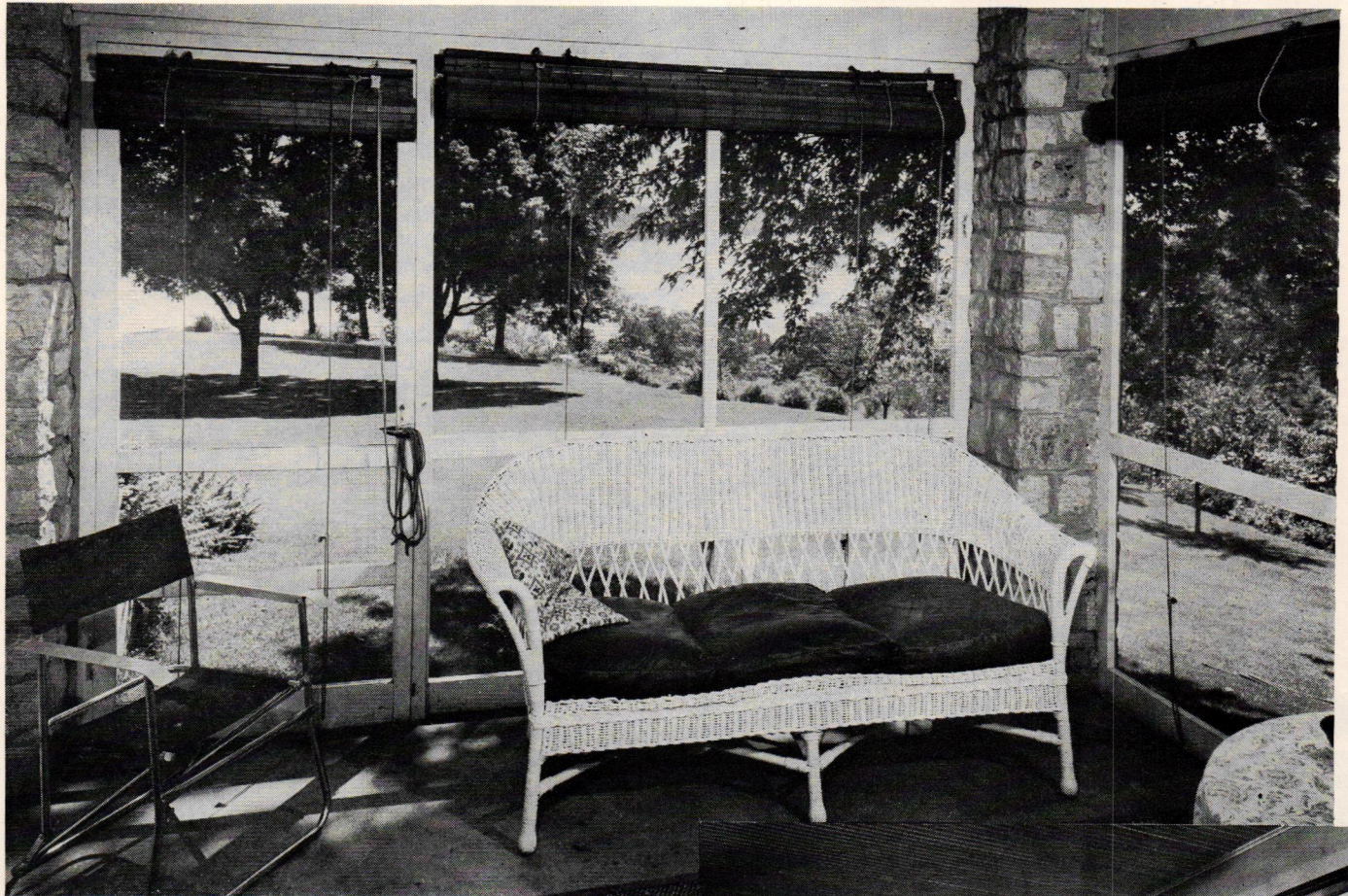
Indianapolis, Indiana

"BUILDERS OF QUALITY HOMES"

GLASS

a Many Splendored Thing

Below: This screened-in porch could be used only a few months of the year, so the owners converted it into a more livable and serviceable room, pictured below, right. This was accomplished by enclosing the porch with modern window units.



THE MODERN HOME uses glass in many ways — for insulation, to cook in, for drapes and curtains as well as for mirrors and windows. And, if the predictions for glass become realities, the home of tomorrow will have windows which will automatically control light and heat transmission by the very nature of their chemical composition.

But it isn't necessary to wait until this world of tomorrow to take advantage of the many window uses and designs which are available today. In fact, if you are planning a remodeling project this Spring, you will



want to consider the many ways that windows can be used in your remodeling or redecorating scheme.

Like many families, perhaps your home seems to be "bursting at the seams," and the only solution is the acquisition of an extra room. If you have a porch or a breezeway, why not enclose it with modern window units? Even without heat, enclosure will give you two or three months of extra use in the Spring and Fall, and come rainy weather, your porch is still a pleasant room for the entire family.

If you don't have a porch or breezeway, perhaps the attic can be converted into extra living area. Here, windows will frequently make the difference between livable and unlivable rooms, for even with good insulation, second floor rooms require plenty of ventilation. To acquire additional space as well as fresh air and light, a dormer can be put up.

If your specific need is an extra room on the ground floor, here's an idea. If the garage is attached to the house, why not convert it into living space?

If space is not a problem in your home, glass can be used extensively in the remodeling of existing rooms. For example, a dreary kitchen can be a lighter and more attractive place in which to work with an expansive picture window over the sink.

A dank and stuffy living room can be transformed

into a light and airy room, with only the addition of a picture window. This holds true for nearly every room in the house, and with proper planning and ingenuity, many of your remodeling problems can be solved with windows.

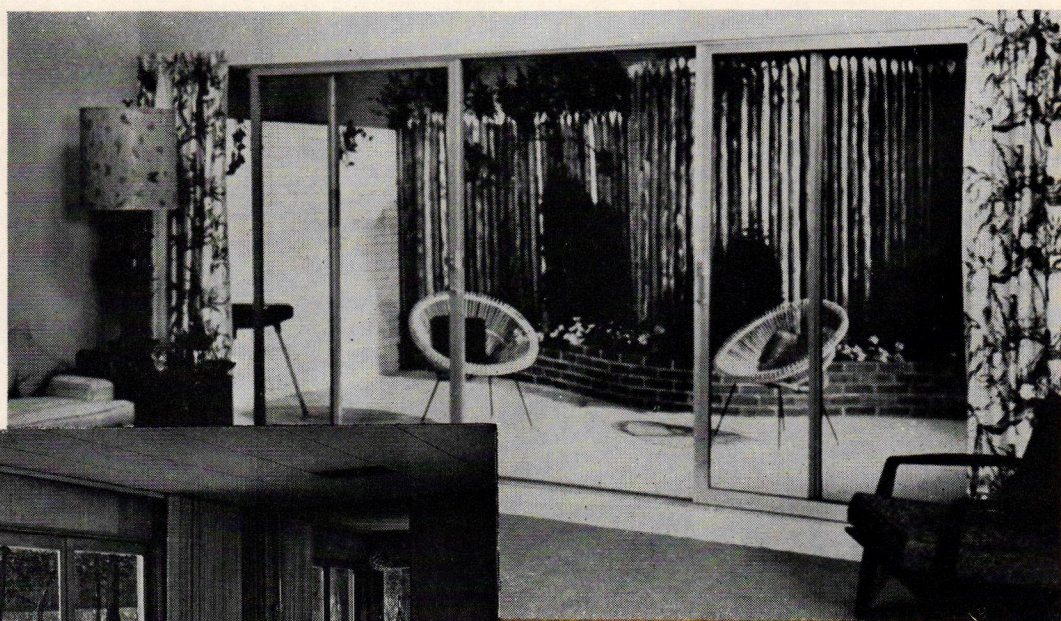
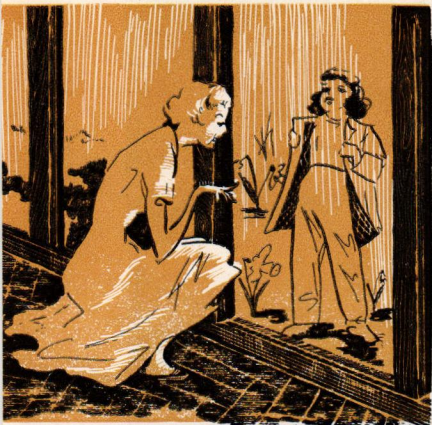
And, because available wall space, and therefore furniture arrangement, is dependent on window placement, you should select the type and size window best suited for your family.

Only you can decide the best size and place for your windows, but there are a few general tips that will aid you in choosing a good, long lasting window. To prevent drafty floors, dusty sills and streaked walls, be sure the windows are leakproof, weathertight and precision fitted.

Secondly, be sure the window frame and the joint it makes with the wall fits perfectly and is a permanent part of the wall. There should be no loose-fitting joint that might permit cold air leaks.

Next, check the window sash, which should be square and true as well as precision fitted to the frame.

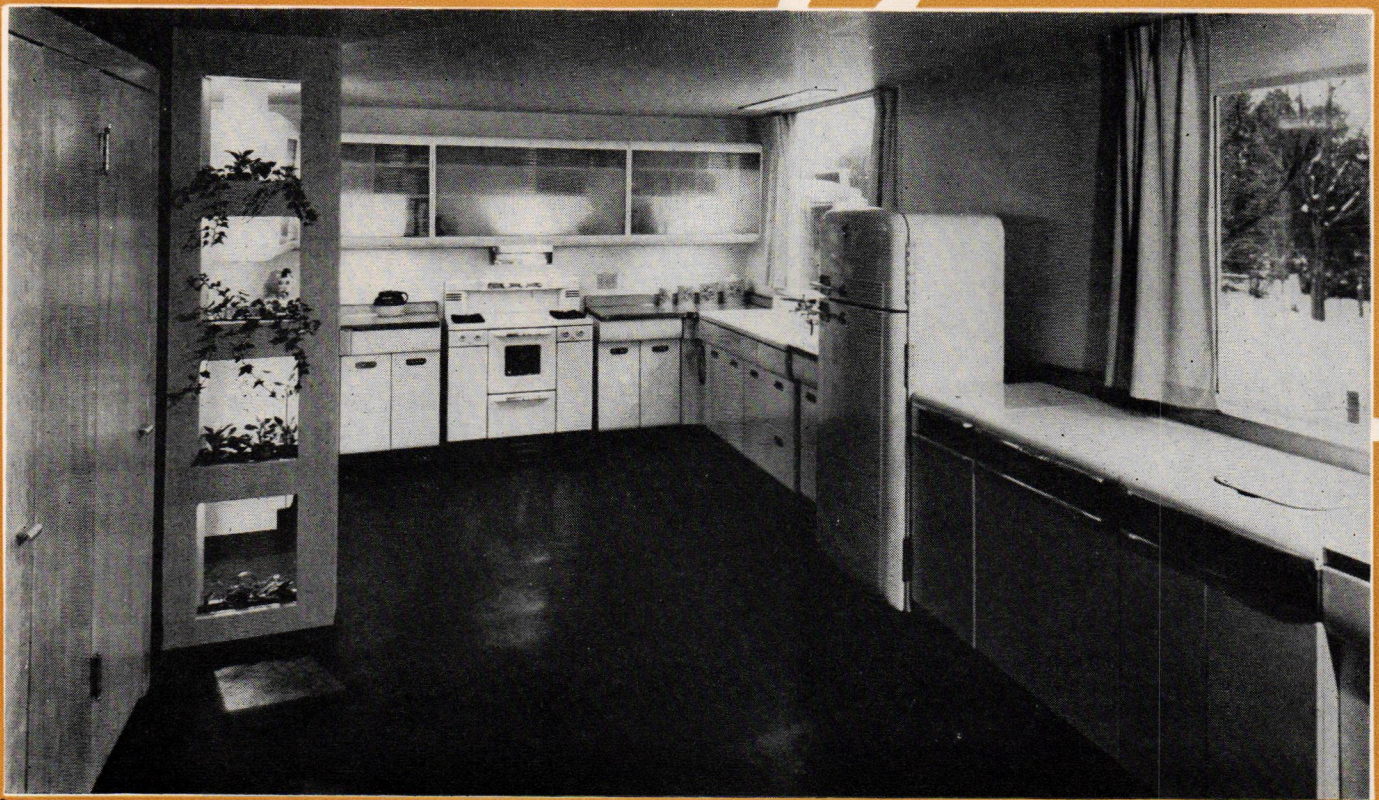
These tips will aid you in selecting the best type of window for your home. The joy and happiness which you and your family will derive from expansive glass areas will be tremendous. In addition, windows will add spaciousness and light to every room in your home.



Above: This attractive living room is linked to the patio by large glass sliding doors, permitting easy accessibility to outdoor living.

Right: Another effective use of glass is seen in this living room. Expansive glass areas not only let in more light, they also add spaciousness to any room.

Photos: Andersen Corporation



A Well Planned Kitchen Saves Steps



JUST AS MODERN RANGES and refrigerators are taking a great deal of the drudgery out of everyday meal preparation, so can the effective placement of these and other labor-saving appliances in the kitchen help to reduce the number of tiring steps in a housewife's day.

A recent nation-wide poll points out how important the modern homemaker considers the proper placement of kitchen appliances. Women interviewed in this poll were asked: "Do you believe that the relative location of kitchen appliances, such as refrigerator, range, and other mechanical helps, is vital to making your kitchen work easier?" An impressive 98.3% answered "Yes."

There are several ways to cut down on tiring — and needless — steps. For example, by placing the stove, refrigerator, storage cupboards and principal work area close to the sink, it is possible for the housewife to prepare a meal with a minimum of movement.

Still another way to eliminate unnecessary steps, is to be sure your storage area is adequate and well planned. In fact, planning is the key to an efficient and well planned kitchen. For instance, crossing the room to get a mixing bowl or pan is lost time and motion. Baking and salad supplies should be at the mix center, pots and

pans at the range, cleaning supplies and non-refrigerated vegetables and fruits and waffle iron at the serve center.

In analyzing your storage area, be sure you are making the best use of available space. In many cupboards, the space between shelves is too great. Why not have shallow shelves built between shelves for small items, such as cups, small cans and spices? For easy accessibility, use pull-out devices, racks and files as much as possible.

If your storage area is inadequate, consider storing infrequently used items, such as large roasting pans, the punch bowl, etc., in the basement or attic. Also, dishes and glassware can be stored in the dining area.

Another "must" in a well planned kitchen is ample work and counter space. The exact amount of counter area in a kitchen is, of course, determined by the size of the room and the number of base cabinets chosen. However, important areas which require plenty of free surface are the sink, where space is needed for stacking dishes as well as preparing meals, the range, mixing and serving centers.

A well planned and efficient kitchen does much more than save steps — it also makes the daily kitchen chores more enjoyable for the homemaker.




*It's Fun To Be
Your Own*
"SODA JERK"



FOR NEARLY 70 years youngsters and oldsters alike have traveled to the corner drug store for delectable treats such as sodas, sundaes, milkshakes and many other gooey delights.

But today, even this tradition is being changed. This Spring an item is being introduced which will delight every child and probably dismay many dieters — a soda fountain designed exclusively for the home.

Today's trend toward relaxation and increased hours spent in family activities is the reason for this development, according to the manufacturer. Casual living has produced the popular mode of informal entertaining, and a soda fountain would certainly add much to this form of entertaining. (It's also perfect for those unexpected guests who drop in).

The children will love playing the role of "soda jerk" for their many friends, and they'll learn the valuable fundamentals of becoming a host or hostess.

Surprisingly economical, the home soda fountain makes soda water for less than two cents a gallon, coca-cola, orange and root beer at one-third the cost (plus no bottle mess!). And, supplies, such as ice cream, can be purchased in money-saving quantities.

For adults, this new device can double as a bar, providing fun and entertainment for the entire family.

The home soda fountain is similar to commercial units in many ways. It consists of three adjustable syrup pumps and jars in a refrigerated bank; three crushed fruit covers and ladles with jars in refrigerated bank; a soda draft arm with coarse and fine stream with drip plate; a water draft arm with drip plate; a six-gallon ice cream compartment; a 9 x 14 sink with overflow and hot and cold water faucet; a storage compartment with double stainless steel lids which is kept at 40° for bottles, milk, etc.; a 1/4 H.P. refrigeration compressor installed and hooked up, and a 10-pound drum of CO₂ gas with regulator and gauge.

Favorite movie personalities, such as Doris Day, Jerry Lewis and Elvis Presley have already installed this home soda fountain in their homes. They, like many other families throughout the country, are finding it's fun to be your own "soda jerk!"

Above: The home soda fountain brings hours of fun and enjoyment to youngsters and oldsters alike. Left: Doris Day, who can currently be seen in the Paramount picture, "Teacher's Pet," has a home soda fountain in her California home.

Photos: Everfrost Sales, Inc.



WALNUT, CONSIDERED by some as a rather somber wood, has been given new treatment this year in furniture stylings. Designed to complement modern decor, patterns of crotch walnut have been utilized for a "pattern on pattern" effect, and, in other pieces, stump walnut has been employed to highlight facades.

The popular sculptured look has been achieved in walnut furniture by making all tops flush and by mitering molded legs and posts into tops as a "frame."

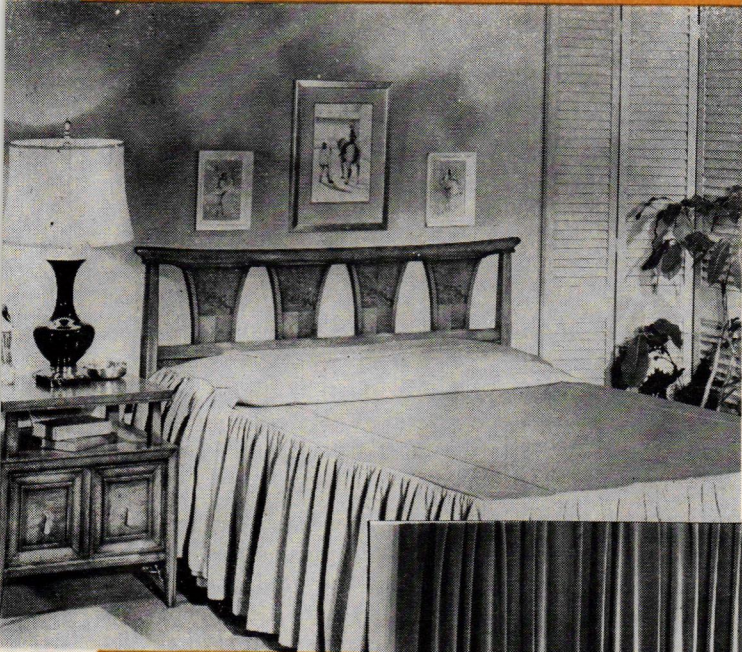
Furniture for nearly every room in the house has been designed for the modern home. For example, a handsome breakfront, suitable for either living or dining room, is available in three sizes. Maximum storage area, with over-sized drawers and concealed shelves make these breakfronts a practical as well as an attractive piece.

Many types and sizes of dining tables are available in walnut — round tables with square-shaped insert panels of crotch walnut; an oval table with a border of contrasting walnut and center insert, rectangular in shape, of crotch walnut, and many more.

For the bedroom, beds with open book shelves at either side of storage compartments or with a sculptured frame which is inset with either wood or cane center panel have been fashioned in walnut.

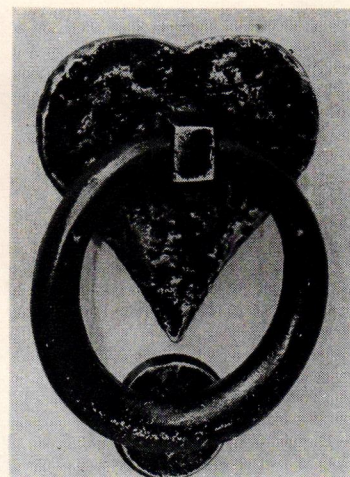
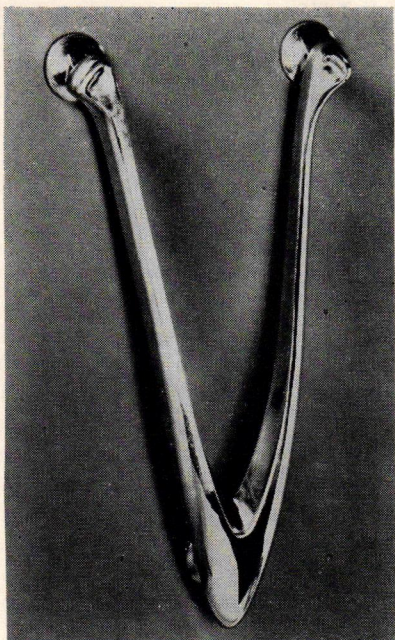
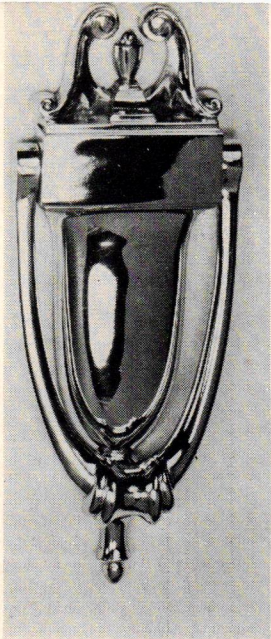
Storage pieces for the bedroom or dining room include high-boys, chests-on-chests; double dressers and over-sized dressers with matching walnut mirrors.

Popular "accent" pieces which add extra beauty to any room have also been designed in walnut.



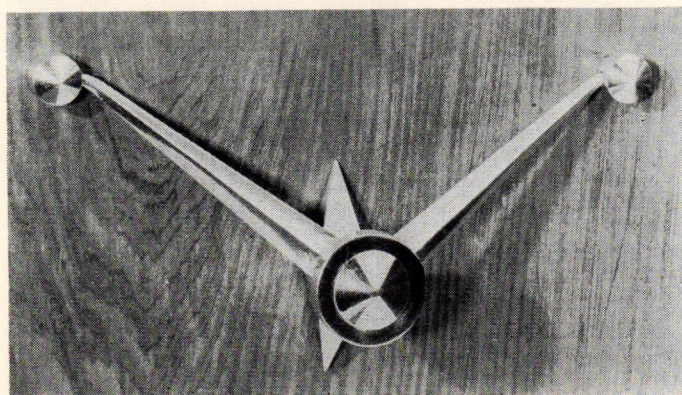
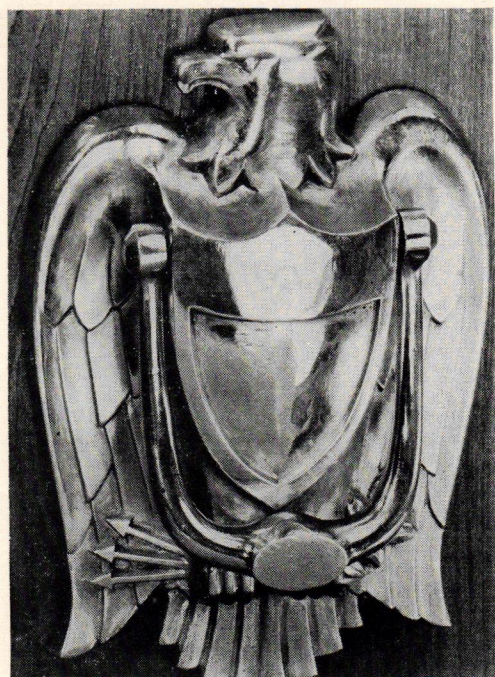
Above: Contrasting walnuts add distinction to this sculptured bed frame. The companion night table is a versatile piece, suitable as well for use in the living room. Right: Here is a dining room group which features an attractive breakfront, dining table and chairs and serving cart. Lower deck doors on the breakfront, dining table top and front panel of the wheeling serving cart all feature contrasting-toned crotch walnut as decorative inserts.

Photos: Fancher Furniture Co.



*Knock
on
any Door*

Photos: Yale & Towne Manufacturing Co.



FEW THINGS are used more frequently than door knobs and door knockers, yet few things are less observed. In an effort to change all this, door hardware manufacturers have given extra attention this year to the appearance — as well as the functional aspects — of door hardware.

As can be seen on this page, door knockers are much more than a useful accessory — in many cases, they are conversation pieces. New concepts and designs have been created for every type of home and taste — from the rich simplicity of a wishbone to the ornate and intricate design of an eagle. Materials used are as varied as the designs. They include aluminum, bronze, gold and silver plate, enamel on copper, brass and others.

Responsibility for this revolution in door hardware design rests with the homeowner who takes great pride in decorating his home with individuality and taste. The first thing a visitor sees when approaching a home is the door, and the manner in which the homeowner adorns his door is of importance to him.

New concepts and ideas have been created for decorating all parts of the home, and it is only natural that door hardware manufacturers recognize the importance of “dressing up” their products.

The results of this “dressing up” can be found in all types of door hardware. Knobs with unusual floral designs and unusual escutcheons have been developed. Particularly noteworthy are an increased use of ceramics in these knobs, and a wide variety of colors available to match the decor of any room.

But outdoor hardware has been given equally as much attention. The functional purpose of door knockers has been blended with the decorative features of fine art, making any home say “Welcome” in a special way.

ROBERT TAYLOR LUMBER CO.

**YELLOW PINE LUMBER
FROM MILL TO YOU**

PHONE
ME 6-1222

1723 N. WARMAN AVE.
INDIANAPOLIS, IND.

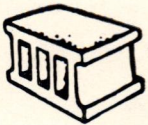
ALBERT HENRY

BRICK AND BLOCK WORK

3657 CAPITOL
INDIANAPOLIS, INDIANA

PHONE
WA 3-6997

FRANZEN BLOCK & MATERIAL CORPORATION



Concrete Blocks - Building
Materials - Lintels - Coping
Stepping Stone - Lawn Furniture

1935 KENTUCKY AVENUE
INDIANAPOLIS 21, INDIANA

MElrose 8-1311

MElrose 8-1312

YOUR HOME OF TOMORROW

is sent to you each month
through the courtesy of
the friendly firms listed
on these back covers.

Your only real security is a home of your own. That is the American dream and ideal.

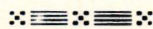
The friendly firms on these covers are here to help you fulfill that dream.

Bring your problems to them. They are anxious to serve you.

Hughey Construction Co.

4305 MELBOURNE ROAD
INDIANAPOLIS 8, INDIANA

Phone WA 3-5141



BUILDERS OF QUALITY HOMES

"Developers of Beautiful Knollton Heights"

Return Postage Guaranteed
BUILDERS PUBLISHING COMPANY
100 STEVENS AVENUE
MT. VERNON, N. Y.

Lloyd E McCann
1905 Orlando
Indianapolis 8 Ind.

BULK RATE
U. S. POSTAGE
PAID
Permit No. 8
Mt. Vernon, N. Y.

A COMPLETE DEPENDABLE BUSINESS GROUP TO SERVE YOU

HOOSIER COAL & OIL CO.



WAlnut 3-3343

BEA AND BEA

GUTTERING — ROOFING — HEATING
OIL OR GAS FURNACES
AIR CONDITIONERS
DELCO and JANITROL FURNACES

2425 E. 29th STREET — PHONE WA. 5-7020

HILL BROTHERS

"Painting At Its Best"

WEST 116th STREET
VI 6-8808

SPRING MILL ROAD
VI 6-8680



3468 CONGRESS WA 4-0566
INDIANAPOLIS 22, INDIANA
ELECTRICAL CONTRACTING & ENGINEERING
GENERAL ELECTRIC WIRE HEAT
SALES AND SERVICE

BROAD RIPPLE LUMBER AND SUPPLY CORPORATION

"Your home deserves the best"

1001 Broad Ripple Ave. Phone CLifford 5-5456

UNITED MORTGAGE CO., INC.

515 Lemcke Building Indianapolis, Indiana

RESIDENTIAL AND COMMERCIAL LOANS

Conventional — V.A. — F.H.A.

EARL LAYNE, President
ME 2-9396



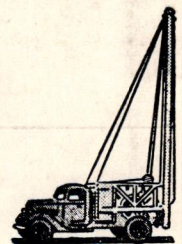
ALBERT GRIFFITH

Hardwood Floor Refinisher
Floors Laid - Quality Work

5115 Rosslyn Avenue Indianapolis, Indiana
Phone CL 5-9665



WE DRILL WELLS!
LET US WORRY FOR YOU
NO DOWN PAYMENT
36 MONTHS TO PAY
WELLS AND PUMPS



HAMILTON BROS.
WELL DRILLING CO.

4025 ROCKVILLE RD. CALL CH 1-2571

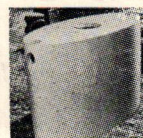
FACE BRICK AND
PLASTERING MATERIALS

Furnished by

HARRY C. ENT MATERIALS, INC.

1415 Commerce Avenue Phone MELrose 8-6543
Indianapolis, Indiana

CARMEL CONCRETE PRODUCTS ALL-NEW SEPTIC TANKS



Featured in All
HUGHEY CONSTRUCTION CO.
HOMES
Meets All F.H.A. State and County
Health Code Requirements

FOR ADDITIONAL INFORMATION—CALL VI 6-2301