

YOUR  
**HOME**  
OF  
TOMORROW

MARCH, 1958

PLANNING  
DECORATING

PRESENTED BY

MAINTENANCE  
GOOD IDEAS  
GARDENING

*Hughey*  
CONSTRUCTION CO.

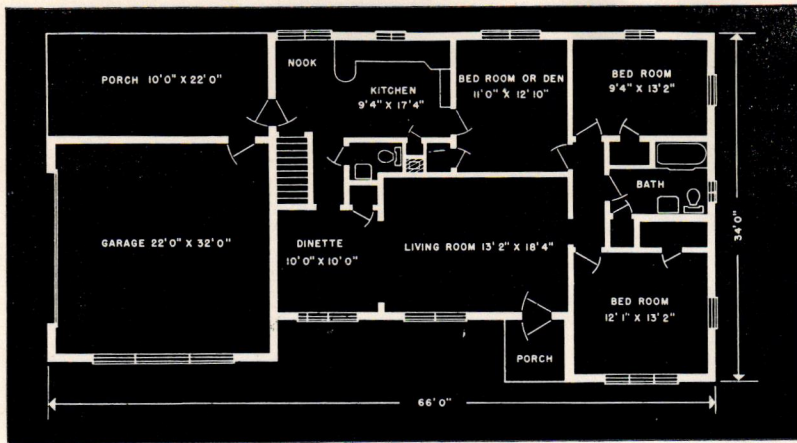
4305 MELBOURNE ROAD

PHONE WA 3-5141

INDIANAPOLIS 8, INDIANA

**BUILDERS OF QUALITY HOMES**

"DEVELOPERS OF BEAUTIFUL KNOLLTON HEIGHTS"



- 3, 4 and 5 Bedroom Models
- 1 1/2 Baths
- All Brick and Stone Construction
- Birch Cabinets
- Full Basement (3 Room), or Utility Room
- Oil or Gas Heat
- Aluminum Windows, Marble Sills
- Hardwood Floors
- Plastered Walls—Ceramic Tile Bath
- Finest Conventional Construction Throughout

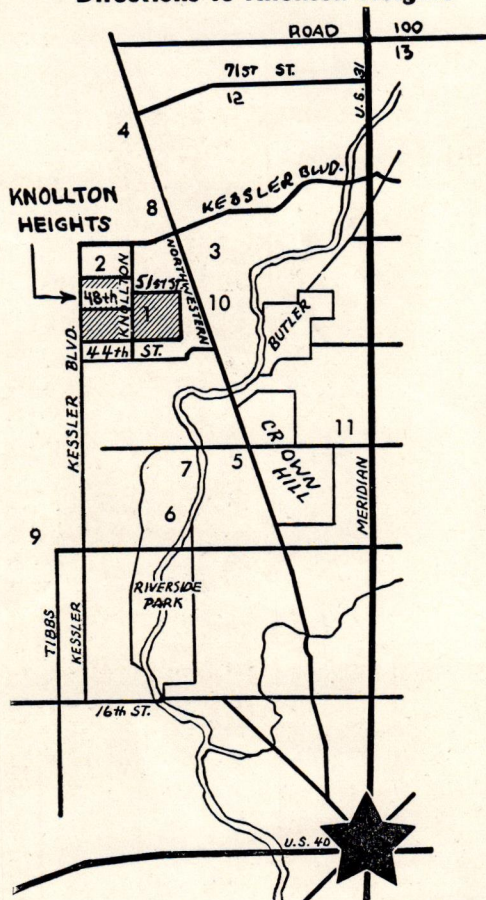
## Why So Many New Homes Are Being Sold in Knollton Heights

- PROTECTIVE BUILDING CODE
- MINIMUM LOT SIZE OVER 1/2 ACRE
- ALL BRICK AND STONE CONSTRUCTION
- 200 ACRES OF FINE HOMES
- WIDE CIRCULAR STREET
- EXCELLENT DRAINAGE
- MANY 3, 4 and 5 BEDROOM MODELS

## SELECT YOUR OWN HOME NOW

Our Service Includes Everything From Lot to Financing – Ready to Move In

### Directions to Knollton Heights



1. Knollton Heights
2. Broadmoor Country Club
3. Highland Country Club
4. Deluxe Shopping Center
5. Woodstock Golf Course
6. Riverside Park
7. Lake Sullivan
8. Crooked Creek School
9. St. Michaels Church and School
10. Excellent Bus Service Direct to Downtown
11. 38th and Illinois Shopping Center
12. West Lane Jr. High School
13. North Central High School

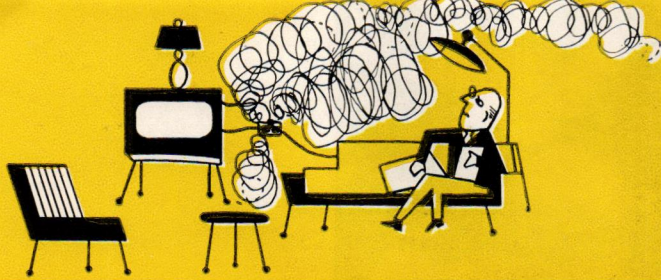
HUGHEY CONSTRUCTION CO.

4305 Melborne Rd.

Phone WA 3-5141

Indianapolis, Indiana

"BUILDERS OF QUALITY HOMES"



# KEEP YOUR HOME FIRES FROM BURNING

**T**HE MAGIC of electricity has contributed a great deal to our modern way of life. Yet, misuse of electricity through carelessness in the home causes considerable property losses and thousands of tragic accidents each year.

According to the latest report of the Committee on Statistics and Origin of Fires of the National Board of Fire Underwriters, about \$5,800 worth of property goes up in flames every hour due to misuse of electricity. That amounts to \$139,600 a day, or about \$51,000,000 a year — and the total is increasing annually.

What can't be measured in terms of dollars and cents are the numerous fatal or near fatal accidents that occur in the home due to improper use of electricity. The majority of these accidents could have been avoided.

In an effort to reduce the gigantic property losses as well as the thousands of annual accidents, many authoritative groups, including the National Safety Council, have launched a major educational program to acquaint home owners with the proper use of electricity.

Twelve easy-to-follow rules have been compiled by the

This gentleman is breaking two rules for home electrical safety. He has overloaded one circuit by connecting too many lamps and appliances, and he is yanking on the cord to disconnect the radio instead of grasping the plug itself.



International Association of Electrical Inspectors and The Safe Cord Committee. They are:

1. Don't connect too many lamps or appliances to a single circuit, as this can cause overloading, which leads to blown fuses.

2. Don't run lamp or appliance cords over radiators or pipes. Heat causes deterioration of insulation, and if the bare wire touches a metal surface, a short circuit or fire can result.

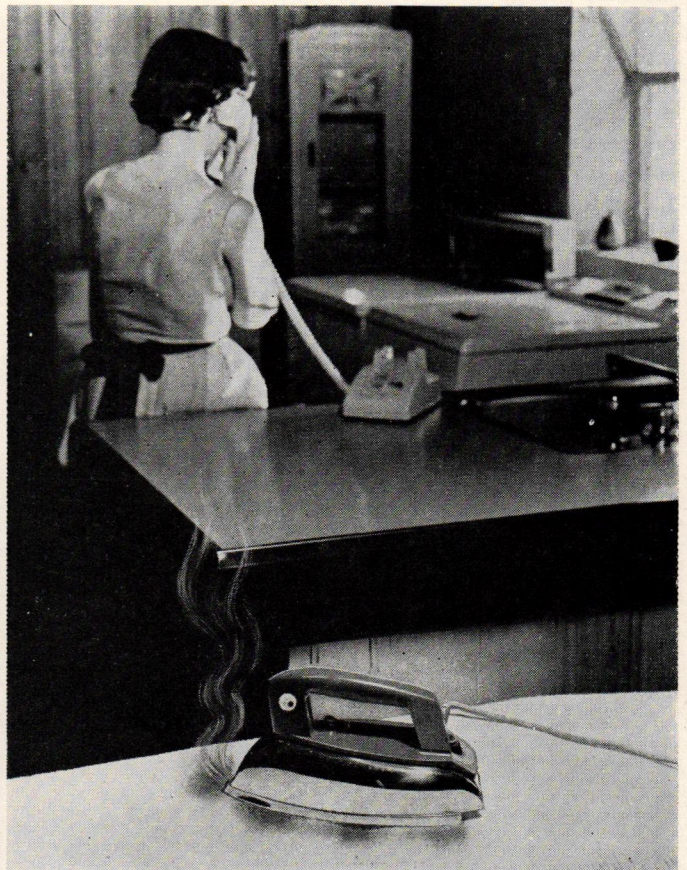
3. Never touch an electric appliance, radio or light switch while you are in the bathtub or stand in a puddle when connecting laundry appliances and never touch any electric appliance with wet hands.

4. Don't place cords in door jambs, as the constant closing of a door will damage insulation.

5. Use convenient outlets in the walls, not lamp sockets for connecting electric appliances.

6. Don't run cords under rugs. Walking on the cords will eventually damage the insulation and this damage will be unseen beneath a rug.

This young lady is breaking one of the rules of home electrical safety — she forgot to disconnect her iron before answering the telephone.





Serious consequences could result from tuning a radio dial while taking a bath.

7. Never touch any grounded metal, such as a radiator, when handling electrical appliances.

8. Don't "yank" plugs out of sockets by pulling on the cord. Grasp the plug itself to remove it from a socket.

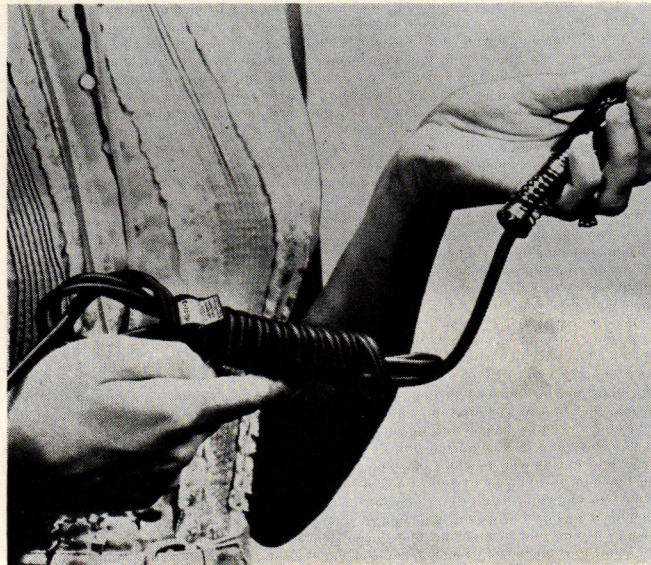
9. Inspect all flexible cords regularly for frayed or cracked insulation. Sharp corners of furniture, twisting and pulling cords can cause protective insulation to wear out.

10. Disconnect electric irons when you are not using them.

11. When buying lamps, appliances, extension cords, power supply cords, or cord-sets, look for Flag Labelled cords carrying the words "Inspected — Underwriters Laboratories, Inc." All components of cords bearing this label have been tested and proven electrically safe.

12. Employ a qualified electrical contractor to make repairs and additions to your house wiring after securing approval from the local inspection bureau in your community.

**Always check cords to be sure they carry the label "Inspected—Underwriters' Laboratories, Inc."—your guarantee that cord components have been tested and proven electrically safe.**



What's Your HOME ELECTRICAL SAFETY SCORE?		(Check One)	
		YES	NO
1	Do you have any electrical cords under rugs?		
2	Do you ever tune a portable radio or use an electric curling iron or hair dryer while taking a bath?		
3	Do you have any appliances connected to a lamp socket?		
4	Do you run any lamp or appliance cords over pipes or radiators?		
5	Do you ever leave your electrical iron on while answering the telephone?		
6	Do you inspect electrical cords regularly for frayed or worn insulation?		
7	Do you look for the Underwriters' Laboratories — "Inspected" Flag label when buying lamps, appliances or extension cords?		
8	Do you have more than one lamp or appliance connected to any single electrical outlet?		
9	Do you have any lamp or appliance cords running from room to room through a doorway?		
10	Do you do your own home wiring or electrical repairs?		
YOUR TOTAL SCORE			

"NO" is the correct answer to all questions except Numbers 6 and 7.

GIVE YOURSELF 10 POINTS FOR EACH CORRECT ANSWER

Your rating: 90-100—Your home and family are safe electrically. 60-80—You are fairly well off electrically, but a little more attention would be worth while. Below 60—Watch out for fires or accidents due to poor electrical safety in the home.

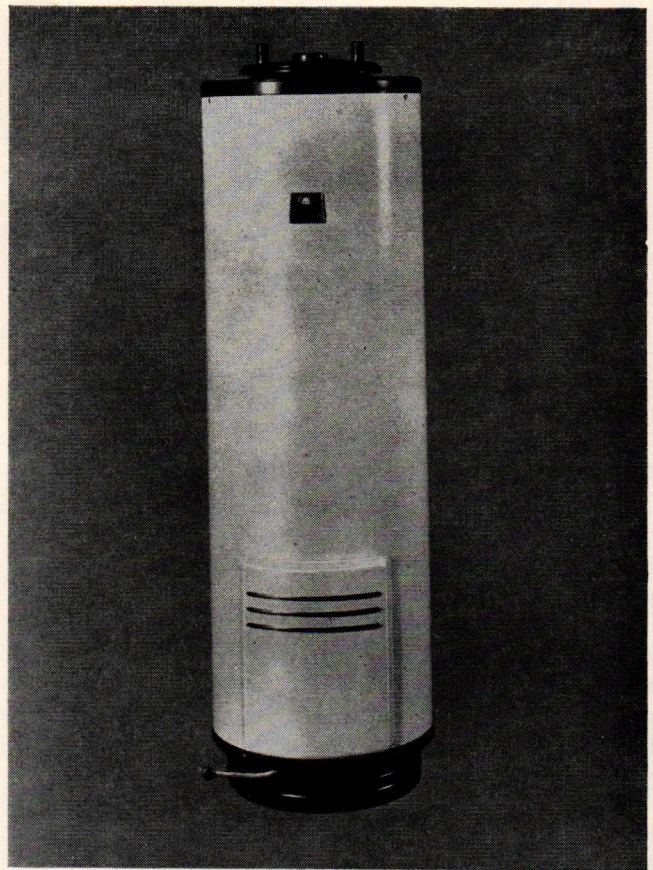
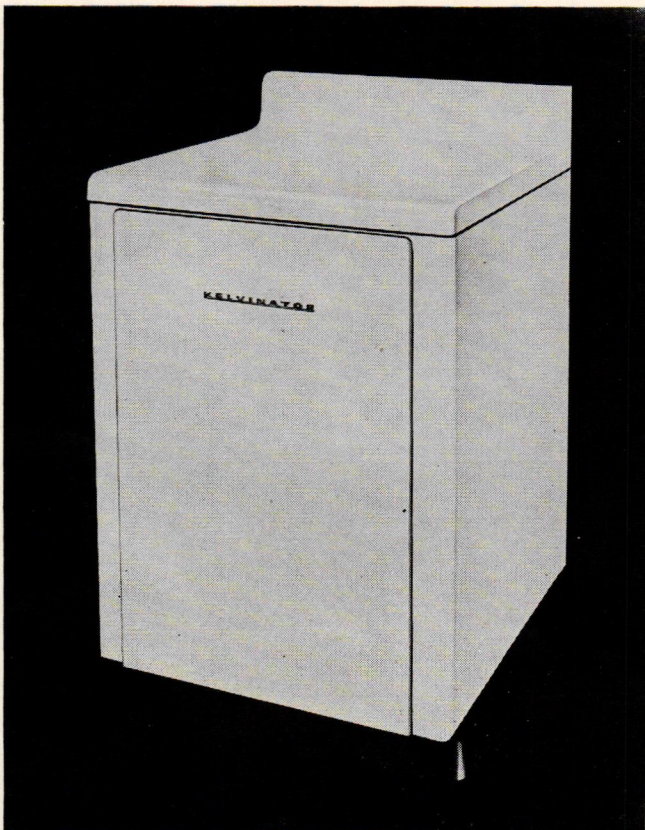


**O**F ALL THE conveniences of modern living, one of the most important is automatic hot water. Yet, because the water heater is usually out of sight, it is often forgotten — until something goes wrong.

And, with so many families using automatic washers and dishwashers, which are entirely dependent on hot water, the selection of a water heater which will fit the needs of the family has become increasingly important.

There are many factors to be considered when selecting the right water heater for your family. For example, the size of your heater depends on the number of people in your family, how many bathrooms you have, how many houseguests you normally have during the year, and

This table-top model water heater was designed for installation in kitchens or utility rooms where table-top space is at a premium.



1958 water heaters incorporate many "plus" features, such as multi-temperature controls to suit the special needs of today's kitchen, laundry and bathroom.

whether you have an automatic dishwasher or washing machine.

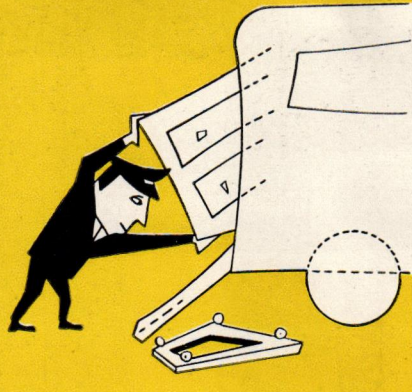
To help you answer all these questions, American-Standard recently announced a selection guide which tells you the total gallons of hot water your water-using appliances, bathroom facilities and family will require during the busiest periods.

After determining the size water heater your family needs, the next consideration is the fuel you will use in the heater. Figure the costs of installation and maintenance as well as possible monthly charges in making this decision.

Plus features, such as control mechanisms, which regulate the temperature of the water in the storage tanks at all times, should also be considered. Automatic selectors which provide the right temperature for a variety of household needs are also available. For example, it is possible to supply 160-degree water to the dishwasher, 140-degree water to the clothes washer and 100-110 degree water to the bathroom fixtures automatically.

These, plus many other developments in water heaters, have been designed to better serve the increased needs of the family.

# IT'S YOUR MOVE



**T**HE THRILL of buying a new home is often dampened by the time and headaches of moving. However, thanks to recent studies by moving engineers, much of the confusion and work can be avoided by following a few simple rules.

The first step in moving is the selection of a mover. Since you will depend on him to transport your valuable furnishings, the selection of a reputable mover is important. Call in two or three such firms, and after you have received their bids, choose the one which best fits your pocketbook and needs.

Proper preparation will also save you considerable time and effort. You will need such items as corrugated boxes, barrels, rope, old newspapers and labels. Some of these items will be supplied by the mover free of charge or at a nominal cost.

To avoid the last minute rush, prepare in advance a

**Below: The first step in moving is the selection of a reputable mover. Since you will entrust him with your valuable furnishings, this selection is an important one.**



list of persons and companies to be notified of your new address. Such people would include the post office, telephone, electric, gas and water companies, magazines and others.

A great deal of time is wasted if the moving men have to be told where each barrel, carton or piece of furniture must be placed. To avoid this, designate a different color for each room of your new home (don't forget the basement, attic and garage). Mark each carton with colored crayon, tags or labels, and pin or sew appropriate color tags on upholstered furniture.

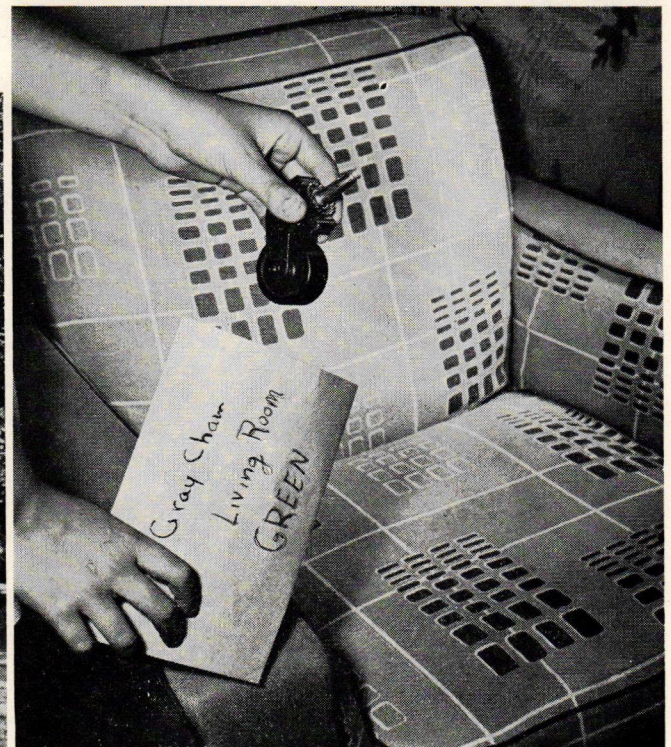
Items that you will need immediately, such as tools, food, washing and sleeping equipment, should be marked with a distinguishing color, such as red. Decide ahead of time what room you want these important items placed — preferably the room immediately to the right or left of the door.

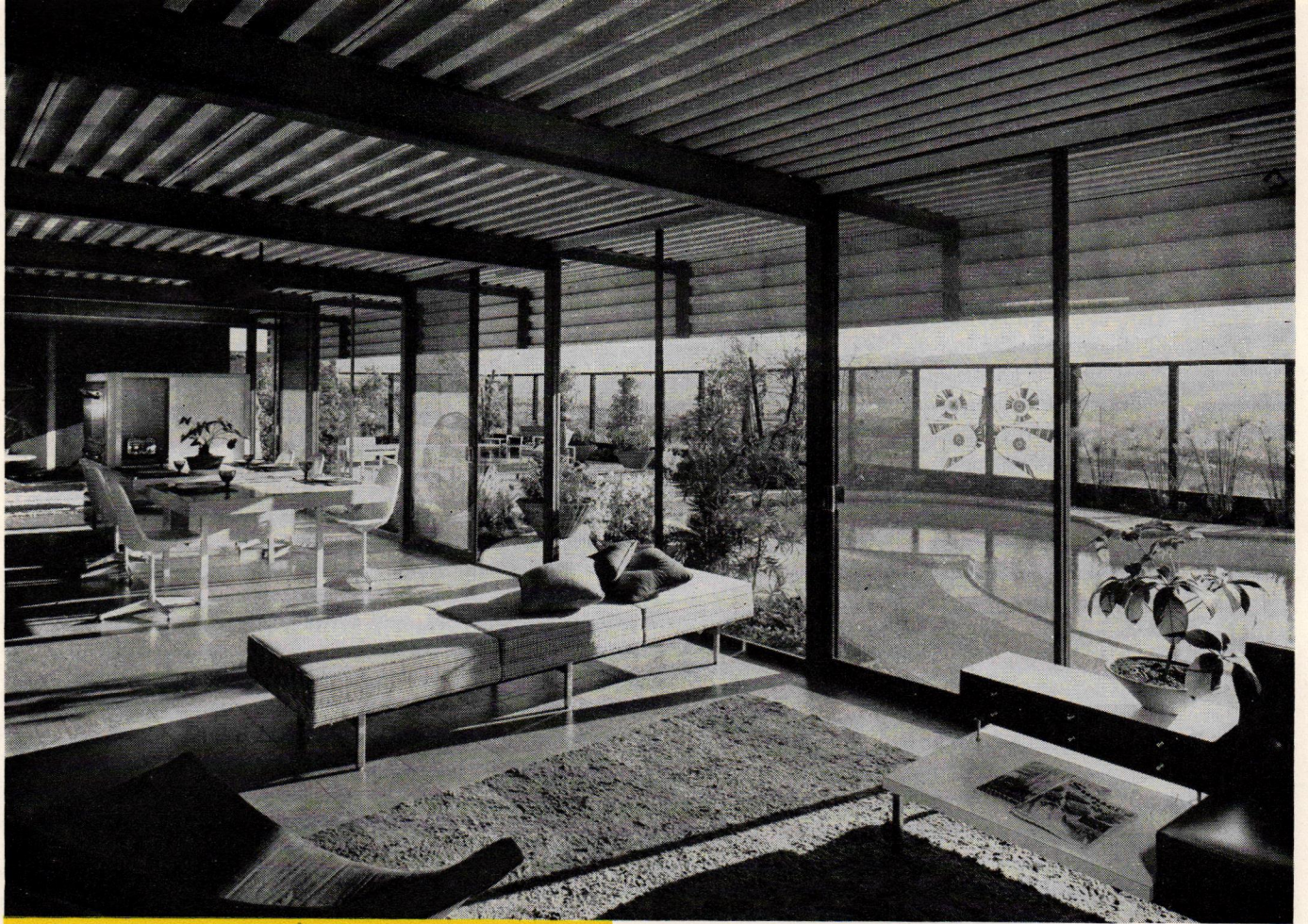
Efficient packing will also save considerable time and worry. Clothing should be taken in dustproof cardboard wardrobes, usually available from the mover. Books should be stacked back to back to avoid crushing of pages. Records should be stacked on end with plenty of excelsior or newspapers to protect them from breaking.

Take casters off the furniture; store in a small sack, marking each so that the casters can be replaced quickly and easily afterwards.

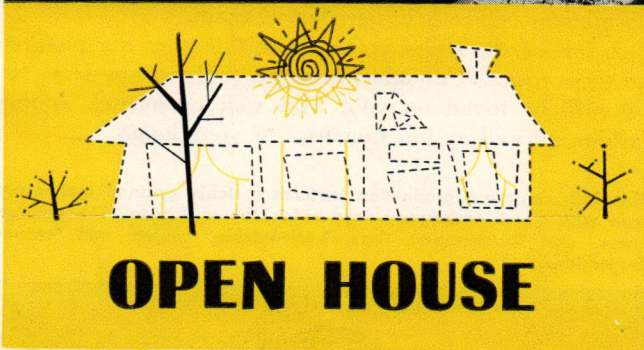
The secret of moving is scientific planning, which not only saves time and effort, but money as well. These moving guides will help to make the transition from your old home to the new one an easier and more pleasant task.

**Below: One of the secrets of moving is efficient packing. Remove all casters from furniture and store them in an envelope which is properly marked for identification.**





This "open house" uses several sliding glass doors which permit easy access to the adjoining patio and swimming pool. They also give the room an added feeling of spaciousness.



## OPEN HOUSE

**T**ODAY'S TREND of "open living" has produced many exciting innovations in architectural design, one of which is the extensive use of glass throughout the house. In addition to its decorative features, glass is being used for a more practical purpose — to take advantage of solar radiation as an auxiliary source of heat.

By means of transparent glass walls on southern exposures, the radiant energy of the winter sun, when it swings low on southern horizons, is allowed to enter and warm the home. During the summer months, when the entry of heat is not desired, overhanging roof constructions serve as visors to keep out the direct rays of the sun.

In addition to providing the means for an auxiliary source of heat, the advantages of an "open house" are many. An obvious "plus" feature of an expansive picture window is an attractive view, which changes with the seasons. Large glass areas also give any room a look of spaciousness, as well as beauty. The increased popu-

larity of an adjacent patio has prompted designers to integrate this indoor-outdoor living by means of sliding glass doors.

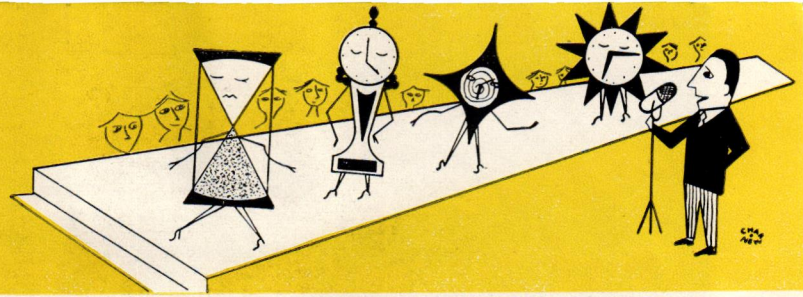
To get maximum benefit from glass areas, three fundamental design principles should be considered. The first is orientation, which means facing as many rooms to the south as possible to obtain the heating plus benefits of solar radiation in winter. This, of course, will depend on the available footage facing south. For example, a lot with a 100-foot dimension running east and west permits more of the rooms to be faced south than a lot with a 50-foot east-west dimension.

The second consideration in planning an "open house" is the large window area. Double-glass insulation should be used, particularly in climates with cold winters. From the standpoint of view possibilities, the surroundings should be studied with the idea of planning windows accordingly. Landscaping should be planned both for views and screening for privacy.

The third principle is sun control, which is achieved by the use of permanent or temporary roof overhangs, visors or other means of controlling shadow areas on the windows so that sunlight can enter during cold weather and be shut out during warm weather.

Although most of these suggestions apply to the building of a new home, many of them can be adapted for use in an existing home. The many advantages of an "open house" contribute much to our casual way of life.

# FASHIONS IN TIME



**S**OME OF THE most glamorous faces this year can be found on clocks. Combining fashion and functionalism, new stylings have been designed to complement contemporary, modern or traditional decors.

Gone are the days when the clock was merely a time-piece. Today it can be used as an important decorating accessory in virtually every room in the house. In addition to traditional woods, such as mahogany and fruitwood, modern, new finishes, such as gold, black, copper and bronze, have been developed to embellish clocks.

Particular attention has been given this year to the restyling of kitchen clocks. To blend with new color appliances, kitchen wall clocks are available in red, yellow, turquoise and pink, as well as white. To add an unusual touch to the kitchen, new designs, such as the Zodiac, which is carved with the 12 familiar astrological signs, are available.

For the traditional living room, many period reproductions are available. For the mantel or bookcase, many styles, which incorporate the design and charm of Early American and 18th century periods, are available. One of the most popular living room wall clocks is a reproduction of the banjo clock, which is available in either mahogany or maple case.

Distinctive stylings in wood is another 1958 trend in clock design. Three of the most popular are fruitwood, walnut and ebony, which have been designed in square

The fine characteristics of the first banjo clocks are retained in this reproduction, which is available in a grained mahogany or maple case.

Photos: Seth Thomas

as well as round shapes to add glamor to every room.

For the modern home, many new designs have been created. Jet black, always a popular decorative color, has been given new treatment in wall clocks. Dramatic touches of white and brass have been added for effect, and new, unusual shapes have been designed.

The popular sunburst motif has also come up for restyling this year. One model features a spray of straight lines that calls dramatic attention to any wall.

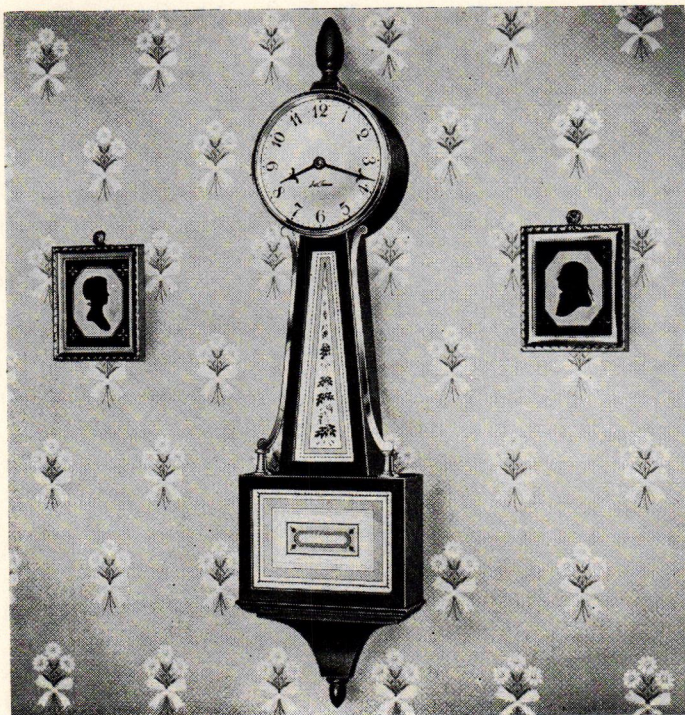
In floral motifs, there is a choice of a charming circlet of forget-me-nots on an openwork background, designed especially for Provincial decor. For the modern home, a clock in the form of a daisy is available, in which each numeral is represented by a long and tapered petal.

Another unusual clock design features a pair of plumed fighting game cocks etched against a contrasting clock face. Also available is a clock which depicts the Four Seasons, decorated with plants and flowers.

Even electric alarm clocks have been restyled to make getting up in the morning more pleasant. One of the newest innovations is the snooze-alarm, which shuts off the alarm and permits the clock owner to sleep for an extra 15 minutes before being awakened again.

A few of the styles you will see this year are pictured on these pages. Undoubtedly many of these new faces for '58 will be found on your own wall or mantel, adding fashion as well as functionalism to your home.

This 18th century reproduction features a richly grained mahogany case with crotch mahogany door, sides, top and base. The antique brass dial background has harmonizing center and corner decorations.





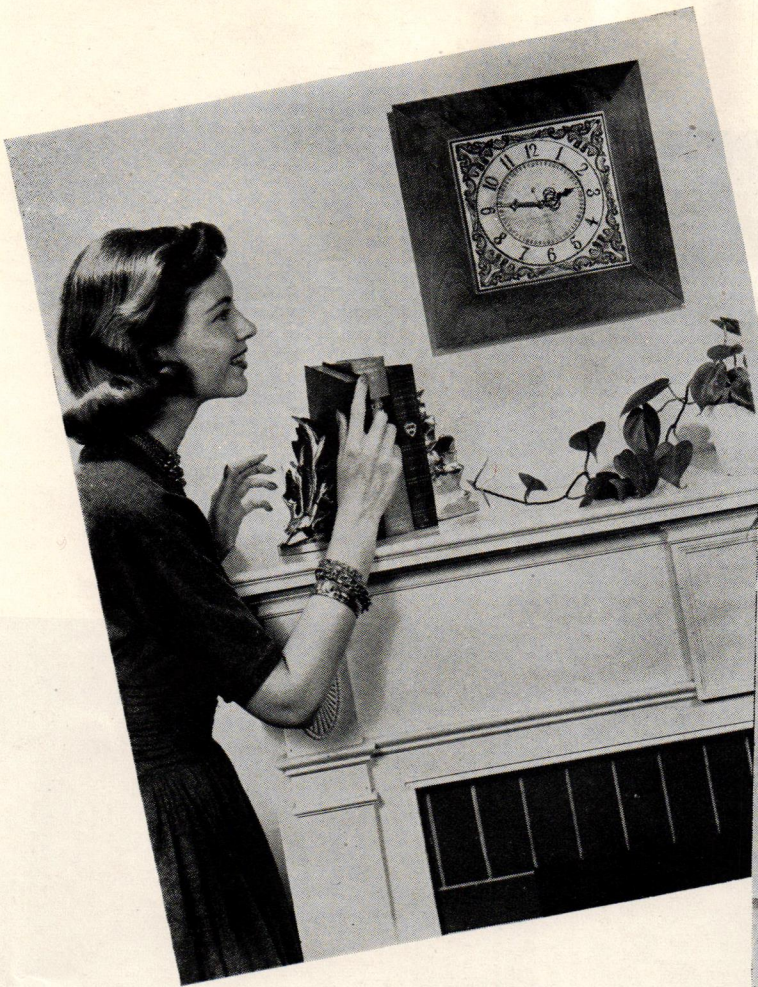


Photo: General Electric

This living room wall uses a clock with a bas-relief solid brass dial framed in a fruitwood finish to add a decorative touch to the room.

Two fighting game cocks serve as a background for this unusual electric wall clock.

Photos: Syroco, Inc.

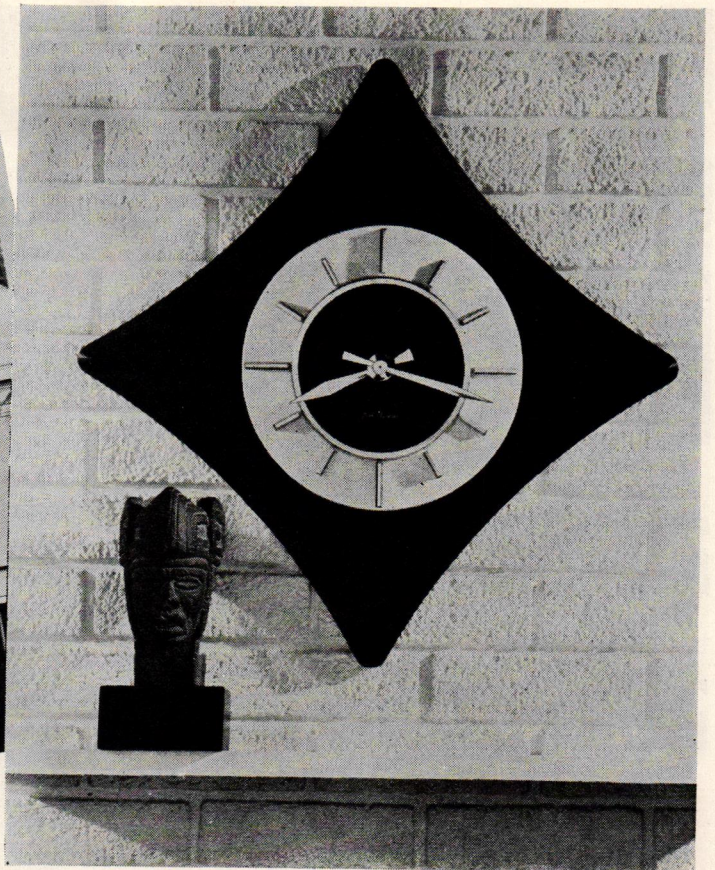
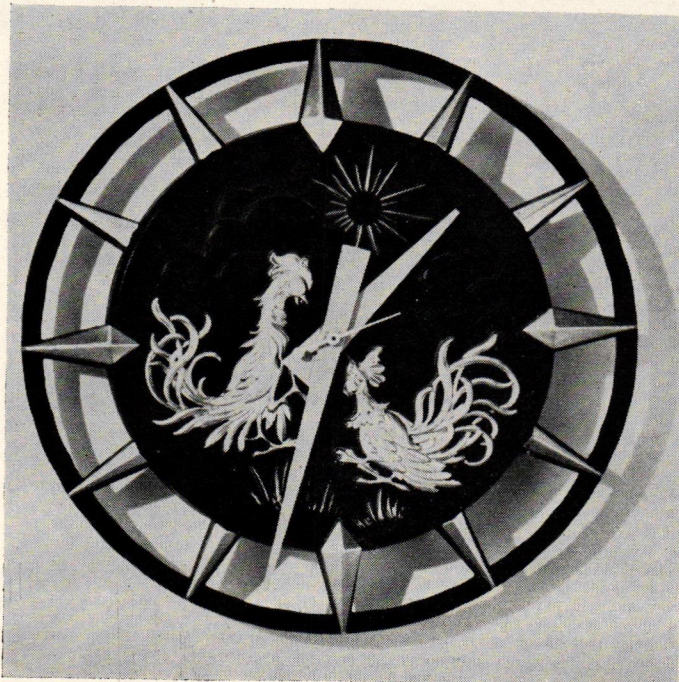
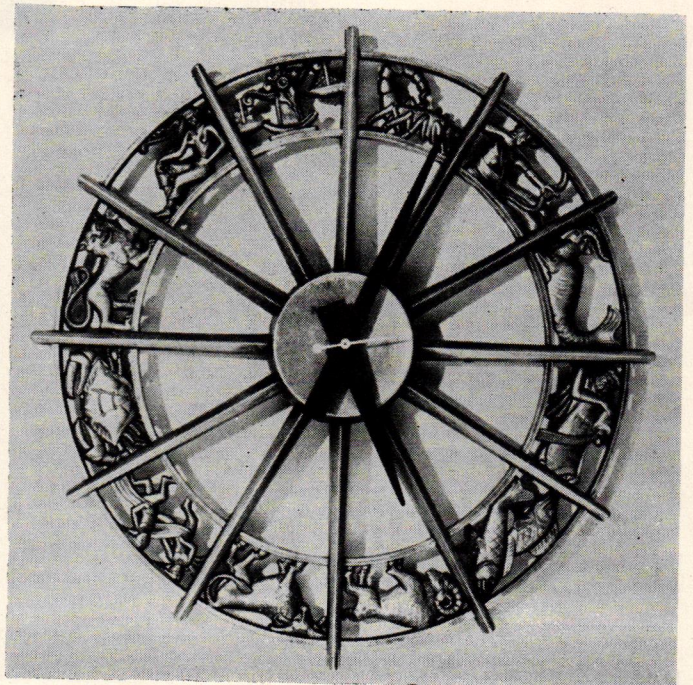


Photo: Seth Thomas

This dramatic modern wall clock has an ebony-finished wood case with large white dial and raised, jet black center.

Signs of the Zodiac lend decorative interest to this clock, designed to blend with any decorating scheme.





Knotty incense cedar paneling and matching plank and beam ceiling construction provide a colorful backdrop for the interesting combination of Chinese modern and Danish furniture in this living-dining area.

The popular family room and random-width paneling of lodgepole pine, with a butterfly pattern at the joint.

Photos: Western Pine Association



## PANELING TO MATCH YOUR DECOR



**O**VER THE PAST DECADE there has been a significant increase in the number of rooms and the types of decor with which wood paneling is being used.

There was a time when wood paneling meant either an Early American setting or an expensive library or den. Nowadays paneling is used in homes of every price range and in every room of the house.

With all the qualities of versatility, economy and "finishability," there is also the quality of individuality. Whatever the period of the decor and whatever the size of the room, there is a wood and a finish that is just right.

If, for instance, you plan a basically modern living room, but wish to relieve it with a touch of period atmosphere, you may want to feature a pair of early brass candlesticks and panel the walls in knotty ponderosa pine, Idaho white pine, or sugar pine. If the room is not very light, then a blond finish is desirable. A room that receives strong natural light may be finished in a rich, inland red cedar, or incense cedar, giving a deep natural tone to the walls.

For a taste that runs to American Colonial, with hooked rugs and maple furniture, any one of the lighter woods or white fir, lodgepole pine or Engelmann spruce with a traditional stain will give the desired warmth.

Currently in vogue is mixing Chinese modern with other contemporary furniture. Such a scheme is excellent against a rick background that can well be achieved with an intermediate toned wood.

Paneling, of course, is very popular for rooms other than the living room. Family rooms are becoming a must for homes with children, and here knotty paneling is a natural because it is easy to maintain. Since a bright and cheerful atmosphere is desirable in the family room, such a finish as Apache Gold is ideal. This is simple to achieve by applying a coat of gold paint, wiping immediately with soft cloth, then applying a coat of plain shellac or waxing.

The variety of effects that can be obtained through use of wood is practically unlimited. Nearly every room in the house can be enhanced with wood paneling and the many colorful finishes available.

**ROBERT TAYLOR LUMBER CO.**

**YELLOW PINE LUMBER  
FROM MILL TO YOU**

PHONE  
ME 6-1222

1723 N. WARMAN AVE.  
INDIANAPOLIS, IND.

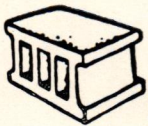
**ALBERT HENRY**

**BRICK AND BLOCK WORK**

3657 CAPITOL  
INDIANAPOLIS, INDIANA

PHONE  
WA 3-6997

**FRANZEN BLOCK & MATERIAL  
CORPORATION**



Concrete Blocks - Building  
Materials - Lintels - Coping  
Stepping Stone - Lawn Furniture

1935 KENTUCKY AVENUE  
INDIANAPOLIS 21, INDIANA

MElrose 8-1311

MElrose 8-1312

**YOUR HOME OF TOMORROW**

is sent to you each month  
through the courtesy of  
the friendly firms listed  
on these back covers.

Your only real security is a home of your own. That is the American dream and ideal.

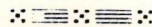
The friendly firms on these covers are here to help you fulfill that dream.

Bring your problems to them. They are anxious to serve you.

**Hughey Construction Co.**

4305 MELBOURNE ROAD  
INDIANAPOLIS 8, INDIANA

Phone WA 3-5141



**BUILDERS OF QUALITY HOMES**

*"Developers of Beautiful Knollton Heights"*

Return Postage Guaranteed  
BUILDERS PUBLISHING COMPANY  
100 STEVENS AVENUE  
MT. VERNON, N. Y.

BULK RATE  
U. S. POSTAGE  
**PAID**  
Permit No. 8  
Mt. Vernon, N. Y.

Lloyd E McCann  
1905 Orlando  
Indianapolis 8 Ind.

A COMPLETE DEPENDABLE BUSINESS GROUP TO SERVE YOU

## HOOSIER COAL & OIL CO.



**WAInut 3-3343**

## BEA AND BEA

GUTTERING — ROOFING — HEATING  
OIL OR GAS FURNACES  
AIR CONDITIONERS  
DELCO and JANITROL FURNACES

2425 E. 29th STREET — PHONE WA. 5-7020

## HILL BROTHERS

*"Painting At Its Best"*

WEST 116th STREET  
VI 6-8808

SPRING MILL ROAD  
VI 6-8680



3468 CONGRESS

WA 4-0566

INDIANAPOLIS 22, INDIANA  
ELECTRICAL CONTRACTING & ENGINEERING  
GENERAL ELECTRIC WIRE HEAT  
SALES AND SERVICE

## BROAD RIPPLE LUMBER AND SUPPLY CORPORATION

*"Your home deserves the best"*

1001 Broad Ripple Ave. Phone CLifford 5-5456

## UNITED MORTGAGE CO., INC.

515 Lemcke Building Indianapolis, Indiana

RESIDENTIAL AND COMMERCIAL LOANS

Conventional — V.A. — F.H.A.

EARL LAYNE, President  
ME 2-9396



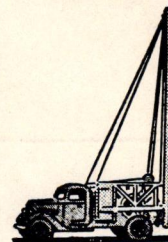
## ALBERT GRIFFITH

Hardwood Floor Refinisher  
Floors Laid - Quality Work

5115 Rosslyn Avenue Indianapolis, Indiana  
Phone CL 5-9665



WE DRILL WELLS!  
LET US WORRY FOR YOU  
NO DOWN PAYMENT  
36 MONTHS TO PAY  
WELLS AND PUMPS



## HAMILTON BROS. WELL DRILLING CO.

4025 ROCKVILLE RD. CALL CH 1-2571

FACE BRICK AND  
PLASTERING MATERIALS

*Furnished by*

## HARRY C. ENT MATERIALS, INC.

1415 Commerce Avenue Phone MELrose 8-6543  
Indianapolis, Indiana

## CARMEL CONCRETE PRODUCTS ALL-NEW SEPTIC TANKS



*Featured in All*  
HUGHEY CONSTRUCTION CO.  
HOMES  
Meets All F.H.A. State and County  
Health Code Requirements

FOR ADDITIONAL INFORMATION—CALL VI 6-2301