

YOUR

**HOME**

OF

**TOMORROW**

DECEMBER, 1957



PLANNING  
DECORATING

**PRESENTED BY**

MAINTENANCE  
GOOD IDEAS  
GARDENING

*Hughey*  
**CONSTRUCTION CO.**

4305 MELBOURNE ROAD

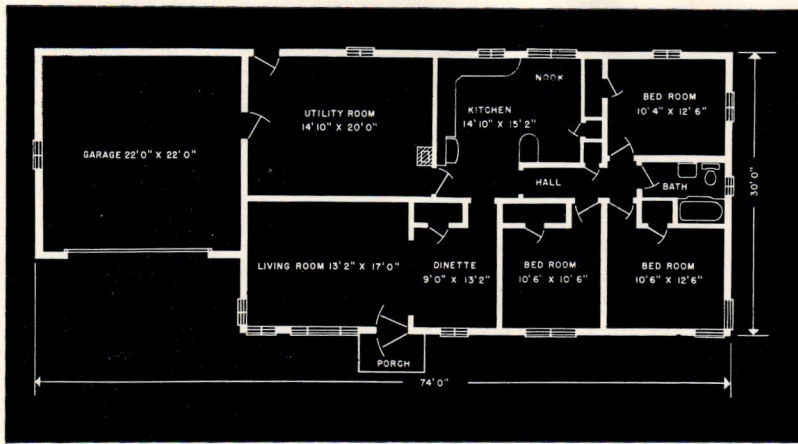
PHONE WA 3-5141

INDIANAPOLIS 8, INDIANA

**BUILDERS OF QUALITY HOMES**

"DEVELOPERS OF BEAUTIFUL KNOLLTON HEIGHTS"





- 3, 4 and 5 Bedroom Models
- 1 1/2 Baths
- All Brick and Stone Construction
- Birch Cabinets or Full Basement
- Full Basement (3 Room)
- Oil or Gas Heat
- Aluminum Windows, Marble Sills
- Hardwood Floors
- Plastered Walls—Ceramic Tile Bath
- Finest Conventional Construction Throughout

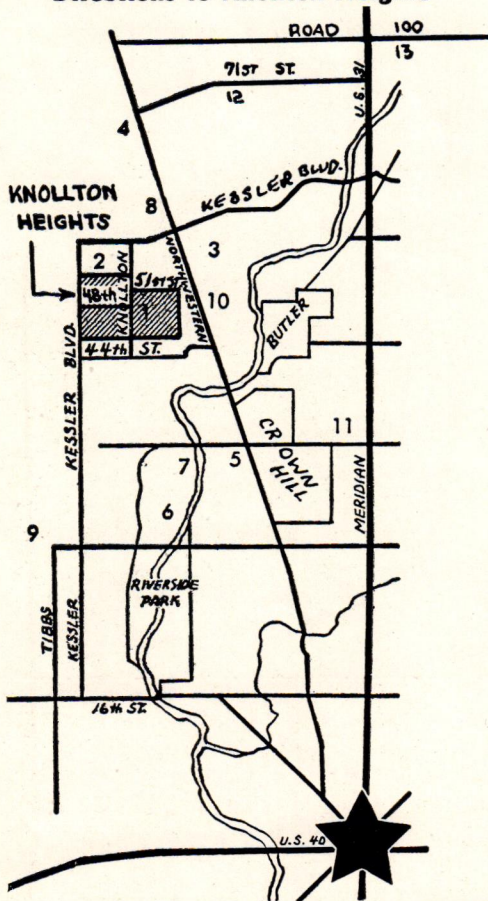
## Why So Many New Homes Are Being Sold in Knollton Heights

- PROTECTIVE BUILDING CODE
- MINIMUM LOT SIZE OVER 1/2 ACRE
- ALL BRICK AND STONE CONSTRUCTION
- WIDE CURVILINEAR STREET
- EXCELLENT DRAINAGE
- MANY 3, 4 and 5 BEDROOM MODELS
- 200 ACRES OF FINE HOMES

### SELECT YOUR OWN HOME NOW

Our Service Includes Everything From Lot to Financing – Ready to Move In

#### Directions to Knollton Heights



1. Knollton Heights
2. Broadmoor Country Club
3. Highland Country Club
4. Deluxe Shopping Center
5. Woodstock Golf Course
6. Riverside Park
7. Lake Sullivan
8. Crooked Creek School
9. St. Michaels Church and School
10. Excellent Bus Service Direct to Downtown
11. 38th and Illinois Shopping Center
12. West Lane Jr. High School
13. North Central High School

HUGHEY CONSTRUCTION CO.

4305 Melborne Rd.

Phone WA 3-5141

Indianapolis, Indiana

"BUILDERS OF QUALITY HOMES"



# DECORATE FOR

WITH THE FESTIVE SEASON of Christmas almost upon us, the annual problem of how to make your home reflect the holiday spirit is probably plaguing you. Here are some ideas — using two inexpensive commodities, greeting cards and ribbon — which will help make your home one of the most attractive at Christmas time.

Perhaps one of the most exciting parts of the holidays is the receipt of greeting cards. Friends whom you haven't heard from in months send their best wishes. And the entire family shares the excitement when the mailman brings mounds of cards to your door. But what happens when the family has read the greetings? Are the cards stocked in a drawer and just forgotten?

If so, you are missing one of the most useful "props" for decorating your home. Using greeting cards to "deck the halls" is easy and fun; something the whole family will enjoy pitching in and doing. And the designs and decorations can be as ingenious as your imagination.

Here are a few suggestions devised by Hallmark Cards, which will give you an idea of the limitless possibilities of using these cards for yuletide decoration.

Have you got a large blank wall in your living room suitable for hanging a tapestry? If so, buy two yards of 50-inch oilcloth in red or green, a jar each of white and black poster paint, a brush. Spread the cloth on the floor, sketch in a design of a sleigh, maybe with a

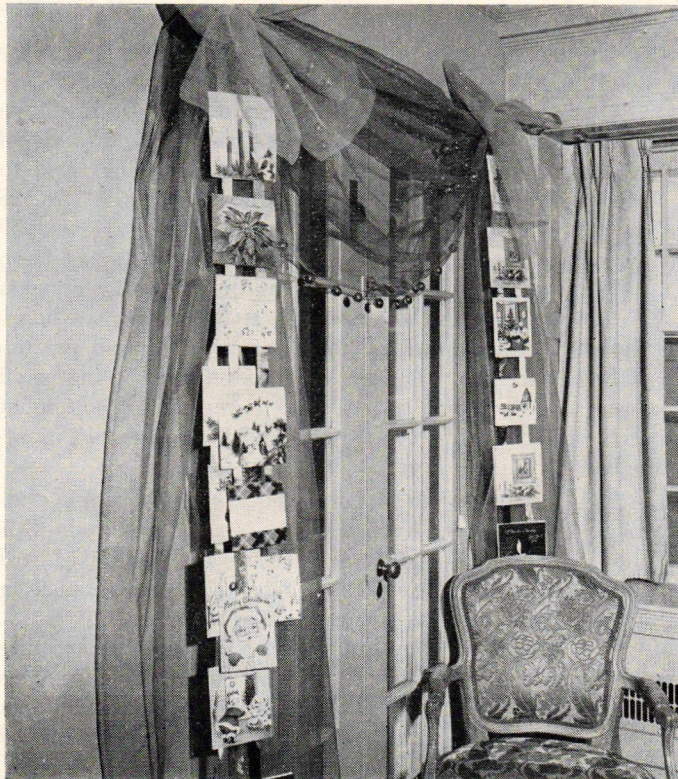


poodle perched in the front, then paint over. Attach a few Christmas baubles over the poodle's collar with adhesive. When dry, tack or tape on wall. Pile the sleigh with cards by taping, pasting or pinning them to oilcloth.

If you have a stairway, here's another suggestion. Starting at the top of the bannister, place branches of green on the railing, securing them with florist's wire or strong cord, overlapping additional branches all the way down to the newel post. Cards are then spaced from top to bottom on top of the greenery and secured in place with wire or ribbon tied to the branches.

An attractive array of greeting cards against a background of tarleton.

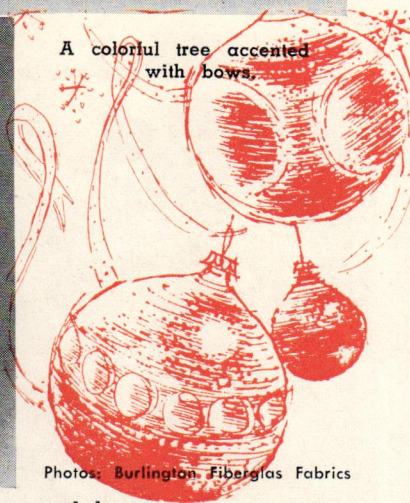
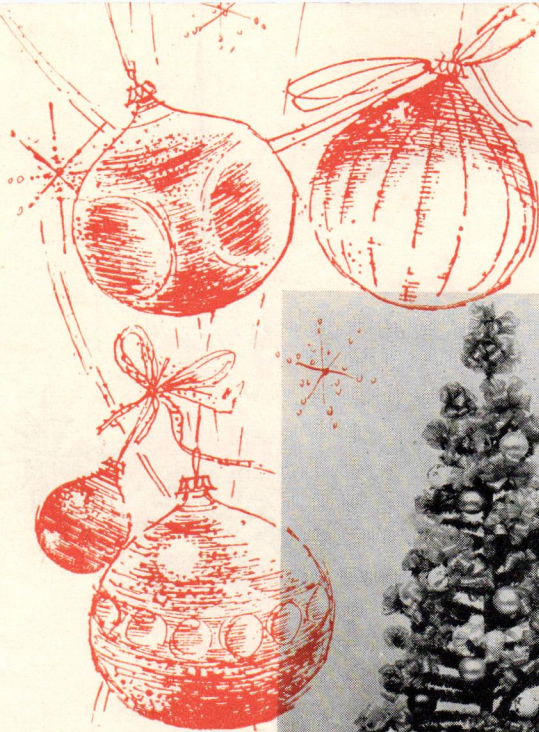
Photos: Hallmark Card



Decorate stairway with Christmas cards.







A colorful tree accented with bows.

Photos: Burlington Fiberglas Fabrics

An elegant mistletoe of ribbons and bows.

And here's an idea to decorate that bay window, picture window or double doors. Buy about 20 yards of inexpensive tarleton. Select a color to harmonize with your general room decor. Drape the tarleton in a swag across the top of the window and tack to the window frame. Cut the remaining portion of tarleton in two equal lengths, fashion big bows at one end of each strip and affix at each end of the swag, draping it to the floor. Attach glitter balls in a free design to the swag. For the garlands of cards, cut lengths of contrasting colored ribbon slightly shorter than drapes, paste cards at intervals

of four or five inches, and hang vertically from the center of each bow.

For your front-door wreath, greeting cards can add a touch of color and originality. You will need a two-foot square of mat board, two yards of tarleton in pale pink or green, sprigs of holly, sequins, green and gold ribbon, and cards. Cut a hollow circle from the board, then paint green with poster paint. Cut tarleton into holly-leaf shapes, then paste to the inner circle of the board, leaving no bare spaces. Then wire or tack holly leaves to outer rim, overlapping tarleton leaves. Attach Christmas cards with paste or pins in center, sprinkle sequins on the tarleton leaves, finish off with a big bow from the two colors of ribbon.

With these few suggestions on how to use those often neglected greeting cards, you can see the numerous possibilities for making your home colorful and unique for the holiday season.

Still another often neglected commodity which offers unlimited decorating ideas is ribbon. Of course, we use gay, colorful ribbon to adorn our Christmas packages, but that's about all. Here are a few of the ways ribbon can be used for holiday decoration.

To give sparkle and color to your Christmas tree, why not add several bright-colored bows. Tie them to the bows of the tree and intersperse them with traditional Christmas balls and tinsel, and you have an attractive tree.

And what would the holidays be without mistletoe? Here's a suggestion for making an everlasting mistletoe, which can be maintained from year to year. And best of all, it's inexpensive to make. Buy 15 yards of  $\frac{3}{8}$ " satin ribbon; 30 yards of  $\frac{1}{2}$ " bow ribbon; 6" embroidery hoop, and 15 small artificial flowers. Use your own color scheme, depending on your ingenuity and taste. For example, you may have a white, green and gold combination, or the traditional red, green and silver.

After selecting your colors, wind the satin ribbon around the hoop to cover. Criss-cross 4-25" strands of satin ribbon evenly over the top of hoop, tack them to hoop's side with thread and let the ends hang. At the center, where ribbons cross, fasten a knot. Tie a 15" piece of satin ribbon to every other spoke on top of hoop and let streamers hang down. You now have 4 streamers in the center of the hoop, and 8 at the outside of hoop. Make 15-2 yard bows. Place three bows around the top of hoop for decoration and add one or two of the small flowers. Now attach a bow and flower to the bottom of each ribbon streamer. All bows and flowers should be attached by tying a knot.

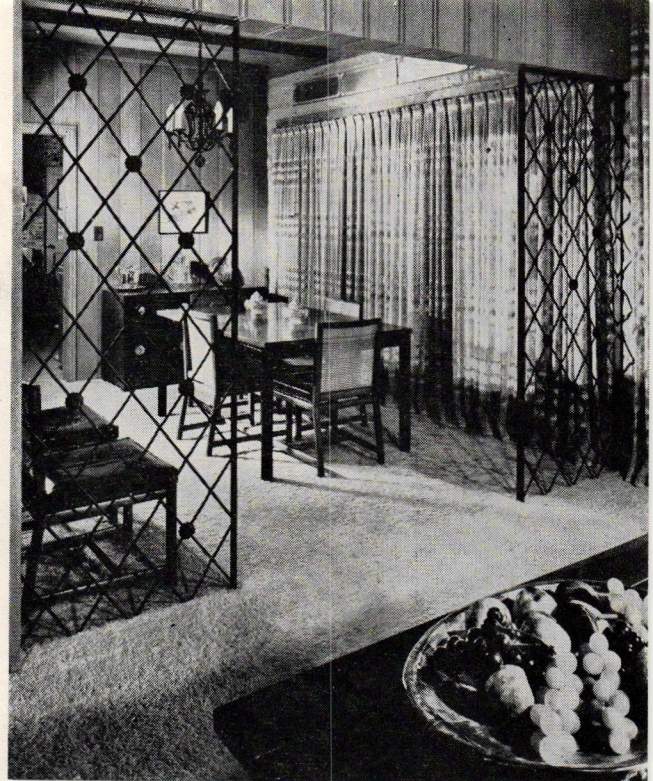
And for those of you who have trouble making attractive bows, here's good news. A new, instant bow is now available. Called Bur-mil Bow, it is made of real ribbon, which has tiny draw-strings woven into it, making it as easy as pulling a string to make a bow.

As you can see, a multitude of ideas for using greeting cards and ribbon in decorating your home for Christmas are available. By using your own ingenuity, you can devise many other ways to reflect the warmth and festivity of the yuletide in your home.





*Look  
what  
wonders  
IRON  
has  
wrought*



**I**F YOU'RE LOOKING for that "something" to dress up your home, perhaps ornamental iron can do the trick. Its uses are as varied as your imagination, and in addition to being attractive in appearance, it is also extremely functional.

For example, the separate dining room is rapidly disappearing, and is being replaced by the larger living room with a dining area at one end. To separate the dining room with a dining section from the rest of the room, why not use wrought iron room dividers, such as are pictured. This particular design uses extra wide columns of wrought iron bars decorated with stamped steel rosettes. A variety of other patterns are available for use in almost any room in the house.

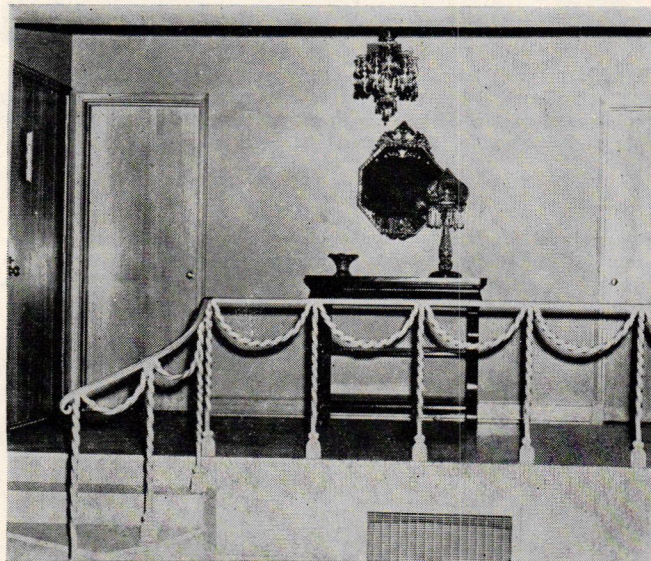
These versatile room dividers can be used in many ways. In the photograph above a room divider placed over a planter box serves two purposes: it provides an attractive background for the planter box, and it makes an unobtrusive room divider. Wrought iron scrolls in a leaf pattern complement the ivy and other plants in the box.

Perhaps one of the most popular uses for ornamental iron is for stair railings. Here, again, many designs and patterns are available. One of the most widely used wrought iron stair railings is the one pictured at right. It features 1/2-inch square steel bars delicately crossed with cast iron rosettes for decoration. The rail is of molded steel. Its simple design, which blends with almost all interior furnishings, is one of the reasons for its widespread popularity.

If you prefer a more ornate stair railing, the "rope rail" pattern will appeal to you. Fashioned of hand turned solid 1-inch square bars, which are twisted into a rope design. It is ornate in appearance, unusual in design.

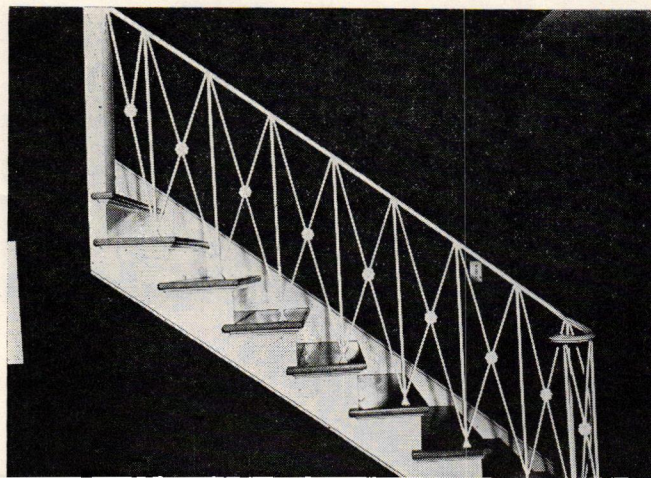
Other uses for ornamental iron include cornice trim, brackets, bric-a-brac, and many more. And it will last forever, if finished properly.

Left: Wrought iron used for planter box. Above: Wrought iron is available in many patterns for attractive and practical room dividers.



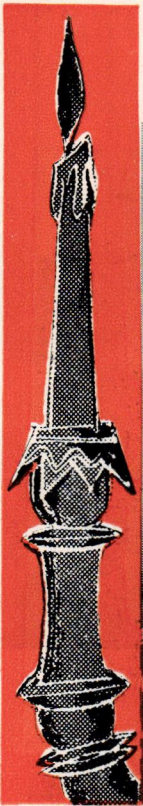
Above and below: Two distinctive designs in ornamental iron stair railings; one simple, one ornate.

Photos by Tennessee Fabricating Co.





# Help Yourself to Lighter Desk Work



A table or wall lamp with a swing-arm located on the side opposite the hand doing the work is a good solution to the lighting problem when the desk is designed so the student works to one side of it instead of the center.

Below: In a departure from the conventional desk lamp, one 30-watt, 36" fluorescent tube is concealed under the wall shelf. A two-inch opening across the top front edge of the shelf permits some upward light.

WITH THE CHILDREN in school and bringing homework home at night, have you considered the importance of providing an adequate work area for them to do their homework?

The first step is to buy your child a desk, if possible. This will give him a feeling of importance — a desk just like Daddy uses at the office — and it will also provide one specified place to do his work, instead of using the dining room table one night, the living room chair the next, etc.

The next important consideration is the location. If there is room in his bedroom, this would be a good place to put his desk. Whatever you do, don't put it in the living room, where television may be on or in any other room where distractions may keep him from concentrating on the work at hand.

Of equal importance is good lighting, for without proper illumination, eyesight and powers of concentration are impaired. In selecting a lamp for the work area, be sure that it provides enough light — the recommended average on the working area is 40 footcandles (units of light).

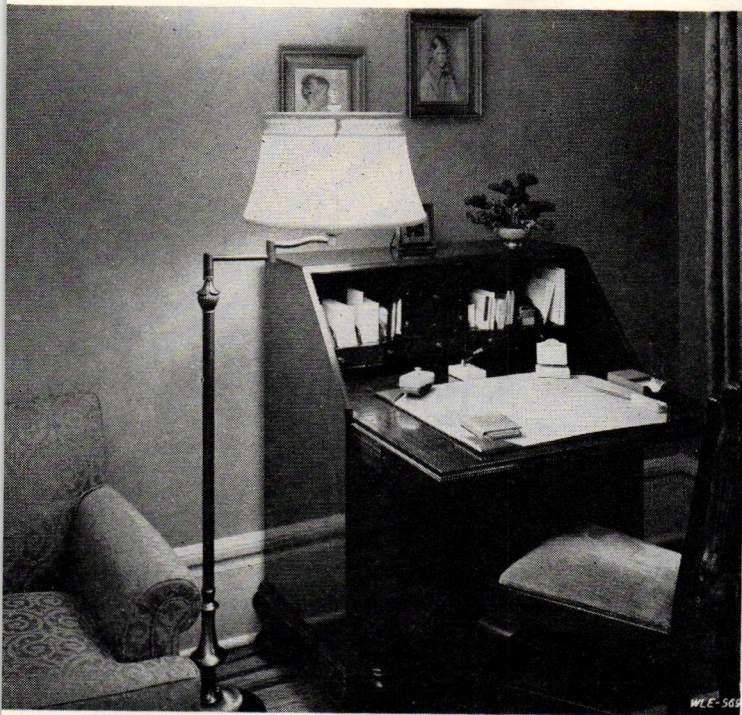
The next step in choosing a lamp is to be sure it provides a good diffusion of light — preferably one with a diffusing bowl. And, to assure proper distribution of light, select a lamp tall enough and with proper shade size.

Photos by Westinghouse

This lamp was designed by an illuminating engineer to provide a large rectangle of uniform illumination on the desk top. It takes a 150-watt silvered bowl bulb and provides well-diffused indirect lighting.

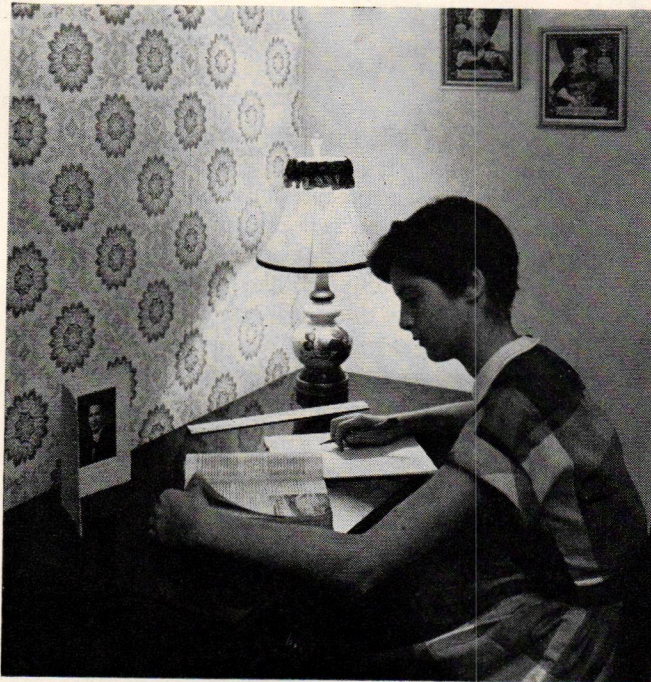






Left: This correct desk lighting includes a lamp which is equipped with a reflector bulb; and proper lamp height to produce a generous circle of light.

Below: A direct contrast to the well lighted desk is this girl struggling to see with desk lighting like this. A skimpy spread of light, poor placement of the lamp, and a "busy" wall-paper contribute to this "all wrong" lighting.



This correct desk lighting includes a lamp which is equipped with a reflector bulb; and proper lamp height to produce a generous circle of light.



The lamp shade should be slightly translucent or opaque, and light in color to minimize the contrast with the light-colored walls recommended for study centers. And, to take advantage of maximum reflected light, locate the desk against a wall that is plain and light in color. Avoid a surface covered with a "busy" distracting paper or a dark color.

If all of the rooms in the house are a dark color, the use of a light-colored bulletin board over the desk allows light to be reflected toward the working area and reduces the contrast of lighted lamps against the wall. This also makes a handy mounting for a pair of pin-to-wall lamps. Use a pair only if the writer sits centered at the desk. At a desk where drawers on one side only, where the writer sits off center, soft shadows will fall on the work. If preferred the desk may be located so the persons look into the room — periodic distant viewing relaxes the eye muscles. However the desk should not be placed so that the person faces a bright window area.

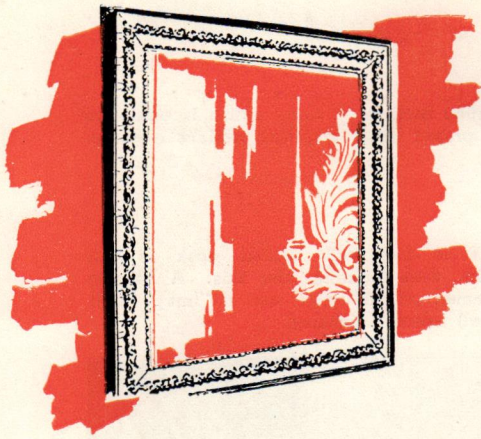
If only one lamp is used, locate it on the opposite side of the hand doing the work: for a right handed person, left side; for a left handed person, right side.

Use a light-colored blotter on desk to eliminate reflections from the shiny top, and to reduce the contrast between dark desk and white book pages or papers.

And finally, eyes should be approximately 14 inches from the book or working area, so select a chair of proper height. (Cushions are a simple solution to the problem of making the chair seat higher).

With these suggestions, you can make your child's work area both attractive and more conducive to study. And by helping him to lighter desk work, you'll be helping yourself, too.





## Highlight Your Room with Mirrors

**T**ODAY'S MIRRORS fulfill much more than their practical function of serving as a looking glass. They are being used to decorate and beautify the home.

For example, take the mirrors created by designer John Van Koert, pictured here. One of his favorite theories is using mirrors in multiples, like pictures. To make this possible, he designs thin, off-beat rectangles (10" by 42"), combining as many as four on one wall.

Hand engravings as decoration takes on varied guises. Created for the panel mirrors are a Persian tree design, a geometric crosshatch design and a vertical miter in an

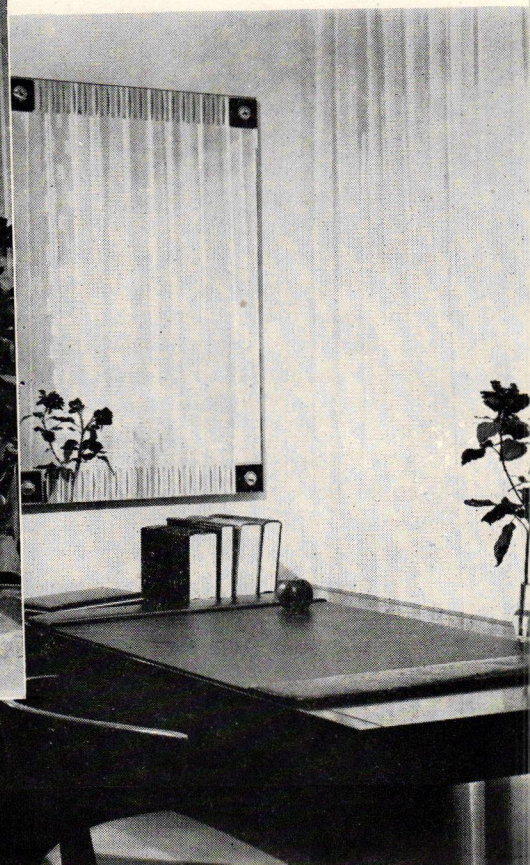
interesting gable top shape. Hand-engraving can be used to enhance all sizes and shapes of mirrors.

To give the mirror a finishing touch, a variety of frames are available. Slender frames of brass or broad ones of waxed natural walnut complement some mirrors, while others are dramatized with wide hand-cut bevelling. Color is frequently added to pick up the monochromatic quality of just plain mirror.

No matter what the design of your home, why not take advantage of the many styles and designs of mirrors. You will surely find one that will highlight your room.

**Left:** Three, long rectangular mirrors arranged to form a unit over a sofa bed. **Center:** New gable-topped, hand-engraved, tall slim mirror designed for use in multiple. **Below, right:** This single mirror is elegantly designed to reflect the beauty of the room.

Photos by Carolina Mirror Corporation





## ROBERT TAYLOR LUMBER CO.

YELLOW PINE LUMBER  
FROM MILL TO YOU

PHONE  
ME 6-1222

1723 N. WARMAN AVE.  
INDIANAPOLIS, IND.

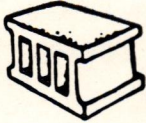
## ALBERT HENRY

BRICK AND BLOCK WORK

3657 CAPITOL  
INDIANAPOLIS, INDIANA

PHONE  
WA 3-6997

## FRANZEN BLOCK & MATERIAL CORPORATION



Concrete Blocks - Building  
Materials - Lintels - Coping  
Stepping Stone - Lawn Furniture

1935 KENTUCKY AVENUE  
INDIANAPOLIS 21, INDIANA

MElrose 8-1311

MElrose 8-1312

YOUR HOME OF TOMORROW

is sent to you each month  
through the courtesy of  
the friendly firms listed  
on these back covers.

Your only real security is a home of your own. That is the American dream and ideal.

The friendly firms on these covers are here to help you fulfill that dream.

Bring your problems to them. They are anxious to serve you.

## Hughey Construction Co.

4305 MELBOURNE ROAD  
INDIANAPOLIS 8, INDIANA

Phone WA 3-5141



BUILDERS OF QUALITY HOMES

*"Developers of Beautiful Knollton Heights"*



Return Postage Guaranteed

BUILDERS PUBLISHING COMPANY

100 STEVENS AVENUE

MT. VERNON, N. Y.

Lloyd E McCann  
1905 Orlando  
Indianapolis 8 Ind.

BULK RATE

U. S. POSTAGE

PAID

Permit No. 8

Mt. Vernon, N. Y.

A COMPLETE DEPENDABLE BUSINESS GROUP TO SERVE YOU

## HOOSIER COAL & OIL CO.



WAInut 3-3343

## BEA AND BEA

GUTTERING — ROOFING — HEATING

OIL OR GAS FURNACES

AIR CONDITIONERS

DELCO and JANITROL FURNACES

2425 E. 29th STREET — PHONE WA. 5-7020

## HILL BROTHERS

"Painting At Its Best"

WEST 116th STREET

VI 6-8808

SPRING MILL ROAD

VI 6-8680



3468 CONGRESS

WA 4-0566

INDIANAPOLIS 22, INDIANA

ELECTRICAL CONTRACTING & ENGINEERING

GENERAL ELECTRIC WIRE HEAT

SALES AND SERVICE

## BROAD RIPPLE LUMBER

AND SUPPLY CORPORATION

"Your home deserves the best"

1001 Broad Ripple Ave. Phone CLifford 5-5456

## UNITED MORTGAGE CO., INC.

515 Lemcke Building Indianapolis, Indiana

RESIDENTIAL AND COMMERCIAL LOANS

Conventional — V.A. — F.H.A.

EARL LAYNE, President

ME 2-9396



## ALBERT GRIFFITH

Hardwood Floor Refinisher

Floors Laid - Quality Work

5115 Rosslyn Avenue

Indianapolis, Indiana

Phone CL 5-9665



WE DRILL WELLS!

LET US WORRY FOR YOU

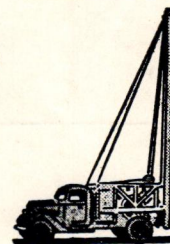
NO DOWN PAYMENT

36 MONTHS TO PAY

WELLS AND PUMPS

## HAMILTON BROS. WELL DRILLING CO.

4025 ROCKVILLE RD. CALL CH 1-2571



## FACE BRICK AND PLASTERING MATERIALS

Furnished by

## HARRY C. ENT MATERIALS, INC.

1415 Commerce Avenue

Phone MELrose 8-6543

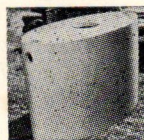
Indianapolis, Indiana

## CARMEL CONCRETE PRODUCTS ALL-NEW SEPTIC TANKS

Featured in All

HUGHEY CONSTRUCTION CO.  
HOMES

Meets All F.H.A. State and County  
Health Code Requirements



FOR ADDITIONAL INFORMATION—CALL VI 6-2301