

YOUR  
**HOME**  
OF  
TOMORROW

JULY, 1956



PLANNING  
DECORATING

PRESENTED BY

MAINTENANCE  
GOOD IDEAS  
GARDENING

*Hughey*  
**CONSTRUCTION CO.**

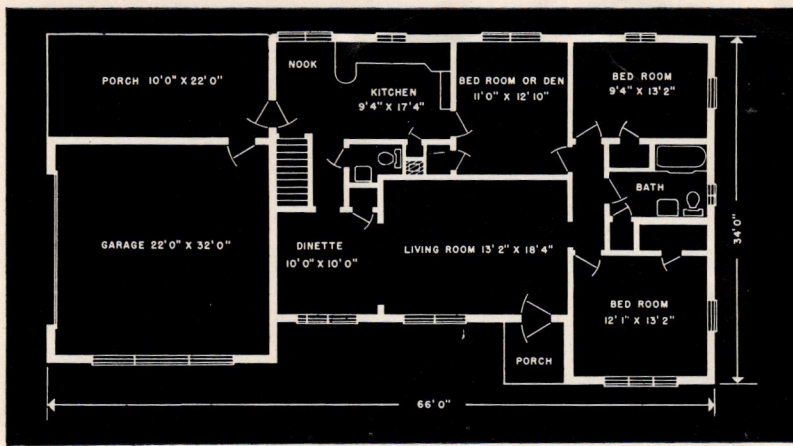
4305 MELBOURNE ROAD

PHONE WA 3-5141

INDIANAPOLIS 44, INDIANA

**BUILDERS OF QUALITY HOMES**

*"Developers of Beautiful Knollton Heights"*



- 3 Bedrooms
- 1 1/2 Baths
- All Brick and Stone Construction
- Youngstown Kitchen
- Full Basement (3 Room)
- Oil or Gas Heat
- Aluminum Windows, Marble Sills
- Hardwood Floors
- Plastered Walls—Tile Bath
- Finest Conventional Construction Throughout

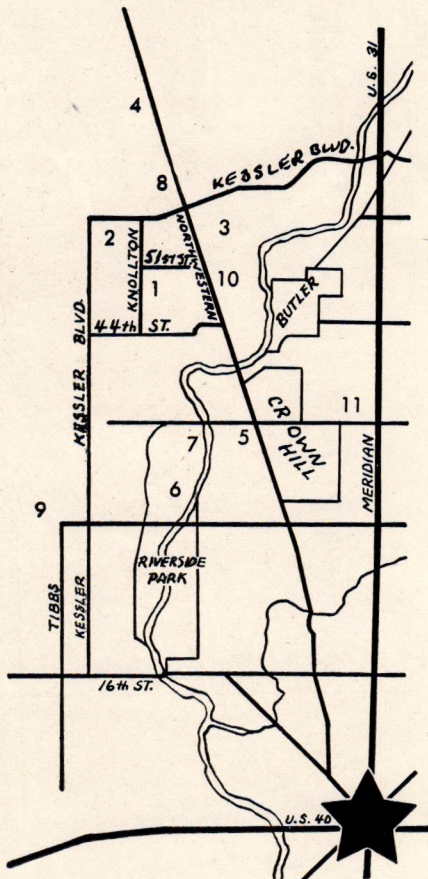
## Why So Many New Homes Are Being Sold in Knollton Heights

- PROTECTIVE BUILDING CODE
- MINIMUM LOT SIZE OVER 1/2 ACRE
- ALL BRICK AND STONE CONSTRUCTION
- WIDE CIRCULINEAR STREET
- EXCELLENT DRAINAGE
- MANY 3 & 4 BEDROOM MODELS

### SELECT YOUR OWN HOME NOW

**Our Service Includes Everything From Lot to Financing – Ready to Move In**

#### Directions to Knollton Heights



1. Knollton Heights
2. Broadmoor Country Club
3. Highland Country Club
4. Deluxe Shopping Center
5. Woodstock Golf Course
6. Riverside Park
7. Lake Sullivan
8. Crooked Creek School
9. St. Michaels Church and School
10. Excellent Bus Service Direct to Downtown
11. 38th and Illinois Shopping Center

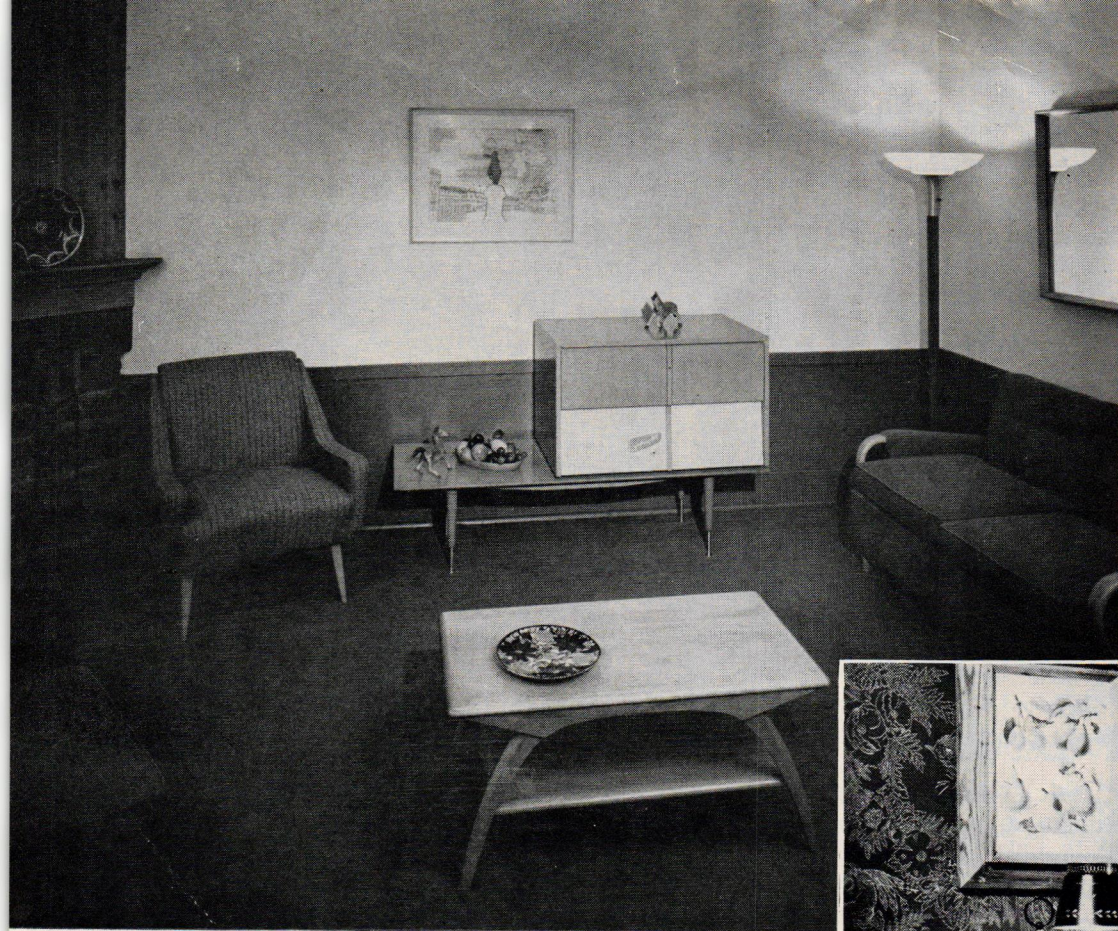
**HUGHEY CONSTRUCTION CO.**

**4305 Melbourne Rd.**

**Phone WA 3-5141**

**Indianapolis, Indiana**

**"BUILDERS OF QUALITY HOMES"**



This modern setting features functional furniture, including high-fidelity record player and radio combination on rectangular table at back of room.

This 18th Century desk in pine adaptation makes an attractive corner piece, with a circular rug on the floor and colorful wallpaper in the background.



## CREATING AN *Attractive* HOME

**A**CHIEVEMENT of the ownership of an attractively furnished home is one of the most satisfying experiences in life. But too often the interior of the house does not follow through with the promise of its architectural exterior.

Attractive rooms do not "just happen." They are the result of furnishings assembled with careful regard for character, harmonious color and correct scale.

More than anything else you acquire, your furniture establishes the true character of your way of life. Good or bad, it influences the cultural development of your family; its form, finish and color, if they are good, will outlive the pleasure you may derive from almost any other possession. It is not too much to say that of all the things essential to a lovely home, the correct choice of furniture is most important.

As assembled groups of furniture have long since replaced the "suites," there is almost an unlimited field for

Continued on page 4

Copyright 1956 by Builders Publishing Co., Inc. • 100 Stevens Avenue, Mount Vernon, New York • July, 1956

Harry Bernstein, Editor • Frank Angelini, Art Director • Dave Fleming, Production Mgr. • Marie George, Plans Editor

## CREATING AN ATTRACTIVE HOME

Continued from page 3

imaginative thought in creating interesting groupings for each room. Good effects are obtained by finding new uses for standard pieces of furniture. No longer are chests of drawers merely bedroom items. We find them in dining rooms, living rooms, halls.

Scale is also very important in your furniture. This does not mean that you must discard the idea of using a piece of large proportions, should you happen to like it for a particular reason. If your room is of average size, you would treat an oversized piece so as to make its size a decorative asset—use it as a focal point, giving it plenty of “breathing space.” The breakfront bookcase is an apt illustration of this point.

Yet, scale must be considered carefully, when you assemble all the pieces for your room. Extremely delicate Sheraton or French pieces of light scale Swedish Modern designs often lose much of their charm and seem merely thin and spindly when used with a preponderance of more robust styles.

In the mixing of period styles, scale again is the main factor to be considered. Whether the furniture you choose may be attributed in design to Chippendale, Hepplewhite or Sheraton is not important. Often it is of no great consequence, whether it be English, French, American or Modern, so long as it is related in scale and general characteristics. Similar style influences can be found in many periods. For example, Chinese motifs are plentiful in several English and French styles as well as in much good modern furniture, and classic details have recurred at intervals during the past two thousand years.

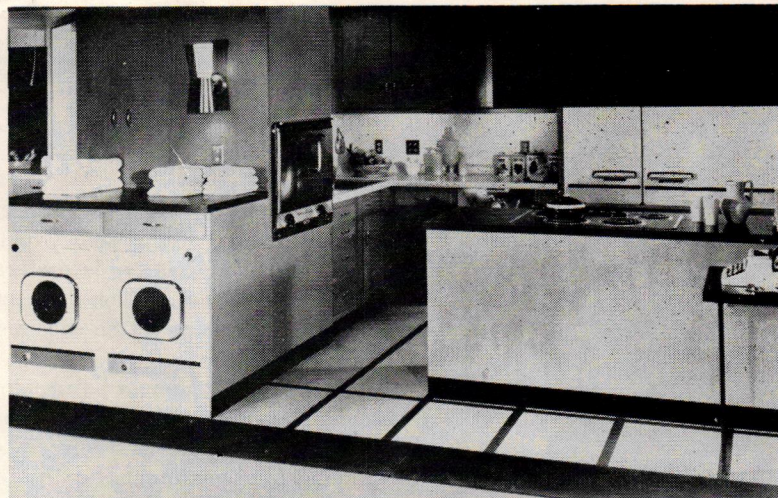
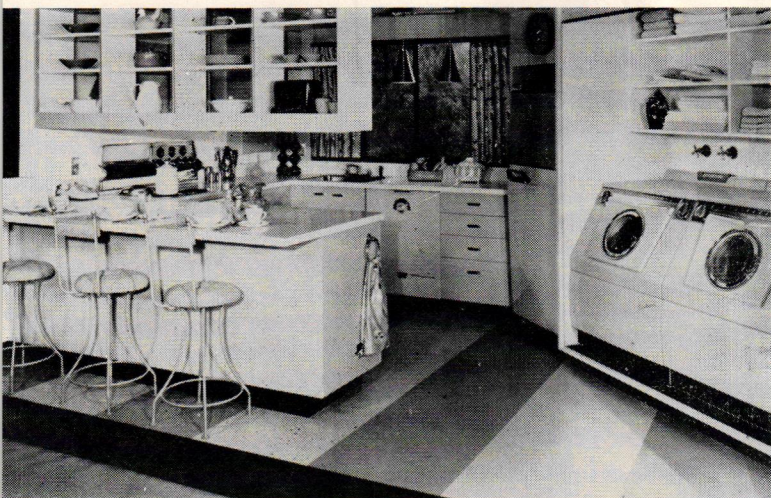


Graceful flowing lines characterize French Provincial furniture. Group is done in mellow-finish walnut, a favorite wood for provincial pieces.

Although we have mentioned the desirability of a relationship between the architecture of your house and the style of your furnishings, this does not mean slavish adherence to a set pattern. A change of flavor from room to room is to be preferred, unless you happen to be a collector with a particular fondness for a certain style of house and furniture. Harmony and understanding are the main essentials. Unless a house is very large, strong contrasts either in style or furnishings, generally should be avoided.

This modern bedroom setting displays the newest type bookcase headboard and low footboard, double dresser and chest in ivory walnut.





Photos courtesy Westinghouse

## 4 NEW *Dream Kitchens*

THE FOUR NEW KITCHENS pictured on this page might well be the dream of every housewife. Featuring the very latest in kitchen equipment, they also offer unusual color styles. They have been given such provocative names as the Cinnamon Kitchen, Mint Aqua Kitchen, Lemon Yellow Kitchen, Frosting Pink Kitchen, and they are loaded with almost every conceivable new appliance and idea to make housework simpler and easier.

A built-in serving bar or luncheon counter highlights the Mint Aqua Kitchen, shown in the upper left. The convenience of this counter lies in the fact that it is just a few steps away from the free-standing refrigerator with the dishwasher, sink and adjoining counter surface, and right next to the free-standing range.

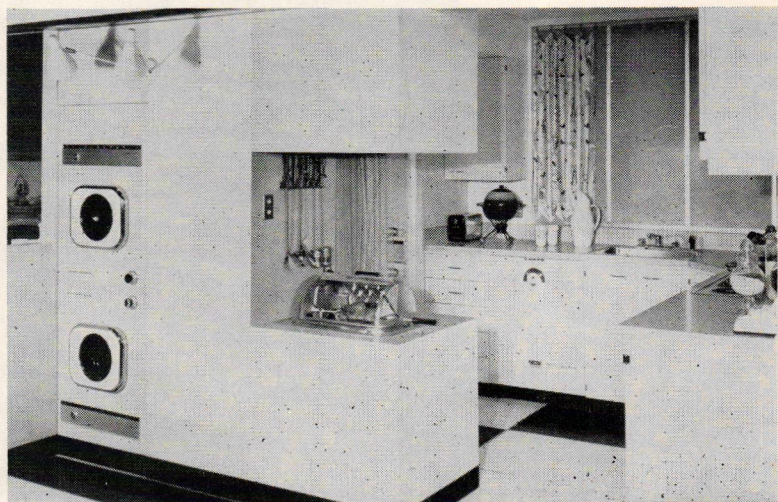
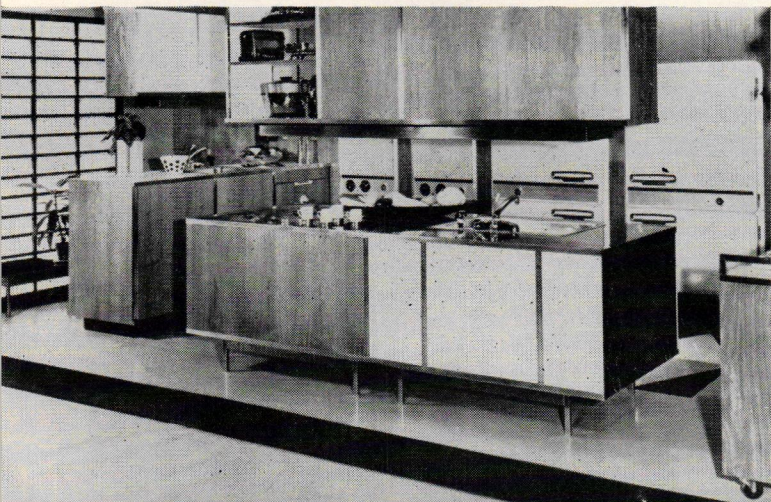
At the upper right, you see the very delightful Yellow Lemon Kitchen, with its built-in horizontal installation of refrigerator-freezer combination, wide built-in oven,

surface cooking platform, and under-the-counter dishwasher and food waste disposer.

Although it takes up only a comparatively small floor area, the Frosting Pink Kitchen, bottom left, also boasts of deluxe equipment, such as built-in oven, refrigerator-freezer combination—and charcoal rotisserie! A completely automatic washer and dryer is provided in a floor space just twenty-five inches wide.

The Cinnamon Kitchen, bottom right, is a deluxe kitchen in every detail, having the finest appliances and fixtures and custom-made walnut cabinets. This kitchen is equipped with two refrigerator-freezer combinations, two built-in ovens, two surface cooking platforms, two food waste disposers, dishwasher, two sinks and an automatic portable appliance cooking center.

Some of the ideas and appliances in these kitchens are not yet on the market—but you'll be seeing them!



# THEME for A BORDER

A FAULT frequently found in border plantings is that they lack a central idea. Stressing one of the showy perennials—peonies, daylilies, Oriental poppies, phlox, or whatever is preferred—will give the planting an integrated and restful appearance. When the central theme is determined, some of the following perennials might be chosen for edging and fillers, as well as to increase the period of bloom.

For early color along a border dominated by any of the important perennials rock cress may be used in quantity, since it takes up little space. Both single and double kinds are white with silvery foliage.

Among blue perennials for the foreground are forget-me-nots. Ground ivy, another useful small plant, has silvery foliage topped with spikes of minute lavender-blue flowers. The dwarf early veronicas, with wooly leaves and spikes of intense blue, help to round out the list of edging plants in this prized tone.

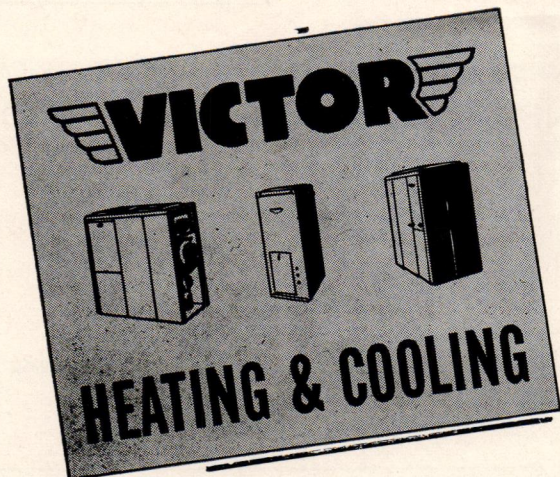
Oriental poppies can be useful for interplanting. Supplying six or seven weeks of bloom, their main liability is dying back to leave large gaps in the bed. Peonies will also give six or seven weeks of bloom in the early summer. Since their foliage remains relatively attractive, they will not be as difficult to use, either for dominant flowers or for interplanting. The rounded heads contrast interestingly with spires of bloom.

Daylilies and phlox may be chosen by variety to flower from May to September. Abundant blooms in soft colors make them equally adaptable for one-plant borders, for dominant flowers with other perennials or for subordinate interest.



# A GREAT NAME..

In Home Comfort



RELY on our 65 year record of  
CUSTOMER SATISFACTION

**HALL-NEAL** FURNACE  
COMPANY

Your Heating and Cooling Headquarters

1324 N. Capitol Ave. — MEIrose 5-7441

INDIANAPOLIS INDIANA

## UNITED MORTGAGE CO., INC.

515 Lemcke Building Indianapolis, Indiana

RESIDENTIAL AND COMMERCIAL LOANS

Conventional — V.A. — F.H.A.

EARL LAYNE, *President*

MA 9396

Your only real security is a home of your own. That is the American dream and ideal. The friendly firms on these covers are here to help you fulfill that dream. Bring your problems to them. They are anxious to serve you.

YOUR HOME OF TOMORROW

is sent to you each month  
through the courtesy of  
the friendly firms listed  
on these back covers.

## Hughey Construction Co.

4305 MELBOURNE ROAD

INDIANAPOLIS 44, INDIANA

Phone WA 3-5141



BUILDERS OF QUALITY HOMES

*"Developers of Beautiful Knollton Heights"*

Return Postage Guaranteed  
BUILDERS PUBLISHING COMPANY  
100 STEVENS AVENUE  
MT. VERNON, N. Y.

Lloyd E. McCann  
1905 Orlando  
Indianapolis 8 Ind.

BULK RATE  
U. S. POSTAGE  
**PAID**  
Permit No. 8  
Mt. Vernon, N. Y.

A COMPLETE DEPENDABLE BUSINESS GROUP TO SERVE YOU

## HOOSIER COAL & OIL CO.



1300 E. 30th St. WALnut 3-3343

## BEA AND BEA

### GENERAL REPAIRING

GUTTERING — ROOFING — HEATING

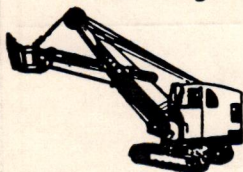
"We Carry Compensation Insurance on Our Men"

2425 E. 29th STREET — PHONE WA. 5-7020

## RUSSELL & TUNGATE

### EXCAVATING OF ALL KINDS

Grading - Excavating - Bulldozing



PHONES

E. Russell  
ID 2128

K. Tungate  
Franklin, Ind. 1198-W



3468 CONGRESS INDIANAPOLIS 22, INDIANA WA 4-0566

ELECTRICAL CONTRACTING & ENGINEERING  
GENERAL ELECTRIC WIRE HEAT  
SALES AND SERVICE

## BROAD RIPPLE LUMBER & SUPPLY CORPORATION

"Your home deserves the best"

1001 BROAD RIPPLE AVE. PHONE BRoadway 5456

## HILL BROTHERS

"Painting At Its Best"

8517 Westfield Blvd. Indianapolis, Indiana

Phone GL. 1231

## ALBERT GRIFFITH

Hardwood Floor Refinisher

Floors Laid - Quality Work

5115 Rosslyn Avenue Indianapolis, Indiana

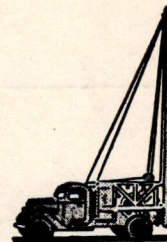
Phone BR. 9665



WE DRILL WELLS!  
LET US WORRY FOR YOU  
NO DOWN PAYMENT  
36 MONTHS TO PAY  
WELLS AND PUMPS

## HAMILTON BROS. WELL DRILLING CO.

4025 ROCKVILLE RD. CALL CY. 2571



## FACE BRICK AND PLASTERING MATERIALS

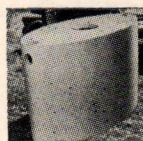
Furnished by

## HARRY C. ENT MATERIALS, INC.

1415 Commerce Avenue Phone MEIrose 8-6543

Indianapolis, Indiana

## CARMEL CONCRETE PRODUCTS ALL-NEW SEPTIC TANKS



Featured in All

HUGHEY CONSTRUCTION CO.  
HOMES

Meets All F.H.A. State and County  
Health Code Requirements

FOR ADDITIONAL INFORMATION—CALL CARMEL—40