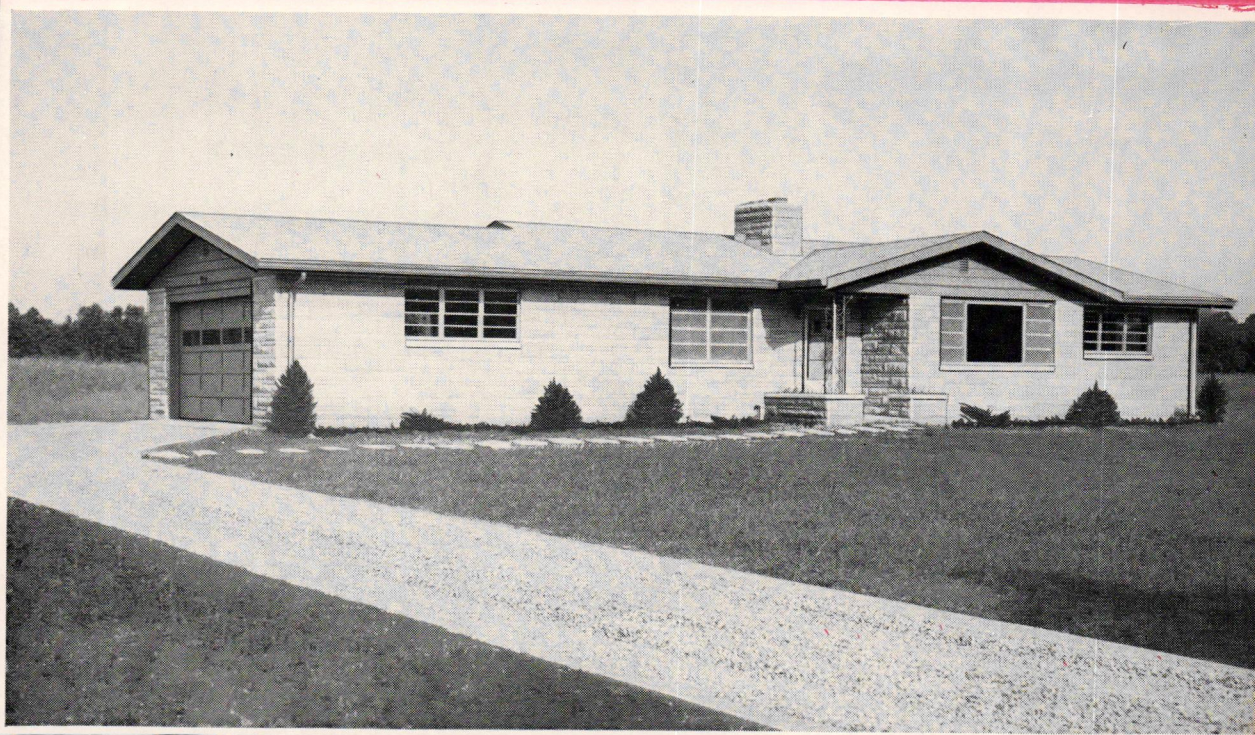


Your Home
OF TOMORROW

MAY, 1955



Presented by

Hughey
CONSTRUCTION CO. Inc.

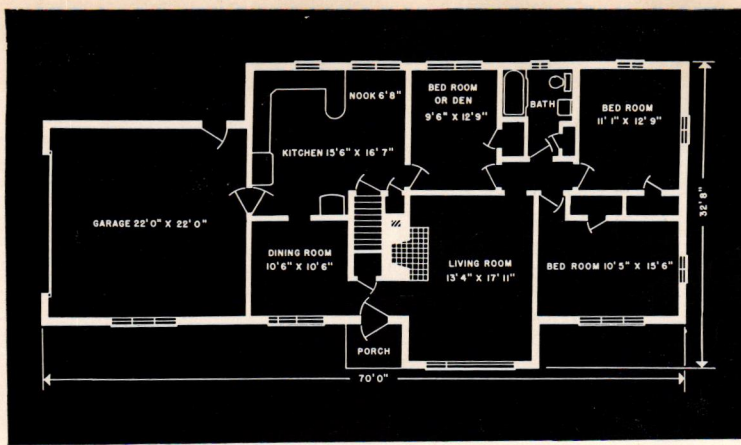
4305 MELBOURNE ROAD

PHONE HU 7181

INDIANAPOLIS 44, INDIANA

BUILDERS OF QUALITY HOMES

"Developers of Beautiful Knollton Heights"



- 3 Bedrooms
- 1 1/2 Baths
- All Brick and Stone Construction
- Youngstown Kitchen
- Full Basement (3 Room)
- Oil or Gas Heat
- Aluminum Windows, Marble Sills
- Hardwood Floors
- Plastered Walls—Tile Bath
- Finest Conventional Construction Throughout

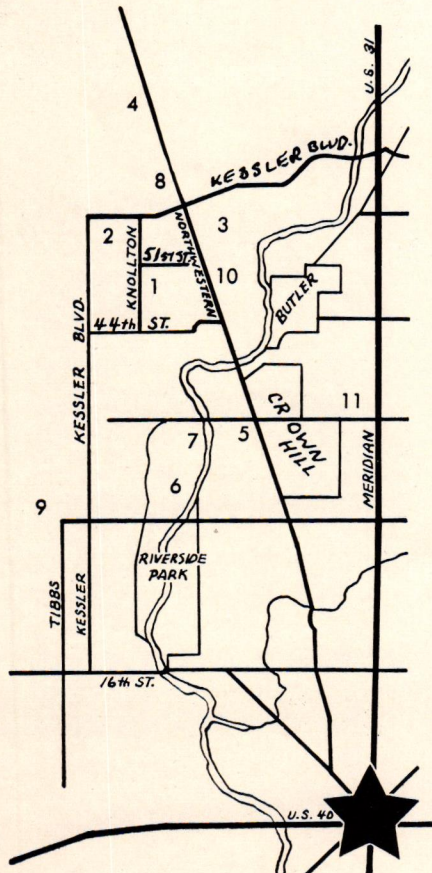
Why So Many New Homes Are Being Sold in Knollton Heights

- PROTECTIVE BUILDING CODE
- MINIMUM LOT SIZE OVER 1/2 ACRE
- ALL BRICK AND STONE CONSTRUCTION
- WIDE CIRCULAR STREET
- EXCELLENT DRAINAGE
- MANY 3 & 4 BEDROOM MODELS

SELECT YOUR OWN HOME NOW

Our Service Includes Everything From Lot to Financing — Ready to Move In

Directions to Knollton Heights



1. Knollton Heights
2. Broadmoor Country Club
3. Highland Country Club
4. Deluxe Shopping Center
5. Woodstock Golf Course
6. Riverside Park
7. Lake Sullivan
8. Crooked Creek School
9. St. Michaels Church and School
10. Excellent Bus Service Direct to Downtown
11. 38th and Illinois Shopping Center

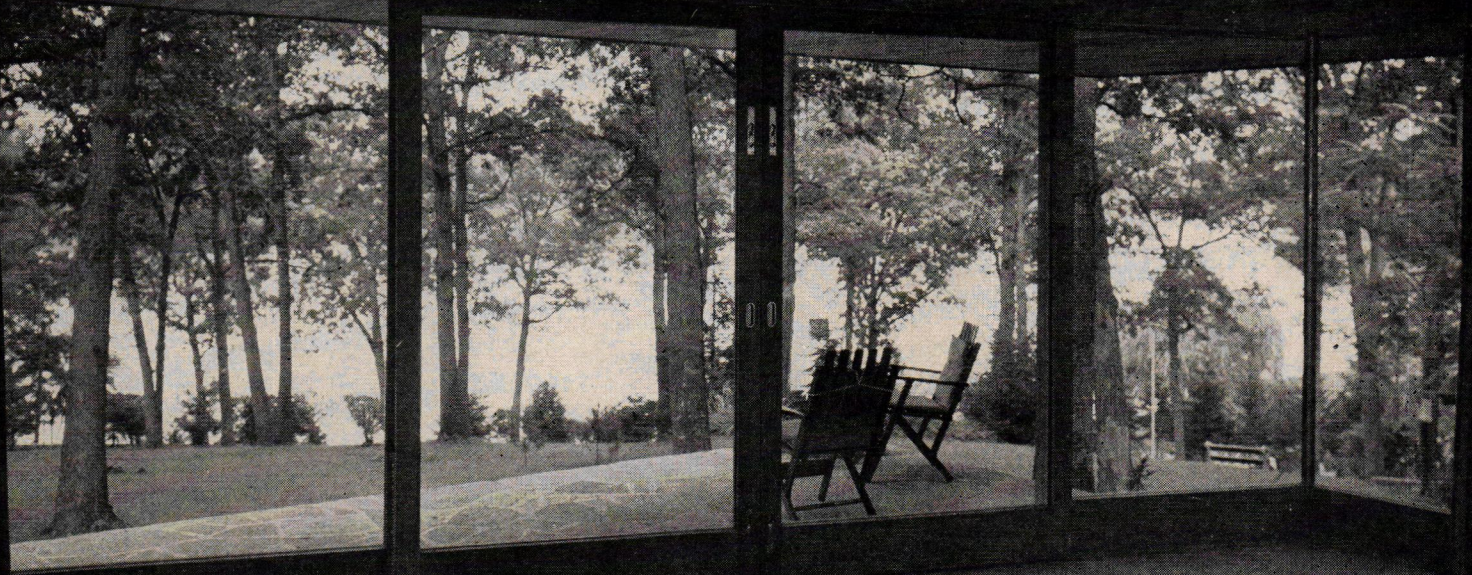
HUGHEY CONSTRUCTION CO., INC.

4305 Melbourne Rd.

Phone HU 7181

Indianapolis, Indiana

"BUILDERS OF QUALITY HOMES"



Shade trees not only add to the beauty of your property but cool the house as well.



Plantings will make your home Cooler

THE objective of everybody during hot spells of summer is to keep comfortable. Cooling can result from the evaporation of water in plants, because energy in the form of heat is required to carry out the evaporative process.

Dr. Robert Deering, University of California, points out that plants have a great capacity for preventing the passage of solar heat to surfaces on the opposite side, the main reason being that solar energy is used in plant photosynthesis.

Dr. Deering further says, "The placement of trees and the use of grass near the house allows the heavier cool air to flow inside the house, providing low openings are present."

"Windbreaks may be necessary to keep out hot-dry, as well as winter winds.

"Keep sun off the walls to prevent heat absorption and re-radiation, and off glass to prevent it from penetrating inside the house. Radiation may be partially stopped by

use of a wall-cover of vines. This creates a cool-air space between the foliage and the wall. Deciduous vines may be used on trellises over windows.

"Roofs may be covered in the same manner as walls, resulting in a double roof, the upper one of living materials." Shading tree branches may serve this purpose.

In warm weather, continues Dr. Deering, "keep lawns and trees well watered. Shade as much paving as possible by trees and vines to prevent heat absorption. It may be well to keep paving to a minimum in hot climates."

The American Association of Nursery men says the best way to keep cool in hot weather is to sit under your own shade tree. At a temperature of 100 degrees Fahrenheit in the shade the bodily loss of perspiration is one-half pint per hour. Sitting in the sun it is one pint, and walking 3½ miles per hour it is one quart, or four times as much perspiration as under your own shade tree. Cooler

continued on page 4



MAY, 1955

Copyright 1955 by BUILDERS PUBLISHING CO., INC. 100 Stevens Ave., Mt. Vernon, N. Y.

Harry Bernstein, Editor — Julian Wagner, Art Director — Dave Fleming, Production Mgr. — Mary L. Osborn, Plans Editor



PLANTINGS WILL MAKE YOUR HOME COOLER

continued from page 3



air beneath shade trees moves outward and this is of real benefit where tree plantings are near the house.

As the sun moves, of course the shadow of the tree moves and speedily cools the ground in a new area. In experiments at the University of California it was found that bare-ground temperatures cooled as much as 40 degrees Fahrenheit in five minutes after the arrival of the shadow line.

When considering the total area covered by the shade from a large tree during the day, one can see the importance of shading both the ground surface and the temperature of the adjacent air layer.

The plants which we have discussed here should not present any great problem to the homeowner. The latter usually wants a tree which will grow fast but not too large, especially when he has a small lot.

The answer may be to purchase a more mature tree, in which case slow growth is not so important. However, if the homeowner is patient, he can purchase a small tree for a few dollars and watch it grow. For instance, a tree with a trunk a few inches in diameter may only cost a small amount, depending on the species. If one wishes at least some shade immediately, he may want to

plant a shade tree with a trunk thickness of three to six inches or more.

To a middle-aged person wishing immediate shade, or even younger people who do not want to wait for a tree to fulfill their needs for shade, the larger sizes are the answer.

Oftentimes homeowners purchase fast-growing trees and this is advisable on the small property if the tree is a type that can be effectively pruned and kept small as it matures. The pines, cedars and hemlocks, for instance, can be effectively sheared, as well as numerous deciduous trees. Your nurseryman can advise you on trees that can be pruned and kept the size you want them, as well as those which do not reach over 35 feet when mature. There are many of these, including certain varieties of maples, hornbeam, hawthorn, dogwood, holly, magnolia, and similar trees, depending on the climate.

In the south and warmer areas of the west coast, there are camphor-trees, with dense, glossy, light green foliage; Montebello ash, an excellent small shade tree is drought resistant and tolerant of alkali. There are many others, including carob tree, crape myrtle and the pepper tree. It is always best to consult with your nurseryman for various trees which grow well on your own individual property. Some trees are more tolerant than others of special conditions, such as drouth, alkaline soil or similar environment.



Experts say that the placement of trees and the use of grass near the house allows the heavier cool air to flow inside the house.

there's an elegant look to this summer's furniture

DELIGHTFUL days are ahead for those who are going to use the new furniture designed for summer use. The latest collections combine beauty with comfort. Some may serve dual roles, both indoors and outdoors. Indoor furniture cannot serve in two places, but today's summer furniture in many instances can do so.

One of the most exciting facets of the new summer furniture is the development of new finishes. For instance, aluminum is a big newcomer, being used both as tubing and as flat sheets. Its great popularity is the result of two factors: it won't rust, and it is easily

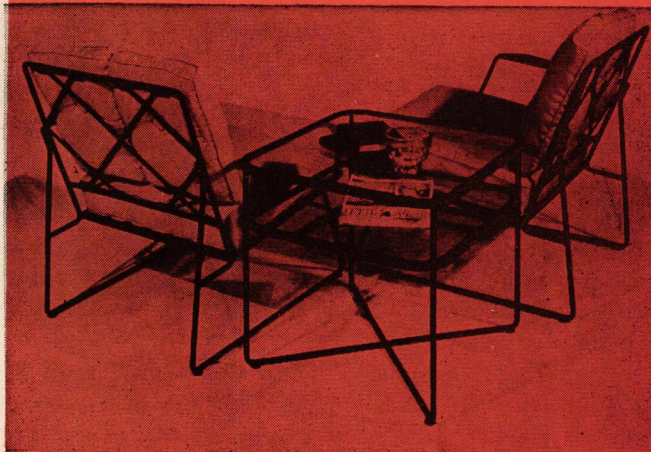
Wrought iron dining set with leaf decoration. Chairs are made with upholstered slip seats. Design by Tempestini.

portable, thus facilitating moving around.

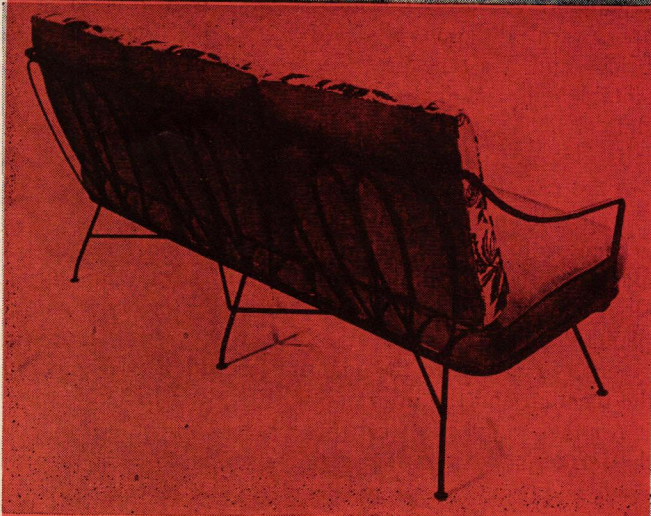
Wrought iron, too, continues in great popularity. And wood folding furniture is a new revival. The flexibility of wood, and the fact that it can be shaped so easily, make this a practical and inexpensive material.

"Name" designers continue to grow in number in the summer furniture field. The nation's top talent in the furniture designing field—Belle Kogan, John Wisner, Norman Cherner, Maurizio Tempestini, Greta M. Grossman, to mention a few, have brought their talents to this fast-developing segment of the furniture industry.

Shown on this page are several pieces by Maurizio Tempestini. The wrought iron setting at the top of the page makes a very interesting conversational group. Various combinations may be arranged with the armless chair and also the wedge table which comes with clear glass top. The dining set in the center is of traditional motif and has a charming leaf decoration. This pattern is made in two tables. One is 42 inches round and the other is rectangular shaped, 32 inches by 48 inches.



An interesting conversational group. Various combinations can be arranged with the armless chair and wedge table.



This sofa is simple and lovely. Three separate seat and back cushions are made for the sofa. It has spring filled cushions.

BRING YOUR LIVING ROOM

YOUR most pleasant form of relaxation this summer will come from lounging in a comfortable chair on your lawn, terrace, porch or patio. Any one of these places can be your outdoor living room, can add immeasurably to the joys of owning your own home.

In selecting your outdoor living room, it is important to keep in mind that your favorite loafing spot should be as close to the house as possible. If it is directly connected to one of the rooms, all the better. You will then have a real outdoor "living room."

Another point worth remembering is that most people like to sit where there is something substantial behind them such as a wall, a hedge, or heavy plantings. If your outdoor living room cannot be located near the house itself, and if you do not have any hedges or thick plantings, it might be best to choose a spot under the shade of some large trees.

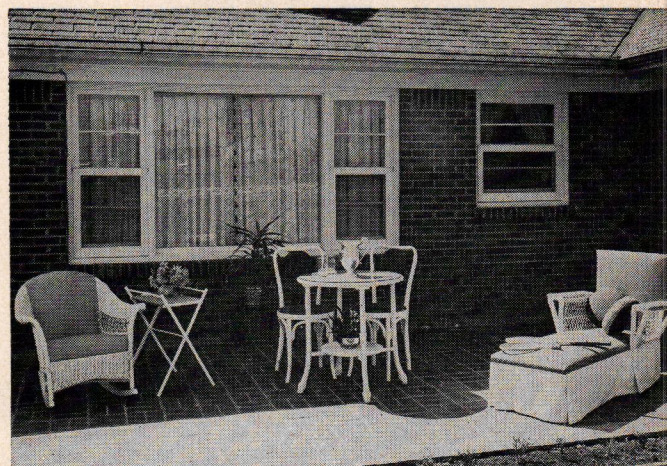
Space is important. Do not locate your outdoor living room in an area that is too small to accommodate less than five or six people. And remember, too, that most summer chairs are of the reclining sort, and occupy more room than the ordinary type of chairs. Too, be sure there is room for tables and lamps. Given a nice calm day, with little wind, there is nothing more enjoyable than a game of bridge outdoors.

Furnishing the outdoor living room is not very difficult these days with a wide variety being offered in aluminum, wrought iron, rattan, wood and steel. You might also be interested in the new selections of outdoor lamps, barbecues, terrace umbrellas and beach accessories. A more complete discussion of outdoor summer furniture is given on Page 5 of this issue.

Considerable thought should be given to the floor of your outdoor living room. If it is situated out on the lawn you might prefer the soft feel of the grass itself. However, you will find that the grass soon wears out from constant use, leaving unsightly spots of bare ground. If you are going to put down a floor of some kind, there are several different kinds of material you might choose from. Bricks and flagstone are good paving material. Plain concrete is suitable, also, though it is not as attractive as flagstone, brick, slate or fieldstone. Coloring, however, can be added to any concrete. It is also possible to use gravel or blue stone chips, though these two are not pleasant to walk on and make an unstable surface.

You will find, too, that you can make your terrace a part of the garden with plantings of annuals, flowering trees and shrubs. It may be a place for dining, set off with fragrant and culinary herbs. Or it may be a retreat—a quiet place to sit away from the house—planted along the sides and back with restful, dark green evergreens. In any case the planting should be designed to fit both the location and the informality of outdoor living.

Another good effect can be achieved by building a trellis over the terrace, and planting a vine such as wisteria to provide both shade and beauty. A grape vine might also be considered. The broad grape leaves afford ample shade, and in addition you will have delicious fruit hanging down in thick bunches from your "living room" ceiling.



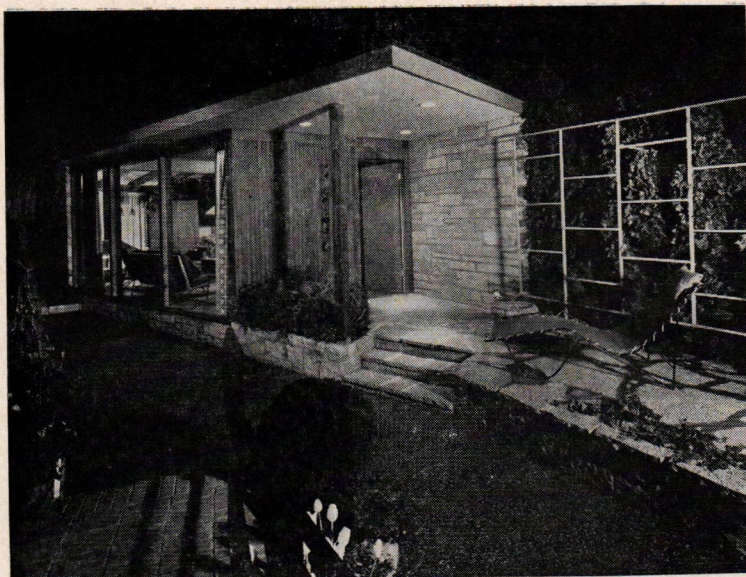
This terrace connects both house and lawn. The brick wall behind is desirable. There is ample lounging comfort in this outdoor living room.



OUTDOORS



Glenn Ford, famous movie star, and his lovely wife, dancing star, Eleanor Powell, relax on the outdoor living room of their California home.

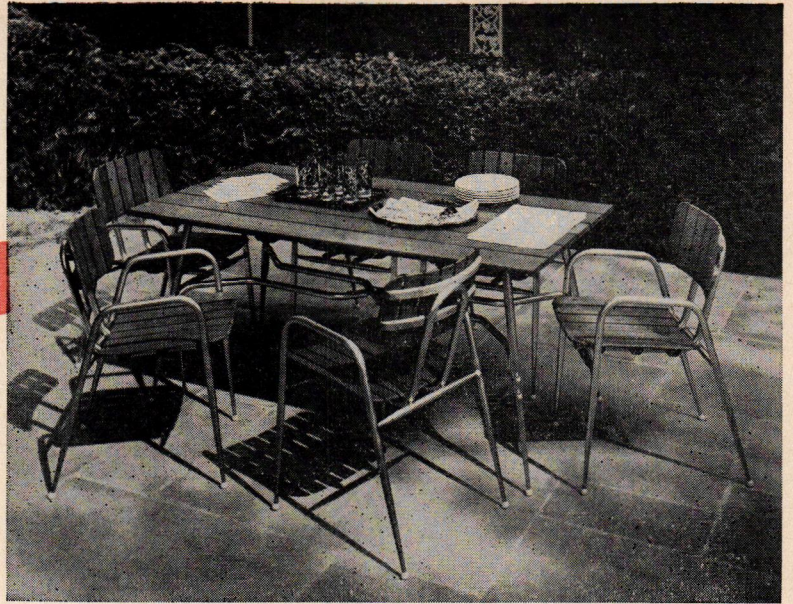


This type of outdoor living room is typical of many Midwest homes. Note the trellis at the back with evergreen plantings behind the trellis. A portion of the terrace is covered, and lighting is provided for evening relaxation. Plantings in foreground add color.



Ideal outdoor living is afforded by this L-shaped ranch house. The outdoor "living room" is sheltered from winds and at the same time permits a maximum of sunshine. Nestled snugly in between the two sides of the house, pleasantly furnished, with borders of flowers and plantings, it gives the family a place to play and relax. There is, of course, direct access to the house, with shade under the overhanging roof. Located at the rear of the house, it gives absolute privacy, too.

Colorful — yet completely “weather-proofed,” is this new table and chair grouping for outdoor dining. Constructed of thinner-than-usual redwood with gracefully-designed gold anodized aluminum frames, the arm chairs are stackable for easy storage. The matching table is constructed with a modified stretcher, and serves as an umbrella holder.

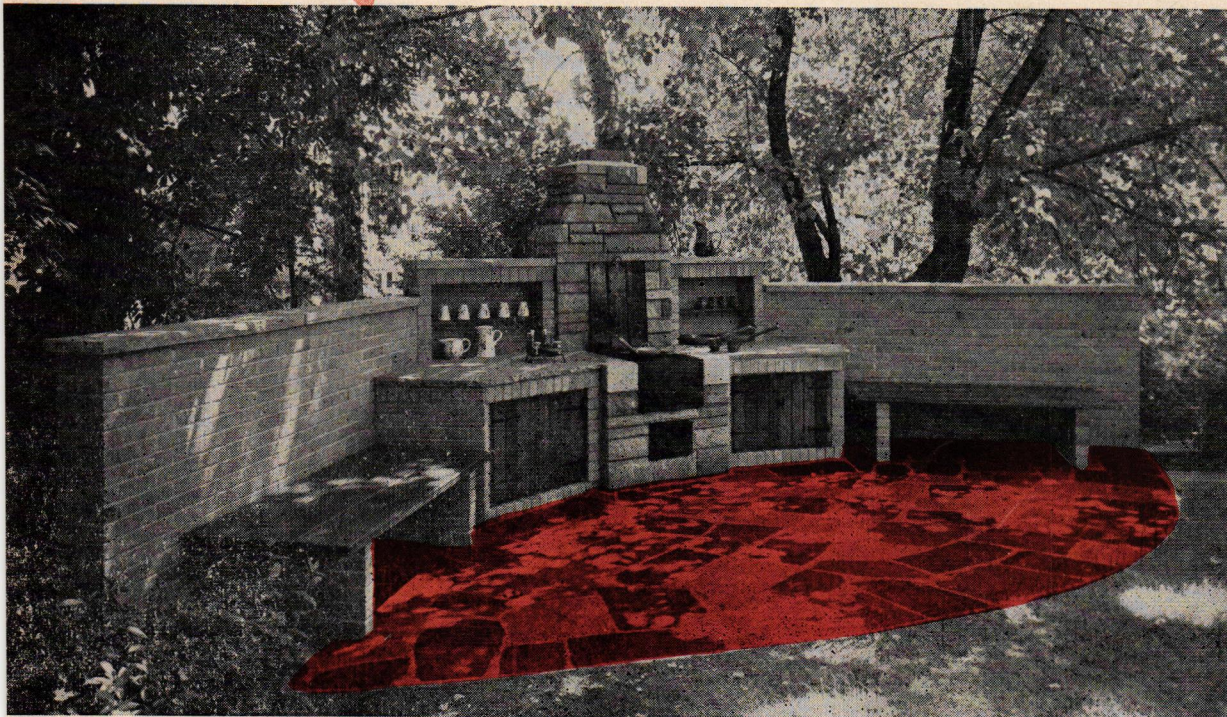


AND BRING THE KITCHEN OUTDOORS TOO

SINCE you are bringing the living room outdoors this summer, why not bring the kitchen outdoors, too? Food never tastes quite so good as when it is cooked over a charcoal fire on a grill and eaten in the pleasant surroundings of a garden. An outdoor fireplace is loads of fun for the whole family, and a boon to the housewife who wants to get away from the hot kitchen every so often.

The outdoor fireplace pictured below is just about as complete as you could want. Constructed of brick and stone, it offers ample cooking space, cupboards for storing utensils, shelves for dishes, counter space for preparing food and even seating space for dining. Furthermore, the brick wall behind it affords the greatest amount of privacy. You are as snug here as you would be in your kitchen indoors, and the large trees behind the wall provide deep shade.

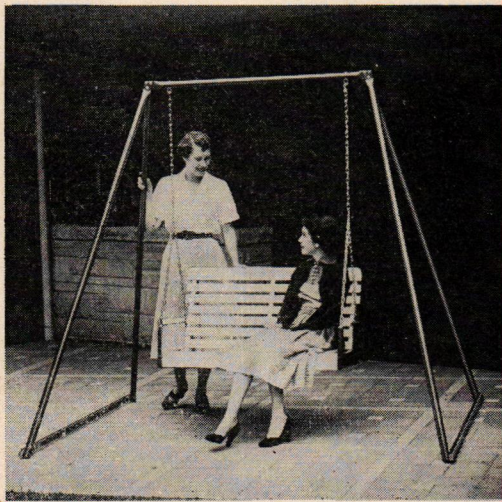
Your outdoor fireplace need not be so elaborate as the one shown here. You can build one of more modest dimensions and simpler design. You can also purchase portable barbecues that do the job nicely and can be folded and put away when not in use.



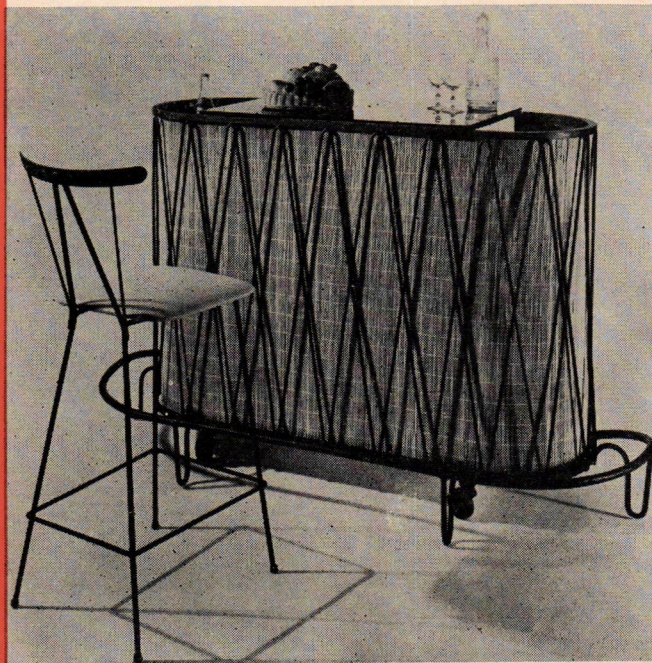
This type of outdoor fireplace is ideal for the family's outdoor dining. Constructed of brick and stone, it is complete in every detail. There is ample cooking space, storage for utensils in the cupboards, shelves for pottery, even seating space for the diners. The flagstone floor, built in a semi-circle, adds to the attractiveness of the whole scene.

Use this as a chaise lounge, cot or hammock! It's really an excellent idea for summer-time relaxing. The portable Hamoc-Lounge has 80" extra-heavy duck bed. It's easy to adjust for use as a chaise lounge, cot or hammock. Sun-fast, vat-dyed in scarlet or emerald green with fringe trim.

**ideas
for
OUTDOOR
RELAXING**

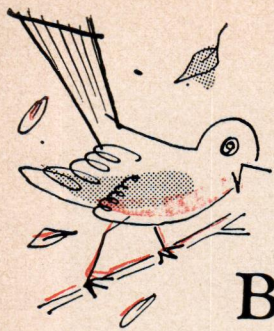


The ever-lasting popularity of the "old porch swing" is retained in this modern Patio Swing. It is available in the two-passenger model shown above, and a larger three-passenger model, comes in various colors, and is adaptable to terrace, open porch and yard. The substantial frame of heavy gauge tubing is easily assembled, and smoothly finished, and equipped with ground-leveling bracing.



Among the new collection of lovely pieces for summer use is this exquisite Roller Bar of wrought iron combined with match stick bamboo lining. The Bar is elliptically shaped, lined with match stick bamboo, and has a red plastic backing. The Bar top has a black glass with open ends for storage of bottles. There are two mesh shelves inside. There is also a footrail and 3" ball bearing casters which assures easy moving from place to place. A bar stool especially designed for the Roller Bar is made with upholstered slip seat. Front view of Bar is shown Above, back view at right.





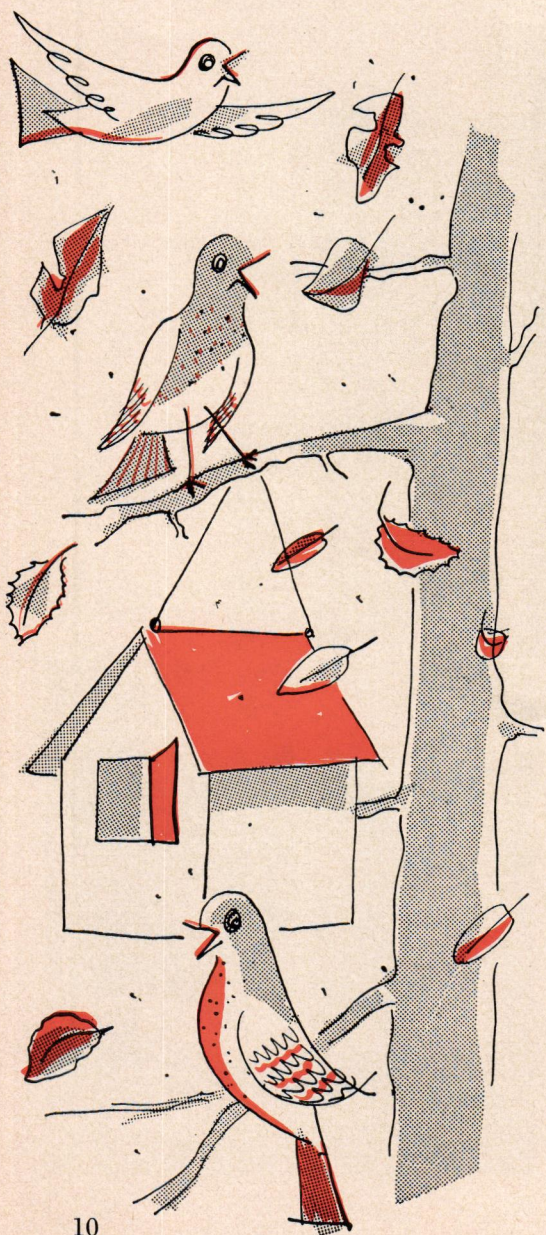
STRICTLY for the BIRDS

BIRDS appeal strongly to the interest and affections of mankind. Not only do they charm by their graceful forms, harmonious colors, sprightly actions, and usually pleasing notes, but they have an even more important claim upon our esteem because of their great economic value. Birds feed on practically all insect pests. They are voracious, able to move freely from place to place, and exert a steady influence in keeping down the swelling tide of insect life.

But for the ordinary homeowner, the appeal of birds as neighbors rests in their more obvious physical charm, as one of the pleasant manifestations of the beauty of Nature. And surrounding his home with houses for birds

can be an interesting hobby for the householder, as well as an addition to the beauty of his home.

For anyone wishing to construct his own bird houses, wood is by all means the best building material. Metal should be avoided, as it gets intensely hot when exposed to the rays of the sun. Pottery nest boxes have some points in their favor, but are not readily made in the average home workshop. Nest boxes constructed of tar paper or similar products have no particular advantage over wooden ones, and the use of these materials is impracticable for some of the larger houses. In the choice of wood, an easily workable kind, such as cypress, pine, or yellow poplar, is preferable.



build your home
**AROUND THE BEST
IN HEATING EQUIPMENT!**

Yes, when you build your home, you want the *best* in every way . . . and no single part of your home is more important to you than the heating system. So, when you consider a furnace, **BE SURE** to learn all about the

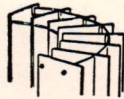


Manufactured by the Hall-Neal Furnace Company since 1890, the Victor Furnace offers many advantages which will spell complete satisfaction for you. Among these advantages are Victor's . . .

**EXCLUSIVE, PATENTED,
FUEL-SAVING FINS**

Steel fins have been specially-designed to increase the radiating surface of your furnace, so that you will get more heat out of less fuel.

These fins surround the combustion chamber of the Victor Furnace to allow for that greater heat transfer. In addition, the "Chimney" effect of every passage formed by the fins increases the rate of heat convection, giving you better heat circulation . . . and more comfort and greater economy.



Now is the time to plan the heating system for your new home. So call a Hall-Neal Sales Engineer **TODAY** . . . for *free* consultation. There is no obligation, of course.

HALL-NEAL Furnace Co.

1322-32 NORTH CAPITOL AVENUE • MELROSE 5-7441
Home-Heating Headquarters in Indianapolis

UNITED MORTGAGE CO., INC.

515 Lemcke Building
Indianapolis 4, Indiana

RESIDENTIAL LOANS

Conventional — V.A. — G.I.

EARL LAYNE, *President*
MA 9396

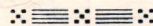
Your only real security is a home of your own. That is the American dream and ideal. The friendly firms on these covers are here to help you fulfill that dream. Bring your problems to them. They are anxious to serve you.

YOUR HOME OF TOMORROW

is sent to you each month
through the courtesy of
the friendly firms listed
on these back covers.

Hughey Construction Co., Inc.

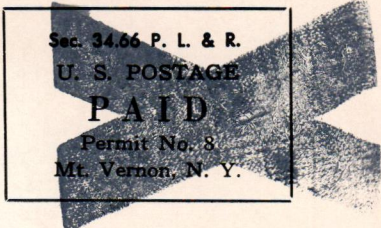
4305 MELBOURNE ROAD
INDIANAPOLIS 44, INDIANA
Phone HU 7181



BUILDERS OF QUALITY HOMES

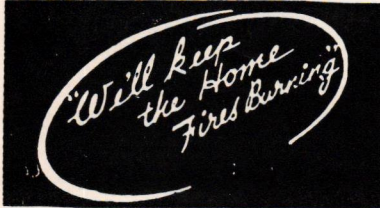
"Developers of Beautiful Knollton Heights"

Return Postage Guaranteed
BUILDERS PUBLISHING COMPANY
100 STEVENS AVENUE
MT. VERNON, N. Y.



A COMPLETE DEPENDABLE BUSINESS GROUP TO SERVE YOU

HOOSIER COAL & OIL CO.



WALNUT
3-3343
1300 EAST 30th ST.

RUSIE AND CHAILLE PLASTERING CONTRACTORS

"For Better Plastering"

Herscher Rusie
264 E. High St.
Mooreville 1103

Herbert Chaille
245 N. Smart St.
Greenwood 624-J

BEA AND BEA GENERAL REPAIRING

GUTTERING — ROOFING — HEATING

"We Carry Compensation Insurance on Our Men"

1606 NO. RURAL ST. — PHONE AT. 0071



3468 CONGRESS WA 4-0566
INDIANAPOLIS 22, INDIANA
ELECTRICAL CONTRACTING & ENGINEERING
GENERAL ELECTRIC WIRE HEAT
SALES AND SERVICE

Broad Ripple Lumber & Supply Corporation

"Your house deserves the best"

1001 BROAD RIPPLE AVE.
INDIANAPOLIS, INDIANA
PHONE BRoadway 5456

HILL BROTHERS PAINTING AND DECORATING

WE USE O'BRIEN PAINTS EXCLUSIVELY

8517 Westfield Blvd. Indianapolis, Indiana

PHONE GL. 1231 or IM. 2927

"Painting At Its Best"

ALBERT GRIFFITH

Hardwood Floor Refinisher
Floors Laid - Quality Work

5115 Rosslyn Avenue Indianapolis, Indiana

Phone BR. 9665

NATIONAL PLUMBING & HEATING SUPPLY CO.

DISTRIBUTORS OF
RICHMOND PLUMBING FIXTURES
F. AND W. WELL SYSTEMS

U.S. Radiator Co. - Boilers & Baseboard Radiation
320-26 N. Capitol Ave. MELrose 4-2543

FACE BRICK AND PLASTERING MATERIALS

Furnished by

HARRY C. ENT MATERIALS, INC.

1415 Commerce Avenue Phone MELrose 8-6543
Indianapolis, Indiana

CARMEL CONCRETE PRODUCTS ALL-NEW SEPTIC TANKS



Featured in All

HUGHEY CONSTRUCTION CO.
HOMES

Meets All F.H.A. State and County
Health Code Requirements

FOR ADDITIONAL INFORMATION—CALL CARMEL—40