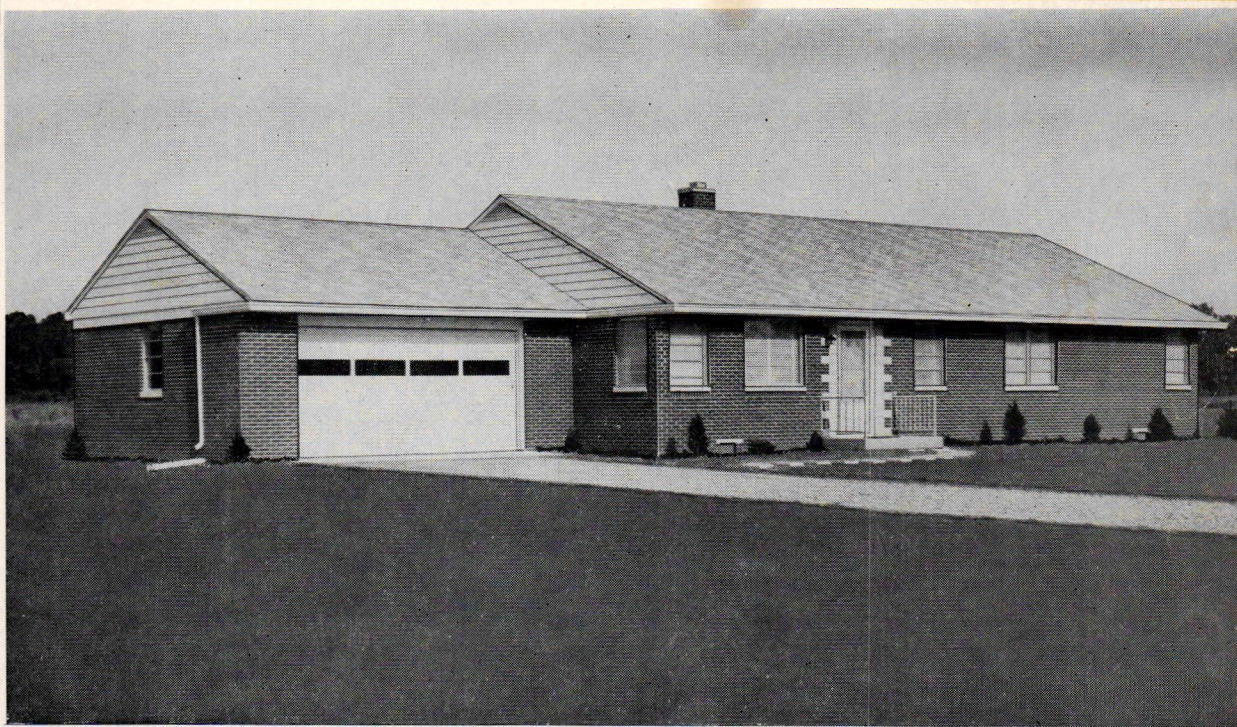


*Your Home*  
OF TOMORROW

OCTOBER, 1954



Presented by

*Hughey*  
CONSTRUCTION CO. Inc.

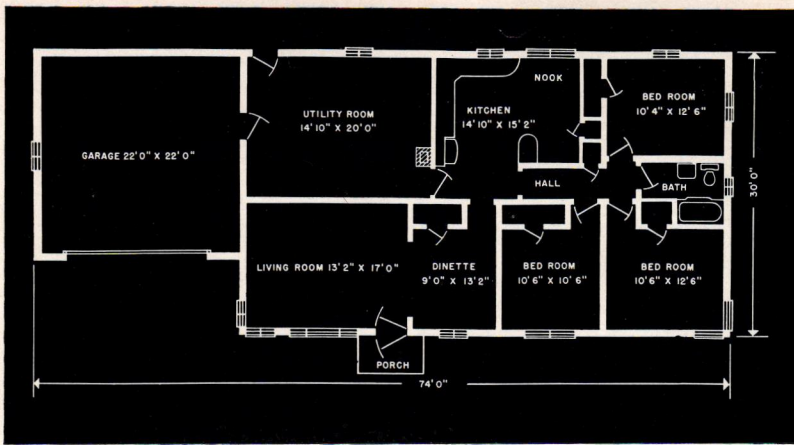
4305 MELBOURNE ROAD

PHONE HU 7181

INDIANAPOLIS 44, INDIANA

BUILDERS OF QUALITY HOMES

*"Developers of Beautiful Knollton Heights"*



- 3 Bedrooms
- All Brick and Stone Construction
- Youngstown Kitchen
- Extra Large Utility Room
- Oil or Gas Heat
- Aluminum Windows, Marble Sills
- Hardwood Floors
- Plastered Walls—Tile Bath
- Finest Conventional Construction Throughout

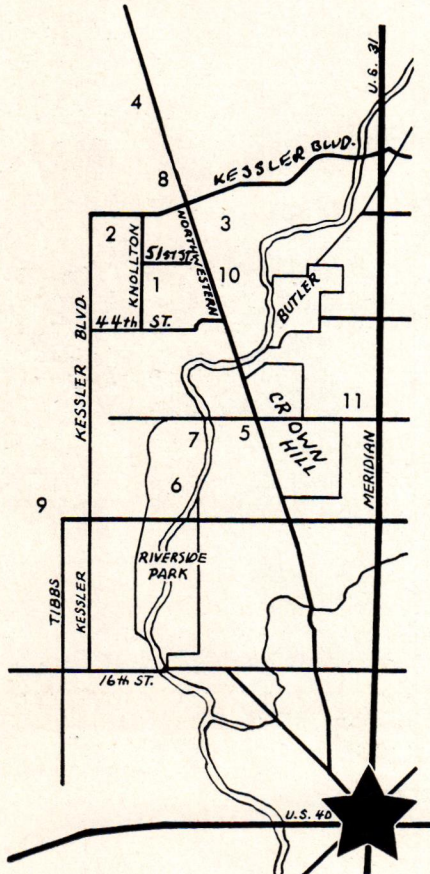
## Why So Many New Homes Are Being Sold in Knollton Heights

- PROTECTIVE BUILDING CODE
- MINIMUM LOT SIZE OVER ½ ACRE
- ALL BRICK AND STONE CONSTRUCTION
- WIDE CIRCULAR STREET
- EXCELLENT DRAINAGE
- MANY 3 & 4 BEDROOM MODELS

### SELECT YOUR OWN HOME NOW

Our Service Includes Everything From Lot to Financing – Ready to Move In

#### Directions to Knollton Heights



1. Knollton Heights
2. Broadmoor Country Club
3. Highland Country Club
4. Deluxe Shopping Center
5. Woodstock Golf Course
6. Riverside Park
7. Lake Sullivan
8. Crooked Creek School
9. St. Michaels Church and School
10. Excellent Bus Service Direct to Downtown
11. 38th and Illinois Shopping Center

HUGHEY CONSTRUCTION CO., INC.

4305 Melbourne Rd.

Phone HU 7181

Indianapolis, Indiana

"BUILDERS OF QUALITY HOMES"

# STONE and MARBLE come into the HOME

**H**ERE'S the inside story—how you can get in on the newest trend in interiors. It's a simple story, straight from nature. In fact, the whole trick is to use and decorate with nature's prime materials—stone and marble.

Walls, fireplaces and floors have been built of stone or marble for centuries. There's nothing new in that. But there is plenty new in the ways that architects and decorators are utilizing stone these days.

For one thing, they are not building stone walls ten or twelve inches thick anymore. It isn't necessary. Now, with stone available in three and a half inch thicknesses, it can be laid up on a wall anywhere, inside or out. This means you can have a very beautiful stone wall in the living room, hallway, playroom or even bedrooms. And you can set off the natural beauty of stone with another wall of redwood or of glass, if you wish.

Then, when you plan the rest of the room, you can duplicate the colors of the stone in your drapes, rugs, furniture covering or other appointments. You can use nature's colors for your own color scheme.

Stone or marble floors are also becoming increasingly popular indoors. A floor which begins as a patio and continues into the home, one which is allowed to flow in and out without a break, becomes a link between indoor and outdoor living.

A touch of stone flooring in the entranceway or in any area which is traveled much will prove economical as well

as beautiful. In many homes today the hearth is raised and projected into the room, sometimes as much as one third of the living room length, giving the effect of a two level living room.

And, speaking of separating different parts of your house, a very interesting room divider can be built out of stone as well. By building a stone planter box between two rooms you can have a marvelous room divider to keep the rooms apart yet permit a flow of space between them. A planter box room divider such as this can be balanced by another stone planter box beneath a picture window or even in one corner next to a window.

*continued on page 4*

Photo courtesy Marble Institute of America

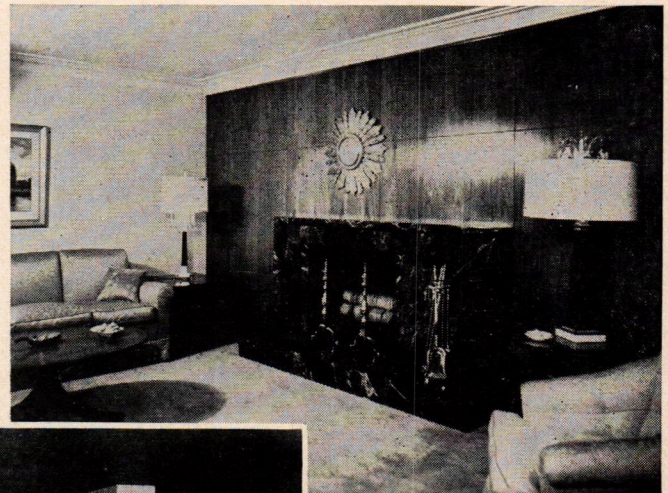
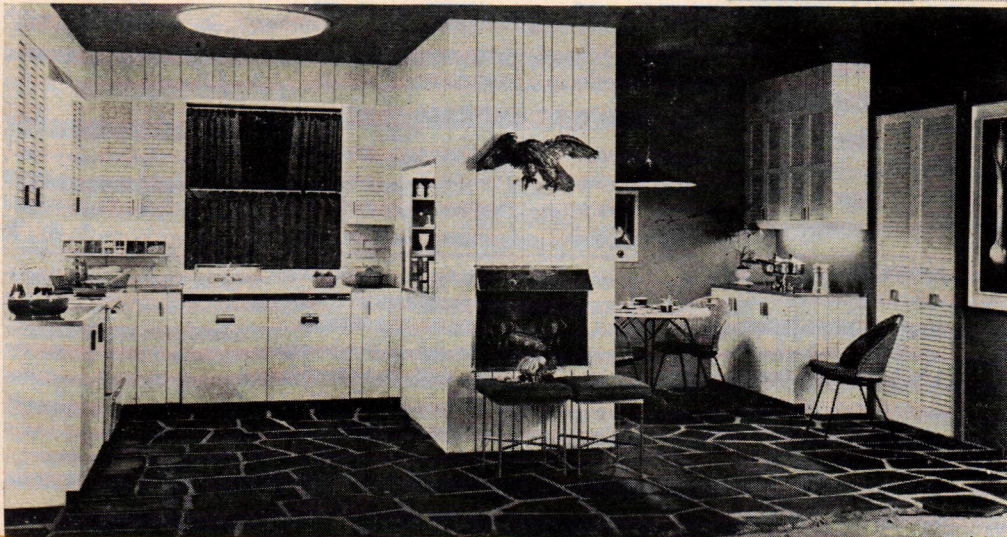
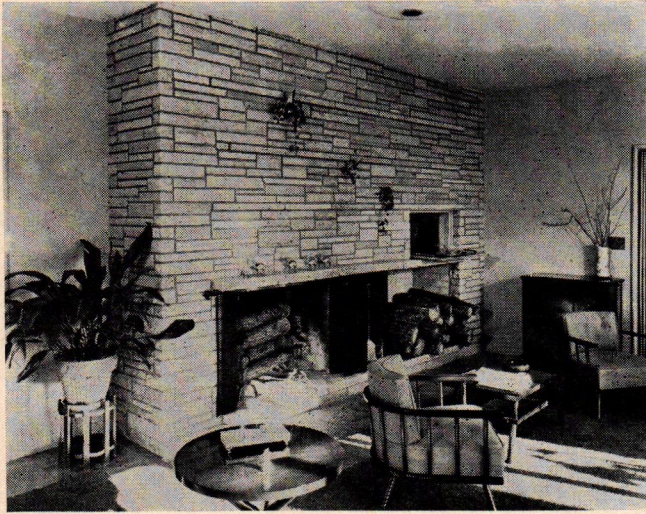


Photo courtesy Stone Council



Marble fireplace and raised hearth fit neatly into the decorative scheme of this modern room, shown above. And at the left, a kitchen with random flagstone flooring. Walls are combination wood, brick, plaster. Metal cabinets are featured.

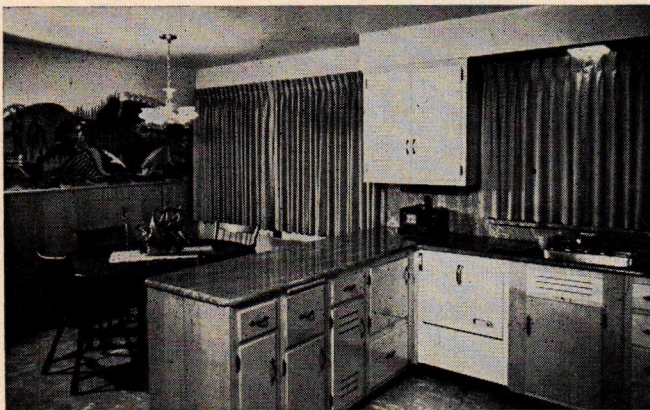
**STONE and MARBLE**  
come into the HOME *continued from page 3*



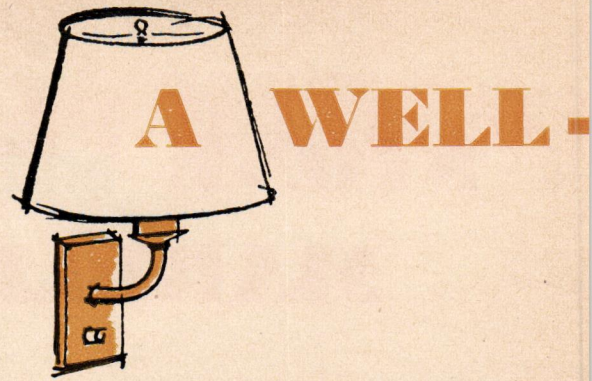
Fireplaces today can be distinctive and striking in modern cut stone. Note touch of vine plantings.

The uses of marble, too, are never-ending. Window stools and radiator covers, which are frequent problems in decorating, can become handsomely functional when enhanced with marble. Consoles, radio and TV sets, and even dressing tables are now being covered with marble which can be shaped in unusually graceful forms.

And think of the color range! You can have purest white or severest black, or choose from a rainbow of brilliant or delicate colors which appear alone or in combination. Black and gold; black and white; blue-gray and gold; buff, brown and yellow; grayish brown, grayish pink, light and dark greens, and exquisite range of pinks and rose shades; reds, reds with brown, white with bluish markings, creamy whites, white with greenish markings.



The uses of marble are never-ending. Here it is attractive and functional over cabinets.



**A** COMFORTABLE, well-lighted place to study—at home or college—may not make homework any easier for the off-spring to take—but, perhaps, don't let that discourage you from making homework easy on their eyes.

The right desk lamp in the right place protects young eyes from the discomfort of glare and from the annoyance of contrasts and shadows. The proper location of desk, and even a blotter on a highly-polished desk top, are further aids to eyesight comfort.

According to Miss Myrtle Fahsbender, director of home lighting for Westinghouse, the "right desk lamp" may be a table or wall model—or even a pair of wall lamps—provided there is a glass or plastic reflector bowl under the shade. This type of under-shade construction is described as particularly "easy on the eyes" because it produces a combination of upward and downward light that reduces the eye-irritating difference in brightness between the desk top and the rest of the room. Downward illumination is "sifted" through the reflector bowl and becomes pleasant and glare-free.

Height of the lamp is equally important. Too short a lamp gives such a meager spread of light that part of the desk is virtually "in the dark". With too-tall a lamp, the bottom of the shade is likely to be far above eye level, and the under-shade brightness will be uncomfortable. For a happy medium in height—and this goes for either table or wall lamp—the distance from the top of the desk to the bottom of the shade should be about 15 inches.

An open-top, light-lined shade is recommended. The open-top permits upward illumination into the room. A light lining increases the amount of reflected downward light by as much as 50 per cent.

To get the full money's worth of light from a well-chosen lamp, it should be placed on the side of the desk opposite the writing hand. Otherwise, shadows from the pencil and writing hand rob the eyes of some of the light they need to see by, and dark, moving shadows on the writing page are distracting. A 150-watt bulb provides the right amount of light.

A light-colored desk—or a table—with a dull finish is "tops" for comfortable seeing. When that isn't available, a white or light-colored desk blotter serves to eliminate reflections from a highly-polished surface and to minimize the contrast between darkness of desk top and whiteness of reading and writing page.

# LIGHTED PLACE TO STUDY



1.

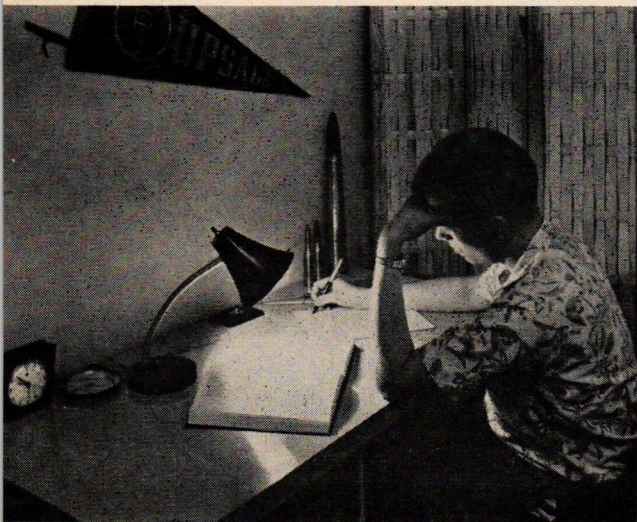
1. Young eyes struggle to see with desk lighting like this. The too-short decorative lamp gives a skimpy spread of light, so skimpy that the book is virtually in the dark. "Busy" pattern of wallpaper is distracting at close range.

2. Several changes for the better shown here. Height of lamp, with bottom of shade about 15 inches above the desk top, produces generous circle of light. Desk at right angles to wall eliminates annoyance from wallpaper.

3. Thumbs down on the direct-type of study lamp, like this gooseneck because it causes discomfort on several counts. In an attempt to get light where needed, direct glare from open end of lamp hits the eyes head on.

4. A glareless quality of light is distributed over the entire desk top thanks to wall lamp at side of desk opposite the writing hand, equipped with diffusing bowl under shade, and mounted about 15 inches above desk top.

3.



2.

4.



# WHAT'S NEW IN HOME FURNISHINGS?



"Uplifted" from the floor is the upholstery fabric used for a new series of lounge pieces by Selig of Leominster. The fabric—tufted loop-twist in white—is used to cover this contour chair and ottoman.

Here is a fireplace grouping that combines the old and the new. Furniture is constructed of knotty pine with a contemporary fabric used for the upholstering. Lamp table features shelves with wrought iron grill work on the sides.



**T**HE GREATEST array of furniture and home furnishings ever produced by the industry is on display now at your local stores. And the trend is to the elegant line, the elegant fabric, the elegant colors.

Color is the focal point in all the new furniture fashions. Pink is the big news on furniture. You will see pink bedroom suites, pink upholstered pieces and pink leather. It's a fashion-right color, and one that will wear well. Blue, too, is becoming more popular, and will be seen more often in shades ranging from delph blue to pastel blue.

The trend is to the compatibility of styles. You can mix the various styles of furniture without fear of disrupting the harmonious decoration of a room. Traditional furniture is cleaned up, more Modern looking. Modern has softer lines and takes on new shapes with gently curving legs. You will see, too, inlays used on modern furniture.

You are sure to appreciate the hard-wearing woods of knotty pine, ash, maple and oak, which are all used in producing the casual furniture groupings that are so ideal for fireplace settings. These are usually designed with simple line, and an absence of dust absorbing carvings. Their surfaces are high waxed and dust-proofed.

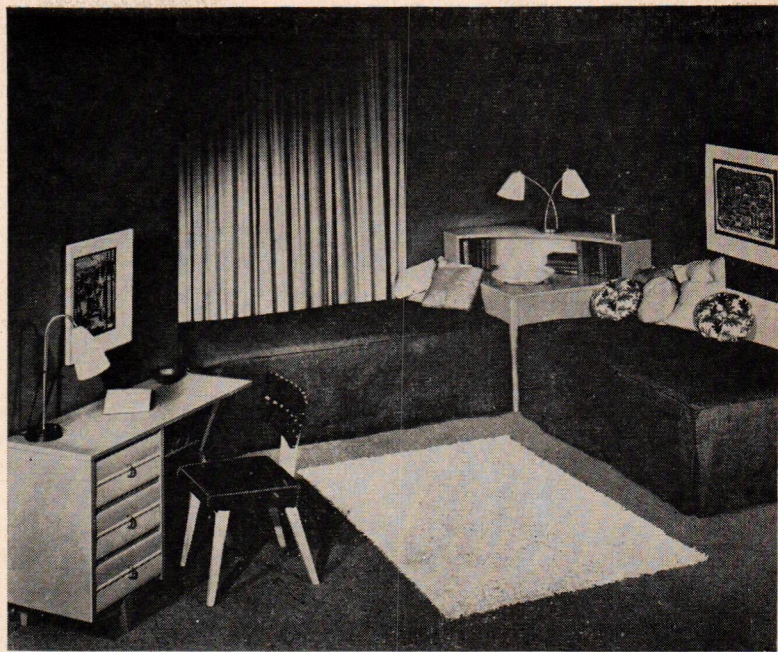
For snacks and corn-popping, small tables that can be pulled into quick service are an absolute "must."

Don't forget end tables when you plan your fireplace setting. But select ones that will give you storage space.

Look for the utility features in all the furniture you buy. Manufacturers are paying greater attention to this than ever before.

If yours is a room with a fireplace and television by all means add revolving chairs to your room plan. Don't neglect your fireplace arrangement. It's an American tradition.

In the versatile type of furniture you will find chairs, couches, sofas, chests, tables and ottomans that either double as, or open into, comfortable beds. Other dual-purpose pieces double as studio couches and storage chests for blankets, pillows, and extra linen.

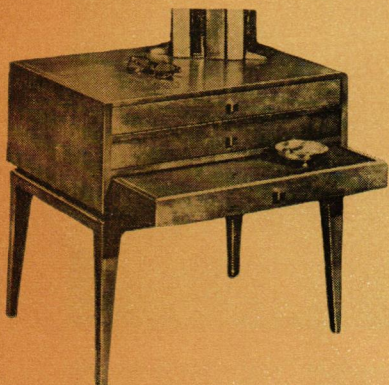


Here is a room designed for maximum use. The two double beds are arranged to double as seating units during the day. Three drawer desk with open book shelf makes this an ideal room for the den.

A chair that combines the comfort qualities of a traditional wing chair with the indestructible attributes of one of today's new materials—fiberglas—is introduced by Selig, shown below.



The small poudre table is just right where space is a consideration. It measures 28 inches by 17 inches. The height is 28 inches.



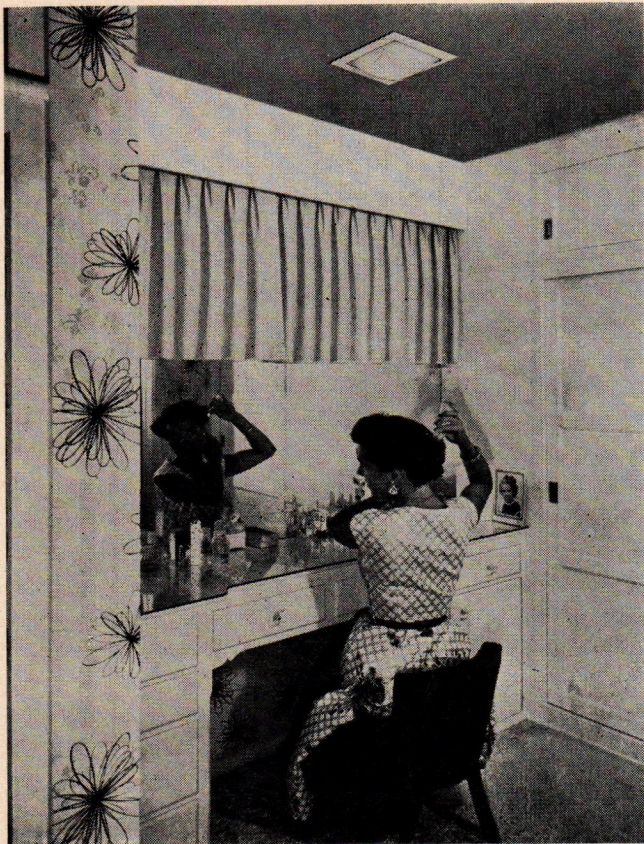
Here is a lamp table that is loaded for double duty. Top drawer is for storage. Two lower drawers are small folding snack tables. Can be used in pairs at either end of sofa.

## THERE'S A MIRROR FOR EVERY ROOM

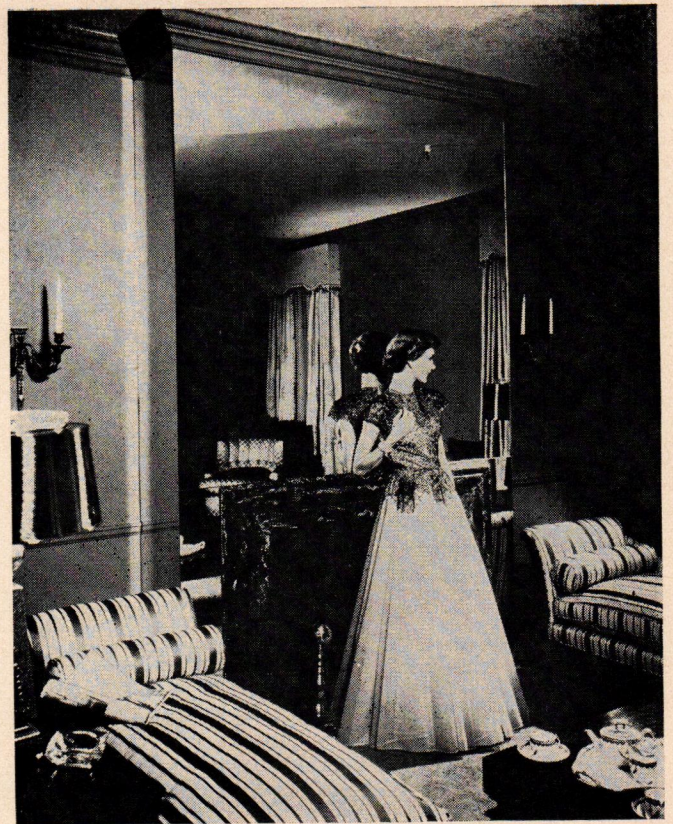
**T**HE foyer—the dining room—the living room—the bedroom—the dressing room—the bathroom—there's a mirror for every one of these rooms. Remember, a mirror is no longer just a looking glass. A carefully chosen decorative mirror can transform every room in the home by contributing the two vital decorating attributes of light and space.

For instance, a large horizontal mirror hung on the long wall of a long and narrow room will tend to widen the room. In a low-ceilinged room, a mirror hung vertically will heighten the room. The room's dimensions can be completely altered by the illusion that mirrors create. The walls can be made seemingly non-existent, their limitations removed.

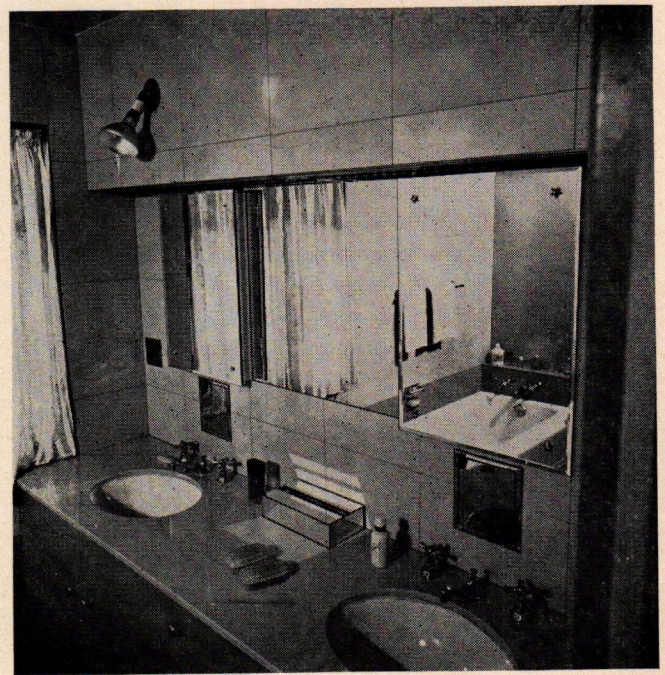
Since a mirror's primary function is to reflect, advantage should be taken of its light-reflecting qualities as well as the attractiveness of the room picture it repeats. The dispersion of light, in addition to lending sparkle to a room, increases a room's spaciousness. Dark corners can be made bright by the mirror's reflection of daylight or lamplight.



The value of a mirror as an accessory to a bedroom can be compared to the dash and zip a new hat can contribute to last year's grey flannel suit.



A mirror is always attractive hung over the mantel and effectively fills that important space which is the center of attention in a room with a fireplace.



A mirror in the bathroom is an absolute "must." But it can also contribute to the attractiveness of the room. It is important to hang the mirror at eye level.



# WARM UP FOR THE WINTER SEASON

**T**AKE a tip from the experts—get your house ready for winter now. If you haven't done the things checked in the column at the right do them now. Later on, your carpenters, plumbers and other craftsmen will be up to their ears in work, and you will be put on a waiting list. Insulation is an important item to consider. A tremendous fuel saver, insulation is the kind of investment that begins to pay off immediately and saves money year by year. Not only does it keep the house warmer in the winter, but also cooler in the summer.

Along with that, of course, should go weatherstripping, storm doors and windows as a means of keeping the cold out. They reduce drafts, help increase temperature near floors, reduce condensation on windows, cut down infiltration of dust and soot, save fuel.

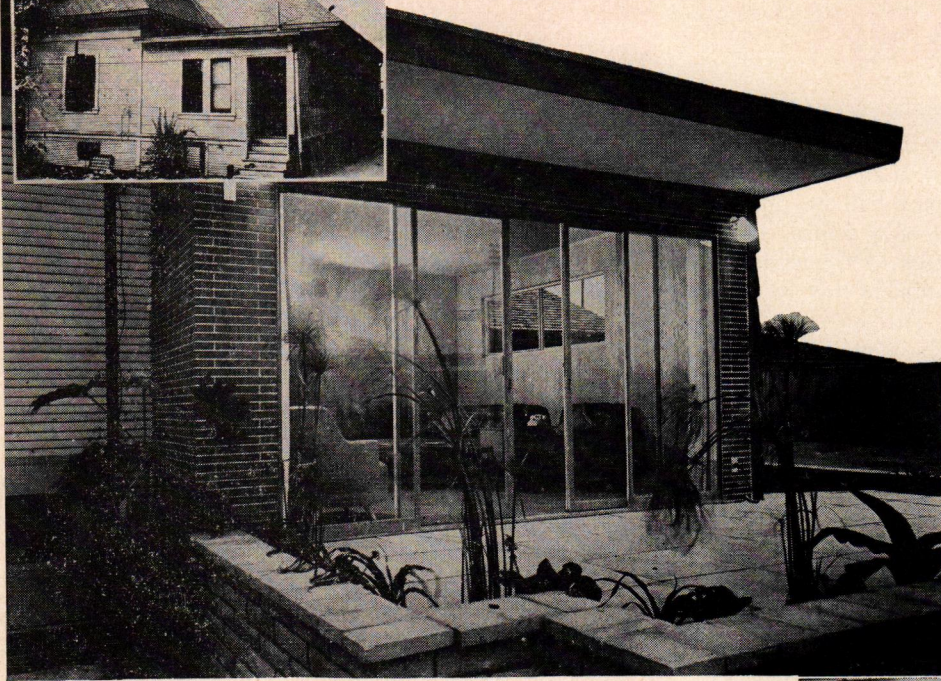
Caulking adds greatly to the stopping of air leaking into the house around window and door frames. Caulk also around chimneys, porches, foundations, or any place where there is a crack between materials. Remember, too, your roof must be in perfect shape to keep out rain and snow. And the furnace should be well oiled and cleaned, ready to perform the important task of creating heat for the house. The picture below shows a cozy living room on a winter day. Yours, too, can be warm and cozy if you follow the rules.

## HERE ARE THE THINGS YOU SHOULD CHECK—NOW

<i>INSULATION</i>	✓
<i>WEATHER STRIPPING</i>	✓
<i>STORM DOORS</i>	✓
<i>STORM WINDOWS</i>	✓
<i>CAULKING</i>	✓
<i>ROOFING &amp; SIDING</i>	✓
<i>POINTING</i>	✓
<i>CLEAN &amp; OIL FURNACE</i>	✓
<i>RADIATORS</i>	✓
<i>CHIMNEY</i>	✓
<i>PLUMBING</i>	✓

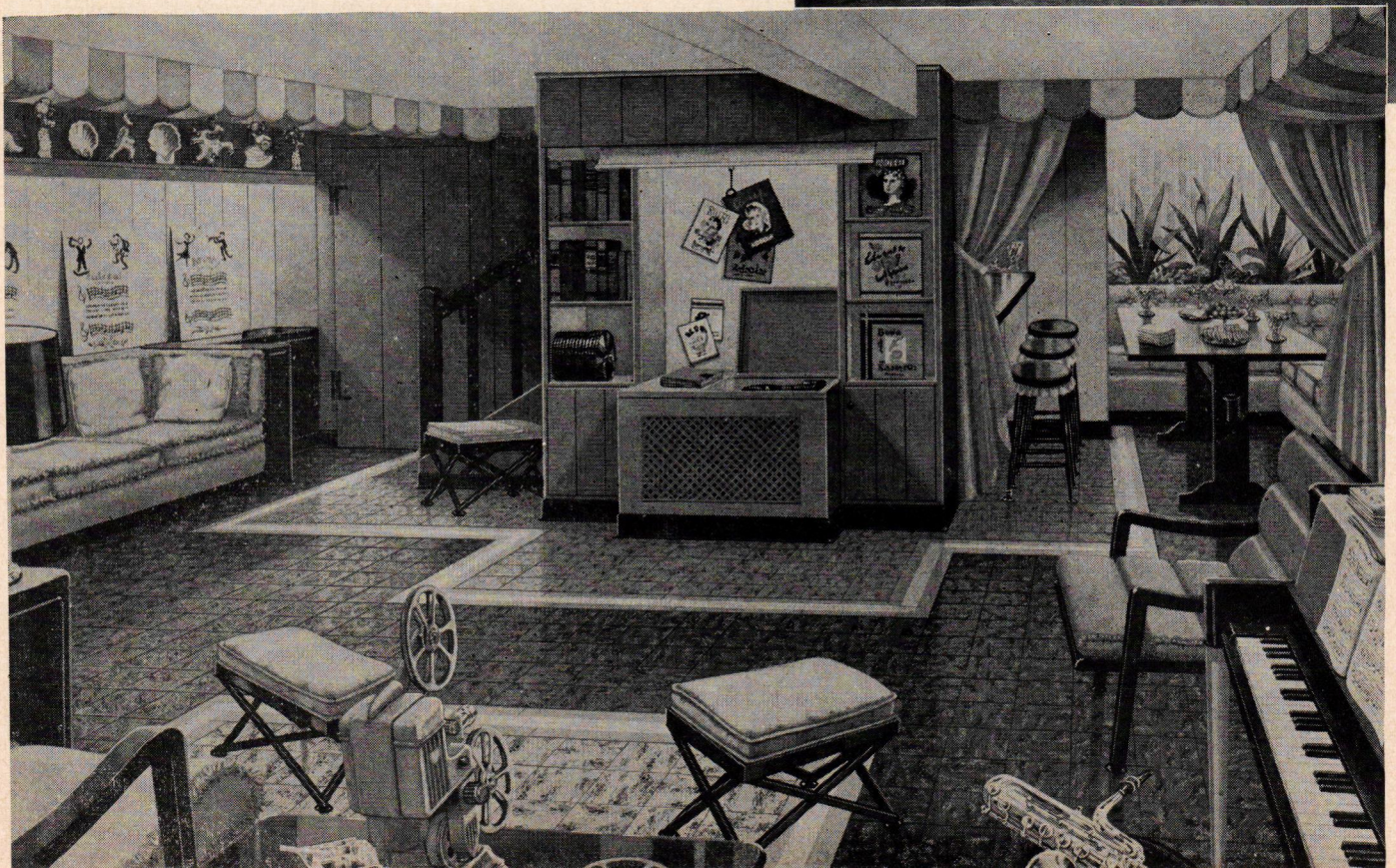
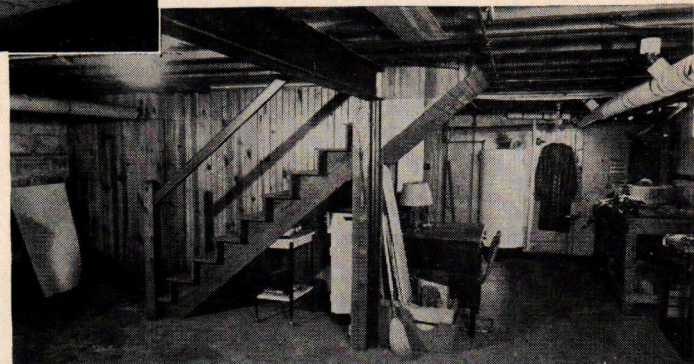


# REMODELING MIRACLES

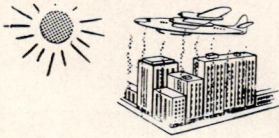


**Y**OU are probably asking the same question that so many other people have asked. Can it be the same house? Yes, the sixty-year-old relic shown in the inset was remodeled in such a clever fashion that all signs of age vanished. The most important part of the job was the addition of another room to serve as a den. A twelve-foot glass doorwall and matching windows were deftly designed into the added-on den to make the old house unmistakably contemporary. The glass doorwall, by Steelbilt, slides open or shut.

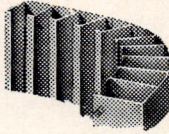
**A** TYPICAL example of what can be done with an old, cluttered basement is shown in these two pictures. At the right you see the basement before it was remodeled, below the basement after. A wall built in front of the stairway contains built-in shelves for records and books. A screen can be pulled down for movies. Note projector in foreground. Also note clever little dinette at right.



## WHAT! A Furnace with FINS?



Sure! Here's why. On a hot day at street level, you'd freeze at 30,000 ft., because air is heated only by contact with hot surfaces, such as buildings, which intercept the sun's heat rays.



So, the greater the heating surface, the more heat you get from the same heat source. That's the principle responsible for the exclusive, patented fin construction in VICTOR Furnaces.



Heat Exchanger & VICTOR FINS

An ordinary furnace simply has a "heat exchanger" (metal drum containing the fire). VICTOR Furnaces, however, surround the heat exchanger with a belt of metal heat interceptors, or "fins!"

Ordinary Furnace



VICTOR Furnace with Heat-Radiating Fins



Compare the Heating Surface!

These fins almost double the heating surface. That means more heat from the same amount of fuel. That's why VICTOR Furnaces save up to 30% of fuel costs!



The VICTOR Fin Demonstrator, at left, shows how you get more heat for less. It will pay you to see it before you buy any furnace. Ask us today ... no obligation!



OIL • GAS • COAL • CONVERSION UNITS

Quality Furnaces Since 1890

### HALL-NEAL FURNACE CO.

1324 N. CAPITOL AVE.

MEIrose 5-7441

## UNITED MORTGAGE CO., INC.

515 Lemcke Building

Indianapolis 4, Indiana

### RESIDENTIAL LOANS

Conventional — V.A. — G.I.

EARL LAYNE, *President*

MA 9396

Your only real security is a home of your own. That is the American dream and ideal. The friendly firms on this cover are here to help you fulfill that dream. Bring your problems to them. They are anxious to serve you.

GRADING - DITCH DIGGING

TRACTOR WORK

SEEDING - SODDING - TOPSOIL



### LIONEL GWIN

5324 Massachusetts Ave.

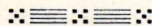
Cherry 6913

## Hughey Construction Co., Inc.

4305 MELBOURNE ROAD

INDIANAPOLIS 44, INDIANA

Phone HU 7181



BUILDERS OF QUALITY HOMES

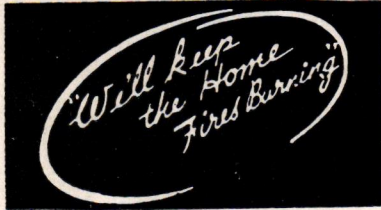
"Developers of Beautiful Knollton Heights"

Return Postage Guaranteed  
BUILDERS PUBLISHING COMPANY  
100 STEVENS AVENUE  
MT. VERNON, N. Y.

Sec. 34.66 P. L. & R.  
U. S. POSTAGE  
**PAID**  
Permit No. 8  
Mt. Vernon, N. Y.

A COMPLETE DEPENDABLE BUSINESS GROUP TO SERVE YOU

## HOOSIER COAL & OIL CO.



WALNUT  
3-3343

1300 EAST 30th ST.

## RUSIE AND CHAILLE PLASTERING CONTRACTORS

*"For Better Plastering"*

Herscher Rusie  
264 E. High St.  
Mooresville 1103

Herbert Chaille  
245 N. Smart St.  
Greenwood 624-J

## BEA AND BEA GENERAL REPAIRING

GUTTERING — ROOFING — HEATING

*"We Carry Compensation Insurance on Our Men"*

1606 NO. RURAL ST. — PHONE AT. 0071



3468 CONGRESS WA 4-0566

INDIANAPOLIS 22, INDIANA  
ELECTRICAL CONTRACTING & ENGINEERING  
GENERAL ELECTRIC WIRE HEAT  
SALES AND SERVICE

## Broad Ripple Lumber & Supply Corporation

*"Your house deserves the best"*

1001 BROAD RIPPLE AVE.  
INDIANAPOLIS, INDIANA  
PHONE BRoadway 5456

## HILL BROTHERS PAINTING AND DECORATING

WE USE O'BRIEN PAINTS EXCLUSIVELY

8517 Westfield Blvd. Indianapolis, Indiana

PHONE GL. 1231 or IM. 2927

*"Painting At Its Best"*

## ALBERT GRIFFITH

Hardwood Floor Refinisher  
Floors Laid - Quality Work

5115 Rosslyn Avenue Indianapolis, Indiana

Phone BR. 9665

## NATIONAL PLUMBING & HEATING SUPPLY CO.

DISTRIBUTORS OF  
RICHMOND PLUMBING FIXTURES  
F. AND W. WELL SYSTEMS

U.S. Radiator Co. - Boilers & Baseboard Radiation  
320-26 N. Capitol Ave. MELrose 4-2543

## FACE BRICK AND PLASTERING MATERIALS

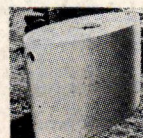
*Furnished by*

## HARRY C. ENT MATERIALS, INC.

1415 Commerce Avenue Phone MELrose 8-6543

Indianapolis, Indiana

## CARMEL CONCRETE PRODUCTS ALL-NEW SEPTIC TANKS



*Featured in All*

HUGHEY CONSTRUCTION CO.  
HOMES

Meets All F.H.A. State and County  
Health Code Requirements

FOR ADDITIONAL INFORMATION—CALL CARMEL—40