

# TEXAS ARCHITECT

OFFICIAL PUBLICATION OF THE TEXAS SOCIETY OF ARCHITECTS

14th TSA CONVENTION OPENS NOVEMBER 4

"TEXAS ARCHITECTURE — 1953" AWARDS MADE

ROLE OF THE ARCHITECT IN HIS COMMUNITY

FIFTEEN YEARS OF PROGRESS FOR THE TSA

OCTOBER  
1953

# WRIGHT

**3 DIVISIONS TO SERVE YOU!**

**1**

## RUBBER AND VINYL TILE DIVISION

The oldest, most-respected name in rubber tile flooring, now brings you another quality flooring . . .

**WRIGHT VINYL TILE . . .**

a thermo-set plastic with a smooth, non-porous, non-slip surface . . . keeps its shape and color in spite of temperature changes.

**2**

## REINFORCED PLASTICS DIVISION

New, lightweight building materials:

**STURDALITE**—shatterproof, translucent, multipurpose structural panels permit unlimited daylighting, dynamic decoration, at low cost.

**VERSATEX**—roofing and siding material that never needs painting!

**VERSARITE**—superior chalkboard material for school-room or nursery; won't become mottled and never needs costly refinishing.

**3**

## CUSTOM MOLDING DIVISION

Plastic and rubber parts and finished items for commerce and industry.



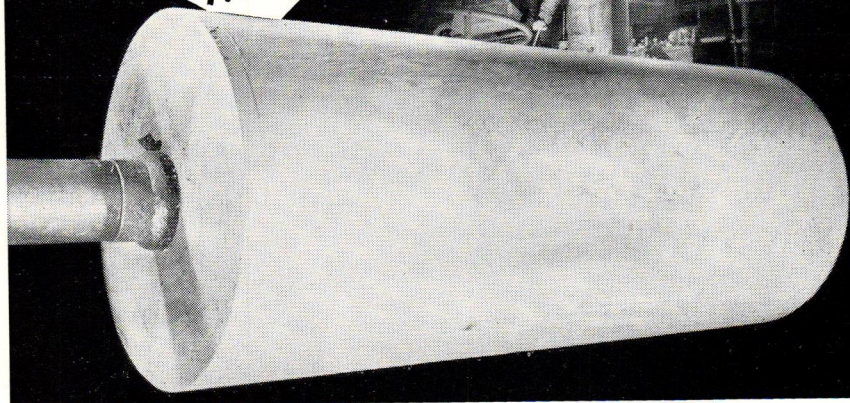
**WRIGHT MANUFACTURING CO.**

5608 Post Oak Road • Houston 5, Texas

Wright Rubber Tile — Wright Vinyl Tile  
Sturdalite — Versatex — Versarite



**APMI**  
**QUALITY PLYWOOD**  
*Begins*  
*Here*



*and it's*  
*sold here*

This "peeler" log was once part of a giant Douglas fir that grew in Oregon's rich rain forests.

It is shown here in an Associated mill at the beginning of its transition from raw log to finished product. At the end of the manufacturing line it is excellent plywood, grademarked and trademarked in a double guarantee of quality.

For more than 30 years APMI has been making plywood from fine timber, in modern mills equipped with the best of machinery and with hundreds of skilled workmen.

This plywood is shipped to major building and distribution areas and is sold by veteran plywood men. We welcome your inquiries.

All car load sales and shipments of APMI plywood for this territory are handled by our Dallas, Texas office at 4814 Bengal Street — Telephone Logan 6647 — Deryl Glossup, Manager.



**ASSOCIATED PLYWOOD MILLS, Inc.**

GENERAL OFFICES: EUGENE, OREGON

Plywood plants at Eugene and Willamina, Oregon. Lumber mill at Roseburg, Oregon

## FIFTEEN YEARS OF PROGRESS

It is fitting that the annual convention of the Texas Society of Architects, from November 4-6, will be held this fall at the Driskill Hotel in Austin. For it was at the Driskill, since completely refurbished, that 85 charter members of TSA met in June of 1938 to form the Society.

In the intervening 15 years, TSA has grown 800% in membership. This increase, accompanied by a normal expansion of TSA activities, is gratifying. But it is not extraordinary, even in the field of professional societies, where additions to membership sometimes come rather slowly.

What we do believe to be unusual, is the manner in which the Texas Society of Architects has progressed in these two principal avenues: (1) maintaining consistently high levels for professional competence in the practice of architecture and (2) encouraging TSA members throughout the state to take an active and useful part in the community.

Designs by Texas practitioners have won acclaim throughout the Southwest and over the nation, in every architectural classification. The TSA's own competition "Texas Architecture—1953", sponsored by the Dallas Chapter in conjunction with the Dallas Museum of Fine Arts, has again attracted attention throughout the U. S. National publications, both the more professional journals and the mass-audience weeklies, reflect the growing interest in Texas architecture.

The seminar subject at this year's convention, "The Role of the Architect in the Community", indicates how the TSA membership accepts the concept of architecture as a vital and active profession which must take a significant role in shaping our environment and patterns of living. With this concept, there has been a marked growth of interest in the profession, and a considerable upturn in public understanding of just what the architect does, and how he contributes to a better life for all.

The fourteenth annual convention will provide a vantage point from which TSA members can look back to 1938, and determine what progress the Texas Society of Architects has made in 15 years. We credit much of the Society's progress to maintaining high levels of professional competence, while encouraging TSA members to be active in the life of their community and state.

# 14th TSA CONVENTION OPENS NOVEMBER 4

## Governor Shivers To Address Opening Session; Austin Attracts Record Number of Delegates; Full Three-Day Program Ends November 6

The Texas Society of Architects will return to the Driskill Hotel in Austin, scene of the Society's founding in 1938, for the 14th annual convention from November 4-6.

A full three-day program, featuring many public figures including Governor Allan Shivers and well-known architects from the U. S. and abroad, has been scheduled for the convention, expected to draw a record number of more than 500 delegates.

### Separate Article On Seminar

The title for the convention seminar this year is, "The Role of the Architect in the Community", and a separate article on this key convention activity is carried elsewhere in this issue of the Texas Architect.

Registration begins at the Driskill at 9 a.m., Wednesday, November 4, and the first day will be devoted to a golf tournament sponsored by the Texas Quarries at the Austin Country Club, followed by a 6:30 p.m. cocktail party at the Driskill.

### President Golemon To Preside

The following day, Governor Shivers speaks at a 9:30 a.m. business session at which TSA President Albert S. Golemon is to preside. The Governor's address follows the invocation by Bishop-Coadjutor John E. Hines of the Episcopal Diocese of Texas, and welcoming speeches by Mayor C. A. MaAden of Austin and Louis Southerland, president of the Central Texas Chapter, TSA.

Also at the opening business session, Herbert Tatum, TSA-AIA of Dallas, will report for the By-Laws Committee; and Edward L. Wilson of Fort Worth, TSA-AIA, for the special committee. President Golemon and Secretary-Treasurer George

F. Pierce, Jr. will present annual reports before the nomination of officers.

### Seminar Thursday Afternoon

The seminar session at 1:30 p.m. will follow separate luncheons for men and women delegates on Thursday. At 4 p.m., there is a Fall Festival in the Music Hall at the University of Texas, and a coffee in the Patio of the Architecture Building.

A social event Thursday night is a hill-billy party jointly sponsored by Green Acres and the Elgin-Butler Brick Company, with the following firms assisting: Austin White Lime Company, Calcasieu Lumber Company, William Cameron Company, Sheffield Steel Company, Texas Steel Company, Tips Engine Works, and the Walter Tips Company.

### Willem Dudak To Speak

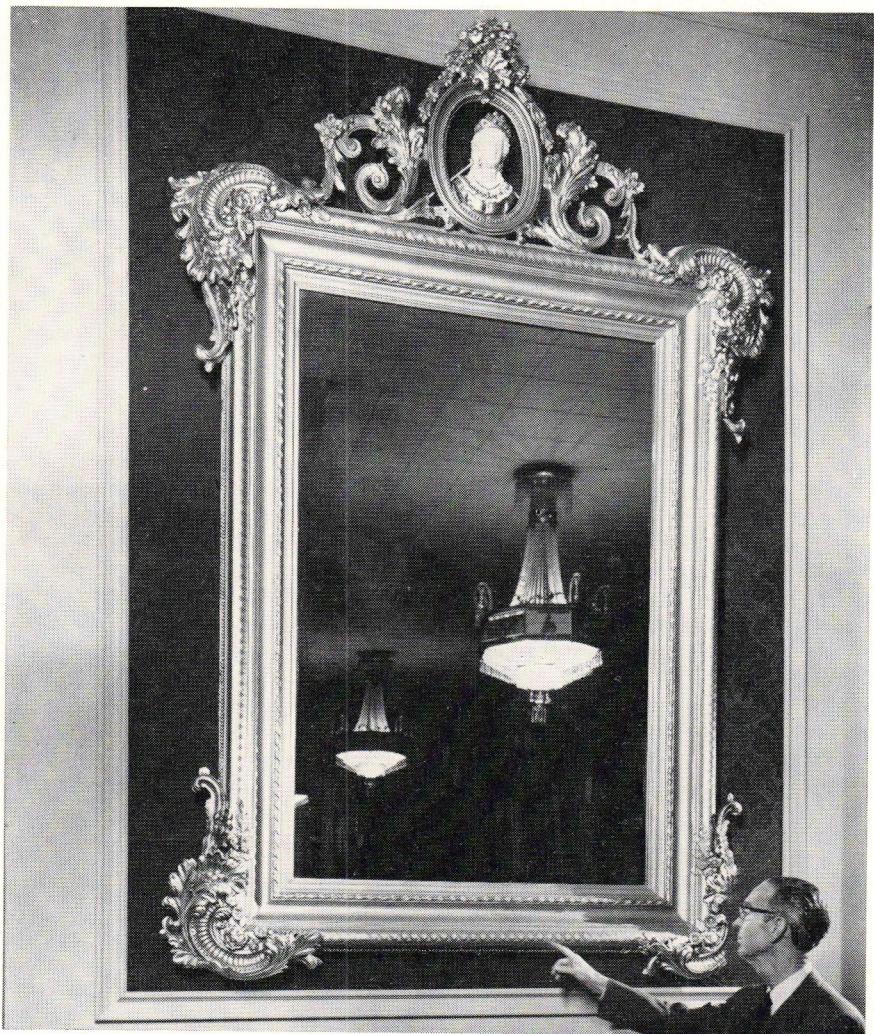
The final day of the convention, Friday, November 6, opens with an 8 a.m. breakfast at the Driskill, sponsored by the Acme Brick Company. The delegates will then attend a 9:30 a.m. public relations forum, followed again by separate luncheons, the one for men being sponsored by the building industry. Willem Dudak, distinguished Dutch architect and town planner is the speaker at this Friday luncheon.

Edwin W. Carroll, vice-president of TSA, presides at a 2 p.m. business session which will include various committee reports, a general discussion, and the election of 1953-54 officers.

### Featherlite Competition Awards

The annual meeting concludes Friday night with a 7:30 p.m. cocktail party given by the Producers' Council and the formal President's Dinner and Ball, at 8:30 p.m. At the dinner, awards in the \$2500 Featherlite Competition for senior architectural students in Texas universities and colleges will be made.

## The Empress Carlotta's Treasured Mirrors



Great crystal chandeliers, made especially to complement the mirrors in which they are reflected, are seen in the famed Maximilian Room of the Driskill Hotel in Austin, scene of the 14th annual TSA convention opening November 4. Several convention affairs will be held in the Maximilian Room.

The mirrors were made in Europe, on order of the Emperor Maximilian of Mexico, to decorate the palace of his Empress, Carlotta, the ill-fated daughter of King Leopold of Belgium.

Read the story of Empress Carlotta's treasured mirrors, which dominate one of Texas' most interesting rooms, on page 11.