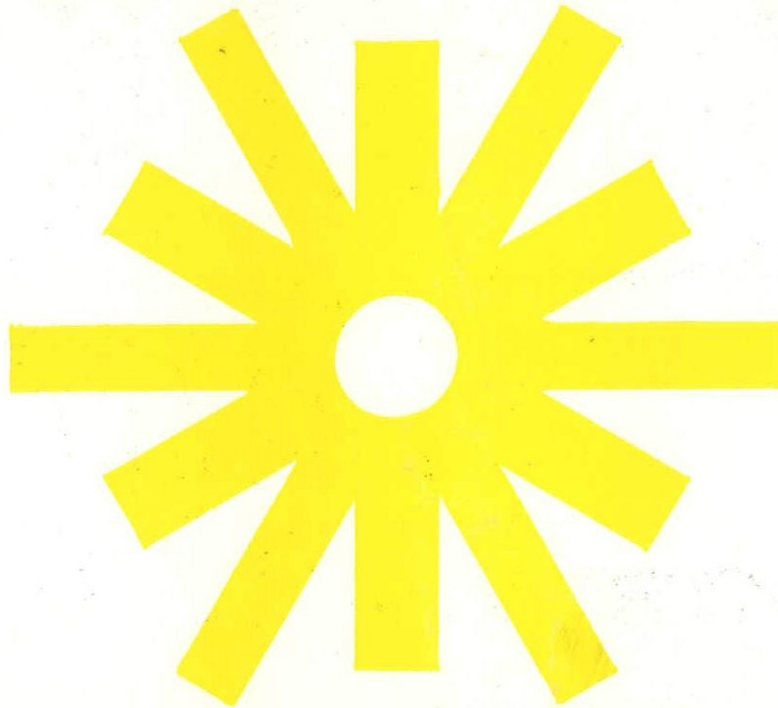


KENNETH R. FULTER  
503 INSURANCE BLDG.  
831 14TH  
DENVER, CO. 80202

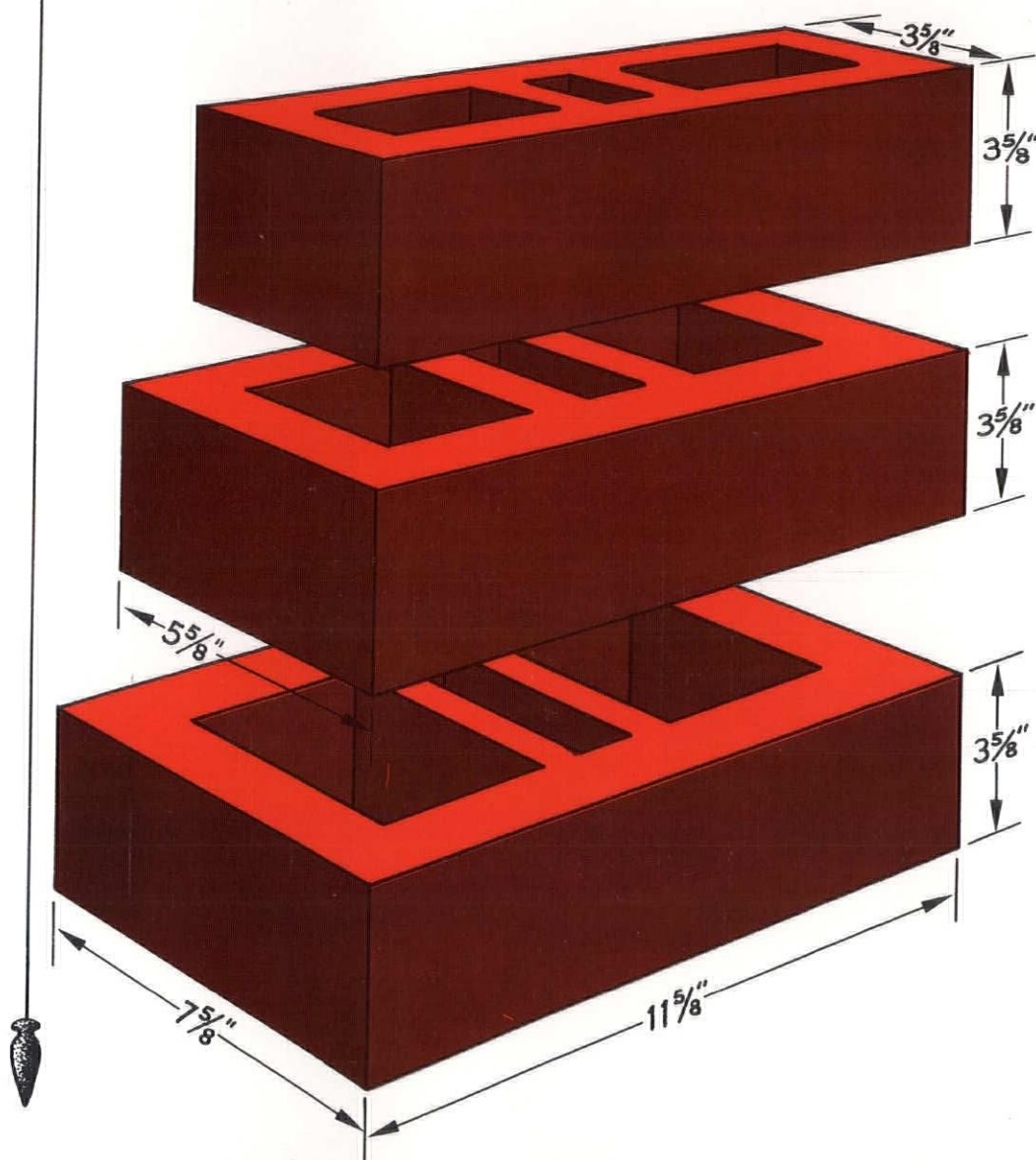
*engineering/construction*  
***symposia***

july, 1974



U  
N  
I  
W  
A  
L  
L

# ROBINSON BRICK and TILE COMPANY



**HOLLOW CLAY REINFORCEABLE UNITS ARE  
AVAILABLE FROM THE QUALITY PRODUCER**

THE **ROBINSON** BRICK AND TILE COMPANY

500 South Santa Fe Drive • Denver, Colorado 80217

Brick and Tile  
for every style  
SINCE 1880

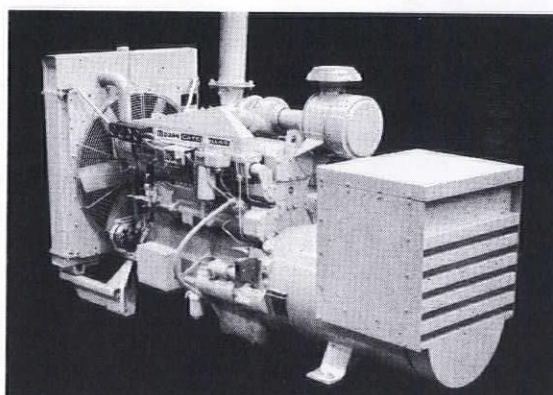
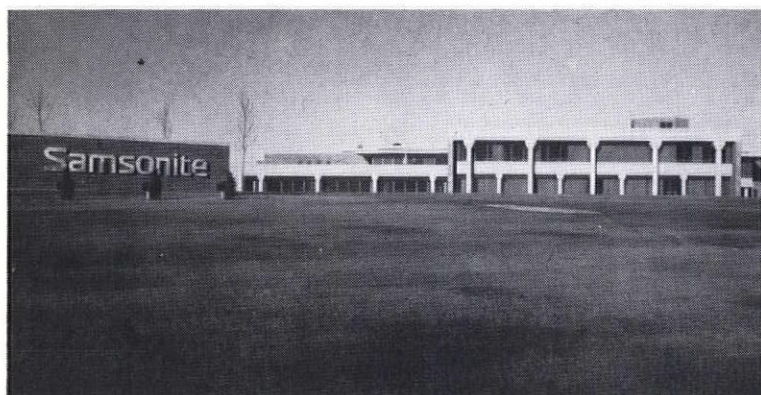


**ROBCO**

744-3371



**We've got your client's number.**  
**50 kw | 60 kw | 70 kw | 75 kw | 85 kw**  
**100 kw | 125 kw | 155 kw | 165 kw**  
**205 kw | 230 kw | 280 kw | 285 kw**  
**310 kw | 335 kw | 340 kw | 375 kw**  
**450 kw | 470 kw | 560 kw | 565 kw**  
**620 kw | 675 kw | 750 kw | 900 kw**



Next time you're choosing a standby power unit, consider a few facts about Caterpillar systems.

First, Caterpillar can match what your plans call for. We make 25 different diesel standby power configurations from 50 kw to 900 kw. Natural gas from 70 kw to 655 kw. Even more in multiple units.

Then consider reliability. The engine-generator is the heart of any standby power system. And Caterpillar systems are powered by engines with a worldwide reputation for dependability. Even Minuteman missile sites rely on Cat Standby Power.

Our systems are versatile, too. They're available for dual service installations that provide both economical on-site power under normal conditions and standby power to critical services in emergencies.

McCoy Company services what we sell. We'll help select, install, test and maintain whatever system fits your needs.


Why not give us a call? Our price per kw may give you a surprise. Because Caterpillar quality costs less than you think.

**McCOY**  
 COMPANY

6000 DAHLIA • DENVER • 288-2621  
 DURANGO • GRAND JUNCTION • PUEBLO



YOUR  
**CATERPILLAR**  
 DEALER <sup>®</sup>

Caterpillar, Cat and  are Trademarks of Caterpillar Tractor Co.

**Cat Standby Power.**

**Reliability comes in all sizes.**



# *symposia*

construction communications  
in the West

VOLUME 9

NUMBER 2

JULY, 1974

RECIPIENT 1974 INSTITUTE PUBLICATIONS COMMENDATION

CONSTRUCTION SPECIFICATIONS INSTITUTE

## THIS MONTH

	Page
<i>The Word</i> by: Cal Hoiland	6
<i>Symposia Salute</i> to: New Fellows—C.S.I./A.I.A.	11
<i>AGC</i>	12
<i>Students</i> Architectural Awards/Arizona	14
<i>Publisher on a Pier</i>	16
<i>Building Code Revision</i> ... Denver's On-Going Program	18
<i>Highlights from the National Convention</i> American Institute of Architects Including: "It's All Water Under the Gate now ..." by: Robert A. Fielden, AIA	20
<i>... A Very Good Neighbor</i> La Placita Village	22
<i>Eight Day Wonder-ful Time</i> "Italy"—a very short course by: James A. Burran, Jr., AIA	23
<i>Take Me To Your Leader</i> with a helping hand from: H. Robert Wilmsen, FAIA Paul Edlund, CSI/AIA Walter Bishop, FCSI	26
<i>Symposia/Around the Region</i>	30
<i>The Last Word</i>	36
<i>Aardvarks Attack</i>	38

**publisher:** Fletcher B. Trunk

**editor:** Elizabeth W. Trunk

### CONTRIBUTING EDITORS

**Landscape:**

F. J. MacDonald, AILA/CSI  
Arizona

**Preservation:**

Thomas Muths, AIA  
Wyoming

For the Western Mountain Region: Robert Fielden, AIA

### EDITORIAL ADVISORY BOARD

#### arizona

Warren Edminster, AIA/CSI  
Richard C. Perrell, FCSI/A

#### colorado

Don Decker AGC/CSI  
John Elmore, AIA/CSI  
William H. Hawes, CEC  
Thomas W. Keeton, FCSI  
Atha Lavalett, CSI  
R. James Noone, CSI/AIA  
Maxwell L. Saul, FCSI/AIA

#### idaho

Robert L. Hamill, Jr., AIA  
John L. Hoffman, CEI

#### montana

Robert E. Fehlberg, FAIA  
Marty W. Crennen, AIA  
A. Calvin Hoiland

#### nevada

Ralph Bond, AIA  
Robert Simpson, AIA

#### new mexico

Joe Boehning, AIA  
John W. McHugh, AIA  
Robert Schmidt, FCSI-FASCC  
Dennis Roberts, AGC

#### oregon

Robert Wilmsen, FAIA  
Paul Edlund, CSI/AIA

#### utah

Boyd Blackner, AIA  
Elden V. Talbot, CSI/AIA

#### washington

Walter F. Bishop, CSI  
Fred Creager, AIA/CSI

#### wyoming

Gerald Deines, AIA  
N. A. Nelson, AGC

#### at large

Donald F. Walton, CSI/PC

Issued monthly by Boyce Publications, Inc.  
Business offices 4070 Estes St., Wheat Ridge, Colorado 80033  
Telephone Area 303—422-4153  
Controlled circulation postage paid at Denver, Colorado  
Copyright 1974 Boyce Publications, Inc.



## APPLICATORS:

### CELBAR

Noise control for plumbing and party wall systems.  
Highest Sound Transmission Class for Your Money.

### K - 13

Spray-on systems, Acoustical and Thermal.

### CAPCO

Direct-to-steel Spray Fireproofing.  
Contains NO Asbestos, NO Free Crystalline Silica.

## FABRICATORS:

Laboratory Counter Tops for Schools, Commerce and Industry.  
Johns-Manville Colorlith Colorceran.

## DISTRIBUTORS and/or INSTALLERS:

Johns-Manville Architectural Panel Systems:  
Permastone S, Stonehenge, Quadro, Venetia, Splitwood Feature, Plied Panels.

## DISTRIBUTORS:

A Traffic Door for all applications.  
Doors meet U.S.D.A., M.I.D. Standards for sanitation and OSHA Requirements for safety.



**Construction Specialties Co.**

**Denver, Colorado 80201**

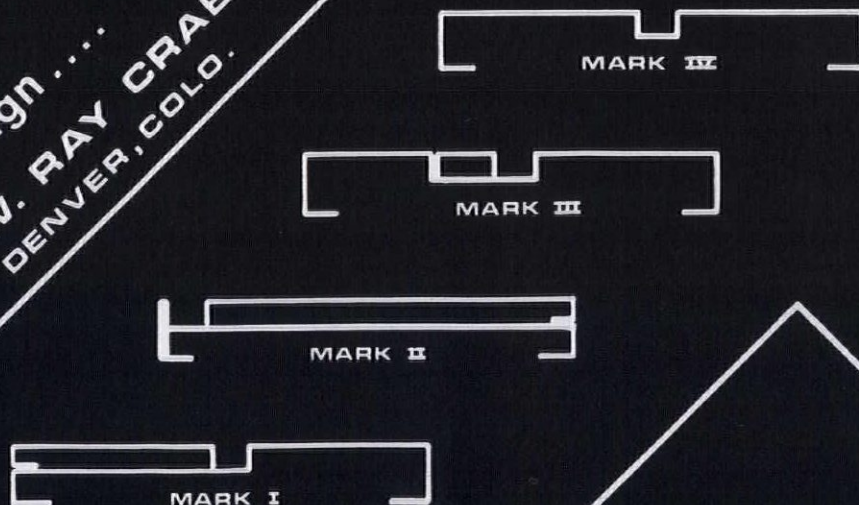
**P.O. Box 927**

**2625 Walnut**

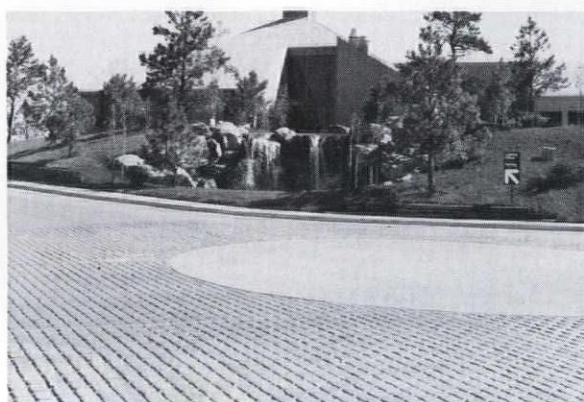
**534-3271**

**the  
innovators**  
in  
hollow  
metal  
design ....

**W. RAY CRABB, INC.**  
DENVER, COLO.







## Available Patterns

Tile  
Brick  
Random Rock  
Cobblestone  
Rough Plank

In your choice  
of colors.



FREEDOM OF ENVIRONMENTAL  
DESIGN THROUGH THE USE  
OF

**ROMANITE**

Colored, Pattern-Stamped Concrete

By

**ROCKY MTN. ELASTIZELL**

2133 S. WABASH ST. • DENVER, COLORADO 80231  
(303) 755-9951

ROCKY MOUNTAIN  
ELASTIZELL

# THE WORD

by: Cal Hoiland

ARCHITECTURE . . . hard word to work into a conversation, for most people.

Oh sure, "House" is an easy word, any salesman or politician can tell you about a good 'house' . . . and "Home" . . . that's another one that means about the same to most people . . . it's where you put your mother when she's old, and where most architects live out their winter years. . . . The Home. . . . but Architecture, that's a doozy.

Design? . . . whattya mean Design?

That's what they taught you in architectural school? . . . hell, that's what they *try to teach everybody* in architectural school, and as most teachers agree, in every school in the system,

"It's the only place you can learn Design, and Design's the one thing nobody can teach."

So there you are; can that be Architecture?

Is Design all there is?

What's popularly called Design probably means a study of people flow,

within symmetrical or abstract patterns of plan and mass . . . or, at least, it could be that, to architects.

To most of us, Design means exterior decoration . . . tasteful (sometimes) arrangements of slats on multi-storied habitational orange crates.

Racing stripes on the box.

Inigo Jones without terra cotta.

The Seagram Building stripped nude, with painted toenails and bright lipstick.

Venturi says, Rejoice, for Decoration is the least expensive means of architectural expression.

So, how about it? . . . can the school and the office get together in what they're trying to do?

Maybe not; who knows?

Can a teacher understand the pride, financial needs, economic drives and client pressures of the architect in practice?

Can a practicing architect understand the emotional impact of too many overcrowded classes full of strong eager bright healthy kids, the stifled creativity and the financial needs of the teaching teacher?

Nobody knows.

Each can only do his job the best way he knows.

The good Architect/Practitioner strives for a sound, thoughtful and beautiful envelope to meet the needs of his client, under the terms of a fair agreement, efficiently for maximum profit to insure continued business life.

The good Architect/Educator strives for adequate compensation, for maximum communication of artistic and

("The Word"—concluded on Page 38)





An exciting concept  
in bathing...  
a 5½ x 7 foot  
bathtub by Kohler



**the  
Bath**

**The Warner Co.**  
**Inc.**

**PLUMBING-HEATING and  
WATER WORKS SUPPLIES**

3625 E. 48TH AVE.  
PHONE (303) 355-7371

Box 5252 TA DENVER, COLORADO 80217  
WHOLESALE DISTRIBUTOR





# The Bath

The bath

Fiberglass  
oval

A very

Shown in the lavatory island are the Lady V  
and the oval shaped Farmington basin. All fixtu

Kohler's Rochelle toilet and the Valen





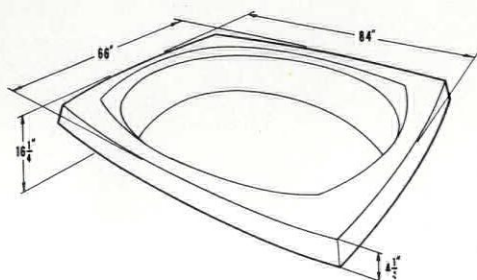
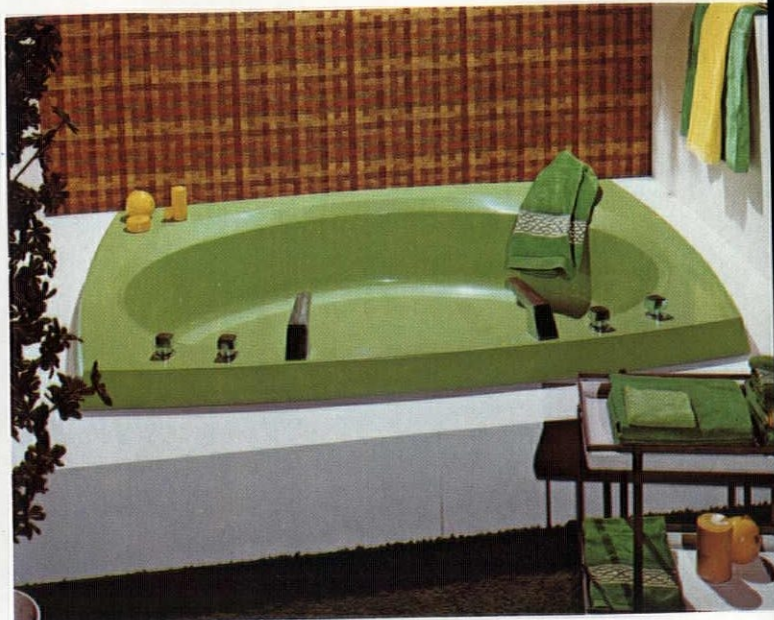
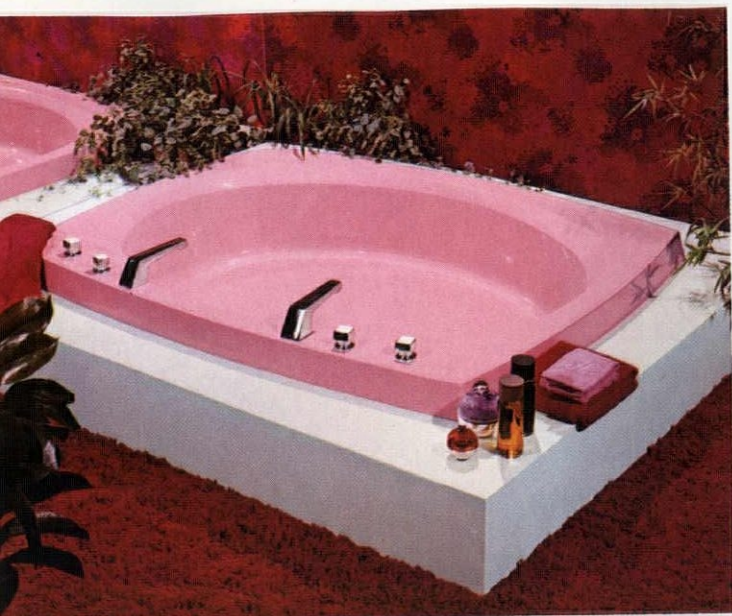
ve always wanted . . . from Kohler, the people  
originated the Bold Look in plumbing fixtures.  
w Kohler brings you a new concept in luxury,  
ub offering 5½ by 7 feet of exciting bathing  
dimensions. We call it, naturally, The Bath.

A retreat, refresher, relaxer, rejuvenator.

— a one piece, sculptured beauty. Made of  
red in New Orleans Blue, the graceful bathing  
with dual water controls . . . and dual showers.  
ry centerpiece in this very unordinary room.

mpoo center with spray arm, swing away spout,  
hown with Kohler's exclusive Alterna fittings.  
elate to the contemporary mood of the room.





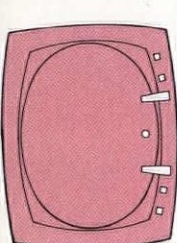
## Pink Champagne and Fresh Green Newest colors for the bath

Your bathroom can be as pink and pretty or as lush and wild as you want. Let Kohler's Pink Champagne or Fresh Green, newest colors for The Bath, lead the way. Pink Champagne is a high fashion pink, bright, bubbly and fun to decorate with. It goes great with whites and chromes, deep reds and woodtones. Fresh Green

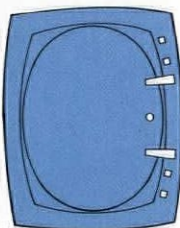
offers wide decorating options. It's vibrant, verdant. Goes with whites — yellows — and earth tones — blues. Fresh Green — the outdoor look comes in.

Kohler's biggest-ever bathtub . . . The Bath . . . 51½ by 7 feet of bathing luxury. One piece. Seamless. A sculptured beauty with oval shaped bathing area. Made of reinforced fiberglass, pleasantly warm to the touch. Good insulating properties keep water warm longer. Can be installed sunken in floor or raised on platform. The Bath is available with dual showers and dual water controls from Kohler's Alterna series, finished in brushed or polished chrome or gold electroplate with decorator inserts in faucet handles. The Bath . . . now in seven colors and white.

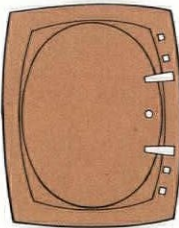
# The Bath



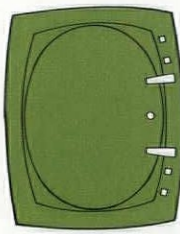
Pink Champagne



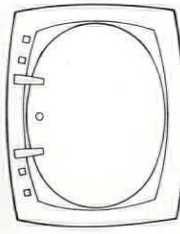
New Orleans Blue



Mexican Sand



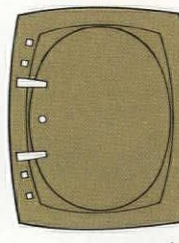
Fresh Green



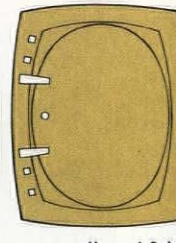
White



Black Black



Avocado



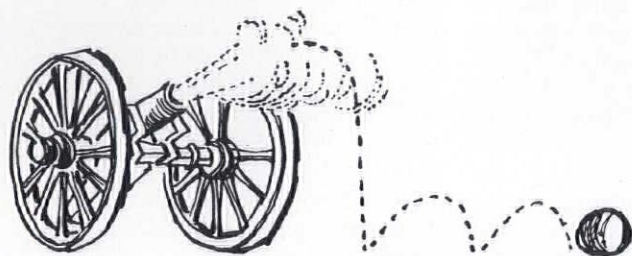
Harvest Gold

# KOHLER

KOHLER CO. OF KOHLER, WI 530



# a symposia salute



**TO:** Three gentlemen who have recently been honored by Fellowship in the Construction Specifications Institute and the American Institute of Architects. We are happy indeed that they are resident in Symposialand, and wish them well as they add this lifetime honor to their long lists of accomplishment.

## **WALTER F. BISHOP, FCSI, Auburn, Washington**

We are, of course, particularly pleased to salute Walt Bishop, a member of our own Symposia family, upon his elevation to Fellowship in the Construction Specifications Institute. Born in Illinois, he is an A/E graduate of the University of Texas, and after a bit of job jumping in the Seattle area, he settled in with the Design and Construction Division of the GSA. His present title is Chief of the Specifications Group.

A Charter member of the Puget Sound Chapter, Walt has served as Chapter Secretary-Treasurer, Vice President and President and is the immediate-Past Director of CSI/Region 12. He also put in seven years as Editor of the Chapter newsletter. He is married — wife Dauna claims she received her MRS degree at the University of Texas — and the Bishops have four boys — aged eight to eighteen.

Hearty congrats, Walter, couldn't happen to a nicer guy!

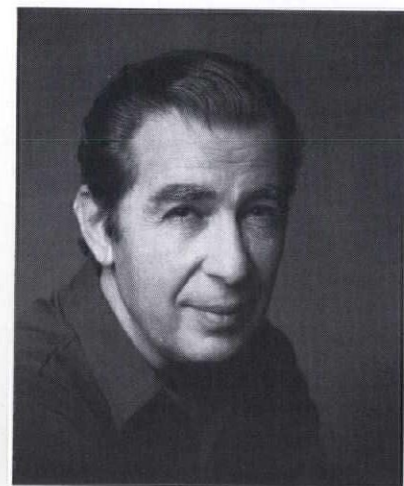


## **FRANK SLAVSKY, FAIA, Honolulu, Hawaii**

Long recognized for his fine design is new AIA Fellow, Frank Slavsky, who is the senior principal in his own firm of Frank Slavsky and Associates in Honolulu. In 1968, he received a National Merit Award for design excellence from HEW for his Mākua Housing for the Elderly and the following year was selected by the Institute as one of five U.S. architects to have work exhibited at the Tenth Congress of the International Union of Architects in Buenos Aires.

Recognized as an authority on housing design, he has conducted research in many other countries, has provided prototype design data for the "Low Income Housing Primer" published by the Pennsylvania University Institute of Environmental Studies, and worked in the White House Conference Committee, State Commission on Aging.

The caliber of Slavsky's design effort has contributed notably to the advancement of the profession . . . creating environments to enhance the enjoyment of living for people in all walks of life.

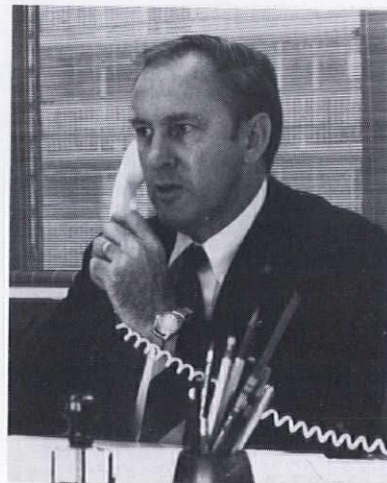


## **GEOFFREY W. FAIRFAX, FAIA, Honolulu, Hawaii**

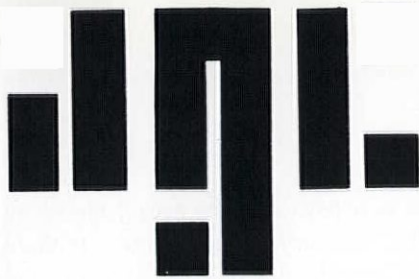
In addition to maintaining a general practice in Honolulu, Fellow Fairfax has been involved for a good number of years in architectural preservation both in Hawaii and on the Mainland. His restoration projects include such notable examples as the Cataldo Mission, oldest building in Idaho; the Iolani Palace, a \$5 million, six-year project, and the master planning of Grove Farm Homestead at Lihue on Kauai.

He has also been active in the restoration of Queen Emma's Summer Palace on Oahu and the Kalahikiola Church on the Big Island.

Mr. Fairfax is the author of a definitive work . . . "The Architecture of Honolulu," published in 1972.







### **Policy Decision**

The National AGC Executive Committee meeting in Washington on May 13-14 has reaffirmed their policy of "no escalation clauses." Writing to the membership regarding this action, AGC President Saul Horowitz, Jr., said . . . "There are many arguments for and against the use of escalation clauses, and the Executive Committee discussed them at great length. Everyone agreed that the AGC should continue to oppose escalation provisions . . ." The President concluded, "For the present and the future there are other remedies. I urge you (AGC members) to encourage the speeding up of the contract award process and the providing of early access to the job-site after the award, and I also ask you to continue to be prudent in your bidding, making reasonable allowances based on your skill, capacity and ability to endure adversity in this highly competitive industry."

### **Brinkerhoff Completes Course**

A new addition to the staff of the Colorado Contractors Association, Inc., Bob Brinkerhoff has completed the J. D. Marshall Executive Training Course. This Course is designed to inform new chapter staff people of programs and activities available through the National AGC office. Participants are provided information on all labor laws applicable to construction, OSHA, the Equal Employment Opportunity Act and current legislation pending before Congress.

Brinkerhoff was born in Durango, and is a graduate of Fort Lewis College with a degree in Business Administration. Prior to joining CCA he was a Wage and Salary Administrator in the Personnel office at Denver's Mercy Hospital. His primary duties with CCA are as Labor Relations Director, Director of the Municipal-Utilities Division and Environmental Affairs Coordinator.

### **All-Day Safety Seminar**

The National Safety Council/Construction Section sponsored a 9-5 Seminar on 18 June in Denver. Discussions dealt with the legal liability aspects of construction equipment rental and leasing . . . nationally recognized speakers and panel members were on hand to consider problems

in the rental of both heavy equipment, small tools and specialty equipment. A short presentation was also given on Ground Fault Interrupter Systems including a demonstration by the National Electrical Manufacturers Association. Also included was an update on both OSHA and COSH. General Chairman for the meeting was Wayne Christensen of Rust Engineering Company with J. R. Milor of the A. G. McKee Company serving as Moderator.

### **And Speaking of Safety . . .**

AGC/C's Tom Gilmore provided us with an informative chuckle in the May "AGC On Site." . . .

"NOW IT HAS HAPPENED . . . AND WITHOUT BENEFIT OF TOMAHAWK. A young workman with long locks was partially scalped when his hand-held drill caught his cascading curls and ripped out a sizable chunk of scalp before he could stop the drill. If your company has no regulation governing tousled tufts tumbling from under hard hats, you'd be well advised to consider it. Control of such matters is a responsibility of management; compliance, according to COSH, is a responsibility of the employee."

## **FOR THE FIRST TIME IN THE M OF NATURAL BEAUTY AND PERMAN**

### **COLOR RETENTION**

In organic oxide pigments used are durable as natural stone. Non-fading and ultra violet stability properties are excellent.

### **UNIFORMITY OF APPEARANCE**

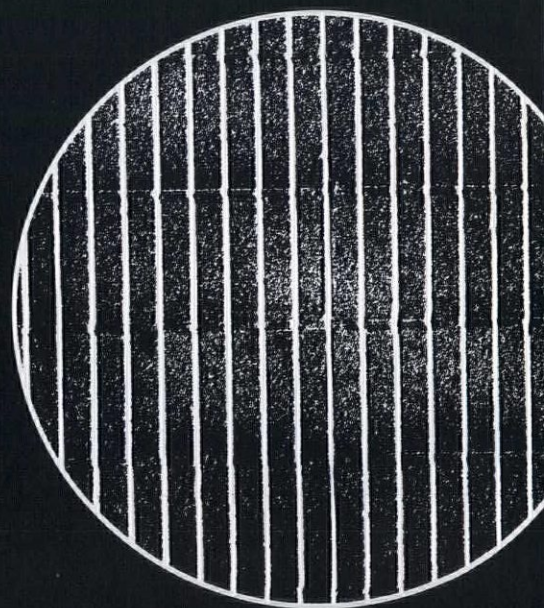
Pigments and colorants are prevented from settling by a new process in chemical suspension. Color uniformity in the container allows the applicator ease of uniform, controlled application to your structure.

### **STAINED MASONRY BEAUTY**

The natural feeling of block, concrete, or brick is retained. Does not hide or opaque the surface. A semi-transparent toner.

### **NON OXIDIZING**

Does not contain oxidizing ingredients such as vegetable and marine oils, paraffins, stearates, or organic pigments which cause other masonry stains to degrade rapidly, allowing moisture intrusion.



*Protecting The Work Of The Masters*



*The delightful sunny south deck gay with potted plants which are changed with the seasons. The architect placed glass wall for each floor well back beyond succeeding floors and roof line for sun control.*

lake-side or back of the building from the high noise busyness of city traffic, parking entry, computer room and circulation core to the serene uninterrupted spaces conducive to highly concentrated work. The total working area comes to 11,000 sq. ft. with expansion planned toward the shore.

Site preparation is almost a story in itself. The original pier built some time around 1880 proved something less than ideal and an entire new support structure had to be created. Old piling was cut off at the lake bottom level by a scuba diver using a special reciprocating, pneumatic saw. Gem State Construction, Inc. of Coeur d'Alene then used a barge-mounted pile driver and foundation piles were driven about 30 feet into the lake bed creating a bearing value of 25 tons. A barge-mounted 3/4 Bucyrus-Erie crane lowered plywood forms with angle iron ribbing into the lake—each pier consisted of approximately 15 cubic yards of concrete.

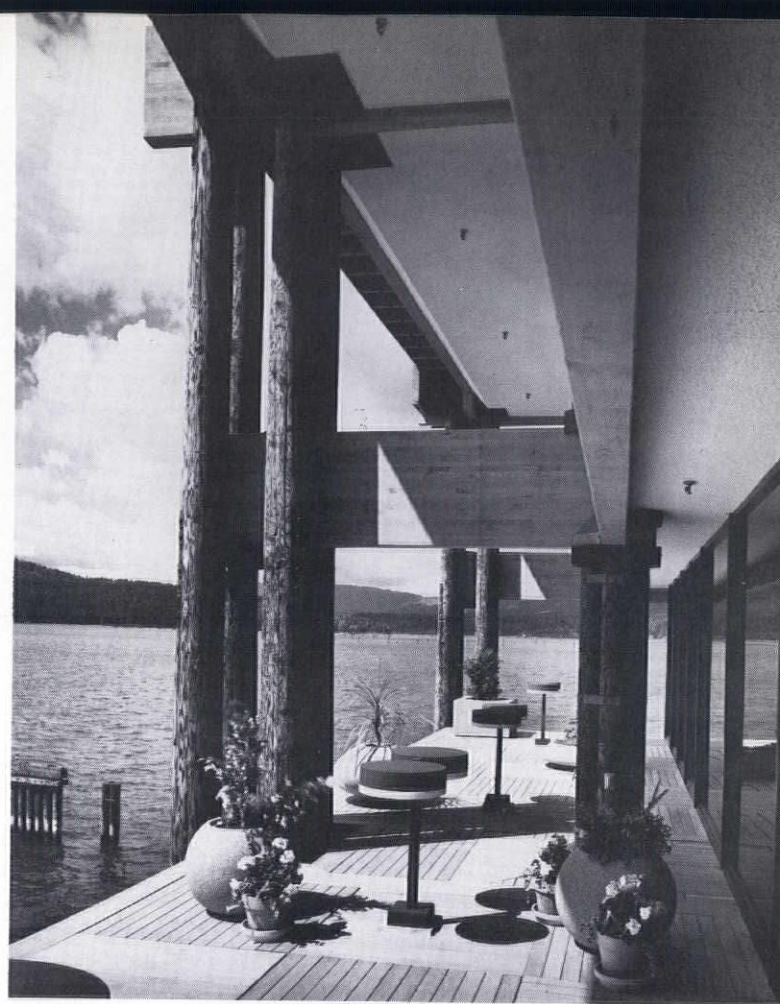
The contractor had to solve a number of other problems at the lake location. Arrival of construction materials dockside had to be coordinated with availability of barges towing them to the site—and many construction tasks, including beam installation, had to be performed using "floating cranes." Main beams were 6¾ inches x 36 inches x 36 feet and weighed about 3,500 pounds apiece.

An example of the minute detailing is shown in the interior where architect and contractor had to work closely to meet exacting demands. For instance, one inch oak paneling used for the interior of the main office floor was put on in 12-, 10- and 8-inch sections in a horizontal pattern. Pieces were spaced 1½ inches apart with bronze metal strips between. At the corners, paneling was hinged like a log cabin and all edges had to be beveled 15 degrees. Screws were placed every 30 inches, counter-sunk and plugged with one inch hardwood dowels. After installation, the entire area was sanded to a smooth finish.

The architect's bold use of forms and materials coupled with his attention to the preservation of the scenic beauty of the site is reflected in the interior design done by William Raiser/Arthur Elrod of Palm Springs, California. The firm "strived for a harmony between the texture, colors and forms that hopefully would bring harmony between interior and exterior." Accents of stainless steel and leather were used with the largely wooden interior with predominant colors those of the forest itself . . . orange, gold, brown and green.

Consultants on the Hagedone Building included Robert Luhn, mechanical engineer, Spokane; Peter Suden, structural engineer from Spokane and Fred Wanless, electrical engineer.

Wise decisions in design, sensitive selection of materials and careful craftsmanship have created a unique business building in Coeur d'Alene. The result calls for congratulations all 'round.



*The lake side view of the Hagedone Offices . . . the cluster of cedar log piling columns support the glulam beams and is characteristic of all the interior supporting columns.*





# Building Code Revision

## ..... Denver's On-Going Program

On almost any day of the business week, somewhere in Denver, a group of dedicated leaders in the construction industry sit down to the tedious task of revising the Mile High City's Building Code. Nor will this task ever be considered complete. "A Code", in the words of Committee Chairman Henry B. Baume, FCSI/AIA, "must be a dynamic and ever-changing structure. We must be constantly re-evaluating — taking a fresh look in terms of rapidly increasing building technology and changing construction conditions."

First step in Denver's on-going program began in late November 1972 with an Executive Order from the Mayor creating a permanent Building Code Revision Committee of nine voting members. Represented in the group — architectural and engineering professions; the building industry; building labor organizations; real estate groups and both the Director of the Building Department and Chief of the Fire Prevention Bureau. The initial appointments were announced by the Mayor in May, 1973, from a list of

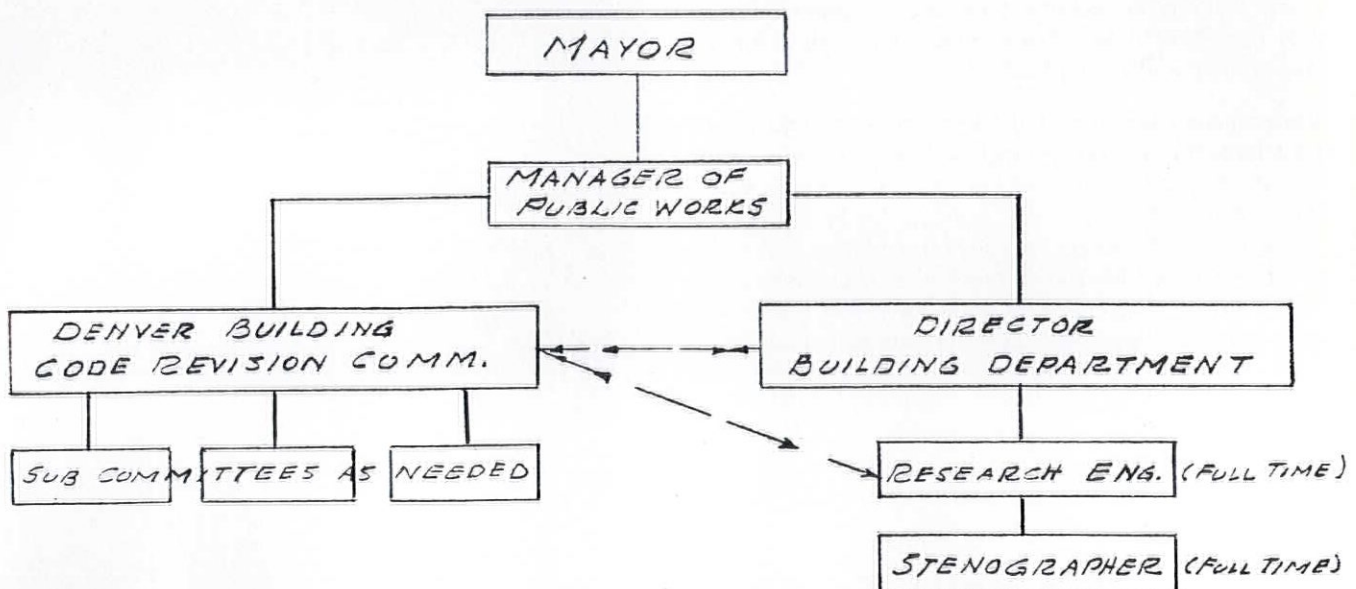
qualified persons submitted by the Director of the Building Department through the Manager of Public Works.

Selected for three-year terms — Architect Henry B. Baume as Chairman; Structural Engineer J. William Sallada as Vice-Chairman and John J. Blank, Mechanical Engineer. Appointed for two-year terms — E. B. Jones, General Contractor, and George Westenberg of the Building Trades Council representing Labor. Home Builder William Wright and Realtor A. J. Brown were appointed for one-year terms. Ex-Officio committee members are John Stone, P.E., Director of the Building Inspection Division / Department of Public Works; Kenneth L. Neville, Chief of the Denver Fire Prevention Bureau, and as permanent Research Engineer (non-voting) Joe Antonio, P.E., of the Building Inspection Division.

This policy making group—the DBCC (Denver Building Code Committee) immediately addressed themselves to the task at hand — the appointment of the Sub-Committees who would ac-

tually conduct the investigations, hammer out recommendations on revision and as Henry Baume suggests . . . "work like dogs." Each Sub-Committee working with a member of the DBCC was urged to consult with appropriate design and trade groups and organizations, interested and knowledgeable public officials and members of the public — to the end that their work might represent the latest and fairest consideration of the health and safety of all Denver's citizens. Since their appointment, these committees have met weekly.

Operating Guidelines for these Sub-Committees reflect the determination to incorporate, as nearly as possible, the innovative new methods, materials and systems available. Although the revised Code will follow the general format of the 1973 Edition of the Uniform Building Code, members of the sub-committees were asked to investigate each Chapter independently of the UBC text to determine the feasibility of using those methods, materials and systems available regardless of the source of this material or its ac-



### ORGANIZATIONAL CHART





**Henry B. Baume, FCSI/AIA Chairman**  
—1973/1976 Denver Building Code Committee.

ceptance by UBC. "Each present requirement," states the Guidelines, "should be re-examined for its source, present need and applicability, degree of restrictiveness (if any) and whether or not it represents a fair and reasonable 'minimum' requirement, enforceability and justification in terms of current technology and construction techniques."

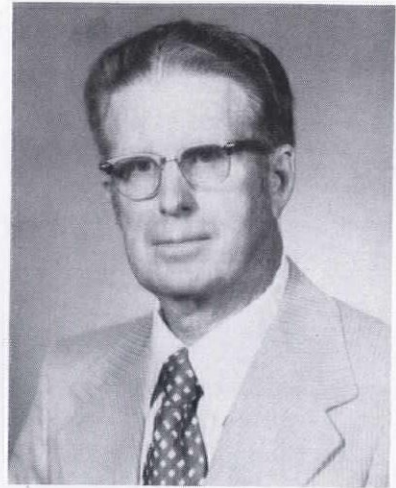
Certainly one directive given sub-committee members will bring about a welcome change . . . "Language should be clear, concise, specific and positive rather than negative. Wherever possible, avoid terms and phrases such as 'adequate', 'proper', 'substantial', and other terms which are subject to interpretation. Avoid the use of the term 'as directed by the Building Department'. Say what is meant in the simplest, most direct manner possible." The elimination of personal interpretation by staff members and inspectors of the Building Department is equally applauded by all members of the DBCC. As Building Official John Stone remarked to Chairman Baume—"our job is enforcement . . . not being called upon to serve as Judge and Jury." Also important is the system of cross-references which will note the Chapter, Section and the subject.

In terms of concrete accomplishment, the result is significant. Although some sub-committees have been at work since October of 1973 — others did not begin meeting until early December and late January of 1974. Thus far, six chapters have been reviewed

and given final approval by the DBCC. They are Chapter 27: Structural Steel; 36: Penthouses and Roof Structures; 39: Stages and Platforms; 40: Projection Booths; 41: Domestic Appliances, and 46: Demolition. Several other chapters have been reviewed but are being held in abeyance until related chapters can be considered. One of these is Chapter 5: Occupancy, which Chairman Baume has described as a "kind of Fibber Magee's closet" and has been totally revised for clarification.

We cannot, of course, name all the names of the public-spirited members of the Construction Community who are serving, at no small personal sacrifice, on the various sub-committees of the DBCC. We would like, however, to name just a few . . . Administrative Sub-Committee: Chairman Carl Kloverstrom, AIA; Secretary Fred Burns, CIMC — Advisor; John A. Stone, PE, Electrical Design and Standards Sub-Committee; Chairman Charles E. Bell, PE; Vice Chairman Gordon Lindsay, Building Official; Secretary Sol Flax, PE, and DBCC Advisor, John Blank, P.E. Mechanical Design and Standards Sub-Committee: Clint C. Cator, PE, Chairman; Henry DeNicola, AIA, Vice Chairman, and Secretary Wally Gordon of the Sheet Metal Industry. Advisor: John Blank, PE. Structural Design and Standards Sub-Committee: Robert Nedell, PE, Chairman; Vice Chairman Robert Helfrich, PE, Colorado Masonry Institute; Secretary Wally Prebis, PE, of the Concrete Industry. Advisor is J. W. Sallada, PE.

Largest of all the subcommittees with twelve busy members is the Building Design and Construction Sub-Committee. Architect Hugh Brown is Chairman; Robert Ralston, Contractor, is Vice Chairman, and Donavon Nickel, PE, is Secretary. Both Baume and G. C. Ed Jones work as advisors for this large group. The Sub-Committee for Construction Types of Classification and the Fire Zones Sub-Committee is



**John Stone, PE, Director Building Inspection Division Department of Public Works.**

chaired by Engineer Sidney J. Flook and Building Official Eugene Burkhart, PE, serves as Vice Chairman and Secretary. Advisor for the DBCC is George Westerberg. The Demolition, Safety and Moving Sub-Committee — Allen Holbrook, Building Official, Chairman; James Hastings, PE, Vice Chairman, and Dan Porter, General Contractor, is Secretary. Ed Jones is the Advisor. Heading the Occupancy Requirements Sub-Committee is Donald R. Roark, AIA, as Chairman, with Building Official Harold P. Sennett as Vice Chairman and Lt. Pete Callinicos, Fire Services, as Secretary. John Stone, PE, is the Advisor.

Laurels are certainly due not to just the above named members of the construction community, but to all those who serve actively on the Denver Building Code Committee and its sub-committees — strictly in the public interest — and without any remuneration. Given innovative guidelines and this kind of dedication, not only will all segments of the Industry move forward, but all of Denver's citizens will be well served.

And, best of all, this is a *permanent* committee; its membership will vary from year to year, but the good work of keeping Denver abreast of the times will continue. It is a Code being largely written by those who use it — rather than by those who must administer it. The Construction Industry is by no means static — it does not stand still and neither should the codes which govern it.





# highlighting

## the national convention

## the american institute of architects



*Jody Proppe, Executive Secretary for Portland Chapter and the Oregon Council talks it over with Bob Harris, AIA Staff in the Exhibit area.*



*The Boys from Boise—Idaho Chapter President Charles Hummel (left) and John Daly.*



*At the AIA Business meeting . . . left to right: Gerald Pomeroy, Seattle President; William Bain, Jr., Washington Council Fearless and President Joseph Hensley, Spokane.*

**Candid Camera: Robert Fehlberg, FAIA  
Regional Director/Northwest**

### keynote

Underscoring the Convention's theme "A Humane Architecture" — Los Angeles Mayor Tom Bradley called for a federally guided policy for "the orderly, balanced and reasoned growth of urban and rural areas" within which "local policies can be implemented." City mayors, said Bradley, have been "compelled to take a position of advocacy." "However, a national growth policy which ignores local governments is not serious about succeeding. Local government is closest to the problems and the people and in any plan to control growth, it must be considered an essential institution."

Mayor Bradley spoke at the formal opening session on Monday afternoon, 20 May, in DAR Constitution Hall where representatives of the 24,000-member Institute were gathered for their 106th Grand National held this year in Washington, D.C.

### awards on loan

Theodore Liebman, chief of architecture for the New York State Urban Development Corporation, made the suggestion at the 1974 convention that AIA Awards traditionally given for design excellence should only be given temporarily and recalled if later studies show the building to be unlivable! Mr. Liebman was really kidding "on the square" — sincerely endeavoring to persuade architects to pay more attention to how people use buildings and to focus on what people really need. He further commented that he would like to see public health departments cite a building as being psychologically unhealthy if it makes the people who work in it unhappy, just as they might require the closing of a restaurant as a health hazard for having too many mice.



## energy policy

The Institute membership adopted the report "Energy and the Built Environment: A Gap in Current Strategies" prepared by Leo A. Daly, FAIA. The Daly report stressed the need for increasing energy efficiency, called for further research into the problems and means of energy conservation and for a national energy conservation program in the built environment. First on the list for future action was the formation of an AIA Energy Steering Committee and an advisory council on research. Collection and evaluation of energy saving ideas was also recommended, along with their distribution in a looseleaf notebook of "energy opportunities."

Members of the newly formed AIA Energy Steering Committee are: Leo Daly, FAIA, chairman; Herbert E. Duncan, FAIA; John M. McGinty, AIA; Robert Burley, AIA, and John Eberhard, AIA, president of the AIA Research Corporation.

## leaders elected

Louis de Moll, FAIA, of Philadelphia was elected to the office of first vice president and president-elect by acclamation at the 1974 convention. Mr. de Moll served as vice president in 1972 and 1973 and is currently chair-

man of the AIA Commission on Institute Affairs. He will succeed William Marshall, Jr., FAIA (who assumes the presidency in December), in December of 1975.

The three vice presidents who will also take office this year are Elmer Botsai, FAIA, of San Francisco; Carl L. Bradley, FAIA, of Fort Wayne, Indiana, and John M. McGinty of Houston, Texas. Elected Institute Secretary was Hilliard T. Smith, Jr., FAIA of Lake Worth, Florida.

## and more business . . .

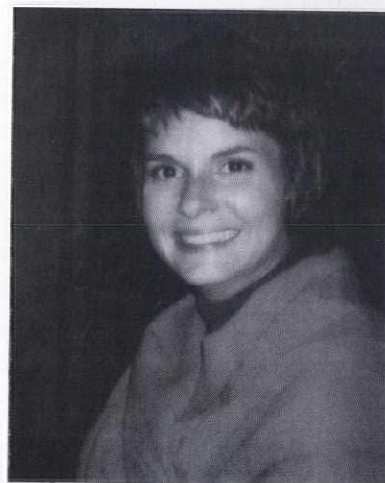
Passed by the convention with more than the required two-thirds majority . . . a by law change which will stabilize individual members' dues while maintaining Institute programs and services in what President Archibald Rogers, FAIA, termed a "stable state." Future increases in dues to fund programs or services will, in future, have to be approved by the membership.

Also passed was a resolution committing the Institute to work for appropriate public disclosure laws with respect to political contributions. In a related resolution, delegates called on any architect making a contribution to political candidates or parties to do so publicly, in their own names and as individual citizens.

A resolution calling for Institute support for the proposed Equal Rights Amendment to the Constitution was also passed, but only after spirited debate with the opposition surprisingly spearheaded by an architect of the feminine persuasion.



*Captain Fielden/SS WMR*



*Secretary of the Navy*

## "it's all water under the gate now" . .

Robert A. Fielden, AIA  
Director/Western Mountain Region

The only thing more outrageous in Washington, D.C., than the Watergate Scandal is the price of hamburgers at the Sheraton Park Hotel. For as mountain people raised with the Golden Arches . . . hamburger, fries, a shake and change from your dollar . . . it's a real shock to awaken and face the world of East Coast reality. It's no wonder that deficit spending has become a way of life. There is no possible way, except working for the Government, that an honest man can make enough money to stay in Washington, D.C. . . . and operate in the black; and for the Government to support the per diem he requires, a red ink supply as large as the Alaskan oil reserves is necessary to lubricate the presses.

The night of the Pension Ball, and a really great party (to advertise the fling, members of the host chapter sported badges reading "Anyone For Balling"), the Secretary of the Navy decided that she would pre-empt the 10:00 p.m. dinner (at \$18.00 a head) with a small snack. Finding the small

snack shop closed, she guided me through the traffic of the hotel lobby into the coffee shop, and into a nice dark corner where she promptly, without the need of a menu, ordered a hamburger, no fries, and no shake.

\$3.50 and a burnt burger later, we headed off to go balling . . . only to find out at dinner time that Mommy wasn't hungry. \$3.50 for a barren burger is more than hijacking. But the \$21.50 that I spent that night for the greasy spoon special still produces gastritis.

There was probably more strong vocal bombardment that night than was spent during the whole convention. In fact a recording of the rather dull business session would probably support that statement.

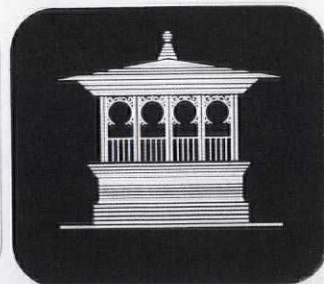
Tom Muths was so bored that the hair fell off his chin. The only thing more boring to Tom is my conversation . . . so Goodnight.





... a very good neighbor

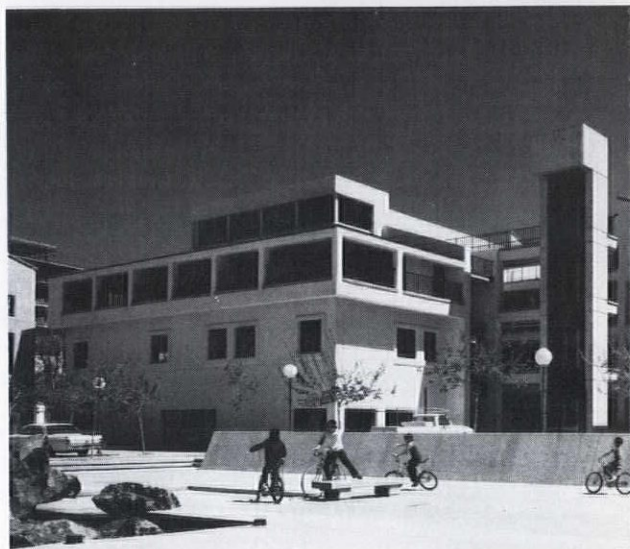
*La  
Placita  
Village*



Those of us fortunate enough to attend the Region 10 Conference of the Construction Specifications Institute in sunny Tucson this past Spring were more than a little impressed by the good neighbors of our convention hotel, the Braniff Place. The Governmental Complex is stunning—the Community Center with Arena/Exhibit Hall, Little Theatre and Music Hall must certainly rank among the most attractive in the country, and on May 3, another new good neighbor joined the company. That was the date of the dedication of La Placita Village—a cluster complex of specialty retail shops, restaurants, recreational facilities and prestige offices.

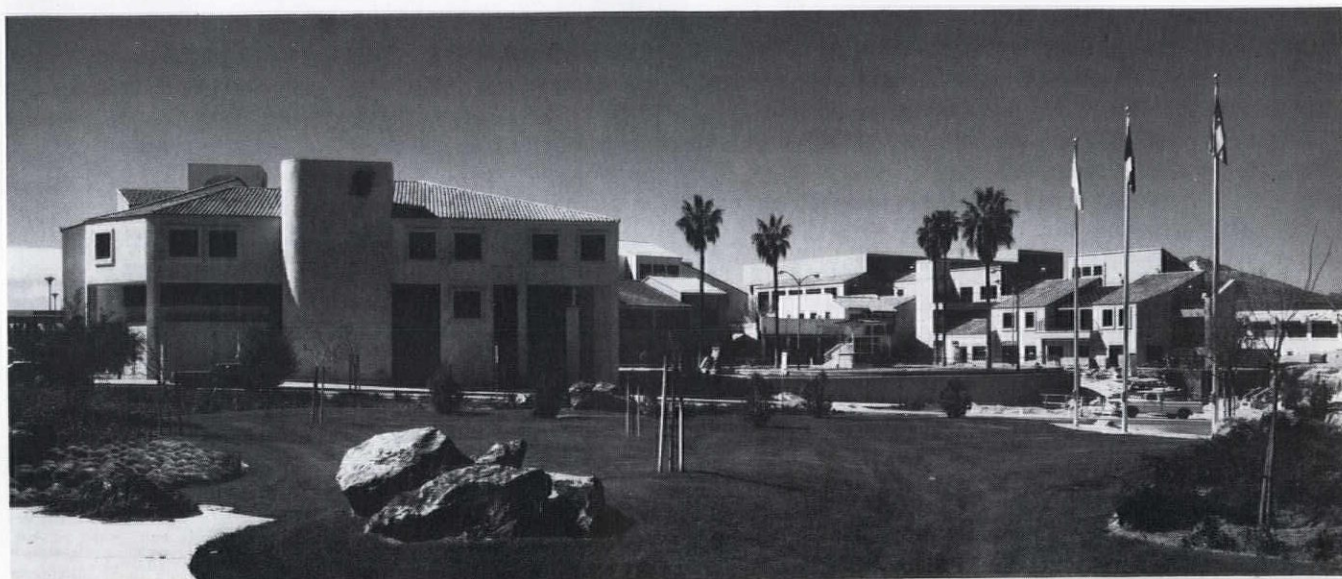
Thanks to the principals and staff of the designers . . . Architecture One, we have followed this project from early schematics, through construction to its ultimate completion.

The Village is in the midst of downtown Tucson under the Pueblo Center Urban Renewal Program and is built around



a tiny park on which stands an historic gazebo. Throughout the five structural levels the character and flavor of historic Tucson has been captured through ample use of wrought iron, adobe, balconies, tiled roofs, brick walkways, stained glass, mosaic and stone.

However, the very fine photography of James Grygutis of Architecture One tells the story of La Placita Village very well—lyrics are really unnecessary.





# Eight Day Wonder-ful Time

## Italy

### *A very short course*

by: James A. Burran, Jr., AIA  
Tourist/Clovis, New Mexico

*Jim Burran—our "whirlwind" traveler—has been in private practice in Clovis, New Mexico, for the past two decades, and for the last few of those years has been associated with John (Himself) McHugh in a joint venture firm. . . . "When in Santa Fe," writes Jim, "we call the firm McHugh, Kidder, Burran and Wright. My alma mater of Texas Tech," he continues, "offered me a teaching appointment this year, and I took it—sort of a reverse sabbatical. Teaching in a University is certainly a different world, and I'm enjoying it. About the Italy trip—Beth and I had an opportunity to go with a chartered group, round trip, leaving from Amarillo, Texas, for a total time of eight days. The price was ridiculously low, and it was a trip we'd always wanted to make."*

*The result is this article . . . a composite of Jim's daily notes. An Eight Day Wonder-ful Time!*

Departure time: 3:00 p.m. on a Tuesday from Amarillo. Touchdown at Oklahoma City to pick up eighty-two people. Landed at Kennedy in New York at 4:00—departure: 5:30 p.m. and Rome at 11:00 the next morning. The six hours between Central and Rome time made this about six in the morning in Lubbock. En route there were meals, unlimited cocktails and a movie—the cocktails made it all bearable. We had tire trouble on the 'plane and when we landed in the "Eternal City"—we were greeted with no less than 20 ambulances and 6 fire trucks on the runway. Obviously, there was no mishap.

Beth and I knew time was of the essence and tried sight seeing that afternoon but had to give it up and take a nap. Our hotel was an older one (Hotel Palantino) but very nice and right in the middle of the city—four blocks from the Colosseum. By evening, we were refreshed and ready to enjoy San Pietro in Vincoli (St. Peters in Chains), and were truly impressed with the great antiquity of the building, the magnificent Michelangelo Moses and the chains from St. Peter's Roman imprisonment. We went to an excellent restaurant for dinner.

I have a teacher friend at Tech who spent several years in Italy and he made me a list of places to go . . . even wrote notes to give to the restaurant owners. This was one of the smarter things I've ever done . . . and it was quite accidental! The food in Rome is excellent . . . the service good, if you don't get in a hurry. The people are gracious. After studying its great history—after dreaming of going some day, it was



*Beth and Jim at the Vatican.*

difficult on that first evening, more or less 24 hours from Lubbock, to believe we were really there!

Thursday's bus tour took in most of the historic buildings, monuments, fountains and the Vatican. St. Peters is in such huge proportions, it's difficult to take it in and the workmanship and detail is unbelievable. The Michelangelo statuary and the Roman use of marble is beautiful. Travertine is even used as curbing on all of the streets and the paving is cobblestone. Nearly all buildings, inside and out, are covered or constructed of marble. The Pantheon is an architectural marvel. . . . I'd hate to see any brick layer I know try such a feat.

Unfortunately, the only unpleasant people on the whole trip were Americans . . . often loud, drunk and/or generally obnoxious. It made you want to apologize to someone for them. There was no fuel shortage we could see. The Fiats were all over the place, and you took your life in your hands to cross the street. Taxis were about a dollar for almost anywhere you wanted to go. The money exchange is 700 lire for one dollar. I was never so rich! You carry thousand lire bills around like dollars at home. I had great difficulty converting the money to terms I could understand . . . you think twice when the tip for lunch comes to 1500 lire.

Friday, we rented a car and guide and went to Florence. Italians, of course, call it "Firenze"—much more suitable. (I don't know who or how anyone could come up with Florence) . . . a true Renaissance City. It doesn't look like anything has changed since the fifteenth century. The Cathedral Duomo is magnificent but nothing like St. Peters. Florence is a great fashion center, and the shops are something else! Our guide was not too sharp, so we wasted time which Beth and I knew was so short, we regretted not being





... the old bridge, Firenze.



lunching in Capri ... the wine comes first and is very good.



Hadrian's Villa—300 acre residence.

able to see everything we should have. The David in Galeria de la Academia is huge ... also the four unfinished slaves—massive. The Pieta in the Maria del Flore was a moving experience ... even more beautiful to us than the more famous one in Rome.

We bought an oil painting. ... I feel it is excellent and it will serve as a fine reminder of our trip. Renaissance Italy was a nation of genius—but I didn't see any well designed modern buildings or signs of positive accomplishment. They seem to be living on past glory. This may be an unfair assessment, however, we certainly couldn't really make any evaluations in our brief eight days.

Saturday was a day and a half ... we left at seven in the morning and returned to the hotel just before midnight. The itinerary included Naples, the Isle of Capri and Sorento. The traffic in Naples is unbelievable. ... I don't know why the streets aren't running with blood. Pedestrians cross anywhere, pay no attention to the cars and the cars are thick as flies with drivers yelling and gesturing out the windows as only Italians can. They *do* have street lights, but nobody pays any attention to them; the natives say they are decorative only. One section is reserved for thieves and the black market, and it's understood that the police don't go into that area. The police are always in pairs and the Italians told us it's because they are so ignorant that only one can read and the other can only write.

We went to Capri on a Russian Hydrofoil which travels about forty miles an hour. Capri is delightful and we saw almost all the famous villas. We took a small boat to the Blue Grotto and lunched on the top of Capri Mountain. Meals always start with "pasta" (spaghetti, noodles, macaroni)—they have it like we have salad. But the wine comes first ... all they want to know is if you want red or white, it's very good, costs practically nothing and is usually included with the meal.

At Sorento we went to a cameo factory, saw them being made and had an opportunity to buy. I really learned more about cameos than I wanted to know; however, they did have some beautiful coral and pearls set with gold and diamonds. We bought some sweaters for the children (and, of course, Beth). The knits and silk are very fine on Capri, and the price makes them even more attractive. The countryside is dotted with medieval castles on the little hills with small houses built all around them. We saw a huge one in Naples complete with moat. Most are still inhabited.

Sunday, we took the bus and went to Tivoli. No private cars are allowed on Sunday so for the first time traffic was no problem. We went to Hadrian's Villa which history books say is the largest residence ever constructed for one person (over 300 acres). Having reviewed Sir Banister Fletcher in preparation for the trip, I was authoritatively prepared. Although much of it was ruined during the Dark Ages, there's a surprising amount of the Villa still standing. We also visited the Villa D'Este which was worth the trip if we hadn't seen anything else. We lunched at a Tivoli restaurant which has been in business in the same location for over 200 years. It is on the site of an early temple and many of the



marble columns and masonry arches are still standing around the restaurant. They had plaques in the entry with names of all the royalty who had eaten there . . . most impressive!

There are eleven miles of the old Roman City Walls still standing, and several of the elaborate gates. The wall is about 20-30 feet thick at the base and rises about 50 feet or more in height. It's difficult to judge sizes—everything is of tremendous proportions. An artist has draped one section of the wall with huge plastic sheets tied with ropes (*Christo in Italy?*), because, he says, the people don't appreciate it. His theory is that when he uncovers the wall again, some time in the future, the people will start appreciating it again. We passed by an enormous travertine marble quarry on this Sunday which must have covered 10 square miles and was 100 feet deep in some areas.

Monday, we went to the Sistine Chapel, the Vatican Museum and the Colosseum. The Museum is something to behold. It would certainly take several days to see it all . . . we could only catch highlights in our half day. There are countless Greek and Roman sculpture pieces, thousands upon thousands of the bits and pieces of history—everything from priceless jewels to tapestry to maps. The first building was started about the time of Christ and the latest addition looks brand new. The new addition is contemporary (one of the very few we saw), very well designed and a perfect blend for a modern method of displaying antiquity. The Colosseum was pretty much as expected, but walking into and around it was a special treat especially when you considered all the people who had walked in those same spaces.

We didn't get to see everything; it would take months to really take it all in. The tour people gave a going-away dinner party for us on Monday night . . . the only bad meal we had in Italy. Most of the people on the tour were ranchers and farmers, and some of the finer things were lost on a few of them . . . about twenty left the dinner party to find some western music and go dancing. If travel is educational and cultural, this particular group might benefit from another trip or two.

Tuesday morning they got us up early so we could hurry up and wait for the airplane. The airport was swarming with armed guards—the plane that had been blown up a few weeks ago was still leaning on the ramp about 200 yards away—they checked everybody thoroughly. We flew over the Swiss Alps, quite a sight, and landed at Shannon, Ireland, to refuel. Shannon has a duty free shop so there was perfume for Beth, at half price, and a 36MM camera for me (needed in the teaching business).

Two and a half hours to Shannon, six and one half hours to New York can only be described as a long, long trip. The only thing that kept us going was the Scotch. I was afraid to take my shoes off for fear I couldn't get them back on. If you think a 30-hour day is long, you're right! Maybe the only solution is to stay drunk all the time, but that's difficult! The worst part of the trip is the readjustment. The outside of you knows you've changed from day to night twice, but



... walking in St. Peter's Square.



*Romulus and Remus at the Villa D'Este . . . "the Villa was worth the trip if we hadn't seen anything else."*

your insides don't understand. We were up at six, took off at 11:00 a.m.—flew for nine hours, and it was still daylight in New York! I thought it would never get dark! We cleared customs in about three hours, flew three and a half hours to Oklahoma City, 45 minutes to Amarillo and a two-hour drive to Lubbock, then back to work the next morning. Almost more than the old body can stand!

In a sense, this whirlwind Italian jaunt might seem, in retrospect, like sheer masochism, but we wouldn't have missed it. We were in the same places where the early Christian Church began, we may have walked in the same places as Peter and Paul, we traveled on roads where Roman Legions marched. We saw where Caesar and Nero lived. Our appetites were whetted—we hope to go back again some time. Slower.



## TAKE ME TO YOUR LEADER



**Kenneth L. Searl, President  
Portland Chapter  
Construction Specifications Institute**

A most unusual guy has been elected president of the Portland Chapter of the CSI, and as his boss, I think I'm the one most qualified to write a little skit about his career.

About 15 years ago I received a call from the Secretary of the Oregon State Board of Control who stated he was sending down to me a job applicant for the clerk-of-the-works position on one of our state projects. He stated if this Mr. Ken Searl looked all right to me, the state would hire him. The job applicant showed up, and even though he was a pretty rough diamond I felt he had plenty of potential. He told me he had been an electrician's mate second class in the Navy and had worked for the Corps of Engineers in Utah as an inspector, as a construction superintendent in Idaho and Utah, and had once served as a building inspector in Ogden, Utah, and was at the moment selling used cars. His credibility was such I'd have bought a used car from him, so he became a state inspector for a good number of years on our and other Oregon architects' state projects.

About 12 years ago we needed a full-time inspector on a federal post office and office building in Medford, and for over a year he was our Medford branch office. Upon the completion of the project we decided he was such a gem we would keep him as a permanent employee working out of both our Eugene and Portland offices as our project field man. It became apparent to us that he was too valuable to just supervise construction, and if anyone was qualified to write our specifications, it would be Ken Searl. As a result of his writing our specifications, we involved him in the CSI, and like anything Ken does, he does too well, and as a consequence he will now be the Portland Chapter President.

He has been in the midst of a bunch of long-haired kids in our drafting room for the past ten years, and it is amazing to me how well Ken has adapted to the commune life style. All these young Turks come to Ken for advice as to the

practicalities of brutalism—will it leak or fall apart or can it even be built. It's good to have this communication between the blue sky designer and the practical nuts and bolts veteran, and as a result our office has had fewer problems on projects since Ken became an in-house member of our team. Regardless, these long-haired kids have had considerable influence on this square-dancing, Elk, Legionnaire, camper-owner, and Coke-drinking square. He now wears the most mod and colorful clothes of anyone in our office (which includes a swinging Ms. interior designer), and nowadays he will occasionally bend an elbow late Friday afternoons. In fact, he has given up on our man in Washington after years of wearing an American flag in his lapel, and he just might vote for a woman running for governor. He still gets incensed over our kids buying Volkswagens, and absolutely forbids anything foreign made on our projects. On birthdays of our staff, he is the one who brings the cake, not the gals in the office—I think they're psyched up over his baking ability. Apparently he is a pretty good speaker, because he has recently addressed both the Salem and the Portland chapters of Women in Construction—for an old guy he really must have sex appeal because it couldn't be his corny jokes.

His latest venture is taking night courses in estimating at Chemeketa Community College, and what concerns me most is that he just might take a course in running an architectural office. If he does, I will have to find other employment, because Ken just does things too well—which means that he'll be the best CSI President the Portland Chapter will ever have, past or future.

H.R.W.  
WE Group



**James G. Bennett, President  
Phoenix Chapter  
Construction Specifications Institute**  
New Fearless Leader in the "Valley of the Sun" is Engineer



James G. Bennett with Engineers Testing Laboratories, Inc. Jim hails from California, a native of El Centro, and served as a Navigator with the Fifth Air Force in Korea completing his education following his discharge. He graduated with a BSCE degree from San Jose State University in 1958.

A registered professional engineer, he is active in a number of civic and professional organizations including the Arizona Consulting Engineers, Camelback Kiwanis, the Phoenix Metropolitan Chamber of Commerce and of course, the C.S.I. Since his graduation, Jim has been a member of the Engineering Testing Laboratories staff serving as Project Engineer and as Area and Branch Laboratory Manager. He has recently been promoted to the position of Executive Vice President of this 110 member engineering organization, a subsidiary of the Howell Corporation of Houston, Texas.

Jim and his wife Virginia live in Scottsdale and are the parents of two children—Lee and James, Jr.

He will be aided and abetted this next year by Charles L. Pearson as Vice President; Robert Tyler as Second V. P.; John Beaulieu, Secretary and by R. W. "Bill" Myers as Treasurer. Have a great year, fellas!



**Fu Hua Chen, President**  
**Consulting Engineers Council/Colorado**

On April 22nd at the CEC/Colorado Annual meeting, the presidential gavel passed to Fu Hua Chen—20th "fearless leader" for the consulting engineers in private and independent practice. Taking office with Chen are Stanley T. Thorfinnson, Denver, vice president; Robert S. Nedell, Denver, secretary-treasurer; and Leonard Rice, Denver, president-elect. Newly-elected directors are Russell M. Miller, Fort Collins, and Ronald K. Blatchley and Richard C. Hepworth, both of Denver. Also serving on the board of directors will be David E. Fleming, Denver, national director; James H. Stewart, Fort Collins, past president; and Malcolm R. Meurer, Denver, national officer of ACEC. Holdover directors are Howard C. Dutzi, Colorado Springs; Charles E. Bell, Englewood; and Gordon A. McDonald, Denver.

Chen, president of Chen and Associates, Denver-based consulting engineering firm, has just completed a two-year term as national director, representing the Colorado Council



## **BROOKSWOOD** Naturally Aged Pine Boards for Distinctive Walls

## **NOW AVAILABLE IN COLORADO**



### Unique Timeless **BROOKSWOOD**

These rare boards of naturally aged Ponderosa Pine are cut from trees 250 to 400 years old. Each board of Brookswood is different, etched and stained by nature, and each wall of Brookswood is unique—distinctively yours. Random widths and lengths, rough or smooth face. Manufactured by Brooks-Scanlon, Inc., the Pine People.

*For Name of Dealer Nearest You, Call*

**Brooks Scanlon, Inc.**  **ABCO Division**

P.O. Box 16107  
Denver, Colorado 80216  
(303) 287-2591

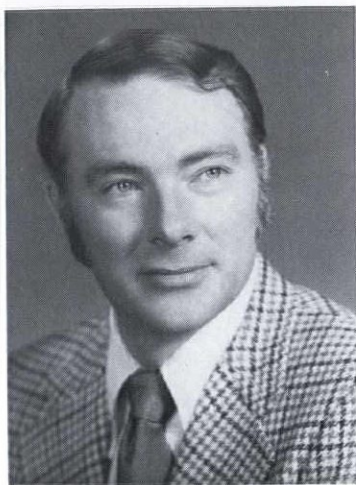


at business meetings of the American Consulting Engineers Council.

Educated at the University of Michigan, the University of Illinois and Imperial College in London, Chen has more than 30 years of full-time experience in soil mechanics and foundation engineering. He was the chief engineer of the Burma Road, the Koknor-Tibet highway, and has a long list of accomplishments in all parts of the world.

He is a registered professional engineer in Colorado, and holds memberships in several technical and professional societies, including the American Society of Civil Engineers, the National Society of Professional Engineers, and is the author of many articles published in leading technical journals.

Welcome, Mr. Chen, to the phalanx of the fearless—you should feel right at home.



**Don Smith, President  
Willamette Valley Chapter  
Construction Specifications Institute**

There are only two reasons why a CSI Chapter (or for that matter any group) would re-elect a member to serve a succeeding term as its president. Either the group is lacking in qualified candidates or the president has performed so well that the membership recalls him by popular demand. Fortunately for the Willamette Valley Chapter CSI (Eugene, Oregon) Don Smith's re-election falls into the latter group.

Under Smith's leadership the Eugene Chapter has maintained continuing growth and advancement. Chapter membership is at an all time high, meeting attendance has averaged over 50% of the Chapter enrollment and technical activity has been undertaken by more than half of the Chapter membership (the Chapter was presented a Technical Excellence Award at the Portland CSI Convention in June).

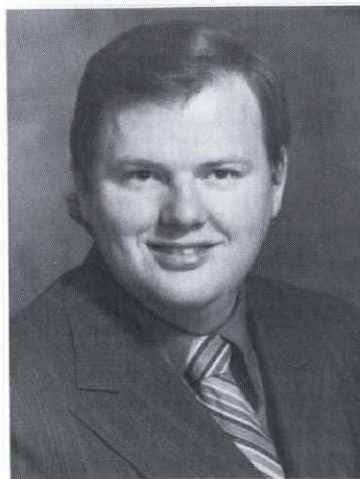
Smith's success has not been limited to CSI. In 1968 he was elected President of the Southwestern Oregon Chapter AIA, he served two years as secretary to the Oregon Council of Architects, and he was a three year member of the National AIA Committee on Production Office Procedures. He is a member of the Oregon State Fire Marshal Region Appeals Advisory Board, the City of Eugene Mechanical Appeals Board, and the Lane Community College Drafting

Advisory Committee. He is currently President of the University of Oregon Campus YMCA Board of Directors, and is a visiting lecturer at the University of Oregon School of Architecture. In his spare time Smith functions as a partner in Moreland/Unruh/Smith, Architects and Planners.

Assisting Smith will be Hubert Stokes, First Vice-President; Benny Bartel, Second Vice-President; Irene Trippett, Secretary; Morris Kielty, Treasurer; Dick Kellner and George Schultz, Directors; Rich Maris, Junior Director; and John Brockett, Advisor.

Smith and his Officers were installed at the Chapter's Annual meeting on June 27, 1974, when the Chapter presented its annual Awards Achievement.

#### **Edlund/ Eugene**



**Dale S. Brookie, President  
Spokane Chapter  
Construction Specifications Institute**

We first shook hands with Dale Brookie in 1971 when he was the Publicity Chairman for the Northwest Regional Conference/AIA held in October of that year in Richland, Washington. At that time he was an associate and Branch office manager for the architectural firm of Culler, Gale, Martell and Ericson of Spokane. A little later that same year, he moved back to Spokane to open the Tan/Brookie Partnership which became a year later... Tan/Brookie/Kundig, Architects-Planners-Interior Designers. This enterprising group has just completed several projects for EXPO '74 including the Iranian and Philippine Pavilions. Dale's emphasis within the firm is in the area of contract documents, specifications and contract administration.

Dale is a 1965 graduate of Montana State University (man, they turn out a "passel" of fearless leaders up at Bozeman) and his first job was with Willard Johnson in Billings. He then joined the Culler, Gale, Martell, Ericson firm in Spokane moving over to Richland in 1969. He joined the Yakima Chapter of CSI in 1970 and became a member in Spokane when he moved. He is also an active member in the Spokane Chapter/AIA and in Kiwanis.

His "team" for FY 1974-'75 includes Vice President (Technical) Art Nordling; Vice President (Membership) Norm Baker; Vice President (Programs) Bill Mincks; Secretary



Stu Stevens and Treasurer John Sorenson. Pat Lightfoot and Bob Smith serve as members of the Board.



**James E. Adkins, Jr., President**  
**Puget Sound Chapter**  
**Construction Specifications Institute**

Jim is a Specifications writer for the Seattle firm of Wright, Gildow, Hartman and Teegarden, where he has been employed since 1967. He was born and educated in Texas, graduating from the University of Texas with a Bachelor of Architecture degree. Prior to college, he served his country as a paratrooper (he actually jumped!) in the occupational Army in Japan.

During and following his college education, he worked for Page Southerland and Page, prominent architects in Austin, Texas. In 1958, he migrated, a "fur piece," to Seattle where, as Jim describes, he joined the "floating drafting pool." He worked for several of the larger architectural firms in Seattle. In 1960 he traveled to Berlin, Germany, as the dependent spouse of his wife who had a Fulbright scholarship to study art. During the year and a half in Berlin, Jim worked for Architect Franz Mocken.

Returning to Seattle, Jim became employed by the Austin Company where among other things he wrote specifications for the Boeing 747 manufacturing facility. Boeing claims their building to be the world's largest building by volume. Jim being a native Texan, where things are BIG! BIG! BIG! adapted to this monstrous task very readily. Jim has been continuously involved in specifications writing for the last nine years. He is demonstrating his skill by teaching a specifications writing course at Seattle Community College in their two year architectural technician curriculum.

He has served the Puget Sound CSI Chapter as Membership Chairman, first Vice President, Second Vice President, Convention and Region Conference delegate and other numerous activities. Jim's wife, Charlotte, and his son, Rainer, enjoy hobbies of Folkdancing and mountaineering. In addition, Jim claims to be an "expert" watercolor artist.

With Jim's experience and interest in Specifications, and his sincere interest in CSI—the Puget Sound Chapter can look forward to another progressive year.

**Walter Bishop/Puget Sound**

## AVAILABLE

Large variety of 20 to 30 minute  
 film and slide presentations  
 Ecology Conservation



will be happy to present these  
 programs to any group wishing a  
 breakfast, lunch or evening pro-  
 gram. To arrange for any of these  
 programs call

Buzz Coffman



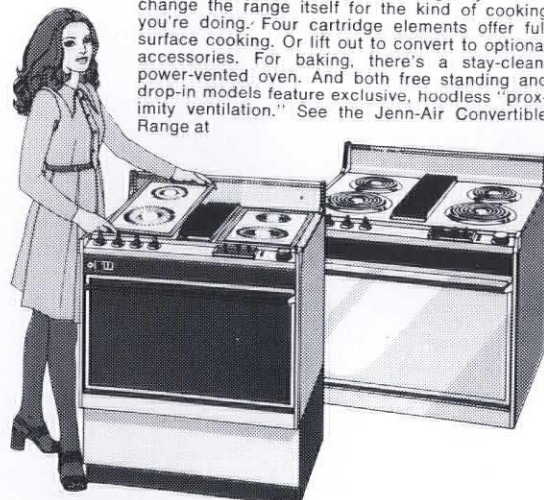
322-5890

JENN-AIR *Announces*

## The world's first convertible range.



With Jenn-Air's Convertible Range, you can change the range itself for the kind of cooking you're doing. Four cartridge elements offer full surface cooking. Or lift out to convert to optional accessories. For baking, there's a stay-clean, power-vented oven. And both free standing and drop-in models feature exclusive, hoodless "proximity ventilation." See the Jenn-Air Convertible Range at



**JBN CORP.**

nelson distributing

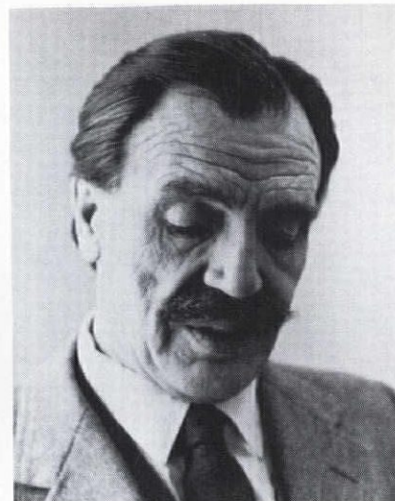
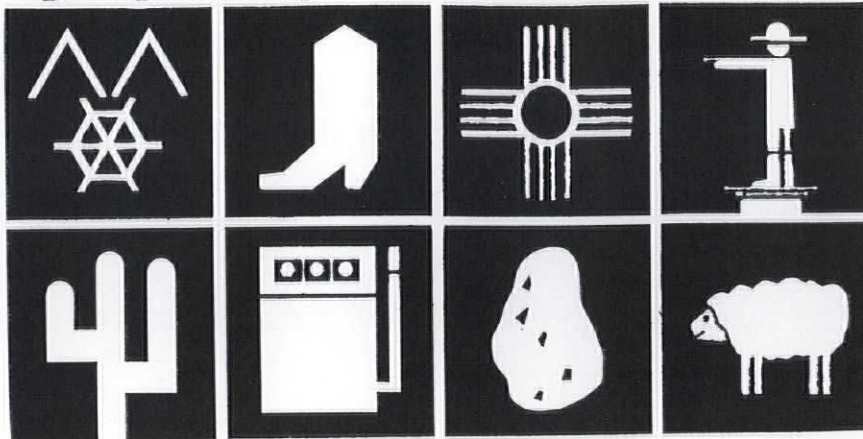
1390 W. Evans

303/934-2411

Denver, Colorado 80223



# symposia/around the region



*Ian McHarg*

## **alaska**

### **Editors Make Good**

Ink stained fingers will wield the gavel at the meetings of Cook Inlet /CSI during the upcoming year. Former editors of the Inlet-Outlet have moved into the larger executive sphere. New "fearless" is Ron Campbell and the next-to-chief honcho is Kit Duke. The rest of the home team includes Secretary-Treasurer Bob Otis with Dave Heusser, Professional Board Member, and Ken Flanigan as Industrial Board Member.

The group met on 19 June to discuss Soils and Foundations Design and Associated Costs. They meet on the third Wednesday of each month at 6:15 p.m. for "attitude adjustment" and dinner at the Gold Rush Hotel in Anchorage. Anchorage, incidentally, will play gracious host to the 1975 Region 12 Conference, an event which is already being anticipated by CSI-ers in the Great Northwest.

## **arizona**

### **Armory Park Plans**

Thirteen architectural students from Arizona University under the direction of Associate Professor Robert C. Giebner presented plans to Tucson city officials on May 20 calling for the restoration and conservation of the Armory Park area.

This 34-block heritage-rich section lies southeast of the city's central business district and was one of the three areas pinpointed when Tucson adopted the Historic Zoning Ordinance in 1972. Actually no area has yet been zoned under the ordinance, but Professor Giebner feels the University study makes a significant contribution toward implementation.

Bounded roughly by the Southern Pacific Railroad, East Broadway, South

Stone Avenue and East 18th Street, Armory Park represents a prime example of Tucson's turn of the century development. The students inventoried the neighborhood citing particularly Architect Henry Trost's Public Library, the Freeman Memorial Bench, the Kitt House, the Velasco House and others. The study calls for restoration of some buildings and the rehabilitation of others. "The idea," explained Professor Giebner "is not to freeze the area. We want to conserve it, to continue its progression with responsive contemporary architecture."

Recommendations of the UA study include the adoption of an historic landmarks program; traffic studies to regulate flow and maximize use of recreational facilities; provide a revolving fund program for the protective purchase of properties and to encourage compatible development of the nearby railroad property.

## **colorado**

### **CML 52nd Annual Conference**

June 19-21, members of the Colorado

Municipal League met at the Broadmoor in Colorado Springs for important discussions, a generous serving of sociability, and the opportunity to hear some very outstanding speakers. Addressing conferees at the luncheon on the 20th — Ian McHarg, Chairman of the Department of Landscape Architecture and Regional Planning, Graduate School of Fine Arts, University of Pennsylvania. Mr. McHarg has an international reputation, has authored more than a baker's dozen of books and articles and frequently is seen on TV. On Friday, the luncheon speaker was Mayor E. J. "Jake" Garn of Salt Lake City. Mayor Garn is First V.P. of the NLC and one of three mayors on the "New Coalition" committee organized to consolidate response to the "New Federalism." His topic was . . . "The Changing Role of Local Governments in the Federal System."

On Friday, the ladies were privileged to hear Architect and Preservationist Langdon E. Morris, Jr., "Lang", give his delightful illustrated talk . . . "Why Are



*First Lady greets F. J. MacDonald, Symposia's Contributing Editor/Landscape at an afternoon reception following presentations of Awards by the American Association of Nurserymen.*



Old Colorado Buildings So Important." A lighter touch was provided at the Annual Banquet on Friday evening when speaker Dr. Murray Banks, author and psychology professor, entertained conferees with both wisdom and wit. His subject . . . "Just In Case You Think You're Normal."

#### Career Study Program

The Colorado Central Chapter/AIA after their happy participation in "Explo", the Career Exploration Fair, has taken on a new assignment. They are assisting in a career study project for the Jefferson County School District. Stu Ohlson was appointed by Fearless Leader Neal Carpenter to head up the CCC effort and the group has begun a pilot program to expose 8th grade students to careers in architecture. Also participating in this endeavor are CCC members Bob Strange and Ned White.

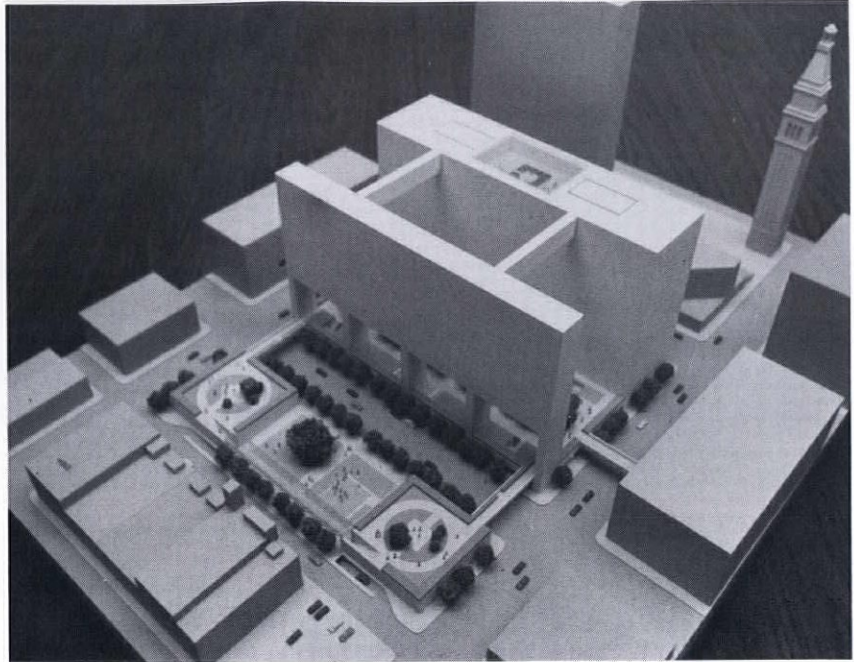
#### Pikes Peak/CSI and Ladies

*A tip of our editorial bonnet to the Prettiest Immediate Past President, Atha Lavalett. She has been an ex-officio member of our Symposia family for lo these many, but this month, it's all terribly official. To celebrate she sent along a great report of the May 31 Pikes Peak Chapter CSI meeting . . . to wit:*

"We held our annual ladies night at the Holiday Inn North and our guest speaker was Micki King of the Air Force Academy . . . (Captain King, that is) who, as you remember, won a Gold Medal for fantastic diving ability at the Olympics in Munich. Captain King made the Olympics come to life by describing the day to day events shown in her slides as well as helping us to relive again her moment of triumph. Micki's enthusiasm for diving, the Olympics and her work at the Academy where she teaches was transferred to the audience and we almost kept her there all night.

"It was my privilege to give out some awards for the year. An award went to Ralph Fowler for his faithful service the past two years as Secretary of the Chapter and a Board member; to Terry Strong for his continued support of not only Chapter activities but Regional and Institute committee work; To G. Brad Bent for his effectiveness as Editor of INTENT and his continued support of Chapter activities. An award will be given at our next meeting to Bill Bottini for his dedication and achievement in preparing the Chapter study on Fees and Permits (Bill was unable to attend the ladies night function).

"The recent election of Chapter officers



*Neusteter Plaza Model: This is looking toward the historic Tower over the intersections of 16th Street at Larimer-Market alley and Larimer Street. Photograph: Dick Johnston/DURA*

is as follows: Vice President (to succeed to President FY 75-76): G. Brad Bent) Treasurer — Will Brown; Secretary — Nick Hyrniuk; newly elected Board Member — Gary Reifschneider. Del Doty — present Vice President — will take command July 1 with Tom Dunn as a carry-over Board member. I will serve the coming year on the Board of Directors as Past President."

*P.S.: Del Doty is Pikes Peak's new "fearless" — we'll take you to meet this most charming leader in an upcoming.*

#### Neusteter Plaza/New Project

In mid-May, the Denver Urban Renewal Authority's Board of Commissioners awarded 1½ blocks in Skyline to the Neusteter Realty Company for construction of a residential, retail and office complex estimated at \$40 million. It will be tagged Neusteter Plaza and brings to \$207 million the value of private investment in redevelopment completed or under negotiation for the 27-block Skyline project.

Plans are being prepared by Skidmore, Owings and Merrill, Robert H. Ciceri, associate partner/Los Angeles in charge, for the project which is to provide a unique and spectacular solution to the design problem of transition between Skyline and the old, low-rise commercial area to the northwest. The half block section between Larimer and the alley will have a one story retail structure at each end of the block flanking a landscaped, ground level, central plaza. The tops of

these buildings will have landscaped pedestrian plazas linked to their counterpart on the main block between 16th/17th streets, Lawrence/Arapahoe. Projected is a 16-story office building; a 240-unit apartment house and two levels of underground parking. The total complex will contain 874,000 square feet of floor space above grade and will be designed to include a variety of energy-saving techniques.

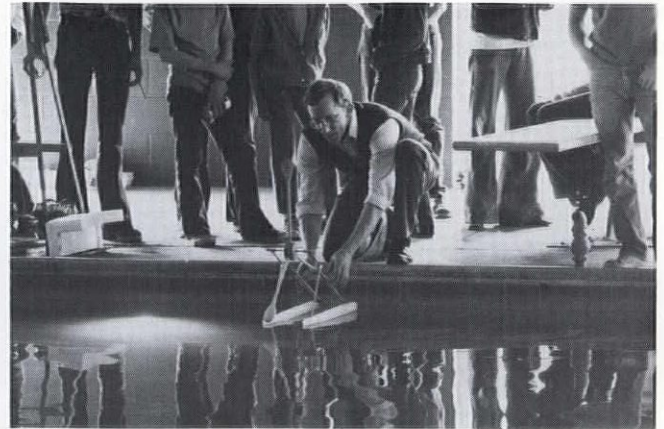
Following the 90-day period of negotiation on details leading to the development contract including preliminary construction plans — the Neusteter firm will prepare final construction plans, purchase the DURA site for \$1.4 million and proceed with construction.

#### Idaho

##### Western Engineers Meet

Yes, July is the month . . . 19-20-21 are the days and the place is beautiful Coeur d'Alene for the Regional Meeting of the American Consulting Engineers Council. Are you ready, you engineers in Idaho, Montana, Oregon, Washington, Wyoming, Nevada and Utah for a Meeting With Everything? Certainly, Coeur d'Alene promises a fantastic site for a family vacation . . . boating, swimming, fishing, golf, tennis, horseback riding, and communion with some of God's most beautiful outdoors. Plus — just thirty miles away is EXPO '74 in Spokane and great group trips are being arranged.





At right spectators at the Big Regatta and Boat Races watch as "Spoon Boat" is launched at left. MSU designs were unique, however Photographer Robert Fehlberg reports although Spoon Boat had great action it didn't make the length of the pool at the Holiday Inn.

There are a lot of pluses on the professional side too — the meetings are designed for information-rich discussions of important topics . . . Selection of Engineers; Kickback: Government Affairs; Company Ownership Policies and many others. You will do yourself a favor professionally to be on hand — and the family will have a ball. Idaho Engineers make great hosts so don't miss this one — July 19-21—Coeur d'Alene. A dandy!

## montana

### Architects Are Inventive

And at the Montana Chapter/Student Chapter A.I.A. Bash in Bozeman . . . they are! Thanks to our Roving Camera Man, Robert Fehlberg, FAIA (he doubles in brass — he's also Regional Director of the Northwest AIA Region), we have the whole, great and beautiful story of this Annual Affair.

The Agenda called for "business as usual" for the Chapter on Friday, May 10th, with the Annual Student Chapter Spring Party poolside at the Holiday Inn complete with Keg Beer and Nibbles. Student projects were on display the next morning in the same location.

Everybody got together at 1:00 p.m. following the Business Meeting for a Buffet Luncheon and for the Boat Races. Inland Montana Naval Architects put together some interesting craft for the Regatta Extraordinaire in the Holiday Inn Pool. Simultaneous events included a meeting of the Women's Architectural League or Volley Ball. A Wine and Cheese Party for Architects and Wives was hosted by O. Berg and Associates at their office, and on Saturday evening — the *raison d'être* for the entire affair . . . the Honor Awards Banquet for the Seniors and Students as held at the Holiday.

Top Award — the AIA Medal — went to Randall Mudge of Concord, New Hampshire, with Warren Hampton of Clinton, Montana, as Runner-Up. Glen Fries of Lewistown received the Alpha Rho Chi award. Undergraduates who earned recognition included . . . David Lintz (Esgar/Montana AIA); Montana Contractors' Scholarships of \$300 each to Mike Epsilansean and Frank Secon. Frank also received a \$220 Lovellday grant along with William Handley. Columbia Paint's \$100 went to Fred Hero and the Helena Architects' grant was won by Jack Rinjal. Sammy Walichi and Mike Epsilansean shared the National AIA Award.

*(Dear Students: It is possible your name is not only mis-spelled, it may not even be recognizable. "Fehl" is a good photographer — an excellent architect, but a long-hand pen-man he ain't. Please forgive errors and omissions!—Ye Ed)*

The Bozeman Blast was arranged by Student Convention Chairman . . . William Louis Hanley; the delightful program was designed by James Roland Neumaier and the Faculty Chairman was John N. DeHaas, Jr., of Montana State University.

## nevada

Bob Simpson, Our Man in Reno, has done a crackerjack job this time around. It was just a little late for last month's deadline, but we did get to publish the AGC/Student Award picture — but now . . . without further ado . . . here's what's

### New In Northern Nevada

NSPE — A good time to pass out kudos, a great big one to Richard Arden, incoming chief of the Nevada Society of Professional Engineers. Dick was cited by

the State Society as "Engineer of the Year" at their April meeting. The Reno City Council is conducting a series of public hearings on the NSPE's Energy Conservation Committee's recommendations for Code changes. Prof. Sandorf and his committee (with a minor input from the Architects) have completed their work with commendable dispatch — it is the City's baby, now!

AID — Reno's Interior Decorators have been well represented among the architects by the Norris-Thompson firm whose principals have become professional affiliates of the AIA and are faithful participants in that Chapter's activities. In fact, the firm will be conducting the program for the Architects' June meeting. Wendel and Mary Jean are doing a great job of exposing architects to the work of the interior decorators — and several furniture reps.

AIA — It's all stops out for the Northern Nevada Architects as they tackle (with gusto) the goal of making the American Institute of Architects a vital contributing entity in the community activities in Northern Nevada. The Chapter is launching an image building campaign — which was given a good start with the City Park design. The Chapter has joined with the Las Vegas Chapter in raising dues to make the State Association an effective force for improving the profession. NNC-AIA members are enthusiastically involved in developing long range goals and programs which will have impact on the community and the building industry. GO! GO!

NAA — The Nevada Association of Architects, with the resounding support of its two member chapters, is about the task of procuring a lobbyist, extending a cooperative hand to fellow professionals, and laboring over proposed state law



revisions in order to be well prepared for a productive legislative session in 1975. Aware of the "crawling before walking" principal, the Association is attempting to identify state laws in all areas affecting construction which are in a need of revision. They are also setting up their State Governmental Affairs organization and reaching out to establish rapport with the Engineers and Contractors to mount a legislative drive which will be beneficial to all. Their ambitious plans include the involvement of members' wives — gals — you are about to be liberated.

We note with pride that one of ours, D. Gary Lerude, now at the University of Denver, was a recent Colorado Consulting Engineers Council scholarship winner.

#### More Northern Nevada Goin's on!

**A.I.A.** — On June 13 the Architects entertained their wives and et ceteras at a special Chapter meeting which featured a program on Interior Decorating. The distaff contingency was challenged to organize and become involved with Chapter activities. A scale model of the Chapter's City Park design was displayed for the first time at that meeting. The bids for the construction of that park were opened on June 5. (Results not

available at this writing.) Also on June 5 Chapter officials and interested members met with Bob Harris, National A.I.A., to discuss Chapter Affairs. On June 8 the Executive Committee of the Nevada Association of Architects convened in Las Vegas to grind ahead with their organizational efforts. The NAAddenda (NAA Newsletter) was launched in June with enthusiastic hopes for its future.

**A. I. D.** — The Interior Design firm of Norris-Thompson put in a busy month in June, beginning with an open house June 1 and 2, featuring sculpture and paintings by Tom Hardy, Al Goldsby and Gary Collins. The affair drew a large crowd on both days and resulted in a good many sales. The firm also provided the program for the Architects' June Meeting.

**A. G. C.** — In May the Education Committee of the Nevada Chapter of Associated General Contractors of America sponsored a tour of Reno Construction sites for over 200 seventh grade students. The Chapter provided manpower and transportation for the tour and gave each participating student a hard hat as a souvenir.

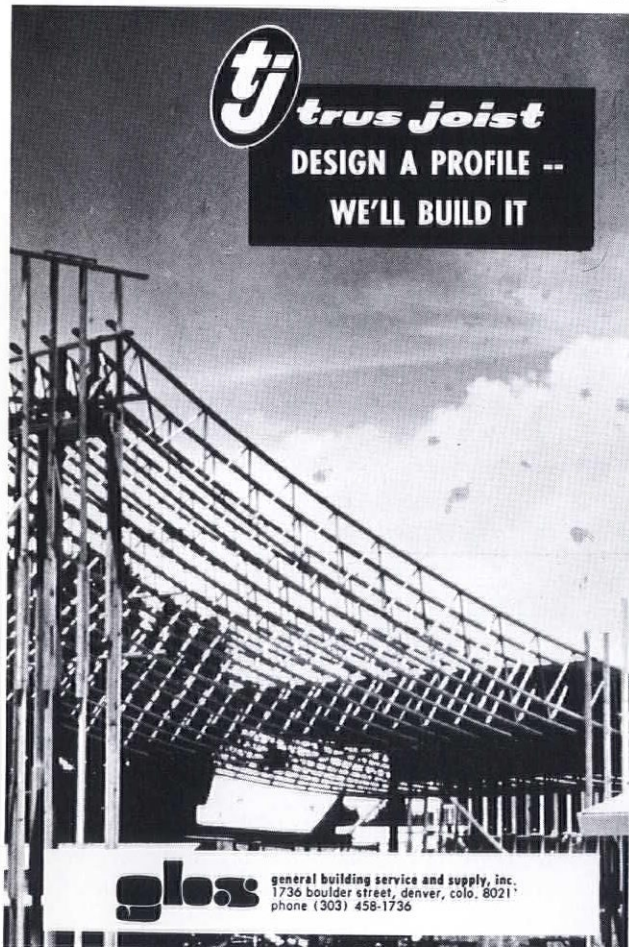
**N. S. P. E.** — The Northern Nevada Engineers held their Annual affair

June 7, at which the 1974-75 officers were presented. Bob Churn will be prexy of the Chapter for the coming year with Mike Hastings as his VEEP and Gil Cochran riding herd over the records and funds. Jack Parvin will be the State Chairman. The State Board met June 15.

#### Meanwhile . . . in Las Vegas

We were privileged to have Bob Harris, staff member A.I.A. National Headquarters, and member of the Institute Affairs programs as a guest speaker at our monthly Chapter meeting on June 4. Bob gave a slide talk on how the National A.I.A. headquarters functions and what vehicles are used for dissemination of material resources to regional and local chapters and to individual members. These include, but are not limited to, urban design, government affairs, architectural research, continuing education programs, professional practice programs, public relations, codes and standards, personnel practices and government affairs teams. For instance, the continuing education programs offer such diversified subprograms as home-study courses, skills development, a catalog of architectural periodicals and their articles, local resource people, seminars, etc.


Bob pointed out that the government af-




**tj trus joist**  
DESIGN A PROFILE --  
WE'LL BUILD IT

**glos** general building service and supply, inc.  
1736 boulder street, denver, colo. 80211  
phone (303) 458-1736

*Live in the cool fresh world of*  
**Richlawn Quality Sod**



**Your choice of**  
**NURICH**  
Grown only by Richlawn  
*Also Windsor and Merion kentucky bluegrass*  
Grown by experts . . . Installed by experts



**Full Written Guarantee**

**Richlawn  
Turf Farms**

Denver 771-5611  
Colorado Springs 473-5836  
Pueblo 473-5836 (Call Collect)

**Call us on your next estimate.**



# Attention Unlimited

WE COULD.....

engineer a jailbreak  
ride a brahma bull  
play the bagpipe  
deal blackjack  
shoe a horse  
dust crops  
run guns  
or  
S T R E A K !

But we don't . . . .  
OUR SPECIALTY IS . . .

Architect's  
Specifications

The best darn answering  
service in Denver



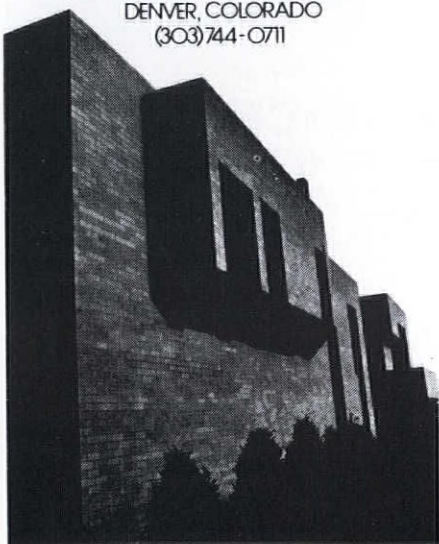
1763 Williams Street  
303/320-6821

## DESIGN PHOTOGRAPHY

EXTERIORS, INTERIORS,  
MODELS, SLIDE PRESENTATIONS,  
MURALS, COPY WORK,  
PROGRESS PHOTOS,  
COLOR, BLACK & WHITE,  
SPECIAL EFFECTS.

## FADER PHOTOGRAPHICS

DENVER, COLORADO  
(303)744-0711



*Just part of the great group of CSI-ers from the Puget Sound Chapter taken prior to their take-off for the Grand National in Portland. From left to right: Al Thurman, Immediate Past Leader Ross Copeland, Richard Peterson, Jess Wilkens, Gordon Cook, Tom Simmons, Prexy Jim Adkins, Duane Hall, Marion Rogstad, Robert Ross, Dick Owen, Hal Cowman, Harry Cummings, Walter Bishop, Jeffrey Bartow. Absent at picture-taking time, but very much on hand in Portland . . . Section Director Harlan Dean, Irv Flotree, Ralph Kratz, Donald Paine and James Tuttle. Some kinda delegation!*

fairs team has become an effective tool with the legislative branch of our government and has established good credibility and liaison with the members of this branch by their performance record.

He also enumerated the variety and number of publications available through the headquarters which could help the individual; practices or programs which might be implemented on a chapter or state level. Such programs held the community become aware of the beauty around them and the potential of growth in a manner that becomes and benefits the community, both economically and aesthetically. He stressed the fact that programs are not initiated by National but by regional and local A.I.A. components. National only implements them after being given the go-ahead by the directors and the finance committee.

Bob's particular bailiwick, as mentioned before, is Institute Affairs which deals with such things as the National Convention, awards programs, grassroots conventions and maintaining by-laws. With such members on the staff at the National A.I.A. headquarters as Bob Harris, I believe that architects on a local level can feel their monies are being wisely and effectively used.

*(And thanks to you, Ralph Bond, for this one—which just sneaked under the wire.)*

## new mexico

### To Be Or Not To Be

The vacillating Dane has a counterpart in "academia." Dean Clinton Adams, Dean of the College of Fine Arts at New Mexico University, announced that a

new chairman had been named to fill Don Schlegel's shoes in the Department of Architecture. This was Robert Riley, a former UNM prof and presently chairman of the Illinois University department of Landscape architecture. Something was wrong with the fit, we must assume, since a couple of weeks later Dean Adams was announcing that Riley had opted "not to be" and decided not to honor his contract "for personal reasons." Commented Adams . . . "This is the first time in my 20 years' experience as chairman and dean that a person who signed a faculty contract has later withdrawn from it."

So guess who's the 1974-'75 Chairman . . . yep, Don Schlegel who had hoped to dump the "admin" bit and return to full time teaching. "I am deeply grateful to Schlegel for agreeing, in these difficult circumstances, to continue in the chairmanship," said Dean Adams. Right on, Don, you'll make it yet — and find cold comfort in the thought that not even Hamlet could make up his mind.

## oregon

### Welcome, Ladies!

The construction community is happily welcoming a new organization in Portland these days. The newest group is the Portland Chapter of the Architectural Secretaries Association complete with interim officers. They are Margrethe Sherwin (WEGroup), President; Linda Fox (Farr/Biggerstaff), Treasurer, and Annette Pisani (Broome, Selig, Orindulph and Partners), Secretary. At their first meeting, Prescott Coleman, AIA, was the featured speaker, and on May 21, the gals met for an "indoor picnic"



at the Portland Chapter AIA offices. Dick Norman was on hand to tell the ASA about the upcoming Northwest Regional Conference — "'74 — Encounter the City" which is slated for October in Portland.

This is a great group and any architectural secretary in Portland may obtain info by contacting any one of the interim officers. You'll be glad you did.

#### Design Awards—1974

June is an important time of year in the City of Roses — annually at about this time Portland architects participate in one of the areas' best Design Award Programs. 1974 was no exception. Larry Bruton was this year's chairman and the Jury included Hugh Hardy, AIA, of Hardy, Holzman and Pfeiffer, New York City; our good friend, Elisabeth Thompson, FAIA, Senior Editor of *Architectural Record*, San Francisco, and David Fukui, Architect of Seattle, Washington. Jurors arrived in Portland on Friday, June 7th, and judging began. On Sunday evening there was an informal discussion and critique of entries by the Jury at the Old Barn, Catlin/Gable School. This Crit session, of course, was directed to the profession, but associates, clients, students and friends were welcome. Beer and pretzels were served and cocktails were available (no doubt a helping hand for anybody whose project really got the shaft).

Climax of the program came on Monday evening with the presentation of Awards at a gala Banquet held at the Portland Art Museum. Design Awards were on display at the Museum June 10-16. We are looking forward to having visual



*Fearless Leaders All! When the Southwestern Washington Chapter/AIA celebrated their 20th Birthday, they quite properly saluted their past-presidents. This Group of Generals (Ret) watched the birdie for Northwest Region Director Robert Fehlberg, FAIA, who just happened to have a camera handy. From left to right: Robert Jones, James Harris, Gordon Johnston, William Hocking, Charles Pearson, FAIA, Robert Olson, Marshall Perrow, Ron Rowe, Robert Price, FAIA, Fred King and Alan Liddle, FAIA.*

coverage of this important event on our pages — probably next month. The Portland projects are of unflinching quality and interest.

#### utah

##### CSI/Annual Bash

On 31 May, Salt Lake Chapter CSI-ers headed for Park City for their annual "rites of Spring." Golfers took to the fairways (and sand traps) at 12:45 and in the evening the group (including the ladies) gathered at the Silver King for socializing and dining. Annual Awards and Golf Awards were presented, and the new officers were installed. Taking office on 1 July is Fearless Leader Frank Anderson who will have Gerald Young as his first V.P.; Bill Erickson as second V. P., and Rulon Edwards will be Secretary-Treasurer. More on this good group to come.

#### washington

##### Canadians Visit Puget Sound

Each year, Spec Writers from Canada join with members of the Puget Sound Chapter for an exchange of ideas and good fellowship. This time around the meeting was held on 21 May at the Northwest Construction Center in Seattle and everyone enjoyed an excellent program on "CQC" — Contractor Quality Control. Spectrum Editor Gene Edstam describes "CQC", "The application of this practice, in the field of public works construction, results in a major shift in the responsibility for ensuring an acceptable end-product." The panel moderated by Lin Wilson included W. Henry Ence, specifications engineer with NAVFAC, Western Division, San Bruno, and Loral Nelson, supervisory civil engineer in the office of the Bremerton area, ROICC.



The versatile, durable, ecological ceramic building material, in a variety of sizes, shapes, colors and textures. Unlimited and economical applications. Send for complete technical information:

## THIXON CORPORATION

Dept. S-2, Thixon Corporation, 1367 Harlan Street  
Lakewood, Colorado 80214 • Phone (303) 237-8050

\*Thixite is a trademark of Thixon Corporation for construction materials.

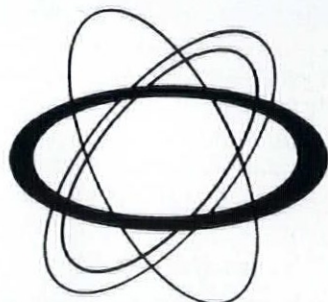
MOVABLE PARTITIONS      **JORDYCO**      ACOUSTICAL CEILING

40 W. Louisiana Avenue/Denver, Colorado 80223/Phone (303) 744-6106, 744-6107

AGC



**WE  
RUN  
RINGS  
AROUND  
OUR  
COMPETITORS**



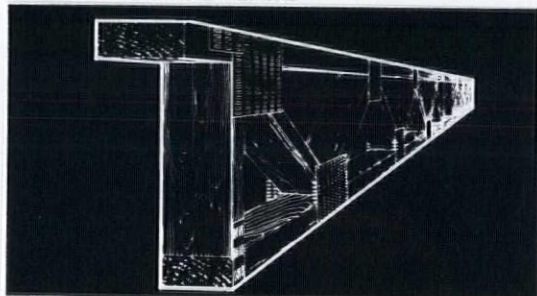
Our knowledge available at your request



*Green Bros. Industries, Inc.*

10401 W. 120th AVE. P.O. BOX 10  
BROOMFIELD, COLO. 80020

**There's a revolution  
underfoot.**



## **The Alpine Floor Truss System.**

**Speeds Construction** • Floor trusses go up faster... the carpenter saves time... the builder saves \$.  
**Saves Costly Labor** • With carpenter, electricians, air conditioning and heating contractors.  
**Versatile** • Permits greater spans and flexibility in design.

Manufactured by:

**RICHARDSON LUMBER CO.**

1480 East 61st Avenue  
Denver, Colorado 80216  
(303) 287-9685

Fabricators & Wholesale Distributors



AT-2

**the  
last  
word:**

Honored by the American Consulting Engineers Council . . . Leonard Rice Consulting Water Engineers, Denver and Albuquerque! This was for the firm's White Rock project in Boulder . . . see page 16/May Symposia.

The American Institute of Landscape Architects will hold its Annual Summer Board meeting in St. Louis on July 12-13 . . . two days of highlevel discussions on Institute programs, activities and problems.

One of the cleverest moving notices we've found in our smilin' Symposia mailbox is the cartoon showing the Brunson Staff "on the move" with little red wagon yet. Brunson Optical Tooling and Surveying Instruments is now located at 2895 West 8th Ave. in Denver . . . just one block off Federal Boulevard. Via Ma Bell, the number is the same (303) 623-4385.

We note with pleasure that the Pikes Peak Chapter/CSI has reprinted Tucson's "Recommended Punch List Procedure" in their newsletter "Intent". Good thought!

Michael Goodwin, AIA, Tempe Architect and a four year veteran of the Arizona House of Representatives, has announced his candidacy for the Republican nomination for Secretary of State. Good luck in the political arena, Mike!



It was some kinda breathless schedule from Denver's Producers Council on their recent jaunt to Wyoming . . . Cheyenne at noon; Laramie in the evening—the next day Casper at noon and Lander in the evening. Luncheons—Dinners—and Product Displays. Whew! Busy!

Gary Reddick, AIA, recently chaired hearings of the Multnomah County Environmental Services Budget Committee. This is the first time Multnomah County (where Portland makes its home) has used citizens on the Budget Committee. Not a bad notion to include a taxpayer occasionally.

The Consulting Engineers Council/Colorado has scheduled their Annual President's Party for Friday, July 19 at Hiwan, near Evergreen. Golf and Tennis in the afternoon with a reception and banquet to follow. A very important event!

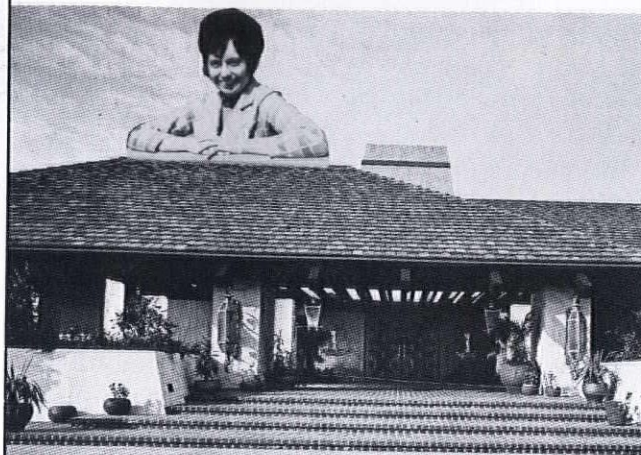
Tucson's CSI Chapter opted out of hosting this year's Phoenix-Tucson Mixer, but Phoenix came charging to the fore led by intrepid Spotts Willis. The Mixer was held May 17-18 at the Golden Hills Country Club in Mesa with everybody much obliged to Spotts and Phoenix.

JPB reports that recently Chandler C. Cohagen, FAIA, and his sister, Mrs. Ora Wilson were honored by the Billings First Christian Church on the occasion of the Church's 70th Anniversary. Mr. Cohagen and Mrs. Wilson are the two oldest members of the congregation . . . they joined the church in 1907.

The Denver Urban Renewal Authority is seeking proposals for the one and one half blocks in Skyline bounded by 15th, 16th, Lawrence and Larimer plus the land across the street to the alley between Larimer and Market. Award of these two blocks will leave only five remaining for sale out of the 27-block renewal project which began in 1968.

## YOU CAN'T TOP THIS! SPECIFY IT!

Clay Roofing & Coping Tile



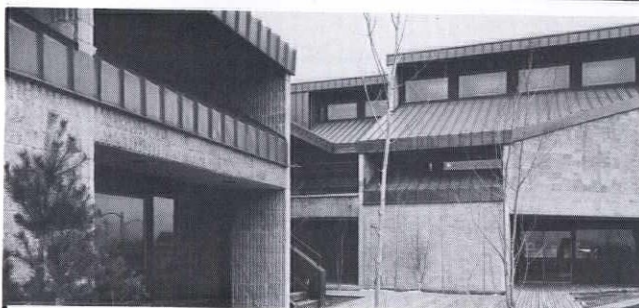
Contact Roberta Leeper, C.S.I.

4425 RACE

**BRICK**  
INC.

PHONE 303  
255-4425  
255-1125

DENVER, COLORADO 80216



Design Center Studios—Denver  
Architect—Holsman Architects

### Waterproofing — OKON W-2

OKON Waterproofing is an easy-to-apply 1 coat water repellent that lasts. It preserves natural appearance of concrete, masonry and wood . . . is non-polluting, non-toxic and non-flammable.



Manufactured by OKON, INC.

**Distributed by SMALLEY & CO.**

In Colorado — Wyoming — New Mexico

1137 So. Jason  
Denver, Colorado 80223  
(303) 744-7289

419 Mountain Rd. N.W.  
Albuquerque, N. Mexico 87102  
(505) 843-6550

Please send me information re OKON products

Name

Telephone

Company

Address



Wine—Cheese—and a wonderful time at the Open House at Architect Pat Sullivan's new and delightful offices in the Sussex building (1430) in historic Larimer Square.

On June 18th, at the Portland AIA Offices, John M. Black, chemist, with over 30 years service with the Forest Products Laboratory in Madison, Wisconsin spoke on the subject "Exterior Natural Finishes for Wood". Informative and there was beer and pretzels besides!

Richard Weingardt Consultants, Inc., Structural Engineers, in Denver have announced the following promotions: Garland Wilson, P.E., Vice-President; Edward Kocman, P.E., Assistant V. P. and John W. Spiess, P. E. Project Engineer. Weingardt is located at A370 in Prudential Plaza.

Whoops! Our early info on the Hospital Design Seminar held in Seattle last month gave us the wrong dates. It happened on 6-7 June. Sorry about that!

Denver's Architectural Secretaries enjoyed a box lunch and a special vacation at their June 7th meeting at the office of Maxwell Saul and Associates. Oh, yes, United Airlines took them all on a arm-chair tour of Hawaii. And a great flight it was, too!

**OLYMPIC**  
**Pre-Stained Wood**

Quality - Economy  
Reduced Labor Cost  
Lasting Results  
IMMEDIATE DELIVERY

**Alpine**  
LUMBER CO.

4100 So. Santa Fe Dr.  
Englewood, Colo. 80110  
Phone 789-2275

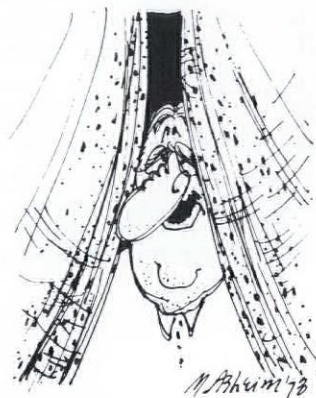
## AARDVARKS ATTACK

Yep, they got into our azalea bushes in the June issue. Our most humble to Sculptor William Mead for the inadvertent mis-spelling of his name! A most talented fellow, Mr. Mead is the son of the well known Denver G. C., the late Roger Mead. Plus, remove the last "e" from the name of Roving Camerman Worth Rees. Those aardvarks really got to us last month. Sorry!

(*"The Word"*—concluded from page 6)

scientific knowledge, creative inspiration to his students, clear interpretation and guidance in the fundamentals of drafting, drawing, verbal expression and visual appreciation, and for a love of Life and Architecture to transmit to his charges.

If both groups succeed in their strivings,  
Architecture'll be the better for it . . .  
efficiency will improve,  
architects will make more money,  
students'll learn more,  
clients will get a better product,  
and, in all that goodness,  
who will suffer for it?  
Maybe nobody.  
Worth a try to find out.



OPENING YOUR CURTAINS  
DURING THE DAY AND CLOS-  
ING THEM AT NIGHT IN THE  
WINTER WILL MAKE USE OF  
NATURAL HEAT, PREVENT  
HEAT LOSS, AND SAVE  
ENERGY.



**Public  
Service  
Company  
of  
Colorado**

an investor-owned utility



What Arizona knows about Blue Ribbon...

# COLORADO WILL SOON DISCOVER!

What's Blue Ribbon? That's what Arizona developers were asking just one year ago. But it didn't take homebuyers and renters long to discover the P.I.P.E. Blue Ribbon Award stands for quality plumbing and heating features vital for comfort and convenience in any new home or apartment. Within a few months, in fact, they were looking for Blue Ribbon quality. Results? Within the year over 40,000 single family homes and more than 15,000 multi-unit dwellings were contracted to be built to Blue Ribbon standards.



**The Sign  
of  
Quality  
Plumbers**



**The Sign of  
Quality  
Plumbing in  
a New  
Development**

When Colorado homebuyers learn what the Blue Ribbon stands for, they'll be looking for Blue Ribbon quality every time they rent or buy. And starting this month, they'll be seeing the Blue Ribbon story on 42 billboards situated throughout the state. They'll recognize the 10 Blue Ribbon quality plumbing and heating features in full-page ads appearing in nine major Colorado papers. And they'll learn to watch for the Blue Ribbon after reading P.I.P.E.'s free homebuyers' guide—"Everything You Ought to Know About Buying A House...but don't know who to ask."

If you're a builder, you can put your development on the *receiving* end of this promotion—as well as on a P.I.P.E. billboard near the project—by enrolling now in the Blue Ribbon Award program.

You'll be glad you did—and so will your future renters and buyers! For details, write us today:



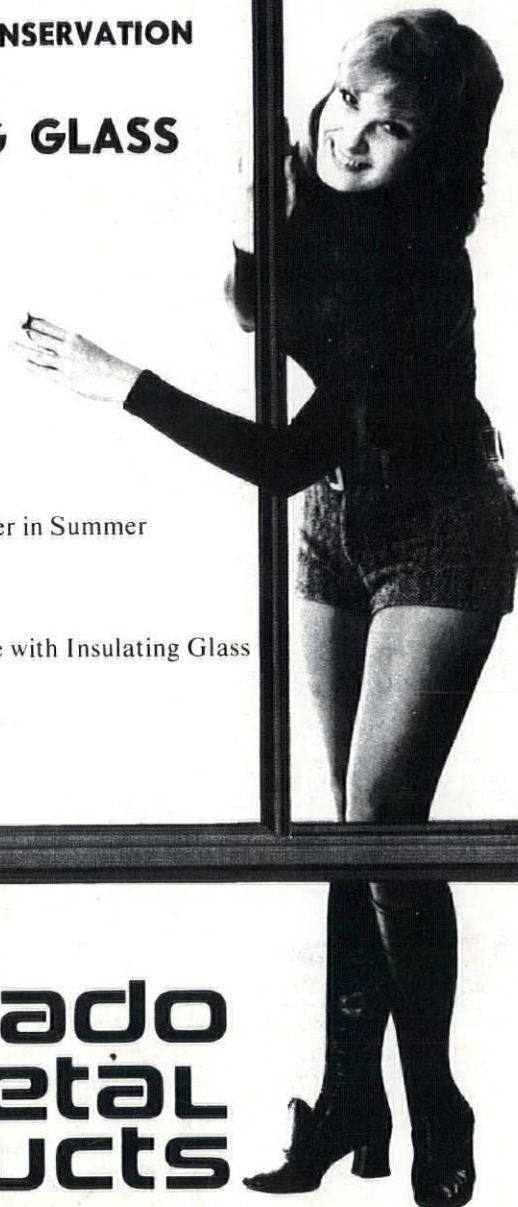
**P.I.P.E. Blue Ribbon  
Award Program**  
1971 West 12th Avenue  
Suite 201  
Denver, Colorado 80204



**FOR ENERGY CONSERVATION  
USE  
INSULATING GLASS**

Warmer in Winter      Cooler in Summer

New Brown Finish Available with Insulating Glass



**colorado  
metal  
products**

INTRODUCES...  
**COLUMBINE  
ALUMINUM CASEMENTS**  
NOW IN THE  
NEW BROWN FINISH

**colorado metal products corp.**



450 KALAMATH STREET • DENVER, COLORADO 80204  
(303) 266-2451

*The only Colorado owned metal window manufacturer for over 30 years.*  
Another Les Taylor Enterprise