

# W I S C O N S I N

*Architect*

**Residential Architecture**

**Landscape Architecture**

**Ronald McDonald House**





# The Electronic Drafting Table

Cast shadows by controlling position of light source. Gouraud shading and anti-aliasing create realistic renderings.

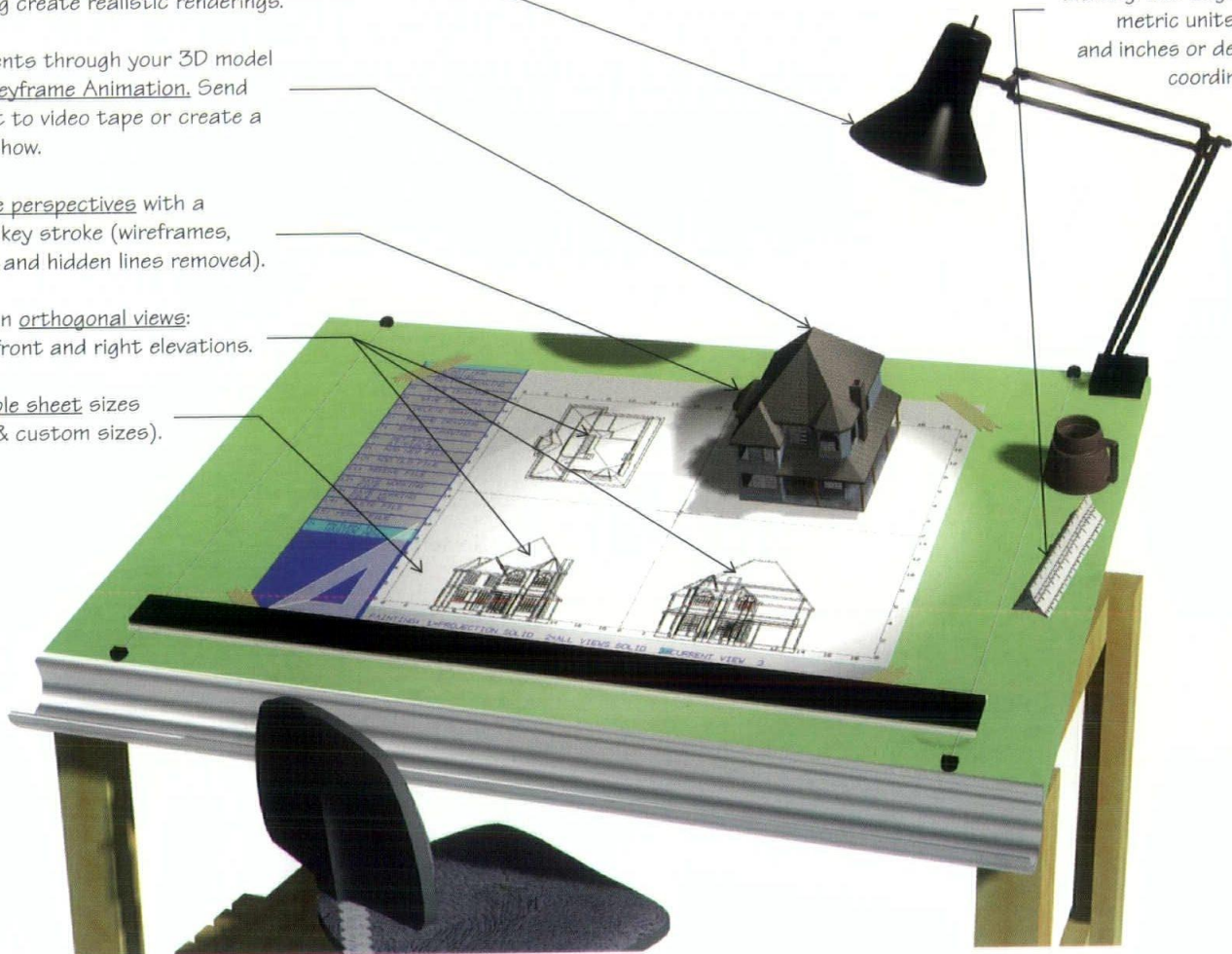
Fly clients through your 3D model with Keyframe Animation. Send output to video tape or create a slide show.

Create perspectives with a single key stroke (wireframes, solids and hidden lines removed).

Draw in orthogonal views: plan, front and right elevations.

Multiple sheet sizes (A-E & custom sizes).

Work with multiple scales on the same drawing. Use English or metric units, feet and inches or decimal coordinates.



**POINT LINE® CADD** is a PC software tool for Architects, Engineers, Interior Designers and Building Contractors. Create 3D models and develop 2D working documents with the design principles that you learned on a manual drafting table. **POINT LINE® CADD** is the fastest, most productive and easiest to learn DOS PC software in the A/E/C CAD market!

Ask about FREE training with the purchase of **POINT LINE® CADD**!

For more information or a personal demonstration contact:

 **POINT LINE® CADD**

POINT LINE USA • 3240 University Ave. • Madison, WI 53705 • phone: 608-231-9911 • fax: 608-231-9910



# AIA Wisconsin

A Society of The American Institute of Architects

May/June 1995

## W I S C O N S I N

### Architect

#### Features

- 7 House with a Mission  
*Frank Maerisch*
- 10 1994 WASLA Awards
- 13 Concrete Professionals Make a Lasting Impression  
*Marianne King*

#### Projects

- 16 Margaret Woodson Fisher Sculpture Gallery  
*the Zimmerman Design Group*
- 18 Association of Women in Agriculture Residence Hall  
*Design Coalition, Inc.*
- 19 Private Residence  
*Bouril Design Studio, LLC*
- 20 Private Residence  
*Paul R. Schultz, AIA*
- 22 Pine Haven Addition  
*The Stubenrauch Associates, Inc.*
- 23 Private Residence  
*Louis Wasserman & Associates*
- 26 Private Residence  
*Sunarc Studio*

#### Departments

- 5 Guidelines
- 28 Forum
- 30 Society News
- 33 Advertiser Index

Cover: Private Residence  
Bouril Design Studio, LLC  
Photographer: Joe Paskus

**AIA Wisconsin Board of Directors:** Kevin J. Connolly, AIA, *President*; Horst W. Lobe, AIA, *Vice President/President-Elect*; A. James Gersich, AIA, *Secretary/Treasurer*; Lisa L. Kennedy, AIA, *Past President*; Jack Fleig, AIA; Erik D. Hansen, AIA; David J. Ewanowski, AIA; John G. Horky, AIA; Robert E. Shipley, AIA; James G. Vander Heiden, AIA; T.J. Morley, AIA; Robert R. Bouril, AIA; Barbara K. Ohlsen, AIA; Carmen R. Behm, AIA; Daniel J. Roarty, AIA; Gary J. Kucko, AIA; Devin Mogck, AIA; Gregory T. Sloniger, Assoc. AIA (*Associate Representative*); Jeff Polachowski (*UWM Student Representative*); Janelle Glaser, *At-Large Student Representative*; William M. Babcock, *Executive Director*.

**AIA Wisconsin, A Society of The American Institute of Architects:** 321 South Hamilton Street, Madison, Wisconsin 53703; Phone (608) 257-8477.

**Wisconsin Architects Foundation Board of Directors:** 321 S. Hamilton Street, Madison, Wisconsin 53703—Phone (608) 257-8477; H. James Gabriel, AIA, *President*; Brian F. Larson, AIA, *Vice President*; Richard J. Griesse, AIA, *Secretary/Treasurer*; Ronald G. Bowen, FAIA; Robert D. Cooper, AIA; Thomas Dowling; Curt Hastings; Gil Snyder; Kerry L. VonDross; William M. Babcock, *Executive Director*.

**North Central Region AIA:** Duane A. Kell, FAIA, and James W. O'Brien, AIA, *Directors*.

**AIA Southeast Wisconsin:** James G. Vander Heiden, AIA, *President*; T. J. Morley, AIA, *Vice President/President-Elect*; Erik L. Madisen, AIA, *Secretary/Treasurer*.

**AIA Southwest Wisconsin:** Robert R. Bouril, AIA, *President*; Barbara K. Ohlsen, AIA, *Vice President/President Elect*; Gregory A. Karn, AIA, *Secretary/Treasurer*.

**AIA Northeast Wisconsin:** Carmen R. Behm, AIA, *President*; Daniel J. Roarty, AIA, *Vice President/President-Elect*; Gregory A. Peterson, AIA, *Secretary/Treasurer*.

**AIA Northwest Wisconsin:** Gary J. Kucko, AIA, *President*; Devin Mogck, AIA, *Vice President/President-Elect*; Kenneth E. Martin, AIA, *Secretary/Treasurer*.

**Wisconsin Architect, Inc.; Board of Directors:** Kevin J. Connolly, AIA; Horst W. Lobe, AIA; A. James Gersich, AIA; Lisa L. Kennedy, AIA.

**Wisconsin Architect Editorial Advisory Board:** Peter J. Schuyler, AIA, *Chair*; Robert C. Greenstreet, Assoc. AIA; Douglas C. Ryhn, Assoc. AIA; Nancy J. Hubbard; William M. Babcock. *Chapter Coordinators:* Robert E. Shipley, AIA; Daniel J. Becker, AIA; Tim Larson, AIA; Dennis L. Olson, AIA.

#### Magazine Staff

**Managing Editor**  
Cheryl Seurinck

**Coordinating Editor**  
Grace Stith

**Publisher**  
William M. Babcock



Printed on recycled paper

**WISCONSIN ARCHITECT** serves the design and construction industry in Wisconsin with circulation to Architects, Engineers, General Contractors, Business and Interior Designers, Landscape Architects, Certified Planners, Developers, Specifiers, Construction Managers, Facilities Managers, Builders, Manufacturers and Suppliers. Wisconsin Architect is the official publication of AIA Wisconsin, A Society of The American Institute of Architects, and is published by Wisconsin Architect, Inc. Address all editorial and advertising inquiries to: Editor, Wisconsin Architect, 321 S. Hamilton St., Madison, WI 53703; phone 608/257-8477. Wisconsin Architect and AIA Wisconsin disclaim liability for statements by the editors, contributors and advertisers.





# DROP DEAD GORGEOUS.

One look at the new Casemaster window from Marvin is all it takes to see this is the most beautiful casement window ever made. And its beauty is only the beginning. New concealed locks are as secure and convenient as they are beautiful. And the all new Marvin exclusive crank

handle and cover design add an unobtrusive design element to the highest quality windows available, Marvin Windows.

Stop by our showroom. You have to see it to believe it.

For technical support contact:  **builders world, inc.**  
p.o. box 881 • waukesha, wisconsin 53187 • (414) 542-8883

**RANDOLPH**  
Randolph Bldg. Ctr.  
(414) 326-3136

**MILWAUKEE**  
A. Fillinger Inc.  
(414) 353-8433

**MENOMONEE FALLS**  
Wood Specialties  
(414) 251-8844

**BARABOO**  
Senger Lumber Co.  
(608) 356-6395

**NEW BERLIN**  
Meyer Lumber Co.  
(414) 786-7919

**WATERTOWN**  
Zuern Building Center  
(414) 261-5676

**MADISON**  
The Door and Window Center  
(608) 235-3110



Whatever residential architects strive for in their pursuits, I believe that we all have at least one thing in common and that is to improve upon the deteriorating quality of the residential landscapes in our communities and countryside.

---

*We have provided a  
worthwhile service  
to society.*

---

How can we make our services more affordable to residential clients so that even people with more modest needs can benefit from our skills?

Maybe it's time that we step aside for a moment and put ourselves in the homeowners' shoes to find the answer.

As we struggle with what our position is in the marketplace called residential architecture, we can find comfort in the fact that there still are people out there that feel that there is a benefit to hiring an architect. As a profession, we need to become more creative to find ways of making our services available to a wider range of people.

For those people that we are able to assist, even if it is only with concept development, we have provided a worthwhile service to society and have helped raise the public's awareness of who we are and what we do.

Robert R. Bouril, AIA

President

AIA Southwest Wisconsin





## Structurally sound for the future.

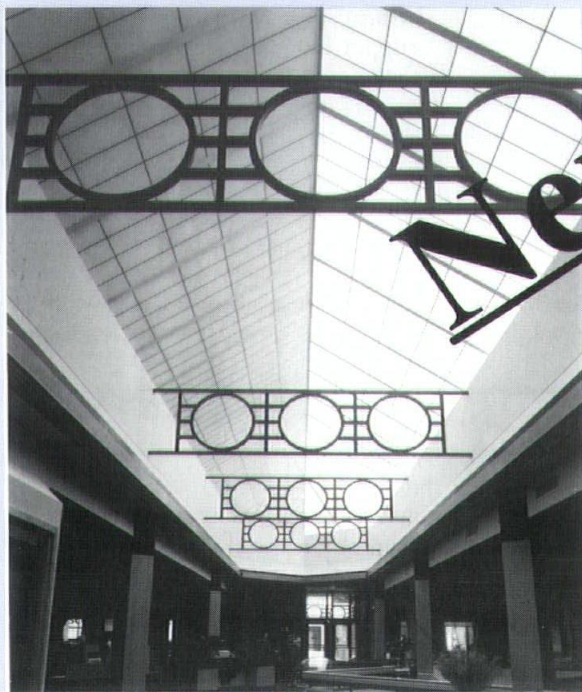
We can provide great energy-saving ideas for your commercial building's design in the planning stage. Ensure a sound structural foundation for your project by building in energy efficiency and savings with help from Wisconsin Gas Commercial Market Services.

Call us at (414) 291-6985

**WISCONSIN GAS**  
A WICOR COMPANY

*The*  
**WISE**  
*Choice*

## Kalwall® After 40 Years...



### We're Still Innovating!

Thermally Broken Panels with Fantastic  
U Values tested to N.F.R.C. Procedures  
at N.F.R.C. Approved Labs!!

- Class I - Factory Mutual Approved for Non Combustible Construction
- Pressure Vent Walls / Skylights
- Clearspan Bldgs / Skylights

**NIELSEN BUILDING SYSTEMS**

**1 800 400 7030 / 414 681 0676**  
**681 1812 Fax**



## House with a Mission

"A home away from home" describes the feeling achieved at the new Ronald McDonald House in Madison, Wisconsin. The house, providing living accommodations for seventeen families, offers a home-like place to stay while the children receive treatment at a nearby hospital.

The primary design challenge stemmed from the integral dilemma that arises from such a project: although semi-institutional in form, the house functions as a home. To bring function and form together, a design concept evolved from the desire to create a much-needed home away from home.



The designers planned the Ronald McDonald House with functional zones similar to a single-family residence. Seventeen guest rooms occupy the upper levels, along with lounges and a library to encourage families to join others for interaction and support. The ground floor, with its common areas such as the lobby, living room, parlor, dining room, double kitchen, pantry, playroom and administration area, provides families with a supportive atmosphere in which they can carry on normal daily activities. Meanwhile, the basement claims a game room, laundry, den, volunteer work area and storage.

To emphasize a home-like atmosphere, the interiors incorporate natural wood floors and trim that have an intimate and inviting appeal. The furnishings, chosen for their compatibility with the building design, are relaxed and comfortable. As in any residence, the selected accessories, such as lighting and artwork, further contribute to the warm, restful environment. Energy-efficient central heating and air conditioning systems have individual controls for each of the guest rooms and common areas.

The house includes a two-story, two-bedroom managers's apartment with separate entrance. This gives families the security of knowing staff is





constantly available while still providing privacy for the manager and manager's family. The house also provides an elevator, handicapped accessible lobby, and two guest rooms with baths also equipped for the handicapped.

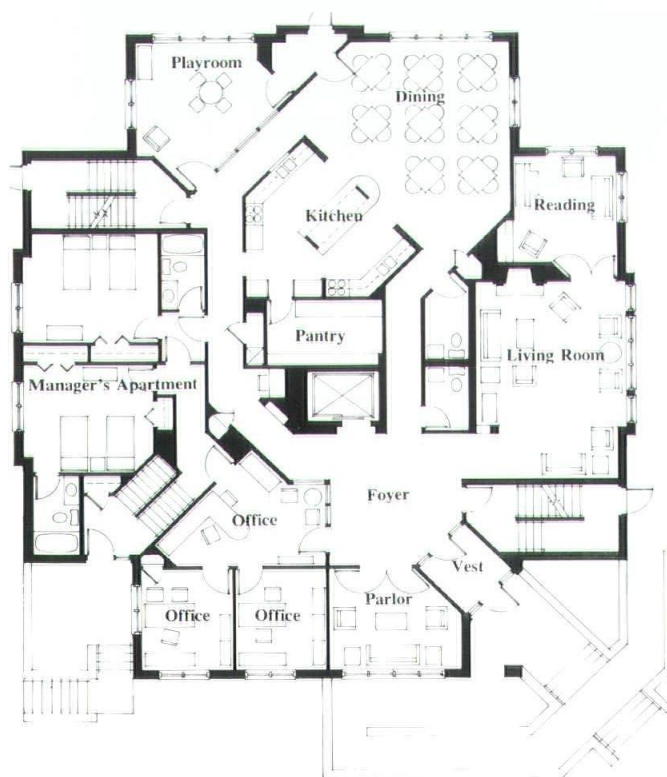
The site selected for the Ronald McDonald house, located on the west side of Madison, is within walking distance of the University of Wisconsin Medical Center and conveniently close to other area hospitals. The many large, stately homes of the surrounding community provide the inspiration for the Prairie-style exterior of this project. Furthermore, horizontal lines of brick and stone, many large windows, and broad roof lines give the 17,000 square foot, three-story building a residential character and scale despite its size.

In making the vision of this charitable effort become a reality, the designers worked closely with the owner's Board of Directors to determine the

needs of the visiting families. Consultants were Affiliated Engineers, Inc., and Pat Burgess Interior Design.

The general contractor was Joe Daniels Construction, Inc.

*Photographer: Joe Paskus*



*Left: Level one; Right: Level two*



SCARBOROUGH™



BEAUTIFUL.  
CLASSIC.  
BUT  
NOWHERE  
NEAR  
TRADITIONAL.

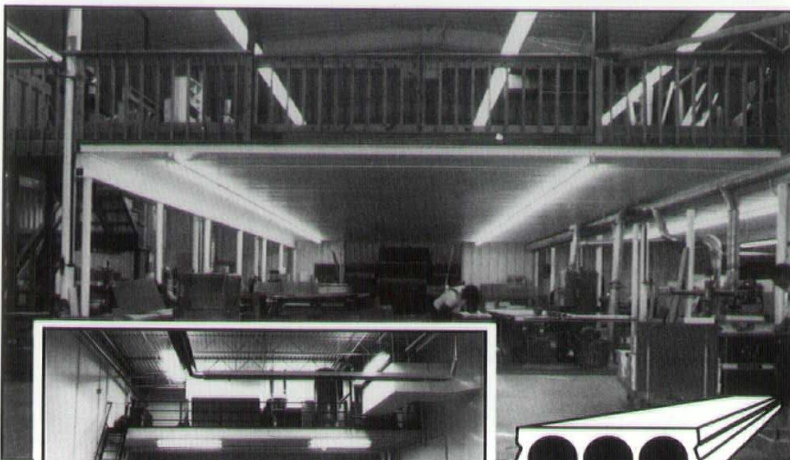


LANDSCAPE FORMS, INC.

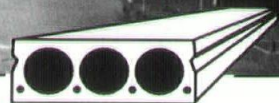
**Bill Quinlan**

835 West Webster  
Chicago, IL 60614  
PH: 312/871-8810  
PH: 800/255-0341  
FX: 312/871-4617

## Design a Flexicore Mezzanine into your next building project (more floor space at less cost)



This company used mezzanine area to place their water heater, furnace and air conditioning equipment.



Mezzanine construction offers more floor space for manufacturing, storage or office use.

- Flexicore decking may be installed in your existing building and/or new construction.
- Mid-States offers factory controlled quality with Flexicore decking.
- Flexicore decking offers sound and vibration control
- Flexicore/Flexicast Systems meet all state and local building codes.
- Mid-States experienced sales and engineering staff are ready to assist with your project.

For more information, call or write—

### MID-STATES CONCRETE PRODUCTS CO.

Box 58, Beloit, WI 53512

Phone 1-800-236-1072 Fax 1-815-389-2339



*Carpet Performance  
Testing Services  
Soil Release Evaluation*

For a free brochure contact:

P.O. Box 71  
Columbus, WI 53925  
Phone (414) 623-5183  
Fax (414) 623-2810



# 1994 WASLA Awards

These projects represent the third biennial awards program of the Wisconsin Chapter of the American Society of Landscape Architects. The awards program exists to further the profession of landscape architecture by recognizing excellence. Award categories include landscape architectural design, landscape planning and analysis, research and landscape architectural communication. There are three levels of award for each category: award of excellence, honor award and merit award.

## Honor Award

The Mason Residence  
Landscape Architect: Patrick H. Ziegewald, ALSA

After a visit to England, the clients planned an English cottage style residence set on a steep, heavily wooded lot with a natural ravine. Their dream home was fully designed and built by the owner with much forethought given to interior and exterior detailing and craftsmanship.

The same care and thought was given to conceptualizing the landscape that would complement the cozy, informal character of the residence. Material selection was to be mostly natural except for the antique brick pavers utilized in the pavement and patios. High priority design criteria included vehicular circulation, retainment of steep grades, screening views, patios, lighting, low maintenance, plantings, attracting wildlife and protection of existing vegetation.





### Merit Award

The Jacobs Residence

Landscape Architect: Judith Z. Stark,  
ASLA

The clients who own this large residential property are enthusiastic gardeners. In 1985, when this project began, a drive to the four car garage and tennis court set in a large expanse of unrelieved lawn dominated the view of their rear property.

Their first request was a design for a terrace, screening the tennis court and a large perennial border. These requests led to a master plan that divided the property into specific garden areas which are linked to one another by paths.

According to the master plan, different projects were given priority. Over the last nine years, a brick

terrace, an herbaceous border, a pergola, a screened tennis court with terrace, an enclosed vegetable garden, a small garden with pool and a hosta

border have been completed. This year's project was an allee of sixteen Bradford pear trees that focus on the pond.



### Merit Award

A Private Residence

Landscape Architect: Steven J. Berg,  
ASLA

The owners' intent was to create a simplistic landscape which would highlight the architectural details of the residence. With the owners' background in design and art, they were very much a part of the overall design as well as material and plant selection. Design objectives were to create a feeling of presence; use of basic and simplified design and construction techniques; maintain open scenery views with mysterious interest to entice adventure and intrigue; and capitalize on the main focus of the property, the pond, without destroying the existing landscape. The long sweeping driveway adjacent to a natural tree line provides views of naturalized meadows and gives a feeling of arrival.





# Concrete. It's changed.

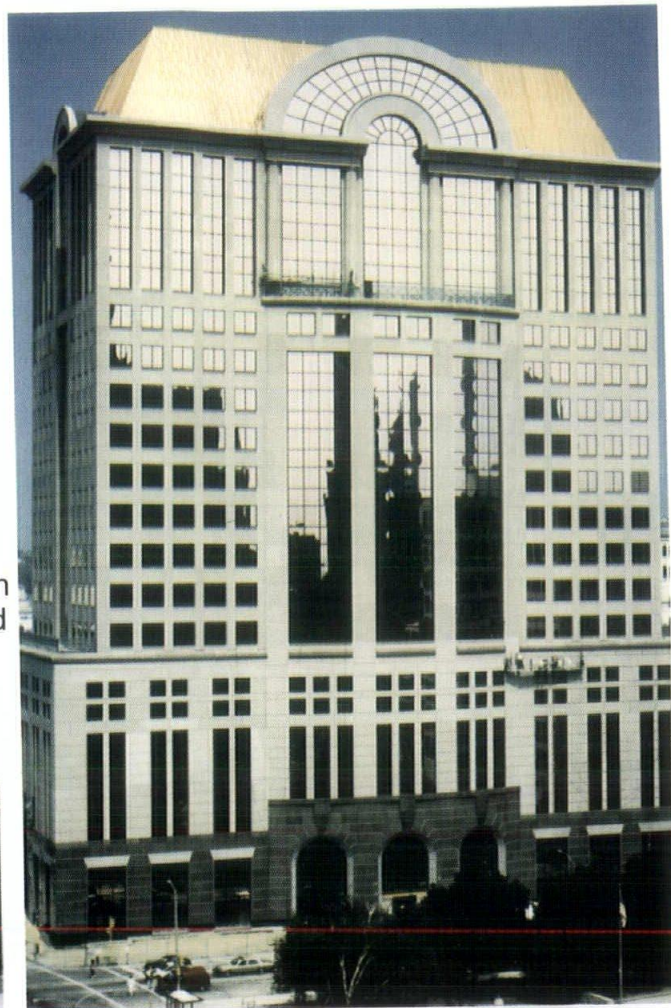
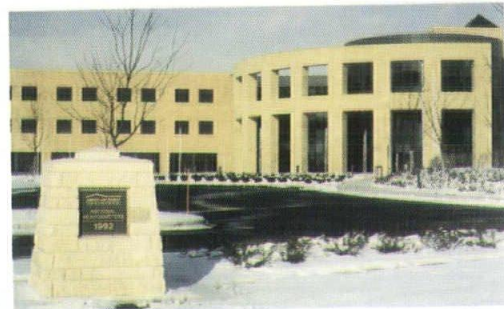
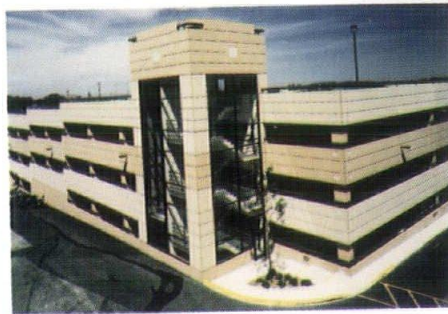
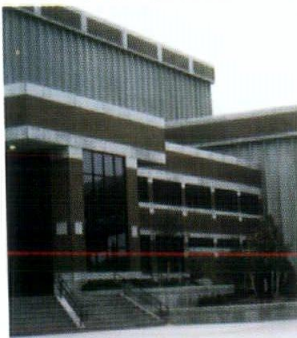
Advanced concrete technology and construction techniques make poured in place reinforced and post-tensioned concrete the structural and aesthetic choice for today's building challenges.

*Consolidated Papers  
Incorporated  
Wisconsin Rapids, WI*

*1000 North Water Street  
Building  
Milwaukee, WI  
(upper right)*

*St. Francis Hospital  
Parking Structure  
Milwaukee, WI*

*American Family Insurance  
National Headquarters,  
Madison, WI  
(lower right)*



Monolithic in nature, cast-in-place concrete successfully adapts to almost any shape, including cantilevers, curved or angled elements. Light-weight and high-strength concrete allow both engineer and architect greater design options. And today's cast-in-place concrete can be placed faster with less manpower.

Ready mixed concrete enhances total frame strength and structural safety. Strengths of

6000 PSI are standard. Strengths up to 15,000 PSI are available.

Cast-in-place reinforced and post-tensioned structural concrete offer superior fire resistance, less maintenance, energy efficiency low life cycle costs.

To learn more about structural concrete and our quality control programs call or write:

## Wisconsin Ready Mixed Concrete Association

9415 W. Forest Home Ave., Hales Corners, WI 53130 • (414) 529-5077

*Building for a solid future.*





# Concrete Professionals Make a Lasting Impression

First impressions are lasting. Or, so say members of the Wisconsin Ready Mixed Concrete Association (WRMCA) when discussing the visual impact of a driveway on the overall look of a property.

When the spouses of WRMCA members toured the Governor's Residence during the association's 1992 convention in Madison, their first impression was marred by a crumbling and rutted asphalt driveway. WRMCA's executive director, Barbara Wesener, mentioned their concern about the drive to the person in charge of tour arrangements. That simple comment began a chain reaction that led to the association taking on the project. Members Nick Rivecca and William Tews, both of Tews Concrete, found willing allies in the WRMCA Board of Directors, the Wisconsin Concrete Pavement Association and the Wisconsin Cement Shippers Promotion Fund, Inc., to move the project forward.

Eager to give the Executive Residence Foundation and the people of Wisconsin a beautiful new driveway, 31 ready-mixed concrete producers, cement suppliers, paving and specialty contractors and others donated

labor, materials and expertise to the project. Bill Brinkmann, field engineer for the Wisconsin Concrete Pavement Association, functioned as on site engineer for the job.

The volunteer team met with state landscapers, architects, engineers and Wisconsin's First Lady Sue Ann Thompson to plan all aspects of the project. Jerry La Londe, then president of the Wisconsin Concrete Pavement Association, notes that the project was enhanced by the excellent cooperation from the state's team of professionals in Madison. It was clear from the very beginning, La Londe said, that concrete would meet their structural, visual and maintenance requirements. "Concrete will be able to handle the heavy busloads that we get for tours and other special events," noted Dale Dumbleton, director of the Bureau of Building Management at the Capitol.

The effort began with Kent Johnson from G.A. Watson, Inc., who labored three days to remove 30,000 square feet of old asphalt surface. The area was then graded and the contractors installed forms to support the edges and surface finishing. The drive was then prepared for 500 cubic yards of

six-bag, small stone mix concrete supplied by Wingra Redi-Mix, Inc. "Being from Madison, we at Wingra were especially glad to contribute to this project, since we had watched the deterioration of the old drive over the years," commented Wingra vice president Robert M. Shea.

The residence at 99 Cambridge Road was built in 1928 on four and a half acres along Lake Mendota. It was purchased by the State 21 years later for use as the personal residence of Wisconsin governors. The original drive provided a single entry to the property from Cambridge Road. The state engineer's design replaced it with a circular drive, which improved the traffic flow as well as the drive's aesthetics. Crews from James Cape & Sons and La Londe Contractors handled the concrete pour. Traditional concrete was chosen for the driveway to create a clean, smooth expanse that would reflect light for greater safety.

The courtyard was of particular concern. Mrs. Thompson desired cobblestones—more in keeping with elegant homes of the 1920s than traditional concrete could provide. In place of actual cobblestones, Creative Impressions Increte and Unique Impressions by McLain Construction Co. created the look of cobblestones with a concrete finishing technique called pattern color stamping. The process involves pressing textured forms into pliable concrete to produce the cobblestone pattern. Color is added to the concrete by a pigmented cement, which has the bonus of increasing the concrete's strength.

Paul Vogel of Creative Impressions claims that pattern color stamping "can simulate almost anything you'd like in concrete . . . bricks, stone, tile, slate, even wood planking." Daniel Stephens, AIA, State of Wisconsin architect, agreed that concrete offered surprising versatility. "Concrete gave us the most available options for color, texture and pattern."





Freedom from the regular maintenance and repair and the ability to select just the right look were reasons for choosing pattern stamped concrete over actual cobblestones. "Pattern stamped concrete is basically a maintenance free system," explains Dennis McLain of McLain Construction. "Because the concrete courtyard is a monolithic surface, the grounds crew won't have weeds growing or ants bringing up sand and bedding between joints that would exist in an actual cobblestone courtyard."

McLain added that while frost heave can roll and move and change the height of actual cobbles, a pattern stamped surface remains level. The cobblestone look of the courtyard was enhanced by four smooth concrete aprons at the margins, created by Zignego Paving. According to president Tom Zignego, the apron was designed to visually connect the drive and courtyard. "Pouring the concrete aprons was actually the first step in the entire project," says Zignego. "The drive and courtyard more or less flowed from the aprons."

Michael Stark, State of Wisconsin landscape architect and facilities designer, was pleased with the effect. "The color of the concrete itself is a soft gray, certainly more pleasing and easier to work with than the dark black sea of asphalt we had before, which was in sharp contrast to the grounds and the house."

As more volunteers joined the team, the project became increasingly elaborate. The courtyard now features a garden fountain at its center. The National Electrical Contractors Association provided dramatic landscape lighting. Even the old fencing was taken apart and fashioned into a gate.

The project took place during the ready-mix industry's busiest period. Jim Sponen, project manager at James Cape and Sons, explained that "the



Governor's Residence project was important enough to our owner and to our men that we organized our job schedule to accommodate it." According to Sponen, the crews working on the drive took great pride in their contribution to the project. "We wanted the people of Wisconsin to have a nice entrance to their Governor's Residence, and we're pleased with the results."

On August 19, 1993, the new drive and courtyard were inaugurated with a ribbon cutting ceremony hosted by

Governor and Mrs. Thompson. "Everyone who comes here is going to have an opportunity to marvel at the craftsmanship, workmanship and tremendous beauty," noted Thompson that evening. Mrs. Thompson concurred. "More than 30,000 people visit the residence each year, and this beautiful concrete driveway is a wonderful way to welcome our visitors."

*Photographers: John Hilbrink, Paul Vogel & Greg Anderson*

The following businesses and associations contributed to the Governor's Residence drive project:

Wisconsin Ready Mixed Concrete Association  
 • Tews Company  
 • Kent Johnson, G. A. Watson, Inc.  
 • Wingra Redi-Mix, Inc.  
 • Wisconsin Wire & Steel  
 Wisconsin Concrete Pavement Association  
 • James Cape & Sons  
 • La Londe Contractors  
 • Zignego Company, Inc.  
 Wisconsin Cement Shippers Promotion Fund, Inc.  
 Creative Impressions Increte  
 Intercon Construction Company

Unique Impressions by McLain's Construction Co.  
 K.D. Fencing, Inc.  
 INCO Company  
 Neuman Pools, Inc.  
 Sta Rite Industries  
 W.S. Peterson Company  
 Central Cable Company  
 Coastal Pond Supply  
 S.R. Block Iron & Supply  
 B.G.A. Associates  
 J.H. Findorff & Son  
 Landforms, Inc.  
 Wausau Tile, Inc.  
 National Electrical Contractors Association  
 • Kap Electric Co., Inc.  
 • Hill Electric, Inc.  
 • Ruud Lighting, Inc.  
 Pechmann Memorials, Inc.





Saint Benedict's Unity House, Middleton, Wisconsin

## Project Designed By

**Potter Lawson**  
Architects Engineers Interiors

**Karl R. Kraemer**  
Construction Contract Administrator

15 Ellis Potter Court  
Madison, WI 53711  
Mobile - 608/444-0532  
Fax - 608/274-3674  
608/274-2741

**Marvin Windows and Doors** offer the flexibility demanded by Design Professionals. Each one is made to your specifications, because each one is made to order. Our Architectural Services Department offers a full range of support in design, engineering, and installation of premium Marvin Products. Contact Mark Heard at:



**builders world, inc.**

p.o. box 4039-waukesha, wi 53187  
(414) 542-8883  
1-800-686-2206

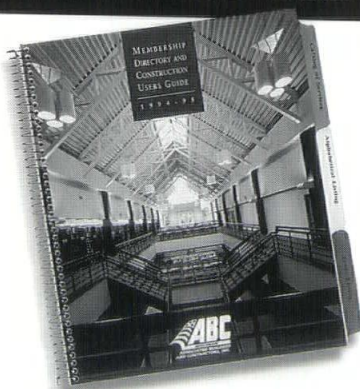
**MARVIN**  
WINDOWS & DOORS.



## PLANNING TO BUILD?

**MAKE YOUR  
BEST CALL  
FIRST.**

Get a copy of  
the 1994-95  
Construction  
Users Guide  
from Associated  
Builders and  
Contractors of  
Wisconsin. Your  
second call will  
be right on target.



The ABC Guide is a comprehensive directory to over 800 construction and construction-related firms in Wisconsin. ABC members are building pros, dedicated to quality, low-cost, on-time construction. The 1994-95 Guide, free to qualified construction users, lists contractors by trade, location, maximum bid and other details. The ABC Guide. Your first and best source for building results.



**CALL 800-236-2224**

## Wanted Chief Operating Officer

The Durrant Group (a 160 person A/E/CM organization with 9 offices in the midwest/west/southwest) seeks a qualified person for the position of Chief Operating Officer, effective August 1995. Send resume to D. Thompson, 3773 Cherry Creek Dr. North, Suite 240, Denver, CO 80209, by 6/12/95. Fax 303-377-0621.

## Professional CAD Drafting & Consulting Services

AUTODESK Certified !!!



**Virtual Automation Labs, Inc.**  
HELPING YOU PROFIT WITH TODAY'S TECHNOLOGY

12010 West Grange Avenue  
Hales Corners, WI 53130

- Utilizing AutoDesk & SoftDesk Products AutoCAD Rel. 13 & 3D Studio
- Production of walk throughs and Fly Bys
- Cost effective CAD Drafting services
- Establishing CAD Drafting Standards
- Customized Training Programs
- Installation & Technical Support
- Before you waste any more of your valuable time call Virtual Automation Labs

**(414) 529-5011**



*Project*

**Margaret Woodson Fisher  
Sculpture Gallery**

*Location*

**Wausau, Wisconsin**

*Architect*

**the Zimmerman Design Group**

*General Contractor*

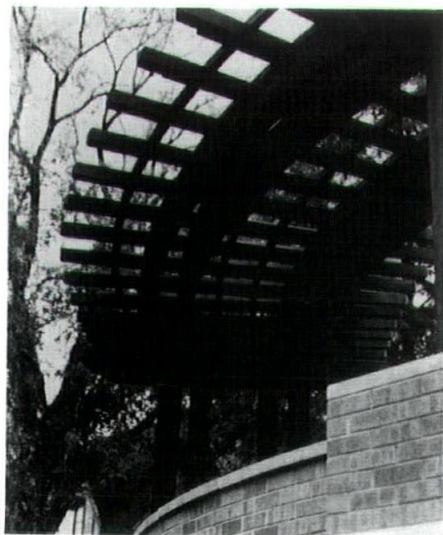
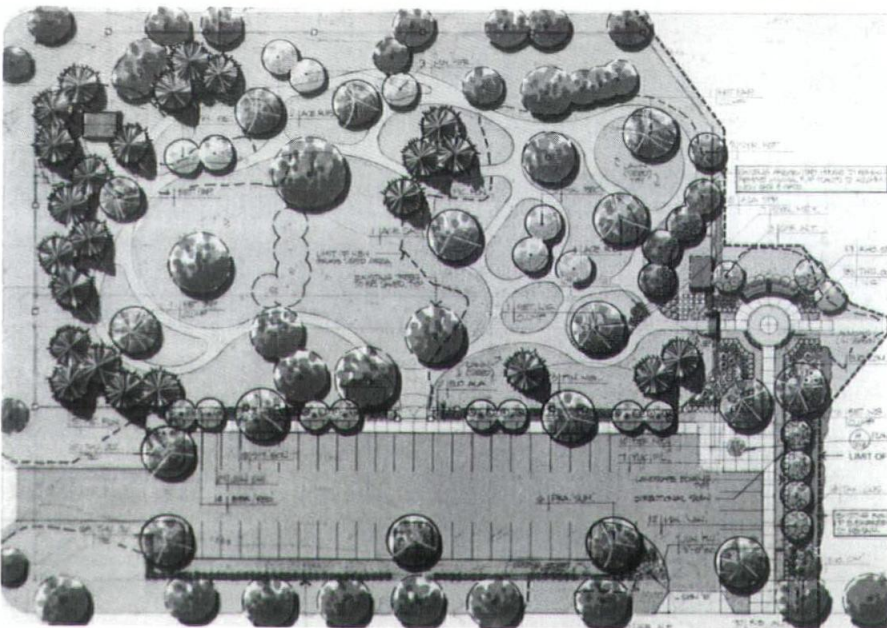
**Oscar J. Boldt Construction Corp.**

The 1.5 acre sculpture gallery is an outdoor extension of the Leigh Yawkey Woodson Art Museum located high on a hill in a quiet residential setting. The design requirements were to provide an informal layout that would provide flexibility in a location and addition of sculpture over the next decade, to provide accessibility to all visitors, and to give it a sense of security with sensitivity to its residential neighbors.

The layout includes a meandering brick path that allows accessibility to all of the sculpture areas. The network of pathways creates up to thirty areas for sculpture with the ability to manipulate the landscape to meet the individual needs of each artwork.

The landscaping within the garden provides a "canopy" as well as defines areas of interest.

Highlights of the sculpture garden include a curvilinear cedar arbor with brick and stone seatwall below, which overlooks an existing formal perennial garden and acts as a gathering point for tour groups prior to entering the garden and/or museum. The garden also includes a decorative gated entry with wood trellis above, a perimeter fence anchored by brick and stone pilaster and walls and new signage and landscaping throughout.



*Photographer: Joe Pepitone*



*Project*

**Association of Women in  
Agriculture Residence Hall**

*Location*

**Madison, Wisconsin**

*Architect*

**Design Coalition, Inc.**

*General Contractor*

**Renschler Company**

The Association of Women in Agriculture is a professional society dedicated to supporting University of Wisconsin coeds studying agriculture and animal sciences and to fostering long-term relationships among its alumni. For years the "actives" made do with rundown living quarters in two aging houses. To build a single new residence hall, however, meant demolishing one of the structures and selling the other, which left a cramped 65 by 110 foot site.

The three-story, 6,000 square foot brick and stucco Prairie Style residence responds to a strict historic district code. It accommodates 26 students, with the bedroom areas designed as suites, rather than dorm-style, to encourage community living. The third floor offers more amenities: all single-occupancy rooms and more generous commons/kitchenettes. The Association values the experience and commitment of upper class students in running the house and expects that the more desirable quarters will encourage them to stay on.

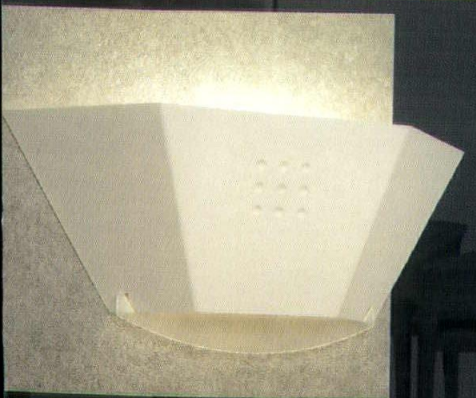
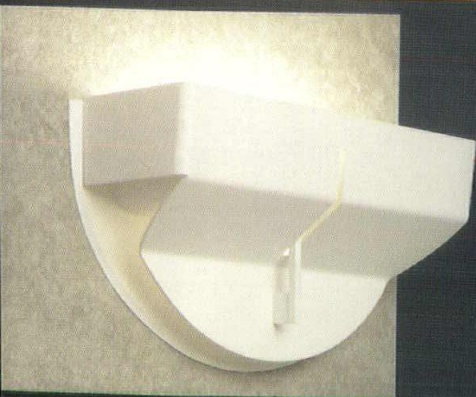
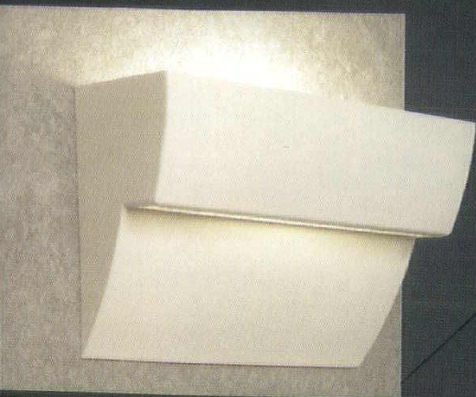
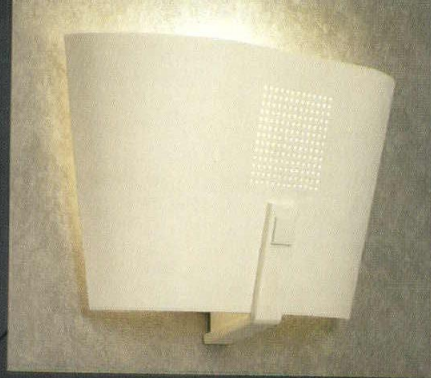
One suite and all common areas on the first floor—kitchen, dining/meeting/hearth room and its backyard patio and the laundry, copier and telephone nook—are fully barrier-free. With the owner's collaboration, less toxic building materials were specified wherever the budget allowed.

*Photographer: Lou Host-Jablonski, AIA*



**First Floor**





## *phaces*

Wall sconce lighting transformed. An indirect alternative to illuminating applications with low ceiling or narrow space limitations. The advantage - ADA compliance.

Designs incorporating graceful curves, compound arcs, angled planes and defined lines created from a palette of materials, finishes and accents.

The innovative, dual-chambered reflector system incorporates HID, fluorescent and halogen lamping options for maximum efficiency and output. Establishing an aesthetic presence with superior optical performance.

The new phaces of indirect lighting - naturally from SPI.



# SPI

SPI Lighting Inc.  
10400 North Enterprise Dr.  
Mequon, WI 53092

414 242 1420  
414 242 6414 FAX



<i>Project</i>	<b>Private Residence</b>
<i>Location</i>	<b>Madison, Wisconsin</b>
<i>Architect</i>	<b>Bouril Design Studio, LLC</b>
<i>General Contractor</i>	<b>Feldt Construction Co., Inc.</b>

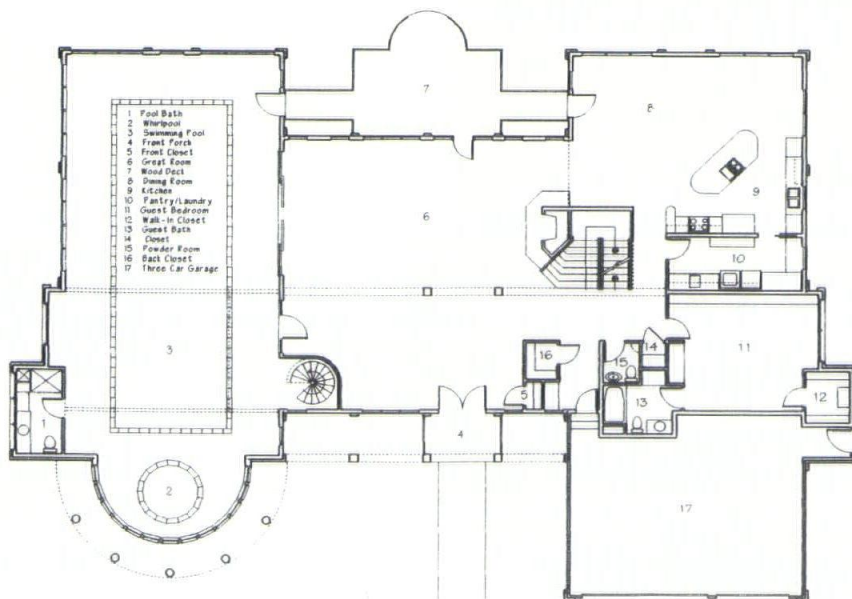
The client had purchased a home backing up to a city park on Madison's west side and had requested a home that was light and airy and took advantage of the woods in the back yard. They also requested vaulted ceilings, a balcony and an indoor swimming pool with a walk-out deck to the rear yard.



The architect's response consisted of a plan with a major linear circulation pattern paralleling the street, with the balcony running the length of the house on the second floor. A monopitch standing seam metal roof runs the entire length of the house corresponding to the interior circulation. A curvilinear projecting bay encloses the indoor hot tub toward the front of the house, which helps offset the mass of the three-car garage facing the street.



The house is finished with a teal green roof, teal green window frames and teal green metal pipe rails at decks. The stucco is a neutral off-white and the brick is a warm tan. The gross area of living space on the first and second floor is approximately 6,800 square feet.



Photographer: Bob Bouril, AIA, and Joe Paskus



*Project*

**Private Residence**

*Location*

**Lake Geneva, Wisconsin**

*Architect*

**Paul R. Schultz, AIA**

*General Contractor*

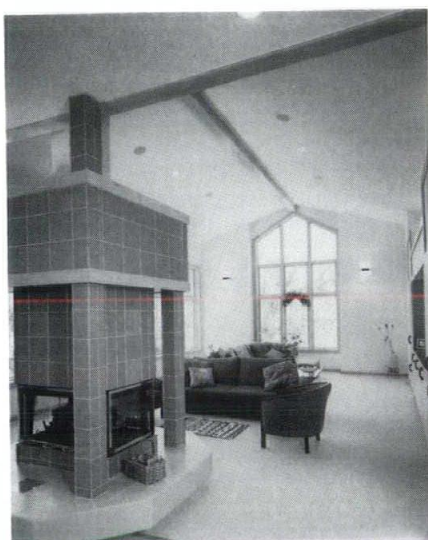
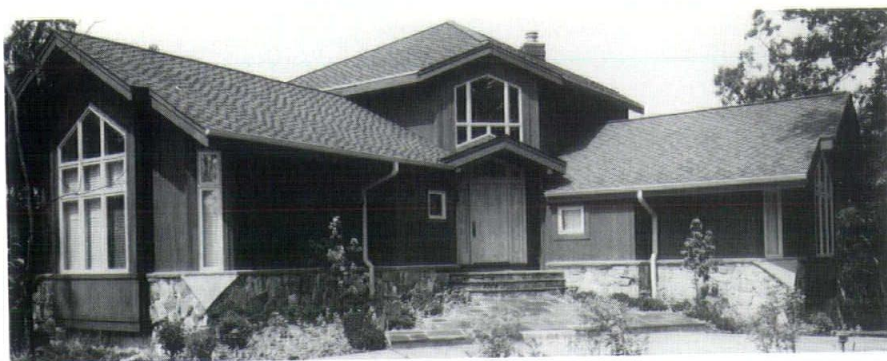
**Ken Huennekens Construction**

Designed to be a future retirement home, this is now a "second home" in a golf development. The site is a sloping wooded lot with distant lake view to the east and views of ravine and wetlands to the rear. The plan, in the shape of a cross, allows for all rooms to have windows on three sides. Kitchen and master bedroom were designed to receive morning sun; living and dining areas have benefit of evening sunsets.

A loft above the dining room provides a lower ceiling and a feeling of intimacy as well as a focal point from the front entry. All four wings have cathedral ceilings and high soaring windows. Because of high summer usage, a screen porch was added, flanked by two decks and sitting high like a tree house. Master and guest bedroom have views plus privacy, with bathroom and stairway as sound buffers. Loft offers a bit of privacy in the open living area.

Owner of this project retained the services of Plunkett Raysich Architects, who then brought in Paul Schultz, AIA, for design work.

*Photographer: Ed Purcell*





# Let's Play Lucky 7

## HERE ARE 7 REASONS WHY YOU ARE A LUCKY WINNER

### IT IS NEVER A GAMBLE WHEN YOU USE UNION ELECTRICAL CONTRACTORS



#### 1. TRAINING

Our rigorous training program has been designed to assure that electricians carrying an IBEW card are top-quality, highly skilled workers.

#### 2. EXCELLENCE

Our commitment to excellence gives you the satisfaction of knowing that you are providing your customers with the best service and quality possible.

#### 3. SAFETY

Safety codes and regulations are strictly enforced, and an extensive amount of time and money is invested in safety programs.

#### 4. PRODUCTIVITY

The depth of our extra trained crews prevents the small delays that can lead to major problems down the road. This helps you to develop an accurate timetable, and to efficiently provide the services that your customers need.

#### 5. EXPERIENCE

NECA/IBEW has been turning out quality work throughout Wisconsin since 1901.

#### 6. VALUE

There are no longer any reasons to think a union contractor is more expensive than a non-union contractor. Working together union electrical contractors and the IBEW

have reduced prices. We know we won't get the work if we're not competitive.

#### 7. TECHNOLOGY

It is more crucial now than ever before that electrical contractors stay on top of new technology. Supported by electrical contractors, manufacturers and utilities, NECA has taken a proactive step to meet this need by creating the Electrical Contracting Foundation.

**Don't gamble** when it comes to choosing an electrical contractor. Rely on highly trained union electricians for the best in quality and value.

## USING UNION ELECTRICAL CONTRACTORS IS A SURE BET!

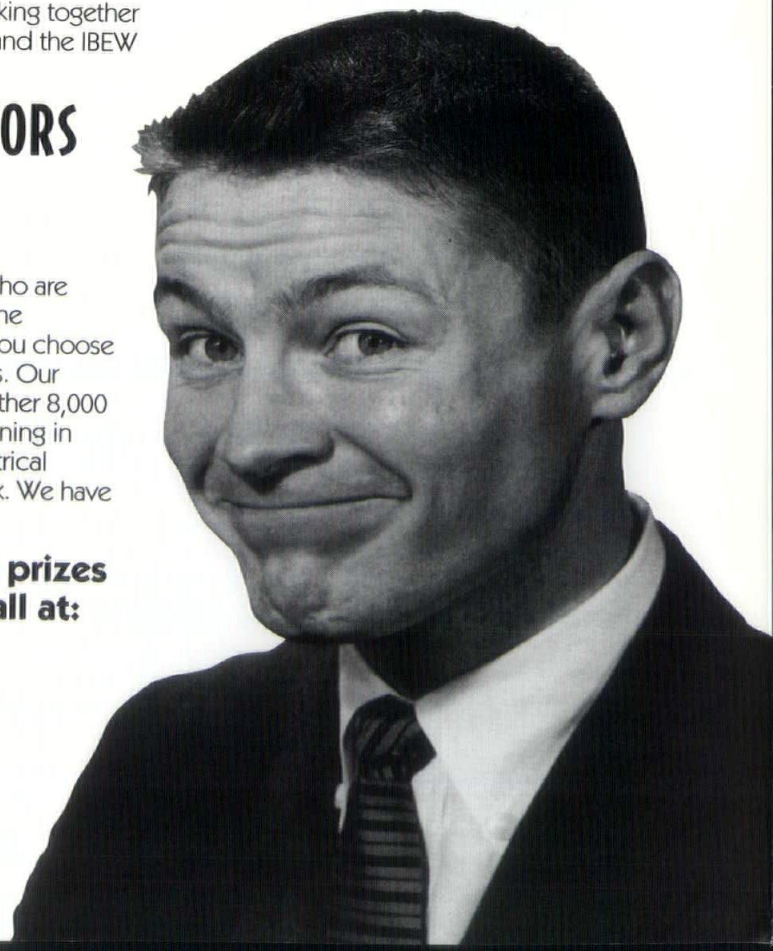
You are always a winner when you choose union electrical contractors who are members of the National Electrical Contractors Association (NECA) and the International Brotherhood of Electrical Workers (IBEW). You know when you choose one of our members you are getting highly trained and expert electricians. Our training is unmatched: 800 hours of classroom training, coupled with another 8,000 hours of on-the-job training and an additional 250 hours of classroom training in the evening. Nonunion electricians have half as much training. Union electrical contractors can provide you, the specifier, the very best in electrical work. We have been doing so for over ninety years!

**For information on how you can qualify for great prizes  
in our "Lucky 7" scratch card game, give us a call at:**

**1-800-376-3310**



CONTRIBUTING AFFILIATED UNION ELECTRICAL CONTRACTORS





<i>Project</i>	<b>Pine Haven Addition</b>
<i>Location</i>	<b>Sheboygan Falls, Wisconsin</b>
<i>Architect</i>	<b>The Stubenrauch Associates, Inc.</b>
<i>General Contractor</i>	<b>Jos. Schmitt &amp; Sons Construction</b>

To accommodate an existing waiting list and to better serve a growing elderly population, Pine Haven Home added an 84-bed Community Based Residential Facility to their existing one-story nursing home and two-story, 51-bed CBRF.

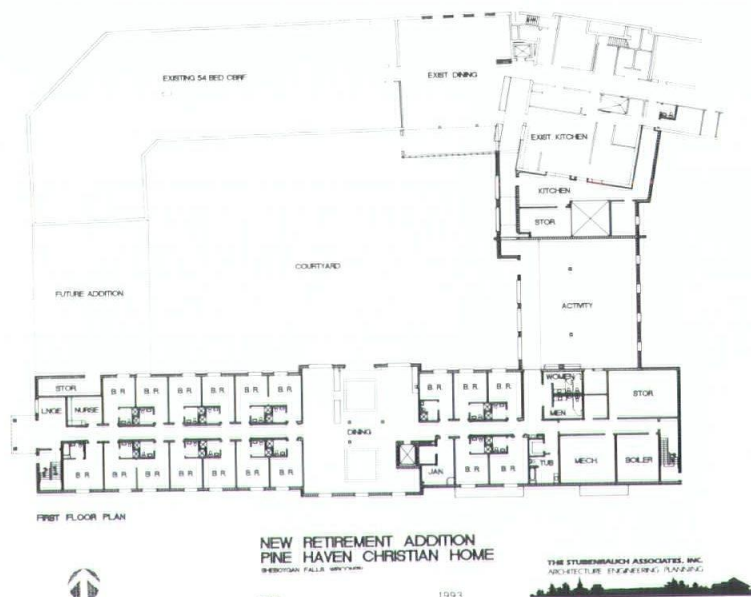
The L-shaped, three-story addition was placed on the site to maintain the existing landscaping and wooded side yards. Each of the resident rooms is provided with a view of these areas.

A variety of room types were designed, including single, double, corner and apartment style. A resident lounge is provided at each floor. A large dining room and activity room are located on the first floor with each room opening onto the courtyard.

Architectural details include interior wood trimmed columns, corridor wall sconces and different color schemes for each floor. Rooms were designed to allow through the wall air conditioners with full a/c in the dining and activity areas.

Six months after completion, all rooms were occupied.

*Photographer: Barbara Gahan*





<i>Project</i>	<b>Private Residence</b>
<i>Location</i>	<b>River Hills, Wisconsin</b>
<i>Architect</i>	<b>Louis Wasserman &amp; Associates</b>
<i>General Contractor</i>	<b>Jack Hengst &amp; Jack Lepold</b>

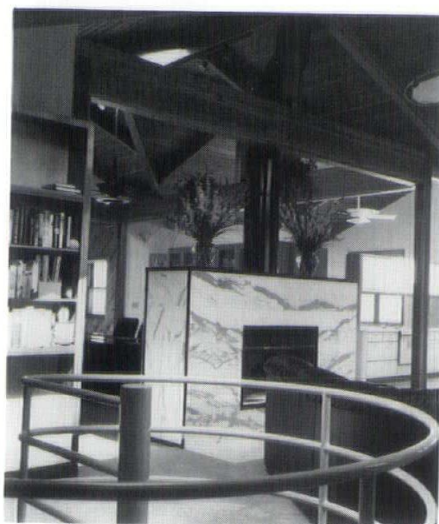
Recent road expansion to the south of this 1970s home had removed 60 feet of frontage and much privacy. A 1980s addition with peculiar roof slope precluded many expansion alternatives. Client directive was to double the area of the existing home with expanded programmatic needs; take advantage of the southern exposure for natural lighting but focus away from the noisy road.

New construction provided a central formal dining room as a visual, circulation and structural center. This aedicule framing at the skylit dining area unifies all the other functions while bringing abundant natural light and structural order to the spaces within. Living room with library share a fireplace with the dining area, and an elegant spiral stair serves the kids' playroom one level below. Dinette and kitchen are twice their earlier size. The original living room/kitchen/dinette was converted into a spacious master bedroom suite with fully appointed bathroom, large closets and indirect glazing.

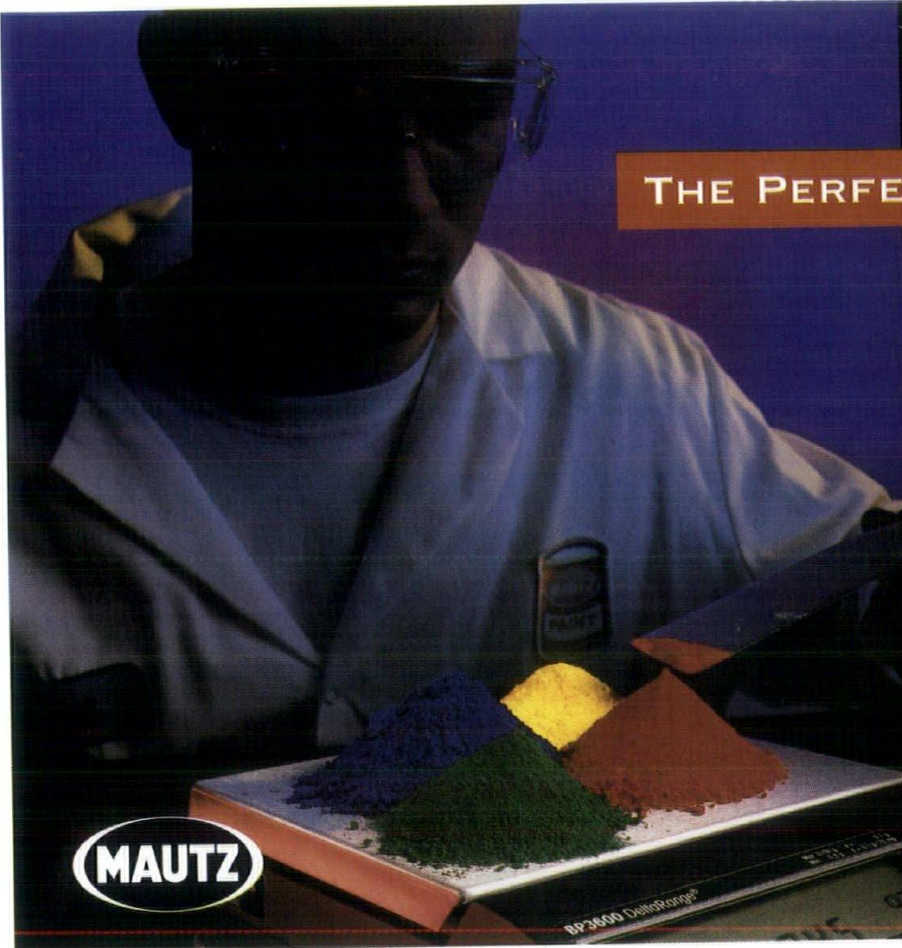
*Photographer: Louis Wasserman, AIA*

#### **Consultants:**

M. Caren Connolly  
Don Osenga  
F. Louis Kerry







## THE PERFECT MIX

- CONSISTENT AND RELIABLE QUALITY, USING THE BEST INGREDIENTS AND THE MOST RIGOROUS QUALITY CONTROL
- A FULL RANGE OF PRODUCTS TO HANDLE YOUR MOST DEMANDING SPECS
- RESPONSIVE SERVICE, RAPID DELIVERY
- COOPERATIVE AND INNOVATIVE CUSTOM PROJECTS
- 1,488 COLORS TO CHOOSE FROM, PLUS SPECIAL-PROJECT TINTING

ATTENTION TO PRECISE MANUFACTURING AND QUALITY SERVICE HAS EARNED MAUTZ A REPUTATION FOR EXCELLENCE.

FIND OUT WHAT MAUTZ CAN DO FOR YOU.  
CALL 608-255-1661.

MAUTZ PAINT COMPANY  
P.O. Box 7068  
MADISON, WI 53707-7068



# For Brick as well as Concrete every day is TEWSday



## TEWS

COMPANY  
Contractor Supply Center

7200 South 10th Street  
Oak Creek, Wisconsin  
414/764-8700  
Toll-free 1-800/686-8401



# FOR QUALITY PRECAST ... TALK TO US

It takes a special kind of employee to create the superior quality precast concrete for which J.W. Peters is known.

**Skilled. Proud. Hard working. Dedicated.**

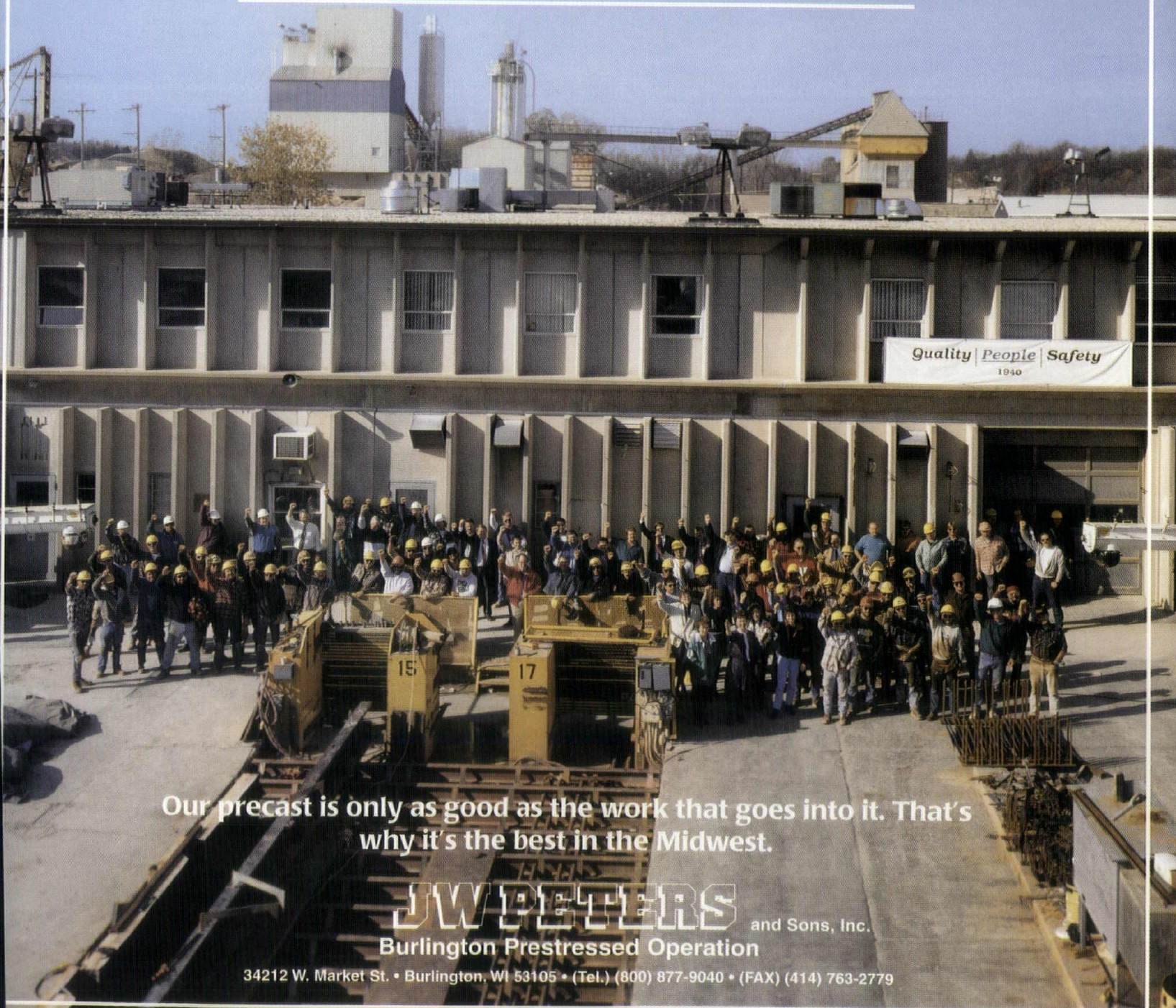
There are more than 120 such employees at Peters today. Meet two of them:



**William J. Spiegelhoff:** Joined Peters in 1963. "If you are going to do a job, do it right the first time."



**Felix Ramirez:** Joined Peters in 1990. "From day one, they told me that quality is the most important thing about my job."



Our precast is only as good as the work that goes into it. That's why it's the best in the Midwest.

**JWPETERS** and Sons, Inc.  
Burlington Prestressed Operation

34212 W. Market St. • Burlington, WI 53105 • (Tel.) (800) 877-9040 • (FAX) (414) 763-2779



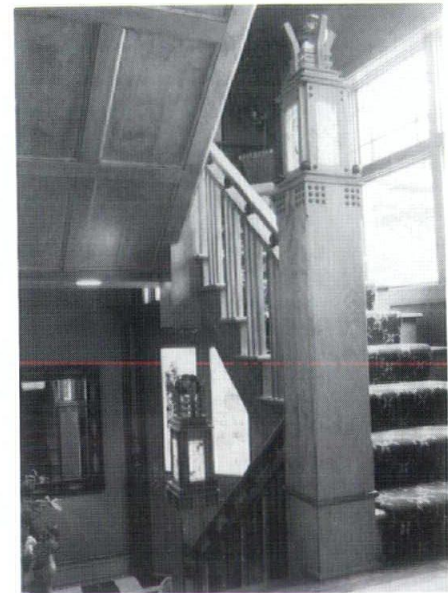
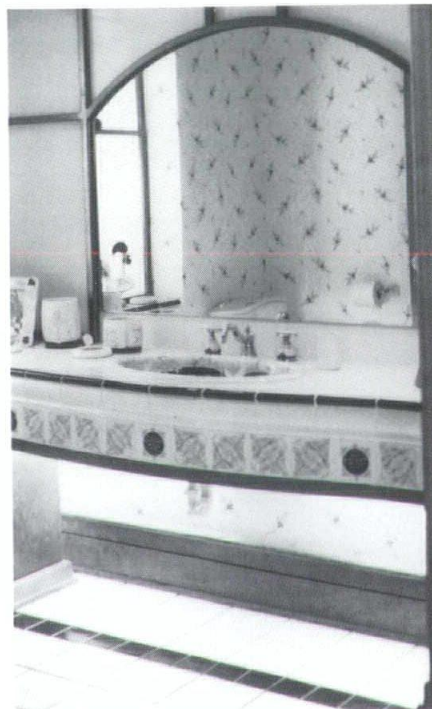
<i>Project</i>	<b>Private Residence</b>
<i>Location</i>	<b>Brookfield, Wisconsin</b>
<i>Architect</i>	<b>Sunarc Studio</b>
<i>General Contractor</i>	<b>Master Builders, Inc.</b>

The owners requested an eclectic home which reflects the skills of varied craftsmen, a home which could be experimented with and easily changed over the course of time.

Therefore, none of the interior walls are loadbearing, to allow rooms to be arranged and rearranged as stage sets. The challenge was to combine new and old materials, both inside and outside, making use of architectural artifacts they had been collecting from demolished buildings.

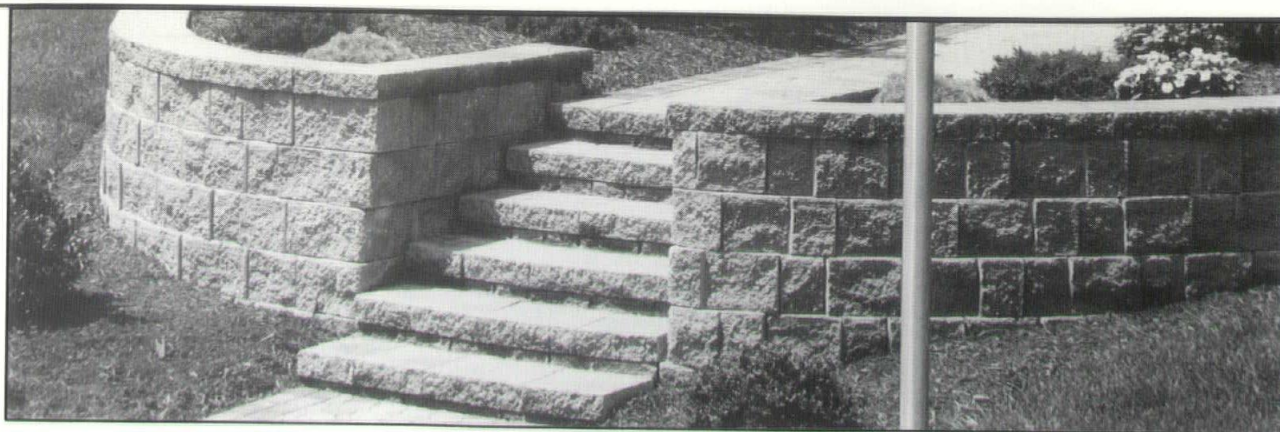
A forty foot square plan was introduced with a simple hipped roof punctuated by a central arched dormer on the front facade. The sloping site created a fourteen-foot grade differential between the front and rear of the house. A split level foyer provided the solution for the front entry. Lower level also has a side entrance.

*Photographer: Helmut Toldt*



*Above: Hand made glass is utilized in the "lighthouse" newel posts. Left: Steel mirror frame is hand forged.*





## Nothing stacks up like StoneWall SELECT

Designed to save time & labor, StoneWall SELECT goes up faster and easier than any other retaining wall system on the market today.

- Superior to wood and poured concrete
- Simple, fast, mortarless installation
- Lightweight and easy to handle
- Complete design flexibility

Now Offering  
**"SELECTedge"**  
An Easy To Install  
Decorative Landscape  
Border Product.

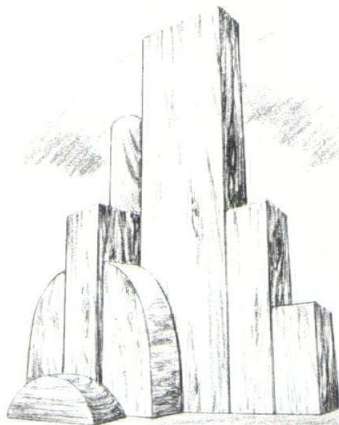


### WAUKESHA BLOCK

10919 W. Bluemound Road  
Milwaukee, Wisconsin 53226  
(414) 453-7980

PROVIDING QUALITY, SERVICE & DURABILITY SINCE 1946

Do you find soaring to new  
heights a dizzying experience?



**Let's talk.**

At Klipstein Insurance, we walk you through the risks and rewards of business expansion one step at a time. For a complete protection plan individually designed for today and into tomorrow, call Klipstein. It's the insurance agency architects and engineers are talking to.

216 N. Midvale Blvd, Madison, WI 608-238-7181 - 800-279-7181

**Klipstein**  
Insurance Services, Inc.

Thomas Dowling  
Ruth Doughty  
Rebecca Bittner



**National Survey & Engineering**

## *The Precise Measurement Of Land*

S I T E S O U R C E

Permitting  
Surveying  
Environmental  
Feasibility Studies  
Site Engineering  
Stormwater Management  
Land Use and Site Planning  
Construction Services/Materials Testing

Telephone 414-781-1000  
Facsimile 414-781-8466  
Toll Free 800-842-7831  
4125 North 124th Street  
Brookfield, Wisconsin  
53005-1837





# The Joys of Residential Architecture

Ask anybody that is involved in single family residential architecture and they will likely tell you that the hours are grueling, the clients are demanding, the schedules are unrealistic, the budgets are marginal and the compensation is minimal. Given that, why would anybody want to design homes and additions for residential clients?

Perhaps there is that dream client lurking out there that will give you free reign on artistic interpretation. Perhaps your next client will hit the lottery and give you a chance on a home in Aspen. Perhaps you will find your next home on the cover of *Architectural Digest*. Or maybe there just are no good answers.

Whatever residential architects strive for in their pursuits, I believe that we all have at least one thing in common and that is to improve upon the deteriorating quality of the residential landscapes in our communities and countryside. Unfortunately, we have one major roadblock to overcome. More often than not, the people that need us the most cannot afford us. We are just too expensive.

Residential architects are too often viewed as a rich person's luxury, and it just shouldn't be that way. How can we make our services more affordable to residential clients so that even people with more modest needs can benefit from our skills? Why do the vast majority of people that are in need of design services have to settle for a carpenter with very little formal

design training? The answer, I believe, is because we have paved our own road to the outside fringes of residential design.

Until we can cater to the needs of all residential client groups in both quality and affordability of services, very little will change. While we have probably all struggled with this issue at some point in our careers, I am not sure that we are finding the answers. Maybe it's time that we step aside for a moment and put ourselves in the homeowners' shoes to find the answer.

While it is very nice to sell a client a full menu of services right on down to the custom trim details, for many people this is not what is important. I have found that most people on limited budgets have a great amount of appreciation for what we do on the more "conceptual" level. You know, the big picture stuff. They want their homes to look good, respond well to the site and function well internally. The reality is that they just cannot afford to buy the traditional package of full services.

For these clients, a simple consulting arrangement may be all that they really need. I have found that a day or two worth of sketching can raise a great number of issues and answer a lot of questions which they may never have considered from the start. Many times these clients will request further exploration to resolve the critical issues that have been raised, resulting in several days of additional work. My experience is that it is not necessary to take a project all the way through construction documents to

serve a client's best needs. While our egos may have a difficult time accepting the concept of a builder picking up our schematic design and finishing up the construction drawings, remember that the homeowner will be the beneficiary of our involvement, to whatever extent it may have been.

While insurance carriers may cringe at the idea of providing "incomplete services," the reality is that our liability exposure is really quite limited when the actual construction drawings are being done by the builder.

As we struggle with what our position is in the marketplace called residential architecture, we can find comfort in the fact that there still are people out there that feel that there is a benefit to hiring an architect. As a profession, we need to become more creative to find ways of making our services available to a wider range of people. Affordability is certainly a key ingredient and sometimes we need to look at how we provide those services so that we are accessible to a greater share of the market.

Maybe we will never develop much more than a tiny fraction of the market for residential design services. However, that doesn't mean that we can't make the effort. For those people that we are able to assist, even if it is only with concept development, we have provided a worthwhile service to society and have helped raise the public's awareness of who we are and what we do.





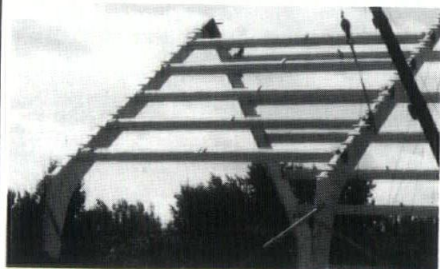
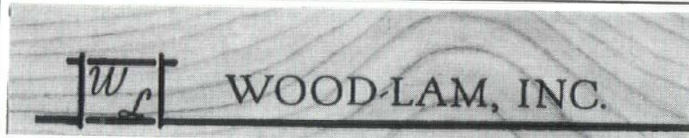
Project: Schroeder Hall, Marquette University, Milwaukee Wisconsin  
Architect: HNTB

An artistic expression of our  
expertise - to fashion metal &  
glass to perfection

Architectural Windows  
Window Replacement  
Thermoclear® Skylights

**arwin**

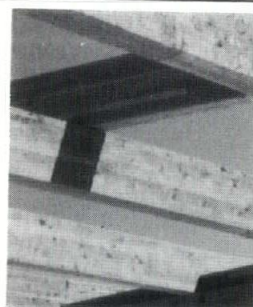
Arwin Builders' Specialties, Inc.  
2145 South 162nd Street  
New Berlin, WI 53151  
(414)782-1090  
1-800-876-1090



Religious



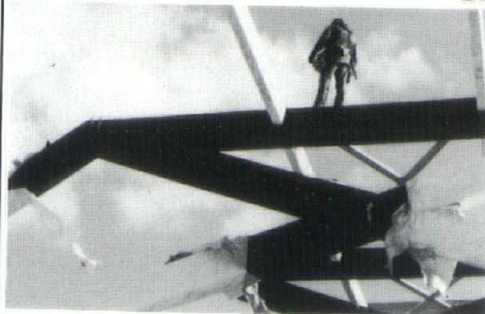
Bridges



Commercial



Park Shelters



Timber Truss  
Furnished or Furnished and Installed  
*For over 35 years*

PHONE: (414) 691-2000  
WATTS: 1/800-242-2216  
FAX: (414) 691-8995

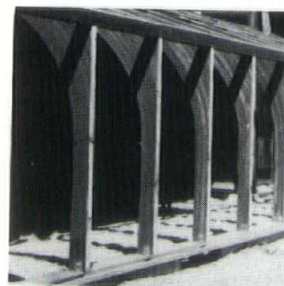
230 SUSSEX STREET  
PEWAUKEE, WI 53072



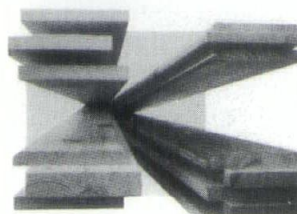
Residential

**SIMPSON**

**StrongTie**  
CONNECTORS



Sunrooms



Joist Hangers



Pool Structures

Roof Decking



### 1995 Design Awards

Six building projects have been recognized for excellence in architectural design as part of the 1995 Design Awards program sponsored by AIA Wisconsin. The 1995 Honor Awards and Merit Awards were presented to the architects, building owners and general contractors during a special awards ceremony on May 11 at The Milwaukee Grain Exchange.

This year's award-winning architecture highlights innovative design solutions for diverse types of projects, from a small private residence addition to a major new county jail facility, from an interior for a men's clothing store to an independent living and skilled nursing care facility, and from a restaurant designed for a local nonprofit organization to a complete renovation of an historic landmark on a college campus. Two projects were selected to receive Honor Awards for overall design excellence. Merit Awards were presented to four other projects for excellence in a particular aspect of design. The design awards jury also recognized a seventh project for Honorable Mention.

The architects and projects receiving 1995 Honor Awards were: Kahler Slater, Milwaukee, for its design of the addition to the David and Cynthia Kahler residence in Milwaukee, and Venture Architects, Milwaukee, for its design of the Milwaukee County Jail and Criminal Justice Facility.

The architects and projects selected for 1995 Merit Awards were: Kahler Slater, Milwaukee, for its design of Chai Point on the Weinberg Jewish

Terrace Campus in Milwaukee; Kubala Washatko Architects, Inc., Cedarburg, for its design of the Bachrach store in Novi, Michigan; LHB Engineers & Architects, Duluth, in association with Hammel Green and Abrahamson, Inc., Minneapolis, for the renovation of Wheeler Hall on the Northland College campus in Ashland; and James Piwoni Architects & Planners, Milwaukee, for its design of Palomas Restaurant in Milwaukee.

In addition, the jury selected the Warner Park Shelter II in Madison by Kenton Peters + Associates, Inc., Madison, for special mention.

A three-person jury, including Donald Carter, FAIA, Pittsburgh, Rod Kruse, AIA, Des Moines, and Eva Maddox, Assoc. AIA, Chicago, selected the 1995 Design Award winners from 70 projects submitted by AIA Wisconsin members. The co-chairs of this year's Design Awards program were Robert Cooper, AIA, with Eppstein Uhen Architects, Milwaukee, and Katherine Schnuck, AIA, with Columbia Hospital, Milwaukee.

### Distinguished Service

At its April meeting, the AIA Wisconsin Board of Directors voted to award a *Citation for Distinguished Service* to three individuals in recognition of their significant contributions to the profession of architecture. The *Citations* were formally presented during the AIA Wisconsin Annual Meeting in May.

Marge Schappe, Madison, and Clarence Huettenrauch, AIA, Mequon, were recognized for their contributions to Wisconsin's design



and construction industry as Co-Chairs of the AIA/AGC Liaison Committee. The AIA/AGC Liaison Committee has become a forum for the discussion of issues of concern to architects and contractors. Through hard work and dedication, it has developed numerous "recommended practices" to improve the process by which clients' dreams are turned into reality.

Gary V. Zimmerman, FAIA, Hartland, was recognized for his contributions to the profession as President of the Wisconsin Architects Foundation. Through his leadership, the WAF renewed its commitment and enhanced its financial ability to improve Wisconsin's built environment by supporting architectural education and programs which increase the public's awareness and appreciation of architecture.

#### **New Director**

David J. Ewanowski, AIA, Madison, has been appointed to fill a Director-At-Large vacancy on the 1995 AIA Wisconsin Board of Directors. He will complete the term of Joseph L. Powelka, AIA, Sun Prairie. Ewanowski is a principal of KEE Architecture in Madison.

#### **WAF Annual Meeting**

At the Annual Meeting of the Wisconsin Architects Foundation, held in conjunction with the 1995 AIA Wisconsin Convention, the following individuals were elected to three-year terms on the WAF Board of Directors: Ronald G. Bowen, FAIA, Middleton; Curt Hastings, Madison; and Brian F. Larson, AIA, Eau Claire. WAF President H. James Gabriel,

AIA, Sheboygan, provided a status report on scholarship programs and encouraged architects and allied design and construction industry professionals to support the efforts of the Foundation.

#### **Golf Outing**

Cancel all your appointments for Monday, June 26, and plan to participate in the 22nd annual Architect/Exhibitor Golf Outing at Old Hickory in Beaver Dam.

This special event is for AIA Wisconsin members and 1995 AIA Wisconsin Convention exhibitors. For more information, please contact the AIA Wisconsin office.

#### **Design Fee Survey**

The results of the "1995 PSMJ Design Services Fee Survey" show slightly improved fee levels and contract terms.

Hourly billing rates rose 4% to 5%, except for design firm principals, according to the survey. The median for project architects and project engineers rose from \$70 to \$75, with similar increases seen in most production level classifications.

With respect to contract terms, the percentage of contracts including a markup on subconsultants and reimbursables rose from 50% to 55%, the percentage of firms billing finance charges on late payments rose from 77% to 81%, and the percentage of firms requesting up-front retainers rose from 66% to 70%.

The complete survey is available for \$243 from: PSMJ, 10 Midland Avenue, Newton, MA 02158; (617) 965-0055.

#### **William V. Kaeser**

Madison architect and AIA Emeritus member William Kaeser died in April in Tucson, Arizona.

Born in 1906 in Highland, Illinois, Kaeser graduated from architectural schools at Illinois, MIT and Cranbrook Academy of Art. He was Madison's city planner for four years and opened his own practice in 1935.

A prominent architect, his work was featured in national journals, particularly his solar homes. The Madison Art Center recently featured an exhibition of his work entitled "William V. Kaeser: Madison's Organic Architect."

His contributions to our built environment were many. His architecture will provide an inspiration to architects for years to come.

#### **People & Places**

AIA Wisconsin members **John H. Simonitsch**, AIA, Milwaukee, and **Helmut Seaman**, AIA, Madison, have been approved for Emeritus membership in The American Institute of Architects. Congratulation!

Attention! If you have been attempting to reach **David H. Lehman**, AIA, Waukesha, by phone without success, please dial (414) 524-9601. The 1995 Membership Directory contained an incorrect telephone number.

**Lisa Kennedy**, AIA, reports that L.L. Kennedy, Inc., has settled in to its new office at: 5900 North Port



Washington Road, Suite b-11a,  
Milwaukee, WI 53217; phone: (414)  
332-9072; fax: (414) 332-7079.

**James F. Price, AIA**, Kohler, has  
joined Jim Pankow, Inc., in Plymouth  
and will handle design-build project  
development for the firm. He can be  
reached at (414) 458-3870.

Welman Architects, Inc., Waukesha,  
is pleased to announce that **R.G.  
Keller, AIA**, Greenfield, has joined  
the firm as director of design. The  
phone number for Welman Architects  
is (414) 523-0555.

**Mike Groth, AIA**, and **Jeff Smies,  
AIA**, have announced the formation  
of their new firm, Groth & Smies  
Architects, Ltd., with offices in  
Grafton and Sheboygan. They can be  
reached at (414) 377-8001 or (414)  
458-0771.

**Martin P. Choren, AIA**, Mequon,  
has joined Hammel Green and  
Abrahamson, Inc., as a project  
architect.

**Mark F. Pfaller, II, AIA**, has opened  
the firm of Pfaller Architectural  
Associates, 213 North Broadway,  
Milwaukee, WI 53202; phone: (414)  
273-8585.

**Michael D. Healy, AIA**, has been  
appointed by Mayor Bloomberg as  
the architect member of the newly  
created city of Brookfield Historic  
Preservation Task Force, which will  
draft an Historic Preservation Ordinance and serve as the city's first  
Historic Preservation Commission.  
Healy is the owner of As Built  
Survey, Unlimited, and can be  
reached at (414) 781-4449.

**Karen Plunkett Muenster, AIA**, has  
been elected vice president of  
Plunkett Raysich Architects, Milwaukee. She joined the firm in 1990 as a  
third generation Plunkett.

The Mayor and Common Council of  
the city of Madison recently recognized **Horst W. Lobe, AIA**, Madison,  
for his twenty years of dedicated  
service to the Urban Design Commission and his contributions to make  
Madison a more livable city. The  
formal resolution notes that the  
Madison Urban Design Commission  
was created in 1972 to promote the  
general welfare of the community by  
enhancing the design and appearance  
of the city's "built environment" and  
that Lobe "has demonstrated a  
constructive and practical approach to  
evaluating plans for hundreds of  
development projects throughout the  
City."

A team from Sturgeon Bay High  
School, coached by **David H.  
Valentine, AIA**, took first place in  
the Odyssey of the Mind (OM) world  
championships held in Ames, Iowa.  
According to an article in *Wisconsin  
Engineer Journal*, Valentine started  
coaching OM teams in 1983. Since  
then, he has coached 60 teams and  
made it to the world competition 15  
times. He is a firm believer in the  
benefits of this innovative problem-  
solving contest that helps young  
people develop skills that are highly  
prized in the job market. Knowledge  
is all well and good, he has discovered,  
but OM teaches kids how to use  
knowledge to solve problems creatively.

OMNI Associates, Inc., Appleton,  
reports that its design of the Washington  
Street parking ramp in Appleton  
received an Honorable Mention  
award in the 1995 parking design and

program innovation competition  
sponsored by the Institutional and  
Municipal Parking Congress.

An AIA Wisconsin member is  
attempting to track down the archives  
of architect Bruce Boswell. If you  
have any information on where they  
may be located, please contact Bill at  
the AIA Wisconsin office in Madison.  
Any potential leads would be appreciated.

The UW-Madison Department of  
Engineering Professional Development  
is offering the following  
courses: "Complying with the ADA  
in Facilities Planning and Design"  
(July 13-14), "Creating Effective  
Construction Specifications" (July  
17-21), "Building Energy Systems—  
EM3" (July 17-21), "Lighting  
Systems and Controls" (October 16-  
18), and "Creativity in Design"  
(November 15-17). For information,  
call (800) 462-0876.

### Membership Action

Please welcome the following  
members of AIA Wisconsin:

#### AIA

Brett D. Daniels, NW  
Kem Everts, SE (Advancement)  
Prabhat L. Kaikini, SE  
Steven A. Margis, SE  
Robert P. Yuhas, SE

#### Associate

John J. Bieno, SW  
K. John Kregel, Jr., NE  
James A. Sisson, SE

#### Professional Affiliate

John G. Gehringer, SE  
Kalika Wamanacharya, SW

#### Student

Brett Liesch, NE  
Andy Nelson, NE  
Matthew J. Schuessler, NE



## Advertiser Index

- 34 Arnold & O'Sheridan, Inc.  
 29 Arwin Builders Specialties, Inc.  
 15 Associated Builders & Contractors  
 34 Baraboo Tent & Awning  
 insert Bend Industries  
 4, 15 Builders World  
 34 Bert Fredericksen, Inc.  
 33 Great Lakes Gypsum Distributors  
 34 Harwood Engineering  
 34 Kapur & Associates  
 27 Klipstein Insurance Service  
 34 Lang Associates, Inc.  
 9 LFI-Landscape Forms, Inc.  
 24 Mautz Paint  
 34 R. L. Merlie  
 34 C.R. Meyer and Sons Company  
 9 Mid-States Concrete Products  
 34 Midwest Visual Equipment Co.  
 21 NECA/IEBW  
 6 Nielsen Building Systems  
 25 J.W. Peters & Sons, Inc.  
 2 Point Line USA  
 17 SPI Lighting  
 9, insert Simuwear  
 27 R. A. Smith & Associates, Inc.  
 33, insert G. Wentworth Smith  
 34 Soils & Engineering Services, Inc.  
 35 Spancrete Industries  
 34 Strass-Maguire & Associates, Inc.  
 27 Tews Company  
 36 Ver Halen, Inc.  
 15 Virtual Automation Labs  
 34 Water Technology  
 24 Waukesha Block  
 34 Skot Weidemann Photography  
 6 Wisconsin Gas Co.  
 12 Wisconsin Ready Mixed Concrete Assn.  
 34 Wisconsin Testing Laboratories  
 29 Wood-Lam

*This index is published at no cost to advertisers, as a service to readers of Wisconsin Architect. When writing to advertisers, tell them you saw their message in Wisconsin Architect. They want to know!*

**LEVEL FLOORS. LESS MONEY.**

# Level-Right®

**Self-Leveling  
Floor  
Underlayment**



**Level-Right delivers superior results for any floor-leveling challenge...**

- New construction or renovation
- Leveling entire floors or transition areas, featheredge to deepfill
- Resurfacing old or damaged concrete floors
- Topping old ceramic, marble or terrazzo floors
- 5500 PSI; water resistant



*LEVEL-RIGHT® can be barrel-mixed or pumped in place.*

- No troweling required
- Enclosing VCT, VAT or asbestos adhesive
- Capping cracked, lightweight concrete
- Filling "duck ponds" in concrete floors
- Provides a temporary wear surface in as little as 2 to 4 hours after application
- Accepts nearly all floor coverings

**Pour on a perfect floor—  
with Level-Right. For  
specifications or a quote,  
contact:**

Acoustical Floors of WI  
 675 Industrial Ct. Ste. C  
 Hartland, WI 53024  
 (414) 367-3306

Superior Gypsum Floors  
 1132 Ashwaubenon St.  
 Green Bay, WI 54304  
 (414) 336-7010

## LEVEL-RIGHT®

The Faster, Cost Effective Floor Leveling System

**Carpet Selection Can Be A Headache . . .**

*For Professional Relief call*

**G. (Gary) Wentworth Smith, CSI**

Carpet Specification & Evaluation  
 Simuwear™ Performance Testing  
 Complaint Investigations

*Education - Medical - Hospitality*

*For a free brochure contact:*

G. Wentworth Smith, Inc.  
 P.O. Box 71  
 Columbus, WI 53925

Phone (414) 623-5183  
 Fax (414) 623-2810



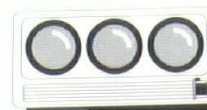
# ARNOLD AND O'SHERIDAN INC

CONSULTING ENGINEERS  
STRUCTURAL MECHANICAL ELECTRICAL CIVIL

815 FORWARD DRIVE, MADISON, WI 53711 608.271.9651  
4125 N. 124TH STREET, BROOKFIELD, WI 53005 414.783.6130

## Meeting Room AV Systems Design

Need more help when you design meeting rooms using AV, video computers or teleconferencing systems? Call Flint Bridge at Midwest Visual. 414/ 784-5880.



## TENT & AWNING

FABRIC PROFESSIONALS

CALL  
1-800-332-8303

## SOILS & ENGINEERING SERVICES, INC.



Geotechnical, Material Testing, and  
Environmental Consulting Engineers

1102 STEWART STREET 608-274-7600  
MADISON, WI 53713-4648 FAX 608-274-7511

## BERT FREDERICKSEN, INC.

CONSULTING ENGINEERS

3245 North 124th Street Brookfield, Wisconsin 53005-3112  
TELEPHONE 781-9070 (414)

HEATING • VENTILATING • AIR CONDITIONING • PLUMBING  
John Fredericksen-President Bert T. Fredericksen-V. President

## Strass-Maguire & Associates, Inc

CONSULTING • STRUCTURAL • INDUSTRIAL • ENGINEERS



9064 N. DEERBROOK TRAIL  
Milwaukee, WI 53223

#414/354-4046 FAX 414- 354-5008



Harwood  
Engineering  
Consultants

7720 Harwood Avenue  
Milwaukee, WI 53213

- HVAC
- Structural
- Telecom/Fiber Optics
- Plumbing/Fire Protection
- Electrical/Lighting Design

(414) 475-5554  
FAX (414) 475-5698

## Engineering Innovation

- NEW CONSTRUCTION
- RENOVATIONS
- OZONE TECHNOLOGY

- PUBLIC POOLS
- WATER PARKS

- INDOOR POOLS
- MECHANICAL/CHEMICAL  
SYSTEM DESIGN



WATER  
TECHNOLOGY, INC.

Aquatic Designers And Engineers

P.O. Box 614 Beaver Dam, Wisconsin 53916 Phone: 414-887-7375 FAX: 414-887-7999



Consulting Engineers

Kapur & Associates, Inc.  
7711 N. Pt. Washington Road  
Milwaukee, WI 53217  
(414) 351-6668

- Mechanical
- Structural
- Electrical
- Civil
- Environmental
- Surveying



## Skot Weidemann

Photography

Architecture, Aerial & Advertising

6621 Century Avenue, Middleton, WI 53562  
608/836.5744 Fax: 608/836.7121



Wausau, WI (715) 845-1333 • Green Bay, WI (414) 435-2488

Associates, Inc.

Consulting Engineers • Electrical & Automation Specialists

- Lighting Design
- High, Med., Low Voltage Design
- Systems Design

- Instrumentation and Controls
- Automation
- Testing



Wisconsin

TESTING LABORATORIES

Geotechnical Engineers

Soil Borings

Materials Testing & Inspection

Menomonee Falls, WI 53051 • (414) 252-3300



Saluting Excellence in Architecture.

Oshkosh & Rhinelander, WI • Phone: 414-235-3350

## HEARTHSTONE TIMBER FRAME HOMES

Massive Oak Timbers with Mortise-and-Tenon Joinery grace the Interiors, while flexible Design Options make a Distinctive Home for Any Neighborhood. When Your Projects Calls for a Frame, call us:

The  
**R.L. MERLIE CO.**  
Spring Green • (608) 588-2851

*This space  
available!*

**Call  
(608) 257-8477**



# Preferred Parking

For a parking structure driven by efficiency, economy and aesthetics, Spancrete is your perfect choice.

Spancrete structural precast parking deck components put construction schedules on the fast track. Each unit is produced and cured in our plant under carefully controlled conditions, and can be erected quickly on any site in any weather, with fewer delays.

Precast Spancrete cladding offers striking architectural treatment options, too. Like decorative reveals. False joints. Rich exposed aggregates in a variety of colors. Stone or masonry veneers. Even curvilinear shapes.

With Spancrete, you'll save on financing and maintenance costs. Realize a faster return on your investment. And produce a parking structure that's an asset to you and its environment.

Spancrete. The vehicle of choice for high-performance parking structures.



Spancrete Industries, Inc.  
10919 West Bluemound Road  
Milwaukee, Wisconsin 53226 • 414-258-4110  
Green Bay • 414-494-0274  
Chicago • 815-459-5580



Children's Hospital of Wisconsin  
Parking Structure  
Wauwatosa, Wisconsin



ANOTHER REASON TO USE PELLA® WINDOWS AND DOORS

# At Smith College, Pella® Windows hold some impressive degrees.

*Seelye Hall, Smith College,  
Northampton, MA, is an  
historic landmark.*

*Energy audit recommenda-  
tions were met by the Pella®  
Single-Hung Window.*



*Openings  
ranged up to  
68" x 118."*

*Only Pella met stringent  
appearance, performance  
and low-maintenance  
requirements.*



Smith College doesn't accept just *any* window to its school. Energy efficiency is a prerequisite. And the answers for renovating venerable Seelye Hall—including custom glazing, light pattern, lift pressure, brickmold, interior finish and color—were genius. In the final exam, only Pella made the grade. Contact your Pella® Commercial Specialist, or call for free literature.

Contact: Mike Baeb  
1-800-242-1008

*Call for our free Commercial Products Guide*



**VERHALEN**  
INC.  
 **COMMERCIAL**  
DIVISION