

AIA Wisconsin
May/June 1994

W I S C O N S I N

Architect

Residential Projects

Interior Architecture

Campus Circle

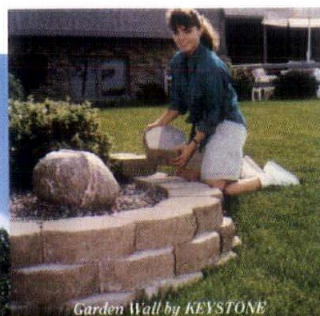
AIA LIBRARY & ARCHIVES
1735 New York Ave., N.W.
Washington, D.C. 20006

JUN 02 1994



KEYSTONE™

Dramatic Design Options And Rock Solid Stability!



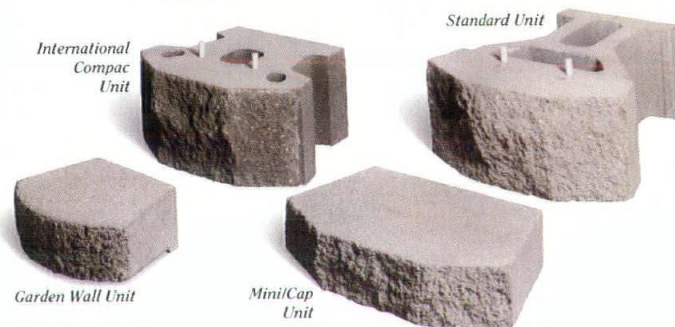
Garden Wall by KEYSTONE



Sculptured Split



Classic Split



DISTRIBUTED BY:

BEST BLOCK COMPANY
W140 N5870 Lilly Road
Menomonee Falls, WI 53051
(414) 781-7200 • (800) 782-7708

**APPLE VALLEY
LANDSCAPE**
1670 Mar-El Road
DePere, WI 54115
(414) 336-0667

BREEZY HILL NURSERY
7530 288th Avenue
Salem, WI 53168
(414) 537-2111

DARBOY STONE COMPANY
W3277 Creek View Lane
Appleton, WI 54915
(414) 734-2882

COUNTY CONCRETE CORP.
1110 Menomonie Street
Eau Claire, WI 54702
(715) 834-7701

102 First Street
Marathon, WI 54448
(715) 443-2434

3200 South Main
Rice Lake, WI 54860
(715) 234-8144

2000 Patch Street
Stevens Point, WI 54481
(715) 341-0990

C. HARVEY CO., INC.
1610 North 8th Street
Manitowoc, WI 54220
(414) 683-5585

**HEMSTOCK CONCRETE
PRODUCTS, INC.**
1702 Kramer Street
LaCrosse, WI 54603
(608) 781-0505

MADISON BLOCK & STONE
5813 North Hwy. 51
Madison, WI 53708
(608) 249-5633

**MILAEGERS
GARDEN CENTER**
4838 Douglas Avenue
Racine, WI 53401
(414) 639-2040

THE PINES, INC.
5309 75th Street
Kenosha, WI 53142
(414) 694-3775

**TRI-COUNTY READY MIX
& EXCAVATING**
2216 Calumet Drive
New Holstein, WI 53061
(414) 898-5771

VAN DER VAART, INC.
1436 South 15th Street
Sheboygan, WI 53080
(414) 459-2400

WAUSAU CONCRETE CO., INC.
North End 3rd Street
Wausau, WI 54402
(715) 842-2288

ZILLGES MATERIALS, INC.
1800 Fountain Avenue
Oshkosh, WI 54901
(414) 231-1994

KEYSTONE™
RETAINING WALL SYSTEMS

**BEST
BLOCK**  **COMPANY**

AIA Wisconsin

A Society of The American Institute of Architects

May/June 1994

AIA Wisconsin Board of Directors: Lisa L. Kennedy, AIA, *President*; Kevin J. Connolly, AIA, *Vice President/President-Elect*; Horst W. Lobe, AIA, *Secretary/Treasurer*; Ross T. Potter, AIA, *Past President*; Robert E. Shipley, AIA; John G. Horky, AIA; Erik D. Hansen, AIA; Joseph L. Powelka, AIA; Ernest R. Seymour, AIA; Daryl J. Dean, AIA; James G. Vander Heiden, AIA; A. James Gersich, AIA; Robert R. Bouril, AIA; Kevin B. Shumann, AIA; Carmen R. Behm, AIA; Dennis E. Miller, AIA; Gary J. Kucko, AIA; Patrick J. Conway, (Associate Representative); Jeff Polachowski (UWM SARUP Student Representative); Daniel Rousseau (MSOE Student Representative); William M. Babcock, *Executive Director*.

AIA Wisconsin, A Society of The American Institute of Architects: 321 South Hamilton Street, Madison, Wisconsin 53703—Phone (608) 257-8477.

Wisconsin Architects Foundation Board of Directors: 321 S. Hamilton Street, Madison, Wisconsin 53703—Phone (608) 257-8477; Gary V. Zimmerman, AIA, *President*; Robert D. Cooper, AIA, *Vice President*; Richard J. Griesse, AIA, *Secretary/Treasurer*; H. James Gabriel, AIA; Dean Robert C. Greenstreet; Clarence Huettnerauch, AIA, FCSI; Paul Berta; Ronald G. Bowen, FAIA; Brian F. Larson, AIA; William M. Babcock, *Executive Director*.

North Central Region AIA: James W. Miller, AIA, and Duane A. Kell, AIA, *Directors*.

AIA Southeast Wisconsin: Daryl J. Dean, AIA, *President*; James G. Vander Heiden, AIA, *Vice President/President-Elect*; T. J. Morley, AIA, *Secretary/Treasurer*.

AIA Southwest Wisconsin: A. James Gersich, AIA, *President*; Robert R. Bouril, AIA, *Vice President/President-Elect*; Barbara K. Ohlsen, AIA, *Secretary/Treasurer*.

AIA Northeast Wisconsin: Kevin B. Shumann, AIA, *President*; Carmen R. Behm, AIA, *Vice President/President-Elect*; Daniel J. Roarty, AIA, *Secretary/Treasurer*.

AIA Northwest Wisconsin: Dennis E. Miller, AIA, *President*; Gary J. Kucko, AIA, *Vice President/President-Elect*; Devin Mogck, AIA, *Secretary/Treasurer*.

Wisconsin Architect, Inc.; Board of Directors: Lisa L. Kennedy, AIA; Kevin J. Connolly, AIA; Horst W. Lobe, AIA; Ross T. Potter, AIA.

Wisconsin Architect Editorial Board: Peter J. Schuyler, AIA, *Chair*; Dean Robert C. Greenstreet; Douglas C. Ryhn; Nancy J. Hubbard; William M. Babcock. *Chapter Coordinators:* Robert E. Shipley, AIA; Daniel J. Becker, AIA; Tim Larson, AIA; Dennis L. Olson, AIA.

Magazine Staff

Editor

William Babcock

Coordinating Editor

Grace Stith

Advertising & Production Manager

Cheryl Seurinck



Printed on recycled paper

Cover: An Architect's Residence
Architect: Plunkett Raysich
Architects
Photographer: Steve Poast

W I S C O N S I N

Architect

Features

- 8 Campus Circle Project
Sherri Wille
- 23 1994 AIA Wisconsin Convention Highlights

Projects

- 11 Private Residence Addition
Sunarc Studio
- 12 An Architect's Residence
Plunkett Raysich Architects
- 15 Timber House
Quorum Architects, Inc.
- 16 Lakefront Residence
Prine Architects, Inc.
- 17 Private Residence
Schute-Larson Architects, Inc.
- 19 House on the Rocks
Joseph W. Albert, III AIA Architect
- 20 Private Residence
Vetter Denk Architects, Inc.
- 21 Harambee/Brewers Hill Townhouses
Sunarc Studio
- 28 Private Residence
Prine Architects, Inc.
- 29 Private Residence
GMK Architecture, Inc.
- 31 Gaslight Pointe Condominiums
Kahler Slater Architects
- 33 House from a Barn
Shute-Larson Architects, Inc.
- 34 Interior of Attorneys' Offices
Blaustein Architect
- 35 BareBones
Kubala Washatko Architects, Inc.

Departments

- 5 Guidelines
- 37 Elevation
- 39 Forum
- 42 Society News
- 45 Advertiser Index

WISCONSIN ARCHITECT serves the design and construction industry in Wisconsin with circulation to Architects, Engineers, General Contractors, Business and Interior Designers, Landscape Architects, Certified Planners, Developers, Specifiers, Construction Managers, Facilities Managers, Builders, Manufacturers and Suppliers. Wisconsin Architect is the official publication of AIA Wisconsin, A Society of The American Institute of Architects, and is published by Wisconsin Architect, Inc. Address all editorial and advertising inquiries to: Editor, Wisconsin Architect, 321 S. Hamilton St., Madison, WI 53703; phone 608/257-8477. Wisconsin Architect and AIA Wisconsin disclaim liability for statements by the editors, contributors and advertisers.



DROP DEAD GORGEOUS.

One look at the new Casemaster window from Marvin is all it takes to see this is the most beautiful casement window ever made. And its beauty is only the beginning. New concealed locks are as secure and convenient as they are beautiful. And the all new Marvin exclusive crank

handle and cover design add an unobtrusive design element to the highest quality windows available, Marvin Windows.

Stop by our showroom. You have to see it to believe it.

For technical support contact:



builders world, inc.

p.o. box 881 • waukesha, wisconsin 53187 • (414) 542-8883

RANDOLPH
Randolph Bldg. Ctr.
(414) 326-3136

MILWAUKEE
A. Fillinger Inc.
(414) 353-8433

MENOMONEE FALLS
Wood Specialties
(414) 251-8844

BARABOO
Senger Lumber Co.
(608) 356-6395

NEW BERLIN
Meyer Lumber Co.
(414) 786-7919

WATERTOWN
Zuern Building Center
(414) 261-5676

MADISON
The Door and Window Center
(608) 235-3110

The American Dream: To own a home—that's just like your neighbor's.

The Architect's Dream: To design a home that is unique.

Are average people's lives more organized because they live in homes that are

*Are we blazing
a trail?*

similar to their neighbor's? Are they happier

because their white picket fences line up with

their neighbor's and their front yards afford

hours of pleasure walking behind a lawn mower?

Are architects trying to change the regimented neighborhood by designing

homes that are unique?

Are we rebels or are we blazing a trail to a new frontier and creating a new and

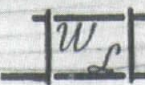
better environment?

Is the gap narrowing between the typical builder's home and the architecturally

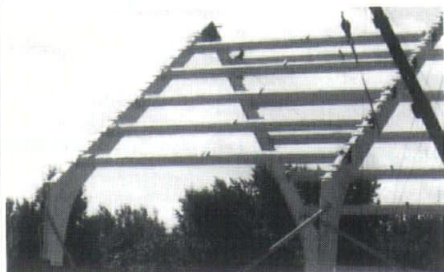
designed home? Are we succeeding?

Read the following pages to find answers to these questions.

David J. Raysich, AIA



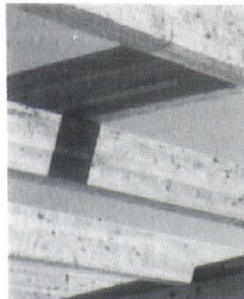
WOOD-LAM, INC.



Religious



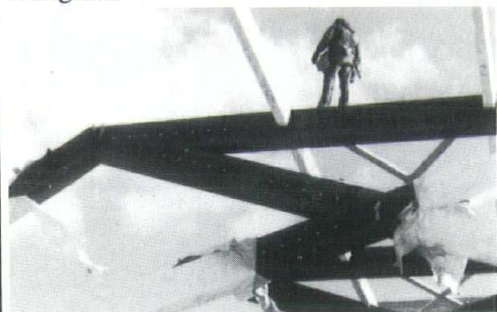
Bridges



Commercial



Park Shelters



Timber Truss
Furnished or Furnished and Installed
For over 35 years

PHONE: (414) 691-2000
WATTS: 1/800-242-2216
FAX: (414) 691-8995

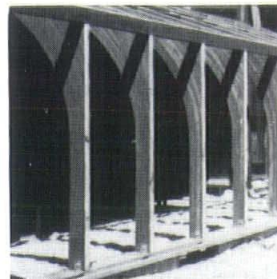
230 SUSSEX STREET
PEWAUKEE, WI 53072



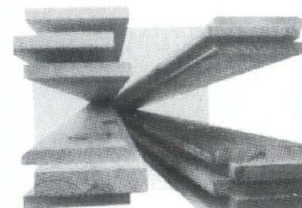
Residential

SIMPSON

Strong-Tie
CONNECTORS



Sunrooms



Joist Hangers



Pool Structures

Roof Decking

Purcell Imaging

Furst Corporation Architects - the Zimmerman Design Group



integrated photographic solutions

architectural and interior photography
computer generated slides and video
custom presentation material

414.278.8290 FAX 414.278.7278

When it comes to great fabrication our reputation



is stainless.

Our reputation is stainless by design. We're the Sheet Metal Contractors of Milwaukee, whose shining products are seen all over the city, from fancy duct work to monumental architecture. Sheet Metal is better by design!

Sheet Metal Contractors
of Milwaukee
2515 North 124th Street
Suite 200
Brookfield, Wisconsin 53005
(414) 784-6889

SMC
Sheet Metal Contractors
of Milwaukee

Simple Addition.

"Clearly, the noise and disorder of conventional construction would have disrupted the lives of the three hundred residents already living at San Camillo when we began the Phase II addition.

"Spancrete enabled us to literally fabricate the addition off site, then bring it to the construction site and erect it quickly. Normal activity in the existing building continued with minimal interruption.

"All of San Camillo's structural and exterior components were made by Spancrete. Of all available materials, Spancrete's precast concrete offered the best sound resistance and the least maintenance.

And, with Spancrete Industries' records of the original color mixes, matching the color of the existing building was easy.

"What Spancrete allowed us to do was complete a perfectly matched, ten-story addition in just sixteen months."

Jack Shepherd, Shepherd Legan Aldrian Ltd.



Spancrete Industries, Inc.
10919 West Bluemound Road
Milwaukee, Wisconsin 53226 • 414-258-4110
Crystal Lake, Illinois • 815-459-5580

San Camillo Retirement Community
Wauwatosa, Wisconsin

Campus Circle Project

Trimborn Mansion and Kraus House

With the introduction of Campus Circle in 1991, Marquette University joined with area businesses, community organizations and residents to revitalize the near west side of Milwaukee. The historic Cedar Square renovation is a major effort to provide quality neighborhood housing; and more than one hundred remodeled apartments have been completed.

Two historic mansions, Kraus House and Trimborn Mansion, are a part of this area providing housing for students and their families. Cedar Square is only one block from the Marquette campus. The neighborhood is rich in diversity and rich in history.

Kraus House is the oldest standing house in the area, built in 1874. Extensive deterioration throughout the years meant carefully moving the house to rebuild the foundation, thus ensuring its long-term existence. Exterior walls, floors and roof were rebuilt to correct damage caused by time and weather. Floor plans were redesigned to include larger living space, larger bedrooms and additional bathrooms. The Italianate style was carefully maintained throughout the rehabilitation. Handicap accessibility was incorporated into the plans to

meet ADA requirements. Over \$300,000 was spent to restore this important piece of history. It is used to house international students as a quality seven-bedroom home with three full baths.

Trimborn Mansion required extensive space reconfiguration to convert 11,200 square feet of space into twenty apartments. They vary from one to two and three bedroom units. Again, the building had suffered much deterioration. It is located next door to Kraus House. Its turn-of-the-century exterior is highlighted by gabled and turreted roof forms. Housing units were tucked into attic spaces punctuated by dormers. Uniquely designed units include one-bedroom apartments with open ceilings in each of the corner turrets. Some units have contemporary kitchens and bathrooms enhanced by simple natural lighting. All first-floor units are accessible. Decorative fencing and landscaping provide the finishing touch for this historic home.

The simultaneous renovation of Trimborn Mansion and Kraus House was completed in just four months. The architect for these projects was Eppstein Keller Uhen, Inc., Milwaukee. The general contractor was Grunau Project Development. **WA**

EDITOR: Photographs and information for this story provided by Sherri Wille, Communications Director of Campus Circle. The 1994 AIA Wisconsin Convention includes a seminar on the Campus Circle Project.



Trimborn Mansion was originally designed by architects Charles D. Crane and Carl C. Barkhausen of the German English Academy on Broadway Street. It was built in 1897 for Conrad Trimborn, Secretary of the Starke Dredge and Dock Company. Conrad's father operated lime kilns on the family farm in Greendale. It shows strongly symmetrical turn-of-the-century architectural features, highlighted dormers and corner turrets.

Above: Before; Right: After; Far right: New interior.



Kraus House, built in 1874, is believed to be the oldest building on this block. Fredrick Kraus was a local Milwaukee carpenter. He purchased the lot in 1873 and built this charming Italianate house the following year. From the turn of the century until the 1920s, it was the home of Henry Zwengel, a Milwaukee jewelry manufacturer. The house had almost completely deteriorated when Campus Circle took it over.

Above: Before; Right: After; Far right: New interior.

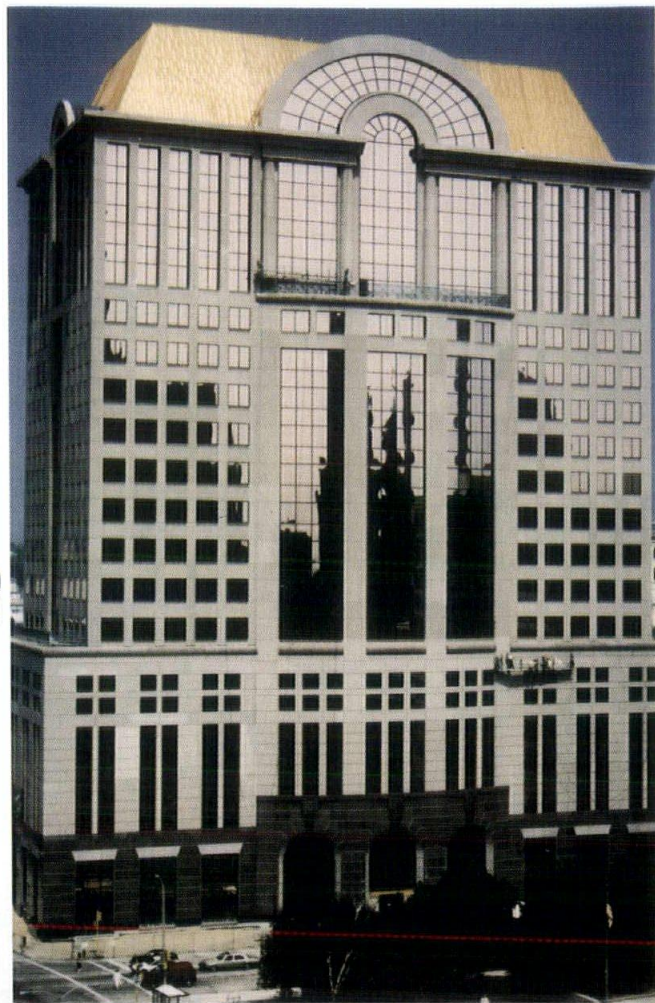
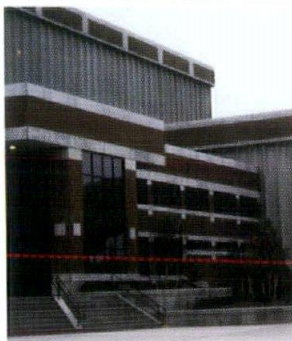


Concrete. It's changed.

Advanced concrete technology and construction techniques make poured in place reinforced and post-tensioned concrete the structural and aesthetic choice for today's building challenges.

*Consolidated Papers
Incorporated
Wisconsin Rapids, WI*

*1000 North Water Street
Building
Milwaukee, WI
(upper right)*



*St. Francis Hospital
Parking Structure
Milwaukee, WI*

*American Family Insurance
National Headquarters,
Madison, WI
(lower right)*



Monolithic in nature, cast-in-place concrete successfully adapts to almost any shape, including cantilevers, curved or angled elements. Light-weight and high-strength concrete allow both engineer and architect greater design options. And today's cast-in-place concrete can be placed faster with less manpower.

Ready mixed concrete enhances total frame strength and structural safety. Strengths of

6000 PSI are standard. Strengths up to 15,000 PSI are available.

Cast-in-place reinforced and post-tensioned structural concrete offer superior fire resistance, less maintenance, energy efficiency low life cycle costs.

To learn more about structural concrete and our quality control programs call or write:

Wisconsin Ready Mixed Concrete Association

9415 W. Forest Home Ave., Hales Corners, WI 53130 • (414) 529-5077

Building for a solid future.



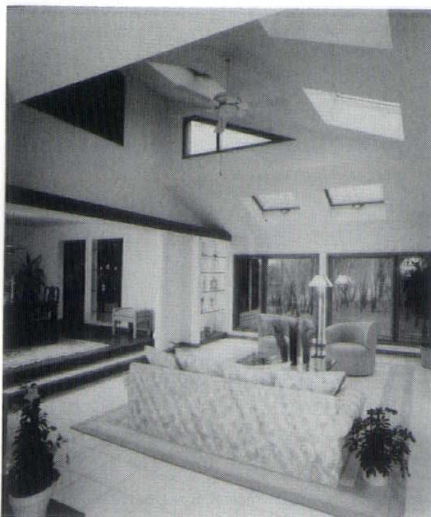
<i>Project</i>	Private Residence Addition
<i>Location</i>	Delafield, Wisconsin
<i>Architect</i>	Sunarc Studio
<i>General Contractor</i>	Michael Eschweiler

This addition is actually larger than the original house. It is built onto the back, which faces south. The grade sloped up approximately eight feet into the woods. This obstacle later proved to be an asset.

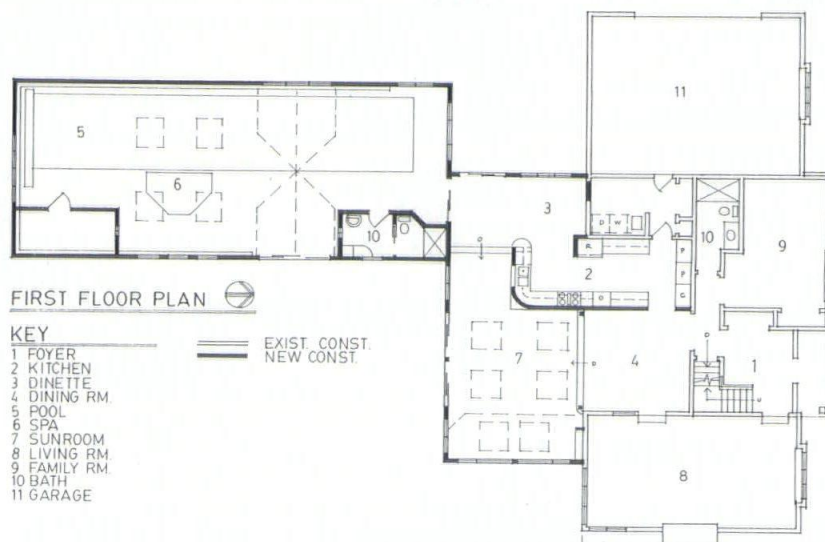
The program called for the addition of a sun room, lap pool, master bedroom suite and remodeled kitchen with dinette. Emphasis was placed on windows, bringing in more light and outdoor views. The kitchen was completely gutted and enlarged with the dinette having access to the pool. The master bedroom was placed on the second floor above the kitchen, allowing a cathedral ceiling in the sun and pool rooms. The interior bathrooms use glass block and skylights to bring in natural light.

The pool, ten by fifty feet long, was built into the natural backyard slope which also provided a court-like patio on each side.

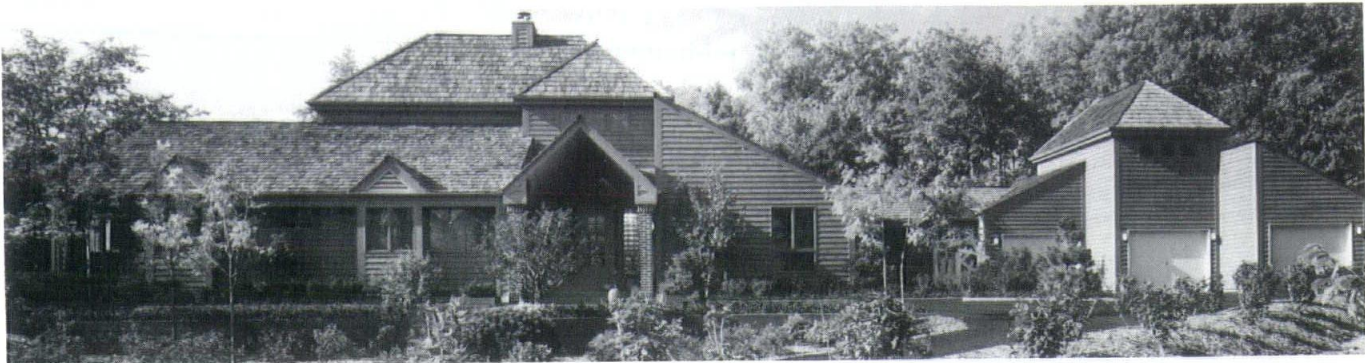
Cedar siding and shake roof were used to match existing house, and roof lines were designed to flow together. Inside, the foyer stair was updated with a metal rail with wooden cap. The original brick fireplace was enhanced with a simple marble surround and wood moldings.



Photography: Ed Purcell



<i>Project</i>	An Architect's Residence
<i>Location</i>	Brookfield, Wisconsin
<i>Architect</i>	Plunkett Raysich Architects
<i>General Contractor</i>	Klapperich Builders, Inc.



A married couple with two young children had particular criteria for the design of their home. A family member's debilitating disease could lead to wheelchair confinement in the future. The site, at the bottom of a wooded hill in an area of multi-story residences, dictated a structure of height.

The solution was an illusion. With a two-story outward appearance, the entire living space is on one floor. The one exception is an upper level loft for the owner's at-home office. Contemporary structural forms and angles, skylights and even landscaping configuration contribute to the multi-level impression.

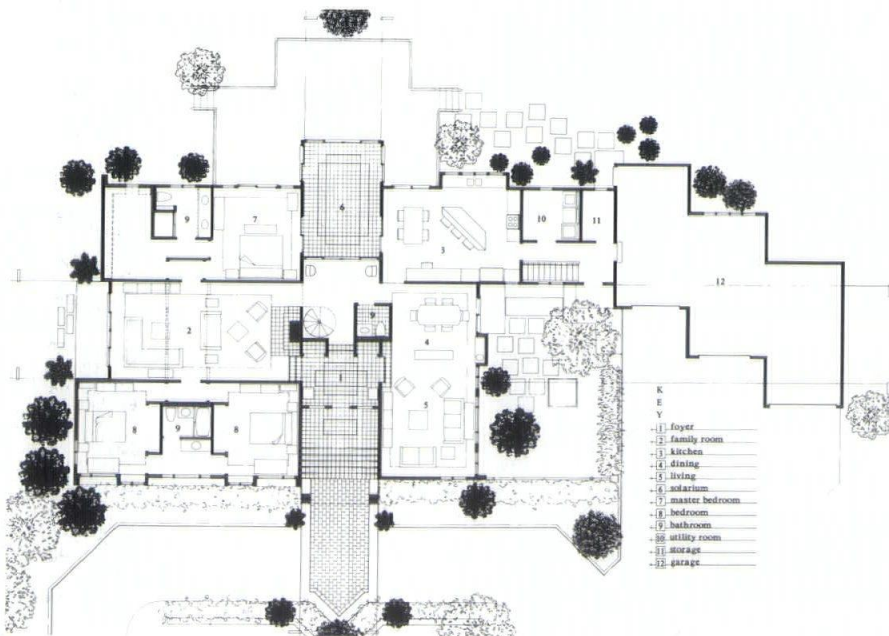
Traditional roof pitches and exterior materials harmonize with the neighborhood. Yet, unique forms and details make this a non-traditional home.

Another criterion was to provide additional space for possible living quarters for an aging parent. This led to the two-story entrance design being repeated on the second garage. It adds interest to the overall structure and flexibility for the future.

White walls and woodwork serve as a backdrop for the owner's extensive contemporary art collection.

Photography: Steve T. O. Poast





For Brick as well as Concrete every day is TEWSday

Marquette Alumni
Memorial Union

TEWS

COMPANY
Contractor Supply Center

7200 South 10th Street
Oak Creek, Wisconsin
414/764-8700 Toll-free 1-800/686-8401

Kemlite.

GLASBORD® fiberglass
paneling with *Surfaseal*®

10X MORE CLEANABLE THAN OTHER FIBERGLASS PANELS

IDEAL FOR: Restaurants

Dairies

Cheese Plants

Hospitals

Meat Plants

RESISTS: Moisture

Bacteria

Impact

Scratches

Graffiti

Kinetics 4281 Acker Road Madison, WI
Phone 608-241-4118 Fax 608-241-9590

Exclusive Distributor of: Glasbord, Envision,™ Sanigrid®

Reprints
of your
project are
available
from Wisconsin
Architect.

Call
(608) 257-8477
for details.

Project

Timber House

Location

Augustine Point, Wisconsin

Architect

Quorum Architects, Inc.

General Contractor

Top Ridge



A young family requested a four-bedroom, timber framed home using true post and beam construction with pegged mortise and tenon joints.

The house proper is an almost cubical mass with a steep pitched roof and dormers perched at the edge of a bluff behind a stand of trees. A low-slung mass joined to the side houses the garage and service areas. The front entrance is via a traditional porch in a symmetrical facade. Once inside, the living areas are located at the opposite side of the house, taking advantage of

the view while preserving the resident's privacy. From the entry, partial views hint at the dramatic surprises awaiting inside and out. After passing through a wide reception hall/gallery lined with Mexican art, the full scope of the great room explodes around the visitor. A massive cream city brick fireplace and hearth with a 20-foot tall chimney rises unsupported through the space. A three-story window wall frames the scenic view beyond.

Photography: Brian Miller



<i>Project</i>	Lakefront Residence
<i>Location</i>	Madison, Wisconsin
<i>Architect</i>	Prine Architects, Inc.
<i>General Contractor</i>	Sipple Building Remodeling



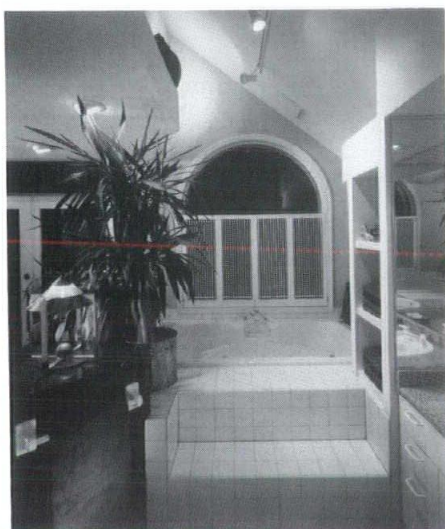
This project involved the redesigning of an existing house on a very narrow lot. A tight budget resulted in a two-phase design. The lakeside facade was the first phase, along with the associated major interior spaces. A semicircular form was introduced to exterior facades.

The original basic house remains, after a dramatic change in appearance with new fenestration to optimize the

lake view, new lighting and ceiling design. Dining space has been moved to the lake side of the kitchen. The two-story master bedroom has been closed off to allow for a third floor bedroom and lounge with a superb lake view.

A deck and semicircular brick terrace extend living space to the outdoors.

Photography: Skot Weidemann



Above: Before; Right: After



<i>Project</i>	Private Residence
<i>Location</i>	La Crescent, Minnesota
<i>Architect</i>	Schute-Larson Architects, Inc.
<i>General Contractor</i>	Marshall Construction Co.

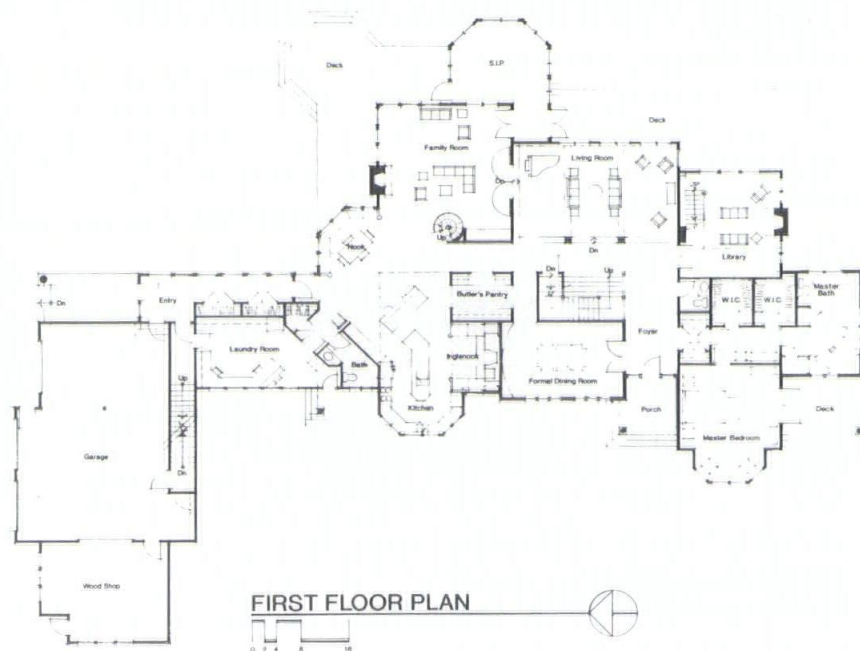
This new, 6,460 square foot home capitalizes on the beauty surrounding its seven-acre site. All major rooms orient toward sweeping vistas of the Mississippi River and the Wisconsin bluffs. Each interior space has a corresponding deck or garden space to take full advantage of the landscape and views. The massing of the home is broken by gabled forms and decks which also reduce its scale.

The three-bedroom home's major design element is from the shingle style, but uses a blend of stone and stucco with double hung windows. A stone/stucco guest house over the garage adds two bedrooms and a second living/cooking/dining area.

The family room, with oak flooring and vaulted wood ceiling, has a spiral staircase leading to the second floor. A kitchen inglenook provides a cozy place to read/visit during food preparation. The two-story, wood-panel library features a rolling ladder to retrieve books from tall shelves on two walls.



Photography: Roger Grant



SOME BUILDING PROJECTS DON'T NEED ENERGY PLANNING.



But, chances are, yours do! Together, let's provide your client with long-term savings from natural gas equipment. For information on new gas technologies which fit your design needs, call your local Wisconsin Natural office today.



**BLUEPRINT
FOR SAVINGS**

WISCONSIN NATURAL
GAS COMPANY

SOLUTIONS TODAY. SAVINGS TOMORROW.

What Would Mom Say?



Don't Copy AIA
Documents. It's Illegal,
Unwise, And Wrong.

AIA Documents
Full Service Distributor

AIA Wisconsin
321 S. Hamilton St.
Madison, WI 53703
(608) 257-8477
1-800-ARCHITECT
FAX: (608) 257-0242



Jung Shoe Building, Sheboygan, Wisconsin
Architect: The Alexander Company

An artistic expression of our
expertise - to fashion metal &
glass to perfection

Architectural Windows

Window Replacement

Thermoclear® Skylights

arwin

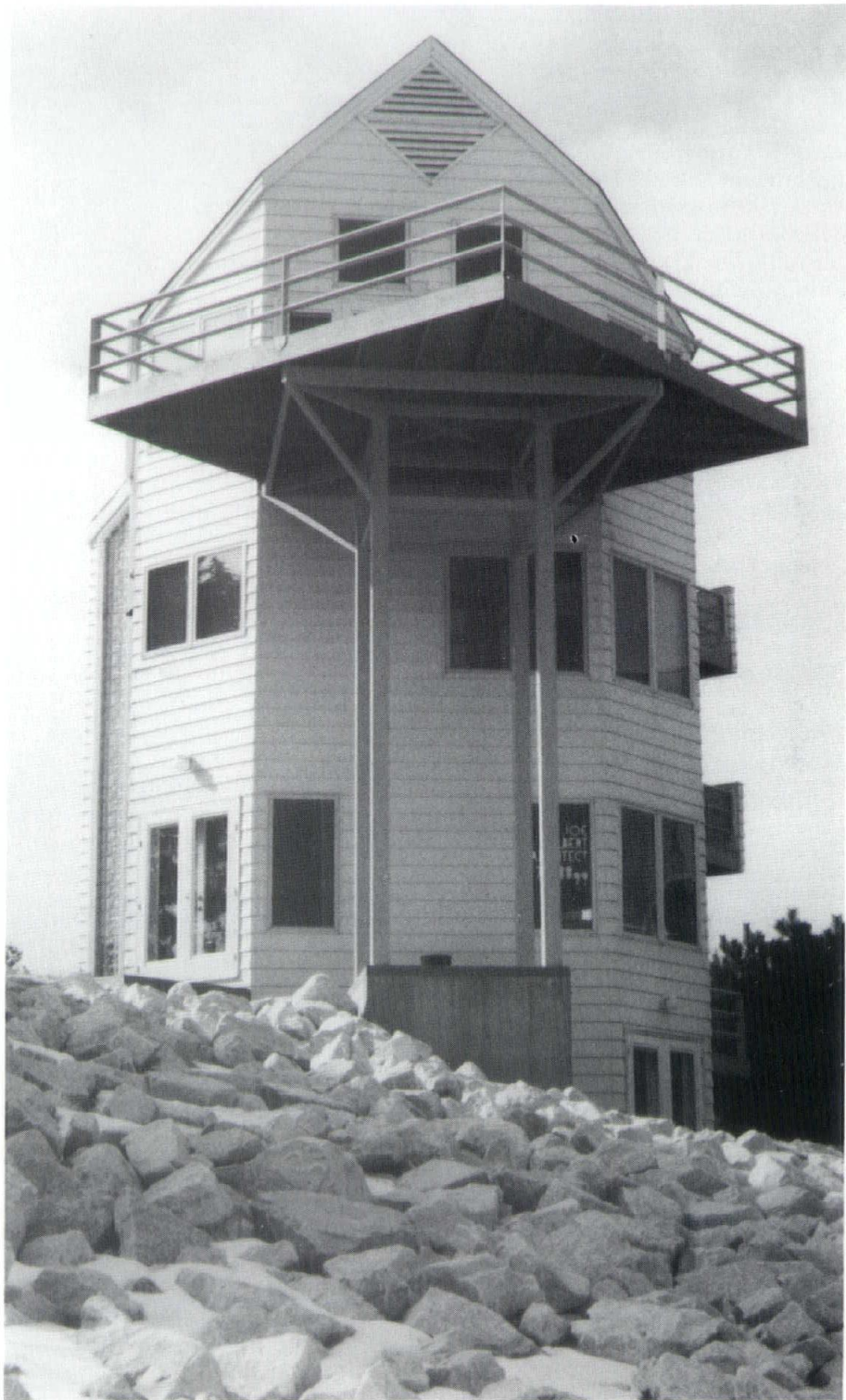
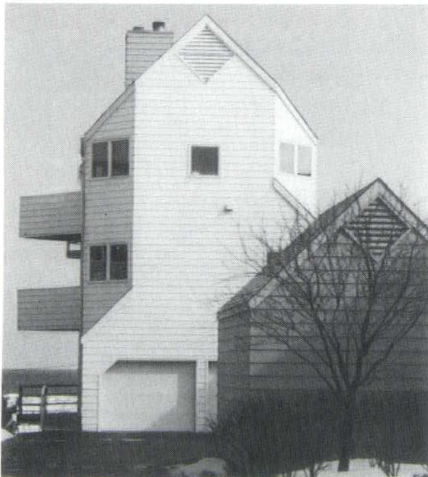
Arwin Builders' Specialties, Inc.
2145 South 162nd Street
New Berlin, WI 53151
(414) 782-1090
1-800-876-1090

<i>Project</i>	House on the Rocks
<i>Location</i>	Milwaukee, Wisconsin
<i>Architect</i>	Joseph W. Albert, III AIA Architect
<i>General Contractor</i>	Construction Services Corporation

Resembling a lighthouse rising above a pile of rocks—about 250 tons of rocks—this house provides more than 2,600 square feet of living space. Because of required setbacks, the house is situated on a 40 foot lot and is only 22 feet wide. The plan is simple and accessible because an elevator was planned from the beginning.

The living area is on the top floor, bedrooms are located below and the two lower levels are office space. All floors are level; spatial “explosions” have been created with varying ceiling heights. Awesome views of Lake Michigan and downtown Milwaukee are provided in every room.

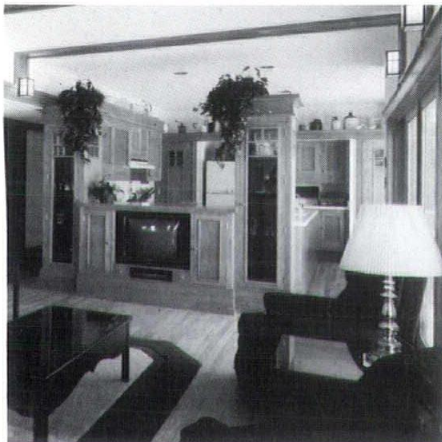
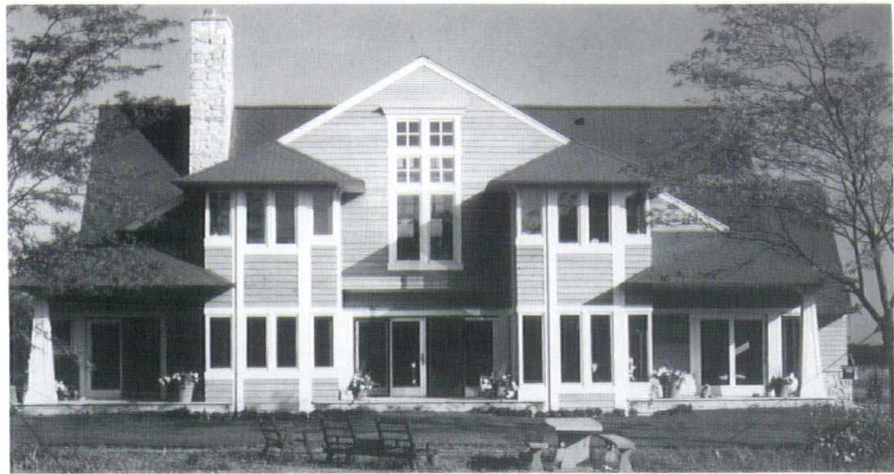
Photography: Joseph Albert, AIA



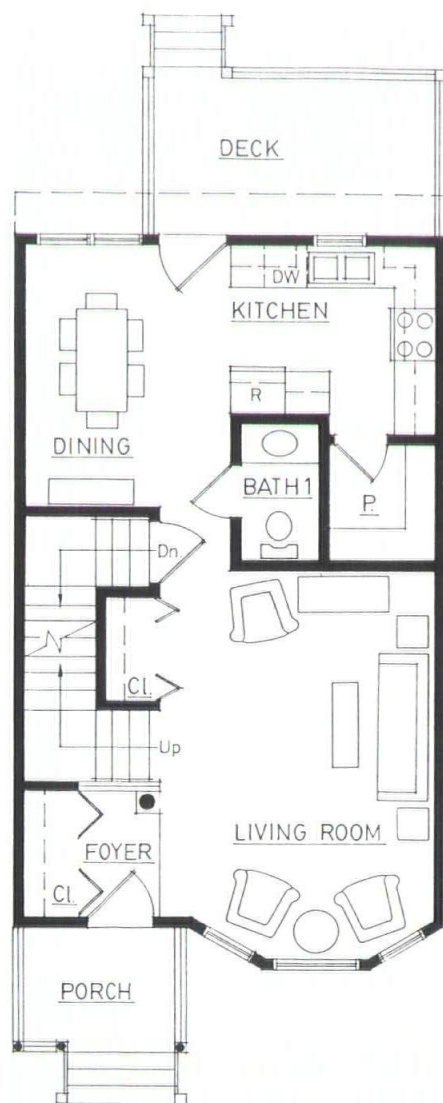
<i>Project</i>	Private Residence
<i>Location</i>	Cedarburg, Wisconsin
<i>Architect</i>	Vetter Denk Architects, Inc.
<i>General Contractor</i>	North Green Master Builders

Located on the rolling open prairie in the countryside of Cedarburg, this house recalls the rural farm house with prairie influences. The cascading roof forms and separate garage structure reflect the grouped out-buildings of the traditional farmstead complexes. The program is based on the client's informal lifestyle. The functions of the home are layered from north to south in plan by locating service areas along the entrance facade, allowing the principal living spaces to open to the light and view. The dark green roof shingles and natural cedar siding allow the house to blend into the landscape, while local stone is used to create a stable base that anchors the house to the ground.

Photography: Dennis Felber and Michael D. Healy



<i>Project</i>	Harambee/Brewers Hill Townhouses
<i>Location</i>	Milwaukee, Wisconsin
<i>Architect</i>	Sunarc Studio
<i>General Contractor</i>	Master Builders, Inc.



FIRST FLOOR PLAN

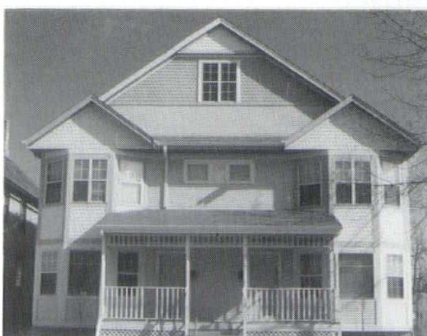
677 ☐

In a neighborhood built circa 1920, this project consisted of 12 narrow scattered sites, some adjacent, each varying from flat to steeply sloped. The requirement was to design a new duplex for each site so the large home effect would fit in the existing 1920s buildings and, yet, would not all look alike.

The solution was a simple two-story plan with porch and deck for each unit which could be repeated in various ways with the possibility of widely diverse exterior elevations. Siding, porches, trim and roof lines

could vary considerably. Any garages provided are reached via back alley.

For speed in construction and economy, the walls and roof trusses were carefully designed and constructed at a factory off-site so they could be assembled by crews with limited carpentry experience. Three standard window sizes were used throughout, but were assembled in various configurations. The illusion of 1920s transom windows was created by inserting horizontal bars at the upper third of a window. Exterior colors vary on each building.



Photography: Paul R. Schultz, AIA



**Wisconsin
Concrete
Masonry Association**

P.O. Box 339 • Valders, WI 54245 • 414-773-2888 • 1-800-722-4248 • FAX: 414-773-2823

May, 1994

A SPECIAL AIA WISCONSIN CONVENTION ANNOUNCEMENT

A SPECIAL BREAKFAST

We invite you to join us at the 1994 **AIA WISCONSIN Convention** for our 6th Annual **"Excellence In Masonry" Design Competition Awards Breakfast**. Be our guest at **7:45 A.M., Wednesday, June 8th**, to enjoy the Holiday Inn's finest 'Something Extra' breakfast buffet. View the finalists in our design competition and find out who will receive *"Best of Show"* and *"Excellence"* honors.

A SPECIAL PROGRAM

WCMA has sponsored the **"Excellence In Masonry" Design Competition** program for outstanding utilization of concrete masonry since 1989. This year we are **'Rebuilding'** our program with **'the Future'** in mind by honoring an outstanding Wisconsin architect.

A SPECIAL AWARD

With the support of Mrs. Meyer and family, and with great respect and honor, the WCMA has dedicated it's **"Excellence In Masonry" Award** in memory of **Maynard W. Meyer** for his outstanding contributions and services to the architectural community.

A SPECIAL PERSON

"Maynard W. (Mike) Meyer, FAIA, made one of the largest and most long-lasting impacts of anyone in the profession of architecture in Wisconsin. Many current principals of state architectural firms had direct training under him. He designed many award-winning projects and was responsible for establishing *Wisconsin Architect* magazine. I cannot say enough about his stature as a leader, friend and mentor... as well as his dedication to and love for the architectural profession." - *William M. Babcock, Executive Director, AIA Wisconsin* -

A SPECIAL PRIZE

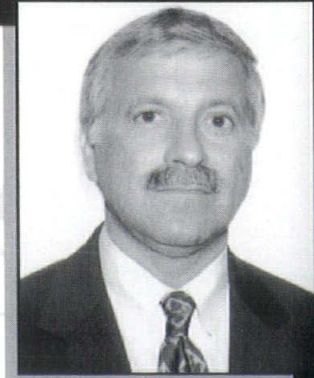
One fortunate breakfast attendee will be awarded a **\$1,500.00 vacation for two to Cancun**, including an excursion to the Mayan ruins at Tulum!

A SPECIAL INVITATION

Visit our exhibit at Booth #333. See how the many aesthetic and practical advantages of concrete masonry can be utilized as you 'Rebuild the Future'.

Robert V. Goldman

P.S. Call (800) 722-4248 to make your breakfast reservation today!



Robert V. Goldman
President, WCMA

WCMA "EXCELLENCE IN MASONRY" BREAKFAST

7:45 A.M. • JUNE 8, 1994

1994 AIA WISCONSIN Convention

YES! I will join you for breakfast.

NAME: _____ TITLE: _____

FIRM: _____

ADD'L GUESTS: _____

FAX THIS TO 414-773-2823 or
MAIL TO ADDRESS ABOVE

REBUILDING THE FUTURE

1994 AIA Wisconsin Convention

June 7 & 8, 1994

Holiday Inn Madison West

As we approach a new century, the year 2000 is becoming more than a simple historic moment or cultural focal point. It will mark the beginning of a new period in American architectural history when the era of building shifts to the era of rebuilding.

The trend of national statistics indicates that additions, alterations and extended use projects will comprise more the 50% of the total construction volume by the year 2000. This trend also is mirrored in Wisconsin, with interest in the reuse of existing facilities expected to grow well into the next century.

The issue of recycling existing facilities extends beyond market driven factors such as over supply of commercial space, slow economic growth or zero population growth. The reality is that our nation's values are changing. We are realizing our social and economic limits, placing a greater emphasis on the past and embracing recycling, environmental sensitivity and resource management. We, as a nation, are finally attempting to nurture a "Green" society and create livable communities.

Our youthful vision of a futuristic gleaming city on the edge of forever is being replaced. We are *REBUILDING THE FUTURE* with a more pragmatic vision of a diverse landscape rich with old and new structures, a multicultural society and a goal to be sensitive to finite resources and the environment.

How will Wisconsin architects face the era which will challenge our long held assumptions and aspirations? James Marston Fitch said it well: "No doubt it will be painful, but architects will have to learn to be more curators, rather than creators, of the built environment."

Susan Maxman, FAIA, 1993 President of The American Institute of Architects, recently said, "The profession pays far too much attention to little gems of new buildings. If we are to survive, let alone prosper, we must fundamentally retool. We must equip ourselves with new kinds of knowledge, skills and attitudes which support our work as renovators."

The 1994 AIA Wisconsin Convention welcomes you to embrace the new era of
REBUILDING THE FUTURE.

Charles J. Quagliana, AIA, Chairperson
1994 AIA Wisconsin Convention Committee

Building Products Exposition

The annual AIA Wisconsin Building Products Exposition is June 7 & 8 in the Trade Center of the Holiday Inn Madison West. This special event features one of Wisconsin's largest displays of design and construction industry products and services.

Admission is FREE to the Building Products Exposition! Everyone allied with Wisconsin's design and construction industry is cordially invited. It's your chance to get answers to all of your questions.

Construction Industry Reception

Tuesday, June 7
3:30-8:00 p.m.

For the grand opening of the Exposition, AIA Wisconsin and 1994 Convention exhibitors are hosting the annual Construction Industry Reception right in the Trade Center.

Join friends and our region's suppliers of construction materials and services for the latest information on building products, hors d'oeuvres, musical entertainment, displays of award-winning architecture, door prizes and more! Make time to visit the hands-on virtual reality exhibit sponsored by Trans-Phonics Inc.

Post-Reception Reception

Tuesday, June 7
8:00-10:00 p.m.

Rendezvous with colleagues in the Ballroom for a strictly social event featuring Michael Feldman of public radio's *Whad'Ya Know?* with musical guests John Thulin and Jeff Eckels.

Plan now to stop by for some healthy social interaction, snacks, music and side-splitting fun!

Exposition & Lunch

Wednesday, June 8
11:00-2:00 p.m.

Enjoy a walking lunch as you tour the displays in the Trade Center . . . and have a piece of cake to celebrate Frank Lloyd Wright's birthday.

This will be your last chance to gather valuable information on the latest product research and innovations that will shape the future of Wisconsin's building industry.

Convention Registration

Please use the Registration Form to sign up for all of the outstanding programs and special events scheduled for the 1994 AIA Wisconsin Convention.

Your name badge and other Convention materials will be available at the Registration Desk in the lobby of the Trade Center.

Continuing Education

Beginning in 1996, continuing education will be a condition of AIA membership. You can get a head start and begin earning valuable Learning Units (LUs) for The American Institute of Architects Continuing Education System (AIA/CES) at the 1994 AIA Wisconsin Convention

AIA Wisconsin is a Registered Provider for AIA/CES. Convention professional development seminars and special workshop sessions are Quality Level 2 programs, so you will be able to earn 2 LUs per hour by participating in these Convention programs. The general sessions, featuring Convention keynote speakers, are Quality Level 1 . . . and AIA members can earn 1 LU per hour by participating in these sessions. Forms to record your AIA/CES Learning Units will be available at the AIA Wisconsin registration desk.

Convention Hotel

The Holiday Inn Madison West in Middleton is the official hotel for the 1994 AIA Wisconsin Convention. It is easily accessible from the West Beltline (Hwy. 12). Take Greenway Blvd. exit (#252) and you can't miss it.

1994 Convention Committee

The following individuals contributed their time, creativity and energy to make the 1994 AIA Wisconsin Convention possible:

Charlie Quagliana, AIA, Chair	Richard Maleniak, AIA
Russell LaFrombois, AIA	Jeffrey Neidorfler, AIA
Tacitus Bond, AIA	Gretchen Pfaehler
Kathy Bond	Douglas Ryhn
Ken Dickert	John Sabinash, AIA
Mark Henrichs	Pat Schmitt, AIA
Ronald Howard, AIA	John Sutton, AIA
Mark Kruser, AIA	Robert Swedeen, AIA

Questions?

For additional information on the 1994 AIA Wisconsin Convention, please call or write:

AIA Wisconsin
321 South Hamilton Street
Madison, WI 53703-4000
(608) 257-8477/1-800-ARCHITECT
Fax: (608) 257-0242

SCHEDULE AT A GLANCE

TUESDAY, JUNE 7

8:00-9:45 a.m.

AIA & WAF Annual Meetings

10:00-11:50 a.m.

Opening Keynote Addresses:

A Vision of Architecture of the New Era

Thomas Fisher

**Place, Community
& Economic Development**

Donovan D. Rypkema

12:00-1:50 p.m.

Golden Award Luncheon

Architecture & Diversity

Richard Thieme

2:00-3:30 p.m.

Professional Development Seminars:

- **Main Street Makes Good**

Alicia Goehring

- **Synergy in the City**

Robert D. Cooper, AIA

Campus Circle Project Team

- **Architecture & Landscapes
of Rural Wisconsin**

William H. Tishler, FASLA

3:30-8:00 p.m.

**Construction Industry Reception
& Building Products Exposition**

*Displays of innovative products & services for the
design & construction industry, virtual reality exhibit,
door prizes, student drawings of future buildings, food
& drink . . .*

FREE admission!

8:00-10:00 p.m.

Whad'Ya Know?

Michael Feldman

*An entertaining social gathering
for architects & exhibitors!*

WEDNESDAY, JUNE 8

7:45-9:00 a.m.

- **Excellence in Masonry Awards**
- **Preservation Breakfast**

9:00-11:00 a.m.

Professional Development Seminars:

- **Once is Not Enough**

Michael Chusid, AIA

- **Desperately Seeking Inspiration I & II**

Wilbert R. Hasbrouck, FAIA

- **Older Buildings & ADA**

Carol Ann Nelson, AIA

- **Archaic to Perfection**

Harry J. Hunderman, AIA

- **Peak Performance**

John G. Waite, AIA

11:00-2:00 p.m.

Building Products Exposition

Walking lunch, birthday party . . . and more!

2:00-3:15 p.m.

Closing Keynote Address

Planning the Future

Peter Calthorpe

3:15-4:00 p.m.

Panel Discussion

Rebuilding the Future

Chusid, Nelson & Waite

4:15-5:00 p.m.

Special Sessions:

- **Condition Assessments**

Carol Ann Nelson, AIA

- **Selective Removal & Documentation**

Robert Corbett, AIA & Jeffrey Neidorfler, AIA

- **Digital Documentation**

MasterGraphics

- **Saving the Prow**

Peter Szotkowski, PE & Jonathan Lipman, AIA

1994 Convention Sponsors

The underwriting support received from the following sponsors has enabled this year's Convention Committee to assemble an outstanding schedule of programs and special events that otherwise would not have been possible.

C.G. Schmidt, Inc.

Thomas Fisher Keynote Address

Reinhart Boerner Van Deuren Norris & Rieselbach

Donovan Rypkema Keynote Address

Staff Electric Co., Inc.

Peter Calthorpe Keynote Address

Andersen Windows

Terence Riley Presentation

Wisconsin Concrete Masonry Association

Excellence in Masonry Awards Breakfast

MasterGraphics

Digital Documentation Workshop

Trans-Phonics Inc.

Virtual Reality Exhibit

Madison Reprographics, Inc.

Convention Logo Graphics

The Hartland Corporation

Convention Entrance

John M. Kohler Family Fund

National Trust for Historic Preservation

General Program Support

Planning Associates, Inc.

Student Drawing Display

The Renschler Company

Klein-Dickert Co.

1994 CONVENTION EXHIBITORS

The 63rd Annual AIA Wisconsin Convention would not be possible without the strong and consistent support of the following companies exhibiting in our Building Products Exposition.

A/E Graphics Inc.
 AP Wisconsin
 APS Concrete Products
 AaCron Incorporated
 Airlift Doors
 American Olean
 Andersen Windows Inc.
 Fred G. Anderson, Inc.
 Arriscraft U.S.A. Corp.
 Associated Buildings and Contractors of Wisconsin
 Automatic Entrances of Wisconsin, Inc.
 Badgerland Supply, Inc.
 Behlen Building Systems
 Bend Industries Inc.
 Best Block Company
 Block Iron and Supply
 Blueprints, Inc.
 Bomanite
 Brick Distributors of Wisconsin
 Curt Bricker & Associates
 Builders World, Inc.
 Carley Wood Associates Inc.
 Certainteed Roofing Products
 Champion Brick Company
 Chemical Specialties
 Childcrest Tile & Stone
 Cold Spring Granite Company

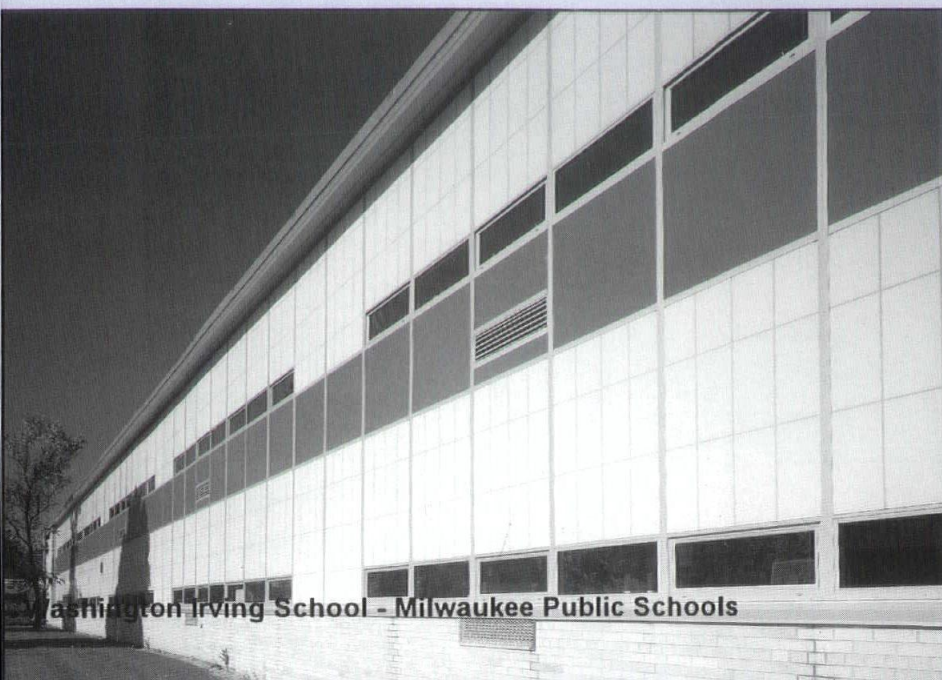
J.F. Cook Co., Inc.
 Cornell Corporation
 Cornell Iron Works, Inc.
 D.L. Couch
 Wallcovering, Inc.
 Crossfield Products Corp.
 DSI of Wisconsin
 DeSCo Thermal Barrier Windows
 Digital Resource
 Dwyer's Specialty Systems/Advanced Insulation & Fire Proofing
 Fabcon Incorporated
 Fenestra Corporation
 Formica Corporation
 Fypon Molded Millwork
 GAF Building Materials Corp.
 Gage Corp.
 The Gagnon Clay Products Company
 Georgia-Pacific Corp.
 Gerber Leisure Products
 Glidden Paint Company
 The "H" Window Co.
 Halquist Stone Co., Inc.
 The Hartland Corp.
 Herregan Distributors
 A.J. Hildebrand Co.
 Home Specialists Ltd/ABC Seamless
 Huntingdon/Twin City Testing
 Hurd Millwork Co., Inc.
 Huttig Sash and Door
 IPC - Institutional Products Corporation
 Institutional Conference of Building Officials
 International Masonry Institute - Great Lakes Region

JWC Building Specialties Inc.
 Jaeckle Wholesale
 Jones & Brown Co., Inc.
 Kant-Sag by United Steel Products
 Kinetics Inc.
 Lafarge Corporation
 LaForce Hardware & Manufacturing Co.
 Donald A. Loss Associates
 MDC Wallcoverings
 Major Industries, Inc.
 Market & Johnson, Inc.
 Marvin Windows and Doors
 MasterGraphics
 Mautz Paint Co.
 McElroy Metal
 Mid States Concrete Products Co.
 Miron Construction Co.
 Molin Concrete Products
 Monarch Tile
 Mule-Hide Products Co.
 W.E. Neal Slate Co.
 Nielsen Building Systems
 North Central Insulation
 North Star Surfaces
 Northwestern Elevator
 Otis Elevator Company
 PFS/TECO
 Parkwood Chicago, Inc.
 Patio Enclosures, Inc.
 Peachtree Doors Inc.
 J.W. Peters & Sons, Inc.
 Photos, Inc.
 ProStar, Inc.
 RM Inc.
 RO-AN Corporation
 The Radford Company
 SPI Lighting Inc.
 S & S Sales Corp.

Schlage Lock Co.
 Spancrete Industries, Inc./Waukesha Block Company
 Stickler & Associates
 Sullivan Brothers, Inc.
 Techline Madison
 Thermal Design, Inc./EnergyCraft Building Systems Inc.
 Thoro System Products
 Thybony Contract Wallcoverings
 Trans-Phonics, Inc.
 Trenwyth Industries, Inc.
 United Brick & Tile, Inc.
 VPI
 Valders Stone and Marble Company
 Vande Hey-Raleigh
 Architectural Roof Tile
 Variform, Inc.
 Ver Halen Inc.
 Vyron Corp.
 Weather-Tek Building Products, Inc.
 Weyerhaeuser Architectural Doors
 Wilsonart
 Wisconsin Automatic Door, Inc.
 Wisconsin Brick & Block Corp.
 Wisconsin Concrete Masonry Association
 Wisconsin EPS, Inc.
 Wisconsin Electric Power Company
 Wisconsin Gas Co.
 Wisconsin Power & Light
 Wisconsin Ready Mixed Concrete Association
 Wood-Lam Inc.
 Woodlot Gallery

Kalwall® -(Kal' - wal) Curtainwalls

Clearspan KALWALL Systems = the Solution !!



Washington Irving School - Milwaukee Public Schools

Kalwall's Curtainwall System is the solution to Replace the 50's & 60's Walls and Windows of Schools - No other system can cover more area *at less cost !!* Operable/Fixed Windows/ Louvres in a Complete Factory Assembled "Panel Unit" provides a Quick Installation!



NIELSEN BUILDING SYSTEMS

4820 Six Mile Road

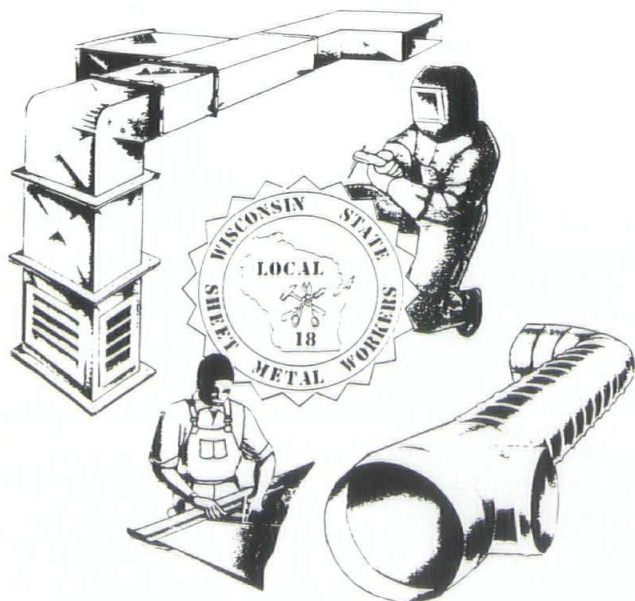
Racine, WI 53402

NIELSEN BUILDING SYSTEMS, INC.

Racine (414) 681-0676

Milw. (414) 764-0914

Fax (414) 681-1812



UNION CRAFTSMEN

SHEET METAL WORKERS' - STATE OF WISCONSIN

TED KUCZYNSKI - STATE BUSINESS MANAGER

5425 W. VLIET STREET - MILWAUKEE, WI 53208-2118

1-800-242-5822

FAX (414) 778-0987

LA FORCE

THE APPEAL...

• HOLLOW METAL
DOORS AND FRAMES

• WOOD DOORS

• BUILDERS HARDWARE

• TOILET PARTITIONS

• TOILET ACCESSORIES

• BUILDING SPECIALTIES



CUSTOM HOLLOW METAL

For over 35 years we have manufactured special steel doors and custom bent unique door frames to compliment your designs. Trust our experience to make your designs truly appealing with custom hollow metal!

LA FORCE

Hardware & Manufacturing Co.

1060 W. Mason St.
Green Bay, WI 54303
(414) 497-7100

12040 W. Feerick St.
Milwaukee, WI 53222
(414) 466-5350

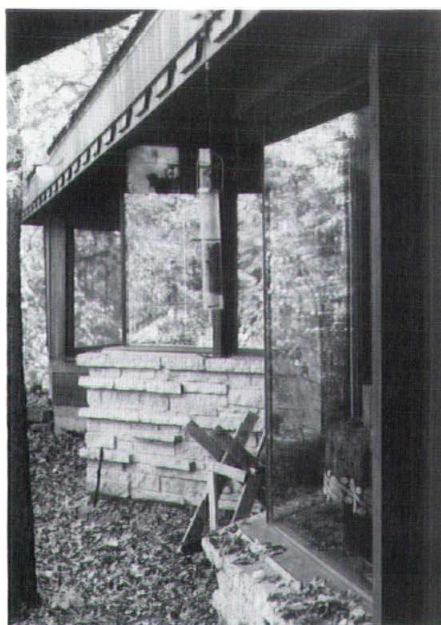
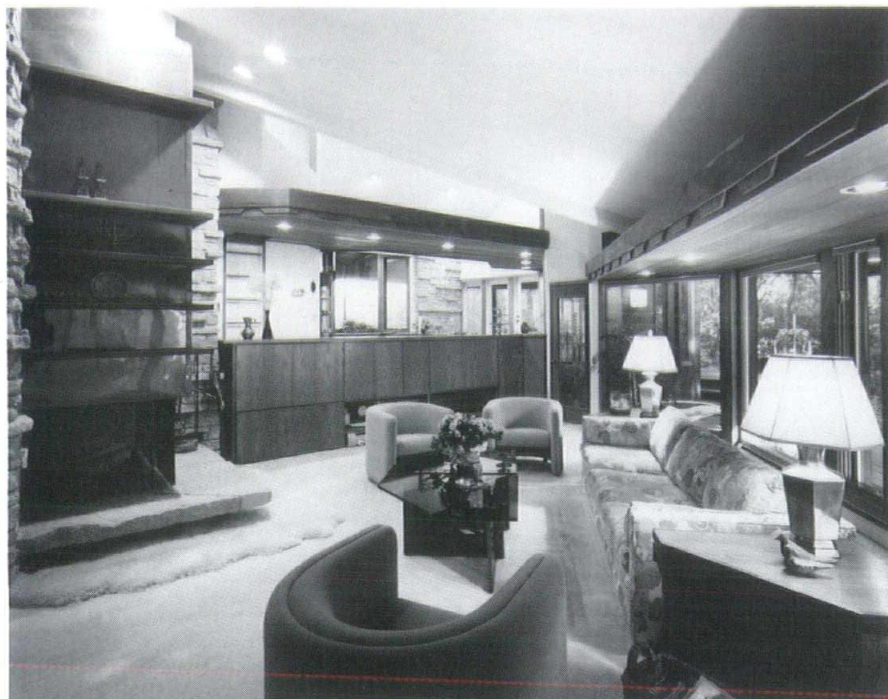
"THE REPUTATION YOU CAN BUILD ON"

<i>Project</i>	Private Residence
<i>Location</i>	Madison, Wisconsin
<i>Architect</i>	Prine Architects, Inc.
<i>General Contractor</i>	Eugene Prine

A couple whose children had grown up wished to build a house in the "Wright" style. The heavily wooded site was a double lot; and the house was planned so it occupied only one lot, in case they decided to divide and develop the second lot in the future. Major elements of the house have a south orientation and enjoy a view of the natural environment of the site.

Local stone is the main design material inside and out. A large fireplace dominates the core of the house and a wood-burning furnace provides heat. The lower level houses a guest room and bath, storage area and a wood supply room with an access opening to the fireplace.

A focal point for the dining area is a solarium, providing an outlet for botanical interests.



Photography: Dale Hall



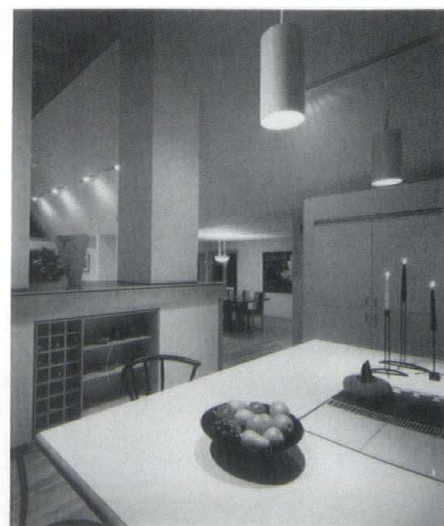
<i>Project</i>	Private Residence
<i>Location</i>	Madison, Wisconsin
<i>Architect</i>	GMK Architecture, Inc.
<i>General Contractor</i>	Design Shelters



The architect was asked to design a house to "capture the feeling of its heavily wooded site." It was to be affordable and not so contemporary as to limit its appeal to the public, since it was being built on speculation.

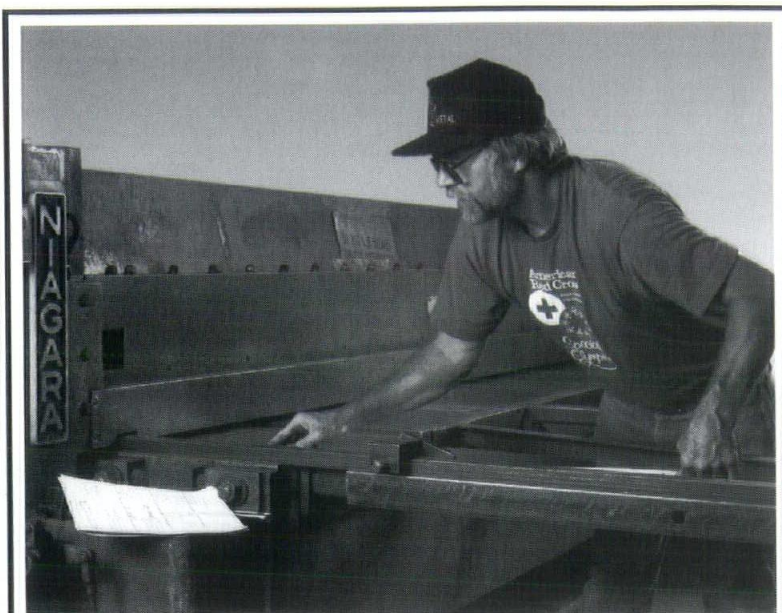
The exterior composition was designed to reflect the gable roof forms typical of the neighborhood. A varied width cedar siding to suggest the rhythm of a log cabin was chosen to downplay the contemporary character of the house.

Sheltering the open plan is a vaulted pavilion, created by two rows of typical roof trusses rotated upside down, which rest on two exposed glue-lam beams. Skylights separate these beams which are supported by the twin chimneys of a central hearth. The glass end walls and the skylights above provide an ever-present view of the surrounding tree canopy, maintaining the charm of a walk through the woods.



Photography: Jim Gempler and Dale Hall

Hiring a sheet metal contractor?



***The experience of skilled
union craftsmen is your
best assurance for
maintaining cost control.***

The members of the Madison Area Sheet Metal Labor-Management Council are dedicated to helping you control your bottom line on every job — by seeing that you get the most value for your construction dollar. Value means quality, efficiency and craftsmanship. It means using the best trained and most highly skilled labor to get the job done on time, with strict adherence to the highest standards of superior workmanship.

We offer experience, professionalism and reliability — your best guarantee that the job will be done right, and that you'll save money in the long run.



MADISON AREA SHEET METAL LABOR- MANAGEMENT COUNCIL

1245 E. Washington Ave., Suite 184, Madison, WI 53703

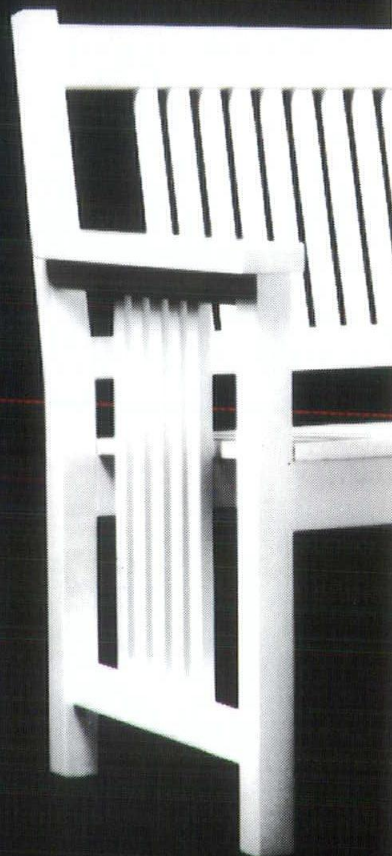
ADVANCED TEMP. TECH., INC.
AIR COMFORT, INC.
AIR TEMPERATURE SVC., INC.
BADGER SHEET METAL
BASSETT MECHANICAL
B & M HEATING, INC.
B & T MECHANICAL, INC.

ENVIRON. SYSTEMS ANALYSIS
GENERAL HEATING & AIR COND.
H & H INDUSTRIES, INC.
HARKER HEATING & COOLING
HOOPER CONSTRUCTION CORP.
INDEPENDENT TESTING AND
BALANCING

KILGUST MECHANICAL, INC.
LAKELAND TEMP. DESIGNS
MADISON MECHANICAL, INC.
MIDLAND BUILDERS
P.L. NELSON COMPANY
SULLIVAN BROTHERS, INC.

AND SHEET METAL WORKERS LOCAL #18

MAKING AN
UGLY WOODEN
BENCH GOES
AGAINST
OUR GRAIN.



KENWORTHY
PRAIRIE BENCH



LFI/Landscape Forms
Bill Quinlan
835 West Webster
Chicago, IL 60614
800/255-0341
312/871-8810
312/871-4617 FAX

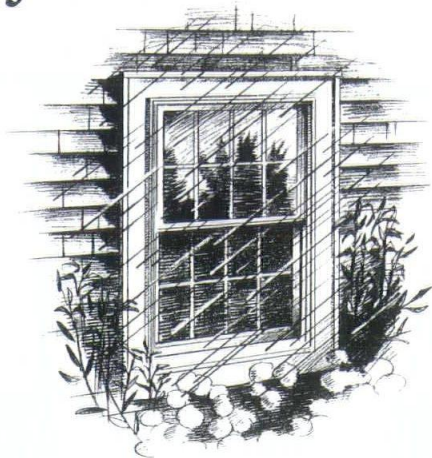
This condominium project is an integral part of the marina complex at the Racine Harbor on Lake Michigan. Residents and neighbors have maximum views of the surrounding waterfront. The tower, located at the pivot point of the building, reinforces the gateway statement to the residential area of the site. The program called for 52 units ranging from 1000 to 1800 square feet, including one, two and three bedroom units. Additionally, the building includes a public lobby with balcony, outdoor pool and boathouse, and underground parking for 70 vehicles.

Exterior design reflects the style of New England waterfront housing. The use of pipe railing at the balconies continues the nautical theme. Interior details include boat-shaped wall sconces in the public corridors.

Photography: Howard Kaplan and Larry Schnuck, AIA



TO SEE HOW WE'VE IMPROVED THE TILT-WASH WINDOW, JUST ADD WATER.

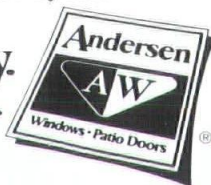


Now, with the new Andersen® DC™ Tilt-Wash window you don't have to sacrifice weathertightness for convenience.

- Revolutionary design handles 8 inches of rain per hour, driven by 43 mph winds, without leaking.
- Unique weatherstripping not only helps to keep window airtight, but makes it easier to operate.
- Easy to clean, too. Tilts into place with the touch of a fingertip.

Call or visit now to see for yourself how well our new window goes through the wash cycle.

**Come home to quality.
Andersen.**



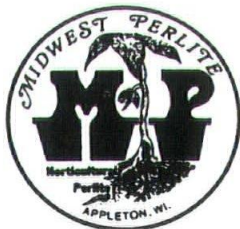
For the Name of your nearest
Andersen Window Center
call 1-800-426-4261

DC03

REBUILDING THE FUTURE

1994 AIA WISCONSIN CONVENTION

JUNE 7 & 8, 1994 HOLIDAY INN MADISON WEST



*Insulation
Lightweight Concrete
Soil Conditioner
Environmentally Safe*

MIDWEST PERLITE, INC.

4280 W. Parkway Blvd.
Appleton, WI 54915-8231

FAX (414) 731-2600
Bus. (414) 731-2671

**Please
support
Wisconsin
Architect
advertisers**

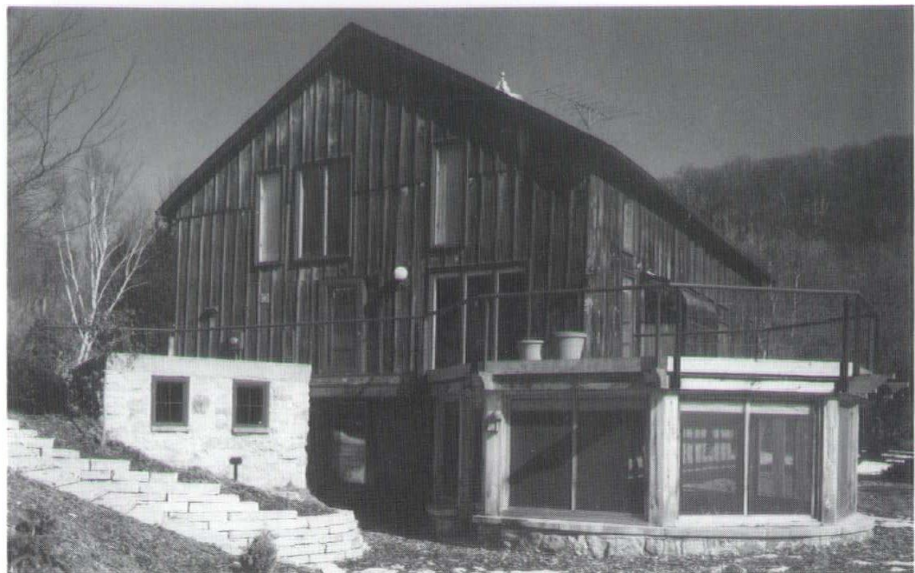
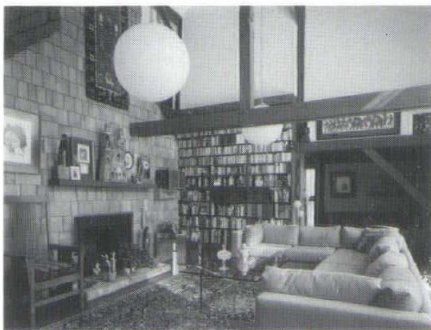
<i>Project</i>	House from a Barn
<i>Location</i>	La Crosse, Wisconsin
<i>Architect</i>	Schute-Larson Architects, Inc.
<i>General Contractor</i>	Peter Nelson & Son, Inc.

Maintaining the form of what was once a turn-of-the-century barn was the most desired element in this home addition. To find appropriate materials, the architect and owner explored the region, searching for old barns with stone matching the original structure. Heavy timbers in the "tuck under" screened-in porch recall the original barn framing.

The kitchen remodeling, a sun room addition, bedroom bay alterations, an added deck and pergola on the first floor adjacent to the kitchen and dining area all extend the inside of this rural home outside for an unobstructed view of the surrounding gardens.

A brick walk with cascading stone steps to and around the milk house creates a special point of interest between the deck and the garage. The garage addition, again using matching materials, creates an additional stall and room for the garden tools necessary to maintain the landscape so critical to this home's magnificent beauty.

Photography: Roger Grant



Project

Interior of Attorneys' Offices

Location

Racine, Wisconsin

Architect

Blaustein Architect

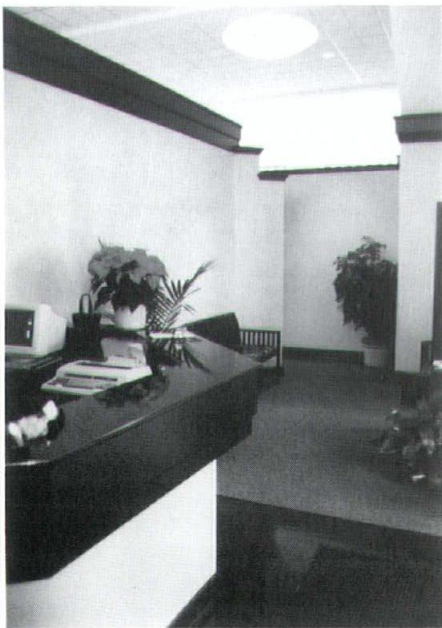
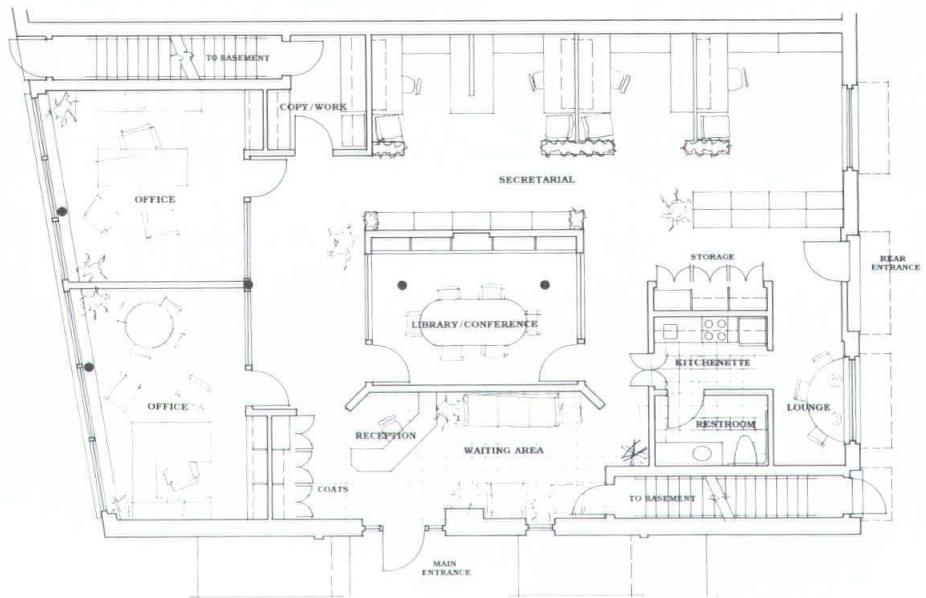
General Contractor

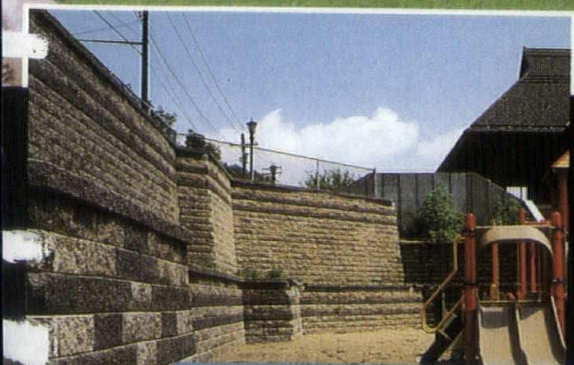
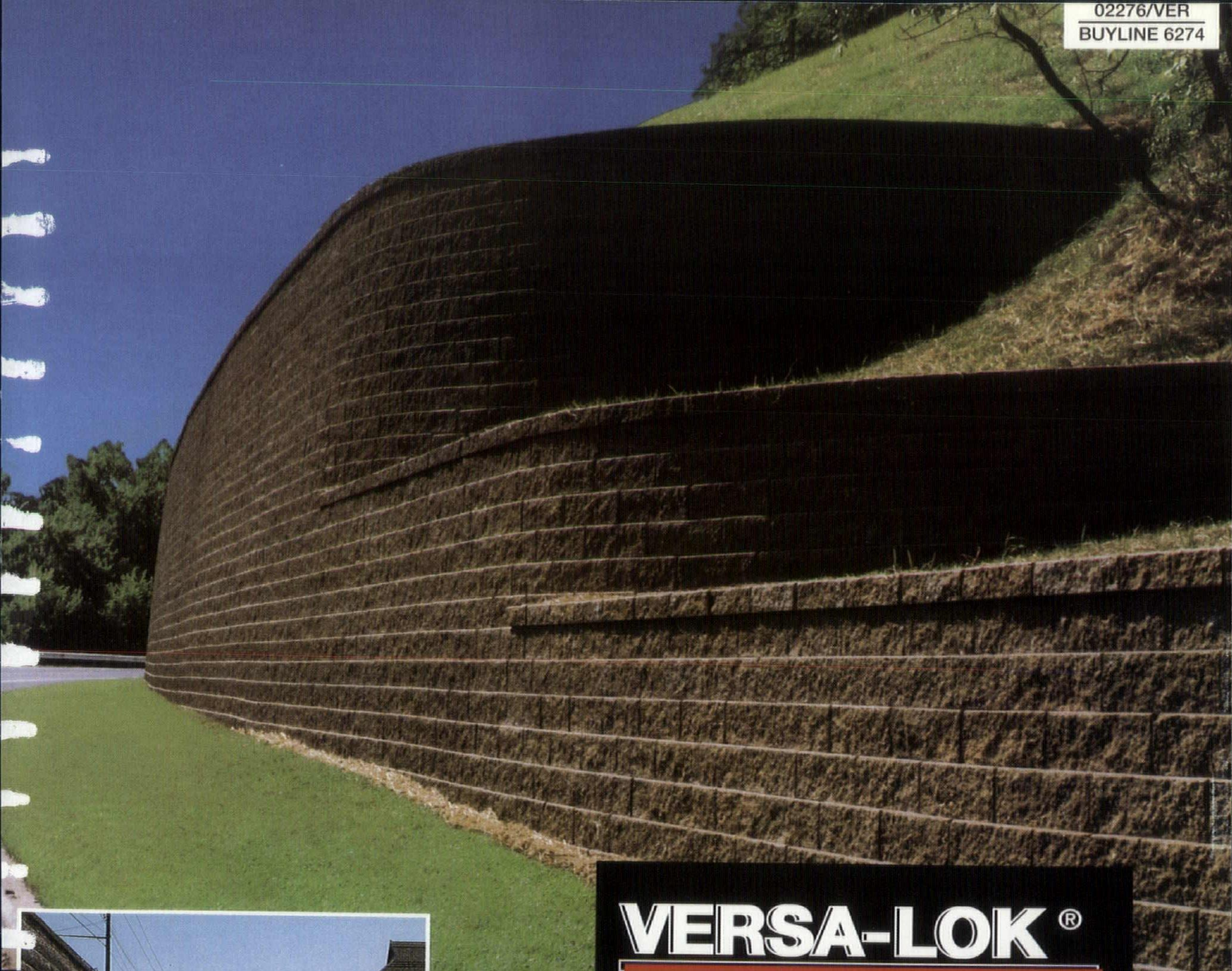
Rossi Construction

The existing first floor of a 1915 commercial building was converted for use as a full-service attorneys' office. With false suspended ceilings and added partitions removed, an exposed space with dramatic 14-foot ceilings provided an interesting design challenge. The new plan coordinated with existing structural columns. New enclosures are treated as free-standing elements, visually terminating well below the high ceiling. Thus, natural light from the windows and the historic prismatic high transom glazing at the front of the building can be directed to interior spaces.

The cascading step vocabulary became the unifying motif. Wall heights step down and away from the north front facade spreading the flow of natural light. A transition from the ten-foot high storefront spandrel beam down to a seven-foot height helps define functional areas within the space. Upper butt glazing provides acoustical privacy where needed without interrupting the flow of light and space.

Photography: George Holt Blaustein, AIA





VERSA-LOK®

RETAINING WALL SYSTEMS

A QUALITY PRODUCT FOR
BOTH COMMERCIAL AND
RESIDENTIAL USE

- NO CONCRETE FOOTINGS REQUIRED
- EASY TO INSTALL • NO MORTAR NECESSARY
- TIMELESS BEAUTY • TEXTURE AND COLORS
- DURABLE-STRUCTURALLY STABLE WALLS
- NO MAINTENANCE • ENVIRONMENTALLY SAFE
- BUILD CORNERS, CURVES, STEPS, SERPENTINE WALLS

OVERVIEW OF VERSA-LOK®

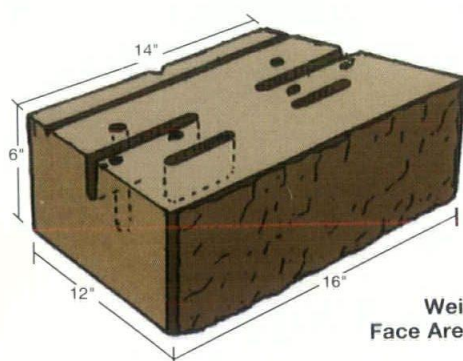
The VERSA-LOK Standard Retaining Wall Unit was developed in 1987 to answer the need for a simplified, easy-to-install retaining wall system; one that permitted architectural flexibility without sacrificing wall stability. The VERSA-LOK unit introduces a new, dramatic look of graceful lines and textures to modern retaining wall design. Its uniqueness, when compared to other systems, is highlighted by the fact that *one* unit provides the ability to install steps, inside and outside corners, various radiuses and serpentine curves.

Today, VERSA-LOK Retaining Walls are recognized across North America for their beauty and structural integrity. Fifty of North America's leading concrete products manufacturers have produced millions of square feet of VERSA-LOK for in-place projects, ranging from complex Corps of Engineer's flood control applications to residential landscape walls. Distribution of the product is achieved nationwide through a network of authorized distributors.



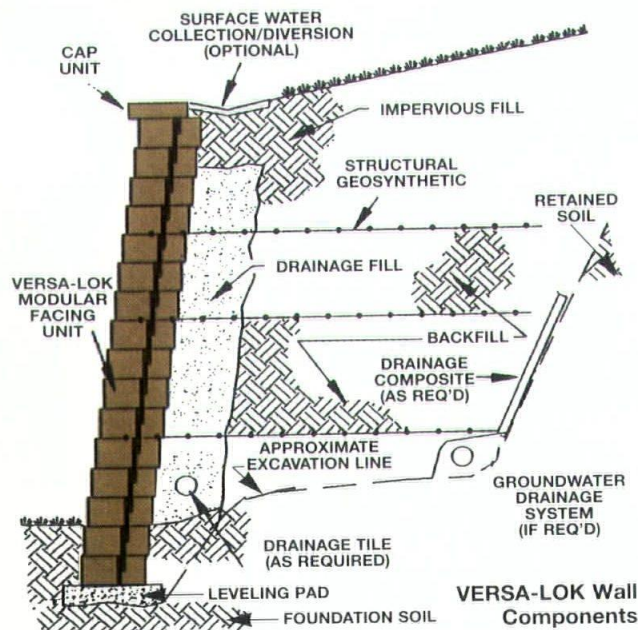
Award winning bridge abutment walls in Menomonie, WI.

PRODUCT PROFILE



Weight - 80 lbs.
Face Area - 2/3 sq. ft.

PRODUCT PRESENTATION



VERSA-LOK WALL COMPONENTS

Under favorable site and soil conditions, VERSA-LOK walls attain a height of 4 feet without the need for reinforcement. For greater heights, the wall can be tiered or reinforced with geosynthetics placed in horizontal layers in the soil backfill.

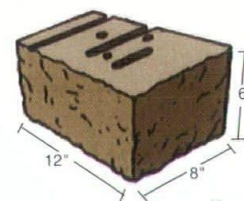
STANDARD UNIT

VERSA-LOK retaining walls are designed as gravity wall systems. The weight of the wall, friction between units, and its unique pinning system all contribute to resist the retained soil. The VERSA-LOK system features high strength, low absorption, solid concrete units designed to interlock with non-corrosive nylon/fiberglass pins. No poured footings or mortar are required. Interlocked units achieve an attractive linear setback of 3/4" per course. VERSA-LOK units come ready to lay in standard colors of gray and tan with a pleasing split rock face texture. Specialty colors may be available from your local manufacturer.

Because VERSA-LOK is a solid unit, custom sized pieces are easily split. Standard units are grooved for splitting on the back side to create a 2-sided split face that may be desired when both sides of the wall are to be exposed.

HALF UNIT

Half units can be factory split (by order) or easily split on the job with hammer and masonry chisel. Both right and left halves are provided from one split standard unit.



Weight - 40 lbs.
Face Area - 1/3 sq. ft.

UNIT INSTALLATION

Place VERSA-LOK units side-by-side on the properly prepared leveling pad, making sure there is complete contact between the unit and the leveling pad. Place the base units for the full length of the wall, using either the backs of the units, or their grooves, slots or pin holes to properly align a straight wall. Once the base course has been installed, place granular drainage fill behind it (12" recommended), and then the backfill material. Compact fill materials as required in the specification. Clean the top of the base course units and place the next course of units. Make sure to stagger the joints as you install subsequent courses.

In placing succeeding courses of VERSA-LOK units, set them in their approximate finished position, pin each course to the course below it. (See Pinning Units) The receiving slots in the lower course allow for a variable bond while maintaining a consistent 3/4" setback. Adjust alignment of each course as necessary, continue to backfill and compact as you build the wall.

GEOSYNTHETIC REINFORCEMENT

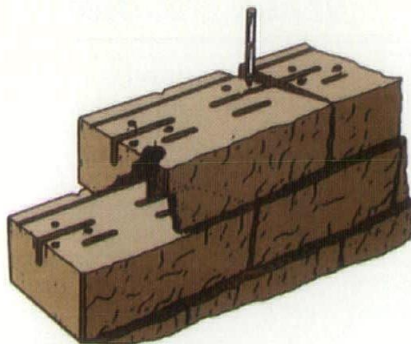
When the weight of VERSA-LOK units alone is not enough to resist soil pressures, horizontal layers of geosynthetics are used to reinforce soil behind the wall. Geosynthetic reinforced VERSA-LOK walls can exceed heights of 30 feet in a wide variety of site and soil conditions.

Geogrids, the most common type of geosynthetics used to reinforce soil, are high-strength plastics formed in an open, mesh-like configuration. The tensile strength of the geogrid holds the reinforced soil together. This creates a coherent soil mass which resists soil loads from behind the wall system. The length and number of geogrid layers is dependent on soil type, loading, wall height, and geogrid type used. The project manager or contractor should consult a qualified engineer to provide a site specific geogrid design.

PINNING UNITS

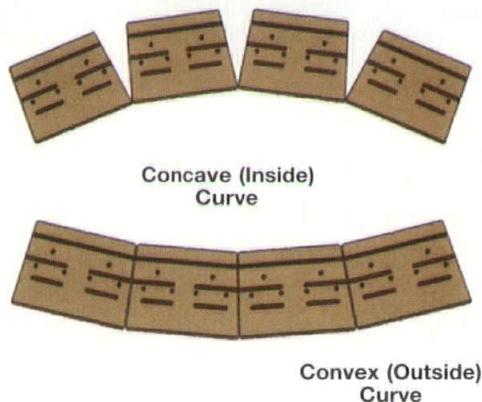
Two non-corrosive, nylon/fiberglass reinforced pins are used per unit. They aid in alignment, provide consistent setback of units from course to course, and aid in shear strength between the units. The pins are inserted into two of the four front holes, depending on bond pattern, and extend into elongated slots in the preceding course of units.

This flexible pinning arrangement allows for a variable bond in the wall. Pinning is done *after* each course is laid, and begins with the second course.



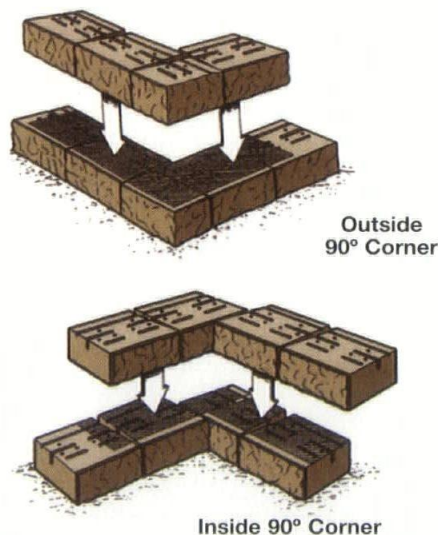
BUILDING CURVES

The trapezoidal shape of standard VERSA-LOK units allows various radius curves to be constructed while maintaining tight vertical joints between the units. Construction of either convex or concave curves is the same as for straight walls, ie: foundation preparation, backfill, compaction requirements, etc. remain the same. Receiving slots in the top of all units allow for easy pinning of curved sections; maintaining a half bond is *not* required to properly pin. For convex radius walls, place sides of adjacent units tight; fan the backs of units to achieve the desired concave radius.



BUILDING CORNERS

The standard VERSA-LOK unit provides simplicity and flexibility for construction of both inside and outside 90° corners. By sawing or splitting the solid VERSA-LOK unit, structurally stable outside corners ranging upward from 25° and inside corners up to 140° can also easily be built. Normally 90° outside corners are started by splitting a standard full size unit in half and alternating them at the corner as shown. Merely alternate full size units past the inside corner face as shown for inside 90° corners.

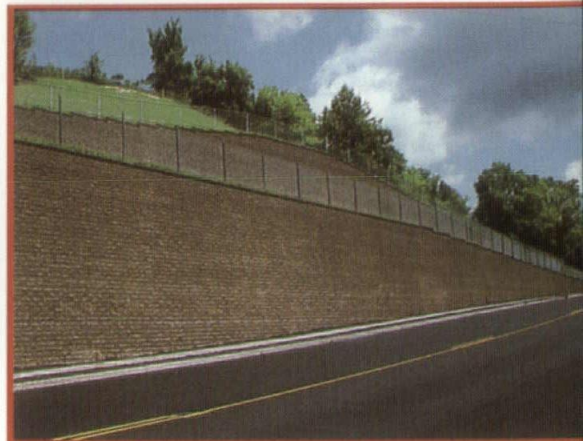
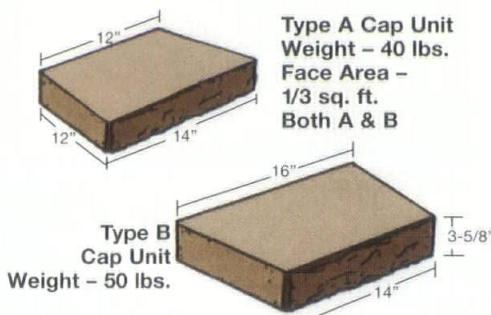


BUILDING STEPS

By using the standard VERSA-LOK regular and cap units, you can also build steps in a straight line, fan or spiral shape. There are two methods used to build steps, either pedestal or "cut-in" (both are fully illustrated and described in VERSA-LOK's Technical Bulletin #2. In both procedures, regular VERSA-LOK units are used as risers; cap units are used as treads. When side (return) walls are required, standard units are used to build these vertical walls, with halves needed for 90° outside corners and caps used to finish off the top of the wall.

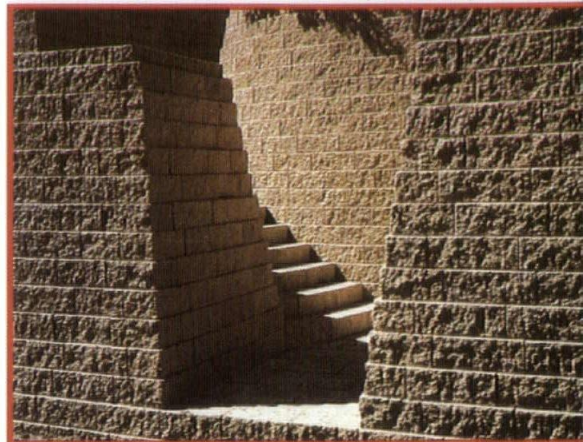
CAPPING WALLS

Caps with matching color and texture are made in tandem and split at the plant. Type A are used for convex (outside) radius walls; Type B for concave (inside) radius walls. By combining types, straight and serpentine walls will achieve an attractive, continuous cap. Use VERSA-LOK concrete adhesive to bond caps to the wall. Technical Bulletin #4 fully illustrates capping of the walls.



Geosynthetic reinforced VERSA-LOK walls on DOT Project.

VERSA-LOK curves, corners and steps are easy to build.



Flood control walls with VERSA-LOK perform well.

Walls and steps are capped with VERSA-LOK.



ADVANTAGES OF THE VERSA-LOK SYSTEM

...TO THE DESIGNER

Freedom to design; built-in steps (straight, fan, or spiral shaped); inside/outside corners with a smooth transition regardless of degree turn; radius and serpentine walls with tight fitting vertical joints and uniform setback; caps with matching color/texture for both straight and radius walls; custom colors to match architectural preference; unit module creates a natural, classic look.

...TO THE ENGINEER

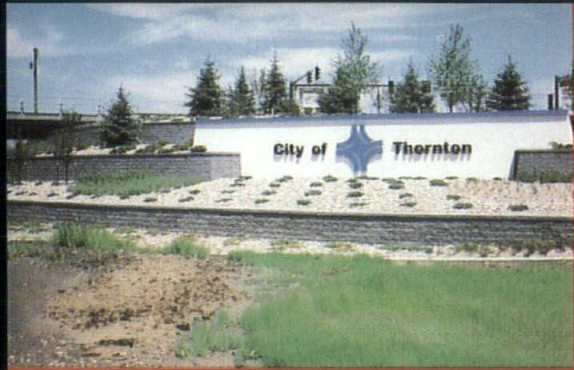
High-strength, low absorption units exceed ASTM standards; high strength non-corrosive nylon/fiberglass reinforced pins provide positive alignment, setback and interlock; heaviest retaining wall system per cu. ft. of wall; solid unit durability provides excellent sliding resistance unit-to-unit. Structural integrity of VERSA-LOK retaining wall system when installed to design guidelines.

...TO THE INSTALLER

One basic unit to work with; install straight or radius walls, corners, curves and steps; make halves, partial units, right and left corner units, step risers, double-sided split face all with one standard VERSA-LOK unit. Pins interlock after unit placed; no lifting and searching for pins in preceding course; ease of leveling with solid, flat surface; solid durability minimizes chipping/breakage of units due to handling or compaction of backfill. No cores to fill; units delivered ready to lay - no breaking of "lips" to make units fit; shape and weight allows ease of handling; variable bond flexibility.

...TO THE CUSTOMER

Economical - lowest life cycle retaining wall cost; unmatched aesthetics - timeless beauty; multiple application offers unlimited design opportunities to blend with any landscape plan; durability of solid unit adds to a lifetime of maintenance free service; environmentally safe VERSA-LOK units contain no toxic properties.

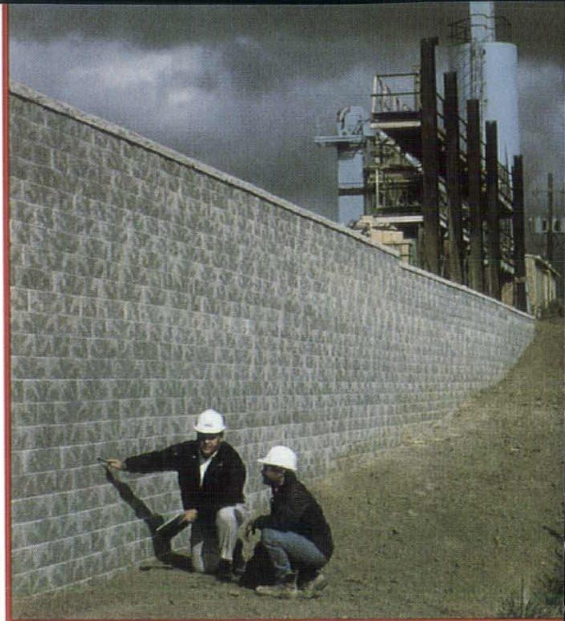
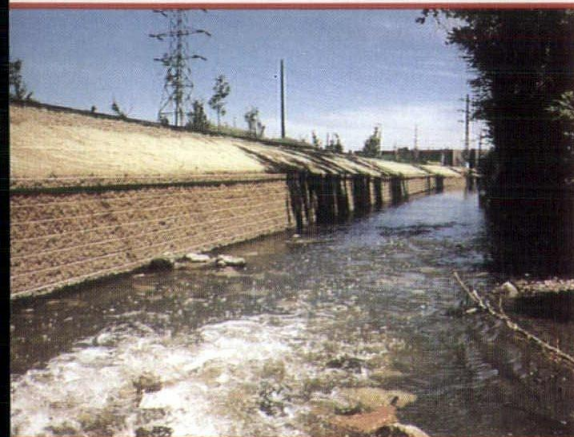


Municipal use of VERSA-LOK adorns highway interchange.



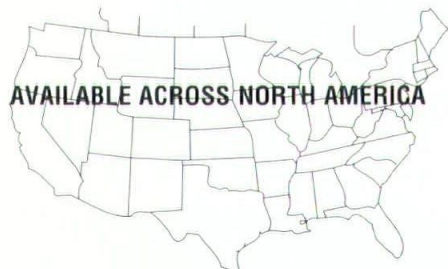
Concave curves built with tight vertical joints.

White water river bank protection with VERSA-LOK.



Patterned "maple leaf" units at Canadian industrial site.

Design flexibility is unlimited with VERSA-LOK.



AVAILABLE ACROSS NORTH AMERICA

VERSA-LOK® RETAINING WALL SYSTEMS

The products shown may be covered by one or more of the following: U.S. Patent D319,885, U.S. Patent D321,060, and other U.S. patents pending; Canadian Industrial Design Registration No. 63929, and No. 71472.

A division of the Kiltie Corporation

P.O. Box 9220, North St. Paul, MN 55109
(612) 770-3166 FAX (612) 770-4089

Copyright 1994 Printed in U.S.A. SW-993

VERSA-LOK Retaining Wall Systems are available through a network of companies across North America who are authorized to manufacture and sell the system. Please write/phone/fax us for the name of your closest manufacturer/distributor, and for additional literature and complete specifications.

- D1-692
- T.B. #1
- T.B. #2
- T.B. #3
- T.B. #4
- T.B. #5
- TD SERIES
- TD-592
- RB-193
- ED

Design and Installation Guide
Shoreline, Retention Pond Protection
Construction Details, VERSA-LOK Steps
Details, VERSA-LOK Curves and Corners
How to Cap VERSA-LOK Walls
Base Installation Procedures
Project Data/Application Sheets
Test Results - VERSA-LOK Walls
Residential/Commercial Brochure
Computer disk with VERSA-LOK details

Color samples shown in our brochure are as accurate as photography and the printing process will allow. Final color selection should be made from actual samples.

MILWAUKEE
11412 W. BROWN DEER ROAD
MILWAUKEE, WI 414/362-7000
1-800-462-9192

APPLETON
1132 E. WISCONSIN AVENUE
APPLETON, WISCONSIN
1-800-242-3134

MANUFACTURED BY
BEND
INDUSTRIES

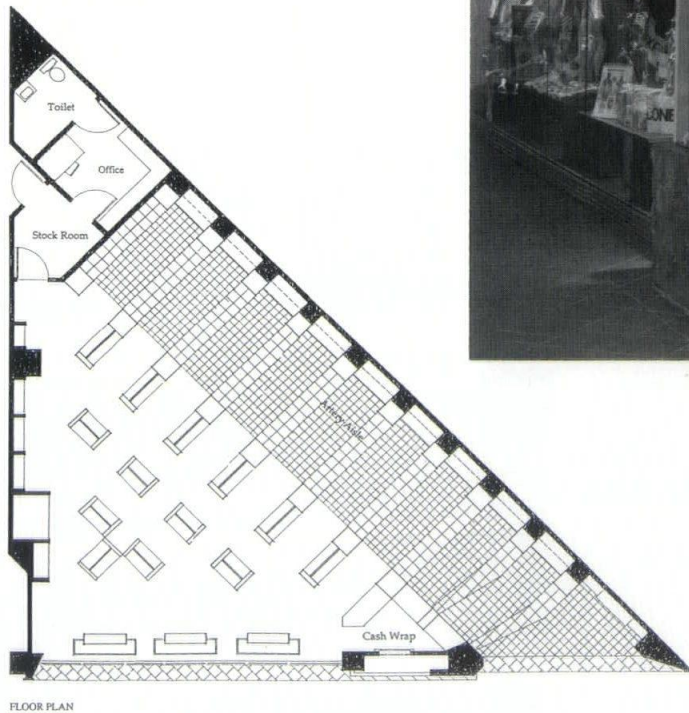
CHICAGO
1260 GOLF ROAD
DES PLAINES, ILLINOIS
1-800-886-4149

LOMBARD
21W 450 NORTH AVENUE
LOMBARD, ILLINOIS
1-800-878-2363

<i>Project</i>	BareBones
<i>Location</i>	Bloomington, Minnesota
<i>Architect</i>	Kubala Washatko Architects, Inc.
<i>General Contractor</i>	Carlson La Vine

BareBones is the retail venture of a company which has provided visual aids and anatomical models to health care and educational communities for years. An eye-catching interior was requested by the client to grab the attention of the public for a new type of product. Larger-than-life anatomical charts terminating the artery aisle of the triangular floor space attract shoppers into the store. Aisle space is framed overhead by blood vessels held in place by variously posed skeletons. Structural elements of the store are also exposed to view to fit in with the theme.

The entrance is marked by skeletal forms, one sitting astride a giant knife blade projecting from the wall. Inside, changes in ceiling height and lighting focus attention on merchandise which includes science books, educational models, apparel and gift items.



Photography: Shin Koyama

PERMABAN™

A Forming System for High Quality Concrete Floors WAREHOUSING & COLD STORAGE

THE CONCEPT

An improved and refined system for protecting construction and contraction joints.
Eliminates chipping and spalling due to heavy fork lift traffic, while providing floor tolerances to F-min 100'.

FREEZER WAREHOUSE
FLOOR SECTION and
JOINT-RACK LAYOUT

NOTES:

STEEL ANGLE JOINTS™

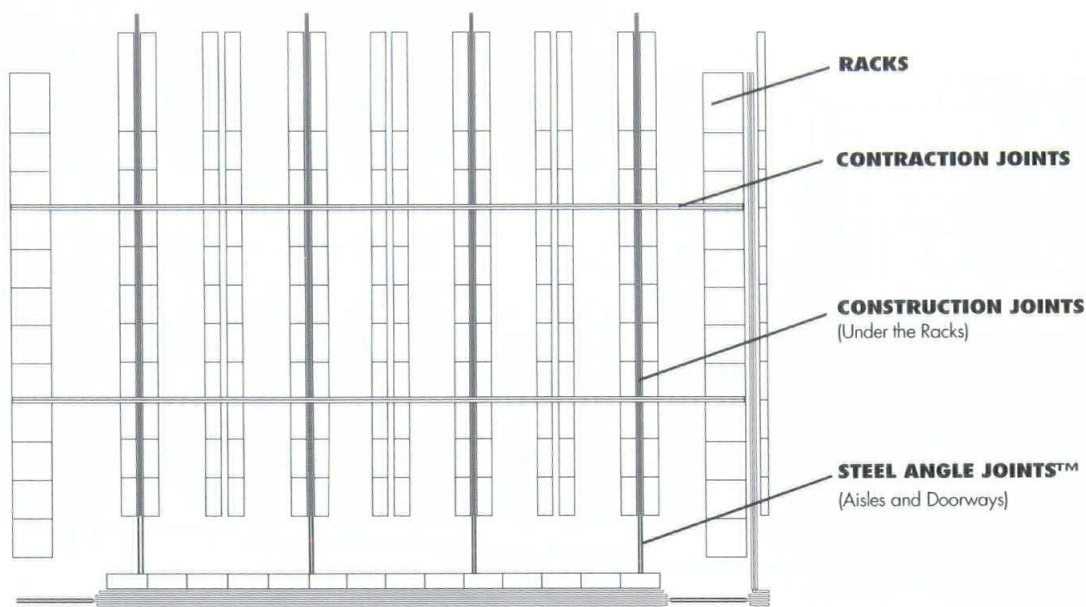
- PNA Steel Angle Joint™ in all traffic Aisles, door thresholds
- 3/4" x 18" square dowels @ 1' centers
- PNA Expando-Lok™ on 1/2 bar length

CONSTRUCTION JOINTS

- PNA Concrete Forms™ set on pads of concrete
- 3/4" x 18" square dowels @ 1' centers
- PNA Expando-Lok™ on 1/2 bar length
- PNA Freezer-Fil™ in all joints

CONTRACTION JOINTS

- 3/4" x 18" square dowels @ 1' centers in dowel basket
- PNA Expando-Lok™ on 2/3 bar length
- PNA Freezer-Fil™ in all joints

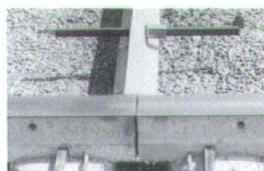


The components are:



PERMABAN™ CONCRETE FORMS

provide an economical forming system, achieving exacting tolerances without puncturing vapor barrier and insulation. The dowels provide additional load transfer capability at the joints.



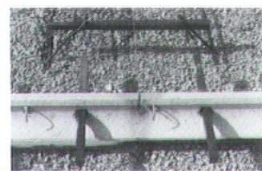
STEEL ANGLE JOINTS

offer armored joint protection in areas subjected to heavy vehicle traffic such as doorways or turn around areas.



EXPANDO-LOK CLIPS

fit over the dowels and eliminate cracking at the end of the dowels while allowing horizontal movement due to shrinkage and/or differential expansion.



DOWELS, DOWEL BASKET ALIGNERS

recommended at contraction & construction joints for increased load carrying capability.



PERMABAN™ JOINT FIL

is a two part semi rigid joint filler with a shore A hardness of 80. This prevents sidewall spalling and chipping, and will not "weld" slabs together.

This is a very brief overview of what we believe to be the best forming system for quality concrete floors in America today.

A 12 minute
video is available
at no charge.
For more
information call
or write -

MID-STATES CONCRETE PRODUCTS CO.

P.O. BOX 58
Beloit, WI 53512

1-800-236-1072
1-815-389-2339 FAX

"Serving the Industry with Flexikore"

ELEVATION is the P.R. idea exchange for the self-advancement of the architect in society.

ELEVATION is similar to the "Neat Files" you see in Architecture magazine, except the information exchange in Wisconsin Architect is about client relationships not technical details. Architects, managers, interns, clerical people, principals and anyone else concerned with the stature of the architectural profession are encouraged to contribute ideas and practical suggestions for publication.

Send your submission to:
Wisconsin Architect
321 South Hamilton Street
Madison, WI 53703

Some Suggestions

As architects, we must become more actively visible in community activities; i.e. political forums, service clubs, other organizations, etc. to help lead and direct activities in the community. Through these activities, we individually will gain credibility. This involvement will benefit our architectural work from a business standpoint when we show that we have leadership skills and sound reasoning to offer to our communities. We have to be involved in a wide variety of forums just as attorneys have been for decades.

Sometimes we take ourselves too seriously and feel our work as architects will solve all of the ongoing community problems. We must realize that, whether we like it or not, architecture will never be viewed as an absolute necessity at the same level as law and medicine. When looking at Maslow's hierarchy of human needs, people are concerned about beauty and design only when other more basic needs, which are covered by the other professions, are met.

We must learn to communicate with the public more from a layman's standpoint. We love to use architectural jargon in talking about our work, but most of the public (and ourselves included) cannot interpret what we are talking about. As a case in point, Bill Pederson's comments about Milwaukee when he toured the city were printed in one of our newspapers. It was a great article and critique of the city, but I have a feeling that the average lay person really didn't understand the architectural verbiage such as "contextural," "urban fabric," etc.

If we want to be respected and valued as a profession, we must always present ourselves in a professional manner. We must command respect by performing all of our services in the most credible and professional manner. When we can consistently show to a client or a group of clients that a final project meets their program, budget, and schedule (in addition to our own aesthetic goals), we will be credible to the community.

AIA Wisconsin P.R. Resources

Want to send out a press release but don't know who or where to send it to? AIA Wisconsin has a list of editors for most newspapers in the state. Call 1-800-ARCHITECT.

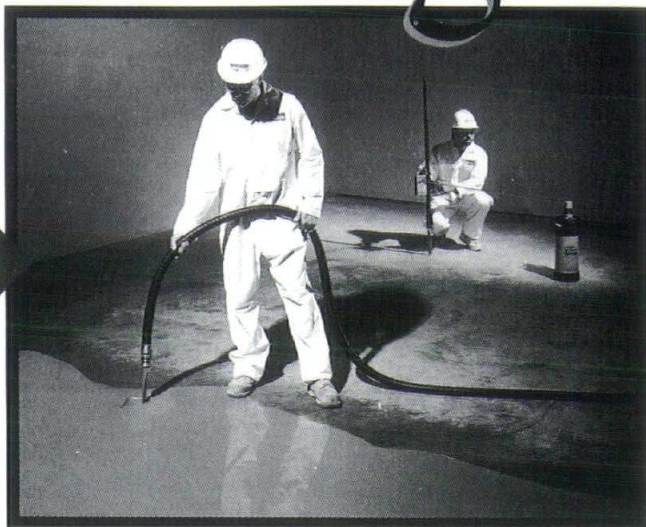
AIA Wisconsin Speakers Bureau

Do you enjoy speaking about architecture or planning? Do you know a group that would enjoy hearing about architecture or planning? Call Mike Ciofani, AIA to find out more. (414) 453-4554.

LEVEL FLOORS. LESS MONEY.

Level-Right®

**Self-Leveling
Floor
Underlayment**



Level-Right delivers superior results for any floor-leveling challenge...

- New construction or renovation
- Leveling entire floors or transition areas, featheredge to deepfill
- Resurfacing old or damaged concrete floors
- Topping old ceramic, marble or terrazzo floors
- 5500 PSI; water resistant



LEVEL-RIGHT® can be barrel-mixed or pumped in place.

- No troweling required
- Enclosing VCT, VAT or asbestos adhesive
- Capping cracked, lightweight concrete
- Filling "duck ponds" in concrete floors
- Provides a temporary wear surface in as little as 2 to 4 hours after application
- Accepts nearly all floor coverings

Pour on a perfect floor—with Level-Right. For specifications or a quote, contact:

Acoustical Floors of WI
675 Industrial Ct. Ste. C
Hartland, WI 53024
(414) 367-3306

Superior Gypsum Floors
1132 Ashwaubenon St.
Green Bay, WI 54304
(414) 336-7010

LEVEL-RIGHT®

The Faster, Cost Effective Floor Leveling System

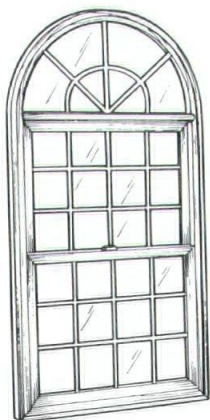
WISCONSIN

Building a better
Wisconsin through
architectural education

ARCHITECTS

321 South Hamilton Street
Madison, WI 53703.3606
1.608.257.8477

FOUNDATION



MARVIN
WINDOWS & DOORS



TRACO
A Three Rivers Aluminum Company

**PROFESSIONALISM...
FROM START TO FINISH.**

J.F. Cook Co., Inc.

P.O. BOX 88 1177 W. NORTHBRANCH DR. OAK CREEK, WI 53154
(414) 762-4000 • FAX: (414) 762-5480

Historical Restoration Capabilities

AIA Round Table on the Licensing of Interior Designers

The Institute of Business Design (IBD) issued a set of guidelines for use by its members to inform potential clients of the scope of their services. *The Science of Interior Design: A New Vision* explains services from programming to construction administration, focusing on the interior designer's contribution to each phase of a project. As an outline of professional practice for interior designers, these services parallel those of architects and reflect the changing role of interior designers in the design and construction process.

With this changing role, the image of an interior designer as a person with a "flair" for picking colors and fabrics is also changing and is no longer valid for a growing number of well-educated and well-trained professionals. With their strong background in design, these designers have become valuable partners to architects in creating high-performing, safe and enjoyable spaces.

This group of professionals, however, is at the center of a controversy which is dividing design professionals across the country. In a young profession at a major crossroads in its development, interior designers are looking for the recognition that accompanies their gains in education, training and stature. They are looking for a way to differentiate between those who have reached this level of professionalism and those who have not. In 35 states they are looking at legislation to protect the title of "interior designer." Title acts that have already passed legislatures in 15

states differ greatly. However, the basis of any title act restricts the use of certain titles to those who, by virtue of their education, experience and examination, possess qualifications above those of the general public. These laws, while not prohibiting the practice of interior design by anyone, allow potential clients to identify those who have achieved this higher level of professionalism. In essence, a title act is a consumer protection vehicle recognizing and differentiating between highly trained individuals and those who have not achieved that level of experience.

Most people can agree that recognizing a higher level of professionalism benefits all the design professions. The controversy lies not in protecting the title of interior designer, but in the attempts by the leaders in the interior design organizations to introduce essentially practice acts similar to those for architecture, medicine or law (professions regulated to protect the health, safety and welfare of the general public). Around the country, architects and interior designers are battling over legislation that goes beyond the accord agreed to by the AIA and the interior design groups and includes language limiting those who can practice interior design, establishes sealing requirements and, in some cases, opens the exemptions in the architectural laws for review and modifications. Turf war aside, as the building process changes and as the role of interior designers grows in the design process, their impact on the

general public will need to be assessed; and the questions of whether or not to regulate the practice of interior design will have to be addressed.

One major issue will be the scope of services interior designers can and will provide. Their traditional services, revolving around finishes and furnishings, are having a growing impact on the general public's safety. Studies point to a direct correlation between an occupant's survival and the toxicity of finishes when faced with a fire. Moreover, the growth of movable office systems has blurred the line between architecture and furniture. These issues along with others require the interior designer to determine required safety features for the spaces they design.

With their role in every phase of the design process expanding beyond their traditional services, the "decorator" image is no longer valid as they program, design and sometimes execute complex and complicated projects (some state laws exempt the design of non-structural, interior partitions by non-licensed individuals). The impact of this profession on the welfare of the public is no longer limited to types of finishes or the placement of furniture. The interior designer's work now affects numerous aspects of the health safety codes governing our designers.

Another issue which must be considered in the questions of licensing are the services that interior designers can provide without being registered. The exemptions allowed by building

codes and by architectural practice laws differ across the country. In general, they allow for non-licensed persons to design certain sizes or types of buildings. Interior designers and other construction-related fields have begun to push these to their limits, challenging the ceiling imposed on their professions. At the same time, building systems have become more complex, requiring more expertise in examining what were once basic issues of public safety. From pounding nails to designing the structural system, every act in the design and construction process affects the safety and welfare of the occupants of the buildings. As these become more and more complex, new and traditionally non-regulated services will have to be reviewed as to whether these exemptions should stay in place or be tightened to reflect the more complicated requirements of today's buildings.

The other question which must be examined is who, by virtue of education, experience and examination, is qualified to perform the services that have a direct and measurable affect on the safety of the public. As architects, we have long worked to establish our standards of knowledge and experience as the basis of entry into the profession. The curriculum in our schools and the development of our internship program have evolved to meet the new challenges of today's designs.

At the same time, the standards of the interior designer's four-year education has evolved and has begun to focus on the health, safety and welfare issues forming our building codes. Their examination process is

developing along the same basic principals as NCARB's ARE and, for many, an internship is a required part of their formal education. As stated earlier, there is a growing number of interior designers with these credentials that have developed a high standard of professionalism and have worked diligently to meet the challenges of today's designs.

The issues surrounding the regulation of aspects of the interior design profession are just beginning to surface in Wisconsin. Arguments for and against such regulation will soon enter the public arena. Should the title "interior designer" be restricted? As a consumer protection measure and to recognize an individual's achievement in reaching a high level of professionalism, the answer is probably yes.

Should the practice of interior design be protected? At this point there are many questions to be addressed and no firm answers. All that can be said is that a dialog between architects and interior designers must take place to work through these issues and come to conclusions that protect the health, safety and welfare of the people of our state. We must also learn from other groups that have gone through this struggle and realize that these issues are too important to be debated as if these were issues in a turf war between the professions.

EDITOR: The author participated in an AIA Roundtable on the licensing of interior designers last October in Washington, DC, sponsored by the AIA Government Affairs Department.



Nothing stacks up like StoneWall SELECT

Designed to save time & labor, StoneWall SELECT goes up faster & easier than any other retaining wall system on the market today.

- Superior to wood and poured concrete
- Simple, fast, mortarless installation
- Lightweight and easy to handle
- Complete design flexibility



**WAUKESHA
BLOCK**

10919 W. Bluemound Road
Milwaukee, Wisconsin 53226
(414) 453-7980

BASEMENT, DECORATIVE & LANDSCAPE BLOCK
PAVERS • FIREPLACE MATERIALS • MASONRY SUPPLIES • PARKING BUMPERS & MORE

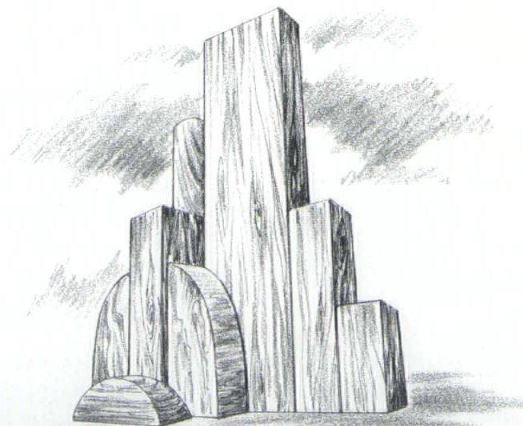


The **Hoida Component System** is designed and constructed to meet the needs of the most discriminating single or multi-family home builder and buyer. Our custom building system met the challenge of Marquette University's Campus Circle Project. Put the Hoida system to work for you!

HOIDA
LUMBER & COMPONENTS

1545 UNIVERSITY AVE. GREEN BAY
KEN GARDNER: 414-436-6310

Do you find soaring to new
heights a dizzying experience?



Let's talk.

At Klipstein Insurance, we walk you through the risks and rewards of business expansion one step at a time. For a complete protection plan individually designed for today and into tomorrow, call Klipstein. It's the insurance agency architects and engineers are talking to.

216 N. Midvale Blvd, Madison, WI 608-238-7181. 800-279-7181. Call Paul Berto or Tom Dowling.

Klipstein
Insurance Services, Inc.



Statute of Repose Law

In a ceremony at the State Capitol on April 14, Governor Thompson signed into law 1993 Act 309. This legislation restores the statute of repose for Wisconsin's design and construction industry.

The new law bars action for damages after ten years from the date of substantial completion of an improvement to real property, with certain exceptions. The effective date of the law is April 29, 1994.

AIA Wisconsin members participating in the bill signing ceremony included Fred Zimmermann, AIA, Noble Rose, AIA, Jim Gersich, AIA, David Lawson, FAIA, and Joe Powelka, AIA. The Legislative Committee thanks every member who helped get this remedial legislation passed by contacting their state legislators.

Several individuals will be recognized for their strong leadership in support of this important legislation by a presentation of a *Citation for Distinguished Service* at the AIA Wisconsin Annual Meeting on June 7 at the Holiday Inn Madison West. *Citation* recipients include: State Senator Joanne Huelsman, State Representative Alvin Baldus, State Representative Michael Wilder and attorneys Thomas Pyper, Donald Stitt and Barbara Ulichny with Whyte Hirschboeck Dudek.

Photography: Joe Paskus



1994 Design Awards

The jury for the 1994 AIA Wisconsin Design Awards program selected ten projects to receive Honor and Merit Awards.

Honor Award recipients are:

- Engineering Building Addition & Remodeling, Madison; *Architect*: Berners-Schober Associates, Inc., Green Bay, and Bowen Williamson Zimmermann, Madison; *Owner*: State of Wisconsin; *Contractor*: Kraemer Brothers.

- Lederle-Praxis Rochester R&D Lab, Rochester, New York; *Architect*: Flad & Associates, Madison; *Owner*: Lederle-Praxis Biologicals; *Contractor*: LeChase Construction Inc.

- Truax Avionics Shops - Truax Field ANGB, Madison; *Architect*: Flad & Associates, Madison; *Owner*: Wisconsin Air National Guard; *Contractor*: P.G. Miron Construction Co.

- BareBones, Bloomington, Minnesota; *Architect*: Kubala Washatko Architects, Inc., Cedarburg; *Owner*: Anatomical Chart Company; *Contractor*: Carlson La Vine.

- Harambee/Brewers Hill Townhouses, Milwaukee; *Architect*: Sunarc Studio, Oconomowoc; *Owner*: E.S.H.A.C. Community Organization; *Contractor*: Master Builders, Inc.

Projects selected to receive Merit Awards are:

- Single Family Residence, Middleton; *Architect*: Bowen Williamson Zimmermann; *Owner*: Karen Kobes Bowen and Ronald Gene Bowen; *Contractor*: Ronald Gene Bowen, FAIA.

- Henni Hall, St. Francis Seminar Campus, Milwaukee; *Architect*: Eppstein Keller Uhen, Inc., Milwaukee; *Owner*: Archdiocese of Milwaukee; *Contractor*: Voss Jorgensen Schueler Company, Inc.
- School of Architecture & Urban Planning, Milwaukee; *Architect*: Eppstein Keller Uhen, Inc., Milwaukee, and Holabird & Root, Chicago; *Owner*: State of Wisconsin; *Contractor*: J.H. Findorff & Son, Inc.
- Congregation Shalom, Milwaukee; *Architect*: Torke/Wirth/Pujara, Ltd., Wauwatosa; *Owner*: Congregation Shalom; *Contractor*: The Jansen Group, Inc.
- Pettit National Ice Center, Milwaukee; *Architect*: Venture Architects, Milwaukee; *Owner*: State of Wisconsin; *Contractor*: J.H. Findorff & Son, Inc.

The three jurors for the 1994 Design Awards program were Larry S. Bruton, AIA, Zimmer Gunsul Frasca Partnership, Portland; Richard J. Diedrich, AIA, Diedrich Architects, Atlanta; and Peter H. Dodge, FAIA, Esherick Homsey Dodge & Davis, San Francisco. The award-winning projects were selected from 90 entries submitted by 45 Wisconsin architectural firms.

Presentation boards of the award-winning projects will be on display at the 1994 AIA Wisconsin Convention on June 7 & 8 at the Holiday Inn Madison West. The 1994 Design Awards were presented to the architects, owners and contractors at an awards ceremony on May 5 in Milwaukee. The AIA Wisconsin Design Awards Committee is chaired by Robert Cooper, AIA, and Katherine Schnuck, AIA.

Correction

The firm of Mark A. Pfaller, FAIA, Architects, Inc., Elm Grove, was inadvertently omitted as the architect for the Concours Motors Addition and Renovation project featured in the March/April 1994 issue of Wisconsin Architect. Lynn Bichler Architects was the design architect. The editorial staff regrets this omission and apologizes for the error.

Golf Outing

Cancel all your appointments for Monday, June 27! That's the date of the 21st annual Architect/Exhibitor Golf Outing at Old Hickory in Beaver Dam.

This special event is for AIA Wisconsin members and 1994 AIA Wisconsin Convention exhibitors. For more information, please contact the AIA Wisconsin office.

Architects' Worth

The following quotes are from an article, "What's an Architect Worth?" in the March issue of *Architectural Record*:

"Architects work harder and longer hours for less reward than any other profession. This is to some extent self-imposed, however. There's an architectural work ethic that comes out of the studio charette process, so there is a great deal of work that is fundamentally volunteered."

Weld Cox
The Cox Group, Inc.

"Given how hard they work, the liabilities they assume, and the level of responsibility they have, architects have a right to expect to earn more. However, firms will have to start by demanding and justifying high fees from their clients—and refusing to work for less."

Frederick D. White
Mark Zweig & Associates

Risk Management Kit

The AIA Risk Management Committee has announced the release of its Risk Management Kit, an informative publication designed to benefit design professionals. Titles in the three-part set include "How to Select a Professional Liability Insurance Broker," "Liability Insurance Survey" and "Office Guide to Insurance Programs."

Copies of the *Risk Management Kit* (publication number J364) may be obtained by calling the AIA at (800) 365-2724. The cost is \$18 for AIA members and \$20 for nonmembers.

On the Big Screen

Can't stay away from the office? Well, here's a selection of movies which involve architects, reprinted from the February 1994 issue of *L.A. Architect*.

The Black Cat (Edgar Ulmer 1934) A revengeful doctor seeks out the Austrian architect and devil-worshiper who betrayed his county in World War I.

Secrets of an Actress (William Keighley 1938) A star actress falls for one of her backers, a married architect.

The Secret Beyond the Door (Fritz Lang, 1938) An heiress marries a moody architect with a death fixation, and comes to think of herself as his next victim.

Hard to Get (Ray Enright 1938) An architect is reduced to working at a gas station; there he meets and falls in love with a millionairess.

The Palm Beach Story (Preston Sturges 1942) A wife leaves her husband, a ne'er do well architect, to become an adventuress.

Mr. Blandings Builds His Dream House (H.C. Potter 1948) A New York advertising man longs to live in the Connecticut countryside, but finds the way to rural satisfaction is hard. The portrayal of the architect is familiar.

The Fountainhead (King Vidor 1949) An idealist architect, modeled after Frank Lloyd Wright, clashes with big business. Ayn Rand also wrote the screenplay.

The Second Woman (James Vern 1950) An architect, apparently paranoid, is proved to be a victim of a revenge plot.

Land of the Pharaohs (Howard Hawks 1955) A pharaoh is obsessed with life after death and builds a great pyramid for himself and his treasures.

The Girl in the Red Velvet Swing (Richard Fliescher 1955) In New York at the turn of the century, a rich unstable man shoots his mistress' former lover, the famous architect Sanford White.

Spanish Affair (Don Siegel 1958) An American architect in Madrid falls in love with his interpreter and is pursued by her lover.

Strangers When We Meet (Richard Quine 1960) A successful architect starts an affair with a beautiful married neighbor.

House of the Damned (Maury Dexter 1963) An architect is asked to make a survey of an old empty castle, but he and his wife find that someone or something is hiding there.

Don't Look Now (Nicholas Roeg 1973) After the death of their small daughter, an architect and his wife, now working in Venice, meet two old sisters who claim a mediumistic connection with the dead girl.

The Glass Cell (Hans Geissendorfer 1978) An architect is framed, then blackmailed, for an accident at a construction site; but he gets his revenge.

The Draughtsman's Contract (Peter Greenaway 1982) In 1694 a young draughtsman receives a curious commission from a country gentlewoman, his rewards to include bed and bawd.

Belly of An Architect (Peter Greenaway 1987) An American architect in Rome discovers he is

terminally ill, is deserted by his wife, and commits suicide.

Jungle Fever (Spike Lee 1991) A black architect has an affair with his white assistant, and then starts his own practice.

Housesitter (Frank Oz 1992) An eccentric waitress moves into an architect's empty dream house and life and proves to be of great help as a faux wife.

Indecent Proposal (Adrian Lyne 1993) An ambivalent architect sells his wife to finance their dream house but later feels remorse.

Sleepless in Seattle (Nora Ephron 1993) A lonely architect finds love via a radio talk-show.

Fearless (Peter Weir 1993) An architect and a mother of a small girl survive a plane crash and both get new insights on fear.

Death Wish 5 (Al Goldstein 1994) After retiring from vigilantism and teaching under a new identity, architect Paul Kersey must avenge the death of his girlfriend.

Intersection (Mark Rydell 1994) An architect must choose between his wife and lover but ends up in a car crash, symbolic of his out-of-control life.

People & Places

Watch out for a new crop of future women architects! Brownie Troop 960 from Richards School in Whitefish Bay demonstrated their creative abilities using AIA Southeast Wisconsin's Lego stock. The project was part of a program to help the group earn their "Building Art" badge.

Kahler Slater Architects, Milwaukee, has announced that **Lawrence J. Schnuck, AIA**, and **Joan C. Suchomel, AIA**, have been named Associates of the firm.

Emeritus member **Frederick W. Raeuber, AIA**, Manitowoc, died on April 2 at the age of 87. He retired

from Raeuber Stark Assoc., Inc., in 1984.

The Easter Seal Society of Wisconsin is sponsoring ADA Accessibility Guidelines training sessions on June 21 in Neenah and June 22 in Wisconsin Rapids. The featured speaker for both sessions is Lois Thibault, Training Coordinator, Office of Technical and Information Services at the Access Board (formerly the Architectural and Transportation Barriers Compliance Board).

Roger D. Roslansky, AIA, La Crosse, has been appointed by Governor Thompson to the Examining Board of Architects, Professional Engineers, Designers and Land Surveyors to serve for the interim term ending July 1, 1997.

The Frank Lloyd Wright Heritage Tour Program is sponsoring a Wright Here in Wisconsin: Heritage Tour Weekend on June 2-5. Eight buildings designed by Mr. Wright will be open for special tours and events. For information, call Gail Kohl at (608) 238-1608.

Membership Action

Please welcome the following new AIA Wisconsin members:

AIA

Daniel L. Blumer, NW
Joseph Gregory Kizevic, SE
Michael W. Krause, SE
Richard W. LaMuro, SW
Mark D. Linser, SE
Dale B. Poynter, NW
Steven M. Rowley, SE
Michael G. West, NW

Associate

Daniel J. Kabara, SE
Sara S. Lenz, SW
Gregory T. Sloniger, SW

Professional Affiliate

Ted W. Firmin, SE
Fieena Zvenyach, SE

Advertiser Index

- 46 Arnold & O'Sheridan, Inc.
- 18 Arwin Builders Specialties, Inc.
- 46 Baraboo Tent & Awning
- insert Bend Industries
- 2, insert Best Block
- 4, 45 Builders World
- 38 J.F. Cook Co.
- 46 Dolan & Dustin
- 46 Bert Fredericksen, Inc.
- 38 Great Lakes Gypsum Distributors
- 46 Harwood Engineering
- 41 Hoida Lumber & Components
- 46 Keating & Co.
- 14 Kinetics
- 41 Klipstein Insurance Service
- 27 La Force Hardware & Manufacturing Co.
- 46 Lampert Lee & Associates
- 46 Lang Associates, Inc.
- 30 LFI-Landscape Forms, Inc.
- 30 Madison Area Sheet Metal Labor-Management Council
- 46 C.R. Meyer and Sons Company
- 36 Mid-States Concrete Products
- 33 Midwest Perlite
- 46 Midwest Visual Equipment Co.
- 46 Neuman Pools
- 27 Nielsen Building Systems
- 47 Otis Elevator
- 6 Purcell Imaging
- 33 The Radford Co.-Corporate Offices
- 6 Sheet Metal Contractors of Milwaukee
- 27 Sheet Metal Worker's Local #18
- 46 Soils & Engineering Services, Inc.
- 7 Spancrete Industries
- 46 Strass-Maguire & Associates, Inc.
- 14 Tews Company
- 48 Ver Halen, Inc.
- 41 Waukesha Block
- 46 Skot Weidemann Photography
- 22 Wisconsin Concrete Masonry Assn.
- 18 Wisconsin Natural Gas Co.
- 10 Wisconsin Ready Mixed Concrete Assn.
- 46 Wisconsin Testing Laboratories
- 6 Wood-Lam

This index is published at no cost to advertisers, as a service to readers of Wisconsin Architect. Publisher assumes no responsibility for errors or omissions. When writing to advertisers,



Now When You Say Reliable You Can Say It With Integrity

Integrity Windows deliver what people want in a window: reliability. To the contractor, that means easy installation, quality services and no callbacks. To the homeowner, it means energy efficiency, low maintenance, smooth operation and good looks.

Integrity Windows are constructed of solid wood with an exterior shield of a durable new product we call Ultrex™. This tough composite of glass fibers and polyester resin eliminates many of the problems you run into with vinyl and aluminum windows.

And they're made by Marvin, a company that knows a thing or two about windows.

The Integrity line includes casements, awnings, pictures, bows, bays and multiple assemblies. And they're available in the most demanded sizes with popular features incorporated standard.

Integrity™

From Marvin



builders world, inc.

p.o. box 881 • waukesha, wisconsin 53187 • (414) 542-8883

For more information contact Mark Heard or Bill Reppert.



ARNOLD AND O'SHERIDAN, INC.
CONSULTING ENGINEERS

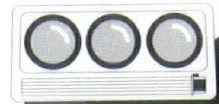

Structural Electrical
Mechanical Civil

608•271•9651
815 FORWARD DRIVE MADISON, WI 53711

414•783•6130
4125 N. 124TH BROOKFIELD, WI 53005

Meeting Room AV Systems Design

Need more help when you design meeting rooms using AV, video computers or teleconferencing systems? Call Flint Bridge at Midwest Visual. 414/ 784-5880.

TENT & AWNING
FABRIC PROFESSIONALS CALL 1-800-332-8303

neuman pools inc.

CUSTOM DESIGNED POOLS & SPAS SINCE 1973
BUILDERS OF RESIDENTIAL, COMMERCIAL, MUNICIPAL POOLS
AND RECREATIONAL WATER AMUSEMENTS
FAX 414-885-3371 • Beaver Dam, WI 53916 • 1-800-472-1214



DOLAN & DUSTIN, INC. CONSULTING ELECTRICAL ENGINEERS

1011 N. MAYFAIR RD WAUWATOSA, WI 53226-3448
(414) 774-4543 FAX (414) 774-4579

Electrical Power - Primary & Secondary Distribution
Lighting Design • Security & Communications Systems
Grounding • Emergency Generation • Uninterruptible Power

SOILS & ENGINEERING SERVICES, INC.



Geotechnical, Material Testing, and
Environmental Consulting Engineers

1102 STEWART STREET 608-274-7600
MADISON, WI 53713-4648 FAX 608-274-7511

BERT FREDERICKSEN, INC. CONSULTING ENGINEERS

3245 North 124th Street Brookfield, Wisconsin 53005-3112
TELEPHONE 781-9070 (414)

HEATING • VENTILATING • AIR CONDITIONING

Bert Fredericksen-Chairman John Fredericksen-President Bert T. Fredericksen-V. President

Strass-Maguire & Associates, Inc

CONSULTING • STRUCTURAL • INDUSTRIAL • ENGINEERS

9064 N. DEERBROOK TRAIL

Milwaukee, WI 53223

#414/354-4046 FAX 414- 354-5008



**Harwood
Engineering
Consultants**

7720 Harwood Avenue
Milwaukee, WI 53213

- HVAC
- Structural
- Telecom/Fiber Optics
- Plumbing/Fire Protection
- Electrical/Lighting Design

(414) 475-5554
FAX (414) 475-5698



Skot Weidemann Photography

Architecture, Aerial & Advertising

6621 Century Avenue, Middleton, WI 53562
608/836.5744 Fax: 608/836.7121



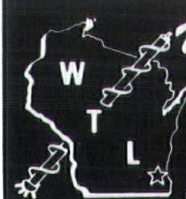
Associates, Inc.

Wausau, WI (715) 845-1333 • Green Bay, WI (414) 435-2488

• Consulting Engineers • Electrical & Automation Specialists

- Lighting Design
- High, Med., Low Voltage Design
- Systems Design

- Instrumentation and Controls
- Automation
- Testing



Wisconsin TESTING LABORATORIES

Geotechnical Engineers

Soil Borings

Materials Testing & Inspection

Menomonee Falls, WI 53051 • (414) 252-3300

W.L. LEE & Associates

- Subsurface Exploration
- Foundation Analysis
- UST Site Assessment
- Environmental Drilling

10968 Hwy. 54 East • Wisconsin Rapids, WI 54494
(715) 424-3131 (715) 344-0068 Toll Free (800) 626-4282



Keating & Company

Business Development Consulting

specialists in the built environment

- Marketing / Strategic Planning
- Public Relations / Image Management
- Client Satisfaction Programs / Research
- Training / Special Events

4901 North Hollywood Avenue • Milwaukee, Wisconsin 53217
(414) 964-1007

Supporting
practical
excellence
in
architecture.



Since 1888

C. R. Meyer and Sons Company
(414) 235-3350
Oshkosh • Rhinelander

**This space available
Call (608) 257-8477**

OTIS

COMMITTED TO QUALITY AND CUSTOMER SATISFACTION

ELEVATORS: From our Hydraulic low-rise installations to our sophisticated gearless elevator systems, the Otis name is synonymous with quality and dependability. An outstanding example is the Otis Elevonic® control system which employs advanced computer technology in adjusting to up-to-the-second traffic conditions.

For Hospitals, Nursing Homes, commercial and residential applications, Otis offers proven reliability, greater efficiency and increased flexibility to meet a variety of elevator installation needs.

PRE-ENGINEERED MODELS: Designed to help meet delivery and installation deadlines without sacrificing performance, reliability, or value. Hydraulic and geared systems are available in economical pre-engineered models.

QUALITY ASSURANCE: The Otis Quality Assurance Center, Otis Service Center and OTISLINE® Service are further evidences of the steps we've taken to deliver the highest level of quality products and services that today's market demands.

TESTING: The Otis commitment to quality and safety is more than just words. The 383 foot Otis

Test Tower is the

tallest of its kind in North America. At 29 stories with 11 hoistways, this structure allows testing on all types of elevator, escalator and prototype components.

ESCAL-AIRE® MODEL ESCALATOR: The industry's finest escalator available today.

Competitively priced, it offers a smoother, quieter operation, advanced handrail drive systems and a solid unicast one piece step design.

MODERNIZATION:

Otis visual and performance modernization makes it possible for older elevators to rival even

their newest counterparts. With an unparalleled selection of architectural

products, visual modernization creates an excellent first impression for current and prospective tenants. Performance modernization upgrades system performance and improves reliability and passenger satisfaction.

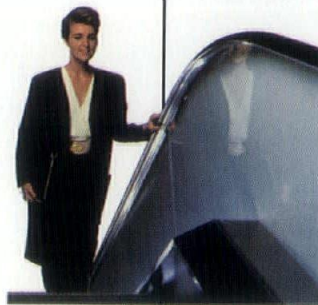
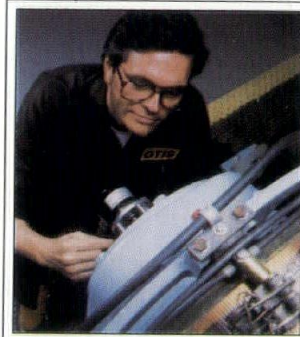
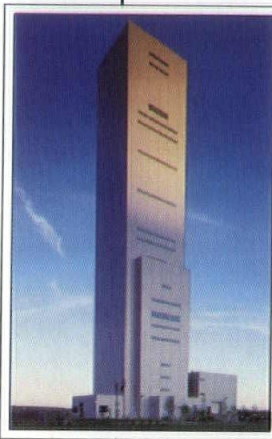
MAINTENANCE:

When it comes to elevator service, Otis has the resources to do the job right and complete it on time. Experience, training, advanced systems, reliable parts and responsive service separates Otis from every other maintenance organization in the world.

Using preventative maintenance as the backbone of

its program, Otis maintenance teams are dedicated to minimizing system downtime and maximizing tenant satisfaction. Pre-planned maintenance helps simplify budgeting and reduces the chances of unexpected repair costs.

Otis...
Committed
To Quality And
Customer Satisfaction.



Otis Elevator
2118 International Lane
Madison, WI 53704
(608) 249-3322

Otis Elevator
3720 N. 124th St.
Milwaukee, WI 53222
(414) 461-8400

 **UNITED
TECHNOLOGIES
OTIS ELEVATOR**

Otis Elevator
2700 S. Broadway
Green Bay, WI 54304
(414) 499-0333

ANOTHER REASON TO USE PELLA® WINDOWS

817 hits. No errors.

The 817 Pella® Architect Series™ windows in the renovated B&O Warehouse at Camden Yards combine historical authenticity, energy efficiency and low maintenance.



Only Pella could provide historically authentic windows with low-maintenance aluminum cladding.



The architect specified tempered safety glass for windows within range of Baltimore Oriole bats.



Architect:
HOK Sports Facilities Group
Contractor:
Donohoe Construction
Owner:
Maryland Stadium Authority
Tenant:
Baltimore Orioles

“We felt very strongly that the replacement windows should have the appearance of true divided light on both the exterior and interior,” explains Janet Marie Smith, Vice President of Planning and Development for the Baltimore Orioles. “We were delighted to find a window from Pella that would give us the authentic look, the energy efficiency and the low maintenance we wanted, at a competitive price.” Let the Pella Commercial Division provide innovative solutions (and architectural support services) for your window challenges. Contact your Pella Commercial Specialist.

Quality like this only comes from Pella.

Pella Corporation is a Sponsor of
The National Arbor Day Foundation

Call or write for our free Commercial Products Guide.

NAME _____
TITLE _____
FIRM _____
ADDRESS _____
CITY _____
STATE _____ ZIP _____
PHONE () _____

1-800-242-1008

Ver Halen, Inc., The Pella Window Store
P.O. Box 11968, Green Bay, WI 54307-1968
Attn: Mike Baeb



©1993 Pella Corporation, 102 Main Street, Pella, IA 50219
Trademarks licensed by Major League Baseball Properties, Inc.