

W I S C O N S I N


Architect

Religious & Cultural Projects

Historic Projects

Stairways

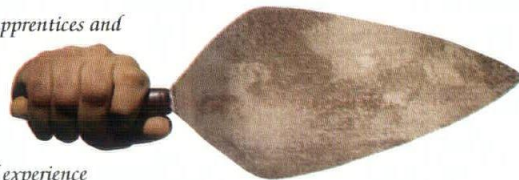




*'Each year, thousands of apprentices
and journeymen receive training from
IMI. Training in brick and block laying,
tile setting, stone and marble masonry,
cement masonry, maintenance and
restoration, terrazzo and mosaic work,
and plastering. Our courses conform
to the everchanging demands of the
marketplace while maintaining craft
standards. Through their work with
union contractors, our apprentices and
trainees gain valuable
experience. The kind of experience
that allows them to offer the
ultimate craftsmanship in masonry.
Union craftsmanship.
International Masonry Institute,
Wisconsin Area.*

*Building
the best in
Wisconsin.*

*Union
Craftsmen
and
Contractors.*



*The best
hands in the
business.*

Wisconsin Society of Architects Board of

Directors: Ross T. Potter, AIA, *President*; Lisa L. Kennedy, AIA, *Vice President/President-Elect*; Kevin J. Connolly, AIA, *Secretary/Treasurer*; Roger D. Roslansky, AIA, *Past President*; Horst W. Lobe, AIA; Daniel J. Becker, AIA; James E. Larson, AIA; Joseph L. Powelka, AIA; Robert E. Shipley, AIA; John W. Sutton, AIA; A. James Gersich, AIA; James L. Fryk, AIA; Daryl J. Dean, AIA; Mark E. Keating, AIA; Kevin B. Schumann, AIA; E. Mitchell Spencer, AIA; Dennis E. Miller, AIA; Charles H. Western (Associate Representative); Jeff Polachowski (UWM SARUP Student Representative); Daniel Rousseau (MSOE Student Representative); William M. Babcock, *Executive Director*.

Wisconsin Society of Architects/AIA: 321 South Hamilton Street, Madison, Wisconsin 53703—Phone (608) 257-8477.

Wisconsin Architects Foundation Board of

Directors: 321 S. Hamilton Street, Madison, Wisconsin 53703—Phone (608) 257-8477; Gary V. Zimmerman, AIA, *President*; Robert D. Cooper, AIA, *Vice President*; Richard J. Griesel, AIA, *Secretary/Treasurer*; H. James Gabriel, AIA; Dean Robert C. Greenstreet, Clarence Huettneraich, AIA, FCSI; Paul Berta; Ronald G. Bowen, FAIA; Brian F. Larson, AIA; William M. Babcock, *Executive Director*.

North Central Region AIA: James W. Miller, AIA, and Duane A. Kell, AIA, *Directors*.

Southwest Wisconsin Chapter: John W. Sutton, AIA, *President*; A. James Gersich, AIA, *Vice President/President-Elect*; Robert R. Bouril, AIA, *Secretary/Treasurer*.

Southeast Wisconsin Chapter: James L. Fryk, AIA, *President*; Daryl J. Dean, AIA, *Vice President/President-Elect*; Allyson D. Nemec Dahlen, AIA, *Secretary/Treasurer*.

Northwest Wisconsin Chapter: E. Mitchell Spencer, AIA, *President*; Dennis E. Miller, AIA, *Vice President/President-Elect*; Gary J. Kucko, AIA, *Secretary/Treasurer*.

Northeast Wisconsin Chapter: Mark E. Keating, AIA, *President*; Kevin B. Shumann, AIA, *Vice President/President-Elect*; Carmen R. Behm, AIA, *Secretary/Treasurer*.

Wisconsin Architect, Inc.; Board of Directors: Ross T. Potter, AIA; Roger D. Roslansky, AIA; Lisa L. Kennedy, AIA; Kevin J. Connolly, AIA.

Wisconsin Architect Editorial Board: Peter J. Schuyler, AIA, *Chair*; Dean Robert C. Greenstreet, Douglas C. Ryhn, Nancy J. Hubbard; William M. Babcock, *Chapter Coordinators*; Robert E. Shipley, AIA; Daniel J. Becker, AIA; Tim Larson, AIA; Dennis L. Olson, AIA.

Magazine Staff

Editor

William Babcock

Coordinating Editor

Grace Stith

Advertising & Production Manager

Cheryl Seurinck



Printed on recycled paper

W I S C O N S I N

Architect

Features

- 21 The Ups and Downs of Stairways
Grace B. Stith
- 30 WAF Annual Report

Projects

- 8 Addition to Congregation Shalom
Torke/Wirth/Pujara, Ltd.
- 11 New Academic Building
CPR Associates, Inc.
- 13 Terminal Building Renovation
Uihlein Architects/the Zimmerman Design Group
- 15 Addition to Conservatory of Music
Engberg Anderson, Inc.
- 17 Lutheran Church Addition
Cedar Corporation
- 18 Brown County Courthouse Renovation
CPR Associates, Inc.

Departments

- 5 Guidelines
- 34 FYI
- 37 Forum
- 39 Society News
- 44 Marketplace
- 45 Advertiser Index

Cover: Washington House Inn
Cedarburg, Wisconsin
Architect: Kubala Washatko Architects, Inc.
Photographer: Steve Poast

WISCONSIN ARCHITECT serves the design and construction industry in Wisconsin with circulation to Architects, Engineers, General Contractors, Business and Interior Designers, Landscape Architects, Certified Planners, Developers, Specifiers, Construction Managers, Facilities Managers, Builders, Manufacturers, and Suppliers. Wisconsin Architect is the official publication of the Wisconsin Society of Architects/A.I.A., published by Wisconsin Architect, Inc. Address all editorial and advertising inquiries to: Editor, Wisconsin Architect, 321 S. Hamilton St., Madison, WI 53703; phone 608/257-8477. Wisconsin Architect and the WSA disclaim liability for statements by the editors, contributors, and advertisers.

MARVIN
WINDOWS & DOORS



ULTIMATE

FROM TOP TO BOTTOM.

One look at the Ultimate French Door from Marvin is all it takes to see it is the most beautiful wood French door ever made. And its Inside Story will prove it's also the most durable. From its airtight, watertight design to its warp-free panels; the Ultimate French Door from Marvin is the highest performing French door ever made. Stop by and get the Inside Story.

For technical support contact:



builders world, inc.

p.o. box 881 • waukesha, wisconsin 53187 • (414) 542-8883

Lake Geneva, WI
Dunn Lumber Co.
(414) 248-4459

Milwaukee, WI
A. Fillinger, Inc.
(414) 353-8433

Fredonia, WI
Neuens Lumber Co.
(800) 292-2456

Baraboo, WI
Senger Lumber Co.
(608) 356-6395

New Berlin, WI
Meyer Lumber Co.
(414) 786-7919

Watertown, WI
**Zuern Building
Center**
(414) 261-5676

Madison, WI
**The Door & Window
Center**
(608) 233-3110

The year 2000 is becoming more than a simple historic moment or cultural focal point. It will be that point in American architectural history when the era

We are Rebuilding the Future

of building finally shifts to the era of
rebuilding.

The trend of national statistics indicates that by the millennium, additions, renovations and extended use projects will comprise more than 50% of the total construction volume. This trend is clearly evident in Wisconsin as well.

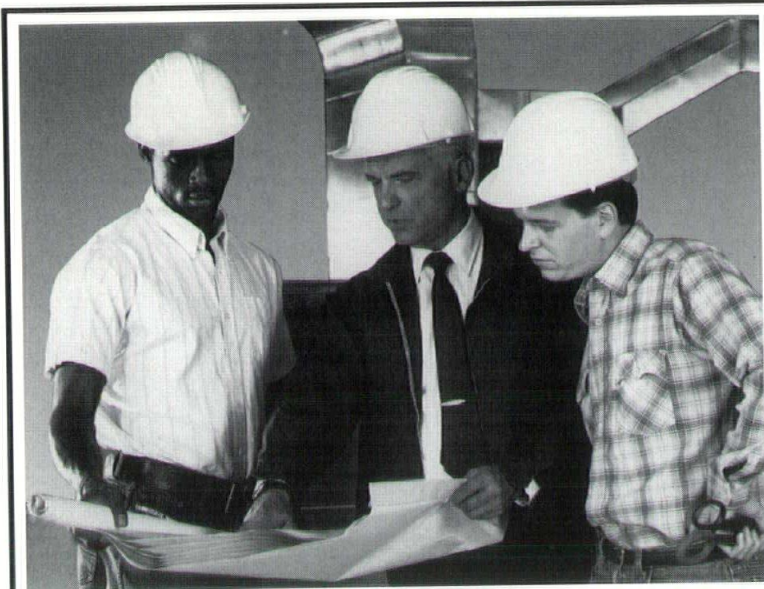
The reuse of existing facilities extends beyond market-driven factors. We are realizing our social and economic limits and embracing recycling, resource management and the concept of livable communities.

Our futuristic vision of the gleaming Jetson-esque city on the edge of forever is being replaced. We are REBUILDING THE FUTURE with a more pragmatic vision and a goal to be resource and environmentally sensitive.

The next few years will be critical as Wisconsin architecture evolves to embrace the significant changes in attitudes, skills and knowledge required to practice in the era of rebuilding.

Charles J. Quagliana, AIA

Hiring a sheet metal contractor?



Remember: the best bid is the one that gives you the greatest value for your construction dollar.

Hiring a contractor who's unable to control costs, deadlines or quality standards always costs you extra in the long run. It's a lesson some people have had to learn the hard way.

What you really need to look for is not the lowest bid, but the one that will give you the most value for your dollar. And that's where the training and experience of skilled union craftsmen can make the difference.

They're your best assurance that the job will be engineered right and built right — and that you'll save money in the long run.



MADISON AREA SHEET METAL LABOR- MANAGEMENT COUNCIL

1245 E. Washington Ave., Suite 184, Madison, WI 53703

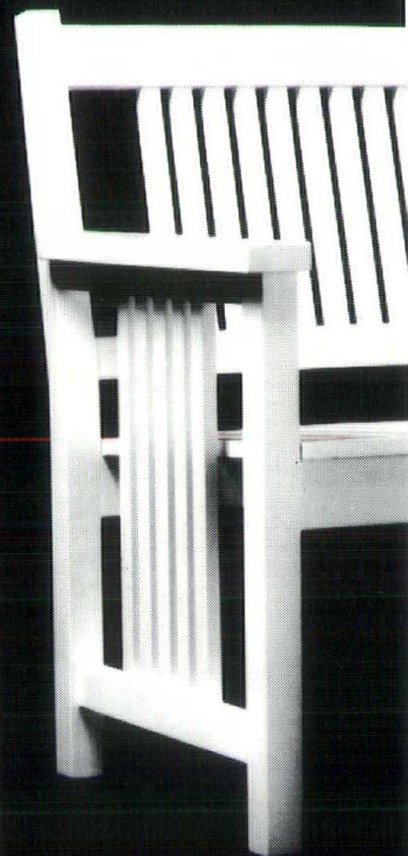
ADVANCED TEMP. TECH., INC.
AIR COMFORT, INC.
AIR TEMPERATURE SVC., INC.
BADGER SHEET METAL
BASSETT MECHANICAL
B & M HEATING, INC.
B & T MECHANICAL, INC.

ENVIRON. SYSTEMS ANALYSIS
GENERAL HEATING & AIR COND.
H & H INDUSTRIES, INC.
HARKER HEATING & COOLING
HOOPER CONSTRUCTION CORP.
INDEPENDENT TESTING AND
BALANCING

KILGUST MECHANICAL, INC.
LAKELAND TEMP. DESIGNS
MADISON MECHANICAL, INC.
MIDLAND BUILDERS
P.L. NELSON COMPANY
SULLIVAN BROTHERS, INC.

AND SHEET METAL WORKERS LOCAL #18

MAKING AN
UGLY WOODEN
BENCH GOES
AGAINST
OUR GRAIN.



KENWORTHY
PRAIRIE BENCH



LFI/Landscape Forms
Bill Quinlan
835 West Webster
Chicago, IL 60614
800/255-0341
312/871-8810
312/871-4617 FAX

Design Versatility. From Any Angle.

"Because of this building's non-rectangular design, we required a material that could accommodate a series of angular shapes. Precast Spancrete was chosen for the floor planking and balconies because it could be cut off site to these precise shapes.

"Building high in the air on the lakeshore in winter presented some unusual weather problems, too. Spancrete provided a flexible construction method that was not weather dependent.

"In short, Spancrete was an economical solution that gave us a clean, finished look and was erected rapidly. And it easily conformed to the unusual shapes called for by the building's design."

Robert Wirth AIA Architect, Torke Wirth Pujara Ltd. Architects Engineers



Spancrete Industries, Inc.
10919 West Bluemound Road
Milwaukee, WI 53226 • 414 258-4110



Lakeshore Towers Luxury Condominiums
Racine, Wisconsin

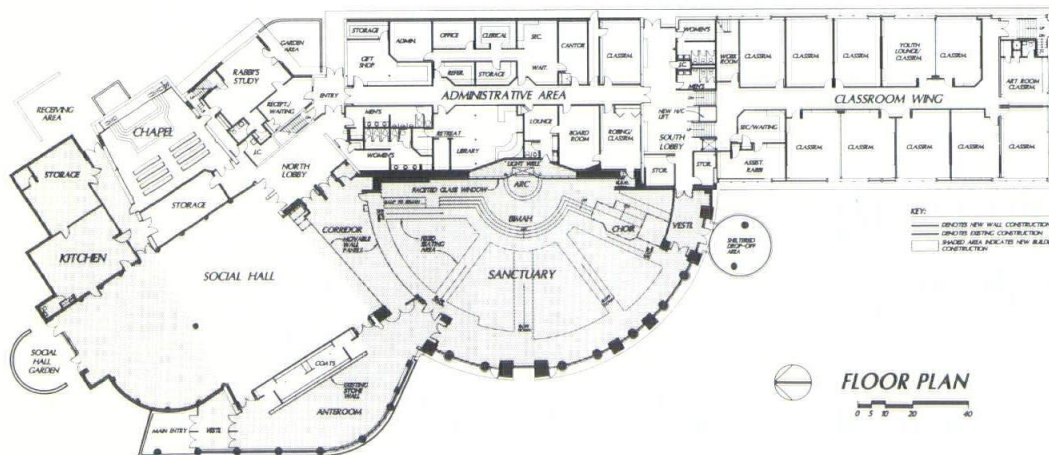
<i>Project</i>	Addition to Congregation Shalom
<i>Location</i>	Fox Point, Wisconsin
<i>Architect</i>	Torke/Wirth/Pujara, Ltd.
<i>General Contractor</i>	The Jansen Group, Inc.



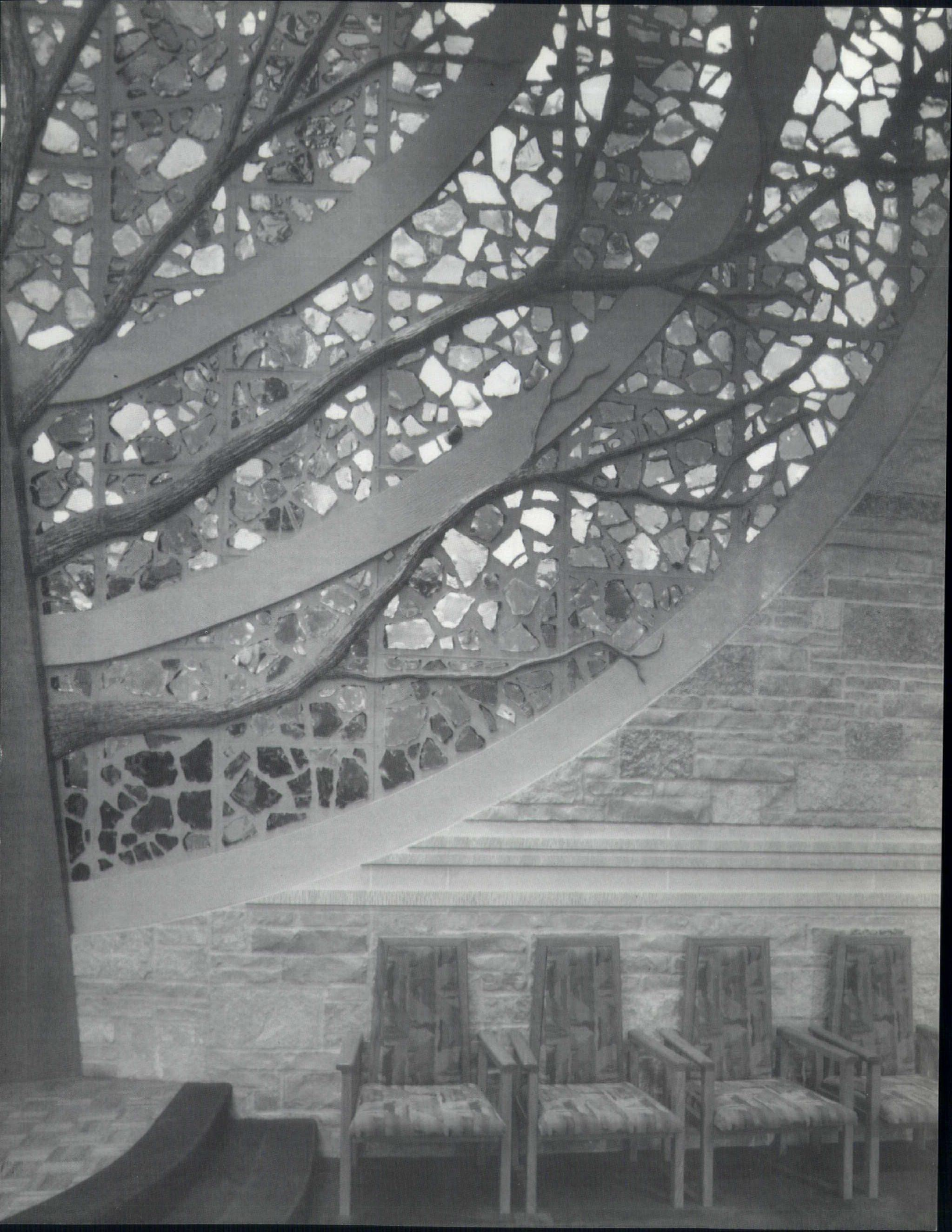
Strong growth in this congregation's membership created the need for expansion. The 1954 synagogue was remodeled to incorporate an addition for worship, administrative and school functions.

A new semicircular shape was designed to provide a 450-seat sanctuary layout that creates an intimate relationship between the central religious Ark and the worshippers. It is separated, via movable wall system, from the old sanctuary space now used as a 350-seat banquet hall. This multipurpose hall can increase religious service space to accommodate 1200 people during "high holiday" season. It takes advantage of clerestory windows and the volumetric shape of the existing structure.

Photography: Steve Poast



"Tree of Life" motif in the faceted glass wall was designed by artist and sculptor Suzi Derzon. She also created the brass lettering on the stone wall and was responsible for interior color selections. Potente Studios of Kenosha constructed the glass wall. Gene Potente also designed and built the podium and free-standing chairs along the wall.



Halquist Greyflek Tile



White - Honed Finish



Grey/Buf - Honed and Sand Finish

The Halquist Stone Company has been quarrying famous Lannon Stone for over 60 years in Lannon, Wisconsin, 20 miles from downtown Milwaukee, and it is now available in interior and exterior paving as well as sills, coping, paneling and specialty units. Halquist Greyflek, a domestic dolomite limestone tile, is superior to any imported limestone tile. As a permanently clean natural stone with great strength, low porosity and resistance to weather, Halquist Greyflek is without equal.

COLORS AVAILABLE

White - light grey/white in color; very uniform.
Grey/Buf - a variegated stone with color ranging from dark to light grey with buff.

FINISHES AVAILABLE

Honed, Polished, Sandblasted and Bushhammered.

SIZES - INTERIOR TILES - STOCK SIZES

7 13/16" x 15 13/16" x 1/2"
12" x 12" x 1/2"

CUSTOM SIZES

Sizes up to 24" wide and 8" thick.
Up to 8' lengths are available.

TECHNICAL DATA

Compressive Strength.....30,000 psi ave.
Density171 lbs/cu.ft
Abrasion Hardness25
Absorption00.95%
(Detailed testing available)

Halquist Lannon is available in a full line of building and landscape stone products. Halquist Lannon has more matching colors, textures and finishes than any other single stone, making it suitable for any project. For more information, call Halquist for our 30-page architectural catalog.

HALQUIST

S T O N E

Family Owned and Operated Since 1929. Quarriers and Fabricators of Original Lannon Stone.

P.O. Box 308 • N52 W23564 Lisbon Road • Sussex, Wisconsin 53089-0308 • 414-246-3561
Interstate Wats 1-800-255-8811 • Wisconsin Wats 1-800-255-9955 • FAX 1-414-246-7148

Design Assistance • Shop Drawings • Will Ship Anywhere - by Rail or Truck • Nationwide Distributors

Quarried & Fabricated in the USA
Dealer Inquiries Invited

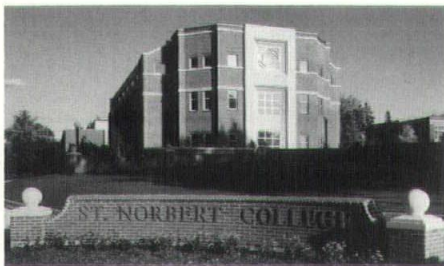
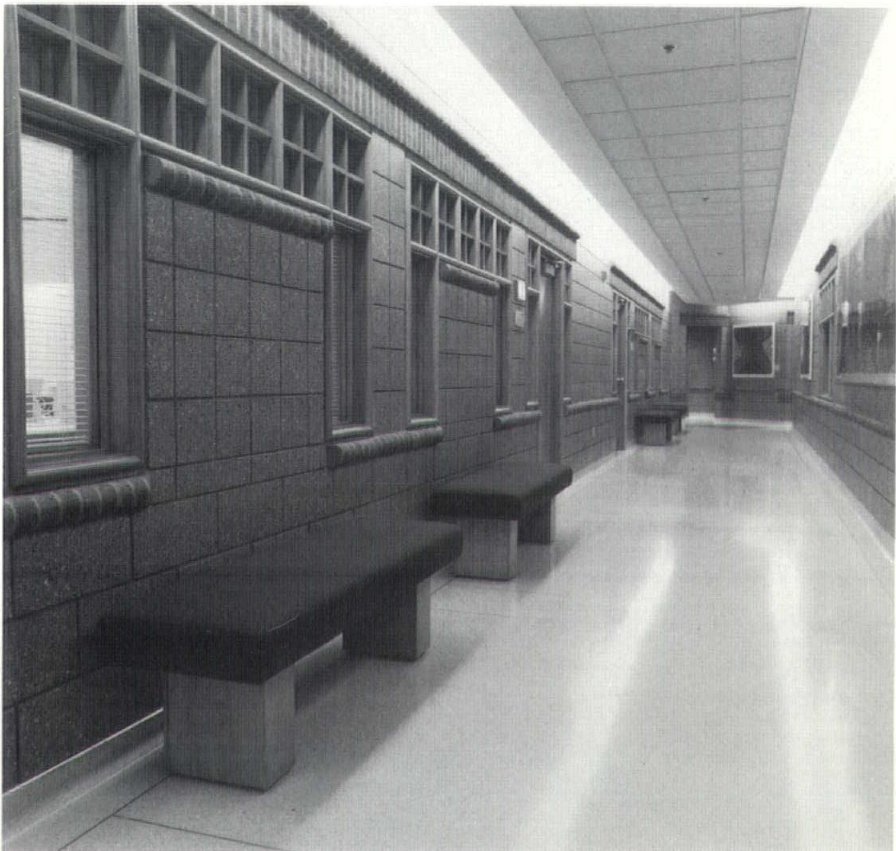
<i>Project</i>	New Academic Building
<i>Location</i>	De Pere, Wisconsin
<i>Architect</i>	CPR Associates, Inc.
<i>General Contractor</i>	George M. Hougard & Sons, Inc.

This is the first of two new buildings on a formerly residential block that will frame a visual "window" into the existing campus from the adjacent downtown area. The structure also forms the third side of a landscaped quadrangle to be completed with the addition of the next building.

Brick and limestone exterior ties in with traditional materials of the campus, founded in the early 1900s. The diamond-within-the-circle motif was designed to be a symbol of the simple geometry of earlier buildings and details.

Basement level features two large lecture halls with raked floors and seminar seating. First and second floors house a computer center and classrooms, respectively. Faculty offices are on the third floor.

Because all offices in the old buildings had windows, there arose the question of adjusting to the windowless interior offices. To prevent this from becoming a problem, a skylight and clerestory glass on interior walls give natural light and a chance for visual escape.



Photography: Jeff Lendrum and Chris Dorach

Tilt-Up Concrete Buildings



Giving you more than beautiful savings

Tilt-Up Concrete offers all the advantages you've come to expect from concrete walls — durability, low maintenance, energy savings, fire resistance, low insurance premiums and lasting value.

As a bonus, Tilt-Up Concrete buildings feature rapid forming, casting and panel erection for

exceptionally, economical construction.

Discover the many benefits of Tilt-Up Concrete buildings. Call Wisconsin Ready Mixed Concrete Association at 1-800-242-6298 for details.

Do It In Concrete.

Wisconsin Ready Mixed Concrete Association
9415 W. Forest Home
Hales Corners, WI 53130



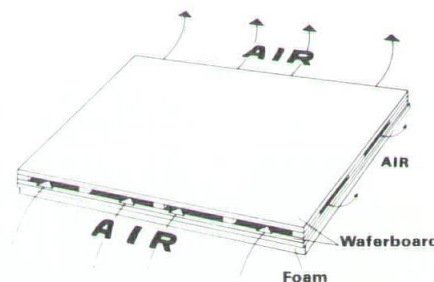
1-800-242-6298

Vent-Top ThermaCal®

Ventilated Nail Base Roof Insulation

Vent-Top ThermaCal combines isocyanurate insulation with a ventilated space between the two waferboard layers. The internal spacer arrangement provides over 95% open air space below the top sheathing and allows air movement in all directions.

USES Vent-Top ThermaCal is used over exposed roof decking. It provides the ventilation that many users and shingle manufacturers recommend. In hot weather, this cools the sheathing and shingles. It also allows any moisture to escape. In winter it provides a cold air space below the top sheathing. This cold roof reduces snow melting and ice dam formation.



Manufactured by: Cornell Corporation
P.O. Box 338, Cornell, WI 54732
(715) 239-6411 • FAX: (715) 239-6260

The Deadline
for advertising in
the *Handbook* is
December 15. Call
(608) 257-8477



Jung Shoe Building, Sheboygan, Wisconsin
Architect: The Alexander Company

An artistic expression of our
expertise - to fashion metal &
glass to perfection

Architectural Windows
Window Replacement
Thermoclear® Skylights

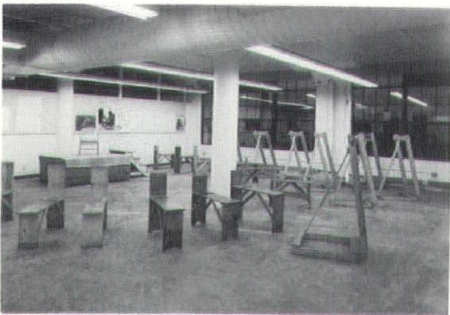
arwin

Arwin Builders' Specialties, Inc.
2145 South 162nd Street
New Berlin, WI 53151
(414) 782-1090
1-800-876-1090

<i>Project</i>	Terminal Building Renovation
<i>Location</i>	Milwaukee, Wisconsin
<i>Architect</i>	Uihlein Architects/the Zimmerman Design Group
<i>Construction Manager</i>	Gruman Project Development

A former steamship warehouse along the Milwaukee River now houses a design school formed in 1974 after the demise of the regionally famous Layton School of Art and Design. The Milwaukee Institute of Art and Design now has five floors of space constructed at a cost of less than thirty dollars per square foot, some of it as "show-off" area and much as suitable "factory-look" space.

Visitors encounter a lobby with an inviting monumental stair down to the river level with its galleries, shops and offices. This lower level has three underground sides with the long axis along the river and six feet above the waterline. The river view proved an excellent opportunity to use this area for the public air conditioned space. Only a portion of the gigantic building is air conditioned. Ventilation issues received priority care where art classrooms produce toxic fumes. Single-zone ventilation and counter-height exhaust systems for spray booths are just a part of the complex heating and ventilating design.



Photography: Ed Purcell

SOME BUILDING PROJECTS DON'T NEED ENERGY PLANNING.



But, chances are, yours do! Together, let's provide your client with long-term savings from natural gas equipment. For information on new gas technologies which fit your design needs, call your local Wisconsin Natural office today.



**BLUEPRINT
FOR SAVINGS**

WISCONSIN NATURAL
GAS COMPANY

SOLUTIONS TODAY. SAVINGS TOMORROW.

Reprints Available From Wisconsin Architect

*Doing A
Trade Show?*

*Considering A
Direct Mail
Campaign?*

*Reprints Are A
Great Marketing
Tool!*

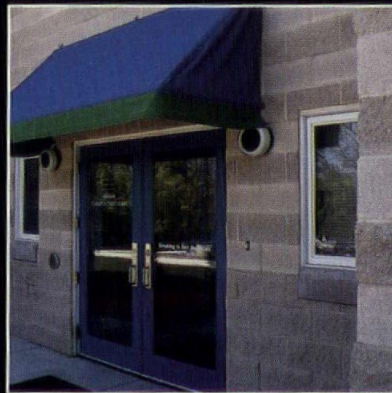
For more information contact:
Cheryl Seurinck
Advertising Sales Manager
608/257-8477



MID-CITY BLUE, INC.
810 NORTH PLANKINTON AVE.
MILWAUKEE, WI 53203
(414) 276-0950

Diazo Printing
Pin Bar Overlays
Specification Printing
Xerox 2080
Xerox 2510
Xerox 3080
Cad Plotting

WCMA Recognizes a Winner.



Campus Child Care Center

Milwaukee Regional Medical Center

Excellence Award

1993 Excellence in Masonry Awards

In addition to accepted structural values, masonry offers flavor and flair to the architectural community like never before!





Campus Child Care Center

Milwaukee Regional Medical Center

Excellence Award

1993 Excellence in Masonry Awards

Milwaukee Regional Medical Center- Campus Child Care Center

Location: Milwaukee, WI

Architect: The Zimmerman Design Group

General Contractor: Guenther-Wagner-Johnson

Mason Contractor: C. Bundy Commercial Masonry

CMU Manufacturer: Waukesha Block

Cost: \$1,400,000

Size (Sq. ft) 14,000

Major Materials: Decorative Block

Judge's Comments: "I really like this project because the overall building gives a residential look, and you want children to feel comfortable in a building like this. Because of the combination of wood frame and block, you get the sturdiness of the block yet the warmth of residential framing."

Architect's Comments: "Decorative masonry was chosen for its competitive value and maintenance free characteristics. The decorative pattern helped define the scale and spirit of the user, creating a youthful yet handsome facade." *John L. Klett, AIA*

Project

Addition to Conservatory of Music

Location

Appleton, Wisconsin

Architect

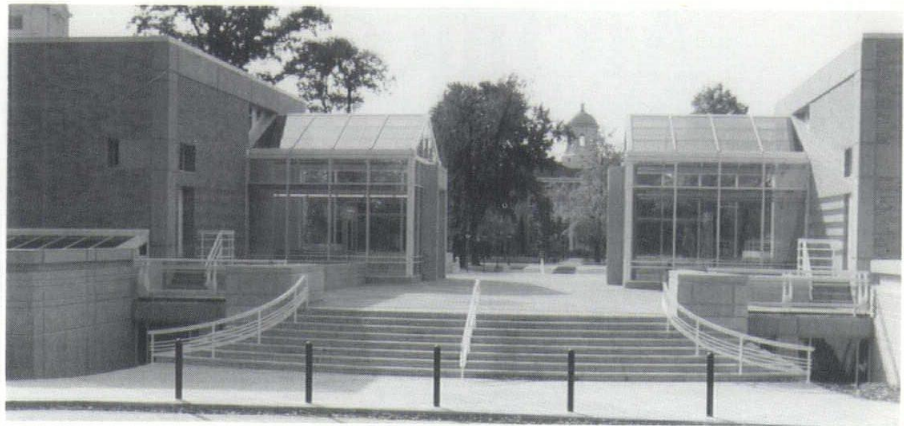
Engberg Anderson, Inc.

General Contractor

Oscar J. Boldt Construction Company

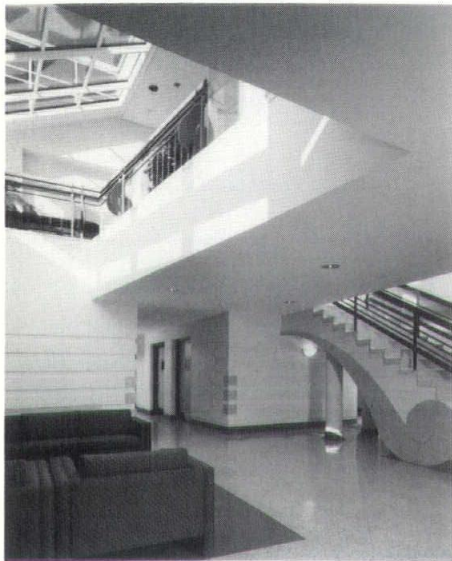
Linking a 1950s Music Drama Center on the Lawrence University campus to a historic 1900s era chapel and performance hall is a new 35,000 square foot addition. It provides classroom, studio and rehearsal space and maintains the established north/south visual and pedestrian axis.

In the new addition a continuous, partially below grade, level has new elevators at each end connecting the two older buildings. An elevated plaza above allows passage from the street to campus and separates east and west wings at the main level. The east wing links rehearsal halls to backstage and performance space in the historic Chapel Hall. The main level of the west wing connects entry, reception and administration with the renovated Music Drama Center.



Practice rooms have glazed sound doors. Sound softening and excellent acoustics are accomplished by acoustical clouds, sound panel and draping. Jazz and percussion studios are remote from quiet areas. Natural light is brought into interior spaces with skylit corridors and glazed pavilions. Musical metaphors are used as design motifs on metal balusters and stairways.

Photography: Howard N. Kaplan, Morley Johnson



Easy on the Eye... Easy on the Architect.



Our beautiful sunrooms come
with something extra...
Complete technical assistance.

When you specify our products, we'll give
you full specifications, detailed drawings,
design assistance and a wealth of experience.
And it's all as close as your phone, your fax
or your overnight mail pickup.



Let's Talk Technical.

We make a great sunroom a great deal
easier to specify. Call us now. We're easy.

(414) 722-8786

622 Airport Road, Menasha, WI

HELP!

We are looking to buy a used Sweets
Catalog file for General Building/Renova-
tion from 1992 or 1993. Please contact
Stacey or Jack at 1-800-236-4253.

Small Change Could Cost You Big Dollars



—By Roger K. Lewis, F374

Copying blank AIA Documents is illegal...and dangerous. The AIA Documents are revised periodically to reflect current case law and the ever-changing practices within the construction industry. Copying an outdated AIA Document—that's missing even a *small* change or revision—increases your liability and the possibility that you'll pay big dollars to settle a dispute. Don't take chances: order your current AIA Documents from us today.



documents
THE AMERICAN INSTITUTE OF ARCHITECTS

The Wisconsin Society of Architects
321 S. Hamilton St.
Madison, WI 53703
(608) 257-8477

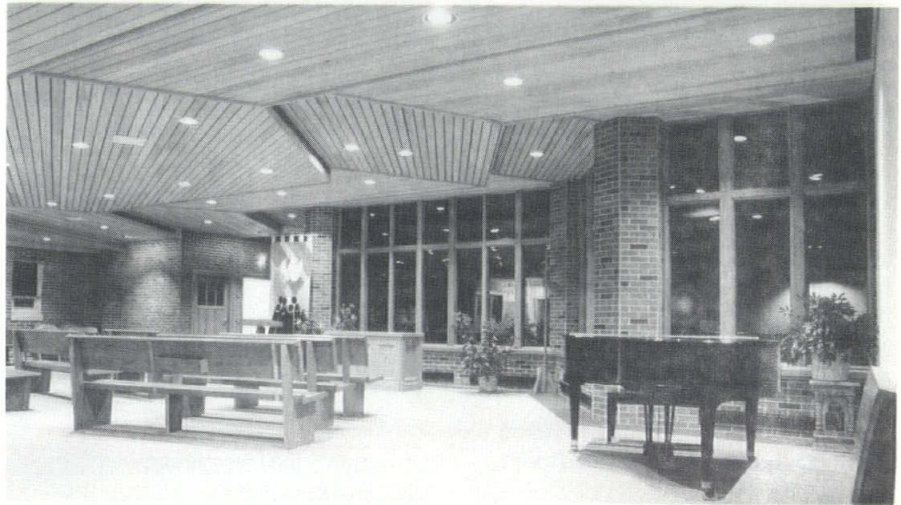
AIA Documents... the foundation for building agreements

<i>Project</i>	Lutheran Church Addition
<i>Location</i>	Menomonie, Wisconsin
<i>Architect</i>	Cedar Corporation
<i>General Contractor</i>	R.J. Jurowski Construction, Inc.

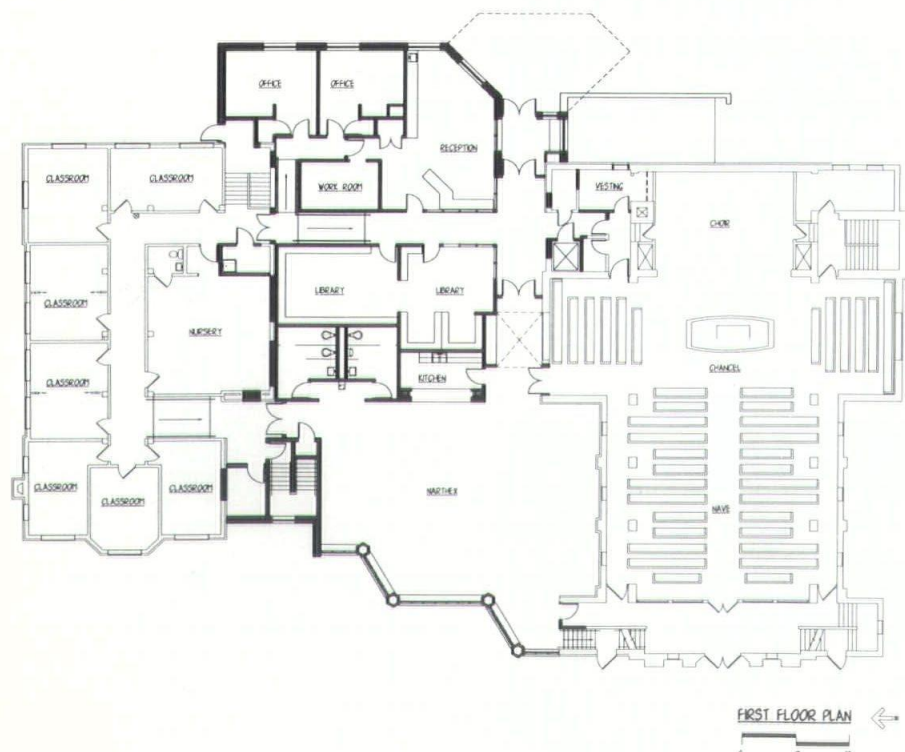
A complex central addition between existing church (1930) and its educational wing (1952) addresses the needs of this congregation. It also gives new life to the regular functions and services performed. Handicap accessibility is solved by an inviting new entrance and limited access elevator which leads from the east parking lot to the spacious new narthex/fellowship area.



The 9,400 square foot two-story addition contains classrooms, library, offices and an expanded narthex. A new atrium skylight surrounds and protects the existing stained glass window of the left transept, allowing natural light into the transept area and creating a tranquil space with benched seating below it. Exterior brick wall now becomes an interior feature.



Full wall-height windows in the new narthex provide a visual connection with the exterior by day and an inviting facade to the street at night.



Narthex ceiling is tiered, slatted, naturally finished maple.

Photography: Romaine V. Anderson

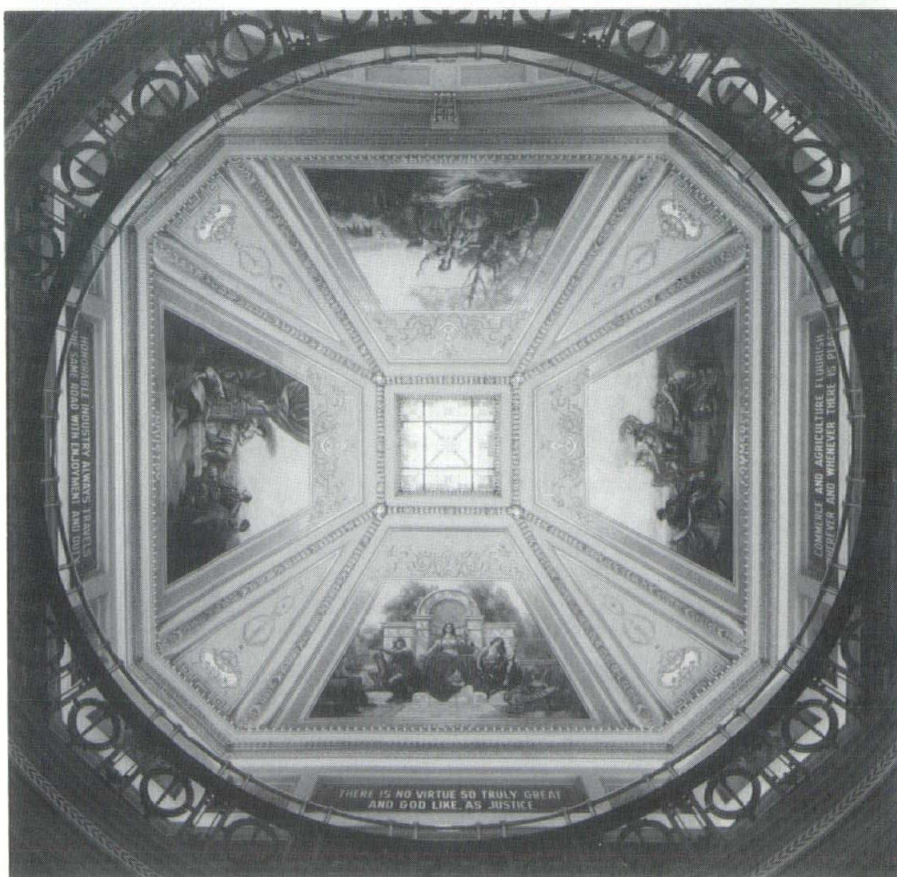
<i>Project</i>	Brown County Courthouse Renovation
<i>Location</i>	Green Bay, Wisconsin
<i>Architect</i>	CPR Associates, Inc.
<i>General Contractor</i>	P.G. Miron Construction Co., Inc.

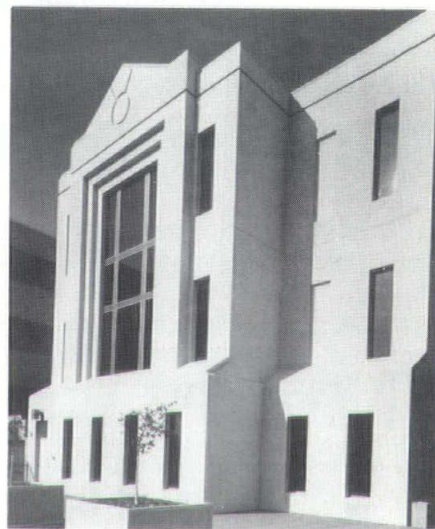
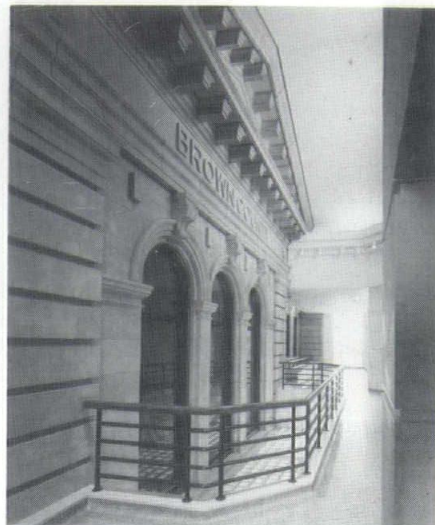
The original courthouse was constructed in 1908 and put on the National Register of Historic Places in 1976. The exterior was restored in 1988. Two years later, additions were added to the south and west of the building and the rotunda plus two original courtrooms were restored. The rest of the original building was gutted and renovated in a complimentary way without trying to mimic original details.

In the interest of preservation, the south addition is completely independent structurally with no connection to the original building. The floor system is cantilevered up to the original building face. One unusual architectural goal on the addition was to incorporate the original west face of the courthouse as a highlighted feature of the new public hallway.

In the restored rotunda, all murals were original, cleaned and resealed. Terrazzo and marble mosaic floors were repolished. Original plaster ceilings and pilasters which had been substantially damaged from roof failure were repaired. Gold and silver leaf on plaster cornices and the dome was redone. Stairs are original cast metal and oak furnishings in courtrooms are original--only the attorneys' tables are new recreations of the old.

Photography: Eric Oxendorf, Bob Freund, Apple Photography Group





Top right: The original exterior west face of the courthouse is now viewed from the upper three floors of the new addition as an interior wall providing a unique appreciation of the massive scale of the stone detailing up close. It emphasizes the beauty and quality of past craftsmanship.

Left: Multi-globe light fixtures are duplicated based on original photographs. In Circuit Court Branch One, the fixtures weigh about 500 pounds each and can be lowered by winches for maintenance.

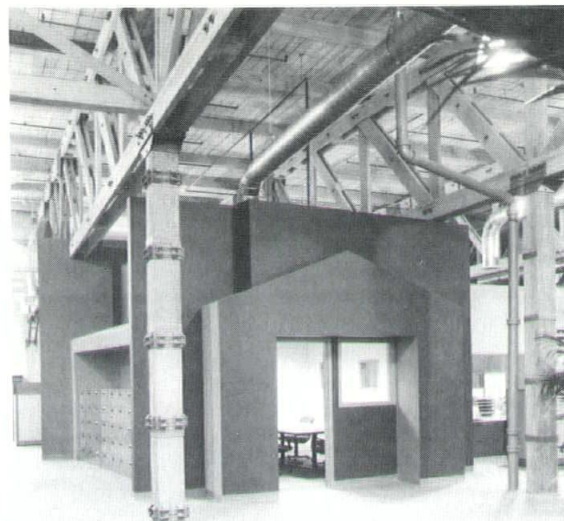


"When we run out of gingerbread, we use oak"

- Fine Hardwood Staircases of All Designs - exceptional custom designs available.
- Traditional "wedge and glue" construction (the strongest) will remain solid and squeak-free for decades.
- Efficient cost-saving construction by truly expert specialists who have fabricated hundreds of staircases.
- Workmanship and joinery second-to-none.
- Excellent competitive pricing and hourly rates.

Serving Greater Milwaukee and Southeast Wisconsin
(414) 349-8448 or (414) 349-3724

Purcell Imaging



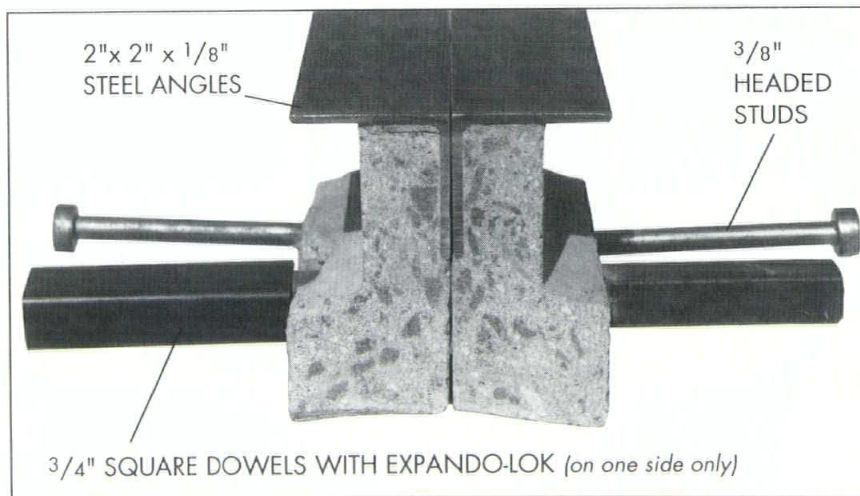
Firstat Corporation Architects - the Zimmerman Design Group

integrated photographic solutions

architectural and interior photography
 computer generated slides and video
 custom presentation material

Represented by Halvorsen & associates 414.278.0144
 414.278.8290 FAX 414.278.7278

Introducing... the
STEEL
ANGLE
JOINT...
another benefit of the
PERMABAN
FORMING SYSTEM...
for concrete floors



FEATURES OF THE STEEL ANGLE JOINT:

THE 2"x2"x1/8" STEEL ANGLE...

protects the joints in concrete floors at heavy vehicle traffic areas. (Aisles, doors, loading docks, etc.)

THE SQUARE DOWELS WITH EXPANDO-LOK

provide vertical load transfer while allowing horizontal movement due to shrinkage.

THE 3/8" HEADED STUDS...

are welded to the steel angle at 12 inches on center. They pass through the rail and extend into the concrete slab.



For Installation Guide and more information... call or write -

Phone: 1-800-236-1072
FAX: 1-815-389-2339



MID-STATES CONCRETE PRODUCTS CO.
 500 S. Park Avenue,
 South Beloit, IL 61080

The Ups and Downs of Stairways

The prehistoric human foot designed the world's first stairways. Footholds worn slowly into steep slopes were merely to gain access to upper levels. According to research by architect John Templer (in the article "An Architect Who Takes Stairways One Step at a Time," by Richard Wolkomir, which appeared in the June 1993 issue of *Smithsonian*), such ancient stairways are still in use today with the aid of plants, roots and rocks for handholds. And from such humble ancestry evolved our most dramatic architectural element.

Templer calls stairs "architectural theater." In ancient times and even today, grand stairways are the focal point of many public buildings--a place to see and be seen. The early Mayans built their pyramids with some of the most dramatic stairways.

There is nothing static about a stairway. When an architect in-

Writers constantly employ the stairway as an element of surprise or drama in their storytelling. They use such phrases as "steps to the damp dark cellar," "a narrow circular stairway," "a rickety stairway," "the hidden stairway," and "the grand marble stairway." The visual equivalent is used by artists and filmmakers when a stairway is a part of their story.

Our marvelous state Capitol is filled with dramatic and dangerous architec-

teur and to set the tone for the importance of the building's purpose. Perhaps the many choices of stairs was to symbolize the many choices the legislators have in governing us.

At a height of one hundred and fifty feet from the ground floor there is an exterior balcony around the dome providing tour groups with a magnificent view of the city. From this level, four inclined stairways lead up between inner and outer domes to the crown of the dome. At this point a single spiral staircase leads up into the lantern which is encircled by another balcony.

In spite of this amazing amount of dangerous stairway architecture, falling has never been a problem in this building.

Safety on stairways depends partly on the architect's design, partly on materials and lighting, but not just on

corporate one into a building it always leads to an invisible "somewhere." All who use the stairs experience a change, be it subtle or dramatic. It is more emotional than merely walking down the hallway. Upstairs, downstairs--ascending, descending. The entire perspective of the building changes. Outdoor views change, or may disappear entirely. There is excitement about a stairway.

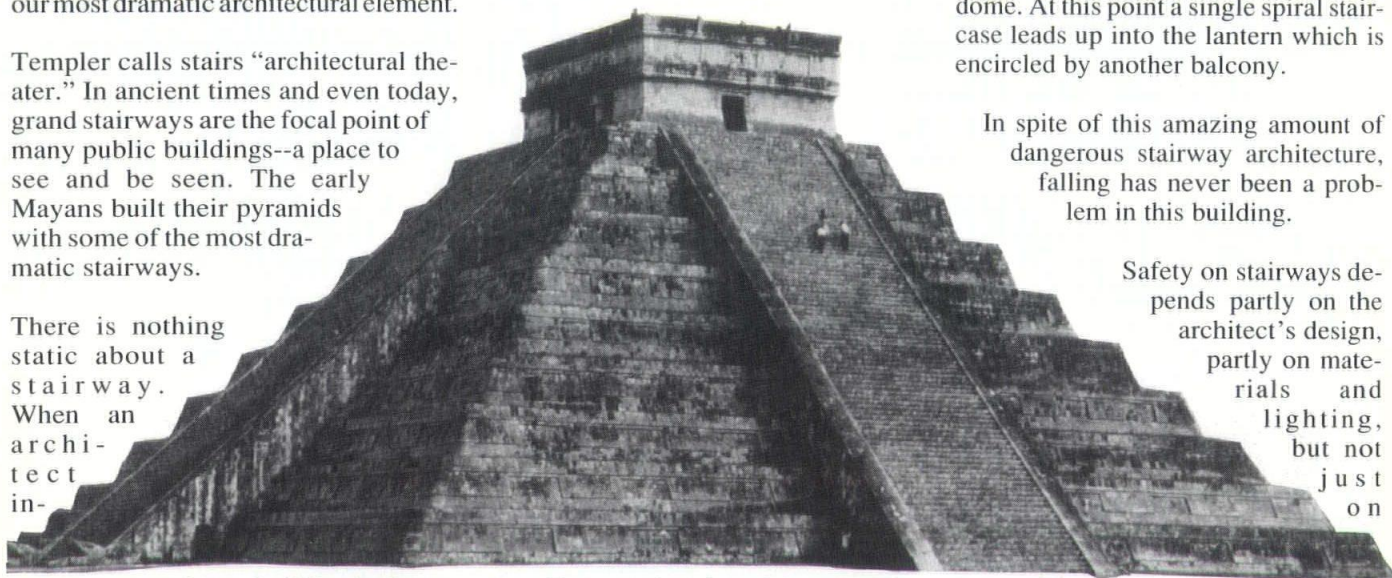
Aesthetically, the stairway with its rhythm of equally spaced steps can add drama to any building from rustic to palatial. In contemporary design, a cantilevered stairway adds mystery. How is that thing supported? What holds it up? A stairway can actually be seductive, inviting the viewer to climb or descend merely to see where it leads.

ture. From each point of the compass, driveways approach the building terminating in carriage porches under the four grand exterior staircases of granite. Inside are marble staircases, many of them. Each of the four wings is centered by a pair of parallel grand staircases in a marble-lined grand hall. The low risers number thirty-two nonstop and the treads are broad.

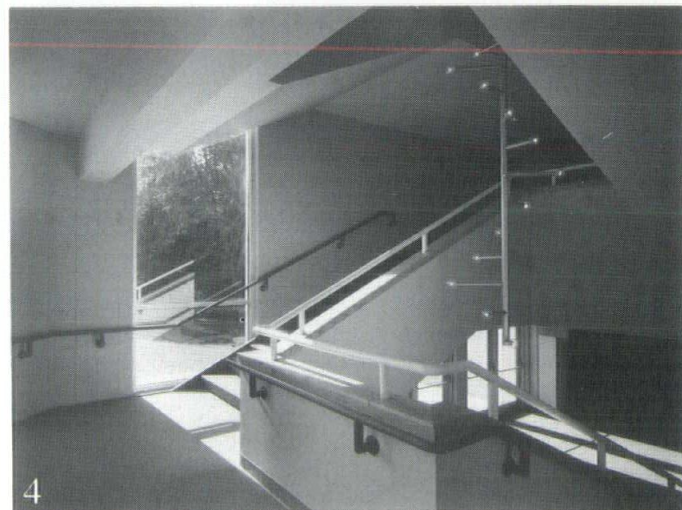
Set off in the back corners of each wing is a pair of secondary stairways with landings between floors and higher risers. Therefore, in going from the rotunda to second or third level, the pedestrian has the choice of sixteen stairways, four in each wing. These were not designed and crafted from the finest of materials out of necessity, but for gran-

that alone--it also depends on the user--on what is on the mind, on the feet and in the hands. Think of the potential danger for a woman in spike heels laden with packages with her mind preoccupied with her next errands. Stairways can also provide wonderful exercise to the climber. Hundreds of workers climb stairs in offices or in hotels when traveling as an economical way to keep in shape. Certainly designing a stairway can be a more noble venture than just leaving a hole for an elevator. On the following pages are several different stairways designed by WSA members. **WA**

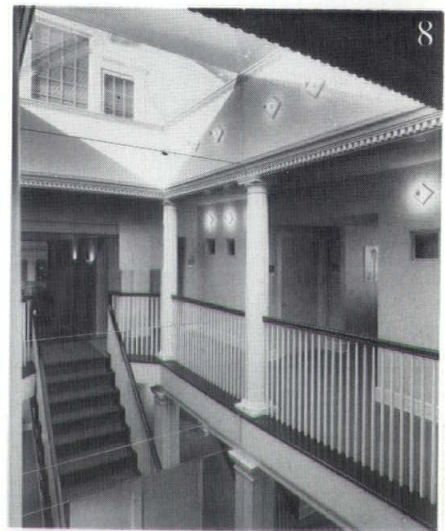
Among the loftiest of the world's famous stairways are the ancient Mayan ceremonial stairways of the pyramid at Chichen-Itza in Yucatan. With no handrails, the priests climbed and then descended in a zig-zag formation. Photography: Dick J. Stith



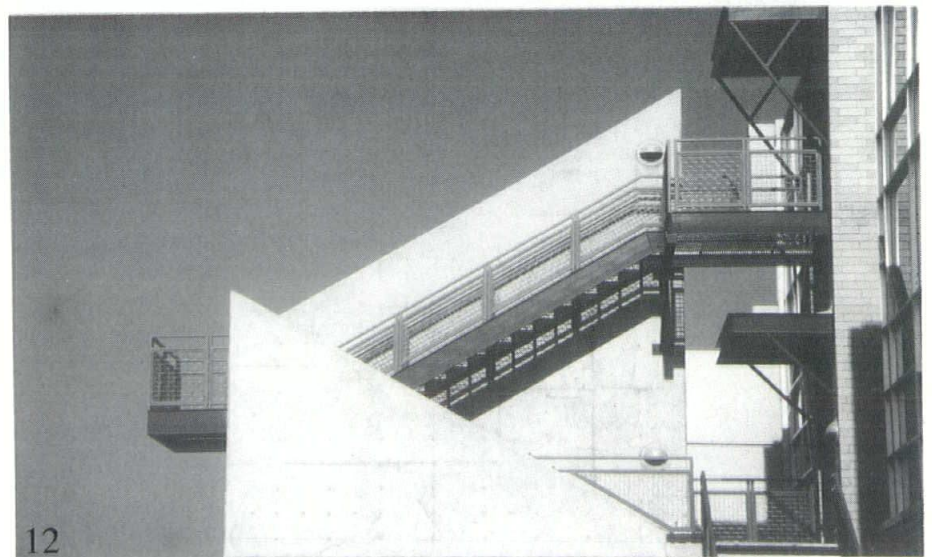
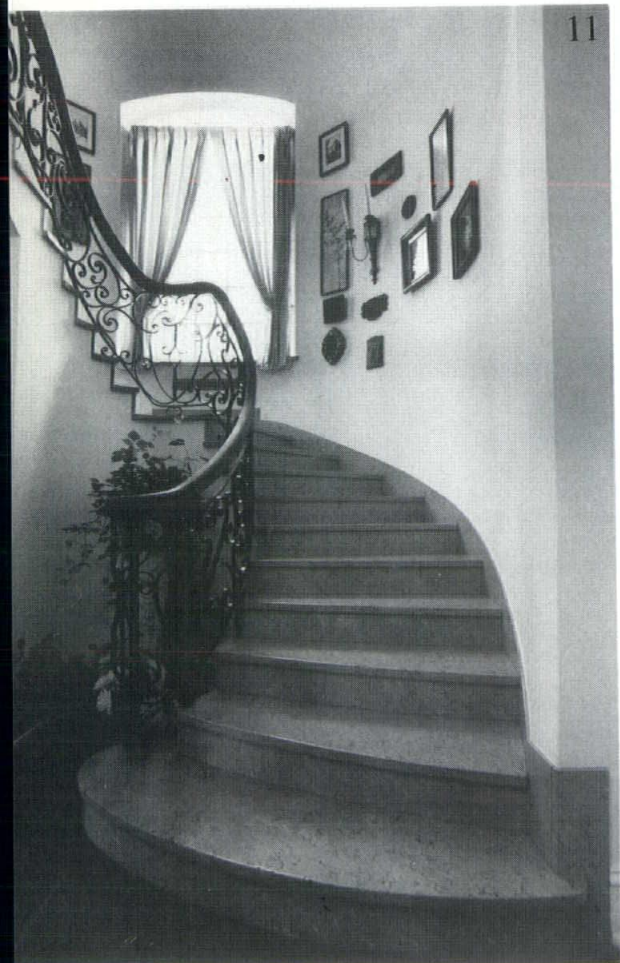
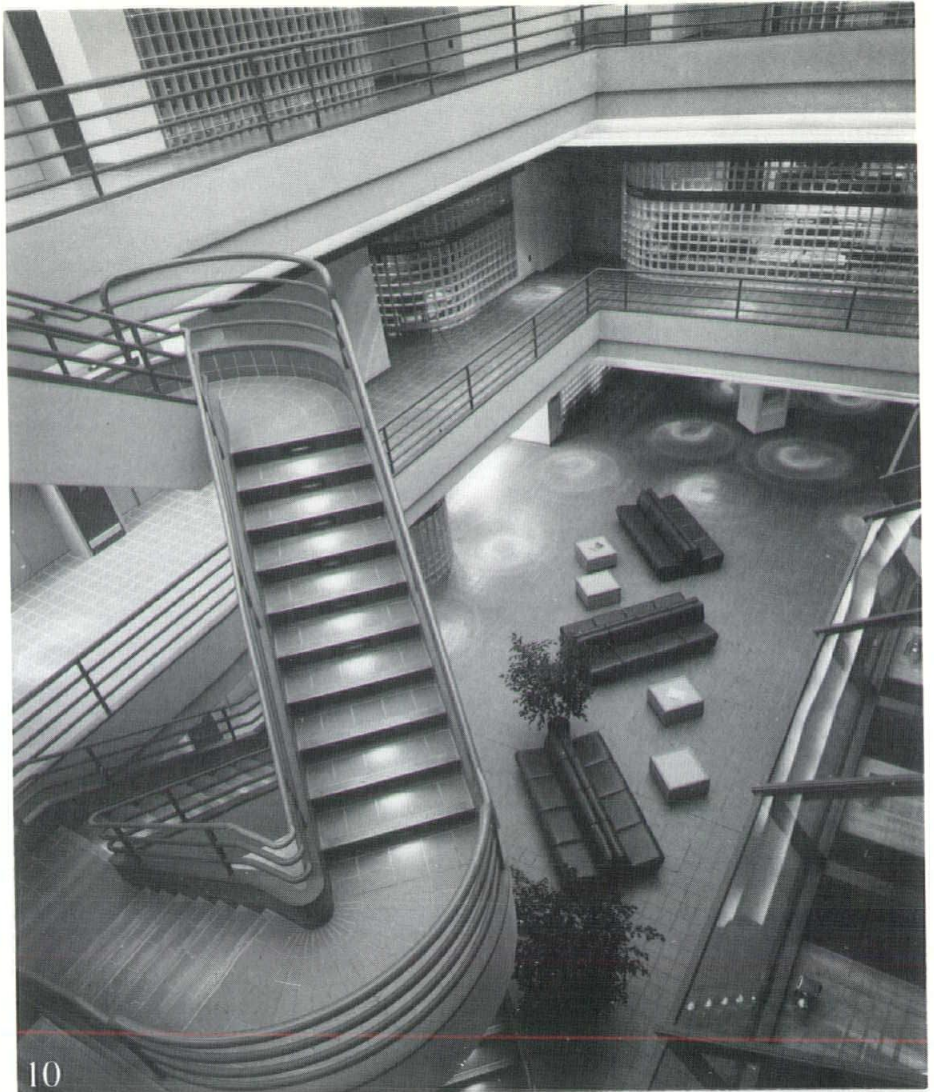
"They flow down the hill like a waterfall, with all sorts of rivulets and ripples and changes of direction," architect Templer describes the Spanish Steps, built in Rome in the late 1600s.



Quotations on these pages are excerpts from an article, "An Architect Who Takes Stairways One Step at a Time," by Richard Wolkomir in Smithsonian, June 1993. Words in quotes are from architect John Templer of the Georgia Institute of Technology.



Above: Mirrored skylight and mirrored wall add many perspectives to stairway users.



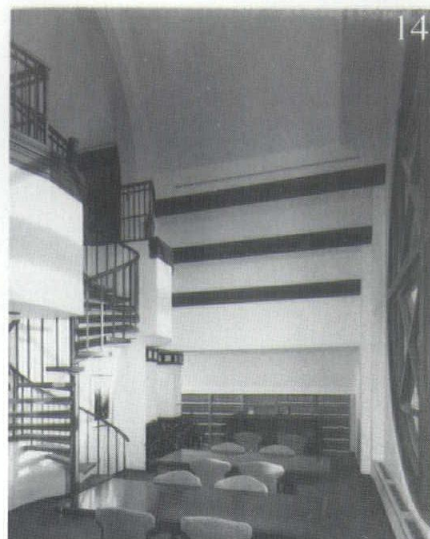
Left: In 1933, architect William J. Raeuber and son designed this curved stairway as a concrete frame with particular emphasis on a graceful easy rise. Marble treads and risers were fabricated in Milwaukee and installed over the solid concrete base. Decorative wrought iron railings were also fabricated in Milwaukee and assembled on site and fitted with a formed wood handrail.

Right (opposite page): Staircase is made of steel composite with slate landings and limestone steps and risers.

One reason for the slip-and-fall epidemic is that today's stair proportions date back to 1675, when the director of France's Royal Academy of Architecture, Francois Blondel, concocted a formula linking stair geometry to the human gait: $2 \times \text{risers plus tread equals 24 inches}$ (25.5 in today's inches). One of the formula's drawbacks is that, for unusually high or low risers, it requires treads that are extremely narrow or extremely wide.



13

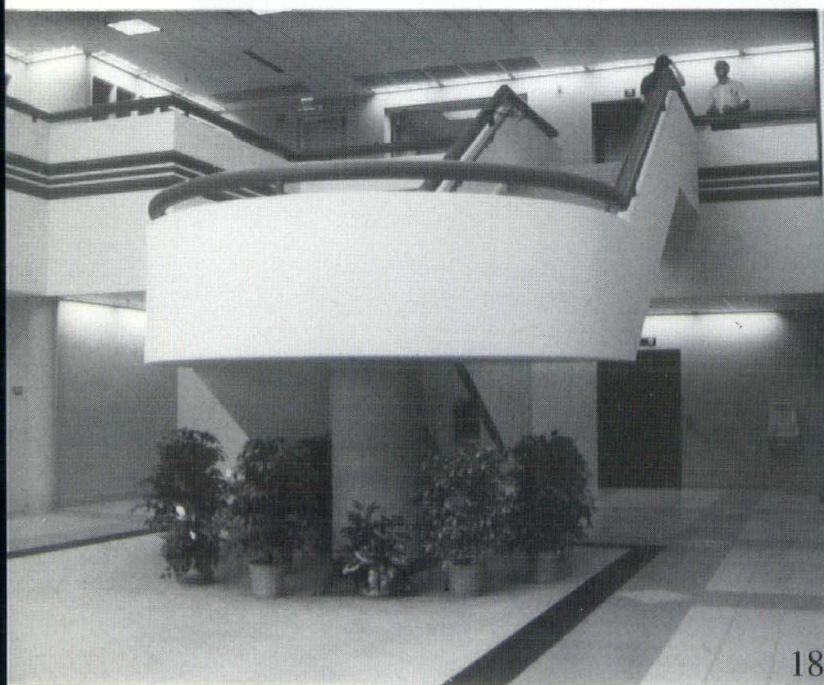


14

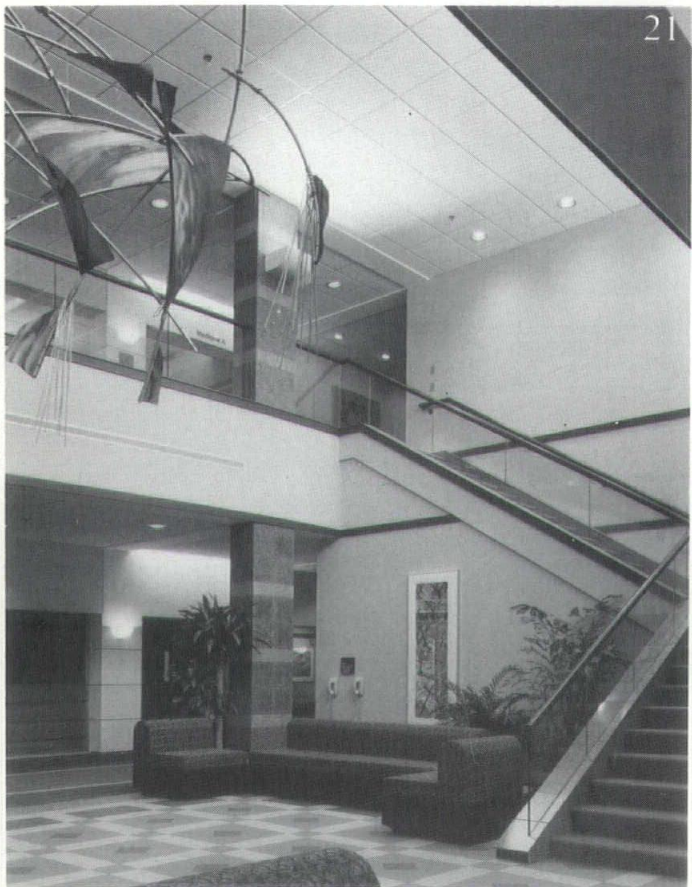


15

Women fall more frequently than men, but boys under the age of 14 fall more often than girls of the same age.



"If treads are alternately colored dark and light, each step's edge is clear."



Credits:

- Photo 1: Neville Public Museum
Green Bay, Wisconsin
Architect: Somerville Associates
Photo: Stephen Seilo
- Photo 2: Demco, Inc. Headquarters
Madison, Wisconsin
Architect: Strang, Inc.
Photo: Dale Hall
- Photo 3: Lakeland Center-Marshfield Clinic
Minocqua, Wisconsin
Architect: Marshall Erdman and Associates, Inc.
Photo: Steven T. Rhyner
- Photo 4: Irvin L. Young Auditorium
Whitewater, Wisconsin
Architect: Wenzler Architects
Photography: Eric Oxendorf
- Photo 5: Dodge County Legal Services Buildings
Juneau, Wisconsin
Architect: Potter Lawson Architects
Photo: Jim Potter, AIA
- Photo 6: Rite Hite Corporation
Brown Deer, Wisconsin
Architect: BHS Architects, Inc.
Photo: Bruce Buchanan
- Photo 7: Cofrin Arboretum Tower
Green Bay, Wisconsin
Architect: Somerville Associates
Photo: Steven Seilo
- Photo 8: Jacobson Rost Advertising Agency
Sheboygan, Wisconsin
Architect: Kubala Washatko Architects, Inc.
Photo: Steve Poast
- Photo 9: The Bradley Center
Milwaukee, Wisconsin
Architect: Venture Architects
Photo: Howard Kaplan, HNK Architectural Photography
- Photo 10: Minot Composit Medical Facility
Minot, North Dakota
Architect: Flad & Associates
Photo: Joe Paskus
- Photo 11: Dan Bleser House
Manitowoc, Wisconsin
Architect: Frederick W. Raeuber, AIA
Photo: Ron Hoerth
- Photo 12: Threshermen's Mutual Insurance
Fond du Lac, Wisconsin
Architect: Potter Lawson Architects
Photo: Jim Potter, AIA
- Photo 13: West Bend Mutual Insurance
West Bend, Wisconsin
Architect: the Zimmerman Design Group
Photo: Ed Purcell
- Photo 14-15: Michael Best & Friedrich
Milwaukee, Wisconsin
Architect: Architectural Designs & Heike/Design Associates
Photo: Ed Purcell
- Photo 16: Ruud Lighting
Racine, Wisconsin
Architect: the Zimmerman Design Group
Photo: Gary Silber
- Photo 17: Northwestern Mutual Life
Milwaukee, Wisconsin
Architect: Flad & Associates
Photo: Joe Paskus
- Photo 18: Ultratec Headquarters
Madison, Wisconsin
Architect: Potter Design Group, Inc.
Photo: Todd Barnett, AIA
- Photo 19: SSI Control Technologies Corporate Headquarters
Janesville, Wisconsin
Architect: Strang, Inc.
Photo: Joe Paskus
- Photo 20: 2100 Riverside Drive Offices
Green Bay, Wisconsin
Architect: Somerville Associates
Photo: Steven Seilo
- Photo 21: Southwood/Clayton Medical Offices
Atlanta, Georgia
Architect: Marshall Erdman and Associates
Photo: Steven T. Rhyner

How To Build A Cozier Home



R-Control® Building Panels keep you warm and give more comfort benefits, too!
Energy savings are really important. R-Control home owners report savings of 50% or more.

R-Control brings a lot more! Annoying hot and cold spots are eliminated, creating a more pollution-free home. Dust, pollens, noise, and other pollutants are held out by R-Control construction.

R-Control reduces fuel burning. A truly environmentally friendly home can be built.

R-Control is warranted for as long as you own your home.

Wisconsin EPS manufactures panels for the entire Midwest. Please call us to learn about: pricing, plans, literature, videos, and builder referrals.



R-Control is a trademark of AFM Corp.

WISCONSIN EPS, INC

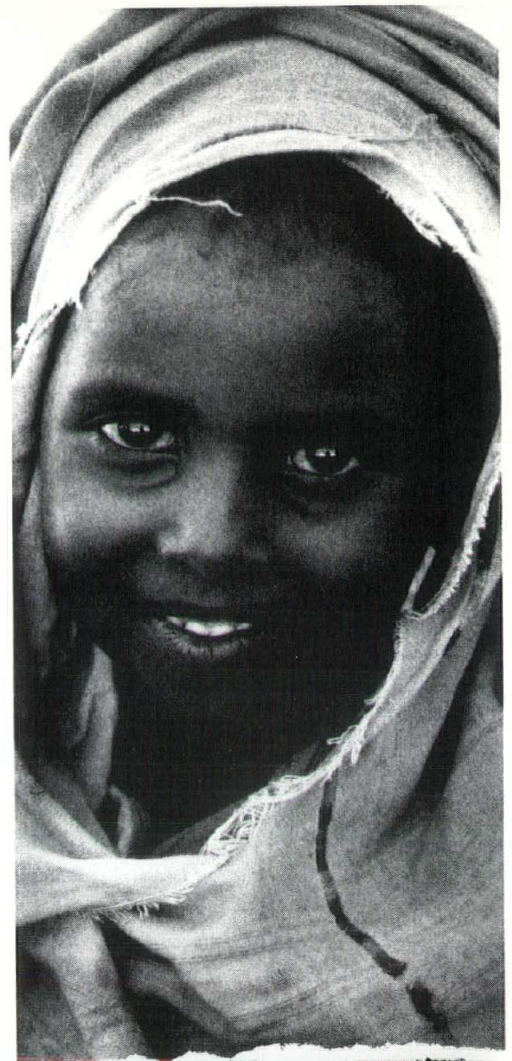
P.O. Box 669

90 Trowbridge Dr., Fond du Lac, WI 54936

Phone 414-923-4146 • Toll Free: 1-800-236-5377



**AFM
PARTNER**



She didn't ask to be hungry.

War, drought and famine engulfed her country, until the support of Americans like you helped us save her. But there are still many more who desperately need your help. Please care.

1-800-521-CARE **CARE**



CORPORATE OFFICE & MANUFACTURING
RMI, MIDDLETON, WI



PUBLIC WORKS/GOVERNMENTAL
U.S. POST OFFICE / WESTSIDE STATION, MADISON, WI

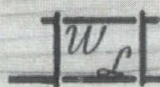


MULTI-FAMILY RESIDENTIAL HOUSING
GREEN TREE GLEN APARTMENTS, MADISON, WI

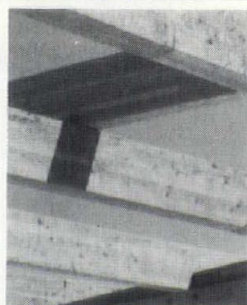
IN MILWAUKEE
CALL FRED BERSCH
(414) 358-3505

IN MADISON CALL
JERRY HENRICH
(608) 222-5100

YOUR BUILDING PARTNER SINCE 1952



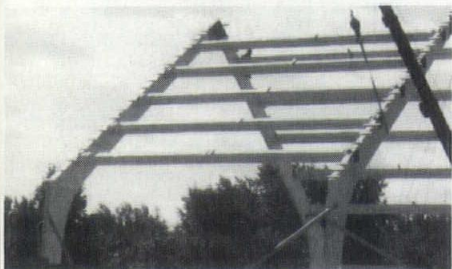
WOOD-LAM, INC.



Commercial



Park Shelters



Religious



Bridges



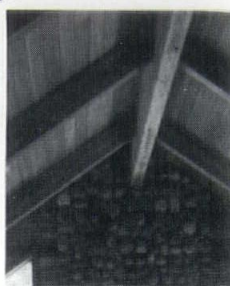
Timber Truss

Furnished or Furnished and Installed

For over 35 years

PHONE: (414) 691-2000
WATTS: 1/800-242-2216
FAX: (414) 691-8995

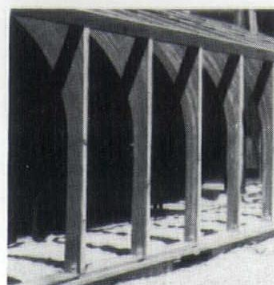
230 SUSSEX STREET
PEWAUKEE, WI 53072



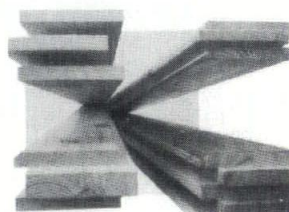
Residential

SIMPSON

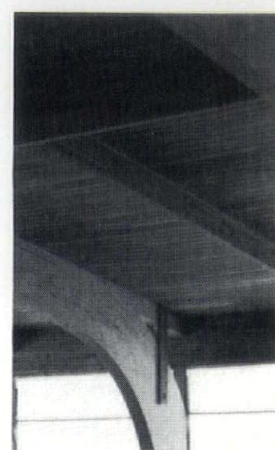
Strong-Tie
CONNECTORS



Sunrooms



Joist Hangers



Pool Structures

Roof Decking

"UNCUSTOMARY CUSTOM HOMES"



MASTER BUILDERS, INC. (414) 781-2264

Premier Custom Homes * Residential/Historic Alterations
Since 1956

Architect: Paul Schultz, AIA

CAD
DRAFTING AND
DESIGN
MAN &
MACHINE
— OUR
SITE OR
YOURS

3-D Design
Translating
Plotting
Training
Facility Documentation & Verification
Construction Documentation
CAD System Rentals
Contract Temporary Personnel

Project Specialists on Staff
Expertise With Multiple Software Packages



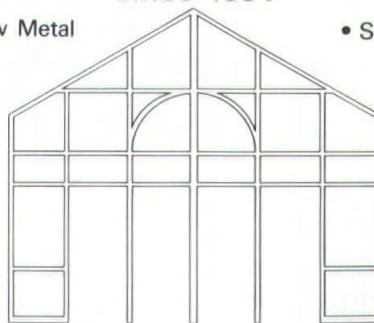
IDAC, Inc.
Suite 550
20900 Swenson Dr.
Waukesha, WI 53186
414-796-1060

LA FORCE

**CUSTOM HOLLOW METAL...
ENHANCING DOORWAYS
since 1954**

• Hollow Metal

• Specialties



• Hardware

• Wood Doors

For over 30 years we have custom bent door frames and manufactured special steel doors to fit your designs. Trust our experience to make your designs truly unique with custom hollow metal.

LA FORCE

Hardware & Manufacturing Co.

1060 W. Mason St.
Green Bay, WI 54303
(414) 497-7100

12040 W. Feerick St.
Milwaukee, WI 53222
(414) 466-5350

"THE REPUTATION YOU CAN BUILD ON"

WAF Annual Report

In the fiscal year ended June 30, 1993, the Wisconsin Architects Foundation (WAF) received income from all sources totaling \$37,872. Total expenditures for scholarships, grants, public outreach, membership and administration amounted to \$20,865. The resulting net income of \$17,007 was added to the WAF endowment, increasing the endowment to \$255,900 as of June 30, 1993.

The WAF received a total of \$23,373 in contributions, including \$12,179 in regular contributions, \$6,374 in "Campaign 300" gifts and \$4,820 in memorial contributions. Investment and rental income accounted for the balance of WAF revenue.

The WAF awarded \$11,350 in scholarships and educational grants in 1992-93. These WAF funds supported tuition scholarships and student chapter programs at the UWM School of Architecture and Urban Planning, MSOE, WITC and NWTC. Two WAF memorial scholarships were awarded to UWM SARUP students in memory of architect Elmer Johnson and contractor Richard Hunzinger. The Southwest Wisconsin Chapter/AIA established an endowment for an annual scholarship for a visual, hearing or otherwise physically impaired UWM graduate student, with the first scholarship to be awarded in 1993-94.

The accompanying list recognizes WAF contributors in 1992-93. The strong and consistent support from the architectural profession and allied construction industry and business leaders enables the WAF to build a better Wisconsin through architectural education.

Regular

Sustaining Members (\$250 or more)

Flad & Associates
Land Ethics
Brian Larson, AIA
Master Blue Print

Contributing Members (\$100-\$249)

Alron Co.
Jan Aslaksen, AIA
Bend Industries
Gregory Benz, AIA
Jerry Bobb
Donald Ebben
James Gabriel, AIA
William Gray, AIA
HSR Associates
Hallman/Lindsey
Victor Halloran, AIA
Robert Kueny, AIA
David Lawson, FAIA
Pieper Electric
James Potter, AIA
Roger Roslansky, AIA
Robert Schmitt
John Somerville, AIA
Ray Stickler
Weinstein Foundation
Robert Wirth, AIA

Donors (\$26-\$99)

Joseph Albert, AIA
Ann Arneson
Jerry Bourquin, AIA
Robert Bridge, AIA
Columbia Health
Robert Cooper, AIA
William Dye, AIA
Gene Eggert, AIA
George Ehrich, AIA
Thomas Eschweiler, AIA
Bruno Franceschi, AIA
Reimar Frank, AIA
Freiburger Construction
John Freiburger
Wm. Funk
Paul Graven, FAIA
Stephen Gries, AIA
Ronald Hansche, AIA
Thomas Hoffman
Frank Infusino, AIA
Theodore Irion, AIA
Ralph Jackson, AIA
John Jacoby, FAIA
Henry Kanazawa, AIA
Arlan Kay, AIA
Lisa Kennedy, AIA
Thomas Kloiber, AIA
Jack Klund, AIA
E. John Knapp, AIA
Albin Kubala, AIA
Nicholas Ladopoulos
James Larson, AIA
David Lawrence
David Lund, AIA
Richard Maleniak, AIA
C. Gene Maloney, AIA
Marcus Restaurants
Roger McMullin, AIA
Dennis Miller, AIA
Joel Minkoff
Terence Mooney, AIA
Gary Moore
Theodore Mrochinski, AIA
John Nichols, AIA
J. Ollswang, AIA
Walker Patton, AIA

Anthony Pawlowsky, AIA
Mark Pfaller, II, AIA
Donald Phillips, AIA
Fred Poethig, AIA
Joseph Powelka, AIA
Progressive Design
Leonard Reinke, FAIA
Alonzo Robinson, AIA
Noble Rose, AIA
Scherrer Construction
Jeffery Schulz, AIA
Frank Shattuck, AIA
Doug Smith, AIA
Southwest Design Assoc.
Roy Stark, AIA
Stephen Steen, AIA
John Stephan, AIA
David Stroik, AIA
Modesto Tavarez, AIA
Robert Van Lanen, AIA
R.E. Vander Werff, AIA
Paul Vidani, Jr.
Cynthia Welman, AIA
William Wenzler, AIA
Derald West, AIA
D. Eric Wheeler, AIA
Robert Wold, AIA
Robert Yarbrow, AIA
John Zimmerman

Members

Helmut Ajango, AIA
James Angus, AIA
Architectural Designs
Warren Bauer, AIA
Bauhs
Frederick Bersch
Doug Blakeslee, AIA
Stephen Bolingbroke, AIA
David Braucht, AIA
Geoffrey Bray, AIA
Lawrence Bray, AIA
Keith Brink, AIA
Paul Brust, AIA
Dennis Burgener, AIA
Charles Burroughs
J. Gerard Capell, AIA

Members Continued

Arthur Chadek, AIA
Cherie Claussen, AIA
Ronald Dakter, AIA
Daryl Dean, AIA
Development Collaborative
Frank Dropsho, AIA
Ellis Stone Co.
Richard Eschner, AIA
Patrick Farrell
Howard Gartner, AIA
James Glueck, AIA
Richard Griffith, AIA
Cliff Gronemeyer
Richard Heinrich
Rolf Irgens, AIA
James Jensen, AIA
Johnson Controls
Valerie Johnson
Jay Johnson, AIA
Robert Jokisch, AIA
Wm. Kaeser, AIA
Kenneth Katte, AIA
Gary Kegler, AIA
The Klein Co.
Scott Klein
John Klick, AIA
Michael Knott, AIA
Frank Kohl, AIA
Stephen Kuhn, AIA
Gene LaMuro, AIA
Mary Lawson, AIA
Ernest Lindgren, AIA
Horst Lobe, AIA
Garrick Maine, AIA
Stanton Marks, M.D.
Kurt McCulloch, AIA
Jay McLean, AIA
John Meyer, AIA
Norman Minster, AIA
Danny Murrish, AIA
Larry Nichols, AIA
Thomas Nisbet, AIA
Harry Ollrogge, AIA
Gordon Orr, FAIA
Phillips & Assoc.
Fred Raueber, AIA
Florian Remitz, AIA
Gerald Rice

William Ruby
Douglas Ryhn
Nathaniel Sample, FAIA
Jerry Sargent, AIA
James Scherrer
Katherine Schnuck, AIA
Lawrence Schnuck, AIA
Edmund Schrang, AIA
Harry Schroeder, AIA
Mark Schuchardt, AIA
Charlotte Schulman
Schute Larson Architects
Peter Siegrist, AIA
E. Mitchell Spencer, AIA
Fred Spinti, AIA
Russell Sprengle, AIA
Dennis Stapleton, AIA
Stevens Construction
J. Steven Swift, AIA
Michael Szczawinski, AIA
John Thompson, AIA
David Torphy, AIA
Debrah Vander Heiden,
AIA
Knute Villand, AIA
Allan Wallsworth
Walter Wilson, AIA
Charles Zahn
Fred Zimmermann, AIA

Campaign 300

Benefactor
(\$5,000 or more)

Southwest Wisconsin
Chapter/AIA

Sustaining Members
(\$100-\$499)

Arnold & O'Sheridan
Robert Greenstreet
Klipstein Insurance Ser-
vices
Kraemer Brothers, Inc.

C.G. Schmidt, Inc.
John Schoenecker
Robert Torkelson, AIA
Wisconsin Testing Labora-
tories
Gary Zimmerman, AIA

Members
The Trane Co.

Memorials

*Elmer Johnson Scholarship
Fund*

Joseph Baldus
Mrs. Alvin Berg
Kenneth Berke
Thomas Eschweiler, AIA
Halquist Stone Co.
Sheila & Ed Hoyle
The Lurie Co.
Marino Construction
Gary Zimmerman, AIA

*Richard Hunzinger Schol-
arship Fund*

Kenneth Berke
Best Block Co.
Thomas Eschweiler, AIA
Forrer Supply Co.
Halquist Stone Co.
Hunzinger Construction
Illingworth Corp.
Kahler Slater Architects
McCartan-Egan Real Estate
Ronald Quigley
Staff Electric
Thomson Corp.
Uihlein Architects
Gary Zimmerman, AIA

Other Memorials

Memorial contributions
were received from the
following on behalf of
Charles Burroughs, Erich
Gnant, AIA, Willis
Leenhouts, FAIA, Maynard
Meyer, FAIA, Felicity
Brogden Ollgwan, and
Ross/Stepko:

J. Aspin
Richard Forester
Reimar Frank, AIA
David Hoff, AIA
Robin Leenhouts
D. Neilbranner
Jeffrey Ollswang, AIA
Harry Schroeder, AIA
Sheldon Segel, AIA &
Beverly Segel
Edward Suchorski, AIA
Robert Van Lanen, AIA

**Wisconsin
Architects
Foundation**

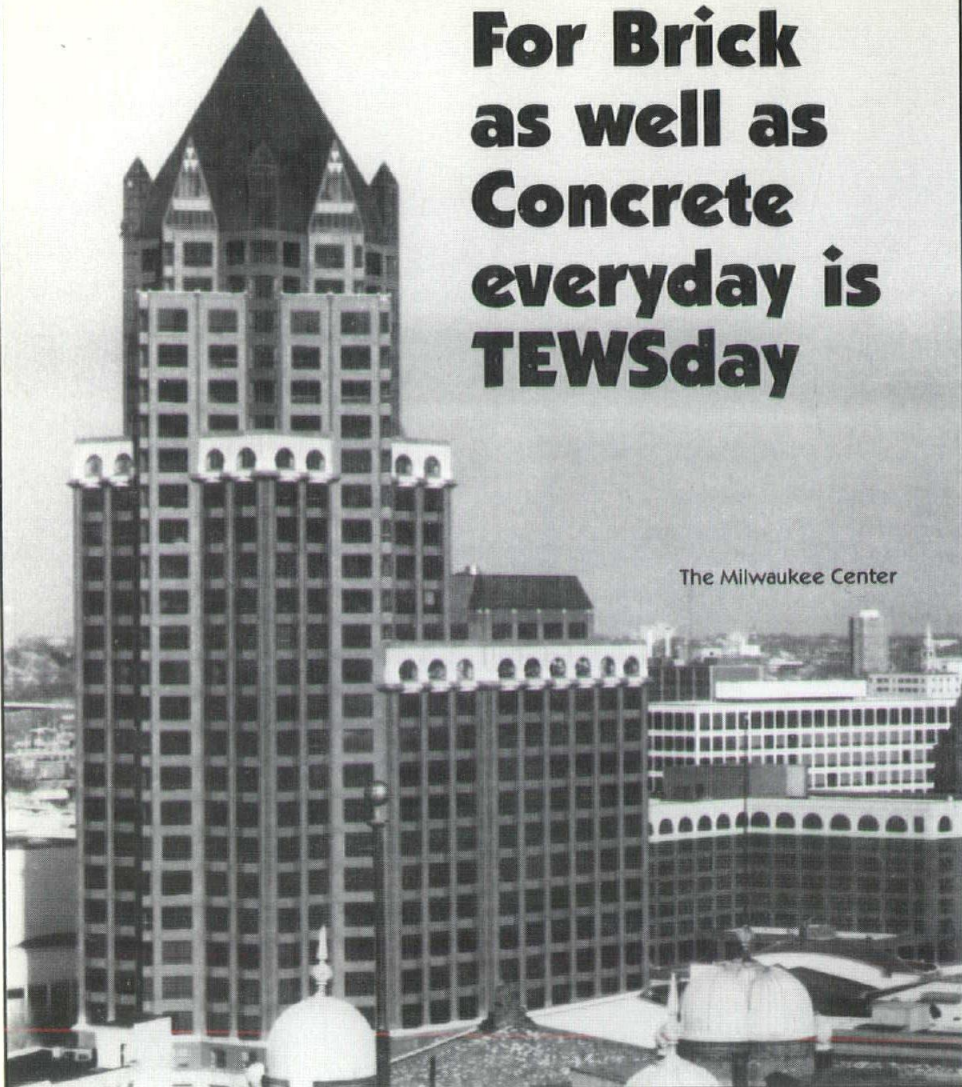
321 S. Hamilton St.
Madison, WI 53703
(608) 257-8477

Board of Directors

Gary V. Zimmerman, AIA
President
Robert D. Cooper, AIA
Vice President
Richard J. Gries, AIA
Secretary/Treasurer
Paul Berta
Ronald G. Bowen, FAIA
H. James Gabriel, AIA
Robert C. Greenstreet,
Dean
Clarence Huettneraich,
AIA, FCSI
Brian F. Larson, AIA

**For Brick
as well as
Concrete
everyday is
TEWSday**

The Milwaukee Center



TEWS

Company

Contractor Supply Center

7200 South 10th Street, Oak Creek, Wisconsin

414/764-8700 Toll-free 1-800/686-8401

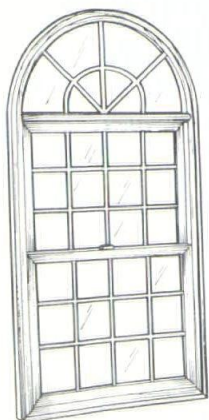
WISCONSIN

Building a better
Wisconsin through
architectural education

ARCHITECTS

321 South Hamilton Street
Madison, WI 53703.3606
1.608.257.8477

FOUNDATION



MARVIN
WINDOWS & DOORS



TRACO
A Three Rivers Aluminum Company

**PROFESSIONALISM...
FROM START TO FINISH.**

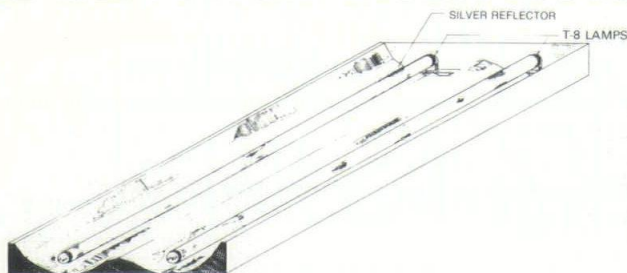
J.F. Cook Co., Inc.

P.O. BOX 88 1177 W. NORTHBRANCH DR. OAK CREEK, WI 53154
(414) 762-4000 • FAX: (414) 762-5480

Historical Restoration Capabilities

Introducing a better idea in fluorescent lighting...

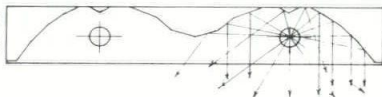
3M™ Silverlux Reflectors



- Reduce fluorescent lighting costs 50 to 75%
- Highest lighting efficiencies in the industry
- Eliminate half the number of tubes
- Easy installation and maintenance
- Rebates available from most Wisconsin electric companies

Available in new **POWERLUX** fixtures or retrofits

The ultimate lighting system
3M Silverlux reflectors, T-8
Lamps and electronic ballasts.



Contact your Wisconsin distributor:

Energy Savings Management of Wisconsin, Inc.

4379 S. Howell Ave., Milwaukee, Wisconsin 53207
Phone (414) 747-0717 • WI 1-800-367-0717 • FAX (414) 747-0953

Manufactured in America with pride by:

Dynamic Energy Products, Inc.

Authorized reflector manufacturing—Construction Markets 3M
Midwest Regional Office—Elk Grove Village, IL



PallasPhotoLabs

Milwaukee & Denver

A custom photo lab
experienced in architectural
and interior design presentations.

- Custom Color/B&W prints and murals.
- Finishing Services
- Digital Imaging
- Canon 500 color laser copies and output from Mac files.

207 East Buffalo

(414) 272-2525

Milwaukee, WI 53202

Fax (414) 272-0942

In Wisc. 1-800-858-6567

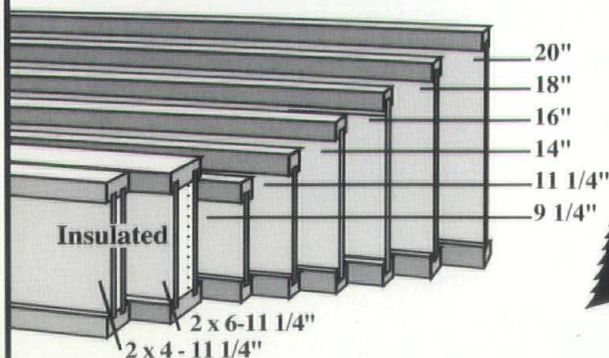
SUPERIOR WOOD SYSTEMS Products

Pre-Engineered to Produce the Ultimate in Structural Capacity & Versatility
Environmentally Efficient • Time Saving • Cost Effective

SWI-Joists

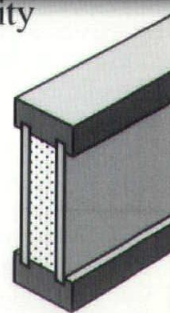
Available in standard lengths up to 48'

- **Lightweight** - Can be handled by a single worker, easily cut with standard job-site tools
- **Dimensionally Stable**
- **No twisting, warping or splitting**
- **Built with No Crown**
- **Less Waste** - Much less than solid wood
- **Easy Boring** of holes in 7/16" thick web



Insulated Headers

2 x 4 and 2 x 6 Wall Construction



- **Pre-Insulated**
- **Cost Savings** - Eliminate the need for on-site insulating
- **Dimensionally Stable** - No shimming required for tight fits.
- **Lightweight** - Can be handled by a single worker, easily cut with standard job-site tools
- **Less Waste** - Much less than solid wood.
- **Energy Efficient** - Provide an R-value of 20 (after sheathing & sheet-rocking)

SW-II Headers are made with Machine Stress Rated lumber and Oriented Strand Board. They are manufactured to strict quality control standards, with PFS Corp. acting as third party inspectors. SW-II Headers have code acceptance by ICBO, BOCA, State of Wisconsin & HUD.

SUPERIOR WOOD SYSTEMS

PO Box 1208 • 1301 Garfield Ave. • Superior, WI 54880
715-392-1822 • FAX 715-392-3484 •
Call for the nearest factory representative.

Standards for Rehabilitation

The Secretary of the Interior is responsible for establishing standards for all national preservation programs under Departmental authority and for advising Federal agencies on the preservation of historic properties listed or eligible for listing in the National Register of Historic Places.

The Standards for Rehabilitation, a section of the Secretary's Standards for Historic Preservation Projects, address the most prevalent preservation treatment today: rehabilitation. Rehabilitation is defined as the process of returning a property to a state of utility, through repair or alteration, which makes possible an efficient contemporary use while preserving those portions and features of the property which are significant to its historic, architectural and cultural values.

The Secretary of the Interior's Standards for Rehabilitation. The Standards that follow were originally published in 1977 and revised in 1990 as part of Department of the Interior regulations (36 CFR Part 67, Historic Preservation Certifications). They pertain to historic buildings of all materials, construction types, sizes and occupancy and encompass the exterior and the interior of historic buildings. The Standards also encompass related landscape features and the building's site and environment as well as attached, adjacent or related new construction.

The Standards are to be applied to specific rehabilitation projects in a reasonable manner, taking into consideration economic and technical feasibility.

1. A property shall be used for its historic purpose or be placed in a new use that requires minimal change to the defining characteristics of the building and its site and environment.

2. The historic character of a property shall be retained and preserved. The removal of historic materials or alteration of features and spaces that characterize a property shall be avoided.

3. Each property shall be recognized as a physical record of its time, place and use. Changes that create a false sense of historical development, such as adding conjectural features or architectural elements from other buildings, shall not be undertaken.

4. Most properties change over time; those changes that have acquired historic significance in their own right shall be retained and preserved.

5. Distinctive features, finishes and construction techniques or examples of craftsmanship that characterize a property shall be preserved.

6. Deteriorated historic features shall be repaired rather than replaced. Where the severity of deterioration requires replacement of a distinctive feature, the new feature shall match the old in design, color, texture and other visual qualities and, where possible, materials. Replacement of missing features shall be substantiated by documentary, physical or pictorial evidence.

7. Chemical or physical treatments, such as sandblasting, that cause damage to historic materials shall not be used. The surface cleaning of structures, if appropriate, shall be undertaken using the gentlest means possible.

8. Significant archeological resources affected by a project shall be protected and preserved. If such resources must be disturbed, mitigation measures shall be undertaken.

9. New additions, exterior alterations, or related new construction shall not destroy historic materials that characterize the property. The new work shall be differentiated from the

old and shall be compatible with the massing, size, scale and architectural features to protect the historic integrity of the property and its environment.

10. New additions and adjacent or related new construction shall be undertaken in such a manner that if removed in the future, the essential form and integrity of the historic property and its environment would be unimpaired.

Note: To be eligible for Federal tax incentives, a rehabilitation project must meet all ten Standards. The application of these Standards to rehabilitation projects is to be the same as under the previous version so that a project previously acceptable would continue to be acceptable under these Standards.

Certain treatments, if improperly applied, or certain materials by their physical properties, may cause or accelerate physical deterioration of historic buildings. Inappropriate physical treatments include, but are not limited to: improper repainting techniques; improper exterior masonry cleaning methods; or improper introduction of insulation where damage to historic fabric would result. In almost all situations, use of these materials and treatments will result in denial of certification. In addition, every effort should be made to ensure that the new materials and workmanship are compatible with the materials and workmanship of the historic property.

EDITOR: Guidelines to help apply the Secretary of the Interior's Standards for Rehabilitation are available from the National Park Service, State Historical Preservation offices, or from the Government Printing Office. For more information write: National Park Service, Preservation Assistance Division-424, PO Box 37127, Washington, DC 20013-7127.

Kalwall® - (Kal' - wal)



West Aids Library—Durrant Group



NIELSEN BUILDING SYSTEMS

Racine (414) 681-0676
Fax (414) 681-1812

Fox Valley (414) 788-6325

Milw. (414) 764-0914

Contact Dale Nielsen for Complete Information
Kalwall Distributor-Wisconsin/Upper Michigan since 1977
Guaranteed Quality - Guaranteed Installations

4 NEW KAL-TINT COLORS

1. Developed for Discerning Architects in the Evolution of Creative use of Natural Lighting.
2. User Friendly - HVAC's Best Friend.
3. Full 25 year non-Pro-Rated Warranty of Surface Degradation of Fiber Exposure (which is common of commercial grade FRP Sheets.) We can do this since Kalwall is the only Panel Fabricator that Manufactures FRP Proprietary Sheets.
4. Ability to "Glow" provides the Constant Architectural Statement.
5. Allows the Enhancement of Architectural Expression in Design and Function.
6. Free Illumination Auditing to Finetune Task Level Lighting.
7. Inventor & Innovator-Glass Erosion Barrier Sheet is totally Maintenance Free.
8. Designs in shape or form to over 100' Clearspan.
9. Kalwall since 1955.
10. NBS Inc. - Installing Distributor since '77 - One Point Responsibility.

GUARANTEED TO YOU, OUR CUSTOMER!
Specify Kalwall in Total Cost Effective Confidence!!

PBBS EQUIPMENT CORP.

5401 N. Park Dr., Butler, WI 53007

SINCE 1955

BOILER ROOM

Service - Parts - Sales - Chemical - Engineering

24 Hour Service
Radio Dispatched

INDUSTRIAL Large Parts
COMMERCIAL Inventory

Cleaver Brooks

**FACTORY AUTHORIZED
PARTS & SERVICE**

ALL MAKES

Webster Burners
And-Car Systems

SERVICE

Troubleshooting - Repairs - Cleaning - Refractory Work
Efficiency Tune-Ups - Service Contracts - Inspections
Mobile Boiler Room Rentals - Descaling - Conversions

SALES

Boiler Room Equipment & Accessories - Chemical
Systems Burners - Chemical Treatment & Analysis
Propane Systems And-Car Boiler Blowdown Systems
And-Car Monitor Systems

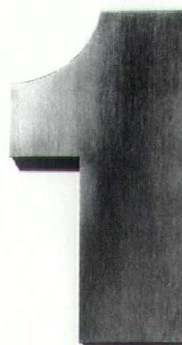
THROUGHOUT WISCONSIN AND UPPER MICHIGAN

Milwaukee (414) 781-9620 • Madison (608) 249-6604
Green Bay (414) 494-3675 • Stevens Point (715) 344-7310
FAX (414) 781-8526

THROUGHOUT MINNESOTA AND NW WISCONSIN

PBBS EQUIPMENT CORP.
TWIN CITIES DIVISION EAGAN, MN.
(612) 686-7227

When it comes to great fabrication our reputation



is stainless.

Our reputation is stainless by design. We're the Sheet Metal Contractors of Milwaukee, whose shining products are seen all over the city, from fancy duct work to monumental architecture. Sheet Metal is better by design!

Sheet Metal Contractors of Milwaukee
2515 North 124th Street
Suite 200
Brookfield, Wisconsin 53005
(414) 784-6889

SMC
Sheet Metal Contractors
of Milwaukee



Project Designed By

design II architects ltd.

131 south main
fond du lac, wi 54935
414-922-2383

Marvin Windows and Doors offer the flexibility demanded by Design Professionals. Each one is made to your specifications, because each one is made to order. Our Architectural Services Department offers a full range of support in design, engineering, and installation of premium Marvin Products. Contact Mark Heard at:



builders world, inc.

p.o. box 881 - waukesha, wi 53187
(414) 542-8883
1-800-686-2206

MARVIN
WINDOWS & DOORS



**A WISCONSIN TRADITION OF
QUALITY FOR OVER 80 YEARS**

**Brick
Block
Pavers
Tile
Stone**



THORO
SYSTEM
PRODUCTS, INC.



Sonneborn
building products

**American
Olean
Tile**

**WISCONSIN
BRICK & BLOCK
CORPORATION**

6399 NESBITT RD MADISON, WI 53719
(608) 845-8636 • (800) 362-6633
FAX: (608) 845-8630

**Is taking your business to
the top worth the trip?**



Let's talk.

At Klipstein Insurance, we walk you through the risks and rewards of business expansion one step at a time. For a complete protection plan individually designed for today and into tomorrow, call Klipstein. It's the insurance agency architects and engineers are talking to.

216 N. Midvale Blvd, Madison, WI 608-238-7181 • 800-279-7181 Call Paul Berta or Tom Dowling.

Klipstein
Insurance Services, Inc.



Photographers Needed

Buildings of Wisconsin is a book that will showcase and describe Wisconsin's premier historic buildings and districts. Planned for publication in time for the state's sesquicentennial in 1998, the book will be published by Oxford University Press in cooperation with the Society of Architectural Historians as part of their joint 55-book series, *Buildings of the United States*.

The Wisconsin volume will cover approximately 1,100 buildings in 700 pages. It will be co-edited by Nancy Hubbard of the University of Wisconsin-Milwaukee School of Architecture and Urban Planning.

Each of the buildings and districts included in the book will be illustrated with high-quality black-and-white photographs. This will entail an ambitious photographic effort because most of the contemporary photographs of historic buildings in the State Historical Society's files are not suitable for publication. We are looking for volunteer photographers from throughout the state to take these photographs. Photographers in northern and central Wisconsin are

especially needed. Because architects, draftspeople and allied professionals are visually inclined and like to photograph buildings, I am hopeful that a number of you will be willing and able to participate in this project.

Participating photographers will be trained, as needed, in the basics of exterior architectural black-and-white photography. They will then be asked to photograph buildings that are to be included in the book and that are located in areas of the state in which they are willing to work. Photographers will be given credit for their work in the book; and the Society will cover the costs of film, processing and printing. Photographers should be able to provide their own photographic equipment of a quality sufficient to take acceptable architectural photographs.

Buildings of Wisconsin will be the first book published that attempts to cover historic architecture in all counties of the state and through all periods, from territorial time to the recent past. It will be arranged geographically for ease of use by motorists, but will have cross-referencing indices by architect and period.

Introductory essays by prominent architectural historians will cover especially significant themes in Wisconsin's architectural past, such as the influence of European settlers, the work of Frank Lloyd Wright and his

colleagues and followers, modernism of the 20th century, and the architectural manifestations of agriculture and tourism. It will become the pre-eminent guide and reference to Wisconsin's historical architecture for use by tourists, architects, historic preservationists, state and local officials, and anyone else who cares about Wisconsin's heritage.

Photographers interested in participating in this project should get in touch with me, Jeff Dean, at the State Historical Society of Wisconsin, 816 State Street, Madison, WI 53706; telephone: (608) 264-6515.

EDITOR: The author is an architect with the State Historical Society of Wisconsin and will be the co-editor of the book.

IT'S A CLEANER WORLD WITH NATURAL GAS

Air pollution was a major factor in the corrosion of the dome and exterior stonework at St. Josephat's Basilica in Milwaukee. The extent of the pollution problems in Southeastern Wisconsin, coupled with growing public concern about the environment, put natural gas above and beyond any other choice for energy. Call your local natural gas utility for more information.

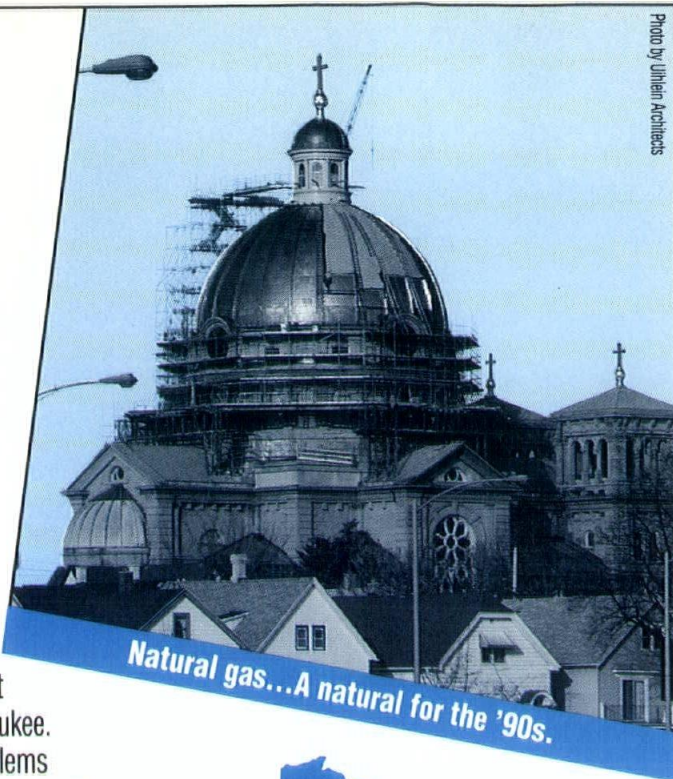
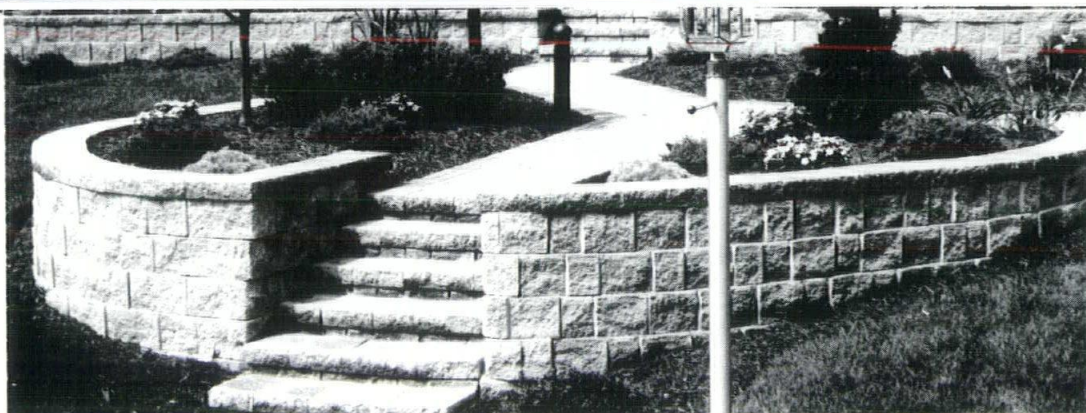


Photo by J. H. Architects



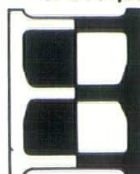
There's no better way to reach design and construction professionals than with an ad in *Wisconsin Architect*. Call today! (608) 257-8477



Nothing stacks up like StoneWall SELECT

Designed to save time & labor, StoneWall SELECT goes up faster & easier than any other retaining wall system on the market today.

- Superior to wood and poured concrete
- Simple, fast, mortarless installation
- Lightweight and easy to handle
- Complete design flexibility



**WAUKESHA
BLOCK**

10919 W. Bluemound Road
Milwaukee, Wisconsin 53226
(414) 453-7980

BASEMENT, DECORATIVE & LANDSCAPE BLOCK
PAVERS • FIREPLACE MATERIALS • MASONRY SUPPLIES • PARKING BUMPERS & MORE

AIA Wisconsin

It's now official. At its October meeting, the WSA Board of Directors voted unanimously to change the name of the Wisconsin Society of Architects. Effective January 1, 1994, the WSA will become AIA Wisconsin, A Society of The American Institute of Architects.

Proponents of the new name agreed that the change would help increase public and client awareness of the fact that the organization is a component of The American Institute of Architects. The name change also will bring Wisconsin in line with AIA components in surrounding states as well as a growing number of other AIA state and local chapters across the country.

The change in identity also will extend to the four local WSA Chapters. For example, the Southeast Chapter will become AIA Southeast Wisconsin, A Chapter of The American Institute of Architects. Similarly, members in other parts of the state will now be members of one of the following local chapters: AIA Southwest Wisconsin, AIA Northeast Wisconsin and AIA Northwest Wisconsin.

Regardless of the name of the organization, the Board of Directors remains committed to providing members in Wisconsin with the highest quality programs and services.

Statute of Repose

On October 7, the Wisconsin Senate voted 20-13 to approve Senate Bill 314. This important remedial legislation would recreate a statute of repose for Wisconsin's design and construction industry that would bar legal action against architects, engineers, contractors, material suppliers and owners after ten years from the date of substantial completion of an improvement to real property.

In 1961, Wisconsin was the first state to enact a statute of repose to limit the "long tail" of liability faced by architects and others involved in the design and construction industry. The Wisconsin Supreme Court, in a 1989 opinion, ruled that the state's statute was infirm because it did not cover building owners and occupiers. As a result, Wisconsin is now one of only five states without such statutory protection to limit the time period in which lawsuits can be started.

The next step in getting Senate Bill 314 signed into law is the Wisconsin Assembly. SB 314 has been referred to the Assembly Insurance, Securities and Corporate Policy Committee chaired by State Representative Alvin Baldus (D-Menomonie). Rep. Baldus has agreed to hold a public hearing on SB 314 in early December. The next regular floorperiod for the Wisconsin Legislature is scheduled for January 25-March 25, 1994. This floorperiod is the next opportunity for SB 314 to be debated and voted upon by the full Assembly.

It is important that every architect and allied professional stay in regular contact with their State Representa-

tive to encourage them to help get SB 314 out of committee and on to the floor of the Wisconsin Assembly for a vote. If you have any questions about this vital legislation and/or how you can help get it passed, please contact the WSA office in Madison.

Continuing Education

The delegates to the national 1992 AIA Convention passed an amendment to Institute bylaws that will require continuing education for membership. The bylaws of the AIA now contain the following provisions: 2.111 Continuing Education Requirement. *Effective January 15, 1996, architect members shall fulfill a periodic continuing education requirement to remain eligible for membership. The Board shall define the elements of the continuing education requirement in the Rules of the Board. Architect members who fail to meet the requirements on and after January 15, 1996 shall be subject to termination under section 2.08 of these Bylaws.*

The Institute carefully studied the notion of life-long learning. The committee charged with this research called for a self-directed program, one in which members select learning activities best suited to improving their own professional capabilities. A mixture of learning methods may be used, following tested educational guidelines. Approximately one-third of the learning credits will be in health, safety and welfare, and constitute the core program.

As part of its long-range planning process, the WSA Board of Directors established a WSA Continuing Education Committee with representatives from each of the four local

WSA Chapters. The mission of the WSA/CEC is "to research and make recommendations to WSA Board of Directors and WSA Chapters regarding continuing education programs and policies to meet members' needs and expectations."

To accomplish its mission, the WSA Committee has established the following four short-term goals:

- Identify existing continuing education programs, policies, frameworks and studies pertaining to continuing education requirements for architects.
- Inform WSA members of the types and status of continuing education programs, policies and requirements.
- Cooperate with Architects Section of the Joint Examining Board of Architects, Professional Engineers, Designers and Land Surveyors of the Wisconsin Department of Regulation and Licensing concerning the development of continuing education programs, policies and requirements.
- Develop and outline recommended policies and procedures to enable the WSA and WSA Chapters to effectively assist members in meeting established AIA continuing education membership requirements that will become effective in 1996.

WSA members with questions, suggestions or recommendations about continuing education programs are encouraged to contact one of the following WSA/CEC members: James Fryk, AIA, Waukesha, (414) 797-0797; A. James Gersich, AIA, Madison (608) 238-2661; Mark Keating, AIA, Neenah, (414) 738-3500; and Mitchell Spencer, AIA Eau Claire, (715) 232-1176.

Members interested in participating in or getting more information on the national AIA Continuing Education System (AIA/CES) pilot project can contact Mike Price, project director, at: AIA/CES Pilot Project, Research Center for Continuing Professional and Higher Education, University of Oklahoma, 200 McCarter Hall, Norman, OK 73037-0003; voice: (405) 325-1080.

The goal of the AIA/CES pilot project is to develop a coordinated system that is accessible and affordable to all architects, credible to the public, efficient and relevant to the professional needs of the various careers in architecture.

1993-94 WAF Officers

At its meeting in October, the Board of Directors of the Wisconsin Architects Foundation elected the following slate of officers for 1993-94: Gary V. Zimmerman, AIA, Hartland, *President*; Robert D. Cooper, AIA, Greenfield, *Vice President*; and Richard J. Griese, AIA, DePere, *Secretary/Treasurer*.

The WAF Board of Directors approved a 1993-94 budget containing total expenditures of \$20,000, including \$13,950 for scholarships and grants. The budget anticipates \$14,000 in WAF contributions.

A list of WAF contributors in 1992-93 is featured elsewhere in this issue of *Wisconsin Architect*. Wisconsin architect and allied professionals are encouraged to contribute generously

to the WAF. Please make checks payable to "Wisconsin Architects Foundation" and mail to: WAF, 321 S. Hamilton St., Madison, WI 53703. Your support will help the WAF continue to build a better Wisconsin through architectural education.

Preservation Tax Credits

One of the benefits of owning a historic property in Wisconsin is the ability to participate in federal and state income tax incentive programs for rehabilitation of historic properties. Currently, there are three tax credit programs available for properties listed in the national or state registers of historic places or eligible for listing in the national register:

- *Federal 20% Historic Rehabilitation Credit.* A 20 percent federal investment tax credit (ITC) for rehabilitation of income producing historic buildings.

- *Wisconsin 5% Supplement to Federal Historic Rehabilitation Credit.* An additional 5 percent Wisconsin investment tax credit (ITC) for persons who qualify for the 20 percent tax credit *and* who apply for and receive project approval before beginning physical work on their projects.

- *Wisconsin 25% Historic Rehabilitation Credit.* A 25 percent Wisconsin investment tax credit (ITC) for persons who rehabilitate historic non-income-producing, personal residences—and who began actual rehabilitation work after January 1, 1989.

Although the rules vary between these programs, there are similarities. To qualify for any of these tax credits, you must:

- Own a historic property. Generally, the property must be listed in the state or national registers. Non-registered properties may qualify for the federal 20% credit if they are determined to be eligible for listing in the national register. To qualify for the federal tax credit, the property must be a building.

- Spend a specified, minimum amount of money on the rehabilitation work. For purposes of the federal 20% ITC and the Wisconsin 5% ITC, you must spend at least as much money as the "adjusted basis" of the property. The 25% Wisconsin ITC requires that you spend at least \$10,000 on eligible work.

- Carry out work in accordance with program standards. All projects must comply with the "Secretary of the Interior's Standards for Rehabilitation."

- Formally apply and obtain approval to receive the credits. All applications must be made to the Division of Historic Preservation (DHP) or the State Historical Society of Wisconsin. Required forms and instructions can be obtained from the DHP.

For information on these tax credit programs, you can contact the following individuals at DHP: Donna Amacher (608) 264-6500, Jim Sewell (608) 264-6490 or Brian McCormick (608) 264-6491.

Quality Time?

Despite increasing pressure to improve customer satisfaction and project quality, construction companies aren't really embracing the Q word.

In a study released earlier this year by Grant Thornton, a Chicago consulting firm that has an office in Brookfield, 71 percent of the architects, engineers and contractors surveyed said their firms were facing competitive pressures to implement total quality management.

But, even though 64 percent said their companies had incorporated quality improvement objectives in their business planning, only 47 percent of those surveyed said most or many of their top managers understand the concept.

(From the June 12, 1993 issue of the *Milwaukee Business Journal*.)

AIA SPECSsystem

The AIA has updated and enhanced SPECSsystem, its electronic specification writing system. SPECSsystem 3.1 offers the end user greater flexibility and efficiency in the specification writing and production process.

The 3.1 version includes a totally new installation program, which can be adapted to both stand-alone computers and Local Area Network (LAN) systems. For the first time, non-network users will be able to install SPECSsystem to a hard drive for faster access.

Special security features were added to SPECSsystem 3.1 to prepare the system for inclusion with McGraw-Hill's new SweetSource CD-ROM.

Since SPECSsystem continues to be available as a service for paid subscribers, a security diskette is now required to access the software. This offers users a variety of installation options and greatly increases the flexibility of the program.

SPECSsystems 3.1 includes a new WordPerfect conversion function that translates SPECSsystem files into true WordPerfect files, complete with embedded codes and automatic paragraph numbering. It offers new reference files, which can be used to produce manufacturer and product lists. These can be organized alphabetically, by manufacturer or by CSI section location.

Introduced in 1991, SPECSsystem is a "knowledge-based" interactive system for automated production of construction specifications. It asks the user questions about the project and produces consistent, comprehensive specifications in selected page formats. Updated monthly, SPECSsystem's 400 sections cover CSI Divisions 1-16 and are based on data from the AIA's MASTERSPEC specifications system. SPECSsystem was developed jointly by the AIA and McGraw-Hill.

SPECSsystem 3.1 is priced from \$1,250 to \$5,950, depending on firm size and the number of concurrent users. For more information call Cindy Flynn, (202) 626-7446.

People & Places

Michael Kadow, AIA, Green Bay, reports that Somerville Associates will be the first firm in the country to host the national exhibition "The White House 1792-1992: Image in Architecture." This important traveling exhibition celebrates the 200th anniversary of the laying of the White House cornerstone. Somerville Associates, in cooperation with The American Architectural Foundation and the White House Historical Association, is bringing the exhibition to its office in Green Bay for six weeks, beginning February 28. For information, call (414) 437-8136.

Knothe & Bruce Architects have moved to: 7611 Elmwood Avenue, Suite 102, Old Middleton Centre, Middleton, WI 53562; telephone: (608) 836-3690.

Jerold Dommer, AIA, Watertown, president of Durrant Architects, Inc., reports that the firm's Madison architectural staff is now based in its Waukesha office: Durrant•Heike Architects, Inc., Crossroads Corporate Center II, 20800 Swenson Drive, Suite 210, Waukesha, WI 53186-4000; telephone: (414) 798-2626. Durrant Engineers and Durrant Group support offices remain at their present International Lane location in Madison.

Patrick J. Conway, Intern AIA, Madison, was one of 40 participants invited to the International Masonry Institute's "Masonry Camp 1993" at the Haystack Mountain School of Crafts in Deer Isle, Maine. The ten intern architects, ten architectural students and 20 masonry apprentices and journeymen from the United States and Canada spent a week

together learning how each other work and think while designing an affordable hurricane-resistant masonry house and actually constructing an element of their design. According to Conway, the camp "provided a forum for young professionals and craftspeople to exchange their distinctive views of how a building gets built from conception to occupancy."

J. Gerard Capell, AIA, Milwaukee, has been elected vice president of the Milwaukee Chapter of the Construction Specifications Institute. **Steve Groth, AIA**, Wauwatosa, also was elected to a three-year term as director of the Milwaukee Chapter CSI.

Several firms have been active in various public service initiatives. The entire staff at Architectural Designs took a day off in June to demolish, insulate and hammer away at a Milwaukee Habitat for Humanity home on N. 32nd Street. The Zimmerman Design Group has been working with Milwaukee's Hope House, a shelter for the homeless, to master plan an effort to expand the south side facility. In addition, ZDG architects have collected donations of needed items to support the shelter's daily operation, including children's items, toiletries, bedding, winter garments, toys and more. For information on how you can participate through contributions to these homeless families, please contact Joann Powell at ZDG at (414) 476-9500. The Mayor of Wauwatosa also recently recognized ZDG for contributing to the overall appearance of the

city by maintaining colorful flower boxes outside its office. In the Madison area, Potter Lawson Architects again this year coordinated a successful canned food drive for the Southern Wisconsin Food Bank with numerous collection centers, including the WSA office. These are a few exemplary examples of what architects from across the state are doing to enhance the quality of life in their communities.

The Wisconsin Concrete Masonry Association presented its fifth annual "Excellence in Masonry" awards at the 1993 WSA Convention. The "Best of Show" was awarded to Marshall Erdman & Associates, Madison, for the Marshfield Clinic-Lakeland Center. "Excellence" awards were presented to Strang, Inc., Madison, for Demco, Inc., and to the Zimmerman Design Group, Wauwatosa, for the Campus Child Care Center at the Milwaukee Regional Medical Center. As part of the WCMA Awards Breakfast, **Warren Olsen, AIA**, Verona, was selected as the winner of a trip of two to Cancun!

CPR Associates, DePere, Foth & Van Dyke, Green Bay, and The Stubenrauch Associates, Sheboygan, recently were recognized by the Fox River Valley Masons Promotions Fund, Inc., as part of its "Excellence in Masonry" competition. Congratulations!

Former WSA member and vice president **Emma Macari, AIA** has been selected as vice chancellor for facilities, planning, construction and management for the City University of New York. Emma will be based at the Manhattan campus and be responsible for campuses in the five boroughs of New York.

Ace architectural photographer and WSA Professional Affiliate member **Eric Oxendorf**, Milwaukee, has been elected vice president of the board of directors of the Chicago/Midwest Chapter of the American Society of Media Photographers (ASMP). Eric also serves as the Wisconsin representative for this worldwide organization. He recently was selected by *Historic Preservation* magazine to photograph Frank Lloyd Wright's home, Taliesin, in Spring Green.

WSA Executive Director William Babcock has been appointed to the Public Affairs Resource Network of the Council of Architectural Component Executives (CACE), the national organization representing over 200 state and local AIA component executives. The CACE Public Affairs Network works with national AIA staff on the development and implementation of AIA programs to enhance the public awareness of the architectural profession.

The *Professional Services Management Journal* (PSMJ) reports that President Clinton's health care reform proposals could have a very big financial impact on design firms. The proposals call for firms to pay a health care premium of up to a maximum of 7.9% of payroll. This is 30% above what the average design firm is paying today, according to PSMJ.

The UW-Madison Department of Engineering Professional Development will offer a course, "Effective Project Management for Building Design and Construction," on January 10-14 in Madison. For information on this course and others scheduled for January-June 1994, please call 1-800-462-0876.

Membership Action

Please welcome the following new WSA members:

AIA

James G. Chambers, SE
Tami P. Corthell, SE
David E. Cramer, NW
Douglas A. Haas, NE
John E. Koga, NE
Peter J. Kuehl, NE
Deann B. Mills, SW
William J. Ramsey, SE
Paul D. Rushing, SE (Transfer)
David R. Tredell, NW

Associate/Intern

Danegza Cordero, SW
James Donovan, SE
Bradley S. Hampel, SE
Timothy L. Hansmann, SE
Charles S. Holschbach, NE

Nancy L. Jaeger, SE
Kevin Wall, SE

Student

Southwest Chapter Members:

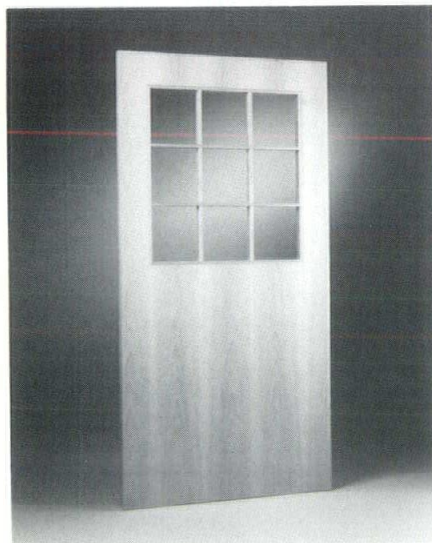
Kimberly Burgess
Richard Bishop
Cheryl Downing
Christopher A. Engstrom
Dean Hutchens
James King
Brad Nygaard
Rita Padfield
Jerry Pagel
Mark Reinsch
Paul Roberts
Stacy A. Scharch
Amy Schneider
Terry Shore
Chris Volk
Kimberly K. Wenger

Landscape Forms' Gretchen's Bench is now available with PolySite recycled timbers in addition to the oak, redwood and jarrah seats which are fastened to cast aluminum supports. A litter receptacle and ash urn round out this ensemble and may be specified with PolySite as well.

PolySite timbers are formed from 100% high density polyethylene, primarily from post-consumer milk containers. Once purified, this reclaimed plastic is molded into timbers and attached to the Gretchen's Bench cast aluminum supports. Exceptionally resistant to moisture, corrosive substances and insect damage, these bench panels will not rot, splinter or crack. No additional finishing is required and graffiti can easily be removed from the molded surface with conventional, all-purpose cleaners.

Gretchen's Bench may be specified in backed or backless bench style or as mitered seats to be installed on a curved horizontal tube support. Optional arm rests can be specified with either ornamental or loop construction.

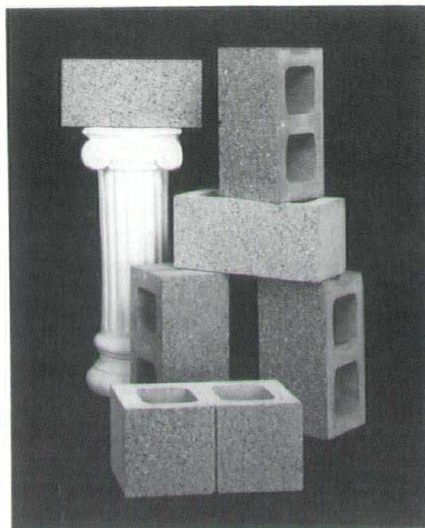
For more information, contact Janis Etzcorn at (800) 521-2546 or write to Landscape Forms, Inc., 431 Lawndale Ave., Kalamazoo, MI 49001. Fax (616) 381-3455.



Eggers Industries announces the first fire rated, veneer wrapped grillwork in the wood door industry, available in labeled fire doors from 20 through 90 minutes.

This innovation allows specifiers to provide the French door and divided light look, retain the warmth of wood and maintain the desired fire rating. The door bead and grillwork can be provided in all available foreign and domestic veneers.

For more information, refer to construction specifier category 08200--wood and plastic doors--fire door accessories, or call Paul Niehaus at (414) 722-6444.



A publication from **SPI Lighting** introduces the Lightruss modular indirect lighting structure for large, open spaces. The brochure provides information on the design flexibility and construction of the Lightruss System.

The basic system is a series of indirect light modules with high intensity discharge lamps that are uniformly spaced in a continuous truss system anchored by die-cast aluminum bulkheads. The bulkheads hold three extruded aluminum tubes in place. The lower tube serves as the conduit for all electrical wiring. The lamps and surfaces are protected from external elements by a hinged, clear tempered glass cover. Lightruss sections are pre-wired, pre-focused and factory-assembled to simplify installation in the field.

For more information on the Lightruss System and a free brochure, contact SPI Lighting, 10400 North Enterprise Drive, Mequon, WI 53092; (414) 242-1420.

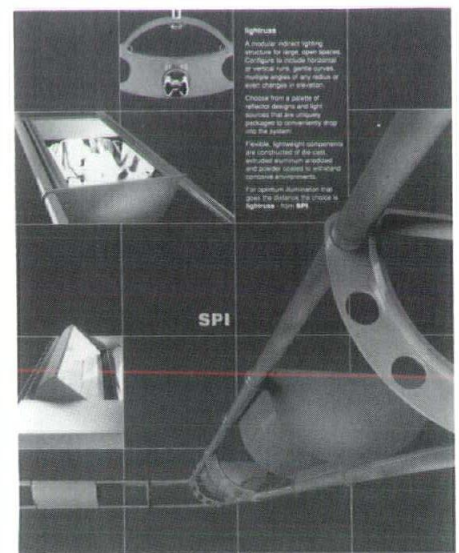
United Air Specialists, Inc., makers of the famous Smokeater, announces the continued availability of The Clean Air Digest, free to architects who inquire. The Clean Air Digest is a 30-page authoritative booklet featuring simple, practical, profitable guidelines for cleaner indoor air.

The information in The Clean Air Digest, when combined with United Air Specialists' industry-leading air cleaners, offers the most complete solution to today's indoor air quality problems. Smokeater and Crystal-Aire Air Cleaning Systems remove more than 95% of all airborne contaminants including tobacco smoke, dust, pollen, bacteria and odors.

In today's architectural market, designers must be cost-conscious while still providing useful and attractive structures. **Trenwyth Industries, Inc.**, a specialty masonry unit manufacturer, is responding to the challenge with a new line of high-quality, low-cost ground face masonry units--Trendstone Apollo units.

Trendstone Apollo units are integrally colored concrete blocks with one or more faces ground to expose the variegated colors of the natural aggregates. Trenwyth has developed a state-of-the-art grinding method and can now grind blocks made with aggregates produced next door to its plant in South Beloit, Illinois. The aggregates cost less and the new grinding process is less labor-intensive, so Trenwyth is passing the savings on to the customer.

Trendstone Apollo units are available in five colors and a variety of sizes. For more information, call Trenwyth at (800) 233-1924.

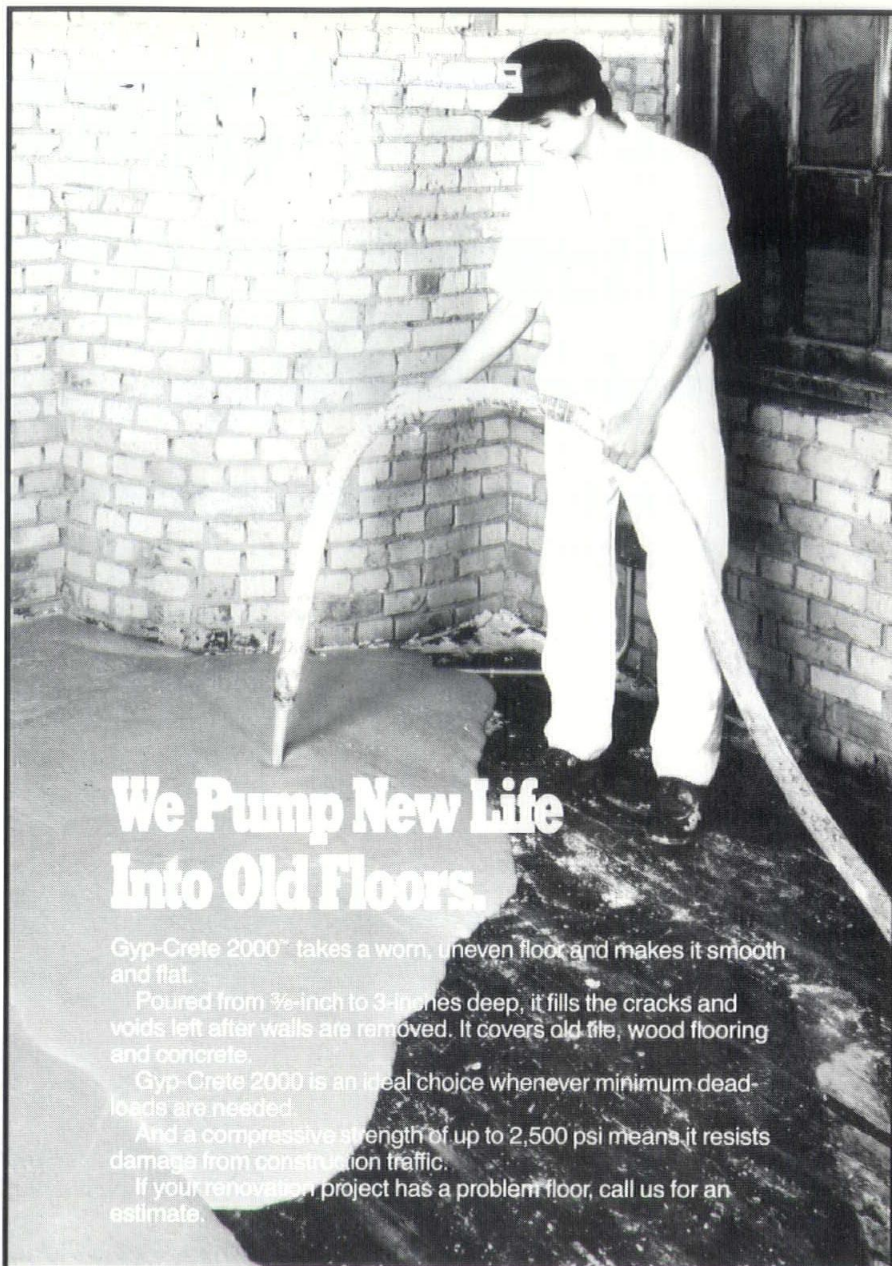


Using two-stage electrostatic technology, our units capture airborne particulate much like a magnet. As contaminated air is drawn in through the unit, the particles are given a positive charge and are then deposited on negatively charged collecting plates. The clean air is then recirculated back into the room.

Standard units feature heavy-gauge steel cabinetry, large reusable collection plates, four-way directional louvers and a three-year warranty. Large and small capacity, wall and ceiling mounts, portable and concealed units are available. For your copy of The Clean Air Digest, or for more information, please call toll-free (800) 551-5401.

- 46 Arnold & O'Sheridan, Inc.
- 12 Arwin Builders Specialties, Inc.
- 46 Baraboo Tent & Awning
- 4, 36 Builders World
- 32 J.F. Cook Co.
- 12 Cornell Corp.
- 46 Dolan & Dustin
- 33 Energy Savings Management of Wisconsin
- 16 Four Seasons Design Group
- 46 Bert Fredericksen, Inc.
- 20 The Gingerbread Staircase
- 45 Great Lakes Gypsum Distributors
- 16 T.J. Hale Co.
- 10 Halquist Stone
- 46 Harwood Engineering
- 29 IDAC, Inc.
- 2 International Masonry Institute
- 46 Keating & Co.
- 36 Klipstein Insurance Service
- 29 La Force Hardware & Manufacturing Co.
- 46 Lampert Lee & Associates
- 46 Lang Associates, Inc.
- 6 LFI-Landscape Forms, Inc.
- 6 Madison Area Sheet Metal Labor-
Management Council
- 29 Master Builders, Inc.
- 46 C.R. Meyer and Sons Company
- 14 Mid-City Blue, Inc.
- 20 Mid-States Concrete Products
- 46 Midwest Visual Equipment Co.
- 46 Miller Engineers & Scientists
- 46 Neuman Pools
- 35 Nielsen Building Systems
- 33 Pallas Photo Labs, Inc.
- 35 PBBS Equipment Corp.
- 47 J.W. Peters & Sons, Inc.
- 45 Photocopy, Inc.
- 20 Purcell Imaging
- 35 Sheet Metal Contractors of Milwaukee
- 46 Soils & Engineering Services, Inc.
- 7 Spancrete Industries
- 28 Stevens Construction
- 46 Strass-Maguire & Associates, Inc.
- 33 Superior Wood Systems
- 32 Tews Company
- 48 Ver Halen, Inc.
- 38 Waukesha Block
- 46 Wind Mill
- 38 Wisconsin Blue Flame Council
- 36 Wisconsin Brick & Block Corp.
- insert Wisconsin Concrete Masonry Assn.
- 28 Wisconsin EPS
- 14 Wisconsin Natural Gas Co.
- 12 Wisconsin Ready Mixed Concrete Assn.
- 46 Wisconsin Testing Laboratories
- 29 Wood-Lam

This index is published at no cost to advertisers, as a service to readers of Wisconsin Architect. Publisher assumes no responsibility for errors or omissions. When writing to advertisers, tell them you saw their message in Wisconsin Architect. They want to know.



We Pump New Life Into Old Floors.

Gyp-Crete 2000™ takes a worn, uneven floor and makes it smooth and flat.

Poured from 3/8-inch to 3-inches deep, it fills the cracks and voids left after walls are removed. It covers old tile, wood flooring and concrete.

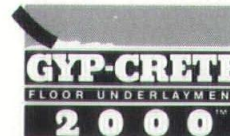
Gyp-Crete 2000 is an ideal choice whenever minimum dead-loads are needed.

And a compressive strength of up to 2,500 psi means it resists damage from construction traffic.

If your renovation project has a problem floor, call us for an estimate.

**Acoustical Floors of
Wisconsin**
675 Industrial Ct., Ste. C
Hartland, WI 53029
(414) 367-3306

**Superior Gypsum
Floors**
1132 Ashwaubenon St.
Green Bay, WI 54304
(414) 336-7225



**Specify the
companies
listed to the
left. Without
them,
Wisconsin
Architect
would not
exist.**

*Black & White Murals *8x10 Glossy Repros
*We Reproduce Blueprints or Masters For
Making Blueprints

PHOTOCOPY

104 East Mason St. Milwaukee, Wisconsin 53202

For Service . . .

CALL: 1-(414)-272-1255



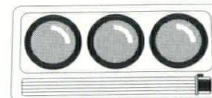
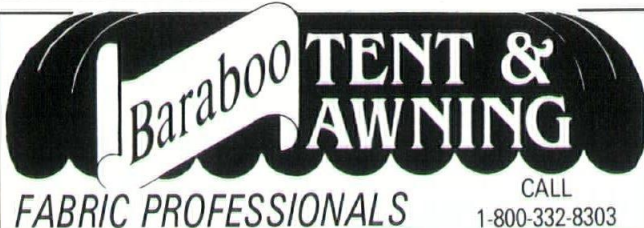
ARNOLD AND O'SHERIDAN, INC.
CONSULTING ENGINEERS

Structural Electrical
Mechanical Civil

608-271-9651
815 FORWARD DRIVE MADISON, WI 53711
414-783-6130
4125 N. 124TH BROOKFIELD, WI 53005

Meeting Room AV Systems Design

Need more help when you design meeting rooms using AV, video computers or teleconferencing systems? Call Flint Bridge at Midwest Visual. 414/ 784-5880.

TENT & AWNING
FABRIC PROFESSIONALS
CALL
1-800-332-8303

neuman pools inc.

CUSTOM DESIGNED POOLS & SPAS SINCE 1973
BUILDERS OF RESIDENTIAL, COMMERCIAL, MUNICIPAL POOLS
AND RECREATIONAL WATER AMUSEMENTS
FAX 414-885-3371 • Beaver Dam, WI 53916 • 1-800-472-1214



DOLAN & DUSTIN, INC. CONSULTING ELECTRICAL ENGINEERS

1011 N. MAYFAIR RD WAUWATOSA, WI 53226-3448
(414) 774-4543 FAX (414) 774-4579

Electrical Power - Primary & Secondary Distribution
Lighting Design • Security & Communications Systems
Grounding • Emergency Generation • Uninterruptible Power

SOILS & ENGINEERING SERVICES, INC.



Geotechnical, Material Testing, and
Environmental Consulting Engineers

1102 STEWART STREET 608-274-7600
MADISON, WI 53713-4648 FAX 608-274-7511

BERT FREDERICKSEN, INC.

CONSULTING ENGINEERS

3245 North 124th Street Brookfield, Wisconsin 53005-3112
TELEPHONE 781-9070 (414)

HEATING • VENTILATING • AIR CONDITIONING

Bert Fredericksen-Chairman John Fredericksen-President Bert T. Fredericksen-V. President

Strass-Maguire & Associates, Inc

CONSULTING • STRUCTURAL • INDUSTRIAL • ENGINEERS

9000 N. DEERBROOK TRAIL, SUITE #110

MILWAUKEE, WI 53223

#414/354-4046 FAX 414/354-5008



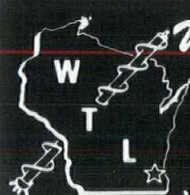
Keating & Company

Business Development Consulting

specialists in the built environment

- Marketing / Strategic Planning
- Public Relations / Image Management
- Client Satisfaction Programs / Research
- Training / Special Events

4901 North Hollywood Avenue • Milwaukee, Wisconsin 53217
(414) 964-1007



Wisconsin TESTING LABORATORIES

Geotechnical Engineers

Soil Borings
Materials Testing & Inspection

Menomonee Falls, WI 53051 • (414) 252-3300

W.L. LEE & Associates

- Subsurface Exploration
- Foundation Analysis
- UST Site Assessment
- Environmental Drilling

10968 Hwy. 54 East • Wisconsin Rapids, WI 54494
(715) 424-3131 (715) 344-0068 Toll Free (800) 626-4282



SLATWALL SYSTEMS



Full line manufacturers. 1-800-548-7528

- Slatwall panels and fixtures.

by Wind Mill
SLATWALL SYSTEMS BY
Wind & Mill

200 Balsam Road, Sheboygan Falls, WI FAX (414) 467-6114

LANG

Associates, Inc.

Wausau, WI (715) 845-1333 • Green Bay, WI (414) 435-2488

• Consulting Engineers • Electrical & Automation Specialists

- Lighting Design
- High, Med., Low Voltage Design
- Systems Design

- Instrumentation and Controls
- Automation
- Testing

MILLER ENGINEERS SCIENTISTS

Geotechnical Engineering

Soil/Materials Testing

Sheboygan, WI (414) 458-6164
Fox Valley, WI (414) 954-9100

Supporting
practical
excellence
in architecture.



C.R. Meyer and Sons Company
Since 1888

895 West 20th Ave., P. O. Box 2157
Oshkosh, WI 54903-2157 (414)235-3350



Harwood Engineering Consultants

7720 Harwood Avenue
Milwaukee, WI 53213

- HVAC
- Structural
- Telecom/Fiber Optics
- Plumbing/Fire Protection
- Electrical/Lighting Design

(414) 475-5554
FAX (414) 475-5698

EQUAL TO THE TEST

Parking structures built by J.W. Peters to withstand the tests of time. Unrivaled in durability, corrosion resistance and lifetime economy.

Ask the owners of more than 135 parking structures built in the past 20 years with pre-cast/prestressed concrete components from J.W. Peters. No one surpasses that experience, that performance.

We'll save you time. We'll save you money. We'll save you headaches...and we'll put that in writing. Ask us about our 10-year parking structure service agreement, the first such long-term commitment to quality offered in the industry.

When it's *your* responsibility, talk to J.W. Peters. We stand behind our work... and behind you.

JW PETERS

and Sons, Inc.

34212 West Market Street
Burlington, WI 53105
1-(800) 877-9040



SPIEGEL WORLD HEADQUARTERS

Owner: Hamilton Partners

Architect: Skidmore, Owings & Merrill

General Contractor: Pepper Construction Company

ANOTHER REASON TO USE PELLA® WINDOWS

817 hits. No errors.

The 817 Pella® Architect Series™ windows in the renovated B&O Warehouse at Camden Yards combine historical authenticity, energy efficiency and low maintenance.



The architect specified tempered safety glass for windows within range of Baltimore Orioles bats.



Only Pella could provide historically authentic windows with low-maintenance aluminum cladding.



Architect:
HOK Sports Facilities Group
Contractor:
Donohoe Construction
Owner:
Maryland Stadium Authority
Tenant:
Baltimore Orioles

“We felt very strongly that the replacement windows should have the appearance of true divided light on both the exterior and interior,” explains Janet Marie Smith, Vice President of Planning and Development for the Baltimore Orioles. “We were delighted to find a window from Pella that would give us the authentic look, the energy efficiency and the low maintenance we wanted, at a competitive price.” Let the Pella Commercial Division provide innovative solutions (and architectural support services) for your window challenges. Contact your Pella Commercial Specialist.

Quality like this only comes from Pella.

Pella Corporation is a Sponsor of
The National Arbor Day Foundation

Call or write for our free Commercial
Products Guide.

NAME _____
TITLE _____
FIRM _____
ADDRESS _____
CITY _____
STATE _____ ZIP _____
PHONE () _____

1-800-242-1008

Ver Halen, Inc., The Pella Window Store
P.O. Box 11968, Green Bay, WI 54307-1968
Attn: Mike Babe

