

Wisconsin Society of Architects
September/October 1992



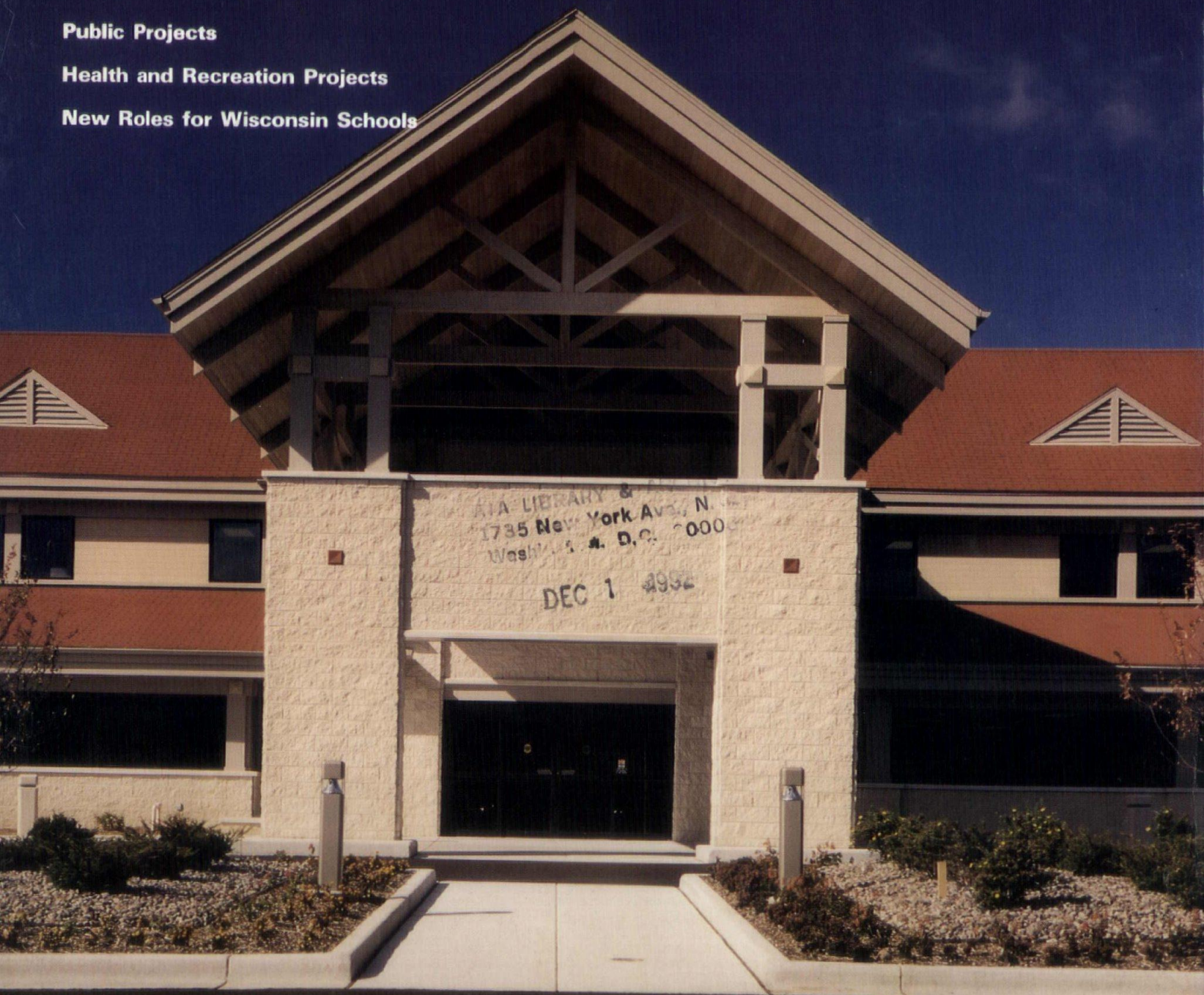
W I S C O N S I N

Architect

Public Projects

Health and Recreation Projects

New Roles for Wisconsin Schools



A R C H I T E C T S O F
MONEY

We're architects of money, not fine buildings. Real pros in investment management. We charge a fee for our counseling, and we're proud of it. You get professional investment advice, not a sales pitch.

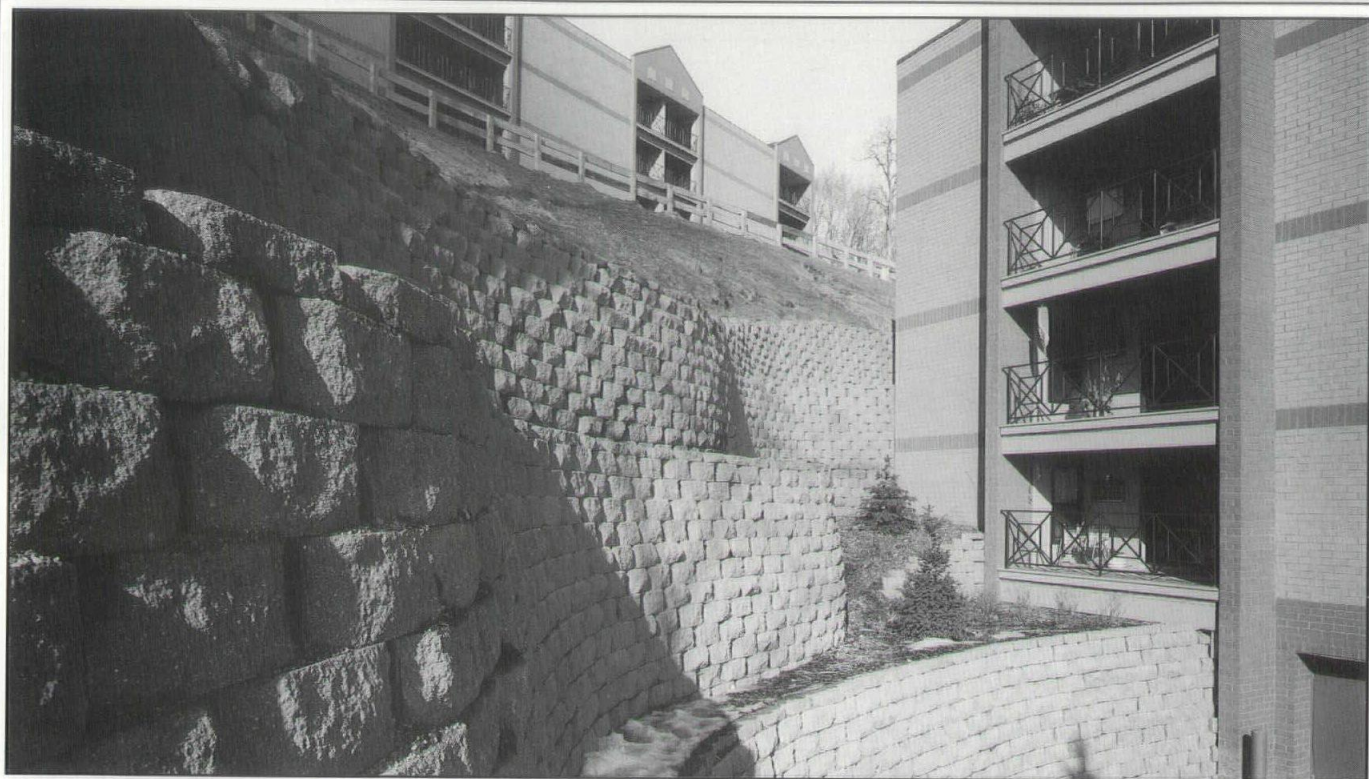


We'll examine your financial situation exhaustively; analyze your investment plans and opportunities; create a blueprint that's right for you personally; suggest risk levels appropriate to your needs...and help you achieve the goals and security you seek. The M&I family of financial institutions has been helping professionals build and preserve personal wealth through depressions and prosperity, war and peace, since 1847.

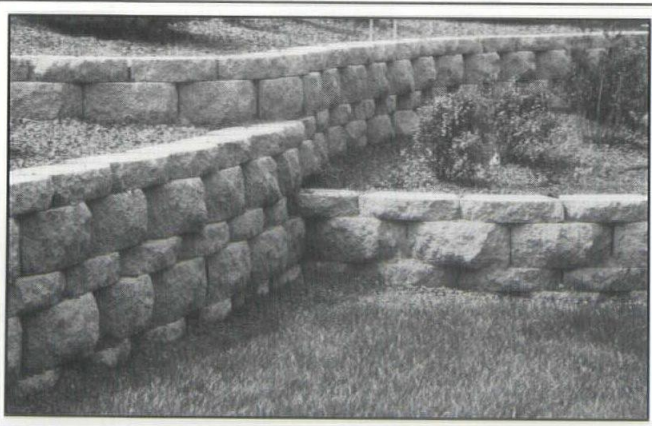


So don't waste your valuable time trying to be your own Architect of Money. Call Christopher F. Gloe, Vice President at 1-800-236-3500 for detailed information about our services and fees.

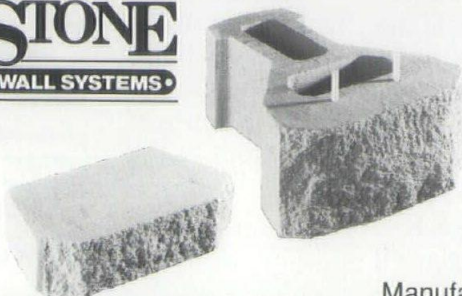
IT'S GOOD TO HAVE A STRONG PARTNER
MARSHALL & ILSLEY TRUST COMPANY
OFFICES IN ARIZONA, FLORIDA AND THROUGHOUT WISCONSIN.



Sculptured Rock is your natural choice for a permanent and beautiful landscape.



KEYSTONE
• RETAINING WALL SYSTEMS •



KeyStone® retaining walls are designed to function beautifully for a lifetime, providing long term savings compared to timbers which will deteriorate.

There are no metal members in **KeyStone** to rust away, such as found in timbers.

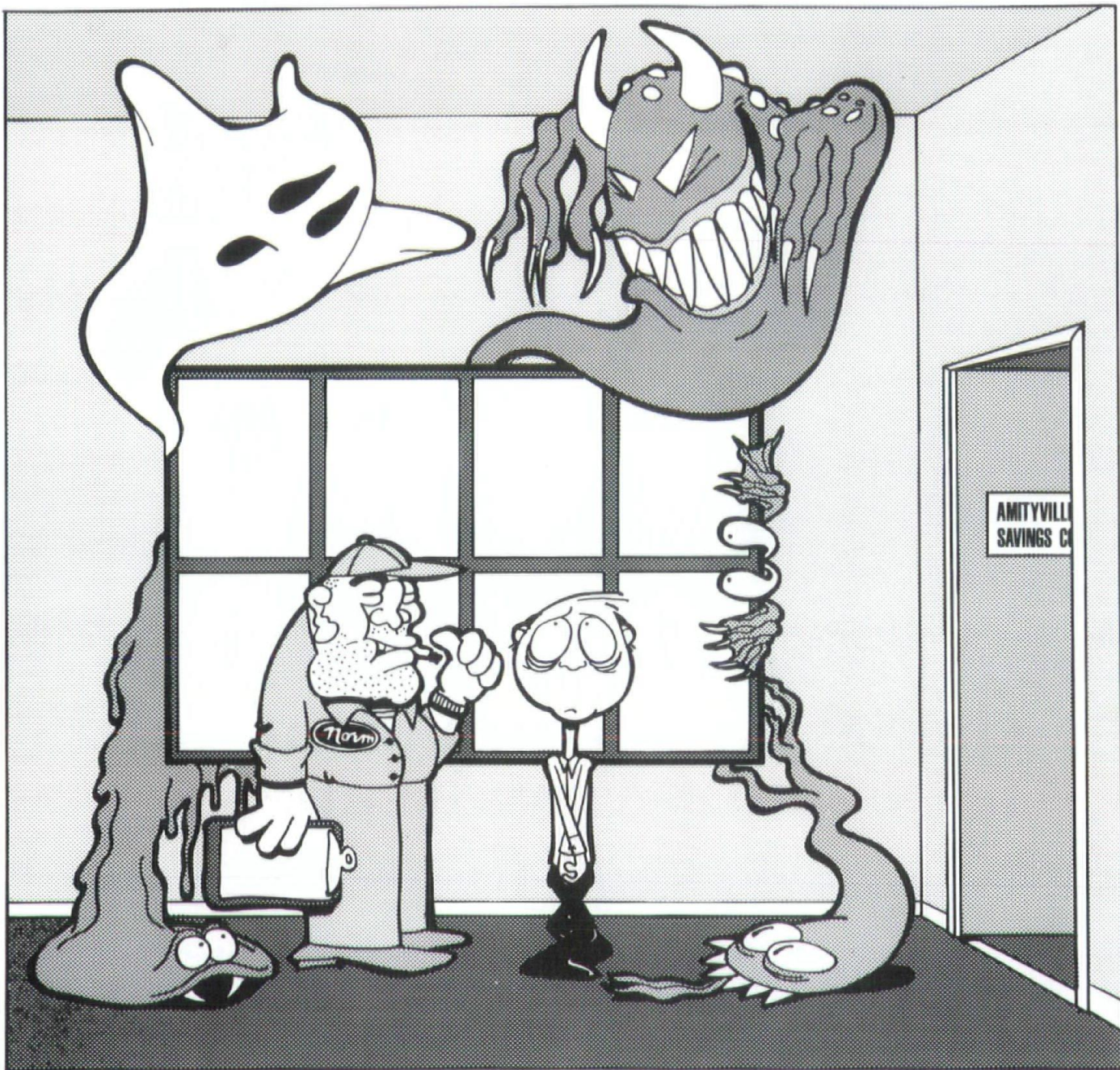
No cumbersome tools, mortars, cutting or preservative treatments are required with **KeyStone**, and the wall goes up in half the time of old methods.

Build it to last!

- Individual concrete units locked together with fiberglass dowels.
- Available in 8" or 4" high mini-units.
- Choice of face, color and texture.
- Strong, permanent and maintenance free.
- Quick and easy installation reduces labor.

Manufactured in this area by

**BEST
BLOCK**  **COMPANY**



"Yeah, I seen it a million times. Folks don't use a decent caulk when they build their offices . . . coupla years down the road, they got all kindsa problems."

Cut a few corners. Make a little extra profit. Right? Wrong! Mistakes like that can . . . well . . . come back to haunt you.

That's why S & S Sales carries the full line of G.E. Silicone caulks. We know that G.E. Silicones perform better longer. They even gun easier and faster

in any kind of weather condition. And G.E. Silicones eliminate the need for primers in most cases. You've saved time in the short run and money in the long run. You've also saved face by not having to come back and do the job right.

Talk to the experts at S & S Sales about the "new" Silglaze II

Silicone sealants from General Electric. We'll help you build a reputation. Not a house of horrors.

**S & S
Sales
CORPORATION**
There is no equal.

For your free "SINGLE SOURCE BOOK," call or write:
S & S Sales Corporation, 12030 West Silver Spring Road, Milwaukee, WI 53225
1-800-657-0701

W I S C O N S I N

Architect

Features

- 9 New Roles for Wisconsin Schools
James McCoy and George Tipler
- 13 Educational Problems in Wisconsin and Possible Solutions
Lawrence E. Bray, AIA

Projects

- 17 Middle School
The Stubenrauch Associates, Inc.
- 19 Maple Dale School
BHS Architects, Inc.
- 21 Bannach K-6 School
Bray Associates • Architects, Inc.
- 22 Elementary School
Mid-State Associates, Inc.
- 23 Elementary School
PSI Design, Inc.
- 25 Forest Glen Elementary School
Berners-Schober Associates, Inc.
- 26 Horizon School
Bray Associates • Architects, Inc.
- 27 University of Wisconsin Center-Fox Valley
Miller Wagner Coenen, Inc.
- 29 City of Waukesha Police Station
the Zimmerman Design Group
- 30 Park Pavilion Exterior Restoration
Schroeder Piwoni, Inc.
- 31 Manitowoc Safety Building
The Stubenrauch Associates, Inc.
- 33 Sturtevant Municipal Building
the Zimmerman Design Group
- 34 Lakeland Medical Center
Marshall Erdman and Associates, Inc.
- 37 Wisconsin Information Center
PSI Design, Inc.
- 38 Health Sciences Offices
Welman Architects, Inc.
- 39 Campus Child Care Center
the Zimmerman Design Group
- 41 Boys' and Girls' Club of Greater Milwaukee
BHS Architects, Inc.
- 44 St. Vincent's Hospital
Berners-Schober Associates, Inc.
- 45 Waukesha Memorial Hospital
Engberg Anderson Architects
- 47 Chippewa Falls Police Station
Seymour Davis Seymour

Departments

- 7 Guidelines
- 49 Forum
- 51 Society News
- 56 Marketplace
- 57 Advertiser Index

WISCONSIN ARCHITECT serves the design and construction industry in Wisconsin with circulation to Architects, Engineers, General Contractors, Business and Interior Designers, Landscape Architects, Certified Planners, Developers, Specifiers, Construction Managers, Facilities Managers, Builders, Manufacturers, and Suppliers. *Wisconsin Architect* is the official publication of the Wisconsin Society of Architects/A.I.A., published by Wisconsin Architect, Inc. Address all editorial and advertising inquiries to: Editor, Wisconsin Architect, 321 S. Hamilton St., Madison, WI 53703; phone 608/257-8477. Wisconsin Architect and the WSA disclaim liability for statements by the editors, contributors, and advertisers.

Wisconsin Society of Architects Board of Directors: Roger D. Roslansky, AIA, *President*; Ross T. Potter, AIA, *Vice President/President-Elect*; Lisa L. Kennedy, AIA, *Secretary/Treasurer*; Richard W. Eschner, AIA, *Past President*; Kevin J. Connolly, AIA; Horst W. Lobe, AIA; Daniel J. Becker, AIA; James E. Larson, AIA; Joseph L. Powelka, AIA; Robert E. Shipley, AIA; John W. Sutton, AIA; Walter L. Wilson, AIA; James L. Fryk, AIA; Stan M. Ramaker, AIA; Mark E. Keating, AIA; E. Mitchell Spencer, AIA; Charles H. Western (Associate Representative); Jeff Polachowski (UWM SARUP Student Representative); Luanne Bowers (MSOE Student Representative); William M. Babcock, *Executive Director*.

Wisconsin Society of Architects/AIA: 321 South Hamilton Street, Madison, Wisconsin 53703—Phone (608) 257-8477.

Wisconsin Architects Foundation Board of Directors: 321 S. Hamilton Street, Madison, Wisconsin 53703—Phone (608) 257-8477; Gary V. Zimmerman, AIA, *President*; Jack L. Fischer, AIA, *Secretary/Treasurer*; Robert D. Cooper, AIA; Dean Robert C. Greenstreet, Clarence Huettneraich, AIA, FCSI; James T. Potter, AIA; Richard J. Griesel, AIA; Ronald G. Bowen, FAIA; Brian F. Larson, AIA; William M. Babcock, *Executive Director*.

North Central Region AIA: James W. Miller, AIA, *Director*.

Southwest Wisconsin Chapter: Robert E. Shipley, AIA, *President*; John W. Sutton, AIA, *Vice President/President-Elect*; A. James Gersich, AIA, *Secretary/Treasurer*.

Southeast Wisconsin Chapter: Walter L. Wilson, AIA, *President*; James L. Fryk, AIA, *Vice President/President-Elect*; Daryl J. Dean, AIA, *Secretary/Treasurer*.

Northwest Wisconsin Chapter: E. Mitchell Spencer, AIA, *President*; Dennis E. Miller, AIA, *Secretary/Treasurer*.

Northeast Wisconsin Chapter: Stan M. Ramaker, AIA, *President*; Mark E. Keating, AIA, *Vice President/President-Elect*; Kevin B. Shumann, AIA, *Secretary/Treasurer*.

Wisconsin Architect, Inc.; Board of Directors: Roger D. Roslansky, AIA; Richard W. Eschner, AIA; Ross T. Potter, AIA; Lisa L. Kennedy, AIA.

Wisconsin Architect Editorial Board: Peter J. Schuyler, AIA, *Chair*; Dean Robert C. Greenstreet, Douglas C. Ryhn, Nancy J. Hubbard; William M. Babcock. *Chapter Coordinators:* Robert E. Shipley, AIA; Daniel J. Becker, AIA; Tim Larson, AIA; Dennis L. Olson, AIA.

Magazine Staff

Editor
William Babcock

Coordinating Editor
Grace Stith

Advertising & Production Manager
Cheryl Seurinck



Printed on recycled paper

Cover: Lakeland Medical Center,
Minocqua, Wisconsin
Architect: Marshall Erdman and
Associates, Inc.
Photographer: Steven T. Rhyner

We'll Help Fund Energy Efficient Retrofit Studies or Building Design.

Innovative energy efficiency measures, designed into new or expanding facilities, offer long-term benefits. Some of these include lower energy bills, faster equipment payback, increased property value and protection of the environment.

To encourage energy efficiency innovation, Wisconsin Public Service will pay 50% of the cost (up to \$5,000) for design studies which evaluate the value-added benefits that can be achieved by incorporating state-of-the-art efficiency vs. conventional design. Pre-approval is required.

Options which may be evaluated include, but are not limited to:

- Efficient motors and drives
- Lighting and lighting control systems
- Process heat recovery
- Efficient building envelope design
- HVAC efficiency improvements
- Thermal energy storage systems
- Natural gas air conditioning
- Alternate energy systems

All existing and potential retail gas and/or electric commercial and industrial customers of WPS may qualify for funding under the Design Studies program. Contact your local Wisconsin Public Service representative today for more information, or call 414-433-1719.



**Design Studies
For Business
And Industry**



Occasionally, it may be good to look back to review the changes that are occurring in the profession of architecture. In the past decade, the changes have been tremendous and more changes are challenging architects almost daily. The Institute, Society and Chapters are each doing a fine job to keep our members informed.

The "new" AIA is streamlining its infrastructure to improve its pro-

***To get the most
out of these
programs—get
involved.***

ducts and information to better serve the profession's needs. However, to get the most out of these programs—get involved. As a member of a WSA or local Chapter committee, you will get the information first hand and

learn much from your fellow architects as you exchange ideas with them.

Membership on a national committee is even more rewarding as you work with some of the best informed people in our profession—get involved. You will benefit greatly and it will help to keep you up-to-date with the many changes that are occurring in our profession.

John Jacoby, FAIA

SMART MONEY. THE PIVOTAL PART OF ANY NEW CONSTRUCTION PROJECT.


If you're in the design or contracting business, Wisconsin Electric's Smart Money For Business program can provide added value to your service.

Contact us with your new construction projects early on. We'll help you design and build more efficient, comfortable, higher-value facilities. And, we offer cash incentives to make it worth your while.

Your clients benefit immediately, and later,

when energy-efficiency measures translate into lower energy costs and higher productivity and profits.

To include Smart Money in your next new construction project, or to apply for your Professional Design Incentive, contact Wisconsin Electric at 1-800-544-7989. In the Milwaukee area, call 221-4900.



SMART MONEY FOR BUSINESS PROGRAM

CALL 221-4900. OUTSIDE MILWAUKEE, 1-800-544-7989.

New Roles for Wisconsin Schools

More than three quarters of the mothers of preschool children are now working out of the home and, in most cases, must find an out-of-home program for their children as a result. Increasingly, the school is being considered as a possible location for preschool programs for young children and as a resource for their families. Persons responsible for school remodeling or new construction should give consideration to the emerging need to serve preschool children, not only during the school year but year round, and for increased parental involvement at the school. About 30 percent of families of preschoolers needed day care outside the home in 1970; in 1990, it is reversed with about 70 percent needing day care services.

Schools serving very young children isn't a new phenomenon in Wisconsin. In 1857, the first kindergarten in Wisconsin at Watertown served children 2, 3, 4 and 5 years of age. Today 8 percent of 4-year-olds are in public kindergartens, which compares to 22 percent in 1909, over 80 years ago. The 1991 Children's Defense Fund Report stated that 63 percent of non-rural and 66 percent of rural mothers are employed revealing that the needs of rural and urban areas are similar.

Why did preschool programs move out of the public schools? In large measure because the environment was inappropriate for both children and parents.

Increasingly, employers will have greater numbers of mothers as employees and increasingly employees are concerned about available child care. Child care for

preschoolers is needed both before and after school hours and during school vacations. Many employers can't provide child care for their limited number of employees and the number of private providers isn't adequate for the need.

The school is being considered as a site for a variety of reasons. Dr. Ed Zigler, an early childhood authority from Yale University, recommends school involvement with services to young children. Programs and experiences in numerous states have supported having schools serve preschool children and their parents. National studies, such as the Council on Economic Development, support more services for young children including educational experiences. Federal and state legislation require schools to serve preschool

the child when kindergarten class is completed for the day. With state aid now available for 4-year-old kindergarten, that program will grow, but presently it is only part time.

However, the service program that will be emerging is definitely not one of more education nor solely a school program. What we will have is a system of service collaboration including education, parenting education, health service, and social service programs coming to the child and the parents. To date we don't have models of experience. This is truly a time for design creativity to conceptualize a facility adapted to serve preschool children and their parents and including use by providers of education, health service, social services and other services

It is estimated that 300,000 children in Wisconsin need child care. It would seem prudent for those planning an elementary school facility to explore with the school community the issue of serving the needs of young children.

children with exceptional educational needs, and the President's educational goals include having young children ready to learn.

In 1988, 6 percent of Wisconsin's 4-year olds were in a public school kindergarten and 32 percent were in a non-public pre-school, 18 percent in special programs, and the remainder at home or in child care out of the home. The U.S. Office of Education reports that in 1970 only 12 percent of 4-year-olds were in a full day program, and in 1990 the percent was 42 in such programs.

In Wisconsin we have a trend toward more school time for both 4- and 5-year-olds with a void, in many cases, of what to do with

for this special clientele. This new school design must accommodate the program features for young children, such as separate arrival, spending some time in their quarters and some time in other parts of the building, and being operational when the total student body isn't present, such as before and after school hours, and during vacation.

It is estimated that 300,000 children in Wisconsin need child care. For a young family, child care can be the third or fourth top budget item after food, housing and taxes. Licensed private care providers are generally providing good care, but there is a large unfilled void.

It would not be surprising if the school district isn't receptive to assuming this new program, but as an alternative, they may contract out the operation to another entity. The facility design should be such that there is separateness for a quasi-separate operation of the programs to which this account is referring.

Funding for this extension of the school operations also offers innovative opportunities. Sources can include attendance, fees, employer contributions or fringe benefits, federal funds, state funding, service agency funds, and, in some measure, the state school aid formula.

The Committee for Economic Development justifies preschool costs stating that "one dollar investment in quality preschool education returns \$4.75 because of the lower costs of special education, public assistance, and crime."

Early intervention or early childhood education for young children who are at risk of academic failure is being supported by such groups as Committee for Economic Development (1987), National Governors' Association (1986-7), Council of Chief State School Officers (1987-8) and the National Association of State Boards of Education (1988). The target is youngsters before they reach kindergarten, and provide developmentally appropriate activities and experiences for young children as well as opportunities for parents to become actively involved in the development and education of their children. This often includes health, nutrition, day care, social services and education. Programs to date aren't nearly adequate.

In 1992, the Wisconsin legislature enacted state budget provisions, which seem to point the direction, with special aid for public schools to serve preschool children with education services plus health, nutrition and social services. Another initiative creates a new program for public schools to provide students with programs which are collaborative with other public service providers. Schools seem increasingly to be a point of aid for services in addition to education with emphasis on preschoolers and their families.

The legislature, before 1992, had authorized school boards to operate or contract their facilities for day care and for pre-school programs. This has allowed numerous varieties of arrangements for programs using school facilities.

An example of the school collaborating with other agencies in serving children is the program Superintendent W. Decker and his Menasha School District operates. The district has a child care with breakfast program before school. The after-school care program in the same school is operated by a separate service agency. A fee for attendance is involved.

The existing and emerging evidence points to a definite trend toward schools providing more services for young children and their families. Creating or remodeling school facilities warrants special consideration for space which can be used by young children in a setting different from a typical classroom. These programs will operate at hours and days when school isn't in session. Parents will be involved with their

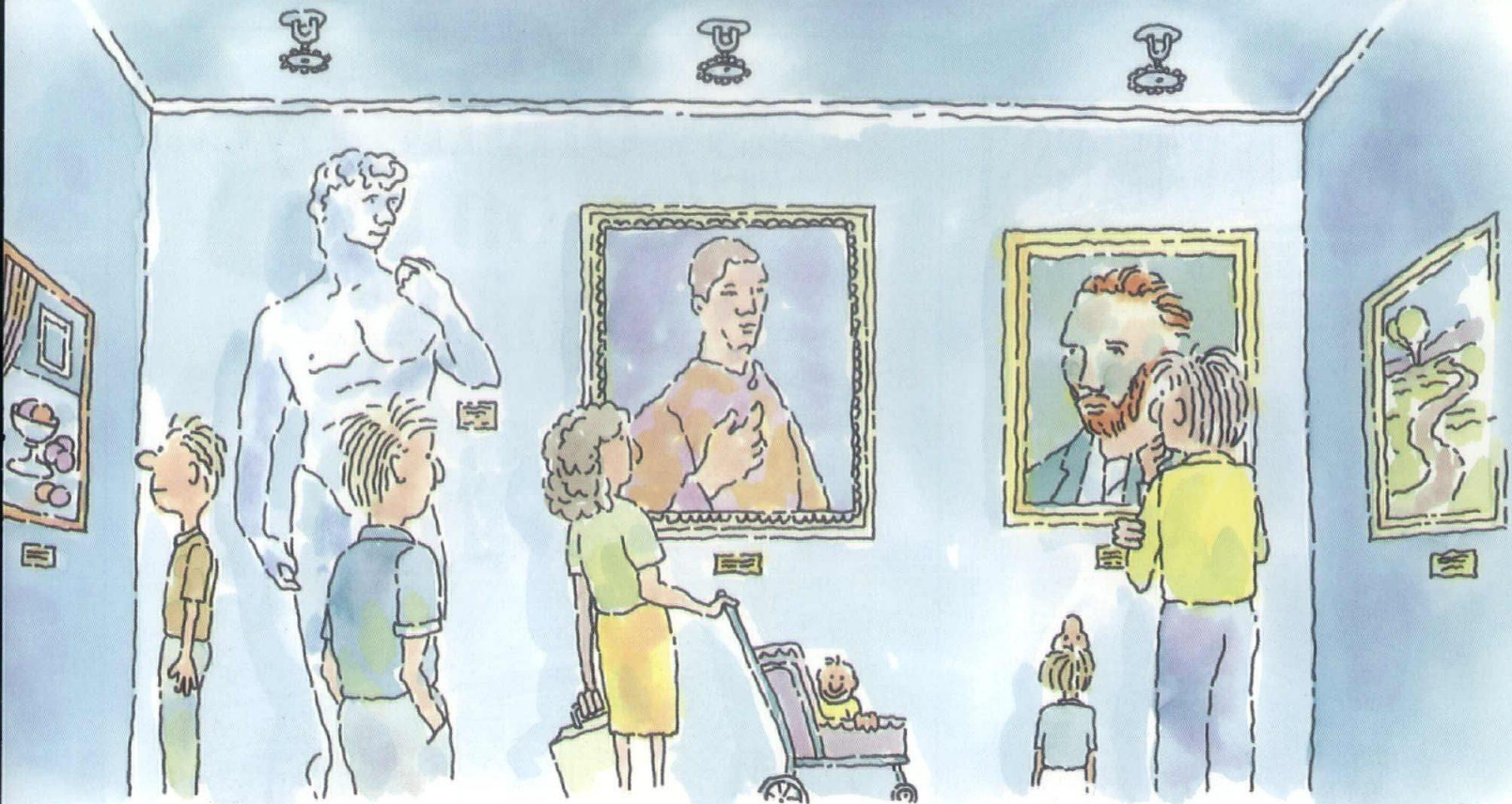
children and in separate programs with their peers but related to their children. Service agencies with programs other than education will be featured in connection with this new clientele. This prospect offers the school design professional with a special opportunity and responsibility to have design options ready to present and discuss with their school clients. It could be possible that any school facility without the capacity to serve preschool children and young children and their parents all year is out-of-date at bid letting.

This emerging program, conducted at the school, isn't an educational program as conventionally perceived, but is a comprehensive program of collaborative services.

It would seem prudent for the parties planning an elementary school facility to explore with the school community the issue of including in the building facilities adaptable to serving pre-schoolers, serving young children before and after school and during vacations, and operated by the district or contracted to another provider.

The changing demographics of our society presents the opportunity for the school to evaluate its roles in serving the needs of the families of the 21st Century. Or is it reinstating the role of a century ago? **WA**

EDITOR: James McCoy is an Early Childhood Consultant and George Tipler is a Consultant with the Department of Public Instruction, Madison, Wisconsin.



Our Work Hangs Above All the Great Masters.

Art museums across the state of Wisconsin contain thousands of precious pieces of art. Masterpieces from world-renowned artists fill each room. The Wisconsin Pipe Trades is proud to have their work displayed right alongside these legendary masters.

In addition to the paintings, statues and sculptures at the museum, there are thousands of automatic sprinklers ready to spring into action to protect the irreplaceable Van Gogh, Monet or Picasso.

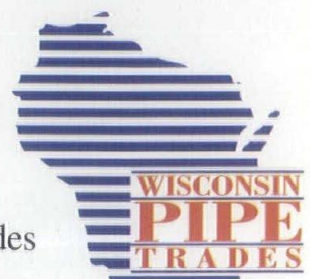
The Wisconsin Pipe Trades members take pride in the fact that their art is relied upon to protect these other precious pieces. And that pride is reflected in their work.

Consisting of knowledgeable and skilled craftspeople, the Wisconsin Pipe Trades Association works to produce quality construction

throughout the entire state. With members specializing in all facets of plumbing, steamfitting, fire protection and air conditioning/refrigeration the Wisconsin Pipe Trades Association can place trained professionals on the job when you need them, with the skills needed to guarantee quality workmanship.

The Wisconsin Pipe Trades members are proud of their work and this pride is reflected in increased productivity and efficiency. With their commitment to quality and care...the Wisconsin Pipe Trades will produce for you.

So when you're lining up your next building project, keep the Wisconsin Pipe Trades in mind.





YOUR BUILDING PARTNER
SINCE 1952



**COURTYARD BY MARIOTT
BROOKFIELD, WI**

**IN MILWAUKEE CALL
FRED BERSCH
(414) 358-3505**

**IN MADISON CALL
JERRY HENRICH
(608) 222-5100**



Easy on the Eye... Easy on the Architect.



Our beautiful sunrooms come
with something extra...
Complete technical assistance.

When you specify our products, we'll give
you full specifications, detailed drawings,
design assistance and a wealth of experience.
And it's all as close as your phone, your fax
or your overnight mail pickup.

We make a great sunroom a great deal
easier to specify. Call us now. We're easy.



Let's Talk Technical.

(414) 722-8786

622 Airport Road, Menasha, WI

Moving?

Let us know 4-6 weeks in advance so that you
won't miss a single issue of *Wisconsin Architect*.
Please include a copy of the old label.

New Address:

Name _____

Address _____

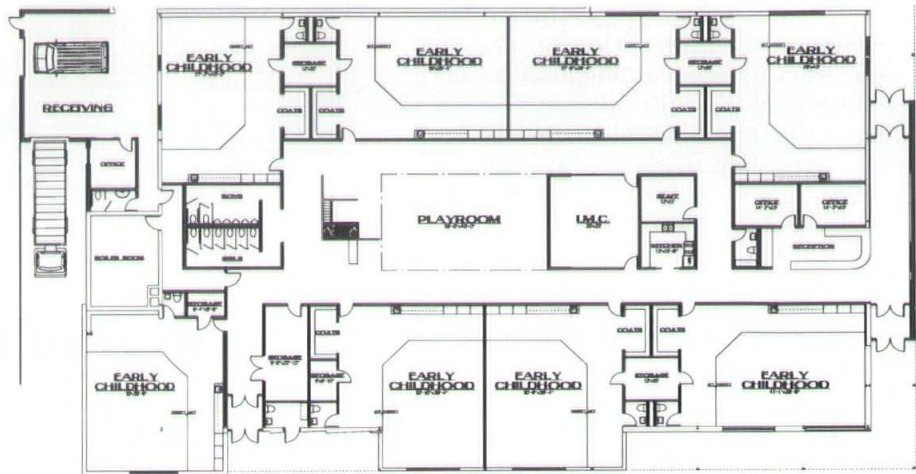
City, State, Zip _____

Mail To:
WISCONSIN ARCHITECT
321 S. Hamilton St.
Madison, WI 53703

Educational Problems in Wisconsin and Possible Solutions

I have been working on a committee with George Tipler, Jim McCoy and Rick Kloiber of the Department of Public Instruction. We have discussed many potential opportunities to address the needs for preschoolers as identified in their article. Unfortunately, there are not many good physical examples offering this type of program. A few "what if" solutions have been suggested along with some projects that we have currently in the embryo stage that may serve to stimulate some opportunities for innovation.

The Sheboygan Area School District has recently purchased a 14,000 square foot grocery store as part of a strip mall complex. This space will be remodeled into eight early childhood rooms along with support areas such as occupational and physical therapy, multipurpose-dining, guidance, offices and others. This school is located right next to South High School where students can serve as teacher aides and receive credits in Family and Consumer Education programs. This use also relieves the crowded elementary schools throughout Sheboygan. The committee has speculated that "what if" an adjacent mall space were leased by a private day-care center and children could be transferred back and forth for a one-step care program. It is further imagined that social services could be provided within these spaces and further coordinate more preschool and family needs.



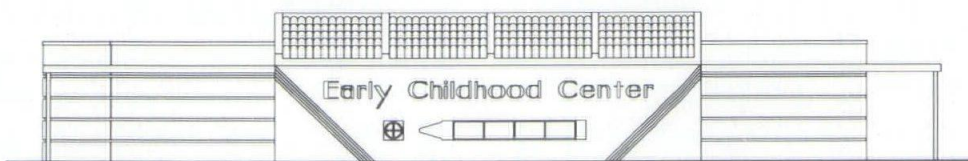
FLOOR PLAN



A similar situation is being investigated in Watertown, home of the first kindergarten in the United States. We are currently bidding a \$20 million new high school which will leave the 1910 and 1950s' old high school vacant. The design anticipated at this time will incorporate preschool and kindergarten programs in the 1950s' structure while demolishing the remaining building to create adequate play and parking areas. This proposal again relieves the crowded elementary schools and will have room to provide additional public or private programs.

These day-care and latch-key programs are probably even more needed in smaller, rural communities where private day-care centers are not as available. The School District of Lodi currently

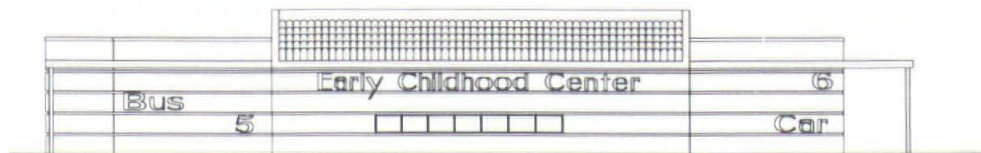
operates a kindergarten center in Dane and is planning on expanding this facility. Although a day-care center is not planned, it may be a future consideration along with other preschool programs. St. Croix Falls is considering a different solution to their facility and educational needs. An older seventh and eighth grade middle school needs expansion to incorporate a comprehensive sixth, seventh and eighth grade program. The site is extremely restricted but recent building improvements limit the desire for abandoning the school. The three kindergarten through sixth grade schools are also overcrowded. The potential solution encompasses a sixth-seventh-eighth grade middle school addition at the high school, conversion of the existing middle school to a fourth and fifth grade intermediate center and keeping all three elementary buildings intact with remodeling for pre-kindergarten through third grades. This maintains all buildings for a desired time, provides new and proper facilities for a middle



North Elevation

school, and develops space for an excellent pre-primary/primary program. Further innovations discussed and being put into operation include the investigation by industry of providing not only day-care facilities, but combining with the local school district to provide preschool and kindergarten programs. The mechanics of this have been discussed at the Department of Public Instruction and it is believed they can be accommodated.

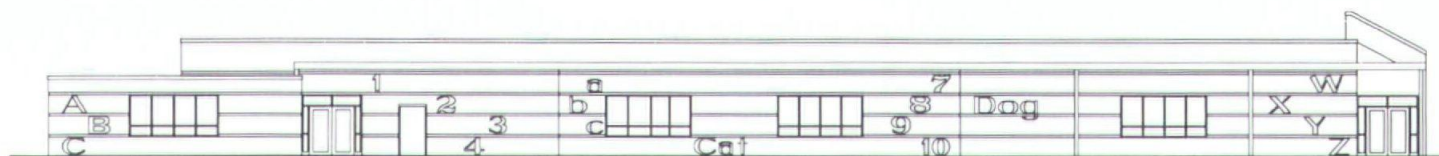
A new kindergarten through third grade building is currently under construction at Marshall, Wisconsin, which recently received a grant of \$654,330 from R.J.R. Nabisco. Superintendent John Benson of Marshall, in applying for this "Next Century School Grant," describes many of the types of programs that are being envisioned for preschoolers through third grade.



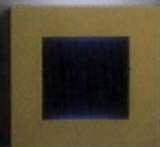
Alternate North Elevation

The building will allow them to provide all day five-year-old kindergarten and one-half day for four-year-olds. The four-year-old program will be age appropriate and not simply an extension of the current programs. Parent involvement is to be an important part of this concept with each student having an individual family service plan (IFSP) developed to suit his or her background and skills. This plan will be monitored through third grade with follow-up review. It is interesting to note that each grade classroom will have the same teacher as they progress from first through third grades. This will create a bonding not only between the teacher and student but the family as well.

An early child community council has been formed to assist in planning and will not only include people from Marshall but from the broader base of Dane County as well. Dane County Human Services and Head Start will be involved at this level and be provided interim space as needed. This school will also accommodate before and after care for children on a pay-as-you-go basis. This 6:00 a.m. to 6:00 p.m. service is being bid to private providers within the school district's facility. This school will truly be a provider for preschoolers and early education programs. **WA**

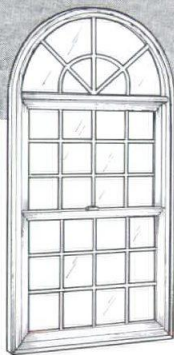
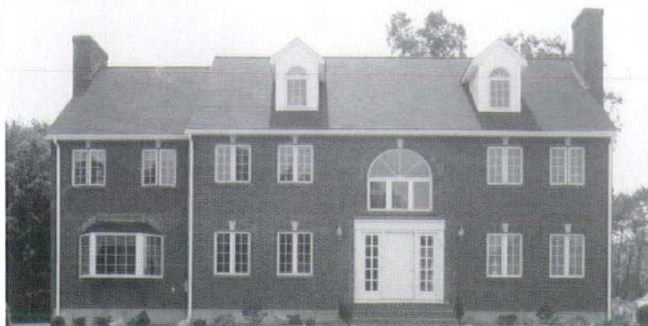


East Elevation

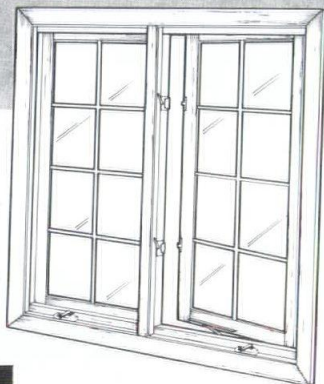


Lighting Solutions For The
Americans With Disabilities Act

Windows



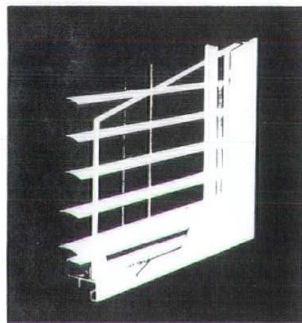
*"New!
15 colors
available"*



First Impression Blind

— BLIND BETWEEN GLASS

— COMPLETELY RETRACTABLE



When only the BEST will do.

Quality materials and workmanship combined with attractive and energy efficient design, have made aluminum clad BiltBest Windows a popular choice with today's builders and home buyers.

Make BiltBest your next choice



OMNI GLASS & PAINT, INC.

2010 Dickinson, Oshkosh

**prefinished galvanized
steel and aluminum**



Project: St. Paul's Lower School Building

Brooklandville, MD

Architect: Greives & Associates

General Contractor: Henry H. Lewis Contractors Inc.

Roofing Contractor: Fick Brothers

Color: Arcadia Green

Profile: Integral Standing Seam

- Full Kynar 500®
- 24 ga. steel
- .032 through .080 aluminum
- 23 standard colors
- 20 year non-prorated warranty
- Metal roofing, gravel stops and copings
- UL 90 rated panels
- New PAC-CLAD metallic finishes

For complete information regarding the Petersen Product Line, and to be placed on our mailing list, please give us a call at 1-800-PAC-CLAD.

Distributed in Wisconsin by:
Milwaukee Insulation
1-800-242-7409

Represented by:
David Fogelstrom & Assoc.
1-414-782-7713

**[PAC] Petersen
Aluminum
Corporation**

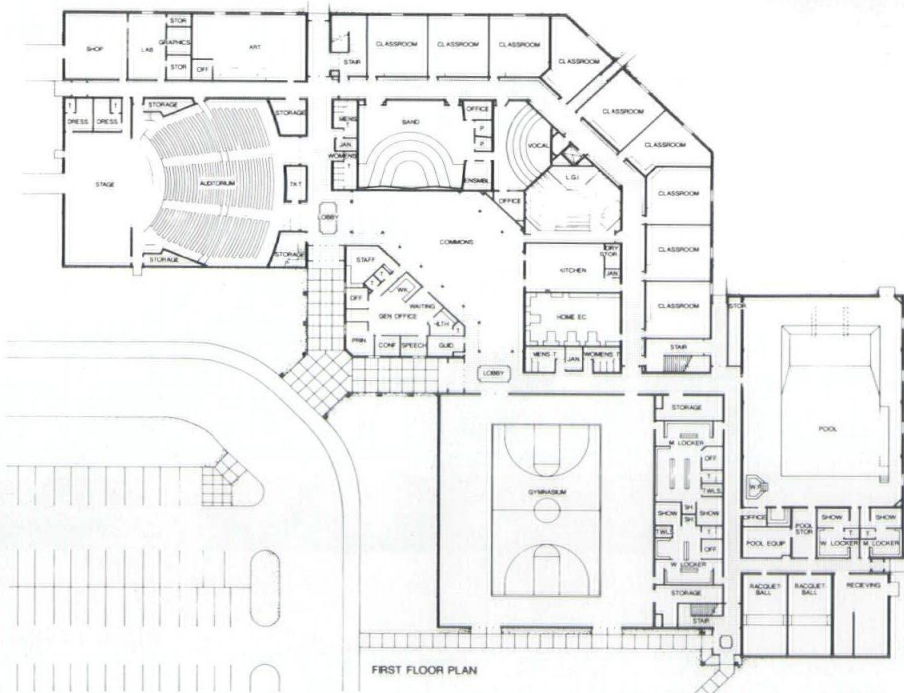
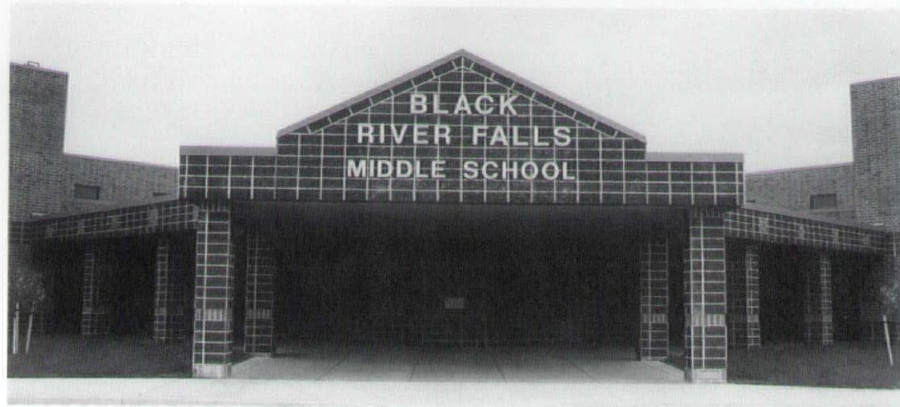
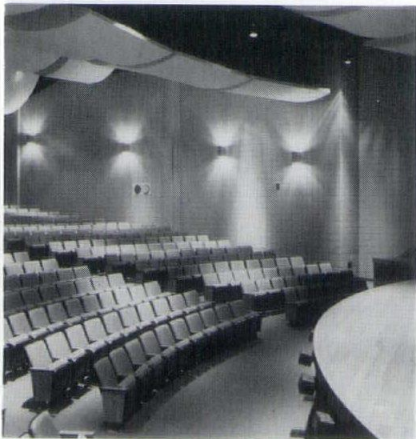
255 Estes Avenue, Elk Grove Village, Illinois 60007

A private donation was made to add an auditorium to this new middle school and to create a recreation area for community use as well. The two-story educational section is housed between auditorium wing and recreation wing.

The site incorporates a hill which was tapered down to create playfields shared by middle school and adjacent high school students. Pool, gym and new auditorium are also shared. The auditorium stage has complete lighting board; the facility is equipped with special electrical systems, cable TV, master clock, public address system throughout plus digital controls for optimal efficiency in heating and ventilation.

Handicap access ramp leads to six lane pool in the Lunda Recreation Center as well as to sauna and whirlpool. The facility provides space for basketball and volleyball, racquetball, exercise room and bleacher seating for 512 people. A separate entrance was planned for public use.

Photography: Barbara Gahan



A P E R F E C T F I T



There's a certain satisfaction that comes with finding the perfect fit. Like crafting a mitered edge. Skillfully inlaying a plastic laminate counter. Or flawlessly matching a turn-of-the-century moulding.

If you're looking for a millwork partner that's the perfect fit for your job, call DeLeers. They're

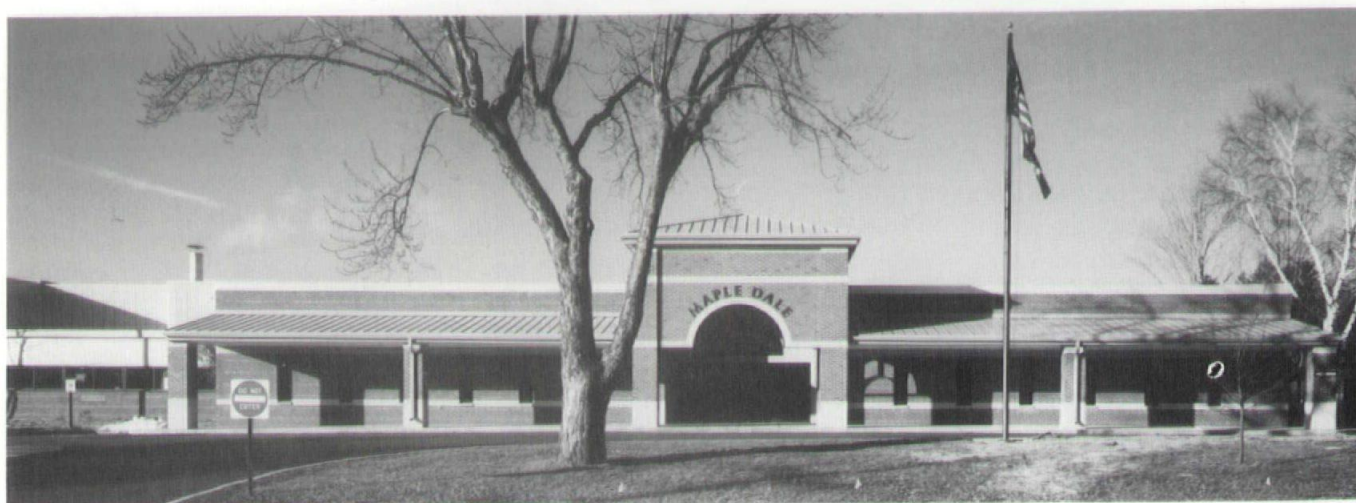
specialists in the design, production and installation of fine custom cabinetry and millwork.

Contact Phil DeLeers at 414/465-6764.

DE LEERS

Quality manufacturers of cabinetry and millwork for remodeling or new construction. Featuring laminate casework and counters, custom casework, paneling and mouldings.

<i>Project</i>	Maple Dale School
<i>Location</i>	Fox Point, Wisconsin
<i>Architect</i>	BHS Architects, Inc.
<i>General Contractor</i>	James Luterbach Construction

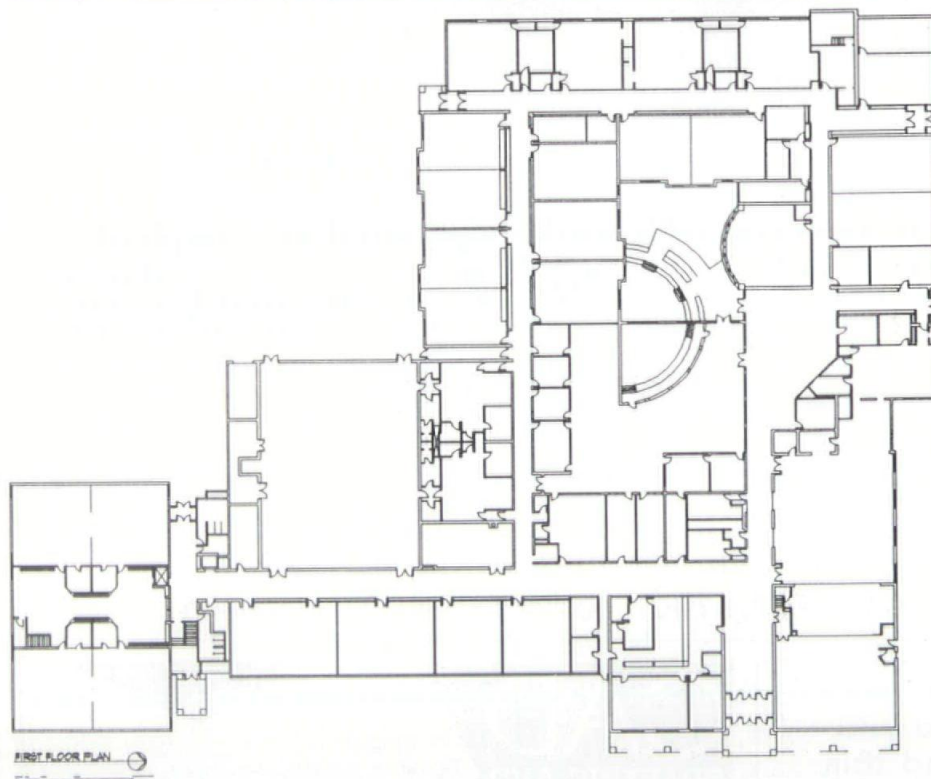


Maple Dale was originally constructed in 1923 and was subsequently added to on seven occasions. The result was a three-story building that was inefficient, unattractive and non-code conforming. Space for library/media center, computers, specialty classes and administration was severely lacking.

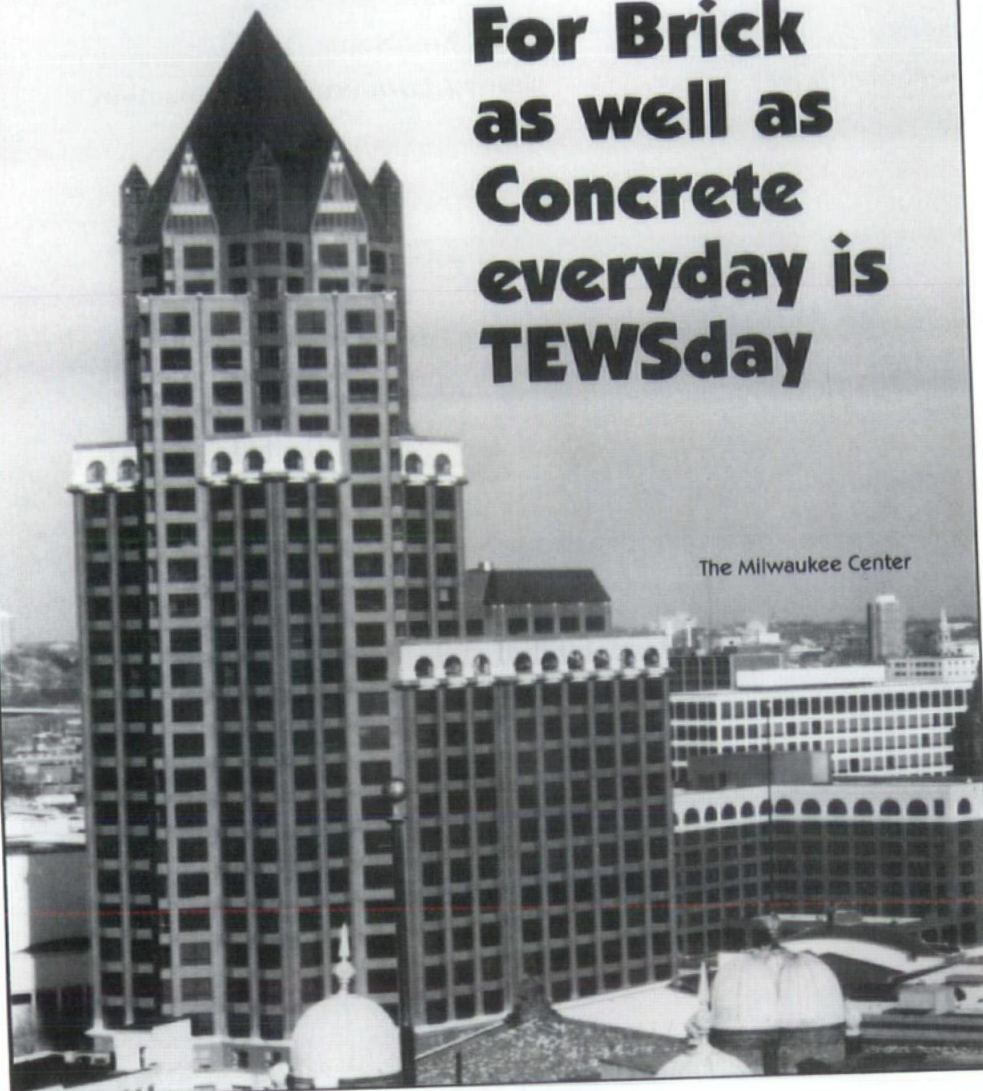
A new addition of 18,000 square feet was built and the entire existing middle school was extensively remodeled. An enclosed courtyard with an outdoor amphitheater was created. The original library was transformed into a new administrative area. An elevator was added in the 8th grade wing to make the area handicap accessible. Locker rooms, kitchen, west wing toilet rooms and music room were extensively remodeled.

The roof was replaced, as were all of the windows, resulting in increased comfort and energy savings. A new state-of-the-art mechanical system was installed, providing air conditioning throughout the building.

Photography: Ed Purcell



**For Brick
as well as
Concrete
everyday is
TEWSday**



The Milwaukee Center

TEWS

Company

Contractor Supply Center

7200 South 10th Street, Oak Creek, Wisconsin

414/764-8700 Toll-free 1-800/686-8401

Do you
read this
magazine? If
so, please
support the
advertisers
you see in
these pages.
They make
this publica-
tion possible.

CAD

**DRAFTING AND
DESIGN**

MAN &
MACHINE

— OUR
SITE OR
YOURS

3-D Design

Translating

Plotting

Training

Facility Documentation & Verification

Construction Documentation

CAD System Rentals

Contract Temporary Personnel

Project Specialists on Staff

Expertise With Multiple Software Packages

IDAC

IDAC, Inc.
Suite 550
20900 Swenson Dr.
Waukesha, WI 53186
414-796-1060

**Small Change
Could Cost You
Big Dollars**



—By Roger K. Lewis, FAIA

Copying blank AIA Documents is illegal...and dangerous. The AIA Documents are revised periodically to reflect current case law and the ever-changing practices within the construction industry. Copying an outdated AIA Document—that's missing even a small change or revision—increases your liability and the possibility that you'll pay big dollars to settle a dispute. Don't take chances; order your current AIA Documents from us today.

documents
FULL SERVICE DISTRIBUTOR
THE AMERICAN INSTITUTE OF ARCHITECTS

The Wisconsin Society of Architects
321 S. Hamilton St.
Madison, WI 53703
(608) 257-8477

AIA Documents...the foundation for building agreements.

page 11

Project

Bannach K-6 School

Location

Stevens Point, Wisconsin

Architect

Bray Associates • Architects Inc.

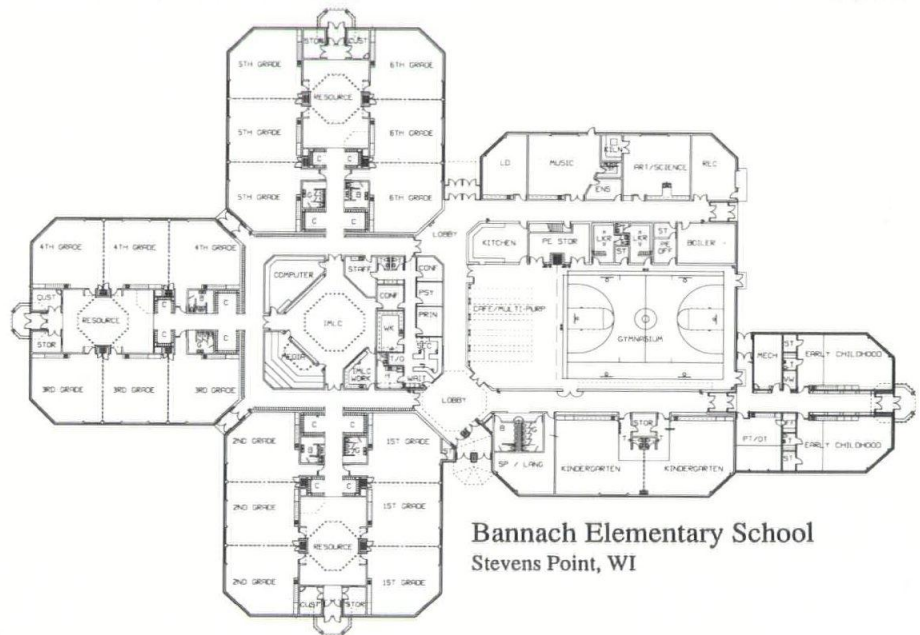
General Contractor

The Boson Company, Inc.

The Bannach elementary school is designed to accommodate three classrooms per grade for kindergarten through 6th. The design reflects the educational concept developed by the administration with its three distinct age orientated pods for grades 1-2, 3-4, and 5-6. These units will be basically self-contained with their own bathrooms, lockers and resource areas (mini-IMLC-library). These resource areas will have a computer area, IMLC materials, conference/small group areas and space for teacher aides. This space is networked with the main IMLC catalog system. The six classrooms sharing this area also have simple four-foot panel folding walls to expand or contract the teaching space for different groupings.

In operation the school is well tuned to "Outcome Based Education" where students are allowed to progress at their own level. The overall school is zoned for active day and night time use of the gym and cafeteria for school and community use. The exterior is designed of three distinct brick colors and clay tile roofs at the entrance porticos that give the school a playful child-like character.

Photography: Terry Berkovitz



Bannach Elementary School
Stevens Point, WI

<i>Project</i>	Elementary School
<i>Location</i>	North Freedom, Wisconsin
<i>Architect</i>	Mid-State Associates, Inc.
<i>General Contractor</i>	Stevens Construction Corp.

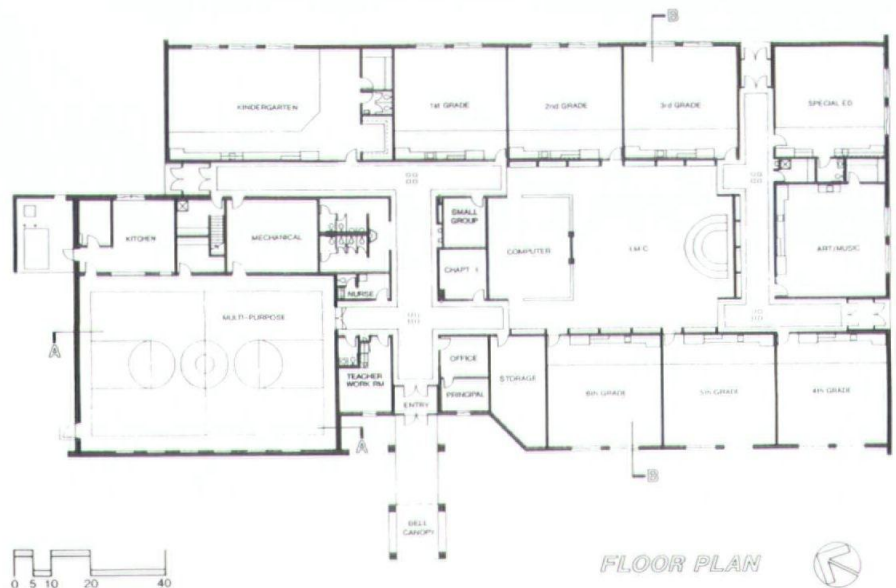
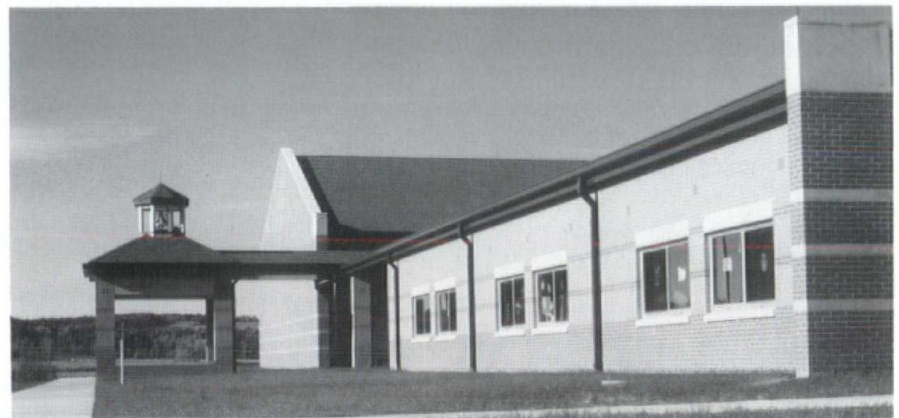
On the rolling countryside of rural Wisconsin, a simple but eloquent new school replaces a turn-of-the-century school and symbolizes new community pride.

Reminiscent of country school charm is the entry pavilion with bell and cupola. The bell from the old school continues, as it has for ninety years, to call students to class. The entry pavilion also serves an architectural role in bringing the building down to a friendly scale for the children.

The facade is articulated with limestone and two warm shades of brick detailed to suggest the traditional use of stone with implied quoins, window lintels and wall coping.

A pinwheel circulation pattern forms the plan of the teaching environment. The instructional materials center features a sunken amphitheater in a semicircular shape for storybook reading and small media presentations.

Photography: Dart Drake





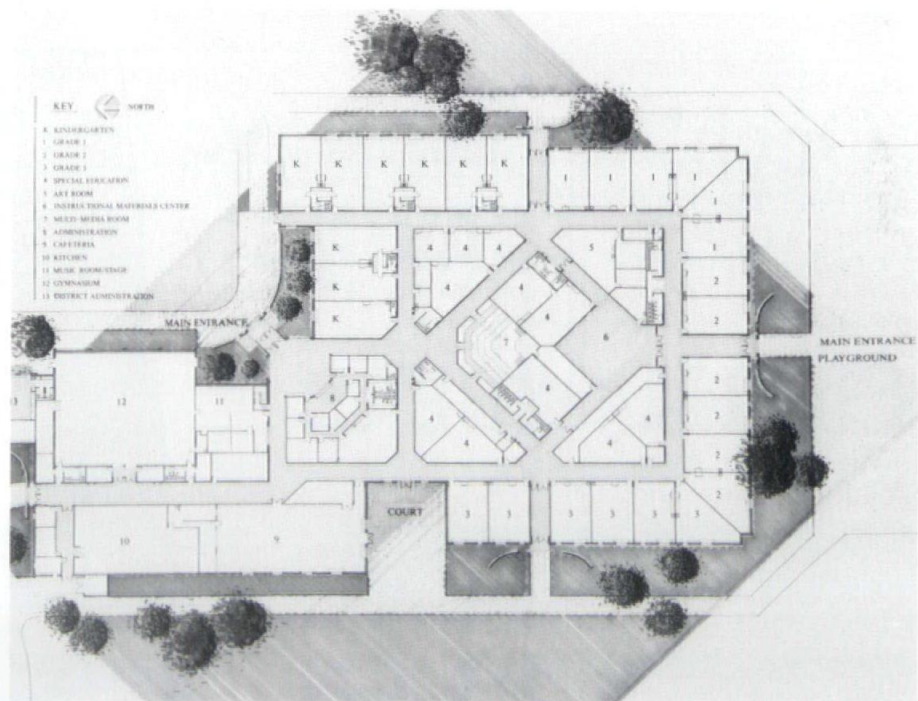
The heart of this school is the instructional materials center with easy access to classrooms. Regular classrooms are secluded from the noisy areas such as gym, music room and cafeteria.

A "welcome-with-open-arms" entrance was planned to be exciting without intimidating the younger children. A playful element is the ornamental ironwork above doorways with four points of the compass, a learning tool as well as an identification point. Each room has a color theme on doors which is repeated on coat racks, window blinds and counter tops in blue green, yellow, orange or red to assist in interior pathfinding. Out-

side the classroom facades, a colored tile is set above each window repeating the color within for orientation from the playground area. Each classroom has a large window plus a small child-height viewing window.

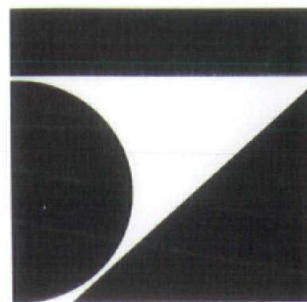
Existing evergreen trees planted by students were relocated and made part of the new landscape. Careful planning was required to fit the 90,000 square foot building in the limited site between high school athletic grounds and a middle school. Bus traffic is divided from regular traffic.

Photography: Leslie A. Ludtke and Ed Purcell





Project Designed By
the Zimmerman Design Group



Marvin Windows and Doors offer the flexibility demanded by Design Professionals. Each one is made to your specifications, because each one is made to order. Our Architectural Services Department offers a full range of support in design, engineering, and installation of premium Marvin Products. Contact Mark Heard at:



builders world, inc.

p.o. box 881—waukesha, wi 53187
(414) 542-8883
1-800-686-2206

MARVIN
WINDOWS & DOORS.



Ouch!

Don't Feel The Pinch.
Order And Use AIA
Documents.

Call Us.

We'll Send You
AIA Documents Today.

documents
FULL SERVICE DISTRIBUTOR

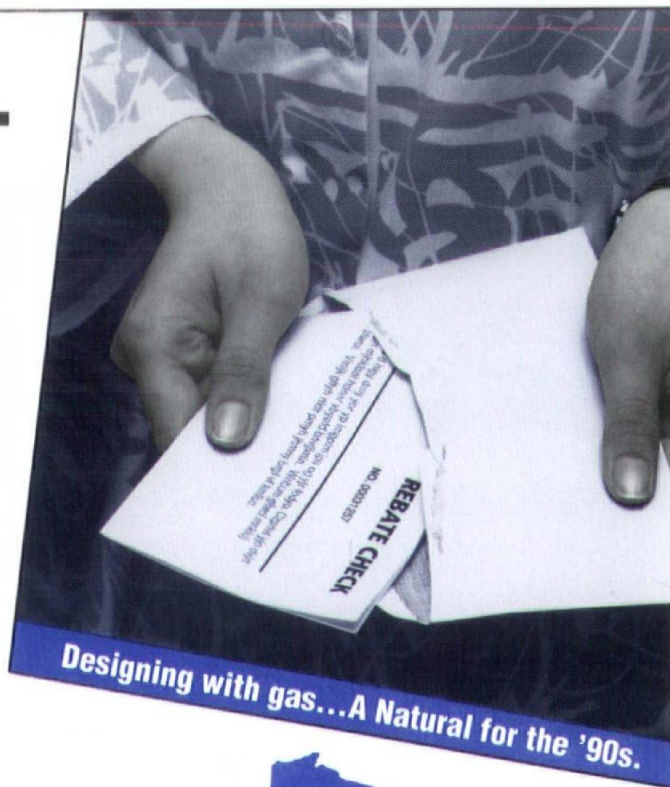


**Wisconsin Society
of Architects**

321 S. Hamilton St.
Madison, WI 53703
(608) 257-8477
(800) ARCHITECT

**MONEY-
SAVING
REBATE
IDEAS**

To learn more
about rebates on
natural gas-fired
equipment and
energy-efficient
building designs,
call your local
natural gas utility.



Designing with gas...A Natural for the '90s.



**Wisconsin
Blue Flame
Council**

<i>Project</i>	Forest Glen Elementary School
<i>Location</i>	Green Bay, Wisconsin
<i>Architect</i>	Berners-Schober Associates, Inc.
<i>General Contractor</i>	Geo. M. Hougard & Sons, Inc.

The design goals for this 81,000 square foot elementary school were to create environments that would appeal to the young and developing child while enhancing the education objectives of the school district. The plan creates a separate teaching unit for the preschool, kindergarten and first grade child and a separate unit for the second through sixth grade age group. A link between the two teaching units was constructed out of the shared functions including dining, food service, gymnasium, administration and counseling areas.

Each teaching unit is developed with the classrooms clustered around activity centers that reflect the teaching needs of the age group it serves. The spatial organization of the classrooms provide a unique environment for individual and group learning. This is achieved through the use of sloped ceilings that reflect the structure's pitched roof and indirect lighting throughout. Large bay windows in each classroom offer a view of the natural surrounding campus while providing natural light for science projects.

Photography: Steve Ryan

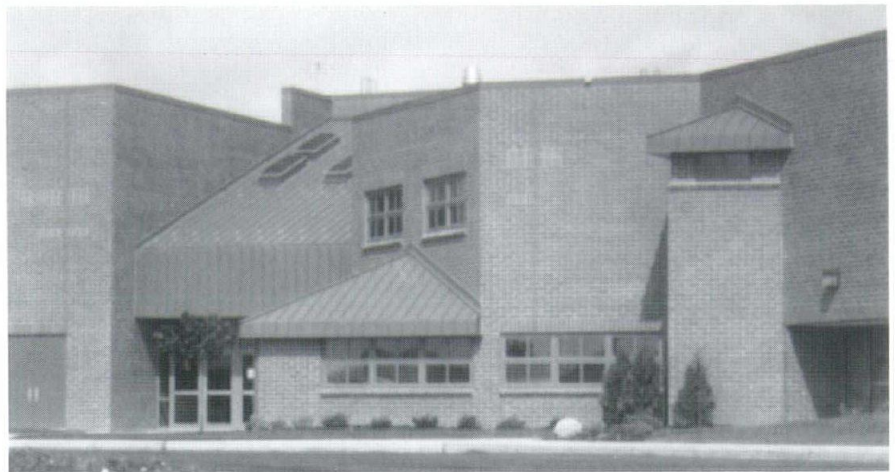


<i>Project</i>	Horizon School
<i>Location</i>	Plymouth, Wisconsin
<i>Architect</i>	Bray Associates • Architects Inc.
<i>General Contractor</i>	Jim Pankow Inc.

The two-story Horizon elementary school is located just south of the Plymouth high school on a sloping site. The school is designed with the upper floor office and classroom area opening to grade as the entrance for parents and high school use. The lower level opening entrance to the south serves as the bus and gym entrance with the cafeteria, kindergarten, music, art and others being on this level. The school is zoned so that high school students and community can use the varsity-size gymnasium after elementary hours. The core of the school, with its central IMC, is designed to expand to three classrooms per grade. An educational feature of the design is a 290 square foot resource area shared between every two classrooms. This space will be used for computers, small groups, special ed programs and teacher set-up areas.

The school is constructed of red brick to match the high school with blue standing seam metal roofs at the entrance and resource areas. These low roofs, along with a three-foot berme against the building, create a child-like scale and inviting atmosphere for the children.

Photography: Geoffrey Bray





Although the center is a "stepping stone" two-year campus, the administration required that it have the image of higher education. Various options were studied and the final decision was to expand with a new addition forming one contiguous facility.

The center had been operating from two sites including a leased junior high school building. The present site crosses a county line and the two county governments

gave unusual support and cooperation to the project.

Buff colored brick and cut stone blend with materials and patterns of the original facility. Binding the complex together is the accent band of terra cotta masonry. Green metal roofing on field house and twin stair towers add a complementary color and a feeling of great stability. Interior color palette is composed of cool grays and charcoal with teal blue and terra cotta accents. The main corridor, referred to as "Main Street," was designed with special attention to detail. The bracketed arches and floor pattern give importance and dignity to this main traffic area used by students.

Photography: King Au



Let Your Imagination Be Our Guide



At Elipticon we feel that you should have the freedom to design your architectural millwork without limitations from your supplier.

Whatever kind of millwork you can imagine for your next project, Elipticon can make it a reality.

Call us today.

See our display in Magnum Opus at Woodlake Mall in Kohler.



ELIPTICON INC.
600 East Moasis Drive
P.O. Box 221
Little Chute, WI 54140
Telephone 414-788-9322
Fax 414-788-3086



There Are 174 New Features in AutoCAD® Release 12.



But Either One of These Alone Makes it Worth the Price.

1. New technology that virtually eliminates regens for all Pan and Zoom operations.
2. New plotting capabilities, including WYSIWYG plot preview, on-the-fly plot device selection—and more.

Call for more information.

AUTODESK.
AUTHORIZED AUTOCAD DEALER

MASTER BLUE PRINT INC.

MADISON

608-256-4884
800-873-7238
810 W. Badger Rd.
Madison, WI 53713

MILWAUKEE

414-476-8161
800-279-7238
8112 W. Bluemound Rd.
Milwaukee, WI 53213

APPLETON

414-738-9077
800-283-7238
670 Westhill Blvd.
Appleton, WI 54915

© 1992 Master Blue Print, Inc. Rev. 7/92 Autodesk, the Autodesk logo and AutoCAD are registered trademarks of Autodesk, Inc.

PBBS EQUIPMENT CORP

5401 N. Park Dr., Butler, WI 53007

SINCE 1955

BOILER ROOM

Service - Parts - Sales - Chemical - Engineering

24 Hour Service
Radio Dispatched

INDUSTRIAL Large Parts
COMMERCIAL Inventory

Cleaver Brooks

**FACTORY AUTHORIZED
PARTS & SERVICE**

ALL MAKES

**Webster Burners
And-Car Systems**

SERVICE

Troubleshooting - Repairs - Cleaning - Refractory Work
Efficiency Tune-Ups - Service Contracts - Inspections
Mobile Boiler Room Rentals - Descaling - Conversions

SALES

Boiler Room Equipment & Accessories - Chemical
Systems Burners - Chemical Treatment & Analysis
Propane Systems And-Car Boiler Blowdown Systems
And-Car Monitor Systems

THROUGHOUT WISCONSIN AND UPPER MICHIGAN

Milwaukee (414) 781-9620 • Madison (608) 249-6604
Green Bay (414) 494-3675 • Stevens Point (715) 344-7310
FAX (414) 781-8526

THROUGHOUT MINNESOTA AND NW WISCONSIN THE HEINEN CO.

MINNEAPOLIS (612) 936-9800
DIVISION OF PBBS EQUIPMENT CORP.



In the past two decades the city of Waukesha has witnessed some of the most dramatic growth of any community in the state. As the city escalated from the government seat of a predominantly rural county to a sprawling city center, the local police department realized its facility needs had to respond to the service demands of urban life.

The new facility nearly tripled their existing space. The design features a secured public lobby, a secured drive-through sally port, intake/booking area, an isolated

dispatch/911 emergency room, detention cells, officer lockers and fitness room, staff lounge, and an attached heated garage space for 37 vehicles.

The masonry building is set within a mixture of industrial and residential neighbors. The gabled profile and shingled roof complement the existing neighborhood scale.

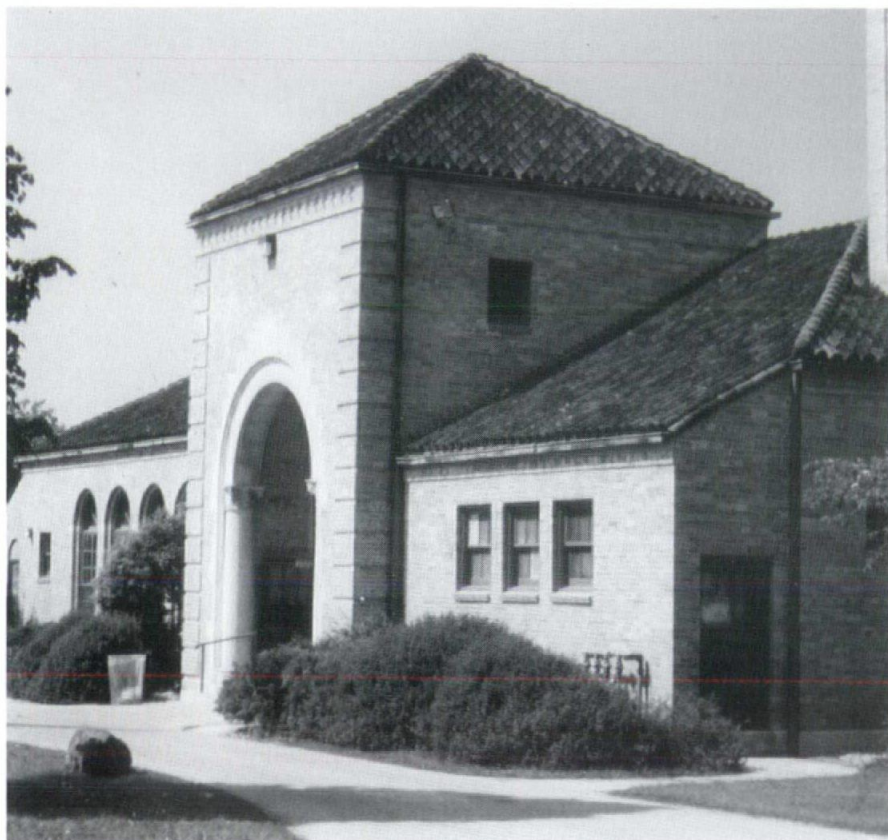
Photography: Greg Gent

<i>Project</i>	Park Pavilion Exterior Restoration
<i>Location</i>	Milwaukee, Wisconsin
<i>Architect</i>	Schroeder Piwoni, Inc.
<i>General Contractor</i>	R. D. Woods Company, Inc.

This historic landmark sits at the edge of the Lake Michigan beach at South Shore Park in Bayview, on Milwaukee's south side. It has long been a favorite facility for community celebrations. However, its use as a beach house has been limited by water pollution problems. With the completion of Milwaukee's deep tunnel project an improvement in water quality is expected which should increase the usage of the beach.

In the early 1970s, the building's brick facades were painted to seal the brick and create a uniform appearance. Over the years, the painting of the building, to some extent, contributed to a continuing problem with brick spalling and deterioration. The Parks Department was given two alternative approaches to resolving the deterioration problem. The initial approach would have covered the exterior with an EIF system providing a new look for the building. The second approach was to remove the paint from the building, replace the spalling brick and tuckpoint the structure. Given the community's interest in maintaining the original character of the building, the second approach was selected. The community's response has been very positive. In addition to restoring the brick, new flashing, roofing, beach side doors and trim painting completed the exterior restoration efforts.

Photography: John Schroeder, AIA



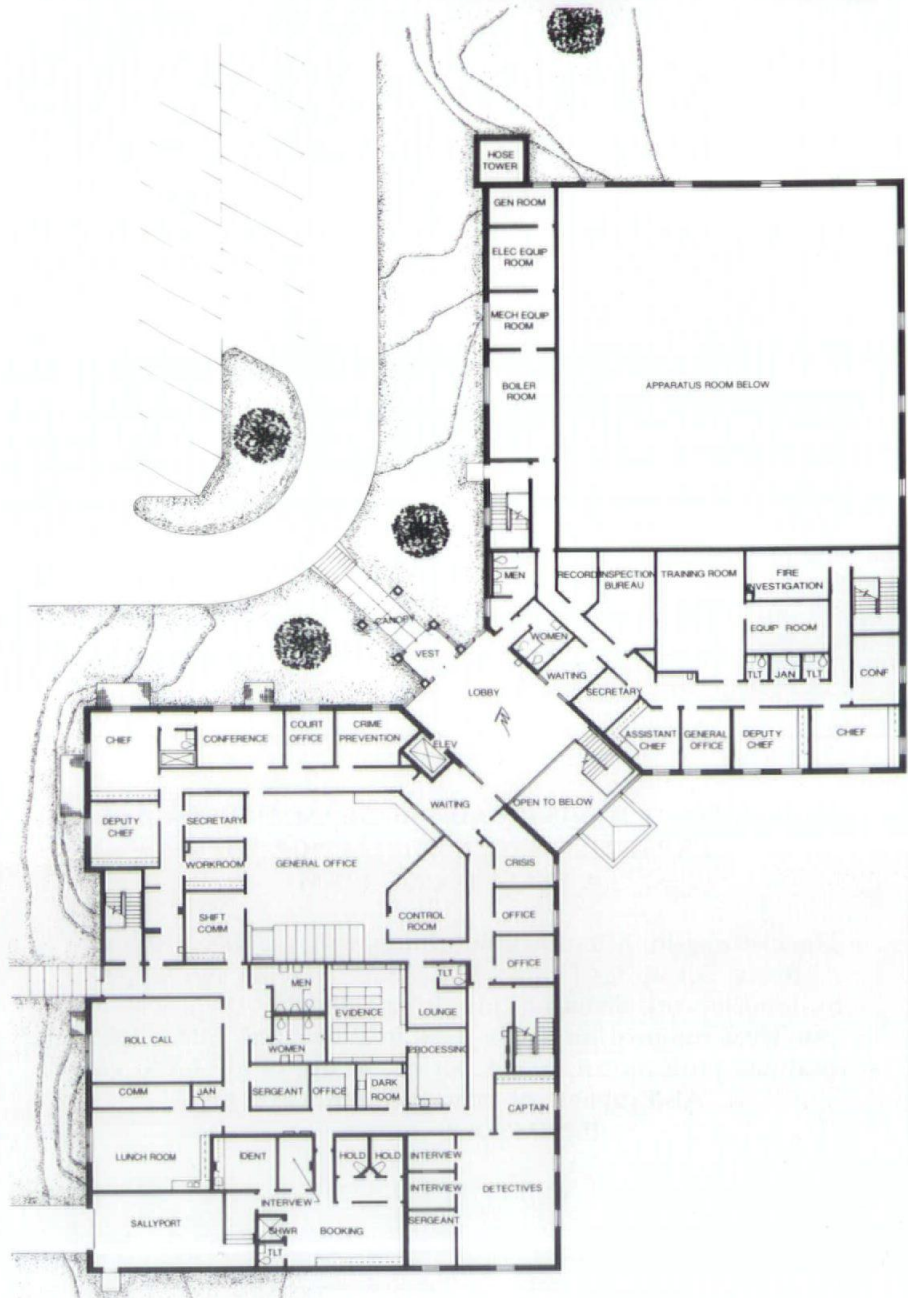
Project	Manitowoc Safety Building
Location	Manitowoc, Wisconsin
Architect	The Stubenrauch Associates, Inc.
General Contractor	Howard Immel, Inc.

The Manitowoc Safety Building has 41,000 square feet on two levels, both accessible at grade due to a sloping site. The lower level contains the apparatus room and police garage, a large meeting/training room and fire department living quarters.

The upper level includes police department operations and the business office for the fire department. Both are conveniently located off a common lobby. Features of the lobby include a continuation of the exterior red brick and cream split face block, exposed wood deck ceiling and brass accents in specialty lighting and hand rails.

This project started with a master plan of a new safety building, future city hall and multi-story parking ramp. The initial phase of the new safety building will functionally integrate with the next phase of municipal facilities.

Photography: Barbara Gahan





Montjuic
1992
Santiago
Calatrava

and
over two
hundred
lighting
models
original
italian
american
world
design
leadership
technology
innovation
performance
energy saving
u.l. listing
quality
warranty
service
investment


Artemide®
the one stop

Chicago Regional Sales Office & Showroom: 208 West Kinzie Street Ph: 312.644.0510

**ARCHITECT HAVING CAD PROGRAMMER/ANALYST
EXPERTISE SEEKS CHALLENGE WITH
A SELECT A/E/C FIRM**

Specializing in: MicroStation - Intergraph - UNIX - MSDOS
Abilities: Set up CAD discipline - Staff training and support -
System/Network management - Programming - Documentation
• An ideal resource for a firm now implementing MicroStation •
A qualified professional with detail knowledge of all A/E/C systems.
Also capable of managing AutoCAD and
other MSDOS applications.

Call (414) 744-5778



Bold and exciting! Two support
styles, a variety of seating panels,
and an innovative litter receptacle
are the basis for the new Petoskey
Group from LFI.
Only from LFI/Landscape Forms.

Bill Quinlan
2140 Halsted
Chicago, IL 60614
312-871-8810
312-871-4617FAX

<i>Project</i>	Sturtevant Municipal Building
<i>Location</i>	Sturtevant, Wisconsin
<i>Architect</i>	the Zimmerman Design Group
<i>General Contractor</i>	F.C. Price

With the advent of the new Racine Correctional Institution within its municipal boundaries, the village of Sturtevant was thrust from a quiet residential community just west of Racine to a burg which now contains one of the largest employers in the county. As the plans for the prison progressed, concerns for how this new state facility would impact the community were voiced. The village Board quickly recognized the need to upgrade and expand facilities which serve the community. The village wished to maintain delivery of its police, fire and municipal administration from a single building. The site was located in a predominantly residential setting, hence great care was taken to match the scale and materials of the building with those of the immediate neighborhood.

The building features a separate, prominent entrance for fire/police business and village administration. The police department has a three-stall vehicle garage with a sally port. The main dispatch area is shared by police, fire and rescue units. The village utilizes a volunteer fire department. The fire station component of the village center is comprised of a five-bay drive-through garage for fire-fighting apparatus. The village administration wing includes office space, council chambers and a multi-purpose room used for community gatherings and special events.

Photography: Greg Gent



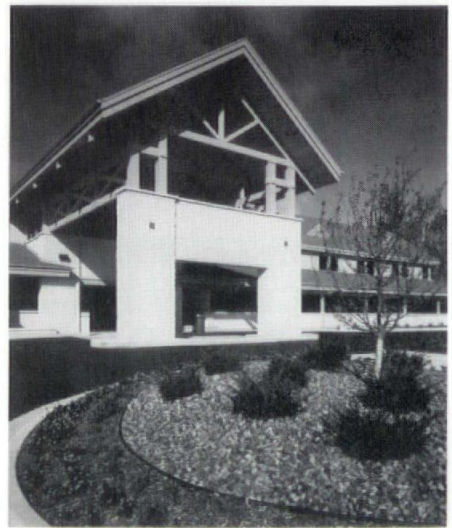
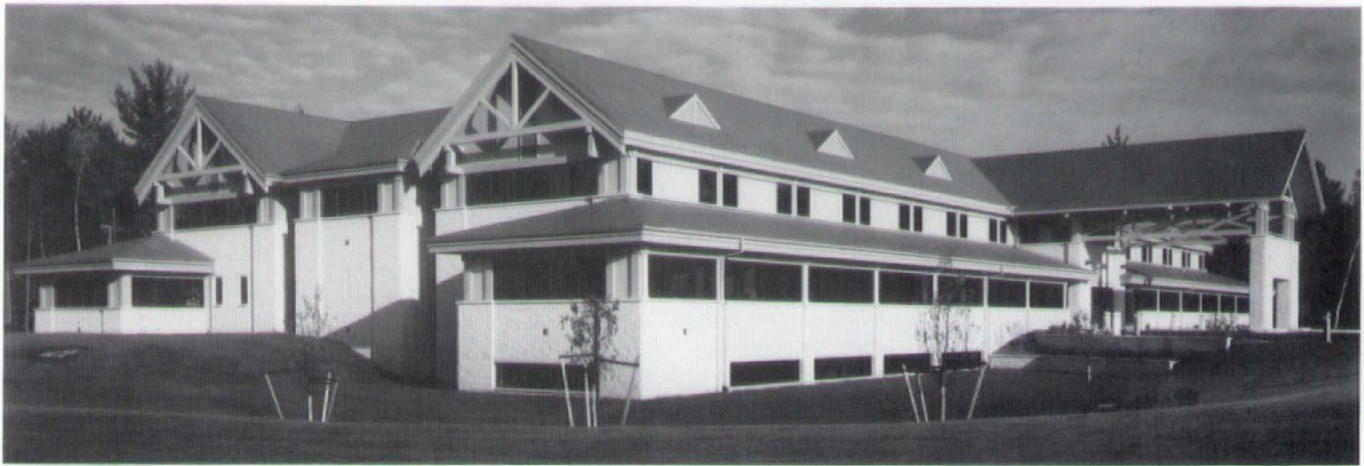
<i>Project</i>	Lakeland Medical Center
<i>Location</i>	Minocqua, Wisconsin
<i>Architect</i>	Marshall Erdman and Associates, Inc.
<i>General Contractor</i>	Marshall Erdman and Associates, Inc.

To provide adequate primary care to this popular resort area where population in summer swells to more than 100,000 people, The Marshfield Clinic expanded the facility from 24 to 40 physicians. Design challenge called for a high tech facility, highly visible, but one which would blend with its northwoods setting.

The 16.5 acre site is heavily wooded, but includes an open meadow and marsh. Building and parking were tucked into the woods to provide a buffer to screen the development from nearby residential areas. The building, which evokes the feeling of a northwoods lodge, gives a feeling of welcome. A covered drive with exposed wood trusses leads to a central "gathering" area and connects directly to patient reception and waiting areas. Open stairway provides circulation between two main floors. Examination and treatment rooms are housed under a projecting roofline that recalls wraparound porches and guest rooms.

Photography: Steven T. Rhyner





Kalwall® - (Kal' - wal)

4 NEW KAL-TINT COLORS



West Allis Library—Durrant Group



NIELSEN BUILDING SYSTEMS

Racine (414) 681-0676
Fax (414) 681-1812

Fox Valley (414) 788-6325

Milw. (414) 764-0914

Contact Dale Nielsen for Complete Information
Kalwall Distributor-Wisconsin/Upper Michigan since 1977
Guaranteed Quality - Guaranteed Installations

1. Developed for Discerning Architects in the Evolution of Creative use of Natural Lighting.
2. User Friendly - HVAC's Best Friend.
3. Full 25 year non-Pro-Rated Warranty of Surface Degradation of Fiber Exposure (which is common of commercial grade FRP Sheets.) We can do this since Kalwall is the only Panel Fabricator that Manufactures FRP Proprietary Sheets.
4. Ability to "Glow" provides the Constant Architectural Statement.
5. Allows the Enhancement of Architectural Expression in Design and Function.
6. Free Illumination Auditing to Finetune Task Level Lighting.
7. Inventor & Innovator-Glass Erosion Barrier Sheet is totally Maintenance Free.
8. Designs in shape or form to over 100' Clearspan.
9. Kalwall since 1955.
10. NBS Inc. - Installing Distributor since '77 - One Point Responsibility.

GUARANTEED TO YOU, OUR CUSTOMER!

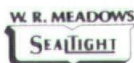
Specify Kalwall in Total Cost Effective Confidence!!

A WISCONSIN TRADITION OF
QUALITY FOR OVER 80 YEARS

Brick
Block
Pavers
Tile
Stone



THORO
SYSTEM
PRODUCTS, INC.



Sonneborn
building products

**American
Olean
Tile**

**WISCONSIN
BRICK & BLOCK
CORPORATION**

6399 NESBITT RD MADISON, WI 53719
(608) 845-8636 • (800) 362-6633
FAX: (608) 845-8630

Insurance By Design

Since accurate designs are what your business demands, you should demand insurance that's designed accurately to protect your business. At Klipstein Insurance Services, we've been providing insurance protection for engineers/architects

since 1978. We also offer other services such as contract review, speeches on loss prevention and in-house risk reducing seminars, to name a few. When you want insurance that's designed for your business, demand the experts. Demand Klipstein Insurance Services.



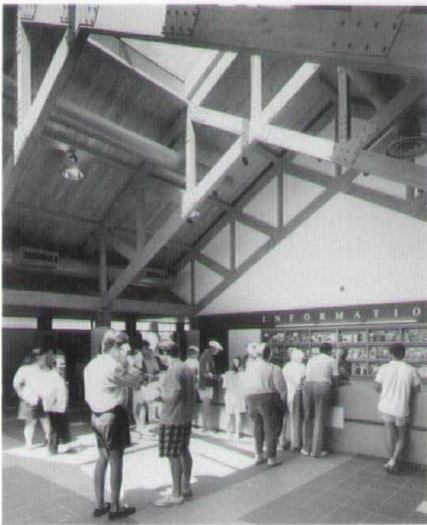
Insuring businesses and professionals since 1971.



Klipstein
Insurance Services, Inc.

238-7181 • 216 N. Midvale Blvd • Madison, WI 53705
Paul Berta, Tom Dowling

<i>Project</i>	Wisconsin Information Center
<i>Location</i>	Kenosha County, Wisconsin
<i>Architect</i>	PSI Design, Inc.
<i>General Contractor</i>	Camosy Construction



“Welcome to Wisconsin” is the message this building has been designed to transmit. Located just north of the Wisconsin-Illinois border on busy I-94, it is sited to be seen frontally by approaching visitors as they exit the interstate. The project shows clarity and directness of expression via two main themes—use of exposed materials indigenous to Wisconsin and a planned visual transparency to the interior of the building. Transparency was achieved by orienting the glass wall of the display area under a “gate way” truss. The large skylight over the center of the lobby provides balanced natural lighting. Square concrete piers and cylindrical columns spatially define the side

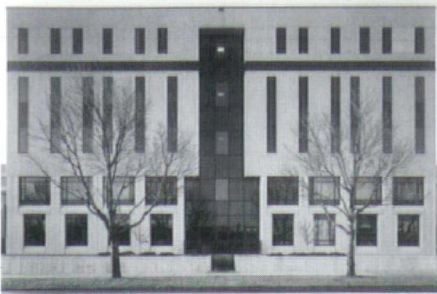


aisles which connect the front and back entries. Exposed glu-lam trusses and patterning of the paver tile reinforce this cellular division of space.

Photography: Steven T. Poast

Native Wisconsin landscaping provides an escape for resting or picnicking with a pond and fountain as foreground elements.

<i>Project</i>	Health Sciences Offices
<i>Location</i>	Milwaukee, Wisconsin
<i>Architect</i>	Welman Architects, Inc.
<i>General Contractor</i>	Boldt Construction



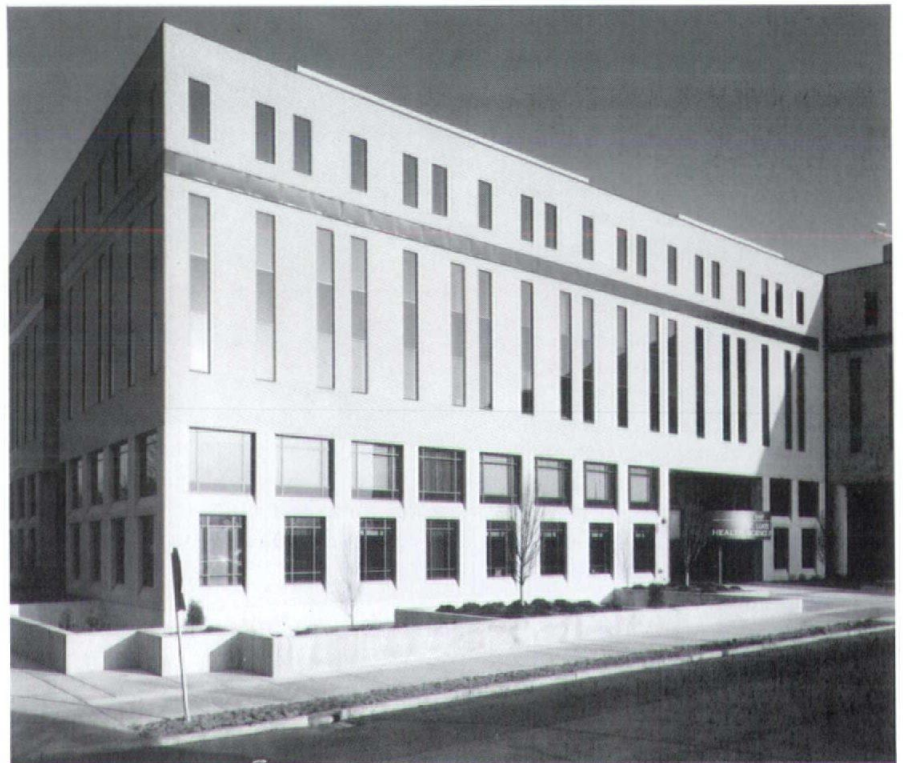
The structural challenge of this project was to plan a 100,000 square foot addition of medical office space adjacent to an existing five-story building, incorporating an existing elevator tower in the parking facility.

The design challenge was to match appearance of Phase I building while using more durable materials and to prevent the new building from being perceived as more desirable office space.

Fenestration pattern for the upper three floors was patterned after the existing structure, while first and second floors use larger windows to present a more interesting facade. New walls are precast panels with same stone colors as existing walls with applied stone matrix. Because first floor level is below existing gradeline, a long interior handicap ramp was required to lower lobby, thus creating a unique character to the first floor.



Handicap ramp and stair entrance from parking structure via elevator tower.



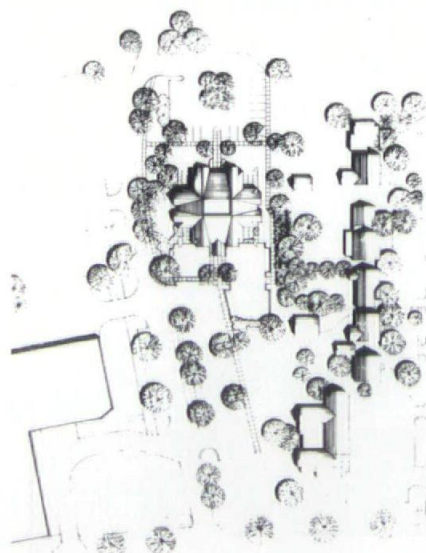
Photography: Chris Duzynski

Project	Campus Child Care Center
Location	Milwaukee, Wisconsin
Architect	the Zimmerman Design Group
General Contractor	Guenther-Wagner-Johnson

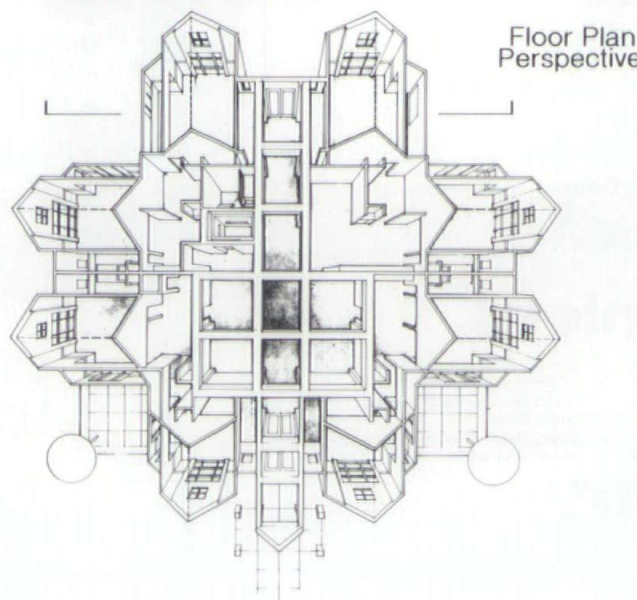
This daycare facility can house 140 children in a building designed with "kid appeal" inside and homey residential feeling outside. The two-story building has safety drop-off and pick-up entrances at both levels where children have to deal with no cross traffic. Architects utilized an existing surface parking area to the south and a lone elm tree to provide shade to play area in summer.

Based on a 25-foot module, each room is connected by a common interior "avenue" and an inside play court. Ceilings were vaulted on upper floors for older children and soffits were dropped on lower level for the younger children. Lower sills make windows ideal for viewing the out-of-doors. Hydronic heating system with radiant floor establishes continuous comfort level.

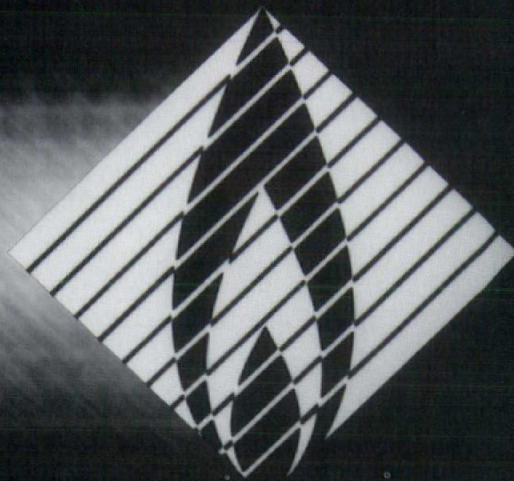
Photography: Greg Gant



Site was a steeply sloped narrow parcel abutting a residential area. It was designated to serve as a buffer between buildings of the Milwaukee Regional Medical Center and private homes.



Does it pay to save energy?



Yes...both today and tomorrow. Wisconsin Natural Gas Company will pay you to reduce your energy consumption...and your energy bills. We have rebate programs for everything from new construction to boiler tune-ups to gas air conditioning. And, lower monthly energy bills mean more dollar bills in your pocket. We'll help you create a customized Blueprint for Savings. Call us at (414) 637-7681.



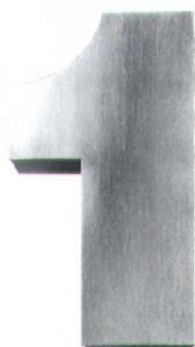
**BLUEPRINT
FOR SAVINGS**

*Blueprint for Savings is available to WN
Commercial/Industrial customers only.*

**Plan On Savings,
Plan On Natural Gas.**

If it weren't
for the
advertisers
you see in
this
magazine,
**Wisconsin
Architect**
wouldn't
exist. Please
support our
advertisers.
Thank You.

When it comes to great fabrication our reputation



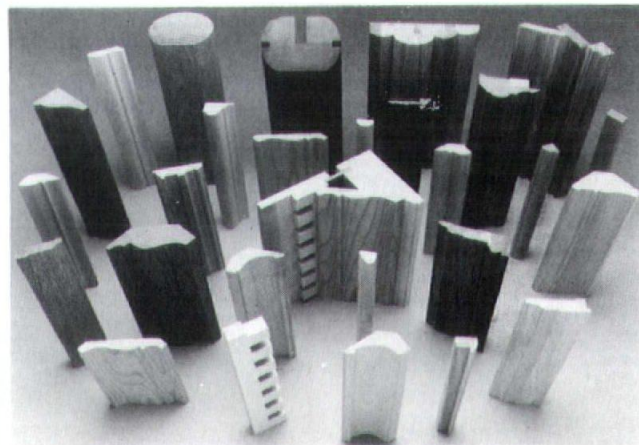
is stainless.

Our reputation is stainless by design. We're the Sheet Metal Contractors of Milwaukee, whose shining products are seen all over the city, from fancy duct work to monumental architecture. Sheet Metal is better by design!

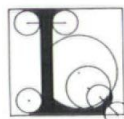
SMC
Sheet Metal Contractors
of Milwaukee

Sheet Metal Contractors
of Milwaukee
2515 North 124th Street
Suite 200
Brookfield, Wisconsin 53005
(414) 784-6889

When You Want To Make A Statement



*Custom
Mouldings by*



LANGE BROS. WOODWORK CO. Inc.
QUALITY ARCHITECTURAL WOODWORK

SINCE 1932

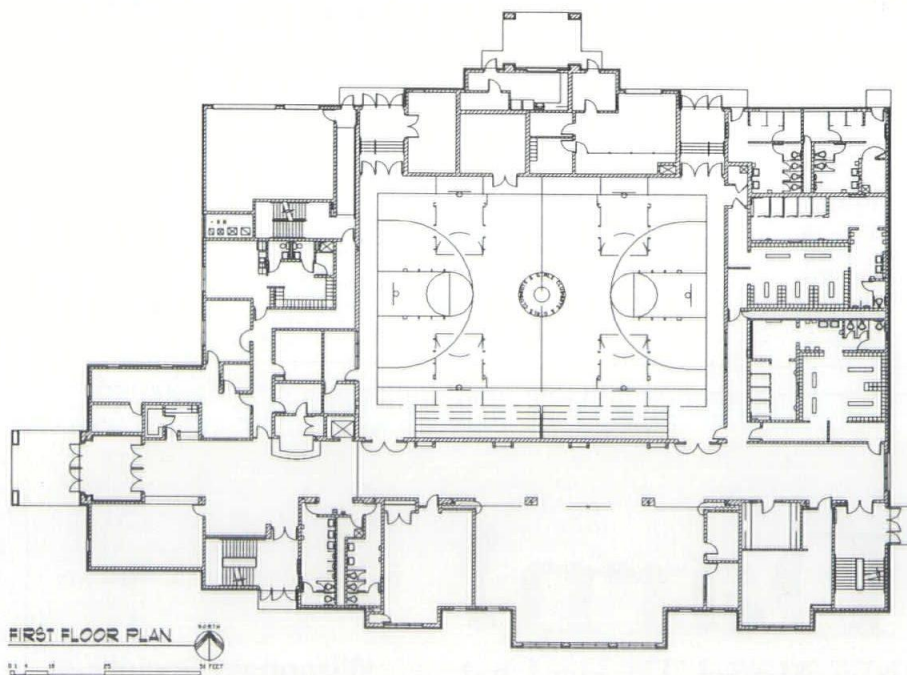
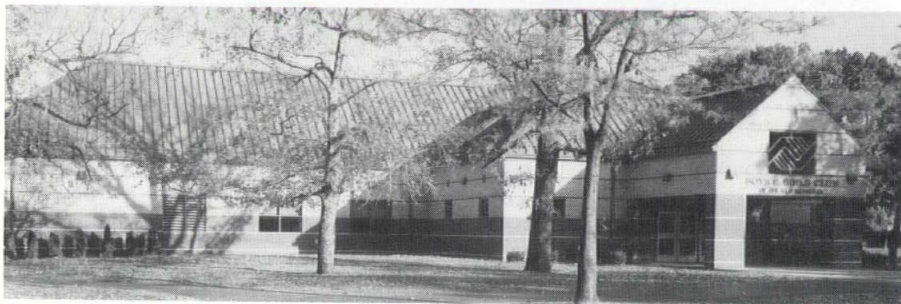
Phone (414) 466-2226
Fax (414) 466-8660

This new facility of 55,000 square feet is designed for the purpose of educating and encouraging positive behavior of Milwaukee's youth through recreational activities.

A major consideration in the design was to create a building that would be sensitive to the county park in which it is located. The first floor includes a gymnasium/multipurpose room complete with showers and locker rooms, computer room, game-room, administrative offices and meeting rooms.

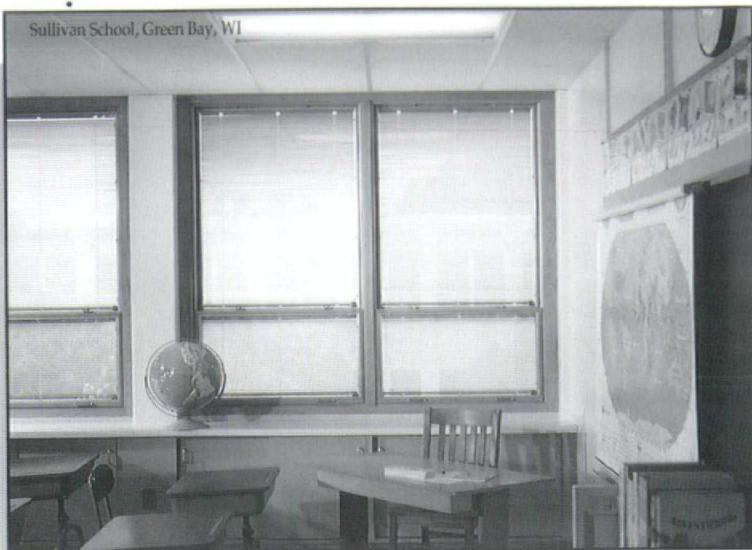
The upper level is primarily for pre-school children and includes a child development area. This level also has a kitchen (functional as well as educational), a dining room area and craft areas for woodworking, sewing, etc. The lower level houses a teen center, weight room and health room. There is also an outdoor wading pool.

Photography: Edward Purcell



FIRST IN ITS CLASS

Sullivan School, Green Bay, WI



To be recognized as first in your class is a standard of excellence in education. That standard also holds true for Pella windows.



That's why the architects (Berners-Schober Associates Inc.) and the Green Bay School administrators turned to Ver Halen, Inc. for their recent window replacement project at Sullivan School.

The Pella clad contemporary double-hung windows installed at Sullivan preserve the look and feel

of the building's original architecture. Plus, they offer the school greater energy efficiency and ease in maintenance. Slimshades® added to each window also increase energy efficiency and classroom privacy, as well as allow the room to be adequately darkened for audio-visual needs.

Pella knows that a building's past history and future needs are equally important when replacing windows. Now that's smart!



VERHALEN
INC.
COMMERCIAL
DIVISION

Green Bay • Madison • Marquette, MI • Mequon • Milwaukee
Neenah • Racine • Waukesha • Wausau

One Of America's Best Run Companies Gives 95% Of Its Money To Charity.

CARE was recently named the best run, best managed charity in America.

We aren't surprised. 95% of every dollar we receive goes to help impoverished people. Only 5% goes to run our organization.

No other company could survive on margins like that. But a lot of starving people can.

Darn!

No Need To Be Out
Of AIA Documents.
Call Us Today.



FULL
SERVICE
DISTRIBUTOR


documents
THE AMERICAN INSTITUTE OF ARCHITECTS

**Wisconsin Society
of Architects**
321 S. Hamilton St.
Madison, WI 53703
(608) 257-8477
(800) ARCHITECT

CARE

We're Helping People
Learn To Live Without Us.
1-800-242-GIVE

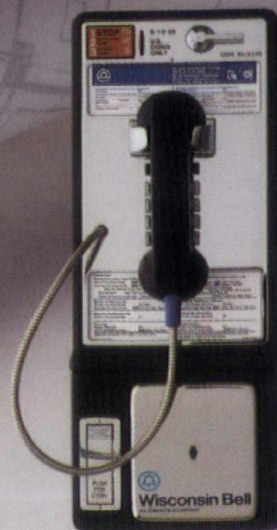
Call 1-800-924-2772 and let us develop a plan for your next project.

A detailed architectural blueprint is spread out, showing various building layouts and utility lines. Several red pushpins are placed at strategic points on the plan. In the lower-left corner, a green circular scale and a pair of drafting compasses are visible. A white ruler lies horizontally across the middle-right section of the blueprint.

At Wisconsin Bell, we'd like to help you with a plan for your public phones. Whether it's one phone or many, our team of communication specialists will help you choose the best phone location for your development. Most importantly, Wisconsin Bell will be there long after the planning and installation.

We'll be there to provide reliable service, regularly scheduled testing, maintenance and prompt repair. All at no cost to you.

For generations, we've been building our business by helping people like you build yours. Let us enhance your plans starting at the ground floor. Just call 1-800-924-2772.



Wisconsin Bell
AN AMERITECH COMPANY

<i>Project</i>	St. Vincent's Hospital
<i>Location</i>	Green Bay, Wisconsin
<i>Architect</i>	Berners-Schober Associates, Inc.
<i>General Contractor</i>	J.C. Basten

St. Vincent's Hospital is located on a limited "super block" in the heart of a historic east side Green Bay residential neighborhood. The priorities selected for this renovation included a new patient access/reception/processing suite and expansion and modernization of the key regional services provided by the hospital.

The hospital was allowed to expand the "superblock" by a shift of the street 45' to the west. This allowed construction of a five story addition.

The key element in the project was the development of a vertically stacked grouping of specialty care suites around an existing four-elevator core. The first level included radiology and imaging areas with the outpatient areas in the new addition to the west and the inpatient intensive areas in renovated existing areas. The second floor includes all therapy functions serving the rehab patient services, again with the outpatient handling within the addition. A central patient reception area occurs at the splayed face of the addition, where major windows were provided, on this and all subsequent levels.

The third floor includes NICU and maternal care suites with the various outpatient testing and pediatric patient follow-up suites. The fourth and fifth levels include a level of general surgical care and a floor of specialty surgical care suites.

Photography: Eric Oxendorf



Project

Waukesha Memorial Hospital

Location

Waukesha, Wisconsin

Architect

Engberg Anderson Architects

General Contractor

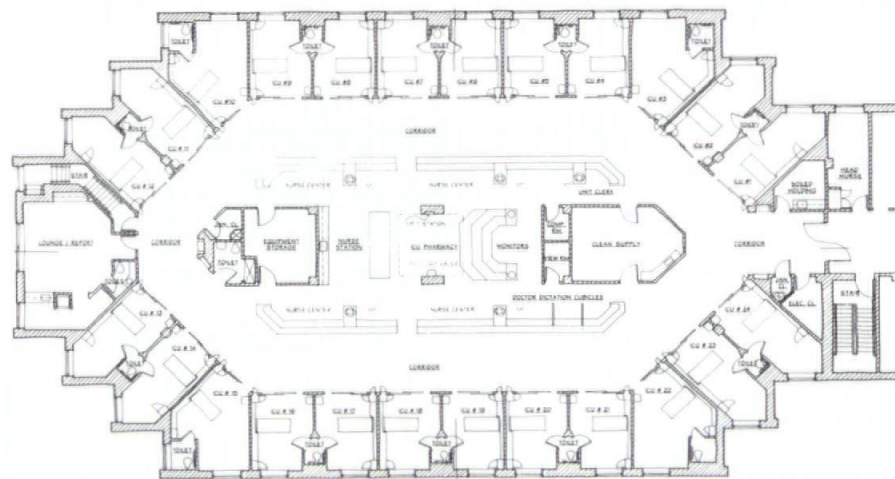
C.G. Schmidt

This new three-level addition was conceived primarily to house the new heart surgery program. Intensive care unit and some lab services were relocated and expanded. Heart surgery rooms were located along outside window wall to allow incorporation of natural light and to provide easy access to ancillary areas.

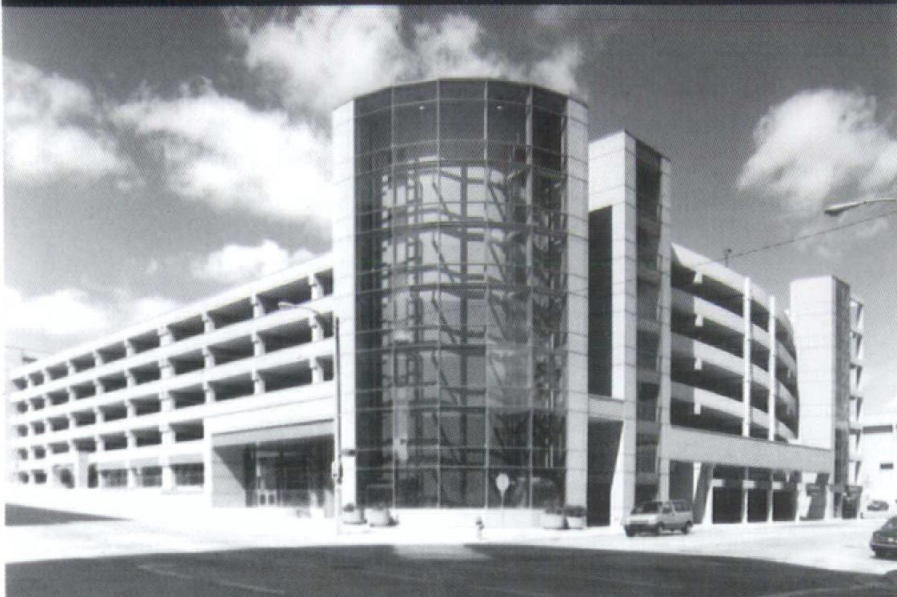
Hexagonal design of intensive care unit provides for staff visibility from a central nursing core into each of the 24 patient rooms. The nurses' area is defined by low walls for visibility and is centered under a skylight. It is separated into quadrants for staffing care which provides flexibility in emergency situations when additional support is needed.

A conference center with 200-seat auditorium and medical educational facilities was designed as part of the addition. Materials management includes two loading docks and warehouse space.

Photography: Morley Johnson



The Concrete Advantage



Bradley Center Parking Structure, 8th and West State Street, Milwaukee

Cast in place concrete parking structures.

Cast in place concrete is economical, durable and flexible. And its monolithic structure eliminates most of the maintenance associated with other construction methods.



STRUCTURAL CONCRETE PROMOTION TEAM
Wisconsin Ready Mixed Concrete Association
9415 W. Forest Home Avenue
Hales Corners, WI 53130



800-242-6298

UNIQUE OPPORTUNITY

*Only Frank Lloyd Wright Home
in Fox Valley*



Beautifully landscaped 2 BR + Prairie house. Located in prestigious historic district of Oshkosh. Great condition. Art glass, built-ins and oak trim throughout. Sunroom, fireplace, 2 bath, central air and 2 car garage.

\$114,900.

By appointment (414) 233-8558

Reprints Available From Wisconsin Architect

*Doing A
Trade Show?*

*Considering A
Direct Mail
Campaign?*

*Reprints Are A
Great Marketing
Tool!*

For more information contact:
Cheryl Seurinck
Advertising Sales Manager
608/257-8477

The program for the new Chippewa Falls Police Department called for a facility that would provide for the needs of a police department staff comprised of twenty-five sworn personnel and ten civilian employees. The City of Chippewa Falls, a community of 13,000 people, needed a facility that would serve the police force, provide for future expansion and be secure, as well as inviting to the public.

The site for the police station was steeply sloped, rather small and located at the edge of the central business district and a nearby residential neighborhood. Because of this, the design of the two story 17,000 square foot facility drew heavily on and was sensitive to the style of the buildings in the neighborhood, specifically two churches that share the intersection with the police station.

The building program mandate, that the new police station meet high standards for safety and security for its occupants, is addressed throughout the building. In addition to the separation of the administration and public areas for safety, security and confidentiality purposes, the building structure features a retaining wall in front of elevated windows to screen the building occupants from possible drive-by assaults.

Photography: Eric Oxendorf



FLOOR PLAN



The Overwhelming Choice in Floor Underlayments.



We've poured our underlayments in apartments, condominiums, office complexes, single-family homes and shopping malls. More than 1 billion square feet of Gyp-Crete®, Gyp-Crete 2000™ and Dura-Cap™ have been installed nationwide. For new construction or renovation, they're the overwhelming choice in poured floor underlayments. Installed at a fraction of the cost of other cementitious underlayments.

Here's why:

- Sound and fire control
- Accepts virtually all finished floor goods
- Pour over wood or concrete subfloors
- No shrinkage cracks
- Poured from featheredge to 3"
- Accepts foot traffic within 90 minutes
- Fast, efficient installation
- Leveling capabilities

Acoustical Floors of Wisconsin
675 Industrial Ct., Ste. C
Hartland, WI 53029
(414) 367-3306

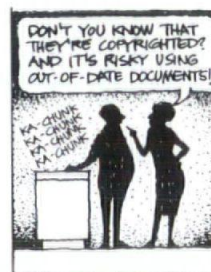
Superior Gypsum Floors
1132 Ashwaubenon St.
Green Bay, WI 54304
(414) 336-7225



Architects:

Be sure to fill out your member roster and firm directory surveys to be correctly listed in the upcoming Handbook! Questions?
Call (608) 257-8477.

Small Change Could Cost You Big Dollars



—By Roger K. Lewis, FAIA

Copying blank AIA Documents is illegal...and dangerous. The AIA Documents are revised periodically to reflect current case law and the ever-changing practices within the construction industry. Copying an outdated AIA Document—that's missing even a *small* change or revision—increases your liability and the possibility that you'll pay big dollars to settle a dispute. Don't take chances; order your current AIA Documents from us today.

documents
FULL SERVICE DISTRIBUTOR
THE AMERICAN INSTITUTE OF ARCHITECTS

The Wisconsin Society of Architects
321 S. Hamilton St.
Madison, WI 53703
(608) 257-8477

AIA Documents...the foundation for building agreements

An Opportunity

I use the metaphor of a *water-wheel* when discussing them with my colleagues. For you see, as the wheel slowly turns, fresh water enters, and that which has already gone around moves along. Those of us who have experienced our profession's emotional highs and lows *depend* on higher quality water to be constantly added.

I am, of course, referring to *young practitioners*.

The practice of architecture is a tremendous endeavor...to be able to spend one's life in a constant state of creation; to be able, like no other segment of society, to have such an impact on and reflect the world's cultures, to be able to blend the arts and the sciences into usable artforms...we are truly fortunate! Yet given the difficulties and disillusionments inherent in the building business, such as hard study, long hours, low pay or the disappointment of litigation, we must focus on the positives to keep young practitioners challenged.

It is legitimate to ask why undertake this. We hear so often, "We only hire experienced people," and is that notion wrong? Not necessarily. Every firm has its own character—a blend of the skills and personalities of its women and men. My view is to celebrate that diversity. And, yes, our profession also depends on the talents of those who have already learned how the built environment is assembled. Therein lies the answer...learning.

In my view, architectural education performs an excellent role in explaining the fundamentals of design, technology and practice. The application of that knowledge depends not only on the abilities of the individual, but also on the opportunities afforded once outside of the scholastic setting. During school is the time to learn to dream about notions such as strong concepts, to appeal to all of the emotions, and to visualize in 3-D yet understand the aging process of the fourth dimension. For those of us distanced by time from the educational arena, young practitioners are invaluable with their freshness, lack of fear of the unknown, highly-charged batteries, and insatiable appetite to learn how buildings really go together. As we continue to teach them, they continue to teach and challenge us as well. We help them apply their unique dream capability with great enjoyment!

So infrequently do we offer young practitioners a forum to discuss their thoughts, one would think that the only source of good architecture is experienced architects. Not true! The enclosed "Call for Entries" for the *Young Practitioners Forum* provides an opportunity to dispel that false notion, yet recognize that they, too, will one day pass along their experiences to younger practitioners in pursuit of better architecture.

EDITOR: The author is a Madison architect and Senior Vice President of Flad and Associates, with 20 years of experience in the profession. As Flad's Director of Operations, his role is to recruit, assign, schedule, coach and coordinate the activities of a staff of 160.



**Structural Integrity
Thermal Stability
Fast Installation**

BUILD WITH CONTROL.



**R-CONTROL PANELS,
THE ENGINEERED SYSTEM
FOR CUSTOM HOMES.**

Structural walls and roofs demand unyielding strength, fast installation and permanent R-value. Typical building methods and materials can't fill these requirements. The solution? R-Control panels. The rigid EPS building panels that meet national structural and fire testing standards.

STRUCTURAL INTEGRITY. A thick core of rigid EPS, expanded polystyrene insulation is adhesively welded between stranded lumber facings. The result is a solid, monolithic structure with the strength of a continuous column. No twisting, warping or racking.

THERMAL STABILITY. The R-value of EPS remains stable for the life of the structure. EPS contains no CFC's.

FAST INSTALLATION. R-Control is made and assembled with familiar wood components. A complete package is delivered ready to install. Houses are closed up in hours.

R-Control is a trademark of AFM Corp.

WISCONSIN EPS, INC

P.O. Box 669
90 Trowbridge Dr., Fond du Lac, WI 54936
Phone 414-923-4146

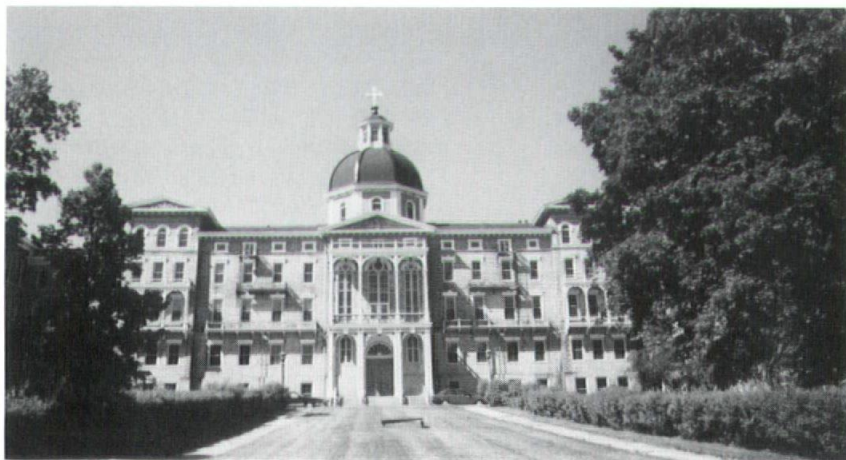
WISCONSIN

**Building a better
Wisconsin through
architectural education**

ARCHITECTS

321 South Hamilton Street
Madison, WI 53703.3606
1.608.257.8477

FOUNDATION



St. Francis Seminary - Henni Hall, Milwaukee, Wisconsin
General Contractor: Voss-Jorgensen-Schueler Co., Inc.
Architect: Eppstein, Keller, Uhen Architects

An artistic expression of our
expertise - to fashion metal &
glass to perfection

Architectural Windows

Window Replacement

Translucent Panels

arwin

Arwin Builders' Specialties, Inc.
2145 South 162nd Street
New Berlin, WI 53151
(414)782-1090
1-800-876-1090

J.W. Peters & Sons understands parking structure design and construction like few companies in America.

Consider:

- Peters is the only producer in the Midwest to complete 100 or more precast/prestressed concrete parking structures.
- Only Peters has such in-depth experience with parking structures for every application—from municipal and health care to retail and office facilities.
- For more than 20 years, Peters has



been a leader in developing more cost-effective design and more durable, corrosion-resistant structures.

- More than 72,000 vehicles park daily in Peters facilities in Illinois, Wisconsin, Indiana and Michigan.

Peters has earned a unique reputation by meeting the most exacting architectural requirements for precast components in shapes, colors and textures that have changed the appearance of parking structures forever.

After 115 parking structures...you can count on J.W. Peters.

115 PARKING STRUCTURES... AND COUNTING

JW PETERS

AND SONS, INC.

34212 West Market Street • Burlington, WI 53105 • (414) 763-2401
(312) 782-4691 (Chicago) • (414) 272-7222 (Milwaukee)



Lake Avenue Parking Ramp, Racine, WI:
HSR Associates, Inc., Madison, WI

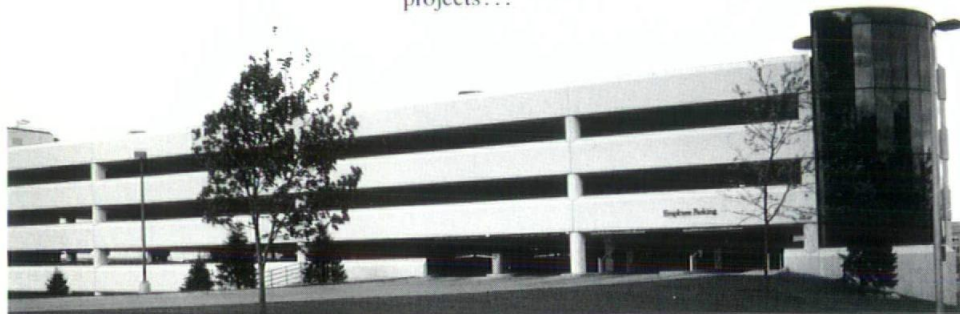
Riverwalk Parking Structure, Buffalo Grove, IL:
Wilson/Jenkins & Associates, Inc., Itasca, IL

MEDICAL, MUNICIPAL PARKING: MAKING EXPERIENCE COUNT

Experience is the critical factor in parking structure design and construction...and few precast/prestressed concrete manufacturers in the nation have as much experience as J.W. Peters. The company is particularly experienced in serving the special needs of municipalities and health care facilities.

In 1990, J.W. Peters became the first precast/prestressed concrete manufacturer in the Midwest to complete 100 parking structures. Peters has been responsible for parking structures of every size and description for a wide range of clients. And, hospital and municipal parking facilities built with Peters' precast components represent over 5 million square feet of parking facility, with over 16,000 total spaces.

Among many notable hospital and municipal projects...



- St. Francis Hospital, Evanston, Ill., a seven-level, 1,300 vehicle parking structure constructed in two stages. In 1980, J.W. Peters completed the first five levels to provide parking for 950 vehicles. Peters returned in 1990, to add two new levels to the top of the existing structure, providing spaces for 361 additional cars.
- Froedart Hospital, Wauwatosa, Wis., a four-level, 1,000-space, 285,000-sq.-ft. parking structure.
- St. Mary's Hospital, Madison, Wis., a 900-space, 184,000-sq.-ft. five-level structure.
- Good Samaritan Hospital, Downers Grove, Ill., a 221,000-sq.-ft., 980-space, three-level structure.
- Milwaukee's Bradley Sports Complex, a 300,000-sq.-ft., 900-space, eight-level structure.
- Stolpe Island Place, a five-level, 122,000-sq.-ft. parking structure in Aurora, Illinois.
- and two parking decks in Wheaton, Ill. which together provide over 3,000 parking spaces for DuPage County government.

While each hospital and municipal project has its own requirements, the great majority share a need for accelerated construction schedules and superior durability.

Fast-Track Construction

Limitations on available land often mean that new parking structures must replace surface lots. Neither municipalities nor hospitals can long afford the loss of revenue and inconvenience that occur when existing parking lots are taken out of service. They are also critically concerned about their ability to maintain the orderly flow of traffic and business during new construction.

Precast concrete parking structures reduce disruption because much of the work can be done off-site and erection

can be completed in less time than with other construction methods. Components are fabricated and stored off-site, then shipped to the project as needed. Problems are minimized by eliminating the on-site presence of the men and materials that would otherwise be required for cast-in-place structural work.

Site preparation and concrete production occur *simultaneously*, not sequentially. Precast components can be ready the moment the site is ready, potentially shaving weeks, even months, from the schedule. Both fabrication and erection of components can proceed throughout the winter months, regardless of weather.

Long-Term Durability

Hospitals and municipalities are long-term owners that must minimize maintenance and repair costs over decades. They demand superior parking structure durability.

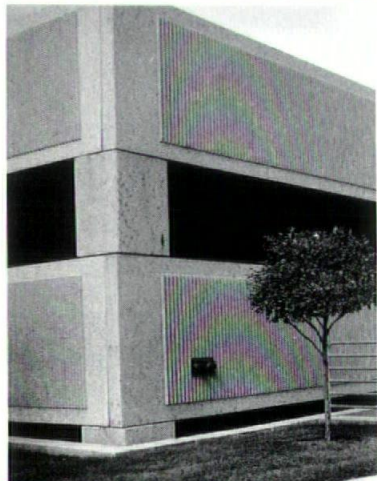
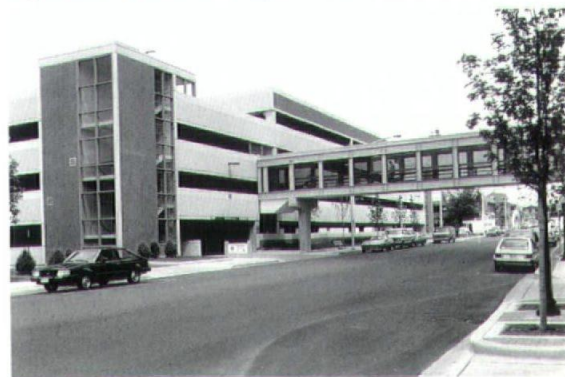
Weather extremes, salt-induced corrosion, and vehicular traffic can rapidly deteriorate a concrete structure of lesser quality and significantly increase costly maintenance and repairs.

J.W. Peters parking decks are unsurpassed in their strength, durability and corrosion resistance. The trouble-free service life of a Peters parking structure can yield a savings of thousands of dollars per year.

J.W. Peters builds long life into its structures with superior concrete...careful design for drainage...adequate concrete cover to protect structural steel...and installation of the proper corrosion-protection system at the time of construction.

For example, J.W. Peters heat-cures every precast component, heating form temperatures up to 150 degrees Fahrenheit. As was demonstrated by a three-year study conducted for the Federal Highway Administration (FHWA), heat-cured precast concrete members are up to 50 percent more durable than moist-cured concrete of the type used in cast-in-place concrete construction.

For unrivaled experience, in-depth knowledge of the special requirements of hospital and municipal officials, accelerated construction capabilities and superior product durability...contact J.W. Peters & Sons, Inc., manufacturers of structural and architectural components for parking structures and other applications.



Statute of Repose

The WSA Legislative Committee, chaired by Fred Zimmermann, AIA, Madison, seeks your support in convincing the Wisconsin Legislature to enact a new and improved statute of repose to limit the "long-tail" of liability for architects and others involved in building projects.

This year's election offers WSA members a unique opportunity to inform state legislative candidates about this important legislation which is vital to the well-being of Wisconsin's design and construction industry. Your involvement can make a difference. Talk with the Assembly and Senate candidates from your area, find out where they stand on our statute of repose proposal and support the candidates of your choice by helping with fund raising, telephone banks, distribution of campaign literature and other activities. The investment of your time and talent this fall could pay big dividends during the next session of the State Legislature.

To help in this cause, the WSA has joined forces with the state's leading design and construction industry organizations to form the Wisconsin Statute of Repose Coalition. The Coalition's sole purpose is to restore Wisconsin's statutory protection for architects and others involved in the building industry.

The Coalition has sponsored successful candidates forums in the Green Bay and Eau Claire areas so members could meet the candidates and learn first hand where they stand on the statute of repose issue. Upcoming forums are planned for Madison and Milwaukee.

Remember, Wisconsin was the first state to enact a statute of repose for the building industry in 1961. Today, however, Wisconsin is one of only five states without such statutory protection limiting the long-tail of liability faced by architects, engineers and contractors. Without the adoption of a new statute of repose, architects in Wisconsin have unlimited liability exposure on each and every project, even after retirement.

For more information on the WSA's statute of repose proposal and how you can make a difference by getting involved in state legislative campaigns, contact the WSA office.

QBS

In 1986, with the help of a grant from The American Institute of Architects, the WSA began an innovative program to assist public owners in Wisconsin establish a step-by-step process for selecting architects for their building projects based on qualifications rather than solely on fee proposals. Over the years, the WSA's Qualification Based Selection (QBS) program has continued to evolve and mature as a result of suggestions from member architects as well as from public owners who have gone through the QBS process.

The popularity of the QBS program among local government and school district officials continues to grow, with several statewide municipal organizations endorsing the WSA's program. In addition, based on the success of the QBS program in Wisconsin, some 20 other AIA Chapters throughout the country already have established or are in the process of implementing a similar QBS program in their own state.

One of the keys to the acceptance and success of the QBS program in Wisconsin is the availability of a QBS facilitator at the WSA office. The facilitator works one-on-one with public owners to help them set up a qualifications-based selection procedure for their particular project.

A goal of the QBS program is to increase the awareness among public owners that a quality project is the result of a properly selected professional team, coordinated and guided within the framework of a clearly defined and understood plan. As a local fire chief commented recently at a conference of municipal officials, "QBS literally took all of the politics out of the selection process, allowing my staff and the elected officials to concentrate on the project requirements and other important issues."

If you have any questions, comments or suggestions about the WSA's QBS program, please don't hesitate to contact Darius Van Fossen, QBS Facilitator, at (608) 257-8477/1-800-ARCHITECT.

Marketing & Managing

Pull out your appointment calendar and reserve Friday, October 16, for the 1992 WSA Fall Workshop at the Sheraton Fond du Lac Hotel. This year's one-day seminar will continue the exploration of practical ways architects can improve practice management and marketing skills to achieve your preferred future.

Fall Workshop Chairman Stan Ramaker, AIA, has put together an informative program addressing the theme *Upsetting the Applecart...Practical Tips for Marketing & Managing Your Practice for the*

'90s. Many factors help to shape and define the practice of architecture. The 1992 WSA Fall Workshop has been designed to provide practical approaches you can use to enhance the management and marketing of your practice and to realize a greater sense of professional fulfillment.

R.A. Sayers, a Milwaukee-based marketing and management consultant, will lead an interactive discussion on the nuts-and-bolts activities necessary to achieve the basic objectives of architectural practice: stable workload, fair allocation of liability, increased ancillary services, greater project control and enhanced profits. During the afternoon session, Sayers will be joined by a panel of WSA members for a roundtable discussion on various marketing and practice management strategies and concepts.

And that's not all! The luncheon program will feature the AIA's political education consultant Michael E. Dunn, a well-known and entertaining lecturer on successful grassroots political action. Dunn is president of a consulting firm based in Washington, DC. Sharpen your political skills and learn how to be an effective "player" in the legislative process that helps shape your practice and business environment.

For more information on or to register for the 1992 WSA Fall Workshop, contact the WSA office at (608) 257-8477/1-800-ARCHITECT. A block of rooms has been reserved at the Sheraton Hotel in downtown Fond du Lac for the evening of October 15. For room reservations, call the Sheraton Hotel at (414) 923-3000 or 1-800-325-3535. WSA room rates are \$45 single or \$50 double occupancy.

1993 WSA Officers

At its August meeting, the Board of Directors of the Wisconsin Society of Architects unanimously approved the nominations of Lisa L. Kennedy, AIA, Milwaukee as 1993 WSA Vice President/President-Elect and Kevin J. Connolly, AIA, Milwaukee, as 1993 WSA Secretary/Treasurer. They will assume their new positions on the WSA Executive Committee and Board of Directors at the first of the year.

Kennedy is president of L.L. Kennedy, Inc. and presently serves as WSA Secretary/Treasurer. She previously has held leadership roles in the Southeast Chapter/WSA, chaired the 1990 WSA Convention and was the first Associate Representative on the WSA Board of Directors. Connolly also has his own firm in Milwaukee, Kevin J. Connolly Architects, Inc. He presently serves as a Director-At-Large on the WSA Board of Directors, having previously been an officer of the Southeast Chapter/WSA and chair of the Chapter's Summerfest/Lego activities.

Kennedy and Connolly will join Ross T. Potter, AIA, Madison, and Roger D. Roslansky, AIA, La Crosse, on the 1993 WSA Executive Committee. Potter will serve as 1993 WSA President and Roslansky as immediate Past President.

Fair Housing

During the recently completed session, the Wisconsin Legislature enacted 1991 Wisconsin Act 295 which is intended to make state law consistent with the 1988 Amendments to the Federal Fair Housing Act (Title VII of the Civil Rights Act of 1968) regarding protected classes, prohibited

acts and procedural enforcement, while maintaining areas in Wisconsin law that exceeded federal provisions.

According to a Legislative Council summary, the new state law requires newly constructed multi-family housing to be designed and constructed in a manner that ensures internal and external accessibility. The Act specifies that guidelines to be used in determining accessibility and for granting variances and waivers when it is impractical to design and construct the housing to be accessible. "Multi-family housing" is defined as housing consisting of three or more dwelling units, if the housing has one or more elevators; and grade-level dwelling units in housing consisting of three or more dwelling units, if the housing has no elevators.

With respect to external accessibility, the Act requires at least one accessible entrance for each building that is on an accessible route; any other entrances that are at grade level must be accessible to the greatest extent feasible. With respect to interior accessibility, the Act specifies that public and common use areas must be accessible to persons with disabilities; interior and exterior doors, interior passages, kitchens and bathrooms must be sufficiently wide for maneuverability by persons with disabilities who use wheelchairs and switches and controls must be located in accessible locations. Also, bathroom walls must be sufficiently reinforced to allow later addition of grab bars and other aids. Unlike federal law, the Act also requires landlords to provide, upon the request of a renter and without cost to a renter, lever door handles and appliance controls.

The Department of Industry, Labor and Human Relations (DILHR) is required to promulgate administrative rules incorporating the federal accessibility standards, while retaining current state accessibility requirements that exceed federal standards. The federal accessibility standards apply to multi-family housing consisting of four or more units that are first ready for occupancy on March 13, 1991. The new state requirements apply to multi-family housing of three or more units first ready for occupancy on September 1, 1993. Builders may rely on federal accessibility standards until six months after the effective date of the administrative rules promulgated by DILHR reflecting the new requirements under the state law.

As noted above, these requirements created by the new state fair housing law apply to newly-constructed multi-family housing consisting of three or more units, whereas federal accessibility requirements apply only to multi-family housing with four units or more. Like federal law, the Act does not apply to one- or two-family dwellings and townhouses. However, the state law requires DILHR to promulgate rules creating standards for interior and exterior accessibility of grade level portions of townhouses, with the rules ensuring access to at least 25% of newly-constructed townhouses. The Act also requires a study of the need for, and availability of, accessible one- and two-family housing.

The Act specifies that DILHR may grant a variance from the exterior accessibility requirements if meeting the requirements would be impracticable because of the

terrain or unusual characteristics of the site. It also requires specified types of existing multi-family housing undergoing remodeling to meet accessibility requirements similar to the requirements for newly-constructed housing, with the extent of the requirements depending on how extensively the housing is being remodeled.

For further information on Wisconsin's new fair housing law, contact the Legislative Council at (608) 266-1304.

People & Places

WSA members Rolland H. Williamson, AIA, Madison, and R.R. Griffith, AIA, Elm Grove, have been approved for Emeritus member status. Congratulations!

AIA Emeritus member Carl Liebert, Sr., Rhinelander, died this past summer at the age of 89. He founded E.R. Liebert and Sons in Milwaukee during the depression and moved the firm's office to Neenah after World War II. Liebert moved to Rhinelander in 1970, where he was active in the profession until his retirement in 1989.

Thomas G. Olson, AIA, Appleton, has been named vice president of architectural discipline and services for Foth & Van Dyke. Paul Wagner, AIA, Madison, and Jay Leimer, AIA, Appleton, recently joined Foth & Van Dyke. Wagner is working in the firm's Madison office, while Leimer is in Green Bay.

Elmer Keller, AIA, Shorewood, has joined Kahler Slater Architects as quality assurance manager in the firm's Milwaukee office. Robert R. Corbett, AIA, Madison, has been assigned to the firm's

Madison office to work on the Wisconsin State Capitol restoration project. Joan Suchomel, AIA, Milwaukee, has been promoted to project manager for Kahler Slater Architects' health care studio.

Andrew A. Kraus, AIA, Milwaukee, has joined Peterman Associates, Inc., Architects as a project architect. He currently is involved in motel and church projects by the firm.

Randy R. Morrison, AIA, Milwaukee, has been promoted to an associate with Warner, Pfaller & Associates, Inc., where he will coordinate the firm's architectural work as well as maintain his current project management responsibilities. Kevin E. Donohue, AIA, Racine, also has joined the firm as a project architect in its restoration/remodeling team.

Paul A. Meier, AIA, Cedarburg, and Thomas C. Hoffman, Associate AIA, Milwaukee, have formed a new firm, Meier and Hoffman Architecture and Interior Design, Inc. Meier is president and Hoffman is vice president of the firm. They can be reached at P.O. Box 667, Cedarburg, WI 53012-0667; telephone (414) 377-8857.

WSA Professional Affiliate member Paul D. Berta has been named president of the Professional Liability Agents Network (PLAN). Berta is president of Klipstein Insurance Services, Inc., Madison, an independent insurance agent. PLAN is an association of North American insurance agencies that specialize in professional liability and other insurance programs for architects, engineers and other professionals. For information on PLAN's new guide for professional loss prevention, *Essential Steps to a Claims-Free Practice*, contact Berta at 1-800-279-7181/(608) 238-7181.

Architecture students at UWM SARUP once again walked away with most of the awards at the annual Chicago Awards student design competition. Of the three awards presented, Roger Klein received the prestigious Benn-Johnck Award for first place and Nick Cascarano took second place.

In celebration of Frank Lloyd Wright's 125th birthday, the Milwaukee Art Museum is featuring an exhibition from September 11 through November 8 entitled *The Wright State: Frank Lloyd Wright in Wisconsin*. Along with the exhibition, many special events and programs are planned that will feature Milwaukee area architects. John Peine, AIA, Wauwatosa, will help lead four art history classes for children and adults on Thursday evenings beginning September 17 and will explore the foundation of modern architecture, focusing on the work of Wright, Mies Van Der Rohe and Le Corbusier, in a four-week class beginning October 15. The Southeast Chapter/WSA is loaning a "pile of Legos" for a special program for kids, ages 7-12, on Saturday mornings. On Sunday, September 20, from 1-4 p.m. to kick off Architecture Awareness Week, WSA members will lead an extraordinary afternoon of activities for families that will include six workshops in which participants will create buildings with Legos, design stained glass installations and work with froebel block sets. For more information on Milwaukee Art Museum events, call (414) 224-3200.

The Madison Opera Guild will present the world premiere of *Shining Brow* on April 21-25, 1993 at the Madison Civic Center. The opera is based on 11 tumultuous years (1903-1914) when Frank Lloyd Wright chose a ridge in

Southern Wisconsin as the site of his home and studio. For ticket information, contact the Madison Opera at (608) 238-8085 or the Madison Civic Center at (608) 266-9055.

The Department of Engineering Professional Development at UW-Madison is sponsoring a number of seminars of interest to architects: *Indoor Air Quality*, September 21-22 and *Implementing and Managing an Effective Construction Safety Program*, September 23-24. It also has scheduled a number of continuing education courses on building design and construction topics available via WisView. For information on seminars, call 1-800-462-0876. For general questions on the WisView programs, contact Janice Friis at (608) 262-2026.

Membership Action

Please welcome the following new WSA members:

AIA

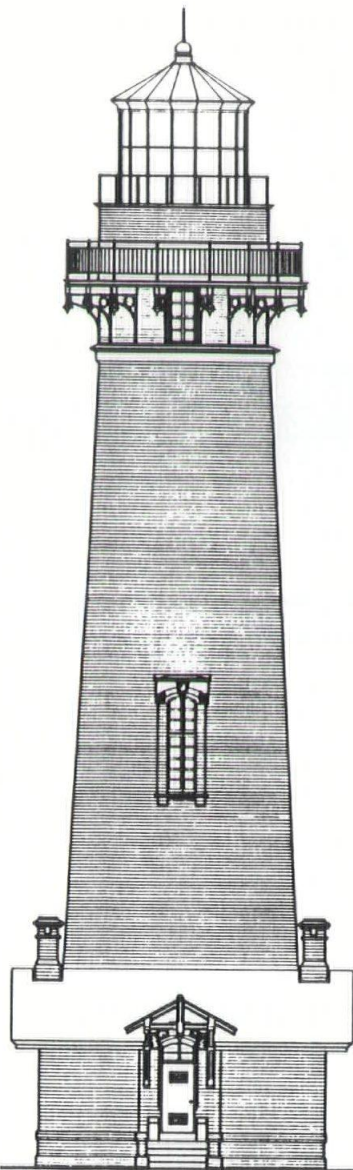
Randall A. Page, Southwest
Robert R. Corbett, Southwest
David M. Burrows, Southwest
(Transfer)
Robert O. Lemke, Southeast
Denis N. Boylan, Southeast
Peter J. Siegrist, Southeast
Matthew D. Tendler, Southeast
Peter J. Crennell, Southwest
Kastas A. Palulonis, Southwest
Richard Ruvin, Southeast
Erik L. Madisen, Southeast
Michael E. Knott, Northeast

Associate

Theresa M. Olsen, Southeast
Josef Staff, Southeast
Patrick B. McGowan,
Southwest

Professional Affiliate

Jeffrey P. Lendrum, Northeast
Robert J. Hackel, Northeast



PIGEON POINT LIGHTHOUSE, SAN MATEO COUNTY, CA

PRESERVATION PLAN ON IT

Planning on restoring a house, saving a landmark, reviving your neighborhood?

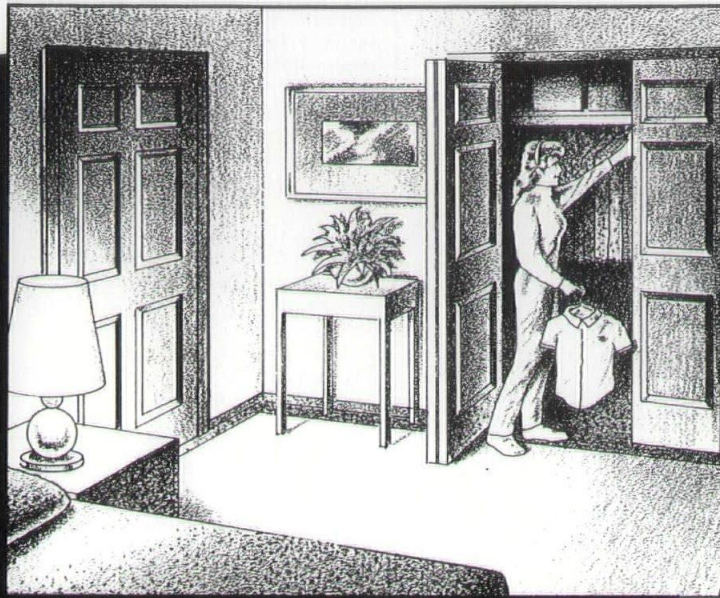
Gain a wealth of experience and help preserve our historic and architectural heritage. Join the National Trust for Historic Preservation.

Make preservation a blueprint for the future.

Write:

National Trust
for Historic Preservation
Department PA
1785 Massachusetts Ave., N.W.
Washington, D.C. 20036

A HARDWOOD DOOR WITH NO KNOCKS AGAINST IT.



*Prideline Doors
Are Made From
Poplar Hardwood...
A Fine Quality,
More Affordable
Hardwood... In Many
Impressive Styles*

STEP UP TO PRIDELINE
POPLAR HARDWOOD DOORS
... STEP UP WITH PRIDE!

This is a different and better kind of hardwood door. Highly receptive to stain, the poplar hardwood can take on the elegant appearance of cherry, or maple, or birch. The quality of wood and craftsmanship are superb. Prideline poplar hardwood doors are available in numerous attractive designs—with high style details to complement today's upscale home. Because of the relative modest price, you can afford Prideline hardwood value from dining room to bedroom—all throughout your home.

SEE US FOR INFORMATION.

PRIDELINE

POPLAR
HARDWOOD DOORS
BY CDC

Distributed by:
The Radford Company
•Oshkosh •LaCrosse •Madison •Duluth

**Your
magazine
depends
on its
advertisers.**

*Black & White Murals *8x10 Glossy Repros
*We Reproduce Blueprints or Masters For
Making Blueprints

PHOTOCOPY

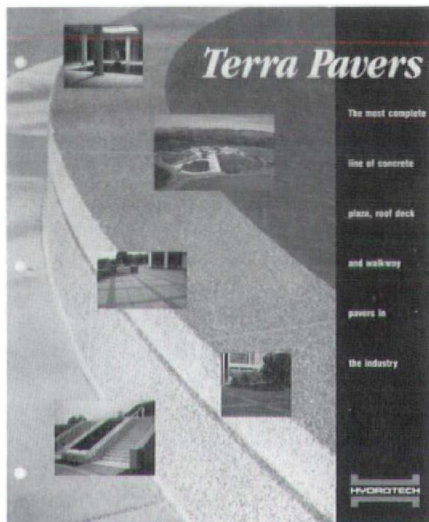
104 East Mason St. Milwaukee, Wisconsin 53202

For Service . . .

CALL: 1-(414)-272-1255



Trap Wrap complies with ADA Legislation (Handicap Accessibility Requirements). Trap Wrap protects wheelchair patrons from burns or injury as a result of contact with lavatory supply and waste lines. Trap Wrap completely covers pipe surface joints and valves to ensure safety. Universally sized. Easy retrofit installation. Provides design element to exposed pipes. Standard color: Taupe. Call 1-800-827-1207.



American Hydrotech, Inc. offers a new four-page brochure on roof deck and plaza deck precast concrete pavers—"Terra-Paver H" by American Hydrotech, Inc."

The precast concrete pavers are available in custom colors, surface texture and a range of sizes and weights to meet your project needs. "Terra-Pavers H" are the most complete line of concrete pavers in the industry today.

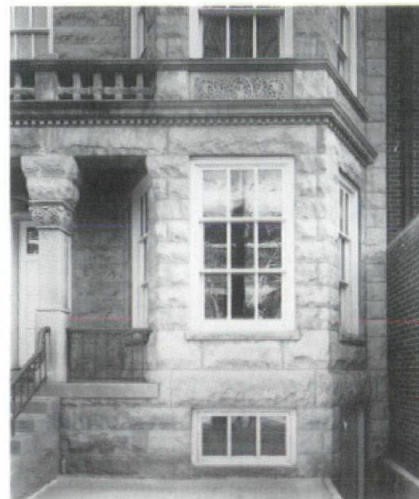
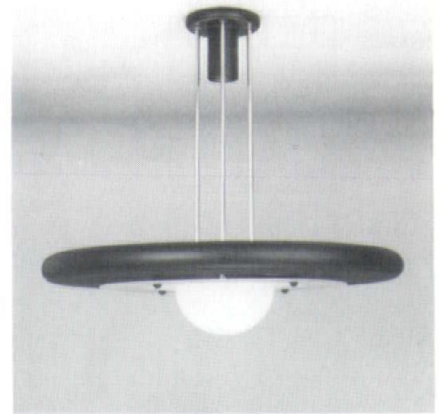
The four-page brochure includes product sizes, thickness, weights and a complete technical product specification.

For additional information, contact American Hydrotech, Inc., 303 East Ohio Street, Chicago, Illinois 60611. Phone 1/800-877-6125 or FAX 312/661-0731.

SPI Lighting has announced the introduction of its "Options" series of fixtures, featuring a low-profile design that is particularly suitable for low-ceiling applications.

The contemporary, 2 3/16"-deep fixture incorporates a newly-designed reflector system that affords exceptionally wide, balanced indirect light distribution. The multi-reflective rebound optics eliminate glare, distracting reflections and harsh angles, producing a comfortable office environment for workers utilizing computer screens and for reading and writing tasks.

For more information, contact SPI Lighting, 10400 N. Enterprise Drive, Mequon, Wisconsin 53092.



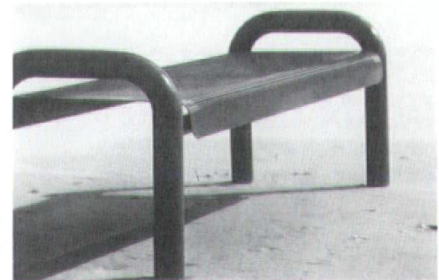
Marvin Windows' new Magnum Triple Hung features a tall, elegant design based upon building styles from Thomas Jefferson's era. It has three vertical sash, with a Marvin-engineered counter-balance system that allows the top and bottom sash to operate simultaneously for ventilation. When the window is fully open, identical daylight openings on all three sash provide a dramatically clean, uniform appearance. The top and bottom sash tilt into the room, and all three are removable for cleaning. The Magnum Triple Hung meets and exceeds NWWDA Grade 40 requirements, ensuring very high performance.

For more information on all Marvin Windows products, contact **Builders World**, P.O. Box 881, Waukesha, WI 53187, or phone (414) 542-8883.

Public seating has reached a new plateau with the Petoskey Group by **Landscape Forms**. Freestanding, surface-mounted or embedded, each seating unit is positioned atop rugged tubular steel supports. The seat inserts may be specified in perforated metal, steel rod or wood — red oak, redwood or jarrah. An all-steel litter receptacle completes this ensemble, and it too, is available either freestanding, surface-mounted or embedded.

Due to a major demand from the overall marketplace, a flat Petoskey Bench with a perforated metal seat has been added to the collection. This version is particularly apropos for shopping mall installations, where users can sit facing either direction.

For additional information on this or any of Landscape Forms, Inc.'s fine indoor and outdoor commercial furniture collections, please call 1-800-521-2546 or write: 431 Lawndale Avenue, Kalamazoo, MI 49001.



Advertiser Index

- 58 Arnold & O'Sheridan, Inc.
 32 Artemide, Inc.
 50 Arwin Builders Specialties, Inc.
 3 Best Block
 24 Builders World
 18 DeLeers Millwork
 58 Dolan & Dustin
 28 Elipticon, Inc.
 12 Four Seasons Design Group
 58 Bert Fredericksen, Inc.
 58 Donna Girard Studio
 48 Great Lakes Gypsum Distributors
 20 IDAC, Inc.
 36 Klipstein Insurance Service
 58 La Force Hardware & Manufacturing Co.
 58 Lang Associates, Inc.
 40 Lange Bros. Woodwork Co., Inc.
 32 LFI-Landscape Forms, Inc.
 2 M & I Bank
 insert Madison Area Sheet Metal Labor
 Management Council
 28 Master Blue Print, Inc.
 58 C.R. Meyer and Sons Company
 57 Mid-States Concrete Products
 58 Midwest Visual Equipment Co.
 58 Milwaukee Blueprint Service
 36 Nielsen Building Systems
 16 Omni Glass & Paint
 28 PBBS Equipment Corp.
 insert J.W. Peters & Sons, Inc.
 16 Petersen Aluminum Corporation
 55 Photocopy, Inc.
 55 The Radford Co.
 4 S & S Sales
 40 Sheet Metal Contractors of Milwaukee
 58 Soils & Engineering Services, Inc.
 59 Spancrete Industries
 12 Stevens Construction
 58 Strass-Maguire & Associates, Inc.
 20 Tews
 42 Ver Halen, Inc.
 15 Visa Lighting
 58 Wind Mill
 43 Wisconsin Bell
 24 Wisconsin Blue Flame Council
 36 Wisconsin Brick & Block Corp.
 60 Wisconsin Concrete Masonry Assn.
 50 Wisconsin EPS
 8 Wisconsin Electric Power Co.
 40 Wisconsin Natural Gas Co.
 11 Wisconsin Pipe Trades
 6 Wisconsin Public Service
 46 Wisconsin Ready Mixed Concrete Assn.
 58 Wisconsin Testing Laboratories

This index is published at no cost to advertisers, as a service to readers of Wisconsin Architect. Publisher assumes no responsibility for errors or omissions. When writing to advertisers, tell them you saw their message in Wisconsin Architect. They want to know.



Design more **CLEAR SPAN** in your next building project with Flexicore/Flexicast Structural Systems —

- Up to 50 feet offers maximum maneuverability for plant operations, warehousing or vehicle traffic.
- Flexicore floors/ceilings are maintenance free and fire resistant.
- Cost effective compared to other systems. Job quotations include delivery and erection by experienced Mid-States personnel.
- Mid-States offers factory controlled high strength quality Flexicore.

For more information, call or write—

MID-STATES CONCRETE PRODUCTS CO.

Box 58, Beloit, WI 53512

Phone 1-800-236-1072 Fax 1-815-389-2339

Moving?

Let us know 4-6 weeks in advance so that you won't miss a single issue of *Wisconsin Architect*. Please include a copy of the old label.

New Address:

Name _____

Address _____

City, State, Zip _____

Mail To:
 WISCONSIN ARCHITECT
 321 S. Hamilton St.
 Madison, WI 53703



ARNOLD AND O'SHERIDAN, INC.
CONSULTING ENGINEERS

Structural Electrical
Mechanical Civil

608-271-9651
815 FORWARD DRIVE MADISON, WI 53711
414-783-6130
4125 N. 124TH BROOKFIELD, WI 53005



DOLAN & DUSTIN, INC.
CONSULTING ELECTRICAL ENGINEERS

1011 N. MAYFAIR RD WAUWATOSA, WI 53226-3448
(414) 774-4543 FAX (414) 774-4579

Electrical Power - Primary & Secondary Distribution
Lighting Design • Security & Communications Systems
Grounding • Emergency Generation • Uninterruptible Power

BERT FREDERICKSEN, INC.

CONSULTING ENGINEERS

3245 North 124th Street Brookfield, Wisconsin 53005-3112
TELEPHONE 781-9070 (414)

HEATING • VENTILATING • AIR CONDITIONING

Bert Fredericksen-Chairman John Fredericksen-President Bert T. Fredericksen-V. President

LANG

Wausau, WI (715) 845-1333
Green Bay, WI (414) 435-2488

Associates, Inc. • Consulting Engineers • Electrical and Automation Specialists

- Lighting Design
- High, Med, Low Voltage Design
- Systems Design
- Instrumentation and Controls
- Automation
- Testing

Meeting Room AV Systems Design

Need more help when you design meeting rooms using AV, video computers or teleconferencing systems? Call Flint Bridge at Midwest Visual. 414/ 784-5880.



SOILS & ENGINEERING SERVICES, INC.



Geotechnical, Material Testing, and
Environmental Consulting Engineers

1102 STEWART STREET 608-274-7600
MADISON, WI 53713-4648 FAX 608-274-7511

Supporting
practical
excellence
in architecture.

RMEYER

C.R. Meyer and Sons Company
Since 1888

895 West 20th Ave., P. O. Box 2157
Oshkosh, WI 54903-2157 (414)235-3350



Donna Girard
Decorative Artist

- Wall Glazing • Faux Finishes • Metal Leaf Gilding • Sky/Cloud Ceilings
- Marbleized Columns • Murals

2826 Ville du Parc Dr.
Mequon, WI 53092
414-242-4708



MILWAUKEE BLUEPRINT SERVICE

7526 W. Appleton Ave., Milwaukee, WI 53216

Fast Diazo Printing • Specs • Supplies
Free Pick-Up and Delivery with Minimum Order
(414) 464-2350 1-800-686-2350

Strass-Maguire & Associates, Inc

CONSULTING • STRUCTURAL • INDUSTRIAL • ENGINEERS

9000 N. DEERBROOK TRAIL, SUITE #110

MILWAUKEE, WI 53223

#414/354-4046 FAX 414/354-5008



SLATWALL SYSTEMS



- Full line manufacturers..
- Slatwall panels and fixtures.

by Wind Mill

1-800-548-7528

SLATWALL SYSTEMS BY
Wind Mill

200 Balsam Road, Sheboygan Falls, WI FAX (414) 467-6114



Wisconsin
TESTING LABORATORIES

Geotechnical Engineers

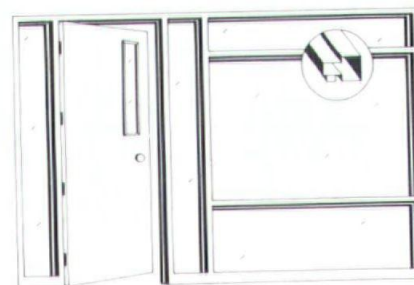
Soil Borings

Materials Testing & Inspection

Menomonee Falls, WI 53051 • (414) 252-3300

LA FORCE

CUSTOM FRAMES . . .
MADE TO YOUR DESIGNS



Expertly engineered hollow metal frames, made to your specifications. Select any door height, profile, face dimension or jamb depth you want. Count on us to provide what you need.

- Hollow Metal Doors & Frames
- Wood Doors
- Builders Hardware
- Toilet Partitions
- Toilet Accessories
- Building Specialties

LA FORCE

Hardware & Manufacturing Co.

1060 W. Mason St. 12040 W. Feerick St.
Green Bay, WI 54303 Milwaukee, WI 53222
(414) 497-7100 (414) 466-5350

THE REPUTATION YOU CAN BUILD ON

Preferred Parking

For a parking structure driven by efficiency, economy and aesthetics, Spancrete is your perfect choice.

Spancrete structural precast parking deck components put construction schedules on the fast track. Each unit is produced and cured in our plant under carefully controlled conditions, and can be erected quickly on any site in any weather, with fewer delays.

Precast Spancrete cladding offers striking architectural treatment options, too. Like decorative reveals. False joints. Rich exposed aggregates in a variety of colors. Stone or masonry veneers. Even curvilinear shapes.

With Spancrete, you'll save on financing and maintenance costs. Realize a faster return on your investment. And produce a parking structure that's an asset to you and its environment.

Spancrete. The vehicle of choice for high-performance parking structures.



Spancrete Industries, Inc.
10919 West Bluemound Road
Milwaukee, Wisconsin 53226 • 414-258-4110
Green Bay • 414-494-0274
Chicago • 815-459-5580



Children's Hospital of Wisconsin
Parking Structure
Wauwatosa, Wisconsin

SHAPING OUR WORLD

Architectural Concrete Masonry Units

are designed
to provide you
with a great
versatility,
as well as,
all the beauty
you can
imagine

•

Another great idea from the



Wisconsin Concrete
Masonry Association

P.O. Box 339

Valders, Wisconsin 54245

Architect:

Heike Design Associates, Inc.

Project:

Capitol Court Renovation

