

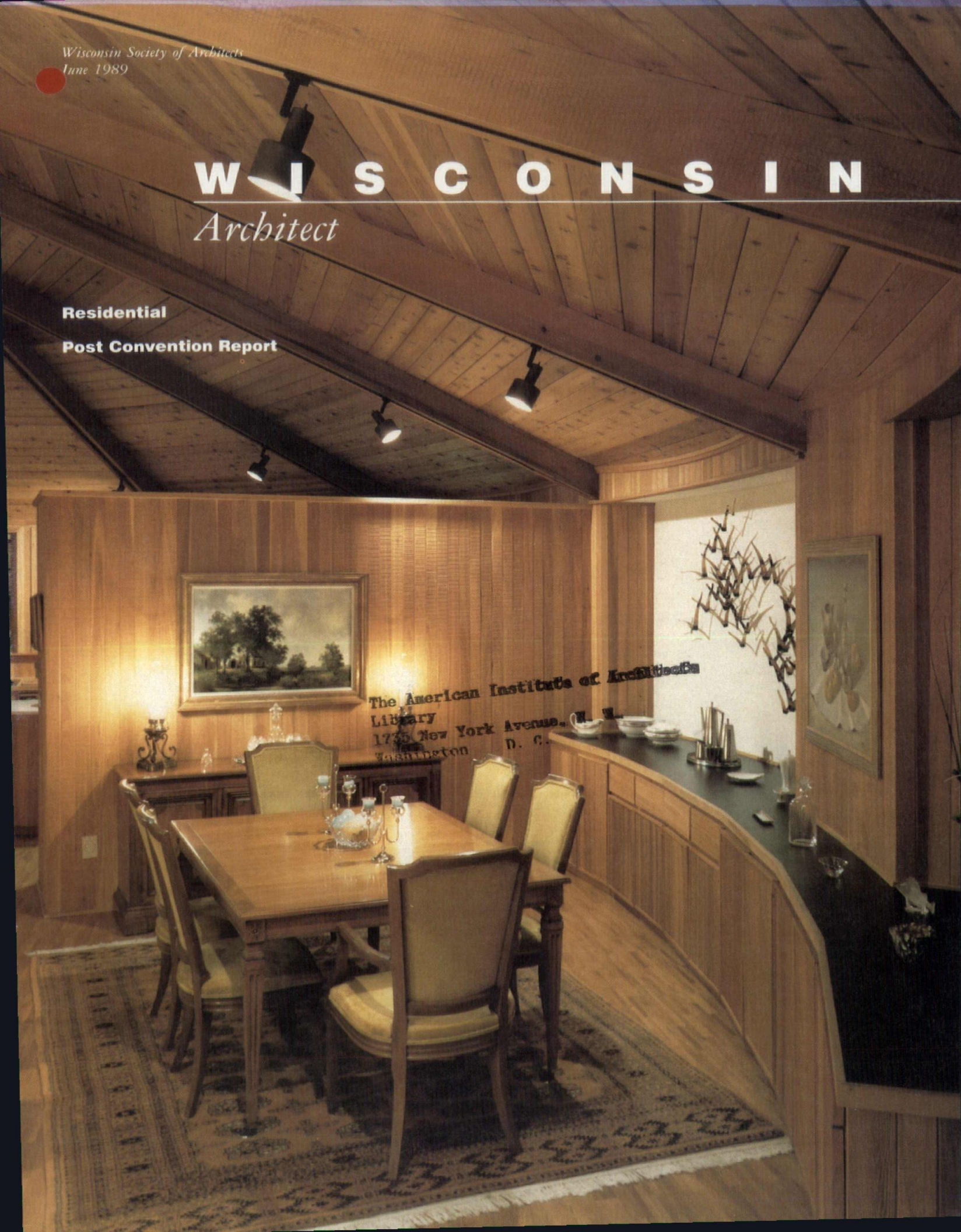
W I S C O N S I N

Architect

Residential

Post Convention Report

The American Institute of Architects
Library
1735 New York Avenue, N.W.
Washington, D. C.



DESIGNED FOR PROJECTION



Auditorium at St. Joseph Hospital, Marshfield, Wisconsin

Would you like to have more technical support when you design meeting rooms?

Look to Midwest Visual, Wisconsin's most experienced installer of audio-visual, video, and computer presentation systems. We specialize in custom systems for conference rooms, board rooms, training centers, and small auditoriums. We can provide the requirements you need for screen sizing, audience seating, front and rear projection rooms, sound systems, control systems, and lighting.

We'd like to help provide your clients with meeting rooms that take full advantage of the latest communications technology. Call us as questions come up in any stage of the design process.



**Milwaukee Area: 16908 West Victor Road, New Berlin, WI 53151
(414) 784-5880**

Wisconsin Society of Architects Board of

Directors: Dennis L. Olson, AIA, *President*; Jay A. McLean, AIA, *Vice President/President-Elect*; Richard W. Eschner, AIA, *Secretary/Treasurer*; H. James Gabriel, AIA, *Past President*; Daniel J. Becker, AIA; Kevin J. Connolly, AIA; Robert H. Grapentin, AIA; Erik A. Jensen, AIA; Douglas N. Kozel, AIA; James E. Larson, AIA; Richard D. Michael, AIA; Karen Newhouse (MSOE); Mark A. Pfaller, FAIA; Ross T. Potter, AIA; E. Mitchell Spencer, AIA; Noble E. Rose, AIA; David Reel (UWM SARUP); Harry A. Schroeder, AIA; Kevin B. Shumann (Associate); Modesto Tavaréz, AIA; William M. Babcock, *Executive Director*.

Wisconsin Society of Architects/AIA: 321 South Hamilton Street, Madison, Wisconsin 53703—Phone (608) 257-8477.

Wisconsin Architects Foundation Board of

Directors: 321 S. Hamilton Street, Madison, Wisconsin 53703 — Phone (608) 257-8477: Thomas K. Nisbet, AIA, *President*; Dean Carl Patton, *Vice President*; David A. Gaarder, AIA, *Secretary/Treasurer*; Clarence Huettnerauch, AIA, FCSI; Robert L. Yarbrow, AIA; Paul H. Graven, FAIA; John P. Jacoby, FAIA; Orville E. Arnold; Jack L. Fischer, AIA; William M. Babcock, *Executive Director*.

North Central Region AIA: Robert C. Mutchler, AIA, *Director*.

Southwest Wisconsin Chapter: Modesto Tavaréz, AIA, *President*; Douglas N. Kozel, AIA, *Vice President/President-Elect*; Horst W. Lobe, AIA, *Secretary/Treasurer*.

Southeast Wisconsin Chapter: Daniel J. Becker, AIA, *President*; Kevin J. Connolly, AIA, *Vice President/President-Elect*; Lisa L. Kennedy-Kimla, AIA, *Secretary/Treasurer*.

Northwest Wisconsin Chapter: Richard D. Michael, AIA, *President*; E. Mitchell Spencer, AIA, *Vice President/President-Elect*; Tim Larson, AIA, *Secretary/Treasurer*.

Northeast Wisconsin Chapter: Erik A. Jensen, AIA, *President*; Robert H. Grapentin, AIA, *Vice President/President-Elect*; Erik D. Hansen, AIA, *Secretary/Treasurer*.

Wisconsin Architect, Inc.; Board of Directors: Dennis L. Olson, AIA; Jay A. McLean, AIA; H. James Gabriel, AIA; Richard W. Eschner, AIA.

Wisconsin Architect Editorial Board: Peter J. Schuyler, AIA, *Chairman*; C. LeVonne Laughinghouse; Robert C. Greenstreet; Douglas C. Ryhn; Steve Quinn; William M. Babcock.

Magazine Staff

Editor

William Babcock

Coordinating Editor

Grace Stith

Advertising & Production Manager

Nancy Baxter

W I S C O N S I N

Architect

Features

29 Post Convention Report

Projects

- 9 Private Residence; Oconomowoc, WI
Thomas R. Poweleit, AIA
- 12 Private Residence; Door County, WI
Architecture 360
- 15 Yankee Hill Residential Development
Kabler Slater Torphy Architects
- 17 Single Family Condominium
E. William Johnson & Associates
- 19 Hyde Residence
William A. Aubrey, AIA
- 21 Private Residence; Fitchburg, WI
Solner & Associates
- 22 Water's Edge Condominiums
Jerome A. Kowalski & Associates
- 23 The Heritage Retirement Center
Hoffman Corp.
- 25 Residence; Bayside, WI
Paul R. Schultz, AIA
- 27 Country Residence; Madison, WI
Herbert G. Gausewitz Architect

Departments

- 7 Guidelines
- 35 Forum
- 38 Society News
- 42 Marketplace
- 42 Advertiser Index

Cover: Door County Private Residence
Architecture 360
Photographer: Eric Oxendorf

WISCONSIN ARCHITECT serves the construction industry in Wisconsin with circulation to Architects, Engineers, General Contractors, Business and Interior Designers, Landscape Architects, Certified Planners, Developers, Specifiers, Construction Managers, Builders, Manufacturers, Suppliers. Wisconsin Architect is the official publication of the Wisconsin Society of Architects/A.I.A., published by Wisconsin Architect, Inc. Address all editorial and advertising inquiries to: Editor, Wisconsin Architect, 321 S. Hamilton St., Madison, WI 53703; phone 608/257-8477. Wisconsin Architect and the WSA disclaim liability for statements by the editors, contributors, and advertisers.



Pre-engineered pyramids and domes from Super Sky.

A new angle on economy.

Super Sky's new line of standards can save time and money, while still offering traditional Super Sky quality.

- 5 sizes of pyramids and 8 types of domes.
- Your choice of glazing and finish.
- 10-year warranty against defects and leakage.

If you'd like to see how Super Sky has an angle on value, contact our representative.



David Fogelstrom & Assoc., Inc.
675 N. Brookfield Rd.
Brookfield, WI 53005
(414) 782-7713

SUPER SKY PRODUCTS, INC., 10301 North Enterprise Dr., Mequon, Wisconsin 53092
(414) 242-2000 Telex 4311037 SSPIMEZ

ATTENTION ARCHITECTS!

For your next project, consult with your local **Kohler** distributor listed here.

APPLETON

W. S. Patterson Co.
2100 W. College Ave.
P.O. Box 1177
Appleton, WI 54912
Telephone: (414) 739-3136

MILWAUKEE

Milwaukee P & H Supply Co.
1313 W. St. Paul Ave.
P.O. Box 2158
Milwaukee, WI 53201-2158
Telephone: (414) 273-3600

W. S. Patterson Co.
12400 W. Silver Spring Dr.
Milwaukee, WI 53007
414-783-6500

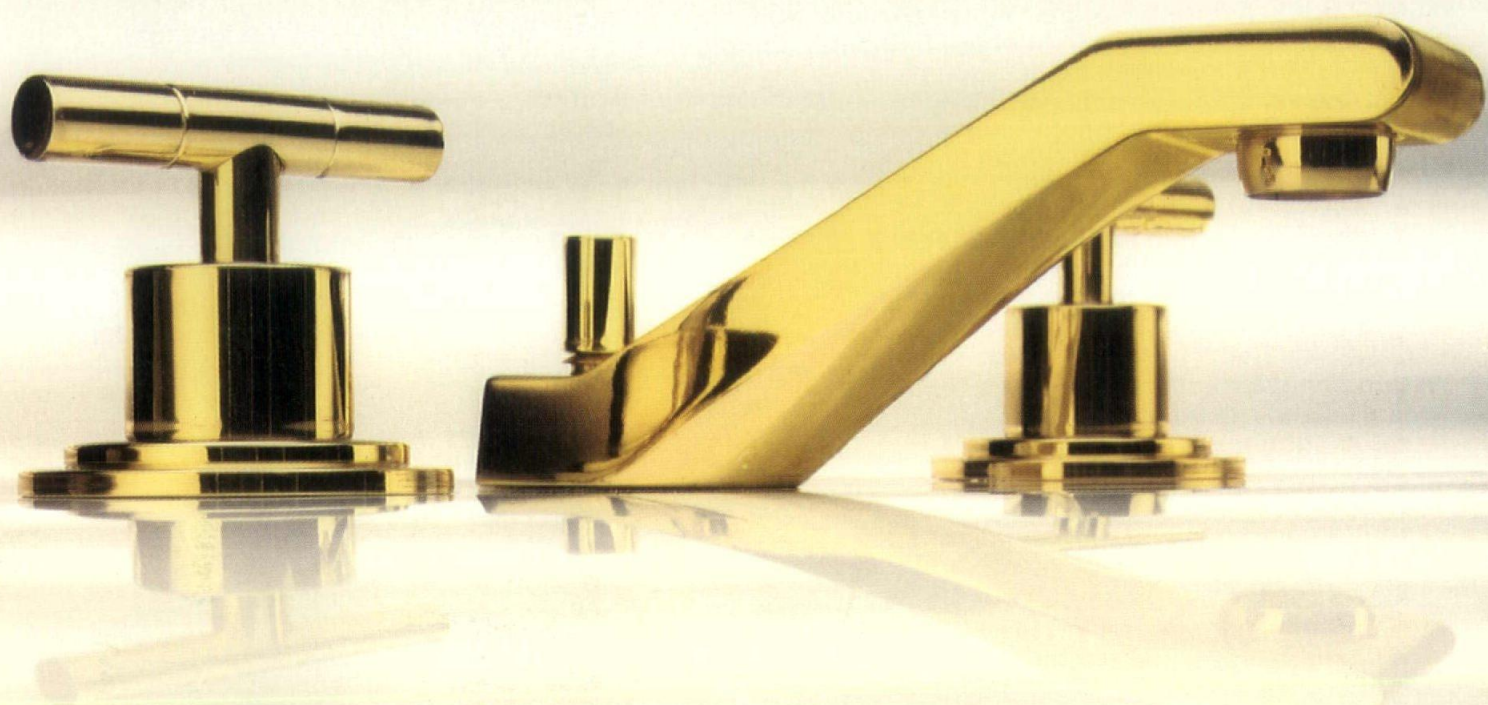
United P & H Supply Co.
9947 W. Carmen Ave.
P.O. Box 25310
Milwaukee, WI 53225
Telephone: (414) 464-5100

RHINELANDER

W. S. Patterson Co. (Branch)
1672 Menominee Dr.
Rhinelander, WI 54501
Telephone: (715) 362-7824

WISCONSIN RAPIDS

W. S. Patterson Co. (Branch)
2111 Engel Road
Wisconsin Rapids, WI 54494
Telephone: (715) 421-1585



Handles Well

Taboret™ Faucets. When it's time for a change, recommend Kohler faucets. It's the one-of-a-kind combination of commercial durability and distinctive residential style. Interchangeable acrylic and metal handle inserts, included with every faucet, are a no-cost option that can be changed to match almost any decor. And Taboret faucets feature solid brass construction and reliable, washerless System C™ ceramic valving. With its interchangeable looks, Taboret is an affordable way to get a handle on your best customer.

THE BOLD LOOK
OF **KOHLER**®

Let Fly Ash do great things for your concrete.

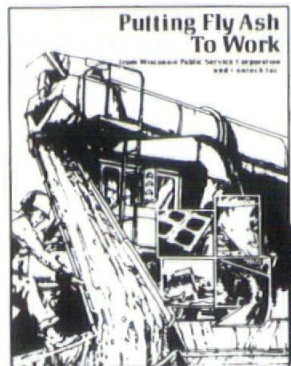
Fly Ash can do some great things for concrete. It can make it stronger and more workable; it can increase density; it can increase resistance to leaching, acid or alkali attack.

Powder-fine Fly Ash also has great lubricating effects. It makes concrete easier to pump, flow and finish. It fills forms completely. Gives you sharper, chip-resistant edges and fine details. And since Fly Ash concrete takes less water, it's more impervious.

The best thing is, Fly Ash does all this for your concrete without costing you more.

Fly Ash is available from two Wisconsin Public Service power plant locations, Green Bay and Wausau, and includes the highly desirable Fly Ash produced from *low sulfur* western coal, available from our electric plant (Weston 3) in Wausau. Careful monitoring and regular lab testing insures the *best* quality Fly Ash possible. You also receive professional services offered by Contech, Inc., Minneapolis, our Fly Ash marketing agent.

Fly Ash. Just what you need for better concrete at lower cost in foundations, garages, driveways, floors, walls, pools, and roads. Let Fly Ash do great things for *your* concrete!



Fly Ash concrete and more information available on request from your ready-mixed concrete suppliers. Or write WPSC for free Fly Ash Idea Kit.

WISCONSIN PUBLIC SERVICE CORPORATION

Industrial Applications Dept.
P.O. Box 19001 Dept. A
Green Bay, WI 54307-9001 414-433-1257



"It is bad economics to spend thousands of dollars on a new home when only part of it is what you want and the other parts you will have to tolerate as long as you live in it."

Residential design tailored to a client's particular needs is good economics...

These are the words of client Suzi Stiennon of Verona, Wisconsin. She and her husband, Arthur, spent seven years planning and house looking. They took plenty of time in choosing their architect and did not hurry any phase of planning or construction. This was their decision. Their new home for their family of six was that important.

Suzi has an art background which she admits helped her to visualize in three dimensions as the planning progressed.

"One really has to want to build to have patience for the time involved," she adds.

"For us, after five years of living in our new home, the rewards have made it all worthwhile."

Grace B. Stith
Coordinating Editor



**GIS Systems
is proud to offer
Arris and
Sun Microsystems.**



Systems Managers, Architects, Designers: More than an Opening Move— GIS Systems Offers The Winning Strategy.

Chess Masters know that success depends on having a winning strategy in place right from the opening move. This same game plan holds true when selecting the right vendor for your CAD purchase.

At GIS Systems, we believe winning the CAD game means more than buying a computer and software. It also means having the right vendor that can help you put it all together with:

- A fully trained staff of experienced and knowledgeable hardware and software applications engineers.
- Complete system training in our training center, or on-site.
- After-sale support and service. ■ Plotting

output service bureau. ■ Custom software development services. ■ Corporate-wide networking strategies and implementation. ■ A commitment to your satisfaction from start to finish.

Developing your winning strategy for CAD begins by discussing your CAD needs and concerns with a knowledgeable and professional GIS Systems account representative. Our representative will work with you to develop and execute a winning strategy, from opening gambit to final move.

With your winning strategy in

place, we want to be sure that when you hear "Checkmate," it won't be coming from your competition.



Grambsch Information Systems, Inc.

**300 NORTH FIRST AVENUE
MINNEAPOLIS, MN 55401
(612) 342-9200**

Sun: Providing you with the winning edge.

Sun Microsystems is the leading manufacturer of high performance CAD workstations, integrating industry standards with new innovations and ease of use.

- Powerful, industry standard UNIX operating system.
- Industry standard MS-DOS.
- Run both UNIX **AND** MS-DOS **CONCURRENTLY** through easy to use windows and icons.
- Built-in, industry standard networking compliments your corporate networking scheme—rather than confusing it.
- Workstation performance; affordable PC price.

Arris: The winning move in software.

ARRIS is the leading micro-computer based CAD package specifically designed for A/E/C and Facilities Management markets. Powerful, yet easy to use.

- ARRIS works the way you do.
- Project oriented, not drawing oriented.
- ARRIS is designed for multiple users to all access the same project database with full control, without risk of lost data.
- True 3D database.
- Fully integrated modules. No clumsy translations.
- Easily customized for company standards or personal use.
- Realistic renderings and walk-throughs.
- Complete BOM reports.
- Full programming language for special applications.

Project

Private Residence

Location

Oconomowoc, Wisconsin

Architect

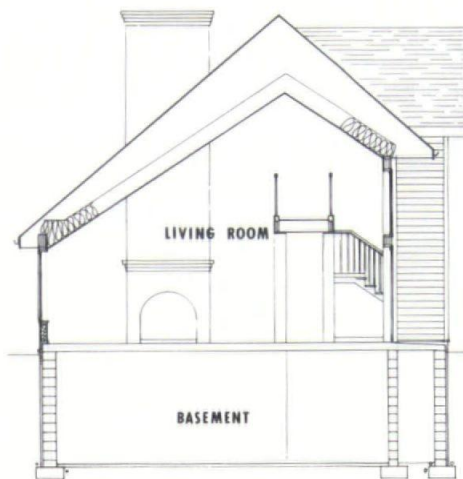
Thomas R. Poweleit, AIA

General Contractor

Butch Schulz

The site is steeply sloped, heavily wooded, 1.3 acres, on a peninsula. The house is located to provide lake views in three directions. A pedestrian access to the lake is provided on a gradually sloping path across the north hill. The driveway is located on an existing ridge, to provide the easiest access to the top of the hill. A flat area to the northwest is used as a private back yard.

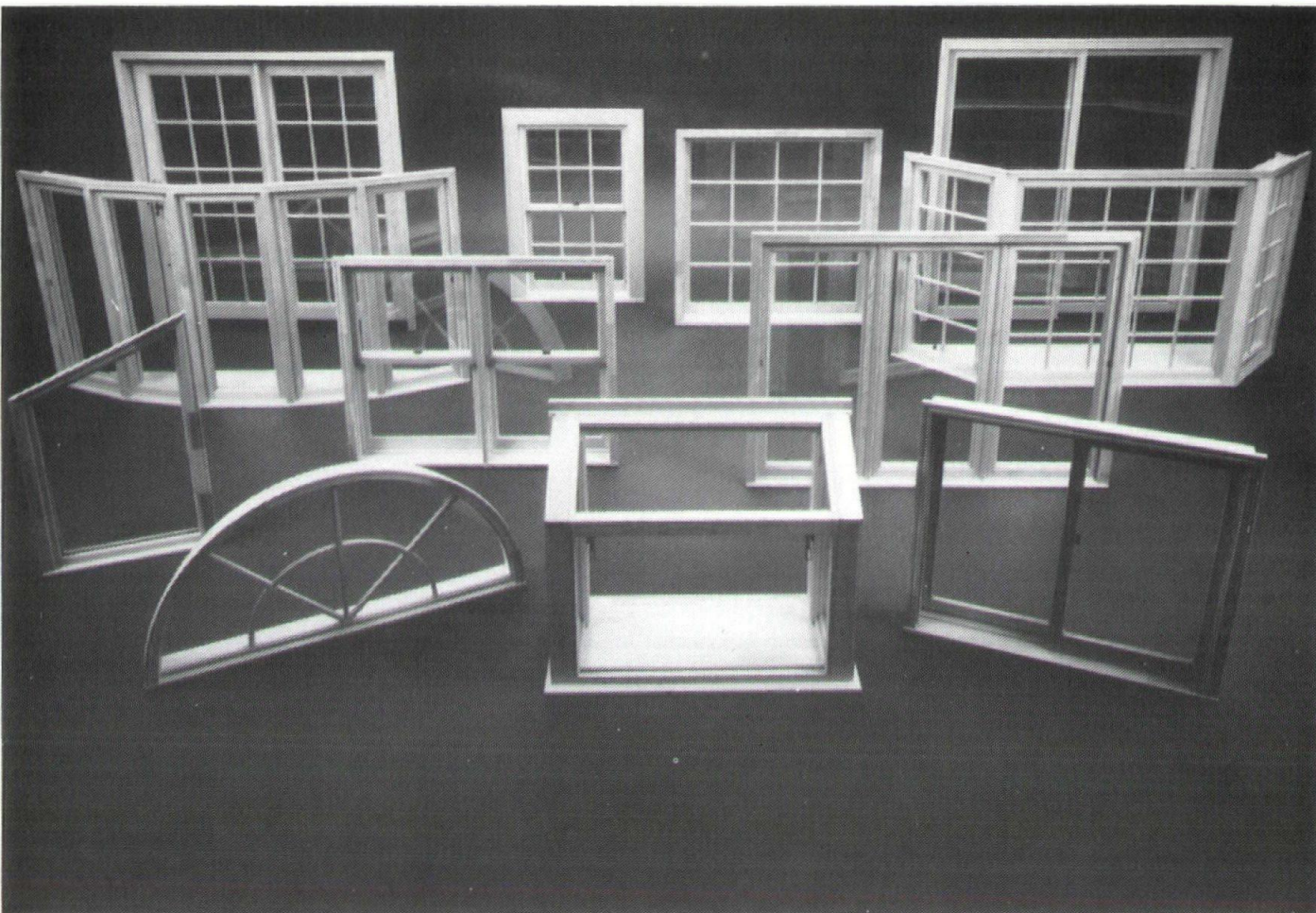
The house is 2000 sq. ft. with an open living concept. The living room, dining room and kitchen are all open to each other. There are three bedrooms, two children's rooms with a bath on one level and the master bedroom and bath on a separate level.



The design intent was to build a relatively small house but to make it look large by using open and high spaces.



Photography: Joan Jenquin



HERE IN ITS SIMPLEST FORM IS A MARVIN WINDOWS CATALOG.

Most window manufacturers make just a few standard shapes and sizes. Marvin offers you thousands to choose from. With everything from authentic divided lites to Round Tops.

All Marvin windows are constructed of fine-grained Ponderosa pine. This wood was chosen for its excellent insulating properties and the way it accepts a stain-and-varnish or paint finish.


A variety of glazing options are available, including insulating glass and special energy-saving Low E glass. So heating and

cooling costs are significantly reduced. What's more, Marvin windows are carefully weatherstripped to eliminate drafts and further reduce energy loss.

And you don't have to wait a long time to have your windows made to order. Delivery is usually within three weeks from the time they receive the order.

For more information on Marvin Windows, contact Bob Smith.

**MARVIN
WINDOWS
ARE MADE
TO ORDER.**




builders world, inc.

p.o. box 881 • waukesha, wisconsin 53187 • (414) 542-8883



RIGHT... FROM THE START

Just 55 minutes at the start could save you thousands of dollars on your next parking structure.

That's all it takes to get crucial planning advice from our specialists.

In 55 minutes we'll show you the latest methods of getting the most parking space for your dollar.

We'll give you up-to-date information on building structures that are virtually maintenance free.

We'll demonstrate how Peters' precast concrete is superior to cast-in-place concrete in corrosion resistance. And we'll show you how best to integrate engineering and construction to assure total budget control.

After a 55 minute consultation with J.W. Peters you'll know how to build your parking structure right...right from the start.



JW PETERS

AND SONS, INC.

4212 West Market Street • Burlington, WI 53105 • (414) 763-2401
(312) 782-4691 (Chicago) • (414) 272-7222 (Milwaukee)

Project

Private Residence

Location

Door County, Wisconsin

Architect

Architecture 360

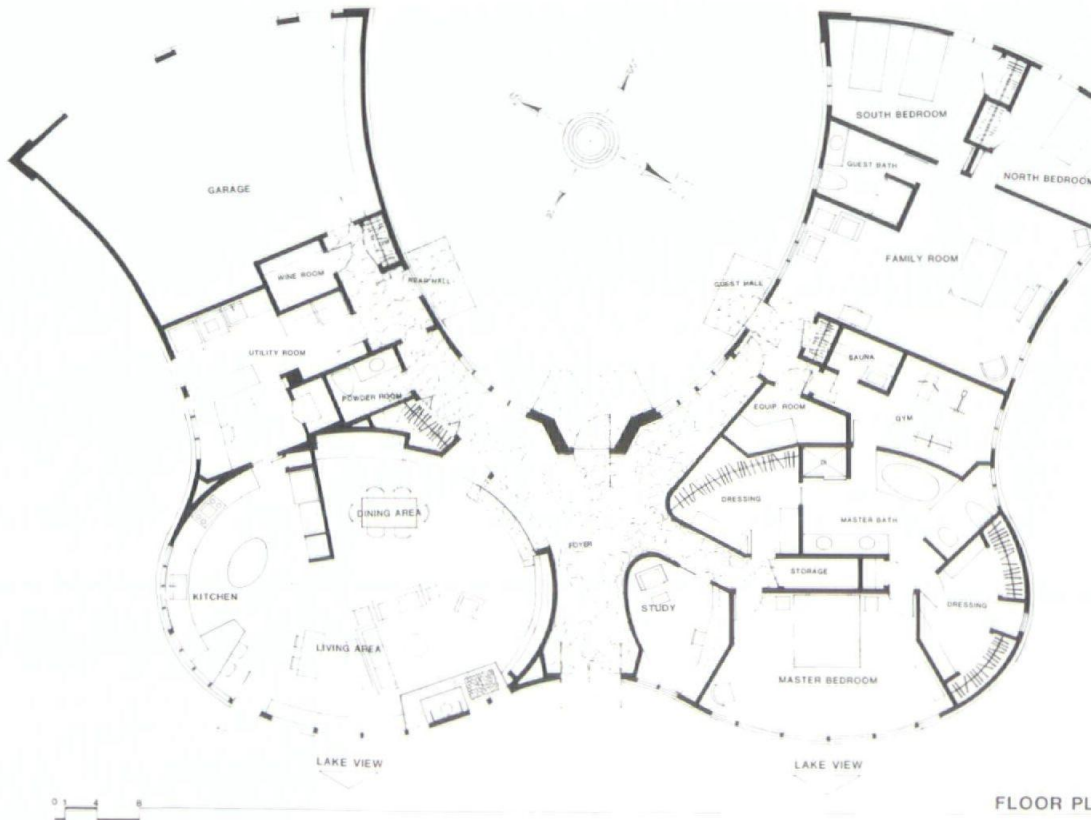
General Contractor

Tishler Builders

Preferring curves to corners, the clients requested a curved design. The solution of warm wood and stone presents a unique roof design above a floor plan of interesting private and open areas. The design provides maximum lake view as well as retreat space for retirement living.

A sophisticated entry provides a protected court for the central gardening and protected patio space almost year-round regardless of wind direction.

Photography: Eric Oxendorf



FLOOR PL



**We sold Graybar Electric their
first Fabcon building. Obviously, the
next two sold themselves!**



Architect: Larsen, Harvala & Berquist-Duluth, MN

Contractor: Lakehead Constructors, Inc.-Superior, WI

Graybar Electric Company chose Fabcon precast prestressed concrete construction for its office/distribution facility in Duluth, MN. More than 12,800 sq. ft. of Fabcon insulated exposed aggregate wall panel makes this building as energy efficient and durable as it is attractive. Previous projects are located in Fargo, ND and Sioux Falls, SD.



Attractive, affordable precast prestressed concrete walls for durable, energy efficient construction.

6111 West Highway 13 • Savage, Minnesota 55378

(612) 890-4444 • Toll Free (800) 727-4444

Regional Offices • Chicago (312) 773-4441 • Detroit (313) 349-1710 • Kansas City (816) 478-4440 • Milwaukee (414) 761-2323 • Omaha (800) 777-1105

PCI Plant Certified — Confirmed Capability to Produce Quality Precast/Prestressed Concrete Products

Project

Yankee Hill Residential Development

Location

Milwaukee, Wisconsin

Architect

Kahler Slater Torphy Architects

General Contractor

Madsen Construction Co.

The program was to create a dense residential development near the center of downtown Milwaukee in an established residential district overlooking Lake Michigan, the first major housing complex to be built downtown in over fifteen years.

The complex consists of 354 living units on one and a half city blocks. The south block with a 23-story high rise residential tower containing 171 units is surrounded by 30 townhouses. The north block accommodates 14 townhouses and a 19-story residential tower containing 139 units. For convenience and security, townhouses and towers on each block are built over two level parking garages.

A large landscaped courtyard guarantees light, openness and security for all the residents indoors or outdoors. Every access point is either monitored electronically or by security personnel.

Photography: Howard N. Kaplan



Something new is brewing in Milwaukee.

Whether you're developing commercial real estate or restoring an old warehouse, the new Milwaukee office of Twin City Testing can provide expert evaluation of acoustics, asbestos, roofing, construction materials and soils. We perform restoration surveys and environmental investigations too.

Call Twin City Testing. We're ready to get the barrel rolling.



**twin city testing
corporation**

11717 W DEARBORN AVENUE
MILWAUKEE, WI 53226
PHONE 414/258-0111

ACG is a service company specializing in computer aided design.

One of our services is **training**. We are an Intergraph Registered Consultant for Project Architect, Project Modeler, and MicasPlus ModelDraft. We are also an Intergraph Education Center for MicroStation. In addition, we offer training on Intergraph's APDP - Architectural Production Design Package.

Another service ACG provides is **turnkey production**. We have a complete professional staff that can help you with your CAD needs.

For more information, call or write:

Training Manager
Advanced Computer Graphics
9316 North 107th Street
Milwaukee, WI 53224
(414) 354-8880

Moving?

Let us know 4-6 weeks in advance so that you won't miss a single issue of *Wisconsin Architect*. Please include a copy of the old label.

New Address:

Name _____

Address _____

City, State, Zip _____

Mail To:
WISCONSIN ARCHITECT
321 S. Hamilton St.
Madison, WI 53703

"The family suggests
that memorial
contributions be made
to the American
Heart Association."
When people want to
honor a loved one
and fight heart disease.

THE AMERICAN HEART
ASSOCIATION
MEMORIAL PROGRAM®



WE'RE FIGHTING FOR
YOUR LIFE

**American Heart
Association**



This space provided as a public service.

Glass



WISCONSIN SOLAR DESIGN

414-444-1639 608-831-2112

Greenhouses
Solariums
Skylights

Project

Location

Architect

General Contractor

Single Family Condominium

Mequon, Wisconsin

E. William Johnson & Associates

Chamberlain Development Company

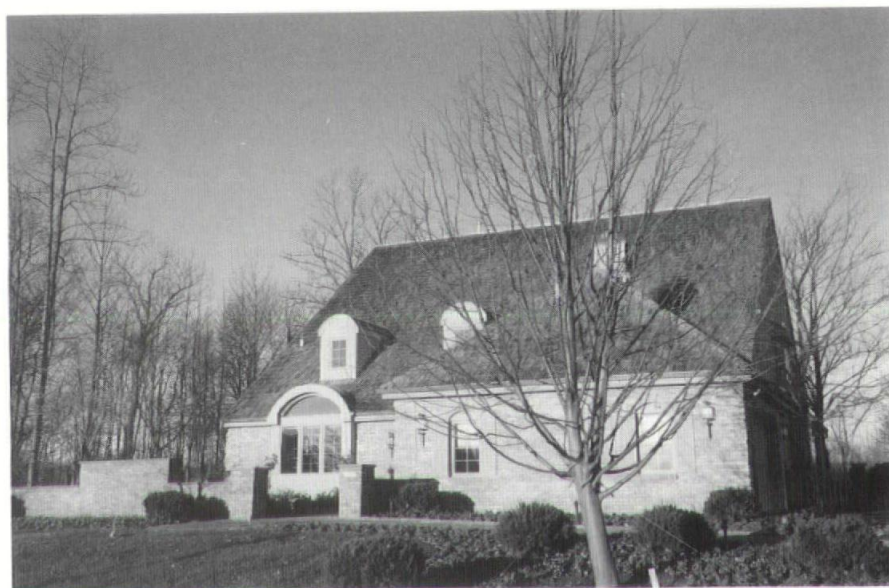


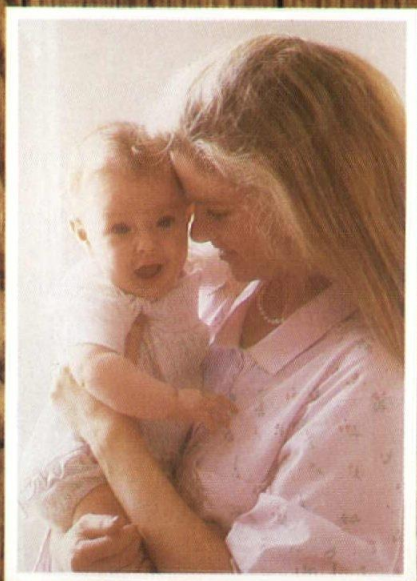
This single family condominium is one of twenty six units located on a golf course. All of the units are traditional in style and are designed to meet the individual needs of each buyer.

This particular unit has several added features beyond the typical unit in the development such as a three car garage, antique face brick, copper gutters and downspouts, brick quoins, formal walled front courtyard and rear patio and elaborate landscaping.

The interior has a two story foyer, living room, family room, den, master bedroom suite with bath, dining room, powder room and kitchen with a wood beam ceiling. The second floor has two additional bedrooms, a full bath and a walk-in cedar closet. A generous amount of wainscoting and crown mouldings were included along with custom cabinetry.

Photography: E. William Johnson, AIA



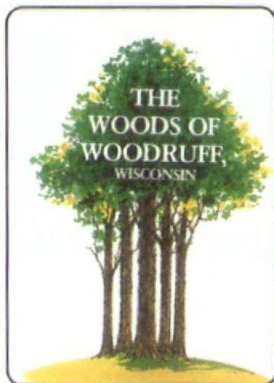


*When she's full-grown,
this wood will still be beautiful.*

You expect hardwood floors and walls to be beautiful. But beauty that endures for generations requires something special. Like the Woods of Woodruff's solid 3/4" thickness and our specially grooved back-sides that provide lifetimes of stability and warping protection.

For your next project, consider the Woods of Woodruff. In Ash, Oak or Cherry. You'll discover a superior product that's produced close to home – and is delivered on time.

Please clip and mail our coupon for a free color brochure and/or a sample of the Woods of Woodruff.



**Pukall
Lumber Company**

10894 Hwy. 70 East
Woodruff, WI 54568
Phone 715 / 356-3252

Pukall Lumber Company
10894 Hwy. 70 East
Woodruff, WI 54568

Please send me:

- ☐ Your brochure.
☐ A sample of the Woods of Woodruff.

YOUR NAME _____

COMPANY NAME _____

ADDRESS _____

CITY _____

STATE _____

ZIP _____

PHONE NUMBER _____

Project

Location

Architect

General Contractor

Hyde Residence

Town of Oshkosh

William A. Aubrey, AIA

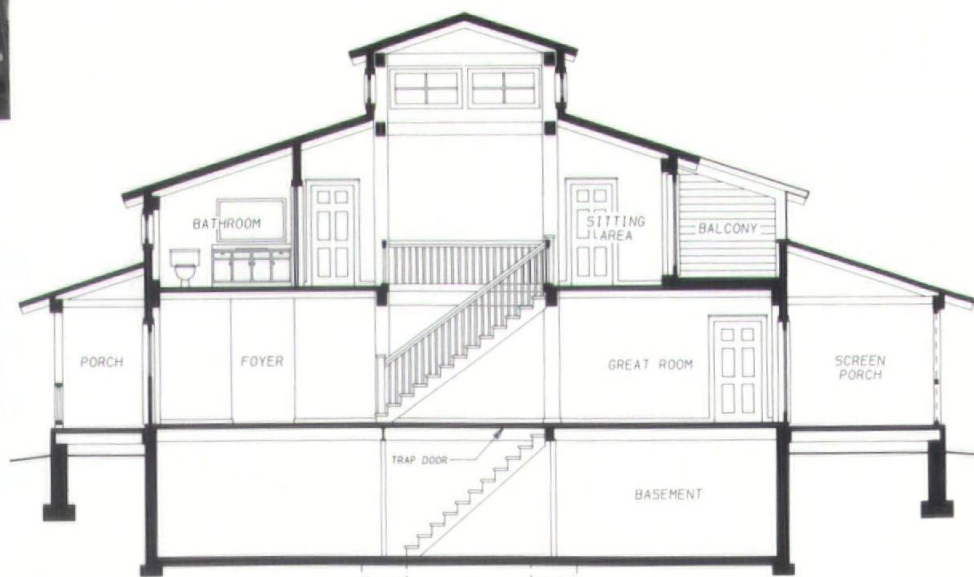
Wayne Gayhart



The residence of Mr. and Mrs. C.F. Hyde is on the north shore of Lake Butte Des Morts in the Town of Oshkosh. The owners design requirements were maximizing the view of Lake Butte Des Morts, an open floor plan, plenty of natural light and ventilation, heavy timber interior and a requirement to meet the developers covenant of 1-1/2 stories maximum. The use of a pre-engineered mortice and tenon, oak pegged post and beam timber frame system provided the ability to have an open floor plan, large areas of glass and the heavy timber

interior. The covenant of 1-1/2 stories was met by having a low eave on the home's second floor, yet providing full use of the entire second floor. The heavy timber frame construction also allowed for the use of high R-value foam insulation in a sandwich wall system that, along with high-E glass and a cupola for exhausting excess heat in the summer, provides the owner with a functional provides and energy efficient home.

Photography: William A. Aubrey, AIA



No matter where it is— if it's asbestos— HSA will find it!

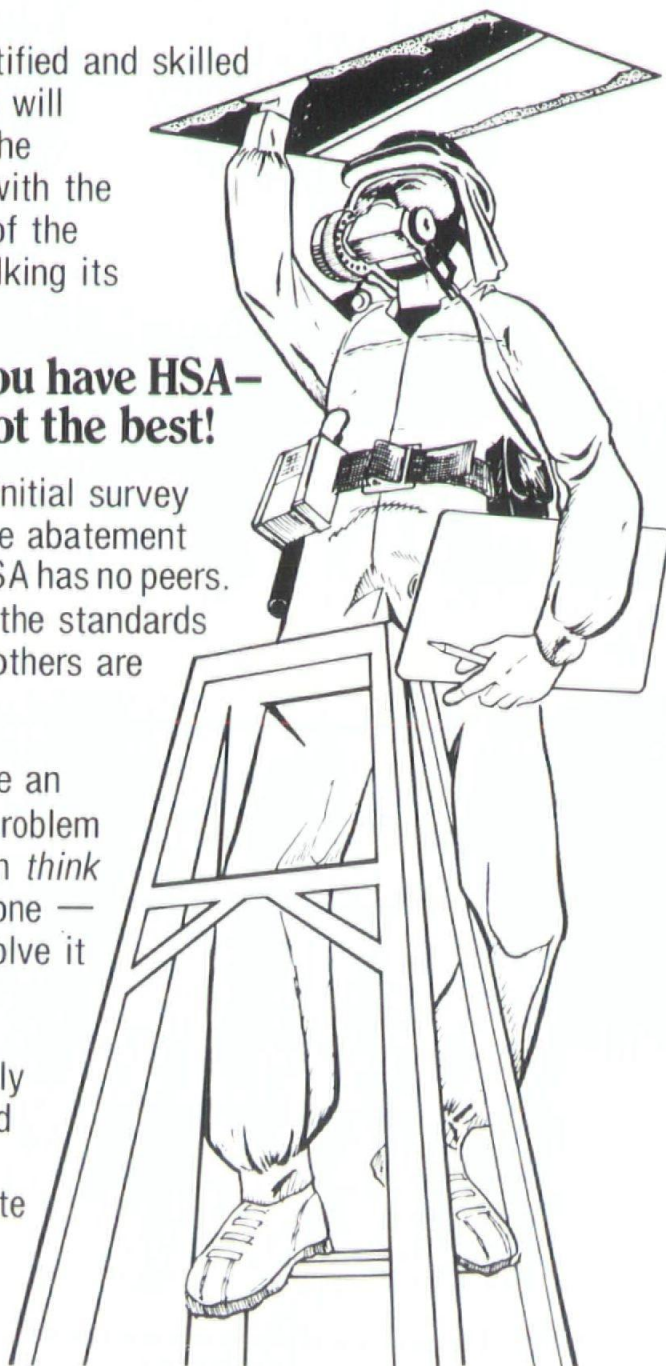
HSA's certified and skilled specialists will seek out the asbestos with the expertise of the hunter stalking its prey.

When you have HSA— You've got the best!

From the initial survey through the abatement process HSA has no peers. HSA sets the standards by which others are judged.

If you have an asbestos problem — Or even *think* you have one — let HSA solve it for you.

HSA is fully bonded and insurable. Call or write today!



HSA CONTRACTORS, INC.

CORPORATE HEADQUARTERS
111 W. Olive St., P.O. Box 17737
Milwaukee, WI 53217
(414) 962-4022

HSA TWIN CITIES
55 W. Ivy Ave.
St. Paul, MN 55117
(612) 488-9044

HSA WAUSAU
(715) 842-1162

Simple, elegant, distinctive.

THE MANISTEE BENCH

The new Manistee Bench invites use, and can withstand it because of the heavy duty welded frame and panel construction.

The back and seat curve gently to provide elegant, comfortable support. The selection of either metal grid or perforated seat panels gives you a choice in appearance and texture.

Electrostatically applied powdercoat colors provide a beautiful, long lasting finish.

Made in the USA.



LANDSCAPE FORMS



LFI/Landscape Forms

Bill Quinlin
2140 North Halsted
Chicago, IL 60614
312-871-8810
FAX 312-871-4617

Project

Location

Architect

General Contractor

Private Residence

Fitchburg, Wisconsin

Solner and Associates

Eberle-Denoble Builders

The owner was influenced, while living in Chicago, by the architecture of Gropius, Mies, and Breuer, among others.

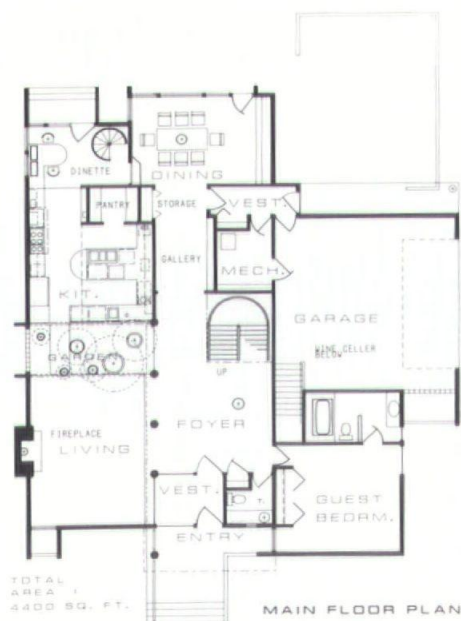
A newly developed urban lot was chosen for the site, which slopes slightly from south to north. One tree of good proportion was located at southwest corner of property.

The clients presented a long list of specialized rooms on two floors to fit their needs plus a privacy deck and an illuminated garden. They wished to have a reflecting pool and a two car garage with the door not to be viewed directly from the street.

Photography: Bill Fritsch



UPPER FLOOR PLAN



MAIN FLOOR PLAN



Land value dictated maximum number of units allowed. The most desirable orientation was the northeast view of South Shore Yacht Club's harbor and breakwater, which also encompassed the eastern skyline of Milwaukee.

Lot width afforded each of the eighteen units a narrow exposure to the orientation, dictating a pie-shaped unit plan which resulted in a crescent building form. Two pie-shaped modules make up a single unit at ground level; a townhouse is stacked above each module. End units vary to take advantage of their greater exposure.

The stepped, gabled chimney modules, and crescent form served to reduce the visual mass of the building, making it compatible with the residential scale of the neighborhood.

Units average 1550 square feet, and amenities include direct access to garages (one third are double garages), fireplaces, gabled ceilings at top floors, and balconies off living rooms, master bedrooms, and dens. Ground floor units also have patios.

Photography: Paul C. Butterbrodt



Project

Location

Architect

General Contractor

The Heritage Retirement Center

Appleton, Wisconsin

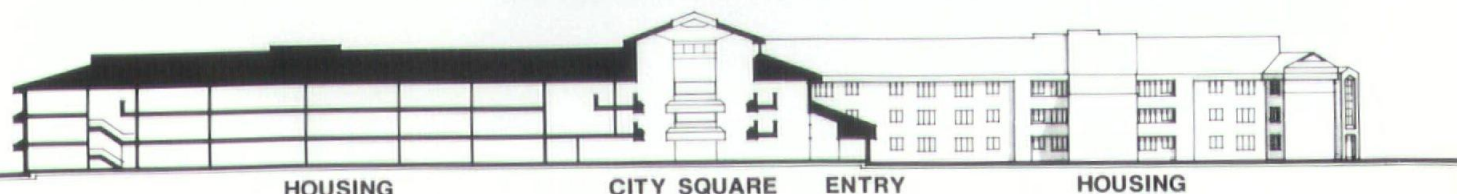
Hoffman Corporation

Madsen Construction Co.

The completed first phase of the project is a three-story wood frame building with residential wings radiating outward from the main "city square" communal space. City Squares is a five story atrium which functions as a spatial focus not unlike that of the traditional village square. Clerestories, skylights, and other large glass areas provide abundant natural light. Exterior views and interior landscaping further enhance the traditional village square concept.

Consideration of the physical limitations, needs, and desires of people age 62 and over resulted in a choice of three floor plans of one and two bedroom apartments. Each long wing is treated as a "street" forming its own neighborhood. Each leads to the dining rooms, lounging space and meeting rooms provided by "City Square".

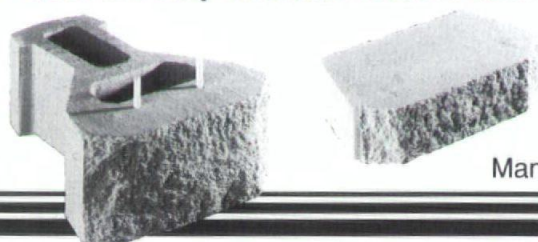
Photography: Derrick Nielsen



TRANSVERSE SECTION A

Sculptured Rock is your natural choice for a permanent and beautiful landscape.

- Individual concrete units locked together with fiberglass dowels.
- Available in 8" or 4" high mini-units.
- Choice of face, color and texture.
- Strong, permanent and maintenance free.
- Quick and easy installation reduces labor.



KeyStone® retaining walls are designed to function beautifully for a lifetime, providing long term savings compared to timbers which will deteriorate. No cumbersome tools, mortars, cutting or preservative treatments are required with **KeyStone**, and the wall goes up in half the time of old methods.

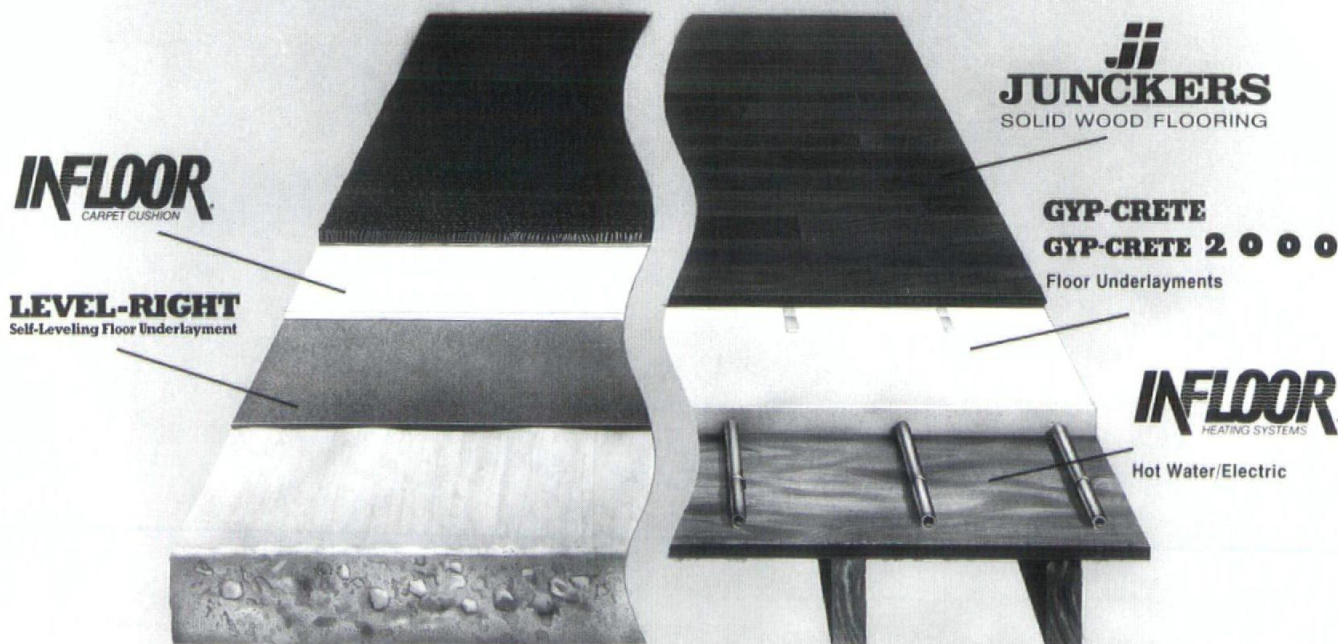
KEYSTONE
RETAINING WALL SYSTEMS

Manufactured in this area by

**BEST
BLOCK B COMPANY**

P.O. Box 1000 • Butler, WI 53007 (414) 781-7200 In Chicago (312) 782-5379

There's something special afoot. . .



Don't settle for an imitation. Demand GYP-CRETE products by name. Only then will you have the confidence that comes from using a time tested product proven to be the leader in the industry.

Local Dealers:

Acoustical Floors of WI - Milwaukee (414)367-3306
D&M Construction Co., Inc. - Madison (608)222-0944
Superior Gypsum Floors - Green Bay (414)336-7225

Project

Location

Architect

General Contractor

Residence

Bayside, Wisconsin

Paul R. Schultz, AIA

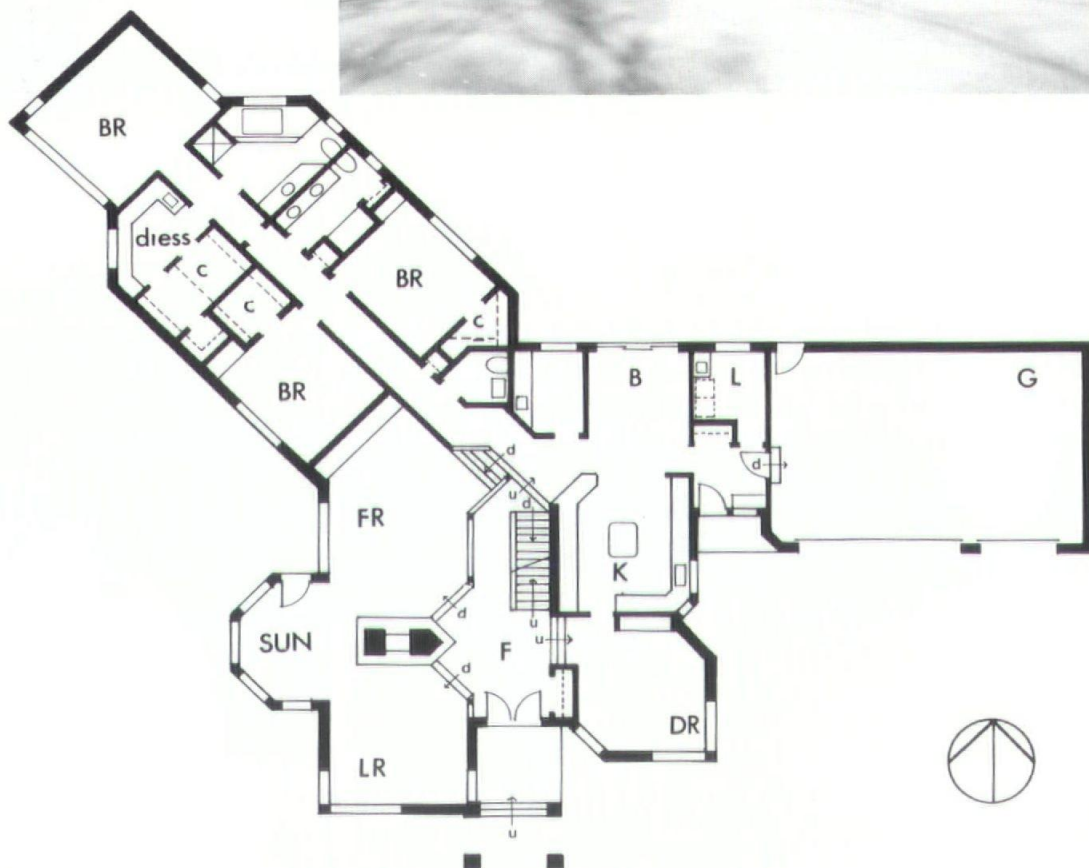
Master Builders, Inc.



The site is located on a ravine to the west of the property, so the house was designed to incorporate it as the focal point. The program called for a residence of 4,000 sq.ft. on one floor with a exposed basement for future recreation area. The adjacent homes are traditional two story with this being the odd lot because of the ravine. The design of the house uses traditional elements: columns, center hall, white brick. A second story private

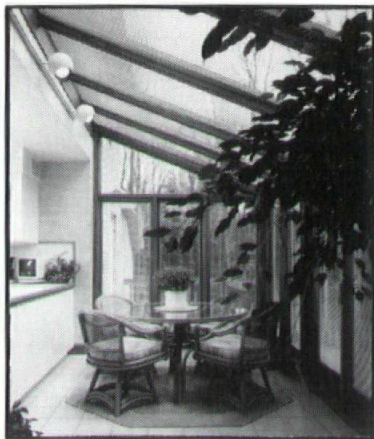
study was added to increase the height of the house to blend into the neighborhood. The public areas are situated off the foyer with large open areas, sloped ceilings and a two sided fireplace as a focal point. Clerestory windows and skylights were used to bring light into the center of the house and halls, with interior transom windows to the bathrooms and master bedroom.

Photography: Jim Buivid





Bring your designs to Pella.



Light up your life.

Pella gives your imagination full rein. Let our window experts help bring your dreams to life.

We can show you one of the biggest selections of windows, doors, sunrooms and skylights anywhere.

Talk to the experts.

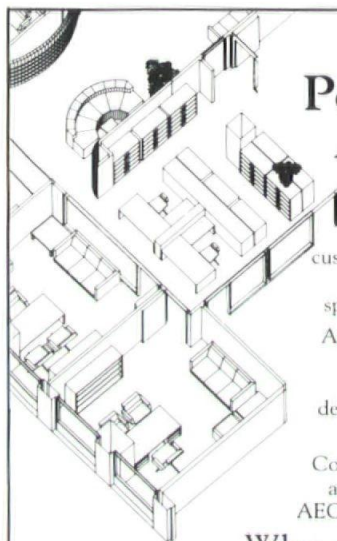
Verhalen, Inc.  The Pella Window Store

Green Bay
Neenah

Madison
Oshkosh

Mequon
Racine

Milwaukee
Wausau



A New Perspective on Architectural Design

AutoCAD AEC Architectural customizes the world's most popular computer-aided design software specifically for design professionals.

AutoCAD AEC Architectural now taps the full power of 3D to streamline the process of design development, floorplan preparation, and presentation.

Contract documents may be created automatically using the AutoCAD AEC architectural database functions.

Why spend time drafting when you could be designing?

CADSYS, INC.

Provides Complete CAD Solutions

Turnkey systems
CAD Training Center
Custom Programming

Authorized Hardware Service
Toll-free Telephone Support
Drawing Input Service

Crossroads Corporate Center III
20875 Crossroads Circle, Suite 600
Waukesha, Wisconsin 53186

(414) 785-9495 or Toll-free: 1-800-999-4CAD

CADSYS, INC. offices are also located in Chicago and Houston



© Autodesk, Inc. 1988 Drawing courtesy of Neeley / Lozano, Incorporated, San Francisco, CA

ThoroWall®

Exterior Insulation & Finish Systems

Thoro System Products brings to the exterior insulation industry over 75 years experience in manufacturing products that waterproof, restore and decorate concrete and masonry.

ThoroWall® Exterior Insulation & Finish Systems are now available. Both ThoroWall Systems provide an exterior insulation and finish system for retrofitting or new construction of concrete, masonry, stud construction, etc.



**THORO
SYSTEM
PRODUCTS**

ThoroWall Systems offer:

- Excellent durability
- Variety of textures
- 16 standard colors
- Energy efficiency
- Full material & labor warranty



©1988 Thoro System Products

**WISCONSIN
REPRESENTATIVES**

Jay Grizzle
8401 73 Ave. N., Suite E38
Brooklyn Park, MN 55428
(800) 443-5090

**SOUTHEASTERN
WISCONSIN**

Steve Downs
673 Aspen Drive
Buffalo Grove, IL 60089
(312) 459-6079

Project

Location

Architect

General Contractor

Country Residence

Madison, Wisconsin

Herbert G. Gausewitz Architect

R. L. Merlie Company



A passive solar, earth sheltered residence which would provide flexibility for present and future needs of the client was the challenge of this project.

The initial program was constrained to 1500 square feet plus a greenhouse. To make these smallish living spaces appear more generous, three strategies were adopted. A ten foot ceiling height was selected. Awning windows were installed above standard height exterior doors and windows, increasing the view of sky. Interior living spaces were to be unpartitioned to share exterior and interior views.

In planning, provision was made for a future third bedroom. The greenhouse changed to a solarium after careful discussion of function. The solarium incorporated plants, mudroom, nursery, and work area.

Plaster wall and ceiling and ceramic tile floor finishes were chosen for thermal storage properties. Oak woodwork and trim brought continuity throughout. Kitchen cabinet door glass was picked by the owners. It performs double duty, reflecting views projected through windows beyond the kitchen and incorporating the tableware as an attractive part of the composition.



Photography: Herbert Gausewitz, AIA

Advancing the Science and Art of Structural Glazing.



Wisconsin Agents for Lord & Burnham
Leadership in glazed structures since 1856.

GREENHOUSES • SOLARIUMS • SLOPED GLAZING



7009 RAYWOOD RD.
MADISON, WI 53713
608.221.4499

CLASSIQUE™ elevator fits today's needs and life styles.



- Ideal for homes, condos, churches and schools.
- Requires no more space than a normal closet.
- An elegant convenience at an affordable price.
- Keyed brass control and call panels.
- Designed to ANSI A17.1 specifications. Check your local codes.

Ask about other Cheney products.

FOR FREE BROCHURE, WRITE OR CALL:

1-800-782-1222

IN WI 1-800-552-7711

Freedom of Movement®

CHENEY
A Mediquip Healthcare Company

Dept. WA689, P.O. Box 51188, 2445 South Calhoun Rd.
New Berlin, WI 53151

Enhance with Tile From Butler Tile Sales



While IAC ceramic tile is priced comparably to most higher grades of vinyl, carpet and wood, it's far more durable, and a lot less trouble. There's no stripping, waxing, sealing, or buffing — ever. And because it's made by IAC, it resists stains, acids and other corrosive substances. In fact, IAC has more than three times the abrasion resistance of current industry standards — as well as nearly twice the breaking strength and almost five times the bonding strength of standard tile.

Tile of Distinction Ceramic Tile Showroom

- Serving Wisconsin builders, architects, and interior designers for 35 years
- Hundreds of samples on display
- Experienced design consultants available to assist you
- Fast delivery of hundreds of different tiles from our warehouse

746 N. 109th St., Milwaukee, WI 53226 • 414-476-0970
toll free 1-800-242-0847

On
the Move
with
Mobility
Unlimited

Equipment
And Accessories to
Meet Mobility and
Accessibility Needs

Residential and Commercial
Accessibility Modification

Home Elevators Interior Stair Lifts
Dumbwaiters Exterior Stair Lifts
Wheelchair Ramps Porch Lifts (Vertical)

The Mobility Center for Individuals, Institutions and Industry.

7030 West National Avenue, P.O. Box 14607, Milwaukee, WI 53214 (414) 774-3085 WI
Toll Free 1-800-236-7730

MEDICAL ARCHITECT

A career opportunity currently exists for a talented, experienced medical facilities architect to join our rapidly growing Milwaukee office. Position requires a registered architect with a minimum of 8 years medical facilities planning that includes previous responsibilities for master planning and design of large scale, complex facilities. Candidates must also be able to demonstrate good verbal and written abilities as well as successful project leadership capabilities. For confidential consideration, please submit resume in confidence to: Sandy Parsley, Personnel Manager, Hammel Green and Abrahamson, Inc., 1201 Harmon Place, Minneapolis, MN 55403. EOE/M/F.

ARCHITECTURESTRUCTURE

A Report on the 1989 WSA Convention

The 1989 WSA Convention was held April 18-20 at the Olympia Village in Oconomowoc. From all reports, this year's annual conference was a success. A record number of members and guests participated in the seminars and social events during the three-day Convention; and the exhibit hall featured a record number of displays of the latest in design and construction industry products and services.

WSA Convention Chair Rick Parfrey, AIA, officially opened the conference by reflecting on this year's theme . . . ARCHITECTURE/STRUCTURE . . . and reviewing the line-up of internationally renowned

speakers scheduled to discuss the relationships between structure and architecture. The 1989 WSA Convention promised to be inspiring, intriguing, challenging and entertaining. It lived up to its billing!

This year's WSA Convention also provided participants with the opportunity to visit with friends, enjoy the adventure of a progressive cocktail party and ice cream social, and get answers to questions on construction industry products and services at a one-stop shopping center featuring over 150 exhibit booths. It was a chance to honor and recognize those individuals and firms who have contributed sig-



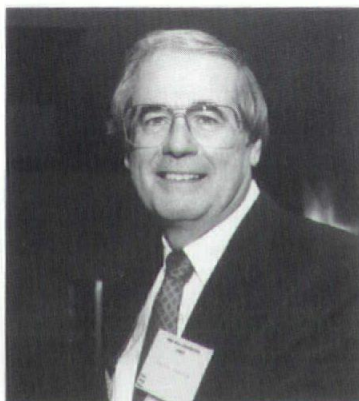
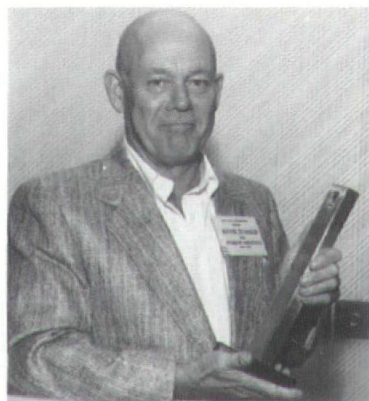
nificantly to the architectural profession, the commitment to design excellence, the public's awareness of architecture and the support of architectural education in Wisconsin.

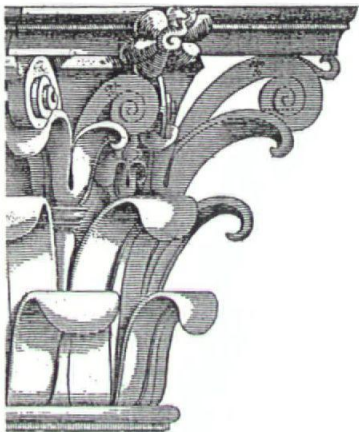
Golden Award Luncheon

Wayne E. Spangler, FAIA, was honored as the fourth recipient of the prestigious WSA Golden Award in recognition of his distinguished service to the WSA and the profession.

Certificates of Appreciation were presented by WSA President Olson to those companies who sponsored Convention speakers and events. The support received from the following companies contributed significantly to the success of the 1989 Convention: J.H. Findorff & Son, Inc., Ver Halen, Inc./Armstrong World Industries, InterPlan OPI Corporation, Best Block Company, David Fogelstrom & Associates, Inc., and Victor O. Shinnerer & Company, Inc.

Texas architect and humorist Dave Braden, FAIA, disrupted the solemn awards luncheon with his entertaining observations on the practice of architecture and society in general.





Speakers & Seminars

During the three-day conference, nationally and internationally acclaimed speakers presented their work and their views on structure and architecture. It will be a hard act to follow.

The 1989 WSA Convention opened with Bruce Graham, FAIA, senior design partner with SOM/Chicago, who discussed the strong influence of structure on his work and design philosophy. "Deconstructivist" architect Zaha Hadid from London closed the conference with a presentation of her fearless, provocative and futuristic work.

In between the wide spectrum of ideas and design philosophies presented by these two featured speakers, Robert Campbell, AIA, Horst Berger and James Wines offered their views on structure as an important and expressive design component. Campbell, the architectural critic for the *Boston Globe*, presented the story behind the story of the troubled John Hancock Building. Berger, an international pioneer in the design of tensile surface structures, discussed non-linear forms for architectural structures. Wines, of SITE in New York,

challenged established notions of what proper architecture should be. In addition to presentations by these featured Convention speakers, participants enjoyed the wit, wisdom and work of award-winning architect Hugh Newell Jacobsen, FAIA, at the Honor Awards Banquet and learned how to better control their liability exposure during a pre-Convention luncheon program presented by Peggy Fassett of Victor O. Schinnerer & Company.



Honor Awards Banquet

The 1989 WSA Convention witnessed the return of the Honor Awards Banquet. Members joined the award-winning architects, clients and contractors in this year's celebration of design excellence.

WSA Design Awards Committee Chair Emma Macari, AIA, with the able assistance of WSA President Dennis Olson, AIA, announced and presented the 1989 WSA Design Awards. The six award-winning projects were selected by a three-member jury from over 80 projects submitted by WSA members.

This year's Honor Award went to Kubala Washatko Architects, Inc., Cedarburg, for St. John United Church of Christ in Germantown. Five Merit Awards were presented to the following firms and projects: Berners-Schober Associates, Inc., Green Bay, for the Lambeau Field Press & Private Box addition; Heike/Design Associates, Inc., Brookfield, for the Manitowoc Maritime Museum; Miller Meier Kenyon Cooper Architects & Engineers, Inc., Milwaukee, for the Country Isle Elementary School in Fort Lauderdale; Potter Lawson & Pawlowsky, Inc., Madison, for the Fitchburg Community Center; and the Wisconsin Department of Administration, Bureau of Architecture, Madison, for the restoration of State Capitol Assembly Chamber.

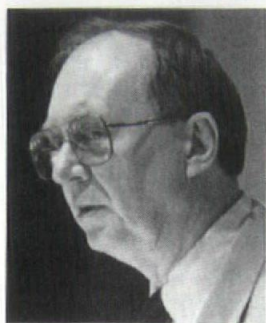
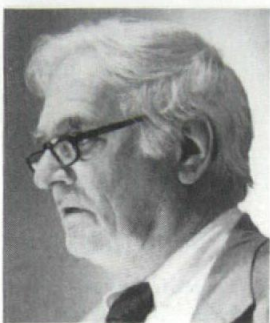
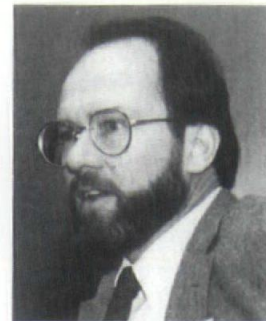


WSA Annual Meeting

With WSA President Dennis Olson, AIA, presiding, the WSA Annual Meeting provided members the opportunity to reflect on where the WSA has been and where it is going.

In his remarks, Olson encouraged members to participate in the many programs and services provided by the WSA. Bill Babcock, WSA Executive Director, brought members up-to-date on legislative issues being tackled by the WSA.

Board members in charge of the four WSA Commissions presented brief status reports on committee activities . . . Jim Gabriel, AIA, Executive Commission; Jim Larson, AIA, Education & Research Commission; Noble Rose, AIA, Government Affairs Commission; and Mark A. Pfaller, FAIA, Component Affairs Commission. QBS Steering Committee Chair Harry Schroeder, AIA, also presented his report on the WSA's innovative Qualification Based Selection program.



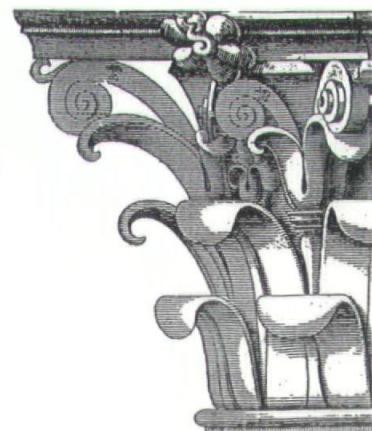
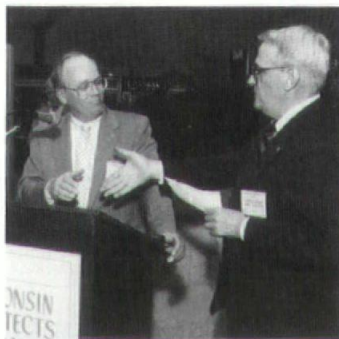
Wisconsin Architects Foundation

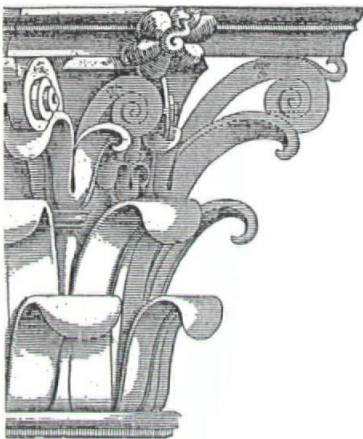
The Wisconsin Architects Foundation again hosted a wine and cheese reception in conjunction with its Annual Meeting. This year the WAF reception and meeting were held in the middle of the exhibit hall, with Best Block Company sponsoring the wine and cheese.

WAF President Tom Nisbet, AIA, reported on WAF programs, scholarships and other activities, including a \$10,000 challenge grant from the Janesville Foundation, Inc., for "Campaign 300." As part of the Annual Meeting, Gary Zimmerman, AIA, Dean Carl Patton and Orville "Bud" Arnold were elected to three-year terms on the WAF Board of Directors.

The WAF also had the pleasure and honor of accepting significant contributions from Kerry VonDross of Best Block Company and from Clarence Huettnerauch, AIA, FCSI, on behalf of the Milwaukee Chapter CSI.

WAF Board member Paul Graven, FAIA, thanked a retiring Tom Nisbet for his years of untiring service and leadership on behalf of the WAF.





ARCHITECTURESTRUCTURE

Exhibitors

The Expo Center at the Olympia Village was filled with over 150 exhibit booths featuring the latest products and services for the design and construction industry. During the exhibit periods each day, it was also crowded with architects and guests hungry for information, competing for door prizes and thirsty for ... their favorite beverage.

The "official" Exhibit Booth Awards jurors, Wayne Spangler, Dennis Olson and Rich Maleniak, AIA, selected ten exhibits as the best of the show. Congratulations are in order for the following exhibitors: First Place, Champion Brick; Second Place, Bend Industries, Inc.; and Third Place, Tropical Plant Rentals, Inc. Honorable Mentions were awarded to: Parkwood Chicago, Inc., World of Wood, Inc., Gagnon Clay Products Co., MDC Wallcoverings, N.L. Contract Interior, Best Block Company and Anderson Corp. Congratulations!

The following companies also were awarded special recognition this year for their long-term and consistent support of the WSA Convention: A/E Graphics, Inc., Acoustical Floors of Wisconsin, Inc., Pete Alexander Co., Inc., Bend Industries, Inc., Best Block Company, Champion Brick, ChildCrest, Cold Spring Granite Company, Cornell Corp., Donovan Floors, Inc., Edwards Sales Co., Fabcon, Inc., David Fogelstrom & Associates, Inc., Formica Corp., Kawneer Co., Monarch Tile Manufacturing, Northwestern Elevator Company, Inc., Spancrete Industries/Waukesha Block, Tremco, Inc., Ver Halen, Inc., Wisconsin Face Brick/Gagnon Clay Products Co., and Wood Lam, Inc.

The one-stop shopping center of design and construction industry products and services is one of the best educational programs at a WSA Convention. The WSA thanks those companies that exhibited at our 1989 Convention.

Photography: Joe Paskus



UNITED brick & block, inc.

Now Open

New
Retail-Design-Center
6634 Watts Rd.
Madison's West Side

Ceramic Tile

- American Made
- Tile & Grouts
- Large Inventory
- Midland
- KPT
- Huntington Pacific

Face Brick

- Midland
- Ochs
- Gleason
- Kansas
- Glen Gery

Fireplaces

- Superior Zero Clearance

West (New Location)

Retail Design Center
6634 Watts Rd.
Madison, WI
608-274-4155

East

Showroom-yard-warehouse
5402 Lien Rd.
Madison, WI
608-241-3844

“ Paul is extremely knowledgeable in insurance applications of the consulting industry. He has consistently offered us alternatives when they were available and, in my opinion, honestly strives to define insurance needs specific to our business, alternatives to us, and the best premium available at a particular time. ”

*John J. Reinhardt,
Exec. V.P., RMT, Inc.*

- Exclusive representative of Design Professionals Insurance Co.
- Representative of all available markets
- Service: review contracts, compare policy provisions, monitor claims, conduct in-house Loss Prevention seminars

Let's talk today!
Paul Berta and Tom Dowling
KLIPSTEIN
INSURANCE SERVICES

216 N. Midvale Blvd. • Box 5566
Madison, WI 53705 • 1-800-792-3505, Ext. 268



It's a Matter of Safety

Install Kemlite Fire-X Glasbord[®] fiberglass wall and ceiling panels

- UL CLASSIFIED
- FM APPROVAL
- LOW TOXICITY
- USDA ACCEPTANCE
- NEW YORK CITY ACCEPTANCE

According to the National Fire Protection Agency, smoke and fire-released gases cause more than 60% of all fire-related deaths.

Fire-X Glasbord has a Class 1/A flame spread rating, and its limited smoke development is rated less toxic than red oak.

When human lives are in your hands, specify the safer fiberglass wall and ceiling panel.

For more information, contact:

Kinetics, Inc.

4281 Acker Road
P.O. Box 7426
Madison, WI 53707
(608) 241-4118



Plotting Problems?

GIS Systems has the solution to your pen plotting bottleneck. Our Plotting Service Bureau is the most experienced in the Midwest, utilizing state of the art 400 dot per inch electrostatic plotting technology. Fast, cost effective, high quality plots. Monochrome and color, in any size.

We offer:

- Overnight turnaround for local and long-distance customers
- Postscript compatibility
- HPGL and Calcomp formats
- Support for most micro- and mini-computer based CAD systems
- Very high speed modem capabilities, up to 19.2k Baud
- Modem purchase plan
- The best plotting rates in the country
- Volume and contract rates available

For more information, call:



Grambsch Information Systems, Inc.

**300 NORTH FIRST AVENUE
MINNEAPOLIS, MN 55401
(612) 342-9200**

Your source for complete AEC CAD solutions.

**A WISCONSIN TRADITION OF
QUALITY FOR OVER 80 YEARS**

Brick

Block

Pavers

Stone



THORO
SYSTEM
PRODUCTS, INC.



**6399 NESBITT RD MADISON, WI 53719
(608) 845-8636**

PBBS EQUIPMENT CORP.

**24
HR**

HEATING AND AIR CONDITIONING
RADIO DISPATCHED SERVICE FLEET
FOR COMMERCIAL AND INDUSTRIAL
INSTITUTIONS, THROUGHOUT WISCONSIN
AND UPPER MICHIGAN

COMPLETE BOILER ROOM

ENGINEERING - PARTS - SERVICE
CLEANING - WATERBLASTING
OF ALL MAKES OF BOILERS
NON-DESTRUCTIVE INTERNAL INSPECTIONS
COMPLETE MOBILE BOILER ROOM RENTALS

AUTHORIZED

CLEAVER BROOKS SALES - PARTS - SERVICE

REPRESENTATIVES FOR

- AEI TURBULATORS
- ASCA STEAM TRAPS - SIGHTGLASSES, UNION
CHECK VALVES, WAFER CHECK VALVES,
STRAINERS
- CAIN FEEDWATER HEATERS
- CANNON FEEDWATER HEATERS
- CLEVELAND CONTROLS
- PROMINENT FLUID CONTROL SYSTEMS
- ICE-O-MATIC ICE CUBER
- THERMO-KOOL WALK-IN COOLERS & FREEZERS

AND-CAR

- AUTOMATIC BOILER BLOWDOWN SYSTEMS
- ELECTRONIC BOILER ROOM MONITORING
- ENERGY MANAGEMENT SYSTEMS
- ELECTRONIC SECURITY SYSTEMS
- OXYGEN ANALYZERS - FLUE GAS ANALYZERS

SERVICE OFFICES

- MADISON, WI (608) 249-6604
- STEVENS POINT, WI (715) 344-7310
- GREEN BAY, WI (414) 494-3675
- MILWAUKEE, WI (414) 781-9620

5401 NORTH PARK DRIVE • BUTLER, WI 53007

Media Architects I

With the inappropriate use of the term "architect" by the media, it is becoming more difficult to practice architecture in the traditional sense. Following is the first of many personal experiences that may help demonstrate the frustration prevalent in the profession in recent years.

During the Nixon years in the late 70's, Huntley and Brinkley broke the ice with the profound television newscast announcing to the world that Henry Kissinger had become the first architect of world peace.

Shortly thereafter, I was retained by a married couple noteworthy for their outrageous teaching styles at a prominent midwest university. During the exercise of developing a program and throughout the schematic design phase, I came to realize that my clients had nothing in common other than their outrage. I negotiated a rather satisfactory arrangement in the floor plan by designing duplicate facilities throughout the residence, each in extreme contrast to the other. Common amenities were limited to the circular driveway (which was later posted to be one-way clockwise in the mornings and one-way counterclockwise in the afternoons and evenings), double entrance doors (keyed separately) and a common foyer, decorated in inappropriate duotones.

The details required for mechanical and electrical systems are so complex they would bore you. Fortunately, the residence was built in an architecturally restricted neighborhood. After flipping a coin, I was able to design the entire street elevation to the liking of the husband who won the toss. The junctures at the side and rear facade were masked with heavy landscaping to the pleasure of the contiguous neighbors.

The project was well publicized and won a first place state design award because of its appeal to a nastily divided architectural jury.

The most perplexing experience was the settlement for fees. Trusting the respect given my clients in the academic community and with faith in their education, I wrote a rather vague contract calling for a modest commission. After several frustrating negotiating bouts (separately with each spouse and their counsel), the settlement for fees ended with the husband and wife agreeing to different fees for work allocated to their share of the residence and their half of the common improvements. (She happened to like his taste in the cooperatively decorated foyer, but blamed me for not providing her with larger bedroom closet and a more elaborate bath than her spouse.)

What a surprise I was in for after the acceptance of the commission settlement. I was called to a meeting with both clients and their attorneys present where I was presented with a bonus. As I stood aghast, I was complimented to my embarrassment by all present. I expressed my gratitude and, prior to leaving, asked my clients, "Why did you select me as the architect for your home?" The answer came as a duet in perfect harmony, "Your ability to keep the peace."

Wisconsin Designs and Builds with **POINT LINE® CADD**

Call for a Point Line Presentation

MASTER BLUE PRINT

1-800-873-7238 Madison

1-800-283-7238 Fox Valley

REPROGRAPHIC TECHNOLOGIES

1-800-686-7376 Milwaukee

QBS

The Wisconsin Society of Architects has recently held several QBS round table sessions with members around the state to evaluate the Qualification Based Selection Program.

If you would like to receive a copy of the documented conclusions resulting from these meetings, or would like to share your thoughts with us regarding the QBS Program, contact Darius Van Fossen, WSA QBS Facilitator.

Call 608-257-8477 or drop a note to the WSA office, 321 S. Hamilton St., Madison, WI 53703.



For Architectural Woodwork Contact These Members:

American Woodwork, Inc.
Architectural Woodwork
Berbaum Hoerz Millwork, Inc.
Carley Wood Associates
Creative Woodcraft, Inc.
Dovetail Woodworking
T.J. Hale Company
Lange Bros. Woodwork
R.J. Lederer Company
A.J. Pietsch Company
Racine Millwork & Supply
Riebau's Cabinets, Ltd.
Glenn Rieder, Inc.
Torg Inc.
Woodmill Products, Inc.
World of Wood
August H. Wulf Co.

Art In

STRUCTURE.

*We would like to thank
everyone who participated
in our "Art In Structure"
booth at the WSA
Convention this year.
If you would like
further information on
sculptured brick please
call Champion Brick
Company at
786-8260.*

NOW. LIGHTWEIGHT BEAMS



FOR HEAVYWEIGHT SUPPORT.

WOOD I BEAM™ JOISTS AND HEADERS SAVE TIME, LABOR AND MATERIAL.

Look at the advantages of the Wood I Beam from Georgia-Pacific over solid sawn lumber.

■ **LIGHTWEIGHT.** Much less than 2x10's or 2x12's, they go into place quickly and easily to save you time and labor.

■ **GREATER LOAD BEARING.** You can span longer distances and use fewer joists with the Wood I Beam. This means you save on labor and material costs.

■ **WORKABLE.** No special tools are needed. The Wood I Beam can be ordered cut-to-size or cut to length on site. The plywood web can be drilled to accommodate ductwork, electrical or plumbing requirements. And Wood I Beams can be insulated.

■ **STRAIGHT AND STIFF.** The Wood I Beam is made of dry materials so it resists twisting, splitting, warping and shrinking. This means you get strong roofs and headers, stiff, squeak-resistant floors, fewer problems and more profit.

■ **WIDER FLANGE.** Gives you more nailing and gluing surface, greater spanning and more rigidity than sawn lumber. This also reduces the cost of cross-bracing.

Wood I Beams are made in depths that match dimensional lumber from 9 1/4" to 24" for roof and floor joists and special sizes for window, door and garage door headers.

For more information, call 1-800-686-4747
And start building homes that are stronger and more problem-free with the Wood I Beam from Georgia-Pacific.

Wood I Beam is listed with B.O.C.A.

Georgia-Pacific



WOOD I BEAM™

Wood I Beam is a trademark of Georgia-Pacific Corporation.
©1989 Georgia-Pacific Corporation. All rights reserved.

WAF

At the Wisconsin Architects Foundation Annual Meeting on April 18 at the Olympia Village, Thomas K. Nisbet, AIA, presented his last annual report as President of the WAF. Having completed two three-year terms on the Board of Directors, WAF Bylaws required that Tom "retire."

Tom Nisbet was first elected to the WAF Board of Directors in 1983-84. He was elected WAF Vice-President in 1984-85 and WAF President in 1985-86. During this period, the WAF has been able to accomplish a great deal towards its goal of building a better Wisconsin through architectural education. These accomplishments include the restoration of the landmark Stoner House as the permanent home of the WAF and WSA, increasing public awareness of architecture, and building an endowment that enables the WAF to provide annual scholarships to more architectural students. Under his leadership, the WAF also kicked off a three-year fund raising effort called "Campaign 300" to further increase its ability to support architectural education.

At the WAF Annual Meeting, Nisbet publicly accepted a \$2,100 contribution from the Milwaukee Chapter CSI and a \$1,000 contribution from the Best Block Company. In addition, it was announced that the Janesville Foundation, Inc. had pledged \$10,000 to the WAF's Campaign 300.

Gary Zimmerman, AIA, was elected by the membership to his first three-term on the WAF Board of Directors, and Dean Carl Patton and Bud Arnold were elected to their second tours of duty. Congratulations.

National ARE Results

In June 1988, 14,785 candidates took all or part of the Architect Registration Examination (ARE). Of the 4,093 candidates who took all eight sections of the exam, only 648, or 16%, passed all sections. The 1988 pass-rates for the individual sections of the exam ranged from a low of 37% for the Building Design section to 89% for the written portion of the Site Design section.

Section 89

In 1986, Congress passed the Tax Reform Act which added Section 89 to the Internal Revenue Code. This Section will affect every employer (regardless of size) who provides a life, accident, health, or other statutory employee welfare benefit plan. Compliance with the requirements of Section 89 became mandatory for plan years beginning after December 31, 1988.

The intent of Section 89 is to encourage employers to offer the same comparable coverage to all employees and to ensure that employees are able to receive benefits from the plan. A secondary intent is to raise revenues through additional income tax, via penalties for noncompliance.

Section 89 imposes both "qualification testing" and "nondiscrimination testing" requirements on each employer for all employer-provided benefit plans, and there are severe tax penalties for a firm's failure to comply with these requirements. Compliance with Section 89 is strictly the responsibility of each employer.

This information represents the basic tenets of Section 89 in very simple terms. Because of the complexity of the law, you may want to contact your tax advisor for guidance in making the required good faith effort to be in compliance with this law.

Membership Action

Rattunde, Wm. Coll, was approved for AIA Membership in the Southwest Wisconsin Chapter.

Osvatic, Kathleen, was approved for Prof. Affiliate Membership in the Southeast Wisconsin Chapter.

Donahue, Kevin, was approved for Associate Membership in the Southwest Wisconsin Chapter.

Maertz, Jeffrey, was approved for Associate Membership in the Southwest Wisconsin Chapter.

Oda, Matthew K., was approved for AIA Membership in the Southeast Wisconsin Chapter.

Wold, Robert A., was approved for AIA Membership in the Southeast Wisconsin Chapter.

Toussaint, Susan Healey, was approved for AIA Membership in the Northeast Wisconsin Chapter. (Transfer from Iowa Chapter.)

LaFrombois, III, Russell, was approved for AIA Membership in the Southwest Wisconsin Chapter. (Upgrade to AIA from Associate Member.)

Stephan, John, was approved for AIA Membership in the Southwest Wisconsin Chapter. (Transfer from Texas Chapter.)

McCain, Bruce L., was approved for Prof. Affiliate Membership in the Northeast Wisconsin Chapter.

Schmidt, Philip J., was approved for AIA Membership in the Northeast Wisconsin Chapter. (Upgrade to AIA from Associate Member.)

Oates, John R., was approved for AIA Membership in the northeast Wisconsin Chapter. (Upgrade to AIA from Associate Member.)

Vandersande, Steve, was approved for Associate Membership in the Northeast Wisconsin Chapter.

Seidel, Timothy, was approved for AIA Membership in the Southeast Wisconsin Chapter.

Wandschneider, Richard A., was approved for AIA Membership in the Southwest Wisconsin Chapter. (Upgrade to AIA from Associate Member.)

The following were approved for Student Membership in the Southwest Wisconsin Chapter:

Staller, Christopher
Kerl, Tom
Damm, Jaclyn
Connell, Sean
Heiman, Scott
Lins, Robin
Mason, Tom
Uselman, Stephan
Meixner, JSK
Schultz, Jr., Randall
Scharer, Jay

MUTOH

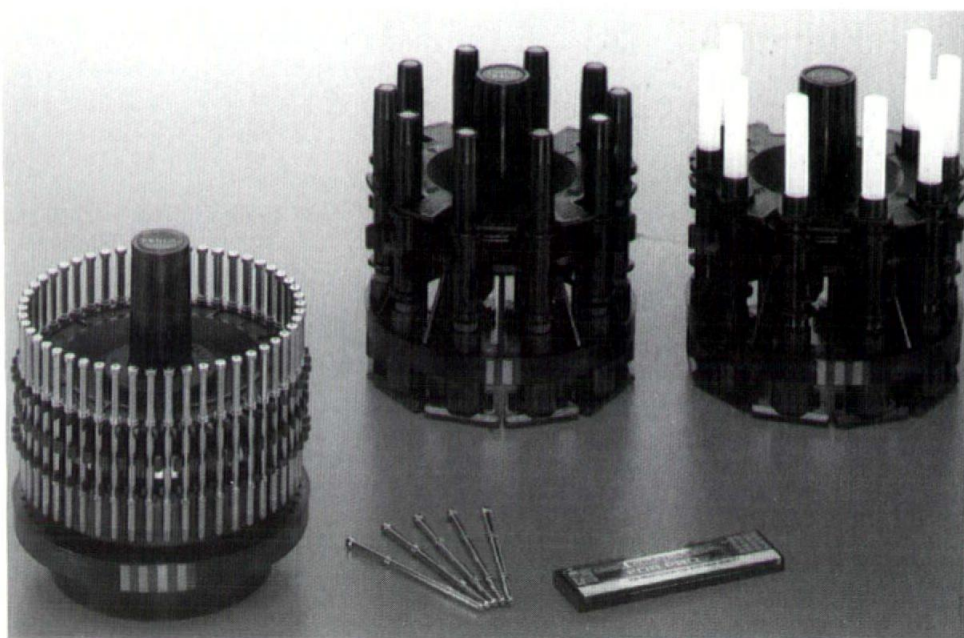
Plotter Plots with Pen and PENCIL

The Power of the Pencil in CAD Output

All drawings are subject to the inevitable changes that occur after the first design. The use of pencils, however, eliminates the replotting that errors on inked drawings require, and enables local corrections to be made quickly and easily. This greatly enhances efficiency in the design stage, allowing drawings to reach the manufacturing floor faster and significantly improving overall productivity.

Whatever plotter you use, ink plotting always means reduced speed to prevent skipping. The F Series, however, provides pencil-plotting convenience with quality rivaling ink plotting, while maintaining the ability to plot many times faster than competing plotters. And since pencils never dry up, trouble caused by ink clogging and the need for the maintenance required to prevent this type of problem are completely eliminated.

Even with all these operational advantages, a copy of a drawing output by these plotters will stand up in quality to those made using ink.



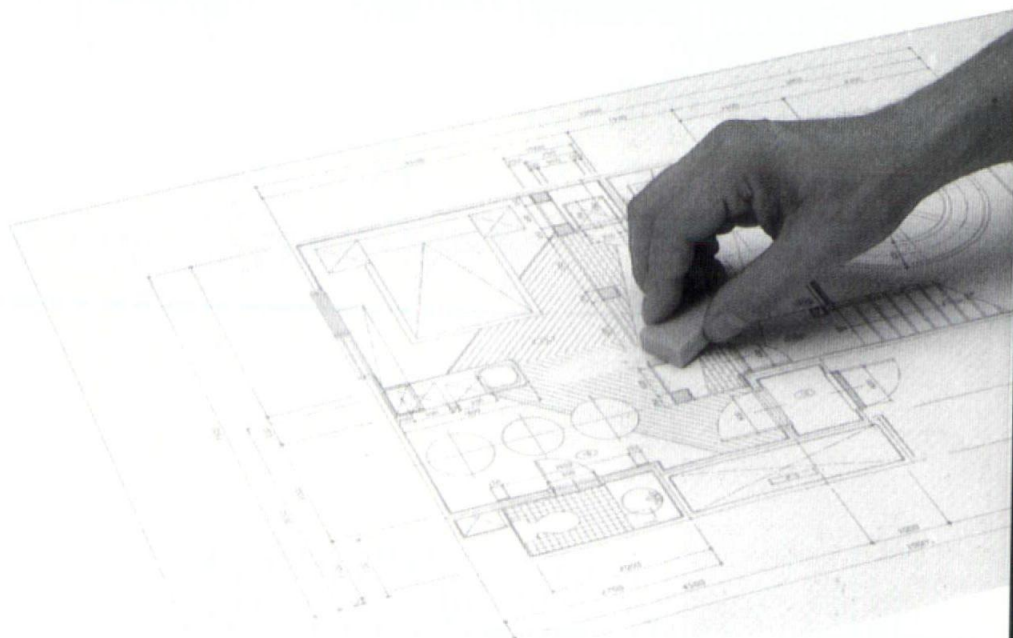
For more information , call:



CADS, INC

2221 E. Capitol Drive
Milwaukee, WI 53211

(414) 481-1223



Why the most
advanced CAD system
for architects and
building designers
puts you on the edge.

ARRIS

And Keeps you there.

For more information, call:

CADS, INC
2221 E. Capitol Drive
Milwaukee, WI 53211

(414) 481-1223

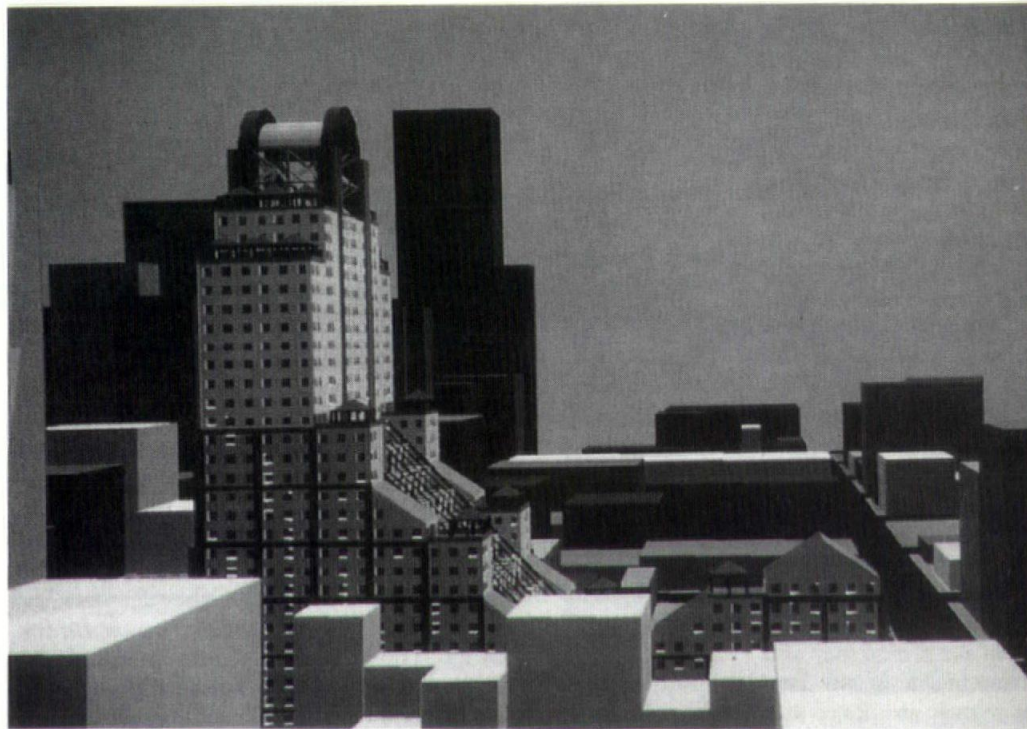
- Complete System Sales
- Technical & Management Consulting
- Custom Software, Support & Training
- Output Service Bureau

Today, there is a revolutionary CAD system that puts you on the edge -- the competitive edge. A CAD system that goes far beyond the ordinary, and gives you the edge in production, presentations, plus a lot more.

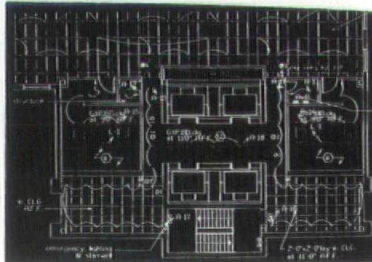
The name of this system is ARRIS.™ And it is the remarkable system that will instantly show you why ordinary CAD is no longer enough for architecture and building design and management.

THE COMPETITIVE EDGE IN PRODUCTION.
With ARRIS, you don't have to make drawings line by line. Instead, you enter basic design parameters -- and the system does the rest of the work, automatically. So more work gets done, in less time.

PLUS.
ARRIS allows your project teams to share data, drawings and systems--so they can work on entire projects, not just single drawings. Plus, ARRIS will grow as you grow, so you keep your competitive edge.



THE COMPETITIVE EDGE IN PRESENTATIONS.
With ARRIS, you can create extraordinary design and marketing presentations that help you win more business. For example, ARRIS 3D modeling and rendering allows you and your clients to view your project from any perspective, at any angle, at any time of night or day. And to "walk through" rooms as if they really existed.



Production--Design automation, design refinement and 3-D capability increases your productivity

SCO
AUTHORIZED
RESELLER



Kohler Company has added a whirlpool to its line of Pillow Talk[®] bath fixtures. The acrylic whirlpool features the same contemporary planes and curves as other Pillow Talk fixtures, as well as new features designed to create a unique bathing environment.

Touch controls, mounted on the whirlpool, operate an array of state-of-the-art features, including interior, rim and room lighting,

in-line heater and two-speed whirlpool pump. Kohler's exclusive Autofill[™] Bath System is also a standard feature. It allows bathers to fill the whirlpool at a predetermined time and temperature. Other features include dual armrests, contoured lumbar supports and eight whirlpool jets. For more information, contact Kohler Co., Kohler, WI 53044 414-457-4441.



Weather-tightness, security and easy installation are combined to make the new Andersen[®] Frenchwood[®] Hinged Patio Door a formidable newcomer to the patio door market. And, its all-wood beauty is sure to please even the most discerning homeowner.

The Frenchwood hinged door is available in white or Terratone[®] (an earth tone color) exteriors to match all other Andersen windows and patio doors. Interior frames and grillework can be stained or painted to match existing woodwork.

For more information, contact The Radford Company, 40 E. Wisconsin St., PO Box 2688, Oshkosh, WI 54901 414-231-4880.

Excellence in Masonry

Wisconsin Concrete Masonry Association is now accepting nominations for the Annual Excellence in Masonry Awards program. Three winning projects will be selected from the nominations by a panel of five independent judges. Rules are:

Project uses concrete masonry units produced by a member of WCMA.
Project was completed within last five years.

Anyone can nominate a project.

Deadline for nominations is Friday, June 30, 1989.

For more information, contact Curt Bauer, WCMA representative, at 414-453-7980.

- 24 Acoustical Floors of Wisconsin
- 16 Advanced Computer Graphics
- 28 Altech
- 36 Architectural Woodwork Institute
- 43 Arnold & O'Sheridan, Inc.
- Insert Bend Industries
- 24 Best Block
- 43 Jeffrey P. Brown
- 10 Builders World
- 28 Butler Tile Sales
- 40, 41 CADS, Inc.
- 26 CADSYS, Inc.
- 37 Champion Brick Co.
- 28 The Cheney Co.
- 24 D&M Construction Co., Inc.
- 43 Dolan & Dustin, Inc.
- 14 Fabcon, Inc.
- 4 David Fogelstrom & Associates
- 43 Bert Fredericksen, Inc.
- 37 Georgia Pacific
- 8, 34 GIS Systems
- 28 Hammel, Green & Abrahamson, Inc.
- 20 HSA Contractors, Inc.
- 33 Kinetics, Inc.
- 33 Klipstein Insurance Service
- 5 Kohler Co.
- 20 L.F.I. Landscape Forms, Inc.
- 43 LaForce Hdw & Mfg. Co.
- 36 Master Blue Print
- 2 Midwest Visual Equipment Co.
- 43 Milwaukee Blueprint Service
- 4 Milwaukee Plumbing & Htg. Supply
- 28 Mobility Unlimited
- 4 W.S. Patterson Co.
- 34 PBBS Equipment Corp
- 11 J.W. Peters & Sons, Inc.
- 43 Photocopy, Inc.
- 18 Pukall Lumber Co.
- 43 Strass-Maguire & Associates, Inc.
- 43 STS Consultants, Ltd.
- 24 Superior Gypsum Floors
- 26 Thoro System Products
- 16 Twin City Testing
- 33 United Brick & Block
- 4 United Plumbing & Htg. Supply
- 26 Ver Halen, Inc.
- 34 Wisconsin Brick & Block Corp.
- 44 Wisconsin Concrete Masonry Assn.
- 6 Wisconsin Public Service
- 16 Wisconsin Solar Design
- 43 Wisconsin Testing Laboratories

This index is published at no cost to advertisers, as a service to readers of Wisconsin Architect. Publisher assumes no responsibility for errors or omissions. When writing to advertisers, tell them you saw their message in Wisconsin Architect. They want to know.



Consulting Engineers

- Geotechnical • Water Resources
- Environmental • Construction Services

STS Consultants Ltd.

Milwaukee, WI 53224 414/359-3030 • Green Bay, WI 54303 414/494-9656



Wisconsin TESTING LABORATORIES

Geotechnical Engineers

Soil Borings

Materials Testing & Inspection

Menomonee Falls, WI 53051 • (414) 252-3300



DOLAN & DUSTIN, INC.

CONSULTING ENGINEERS

2266 N. PROSPECT AVENUE MILWAUKEE, WIS. 53202

(414) 276-5502

Electrical Power - Primary & Secondary Distribution
Lighting Design • Security & Communications Systems
Grounding • Emergency Generation • Uninterruptible Power

George E. Dolan, PE
Gerald E. Braun, PE
Charles M. Mullikin, PE

Roger A. Nass, PE
Richard Gumpert, PE

Strass-Maguire & Associates, Inc

CONSULTING * STRUCTURAL * INDUSTRIAL * ENGINEERS



9000 N. DEERBROOK TRAIL, SUITE #110

MILWAUKEE, WI 53223

#414/354-4046

JEFFREY P. BROWN



Architectural Rendering
and
Models

P.O. Box 71177 Milwaukee, WI 53211 • (414) 962-0510

Offering:

- all types of medium
- fast and reliable service,
- reasonable rates.



ARNOLD AND O'SHERIDAN, INC.
CONSULTING ENGINEERS

Structural Electrical
Mechanical Civil

608 • 271 • 9651

815 FORWARD DRIVE MADISON, WI 53711

414 • 461 • 9040

3720 N. 124TH MILWAUKEE, WI 53222



FJA CHRISTIANSEN ROOFING CO., INC.

Milwaukee, Wisconsin

LET US SHARE OUR ROOFING EXPERIENCE WITH YOU
Project Review • Job Site Investigations • Budget Pricing

Ted B. Crawford 414-445-4141



MILWAUKEE BLUEPRINT SERVICE

7526 W. Appleton Ave., Milwaukee, WI 53216

Fast Diazo Printing • Specs • Supplies

Free Pick-Up and Delivery with Minimum Order

(414) 464-2350

BERT FREDERICKSEN, INC.

CONSULTING ENGINEERS

3245 North 124th Street Milwaukee, Wisconsin 53222-3195

TELEPHONE: 781-9070 (414)

HEATING • VENTILATING • AIR CONDITIONING

Bert Fredericksen-Chairman John Fredericksen-Pres. Bert T. Fredericksen-V. Pres.

Rent this Space
Call: Nancy Baxter
608-257-8477

*Black & White Murals *8x10 Glossy Repros
*We Reproduce Blueprints or Masters For
Making Blueprints

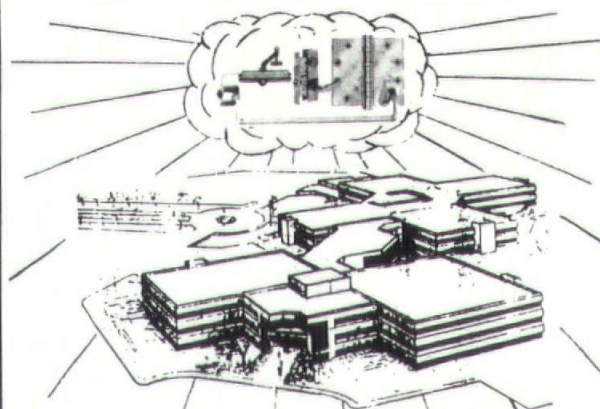
PHOTOCOPY

104 East Mason St. Milwaukee, Wisconsin 53202

For Service . . .

CALL: 1-(414)-272-1255

LA FORCE



Whatever applications your project requires,
we can supply all the door hardware you need.

- Complete Selection
- Competitive Prices
- Reliable Service

Let us be your headquarters for door hardware.

LA FORCE

Hardware & Manufacturing Co.

1060 W. Mason St., Green Bay, WI 54303

(414) 497-7100

THE REPUTATION YOU CAN BUILD ON

SHAPING OUR WORLD

Architectural Concrete Masonry Units

are designed
to provide you
with a great
versatility,
as well as,
all the beauty
you can
imagine

•

Another great idea from the

WCPA

Wisconsin Concrete
Products Association

P.O. Box 881

Menomonee Falls, WI 53051

Architect:
Heike Design Associates, Inc.
Project:
Capitol Court Renovation

