

Wisconsin Society of Architects
August 1988

W I S C O N S I N

Architect

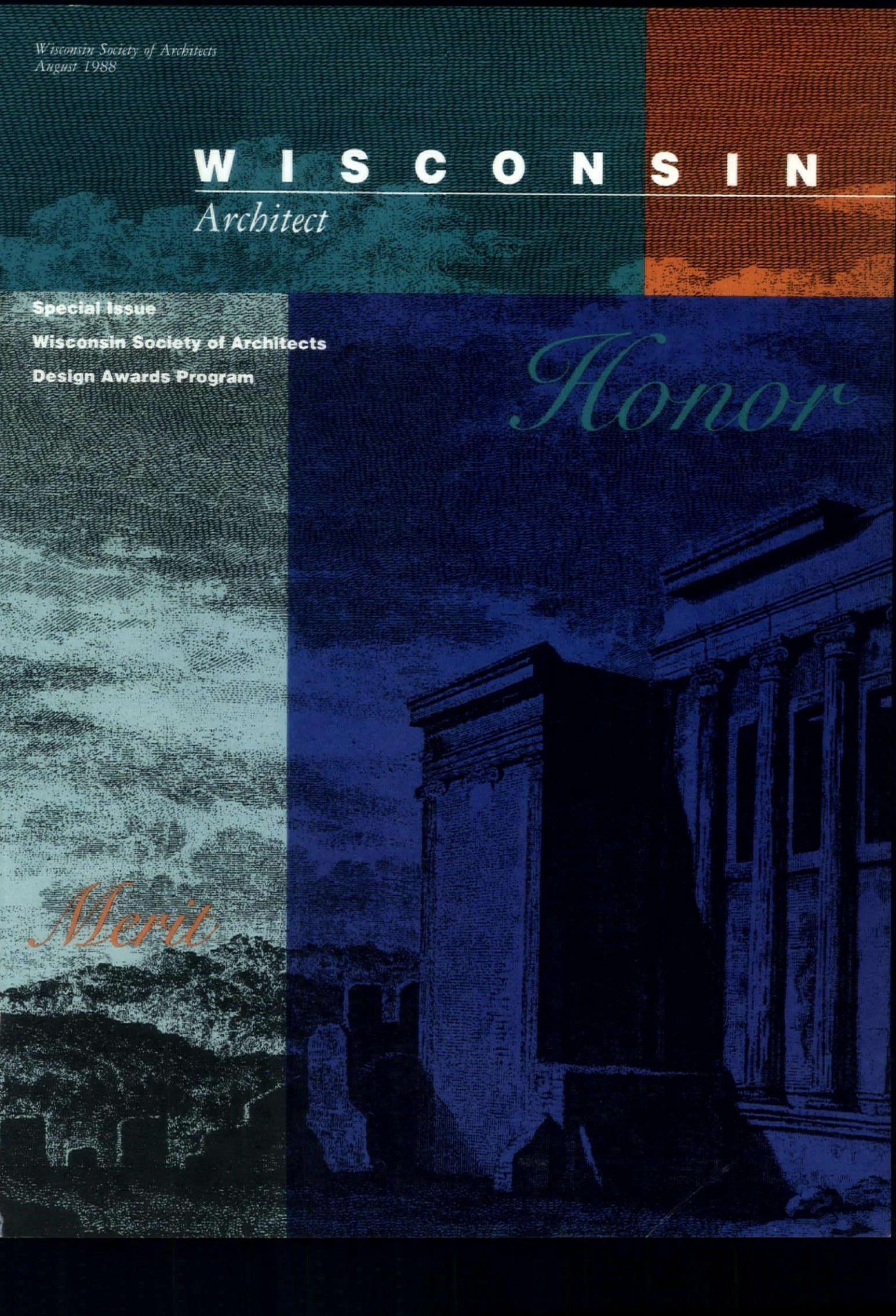
Special Issue

Wisconsin Society of Architects

Design Awards Program

Honor

Merit



Let Fly Ash do great things for your concrete.

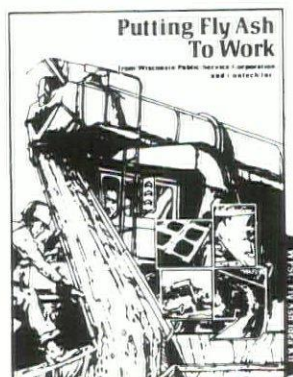
Fly Ash can do some great things for concrete. It can make it stronger and more workable; it can increase density; it can increase resistance to leaching, acid or alkali attack.

Powder-fine Fly Ash also has great lubricating effects. It makes concrete easier to pump, flow and finish. It fills forms completely. Gives you sharper, chip-resistant edges and fine details. And since Fly Ash concrete takes less water, it's more impervious.

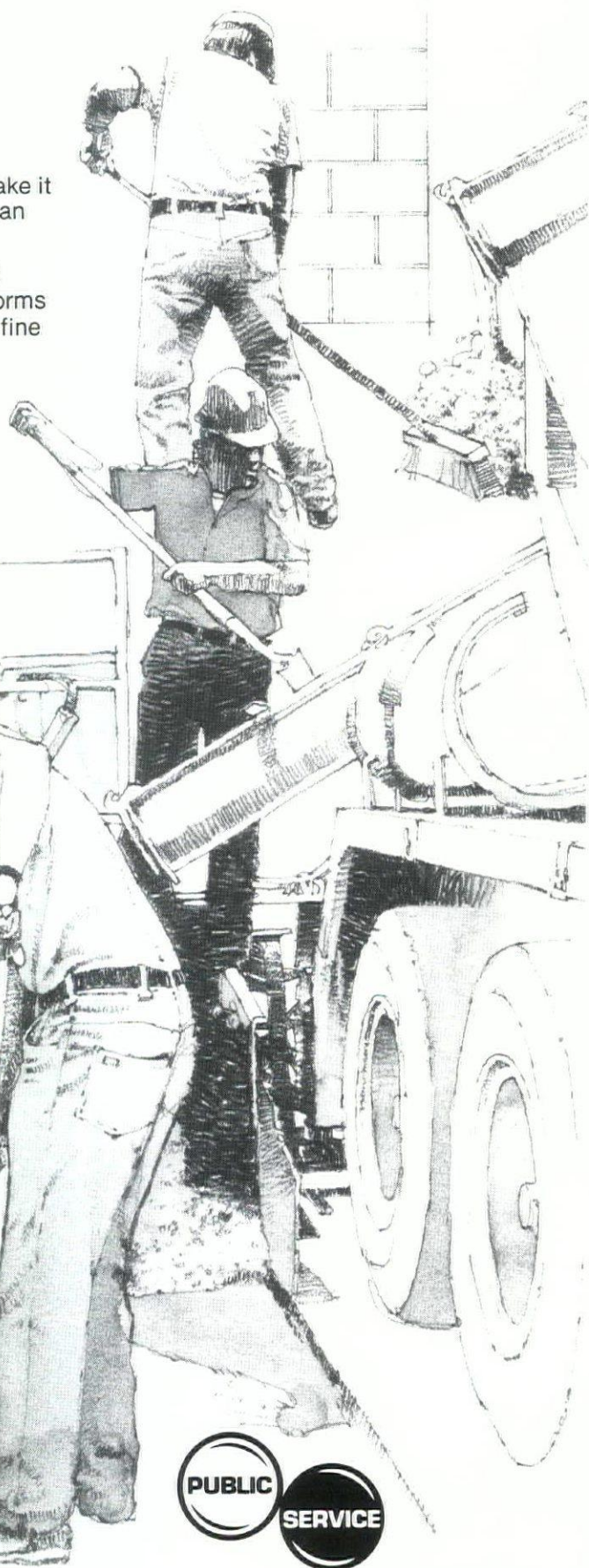
The best thing is, Fly Ash does all this for your concrete without costing you more.

Fly Ash is available from two Wisconsin Public Service power plant locations, Green Bay and Wausau, and includes the highly desirable Fly Ash produced from *low sulfur* western coal, available from our electric plant (Weston 3) in Wausau. Careful monitoring and regular lab testing insures the *best* quality Fly Ash possible. You also receive professional services offered by Contech, Inc., Minneapolis, our Fly Ash marketing agent.

Fly Ash. Just what you need for better concrete at lower cost in foundations, garages, drive-ways, floors, walls, pools, and roads. Let Fly Ash do great things for *your* concrete!



Fly Ash concrete and more information available on request from your ready-mixed concrete suppliers. Or write WPSC for free Fly Ash Idea Kit.



WISCONSIN PUBLIC SERVICE CORPORATION

Industrial Applications Dept.
P.O. Box 19001, Green Bay, WI 54307-9001
414-433-1626

Wisconsin Society of Architects Board of

Directors: H. James Gabriel, AIA, *President*; Dennis L. Olson, AIA, *Vice President/President-Elect*; Jerold W. Dommer, AIA, *Secretary/Treasurer*; Robert D. Cooper, AIA, *Past President*; Daniel J. Becker, AIA; Richard W. Eschner, AIA; Erik A. Jensen, AIA; Scott Kuehne, UWM SARUP; James E. Larson, AIA, Nadine Love, MSOE; Milton B. Martinson, AIA; Jay A. McLean, AIA; Richard D. Michael, AIA; Beth Ann Partleton, AIA; Mark A. Pfaller, FAIA; Noble E. Rose, AIA; Harry A. Schroeder, AIA; Valentine J. Schute, AIA; Kevin Shumann; Modesto Tavarez, AIA; William M. Babcock, *Executive Director*.

Wisconsin Society of Architects/AIA: 321 South Hamilton Street, Madison, Wisconsin 53703 — Phone (608) 257-8477.

Wisconsin Architects Foundation Board of Directors: 321 S. Hamilton Street, Madison, Wisconsin 53703 — Phone (608) 257-8477: Thomas K. Nisbet, AIA, *President*; Robert L. Yarbrow, AIA, *Vice President*; David A. Gaarder, AIA, *Secretary/Treasurer*; George A.D. Schuett, FAIA; Dean Carl Patton; Paul H. Graven, FAIA; John P. Jacoby, FAIA; Bert Fredericksen; Jack C. Fischer, AIA; William M. Babcock, *Executive Director*.

North Central Region AIA: Tom Van Housen, AIA, *Director*.

Southwest Wisconsin Chapter: Jay A. McLean, AIA, *President*; Modesto Tavarez, AIA, *Vice President/President-Elect*; Charles J. Quagliana, AIA, *Secretary/Treasurer*.

Southeast Wisconsin Chapter: Beth Ann Partleton, AIA, *President*; Daniel J. Becker, AIA, *Vice President/President-Elect*; Paul Mueller, *Secretary/Treasurer*.

Northwest Wisconsin Chapter: Valentine J. Schute, AIA, *President*; Richard D. Michael, *Vice President/President-Elect*.

Northeast Wisconsin Chapter: Milton B. Martinson, AIA, *President*; Erik A. Jensen, AIA, *Vice President/President-Elect*; Robert H. Grapentin, AIA, *Secretary/Treasurer*.

Wisconsin Architect, Inc.: Board of Directors: H. James Gabriel, AIA; Dennis L. Olson, AIA; Jerold W. Dommer, AIA; Robert D. Cooper, AIA.

Wisconsin Architect Editorial Board: Peter J. Schuyler, AIA, *Chairman*; Uel C. Ramey, AIA; Robert C. Greenstreet; Douglas C. Ryhn; Steve Quinn; William M. Babcock.

Magazine Staff

Editor

William Babcock

Coordinating Editor

Grace Stith

Graphic Consultant

Steve Quinn

Advertising Manager

Nancy Baxter

Internship Program

Advertising Sales

Daniel Lenz

Lisa R. Klawans

W I S C O N S I N

Architect

Honor Awards

- 18 Christ Presbyterian Church
Bowen Williamson Zimmermann Inc., Architects
- 20 Sparta Free Library
Potter Lawson & Pawlowsky, Inc.

Merit Awards

- 8 The Lion House
Schroeder Piwoni, Inc.
- 11 Racine Festival Hall and Colonnade
the Zimmerman Design Group
- 14 600 North Broadway
Herbst Eppstein Keller & Chadek, Inc.
- 15 Majolie Club & Garcon
Jules-Van Ondenallen-Shields Architects
- 23 Unitarian Church North
Kubala Washatko Architects, Inc.
- 26 Vagabond Travel
Kubala Washatko Architects, Inc.

Departments

- 5 Guidelines
- 29 Forum
- 30 Society News
- 34 Marketplace

Cover Design: Steve Quinn

WISCONSIN ARCHITECT, serving the construction industry in Wisconsin with circulation to Architects, Engineers, General Contractors, Business and Interior Designers, Landscape Architects, Certified Planners, Developers, Specifiers, Construction Managers, Builders, Manufacturers, Suppliers. WISCONSIN ARCHITECT is the official publication of the Wisconsin Society of Architects/A.I.A., published by Wisconsin Architect, Inc. Address all editorial and advertising inquiries to: Editor, Wisconsin Architect, 321 S. Hamilton St., Madison, WI 53703; phone 608/257-8477. Wisconsin Architect and WSA disclaims liability for statements by the editors, contributors, and advertisers.



A PANEL DISCUSSION.

We went straight to the experts pictured above for the answers to some of the most frequently asked questions in the architectural panel market: "What company can I go to that will serve as a consultant to me and my contractors?" "What company has a reputation for innovation at the

design stage when I need it most?" "What company handles all the big names like Stonecast by Sanspray, Petrarch and Fasset, Weyerhaeuser Panel 15, Masonite Flame Test, Stenni Composite Stone Panels and now Senergy innovative exterior wall systems? In short:

"Where can I go to find a problem solver?"

Their answer? It appears to be unanimous.

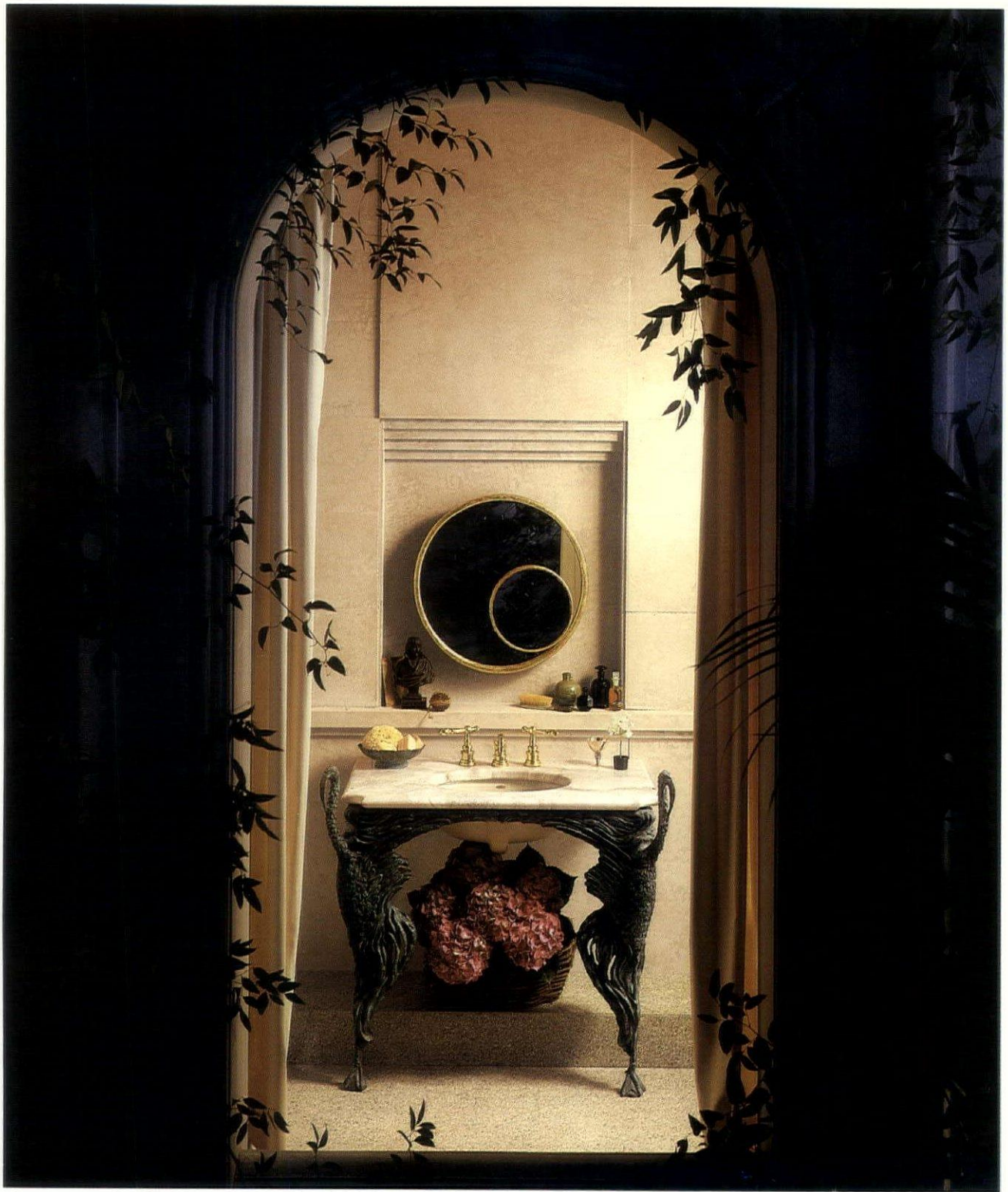


There is no equal.

For your free "SINGLE SOURCE BOOK," call or write:

S & S Sales Corporation, Architectural Division, 12030 West Silver Spring Road, Milwaukee, WI 53225

Toll-free 1-800-792-3504, ext. 329



THE BOLD LOOK
OF **KOHLER**®

The Uccello™ console table, of classic sculptured bronze with marble top, recalls the formal fountains found only in other times, on other continents. Acquire it in your lifetime to enhance your bath, dressing or powder room. Shown with IV Georges Brass™ faucet in polished brass. See the whole line of Kohler possibilities at your nearest Kohler distributor or write Kohler Co., Department AX9, Kohler, Wisconsin 53044.

C7022 Copyright 1987 Kohler Co.

“ATTENTION ARCHITECTS!”
FOR YOUR NEXT PLUMBING
OR HEATING PROJECT, CONSULT
WITH YOUR LOCAL KOHLER DISTRIBUTOR
LISTED HERE.

APPLETON

W. S. Patterson Co.

2100 W. College Ave.
P.O. Box 1177
Appleton, WI 54912
Telephone: (414) 739-3136

GREEN BAY

Murphy Supply Co.

P.O. Box 19310
Green Bay, WI 54307-9310
Telephone: 1-800-242-2850

MILWAUKEE

Milwaukee P & H Supply Co.

1313 W. St. Paul Ave.
P.O. Box 2158
Milwaukee, WI 53201-2158
Telephone: (414) 273-3600

W. S. Patterson Co.

12400 W. Silver Spring Dr.
Milwaukee, WI 53007
414-783-6500

United P & H Supply Co.

9947 W. Carmen Ave.
P.O. Box 25342
Milwaukee, WI 53225
Telephone: (414) 464-5100

RHINELANDER

W. S. Patterson Co. (Branch)

1672 Menominee Dr.
Rhinelander, WI 54501
Telephone: (715) 362-7824

WISCONSIN RAPIDS

W. S. Patterson Co. (Branch)

2111 Engel Road
Wisconsin Rapids, WI 54494
Telephone: (715) 421-1585

Each year the WSA Honor Awards program searches for excellence in design by Wisconsin's
... there is no "typical"
architects.

award-winning

A jury of renowned architects, Kirkland of Toronto, McCurry of Chicago, and Schmertz of
building ...
New York, recognized eight projects from a total of 65 submitted. Two projects were awarded Honor
Awards for overall design excellence and six projects received Merit Awards for excellence in a par-
ticular aspect of their design.

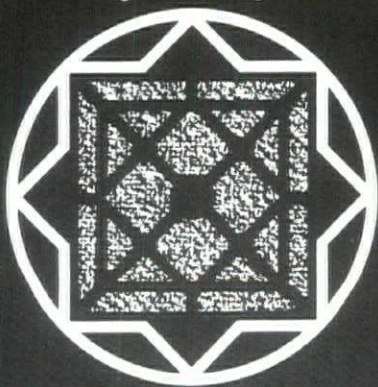
The wide range of winning projects demonstrated that there is no "typical" award-winning building
and that project or firm size is no barrier to success.

The 1988 Design Awards program followed the tradition of representing design excellence by Wis-
consin architects. As Chair of this year's event, I was very proud to take part in recognizing the
success of my peers.

Emma Macari, AIA, Chair
WSA Design Awards Committee

INTERNATIONAL

CITIES



DESIGN

COMPETITION

THE SCHOOL OF ARCHITECTURE AND URBAN PLANNING
UNIVERSITY OF WISCONSIN-MILWAUKEE, USA

WILL AWARD

**US \$125,000
IN CASH PRIZES**

TO THE WINNERS OF THE

INTERNATIONAL CITY DESIGN COMPETITION

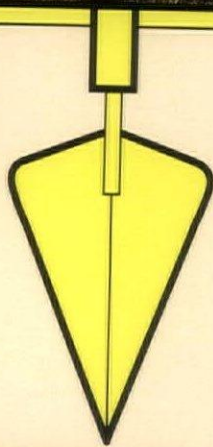
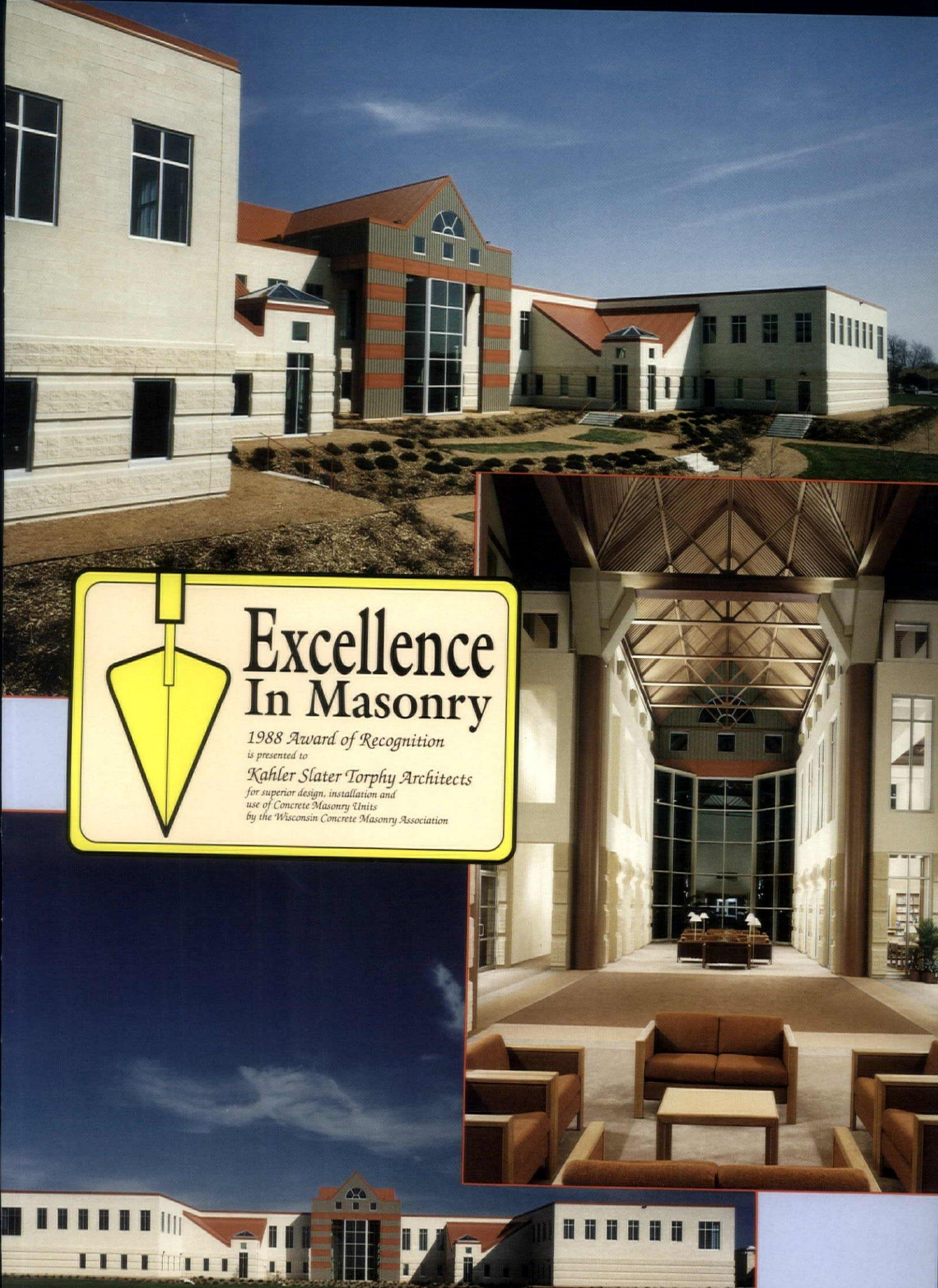
A CONCEPT COMPETITION FOR IDEAS
ABOUT THE FUTURE OF THE INDUSTRIAL CITY

The International City Design Competition is an open competition sanctioned by the International Union of Architects (UIA) with no eligibility requirements for professional licensure or residency. Registrations with the fee of US\$75 must be postmarked no later than November 30, 1988. Cash will not be accepted. Checks, money orders, or bank drafts must be made payable in US dollars to: SARUP/UWM FOUNDATION/ICDC, and sent to:

ICDC

School of Architecture and Urban Planning
University of Wisconsin-Milwaukee
P.O. Box 413
Milwaukee, Wisconsin 53201, USA

Submissions, limited to 3 boards, will be due May 1989. The winners will be announced in July. The jury is: Charles Correa, India, Geoffrey Darke, England, Allan Jacobs, USA, Amos Rapoport, Australia-USA, Carlos Tejeda, Mexico, William Turnbull, USA, Cynthia Weese, USA. Requests for information and a free videotape should be sent to the address above, or telephone USA 414-229-4014, and ask for the ICDC Staff.



Excellence In Masonry

*1988 Award of Recognition
is presented to*

*Kahler Slater Torphy Architects
for superior design, installation and
use of Concrete Masonry Units
by the Wisconsin Concrete Masonry Association*

The Campus Center Building *Cardinal Stritch College* Milwaukee, Wisconsin

Program: Student Gymnasium, Library, Auditorium, Cafeteria
Architects: Kahler Slater Torphy Architects
Consultants: Graef Anhalt Schloemer; Lubebow, Gobster Dominiak; Bert Fredrickson; Leedy & Petzold
General Contractor: CMA
Mason Contractor: C. Bundy
Structural System: Concrete Masonry Unit Bearing Walls with Steel Bar Joist Roof System
Major Materials: Concrete Block, Industrial Metal Panels
Mechanical System: Variable
Size: 75,000 Square Feet
Cost: \$4.7 Million

The Judges Comment...

"A fine use of block in a commercial structure. This use of block exhibits a simplified but elegant massing of both texture and form. You are surprised that this building is built of block, given its detail both interior and exterior." *R. G. Keller*

"First Choice from the beginning. Striking first appearance. Design grabs you. Good & creative details. Excellent use of color. Combination of materials, particularly well done." *R. Hackworth*

"A large building that maintains a "human" scale through material selection, color and proportion." *Milt Mortinson*

"Careful detailing of concrete block to achieve sense of scale and importance."

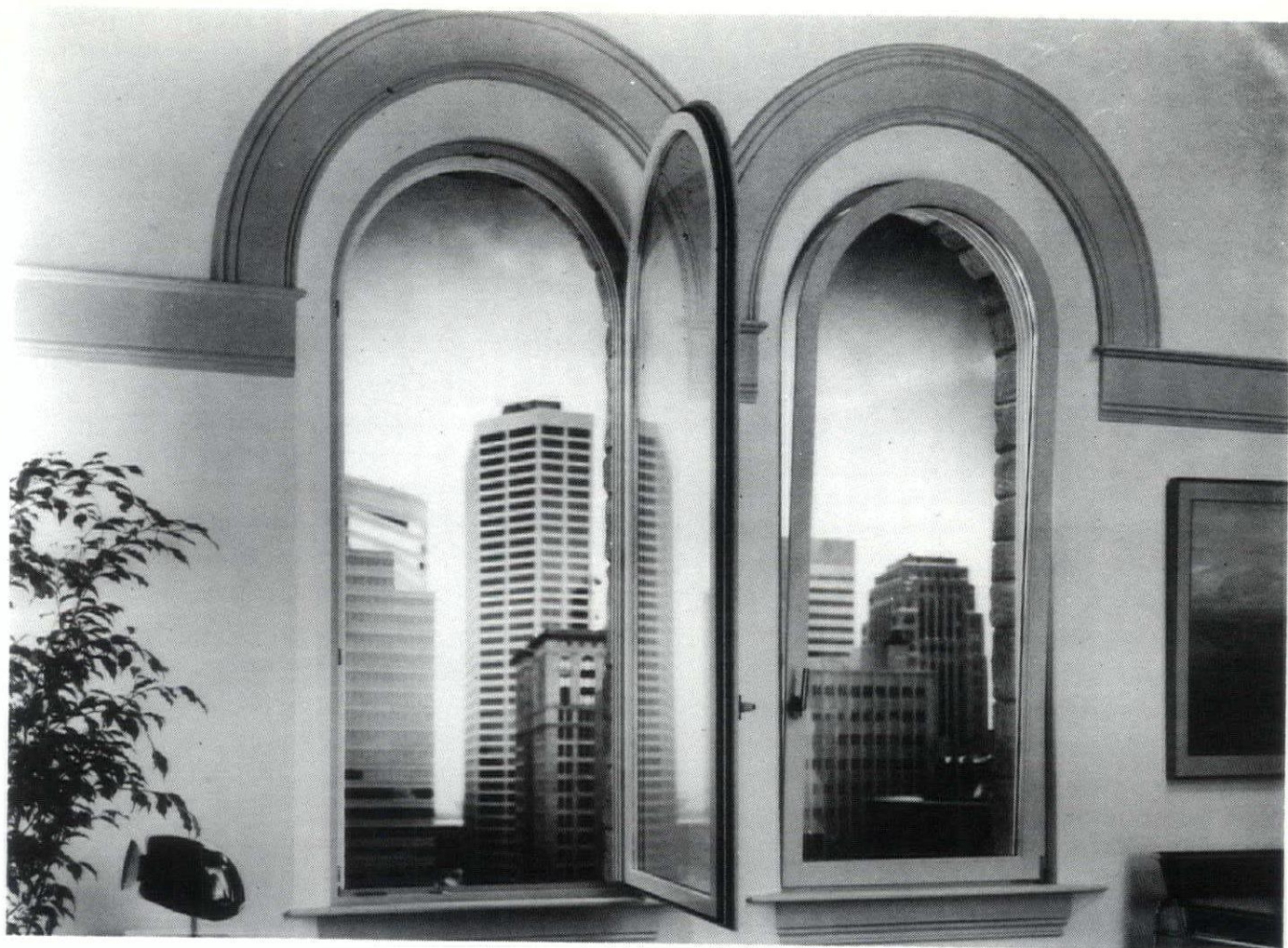
"Sensitive use of block in concert with metal and glass to achieve sense of importance and dignity." *John Cain*

"Impressive use of color for accent. The mass of masonry gives the building a feeling of stability and permanence, while the shapes, color, and fenestration contribute to a feeling of warmth and light." *Tom Williams*

The Architect Comments...

"The flexibility to create custom shapes to develop a unique character in the building was a major factor in the choice of block for the Cardinal Stritch College Campus Center Building. The building mass, brick, and other materials of the existing campus were neutral, and needed a dramatic accent in the new building. The larger scale of concrete block elements allowed us to design a more monumental solution.

An additional reason for selection was the efficiency and economy of concrete block construction, which permitted us to build more area and provide for a greater range of the school's needs." *David Kahler - Edited by Anne Kufus, Marketing Director*



STOP SETTLING FOR THE WARMTH AND BEAUTY OF ALUMINUM.

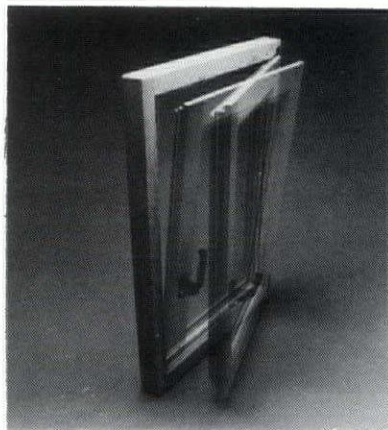
What windows should you specify for a commercial project?

For years the standard answer to that standard question was standard aluminum. Aluminum windows offered the best combination of performance characteristics. Never mind that they left something to be desired in terms of insulation and beauty.

Now you have a beautiful and efficient alternative. Marvin Magnums. Wood windows that shatter commercial standards. Air infiltration, positive and negative wind load pressure,

water infiltration. In every conceivable test, Magnum Tilt-Turn windows have proven they can take just about anything, anywhere.

Of course, tilt-turns aren't the only commercial win-



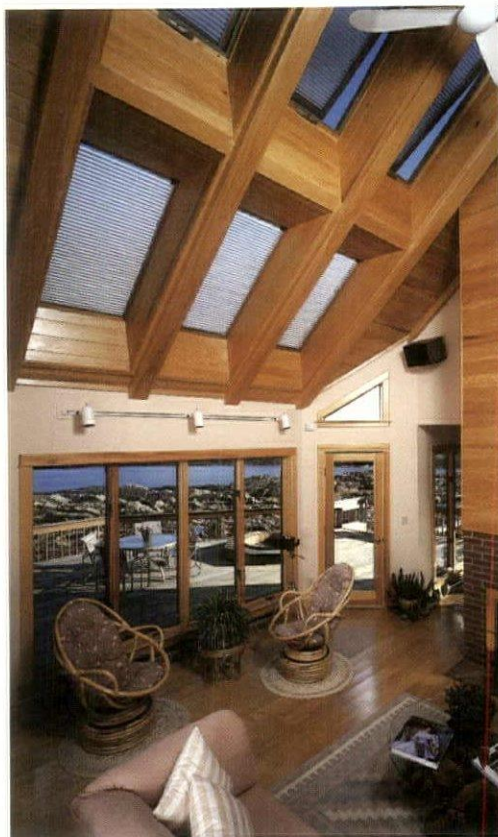
dows in the Magnum line. There's also a Magnum Round Top Tilt-Turn, a simulated double hung tilt-turn, a stationary unit, a hopper and an authentic double hung. All windows in the Magnum Series are made of beautiful Ponderosa pine and are available with low maintenance exteriors.

For the name of your nearest Marvin dealer contact:

S&S Sales Corporation
1-800-792-3504 Ext. 329

**MARVIN
MAGNUMS** 
ENGINEERED TO OPEN THE MIND.

Multiply the Possibilities



VELUX® prefabricated gang flashings let you group VELUX roof windows and skylights in almost any combination quickly and easily.

The precision engineering of VELUX gang flashings allows weather tight installation without the need for caulk or mastic. This means no weather delays, no mess, and less chance of callbacks. In

addition, VELUX gang flashings are readily available nationwide in a wide range of standard sizes to meet your building requirements and your deadline.

VELUX®

The world leader in roof windows and skylights.

Sales, Warehousing and Service Nationwide

For more information about VELUX Gang Flashings, send for a free copy of our VELUX Gang Flashing brochure, plus "The Complete Guide to Roof Windows and Skylights", and a price list. Your inquiry will be answered within 24 hours.

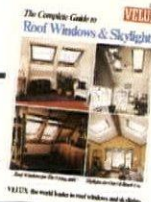
VELUX-AMERICA INC.
2501 Allan Drive
Elk Grove Village, IL 60007

1-800-942-7828 (in IL)
1-800-323-8336 (outside IL)

©1988 VELUX AMERICA INC. ©VELUX is a registered trademark

FREE 28 page full color brochure

Name _____
Firm _____
Address _____
City/State/Zip _____



3WA888



Merit

Project

The Lion House

Architect

Schroeder Piwoni, Inc.

Contractor

Kelman Corporation

City

Milwaukee, Wisconsin



Jury Comment

The house has a very strong plan. Inside planning decisions were generated by a response to the building's strong plan, with all interior detailing very much in the character of the house.

Architect's Statement

Once a splendid example of an urban villa sited on a typical Milwaukee residential boulevard, the Lion House has, because of its public edifice and architectural quality, always drawn uses of symbolic significance despite its small size. The Neoclassical Palladian style structure survived demolition and became the administrative headquarters for Concordia College until their move in 1982. In 1983, a fire gutted the inside of the then vacant house. Recognizing its importance to the neighborhood, Westside Conservation Corporation acquired the property and hired the architect to renovate the building for reuse as its headquarters.

The new interior with its two-level layout respects the existing shell by developing the square cupola-lit room at the center of the house. Inside, antique elements (light fixtures, handrails, mouldings, etc.) are used to contrast with an austere rationalistic aesthetic. Outside, the structure is restored to Federal National Park Service standards. The result is a building made whole again and respectful of the intentions of its original architect.

Photography, Mark F. Heffron

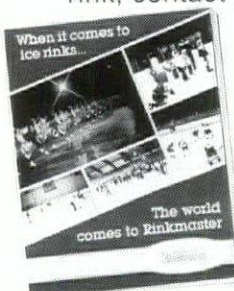
The Festival Park Rinkmaster System:

- More responsive ice temperature control
- Superior energy efficiency



Photo by Mark F. Heffron

We are proud to have been selected as the supplier of the ice rink system at Racine's Festival Park. If you are planning an ice rink, contact us. We will make your job easier with:



- Typical plans and specs.
- Customized plans and specs for your project.
- Preliminary cost estimate.
- Total rink responsibility including refrigeration, installation, rink floor, dashers and accessory equipment.

FREE FULL COLOR BROCHURE



For your copy contact:

Holmsten Ice Rinks, Inc.

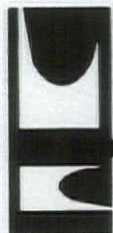
1852 Como Ave., St. Paul, MN 55108 612/646-8625 FAX 612/646-0806

TOLL FREE U.S.A. 800-328-6808 MN 800-392-0323

Building Your Dreams Come True

We're proud of our workmanship. From project planning to project completion — on time and within budget.

Serving S.E. Wisconsin and N.E. Illinois for 25 years.

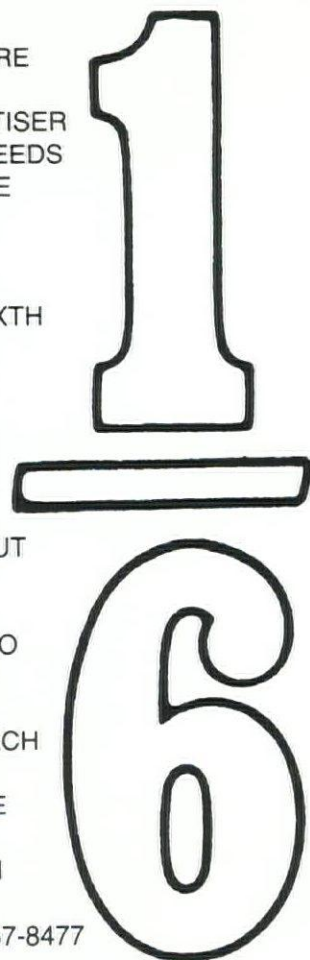


UNITED

CONSTRUCTION CORP.

General Contractor
2425 S. Memorial Dr.
Racine, WI 53403 414-637-5681

IF YOU'RE
AN
ADVERTISER
WHO NEEDS
A LITTLE
SPACE
LIKE
THIS
ONE-SIXTH
PAGE,
CALL
OUR
OFFICE
TODAY.
YOU'LL
FIND OUT
YOU
DON'T
HAVE TO
SPEND
A LOT
TO REACH
THE
PEOPLE
WHO
DESIGN
A LOT.
(608) 257-8477



**Seeking an Associate
or Looking for a
New Position?**

**Try the WSA
Job Bank**

If you are looking for a new position or seeking an associate, the WSA Job Bank can help you. There is no charge for using the service.

If you have any questions or need more information about the service, call Sandra at the WSA office (Madison - 608/257-8477; Wisconsin - 1-800-272-4483).



Merit

Jury Comment

This project is an example of exuberant, festive, public architecture as a centerpiece for the revitalization of the downtown. The architect took the relatively small amount of program space and, by the device of re-inventing the colonnades, provided a much bigger armature. It's interesting how such little program space is providing so much spacial definition for the site.



Project

Racine Festival Hall and Colonnade

Architect

the Zimmerman Design Group

Contractor

Korndorfer Corporation

City

Racine, Wisconsin

Architect's Statement

The Downtown Racine Development Corporation, in concert with the City of Racine, sought to create a new multi-purpose facility to accommodate a multitude of ethnic and civic activities. The facility would serve as a focal point for the new Racine harbor and 1,000-slip marina development on the shore of Lake Michigan. The client sought a building which would bring new life to a blighted area and promote additional downtown development.

The functional program identified two distinct but related buildings for the festival site. The Festival Building was to be a self-sufficient, multi-purpose building which would serve as a community center, banquet hall, exposition center and concert hall. The Colonnade Building provided a covered farmers market and outdoor exhibit space as well as a support facility for the Festival Park. Building materials were chosen for durability, serviceability and appropriateness to the overall nautical theme. Multiple lighting and sound systems were incorporated to provide for the building's many users. Exterior lighting includes continuous strings of tivo lights on the edges and ridges of both the Colonnade and Festival Building which add a festive feeling to the entire complex and help draw people from the marina and downtown. The building's roof shape, fenestration and playful color palette all add to reinforce the festival nautical theme. The building and the surrounding development help set the spirit and tone for Racine's future.

Photography, Howard Kaplan

*An artistic expression
of our expertise
to carefully craft metal and glass
to perfection.*

*An enhancing quality.
Season-All windows
by Arwin
for 600 North Broadway.*

arwin

Builders' Specialties, Inc.

2145 S. 162nd Street New Berlin, WI 53151 (414) 782-1090

Architectural Windows / Translucent Panels

Reprints Available From Wisconsin Architect

PBBS EQUIPMENT CORPORATION

5401 N. Park Dr.
Butler, WI 53007

MILWAUKEE . . (414) 781-9620

24 HOUR. Radio Dispatch Truck Fleet for
INDUSTRY, INSTITUTIONS, SCHOOLS, etc.
AUTHORIZED PARTS & SERVICE FOR
CLEAVER — BROOKS, CLEVELAND
CONTROLS, MORR CONTROLS CO.
Throughout Wisconsin & Upper Michigan.
SALES, BOILER ROOM ACCESSORIES, O²
Trims, And-Car Automatic Bottom Blowdown
Systems. SERVICE - CLEANING ON ALL
MAKES. Complete Mobile Boiler Room Rentals.

MADISON (608)249-6604

GREEN BAY (414)494-3675

STEVENS POINT . (715)344-7310

*Doing A
Trade Show?*

*Considering A
Direct Mail
Campaign?*

We will reprint your ad
on our magazine paper
stock in the quantities
you need.

For more information contact:
Nancy Baxter
Advertising Sales Manager
608/257-8477

Moving?

Let us know 4-6 weeks in advance so that you
won't miss a single issue of *Wisconsin Architect*.
Please include a copy of the old label.

New Address:

Name _____

Address _____

City, State, Zip _____

Mail To:
WISCONSIN ARCHITECT
321 S. Hamilton St.
Madison, WI 53703

NATURALITE AND CARLISLE ROOFING SYSTEMS MADE 600 NORTH BROADWAY A WINNER RIGHT FROM THE TOP

Rehabilitation of a building can be a tough demanding job. Time constraints, deadlines, delays and availability all play key roles in the timely and successful completion of a project. After all, as an architect, the client's problem must be solved. The project completed so that the space can be leased.

The 600 BROADWAY project in Milwaukee was recognized for this type of performance by the Wisconsin Institute of Architects. R.G. Keller, lead architect for the project at Herbst, Epstein, Keller & Chadek will specify products "when I know that they are good, reliable."

For instance, a Carlisle light-weight fully-adhered EPDM roofing system was selected because it is the "standard by which all others are



measured. After it is installed, there are no problems."

And on-time completion is of little value if the space is unattractive and difficult to lease. For the 600 BROADWAY project, three 8-foot pyramid Naturalite skylights were added for aesthetic and value enhancement of the top floor space.

Look up to Weather-Tek for performance, service and product availability of Carlisle Roofing Systems and Naturalite skylights. 10700 West Venture Drive, PO Box 544, Hales Corners, Wisconsin, 53130, 414 425-3322.





Merit

Project

600 North Broadway

Architect

Herbst Eppstein Keller & Chadek, Inc.

Construction Manager

Associated Construction Consultants

City

Milwaukee, Wisconsin



Jury Comment

The exterior is restrained though elegant. The lobby is quite handsome in its elaboration of the column system, beams, railing detail and floor patterning. These items reflect a very high level of restoration.

Architect's Statement

The renovation of a c. 1870 building located in downtown Milwaukee challenged the architectural firm to design a contemporary office space for its client while still maintaining the historic nature of the structure. The building, which is a part of a larger historically intact block, was in a state of disrepair with the upper three floors of the building unoccupied for over 25 years.

The exterior, adorned by cast-iron columns, was cleaned and restored using black glass at the openings to contrast with the elegant existing cast-iron detailing. The interior design solution became a task of replanning each floor to allow flexibility for tenants' open office landscaping and to maximize floor efficiency while leaving the majority of the bearing walls intact. The result of this project was contemporary office space while still maintaining the historic nature of the building.




Photography, Ed Purcell



Annual Design Conference
Contract and Residential Furnishings Exposition
International Market Square
Minneapolis/St. Paul

PERIPHERAL VISION

A program designed to educate,
inspire and entertain
interior designers, architects, facilities managers
and the corporate community.



Dedicated to the exploration
of creativity that springs
from the outer edges of imagination.



SEPTEMBER 15 & 16

Continuing Education September 17

For a schedule of events
and registration materials,
call or write:

International Market Square
275 Market Street
Minneapolis, MN 55405
(612) 228-6959

PERIPHERAL VISION

INTERNATIONAL MARKET SQUARE, MINNEAPOLIS, MINNESOTA

Thursday, September 15

■ DESIGN AND SIGNS OF THE TIMES

Dr. Sidney Harman, chairman, Harman International, Washington, DC

Dr. Harman will share his dynamic vision of the future—including the role of design in our lives. Learn how people will live and work and how design professionals can prepare for a profitable future. Co-sponsored by IMS and Audio Video Environments.

■ CREATING A DESIGN IMAGE

Susan Lewin, creative director, Formica Corporation, and president, Design Communications International, Wayne, NJ. Introduction by Miriam Furman, editor, *The Designer Specifier* magazine.

Learn how to access the best resources for each and every design project through strong communication with manufacturers. Lewin will discuss the importance of maintaining high standards and how designers can effectively work with manufacturers to achieve excellence. Co-sponsored by IMS, IDA and Formica Corporation.

■ FOCUSED VISION: DISCIPLINE IN DESIGN

Peter Blake, FAIA, professor, Department of Architecture and Planning, The Catholic University of America, Washington, DC. Introduction by Stanley Abercrombie, editor, *Interior Design* magazine.

Although seemingly unrelated, a common thread binds art, architecture, engineering and furniture design, according to Peter Blake, a celebrated architect, author and educator. Learn why a true design vocabulary must involve consensus rather than devotion to fashion. Co-sponsored by IMS and MSAIA.

■ A THIRD VIEW: COLLABORATION BETWEEN ARTIST AND LANDSCAPE ARCHITECT

Friedberg, FASLA, M. Paul Friedberg & Partners, New York, NY. Ferrara, sculptor, New York, NY

Urban landscape pioneer M. Paul Friedberg and artist Jackie Ferrara will share the ideas and innovations at the forefront in contemporary landscape architecture. They will explore the 'third view,' in which artist and landscape architect collaborate to create an integrated environmental work. Co-sponsored by IMS and MASLA.

■ WALKER ART CENTER SCULPTURE GARDEN TOUR AND RECEPTION

A special guided tour of the new landmark Minneapolis Sculpture Garden, combining art, architecture and landscape architecture.

Proceeds to benefit DIFFA.

Friday, September 16

■ FENG SHUI: THE CHINESE ART OF PLACEMENT

Professor Thomas Yun Lin, Yun Lin Temple, Berkeley, CA

The ancient art of Feng Shui dictates that surroundings be designed in harmony with the environment. Learn practical, modern applications for Feng Shui from this noted Chinese philosopher and teacher.

■ FIBERS FOR PERFORMANCE

Carl Brewster, contract consultant, BASF Fibers, Chicago, IL

Brewster will illustrate how professionals can better access market information on fibers, product quality guidelines, general specification and bidding information, and technical studies including stain, resoil and light fastness. Co-sponsored by IMS and BASF Fibers.

■ KEYNOTE LUNCHEON

REAGAN'S LEGACY: ECONOMIC, POLITICAL, SPIRITUAL

Daniel Schorr, senior news analyst for "All Things Considered" and "Weekend Edition," National Public Radio, Washington, DC

One of the most distinguished journalists of our time will present his unique viewpoint of the state of the union. This timely presentation will delve into the coming election and the challenges facing our next administration. Daniel Schorr's controversial career in journalism has spanned more than half a century as a foreign correspondent, Watergate correspondent for CBS News and National Public Radio analyst.

■ ENHANCING YOUR OWN CREATIVITY

Jerry E. Allan, president, Criteria Architects, Chairman of Visual Studies, Minneapolis College of Art & Design, Minneapolis, MN. Introduction by Eileen McMorro, managing editor, *Facilities Design and Management* magazine.

Jerry Allan is a practicing architect and educator who has developed innovative methods to enhance creativity and foster it in others. This practical workshop will help you discover how problems can be transformed into creative solutions. Co-sponsored by IMS and IFMA.

■ FANTASY IN RESTAURANT, RETAIL AND COMMERCIAL DESIGN

Sam Lopata, president, Sam Lopata, New York, NY. Introduction by Justin Henderson, hotel/restaurant editor, *Interiors* magazine.

From "Lox Around The Clock" to "Pig Heaven," Sam Lopata has created some of the most distinctive interiors in the hospitality industry. But elements of fantasy can enhance any design project. Lopata will present his unique interiors and discuss concept development, client relations and industry trends. Co-sponsored by IMS and ASID.

Saturday, September 17

Continuing Education

Showrooms open by appointment only

■ CONTINUING EDUCATION UNIT ONE "CLEARLY BUSINESS II"

This full day business seminar emphasizes management strategies and practices. Designers will learn effective management techniques and how to increase competitiveness in the marketplace. Certified for .6 CEU credits. Co-sponsored by IMS, Kimball International and IBD.

■ CONTINUING EDUCATION UNIT TWO "PRICING INTERIOR DESIGN SERVICES"

Effective communication and strong negotiating skills can lead to higher fees. Design professionals will learn how to establish a profitable fee structure for a variety of situations in this valuable continuing education course. The seminar will include techniques on estimating required hours, methods for cutting production costs and negotiation tactics. Certified for .6 CEU credits. Co-sponsored by IMS, ASID, IDA, IDS and IFDA.

Peripheral Vision Gala

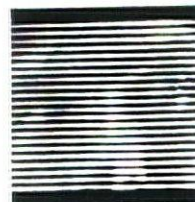
Friday, September 16

5:00 p.m. on

- Showroom Open House
- The Show
- Dancing

Gala co-sponsored by IMS and BASF Fibers.

To register for Peripheral Vision, call or write: International Market Square
275 Market Street
Minneapolis, MN 55405
(612) 338-6250





Merit

Project

Majolie Club & Garcon

Architect

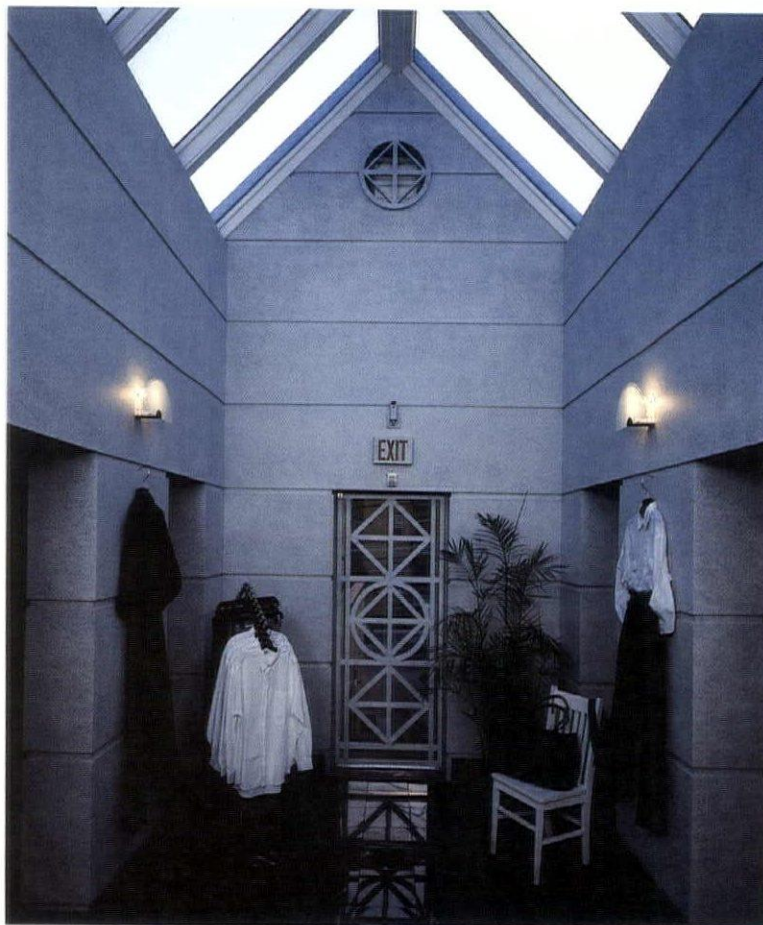
Jules-Van Oudenallen-Shields Architects

Contractor

Rick Pilon & Associates

City

Milwaukee, Wisconsin



Jury Comment

The project reflects an interesting and provocative idea about relating the selling of clothes to the architecture of the store. It is an ambitious design which takes a rather conventional space and creates a miniature piazza within a central pavilion.

Architect's Statement

The project involves the extension of first floor retail space to the second floor. The design assignment was to connect the first and second floors and integrate men's and women's fashion in one space, creating an exciting environment to shop for contemporary clothes.

An existing light well was converted to an atrium that became the focus of a round room accented by buttresses. The living rooms of the earlier apartments were kept and integrated into the circular composition through transition spaces designed for the sale of accessories. Display fixtures in these areas were designed as simple, elegant furniture. The skylight atrium proved to be a successful attraction and an excellent way of testing the color of garments before purchase. The buttresses, their platforms and coursing reveals are excellent for display while being geometrically strong enough to unify and clarify the composition.

Photography, Mark Heffron

Quick! Name at least five good reasons why architects are AIA members.

2. We meet our members' changing needs.

Professional programs help you to keep pace with: productivity improvement, project budgeting and management, building technology and business opportunities—to help you *and* your company.

3. We produce the finest in professional publications.

ARCHITECTURE magazine, incorporating Architectural Technology, is the only publication you'll need for the latest news in design, technology, and practice.

1. We have specialized programs.

AIA members serve on more than 50 committees—which range from design, housing, computers to education, industry, government—to initiate action on issues important to you.

4. We provide vital information.

AIA membership gives you access to information services, like: document services, technical and practice aids and library reference services.

5. We are the premier architectural association.

"AIA" after your name represents more than a recognized standard of architectural excellence—it represents a national network. With over 51,000 members, the AIA shapes the architectural profession.

The American Institute of Architects
1735 New York Avenue, N.W.
Washington, D.C. 20006
(202) 626-7393



The American
Institute of
Architects.

*We want you
to belong.*

For more good reasons, contact:

WSA

Wisconsin Society of Architects
American Institute of Architects

321 south hamilton street madison wisconsin 53703
257-8477 (madison only)
1-800-272-4483

EASY CHAIR

Versatile Plexus® seating provides comfort for years with easy, low maintenance.

Part of the Plexus® Collection, a complete Shopping Center furniture system.

Durable, powder coated steel in a variety of color options.

Freestanding, embedded, surface, or wall mounting choices.

Made in the USA.



LANDSCAPE FORMS



LFI/Landscape Forms

Bill Quinlan

2140 North Halsted
Chicago, IL 60614
312/871-8810

THE PUBLIC SPACE FURNITURE COMPANY

*Faster than a speeding bullet,
more powerful than a locomotive,
able to build complex buildings
with amazing skill...*



...and who, disguised as the mild-mannered Kraemer Brothers from Plain, Wisconsin perform incredible feats of construction excellence. Whether it's an airport, hotel, office or supermarket, they are fast becoming a legend in their own time. They consistently and successfully build projects that are the result of careful planning, skilled craftsmanship, and a close working relationship between owner, architect and builder.

In pre-selecting Kraemer Brothers as your building contractor, you're assured a certain degree of heroism. Promises made are promises kept—your project is completed on time and on budget. What's more, they're always there for you, upholding a long-standing family tradition as champions of quality, efficiency, and just plain old hard work. Want to know more?

Call Kraemer Brothers and talk to a Kraemer.

608-546-2411

**KRAEMER
BROTHERS**

GENERAL CONTRACTOR

925 Park Avenue
Plain, Wisconsin 53577

Glass



WISCONSIN SOLAR DESIGN

414-444-1639 608-831-2112

Greenhouses
Solariums
Skylights



Project

Christ Presbyterian Church

Architect

Bowen Williamson

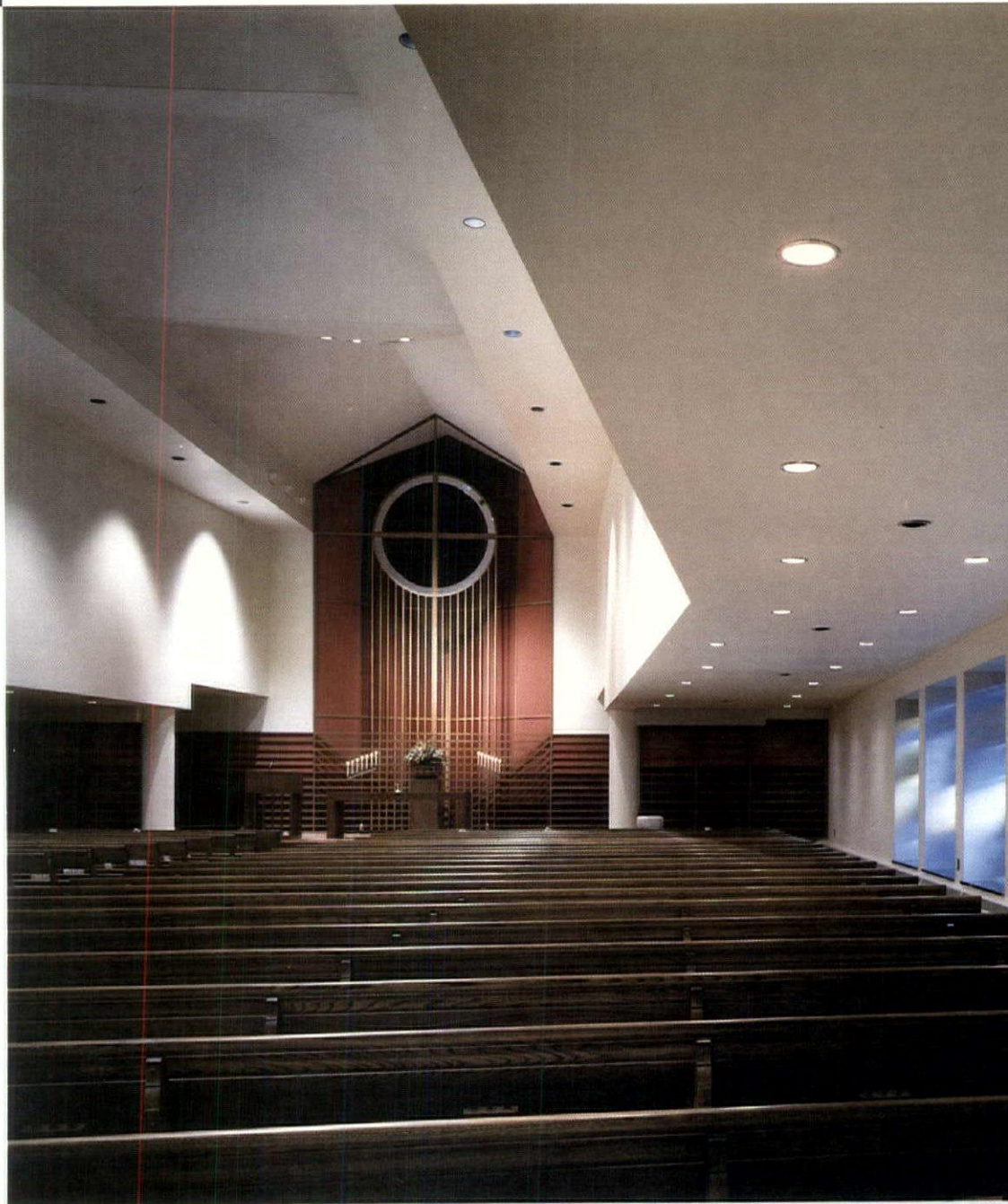
Zimmermann Inc., Architects

Contractor

Kraemer Brothers

City

Madison, Wisconsin



Architect's Statement

The project involved the design of an addition to an existing 1950's church to accommodate a 75-seat chapel and administrative offices as well as the renovation of the existing main sanctuary to seat 300 members. The congregation's access and egress to the new addition, flexible and simple arrangements to allow change, and contextual references to the existing church were important considerations in developing the architectural design.

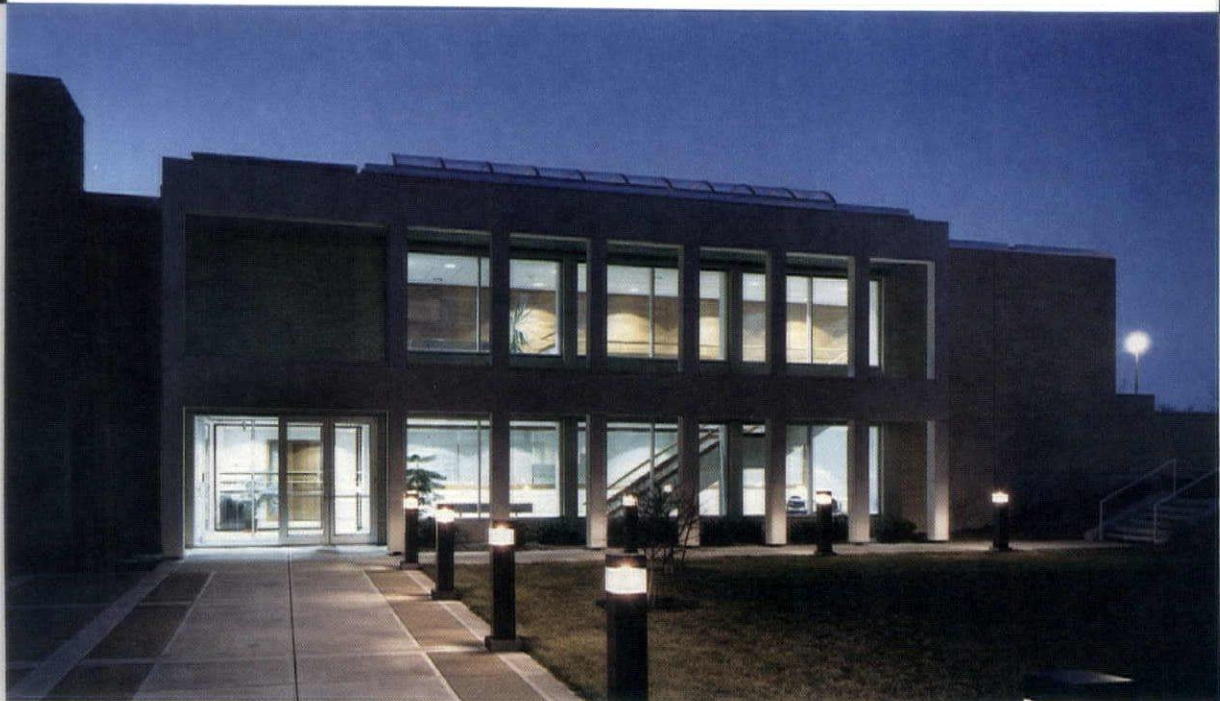
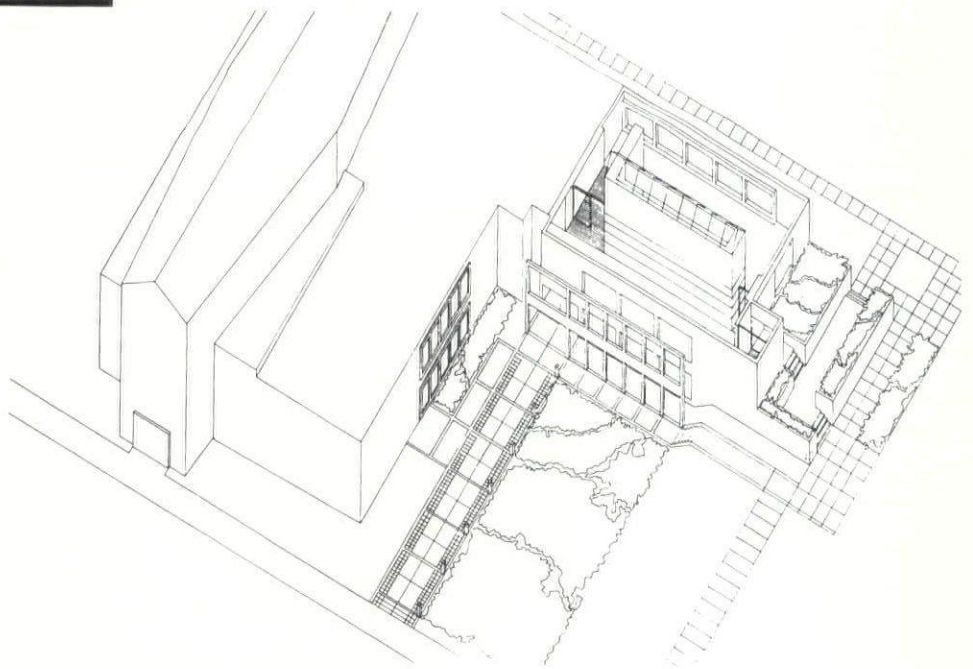
The external access to the addition was gained through a courtyard garden providing an interface with the existing building. The plan was an extension of the volumetric shape reflected in the existing structure. A free standing limestone sun screen and window frames and the use of matching brick provided contextual references to the existing building. Flexible chapel seating arrangements were enhanced by providing a variety of focal points including views to the lake. The renovated sanctuary interior was transformed into processional, articulated and participatory spaces highlighted by quality lighting, variations of color, focus and superb acoustics.

Photography, Eric Oxendorff

Jury Comment

The addition has a dignity and power of its own without upstaging or overpowering the church. It extends the metaphor of what you think of as church architecture. It is the beginning of a cloister and, in its quiet way, it has in fact made the church a stronger image.

Honor





Project

Sparta Free Library

Architect

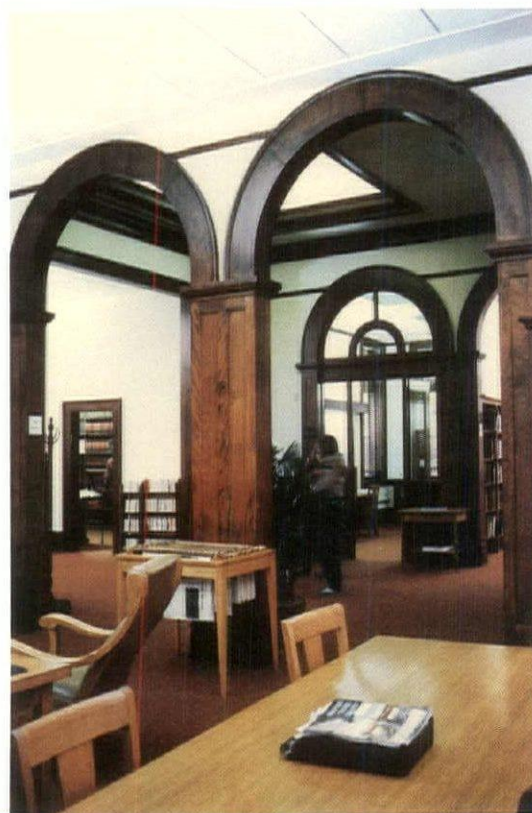
Potter Lawson & Pawlowsky, Inc.

Contractor

John E. Clements Construction

City

Sparta, Wisconsin

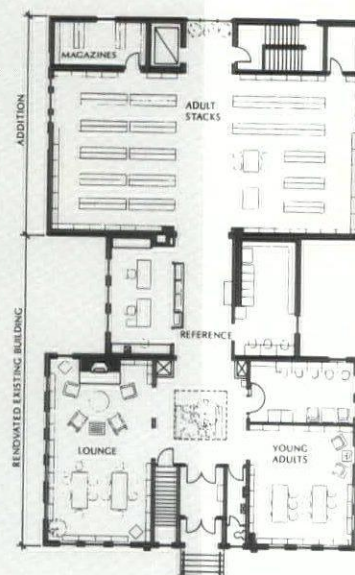




Honor

Jury Comment

The addition has the vocabulary elements of the existing building, though it is a very modern addition. It's quieter, yet very strong. It displays the absolute courage to not flinch at the prospect of making a replica addition. The addition is an unflinching attempt to extend the building in the spirit and language of the existing building.



Architect's Statement

The architect was requested to program and design an addition of approximately 5,000 square feet to both floors of an existing library (nominated to the National Register of Historic Places) located in a small central Wisconsin community. The goal of the project was to effect a modern working library based on today's standards, retaining the period character of the original building while doubling its size.

The addition was designed to compliment the existing building. Window treatment is similar to the original, but subtly different in style, volume and placement. Brick color was matched closely, and limestone courses and quoins were repeated. The half-story limestone base of the original building was rendered in concrete with thin rustication joints on the addition. Close inspection reveals little difference in materials attesting to the skill of the workmanship on this project, both outside and inside. The finished composition has a unity of materials and detailing with subtle differences, so the careful observer can detect the difference in ages of the two sections.

Photography, James T. Potter, AIA

THINK LONG TERM

. . . And Realize Immediate Returns on Your Building Investment With The Spancrete Insulated Wall Panel System.

- Low Fire Insurance Rates
- High Heating and Cooling Efficiency
- Virtually Maintenance Free
- Extremely Durable Construction
- Expandability
- Unique Selection of Colors & Finishes

Call us today and we'll show you how economical the Spancrete Wall System can be. Our professional staff will provide preliminary planning and budget assistance enabling you to clad your building frame with the affordable Spancrete precast, prestressed, insulated concrete wall panel.



Spancrete Industries
10919 W. Bluemound Rd.
Milwaukee, WI 53226
(414) 258-4110

Spancrete Inc.
2448 Century Rd.
Green Bay, WI 54307
(414) 494-0274

Spancrete of Illinois
4012 Route 14
Crystal Lake, IL 60014
(312) 775-6402
(815) 459-5580



Merit

Jury Comment

The building has a vernacular matter-of-factness about its design and construction as it alludes to the architecture that exists in the region. It suggests the charm that a platonic, simple shape might have as a religious institution.



Project

Unitarian Church North

Architect

Kubala Washatko Architects, Inc.

Construction Manager

Kubala Washatko Architects, Inc.

City

Mequon, Wisconsin

Architect's Statement

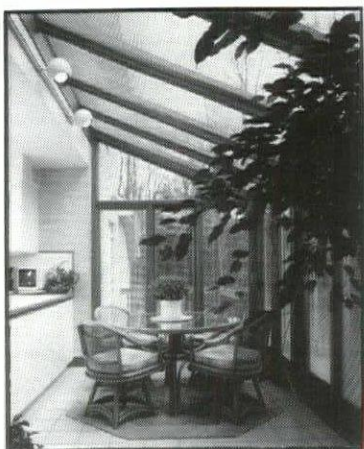
The congregation requested that a new church be designed with space for 350 people to worship, gather for fellowship and complete administrative tasks. They desired a replica of an eight-sided barn of a style constructed and used in the Southeastern Wisconsin area during the late nineteenth century. The design reflects the philosophical and spiritual view of the congregation by providing a tangible link with its regional heritage and its egalitarian perspective.

The structure is in harmony with the rural setting while successfully blending traditional construction techniques with state of the art technology. The low lying nature of the site required extensive recontouring in order to insure proper drainage as well as the full utilization of natural lighting in the lower level. Generous dimensioning of the cupola and the windows also help to illuminate and ventilate the worship space. The massive timber frame was maximized as a design element in order to convey a sense of strength and continuity.

Photography, Mark F. Heffron



Bring your designs to Pella.



Light up your life.

Pella gives your imagination full rein. Let our window experts help bring your dreams to life.

We can show you one of the biggest selections of windows, doors, sunrooms and skylights anywhere.

Talk to the experts.

Verhalen, Inc.  The Pella Window Store

Green Bay
Neenah

Madison
Oshkosh

Mequon
Racine

Milwaukee
Wausau

UNITED brick & block, inc.

Now Open

New
Retail-Design-Center
6634 Watts Rd.
Madison's West Side

Ceramic Tile

- American Made
- Tile & Grouts
- Large Inventory
- Midland
- KPT
- Huntington Pacific

Face Brick

- Midland
- Ochs
- Gleason
- Kansas
- Glen Gery

Fireplaces

- Superior Zero Clearance

West (New Location)

Retail Design Center
6634 Watts Rd.
Madison, WI
608-274-4155

East

Showroom-yard-warehouse
5402 Lien Rd.
Madison, WI
608-241-3844

What do you call someone who uses the floor for heat?

A winner! Congratulations Kubala Washatko Architects, Inc. for receiving the WSA/AIA 1988 Design Award. Acoustical Floors of Wisconsin, Inc. is proud to have been a part of the award winning Unitarian Church North, Mequon, Wisconsin.

The heating system specified included hot water tubes laid out on the subfloor and then embedded in Gyp-Crete 2000™ Infloor Blend, a flowable floor underlayment. The system warms the underlayment, which gently radiates heat into the room.

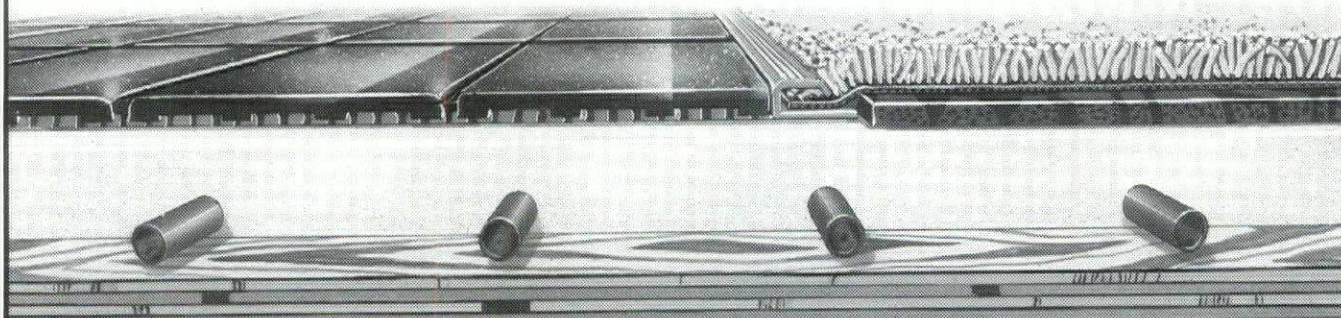
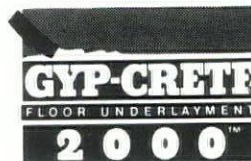
It's clean, efficient and unsurpassed in comfort.

There's no moving air to create drafts or stir up dust. Just pleasantly warm floors silently radiating heat.

Thank you for specifying GYP-CRETE 2000™ Infloor Blend — the ideal thermal mass for radiant floor heat.

For more information, contact:

Acoustical Floors of
Wisconsin, Inc.
675 Industrial Ct., Suite C
Hartland, WI 53029
(414) 367-3306



Anyone who
needs to stay
current with
the design
industry in
Wisconsin
definitely reads
**Wisconsin
Architect**

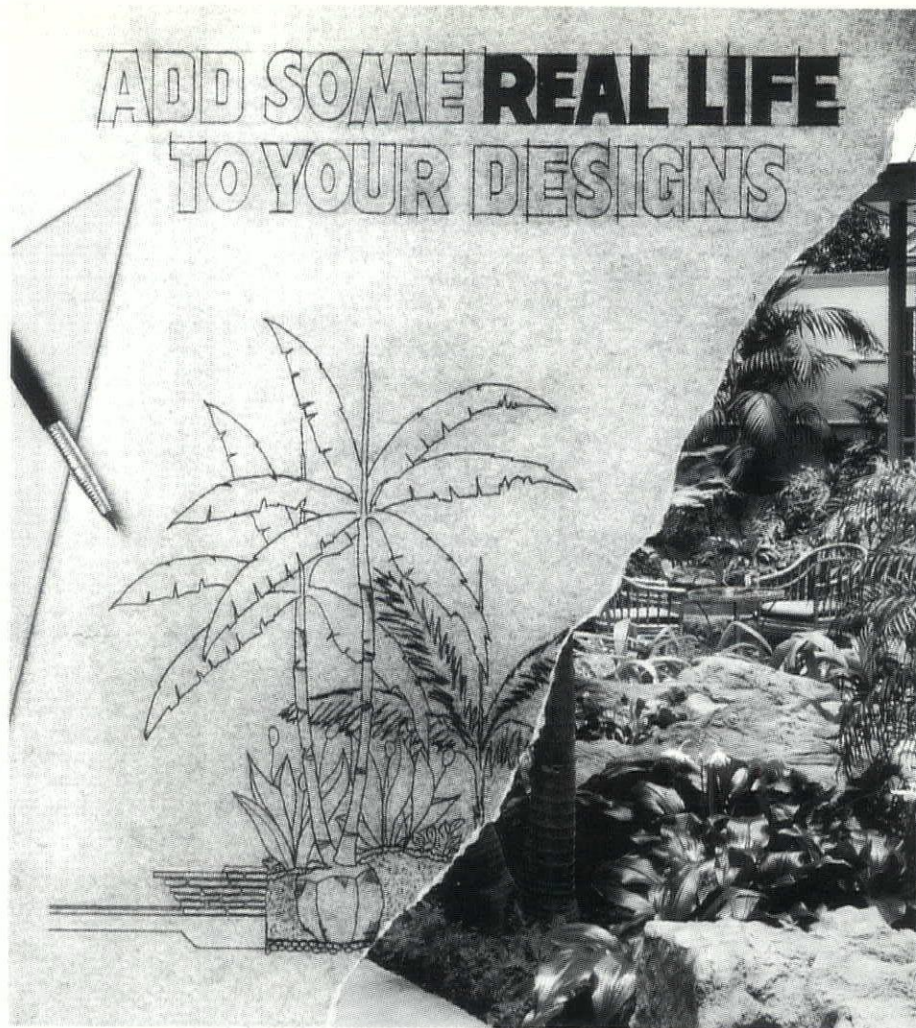


Subscribe today!

Name _____
Company Name _____
Address _____
City, State, Zip _____
\$30 Yr. _____

PLEASE ENCLOSE PAYMENT

MAIL TO:
WISCONSIN ARCHITECT
321 S. Hamilton St.
Madison, WI 53703



The finishing touch to any commercial design is a professional plant program. A program that includes the procurement, installation and maintenance of the finest plant material available.

Tropical Plant Rentals, Inc. is the nation's largest and most experienced interior landscape contractor. We

reached this formidable position, simply by outdoing all our competitors in every category, including total value.

So, add some life to your designs. Contact the firm that's been providing more green than anyone, anywhere. Tropical Plant Rentals, Inc., 7000 North 76th Street, Milwaukee, WI 53223, (414) 353-4700.

Tropical Plant Rentals, Inc.



PROVIDING INTERIOR LANDSCAPING SERVICES NATIONALLY

ATLANTA • CHICAGO/DOWNTOWN • CHICAGO/SUBURBS • DALLAS/FT. WORTH • DENVER
HOUSTON • KANSAS CITY • MIAMI/FT. LAUDERDALE • MILWAUKEE • ST. LOUIS • WEST PALM BEACH

Moving?

Let us know 4-6 weeks in advance so that you won't miss a single issue of *Wisconsin Architect*. Please include a copy of the old label.

New Address:

Name _____

Address _____

City, State, Zip _____

Mail To:
WISCONSIN ARCHITECT
321 S. Hamilton St.
Madison, WI 53703



Merit

Jury Comment

This project is successful because, in spite of being a small space in a shopping mall, it compels you to go inside and explore. The very exciting images which speak on the nature of travel are highly abstracted. Though the use of materials seems to be simple and economical, the architect has achieved a suggestion of luxury and elegance.



Project

Vagabond Travel

Architect

Kubala Wasbatko Architects, Inc.

Construction Manager

Kubala Wasbatko Architects, Inc.

City

Wauwatosa, Wisconsin

Architect's Statement

The client requested a unique facility which was elegant without being intimidating to the clientele of a large suburban shopping mall. The client expressed a desire that a feeling of warmth be conveyed, and that the customer be attracted into the store and encouraged to interact with agency personnel. Architectural elements and materials were selected and arranged to reinforce thoughts of travel. Kiosks and cabinetry fashioned of wood convey a feeling of warmth and security. Agent work stations are arrayed along an avenue delineated by a paved surface underfoot. The arrangement suggests a sidewalk cafe, spilling out onto the sidewalk and inviting passers-by to sit down and relax. The agent work stations are true to the Scandinavian ideal, simple yet rich. The low ceiling above helps reinforce a sense of intimacy and trust. The view to the front of the space helps to carry the customer away on a flight of fantasy. The sky blue ceiling increases in height creating a more dream-like scale for the kiosks, the illuminated transparencies and the imagination of the would-be traveller.

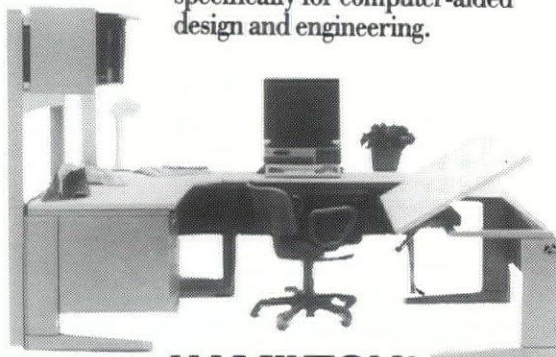
Photography, Mark F. Heffron



POINT LINE®

Professional Micro-based CADD

Introducing MAX/CAD.
The first furniture system designed
specifically for computer-aided
design and engineering.



**HAMILTON®
MAX/CAD**



MASTER BLUE PRINT INC.

Retail Location
810 W. Badger Rd.
Madison, WI 53713
(608) 256-4884

Fox River Valley Office
54 Park Pl.
Appleton, WI 54915
1-414-738-9077

Toll Free Number
1-800-822-4885

Yes, we are Design Professionals.

You put care into your designs. Well, we at Klipstein Insurance Services are design professionals too when it comes to liability insurance for architects and engineers. We know your product and we take care to design a policy sensitive to your individual needs. We identify your risk exposure—both insured and not insured—and advise you on how to reduce risk. We review contracts, compare policy provisions, monitor claims and conduct inhouse Loss Prevention seminars. Yes, we are Design Professionals. And we want to work with you!

**We are the exclusive representatives of
Design Professionals Insurance Company
and a member of Professional Liability
Agents Network (PLAN).**

Let's talk today!

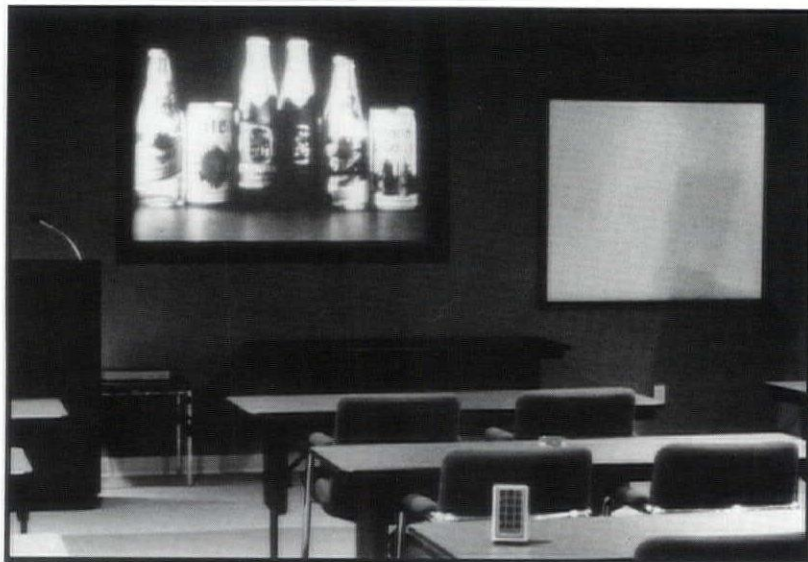
Paul Berta and Tom Dowling



KLIPSTEIN
INSURANCE SERVICES

216 N. Midvale Blvd. ■ Box 5566
Madison, WI 53705 ■ 1-800-792-3505, Ext. 268

DESIGNED FOR PROJECTION



Conference room at Miller Brands, Milwaukee

We'd like to help provide your clients with meeting rooms that take full advantage of the latest communications technology. Call us as questions come up in any stage of the design process.

Would you like to have more technical support when you design meeting rooms with projection systems?

Look to Midwest Visual, Wisconsin's most experienced installer of audio-visual, video, and computer presentation systems. We specialize in custom systems for conference rooms, board rooms, training centers, and small auditoriums. We can provide the requirements you need for screen sizing, audience seating, front and rear projection rooms, sound systems, control systems, and lighting.



16908 West Victor Road, New Berlin, WI 53151

(414) 784-5880

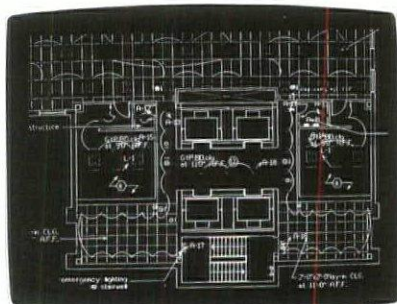
Why the most
advanced CAD system
for architects and
building designers
puts you on the edge.

ARRIS

And keeps you there.



Presentations—Dramatic visualizations help you win new business and communicate design ideas.



Production—Design automation, design refinement and 3-D capability increase your productivity.

Today, there is a revolutionary CAD system that puts you on the edge—the competitive edge. A CAD system that goes far beyond the ordinary, and gives you the edge in production, presentations, plus a lot more.

The name of this system is ARRIS.™ And it is the remarkable system that will instantly show you why ordinary CAD is no longer enough for architecture and building design and management.

THE COMPETITIVE EDGE IN PRODUCTION.

With ARRIS, you don't have to make drawings line by line. Instead, you enter basic design parameters—and let the system do the rest of the work, *automatically*. So more work gets done, in less time.

THE COMPETITIVE EDGE IN PRESENTATIONS.

With ARRIS, you can create extraordinary design and marketing presentations that help you win more business. For example, ARRIS 3D modeling and rendering allows you and your clients to view your project from any perspective, at any angle, at any time of night or day. And to "walk through" rooms as if they really existed.

PLUS.

ARRIS allows your project teams to share data, drawings and systems—so they can work on entire projects, not just single drawings. Plus, ARRIS will grow as you grow, so you keep your competitive edge.

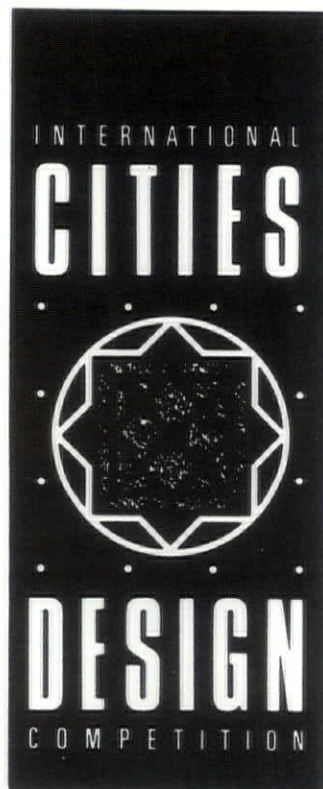
So be sure to call today for our *free* ARRIS demonstration. We're your ARRIS Power Dealer—and we can show you how ARRIS provides extraordinary CAD capabilities. And we can also provide you with the very best in training, service, and support. Call now to get the competitive edge.

You can get the competitive edge at: _____

CADS, INC
2221 E. Capitol Drive
Milwaukee, WI 53211

(414) 481-1223

International Cities Design Competition



The Wisconsin Society of Architects is pleased to be a sponsor of the International Cities Design Competition (ICDC) coordinated by the School of Architecture and Urban Planning at the University of Wisconsin-Milwaukee. This Competition will focus the attention of architects and planners from around the world on the future of Milwaukee as a mature industrialized city.

We, of course, are confident that WSA members will be splitting up the \$125,000 in prizes.

Dean Carl Patton and Professor Jeffrey Ollswang, AIA, of SARUP made an eye-opening presentation on the Competition at the WSA Convention in May. The goal of the ICDC is to generate visions of the city of the future. The theme is the "Future of the Industrial City." Milwaukee will serve as the prototype for which competitors will create images of the way cities should be planned, designed and built. The results of the Competition will be disseminated internationally through a traveling exhibition, catalog, conference presentations and video.

Competitors in this open competition sanctioned by the International Union of Architects will illustrate their visions of the city of the future by proposing designs for three areas in Milwaukee: the central city district, mature residential neighborhoods and the growing edge of the city. The program will include detailed information about Milwaukee and expected future conditions upon which entrance will develop their designs.

Registration for the Competition opened in July. The registration fee is \$75, with checks or money orders made payable to: SARUP/UWM Foundation/ICDC. To qualify for entering the ICDC, all registrations with the fee must be postmarked or delivered no later than November 30, 1988. For further information, write: ICDC, School of Architecture and Urban Planning, University of Wisconsin-Milwaukee, P.O. Box 413, Milwaukee, WI 53201 . . . or call (414) 229-4014 and ask to speak to the ICDC Staff.

Questions from competitors may be submitted through December 31, 1988. Answers to questions will be mailed to all competitors by January 31, 1989.

Submissions are due no later than May 31, 1989. Deliberations of the seven-member Competition jury will take place next June; and the winners are to be announced in July, 1989.

Between now and December 1988, SARUP will be actively seeking registrants for the Competition. Ads will be appearing in major journals around the globe and 25,000 posters on the Competition, in both French and English, are being distributed world-wide.

All WSA members are encouraged to enter. You can't win if you don't. Also, if you would like to become a sponsor of the International Cities Design Competition as an individual or firm, please contact the ICDC Staff at SARUP.

Fall Workshop

The 1988 WSA Fall Workshop will be held Friday, September 30, 1988 at the Madison Civic Center. Mark your calendar and plan to attend this educational conference.

Featured topics and speakers include: "Controlling Liability by Negotiating Better Contracts," Paul Berta and Tom Dowling, Klipstein Insurance Services; "Asbestos Abatement" with a panel of Frank Dropsho, AIA, Madison Metropolitan School District, Blair McMillan, Wisconsin Department of Health and Social Services and John Schauer, HSA Contractors, Inc.; "State Capitol Restoration," Anton Rajer; "Working with the State," Jerold Slack, Division of State Facilities Management; "Percent for Art," Regina Flanagan, Minnesota State Arts Board; and "Restoration of Frank Lloyd Wright Home and Studio," Donald Kalec, The Art Institute of Chicago.

The lineup for the 1988 Fall Workshop truly represents a potpourri of seminars on issues and topics of concern to the profession.

But that's not all. Following the Fall Workshop program, Edgar Tafel will give a free lecture at the Elvehjem Museum of Art in Madison as part of the Southwest Chapter's Architecture Week activities.

And that's still not all. You'll also want to tour the exhibition at the Elvehjem Museum entitled "Frank Lloyd Wright in Madison: Six Decades of Experimentation and Design." This exhibition is attracting international attention and will run from September 2 to November 6, 1988.

Wood Design Award

The American Wood Council invites entries in the 1988 Wood Design Award Program, the seventh national program honoring design excellence in wood buildings.

Awards will be given for residential and nonresidential buildings, both new and remodeled. Projects must have been completed since January 1985 to be eligible.

To qualify for the program, buildings must have a dominant wood appearance, although they need not be built entirely of wood. Remodelings or additions must involve a significant alteration to the structure.

The deadline for receipt of submissions is September 30, 1988. There is no entry fee.

For program requirements and entry forms, contact the American Wood Council, 1250 Connecticut Ave., N.W., Washington, D.C. 20036. Phone (202) 833-1595.

Boston Visions

The Boston Society of Architects is sponsoring a national design competition. Architects, urban designers, artists, and other visionaries throughout the United States are invited to design Boston's future.

The entry fee is \$60; \$30 for students. A kit with competition rules and program information will be provided. Send a non-refundable check or money order payable to Boston Society of Architects to: Boston Visions, BSA, 305 Newbury Street, Boston, Massachusetts 02115.

Registration opened July 15, 1988 and entries are due October 31, 1988. There are \$50,000 in prizes.

People & Places

Porter Lawson & Pawlowsky, Inc., is celebrating its 75th year of continuous practice in Wisconsin. Their office is located at 15 Ellis Potter Court in Madison.

Clarence Huettenrauch, AIA, has received the prestigious Construction Specification Institute Fellow Award. Clarence is one of only 150 individuals that have received this esteemed honor. The award was made in recognition of his contributions to the advancement of construction technology through educational publications and innovative design and methods, outstanding proficiency in specification writing, and invaluable contributions to the SPEC-TEXT COMMITTEE.



Clarence Huettenrauch, AIA

David Uihlein, Jr., AIA, has been appointed by Governor Tommy Thompson to the Governor's Commission on Taliesin. The four primary charges of the Commission include: preparation of a physical preservation program for Taliesin; preparation of a program for public access to the Taliesin buildings and facilities; recommendation of the "most appropriate" administrative organization to assist the Frank Lloyd Wright Foundation in the planning, management and oversight of the preservation and ongoing operations of the Taliesin properties; and preparation of an estimate of the five-year capital and operational costs of managing the Taliesin properties, as well as review of potential revenue sources.

Arlan Kay, AIA, has been named Wisconsin's State Coordinator for the Intern-Architect Development Program. IDP is designed to give structure, direction and support to the internship training experience.

Towns Support QBS

The Wisconsin Towns Association has endorsed the WSA's Qualification Based Selection (QBS) program. The Towns Association endorsed the program as a service to its members in its June newsletter.

This type of support for QBS provides additional exposure and momentum to the program. QBS was endorsed earlier this year by the League of Wisconsin Municipalities.

Endorsement by the Towns Association means the QBS public service program is available through the Association to its 1,800 members. The QBS Facilitator is available to provide assistance to Wisconsin municipalities in establishing a process for selecting an architect. The QBS Facilitator also will serve as a resource person at several meetings sponsored by the Towns Association throughout the year.

The WSA extends its appreciation to Richard Stadelman, Executive Director, and the Board of Directors of the Wisconsin Towns Association for their support for QBS.

Antitrust

Up until the early 1970's AIA policy considered competitive bidding unethical and competition by AIA members on the basis of fees unprofessional. However, that policy violated antitrust laws which forbid competitors from agreeing on how or how not to compete.

The U.S. Justice Department challenged the AIA's policy, and in 1972 the AIA consented to a decree prohibiting it from adopting such a policy or from saying anything that would imply that submitting price quotations is a bad thing for architects to do.

The Justice Department is now investigating whether the AIA and three of its components have complied with the consent decree. The WSA is not among the components being investigated.

The AIA believes strongly that at the end of the investigation the Justice Department will agree that neither the AIA nor any components has done anything to violate any law. It is important to note that the market for architectural services is highly competitive, and that architects are capable and eager to rise to the challenge that competition presents.

Membership Action

Healy, Michael D., was approved for Associate Membership in the Southeast Wisconsin Chapter.

Reginato, Grant, was approved for AIA Membership in the Southeast Wisconsin Chapter. He advanced from Associate Member.

Dallich, Dan, was approved for AIA Membership in the Northeast Wisconsin Chapter.

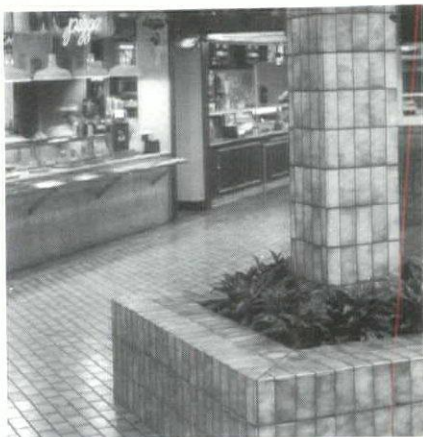
Dallich, Renee, was approved for AIA Membership in the Northeast Wisconsin Chapter.

Mathys, Timothy H., was approved for AIA Membership in the Northeast Wisconsin Chapter.

Kemppainen, Rand was approved for Associate Membership in the Southeast Wisconsin Chapter.

Hillebrand, Thomas was approved for Associate Membership in the Southwest Wisconsin Chapter.

Enhance with Tile From **Butler Tile Sales**



While IAC ceramic tile is priced comparably to most higher grades of vinyl, carpet and wood, it's far more durable, and a lot less trouble. There's no stripping, waxing, sealing, or buffing — ever. And because it's made by IAC, it resists stains, acids and other corrosive substances. In fact, IAC has more than three times the abrasion resistance of current industry standards — as well as nearly twice the breaking strength and almost five times the bonding strength of standard tile.

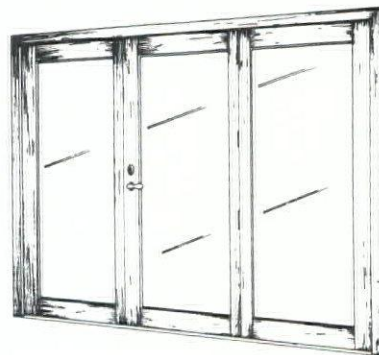
Tile of Distinction Ceramic Tile Showroom

- Serving Wisconsin builders, architects, and interior designers for 35 years
- Hundreds of samples on display
- Experienced design consultants available to assist you
- Fast delivery of hundreds of different tiles from our warehouse

746 N. 109th St., Milwaukee, WI 53226 • 414-476-0970
toll free 1-800-242-0847

Marvin Windows

THE DOOR OF CHOICE Marvin Terrace Door



This is the one that slams the door on energy loss. The solid Ponderosa pine construction takes a perfect stain or paint finish, and the Lexan sill lasts and lasts — maintenance-free. It's available with your choice of glazing, true divided lites, and combination storm/screen door. It's the beautiful replacement for drafty aluminum sliding doors.

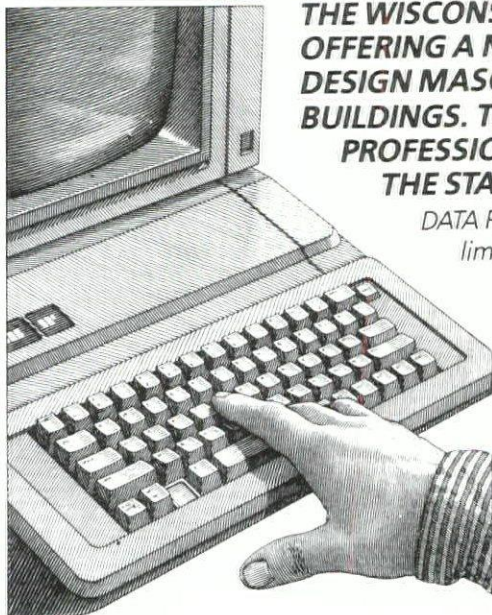


builders world, inc.

P.O. BOX 881, WAUKESHA, WISCONSIN 53187
(414) 542-8883 (800) 242-2206



IMPORTANT NOTICE FREE COMPUTER DESIGN SERVICE FOR MASONRY WALLS



THE WISCONSIN CONCRETE & PRODUCTS ASSOCIATION IS OFFERING A NEW SERVICE WHICH WILL ANALYZE OR DESIGN MASONRY WALLS FOR LOW, MID OR HIGH RISE BUILDINGS. THIS SERVICE IS OFFERED FREE TO DESIGN PROFESSIONALS—ARCHITECTS AND ENGINEERS—IN THE STATE OF WISCONSIN.

DATA PROVIDED: The program will check resisting moments limited by steel stress, masonry stress and deflection of the wall. It also checks shearing resistance limited by shear stress and bond strength and checks flexural compressive stresses, both allowable and actual. Once the stresses have been determined, the programs will check various masonry configurations to arrive at the configuration which would be the most economical construction.

CALL OR WRITE TODAY FOR COMPLETE INFORMATION

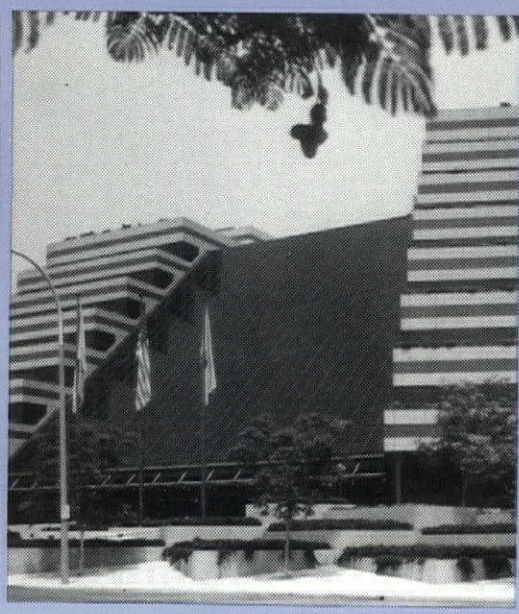
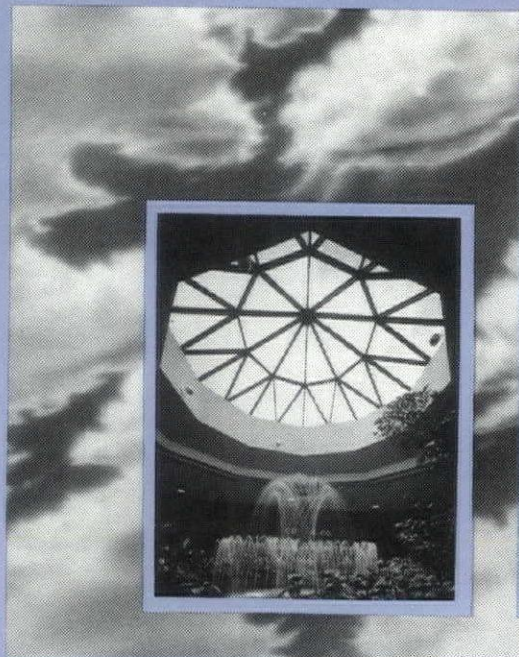
414 251-4551

1-800-545-4141 Ext. 251

RICHARD H. WALTER, P.E.

EXECUTIVE DIRECTOR, WCPA
P.O. BOX 881 MENOMONEE FALLS WI 53051





S, M, L, XL. One skylight manufacturer fits all sizes.

Super Sky is the world's largest manufacturer of custom aluminum and glass skylight systems. No challenge is too large to exceed our capacity. And none too small to merit our attention. If you'd like to see how Super Sky can fit in with your plans, contact our representative.



David Fogelstrom & Assoc., Inc.
675 N. Brookfield Rd.
Brookfield, WI 53005
(414) 782-7713

SUPER SKY PRODUCTS, INC., 10301 North Enterprise Dr., Mequon, Wisconsin 53092 (414) 242-2000 Telex 4311037 SSPIMEZ

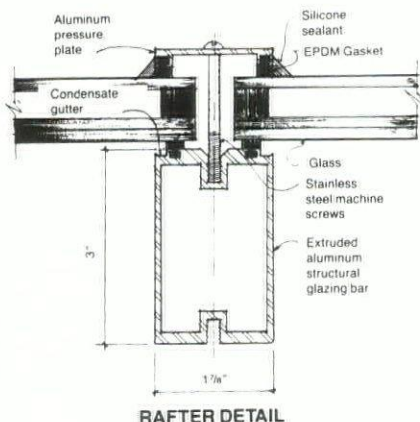


What is QBS?

QBS stands for Qualification Based Selection. It entails a fair and equitable step-by-step process that will facilitate the owner's selection of a design professional based on qualifications and competence in relation to the scope of the project. The WSA has an experienced and knowledgeable QBS Facilitator on staff to assist owners in establishing a selection process tailored to their particular needs.

321 S. Hamilton St., Madison, WI 53703 608-257-8477 1-800-272-4483

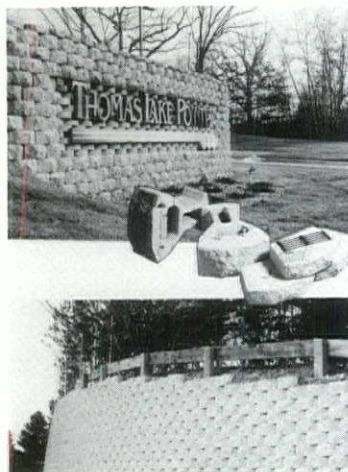
Marketplace



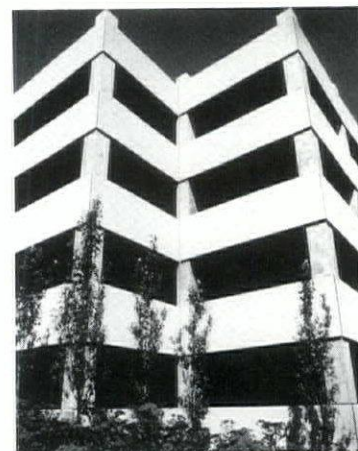
WISCONSIN SOLAR DESIGN'S extruded aluminum glazing system facilitates custom designs for unique shapes and sizes of slope glazing, greenhouses, solariums and custom skylights. The system has a PPG polycron III finish available in a wide variety of colors. The glazing gaskets are extruded rubber with a silicon final seal. The system accommodates all glass thicknesses and types.

Write or call for specifications, preliminary pricing and samples. WISCONSIN SOLAR DESIGN, 6349 Briarcliff Lane, Middleton, WI 53562 (608) 831-2112 or (414) 444-1639.

The broadly patented KeyStone units have distinctive curved faces and the appearance of natural quarried stone. They are architecturally engineered to provide the most functional, aes-



thetically appealing and cost effective retaining wall system which will be the focal point to any landscape or masonry design. This off the shelf retaining wall system provides the design flexibility every architect and landscaper demands. The interlocking design feature of the KeyStone standard 8" module and 4" mini-module, allow not only for the construction of simple straight walls, but also walls that can gracefully adapt to the natural contours of any building site. The unique KeyStone interlocking system provides a new level of structural versatility without compromising strength or integrity. Manufactured in this area by Best Block Company, P.O. Box 1000, Butler, WI 53007 (312) 782-5379 or (414) 781-7200.



INNOVATIVE SOLUTIONS

Through its excellent track record in planning . . . in engineering . . . in fabrication . . . in erection . . . J.W. Peters has established an unquestioned reputation for leadership in the creation of high-performance parking structures.

That's why major developers turn to us time and time again for their parking structure needs. Developers have come to rely on J.W. Peters for excellence. Municipal officials have also come to appreciate the efficiency and economy J.W. Peters can provide.

Ask the people we've worked for. When they need the very best, they call J.W. Peters. Contact J.W. Peters & Sons, Inc., P.O. Box 160, Burlington, WI 53105. Phone 414/763-2401.

ADVERTISER'S INDEX

Acoustical Floors of Wisconsin	24	PBBS Equipment Corp.	12
Arnold & O'Sheridan, Inc.	35	J.W. Peters & Sons, Inc.	36
Arwin Builders Specialties, Inc.	12	Photocopy, Inc.	35
Builders World	32	S & S Sales Corp.	4, 7
Butler Tile Sales	32	Spancrete Industries	22
CADS, Inc.	28	Strass-Maguire & Associates, Inc.	35
Dolan & Dustin, Inc.	35	STS Consultants, Ltd.	35
David Fogelstrom & Associates	33	Tropical Plant Rental	25
Holmsten Ice Rinks, Inc.	10	United Brick & Block	24
International Market Square	15ab	United Construction Corp.	10
Klipstein Insurance Services	27	United Plumbing & Htg. Supply	5b
Kohler Co.	5a	Velux-America, Inc.	8
Kraemer Bros.	17	Ver Halen, Inc.	24
L.F.I. Landscape Forms, Inc.	17	Weather-Tek Building Supplies	13
LaForce Hdw. & Mfg. Co.	35	Wisconsin Brick & Block Corp.	35
Master Blue Print	27	Wisconsin Concrete & Products Assn.	32
Midwest Visual Equipment Co.	27	Wisconsin Concrete Masonry Assn.	7a,b
Milwaukee Plumbing & Htg. Supply	5b	Wisconsin Public Service	2
Murphy Supply Co.	5b	Wisconsin Solar Design	17
W.S. Patterson Co.	5b	Wisconsin Testing Laboratories	35

This index is published at no cost to advertisers, as a service to readers of WISCONSIN ARCHITECT. Publisher assumes no responsibility for errors or omissions. When writing to advertisers, tell them you saw their message in WISCONSIN ARCHITECT. They want to know.

PROFESSIONAL SERVICE DIRECTORY



Consulting Engineers

- Subsurface Exploration
- Foundation Analysis
- Ground Improvement
- Construction Monitoring

STS Consultants Ltd.

Green Bay, WI (414) 494-9656 • Milwaukee, WI (414) 354-1100



TESTING LABORATORIES

Geotechnical Engineers

Soil Borings

Materials Testing & Inspection

Menomonee Falls, WI 53051 • (414) 252-3300



DOLAN & DUSTIN, INC.

CONSULTING ENGINEERS

2266 N. PROSPECT AVENUE MILWAUKEE, WIS. 53202
(414) 276-5502

Electrical Power - Primary & Secondary Distribution
Lighting Design • Security & Communications Systems
Grounding • Emergency Generation • Uninterruptible Power

George E. Dolan, PE
Gerald E. Braun, PE
Charles M. Mullikin, PE

Roger A. Nass, PE
Arthur L. Miller, PE
Richard Gumpert, PE

Strass-Maguire & Associates, Inc.

Professional Engineers

9000 North Deerbrook Trail

Milwaukee, WI 53223

Phone: (414) 354-4046



Carrol R. Maguire, P.E.
Ralph E. Benz, P.E.

David F. Brandt, P.E.
Jack C. Isnard, P.E.
Thomas J. Dekker, P.E.

*Black & White Murals *8x10 Glossy Repros
*We Reproduce Blueprints or Masters For
Making Blueprints

PHOTOCOPY

104 East Mason St. Milwaukee, Wisconsin 53202

For Service . . .

CALL: 1-(414)-272-1255



ARNOLD AND O'SHERIDAN, INC.
CONSULTING ENGINEERS

Structural Electrical
Mechanical Civil

608 • 271 • 9651
815 FORWARD DRIVE MADISON, WI 53711

414 • 461 • 9040
3720 N. 124TH MILWAUKEE, WI 53222



MILWAUKEE BLUEPRINT SERVICE

7526 W. Appleton Ave., Milwaukee, WI 53216

Fast Diazo Printing • Specs • Supplies

Free Pick-Up and Delivery with Minimum Order

(414) 464-2350

**A WISCONSIN TRADITION OF
QUALITY FOR OVER 80 YEARS**

Brick

Block

Pavers

Stone



THORO
SYSTEM
PRODUCTS, INC.



Sonneborn
building products

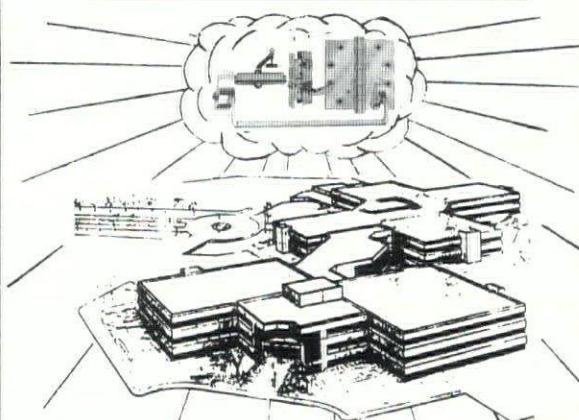


**WISCONSIN
BRICK & BLOCK
CORPORATION**

6399 NESBITT RD MADISON, WI 53719

(608) 845-8636

LA FORCE



Whatever applications your project requires,
we can supply all the door hardware you need.

- Complete Selection
- Competitive Prices
- Reliable Service

Let us be your headquarters for door hardware.

LA FORCE

Hardware & Manufacturing Co.

1060 W. Mason St., Green Bay, WI 54303

(414) 497-7100

THE REPUTATION YOU CAN BUILD ON



RIGHT... FROM THE START

Just 55 minutes at the start could save you thousands of dollars on your next parking structure.

That's all it takes to get crucial planning advice from our specialists.

In 55 minutes we'll show you the latest methods of getting the most parking space for your dollar.

We'll give you up-to-date information on building structures that are virtually maintenance free.

We'll demonstrate how Peters' pre-cast concrete is superior to cast-in-place concrete in corrosion resistance. And we'll show you how best to integrate engineering and construction to assure total budget control.

After a 55 minute consultation with J.W. Peters you'll know how to build your parking structure right...right from the start.



JW PETERS

AND SONS, INC.

34212 West Market Street • Burlington, WI 53105 • (414) 763-2401
(312) 782-4691 (Chicago) • (414) 272-7222 (Milwaukee)