

Wisconsin Society of Architects
September 1987

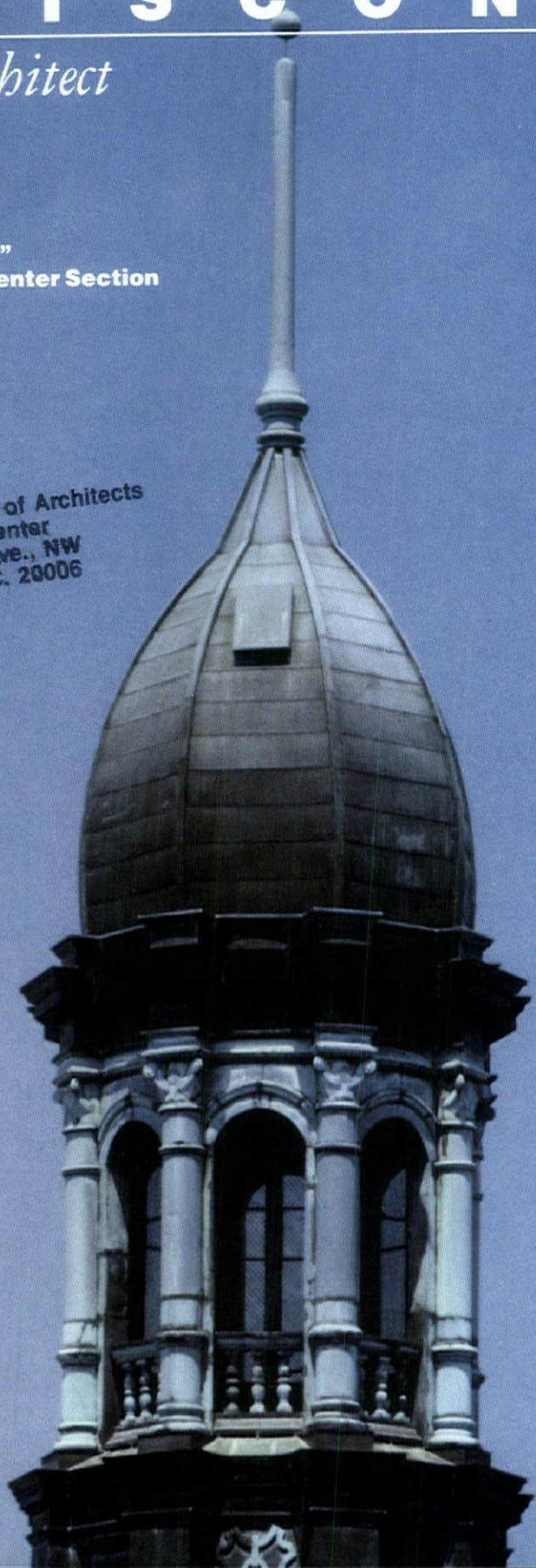
W I S C O N S I N

Architect

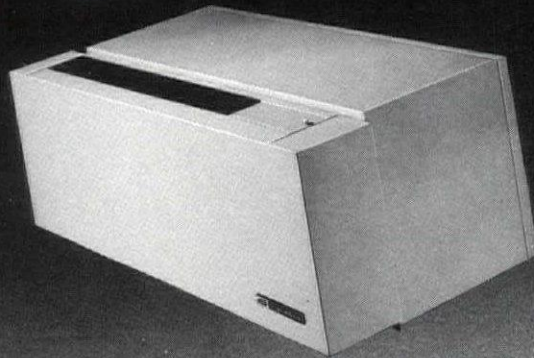
Public Projects

"Selecting Your Architect"
A Special Public Official Center Section

American Institute of Architects
Information Center
1735 New York Ave., NW
Washington, D.C. 20006



THE ONLY PTAC WITH ECONOMICAL GAS HEAT.



Specify Suburban Dynaline

With Suburban Dynaline, you'll be choosing the economy and efficiency built into our gas heating/electric cooling PTAC. Get the heating power that only a gas furnace can provide at upwards of 60% savings over other individual electric zone systems.

You'll also be choosing features that allow flexibility in building plans and dependability when your plans are complete. You can plan inside or outside connections for either LP or natural gas. Dynaline's standard wall sized case (42" x 16") makes it perfect for new construction and very easy to replace old electric units.

Specify the only PTAC with gas heat: Suburban Dynaline

SUBURBAN
Suburban Manufacturing Company
Box 399, Dept. L, Dayton, TN 37321
Phone: (615) 776-2131

WISCONSIN DISTRIBUTORS

TSi
MADISON
(608) 271-7500

AUER STEEL
USE GAS SERVICE HEATING SUPPLY CO.

MILWAUKEE
(414) 463-1234

KMS
KERSCHER
METAL SERVICE CO.
GREEN BAY
(414) 242-2854

Gas: Wisconsin's best energy value.



Wisconsin
Blue Flame
Council

W I S C O N S I N

Architect

Projects

- 7 Madison Area Technical College
Flad & Associates
- 9 Heavenwoods Environmental Awareness Center
Donohue, Engineers & Architects
- 11 Boyceville Community Center
Cedar Corporation
- 12 Medford K-5 Elementary School
Bray Associates - Architects, Inc.
- 15 Ross Lodge, Whitnall Park
Hoeh Schroeder Piwoni, Inc.
- 16 Howe School
Foth & Van Dyke
- 17 Dunn County Highway Shop
Seymour Davis Seymour Architects - Engineers, Inc.
- 19 Horizons Elementary School
The Stubenrauch Associates, Inc.
- 21 Baraboo Public Library Expansion
Strang Partners, Inc.
- 23 UW Center - Manitowoc County
Sommerville Associates
- 25 Educational Support Center
Ayres Associates
- 27 Beaver Dam Community Library
Architecture 360, Inc.
- 29 Waukesha County Huber Facility
The Zimmerman Design Group
- 31 Atwater Park Restroom Facility
Earll Design, Inc.
- 33 Oconomowoc Public Library
The Durrant Group, Inc.
- 35 DNR Ranger Station
G.W. Kortness Associates, Inc.
- 36 Four Hospital Incinerator Facility
Strang Partners, Inc.
- 39 Fairview Recreation Center
Heikel/Design Associates, Inc.
- 41 Wastewater Treatment Plant
Foth & Van Dyke
- 43 Southview Hall - Waukesha Center
Heikel/Design Associates, Inc.

Departments

- 5 Guidelines
- 46 Marketplace

Cover: North Tower, Milwaukee City Hall
(as seen from the Bell Tower)

Photographer: Eric Oxendorf

WISCONSIN ARCHITECT, serving the construction industry in Wisconsin with circulation to Architects, Engineers, General Contractors, Business and Interior Designers, Landscape Architects, Certified Planners, Developers, Specifiers, Construction Managers, Builders, Manufacturers, Suppliers. **WISCONSIN ARCHITECT** is the official publication of the Wisconsin Society of Architects/A.I.A., published by Wisconsin Architect, Inc. Address all editorial and advertising inquiries to: Editor, Wisconsin Architect, 321 S. Hamilton St., Madison, WI 53703; phone: 608/257-8477. Wisconsin Architect and WSA disclaims liability for statements by the editors, contributors, and advertisers.

Board of Directors: Robert D. Cooper, AIA, *President*; H. James Gabriel, AIA, *Vice President/President-Elect*; Dennis L. Olson, AIA, *Secretary/Treasurer*; James W. Miller, AIA, *Past President*; Mike Gordon, AIA; Jay McLean, AIA; Martin Choren, AIA; Beth Partleton, AIA; David Peterson, AIA; Val Schute, AIA; James Larson, AIA; Milton Martinson, AIA; Jerold Dommer, AIA; Robert Miller, AIA; Richard Griese, AIA; Harry Schroeder, AIA; Noble Rose, AIA; Joseph Sokal, AIA; Daniel Becker, AIA; Richard Michael, AIA; Erik Jensen, AIA; Jeri McClenaghan-Ihd; Nadine Love, MSOE; Joe Rand, UWM SARUP; William M. Babcock, *Executive Director*.

Wisconsin Architects Foundation Board of Trustees: 321 South Hamilton Street, Madison, WI 53703 — Phone (608) 257-8477. Tom Nisbet, AIA, *President*; Robert Yarbro, AIA, *Vice President*; David Gaarder, AIA, *Secretary/Treasurer*; George Schuett, FAIA; Jack Fischer, AIA; Paul Graven, FAIA; Dean Carl Patton; Bert Frederickson; John Jacoby, FAIA; William M. Babcock, *Executive Director*.

Wisconsin Society of Architects; A.I.A.: 321 S. Hamilton St., Madison, WI 53703 — Phone 608/257-8477.

North Central Region: Tom Van Housen, AIA, *Director*.

Southwest Wisconsin Chapter: Michael Gordon, AIA, *President*; Jay McLean, *Vice President/President-Elect*; Joseph Sokal, *Secretary/Treasurer*.

Southeast Chapter: Martin Choren, AIA, *President*; Beth Ann Partleton, AIA, *Vice President/President-Elect*; Daniel Becker, *Secretary/Treasurer*.

Northwest Chapter: David Peterson, AIA, *President*; Val Schute, AIA, *Vice President/President-Elect*; Richard Michael, AIA, *Secretary/Treasurer*.

Northeast Chapter: James Larson, AIA, *President*; Milton Martinson, AIA, *Vice President/President-Elect*; Erik Jensen, AIA, *Secretary/Treasurer*.

Wisconsin Architect, Inc.: Board of Directors: Robert Cooper, AIA; H. James Gabriel, AIA; Dennis Olson, AIA; James Miller, AIA.

Wisconsin Architect Editorial Board: Peter Schuyler, AIA, *Chairman*; Robert Greenstreet, Steve Quinn, Uel C. Ramey, AIA, Douglas Ryhn, Harry J Wirth, AIA, William M. Babcock.

Magazine Staff

Editor
William Babcock

Coordinating Editor
Grace Stith

Graphic Consultant
Steve Quinn

Advertising Manager
Nancy Baxter

Internship Program
Advertising Sales
Alexandra Spaulding
Eric Schilder
Graphic Art
Kendal Morris

"O'Hare International Airport puts the world's busiest restrooms on automatic pilot with Sloan OPTIMA® No-Hands systems."

Maintaining clean, sanitary restroom facilities for more than 40 million travelers each year can be an expensive, labor-intensive operation. At O'Hare International, the world's busiest airport, this problem was solved by installing Sloan No-Hands automated flush valves and sink faucets in public restrooms.

A Sloan OPTIMA system uses an electronic sensor that "sees" the user and automatically flushes the

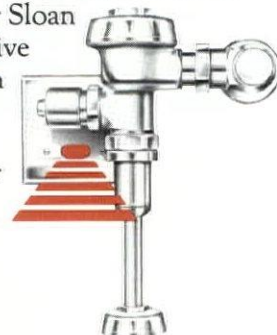
sanitary fixture—or turns the faucet or appliance on and off—only as needed. This eliminates unflushed urinals and toilets as well as assures that faucets and hand dryers are turned off after use.

The results: Improved sanitation. Reduced water usage. A cut in energy consumption. Fewer repairs. And less maintenance.

The Sloan OPTIMA system meets all building code requirements and automatically solves the problem of mandated access for the handicapped. The system easily adapts to soap dispensers, hand

dryers, shower heads, and more.

Ask your Sloan representative about Sloan No-Hands automated systems. Or write us.



SLOAN VALVE COMPANY

10500 Seymour Avenue, Franklin Park, IL 60131

Represented by: **Stickler & Associates, Inc.**
333 N. 121st Street, Milwaukee, WI 53226 (414) 771-0400

O'Hare International Airport—Chicago, Illinois

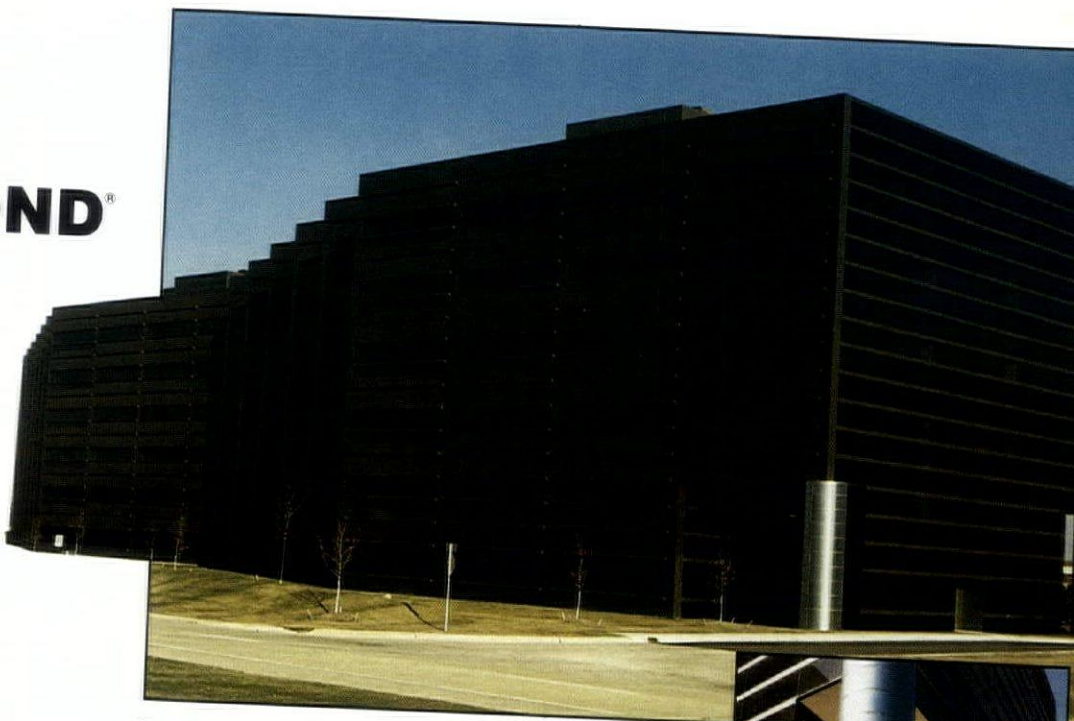




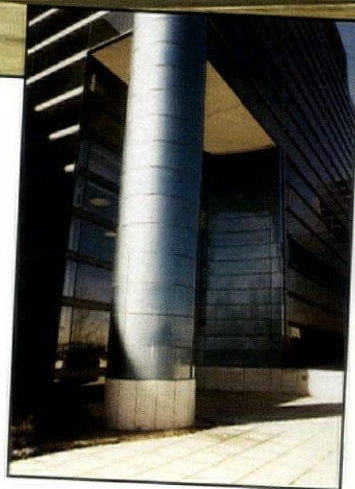
*An architect's choice
To follow the straight and narrow
... or discover what is around
the next curve*

ARCHITECTURAL PANELS

specify
**ALUCOBOND[®]
PANELS**
...the solution
for architects
who want
both straight
lines and
curves!



Fairlane Office Center, Phase II
Dearborn, Michigan
Architect: Rossetti and Associates
Panels supplied by Omni.



◀ Serpentine wall
at main entrance.



For information call

414/233-3333

OMNI

GLASS & PAINT, INC.

2010 Dickinson Avenue
P. O. Box 2186
Oshkosh, WI 54901

IMAGINE...A casement window sunroom
Casements...with 1 1/4" x 5 13/16" basic frames...
Extruded aluminum cladding...

In standard bronze, colonial white, sandstone
beige or one of 52 custom colors...

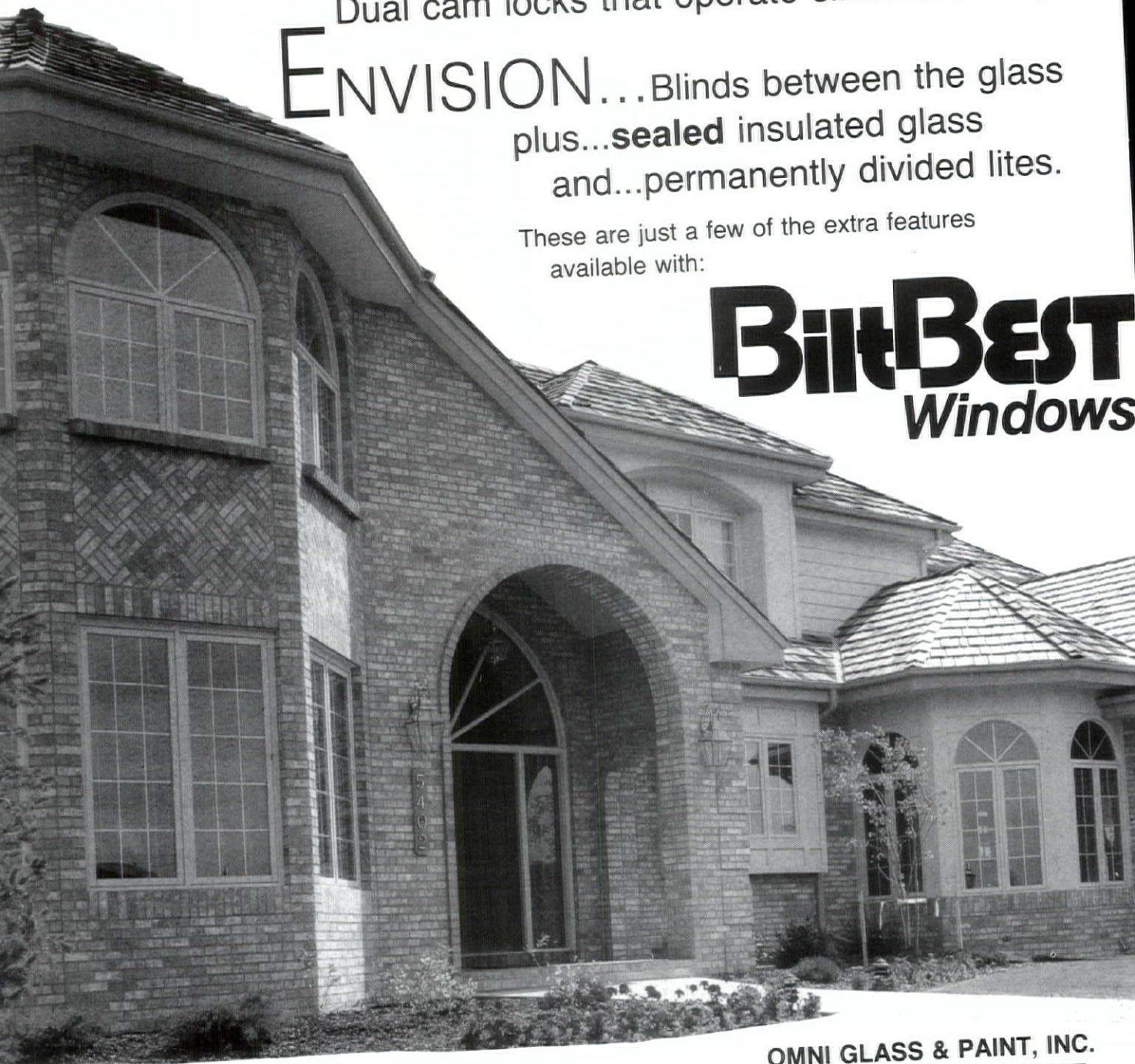
Sash hung on adjustable 4-bar, extra heavy-duty,
counter-balanced hinges...

Dual cam locks that operate simultaneously.

ENVISION...Blinds between the glass
plus...**sealed** insulated glass
and...permanently divided lites.

These are just a few of the extra features
available with:

BiltBest
Windows



OMNI GLASS & PAINT, INC.
2010 DICKINSON AVENUE
P.O. BOX 2186
OSHKOSH, WISCONSIN 54903
1-800-242-8222

This issue of Wisconsin Architect is dedicated to public officials throughout Wisconsin.

The QBS process has

Through its Qualification Based Selection or "QBS" program, the Wisconsin Society of Architects
proved to save time and

(WSA) has provided assistance to over 200 public owners in establishing a process for selecting a
money for both the owner

qualified, competent and compatible architect to provide the professional services required. These
and the architect.

services include feasibility studies, programming, site analysis, design services, construction documents and construction administration.

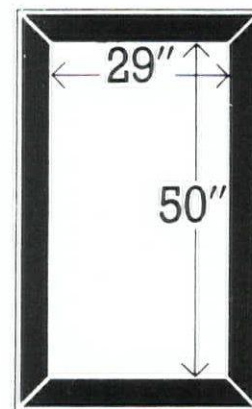
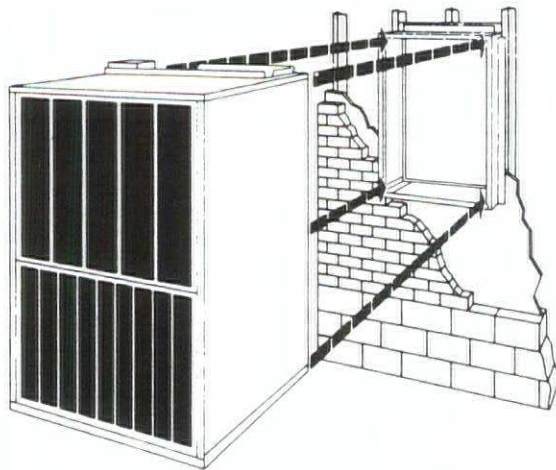
The WSA has an experienced individual on staff whose specific responsibility is to serve as an independent facilitator and assist owners in establishing a rational selection process based on qualifications and competence. This service is provided at no charge to the owner. The QBS process has proved to save time and money for both the owner and the architect.

It is recommended that public owners review and retain the booklet "Selecting Your Architect" found in the centerfold of this issue of the magazine. It outlines the QBS process recommended by the WSA for selecting an architect. Contact the WSA for any assistance. This public service is provided in a timely manner, with enthusiasm and a sincere desire to assist public owners in obtaining the best possible architectural services for their building projects.

The pages that follow demonstrate the type of work that Wisconsin architects have provided for school districts, cities, villages, towns, counties and other public owners. These projects are presented with pride in the product and respect for the owners.

*William M. Babcock
Executive Director, WSA*

GNE **Magic-Pak®** A LITTLE OPENING



and you can have the finest
heating & cooling system available for
apartments, condos, and office complexes

- Sealed Combustion Design
- No Chimney or vent Pipes Required
- Slides into Wall Sleeve for Easy installation
- Provides Low Cost Gas Heating
- Heating & Cooling in One Cabinet with Ducted Central System
- Insures High Occupancy Rate in Rental Units
- Over 300,000 Installed — Many in Wisconsin

For literature and specifications or appointment for demonstration, please feel free to call:

MONROE EQUIPMENT INC.

N113 W18825 Carnegie Drive, Germantown, Wisconsin 53022

(414) 255-2610 Toll-Free Statewide (800) 242-9398

Member Metropolitan Builders Association of Greater Milwaukee and Madison

Gas: Wisconsin's best energy value.



**Wisconsin
Blue Flame
Council**

Project

Architect

Contractor

Location

Madison Area Technical College

Flad & Associates

J. H. Findorff & Son, Inc.

Madison, Wisconsin

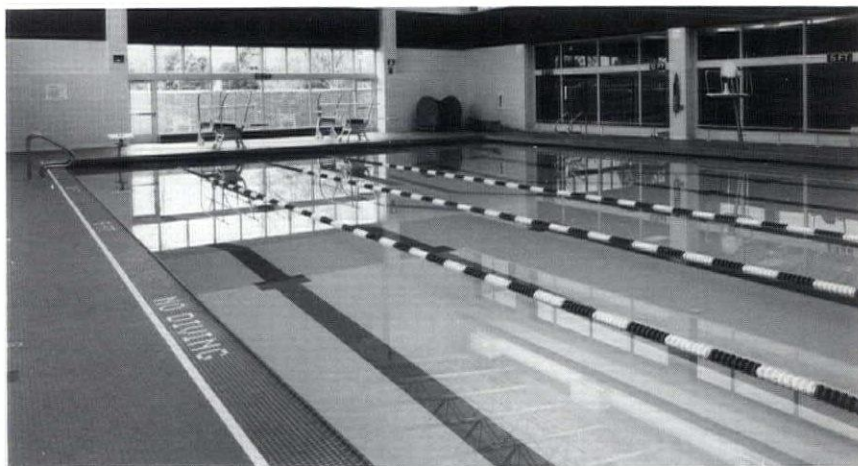
Flad began working with MATC in site selection and completed a long-range master plan for the school. The campus serves as the central educational facility for a multi-county area in south central Wisconsin. More than 25,000 students attend classes annually.

The 790,000 square foot Madison Area Technical College (MATC) was completed in the fall of 1987. Design and construction of the new campus was accomplished under an accelerated fast-track schedule. The project was completed six months ahead of schedule and under budget. Early in the planning process, MATC expressed the desire to house all of the diverse educational activities of eight major departments under one roof — everything from music and the arts to diesel mechanics. Typically, technical

colleges have many separate buildings that house the different trades and disciplines offered as part of the curriculum. As a result, a flexible building was designed, one in which spaces would accommodate different functions, not become obsolete with the development of new technologies and accommodate expansion at a later time.

Few technical schools offer the athletic and recreational facilities provided at the new MATC campus. The MATC site was generously landscaped and designed to encourage outdoor activities. The site includes large courtyards, walkways, benches, and outdoor terrace areas.

Photography: Joe Paskus





Kalwall® ... Nobody does it better . . .

The Avenue Mall — Appleton, WI — Winsor/Faricy Architects/ Oscar Boldt General Contractor

... and we prove it every day! The Avenue Mall is a spectacular display of **Kalwall's** ability of providing quality lighting levels while blending form and function.

Kalwall out-performs any alternative system providing designers with complete design freedom in clearspan or supported skyroof systems, curved or flat panels. Our lightweight structural panels save on substructure, engineering and installation costs. **Kalwall's** wide range of insulation values and shading coefficients will dramatically reduce air conditioning and heating costs!

NBS provides complete design-engineering and budget assistance from conceptals to working drawings for the most cost efficient designs. **Kalwall** is our major system! We've been installing **Kalwall** systems for hundreds of satisfied architects and owners since 1977. For complete quality assurance and responsibility, specify **Kalwall** and Nobody does it better!



NIELSEN BUILDING SYSTEMS
WI WATS 800-242-6665

for information and design assistance, contact Dale Nielsen, 4820 Six Mile Road, Racine, WI 53402 414-681-0676 or Bob Bergmann in Green Bay 414-497-4673.

Contact **NBS** for Space Frames, Architectural Standing Seam Roof Systems, Saunas, Sloped Glazing System, Metal Wall Panels

Project

Architect

Contractor

Location

Havenwoods Environmental Awareness Center

Donohue, Engineers & Architects

Platt Construction

Milwaukee, Wisconsin



At the Havenwoods Environmental Awareness Center, form and function mesh to create a warm and inviting learning laboratory. The 9,600-square-foot facility is located in the Havenwoods Forest Preserve and Nature Center in Milwaukee.

Donohue's passive solar design, chosen in a design competition sponsored by the Department of Natural Resources, integrates functional spaces for people with maximum use of sunlight through passive solar heating, daylighting, and other environmentally sound technologies. Earth sheltering is another distinctive feature. Visitors to the center can see how each of these techniques relates to the whole facility.

The building received the Governor's Energy Award from the Wisconsin Department of State Energy for its innovative energy use.

Completed in early 1987, the Center houses exhibit areas, an auditorium, classrooms, administrative offices, work spaces, indoor and outdoor eating areas, and a library.

Photography: Ed Putnam

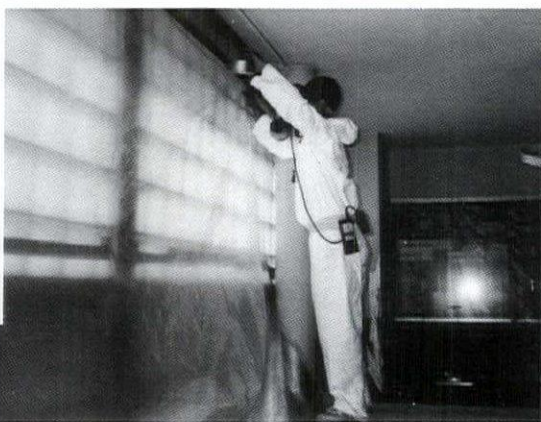
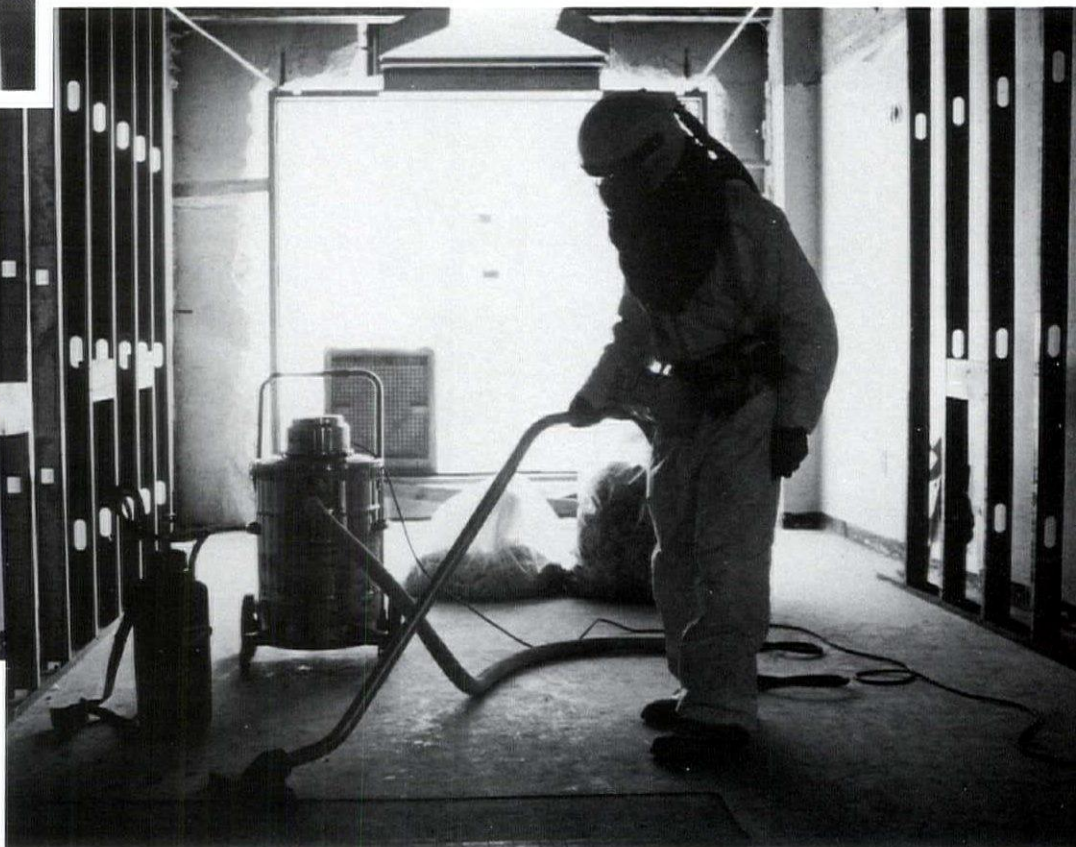
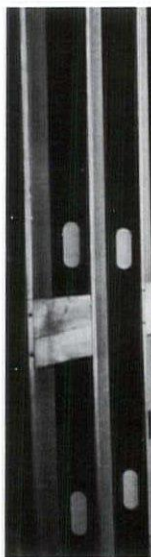


ASBESTOS TAKES YOUR BREATH AWAY!!

Don't try to buck the odds. You'll lose. If you've got asbestos in your facility, get rid of it now! Why prolong your liability?

Asbestos is a killer!

BUT . . . Make certain you have a qualified fully insured abatement contractor. Ask questions. Do his procedures meet or exceed EPA and OSHA regulations? Is he a state of the art contractor? What about safety? If he doesn't care about his people, he surely won't worry about yours. Are the lines of communication open between you and him? **Wait a moment. Save yourself some time.** Call **HSA CONTRACTORS, INC.** They're fully insured. Their employees are fully trained and qualified abatement specialists. They perform the job quickly with a minimum amount of disruption. H.E.P.A. equipment is used to transport hazardous fibers safely up to 1,000 ft. through a hose from a low speed shredder. **HSA CONTRACTORS** carefully removes the saturated asbestos and quickly transports it to certified waste locations. However, before any of this takes place, **HSA CONTRACTOR** provides a site survey in accordance with new EPA regulation 40CFR Part 763 . . . identification of asbestos problem areas . . . air monitoring analysis . . . budget projection and scheduling . . . and abatement options.



Call or write us today for more information.
You'll breathe easier!



HSA CONTRACTORS, INC.

111 W. Olive Street, P.O. Box 17737
Milwaukee, Wisconsin 53217 • (414) 962-4021

Project

Boyceville Community Center

Architect

Cedar Corporation

General Contractor

Len Stephan Construction

Location

Boyceville, Wisconsin

Boyceville's Young at Heart Club, a group of active senior citizens, had been meeting in the basement of the Village Hall.

The location had several inherent problems. Some seniors had difficulty negotiating the steps. Parking was limited. The need for more room served as the impetus for the construction of the new Boyceville Community Center.

It has become the focal point of community activities. Youth groups, organizations, school and private groups use the building for meetings, instruction, and events.

The Center was constructed on Village property. An above-ground reinforced concrete structure within the wood frame, brick veneer building serves as a storm shelter.

In response to the Village's concern, the building exterior is maintenance free. Construction details include a heavily insulated roof and other features to make the building as energy efficient as possible while staying within the design/construction budget.

Photography: Cedar Corporation



Project

Architect

General Contractor

Location

Medford K-5 Elementary School

Bray Associates - Architects, Inc.

Steel Structures, Inc.

Medford, Wisconsin

The new school is an L-shaped structure with offices, commons-cafeteria and gymnasium located in the central core for easy access and utilization by all students. The commons-kitchen and varsity-sized gymnasium are segregated to provide access for dual educational and public use. Primary grades (K-2) are located in one academic section with special education and media room forming core area. The other academic section accommodates grades 3-5 with instructional materials center, art and other specialized areas located at the core. All core areas are air-conditioned. The facility includes a full service production kitchen which handles the baking needs for the entire district's lunch program.

The interior features quality materials throughout with a generous use of natural oak in the IMC and commons areas, interior brick corridors with colorful acoustic carpet over the lockers, earth tone terrazzo corridor floors, carpeted classrooms and parabolic light fixtures. The use of exterior stone trim at windows and pitched roof entrances — reminiscent of school design in the past — becomes a significant symbol for the children beginning their educational experience.

Building costs totaled \$3.3 million or \$35.65 per square foot.





THE REALLY GREAT WALL.

If the Chinese had had S & S Sales Corporation available to them in 200 B.C., they wouldn't have had to settle for just a Great Wall. They could have had a *really* great wall with the beauty, strength, durability and energy efficiency of exterior panels from S & S. And, because of their flame-retardant properties, they wouldn't have had to contend with any of

that nasty fire-breathing dragon graffiti either!

Stonecast by Sanspray; Stonehenge, Klefstone and Permatone S by Manville. Weyerhaeuser Panel-15; Masonite Flame Test; Granex Composite Stone Panels... the Seven Wonders of the World. And S & S has them all. As well as the expertise to serve as a consultant to you and your contractors

and the innovation to solve problems at any stage of construction, including design.

A very wise man once said: "It is far better to call S & S today than to have to call for help tomorrow." Not Confucius, perhaps. But still very wise.



There is no equal.



Liberty Wheelchair Lift*



Handi-Lift*

Freedom to get up and down stairways.

The Cheney Liberty* Wheelchair Lifts for straight stairways enable individuals to ride comfortably from floor to floor both indoors and out. The Lifts are so versatile they can even handle intermediate landings.

- Optional top or bottom overruns
- 500 pound load rating

The Cheney Handi-Lift* Vertical Wheelchair Lift provides stairway access when space is limited. It features an extra large 12 square foot platform.

helping people help themselves*

The CHENEY Company

Dept. WA, P.O. Box 188, 2445 S. Calhoun Rd., New Berlin, WI 53151

Look for Cheney Lift products at Mitchell International Airport and at Midway Airport in Chicago.

- Lifting range of 4 to 12 feet
- Indoor and outdoor applications
- 500 lb load rating, 750 lb optional

When restrictive access is a problem, a Handi-Enclosure* can be installed along with the Handi-Lift. Find out more about the freedom Cheney Lifts can provide in public buildings or private residences.

For more information, write or call
Toll Free **1-800-782-1222**
In WI 1-800-552-7711.

AMERICA BY DESIGN



*A five part series on the way
America looks & works.*

AMERICA BY DESIGN, tells the story of the people and events that shaped America's houses, workplaces, streets, public places and monuments, and the land itself.

Hosted by noted architectural historian and author, Spiro Kostof, this five-part public television series captures the epic of the way America looks and works.

Presented on PBS by
WTTW/Chicago.

Mondays at 7 P.M.
Begins September 28
on your Public
Broadcasting Station.

Check Local Listings for Exact
Date and Time In Your Area

Are The Metal Edges And Copings You Specify The Best For The Money?

If you're not sure, call us.

We're Weather-Tek. We represent Metal Era.

We'll tell you if the metal edges and copings you specify are bent under manufacturer-controlled conditions, with full warranties.

Or if they're merely "shop bent" — subject to variances of workmanship, color finishes and the like.

Our consultants can help make sure the edge you want is compatible with your building design, roof membrane and application parameters.

So call us. You'll find our problem-solving capabilities as dependable . . . as our products.

(414) 425-3322

**WEATHER-TEK
BUILDING
PRODUCTS, INC.**



CARLISLE NATURALITE Metal-Era

• Roofblock, Ltd. • Humane Equipment Co. • EnviroSpec Corp. • Fortifiber Corp.
• Lucas Sales Co. • Diversiform Corp. • Con-Stone Products, Inc.

P.O. Box 544
6151 South 108th St.
Hales Corners, WI 53130
(414) 425-3322

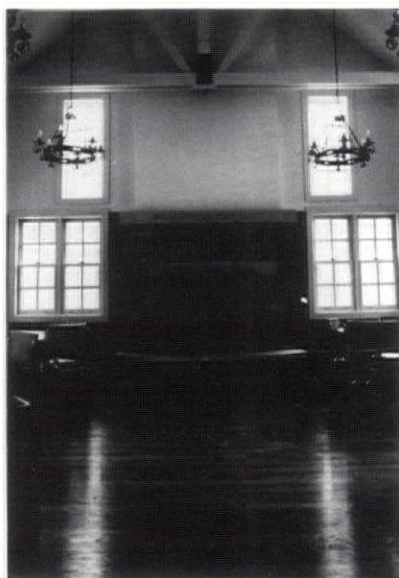
Project

Architect

Contractor

Location

Ross Lodge, Whitnall Park
Hoeh Schroeder Piwoni, Inc.
Maier Construction, Inc.
Greendale, Wisconsin



The Park People of Milwaukee County sought to improve a turn of the century farmhouse in Whitnall Park to better facilitate youth organizations who use it as an overnight lodge. They raised the necessary funds for the project, the majority of which was contributed by the Ross Foundation. Symbolic recognition of this generous gift was requested.

The building shares a beautiful wooded site at the crest of a hill with another small farm outbuilding. The architect advised the client that much could be accomplished within the existing footprints of the two structures.

Relocating interior walls provided larger, naturally lit rooms functionally and symbolically appropriate for a small public Lodge. In the new Great Room the social atmosphere is enhanced by the two story open trussed volume and natural fieldstone fireplace.

The new ceremonial public entrance court is defined by rustic totem like poles where a perched golden eagle welcomes visitors. The building opened in November of 1986.

Photography: James Piwoni, AIA



Project

Architect

Contractor

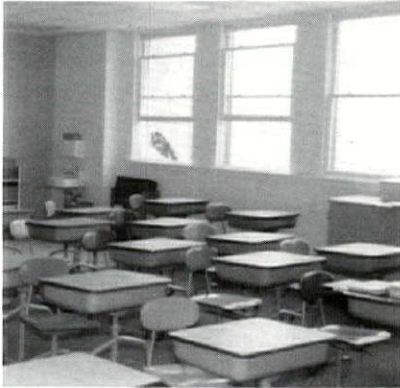
Location

Howe School

Foth & Van Dyke

George Hougard & Sons

Green Bay, Wisconsin



Built in 1912, Howe School was a definite asset to Green Bay's prominent Astor neighborhood but the school had deteriorated over time and needed to be upgraded.

Extensive renovation of the 42,585-square-foot school with 25 classrooms took place while the 700 students were enjoying their 1986 summer vacation. With energy conservation and building comfort an important focus of the project, renovation included replacing the 200 original windows with new, smaller energy-efficient windows. The

windows, new heating and ventilating systems and new insulation have dramatically reduced the school's energy bills by 50 percent.

Lightweight concrete floors replaced the original wooden floors and were covered with carpet or vinyl. Renovation cost \$921,500, or \$21.64 per square foot, about half the cost of new school construction in the area, and added 50 years to the school's lifetime.

Photography: Paul Mickle





THE BOLD LOOK
OF **KOHLER**®

The first bath luxurious for one, spacious for two. No spout, making bathing much more pleasant and safe. The Infinity ∞ Bath™ Whirlpool has central controls, easy to reach from either end. In 17 fantastic colors and five or six foot lengths. See the whole line of Kohler possibilities at your nearest Kohler distributor or write Kohler Co., Dept. 100, Kohler, Wisconsin 53044.

© 5008 Copyright 1985 Kohler Co.

“ATTENTION ARCHITECTS!”
FOR YOUR NEXT PLUMBING
OR HEATING PROJECT, CONSULT
WITH YOUR LOCAL KOHLER DISTRIBUTOR
LISTED HERE.

APPLETON

Baker Manufacturing Co.

550 Hickory Farm Lane
Appleton, WI 54913
Telephone: (414) 734-9284

W. S. Patterson Co.

2100 W. College Ave.
P.O. Box 1177
Appleton, WI 54912
Telephone: (414) 739-3136

GREEN BAY

Murphy Supply Co.

1055 Lake St.
P.O. Box 19310
Green Bay, WI 54310-9310
Telephone: (414) 497-7004

MADISON

Automatic Temperature Supplies, Inc.

1023 E. Main St. (53703)
P.O. Box 1151 (53701)
Madison, WI
Telephone: (608) 257-3755

MILWAUKEE

Milwaukee P & H Supply Co.

1313 W. St. Paul Ave.
P.O. Box 2158
Milwaukee, WI 53201-2158
Telephone: (414) 273-3600

United P & H Supply Co.

9947 W. Carmen Ave.
P.O. Box 25342
Milwaukee, WI 53225
Telephone: (414) 464-5100

W. S. Patterson Co.

12400 W. Silver Spring Dr.
Milwaukee, WI 53007
414-783-6500

RHINELANDER

W. S. Patterson Co. (Branch)

1672 Menominee Dr.
Rhinelander, WI 54501
Telephone: (715) 362-7824

WISCONSIN RAPIDS

W. S. Patterson Co. (Branch)

2111 Engel Road
Wisconsin Rapids, WI 54494
Telephone: (715) 421-1585

Project

Architect

Contractor

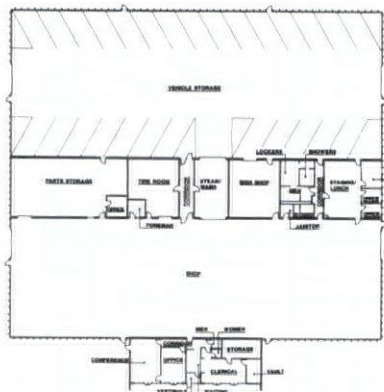
Location

Dunn County Highway Shop

Seymour Davis Seymour Architects-Engineers, Inc.

R. J. Jurowski Construction, Inc.

Menomonie, Wisconsin



The need to replace existing outdated buildings and to centralize highway department functions into a single facility served as the key reasons for Dunn County's decision to build a new highway shop facility.

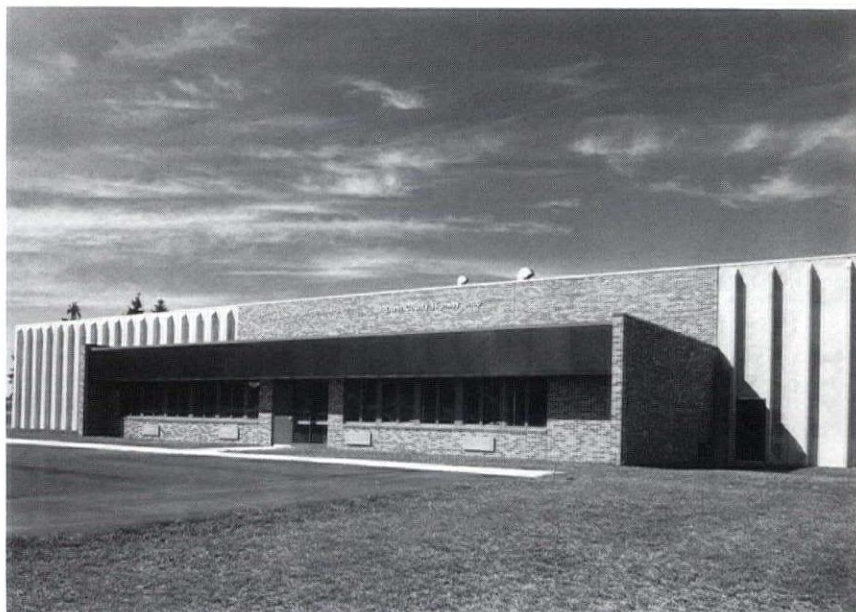
Prior to the building program, the Dunn County Highway Department's administrative operations were housed in the County Courthouse several blocks away from the crews and equipment.

The design solution was a 45,000 square foot facility located on a spacious site at the outskirts of the City of Menomonie. The new building includes a 43,000 square foot shop and

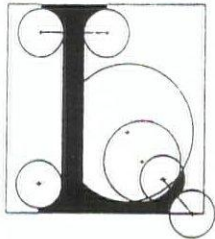
a 2,000 square foot highway department office area. The shop consists of a large equipment maintenance and vehicle storage areas separated by facilities such as the employee lunch and locker rooms, parts department, tire department, and foremen offices.

The design of the pre-cast concrete and masonry building was "fast tracked" over a short ten week period to take advantage of an early construction market and to assure an early summer construction start.

Photography: Christoffersen Photography



LANGE BROS. **WOODWORK CO. Inc.**



QUALITY ARCHITECTURAL WOODWORK
 SINCE 1932

3920 W. Douglas Ave.
 Milwaukee, Wisconsin 53209-3599

(414) 466-2226

Anyone who
 needs to stay
 current with
 the design
 industry in
 Wisconsin
 definitely reads
**Wisconsin
 Architect**

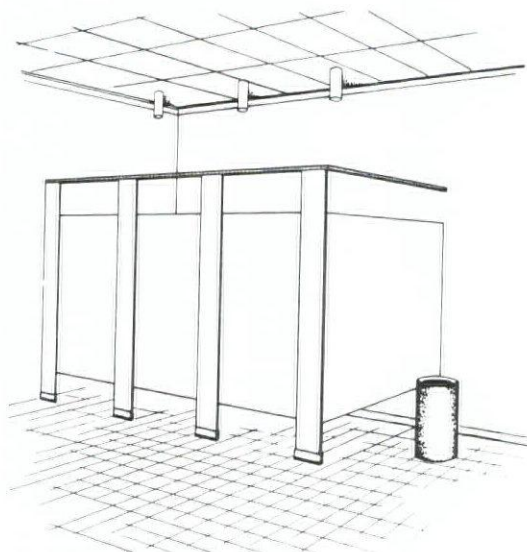


Subscribe today!

COLUMBIA

A formula for
 vandal resistant
 toilet partitions

1. **Melamine** (which is washable & scratch resistant) is bonded chemically to a
2. **Phenolic Resin Core** (which meets smoke codes, is hard & strong) and equipped with
3. **11 ga Stainless Steel Hinges** (tested with a 2,500 lb load) and installed with
4. **Full Height Wall Brackets**



by



JOHN BUHLER COMPANY
 1331 N. 29TH STREET
 MILWAUKEE, WISCONSIN 53208
 414-344-9157

WE STOCK
 TOILET PARTITIONS
 BATHROOM ACCESSORIES
 & SKYLIGHTS

Name _____
 Company Name _____
 Address _____
 City, State, Zip _____
 \$30 Yr. _____

PLEASE ENCLOSE PAYMENT

MAIL TO:
WISCONSIN ARCHITECT
 321 S. Hamilton St.
 Madison, WI 53703

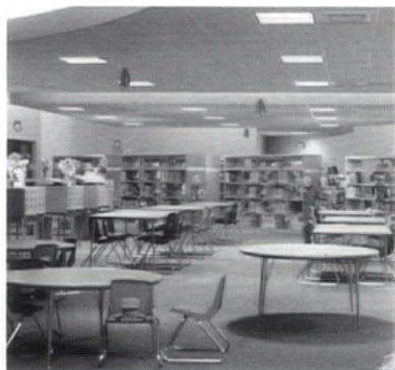
Project

Architect

General Contractor

Location

Horizons Elementary School
The Stubenrauch Associates, Inc.
Howard Immel, Inc.
Appleton, Wisconsin



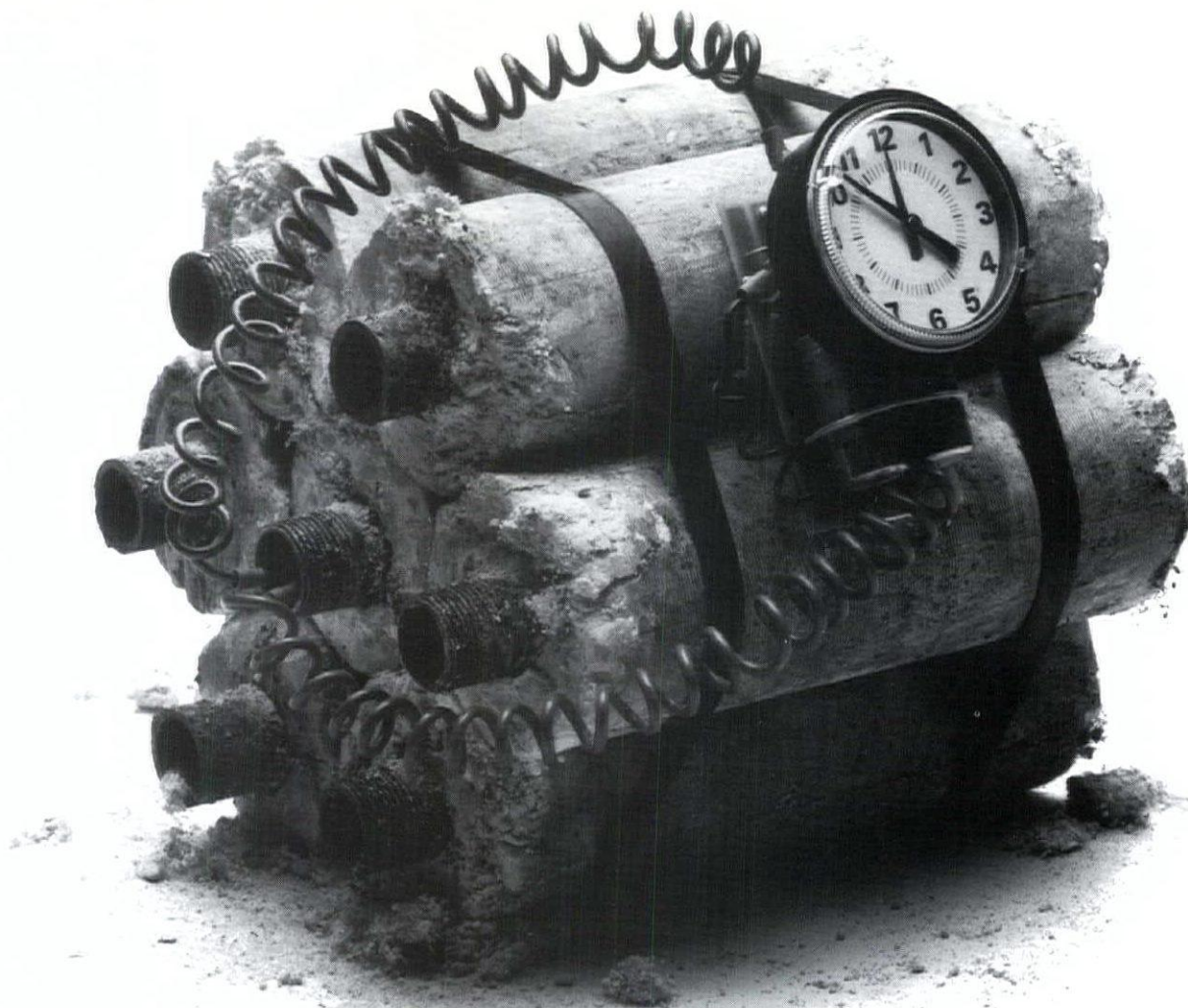
The wooded site for the new school is part of a city park which allows for the shared use of facilities. Physical education facilities were designed to accommodate an active adult recreation program in the evenings and yet have the remainder of the building secure.

The layout has isolated the noisier physical education and music activities from the academic areas. The I.M.C. is the heart of school and is located at a mid level between the 1st and 2nd floor classrooms which wrap around the I.M.C. The facility was designed

to incorporate an IGE educational program and still be flexible enough to allow conventional teaching methods.

The school is designed as a model of applied solar technology, combining the use of solar attics and modified trombe walls to collect solar energy and transfer it to the interior for space heating. The systems provide a living lab which exposes the students to valuable technology which will be part of their future.





ASBESTOS:

You Don't Have Time to Waste.

There is no question about it. Asbestos is a health hazard. You may be exposed and not even know it. It's like sitting on a time bomb. Prolonged exposure to asbestos in a home, school or work place can lead to cancer or other asbestos-related diseases.

The danger is real. You need to take action.
You need IRL.

IRL has all the qualifications necessary to identify the problem and eliminate it safely and efficiently.

IRL is fully insured, EPA trained and uses

certified abatement technicians. We maintain the strictest safety standards by bulk air sampling of suspect areas, isolating contaminated areas during the abatement, and disposing of all asbestos removed. And, because these safety standards are followed, you can usually stay open throughout the entire abatement procedure.

At IRL your health is our main concern. We want to protect it for years to come.

If you're concerned that you may have an asbestos problem, call IRL. Don't put it off. You don't have time to waste.



INSULATION REMOVAL LTD.

Project

Architect

General Contractor

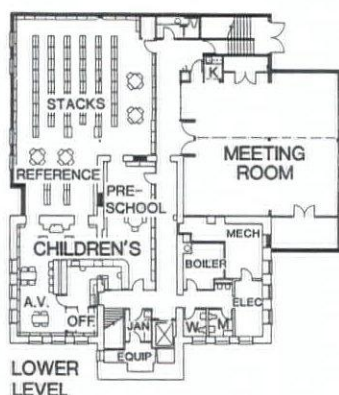
Location

Baraboo Public Library Expansion

Strang Partners, Inc.

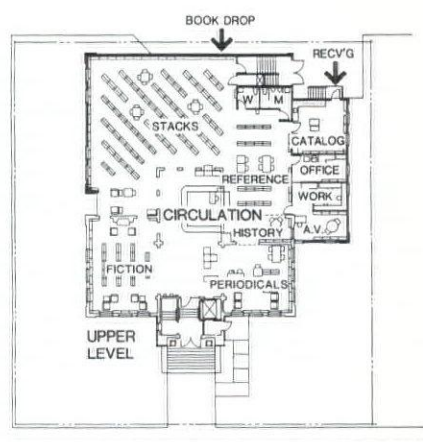
Construction Concepts, Inc.

Baraboo, Wisconsin



One of Wisconsin's most beautiful Carnegie libraries was transformed into a modern facility geared toward the library needs of the 21st century through a major remodeling and addition program. Almost tripling in size, the library features full integration of existing and new spaces into a single, highly functional plan.

The design completely integrates the new addition to the existing building through careful material selection and detailing. It creates a warm and inviting interior while providing for a highly centralized circulation desk with visual control over the main entry, the general/special collection areas, reading areas, restroom facilities and the new elevator. Particular attention was paid to replicating (wherever economically practical) exterior and interior details. Matching the existing brick's unusual size, color and texture characteristics was a challenge.



Photography: Charles McEniry



ARCHITECTURAL PHOTOGRAPHY



ERIC OXENDORF

1442 N. FRANKLIN STREET
MILWAUKEE
414-273-0654

Project

UW Center - Manitowoc County

Architect

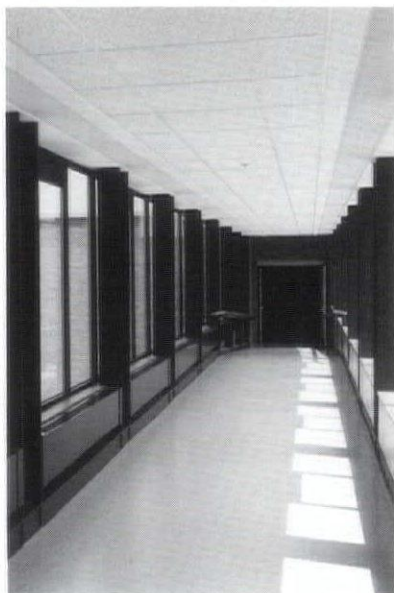
Somerville Associates

General Contractor

Jim Pankow, Inc.

Location

Manitowoc, Wisconsin

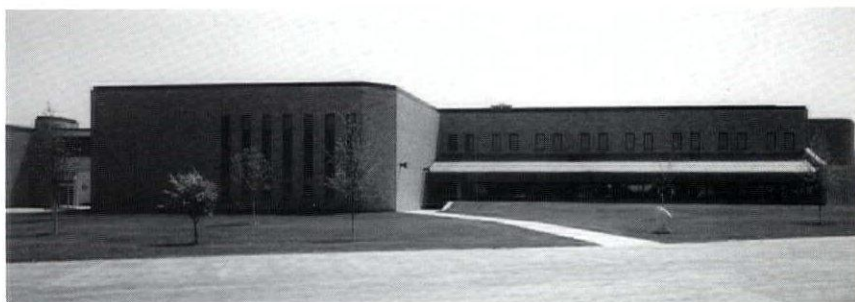


The addition to the existing facilities at the UW Center - Manitowoc County is a two-story structure of 34,000 square feet.


The addition is designed as a separate building set into the hillside and connected to the existing building by a second-level pedestrian bridge. This configuration was chosen for both aesthetic and economic reasons. The design gave the campus a more collegiate atmosphere with pleasant pedestrian circulation and it reduced site reconstruction costs for utilities and roads.

The exterior of the addition blends with the existing building in color and composition. The vertical window treatment reflects the vertical slot windows used as a design element in the existing buildings. The total complex, linked by the connecting bridge, presents an image of low horizontal buildings that reaches from the hillside toward Lake Michigan.

Photography: Photodynamix



SAVE THIS AD NOW. IT COULD SAVE YOUR LIFE LATER.

 Digging near underground power lines and other utilities can be dangerous. Before you dig, uncover the facts. If you are digging in Wisconsin call Diggers Hotline at least 3 days before digging.

1-800-242-8511

In Wisconsin

344-5111

Milwaukee Area

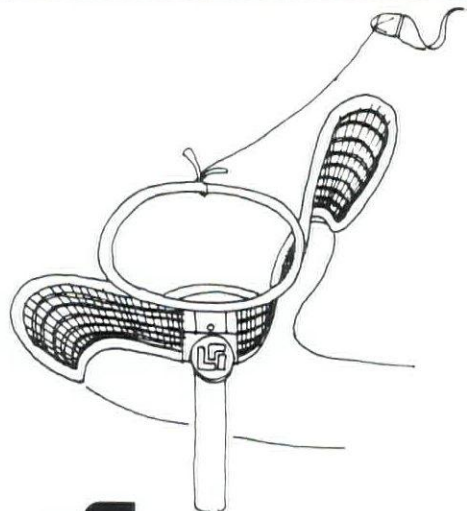
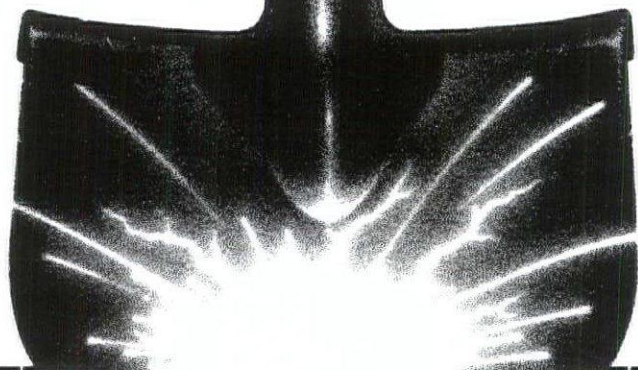
1-800-922-6576

Outside Wisconsin

State law requires you to notify owners and operators of underground facilities at least three working days before you dig. One call to Diggers Hotline alerts most major Wisconsin utilities. If there are utility lines under the site you specify, the company will mark their locations for you.

Save this ad. It's one you can live with.

DIGGERS HOTLINE



LANDSCAPE FORMS
431 LAWDALE AVENUE
KALAMAZOO, MI 49001-9543
616/381-0396 800/521-2546

Bill Quinlan

2140 North Halsted
Chicago, IL 60614
312/871-8810

THE PUBLIC SPACE FURNITURE COMPANY

WSA FALL WORKSHOP

Friday, October 9, 1987
Embassy Suites Hotel
Green Bay, WI

Call WSA office for details:
608-257-8477
1-800-ARCHITECT

Moving?

Let us know 4-6 weeks in advance so that you won't miss a single issue of *Wisconsin Architect*. Please include a copy of the old label.

New Address:

Name _____

Address _____

City, State, Zip _____

Mail To:
WISCONSIN ARCHITECT
321 S. Hamilton St.
Madison, WI 53703

YOUR BUILDING PROJECT

When public officials undertake a building project, whether it's erecting a new building, remodeling or expanding an existing building, creating a city park, or any number of other public improvements - the selection of an architectural firm is one of the most important events in the process. That's because the architect's performance influences the entire course of the project - financial, feasibility, appropriate public response, design, functional efficiency, construction costs, operating costs, and maintenance costs during the facility's life.

Many public owners struggle with the method that should be used in identifying and hiring an architect. While there are several, one basic difference between selection methods is whether or not the fee charged by the architectural firm should be the primary criteria for selection as opposed to the compensation being one consideration along with other factors such as competence, qualifications, experience, staff, location, and compatibility. Public and private owners have found that choosing an architect on the basis of qualifications, and not solely on the basis of fee, best suits their needs and enhances the relationship and team effort. Why? Read on!

This booklet is meant to assist you, the public owner, in understanding why Qualification Based Selection of architects is in your best interest and that of the public you represent!

As a public service the Wisconsin Society of Architects (WSA) offers the services of its QBS Facilitator at no cost to you the owner. The Facilitator is available as a resource to you regarding information on establishing a selection process and providing general information on what an architect can do to assist you with your specific project requirements.

FINDING THE BEST ARCHITECT

Choosing the right architect for your project is as important as choosing the right doctor, lawyer or accountant, maybe more so.

For many owners, the investment in their buildings is the largest investment they will make. Selecting the proper architect, who will guide that building from concept to completion, is crucial and should be made with time and care.

The following is the method endorsed by many public and private owners and recommended by the Wisconsin Society of Architects (WSA).

1 IDENTIFICATION AND REQUEST FOR QUALIFICATIONS

Directories of architectural firms are available from the WSA office to help you identify compatible firms. In addition, the announcement of the proposed project should be made in an official publication and in the general press. A Request for Qualifications (RFQ) typically includes an indication of the type of project to be designed; the scope of services required; budget and time constraints; evaluation criteria; the form in which statement of interest and qualifications are to be submitted; and the submittal deadline. Samples are available from the WSA office.

2 SUBMITTALS

Receipt of submittals made by interested firms is the next step in the process. To simplify the task of comparing the relative qualifications and experience of various firms, many owners have adopted the use of a standard form for architects to use in providing this information. Copies of this form are available through the Wisconsin Society of Architects in Madison.

These forms provide an overall profile of the firm including size, experience, volume of business and area of specialization, if any. Forms submitted in response to the RFQ for a specific project, generally describe the firm's experience with projects of similar type and scope, and the special expertise of personnel who would be assigned to the project. The owner may request the architect to provide additional detailed information in specific response to the request for proposal, including references.

3 EVALUATION

Evaluation of submittals is the next step in the selection process. Evaluation criteria generally include relevant experience and specific expertise; performance references on previous projects; qualifications of consultants and staff; availability of key personnel; and, current and projected workloads that would affect the firm's ability to perform the required work on schedule.

The purpose of this preliminary evaluation is to select a manageable number of firms for personal interviews. The number of firms to be interviewed depends in part on the size, scope and complexity of the project, the number of qualified submittals and also on the time available to complete the selection process.

Great care should be taken to insure the ability of prescreening panels to select the best firms to be interviewed for specific projects. The final selection can only be as good as the original screening.

Since each firm should be given sufficient time – usually 45 to 60 minutes – to present its qualifications and since interviews may represent a considerable investment in travel and/or the commitment of time for the firm's personnel, only those that appear qualified to take on the project should be interviewed. Prescreening to limit the number of interviews to five or fewer is clearly to the advantage of the client as well.

Those firms invited to interview should be given as much advance information as possible about the project, the size and makeup of the interviewing panel, allocation of time for presentation and for a question/answer period, which is very useful to both the owner and the architects.

It is recommended that for the short listed firms a site/facility visitation be scheduled. This should take place at least two weeks prior to the interviews to allow the architects to observe the situation and ask questions before they finalize their presentation for the interview.

Interviews are conducted after the evaluation process has identified those firms (3-5) with the appropriate experience and qualifications for the project. The interviews provide an opportunity to compare the different approaches to the design process and interpretations of the specific program, but do not expect sketches of your project. Preconceived designs are not applicable to most building programs. Interviews also allow for the comparison of the personal styles of each firm's managers and key personnel — an important consideration, since the firm selected will be closely associated with the client's staff over a period of months or years. For that reason, clients frequently request that key personnel who would actually be assigned to the project appear at the interview.

Ranking of the top firms to identify the best qualified firm is the next step. Ranking criteria might include such items as design ability and experience of the firm, demonstrated interest in your project, conveyed understanding of the unique requirements of your project, relevance of previous projects presented during the interview, availability of key personnel, schedule and budget performance on previous projects.

Discussions with the top-ranked firm then follow to confirm its ability to perform the necessary work, on time, within budget and at the expected level of quality and further refine performance requirements.

Some owners mandate the method of compensation such as a percentage of construction costs, hourly rates, lump sum or some other formula. However, it is important to understand that design professionals base their compensation on their anticipated direct and indirect costs for providing the anticipated services, plus a normal profit margin. Thus, if the fee requested by the top-ranked firm is higher than the amount the client can or will pay, it is reasonable and proper to review the scope of services to determine whether all the services requested are in fact necessary. If agreement on the scope of services and compensation cannot be reached, negotiations with the first-ranked firm are formally terminated, and the owner enters into negotiations with the firm that was ranked second and repeats the process.

The procedure outlined above is typical of the selection methods that have been adopted by many government agencies and local jurisdictions. We recommend that all public owners adopt a formal selection procedure.

4 SITE VISITATION

5 INTERVIEWS

6 RANKING

7 ARCHITECT COMPENSATION

SUMMARY

ARCHITECT SELECTION FOR PUBLIC CONSTRUCTION PROJECT

by Anders C. Dahlgren

Public Library Construction and Planning Consultant
Wisconsin Department of Public Instruction

The selection of an architect is a crucial decision in any construction project. For a public construction project, the choice can become a highly charged issue. The board or committee charged with the authority to make that decision, after all, is obligating public funds and there will certainly be pressure to make that decision responsibly. Political pressures may become a factor as well. How should a board select an architect?

There are three basic methods for choosing an architect: direct selection, design competitions, and comparative selection.

Direct selection can be as simple as it sounds. An architect is identified and a contract signed. This method is more often used for small or private projects. On the other hand, the municipality may retain an architect or have an architect on staff to design municipal projects, and in that case there may be little choice but to work with that individual.

A design competition is a much more complex selection method. In brief, a client invites a limited number of architects (or may open the competition to any interested firm) to prepare a design based on a written building program statement. A qualified jury selects the design from among the submittals. A design competition may appear to remove the client from the selection of a design, and it may be a more costly selection method, but a well-managed competition can produce a wider variety of design solutions than any other method. This does not even begin to describe the complexities of a well-run competition. Further information can be obtained from the American Institute of Architects.

Comparative selection is the most common means of architect selection for public construction projects. This process begins with the identification of a number of firms that may be capable of completing the commission and progressively narrows the field until one primary candidate remains.

The first step is the identification of potential candidates. Look at other buildings of similar size and type in the vicinity. If a police building is being planned, look to other police buildings in the area. Identify those that appear to be especially successful. Find out what firms designed those buildings.

Don't necessarily limit this search to structures of the same type. It may be worthwhile to consider the designer of a nearby office building if that structure represents a creative design solution for a challenging site, or if it creates an ambiance appropriate to the project at hand, and so on.

Contact area professional organizations for assistance. The Wisconsin Division for Library Services, for instance, maintains a non-selective, non-comprehensive list of architectural firms with library design experience in Wisconsin.

When several candidates for the commission have been identified, a questionnaire is sent to each firm. It should ask for a list of recently completed projects and projects in progress. Each firm should specify the number of staff they employ and their areas of specialization and expertise. Each firm should be asked to describe their perception of the architect/client relationship and how they approach their role in monitoring construction progress. In addition, firms can be asked to relate their performance and accuracy in estimating construction costs.

The responses should be evaluated and the field narrowed to five to seven firms. Visits to these firm's recently completed projects

or discussions with their clients may serve to narrow the field further.

The next step is to schedule interviews. The finalists are invited to make a presentation of their qualifications to the board or the selection committee. If a written building program statement has been prepared, it can be helpful to forward a copy to each firm and ask them to identify what they perceive to be major design concerns.

The interview can be used to continue to explore each architect's approach to design, each firm's performance in terms of bringing projects in on time and within budget. Verify which individuals in the firm will bear what responsibilities at different stages of the project. Take the opportunity to define just how the architect's fee is determined, and what services are included in the fee. Discuss other pertinent experience, focusing on prior work for public clients, and experience with the law relating to public bidding.

Allow about one hour for each interview. Leave plenty of time for questions following the initial presentation. Provide a screen and a projector in case an audiovisual presentation is made. Schedule 15 to 20 minutes between interviews to compensate for the possibility of extended questioning and to allow the next candidate time to set up.

As each interview is evaluated, consider the architect's communications skills. Like many professional relationships, the success of the architect/client relationship relies on the ability of both parties to communicate clearly, directly and perceptively. Also consider the architect's demonstrated design ability.

Both of these elements should be placed before consideration of an architect's fee. The fee should not become an overriding factor in the selection process. Under routine circumstances, the range of fees among candidates should be relatively limited, and certainly when taken as a percentage of the overall project cost the differential between the lowest fee and the highest fee is likely to be negligible. The board or selection committee is far better off paying a higher fee to secure the services of a firm they have confidence in, rather than trying to save a few dollars on professional fees.

Similarly, exercise caution if a firm offers to perform any services at no charge or at a highly reduced rate. Here, as in so many other matters, the buyer must beware, because too often you do get what you pay for.

Based on the information gathered, the selection committee should then come to a consensus about its primary choice and negotiate a contract with that firm. The American Institute of Architects can provide a sample form of contract between architect and client. The contract should be examined and approved by the municipality's legal counsel before it is signed.

As an aside, it can be useful to include in the contract a provision that requires that architect to return one year after the new building has been occupied to conduct a post-occupancy evaluation of the structure. Both architect and client can learn from that review.

With a contract in hand, the architect and the client are able to sit down to the challenge and rewards of designing a new building and watching those hopes, dreams and wishes become a reality.

ARCHITECT SELECTION

BY WISCONSIN SCHOOLS

by Richard D. Peterson
School Administration Consultant
Wisconsin Department of Public Instruction

It would be difficult to find a more naive building owner than an elected school board. This is not to demean Wisconsin school board members, who are truly sincere and dedicated people, but to recognize that they come from all walks of life for an often short term of service as a board member.

Drawn to board membership by an interest in the education of our young people, it should not be surprising to find these citizens more conversant with matters of curriculum and methodology than with bricks, mortar and contracts.

Nevertheless, Wisconsin code (ILHR 50.07) requires that school buildings be designed by an architect, and Wisconsin Statute (s. 120.13) assigns to the school board the power to select and employ design professionals.

The process of providing new or altered school facilities is discussed at length in texts and professional journals. Covering the time from recognition of need to building dedication, these articles support a surprisingly consistent series of steps.

A survey/study to determine the need and alternate methods of satisfying that need is the common first step. While architects may be employed to provide support information, most of the literature stresses the educational nature of this step.

Probably the most misunderstood step in the whole process is that of drawing up an educational specification for the work to be done. Prepared by the school administration and staff, this document sets forth the **educational** requirements to be met by the physical changes to be made. Answering the questions of **what** is to be taught (curriculum) and **how** it is to be taught and to **how many at a time** (methodology), the educational specification should be the document used by the architect in developing the building program.

Properly done, the educational specification should contain no references to the physical size of any teaching space. Any mention of "square feet" should be stricken from the report. Even mention of the shape of a teaching space should be restricted to the minimum necessary for the desired methodology.

Enter the architect! It will be the responsibility of the design professional to translate the educational specification (whether written or verbal) into a workable physical design and to direct the building program through its entire course to the end of the warranty period.

During the entire association, the architect must be, and must be **seen as** the representative of the school board. This relationship can only exist in an atmosphere of mutual understanding and trust. The architectural selection process and the resulting contract will both play a large part in determining whether or not there is to be a good working partnership.

The architect's relationship to the board of education ranges somewhere on the board spectrum from "AGENT OF" to "VENDOR

TO" and the basis of the architect's selection will range somewhere on the equally-broad spectrum from "QUALIFICATIONS" to "PRICE".

If both sides are truly interested in the architect as agent, they will both recognize the necessity of selection being made on the basis of qualifications. Every inch that the selection criteria moves toward price makes the architect a little bit more of a vendor and less an agent.

The process of architectural selection should then follow a fairly simple outline:

Expression of mutual interest. This may include a public announcement by the board soliciting contact from design firms.

Preliminary screening. This is usually accomplished by mail, with the board narrowing its choices to a few (3?) architects by use of a screening questionnaire or by examination of general data sent by the architect.

Final selection interview. It is important at this critical point that both sides must be careful to avoid any semblance of a bidding competition. It is here that the school board's lack of previous experience in such matters may well make them lose sight of the long range value of a trusting agent relationship in favor of a relatively few dollars saved on the professional fee.

Fee negotiation. At this time, the board meets with its first choice to decide on the fee basis and size. Only if the board cannot come to an agreement with its first choice does it break off that negotiation and turn to the second choice.

The fee basis for school architectural services in Wisconsin has traditionally been a percentage-of-contract. While this is easy to determine and should compensate the architect in proportion to the work required, it is also the cause of the most common complaint made against architects by school administrators, school boards, and taxpayers in general.

Percentage-of-contract fees leave the architect open to suspicion (and sometimes open accusation) that the choices of design, construction method and materials were made to enhance the fee rather than to the benefit of the school district.

While neither side is well acquainted with a fixed-dollar fee, it would be well to investigate this fee base at the time the scope of the project becomes clear.

We can probably never get away from the truism that "In business, the level of ethics is directly proportional to the square of the economic well-being of the parties involved." When money and work are scarce, school boards will invite, and architects will offer, cut-rate deals.

An understanding of the nature of the agent role of the architect should, however, reduce price bidding to a minimum.

ONE ON ONE

A WSA PUBLIC SERVICE PROGRAM

Since this booklet was first published in September of 1985, the WSA has had over 200 responses to its offer of assistance, advice and counsel from owners who wanted help in establishing an objective, sane, and competent method for selecting an architect. While there are many similarities in the desires of these owners, the WSA has found that each owner has unique needs and particular concerns which must be integrated into the selection process that the owner evolves in attempting to find the architect who can best serve the owner's requirements.

Recognizing the uniqueness of each owner's situation, the WSA has developed a variety of useful documents and, more important, has engaged the services of an experienced and qualified facilitator/counselor to assist owners in developing their individualized selection methodology. This service is offered, without charge, to any owner interested in developing a selection methodology for their professional design needs.

What does this service entail? The WSA's QBS Facilitator will work with you over the telephone, through the mail, and by meeting with you "one on one." The Facilitator will provide information, answer questions and actually develop a draft set of selection materials based on your specific needs.

Give us a call to see if we can help. If you want the names of schools, counties, towns, churches, or other groups that we have successfully worked with . . . we'll be happy to supply them.

Let us go "one on one" with you in developing a competent selection process for your building needs.

For more information call the office of the Wisconsin Society of Architects (608) 257-8477 or 1-800-272-4483.

CASE STUDIES

Comments from Public Owners on Qualification Based Selection

Over the past two years, the Wisconsin Society of Architects has assisted many Wisconsin school districts and local governments in establishing a rational and objective process for selecting an architect for their building projects on the basis of qualifications, competence and compatibility. The WSA has received very positive feedback from these public owners who have utilized our Qualification Based Selection (QBS) process.

With the assistance offered as a public service by the WSA, public owners in Wisconsin have found that the QBS process saved them time and money in the selection of an architect and, perhaps more importantly, resulted in the selection of the most qualified and capable architect for their particular building project. The following excerpts from recent letters received by the WSA are illustrative of the positive results public owners have had by utilizing the QBS process and the unique implementation assistance provided at no cost by the WSA.

LARGE SCHOOL DISTRICT

"This letter is a brief review of the selection process that the Wausau School District used to employ an architectural firm for the Grant Elementary School remodeling project. We followed your recommendations very closely and were extremely satisfied with the results. The steps of the selection process were as follows:

- Identification of the original list of 12 firms from previous district interviews, recommendations from the Department of Public Instruction, and other local sources.
- Telephone interviews with the references from the firms on the original list to narrow the field to four firms.
- Narrowed the field to four firms through the use of telephone interviews with references, analysis of the firm's statement of qualifications, and information from other sources knowledgeable of the firm's capabilities.
- The firms to be interviewed were given a schedule of interviews and a list of the interview criteria to assist them in preparing for the interview.
- The four interviews were held the same evening with each firm given a 45 minute time allotment.
- The Board members reviewed the interviews and selected the firm the same evening while the interview information was still fresh in their minds.

The Board of Education members were very pleased with the four firms interviewed and felt that the process was very successful. They are extremely pleased with the firm selected and have a very positive attitude toward working on the project with the new firm.

I personally would like to thank [the WSA] for spending the time and effort to develop the process for us and we recommend that any school district faced with employing an architectural firm follow the same procedures."

John W. Sandberg
Assistant Superintendent for Business Services
Wausau School District

COUNTY BUILDING COMMITTEE

"... thank you for your very valuable assistance in the preliminary work of choosing an architect.

You have changed the concepts of architects held for years by the County Supervisors on the Committee. Committee members have told me they had always received bids by architects for a specific project, and then picked the lowest bidder.

Hopefully, the educating you did will be used in future projects and architects will be chosen on the basis of qualifications rather than [solely on] cost.

Thank you again for your willingness to give time, patience and humor in assisting us to choose a suitable architect. We would not have done any of the preparation as intelligently without you."

Charlotte J. Williams, Chair
Human Services Building Committee
Sheboygan County

SMALL SCHOOL DISTRICT

"Just a brief note to let you know how pleased we are with the Architect Selection Process which you supplied. By following your guidance, the process went smoothly and did, we feel, afford us an excellent procedure for the selection of an architectural firm which will most adequately meet our needs.

I would not hesitate to recommend this method of selection to anyone."

Raphael L. Artz
District Administrator
Lena Public School District

COOPERATING ORGANIZATIONS AND INDIVIDUALS TO CONTACT IN WISCONSIN

STATE OF WISCONSIN

SCHOOLS:

Richard D. Peterson
School Administration Consultant
Department of Public Instruction
125 S. Webster Street, Box 7841
Madison, WI 53707
(608) 266-2803

LIBRARIES:

Anders C. Dahlgren
Consultant for Public Library
Construction and Planning
Dept. of Public Instruction
125 S. Webster Street, Box 7841
Madison, WI 53707
(608) 266-3874

PUBLIC PROJECTS:

Harlyn Verhage
Director of Bureau of Administrative Services
Division of State Facilities Management
8th Floor, 101 S. Webster Street
Madison, WI 53703
(608) 266-3620

WISCONSIN ASSOCIATION OF SCHOOL BOARDS

George Tipler
Executive Director
122 West Washington Avenue
Madison, WI 53703
(608) 257-2622

WISCONSIN LEAGUE OF MUNICIPALITIES

Stan York
Executive Director
122 West Washington Avenue
Madison, WI 53703
(608) 267-2380

WISCONSIN TOWNS ASSOCIATION

Richard Stadelman
Executive Secretary
Route 4, Box 319
Shawano, WI 54166
(715) 526-3157

WISCONSIN COUNTIES ASSOCIATION

Mark Rogacki
Executive Director
802 West Broadway
Madison, WI 53713
(608) 266-6480

WISCONSIN LIBRARY ASSOCIATION

Faith Miracle
Administrator
1922 University Ave.
Madison, WI 53705
(608) 231-1513

NEED MORE INFORMATION?

If you would like to receive more information on Qualification Based Selection (QBS) and how the Wisconsin Society of Architects can assist you in establishing a QBS process for selecting an architect for your building projects, the WSA office can provide you with the following materials . . . and more:

- Directories of architectural firms who can do your work.
- Samples of requests for qualifications (RFQs) seeking qualified firms.
- A qualifications questionnaire for architects.
- A score sheet to use in interviewing architects.
- An architectural services procurement guide.

For more information contact:

Darius Van Fossen
QBS Facilitator
Wisconsin Society of Architects
321 South Hamilton Street
Madison, WI 53703
(608) 257-8477
1-800-272-4483

William M. Babcock
Executive Director
Wisconsin Society of Architects
321 South Hamilton Street
Madison, WI 53703
(608) 257-8477
1-800-272-4483

**WISCONSIN SOCIETY OF ARCHITECTS
AMERICAN INSTITUTE OF ARCHITECTS
321 South Hamilton Street, Madison, WI 53703
(608) 257-8477
1-800-272-4483**



Project

Architect

General Contractor

Location

Educational Support Center

Ayres Associates

Camosy Construction Co., Inc.

Kenosha, Wisconsin



Consolidating the district administration and operational services from five separate locations required a structure of some size. This, and budget constraints, favored rehabilitating an existing centrally located building, the former Montgomery Wards Department Store.

Originally constructed in 1964, the brick structure required exterior cladding and a new roof and insulation to increase thermal performance from an R value of 2 to 12.5 in the walls, and from 7.5 to 21 in the roof.

Plans were designed to remodel 90,000 square feet, including offices for administration and operations, and areas for centralized data processing, food service, maintenance, stores, and an instructional materials center. Occupied since November, 1985, the district staff is particularly pleased with performance of the Metal Halide Indirect Lighting System, and sophisticated Audio and Annunciated Recognition Systems in the board room.

Photography: Doug Green



Schooled in Design



Thanks Sheboygan! Steve Schmitt (Joseph Schmitt & Sons Construction). Erik Jensen AIA (Linde Jensen Mercheske Architects, Inc.) — quality gentlemen. Working with you is a pleasure.

JANCO
GREENHOUSES
& GLASS STRUCTURES . . . see us in Sweets

- A 39 year tradition of superior craftsmanship and quality
- Over 100 distinctive models to choose from
- Wisconsin Solar Design — the engineering capability and fabrication experience to provide the construction details you require



WISCONSIN SOLAR DESIGN
Holtzman Associates, Middleton, WI

414-444-1639 • 608-831-2112

Skylights
Solariums
Greenhouses

Say that you saw it in
Wisconsin Architect

(414) 835-4200

INSULATION

Thermal & Acoustical

ROOFING

Urethane & Elastomerics

MEMBRANE WATERPROOFING

Pedestrian & Vehicular



SEAMLESS
SYSTEMS, INC.

7915 Hwy. 41, P.O. Box 5, Caledonia, WI 53108

Quality

The meaning of quality, as such, is difficult to define, for it is somehow intuited in the presence of the work in which it is embodied. This has little to do with popular conceptions of beauty, taste, or style, and has nothing to do with status, respectability, or extravagance. It is revealed, rather, in an atmosphere of propriety and restraint.

Paul Rand

Steven Quinn Design
Graphic Design consultation
for the architect.
2612 North Maryland
Milwaukee, Wisconsin 53211
414 332 2483

Project

Architect

General Contractor

Location

Beaver Dam Community Library

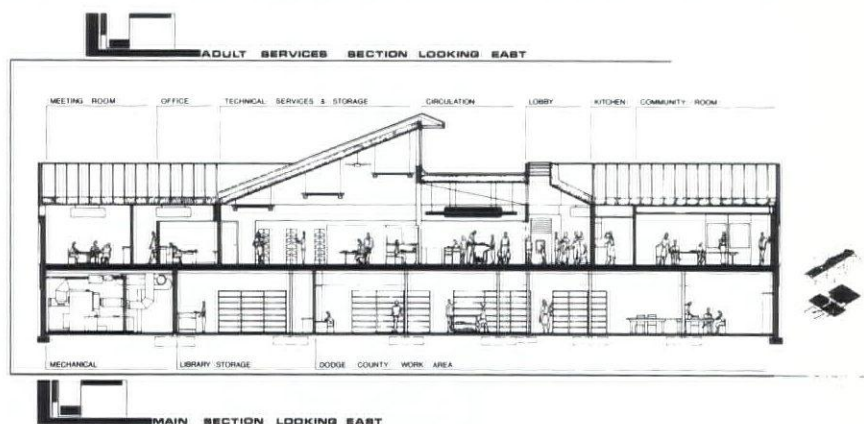
Architecture 360, Inc.

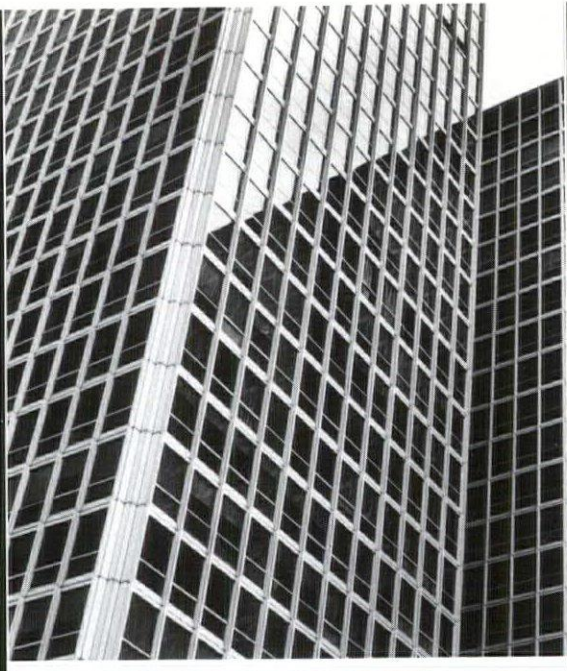
Westra Construction, Inc.

Beaver Dam, Wisconsin

Located on a busy thoroughfare in downtown Beaver Dam, the library is well situated to serve all its citizens. Two entrances provide access from the parking lot as well as from the street. The roof slopes up to form a south-facing clerestory to take advantage of natural light. Sunlight is deflected by louvers inside the building and transformed into soft diffused light, reducing energy expense. Automatic controls turn off the light fixtures when a certain brightness is registered, saving even more. The entrances provide separate access to the community room and library, allowing use of the former when the latter is closed.

Photography: Architecture 360, Inc.





Architectural

Interior

Landscape

Computer Generated

■ **Purcell Imaging** ■

Purcell Imaging, Ltd. (414) 964 0977

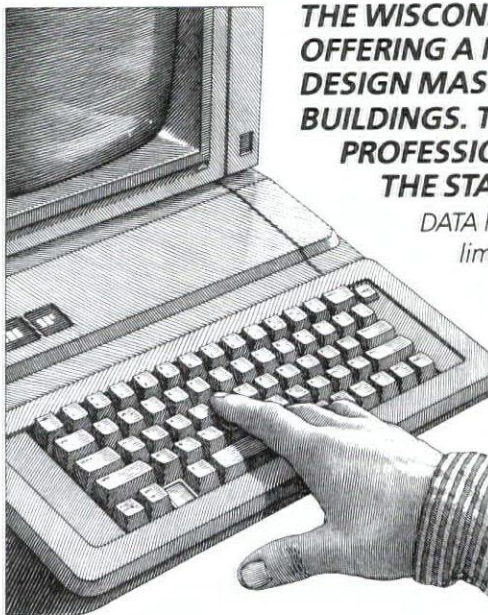
Klipstein Insurance Services

- I. We are the exclusive representative in the state of Wisconsin for Design Professional Insurance Company.
- II. We also represent **all** the available **markets** for professional liability insurance.
- III. Services provided:
 - A. **Contract** Review
 - B. Comparison of Professional Liability Insurance policies
 - C. Monitor claims
 - D. Conduct In House Loss Prevention seminars

Contact: Paul Berta

216 North Midvale Boulevard
P.O. Box 5566 • Madison, WI 53705-0566
608-238-7181

IMPORTANT NOTICE FREE COMPUTER DESIGN SERVICE FOR MASONRY WALLS



THE WISCONSIN CONCRETE & PRODUCTS ASSOCIATION IS OFFERING A NEW SERVICE WHICH WILL ANALYZE OR DESIGN MASONRY WALLS FOR LOW, MID OR HIGH RISE BUILDINGS. THIS SERVICE IS OFFERED FREE TO DESIGN PROFESSIONALS—ARCHITECTS AND ENGINEERS—IN THE STATE OF WISCONSIN.

DATA PROVIDED: The program will check resisting moments limited by steel stress, masonry stress and deflection of the wall. It also checks shearing resistance limited by shear stress and bond strength and checks flexural compressive stresses, both allowable and actual. Once the stresses have been determined, the programs will check various masonry configurations to arrive at the configuration which would be the most economical construction.

CALL OR WRITE TODAY FOR COMPLETE INFORMATION

414 251-4551

1-800-545-4141 Ext. 251

RICHARD H. WALTER, P.E.

EXECUTIVE DIRECTOR, WCPA

P.O. BOX 881 MENOMONEE FALLS WI 53051



Project

Architect

General Contractor

Location

**Waukesha County Huber Facility
the Zimmerman Design Group**

Mark Zimmerman

Waukesha, Wisconsin

In 1985, the Waukesha County Sheriff Department was faced with a rising population of inmates with work release privileges. As crowded conditions in the former county jail became stressed, the Sheriff and Facilities Departments investigated ways to double the inmate population capacity from 48 to 96, update the antiquated incarceration concept in favor of a state-of-the-art work release environment, and not compromise existing programmed needs.

The legal process, however, could not tolerate postponement of work release sentences in order that the facility could be shut down for remodeling. It was a challenge for the design team, the general contractor, and the Sheriff Department to sequence the remodeling such that the facility could function day to day.

With a total project budget of approximately \$600,000, the construction materials and finishes were kept utilitarian and economical. The projected abuse the facility would encounter over time was also criteria in selecting durable finish materials.

Some amenities that improved the quality and operation of the facility are an updated kitchen, a dining room which can handle a capacity population in two dinner shifts, a remote door locking control system, an intercom system to all floors, two high security detention cells, individual personal effects lockers, and increased toilet and shower facilities.



**A WISCONSIN TRADITION OF
QUALITY FOR OVER 80 YEARS**

Brick

Block

Pavers

Stone



THORO
SYSTEM
PRODUCTS, INC.



**6399 NESBITT RD MADISON, WI 53719
(608) 845-8636**



IF ALUMINUM LEAVES YOU COLD, WARM UP TO WOOD.

Every Marvin Door is constructed of fine-grained Ponderosa pine, chosen for its excellent insulating properties and beauty.

Our retro sliding door and terrace doors can make an aluminum door replacement special. Double-sealed insulating glass is standard. Or you can choose energy-saving Low E glass. And our weatherstripping provides one of the lowest air infiltration rates in the industry.

So warm up to wood. Warm up to a Marvin Door.



Builders World, Inc.

P.O. BOX 881, WAUKESHA, WISCONSIN 53187
(414) 542-8883 (800) 242-2206

Gyp-Crete 2000™ Floor Underlayment

Because Not All Concrete Floors Are Created Level.

Maybe the concrete curled or the form work sagged. Or maybe the surface just wasn't smooth enough to accept a finished floor good.

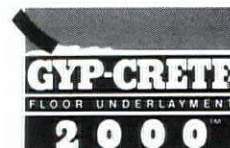
To anyone who works with concrete, the problem of a rough, uneven, out-of-level floor is all too familiar.

Luckily, there's a solution.

Gyp-Crete 2000 pours over concrete and corrects a multitude of sins. It smooths rough spots without dusty grinding. It dries without shrinkage cracks, accepting foot traffic within 90 minutes of application. And at depths of 3/8 inch to 3 inches, Gyp-Crete 2000 can create a smooth, flat floor without time-consuming hand troweling.

Best of all, a Gyp-Crete 2000 crew can apply up to 30,000 square feet per day at a fraction of the cost of other cementitious underlayments.

ACOUSTICAL FLOORS OF WISCONSIN, INC.
675 Industrial Ct., Suite C • Hartland, WI 53029
Telephone (414) 367-3306



Project

Architect

General Contractor

Location

Atwater Park Restroom Facility

Earll Design, Inc.

Giorgi Construction, Inc.

Shorewood, Wisconsin



The scope of the project was to provide toilet facilities, an observation deck, stairway to the beach and improve an existing switch-back trail for pedestrian and emergency vehicle access.

The location of the new facility at the top of the bluff, as opposed to at the beach level, was due to the increasing

water level of Lake Michigan. Also, the new facility serves both the upper level park, as well as, the beach.

The observation deck will permit an overview of the bluff and panoramic view of Lake Michigan.

Photography: Eric Schilder



Creating new Images?

Vondra

Interior Sign Systems

Manufactured on site & displayed
for your convenience.
Custom sign ideas welcome.
Since 1958.

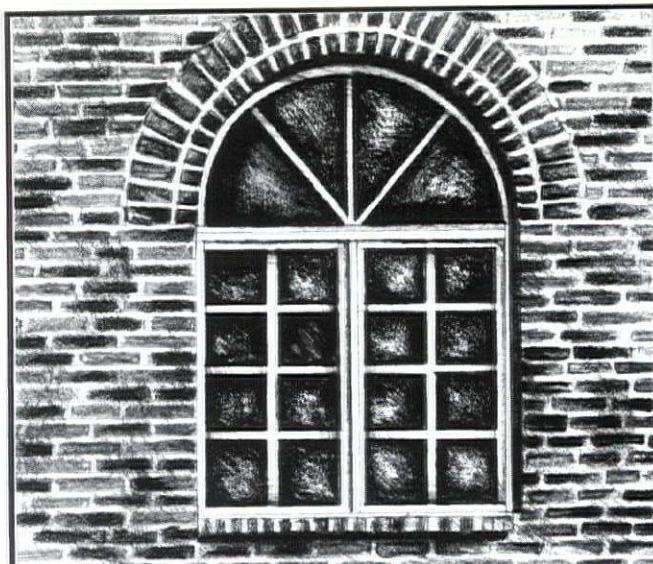
(608) 271-4804



Vondra
ENGRAVING
INC.

Member: NAPE
National
Association
Professional
Engravers

1128 Stewart St., Madison, WI 53713



Pella.

**The significant difference
in windows and doors.**

Custom built windows, doors and skylights
to your specifications.

Verhalen, Inc.

| | |
|-----------|--------------|
| Green Bay | 800-242-1008 |
| Madison | 800-362-6601 |
| Mequon | 800-433-1335 |
| Milwaukee | 800-242-6212 |
| Oshkosh | 800-231-7450 |
| Racine | 800-472-8686 |

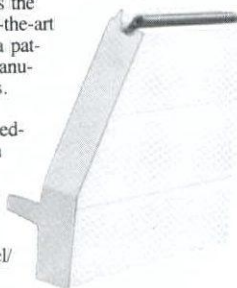
Thermospan: a concept whose time has come.



- **Thermal break** separates inner and outer skins so virtually no heat or cold is conducted through section.
- **Prepainted inner and outer skins** for added corrosion-resistance.
- **Solid polyurethane core** (with a density of 2.4 lb/ft³) provides maximum thermal efficiency and adds to quiet operation and strength.

The inside story.

Thermospan is the result of state-of-the-art technology and a patented, proven manufacturing process. Polyurethane is continuous foamed-in-place between the inner and outer steel skins to form a homogenous sandwich of steel/polyurethane/steel. This manufacturing technique produces outstanding thermal, strength and bonding characteristics. Close inspection shows that every part of the finished composite is completely filled with polyurethane—including the two integral horizontal ribs of each section.



- **Embossed pinstripping** (grooves) on outer skin adds strength and enhances appearance.
- **Two 1-3/4" roll-formed struts** per section add rigidity and strength.
- **Two-inch nominal thickness.**
- **Joint seal** prevents air infiltration and saves energy.

20520 Enterprise Avenue, Brookfield, Wisconsin 53005 414/784-4250

GEIS
BUILDING PRODUCTS

Project

Architect

General Contractor

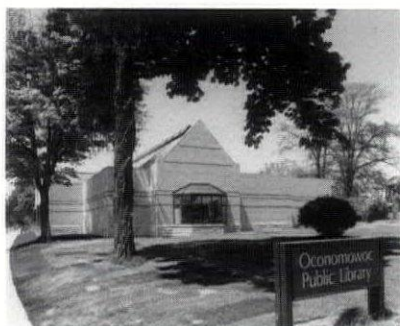
Location

Oconomowoc Public Library

The Durrant Group, Inc.

Peter Schwabe, Inc.

Oconomowoc, Wisconsin



The newly completed Oconomowoc Public Library is happily situated in a transitional area between a residential area and the downtown, municipal district. Both the site and the building design — chosen to blend together these two distinct neighborhoods — make the library an inviting gathering place.

The goal of the exterior design was to be compatible with the other municipal buildings in the area. The stone base, the color and pattern of the

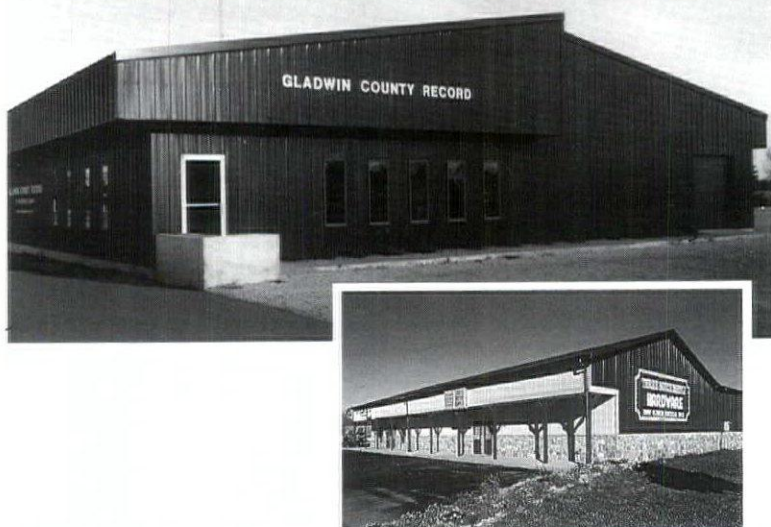
brick, and the repetitive gables all reflect the design of the restored City Hall and Police Station, which is on the National Register of Historic Places.

Another link between the new facility and its environs is the city's distinctive red and gray brick walkway, which extends from the downtown area, past City Hall, to the Public Library.

Photography: Scott Weidemann



Wick Builds Your Success



Newspaper publishers, hardware store owners and hundreds of other successful business people have discovered that Wick can answer their new building needs.

Since no one knows your business better than you, we listen to you first. Then we help plan a building to meet your needs best, including the most efficient layout to save you time and labor every day. We can also incorporate energy-saving features to keep monthly operating costs low. Finally, such details as doors, windows and finishes are matched to your needs and preferences.

We know the building business. Thirty years of experience and the Wick system for post-frame construction ensure that you get a quality building without expensive delays. You also save 20-40% over other construction methods.

To obtain a copy of our new commercial buildings brochure, contact your nearest Wick dealer, or call toll free at 1 800 356-9682. In Wisconsin, call 1 800 362-5457. Do it today.



Wick Buildings®

A product of Wick Building Systems, Inc.
Mazomanie, WI 53560

WSA FALL WORKSHOP

Friday, October 9, 1987
Embassy Suites Hotel
Green Bay, Wisconsin

Call WSA office for details:
608-257-8477
1-800-ARCHITECT

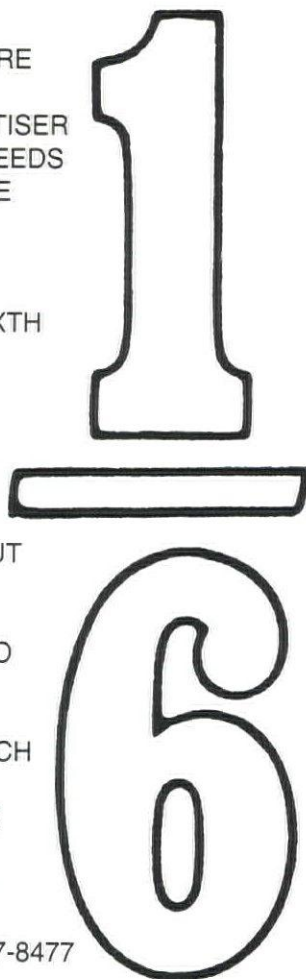
PBBS EQUIPMENT CORPORATION

5401 N. Park Dr.
Butler, WI 53007

24 HOUR. Radio Dispatch Truck Fleet for INDUSTRY, INSTITUTIONS, SCHOOLS, etc. AUTHORIZED PARTS & SERVICE FOR CLEAVER — BROOKS, CLEVELAND CONTROLS, MORR CONTROLS CO. Throughout Wisconsin & Upper Michigan. SALES, BOILER ROOM ACCESSORIES, O² Trims, And-Car Automatic Bottom Blowdown Systems. SERVICE - CLEANING ON ALL MAKES. Complete Mobile Boiler Room Rentals.

| | |
|--------------------|---------------|
| MILWAUKEE | (414)781-9620 |
| MADISON | (608)249-6604 |
| GREEN BAY | (414)494-3675 |
| STEVENS POINT | (715)344-7310 |

IF YOU'RE
AN
ADVERTISER
WHO NEEDS
A LITTLE
SPACE
LIKE
THIS
ONE-SIXTH
PAGE,
CALL
OUR
OFFICE
TODAY.
YOU'LL
FIND OUT
YOU
DON'T
HAVE TO
SPEND
A LOT
TO REACH
THE
PEOPLE
WHO
DESIGN
A LOT.
(608) 257-8477



Project

Architect

Contractor

Location

DNR Ranger Station

G. W. Kortness Associates, Inc.

Buchholtz Construction

Spooner, Wisconsin

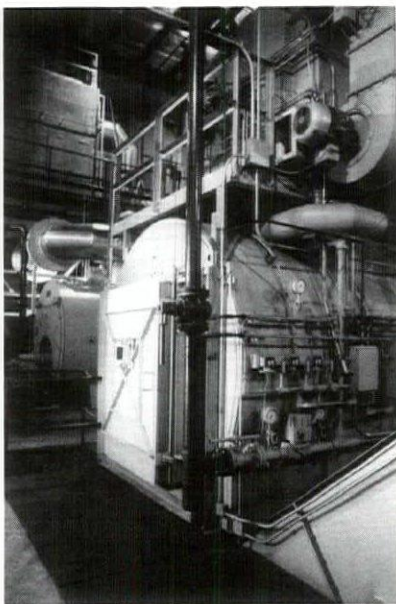
In June of 1986 the State of Wisconsin Department of Natural Resources moved into a new Ranger Station along Highway 70 in Spooner, Wisconsin. The new 3,000 sq. ft. facility houses the offices of wildlife management, fish management, fire control and law enforcement. This new facility replaced the original ranger station built in the 1920's.

The one-story structure rests on a landscaped site within a maturing pine plantation. The main entrance faces

south, is enclosed with glass, and opens directly into the reception/lobby featuring a high ceiling paneled with cedar. The wood framed building has a pitched roof, asphalt shingles, cedar siding, quarry tile and carpeted floors, vinyl covered gypsumboard walls, suspended ceilings, and is very well insulated. The entire floor area is accessible to the handicapped with the exception of the full basement which is used for storage and mechanical equipment.

Photography: G. W. Kortness Assoc.



Four Hospital Incinerator Facility**Strang Partners, Inc.****Joe Daniels Construction****Madison, Wisconsin**

This project made it quite clear that the use of high-tech, multi-chambered incinerators is one of the few feasible options to cure disposal problems presented by infectious, solid, and other hazardous wastes.

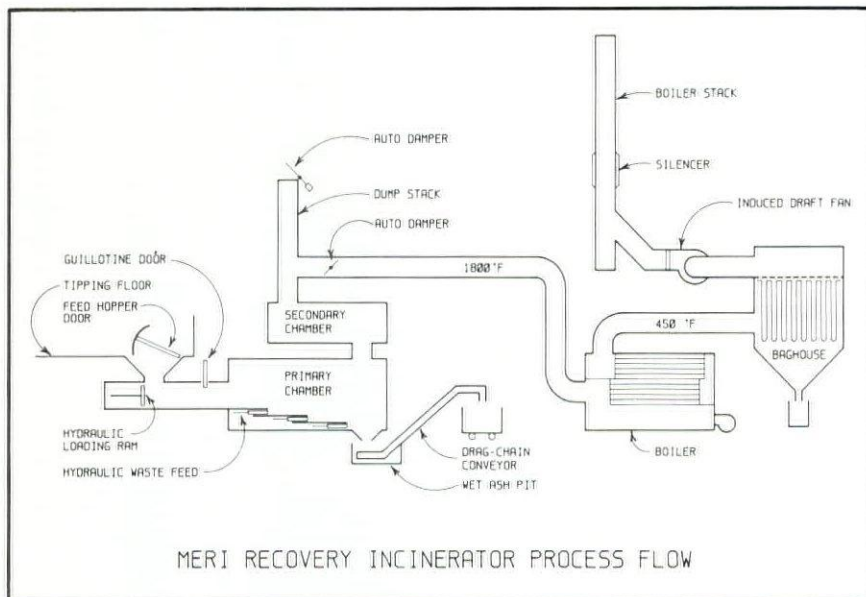
In late 1984 Strang Partners, Inc. was commissioned by Madison Energy Recovery, Inc. (MERI) to design and construct an energy recovery incinerator facility. MERI was formed to find an economical solution to the infectious and solid waste disposal problem of four hospitals in the City of Madison.

The original study provided the data to determine equipment capacity requirements along with the potential fuel energy contents of the combined waste.

The resulting incinerator enclosure includes a tipping floor containing storage area for 32 tons (200 cubic yards) all waste in addition to an area for contaminated (infectious) waste cart storage. Other areas include a centrally-located office, cart wash area, maintenance shop, toilet facilities and space for a standby incinerator.

The actual weekly consumption of total waste averages 100,000 pounds with approximately 22,000 pounds of red bag (infectious) waste. MERI sells about 160,000 pounds of steam to the laundry per week.

Photography: Charles McEniry



Ad Reprints Available From Wisconsin Architect

*Doing A
Trade Show?*

*Considering A
Direct Mail
Campaign?*

We will reprint your ad
on our magazine paper
stock in the quantities
you need.

For more information contact:
Nancy Baxter
Advertising Sales Manager
608/257-8477

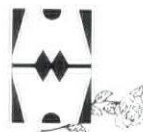


MARVIN LETS YOU REPRODUCE THE ORIGINAL WINDOWS. NOT MERELY REPLACE THEM.

In the age of standardization and cookie cutter, mass production techniques, Marvin Windows are virtually in a class by themselves.

Windows have undergone a lot of changes in the last century. Not all of them for the better. Many manufacturers have substituted snap-in plastic grids for authentic divided lites. And many of the ornate, old styles have been abandoned for simpler, more easily mass produced windows.

In some ways, Marvin Windows are 100 years behind the times. Marvin is the only major brand that can offer you affordable reproductions of an old building's original windows, so its historical value can be preserved.



There is no equal.

12030 W. Silver Spring Rd.
Milwaukee, WI 53225
(414) 464-8550
(800) 792-3504, Ext. 329

AMERICA BY DESIGN

AMERICA BY DESIGN, tells the story of the people and events that shaped America's houses, workplaces, streets, public places and monuments, and the land itself.

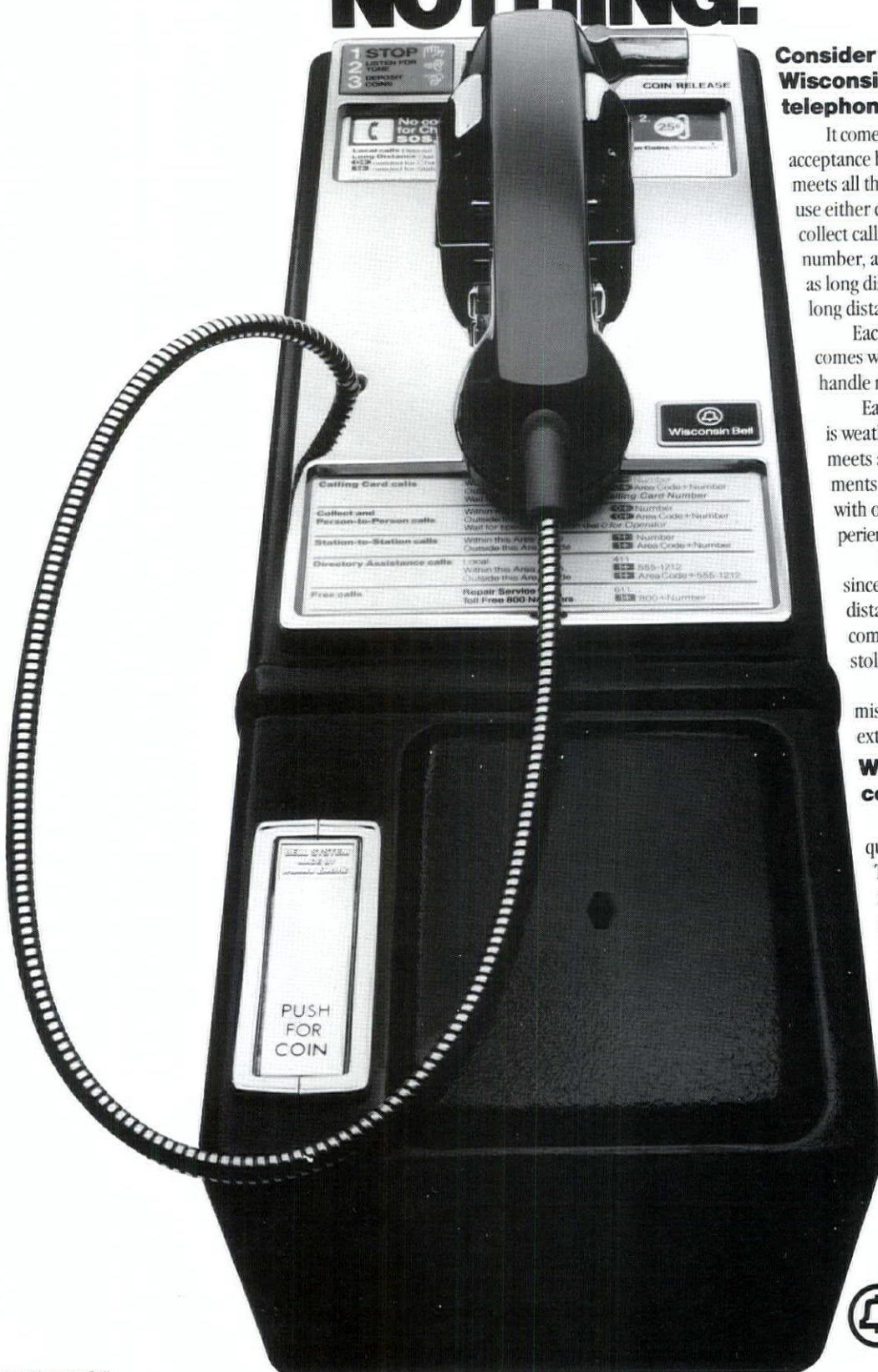
Hosted by noted architectural historian and author, Spiro Kostof, this five-part public television series captures the epic of the way America looks and works.

Presented on PBS by WTTW/Chicago.

Mondays at 7 P.M. Begins September 28 on your Public Broadcasting Station.

Check Local Listings for Exact Date and Time In Your Area

IT COMES WITH EVERYTHING AND COSTS YOU NOTHING.



Consider what each Wisconsin Bell public telephone comes with.

It comes with customer and employee acceptance because, quite simply, it meets all their calling needs. They can use either coins or Calling Cards, make collect calls and bill calls to a third number, and make local calls, as well as long distance calls through many long distance companies.

Each Wisconsin Bell telephone comes with trained technicians to handle maintenance and repair.

Each comes in heavy-gauge steel, is weather and vandal resistant, and meets all federal and state requirements for the disabled. Each comes with our unmatched 100 years' experience in public communications.

Each comes headache-free, since we handle fraudulent long distance calls, refunds, customer complaints, slugs, vandalism and stolen sets.

And each comes with commissions, a valuable source of extra income for your business.

What does all this cost you?

Nothing, if your business qualifies for a public telephone. There's no installation fee, no initial purchase investment, no ongoing financial commitment, no maintenance and repair expense, and no charge for outdoor enclosures.

Call your Wisconsin Bell Public Communications consultant today. Offer your customers and employees the public telephone service they appreciate.

1-393-2772
(TOLL-FREE)*

*Toll-free only when dialed from residence, business or public telephone numbers served by Wisconsin Bell.



Wisconsin Bell
AN AMERITECH COMPANY

Helping you communicate.

Project

Architect

General Contractor

Location

Fairview Recreation Center
Heike/Design Associates Inc.
Gerald Nell, Inc.
West Allis, Wisconsin



In September 1984, the original Fairview Center in West Allis was seriously damaged by fire. Alternatives investigated ranged from doing nothing to building additional property and expanding the programs at Fairview. It was concluded that building a new facility on the existing site was the best solution.

The new \$600,000 field house, which opened in October, 1986, includes offices for the West Allis-West Milwaukee Recreation Department. It also has multipurpose rooms for classes, public meetings and games such as ping pong or pool; a kitchen to service that space; bathrooms which can be accessed from the inside, outside or both; and the unique "Survive

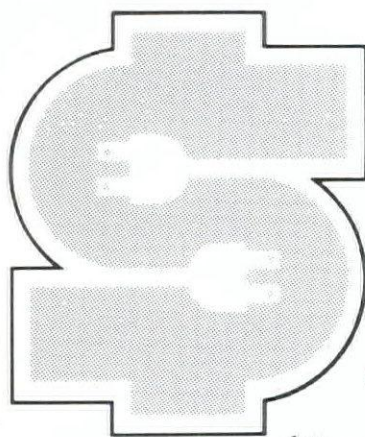
Alive" house. Survive Alive is a concept which enables school groups, as well as adults, to learn about and practice fire escape techniques and safety under conditions that simulate a real fire.

The building is designed to be utilitarian, durable, and maintenance free. It has few windows to avoid vandalism. A two-tone brick exterior was used with terra cotta color horizontal bands projecting from a background of cream color brick. A gabled roof style blends within the residential neighborhood context.

Photography: Richard Blommer



Give your clients more than they asked for.



Wisconsin Electric's Smart Money Energy Program can help you save your clients energy and money. That's good for them—and it's good for your client relationship.

We can provide financial incentives like interest-free loans to help pay for certain energy efficiency improvements. Standard rebates on specific energy-efficient products. Even customized rebates to help you design your own conservation programs. We can analyze the cost-effectiveness of

investing in proven efficiency measures, based on your client's needs and budget.

And we can keep you up-to-date with all the latest news from the rapidly evolving field of energy management.

For more information, call your local Wisconsin Electric district office or (414) 221-4900. We'll help your clients save energy and money. And that makes you look good.

Now *that's* Smart Money.



**Wisconsin
Electric**
POWER COMPANY

Smart Money Energy Program

Available to Wisconsin Electric customers only. Other restrictions may apply.

Wastewater Treatment Plant**Foth & Van Dyke****Champion, Inc.****Ishpeming, Michigan**

The five buildings at the wastewater treatment plant in Ishpeming, Michigan, were designed with an eye for aesthetics, economy and efficiency.

A single 10,500-square-foot building houses offices and service areas. Exterior walls and roof structure are precast concrete and the roof is metal with batten seams. A clerestory window across the building's southern face pulls natural light into the interior and provides passive solar heating. A continuous, unpenetrated prestressed concrete wall separates the administrative area from the service area containing process equipment. A glass window allows viewing operations.

Placing offices and services in one building saves operating and heating costs, especially important where winters are long and cold.

A tunnel/pipe galley leads from the service building to the three-story, 52,000-square-foot treatment module, which is earth sheltered and extends two stories underground. Its modular concept allowed using common walls, saving considerable construction costs.

The plant also includes two 1,620-square-foot blower buildings designed to match the service building, a 3,600-square-foot garage and a 5,000-square-foot sludge storage building.

Photography: John Shibley





MAJOR DISTRIBUTORS OF CONSTRUCTION MATERIALS

SEALANTS & WATERPROOFING

Tremco • G.E. Silicone • Chemstop Waterproofing

ARCHITECTURAL PANELS

Weyerhaeuser Panel 15 • Masonite Flame Test •
Stonecast • Granex • Synergy Wall Systems •
Manville Architectural Panels • Petrarch

EXTRUDED ALUMINUM MOLDING

Mill Finished • Custom Painted and Anodized

MARVIN MAGNUM SERIES

Commercial Design Windows for New Construction •
Retrofit • Historic Preservation

2045 Bellevue St.
Green Bay, WI 54305
(414) 568-8566

12030 W. Silver Spring Rd.
Milwaukee, WI 53225
(414) 464-8550

(800) 792-3504 • Ext. 391

There is no equal.

LA FORCE

A TRADITION OF QUALITY



Whatever you can design . . .
we are the people who can supply it!

- HOLLOW METAL DOORS & FRAMES
- BUILDERS HARDWARE
- WOOD DOORS
- TOILET PARTITIONS
- TOILET ACCESSORIES
- BUILDING SPECIALTIES

Let us be the source for your needs.

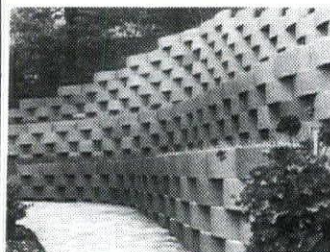
LA FORCE

Hardware & Manufacturing Co.
1060 W. Mason St., Green Bay, WI 54303
(414) 497-7100

THE REPUTATION YOU CAN BUILD ON

ROCKWOOD

RETAINING WALLS



Patios • Planters • Sidewalks



*Natural
Beautiful
Economical
Easy to Install*

*Contact us
today!*

RSI Industries, Inc.
7200 N. Hwy 63
Rochester, MN 55904
507-288-8211
1-800-228-7456

Enhance with Tile From Butler Tile Sales



Ostara floor tile and Incepa wall tile. A delightful duet from INCERCO. Perfect harmony of appearance, line after line. Solids, murals, mosaics, motifs - all in a medley of colors and sizes. Beautifully in tune with most other tiles, too.

High quality. Easy to clean. There are also Ostara "step-safety" designs for the bath, the kitchen, the poolside — wherever wet surfaces could be a hazard.

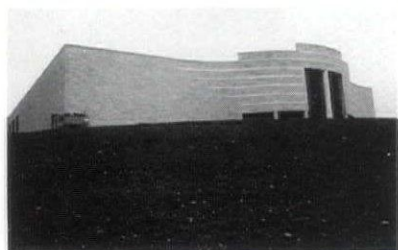
Tile of Distinction Ceramic Tile Showroom

• Serving Wisconsin builders, architects, and interior designers for 35 years • Hundreds of samples on display • Experienced design consultants available to assist you • Fast delivery of hundreds of different tiles from our warehouse

746 N. 109th St., Milwaukee, WI 53226 • 414-476-0970

Project
Architect
General Contractor
Location

Southview Hall - Waukesha Center
Heike/Design Associates Inc.
Selzer-Ornst Co.
Waukesha, Wisconsin

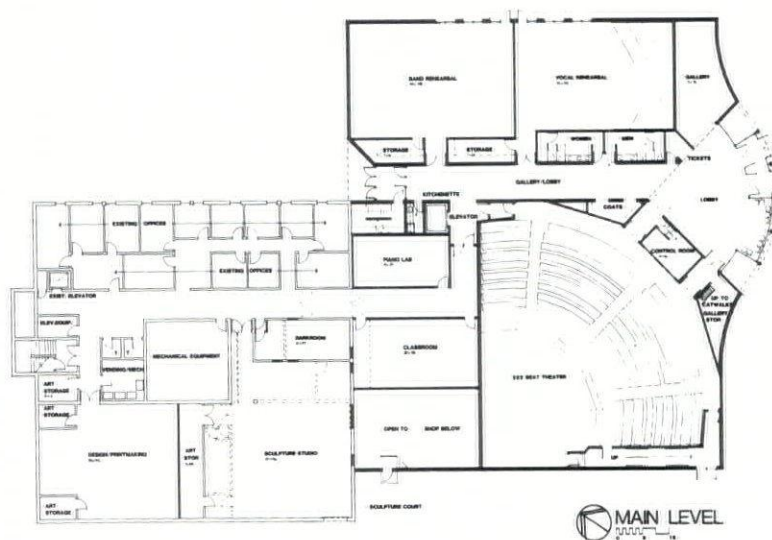


The campus, located on a hilltop overlooking the City of Waukesha to the east, is highly visible as visitors approach from Highway 18. The new building design contributes significantly to the low scale utilitarian campus architecture. Its gently curved, cream color brick front facade suggests entertainment and playfulness. As the new main entrance to a complete campus circulation corridor, the building also enables greater exposure to the fine arts for campus visitors and students.

Focusing on good acoustics, durability, circulation, ventilation, and interior organization to create an optimum teaching environment was the first goal.

A new 350-seat performance theater will house music and drama programs as well as large lectures with accommodations for sophisticated audiovisual presentations. A performance stage with sceneshop, makeup, dressing, costume, and property rooms are part of the program. The glass enclosed theater lobby will function as an art gallery for flat art while a separate gallery space off the lobby will be used to show two and three dimensional work.

Photography: Randel Steele



All a-twitter



McKay landscape designs capture shadows under shady trees. Make paths for streaks of sunshine. Shrubs bring bursts of color. Air is filled with fragrances and birds pause to present an evensong. Keep yards a-twitter!

Plan before you plant and add value to your home. It costs no more for the professional — McKay, with 1200 acres of guaranteed nursery stock. Call now and spring into summer.



MAIN OFFICE — NURSERIES WATERLOO, WI 414/478-2121
SEE YOUR YELLOW PAGES FOR LOCAL REPRESENTATIVE

Ad Reprints Available From Wisconsin Architect

*Doing A
Trade Show?*

*Considering A
Direct Mail
Campaign?*

We will reprint your ad on our magazine paper stock in the quantities you need.

For more information contact:
Nancy Baxter
Advertising Sales Manager
608/257-8477

Coming up in

Wisconsin Architect

November: Cultural features
Libraries, Churches, Museums
Deadline: October 1, 1987

December: Rehabilitation
Deadline: November 1, 1987

Contact: Nancy Baxter, 608-257-8477

There are differences between roof windows and skylights.



Roof Windows



Skylights

Both VELUX® roof windows and skylights can make an important contribution to the beauty of your home. Both bring in warming solar energy and provide a dramatic and exciting feeling of openness and light. Both create imaginative new solutions to adding rooms and saving money. Both are surprisingly affordable, especially when you consider all their benefits.

The differences are straightforward. A roof window opens and pivots so both glass surfaces can be cleaned from inside. A skylight does not pivot for cleaning. Roof windows are ideal in easy to reach applications. Skylights are an excellent choice for overhead applications. All VELUX models have optional sunscreening accessories which are easy to operate with simple manual or remote controls.



There are other facts about VELUX roof windows and skylights which are even more important to you—their quality construction will provide performance and satisfaction for years to come. Only VELUX roof windows and skylights will make the reality of a light-filled home as wonderful as the dream. They're designed for problem-free reliability, backed by our record of customer recommendation and repeat business. You'll never regret the day you chose VELUX roof windows or skylights to increase the value and livability of your home.

See all the possibilities for yourself. Send for our FREE 28 page color brochure, pricing information and a list of VELUX dealers in your area.

VELUX®

The world leader
in roof windows and skylights.

©1987 VELUX-AMERICA INC.
® VELUX is a Registered Trademark.

Sales, Warehousing and Service Nationwide

Mail this coupon. We'll send you a free copy of "The Complete Guide to Roof Windows and Skylights," and a price list within 24 hours.

VELUX-AMERICA INC. 1-800-942-7828 (in IL)
2501 Allan Drive 1-800-323-8336 (outside IL)
Elk Grove Village, IL 60007

FREE 28 page full color brochure

Name _____

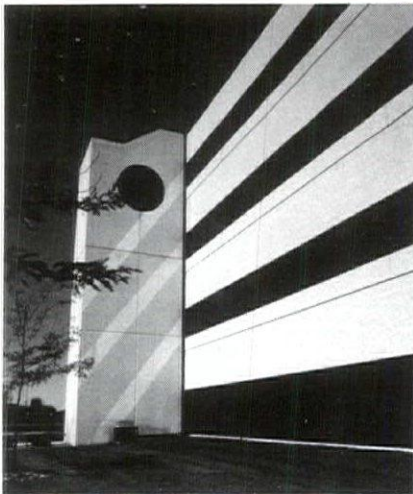
Address _____

City/State/Zip _____



3WA987

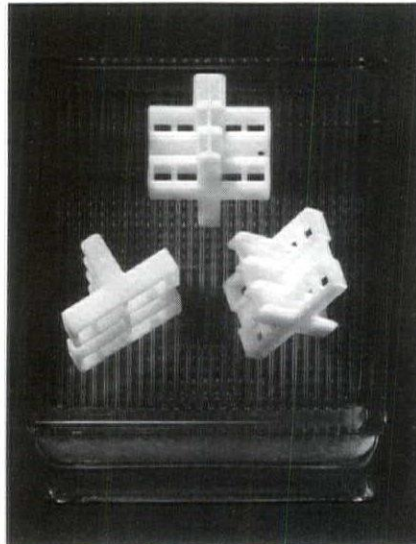
Marketplace



Total-frame precast/prestressed concrete office buildings from J.W. Peters leave the architect completely free to design interior spaces in any dimension necessary. Office space can be dimensioned to the specific requirements of tenants, without the hindrance of predetermined bay spaces.

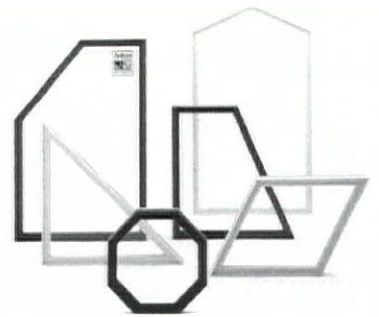
Fabrication of the precast/prestressed concrete components can begin even as site preparation commences. That means weeks of construction time saved — a savings that can mean drastically reduced financing costs. And the sooner the building is completed, the sooner the developer can begin to enjoy a return on his investment.

Contact J.W. Peters & Sons, Inc., P.O. Box 160, Burlington, WI 53105. Phone 414/763-2401.



The Accu-Speed Glass Block Connector, constructed of Hi-density Polyethylene, are shaped like plus signs (+) for maximum strength and accuracy. In addition, they insure uniform alignment and spacing of the blocks, while imparting structural rigidity and reinforcement. They are available in three configurations: Straight, Tapered (for curved panels), and Jamb.

For more information, contact: Mayer Equity, Inc., 1015 Cedar Lane, Woodmere, New York 11598, (516) 374-3861 or (516) 374-0336.



Andersen Corp., the nation's largest manufacturer of windows and patio doors, have added three new shapes — the angled pentoid, peak pentagon and octagon — to their Flexiframe® window product line. These, along with squares, rectangles, right angle triangles and trapezoids, will now be assembled in-house with Andersen's advanced high-performance glazings.

Flexiframe® meets the building industry's most stringent, "AAMA 605" specifications for organic coatings on architectural extrusions; criteria includes corrosion, outdoor weathering, and chemical testing. No other vinyl clad window manufacturer has products that meet these standards.

For more information contact the Radford Company, Oshkosh 414-321-4880, La Crosse 608-781-2280, Madison 608-222-8240.

ADVERTISER'S INDEX

| | |
|--|--------|
| Acoustical Floors of Wis., Inc. . . . | 30 |
| A.K. Seamless Systems, Inc. . . . | 26 |
| Arnold & O'Sheridan, Inc. . . . | 47 |
| Auer Steel & Heating Supply Co. . . | 2 |
| Automatic Temperature Supplies | Insert |
| Baker Mfg. Co. | Insert |
| John Buhler Co. | 18 |
| Builders World | 30 |
| Butler Tile Sales | 42 |
| The Cheney Co. | 14 |
| Diggers' Hotline | 24 |
| Dolan & Dustin, Inc. | 47 |
| Geis Building Systems, Inc. . . . | 32 |
| Graef, Anhalt, Schloemer Assoc., Inc. | 47 |
| HK Engineering, Inc. | 47 |
| Holand & Kurtz, Inc. | 47 |
| HSA Contractors, Inc. | 10 |
| Insulation Removal, Inc. | 20 |
| Jerry's Cabinets & Supplies, Inc. . | 47 |

| | |
|---|------------|
| Kerscher Metal Service Co. | 2 |
| Klipstein Insurance Services | 28 |
| Kohler Co. | Insert |
| LaForce Hdw. & Mfg. Co. | 42 |
| Landscape Forms | 24 |
| Lange Bros. Woodwork Co., Inc. . | 18 |
| McKay Nursery | 44 |
| McLauke Plumbing & Htg. Supply | Insert |
| Monroe Equipment, Inc. | 6 |
| Murphy Supply Co. | Insert |
| Nielsen Building Systems, Inc. . . | 8 |
| Omni Paint & Glass, Inc. | Insert |
| Eric Oxendorf Photography | 22 |
| W.S. Patterson Co. | Insert |
| PBBS Equipment Corp. | 34 |
| J.W. Peters & Sons, Inc. | Back Cover |
| Photocopy, Inc. | 47 |
| E. J. Purcell | 28 |
| Steve Quinn Design | 26 |
| RSI Industries | 42 |

| | |
|---|------------|
| S & S Sales Corp. | 13, 37, 42 |
| Stickler & Associates- Sloan Valve | 4 |
| STS Consultants, Ltd. | 47 |
| Stubenrauch Associates | 47 |
| Temperature Systems, Inc. | 2 |
| United Brick & Block | 47 |
| United Plumbing & Htg. Supply | Insert |
| Velux-America, Inc. | 45 |
| Ver Halen, Inc. | 32 |
| Vondra Engraving | 32 |
| Weather-Tek Building Supplies . | 14 |
| Wick Buildings | 34 |
| Wis. Concrete & Products Assn. . | 28 |
| Wisconsin Bell | 38 |
| Wisconsin Blue Flame Council . | 2 & 6 |
| Wisconsin Brick & Block Corp. . | 30 |
| Wisconsin Electric Co. | 40 |
| Wisconsin Solar Design | 26 |
| Wisconsin Testing Laboratories . | 47 |

This index is published at no cost to advertisers, as a service to readers of WISCONSIN ARCHITECT. Publisher assumes no responsibility for errors or omissions. When writing to advertisers, tell them you saw their message in WISCONSIN ARCHITECT. They want to know.

PROFESSIONAL SERVICE DIRECTORY



Consulting Engineers

- Subsurface Exploration
- Foundation Analysis
- Ground Improvement
- Construction Monitoring

STS Consultants Ltd.

Green Bay, WI (414) 494-9656 • Milwaukee, WI (414) 354-1100



TESTING LABORATORIES

Geotechnical Engineers

Soil Borings

Materials Testing & Inspection

Menomonee Falls, WI 53051 • (414) 252-3300



DOLAN & DUSTIN, INC.

CONSULTING ENGINEERS

2266 N. PROSPECT AVENUE MILWAUKEE, WIS 53202
(414) 276-5502

Electrical Power - Primary & Secondary Distribution
Lighting Design • Security & Communications Systems
Grounding • Emergency Generation • Uninterruptible Power

George E. Dolan, PE
Gerald E. Braun, PE
Charles M. Mullikin, PE

Roger A. Nass, PE
Arthur L. Miller, PE
Richard Gumpert, PE



CONSULTING ENGINEERS

ENGINEERS INC.

- HVAC
- Electrical
- Plumbing
- Energy Management
- Fire Protection
- Construction Management

3240 University Avenue
Madison, WI 53705

608-233-3979



CONSULTING ENGINEERS

ASSOCIATES INC.

345 N. 95th St., Milwaukee, Wisconsin 53226 414-259-1500
Little Chute, WI



ARNOLD AND O'SHERIDAN, INC.
CONSULTING ENGINEERS

Structural Electrical
Mechanical Civil

608 • 271 • 9651
815 FORWARD DRIVE MADISON, WI 53711
414 • 461 • 9040
3720 N. 124TH MILWAUKEE, WI 53222

Holland & Kurtz INC.



Consulting Engineers

HEATING • VENTILATION • AIR CONDITIONING
PLUMBING • FIRE PROTECTION

6619 W. Capitol Drive • Milwaukee, Wisconsin 53216
(414) 463-1600

ARCHITECTURAL

Position with production responsibilities. Professional degree, registration and three years related experience. Send resume to HSR Associates, Inc., Attn: Jim Gersich, 100 Milwaukee Street, La Crosse, Wisconsin 54602-0129. An equal opportunity/affirmative action employer.

*Black & White Murals *8x10 Glossy Repros
*We Reproduce Blueprints or Masters For
Making Blueprints

PHOTOCOPY

104 East Mason St. Milwaukee Wisconsin 53202

For Service ...

CALL: 1-(414)-272-1255

We at United Brick invite you to stop in and see our newly remodeled showroom with a complete selection of:

Face Brick in many colors & textures

- Thin Brick-Thin Stone
- Patio Brick
- Chimney Block-Cement Block

Superior Zero Clearance Fireplaces

Ceramic Wall-Floor Tile

- 1x1-24x24
- Grouts by H.B. Fuller
- Marble-Granite-Porcelain
- Quarry Tile



brick & block, inc.

5402 Lien Rd. Madison, WI
608-241-3844

JERRY'S

Cabinets and Supplies, Inc.

Architectural Millwork
Commercial & Institutional Casework

1735 Sal Street
P.O. Box 8237
Green Bay, Wisconsin 54308-8237
Phone: (414) 465-6764

THE STUBENRAUCH ASSOCIATES, INC.

ARCHITECTURE • ENGINEERING • PLANNING

- *NEW FACILITIES
- *REMODELING & RENOVATION
- *ENERGY STUDIES
- *FACILITY STUDIES



708 ERIE AVENUE, BOX 975 SHEBOYGAN, WI 53082-0975 (414) 458-3526
ADDITIONAL OFFICES LOCATED IN APPLETON, HAYWARD, RHINELANDER

Behind the Beauty...

...The economy, strength and durability of precast/prestressed concrete total-frame office buildings from J.W. Peters.

Dazzlingly beautiful exterior shapes and finishes accommodate any architectural vision. High-strength structural components allow almost unlimited freedom in the design of interior space.

Faster construction. Lower maintenance. Better fire ratings. Greater energy efficiency. All possible with precast concrete. All achieved by J.W. Peters.

VERSATILE, REPUTABLE, RELIABLE
JW PETERS
AND SONS, INC.

34212 West Market Street • Burlington, WI 53105 • (414) 763-2401
(312) 782-4691 (Chicago) • (414) 272-7222 (Milwaukee)

Owner:
Association Life Insurance Co.
Architect/Engineer:
Torke-Wirth-Pujara, Ltd.
General Contractor:
Inland Development Corp.