

The American Institute of Architects

# Wisconsin Architect

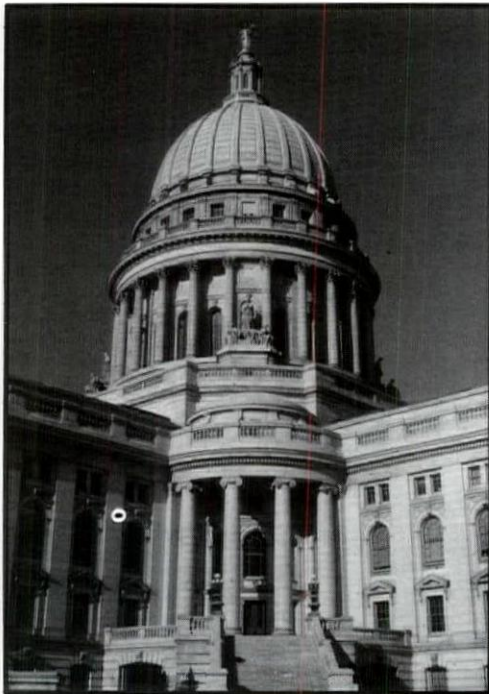


Legislative/State Capitol

January 1985



# **Monona** **MASONRY INC.**



**Wisconsin  
State  
Capital,  
Madison, WI**

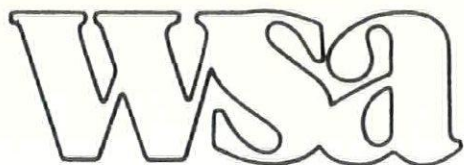
**U.S. Courts Building, Madison, WI**



"We are pleased to have participated in the Wisconsin State Capitol Renovation and U.S. Courts Building, Madison, WI projects by supplying granite, glass block, mortar and masonry.

completely bondable  
brick ● stone ● block ● fireplaces  
commercial ● residential ● industrial

**4290 Hoepker Rd. ● Madison ● 53704 ● 608/249-7686**



## WISCONSIN ARCHITECT

**Board of Directors:** Harry Schroeder, *President*; Jim Miller, *Vice President*; Robert Cooper, *Secretary/Treasurer*; Fred Zimmerman, *Past President*; Dan Murrish, Madison; Joe Powelka, Madison; Bob Shipley, Madison; Jim Otto, Milwaukee; Michael Ciofani, Milwaukee; Martin Choren, Milwaukee; Pat Frost, Milwaukee; Dennis D'Jock, Eau Claire; Val Schute, La Crosse; David Peterson, Eau Claire; Frank Carter, Green Bay; Curt Bigger, Appleton; James Larson, Oshkosh; Harry Schroeder, La Crosse; Wayne Spangler, Rice Lake; Frederick Jules, Milwaukee; Emma Macari, Madison; Dennis Olson, Appleton; Kenton Peters, Madison; Lisa Kimla, Elm Grove; Russ La Frombois, UW-M SARUP Rep.; Paul Kayser, MSOE Rep.; Eric Englund, Executive Director.

**Wisconsin Architects Foundation Board of Trustees:** 321 S. Hamilton St., Madison, WI 53703 — Phone 608/257-8477. Paul Bronson, *President*; Tom Nisbet, AIA, *Vice President*; Robert Beckley, AIA, *Secretary/Treasurer*; Richard Griffith, AIA; Paul Graven, FAIA; Emma Macari, AIA; Richard Blake, FAIA; John Jacoby, FAIA; Robert Kluth; Eric Englund, *Executive Director*.

**Wisconsin Society of Architects; A.I.A.:** 321 S. Hamilton St., Madison, WI 53703 — Phone 608/257-8477.

**North Central Region:** David Lawson, AIA, *Director*.

**Southwest Chapter Officers:** Danny Murrish, *President*; Joe Powelka, *Vice President/President Elect*; Robert Shipley, *Secretary/Treasurer*.

**Southeast Chapter Officers:** James Otto, *President*; Michael Ciofani, *Vice President/President Elect*; Martin Choren, *2nd Vice President*; Pat Frost, *Secretary/Treasurer*.

**Northeast Chapter Officers:** Frank Carter, *President*; Curtis Biggar, *Vice President/President Elect*; James Larson, *Secretary/Treasurer*.

**Northwest Chapter Officers:** Dennis D'Jock, *President*; Val Schute, *Vice President/President Elect*; David Peterson, *Secretary/Treasurer*.

**Wisconsin Architect Inc.:** *Board of Directors:* Harry Schroeder, AIA; Jim Miller, AIA; Bob Cooper, AIA; Fred Zimmermann, AIA.

**Wisconsin Architect Editorial Board:** Peter Schuyler, *Chairman*; Uel C. Ramey, Douglas Ryhn, Harry J. Wirth, AIA, Eric Englund. Times Printing Co., Random Lake, WI - Printer; Bob Arndt - Graphics. Nancy A. Baxter - Advertising Manager.

The Wisconsin Architect is the official publication of the Wisconsin Society of Architects/A.I.A., published by Wisconsin Architect, Inc. Address all editorial and advertising inquiries to: Editor, Wisconsin Architect, 321 S. Hamilton St., Madison, WI 53703; phone: 608/257-8477. The Wisconsin Architect and WSA disclaims liability for statements by the editors, contributors, and advertisers.

## TABLE OF CONTENTS

DILHR Wants You	5
Renovations At The State Capitol	7
Madison Federal Building	13
Society News	16



**COVER CREDIT:**  
Capitol Dome, Madison  
© Eric Oxendorf, Photographer





# PROFESSIONALISM...



Bachmann Construction Inc.

General Contractor  
Remodeling & Renovations  
4622 Fernite Dr.  
Madison, WI 53716  
608-222-8869



Ganer  
Roofing  
Systems

Roofing Contractor  
2616 Industrial Dr.  
Madison, WI 53713  
608-222-1243



Architectural Sheet Metal  
925 Applegate Rd.  
Madison, WI 53713  
608-273-1096



Skylight Manufacturer  
10301 N. Enterprise  
Mequon, WI 53092  
414-242-2000

## from start to finish



# DILHR WANTS YOU

by Eric Englund

Did you file a Completion Statement for your last project? How about every project completed since 1981?

DILHR rules require that all projects over 50,000 cu. ft. in which they have reviewed plans have a registered architect or engineer in responsible charge of construction. Those same rules require that the A-E file a completion statement at the end of the project at which time the A-E certifies to the best of his or her knowledge or belief that the project was done in substantial compliance with the plans and specifications submitted and approved by DILHR. (see ILHR 50.10)

DILHR has geared up its computer to enforce this requirement. In Jan-

uary, 1985 over 1,700 letters will be sent to A-E's requesting that Completion Statements be filed for projects approved by DILHR since 1981.

What happens if you don't file a Completion Statement for a completed project? DILHR has a process which will refer your name to the Department of Regulation and Licensing for investigation for failure to comply with the terms governing A-E registration in Wisconsin.

It is extremely important that Wisconsin architects understand that they do **not** have to file the form until the project is substantially completed.

It is also important to understand that DILHR will accept forms which

have been modified to list areas of exception.

The enforcement of this rule raises the larger question of the scope of the A-E's responsibility for the construction of projects.

The existing rule imposes some responsibility on the A-E in this area. Do architects want it? Can they get paid for it? Is the standard specific enough so that the architect knows what is expected by the state? Should the standard be changed? These and other questions are being studied by the WSA Legislative Committee. Any WSA member who has thoughts, comments, or suggestions regarding this standard should contact Eric at the WSA office.

## STOP WASTING ENERGY!

### Control POOL ROOM Humidity

**Finally!** A sensible way to control Pool Room Humidity while reducing operating costs.

#### DESERT AIRE DOES IT ALL!

- Reduces Operating Costs Up to 75%
- Controls Damaging Humidity while Heating Pool Room
- Saves Money
- Uses No Gas or Oil
- Models to Suit All Needs

**Don't throw Money Out the Window!**



#### DESERT AIRE CORP.

Dept. DA  
5633 W. Florist  
Milwaukee, WI 53218  
1-414-462-4143

## WISCONSIN BRICK & BLOCK CORPORATION

*Distributors of:*



**W. R. MEADOWS**

**SEALTIGHT**

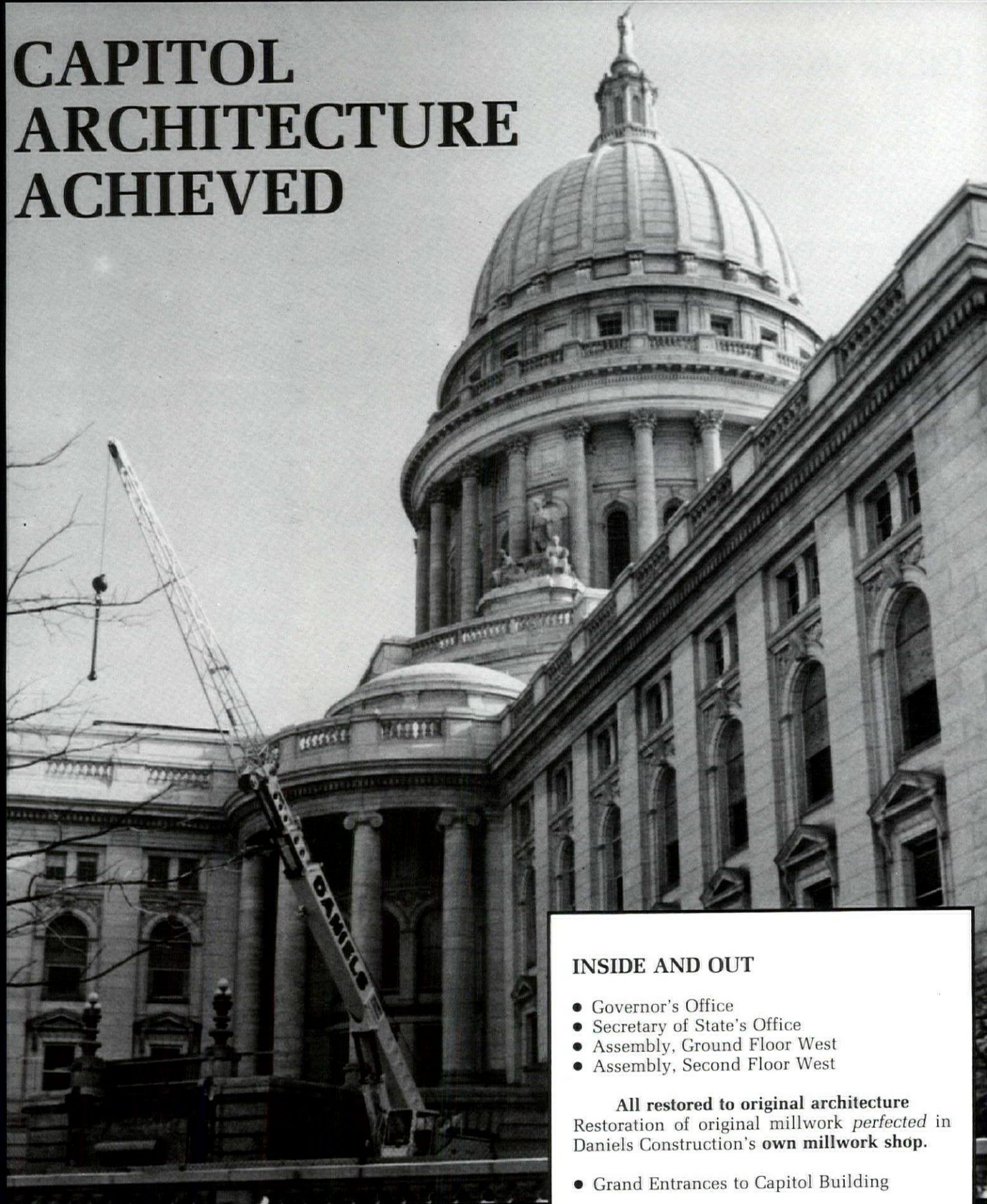
*Serving Southern Wisconsin Architectural Needs For 80 Years.*

**Brick — Block — Pavers — Stone**

**2840 UNIVERSITY AVENUE  
MADISON, WI 53705  
(608) 238-2636**



# CAPITOL ARCHITECTURE ACHIEVED



## INSIDE AND OUT

- Governor's Office
- Secretary of State's Office
- Assembly, Ground Floor West
- Assembly, Second Floor West

All restored to original architecture  
Restoration of original millwork *perfected* in  
Daniels Construction's **own millwork shop.**

- Grand Entrances to Capitol Building

The Achievers:

**JOE DANIELS CONSTRUCTION COMPANY, INC.**  
919 Applegate Rd., Madison, WI 53713 608-271-4800



# RENOVATIONS AT THE STATE CAPITOL

by Grace Stith

During this past summer a visitor from Kashmir was brought to Madison to visit our Wisconsin State Capitol. He is a world traveler and frequent visitor to Europe's great cathedrals. His host reported — "He was overwhelmed with the majesty of the Capitol, with the contrasting marbles from many countries, and the crescendo of arches rising high to the great dome." After the tour, the concluding commentary — "What a statement of political faith that building is! Such a building of the past enriches our present immeasurably."

This "statement of faith" on the part of the builders was evident when our Capitol was first built and is evident still as renovating work takes place in the 1980s. Fine materials deserve fine workmanship and fine craftsmanship is not just a thing of the past. Some of today's artisans can do work equal to the best craftsmanship of past generations.

Pride of workmanship rides high on all phases of the renovation work which has been going on for the past two years, according to the project manager. This is the first major work which the seventy year old building has required. Its high quality materials and original building supervision have kept its maintenance needs to a minimum.

Under the governorship of Lee Dreyfus it was determined that a complete renovation was necessary. Five million dollars was allotted toward such a project in 1982. Work began that same year with Fred Wegener as project manager.

The onslaught began with roof and windows. Leakage had caused many original skylights to be boarded up. Rotted and warped window frames allowed daylight to show between the meeting rails in some instances. Seventy winters of freezing and thawing took its toll on the ornamental stonework and exterior stairways. Their supporting steel was rusted through and was in need of complete replacement. wisconsin architect/january 1985



(Photo — James T. Potter, AIA)

The building is now protected by an all new roof — membrane roofing on all flat parts and copper on all gables and pitched sections. Existing skylights have all been replaced using insulated glass. This includes the glass barrel vaults (shown above) in each of the four wings which add necessary light to show off the splendor of the Capitol's interior.

Interior space in all the wings had been rearranged several times, requiring temporary partitions. Dropped ceilings of various kinds were added when fluorescent lighting was installed in the '50s and '60s as a "necessity for workers".

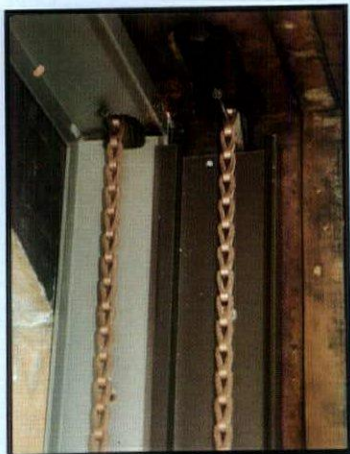
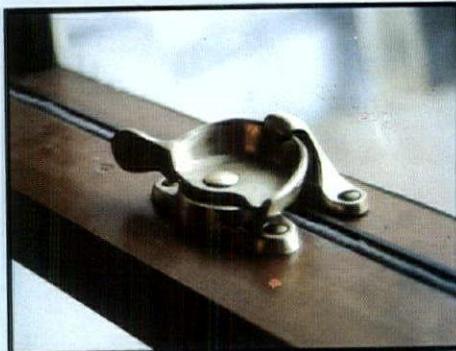
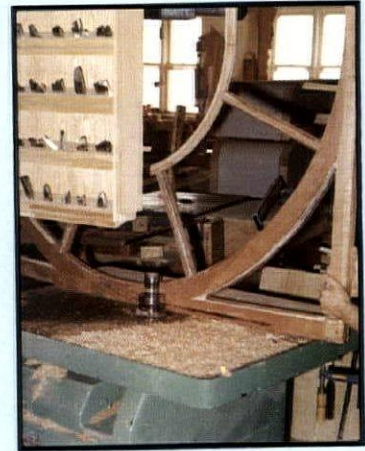
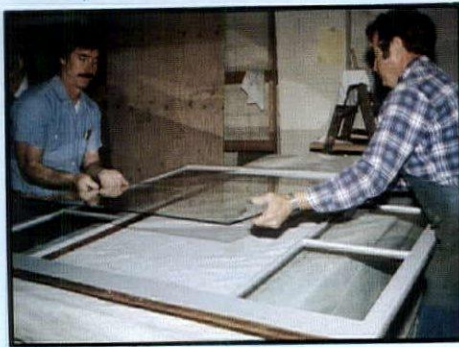
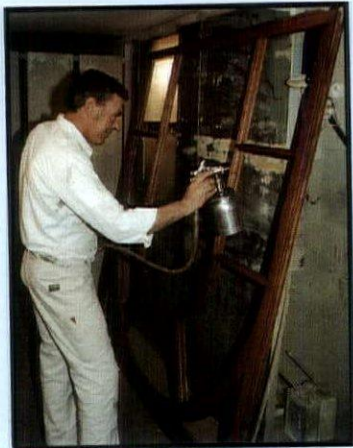
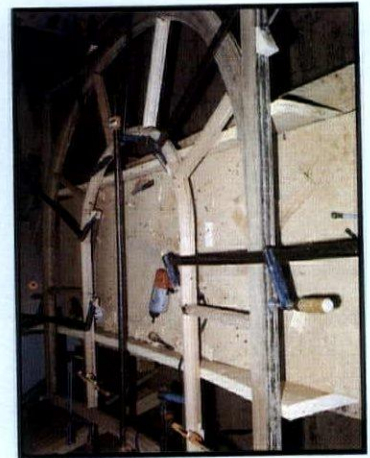
Renovation work will be an ongoing project, according to Wegener. But some of the completed details show that one of the nation's most

beautiful state capitols is being cared for in a manner appropriate to its architectural heritage.

The windows, more than 500, required two years to replace. Work began in 1982 with a five-step process for each one. Five to ten windows were removed at a time. All window frames and indoor trim are solid cherry. If diagnosis showed that a rail or muntin bar needed to be replaced, the window was sent



# AN OLD VIEW . . .



# THROUGH REVIVED WINDOWS!



Bachmann Construction Inc.

General Contractor  
Remodeling & Renovations  
4622 Femrite Dr.  
Madison, WI 53716  
608-222-8869



Klein-Dickert  
Company, Inc.

Refinishing, Painting &  
Glazing Contractor  
1124 Regent St.  
Madison, WI 53715  
608-257-9231



LANGE BROS. WOODWORK CO., INC.

Manufacturers of and Dealers in  
Sash, Doors, Mouldings, Stairs  
and Cabinets  
3920 W. Douglas Road  
Milwaukee, WI 53209  
414-466-2226

## . . . Capital Window Renovation Project.

wisconsin architect/january 1985



to a millwork shop where each piece was custom cut to the same configuration as the original, again using cherry. The window was then reconstructed using a new type of weather stripping. It is an extruded aluminum stripping run through a die, like squeezing toothpaste through a tube. The windows, stripped and refinished by Klein-Dickert, were caulked and reinstalled after each sill was repainted.

Changing needs and priorities in the office spaces led to additions now being corrected. Removal of dropped ceiling reveals the graceful coved plaster ceiling which gives each office its original scale and dignity. Office workers and workmen alike appreciate the transformation back to the original design.

Soft lighting is now provided by the opaque glass of the original ceiling fixtures. Each desk has a designful lamp for adjustable light when and where it is required. Partitions which are still required are being built as permanent plaster walls with new oak doors to match the original.

In the west main corridor a new double door, which defies identification, was cut into the marble wall. Hauteville marble from France was shipped to Milwaukee in 1983 via Great Lakes. Milwaukee Tile & Marble cut the new door casings and the setting was done by David Ihland. Oversize oak doors were made with Florentine glass inserts.

Among the high quality replica items are the bronze door knobs and escutcheon plates on the new interior doors. Hermann Rittmeyer, ornamental metal craftsman of Milwaukee, reports that the new plates are more beautiful than the originals, due to superior tech-

(Photo — James T. Potter, AIA)  
The Governor's office has been completed. Decorative plaster was done by Karl Buschman. Original woodwork was refinished; original enclosures under windows were used for new heating and cooling units. The huge conference table and roll-top desk, both of mahogany, have been restored to their original location.  
wisconsin architect/january 1985



(Photo — James T. Potter, AIA)  
State coat of arms adorns the top of each escutcheon plate. On a tour through the building, only a keen eye would notice such a small detail.





# Quality . . .

- materials
- craftsman
- project supervision



Ranney & Lund Architects, Architect (following guidelines of the Division of State Facilities Management as developed by Fred Loewen);  
Joe Daniels Construction Co., General Contractor.

## One Word Says It All!

We are proud to have been part of the team that worked on the Wisconsin State Capitol Renovation Project. For your next project, call on those who were selected for this difficult and prestigious task.

### **Ganser Roofing Systems**

Div. Ganser Co., Inc.  
2616 Industrial Dr.  
Madison, WI 53713  
608-222-1243

*Providing below grade water proofing on Capitol steps*

### **Mechanical Team, Inc.**

925 Applegate Rd.  
Madison, WI 53713  
608-273-1096

*Providing Architectural Sheet Metal*

### **Robert J. Nickles, Inc.**

4269 Argosy Ct.  
Madison, WI 53714  
608-222-3456  
Electrical Contractor

### **Schmelzer Paint Co., Inc.**

902 Stewart St.  
Madison, WI 53713  
608-271-6244  
*Providing Painting and Refinishing*

### **Wisconsin Office Supply-Parker Dean**

502 High Point Rd.  
Madison, WI 53711  
608-833-1255  
*Providing Window Coverings*



niques available today. Through microscopic cleaning and engraving, flaws were removed from the original plates. With the assistance of Frank Boesel, who is in charge of castings, approximately eighty hours were involved getting the first high quality replica plate completed. A total of 150 pairs will be needed to complete interior renovation.

Shrinkage was a problem. The first product was one eighth of an inch too short. Perfection was achieved by trial and error. Some plates will be used for replacements on old doors where theft has occurred. Boesel has also worked out a safety feature to prevent removal of the new plates.

Another perfectionist is Karl Buschman who did all the decorative plaster work. He developed a seven step procedure for producing crown mold sections for new partitions as well as for repair. When he inserts a "patch" one cannot discern where new meets old. He also created the chandelier centerpiece for the fixture in the governor's office. It is a plaster disc about 42 inches across with applied beadwork decorations attached separately. It required 48 working hours from first drawing to installation. To avoid the cost of removing the heavy chandelier, Buschman carefully cut the finished piece in two and set it in place around the fixture.

In the words of general contractor, Joe Daniels, Sr., "The amazing thing on this job was the coordination of many workers and contractors, each doing his bit, taking apart or putting back together." Dick Machesey, project superintendent, was responsible for directing and scheduling.

During the past three summers all four exterior stairways were dismantled, repaired, and put back together. Interior restoration will continue, including all the art work. Every Wisconsinite should visit the Capitol to see what is being done in what a 1917 issue of "Architectural Record" called "undoubtedly the most beautiful public building in America."

wisconsin architect/january 1985



(Photo — Richard Machesey)

Even the hard Vermont granite allows moisture to seep in. The crumbling brick stringers with their rusted steel supports were replaced by reinforced concrete stringers on all four exterior stairways.



Every surface stone from the steps, wall, railing, and the upper terrace paving stones were numbered and laid aside during construction.



# Marketplace



Simpson Door Co.

Elegant, graceful doors, hand-crafted from genuine Philippine Mahogany heartwood, comprise the new Private Collection just introduced by Simpson Door Company. The collection features two doors with rounded tops — an entirely new design element. Jambs are also available to fit these round-topped doors.

All leaded glass in the private collection doors is insulated and is expertly crafted with zinc for superior strength. The design is on the inside of the triple-paned glass for easy cleaning.

For more information, contact: Simpson Door Company, 900 Fourth Ave., Seattle, WA 98164.



Baldwin Hardware Mfg.

Impeccable styling and precision craftsmanship have made Baldwin Hardware Corp. the leader in solid brass architectural hardware and giftware for more than 35 years. The "New Orleans" accessory series, represented here by a solid brass tissue roll holder with a melon rosette motif, is one of seven contemporary and traditional groupings comprising the Epic Accessories line.

All Epic Accessories are available in at least three finishes, varying by series, and all come with concealed mounting for design continuity and ease of maintenance. For more information, contact: Baldwin Hardware Manufacturing Corp., 841 Wyomissing Blvd., P.O. Box 82, Reading, PA 215-777-7811.



Highline Products Corp.

The City of Syracuse wanted to help restore the original charm of the neighborhoods by replacing damaged cast iron poles with new ones of identical style. This resulted in the recommendation, after viewing Highline's manufacturing facilities for these poles, to use Highline's "Boulevard" polymer composite replica lighting pole for several engineering, economic, and aesthetic reasons. First and foremost, the Highline poles looked identical to the cast iron poles. Plus, the quality was good, the lighter weight made them easier to handle, and they were less expensive than cast iron poles.

For more information on these unique lighting poles, contact: Highline Products Corp., 330 Boston Post Rd., Old Saybrook, CT 06457.

## RSJ

- Floor Covering
- Window Treatments
- Upholstery
- Office Furniture & Systems
- Interior Design

RSJ is proud to have supplied the floor covering, steelcase furnishings and upholstered walls and furniture for the United States Courts Building and the carpeting and window treatments for the Wisconsin State Capitol renovation.

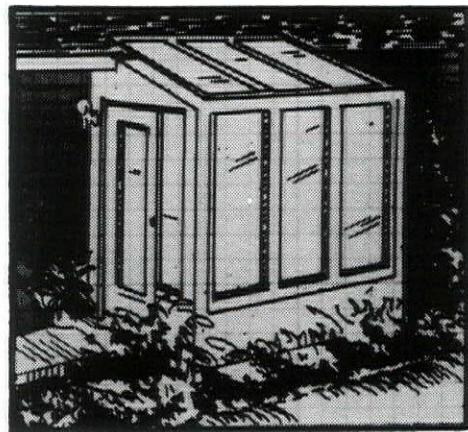
**702 Washington Ave.  
Madison, WI  
608-257-0521**

## VER HALEN

Distributors Of



- Sunrooms
- Skylights
- Patio Doors
- Energy Tight Windows
- Window Replacements



### VER HALEN INC.

Madison Milwaukee Green Bay  
800/362-6601 800/242-6212 800/242-1008



A detailed blue-line architectural drawing of the Wisconsin State Capitol building. The drawing shows the large dome on the left, with its structural ribs and decorative elements. Below the dome is a section of the building's facade featuring a row of windows and a classical pediment. At the bottom, there is a sculptural group with figures. The drawing is a technical sketch, showing lines for structure and ornamentation.

# 1985 LEGISLATIVE CONCERNS

The Wisconsin Society of Architects

The American Institute of Architects

WISCONSIN SOCIETY OF ARCHITECTS/AIA  
321 S. HAMILTON STREET  
MADISON, WI 53703  
608/257-8477



**EXECUTIVE OFFICE**

The Stoner House  
321 South Hamilton St.  
Madison, WI 53703  
(608) 257-8477

**EXECUTIVE DIRECTOR**

Eric Englund

**OFFICERS**

Harry Schroeder, AIA, President  
La Crosse, WI  
Jim Miller, AIA, Vice President/President Elect  
Madison, WI  
Robert Cooper, AIA, Secretary/Treasurer  
Milwaukee, WI  
Fred Zimmermann, AIA, Past President  
Madison, WI

**DIRECTORS**

Dan Murrish, AIA, Madison  
Joe Powelka, AIA, Madison  
Jim Otto, AIA, Milwaukee  
Michael Ciofani, AIA, Milwaukee  
Dennis D'Jock, AIA, Eau Claire  
Val Schute, AIA, La Crosse  
Frank Carter, AIA, Green Bay  
Curt Bigger, AIA, Appleton  
Lisa Kimia, Elm Grove  
Russ La Frombois, Milwaukee  
Paul Kayser, Burlington  
Wayne Spangler, AIA, Rice  
Fred Jules, AIA, Milwaukee  
Emma Macari, AIA, Madison  
Dennis Olson, AIA, Appleton  
Kenton Peters, AIA, Madison

GOVERNMENT AFFAIRS COMMITTEE  
Noble Rose, AIA, Beloit, Chairman

## WISCONSIN SOCIETY OF ARCHITECTS AMERICAN INSTITUTE OF ARCHITECTS

### A POSITION PAPER OF THE WISCONSIN SOCIETY, OF ARCHITECTS

Dear Member of the Wisconsin Legislature:

The rush of events during the legislative session makes it difficult at times for concerned citizen groups to effectively communicate with all interested legislators on issues of concern.

As you are aware, the necessity of reacting to specific pieces of legislation and the political processes of compromise and accommodation of others' concerns sometimes leaves legislators wondering, "What do you really want?", "What do you hope to achieve?", or "In what do you really believe?"

To help overcome those problems, we have developed the attached position paper. It addresses general concerns and philosophy in the major policy areas architects tend to confront year after year, rather than attempting to speak to specific legislative proposals.

Don't worry . . . we will continue to speak to you on specific bills. We intend to continue seeking compromises and accommodation of the concerns of others. Our priorities will be based, at least in part, on the political realities of the moment.

The enclosed position paper is our attempt at a fair statement of the overall legislative concerns of the architectural profession in Wisconsin. It will help you understand "Where we're coming from." We commend it to your attention at the beginning of the 1985-86 session.

Cordially,

Harry Schroeder, AIA  
President

HS/ss

cc: WSA membership  
Selected administrative  
officials





## LICENSING OF ARCHITECTS

The health, safety and welfare of the citizens of Wisconsin are impacted everyday by the quality of the "built environment" — the buildings, structures, roads, bridges, etc., which alter the "natural environment" for human purposes. There is no question that hazards exist — both real and potential — in that built environment.

Most activities of boards within the Department of Regulation and Licensing are aimed at regulation of business practices for the at least ostensible purpose of consumer protection. In the case of architects and engineers, the concern is for both the protection of the immediate user of their services (who is most likely a corporation, public agency, institution, etc.) and the protection of the ultimate users of the buildings or structures they design.

To be sure, there exists a state-wide building code designed for this very purpose. In most cases this code sets performance standards rather than prescribing specific construction solutions. This is desirable to allow for flexibility. But only a

technically trained architect or engineer can, in most cases, design in conformance with the code's performance standards. Even local building officials — many of whom do not have extensive technical training — frequently must rely on the certification of an architect or engineer that a building is designed in accordance with the code.

It is vital to the health and safety of all Wisconsin citizens that the state continue to adequately test for qualifications and issue licenses to individuals permitted to practice architecture and/or engineering.

A licensing system without meaningful enforcement is worthless. It is necessary that the investigatory staff of the Department of Regulation and Licensing be properly funded in order to fulfill their statutory mandate.

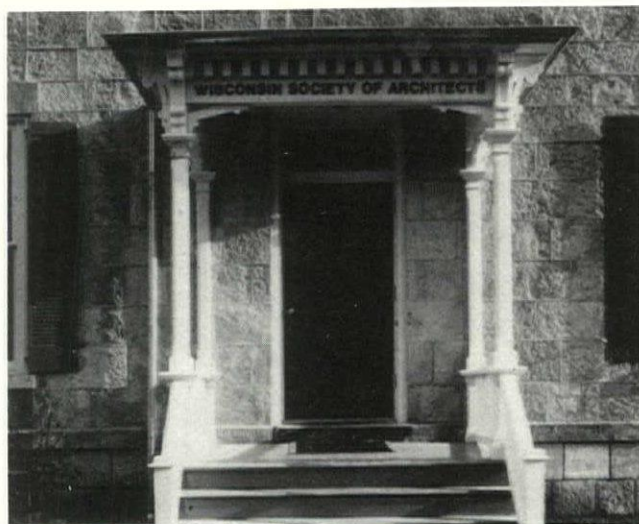
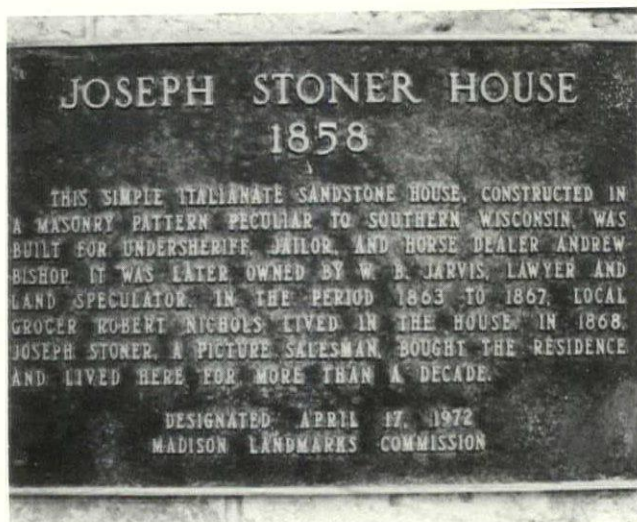
## STATE AND LOCAL PROCUREMENT OF ARCHITECTURAL AND ENGINEERING SERVICES

Civilizations are frequently measured by the quality of their public architecture. Consider ancient Rome, Greece and Egypt for example. We believe that the quality of public buildings today deserves no less attention than in times past.

Beyond esthetics, there are few structures which have impact on the health, safety and welfare of greater numbers of citizens than those built by public bodies. Questions of public value are often more important here than in private sector construction.

As you are aware, architects are trained in building technologies. Sufficient time spent by competent professionals can actually increase value and reduce construction costs and operational costs (life-cycle costs) of public buildings by many times the professional fee involved. It is important to recognize that not all architects are equally





competent, even though licensed. Licensing exams test only for minimum entry levels of competence.

Any form of architect selection which relies on price competition will force the successful firms to keep professional time and expense to the minimum necessary to avoid liability, which usually will not produce the best possible design in terms of function, construction costs and life-cycle costs.

A selection system known as the "Brooks Bill" approach avoids the pitfalls of a bidding system while promoting necessary competition among architectural firms in insuring that public bodies do not pay more than a fair and equitable fee for the services rendered. The system is used successfully by the Federal Government and by at least 40 states. It is recommended in the American Bar Association Model Procurement Code. It has been adopted as administrative rule by the Wisconsin Department of Administration.

We support current Wisconsin administrative rules pertaining to architect/engineers selection by the State of Wisconsin which are modeled according to the "Brooks Bill."

## STATE WIDE BUILDING CODE

Wisconsin has long had a tradition of a uniform state building code which has been applied in fairness throughout the State of Wisconsin. Historically this code has been developed based upon legislative mandate with a long history of public participation in the formulation of the rules which make up the code.

The Wisconsin architectural community strongly supports the concept of a uniform state building code which provides a fair and equal standard for building construction within our state and provides for design professionals participation in formulation.

### PHOTO CREDITS

The Wisconsin Architects Foundation (WAF) and Wisconsin Society of Architects (WSA) have recently completed the successful restoration of the Joseph John Stoner House. Located less than three blocks from the State Capitol in Madison, the WAF and WSA invite you to drop by for a visit. Jeff Dean, photographer ©

## PROFESSIONAL LIABILITY INSURANCE

Architects assume levels of professional liability far in excess of their level of compensation — probably to a greater degree than any other profession. The costs of insuring against that liability is extremely high, a factor in the overall costs of building. Architects believe there are factors which, if properly addressed, can keep costs down.

One of the biggest problems is non-meritorious suits. When anything goes wrong with a building, the architect and engineer are virtually always named as co-defendants — even where there is absolutely no evidence of responsibility. The cost of defending against lawsuits accounts for 35% of the combined insurance company and "deductible" losses in architect liability cases. Over half of those lawsuits are ultimately settled with no payment to the plaintiff by either the architect or their insurance company. Yet due to the high costs of defense, even when we win ... we lose.



# Madison Federal Building



**Project**  
United States Courthouse  
Madison, Wisconsin

**Architect**  
Kenton Peters,  
Peters/Orput Incorporated

**Engineers**  
Arnold & O'Sheridan

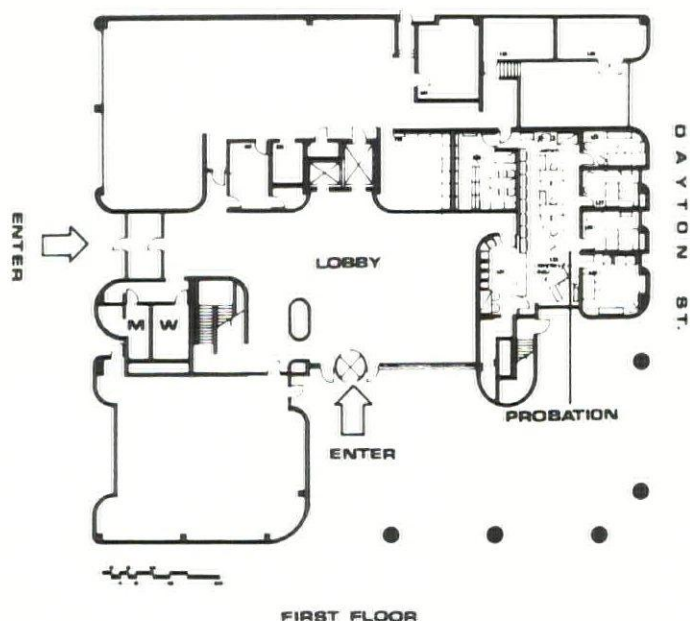
**Owner**  
United States General Services  
Administration  
wisconsin architect/january 1985

Architecture can be a very powerful voice, expressing the values, attitudes, and aspirations of those for whom it is built.

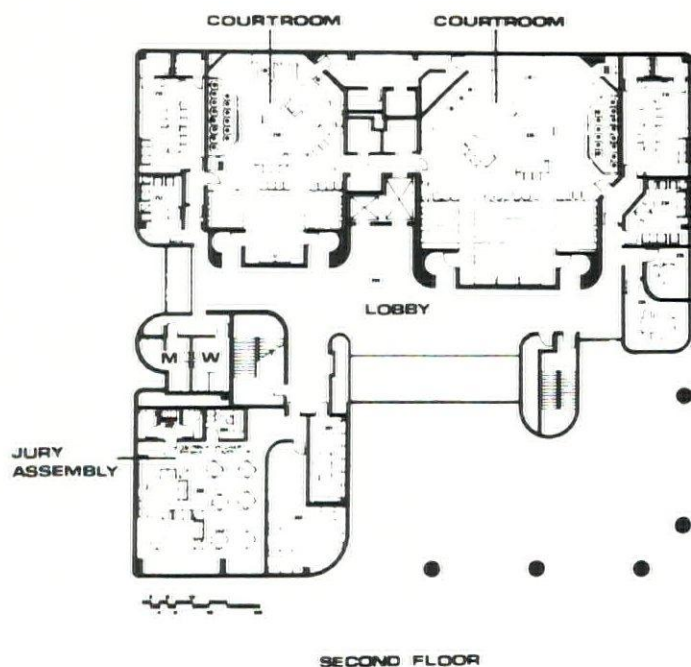
So it is with the new United States Courts Building. Each element of this new building, from the dramatic blue exterior to the undulating oak ceilings of the courtrooms, becomes a tangible statement of the

function, role, and prominence of the federal courts within our city. Through mass, form, color, material, and texture, this building projects in a dynamic way both the character of its external personality and its relationship to the city around it. Additionally, it seeks to speak quietly about the times, the technology, and the society contributing to its creation.

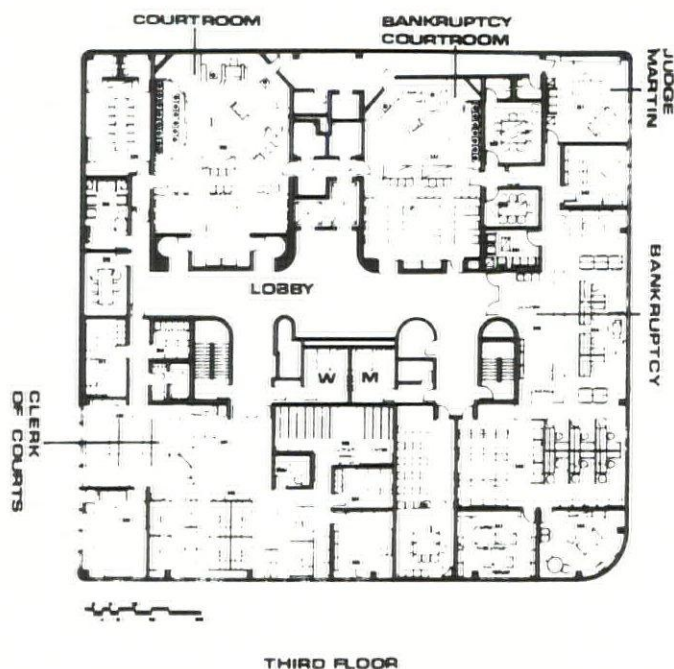




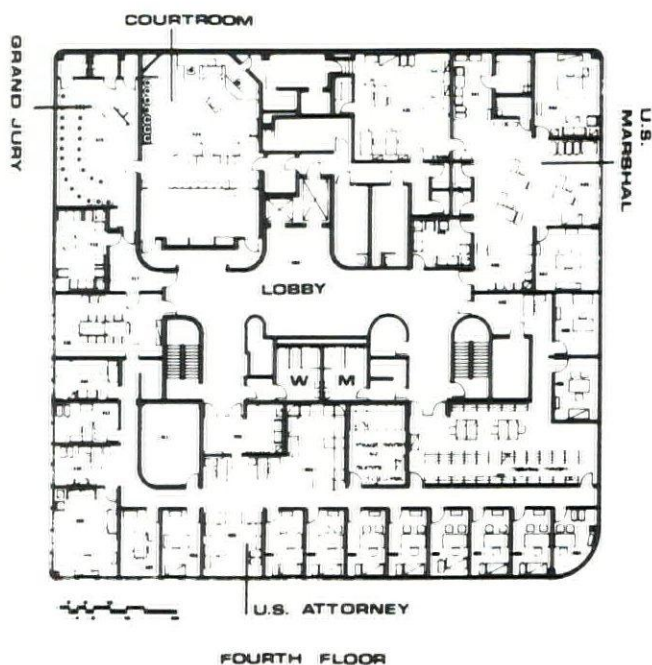
FIRST FLOOR



SECOND FLOOR



THIRD FLOOR



FOURTH FLOOR

Externally, the force of the surrounding neighborhood became a major determinant in establishing the form and color of the new building. The site was at the backdoor to downtown. It was surrounded by a multitude of relatively undistinguished backsides of existing buildings. The design goals were to create a unifying element

in this diverse masonry space; to express architecturally the prominence of the federal courts in Madison; to complement the Civic Center and its important position in city life; and to contribute measurably to increasing the vitality of downtown.

Color became the major key to

achieving the aesthetic design goals set for the building. Blue, deep and rich, was selected for its compatibility with the various warm shades of masonry buildings surrounding the site. This blue is also rich with symbolism. It is the familiar Federal blue and it is the blue of the agricultural structures that dot the Wisconsin landscape.

wisconsin architect/january 1985



# “Why hire an architect if all I need is four walls and a roof?”

“It’s not a big project,” the argument goes. “So let’s not make it any more complicated than it has to be . . .”

With these words, architects are shut out from the job they do best.

## Architects are trained un-complicators.

Architects are simplifiers, trained to help you separate what you truly need from what you think you need.

Together, you and your architect make discoveries you might never make by yourself.

You may discover (as a North Carolina bank did) that 4 walls are one wall too many.

You may discover (as a Kentucky company did) that those two buildings you’re assuming you need should really be one building.

Or you might find that that steep (and cheap) site is actually better suited to your building’s function than that flat (and costly) one.

## Architects are assumption-busters.

Walls, sites, materials, “inevitable” costs and delays — all of your assumptions about traditional construction come under attack.

And as you collaborate, you may find your assumptions about architects (that they’re slow, or spendthrifts, or impractical dreamers) being shattered, too.

Talk to an architect about your next project.

Send this coupon for a free brochure, “You and Your Architect,” for details on architectural firms in your area, or for information on how to hire an architect.

Wisconsin Society of Architects

321 S. Hamilton Street, Madison, WI 53703

☐ Please send me a copy of your free brochure, “You and Your Architect”.

☐ Please send me information on architectural firms in my area.

☐ Please send me information on how to hire an architect.

Name

Firm

Address

City  State  Zip



# SOCIETY NEWS

---

## ARCHITECTS ANNOUNCE COMMUNICATORS AWARD WINNERS

The Wisconsin Society of Architects of the American Institute of Architects (WSA) has announced the winners of its 1984 Communicators Award Program. The intention of this program is to honor persons whose work in the field of communications advances the public understanding and appreciation of architecture and the architectural profession in Wisconsin. All winners will receive certificates, a gift membership in The Forum for Architecture. First, second and third place winners will also receive cash awards as noted.

Nominations were made in recognition of efforts made in a wide variety of communications activities including radio, TV and newspapers. Nominators included architects, directors of public affairs, radio and TV stations and newspaper editors. Award winners are as follows:

FIRST PLACE . . . Joy Krause of the Milwaukee Journal . . . \$1,000.00.

SECOND PLACE . . . Anne Lambert, Educational Coordinator for the Elvehjem Museum of Art . . . \$300.00.

THIRD PLACE . . . Barbara Conway, WLSU FM Radio, La Crosse, Wisconsin . . . \$100.00.

### HONORABLE MENTION . . .

Fran Bauer — The Milwaukee Journal

Tom Richards — The Post-Crescent

Julie Zuehlke — La Crosse City Business

Danele Wilson — Mount Horeb Mail

Don Olesen — The Milwaukee Journal

Shelley Harings — Rice Lake Chronotype

Pete Bach — The Post-Crescent

John Wackman — PM Magazine (WMTV-Madison)

Marc Eisen — Isthmus of Madison

---

## A COMMENT

*by Larry LaMar*

Tonight I heard a landscape architect speak about life  
and the spirit of Nature and the abstraction of Nature . . .

About the need to restore, to rebuild  
something of the spirit . . .

Something of the rock  
or the tree  
or the fresh water and air  
that touches each of us  
way down  
inside . . .

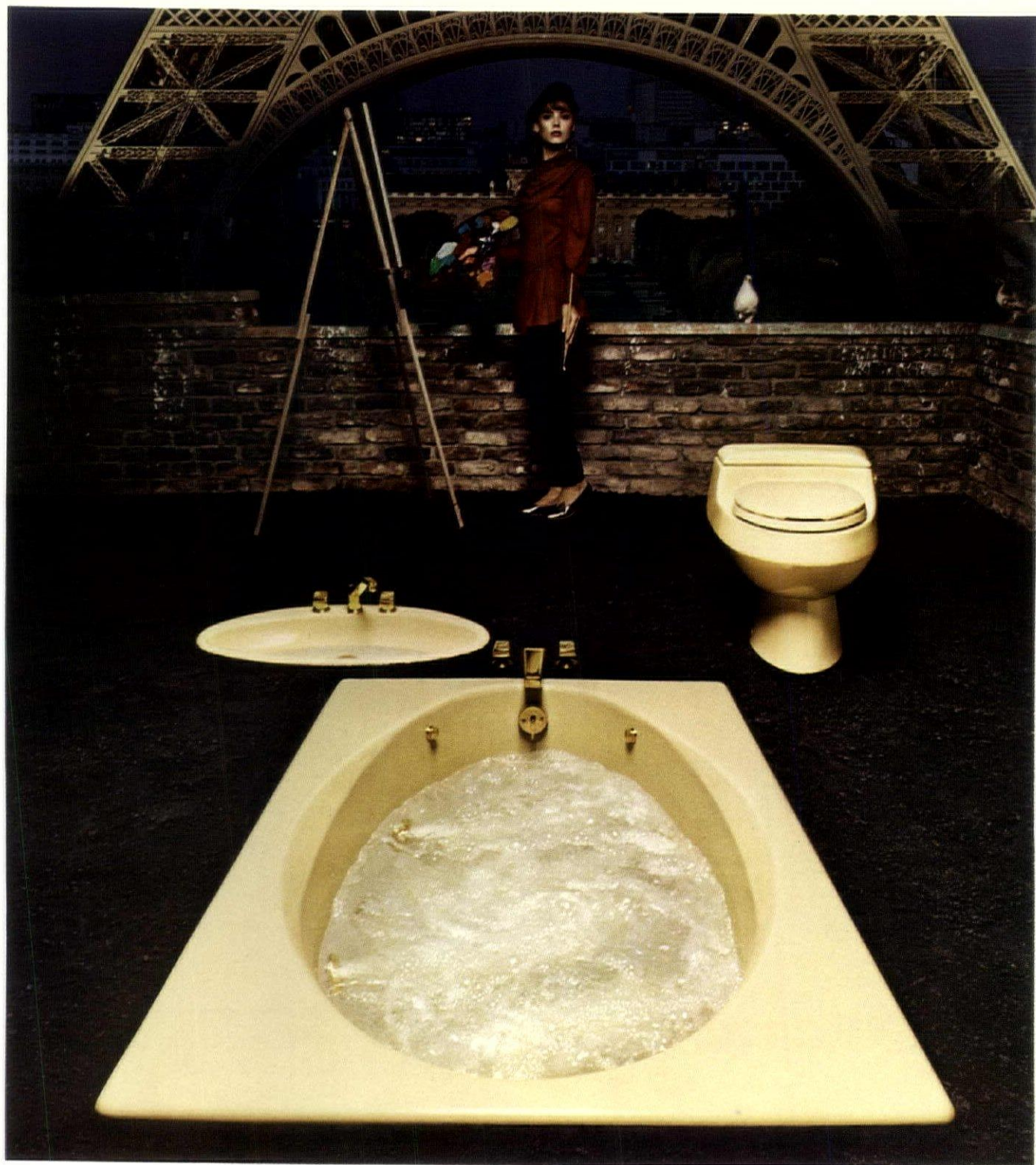
And kindles that spark  
or desire  
or sense of purpose  
of worth  
to live  
to give . . .

Mr. Halprin is a breath of fresh air.

. . . a person concerned about the seeming disrespect  
for the quality of life in modern built environments.

. . . a person aware that our roots show us other ways . . .





## FRENCH VANILLA..."MAGNIFIQUE"

Leave it to the French to take something as simple as vanilla and give it spice. Make it richer, creamier and tastier than it's been before.

Leave it to Kohler to bring it to the bath.

French Vanilla. Kohler's newest color leaves your decorating palette wide open because it blends so

beautifully with any shade; yet stands by itself with a flavor uniquely its own. Exhibited here on the new Pristine™ Bath/Whirlpool, Ellipse™ lavatory and Rialto Water-Guard® toilet. Just a small part of the gallery of bath and powder room fixtures Kohler has created in French Vanilla.

This is a color that must be seen firsthand to be experienced. To view French Vanilla, as well as the full spectrum of bold Kohler colors and exciting Kohler products for the kitchen, bath, and powder room, check the Yellow Pages for the Kohler showroom near you.

THE BOLD LOOK  
OF **KOHLER**

Copyright 1982 Kohler Co.



# **“ATTENTION ARCHITECTS!”**

**FOR YOUR NEXT PLUMBING  
OR HEATING PROJECT, CONSULT  
WITH YOUR LOCAL KOHLER DISTRIBUTOR  
LISTED HERE.**

## **APPLETON**

### **Baker Manufacturing Co.**

550 Hickory Farm Lane  
Appleton, WI 54913  
Telephone: (414) 734-9284

### **W. S. Patterson Co.**

2100 W. College Ave.  
P.O. Box 1177  
Appleton, WI 54912  
Telephone: (414) 739-3136

## **GREEN BAY**

### **Murphy Supply Co.**

1055 Lake St.  
P.O. Box 19310  
Green Bay, WI 54310-9310  
Telephone: (414) 497-7004

## **JANESVILLE**

### **Automatic Temperature Supplies, Inc. (Branch)**

Route #3 — Hwy. 51  
Janesville, WI 53545  
Telephone: (608) 754-8106

## **MADISON**

### **Automatic Temperature Supplies, Inc.**

1023 E. Main St. (53703)  
P.O. Box 1151 (53701)  
Madison, WI  
Telephone: (608) 257-3755

## **MILWAUKEE**

### **Milwaukee P & H Supply Co.**

1313 W. St. Paul Ave.  
Milwaukee, WI 53233  
Telephone: (414) 273-3600

### **United P & H Supply Co.**

9947 W. Carmen Ave.  
P.O. Box 25342  
Milwaukee, WI 53225  
Telephone: (414) 464-5100

## **RHINELANDER**

### **W. S. Patterson Co. (Branch)**

1672 Menominee Dr.  
Rhineland, WI 54501  
Telephone: (715) 362-7824

## **WISCONSIN RAPIDS**

### **W. S. Patterson Co. (Branch)**

2111 Engel Road  
Wisconsin Rapids, WI 54494  
Telephone: (715) 421-1585

## **SHEBOYGAN**

### **J. J. Koepsell Co.**

A Kohler Registered Showroom  
1010 S. 9th St.  
Sheboygan, WI 53081  
Telephone: (414) 457-3646



His work is impressive.  
His awareness of individuals, children, adults and groups  
in touch with the spirit of his works - his stages -  
his abstractions  
is indeed  
a breath of fresh air.

Perhaps we have many in Wisconsin who practice like Halprin.  
Perhaps we do need visibility.

*The comment printed above was sent to the WSA office by Mr. Lamar who attended a lecture by Lawrence Halprin. The lecture was underwritten, in part, by the Southwest Chapter of WSA.*

YOU  
STAMP  
IT . . .  
YOU  
GET  
SUED

Two recent calls to the WSA office made the same inquiry. Both callers, employees of firms, questioned whether or not they were personally responsible for projects on which they placed their professional stamp.

Yes.

Yes.

Yes.

No . . . the above is not a misprint.

Any man, woman, or combination of the two that places his or her stamp on a set of plans is personally responsible for those plans.

The employer (firm, partnership, solo practitioner, corporation, etc.) is also responsible if the architect stamps the plans in the ordinary course of being an employee for the employer.

For more information, contact Eric at the WSA office.

HELP  
WANTED

Travel to exotic places.

Rub shoulders with the beautiful people.

Become recognized as a leader and trend setter.

No . . . you don't have to buy a veg-a-matic. No . . . this isn't a come on for a 12-week course in "EXISTENTIAL MARKETING".

The WISCONSIN ARCHITECT needs you. The Editorial Board of the WISCONSIN ARCHITECT is seeking corresponding members. These corresponding members will have primary responsibility in identifying buildings and other matters pertaining to Wisconsin architecture that could be featured in your magazine. The Editorial Board needs help in identifying new projects. No, you don't have to write the article. No, you don't have to take the pictures. All we're looking for is some help in identifying projects for publication. In addition to this service, the Editorial Board will also be pleased to react to your substantive comments on the quality, length, distribution, etc., of your magazine.

The criteria for appointment to this position are few. If at all possible, you should live at least 51½ miles away from Milwaukee. It's not that the Editorial Board is prejudiced against Milwaukee . . . it's just that the Editorial Board has excellent representation from the greater Milwaukee area.

For further information contact Eric at the WSA office or any member of the Editorial Board.



THANKS  
JACK

Our thanks to Jack Klund, AIA, of Madison, for a recent donation to the WSA Library.

Jack donated bound volumes of ARCHITECTURAL RECORD for the past 30 years. This reference, along with many other volumes pertaining to architecture, are available for your use at the WSA office.

If there is volume that you feel should be in the WSA collection . . . and it is not . . . call Eric and we'll see about the WSA purchasing the book.

Thanks Jack . . . your donation is much appreciated.

---

COPYING  
AIA  
DOCUMENTS

As you are aware . . . AIA documents are copyrighted. Users of the AIA documents are **not** to make copies. The unauthorized copying of AIA documents can result in claims being filed against the entity making the copies.

One exception that you should be aware of has to do with the customary use of an AIA document. Under this exception, the AIA authorizes no more than 10 copies of a document to be made AS LONG AS the forms have been filled in prior to the copies being made. In other words, the B-141 (Owner-Architect Agreement) can be filled out in original and copies made for the bank, owner, etc.

---

CODE  
COMPLIANCE

A concerned architect recently contacted the WSA office regarding his responsibility to advise an owner and/or DILHR when the architect becomes aware of failures within a building to comply with the building code. More specifically . . . the architect was concerned about the scope of his responsibility when he was only hired to perform an energy audit.

DILHR rules (ILHR 50.10) require a registered architect or engineer to provide "supervision" on many projects. This rule further provides that the "supervising" architect **shall** notify the department of any non-compliance with building codes. In other words, if the owner or architect have advised DILHR that the architect will be the "supervisory" architect . . . the architect has a clear responsibility to advise DILHR of any area of non-compliance with the building code.

Architects are employed by owners to provide services which are not in the "supervisory" role as set forth in ILHR 50.10 i.e. an energy audit. While the DILHR code appears to not impose an obligation to report non-compliance matters, the rules of the architectural registration board do. These rules provide that strict adherence to the applicable sections of the law and the Wisconsin administrative code and all local codes and ordinances shall be maintained in **all** services rendered by an A-E. This requirement (A-E 4.06) appears to be so broad as to provide a legal responsibility on the part of the architect to report any and all non-compliance with building code that comes to the attention of the architect.

If you feel that this is an improper or impossible responsibility . . . contact Eric at the WSA office.

---

INVESTMENT  
IN  
AIA

While there appears to be growing support and enthusiasm for the various efforts of both WSA and AIA, there are always those who register complaints regarding the dollar amount required to join the WSA and AIA.

Yes! Of course, there are ways to justify that those dues are too high or a waste of money or both.

DON'T come to any chapter, WSA, or AIA meeting or programs.



NEVER accept an office, chairmanship, or a participation role on a committee.

DONT read publications or mail from AIA or WSA.

IGNORE surveys and requests for information.

DONT take advantage of free publications from the AIA's Public Relations Department that will help potential clients understand the profession and its' services.

DONT enter the WSA or AIA's Design Awards Program.

FORGET that you have access to more than 20,000 titles to the AIA's loan-by-mail program.

FORGET that this reference service includes audio-visual materials.

IGNORE the benefits your AIA Executive Card entitles you to.

SCRATCH the idea that the WSA and AIA gives you a myriad of opportunities to meet and exchange challenging ideas with your fellow professionals.

NEVER, never, never attend the WSA or AIA Convention.

SCORN the political process by not becoming a WSA or AIA Minuteman or contributing to the Political Action Committee.

FORGET that WSA and AIA are your organizations . . . waiting for your input, suggestions, comments and criticism.

---

**SINGLE  
PRIME  
vs.  
MULTIPLE  
PRIME  
(ANOTHER  
CHAPTER)**

Do you remember the story about Hunzinger Construction Company? They sued the State of Wisconsin alleging, as a multiple prime contractor on the construction of the Humanities Building at the University of Wisconsin-Milwaukee, that they suffered increased costs caused by the State of Wisconsin, including the State's failure to prevent the plumbing contractor from interfering with or delaying the construction. In other words, Hunzinger claimed that the State of Wisconsin was responsible for the alleged screw up of one of the other multiple prime contractors on the project.

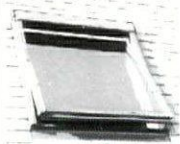
The project was completed in 1975 and finally made it to trial in 1982. The jury assessed damages of \$489,366.00. The judge, in interpreting the jury verdict, found that the State was only responsible for a measly \$195,746.40 of this amount, the balance being the responsibility of the plumbing contractor . . . who is now defunct, as is his surety.

On appeal, the Wisconsin Court of Appeals has held that the State is responsible for the full amount of the jury verdict.

No one suggests that the use of single prime contracts will void the potential of claims by contractors against owners (architects). What is clear is that the utilization of multiple prime contracts does give rise to increased potential liability of the part of owners and architects. Architects who recommend multiple prime contracts to owners should do so recognizing the potential for increased liability on the part of owners and architects.

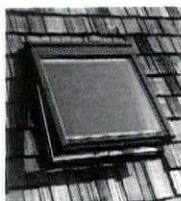
---





Used extensively in Living Attic conversions and cathedral ceilings, our **MODEL GGL** roof window comes in 9 sizes.

With its fully integrated screen and reversible sash, our new top-hung **MODEL TPS** is the most advanced roof window made today.



Our ventilating skylight **MODEL VS** with integrated screen is specifically designed for out-of-reach applications.

Our fixed skylight **MODEL FS** is made to the usual VELUX quality standards. Priced as low as \$122, it is America's outstanding skylight value.



## VELUX gives you a greater choice in roof windows and skylights

What you see above is the tip of the iceberg. Because we also offer a full range of accessories and options that include colorful roller blinds, awnings, venetians, electric remote controls, special glazings and much more. We offer you not only the best choice but the best roof window and skylight value in America! See us in Sweet's 7.8/Vel or 8.16/Ve.

### Free 24-page color brochure!

VELUX-AMERICA INC.  
P.O. Box 1107  
Elk Grove Village, IL  
60007



**The world leader in roof windows and skylights.**

\* VELUX is a Registered Trademark

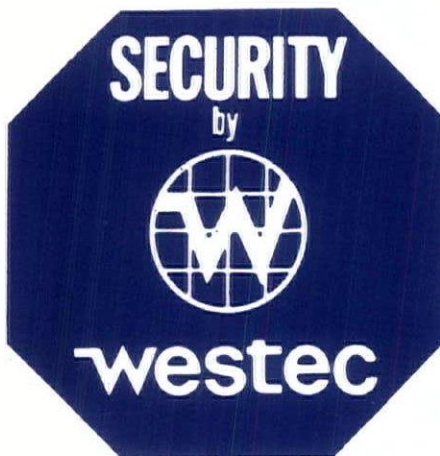
### This coupon answered in 24 hours.

VELUX-AMERICA INC.  
P.O. Box 3268  
Greenwood, SC 29648

In Canada:  
VELUX-CANADA INC.  
16805 Hymus Blvd.  
Kirkland  
P.Q. Canada H9H3L4

Name \_\_\_\_\_  
Firm \_\_\_\_\_  
Address \_\_\_\_\_  
City \_\_\_\_\_ State \_\_\_\_\_  
Zip \_\_\_\_\_ (\_\_\_\_\_) \_\_\_\_\_  
Area Code WA185

**The most trusted residential security systems since 1968.**  
**From \$995.**



Distributed by Jacobus Security Systems, Inc., formerly Westinghouse Security Systems.

**westec**  
SECURITY SYSTEMS

**MILWAUKEE • (414) 258-5500**  
**FOND DU LAC • (414) 921-7055**  
**JANESVILLE • (608) 752-1233**  
**RACINE-KENOSHA • (414) 552-9493**



2018 EAST THOMAS AVE.  
MILWAUKEE, WIS.  
414-962-2150

The Little Shop has special skills in antique restoration: furniture refinishing; furniture finishing. The Little Shop does museum quality work. . . has for more than 50 years.

You would use The Little Shop where the quality of work must be assured to satisfy a demanding client or to insure that special furniture be completed predictably and perfectly — however demanding or sophisticated the look might have to be.

## The Revolution in Commercial & Residential Water Heating

The Thermo-Stor® Heat Pump Water Heater is causing quite a stir in the industry. Installations across the country show it heats water at 1/4 the cost of electric resistance, 1/2 the cost of gas, and that's just the beginning.

- by product; dehumidification/air conditioning benefit perfect for today's super tight construction methods
- all electric design circumvents the code requirements for fireproof room and outside venting
- minimizes liming, reduces electric demand charge
- smart investment - typical 1-3 year payback
- C.O.P. 3.4 - top rated in the industry by Gas Appliance Manufacturers Association and American Council for an Energy Efficient Economy
- Developed by Thermo-Stor Products Group - DEC International, a worldwide leader in commercial, industrial, agricultural heat transfer technology for over 50 years.

A complete line of residential and commercial Thermo-Stors are available at:

**BENJAMIN PLUMBING CO., INC.**  
**6634 Watts Rd.**  
**Madison, WI 53719**  
**608-271-7071**



**THERMA-STOR®**  
**HEAT PUMP**  
**WATER HEATER**



# EXCELLENCE IN MASONRY

ARCHITECT: P.F. Schmitter, Inc.  
PROJECT: Ronald McDonald House  
Wauwatosa, Wisconsin

Sponsored by:  
**MASONRY INSTITUTE OF WISCONSIN, INC.**  
8989 North Deerwood Drive, Milwaukee, WI 53223  
(414) 355-7800







13000 WEST BLUE MOUND ROAD, ELM GROVE, WIS. 53122 PHONE 786-7890

Masonry Institute of Wisconsin, Inc.  
8989 N. Deerwood Drive  
Milwaukee, Wisconsin 53223

Gentlemen:

The Milwaukee Ronald Mc Donald House is truly a "house that love built" by and for loving people. The House, located on the Milwaukee County grounds in Wauwatosa, is a home away from home for families with seriously ill children who are being treated in the area.

Consequently, a warm, residential character was an essential requirement of design, and was accomplished through the use of brick and stone. The face brick exterior of the three story structure exudes a feeling of welcome and draws the visitor to an interior dominated by a fireplace of Kensington Blend stone.

To all parties involved who gave from the heart, we salute and thank you.

Very truly yours,

P.F. Schmitter Architects, Inc.

Paul F. Schmitter, President

PFS/js



# Read why Wisconsin architects specify Dover<sup>®</sup> 10 to 1 over any other elevator make.

The reasons are simple:

- Expert planning assistance
- The best computerized traffic control available
- Superior custom design capabilities
- Responsive round-the-clock service your clients can count on
- Quality you can stake your reputation on

## More for the money with Dover

There's more to comparing elevator systems than comparing prices. It's important to be concerned with design, performance and dependability as well. To do a thorough job means you have to analyze all the systems on the market and choose the one that best meets your requirements. At Northwestern Elevator we welcome close scrutiny. We know that whenever a careful price/value comparison is made, Dover wins every time.

## Dover, no equal

Why do Dover elevators last so long? Simple. Every major part of a Dover elevator is designed with reliability in mind. Each is engineered to go together, work together smoothly and reliably, now and for the long haul. With all you've got riding on it,

why settle for less than Dover elevator performance?

## Service you can count on

Specify Dover and your client will be assured of skilled manufacturer maintenance as well as preventative maintenance programs designed to eliminate downtime.

Dover-trained service technicians and Dover-designed replacement parts stand behind our systems 24 hours a day, every day of the year to keep them operating smoothly and continuously.

## Dover renovations win awards

If remodeling is the answer, we offer several choices. Sometimes you can make an old system act like new by installing solid-state computerized controls. But you may also want to rebuild a cab or put in custom-designed parts. Whatever your needs, we can meet them completely regardless of who manufactured the original equipment.

Dover's comprehensive engineering database, wiring diagrams, detailed service

records and computer programs enable us to make an accurate assessment of your project's needs.

## We'll give you all the help you need... Free

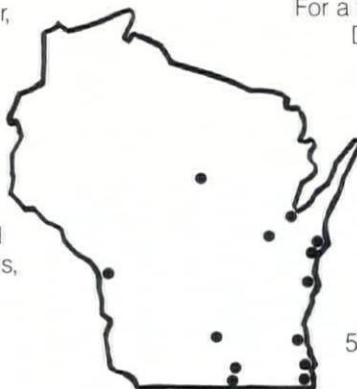
Northwestern offers you complete elevator planning service.

- We'll analyze your needs
- Write your specifications
- Lay out your elevators

You'll find that Northwestern offers everything you need, including the one thing you need most: the assurance that your elevator job is done right.

## Phone or write for 1985 Dover Planning Guide

For a free copy of the 1985 Dover Planning Guide for Wisconsin, a complete and comprehensive guide containing localized requirements, phone (414) 228-1424 or write Northwestern Elevator Co., Inc., 6070 N. Flint Road, Milwaukee, Wisconsin 53209-0976.



Sixteen offices throughout Wisconsin and upper Michigan.



# Northwestern Elevator is Dover<sup>®</sup> in Wisconsin



## PEOPLE AND PLACES

THE HALLBECK GROUP ARCHITECTS-ENGINEERS, INC. has changed their name. The new corporation name is SEYMOUR DAVIS SEYMOUR, ARCHITECTS-ENGINEERS, INC., 205 N. Dewey Street, Eau Claire, WI 54703. Only the name has been changed - corporate structure, directors, officers remain the same.

## MEMBERSHIP ACTIONS

CALLOWAY, KENT A., was approved for Associate Membership in the South-west Wisconsin Chapter.

WITEK, PAUL, was approved for Associate Membership in the Northeast Wisconsin Chapter.

EGGERT, GENE was approved for Associate Membership in the Southeast Wisconsin Chapter.

HARR, EARL R., was approved for AIA Membership in the Southeast Wisconsin Chapter.

## THE FOLLOWING WERE APPROVED FOR STUDENT MEMBERSHIP

WUNDROW, NATALIE - Northwest  
OLICHWIER, LUCINDA ANN - Northwest  
JACKOVICH, ROBERT - Northeast  
KAMINSKI, JOE - Northeast  
LEMERE, DENNIS - Northeast  
LOGGHE, MARY - Northeast  
LUNDIN, SUE ELLEN - Northeast  
WESTERN, CHARLES - Northeast  
WIESNER, RANDALL - Northeast  
ZEHREN, LISZ - Northeast

## PBBS EQUIPMENT CORPORATION

5401 N Park Dr.  
Butler, WI 53007

MILWAUKEE . . (414)781-9620

24 HOUR. Radio Dispatch Truck Fleet for  
INDUSTRY, INSTITUTIONS, SCHOOLS, etc.  
AUTHORIZED PARTS & SERVICE FOR  
CLEAVER — BROOKS, CLEVELAND  
CONTROLS, MORR CONTROLS CO.  
Throughout Wisconsin & Upper Michigan.  
SALES, BOILER ROOM ACCESSORIES, O<sup>2</sup>  
Trims, And-Car Automatic Bottom Blowdown  
Systems. SERVICE - CLEANING ON ALL  
MAKES. Complete Mobile Boiler Room Rentals.

MADISON . . . . . (608)249-6604

GREEN BAY . . . . . (414)494-3675

STEVENS POINT. . (715)344-7310

## Advertiser Directory

American Surveying Co., Inc. ....	23
Arnold & O'Sheridan, Inc. ....	23
Automatic Temperature Supplies .....	Kohler
Bachmann Construction Co. ....	4,8
Baker Mfg. Co. ....	Kohler
Benjamin Plumbing Co., Inc. ....	20
Joe Daniels Construction Co. ....	6
Desert Aire Corp. ....	5
Dolan & Dustin, Inc. ....	23
Ganser Roofing Systems .....	4,10
Genz Construction Co. ....	23
Graef, Anhalt, Schloemer & Associates .....	23
Jacobus Security Systems, Inc. ....	20
Thomas H. Joeschke & Associates .....	23
Klein Dicker Co. ....	8
J.J. Koepsell Co. ....	Kohler
Kohler Co. ....	Insert
Lange Bros. Woodwork Co., Inc. ....	8
The Little Shop .....	20
Masonry Institute .....	Insert
Mechanical Team, Inc. ....	4,10
Milwaukee Plumbing & Heating Supply .....	Kohler
Monona Masonry, Inc. ....	2
Murphy Supply Co. ....	Kohler
Robert J. Nickles, Inc. ....	10
Northwestern Elevator Co., Inc. ....	21
PBBS Equipment Corp. ....	23
Orlandini Studios, Ltd. ....	22
W.S. Patterson Co. ....	Kohler
Photocopy, Inc. ....	23
Rowley, Schillingen & Jones .....	12
STS Consultants, Ltd. ....	23
Schmelzer Paint Co., Inc. ....	10
C.D. Smith Construction, Inc. ....	Back Cover
Super Sky Products, Inc. ....	4
United Brick and Block, Inc. ....	Kohler
United Plumbing and Heating Supply .....	Kohler
Velux-America, Inc. ....	20
Ver Halen, Inc. ....	12
Wisconsin Brick and Block .....	5
Wisconsin Office Supply - Parker Dean .....	10
Wisconsin Testing Laboratories .....	23

## Moving?

Let us know 4-6 weeks in advance so that you  
won't miss a single issue of *Wisconsin Architect*.  
Please include a copy of the old label.

### New Address:

Name \_\_\_\_\_

Address \_\_\_\_\_

City, State, Zip \_\_\_\_\_

Mail To:  
WISCONSIN ARCHITECT  
321 S. Hamilton St.  
Madison, WI 53703



# PROFESSIONAL SERVICE DIRECTORY

## THOMAS H. JAESCHKE & ASSOCIATES, INC.

4085 N. 137th Street  
Brookfield, Wis. 53005 (414) 781-6564

CONSULTANTS — DESIGNERS  
FOOD SERVICE SYSTEMS & EQUIPMENT



## DOLAN & DUSTIN, INC.

CONSULTING ENGINEERS

2266 N. PROSPECT AVENUE MILWAUKEE, WIS. 53202  
(414) 276-5502

GEORGE E. DOLAN, PE  
GERALD BRAUN, PE

ROGER A. NASS, PE  
CHARLES MULLIKIN, PE  
ARTHUR MILLER, PE



CONSULTING ENGINEERS

ASSOCIATES INC.

Structural Municipal Environmental

6415 West Capitol Drive Milwaukee, Wisconsin 53216 414-461-6900



STS Consultants Ltd.

540 Lambeau St., Green Bay, WI 54303 • (414) 494-9656  
9055 N. 51st St., Milwaukee, WI 53223 • (414) 354-1100

### Consulting Engineers

- Subsurface Exploration
- Foundation Analysis
- Laboratory Testing
- Construction Monitoring

**Patronize  
Our Advertisers**

## GENZ CONSTRUCTION INC.

"Constant Concern For Customer Satisfaction"

**(414)781-5230**



- COMMERCIAL
- RESTAURANT
- RETAIL STORES
- NATIONALLY RECOGNIZED

4235 N. 127th Street  
Brookfield, WI 53005



American Surveying Company, Inc.  
6522 North 53rd Street  
Milwaukee, Wisconsin 53223

Providing Preliminary Architectural Surveys

Pete L. Bailey, R.L.S.  
President

(414) 353-1166



Wisconsin

## TESTING LABORATORIES

Geotechnical Engineers

Soil Borings

Materials Testing & Inspection

Menomonee Falls, WI 53051 • (414) 252-3300

414-272-3657

## ORLANDINI STUDIOS, Ltd.

DECORATIVE PLASTER SUPPLY CO.

SINCE 1936

ARCHITECTURAL ORNAMENT  
SUPPLY — INSTALL — RESTORE

633 W. Virginia St.

Milwaukee, Wis. 53204

Julian Orlandini



ARNOLD AND O'SHERIDAN, INC.  
CONSULTING ENGINEERS

Structural Electrical  
Mechanical Civil

608•271•9651  
815 FORWARD DRIVE MADISON, WI 53711

414•797•8705  
2505 N. 124TH BROOKFIELD, WI 53005

\*Black & White Murals \*8x10 Glossy Repros  
\*We Reproduce Blueprints or Masters For  
Making Blueprints

# PHOTOCOPY

104 East Mason St. Milwaukee, Wisconsin 53202

For Service . . .

**CALL: 1-(414)-272-1255**

# UNITED

## brick & block, inc.

Glazed Tile, Spectraglaze,  
• Quality Face Brick •

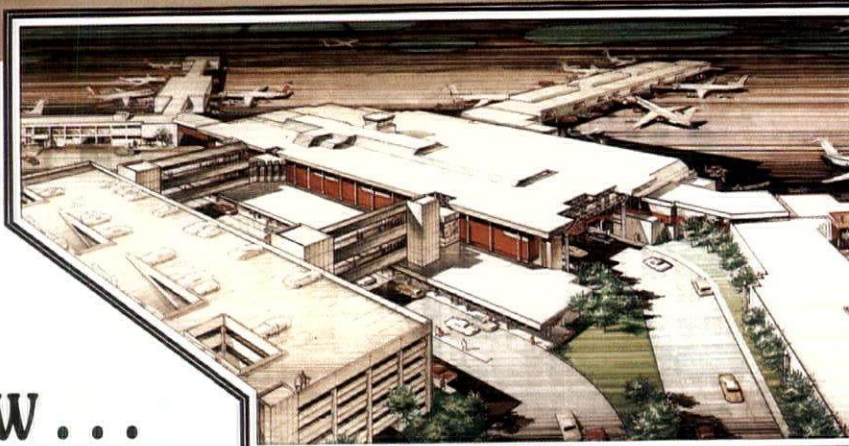
Glen Gery — Hanley — Midland — Ochs — Richtex  
Insulation, Cements, Block, Fireplaces & Access.  
Superior Zero Clearance Fireplaces

5402 Lien Road Madison, Wisc. 53704  
Contact: Joe Goodwin (608) 241-3844





General Mitchell Field Terminal Expansion  
 Miller and Meier and Associates, Inc., Architect  
 C.D. Smith Construction, Inc., General Contractor  
 Eric Oxendorf, Photo Credit



GENERAL MITCHELL FIELD TERMINAL EXPANSION

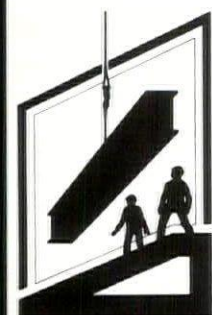
MILLER AND MEIER ARCHITECTS AND

# Building the Quality of Tomorrow . . .

## With the Experience of the Past.

Founded in 1936, C.D. Smith Construction, Inc. is a group of highly experienced construction professionals. We have a reputation with architects and owners for quality and integrity in every phase of our operations.

So, for your next project, talk to the company that people count on for reliability in general construction. . . C.D. Smith Construction, Inc., P.O. Box 1006, Fond du Lac, WI 54935 — 414-922-0421.



**C.D. SMITH**  
**CONSTRUCTION**