

JULY 1957

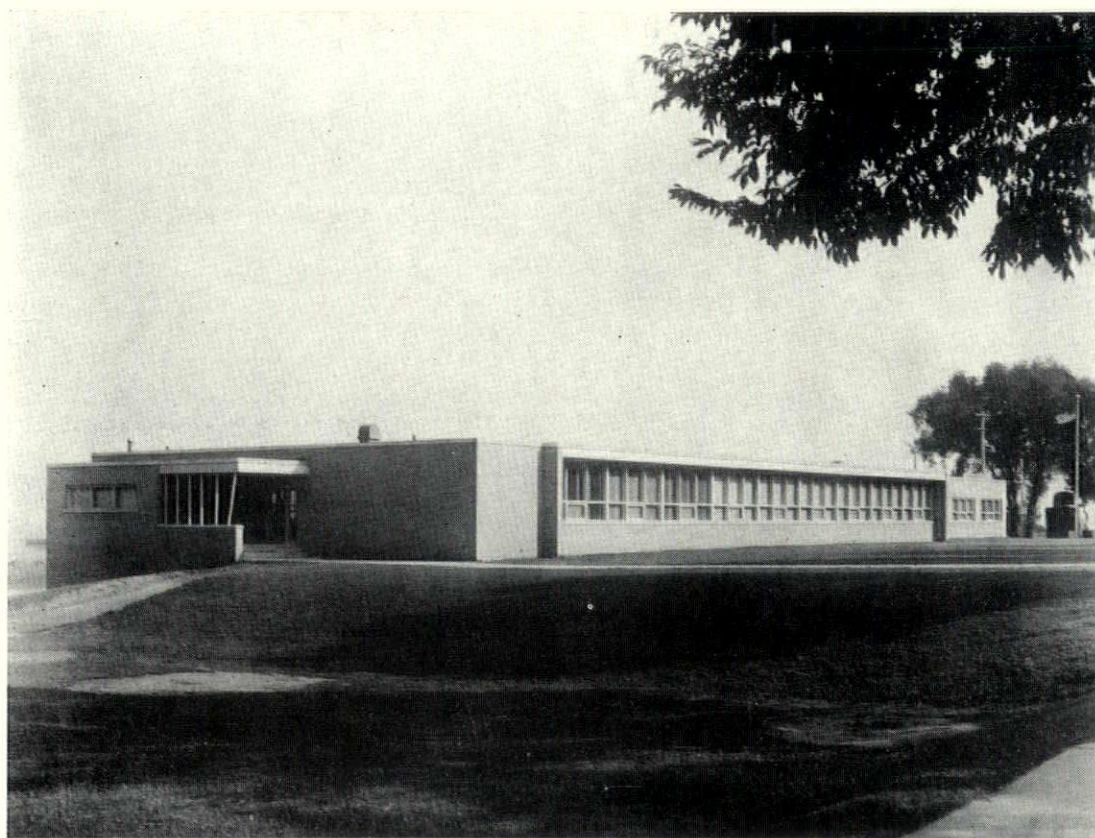
the Wisconsin Architect

AMERICAN INSTITUTE

OF ARCHITECTS

JUL 31 1957

LIBRARY



ELEMENTARY SCHOOL



*for modern convenience!
for modern appearance!*

SPECIFY A BUILT - IN GAS RANGE

● Modern homes must have modern kitchens . . . and today's most modern kitchens have built-in gas ranges. They are so attractive . . . so space-saving! But, even more important, a built-in gas range is practical, too . . . with every cooking feature in just the right place for cooking convenience!

completely automatic!

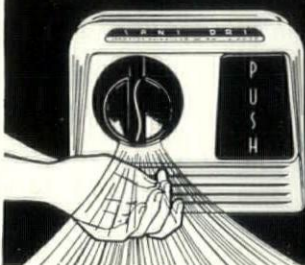
Only built-in gas ranges offer all of these important features: "set-it-and-forget-it" top burner cooking, clock-timed ovens, smokeless broilers, automatic rotisseries. Only built-in gas ranges come in such a wide choice of styles . . . and in many attractive colors that will beautifully match or harmonize with the kitchen's surroundings.

THE GAS COMPANY

626 E. WISCONSIN AVENUE

BRoadway 6-6720

**Announcing . . . AMERICA'S
MOST MODERN—MOST EFFICIENT**



**Automatic
Hand and
Hair Dryer**

Sani-Dri No. 12

Never Before So Many Exclusive Features

Decorator Styling!—Blends perfectly with today's new fixtures . . . modernizes old washrooms.

Faster Drying!—Increased air flow . . . gives much greater drying efficiency.

Quieter...Safer!—Dynamically balanced motor and blower operate smoother and quieter.

Less Maintenance Required!—New timer gives longer service . . . thermostatic motor protection eliminates fuse replacement.

More Economical, Too!—Delivers more warm air with 33 1/3% less current consumption.

**GUARANTEED
2 FULL
YEARS**

Write Today
For New Brochure
... SHOWS THE
COMPLETE LINE



THE TREND IS TO *Sani-Dri*
IN WISCONSIN'S

- SCHOOLS
- INDUSTRY
- HOSPITALS
- PUBLIC BUILDINGS
- THEATRES
- HOTELS
- MOTELS
- AIR AND RAIL
TERMINALS
- RESTAURANTS
- SHOPPING CENTERS

Keeps washrooms
neat and clean.
Prevents colds,
reduces absences.



For Further Information, Contact

NOVOTNY, INC.

Phone BRoadway 6-1899 — BRoadway 2-4183
647 W. Virginia St. MILWAUKEE 4, WIS.

THE CHICAGO HARDWARE FOUNDRY CO.

2500 Commonwealth Ave.
NORTH CHICAGO, ILL.

A PROGRESS PICTURE...

OFFICE LIGHTING AT THE HARNISCHFEGGER CORPORATION, MILWAUKEE

THE NEW

Superior lighting
in excess of 100
footcandles.

THE OLD

Good quality but
low level lighting
— 40 footcandles.



Photo was taken before lighting modernization was complete. Modernization now completed.

The NEW offers excellent quality lighting plus adequate lighting levels for visual comfort throughout the room. Accoustical baffles provide satisfactory sound conditioning. Here is a combination of lighting and accoustical treatment

which creates a comfortable atmosphere for all employees. This results in increased production and less fatigue.

Call our lighting engineers when you have lighting problems.

WISCONSIN ELECTRIC POWER CO.

Members Awaiting Summer Meeting Aug. 16 at Chenequa

Chenequa Country Club will be the scene of the 1957 Mid-Summer meeting on Friday, August 16. The business meeting is scheduled to open promptly at 9 a.m. and the agenda, which is short but important, will include consideration of changes in the by-laws (Article 12) to allow Wisconsin Chapter by-laws to coincide with the Vertical Committees of the A.I.A. The changes incorporated in the proposed amendment increase the number

of standing committees from eight to sixteen and standardize the number of members of each committee to five. Currently several of the proposed standing committees were listed as "special" committees. The duties of the committees have not been changed.

John Flad, chairman of the combined Legislation and Relations with the Engineers Committee and committee members John Brust and Alvin Grellinger will report on their recent meetings with the engineers and outline the future plans of the Interprofessional Committee.

Old and New Business items round out the agenda.

Following the one o'clock luncheon, members may play golf or cards. The bar will be open.

To complete the day's activities, a block of 100 tickets has been reserved for the Braves-Cardinals game at the Stadium at 8 p.m.

It's Official Our Name Changed

Certification of the change of the name of the Wisconsin Architects Association to the Wisconsin Chapter, of the American Institute of Architects has been received from the Register of Deeds, Milwaukee County. Although the membership voted this change at the Mid-Summer meeting in August, 1955, on the advice of Legal Counsel Gerald Rice, official change in name was delayed because of the legislation pending in the Courts. Following the withdrawal of Bill 349S, the change was then filed.

Also, as voted at the February 26, 1957, meeting, the requirement of the quorum at Annual Meetings was officially changed from 20% to 15%.

If you can't get away for a vacation don't let it worry you. You can get the same feeling by staying home and tipping every third person you see.

COVER COMMENT

A splendid example of contemporary school architecture is shown on this month's cover, as well as on pages six and seven of this issue. The structure is the James Madison Elementary School, of Manitowoc, and is another of the fine jobs performed by Wisconsin A.I.A. members. This school was performed by Frederick W. Raeuber and Associates, of Manitowoc.

The Wisconsin Architect, Volume 25, Number 7, the official publication of the Wisconsin Chapter of the American Institute of Architects is published monthly from the business and editorial offices at 8416 W. Lisbon Ave., Milwaukee 16, Hopkins 3-1080. Published by Acme Publishing Co. Editor is Paul F. Thielen. Subscription rates are \$1.00 per year.

Wisconsin Chapter American Institute of Architects

8416 W. Lisbon Avenue Milwaukee 16, Wis.
Telephone HOPkins 3-1080

OFFICERS

Arthur O. Reddemann President
Joseph H. Flad Vice-President
Robert P. Potter Secretary-Treasurer
Gerald J. Rice Legal Counsel

DIRECTORS AT LARGE

Maurey Lee Allen Mark Purcell
John Brust Arthur O. Reddemann
Theodore Eschweiler Julius Sandstedt

DIVISION DIRECTORS

Milwaukee Division
Herbert Grassold Robert Potter
Madison Division
Joseph H. Flad Robert Hackner
Northeast Division
Frank Shattuck Karel Yasko

DIVISION OFFICERS

Milwaukee Division
John Jacoby, President; Myron Sielaff, Vice-President; Robert Klocksins, Secretary-Treasurer.

Madison Division

Nathaniel Sample, President; Robert Cashin, Vice-President; Franklin Mabbett, Secretary-Treasurer.

Northeast Division

Leonard Reinke, President; Leonard Schober, Vice-President; George Narovec, Secretary-Treasurer.

PREXY'S CORNER

By Arthur O. Reddemann

President, Wisconsin Chapter, A.I.A.



Pack your briefcases and golf clubs for the August 16 meeting at Chenequa Country club. It does not appear that the business meeting will be very long so there will be plenty of time for socializing. I look forward, too, to meeting the men who are celebrating their fortieth year of registration. Please help the office by returning your reservations by August 9 in order that adequate preparations can be made.

From rumblings heard hereabouts, several of the offices have planned on an "architects night out" and will attend the Braves game that evening en masse.

No meeting of the Board of Direc-

tors is scheduled for July. The next Board meeting will be held following the luncheon at the Mid-Summer meeting.

The team from The Institute which will make an Architectural School study to determine the feasibility of an architectural school in the state is expected to arrive soon. I am anxiously awaiting their report. As previously noted, at least one of the Wisconsin colleges has indicated an interest in the outcome of the study.

I am delighted to learn that we are now legally and officially members of the Wisconsin Chapter, A.I.A.

See you on August 16.

Architects Participate in Organization of

Construction Specifications Institute

The recently organized Wisconsin Chapter of the Construction Specifications Institute was given its charter Monday, June 24, at a meeting in Milwaukee. J. Stewart Stein of Chicago, national vice-president of the Institute presented the charter dated May 11, 1957 to Alfred C. Kluge, Milwaukee, president of the Wisconsin group.

Kluge announced the Wisconsin Chapter would be hosts to a regional fall conference which would include members of CSI chapters from Chicago, Detroit, Cleveland and St. Louis. Thomas Eschweiler will be general chairman of the gathering.

Warren L. Vedder of Meigs and Cope, a Milwaukee insurance

agency, spoke on the influence on specifications of bid bonds, performance bonds, and liability and Workmen's Compensation insurance. He and Robert K. Cope of the agency answered questions. Builders Risk insurance will be covered at a future meeting.

The Wisconsin Chapter of CSI,
(Continued on Page 11)

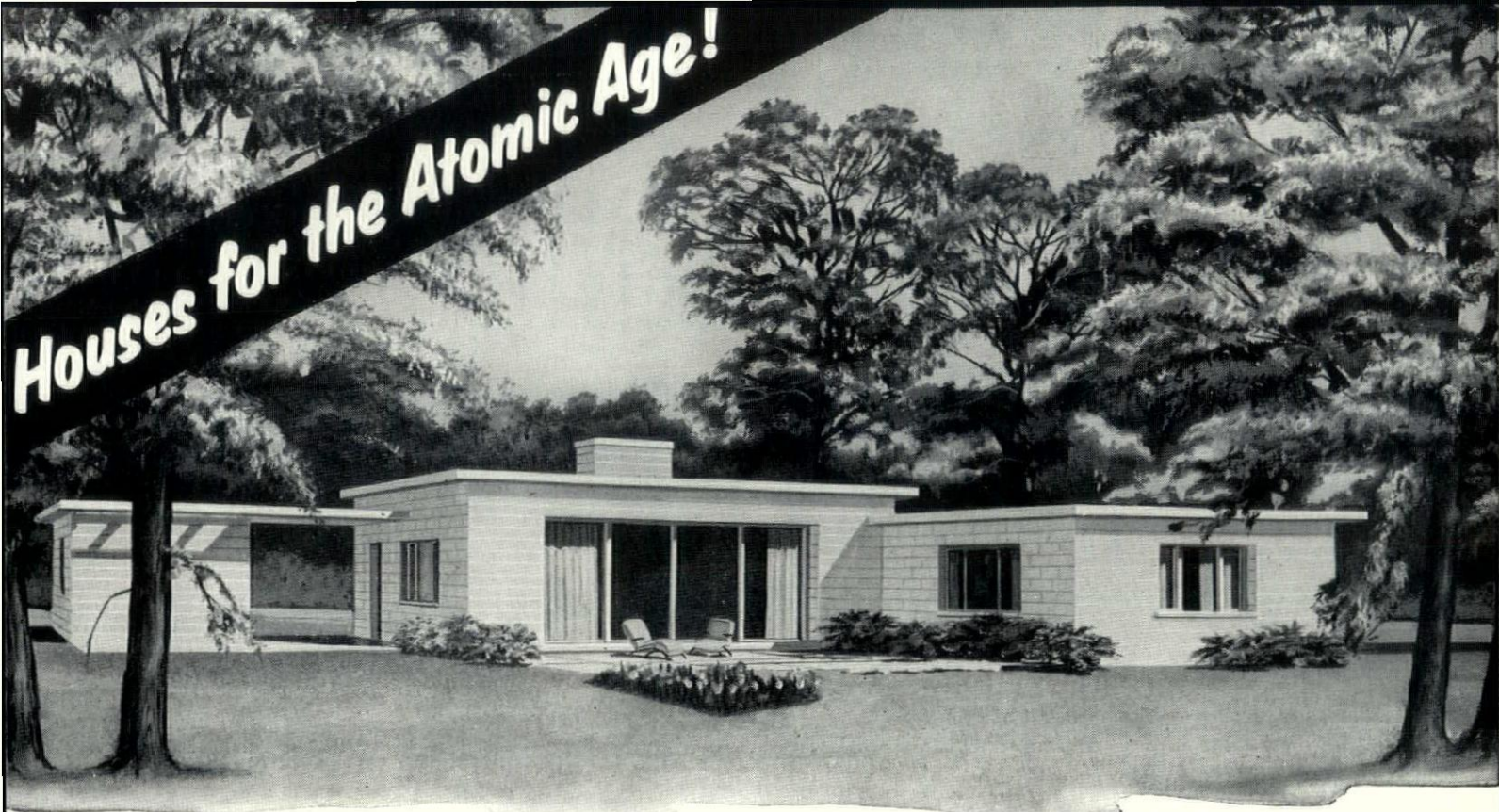


MEETING. These photos show scenes at the C.S.I. meeting. At left, J. Stewart Stein, Chicago, national vice president of the organization, presents the charter to Alfred G. Kluge, Milwaukee, president of the Wisconsin Chapter. Seated at left is Thomas Cantwell, treasurer of the local group.



Picture at left shows C.S.I. officials. Seated, from left, are Stein; Kluge; Arthur O. Reddemann, president of the Wisconsin Chapter, AIA, and executive committeeman of the C.S.I.; and Gerry Ahrens, another executive committeeman. Standing, from left, are Cantwell; Lester G. Seubert, C.S.I. secretary; and Don Woodward, executive committeeman.

Houses for the Atomic Age!



Now you can protect precious lives with **An all-concrete blast-resistant house**

Here's a house with all the advantages of any concrete house—PLUS protection from atomic blasts at minimum cost.

A firesafe, attractive, **low-annual-cost** house, it provides comfortable living—PLUS a refuge for your family in this atomic age.

The blast-resistant house design is based on principles learned at Hiroshima and Nagasaki and at Eniwetok and Yucca Flats. It has a reinforced concrete first floor and roof and reinforced concrete masonry walls. The walls, the floor and the roof are tied together securely with reinforcement to form a rigidly integrated house that the engineers calculate will resist blast pressures 40% closer to bursts than conventionally-built houses.

Anywhere in the concrete basement of the house would be much safer than above ground but a special shelter area has been provided in this basement to protect occupants from blast pressures expected at distances as close as 3,600 feet from ground zero of a bomb with an explosive force equivalent to 20,000 tons of TNT. This shelter

area affords protection from radiation, fire and flying debris as well. And the same shelter area also can serve as a refuge from the lesser violence of tornadoes, hurricanes and earthquakes.

The safety features built into this blast-resistant house are estimated by the architect and engineer to raise the cost less than 10%.

Concrete always has been known for its remarkable strength and durability. That's why it can be used economically to build houses with a high degree of safety from atomic blasts.

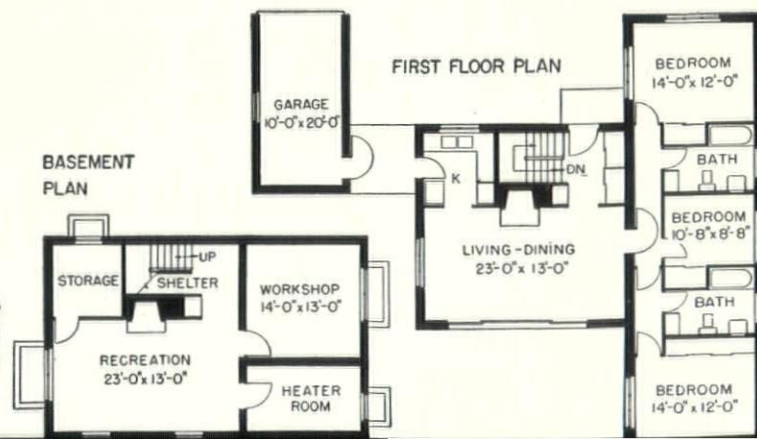
Like all concrete structures, blast-resistant concrete houses are moderate in first cost, require little maintenance and give long years of service. The result is **low-annual-cost** shelter. Write for folder.

PORTLAND CEMENT ASSOCIATION

735 North Water Street, Milwaukee 2, Wisconsin

A national organization to improve and extend the uses of portland cement and concrete through scientific research and engineering field work.

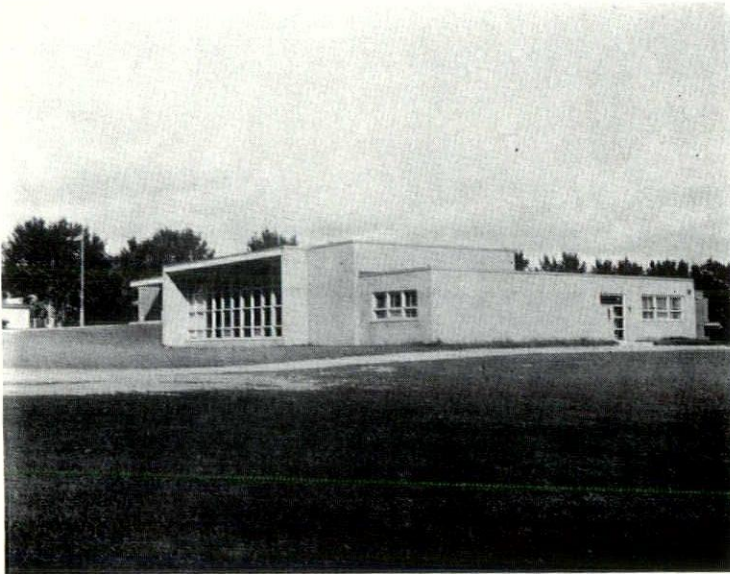
Interiors of a blast-resistant house have all the charm and livability of conventional houses.



ELEMENTARY SCHOOL

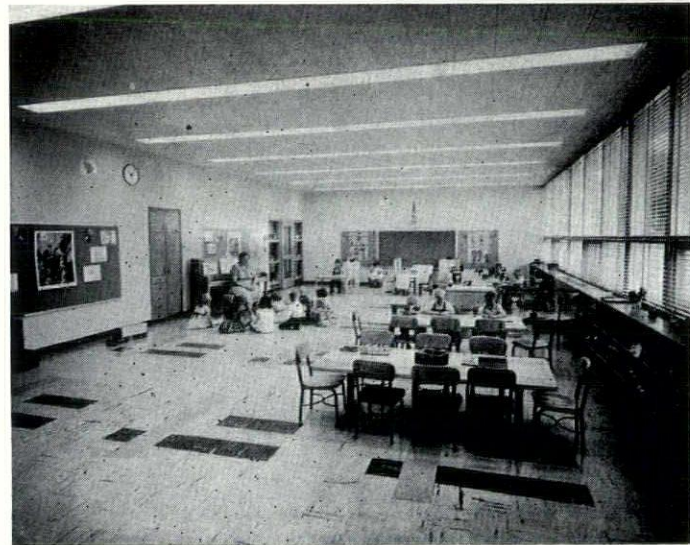
JAMES MADISON ELEMENTARY SCHOOL
MANITOWOC, WISCONSIN

ARCHITECT • FREDERICK W.
RAEUBER AND ASSOCIATES
A.I.A.



EXTERIOR

KINDERGARTEN CLASSROOM



GYMNASIUM

PRINCIPAL'S
OFFICE



... "SERVING YOU
IS A PLEASURE" ...

... Write or call our nearest office for
details and specifications on ...

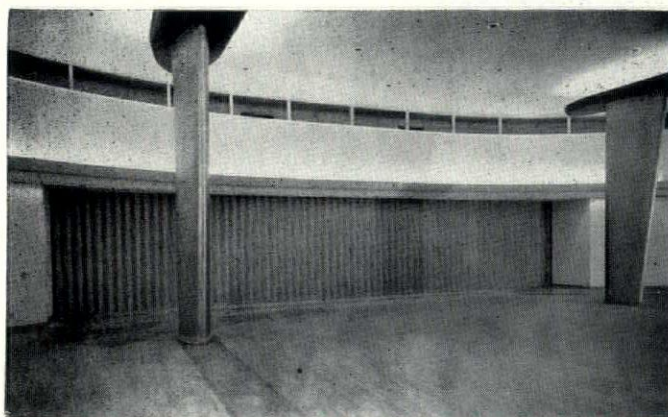
GLASS	PAINT
THERMOPANE	WALL COVERING
GLASS BLOCK	SCENICS
CORRULUX	STORE FRONT METAL
STAINED GLASS	

T. C. ESSER CO.

Mfg. and Distributors
MILWAUKEE, WIS.

BRANCHES:

La Crosse, Wis.	Oshkosh, Wis.
Sheboygan, Wis.	Racine, Wis.
Iron Mountain, Mich.	Menominee, Mich.



FOR BEAUTY AND QUALITY

Ballroom and lounge of Marquette University Memorial Union are separated by a pair of Folddoors 48 in. wide by 9 ft., 6 in. high. Two pairs of Folddoors, each 32 ft. by 8 ft., 9 in., divide second floor meeting room into three private rooms. First floor meeting room has two pairs of Folddoors, 18 ft. by 11 ft., 3 in. Folddoors fold neatly into wall recesses. Brust & Brust, Architects.

Folddoor engineers are ready to extend complete cooperation at any time.

FOLDDOOR

Sales Co. of Wisconsin

8231-8251 W. Greenfield Ave., Joseph W. Wilde, Pres.
Milwaukee 14, Wis.

SPRING 4-8500

Hi-Lites

Of The June Board Meeting

The following actions were taken by the Board of Directors at its June 14 meeting:

Approved forwarding the application of Ned Emil Fischer, Brookfield, to the Institute with the recommendation that he be accepted as a corporate member. Fischer has been an associate for the past four years;

Approved a quarter-page ad in the name of the Wisconsin Chapter, AIA, in the Milwaukee Building Construction Trades Council yearbook at a cost of \$45;

Recommended to North Central States Regional Director Bryant Hadley the establishment of a Regional Fee Study committee to make a regional basic fee study;

Appointed a new Fellowship Study committee composed of the presidents of the three Chapter divisions, John Jacoby, Nathaniel Sample, and Leonard Reinke to recommend to the Board nominees from this Chapter for Fellowship status;

Approved adoption of the following resolution, and recommended its publication in THE WISCONSIN ARCHITECT:

"Effective June 14, 1957, the chairmen of all state-level committees of the Wisconsin Architects Association, whose committees affect the welfare of the architects at large, shall have the approval of the Board of Directors of the Wisconsin Architects Association before any findings of their respective committees are submitted to any other professional society, or to the press, or to the public in any manner. In further emphasis of the importance of screening vital information,

the president of each of the divisions of the Wisconsin Architects Association shall be so instructed that they shall also be responsible for the screening of their Division Committees to avoid unwise disclosure of information."

PRODUCERS' COUNCIL ELECTS OFFICERS FOR 1957-58 TERMS

The annual election dinner installing new officers for the Wisconsin Chapter of Producers' Council, was held on June 3 at the Eldora Restaurant. The following members were elected for the 1957-58 term:

President—Thomas Cantwell of Mosaic Tile Co.

1st Vice Pres.—Charles Downs of Josam Mfg. Co.

2nd Vice Pres.—Robert Hanlon of Ceco Steel Products Corp.

Secretary—Raymond Dunke of U. S. Plywood Corp.

Treasurer—John Casey of Zuron Industries, Inc.

Committee Chairmen

Program Committee—Robert Hanlon of Ceco Steel Products Corp.

Publicity Committee—J. G. Maimone of Congoleum-Nairn, Inc.

Arrangement Committee—William Burton of the Crane Co.

Membership Committee—Boyd Nelson of Inland Steel Co.

Joint AIA and PC Liaison—James Pellock of Overly Mfg. Co.

The above officers represent the executive board of the Wisconsin Chapter of the Producers' Council.

—•—

It takes two to make a bargain but only one to make a whale of a mistake.

Roger Kirchhoff To Be Honored

The first architects registered in Wisconsin forty years ago will be guests of honor at the luncheon at the mid-summer meeting on August 16 and a special Citation of Honor will be presented to State Architect Roger Kirchhoff by President Arthur Reddemann.



MR. KIRCHHOFF

Of the 183 architects registered in 1917, 78 are believed to still be living in Wisconsin and have been invited to attend the informal luncheon.

Roger Kirchhoff, one of the group, will also be cited by the Wisconsin Chapter AIA, for "his many years of fidelity to the State of Wisconsin and his constancy in maintaining the profound principles of the architectural profession."

DEATH TAKES HAY AND SATRE

Two members of the Wisconsin Chapter, AIA, died recently.

They are Henry Harshaw Hay, of Ogdensburg, who formerly practiced in Milwaukee, and Harold P. Satre, a partner in the firm of Satre and Senescall, of Sheboygan. The former died last month, while Mr. Satre passed away in April.

The sincere sympathies of the Wisconsin Chapter go to the relatives, friends and business associates of these men.

MONBERG TRANSFERS

Lawrence Monberg, 815 57th St., Kenosha, has transferred his membership from the Chicago Chapter, A.I.A., to the Wisconsin Chapter, A.I.A.

The American Institute of Architects and Its Reason for Being, as Published by The A. I. A.

(PART I OF THREE PARTS)

In our national history an element about which very little has been written is the formation, growth and activities of the professional societies. The doctors were the first to organize for the sake of self-improvement and the betterment of their service to the public. The American Medical Association was formed in 1847—just a few years more than a century ago. The civil engineers were next, in 1852, and their first organization included the architects; it was known as the American Society of Civil Engineers and Architects. Five years later the architects formed the nucleus of what soon became their national professional body,

The American Institute of Architects. Curiously enough, the lawyers, so plentiful in the early days of the republic and so active in its government, did not organize the American Bar Association until 1878.

During the first fifty years of our life as a nation, the building needs were fairly simple—dwellings, town halls, courthouses, churches, for the most part, and the master builders of those days improvised very well indeed, relying on their memories of old-world forms and leaning heavily on books of details that were sent over from England and later, written and published by a few of our own highly skilled carpenters and wood carvers.

But from about 1850 to 1870 with

the rapidly increasing scope of our needs aided by our infatuation with the machine, particularly the scroll saw, our architecture fell to what now seems an all-time low—the Dark Ages of architecture in the United States. Yet it was in this period of dim thinking, when public regard for technical knowledge and orderliness was at such a low ebb, that twelve architects met in New York City to consider how they might improve their individual competence by sharing knowledge and experience, and thus become better able to serve society as it unknowingly deserved to be served. So barren was the field, even in the country's largest metropolis, that the twelve founders were hard put to it to find eighteen others of sufficient competence to share their responsibility in organizing the new

(Continued on Page 10)

✓ VITRO-SURF ✓

A GLAZED CEMENT SURFACE COATING

FOR WALLS
NEW or EXISTING
INTERIOR and EXTERIOR

applied on

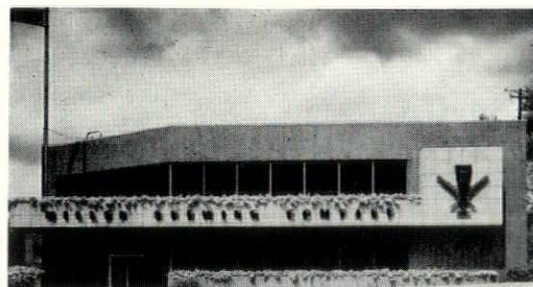
PLASTER, CONCRETE, BRICK
BLOCK, WALLBOARD, ETC.
PAINTED or UNPAINTED

Decorative — Colorful — Permanent — Sanitary
Economical — Washable — Waterproof — Durable
Innumerable Combinations of Non-Fading Colors

**R. H. Olson
Company**

WOodruff 4-4040
WOodruff 4-4041
3869 N. Port Washington Rd.
Milwaukee 12, Wisconsin

MILLER BREWING COMPANY USES PIPKORN FACE BRICK



Designer — Brooks Stevens & Associates
Architect — Arthur Seidenschwartz & Son
Gen. Contr. — Selzer-Ornst Co.

Metro Sunset Blend Yellowstones

Remember W. H. PIPKORN when you are selecting Brick. See our large assortment in our new display room.

Representing America's Leading Face Brick Manufacturers

Phone Mitchell 5-6800

W. H. PIPKORN CO.

1548 West Bruce Street South end of 16th Street Viaduct
Milwaukee, Wisconsin

It's W. H. PIPKORN for the finest in quality face brick

Foster and Yasko Hosts To Danish Visiting Team

Foster & Yasko, architects, of Wausau, were hosts on May 26 to May 29 to a visiting team from Denmark who were in this country studying "Building in the United States" under the auspices of the International Co-operation Administration and the Housing and Home Finance Agency.

They arrived in the U. S. on April 29th and left on June 6th, after covering Washington, Philadelphia, New York, Detroit, Wausau, Green Bay, Chicago.

The team was composed of two architects, two engineers, 2 trades union leaders and a lawyer member of the Ministry of Housing of Denmark.

"In Wausau they visited our office, examined our working drawings and then inspected the jobs

built from them. In addition they visited local wood working plants, aluminum window plant and saw their first baseball game," Yasko reported.

The purpose of the visit was to help stimulate and further support the efforts of Denmark to effect increased industrialization of building by demonstrating American managerial and organization techniques in building.

History . . .

FROM PAGE 9

technical body. Today, in 1957, there are over 20,000 persons who have been examined and found worthy to be registered by the various states as competent to practise architecture.

(To Be Continued)

Building Figures Show a Decrease

Contracts for future construction in Wisconsin in March totaled \$54,011,000, a decrease of 15 per cent compared to March 1956, F. W. Dodge Corporation, construction news and marketing specialists, reported recently.

March contracts by the major construction categories compared to the similar month of a year ago showed: non-residential at \$20,290,000, up one per cent; residential at \$27,581,000, down one per cent; and heavy engineering at \$6,140,000, down 60 per cent.

April contracts for future construction in the residential category in the metropolitan Milwaukee area totaled \$10,647,000, a decrease of 27 per cent compared to April 1956.

for GREATER BEAUTY
at LOWER COST

SPECIFY

fabrow  **frames**

distributed by

CENTRAL WISCONSIN SUPPLY CORP.

Windsor, Wis.

PHONE: CHERRY 9-5535 (Madison)

in Milwaukee

HOME GLASS AND PAINT COMPANY

5936 West Appleton Avenue

PHONE: HILLTOP 2-9360

**Hunzinger
Construction
Company**

Milwaukee

Phone: SUNset 1-9100

Fete Members Of State Board

Members of the architectural division of the Wisconsin Registration Board of Architects and Professional Engineers were guests at the June meeting of the Milwaukee Division held at the City club. They included Edgar Berners, Ralph Kloppenburg, Gerrit DeGelleke, Roger Kirchhoff and the group's secretary, W. A. Piper.

The 46 Milwaukee division members present were given an opportunity to see how a design problem is solved by candidates taking the State Board examinations. Five problems and solutions, typical of those offered to candidates, were posted for judging by members. It was interesting to observe that the gradings given by the membership were more severe than those offered by the Registration Board.

CSI Charter . . .

From Page 4

organized in January of 1957, held bi-weekly meetings at first. Now its meetings are scheduled on the fourth Monday of each month. Specification writers or others who write specifications are eligible for active membership. Material suppliers may become associate members. Persons interested in joining this group, dedicated to the improvement of the preparation of specifications, may obtain details from Secretary Lester G. Seubert, of Eschweiler and Eschweiler.

Charter members of the Wisconsin Chapter, CSI, are:

Active Members

Herbert W. Bradley, Thomas L. Eschweiler, Roswell H. Graves, George W. Gunn, Alfred C. Kluge, Lawrence E. MacDonald, Jr., Erhard A. Meyer, Harry A. Ollrogge, Arthur

O. Reddemann, Lester G. Seubert, Robert F. Slater, Walter E. Zoller.

Associate Members

Gerry H. Ahrens, Norman W. Allen, Delyle G. Beyer, Orley C. Brown, William P. Burton, Eugene L. Cady, Thomas L. Cantwell, Jr., John L. Casey, Rollin B. Child, Gerritt J. DeGelleke, Jr., Charles O. Downs, Raymond F. Dumke, John T. Hanlon, David J. Hensler, Theodore C. Hunt, George K. Johnson, Robert L. Kirkpatrick, Thomas L. Klug, Robert J. Krieger, George K. Leisenring, Donald A. Loss, James M. Mitchell, K. Boyd Nelson, Jay Barton Oker, Donald C. Popalisky, Aldo Louis Presenza, Joel R. Rachlin, Robert G. Sandvik, Maurice L. Simmons, Alfred L. Tolpingrud, Bruce H. Waldo, Harry D. Warnke, Harry L. Wittwer, Donald D. Woodward

The STRAITS ACCORDION FOLDING DOOR

is

Architecturally Correct

Residential — Commercial — Institutional

- RUST RESISTANT STEEL FRAME
 - PANTOGRAPH ACTION
 - FIBERGLAS SOUND INSULATION
 - FLAME RESISTANT, WASHABLE FABRICS IN 50 COLORS
- R-8 MEDIUM or C-12 SIZES

See Us When Writing Your "Specs"

DISTRIBUTED BY

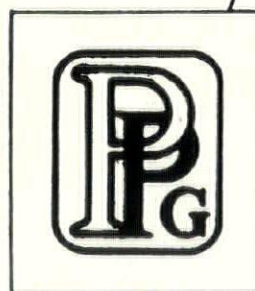
LICHTER'S

1813-15 W. CENTER ST. • MILWAUKEE 6, WIS.

FRanklin 4-1032

A.I.A. Manual on Request

Member, Milwaukee Builders' Exchange



**STANDS
FOR QUALITY**

PAINTS • GLASS

in homes • offices • factories
institutions • schools • stores

PAINTS • GLASS • CHEMICALS • BRUSHES • PLASTICS
PITTSBURGH PLATE GLASS CO.
620 SOUTH FIRST STREET • MILWAUKEE, WIS.

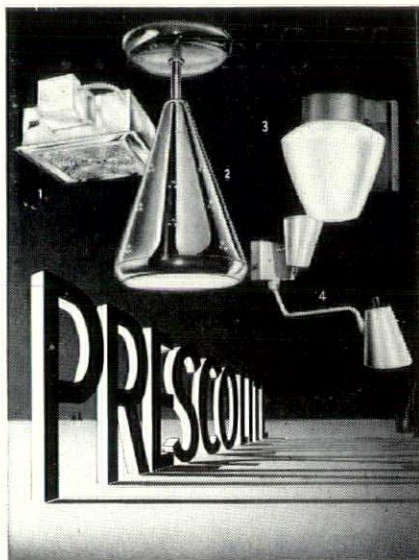


Complete Supplies for
ARCHITECT AND ENGINEER

BLUE PRINTS • DIRECT READING
BLACK OR BLUE DRY PRINTS
TRACING REPRODUCTIONS

FREDERICK POST CO.

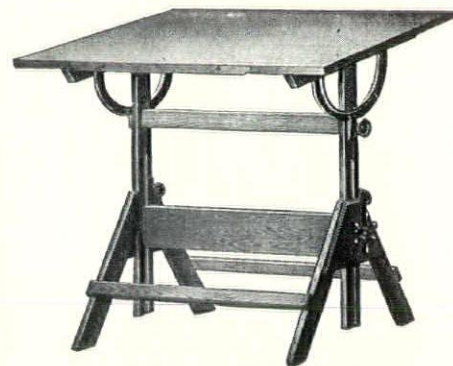
115 EAST WELLS STREET
BROADWAY 1-9300
MILWAUKEE, WISCONSIN



The fixtures illustrated above, and many others too, employ "DieLux"™ diecastings as an integral part of the unit . . . for STRENGTH, DURABILITY, APPEARANCE. 1. No. 1015-6715 Recessed. 2. No. A-14 Swivel Unit. 3. No. WB-25 Wall Unit. 4. No. 8585 Hospital Light. Write for your free copies of current PRESCOLITE literature.

*Prescolite's trade name for precision diecast products.

PRESCOLITE MANUFACTURING CORP
Berkeley, California • Neshaminy, Pennsylvania



TABLES, FILES, STOOLS
AND SUPPLIES OF ALL
KINDS AND MAKES

A. I. A. FORMS

PHOTOCOPIES
REPRODUCED TRACINGS

SCHMITT BLUEPRINT CO.

BROADWAY 6-1761
628 N. BROADWAY MILWAUKEE

Edward T. Ver Halen Inc.

Established — 1911



Weldwood
Movable Partitions

- Beauty of real wood
- Flexibility and flush design
- Modular panels with incombustible Weldrok core
- Wiring accessible, concealed
- Interchangeable units — positive metal connectors

SOUND CONDITIONING
BUILDING SPECIALTIES

Our
47th
Year

Madison — Milwaukee — Green Bay



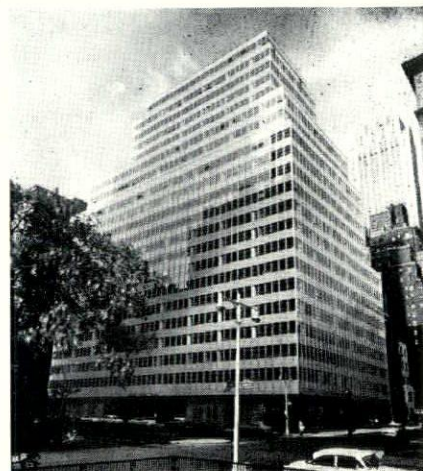
For Flexibility of Design PLUS
Outstanding Beauty and Economy . . .

Insist on LUPTON Simplified CURTAIN WALL SYSTEMS

Designed specifically
to form complete
exterior walls for single
or multi-story build-
ings of any type —
particularly hospitals
and office buildings.

We are the
Midwest
Distributors for
all Lupton
Metal Products
Call
LO. 2-4600

for
complete facts
and estimates

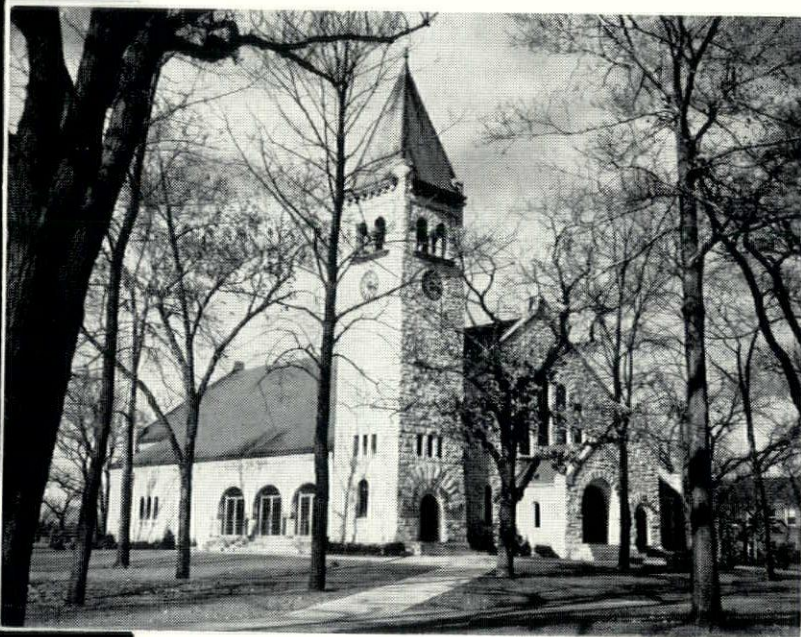


Actual photo of Lupton Curtain Wall installation
at 300 Park Avenue, N. Y. Architect:
Emery Roth & Sons.



ALUMINUM PRODUCTS DIVISION
1824 West North Avenue Milwaukee 5, Wisconsin

flexicore



**BELOIT
COLLEGE
CHAPEL**

Beloit, Wisconsin

Architect, Maurice Webster, Evanston, Illinois
Contractor, Cunningham Brothers, Inc., Beloit, Wisconsin

**Built with Flexicore Concrete Floor System in
conjunction with poured-in-place columns and beams.**

Flexicore provides fast, all-weather construction — it cuts days off building schedules.

Flexicore is fire-safe.

Flexicore is attractive for ceilings and requires minimum finishing and maintenance.

Flexicore provides economical, low-man-hour construction.

Write for A.I.A. File Bulletins on Regular and Electrified Flexicore.

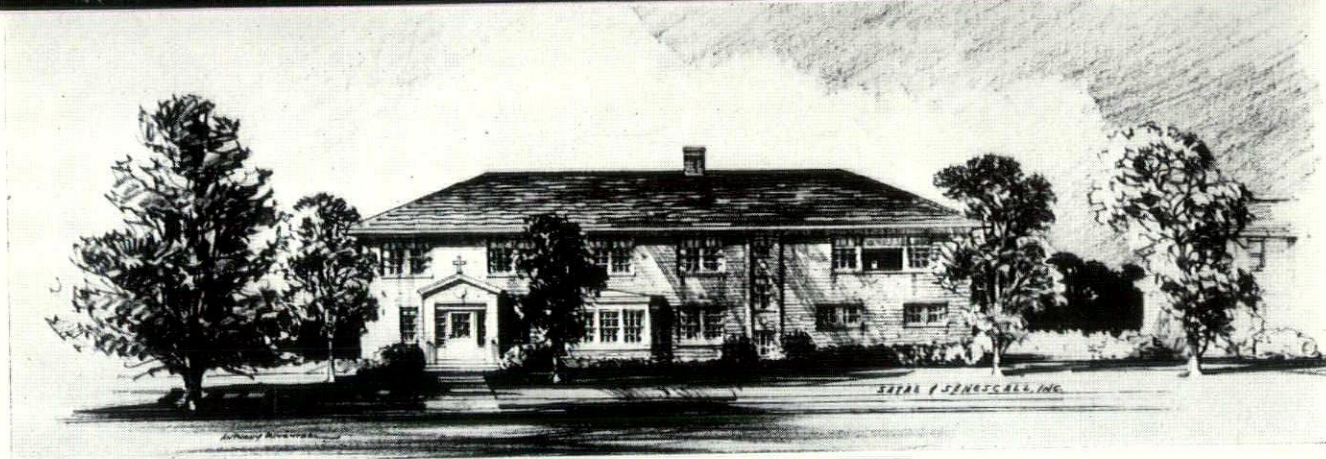
MID-STATES CONCRETE PRODUCTS CO.

P.O. BOX 325

BELOIT, WISCONSIN

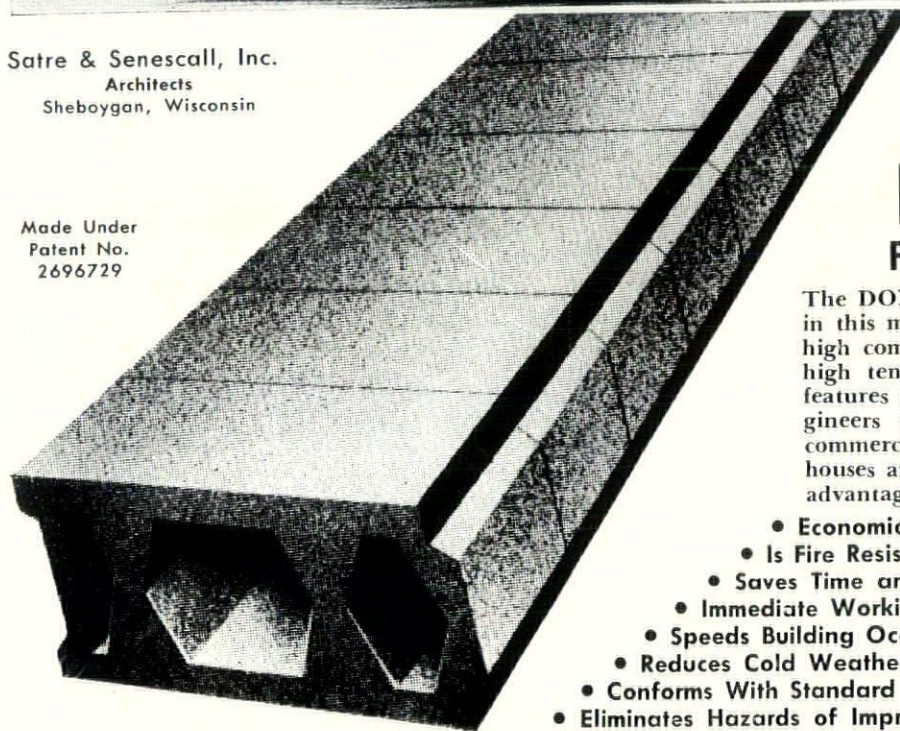
DoxPlank

FOR SPEED IN CONSTRUCTION AND ECONOMY



Satre & Senescall, Inc.
Architects
Sheboygan, Wisconsin

Made Under
Patent No.
2696729



Rectory for
St. Dominics Congregation
Sheboygan, Wisconsin

DoxPlank FLOOR and ROOF SYSTEMS

The DOX PLANK system was selected for use in this modern school because it combines the high compressive strength of concrete and the high tensile strength of steel. DOX PLANK features make it the favorite of architects, engineers and contractors for use in schools, commercial buildings, factories, apartment houses and private homes. It offers the special advantages listed below.

- Economical
- Is Fire Resistant
- Saves Time and Labor
- Immediate Working Deck
- Speeds Building Occupancy
- Reduces Cold Weather Delays
- Conforms With Standard Building Practices
- Eliminates Hazards of Improper Field Construction

VanderHeyden Inc.

Serving the Building Industry Since 1912

6633 W. National Ave.

Milwaukee, Wis.