

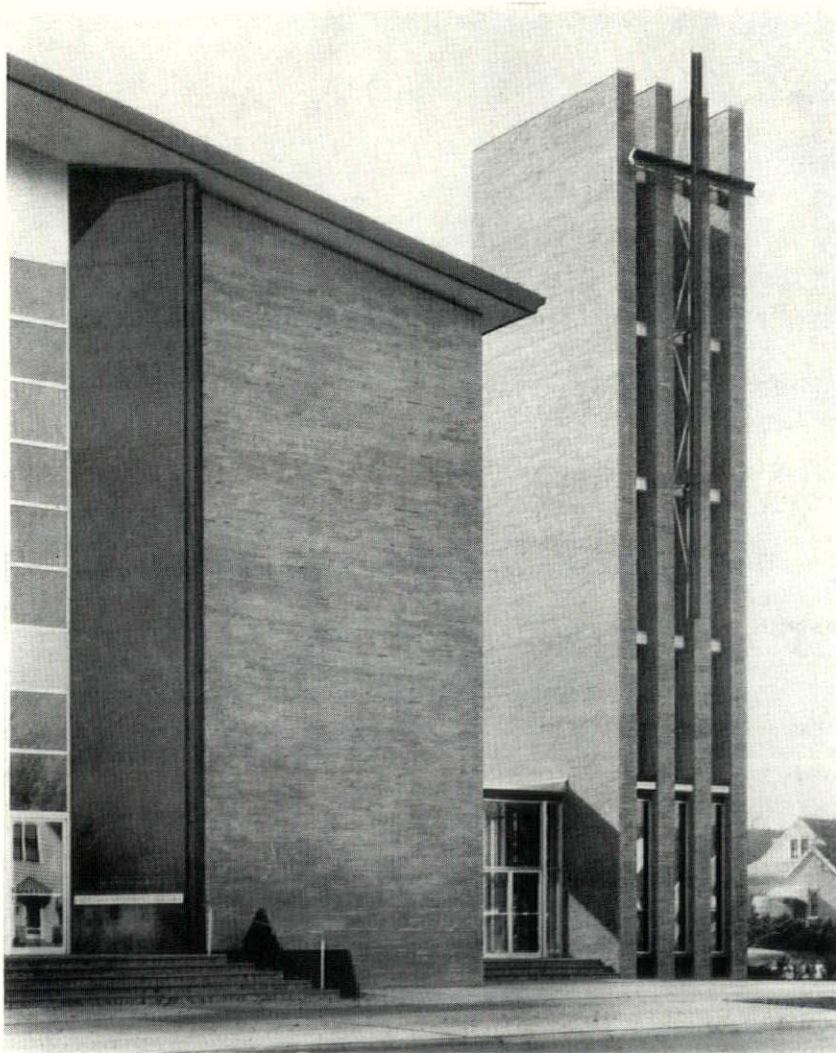
JUNE 1957

the
Wisconsin
Architect

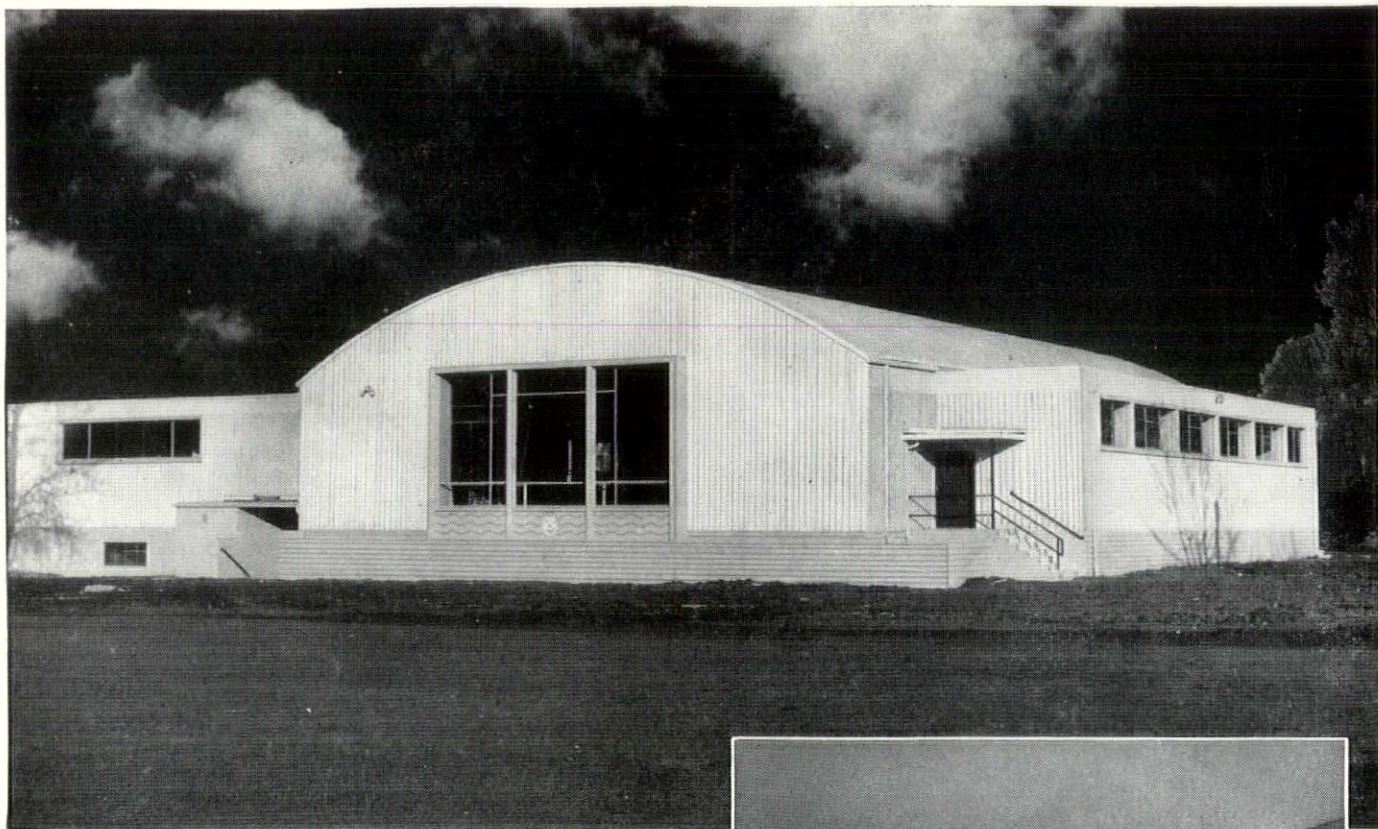
AMERICAN INSTITUTE
OF
ARCHITECTS

JUL 8 1957

LIBRARY



CONTEMPORARY CHURCH

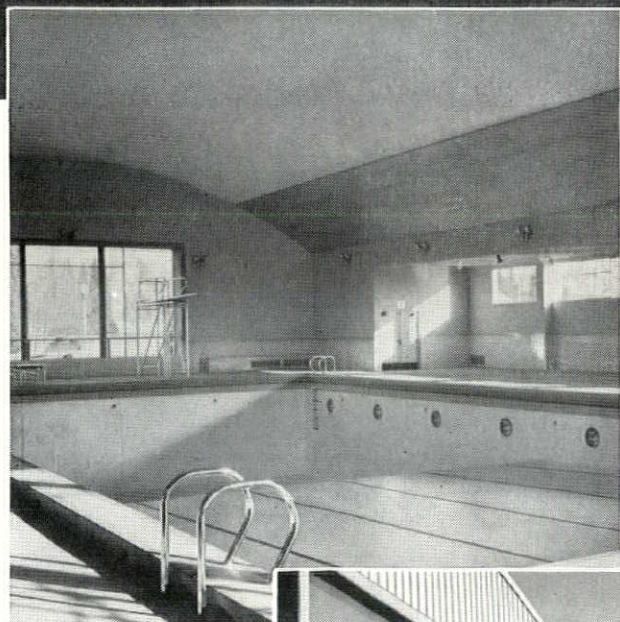


CONCRETE
Shell Roof Provides
Distinctive, Economical Pool
in Seattle

Economical construction and unobstructed inside space were main reasons for choosing a concrete shell roof for the Seattle park department's swimming pool at Green Lake. The 64' x 110' roof is supported only at the end walls. It forms a curve with a 54' radius and arches to 25' above the normal pool water level. The concrete in the roof tapers from 6" thick at the end walls to 3 1/4" in a distance of 4'.

Concrete shell roofs can span up to 300' and more without supporting columns. That's an important consideration in auditoriums, garages, warehouses, hangars, gymnasiums, exhibition buildings and train sheds and repair shops.

Concrete shell roofs are low-annual-cost investments. They are economical to build, need little or no maintenance, have long life and low insurance rates. Write for free literature. It is distributed only in the United States and Canada.

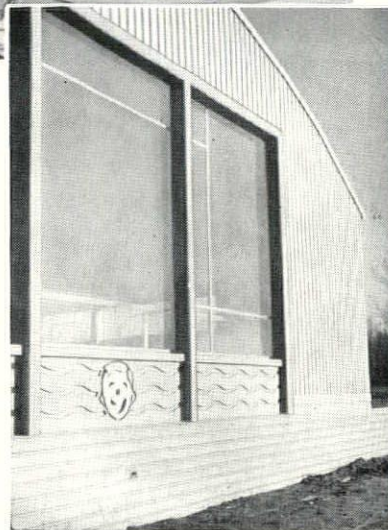


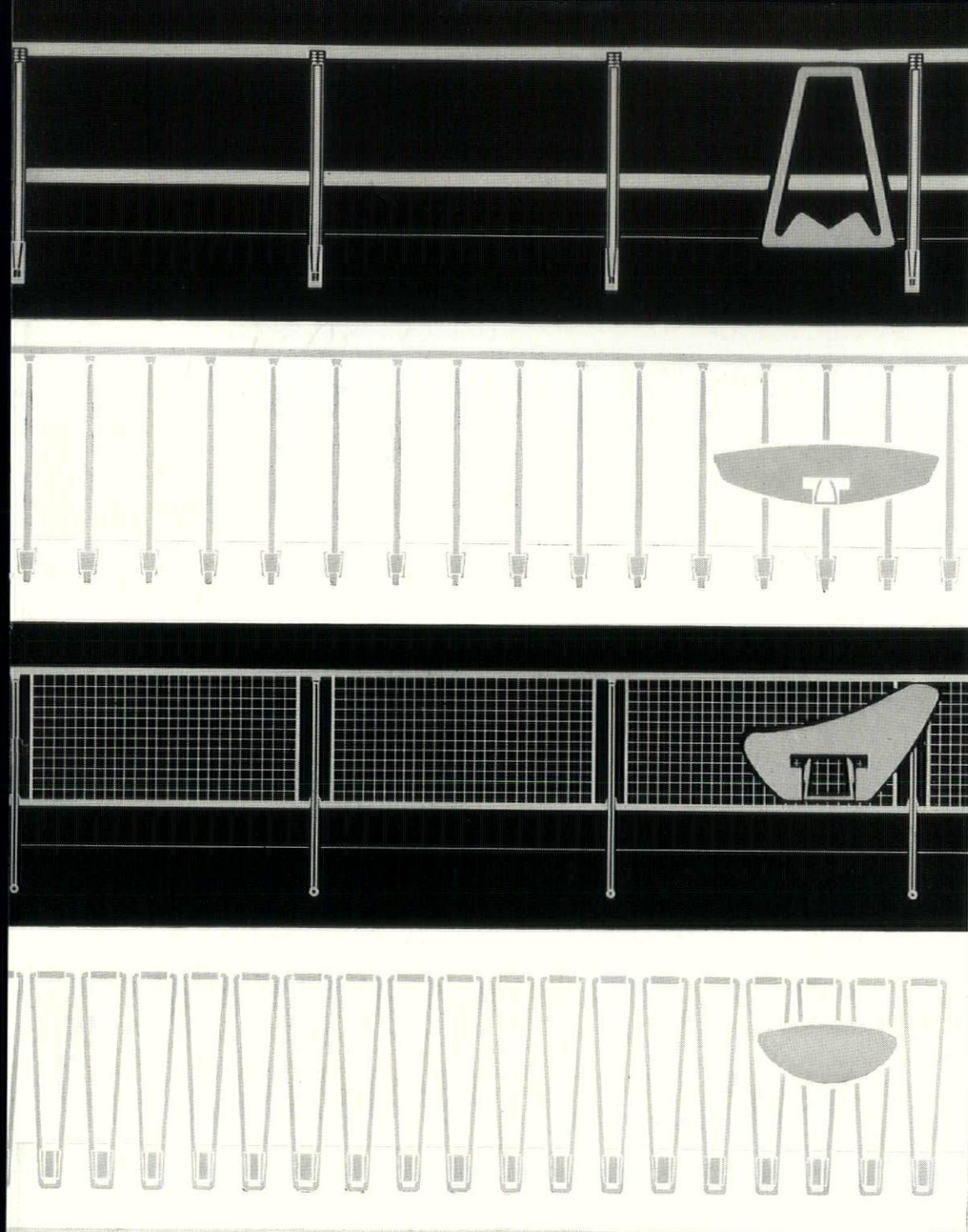
Top: Attractive exterior of the Green Lake swimming pool building of the Seattle, Wash. park department.

Center: In the interior of the building the concrete shell roof made possible a large unobstructed area.

Right: Interesting decorative touches were cast in the exterior architectural concrete wall surfaces.

Architects and engineers: Lamont & Fey. General contractor: Cawdry & Vemo. Both firms are from Seattle.



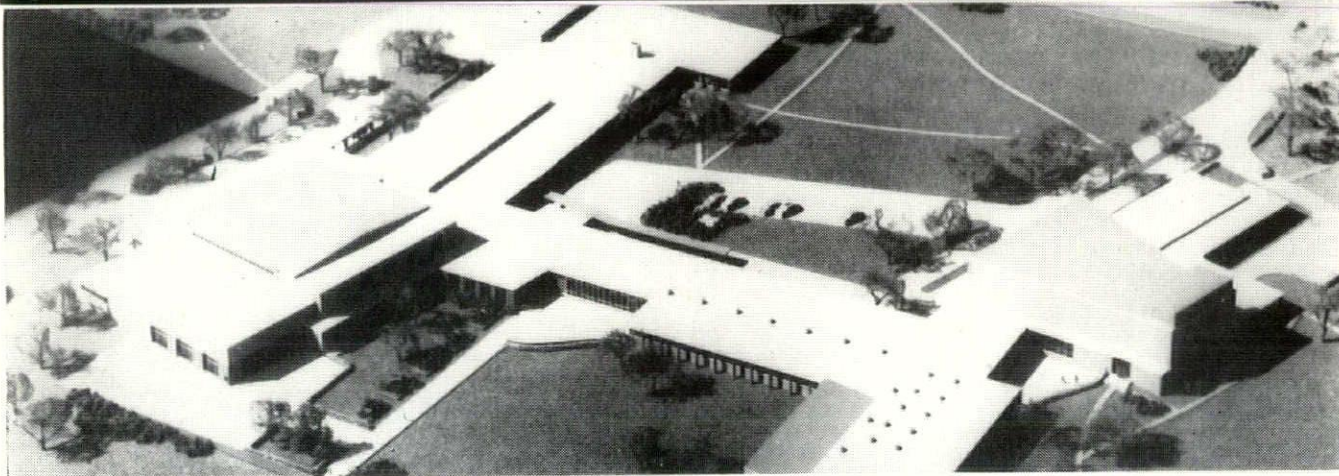



Blumcraft
 O F P I T T S B U R G H

YOUR LOCAL METAL FABRICATORS build these aluminum railings from Blumcraft materials.
COMPETITIVE BIDDING by local fabricators is provided for public and private work.
TWO PRICE RANGES . . . Blumcraft **DELUXE-LINE . . .** and low-cost **TUBE-LINE.**
CREATIVE DESIGN BY THE ARCHITECT with interchangeable Blumcraft stock components.
 General Catalogue M-57 is available to Architects; or consult Sweets File 6e/Blu.

DoxPlank

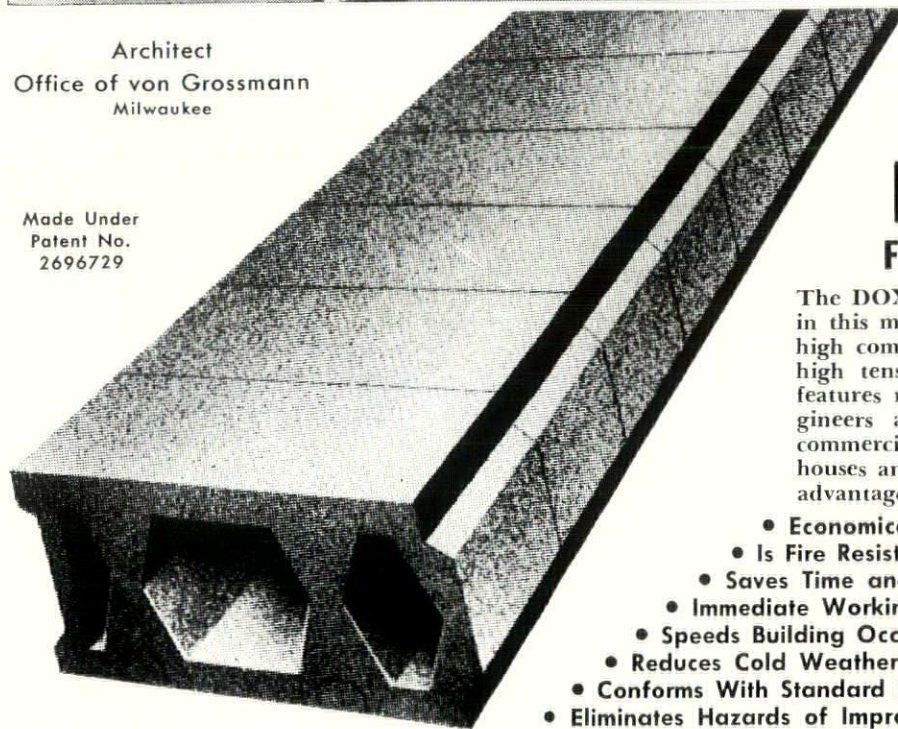
FOR SPEED IN CONSTRUCTION AND ECONOMY



Architect
Office of von Grossmann
Milwaukee

Nicolet High School
Glendale, Wisconsin

Made Under
Patent No.
2696729



DoxPlank

FLOOR and ROOF SYSTEMS

The DOX PLANK system was selected for use in this modern school because it combines the high compressive strength of concrete and the high tensile strength of steel. DOX PLANK features make it the favorite of architects, engineers and contractors for use in schools, commercial buildings, factories, apartment houses and private homes. It offers the special advantages listed below.

- Economical
- Is Fire Resistant
- Saves Time and Labor
- Immediate Working Deck
- Speeds Building Occupancy
- Reduces Cold Weather Delays
- Conforms With Standard Building Practices
- Eliminates Hazards of Improper Field Construction

VanderHeyden Inc.

Serving the Building Industry Since 1912

6633 W. National Ave.

Milwaukee, Wis.

Legislature Makes Change In Safe-Place Statute

By GERALD J. RICE, Legal Counsel

After persistent effort and patient explanation of Bill 185S by the Legislative Committee and Counsel for the Wisconsin Architects Association, the Wisconsin Legislature has now removed the troublesome reference to the architect in the last sentence of the Safe-Place Statute. Such sentence read: (Sec. 101.06) "... Every employer and every owner of a place of employment or a public building now or hereafter constructed shall so construct, repair and maintain such place of employment or public building, AND EVERY AR-

CHITECT SHALL SO PREPARE PLANS FOR THE CONSTRUCTION OF SUCH PLACE OF EMPLOYMENT OR PUBLIC BUILDINGS, as to render the same safe."

As a general rule, when a building is completed and turned over to an owner, the architect, engineer and the various contractors being no longer in control are relieved from direct liability to persons injured on the premises because of some defect in planning or construction. They can be held indirectly liable by the owner, who may have to pay for an injury, during a period of six years after completion of the building on the theory that there

has been a breach of the implied contract to plan and build a safe building. But it has been contended by some lawyers in recent years that, by reason of the special reference to the architect in the Safe-Place Statute, the architect remained directly liable after completion of a building continuously and without limitation, notwithstanding the same liability did not also attach to engineers and contractors.

Bill 185S was introduced by Senator J. Kirby Hendee to remedy such unreasonable burden. A similar bill was introduced in the 1955 Legislative Session, and although it passed the Senate and was recommended by the Assembly Judiciary Committee, it was defeated as a collateral result of the contest between the architects and profession-

(Continued on Page 8, Column 2)

COVER COMMENT

This month's cover shows an exterior view of the Blessed Sacrament Roman Catholic Church of Milwaukee, a splendid example of contemporary church architecture. More photos of this work, the design of Herbst, Jacoby and Herbst, Milwaukee, will be found on pages 10 and 11 of this issue.

The Wisconsin Architect, Volume 25, Number 6, the official publication of the Wisconsin Chapter of the American Institute of Architects is published monthly from the business and editorial offices at 8416 W. Lisbon Ave., Milwaukee 16, Hopkins 3-1080. Published by Acme Publishing Co. Editor is Paul F. Thielen. Subscription rates are \$1.00 per year.

Wisconsin Chapter American Institute of Architects

8416 W. Lisbon Avenue Milwaukee 16, Wis.
Telephone Hopkins 3-1080

OFFICERS

Arthur O. Reddemann President
Joseph H. Flad Vice-President
Robert P. Potter Secretary-Treasurer
Gerald J. Rice Legal Counsel

DIRECTORS AT LARGE

Maurey Lee Allen Mark Purcell
John Brust Arthur O. Reddemann
Theodore Eschweiler Julius Sandstedt

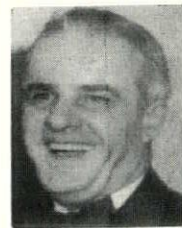
DIVISION DIRECTORS

Milwaukee Division
Herbert Grassold Robert Potter
Madison Division
Joseph H. Flad Robert Hackner
Northeast Division
Frank Shattuck Karel Yasko

DIVISION OFFICERS

Milwaukee Division
John Jacoby, President; Myron Sielaff, Vice-President; Robert Klocksins, Secretary-Treasurer.
Madison Division
Nathaniel Sample, President; Robert Cashin, Vice-President; Franklin Mabbett, Secretary-Treasurer.
Northeast Division
Leonard Reinke, President; Leonard Schober, Vice-President; George Narovec, Secretary-Treasurer.

PREXY'S CORNER



By Arthur O. Reddemann
President, Wisconsin Chapter, A.I.A.

It was my privilege to attend as a delegate the 89th Convention of The A.I.A. which celebrated the 100th Anniversary of our organization. The Convention was the greatest held, the number in attendance, etc., all set records, reports from the delegates and their reactions will be published in this and future issues so I shall not elaborate.

The one disturbing factor to me was the fact that 48 Fellowships were granted, but not one from Wisconsin and our Chapter. It does not seem possible to me that in our Chapter we cannot find someone eligible for this honor. If you have any suggestions, your Board would welcome such.

It is indeed gratifying to hear reports on committee action such as have been forthcoming.

In the May issue, I reported that we have a Construction Specifications Institute Chapter in Wisconsin and stated that the meetings were held once a month on the fourth Monday but was in error where the meetings were to be held. This is a worthwhile endeavor and more

architects and specification writers should join. For further information on this write to Lester G. Seubert, Secretary, at 720 E. Mason Street, Milwaukee 2, Wisconsin for dates and place of meetings for the balance of the year.

Please also reserve August 16 for the summer convention to be held at the Chenequa Country Club near Hartland, Wisconsin. The agenda will be forwarded in due time for all to read and study.

Ted Eschweiler's Committee has a great program outlined and plenty of time will be reserved for golf after lunch and for those who enjoy baseball, we have reserved a block of tickets for a night game in Milwaukee between the St. Louis Cardinals and the Braves.

Please also let us have a good attendance to honor our first registered architects in Wisconsin at the luncheon which is being planned.

The business session will be of great importance and should be attended if at all possible as your future as an architect will be discussed in the issues to be presented.

WAA Drops Effort to Seek Change in Registration Law

Bill 349S, to amend the Law relating to the registration of architects and professional engineers in Wisconsin, has been withdrawn at the request of the Wisconsin Architects Association. Introduced by Senator Leo P. O'Brien of Green Bay, at the request of the Association, the Bill proposed to create a statement of intention of the Registration Act to read as follows:

"Sec. 101.31 (Intro. Par.) The meaning and intent of this Section is to provide for the registration of only those architects and professional engineers who are qualified by training and experience to design and supervise construction of safe places of employment and safe public buildings as defined in Sec. 101.01."

The objects of the Bill were to clarify the purposes of the Registration Law and to set up a guide for the Engineers' Division of the Registration Board in considering applications for registration as professional engineers.

To better understand the purpose of the Registration Act, it is necessary to briefly review the history and statutory background. The Registration Act, Sec. 101.31, is part of Chapter 101 of the Wisconsin Statutes, which imposes the duty on employers and owners to furnish safe places of employment and safe public buildings. To insure the observance of such duty, Chapter 101 provides for the establishment of the Wisconsin Industrial Commission. Among its duties are the duty and power: to establish a building code of safety standards of construction; to require owners to submit plans for approval before issuing a building permit; to supervise construction for compliance with approved plans; and to limit the preparation of plans and supervision of construction to registered architects and professional engineers. In addition, by Sec. 101.31, the Commission is empowered to appoint a Registration Board to qualify and register architects and engineers.

In Sub-sections 101.31 (2) (b) and (d), the definitions of the practices of "architecture" and "professional engineering" are both prefaced with

the limitation "within the meaning and intent of this Section". Yet nowhere in the Statutes is there a statement of intention or meaning.

When the Registration Law was first adopted in 1917 and provided only for registering architects, no statement of intention was needed. Nor was such statement needed when the Civil Engineer was first registered in 1931, since architecture and civil engineering are well-defined and identifiable professions dealing with planning and construction of buildings and other structures.

However, in 1935, when the title of Civil Engineer was changed to Professional Engineer, the Engineers' Division of the Registration Board apparently felt that the word "professional" encompassed more than civil engineering. Disregarding the limitation that professional engineering be construed "within the meaning and intent of this Section," the Registration Board since 1935 has registered many engineers whose professional practices have nothing whatever to do with "safe places of employment and safe public buildings."

Thus, through June, 1955, the Board has registered professional engineers on the basis of separate examinations selected by applicants in the following fields of engineering:

4% Chemical Engineers.	
40% Civil Engineers divided:	
Highway	13%
Hydraulics	3%
Municipal	5%
Sanitary	6%
Structural	20%
Unclassified	13%
Registered between 1931	
and 1935	40%
20% Electrical Engineers divided:	
Machinery	9%
Power	31%
Illumination	3%
Industrial & Electronics	7%
Communications	10%
Unclassified	40%
28% Mechanical Engineers divided:	
Air-conditioning,	
Heating, etc.	17%
Heat and Power	12%
Industrial	9%

Machine & Tool	23%
Unclassified	39%
1% Metallurgical Engineers	
1% Mining Engineers	
6% Totally Unclassified Eng'rs.	

100%

As a result of the 1955 Amendment to the Registration Act, all of the above professional engineers are entitled by law to prepare plans and supervise construction of all types of buildings.

It would seem reasonable to conclude that the Board has construed "professional engineer" as any engineer who is professional as distinguished from non-professional, and has not recognized the apparent intent of the registration law which is to register only those architects and engineers who can aid employers and owners in their duty to furnish safe places of employment and public buildings.

It is readily acknowledged that the registration of professional engineers to distinguish them from non-professional engineers and to elevate the status of the professional engineer, is a worthwhile and meritorious objective. Bill 349S purported to correct the misinterpretation of professional engineer in the background of Chapter 101 of the Statutes, but would have terminated the registration of the great majority of professional engineers who have nothing to do with building construction. A companion bill to provide for the registration of such other professional engineers should have been offered. Architects were reluctant to draft such a bill and were waiting for the initiative to be taken by the Professional Engineers Society. When no companion bill was offered and when the architects did not offer their own version and were withholding action pending Legislative action on Bill 185S to amend the Safe-Place Statute, it became apparent that Bill 349S could not be given adequate study before the end of the present Legislative session.

At the suggestion of members of the Registration Board, a new joint committee of architects and professional engineers was created to study proposed legislation and allied problems. As an act of good faith, the Wisconsin Architects Association has requested withdrawal of Bill 349S, and will work with Professional Engineers for a reasonable solution of their mutual problems.

RUSCO PRIME WINDOWS

Hot Dipped Galvanized Steel — Tubular Construction Finish Painted with Baked-On Enamel

- Functional Superiority
- Design Flexibility
- Minimum Maintenance

ALSO RUSCO ALUMINUM PRIME WINDOWS

Call us for catalog, estimates, details, and service on Rusco Windows. Warehouse stocks on hand.

ARWIN

Builders' Specialties, Inc.

3131 N. 31st Street Milwaukee, Wisconsin
Uptown 1-8040



... Write or call our nearest office for details and specifications on . . .

GLASS	PAINT
THERMOPANE	WALL COVERING
GLASS BLOCK	SCENICS
CORRULUX	STORE FRONT METAL
	STAINED GLASS

T. C. ESSER CO.
Mfg. and Distributors
MILWAUKEE, WIS.

BRANCHES:

La Crosse, Wis.	Oshkosh, Wis.
Sheboygan, Wis.	Racine, Wis.
Iron Mountain, Mich.	Menominee, Mich.

home arts furniture

Hamilton

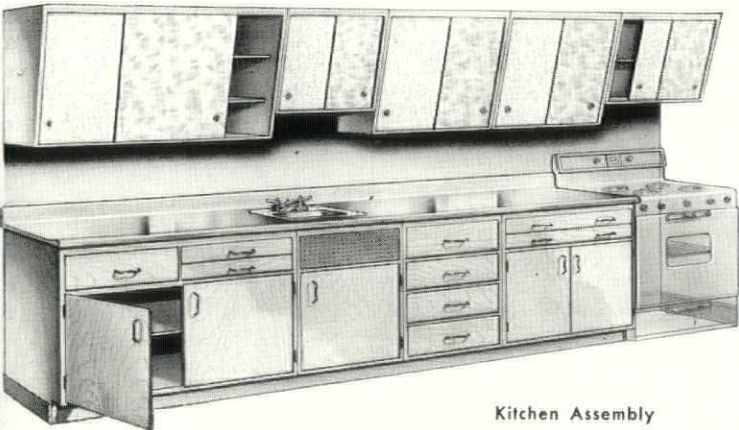
Catalog 220

A brand new book about completely new products from an old hand in the school equipment field. Thirty-two pages of fresh ideas for Home Arts Rooms — designs that blend into your contemporary school plans — versatile units that provide hundreds of assembly variations — floor plans and a wealth of associated information.

Your school designers are waiting for their copy now. It's yours for the asking — Write today!

Hamilton Catalog No. 220 — Home Arts Furniture.

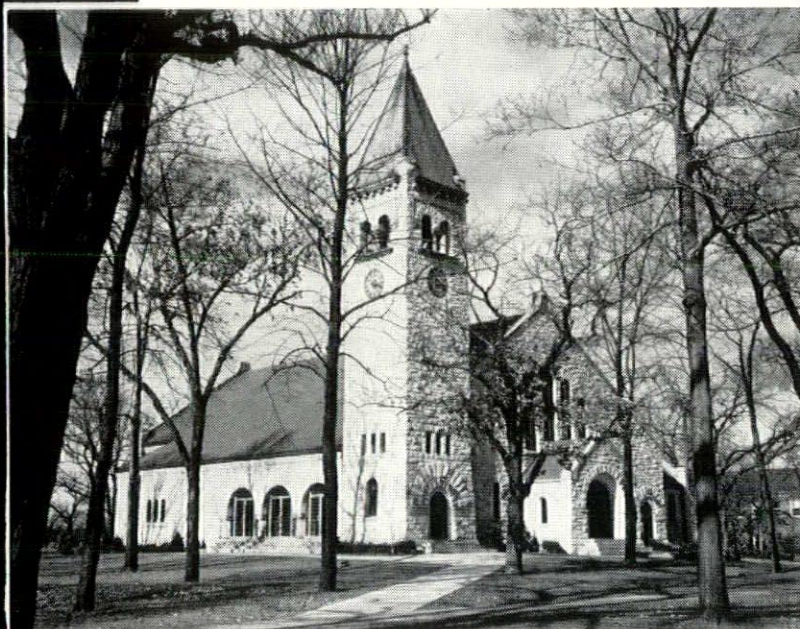
MILWAUKEE EQUIPMENT COMPANY
4221 North 35th Street
Milwaukee 16, Wisconsin



Kitchen Assembly

If you're designing schools you'll want to see the book that shows this and other typical assemblies.

flexicore



**BELOIT
COLLEGE
CHAPEL**

Beloit, Wisconsin

Architect, Maurice Webster, Evanston, Illinois
Contractor, Cunningham Brothers, Inc., Beloit, Wisconsin

**Built with Flexicore Concrete Floor System in
conjunction with poured-in-place columns and beams.**

Flexicore provides fast, all-weather construction — it cuts days off building schedules.

Flexicore is fire-safe.

Flexicore is attractive for ceilings and requires minimum finishing and maintenance.

Flexicore provides economical, low-man-hour construction.

Write for A.I.A. File Bulletins on Regular and Electrified Flexicore.

MID-STATES CONCRETE PRODUCTS CO.

P.O. BOX 325

BELOIT, WISCONSIN

Northeastern Division Holds Meeting at Weyauwega

By GEORGE NAROVEC, Secretary

The regular meeting of the Northeastern Division of Wisconsin Architects Association was held at Weyauwega, May 20, 1957. The meeting was called to order by the President, Leonard Reinke, and Junior Associate Certificates were presented to several new members.

Mr. Reinke asked for discussion as to where the July meeting should be held and it was decided to let the officer's plan the July program. The September meeting is to be held in Oshkosh.

Mr. Perc Brandt was introduced by the President and told members of a new group which is forming in the southwest, "National Association of Registered Architects", (N.A.R.A.). Mr. Brandt wrote the group for information regarding their organization and officers but has received no reply. Members agreed that this

off-shot group is not legitimate and that the State organization is best able to handle the problem of resisting any move of the NARA in moving into Wisconsin.

Mr. Julius Sandstedt was then introduced and spoke briefly of his experiences in Washington while attending the National Convention. The theme of the convention was "100th Anniversary of A.I.A. World Wide Attendance". Notable speakers at the Convention were Secretary of Commerce Sinclair Weeks, Dr. Kimball, Lillian Gish, Bennett Cerf, Walter Reuther and Dr. Howard Mitchell.

Dr. Kimball's talk outlined expected trend in population growth as follows:

30% of world's land is usable.

Population growth has been one billion increase in the last 500 years.

With the prediction of 1 billion increase in the next 30 years which means density of 1 person per acre of land.

Dr. Kimball presented these figures to show what this will mean in terms of building and land use in the coming years.

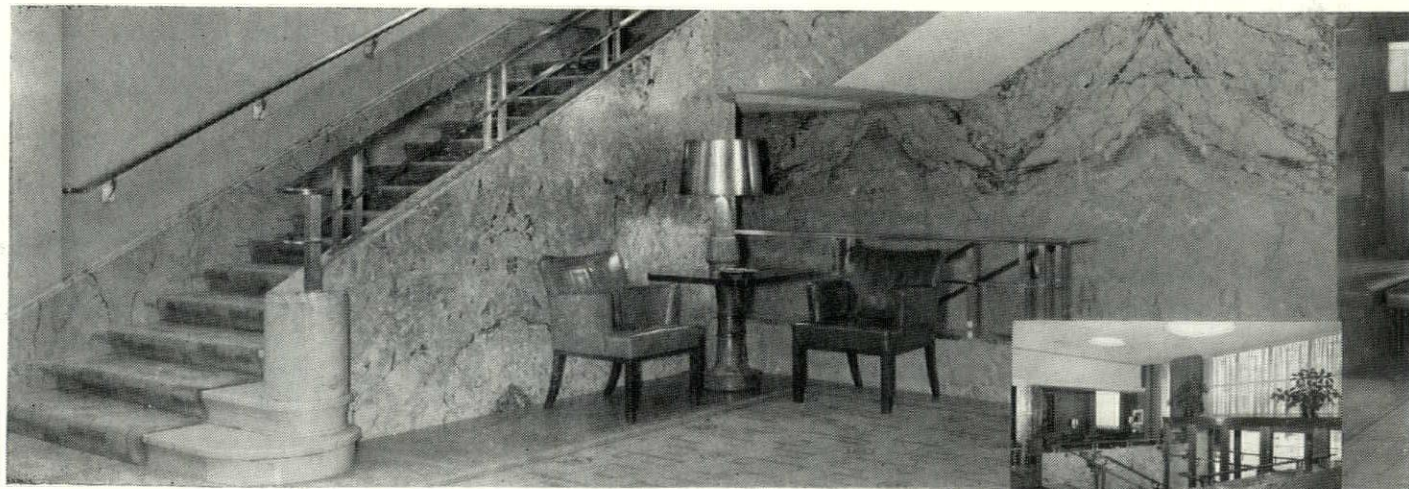
Mr. Sandstedt described briefly the exhibit on Architecture at the National Gallery of Art.

The meeting was concluded with two movies:

"Be Gone Dull Care" by Oscar Peterson, a color and design study in abstract form relating art forms to music.

"Bethlehem Steel Film". A story of changes in architecture in the last 100 years, due to the development of new structural steel members. Namely, the wide flange section which has made possible the skyscraper.

Attendance at the meeting consisted of 18 members and their guests.



MARBLE
BECAUSE
IT'S BEST

MILWAUKEE MARBLE CO.

because long experience and a determined interest in *every job* provides the best selection in *skilled* fabrication and installation.

Milwaukee Athletic Club
Eschweiler and Eschweiler
Architects



MILWAUKEE MARBLE CO. • 122 NORTH 27th ST. • MILWAUKEE 1, WISCONSIN

Ross Potter Is Awarded First Kenneth M. Murchison Prize

Ross T. Potter, 7425 Kenwood Avenue, Wauwatosa, a third year architectural student at the University of Illinois, has been awarded the first Kenneth M. Murchison prize in a recent competition of the National Institute for Architectural Education (formerly the Beaux Art In-

stitute of Design). The problem was "A Nursery in a Shopping Center."

University of Illinois students won 21 of the 28 awards in the three NIAE competitions in which they were entered. Judging took place in Washington, D.C., at the Centennial Convention of the A.I.A.

Ross is the son of Robert P. Potter, secretary-treasurer of the Wisconsin Architects Association.

CENTRAL WISCONSIN ANNOUNCES NEW REPS

Central Wisconsin Supply Corp. of Windsor announces new representation in two Wisconsin areas.

In Milwaukee, the Home Glass & Paint Company, 5936 W. Appleton Avenue, has been appointed as exclusive dealers for the Fabrow Window Wall line.

In the Madison area, Ray Wolff has been retained as the Corporation's sales representative for its complete line of building products.

Amendment . . .

From Page 3

al engineers relating to the registration act.

In the current session of the Legislature, Bill 185S was opposed by some labor elements and by Milwaukee County because of fears that Bill 185S proposed to relieve architects of some proper and just responsibility. However, when it

was pointed out that the existing reference to the architect in the Safe-Place Statute might be interpreted as to single out the architect for an unjust and unreasonable burden and that the engineer and contractor were not equally liable, the official lobbyists for labor and for Milwaukee County withdrew active opposition. Nevertheless Bill 185S barely passed the Senate on a 15 to 13 vote, although recommended for passage by the Senate Judiciary Committee. In the Assembly, although recommended for passage by the Assembly Judiciary Committee, three separate votes were taken before the Bill was finally passed by a 66 to 29 vote. At all Committee hearings, the Wisconsin Architects Association was strongly supported by representatives of the Professional Engineering Society of Wisconsin and its Counsel.

After both Houses passed the Bill and it was sent to Governor Thomson for consideration, the following letter was addressed to the Governor by Gerald J. Rice, Counsel.

(Continued on Page 17, Column 1)

Hunzinger Construction Company

Milwaukee

Phone: SUNset 1-9100

for GREATER BEAUTY
at LOWER COST

SPECIFY

fabrow



frames

distributed by

CENTRAL WISCONSIN SUPPLY CORP.

Windsor, Wis.

PHONE: CHERRY 9-5535 (Madison)

in Milwaukee

HOME GLASS AND PAINT COMPANY

5936 West Appleton Avenue

PHONE: HILLTOP 2-9360

A Distinguished Visitor

MILWAUKEE TV AUDIENCE
TO HEAR WARREN H. ASHLEY

The traditionalist Northeast, where the public conception of school design still generally centers on a pattern of red-brick-and-white trim monuments, has discovered many exciting surprises in recent years over the signature of Warren H. Ashley.

He will visit Milwaukee on Saturday, July 13, to appear on TV Station WITI at 3:30 p.m. on the regular program, "Art and You." Also appearing with him will be Fritz von Grossmann, Milwaukee W.A.A. member. Both will be interviewed by Miss Merceline Skoll.

In the brief span of five years, Ashley has introduced the campus (or unit) style into public high school construction in Connecticut, Rhode Island, New York, and Massachusetts.

He has explored the efficiency and beauty of the circular building as a school unit — and realized it in operation in one of his completed designs.

Most notably, he has visualized the school site as an integral part of school design, with trees, stones, and slopes brought "into the classroom." The results have brought him national attention and honors.

In May, an Ashley design representative of this idea received one of six First Honor Awards given by the American Institute of Architects in its centennial year.

The award-winning school, the Edgemont Junior-Senior High, has been in operation for a year in the town of Greenburgh, N. Y.

Greenburgh had a "problem"

site. Its wooded 70-acre tract was dominated by sharp elevations and stone outcroppings. A crisscross of ledges lay underneath 90 per cent of the rough land.

Greenburgh faced staggering expenses if it adopted the customary swept-clean, cut-flat definition of a school site. But this would have been demanded by a conventional "all-in-one" school.

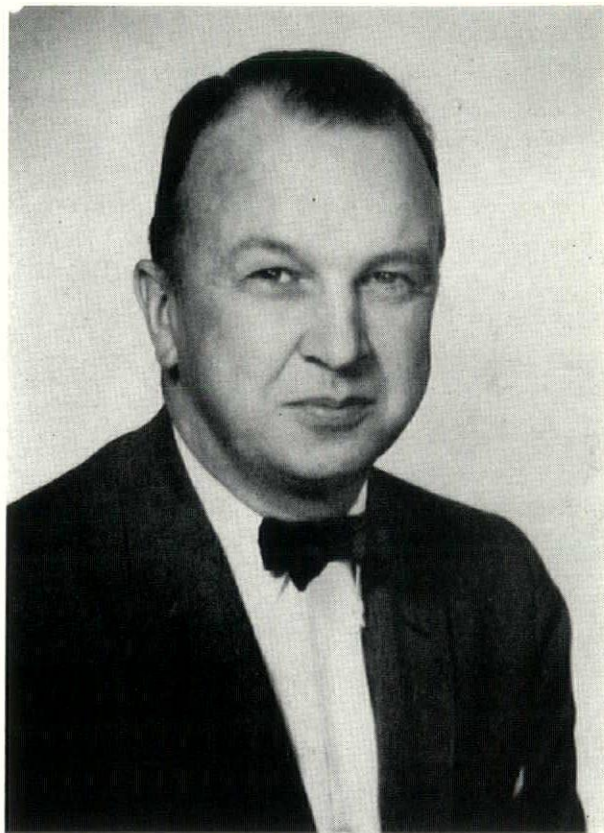
Today the stones, trees, and woodland contours remain as part of a nationally acclaimed school campus. Ashley's classroom units follow a graceful curve discovered in a

broad, horseshoe-shaped ledge.

The relatively level areas of the site have been used for playing fields and for the administration-cafeteria-auditorium unit, largest of the school's seven buildings. Greenburgh officials estimate that this arrangement saved them nearly a quarter-million dollars in site preparation costs.

Edgemont, only school in this year's top AIA honor group, is a highly personal answer to one town's search for beauty and economy combined.

(Continued on Page 14, Column 1)



Warren H. Ashley

BLESSED SACRAMENT CHURCH

MILWAUKEE, WISCONSIN

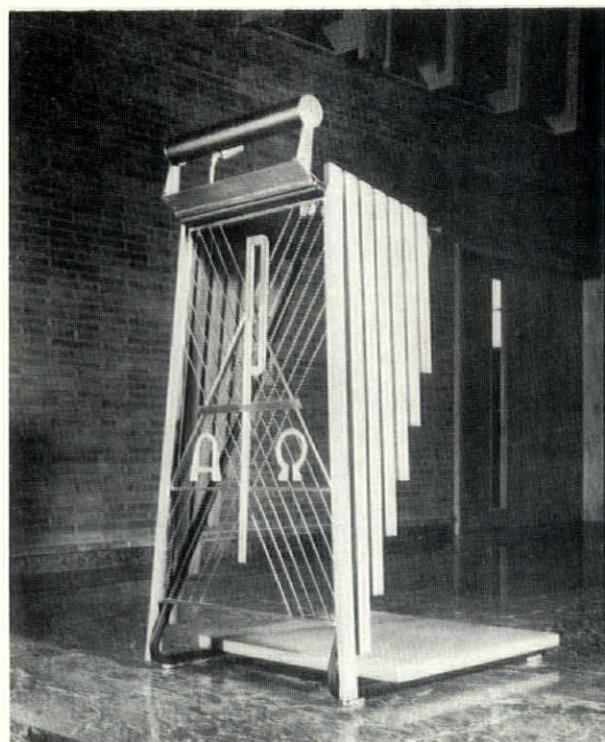
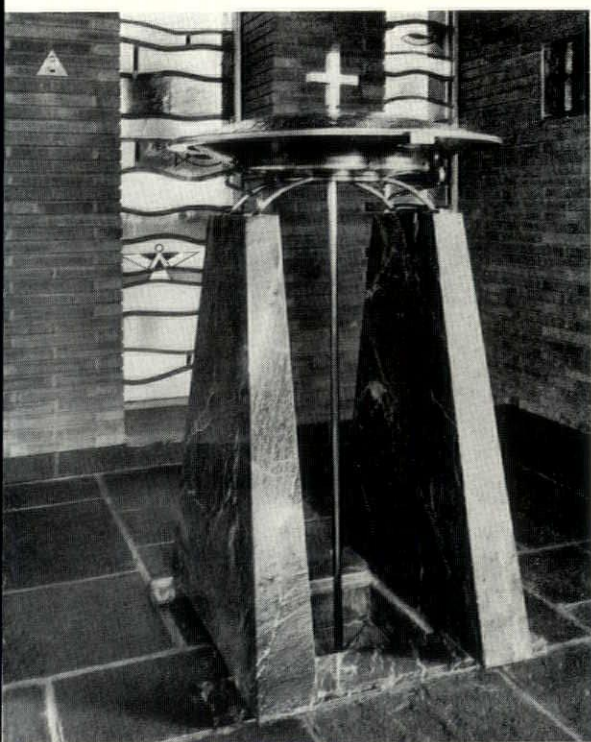
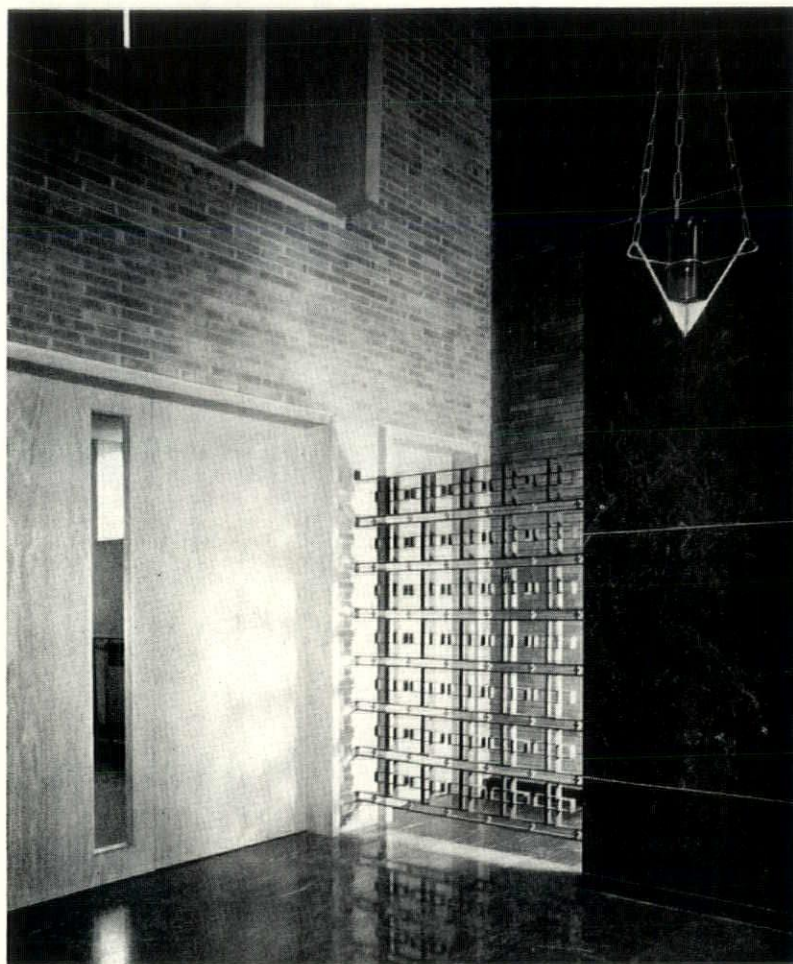
HERBST, JACOBY & HERBST
A. I. A.

A place of spiritual worship in contemporary architecture is the Blessed Sacrament Church, in Milwaukee. Strikingly beautiful design in every phase of the building, the church combines utility with the traditional serenity of a house of worship. It is the work of Herbst, Jacoby and Herbst, A.I.A., Milwaukee, with Heinz Brummel as Design Associate. General Contractor was H. Schmitt and Son. The combination of stone and metal lends a spirit of permanence to the structure, both inside and outside.

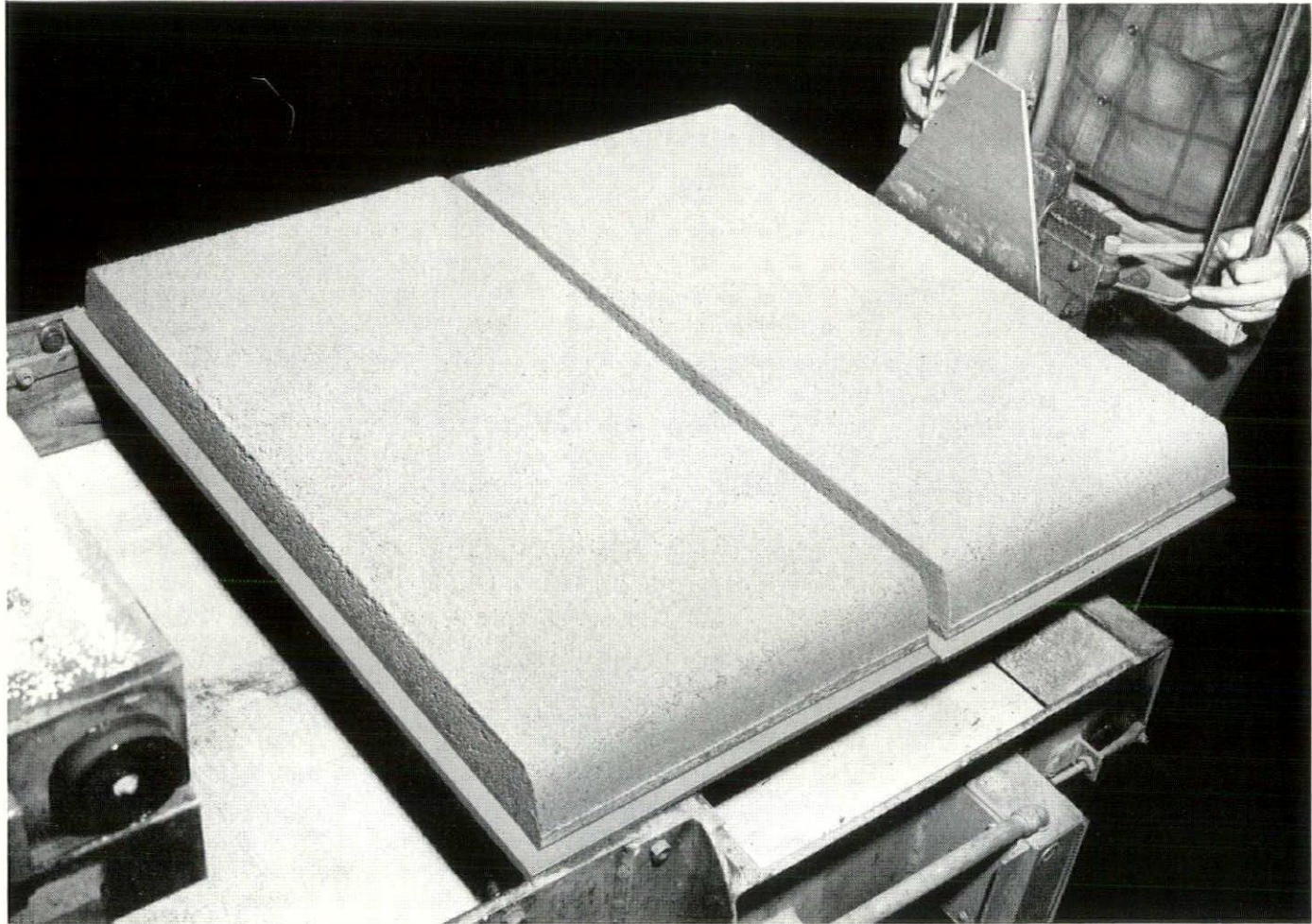


• THE ALTAR

- A CONTEMPORARY BLEND
OF SPIRITUAL SERENITY
AND DIGNITY



dry cast ZONATILE SLABS ASSURE QUALITY ROOF DECKS



Zonatile

In only 15 seconds, Zonatile roof slabs are cast from a relatively dry mixture of vermiculite concrete. Each tile is machine-formed by vibration and pressure around a "skeleton" of reinforcing mesh. Zonatile slabs then go through a process of kiln curing which is accelerated under carefully controlled conditions. This modern dry cast process assures dimensionally accurate tile, positive placement of reinforcing steel and controlled consistency. On-the-job benefits: workman can easily lay Zonatile decks uniformly; tile strength and insulation value always meet specifications.

- DIMENSIONALLY ACCURATE
- CONTROLLED CONSISTENCY
- HIGH SOUND ABSORPTION

Zonatile's under-surface is entirely suitable as the finished ceiling. It has excellent sound absorption.

For detailed information about Zonatile and "on-the-job" assistance, write or call our office.

Zonatile is available for immediate delivery

**WESTERN MINERAL
PRODUCTS COMPANY**

Zonatile Division
525 West Oregon Street

Broadway 6-9886
Milwaukee 4, Wisconsin

The National Convention in Retrospect

WISCONSIN DELEGATES LOOK BACK TO WASHINGTON, AND THE A.I.A. IN ASSEMBLY

Following is a report on the A.I.A. convention in Washington, D.C. It was compiled from descriptions offered by three delegates in attendance, President Arthur O. Reddemann, Karel Yasko and Fritz von Grossman.

— Editor.

The nation's capitol presented heat and humidity last month to 4000 architects and 2000 guests for the centennial convention.

The new century of the A.I.A. was ushered in with a colorful ceremony at the opening assembly on Monday evening. Representatives of national professional and technical organizations, the Federal Government, Deans of the Collegiate Schools of Architecture, University Presidents, Gold Medalists of the A.I.A., officers of Architectural Societies of other nations, Fellows of the A.I.A. and officers of the Institute marched into the Grand Ball Room of the Sheraton-Park to the music of the U. S. Navy School of Music Band.

After President Leon Chatelain opened the assembly, gifts from the foreign architectural societies were presented by their representatives. Illuminated scrolls were presented by the Presidents of the Royal Institute of British Architects, and the Royal Institute of Architects of Ireland; the Architectural Association of London brought a set of 15 bound volumes of English architecture, the Philippine Institute of Architects brought a solid slab of their masonry with the A.I.A. seal carved out of it. The hit of the program was the President of the Danish Architects Association, Flemming Grut, who presented a solid gold medal and an illuminated scroll to the A.I.A.

The Editor of "The Atlantic Monthly", Dr. Edward A. Weeks, Jr., fol-

lowed with the keynote address which set the optimistic tone for the entire convention. He also sounded the first protests against contemporary residential architecture, a complaint which reappeared in other talks during the week, i.e., lack of privacy in the modern home. Dr. Weeks lamented the lack of recognition of one of man's great needs; to go off into a quiet corner to relax and to be alone.

Dr. Paul Tillich of Harvard, one of our great contemporary philosophers and Dr. Detlev W. Bronk, President of the National Academy of Sciences in separate seminars repeated the same longing.

Lillian Gish presented her program for a Secretary of the Fine Arts in the President's Cabinet to which Dr. Howard Mitchell, conductor of the National Symphony, took strong exception in an interesting debate. She also decried the public's unawareness of the architect and cited several instances where, in ceremonies dedicated to his structure, the architect was not invited — he was forgotten.

Dr. Mitchell conducted the National Symphony Orchestra in a musically illustrated lecture on Thursday afternoon in one of the outstanding programs of the week. Presented in Constitution Hall, the concert drew an interesting parallel between Music and Architecture in

the Environment of Man.

President Chatelain's address took the housing industry to task for its complaint of "tight money" accusing them of floundering and of trying to get the Federal government to resolve the housing program for them through legislation.

Mr. Chatelain's bare knuckle speech drew loud protests in the Washington press but the consensus agreed with him.

The only relief from Washington's heat and humidity came with rain which fell in buckets just as the delegates were going to the National Gallery of Art for the opening of exhibition "One Hundred Years of American Architecture". Soaked gowns didn't dampen the spirits who saw a carefully panorama of American Architecture in photographs,

(Continued on Page 15, Column 1)

VANDER HEYDEN APPOINTS SEVEN

Vander Heyden, Inc., Milwaukee concrete block and plank manufacturer, has appointed seven men to newly created positions in an effort to departmentalize its growing business, according to a company spokesman.

The appointments are: J. Herbert Graf, as dox plank sales manager; Robert J. Twieg, chief engineer; Herbert Loucks, Jr., production manager; Frank Hebal, purchasing agent; James Mutchler, credit manager, Harry Zaeske, traffic manager, and Larry A. Glisch, chief accountant.

Two salesmen, Earl H. Frailing and Jerry F. Kenkel, were named sales engineers, and Robert Bergmann was selected as an additional field service man.

SCHWEITZER SPEAKS TO COLLEGE WOMEN'S CLUB

Frederick Schweitzer, Milwaukee, addressed the College Women's Club on Tuesday, May 21. His subject was "The Contemporary Thought in Architecture: Part II The Home."

It was another in a series of fine public relations efforts by W.A.A. members in recent weeks.

BLUE SHIELD HAS NEW SURGICAL PLAN

New special and preferred programs have been announced by Surgical Care of the Blue Shield Plan.

The current contract, now referred to as the special plan, has been revised to include the additional benefits of X-ray and radium therapy (in or out of the hospital) as well as certain other benefits.

Monthly group rates for the new programs will be \$1.35 for single, and \$4.10 for family. The current contract rates are \$1.00 for single, and \$3.00 for family.

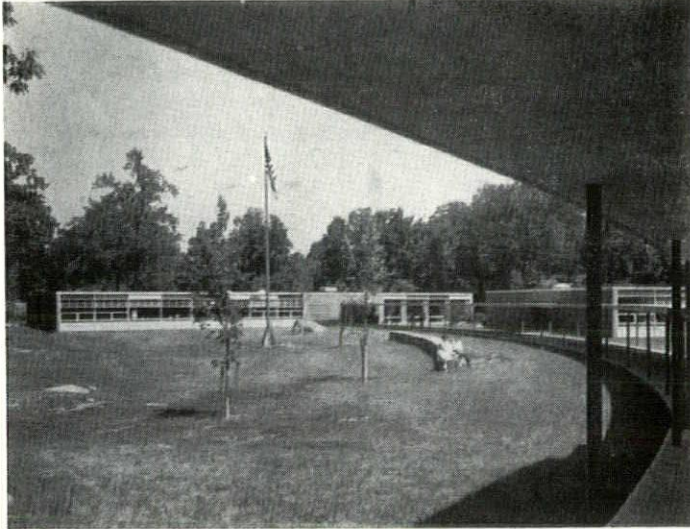
DROLSHAGEN MOVES

Frank F. Drolshagen, who is completing his 50th year as an architect in Milwaukee, has moved his office from 647 West Virginia Street, and is now located at 816 N. 66th Street, Wauwatosa 13. He will practice hereafter as a Consulting Architect.

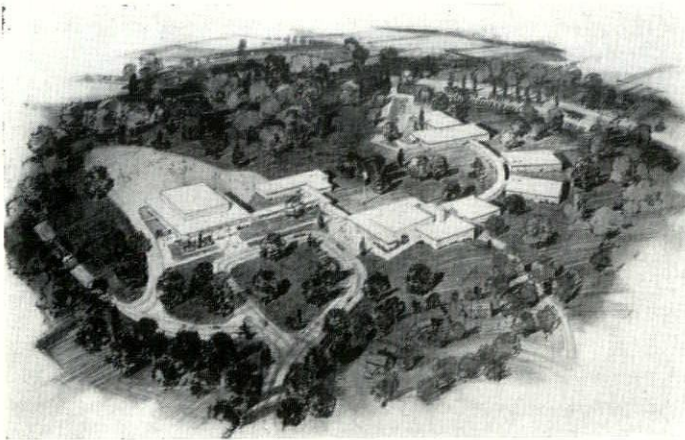
Warren H. Ashley . . .

From Page 9

But it incorporates concepts and aims which are the basis of all Ashley designs. In the current era of standing-room-only schools, Warren Ashley has tried to defeat "bigness" and the tumult of mass traffic. He does not believe that this can be accomplished by the mere expansion of conventional schools. His campus units



The campus of the award-winning Edgemont Junior-Senior High School preserves much of the original beauty of a wooded site. This photograph shows the social studies-library unit and at right, a corner of the science unit, as they are approached on the open campus walkway.



This is an artist's version of Edgemont Junior-Senior High School, winner of the First Honor Award of the American Institute of Architects. It has also been chosen for exhibition at the Twentieth International Conference on Public Education in Geneva, Switzerland, next July. The school units, left to right, include the gymnasium, arts and crafts unit, administration-cafeteria-auditorium unit, mathematics unit, science unit, and social studies-library unit.

are created to divide a school into areas of privacy, comfort, and pleasant teacher-student contacts.

In a time of skyrocketing school costs, Ashley has sought economy without skimping on the quality of construction materials. One of his major aims has been

the minimizing of conventional school corridors, which he calls "education's dead-end streets." He points out that corridors, though they are used for neither classes nor athletics nor student activities, often take up more than a quarter of the cost of a conventional school building.

In a time when educational demands and techniques are rapidly changing, Ashley has sought flexibility in school construction. The campus concept itself makes expansion economical and efficient. New units, whether they are intended for conventional classroom use, or for such purposes of the future as television studios and special science laboratories, can be added without shattering the peace or shuffling the educational plan of the campus school.

Ashley's schools were the first structures in New England to incorporate the lift slab concrete roof, which is poured at ground level and then hoisted mechanically atop steel columns. This basic design provides a school interior in which classroom walls can be easily adapted to changing needs in future years.

Schools of the recent past, Ashley points out, have been built with rigid bearing walls that insist on a class size of exactly 30 pupils. Schools of the present and future, he maintains, must be able efficiently to accommodate classes which range in size from three or four gifted pupils to a hundred or more working at one time with a television teacher.

The STRAITS **ACCORDION** FOLDING DOOR

is

Architecturally Correct

Residential — Commercial — Institutional

- RUST RESISTANT STEEL FRAME
- PANTOGRAPH ACTION
- FIBERGLAS SOUND INSULATION
- FLAME RESISTANT, WASHABLE FABRICS IN 50 COLORS

R-8 MEDIUM or C-12 SIZES

See Us When Writing Your "Specs"

DISTRIBUTED BY

LICHTER'S

1813-15 W. CENTER ST. • MILWAUKEE 6, WIS.

FRanklin 4-1032

A.I.A. Manual on Request

Member, Milwaukee Builders' Exchange

Convention Report . . .

From Page 13

many of which had not been seen before in exhibits. Color transparencies several feet in dimension, each way, and made for the exhibition by Eastman-Kodak were the highlights.

A boat trip down the Potomac River to Mt. Vernon with a picnic supper on board was the informal social event of the convention.

The grand finale was the annual dinner where 2200 delegates and guests saw Louis Skidmore receive the Gold Medal of the Institute and Ralph Walker the Centennial Gold Medal of Honor. They also heard Henry R. Luce, editor-in-chief of Time, Inc., ask for an expression of the American ideals in our architecture.

The convention was brought to a close on Friday with the showing of a film "Architecture 1977" prepared for the A.I.A. Centennial by Time,

Inc. The film was followed by an address by Pietro Belluschi, Dean of School of Architecture and Planning M.I.T. He cited that modern society places no value on permanence because it expects modern technology will produce something better.

Resolutions passed:

1. That the American Institute of Architects back 1960 as the year to be designated as World Construction Year and 1961 as the year for a World Construction Congress to be held in Chicago.

2. That the A.I.A. send a congratulatory letter to the Royal Institute of Architects of Canada who are about to celebrate their 50th anniversary.

3. That the A.I.A. bring what influence it could to bear in pressing for the preservation of the Robie house, designed by Frank Lloyd Wright, in Chicago. The world famous house is in great danger of being torn down to make way for a new dormitory. The newly formed Chicago Society for the Preservation of Architectural Landmarks is already at work in an attempt to save the structure.

4. That the A.I.A. survey the entire membership to determine range of present architectural fees being charged government agencies.

5. That the A.I.A. use its influence to promote the long-delayed construction of the Jefferson Memorial Expansion project in St. Louis, Mo.

6. That the A.I.A. appoint a special committee to meet with the proper government agencies to re-

examine the requirements for architectural services and fees. The resolution was proposed by the Chicago delegation which has a local situation in which the local agency would remove the designing of preliminary plans and the supervision of construction from the architects services.

7. That the A.I.A. study the present regional structure of the A.I.A. with a view towards re-organization.

8. That the new Journal be made available to junior associate members of the Institute.

Resolutions that failed to pass:

1. That the A.I.A. oppose the bill to establish an advisory council or commission on the fine arts because of the danger of government interference and political control. A motion to table the resolution was passed which, in effect, killed it.

2. That the A.I.A. ask for a redesign of the emblem of the Institute and do so by competition.

WALTER W. JUDELL DIES IN MILWAUKEE

A former president of the Milwaukee Division, Walter W. Judell, 79, died last month in Milwaukee after a short illness.

He designed many homes in the Milwaukee area, as well as the Riverside pumping station. He retired from active practice in 1938.

Born in Germany, he came to Milwaukee in 1892. He was graduated from Cornell university in 1900 and won a traveling fellowship from the University of Pennsylvania in 1904. Mr. Judell studied architecture in Europe for a year under the grant.

TWO NEW MEMBERS

Two new members have been elected, according to word received from the A.I.A. Thomas L. Eschweiler, 720 E. Mason St., Milwaukee, has been advanced from Associate member, and Charles A. Woehrl, Jr., 411 Main St., Madison, has been accepted as a new member.

Hi-Lights

Of Board Meeting

At its meeting in Milwaukee on May 10, the Board of Directors of the W.A.A. took these actions:

Recommended that the Milwaukee Division consider the formation of an AIA-Producers' Council committee, patterned after that of the AIA-AGC, and that it function as a Milwaukee Division committee;

Directed the secretary to write the Chicago Theological Seminary recommending the preservation of the Robie House;

Heard a discussion of alleged illegal practice of law by architects, by Attys. Edwin P. Wiley and George Lorinczi of the Milwaukee Bar Association, who said they would furnish a list of controversial points which they believe constitute unauthorized practice of law;

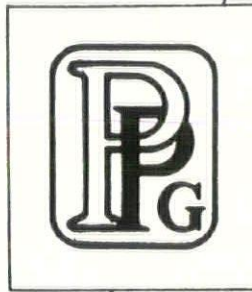
Chose the Loraine Hotel in Madison as the site of the 1960 W.A.A. convention; and

Voted a contribution to the Wisconsin Architects Foundation in memory of Walter Judell.

NEW DISTRIBUTOR

Brick, Inc., of Milwaukee, has been appointed distributors in Waukesha, Washington, Ozaukee and Milwaukee counties for the Hydraulic Press Brick Company, F. E. Lynn, manager, announced last month.

The company manufactures Hy-Tex brick in various colors and both standard and Norman size units.



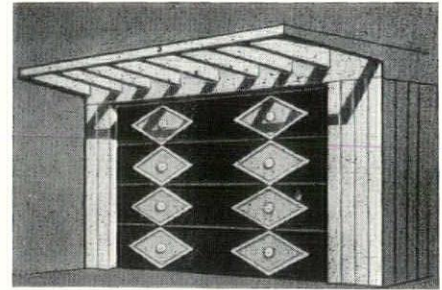
**STANDS
FOR QUALITY**

PAINTS • GLASS

**in homes • offices • factories
institutions • schools • stores**

PAINTS • GLASS • CHEMICALS • BRUSHES • PLASTICS
PITTSBURGH PLATE GLASS CO.
620 SOUTH FIRST STREET • MILWAUKEE, WIS.

CUSTOMIZE . . .



... YOUR GARAGE DOOR

Any standard model CRAWFORD Marvel-Lift Garage Door can be customized to the architecture of a home or preferences of a client. Moldings, rosettes and initials are available from Crawford. Produces a decorator-designed, custom-built door at modest cost. Crawford Doors are built to outlast the garage.

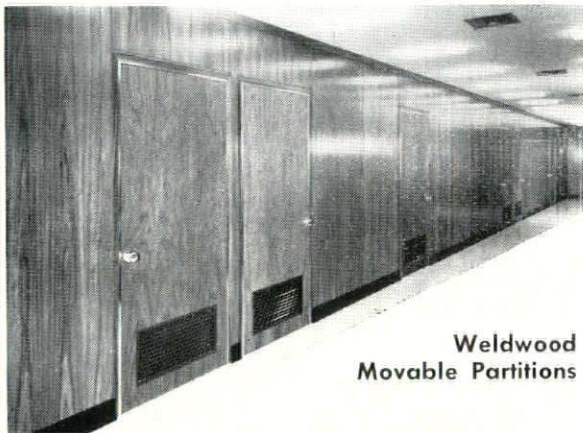
CRAWFORD DOOR

Sales Co. of Wisconsin

8231-8251 W. Greenfield Ave., Joseph W. Wilde, Pres.
Milwaukee 14, Wis. **SPring 4-8500**

Edward T. Ver Halen Inc.

Established — 1911



**Weldwood
Movable Partitions**

- Beauty of real wood
- Flexibility and flush design
- Modular panels with incombustible Weldrok core
- Wiring accessible, concealed
- Interchangeable units — positive metal connectors

**SOUND CONDITIONING
BUILDING SPECIALTIES**

Our
47th
Year

Madison — Milwaukee — Green Bay



**For Flexibility of Design PLUS
Outstanding Beauty and Economy . . .**

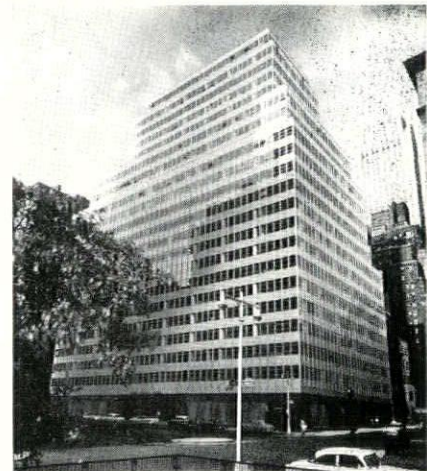
**Insist on
LUPTON
Simplified
CURTAIN
WALL
SYSTEMS**

Designed specifically to form complete exterior walls for single or multi-story buildings of any type — particularly hospitals and office buildings.

We are the
Midwest
Distributors for
all Lupton
Metal Products
Call

LO. 2-4600

for
complete facts
and estimates



Actual photo of Lupton Curtain Wall installation at 300 Park Avenue, N. Y. Architect: Emery Roth & Sons.

VICTORY
Steel Supply Co.

ALUMINUM PRODUCTS DIVISION

1824 West North Avenue Milwaukee 5, Wisconsin

Amendment . . .

From Page 8

"As Counsel for the Wisconsin Architects Association it was my privilege to appear before the Judiciary Committees of the Senate and Assembly, respectively, to explain the above numbered Bill No. 185S.

Now that the Bill has passed both Houses of the Legislature and is before you for consideration, I respectfully offer to make any explanation or appearance for your further information that you may deem desirable.

By way of a brief description of Bill 185A, it strikes words obviously intended as admonitory, but not intended, as some lawyers have claimed, to impose continuing liability on an architect without limitation to see to it that the buildings he designs comply with the building code.

No other safe-place statute in any other State contains a similar reference to the architect, nor has there been any construction by the Wis-

consin Supreme Court as to the legal effect of the reference to the architect in the Safe-Place Statute (Sec. 101.06) in the forty-four years the law has been on our Statute Books.

It is unlikely that our Supreme Court would hold an architect liable for an unsafe condition in a building long after the building is completed, if the architect has no opportunity or right either to enter to inspect or to effect a correction of such unsafe condition. As between tenants and owners, our Supreme Court has held that owners are not liable when they have surrendered possession and control to tenants. Yet at least an owner can insure against the expense of litigation because he has an insurable interest for which public liability insurance can be purchased. But the architect has no such insurable interest, even if he could afford to pay annual public liability insurance premiums to insure every building ever erected from his plans. Bill 185S removes an ambiguity which is exploited by some lawyers for its nuisance value, and against which the architect can

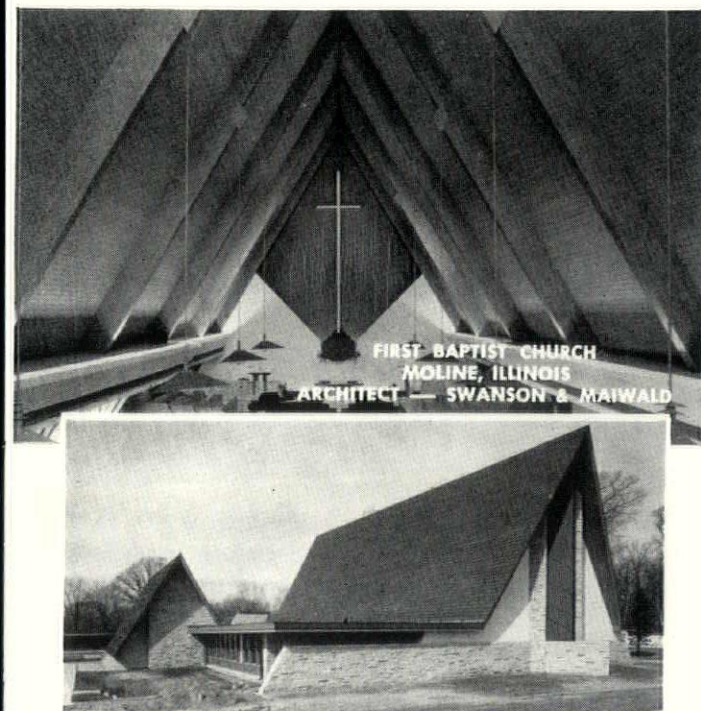
obtain no adequate insurance protection.

Bill 185S does not relieve the architect of the liability which ordinarily prevails in construction cases and which he shares equally with construction engineers and contractors. Thus he continues to remain directly liable to third persons during the period of construction when he exercises some control over the premises by virtue of the provisions of Sec. 101.01 (13) Stats., and he remains indirectly liable to third persons for a period of six years after completion of a building; for if during such period, the owner is sued and held liable by a person injured in the building, the owner can recover from the architect by reason of his implied warranty to design a safe building for the owner.

Cases and authorities were given to Senator J. Kirby Hendee, who sponsored the Bill, and to Members of the Senate and Assembly Judiciary Committees.

Respectfully submitted"

Under date of May 22, 1957, Governor Thomson approved Bill 185S.



FIRST BAPTIST CHURCH
MOLINE, ILLINOIS
ARCHITECT — SWANSON & MAIWALD



NEW FILM — An interesting new 16mm sound and color film entitled GLUED LAMINATED WOOD ARCHES available free for group showings. Write for Details.

The Contemporary Approach

WITH UNIT LAMINATED ARCHES and VERSATILE UNIT DECK

A single application affords a structural, fire-safe roof with a finished ceiling as a premium. The modern trend to laminated arches and Unit Deck has brought about a new concept in contemporary architecture, allowing the architect full freedom of expression toward the creation of inspirational interiors. Versatile Unit Deck, available in a variety of species, serves the multiple function of clean spanning roof and unobstructed ceiling — adding warmth and simplicity to an interior already made attractive by the dependable Southern Pine laminated arches. Write for informative literature.

SALES — OFFICES

DONALD W. OSENGA

3803 North Port Washington Road
Milwaukee, Wisconsin

Phone Franklin 2-2823

UNIT STRUCTURES, INC.



PLANTS AND OFFICES—PESHTIGO, WIS.
AND MAGNOLIA, ARKANSAS

VITRO-SURF V

A GLAZED CEMENT SURFACE COATING

FOR WALLS
NEW or EXISTING
INTERIOR and EXTERIOR

applied on

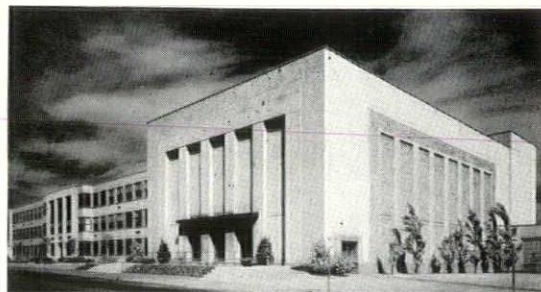
PLASTER, CONCRETE, BRICK
BLOCK, WALLBOARD, ETC.
PAINTED or UNPAINTED

Decorative — Colorful — Permanent — Sanitary
Economical — Washable — Waterproof — Durable
Innumerable Combinations of Non-Fading Colors

**R. H. Olson
Company**

WOodruff 4-4040
WOodruff 4-4041
3869 N. Port Washington Rd.
Milwaukee 12, Wisconsin

BELOIT HIGH SCHOOL SELECTS PIPKORN FACE BRICK



Architect, Law Law Potter & Nystrom, Madison
General Contractor, Sherry-Richards Co., Chicago

HANLEY S-52 IRON SPOTS

Remember W. H. PIPKORN when you are selecting Brick. See
our large assortment in our new display room.

Representing America's Leading Face Brick Manufacturers

Phone Mitchell 5-6800

W. H. PIPKORN CO.
1548 West Bruce Street South end of 16th Street Viaduct
Milwaukee, Wisconsin

It's W. H. PIPKORN for the finest in quality face brick

A new and significant documentary film, "The World of Mosaic", brings together for the first time a wealth of material never before shown on the screen from ancient cultural centers of Europe and the Middle East. From ancient Sumerian, Greek and Roman civilizations through Byzantine and Aztec, the evolution of the mosaic art is shown moving toward the present tile renaissance in Mexico and the United States. "The World of Mosaic" focuses upon the relationship between architecture and 4000 years of epic mosaics, employs examples of contemporary works to project the history of mosaics in terms of art and architecture in our time. The film was produced and photographed by Ernest Rose in cooperation with the Theatre Arts Department, University of California in Los Angeles, and The Mosaic Tile Company. ■ Architects will find great interest in new Mosaic Medley patterns and other fresh tile treatments we have recently developed in the tradition of the ancient mosaic art depicted in the film. ■ For showing at your A.I.A. Chapter meeting, you may obtain a print of this 28-minute 16 mm. color-sound film, "The World of Mosaic", through your local Mosaic representative or by writing **Mosaic Tile Co., Zanesville, Ohio.**

T. M. Cantwell, Jr., Sales Representative
Showroom-Warehouse 4030 North 126th Street
Milwaukee 10, Wisconsin • Sunset 6-5620

MOSAIC



Complete Supplies for
ARCHITECT AND ENGINEER

•

BLUE PRINTS • DIRECT READING
BLACK OR BLUE DRY PRINTS
TRACING REPRODUCTIONS

•

FREDERICK POST CO.

115 EAST WELLS STREET
BROADWAY 1-9300
MILWAUKEE, WISCONSIN



TABLES, FILES, STOOLS
AND SUPPLIES OF ALL
KINDS AND MAKES

•

A. I. A. FORMS

•

PHOTOCOPIES
REPRODUCED TRACINGS

**SCHMITT
BLUEPRINT CO.**

BROADWAY 6-1761
628 N. BROADWAY MILWAUKEE

Distinctive
Low Cost

**COLOR COUNSELING
and Complete
INTERIOR DECORATING
SERVICE**

for Your
Commercial Structures
Anywhere in Wisconsin

*Excellent Custom
Workroom Facilities*

CALL . . .

Edgewood 2-0877

BELLA H. SELAN

Interior Decorator
2908 N. Stowell Ave.
Milwaukee 11, Wisconsin

A PROGRESS PICTURE...

OFFICE LIGHTING AT THE HARNISCHFEGER CORPORATION, MILWAUKEE

THE NEW

Superior lighting
in excess of 100
footcandles.

THE OLD

Good quality but
low level lighting
— 40 footcandles.



Photo was taken before lighting modernization was complete. Modernization now completed.

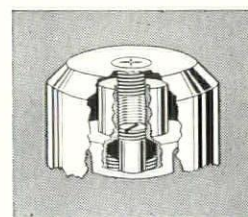
The NEW offers excellent quality lighting plus adequate lighting levels for visual comfort throughout the room. Accoustical baffles provide satisfactory sound conditioning. Here is a combination of lighting and accoustical treatment

which creates a comfortable atmosphere for all employees. This results in increased production and less fatigue.

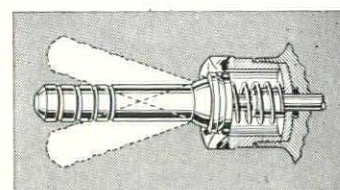
Call our lighting engineers when you have lighting problems.

WISCONSIN ELECTRIC POWER CO.

**PISTON-TYPE
FLUSH VALVE**



Readily accessible screw limits time of flushing—saves water.



Light pressure on handle trips valve from any angle.

The Kohler Metro for closets and urinals is made with the precision workmanship developed by Kohler Co. in the manufacture of highly specialized valves and fittings.

Light pressure in any direction on the handle trips the valve for normal, positive flush and refill. A surge of water through the passageways an instant before each flushing action removes foreign particles and in-

sure prompt, thorough cleansing.

The length of each flushing, and the volume of water, are regulated by easily accessible screws. Waste of water is forestalled because action cannot be prolonged by continued pressure, or by wedging the handle. Cap and flush handle are sealed with O-rings. Sturdy construction assures years of satisfactory service. Available with or without vacuum breaker.



Kohler Co., Kohler, Wisconsin • Established 1873

KOHLER OF KOHLER

PLUMBING FIXTURES • HEATING EQUIPMENT • ELECTRIC PLANTS
AIR-COOLED ENGINES • PRECISION CONTROLS



*for modern convenience!
for modern appearance!*

SPECIFY A BUILT - IN GAS RANGE

● Modern homes must have modern kitchens . . . and today's most modern kitchens have built-in gas ranges. They are so attractive . . . so space-saving! But, even more important, a built-in gas range is practical, too . . . with every cooking feature in just the right place for cooking convenience!

completely automatic!

Only built-in gas ranges offer all of these important features: "set-it-and-forget-it" top burner cooking, clock-timed ovens, smokeless broilers, automatic rotisseries. Only built-in gas ranges come in such a wide choice of styles . . . and in many attractive colors that will beautifully match or harmonize with the kitchen's surroundings.

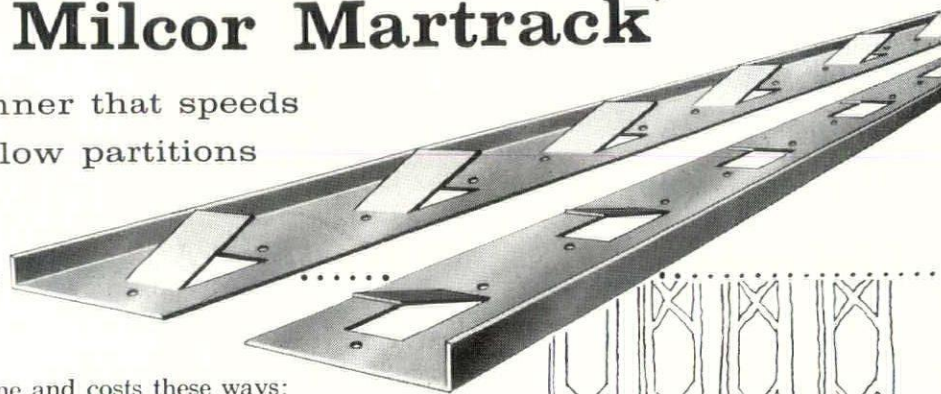
THE GAS COMPANY

626 E. WISCONSIN AVENUE

BRoadway 6-6720

NEW Milcor Martrack*

...angle floor runner that speeds
erection of hollow partitions



Martrack saves job time and costs these ways:

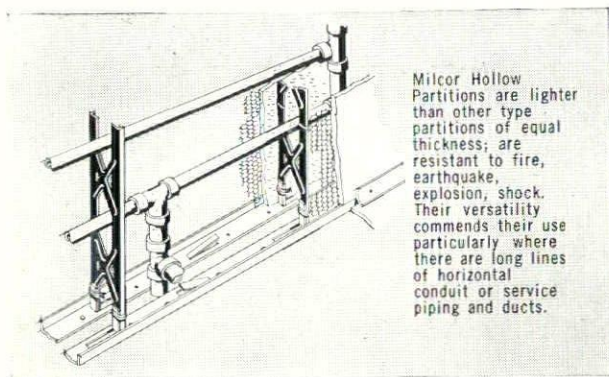
1. Enables the lather to space studs at 16" or 24" intervals without measuring.
2. Saves the expense and extra time required to install stud shoes.
3. Eliminates the need for the customary grounds — an important saving.
4. Martrack runners can be placed to accommodate any size Milcor Stud.

Martrack makes an excellent ceiling runner to obtain a separation of acoustical-plaster ceiling surface from a sanded-plaster wall.

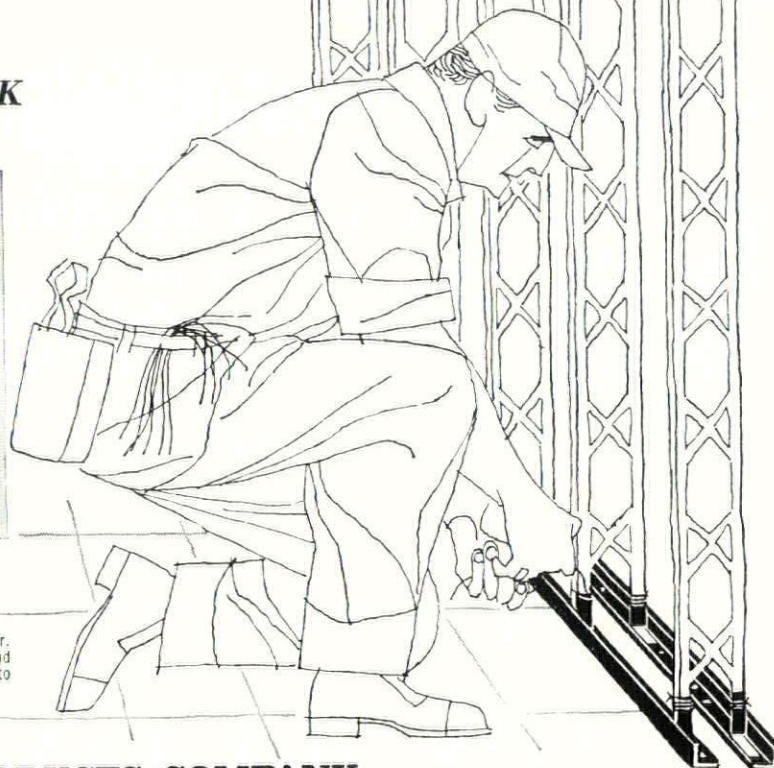
Made from 20-gauge TI-CO galvanized steel, furnished in 10-ft. lengths. (Also designed in channel type for 2-inch solid partitions.)

See the Milcor Manual in Sweet's — Section 12a/In. Or write for your own copy — ask for Catalog 202.

MILCOR® MARTRACK



Milcor Hollow Partitions are lighter than other type partitions of equal thickness; are resistant to fire, earthquake, explosion, shock. Their versatility commands their use particularly where there are long lines of horizontal conduit or service piping and ducts.



Martrack is nailed to the floor. Prongs are bent up to 90° and Milcor Steel Studs wire-tied to them.

*Patent applied for

INLAND STEEL PRODUCTS COMPANY

Dept. R4081 West Burnham Street, Milwaukee 1, Wisconsin

ATLANTA • BALTIMORE • BUFFALO • CHICAGO • CINCINNATI • CLEVELAND • DALLAS • DENVER • DETROIT • KANSAS CITY
LOS ANGELES • MILWAUKEE • MINNEAPOLIS • NEW ORLEANS • NEW YORK • ST. LOUIS.

