

THE AMERICAN INSTITUTE
OF ARCHITECTS

Nov 18 12 37 PM '48

THE DEPARTMENT OF
EDUCATION AND RESEARCH

THE

WISCONSIN ARCHITECT

THE OFFICIAL PUBLICATION OF THE STATE ASSOCIATION OF WISCONSIN
ARCHITECTS — THE WISCONSIN CHAPTER A.I.A. AND THE PRODUCERS
COUNCIL CLUB OF WISCONSIN

STATE ASSOCIATION OFFICERS

Mark F. Pfaller President
Emiel F. Klingler 1st Vice Pres.
Allen J. Strang 2nd Vice Pres.
Leigh Hunt Secretary-Treasurer

EXECUTIVE BOARD

Districts Nos. 1 and 2
Emiel F. Klingler Eau Claire
District No. 3
Harry W. Williams Green Bay
Edgar H. Berners Green Bay
District No. 4
Gage M. Taylor Stevens Point
District No. 5
Sylvester Schmitt Two Rivers
Sylvester J. Stepnoski Fond du Lac
District No. 6
Allen J. Strang Madison
William V. Kaeser Madison
Carl W. Schubert La Crosse
District No. 7
Carl Lloyd Ames Milwaukee
Leigh Hunt Milwaukee
John P. Jacoby Milwaukee
Mark F. Pfaller Milwaukee
District No. 8
Al. J. Seitz Racine
Robert S. Chase Janesville

OFFICERS AND DIRECTORS WISCONSIN CHAPTER A.I.A.

T. L. Eschweiler President
A. L. Seidenschwartz Vice Pres.
Fred A. Lubber Sec.-Treas.
G. E. Wiley Edward J. Law
Francis S. Gurda Wm. G. Herbst
Ralph H. Kloppenburg

OFFICERS PRODUCERS COUNCIL WISCONSIN CHAPTER

Lorenz Meyer President
E. S. Ver Halen Vice President
C. Earl Hess Treasurer
R. R. Friauf Secretary

OCTOBER

1948

VOL. 16 NO. 3

CONTENTS



Program of Sixteenth Annual Convention State Association of Wisconsin Architects



Roster of Members of State Association of Wisconsin Architects

THE WISCONSIN ARCHITECT

Official Publication

The State Association of Wisconsin Architects

Wisconsin Chapter, The American Institute of Architects

Producers' Council Club of Wisconsin

LEIGH HUNT, F.A.I.A., *Editor and Publisher*

ELIZABETH SCOTT HUNT, *Managing Editor*

3800 N. Humboldt Ave., Milwaukee 12

WOodruff 4-2113

Published Monthly

Subscription, \$1.00 per year

Address all communications for publication to Editor

3800 N. Humboldt Ave., Milwaukee 12

WOodruff 4-2113

OCTOBER BOARD MEETING OF THE STATE ASSOCIATION OF WISCONSIN ARCHITECTS

The Executive Board of the State Association of Wisconsin Architects met Saturday, October 9, at the Plankinton House, Milwaukee.

The meeting was called to order by President Mark F. Pfaller at 2 p.m.

Present: Emiel F. Klingler, Districts 1 and 2; Edgar H. Berners and Harry W. Williams, District 3; Sylvester Schmitt and Sylvester J. Stepnoski, District 5; Carl Schubert, District 6; Carl Lloyd Ames, Leigh Hunt, John P. Jacoby, Mark F. Pfaller, District 7; Robert S. Chase, Al Seitz, District 8.

By Proxy: Gage M. Taylor, District 4; Allen J. Strang, District 6.

Absent: William V. Kaeser, District 6.

In the absence of Mr. Strang, Chairman of the Plan Book Committee, the Secretary reported that the Plan Books were about to be printed and that the plans for the 21 houses should be completed by the contributing architects as quickly as possible.

Mr. Berners, Chairman of the Membership Committee, reported that there had been one meeting of the Joint Committee on Consolidation of the State Association and the Wisconsin Chapter and that another meeting would be held prior to the Convention.

A motion was made by Mr. Berners, seconded by Mr. Ames, and carried that the 1948 Convention be conducted under the Proposed Bylaws as printed in the September 1941 Wisconsin Architect and reprinted in the November 1947 Wisconsin Architect. These Bylaws were not formally adopted but have been followed at all conventions since that date.

The date for the Sixteenth Annual Convention was set for November 19 and 20. Leigh Hunt was appointed Convention Chairman, to be assisted by Mr. Pfaller and Mr. Jacoby.

Inasmuch as the Convention will be held a month later than previous conventions, the Secretary was instructed by the Board to send the due cards for 1948-49 to all members immediately.

The Resolutions Committee for the Convention was appointed with Sylvester Schmitt, Chairman; Al Seitz and Allen J. Strang.

Those having resolutions they wish to be submitted

to the Convention, must present them to this committee.

The Nominating Committee for the Convention will have Carl Schubert as Chairman, assisted by the chairmen of the various districts.

It was moved by Mr. Berners, seconded by Mr. Schmitt and carried that a Resolution again be presented to the Convention asking for voluntary contributions.

It was moved and carried that the Secretary be authorized to pay all bills.

The meeting was adjourned at 4 o'clock.

Respectfully submitted,

LEIGH HUNT, *Secretary*

CONSTRUCTIVE PROGRAM ARRANGED FOR CONVENTION

From all indications, the SIXTEENTH ANNUAL CONVENTION of the State Association of Wisconsin Architects to be held at the Plankinton House, Milwaukee, Friday and Saturday, November 19 and 20, promises to be one of the most successful and constructive ever to have been held by the Association.

James M. Ashley, president of the Producers' Council, Inc., Washington, D.C., and the director of Public Relations for the Libbey-Owens-Ford Glass Company, Toledo, Ohio, will be the principal speaker at the Banquet Friday at 7 p.m. Short talks will be given by Paul Gerhardt, Jr., Director of The American Institute of Architects, North Central District, Chicago, and Branson V. Gamber, The Institute's State Association Director, Detroit, Mich.

Mr. Ashley's subject is "The Year Ahead in the Building Industry" and according to word from the Producers' Council headquarters in Washington, his talk, while covering the salient points, will not be full of statistics.

Earlier in the day, beginning at 4:30 o'clock, an hour's program on "Apprentice Training in the Construction Industry" will be conducted by Morris M. Hansen, National Coordinator of Apprentice Training, U.S. Department of Labor, and Max L. Kuehnert, Regional Director of the Structural Clay Products Institute. Mr. Hansen has had wide experience in working throughout the country with apprentice training groups for the construction trade, and Mr. Kuehnert has been actively promoting such training in connection with the masonry trades. Colored movies will be shown of apprentice competition at the Indiana State Fair in Indianapolis.

The Wisconsin Chapter of the Producers' Council has again taken over the Mezzanine for its exhibit of new materials, and at 6:30 will be host, as in previous years, at a cocktail party for members of the State Association, their draftsmen, and the exhibitors.

SATURDAY SESSION

President Mark F. Pfaller will call the Convention to order Saturday at 9:30 a.m. Reports of the various committees will be heard. Following the report of the Nominating committee, the members will vote on the directors for the year 1948-49, the polls to remain open until 1 p.m.

Lyman W. Wood, engineer, of the Forest Products Laboratory, United States Department of Agriculture, Madison, will be the speaker at the Saturday luncheon.

(Continued on Page 7)

Program
of the
SIXTEENTH ANNUAL CONVENTION
of the
STATE ASSOCIATION OF WISCONSIN ARCHITECTS
PLANKINTON HOUSE, MILWAUKEE
NOVEMBER 19 and 20, 1948

12:15 P.M. — Executive Board Luncheon — Sky Room

2:00 P.M. — Registration

2:15 P.M. — Pre-Convention Executive Board Meeting — Colonial Room

2:30 P.M. — EXHIBITS by Producers' Council, Wisconsin Chapter, of new materials and methods — Mezzanine

4:30-5:30 P.M. — Lecture by Morris M. Hansen, National Coordinator of Apprentice Training, U.S. Department of Labor, and Max L. Kuehnert, Regional Director, Structural Clay Products Institute. Subject: "Apprentice Training in the Construction Industry."

6:30-7:00 P.M. — Cocktails by Producers' Council

7:00 P.M. — BANQUET — Address by James M. Ashley, President of the Producers' Council, Inc. Subject: "The Year Ahead in the Building Industry."
Talk by Paul Gerhardt, Jr., Director of A.I.A., North Central District, Chicago, Ill.
Talk by Branson V. Gamber, State Association Director, Detroit, Michigan

SATURDAY, November 20

9:00 A.M. — Registration Continued

9:30 A.M. — OPENING SESSION: Convention called to order by President Mark F. Pfaller.
Report of the Board of Directors by Leigh Hunt, Secretary-Treasurer.
Report of the Legislative Committee.
Report of the Membership Committee.
Report of the Small House Committee.
Report of the Unification Committee.
Report of the Nominating Committee.
Upon closing of nominations, the Polls Open.
Polls Close at 1:00 P.M. Tellers to report results at afternoon session.
Unfinished Business.
New Business.

12:30 P.M. — Luncheon — Address by Lyman W. Wood, Engineer, Forest Products Laboratory. Subject: "Working Stresses for Structural."

3:00 P.M. — Announcement of Election Results by the Tellers.

3:15 P.M. — Announcement of Winners of Attendance Prizes by Lorenz Meyer, President of Producers' Council, Wisconsin Chapter.

3:30 P.M. — ADJOURNMENT OF SIXTEENTH ANNUAL CONVENTION.
Meeting of New Board to Elect Officers for Ensuing Year.

ROSTER OF MEMBERS OF THE STATE ASSOCIATION OF WISCONSIN ARCHITECTS 1947-48

DISTRICT Nos. 1 & 2

Klingler, Emiel F., 218 S. Barstow St., Eau Claire
Larson, Albert F., 1515 Rust St., Eau Claire

* * * *

DISTRICT No. 3

Allen, Maurey Lee, Zuelke Building, Appleton
Berners, Edgar H., 310 Pine St., Green Bay
Coughlen, Gardner C., Columbus Bldg., Green Bay
Feldhausen, Gordon J., Columbus Bldg., Green Bay
Hanisch, Max, 1812 Stephenson St., Marinette
Jahn, Clarence O., 310 Pine St., Green Bay
Kilp, Paul A., 912 Ethel Ave., Green Bay
Le Vee, Raymond N., 203 E. College Ave., Appleton
Safford, Noel Ross, 310 Pine St., Green Bay
Schober, Leonard M., 310 Pine St., Green Bay
Schober, Max W., 310 Pine St., Green Bay
Satre, Harold P., 707 Center Ave., Green Bay
Schoepke, Donald M., Stephenson Bldg., Marinette
Sequist, Melvin, 792 Mather St., Green Bay
Senescall, L. C., 707 Center Ave., Green Bay
Surplice, Robert W., City Center Bldg., Green Bay
Wettengel, Edward A., 116 S. Pierce St., Appleton
Williams, Harry W., 516 S. Van Buren St., Green Bay

* * * *

DISTRICT No. 4

DeGuere, L. A., 252 Grand Ave., Wisconsin Rapids
Foster, George E., 407 Scott St., Wausau
Hougen, Donn, Wood Block, Wisconsin Rapids
Krasin, Gustave A., 208 S. Central Ave., Marshfield
Madsen, C., 303 Prairie St., Stevens Point
Obel, I. A., 610½ Third St., Wausau
Spalenka, Frank, 403 N. Huntington Ave., Monterey
Park, California
Taylor, Gage M., 101½ Strong's Ave., Stevens Point
Yasko, Karel, 407 Scott St., Wausau

* * * *

DISTRICT No. 5

Auler, Henry, 46 Washington Blvd., Oshkosh
Brandt, Perc, Dempsey Bldg., Manitowoc
Brown, Wallace H., 787 Bowen St., Oshkosh
Irlon, Theodore H., 46 Washington Blvd., Oshkosh
Raeuber, F. W., 1024 S. Ninth St., Manitowoc
Sandstedt, Julius, 22 Otter St., Oshkosh
Schmitt, Sylvester, Bank of Two Rivers Bldg., Two
Rivers
Steinhaus, Frederick C., 708 Erie Ave., Sheboygan
Stepnoski, Frank J., Commercial Nat. Bank Bldg.,
Fond du Lac
Stepnoski, S. J., Commercial Nat. Bank Bldg., Fond
du Lac
Stubenrauch, E. A., 708 Erie Ave., Sheboygan
Thew, Frank A., 48 Otter St., Oshkosh

* * * *

DISTRICT No. 6

Durrant, Joseph G., Boscobel
Dysland, Henry T., 2128 Coalinga Ave., Richmond,
California
Flad, John J., 908 W. Johnson St., Madison 3
Gallistel, Albert F., University of Wisconsin, Madison
Kaeser, William V., 1006 Shorewood Blvd., Madison
Kirchhoff, Roger C., State Capitol, Madison

Law, Edward J., 121 S. Pinckney St., Madison 3
Lippert, Grover H., 3832 Tonyawatha Trail, Madison 4
Loeprich, Henry, 317 Pinckney St., Madison
Nerlinger, August F., 4823 16th St., N.W., Washington
11, D.C.

Nystrom, Paul E., 121 S. Pinckney St., Madison 3
Parkinson, A.E., 404 Linker Bldg., La Crosse
Potter, Ellis J., 121 S. Pinckney St., Madison 3
Rote, Robert L., Monroe
Schubert, Carl, 308 Hoeschler Bldg., La Crosse
Siberz, Lewis, 103 W. Mifflin St., Madison 3
Strang, Allen J., 114 N. Carroll St., Madison 3
Tough, Edward, 305 S. Mills St., Madison 5
Weiler, Joseph J., 114 N. Carroll St., Madison 3

* * * *

DISTRICT No. 7

Ames, Carl Lloyd, 3505 W. Center St., Milwaukee 10
Belongia, Myles E., 1720 E. Capitol Dr., Milwaukee 11
Bogner, Harry, 759 N. Milwaukee St., Milwaukee 2
Bradley, H. W., 720 E. Mason St., Milwaukee 2
Brielmaier, Jos. M., 735 N. Water St., Milwaukee 2
Brielmaier, Leo, 735 N. Water St., Milwaukee 2
Brimeyer, F. J., 757 N. Broadway, Milwaukee 2
Bruecker, John P., 746 E. Day Ave., Milwaukee 11
Brust, John, 135 W. Wells St., Milwaukee 3
Brust, Paul, 135 W. Wells St., Milwaukee 3
Burroughs, Chas. W., 4630 W. Burleigh St., Milw. 10
Clas, Rubens F., 524 E. Mason St., Milwaukee 2
deGelleke, Gerrit J., 152 W. Wisconsin Ave., Milw. 3
Dieterich, Ray, 5050 Wauwatosa Ave., Milwaukee 9
Domann, Walter A., 7616 Harwood Av., Wauwatosa 13
Drolshagen, Frank F., 647 W. Virginia St., Milw. 4
Dwyer, R. W., 3316 W. Wisconsin Ave., Milwaukee 8
Ebling, Herbert L., 1220 N. Milwaukee St., Milw. 2
Eschweiler, A. C., Jr., 720 E. Mason St., Milwaukee 2
Eschweiler, Carl F., 720 E. Mason St., Milwaukee 2
Eschweiler, T. L., 720 E. Mason St., Milwaukee 2
Esser, Verner H., 4061 N. Prospect Ave., Milwaukee 11
Fraser, Willard E., 4630 W. Burleigh St., Milwaukee 10
Grassold, Herbert J., 734 N. Jefferson St., Milwaukee 2
Grellinger, Alvin E., 757 N. Broadway, Milwaukee 2
Gurda, Francis S., 733 W. Mitchell St., Milwaukee 4
Herbst, William G., 1249 N. Franklin Pl., Milwaukee 2
Herrmann, Milton C., 3011 W. Juneau Ave., Milw. 8
Hinton, F. J., 1721 N. Water St., Milwaukee 2
Hunt, Leigh, 3800 N. Humboldt Ave., Milwaukee 12
Jacoby, John P., 1249 N. Franklin Pl., Milwaukee 2
Johnson, Elmer A., 734 N. Jefferson St., Milwaukee 2
Kastner, Arthur H., 3460 N. 16th St., Milwaukee 6
Kemp, Thomas L., 4940 N. Port Wash'ton Rd., Milw. 11
Kenney, Allan J., 3959 N. 19th Pl., Milwaukee 6
Keymar, Albert F., 1220 N. Milwaukee St., Milwaukee 2
Klenzendorff, George E., 1522 W. Columbia St., Milw. 6
Kloppenburg, Ralph, 708 E. Green Tree Road, Milw. 11
Knuth, Clarence R., 161 W. Wisconsin Ave., Milw. 3
Kraus, E. J., 735 N. Water St., Milwaukee 2
Kuenzli, E. O., 8727 Warren Ave., Wauwatosa 13
Kurtz, Roland C., 2252 Menomonee River Parkway,
Wauwatosa 13
Lange, Walter, 1615 W. County Line Rd., Milwaukee 9
Leenhouts, Lillian, 759 N. Milwaukee St., Milwaukee 2
Leenhouts, Willis, 759 N. Milwaukee St., Milwaukee 2

BLUE PRINTING

- PHOTOSTATS -

Enlargements and Reductions Kept to Your
Exact Specifications

★ BLUE LINE PRINTS

... any size reduced or enlarged

★ VANDYKES

★ B. W. PRINTS

★ PHOTO TRACINGS

★ COPY-FLEX... Reproductions

(Inexpensive copies made from blue prints)

Prompt Service

Plant Operating Around the Clock

Drawing Materials ~ Instruments
~ Hamilton Furniture ~

DAVID WHITE CO.
315 W. Court Street - MA 6934

FLOORING

FOR

RESIDENTIAL, PUBLIC BUILDINGS

OR

COMMERCIAL USE

- MAPLE, BEECH, BIRCH •
- and WISCONSIN OAK •
- in •
- STRIP, HERRINGBONE and •
- ASSEMBLED BLOCK FORM •

OUR MAPLE, BEECH and BIRCH flooring is guaranteed MFMA (Maple Flooring Manufacturers Association) grade and manufacture.

Architects

ADDRESS YOUR FLOORING PROBLEMS TO US

HOLT HARDWOOD CO.

OCONTO, WISCONSIN

★ ★ ★

Lefebvre, Gregory G., 2479 W. Auer Ave., Milw. 10
 Luber, Frederick A., 231 W. Michigan St., Milwaukee 3
 Mason, Elliott B., 935 E. Wells St., Milwaukee 2
 Memmler, Walter G., 1825 E. Hartford Ave., Milw. 11
 Messmer, Henry, 231 W. Wisconsin Ave., Milwaukee 3
 Messmer, John, 2741 N. Maryland Ave., Milwaukee 11
 Mikkelsen, Fred A., 2110 W. National Ave., Milw. 4
 Mitterhausan, Alfred E., 1723 N. 58th St., Milwaukee 8
 Mitterhausen, W. H., 2137 N. 55th St., Milwaukee 8
 Oberst, Richard E., 2659 N. 27th St., Milwaukee 10
 Ollrogge, Harry A., 2412 W. Clarke St., Milwaukee 6
 Papenthien, Roy O., 611 N. Broadway, Milwaukee 2
 Peacock, Urban F., 1012 N. Third St., Milwaukee 8
 Perrin, Richard W. E., 926 N. Cass St., Milwaukee 2
 Petelinz, Albert J., 108 W. Wells St., Milwaukee 3
 Pfaller, Mark F., 8525 Ravenswood Circle, Wau'tosa 13
 Phillips, Richard, 756 N. Milwaukee St., Milwaukee 2
 Phillips, Eugene W., 2340 S. 59th St., Milwaukee 14
 Pollatz, Walter, 8725 Jackson Park Blvd., Wauwatosa 13
 Potter, Robert P., 720 E. Mason St., Milwaukee 2
 Reddemann, Arthur O., 524 E. Mason St., Milwaukee 2
 Reynolds, Charles C., 1621 N. Farwell Ave., Milw. 2
 Riemenschneider, Carl E., 2659 N. 27th St., Milw. 10
 Rose, Francis J., 757 N. Broadway, Milwaukee 2
 Runzler, Arthur C., 728 N. Jefferson St., Milwaukee 2
 Rypel, Stanley A., 3016 S. 15th Pl., Milwaukee 7
 Schaefer, Ralph E., 759 N. Milwaukee St., Milwaukee 2
 Scharpf, Elmer, 720 E. Mason St., Milwaukee 2
 Schley, Perce G., 735 N. Water St., Milwaukee 2
 Schneider, William C., 3125 N. Palmer St., Milw. 12
 Schramek, H. T., 5501 W. State St., Milwaukee 8
 Schrang, Edmund J., 4601 N. Woodburn St., Milw. 11
 Schutte, Albert J., 6101 N. Lydell Ave., Milwaukee 11
 Schweitzer, Frederick J., 785 N. Jefferson St., Milw. 2
 Scott, Fitzhugh, 724 E. Mason St., Milwaukee 2
 Scott, Fitzhugh, Jr., 724 E. Mason St., Milwaukee 2
 Seidenschwartz, Arthur L., 2104 N. 64th St., Wau'tosa 13
 Slaby, Henry A., 2750 N. Teutonia Ave., Milwaukee 6
 Siewert, Alfred H., 2716 W. North Ave., Milwaukee 8
 Steffen, R. O., 7218 W. North Ave., Milw. 13, Box 63
 Topzant, John, 424 E. Wells St., Milwaukee 2
 Trapp, Walter M., 2711 N. 27th St., Milwaukee 10
 Valentine, Charles W., 5537 N. Berkeley Blvd., Milw. 11
 Van Alyea, Thomas S., 1422 E. Albion St., Milw. 2
 Veenendaal, Walter, 4918 W. Wash'ton Blvd., Milw. 8
 von Grossmann, Fritz, 4630 W. Burleigh St., Milw. 10
 Wagner, Edwin A., 1205 Glenview Ave., Milwaukee 13
 Wagner, Fred A., 1112 N. 22nd St., Milwaukee 3
 White, Martin F., 7827 W. National Ave., West Allis 14
 Wright, Robert L., 2111 N. 35th St., Milwaukee 8
 Zagel, George, 424 E. Wells St., Milwaukee 2

* * * *

DISTRICT No. 8

Chase, Robert S., 117 S. Locust St., Janesville
 Hoffman, Frank J., 201 6th St., Racine
 Seitz, Al. J., 423 Main St., Racine

IMPORTANT

The American Institute of Architects is Discontinuing
All State Association Memberships

as of December 31, 1948, and,

The State Association of Wisconsin Architects
will no longer be a

Member of the Institute after this date.

Therefore, The Wisconsin Chapter, A.I.A., and

The State Association of Wisconsin Architects
have appointed a Joint Committee to report to the
1948 State Association Convention

on how Consolidation of the Chapter and the
State Association can be accomplished.

The Board believes that all members
should be present as a matter of this Import
should be thoroughly discussed by the
greatest number possible.

(Continued from Page 2)

his subject to be "Working Stresses for the Structural Grades of Timber." For the past two years much of Mr. Wood's time has been spent on working stresses and he will discuss recent developments in this field.

ATTENDANCE PRIZES

To stimulate the interest of the architects in the exhibits, last year the Producers' Council awarded attendance prizes. As each member of the State Association registered, he was given a card bearing the numbers of the booths. As he visited each exhibitor's booth, that specific number was punched, the architect then dropping his completed card in a sealed box on the registration desk.

At the close of the day when the winning cards were drawn, some thirty-two prizes were awarded, prizes such as large circular mirrors, a utility cart, Stetson hats, gift certificates, a pressure cooker, etc.

This year the Producers' Council will again have attendance prizes and they will be awarded by Lorenz Meyer, President of the Council's Wisconsin Chapter, directly following the announcement of the State Association election.

The Convention will be adjourned at 3:30 o'clock.

CONVENTION COMMITTEE

Members of the State Association's Convention Committee are Leigh Hunt, Chairman; Mark F. Pfaller and John P. Jacoby. The Producers' Council Convention Committee is composed of Harold J. Row, Chairman, E. A. Witzel, R. R. Friauf, and W. A. Mather.

SEVENTH DISTRICT STATE ASSOCIATION OF WISCONSIN ARCHITECTS

Minutes of October Meeting

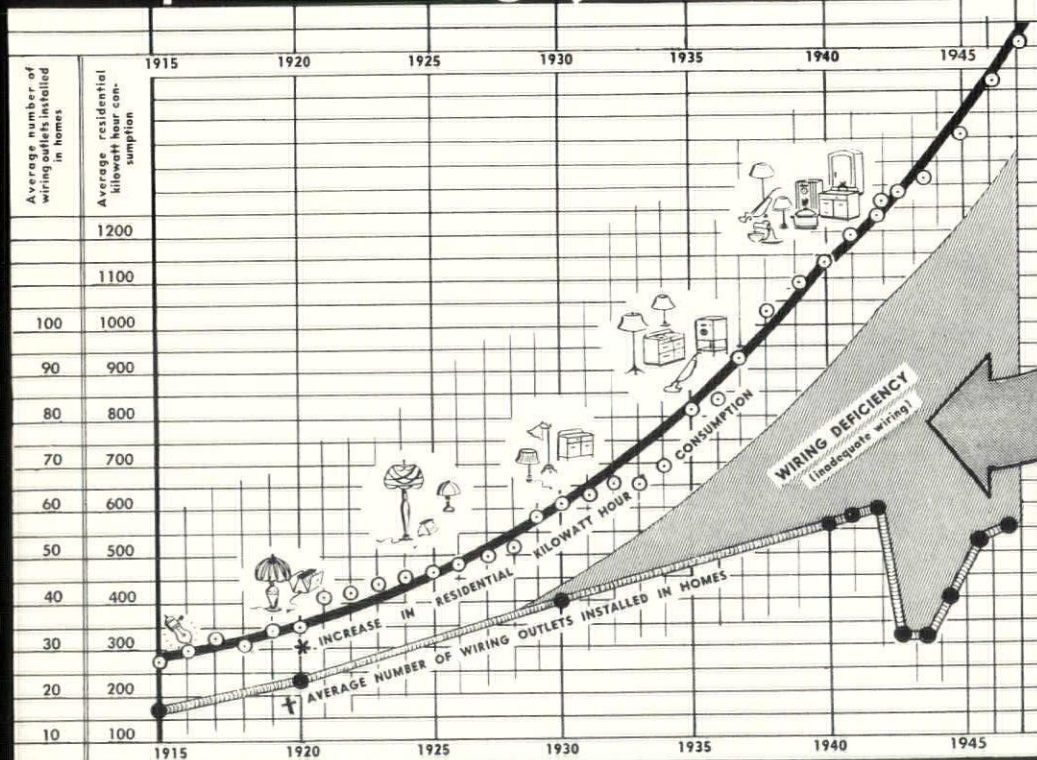
The annual meeting for the election of officers of the Seventh District was held on October 14, 1948, at 6:30 P.M. This was a dinner meeting with President Carl Ames presiding. There were 16 members in attendance as we outlined the purpose of the meeting.

The Building Code Review Committee reported through its co-chairmen, Frank Drolshagen and Miles Belongia, reviewed the activity of the Committee and indicated that they had outlined tentative revisions to the new Milwaukee Building Code which they hoped to present at a public hearing. Members in attendance cited specific objections to the new Code which they desired added to the official list.

A motion was made by Urban Peacock and seconded by Fritz Von Grossmann that Mr. Peacock be authorized to present a letter requesting the Board of the Mayor's Advisory Council for a hearing so that they consider acceptance of a resolution by the Seventh District advising the Mayor to rescind his instructions to the Common Council whereby the Building Code would be approved by that Council in sections rather than as a complete Code, and without the Council eliminating public hearings on the entire Code or on its separate sections. This resolution embodying these recommendations was to be signed by the Code Review Committee. The action of the Mayor's

(Continued on Page 8)

"Adequate Wiring" from the Engineering Standpoint



Conventional wiring systems are no longer adequate . . . they can't "deliver the goods".

Only Certified Adequate Wiring can deliver the electricity necessary to operate efficiently and economically present day electrical equipment.

The graph at the left illustrates the ever existing wiring deficiency.

For further information call or write Wiring Service Bureau, DAly 6600, Room 380, Public Service Building, Milwaukee.

*Figures taken from Wisconsin Electric Power Company records.

†Information from the records of Electrical Contractors Association, Milwaukee Chapter.

THE ELECTRICAL LEAGUE OF MILWAUKEE

(Continued from Page 7)

Advisory Council relating to this resolution is to be cited at the next meeting of the Seventh District. This motion was passed.

The President reported that after meeting John Messmer, County Superintendent of Construction, he wrote a letter to the Chairman of the County Board requesting that local and not outside architects be employed by Milwaukee County in its anticipated building program.

Frank Drolshagen offered a motion for the re-election of all present officers except the Secretary for the next season. This motion was seconded by Mr. Miles Belongia and passed. The Secretary refused re-election.

Urban Peacock nominated Stanley Rypel for the position of Secretary and Treasurer. This selection was made unanimously.

In accordance with by-laws, there was an election for a representative to the State Association Board of Directors. Mr. John Jacoby was elected to this position. The Treasurer's report was read, indicating a bank balance of \$102.76. This report was accepted.

The membership at large discussed unification of the State Association with the American Institute of Architects. After a thorough discussion from all angles, the suggestion was made that the Board of the Seventh District order its new Secretary to send notices to all members relative to the date and location of the State Convention of the State Association so that all would be sure to attend and indicate their preference for unification.

The meeting was adjourned.

PAUL C. BRUST, *Outgoing Secretary*
STANLEY RYPEL, *Incoming Secretary*

MILCOR APPLIED CASINGS AND TRIM FOR RESIDENTIAL CONSTRUCTION

Architects will find the new Milcor Applied Casings and Trim ideally suited for the small homes so much in demand today. They are inexpensive and easy to apply after plastering has been completed.

Each unit in the line is beautiful in design, and extremely practical in installation and use. All units may be finished in any desired color to blend with the home interior.

Because they are made of steel there are many other advantages in addition to those of attractiveness, easy application and low cost. They cannot warp, split, crack, splinter or rot. They cannot be damaged by mice, rats or vermin. They offer greater resistance to impact. They will not burn. And they will last the life of the building.

There are three styles of Casing Trim from which to choose, in addition to Base Trim, Stop Mould and Window Stool. Corner Fittings are available for use with the Casing and Base Trims. Their use speeds the erection and assures tight fitting, neatly finished jobs.

Specifications: Fabricated from 22 gauge Cold Rolled Steel. Painted on both sides with a rust-inhibitive, light grey primer coat. Countersunk screw holes spaced 8 inches on centers. No. 5, one inch, oval head wood screws furnished. Standard Lengths: 7 and 10 ft. Base Trim made in 10 ft. lengths only.

The Milcor Applied Casings and Trim Folder No. 610 provides detailed information on these products. It is available for those requiring further data. Requests should be sent to Inland Steel Products Company, P. O. Box 393, Milwaukee 1, Wisconsin.

H. B. Brown Becomes Manager
of Sales, Fireproof Division
Inland Steel Products Company

W. B. "Bill" Turner has accepted an appointment as Commissioner of the Metal Lath Manufacturers Association, Cleveland, Ohio. He assumed his new duties on October 15 when he retired from his position as Manager of Sales of the Fireproof Materials Division.

**QUALITY... GLAZED BRICK AND TILE,
FACE BRICK, COMMON BRICK, FIRE BRICK
AND HIGH TEMPERATURE CEMENTS**

Wisconsin Face Brick & Supply Corp.

4485 N. Green Bay Ave. CONCORD 4770 Milwaukee, Wis.

BRIXMENT the leading masonry cement

ANTHONY WUCHTERL

ARCHITECTURAL ILLUSTRATIONS

1626 Ridge Court

BL. 8052

Wauwatosa 13, Wis.



★ *Stands for quality*

**PAINTS
GLASS**

**IN HOMES • OFFICES
FACTORIES • INSTITUTIONS
SCHOOLS • STORES**

PAINTS • GLASS • CHEMICALS • BRUSHES • PLASTICS

PITTSBURGH PLATE GLASS CO.

820 NO. MARKET ST. • MILWAUKEE, WIS.

vision of Inland Steel Products Company (Formerly Milcor Steel Company). H. B. Brown, who recently joined Inland Steel Products Company after many years of experience in the manufacture and distribution of fireproof building materials, has succeeded Mr. Turner as Manager of Sales of the Fireproof Materials Division.

"Bill" Turner can well be termed the "Dean of the Metal Lath Industry." He has more years of service than any other active member of the Metal Lath Manufacturers Association, is president of that organization at present and has held that office on several previous occasions. As a result of this experience, Mr. Turner is familiar with the association's procedures and functions and is extremely well qualified to fill the duties of commissioner.

Upon leaving Inland Steel Products Company, Mr. Turner had completed 15 years as Manager of Sales of the Fireproof Materials Division of that firm. Previously he had been employed in various capacities, including Advertising Manager, Sales Manager and General Manager, with other firms in the same industry. In all he had approximately 40 years of experience in the sale and development of metal lath and steel capacity building materials.

REDUCING BUILDING COSTS DISCUSSED BY J. M. ASLEY

Research can contribute importantly to lower housing costs by developing building products which can be used in larger unit sizes, thus reducing labor expense, and by perfecting new single materials which will do the work of two or more existing products, James M. Ashley, president of the Producers' Council, stated today.

"Possibilities of using less costly raw materials also should be exhausted, although in housing the construction industry already is using extremely low cost raw materials, in comparison with those used in other industries," Mr. Ashley said.

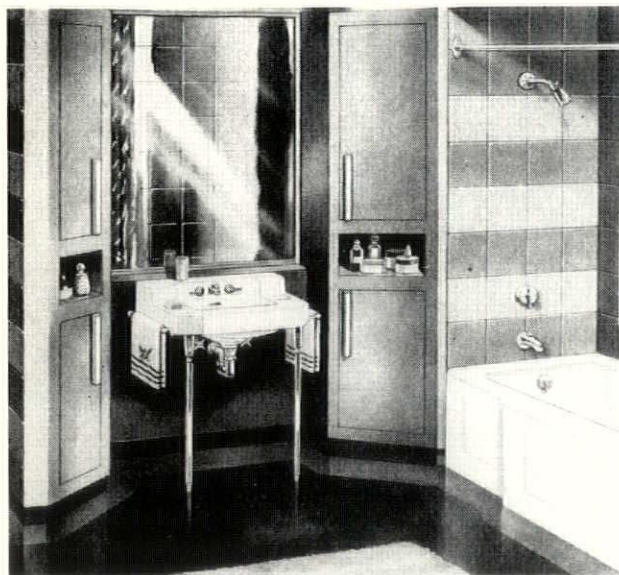
"Thus, if research is to reduce the cost of finished housing, it must do so primarily by reducing the amount of material needed or by reducing the amount of time required to convert the raw materials into completed homes.

"More efficient use of materials in combination and the designing of homes which can be constructed with a minimum of man hours are other ways by which residential construction costs can be lowered.

"The Industry Engineered Housing developed

(Continued on Page 10)

You provide many satisfactions when you specify KOHLER plumbing



An arrangement of Kohler fixtures like the one in the bathroom above has lasting practical advantages that home owners want.

The Cosmopolitan Bench Bath is of non-flexing iron, cast for rugged strength and permanent rigidity, and coated with the famous Kohler enamel. The Triton Shower Mixer is efficient and simple to operate. The Gramercy vitreous china lavatory has a roomy shelf. The Wellworth close-coupled closet works smoothly and quietly.

The fittings are of chromium plated brass — durable, and built especially for the fixtures they serve. Your customers know the name "Kohler" means first quality in every detail.

Shipping crates have been carefully designed for each Kohler fixture, to assure delivery in perfect condition. Kohler Co., Kohler, Wis. Established 1873.

KOHLER OF KOHLER

PLUMBING FIXTURES • HEATING EQUIPMENT • ELECTRIC PLANTS

(Continued from Page 9)

jointly by the 'Producers' Council and the National Retail Lumber Dealers Association is an important contribution in the latter field, as is the study of time-savings in constructing engineered housing recently completed at the University of Illinois.

"The number of individual pieces which must be handled and erected in a house also can be decreased by assembling the materials into prefabricated sections in a factory or shop before they are shipped to the site, and it seems likely that a considerable amount of research activity will be directed both toward the development of materials specially suited for prefabrication and toward improved design and manufacture of the prefabricated units themselves.

"In the field of housing, research also should be directed toward lowering the cost of repair and maintenance as a further means of reducing the cost of home ownership, and toward improvements which will provide increased comfort and convenience for home owners."

WAR DEPARTMENT AFFILIATION ENDORSED BY A.I.A. BOARD

The executive Committee of the Board of Directors of The American Institute of Architects has endorsed a War Department affiliation program which will enable architects to serve in a reserve capacity with the Army Corps of Engineers.

This announcement was made by Edmund R. Purves, Director of Public and Professional Relations of The A.I.A., in a special message to officers and members of The Institute.

"The Affiliation Programs initiated by the War Department," said Mr. Purves, "are conceived in the belief that it is advisable for the country to so organize its potential as to insure that in the event of an emergency there will be available a trained reserve.

"In the case of The A.I.A. the endorsement is general, but the implementation will have to be on an individual basis. It is possible that some Chapters of The Institute may be in a position to sponsor and organize units, even of Company size. However, for the most part, it is anticipated that interested architects who are equipped to do so, will make application individually."

Mr. Purves told the architects that the present announcement pertains only to the Corps of Engineers of the Army but that opportunities for affiliation of architects with other branches of the armed services will be made possible in the future.

The Army Affiliation Program was called into being, according to a War Department announcement, "in part from the changed world political alignment and in part from technical developments which have largely eliminated our traditional defensive barrier of distance.

PHOTOCOPIES

DRAFTING SUPPLIES

REPRODUCED TRACINGS

SCHMITT BLUEPRINT CO.

VAN DYKES

AA CONTRACTS

C. F. PEASE AGENCY

628 N. BROADWAY

DALY 1761

MILWAUKEE

QUALITY . . .

GLAZED BRICK AND TILE, FACE BRICK,
COMMON BRICK**GAGNON CLAY PRODUCTS CO.**

526 S. Broadway

HOWARD 78

Green Bay, Wis.

BRIXMENT the leading masonry cement

T. C. ESSER CO.

PAINTS

GLASS

WALL PAPER

MIRRORS

GLASS BLOCK

◇

CHURCH

STAINED GLASS

◇

MILWAUKEE

• OSHKOSH

LA CROSSE



MITCHELL 6800

W. H. PIPKORN CO.

South End of 16th Street Viaduct

1548 W. BRUCE STREET

MILWAUKEE 4, WIS.

Everything in Building Materials and Reinforcing Steel

A.I.A. APPOINTS COMMITTEE TO AID CIVIC PLANNERS

In order to promote the erection of public buildings that will be both progressive and efficient, a special committee of The American Institute of Architects is launching a nationwide study. In the planning and construction of city, county and state government buildings there are basic principles which should govern, and it is these principles that the committee will strive to establish.

James W. Kideney, of Buffalo, N. Y., Chairman of the Committee on Study of Local Public Buildings, A.I.A., announces that he has sent out an invitation to civic, planning, legal and building groups concerned with such structures asking for cooperation and information as the first step in the formation of a sound approach to the problem.

"The citizen who seeks advice, information or aid from various sources of government—at the lowest or highest level—should be able to go to a centralized, well-designed building," said Mr. Kideney in outlining the purpose of the survey.

"In our large cities and the county seats of our agricultural communities we possess too many rubber-stamped buildings which are monuments of inefficiency.

"We do not hope to present civic planners with stock plans but rather with a check list and analysis of the function which should be common to most buildings housing local governments. Of course, such buildings will vary with the character of each American community and will possess an individuality of their own.

"A good local government center may be one or a group of buildings. In a rural area, the stress may be on placing public health and agricultural extension facilities in one building, for example. But under any circumstances, those responsible for planning and designing such structures should think along new lines rather than copying the ancient courthouse down the road."

Cooperating with Mr. Kideney in making the survey are Professor Walter F. Bogner, of Cambridge, Mass., and Perry C. Smith, of New York City.

The American Institute of Architects is collaborating with many national organizations interested in local government buildings including the American Bar Association's Committee on Traffic Courts.

"This latter cooperative arrangement may lead to changes in the design of traffic courts—the places where the vast majority of American citizens meet the agencies of the law," said Mr. Kideney. "We would like to see buildings possessing the dignity that the administration of justice merits in place of what is often a dingy setting."

The committee called attention to the fact that many government functions today are housed in "inadequate, shabby, makeshift quarters, often widely separated, which induce discontent, frustration and disrespect in both employees and citizens."

Copies of the New Schedule of Proper Minimum Charges and Professional Practice may be obtained through the Secretary of the State Association. 3c a copy.

Rundle-Spence

MANUFACTURING COMPANY

PLUMBING, HEATING
and MILL SUPPLY

MILWAUKEE - MADISON

1327 UNIVERSITY AVE. MADISON 5, WIS.
Phone Badger 208

445 N. FOURTH STREET MILWAUKEE 3, WIS.
Phone MArquette 2500

ARCHITECTS, ENGINEERS
and ARTISTS MATERIALS

★
DRAFTING ROOM
FURNITURE

★
Blueprints & Photostats

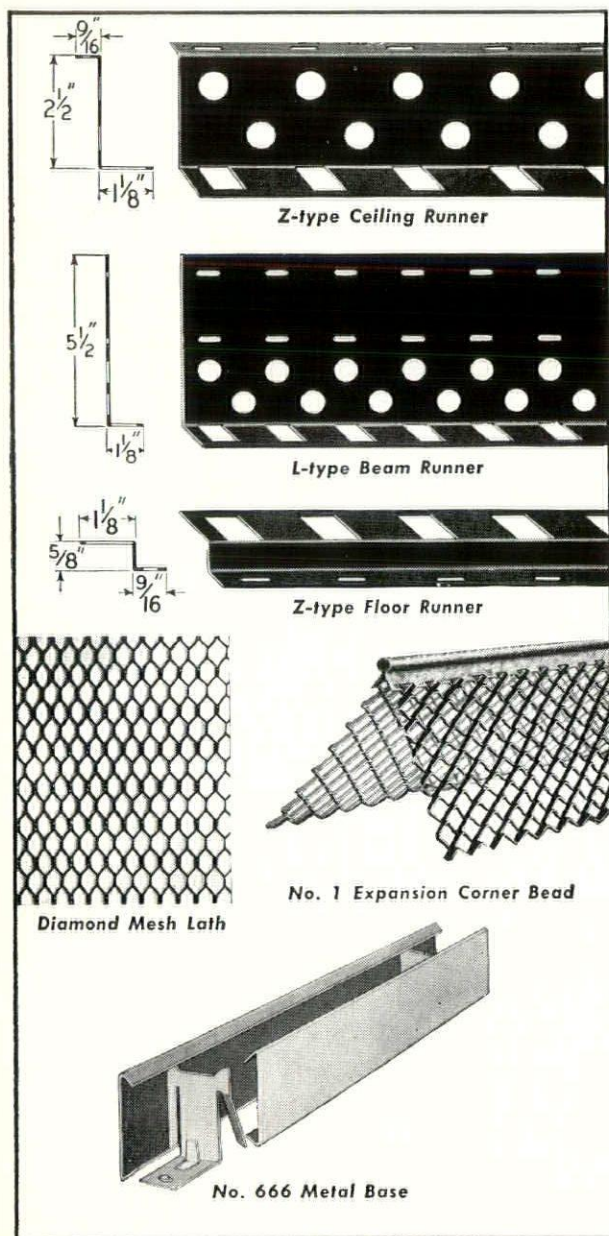


At Bridge

115 EAST WELLS STREET • MILWAUKEE

to protect plaster surfaces
in **New York City's
Abraham
Lincoln
Houses**

— and to assure ease and
economy of maintenance



... architects approved

Milcor Steel Building Products

**Milcor products help you
attain creditable results
with fireproof construction**

In many large projects like Abraham Lincoln Houses—and smaller structures, also—the *Milcor Solid Partition* system is used for resistance to physical impact, fire, wind, water, sound, and vibration.

With this type of Milcor construction, steel channels are inserted into slotted ceiling and floor runners or metal base. These channel studs reinforce the partition vertically and hold the metal lath, to which plaster is applied on both sides.

In addition to functioning as an efficient plaster base, *Milcor*

Metal Lath reinforces the partition in every direction.

Milcor Metal Base provides a permanent, sanitary interior trim. It simplifies finishing and is economical to maintain. Where it is used with *Milcor Solid Partitions*, the metal base acts as a plaster ground and eliminates the need for base screed.

Milcor Expansion Corner Beads give plaster corners the double reinforcement of a metal bead and expanded metal wings; vulnerable points are adequately protected against unsightly cracks, chipping, or cleavage.

For planning help, consult the catalog of *Milcor Steel Building Products* in Sweet's Architectural File, or write for *Milcor Manual*.

INLAND STEEL PRODUCTS COMPANY

FORMERLY MILCOR STEEL COMPANY

MILWAUKEE 1, WISCONSIN

BALTIMORE 24, MD. • BUFFALO 11, N. Y. • CHICAGO 9, ILL. • CINCINNATI 25, OHIO • CLEVELAND 14, OHIO • DETROIT 2, MICH. • KANSAS CITY 8, MO. • LOS ANGELES 23, CALIF. • NEW YORK 22, N. Y. • ROCHESTER 9, N. Y.