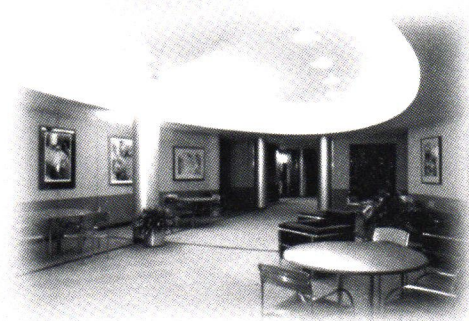


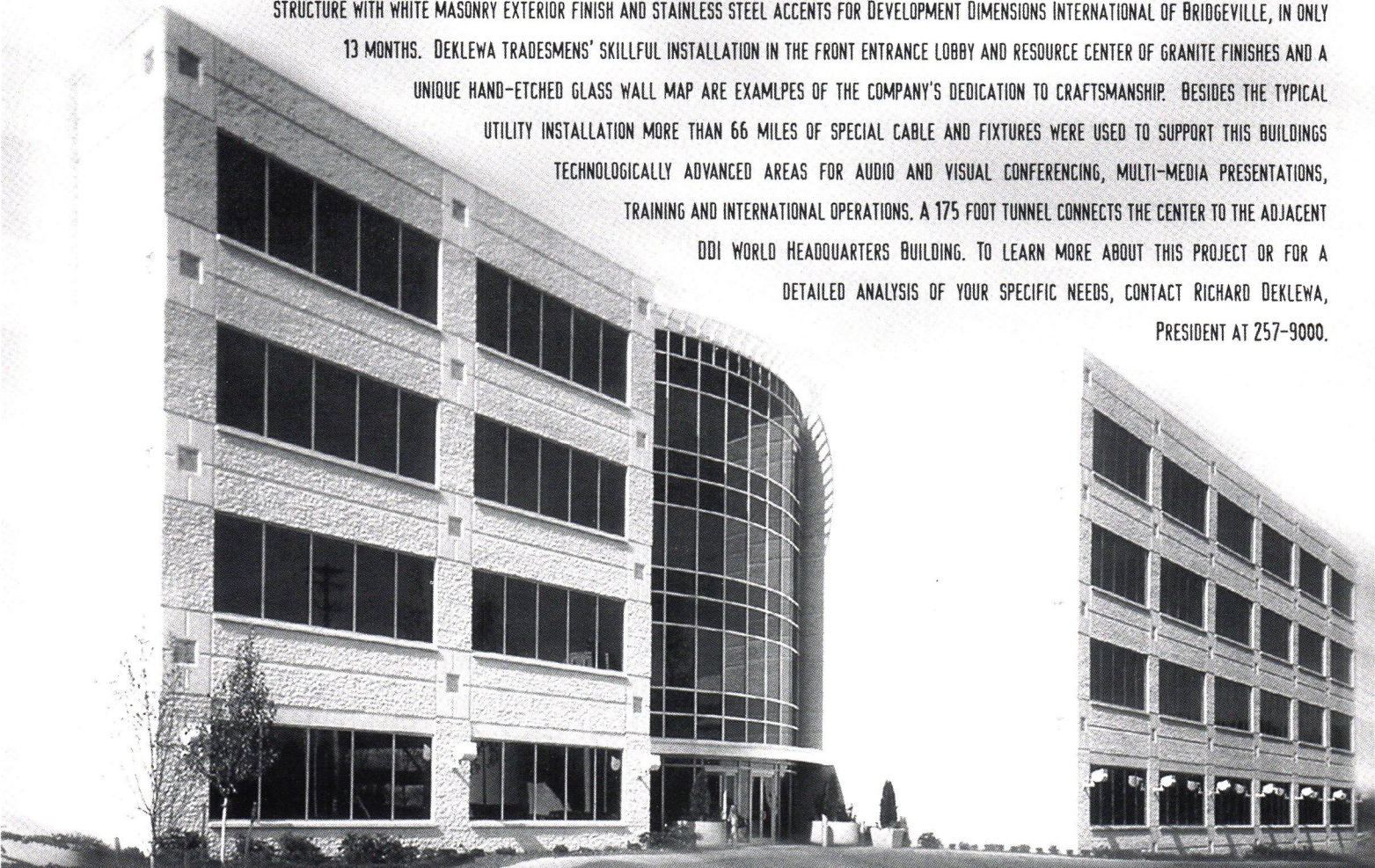
C O L U M N S





DEKLEWA DEVELOPS A NEW DIMENSION

THE RECENT COMPLETION BY JOHN DEKLEWA & SONS, INC. OF THE NEW CENTER FOR ADVANCED LEARNING AND ASSESSMENT TECHNOLOGY SIGNALS ANOTHER MILESTONE IN THE CONSTRUCTION FIRM'S LONG HISTORY OF PROJECTS FOR HIGH PROFILE CLIENTS. DEKLEWA CONTRACTORS ERECTED THIS "STATE OF THE ART" FOUR STORY STEEL FRAME STRUCTURE WITH WHITE MASONRY EXTERIOR FINISH AND STAINLESS STEEL ACCENTS FOR DEVELOPMENT DIMENSIONS INTERNATIONAL OF BRIDGEVILLE, IN ONLY 13 MONTHS. DEKLEWA TRADESMEN'S SKILLFUL INSTALLATION IN THE FRONT ENTRANCE LOBBY AND RESOURCE CENTER OF GRANITE FINISHES AND A UNIQUE HAND-ETCHED GLASS WALL MAP ARE EXAMPLPES OF THE COMPANY'S DEDICATION TO CRAFTSMANSHIP. BESIDES THE TYPICAL UTILITY INSTALLATION MORE THAN 66 MILES OF SPECIAL CABLE AND FIXTURES WERE USED TO SUPPORT THIS BUILDINGS TECHNOLOGICALLY ADVANCED AREAS FOR AUDIO AND VISUAL CONFERENCING, MULTI-MEDIA PRESENTATIONS, TRAINING AND INTERNATIONAL OPERATIONS. A 175 FOOT TUNNEL CONNECTS THE CENTER TO THE ADJACENT DDI WORLD HEADQUARTERS BUILDING. TO LEARN MORE ABOUT THIS PROJECT OR FOR A DETAILED ANALYSIS OF YOUR SPECIFIC NEEDS, CONTACT RICHARD DEKLEWA, PRESIDENT AT 257-9000.



Project Architect: Johnson/Schmidt & Associates

JOHN DEKLEWA & SONS, INC.

1273 Washington Pike • P.O. Box 158 • Bridgeville, PA 15017 • (412) 257-9000

GENERAL CONTRACTORS BUILDING SUCCESS

The Entrepreneurial Spirit by Cheryl R. Towers

Ah, May. A gardener's fancy turns to

thoughts of *Epimedium x rubrum*, *Hydrangea quercifolia* and *Metasequoia glyptostroboides* (I go in for the really big stuff - at least in my dreams). Time to stock up on cheap beer for slug drowning purposes, and hope that a winter's worth of lifting weights in the basement gets me through a season of carrying 60 lb. bags of soil up two flights of stairs and out onto the deck, a/k/a the South Forty. Urban gardeners make do.

"Making do" is an interesting concept. Sometimes it's a cross between shoddy standards and martyrdom ("Don't worry about me...I'll make do...."). Othertimes, it's the hallmark of the entrepreneur. Don't have all the tools, information and resources you need? So what? Make do. Or, as a famous marketing campaign puts it, "Just do it!"

The architectural process reminds me of this, especially when under the gun of a fast track schedule. Just as I still in my heart of hearts don't believe that big planes really fly, I'm amazed that buildings get built. And yet I look around town and see all sorts of things happening — two stadia, new office buildings, renovations, rehabs, adaptive re-use, you name it. Somehow, in spite of lumbering and sometimes ill-conceived planning processes, we're managing to "just do it" all over town.

My hope is that more and more of you are getting involved in making the difference between the martyrdom style of making do and the take charge kind that gets important work accomplished. Many of you sit on planning boards and volunteer for community involvement. Many of you do not. Yet architects of all stripes have the unique ability

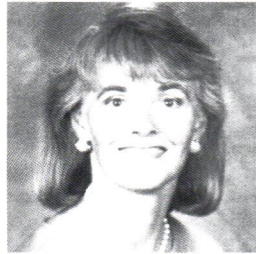
to help our communities through difficult decision making times. I've been privileged to watch many of you as you take values that citizens express and turn them into living design solutions, and it's truly exciting. Abstract concepts become realities and tough choices become easier when people see the results.

You've heard calls for public involvement in these pages before, but spring, the time of renewal, seems like a good time to say it again. It's critically important that our region continue to cease to "make do" and adopt a progressive and aggressive style of forward movement. We all need you to help make it happen.

Ronald L. Skaggs, FAIA made the appeal in last month's *AIArchitect*: "Detachment carries a high price. It robs us of a strong voice in shaping the debates, the laws, the regulations, and the values of our community, our state, our nation, and, yes, even the world.

" We need to step into the fray. We need to become engaged. We need to recognize a fact I learned during my early years in the military: if you want to lead, be prepared to be shot at."

Unappealing though the thought may be, that's the chance a real leader takes. It's spring. Take a chance. Even my plants are willing to give it a go in often inhospitable surroundings. Certainly jumping into the fray isn't as bad as belonging to someone who forgets to water your roots for days on end!



"Detachment carries a high price."

— RONALD L. SKAGGS, FAIA

IN THIS ISSUE

<i>Masonry Construction</i>	6
A tradition continues	
<i>Radical Masonry Teaching / Radical Masonry Learning</i>	12
Area architects gain hands-on experience.	
<i>A Tour of Bridges</i>	14
A review of Walter C. Kidney's latest contribution to Pittsburgh's past	
News	5
Breaking Ground	17
Dossier	19
Calendar	21

On the cover: Indian Nationality Classroom at the University of Pittsburgh. Design by Renaissance 3 Architects. Photo by Mark Portland.