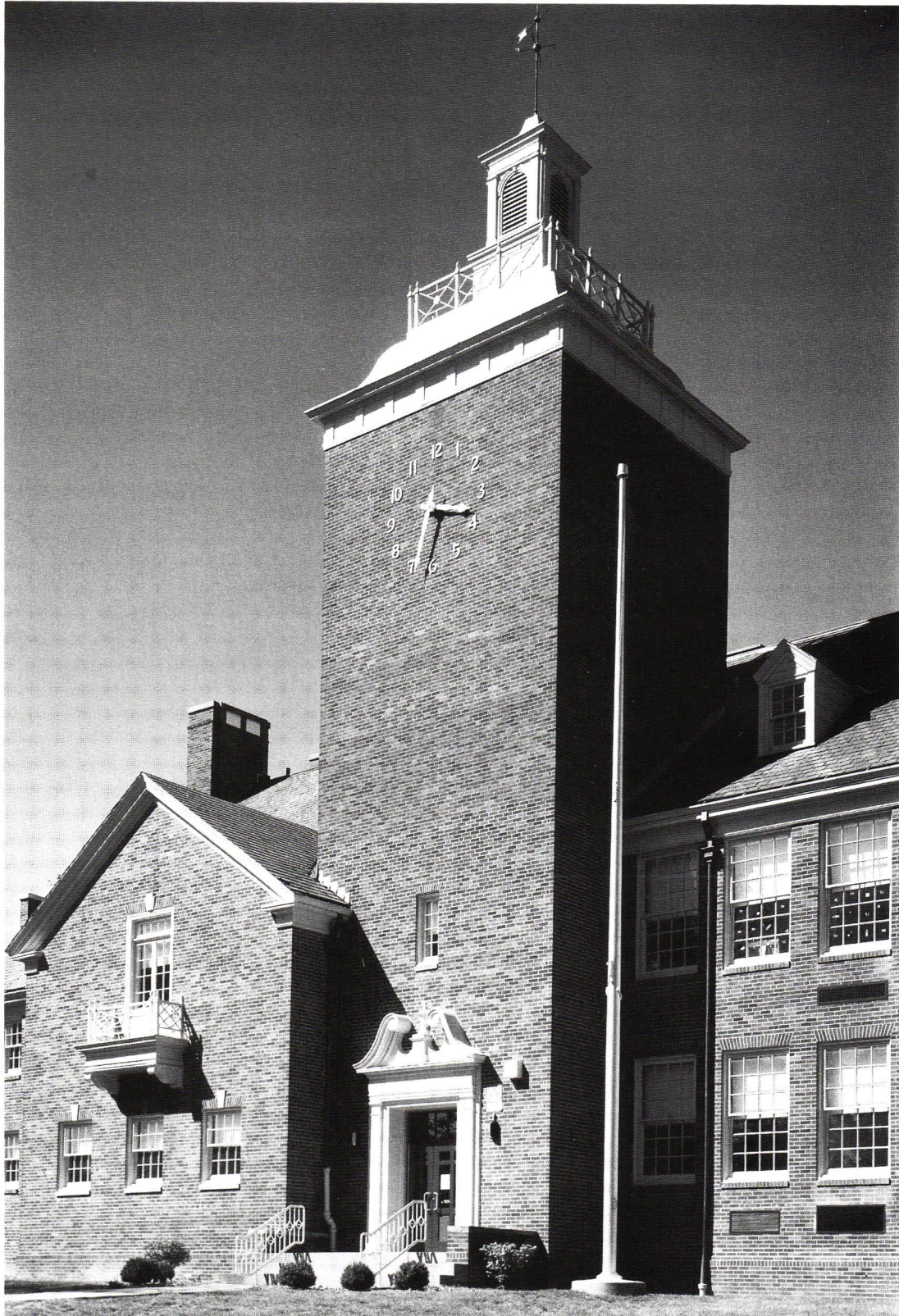
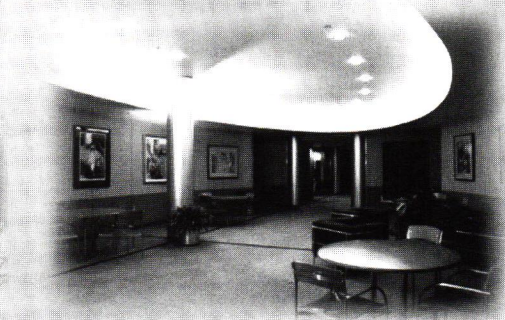


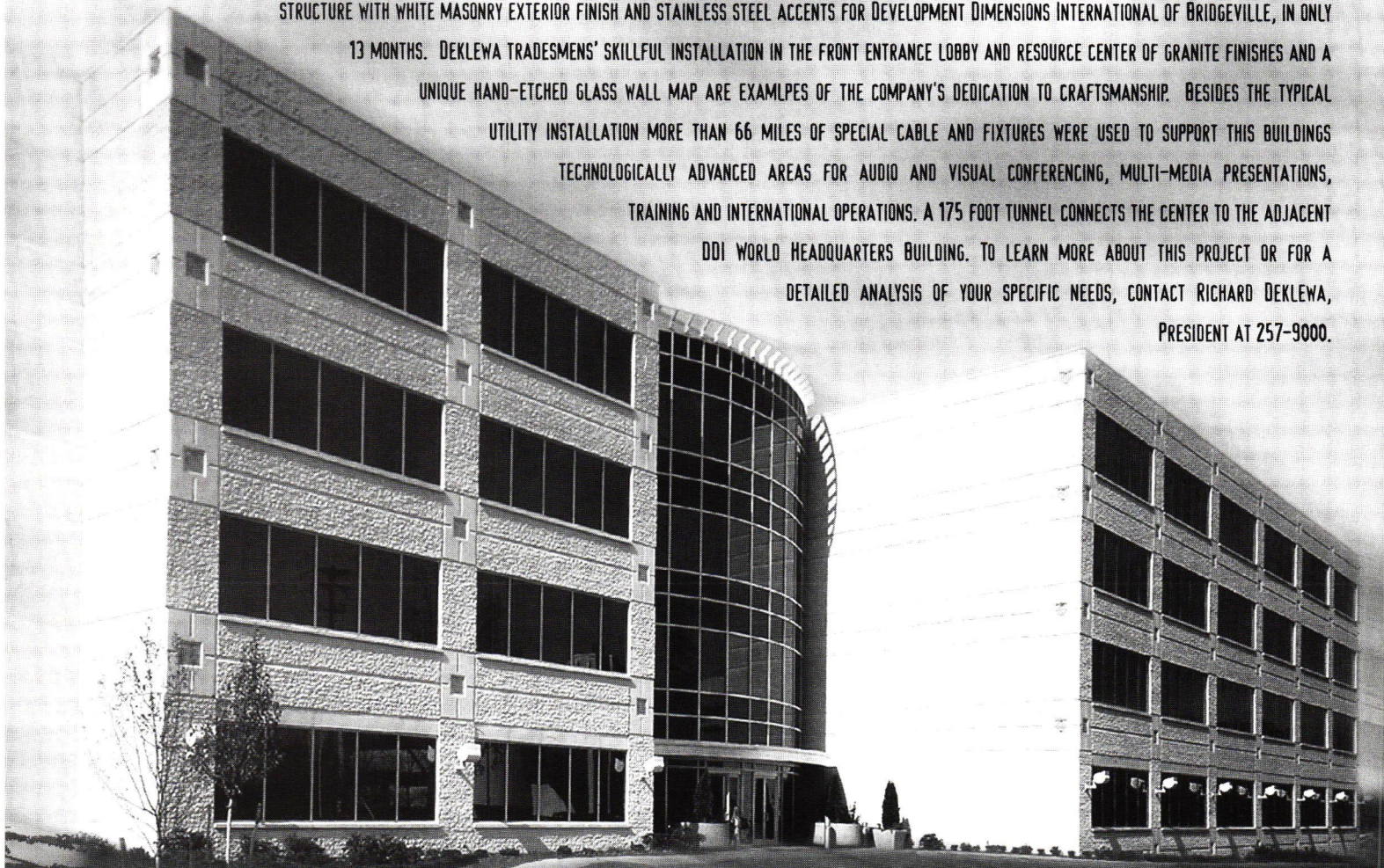
C O L U M N S





DEKLEWA DEVELOPS A NEW DIMENSION

THE RECENT COMPLETION BY JOHN DEKLEWA & SONS, INC. OF THE NEW CENTER FOR ADVANCED LEARNING AND ASSESSMENT TECHNOLOGY SIGNALS ANOTHER MILESTONE IN THE CONSTRUCTION FIRM'S LONG HISTORY OF PROJECTS FOR HIGH PROFILE CLIENTS. DEKLEWA CONTRACTORS ERECTED THIS "STATE OF THE ART" FOUR STORY STEEL FRAME STRUCTURE WITH WHITE MASONRY EXTERIOR FINISH AND STAINLESS STEEL ACCENTS FOR DEVELOPMENT DIMENSIONS INTERNATIONAL OF BRIDGEVILLE, IN ONLY 13 MONTHS. DEKLEWA TRADESMEN'S SKILLFUL INSTALLATION IN THE FRONT ENTRANCE LOBBY AND RESOURCE CENTER OF GRANITE FINISHES AND A UNIQUE HAND-ETCHED GLASS WALL MAP ARE EXAMPLPS OF THE COMPANY'S DEDICATION TO CRAFTSMANSHIP. BESIDES THE TYPICAL UTILITY INSTALLATION MORE THAN 66 MILES OF SPECIAL CABLE AND FIXTURES WERE USED TO SUPPORT THIS BUILDINGS TECHNOLOGICALLY ADVANCED AREAS FOR AUDIO AND VISUAL CONFERENCING, MULTI-MEDIA PRESENTATIONS, TRAINING AND INTERNATIONAL OPERATIONS. A 175 FOOT TUNNEL CONNECTS THE CENTER TO THE ADJACENT DDI WORLD HEADQUARTERS BUILDING. TO LEARN MORE ABOUT THIS PROJECT OR FOR A DETAILED ANALYSIS OF YOUR SPECIFIC NEEDS, CONTACT RICHARD DEKLEWA, PRESIDENT AT 257-9000.



Project Architect: Johnson/Schmidt & Associates

JOHN DEKLEWA & SONS, INC.

1273 Washington Pike • P.O. Box 158 • Bridgeville, PA 15017 • (412) 257-9000

GENERAL CONTRACTORS BUILDING SUCCESS

AIA Pittsburgh serves 12 Western Pennsylvania counties as the local component of the American Institute of Architects and AIA Pennsylvania. The objective of AIA Pittsburgh is to improve, for society, the quality of the built environment by further raising the standards of architectural education, training and practice; fostering design excellence; and promoting the value of architectural services to the public. AIA membership is open to all registered architects, architectural interns, and a limited number of professionals in supporting fields.

AIA Pittsburgh
211 Ninth Street
Pittsburgh, PA 15222
Telephone: 412/471-9548
FAX: 412/471-9501

Chapter Officers

Edward A. Shriver, Jr., AIA, President
J. David Hoglund, AIA, First Vice President
Paul B. Ostergaard, AIA, Second Vice President
Charles DeLisio, AIA, Secretary
Alan J. Cuteri, AIA, Treasurer
Anne J. Swager, Executive Director

Columns Staff

Cheryl R. Towers, Editor
Joseph Ruesch, Art Director

Editorial Board

David J. Vater, AIA, Chair
Robert J. Bailey, AIA
Alan L. Fishman, AIA
Donald G. Zeilman, AIA

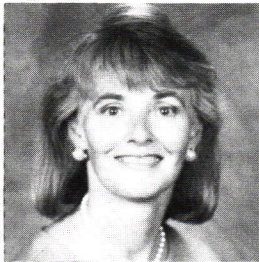
COLUMNS is published ten times a year by, and primarily for, members of AIA Pittsburgh, A Chapter of the American Institute of Architects. Preference may be given to the selection of works, articles, opinions, letters, etc. of members for publication. However, in the interest of furthering the goals of the Chapter, as stated monthly at the top of the masthead and in the membership directory, COLUMNS will publish the names of and properly credit non-members, whether as participants in the design of works submitted by a member, or as designers of their own work, or as authors of articles, opinion or letters.

Opinions expressed by editors and contributors are not necessarily those of AIA Pittsburgh. The Chapter has made every reasonable effort to provide accurate and authoritative information, but assumes no liability for the contents.

Musings by Cheryl R. Towers

This summer, my brother-in-law the RV dealer

marched us smartly off to Somerset for a tour of the Coleman plant. Thanks to our tour guide, Dale, we were well fed, and now know more about folding trailers (a/k/a "pop-up" campers) than anyone outside of Somerset or the industry has a right to. According to our resident family expert, Coleman is the gold standard for these things. They not only assemble campers, they make most everything that goes into them. Looking down the assembly line where a frame rolls on at one end and rolls off 14 stations later as a completed camper is rather like looking down the length of a runway at take-off — thrilling in its own way.



"When architects have an opportunity to contribute to society through design and through influencing policy, it can only be a good thing."

The factories of my youth were places to be avoided - dirty, noisy and dangerous, they were enough to keep my baby boom friends and I focused on school. These were the stereotyped places that rewarded strong backs and probably discouraged strong minds. Undoubtedly, lots of tedious and backbreak-

ing factory work still exists, some of it even at enlightened places such as Coleman. But, what a difference technology has made. Virtually everyone in this plant was operating a computer in one way or another. As we moved around the huge facility, it was obvious that people are encouraged to think and make decisions.

So, what has all this got to do with architecture? There's the obvious - the pleasure of seeing a well designed and well made product that is doing well in the marketplace. There is also the renewed appreciation we felt for actually *making* things. Heaven

knows that I couldn't live without a vast service network, but we can't sustain an economy by all running around doing each other's dry-cleaning. When architects have an opportunity to contribute to society through design and through influencing policy, it can only be a good thing.

On another matter, architecture and the Internet are giving me no end of headaches, and I suspect I'm not alone. "Architecture" is one of those stupefyingly complicated words: it can mean designing, or the actual building, or a style, or a method, or the arrangement of parts and structure. So what happens when you use a search engine and type in "architecture"? 1,343,568 hits later, responses may range from an exposition of the software industry to "architectural distortions in tissue mass". This is an intellectual variation on the "use less stuff" movement: there's too much "stuff" out there. How the heck do we navigate it all to find something really useful? I may be revealing my fogginess, since 20-somethings are currently getting rich starting up companies to simplify life for people like me. In the meantime, I search, rather like Diogenes looking for an honest man.

Finally, the secret to becoming an editor's best friend: use email to communicate when possible. Our service area now covers half the state, and anyone who has driven from here to there knows just how big that is. We're trying to keep up with you and with your activities, but there aren't enough hours in the business day. Consequently, email has become the quickest way to exchange information easily.

And, while you're online, be certain to visit the Chapter's website at www.aiapgh.org. Like email, it's promising to become our most efficient way to transmit information to the membership.

IN THIS ISSUE

Reshaping the Region III 6
Focus on Middle PA Chapter.

An Ethical Client Relationship 10
The heart and soul of an architect's service to a client.

John Hunter, Jr. 12
A solo practice evolves into one of the region's largest firms.

Department of Architecture 16
Visiting Penn State.

News 5
Breaking Ground 19
Calendar 21
Dossier 23

On the cover: Northside Elementary School, Brookville School District. Original design by Hunter & Caldwell, 1938; renovations designed by successor firm Hayes Large Architects, 1998.