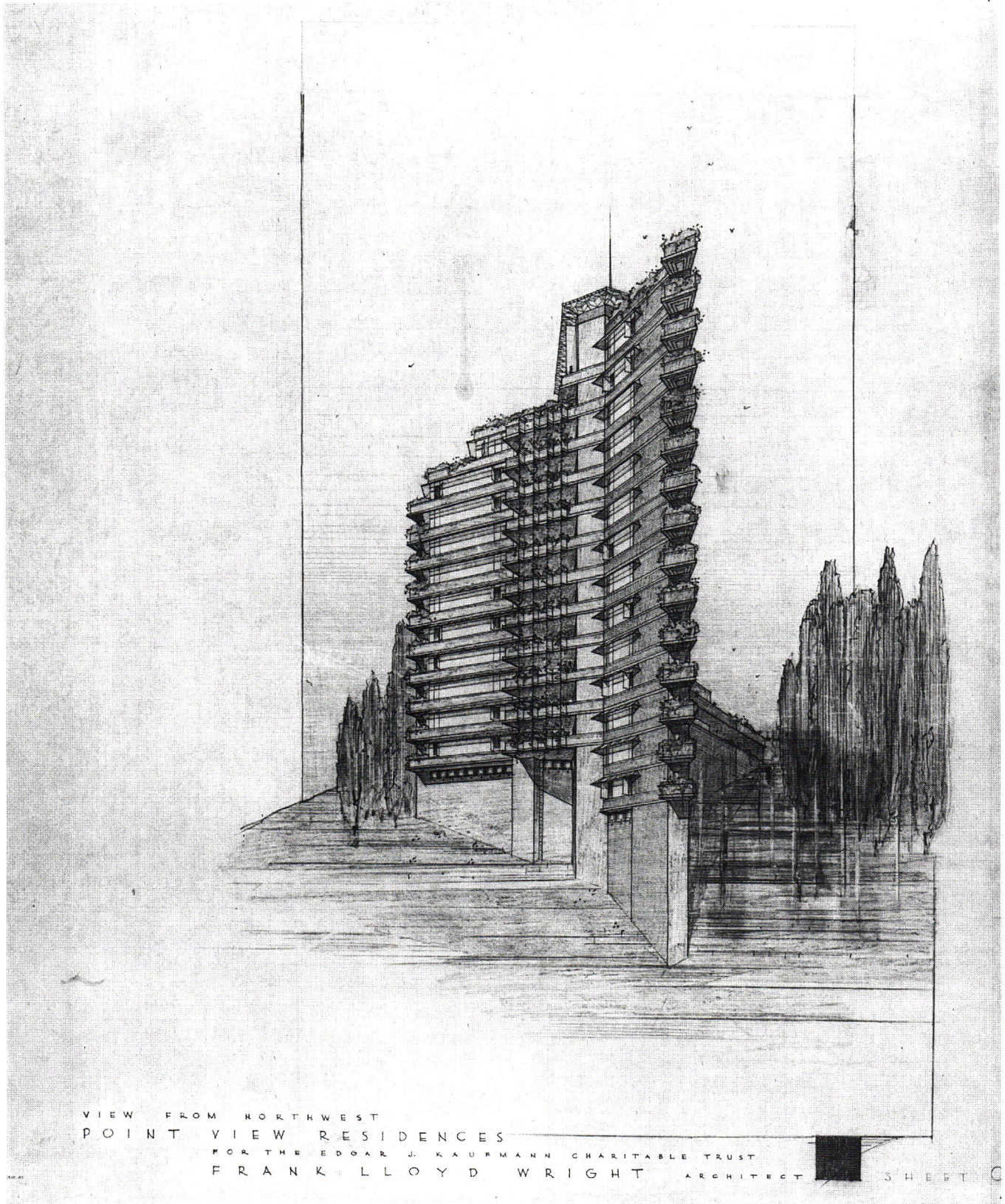
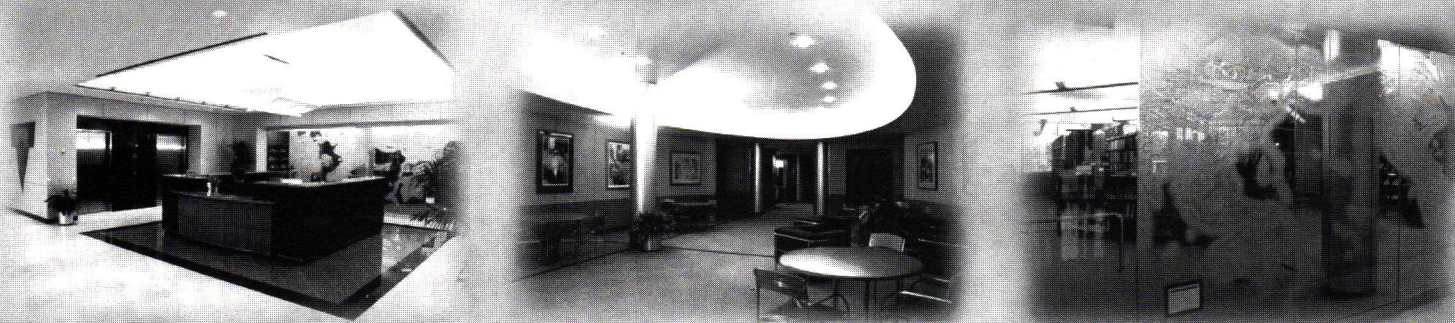


C O L U M N S

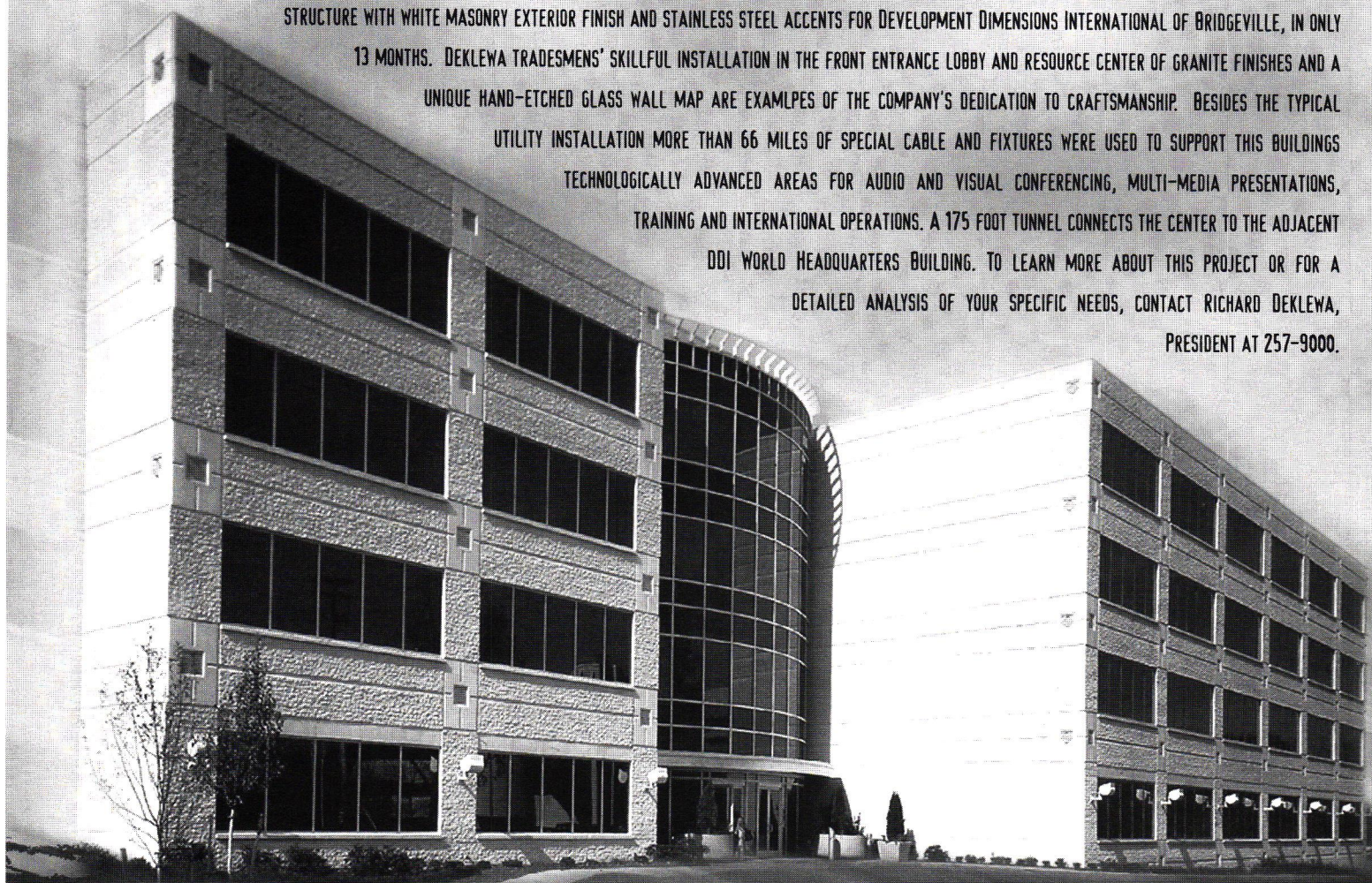


V I E W F R O M N O R T H W E S T
P O I N T V I E W R E S I D E N C E S
F O R T H E E D G A R J . K A U R M A N N C H A R I T A B L E T R U S T
F R A N K L L O Y D W R I G H T A R C H I T E C T S H E E T C



DEKLEWA DEVELOPS A NEW DIMENSION

THE RECENT COMPLETION BY JOHN DEKLEWA & SONS, INC. OF THE NEW CENTER FOR ADVANCED LEARNING AND ASSESSMENT TECHNOLOGY SIGNALS ANOTHER MILESTONE IN THE CONSTRUCTION FIRM'S LONG HISTORY OF PROJECTS FOR HIGH PROFILE CLIENTS. DEKLEWA CONTRACTORS ERECTED THIS "STATE OF THE ART" FOUR STORY STEEL FRAME STRUCTURE WITH WHITE MASONRY EXTERIOR FINISH AND STAINLESS STEEL ACCENTS FOR DEVELOPMENT DIMENSIONS INTERNATIONAL OF BRIDGEVILLE, IN ONLY 13 MONTHS. DEKLEWA TRADESMEN'S SKILLFUL INSTALLATION IN THE FRONT ENTRANCE LOBBY AND RESOURCE CENTER OF GRANITE FINISHES AND A UNIQUE HAND-ETCHED GLASS WALL MAP ARE EXAMPLES OF THE COMPANY'S DEDICATION TO CRAFTSMANSHIP. BESIDES THE TYPICAL UTILITY INSTALLATION MORE THAN 66 MILES OF SPECIAL CABLE AND FIXTURES WERE USED TO SUPPORT THIS BUILDING'S TECHNOLOGICALLY ADVANCED AREAS FOR AUDIO AND VISUAL CONFERENCING, MULTI-MEDIA PRESENTATIONS, TRAINING AND INTERNATIONAL OPERATIONS. A 175 FOOT TUNNEL CONNECTS THE CENTER TO THE ADJACENT DDI WORLD HEADQUARTERS BUILDING. TO LEARN MORE ABOUT THIS PROJECT OR FOR A DETAILED ANALYSIS OF YOUR SPECIFIC NEEDS, CONTACT RICHARD DEKLEWA, PRESIDENT AT 257-9000.



Project Architect: Johnson/Schmidt & Associates

JOHN DEKLEWA & SONS, INC.

1273 Washington Pike • P.O. Box 158 • Bridgeville, PA 15017 • (412) 257-9000

GENERAL CONTRACTORS BUILDING SUCCESS