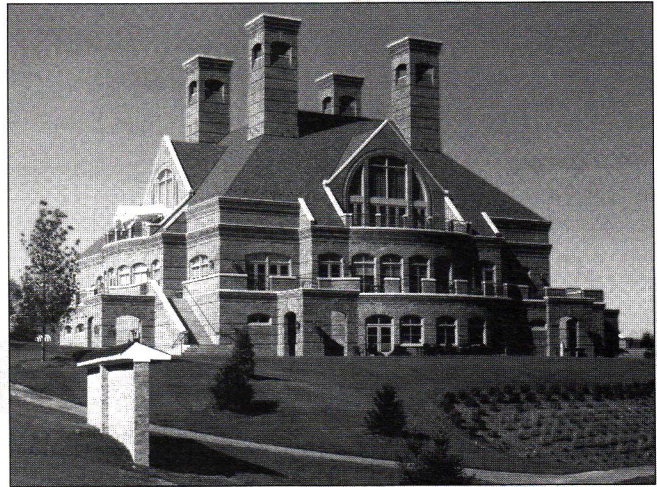


C O L U M N S



Your clients depend on you to be knowledgeable of materials and techniques while still providing professional design expertise. You can depend on John Deklewa and Sons, Inc., for quality workmanship and professional management on all your construction projects.

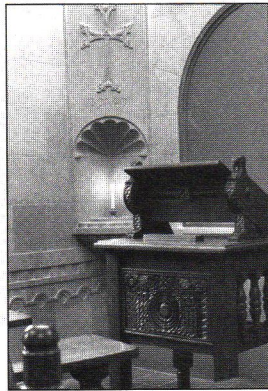
No area general contractor is better known or more respected than John Deklewa and Sons.



One of our recent projects, *The Clubhouse at Nevillewood* is now home to the *Family House Invitational Golf Tournament*.

Sweating The Details Is No Sweat

In the seventy-five years since our founding, we've produced some of the most dramatic and functionally well-integrated buildings in Western Pennsylvania, Ohio and West Virginia.

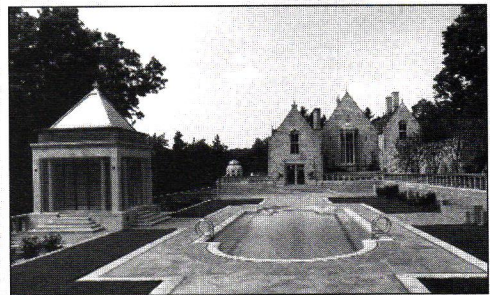


The Armenian room located on the third floor of the Cathedral of Learning at the University of Pittsburgh is the 22nd nationality room to be established at the university. The stone arched room copies the masonry techniques of church and monastery builders of the 11th century. This magnificent classroom was designed by Torkom Khrimiam who emigrated from Armenia in 1978.

We offer a full range of contractor services. Our pre-construction planning and value engineering, for example, can detect trouble spots early to help smooth out the production process. This insures your project comes in on time and on budget.

Whether you're considering renovation and retrofit of an existing structure or new construction, consult the experts at John Deklewa & Sons, Inc.

For a more detailed analysis of your specific needs, contact John E. Deklewa, President at 257-9000.



"Elm Court", a 9-acre private estate located north of Pittsburgh, involves unique additions and renovations. For example, the pool above is heated and has an ozone purification system. The deep blue water is surrounded by a granite surface edged in limestone. The pool is lined with hand made ceramic tile. On the left is a pool house sitting area. To the right is the "Fish Slide" built to hold two antique Indian carved marble panels giving the appearance of two carved fish swimming in the current of the fountain.

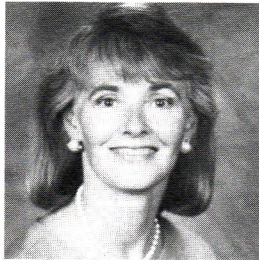
JOHN DEKLEWA & SONS, INC.

1273 Washington Pike • P.O. Box 158 • Bridgeville, PA 15017 • (412) 257-9000

GENERAL CONTRACTORS BUILDING SUCCESS

A Case For Being Present and Accounted For

by Cheryl R. Towers, Editor



"The people we often think are the most irrelevant are often the ones that come back to bite us."

The challenge of a more-or-less monthly magazine

is to be able to think several months ahead and not trip up by referencing something in the present that's a dead give away of the time lag in production. It's rather like the challenge of taping a television or radio show to be aired later. I still shudder at the rabid ire I aroused in a television director one fine morning while taping a show to be aired late at night. "Good morning" was *not* the proper response to "Hello, and welcome to our show!"

This month's deadline coincided with the deaths of Princess Diana and Mother Theresa. While not the usual stuff of *Columns*, no one seemed to want to talk about traffic calming, construction management or even haunted houses as our deadline approached. It was difficult not to weave some pithy reference into all sorts of seemingly unrelated topics. While these references reflected unfortunate passings, they are ancient history if not out and out irrelevant in journalistic terms by the time they cross your desks.

Irrelevance seems to be in the air these days. The (mostly) guys inside the Beltway may not feel irrelevant, but a lot of us act as though they are. The County Commissioners - or at least the minority Commissioner of the moment - certainly feels that way. Dilbert's fans - and they are legion - fight irrelevance at every step.

A couple of thoughts about irrelevance. The people we often think are the most irrelevant are often the ones that

come back to bite us. Witness some of the folks inside that Beltway who make mischief even as they make promises of (fill in your favorite cause). Or the changing parade of Commissioners. The revolving door of politics and political appointments teaches us to take no one for granted, and to count no one out.

And what if we feel *we* are irrelevant? Many of us do — just witness low voter turnout and the few number of people who serve on public and civic boards. Most of us don't even bother to try to have input because we think it's not worth the effort. Or, we're just so overwhelmed by life that we don't want to make an investment outside of our immediate jobs and homes. As a card carrying member of the "sandwich" generation, I can relate to that.

The cost of complicity in accepting irrelevance is high. We lose our dignity and our voices, and our fellow citizens lose our talents.

So this is a call to arms of sorts. Make yourself relevant. Get in the face of policymakers, the media and the public. Architects, as we've noted repeatedly, are problem solvers and have unique skills to bring to meeting the big challenges of society. You may not know everything there is to know about an issue, but you've got the ability to find out the facts and the nuances, and to be articulate in making your case for a cause. Be relevant, or be square. It sure as heck beats the alternatives. ☱

IN THIS ISSUE

Construction Management 6
What is it? Who does it? Who needs it? What's driving the market?

Chapter Members Chair National Committees 11
Three chapter members embody the Chapter's pro-active stance.

Traffic Calming 12
Traffic engineers and planners advance ideas to slow motorists on our streets.

Acoustics Is A Plural Noun 20
Acoustical problems have driven many an architect and building owner mad. Clarification and the role of noise may help arrive at better solutions.

Masonry Camp 21
A different kind of summer vacation builds mutual respect between student architects and masonry apprentices.

From the top 4
News 5
Calendar 19
Dossier 23

On the cover: Construction at Conair World Headquarters. Photo by Nicholas Traub.

Wondering where to find **your** next super staff person?

Why not join the Chapter's Placement Service. We work with both employers and applicants to help you make a perfect match.
Call 412-471-9548.