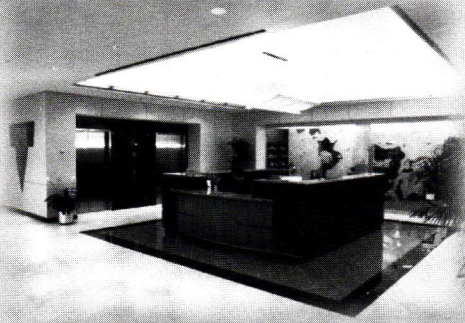


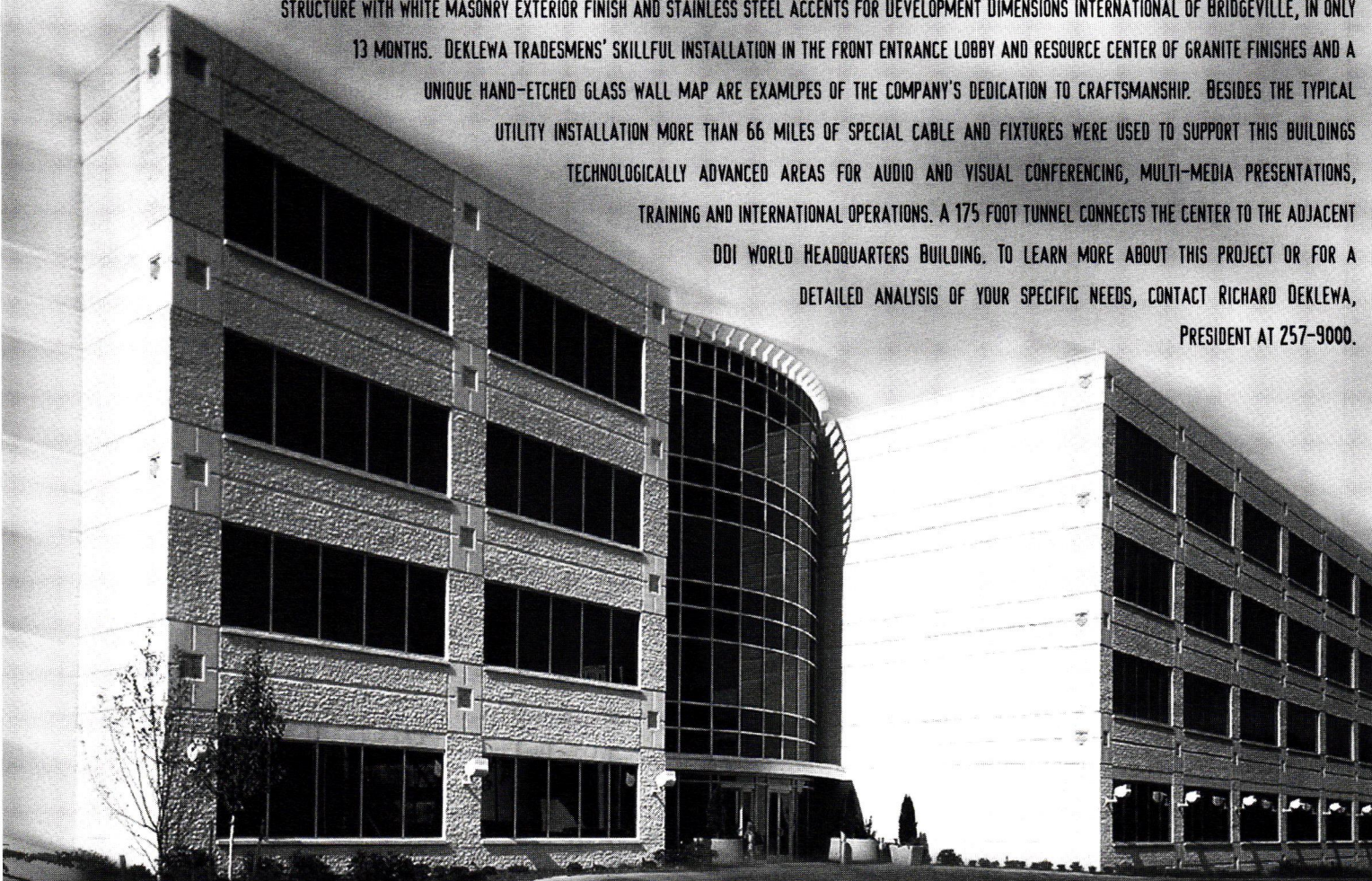
C O L U M N S





DEKLEWA DEVELOPS A NEW DIMENSION

THE RECENT COMPLETION BY JOHN DEKLEWA & SONS, INC. OF THE NEW CENTER FOR ADVANCED LEARNING AND ASSESSMENT TECHNOLOGY SIGNALS ANOTHER MILESTONE IN THE CONSTRUCTION FIRM'S LONG HISTORY OF PROJECTS FOR HIGH PROFILE CLIENTS. DEKLEWA CONTRACTORS ERECTED THIS "STATE OF THE ART" FOUR STORY STEEL FRAME STRUCTURE WITH WHITE MASONRY EXTERIOR FINISH AND STAINLESS STEEL ACCENTS FOR DEVELOPMENT DIMENSIONS INTERNATIONAL OF BRIDGEVILLE, IN ONLY 13 MONTHS. DEKLEWA TRADESMENS' SKILLFUL INSTALLATION IN THE FRONT ENTRANCE LOBBY AND RESOURCE CENTER OF GRANITE FINISHES AND A UNIQUE HAND-ETCHED GLASS WALL MAP ARE EXAMPLPS OF THE COMPANY'S DEDICATION TO CRAFTSMANSHIP. BESIDES THE TYPICAL UTILITY INSTALLATION MORE THAN 66 MILES OF SPECIAL CABLE AND FIXTURES WERE USED TO SUPPORT THIS BUILDINGS TECHNOLOGICALLY ADVANCED AREAS FOR AUDIO AND VISUAL CONFERENCING, MULTI-MEDIA PRESENTATIONS, TRAINING AND INTERNATIONAL OPERATIONS. A 175 FOOT TUNNEL CONNECTS THE CENTER TO THE ADJACENT DDI WORLD HEADQUARTERS BUILDING. TO LEARN MORE ABOUT THIS PROJECT OR FOR A DETAILED ANALYSIS OF YOUR SPECIFIC NEEDS, CONTACT RICHARD DEKLEWA, PRESIDENT AT 257-9000.



Project Architect: Johnson/Schmidt and Associates

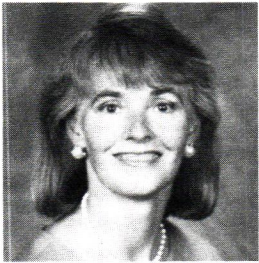
JOHN DEKLEWA & SONS, INC.

1273 Washington Pike • P.O. Box 158 • Bridgeville, PA 15017 • (412) 257-9000

GENERAL CONTRACTORS BUILDING SUCCESS

The First Word

by Cheryl R. Towers, Editor



What you do is tremendously important, and COLUMNS is an essential tool for marketing the profession, for bringing you crucial ideas and information, and for raising policy issues which are critical to the region. If I can assist that process, I will feel very fulfilled.

The second person whom I met upon moving

to Pittsburgh in 1981 was David Lewis. Between the flood of ideas pouring from David and the energy emitted from his expressive eyebrows, it didn't take too much convincing that Pittsburgh had to be an o.k. kind of place if a David Lewis was so keen on it (I was coming here from New York, so there was some trepidation). Other architects soon came into my life—I recall meeting Steve George, Jay LaBarthe, the late Bill Kerr, Marsha Berger, Phil Andrews, Syl Damianos, Don Carter, Ray Gindroz, and a host of others as I plunged into my new life as executive director of the Pittsburgh Center for the Arts. During that time, I often did site visits for the Pennsylvania Council on the Arts, and wound up spending an hysterically funny afternoon in the offices of Uptown Mt. Lebanon with the executive director—one Anne Swager.

After I moved on from the Center to open my own consulting practice and give in to a need to write, I continued to have the privilege of getting to know many more of you as friends and as colleagues. Over the last few years, the Committee on the Environment/Reshaping the Region team members have become constant companions and foils. Trust me when I say that continued interaction over time with David Pecharka, Rob Robinson, Gary Moshier, Bob Kobet, Steve Lee, et al. has left me with everything from great ideas and energy to severe headaches and a terrific

collection of jokes, none of them suitable for print. Along the way I've also developed a growing appreciation for the wit and wisdom of one Ms. Swager (how can you not love someone whose favorite building is Tail of the Pup?), and, through working with Michelle Fanzo, a fondness for *Columns*.

So here I am today, writing not my first words for *Columns*, but my first words as editor. Anne, as always, made a persuasive argument: "You already write for us once in awhile. If you become the editor, it'll just be a *little* more work, and, we'll pay you!" And, I get to go to the staff Christmas party. Bliss. But parties aside, I really do look forward to working with all of you, and to meeting those of you whose names I keep hearing but haven't yet met. What you do is tremendously important, and the magazine is an essential tool for marketing the profession, for bringing you crucial ideas and information, and for raising policy issues which are critical to the region. If I can assist that process, I will feel very fulfilled.

To close, I want to share with you one last sign I received in yesterday's horoscope (Cancer) that reinforces my desire to help shape these pages: "you'll be called upon to articulate customs of individuals who are different." Cheers! 🏠

IN THIS ISSUE

The Wheels on the Bus Go 'Round, 'Round, 'Round. 6
Trying to get from here to there is a Western Pennsylvania challenge, and a complicated one at that. Are we up to taking a longer term and more sophisticated approach to solving our problems?

The Regional Transportation Planning Process and You 10
Transportation planning is more inclusive than ever but still faces serious issues and a need for more involvement.

The Bridges of Schenley Park 14
May is Historic Preservation Month and restoration of the Schenley Park bridges demonstrates how transportation requirements and historic preservation can collide.

Tapping the Nonprofit Market 19
New opportunities may be found in an arena not known for profit making.

Homefront 3
From the top 4
News 5
Breaking Ground 12
Calendar 17
Meeting info, memberships 23

On the cover: Original watercolor of the Smithfield Street Bridge before restoration by Dana Steadman, AIA.