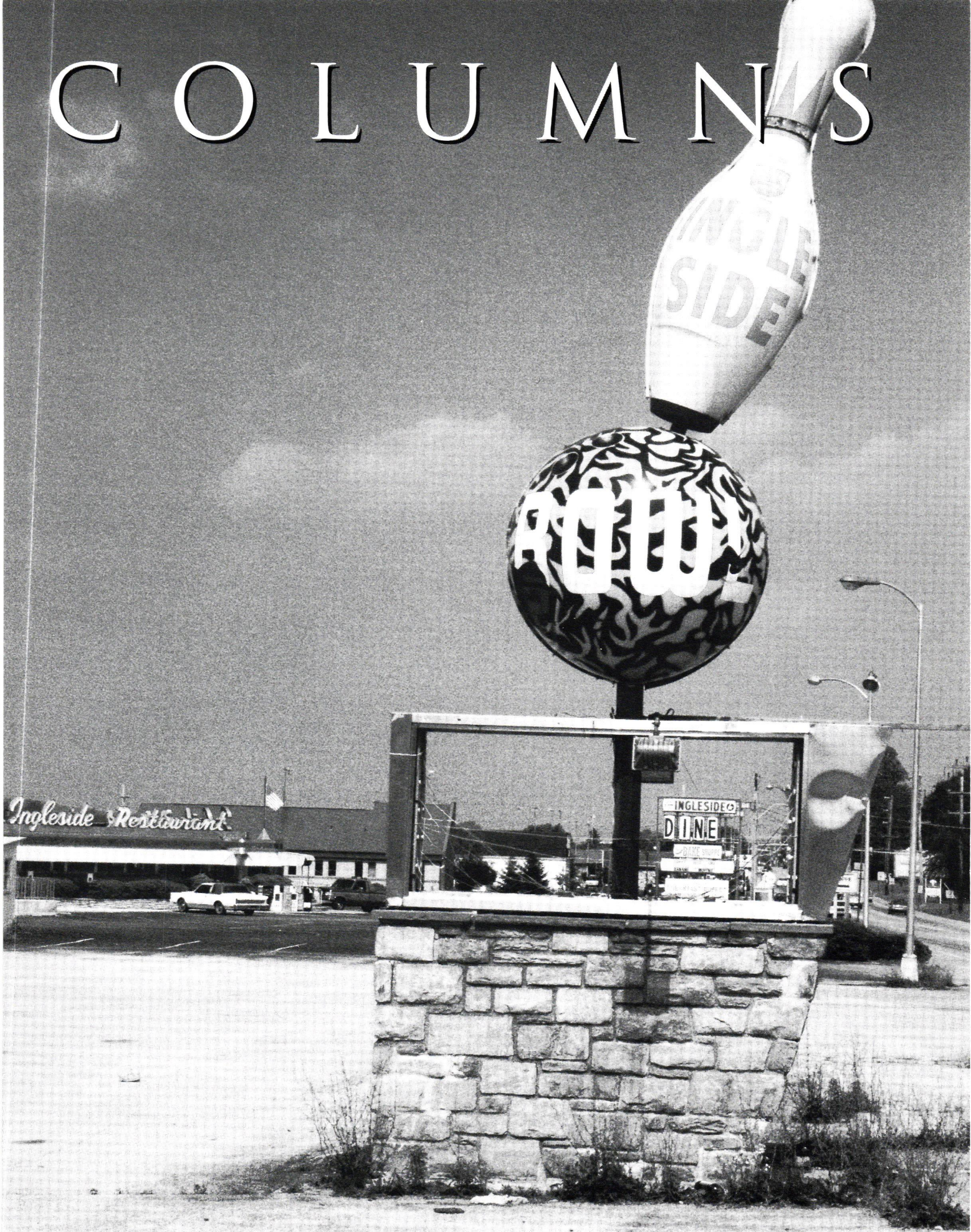


C O L U M N S



Your clients depend on you to be knowledgeable of materials and techniques while still providing professional design expertise. You can depend on John Deklewa and Sons, Inc., for quality workmanship and professional management on all your construction projects.

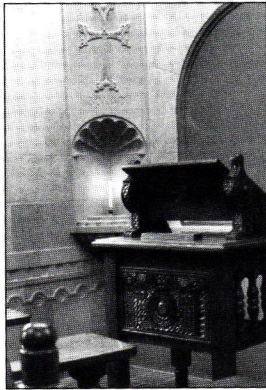
No area general contractor is better known or more respected than John Deklewa and Sons.



One of our recent projects, *The Clubhouse at Nevillewood* is now home to the *Family House Invitational Golf Tournament*.

Sweating The Details Is No Sweat

In the seventy-five years since our founding, we've produced some of the most dramatic and functionally well-integrated buildings in Western Pennsylvania, Ohio and West Virginia.

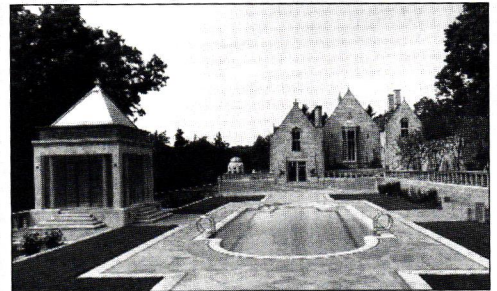


The Armenian room located on the third floor of the Cathedral of Learning at the University of Pittsburgh is the 22nd nationality room to be established at the university. The stone arched room copies the masonry techniques of church and monastery builders of the 11th century. This magnificent classroom was designed by Torkom Khrimiam who emigrated from Armenia in 1978.

We offer a full range of contractor services. Our pre-construction planning and value engineering, for example, can detect trouble spots early to help smooth out the production process. This insures your project comes in on time and on budget.

Whether you're considering renovation and retrofit of an existing structure or new construction, consult the experts at John Deklewa & Sons, Inc.

For a more detailed analysis of your specific needs, contact John E. Deklewa, President at 257-9000.



"Elm Court", a 9-acre private estate located north of Pittsburgh, involves unique additions and renovations. For example, the pool above is heated and has an ozone purification system. The deep blue water is surrounded by a granite surface edged in limestone. The pool is lined with hand made ceramic tile. On the left is a pool house sitting area. To the right is the "Fish Slide" built to hold two antique Indian carved marble panels giving the appearance of two carved fish swimming in the current of the fountain.

JOHN DEKLEWA & SONS, INC.

1273 Washington Pike • P.O. Box 158 • Bridgeville, PA 15017 • (412) 257-9000

GENERAL CONTRACTORS BUILDING SUCCESS



Pedal Pittsburgh

1996 Sponsors

The Community Design Center of Pittsburgh extends a warm "thank you" to all of the sponsors who have made Pedal Pittsburgh possible.

COMMUNITY
DESIGN
CENTER OF
PITTSBURGH

PEDAL
PITTSBURGH
A COMMUNITY DESIGN TOUR

National City
Going the distance for you

 Pittsburgh Mercy Health System

 **ARAMARK**
Managed Services, Managed Better.

PITTSBURGH CityPaper

Thrift Drug Classic

PITTSBURGH

Contributing Sponsors

Bell Atlantic Mobile
Cameron Coke
City of Pittsburgh
Columbia Gas Co.
CROWN Mobile Systems, Inc.
L&M Paper
Leed's Business Accessories
Heinz U.S.A.
Pittsburgh Power
Power Bar
Station Square
Super Donut
SUPERVALU
SYSCO
Three Rivers Rowing Association
Tyler Mountain Water
QED Communications
Youth Bike League

Mile Sponsors

\$500
L.D. Astorino & Associates Ltd.
Mosites Construction Company

\$400
Rubinoff Company

\$300
Pittsburgh Partnership for
Neighborhood Development
TRACO

\$200
Amcom Office Systems
Bohlin Cywinski Jackson
Landmarks Design Associates Inc.
LaQuatra Bonci Associates
Tai + Lee Architects
Turner Construction Company

\$100
AIA Pittsburgh Chapter
ASLA
Avanti Construction
Baker Mellon Stuart
Burt Hill Kosar Rittelmann Associates
Charles L. Desmone & Associates
Club One
DBA Associates
Dick Corporation
DM Products
Dynamic Building Corporation
Edge Architects
Engineering Products Incorporated
Eve Picker
Glimcher Group, Inc.
Golba & Associates/Design Inc.
Gustine Company

GWSM Incorporated
Hanlon Electric
Hayes Large Architects
Hellmuth Obata & Kassabaum, Inc.
Hornfeck Engineering, Incorporated
Huckestein
IKM Incorporated
Imbrie, Charity J., Attorney at Law
Integrated Architectural Services
Jendoco Construction Corporation
Korzeniowski Cullen
Kronk, Morgan P.,
Construction Consultant Inc.
KSBH Architects
Massaro Company
Miller Electric
Pashek Associates
Perkins Eastman Architects
Peter F. Loftus, Division of
Eichleay Engineers
Pittsburgh Velosports Inc.
Radelet McCarthy Architects
Ray Engineering
Real Estate Enterprises
Repal Construction Co.
Ross Schonder Sterzinger Cubcke
Sauer, Inc.
Sitko, Margaret K., Attorney at Law
James P. Goldman,
Sports Facilities Consultant
Steve Catranel Construction Company
Structural Engineering Corp.
Tedco Construction
UDA Architects
The Village at Washington's Landing
Williams Trebilcock Whitehead
Wood Electric