

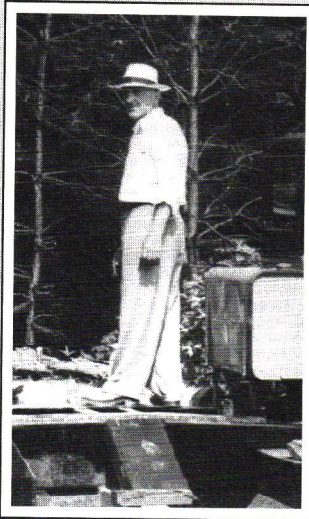
# COLUMNS





# A seventy-five year commitment to craftsmanship

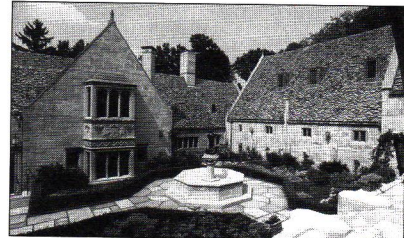
Today, John Deklewa & Sons, Inc. is one of the areas most experienced general contractors. Since it's inception by John Deklewa, Sr., in 1918, the firm has been involved in most types of construction activity. From building construction to water and waste treatment facilities to high end residential and fine mill work installation, John Deklewa & Sons, Inc.



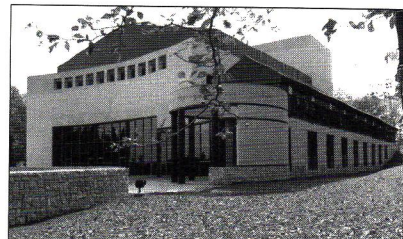
*John Deklewa, Sr., founder of the firm that bears his name, could be found checking the job progress. This same attention to detail has become a tradition on all John Deklewa & Sons, Inc. projects.*

applies state of the art construction techniques and a sense of fine craftsmanship.

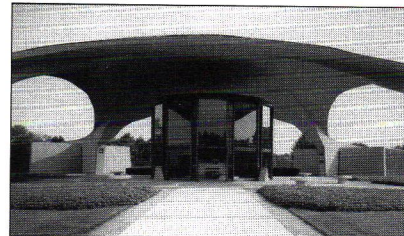
We are proud to have been a part of the Western Pennsylvania construction industry for the past seventy-five years and as we step into the future, we keep one foot in the past.



*"Elm Court" a 9-acre private estate located north of Pittsburgh involves unique additions and renovations, including an underground theater.*



*"Pasquerilla Performing Arts Center" situated on the University of Pittsburgh's Johnstown campus, contains a 1000 seat proscenium style main theater, and the 200 seat "Black Box" theater.*



*St. Lazarus Oratory is one of the largest clear span post-tension concrete structures in the tri-state area, requiring the special skills of John Deklewa & Sons, Inc..*

## **JOHN DEKLEWA & SONS, INC.**

1273 Washington Pike • P.O. Box 158 • Bridgeville, PA 15017 • (412) 257-9000 • Fax (412) 257-4486

# Involvement Encouraged for Visionaries

by Douglas Shuck, AIA, President

## 1993 presents some unique challenges

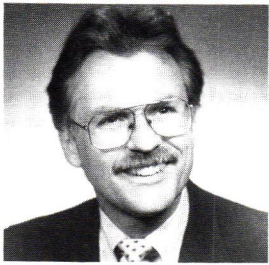
for architects. We can increase our effectiveness in local government, increase the perceived value of the profession, and facilitate AIA member involvement in outreach projects. These are three of the six goals identified by our organization's 1993 long-range plan.

This year, we have the opportunity to elect a new mayor for the City of Pittsburgh. As professionals, we need to establish an ongoing dialogue with local officials, lobby for qualifications-based selection for government projects, and achieve architectural representation on selected committees and planning groups. All of the above can be initiated by becoming involved in the primary race and supporting the candidate of your choice.

The next mayor should be a person with vision that will lead us into the next decade and have a dynamic influence on the city. Our new mayor should be encouraged to espouse the following programs:

- New housing similar to the Crawford Square project.
- Infrastructure improvements, similar to the Wabash Bridge project.
- Mass transportation improvements.
- Public safety improvements.
- Waterfront development for public use.
- Tax incentives for job creation and economic development within specified zones.
- Contaminated industrial site clean up.
- Programs to attract new businesses, corporations and industries to invest within the city.

Recent editorials in the *Post-Gazette* have identified architects as "visionaries and problem solvers," promoting a positive perception of our role in the city. We, as architects, have an urban agenda for Pittsburgh and have established ourselves in a leadership position interested in growth and development, and I encourage all of you to maintain that momentum and become involved.



We, as architects, have an urban agenda for Pittsburgh and have established ourselves in a leadership position.

## In This Issue

### DGS Speaks ..... 6

About the selection process.

### Home Is Where The Art Is ..... 8

A residential portfolio of members' work.

### UDA Architects ..... 12

Putting it all in context.

### Viewpoint ..... 3

### From the Top ..... 4

### Letters ..... 5

### Breaking Ground ..... 15

### Calendar ..... 17

### Dossier ..... 19

### Contractors' Directory ..... 20

### Engineers' Directory ..... 21

### Hornbostel Lecture ..... 23

### On the cover:

Gardner & Pope's ski vacation residence unites the old and new while providing necessary space for family and guests.  
*Photo by Ed Massery.*