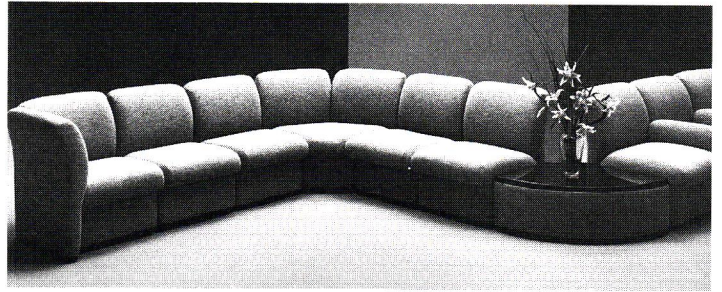


COLUMNS

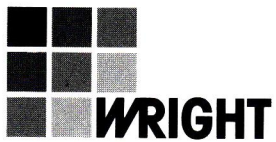


100th Anniversary of the Pittsburgh Chapter AIA



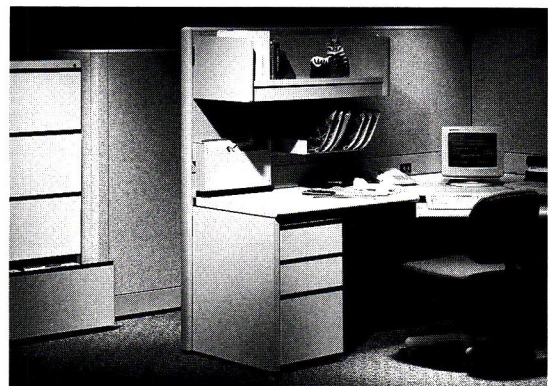
C H O I C E S

KIMBALL  ARTEC®



Wright Office Furniture, Inc.
916 Penn Ave. Pittsburgh, PA 15222

412-471-2700



The Pittsburgh Chapter AIA serves 12 Western Pennsylvania counties as the local component of the American Institute of Architects and the Pennsylvania Society of Architects. The objective of the Chapter is to improve, for society, the quality of the built environment by further raising the standards of architectural education, training and practice; fostering design excellence; and promoting the value of architectural services to the public. AIA membership is open to all registered architects, architectural interns, and a limited number of professionals in supporting fields. Chapter Headquarters: CNG Tower, 625 Liberty Ave., Pittsburgh, PA 15222 Telephone: 412/471-9548; FAX: 412/471-9501.

Chapter Officers

Douglas C. Berryman, AIA, President
 Robert S. Pfaffmann, AIA, 1st V. President
 James Johnson, AIA, 2nd V. President
 Douglas L. Shuck, AIA, Secretary
 Stephen Quick, AIA, Treasurer
 Anne Swager, Executive Director

COLUMNS is published ten times a year by the Pittsburgh Chapter AIA in association with the Cantor Group. Telephone: 412/661-3734; FAX: 412/661-6287.

Connie Cantor/Executive Editor
 Teresa A. McNulty/Features Editor
 Drue Miller/Production Assistant
 Tom Lavelle/Advertising Manager

Editorial Board

Douglas L. Shuck, AIA
 Marsha Berger, AIA
 William Brocius, AIA
 Edward Dapper, assoc. member
 Alan L. Fishman, AIA
 Shashi Patel, AIA
 Anthony G. Poli, AIA
 Deepak Wadhvani, AIA

COLUMNS is published by, and primarily for, the members of the Pittsburgh Chapter of the American Institute of Architects. Preference may be given to the selection of works, articles, opinions, letters, etc. of members for publication. However, in the interest of furthering the goals of the Chapter, as stated monthly at the top of the masthead and in the membership directory, COLUMNS will publish the names of and properly credit non-members, whether as participants in the design of works submitted by a member, or as designers of their own work, or as authors of articles, opinions or letters.

Opinions expressed by editors and contributors are not necessarily those of the Pittsburgh Chapter, AIA. The Chapter has made every reasonable effort to provide accurate and authoritative information, but assumes no liability for the contents.

"A Noble Past..." A Tribute from Mayor Sophie Masloff



Dear Friends:

I am delighted to offer my personal congratulations to the Pittsburgh Chapter of the American Institute of Architects on the very special occasion of the Chapter's 100th Anniversary.

Pittsburgh is a dynamic and vital city. Its architecture, diverse and bold, reflects the dramatic forces that have molded our city. One can easily understand why Mies

Van Der Rohe described architecture as "the will of an epoch translated into space" when looking at Pittsburgh's architecture. In every direction one can see the distinct imprint of Pittsburgh's history and its architects. Look at our historic buildings and it's easy to reflect back to a time not so long ago when Pittsburgh was the "forge" for the nation and the world, producing glass and iron that was distributed worldwide. Condensed within the confines of the city's unique geography, one can see examples of many different styles representative of architecture's past. Distinctive architectural styles such as the Greek Revival and Romanesque styles of a hundred years ago are still evident in Pittsburgh today. It is this diversity that gives Pittsburgh architecture its singular and identifiable character.

As we look toward the twenty-first century, Pittsburgh looks and feels like a new city. Our distinctive architectural features have been preserved and we look to a new urban landscape, future designs along our riverfronts that reflect new trends and new industry, a more diversified economy.

Throughout the past 100 years, architects have played a key role in crafting the shape of Pittsburgh as a confident and powerful urban center. Pittsburgh and Western Pennsylvania are now home to more than 1000 architects — some making their mark on our own urban landscape; others, reaching out to new horizons across the globe.

I am personally grateful to the many members of the AIA as you celebrate the 100th anniversary of this outstanding Pittsburgh Chapter. Architecture is a truly living and creative art. Its purpose is to enhance our life and workplace. The Pittsburgh Chapter AIA has a noble past and I look forward to an exciting future.

Sincerely,

Sophie Masloff
 Sophie Masloff

Mayor

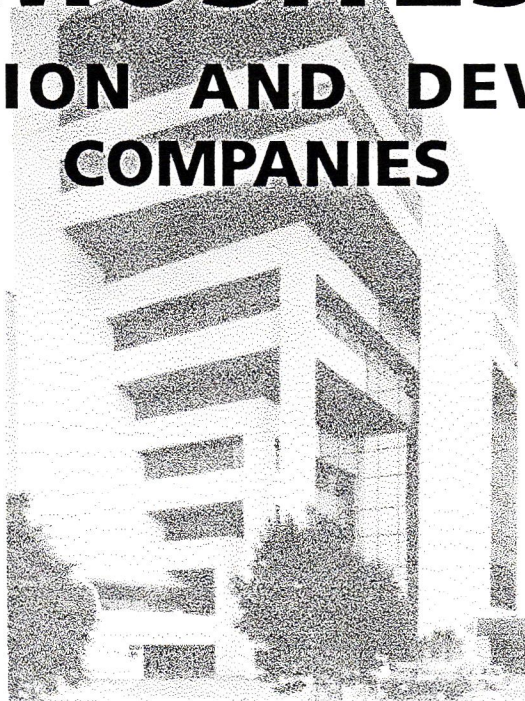
Congratulations
on the
100th Anniversary
of the
AMERICAN INSTITUTE OF ARCHITECTS



PITTSBURGH CHAPTER

from the

MOSITES
CONSTRUCTION AND DEVELOPMENT
COMPANIES



*Comstock Center
Pittsburgh, PA*

*1986 BOMA
Building of the Year*

*Architect:
Burt Hill Kosar Rittelmann
Associates*

*Contractor:
Mosites Construction*

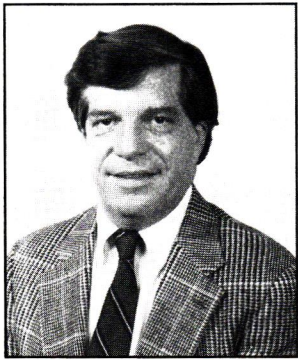
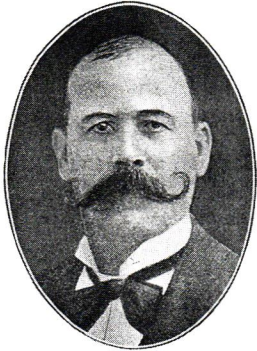
Transforming the Architect's Vision into Reality for Three Generations



MOSITES CONSTRUCTION AND DEVELOPMENT
4839 Campbells Run Road, Pittsburgh, PA 15205
Phone:(412)923-2255 Fax:(412)788-1169

Viewpoint: One Hundred Years!

Douglas C. Berryman, AIA, President



Then and now: T.D. Evans, the first Chapter President, in 1894; and Douglas C. Berryman, AIA, current Chapter President.

Our 100th anniversary is so big, we're celebrating twice! Join us at the July meeting for cake and champagne and a special talk by Charles Moore, FAIA. On September 28, ring in our second century in grand style when the Chapter co-sponsors "A Celebration of 100 Years of Pittsburgh Architects", the Community Design Center's annual Palladian Ball. Watch COLUMNS for details of both exciting events!

In 1891, H.H. Richardson's Allegheny County Courthouse and Jail had been in use for four years; McKim, Mead and White's Madison Square Garden opened in New York City; Louis Sullivan celebrated his thirty-fifth birthday with (among other things) the opening of the Wainwright Building in St. Louis; Frank Lloyd Wright was 24 years old; and somewhere in Pittsburgh a group of architects convened for the first time as a Chapter of the American Institute of Architects.

In our records, Mr. T.D. Evans is listed as the first Chapter President, serving in 1894. The discrepancy apparent in these dates is due either to lax records on the Chapter's part at that time or, possibly, that our professional ancestors had difficulty raising a quorum. Or maybe they didn't *need* a president. Interesting thought.

Throughout the first hundred years of our Chapter's history, the profession of architecture has experienced obvious changes; there are also concepts and goals which have remained consistent. Then, as now, architects ostensibly united in the spirit of the mission of the AIA, and while we may differ in our opinions about how successful the Institute is in carrying out such lofty goals, it would be difficult to imagine our professional life without it.

The twenty-odd gentlemen who first established the Pittsburgh Chapter were undoubtedly a group of independent-minded professionals, each with his own attitude towards design, and each with his own feeling about the services and direction the Chapter should provide for the members. They also recognized that there was a need to be together — to talk about architecture, lobby as a group for the

benefit of the profession, and combine their personalities and objectives for the betterment of the community. I'd like to think the Chapter continues in the same spirit today.

OK, our dues are higher and we're using computers instead of an abacus; but we now have a membership of close to 600 with an office and staff instead of a closet and the secretarial services of whomever happened to be Chapter president. We have survived, for the most part, wars, depression and recessions, and have put on Remaking Cities, seminars and programs too numerous to count. We are in the planning (and hoping) phase of hosting a National Convention, and have committees actively involved with everything from legislative issues to the inestimable role of women in the field of architecture.

And we are as concerned today as were our forebears with the education of students and each other in the rudiments of practice and the spirit of professionalism, though we experience this in varying degrees. We are involved with our community, mindful of our responsibilities to the environment, and becoming more respectful of our history.

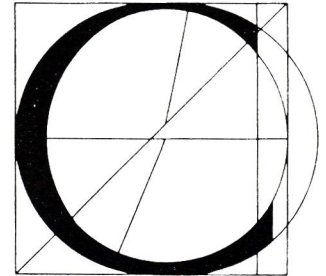
The legacy we share with those Chapter-founding architects is to do more — to foster and promote better design, to increase the standards by which people live, to speak on issues of relevance, to share with each other the combined benefits of our experience.

One hundred years. Much accomplished, and still much to do. Happy Centennial, Pittsburgh Chapter! 🏛️

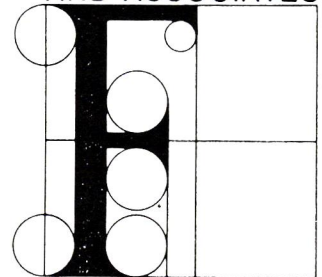
*Williams Trebilcock Whitehead
congratulates
the Pittsburgh Chapter AIA
on their
100th Anniversary*



Architects
Planners
Interior Designers (412) 321-0550
Pittsburgh • Washington DC • Colorado Springs



**CELLI-FLYNN
AND ASSOCIATES**

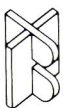


ARCHITECTS AND PLANNERS
606 LIBERTY AVENUE
PITTSBURGH, PA 15222-2720

*Best Wishes to the
AIA Chapter from
Celli-Flynn and Associates*

**Congratulations to the
Pittsburgh Chapter AIA**

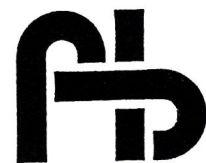
**Burt Hill Kosar
Rittelmann Associates**



**Architecture
Engineering
Interior Design**

Butler • Pittsburgh • Philadelphia • Washington, D.C. • Fort Myers • Houston

*Congratulations
to the
Pittsburgh
Chapter AIA
from
Foreman
Bashford*



**FOREMAN BASHFORD
ARCHITECTS ENGINEERS**

BOX 189 ZELIENOPLE, PA 16063
(412) 452-9690
FAX: (412) 452-0136