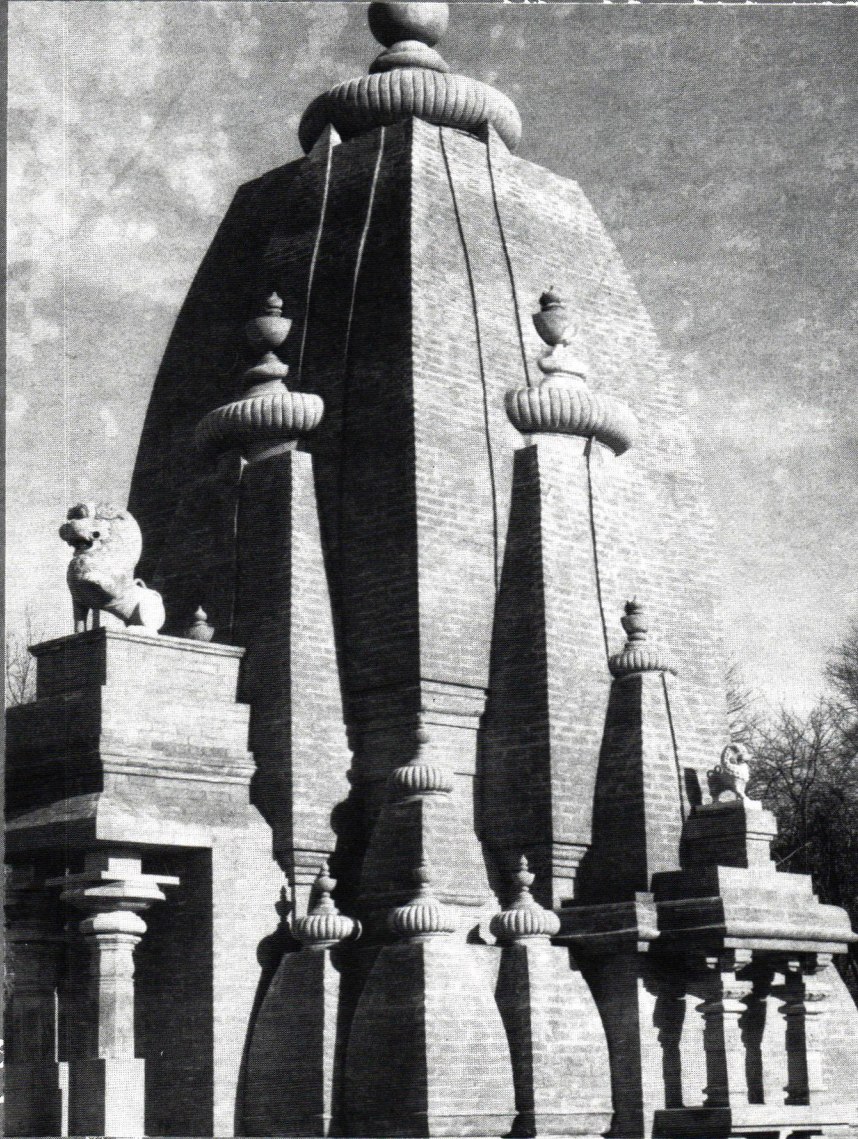


COLUMNS



**Einstein said, "Imagination is more important than knowledge."
But then Einstein didn't use CADD.**

TSA/ADVET

Where we say, "Imagination is as important as knowledge."

SEE US FOR ALL YOUR CADD NEEDS

SOFTWARE

Intergraph MicroStation PC - MicroStation MAC

Architectural and Facilities Management

Network Drawing Control and Management

HARDWARE

Custom PC Workstations, Digitizers, Plotters, Printers

SERVICES

System Integration and Setup - Networking

Operator Training

Contract Programming

Drawing Conversions and Translations

INTERGRAPH®

AUTHORIZED RESELLER

Intergraph is a registered trademark of Intergraph Corporation. MicroStation is a trademark of Bentley Systems, an Intergraph affiliate.

TSA/ADVET

4722 Campbell's Run Road,
P.O. Box 44145, Pittsburgh, PA 15205-0345
Telephone (412) 787-0980 FAX (412) 787-9835

*TSA/ADVET - ENGINEERS,
CADD CONSULTANTS & SUPPLIERS,
SOFTWARE SPECIALISTS-
WHERE OUR MOTTO IS:
"IMAGINATION IS AS IMPORTANT
AS KNOWLEDGE."*

ON THE COVER

Builders of the intricately decorated Hindu Jain Temple don't have any working drawings to follow. Find out why in "Hindu Minds over Matter" on page 6. *Sashi Patel, AIA, architect.*

THE PITTSBURGH CHAPTER AIA serves 12 Western Pennsylvania counties as the local component of the American Institute of Architects and the Pennsylvania Society of Architects. Membership is open to all registered architects, architectural interns, and a limited number of professionals in supporting fields. Chapter Headquarters: CNG Tower, 625 Liberty Ave., Pittsburgh, PA 15222 412/471-9548.

Marsha Berger, AIA, President
 Douglas Berryman, AIA, 1st V. President
 James Johnson, AIA, 2nd V. President
 Derek Martin, FAIA, Secretary
 Stephen Quick, AIA, Treasurer
 Pat Iams, Executive Director

COLUMNS is published ten times a year by the Pittsburgh Chapter of the American Institute of Architects in association with the Cantor Group.

Connie Cantor/Executive Editor
 P.J. Corso/Managing Editor
 Drue Miller/Production Assistant
 Tom Lavelle/Advertising Manager

EDITORIAL BOARD:

Douglas L. Shuck, AIA
 William Brocius, AIA
 Anthony G. Poli, AIA
 Deepak Wadhvani, AIA

COLUMNS is mailed each month to 2000 architects, engineers, interior designers, landscape architects, facility managers, specialty and general contractors, and press editors in 12 western Pennsylvania counties. For inquiries on advertising or literature insertion, please call Tom Lavelle (882-3410) or Connie Cantor (661-3734).

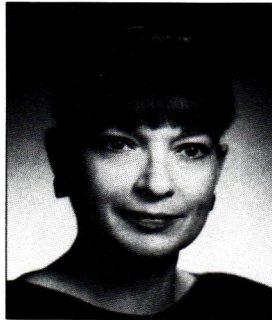
Opinions expressed by editors and contributors are not necessarily those of the Pittsburgh Chapter, AIA. The Chapter has made every reasonable effort to provide accurate and authoritative information, but assumes no liability for the contents.

IN THIS ISSUE

INSITES _____	5	INTERVIEW: AL FILONI, AIA _____	16
HINDU MINDS OVER MATTER _____	6	FROM THE ARCHIVES _____	18
BOSNYWASH AND BEYOND _____	9	ARCHITECTURAL RESEARCH _____	19
BREAKING GROUND _____	10	BEST BET _____	21
FALLINGWATER ALL WRIGHT _____	12	CALENDAR _____	21
BRICKS AND MORTAR _____	14	MARCH MEETING _____	23

VIEW POINT

MARSHA BERGER, AIA, CHAPTER PRESIDENT



Once upon a time, in the Valley of the Moan, following the death of King Steel, Sir Lewislot proposed to the Knights of the Golden Triangle that they hold a conference on remaking cities. Prince Charlming was asked to join them since he had similar problems in his realm. Many wizards and soothsayers descended on the valley and after intense deliberation made their proclamation. "Look to your rivers, beautify their edges, reclaim the land seized by King Steel, march forward toward a different life and don't look back!" the wizards cried. "But," they cautioned, "preserve his memory, because his 100 year reign is significant in the history of the world." They elaborated, "Clear the land and plant flowers to change your image immediately, then build education centers, museums, recreation facilities, and attract high-tech industries that can use your labor force." The people were frightened to hear such things and shook their fists at the wizards. The King had always taken care of them, surely the Prince had come to save them. But all he did was grace them with his presence.

Two years passed and the Prince crossed the sea again. "What has happened in the Valley of the Moan?" he queried. The knights told of the Riverfront Commission appointed by the Mayor; the County's aid in rezoning miles of riverfront property; its acquisition and planned development for the mill sites; the Riverfront Development Study Group formed by the Citizens League; the Steel Industry Heritage Task Force saving Carrie Furnace and planning a museum; community action groups focusing efforts on housing developments and river access for the residents; local development groups working together for the common good; government agencies pooling resources to form enterprise zones and historic districts; restoration of the Carnegie Library buildings; private development of one of the mill sites; and the castle of sand recently completed. The valley was reawakening. It had become the Valley of the Morn.

And the moral of the story is: Although the wizards do the work, it takes a Prince's kiss to awaken a Sleeping Beauty. Δ

HOW TO TELL IF YOU'RE SITTING ON A LEMON.

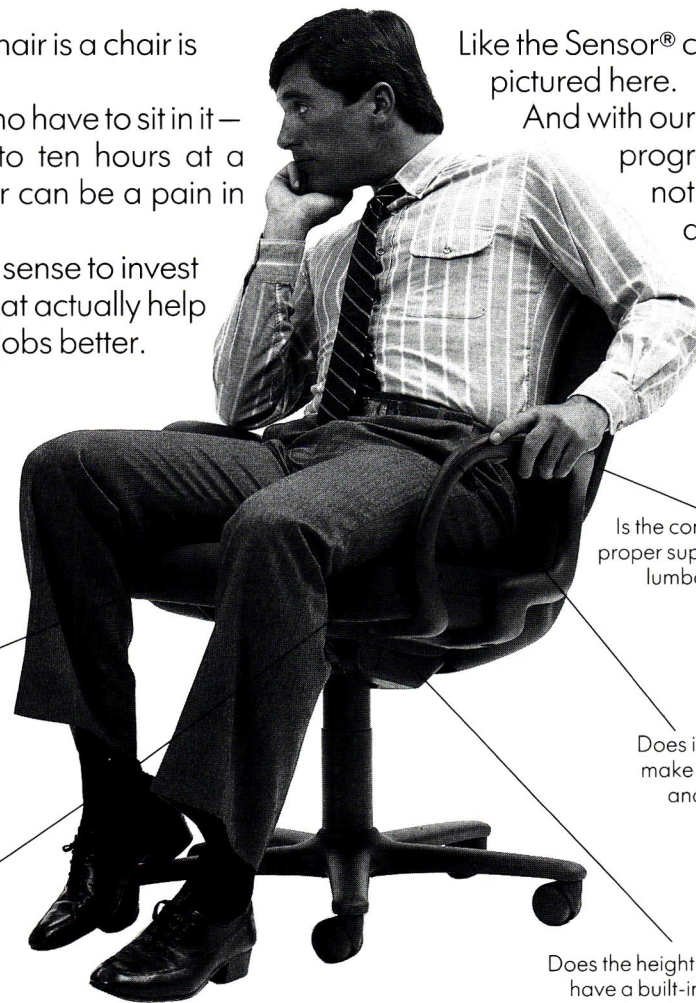
To some people, a chair is a chair is a chair.

But to the people who have to sit in it — sometimes for eight to ten hours at a time — the wrong chair can be a pain in the you-know-where.

That's why it makes sense to invest in ergonomic chairs that actually help your workers do their jobs better.

Like the Sensor® chair from Steelcase, pictured here.

And with our convenient leasing programs, these chairs are not only easy on the eyes and easy on your employees, they're also easy on your budget.



Does it have a sculptured seat whose curved front edge distributes body weight properly and won't cause pressure under the thighs?

Does the upholstered cushion "breathe" to eliminate heat buildup?

Is the contoured backrest designed for proper support of the entire back, from the lumbar region to the shoulders?

Does it have rounded contours to make it "user friendly" to people and surrounding furniture?

Does the height adjustment mechanism have a built-in shock absorber that softens impact when you sit?

 **Franklin Interiors**

Tenth and Bingham Sts. Pittsburgh, PA 15203
For more information call (412) 381-2233. Ask for Michelle.