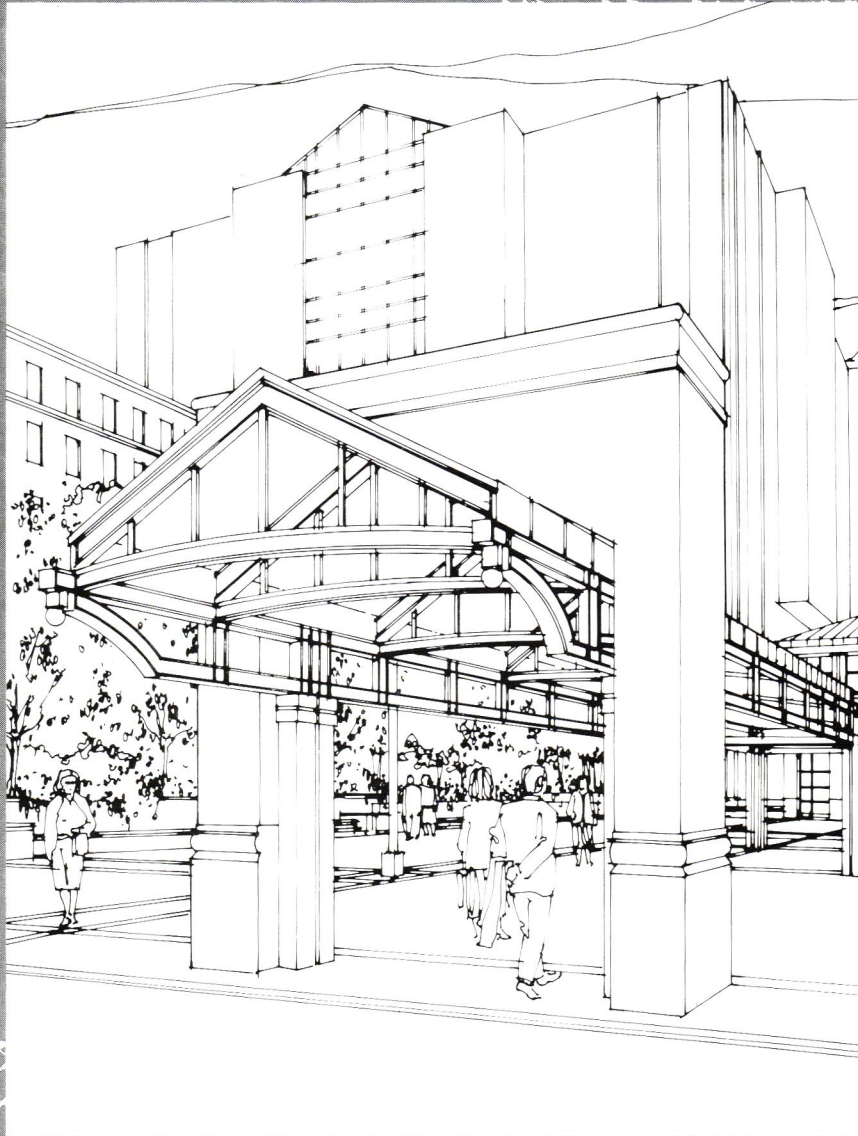


COLUMNS



BRING DOWN THE HOUSE.



We can put a forty-story building in the palm of your hand. In fact, with our new Xerox 5080, we can take a plan as large as 36" by any reasonable length and reduce it to a manageable 45%.

And it's no small matter that we can do it faster and better than any

other copier in the area. For about the same price you're used to paying.

We'll even take all kinds of originals. From bluelines, sepias and vellums to polyester films and bond papers. And when it comes to printing, you have a wide choice of

specialty stocks, bond and erasable vellum and mylar.

So if you have a project that's too big for you to handle, just pick up the phone and call. We'll never give you anything less than a great reduction.



TRI-STATE BLUE PRINTING, INC.

911 Penn Ave., Pittsburgh, PA 15222
8:00 a.m.-6:30 p.m. Phone 281-3538

ON THE COVER

The entrance canopy to the new Professional Office building at Shadyside Hospital (IKM) sits in front of the West Wing Addition designed by WTW. The \$100 million addition and restoration complex is a joint partnership between the two firms. Story begins on page 5.

THE PITTSBURGH CHAPTER AIA serves 12 Western Pennsylvania counties as the local component of the American Institute of Architects and the Pennsylvania Society of Architects. Membership is open to all registered architects, architectural interns, and a limited number of professionals in supporting fields. Chapter Headquarters: Suite 1207, Bank Tower, 307 4th Ave., Pittsburgh, Pa. 15222. 412-471-9548.

Kent Edwards, AIA, President
 Marsha Berger, AIA, 1st V. President
 James Johnson, AIA, 2nd V. President
 Derek Martin, FAIA, Secretary
 Stephen Quick, AIA, Treasurer

COLUMNS is published ten times a year by the Pittsburgh Chapter of the American Institute of Architects in association with the Cantor Group.

Connie Cantor/Managing Editor
 Kathy Ayres/Features Editor
 Laurie Lehew/Production Assistant
 Tom Lavelle/Advertising Manager

EDITORIAL BOARD:

Douglas L. Shuck, AIA
 Marsha Berger, AIA
 William Brocius, AIA
 Anthony G. Poli, AIA
 Deepak Wadhvani, AIA

COLUMNS is mailed each month to 2000 architects, engineers, interior designers, landscape architects, facility managers, specialty and general contractors, and press editors in 12 western Pennsylvania counties. For inquiries on advertising or literature insertion, please call Tom Lavelle (882-3410) or Connie Cantor (661-3734).

Opinions expressed by editors and contributors are not necessarily those of the Pittsburgh Chapter, AIA. The Chapter has made every reasonable effort to provide accurate and authoritative information, but assumes no liability for the contents.

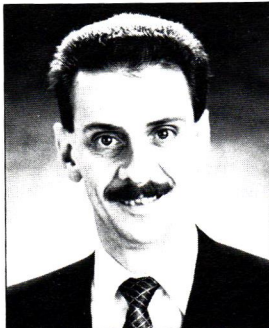
IN THIS ISSUE

SHADYSIDE HOSPITAL	5	WIA COMMITTEE FUNDRAISER	15
CAD RATING GUIDE REVIEW	7	FORUM	16
THE VOICE OF BURT HILL	9	HARTMAN COX	19
BREAKING GROUND	10	MCF CELEBRATES A CENTURY	21
DESIGN AWARDS	12	CALENDAR	23
BRICKS AND MORTAR	14	OCTOBER DINNER MEETING	23

VIEW POINT

FINAL COMMENTS

KENT EDWARDS, AIA, CHAPTER PRESIDENT

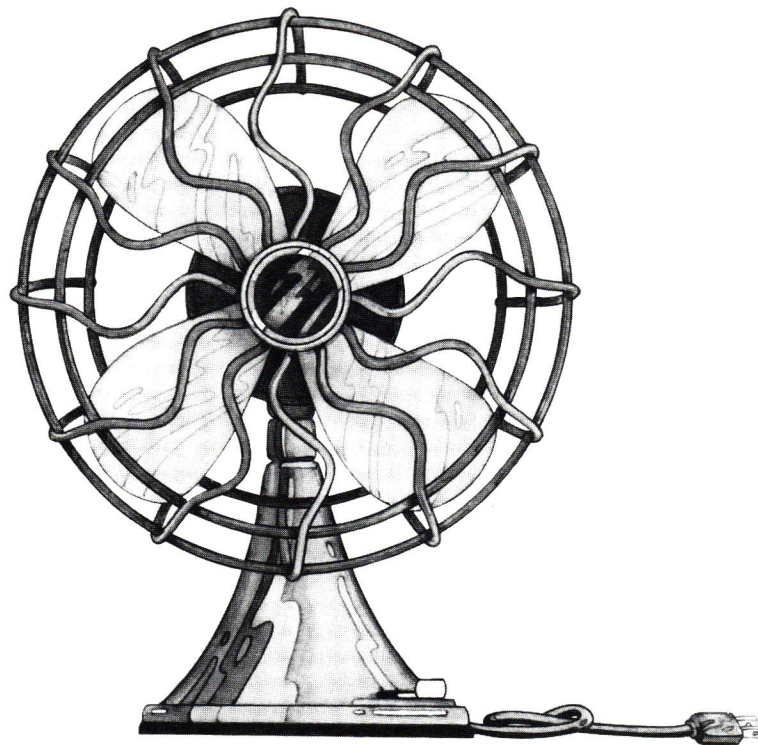


AIA National has informed our Chapter that Pittsburgh as been short-listed for the next available National Convention. You should only care depending on how you feel about free, front-page publicity for architects and the opportunity to attend top-notch seminars close to home. Our competition for selection is Denver and Kansas City. For those of you who have been to either of those places, you've got to feel pretty good about our chances.

Every volunteer organization, like the Pittsburgh Chapter AIA, has a core group of extraordinary individuals on whose coattails the rest of you ride. In our case, it is the Board and the committee members, especially the chairs, who expend considerable effort and personal time to accomplish the activities of the Chapter. Even within this exemplary group, however, are special cases to whom gratitude and admiration need to be extended:

- To Marilyn Lupo, who took charge of a committee with no budget and no agenda, and is making things happen. Big things.
- To Marsha Berger, who is everywhere, doing everything.
- To Park Rankin, who not only endured a very difficult year as President, and went on to become a PSA Director, but also took on the chair of the most demanding committee, and is doing all in exemplary style.

Thanks. We know it's not for the glory.



Is Your Cooling System Really Cost-Efficient?

Save Up To 50% With The TECOCHILL™ Water Chiller.

As electric prices continue to rise, your air-conditioning costs will keep going up and up.

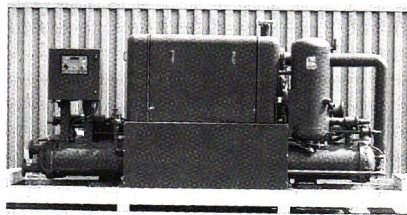
Unless you get TECOCHILL. The economical alternative from Equitable Gas and TECOGEN.*

TECOCHILL gives you all the cooling performance and comfort you get with electric air conditioning. And more.

You get superior part-load performance. An additional 15% cooling capacity on the hottest days. And you even get space or hot water heating from recovered

waste heat. All for less.

Because TECOCHILL uses



TECOCHILL Model CH-150.

inexpensive, plentiful natural gas to keep your commercial or industrial building cool.

And TECOCHILL eliminates essentially all the demand charges you pay with electrical air conditioning's peak hours. So you save up to 50% in cooling costs.

If you're looking to replace an electric chiller, start by comparing it to gas-powered TECOCHILL. You won't find a more cost-efficient cooling system.

If you'd like more information, call Equitable's Market Development Division at (412) 553-5786. Or write to: 420 Boulevard of the Allies, Pittsburgh, PA 15219.

There's A New Energy At Equitable.

TECOCHILL™

