

EMPIRE STATE ARCHITECT

AMERICAN INSTITUTE
OF
ARCHITECTS

DEC 20 1956

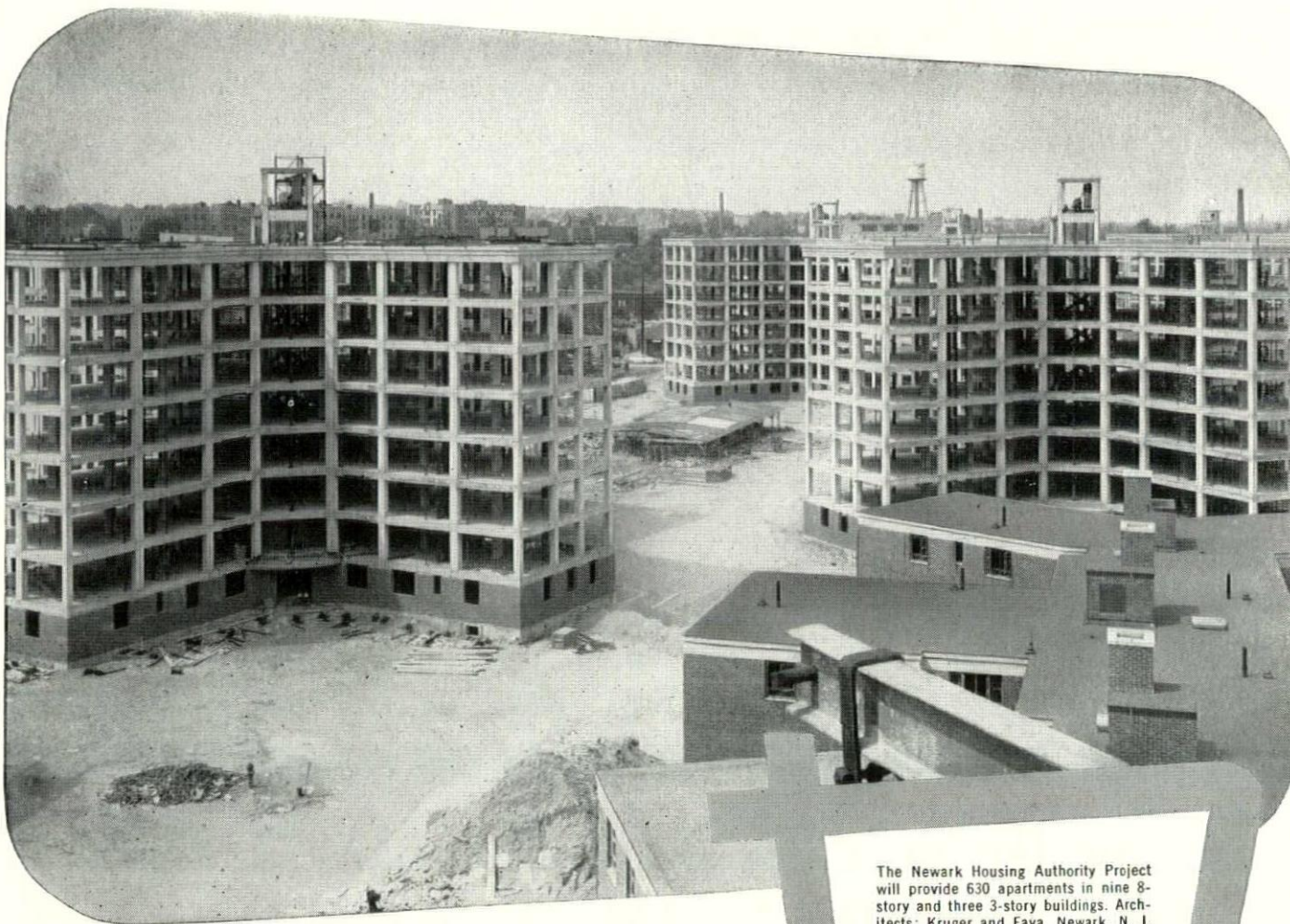
LIBRARY



NOVEMBER - DECEMBER

1956

VOLUME XVI - NUMBER VI



Concrete Frames and Floors

The Newark Housing Authority Project will provide 630 apartments in nine 8-story and three 3-story buildings. Architects: Kruger and Fava, Newark, N. J. Structural engineer: J. Di Stasio and Co., New York City. Contractor: Terminal Construction Corp., Wood Ridge, N. J.

... QUALITY CONSTRUCTION FOR MODERN BUILDINGS

By achieving important savings in time, money and materials, reinforced concrete frame and floor construction has been selected on an increasing number of projects across the nation. Another example is the Newark Housing Authority Project, shown above.

Reinforced concrete allows frame and floor construction to proceed simultaneously. This means plumbers, electricians, masons and other tradesmen can do their jobs as the structural work goes ahead. The saving of time is considerable.

Competitive bids and cost analyses show that concrete frame and floor construction can save up to 40%. Its moderate first cost, + low maintenance cost ÷ long life = true *low-annual-cost* service.

Durable, sturdy, firesafe concrete frame and floor construction is ideal for schools, hospitals, factories, apartment or office buildings.



Write for free bulletins, distributed only in United States and Canada.

PORTLAND CEMENT ASSOCIATION

A national organization to improve and extend the uses of portland cement and concrete through scientific research and engineering field work
250 PARK AVENUE, NEW YORK 17, NEW YORK



MAN-MADE HURRICANES

prove weathertightness of curtain walls and windows by GENERAL BRONZE

From a steady drizzle to a driving rain with quick changing squalls of from 40 to 80 miles per hour . . . yes, even to the full force of a 120 m.p.h. hurricane—that's the weathertightness test all new curtain walls and windows are subjected to by General Bronze.

Here at General Bronze, nothing is left to chance. Every new design, every new product must prove its engineering soundness and its weathertightness under the most severe weather conditions imaginable. Not only are windows and wall panels tested for air and water infiltration but their deflection under varying wind pressures is also carefully measured and recorded.

Our static and dynamic weather-testing facilities at Garden City are considered by many architects, engineers and contractors to be the finest and most complete available anywhere. And that's why they all feel so confident when the specs call for "curtain walls and windows by General Bronze."

General Bronze has prepared a new booklet, "Static and Dynamic Weather Testing of Architectural Products," that explains with photos and diagrams how these tests are conducted. It is free, without obligation, to architects, engineers and contractors who write on their business letterhead. Address your request to Dept. ES-5611.



Another CURTAIN WALL by GENERAL BRONZE

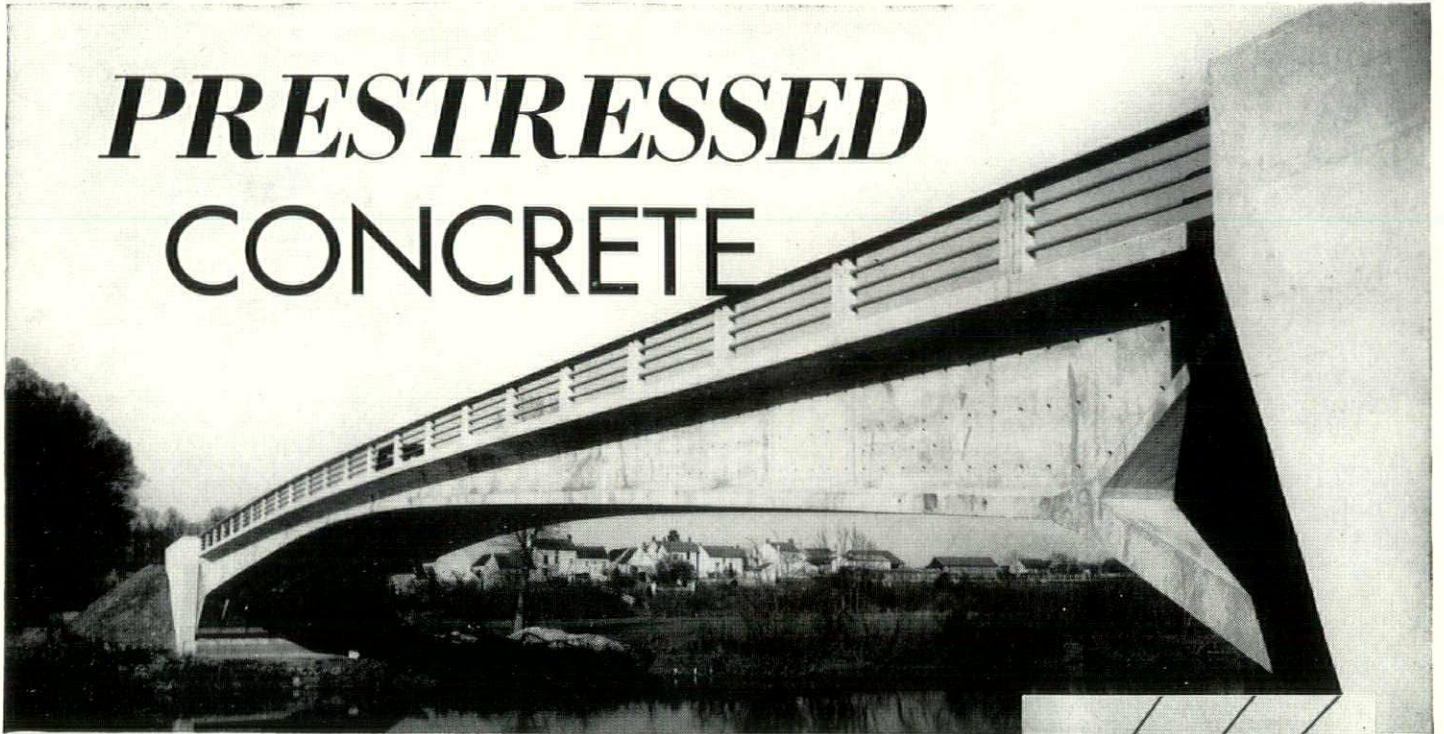
Connecticut General Life Insurance Co., Bloomfield, Conn.
Architects: Skidmore, Owings & Merrill
Contractor: Turner Construction Co.



GENERAL BRONZE CORPORATION • GARDEN CITY, N. Y.

PERMATITE DIVISION—Custom-built Windows, Architectural Metal Work and Revolving Doors. ALWINTITE DIVISION—Stock-size Aluminum Windows
BRACH MFG. CO. DIVISION—Multel, T. V., Radio and Electronic Equipment. STEEL WELDMENTS, INC. DIVISION—Custom fabrication in steel and iron.

PRESTRESSED CONCRETE



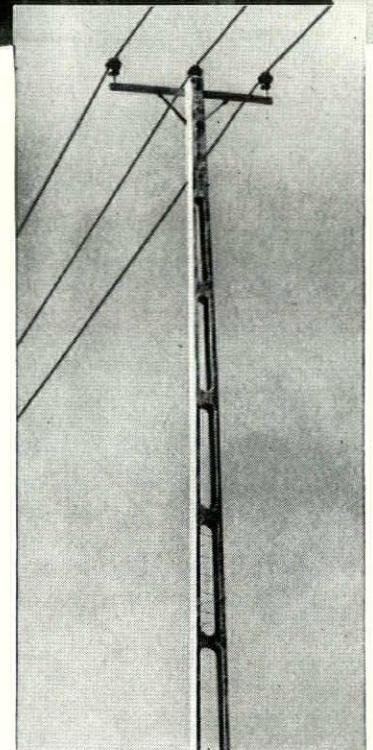
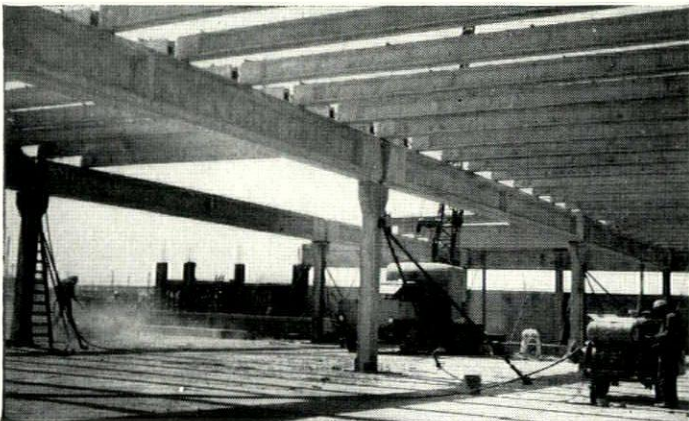
We are now producing prestressed concrete under the Freyssinet process for bridges, and for industrial, commercial, and school buildings.

Prestressing transforms concrete economically into a flexible, efficient building material that takes tension without cracking, and overcomes tensile stresses caused by loads, impact, and volume change. For greater bending moment, we use only the best concrete and high tensile strength steel.

Let our engineers consult with you on this revolutionary construction material.

- Wide-flange bridge girders ● I-Beam girders
- Channels ● Double-T slabs

*Approved by the Council of the City of Rochester, N. Y.,
and many other municipalities.*




GOODSTONE MANUFACTURING CO., INC.

470 HOLLENBECK STREET
ROCHESTER 21, NEW YORK

THE DEXTONE CO.

NEW HAVEN 3, CONN.



ALUMINUM RAILINGS
BUILT BY YOUR LOCAL FABRICATOR
POST SP-11 FOR PLANK TREADS
DETAILS PAGE 9 CATALOGUE M-56

Glumcraft[®]
OF PITTSBURGH
10 MELWOOD ST. PITTSBURGH 13, PENNA.

RIGID-tex

Metal Helps Architects

Cut Construction Costs more than \$3 per sq. ft.

Cutting costs from a state average of \$13.85 to \$10.00 per square foot in the construction of St. Jude's School at Havre, Montana was achieved in part by the use of Type 430 Stainless RIGID-tex Metal as a facing material for Tim-Deck wood window spandrels.

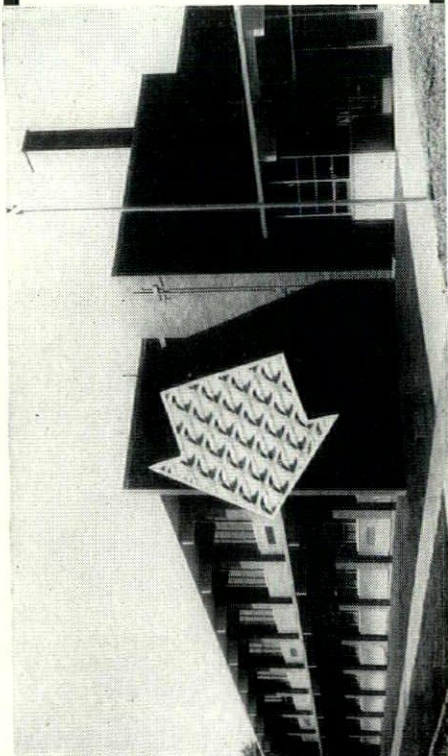
The RIGID-tex Metal panels are glare free, rigid, dirt concealing and cost saving.

RIGID-tex Metal is produced in any metal...any finish...any color, solid or perforated. More than 40 standard patterns are available.

See Sweet's Design File 1a/Rt or write us for complete information.



RIGIDIZED METALS CORPORATION 67011 Ohio Street, Buffalo 2, N. Y.
Sales Representatives in all Principal Cities



PUBLICATIONS SUBCOMMITTEE REPORT

Report of the Subcommittee of the Committee on Publications of the New York State Association of Architects, formed to procure material for November-December Metropolitan issue of the Empire State Architect.

At a meeting held on August 22, 1956, in Mr. Voss' office in New York City, the solicitation of material from the several constituent organizations in the Metropolitan Area was apportioned among the several members of the Subcommittee. The Subcommittee received 31 submissions as follows.

1. Pomerance & Breines
 2. Office of York & Sawyer
 3. Office of York & Sawyer
 4. Gerson T. Hirsch
 5. Herman J. Jessor
 6. Wm. F. Ballard
 7. Skidmore, Owings & Merrill
 8. Henry H. Moger, Jr.
 9. D. Salvati & Son
 10. Irving P. Marks
 11. John O. Malley
 12. Frederic P. Wiederman
 13. Michael D. Schwartz
 14. Brown & Guenther
 15. Alton L. Craft
 16. Irving S. Saunders
 17. George G. Miller
 18. D. Salvati & Son
 19. Sylvan & Robert Bien
 20. Sylvan & Robert Bien
 21. Sylvan & Robert Bien
 22. Sylvan & Robert Bien
 23. Sylvan & Robert Bien
 24. H. I. Feldman
 25. H. I. Feldman
 26. Roberts & Schaefer
 27. Schoen & Hennessey
 28. William J. Freed
 29. Crozier & Sirene
 30. Crozier & Sirene
 31. Michael Radoslovich
- Chief Architect — Board of
Education — The City of New York
- Bronx Municipal Hospital Center
 - St. Casimir's Convent
 - Headquarters for — National
Conference of Christians & Jews
 - Residence
 - Large Scale Housing Project
 - Public School
 - Manufacturers' Trust Company Bank
 - Motel
 - Medical Center
 - Shopping Center
 - Church
 - School
 - Apartment House
 - Junior High School
 - Savings Bank
 - Contemporary Residence
 - Apartment Building
 - Medical Center
 - Office Building
 - Apartment Building
 - Apartment Building
 - Club Building
 - Office Building
 - Medical Center
 - Apartment
 - Ferry Terminal
 - Health Center
 - Public Library
 - Residence
 - Recreational Center
 - School — Cerebral Palsy Children

These were all sent to Mr. Charles E. Ellis commencing October 2, 1956 through October 11, 1956. Additional material received thereafter was sent directly to the Editor, Warren N. Wittek.

The Subcommittee wishes to acknowledge with thanks the assistance of the following in obtaining so large a response in so little time:

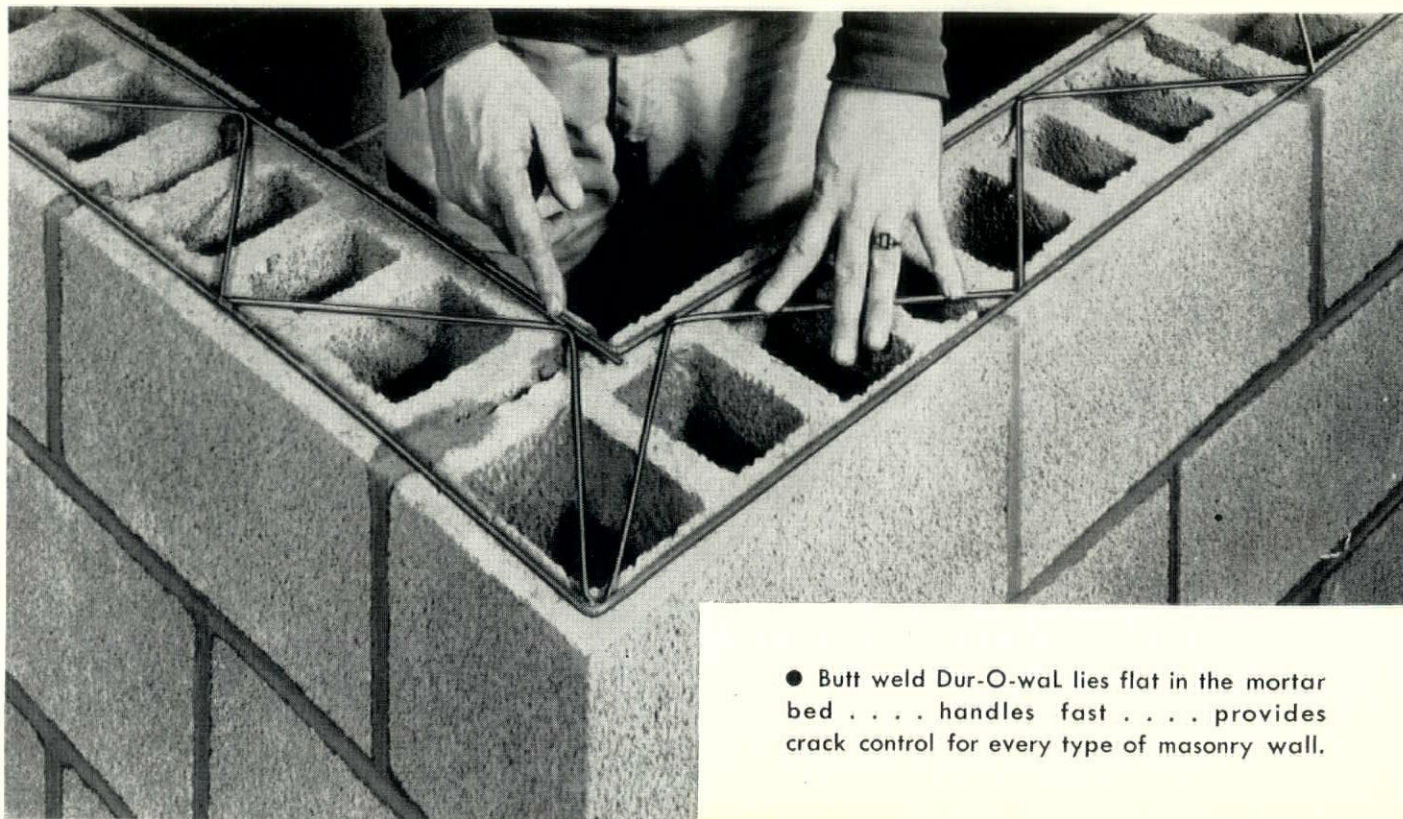
Mr. Theodore Koch, President, Staten Island Chapter, A.I.A.
Mr. Gabriel Nathan, President, Queens Chapter, A.I.A.
Mr. Albert J. Heitman, President, Long Island Chapter, A.I.A.
Mr. Max M. Simon, President, Bronx Chapter, A.I.A.
Mr. Richard Roth, President, New York Society of Architects
Mr. Joseph Levy, Jr., President, Brooklyn Chapter, A.I.A.
Mr. Gerson T. Hirsch, President, Westchester Chapter, A.I.A.
Mr. Jacob Sherman, President, Brooklyn Society of Architects.

Respectfully submitted,

Albert Melniker
Herbert Epstein
Frederick H. Voss

Participating: Harry W. McConnell and
Samuel M. Kurtz

Dur-O-wal Adds STRUCTURAL SOUNDNESS to Masonry Walls



● Butt weld Dur-O-wal lies flat in the mortar bed . . . handles fast . . . provides crack control for every type of masonry wall.

6 REASONS why Architects Specify Dur-O-wal

- Dur-O-wal combats cracks; safeguards beauty
- The trussed design makes all steel work as a unit
- Dur-O-wal meets ASTM Specification A82-34
- Dur-O-wal handles fast, assures tight mortar joints
- Dur-O-wal's performance has created its demand
- Dur-O-wal is nationally distributed; dealers everywhere.

Trussed Design
Butt Weld • Deformed Rods
DUR-O-WAL®

**the Backbone of Steel
for EVERY masonry wall**

Phone, write, or wire
Dept. 5K for additional
information about Dur-O-wal

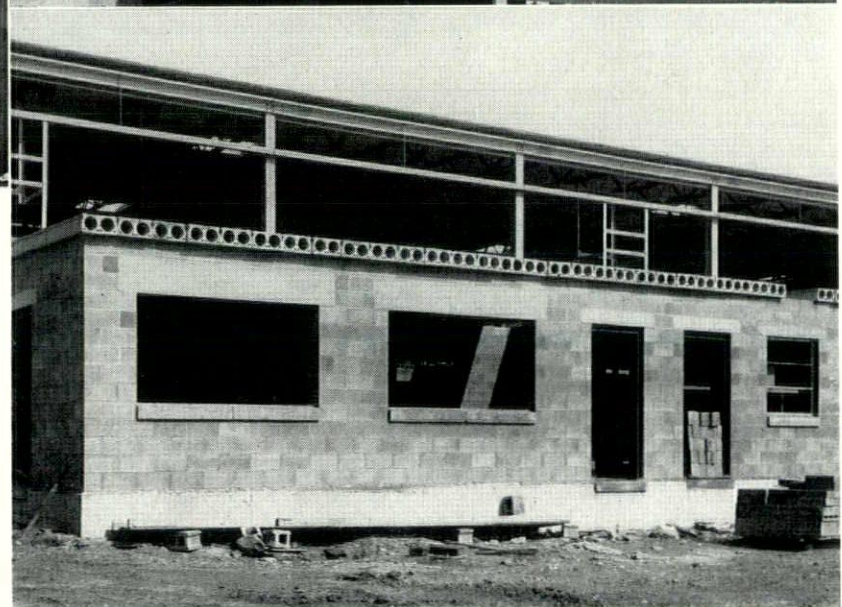
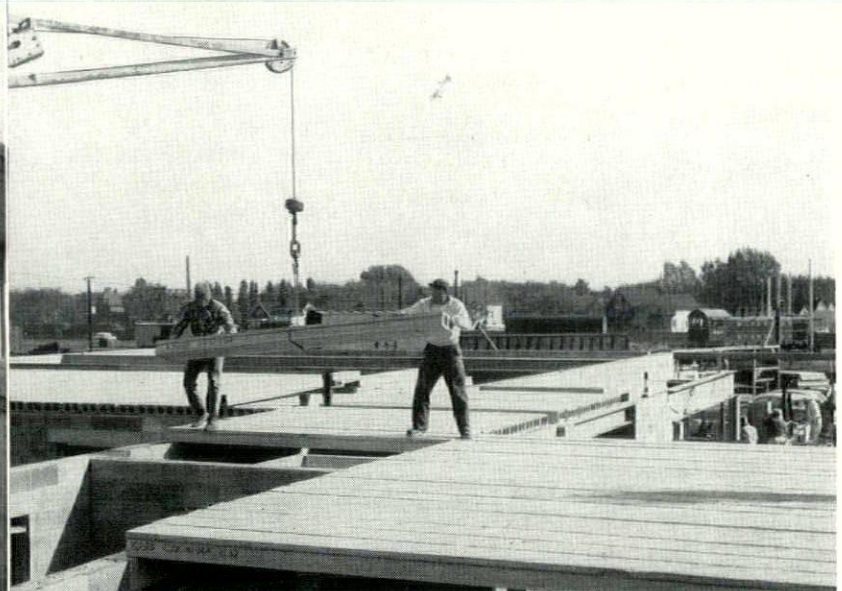
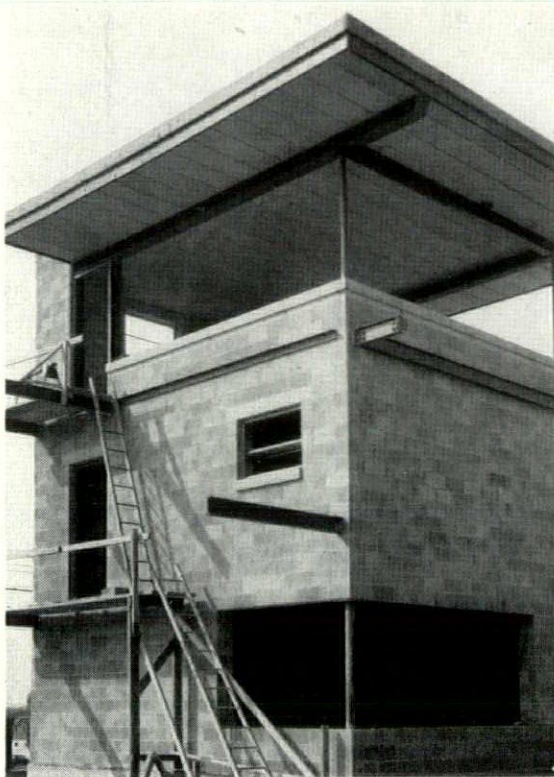


Dur-O-wal Div., Cedar Rapids Block Co., CEDAR RAPIDS, IA. Dur-O-wal Prod., Inc., Box 628, SYRACUSE, N.Y. Dur-O-wal of Ill., 119 N. River St., AURORA, ILL. Dur-O-wal Prod. of Ala., Inc., Box 5446, BIRMINGHAM, ALA. Dur-O-wal Prod., Inc., 4500 E. Lombard St., BALTIMORE, MD. Dur-O-wal Div., Frontier Mfg. Co., Box 49, PHOENIX, ARIZ. Dur-O-wal, Inc., 165 Utah St., TOLEDO, OHIO

DOING MORE WITH FLEXICORE

FLEXICORE Roof Slabs for SPEED

45,000 Sq. Ft. Help Hasten New York Central Railroad
Electronically-Controlled Project



"Approximately 500 men are working at top speed to complete the \$10,500,000 electronically-controlled freight classification center of the New York Central in Cheektowaga," reported the Buffalo Evening News recently.

A total of 45,000 sq. ft. of FLEXICORE prestressed, precast reinforced roof slabs hastened the work.

FLEXICORE is speedily and easily erected . . . provides an immediate working deck for other craftsmen. It's economical.

FLEXICORE saves time, enables the contractor to meet construction schedules on time. FLEXICORE is readily installed in any type of weather.

In addition to Anchor's FLEXICORE, Anchor AUTOCLAVE high-pressure steam-cured pre-shrunk **Celocrete** blocks were used in the giant New York Central job, one of the biggest and most modern in the country.

OTHER ANCHOR PRODUCTS

Autoclaved Denstex Celocrete and Concrete Blocks.
Streestrete Precast Floor and Roof Slabs.
Precast Lintels and Sills.
Anchorseal Colorless Water Repellent (Silicone Base).

DISTRIBUTORS FOR

Dur-o-wal steel reinforcing for masonry walls.
Medusa Portland Cement Paint, for concrete wall surfaces.
Medusa Floor Coating, for concrete floors.

"Hump" building is shown upper left, featuring FLEXICORE cantilever overhang. Ease of FLEXICORE installation is shown in the crew quarters building (upper right), while lower right shows FLEXICORE installed on Diesel and car repair building. Contractor: H. F. Stimm, Inc., Buffalo. FLEXICORE furnished by Anchor Concrete Products, Inc., Buffalo.

ANCHOR CONCRETE PRODUCTS, INC.

WABASH AVE. at 2450 WILLIAM ST.

BUFFALO 6, N. Y.



EMPIRE STATE ARCHITECT

THE OFFICIAL PUBLICATION
NEW YORK STATE ASSOCIATION OF ARCHITECTS

OFFICERS

President	Trevor W. Rogers Buffalo-W. N. Y. Chapter 3491 Delaware Ave., Buffalo 17, N. Y.
1st Vice President	Harry M. Prince New York Chapter 101 Park Avenue, New York 17, N. Y.
2nd Vice President	John W. Briggs Central N. Y. Chapter 311 Alexander St., Rochester 7, N. Y.
3rd Vice President	Frederick H. Voss Westchester Chapter Bradley Lane, Dobbs Ferry, N. Y.
Secretary	Simeon Heller New York Society 38-11 Union St., Flushing 54, N. Y.
Treasurer	Martyn N. Weston Brooklyn Society 44 Court Street, Brooklyn, N. Y.

PAST PRESIDENTS

James Wm. Kideney Buffalo-W. N. Y. Chapter
Charles R. Ellis Syracuse Society
Matthew W. Del Gaudio New York Society
C. Storrs Barrows Rochester Society
Henry V. Murphy Brooklyn Chapter
Donald Q. Faragher Rochester Society
Adolph Goldberg New York Society

DIRECTORS

Michael A. Cardo Bronx Chapter
Harry Silverman Brooklyn Chapter
Frank Randazzo Brooklyn Society
Roswell E. Pfohl Buffalo-W. N. Y. Chapter
Carl W. Clark Central New York Chapter
Harry E. Rodman Eastern New York Chapter
Walter Brach Long Island Society Chapter
J. Stanley Sharp New York Chapter
George J. Cavalieri New York Society
Guerino Salerni Queens Chapter
Leonard A. Waasdorp Rochester Society
Michael S. Diamond Staten Island Chapter
S. Elmer Chambers Syracuse Society
Harry W. McConnell Westchester Chapter

PUBLICATION COMMITTEE

Charles Rockwell Ellis, *Chairman*
Frederick H. Voss, *Vice-Chairman*
August Lux, *Vice-Chairman*
Warren Neal Wittek, *Editor*
Harry E. Rodman
Carl W. Clark
John W. Briggs
Albert Melniker
Herbert Epstein
Geoffrey Lawford

Contributing Editors

Harley J. McKee
Carl F. Schmidt
James W. Kideney
Malcolm B. Moyer
Thomas H. McKaig
Harold R. Sleeper
Arthur C. Holden

Associate Editors

Warren L. Henderson, *Constituents*
Daniel Schwartzman, *Editorials*
George B. Cummings, *National Affairs*
C. Storrs Barrows, *State Activities*
Matthew W. Del Gaudio, *Legislation*
Howard P. Bell, *Design*

Address all communications regarding the State Association to the Secretary, Simeon Heller, 38-11 Union Street, Flushing 54, New York; all editorial comments to Charles Rockwell Ellis, 433 South Salina Street, Syracuse 2, New York; all editorial material to Warren Neal Wittek, 819 Forest Ave., Buffalo 9, New York; and inquiries regarding advertising to the Publisher.

Publisher Julian L. Kahle
21 Clarendon Place, Buffalo 9, New York

November - December Issue — Vol. XVI, No. VI

"Entered as second-class matter March 6, 1943 at the Post Office at Buffalo, New York, under the act of March 3, 1879."

Subscription Price: \$1.00 per year. Non-Members \$2.50; \$.50 per issue
Published 6 Times a Year

EMPIRE STATE ARCHITECT

1957

With this issue of the EMPIRE STATE ARCHITECT, the Publications Committee has inaugurated a new policy. Heretofore, the Publications Committee has devoted individual issues to building classifications. This issue is composed entirely of material submitted by members from the metropolitan New York City area and endeavors to present a selection of buildings of all types representative of the work of the members of the constituent organizations in the New York City area.

The response from the membership for this issue has been unprecedented. Elsewhere in this issue will be found a report by the Subcommittee of the Publications Committee, containing the names of the architectural offices and the building selected from that office, for publication. It is unfortunate that space limitations prohibit the publication of all of the material at this time, however, all buildings listed in the report will be published within the forthcoming year.

The following schedule has been adopted by the Publications Committee for the six issues to be published in 1957. Any member of the New York State Association of Architects wishing to submit an example of his work for publication in one of the forthcoming issues, is urged to write to the Chairman of the Publications Committee as soon as possible.

January - February

Annual Roster Issue. Building types — Hospitals, medical centers, clinics, Doctors' Offices, etc.

March - April

This issue will be devoted to the Eastern-New York area.

May - June

Educational issue featuring Schools, College Buildings, etc.

July - August

Housing Issue featuring Apartment houses, private residences, hotels, motels, etc.

September - October

Annual Convention Issue.

November - December

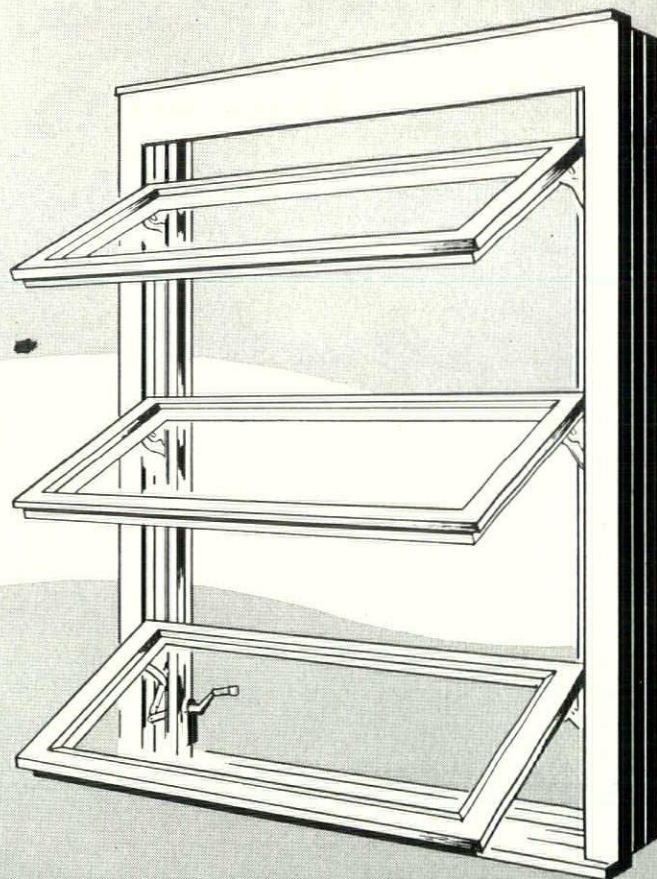
Religious Buildings Issue featuring ecclesiastical buildings of all types.

ON THE COVER

Two fourteen story apartment buildings are under construction west of the New York Coliseum from 58th to 60th Streets on Columbus Avenue. They are of reinforced concrete construction and contain a total of 608 apartments. The buildings cover only 28.2% of the plot, which creates a garden between the two buildings, under which there is a 250 car garage. The exterior of the buildings are finished in red brick and the entrances feature driveways up to the building with a concrete canopy over the driveway. All living rooms and bedrooms throughout contain air conditioning units.

—Sylvan Bien and Robert L. Bien, Architects

COMPLETE VENTILATION CONTROL



with **WOODCO®
E-ZEE Loc**

*the easiest closing awning
window ever made!*

Quality and beauty are combined to make Woodco the finest performing awning window in the industry. Our exclusive VentAir night ventilation window opens to 10° to permit gentle air movement in the room while upper sash remains securely locked. Precision-balanced hardware is so engineered that no adjustments are ever required. Double vinyl weatherstripping* assures positive closure. Never sticks, never rattles. When you specify Woodco — you specify the best.

CHECK THESE EXCLUSIVE ADVANTAGES!

- EASY TO LOCK
- SEQUENCE AIR CONTROL
- TOXIC-TREATED TO PREVENT DECAY
- EXTRA HEAVY SASH and FRAME
- DOUBLE VINYL WEATHERSTRIPPING
- WATER-REPELLENT TREATED
- COMPLETELY ASSEMBLED

For full information we refer you to Sweets Catalog or write to

WOODCO CORPORATION

Jacksonville 1, Fla.

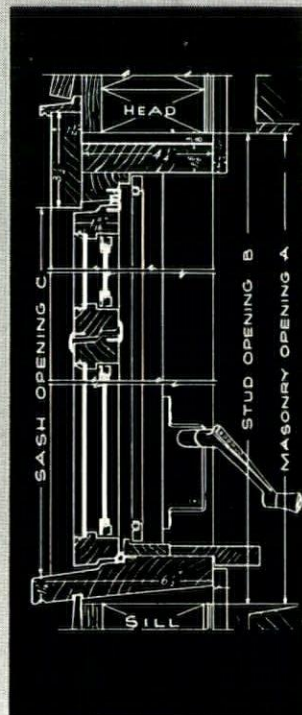
North Bergen, N. J.

Schenectady 3, N. Y.

Lowell, Mass.

Factories:

NORTH BERGEN, N. J. and ROCKWELL of RANDOLPH, Inc., Randolph, Wisc.



Woodco *Windows* for the Beautiful point-of-view...®

lenroc stone®

Architecturally Distinctive



Phillips Hall—Cornell University, Ithaca, N. Y.
Architects—Perkins and Will, Chicago, Ill.
Contractor—White General Construction Co., Inc.,
New York City
LENROC SAWED—BED ASHLAR

LENROC SAWED-BED ASHLAR:

Sawed Multiple Rise Ashlar Low cost—Minimum Hand-cutting

LENROC SEAM FACE BONDED ASHLAR:

Our Finest Squared Rubble Stone All natural seam faces

LENROC DIMENSION BLUESTONE:

Sills, treads, copings, flooring, etc. Variety of machine finishes

LENROC FLAGSTONE:

Natural Cleft Surface with Variegated Color All dimensions and sizes

LENROC PANELWALL:

Thin stone panels insulated for curtain walls Anchored to conventional masonry backup systems

LENROC STONE REPRESENTATIVES

Albany, N. Y. Adam Ross Cut Stone Co., Inc.
Amsterdam, N. Y. Grieme Lumber Co.
Auburn, N. Y. Maloney Lumber & Supply Corp.
Binghamton, N. Y. Binghamton Standard Materials Corp.
Buffalo, N. Y. John H. Black Company
Corning, N. Y. Corning Building Co.
Elmira, N. Y. Harris, McHenry & Baker
Erie, Pa. Erie Builders Supply Co.
Liberty, N. Y. Sullivan County Building Materials Co.
Odessa, N. Y. Cotton-Hanlon

Oneonta, N. Y. L. P. Butts
Paramus, N. J. Bergen Bluestone Co.
Poughkeepsie, N. Y. Hudson Valley Block Co.
Rochester, N. Y. Hutchison-Rathbun, Inc.
Rome, N. Y. Prossner & Sons, Inc.
Syracuse, N. Y. D. J. Salisbury, Inc.
Utica, N. Y. N. D. Peters & Co.
Watertown, N. Y. Cushman Builders Supply Co., Inc.
West Hempstead, N. Y. Lawlor Stone, Inc.
White Plains, N. Y. Mills Cut Stone Co., Inc.

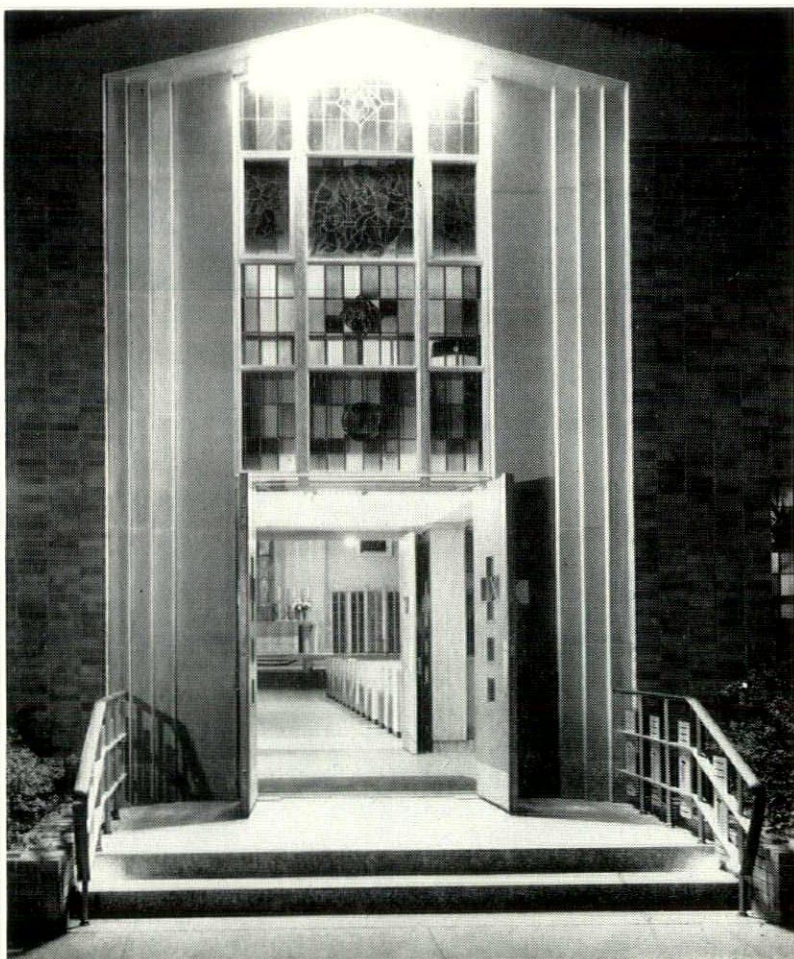


Cost is surprisingly low. Our Architectural Staff will gladly assist you in detailing information or budget estimates.

Write for Full Color Brochure and Estimating and Detailing Bulletins No obligation, of course.

FINGER LAKES STONE Co., Inc.

Professional Building
903 Hanshaw Road
Ithaca, N. Y.



NEW CHURCH of ST. SYLVESTER

BROOKLYN, NEW YORK

JOHN O'MALLEY, *Architect*

MAIN ENTRANCE

The rapid growth of the Roman Catholic parish of St. Sylvester, Brooklyn, has necessitated the demolition of an existing frame church to make way for a new church building.

Designed in a cruciform plan, to provide intimate relationship between the congregation and the sanctuary, the new Church of St. Sylvester will be a commodious, fireproof edifice built on a base of reinforced concrete and structural steel framework.

Within the carved wood reredos over the main altar there will be a life-sized wood carving of St. Sylvester.

The new church will have a well equipped work sacristy and choir balcony to accommodate a full-sized parish choir.

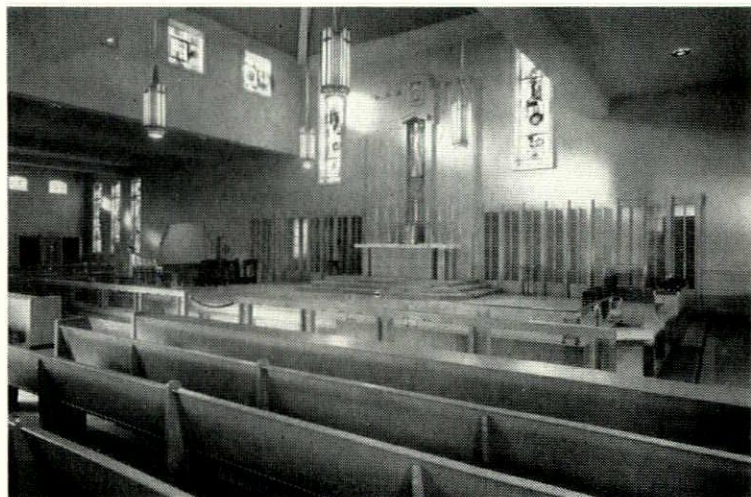
The church will be a current expression of traditional plan, but not a copy of any style. It will be an

American conception planned according to canonical requirements, with regard to its functional nature, economical considerations and ecclesiastical tradition.

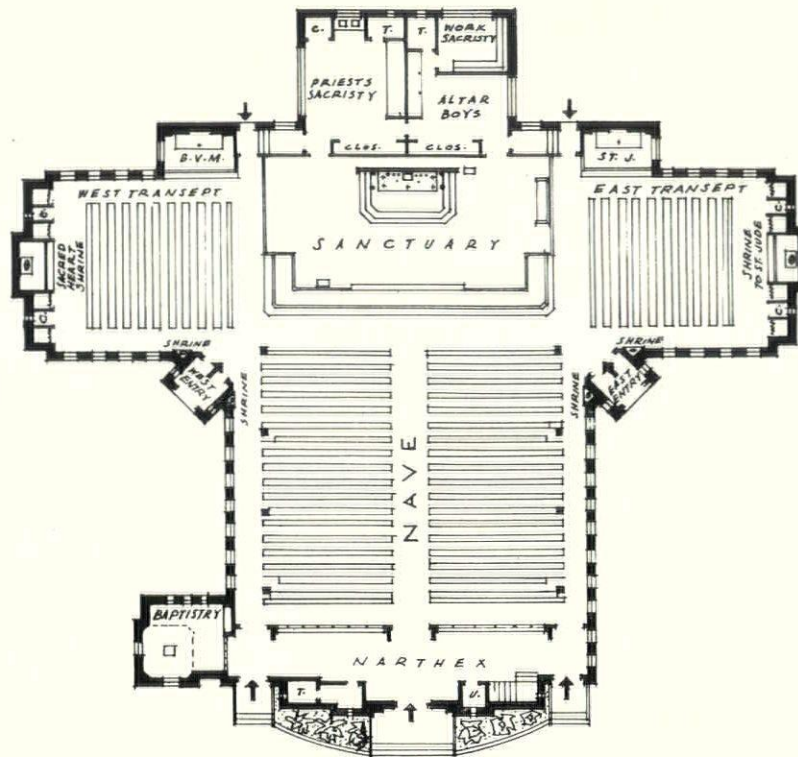
The church will be situated within the center of the large plot providing ample room for landscaping all around.

The new church, which will be a notable addition to the religious monuments of the borough, was designed by the architect, John O'Malley in close co-operation with Father Skelly and the Diocesan Building Office of which Monsignor Ronald P. MacDonald is director.

The salient exterior feature will be a graceful tower, which will house the large and rubrically situated Capistris. The tower will be capped by a slender copper spire and ornamental bronze cross.



INTERIOR TOWARDS
SANCTUARY AND WEST TRANSEPT

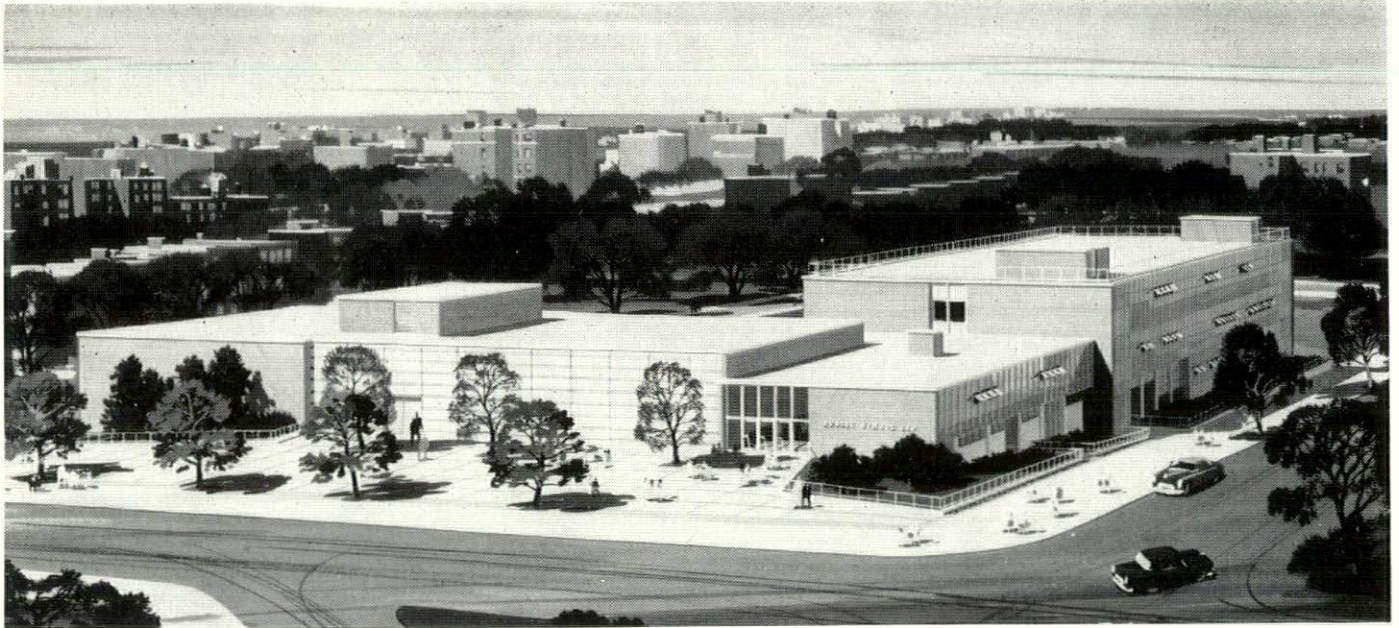


THE PLAN



PUBLIC SCHOOL 220 . . . QUEENS, NEW YORK CITY

WILLIAM F. R. BALLARD, *Architect*



THE PROBLEM

To design a K-6, 28-classroom elementary school on a 2½ acre, single block site on a Queensboro City block, the short easterly side of which faces a wide avenue and the long northerly side of which faces a future expressway. The site slopes gently from east to west.

THE SOLUTION

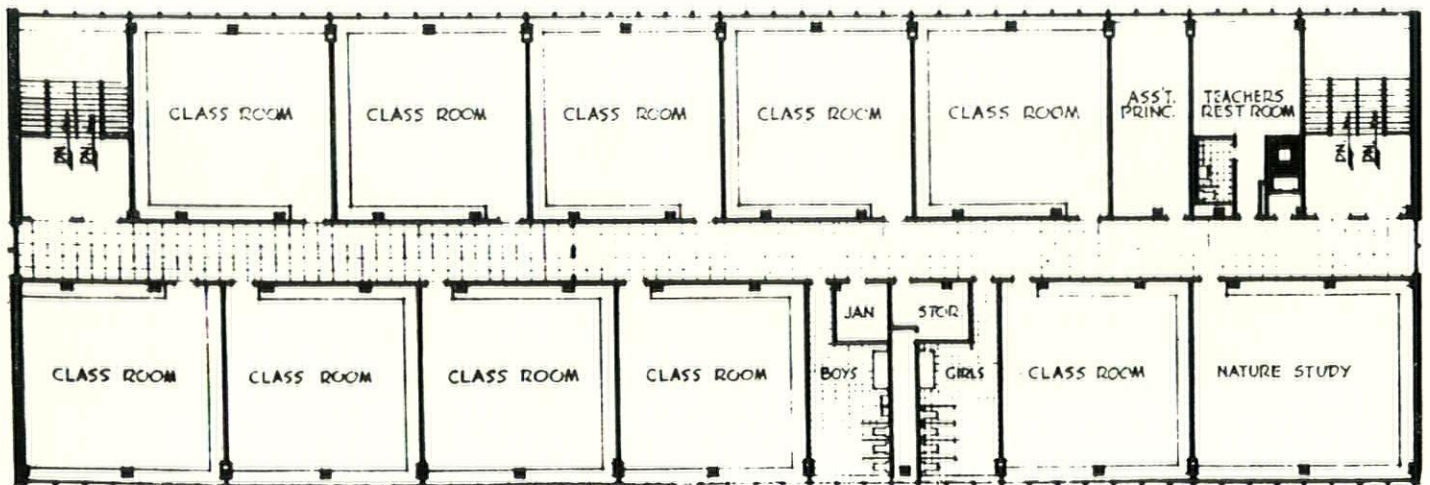
An L-shaped structure with the base of the L fronting on the avenue, accommodating the Administration Unit in the juncture between the base and the stem of the L for best control. The base of the L holds the Auditorium and the Gymnasium. The classrooms are placed in the stem of the L in three stories. The stem of the L is removed from the adjacent apartment

houses to the south for better daylighting and is set back sufficiently to accommodate protective planting between it and the approaches to the expressway. The expressway traffic itself will be sufficiently far from the north classrooms not to constitute a noise hazard.

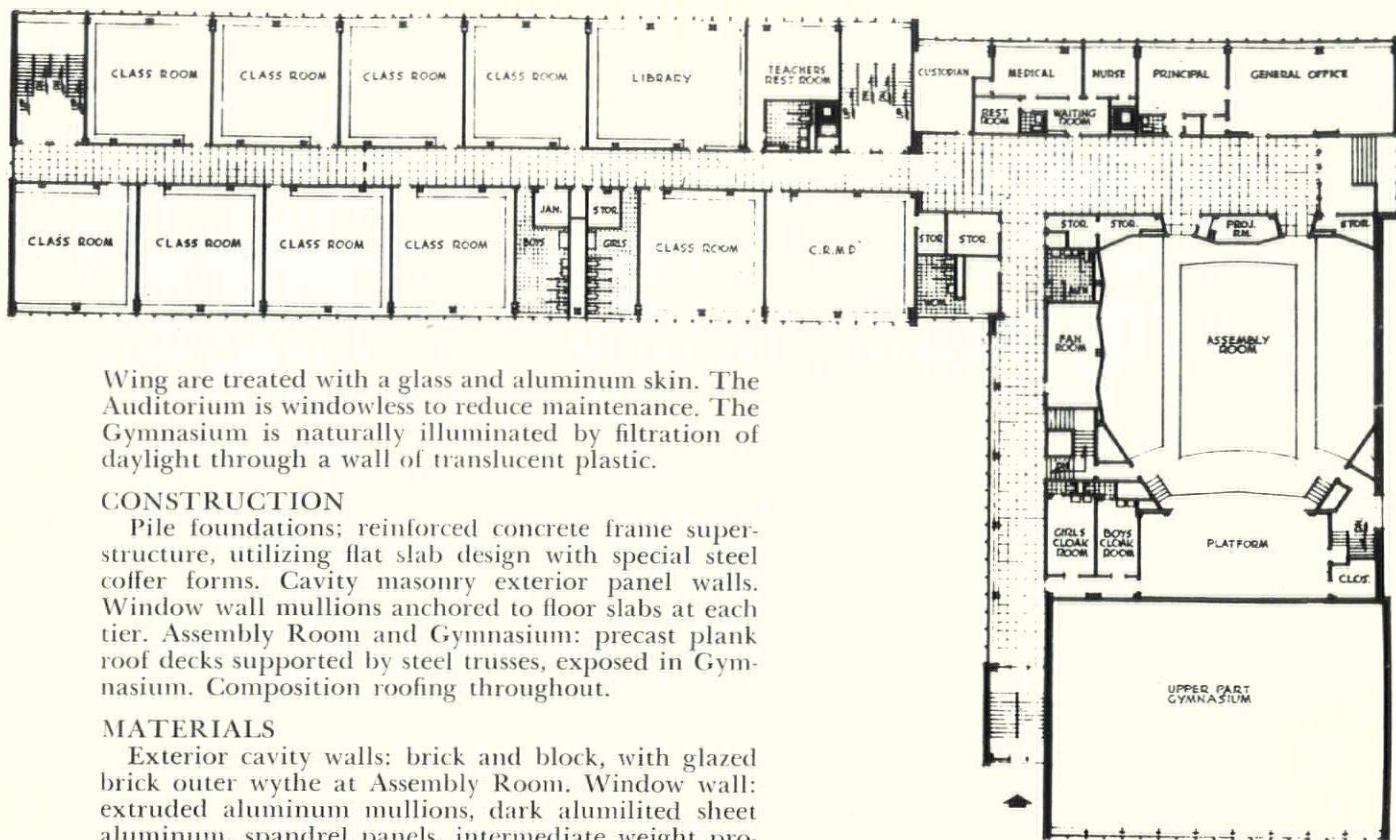
The drop in grade from east to west is used so that the Administration Unit occupies a controlling position at the intermediate level of the Classroom Wing, with a story of classrooms above and below.

The avenue side of the building is provided with a spacious plaza, with planting and benches, thus introducing a gracious, park like effect in front of the school to distinguish it within its City surroundings.

The Auditorium wall is handsomely treated with stripes of white, grey and blue brick. The exterior wall of the Administration Unit and the Classroom



SECOND FLOOR



FIRST FLOOR

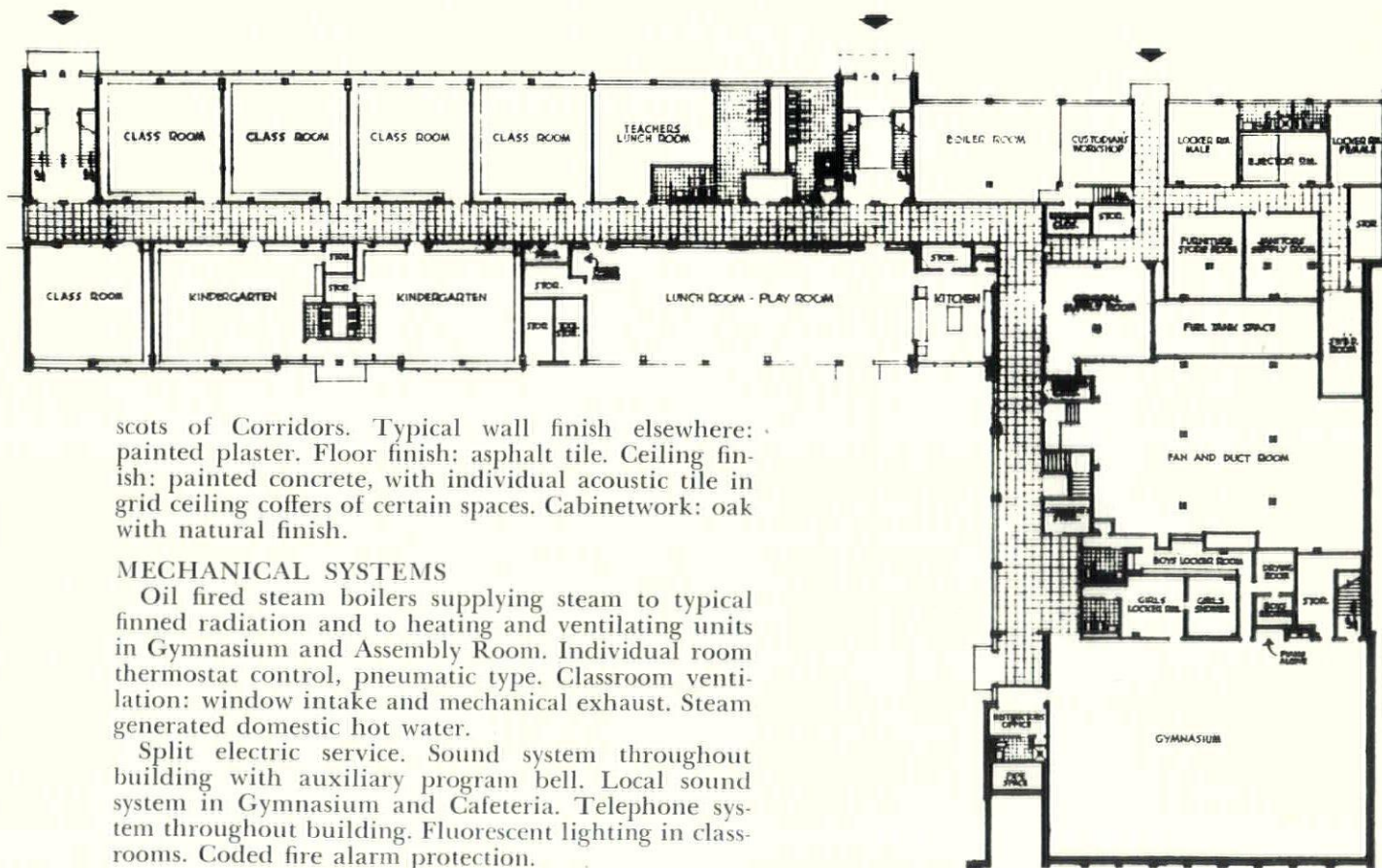
Wing are treated with a glass and aluminum skin. The Auditorium is windowless to reduce maintenance. The Gymnasium is naturally illuminated by filtration of daylight through a wall of translucent plastic.

CONSTRUCTION

Pile foundations; reinforced concrete frame superstructure, utilizing flat slab design with special steel coffer forms. Cavity masonry exterior panel walls. Window wall mullions anchored to floor slabs at each tier. Assembly Room and Gymnasium: precast plank roof decks supported by steel trusses, exposed in Gymnasium. Composition roofing throughout.

MATERIALS

Exterior cavity walls: brick and block, with glazed brick outer wythe at Assembly Room. Window wall: extruded aluminum mullions, dark alumilited sheet aluminum, spandrel panels, intermediate weight projected aluminum sash. Fiberglass reinforced plastic glazing at Gymnasium wall. Concrete and gypsum block interior partitions. Plastic faced block for walls of Locker Rooms, Toilets and Gymnasium, and wain-



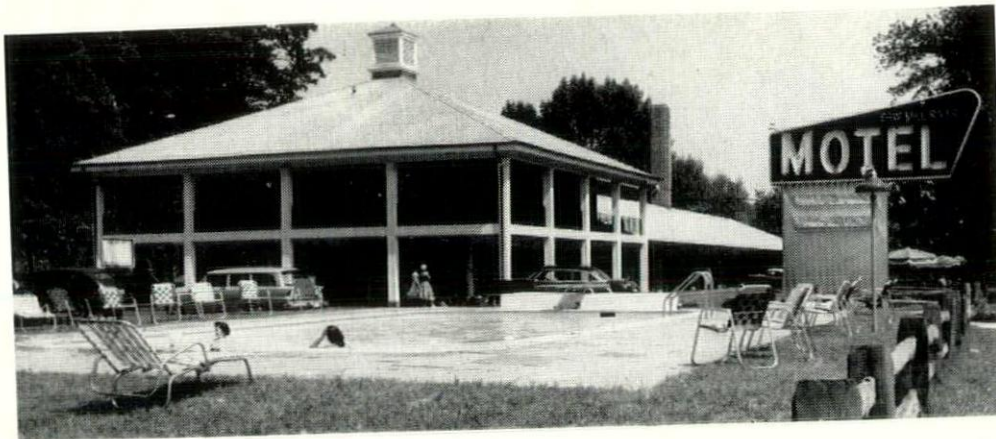
GROUND FLOOR

scots of Corridors. Typical wall finish elsewhere: painted plaster. Floor finish: asphalt tile. Ceiling finish: painted concrete, with individual acoustic tile in grid ceiling coffers of certain spaces. Cabinetwork: oak with natural finish.

MECHANICAL SYSTEMS

Oil fired steam boilers supplying steam to typical finned radiation and to heating and ventilating units in Gymnasium and Assembly Room. Individual room thermostat control, pneumatic type. Classroom ventilation: window intake and mechanical exhaust. Steam generated domestic hot water.

Split electric service. Sound system throughout building with auxiliary program bell. Local sound system in Gymnasium and Cafeteria. Telephone system throughout building. Fluorescent lighting in classrooms. Coded fire alarm protection.



SAW MILL RIVER MOTEL

HENRY H. MOGER, JR., *Architect*

The Saw Mill River Motel is situated on a 192' x 400' plot along the Saw Mill River Parkway in Elmsford, N. Y., which is 26 miles above New York City. The Motel, due to a budget, was designed to allow the first 40 units to be constructed in 1955 and the second 45 units in 1956. The project consists of 85 units; manager's apartment; office; lounge; laundry; central heating; 4 linen rooms; storage rooms; swimming pool; children's pool; 10 cabanas and showers; air conditioning with individual room control, and ample parking. Each unit consists of a large tastefully decorated room, tile bath, television, private telephone, and wall to wall carpeting.

From the initial planning it was determined that a sufficient amount of the plot should be set aside to insure the project would have proper landscape treatment.

The construction of the buildings consists of concrete footings and foundations, brick veneer with con-

crete back up block exterior walls, concrete slab first floor, wood construction with special sound proofing second floors, special designed sound proof partitions between rooms, plaster walls and ceilings, and heavy white asphalt shingle roof.

Some of Westchester's finest restaurants are close at hand. Neighboring Bill Reiber's Restaurant offers a special breakfast as well as full course luncheons and dinners. Large and small private dining rooms for business meetings.

Branches of many famous New York City Stores are located nearby to offer good shopping.

The colonial designed buildings with the red brick and white trim, columns, railings, and roofs together with the landscaping present a striking picture while traveling along the parkway. The Motel, due to its good location, design, and management has been doing 100% business since its completion.

SHOPPING CENTER . . . RIVERHEAD, LONG ISLAND

IRVING P. MARKS, *Architect*

This shopping area consists of a one and two-story building on a site of approximately 52,000 sq. ft. The building at the first floor occupies 26,000 sq. ft., and provides 26,000 sq. ft. of parking area, and at the second floor, occupies 15,000 sq. ft.

The main tenant occupies a major portion of the two-story building, and offices at the second floor front were provided for professional purposes. All loading and parking are accessible to the rear of each store. The building was erected of skeleton steel construction and outer walls of brick and cinder block.

First floor is terrazzo; second floor is cellular steel units with lightweight concrete floor finish in storage

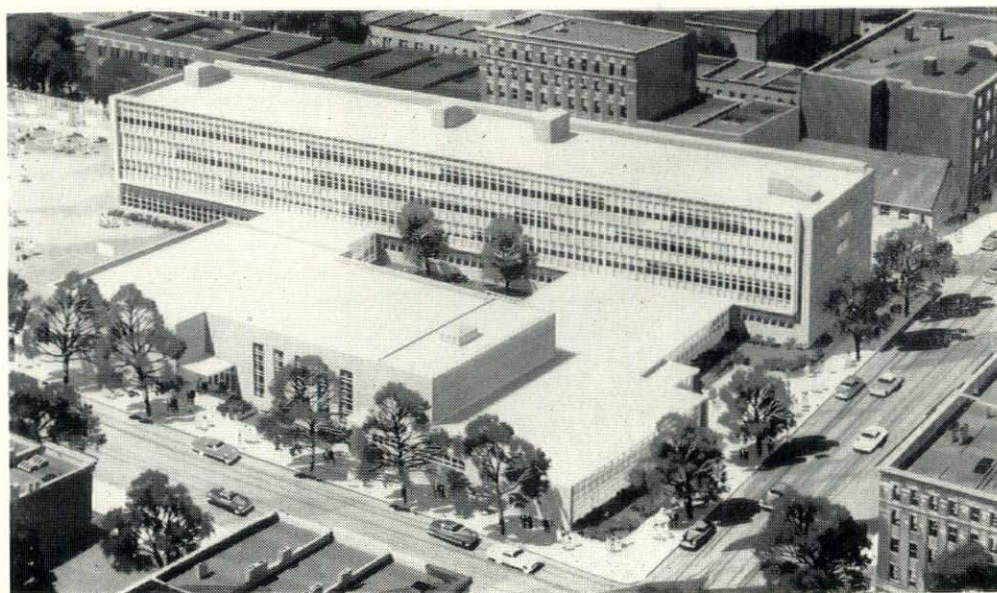
areas, and lightweight concrete, terrazzo and tile finish in offices and corridors. The roofs are of cellular steel units, finished with rigid insulation and slag roofing.

The store fronts are finished according to tenants' requirements with stainless steel, aluminum, brick, porcelain and stone, and the portions above the awning box are of marble, with a curtain wall aluminum window unit 75' long.

The building is equipped with a passenger elevator; two conveyors; a circular metal chute; an incinerator; and is air conditioned throughout.



ALEXANDER BURGER JUNIOR HIGH SCHOOL



BROWN & GUENTHER, *Architects*

Construction was officially begun on the Alexander Burger Junior High School No. 139 on Monday, January 9, when the first bulldozer moved onto the site. The three million dollar school at 142 Street and Brook Avenue in the Bronx is expected to be completed by spring of 1957. It will contain 169,066 sq. ft. of space and is estimated to cost \$1.45 per cu. ft. The firm of Brown and Guenther was selected by the Board of Education to design this building and both final plans and construction bids have been accepted for the project.

This newest public school is pure modern with its heavy emphasis on metal and glass. The classroom wing features a virtual facade of glass broken up by aluminum spandrels and mullions creating a checker-board effect. The classroom wing is of reinforced concrete construction; the gymnasium, auditorium and administration wings of structural steel with roofs of concrete plank. A brownish-colored brick will also be used on the exterior of the building.

Facilities have been provided to accommodate a co-ed student body of approximately 1600 pupils in grades 7 to 9. In addition to 30 regular classrooms there are 15 special classrooms, 9 shops, 2 remedial instruction rooms, a gymnasium with adjacent exterior playground, an auditorium seating 500 persons and a cafeteria with a seating capacity of 600. The cafeteria is served by a kitchen equipped for the preparation of complete meals, and the auditorium has a full sized stage complete with wings, dressing rooms and property storage. Folding bleachers and a folding partition permit the gymnasium to be opened up for interscholastic and public functions. There are, in addition to these educational spaces, the necessary administrative, service and custodial areas.

In planning the building special consideration was given to what is considered the dual function of the auditorium and gymnasium wing. It is planned that this area should not only serve the student body in its recreational and athletic functions but serve the community as well, providing a center for adult education and recreation. This section can be easily isolated

from the rest of the school and the functions independently during the after-school activities.

The over-all design of the school consists of three basic elements; a four-story classroom wing, a two-story wing housing the auditorium, and gymnasium, and the one-story connecting section containing the music suite, administrative, exhibition and lobby areas. An additional feature is the interior garden adjacent to the main lobby which creates a pleasant background for the main exhibition area and acts as a further tie between the two larger elements.

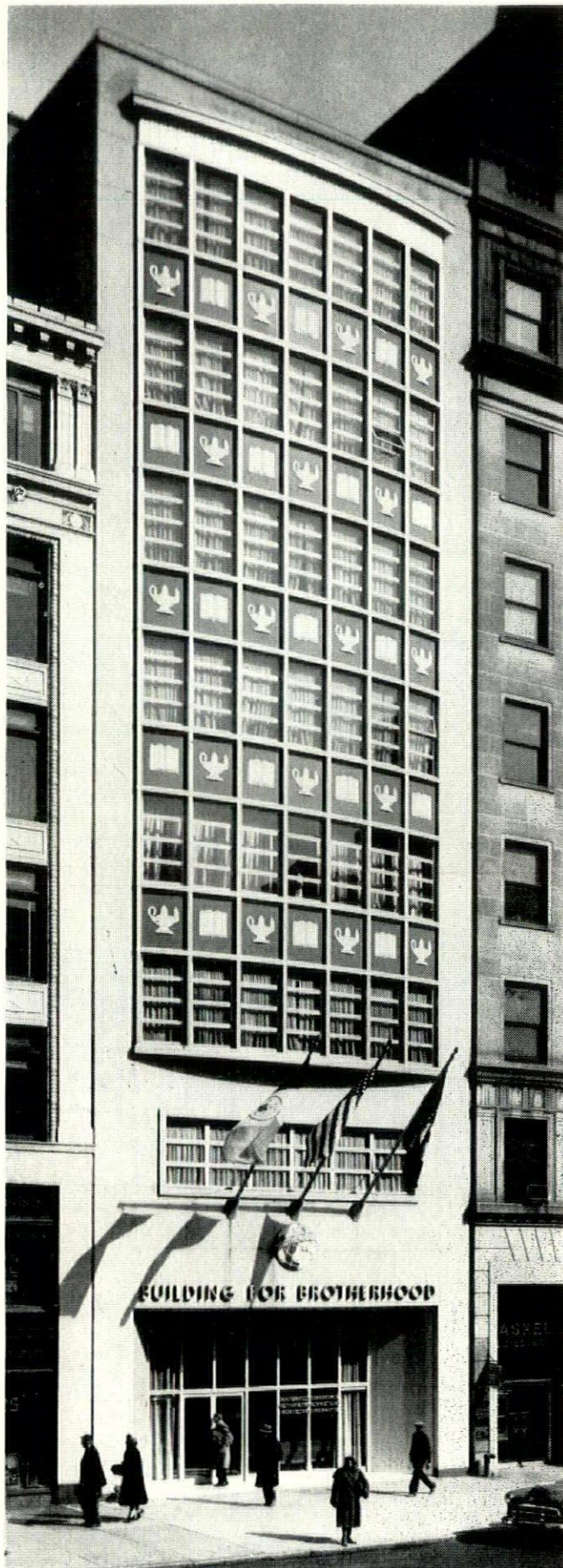
The articulation in the plan is expressed again in the selection of structural materials. In the classroom wing, where there is a repetition of units, reinforced concrete is used. In the other wing, however, where there is a diversity of units, the structure is of steel with concrete roof planks.

Blending of finish materials is designed to give the school an attractive overall appearance. The classroom wing is distinguished by use of aluminum and glass modular curtain walls while brick is used for contrasting appearance in most of the other exterior areas. As an accent, architectural terra cotta is used under the windows of the music suite with crab orchard stone for the retaining walls of the exterior plant boxes at the entrance — all contributing additional desirable color and variation.

The interiors will be done in plaster and asphalt tile except for the heavily trafficked areas where such materials as ceramic facing tile, brick, terra cotta and terrazzo will be used for ease of maintenance. Fluorescent lighting, a two channel sound system for the reproduction of speech and music, and many other architectural, structural and mechanical features will help to make this a modern effective school plant.

The remainder of the site will consist of a large playground and other open areas which will be well planted with shrubs, trees and hedges to make the new school a welcome addition to the neighborhood.

The low bid figure for the construction of J.H.S. 139 was submitted by the Caristo Construction Company of Brooklyn, N. Y. Sears & Kepf were mechanical engineers; Strobel and Salzman, structural engineers.



FRONT FACADE

THE BUILDING FOR BROTHERHOOD

From the office of YORK AND SAWYER, *Architects*
KIFF, COLEAN, VOSS AND SOUDER

Shortly after the 1929 Presidential Campaign, the National Conference of Christians and Jews was organized to promote justice, amity, understanding and cooperation among Catholics, Protestants and Jews. Headquarters were established in New York City, in rented quarters. Through the generosity of the Ford Motor Company Fund, funds were made available for the purchase and alteration of the building at 43 West Fifty-seventh Street, New York, to serve as a headquarters for the National Conference of Christians and Jews, The World Brotherhood Organization, The Manhattan-Westchester Regional Office, and the Religious News Service.

The old facade was typical of the loft building of the early part of this century, and was completely replaced with stone and a simple motif six stories high of aluminum windows with spandrel panels of blue enameled steel with a central sculptural panel of off-white enameled aluminum, using the motifs of the Open Book and the Lamp of Learning — symbolic of the aim of the Conference.

The main entrance lobby on the first story has light toned Venetian terrazzo floor and walls are finished in dark blue tone, with the dominant motif a mural painted by Dean Fausett, depicting the efforts of the Society to promote a belief in Brotherhood among people of varied background under the Fatherhood of God. A luminous glass and aluminum ceiling provides an overall lighting which brings the mural into prominence.

On the main floor, entered from the Lobby, there is a level floor auditorium seating 110 people, used for meetings, lectures and exhibits. Behind the auditorium is a conference and board room seating 35, with walls finished with straight grain oak plank-wall.

Along the street front of the fourth floor is a large room dedicated to World Brotherhood, known as the Thomas E. Braniff Room which serves as a meeting room and an office for visiting Trustees. The remainder of the floor is devoted to The Paula K. Lazrus Library donated by Julian and Jay Lazrus, as a national center for the study of intergroup and human relations. The rest of the building is devoted to offices and working space for the various departments.

The building is an eight story steel structure 33' x 100' and has approximately 23,000 square feet of working space. It has been completely modernized, with air-conditioning and new fluorescent lighting throughout. The interior finishes and furnishings of the various special rooms throughout the building were donated as memorials by the following: The Charles Evans Hughes Auditorium — Members of the United States legal profession; Newton D. Baker Board Room — Roger Williams Straus; Thomas E. Braniff Conference Room — Mrs. Thomas E. Braniff, The Braniff Foundation; President's Office — Mr. and Mrs. John L. Loeb.

The alterations were completed September 1955, and the building dedicated on November 11, 1955 with Rabbi Dr. Israel Goldstein, Rt. Rev. Horace W. B. Donegan, Rt. Rev. Monsignor Cornelius J. Drew, Dr. Ralph J. Bunche, Ambassador Carlos P. Romulo, Everett R. Clinchy, William Clay Ford, Roger Williams Straus, and many other educators, religious leaders and social scientists in attendance.

The Office of York & Sawyer, Architects — Kiff, Coleman, Voss & Souder, were the Architects. Kuhn, Smith & Harris, Inc., were the general contractors, with Weathermatic Corporation as heating and air-conditioning subcontractors, Philip Levitt as plumbing subcontractor, Henry Drexler, Inc. as electrical subcontractors, all of New York City. The special ornamental metal facade was constructed by Albro Metal Products Co. The sculptural details were modeled by Rochette & Parzini, Inc.



MAIN LOBBY



WORLD BROTHERHOOD ROOM — BRANIFF

WHITEHALL-SOUTH STREET FERRY TERMINAL FOR DEPARTMENT OF MARINE AND AVIATION NEW YORK CITY



BEFORE

The Whitehall-South Street Ferry Terminal Buildings were erected a half-century ago. The Whitehall Terminal, the main link between Staten Island (Richmond County) and New York City, provides regular ferry service operations using slips No. 1 and No. 2, with slip No. 3 in the connecting structure operating during peak periods, handles as many as 250 pedestrians per minute during peak periods, and serves more than 1,500,000 vehicles per year. This activity was crowded into 11,400 square feet of area on two levels.

The desired objectives of the Department of Marine and Aviation were to provide an increase in size of waiting room facilities at the second floor level, bridging of terminal passengers over South Street, overhead ramps and moving and fixed stairs to the second floor of Terminal, complete modernizations of exterior and interior of Terminal and utilities, plus new offices at 3rd and 4th floors of the South Street Terminal to house the complete personnel of the Department of Marine and Aviation. Access to offices shall be by new elevators and stairs.

Since it was required to provide complete waiting room facilities at the second floor level, new construction could have been developed either to the East of Whitehall Terminal or to the North across South Street. In either case, an overpass for pedestrians was required over South Street to the safety island North of the Terminal.

After studying many solutions, it was apparent that the Northerly extensions was the most feasible. It avoided duplication of construction by combining pedestrian bridges with the new waiting rooms. Terminal passengers would not only reach shelter faster, but would also have the most direct access to the primary ferry slips.

The new waiting room extension at second floor bridges over South Street providing a total area of approximately 24,800 sq. ft. compared to the old two-level waiting room space of 11,400 sq. ft. Concession space was provided at center and on both sides of the



AFTER

new waiting room extension. New public toilet facilities were also added.

The concourses permits complete segregation of outbound and inbound passengers. Two directional flow only occurs on the ramp and ramp stairs. However, primary flow so exceeds counter flow that no difficulty has arisen. The combinations of non-slip finish and embedded snow melting coils in concrete slab of exposed ramp makes the area safe for all weather walking.

The ramp stairs provides direct access to two subway systems. The lower vestibule used only for incoming passengers, provides to second floor one fixed 16'-0" wide stair and two 4'-0" wide moving stairs. Approximately 85 percent of the total peak load is carried by the moving stairs. For passengers walking from lower Manhattan, buses or BMT subway, the ramp is their first point of contact with the Terminal. These passengers may so enter the Terminal when the moving stairs are handling peak loads.

The exterior of the Terminal which was of ornamental steel, cast iron and sheet metal was refinished with colored porcelain steel panels with Plywood core and zinc coated steel back trims and aluminum; the interior with tile, aluminum and plaster.

Among the major problems confronted were the installation of foundation columns around both the existing structures, new extensions and a twin 23'-0" diameter tube of a subway tunnel at a lower level. Crossing at an intermediate level and at an angle, under the new extension is the 98' foot wide sub grade Battery Park Underpass, also numerous tunnels for subway station facilities and utility piping and conduits.

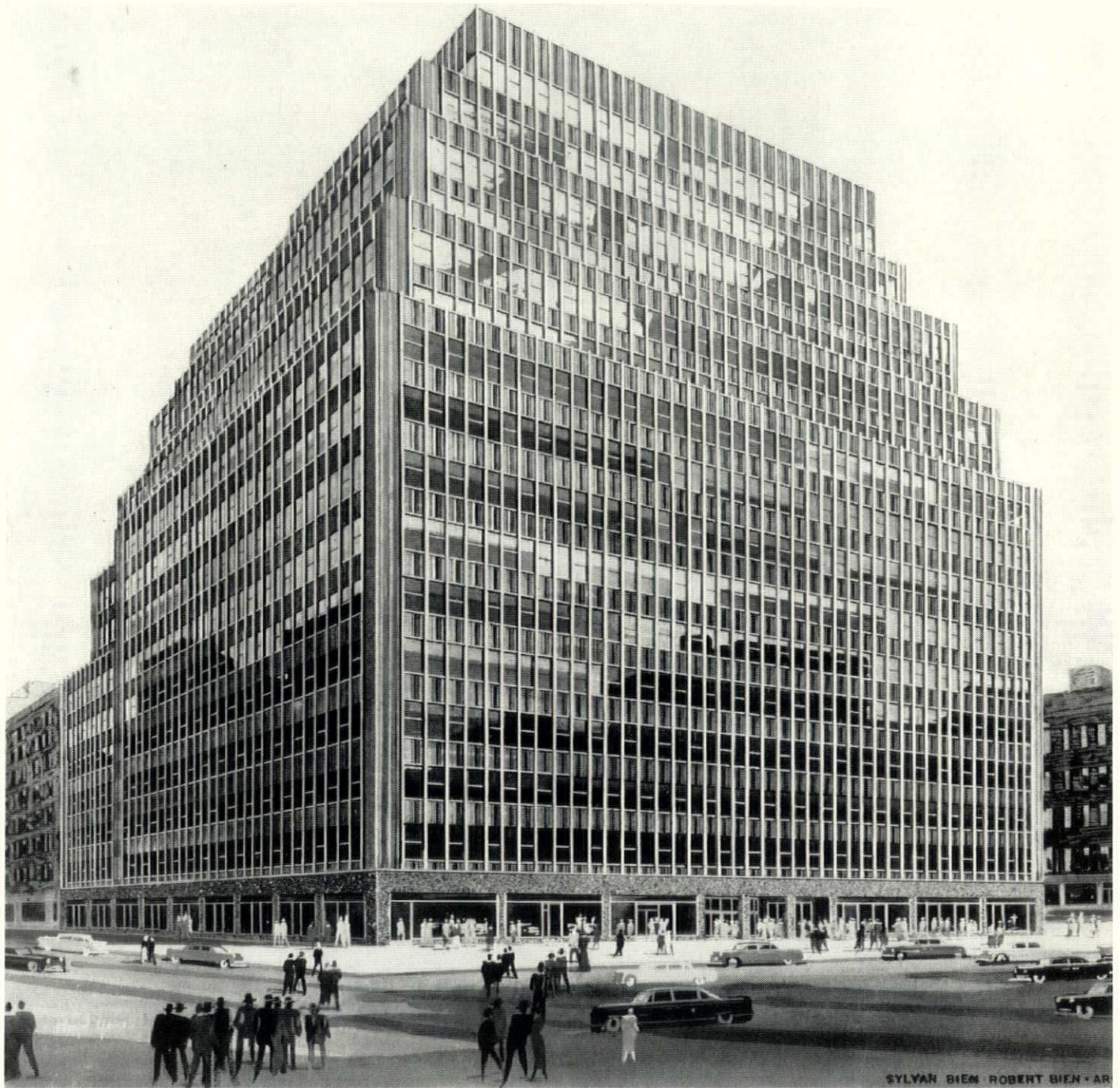
Construction work was organized as to permit the use of two ferry slips for municipal ferry operations at all times.

When completed the entire work will be executed at a cost in excess of \$3,000,000.

This project was designed and supervised by: Roberts and Schaefer Company, with N. J. Sapienza, Chief Architect in charge.

STANDARD BRANDS BUILDING . . . NEW YORK

SYLVAN BIEN & ROBERT L. BIEN, *Architects*



The Standard Brands Building at 625 Madison Avenue, 58th to 59th Streets, New York City, is an example of a modernization treatment that created a new building. The building originally contained 225,000 square feet of net rentable area in 10 stories. By the addition of 6 stories and the filling in of an obsolete courtyard, additional space was gained to provide a new total of 395,000 square feet.

The exterior stonework was completely removed and replaced with a new metal wall facing of extruded aluminum mullions and spandrels.

The existing elevators and machinery were replaced and 2 new elevators were added. The building was air-

conditioned and refinished throughout.

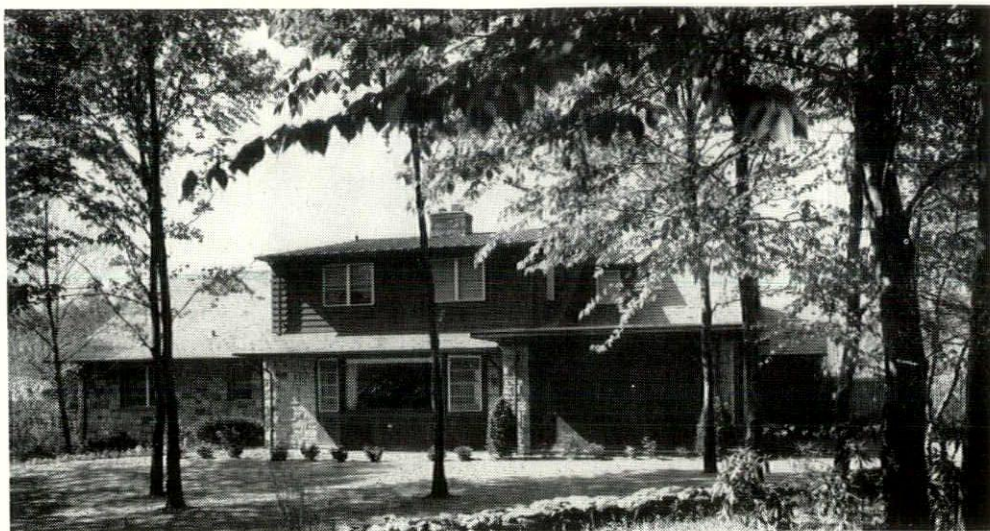
In order to accomplish this, columns were reinforced and the new 6 story addition was constructed of lightweight materials. No reinforcing of the foundations was necessary as the original design was based on heavier loading than the present use calls for.

The entire job was done while first floor tenants, including a restaurant and many stores, occupied the building. There was no disturbance caused these tenants and, in fact, their premises were enhanced by a decorative and illuminated sidewalk bridge erected by the builders.

RESIDENCE

WHITE PLAINS,
NEW YORK

GERSON T. HIRSCH, *Architect*



This residence is set well back near the high point of a sloping and moderately wooded site of nearly three acres, with the road location to the north.

The basic requirement of the design program was that the main floor should provide a complete housing unit for the family (parents and a teen-age daughter), organizing all the elements required for their normal daily indoor and outdoor living; a plan comparable, perhaps, to a well appointed apartment with terrace and garden. Other elements, infrequently or irregularly used, were to be sternly subordinated, but conveniently available when needed.

This was accomplished through two devices, one ancient and one modern. The ancient one is the familiar rear dormer of the Cape Cod cottage (restricted here to the central area over the living room), which shelters a guest room with bath, and a maid's room with bath and kitchenette, thus providing the servant with something of a private life of her own.

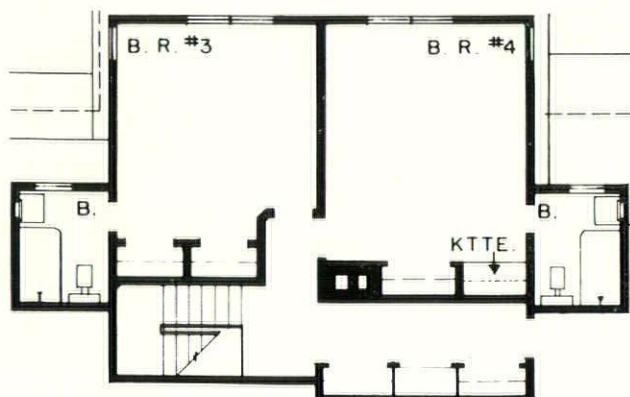
The more modern device makes a virtue of an 8' slope by utilizing the above-grade part of the lower or basement level, where a separate outside door serves a spacious and airy entertainment room, equipped

with built-in bar and storage cabinets.

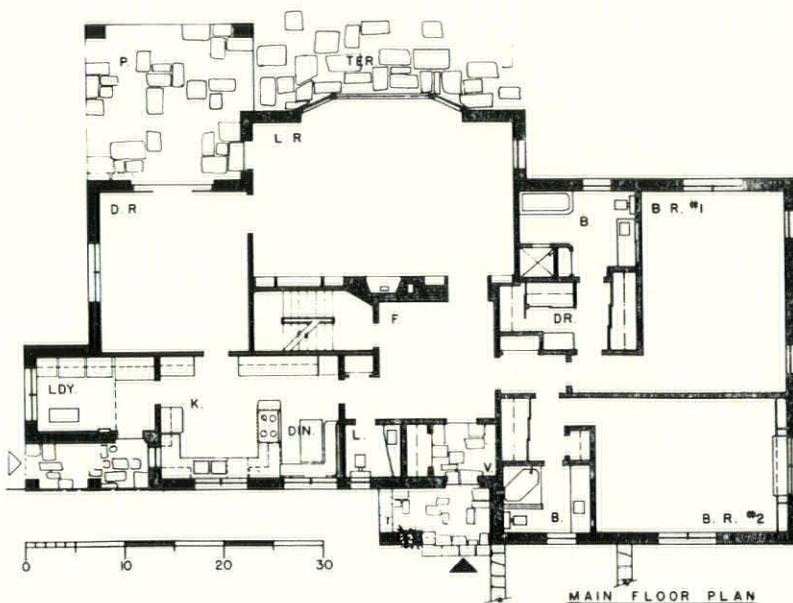
The stairway of this house is treated as a strictly functional means of circulation, rather than as an architectural feature. Fully enclosed, it does not obtrude upon the fundamental one-story quality of the main living area.

The exterior, too, is designed to emphasize this strong main-level feeling, with the long stepped-up roof slopes suggesting subtly that there may be something more behind them.

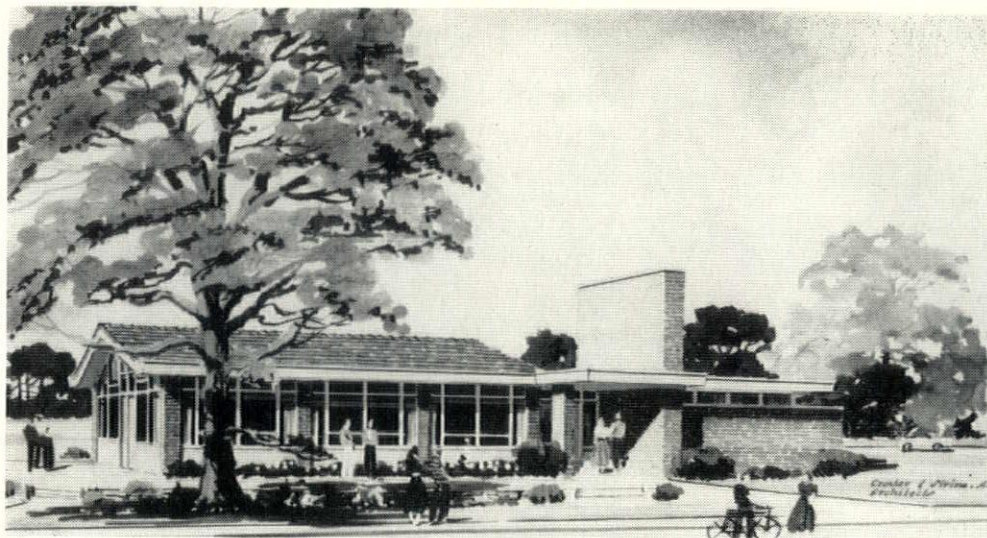
Frame construction was used, much of it finished with an 8" veneer of local quarry stone. Siding at the gables and dormer is of redwood; roofs of rough black slate and standing seam copper. Windows are architectural aluminum double-hung, with insulating glass. Heating is radiant panel type, forced hot water being circulated in sinuous welded steel tubing embedded in plaster ceilings throughout, with modulating outside-inside controls, and with maximum entering water temperature at about 130°F. Interior detailing follows a traditional feeling in the main rooms and a functional contemporary manner in dressing rooms, baths, and service areas.



UPPER FLOOR PLAN



MAIN FLOOR PLAN



RECREATIONAL CENTER

RYE, NEW YORK

CROZIER & SIRINE, Architects

This proposed recreational building, subject to approval of a local bond issue, is to be built in the City of Rye, on the Recreational Field. The Recreational Field is centrally located between the High School and Midland Avenue Grade School. A city picnic grove is immediately adjacent. This building was designed primarily to provide an after school "home" for the teenagers. A place where they can gather, safely, with a minimum of adult supervision for after game rallies or Saturday dances.

The Rye Recreation Commission also realizes that this building can also be used by the community in general when the teenagers don't have priority. A Nursery School is being considered during school days. The club rooms would be available during the week

for the Boy and Girl Scouts, the Golden Age Club or various other civic groups.

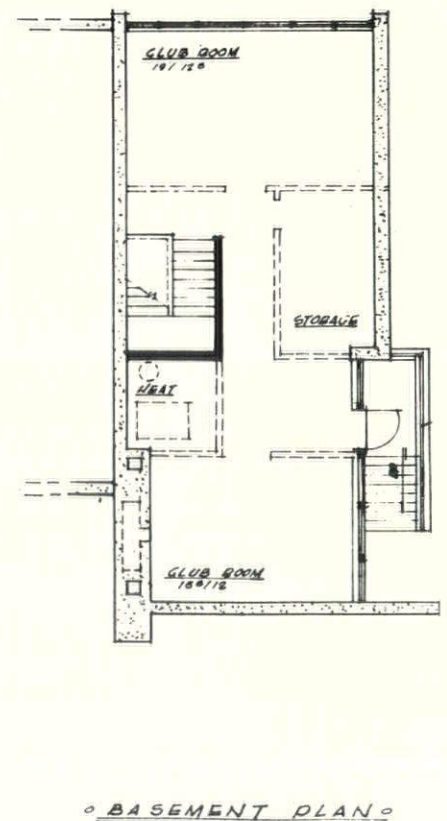
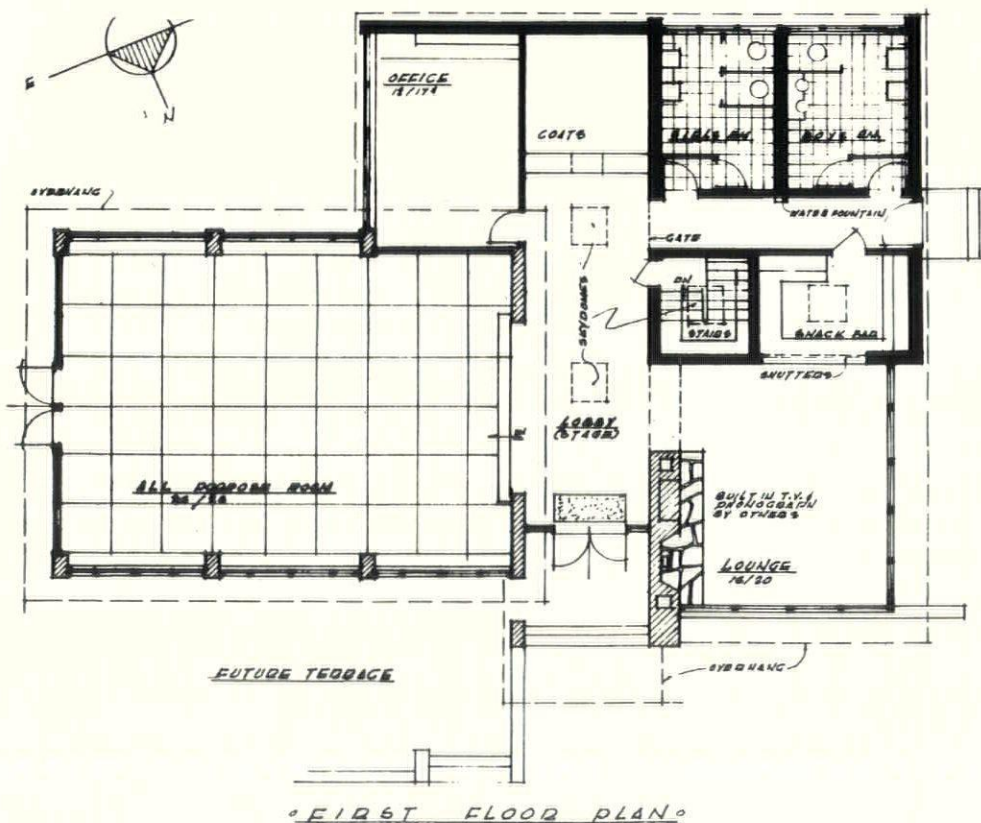
The toilet facilities will be available to the picnic area and the recreational field.

Construction Outline:

Floors — concrete slab or grade, or concrete planks. Walls — face brick or concrete block — Silicone paint.

Structure:

Laminated arches and wood deck or wood beams with wood deck. *Roof:* Built-up or Asbestos — Asphalt shingles. *Glazing:* Plate glass, or 3/16" d.s. sky domes. *Windows:* Wood milled sections with metal inserts for ventilations. *Heating:* Zoned 1 pipe hot water, finned radiation, gas fired. *Electrical:* 150 amp service, circuit breakers, silent switches. *Special equipment:* Snack bar to be equipped by civil contributions.

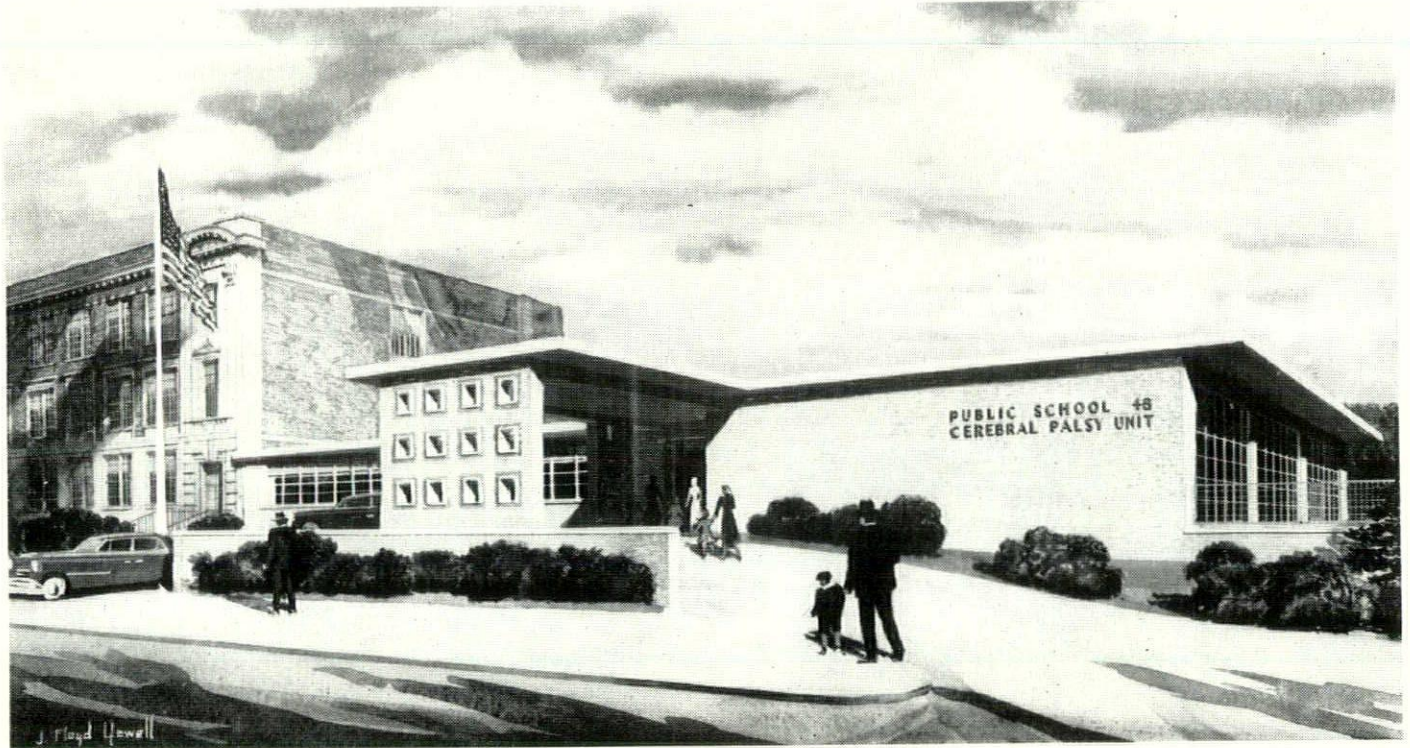


PUBLIC SCHOOL 48 . . . RICHMOND

CEREBRAL PALSY UNIT

BOARD OF EDUCATION
City of New York

MICHAEL L. RADOSLOVICH
Chief Architect



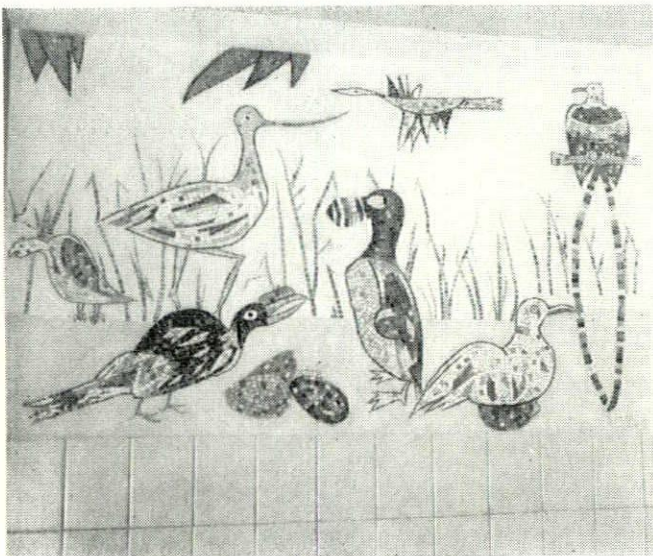
The new Cerebral Palsy Unit as an addition to Public School 48 Richmond, is to be located on the east side of Targee Street, 200 feet south of Maples Street, and will incorporate in its plan the following:

Cerebral Palsy Classrooms	2
Orthopedic Classroom	1
Physio-Occupational Therapy	1
Medical Office	1
Speech Therapy Room	1
Conference Room	1
General Office	1
Lunch Room and Serving Unit	1

The above facilities will accommodate a normal complement of 50 cerebral palsy pupils.

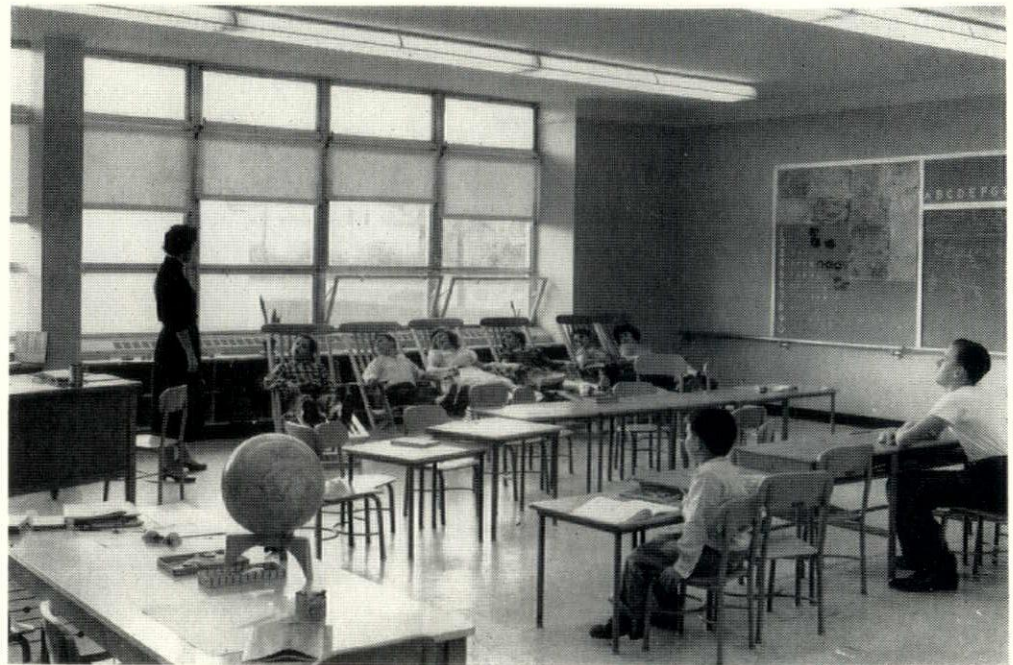
The gross site area to be developed for the Addition is 15,780 square feet; the school building proper at grade for the Addition only will occupy 10,760 square feet and the remaining area of 5,020 square feet will be developed as planting, landscaping and paved areas. The portion of the site south of the classrooms will remain undeveloped until additional land is acquired to provide adequate play area.

The building is designed as a one story unit with interior height of 10'-0". The cerebral palsy and orthopedic classrooms are 34' x 29' with full wall length fenestration on the south side, intercommunicating doors between rooms and each with a door directly to the future outdoor play area. Boys' and girls' toilets with a large store room are provided for each classroom. The Physio and Occupational Therapy Room is 51' x 25' in size and can be divided into two rooms by a full height folding partition. The Speech Therapy Room will



Mosaic Tile panel designed by artist Max Spivak dominates a corridor seat alcove.

Typical classroom interior of the Cerebral Palsy Unit of the Richmond Public School No. 48. Classrooms are 34' x 29' with full wall fenestration on the south side. Intercommunicating doors connect classrooms and provide direct access to outdoor play areas.



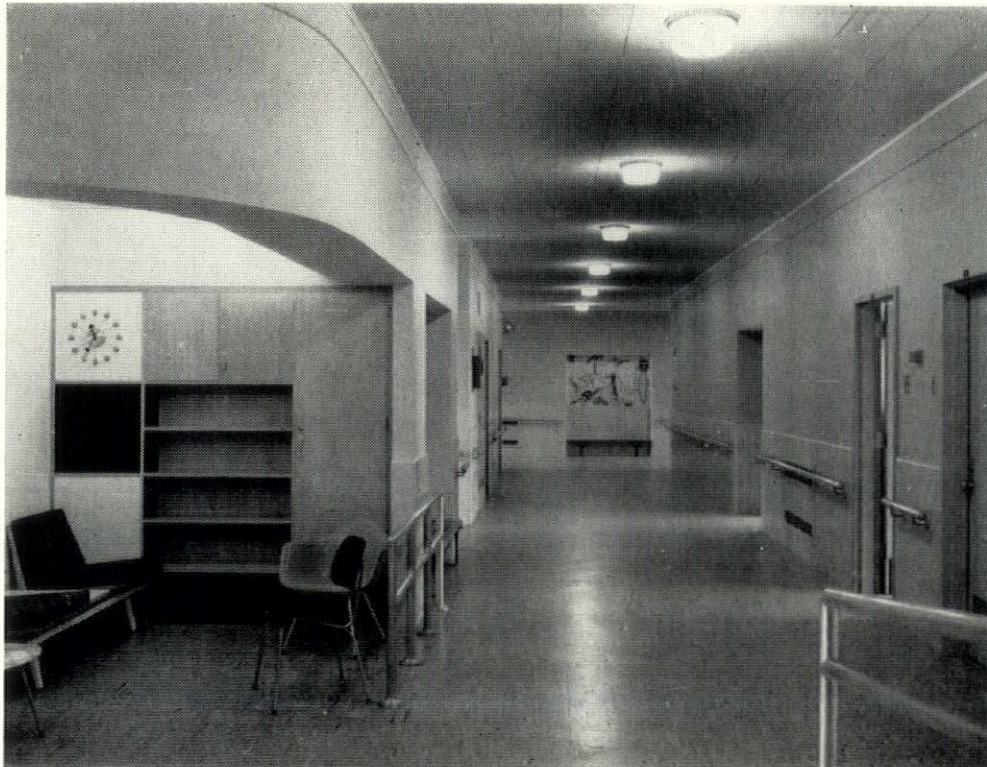
have an Audiometer Testing Area and other special equipment. The Lunch Room serving Unit will be specially designed by practical and convenient use of supervisors and parents. Corridors are minimum 10 feet in width; a ramp will be provided between the Addition and existing building; one way vision panels will be provided at classroom doors. A seating area for parents on duty and seat alcoves for pupils have been provided in the corridor. The interior throughout will be treated in contemporary design with informality, friendly and pleasant atmosphere. Fluorescent light, asphalt tile floors, plaster walls painted or treated with wall covering, acoustical tile ceilings will be provided in general. Colors of walls and floors will be selected to provide the most beneficial effect for the pupils.

The building will be fireproof, of concrete and steel, with exterior face brick, aluminum windows, concrete canopy overhang at roof. A driveway will be provided to a roofed over main entrance permitting pupils to be discharged and called for without unnecessary stair climbing or exposure to bad weather.

In the design of this school an attempt was made to create a happy atmosphere for the handicapped children who are to use this building, and included in this design are six mosaic panels designed by Max Spivak, artist.

These panels received an award for craftsmanship and design from the Architectural League.

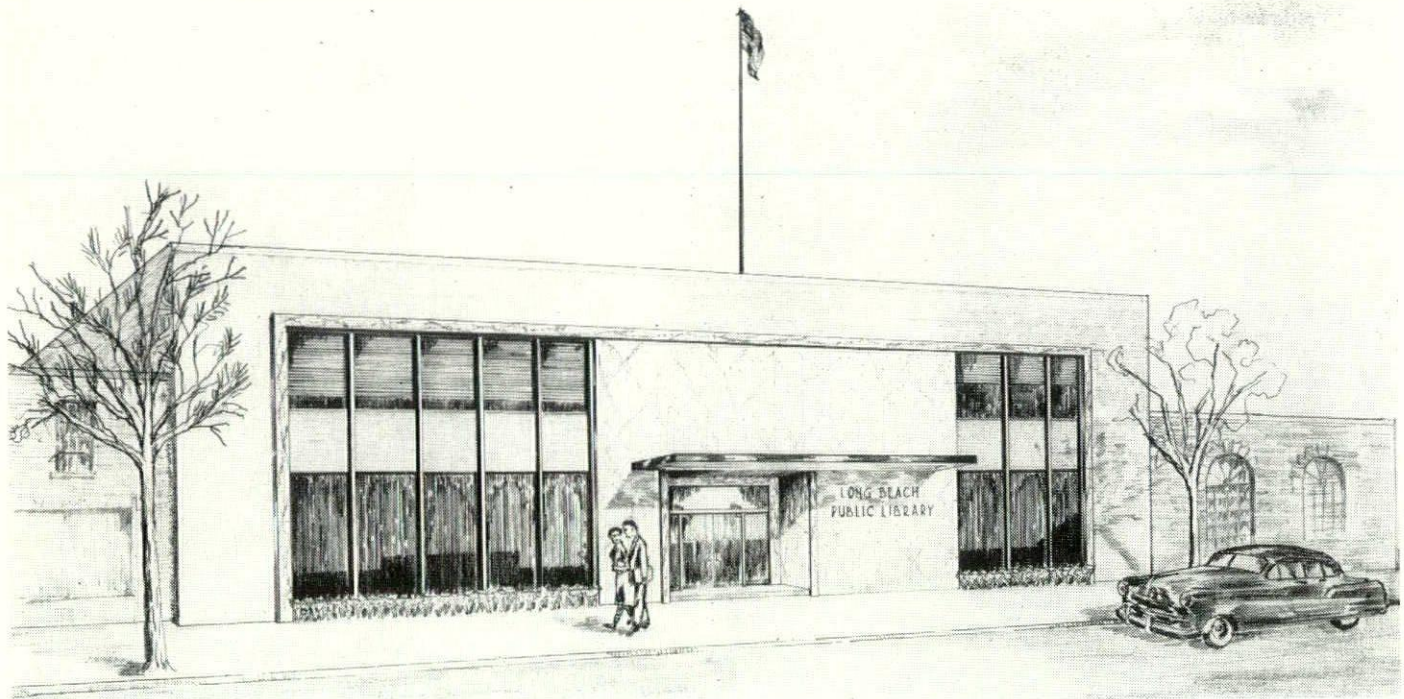
The color scheme of the school is also gay and attractive.



View of a typical corridor. Seating area at left is provided for parents. Hand rails and seat alcoves in corridor provide necessary support and rest areas for children.

LONG BEACH PUBLIC LIBRARY

WILLIAM J. FREED, *Architect*



This building has been occupied for the past six months, but has just been accepted as 100% completed as of Sept. 27, 1956.

Built on steel tube piles on a sand soil with a water head four and a half feet below grade, the new Library houses all the requirements of a modern completely air-conditioned building.

The structure is built of steel and masonry, is tee-shaped 90' x 100' and includes separate adult and children's sections, Auditorium, Staff Lounge, Music and Art Room, Story Hour Room, Check Room, Storage Room, Three additional Stack Rooms, Work Room, Librarian's Office, Record Playing Booths, and Micro Film Reading.

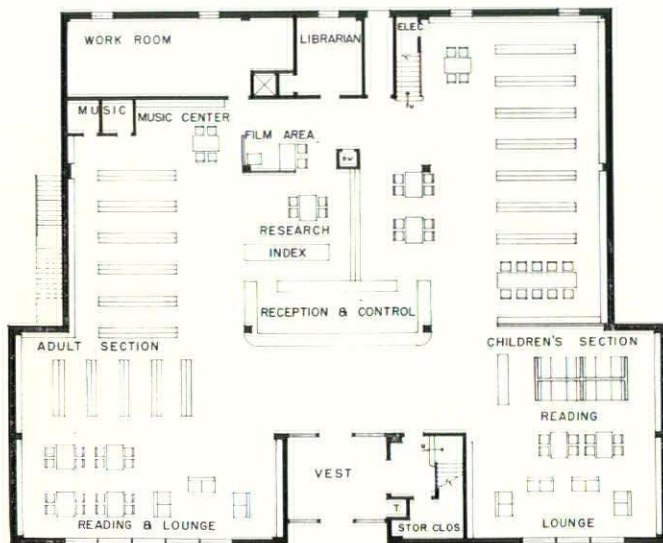
Developed for efficiency and low cost the building cost \$211,000. to erect. Exclusive of foundations the 198,000 cubic feet cost approx. 90c per cubic foot, including the new book stacks.

The entire entrance and vestibule are trimmed in stainless steel with the large front windows encased in stainless steel and set into a frame of Swedish rose granite, surrounded by buff Roman brick.

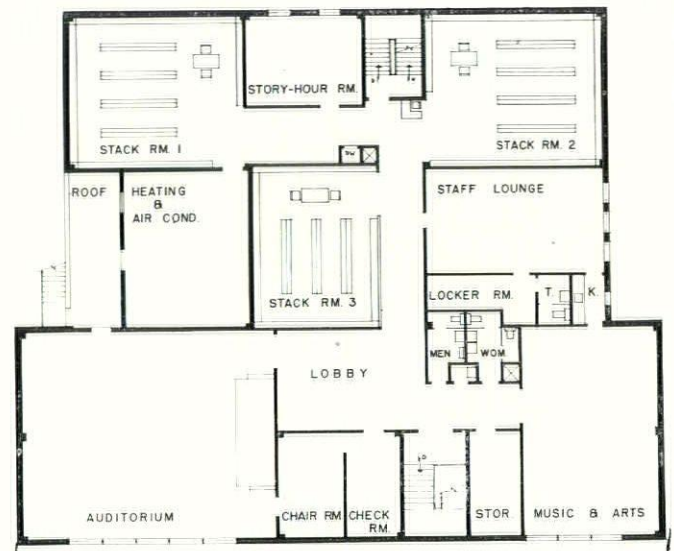
The interiors are simple, the stair enclosure are in marble faced block, most walls are furred and plastered, with flanking exposed face brick walls. All doors except the entrance doors are flush metal baked aluminum finish, all stair rails in a modern aluminum design.

All general lighting is semi-recesses controlled for dim, medium and bright. The ceilings are acoustical plaster throughout. The Utility Room is placed centrally on the 2nd Floor, using the hung ceilings above and below as a return plenum chamber for the heating and air conditioning system.

The capacity of the Library is 67,000 volumes giving them a circulation of 100,000 volumes.



FIRST FLOOR PLAN



SECOND FLOOR PLAN

THE FIFTH AVENUE OFFICE OF MANUFACTURERS TRUST COMPANY

SKIDMORE, OWINGS & MERRILL,
Architects

GORDON BUNSHAFT,
in charge of design

WILLIAM S. BROWN,
coordination



Dwarfed by its skyscraping neighbors, the new Fifth Avenue Office of Manufacturers Trust Company nestles among towering buildings at the corner of Fifth and Forty-Third Street. This glass and polished aluminum bank is five stories high, thus avoiding setbacks and use of valuable midtown ground floor space for other than customer conveniences.

Where banks once sold "security," now they sell "service." Competition for the "little customer's" account has increased over the years to the point where merchandising practices considered inappropriate a generation ago are now basic to survival.

This was part of the thinking behind the bold advance in bank architecture represented by the new office of Manufacturers Trust Company at Fifth Avenue and 43rd Street in New York City.

This five-story office amid skyscrapers is walled, not with the giant marble slabs of yesterday, but with polished aluminum and clear glass — some panes as large as 9 feet by 22 feet. Purpose of this new concept in bank design was to turn the building into a "showcase" to attract attention, talk — and new customers — to the Trust Company's 112th branch. Its bright, wide open look and skillful use of color also create a friendlier, more informal atmosphere for customers and employees alike.

The \$3,000,000, 73,000 sq. ft., air-conditioned building stands on a plot 100 by 125 feet with the main entrance on 43rd Street, just west of Fifth Avenue. This permits an uninterrupted display window along the entire 100-foot Fifth Avenue frontage.

Its glass walls support no weight. Hanging as they do from the floor above, steel members of the mullions are in tension rather than compression so their widths are minimal and emphasize the "all-glass" facade.

There is a functional difference, too, between this and older banks. Skidmore, Owings & Merrill's Gordon Bunshaft says the bank "is a store type operation — open, departmentalized, efficient."

On the main floor, only ten feet behind the glass wall, the bank's thirty-ton Mosler Vault door — raised from the traditional basement location — stares confidently at Fifth Avenue passersby, secure in the knowledge that working in full view of eight million curious New Yorkers would discourage even the most brazen safecracker.

On the same floor, seventeen positions for paying and receiving tellers assure rapid handling of day-to-day transactions. Tellers do their business over open counters, free of grillwork of any kind.

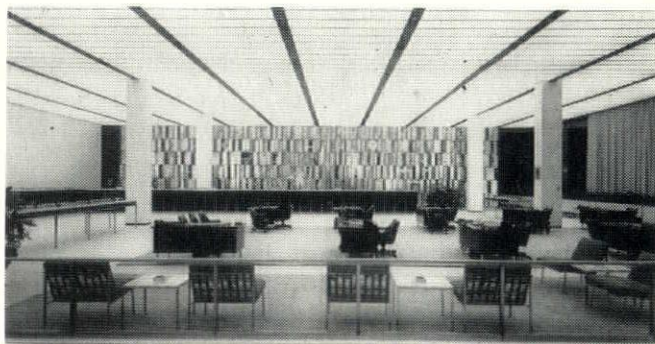
Commercial accounts are handled at 120 more feet of teller space on the second floor. Here the architec-

tural highlight is a 70-foot long, 16-foot high, six-ton sculptured metal screen by Harry Bertoia which acts as a backdrop for the Main Banking Room.

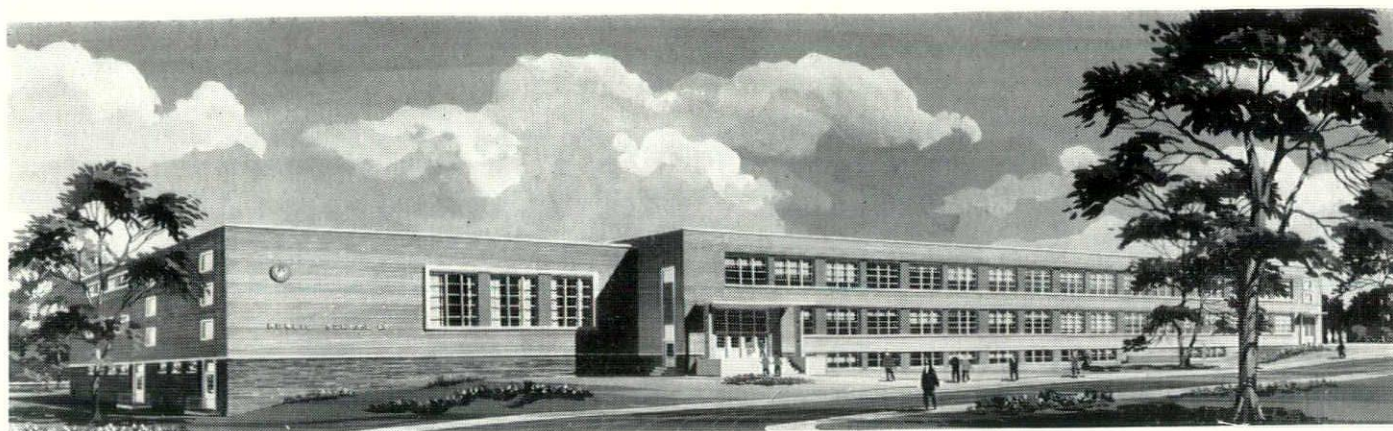
A cantilever construction in two directions holds the number of interior columns on this floor to eight. A 20-foot cantilever reaches from the column line to 43rd Street and an 11-foot cantilever to Fifth Avenue.

Personal loan and bookkeeping facilities are on the third floor, the bank's real estate and mortgage department on the fourth, and executive offices and the board of directors room on the fifth.

The bank opened for business October 4, 1954, and was recently selected by the Fifth Avenue Association as "the best new commercial building" constructed during 1954 and 1955.



Senior officers, representatives of the Foreign and Trust Departments and 24 teller positions for commercial accounts are located on the second floor of Manufacturers Trust Company's new Fifth Avenue office. Harry Bertoia's sculptured metal screen provides a colorful background for the Main Banking Room.



PUBLIC SCHOOL 50 . . . RICHMOND

MICHAEL L. RADOSLOVICH
Chief Architect

MILNES & MELNIKER, *Architects*

WILLIAM H. CORREALE
Director

Square Foot Area of Site	227,397 S.F.
Square Foot Area of Building (1st floor)	31,492 S.F.
Total Building Cubage	1,142,714 cu. ft.
Cost of Building Construction	\$1,725,000
Cost per cubic foot	\$1.51
Pupil Capacity — 894	
Cost per pupil — \$1,927	

Includes General Craft Shop, Unassigned Play Area, Kitchen and Lunch Room in Basement. 9 Class Rooms, 2 Kindergartens, Auditorium (422 seat capacity), and

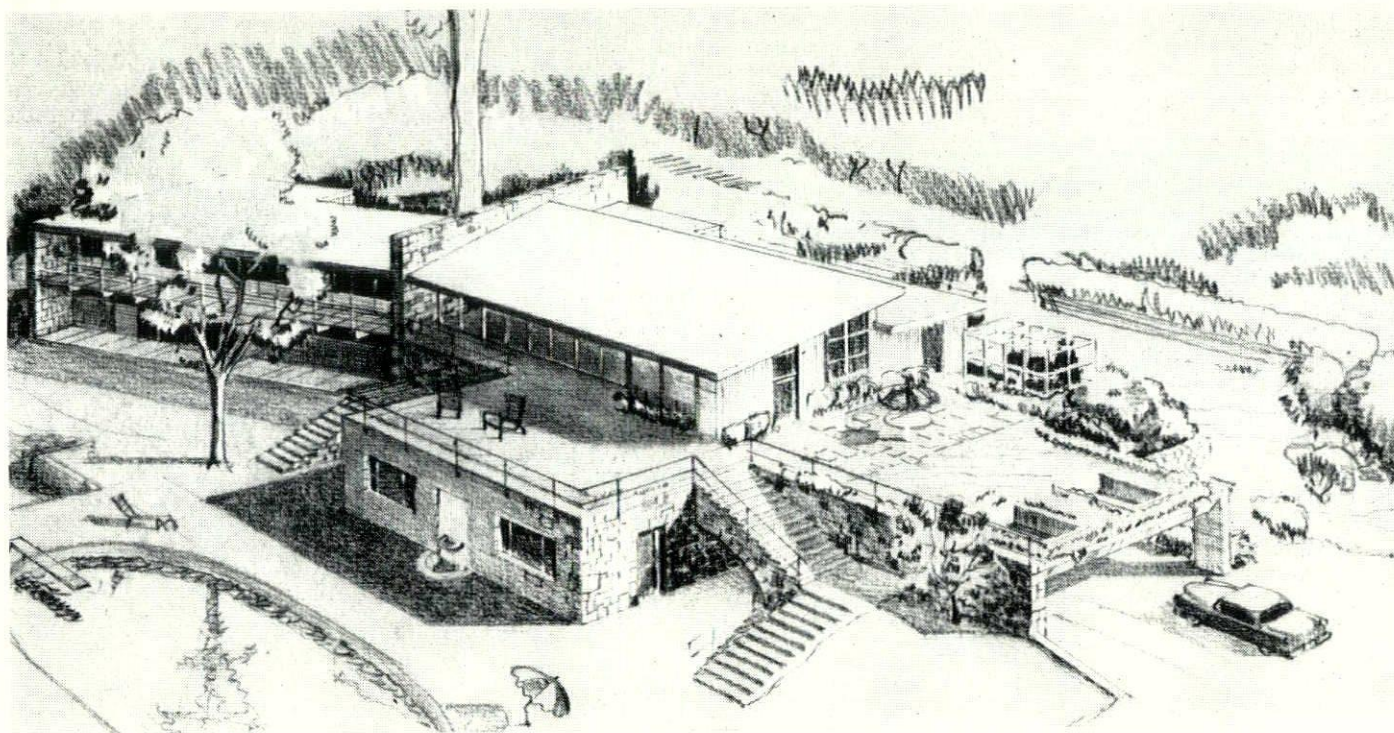
Gymnasium on 1st floor.

9 Class Rooms, 1 Art Room, 1 Science Room, 1 Cooking and Sewing Room and 1 Library on 2nd floor.

Landscaping and fencing will be provided around the building, in addition to a school garden, and a kindergarten playground. The remaining portion of site, not occupied by the school building etc., will be developed into a playground area, by the Parks Department of New York City.

RESIDENCE of MR. and MRS. NORMAN E. BLANKMAN

IRVING S. SAUNDERS, *Architect*



The residence was located on the existing clay tennis court overlooking the existing swimming pool, which was the former estate of Percy Uris, Builder.

The big house was destroyed by fire about 3 years ago and the pool and tennis court remained of the former estate. The site is situated quite high and has a panoramic view of the skyline of Manhattan and Long Island Sound.

The floors of the living room, dining room and den are in terrazzo. The master bath is all marble, and the powder room is done in travertine.

Unusual lighting is achieved by low voltage wiring and dimmer controls for the large living areas. By incorporating the existing improvements into the overall design the result is a residence which looks like it was all built and designed at the same time.

NEWMAN RESIDENCE . . . LUDERS & ASSOCIATES, Architects



The Owners came to the Architect wanting a nationally known contemporary prefabricated home. Local restrictions, however, did not permit the erection of this particular prefabricated home. In its place, the Architect designed this residence about the specific needs of the client and the particular site conditions.

A balcony was projected along the entire length of the house to afford a greater ease of circulation between inside and outside with an upper level living area. The balcony projects over the terrace below and overlooks a nearby brook.

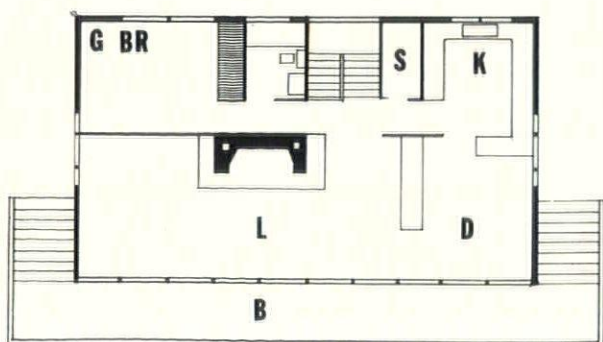
With the use of stock materials and simplicity of construction, costs (including architect's fee) came in substantially under the cost of erecting the comparable prefab.

Owners: Mr. & Mrs. Eugene Newman

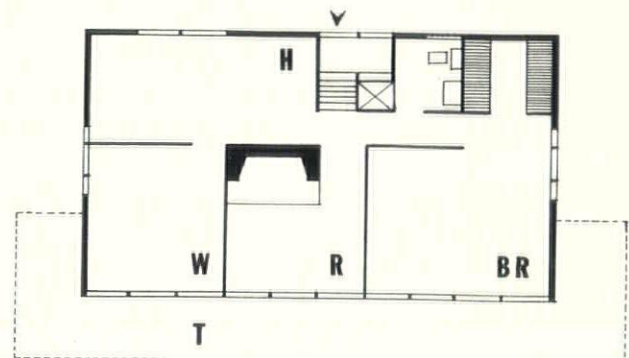
Location: Irvington-on-Hudson, N. Y.

Description of Materials:

Floors Upstairs:	vinyl and oak
Downstairs:	vinyl on concrete slab
Walls	plasterboard throughout
	ceramic tile in baths.
Ceilings Upstairs:	exposed plank and beam
Downstairs:	plasterboard
Fireplaces	stucco on concrete block
Sash	aluminum casement
Roofing	210# Asphalt shingles
Siding	Random width vertical T & G cypress siding
Balcony	projecting floor beams covered with spaced 2x4. Railing made of 2x2 cypress.
Heating	American-Standard forced warm air, Perimeter loop downstairs, ducted supply and return upstairs.
Plumbing	American-Standard fixtures.



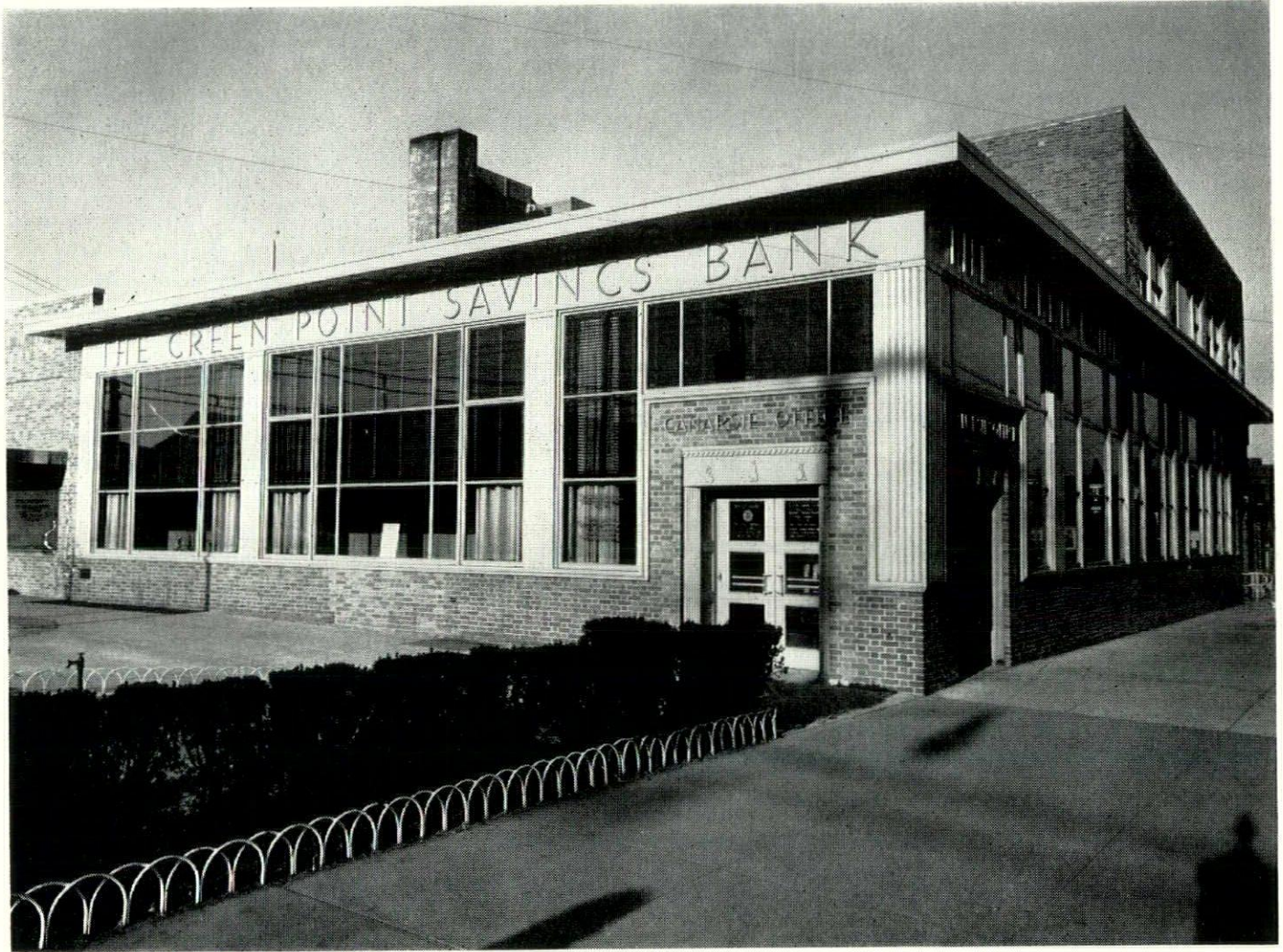
UPPER LEVEL



LOWER LEVEL

CANARSIE BRANCH GREEN POINT SAVINGS BANK

BROOKLYN, N. Y.



ALTON L. CRAFT, *Architect*

The recently completed two story extension of the Canarsie Office of the Green Point Savings Bank located at 1435 Rockaway Parkway, Brooklyn, provides the latest and most modern banking facilities for both patrons and employees. The project, completed in November 1955, consists of a new extension to an existing building as well as alterations and redecoration to the existing bank building.

The first floor provides all of the accepted banking services and includes the public banking area, safe

deposit department and vault. A walk in tellers booth (Early Bird Window) provides a complete banking service to patrons using a nearby bus terminal who are unable to wait until the usual banking hours. The second floor contains a Board Room, several Conference Rooms, Rest Rooms, Lounge and Offices. The basement contains a Lunch Room for the employees, toilet facilities, mechanical equipment, storage space and a new record vault.

BAKERS' *Choice!*



Ironbound Continuous Strip Maple Flooring new Hart's Bakery, Rochester, N.Y. Architect: Benedict Ade, Rochester, N.Y.

IRONBOUND* CONTINUOUS STRIP* MAPLE FLOOR

Bakers, like architects, can be a rather choosy lot. When it comes to long-run economy, they know what they want. And for long-run floor economy, they want Ironbound Continuous Strip Maple Flooring.

WHY? Because Ironbound solves baker's floor problems so much easier than any other type of flooring. It's easy on the feet, easy to clean, doesn't create dust, doesn't splinter or crack. And its smooth natural beauty, tight grain and uniform resiliency last so much longer than ordinary floors. These benefits are achieved by selecting finest strips of Northern Maple, laying them in mastic and interlocking each strip with sawtooth steel splines. Then, too, there's the fact that every Ironbound floor is installed by experienced, competent flooring men.

To give bakers even greater long-run floor economy, Ironbound flooring is now available Dri-Vac treated with Woodlife, the original water repellent preservative containing PENTACHLOROPHENOL. This exclusive Ironbound feature assures protection against termites, vermin and fungi attack and also protects against moisture absorption, shrinking, swelling, grain raising and "cupping".

These are a few of the reasons why Ironbound Continuous Strip Maple Floors are chosen for the nation's finest bakeries, gymnasiums, classrooms, machine shops, ballrooms, laboratories, warehouses and auditoriums. For more information, write to your nearest New York State Ironbound installer.

IRM FLOORING COMPANY, INC.

2650 Park Avenue, New York 51, N.Y.

YAEGER FLOOR COMPANY, I

Post Office Box 74, Brighton Station, Rochester 10

The Name **HOPE'S** *Guarantees*
CUSTOM WINDOWS



*Headquarters Building: Carnegie Endowment for International Peace—New York, N. Y.
Architects: Harrison & Abramovitz, Goldstone & Abbe Builder: Cauldwell—Wingate Co.*

The unusual flexibility and structural strength of HOPE'S STEEL CUSTOM WINDOWS permit the architect complete freedom in design. This strikingly handsome building contains 660 custom windows made to the sizes and designs required by the architects, while on the front elevation the windows were especially developed to be installed

in tubular metal frames for this unusual effect.

Hope's Steel Windows retain their weathertight seal and ease of operation for the life of the building. They are well-known for low maintenance costs.

Hope's engineers are ready to give you any assistance you may require. Just write!

HOPE'S WINDOWS, INC., Jamestown, N. Y.

THE FINEST BUILDINGS THROUGHOUT THE WORLD ARE FITTED WITH HOPE'S WINDOWS

ART AND FINANCE

By ARTHUR C. HOLDEN, *Architect*

Contributing Editor, Arthur Holden has recently completed a book of sonnets depicting an Architect's impression of that most fabulous of cities, New York. The book, soon to be published, is profusely illustrated by Alfred M. Butts, an associate of Mr. Holden, from the firm of Holden, Egan, and Associates. It is appropriate that the following selection of sonnets be included in this Metropolitan New York Issue of the Empire State Architect.



PROPORTION

Majestic city — city of my birth;
The forms man rears blot out the sense of earth.
My city is the meeting place of lives;
From human love and work, this shell survives.
Majestic city — shadows dark and wide;
Capacity for beauty shadows hide;
Space badly cramped so men must fight their way,
Eyes looking down unnoticed the day.
Majestic city — with its towers lighted
Center of wealth and yet with acres blighted,
These forms within which human life unfolds;
Our turn to build so vital beauty holds,
Emergent harmony from thoughtless strife,
Build with proportion, dignity and life.

THE TRANSPARENT BANK*

See that transparent bank which Bunshaft built
Its clear glass walls will let men see inside,
For open knowledge of his functioning
Has now become the modern banker's pride.
How different from the temple's mysteries
Which once symbolically our banks concealed!
Now, emphasis on keeping of accounts,
Bank service understandingly revealed.
Machines have made accounting easier,
Recording what men enter or withdraw.
Men's promises become receivables,
Combined accounts have built a banking store.
Turn and return of money, growing, growing —
What does it mean, as man becomes more knowing?

* See Appendix

UNION SQUARE

Broadway is cut by Fourteenth at the Square.
Here once were centered shops which drew fine trade
And quality and fashion filled the air,
But now the shoppers seek the cheapest grade.
Statues and trees which line the pleasant walks
Have been renewed, though progress here has faltered.
Now Union Square resounds to fiery talks
While silent buildings stand and few are altered.
Still garish signs declare that trade is wanted,
Three subways intersect beneath the grass,
Throwing their crowds upstairs to shop undaunted.
Here, human beings seem to be just mass,
And zealot speakers shout of brotherhood
Where art and harmony aren't understood.

FIFTH AVENUE

Fifth Avenue took on its famous name
When spacious mansions told of money made
And rivalries of wealth became
Attractions for the crowds thus bringing trade.
The city's greatest stores began to creep
Along the Avenue and garish great hotels
Drew wealth which made men wonder how to keep
The maddening pace, although they heard the bells
From spired churches call for reverent peace.
Great mansions built in imitation of dead art
In spite of zoning fall, while offices increase.
More jostling people come, each plays his puzzled part.
So beauty fades while progress makes its way.
The best on Fifth lives only a brief day.

THIRD AVENUE

The noisy El, that once was pulled by steam,
Has shadowed properties along its route;
Till narrow tenements which flank it seem
Its counterpart in darkness, dust and soot.
Deep shadows crisscross from the ties and track,
The trains make clatter and crowds push and stink,
Oblivious that street noises answer back,
Drowning what neighbors shout, or feel, or think.
In days to come, will viewless fam'lies still
Sit at their supper? then to draw apart,
The women's elbows on the window sill,
The men and children seeking thrills to start?
The El is doomed. What will Third's future be?
Can it be planned so families beauty see?

ASPIRING TOWERS

The wealth that down the Hudson River rolled
Started the trade that made my city great.
The ships that carried produce and brought gold
Lifted a village to majestic state.
Afar, from ocean, meadow or the sky,
Manhattan's towers lift their silhouette.
They are my city's welcome to the eye,
A marvel which the mind can not forget.
When nearer viewed, the towers lose their grace.
Chaotic forms are all too evident.
False ornament seems like a double face
Betraying a confusion of intent.
Yet calm above the city's daily strife,
Tower these symbols, man's aspiring life.

Join ^{THE} MARCH OF DIMES

"Remember Me"



THE NATIONAL FOUNDATION FOR INFANTILE PARALYSIS • FRANKLIN D. ROOSEVELT, FOUNDER

BUILDING FOR THE STATE OF NEW YORK

Part VI

1790-1890

LANDSCAPING CAPITOL PARK

HARLEY J. MCKEE

Among the papers which the Onondaga Historical Association saved from destruction in a Canadian paper mill, originally coming from the New York State Comptroller's office, are a number of items relating to grading, paving, walling, fencing and planting of the grounds around state buildings in Albany. In 1814 a project for improving the site of the first State Offices was carried out; this included planting trees and shrubs, sodding the lawn, laying drains and building a fence. 50 forest trees were brought in, consisting of locusts, chestnuts, elms, birches and beeches. To these were added 100 small pines, spruce, sassafras, sumach and other kinds not specifically mentioned. A number of plants were purchased from E. & E. Janes of Lansingburgh in April: locust, horse chestnut, honeysuckle, roses, acacia, "saringas," hydrangia, mountain ash, spruce, plum and loristina. A double ballister fence 76 feet long was built across the lot. This was of wood, with eight posts surmounted by turned urns. Drains were constructed of large brick, some of which were paid for by the sale of "the old Necessary." This work, or at least the structural parts of it, was directed by William Colling, who was also in charge of repairs and alterations to the building in 1813 and 1814. He died before completion of the landscaping, and on August 11, 1814 the final payment to his estate was acknowledged by Catherin Colling.

In 1832 it was decided to erect a fence around the Capitol Park and to make other improvements. Following legislative authorization a committee of the Trustees of the Capitol was appointed, consisting of Silas Wright, Jr., Comptroller, Azariah C. Flagg, Secretary of State, and Greene C. Bronson, Attorney General. Herman V. Hart was made Superintendent of the work. On July 9 an advertisement for proposals was inserted in the Albany Daily Advertiser, to run six times at a cost of \$3.50. Since this gave quite a full

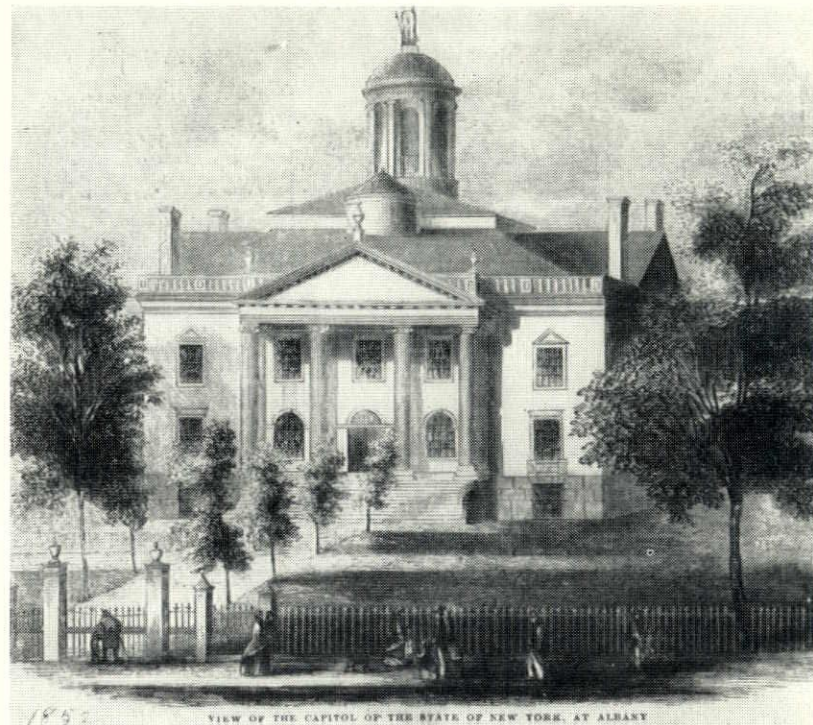


Photo: NEW YORK STATE LIBRARY

description of the fence I quote substantial portions:—"erecting an iron fence around the Capitol Park, in most respects similar to that now constructing round the City Park, the following variations only being proposed:

"1st. A bottom rail to be added, but still the bannisters to be inserted in the coping in the same manner with the other fence.

No.

Albany, June 14th 1832

I certify that I have measured a freight of Stone for *John Burns*

containing *Thirty nine* yards, *Seven* feet.

39 Yds. 7 ft. — lds. ft.

Fees, \$ 78 cts.

Wm. Theaner
Measurer of Stone for the City of Albany.

"2nd. The rails to be each of the same width with the top rail of the City Park fence, but both to be 3-4 of an inch in thickness.

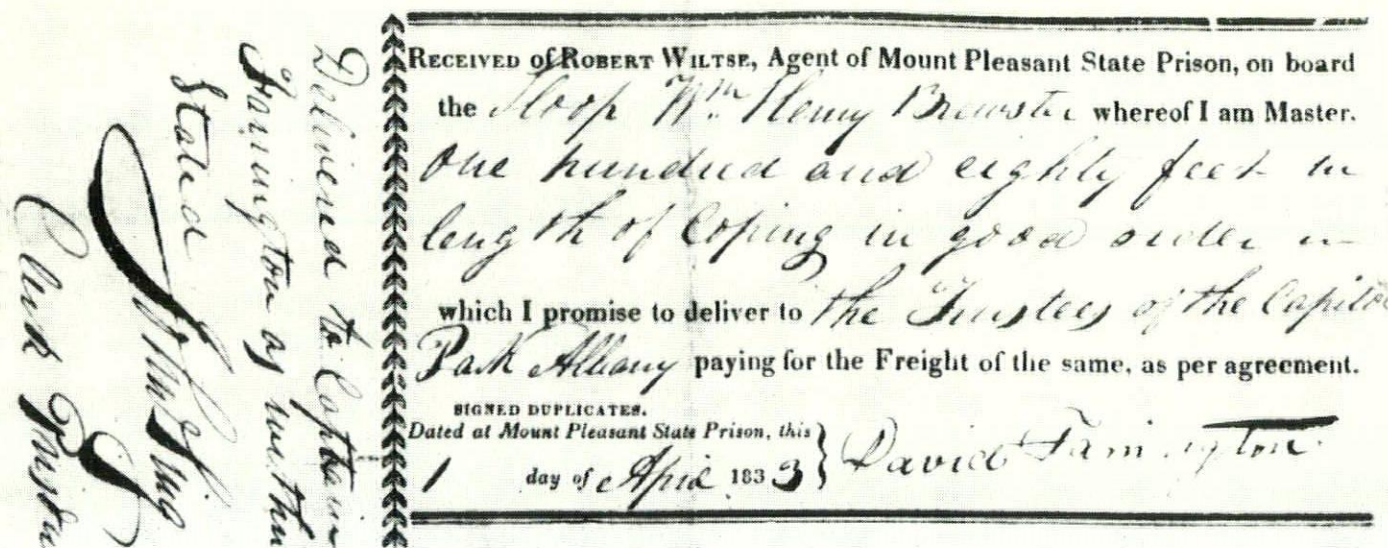
"The proposals to be made by the foot run of the fence, not including the gates.

"Separate propositions for the gates to be made containing an offer in gross for the large gates, and for a single small gate. The large gate and each small gate to be made according to the plan adopted for similar gates for the City Park."

On July 31 an agreement was made between the committee and Bailey G. Hathaway for furnishing and erecting the fence, and on September 4 the same contractor signed an agreement to furnish and install the gates. The fence was to cost \$3.53 per running foot; the gates were to be paid for according to weight, ten

construction proceeded under the superintendence of Mr. Hart. By the end of 1832 the wall was nearly complete, but not much of the coping was in place and the committee had to admit that the fence contractor could not be held accountable for the delay. Coping stone was procured from Mount Pleasant State Prison, better known today as Sing Sing; larger quantities of it came through by April of 1833 so that the fence could be installed and completed late in July. The illustrations reproduced here show forms used for certifying stone sent from the Prison, and for measuring by the Albany official "Measurer of Stone."

In the meantime grading and moving earth, laying drains, planting and seeding were being done, but not all operations could be performed at the most favorable time. A voucher covering the services of John J.



cents per pound for all wrought and cast iron and lead in the completed work. The job was to be completed by November 15, with an additional penalty-free month if delays were caused by unavoidable misfortune, nor would a penalty be assessed for delays occasioned by action of the committee. The articles of agreement included specifications, all in a single document, which was not an unusual practice at that time. The fence was to have wrought iron bars ornamented by cast iron balls. It was to rest on a stone wall four feet deep, 1'-6" thick at the top and 3'-0" at the bottom, and be set into the stone coping with lead. The principal gateway on State Street was to have stone piers and sills, with cast iron pedestals from which wrought iron gates were to hang. It followed a design by Henry Rector, architect, except for the omission of the two outside stone piers.

The state furnished the stone wall. A contract for excavation was let to Matthew Hallenbeck, stone was brought in, masons and stonecutters were hired, and

Kennedy in June 1832 indicates that he was to "transplant and retain if possible selected trees in that contrary season of year" and "after finish setting them out attended watering morning and evening 5 days, 4 hours per day." We may wonder if the trees survived. In July 1833 considerable earth moving was done under the direction of James Wilson, of the firm of Buel & Co., seedsmen and florists. A bill from this company shows us a seeding formula of the time: 10 pounds of white clover, 1 pound trefoil, 1 bushel red top, 1 peck rye grass, and 1 bushel oats — the cost of this seed amounted to \$7.31¼. Presumably this was a temporary ground cover, to be ploughed under later to make way for a more permanent lawn.

As nearly as can be determined from the accounts, the improvements to Capitol Park cost \$5,974.74. The major item was, of course, the 1270-foot fence and its gates. Some stone for the wall was on hand before the work began, but its amount and value were not given in the documents at my disposal.



American National Red Cross Building, Brooklyn, N. Y. Architect: Eggers & Higgins, New York City. Contractors: George F. Driscoll Co., Moccia Construction Corp., both New York City. Windows: Lupton Master Aluminum.

"On the Job"
with the
American Red Cross

The current slogan of the American National Red Cross is equally fitting for the windows in their new Brooklyn building. They are Lupton Master Aluminum Windows and will be "on the job" for many years of efficient service. Designed for permanent beauty these modern aluminum windows are backed by a reputation for quality that's fifty years old.

When you plan with Lupton, you work with a *complete* line. You'll find windows in steel or aluminum for any project on your boards. And for a truly modern building, use the Lupton Simplified Curtain-Wall System. It offers you complete freedom in design plus savings in construction time. You'll find more information in Sweet's, or write direct.

MICHAEL FLYNN MANUFACTURING CO.

Main Office and Plant: 700 East Godfrey Avenue, Philadelphia 24, Pa.

New York Office: 51 East 42nd Street, New York 17, N. Y.

West Coast Office: 672 South Lafayette Park Place, Los Angeles 57, Cal.

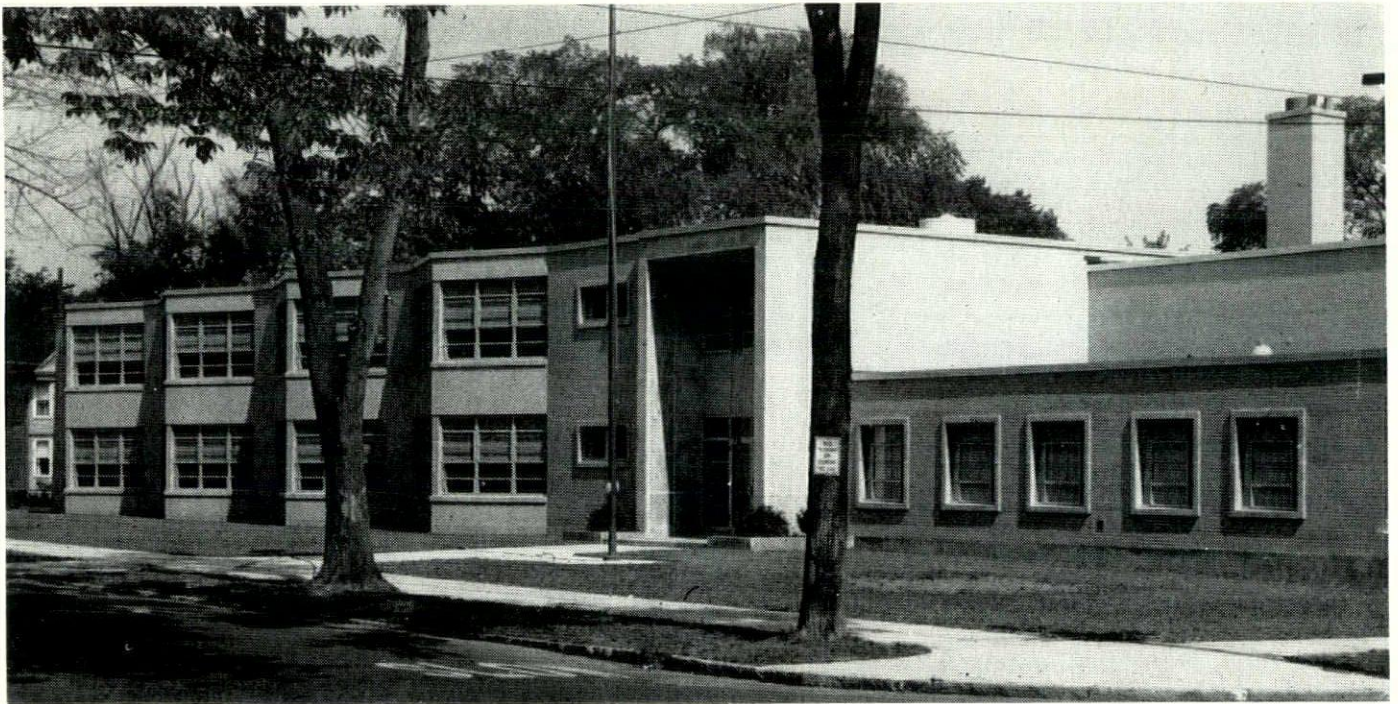
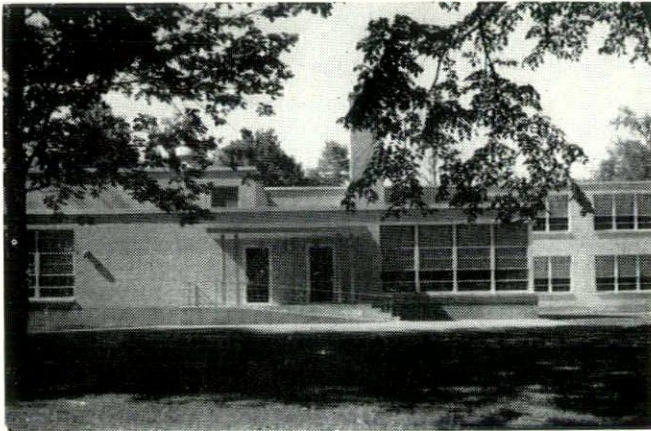
Stockton Office and Warehouse: 1441 Fremont Street, Stockton, Cal.

Cincinnati Office: DeSales Bldg., 1620 Madison Road, Cincinnati 6, Ohio

Sales Offices and Representatives in Other Principal Cities

LUPTON

METAL WINDOWS AND CURTAIN-WALLS



MILLER SCHOOL—UTICA, N. Y.

FRANK C. DELLE CESE, *Architect*

BRICK **for beauty** **and** **durability**

The use of brick is the perfect answer to today's demand for naturally durable and beautiful building materials. And they offer an almost unlimited range of colors and textures to fit any decorative scheme.

WECKESSER BRICK CO., ROCHESTER, N. Y.

MOHAWK BUILDING MATERIALS CORP., RENSSELAER, N. Y.

HUTCHISON-RATHBUN, INC., ROCHESTER, N. Y.

THE BELDEN-STARK BRICK CORPN., NEW YORK CITY

BINGHAMTON BRICK CO., INC., BINGHAMTON, N. Y.

BUFFALO BRICK CORP., WEST FALLS, N. Y.

PARAGON SUPPLY, INC., SYRACUSE, N. Y.

ACME SHALE BRICK CO., INC., BUFFALO, N. Y.

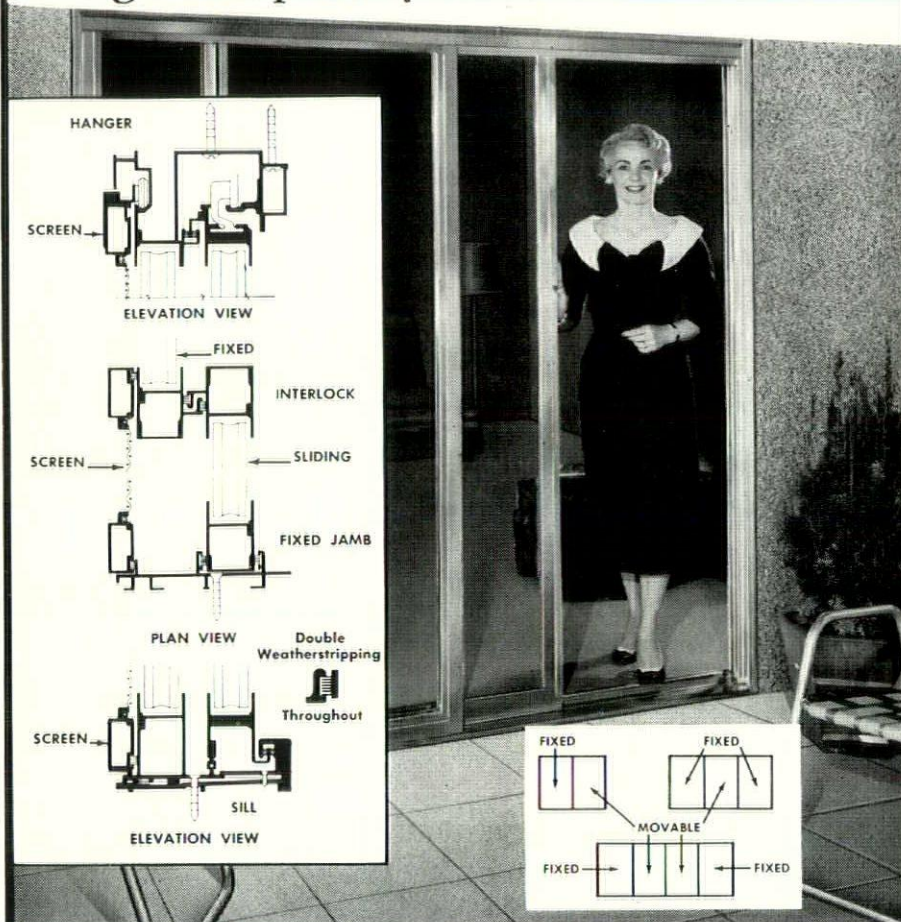
SYRACUSE BRICK CO., SYRACUSE, N. Y.

CONSOLIDATED BRICK CO., INC., HORSEHEADS, N. Y.

JOHN H. BLACK CO., BUFFALO, N. Y.

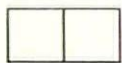
New Fleetlite Sliding Glass Door

Designed Especially for Northern Weather

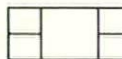


Now you can specify Fleetlite Sliding Glass Doors or attractive Picture Walls that block winter winds and western dust storms yet bring outdoor beauty into any room. Your clients will appreciate the extra benefits of this quality engineered trouble-free construction.

Doors slide silently and easily on overhead ball bearings. Screens glide on nylon rollers. Doors interlock with double mohair weather stripping on all four sides. Specially designed aluminum extrusions provide rigidity and maintain alignment. You can specify plate glass or insulating glass up to one inch thick.



Double Horizontal Sliding Windows lift out for easy cleaning. Mohair weatherstripping.



Picture window combination with double, double-hung flanking windows.



Jalousie Windows and Doors protect in any climate. Inside screens replaceable with storm sash.

Achieve design harmony with matching Fleetlite double hung and sliding windows.

Please send literature on:

- ☐ Sliding Glass Doors
- ☐ Horizontal Sliding Windows
- ☐ Double-Hung Windows
- ☐ Jalousie Windows and Doors

Name.....

Address.....

City..... State.....

Fleetlite
AMERICA'S FINEST WINDOW®

FLEET OF AMERICA, INC., 2023 Walden Avenue, Buffalo 25, N. Y.

TWO NEW PARTNERS

Darrel D. Rippeteau of Watertown and Sarkis M. Arkell of Albany have become partners in the architectural firm of Sargent-Webster-Crenshaw & Folley of this city, according to announcement by D. Kenneth Sargent. The two new members of the architectural firm have previously been associated in the architectural practice. Both men are members of the American Institute of Architects and the New York State Association of Architects.

EASTERN NEW YORK CHAPTER

Harold Friedman, consulting engineer of the office of Joseph Ottenheimer, Consulting Engineers, Albany, New York, presented a very interesting paper on the comparative costs of incandescent and fluorescent lighting for school rooms. Mr. Friedman showed that when the total cost picture was taken into account over a period of 10 years, fluorescent lighting was by far the more economical installation. The total cost over a period of 10 years consists of the initial cost and operating cost. Initial cost includes material cost exclusive of fixtures, total cost of fixtures and total cost of labor. The operating cost includes cost of power per year, cost of lamps per year and the cost of owning the fluorescent light fixtures. At the end of 10 years, the comparison definitely is in favor of the fluorescent installation. The net savings are almost equal to the initial cost of installation.

Mr. Friedman also showed a very interesting method of lighting a gymnasium-auditorium, by the use of sky-domes approximately 7 feet by 9 feet, into which four artificial lights, fluorescent fixtures, were mounted. Above the fluorescent fixtures is a motor-operated louver which, when in a closed position at night, acts as a reflector for the incandescent lamps; in a closed position during the day serves to darken the auditorium to one foot candle. Mr. Friedman showed colored moving pictures of the installation which showed the installation to be most effective.

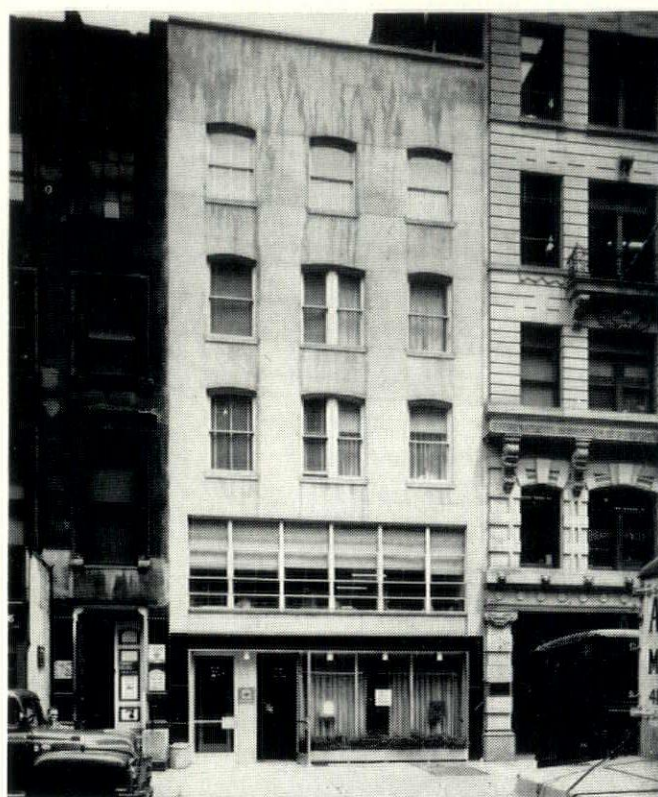
The gymnasium-auditorium is located at Maple Hill High School, Castleton-on-Hudson, designed by W. Parker Dodge Associates, Architects and Engineers of Rensselaer, New York.

THE ARCHITECT'S OWN INSURANCE POLICY

MICHAEL D. SCHWARTZ, *Architect*



BEFORE RENOVATION



AFTER RENOVATION

After doing many variations of the small building reconstruction and receiving a fair fee on each one, the architect should reflect on the condition of the times, an ever increasing inflationary trend, on his own energy capacity diminishing as the years go by. Every architect must see himself as being in a hazardous professional field where the very nature of the work demands his personal attention. It is almost impossible to run a firm unless all the principals are active, in good health, and able to devote their entire energies to the work. This is even more difficult when only one principal is involved.

What about the Architect's wife and children; what have they left should he either through accident, sickness, or old age lessen his capacity for work? He may have an insurance policy for such mishaps but too often they pay off in inflated dollars leaving the difficulty only somewhat alleviated.

The answer, as I see it, is if he can afford to devote a minor portion of his time to being his own client he can open several excellent paths of security for himself and his family. He will have the advantage of experimenting with some of his pet theories or new ideas and feeling their full effect as to cost savings or construction speed-ups etc. He can actually "feel" the cost of a construction project even more than he does when engaged on a professional architectural supervisory contract. He gains prestige from real estate operators, property owners, and others in the field, that he can do for himself successfully what he is doing for them — a point I found most important to clients who sometimes doubt the need to pay a fair fee for advice. These people do realize that the architect has "know-

how" which they respect but lack of capital prevents him from exercising this talent.

Very often an Architect recommends a method or an idea to a client for the economic betterment of a project and the client failing to see the possibilities, rejects it. This is particularly true when it comes to aesthetics. Good looks can pay off in higher income return for practically the same investment.

This particular project was accomplished with the partnership of Mr. Harry K. Weiss of the Helmsley-Spear Company who had the "know-how" in his field. With each contributing his services and money a very successful venture from both the economic and aesthetic standpoint was worked out.

We purchased a broken-down rooming-house with a shabby bar occupying the store on the ground floor. The location was on the fringe of the fine Grammercy Park area close to major arteries of transportation.

Most of the original structure was retained but new plumbing, electrical work, and kitchenettes were added. Particular care was given to the choice of colors used in the painting of apartments and hallways. Gilded mirrors, carpeting, and elegant lighting added a rich quality to the hallways. White, gold and crimson paint as well as brass fixtures and hardware created an effect that appealed to the higher rental levels.

We found that the smaller units (1½-2 rooms) were in great demand in good neighborhoods. When completed, the results showed better than 25% return on the capital investment, as well as a handsome building with an attractive restaurant and cocktail lounge, executive offices of the N. Y. Telephone Company, and 10 good rental units.

CONCRETE MASONRY HOME COMPETITION

Lake Placid, N. Y. — Winners in the Concrete Masonry Home Competition, sponsored by the New York State Association of Architects and the New York State Concrete Masonry Association, were announced here by Henry C. Quaritius, Jr., Brooklyn, president of the Concrete Masonry group.

Winners were announced, and awards offered by the New York State Concrete Masonry Association totaling \$3,250 presented, at the Annual Banquet of the Architects' Association, held here in conjunction with their Annual Convention.

The Competition, opened to architects, draftsmen, and students of architecture, registered, employed or studying in New York State, sought to "apply the value of architecturally trained effort to the design of concrete masonry homes within the financial reach of a large segment of the home seeking public and to stimulate in the public mind a further desire for architectural service in concrete masonry home design."

The winners follow:

First prize, \$1,000, to John M. Paul and E. H. Paul, 79 Wayne Avenue, White Plains.

Second prize, \$750, to Patrick S. Raspante, 551 5th Avenue, New York, and Robert R. Braydon, 361 Clinton Avenue, Brooklyn.

Third prize, \$500, to Barry Gourlay, 109 E. 94th St., New York City.

Special Honorable Mention, \$200, to Melvin H. Smith and Noel Yauch, 133 Henry Street, Brooklyn.

Special Honorable Mention, \$200, to Tadeusz J. Kublicki, 19 Park Street, Buffalo.

Honorable Mentions, \$100:

Frederick R. and Maria R. Bentel, 25-30 30th Road, Astoria, Long Island; Francis Leslie Bennetts, 184 Main Street, Whitesboro; Robert Macon, 463 Congress Avenue, Rochester; Richard B. Maides, 361 Overbrook Avenue, Tonawanda; Charles W. Rothery, 149 W. Genesee Street, Chittenango; Howard K. Bonington, 23 Cresent Street, Brooklyn.

The jury of awards consisted of William Lescaze, F.A.I.A., New York City, chairman; John A. Briggs, A.I.A., Rochester; and Peter Blake, architectural editor, "House and Home," New York. John N. Highland, Jr., A.I.A., Buffalo, served as the professional advisor.

More than 4,000 architects throughout New York State were invited to participate.

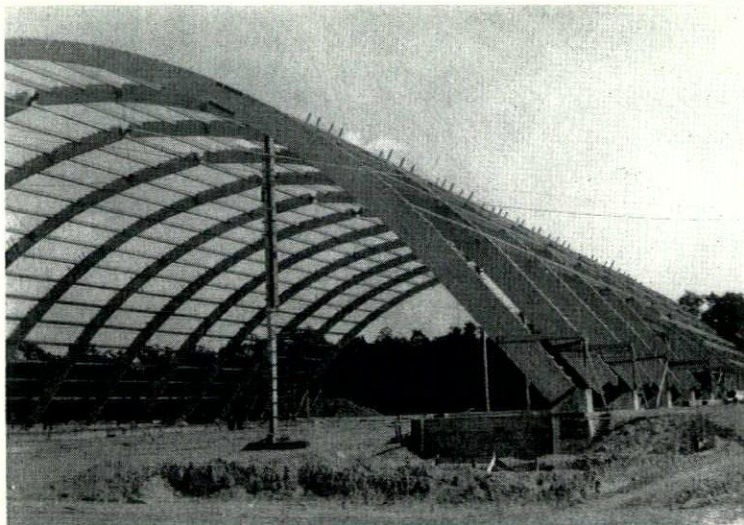
The Competition, in which the National Concrete Masonry Association and the Portland Cement Association also cooperated, had the approval of the Committee on Architectural Competitions, American Institute of Architects.

While the Competition was limited to New York State residents, inquiries concerning the contest came from many other states and from Honolulu.

Another inquiry was received from an architect living, and practicing, in Czechoslovakia.

(Continued on Page 42.)

Master craftsmen of laminated wood roof structures



Commack Arena, Commack, Long Island, New York
Architect: James Van Alst, Centerport, New York
Arch Clear Span — 205' 0" — Linear Arc Measurement — 240' 0"

UNIT

Truly Master Craftsmen — Unit laminated members are designed and fabricated to exacting dimensions, precision manufactured in sturdy Southern Pine — the strongest of all softwoods. Beautiful stained and varnished finishes are available at a fraction of what field finishes would cost.

Investigate, too, the multiple advantages of UNIT DECK, the all-purpose roof sheathing available in Western Red Cedar, Inland White Fir and other species.

For full information on design and quotations, contact your nearest sales office.

SALES OFFICES

Roof Structures, Inc.
45 W. 45th St.
New York 36, N. Y.
Tel: Judson 2-1920
P. O. Box 54
Glen Rock, N. J.
Tel: Gilbert 5-6856

Jerome F. Walker & Assoc.
Valentine Hall Road
Victor, N. Y.
Tel: Victor 2081
185 Mt. Airy Drive
Rochester, N. Y.
Tel: Charlotte 0-902J

NEW FILM AVAILABLE

Write today for information on a new sound color film entitled "Glued Laminated Wood Arches." Loaned free of charge.



UNIT STRUCTURES, INC.

PLANTS AND OFFICES, PESHTIGO, WISCONSIN AND MAGNOLIA, ARKANSAS

ROBERT A. JACOBS

Robert A. Jacobs, of Kahn & Jacobs, was renamed chairman of the Architect and Engineers Division drive for the Federation of Jewish Philanthropies. Citing the outstanding leadership given to last year's campaign, Mr. Jacobs was again selected to lead the formulation of the division Federation campaign.

Stressing the high level maintained by the programs of Federation's 116 agencies, Mr. Jacobs called upon all Architect and Engineers group members to exert a maximum effort in behalf of the forthcoming drive. Entire industry support will determine the success of the annual drive, he noted.

"Federation's hospitals and agencies stand ready to help the sick, the aged and the troubled. In addition, the emphasis on communal and cultural activities in YMHA's and recreational centers associated with Federation is one of the best answers we have to the problem of juvenile delinquency," Mr. Jacobs said.

The 1956-57 campaign of the Federation of Jewish Philanthropies seeks \$18,100,000 to maintain a network of 116 hospitals, child care and family agencies, homes for the aged, community centers and camps that annually serves more than 620,000 New Yorkers of all races and creeds.

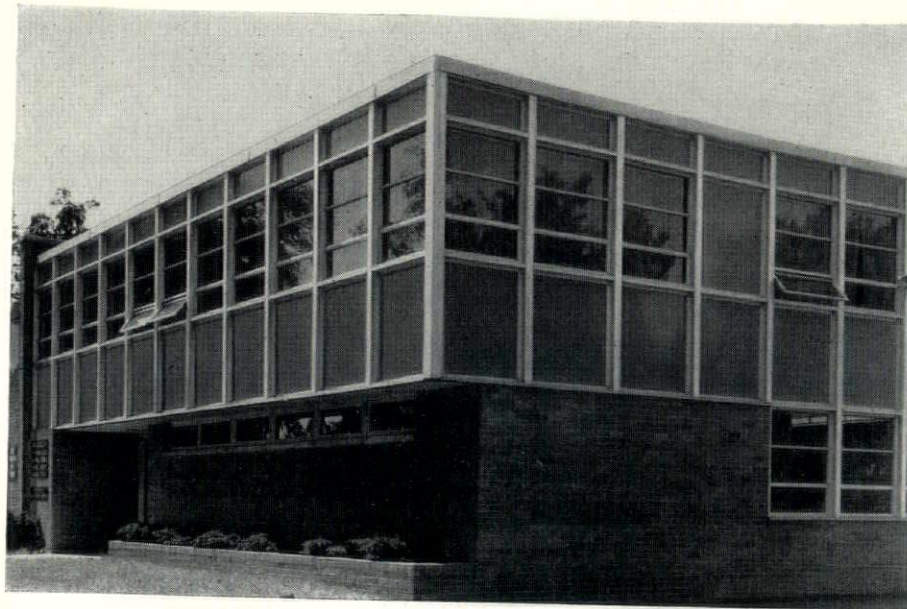
STATEMENT OF THE OWNERSHIP, MANAGEMENT, AND CIRCULATION REQUIRED BY THE ACT OF CONGRESS OF AUGUST 24, 1912, AS AMENDED BY THE ACTS OF MARCH 3, 1933, AND JULY 2, 1946 (Title 39, United States Code, Section 233)

Of Empire State Architect published 6 times a year at Buffalo, New York for Oct. 1, 1953.

1. The names and addresses of the publisher, editor, managing editor, and business managers are: Publisher Julian L. Kahle, 21 Clarendon Pl., Buffalo 9, N. Y.; Editor Warren N. Wittek, 232 Delaware Ave., Buffalo 2, N. Y.; Business manager Julian L. Kahle, 21 Clarendon Pl., Buffalo 9, N. Y.

2. The owner is: (If owned by a corporation, its name and address must be stated and also immediately thereunder the names and addresses of stockholders owning or holding 1 percent or more of total amount of stock. If not owned by a corporation, the names and addresses of the individual owners must be given. If owned by a partnership or other unincorporated firm, its name and address, as well as that of each individual member, must be given.) New York State Association of Architects, 433 S. Salina St., Syracuse 2, N. Y.; Julian L. Kahle, 21 Clarendon Pl., Buffalo 9, N. Y.

EMPIRE STATE ARCHITECT



-nothing cut but costs

Making the most of modern materials, the architect here combined Davidson Architectural Porcelain with aluminum sash. Result: virtually "custom-made" walls, since Davidson Panels are furnished in exact, required sizes for immediate assembly with any framing system. Gray-colored Type A "Double-Wall" Panels, with fiberglass insulation were used in the sash framing. Type 1 Facing Panels provided facing trim for other areas of the building.

Whether it's curtain-wall — or facing over other materials — be sure to investigate the advantages of Davidson Architectural Porcelain for new or modernization construction.

"Made for the job," Davidson Panels provide easy erection, plus trim appearance and durability. Buildings go up faster, more economically, with Davidson Architectural Porcelain, the modern building material.



Consult the Davidson Architectural Porcelain distributor in your area, (listed below). He offers skilled engineering and erection service, plus assistance on any application.

F. P. ARNOLD CORP.

312 Kensington Place
SYRACUSE 10, N. Y.

AT YOUR SERVICE MR. ARCHITECT

- **BLUE PRINTS**
- **PHOTO COPIES**
- **DRAWING MATERIALS**



BUFFALO

BUFFALO BLUE PRINT CO.

L. J. Marquis, Jr., Owner-Manager

Phone CL. 0370

35 Court Street

COMMERCIAL BLUE PRINT CO.

Geo. G. Merry

MA. 0208

208 Lower Terrace

SENECA BLUE PRINT CO.

Herbert Knight

Phone WA. 6772

187 Delaware Avenue

SULLIVAN-McKEEGAN CO., INC.

R. K. McKeegan

Phone CL. 4400

739 Main Street

ROCHESTER

CITY BLUE PRINT CO.

W. F. Schock

Phone Hamilton 3730

Six Atlas Street

H. H. SULLIVAN, INC.

John H. Sullivan, President

Phone Baker 5-4220

67 South Avenue

SYRACUSE

H. H. SULLIVAN, INC.

John H. Sullivan, President

Phone 3-8159

213 E. Genesee Street

SYRACUSE BLUE PRINT COMPANY, INC.

A. B. Nye, President

Phone 76-6251

427 E. Jefferson Street

HOME COMPETITION

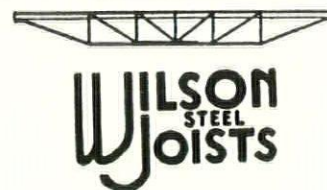
(Continued)

The contestants were to design a one story, two or three bedroom home, with basement, for an average American family in the limited income group to be located any place in the state of New York. The lot size is 60 ft. by 125 ft.

Concrete masonry units were to be used and featured throughout the homes.

The living area of the home was restricted to a maximum of 1,100 sq. ft. for the two bedroom home, or 1,200 sq. ft. for the three bedroom home, and was to be designed on one level. A one-car garage, attached or unattached, was to be included.

The price range of the 1,100 sq. ft. home was not to exceed \$14,000 with garage, and that of the 1,200 sq. ft. not to exceed \$16,000 with garage, both exclusive of land.



UNITED STEEL of AMERICA, INC.

BALTIMORE 19, MD.

P.O. Box 6501

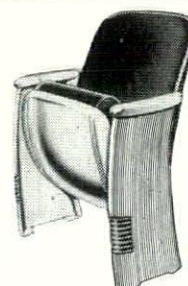
Sparrows Point

ATwater 5-2000

IMPROVE ACOUSTICS

with full-upholstered American **BODIFORM® Auditorium Chairs**

Spring-arch seat construction; backs with scientific, body-fitting contours. No pinching or tearing hazards. Automatic, silent, 3/4-safetyfold seat action with self-lubricating bronze bearings, for long life. Full fabric upholstery compensates acoustically for seat vacancies. Wide range of colors, styles, materials. Write for data.



AMERICAN SEATING

1776 Broadway, New York 19

923 Genesee St. W., Syracuse 4

Electra LIGHTNING ROD SYSTEMS

Electra Designs Lightning Rod Systems to incorporate in Architects' Plans for Every Type Building.

ELECTRA PROTECTION CO., INC.

127 N. Lake Ave. (Tel. 4-4149) Albany, N. Y.

420 Lexington Ave., New York City 17, N. Y.

"YOUR PUBLIC"

MALCOLM B. MOYER

Architects, like Radio performers, have their "public."

Each well established architectural office seems to have a group of contractors upon whom it depends for the execution of its plans. Upon the skill and competence of this group of Craftsmen will depend the degree of excellence of the Architect's work.

The finest drawings and the tightest specifications cannot breathe skill into a fumbler's hands. In the middle twenties, the writer was a sales engineer, following "the building game" and calling on Architects and Steam Fitters who specialized on School Houses. It was an enlightening experience. In some instances, material salesmen were doing engineering layouts for the Architect with the understanding that the remuneration for this work would come from a profitable sale of their products. To insure this, bid sheets were heavily slanted towards the favored products to make doubly sure the contractors who were in especial favor with the Architect, would receive "preferred prices" from the material salesman which usually were sufficiently low to enable the favored contractor to make the low bid.

The ultimate effect of this sort of thing was to cause material men who were "outside" to make early contacts with prospective school building boards in an effort to divert them from this particular architect.

The contractors, who had been hurt by the preferentials, would soon decline to bid.

This narrowed the architect's "Public" and his effectiveness was impaired.

Another Architect made it his practice to insist that his plans and specifications be followed to the letter, even after a gross error had been called to his attention. When the work had been placed, he would issue an order to tear it out and unflinchingly pay the cost out of his own pocket. He hired all his engineering done by legitimate consultants, and gave brief audiences to each sales engineer without favoritism.

Until his death, his office was full of work and he bore a fine reputation. His "Public" was a large one, for any contractor knew that "come what may," he could follow the contract documents with the utmost confidence. Between these extremes stand the majority of offices.

Where the best contractors are loyally bidding on all work which emerges from a certain office, it can be safely stated that the Architects' Practice has been found to be based upon well executed plans, comprehensive and exact specifications, plus a record of square dealing when mistakes crop up (which they always will) and fairness to his contractors. Such an architectural office will enjoy a wide following among contractors and material men and indeed have a "Large Public."

CONCRETE PLANK

ROOF AND FLOOR INSTALLATIONS

TONGUE AND GROOVE
LIGHTWEIGHT



PRECAST
CONCRETE

CONCRETE PLANK CO., Inc.

15 EXCHANGE PLACE

JERSEY CITY 2, N. J.

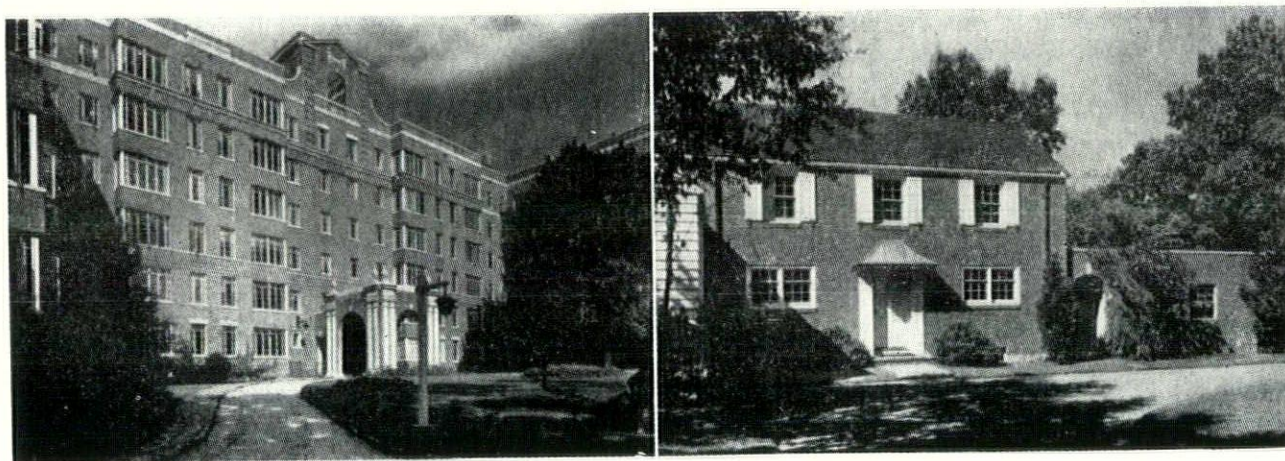
Henderson 4-1401

New York City Phone Digby 9-2450

HUDSON RIVER BRICK

for every

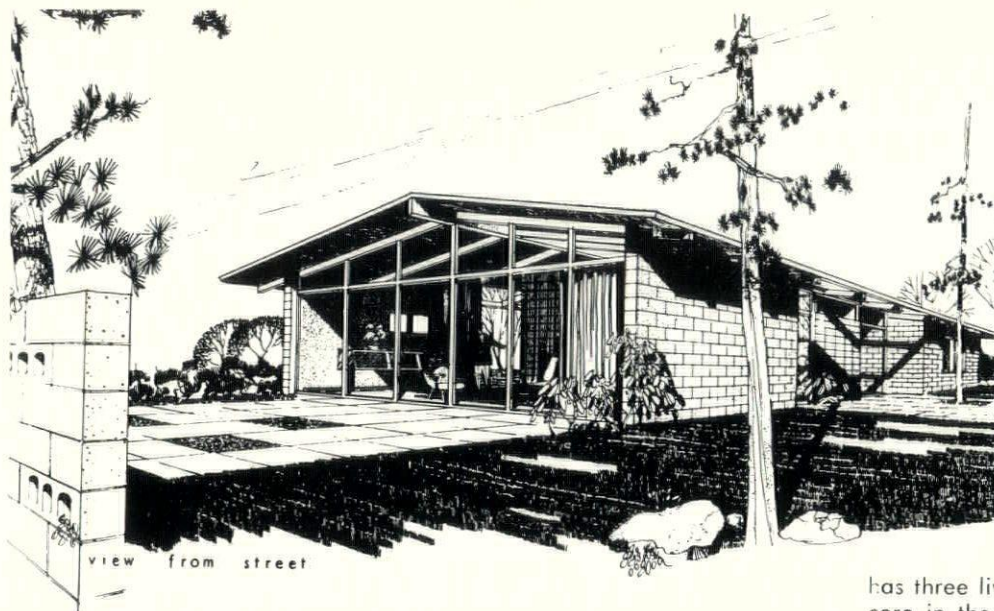
"DESIGN DEMAND"



Whether designing in contemporary or conventional architecture, no building product will do more to enhance the beauty of your building than Hudson River Brick.

BRICK MANUFACTURERS ASSOCIATION OF NEW YORK, INC.
1949 GRAND CENTRAL TERMINAL
NEW YORK 17, N. Y.

Presenting: FIRST PRIZE WINNER in the CONCRETE MASONRY HOME Competition



The New York State Concrete Masonry Association is pleased to announce the winners in the Concrete Masonry Home Competition, which it sponsored in cooperation with the New York State Association of Architects. The National Concrete Masonry Association and the Portland Cement Association also cooperated.

First prize of \$1,000.00 went to the father-son team of John M. Paul and E. H. Paul of White Plains, N. Y. Their bar-type plan home, featuring Concrete Masonry Units, is shown here.

The design, highlighting glass gables and open ceiling, has three living zones with circulation and utility core in the central element separating the bedroom wing and the living-dining wing.

It will be built in 1957 by Anchor Concrete Products, Inc. as a model home and opened for public inspection. Proceeds from the admission charge will go to the American Cancer Society.

Other winners in the Competition:

Second prize, \$750, to Patrick S. Raspante, New York, and Robert R. Braydon, Brooklyn.

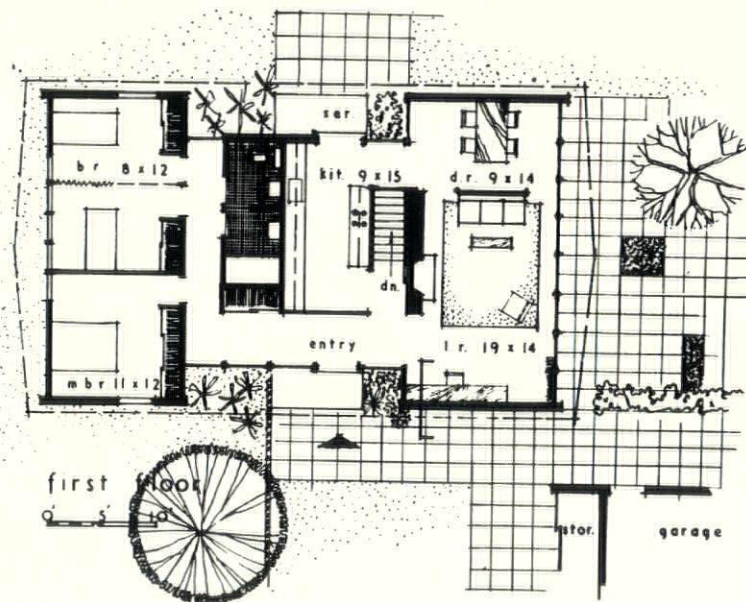
Third, \$500, to Barry Gourlay, New York.

Special honorable mention, \$200, to Melvin H. Smith and Noel Yauch, Brooklyn.

Special honorable mention, \$200, to Tadeusz J. Kublicki, Buffalo.

Honorable mention, \$100 each: Frederick R. and Maria R. Bentel, Astoria, L. I.; Francis Leslie Bennetts, Whitesboro; Robert Macon, Rochester; Richard B. Maides, Tonawanda; Charles W. Rothery, Chittenango; Howard K. Bonington, Brooklyn.

The jury of awards: William Lescaze, F.A.I.A., New York, chairman; John A. Briggs, A.I.A., Rochester; Peter Blake, architectural editor, House and Home, New York. The professional advisor: John N. Highland, Jr., A.I.A., Buffalo.



MEMBERS, NEW YORK STATE CONCRETE MASONRY ASSOCIATION:

ALBANY, N. Y.

Ramloc Stone Co., Inc.

ALFRED, N. Y.

Southern Tier Concrete Products Co.

AUBURN, N. Y.

Auburn Cement Products Co., Inc.

BALDWIN, N. Y.

Nassau Concrete Products Co., Inc.

BEDFORD HILLS, N. Y.

Bedford Hills Concrete Products Corp.

BINGHAMTON, N. Y.

Bowen Building Block & Supply Co.

Building Block Div. of Cutler Ice Co.

BROOKLYN, N. Y.

Nailable Cinder Block Corp.

Picone Bros. Builders Supplies, Inc.

BUFFALO, N. Y.

Anchor Concrete Products, Inc.

COOKSVILLE, ONT.

Argo Block Co., Ltd.

ELMIRA, N. Y.

Latta Brook Corp.

FALCONER, N. Y.

Marietta Concrete Corp.

GLENS FALLS, N. Y.

Dempsey's Concrete Products

HAMILTON, N. Y.

Cossitt Concrete Products, Inc.

INWOOD, L. I., N. Y.

A. Pollera & Sons

JAMESTOWN, N. Y.

Hildom Cinder Block Co.

LOCKPORT, N. Y.

Frontier Dolomite Concrete Products Corp.

PATCHOGUE, L. I., N. Y.

Allco Concrete Products Co.

PHELPS, N. Y.

Phelps Cement Products, Inc.

ROCHESTER, N. Y.

Comac Builders Supply Corp.

Domine Builders Supply Co., Inc.

Flower City Builders and

Supply Corp.

Rappl & Hoenig Co., Inc.

ROME, N. Y.

Cataldo Brothers & Sons, Inc.

SCHENECTADY, N. Y.

Dagostino Building Blocks

SMITHTOWN, N. Y.

Smithtown Concrete Products Corp.

SYRACUSE, N. Y.

Barnes & Cone, Inc.

Paragon Supply Co., Inc.

Tony Nuzzo & Sons, Inc.

Andrew Susco & Son

THOROLD, ONT.

Thorold Concrete Block Co., Ltd.

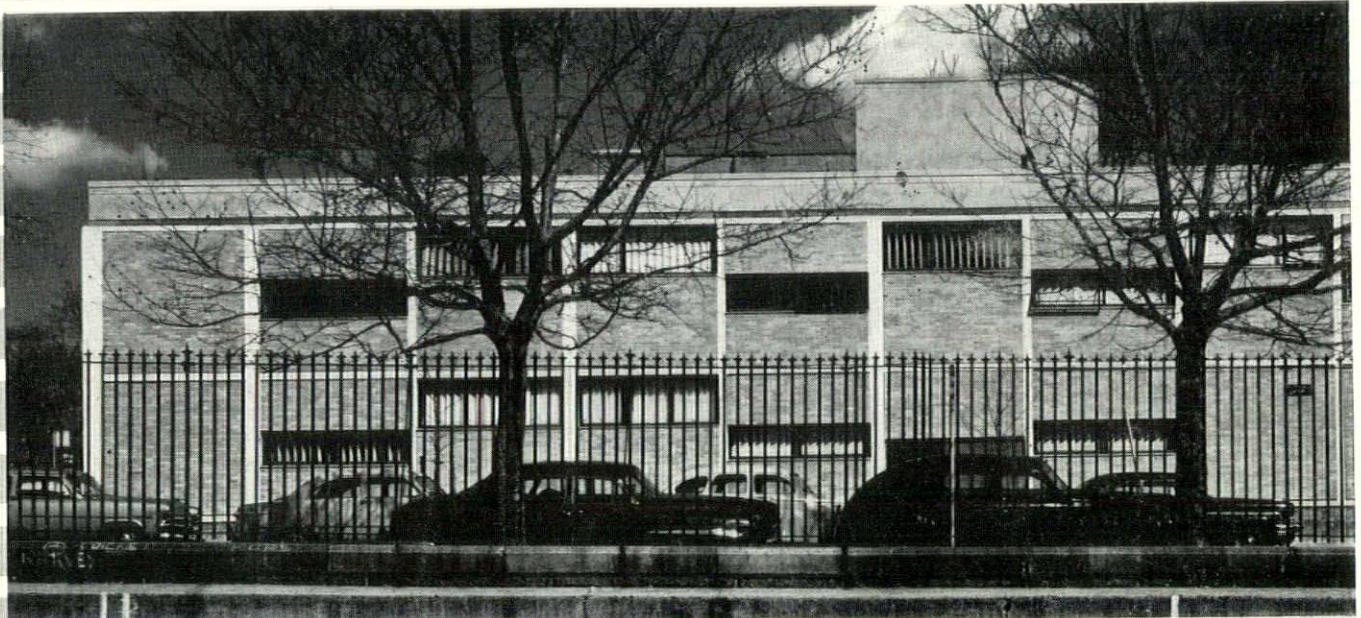
WATERTOWN, N. Y.

Taylor Concrete Products, Inc.

HEADQUARTERS OFFICE, 1 NIAGARA SQUARE, BUFFALO 2, N. Y.

Copyright 1956, New York State Concrete Masonry Association, Inc., Buffalo, N. Y.

WHEN QUALITY MUST BE THE HIGHEST...
BUT ECONOMY IS IMPORTANT



Associated Architects:
George Nemeny,
Abraham W. Geller,
Basil Yurchenco
General Contractor:
Adson Builders, Inc.
Flooring Contractor:
Sidney Fenster, Inc.

Upper Manhattan Medical Group, Health Insurance Plan Clinic, New York, N. Y.

MATICO®

TILE FLOORING

Preferred for leading hospitals across the country

Where the highest standards are faced with essential economy considerations, more and more architects are specifying MATICO tile flooring for many of the country's finest medical institutions.

Outstanding for utility, beauty and economy, MATICO satisfies the most exacting hospital project requirements. MATICO's tough, long-wearing, easy to clean surface surpasses the most rigid service and hygiene standards. In addition, its resiliency underfoot provides essential quiet in wards, rooms and corridors. And for the touch of cheer that lifts morale, there's nothing quite like MATICO's gay, handsome colors to brighten up the hospital—and the patient. Yes, low-cost MATICO tile flooring gives unequalled value in long-lasting beauty, trouble-free wear and economical maintenance.

No wonder, then, that leading architects specify MATICO for hospital projects all across the country.

QUALITY CONTROLLED

MATICO
PRODUCTS

ATTACHMENT OR REFUND OF MONEY
Guaranteed by
Good Housekeeping
IF NOT AS ADVERTISED THEREIN

MASTIC TILE CORPORATION OF AMERICA
Houston, Tex. • Joliet, Ill. • Long Beach, Calif. • Newburgh, N. Y.

Rubber Tile • Vinyl Tile • Asphalt Tile • Confetti • Aristoflex
Parquetry • Maticork • Cork Tile • Plastic Wall Tile

MASTIC TILE CORP. OF AMERICA
DEPT. 19-11, P.O. BOX 986, NEWBURGH, N. Y.

Please send me full details on Matico Tile Flooring.

NAME.....

ADDRESS.....

CITY..... ZONE..... STATE.....

GA373