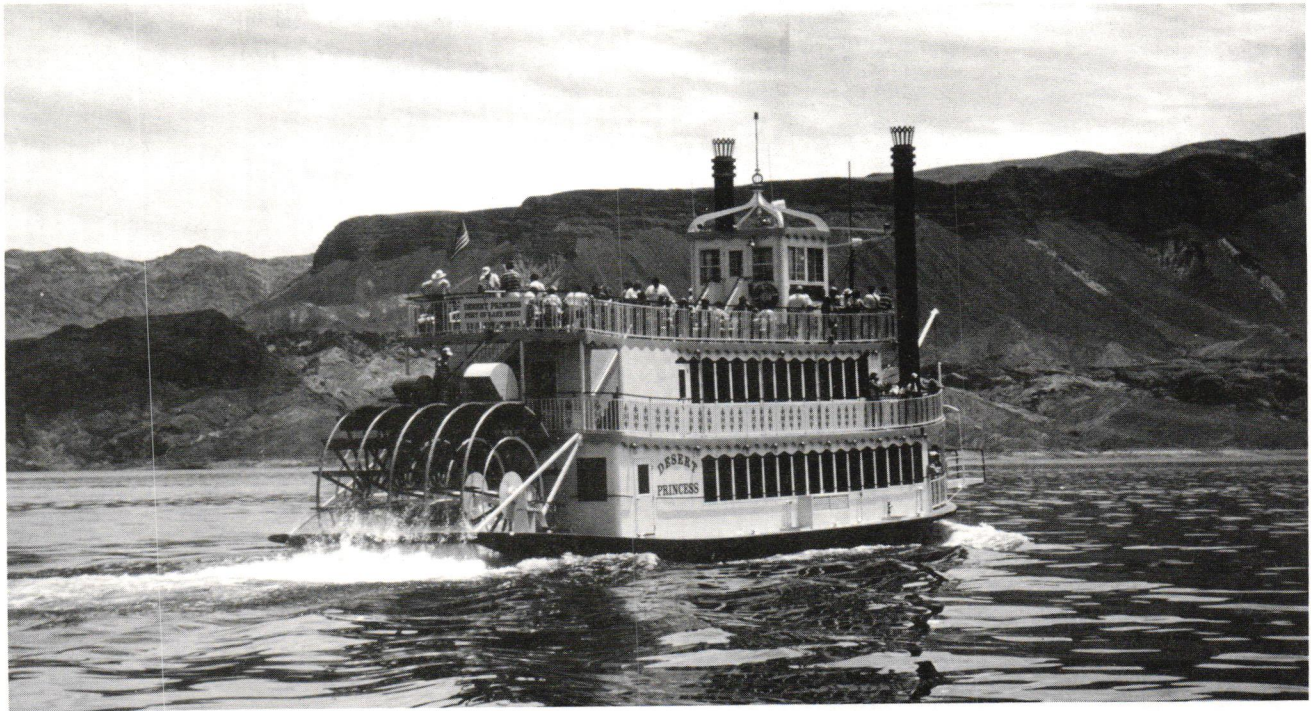


A SUMMER CRUISE

AUGUST 19 - LAKE MEAD CRUISE



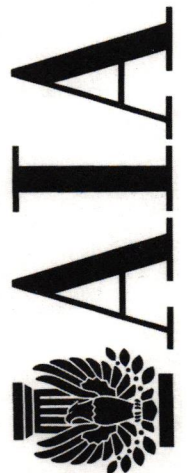
Don't forget to RSVP for the August Membership Meeting. This is a joint meeting with our friends at SDA (Society of Design Administrators). Limited to the first 150 RSVP's. Call today.

AIA Las Vegas

A CHAPTER OF THE AMERICAN INSTITUTE OF ARCHITECTS

UNIVERSITY REPORT CLASSIFIEDS OPPORTUNITIES MEETINGS AND EVENTS

FORUM



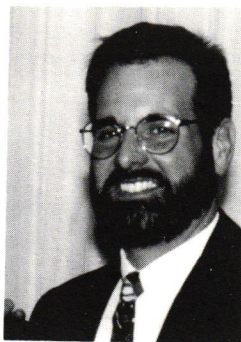
E
W
S
L
E
T
E
R

N

AIA LAS VEGAS PRESIDENT'S MESSAGE

by John Treston, AIA

Vacation. A word that conjures up images of rest and relaxation on some far away tropical isle with no cell phones, pagers, faxes, or numerous other conveniences of today's society. It would be nice if all of us could partake in such flights of fancy, but reality has set in at the local office. The year is half over and we still have a long way to go.



Due to a lack of response from members and friends of St. Rose, we were asked to cancel the bird house auction. A similar problem has occurred with the dog house competition, due to their schedule and our events calendar. Both St. Rose and the Animal Foundation are great organizations, with causes that we wholeheartedly support. We will prepare for next year, when I am sure both of these events can be accomplished with great success.

So, since we have time, so to speak, let's concentrate on the Western Mountain Region and the remaining events for the year. We still need more conference help on Architecture Week, the planning committee for the Western Mountain Region, and various other events surrounding the October gala. Please call today to volunteer or support us with your contribution, to be a sponsor for the event.

During the summer months, we will have our legislative meeting with our state representative and lobbyist, and a cruise on Lake Mead, to learn more about environmental issues, in a joint meeting with the Society of Design Administrators. So let's beat the heat, continue to learn, and keep working to improve on our CES credits.

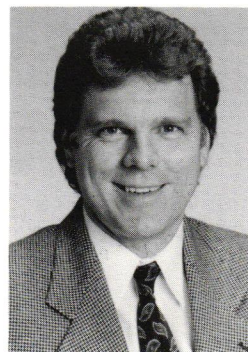
While some are actually giving into their vacation plans and "flights of fancy", we are working to make the rest of the year as great of a success as the first half. Please plan on participating, since it is all of you that made the year a success so far.

Go ahead and have those well-earned vacations and save a spot for us. We will all be there, at least in spirit!

AIA NEVADA PRESIDENT'S MESSAGE

by Brad Schulz, AIA

The results are in from California, Proposition 224 was soundly defeated. This is great news for all architects and reinforces selection of architectural services based on qualifications and not fees. The fact that it was defeated by a relatively large margin should send a signal to other states. It is still up to AIA to keep its eyes open to prevent this from being put on another ballot. It is a shame that so much money, literally millions, had to be spent to fight this proposition.



Next month's AIA Las Vegas Membership meeting is dedicated to our legislative efforts for next year. Position papers will be presented regarding Tort Reform, Design/Build, Homeowners Association Suits, and Lien Rights. We will get copies of these out to the membership prior to the meeting and we hope to get your opinions and comments at the meeting. Our lobbyist, Fred Hillerby, and Marvin Sparr, AIA, WMR director will be attending the meeting. Please plan to attend this most important event.

Our web site is growing and providing more and more information. Over the next few months we should be in a position to conduct all of our business over the Internet. This is the future and we are trying to stay ahead of the curve. Check it out and let Randy know what you think about the web page and how we can make it better.

The WMR conference is proceeding along very well. Our primary mailing of the registration material is due out by July 4th. This conference promises to be informative and a lot of fun, so mark down October 8 - 10 on your calendar. I want to take this opportunity to thank all of the members of the WMR Conference committee for their efforts to date.

I hope to see you all at the July membership meeting.

CALIFORNIA ARCHITECTS TRIUMPH OVER CALTRANS POWER GRAB

"I hope that we in the design industry use the momentum from this great victory to increase our political participation at the local, state and federal levels."

Sacramento - California voters overwhelmingly rejected Proposition 224 in California's primary election. In doing so, California voters voiced their preference to have local governments, schools, hospitals, prisons and other shire design and engineering professionals that are the most qualified to design and construct public works projects.

"We are very pleased by the outcome of the election," said Donald M. Comstock, AIA, President of The American Institute of Architects, California Council (AIACC), an 8,000 member organization. "We preserved thousands of jobs and ensured that the vital component of California's economic engine — the private sector — will continue to have a role in designing and constructing beautiful, safe and taxpayer efficient public infrastructure."

The defeat of Prop. 224 is the result of nearly two years of hard work and education efforts put forth by one of the largest and most broad-based coalitions in history. Added Comstock, "Democrats, Republicans, labor, business, the PTA, educators, local governments, minority and women's groups, and seismic safety experts all came together to fight this detrimental initiative. In the end, more than 900 various organizations and groups officially opposed Prop. 224, once they fully understood the real impact of the initiative."

Masked under the guise of "competitive bidding", Prop 224, sponsored by the Professional Engineers in California Government (PECG), would have shifted thousands of private sector jobs to the state payroll and dramatically restricted the participation of private sector architects and engineers in designing California's public infrastructure. For California taxpayers, Prop. 224 would have meant costly delays on critical public projects such as libraries, hospitals, schools, roads, bridges and more.

"Hats off to the entire design and construction community and the many organizations that joined our coalition to defeat Prop. 224," said Robert L. Newsom, AIA, co-chair of Architects Registered in California Political Action Committee (ARC PAC) and President of AIA Los Angeles. "This group stood up to

the political powerhouse on an issue with potentially disastrous implications for California's public design integrity and public infrastructure and defeated them soundly." Newsom is Senior Vice President of DMJM.

"I said this at the beginning of the campaign and I'll say it again now: We didn't ask for this fight, but once the initiative qualified, we let PECG know that the architectural profession would not sit idly by while they created the largest A/E firm in the world funded by taxpayer dollars," said M. Arthur Gensler, Jr., FAIA, who co-chaired ARC PAC in Northern California. "I would further add that if any proposition ever illustrated the need for reform of California's initiative process, Prop. 224 is the poster child. The deceitful and misleading language of the initiative and the campaign of half-truths run by PECG leaves little wonder why voters are fed up with politics and cynical about the process." Gensler is Founder and Chairman of the eponymous Gensler, one of the largest and fastest growing design firms in the world.

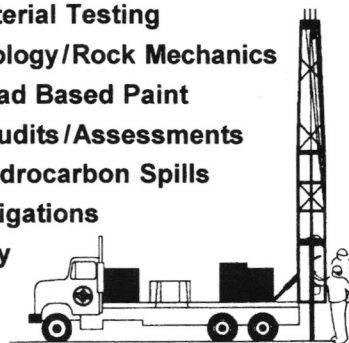
"I hope that we in the design industry use the momentum from this great victory to increase our political participation at the local, state and federal levels."

CONVERSE CONSULTANTS

Over 50 Years of Dedication in Engineering and Environmental Sciences

*"Providing a Solid Foundation Study
for Today's Architecture"*

- **Hydrogeologic Investigations / Dewatering**
- **Soils and Foundation Studies**
- **Construction Material Testing**
- **Underground Geology / Rock Mechanics**
- **Asbestos and Lead Based Paint**
- **Environmental Audits / Assessments**
- **Chemical and Hydrocarbon Spills**
- **Biological Investigations**
- **Indoor Air Quality**



Las Vegas:
(702) 269-8336



Reno:
(702) 856-3833

Geotechnical, Environmental & Materials Testing

OCTOBER 8-11 - BALLY'S LAS VEGAS

REGISTRANTS \$115.00 PER NIGHT - CALL 800-833-3380, REFERENCE WMR CONFERENCE OR "BARCH".

The WMR Conference is a major event for AIA Nevada, and there are hundreds of jobs that will need to be done. We need your help. We will need about 25 to 30 volunteers to work during the conference. If you would like to help in any of the following areas, please contact Randy Lavigne at 895-0936.

- * Escorting jurors and speakers from airport to hotel
- * Registering exhibitors for the WMR Product Show
- * Registering attendees to the Conference
- * Being a Tour Guide or Tour Supervisor for the optional tours
- * Helping to set up/decorate the Design Awards Banquet
- * Registering guests at the Design Awards Banquet
- * Collecting and delivering silent auction items
- * General assistance for all programs and events

WMR AND AIA NEVADA AWARDS PROGRAMS

The "Call for Entry" and "Call for Nominations" forms were included in last month's issue of the FORUM. Please fill them out early and get your entries in to the AIA Nevada office as soon as possible. Once your entry and payment is received, an "Entry Instructions Packet" will be returned to you. If you need additional information, contact the AIA Nevada office at 702-895-0936 or the AIA Nevada website at <http://www.aianevada.org>

"GAMBLING WITH GROWTH" SPEAKERS SET

Under the theme "Gambling with Growth," the WMR Speakers Committee, headed by Windom Kimsey, AIA, has assembled an impressive line up of guest speakers and topics for the WMR conference.

John A. Fregonese, founding principal of Fregonese Calthorpe & Associates, Portland, Oregon, will help to open the Conference with the first scheduled seminar on Friday morning, October 9th, entitled "*Density vs Sprawl: Urban Growth Boundaries*". In addition to founding a firm that specializes in comprehensive planning, GIS analysis, land use ordinances, implementation strategies and public involvement programs and materials, Mr. Fregonese was Director of Growth Management Services for Metro, Portland, Oregon and developed the Metro 2040 Growth Concept from its early studies through its unanimous adoption by the Metro Council and the local government based Metropolitan Policy Advisory

Continued to next column.

Commission. This included the development of the award-winning public involvement programs, the modeling and analysis of five complex metropolitan level designs, and the development of the Growth Concept into regional goals and policies for adoption. The plan has been recognized nationally and has been the subject of many articles by numerous national and regional publications.

Mr. Fregonese will be joined in the discussion by Senator Dina Titus, Nevada and Commissioner Erin Kenny, Las Vegas. The panel will be moderated by Jon Ralston, Guest Column, Las Vegas Review Journal.

William E. Riebsame, Geography Professor from the University of Colorado, and Steve Holbrook, Executive Director for the Coalition for Utah's Future will participate in the seminar entitled "*Growth in the Western City: What's the Right Solution?*" scheduled for 10:45AM on October 9th.

Richard Smith, Vice President of the American Nevada Corporation, Rob Snowden, Executive Vice President of World Entertainment Centers, and Las Vegas City Planner Terry O'Donnel will lead the discussion on "*The New Las Vegas: Public/Private Partnership and Urban Re-development*" scheduled for Friday afternoon, 2-4PM.

Noted journalist and author, Alex Marshall will speak on Saturday, October 10th, regarding "*Masterplanned Communities: A Blueprint for the West?*" Mr. Marshall has specialized in writing about urban design, planning, architecture and politics for the past decade. He has focused on the social and physical changes that have occurred to city and suburb, as technological and economic forces wrench them into new shapes and forms. His work has appeared in Metropolis Magazine, The Washington Post, George magazine and numerous other publications. He speaks regularly around the country on issues of urban design and planning.

Jeff Rhodes, AIA from The Howard Hughes Corporation and Richard Beckman, AIA, Associate Professor of Architecture and Urban Design at UNLV will join Alex Marshall in this discussion.

To complete the discussions all speakers are invited to participate in a "*Growth Panel Discussion*" at 10:30AM on Saturday morning. Be sure to register for the WMR Conference so you can attend and participate in these seminars. Each program is registered for continuing education credits.

HIGHLIGHTS OF THE WMR CONFERENCE

THURSDAY, OCT. 8

All Day	Registration
8-4PM	DPIC Seminar - B141
8-4PM	CSI Seminar
3PM	WMR Product Show Opens Grand Ballroom
6PM/7PM	Reception/Dinner (Open to all) Grand Ballroom
8PM	Program - Keynote Speaker Grand Ballroom

FRIDAY, OCT. 9

All Day -	Registration Continues
8AM	Breakfast-Product Show
8AM	AIA Fellowship Seminar - Burch W. Beall, Jr.
9- Noon	"Gambling With Growth" Seminars
Noon - 1:30	Buffet Lunch Product Show
2-4P	"Gambling With Growth" Seminars
5:30	Buses Leave to Host Chapter Party Tour Bus Entrance
6PM	Host Chapter Party Stratosphere Tower

SATURDAY, OCT. 10

All Day	Registration & Information
9-Noon	"Gambling With Growth" Seminars
1-4P	Tour Buses leaving from Tour Entrance
	Casino Tour #1 - Bally's Paris Property
	Historic Walking Tour #1
	Architectural Tour #1
	Hoover Dam Tour #1
	Daredevil Tour #1
6PM	Pizza Party for Children Las Vegas Rooms
6PM	Design Awards - Reception & Silent Auction Pacific Ballroom
7PM	Design Awards Banquet
8PM	Design Awards Presentation

SUNDAY, OCT. 11

10AM	Optional Tours Bus Tour Entrance
	Casino Tour #2 - Bally's Paris Property
	Historic Walking Tour #2
	Hoover Dam #2

FACILITY MANAGERS

IFMA

The Southern Nevada Chapter of the International Facility Managers Association (IFMA) conducted their monthly meeting at Marie Callender's (4875 West Flamingo Road) on June 16, 1998. Mike Woods (CFM), the Southwest Regions District Manager, conducted the swearing in ceremony of officers for the 1998/99 business year. The new officers are as follows:

Andy Truelson	President
Steve McLaughlin	Vice President
Dennis Arentsen	Treasurer
Marieka Meyer	Secretary

Martin Myers, the outgoing Chapter President, gave a moving speech on the direction and further of the chapter with congratulatory remarks given to his staff.

Monthly chapter meetings are conducted at 5:30 p.m. on the third Tuesday of each month at Marie Callender's. For further information, call Phil Simmons at 386-7152.



COMMERCIAL KITCHEN DESIGN
CONSULTANTS AND DESIGNERS OF COMMERCIAL KITCHENS

William J. Watts

1355 Journey's End Drive
La Cañada-Flintridge, CA 91011
(818) 790-8494 • (818) 952-8025 Fax
1439 E. Bogey Dr. Eagle, ID 83616
(208) 939-1376 • (208) 939-1376 Fax

ADOBE

CONSULTING ENGINEERS

"Setting the standard in Quality, Service and Innovation"

- MECHANICAL
- ELECTRICAL

Ph: (702) 362-9222
Fax: (702) 362-2191
Email: ace@intermind.net

4330 W. Tompkins Ave., Suite A, Las Vegas, NV 89103

ARCHITECTURE WEEK

Architecture Week, the statewide celebration of art, architecture and the built environment, is planned for October 4-10, which handily coincides with the WMR Conference.

Special events that are planned for the week include:

"Artists & Architects Exhibit" — In collaboration with the Contemporary Arts Collective this special program teams local artists and architects. Utilizing the theme of the WMR Conference, "Gambling With Growth" the teams will be challenged to produce pieces for exhibition. If you are interested in participating in this program, please contact the AIA office at 895-0936.

"Architects In Schools" — Architects and Associates are invited to participate in this program that introduces design career options to high school students. Visit a high school drafting or art class and answer questions, talk about your own career choices and options and encourage students to further their education in this area. This program also launches the design challenge used in the "High School Design Awards". If you are interested in participating in this program, please contact Eric Christensen, Welles Pugsley Architects - 435-1150.

"Built Environment Photo Exhibit" Watch for entry and exhibit details on this special program

NEW MEMBERS

We are very happy to welcome these new members to the AIA Las Vegas Chapter.

Architects:

BENNY CANIZARO, CSI, AIA

Paul Steelman Architects

JOE ROTHMAN, AIA

Bergman, Walls & Youngblood, Ltd.

Associates:

EDGAR EVANGELISTA, ASSOCIATE AIA

Swisher & Hall, Ltd.

BILL NIX, ASSOCIATE AIA

Mary Kozlowski Architects

IAN PEDDIESON, ASSOCIATE AIA

Pinnacle One Assoc.

Allied:

DENNIS BERLIEN

Adobe Consulting Engineers, Inc.

TOM FOSTER

Parsons Infrastructure & Technology, Inc.

HAMID PANAH

Megawall Corporation

KEN REYNAR

Light Solutions

We have welcomed 48 new members since January 1st. This is great and while we are delighted to have them, we are still a long way from the objective we set at the beginning of the year. Have you encouraged anyone to join? Have you used the "membership kit" that was sent to you? We need those new members and we're depending on you (our established members) to spread the word about the benefits and opportunities of belonging to AIA Las Vegas. Members who join now are pro-rated for the remainder of the year. Spread the word.

ASSET PROTECTION

R

ROBERT L.
BOLICK
LTD.

Attorneys
At Law

6060
W. Elton Avenue
Suite A
Las Vegas, NV 89107

- ◆ Family Limited Partnerships
- ◆ Limited-Liability Co's
- ◆ Professional Corporations
- ◆ Wills & Trusts
- ◆ Tax Planning
- ◆ Business Litigation
- ◆ Offshore Entities

Over 17 Years of Tax & Business Experience

870-6060

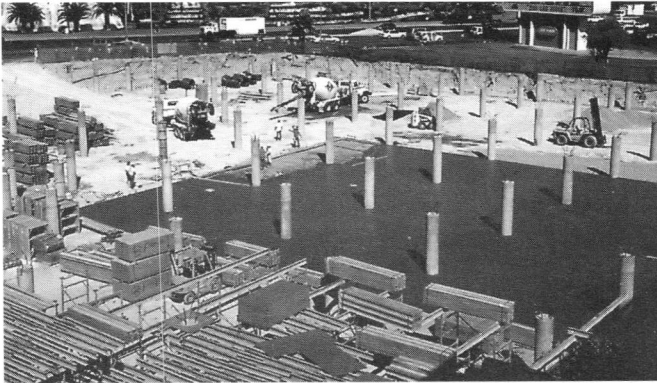
Convenient Location (SW Corner Jones & US 95)

www.bolick.org

TATE SNYDER ARCHITECTS

"If you come to a fork in the road...take it..."
Yogi Berra

**We've built our
reputation from
the ground up.**



BURKE

BURKE & ASSOCIATES, INC.

GENERAL CONSTRUCTION ORGANIZATION

Commercial Construction • Hotel / Casino Construction

For over fourteen years the business community has been coming to Burke & Associates when they want something built right, on time and within budget.

Call Burke & Associates and see how we can help you.

3365 Wynn Rd. Las Vegas, NV 89102 • 702-367-1040 • Fax 702-367-4083

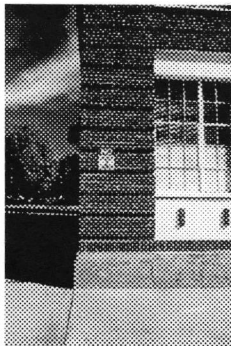
UNITED STATES POSTAL SERVICE RED ROCK STATION

**National Winner
1998 USPS Design Competition
Innovative Exterior Design**

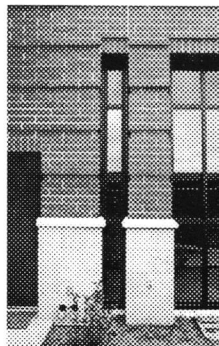


The city of St. George was established as a town in 1861 when Brigham Young sent settlers into the southern Utah region. The pioneers found the local sandstone to be plentiful and a good building material. They carved this stone into block to construct their most important civic structure, their Tabernacle. Through the town's history, all of the important civic buildings have continued this tradition of using the local sandstone and the Red Rock Station continues this tradition.

The entrance elements are all clad in indigenous sandstone. The remainder of the building is finished with locally produced masonry. A sculptural flagpole, composed of steel, masonry and sandstone acts as an organizing element for residents coming to the post office. The flagpole is also a reference to the towers and steeples at the other public buildings.



Details at the Post Office respect the traditional details and the nearby civic buildings



The entrance tower is composed of horizontal planes and vertical piles evoking the nearby mesas and rock formations. The masonry walls contain reliefs and projections similar to the nearby historic buildings.

The plan of the station is a modified standard United States Postal Service plan. The modifications were made at the request of the local postmaster, and were incorporated into the design during the Design Development Phase. Adjustments to the plan for local site and code conditions were also incorporated during this phase of the drawings.

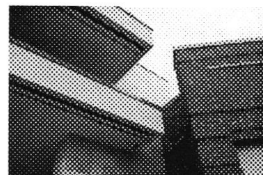
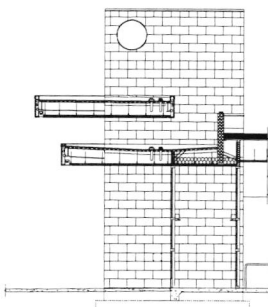
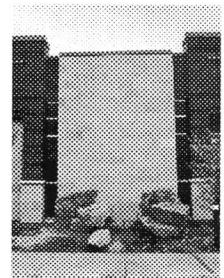
Location
St. George, Utah

Completion Date
December, 1997

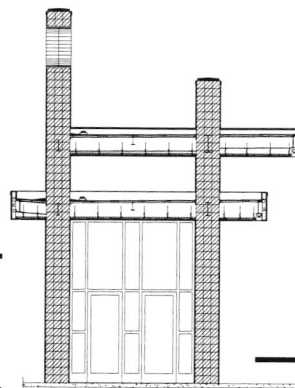
Cost
\$3,300,000

Size
26,000 Square Feet

Local details are apparent on both the exterior and interior of the Post Office

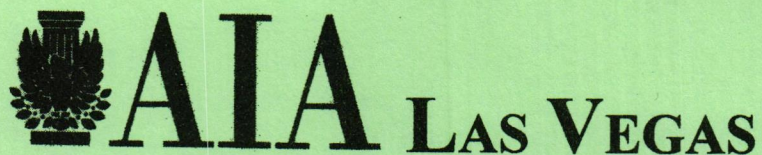


Horizontal and vertical planes at the entry evoke images of the natural landscape around the site.



KGA
ARCHITECTURE

KITTRELL GARLOCK
AND ASSOCIATES, AIA



JULY MEMBERSHIP MEETING

"LEGISLATIVE ISSUES"

Presentation of AIA Position Papers.

Review of candidates for office and legislative issues that affect the profession. This is a very important meeting and you are encouraged to attend. Special Guests are Fred Hillerby, AIA Lobbyist, Hillerby & Associates
Marvin Sparn, FAIA, Western Mountain Region Director

WHEN:

Wednesday, July 15, 1998

WHERE:

2ND FLOOR MEETING ROOMS
MONTE CARLO HOTEL & CASINO
RECEPTION - 6:00 PM (ABOVE THE BREWERY)
DINNER - 7:00 PM
PROGRAM - 8:00PM

MEETING SPONSOR: TO BE ANNOUNCED

NON-MEMBERS & GUESTS \$25.00

PLEASE RSVP TODAY --

CALL 895-0936

AIA Las Vegas

A Chapter of The American Institute of Architects

4th Annual (Fall) AIA Las Vegas Putting Tournament

Date: Friday, September 4, 1998

Shotgun Start: 6:30 p.m. (Team captains report by 6:15 p.m.)

Location: Angel Park Golf Club Putting Course

Fee: \$25 per player (\$150 per 6 person team)
Fee includes dinner and door prizes

Players:
Captain _____ Phone _____

2 _____

3 _____

4 _____

5 _____

6 _____

Please invite spouses and friends to play!

Please make checks payable to: AIA Las Vegas

Mail to: Tate & Snyder Architects
c/o Todd Vedelago, AIA
709 Valle Verde Court
Henderson, NV 89014

Limited to first 108 paid entries received.
Players signing-up individually will be assigned a team.
Putters provided to those not bringing their own.

THE FIELDEN MEDALS FOR EXCELLENCE IN ARCHITECTURE BESTOWED TO INAUGURAL RECIPIENTS

At a ceremony held in the library of UNLV's Paul B. Sogg Architecture Building on May 10, the *Jane and Robert Fielden Medals for Academic Excellence in Architecture* were awarded to their first recipients.

Jane and Bob Fielden presented the Medal for Academic Excellence in Undergraduate Architecture studies to graduating senior, Stephanie Perone. Randy Barnes received the medal for Academic Excellence in Graduate Studies. The medal for Contributions of Excellence to Architectural Education was awarded to John Klai and Daniel Juba, principals of Klai::Juba Architects for their generous donations of time and resources to the recently accredited School of Architecture.

The recipients were chosen by the faculty of the School of Architecture based on their academic records and contributions to the School of Architecture. Jane and Bob Fielden instituted the award to recognize the School of Architecture's outstanding graduating students and supporters at commencement.

Michael Alcorn, Director of UNLV's School of Architecture presented Bob and Jane with honorary donor medals that he ceremony as well. Mr. Alcorn said of the awards: "This is the beginning of the School of Architecture recognizing excellence in design academics and service to the School of Architecture. The School is deeply appreciative to Bob and Jane for starting this tradition."

In addition to serving as the senior principal of Fielden and Partners, an interior design firm, Jane Fielden is the volunteer Interior Designer of the Ronald McDonald House Las Vegas, an Artist in Residence for the Nevada Arts Council and a Board Member of the Allied Arts Council.

Bob Fielden is principal of RAFI: Planning, Architecture and Urban Design. He received his Masters in Education Administration from UNLV and teaches graduate design studio at The School of Architecture. Along with these duties, he is a board member of the National Architectural Accreditation Board, a Fellow of the American Institute of Architects and past president of the National Council of Architectural Registration Boards.

Bob and Jane have lived in Las Vegas since 1965 and have a daughter Laura Spiner - a partner in The Fielden Companies - and a son, Scott - an anesthesiologist based in Las Vegas. They are the proud grandparents of Trevor, Klein, Jane and Kyle.

SCHOOL MAY BE OUT FOR SUMMER, BUT NOT SCHOOL BUILDING

In an effort to keep up with the incredible population growth spurred on by the building boom in Las Vegas, Harris Consulting Engineers (HCE), has just completed the HVAC (heating ventilation, air conditioning) and plumbing design on 25 new elementary schools in Las Vegas. According to Tom Harris, President, this is just the tip of the iceberg. "Recently it was reported in a local business publication that in order to meet demand for the growth of the youth population in the greater Las Vegas area, we would have to begin construction on one new elementary school per month for five years. In Las Vegas, building schools has become an industry in and of itself."

Per a bond issue, these first new schools were designed to fit a prototype model developed in conjunction with three architectural firms: JMA Architecture Studios, Welles-Pugsley Architects and Domingo Cambeiro Corporation. Each firm was then given a number of schools to design, and HCE worked with all of the architectural firms to provide HVAC and plumbing design drawings.

"Even though it is a prototype design, they have yet to build two exactly the same," said Harris. "Changes in building orientation and differing utility requirements for each site affect the plumbing and HVAC systems. Multiply that by 25 and it's a lot of modification work."

HCE is also involved in a number of retrofits at existing schools. In some cases the retrofits are done to bring schools up to current codes. At other times, the purpose is to upgrade the facility to add communication and computer capability, to update and upgrade power distribution systems and improve building safety features like exterior lighting.

"We have had as many as 30-35 school projects in process at one time, not to mention our other building projects. It keeps us hopping. Helping the school district cope with this strain on our community's educational facilities is rewarding on many levels," said Harris.

by Randy Lavigne, Executive Director

JULY MEMBERSHIP MEETING

It's time to get geared up and get our act together for the elections and the coming legislative session. Come to the July meeting and get caught up on the latest "Legislative Issues" AIA Nevada position papers will be presented dealing with "Design Build", "TORT Reform" and "Homeowner's Association Suits". These are all vital issues that affect the practice of architecture in the state. Our lobbyist, Fred Hillerby will be there to discuss these and any other issues that you feel pertinent. Marvin Sparr, FAIA, WMR Director will also bring us up to date on the issues being considered on the regional and national level.

The meeting will be held at the Monte Carlo Hotel (2nd Floor Meeting Rooms) - 6PM on Wednesday, July 15th. Reception will be held in the loft above the "brewery". Dinner will be served at 7PM and the program will begin at 8PM. Call your RSVP today. Don't miss this important meeting in preparing for the 1999.

AUGUST MEMBERSHIP MEETING

Have you made your RSVP yet? Better hurry! We're limited to the first 150. We'll be cruising aboard the "Desert Princess" on Lake Mead for our August Membership Meeting on Wednesday, August 19th. We'll meet at the Lake Mead Cruises Landing at 6PM sharp, the boat will depart at 6:30 sharp. Ah, just picture it...a tropical night...delicious food....exotic beverages...music...entertainment... and 150 of your good friends. Where else can you get all this for only \$20.00. Of course, we are limited to the first 150 RSVP's and the trip will cost everyone \$20.00 but it will be worth it. Plan to join us....bring a friend.....and RSVP early. Our friends from the Society of Design Administrators (SDA) will be joining us.

THE WMR PRODUCT SHOW IS THE SEPTEMBER MEETING

125 Exhibitors...Prizes....Games.....Continuing Education Credits.....Reception and Dinner.....WMR Keynote Speaker....The WMR Product Show is the kickoff event of the WMR Conference AND the AIA Las Vegas Membership Meeting. The show opens at 3PM on Thursday, October 8th. Get there early so you can visit all the booths. The reception begins at 6PM, dinner at 7PM, Keynote speaker (to be announced) at 8PM....and Prizes and giveaways throughout the evening. Yes, we need your RSVP.

OCTOBER MEMBERSHIP MEETING

Stanley Ambercrombe, Editor of Interior Design Magazine (past editor of Architecture Magazine) will be the guest speaker at our October Meeting. Another in the Klai::Juba Lecture Series, the meeting will be held at the UNLV School of Architecture on Thursday, October 29th.

NOVEMBER MEMBERSHIP MEETING

It's true. Reed Kroloff, Design Editor of Architecture Magazine will be the guest speaker for the November Meeting. This could be fireworks.....as the architecture critic faces the designers in the building he criticized. That's right, the meeting is being held in the UNLV School of Architecture, and we'll all have an opportunity to discuss the criticism....and many other issues dealing with design. The meeting is scheduled for Wednesday, November 18th. Mark your calendar.

SPECIAL THANKS

Many thanks to Jimmie Garrett of Industrial Photo for providing photo services at our membership meetings.



We Sell Hardware, Too!
One-Stop Solutions
AUTOCAD[®], Computers, Plotters
Training & Support

Computers • HP & Calcomp Plotters • Monitors
Graphics Adapters • TurnKey AutoCAD Workstations
Hardware Upgrades • Internet/Intranet • Networks
Website Hosting and Development

Idaho
Washington
Nevada
Oregon

IVOCAD[®]
Computer Solutions

Montana
Wyoming
California
Arizona

Call For Current Pricing & For More Information
see www.ivocad.com


Authorized Systems Center
AEC

AUTOCAD[®]

Las Vegas--Nevada
699-7001
Outside 702 Area Code Call
1-800-550-0607

KINETIX

Howa Construction, Inc. has announced their selection as General Contractor for the remodel of Las Vegas' Hard Rock Hotel and Casino's Harmon Street and Retail Shop Expansion.

AIA NIGHT AT THE LAS VEGAS STARS

TAKE ME OUT TO THE BALL GAME

Take me (and everyone you know) out to the ball game!!!! Friday, August 14 at 7:05PM is AIA Night at the Las Vegas Stars. A section will be reserved for all AIA Members and Guests attending the game. All attendees will receive a Las Vegas Stars T-Shirt. Tickets will be \$10.00 (\$8.00 admittance charge) and the good news is that \$2.00 of the ticket price will be donated to the AIA Scholarship Fund. All participating firms will be recognized during the game on the electronic message center. The Las Vegas Stars will be playing the Salt Lake Twins at Cashman Field. Parking at Cashman Field is an additional \$3.00 per car. Round up your team and call Mike Levine at 798-2880 to order tickets. Get your tickets Today!

**creative
architectural
photography**

**t a l e n t
s e r v i c e
s p e e d
q u a l i t y
i n t e g r i t y**



OPULENCE STUDIOS

INC

3347 S Highland Dr #304 • Las Vegas NV 89109

7 0 2 • 8 9 2 • 9 3 0 0

WHO WON THE GOLF TOURNAMENT?

Todd Vedelago, AIA deserves a pat on the back and a huge thank you for a job well done. The 23rd Annual AIA Golf Tournament was literally the biggest ever. With 193 golfers playing 18 of 27 holes at Badlands Golf Course ... it was quite a tournament.

Winners of \$100.00 Badlands Gift Certificates for "Closest to the Pin" were: Hole #8 = Ron Labar, AIA; Hole #16 Carl Marcello; and Hole #26 Dave Melroy.

Dave Dratnol took the prize(\$100.00 Badlands Gift Certificate) for the "Longest Drive" — 231 Yards. Way to go, Dave!

WINNERS IN THE LOW GROSS SCORE WERE:

3RD PLACE: KGA TEAM #17A = SCORE 61

Dave Brom, Lowell Masters, Rick Kilburn and Art Gross

2ND PLACE: JMA TEAM #14A = SCORE 60

Jim Bellard, David Rough, Ed Vance and Marti Siska

1ST PLACE: GARY GUY WILSON TEAM #3B = SCORE 57

Mark Owens, Barren Bench, G. Cash Wilson and Keith Lyon

WINNERS IN THE LOW NET SCORE WERE:

3RD PLACE: KGA TEAM #11A = SCORE 58.7

Joe Demarco, Carl Sheets and Tim Kretschmar

2ND PLACE: HCA TEAM #18B = SCORE 55.8

Harry Campbell, Mark Hobaica, Judy Campbell, Merril Kieffer

1ST PLACE: CARPENTER SELLERS TEAM #18A = SCORE 54.9

Rick Sellers, Ron Labar, Woody, Brian Patterson

The winners of the tournaments received trophies and certificates, and donated \$800.00 to the UNLV Architecture Library. Thousands of dollars in door prizes were awarded and Mike Stewart from Marnell Carrao was the lucky winner of the color tv. Get ready for the Fall Putting Tournament scheduled for Friday, September 4th.

by Allen Holl, AIA

**DRAWINGS AND SPECIFICATIONS - PART 2
SUGGESTED STANDARD KEY NOTE, DRAWING &
SPECIFICATIONS NOMENCLATURE****4.01 Introduction:**

- A. Whether key notes or detail specific notes are used to identify materials, products or systems, their compatibility with specification terminology is fundamental to creating unambiguous bid (or pricing) and construction documents.
 - 1. To often what is keynoted does not correlate exactly with that which is specified (or vice versa) resulting at best in a request for clarification during the bid phase, necessitating an Addenda, or at worst resulting in a request for information during construction with a subsequent change proposal and change order if the discrepancy involves a change in cost or time or both.
- B. Specification integrated key notes or detail notes for materials, products and systems commonly used on the office's projects must be developed and should be available to the project team at the beginning of Schematic Services and must be available at the beginning of Design Development Services.
 - 1. Notations for commonly used items should be constant; do not change them from project to project.
 - 2. Should a "standard" notation not occur on a particular project, adjust the specification to indicate "not used", e.g. WP MEMB TYPE A - Adhesive Applied Elastomeric Sheet Membrane: Not Used.
- C. One person on the project team should be responsible to establish and maintain the project's key or detail notes.
 - 1. If the firm has a specifier, the specifier should be that individual.
 - 2. If there is no in-house specifier, the project's senior technical person should have this responsibility.
- D. If key notes are used, develop a project specific master list by CSI specification Division and Section.
 - 1. Do not edit the list to be Sheet specific.
 - 2. Use the entire list on each sheet on which key notes appear.
 - a. While this will take more space, it will benefit all by eliminating future modifications and familiarizing all with the entire list.
 - 3. Assign the responsibility to maintain the office master key note list to a single individual.
 - a. That individual should review work-in-progress, work-under-construction and products and materials currently being shown and specified and revise the master accordingly.
 - b. Implement the revised master list with the next project; do not attempt to change the master list on an on-going project.

- E. The following are examples of an integrated specification - key or detail notation system for commonly used products.
 - 1. The abbreviated description, e.g. WP MEMB TYPE A, would appear on the Drawing indicating its location; the specification would identify the item using the same terminology as that which appears on the Drawing followed by its technical description.

4.02 Waterproof Membranes (WP MEMB):

- A. Spec Section 07110 - Sheet Membrane Waterproofing
 - 1. WP MEMB TYPE A - Adhesive Applied Elastomeric Sheet Membrane
Typical Use - Wide roll application over below grade horizontal surfaces with occupied space under and over waste slabs below wearing slabs at conditions exposed to below grade water (boating).
 - 2. WP MEMB TYPE B - Self-Adhered Elastomeric Sheet Membrane
Typical Use - Narrow roll application over below grade vertical surfaces.
- B. Spec Section 07120 - Fluid Applied Waterproofing
 - 1. WP MEMB TYPE C - Fluid Applied Rubberized Asphalt Membrane
Typical Use - Roller application in constrained spaces such as planters over occupied space below.
- C. Spec Section 09300 - Ceramic Tile
 - 1. WP MEMB TYPE D - Composite Elastomeric Sheet Waterproofing. e.g. Nobelseal TS
Typical Use - CPE sheet laminated to non-woven polyester on both sides over concrete slabs receiving cured mortar bed or with direct thin set tile [preferable to WP MEMB Type F].
Use at locations with periodic exposure to surface water such as horizontal waterproofing at bathroom floors adjacent to showers, vertical waterproofing at showers and at tub/showers, horizontal waterproofing at drop-in tubs, spas, etc., food service and dishwashing areas over suspended slabs, etc.
 - 2. WP MEMB TYPE E - Thermoplastic Elastomeric Chlorinated Polyethylene (CPE) Sheet Membrane, e.g. Chloraloy® 240.
Typical Use - Shower floor waterproofing, i.e. shower pans and curbs.
 - 3. WP MEMB TYPE F - Liquid Applied Elastomeric Waterproofing, e.g. Latcrete 9235 or trowel applied Latcrete 9236 at residential applications.
Typical Use - Liquid rubber with reinforcing fabric over concrete slabs receiving thin set floor tile with limited exposure to surface water, i.e. bathroom floors where there are tubs or showers with precast receptors,

PRACTICE HINTS - No. 4

by Allen Holl, AIA

4.03 Building Insulation (BLDG INSUL)

A. Spec Section 07320 - Building Insulation

1. BLDG INSUL TYPE A - Semi-rigid fiberglass insulation board, unfaced (ASTM C 612, Class 1); Thickness: 1-inch; R-4.3; Size 24-inches wide by 48-inches high.
Typical Use - Inside face of exterior concrete or masonry walls with furring TYPE A2 when additional R is required. DO not leave exposed; must be furred to maintain noncombustible rating
NOTE: Use TYPE A1.5, TYPE A2, TYPE A2.5, etc. for 1 1/2-inch, 2-inch, 2 1/2-inch thickness, respectively; change specified R values accordingly.
2. BLDG INSUL TYPE B - Fiber glass batt insulation, unfaced, friction fit (ASTM C 665, Type I); Thickness: 3 1/2-inches, R-11; Size: 16 or 24-inches wide by 96 inches high for metal stud construction, 15 or 23-inches wide by 93 inches high for wood frame construction.
Typical Use - Exterior framed cavity walls where vapor barrier is not required. DO not leave exposed; must be furred to maintain noncombustible rating (UBC Construction Types I and II).
NOTE: Use TYPE B6 for 6 1/4-inch thickness (R-19).
3. BLDG INSUL TYPE C - Fiber glass batt insulation, kraft paper faced, friction fit (ASTM C 665, Type II, Class C); Thickness: 3-1/2 inches, R-11; Size: 16 or 24 inches wide by 96 inches high for metal stud construction, 15 or 23 inches wide by 93 inches high for wood frame construction.
NOTE: Use Type C6 for 6 1/4-inch thickness (R-19). Typical Use - Exterior framed cavity walls where insulation may be exposed and no vapor barrier is required; cannot be used exposed in non-combustible construction (UBC Construction Types I and II).
4. BLDG INSUL TYPE D - Fiber glass batt insulation, foil faced, friction fit (ASTM C 665, Type II, Class C); Thickness: 3 1/2-inches, R-11; Size: 16 or 24-inches wide by 96-inches high for metal stud construction, 15 or 23-inches wide by 93-inches high for wood frame construction.
NOTE: Use Type D6 for 6 1/4-inch thickness (R-19). Typical Use - Exterior framed cavity walls where insulation is exposed or concealed and a vapor barrier is required; cannot be used exposed in non-combustible construction (UBC Construction Types I and II).
5. BLDG INSUL TYPE E - Other

4.04 Joint Sealers (SEALANT):

A. Spec Section 07900 - Joint Sealers

1. SEALANT TYPE 1 - Polyurethane, single component, chemical cure, non-sagging, movement class 25.
Typical Use - Small exterior and interior vertical and horizontal perimeter joints between metals, or between metal and concrete or masonry such as surface reglets, flashing and counterflashing, non-curtainwall and non-window wall metal to metal joints.
Limitations: Maximum joint width 1/2-inch, minimum joint depth 1/4-inch.
2. SEALANT TYPE 2 - Polyurethane, multiple component, high modulus, chemical cure, non-sagging movement class 25.
Typical Use - Exterior vertical working joints between metals and concrete or masonry, between metals, or between concrete and concrete (This is typical exterior vertical joint sealant).
Limitations: Minimum width and depth - 1/4 inch.
3. SEALANT TYPE 3 - Polyurethane, multiple component, high modulus, chemical cure, traffic bearing, flow type, self-leveling, movement class 25.
Typical Use - Exterior and interior horizontal joints between concrete, concrete and stone, metal and concrete, metal and stone (This is typical exterior and interior horizontal joint sealant).
Limitations: Maximum joint width 2-inches; minimum joint depth 1/2-inch.
4. SEALANT TYPE 4 - General purpose construction and glazing silicone, one component, neutral curing, non-sag, movement class 50.
Typical Use - Butt glazed joints, channel glazing.
Limitations: Glazing applications.
5. SEALANT TYPE 5 - Fungus resistant, one component silicone, nonsag, movement class 25.
Typical Use - Interior joints around plumbing fixtures, etc.; interior vertical joints in tile, plastic laminates and solid plastics in wet areas.
Limitations: Non-paintable, available in limited colors.
6. SEALANT TYPE 6 - One component acrylic latex, non-sag, paintable.
Typical Use - Interior joints in dry locations subject to not more than 5% movement such as non-moving joints in gypsum board, plaster, etc.; can be painted.
Limitations: Interior dry non-moving joints.
7. SEALANT TYPE 7 - One component, solvent release curing, non-hardening, non-skinning, non-migrating polyisobutylene polymer base.
Typical Use - Under metal thresholds.
Limitations: Concealed locations.
8. SEALANT TYPE 8 - Other.

CONTINUING EDUCATION

By Randy Lavigne, Executive Director

JULY 8, 1998

AIA DOCUMENTS WORKSHOP

Presented by Victor O. Schinnerer/CNA

1-3PM, Assurance Ltd., South Tech Business Park

4325 South Industrial Road, Ste. 300, LV NV 89103

FREE. To register or further details call Lynn Campbell 798-3700

AUGUST 20-23, 1998

CSI TRI-REGION CONFERENCE

Caesar's Palace, Las Vegas, NV

Workshops, Seminars and Programs all registered for AIA and CSI credits.

For full details and registration contact CSI Tri-Region Conference, 8246 Broadway, Lemon Grove, CA 91945, or FAX request to 619-460-7539

HOW ARE WE DOING?

According to the last report from CE Headquarters, Nevada Architects are doing well in achieving their CE requirements. In 1997, 93% of all architects across the state, achieved at least a portion of their requirements; and 72.57% achieved their requirement in full. So far this year 43.81% have already achieved their 1998 requirement.

To Check Your AIA CE Credits - Call 800-605-8229

ALWAYS USE ORIGINAL AIA DOCUMENTS

Contact - AIA Contract Documents @ 800-365-2724
and receive your AIA Member Discount Documents are
also available through Construction Notebook -
876-8660



... Committed to Insurance Excellence

South Tech Business Park
4325 S. Industrial Road, Suite 300
Las Vegas, Nevada 89103
(702) 798-3700 • Fax 798-3711

Specializing in all forms of
bonds and insurance for the
design professional and the
construction industry

A FULL SERVICE INDEPENDENT INSURANCE AGENCY

ARE YOU

CERTIFIABLE?

Even if you do not hold an architecture degree accredited by the National Architectural Accrediting Board, you may still qualify for NCARB certification through certain provisions:

- ☐ Do you hold a pre-professional degree in architecture and have four years experience under the supervision of an architect prior to July 1, 1984?
- ☐ Do you hold A Bachelor of Arts or a Bachelor of Science degree and have six years experience under the supervision of an architect prior to July 1, 1984?
- ☐ Do you have a high school diploma and 10 years experience under the supervision of an architect prior to July 1, 1984?
- ☐ Were you registered prior to July 1, 1984, and have fulfilled the experience requirements as applicable above up to the present?
- ☐ Were you registered by June 30, 1990 and have or will have 10 years experience in responsible charge of an architecture practice?

If you answered "YES" to any of these questions, you may be certifiable! These provision expire June 30, 2000. Contact NCARB at 202/783-6500 to request an application for certification, or download it from our web site at www.ncarb.org



**Western
Technologies
Inc.**

The Quality People
Since 1955

Nevada
Arizona
New Mexico
Mexico

**Environmental Consulting, Geotechnical
Engineering, Construction Materials Testing
and Special Inspection Services**

Environmental Consulting
Chris White, C.E.M., P.E.

Geotechnical Engineering
Rick Stone, P.E.

Materials Testing/Special Inspections
Dave Wozniak

Director of Marketing
Teri Askew

(702) 798 - 8050

3611 West Tompkins Avenue, Las Vegas, NV 89103-5618
Fax: (702) 798-7664

AIA Las Vegas

OFFICERS AND DIRECTORS

PRESIDENT

John Treston, AIA 4 5 6 - 3 0 0 0
Tate & Snyder Architects

PRESIDENT-ELECT

Ed Vance, AIA 7 3 1 - 2 0 3 3
JMA Architecture Studios

TREASURER

Mark Dowell, AIA 7 3 2 - 0 0 8 4
Domingo Cambeiro Corp. Architects

SECRETARY

Larry Staples, AIA 7 3 1 - 2 0 3 3
JMA Architecture Studios

DIRECTOR

Eric Anderson, AIA 8 9 5 - 1 4 7 5
UNLV, Director of Planning and Construction

DIRECTOR

Curt Carlson, AIA 7 3 1 - 2 0 3 3
JMA Architecture Studios

DIRECTOR

Steve Carpenter, AIA 2 5 1 - 8 8 9 6
Carpenter Sellers Associates

DIRECTOR

Charles Coleman, AIA 7 9 1 - 4 3 3 3
The Howard Hughes Corporation

ASSOCIATE DIRECTOR

David Frommer, Assoc. AIA 4 3 5 - 6 4 0 1
RAFI (Robert A. Fielden, Inc.)

ALLIED DIRECTOR

Kathy Plant 2 7 0 - 4 1 8 0
Nevada Sales Agency

PAST PRESIDENT

Windom Kimsey, AIA 4 5 6 - 3 0 0 0
Tate & Snyder Architects

EXECUTIVE DIRECTOR, AIA OFFICE

Randy Lavigne 8 9 5 - 0 9 3 6
UNLV School of Architecture
E-Mail randylavigne@aialasvegas.org

COMMITTEE CHAIRS

AIA INTERNET

Eric Anderson, AIA 8 9 5 - 1 4 7 5
UNLV, Director of Planning and Construction
E-Mail eanderson@ccmail.nevada.edu

CODES LIAISON

David Brom, AIA 3 6 7 - 6 9 0 0
KGA Architecture

CONTINUING EDUCATION

Doug Allen, AIA 3 6 7 - 6 9 0 0
KGA Architecture

GOLF TOURNAMENT & PUTTING TOURNAMENT

Todd Vedelago, AIA 4 5 6 - 3 0 0 0
Tate & Snyder Architects

GOVERNMENT AFFAIRS

Michael Crowe, AIA 4 5 6 - 3 0 0 0
Tate & Snyder Architects

INTERN DEVELOPMENT

Ed Vance, AIA 7 3 1 - 2 0 3 3
JMA Architecture Studios

MEMBERSHIP

Peggy Pound 2 5 8 - 0 1 1 5
Pentacore Engineering, Inc.

NEWSLETTER COMMITTEE

Randy Lavigne 8 9 5 - 0 9 3 6
AIA Nevada & AIA Las Vegas
Valerie Bugni, Assoc. AIA 2 6 3 - 7 1 1 1
Lucchesi, Galati Architects, Inc.
Kathleen Richards, Assoc. AIA 5 9 7 - 9 3 9 3
Terracon

OUTREACH

John Treston, AIA 4 5 6 - 3 0 0 0
Tate & Snyder Architects

1998 WMR & PRODUCT SHOW

Brad Schulz, AIA 3 6 7 - 6 9 0 0
KGA Architecture

SCHOLARSHIPS

Steve Carpenter, AIA 2 5 1 - 8 8 9 6
Carpenter Sellers, Inc.

fabulous

AIA Las Vegas

UNLV Box 454018

Paul B. Sogg Architecture Bldg.
4505 South Maryland Parkway
Las Vegas Nevada 89154 - 4018

BULK RATE
US POSTAGE
PAID

Las Vegas, NV
Permit #1369

FORUM is published monthly by the Las Vegas chapter of The American Institute of Architects. The editorial staff welcomes your participation and comments. For information, call or write to FORUM Editor at the above address. All materials for publication are due by the 20th of the month prior to publication.

TO:

Telephone 702-895-0936

Fax 702-895-4417

E-Mail: www.aialasvegas.org

1 9 9 8

J U L Y

CONTENTS:

PRESIDENTS MESSAGES BRIEFS OPINIONS STATE AND LOCAL NEWS DESIGN NEWS

JULY

- 14 AIA Las Vegas Board Meeting
11:30A - UNLV School of Architecture
- 15 AIA Membership Meeting
"Legislative Issues"
6PM Monte Carlo Hotel
- 16 AIA Nevada Board Meeting
11:30A - School of Architecture

AUGUST

- 11 AIA Las Vegas Board Meeting
11:30 A - School of Architecture
- Note Correction in Date:
- 19 AIA Membership Meeting
Desert Princess Paddlewheel Cruise
Lake Mead - \$20. per person
- 20 AIA Nevada Board Meeting
11:30A - School of Architecture

SEPTEMBER

- 4 AIA Fall Putting Tournament
Angel Park 6:30P
- 8 AIA Las Vegas Board Meeting
11:30A - School of Architecture
- 17 AIA Nevada Board Meeting
11:30A - School of Architecture