

new mexico architecture

AMERICAN INSTITUTE
OF
ARCHITECTS
MAY 29 1968
LIBRARY

may-june 1968 50c

ONE IDEA LEADS TO ANOTHER

These idea sketches are just a few examples of concrete's potential for innovative design.

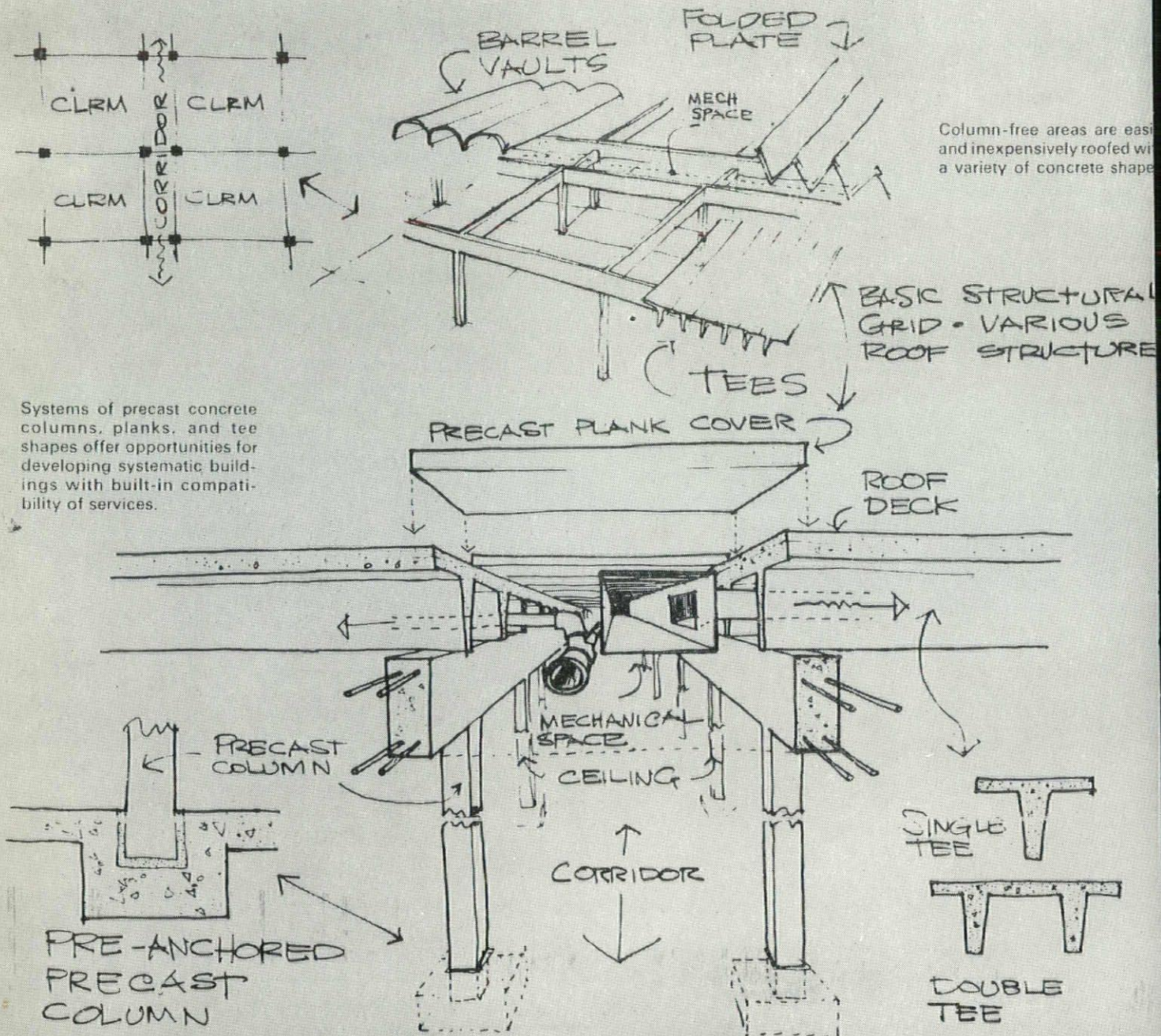
In further exploration of the systems building concept, you'll find PCA can help . . . through its technical literature and its nationwide staff of architects, engineers and specialists. Call the PCA office nearest you, or write for additional information. (U.S. and Canada only)



PORTLAND CEMENT ASSOCIATION

Suite 705—5301 Central N.E., Albuquerque, N.M. 871

An organization of cement manufacturers to improve and extend the uses of portland cement and concrete.



nma

vol. 10 • nos. 5 and 6 • may - june 1968 • new mexico architecture

NMA News 7

1967 Honor Awards 11
Albuquerque Chapter, A.I.A.

Annual Meeting May 25, 1968 17
New Mexico Society of Architects

Can You Afford Free Sketches 19

Book Reviews 20

Letter to the Editor 21

Index of Advertisers 22

(Cover—Carl Paak residence—Hildreth Barker, A.I.A.—Architect)

— Official Publication of the New Mexico Society of Architects, A. I. A. —

Society Officers

President—Kenneth S. Clark, F.A.I.A.
Vice-President—Beryl Durham
Secretary-Treasurer—Joe Boehning
Director—Richard S. Clark
Director—Loren S. Mastin
Director—Albert S. Merker
Director—John B. Reed
Director—Frank M. Standhardt
Director—John P. Varsa

Commission for NMA

John P. Conron—Editor
Bainbridge Bunting—Editorial Consultant
W. M. Brittelle, Sr.—Advertising
Van Dorn Hooker—Circulation
John B. Arrison
James Murray, III
John B. Reed

Now Available State Wide:

**CREATIVE
CONCRETE
PRODUCTS**



*in 6 shapes, 11 sizes
Also available in colors
made in New Mexico by*

**AGP ALBUQUERQUE
GRAVEL PRODUCTS
COMPANY**

**Design
Interiors**

Complete Design Service

- ★ Office Furnishings
- ★ Contract Sales
- ★ Color Co-ordination
- ★ Draperies, Carpeting, Accessories

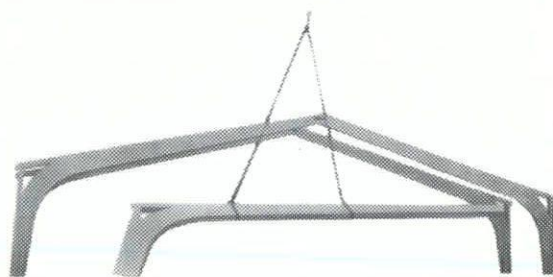
Professional Design Staff

3 Locations to Serve You

THE PAPER MILL, Inc.
132 W. Las Cruces Ave.
LAS CRUCES, N. M.

DESIGN INTERIORS
120 Morningside, S.E.
ALBUQUERQUE, N. M.

THE INK WELL, Inc.
314 Ninth Street
ALAMOGORDO, N. M.



WE CAN DO A QUALITY BUILDING
JOB FOR YOU AT LESS COST WITH
WEYERHAEUSER LAMINATED WOOD BEAMS
WEYERHAEUSER LAMINATED WOOD ARCHES
WEYERHAEUSER LAMINATED WOOD DECKING

See us for complete Weyerhaeuser Structural Roof Systems.
We can do the complete job from estimate through erection.
Call for estimates or more information.



Weyerhaeuser Architectural Specialty Dealer

ALBUQUERQUE

1881

Lumber COMPANY

1968

3825 Edith, N.E.

Phone 345-2511

Variations on a theme :

NEW Spectra-Glaze®

**glazed masonry units
DESIGN SERIES**

(not an alternate for
any other material)

Your choice in *color, texture,
form, scale and pattern . . .*

Select from a variety of
scored units to reduce scale
for as little as a nickel extra
per block . . . Build, decorate
and finish in a single
operation. Thru wall,
load bearing units eliminate
expense of back-up
wall . . . Specify

*Spectra-Glaze glazed
concrete units in your
base bid to realize
their unique
advantages of
design flexibility
combined with
lower-in-the-wall
costs . . . Local
delivery, world-wide.*

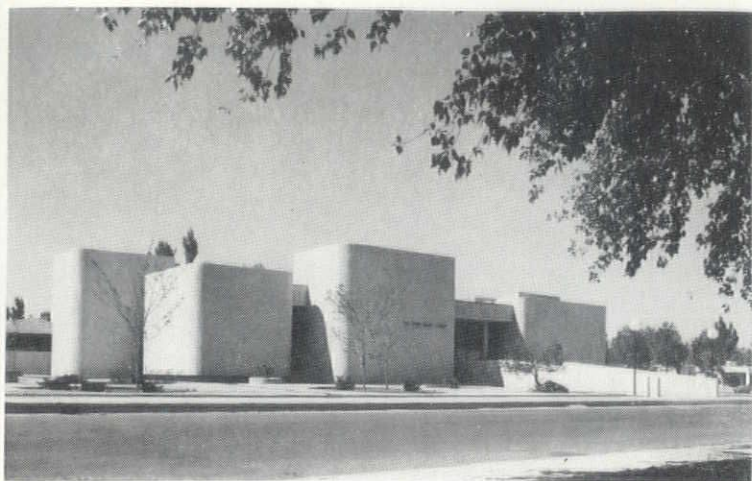
Ⓢ Cataloged in SWEET'S

(R) Reg. U. S. Pat. Off.

Canada & other countries by The Burns & Russell Co.

FEATHERLITE TILE COMPANY P. O. Box 489, Erskine Rd.
LUBBOCK, TEXAS 79408

Phone 809 & PO-3-8202



SAN PEDRO BRANCH LIBRARY, Albuquerque, N. M.
JOHN REED, Architect

TEXTURE

We are pleased to have applied the heavily textured cementitious coating on the exterior and interior walls of the award winning San Pedro Library. Selected for its permanent beauty and simplicity, the coating will provide many maintenance free years for the City of Albuquerque. Whether building or remodeling, let us tell you the exciting story of this permanent finish.

KEYSON APPLIED COATING, INC.
502 General Patch S.E., Phone 298-7597
ALBUQUERQUE, N. M. 87112



NEW MEXICO QUARTZ BEAUTIFIES ALBUQUERQUE'S SKYLINE

Now completed is the installation of 1400 precast concrete panels on the exterior treatment on St. Joseph's Hospital, Albuquerque. The white quartz exposed aggregate surface material was acquired here in New Mexico. The panels are being produced on Otto's new high production impact table facilities, the only facility of its type in New Mexico. A new peak in product strength and uniformity.

Architect—W. C. Kruger & Assoc.

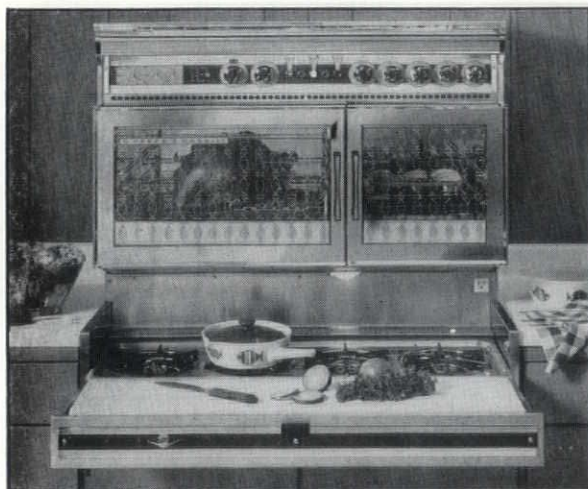
Engineer—Robert Krause

Contractor—Lembke Constr., Co., Inc.

EDGAR D. OTTO & SON INC.

243-6721

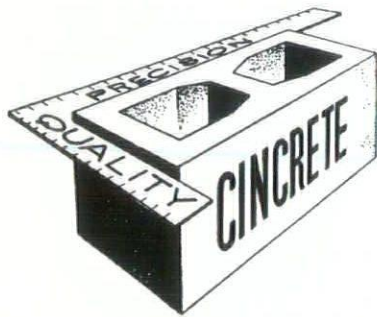
2700 2nd St. S.W. Albuquerque, New Mexico 87103



AUTOMATIC COOKING?

if you want the job done right
...do it with gas

SOUTHERN UNION  **GAS** COMPANY



Serving Southwestern New Mexico
and El Paso with
Quality Concrete Masonry Products
and many allied building materials



Hollow Metal Doors and Frames

Commercial Hardware

Wood and Plastic Folding Doors

Reinforcing and Fabricated Steel

Residential and Commercial Steel and Aluminum Windows

Builders Block & Stone Co., Inc.

P. O. Box 1633

622-1321

Roswell

Builders Block & Supply Co., Inc.

El Paso

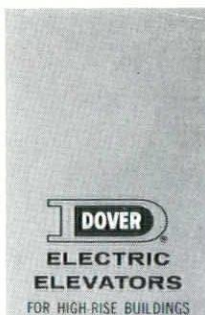
532-9695

P. O. Drawer FF

524-3633

Las Cruces

Members of New Mexico Concrete Masonry Assn. and National Concrete Masonry Assn.



Mr. Architect . . .

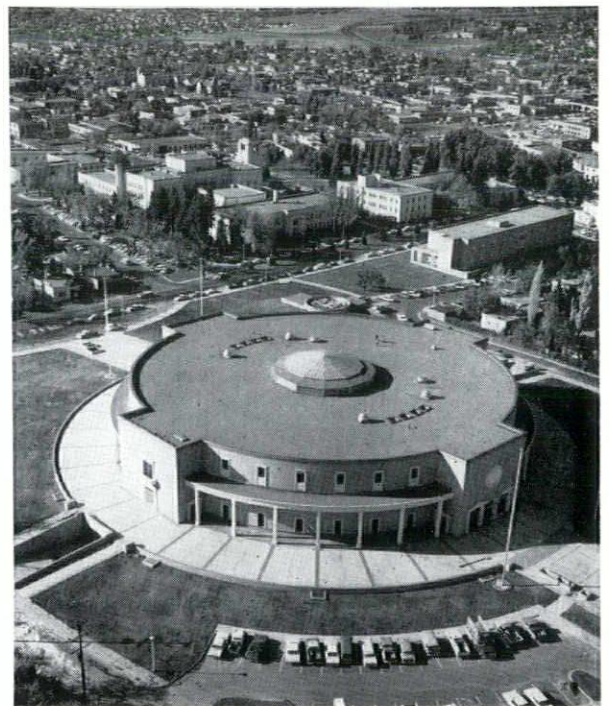
let us show you why a large percent of
Building owners in New Mexico rely upon
us for dependable Vertical Transportation.
Hunter-Hayes Elevator Co.

106 Buena Vista S.E.
Albuquerque, N. M. 87106



HUNTER-HAYES ELEVATOR CO.
SUBSIDIARY ■ DOVER CORP.

Offices Throughout the Southwest



NEW MEXICO STATE CAPITOL COMPLEX
Santa Fe, New Mexico

Geared Passenger Elevators as well as Rotary Oilraulic
Elevators installed throughout.

BAINBRIDGE BUNTING RESIGNS AS CO-EDITOR OF NMA.

It is with great regret that we announce the resignation of Bainbridge Bunting as Co-Editor of *New Mexico Architecture*.

A coronary, suffered last winter, has forced a curtailment of activities by Dr. Bunting. However, he retains a close interest in the magazine; he will contribute an occasional article and (the surviving editor hopes) frequent advice.

"Bain" has served as co-editor since the September-October, 1960 issue of NMA, when the editor, Dr. David Gebhard, left on a one year leave of absence to teach architectural design and history at the University of Istanbul. Upon completion of his teaching year, David returned not to New Mexico, but to California, where he became the director of the Art Gallery at the University of California at Santa Barbara.

The members of the New Mexico Society of Architects are deeply grateful to Dr. Bunting for the seven and one-half years which he has served as Co-Editor of *New Mexico Architecture*.

JIM MURRAY SUFFERS ACCIDENT — AND WISECRACKS

The following article was printed in the *Kackles* by *Katy* column of the March 3, 1968 *Hobbs Daily News-Sun*. While the story has little to do with furthering the profession of architecture, it does illustrate one of the hazards in the practice of architecture. The architect is James Murray, III of Hobbs, New Mexico.

No one but my klunk-headed architect friend, Murray Three, could drop part of a swimming pool on his foot and break two toes — but he did it, and now he is limping around the country on a crooked walking stick reminiscent of those the leprechauns use. Very appropriate, I'd say.

Murray was alone in his little

oriental hideaway in the South Broadmoor Building when he picked up a sample of an aluminum swimming pool which had been sent him for examination.

In some way he can't explain, it slipped and crashed down on his foot. And despite the fact the thing is touted for its light weight, it was heavy enough to fracture a couple of his tootsie toes.

He says the pain was terrific. But he didn't have time to revel in his misery because "suddenly there were at least eight people in the office, each wanting an answer to a different question — right then!"

So it was a couple of hours later before he could get to a doctor and find out for sure that he had busted something. By that time he had accumulated enough experience in being a stout fellow to survive the horrible ordeal.

And a wierdly-curved souvenir cane he had bought just because he thought it was interesting suddenly came in handy.

When I saw Murray and heard his tale of woe, I was reminded all over again that a person who breaks an arm a leg, or even a finger, usually gets sympathy and concern from his friends, but the guy who breaks a nose or a toe gets nothing but wise cracks.

AIA SCHOLARSHIP AWARDED TO UNM STUDENT

Arthur J. Torres, architectural student at the University of New Mexico, has been awarded a \$1000 scholarship by the American Institute of Architects for the 1968-69 academic year.

A total of \$36,000 was awarded by the AIA Committee on Scholarships to fifty-five student and professional architects throughout the United States, Canada and England.

Mr. Torres, who graduates from the Department of Architecture at UNM in June, 1968, received the scholarship to continue the study of architecture in the Graduate

Program at the University of California at Berkeley, California.

NEWLY REGISTERED ARCHITECTS

At the April 5, 1968 meeting of the New Mexico Board of Examiners for Architects, three applicants received architectural registrations:

- Arthur W. Jones
Department of Architecture,
UNM, Albuquerque, N. M.
- William W. Milburn, Jr.
Boulder, Colorado
- Richard J. Frank
Denver, Colorado

NEW PUBLICATIONS OF INTEREST

With the growing need for improved flood plain management, desirability of a basic, uniform method of establishing flood frequencies for general use throughout the nation is manifest. With this need in mind, Bulletin No. 15, "A Uniform Technique for Determining Floodflow Frequencies" has been published by the Hydrology Committee of the Water Resources Council. The technique set forth in this bulletin has been adopted for use in all Federal planning involving water and related land resources.

"Introduction to Flood Proofing" by John R. Shaeffer, published by the Center for Urban Studies, The University of Chicago, was prepared as a part of a study of certain aspects of flood plain management for the U. S. Army Corps of Engineers and T. V. A. This publication on structural flood proofing is intended to acquaint public officials, building owners, and professional engineers with design principles to reduce water damage to structures. A number of simple but effective measures are illustrated for reducing flood damage.

Copies of the publications may be obtained from the Flood Plain Management Section, Department of the Army, Albuquerque District Corps of Engineers, P. O. Box 1580, Albuquerque New Mexico, 87103.

more 

Grograin® Lockweave® face is 100% Bigelow approved acrylic® level-loop style which is resilient, long-wearing, easy-care Acrilan® face that forms a very gentle texture to blend into any decorative scheme with ease. Virtually snagproof due to a special manufacturing process that locks each tuft through to the back, it is a practical carpet for heavy traffic areas . . . both in the home and for commercial installation. The pattern is a textured loop pile (as illustrated) available in 15 colors, 9 and 12 foot widths.

®Trademark ®Acrilan®

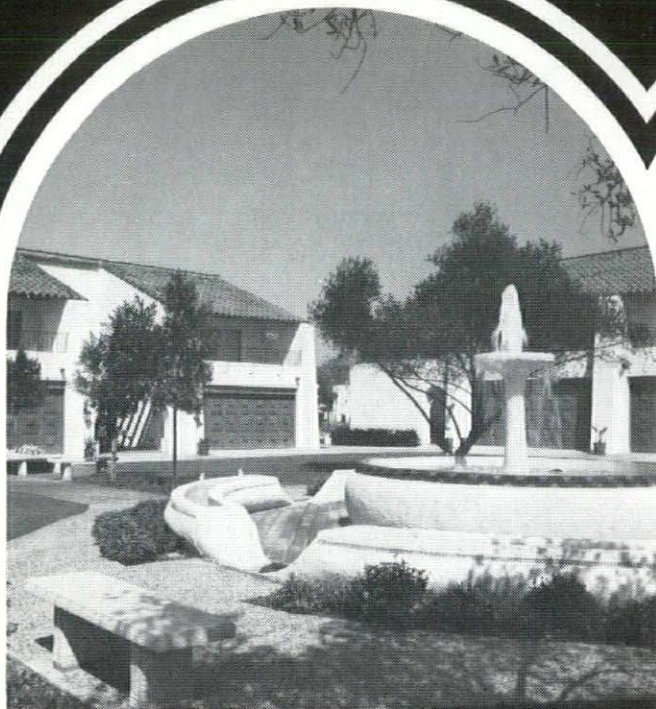
Architectural Carpet Consultants is at your service to provide complete information and specifications to fit your specific floor covering requirements . . . at no charge . . . call or write us today!



ARCHITECTURAL CARPET CONSULTANTS

1615 UNIVERSITY NORTHEAST
ALBUQUERQUE, N.M. 87106 • 242-1212

GROGRAIN



*At
Ciudad Capistrano...
there is no compromise
with quality*

THE SPECIFICATIONS CALLED FOR GENUINE CLAY MISSION TILE

Just blocks from historic Mission San Juan Capistrano is Ciudad Capistrano, a unique city within a city. Here, the mission-tiled Casas and Casitas reflect the old-world charm of their surroundings. At Ciudad Capistrano, neither beauty nor quality has been sacrificed, for Architect Robert E. Jones, A.I.A., specified only genuine clay mission tile—from the kilns of San Vallé. After all, **if it isn't clay...it isn't tile.**

San Vallé TILE KILNS
Since 1898

Representative for Ludowici-Celadon Roofing Tile, Quarry Tile and Nailon Brick in California and Arizona

1258 NORTH HIGHLAND AVENUE, LOS ANGELES, CALIFORNIA 90038 • TELEPHONE (213) 464-7289

MISSION TILE



CLAY SHINGLE

TEXAS — NEW MEXICO DISTRIBUTOR: LUDOWICI-CELADON COMPANY, DALLAS

The following article has nothing to do with architecture. However, I found it to be amusing and thoroughly educational. The written policy of this magazine includes education as a primary purpose. Accordingly, I pass along to the readers of NMA this lesson in social customs.—JPC

COLONISTS JUST KNEW ONE VERB — DRINK-DRANK-DRUNK

By CARL BERNSTEIN
The Washington Post

WASHINGTON: To hear Harold Peterson describe our ancestors is to wonder how the American colonists managed to stagger their way through English rule, much less win a revolution.

Peterson, chief curator of the National Park Service, is an expert on the drinking habits of our forefathers, of whom he says: "A happier bunch of drunks never climbed on horseback."

Indeed, those who listened to his lecture here about "our alcoholic ancestors" doubted that the colonists were even in shape to get astride their horses.

The audience's skepticism stemmed from its own sampling, after the lecture, of Chatham Artillery Punch (3 gals. catawba wine, 1 gal. rum, 1 gal. brandy, 1 gal. rye whisky, 5 lbs. brown sugar, 2 qts. cherries, juice of 3 doz. lemons and 1 gal. gin — "to make it smooth").

The colonists, it would seem from Peterson's lecture, however, were a hardier bunch than their martini-bred descendants and took the likes of Chatham Artillery Punch in wobbly stride. To wit:

EVERY DAY before breakfast, John Adams worked through a tankard or two of hard cider, which probably accounts for the portraits depicting our second president with his mouth puckered up.

IN ONE OF the most joyous ordinations on record, 80 guests at a priestly ceremony honoring a 1787 seminary graduate consumed 40 huge bowls of punch.

JOHN HANCOCK had a penchant not only for writing his name with doo-dads under it, but he also liked a good party. At a dinner at his home in 1792, Hancock signed off his 200 guests with 136 bowls of punch, 300 bottles of wine and — for those still standing — served sherry and brandy after supper.

WHILE Jonathan Edwards was busting his lungs about hellfire and damnation, most of his contemporaries in the Massachusetts Bay Colony were off sipping "whistle-belly vengeance," a brew concocted from sour beer and "a lot of other perfectly disgusting items."

THE JUSTICES of the Supreme Court under John Marshall established a firm rule not to drink on the bench except on rainy days. Presumably using the same logic they later employed in Marbury vs. Madison, the justices promptly decided that their jurisdiction covered the whole country — where it must have rained some place.

These examples, according to Peterson, "are just part of the evidence that the colonists drank on every occasion — holidays, weddings, proclamation signings, funerals — any excuse they found."

And the revolution? After all, one questioner reasoned, whiskey might have helped out at Valley Forge, but what about the rest of the war?

Apparently a little cup now and then didn't impair the efficiency of the revolutionary navy, if the following story related by Peterson is to be believed:

On Aug. 23, 1779, the USS Constitution set sail from Boston loaded with 475 officers and men, 48,600 gallons of fresh water, 74,000 cannon shot, 11,500 pounds of black powder and 79,400 gallons of rum. Her mission: to destroy and harass English shipping.

On Oct. 6, she made Jamaica, took on 826 pounds of flour and 68,300 gallons of rum. Three weeks later, the Constitution reached the Azores, where she provisioned with 550 pounds of beef and 64,300 gallons of Portuguese wine.

On Nov. 18, the ship set sail for England, where her crew captured and scuttled 12 English merchantmen and took aboard their rum.

But the Constitution had run out of shot, and she made her way unarmed up the Firth of Clyde for a night raid. Nevertheless, her landing party captured a whisky distillery, transferred 40,000 gallons aboard and headed for home.

On Feb. 20, 1780, Peterson continued, the Constitution arrived in Boston with no cannon, no shot, no food, no powder, no rum, no whisky — and 48,600 gallons of stagnant water.

NEW MEXICO ARCHITECTS APPOINTED TO HISTORIC SITES PLAN

The New Mexico State Planning Office has undertaken to prepare a "Comprehensive Statewide Historic Sites Preservation Plan." The plan will be based upon a survey of prehistoric sites now being conducted by the Museum of New Mexico, and a survey of historic sites prepared by the Museum under a contract with the State Planning Office in 1964. The Planning Office will combine the results of the prehistoric survey and an updated historic sites review into a single inventory.

The purpose of the project is to prepare a ten year plan for the preservation and development of its historic sites and to select the sites which will be included in the National Register.

To assist the State Planning Office, two committees have been appointed and two New Mexico architects have been asked to serve.

John P. Conron, AIA/AID, Dr. Myra Ellen Jenkins, and Albert H. Schroeder have been appointed to the three member Advisory Committee.

George C. Pearl, AIA, Fray Angelico Chavez, Jack D. Rittenhouse, Dr. Edward P. Dozier join the three members of the Advisory Committee to form the Governor's Historic Sites Review Committee.



This attractive home is built of 8x4x16 Atlas Mission Masonry

**for beauty
... for durability
build with
ATLAS
MISSION MASONRY**

Atlas Mission Masonry block is perfect for exterior (and interior) construction of homes in the Spanish architectural style so popular in the Southwest. The smooth, slightly rounded outward shape of the block gives an effect of casual beauty. Atlas Mission Masonry is durable, too. The block retains its original color after years of weathering.

Write Walter Frank for details:
Box 9977, El Paso, Texas 79990

THE
ATLAS
BUILDING PRODUCTS CO.

**OUR 32ND YEAR CLIMATE DESIGNING
PAINT FOR THE SOUTHWEST**

HANLEY'S *and the*

COLOR GUILD ASSOCIATES PRESENT **NEW WORLD
OF COLOR**

**ARCHITECTURAL PAINTS
FOR BEAUTY AND
PROTECTION**

**TECHNICAL COATINGS FOR
PROTECTION — FUNCTION
AND BEAUTY.**

**SUNFOE
AMBASSADOR**



HANLEY PAINT MFG. CO., INC.

EL PASO, TEXAS
PH. 532-6921
PH. 755-9821

**LAS CRUCES
NEW MEXICO**
PH. 523-1222

**ALBUQUERQUE
NEW MEXICO**
PH. 265-1524

WORKING FOR:

**An improved
business climate in
the New Mexico
Construction Industry**



W. D. Ross
Executive Director

205 Truman N.E.
Albuquerque,

265-8703
New Mexico 87108

The architects, owners, and contractors of nine New Mexico buildings were honored at the second annual awards banquet of the Albuquerque Chapter, AIA. The jury selected the winners from the more than twenty entries submitted by the members of the Albuquerque Chapter. Jurors were: Prof. Charles Moore, Chairman of the Department of Architecture of Yale University, Prof. Thomas R. Vreeland, Jr., chairman of the Department of Architecture of the University of New Mexico, and Prof. Clinton P. Adams, Dean of the College of Fine Arts at the University of New Mexico.

1967 HONOR AWARDS

Albuquerque Chapter, American Institute of Architects

FIRST HONOR AWARD

**San Pedro Branch Library,
Albuquerque, New Mexico**

ARCHITECT: John Reed

OWNER: City of Albuquerque

CONTRACTOR: Sanders
Construction Co.

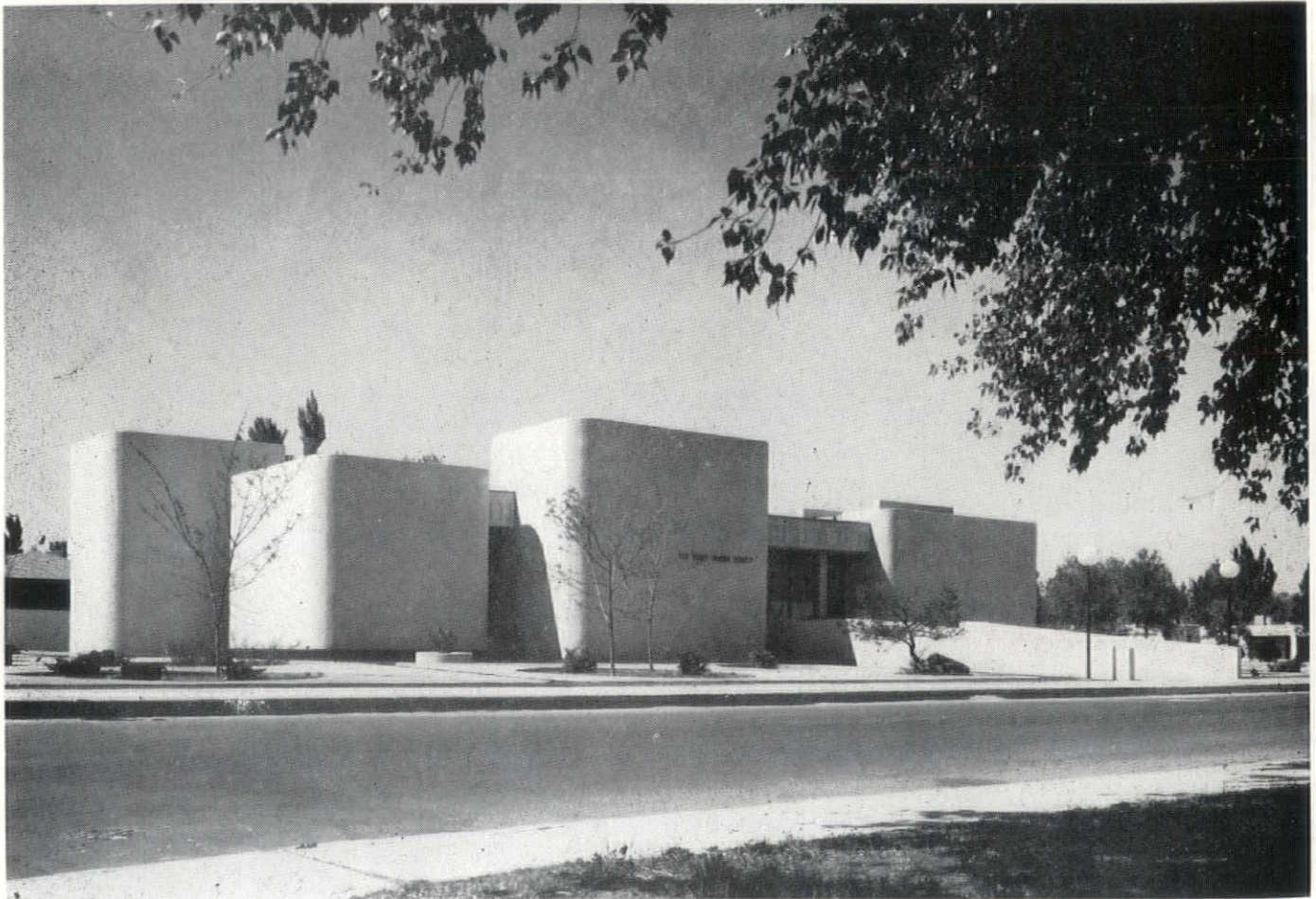
COMPLETED: June, 1967

Dick Kent—Photographer

Jury Comment:

The forms of this building are handsome, consistent and direct. They mold the light inside the building and in turn are molded by it on the exterior. They conform perfectly to the function of the library inside.

(See *New Mexico Architecture*
November/December, 1967)



more 



Dick Kent—Photographer

FIRST HONOR AWARD

**University Arena,
University of New Mexico,
South Campus,
Albuquerque, New Mexico**

ARCHITECT: Joe Boehning

OWNER: University of
New Mexico

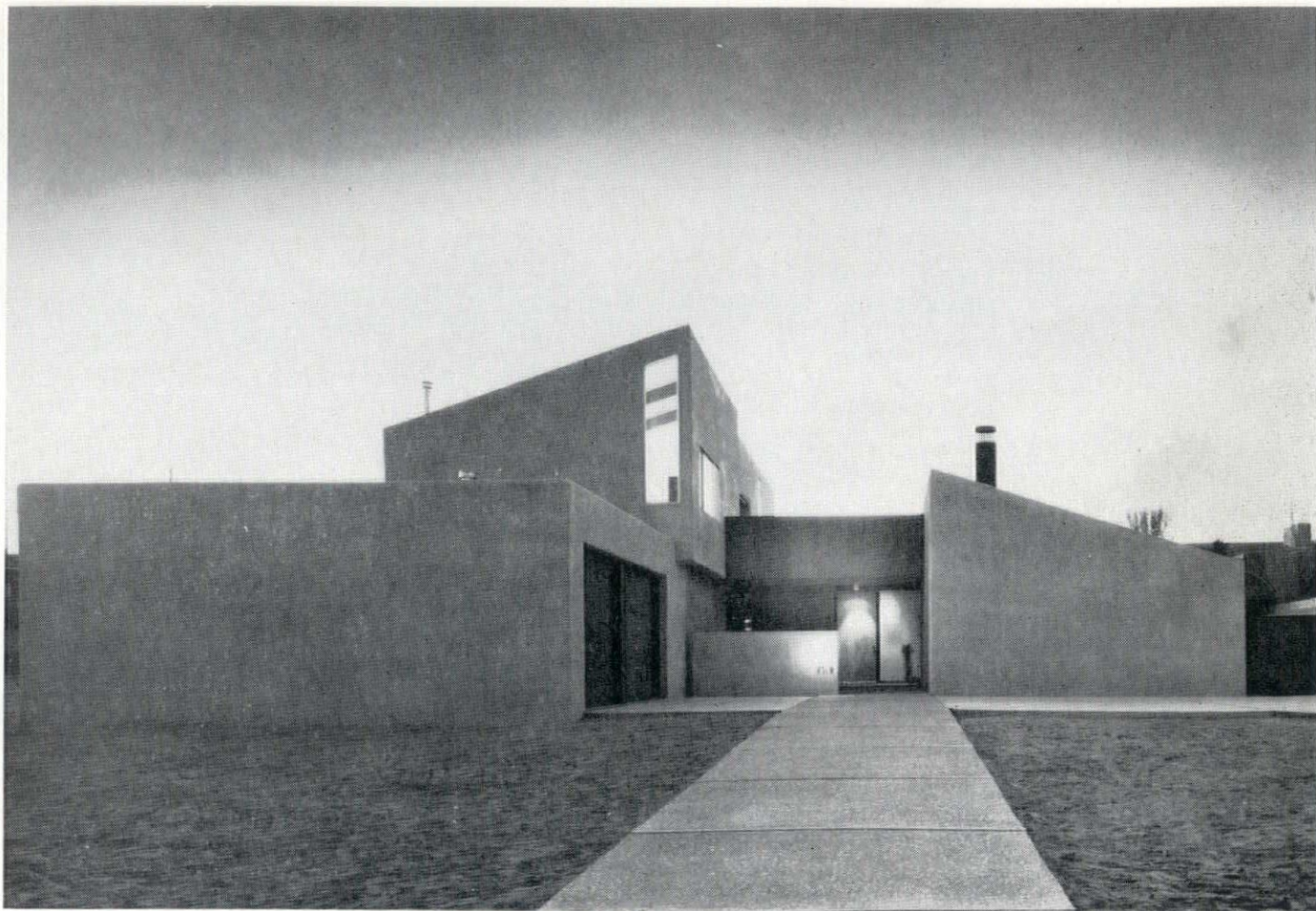
CONTRACTOR: K. L. House
Construction Co.

MECHANICAL ENGINEER:
Bridgers & Paxton

COMPLETED: December 1, 1966

Jury Comment:

The absolute directness of this vast arena, the economy of its structure, the renunciation of any architectural trivialities, and the power of its space render it a building (or non-building) of national importance.



HONOR AWARD

A residence for Mr. & Mrs.
**Carl Paak, 1719 Notre Dame
 Dr., N.E., Albuquerque,
 New Mexico**

ARCHITECT: Hildreth Barker

OWNERS: Mr. & Mrs. Carl Paak

CONTRACTOR: Homes by
 Marilyn, Marilyn Jaschke

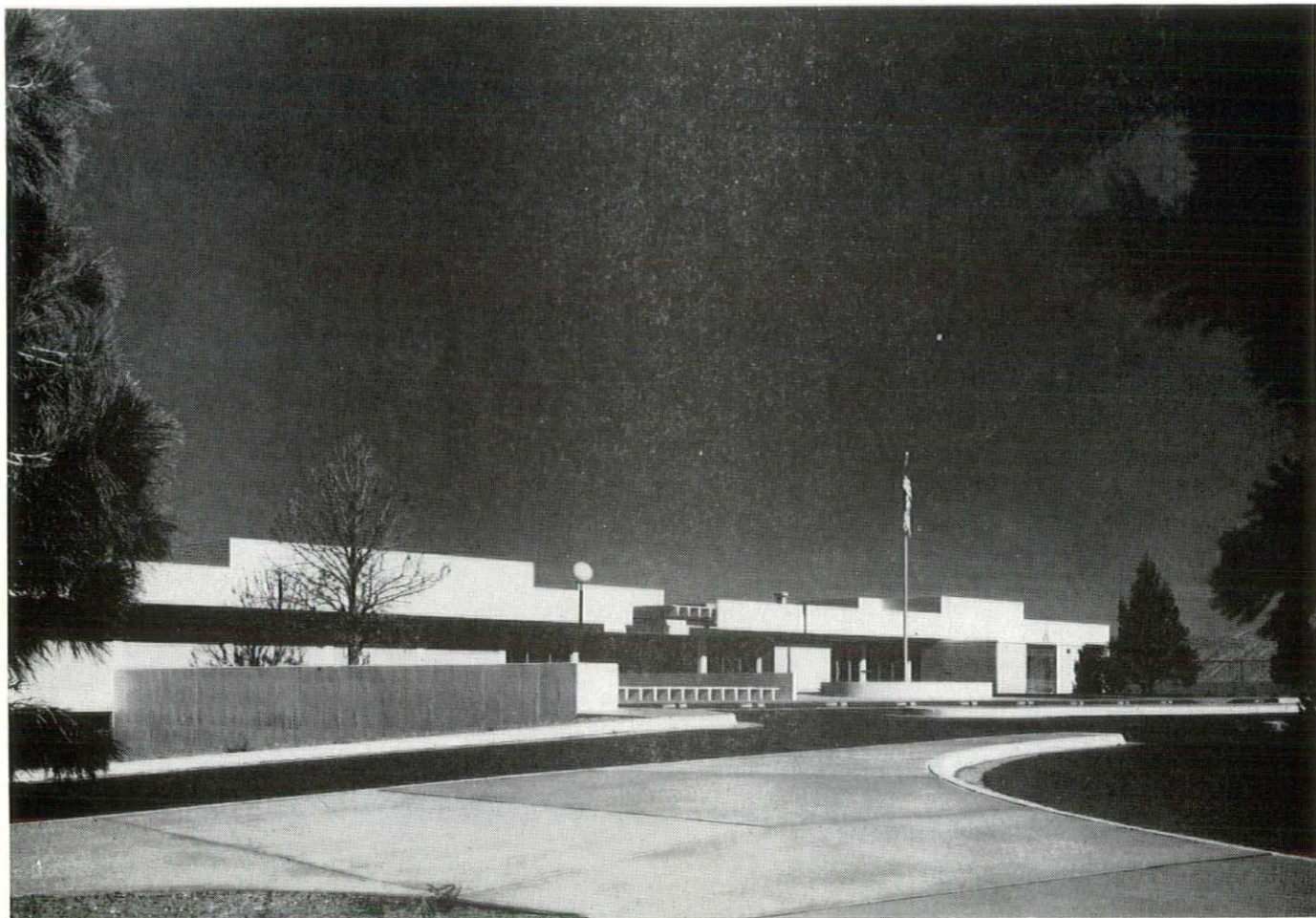
COMPLETED: October 1, 1967

Jury Comment:

The simplicity of materials, clarity of form, and the richness of sunshine moving through this house and studio make it a bright, exciting and joyous place to be.

(see cover photograph)

more 



Jerry Soff—Photographer

HONOR AWARD

**Golf Clubhouse for the University
of New Mexico
Far South Campus,
Albuquerque, New Mexico**

ARCHITECT: John Reed

OWNER: The University of
New Mexico

CONTRACTOR: Weaver
Construction Company

COMPLETED: December, 1966

Jury Comment:

This golf clubhouse sits powerfully and serenely in the landscape, yet has an almost explosive variety of form tempered by an air of comfort and good cheer which make it an unusually effective building.

MERIT AWARD

St. Anthony Church, Fort Sumner, New Mexico

ARCHITECT: George Wright,
Associates

OWNER: Archbishop of Santa Fe

GENERAL

CONTRACTOR: Styron
Construction Co., Inc.

MECHANICAL

CONSULTANT: Steele
Engineering

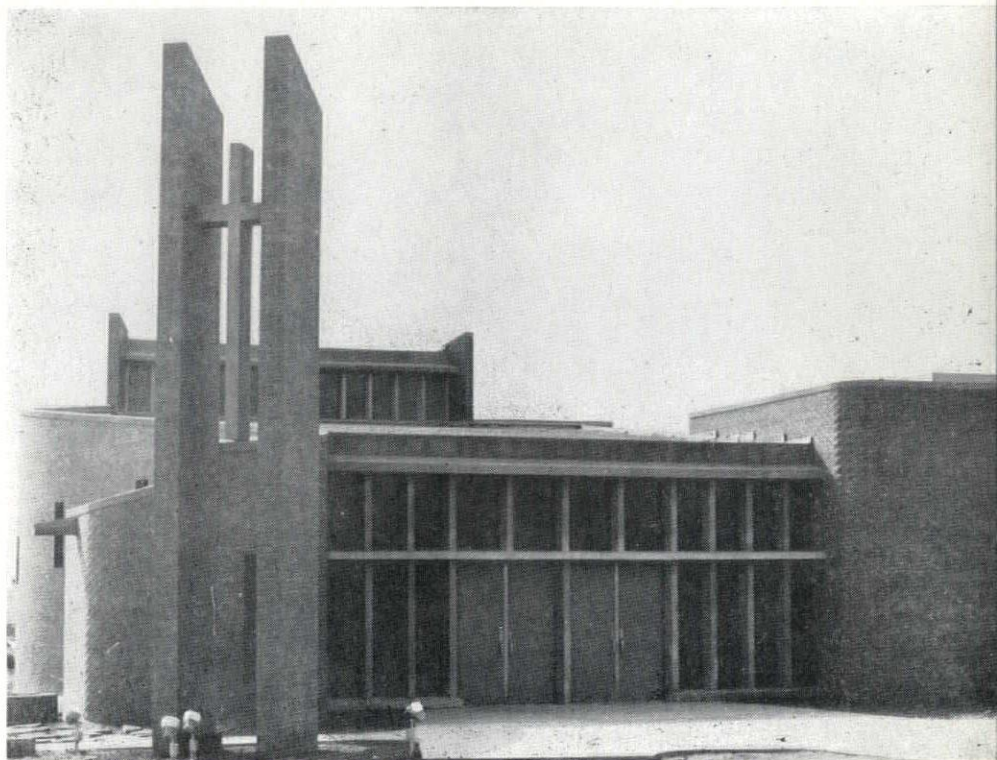
ELECTRICAL

CONSULTANT: Engineering,
Inc.

COMPLETED: April, 1967

Jury Comment:

The interior of this church, glowing with light, achieves, when one looks through a layer of modern architectural devices, a simple power which gives it a surprising affinity with the early churches of New Mexico.



MERIT AWARD

Office Building — 2001 Carlisle N.E., Albuquerque, N. M.

ARCHITECT: Joe Boehning

OWNER: James R. Williams

CONTRACTOR: R. M. Swain
& Son, Inc.

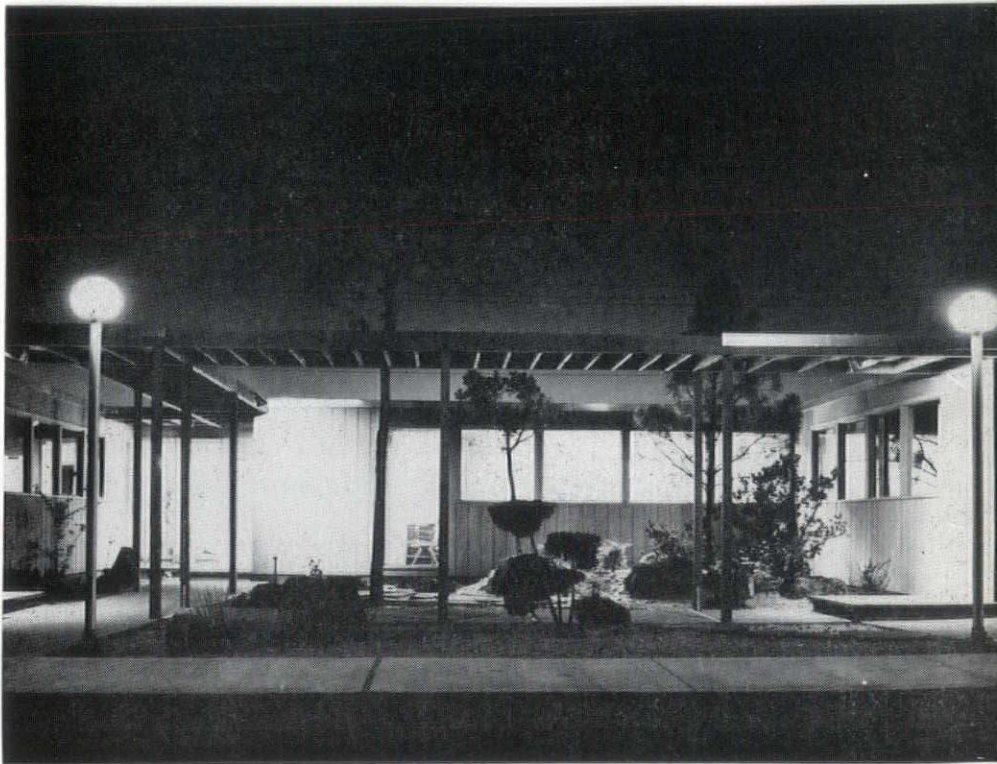
LANDSCAPE: Taro's Gardens


COMPLETED: October 15, 1967

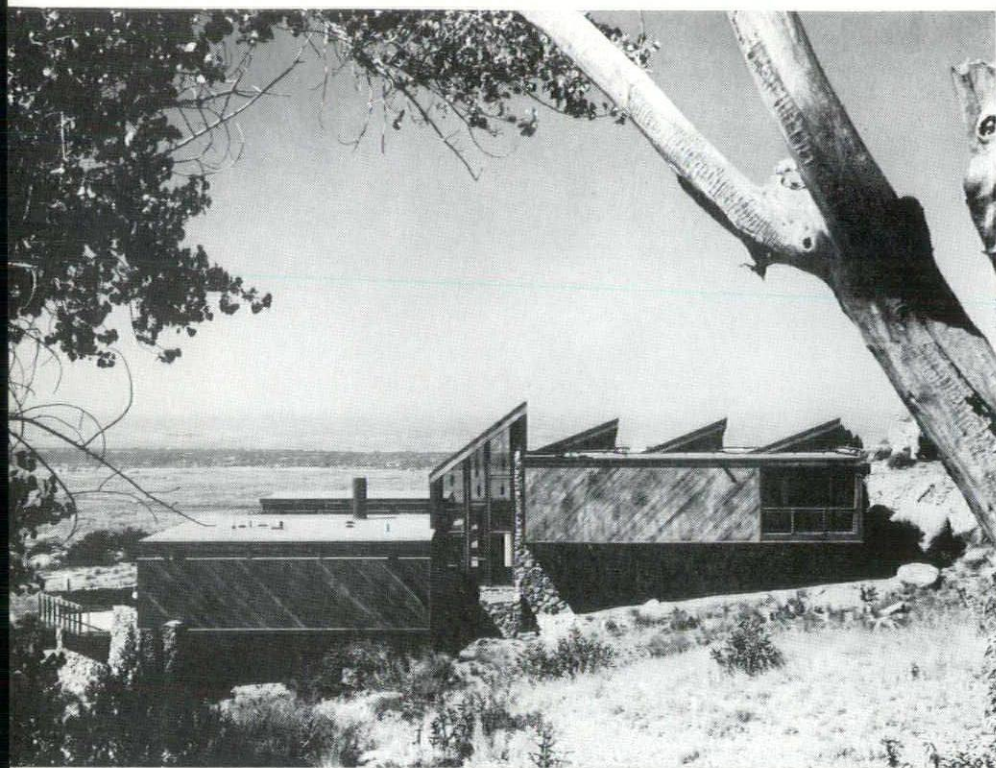
Jury Comment:

The simple informal unpretentiousness of this small office building is brought to a high degree of success by a meticulous attention to simple details and an adroit handling of simple materials.

(See *New Mexico Architecture*
November/December, 1967)



more 



Jerry Soff—Photographer

MERIT AWARD

**Bowers Residence,
Sandia Heights, Bernalillo
County, New Mexico**

ARCHITECT: John Peter Varsa,
Wendell and Varsa,
Architects

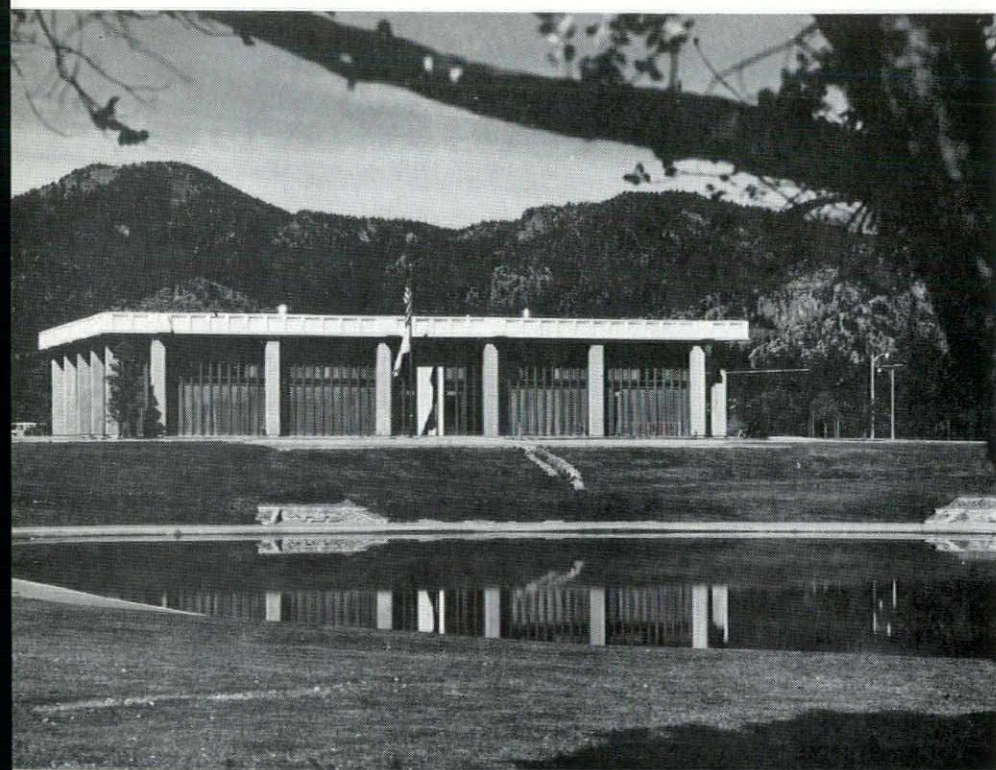
OWNER/BUILDER:
Robert Bowers

COMPLETED: Summer, 1967

Jury Comment:

To a difficult but dramatic site this house seems naturally adapted by virtue of its harsh vertical and angular forms, its rugged textures and the magnificent views it commands.

Jerry Soff—Photographer



MERIT AWARD

**Los Alamos County Courthouse
Administration Facility**

ARCHITECT: Flatow, Moore,
Bryan and Fairburn

OWNER: County of Los Alamos,
New Mexico

GENERAL
CONTRACTOR: Franklin
Construction Company

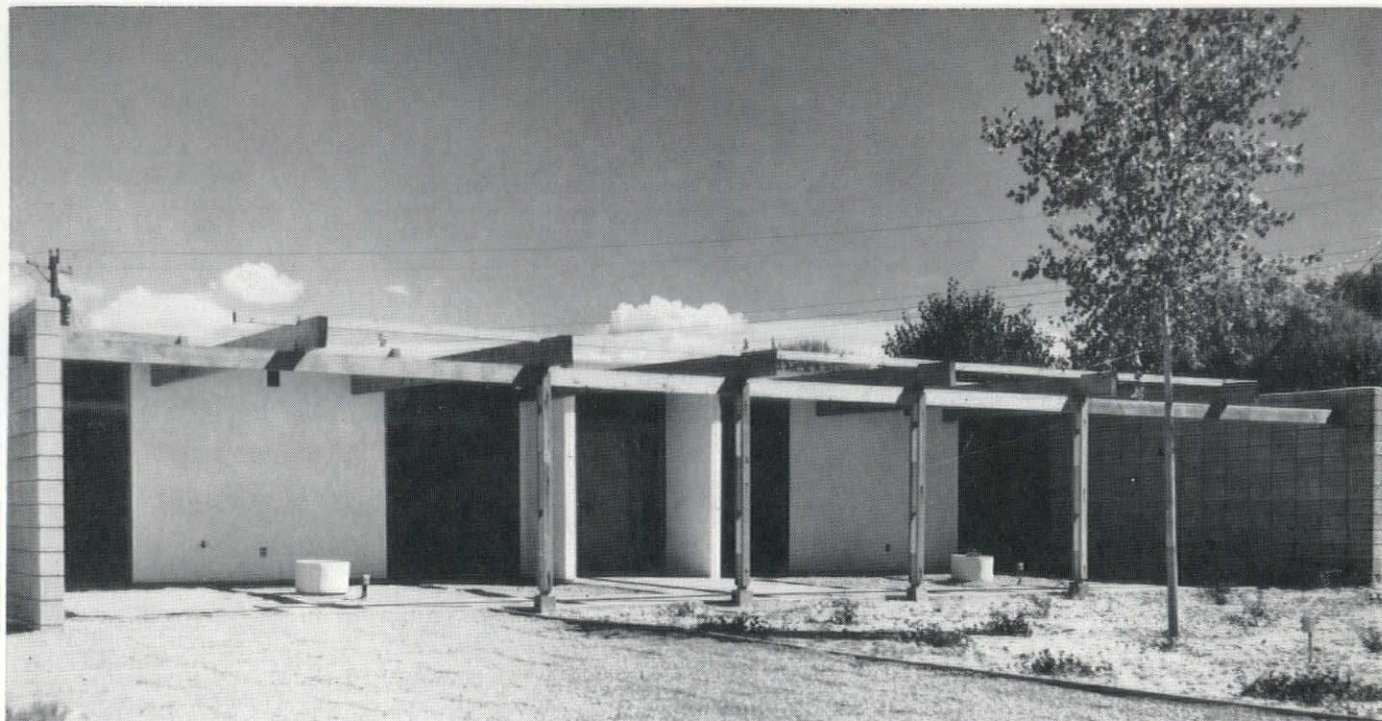
ELECTRICAL
ENGINEER: Uhl & Lopez

MECHANICAL
ENGINEER: Bridgers & Paxton

COMPLETED: June, 1967

Jury Comment:

Against the rugged sweep of giant landscape forms, this building establishes a sense of scale, of strong identity and of dignity which is in perfect keeping with its purpose as a seat of government and justice.



MERIT AWARD

**A Residence for Mr. & Mrs.
Robert Riley,
Albuquerque, New Mexico**

ARCHITECT: Robert Riley

OWNER: Mr. & Mrs.
Robert Riley

CONTRACTOR: Stu Hill
Construction Co.

COMPLETED: September, 1967

Jury Comment:

This house uses ordinary, even drab, materials and techniques with an intellectual clarity which give it great presence.

**ANNUAL MEETING
MAY 25, 1968**

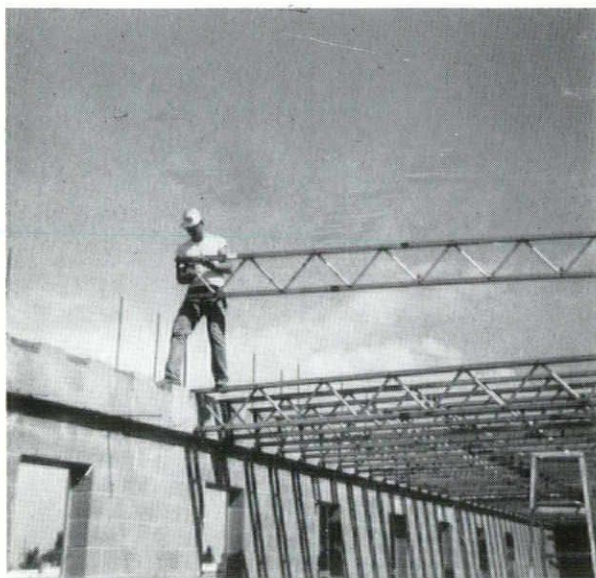
**NEW MEXICO
SOCIETY OF ARCHITECTS**

**WESTERN SKIES MOTOR HOTEL
13400 CENTRAL AVENUE, S.E.
ALBUQUERQUE, NEW MEXICO**

SATURDAY — MAY 25, 1968

The one day annual meeting of the state Society will be hosted by the Albuquerque Chapter, A.I.A. A golf tournament has been scheduled for the morning. The afternoon program will feature a panel of speakers discussing important current topics of Society interest. These topics will include the recently published *Fee Schedule* and *Services of the Architect*. The past record and future prospects of the society's magazine, *New Mexico Architecture*, will also be discussed.

Cocktails and dinner will be followed by a *surprise* guest speaker. Dancing until the closing hour.



"It resulted in a good savings over our estimate . . ."

And then —

"We would like to thank you for the prompt delivery of our Trus Joists. In fact, they were earlier than needed and we always appreciate good service. My real reason for writing this letter is to express our delight in the ease of installation and the speed with which our crew installed them."

So stated Mr. Roger Smith of General Builders, Inc., Albuquerque in the construction of the Eastern Hills Baptist Church.

We wouldn't add a thing . . . just ask the man who's tried them.

Architects:

Pacheco & Graham
Albuquerque



George B. McGill

1113 Pennsylvania, Northeast
Albuquerque 505/256-2058

WOOD is WARM and WONDERFUL!

MEMBERSHIP:

BALDRIDGE HOME SUPPLY CENTER
GIBSON LUMBER CO.
HOME BUILDERS SUPPLY CO.
BOSQUE FARMS LUMBER CO.
AMERICAN BUILDERS SUPPLY CORP.

SANDIA LUMBER CO.
APACHE LUMBER CO., INC.
FIR PINE LUMBER CO.
GEORGIA - PACIFIC CORP.

U. S. PLYWOOD CORP.
WEYERHAEUSER
DUKE CITY LUMBER CO.
NEW MEXICO TIMBER INC.

These are the experts on wood and wood products to contact for information and consultation . . . members of



LUMBER MERCHANDISERS ASSOCIATION
ALBUQUERQUE, NEW MEXICO



The new Los Alamos, N. M. High School Learning Center featuring 8' single tee wall panels, precast panels & prestressed entry roof tees, all exposed precast concrete received an applied ARCHITECTURAL COATING.

Architects—Buffington & Hill—Silver City, N. M.
Contractor—Bradbury & Stamm
Photo—Terrance Ross, Santa Fe

1900 MENAUL ROAD N. E., ALBUQUERQUE, NEW MEXICO 87106



**PRESTRESSED CONCRETE
PRODUCTS, INC.**
MANUFACTURERS OF ROOF AND FLOOR DECKS

THEY EXCEL IN

- ECONOMY ● PERMANENCY ● DURABILITY
- VERSATILITY ● FLEXIBILITY
- and most important ● FIRE RESISTANCE

(505) 345-2536

ALBUQUERQUE TESTING LABORATORY

Sub-soil Investigations
For Structural and Dam Foundations

**Two Drills and Crews now
available for Prompt Service**

Laboratory Analysis and
Evaluation of Construction Materials

**All work done under the supervision
of Registered Professional Engineers**

532 Jefferson St., N.E. — P. O. Box 4101
Phone AL 5-8916 Albuquerque
Phone AL 5-1322 New Mexico



Jim Denison 525 Harden Blvd.
Hobbs, New Mexico 88240 phone 393-7814
Plain Steel - Structural - Misc. - Rebars - Joists

Dependable . . .

**SOUND, INTERCOM
AND POCKET PAGING
FOR EVERY BUILDING TYPE**

Our broad experience in this specialized field
is available to you. Contact us for general
planning help.

No obligation, of course.

Executone OF NEW MEXICO

111-A CORNELL DR., S.E., ALBUQUERQUE, N. M. 87106
PHONE 242-4611

Can You Afford Free Sketches?

The following article first appeared in ARCHITECTURE NEW JERSEY, and was later reprinted in ARIZONA ARCHITECT. It is aimed at the architect who sometimes thinks he can afford to provide free sketches. Further it is directed to the client who wants something for nothing!

Few clients can afford free architectural sketches.

No man would go to a few lawyers and as for free "briefs" with the idea that he would choose the lawyer by the brief he liked best. No man would go to a few doctors and ask for free physical exams with the idea that he would follow the advice of the doctor whose diagnosis he preferred. Yet once in a while a potential client gets the idea that an architect can be chosen by asking for free sketches. Why won't it work?

On a major project, meaningful preliminary plans can cost thousands of dollars. Obviously no architect can afford to spend the time to study the potential client's needs in detail for a free sketch; therefore the result would only be a "pretty picture" with little relationship to the actual problem.

The potential client will seldom be trained to spot these deficiencies in a sketch and often be swayed by some clever rendering technique, only to find too late that it was all frosting with no cake.

For these reasons such free sketches are against the Code of Ethics of the American Institute of Architects. Therefore the client who obtains free sketches is at once cancelling from consideration most of the men best qualified to help him. This is particularly important when one considers the amount of money involved in most building programs today.

Finally, a client must depend on his architect to make many decisions for him. A lot of money is involved and it is solely the ethics of the architect on which the client must depend. If a client bases his selection of an architect on his lack of ethics he has only himself to blame when things go wrong. It is a big risk.



How many clients can afford free sketches?

BOOK REVIEWS

Desert Architecture, Ralph E. Parachek, Parr of Arizona, \$6.95. *The Architecture of Wisconsin*, Richard W. E. Perrin, State Historical Society of Wisconsin, 1967, \$7.50.

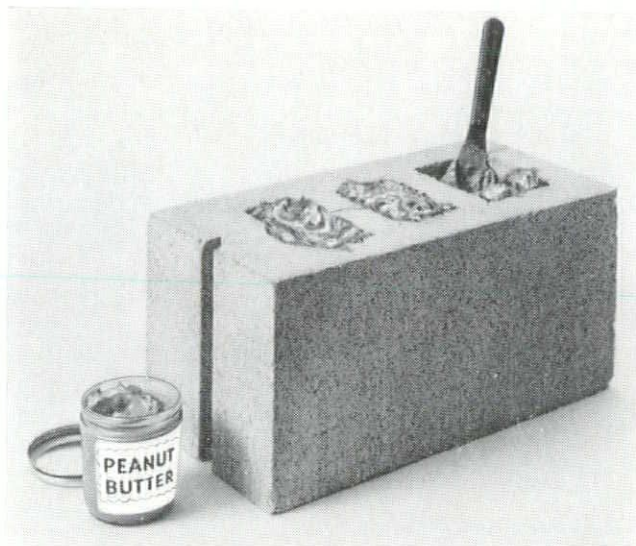
Although dealing with widely separated areas, the two authors attempt the same problem — a chronicle of architectural developments within a given region. Mr. Parachek undertakes a formidable task which includes the vast area lying between the Pecos and Colorado rivers and extends from the Four Corners area south to the Altar River in Sonora. In time he ranges from prehistoric Hohokam and Basketmaker builders (300-700 A.D.) to the present. Mr. Perrin's problem is more manageable as the first Wisconsin building he considers is a log house constructed in 1843.

The procedure of both authors is also similar: they break history into a series of episodes, explain briefly the economic, social, and artistic roots, and present text book examples. The difference is that Mr. Perrin, in addition to being a FAIA, is a historian and conservationist with years of patient research and many salvaged Wisconsin landmarks to his credit. A young practicing architect from Phoenix, Mr. Parachek's scholarship is not up to his sketches.

The trouble is that Parachek's material is entirely second hand, and in areas such as the nineteenth century where material is not readily available, he has not troubled to dig it out. His coverage, therefore, is disturbingly uneven. Indian architecture, about which a great deal has been written from an archaeological point of view, is reasonably comprehensive. A good deal of space is also devoted to Spanish Colonial history, but the author misses the architectural significance of the New Mexican churches and the cultural implications of differences in the expression between Colonial building in the Rio Grande, Salt, and Altar River basins. His treatment of territorial times, compressed to a two-page chapter entitled "The Pioneers", is totally deficient, while the early twentieth century, "The Tourists", gets all of two paragraphs and these are inexplicably related to recent "pioneer villages." "The Contemporaries" fill the last 35 pages (from a total of 90) with all examples drawn from Arizona save the Herbert Bayer chapel in the Hondo Valley of eastern New Mexico.

Mr. Parachek's point of view changes constantly depending on the source he is just then summarizing. Even the concept of the desert as the unifying force that dares men to build structures in its environs is lost sight of at times. There are, however, some large and handsome photographs (unfortunately printed in sepia ink) and a number of crisp line drawings (redrawn from available photographs.) Obviously this is a layman's book and for a layman who prefers pictures to text.

Mr. Perrin, on the other hand, has done an exemplary job of portraying the effects of ethnic back-



Anything in the wall is better than nothing at all

Now read about the masonry insulation that often doubles insulating value and fire ratings

Zonolite® Masonry Fill Insulation was developed specifically for concrete block or brick cavity walls.

By doubling their insulating value, it keeps the occupants much more comfortable and cuts heating and air conditioning bills as well.

Fire ratings can double, too. An 8" lightweight block wall rated at two hours gets a four-hour rating when insulated with Zonolite Masonry Fill. Particularly important in party walls, elevator shafts and stairwell walls.

In addition, Zonolite Masonry Fill cuts sound transmission.

All for as little as 10¢ per sq. ft., installed.

There is simply no other way to build a masonry wall that blocks thermal and sound transmission so well, increases fire safety so much, and does it at such low cost.

For complete information, mail the coupon.

GRACE Southwest Vermiculite Co.
5119 Edith Blvd. N.W. Albuquerque, N. M.
87107

Gentlemen: Much as I like peanut butter, it doesn't seem to do much more for a wall other than insulate it better than air. Please send me Zonolite Masonry Fill Insulation folder which contains complete technical data and specifications.

NAME _____

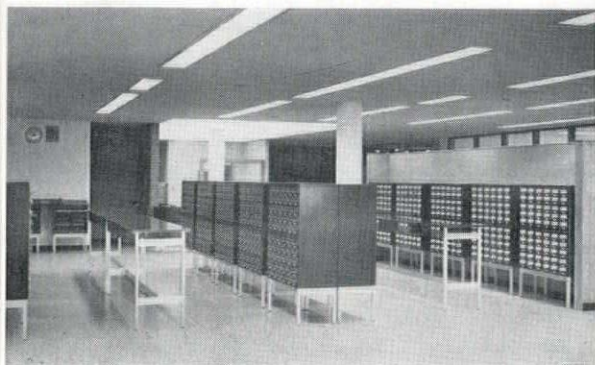
TITLE _____

FIRM _____

ADDRESS _____

CITY _____ STATE _____ ZIP _____

FROM CONCEPT TO COMPLETION



Exclusive distributors
for BUCKSTAFF

Consultation Planning Design Layout

In the library, where mind speaks to mind, uncluttered and compatible design creates study carrels, personalized learning centers. These centers are a long-time dream of theoretical educators who envisioned the creation of units flexible enough for the needs of individual thought patterns. Now, carrels incorporate storage for film, earphone jacks, 8 mm projectors, pre-recorded magnetic tape . . . and partitioned seclusion for undisturbed concentration.

Architects use our design consultation services for:
Science Labs / Offices / Artrooms / Dormitories /
Libraries / Auditorium Seating / Home Economics
Labs / Gymnasiums

UNIVERSITY BOOK STORE ALLIED SUPPLY CO.

2122 Central, SE
Phone 243-1776
Albuquerque, N. M.

ground as well as historical considerations on the architecture of Wisconsin. Between 1830 and 1910 no less than twenty-eight distinct ethnic and national groups settled the state, and each of them built in the manner of the homeland. With the advent of easier communications and transportation, however, cultural traditions as well as distinctions fostered by local technology and building materials began to disappear. Noteworthy is the way the author relates the various types of Wisconsin log and half-timber construction to antecedents in northern Europe. He also paints a deft picture of the self-conscious and exaggerated designs of the 1860's and 70's which overlaid the traditional ethnic patterns only to be engulfed by World's Fair Classic and a later eclecticism of more erudite mien. His treatment of the first three decades of the present century strikes an intelligent balance between criticism and appreciation and is one of the best evaluations yet written on that still undiscovered era. Not hesitating to point out the period's blind spots, he helps the reader to appreciate the spacious comfort, good craftsmanship, and prodigal use of materials displayed in the finest homes of that time.

On the other hand, Mr. Perrin's treatment of the historical roots of Gothic and Byzantine movements is somewhat lengthy and peripheral to the Wisconsin buildings he discusses. The book's major fault, it seems to me, is the consideration of modern architecture exclusively in terms of Frank Lloyd Wright. While Wright can not be omitted from an account of Wisconsin architecture, certainly, he does not dominate it that completely. And whereas earlier chapters in the book were content to describe characteristic buildings and explain why they had been built that way, the final chapter on Wright is a chronological inventory of and criticism of the master's Wisconsin buildings, beginning with the famous Romeo and Juliette windmill of 1893. This treatment is so at variance with the earlier chapters that it almost becomes a separate book.

—Bainbridge Bunting

○ ○ ○ ○ ○ ○ ○ ○

LETTER TO THE EDITOR

Editor:

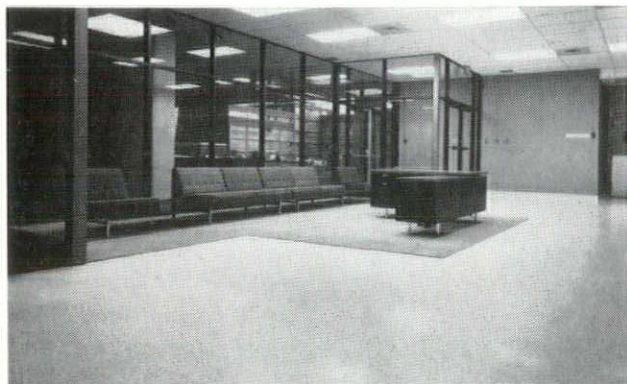
I was pleased to see the article concerning the Santa Fe Urban Renewal Project, by Mr. Midyette.

I hope something can be done about reworking this project so that it will turn out right. One certainly does not want all that commercial land competing with the Plaza when it could be better used.

Sincerely,
Jerold G. Widdison,
Planner II
Planning Department
City of Albuquerque

EPOXY TERRAZZOS

THE REVOLUTIONARY HIGH QUALITY
FLOOR COVERING



BOTH EAST AND WEST VESTIBULES OF THE NEW UNIVERSITY BASIC MEDICAL FACILITY AT ALBUQUERQUE FEATURE GLEAMING EPOXY TERRAZZO FLOORS.

EPOXY TERRAZZOS

ARE THE MOST BEAUTIFUL AND FUNCTIONAL FLOOR COVERING YET DEvised. SEAMLESS, GROUND IN PLACE TERRAZZO FLOORS GIVE EVERLASTING WEAR, EASE OF MAINTENANCE AND COLOR AND DESIGN VERSATILITY.

EPOXY TERRAZZO FLOORS ARE NOW AVAILABLE IN CONDUCTIVE FORM FOR USE IN HOSPITAL OPERATING ROOMS OR EXPLOSIVE HAZARD AREAS.

**NEW MEXICO
MARBLE AND TILE CO.**
414 Second St., S.W. Albuquerque, N. M.
P. O. Box 834 • Phone 243-5541

new mexico architecture nma

Published bi-monthly, by the New Mexico Society of Architects American Institute of Architects, a non-profit organization, 115 2nd St., S.W., Suite 200, Albuquerque, N. M. 87101.

Editorial Correspondence: All correspondence should be addressed to John P. Conron, P. O. Box 935, Santa Fe, New Mexico 87501.

Editorial Policy: Opinions expressed in all signed articles are those of the author and do not necessarily represent the official position of the New Mexico Society of Architects, A.I.A.

No responsibility will be assumed by the editor or publishing organization for unsolicited contributions. Return postage should accompany all unsolicited manuscripts.

Subscription rates: single copy 50c; one year \$2.50. Second class postage paid at Roswell, New Mexico.

Change of address: Notifications should be sent to N.M.A., Box 18, University Station, Albuquerque, N. M. 87106 at least 45 days prior to effective date. Please send both old and new addresses.

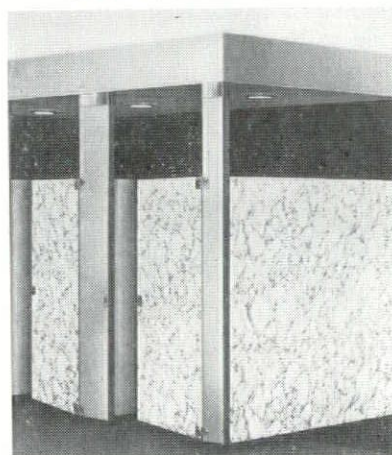
Advertising: Requests for rates and information relating to advertising should be addressed to W. M. Brittelle, Sr., 115 2nd Street, S.W., Suite 200, Albuquerque, N. M. 87101.

INDEX TO FIRMS

Cooperating in the public relation program of the NMA magazine, making possible its publication and the page upon which their message may be found.



TOILET COMPARTMENTS



- Endless design and pattern possibilities
- Durable, easy to maintain
- Assured local availability ceiling hung, floor mounted or overhead braced

Formica Brand Laminated Plastic is the ideal surfacing material for toilet compartments and other restroom partitions, for the same reason it serves so handsomely on surfaces in other parts of a building.

FORMICA DISTRIBUTOR



PHONE 233-2317
312 INDUSTRIAL, N. E. P. O. BOX 1098
ALBUQUERQUE, NEW MEXICO

Albuquerque Gravel Products	4
Albuquerque Lumber Co.	4
Albuquerque Testing Lab.	19
Architectural Carpet Consultants	8
Atlas Building Products Co.	10
B & B Steel	19
Builders Block & Stone Co., Inc.	6
Crego Block Co., Inc.	23
Design Interiors	4
Executone of New Mexico	19
Featherlite Tile Company	4
Hanley Paint Mfg. Co., Inc.	10
Hunter-Hayes Elevator Co.	6
Hydro Conduit Corp.	24
Keyson Applied Coating, Inc.	5
Lumber Merchandisers Association	18
McGill, George B.	18
New Mexico Pipe Trades	10
New Mexico Marble & Tile Co.	22
Otto, Edgar D. & Sons, Inc.	5
Prestressed Concrete Products, Inc.	18
Portland Cement Association	2
San Valle Tile Kilns	8
Southern Union Gas Co.	5
Southwest Vermiculite Co.	20
Stryco Sales, Inc.	22
University Book Store	21



Residence of Gov. and Mrs. John F. Simms, Jr.
Rio Grande Court, N.W.
Albuquerque, New Mexico

Miles Britelle, Jr., A.I.A.
Architect

Mossman-Gladden, Inc.
General Contractors
Albuquerque, N. M.

Riccobene & Kritzer
Masonry Contractors

Landscaping by Taro

Versatility of "SLUMP BLOCK"

Slump Block used throughout. Exterior walls are of cavity wall construction,
achieved by the use of 4"x4"x16" units.

Masonry units manufactured and furnished by
CREGO BLOCK CO., INC.

6026 Second St., N.W.

Phone 344-3475

Albuquerque, N. M. 8710

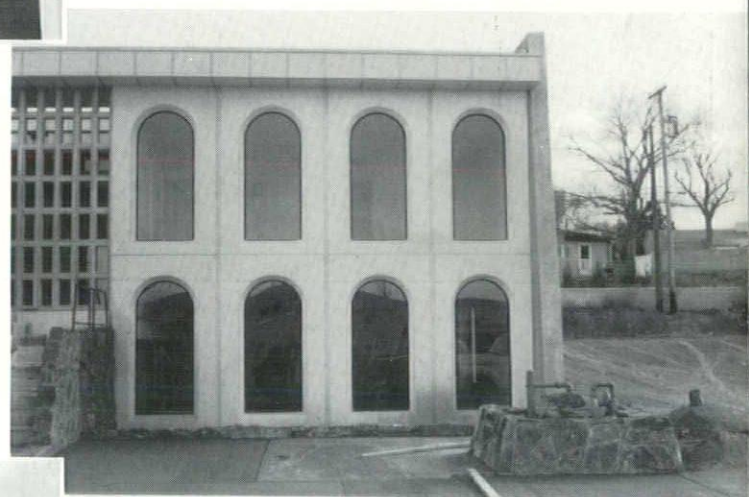
George E. Pettengill
The Octagon
1735 New York Avenue, NW
Washington, D.C. 20006

Bulk Rate
U. S. Postage
PAID
Roswell, N. M.
Permit No. 47



A FINE EXAMPLE OF THE CLEAN-
NESS AND BEAUTY OF PRECAST CON-
CRETE IS THE CHI OMEGA SOROR-
ITY HOUSE AT U. N. M., ALBUQUERQUE,
WHERE HYDRO CONDUIT CORP. FURTHER
ILLUSTRATED THE ATTRACTIVE PRECAST
STRUCTURAL WALL SYSTEM.

THAT'S
THE
SYSTEM



ARCHITECT: CRAWFORD & ORVOY
ALBUQUERQUE, N. M.

CONTRACTOR:
K. L. HOUSE CONSTRUCTION



HYDRO CONDUIT CORPORATION

2800 SECOND ST., SW • ALBUQUERQUE, NEW MEXICO 87103