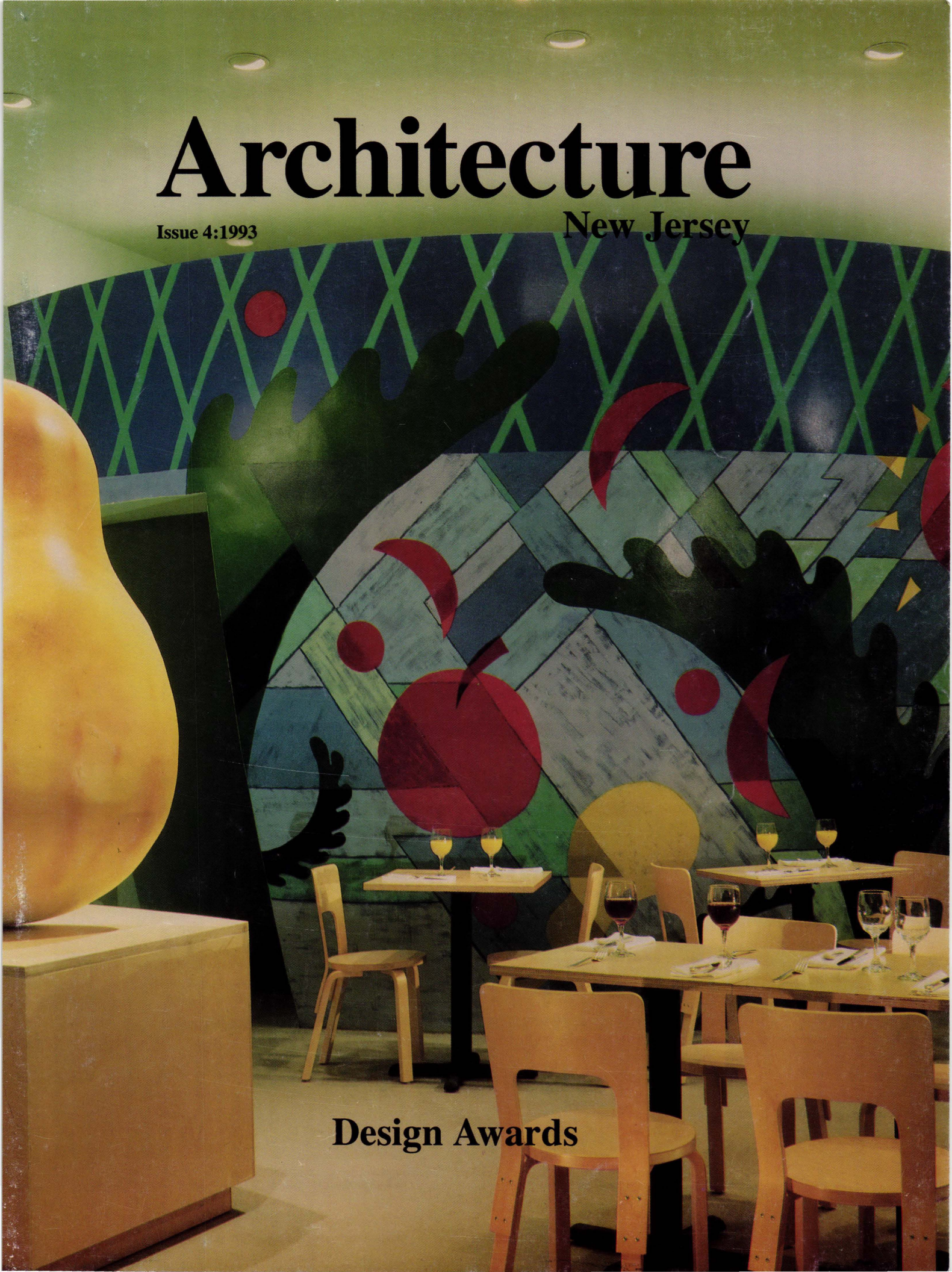



Architecture

Issue 4:1993

New Jersey



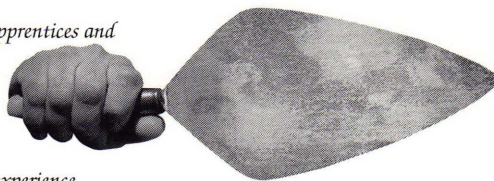
Design Awards



*Each year, thousands of apprentices
and journeymen receive training from
IMI. Training in brick and block laying,
tile setting, stone and marble masonry,
cement masonry, maintenance and
restoration, terrazzo and mosaic work,
and plastering. Our courses conform
to the everchanging demands of the
marketplace while maintaining craft
standards. Through their work with
union contractors, our apprentices and
trainees gain valuable
experience. The kind of experience
that allows them to offer the
ultimate craftsmanship in masonry.
Union craftsmanship.
International Masonry Institute,
New Jersey Area.*

*Building
the best in
New Jersey.*

*Union
Craftsmen
and
Contractors.*



*The best
hands in the
business.*

EXPRESSLY FOR AIA NEW JERSEY MEMBER FIRMS
ASSOCIATE MEMBERS, SELF-EMPLOYED MEMBERS
AND THEIR FAMILIES



Compared Your Health Insurance Plan Lately?

When you purchased your employee health benefit plan, did you shop around? Probably not. Not because you didn't want to, but because comparison shopping for benefit plans is not that easy to do. Until now.

With some basic information about your needs, we can give you a free comparison of features and costs of the AIA New Jersey sponsored plan. You may discover you're paying more than you have to for coverage that's not what you need or want.

You should consider the Benefit Program developed specifically for AIA New Jersey members and their employees. This program is sponsored by AIA New Jersey and offers you:

- A full range of Comprehensive Major Medical coverage options.
- Deductibles from \$200 to \$2,000 are available at competitive rates.
- Flexibility to design a benefits package that fits your needs and budget.
- Available to **SELF EMPLOYED AIA New Jersey Members**.
- Convenient enrollment. Everything is handled through the mail to save you time, money and there's no pressure.
- **NO OBLIGATION. Just call toll-free 1-800-284-9834** or mail this coupon to the AIA New Jersey Plan Administrator for your free information packet, including plan benefits and costs. Then just complete the Application and return it.

Call or write today:
AIA New Jersey Health Plan Administrator
National Benefits Corporation
110 Gibraltar Road
Horsham, PA 19044
1-800-284-9834

Underwritten by.
National Casualty Company
of St. Louis, MO, a member of the
Nationwide Life Insurance
family of companies.

Yes! Send me the Free Information Kit on the
AIA New Jersey Health Plan.

Name

Firm

Number of Employees

Address

City State Zip

Phone ()

Best time to call:

AIANJ 92.9



melabee m miller
908 527 9121

Photography

29 beechwood pl hillside nj 07205

In the professional liability arena, where financial ruin could hang in the balance, it's crucial to find a broker with the technical expertise and intuitive know-how to manage the most complex and unusual risks.

NO RISK TOO UNUSUAL. NO COVERAGE TOO COMPLEX.

Such a broker is Bavaro Associates. Our excellent reputation in professional liability (you're invited to check our credentials) allows us to obtain competitive terms and favorable pricing for all clients regardless of the risk.

We continually monitor the changing professional liability markets, both in the United States and abroad, to offer the optimum in service on a full range of coverages. If you have an insurance concern that requires more than just an average effort, don't trust it with an average broker, contact an expert.

BA

BAVARO ASSOCIATES INC.

Professional Liability Experts

33 Wood Avenue South • Iselin, New Jersey 08830 • 908-321-0700
60 East 42nd Street • New York, New York 10165 • 212-972-6999

PROFESSIONAL LIABILITY SPECIALISTS FOR ARCHITECTS, ENGINEERS, SURVEYORS, ENVIRONMENTAL AND ASBESTOS CONSULTANTS.

Architecture

Vol. 29, No. 4

New Jersey

Letter From the AIA New Jersey President 1994 5

Design Awards 7

The Salad Bowl
Boyd Associates

Ujima Community Center
Richardson Smith Architects

Inanç Lisesi, Gebze, Turkey
The Hillier Group

The Reinterpretation of a Student Center
Nastasi Costantine, Architects

Hsu/Ling Residential Addition
Richardson Smith Architects

Convention Notes 19

Architecture in the News 21

Cover: The Salad Bowl
Boyd Associates

Cover Photo: Dub Rodgers

Architecture New Jersey (USPS 305-670) is a publication of the New Jersey Society of Architects, a Region of the American Institute of Architects. It covers projects of current interest, news of architects, and issues in architecture. The purpose of the publication is to increase public awareness of the built environment. The publication is distributed to all members of the New Jersey Society of Architects, to consulting engineers, to people in fields related to architecture, and to those leaders in business, commerce, industry, banking, education, religion, and government who are concerned with architecture. Views and opinions expressed in *Architecture New Jersey* are those of the writers and not necessarily those of the New Jersey Society of Architects.

Architecture New Jersey is published bi-monthly by the New Jersey Society of Architects, Nine Hundred Route Nine, Woodbridge, NJ 07095. Subscription price \$15 per year.

Postmaster: Send address changes to *Architecture New Jersey*, Nine Hundred Route Nine, Woodbridge, NJ 07095.

HILL WALLACK

ATTORNEYS AT LAW



Alan M. Wallack
*Managing Partner
Head, Litigation Division
Partner-In-Charge,
Construction Industry
Practice Group*

- ◆ Risk Management & Prevention
- ◆ Professional Liability
- ◆ Contract Preparation & Negotiation
- ◆ Litigation, Arbitration & Mediation
- ◆ Bond & Insurance Counselling
- ◆ Business Formation
- ◆ Tax & Financial Planning

Concentrated Practice Groups serving architects, engineers, owners and developers, contractors, construction managers, allied design professionals, and insurance and surety companies.

General Counsel to the NJ Society of Architects

210 Carnegie Center, Princeton, New Jersey 08543-5226 Telephone: (609) 924-0808

What Do Architects Say About The AIA Trust Health Insurance Plan?

- **83% of participants say they are very satisfied.**
- **59% say the plan is a reason to belong to AIA.***

And in its December 1992 issue, MONEY Magazine says the AIA Trust's plan is an excellent example of a comprehensive medical coverage at a reasonable price.

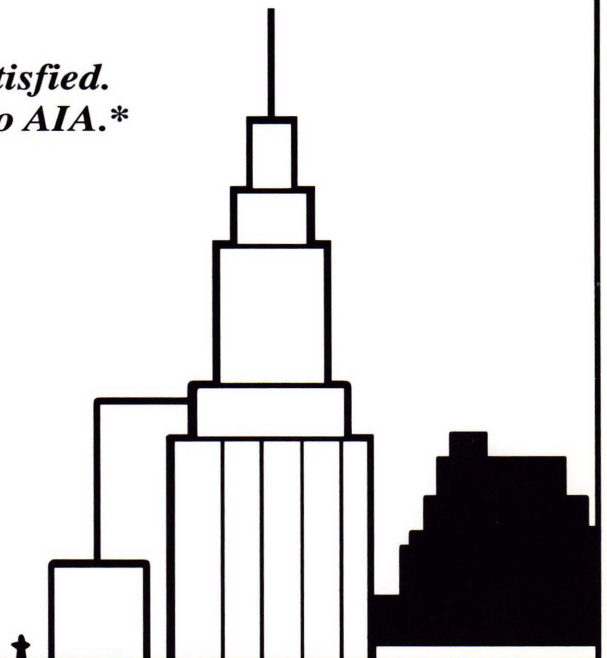
Call for information... **1-800-343-2972**



AIA Trust

The American Institute of Architects
Benefit Insurance Trust

* AIA member insurance evaluation & needs assessment study, wave #3.
Wiese Research Associates, October 1992.



Letter From the AIA New Jersey President 1994

AIA New Jersey was established nearly one hundred years ago to advance the cause of architects and architecture in New Jersey. To fulfill this mission today, clear communication of timely, relevant information to members and the public is imperative. We must deliver a lucid, compelling message about our services and the benefits of membership to all architects in the State, and we must especially heighten public understanding of the value of architecture and the central role architects and architecture can play in building productive and stable communities of all kinds. We must also consider the best way to deliver these messages to each audience.

The publications of AIA New Jersey are designed to support this communication. *Architecture New Jersey*, in particular, is one of our most important communication vehicles. As the primary "voice" of AIA New Jersey, it showcases the work and opinions of New Jersey architects, demonstrating the fundamental contributions good design makes to communities, institutions and corporations. AIA New Jersey members who have participated in the production of this publication over the years deserve generous applause for their thought, creativity, and serious dedication to what is a challenging and time-consuming effort.

In order to strengthen AIA New Jersey's message, and thereby empower our overall communications program, we established a two-phase "Publications Task Force" during 1993. This Task Force has initiated a strategic view of all our publications including *Architecture New Jersey*, the State Newsletter, the Legislative Bulletin, and even the communication tools used to inform members about conferences and seminars. Chaired by Hal Lichtman, AIA, and Robert Zaccone, AIA, the Task Force has thoroughly examined the purpose, content, design, audience, and budget for each of these publications.

The outcome of this review is a commitment by the AIA New Jersey Board of Trustees to insure that every publication issued by AIA New Jersey — whether directed to members or the public or both — functions to maximum effect. We are particularly dedicated to refocusing *Architecture New Jersey* so that it becomes as effective as possible in encouraging the positive public opinion so essential to the health and future of our profession.

We will be reaching out to all members early in 1994 — and often throughout the year — to share ideas as we develop AIA New Jersey's publications to serve, support and promote architecture.

We welcome your input.

May you all have a happy and prosperous New Year.

Ronald P. Bertone, AIA, PP
AIA New Jersey
President 1994

ST Technologies, Inc

Your Total Computer Solution

□ Sales □ Service □ Support □ Training

IBM
COMPUTER
ASSOCIATES
software superior by design.

OKIDATA
NOVELL

COMPAQ



ARTISOFT

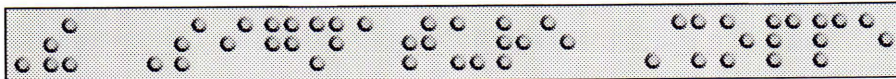
**HP HEWLETT
PACKARD**

EPSON®

- FREE Estimates on Repairs
- FREE Delivery & Setup ● FREE Technical Support
- Warranty on Parts & Labor
- Financing and Lease Terms Available

7 Day/ 24 Hour Service and Support
800-457-6249

The Signature Shoppe



Computerized Engraving, Vinyl Lettering & Graphics



(908) 730-9722
Fax: (908) 730-9711
Lebanon, NJ

- A.D.A. / Braille Signage
- Signs & Awards
- Interior / Exterior
- Trophies & Plaques
- Cast Bronze & Aluminum Plaques
- Electric Signs & Faces
- Electronic Moving Message
- Magnetic / Banners
- Vehicle Lettering
- Logos & Designs
- Installations

AIA New Jersey

New Jersey Society of Architects

A Region of the American Institute of Architects
Nine Hundred Route Nine, Woodbridge, NJ 07095
(908) 636-5680

<i>President</i>	Robert H. Lee, AIA
<i>President-Elect</i>	Ronald P. Bertone, AIA
<i>First Vice-President</i>	Martin G. Santini, AIA
<i>Second Vice-President</i>	Albert F. Zaccone, AIA
<i>Treasurer</i>	Christine L. Miseo, AIA
<i>Secretary</i>	Robert E. Sussna, AIA
<i>Immediate Past President</i>	Michael J. Savoia, AIA
<i>Director, NJ Region, AIA</i>	Daniel R. Millen, Jr., AIA

Board of Directors

<i>Architects League</i>	Mauro J. Cappitella, AIA Joseph M. Sterba, AIA Frank J. Stiene, AIA Thomas E. Hitchins, AIA Walter E. Levy, AIA
<i>Central</i>	Fred Travisano, AIA John R. Rivers, AIA Richard J. Finch, AIA Barbara E. Vincentsen, AIA Robert F. Barranger, AIA Jeanne Perantoni, AIA
<i>Jersey Shore</i>	Richard Villano, AIA Paul Barlo, AIA Eric Allen Cohen, AIA
<i>Newark & Suburban</i>	Steven A. Safary, AIA Roger W. Keller, AIA Jennifer Anne Stark, AIA William M. Brown, III, AIA Hugh A. Boyd, AIA
<i>South Jersey</i>	David Jacobson, AIA Michael J. Ryan, AIA Thomas Sidrane, AIA
<i>West Jersey</i>	Ronald D. Franke, AIA David Danton, AIA Neil K. Johnson, AIA
<i>Past President Director</i>	Daniel R. Millen, Jr., AIA
<i>Ex Officio</i>	Dean Urs P. Gauchat School of Architecture New Jersey Institute of Technology Dean Ralph Lerner, AIA School of Architecture Princeton University
<i>State Board Liaison</i>	Charles A. Spitz, AIA
<i>Executive Director</i>	Katharine E. Shuler

Architecture New Jersey

Vol. 29, No. 4

1993

Full Circle Marketing Ventures, Inc.

Advertising Offices
2985 Yorkship Square
The Village of Fairview
Camden, New Jersey 08104
609/365-8551 • 609/365-8553FAX

Design Awards

The jury:

Ralph Lerner, AIA, Dean of Princeton University's
School of Architecture and Urban Planning

Julie Bargmann, Assistant Professor, University of Minnesota
Department of Landscape Architecture

Michael Graves, FAIA, Michael Graves Architect, Princeton, NJ;
Schirmer Professor of Architecture at Princeton University

Emanuel Kelly, AIA, Kelly/Maiello, Inc., Architects and Planners,
Philadelphia, PA

Jorge Silvetti, Principal, Machado and Silvetti, Architects, Inc.,
Boston, MA

Lauretta Vinciarelli, Adjunct Professor of Architecture,
Columbia University, New York, NY

The Salad Bowl

Boyd Associates

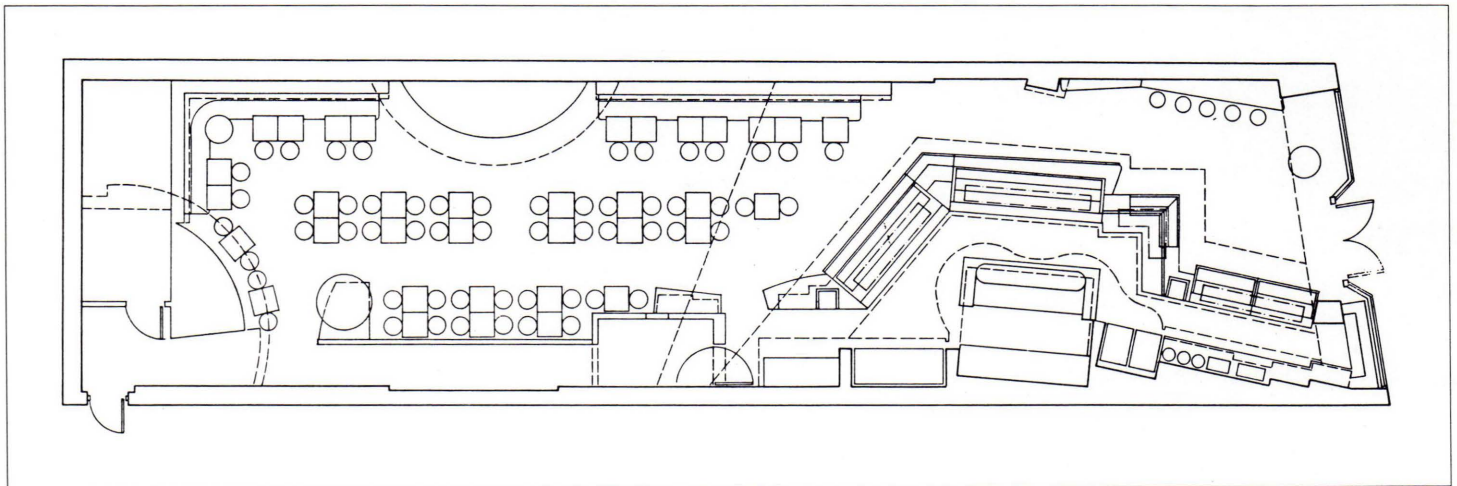


View of Dining Room from rear

The Salad Bowl, a New York City restaurant in the center of Times Square, is a take-out and self-service cafe. Operated by four Kurdish brothers, the cafe features fresh salads, frozen yogurt and light fare. Competing directly against nationally known foodservice operators and outlets, the design needed to distinguish the restaurant sharply from similar cafes which dot the Manhattan landscape. The shape and color of the space was derived from the architects' search for a decorative language that would highlight the product. It borrows "Alice in Wonderland" imagery in the form of a fantasy courtyard where seating is arranged around giant pieces of fruit and oversized crockery shapes detailed with Matisse-like still life images. In keeping with the menu, finishes and furnishings are simple — a sand and epoxy paint floor, textured acrylic wall coating, and a plywood chair for seating originally designed by Alvar Aalto for the Children's Library of Viipuri. Tabletops are birch plywood with a clear industrial coat.

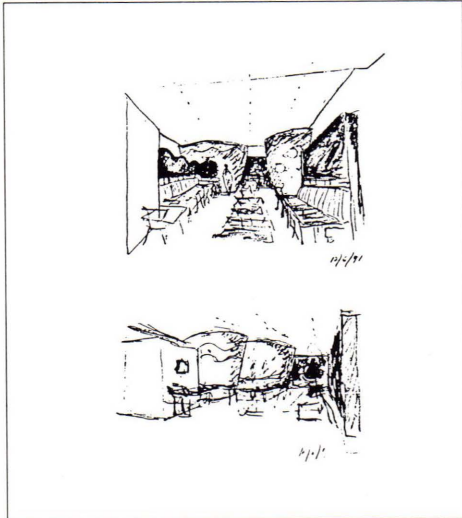
View of Dining Room toward rear





Floor Plan

Early Sketches



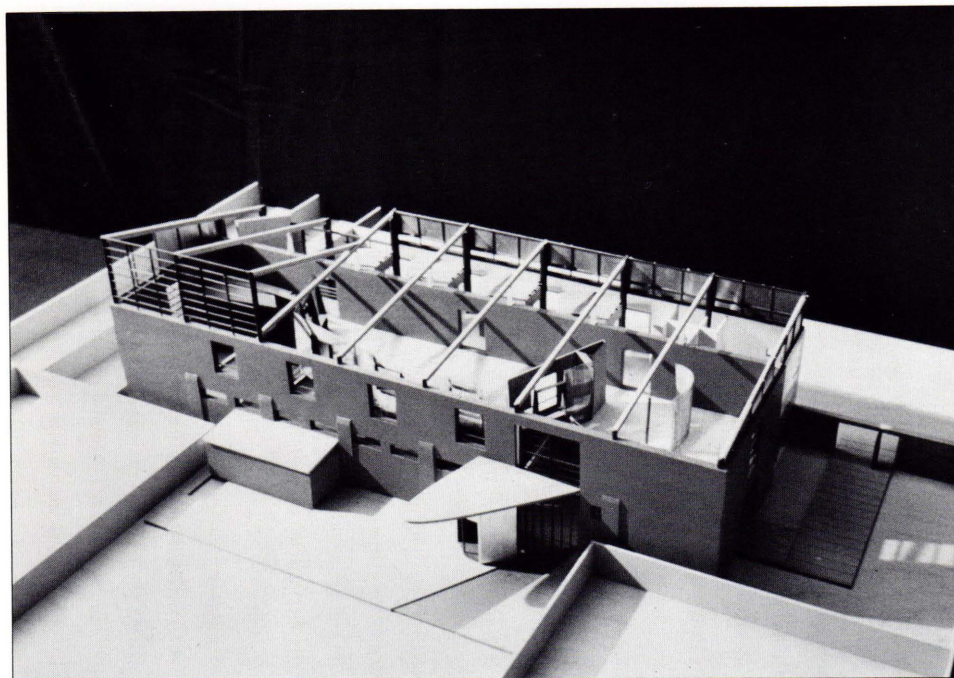
Yellow Bowl Detail



Sales and Food Preparation Area



Ujima Community Center Richardson Smith Architects

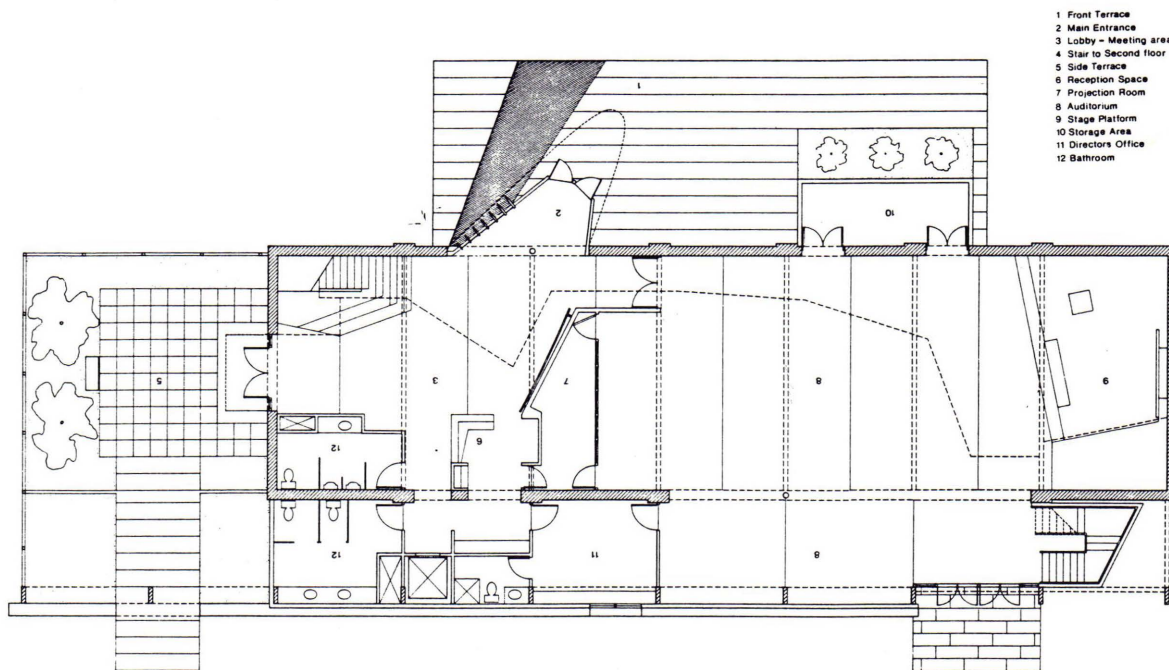


Model, west façade

Ujima Community Center creates a community center in an inner-city neighborhood in Trenton in the burned out shell of a 60 year-old abandoned brick warehouse. The owner is a local community group headed by the Reverend John Norwood, Pastor of the Ujima Christian Church and Director of the Youth Services Program at the Friends of Mercer Street Center in Trenton, and Mr. Robert Drake, founding member of Bellevue Restoration, Inc. Reverend Norwood will become the Director of the Ujima Community Center, which also will be home for his church.

Intended to provide space for community activities, high school and college level education programs, social services and counseling, the Center will include a large open meeting hall on the ground floor. To provide the functional flexibility required by the project, a mezzanine

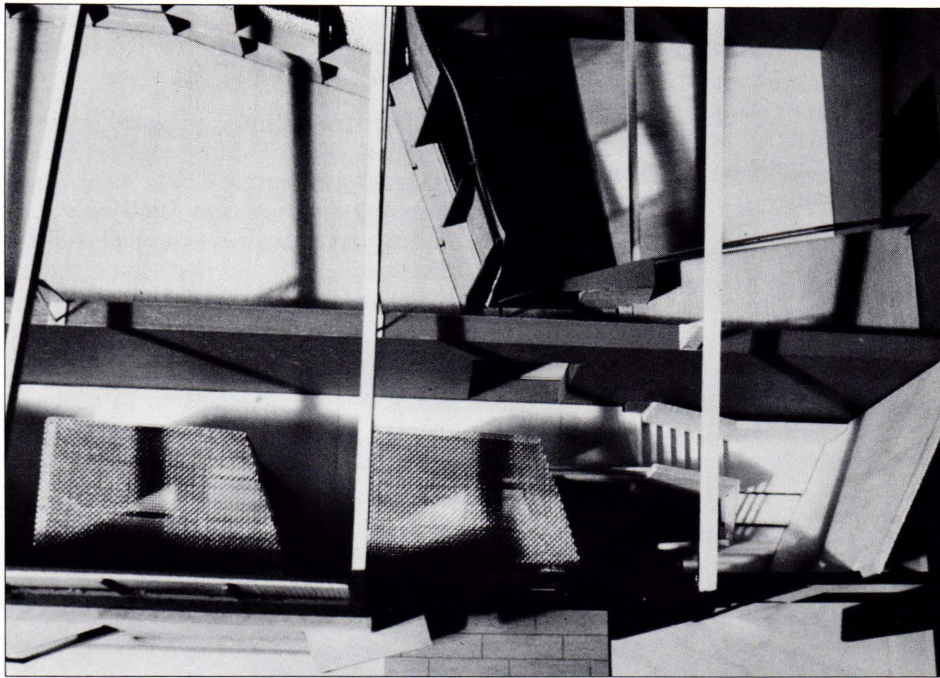
First Floor Plan



Scale 0 5 10 20

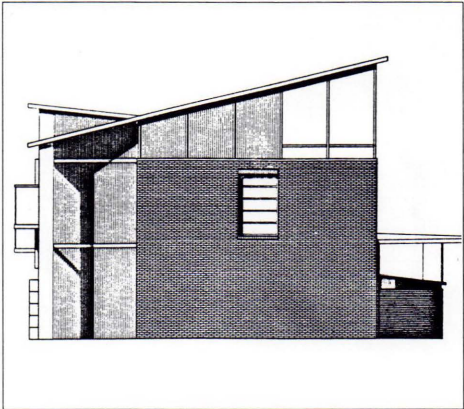
will be included at the second floor level, to be used independently or in conjunction with the meeting hall. The design currently is being used as a fundraising tool. The City of Trenton is supporting the project by acquiring the sites and providing it to the community at minimal cost, and will provide grants and low interest loans through its urban redevelopment program. Additional funding will be provided through New Jersey philanthropic organizations who support similar projects.

The jury uniformly applauded the designers; attention to the details of the original building, and the new expression these details find in the renovation. They also were captivated with the project's formality and inventiveness, noting that in some aspects the new building appeared playful and thoughtful.

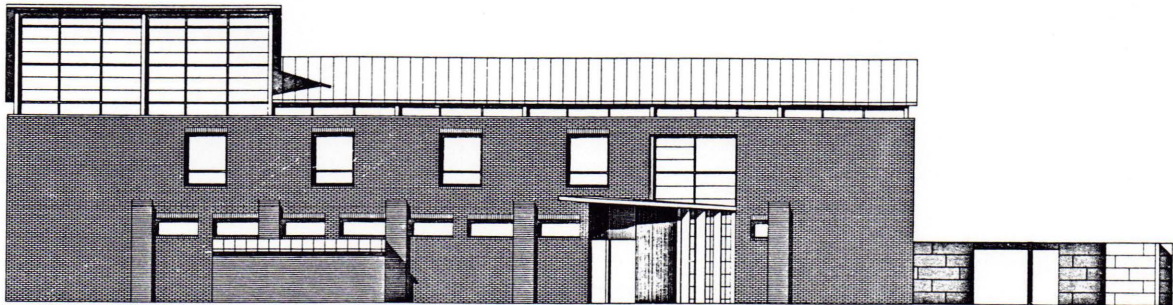


Model, top view

North Elevation



West Elevation



WEST ELEVATION

Scale
0 5 10

Inanç Lisesi, Gebze, Turkey

The Hillier Group

Inanç Lisesi is a 180,000 square foot school for 300 intellectual gifted Turkish children from financially deprived families throughout Turkey. Funded by the Inanç Foundation, the school will include middle and high school years preceded by one preparatory year, primarily for language training. The school will occupy a rocky site overlooking the Sea of Marmara, an hour from Istanbul. All students, faculty, and senior administration will live at the school in a variety of residential accommodations. Reflecting classical and indigenous Turkish traditions, the school draws on the notion of urban settlement, resulting in a "town" of approximately 40

buildings, including a library, classrooms, study areas, and recreation, social, dining and residential facilities.

The Hillier Group provided programming, master planning and schematic design for the project. The final design currently is being completed by a local Turkish architectural firm, STFA-Temel Engineering. Completion of construction is targeted for Fall, 1994.

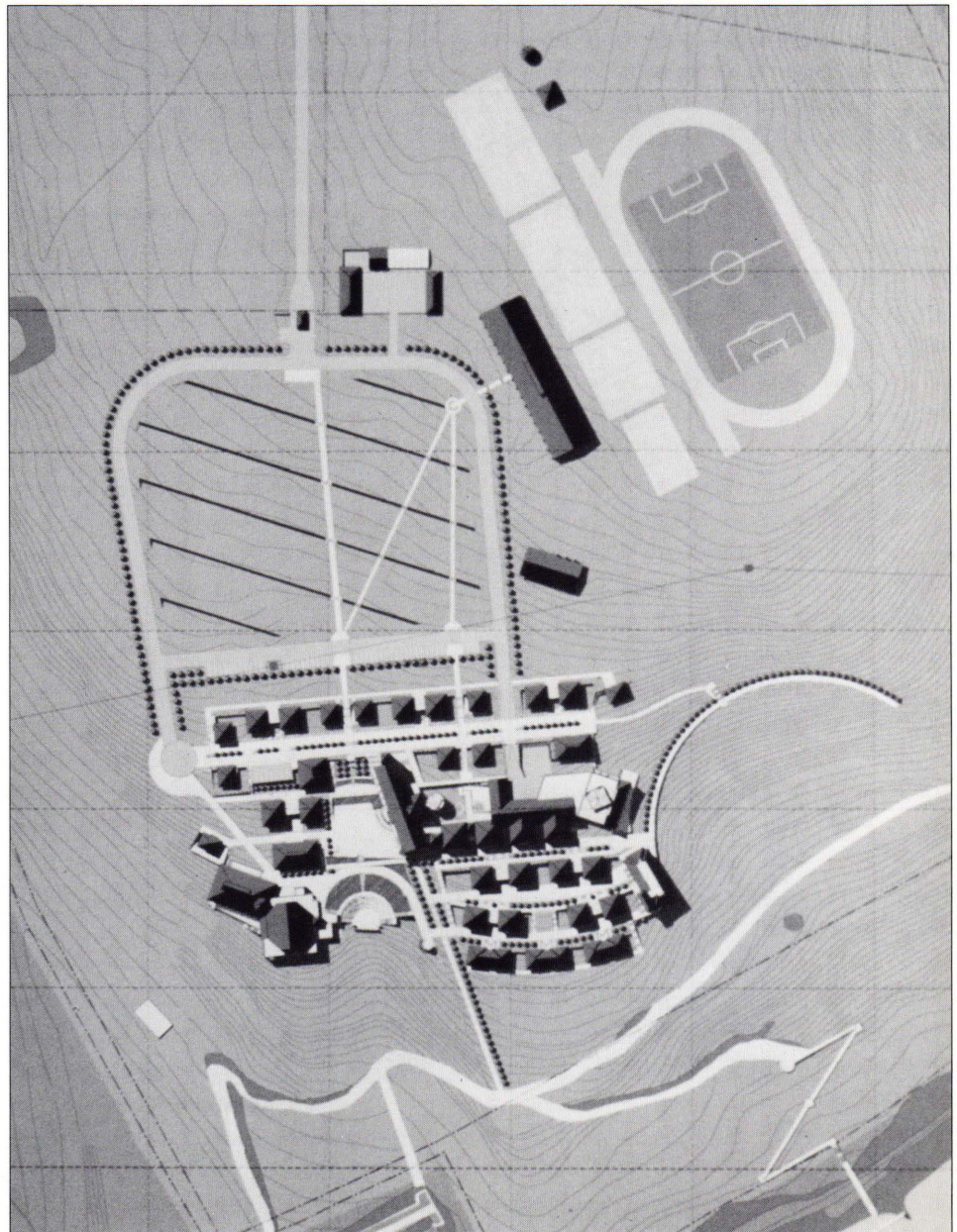
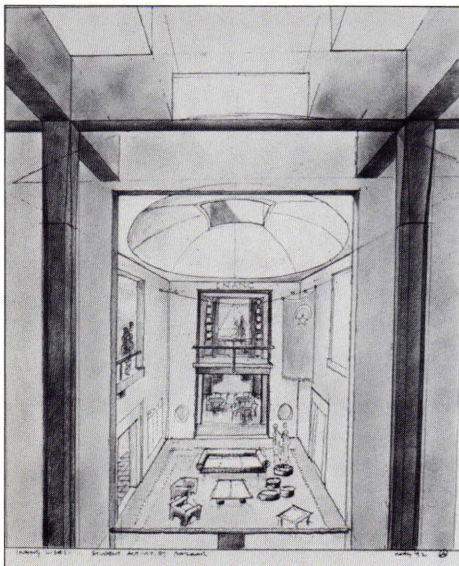
Commenting on this project, the jurors especially appreciated its intellectual calibre, applauding particularly the quality of the site plan and the sequencing of the buildings.

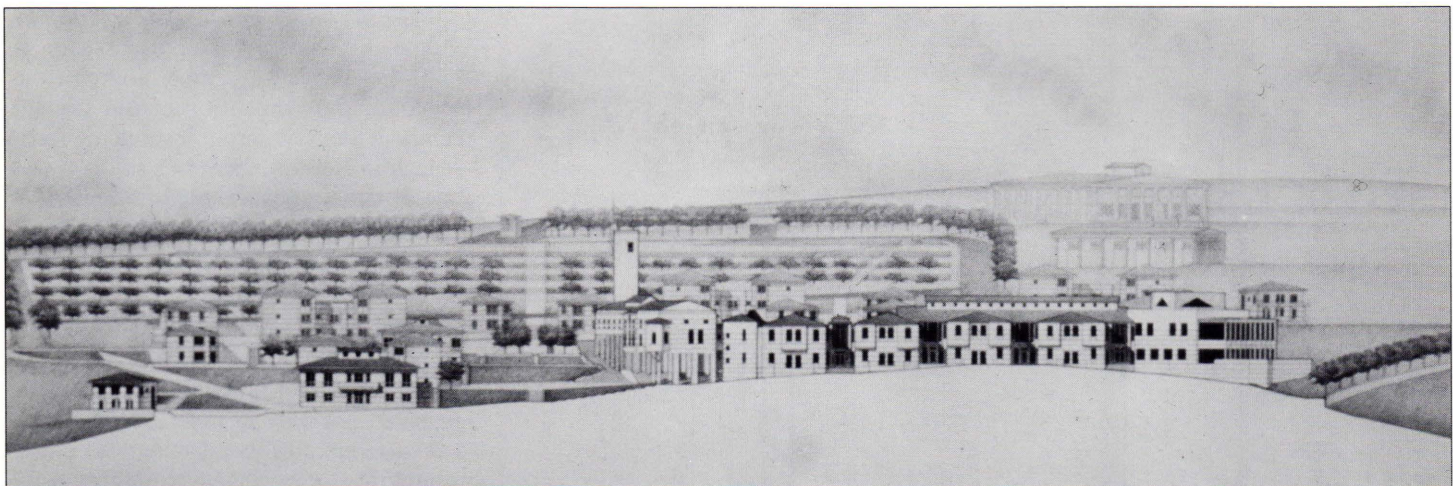
Site Plan



View to the Sea

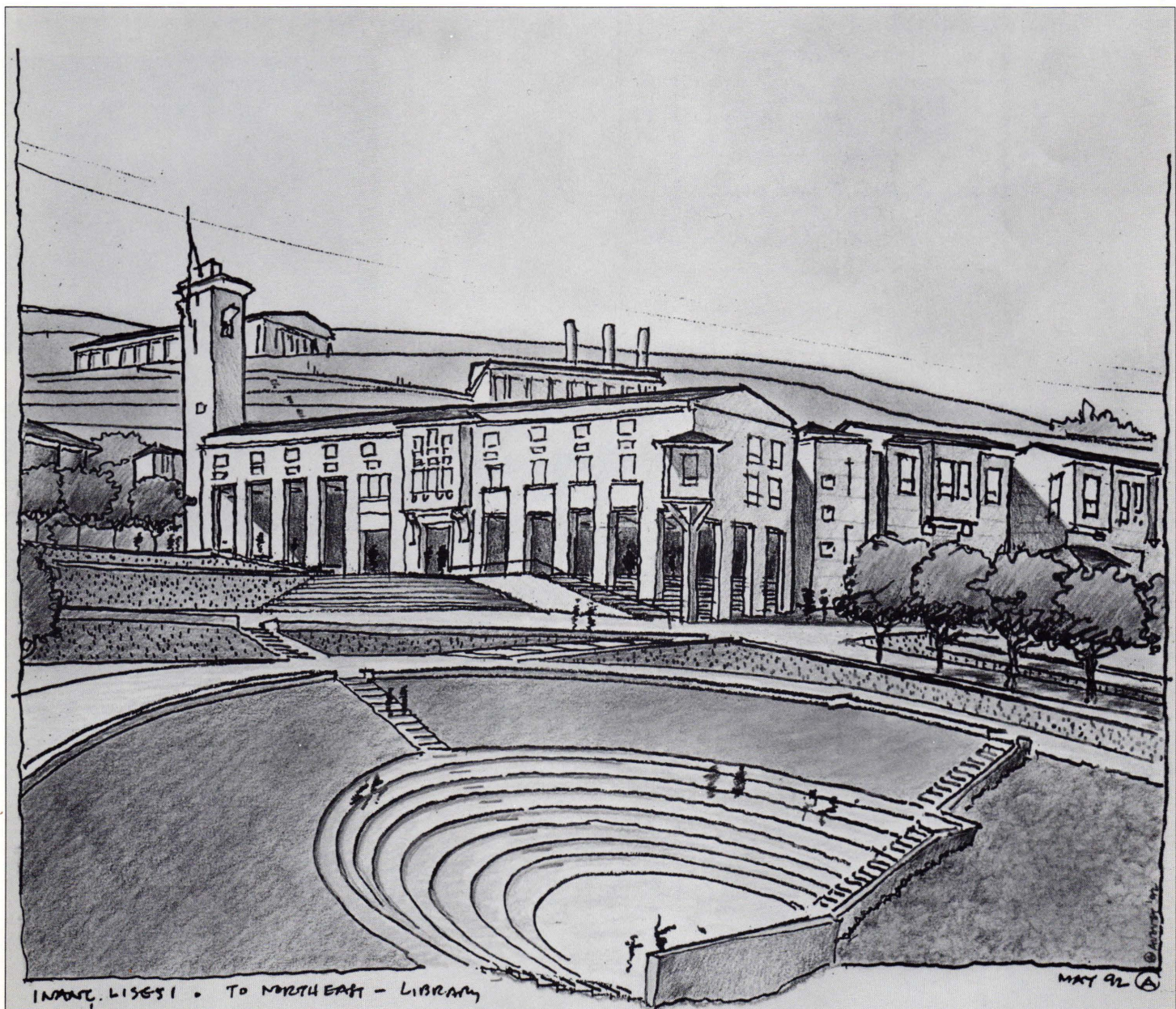
Student Activities Bazaar





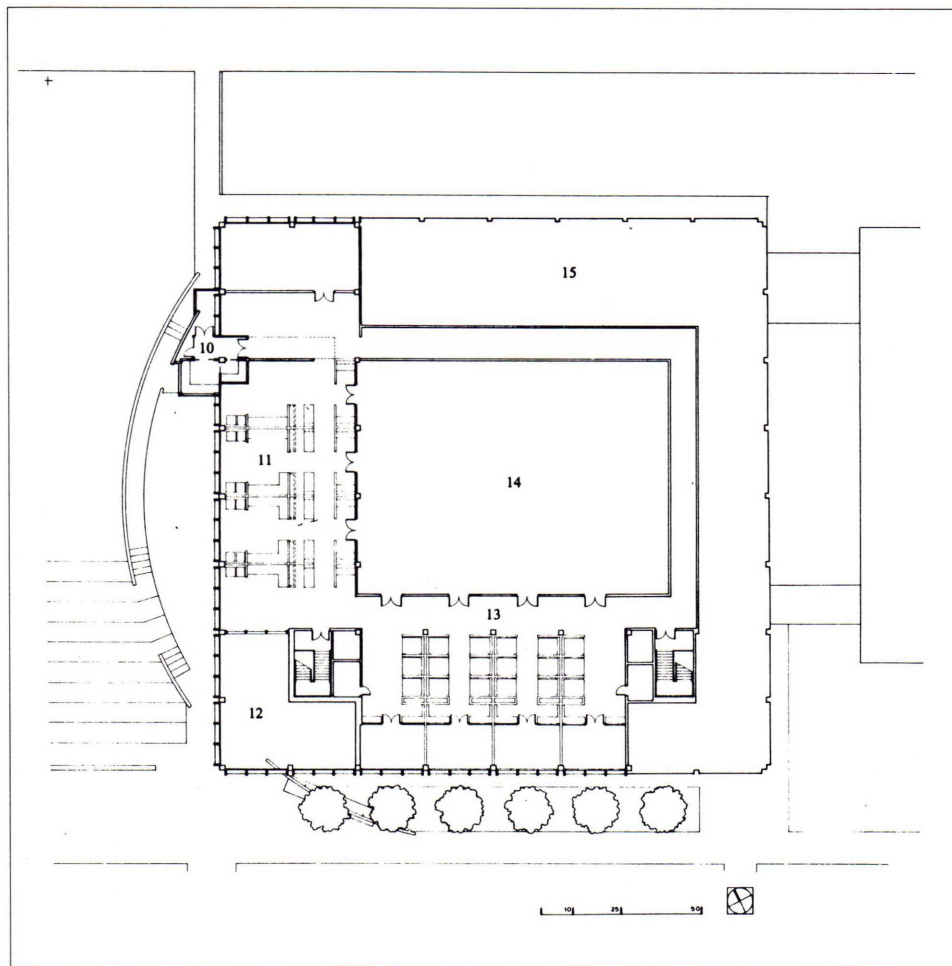
Elevation

View of Library



Reinterpretation of a Student Center

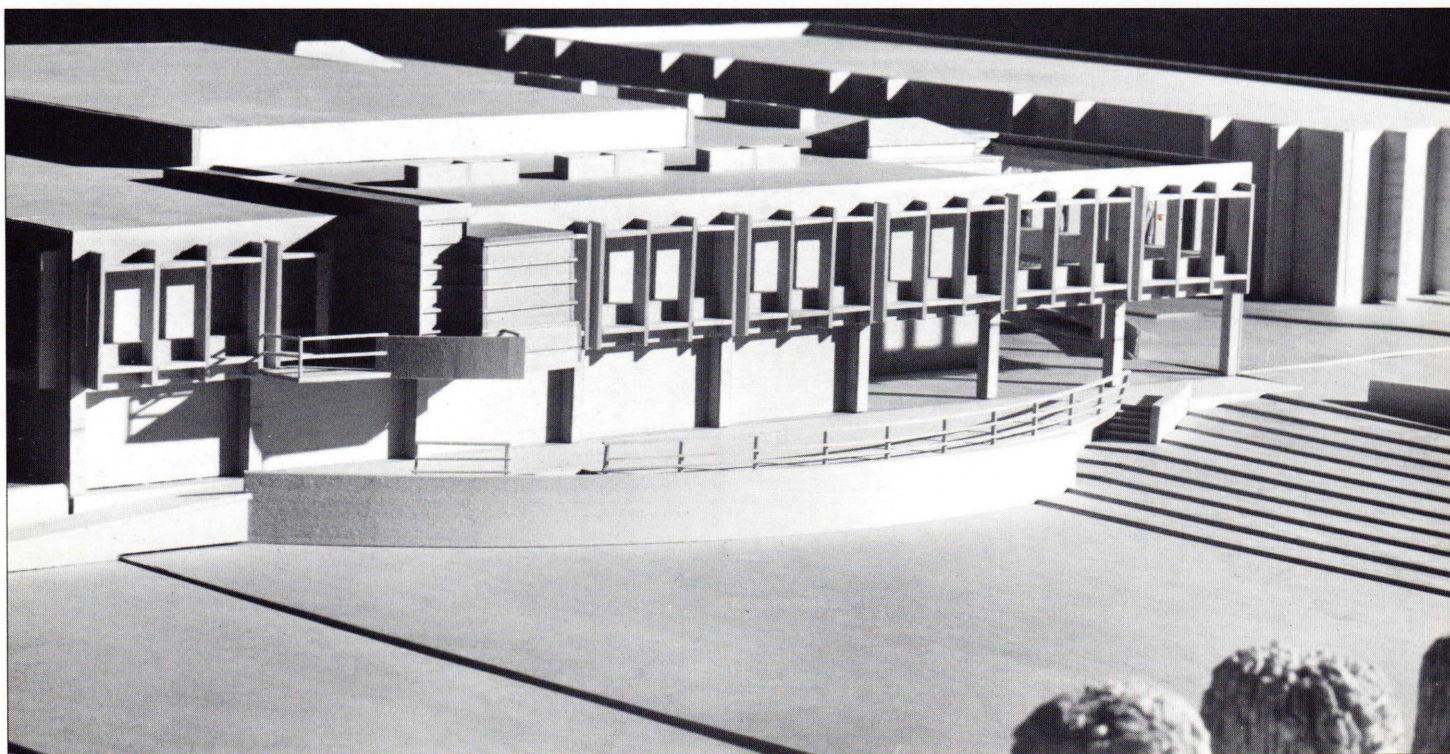
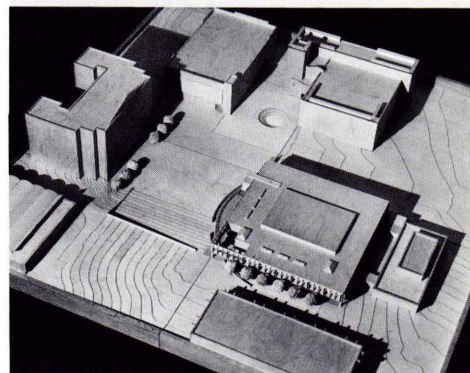
Nastasi Costantino, Architects



Floor Plan

The Reinterpretation of a Student Center, by Nastasi Costantino Architects of Hoboken, was a competition entry in 1992 for the renovation of the student center at the New Jersey Institute of Technology in Newark. Nastasi's solution was one of two entries awarded first place — the other was won by Julian Weiss of Weiss and Reed Architects, New York City. The two first place architects currently are awaiting a run-off to select one architect for the commission.

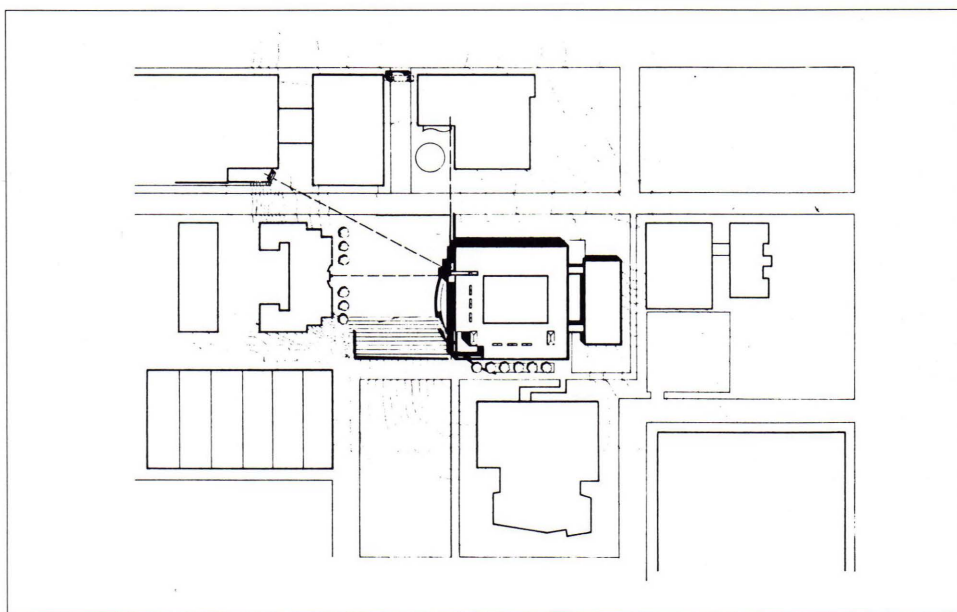
Nastasi Costantino's solution is intended not only to redefine the center, but to reinterpret its meaning: "to create something new out of something very familiar," explains John Nastasi, AIA.



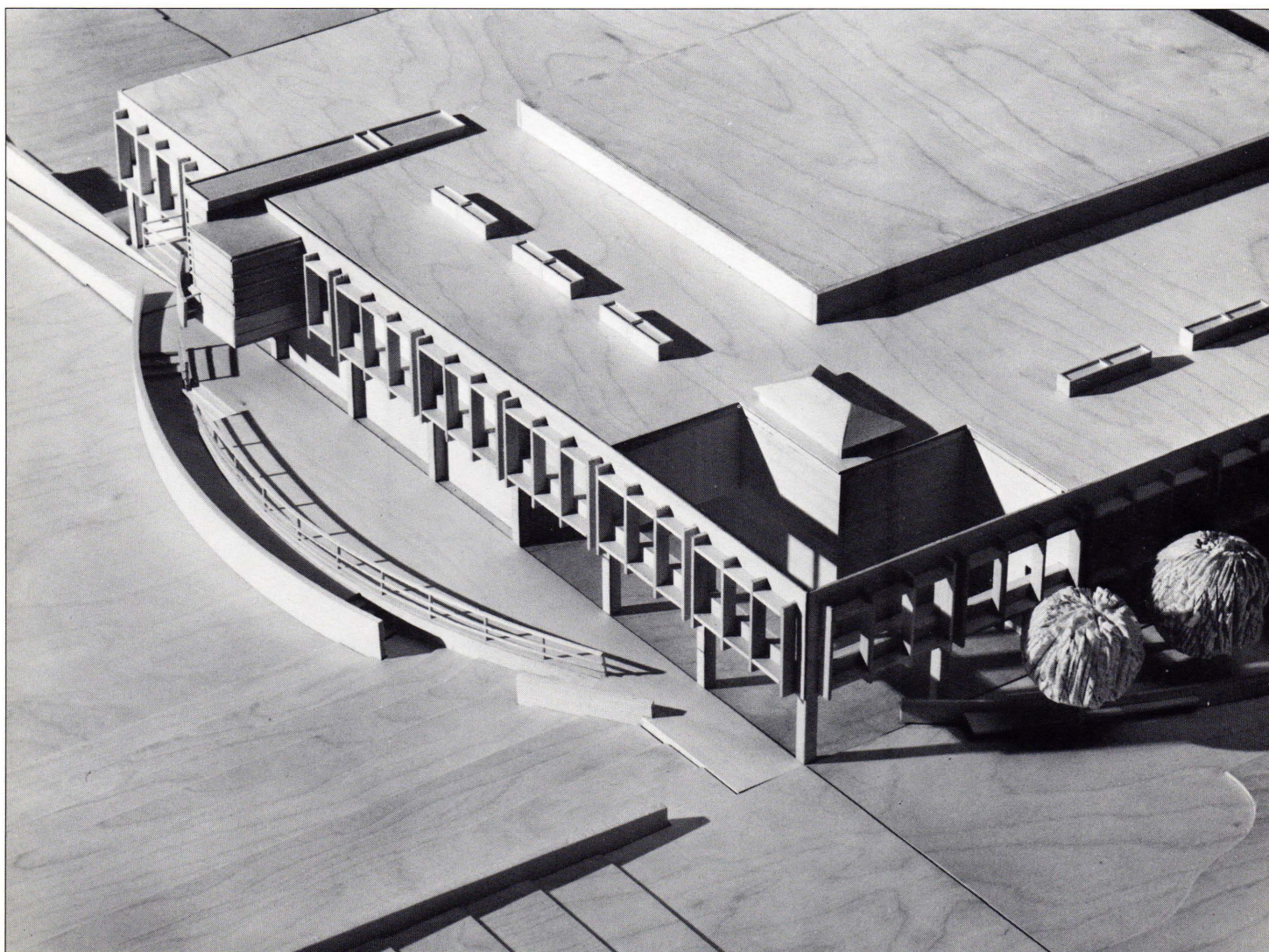
The solution proposes an extended green on the western side of the building, and projects the existing campus radio station over the green as "a new symbolic element; the eyes, ears, and voice of the campus as a whole."

The Nastasi Costantino team included John Nastasi, AIA; Anthony Costantino, AIA; and Peter Gulick, Mario DeMarco, James Hatton, Paul Teng and Yong Shin.

The jury credited this project for its economy, the significance of the intended transformation to the original building, and the positive impact the project would make on the site at NJIT.



Site Plan



Hsu-Ling Residential Addition

Richardson Smith Architects

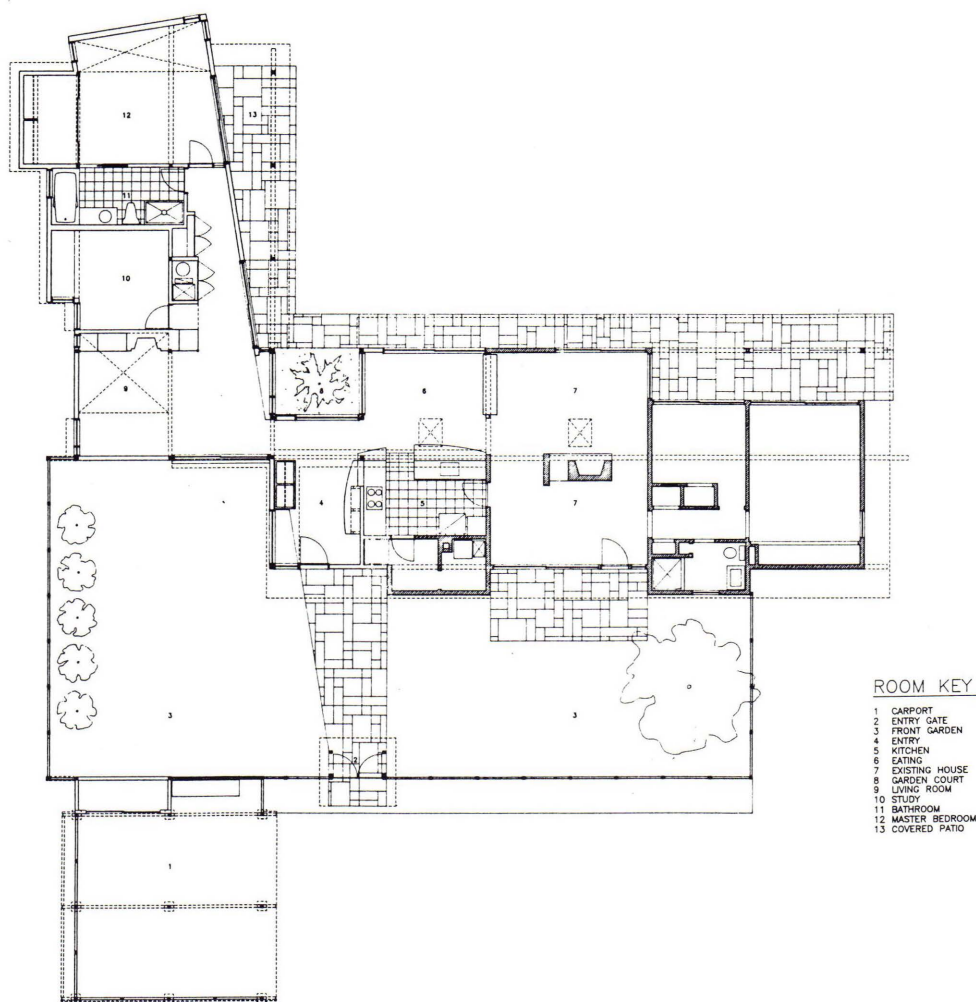
The Hsu-Ling Residential Addition is a 1300 square foot addition to an existing 1300 square foot house. The project also included renovations to the kitchen and eating areas of the original house, which was designed in 1956. Distinguished by an abundant use of natural light, the finished design creates a 'whole new' out of the original structure and new addition, expressed in part by the use of materials in the addition similar to those in the original, such as cedar siding and slate floors. Mahogany, aluminum and maple are used as counterpoints to the original.

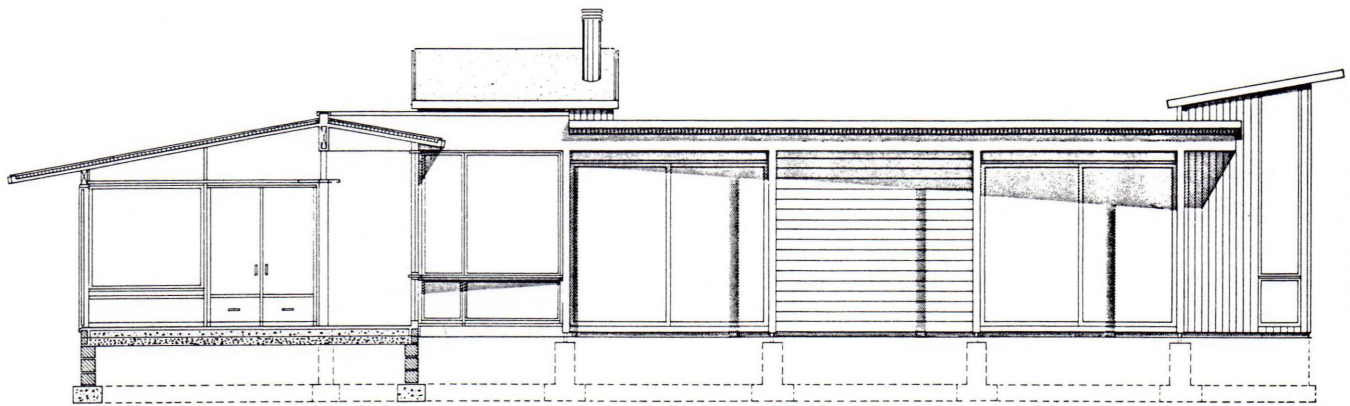
Jurors commented on the elegance of the design solution, the appropriateness of materials used and the successful union of the new addition to the existing structure.



Exterior View

Floor Plan





West Elevation

Interior View — Kitchen



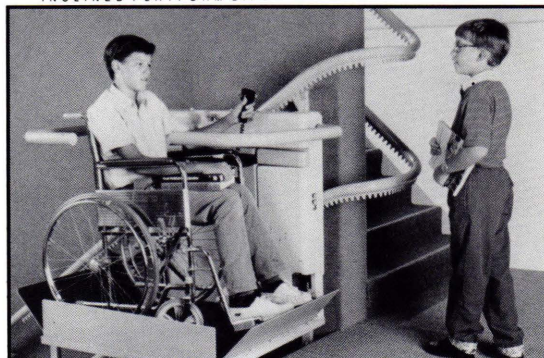
Need A Cost-Effective Way To Make Your Facility More Accessible To The Public?

Now...there is a simple, cost-effective and dependable transportation system that can glide up and down stairs and around corners to reach every floor of your building. This state-of-the-art technology is the "Carrier-Lift®".

Each Carrier-Lift unit is custom designed to fit your stairway and folds up when it is not in use. This fine product and many others are what you can rely on from the **Mobility Elevator & Lift Co.** We are dedicated to providing you with the most advanced accessibility products for *schools, restaurants, shopping centers, offices, religious institutions, hotel/motels and many other public facilities.*



•ADA...
It's the law!



For a FREE estimate or product brochure, call us today at **(201) 887-7500**



**MOBILITY
ELEVATOR & LIFT CO.**

25 MERRY LANE ■ EAST HANOVER, NJ 07936
(201) 887-7500 FAX (201) 887-0442

★ Tax credits and deductions are available.

•The Americans with Disabilities Act

PROFESSIONAL LIABILITY INSURANCE

Discover how your premiums are developed and what YOU can do to better them.

Thomas J. Sharp & Associates, Inc. has been servicing design professionals for over two decades. We have dedicated ourselves to educating

Architects, Engineers and Land Surveyors about their needs and questions concerning professional liability insurance.

As specialists in professional liability insurance, let us show you:

- How you can improve your premiums and work to improve your coverage by thorough application review
- Coverage for full- or part-time practices
- How to understand your policy
- The insurers that best fit your practice
- Your contractual exposures and how to limit them
- How to better your cash flow through premium financing

DESIGN PROFESSIONALS TODAY NEED PROFESSIONAL INSURANCE BROKERS



**THOMAS J. SHARP
& ASSOCIATES, INC.**

Suite 260
24 Columbia Road
Somerville, New Jersey 08876
(908) 707-0300
FAX (908) 707-0990

Thomas J. Sharp, *President*
Richard N. Hartman, *Executive Vice President*



Architecture Meets Children & 40,000 Legos® — At the recent annual Convention of AIA New Jersey, a Chapter and Region for the American Institute of Architects, schoolchildren from Livingston and Teaneck planned and created a town using 40,000 LEGOS® pieces donated by the toy company. The project, conducted earlier this month at the Convention site at the Marriott Glenpointe in Teaneck, New Jersey, was organized by the Young Members Committee of AIA New Jersey.



New Jersey Architects Name 1994 officers — Pictured at the recent annual Convention of AIA New Jersey, a Chapter and Region of the American Institute of Architects, are the 1,500-member organization's newly elected officers: Ronald Bertone, AIA, President (from Red Bank), Charles Weiler, AIA, President-Elect (from Haddonfield), Christine Misco, AIA, First Vice-President (from Livingston), Martin Santini, AIA, Second Vice-President (from Englewood Cliffs), Robert Sussna, AIA, Treasurer (from Princeton), James Gatsch, AIA, Secretary (from Princeton), Daniel Mille, Jr., AIA, Regional Director (from Trenton)

ATLANTIC BUILDERS CONFERENCE '94

New Jersey Builders
Association



Wednesday, March 16 -
Friday, March 18, 1994

TRUMP TAJ MAHAL
Atlantic City, NJ

Mark your calendar today...
plan to attend for a full day,
or more. Sit in on 40 plus
industry-related seminars and
visit the over 250 exhibits
displaying the latest construc-
tion products and services.
Network with industry-peers
at the many social functions.

WEDNESDAY is Sales & Mktg Day
THURSDAY is Associates Day
FRIDAY is Remodelers Day
EVERY DAY is Builders Day



TUESDAY

6 & 7 pm Sales & Marketing (SAM) Reception and Awards Banquet

WEDNESDAY

8:30 am Sales & Marketing (SAM) Breakfast
10:00 am NJBA Annual Board of Directors Meeting
10:30 am Managing and Motivating Your On-Site Sales Team
How to Use Your SAM Awards to Your Advantage
11:30 am Just Do it Right - The First Time
Big Time Marketing on Small Dollar Budgets
Value & Quality, Getting, Giving & Selling
NJ Building Officials Luncheon
11:30 am OFFICIAL OPENING OF EXHIBIT AREA
12 - 5 pm Insurance Trust Luncheon
1:00 pm Team Approach to Opening a New Subdivision
1:00 pm Fast Track Development Through the Planning Charrette
Overcoming Obstacles to Building Affordable Housing
5:00 pm Build-PAC/BPAC Reception
6:00 pm Master Sponsor Cocktail Party
7:30 pm Spike Party

THURSDAY

8:30 am Ins. Trust Continental Breakfast - SEH Update
10:00 am Associate Brunch - 5 Year Marketing Plan for your Business
CABO Energy Code Compliance
Environmental Considerations in Land Buying
Seniors - What Do They Really Want
Townhouses and Condos that Work
11:30 am Code Update
Romancing the Broker
Wetlands Assumption and its Aftermath
Total Quality Construction
What to Build for the Rest of the '90s
The New Construction Lien Law
12 - 5 pm EXHIBIT AREA OPEN
1:00 pm Lightweight Residential Steel Framing
Uniform Site Improvement Standards
CAFRA II
Super Sales and Marketing Techniques
Master Planned Community Techniques
7 & 8 pm Presidents Reception & Installation Banquet

FRIDAY

6:25 am Insurance Trust Fun Run on the Boardwalk
8:00 am BPAC Breakfast
9:00 am Remodelers Breakfast
9:30 am - 4 pm EXHIBIT AREA OPEN
10:00 am NJ HOW Technical Seminar
Recent Changes to the Sewer Permitting Program
Plywood vs. OSB
Housing Recovery is Here - Now What Should we Do With it
10:30 am The Computer Literate Remodeler
11:30 am Trends in Land Use Law
When You Must Build with Septics
12:00 pm NJ HOW Annual Luncheon and Membership Meeting
12:00 pm NJ Lumber Dealers Educational Program
1:00 pm Trends in Environmental Law
Are the New COAH Rules Incentives?
Preparing for the Planning Board
1:30 pm Regulatory Issues Confronting the Remodeler
Production for Growing Remodeling Firms
4:00 pm Remodelers Reception

(Admission to certain functions by ticket only)

Call ABC (609) 275-8888 for Registration form



Fig. 1

Play Ball!

The Mercer County Waterfront Park, a new minor league Class AA baseball stadium with a seating capacity of 6,250, is under construction in Trenton, NJ. (Fig. 1). Designed jointly by Trenton architects **Faridy Throne Fraytak, P.C.** and **Clark & Caton**, the park is a critical project in Trenton's Renaissance. According to the architects, the stadium's design "reflects the history of the city of Trenton" in its use of masonry and ornamental iron and steel materials that recall the architectural legacy of the John A. Roebling Company. Opening day is slated for April of 1994 when the Park's home team, the Trenton Thunder, an affiliate of the Detroit Tigers, will meet its first opponent.

Architecture on the Comparative Method

Princeton University's Department of Art and Archaeology has reopened after undergoing extensive renovation. Designed by Princeton architects, **Ford Farewell Mills and Gatch**, the Department is housed in the three-story McCormick Hall. The lowest level holds the 4000 square foot Index of Christian Art. The first and second floors contain 5200 square feet each of administrative and teaching spaces.

The building has been designed with contrasting spaces free-flowing and traditional centralized — "to act as an analogy to the discipline of Art History, which typically compares differing artistic approaches." (Fig. 2)

Bibliothèque Additionale

The **Walter H. Annenberg Library** at the **Peddie School** in Hightstown, NJ, has opened. Designed by **The Hillier Group**,

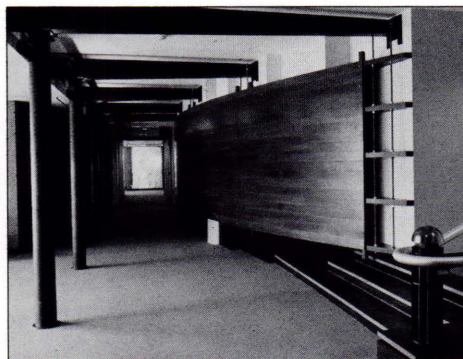


Fig. 2

of Princeton, Philadelphia, and New York, the 12,900 square foot library is a two-story addition to Memorial Hall, the school's main academic and administrative facility and its signature building. Built of brick and limestone, the library is punctuated by a curved glass well that frames a vista onto Peddie's playing fields to the east (Fig. 3). The facility provides students access to more than 27 million titles through interlibrary loan, and is equipped with an automated public catalog, CD-ROM reference area, and computerized indices to periodical literature.



Fig. 3

The **Elizabeth B. McGraw Arts Center** is a new 25,000 square foot visual and performing arts facility housed within the **Newark Academy**, a 150 year-old middle school, located in Livingston, NJ. Designed by **Nadaskay Kopelson Architects** of Morristown, the Center is a single story red brick Georgian extension of the academy's existing facility. Principal spaces of studios, classrooms, a theatre, and an art gallery are grouped around courtyards that occur off of the building's main circulation spine. The architects based the Center's organizational scheme on scientific research facilities, where informal reading and lounge areas are placed among laboratories to enhance opportunities for scientists to gather for an informal exchange of ideas.

New Commissions in New Jersey and Beyond

Michael Graves Architect, of Princeton, and **Haigo Shen & Associates Architects and Engineers** of Taipei, Taiwan, have been awarded the commission to design the \$80,000,000 **National Museum of Pre-history**, as a result of a two-stage competition. The 300,000 gross square foot program is expected to include a Visitor Center, an on-site Archaeological Facility and Exhibition, as well as collection, research and educational facilities.

The winning scheme (Fig. 4) includes an open air exhibition area of "Island Exhibits," connected by a series of footbridges and featuring scaled-down depictions of famous archaeological sites, such as China's ruins of An-Yang, the Acropolis in Greece, El Castillo pyramid at Chichen Itza, a portion of Agkor vat in Cambodia, the Cheops Pyramid and Sphinx, Stonehenge and the Great Mosque at Sammarra. A "Court of Man" plaza at the Museum's center connects the institution's various components. Construction of Phase 1 of the project, an Academic Activity Center, is scheduled to begin in 1994.

The Hillier Group of Princeton, Philadelphia, and New York, has been commissioned to design a new World Headquarters complex for **Marion Merrell Dow** in Kansas City, MO. The project will bring 500,000 square feet of new office space and approximately 375,000 square feet of new research and development space to a site that already houses the pharmaceutical company's manufacturing and product development facilities. Construction is scheduled to begin in the spring of 1994. The firm has also been selected to design a new Medical Office Building for **Hackettstown Community Hospital**, in Hackettstown, and will be providing interior design and environ-

Fig. 4



mental, graphics in association with the Karlsberger Companies for the new **Newington Children's Hospital** to be located in Hartford, Ct.

Nadaskay Kopelson Architects of Morristown has been selected to design a \$3.6 million Family Health Center for Jersey City Medical Center. The ambulatory care facility is expected to house a staff of 95 and service daily a transient patient population of 250 to 300.

Sussna Architects PA, of Princeton has been selected by **Enzon** to design several laboratory renovations for the biopharmaceutical company's new R&D headquarters in Piscataway, NJ.

Sykes O'Connor Salerno Hazaveh, Architects, of Atlantic City, has been commissioned to design four casino-related projects in Atlantic City and short listed in an invited design competition for a new casino complex in Gary, Indiana. The firm's Atlantic City projects include a 1,000-room Hotel Tower addition to the **Taj Mahal**; a Casino expansion and Hotel Tower addition to the **Trump Plaza** which will comprise an entire city block; a 20,000 square foot expansion of the **Sands Casino**; and the **Redevelopment of Huron Avenue**, an urban design commission that calls for the creation of a new streetscape and accompanying buildings for **Harrah's** and **Trump Castle** casinos.

The firm's competition entry for a new casino complex in Gary, Indiana, was submitted in association with **The Trump Organization** of New York. A notable feature of its design is the creation of a "floating casino" on Lake Michigan.

Architects in the News

Samuel J. Armijos, AIA, of Newark, was cited in the July issue of *Progressive Architecture* magazine on Young Architects. Armijos, a Principal of Nomadic Structures, and Samuel J. Armijos, Architect, was one of 81 architects selected from a field of 485 featured in the magazine.

Michael Burns, AIA, of Princeton, was an invited speaker at the Association of New Jersey Environmental Commissions (ANJEC) 20th Annual Congress held this October in Mount Holly, NJ. Burns' talk, entitled "Affordable Housing: Opportunity for the Environment", illustrated how affordable elderly housing can utilize, reinforce, and enhance the dynamics of the "New Jersey Village".

Alan Chimacoff, AIA, Director of Design for The Hillier Group, presented a

lecture entitled "Purposeful Ambiguities" at two universities this fall; the University of Miami, in Miami, FL., and the University of North Carolina in Charlotte. Chimacoff's talk explored the themes of contemporary and historic architecture and suggested the possibility of conciliation between the seemingly diverse and antithetical position of contemporary and historic architecture — the traditional/historicist and the modernist/abstract.

Barbara A. Hillier, AIA, managing Principal of The Hillier Group's Philadelphia office, was cited as a "Person to Watch" in the July issue of *Business Philadelphia* magazine.

J. Robert Hillier, FAIA, Chairman and CEO of The Hillier Group, served as a design juror this fall for the Steel and Ornamental Metal Institutes' of New York Annual Architectural Awards Competition and the Delaware Society of Architects Annual Awards Competition.

Stores Opened by Architects

Two New Jersey architects have announced the opening of retail stores. February marks the opening of the new **Graves Design Studio** store in Princeton, NJ. The store will offer a wide range of Graves-designed products such as charm bracelets featuring miniature versions of Graves' collection of gourmet kitchen objects; watches and various other jewelry pieces; note cards and wall calendars depicting Graves' architectural and landscape drawings; wooden picture frames and hand-crafted desk clocks influenced by 19th century Biedermeier artifacts; the Graves Design Portfolio collection of calfskin leather goods by Spinneybeck; stainless steel kitchen items manufactured by Alessi; and pure wool throws woven in Ireland. Custom carpet designs will be available, as well as furniture items in a variety of wood and metal finishes.

The store is a 250-square-foot annex to Michael Graves' architectural offices on Nassau Street. To obtain a Graves Design Collection Catalog call Graves Design at 609-497-6878.

J. D. Measley Architectural Books, which opened in November, is a 300-square-foot store housed within the architect's design studio at 12 Monmouth Street, in Red Bank, NJ. The store carries all titles by Princeton Architectural Press, MIT Press, and Rizzoli and selected titles from other publishers including European houses. Rare and out-of-print treasures such as *Skyline* magazine and *Oppositions* can also be found there. Open from 9-5

on weekdays and 10-5 on Saturdays, the store offers a 10% discount to AIA members. For additional store information, contact 908-747-1755.

Appointments and Promotions

CUH2A has announced the following staff appointments and promotions. **Charles A. Johnsrud, AIA**, and **Brian Kowalchuk, AIA**, have been named Senior Associates. **Caroline L. Hancock, AIA**, has been named the new Director of Communications. Also, **Kenneth Sigel** has joined CUH2A as Director of Cost Estimating Services, and **John W. Yee** has joined the firm in the capacity of Director of Environmental Graphic Design.

The Hillier Group has announced the following promotions in its Princeton and Philadelphia offices. In the Princeton office, **Martin M. Bloomenthal, AIA**, CSI, CCS, Manager of Specifications, **Robert Kady, AIA**, **Peter Hoggan, AIA**, and **Joseph Rizzo, AIA** have been promoted to Associate Principals. **Gregory J. Romero**, Vice President of Design Interface, has been promoted to Senior Associate. In Hillier's Philadelphia office, **James D. Carter, AIA** has been promoted to Associate Principal and **David S. McHenry, RA** has been promoted to Senior Associate.

Shive/ Spinelli/ Perantoni & Associates, Architects + Planners has announced the promotion of **Eric Lee Udsen** to Associate.

The Hillier Group has acquired GSGSB — Architects, Engineers, Planners, of Clarks Summit, PA. The firm will be known as GSGSBH. Originally established in 1949, GSGSB is strong in sports facilities, data centers, retail store, governmental projects, and public schools — markets that Hillier is seeking to penetrate. Some of GSGSB's more visible projects include Giants Stadium, the Statue of Liberty and Ellis Island Restorations, Yankee Stadium, and Lincoln Center.

The New Jersey Institute of Technology Board of Trustees has established a scholarship in memory of their colleague, **Bill Brown, AIA**, who died last January. The scholarship will be awarded to a School of Architecture sophomore who demonstrates academic merit, financial need, high professional standards and community service involvement.

Awards

A poolhouse in Fishers Island, NY, designed by Michael Farewell of **Ford Farewell Mills and Gatch, Architects**, of Princeton, is an award winner in the 1993 New York SARA Professional Design Awards program. The program is sponsored by at the New York Council of the Society of American Registered Architects.

The **Bristol-Myers Squibb** (Fig. 5) complex in Plainsboro and the **Crossroads Business Center** in Bedminster Township, designed by **The Hillier Group** of Princeton, Philadelphia and New York, have won **Good Neighbor Awards**. The awards were presented by the New Jersey Business and Industry Association.

Fig. 5



Two projects designed by the Philadelphia office of **The Hillier Group** were honored with design awards by the American Institute of Architects Philadelphia Chapter in September. A medical office building in Atlanta, GA., designed for **Cancer Specialists of Georgia**, was considered by the judges to be "beautifully drawn" with "elegant proportions" that "reached a level of rich sophistication."

Fig. 6

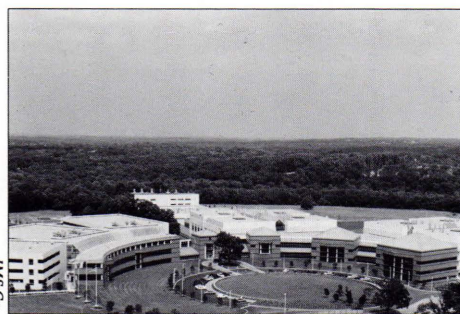


The headquarters for **Bell Atlantic Corporation** (Fig. 6) in Philadelphia was praised for its "extremely beautiful stair... (which) is an eloquent expression of modern architecture...(with) exquisite detail." The Awards Program's Jurors included Stanton Eckstut, FAIA of Eckenkrantz & Eckstut Architects, NY; Peter C. Pran, FAIA of Ellerbe Beckett, NY; Mark Simon of Centerbrook Architects, Essex, Ct., and Amy Weinstein, AIA of Weinstein Associates Architects, in Washington, D.C..

Morristown Memorial Hospital, Morristown; **Princeton Materials Institute**, Princeton; and the **Annenberg Library** and **Kerr Dorms** on the campus of The Peddie School, Hightstown, are four projects designed by **The Hillier Group** that received "Special Recognition" in the Tenth Annual New Jersey Masonry Awards Program, held earlier this year.

CUH2A, Inc., of Princeton, has received two design awards honoring its project for **Rhone-Poulenc Rorer, Inc.** (Fig 7). Located in Collegeville, PA., the project received a "High Honors" award in the annual "Laboratory of the Year" awards program, conducted by *R & D Magazine*. Also, the building was a "Winner" in the Suburban Commercial Category of a program called, "Building Excellence Awards of the Delaware Valley, 1993," sponsored by the *Philadelphia Business Journal* and Commerce Bank.

Fig. 7



News from Princeton

Princeton University's School of Architecture has announced a series of exhibitions and lectures for the spring semester, 1994, that are open to the public. Confirmed Lectures as follows: February 16—Mark Jarzombek, Professor of History of Architecture and Urbanism, Cornell University; March 2—Ellen Lupton, Curator of Contemporary Design, Cooper Hewitt Museum; March 30—Nancy Troy, the Getty Center; April 20—Sylvia Lavin, Assistant Professor of History and Theory, Graduate School of Architecture and Urban Planning, UCLA.

All lectures will take place at 5:30 PM in Betts Auditorium, Princeton University School of Architecture, Washington Road, Princeton.

The School's Exhibition Series which featured two shows this Fall **Discontinuous Spaces: Smith-Miller + Hawkinson Architects** (Fig. 8) and **"Prompt"**, Recent Projects by Franklin D. Israel & Associates — will continue in the spring semester (Fig. 9). The current show, John Lautner California Architect Selected Projects 1937-1991: An Exhibition of Drawings, Scale Models and Photographs, runs from December 12 to February 12 (Fig. 10). For up-to-date information about lectures and exhibitions contact the School at 609-258-3741.

Fig. 8

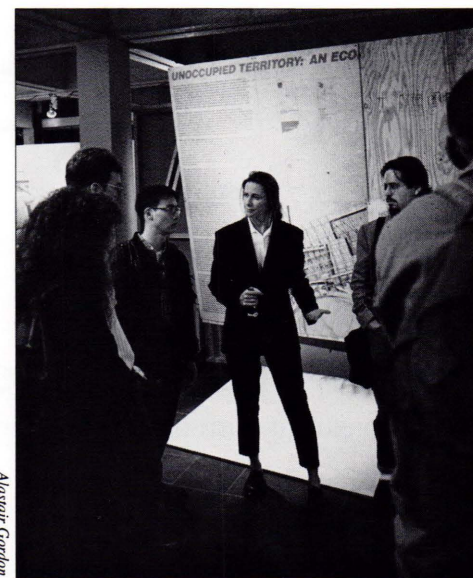


Fig. 9

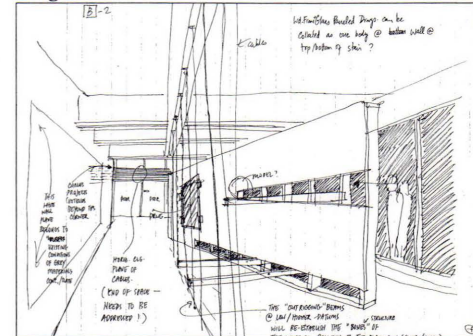
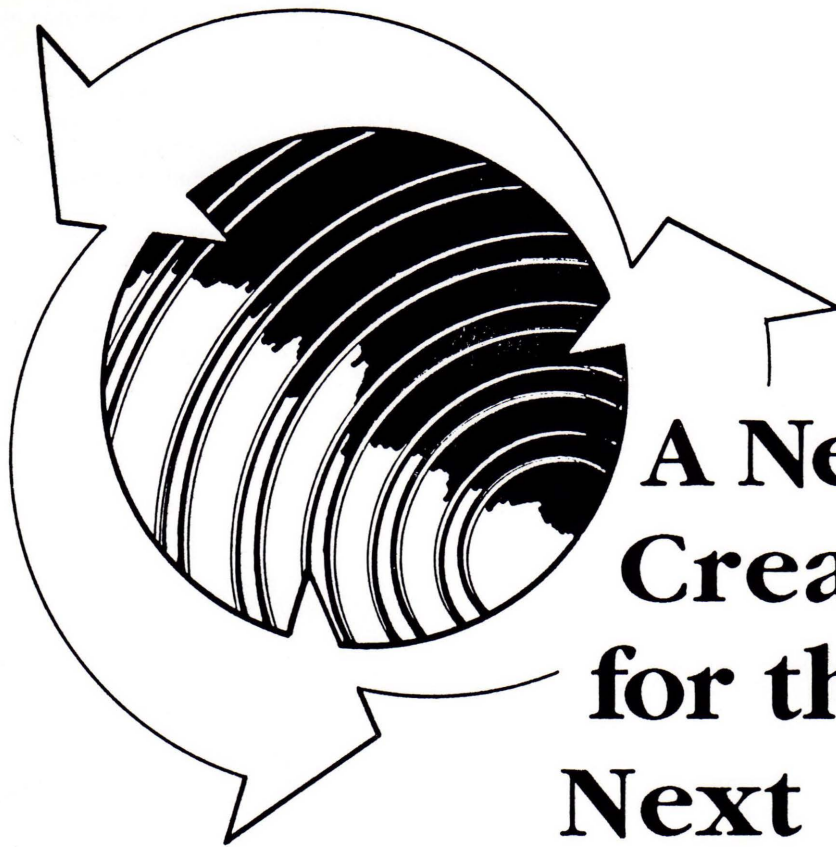


Fig. 10





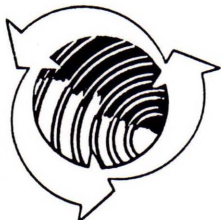
A New Concept Created for the Next Millenium

Full Circle Marketing Ventures, Inc....

a consulting firm creating synergy through a team approach for positioning and marketing solutions.

Full Circle will give busy decision-makers:

- the creative talents of a team chosen by your staff
- a set of goals and developed plans
- designed and executed strategies
- only one coordinating person to meet with
- accountability and efficiency



Full Circle Marketing Ventures, Inc.

2985 Yorkship Square • The Village of Fairview • Camden, NJ 08108
(609) 365-8551 (609) 365-8553/fax