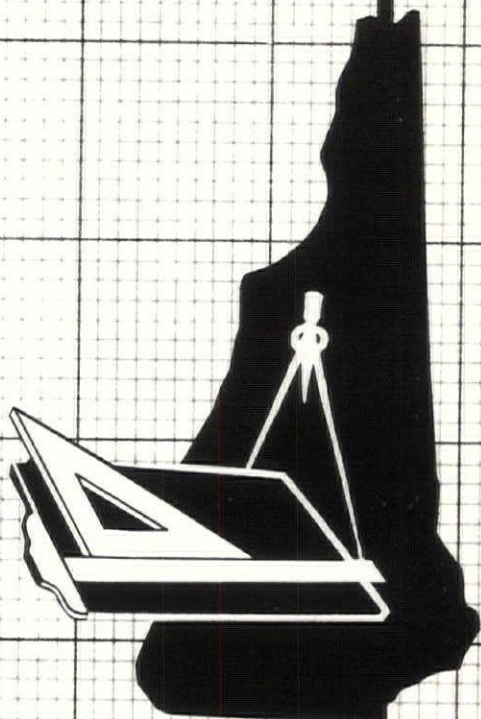


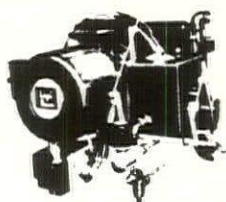
new hampshire architect

PUBLICATION NEW HAMPSHIRE CHAPTER AMERICAN INSTITUTE OF ARCHITECTS

AMERICAN INSTITUTE
OF
ARCHITECTS
MAY 9 1962
LIBRARY



new hampshire architect



D. H. McClarty Co., Inc.
Heating and Plumbing
JOHNSON
OIL BURNERS

**THE FINEST IN HEAVY OIL
 BURNING EQUIPMENT**

57 McCauley St. Manchester, N. H.
 Phone 5-8693

Panel Industrial, Inc.
Distributors of
Construction Equipment and Supplies
 159 SOUTH MAIN STREET • CONCORD, N.H.
 TEL. CA 5-2726

Sonneborn Building Materials
 Delta Power Tools
 DeWalt Radial Saws
 Schlueter Artic Boy Water Coolers
 Timken Bits
 Crosby Clips
 Aeroquip Hose & Couplings
 Vulcan Drill Steel & Pavement Breaking
 Tools
 Laughlin Drop Forge Fittings
 Dixon Valves & Couplings
 Springs — New & Repaired
 Welding Supplies — Marquette, Victor
 & Stulz-Sickles
 Complete Motor Rebuilding
 Kohler Electric Plants
 Complete stock of all sizes Machine
 Bolts & Cap Screws

now ..
**ONE
 STOP**
 for
 every
 paint
 need!



First choice of professional painters — first choice with home owners — that's Dutch Boy. There's a Dutch Boy finish specially blended for every painting need, inside or outside your home. Choose yours today at —

PAINT DEPARTMENTS
Main Store and Annex

EXCLUSIVE DEALER
J. J. MOREAU & SON, INC.
 MANCHESTER, N. H.
 Dial NA 4-4311

ANDREW T. JOHNSON CO.,

4 LOCATIONS	3	{	15 TREMO
	IN		103 NEWBU
	BOSTON		173 MILK S

BURLINGTON, MASS. ON MIDDLESEX TURN
 (AT EXIT 35 OFF ROUTE 128)

Richmond 2-1610

(Connecting all Plants)

REPRODUCTIONS OF ALL TY

- BLUEPRINTS (on Paper or Cloth)
- BLUELINE PRINTS (on Paper or Cloth)
- PHOTOSTATS (Negatives or Positives)
- DIRECT WHITE POSITIVES (Blue or Black Lines)
- AUTOPOSITIVES (Direct Positive Prints)
- "PHOTO-ARC" TYPE (Negatives or Positive Prints)
- KODALITH PAPER (Negatives or Positives)
- J-R REPRODUCTIONS (on Blue or White Tracing Cloth)
- VAN DYKE NEGATIVES AND POSITIVES
- "B & W" SEPIA "Transparencies" film, Etc.
- FILM NEGATIVE POSITIVES (Enlarged or 1
- CAMERA ENLARGEMENTS or BR POSITIVES (Up to 60" x 1 in one piece of the largest cameras in N land)
- PHOTO VELLUM Enlarged or 1
- GLOSSY PHOTO PHIC PRINTS
- PHOTO-OFFSET PLANOGRAPHING



OFFICERS

President
ANDREW C. ISAAK, Manchester
Vice-President
WALTER T. WILLIAMS, Rochester
Secretary
GEORGE SOULE, Manchester
Treasurer
FRANK E. KENNETT, JR., Conway

DIRECTORS

W. BROOKE FLECK, Hanover
JOHN CARTER, Nashua
EDGAR H. HUNTER, Hanover

Regional Council Delegates

A. ISAAK, *ex-officio*
J. HOLBROOK, 1 yr.
N. ISAAK, 1 yr.
N. RANDLETT, 2 yrs.
M. WITMER, 3 yrs.

Member of National Chapter

Fair Committee

ALEXANDER R. JAMES

Member of AIA Committee on Architectural and Building Information Services

NORMAN P. RANDLETT

Members of AIA - AGC Committee

NICHOLAS ISAAK, Manchester
JOHN CARTER, Nashua
MAURICE E. WITMER, Portsmouth
W. BROOKE FLECK, Hanover
STEPHEN P. TRACY, Nashua

EDITOR

ALEXANDER MAJESKI, R. A.
Palomino Lane
Manchester, N. H.

PUBLISHER

ROBERT P. MOYNIHAN
P. O. Box 291
Concord, N. H.
Tel. CA 5-6760

NEW HAMPSHIRE ARCHITECT

VOL. 13

APRIL 1962

NO. 8

TABLE OF CONTENTS

	Page
New President and Executive Vice President named at C. H. Sprague & Son Co.	6
Life	6
Captain Harmon Retires from United States Naval Reserve	8
"Environmental Engineering for the School" ..	8
Kendall Insurance, Inc. by Littlefield & Williams, A I A	10-14
First U. S. Lift-Dome Cuts Construction Cost in Half	15
Credit Where Credit is Due — and How Come	16
New Office Location at Concord for Dunlap Agency, Inc.	16
Rules Cited for Use of Initials "A I A"	16
The Charles K Shoe Store by Andrew C. IsaaK, A I A	19
Adjustable Anchoring System Solves Problem	20



New Hampshire Architect is published monthly, under the direction of the president and board of directors of the New Hampshire Chapter, American Institute of Architects, to promote the objectives and public relations of the chapter. Advertising rates furnished upon request.

25c A COPY
\$3.00 A YEAR

In New Hampshire . . .

**NEW OFFICE
NEW PLAN ROOM
EXPANDED DODGE SERVICES**

The New Hampshire - Vermont area is growing and Dodge is growing with it. Increased Dodge services will mean more benefits to New Hampshire architects.

The new Dodge Plan Room and office in Manchester will provide increased coverage of the local construction market. You will benefit through faster preparation of bids and quotations. Your needs will be made known to more suppliers. This wider participation will mean better prices. The Dodge office in Manchester will strive to bring architects and suppliers together at the time of mutual need to make more efficient use of the architect's time and to eliminate poorly timed sales calls.

DODGE REPORTS

CONSTRUCTION NEWS SERVICE

In Manchester: In Boston:
1245 Elm Street 31 St. James Avenue

F. W. DODGE CORPORATION
119 West 40th Street, New York 18
New York

**REFRIGERATION
DISTRIBUTORS
FOOD SERVICE
CONSULTANTS**

Complete Planning Service

For Markets and Food Stores
 Special Industrial Refrigeration
 Complete Air Conditioning
 Hotel, Restaurant and
 Institutional Kitchens,
 Cafeterias, Dining Areas
 Cocktail Lounges

HUMPHREYS, INC.

180 No. Main Street - Concord, N. H.

**A Business Devoted To Those
Who Serve Food**



**COMMITTEES
1961 - 1962**

CHAPTER ACTIVITIES

Norman P. Randlett, Chapter Affairs,
Chairman
Maurice E. Witmer, Membership
John Carter, Education
Richard Koehler, Office Practice
George R. Thomas, Awards and Scholar-
ships

PUBLIC RELATIONS

Nicholas Isaak, Public Relations, Chair-
man
Douglass C. Prescott, Government Rela-
tions
Alexander J. Majeski, N. H. Architect
Bliss Woodruff, Construction Industries
Edgar H. Hunter, Collaboration with
Design Professions

COMMUNITY DEVELOPMENT

Mitchell P. Dirs, Community Develop-
ment, Chairman
Horace G. Bradt, Preservation of His-
toric Buildings
Arnold Perreton, Research
Stephen P. Tracy, School Buildings
Alfred T. Granger, Hospitals and Health

Officers and Directors of
N. H. Chapter, A. I. A. Meet



CORPORATE MEMBERS

New Hampshire Chapter, American Institute of Architects

HUDDLESTON, Eric T. FAIA

BETLEY, John D.

Manchester, N. H.

BRADT, Horace G.

Exeter, N. H.

BRODIE, James A.

Durham, N. H.

CARTER, John A.

(Carter & Woodruff)

Nashua, N. H.

DIRSA, Mitchell P.

(Dirsa & Lampron)

Manchester, N. H.

DOYLE, Arthur M.

Keene, N. H.

ERICKSON, Henry W.

Laconia, N. H.

FLECK, Brooke W.

Hanover, N. H.

FORREST, Harry G.

Concord, N. H.

GEOFFRION, Lucien O.

Portsmouth, N. H.

GRANGER, Alfred T.

(Alfred T. Granger Assoc.)

Hanover, N. H.

GRAY, Chas. Hildreth

Hanover, N. H.

HARMON, Russell S.

Durham, N. H.

HERSEY, Irving W.

(Irving W. Hersey Assoc.)

Durham, N. H.

HILDRETH, Malcolm D.

(Tracy & Hildreth)

Nashua, N. H.

HOLBROOK, John R.

(John R. Holbrook Assoc.)

Keene, N. H.

HUDSON, Archer E.

Hanover, N. H.

HUNTER, Margaret King

(E. H. & M. K. Hunter)

Hanover, N. H.

HUNTER, Edgar H.

(E. H. & M. K. Hunter)

Hanover, N. H.

ISAAK, Andrew C.

Manchester, N. H.

ISAAK, Nicholas

(Koehler & Isaak)

Manchester, N. H.

JAMES, Alexander R.

Keene, N. H.

KENNETT, Frank Jr.

North Conway, N. H.

KOEHLER, Richard

(Koehler & Isaak)

Manchester, N. H.

LAMPRON, Joseph F.

(Dirsa & Lampron)

Manchester, N. H.

LITTLEFIELD, Willis E.

(Littlefield & Williams)

Dover, N. H.

MacCORNACK, Donald A.

W. Sayville, L. I., N. Y.

MAGENAU, Eugene F.

Lewiston, N. Y.

MAJESKI, Alexander J.

Bedford, N. H.

MILES, Edward B.

Exeter, N. H.

PERRETON, Arnold

(Arnold Perretton & Assoc.)

Concord, N. H.

POSTMA, Theodore

Concord, N. H.

PRESCOTT, Douglass

Laconia, N. H.

PROVOST, Leo P.

Manchester, N. H.

RANDLETT, Norman P.

Laconia, N. H.

SIMONDS, Roland S.

Manchester, N. H.

SNODGRASS, Robert L.

Nashua, N. H.

SOULE, George C.

Manchester, N. H.

SULLIVAN, John D.

Contoocook, N. H.

THOMAS, George R.

Durham, N. H.

TRACY, Stephen P.

(Tracy & Hildreth)

Nashua, N. H.

VOGELGESANG, Shepard

Whitefield, N. H.

WHITE, William L.

Exeter, N. H.

WILLIAMS, Walter T.

(Littlefield & Williams)

Rochester, N. H.

WITMER, Maurice E.

Portsmouth, N. H.

WOODRUFF, Bliss

Nashua, N. H.

(Carter & Woodruff)

New President and Executive Vice President named at C. H. Sprague & Son Co.

P. Shaw Sprague, Chairman of the Board of C. H. Sprague & Son Co., a large integrated coal company and fuel oil distributor of Boston and New York, announces the election of George H. Seal of Marblehead, Mass. as President, and DeWitt C. Snyder of Greenwich, Conn. as Executive Vice President of the company.

Mr. Seal succeeds Peter F. Masse, who was killed in a plane crash at Idlewild on March 1st. Born in Lynnfield, Mass. in 1909, Mr. Seal joined the Sprague organization in Boston in 1933. He became a Vice President in 1948 in charge of all New England operations and is largely responsible for the development since that time of Sprague's eight fuel oil terminals on the New England coast. He is also a Vice President of Atlantic Terminal Sales Corp., Imperial Smokeless Coal Co., C. H. Sprague & Son (Canada) Ltd., Starch Sales, Inc., and a director of the foregoing and also Bangor & Aroostook Railroad, Bangor & Aroostook Corporation, St. Croix Paper Co., Petroleum Heat & Power Co. of Rhode Island, and Sprague Steamship Co. He is a member of the Transportation

and Communications Committee of the U. S. Chamber of Commerce, the Fuel and Energy Committee of the New England Council, the Committee on State Affairs of the Greater Boston Chamber of Commerce, and a director and former President of the Massachusetts Higher Education Assistance Corporation, and President of the Fort Hill Club of Boston.

Mr. Snyder fills the new position of Executive Vice President and will be General Director of all operations of the company's coal mines, and the sale and distribution of coal to Sprague's customers both in this country and abroad. Born in Mount Hope, West Virginia in 1914, Mr. Snyder has spent most of his business career in the mining of West Virginia coals. He joined Sprague in 1955 as a Vice President and in addition to that post, became President of Imperial Smokeless Coal Co., a Sprague subsidiary, in 1960. He also is President of Sterling Smokeless Coal Co., and Vice President of Winding Gulf Coals, Inc. He is a member of the American Institute of Mining, the American Coke & Coal Chemicals Institute, the Eastern States Blast Furnace & Coke Oven Association, and of the Marketing Committee of the National Coal Association.

LIFE

Man comes into the world without his consent and leaves against his will. During his stay on earth, his time is spent in one continual round of contraries and misunderstandings.

In his infancy he is an angel; in his boyhood he is a devil, and in his manhood he is everything from a skunk up. In his duties he is a fool. If he raises a family, he is a chump; if he raises a check, the law turns around and raises hell with him. If he is a poor man, he is a poor manager and has no sense; if he is rich, he is dishonest, but considered smart. If he is in politics, he is a grafter and a crook; if he is out of politics, you can't place him because he is an undesirable citizen. If he goes to church, he is a hypocrite; if he stays away from church, he is a sinner. If he donates to foreign missions, he does it for a show; if he doesn't, he is stingy and close-fisted. When he comes into the world everybody wants to kiss him; when he goes out everyone wants to kick him. If he dies young, there was a great future before him, but if he lives to a ripe old age, he is in the way, only living to save funeral expenses.

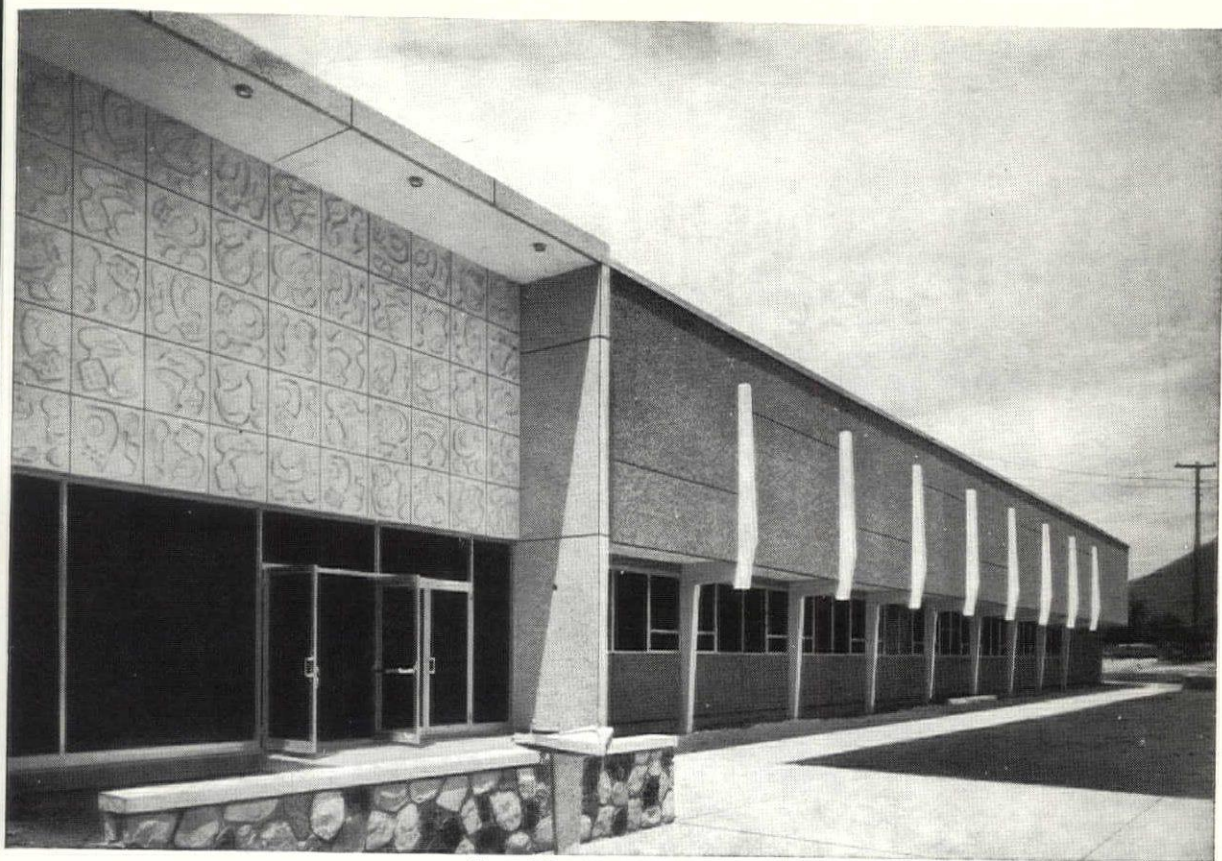
A.W. THERRIEN CO.

INC.

"A Roof by Therrien is a Good Roof"

ROOFING CONTRACTORS

PHONE NA 3-6193 • 199 HAYWARD STREET • MANCHESTER, N. H.



General Purpose Addition to the Central Utah Vocational School, Provo, Utah. Architects: Dixon, Knell & Long, Provo, Utah. Engineer: Hugh McKellar, Provo, Utah.

Fire safety came first – economy's a bonus in this low-cost, all-concrete school



Stepped columns support the prestressed concrete frame. Offset provides extra 4 feet of classroom space on second floor and built-in sunshade over first floor windows.

Fire protection is a vital consideration when building a school. This was one reason the architects chose all-concrete construction for the new General Purpose Addition to the Central Utah Vocational School at Provo.

And use of concrete in its newest forms gave opportunity for economy, too. The entire shell of the building, including prestressed concrete roof, frame and floor beams, precast columns and curtain wall panels, was completed for \$3.21 per sq. ft.

All this and beauty, too. The warm texture of the exposed aggregate panels contrasts with the clean lines of the unusual stepped columns. Panels are "sandwich" type. No additional finishing is needed for interior surfaces. Over the entrance, small panels cast with plaster forms depict tools of industry.

More and more engineers are finding that concrete offers opportunity for money-saving construction.

PORTLAND CEMENT ASSOCIATION

142 High Street, Portland 3, Maine

A national organization to improve and extend the uses of concrete

FOR STRUCTURES...

MODERN

concrete

Nash Engineering Co.

Union Pump Sales Inc.

Layne & Bowler, Inc.

C. H. Wheeler Mfg. Co.

Rank Cintel

Metal Detectors

PUMPS

•
C. R. SWANEY CO.

335 Newbury St.,

Boston, Mass.

ORANGE LABEL SISALKRAFT

Orange Label Sisalkraft consists of two layers of long fibered kraft, specially treated to resist scuffing, dry rot, mildew and shrinkage. Two layers of tough reinforcing fibers are completely imbedded in the double coating of asphalt for extra strength.

MOISTOP

A layer of sun-resistant black polyethylene is bonded to a sheet of rot-resistant *Sisalkraft*. This combination gives *Moistop* the advantages of pure polyethylene — permanency and resistance to rot, plus the characteristics of reinforced paper . . . strength and ease of handling.

**COPPER ARMORED
SISALKRAFT**
**for concealed
waterproofing
and flashing protection**

CORRIVEAU - ROUTHIER, INC.

266 Clay Street Manchester, N. H.

NA 2-3506

CAPTAIN HARMON RETIRES FROM UNITED STATES NAVAL RESERVE

Russell S. Harmon, A I A has retired at Portsmouth from the U. S. Naval Reserve.

Holding the rank of Captain he spent ten years on active duty in three wars and ten years in a "ready" status of the Naval Reserve.

He studied engineering at Dartmouth, architecture at Boston University, and graduated from the University of New Hampshire.

Shortly after Pearl Harbor he was called to active duty in the Navy as a lieutenant, returning to civilian life eight years later with the rank of Commander.

During World War II he was active in the construction of many continental and overseas bases. After World War II, as a member of the commandant's staff, he organized and activated the Sea Bee Reserve forces for the First Naval District. For two years during the Korean conflict he served as executive officer in the Public Works Department of the New York Naval Shipyard.

In 1955 Commander Harmon assumed command of the Sea Bee Reserves at the Portsmouth Naval Reserve Training Center. Upon promotion to the rank of captain in 1956 he became the public works officer of the Portsmouth Naval Reserve Training Center which billet he held until his retirement.

Captain Harmon and his wife, the former Mildred Wilson, of Anchorage, Kentucky, reside in Durham. Long identified with the American Institute of Architects, and its New Hampshire Chapter. Mr. Harmon plans to devote his time to a renewed and revived practice of architecture. Where and when time permitted he served a limited number of clients. With a change in status new design and construction will be seen in the area by the work of Mr. Harmon.

"Environmental Engineering for the School"

Paul E. Farnum, Deputy Commissioner of Education, State of New Hampshire, advises the editor of a new publication by the U. S. Department of Health, Education and Welfare.

Titled "Environmental Engineering for the School", the magazine is replete with subjects on Site Selection, Construction Planning, Acoustics, Lighting, Food Sanitation, Housekeeping, Insect and Rodent Control, Air Conditioning, Water Supply, Sewage Disposal, Plumbing, Swimming Pools, Solid Waste Disposal, Fire Prevention and Protection, plus numerous illustrations and tables.

Luther L. Terry, Surgeon General, Public Health Service, states in the foreword: It should be of particular value to those charged with responsibility for the planning, construction, maintenance, renovation, or repair of school facilities.

It is for sale by the Superintendent of Documents, U. S. Government Printing Office, Washington 25, D. C. Cost per copy is fifty (.50) cents. Ask for Public Health Service Bulletin No. 856, Office of Education Publication OE21014.



WOOD POST

SCULPTURED BY BLUMCRAFT IN HAND RUBBED
OIL FINISH • SEND FOR GENERAL CATALOG M-61



Blumcraft

OF PITTSBURGH

COPYRIGHT 1961 BY BLUMCRAFT OF PITTSBURGH • 460 MELWOOD ST., PITTSBURGH 13, PENNSYLVANIA

KENDALL INSURANCE, INC.
Rochester, N. H.

Littlefield & Williams A I A
Dover, N. H.
Architects

Blanchard Stebbins, Inc.
Manchester, N. H.
General Contractors



This modernization project reflects the cooperation of client, architects and contractor.

The client, with the aid of the architects, considered moving the offices to two other locations. One location — a new building, where the investment and operating costs would have proven excessive, and the other — a building to be vacated, where the location and building would not have been as suitable. Another major factor was that the client has been at this location for 65 years.

Many preliminary sketches and estimates were prepared, showing a new facade ranging from a gold and blue contemporary curtain wall to the brick colonial.

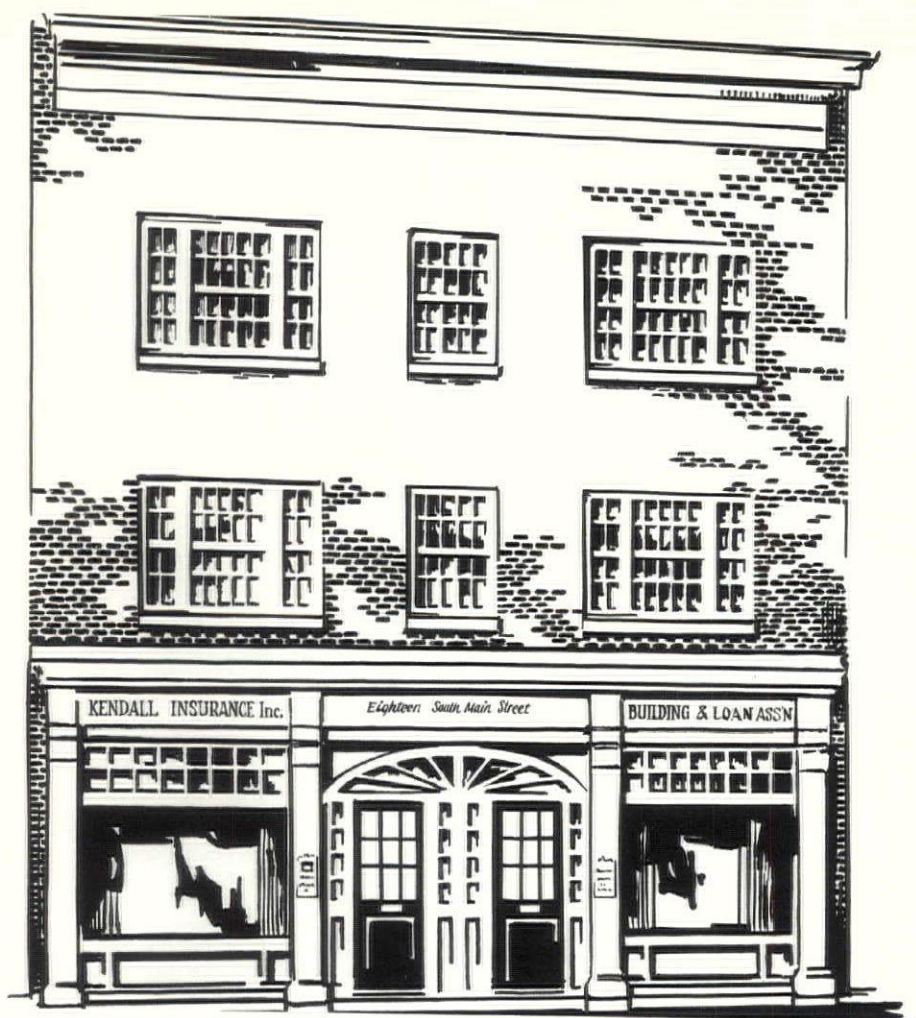
As the area of the building was limited several plans of each floor were prepared, with furniture laid out for efficient operation and future expansion.

An elevator was considered, but, due to the amount of floor space it would take up in addition to the stairs, the investment and operating costs ruled it out. A manually operated record carrier was installed to eliminate travel between floors.

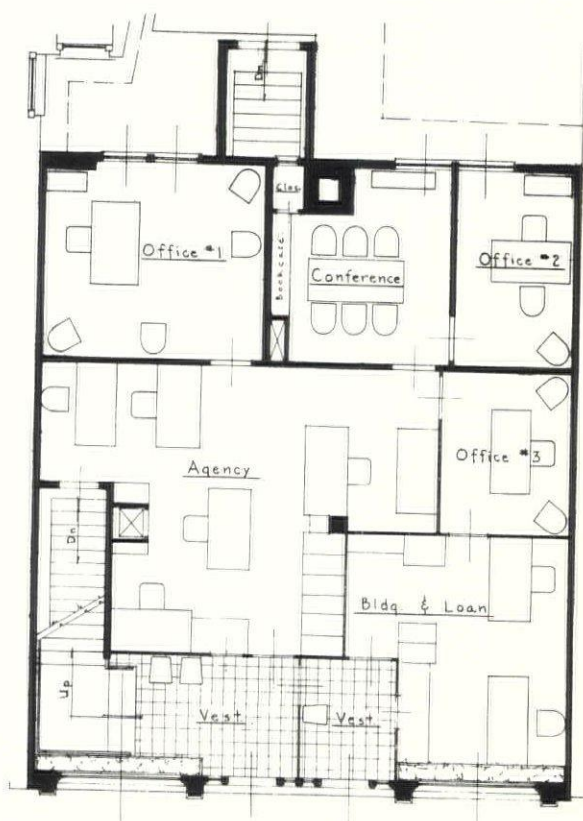
The work was scheduled floor by floor and according to vacation periods, as the building was occupied during progress of the work. The architects and contractors changed plans and work to afford flexibility in meeting many unforeseen structural or other conditions as they were exposed.

The first floor is divided to separate the insurance and real estate agency from the building and loan association in accordance with Federal regulations.

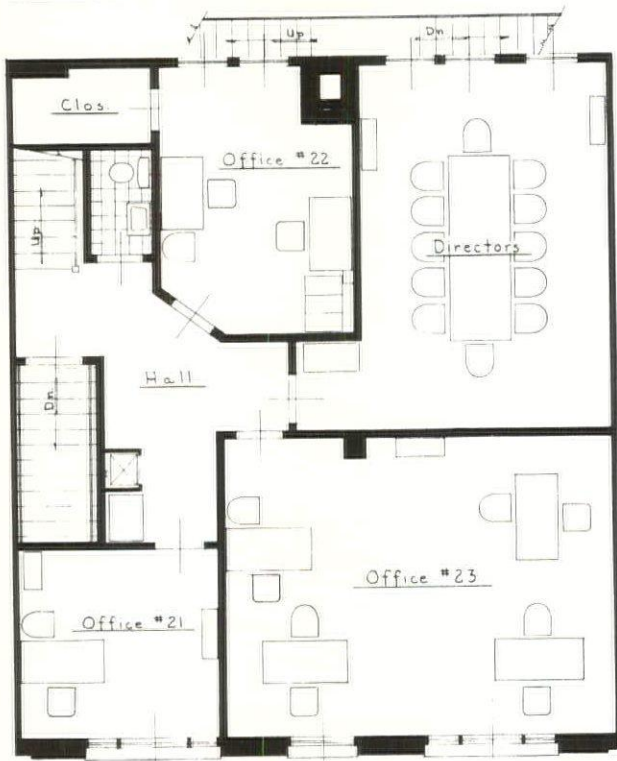
The building has a sprinkler system, and is air conditioned throughout, with acoustical tile ceilings, fluorescent lighting and vinyl floors, except the first floor and stairs, which are carpeted.



FIRST FLOOR PLAN

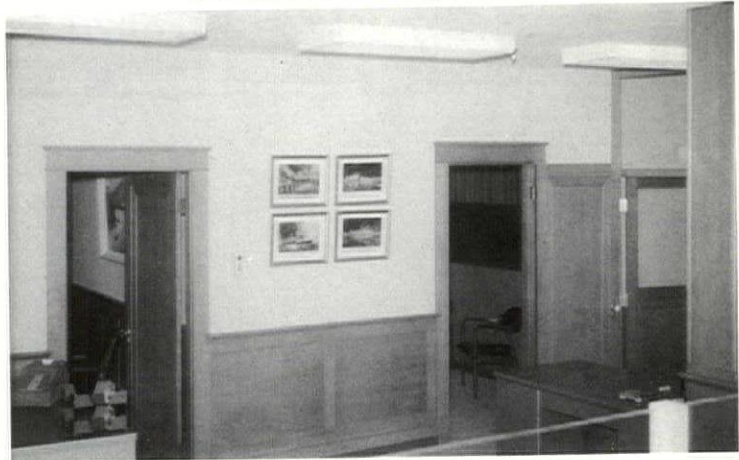


KENDALL INSURANCE, INC.

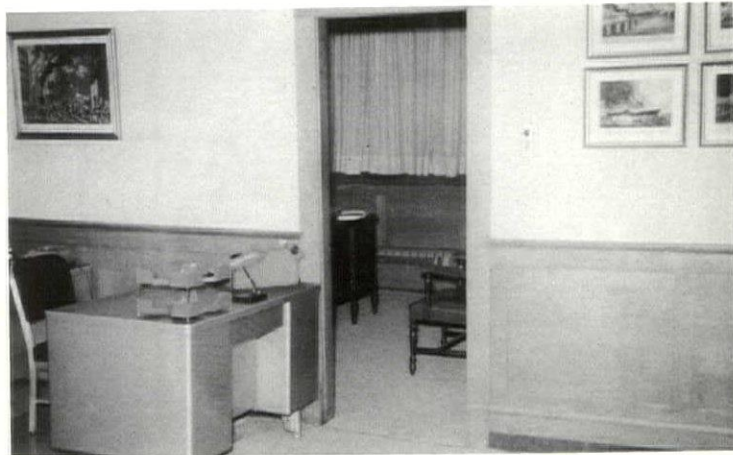


SECOND FLOOR PLAN

View overlooking reception counter showing entrance to conference rooms and private offices.



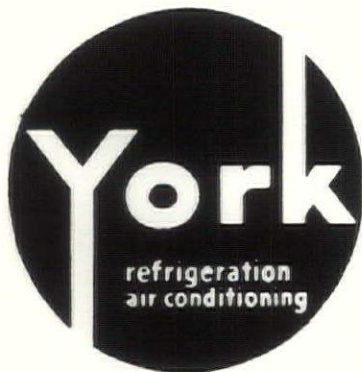
View from reception room.



AIR CONDITIONING

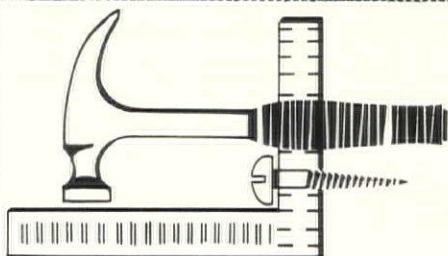
*for the comfort and
convenience of employees
and customers at*

KENDALL INSURANCE, INC.



NEW HAMPSHIRE YORK CO.

720 Union St. Manchester, N. H.



PROFESSIONAL

LIABILITY INSURANCE

for architects and engineers

Featuring a
knowledge of
local conditions
and personalized
client service.



KENDALL
INSURANCE Inc.

ROCHESTER, NEW HAMPSHIRE

BLANCHARD STEBBINS, INC.



Commercial and Industrial Work

330 Lincoln Street

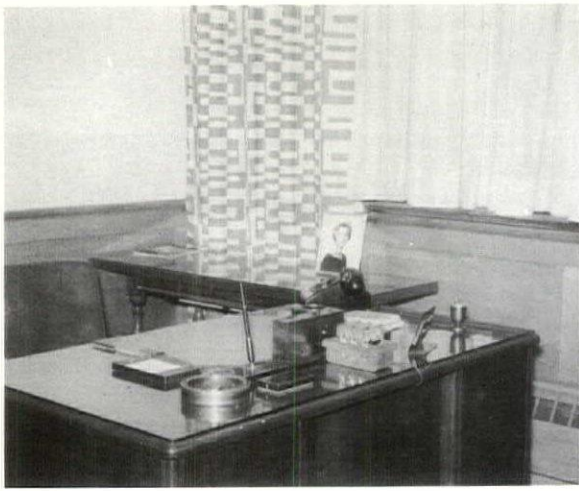
Dial NA 3-2273

MANCHESTER, N. H.

General Contractor
for

KENDALL INSURANCE, INC.

Rochester, New Hampshire

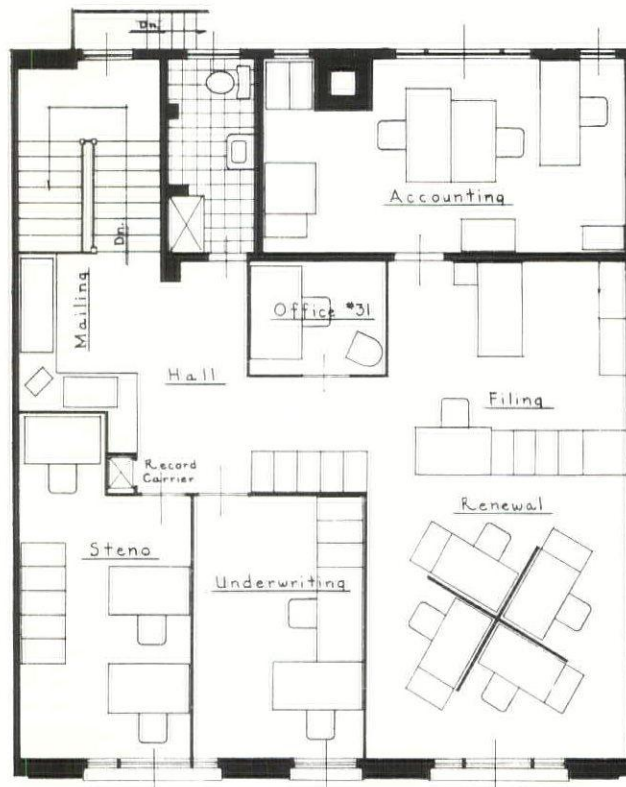


Private office of Kennett R. Kendall, president of Kendall Insurance, Inc.

Completion, Signs Up, Open for Business.



THIRD
FLOOR
PLAN



The Complete
Electrical Installation
for
KENDALL INSURANCE, INC.

Rochester, N. H.

by

JOS. P. WOODWARD CO.
ROCHESTER, N. H.

Phone 332-4473

Quality and Satisfaction are
in All Our Installations

BLIVEN'S
HEATING SERVICE

R.F.D. — Milton Rd.
Rochester, New Hampshire

Phone 332-2584

PLUMBING

HEATING

SHEET METAL

at

KENDALL INSURANCE, INC.
ROCHESTER, N. H.

**FIRST U.S. LIFT-DOME CUTS
CONSTRUCTION COST IN HALF**

A unique combination of construction technique gives Warner Auditorium in Anderson, Ind., the distinction of being the first lift-dome in the United States. Equally impressive is the fact that the cost of the 240-ft. diameter dome, columns and footings was only \$178,000 — about \$3.15 per sq. ft. This lowers the overall costs to about half that of a comparable structure built by conventional methods.

Concrete shell design, prestressing, and hydraulic lifting (lift-slab technique) were combined to produce this unique structure. By employing shell design, it was possible to create a majestic auditorium with soaring 68-ft. ceiling and no obstructing columns.

Casting of the 4-in. thick shell was done on the ground. The outer rim of the dome, which forms a 3-ft. wide compression ring, was posttensioned to offset the outward thrust of the dome. Thirty-six steel support columns resting on concrete footings were spaced at 20-ft. intervals in the compression ring. The entire dome, weighing three million pounds, was lifted 24 ft. into position and fastened to the columns.

Footings for the dome were placed in February, 1961. They extend 10 ft. into the ground, and form the base to which the 36 steel support columns are anchored.

To form the earth mound on which the dome was cast, some 38,000 cu. yd. of dirt and gravel was brought in, and the mound built up in stages. A topping of fine sand was used, covered with strips of 1-in. thick styrofoam. When the roof was cast, the styrofoam adhered to the concrete and later served as insulation and base for the interior plaster finish. Reinforcement was laid in place over the styrofoam.

A total of 900 cu. yd. of concrete was required for the roof. Expanded shale lightweight concrete, weighing about a third less than regular concrete (100 lb. per cu. ft. instead of 145-150 lb.), was specified. In placing the two lower sections, mixing trucks were driven up onto the earth mound and the concrete placed from above. For the final layers, cranes and buckets were used. To place the cap, the crane was positioned halfway up the earth mound on an open strip which was later filled in with concrete.

After the concrete has been allowed to cure, posttensioning of the compression ring took place. The ring, a thickened flange 44 in. wide and 25 in. deep around the base of the dome, contained conduits for three sets of steel tendons 202 ft. long composed of 40 high tensile steel wires 1/4-in. in diameter. The tendons were placed to overlap each other by 8 ft. and take in 90 degrees of the dome's perimeter. Each tendon end was fitted with a movable anchor which allowed prestressing and anchoring to the structure. The BBRV system of posttensioning was used, and a force of 720,000 lb. applied.

**SEE PHOTOS PAGES
17-18-21-22**

CREDIT WHERE CREDIT IS DUE, — AND HOW COME?

Perhaps in perusing the February issue of this magazine you took note on page 17 that Leo P. Provost A I A was the architect for the Administrative & Dormitory Units, Mount Saint Mary's College. As you continued on through pages 18, 19, and 20 perhaps you spotted the name of Douglass Prescott. So you say, — how come?

Well, as we all know, mistakes do happen, and we are sure it won't be the last one. Somehow Doug's name got by us at that spot, but luckily still appeared where it was supposed to.

So the credit is all to Leo. Sometime soon perhaps Doug will be entitled to credit, and who knows, — perhaps Leo's name will slip by us.

NEW OFFICE LOCATION at CONCORD for DUNLAP AGENCY INC.

The Dunlap Agency, Inc. has recently moved into new quarters at 3 North State Street, Concord, N. H. This agency, which concentrates on the bonding and insurance requirements of the construction industry, has been located at Boscawen for the past year and a half.

The Dunlap Agency, Inc. operates in close association with the Dunlap Agency of Auburn, Maine, which latter organization was organized in 1869 and has for most of those years been outstanding in servicing the insurance and bonding needs of Maine contractors.

Just as a matter of interest, the present Mr. Dunlap, at the helm of the agency headquarters in Auburn, is a native of Whitefield, N. H. This agency has been referred to, with considerable justification, as "the largest insurance agency in New England — north of Boston."

Joseph E. Rowley, who heads up the New Hampshire operation, still resides at Boscawen and is generally available there evenings at Pyramid 6-6231.

The motivation of both agencies will continue to be, as it has been in the past, a dignified and complete insurance service to the construction industry.

RULES CITED FOR USE OF INITIALS "AIA"

From time to time laymen, and architects too, write the institute asking about the proper use of the initials AIA or complain about the improper use an architect is making of them. Since the initials are a symbol of membership in The American Institute of Architects, the use of them is guarded zealously by the Institute. When the mis-use of them is reported, steps are taken immediately to correct the situation, according to a recent notice from the AIA headquarters, which cited proper use of the initials.

"The By-Laws of the Institute are explicit in stating who may use the initials and in what manner they may be used. It seems appropriate, however, to review their use from time to time.

"A *student associate* member may not use the initials or the name The American Institute of Architects at any time after his name.

"A *junior associate* member, after his name, is legally entitled to write, 'Junior Associate of the (blank) Chapter of The American Institute of Architects.' Note that the initials AIA cannot be used and the name of the Institute must be spelled out in full.

"An *associate member* is entitled to write 'Associate Member of the (blank) Chapter of The American Institute of Architects.' Once again the initials may not be used and the name of the institute must be spelled out in full.

"An *honorary associate* is entitled to write 'Honorary Associate of the (blank) Chapter of The American Institute of Architects.' The use of initials is not permitted.

"A *corporate member* of the institute is the only membership category in which the use of the initials AIA is permitted.

"An *honorary member* is entitled to write 'Honorary Member of The American Institute of Architects.' No initials may be used.

NORTHWEST ARCHITECT



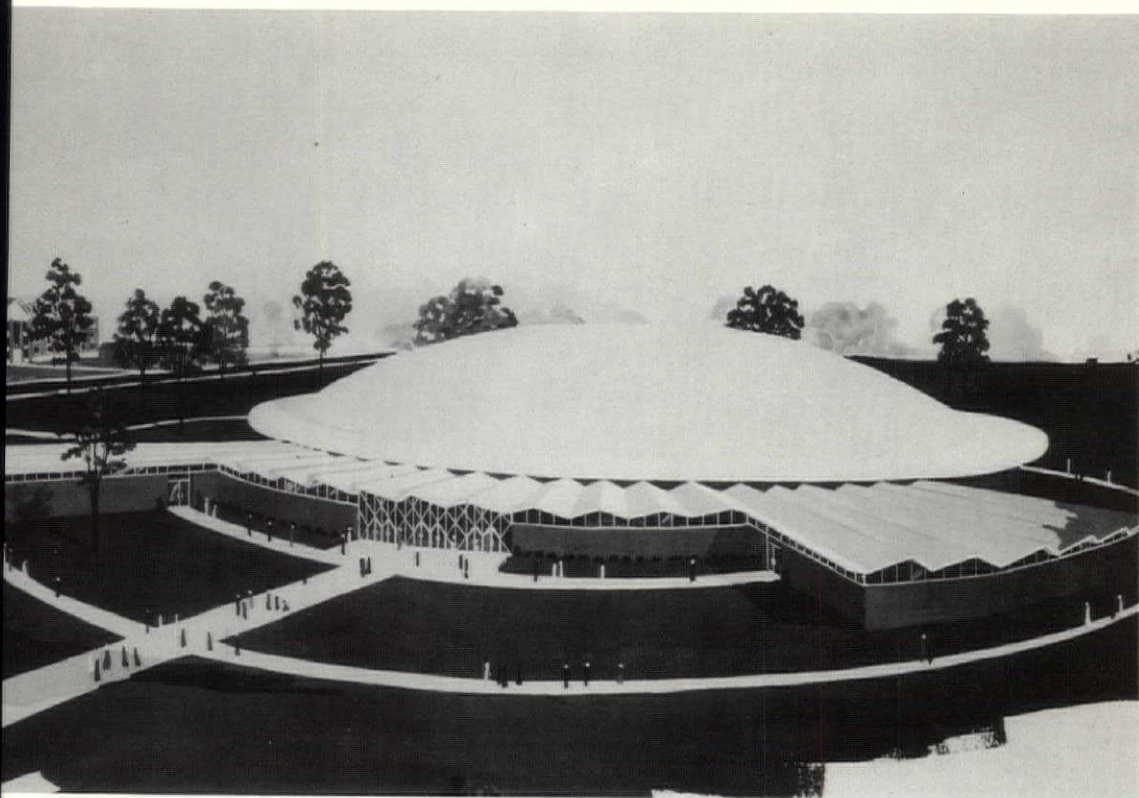
RESIDENTIAL
COMMERCIAL
INDUSTRIAL

The Eastern

GARAGE DOOR

THE NEW OVERHEAD-TYPE SECTIONAL GARAGE DOOR

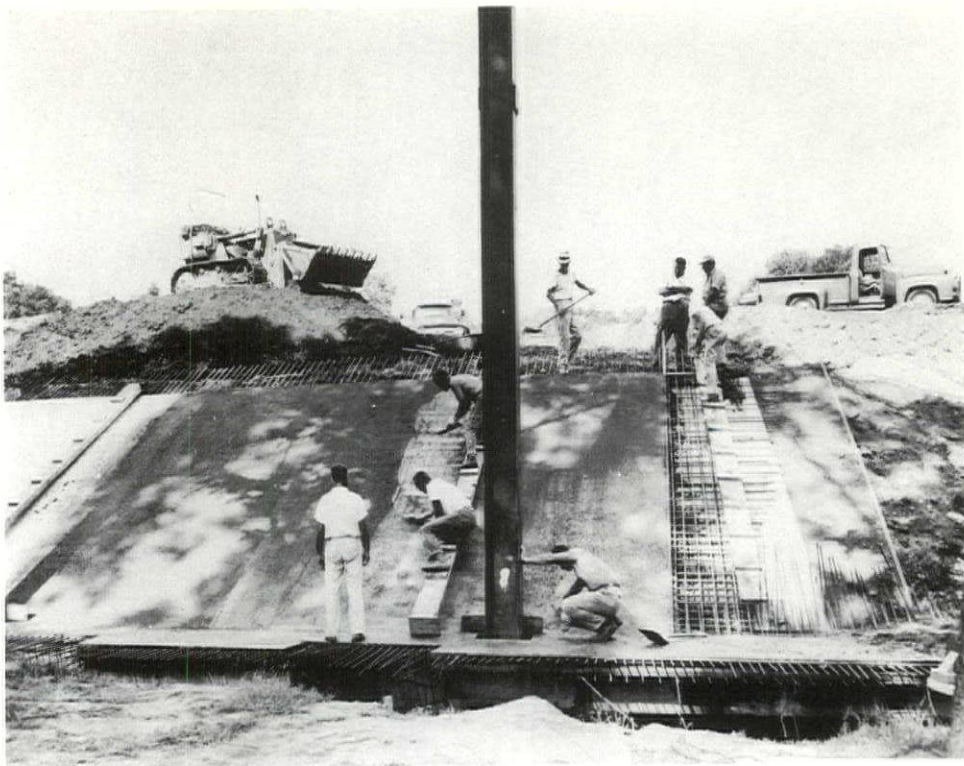
MANUFACTURED IN LAWRENCE, MASSACHUSETTS
— SEE YOUR BUILDING SUPPLY DEALER —



Artist's rendering of the Auditorium for the General Ministerial Assembly of the Church of God, now nearing completion at Anderson, Ind. The building has the distinction of being the first concrete shell dome to be raised by lift-slab technique.



DURACRETE



Concrete is being placed on the lower 16-ft. section of the shell dome. An earth mound shaped to the desired contour served as base. Over this was placed a thin layer of fine sand and 1-in. thick styrofoam. Reinforcement was positioned over the styrofoam. (The various layers are visible, looking from right to left of the picture.)



The Dunlap Agency, Inc.

SPECIALIZED BONDING AND INSURANCE FOR CONTRACTORS

AREA CODE 603
224-1947

JOSEPH E. ROWLEY, MGR
NEW HAMPSHIRE AND VERMONT

3 NORTH STATE ST.
CONCORD, N. H.

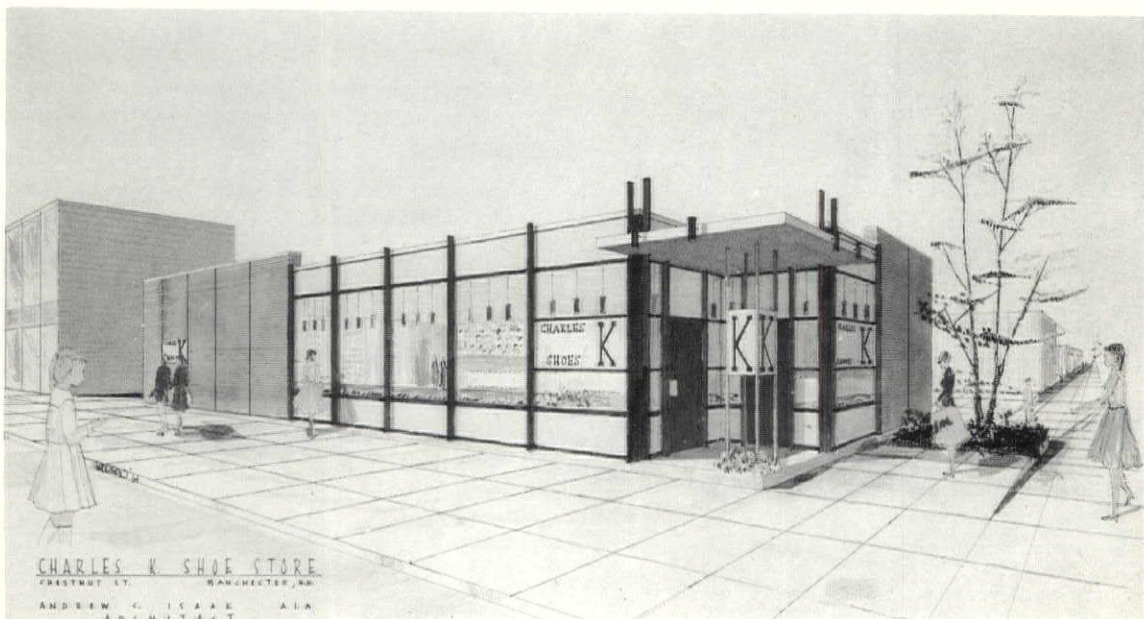
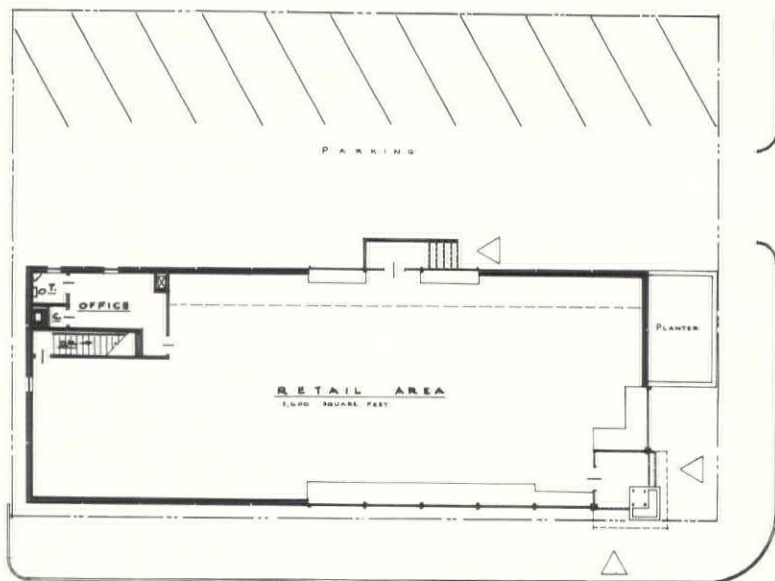
The Charles K shoe store, of cement block, brick and curtain wall construction should be the first new building completed in the Spruce Street Project of the Queen City Urban Renewal Program.

Modern decor and design, brilliant lighting and its unabashed newness will set the store apart from the drab surrounding area.

There has been considerable progress during the past year in the Spruce Street Project area. Of the 434,452 square feet available for private development, 406,669 square feet are sold and the remainder is spoken for by re-developers.

The new Charles K store will have its own customer parking accommodations.

Andrew C. Isaak A I A
Manchester, N. H.
Architect



Adjustable anchoring system solves problem of fastening railings to thin precast treads

Many of the problems of securely anchoring metal railings to concrete stairs have been overcome by an adjustable anchoring system developed by Blumcraft of Pittsburgh.

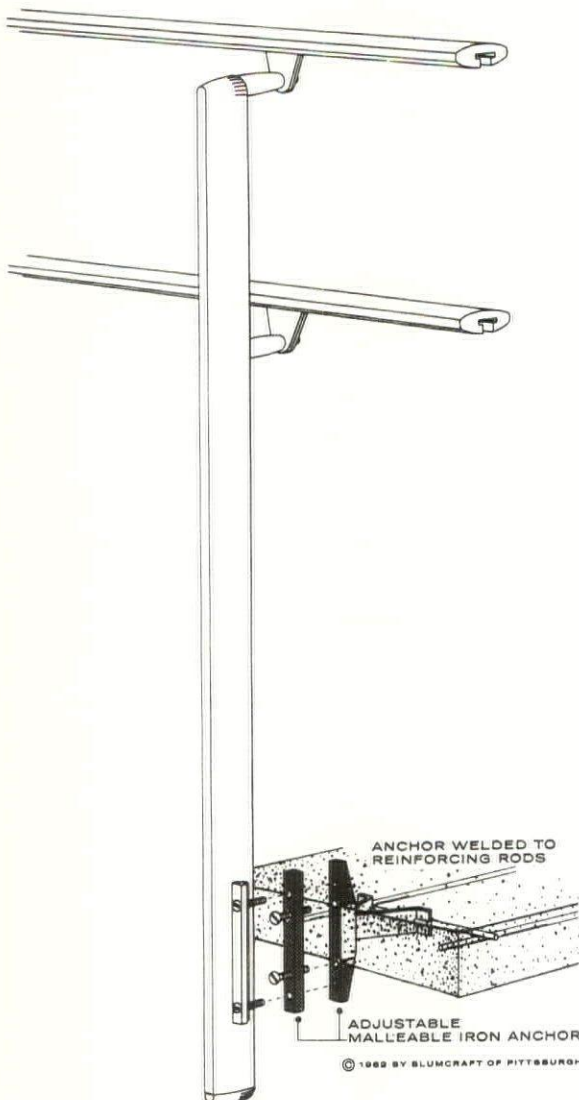
Heretofore, two conventional methods have most frequently been used to fasten metal railings to concrete:

1. Drill into the concrete and insert expansion shields.
2. Build steel anchors into the concrete, drill and tap the steel anchors for fastening the posts.

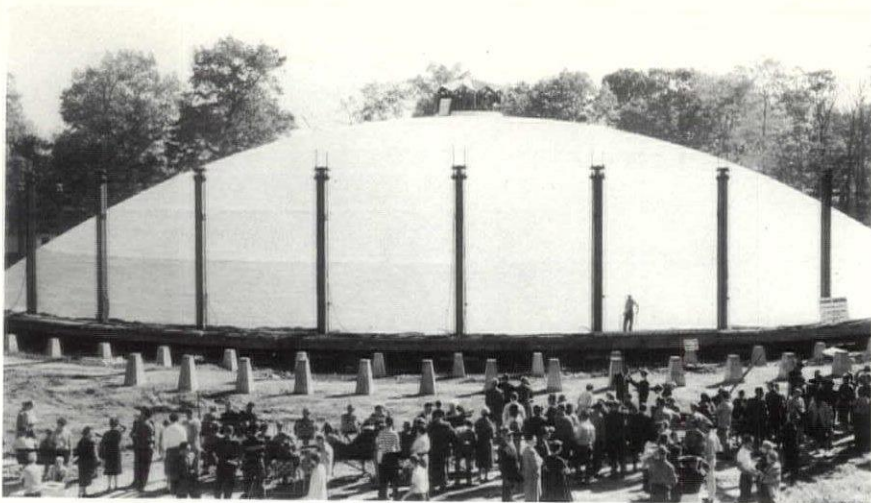
Both methods obviously require expensive field labor, and if the drilling is not perfect, vertical alignment of the posts is not possible.

Blumcraft's new adjustable anchoring system provides these advantages:

- Reduces costly field labor.
- Permits adjustability for post alignment.
- Eliminates breakage in masonry when drilling for expansion bolts.
- Provides extreme rigidity through sound structural supports.
- Prongs can be welded to reinforced steel in the concrete, so that the anchors form an integral part of the stair.
- Built-in anchors will not work loose, as may happen to applied expansion shields.
- Posts can be mounted at extreme edge of stair, permitting use of the full width of the stair.
- Permits side-mounting of posts to thin precast treads as narrow as 2", as well as to wood plank stairs and conventional concrete stairs.
- Decorative trim can be applied to the anchor at the edge of the tread.
- For through-tread mountings Blumcraft provides sleeves for building into the precast treads.



As pointed out by Blumcraft, the railing is only as strong as the anchoring to which it is applied.



Dome of the Warner Auditorium, Anderson, Ind., ready to be lifted into place. A protective surfacing and paint were applied before the lifting operation. Hydraulic jacks mounted on the 36 steel support columns were connected by steel rods to lifting collars embedded in the compression ring, and the entire lifting operation was synchronized through an electronic control panel.

Reduce maintenance
care and costs for
your swimming

POOL

with amazing
perma>glaze

*the remarkable
"tile-like finish" that lasts and lasts!*

Now you can enjoy your pool without the worry and cost of constant maintenance. This unique surfacing material is pressure-applied to give a hardness and tile-like lustre that resists algae growth and stain, makes cleaning so much easier, gives your pool clean, bright appearance - guaranteed for 5 years. If the Perma-Glazed surface peels, cracks or separates from the material to which it has been bonded due to defective materials or improper application within a period of 5 years subsequent to the date of application, Francis P. Connor & Son, Inc. will restore the Perma-Glazed surface to its original condition at its own expense.



FOR ALL MASONRY WALLS, COMMERCIAL AND RESIDENTIAL

perma>glaze

*the remarkable "tile-like finish"
that lasts and lasts!*



Perma-Glaze eliminates the cost and trouble of regular painting because it becomes a bonded part of your pool's surface with the beauty and enduring qualities of tile.

Discover why so many home, motel and hotel owners are Perma-Glazing their pools and other masonry surfaces and forgetting the problems of paint.

**CALL OR WRITE FOR FULL INFORMATION
AND FREE ESTIMATE WITHOUT OBLIGATION
TODAY!**

CALL TU 2-0451 OR MAIL COUPON

FRANCIS P. CONNOR & SON, INC.

12 John St., Nashua, N. H.

Please send me full information on Perma-Glaze. I am especially interested in Perma-Glaze for:

☐ Industrial and commercial buildings

☐ Pools

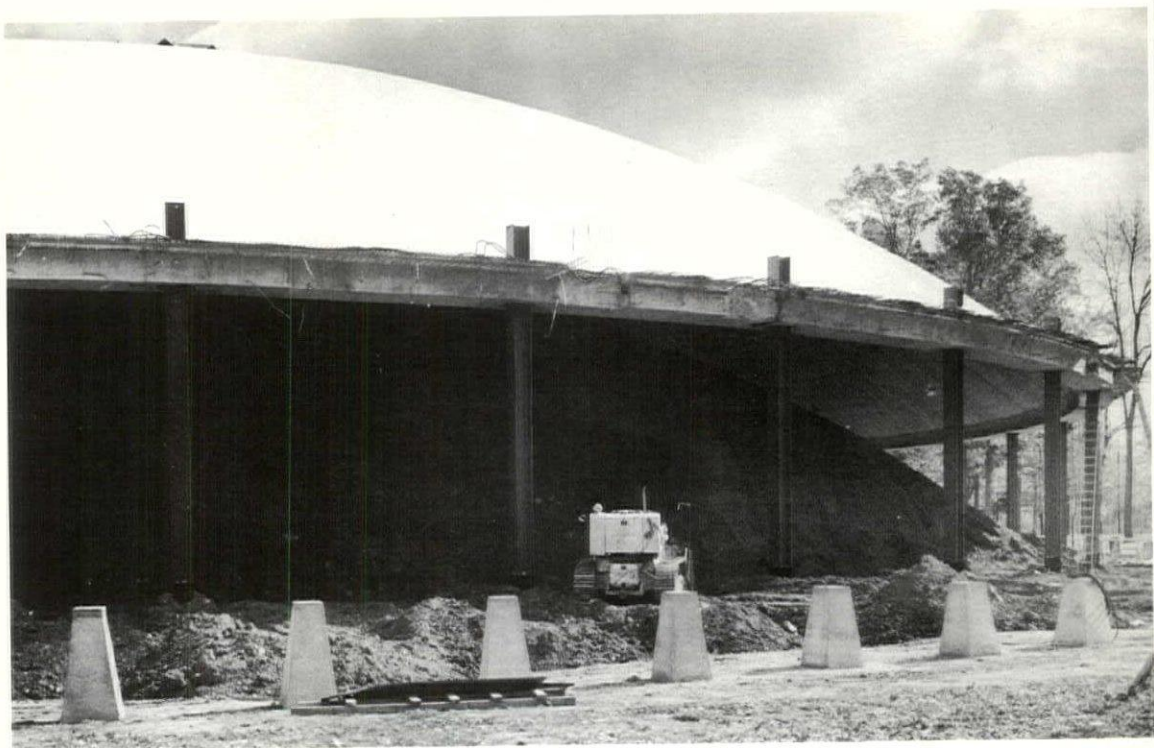
☐ Residences

☐ Other

Name

Address

Phone Number



The concrete dome, 240 ft. in diameter and weighing 3,000,000 lb., was cast on the ground and raised 24 ft. into place. A combination of techniques was used, including concrete shell design, prestressing, and lift-slab. Cost of the dome, columns and footings was only \$178,000, or about \$3.15 per sq. ft.



MONADNOCK BLOCKS

... the best in concrete masonry
 standard blocks hilite block
 split block shadow block
 formbloc duraglaze block



READY-MIX CONCRETE

mixed scientifically to specifications
 quality-controlled aggregate
 delivered where and when you want it
 radio-equipped trucks, for fast service

PLANTS LOCATED IN
 KEENE, BRATTLEBORO, NEWPORT,
 CHARLESTOWN, PETERBOROUGH

**COMPLETE LINE OF
 MASONRY SUPPLIES**

**ARTHUR
 WHITCOMB, inc.**

725 MAIN STREET

KEENE, NEW HAMPSHIRE

ELmwood 2-0101



ELECTRICAL
CONTRACTOR

Residential and Industrial Wiring

DIAL MAN. 3-3568

875 South Willow St., Manchester, N. H.

Motor Repairing

PALMER Plumbing Supply Co.

Wholesalers
Plumbing - Heating - Mill Supplies

Distributors of
WELL-McLAIN BOILERS
KOHLER ENAMELWARE
PETRO OIL BURNERS

ROCHESTER, LACONIA, N. H.
PORTLAND, MAINE

"Competent Engineering Service"

**S
T
E
E
L**

Lyons

IRON WORKS, Inc.
MANCHESTER, NEW HAMPSHIRE

NEW HAMPSHIRE ARCHITECT

P. O. Box 291, Concord, N. H.

RETURN REQUESTED

BULK RATE
U. S. POSTAGE
PAID
Concord, N. H.
PERMIT NO. 297

Library-American Inst. of Archt's.
1735 New York Ave. N.W.
Washington 6, D.C.

Call DENSMORE For Fast Delivery of Clay Products



Hopkins Cultural & Social Center
Dartmouth College, Hanover, N. H.
Architects
Harrison & Abramovitz
New York, N. Y.
General Contractor
John A. Volpe Const. Co.
Malden, Mass.

Suppliers of quality
BRICK, TILE
&
MASONRY
for over half a century.

Densmore Brick Company

MAIN OFFICE & PLANT LEBANON, N. H. TEL 448-4360

BRANCH OFFICE BURLINGTON, VT. TEL. UN2-7173

K+Σ
**QUALITY
PRODUCTS
and
PRECISION
INSTRUMENTS**

- **MICRO-MASTER®** — an amazing new process providing clear, distortion-free "second originals". Tiny 4 x 6" negatives can be projected up to original size and more. Save storage space, mailing costs.
- **HERCULENE®** Drafting Film — the newest, most durable drawing medium. Ideal surface "take" for pencil, ink, or typewriter. Balanced transparency. Lies flat. Resists rough handling. Matted one or both sides. In Rolls or Sheets. Find out Today!
- **K & E INSTRUMENTS** — select from our complete line . . . for every engineering and drafting use.

**Choice
of
Engineers
for OVER
60
YEARS**

- Expert Blueprint, Photostating and Plan Reproduction Service
- Engineering, Surveying and Drafting Equipment
- Professional Repair Service

B. L. MAKEPEACE Inc.
1266 BOYLSTON ST. BOSTON MASS

Call COpley 7-2700