

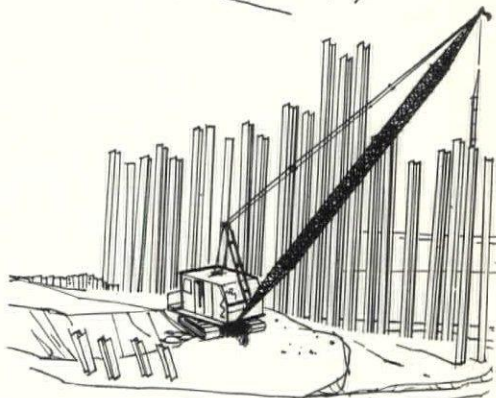
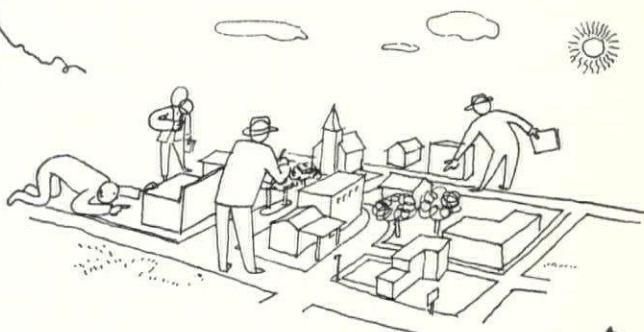
MAY
1961

NEW HAMPSHIRE ARCHITECT

AMERICAN INSTITUTE
OF
ARCHITECTS

MAY 24 1961

LIBRARY



OFFICIAL PUBLICATION
NEW HAMPSHIRE CHAPTER
AMERICAN INSTITUTE of ARCHITECTS

now ..
**ONE
STOP**
for
every
paint
need!



First choice of professional painters—first choice with home owners—that's Dutch Boy. There's a Dutch Boy finish specially blended for every painting need, inside or outside your home. Choose yours today at—

PAINT DEPARTMENTS
Main Store and Annex

EXCLUSIVE DEALER

J. J. MOREAU & SON, INC

MANCHESTER, N. H.

Dial NA 4-4311

Panel Industrial, Inc.

*Distributors of
Construction Equipment and Supplies*

159 SOUTH MAIN STREET • CONCORD, N.H.

TEL. CA 5-2726

Sonneborn Building Materials
Delta Power Tools
DeWalt Radial Saws
Schlueter Artic Boy Water Coolers
Timken Bits
Crosby Clips
Aeroquip Hose & Couplings
Vulcan Drill Steel & Pavement Breaking Tools
Laughlin Drop Forge Fittings
Dixon Valves & Couplings
Springs—New & Repaired
Welding Supplies—Marquette, Victor & Stulz-Sickles
Complete Motor Rebuilding
Kohler Electric Plants
Complete stock of all sizes Machine Bolts & Cap Screws

Armstrong

ACOUSTICAL FIRE GUARD

the first time-design-rated
acoustical ceiling tile dis-
tributed and installed in

MAINE

NEW HAMPSHIRE

VERMONT

NEW ENGLAND INSULATION CO.

498 FORE ST.

PORTLAND, MAINE

SPRuce 2-7481

New Hampshire Office

Union, New Hampshire

Phone: - GRanite 3-2211

Arthur E. Swanson, Manager

ANDREW T. JOHNSON CO., INC

4
LOCATIONS

3

IN

BOSTON

15 TREMONT PL

103 NEWBURY ST

173 MILK ST.

BURLINGTON, MASS. ON MIDDLESEX TURNPIKE
(AT EXIT 35 OFF ROUTE 128)

Richmond 2-1610

(Connecting all Plants)

REPRODUCTIONS OF ALL TYPES

- BLUEPRINTS
(on Paper or Cloth)
- BLUELINE PRINTS
(on Paper or Cloth)
- PHOTOSTATS
(Negatives or Positives)
- DIRECT WHITE POSI-
TIVES (Blue or Black
Lines)
- AUTOPOSITIVES
(Direct Positive Prints)
- "PHOTO-ARC" TYPE
(Negatives or Positive
Prints)
- KODALITH PAPER
(Negatives or Positives)
- J-R REPRODUCTIONS
(on Blue or White Trac-
ing Cloth)
- VAN DYKE NEGATIVES
AND POSITIVES
- "B & W" SEPIA PRIN
"Transparents" on V
lum. Etc.
- FILM NEGATIVES AND
POSITIVES
(Enlarged or Reduced)
- CAMERA ENLARGE-
MENTS or BROMIDE
POSITIVES
(Up to 60" x 120" ma
in one piece on one
the largest commerc
cameras in New En
land)
- PHOTO VELLUM PRIN
Enlarged or Reduced
- GLOSSY PHOTOGRA-
PHIC PRINTS
- PHOTO-OFFSET OR
PLANOGRAPH PRINT-
ING



OFFICERS

President

EDGAR H. HUNTER, Hanover

Vice-President

ANDREW C. ISAAK, Manchester

Secretary

GEORGE SOULE, Manchester

Treasurer

FRANK E. KENNETT, Jr., Conway

DIRECTORS

WALTER T. WILLIAMS, Rochester

ROBERT L. SNODGRASS, Nashua

W. BROOKE E. FLECK, Hanover

Regional Council Delegates

JOHN D. BETLEY

NORMAN P. RANDLETT

ALEXANDER J. MAJESKI

JOHN R. HOLBROOK

NICHOLAS ISAAK

Member of National Chapter

Affair Committee

EUGENE MAGENAU

Member of Sub-Committee on

Building Products Registration

NORMAN P. RANDLETT

Members of AIA - AGC Committee

NICHOLAS ISAAK, Manchester

JOHN D. BETLEY, Manchester

WALTER T. WILLIAMS, Dover

W. BROOKE FLECK, Hanover

STEPHEN P. TRACY, Nashua

EDITOR

ALEXANDER MAJESKI, R. A.
Palomino Lane
Manchester, N. H.

PUBLISHER

ROBERT P. MOYNIHAN
P. O. Box 291
Concord, N. H.
Tel. CA 5-6760

NEW HAMPSHIRE ARCHITECT

VOL. 12

MAY, 1961

NO. 10

TABLE OF CONTENTS

N. H. Chapter, AIA Meets May 19	6
National AIA Convention at Philadelphia	6
S. C. P. I. Holds Meeting on Promotion.	6
Administrative and Dormitory Units at Mount Saint Mary's College by Leo P. Provost, AIA	7- 8
Addition to Elementary School, Exeter, by Alfred T. Granger Assoc. AIA	10-12
The Reproduction Center.	13
California Products Corporation Announces New Sales Managers.	13
Duracrete Block Company Holds Open House	14

New Hampshire Architect is published monthly, under the direction of the president and board of directors of the New Hampshire Chapter, American Institute of Architects, to promote the objectives and public relations of the chapter. Advertising rates furnished upon request.

25c A COPY
\$3.00 A YEAR

CAPITOL

PLUMBING & HEATING SUPPLY CO.



WHOLESALE DISTRIBUTORS FOR:

YOUNGSTOWN STEEL KITCHENS
 ELJER PLUMBING FIXTURES
 NATIONAL - U. S. HEATING
 KOVEN BOILERS & WATER HEATERS
 MINNEAPOLIS - HONEYWELL CONTROLS
 BARNES & JONES TRAPS
 TACO HEATING SPECIALTIES
 BELL & GOSSETT SPECIALTIES
 DOLE VALVES
 SYMMONS SAFETY MIX VALVES
 ELKAY STAINLESS STEEL SINKS
 GOULD WATER SYSTEMS

All Other Nationally Advertised Brands

DIAL CA 4-1901 or 4-1902

Ward Ave. Concord, New Hampshire

REFRIGERATION DISTRIBUTORS FOOD SERVICE CONSULTANTS

Complete Planning Service

For Markets and Food Stores
 Special Industrial Refrigeration
 Complete Air Conditioning
 Hotel, Restaurant and
 Institutional Kitchens,
 Cafeterias, Dining Areas
 Cocktail Lounges

HUMPHREYS, INC.

180 No. Main Street - Concord, N. H.

A Business Devoted To Those
 Who Serve Food

1ST STEP TO SOUND, SUCCESSFUL BUILDING
CONSULT AN ARCHITECT

**N. H. CHAPTER A. I. A.
 COMMITTEES
 1960 — 1961**

CHAPTER ACTIVITIES

Malcolm D. Hildreth, Chairman
 Joseph F. Lampron, Membership
 Charles H. Gray, Education
 Theodore Postma, Office Practice
 George R. Thomas, Awards and
 Scholarship

PUBLIC RELATIONS

Nicholas Isaak, Chairman
 Edward B. Miles, Government Relations
 Alexander J. Majeski, New Hampshire
 Architect
 Alexander J. Majeski, Construction
 Industry
 John A. Carter, Collaboration with Design
 Profession

COMMUNITY DEVELOPMENT

Willis Littlefield, Chairman
 Horace G. Bradt, Preservation of Historic
 Buildings
 Arnold Perreton, Research
 Stephen P. Tracy, School Buildings
 Leo P. Provost, Hospitals and Health



Serving the People of NEW HAMPSHIRE

John D. Betley,
Manchester

Horace G. Bradt
Exeter

Dirsa and Lampron,
Manchester

W. Brooke Fleck,
Hanover

Alfred T. Granger Associates,
Hanover

Irving W. Hersey Associates,
Durham

John R. Holbrook Associates,
Keene

Andrew C. Isaak
Manchester

Koehler and Isaak,
Manchester

Littlefield and Williams
Dover

Alexander Majeski,
Bedford

Arnold Perreton and Associates,
Concord

Douglass G. Prescott,
Laconia

Leo P. Provost,
Manchester

Norman P. Randlett,
Laconia

Tracy and Hildreth,
Nashua

William L. White,
Exeter

Maurice E. Witmer,
Portsmouth

Participating Members of the New Hampshire Chapter

A. I. A.

CALIFORNIA PRODUCTS CORPORATION

MANUFACTURERS
of
QUALITY BUILDING PRODUCTS
THROUGH
RESEARCH & DEVELOPMENT

**LATEX PAINTS
VERMICULITE INSULATION
MASONRY & SPECIALTY PRODUCTS**

BROCHURES and SPECIFICATIONS
AVAILABLE UPON REQUEST

**169 WAVERLY STREET
CAMBRIDGE 39, MASS.
KI 7-5300**

Colonial Supply Corp.

**25 Union Street
MANCHESTER, N. H.
Plumbing - Heating - Mill Supplies**

DUNHAM- BUSH

**Central
System Air Conditioning
HEATING—in Winter
COOLING—in Summer
Today's Trend In Building**

**WE INVITE YOU TO VISIT THE
LARGEST SHOWROOM IN NEW ENGLAND**

WHOLESALE ONLY

N. H. CHAPTER, AIA MEETS MAY 19 AT MANCHESTER

The spring meeting and election of officers of New Hampshire Chapter, American Institute of Architects is being held at the Manchester Country Club, May 19.

Election of officers for the 1961-62 year will be held. A product display has been arranged, and a guest speaker will be part of the program.

Duracrete Block Co. has arranged open house for an afternoon showing of automation in block manufacturing and tour of plant facilities.

NATIONAL A.I.A. CONVENTION AT PHILADELPHIA

Philadelphia was the site of the National Convention of the American Institute of Architects, with the convention in session from April 24-28.

The convention theme was "Redesigning Urban America". Keynote speaker was John Kenneth Galbraith.

Representing New Hampshire were E. H. & M. K. Hunter, Hanover, Nicholas Isaak, Manchester, Norman P. Randle, Laconia, Maurice E. Witmer, Portsmouth. Mr. and Mrs. Bill White of Exeter also attended, enjoyed an extended tour of historic sites and the hospitality of relatives and friends.

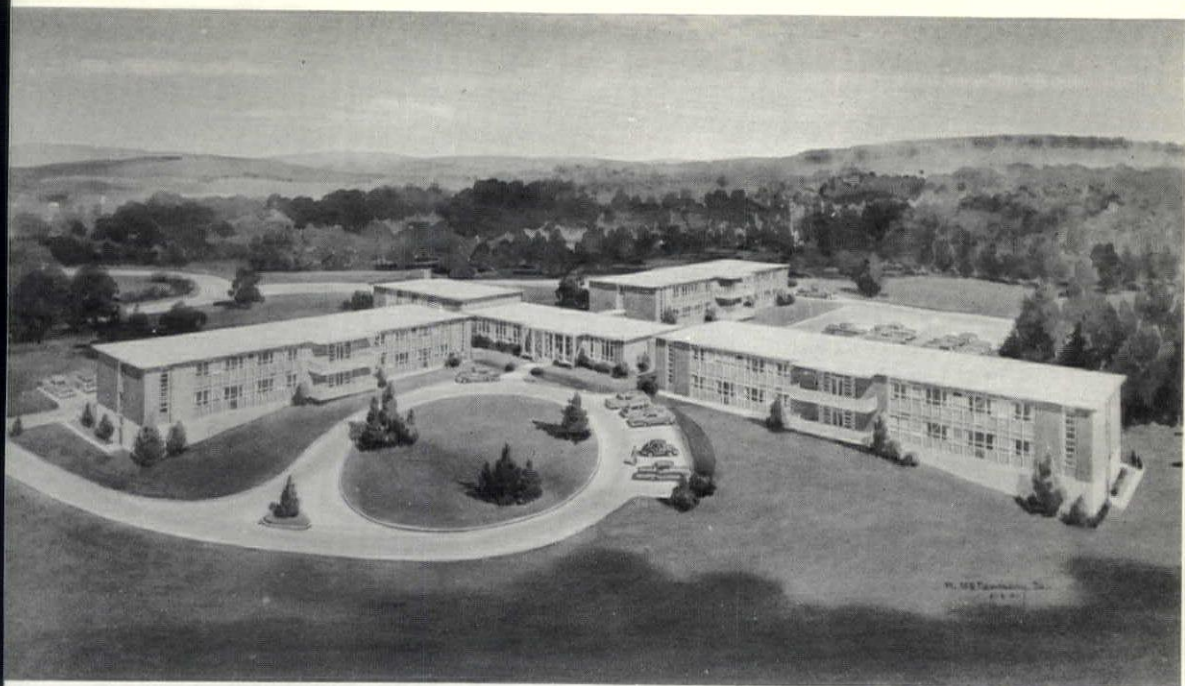
S.C.P.I. HOLDS MEETING ON 1961 PROMOTION

The promotion department of Structural Clay Products Institute sent four staff members from Washington recently to present a three hour presentation of types of promotion to be used by the Institution in 1961.

Subject matter of the four-point program for SCPI members was:

1. Selling color. 2. Wall comparison both cost and performance. 3. Specifications used as a sales tool. 4. Research as a sales tool.

About sixty five persons from the New England area attended the program held at the University Club, Trinity Place, Boston, with dinner preceding the meeting. Thomas Crane, Regional Director of SCPI was in charge of arrangements.



Administrative and Dormitory Units

Mount Saint Mary's College

Hooksett, New Hampshire

Leo P. Provost A I A Architect
Manchester, New Hampshire

Construction has started on one dormitory and administrative unit at Mount Saint Mary's College, Hooksett, New Hampshire. Plans eventually call for the erection of two additional dormitory units.

Upon completion the three dormitory units will be similar, each unit housing forty eight girls and two proctors. Each floor of the dormitories will have the following rooms: 24 double rooms with the following built-ins; two large wardrobes, two dresser units with large mirror over length of two units, two built-in desks with tack boards over same, and shelving for books. Opposite walls will have two beds separated by book shelving units. Windows will extend from wall to wall. Proctors room will have private bath and small office. A large wash room and toilet, bath and shower room, linen closet, janitor's closet, a snack room, laundry room with washer, dryer, built-in ironing boards, sewing unit etc. Also a large lounge in the center of the building with an exterior balcony. The above described rooms are duplicated on each floor of the dormitory. Dormitories to be connected to administration building by enclosed passages.

The Administrative building which is the heart of the units will house the heating and mechanical rooms. These rooms to be in the partial basement at one end of the building. Off the lobby of the building will be a reception room, an office, two private parlors, cloak room, storage room, men and womens toilets and a spacious lounge. Off the lounge will be a large recreation and TV room, storage rooms and a large kitchen and storage room for same.

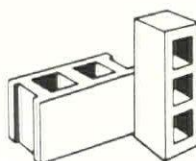
(Continued on Page 8)

Each of the dormitory units to have trunk rooms in partial basement and an incinerator room. Incinerator to service all floors. All buildings to have crawl space below first floor for easy access to mechanical lines. Each dormitory to have a parking area in rear of same.

Both buildings to have brick veneer exterior walls with cinder concrete masonry unit back-up, aluminum curtain walls with all insulated glass and porcelain enameled insulated panels of colors selected. Both buildings to have reinforced concrete first floor slabs. Dormitory to have concrete floors and roof slabs. Administrative unit to have roof of bar joists, metal deck, lightweight insulated concrete fill, tar and gravel roof. All interior partitions in both buildings to be of steel stud, rock lath and plaster painted or fabric covered.

All buildings to have public address system, fire alarm system, telephone system, etc. All toilet, bath, shower and wash room areas to have terrazzo floors. All other floors to be covered with vinyl asbestos tile. All ceilings to be acoustical tile except plaster in rooms noted above. Driveway to main entrance to Administration building to be lighted with low silhouette lamp standards. Present mechanical systems to be installed and made ready to receive additional two dormitory units in the future.

"RUGGED AS MONADNOCK"



standard block
half-hi block
hilite block
glazon block
formbloc

MONADNOCK BLOCKS

... the best in concrete masonry ...

READY-MIX CONCRETE

available at plants in
Keene, Charlestown,
Peterborough and Newport

COMPLETE LINE

OF

MASONRY SUPPLIES

ARTHUR WHITCOMB, inc.

725 MAIN ST.
KEENE, N. H.

Plumbing - Heating -

- Ventilating -

at
ADDITION to
ELEMENTARY SCHOOL

EXETER
NEW HAMPSHIRE

by

WALTER J. Parenteau, Inc.

7 Maple St.

Tel. NA 2-8130

MANCHESTER, N. H.

DAVID W. DAVISON



DANIEL WEBSTER HIGHWAY, NORTH

Tel. NA 4-4041

MANCHESTER, NEW HAMPSHIRE

General Contractor

FOR ADDITION to
ELEMENTARY SCHOOL
EXETER, NEW HAMPSHIRE

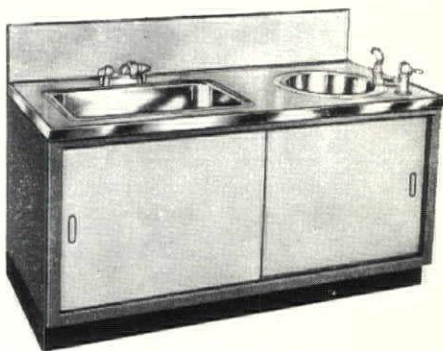
GRADE-AID[®] STEEL STORAGE AND SINK CABINETS

GRADE-AID storage units are ideally suited for installation in schools, churches, and other institutional building projects. Now in use in many of New England's finest schools, **GRADE-AID** equipment is being specified more and more by leading architects and progressive school districts.

FLEXIBLE, FUNCTIONAL, DURABLE, FIRE-SAFE, and ECONOMICAL are by-words in describing **GRADE-AID** equipment.

Write for free catalog.

File No. 23i GR. in Sweets



SINK MODEL 1421P

Similar to the units specified and installed in Addition to Elementary School, Exeter, N. H.
Alfred T. Granger Associates, Architects

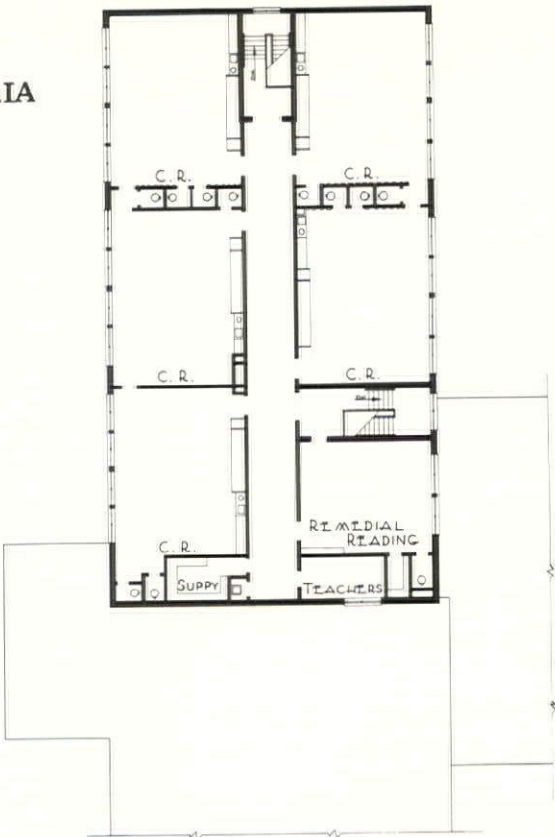
GRADE-AID CORPORATION

46 BRIDGE STREET, NASHUA, NEW HAMPSHIRE

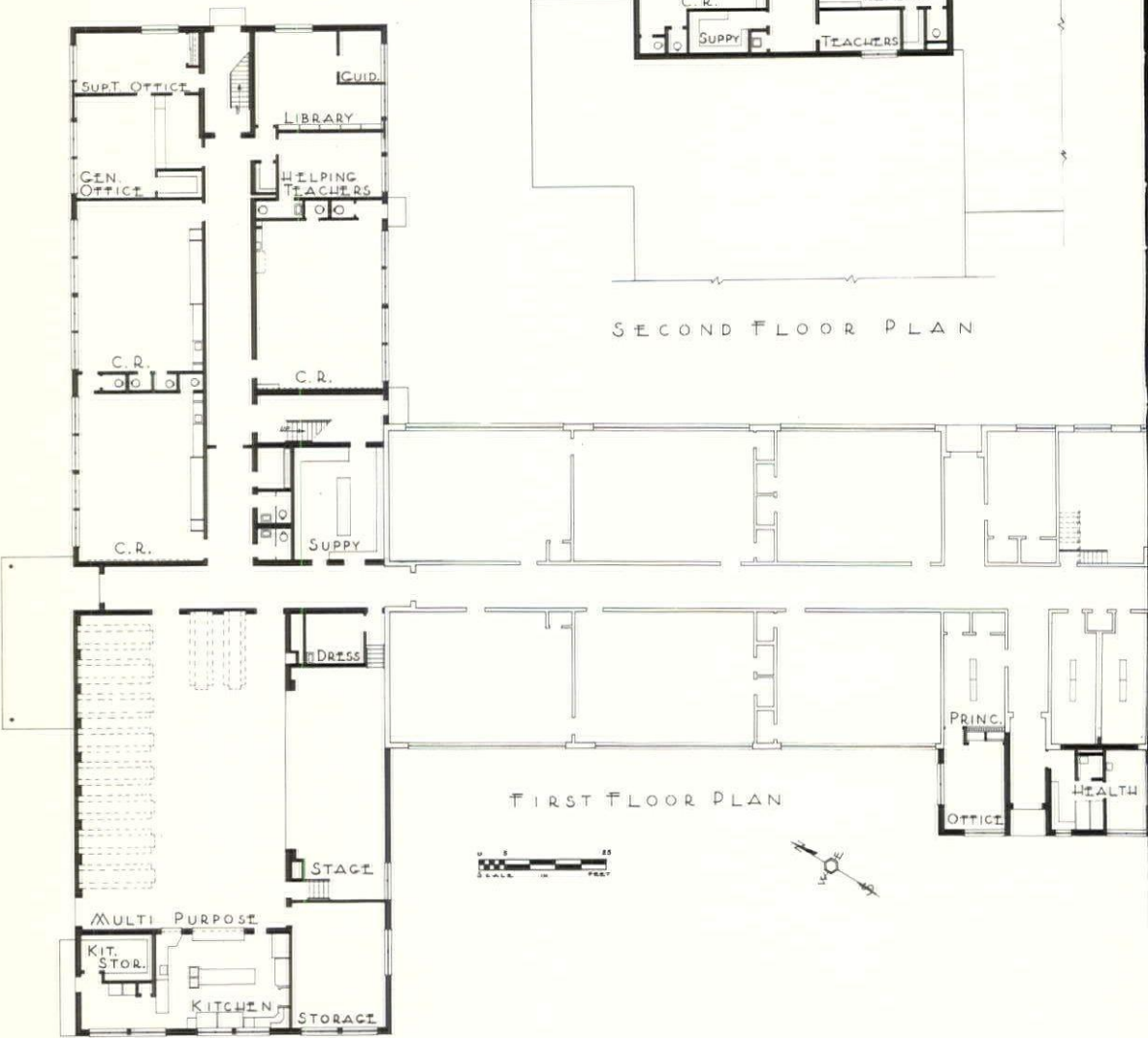
Addition to
ELEMENTARY SCHOOL
Exeter, New Hampshire

ALFRED T. GRANGER ASSOC., AIA
ARCHITECTS, HANOVER

DAVID W. DAVISON
GENERAL CONTRACTOR,
MANCHESTER



SECOND FLOOR PLAN



FIRST FLOOR PLAN

CONTENTS

FIRST FLOOR

3 CLASSROOMS—25' x 32' With separate toilets, Grade-Aid Cabinet Sink & Bubbler units, counters, built-in wardrobes and teachers' closets; LIBRARY—19'-6" x 25'; GUIDANCE ROOM—8'-2" x 9'-6"; HELP-ING TEACHER'S ROOM—12' x 20'-6" with toilet; storage room—4' x 5'-4"; SUPPLY ROOM—16' x 21'-6"; JANITOR'S ROOM—7' x 7'-6"; SUPERINTENDENT'S SUITE: general office—16' x 19'-6" waiting space—9' x 13' storage—5' x 8'-9" superintendent's office—12' x 25'—with closet; ENTRANCE FOYER ON NORTH EN-TRANCE—8' x 21'; MEN'S TOILET—6'-2" x 7'; WOMEN'S TOI-LET—6'-2" x 7'; MULTI-PURPOSE ROOM—40' x 60'; STAGE—20' x 44'; DRESSING ROOM—9'-6" x 12'; STORAGE ROOM—19' x 24'-6"; KITCHEN—18' x 26'; KITCHEN STORAGE—9' x 13'-10"; LOADING PLATFORM—15' x 30';

SECOND FLOOR

5 CLASSROOMS—25' x 32'; REMEDIAL READING ROOM—21'-6" x 25' with toilet and storage room; TEACHER'S ROOM—8'-6" x 16'; SUPPLY ROOM—8'-6" x 15'-6";

WEST ADDITION

OFFICE—12' x 16'; HEALTH ROOM—8' x 15' with waiting room—10'6" x 15' toilet, dressing compartments.

COSTS

	<u>Cost</u>	<u>% of Total Cost</u>	<u>Cost Per Sq. Ft.</u>	<u>Cost Per Cu. Ft.</u>
Structure	\$160,404	62.	\$ 8.14	\$0.57
Plumbing, Heating & Ventilating	56,800	22.	2.88	0.20
Electric	18,530	7.	.94	0.07
Construction Cost	\$235,734	91.	\$11.96	\$0.84
West Addition, Remodeling of Present Building and Finish Grading	22,000	9.		
Total Construction Cost:	\$257,734	100.		

TOTAL VOLUME: 280,500 Cubic Feet

TOTAL AREA: 19,700 Square Feet

BID OPENING: July 26, 1960

CLASSROOM HEIGHT: 10'-0"

MULTI-PURPOSE ROOM HEIGHT: from floor to bottom of trusses,
13'-0"

GENERAL CONTRACTOR: David W. Davison, Manchester, N. H.

SUPERINTENDENT OF SCHOOLS: Raymond A. Hoyt

ADDITION TO ELEMENTARY
SCHOOL, EXETER, N. H.

CONSTRUCTION MATERIALS

FOOTINGS AND FOUNDATIONS—

Reinforced concrete

WALLS ABOVE FOUNDATIONS—

Waterstruck brick backed up with load-bearing concrete block, to match present.

GROUND FLOOR CONSTRUCTION

— Reinforced integral waterproofed concrete slab on earth with floor covering of asphalt tile throughout excepting kitchen, corridors and steel stairs which will have vinyl tile flooring, and stage floor which will be wood.

FIRST FLOOR CONSTRUCTION—

Open steel joists and Steeltex concrete slab.

ROOF CONSTRUCTION—CLASS-

ROOM PORTION—2" x 14" roof rafters, Insulrock plank and 20-year bonded tar and gravel roof.

MULTI-PURPOSE ROOM ROOF

FRAMING—Long span trusses with Insulrock plank, exposed.

FLASHING—16 oz. copper

GRAVEL STOP AND DRIP EDGE—lead-coated copper.

WINDOWS—structural wood sash in classroom portion steel sash in multi-purpose room and kitchen portion

INTERIOR PARTITIONS—concrete block, painted corridors—Vitritile dadoes

DOOR BUCKS—Metal trim and door buck combinations, 16 gauge.

DOORS—Outside—white pine Inside—Birch veneer, solid-core, flush-type, glazed where shown

CEILING—acoustical tile units, 12" x 12", classroom portion Insulrock plank, exposed, multi-purpose room

HEATING—steam, Vulcan radiation, zone & temperature controlled

PLUMBING—Standard, meeting all plumbing codes & requirements

SEWAGE—city sewer

ELECTRIC—fixtures, — fluorescent and flush lighting wiring—Romex

Form round CONCRETE COLUMNS

the quick,
low-cost
way!

USE



FIBRE FORMS—

Low-cost, easy-to-handle Sonoco Sonotube Fibre Forms save time, money and labor!

These forms provide the fastest and most economical means of forming round columns of concrete.

Use for columns, piers, underpinning, piles, etc. Minimum bracing is required. Order in sizes from 2" to 48" I.D. in standard lengths of 18 feet. Other lengths can be furnished to meet special requirements. Saw to size on the job.

Ask for technical data

Complete Masonry Supply Center

**CORRIVEAU-
ROUTHIER**

266 CLAY STREET

MANCHESTER, N. H.

NA 3-5293—2-3

THE REPRODUCTION CENTER

OFFERS COMPLETE REPRODUCTION SERVICE, DRAFTING SUPPLIES

Progress, as the result of satisfied customers, requires changes in operation and the addition of new services by any growing company.

In 1945 George C. Benjamin opened a small reproduction business in connection with his engineering offices. Eventually, time, methods, equipment needs and the demand for reproductions required greater facilities and the formation of Acorn Press Inc.

For the past fifteen years architects, engineers, contractors, municipalities, utilities and others have been doing business with George Benjamin for their reproduction needs.

Recently the reproduction services of George C. Benjamin and Acorn Press Inc. have been brought together and will be known as The Reproduction Center, Inc. This merger of facilities affords a single source for all technical reproductions, a service not available other than outside of New Hampshire.

The Reproduction Center, Inc. has a complete selection of drafting room supplies and equipment. If you need drafting supplies or equipment, photo offset printing, 105mm miniaturization, blue-line prints, photostats, direct white positives, autositives, photo-arc type prints, "B&W" sepia prints, film negatives and positives, bromide positives, enlargements and photo vellum prints, they are all available through The Reproduction Center, Inc. 94 Market Street, Manchester, N. H.

CALIFORNIA PRODUCTS CORPORATION ANNOUNCES NEW GENERAL SALES MANAGER



California Products Corp. of Cambridge, Mass., a leading manufacturer of latex paints, masonry and insulation in New England, announced today the appointment of Mr. Hugh A. Morton as General Sales Manager.

Mr. Morton is widely known in the construction industry throughout New England and until recently was associated with a leading manufacturing firm in the Philadelphia area. He will assume the direction of the company's product lines in New England.

A native of Quincy, Mass., Mr. Morton is a graduate of the University of New Hampshire. He and his family will make their home in Framingham, Mass.

A ROOF BY

THERRIEN IS A *Good Roof*

PHONE NA 3-6193 • 199 HAYWARD STREET • MANCHESTER, N. H.

**DURACRETE BLOCK COMPANY
HOLDS OPEN HOUSE WEEK OF
MAY 15-20**

**Special Showing for Architects
Friday, May 19**

The facilities and know-how of modern concrete block manufacturing will be shown architects at the Duracrete plant, Hooksett, N. H., the afternoon of May 19, prior to the annual meeting of New Hampshire Chapter, American Institute of Architects.

Duracrete personnel have scheduled the week of May 15, for various groups, each group on a different day. Invited throughout the week will be Duracrete dealers, home builders, contractors, students, architects and concrete masonry producers from all over New England.

Glazon Corporation will display their line along with an exhibit by Raybestos Manhattan of their threadline products. Automation of mixing, cubing, and manufacture of prefaced units will be shown. Literature and samples of the latest processes and products will be available.

NORTHERN
HEATING & PLUMBING CO., INC.

A. C. TROMBLY, President

**Plumbing, Heating and Ventilation
Contractors - Engineers**

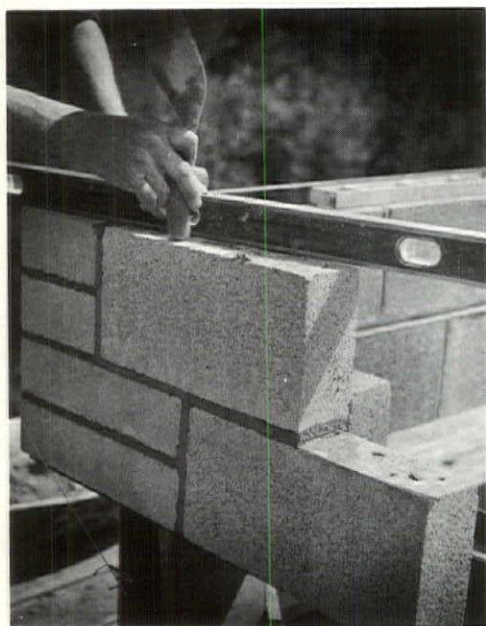
**Serving Northern New Hampshire in Domestic
Commercial and Industrial Installations**

91 Bisson Avenue

Laconia, N. H.

STOKERS

OIL BURNERS



DURACRETE



ELECTRICAL
CONTRACTOR

Residential and Industrial Wiring

DIAL MAN. 3-3568

875 South Willow St., Manchester, N. H.

Motor Repairing

PALMER
Plumbing Supply Co.

Wholesalers

Plumbing - Heating - Mill Supplies

Distributors of

EIL-McLAIN BOILERS

KOHLER ENAMELWARE

PETRO OIL BURNERS

ROCHESTER, LACONIA, N. H.
PORTLAND, ME.

"Competent Engineering Service"

S
T
E
E
L

Lyons

IRON WORKS, Inc.
MANCHESTER, NEW HAMPSHIRE

NEW HAMPSHIRE ARCHITECT

P. O. Box 291, Concord, N. H.

Library-American Inst. of Archt's.
1735 New York Ave. N.W.
Washington 6, D.C.

BULK RATE
U. S. POSTAGE
PAID
Concord, N. H.
PERMIT NO. 297

Form 3547 Requested

Call DENSMORE For Fast Delivery . . .



of
CLAY PRODUCTS

and

MASONRY SUPPLIES

Face Brick	—	Glazed Facing Tile
Sewer Pipe	—	Flue Lining
Fire Brick	—	Sonneborn Products
Scaffolding	—	Cardinal Masonry Blades



Densmore Brick Company

HANOVER STREET, LEBANON, NEW HAMPSHIRE

MANUFACTURERS OF WATERSTRUCK AND SANDSTRUCK BRICK

K+Σ

QUALITY PRODUCTS and PRECISION INSTRUMENTS

- **MICRO-MASTER®** — an amazing new process providing clear, distortion-free "second originals". Tiny 4 x 6" negatives can be projected up to original size and more. Save storage space, mailing costs.
- **HERCULENE®** Drafting Film — the newest, most durable drawing medium. Ideal surface "take" for pencil, ink, or typewriter. Balanced transparency. Lies flat. Resists rough handling. Matted one or both sides. In Rolls or Sheets. Find out Today!
- **K & E INSTRUMENTS** — select from our complete line . . . for every engineering and drafting use.

Choice
of
Engineers
for **OVER**
60
YEARS

- Expert Blueprint, Photostating and Plan Reproduction Service
- Engineering, Surveying and Drafting Equipment
- Professional Repair Service

B. L. MAKEPEACE Inc.
1266 BOYLSTON ST. BOSTON, MASS.

Call Copley 7-2700