

New Hampshire ARCHITECT

AMERICAN INSTITUTE
OF
ARCHITECTS

JUN 2 1960

LIBRARY



OFFICIAL PUBLICATION

New Hampshire Chapter of the American Institute of Architects



JUNE
1960

25c A COPY
\$3.00 A YEAR

Dutch Boy —THE NAME TO GO BUY—FOR EVERY PAINT JOB

First choice of professional painters — first choice with home owners — that's *Dutch Boy*. There's a *Dutch Boy* finish specially blended for every painting need, inside or outside your home, and you can depend on it for long-lasting beauty. Choose yours today at—



PAINT DEPARTMENT
Main Store — Street Floor
BUILDER'S PAINT DEPARTMENT
MOREAU ANNEX
Opposite Main Store

EXCLUSIVE DEALER
J. J. MOREAU & SON, INC
MANCHESTER, N. H.
Dial NA 4-4311

NEW ENGLAND INSULATION CO. **ACOUSTICAL DIVISION**

Distributors and Applicators

Maine • New Hampshire • Vermont

OWENS-CORNING FIBERGLAS

NATIONAL GYPSUM COMPANY

REYNO COUSTIC—EASTERN SYSTEM

ALTON, NEW HAMPSHIRE

Phone: Alton 5-7500

Arthur E. Swanson, Manager

Sanel Industrial, Inc. *Distributors of* *Construction Equipment and Supplies*

159 SOUTH MAIN STREET • CONCORD, N.H.

TEL. CA 5-2726

Sonneborn Building Materials
Delta Power Tools
DeWalt Radial Saws
Schlueter Artic Boy Water Coolers
Timken Bits
Crosby Clips
Aeroquip Hose & Couplings
Vulcan Drill Steel & Pavement Breaking Tools
Laughlin Drop Forge Fittings
Dixon Valves & Couplings
Springs — New & Repaired
Welding Supplies — Marquette, Victor & Stulz-Sickles
Complete Motor Rebuilding
Kohler Electric Plants
Complete stock of all sizes Machine Bolts & Cap Screws

ANDREW T. JOHNSON CO., INC.

<div style="border: 1px solid black; padding: 5px; text-align: center;"> 4 LOCATIONS </div>	3	15 TREMONT
	IN	103 NEWBURY
	BOSTON	173 MILK ST.

ANNOUNCING

NEW ENGLAND'S NEWEST AND LARGEST

COMPLETE PLANT UNDER ONE ROOF

BURLINGTON, MASS. ON

MIDDLESEX TURNPIKE !!

(AT EXIT 35 OFF ROUTE 128)

Richmond 2-1610

(Connecting all Plants)

BLUE PRINTERS — MICROFILMING

— ZEROGRAPHY —

— OFFSET PRINTING —

— MINIATURIZATION —



OFFICERS

President
EDGAR H. HUNTER, Hanover
Vice-President
ANDREW C. ISAAK, Manchester
Secretary
GEORGE SOULE, Manchester
Treasurer
FRANK E. KENNETT, Jr., Conway

DIRECTORS

WALTER T. WILLIAMS, Rochester
ROBERT L. SNODGRASS, Nashua
W. BROOKE FLECK, Hanover

National Council Delegates

JOHN D. BETLEY 1 yr.
NORMAN P. RANDLETT 1 yr.
WALTER T. WILLIAMS 1 yr.
JOHN R. HOLBROOK 2 yrs.
NICHOLAS ISAAK 3 yrs.

Members of AIA - AGC Committee

NICHOLAS ISAAK, Manchester
JOHN D. BETLEY, Manchester
WALTER T. WILLIAMS, Dover
W. BROOKE FLECK, Hanover
STEPHEN P. TRACY, Nashua

EDITOR

ALEXANDER MAJESKI, R. A.
Palomino Lane
Manchester, N. H.

PUBLISHER

LAWRENCE J. MOYNIHAN
P. O. Box 291
Concord, N. H.
Tel. CA 5-3297

New Hampshire ARCHITECT

VOL. 11

JUNE, 1960

NO. 11

TABLE OF CONTENTS

The President's Message	6
Architects Study New Proposals for Membership	7
New Officers Elected at National AIA Convention	8
N. H. Chapter to Incorporate	9
Regional Meeting Discussed	9
Architects Place in Civil Defense	9
New Associate Members	9
New Slate of Officers Elected by N. H. Chapter	10
Report and Recommendations on Bidding Procedures	11
Projects from the Office of Maurice E. Witmer, AIA	14-25

COVER PICTURE

Tri-County Osteopathic Hospital, Kittery,
Maine.

New Hampshire Architect is published monthly,
under the direction of the president and board of
directors of the New Hampshire Chapter,
American Institute of Architects, to promote the
objectives and public relations of the chapter.
Advertising rates furnished upon request.

VERMONT SLATE

for

Fine Buildings

Floors - - - Roofing

Flagstone - - - - - Structural

Our quarries and finishing plants producing all colors of natural Vermont slate are at your service. Consult our estimating department for prompt quotations and general information.

VERMONT STRUCTURAL SLATE CO, Inc.

FAIR HAVEN, VT.

TEL. 28

REFRIGERATION DISTRIBUTORS FOOD SERVICE CONSULTANTS

Complete Planning Service

For Markets and Food Stores
Special Industrial Refrigeration
Complete Air Conditioning
Hotel, Restaurant and
Institutional Kitchens,
Cafeterias, Dining Areas
Cocktail Lounges

HUMPHREYS, INC.

180 No. Main Street - Concord, N. H.

A Business Devoted To Those
Who Serve Food

1ST STEP TO SOUND, SUCCESSFUL BUILDING
CONSULT AN ARCHITECT

N. H. CHAPTER A. I. A. COMMITTEES

1959 — 1960

CHAPTER ACTIVITIES

Chapter Affairs, Membership, Education, Office Practice, Awards and Scholarship:

Norman P. Randlett, Chairman, Malcolm D. Hildreth, Maurice E. Witmer, Eric Huddleston, Edgar H. Hunter, Charles Gray.

PUBLIC RELATIONS

Public Relations, Government Relations, N. H. Architect, Home Building and Construction Industries, Collaboration with Design Professions:

Shepard Vogelgesang, Chairman, Alexander J. Majeski, John Carter, Alexander R. James, Carl E. Peterson.

COMMUNITY DEVELOPMENT

Community Development, Preservation of Historic Buildings, Research, Schools, Buildings, Hospitals and Health.

Arnold Perreton, Chairman, Horace Bradt, Mitchell Dirsra, Leo P. Provost, Stephen P. Tracy.



Serving the People **of NEW HAMPSHIRE**

John D. Betley,
Manchester

Horace G. Bradt
Exeter

Dirsa and Lampron,
Manchester

W. Brooke Fleck,
Hanover

Alfred T. Granger Associates,
Hanover

Russell S. Harmon,
Durham

Irving W. Hersey Associates,
Durham

John R. Holbrook Associates,
Keene

Andrew C. Isaak
Manchester

Koehler and Isaak,
Manchester

Littlefield and Williams
Dover

Alexander Majeski,
Bedford

Arnold Perreton and Associates,
Concord

Douglass G. Prescott,
Laconia

Leo P. Provost,
Manchester

Norman P. Randlett,
Laconia

Tracy and Hildreth,
Nashua

William L. White,
Exeter

Maurice E. Witmer,
Portsmouth

Participating Members of the New Hampshire Chapter

A. I. A.

The President's Message

ARCHITECTS AND COMMUNICATION

At the A. I. A. Convention in San Francisco in April, I was again impressed with the great value of interchange between the members of our profession; in fact the stimulation of opinion freely given and taken, both in formal meeting and social function, is perhaps the greatest justification for a meeting of architects in professional association such as the A. I. A. This is communication. In our day of television, jet flight, and space exploration, the need for communication of this sort was never greater. In the complexity of modern life and its severe problems, it is reassuring to find that practical idealism is still valued; that the architects who are shaping and will shape the interior and exterior spaces reflecting our times, continue to strive for better solutions to new and old building problems, within the fabric of our society.

Dr. J. Robert Oppenheimer, atomic scientist, speaking at the Convention, stated that his image of public life included a common culture, "where we can talk to each other about the nature of the human predicament, about the nature of man, about law, about the good and bad, about morality, about political virtue and politics, and the high forms of art."

Dr. Oppenheimer stated that scientific activity has doubled every ten years for the last 200 years. Hence if a man went to school, learned well, and learned most of what there was to know, he would still be an ignoramus in twenty years, if he stopped learning.

In another context, he said "Mature men today have to lead a life of continuing intellectual vigor and remain students."

Discussion is a favorite device of teachers who seek to learn themselves, while teaching others. In this spirit, social give and take, while respecting individuality, will stimulate our Chapter meetings. For this vitality, each member should give as well as receive.

E. H. Hunter

A ROOF BY THERRIEN IS A GOOD ROOF

TEL. 3-6193

199 HAYWARD STREET

MANCHESTER, N.

ARCHITECTS STUDY NEW PROPOSALS FOR MEMBERSHIP

SAN FRANCISCO — The question of admitting registered engineers to membership in the American Institute of Architects as professional affiliates came up early on the convention floor here.

In the first business session the subject was broached and immediately stimulated a brief flurry of argument. It was disposed of temporarily by a motion to adjourn.

But before debate was cut off, there were quick expressions of opinions, pro and con. The proposal was that consulting engineers, planners, landscape architects and professional artists be admitted to the AIA ranks as professional affiliates. There were charges that the AIA now was much too "aloof" and should broaden its membership to bring in the allied pro-

fessions. Some delegates, however, indicated they enjoyed their "aloofness" and would be wholeheartedly opposed to such a move.

Professional affiliates, as a new category of AIA membership, had been approved by the Board of Directors for presentation to the convention. The proposed by-laws change stated "Consulting engineers, planners, landscape architects and professional artists who, in addition to character qualifications, have legally established their right to practice their profession or where no such legal requirements exist (such as artists) have established worthy reputations."

The proposal set out in detail definitions of each category of non-architect named.


PHOTOSTATS-BLUELINE PRINTS

LEGAL COPIES OF ANYTHING

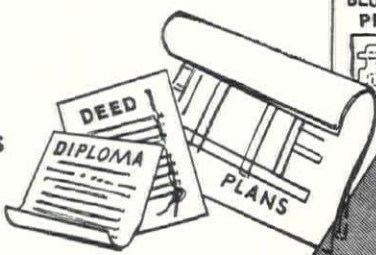
COPIES OF:
LETTERS, CHECKS, DOCUMENTS, DEEDS
COURT EXHIBITS, LICENSES, TITLES,
DISCHARGE PAPERS & MAPS

**DON'T TAKE A CHANCE
ON ORDINARY PHOTO COPYING
CALL US**

"WE ARE REPRODUCTION SPECIALISTS"



**PHOTOSTATS
BLUEPRINTS
BLUELINE PRINTS**



**BUSINESS PHOTOGRAPHY
AUTO POSITIVES
24 HOUR SERVICE**

"ONE TO A MILLION COPIES OF ANYTHING"

GEORGE C. BENJAMIN

92 MARKET STREET

DIAL 2-2273

MANCHESTER, N. H.

NEW OFFICERS ELECTED AT NATIONAL A.I.A. CONVENTION

SAN FRANCISCO — Philip Will, Jr., FAIA, of Chicago, partner in the architectural firm of Perkins & Will, Chicago, has been elected president of the American Institute of Architects at the AIA annual convention at San Francisco, Calif.

His candidacy for president was unopposed.

So was that of Henry L. Wright, FAIA, of Los Angeles, Calif., for the position of the Institute's first vice president.

James M. Hunter, FAIA, of Boulder, Colo., won a three-way contest for the office of second vice president.

Raymond S. Kastendieck, FAIA, of Gary, Ind., was re-elected treasurer in another election contest.

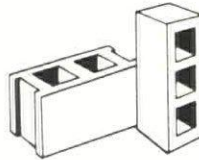
J. Roy Carroll, Jr., FAIA, of Philadelphia, Pa., was unopposed for his second term as the Institute's secretary.

CONVENTION LOCATIONS

Following are the cities selected for AIA conventions to 1968:

- 1961 — Philadelphia, Pa.
- 1962 — Dallas, Texas
- 1963 — Miami, Florida
- 1964 — St. Louis, Missouri
- 1965 — Denver, Colorado
- 1966 — Detroit, Michigan
- 1967 — New York City
- 1968 — Portland, Oregon

"RUGGED AS MONADNOCK"



MONADNOCK BLOCKS

... the best in concrete masonry ...

standard block
half-hi block
hilitite block
duraglaze block
formbloc

READY-MIX CONCRETE

available at plants in
Keene, Charlestown,
Peterborough and Newport

COMPLETE LINE

OF
MASONRY SUPPLIES

ARTHUR WHITCOMB, inc.

725 MAIN ST.
KEENE, N. H.

H. CHAPTER TO INCORPORATE

The committee on By-Law changes was given the go ahead signal to proceed with the necessary requirements to incorporate the New Hampshire Chapter AIA, at the annual meeting last month.

Committee chairman, Norman P. Randt was instructed by President Holbrook to change the By-Laws as had been proposed.

REGIONAL MEETING DISCUSSED

Alonzo Harriman, AIA., of Auburn, Maine, regional director, attended the New Hampshire Chapter meeting and spoke briefly on the regional meeting to be held in the White Mountain area this coming fall. New Hampshire Chapter is to play host for the coming conclave.

The theme of the regional meeting is "The Business of Architecture." Further announcements on the time and place of the meeting will be announced shortly.

SPRAGUE'S #4 DISTILLATE FUEL OIL

Sprague at Portsmouth now offers a special fuel oil for use

- where #6 (Bunker "C") fuel oil is not considered practicable
- where #5 blended oil results in inefficient operation, excessive service calls, or unsatisfactory performance
- where #2 fuel oil is over 20,000 gallons per year

This is SPRAGUE'S #4 DISTILLATE, a refined product of consistent analysis, delivered to Portsmouth by tanker direct from the refinery, and stored separately in 4,000,000 gallon capacity tank.

The use of SPRAGUE'S #4 DISTILLATE eliminates the problems of poor combustion and excess soot caused by variations in the oil's characteristics from load to load, does away with starting failures in cold weather, high preheating costs, and sludge precipitation in storage tanks, and requires less attention and service.

Deliveries of SPRAGUE'S #4 DISTILLATE are made in Sprague trucks throughout New Hampshire and into Maine, Massachusetts, and Vermont.

SPRAGUE'S #4 DISTILLATE is competitive in price with #5 blended oil and superior in performance. Let one of our representatives tell you more about it.

Telephone Portsmouth, GENEVA 6-4120 for further information.

C. H. SPRAGUE & SON CO.

Gosling Road — P. O. Box 478

PORTSMOUTH, NEW HAMPSHIRE

Home office at Boston — Offices serving customers in 24 States and Canada.

ARCHITECTS PLACE IN CIVIL DEFENSE

Arnold Perreton, chairman of the annual meeting, arranged a program concerning Civil Defense, with a film and speakers who discussed the "Architects Place in Civil Defense."

Participating as speakers were Admiral A. Brinkman, state director, Fred Olson and George Flowers.

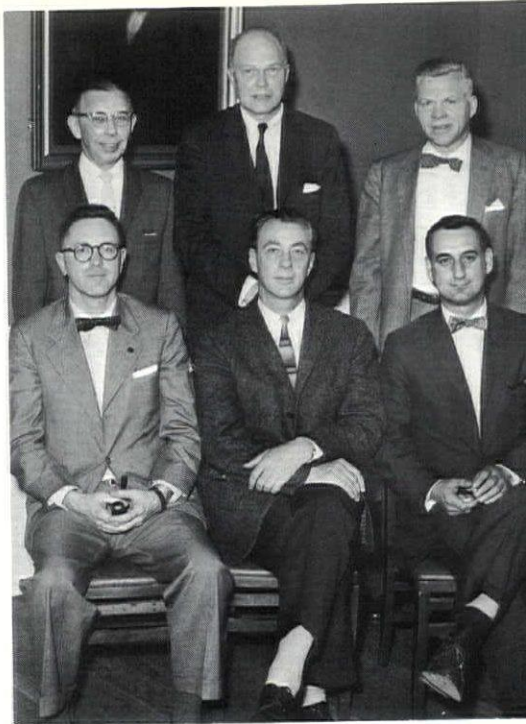
NEW ASSOCIATE MEMBERS

New Associate members, Ted Postma, Jr., and David Cheever were welcomed and introduced by President John R. Holbrook at the May meeting.

Roy Banwell, Jr., also a new associate member was unable to be present.



Retiring President John R. Holbrook presents gavel to his successor and newly elected President, E. H. Hunter, at annual election of officers.



Officers and directors of New Hampshire Chapter, AIA are Frank Kennett, Jr., treasurer, Edgar H. Hunter, president, Andrew C. Isaak, vice president, seated. Standing are the directors, Walter T. Williams, W. Brooke Fleck, Robert L. Snodgrass. Absent for photo was George Soule, secretary.

—Photos by Swenson Studio

New Slate of Officers Elected by N. H. Chapter A.I.A.

A new slate of officers for the coming year was elected by New Hampshire Chapter, AIA, at the annual meeting and dinner held at the New Hampshire Highway Hotel in Concord, May 19.

Elected as president of the Chapter was Edgar H. Hunter of Hanover. He succeeds John R. Holbrook of Keene.

Andrew C. Isaak of Manchester, secretary of the chapter for the past two years was named vice-president. New secretary of the chapter is George Soule of Manchester, while Frank Kennett, Jr., of Con-

way takes over the duties of treasurer, succeeding W. Brooke Fleck of Hanover.

Mr. Fleck was elected a director of chapter for a term of three years, succeeding Joseph F. Lampron of Manchester, whose term expired.

Continuing as directors are Walter Williams and Robert L. Snodgrass.

The nominating committee was composed of Richard Koehler, chairman, Norman P. Randlett and Stephen Tracy.

REPORT AND RECOMMENDATIONS ON BIDDING PROCEDURES

Nicholas Isaak, chairman of the AIA committee to discuss bidding procedures with the AGC, gave a report and recommendations of his committee to the full membership at the annual May meeting.

The chairman prefaced his remarks by stating that this committee report and recommendation is in agreement with the

previous committee appointed five years ago. Mr. Isaak further stated that the Institute has not taken any definite stand on the question, but the preferred method is for lump sum bidding.

In view of the above, Mr. Isaak presented the following resolution for action at the meeting.

(Continued Bottom of Page)

SPRAGUE FUELS for New Hampshire consumers

Sprague has a fuel to satisfy most heating and process load requirements

Industrial Fuel Oils

- #4 Distillate
- #5 Blend
- #6 Bunker "C" (Residual)

Bituminous Coals

Southern Tidewater and Northern All Rail coals for underfeed, spreader, or chain grate stokers and pulverized fuel units

Sprague has a New Hampshire organization on the spot to serve the entire state

- A tidewater terminal at Portsmouth handling a full range of Industrial fuel oils and quality Southern West Virginia coals.
- A fleet of fuel oil and coal trucks for complete delivery service, and facilities for making rail shipments of both coal and fuel oil.
- A sales and engineering force available to you offering factual information on the type of fuel best suited to each installation's equipment.

Telephone our representatives at Portsmouth, GENEVA 6-4120 for sales service.

C. H. SPRAGUE & SON CO.

Gosling Road — P. O. Box 478

PORTSMOUTH, NEW HAMPSHIRE

Home office at Boston — Offices serving customers in 24 States and Canada.

LUMP SUM BIDDING

Whereas, the advantage of one general contract are manifold and self-evident, and

Whereas, it is desirable that bidding procedures be standardized for the protection of the Owner, Architect and Contractor, and

Whereas, undivided responsibility as

exemplified by one general contract is the key to lower construction costs, be it therefore

Resolved, that the award of construction contracts on a lump sum basis in New Hampshire shall be encouraged, except on unusual or specialized projects where a specialty contractor performs a substantial portion of the work, as on

(Continued on Page 26)

DERRYFIELD SUPPLY CO., INC.

- Wholesalers -



Kohler Plumbing Fixtures

National — U. S. Radiator Heating Products

Fluid Heat Air Conditioning

John Wood Hot Water Heaters

H. B. Smith Boilers

Pipe • Fittings • Valves

National Disposal Units



GRANITE and FRANKLIN STS.
Manchester, N. H.

Architects

have long recognized the benefits derived from timely, systematic interchange of information in the construction field. They find that this benefits their clients and all concerned . . . brings a wide range of bids . . . brings more complete news of new products, new trends, new techniques. And saves much time that might otherwise be wasted on salesmen uninformed as to the architect's current interests.

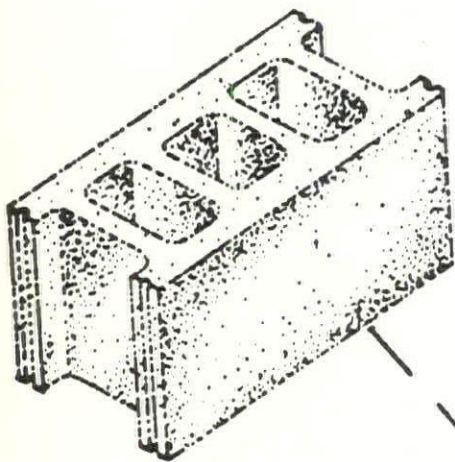
This information, incorporated in Dodge Reports, is helpful to all firms in new construction. And it guides the *right* supplier's salesman to the *right* architect at the *right* time.

That's why for more than 65 years architects have found it good practice to provide their Dodge reporters with complete information about their work.

DODGE REPORTS

Construction News Service

31 St. James Avenue, Boston 16
119 West 40th Street, New York 18



DURACRETE

RIVERS and HENRY

D. A. Rivers

R. H. Henry

Plumbing and Heating Contractors

KEENE, NEW HAMPSHIRE

near 97 Main St.

Tel. ELMwood 2-3231



C. R. SWANEY CO.

- Nash Engineering Co.
- Nationals Controls Inc.
- C. H. Wheeler Mfg. Co.
Economy Pump Div.
- Carver Pump Co.

PUMPS for Vacuum Heating
Condensation, Boiler Feed,
Sewage
Hot and Cold Water
and Process
Temperature Controls
Motorized Valves

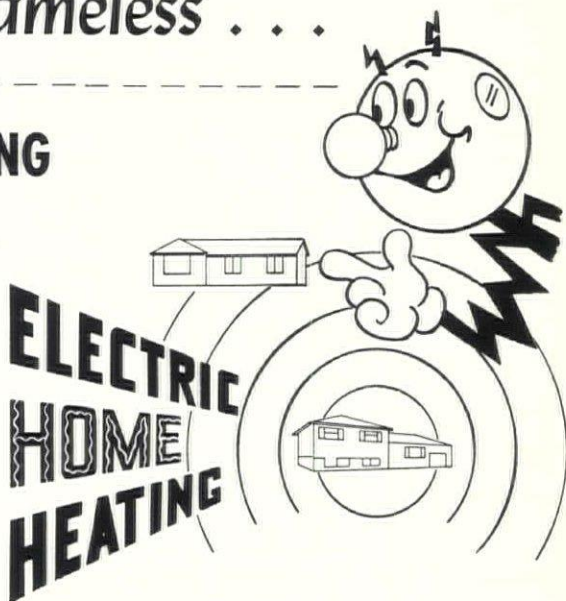
335 Newbury Street - Boston 15, Mass.
KENmore 6-5613

It's modern -

It's flameless . . .

ELECTRIC HOME HEATING IS BEST BECAUSE . . .

- Room-by-room control
- Matchless comfort
- Flameless, flueless safety
- More usable space
- Lower maintenance cost
- Quietness of operation
- Efficiency of operation



See your heating contractor or

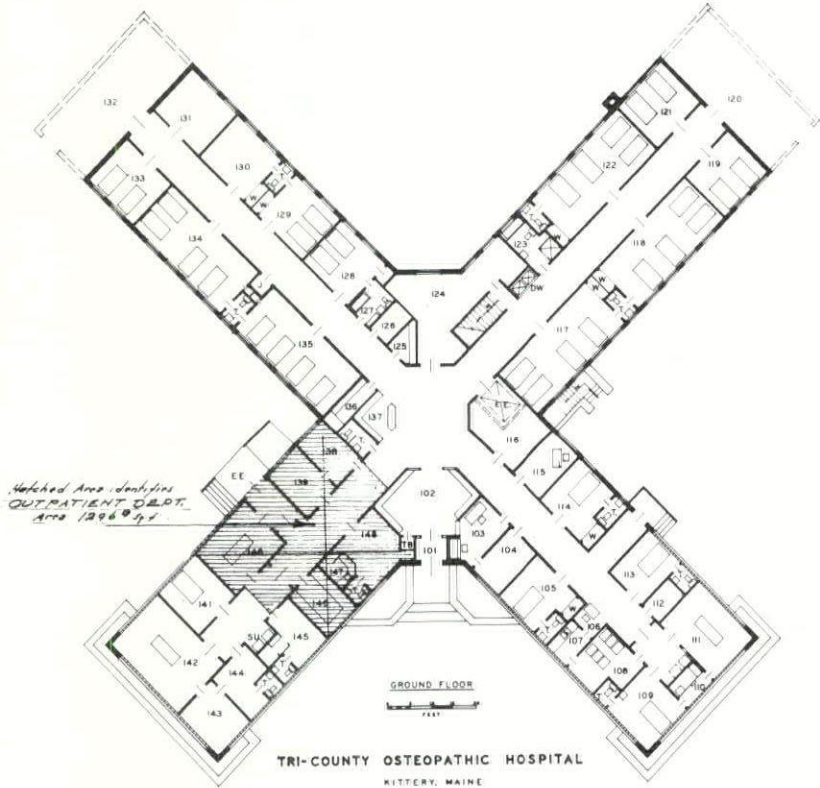
**PUBLIC SERVICE COMPANY
OF NEW HAMPSHIRE**

*"For those who
demand the finest"*

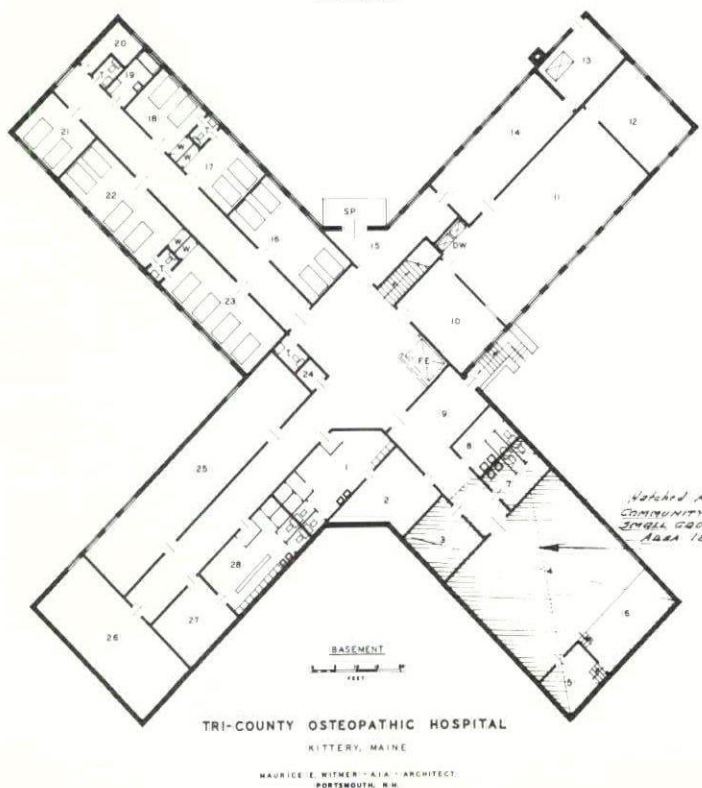
THE FOLLOWING PAGES OF PROJECTS
ARE FROM THE OFFICE OF:

MAURICE E. WITMER, AIA
PORTSMOUTH, N. H.

TRI-COUNTY OSTEOPATHIC HOSPITAL, KITTERY, MAINE



ROOM SCHEDULE	
101	VESTIBULE
102	WAITING ROOM
103	RECEPTIONIST
104	CONFERENCE
105	SINGLE
106	NURSES STATION
107	FORMULA PREPARATION
108	NURSEY
109	LABOR
110	SUB-STERILIZING
111	DELIVERY
112	CLEAN-UP
113	ISOLATION
114	SINGLE
115	SUPT. OFFICE
116	UTILITY
117	4-BED WARD
118	4-BED WARD
119	DOUBLE
120	FUTURE SOLARIUM
121	DOUBLE
122	4-BED WARD
123	BATH
124	FOOD PREPARATION
125	DRUGS
126	STORAGE
127	BATH
128	DOUBLE
129	DOUBLE
130	DOUBLE
131	DOUBLE
132	FUTURE SOLARIUM
133	DOUBLE
134	4-BED WARD
135	4-BED WARD
136	LINE
137	NURSES STATION
138	DOCTORS OFFICE
139	EXAMINATION
140	EMERGENCY
141	RECOVERY
142	OPERATING
143	STERILIZING
144	NURSES CLEAN-UP
145	DOCTORS CLEAN-UP
146	LABORATORY
147	DARKROOM
148	X-RAY
1	TOILET
2	JANITOR
FE	FUTURE ELEVATOR
W	WARDROBE
DW	DUMBWAITER
EE	EMERGENCY ENTRANCE
TR	TELEPHONE BOOTH
SU	SCHUB-UP



ROOM SCHEDULE	
1	DOCTORS LOCKERS
2	DOCTORS LOUNGE
3	SMALL GROUP CLINIC
4	COMMUNITY CENTER
5	EQUIPMENT STOR & DR
6	STAGE
7	LADIES
8	MEN
9	LOBBY
10	STAFF DINING
11	KITCHEN
12	HELPS DINING
13	ROLLER ROOM
14	LAUNDRY
15	SERVICE AREA
16	4-BED WARD
17	DOUBLE
18	BATH
19	STORAGE
20	DOUBLE
21	DOUBLE
22	4-BED WARD
23	4-BED WARD
24	STORAGE
25	EMERGENCY WARD
26	STORAGE
27	NURSES LOUNGE
28	NURSES LOCKERS
1	TOILET
DW	DUMBWAITER
FE	FUTURE ELEVATOR
SP	SERVICE PLATFORM

Tri-County Osteopathic Hospital is a community non-profit institution which serves the communities of Strafford and Rockingham counties in New Hampshire, and York County in Maine.

The building is located on a high knoll, bordering Route No. 1, in Kittery, Maine, overlooking the entire valley skirted by the Piscataqua and Mount Agamenticus. The contours of the land are such that the basement is predominantly at the grade of natural topography, providing extensive natural lighting.

The structure, as presently designed, encompasses in the basement the community health center, which will be used for public functions, such as the varying health clinics, health lectures, etc., incumbent upon the community hospital to serve in its area, X-ray department, laboratories, pharmacy, surgical suites, and kitchen areas with cafeteria.

The first floor encompasses the women's wing, men's wing, children's wing, obstetrical departments, reception area, administrative area, receiving office, etc.

The building is designed to care for an additional floor. At present the facilities are equipped to take care of from 50 - 75 bed hospital; however, the bed capacity at present is 42.

The nurses' station has been placed in the octagonal lobby, from which radiate the four wing corridors, where the nurses on duty have complete observation of all stations in every direction.

The structure is built entirely of concrete, masonry, and steel with aluminum windows, conductive tile floors in all the operating suites.

As can be recognized in the low cost of the structure, austerity with completeness of essential facilities was the "guiding star" in all the planning and equipping stages of this plant and the hospital will serve a complete complement, as any general hospital.

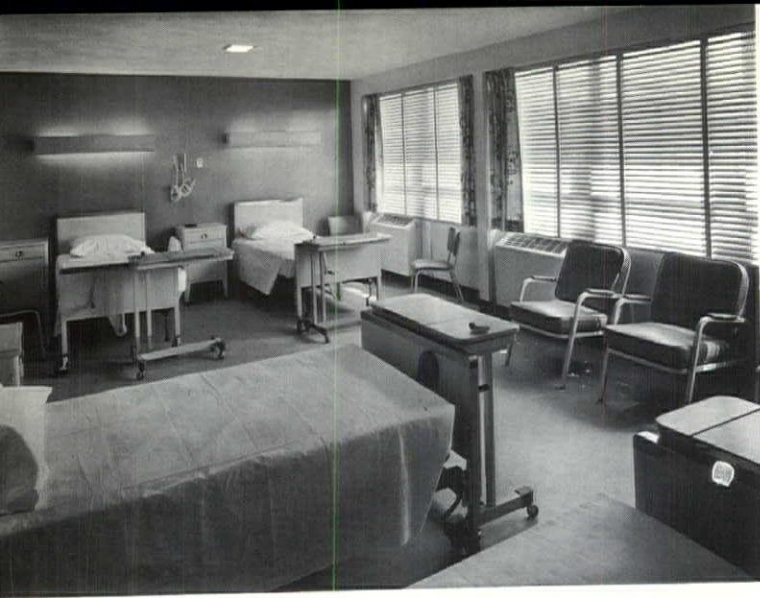
The cost of this building was \$416,153.00, or \$17.03 per square foot. The equipment and furnishings for this structure cost approximately \$30,000.00.



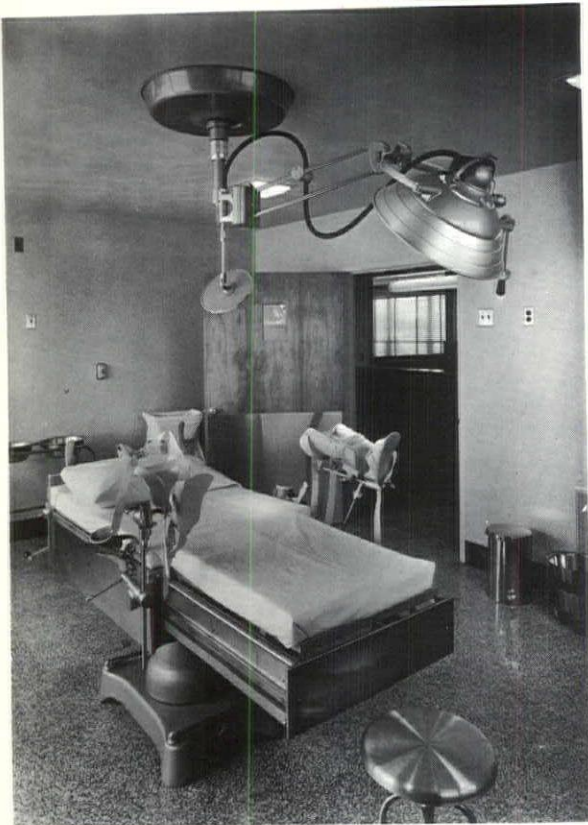
Reception Room



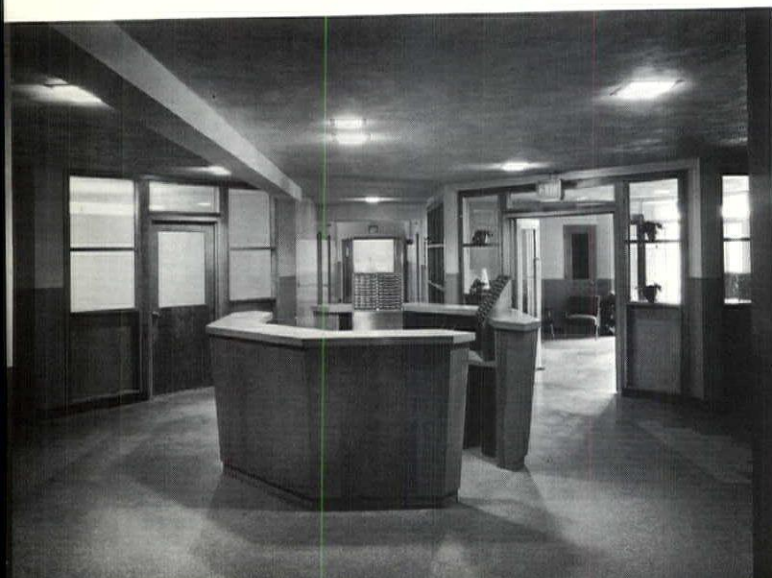
X-Ray Room



A Four Bed Ward



Delivery Room



Nurses Station

The MAHANEY COMPANY

3 High Street

ATlantic 4-4547

Biddeford, Maine

Mechanical

Piping

Contractors

for

TRI-COUNTY

OSTEOPATHIC HOSPITAL

Kittery, Maine

Lathing and Plastering

— at —

TRI-COUNTY

OSTEOPATHIC HOSPITAL

Kittery, Maine

— by —

**P. H. McGRANAHAN
COMPANY, INC.**

555 Valley St.

Manchester, N. H.

Dial 2-9373

ELEVATOR INSTALLATION

at

TRI-COUNTY OSTEOPATHIC HOSPITAL

KITTERY, MAINE

STANLEY ELEVATOR COMPANY, INC.

PASSENGER & FREIGHT ELEVATORS

ROTARY OILDRAULIC — DOVER CABLE

ORCHESTRA LIFTS

RESIDENCE ELEVATORS & STAIRCARS



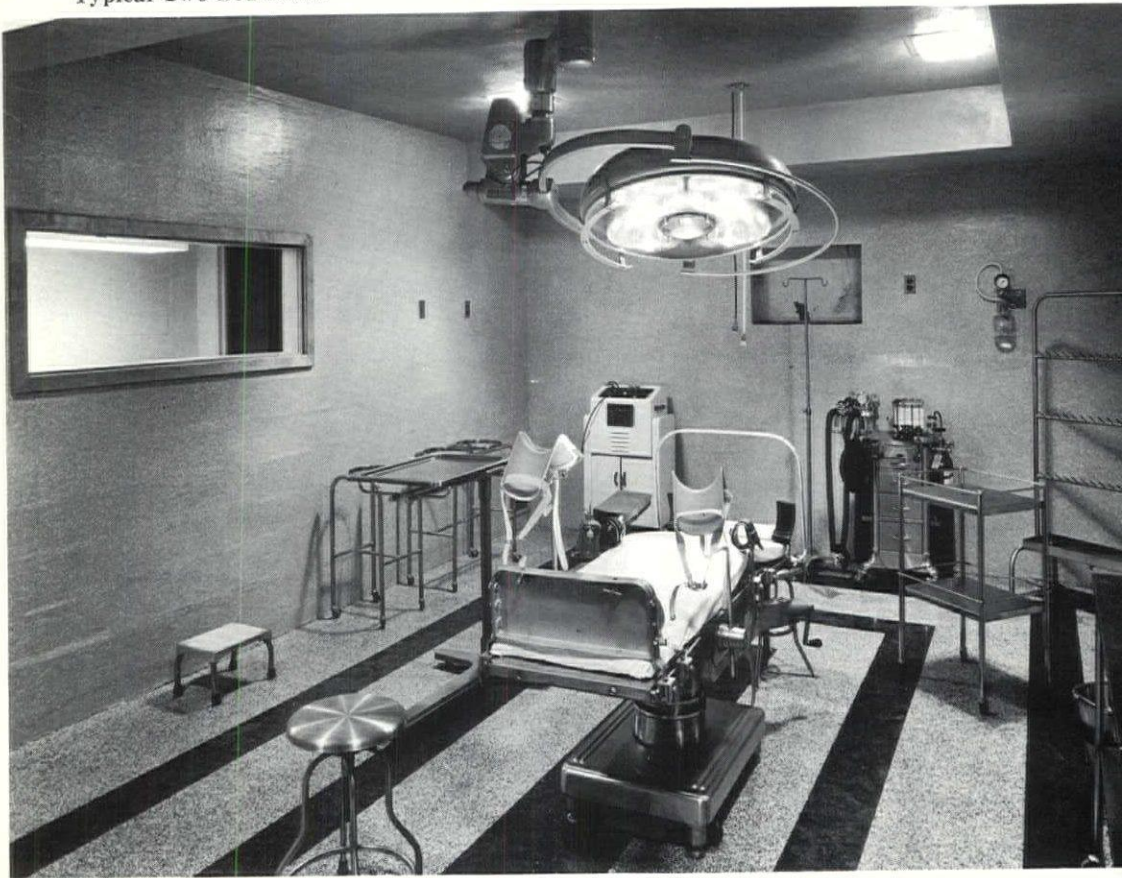
Sales - Service - Repair

NASHUA, N. H. — LEWISTON, MAINE

TUxedo 2-9591 — STate 2-7955



Typical Two-Bed Room



Major Operating Room

Complete Food Service Equipment

for

Tri-County Osteopathic Hospital
Kittery, Maine

Supplied and Installed by

M. P. ALKON & CO.

49 Market St. Portsmouth, N. H.

GENEVA 6-2405

Sales - Service - Consultants - Engineering

RESTAURANTS • KITCHENS • HOTELS

SCHOOLS • INSTITUTIONS

China Glass Silverware

Coffee Makers Ranges Dishwashers

Refrigerators

FRANK T. CODY CO.

Electrical Contractors

HANOVER, N. H.

Phone Hanover 720

Another Quality

ELECTRICAL INSTALLATION

By Us At

TRI-COUNTY

OSTEOPATHIC HOSPITAL

Kittery, Maine



Nursery

WITMER PROJECTS — (continued)

MEMORIAL STUDENT ACTIVITY CENTER, NASSON COLLEGE, SPRINGVALE, MAINE

This building is for a small college in Springvale, Maine, and serves not only the athletic needs of the college, but its recreational and cultural use, in that the dramatic arts, and musical arts, convocations, and many community group affairs are exercised within this building.

The stage is so constructed that it has dual use for either the recreational building, at the rear which is an existing structure and was the prior gymnasium, or can be converted into use for either, or both, of the two buildings.

The bleachers seat a total of approximately 1000 persons. The gymnasium playing area is a standard college court.

The complete structure cost \$140,200.00, the square foot cost of which is \$9.05.

The present college enrollment is approximately 300. Its ultimate development is for an enrollment of approximately 500 students.

H. E. CARPENTER

Springvale, Maine

131 Main Street

Tel. 253-V

General Contractor

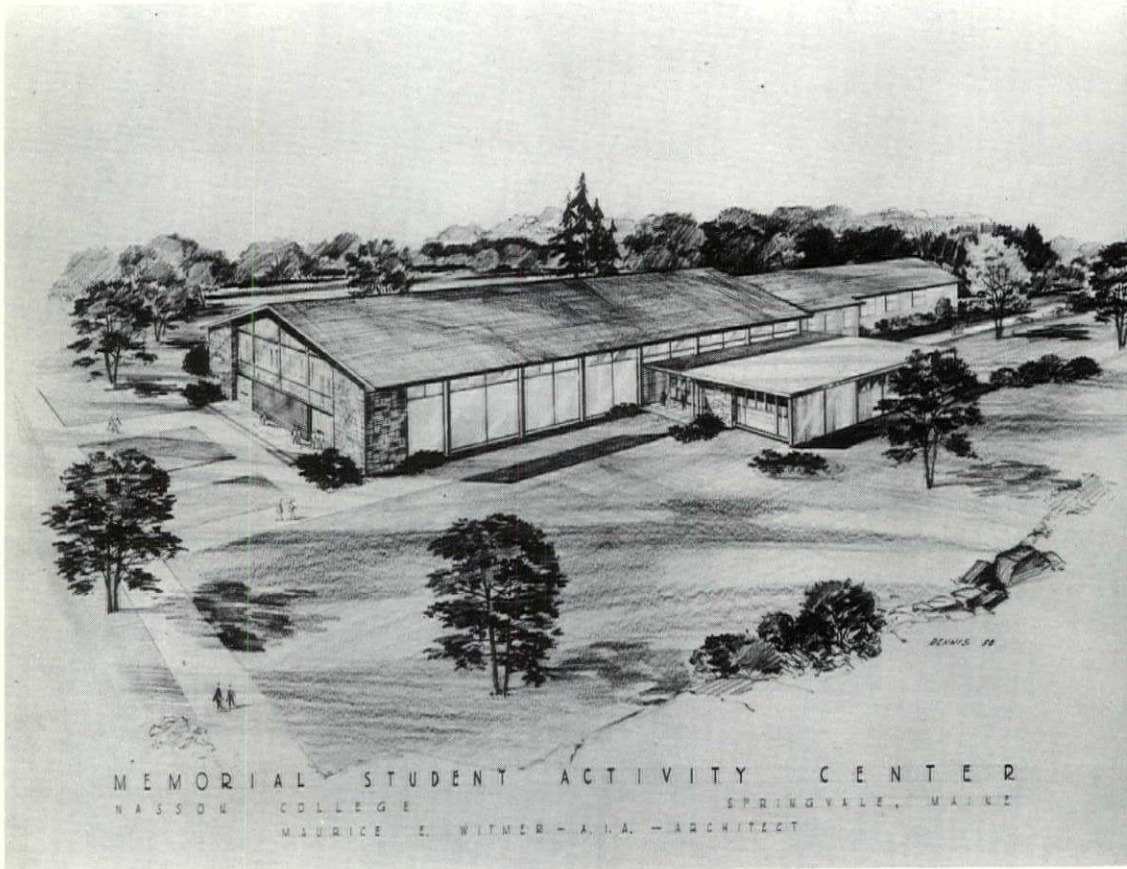
for

Memorial

Student Activity Center

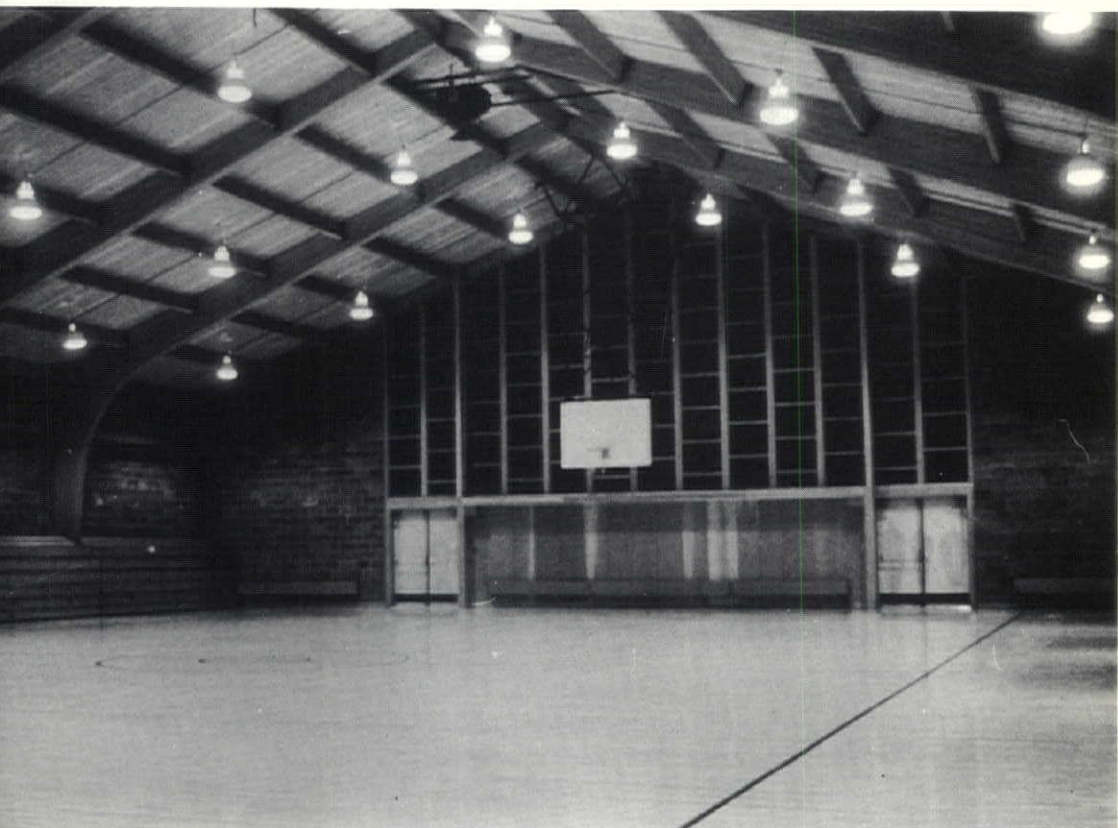
NASSON COLLEGE

Springvale, Maine





Chapel Toward Altar



Gymnasium Toward Rear

RESIDENCE FOR DR. AND MRS. JOHN COLBY MYER, SPRINGVALE, MAINE

This residence was designed by our office for Dr. and Mrs. John Colby Myer and their family, who desired a more contemporary home which would be compact, and yet conveniently providing for the several talents of their home.

Dr. Myer is a physician and a professor at Nason College, in Springvale, Maine, and his wife is also an instructor at the college. Both Dr. and Mrs. Myer, being instructors, desired to have a study convenient to their own bedroom for quietness, and late evening hour studying could be maintained.

The family consists of three girls and one boy. A small compact bunkroom was designed for the young man of the family. The younger daughter, being the only girl at home, since the elder daughter is married and the second eldest is away at college, has her own private bedroom. With two of the girls away, a minimum use of one spare bedroom would be required for summer guests, or possibly during vacation time when the elder children are at home.

As music and TV are popular sports with the two younger children, a playroom, or "noise center" is provided convenient to the kitchen and living room, and yet separated from the living room area by the kitchen and dinette, which affords a degree of silence for those using the living room for a social center.

The kitchen is designed distinctly for the culinary purpose for which it is instituted; however a simple, but convenient, breakfast or snack bar separates the kitchen from the living room.

The core unit of sanitary facilities are flanking the kitchen with the bathroom, in conjunction with the youths' bedroom suite, also providing the laundry area with the washer and dryer which are screened with shutter doors. Sanitary facilities are provided adjacent to the study in the master bedroom suite.

This home site is located in a wooded glen, bisected by a small brook, which flows through it. The terrain is principally ledgy and large rock shelves protrude above the normal lot level, making the home's location the most ideal site for placement, permitting a very lovely view into the wooded area skirting the small brook, which meanders around the southerly and easterly side of the cottage. This provides for excellent sunny exposures during the long winter months with an excellent view into the woodlands both in summer and winter.

As the contour of the ledge drops several feet toward the southerly end, it skirts the small brook, the lower elevation permitted the placement of a two-car garage with storage and heater room available under the living room and master bedroom suite.

Dr. Myer is a talented sculptor and artist; therefore, a workshop for his work was provided in this lower level with a lovely view made possible looking across the stream and woodland.

(Continued on Page 26)

CHAS. W. BROWN & SONS, INC.

Office: 10 Oak St.

Mill: Elm St.

SPRINGVALE, MAINE

GENERAL CONTRACTOR

Residence of

DR. and MRS. JOHN C. MYER

Springvale, Maine

also

Millwork and Pews

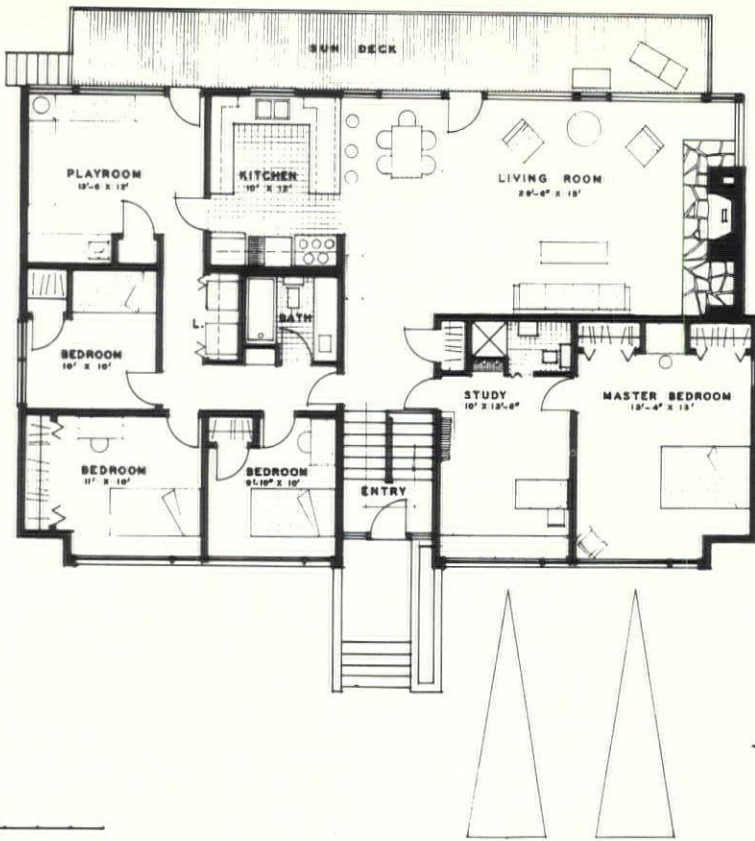
Chapel Section

of

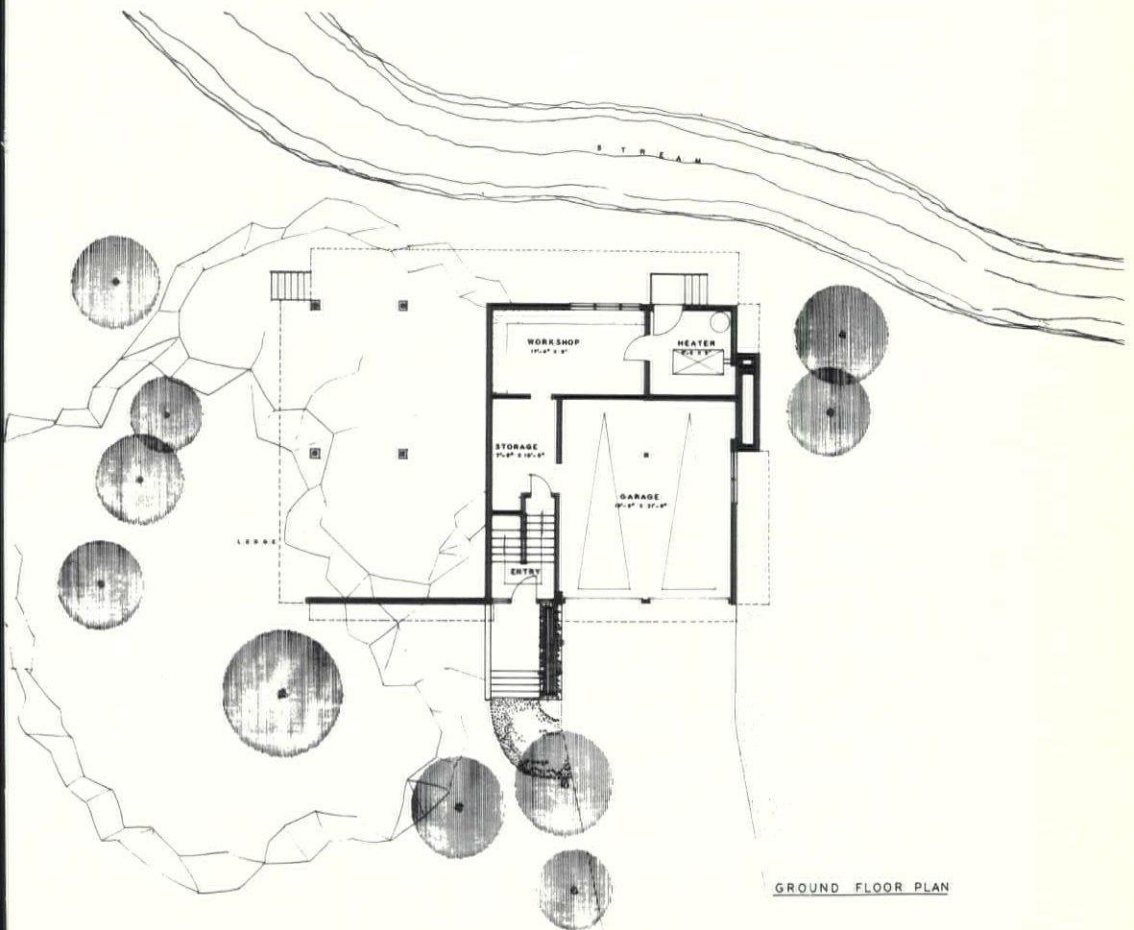
STUDENT ACTIVITY CENTER

Nason College

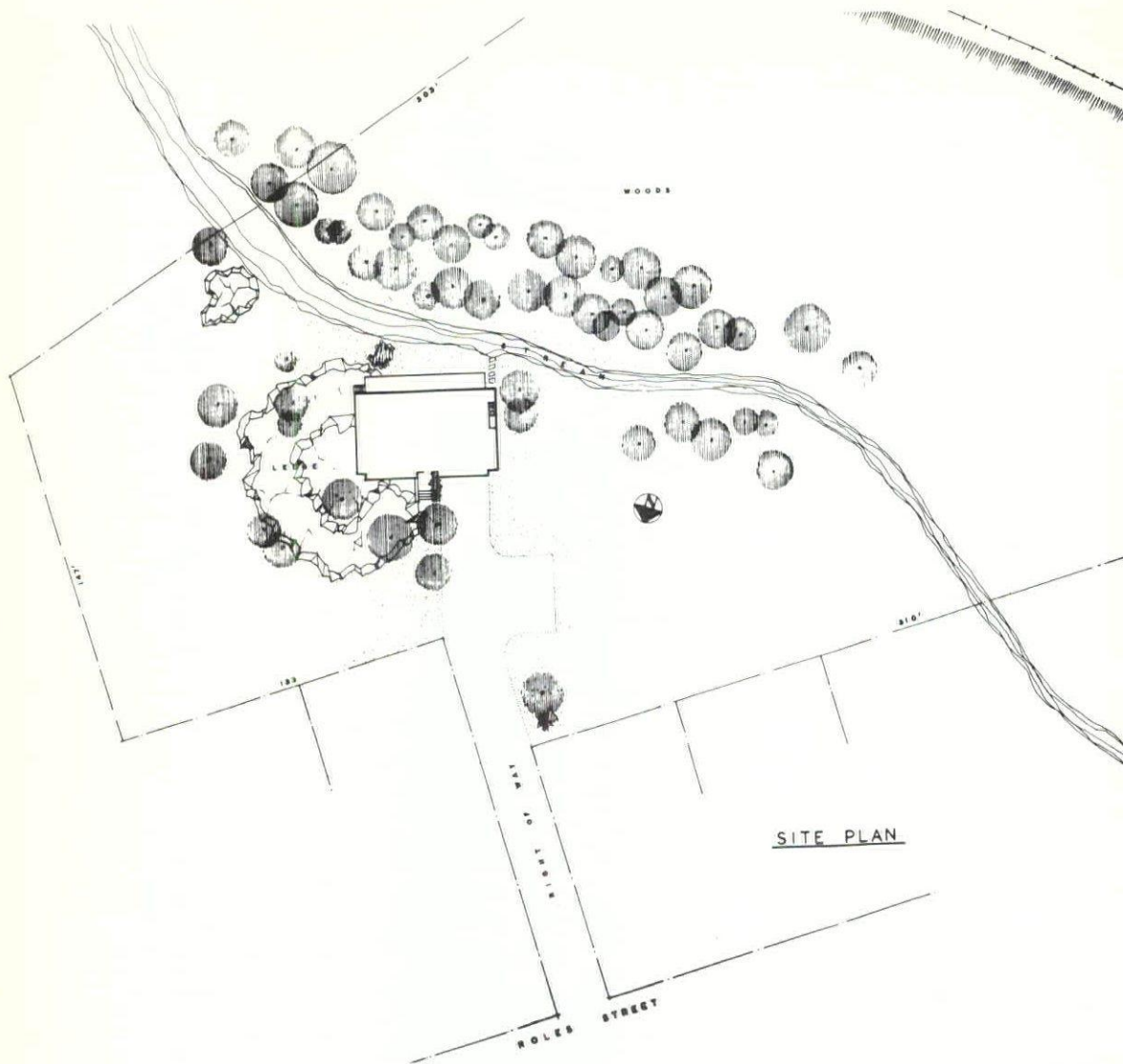
Springvale, Maine



FIRST FLOOR PLAN



GROUND FLOOR PLAN



View of Residence Along Brook



View in Stairwell

View From Street, Toward Main Entrance



BIDDING—

(Continued from Page 11)

power plants, pumping stations, etc., and be it further

Resolved, the use of lump sum bidding and the award of one general contract shall not abrogate the right of the Architect to approve sub-contractors as set forth in article 36 of the Standard AIA Documents.

After a lengthy discussion of the resolution by Richard Koehler, Edgar Hunter and Maurice E. Witmer, the motion to adopt the resolution, with the last paragraph to be deleted, was passed.

President Holbrook instructed the committee to inform the AGC that the New Hampshire Chapter, AIA, endorses the resolution on lump sum bidding.

Serving on the committee with Mr. Isaak were John D. Betley, Walter T. Williams, W. Brooke Fleck and Stephen P. Tracy.

This committee met last December with a committee of the AGC., including Robert C. Davison, John Jacobson, Jr., Herbert Stebbins and Tom Power, executive secretary.

MASONRY BLADE
by Carborundum

DIAMOND or ABRASIVE

Cut Fast at
Low Cost

These Masonry Blades will cut any type or size masonry material . . . easily . . . quickly . . . and economically.

National 3-5293
2-3506

Corriveau - Routhier Co.
266 Clay St. Manchester, N. H.

MYER RESIDENCE —

(Continued from Page 22)

The building is constructed of concrete footings and foundation to grade; cinder block up to the first floor level, embracing the garage and workshop area which are provided in the basement.

The entire frame is designed in modular construction, with beam and post construction, which is entirely of Douglas fir.

The roof construction, as indicated, pitches toward the center of the building from the easterly and westerly sides, the purpose being to avoid any roof surface water drainage spilling over onto the deck or entrances to the garage or residence.

The exterior cement panels are backed by insulation. The interior walls are finished in redwood vertical boarding.

The 3" Engleman spruce finished tongue and grooved plank constitutes the main insulation, and ceiling, all in one.

The fireplace is constructed of cinder block and concrete hearth.

Finish floors are all vinyl tile over 1-1/16" plywood sub-flooring.

A small cypress and redwood plank bridge was built across the stream connecting the two segments of the lot.

This building was completed in December of 1958 at a cost of \$23,410.00, or a square foot cost of \$11.71.

The area of the first floor is	1800 sq. ft.
The area of usable space in the basement is	870 sq. ft.
Total area of this home	2670 sq. ft.



ELECTRICAL
CONTRACTOR

Residential and Industrial Wiring

DIAL MAN. 3-3568

75 South Willow St., Manchester, N. H.

Motor Repairing

PALMER
Plumbing Supply Co.

Wholesalers

Plumbing - Heating - Mill Supplies

Distributors of

WIL-McLAIN BOILERS

KOHLER ENAMELWARE

PETRO OIL BURNERS

ROCHESTER, LACONIA, N. H.
PORTLAND, ME.

"Competent Engineering Service"

S
T
E
E
L

Lyons

IRON WORKS, Inc.
MANCHESTER, NEW HAMPSHIRE

NEW HAMPSHIRE ARCHITECT

P. O. Box 291, Concord, N. H.

Sec. 34.66 P. L. & R.

U. S. POSTAGE

PAID

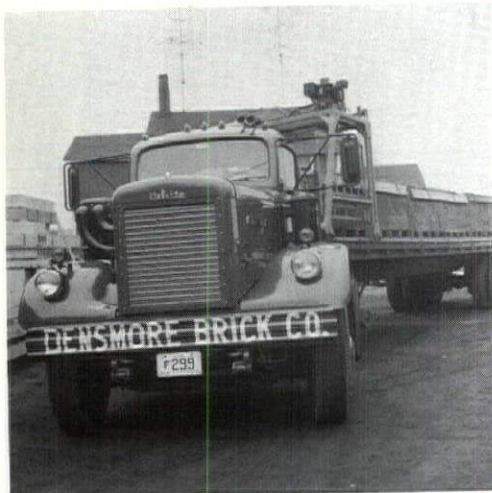
Concord, N. H.

PERMIT NO. 297

Library-American Inst. of Architects
1735 New York Ave. N.W.
Washington 6, D.C.

Form 3547 Requested

Call **DENSMORE** *For Fast Delivery . . .*



of
CLAY PRODUCTS
and
MASONRY SUPPLIES

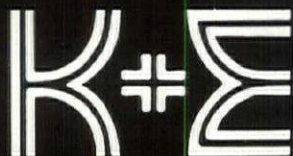


Face Brick	—	Glazed Facing Tile
Sewer Pipe	—	Flue Lining
Fire Brick	—	Water Proofing
Scaffolding	—	Metal Specialties

DENSMORE BRICK COMPANY

Manufacturers and Distributors

Lebanon, New Hampshire



**QUALITY
PRODUCTS
and
PRECISION
INSTRUMENTS**

- **MICRO-MASTER®** — an amazing new process providing clear, distortion-free "second originals". Tiny 4 x 6" negatives can be projected up to original size and more. Save storage space, mailing costs.
- **HERCULENE®** Drafting Film — the newest, most durable drawing medium. Ideal surface "take" for pencil, ink, or typewriter. Balanced transparency. Lies flat. Resists rough handling. Matted one or both sides. In Rolls or Sheets. Find out Today!
- **K & E INSTRUMENTS** — select from our complete line . . . for every engineering and drafting use.

*Choice
of
Engineers
for OVER
60
YEARS*

- Expert Blueprint, Photostating and Plan Reproduction Service
- Engineering, Surveying and Drafting Equipment
- Professional Repair Service

B. L. MAKEPEACE Inc.
1266 BOYLSTON ST. BOSTON, MASS.

Call COpley 7-2700