

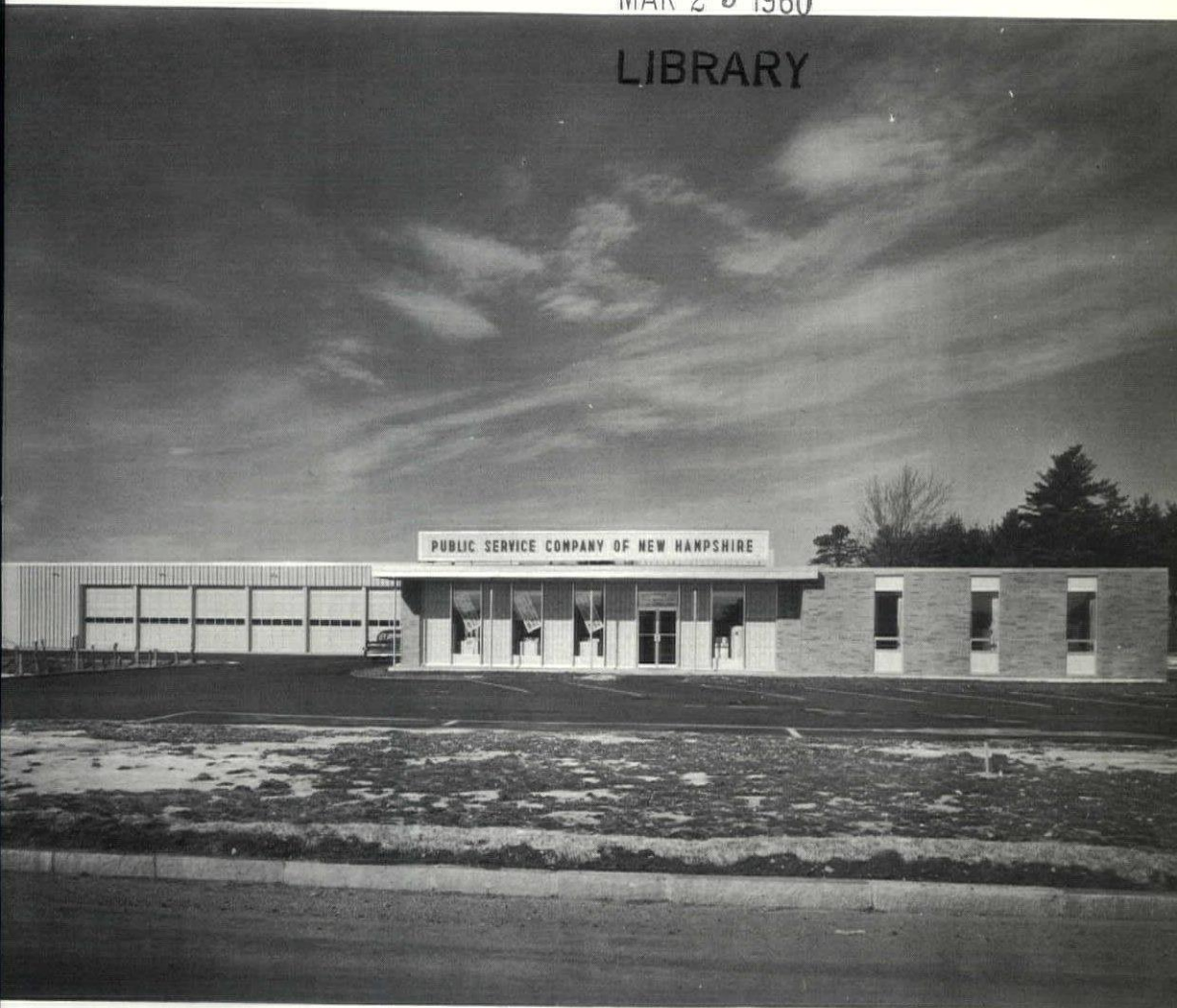
21

# New Hampshire ARCHITECT

AMERICAN INSTITUTE  
OF ARCHITECTS

MAR 25 1960

LIBRARY



OFFICIAL PUBLICATION

New Hampshire Chapter of the American Institute of Architects



MARCH  
1960

25c A COPY  
\$3.00 A YEAR

# ***Dutch Boy*** —THE NAME TO GO BUY—FOR EVERY PAINT JOB

First choice of professional painters — first choice with home owners — that's *Dutch Boy*. There's a *Dutch Boy* finish specially blended for every painting need, inside or outside your home, and you can depend on it for long-lasting beauty. Choose yours today at —



PAINT DEPARTMENT  
Main Store — Street Floor  
BUILDER'S PAINT DEPARTMENT  
MOREAU ANNEX  
Opposite Main Store  
EXCLUSIVE DEALER  
**J. J. MOREAU & SON, INC**  
MANCHESTER, N. H.  
Dial NA 4-4811

## ***Panel Industrial, Inc.*** *Distributors of* ***Construction Equipment and Supplies***

159 SOUTH MAIN STREET • CONCORD, N.H.

TEL. CA 5-2726

Sonneborn Building Materials  
Delta Power Tools  
DeWalt Radial Saws  
Schlueter Artic Boy Water Coolers  
Timken Bits  
Crosby Clips  
Aeroquip Hose & Couplings  
Vulcan Drill Steel & Pavement Breaking Tools  
Laughlin Drop Forge Fittings  
Dixon Valves & Couplings  
Springs — New & Repaired  
Welding Supplies — Marquette, Victor & Stulz-Sickles  
Complete Motor Rebuilding  
Kohler Electric Plants  
Complete stock of all sizes Machine Bolts & Cap Screws

## **NEW ENGLAND INSULATION CO** **ACOUSTICAL DIVISION**

*Distributors and Applicators*

Maine • New Hampshire • Vermont

OWENS-CORNING FIBERGLAS

NATIONAL GYPSUM COMPANY

REYNO COUSTIC — EASTERN SYSTEM

ALTON, NEW HAMPSHIRE  
Phone: Alton 5-7500

Arthur E. Swanson, Manager

## **ANDREW T. JOHNSON** COMPANY INCORPORATED

### **Four Plants**

IN BOSTON { 15 Tremont Place  
103 Newbury Street  
173 Milk Street

Middlesex Turnpike (at exit 35 off Route 1)  
BURLINGTON, MASS.

CONNECTING  
ALL PLANTS Richmond 2-1610

**BLUE PRINTERS — MICROFILM**  
— ZEROGRAPHY —  
— OFFSET PRINTING —  
— MINIATURIZATION —





ELECTRICAL  
CONTRACTOR

Residential and Industrial Wiring

DIAL MAN. 3-3568

5 South Willow St., Manchester, N. H.

Motor Repairing

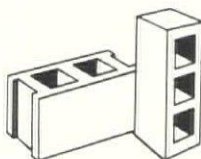
## C. R. SWANEY CO.

- Nash Engineering Co.
- Nationals Controls Inc.
- C. H. Wheeler Mfg. Co.  
Economy Pump Div.
- Carver Pump Co.

**PUMPS** for Vacuum Heating  
Condensation, Boiler Feed,  
Sewage  
Hot and Cold Water  
and Process  
Temperature Controls  
Motorized Valves

335 Newbury Street - Boston 15, Mass.  
KENmore 6-5613

"RUGGED AS MONADNOCK"



standard block  
half-hi block  
hilite block  
duraglaze block  
formbloc

## MONADNOCK BLOCKS

... the best in concrete masonry ...

### READY - MIX CONCRETE

available at plants in  
Keene, Charlestown,  
Peterborough and Newport

### COMPLETE LINE

OF

### MASONRY SUPPLIES

# ARTHUR WHITCOMB, inc.

725 MAIN ST.  
KEENE, N. H.

# Serving the People of NEW HAMPSHIRE

---

John D. Betley,  
Manchester

Bradt, Littlefield & Williams  
Dover

Dirsa and Lampron,  
Manchester

W. Brooke Fleck,  
Hanover

Alfred T. Granger Associates,  
Hanover

Russell S. Harmon,  
Durham

Irving W. Hersey Associates,  
Durham

John R. Holbrook Associates,  
Keene

Andrew C. Isaak  
Manchester

Koehler and Isaak,  
Manchester

Alexander Majeski,  
Bedford

Arnold Perreton and Associates,  
Concord

Douglass G. Prescott,  
Laconia

Leo P. Provost,  
Manchester

Norman P. Randlett,  
Laconia

Tracy and Hildreth,  
Nashua

William L. White,  
Exeter

Maurice E. Witmer,  
Portsmouth

Participating Members of the New Hampshire Chapter

# A. I. A.





## OFFICERS

*President*

JOHN R. HOLBROOK, Keene

*Vice-President*

EDGAR H. HUNTER, Hanover

*Secretary*

ANDREW C. ISAAK, Manchester

*Treasurer*

W. BROOKE FLECK, Hanover

## DIRECTORS

JOSEPH F. LAMPRON, Manchester

WALTER T. WILLIAMS, Rochester

ROBERT L. SNODGRASS, Nashua

*Regional Council Delegates*

JOHN D. BETLEY 1 yr.

NORMAN P. RANDLETT 1 yr.

WALTER T. WILLIAMS 1 yr.

JOHN R. HOLBROOK 2 yrs.

NICHOLAS ISAAK 3 yrs.

*Member of National Chapter  
Affairs Committee*

HORACE G. BRADT

*Member of Regional  
Advisory Committee*

RICHARD KOEHLER

*Member of Sub-Committee on  
Building Products Registration*

NORMAN P. RANDLETT

## EDITOR

ALEXANDER MAJESKI, R. A.  
Palomino Lane  
Manchester, N. H.

## PUBLISHER

LAWRENCE J. MOYNIHAN  
P. O. Box 291  
Concord, N. H.  
Tel. CA 5-3297

# New Hampshire ARCHITECT

VOL. 11

MARCH, 1960

NO. 8

## TABLE OF CONTENTS

Quarterly Meeting of AIA .....	7
Arnold Perreton Chairman for May Meeting .....	7
Lampron & Witmer Elected Delegates .....	7
George F. Soule Becomes Corporate Member .....	7
Walter Gill, New Dodge Representative .....	7
N. H. Contractors to Attend A.G.C. Convention .....	8
Gibbs and Creer to Receive Medals .....	8
Famous Architect Wins AIA Gold Medal .....	9-11
Greenfield Carpet Company .....	10
Nutt Building .....	12-13
From the Office of Carter & Woodruff .....	14-15
New Plant of Public Service Company....	16-17-18-19-20-29
Cottage Hospital .....	21-22-23-24-25
Tatleman Warehouse .....	26-27-28

## COVER PICTURE

Public Service Company's new plant at  
Somersworth.

— Photos by Douglas Armsden, Kittery Point, Maine

New Hampshire Architect is published monthly,  
under the direction of the president and board of  
directors of the New Hampshire Chapter,  
American Institute of Architects, to promote the  
objectives and public relations of the chapter.  
Advertising rates furnished upon request.

D O W

## STYROFOAM

EXPANDED POLYSTYRENE

RIGID PERIMETER  
INSULATING BOARD

•

POLYETHYLENE  
BUILDING PAPER

Available in all widths and thicknesses

•

EXPANSION JOINTS  
FLEXCELL & CAREY

2-1071

National 3-5293 COLLECT

2-3506

**Corriveau - Routhier Co.**

266 Clay St.

Manchester, N. H.

## REFRIGERATION DISTRIBUTORS FOOD SERVICE CONSULTANTS

**Complete Planning Service**

For Markets and Food Stores  
Special Industrial Refrigeration  
Complete Air Conditioning  
Hotel, Restaurant and  
Institutional Kitchens,  
Cafeterias, Dining Areas  
Cocktail Lounges

**HUMPHREYS, INC.**

180 No. Main Street - Concord, N. H.

A Business Devoted To Those  
Who Serve Food

1ST STEP TO SOUND, SUCCESSFUL BUILDING  
CONSULT AN ARCHITECT

N. H. CHAPTER A. I. A.  
COMMITTEES

1959 — 1960

### CHAPTER ACTIVITIES

Chapter Affairs, Membership, Education, Office Practice, Awards and Scholarship:

Norman P. Randlett, Chairman, Malcolm D. Hildreth, Maurice E. Witmer, Eric Huddleston, Edgar H. Hunter, Charles Gray.

### PUBLIC RELATIONS

Public Relations, Government Relations, N. H. Architect, Home Building and Construction Industries, Collaboration with Design Professions:

Shepard Vogelgesang, Chairman, Alexander J. Majeski, John Carter, Alexander R. James.

### COMMUNITY DEVELOPMENT

Community Development, Preservation of Historic Buildings, Research, Schools, Buildings, Hospitals and Health.

Arnold Perreton, Chairman, Horace Bradt, Mitchell Dirsas, Leo P. Provost, Stephen P. Tracy.





## **QUARTERLY MEETING OF AIA HELD AT MANCHESTER ALUMET CLUB**

More than 40 architects and their guests attended the first 1960 business meeting and dinner of the New Hampshire Chapter of the American Institute of Architects, held February 19 at the Almet Club in Manchester.

Guest speaker was Marvin I. Adelman of the firm of Sasaki, Walker and Associates of Boston, landscape architects. His subject was "Landscape Architecture."

Nicholas Isaak, chairman of the committee on bidding procedures, presented progress report to the membership.

Philip S. Tambling was introduced to members as a junior associate.

Richard Koehler was general chairman in charge of the meeting.

## **ARNOLD PERRETON APPOINTED CHAIRMAN FOR MAY MEETING**

Arnold Perreton of Concord was named chairman for the May meeting which is to be held in Concord. Further details of the coming meeting will be announced at a later date.

At the May meeting, officers for the coming year will be elected, and a nominating committee was named at the February meeting to bring in a slate of officers. Named to this committee were Richard Koehler, Stephen P. Tracy and Norman Randlett.

## **LAMPRON AND WITMER ELECTED DELEGATES TO NATIONAL CONVENTION**

Joseph F. Lampron of Manchester and Bruce E. Witmer of Portsmouth were elected delegates to represent New Hampshire Chapter, AIA, at the National Convention to be held in San Francisco, April 18 to 22.

The two delegates were elected at the February meeting held in February at Manchester. Other members of the chapter have under consideration plans for attending the convention.

## **GEORGE F. SOULE BECOMES CORPORATE MEMBER**

George F. Soule, formerly of Peterson, Hamlin & Soule, Manchester Architects, became a corporate member of N. H. Chapter, AIA, at the February meeting.

Mr. Soule has opened an office for the Practice of Architecture at 1008 Elm Street, Manchester.

## **WALTER F. GILL NEW REPRESENTATIVE FOR DODGE CORPORATION IN N. H.**



Walter F. Gill, since 1948 a reporter for the F. W. Dodge Corporation, has taken over his duties as reporter for Dodge in the New Hampshire area and northern Essex County in Massachusetts. He succeeds Gordon Marshall as a reporter, although Mr. Marshall remains with the company in the sales department, covering New Hampshire, Vermont and northern Essex County.

A native of Boston, Mr. Gill served as a reporter in the Boston area, and parts of Massachusetts, southwest of Boston, for 12 years.

Mr. Gill attended Northeastern University Night School of Engineering for three years and is a veteran of the Korean War. He is married, has four children and makes his home at 297 Pearl Street in Manchester.



## **N. H. CONTRACTORS TO ATTEND A.G.C. CONVENTION**

Following is a list of the A. G. C. members, who are planning to attend the 41st Annual Convention of the A. G. C. in San Francisco, on March 21st through 24th.

Mr. and Mrs. Parker Rice, Manchester Sand, Gravel & Cement Company of Manchester; Mr. and Mrs. Robert Davison, Davison Construction Company of Manchester; Mr. and Mrs. E. D. Swett, E. D. Swett, Inc., of Suncook; Mr. and Mrs. Halsey Weaver, Weaver Brothers Construction Co. of Concord; Mr. and Mrs. Frank Whitcomb, Frank Whitcomb Construction Co. of North Walpole; Paul Harvey, Harvey Construction Co. of Manchester; Mr. and Mrs. Milo Pike, L. M. Pike & Son of Laconia; Mr. and Mrs. Walter Smith, L. M. Pike & Son; Albert Crandall, Aetna Casualty & Surety, Boston, Mass.; Guy MacMillin, The MacMillin Company of Keene; Tom Power, Executive Secretary.

## **Colonial Supply Corp.**

**25 Union Street**

**MANCHESTER, N. H.**

**Plumbing - Heating - Mill Supplies**

### **BORG WARNER'S HYDRALINE**

**Central**

**System Air Conditioning**

**HEATING — in Winter**

**COOLING — in Summer**

**Today's Trend In Building**

**WE INVITE YOU TO VISIT THE  
LARGEST SHOWROOM IN NEW ENGLAND**

**WHOLESALE ONLY**

## **GIBBS and CREER TO RECEIVE MEDALS**

WASHINGTON, D. C.—The American Institute of Architects' Allied Professional Medal will be conferred on Mr. Frank Gibbs, a Naval Architect, of New York, N. Y.

The award will be presented by President John Noble Richards, FAIA, at the Institute's annual convention in San Francisco, April 18-22.

Also to be honored at this time will be Philip D. Creer, FAIA. He will receive the Institute's Edward C. Kemper Award for his long and outstanding service to the Institute as Chairman of the Judiciary Committee.

Mr. Gibbs, partner in the firm of Gibbs & Cox, Naval Architects and Marine Engineers, has been the recipient of numerous distinguished awards and honorary degrees. His firm has designed many large passenger and cargo vessels and naval ships of various categories. Among the former are passenger cargo ships of the Grace Line, the American Line, the American Export Line and the United States Lines (including the America and S/S United States).

Through their advanced designs and their ambitious preparation of working plans and procurement of materials, apparatus and equipment, the firm had, at the end of World War II, directed the preparation of working plans of more than 60% of all ships of major size except battleships and submarines constructed in American Shipyards and Navy Yards during the war.

Mr. Creer, Director of the School of Architecture, University of Texas, is a partner in the architectural firm of Creer & Roessner, Austin, Tex. He is the designer of many architectural works including public housing, commercial, industrial and institutional buildings. He has served several public agencies as well as on a number of AIA committees. The coveted Kemper Award is granted annually by the AIA Board of Directors to an AIA member who has made significant contributions to the Institute and to the Profession.



## AMOUS ARCHITECT WINS AIA GOLD MEDAL

WASHINGTON, D. C.—Ludwig Mies van der Rohe, FAIA, world famous architect and retired director of the Department of Architecture and City Planning of the Illinois Institute of Technology has won the 1960 Gold Medal of The American Institute of Architects.

Mies van der Rohe was elected for this honor by the AIA Board of Directors

meeting at Institute headquarters at the Octagon in Washington, D. C.

The famous architect will receive the coveted award at the annual dinner of the AIA convention in San Francisco on April 21, 1960.

Mies van der Rohe was born in 1886 in Aachen, Germany, and, like two other

(Continued on Page 11)

## SPRAGUE'S #4 DISTILLATE FUEL OIL

Sprague at Portsmouth now offers a special fuel oil for use

- where #6 (Bunker "C") fuel oil is not considered practicable
- where #5 blended oil results in inefficient operation, excessive service calls, or unsatisfactory performance
- where #2 fuel oil is over 20,000 gallons per year

This is SPRAGUE'S #4 DISTILLATE, a refined product of consistent analysis, delivered to Portsmouth by tanker direct from the refinery, and stored separately in a 4,000,000 gallon capacity tank.

The use of SPRAGUE'S #4 DISTILLATE eliminates the problems of poor combustion and excess soot caused by variations in the oil's characteristics from load to load, does away with starting failures in cold weather, high preheating costs, and sludge precipitation in storage tanks, and requires less attention and service.

Deliveries of SPRAGUE'S #4 DISTILLATE are made in Sprague trucks throughout New Hampshire and into Maine, Massachusetts, and Vermont.

SPRAGUE'S #4 DISTILLATE is competitive in price with #5 blended oil and superior in performance. Let one of our representatives tell you more about it.

*Telephone Portsmouth, GENEVA 6-4120 for further information.*

### C. H. SPRAGUE & SON CO.

Gosling Road — P. O. Box 478

PORTSMOUTH, NEW HAMPSHIRE

Home office at Boston — Offices serving customers in 24 States and Canada.

COMPLETE SERVICES SINCE 1920

### ELECTRICAL CONSTRUCTION

— of —

ANY SIZE • ANY TYPE • ANY LOCATION

## E. S. BOULOS CO.

**ELECTRICAL ENGINEERS and CONTRACTORS**

21 CENTER STREET — PORTLAND, MAINE — Tel. SPruce 2-3706

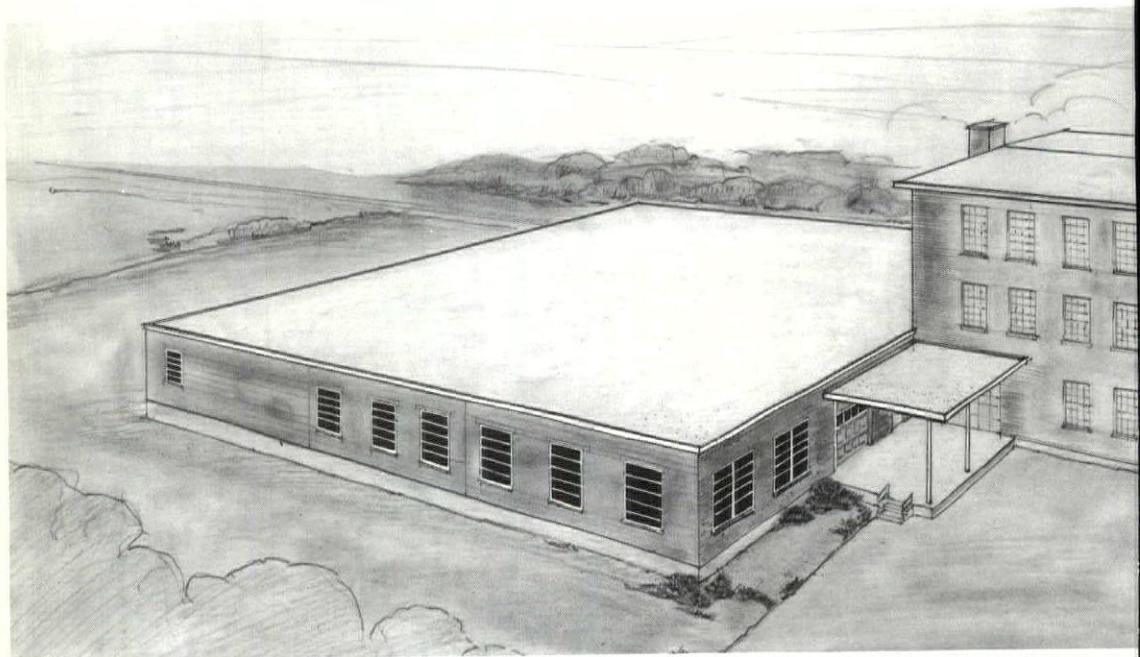
P. O. BOX 860



greenfield carpet company inc

ALEXANDER J. MAJESKI, AIA, ARCHITECT  
Bedford, N. H.

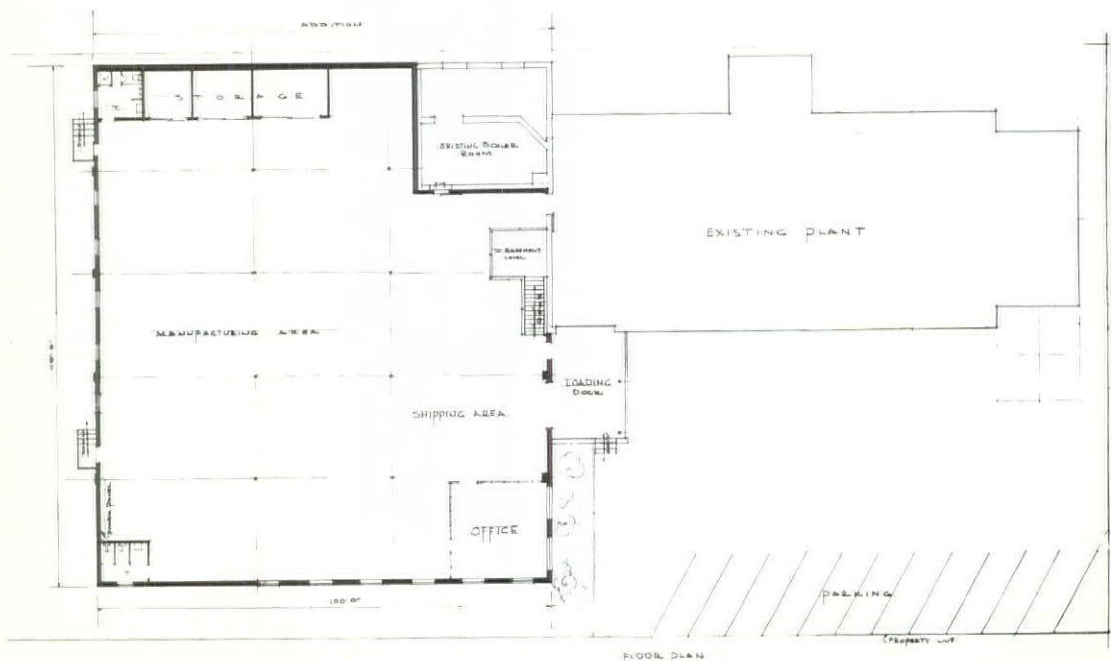
DAVID W. DAVISON, GENERAL CONTRACTOR  
Manchester, N. H.



### Construction Outline:

Foundations: Reinforced concrete; Exterior Walls—Face Brick backed up with concrete block—Concrete Blocks; Windows—Steel, projected sash; Roof Framing—Jr. beams—Steeldeck; Roofing—Vapor seal, rigid insulation, 20-yr. built-up roof-

ing; Floors—Reinforced concrete slab on grade; Partitions—Wood framing plywood finish; Electrical—Fluorescent lighting; Heating—Extension of existing heating system, unit heaters; Sprinkler System—Extension of existing system.





(Continued from Page 9)

world famous architects, Walter Gropius and LeCorbusier, apprenticed in the office of Peter Behrens in Berlin. Mies' first building, the Kroeller house at The Hague, Holland, completed in 1912, caused a sensation in architectural circles for the classic simplicity which still denotes his most recent buildings such as the Seagram Building on New York's Park Avenue.

A first vice president of the German Werkbund, which strove to bring artists

and manufacturers together to improve industrial design, Mies became the director of the Bauhaus school of design in Dessau and later Berlin, Germany.

After the Nazis closed the Bauhaus, Mies, who had meanwhile built a reputation as the architect of some of Europe's most modern buildings, emigrated to the United States in 1938 and became the Director of Architecture at the Armour Institute, later the Illinois Institute of Technology, in Chicago.

## **SPRAGUE FUELS for New Hampshire consumers**

Sprague has a fuel to satisfy most heating and process load requirements

### **Industrial Fuel Oils**

- #4 Distillate
- #5 Blend
- #6 Bunker "C" (Residual)

### **Bituminous Coals**

Southern Tidewater and Northern All Rail coals for underfeed, spreader, or chain grate stokers and pulverized fuel units

Sprague has a New Hampshire organization on the spot to serve the entire state

- A tidewater terminal at Portsmouth handling a full range of Industrial fuel oils and quality Southern West Virginia coals.
- A fleet of fuel oil and coal trucks for complete delivery service, and facilities for making rail shipments of both coal and fuel oil.
- A sales and engineering force available to you offering factual information on the type of fuel best suited to each installation's equipment.

*Telephone our representatives at Portsmouth, GENEVA 6-4120 for sales service.*

## **C. H. SPRAGUE & SON CO.**

Gosling Road — P. O. Box 478

PORTSMOUTH, NEW HAMPSHIRE

Home office at Boston — Offices serving customers in 24 States and Canada.

In addition to the Seagram Building, on which he collaborated with Philip Johnson, he designed a great many of the buildings on the IIT campus, the glass-enclosed apartment houses at 860 Lake Shore Drive in Chicago, and Cullinan Hall, an addition to the Houston (Texas) Museum of Fine Arts.

Mies, who learned his first lessons of building from his father, a master mason and the proprietor of a small stone cutting

shop, never received a formal architectural education. Nevertheless, his contributions to architectural thought and his influence on young architects quite possibly exceeds that of his building designs. An ardent advocate of simplicity and functional forms, Mies' pronouncement that "less is more" is widely quoted in architectural circles. "Architecture," Mies has said, "is the battleground of the spirit" and must be a true symbol of our time.

## **LOVEJOY & SMITH**

**PLUMBING and HEATING  
CONTRACTORS**

8 Green Street

TUxedo 2-3421

**Nashua, N. H.**



## **Plumbing Contractors**

for

**The New**

**NUTT BUILDING**

(stores and offices)

**NASHUA, N. H.**

This commercial building is to replace an original 3-story building that was destroyed by a \$1,500,000 fire July 1959. It contains two stories and an insurance agency. The partition between the stores is designed to be removed; one store is desirable. The framing of the roof is designed for future vertical expansion. The insurance office section will be completely air conditioned, both summer cooling and winter heating. A 10,000 watt auxiliary electrical unit is provided in the heater room for emergency use. Parking facilities will accommodate 130 cars.

A brief outline of materials follows:

Foundations—Existing granite and new reinforced concrete; Exterior Walls—Brick and concrete block backers; Basement Floors—Concrete slab on earth; First Floor—Steel joist and poured concrete slab; Roof—Steel joist and poured concrete slab; Roofing—Vapor barrier insulation, built-up roofing; Windows—Aluminum awning, wood sash on street facade; Flooring—Vinyl tile; Partitions—Masonry block stud; Ceilings—Acoustical; Lighting—Fluorescent; Heating—Stores—forced hot water; Office section—forced warm air, gas fired; Special Items—Intercommunicating telephone system, music system, dictating system with central recording station and dictating stations at desks; Brick painted white on street facade.

# **SEPPALA and AHO**

**CONSTRUCTION COMPANY**

**NEW IPSWICH, NEW HAMPSHIRE**

**Tel. New Ipswich, N. H. 89**

**Ashby, Mass. Dupont 6-5380**

---

**GENERAL CONTRACTORS**

**for**

**The New**

**NUTT BUILDING**

**Nashua, N. H.**



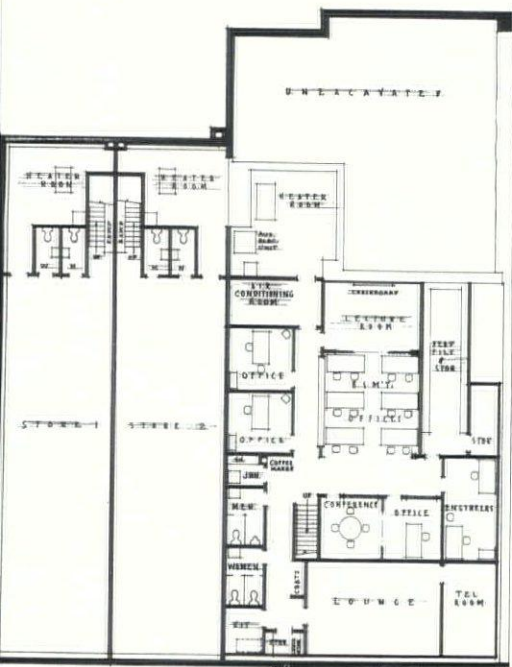
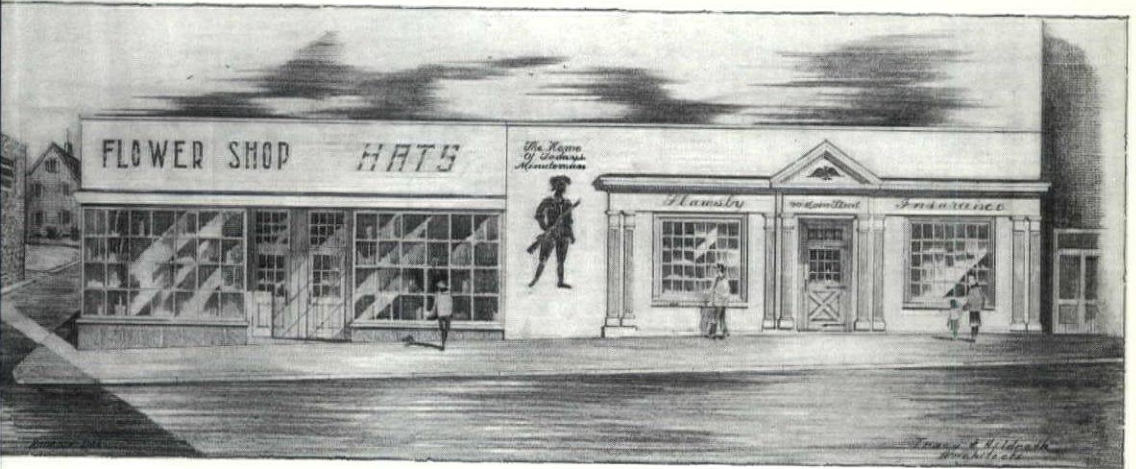
# NUTT BUILDING

for

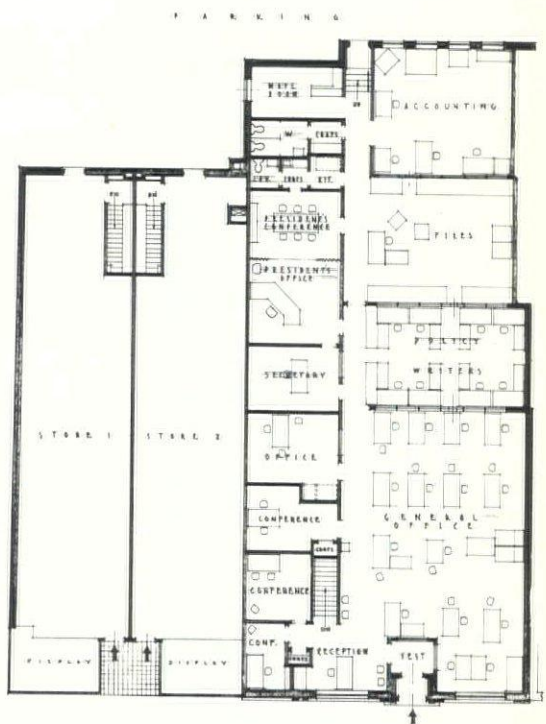
SLAWSBY REAL ESTATE  
COMPANY, NASHUA, N. H.

RACY & HILDRETH, AIA, ARCHITECTS  
Nashua, N. H.

DEPPALA & AHO CONST. CO., GENERAL CONTRACTORS  
New Ipswich, N. H.



BASEMENT PLAN  
22' 0" 10' 0" 10' 0"



FIRST FLOOR PLAN  
22' 0" 10' 0" 10' 0"

## *From the Office of:*

CARTER & WOODRUFF, AIA  
Nashua, N. H.

## *Under Construction:*

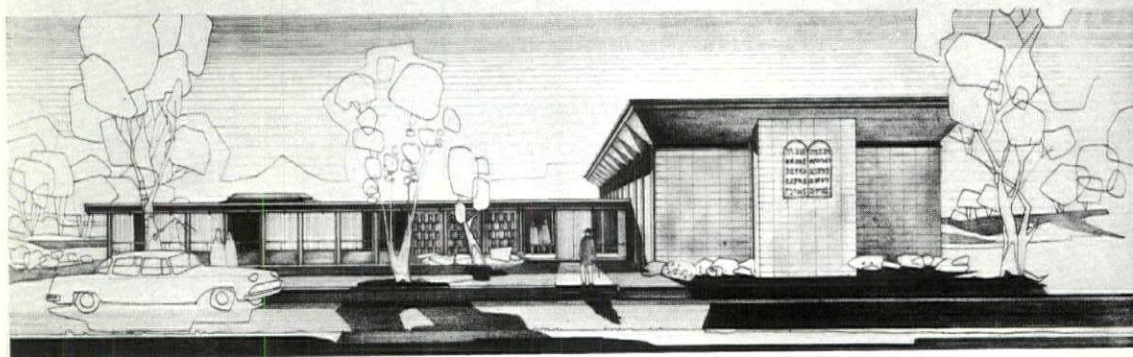
TEMPLE BETH ABRAHAM  
Nashua, New Hampshire

The Temple Beth Abraham was designed as a symbolic, yet efficient, and economical structure providing a focus for both the religious and the social life of the community.

The low wing contains a small chapel, the rabbi's office, four classrooms, a large lounge, and a library. The sanctuary will seat 96 and by opening the folding partition more than 200 can be seated for high holidays. With the partition closed there is a large hall with stage served by a complete kitchen designed for catered meals. There is also a large parking lot behind the building.

The Ten Commandment Tablets, the Memorial Alcove Eternal Light, the Eternal Light over the Ark, and the Menorah are designed and made by George Salo of Sutton, New Hampshire. Lilly Hoffmann of Concord, is designing and weaving the Ark curtains. The reading desk, the Ark, and paneling work is designed by the architects.

Singleton Construction Co., Inc. of Tewksbury, Massachusetts are the general contractors.



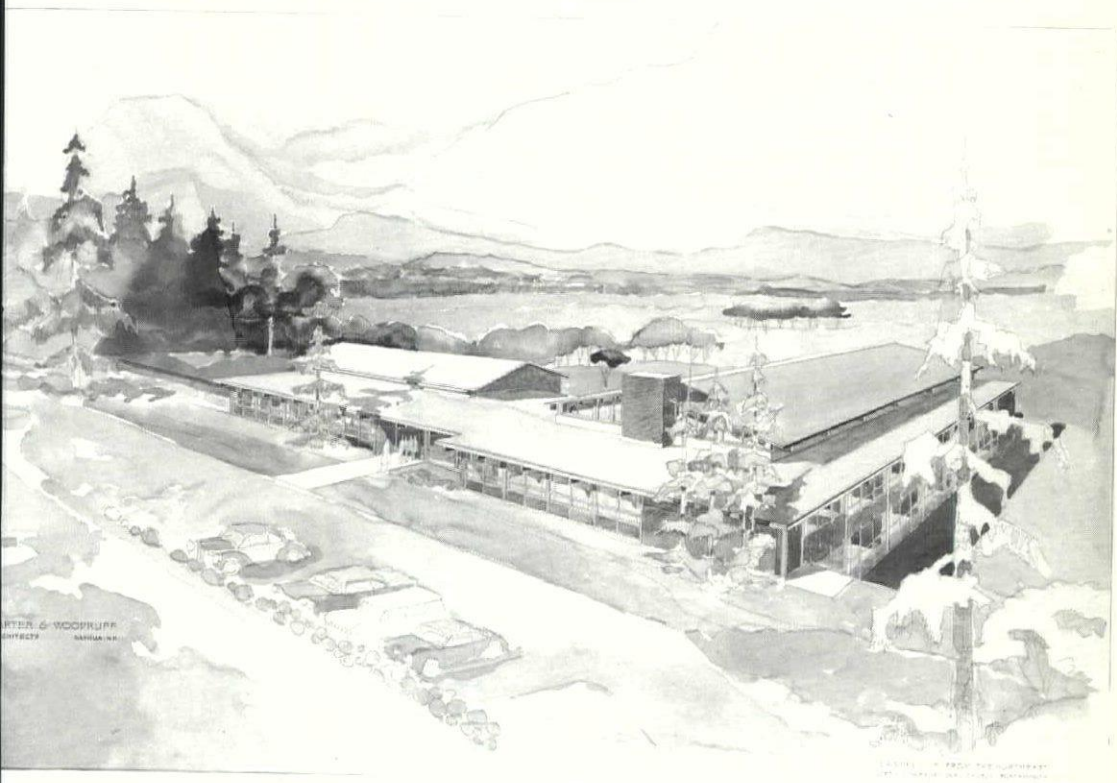


*Proposed:*

**NORTH CONGREGATIONAL CHURCH**  
Portsmouth, New Hampshire

The new parish hall facilities for the North Congregational Church in Portsmouth include the parish offices, a chapel for small weddings, a family room (the church's "living room"), a sizable kitchen, a large fellowship hall of flexible design, and eighteen classrooms. Two of the larger classrooms are separated by a folding partition so that the space can be joined together for Boy Scout use. Even though the building is quite large, as its prime users are children, every effort was made to keep it modest in scale. From the main entrance the building appears only one story in height, the slope in the lot permitting most of the lower floor to have windows completely above grade.

There is provision for a sizable parking area behind the building as well as space to add to the building if future demands require it.



**ROOF BY THERRIEN IS A GOOD ROOF**

3-6193

199 HAYWARD STREET

MANCHESTER, N. H.

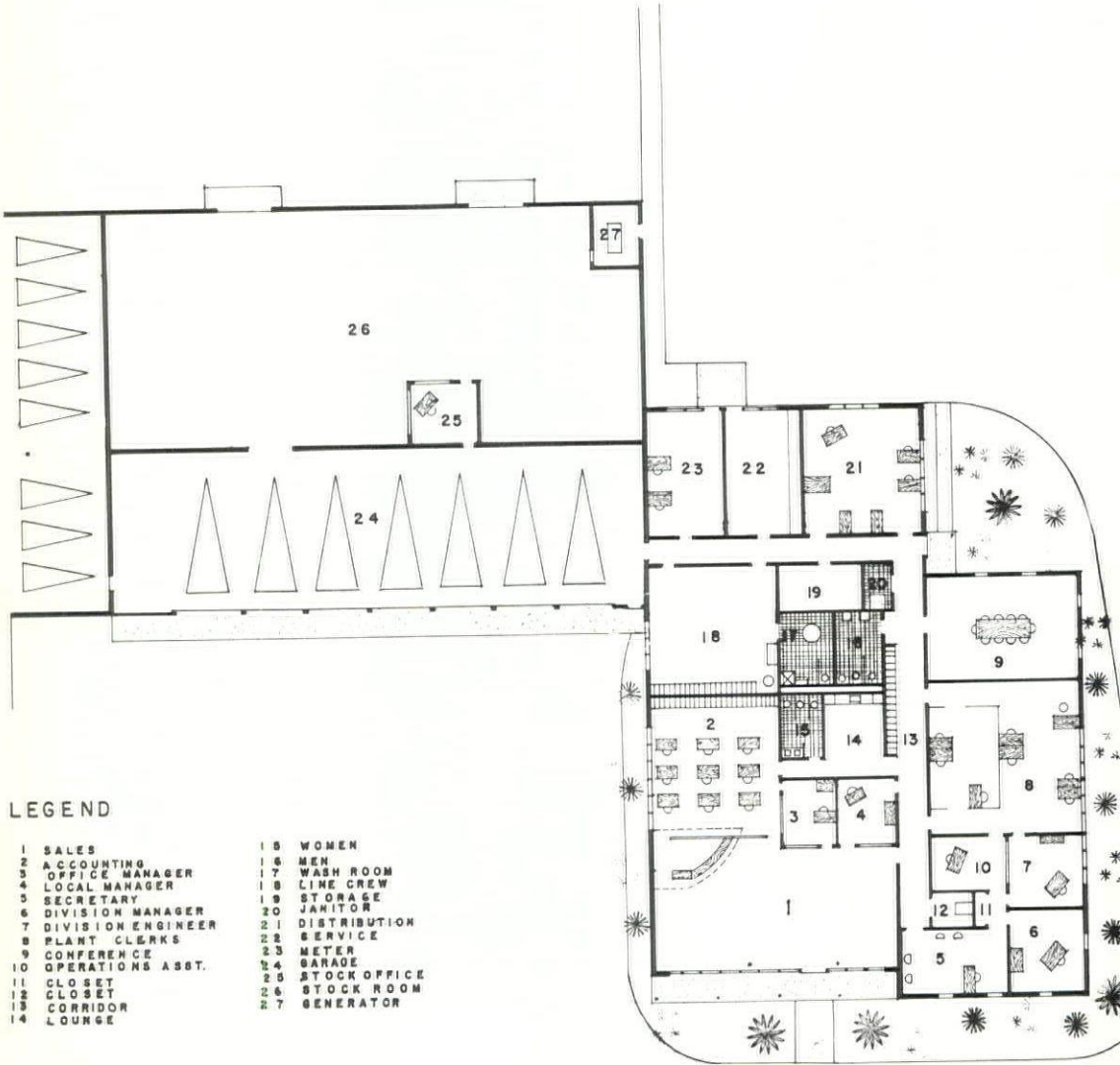
# **PUBLIC SERVICE COMPANY OF N. H.** **NEW PLANT, SOMERSWORTH, N. H.**

**BRADT, LITTLEFIELD & WILLIAMS, AIA, ARCHITECTS**  
**Dover, N. H.**

**LITTLEFIELD BROTHERS, GENERAL CONTRACTORS**  
**North Berwick, Maine**

This building houses sales, accounting, administrative, warehousing, repair and garaging areas. The main entrance wall is veneered with light shades of red brick; with opaque and translucent white Kalwall panels. The rest of the building is concrete block and corrugated siding painted either white or dun.

The corridor walls have a plastic wood-grain dado; the doors from the corridor are several colors to break the monotony. The general color scheme is light green, white and yellow.





## **R. C. Peabody Co., Inc.**

Plumbing • Heating • Sprinkler

### **Contractors**

Sales - Installation - Service  
10 Union St. Dial 3-3578  
Manchester, N. H.

## **Plumbing Contractors**

for the new

**PUBLIC SERVICE COMPANY**

**BUILDING**

**SOMERSWORTH, N. H.**

## **LITTLEFIELD BROS. General Contractors**

Phone: OSborne 6-2674

WELLS ST. NO. BERWICK, ME.

GENERAL CONTRACTORS

for

**PUBLIC SERVICE COMPANY  
OF NEW HAMPSHIRE**

at

**THE NEW PLANT  
SOMERSWORTH, N. H.**

FOR THOSE WHO DEMAND THE FINEST!

## **ELECTRIC HOME HEATING IS BEST BECAUSE . . .**

- Room-by-room control
- Matchless comfort
- Flameless, flueless safety
- More usable space
- Lower maintenance cost
- Quietness of operation
- Efficiency of operation

**ELECTRIC  
HOME  
HEATING**

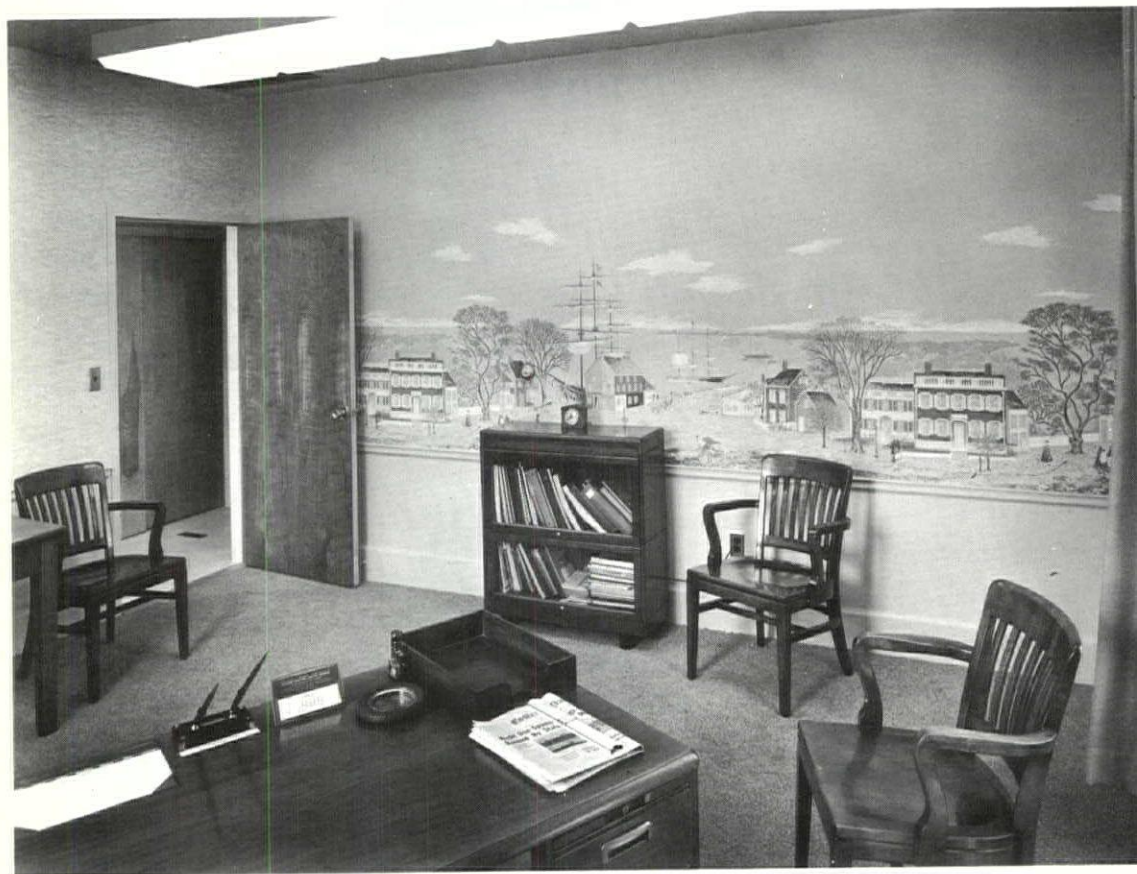


SEE YOUR HEATING CONTRACTOR OR

**PUBLIC SERVICE COMPANY of NEW HAMPSHIRE**



SALES AREA



DISTRICT MANAGER'S OFFICE



## **M. B. Foster Electric Co.**

Telephone GENEVA 6-5606 - 07

69 Albany Street

PORTSMOUTH, N. H.



## **Electrical Contractor**

for

NEW OFFICE and SALES  
BUILDING

of

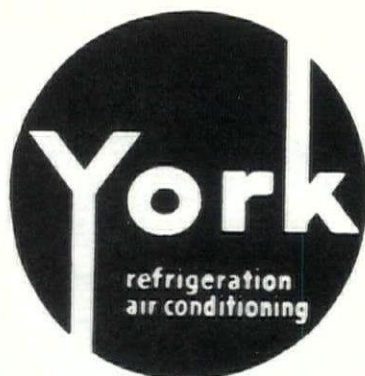
PUBLIC SERVICE COMPANY  
of NEW HAMPSHIRE

at

SOMERSWORTH, N. H.

## **AIR CONDITIONING**

Residential - Commercial - Industrial



## **Air Conditioning**

at the new

PUBLIC SERVICE COMPANY  
BUILDING

SOMERSWORTH, N. H.

Engineering Assistance Available For Your  
Air Conditioning Problems

NEW HAMPSHIRE YORK CO.

720 Union St. Manchester, N. H.

National 3-5421

## *F. A. Gray, Inc.*

32 DANIEL ST., PORTSMOUTH, N. H.

Tel. GENEVA 6-0170

PAINTING and DECORATING  
CONTRACTORS



THE NEW BUILDING

of

PUBLIC SERVICE COMPANY  
of NEW HAMPSHIRE

at

SOMERSWORTH, N. H.

Has Been

PAINTED and DECORATED  
BY US

## **WESTERN** **WATERPROOFING CO., INC.**

82 West Dedham St.

Boston 18, Mass.

Commonwealth 6-4100

SUBCONTRACTORS FOR

## **CALHESS SYSTEM**

of continuous membrane wall flashing  
on

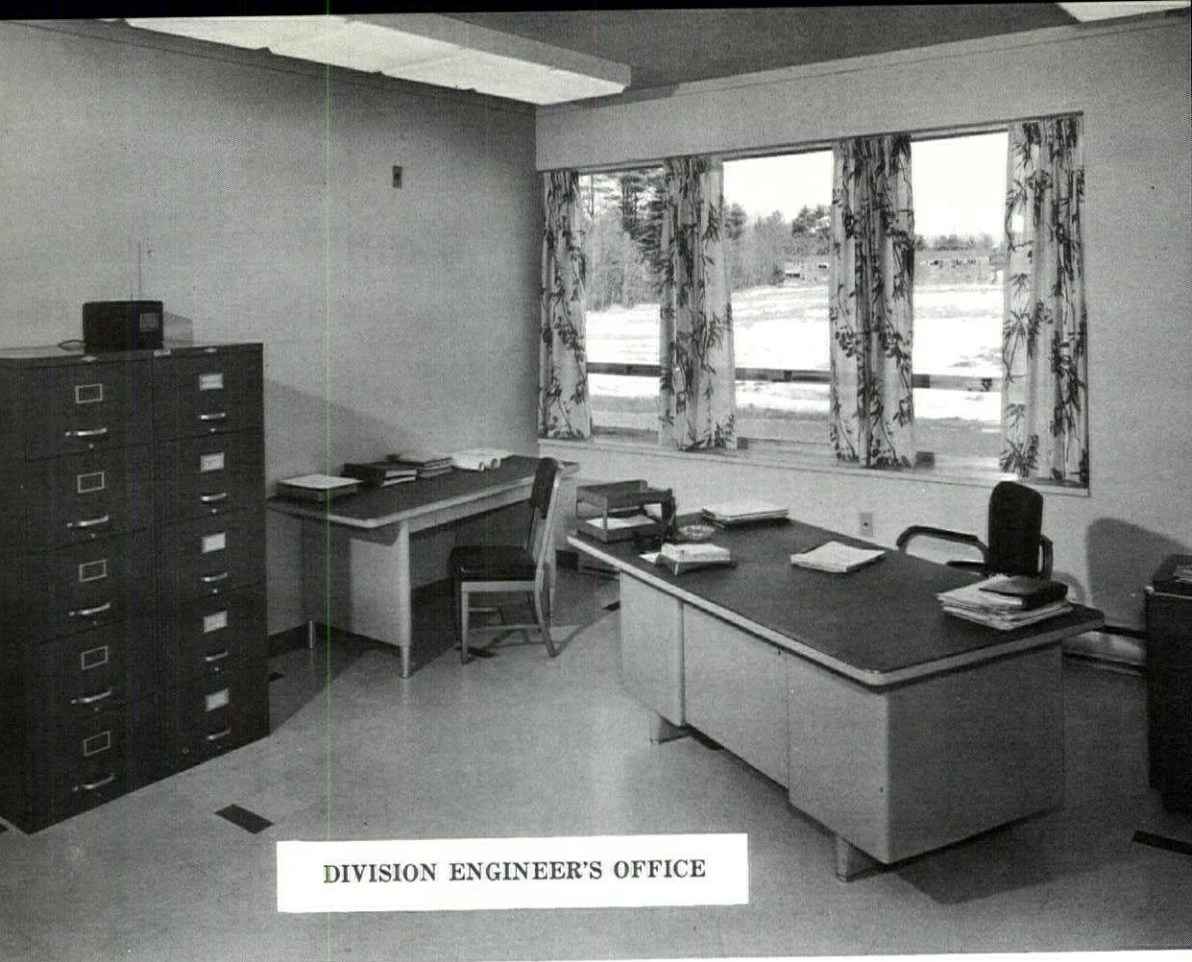
PUBLIC SERVICE COMPANY  
of NEW HAMPSHIRE  
SOMERSWORTH PROJECT

Installation Carries

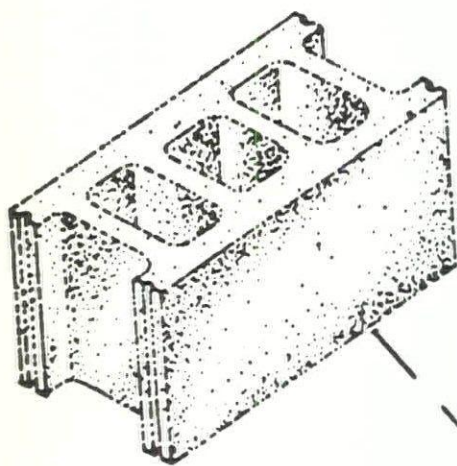
## **Western's**

Ten Year Guarantee

WRITE TO US FOR SPECIFICATION



DIVISION ENGINEER'S OFFICE



# DURACRETE



# COTTAGE HOSPITAL

## WOODSVILLE, N. H.

GORDON R. INGRAM,  
ARCHITECT, Hanover, N. H.

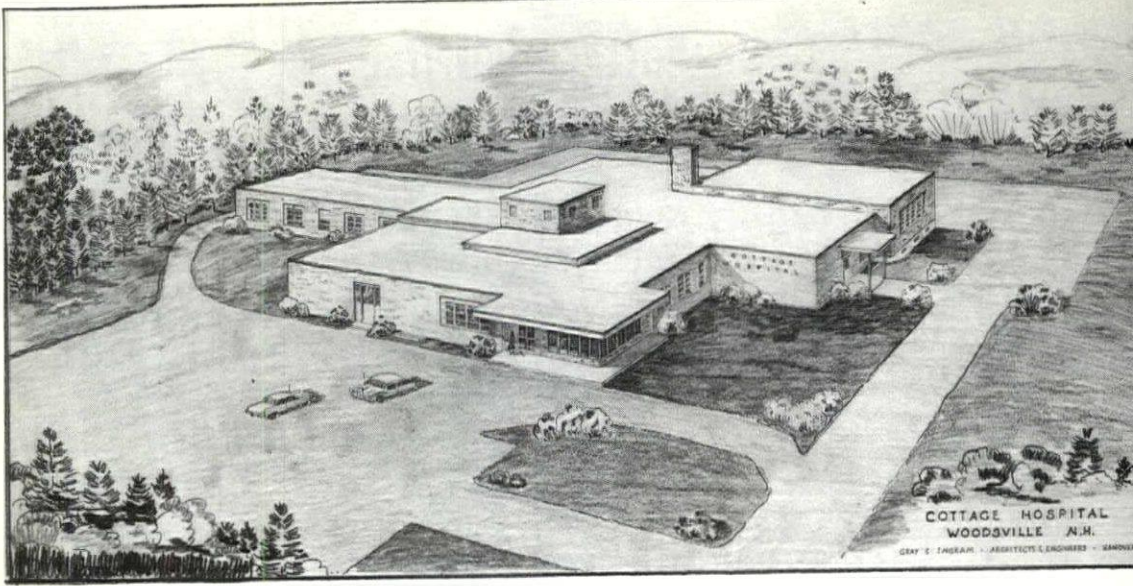
H. P. CUMMINGS CONST. CO.,  
GENERAL CONTRACTORS  
Ware, Mass. — Woodsville, N. H.

Foundations — Reinforced concrete; Exterior Walls — Brick face cinder block pick-up furred and plastered; Frame — general, slab on grade with reinforced pipe trenches, reinforced concrete construction under kitchen and laundry for basement storage. Roof — rafter, bar joists with steel deck; steel siding and concrete slab under fan room and over air conditioned areas; Roof — 20-year bonded tar and gravel roof with all copper flashing metal; Sash — All patients rooms have double-hung double run aluminum windows, all other windows are aluminum projected; Partitions — Interior partitions in general are cinder block painted, all corridors have glazed facing tile dado and walls of kitchen and central supply are glazed tile, showers and tub room are ceramic tile; Doors and Frames — All exterior door frames are kalamein, all interior doors are birch slab in hollow metal frames; Floors — In general all floors are asphalt tile except kitchen which is quarry tile and showers and tub room which are ceramic tile. Storage areas are

painted concrete. Operating and delivery areas have conductive tile. Ceilings — All ceilings are plastered, with acoustical plaster in corridors and other critical areas. Heating and Ventilating — Two pipe steam with #4 oil-fired cast iron boilers, individual controls throughout the building, radiation in general is wall hung convectors with unit ventilators in corridors, emergency operating room and staff lounge. High pressure boiler feeds sterilizing, laundry and some kitchen equipment. Pathological type incinerator included. Mechanical ventilation throughout. Plumbing — Kohler fixtures, diverter valves for bed pan washing on all patients water closets. City Water. Sewage Disposal by septic tank and disposal field. Piped oxygen system throughout. Electric — In general incandescent fixtures, with combination incandescent and fluorescent in recovery and nursery to produce natural daylight. Audio — visual nurses call system. Automatic local fire alarm system. Complete emergency lighting system, with 75 K. W. generator.

ITEM	Cost	% of Total Cost	Cost Per Sq. Ft.	Cost Per Cu. Ft.
GENERAL CONSTRUCTION.....	\$268,538.00	57.6	\$11.04	\$ .79
P. V. and A. C.....	146,779.00	31.5	6.04	.43
ELECTRICAL.....	50,794.00	10.9	2.09	.15
<b>TOTAL.....</b>	<b>\$466,111.00</b>	<b>100</b>	<b>\$19.17</b>	<b>\$1.37</b>

TOTAL AREA: 24,315 sq. ft.—TOTAL VOLUME: 341,002 cu. ft.—  
DATE OF BIDS: April 21, 1959.



### DEPARTMENTS OUT-PATIENT, DIAGNOSTIC & TREATMENT

1. EXAMINATION ROOMS
2. STORAGE
3. EMERGENCY OPERATING
4. -
5. LABORATORY
6. WAITING
7. X-RAY MACHINE
8. - CORRIDOR
9. - DARK ROOM
10. - DRESSING ROOM
11. - OFFICE & VIEWING

### PEDIATRIC

12. PRIVATE OR SEMI-PRIVATE ROOMS
13. WARD ROOM

### NURSING

14. RECOVERY
15. LINEN
16. PRIVATE OR SEMI-PRIVATE ROOMS
17. 4 BED WARDS
18. UTILITY
19. BATH

### DEPARTMENTS CONT.

#### MATERNITY

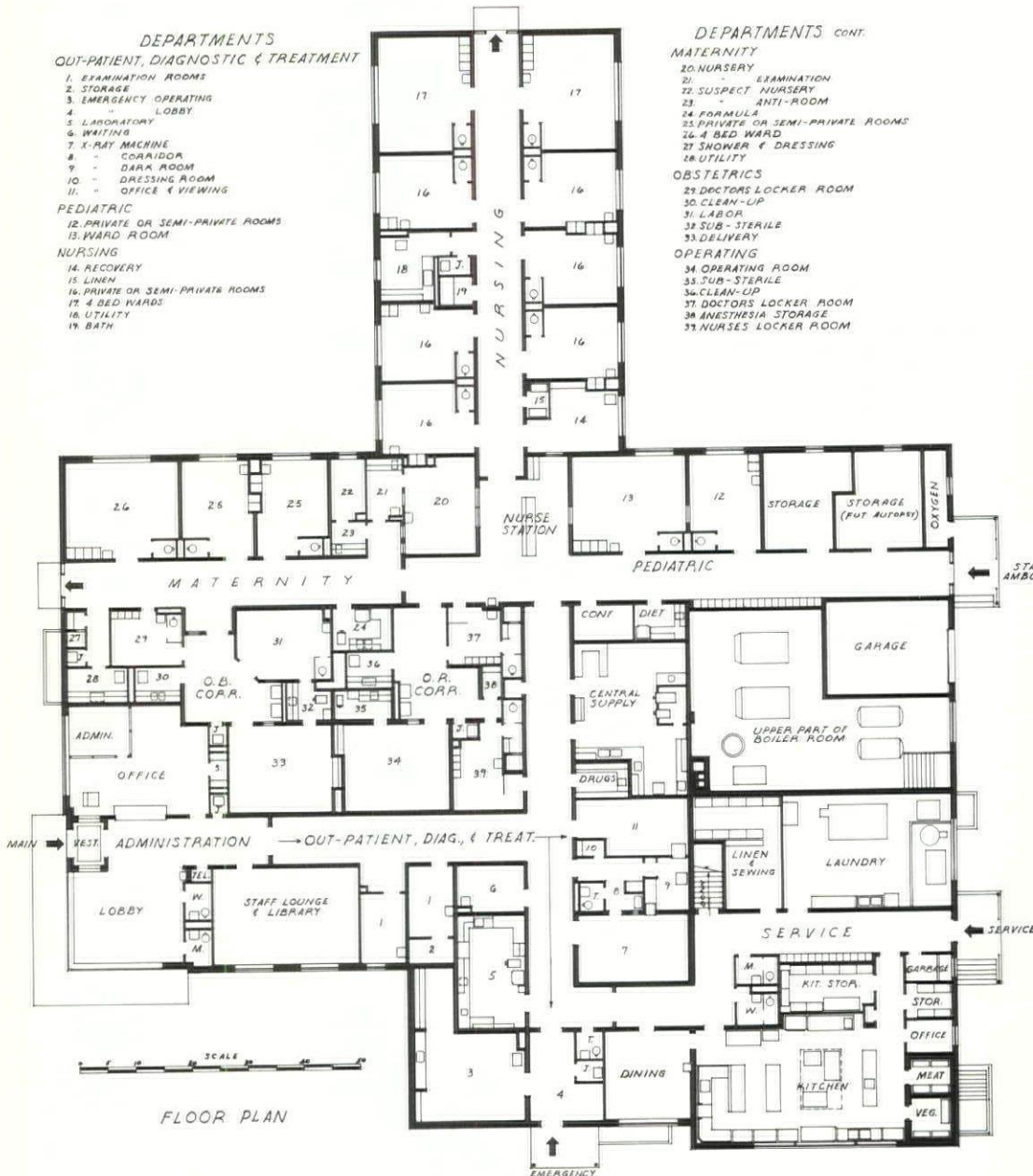
20. NURSERY
21. - EXAMINATION
22. SUSPECT NURSERY
23. - ANTI-ROOM
24. FORMULA
25. PRIVATE OR SEMI-PRIVATE ROOMS
26. 4 BED WARD
27. SHOWER & DRESSING
28. UTILITY

#### OBSTETRICS

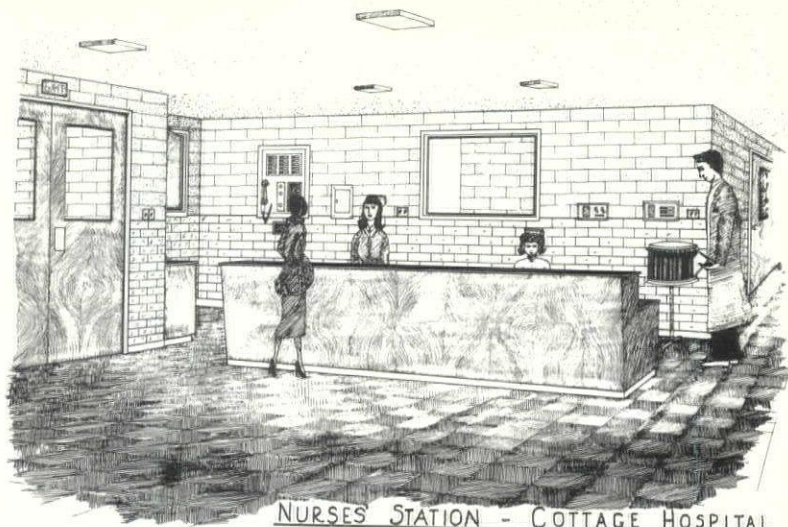
29. DOCTORS LOCKER ROOM
30. CLEAN-UP
31. LABOR
32. SUB-STERILE
33. DELIVERY

#### OPERATING

34. OPERATING ROOM
35. SUB-STERILE
36. CLEAN-UP
37. DOCTORS LOCKER ROOM
38. ANESTHESIA STORAGE
39. NURSES LOCKER ROOM







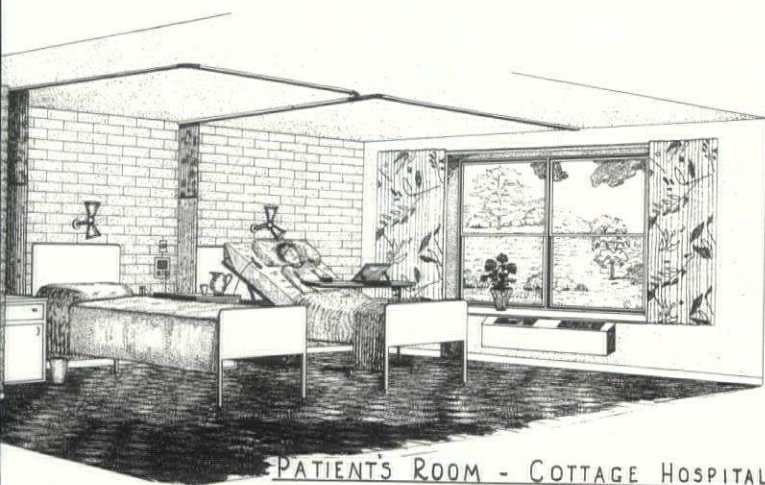
**NURSES STATION - COTTAGE HOSPITAL**  
WOODSVILLE - N. H.

GORDON & INGEGAN  
ARCHITECTS-ENGINEERS  
HAVERHILL - NEW HAMPSHIRE



**LOBBY - COTTAGE HOSPITAL**  
WOODSVILLE - N. H.

GORDON & INGEGAN  
ARCHITECTS-ENGINEERS  
HAVERHILL - NEW HAMPSHIRE



**PATIENTS ROOM - COTTAGE HOSPITAL**  
WOODSVILLE - N. H.

GORDON & INGEGAN  
ARCHITECTS-ENGINEERS  
HAVERHILL - NEW HAMPSHIRE

**Interstate  
Restaurant Equipment  
Company**

607 Elm Street

MANCHESTER, N. H.

Member: Food Service Equipment Industry

DESIGNERS and INSTALLERS

of

**Kitchen Equipment**

at

**COTTAGE HOSPITAL  
Woodsville, N. H.**

**Bloom, South & Gurney**

Incorporated

9 Melcher Street

BOSTON, MASS.

Liberty 2-5300

**CERAMIC TILE**

and

**RESILIENT TILE**

at the new

**COTTAGE HOSPITAL  
Woodsville, N. H.**

**CERAMIC TILE - QUARRY TILE  
RESILIENT TILE FLOORS**

Our salesmen cover all of New England.  
Phone Liberty 2-5300 for a qualified  
representative to assist your planning.

**Fabricated Steel  
Products Co., Inc.**

Agents for

**Ceco Steel Products Corporation**

---

**STEEL JOISTS - ROOF DECK  
STEEL SASH - ALUMINUM SASH  
REINFORCING MESH  
DUR-O-WAL**

---

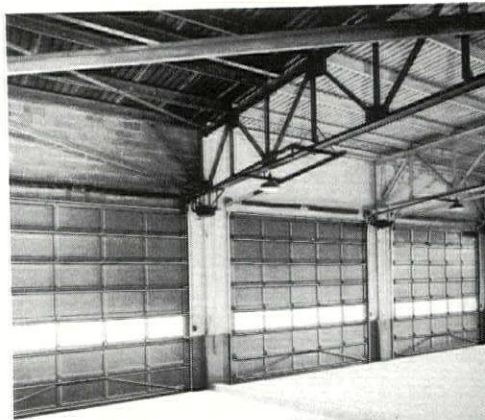
Warehouse and Office

115 Old Colony Avenue

Wollaston 70, Mass.

Mayflower 9-5218

**THE  
FINEST GARAGE DOOR BU  
OVERHEAD DOOR  
TRADE MARK**



**Residential - Commercial - Indu  
Sales - Installation - Service**

**OVERHEAD DOOR PRODUC  
CORPORATION**

Nashua, N. H.  
Manchester, N. H.

TUxedo 2-  
NA 2-



**FRANK T. CODY CO.**  
**Electrical Contractors**

HANOVER, N. H.

Phone Hanover 720

WE HAVE DONE

The Finest of  
ELECTRICAL INSTALLATIONS  
at

THE NEW

**COTTAGE HOSPITAL**  
**Woodsville, N. H.**

**Plumbing - Heating**  
**Ventilating**

At

THE NEW

**COTTAGE HOSPITAL**  
**Woodsville, N. H.**

By

**Fitzmorris Plumbing**  
**and Heating, Inc.**

WHITEFIELD, N. H.

Tel. 7-2503

**H. P. CUMMINGS CONSTRUCTION CO.**

**GENERAL CONTRACTORS**

**WARE, MASS.**

**Winthrop, Maine**

**Woodsville, N. H.**

**Builders of**

**THE NEW COTTAGE HOSPITAL**  
**Woodsville, N. H.**

## **JOHN J. GAFFNY and SONS**

853 Essex Street  
LAWRENCE, MASS.  
Tel. MURdock 2-0098

**PLUMBING and HEATING  
CONTRACTORS**

•

### **Plumbing Contractor**

for

**TATELMAN WAREHOUSE**  
LAWRENCE, MASS.

## **DAVID W. DAVISON**



DANIEL WEBSTER HIGHWAY, NORTH

Tel. NA 4-4041

MANCHESTER, NEW HAMPSHIRE

### **General Contractor**

For

**GREENFIELD CARPET COMPANY**  
INCORPORATED  
BUILDING ADDITION

PAGE ST.

MANCHESTER, N. H.

and

**TATELMAN WAREHOUSE**  
LAWRENCE, MASS.

## **ERIC ANDERSON**

482 Reservoir Ave. Dial NA 5-5640  
MANCHESTER, N. H.

### **Painting Contractor**

for

**GREENFIELD CARPET COMPANY**  
MANCHESTER, N. H.  
and  
**TATELMAN WAREHOUSE**  
LAWRENCE, MASS.

## **Celotex Acoustical Products**

### **Office Partitions**

### **Insulrock Roof Deck**

by

## **Pitcher & Company, Inc.**

67 Rogers St., Cambridge, Mass.  
Goffstown, N. H. HYacinth 7-23

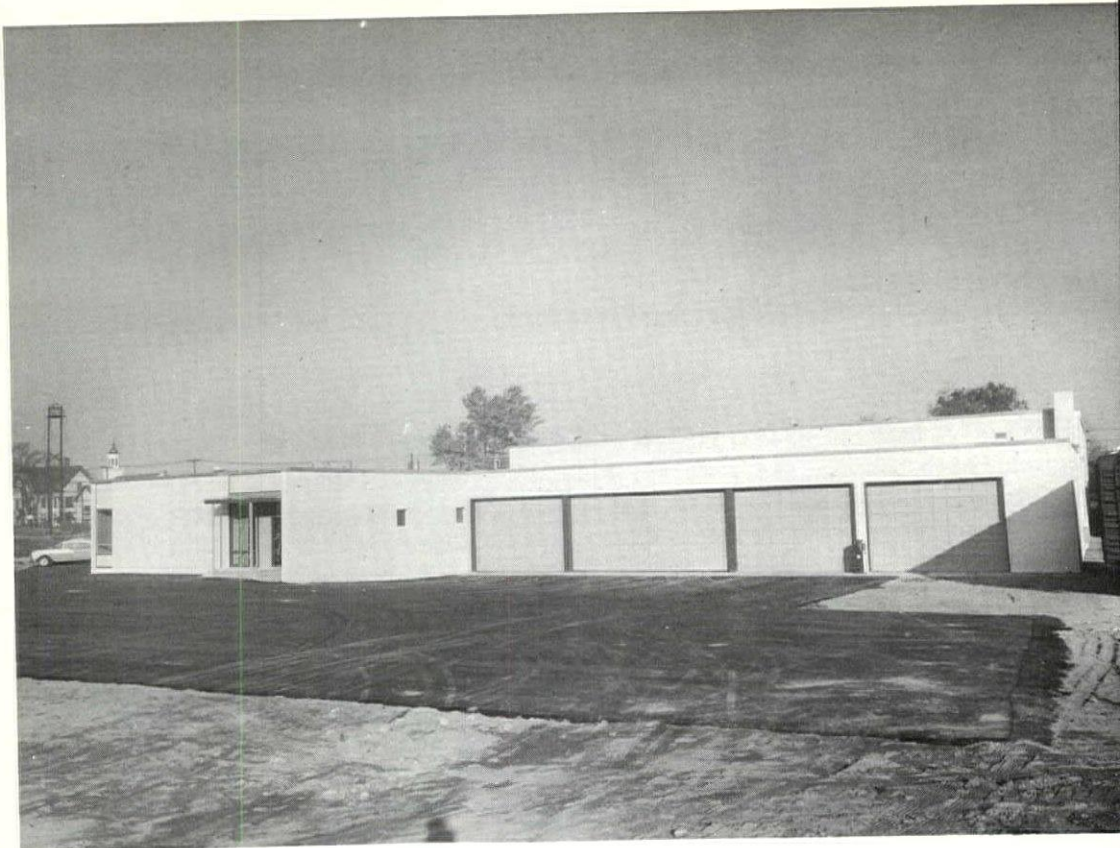


## Lawrence, Massachusetts

DAVID W. DAVISON, GENERAL CONTRACTOR  
Manchester, N. H.

The office section has, in addition to the usual facilities, a large "hospitality" room that can be used by outside groups for meetings. This room has its own outside entrance, lobby, kitchen, bar, and toilet facilities; it also serves as the sales conference room for the distributing company.

[illegible]



WAREHOUSE LOADING AREA

TATLEMAN WAREHOUSE

ENTRANCE AREA







OFFICE AREAS

PUBLIC SERVICE COMPANY, SOMERSWORTH, NEW HAMPSHIRE





## WHAT IS YOUR QUESTION ?

Q. Our office doesn't seem to have any established policy regarding promotions. Is this common in Architecture?

A. Yes. It is known as the Law of Tooth-Fang and Bring-in-Some-Work.

Q. In the utter chaos that exists in manufacturers' claims for similar products—what do you think is the answer? The C. S. I.? The AIA's Building Products Registry? Testing Laboratories? Or payola?

A. The AIA's Building Products Registry. Have you enrolled?

Q. Is a "slush fund" to promote legislation favorable to architects unethical?

A. Not unless it is used to bribe or buy votes.

Q. Our firm name—McCrackin, Miller, Hiett, Hockett and Dronberger is a tongue twister for any switchboard operator. What alternative do you recommend?

A. "Architects."

Q. We saw an ad recently "FOR SALE—Large Drafting Table with Drawers. Also Spirit Duplicator" but when we called the phone didn't answer. Can you put us in touch with the right party?

A. For which item?

Q. Do you think it is ever wise to look the client straight in the eye and admit a mistake? I can look one straight in the eye but that's as far as I get . . .

A. See your oculist.

Q. What does it mean when Architectural Critic Cranston Jones calls an Ed Stone building "rich Madeira" and Mies van der Rohe's style "a dry martini"?

A. He is over-coffee-ed.

Q. My feeling about Frank Lloyd Wright's death is that we're now all a little freer and can get away with a few things. But then somehow . . .

A. Yours is a natural reaction. The binding spirit of a great genius is, above all, fatherly.

Q. Why is Architecture called the "Mother Art" when earlier pre-historic paintings have been found in many caves?

A. Who made the caves?

Q. I understand that in Georgia a church invited four architects to compete for their building, each to furnish two schemes—one modern and one traditional. What compensation was involved?

A. An honorarium that, if stretched, might have covered the cost of one day's real study, says the AIA Georgia Chapter, in condemning the action.

Q. Did Frank Lloyd Wright ever say anything good about anything or anybody?

A. About Buckminster Fuller, he once said, "Bucky has more integrity than any man I have ever known."

Q. What's eating George V. Russell, FAIA, of California, when he says about Architects, "We make noises like a profession and behave like church mice?"

A. This is Mr. Russell's colorful way of describing apathy.

Q. The two draftsmen in my office have an annoying habit of hanging their coats over the triangles. What should be done?

A. Try getting some coat hangers first and if this doesn't work, offer raises.

Q. As practitioners in a medium-sized town we have offices on the same floor of the National Bank Building as our only local competitors. They have a sign on their glass door, "Do It Yourself—Then Call Us." This sometimes gives our clients ideas. Help.

A. See your rental agent.

Q. Why do Savings & Loan Associations refuse F. H. A. mortgages but welcome and advertise the Government's \$10,000 insurance of their depositors?

A. What is sauce for the goose is not always profitable when applied to the gander.

Q. What is a Ghost Thinker?

A. A Ghost Thinker tells the Ghost Writer what to say.

Q. In our office the Boss makes us cut open the envelopes and use them for scratch paper and office notes. Will you please tell the cement companies to call on us and leave some scratch pads?

A. Certainly.

Q. When the Colonial Fathers laid out Pittsburgh's "Point," do you reckon they ever dreamed it would one day be just a freeway interchange?

A. No. George Washington had better teeth but he was in good health generally and never had nightmares.

Q. I see where at Lehigh University this year they are going to try to teach the Mechanical Engineers "creative thinking"? Do you believe they will succeed?

A. Possibly. Look at Rube Goldberg.

Q. I went to the 25th Birthday dinner for the F. H. A. in Pittsburgh and resented paying \$12.50 for the place. Wasn't F. H. A. originally set up for the poor?

A. Get with it, Man. Next question.

Q. Is it true that out on the West Coast they are putting advertising messages in Chinese fortune cookies now?

A. Yes. But a Senate Investigative Committee is already at work.

Q. Why do some renderings look like cartoons?

A. A funny question deserves a funny answer. Ha.

Q. Is it true that American cities have become places only for the very poor or the very rich or the slightly odd?

A. Yes, according to William H. Whyte Jr.'s *The Exploding Metropolis*. (I number ourselves among the latter incidentally).





CALIFORNIA



. . . the finest all-purpose interior paint for plaster, dry wall and masonry . . . and RAY-O-GLOS for semi-glos latex enamel trim.

MANUFACTURED IN  
NEW ENGLAND

California Products Corporation  
69 Waverly Street, Cambridge 39, Mass.  
KI 7-5300

**PALMER**  
**Plumbing Supply Co.**

Wholesalers  
Plumbing - Heating - Mill Supplies

Distributors of  
MIL-McLAIN BOILERS  
KOHLER ENAMELWARE  
PETRO OIL BURNERS

ROCHESTER, LACONIA, N. H.  
PORTLAND, ME.

"Competent Engineering Service"

S  
T  
E  
E  
L

*Lyons*

IRON WORKS, Inc.  
MANCHESTER, NEW HAMPSHIRE

NEW HAMPSHIRE ARCHITECT

P. O. Box 291, Concord, N. H.

Library-American Inst. of Architects  
1735 New York Ave. N.W.  
Washington 6, D.C.

Sec. 34.66 P. L. & R.

U. S. POSTAGE

PAID

Concord, N. H.

PERMIT NO. 297

Form 3547 Requested

Call **DENSMORE** For Fast Delivery . . .



of  
**CLAY PRODUCTS**  
and  
**MASONRY SUPPLIES**



Face Brick	—	Glazed Facing Tile
Sewer Pipe	—	Flue Lining
Fire Brick	—	Water Proofing
Scaffolding	—	Metal Specialties

**DENSMORE BRICK COMPANY**

Manufacturers and Distributors • Lebanon, New Hampshire

**K & E**

**QUALITY  
PRODUCTS  
and  
PRECISION  
INSTRUMENTS**

- **MICRO-MASTER®** — an amazing new process providing clear, distortion-free "second originals". Tiny 4 x 6" negatives can be projected up to original size and more. Save storage space, mailing costs.
- **HERCULENE®** Drafting Film — the newest, most durable drawing medium. Ideal surface "take" for pencil, ink, or typewriter. Balanced transparency. Lies flat. Resists rough handling. Matted one or both sides. In Rolls or Sheets. Find out Today!
- **K & E INSTRUMENTS** — select from our complete line . . . for every engineering and drafting use.

**Choice  
of  
Engineers  
for OVER  
60  
YEARS**

- Expert Blueprint, Photostating and Plan Reproduction Service
- Engineering, Surveying and Drafting Equipment
- Professional Repair Service

**B. L. MAKEPEACE Inc.**  
1266 BOYLSTON ST. BOSTON, MASS.

Call COpley 7-2700