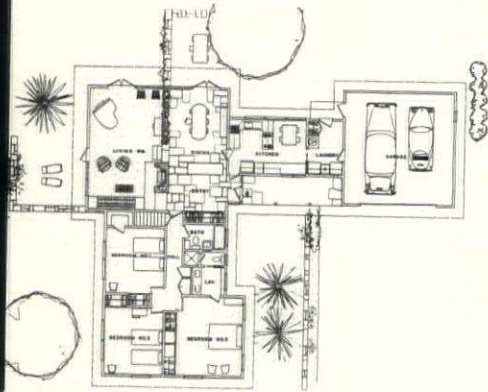


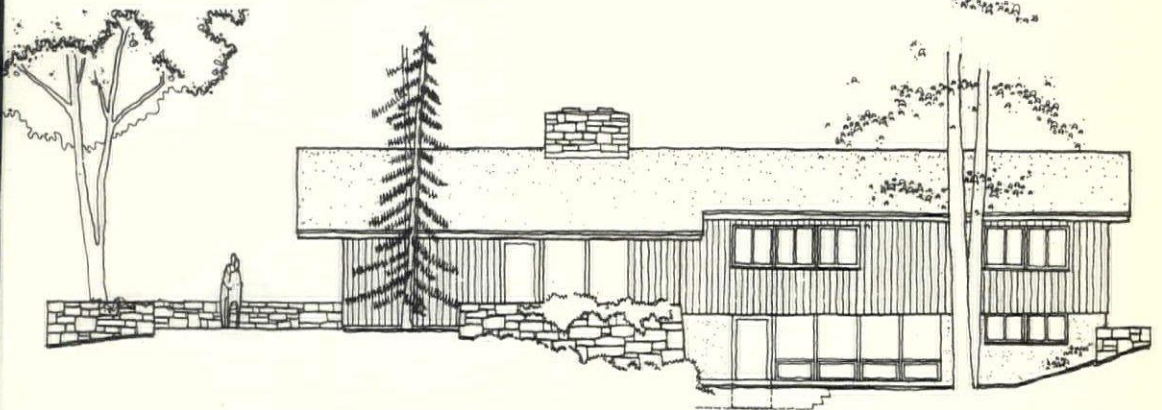
New Hampshire
ARCHITECT



AMERICAN INSTITUTE
OF
ARCHITECTS

JUL 20 1959

LIBRARY



OFFICIAL PUBLICATION

New Hampshire Chapter of the American Institute of Architects

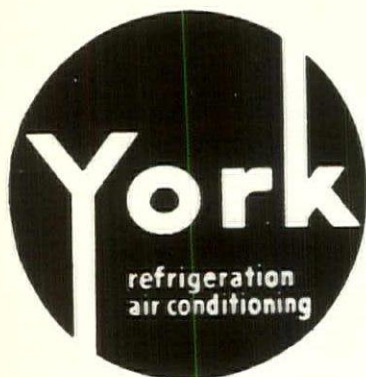


JULY
1959

25c A COPY
\$3.00 A YEAR

AIR CONDITIONING

Residential - Commercial - Industrial



Year-Round or Summer

Engineering Assistance Available For Your
Air Conditioning Problems

NEW HAMPSHIRE YORK CO.

720 Union St. Manchester, N. H.

NEW ENGLAND INSULATION CO.

ACOUSTICAL DIVISION

Distributors and Applicators

Maine • New Hampshire • Vermont



OWENS - CORNING FIBERGLAS

NATIONAL GYPSUM COMPANY

REYNO COUSTIC — EASTERN SYSTEMS



219 Anderson St., Portland, Me.

Phone SPruce 2-7481

Arthur E. Swanson, Manager



Specify

YORK HEAT

for greater
CUSTOMER SATISFACTION

Distributed in New England
by

HEAT INCORPORATED

Pine Street Extension,

Nashua, N. H.

TUxedo 3-5021

Call or write for Engineering Assistance

LET US HELP YOU TO HELP
YOURSELF WHEN IN NEED OF

SCAFFOLDING

Lease

Sale

Sectional Steel Scaffolding

Putlogs — Ledger Clamps

Plasterers' Jacks

Sidewall Steel Scaffolding

BUY DIRECT FROM FACTORY

And Save Agent's Commission

MADE TO FIT ANY TYPE OF SCAFFOLD

**Scaffolding Specialty
Co., Inc..**

35 Lexington Avenue

WEST SOMERVILLE, MASS.

Telephone—SOMerset 6-4050



OFFICERS

President

JOHN R. HOLBROOK, Keene

Vice-President

EDGAR H. HUNTER, Hanover

Secretary

ANDREW C. ISAAK, Manchester

Treasurer

W. BROOKE FLECK, Hanover

DIRECTORS

JOSEPH F. LAMPRON, Manchester

WALTER T. WILLIAMS, Rochester

ROBERT L. SNODGRASS, Nashua

Regional Council Delegates

NICHOLAS ISAAK (ex-officio) 1 yr.

JOHN D. BETLEY 1 yr.

ALEXANDER J. MAJESKI 1 yr.

NORMAN P. RANDLETT 2 yrs.

JOHN R. HOLBROOK 3 yrs.

Member of Regional

Judiciary Committee

RICHARD KOEHLER

Member of Sub-Committee on Building Products Registration

NORMAN P. RANDLETT

EDITOR

ALEXANDER MAJESKI, R. A.
Palomino Lane
Manchester, N. H.

PUBLISHER

LAWRENCE J. MOYNIHAN
P. O. Box 291
Concord, N. H.
Tel. CA 5-3297

New Hampshire ARCHITECT

VOL. 10

JULY, 1959

NO. 12

TABLE OF CONTENTS

President's Message	4
Corriveau-Routhier Styrofoam Distributor	6
AIA and AGC Name Joint Committee	8
Inaugurate New System for Projects	8
Project by Carter and Woodruff, AIA	11-12-13

COVER PICTURE

Home of Mr. and Mrs. Sherman Seeche, North
Andover, Mass.

— Photos by Gerda Peterich
R.F.D. #2, Concord

New Hampshire Architect is published monthly,
under the direction of the president and board of
directors of the New Hampshire Chapter,
American Institute of Architects, to promote the
objectives and public relations of the chapter.
Advertising rates furnished upon request.

The President's Message

The New Hampshire Chapter, AIA, has for many years published the works of its chapter members in our magazine, New Hampshire Architect.

Starting with the August issue, an effort to improve the magazine is being made. The tremendous interest shown in past years with our School issue has led the publishers to believe that a similar method of showing the work of New Hampshire Architects in specific categories will improve our magazine.

We all know that the pressure of office work makes it difficult to prepare material for presentation, and many times our publisher has found it difficult to find proper material for publication.

In the future, material can be prepared well in advance, and kept on file ready for the proper issue.

The success of this change will, as always, depend upon the cooperation of our membership in submitting work from their offices for as many types of building as possible.

John D. Holbrook

A ROOF BY THERRIEN IS A GOOD ROOF

TEL. 3-6193

199 HAYWARD STREET

MANCHESTER, N. H.



NEW HAMPSHIRE *Supply Company*



Wholesalers and Jobbers

40-48 COMMERCIAL ST.

149 PLEASANT ST.

MANCHESTER, N. H.

CLAREMONT, N. H.

TEL. 5-7881

TEL. 2030

PLUMBING & HEATING
SUPPLIES
INDUSTRIAL SUPPLIES
POWER TOOLS
PAINT & HARDWARE

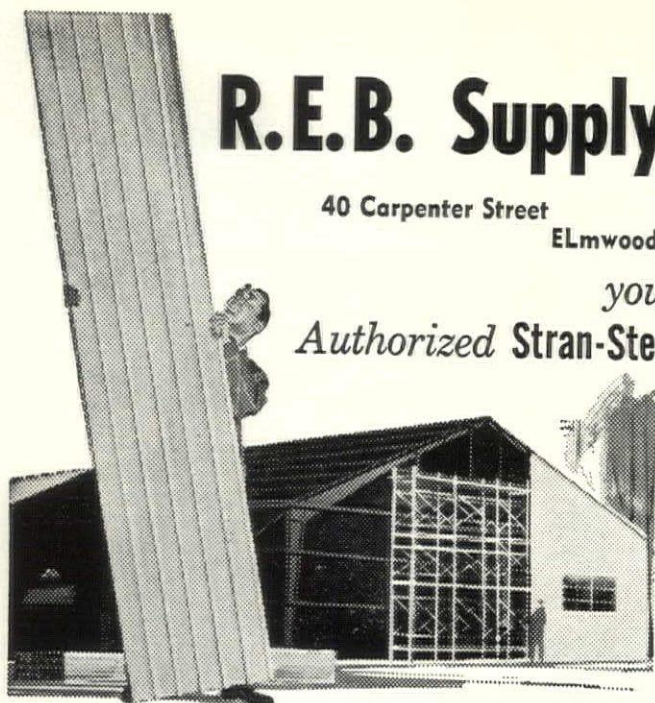
R.E.B. Supply Co., Inc.

40 Carpenter Street

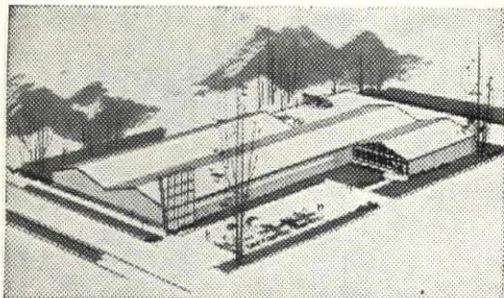
ELmwood 2-1774

Keene, N. H.

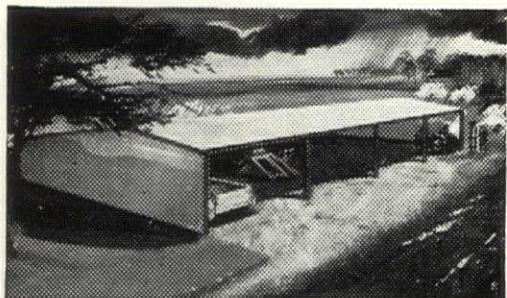
your
Authorized Stran-Steel Building Dealer



Organized to Plan and Erect Your Next Building



RIGID FRAME BUILDINGS—Ideal for industrial manufacturing plants, warehousing, retail stores, truck terminals and municipal and farm service use.



STRAN-MASTER BUILDINGS—Multi-purpose low cost all steel buildings for farm and industry, featuring steel pole construction.

Now, with the appointment of this new Stran-Steel dealer here in your area, America's finest looking steel buildings are yours for the asking.

Your new Stran-Steel dealer has been carefully selected to give you the best possible service in all phases of building, from planning and designing right through to construction. And only from your Stran-Steel dealer can you get economical steel buildings with the luxurious look of **Stran-Satin** metal wall, exclusive with Stran-Steel buildings.

Your local Stran-Steel dealer is backed by years of research and development that have produced over 100,000 Stran-Steel job-engineered steel buildings. You can put your confidence in him.



STRAN-STEEL CORPORATION

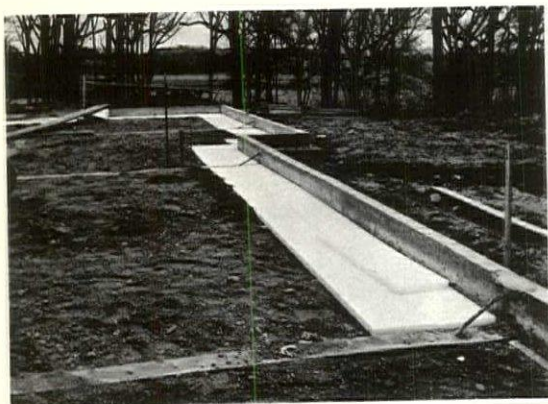
Detroit 29, Michigan • Division of

NATIONAL STEEL CORPORATION

CORRIVEAU-ROUTHIER COMPANY STYROFOAM DISTRIBUTOR FOR N. H.

Styrofoam, an expanded polystyrene, is the unique material you perhaps first became acquainted with a few years ago in selecting Christmas gifts and tree decorations. All manner of novelties for decorations came onto the market, then florists, window dressers, and a multitude of other trades and businesses found Styrofoam adaptable to their packaging and display needs.

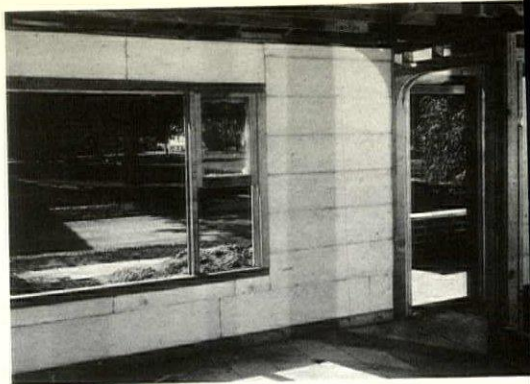
Most recently Styrofoam has been accepted in the mechanical field for its wonderful insulating qualities. Cold storage and freezer spaces, warehouses, lockers, and industrial plants, are now among the users.



Styrofoam around the perimeter of a home.

A growing field of use for Styrofoam is perimeter insulation. It is easy to install around the footings or under the slab of a building, and is such an effective insulation that it seems tailor-made for the job. Styrofoam is strong enough to form a direct support for the concrete if the builder wishes to extend the insulation inward. In masonry construction, Styrofoam is easily applied to the inside surface of concrete, cinder block, etc., and forms a fine base for plastering.

Styrofoam's structural strength, plus the durable bond it forms with plaster, reduces plaster cracking to a minimum. As in other uses, Styrofoam is competitive cost-wise.



Styrofoam as an insulation, water vapor barrier and plaster base in masonry construction.

In announcing their appointment as distributors for Styrofoam for the State of New Hampshire, Corriveau-Routhier Company stressed their ability to make prompt delivery with adequate stock always on hand.

For the asking, Corriveau-Routhier Company has a free handbook ready to be mailed to you. This handbook is published by the manufacturer and presents the technical details of Styrofoam.

RUST-OLEUM



***Stops
Rust!!!***

SPECIALLY PROCESSED FISH OIL VEHICLE that penetrates through rust to bare metal.

POPULAR PASTELS

Color harmony for plant interiors

LONG OIL TYPE COATINGS

For exterior applications and many other finishes for the requirements of architect and contractor through

CLARK & STEARNS, INC.

New Hampshire's Leading Paint Distributor

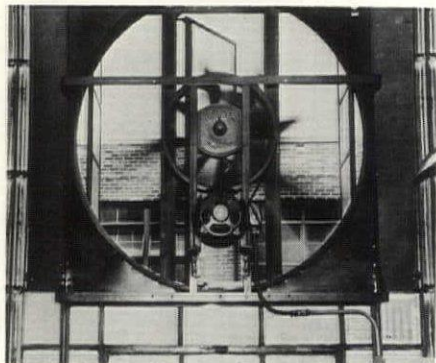
South Commercial Street Manchester NA 3-1

REGARDLESS OF THE SEASON, THESE UNITS SHOULD BE
CONSIDERED IN YOUR BUILDING PLANS



COMMERCIAL
INDUSTRIAL

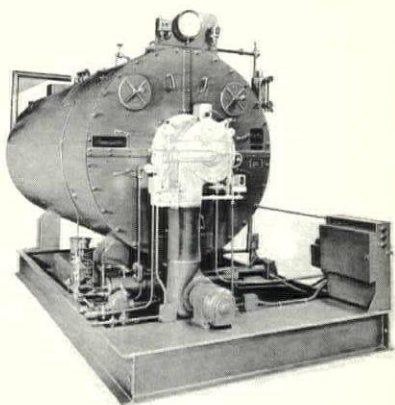
VENTILATING and COOLING FANS



Every commercial and industrial building has its own individual cooling and ventilating needs. It takes a trained man to analyze these needs and meet them in a practical, economical manner. Even in buildings of almost identical size and design, differences in windows and doors, partitions, workroom operations, heat-producing equipment and many other factors must be considered.

Coolair Representatives are factory-trained to plan Breeze-Conditioning systems correctly.

Powermaster[®] PACKAGED AUTOMATIC BOILERS



for all steam processing and
comfort heating needs in . . .

Apartment Buildings	Greenhouses
Apparel	Hospitals
Bakeries	Hotels
Beverages	Laundries
Camps	Leather
Canning	Machinery
Churches	Meat
Colleges	Paper Mills
Concrete Blocks	Petroleum
Confectioners	Public Buildings
Dairies	Quarries
Dry Cleaning	Rubber
Feed Pelleting	Schools
Fertilizers	Textiles
Fisheries	Tire Recapping
Furniture	Warehouses
Garages	Wood Products

THROUGH

CRAIG SUPPLY CO., INC.

99 MADBURY ROAD - DURHAM, N. H.

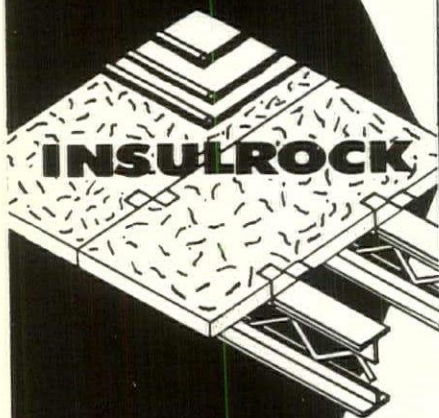
PITCHER & COMPANY

INCORPORATED

ENGINEERS —
CONTRACTORS

*a
quarter century of
dependable service*

CELOTEX
ACOUSTICAL
PRODUCTS



INSULROCK

BURGESS
MANNING
RADIANT
HEATED
CEILINGS

•
MOVABLE
OFFICE
PARTITIONS

•
ASHLAR DRIVE,
GOFFSTOWN, N. H.
TEL. HY 7-2376

CAMBRIDGE, MASS.
WORCESTER, MASS.
WINTHROP, MAINE
PROVIDENCE, R. I.

ARCHITECTS AND CONTRACTORS NAME NEW JOINT COMMITTEE

New joint committees have been named by New Hampshire Chapter, AIA and New Hampshire-Vermont Chapter, AGC. These committees will work jointly in connection with mutual problems of the architects and contractors.

Before relinquishing his office as president of the Chapter, Nicholas Isaak named the following architects to serve on the committee: John D. Betley, Manchester; W. Brooke Fleck, Hanover; Stephen I. Tracy, Nashua; Nicholas Isaak, Manchester; Walter T. Williams, Rochester.

Representing the AGC on the committee are Robert C. Davison, Manchester; Guy MacMillan, Keene; Robert Foster, Concord; Dale Nelson, Hanover; W. M. Adams, Burlington, Vt.

Members of the committee will be notified of the dates of future meetings.

INAUGURATE NEW SYSTEM FOR PUBLISHING PROJECTS

Commencing with the August 1951 issue, New Hampshire Architect is to inaugurate a new system of publishing projects by members of New Hampshire Chapter, AIA.

This system is designed to make it easier for the members to anticipate work in advance, the months of the year they are interested in publishing their work.

All members of the chapter have received the schedule for the coming twelve months.

Incidentally, the new system goes in effect on the tenth birthday of New Hampshire Architect.

1ST STEP TO SOUND, SUCCESSFUL BUILDING

CONSULT AN ARCHITECT



MORE THAN SALES ALONE . . .

*Trained Gustin sales engineers
"get to the point"*

GUSTIN representatives are selected for engineering ability, enabling them to effectively assist you in quality construction, using GUSTIN engineered products. They call on you with one major purpose — "getting to the point" with the information you need to make sound decisions.

■ Write for product literature, and brochure entitled "More Than Sales Alone."

The GUSTIN CORP.

95B CROSS ST., WINCHESTER, MASS.

Representing MACOMBER open web steel framing, and other fine engineered products for the construction industry.

REFRIGERATION DISTRIBUTORS FOOD SERVICE CONSULTANTS

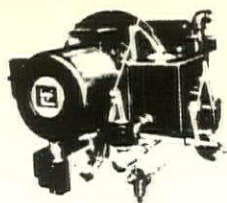
Complete Planning Service

For Markets and Food Stores
Special Industrial Refrigeration
Complete Air Conditioning
Hotel, Restaurant and
Institutional Kitchens,
Cafeterias, Dining Areas
Cocktail Lounges

HUMPHREYS, INC.

180 No. Main Street - Concord, N. H.

A Business Devoted To Those
Who Serve Food



D. H. McClarty Co., Inc. Heating and Plumbing

JOHNSON OIL BURNERS

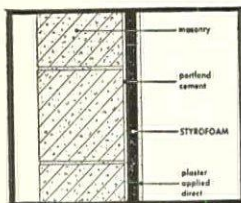
THE FINEST IN HEAVY OIL
BURNING EQUIPMENT

57 McCauley St. Manchester, N. H.
Phone 5-8693

new construction method with

STYROFOAM[®]

cuts building costs!



Styrofoam*, a Dow plastic foam insulation, is now available for a completely new construction method. Fully insulated masonry homes with plaster interiors can now be built without the usual

furring and lathing. And the finished plaster wall is warm and dry.

Styrofoam is clean, lightweight, easy to handle insulation that does not lose its effectiveness. It resists moisture, heat, cold and deterioration; assures lower fuel bills. And it's easy to cut and shape Styrofoam, even around pipes, windows and electrical outlets.

For complete details and free estimate, contact us today.

CORRIVEAU-ROUTHIER CEMENT BLOCK CO.

266 Clay Street — Manchester, N. H.
NAtional 2-3506

*Styrofoam is a registered trademark of The Dow Chemical Company

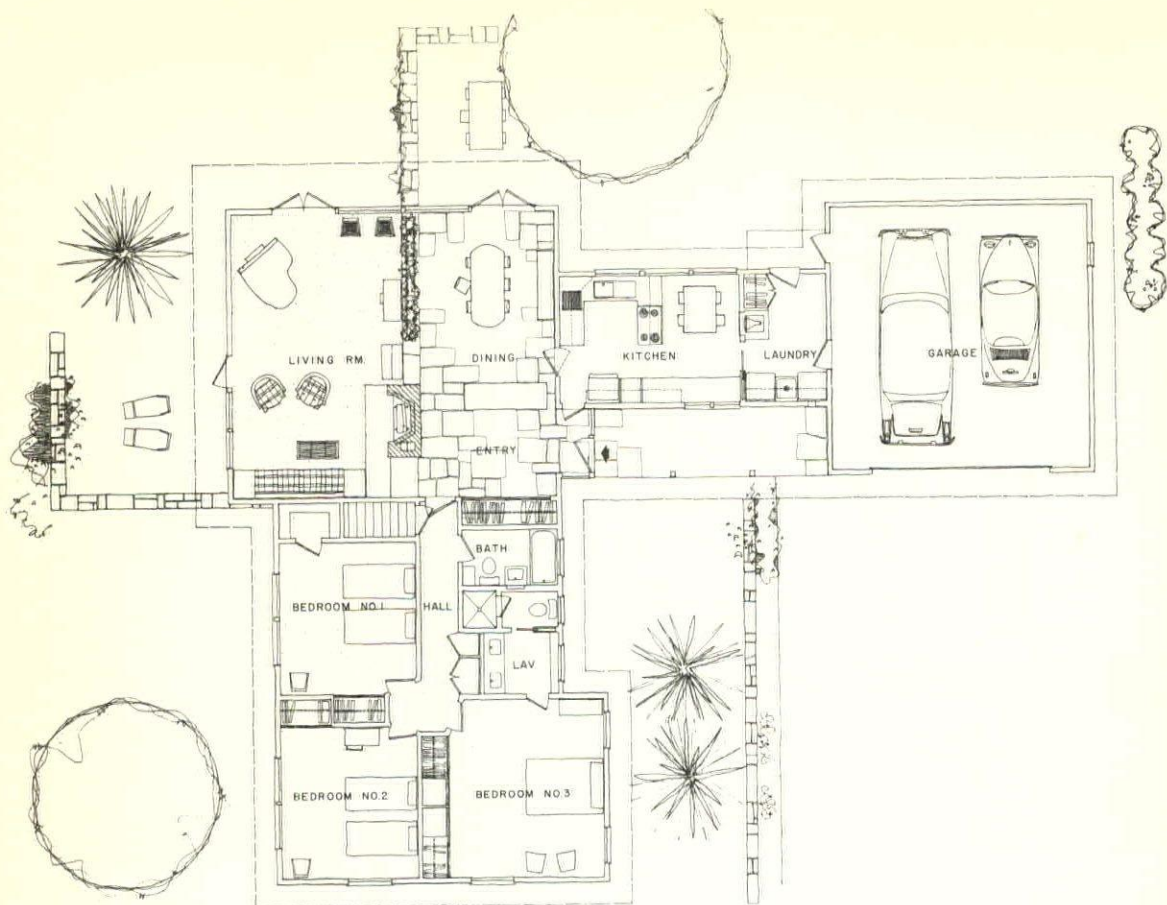
HOUSE FOR MR. & MRS. SHERMAN SEECHÉ
North Andover, Massachusetts

CARTER and WOODRUFF, A.I.A.
ARCHITECTS
Nashua, New Hampshire

This house was planned for a family of four on a sloping site which allows the play-room in the basement to open to grade. Care has been taken to maintain privacy in the bedroom areas and to open the living areas of the house to the lovely site.



Left to right: garage, laundry, kitchen, dining with its terrace, and living room defined by the stone wall.



Entrance Court: privacy within is provided by very limited window area on the "public" side of the house, contrasted to the fully open "private" side shown in photo #1. Traffic is subtly directed to the front door by the low stone wall which also keeps vehicles away from the house itself.



The stone wall which forms the dining terrace outside can be seen separating the dining from the living room. The areas, connected by the simple stone steps next to the fireplace at right, are under the same roof shape, giving the house a great sense of spaciousness as well as shelter.



The dominating fireplace of seamfaced granite forms a traffic-free area for quiet conversation. The rugged fireplace contrasts nicely with the mellow redwood panelling and the architect-designed birch phonograph cabinet. The rough sand-finished plaster of the ceiling unifies and joins all the spaces together.

ANNOUNCEMENT

The Whiting Fence Co., for 28 years located in Cambridge, Mass., was recently purchased by Leon E. Pearson et al. The new headquarters is located on the Daniel Webster Highway, North, one-half mile north of Bypass 28 Junction, at the Red Barn, just past Howard Johnson's Restaurant.

Now operating as Whiting Fence Co., Inc., we are the oldest manufacturer and distributor of Rustic Cedar Fences. For natural beauty, for strength, for permanence, select LOCK-WEAVE Screen Fencing.

Distributed in New Hampshire by

N. H. LANDSCAPING, INC.

RFD No. 1 Manchester Tel. NA 3-4313

**REYNOLDS HOME IMPROVEMENT
SHOPPING CENTER**

714 Hanover St. Manchester NA 2-0614

PRESCOTT LUMBER CO.

Meredith, N. H. Tel. CRestview 9-4531

Also sold throughout New Hampshire and New England by your better lumber dealers and many fence erection companies. Descriptive literature available upon request. We urge you to compare the Whiting Fence with other Cedar Fences.

WHITING FENCE CO., Inc.

D. W. Highway, North NA 3-4313

EDITOR
New Hampshire Architect
Palomino Lane
Manchester, N.H.

Dear Sir We received a copy
of New Hampshire Architect recently. We think
it is an excellent magazine.

Cordially yours,

Eaton W. Tarbell
Eaton W. Tarbell, AIA

EATON W. TARBELL & ASSOCIATES, INC.
ARCHITECTS
173 EXCHANGE STREET • BANGOR, MAINE

HERE IT IS!

Whiting Cedar Fence

**THE OLDEST AND MOST RESPECTED NAME
IN THE FIELD OF CEDAR FENCING**

COMES TO NEW HAMPSHIRE!

FENCING IS PART OF YOUR LANDSCAPING PICTURE!

Call **LEON E. PEARSON**

20 YEARS OF EXPERIENCE

FOR THE BEST

PROFESSIONAL ADVICE

EXPERT INSTALLATION

ON THIS TYPE OF FENCING

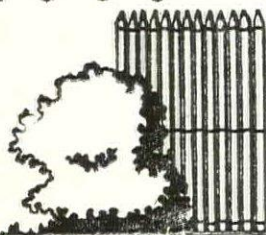
N. H. Landscaping

• • • INC. • • •

**N. H. DISTRIBUTORS FOR
WHITING FENCES**

D. W. Highway, No.
Just Past 28 Bypass Junction
at the RED BARN

Tel. NA 3-4313



Panel Industrial, Inc.

*Distributors of
Construction Equipment and Supplies*

159 SOUTH MAIN STREET • CONCORD, N.H.

TEL. CA 5-2726

Sonneborn Building Materials
Delta Power Tools
DeWalt Radial Saws
Schlueter Artic Boy Water Coolers
Timken Bits
Crosby Clips
Aeroquip Hose & Couplings
Vulcan Drill Steel & Pavement Breaking
Tools
Laughlin Drop Forge Fittings
Dixon Valves & Couplings
Springs — New & Repaired
Welding Supplies — Marquette, Victor
& Stulz-Sickles
Complete Motor Rebuilding
Kohler Electric Plants
Complete stock of all sizes Machine
Bolts & Cap Screws

DID YOU KNOW WHERE TO LOCATE THEM?

The publishers of New Hampshire Architect and Clark and Stearns, Inc., one of our advertisers, realize that at least fifty per cent of our readers know the address and telephone number of Clark and Stearns, Inc.

But for the benefit of those readers who don't know the address and phone number, it is as follows: Location, South Commercial Street, Manchester, N. H. Telephone, NAtional 3-1402.

For some unknown reason, we omitted this bit of pertinent information in their advertisement concerning masonry finishes, published on Page 25 of the June issue.

WHO WAS IT?

ALL of which reminds us of the architect who went to Washington last winter on one of those flights that serves free cocktails to passengers. He landed during a snowstorm and took a taxi to the Hotel Mayflower.

Snow drifts had trapped the caretaker inside the Washington Monument and the resourceful soul had built a fire to keep from freezing to death. As a result, smoke was billowing out around the base of the Monument as the taxi passed by.

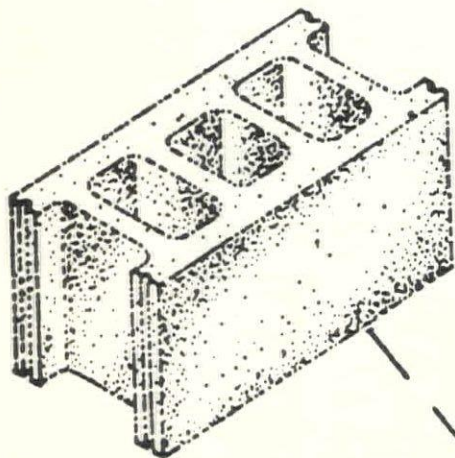
The happy architect turned to a companion and offered: "Ten to one they never get it off the ground."

RESORT LIVING AT HOME

The appeal of "resort living at home" has each year led more and more smart homeowners to build outdoor living facilities for eating, playing, and just relaxing. It's a good idea. A small amount of planning and work, and a moderate outlay can pay generous dividends in increased enjoyment of the home and in significantly increased property value.

1ST STEP TO SOUND, SUCCESSFUL BUILDING

CONSULT AN ARCHITECT



DURACRETE

**FINEST GARAGE DOOR BUILT!
THE**



**Residential - Commercial - Industrial
Sales - Installation - Service**

**OVERHEAD DOOR PRODUCTS
CORPORATION**

Nashua, N. H. TUXedo 2-9786
Manchester, N. H. NA 2-1611

CALIFORNIA



... the finest all-purpose interior
paint for plaster, dry wall and
masonry ... and RAY-O-GLOS for
semi-glos latex enamel trim.

**MANUFACTURED IN
NEW ENGLAND**

California Stucco Products of N. E., Inc.

169 Waverly Street, Cambridge 39, Mass.
KI 7-5300

Architects

have long recognized the benefits derived from the
timely, systematic interchange of information in
the construction field. They find that this benefits
their clients and all concerned ... brings a wider
range of bids ... brings more complete news of
new products, new trends, new techniques. And it
saves much time that might otherwise be wasted
on salesmen uninformed as to the architects'
current interests.

This information, incorporated in Dodge Reports,
is helpful to all firms in new construction. And
it guides the *right* supplier's salesman to the
right architect at the *right* time.

That's why for more than 65 years architects have
found it good practice to provide their Dodge
reporters with complete information about their
work.

DODGE REPORTS
Construction News Service

31 St. James Avenue, Boston 16
119 West 40th Street, New York 18

Colonial Supply Corp.

25 Union Street

MANCHESTER, N. H.

Plumbing - Heating - Mill Supplies

BORG WARNER'S HYDRALINE

Central

System Air Conditioning

HEATING — in Winter

COOLING — in Summer

Today's Trend In Building

**WE INVITE YOU TO VISIT THE
LARGEST SHOWROOM IN NEW ENGLAND**

WHOLESALE ONLY

Dutch Boy —THE NAME TO
GO BUY—FOR EVERY PAINT JOB

first choice of professional
painters — first choice with
home owners — that's *Dutch
Boy*. There's a *Dutch Boy*
mish specially blended for
every painting need, inside
or outside your home, and
you can depend on it for
long-lasting beauty. Choose
ours today at—



PAINT DEPARTMENT
Main Store — Street Floor
BUILDERS' PAINT DEPARTMENT
Opposite Main Store
(Rear of State Theatre)

EXCLUSIVE DEALER
J. J. MOREAU & SON, INC
MANCHESTER, N. H.
Dial 4-4311

E. S. BOULOS CO.

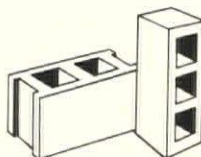
ELECTRICAL ENGINEERS and CONTRACTORS

1217 ELM STREET
MANCHESTER, N. H.
Tel. National 3-8831
P. O. Box 837

21 CENTER STREET
PORTLAND, MAINE
Tel. SPruce 2-3706
P. O. Box 860

*"Serving Northern New England
since 1920"*

"RUGGED AS MONADNOCK"



MONADNOCK BLOCKS

... the best in concrete masonry ...

standard blocks
of all types
split block

hilite block
shadow block
duraglaze block
formbloc

REDI-MIXED CONCRETE

available at plants in Keene, Charlestown and Peterborough
COMPLETE LINE OF MASONRY SUPPLIES

ARTHUR WHITCOMB, inc.

725 MAIN ST., KEENE, N. H.

Serving the People of NEW HAMPSHIRE

John D. Betley,
Manchester

Bradt, Littlefield & Williams
Dover

Dirsa and Lampron,
Manchester

W. Brooke Fleck,
Hanover

Alfred T. Granger Associates,
Hanover

Gray and Ingram,
Hanover

Russell S. Harmon,
Durham

Irving W. Hersey Associates,
Durham

John R. Holbrook Associates,
Keene

Andrew C. Isaak
Manchester

Koehler and Isaak,
Manchester

Alexander Majeski,
Bedford

Arnold Perreton and Associates,
Concord

Peterson, Hamlen and Soule,
Manchester

Douglass G. Prescott,
Laconia

Leo P. Provost,
Manchester

Norman P. Randlett,
Laconia

Tracy and Hildreth,
Nashua

William L. White,
Exeter

Maurice E. Witmer,
Portsmouth

Participating Members of the New Hampshire Chapter —

A. I. A.



ELECTRICAL
CONTRACTOR

Residential and Industrial Wiring

DIAL MAN. 3-3568

875 South Willow St., Manchester, N. H.

Motor Repairing

PALMER

Plumbing Supply Co.

Wholesalers

Plumbing - Heating - Mill Supplies

Distributors of

VEIL-McLAIN BOILERS

KOHLER ENAMELWARE

PETRO OIL BURNERS

ROCHESTER, LACONIA, N. H.
PORTLAND, ME.

"Competent Engineering Service"

**S
T
E
E
L**

Lyons

IRON WORKS, Inc.
MANCHESTER, NEW HAMPSHIRE

NEW HAMPSHIRE ARCHITECT

P. O. Box 291, Concord, N. H.

Sec. 34.66 P. L. & R.
U. S. POSTAGE
PAID

Concord, N. H.

Library-American Inst. of Architects
1735 New York Ave. N.W.
Washington 6, D.C.

Form 3547 Requested

Call **DENSMORE** *For Fast Delivery . . .*



of
CLAY PRODUCTS
and
MASONRY SUPPLIES



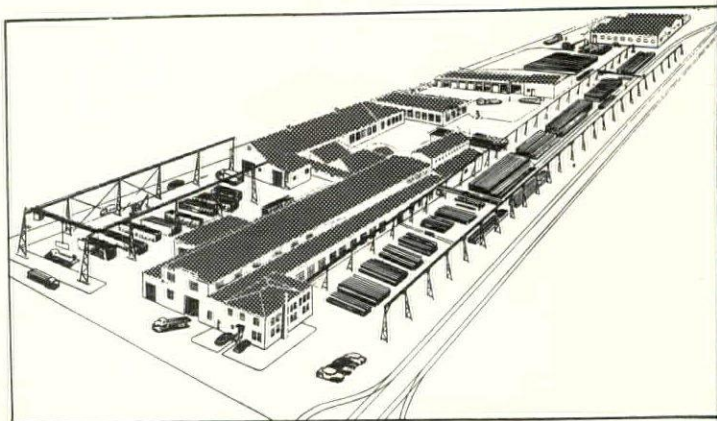
Face Brick	—	Glazed Facing Tile
Sewer Pipe	—	Flue Lining
Fire Brick	—	Water Proofing
Scaffolding	—	Metal Specialties

DENSMORE BRICK COMPANY

Manufacturers and Distributors • Lebanon, New Hampshire

**Serving Northern
New England
and New York
with Steel
Products**

Our large steel fabrication plant can provide you with structural steel, longspan trusses, ornamental iron and fabricated platework. Our warehouse is kept stocked with large inventories of steel and steel products in all sizes. Prompt delivery is our goal on all orders, large or small.



Aerial view of Vermont Structural Steel Corp.

LET US QUOTE ON YOUR REQUIREMENTS

VERMONT STRUCTURAL STEEL CORP.

Plant and Warehouse Dial

UNiversity
4-9844

Burlington

207 FLYNN AVENUE
BURLINGTON, VT.